



Full wwPDB EM Validation Report ⓘ

Dec 16, 2024 – 01:06 PM JST

PDB ID : 8KCO
EMDB ID : EMD-37106
Title : Cryo-EM structure of human gamma-secretase in complex with RO4929097
Authors : Guo, X.; Li, H.; Kai, U.; Yan, C.; Lei, J.; Zhou, R.; Shi, Y.
Deposited on : 2023-08-08
Resolution : 2.80 Å(reported)

This is a Full wwPDB EM Validation Report for a publicly released PDB entry.

We welcome your comments at validation@mail.wwpdb.org

A user guide is available at

<https://www.wwpdb.org/validation/2017/EMValidationReportHelp>

with specific help available everywhere you see the ⓘ symbol.

The types of validation reports are described at

<http://www.wwpdb.org/validation/2017/FAQs#types>.

The following versions of software and data (see [references ⓘ](#)) were used in the production of this report:

EMDB validation analysis : 0.0.1.dev113
Mogul : 1.8.5 (274361), CSD as541be (2020)
MolProbity : 4.02b-467
buster-report : 1.1.7 (2018)
Percentile statistics : 20231227.v01 (using entries in the PDB archive December 27th 2023)
MapQ : 1.9.13
Ideal geometry (proteins) : Engh & Huber (2001)
Ideal geometry (DNA, RNA) : Parkinson et al. (1996)
Validation Pipeline (wwPDB-VP) : 2.40

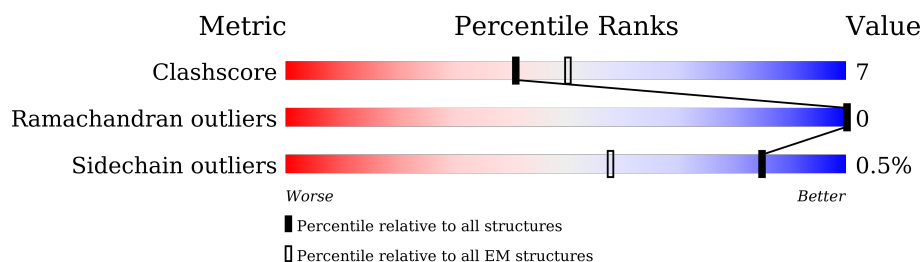
1 Overall quality at a glance

The following experimental techniques were used to determine the structure:

ELECTRON MICROSCOPY


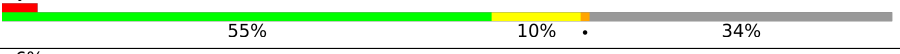


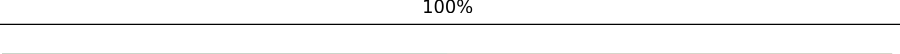

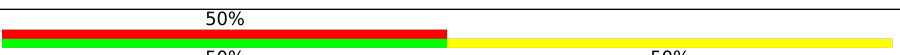

The reported resolution of this entry is 2.80 Å.

Percentile scores (ranging between 0-100) for global validation metrics of the entry are shown in the following graphic. The table shows the number of entries on which the scores are based.



Metric	Whole archive (#Entries)	EM structures (#Entries)
Clashscore	210492	15764
Ramachandran outliers	207382	16835
Sidechain outliers	206894	16415

The table below summarises the geometric issues observed across the polymeric chains and their fit to the map. The red, orange, yellow and green segments of the bar indicate the fraction of residues that contain outliers for ≥ 3 , 2, 1 and 0 types of geometric quality criteria respectively. A grey segment represents the fraction of residues that are not modelled. The numeric value for each fraction is indicated below the corresponding segment, with a dot representing fractions $\leq 5\%$. The upper red bar (where present) indicates the fraction of residues that have poor fit to the EM map (all-atom inclusion $< 40\%$). The numeric value is given above the bar.

Mol	Chain	Length	Quality of chain
1	A	701	 83% 12% 5%
2	B	467	 55% 10% 34%
3	C	265	 6% 80% 11% 8%
4	D	101	 8% 86% 9% 5%
5	E	2	 50% 100%
5	G	2	 50% 50%
5	H	2	 50% 50%
5	I	2	 50% 50%

Continued on next page...

Continued from previous page...

Mol	Chain	Length	Quality of chain
5	J	2	<div><div></div><div>50%</div><div></div><div>50%</div></div>
6	F	5	<div><div></div><div>40%</div><div></div><div>80%</div><div></div><div>20%</div></div>

2 Entry composition [i](#)

There are 10 unique types of molecules in this entry. The entry contains 10837 atoms, of which 0 are hydrogens and 0 are deuteriums.

In the tables below, the AltConf column contains the number of residues with at least one atom in alternate conformation and the Trace column contains the number of residues modelled with at most 2 atoms.

- Molecule 1 is a protein called Nicastrin.

Mol	Chain	Residues	Atoms					AltConf	Trace
1	A	667	Total	C	N	O	S	0	0
			5235	3321	890	1003	21		

- Molecule 2 is a protein called Presenilin-1.

Mol	Chain	Residues	Atoms					AltConf	Trace
2	B	307	Total	C	N	O	S	0	0
			2436	1649	370	403	14		

- Molecule 3 is a protein called Gamma-secretase subunit APH-1A.

Mol	Chain	Residues	Atoms					AltConf	Trace
3	C	243	Total	C	N	O	S	0	0
			1872	1254	299	315	4		

- Molecule 4 is a protein called Gamma-secretase subunit PEN-2.

Mol	Chain	Residues	Atoms					AltConf	Trace
4	D	96	Total	C	N	O	S	0	0
			814	559	126	128	1		

- Molecule 5 is an oligosaccharide called 2-acetamido-2-deoxy-beta-D-glucopyranose-(1-4)-2-acetamido-2-deoxy-beta-D-glucopyranose.



Mol	Chain	Residues	Atoms				AltConf	Trace
5	E	2	Total	C	N	O	0	0
			28	16	2	10		
5	G	2	Total	C	N	O	0	0
			28	16	2	10		

Continued on next page...

Continued from previous page...

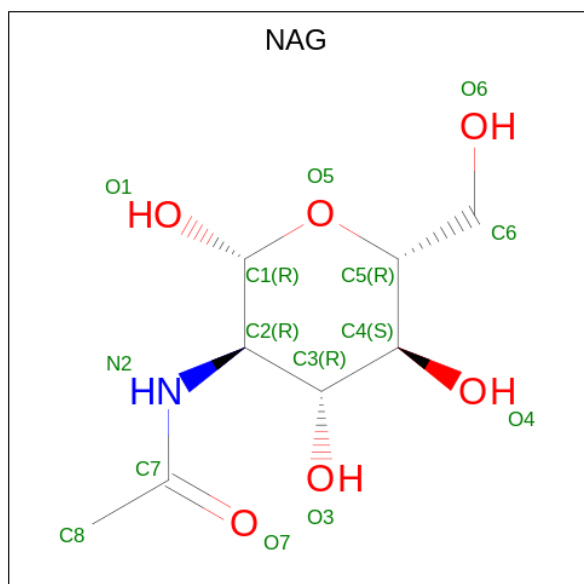
Mol	Chain	Residues	Atoms				AltConf	Trace
5	H	2	Total	C	N	O	0	0
			28	16	2	10		
5	I	2	Total	C	N	O	0	0
			28	16	2	10		
5	J	2	Total	C	N	O	0	0
			28	16	2	10		

- Molecule 6 is an oligosaccharide called beta-D-mannopyranose-(1-3)-[beta-D-mannopyranos e-(1-6)]beta-D-mannopyranose-(1-4)-2-acetamido-2-deoxy-beta-D-glucopyranose-(1-4)-2-acetamido-2-deoxy-beta-D-glucopyranose.



Mol	Chain	Residues	Atoms				AltConf	Trace
6	F	5	Total	C	N	O	0	0
			61	34	2	25		

- Molecule 7 is 2-acetamido-2-deoxy-beta-D-glucopyranose (three-letter code: NAG) (formula: C₈H₁₅NO₆).



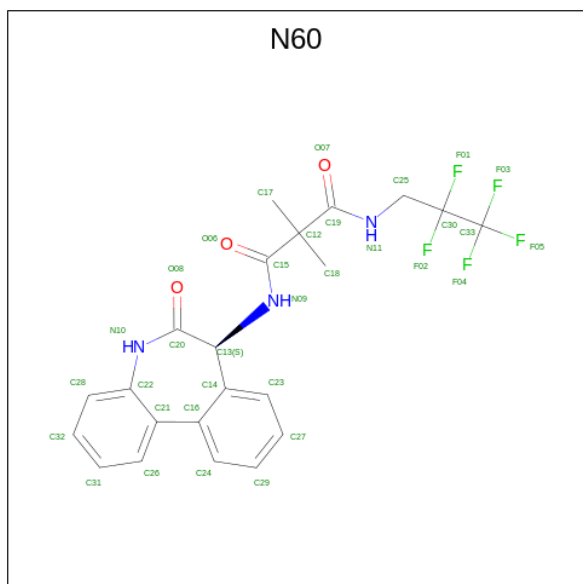
Mol	Chain	Residues	Atoms				AltConf
7	A	1	Total	C	N	O	0
			14	8	1	5	

Continued on next page...

Continued from previous page...

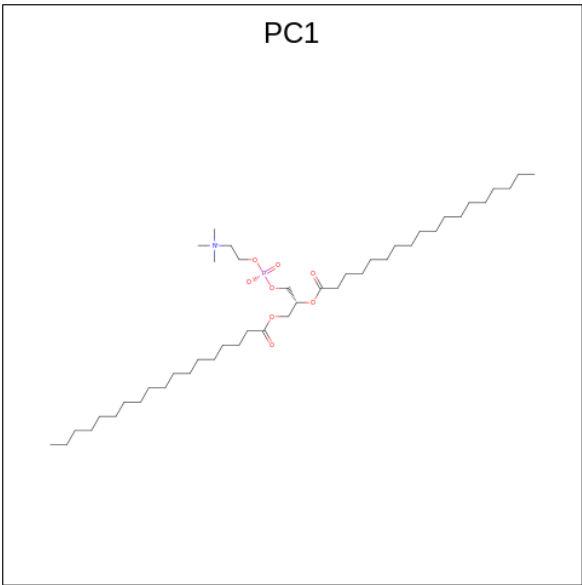
Mol	Chain	Residues	Atoms				AltConf
7	A	1	Total	C	N	O	0
			14	8	1	5	
7	A	1	Total	C	N	O	0
			14	8	1	5	
7	A	1	Total	C	N	O	0
			14	8	1	5	
7	A	1	Total	C	N	O	0
			14	8	1	5	
7	A	1	Total	C	N	O	0
			14	8	1	5	

- Molecule 8 is 2,2-dimethyl-N-[(7S)-6-oxo-5,7-dihydrobenzo[d][1]benzazepin-7-yl]-N'-(2,2,3,3,3-pentafluoropropyl)propanediamide (three-letter code: N60) (formula: C₂₂H₂₀F₅N₃O₃) (labeled as "Ligand of Interest" by depositor).



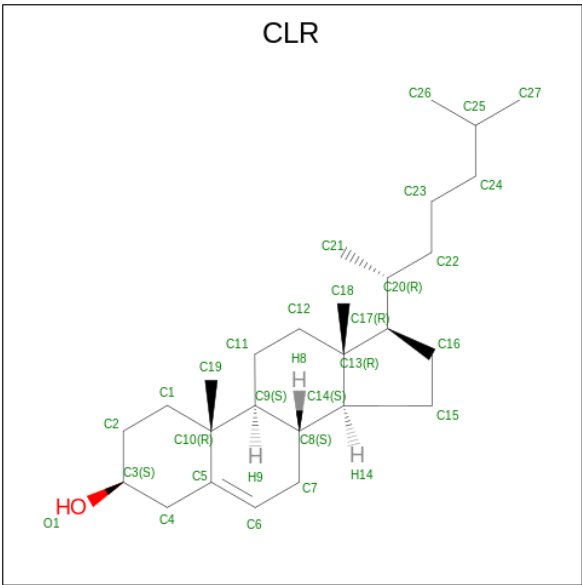
Mol	Chain	Residues	Atoms				AltConf
8	B	1	Total	C	F	N	O
			33	22	5	3	3
							0

- Molecule 9 is 1,2-DIACYL-SN-GLYCERO-3-PHOSPHOCHOLINE (three-letter code: PC1) (formula: C₄₄H₈₈NO₈P).



Mol	Chain	Residues	Atoms					AltConf
9	B	1	Total	C	N	O	P	0
			37	27	1	8	1	
9	C	1	Total	C	N	O	P	0
			41	31	1	8	1	

- Molecule 10 is CHOLESTEROL (three-letter code: CLR) (formula: C₂₇H₄₆O).



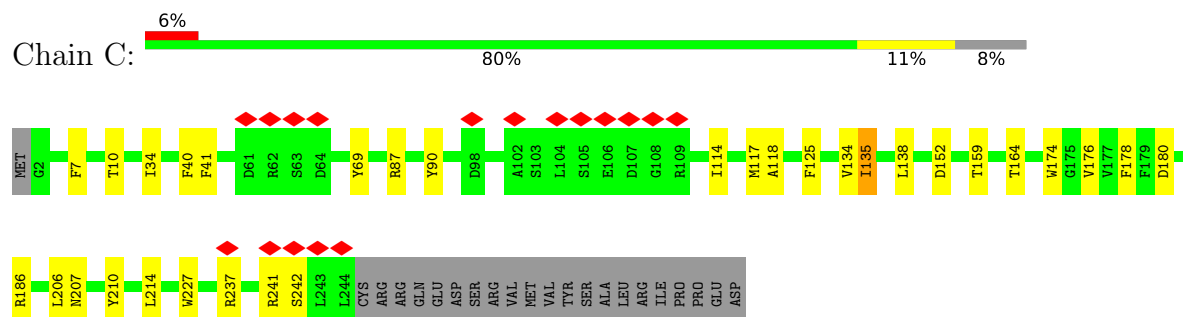
Mol	Chain	Residues	Atoms			AltConf
10	C	1	Total	C	O	0
			28	27	1	
10	C	1	Total	C	O	0
			28	27	1	

Continued on next page...

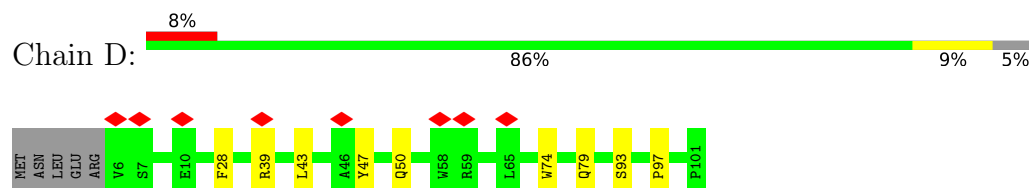
Continued from previous page...

Mol	Chain	Residues	Atoms			AltConf
			Total	C	O	
10	C	1	28	27	1	0

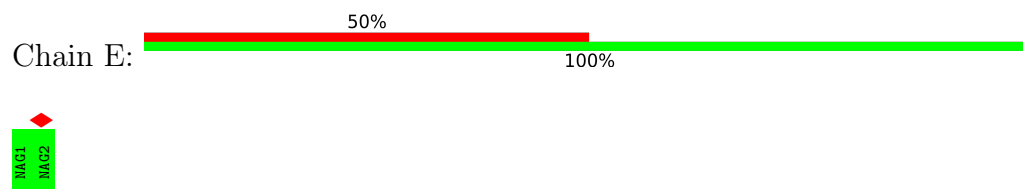
- Molecule 3: Gamma-secretase subunit APH-1A



- Molecule 4: Gamma-secretase subunit PEN-2



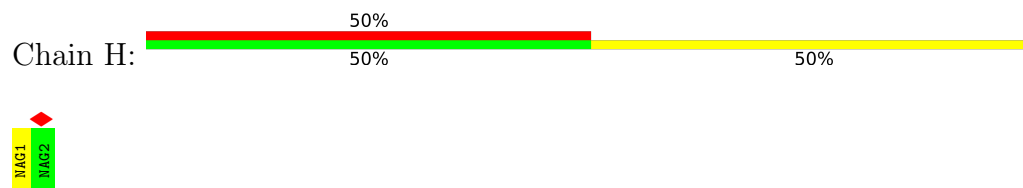
- Molecule 5: 2-acetamido-2-deoxy-beta-D-glucopyranose-(1-4)-2-acetamido-2-deoxy-beta-D-glucopyranose



- Molecule 5: 2-acetamido-2-deoxy-beta-D-glucopyranose-(1-4)-2-acetamido-2-deoxy-beta-D-glucopyranose



- Molecule 5: 2-acetamido-2-deoxy-beta-D-glucopyranose-(1-4)-2-acetamido-2-deoxy-beta-D-glucopyranose



- Molecule 5: 2-acetamido-2-deoxy-beta-D-glucopyranose-(1-4)-2-acetamido-2-deoxy-beta-D-glucopyranose





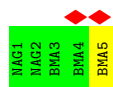
- Molecule 5: 2-acetamido-2-deoxy-beta-D-glucopyranose-(1-4)-2-acetamido-2-deoxy-beta-D-glucopyranose

Chain J: 50% 50%



- Molecule 6: beta-D-mannopyranose-(1-3)-[beta-D-mannopyranose-(1-6)]beta-D-mannopyranose-(1-4)-2-acetamido-2-deoxy-beta-D-glucopyranose-(1-4)-2-acetamido-2-deoxy-beta-D-glucopyranose

Chain F: 40% 80% 20%



4 Experimental information

Property	Value	Source
EM reconstruction method	SINGLE PARTICLE	Depositor
Imposed symmetry	POINT, Not provided	
Number of particles used	5551418	Depositor
Resolution determination method	FSC 0.143 CUT-OFF	Depositor
CTF correction method	PHASE FLIPPING AND AMPLITUDE CORRECTION	Depositor
Microscope	FEI TITAN KRIOS	Depositor
Voltage (kV)	300	Depositor
Electron dose ($e^-/\text{\AA}^2$)	50	Depositor
Minimum defocus (nm)	1500	Depositor
Maximum defocus (nm)	1800	Depositor
Magnification	Not provided	
Image detector	GATAN K3 (6k x 4k)	Depositor
Maximum map value	3.006	Depositor
Minimum map value	-1.150	Depositor
Average map value	0.002	Depositor
Map value standard deviation	0.058	Depositor
Recommended contour level	0.6	Depositor
Map size (Å)	351.328, 351.328, 351.328	wwPDB
Map dimensions	320, 320, 320	wwPDB
Map angles (°)	90.0, 90.0, 90.0	wwPDB
Pixel spacing (Å)	1.0979, 1.0979, 1.0979	Depositor

5 Model quality

5.1 Standard geometry

Bond lengths and bond angles in the following residue types are not validated in this section: N60, PC1, BMA, CLR, NAG

The Z score for a bond length (or angle) is the number of standard deviations the observed value is removed from the expected value. A bond length (or angle) with $|Z| > 5$ is considered an outlier worth inspection. RMSZ is the root-mean-square of all Z scores of the bond lengths (or angles).

Mol	Chain	Bond lengths		Bond angles	
		RMSZ	$\# Z > 5$	RMSZ	$\# Z > 5$
1	A	0.42	1/5358 (0.0%)	0.60	1/7302 (0.0%)
2	B	0.40	0/2499	0.61	1/3410 (0.0%)
3	C	0.43	0/1924	0.61	0/2624
4	D	0.42	0/847	0.53	0/1157
All	All	0.41	1/10628 (0.0%)	0.60	2/14493 (0.0%)

Chiral center outliers are detected by calculating the chiral volume of a chiral center and verifying if the center is modelled as a planar moiety or with the opposite hand. A planarity outlier is detected by checking planarity of atoms in a peptide group, atoms in a mainchain group or atoms of a sidechain that are expected to be planar.

Mol	Chain	#Chirality outliers	#Planarity outliers
1	A	0	2
2	B	0	2
3	C	0	1
All	All	0	5

All (1) bond length outliers are listed below:

Mol	Chain	Res	Type	Atoms	Z	Observed(Å)	Ideal(Å)
1	A	261	LYS	C-N	9.04	1.51	1.34

All (2) bond angle outliers are listed below:

Mol	Chain	Res	Type	Atoms	Z	Observed(°)	Ideal(°)
2	B	286	LEU	CA-CB-CG	6.86	131.08	115.30
1	A	282	LEU	CA-CB-CG	6.09	129.31	115.30

There are no chirality outliers.

All (5) planarity outliers are listed below:

Mol	Chain	Res	Type	Group
1	A	209	THR	Peptide
1	A	91	ASN	Peptide
2	B	279	ASN	Peptide
2	B	435	LEU	Peptide
3	C	206	LEU	Peptide

5.2 Too-close contacts

In the following table, the Non-H and H(model) columns list the number of non-hydrogen atoms and hydrogen atoms in the chain respectively. The H(added) column lists the number of hydrogen atoms added and optimized by MolProbity. The Clashes column lists the number of clashes within the asymmetric unit, whereas Symm-Clashes lists symmetry-related clashes.

Mol	Chain	Non-H	H(model)	H(added)	Clashes	Symm-Clashes
1	A	5235	0	5126	54	0
2	B	2436	0	2558	46	0
3	C	1872	0	1911	34	0
4	D	814	0	804	7	0
5	E	28	0	25	0	0
5	G	28	0	25	0	0
5	H	28	0	25	0	0
5	I	28	0	25	0	0
5	J	28	0	25	0	0
6	F	61	0	52	0	0
7	A	84	0	78	0	0
8	B	33	0	0	1	0
9	B	37	0	48	1	0
9	C	41	0	56	1	0
10	C	84	0	138	17	0
All	All	10837	0	10896	146	0

The all-atom clashscore is defined as the number of clashes found per 1000 atoms (including hydrogen atoms). The all-atom clashscore for this structure is 7.

All (146) close contacts within the same asymmetric unit are listed below, sorted by their clash magnitude.

Atom-1	Atom-2	Interatomic distance (Å)	Clash overlap (Å)
2:B:291:THR:CG2	2:B:378:GLY:HA3	1.48	1.41
2:B:291:THR:HG23	2:B:378:GLY:HA3	1.22	1.12
10:C:302:CLR:H25	10:C:302:CLR:H211	1.18	1.12
2:B:291:THR:CG2	2:B:378:GLY:CA	2.26	1.12

Continued on next page...

Continued from previous page...

Atom-1	Atom-2	Interatomic distance (Å)	Clash overlap (Å)
2:B:291:THR:HG21	2:B:378:GLY:CA	1.83	1.08
3:C:69:TYR:HE2	10:C:301:CLR:H6	1.16	1.08
2:B:291:THR:HG21	2:B:378:GLY:HA3	1.30	1.04
3:C:134:VAL:CG1	3:C:138:LEU:HD13	1.87	1.03
10:C:302:CLR:H211	10:C:302:CLR:C25	1.89	1.01
3:C:69:TYR:CE2	10:C:301:CLR:H6	2.04	0.91
10:C:302:CLR:H221	10:C:302:CLR:H183	1.53	0.89
2:B:381:LEU:HD23	2:B:386:PHE:CE2	2.08	0.89
3:C:134:VAL:HG12	3:C:134:VAL:O	1.79	0.82
3:C:134:VAL:HG13	3:C:138:LEU:HD13	1.61	0.82
3:C:134:VAL:HG12	3:C:138:LEU:HD13	1.62	0.82
1:A:629:ARG:HH21	1:A:631:LEU:HD12	1.44	0.82
3:C:134:VAL:CG2	3:C:164:THR:OG1	2.29	0.80
10:C:302:CLR:H211	10:C:302:CLR:C24	2.12	0.78
1:A:261:LYS:HD3	1:A:318:VAL:O	1.84	0.77
10:C:302:CLR:H221	10:C:302:CLR:C18	2.18	0.73
2:B:291:THR:HG21	2:B:378:GLY:N	2.03	0.73
1:A:629:ARG:NH2	1:A:631:LEU:HD12	2.06	0.70
10:C:302:CLR:H183	10:C:302:CLR:C22	2.22	0.70
3:C:69:TYR:HE2	10:C:301:CLR:C6	2.02	0.68
3:C:134:VAL:CG1	3:C:134:VAL:O	2.42	0.67
1:A:629:ARG:HH21	1:A:631:LEU:CD1	2.07	0.67
2:B:117:PRO:HD3	2:B:138:ILE:HD11	1.78	0.66
2:B:85:LEU:HD13	2:B:381:LEU:HD13	1.77	0.66
10:C:302:CLR:H25	10:C:302:CLR:C21	2.12	0.65
2:B:194:ASP:OD2	4:D:74:TRP:NE1	2.28	0.65
1:A:261:LYS:HB2	1:A:261:LYS:NZ	2.11	0.64
2:B:381:LEU:CD2	2:B:386:PHE:CE2	2.80	0.64
1:A:530:ASN:OD1	1:A:535:GLN:NE2	2.34	0.61
2:B:96:VAL:HG21	2:B:390:SER:HB3	1.83	0.60
2:B:291:THR:O	2:B:291:THR:OG1	2.18	0.60
2:B:85:LEU:HD11	2:B:379:VAL:CG1	2.31	0.60
3:C:180:ASP:OD2	3:C:186:ARG:NH2	2.35	0.59
1:A:342:ARG:HH12	1:A:636:GLU:HG3	1.66	0.59
2:B:157:ARG:NH1	2:B:278:ARG:NH1	2.51	0.59
3:C:134:VAL:HG23	3:C:164:THR:OG1	2.02	0.59
3:C:87:ARG:HH12	3:C:174:TRP:HB3	1.67	0.58
1:A:246:ILE:HB	1:A:652:ARG:NH1	2.18	0.58
1:A:265:THR:HG21	1:A:626:ARG:NH1	2.19	0.58
2:B:88:PRO:HG3	2:B:288:TYR:OH	2.02	0.58
3:C:87:ARG:NH1	3:C:174:TRP:HB3	2.19	0.57

Continued on next page...

Continued from previous page...

Atom-1	Atom-2	Interatomic distance (Å)	Clash overlap (Å)
9:C:304:PC1:H362	9:C:304:PC1:H2A1	1.88	0.56
1:A:632:SER:OG	1:A:645:TYR:O	2.23	0.56
1:A:408:VAL:HG22	1:A:410:ALA:H	1.71	0.55
3:C:237:ARG:HB3	3:C:241:ARG:NH1	2.22	0.55
2:B:194:ASP:HA	4:D:93:SER:HA	1.89	0.55
1:A:282:LEU:HD11	1:A:567:VAL:HG21	1.89	0.55
10:C:302:CLR:C18	10:C:302:CLR:C22	2.85	0.55
1:A:224:VAL:HG11	1:A:233:ARG:HH12	1.72	0.55
3:C:87:ARG:HH21	3:C:125:PHE:HD2	1.55	0.55
3:C:135:ILE:HG23	3:C:135:ILE:O	2.06	0.54
1:A:218:PHE:O	1:A:656:ILE:HA	2.07	0.54
3:C:134:VAL:CG1	3:C:138:LEU:CD1	2.75	0.54
2:B:106:TYR:HA	2:B:239:LYS:HD3	1.89	0.54
3:C:134:VAL:HG21	3:C:164:THR:OG1	2.07	0.54
2:B:118:PHE:HB3	2:B:131:HIS:CG	2.43	0.53
2:B:379:VAL:HG12	2:B:379:VAL:O	2.08	0.53
1:A:253:ASP:HB3	1:A:331:GLN:HG2	1.89	0.53
1:A:210:PHE:O	1:A:212:LEU:N	2.42	0.53
9:B:502:PC1:H362	9:B:502:PC1:H2A2	1.89	0.53
1:A:261:LYS:O	1:A:324:ASN:ND2	2.36	0.53
1:A:261:LYS:HB2	1:A:261:LYS:HZ1	1.74	0.52
1:A:85:VAL:HG23	1:A:94:TYR:HB2	1.92	0.52
2:B:166:LEU:HD11	2:B:285:ALA:HB3	1.92	0.52
1:A:52:ARG:NH2	1:A:63:GLN:OE1	2.43	0.51
1:A:693:LYS:NZ	3:C:242:SER:O	2.40	0.51
1:A:473:PRO:HA	1:A:476:ASP:HB2	1.93	0.51
2:B:85:LEU:HD11	2:B:379:VAL:HG11	1.91	0.51
2:B:464:GLN:O	3:C:207:ASN:ND2	2.37	0.51
1:A:112:LYS:NZ	1:A:175:ASP:O	2.43	0.51
1:A:388:GLU:OE1	1:A:391:ARG:NH2	2.45	0.50
2:B:288:TYR:C	2:B:288:TYR:CD1	2.85	0.50
2:B:192:ALA:O	4:D:79:GLN:NE2	2.35	0.49
1:A:537:ILE:HG22	1:A:569:TYR:HB3	1.95	0.49
2:B:432:LEU:O	8:B:501:N60:N11	2.46	0.49
1:A:305:GLN:HE21	1:A:327:PHE:HD1	1.60	0.48
3:C:134:VAL:HG13	3:C:138:LEU:CD1	2.38	0.48
3:C:134:VAL:HG21	3:C:164:THR:CB	2.44	0.48
1:A:261:LYS:NZ	1:A:261:LYS:CB	2.75	0.48
4:D:39:ARG:HA	4:D:43:LEU:HD13	1.95	0.48
2:B:110:ASP:HB2	2:B:239:LYS:NZ	2.29	0.47
1:A:224:VAL:HG11	1:A:233:ARG:NH1	2.30	0.47

Continued on next page...

Continued from previous page...

Atom-1	Atom-2	Interatomic distance (Å)	Clash overlap (Å)
1:A:296:GLU:HG2	1:A:369:ALA:HB3	1.95	0.47
1:A:607:GLY:HA2	1:A:619:ARG:NH1	2.29	0.47
10:C:303:CLR:H212	10:C:303:CLR:H121	1.97	0.47
1:A:256:VAL:HG13	1:A:329:PHE:HB2	1.97	0.47
3:C:227:TRP:NE1	10:C:302:CLR:H122	2.30	0.46
1:A:580:ASN:OD1	1:A:580:ASN:N	2.41	0.46
2:B:256:TYR:HA	2:B:259:VAL:HG12	1.98	0.46
1:A:54:LEU:HD11	1:A:223:ALA:HB1	1.96	0.46
1:A:74:HIS:O	1:A:96:VAL:HA	2.15	0.46
1:A:607:GLY:HA2	1:A:619:ARG:HH12	1.80	0.46
3:C:227:TRP:CD1	10:C:302:CLR:H17	2.51	0.46
2:B:116:THR:O	2:B:116:THR:OG1	2.33	0.46
1:A:278:ALA:O	1:A:305:GLN:NE2	2.49	0.46
1:A:496:ARG:HG2	1:A:511:VAL:HG13	1.98	0.45
3:C:34:ILE:O	3:C:90:TYR:OH	2.31	0.45
1:A:202:SER:OG	1:A:206:SER:O	2.26	0.45
2:B:287:ILE:HG23	2:B:287:ILE:O	2.15	0.45
2:B:264:PRO:HA	2:B:269:ARG:NH1	2.32	0.45
1:A:275:VAL:HG12	1:A:324:ASN:HB3	2.00	0.44
2:B:120:GLU:OE2	2:B:128:ARG:NH1	2.45	0.44
3:C:7:PHE:HA	3:C:10:THR:HG22	2.00	0.44
3:C:114:ILE:HA	3:C:117:MET:HE2	2.00	0.44
1:A:335:PHE:O	1:A:337:TYR:N	2.50	0.44
2:B:173:LEU:HD22	2:B:229:ILE:HG23	2.00	0.44
1:A:317:ASP:OD1	1:A:320:THR:OG1	2.35	0.44
10:C:302:CLR:H262	10:C:302:CLR:H231	1.74	0.44
1:A:533:TRP:O	1:A:537:ILE:HG12	2.17	0.44
2:B:192:ALA:HB2	4:D:97:PRO:HD3	2.00	0.43
1:A:120:GLY:H	1:A:178:PHE:HB2	1.84	0.43
1:A:559:SER:HB2	1:A:629:ARG:HH12	1.83	0.43
2:B:103:VAL:HG12	2:B:105:PHE:H	1.84	0.43
1:A:39:LYS:HD2	3:C:152:ASP:OD2	2.19	0.42
1:A:49:PRO:HG3	1:A:656:ILE:HG21	2.01	0.42
1:A:200:ASN:HD21	1:A:213:CYS:HB3	1.84	0.42
2:B:211:ILE:HG23	2:B:215:TRP:HE3	1.84	0.42
2:B:157:ARG:HH12	2:B:278:ARG:NH1	2.16	0.42
2:B:416:ILE:HG13	3:C:40:PHE:HB2	2.00	0.42
4:D:47:TYR:HB2	4:D:50:GLN:HB2	2.01	0.42
1:A:381:ASP:OD2	1:A:431:LEU:HD13	2.19	0.42
2:B:142:VAL:HA	2:B:145:VAL:HG12	2.01	0.42
3:C:159:THR:HG23	3:C:214:LEU:HD22	2.01	0.42

Continued on next page...

Continued from previous page...

Atom-1	Atom-2	Interatomic distance (Å)	Clash overlap (Å)
1:A:460:ALA:HB1	1:A:465:VAL:HB	2.01	0.42
3:C:159:THR:HG21	3:C:210:TYR:CD1	2.54	0.42
1:A:73:ILE:HD11	1:A:215:MET:HB2	2.01	0.41
1:A:133:GLY:HA3	1:A:167:LEU:HD21	2.02	0.41
3:C:118:ALA:HB1	3:C:176:VAL:HA	2.00	0.41
3:C:41:PHE:HD2	3:C:90:TYR:HB2	1.86	0.41
2:B:88:PRO:CG	2:B:288:TYR:OH	2.68	0.41
2:B:85:LEU:HD12	2:B:422:LEU:HD21	2.03	0.41
2:B:435:LEU:HB3	2:B:439:ILE:HD12	2.02	0.41
2:B:449:THR:HA	2:B:453:VAL:HB	2.03	0.41
2:B:208:VAL:HG21	4:D:28:PHE:CD2	2.56	0.41
1:A:289:TRP:NE1	1:A:650:GLU:OE2	2.54	0.41
1:A:463:ILE:HG13	1:A:465:VAL:HG23	2.03	0.41
1:A:72:VAL:HG21	1:A:212:LEU:HD23	2.03	0.40
10:C:301:CLR:H183	10:C:301:CLR:H20	1.94	0.40
10:C:302:CLR:C24	10:C:302:CLR:C21	2.84	0.40
2:B:291:THR:HG23	2:B:378:GLY:CA	2.15	0.40
2:B:381:LEU:HD23	2:B:386:PHE:CD2	2.53	0.40
3:C:174:TRP:O	3:C:178:PHE:HB2	2.20	0.40

There are no symmetry-related clashes.

5.3 Torsion angles

5.3.1 Protein backbone

In the following table, the Percentiles column shows the percent Ramachandran outliers of the chain as a percentile score with respect to all PDB entries followed by that with respect to all EM entries.

The Analysed column shows the number of residues for which the backbone conformation was analysed, and the total number of residues.

Mol	Chain	Analysed	Favoured	Allowed	Outliers	Percentiles	
1	A	665/701 (95%)	616 (93%)	49 (7%)	0	100	100
2	B	303/467 (65%)	285 (94%)	18 (6%)	0	100	100
3	C	241/265 (91%)	229 (95%)	12 (5%)	0	100	100
4	D	94/101 (93%)	88 (94%)	6 (6%)	0	100	100
All	All	1303/1534 (85%)	1218 (94%)	85 (6%)	0	100	100

There are no Ramachandran outliers to report.

5.3.2 Protein sidechains ⓘ

In the following table, the Percentiles column shows the percent sidechain outliers of the chain as a percentile score with respect to all PDB entries followed by that with respect to all EM entries.

The Analysed column shows the number of residues for which the sidechain conformation was analysed, and the total number of residues.

Mol	Chain	Analysed	Rotameric	Outliers	Percentiles	
1	A	584/606 (96%)	582 (100%)	2 (0%)	91	97
2	B	265/408 (65%)	262 (99%)	3 (1%)	70	90
3	C	193/214 (90%)	192 (100%)	1 (0%)	86	95
4	D	84/89 (94%)	84 (100%)	0	100	100
All	All	1126/1317 (86%)	1120 (100%)	6 (0%)	85	95

All (6) residues with a non-rotameric sidechain are listed below:

Mol	Chain	Res	Type
1	A	261	LYS
1	A	691	ASN
2	B	288	TYR
2	B	377	ARG
2	B	379	VAL
3	C	135	ILE

Sometimes sidechains can be flipped to improve hydrogen bonding and reduce clashes. All (1) such sidechains are listed below:

Mol	Chain	Res	Type
1	A	691	ASN

5.3.3 RNA ⓘ

There are no RNA molecules in this entry.

5.4 Non-standard residues in protein, DNA, RNA chains ⓘ

There are no non-standard protein/DNA/RNA residues in this entry.

5.5 Carbohydrates ⓘ

15 monosaccharides are modelled in this entry.

In the following table, the Counts columns list the number of bonds (or angles) for which Mogul statistics could be retrieved, the number of bonds (or angles) that are observed in the model and the number of bonds (or angles) that are defined in the Chemical Component Dictionary. The Link column lists molecule types, if any, to which the group is linked. The Z score for a bond length (or angle) is the number of standard deviations the observed value is removed from the expected value. A bond length (or angle) with $|Z| > 2$ is considered an outlier worth inspection. RMSZ is the root-mean-square of all Z scores of the bond lengths (or angles).

Mol	Type	Chain	Res	Link	Bond lengths			Bond angles		
					Counts	RMSZ	# Z > 2	Counts	RMSZ	# Z > 2
5	NAG	E	1	5,1	14,14,15	0.29	0	17,19,21	0.47	0
5	NAG	E	2	5	14,14,15	0.23	0	17,19,21	0.62	0
6	NAG	F	1	6,1	14,14,15	0.32	0	17,19,21	0.59	0
6	NAG	F	2	6	14,14,15	0.21	0	17,19,21	0.59	0
6	BMA	F	3	6	11,11,12	0.81	0	15,15,17	0.94	0
6	BMA	F	4	6	11,11,12	0.81	0	15,15,17	0.82	0
6	BMA	F	5	6	11,11,12	1.55	2 (18%)	15,15,17	1.99	4 (26%)
5	NAG	G	1	5,1	14,14,15	0.28	0	17,19,21	1.12	2 (11%)
5	NAG	G	2	5	14,14,15	0.45	0	17,19,21	0.57	0
5	NAG	H	1	5,1	14,14,15	0.59	1 (7%)	17,19,21	0.64	0
5	NAG	H	2	5	14,14,15	0.24	0	17,19,21	0.63	0
5	NAG	I	1	5,1	14,14,15	0.19	0	17,19,21	0.56	0
5	NAG	I	2	5	14,14,15	0.86	1 (7%)	17,19,21	2.23	3 (17%)
5	NAG	J	1	5,1	14,14,15	0.46	0	17,19,21	0.48	0
5	NAG	J	2	5	14,14,15	0.19	0	17,19,21	0.63	1 (5%)

In the following table, the Chirals column lists the number of chiral outliers, the number of chiral centers analysed, the number of these observed in the model and the number defined in the Chemical Component Dictionary. Similar counts are reported in the Torsion and Rings columns. '-' means no outliers of that kind were identified.

Mol	Type	Chain	Res	Link	Chirals	Torsions	Rings
5	NAG	E	1	5,1	-	2/6/23/26	0/1/1/1
5	NAG	E	2	5	-	4/6/23/26	0/1/1/1
6	NAG	F	1	6,1	-	4/6/23/26	0/1/1/1
6	NAG	F	2	6	-	2/6/23/26	0/1/1/1
6	BMA	F	3	6	-	2/2/19/22	0/1/1/1
6	BMA	F	4	6	-	2/2/19/22	0/1/1/1
6	BMA	F	5	6	-	2/2/19/22	0/1/1/1

Continued on next page...

Continued from previous page...

Mol	Type	Chain	Res	Link	Chirals	Torsions	Rings
5	NAG	G	1	5,1	-	1/6/23/26	0/1/1/1
5	NAG	G	2	5	-	4/6/23/26	0/1/1/1
5	NAG	H	1	5,1	-	1/6/23/26	0/1/1/1
5	NAG	H	2	5	-	4/6/23/26	0/1/1/1
5	NAG	I	1	5,1	-	2/6/23/26	0/1/1/1
5	NAG	I	2	5	-	5/6/23/26	0/1/1/1
5	NAG	J	1	5,1	-	0/6/23/26	0/1/1/1
5	NAG	J	2	5	-	0/6/23/26	0/1/1/1

All (4) bond length outliers are listed below:

Mol	Chain	Res	Type	Atoms	Z	Observed(Å)	Ideal(Å)
6	F	5	BMA	C2-C3	3.11	1.57	1.52
6	F	5	BMA	C1-C2	3.08	1.59	1.52
5	I	2	NAG	C1-C2	2.61	1.56	1.52
5	H	1	NAG	O5-C1	-2.05	1.40	1.43

All (10) bond angle outliers are listed below:

Mol	Chain	Res	Type	Atoms	Z	Observed(°)	Ideal(°)
5	I	2	NAG	C2-N2-C7	7.79	133.99	122.90
6	F	5	BMA	C1-O5-C5	5.17	119.19	112.19
5	I	2	NAG	C1-C2-N2	3.60	116.64	110.49
6	F	5	BMA	C1-C2-C3	3.31	113.73	109.67
5	G	1	NAG	C2-N2-C7	3.10	127.32	122.90
6	F	5	BMA	O5-C1-C2	2.96	115.34	110.77
5	G	1	NAG	C1-O5-C5	2.40	115.45	112.19
6	F	5	BMA	C2-C3-C4	2.26	114.80	110.89
5	J	2	NAG	C1-O5-C5	2.22	115.20	112.19
5	I	2	NAG	C8-C7-N2	2.12	119.69	116.10

There are no chirality outliers.

All (35) torsion outliers are listed below:

Mol	Chain	Res	Type	Atoms
6	F	3	BMA	C4-C5-C6-O6
5	H	2	NAG	O5-C5-C6-O6
5	E	1	NAG	O5-C5-C6-O6
5	I	2	NAG	O5-C5-C6-O6
6	F	3	BMA	O5-C5-C6-O6

Continued on next page...

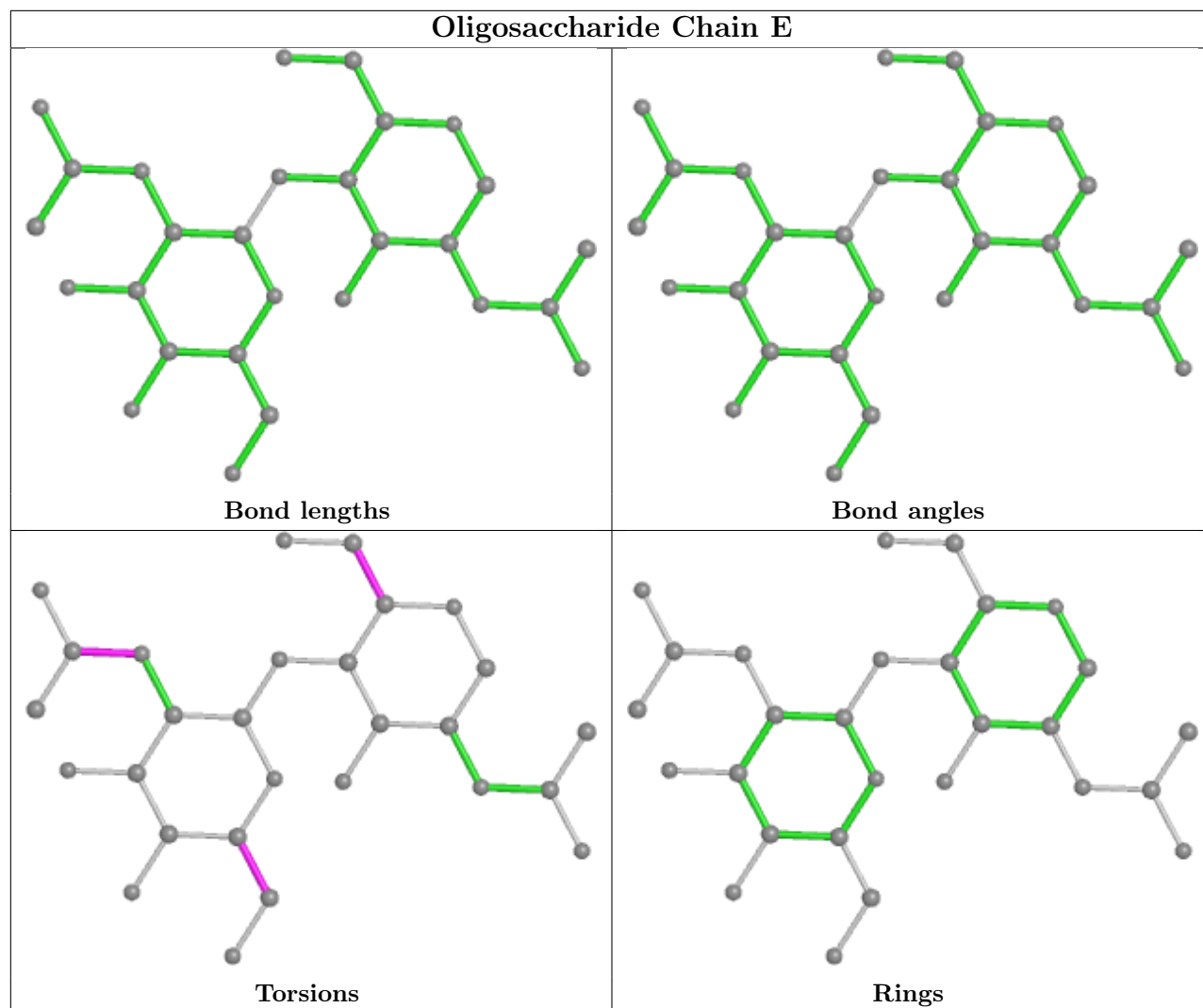
Continued from previous page...

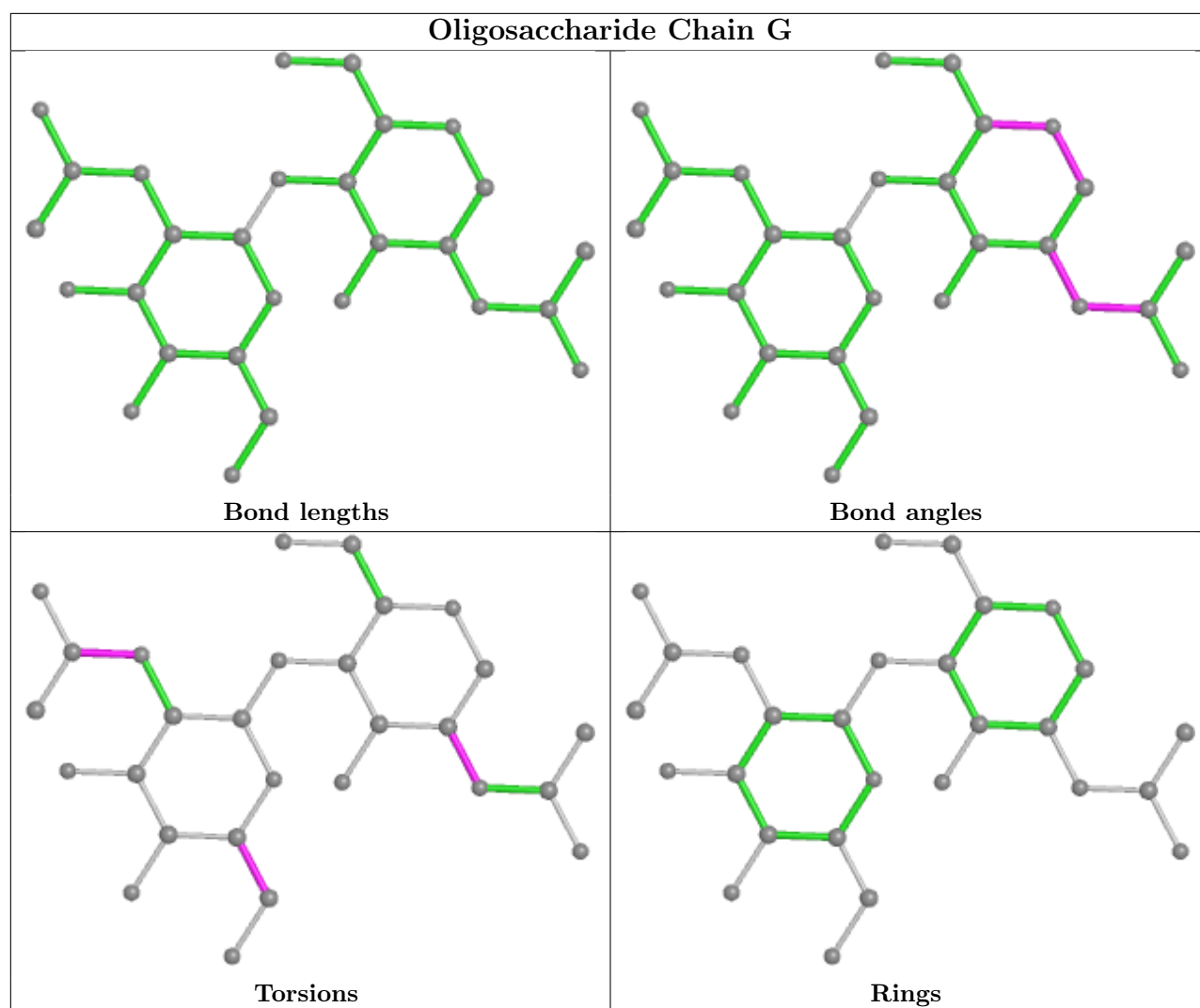
Mol	Chain	Res	Type	Atoms
6	F	4	BMA	O5-C5-C6-O6
6	F	1	NAG	C4-C5-C6-O6
5	I	2	NAG	C4-C5-C6-O6
5	E	1	NAG	C4-C5-C6-O6
5	E	2	NAG	C8-C7-N2-C2
5	E	2	NAG	O7-C7-N2-C2
5	G	2	NAG	C8-C7-N2-C2
5	G	2	NAG	O7-C7-N2-C2
5	H	2	NAG	C8-C7-N2-C2
5	H	2	NAG	O7-C7-N2-C2
5	I	2	NAG	C8-C7-N2-C2
5	I	2	NAG	O7-C7-N2-C2
6	F	1	NAG	C8-C7-N2-C2
6	F	1	NAG	O7-C7-N2-C2
5	H	2	NAG	C4-C5-C6-O6
6	F	1	NAG	O5-C5-C6-O6
6	F	4	BMA	C4-C5-C6-O6
6	F	2	NAG	C4-C5-C6-O6
5	I	1	NAG	C4-C5-C6-O6
5	H	1	NAG	O5-C5-C6-O6
6	F	5	BMA	C4-C5-C6-O6
6	F	5	BMA	O5-C5-C6-O6
6	F	2	NAG	O5-C5-C6-O6
5	G	2	NAG	C4-C5-C6-O6
5	I	1	NAG	O5-C5-C6-O6
5	I	2	NAG	C3-C2-N2-C7
5	G	2	NAG	O5-C5-C6-O6
5	E	2	NAG	C4-C5-C6-O6
5	G	1	NAG	C3-C2-N2-C7
5	E	2	NAG	O5-C5-C6-O6

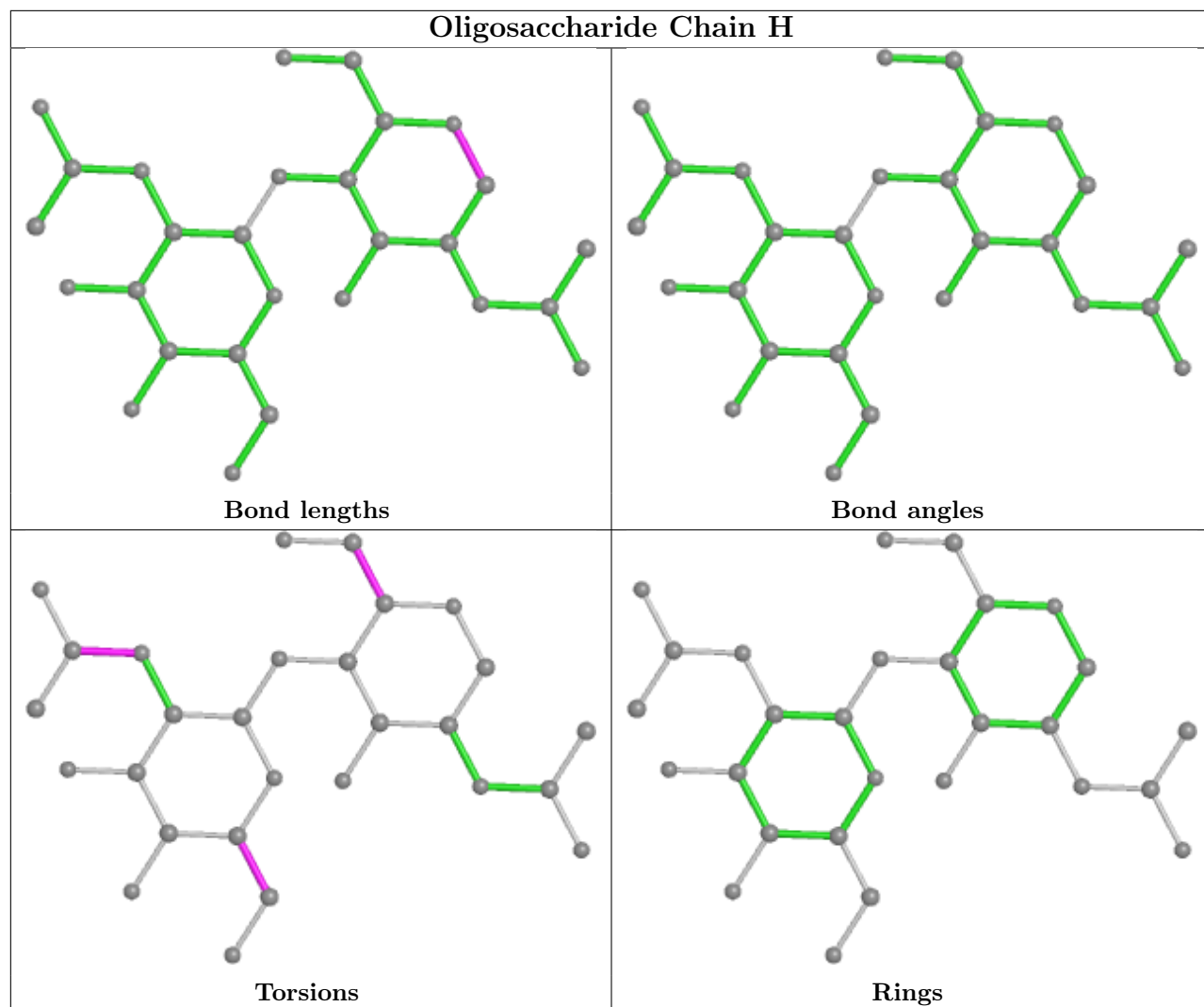
There are no ring outliers.

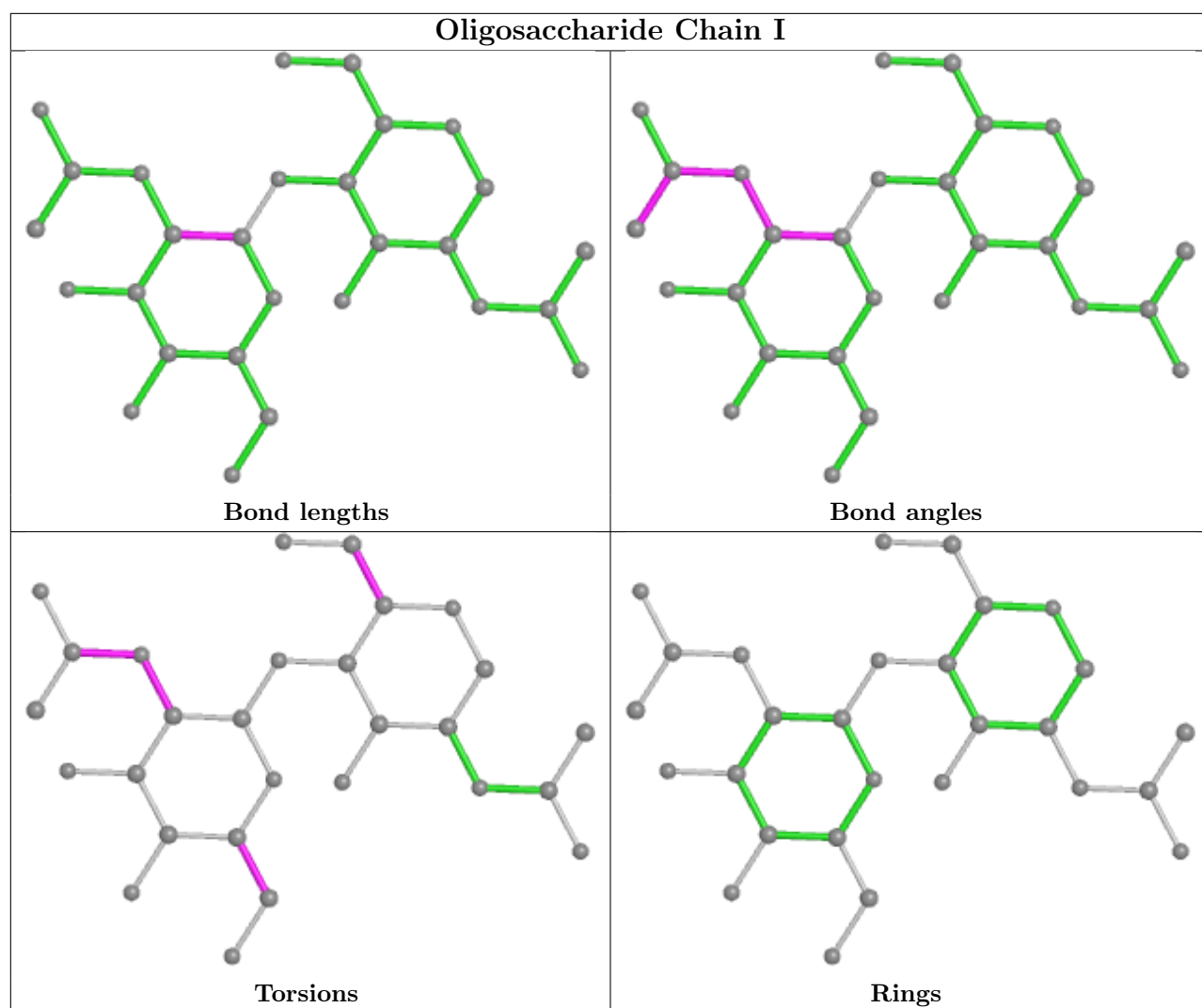
No monomer is involved in short contacts.

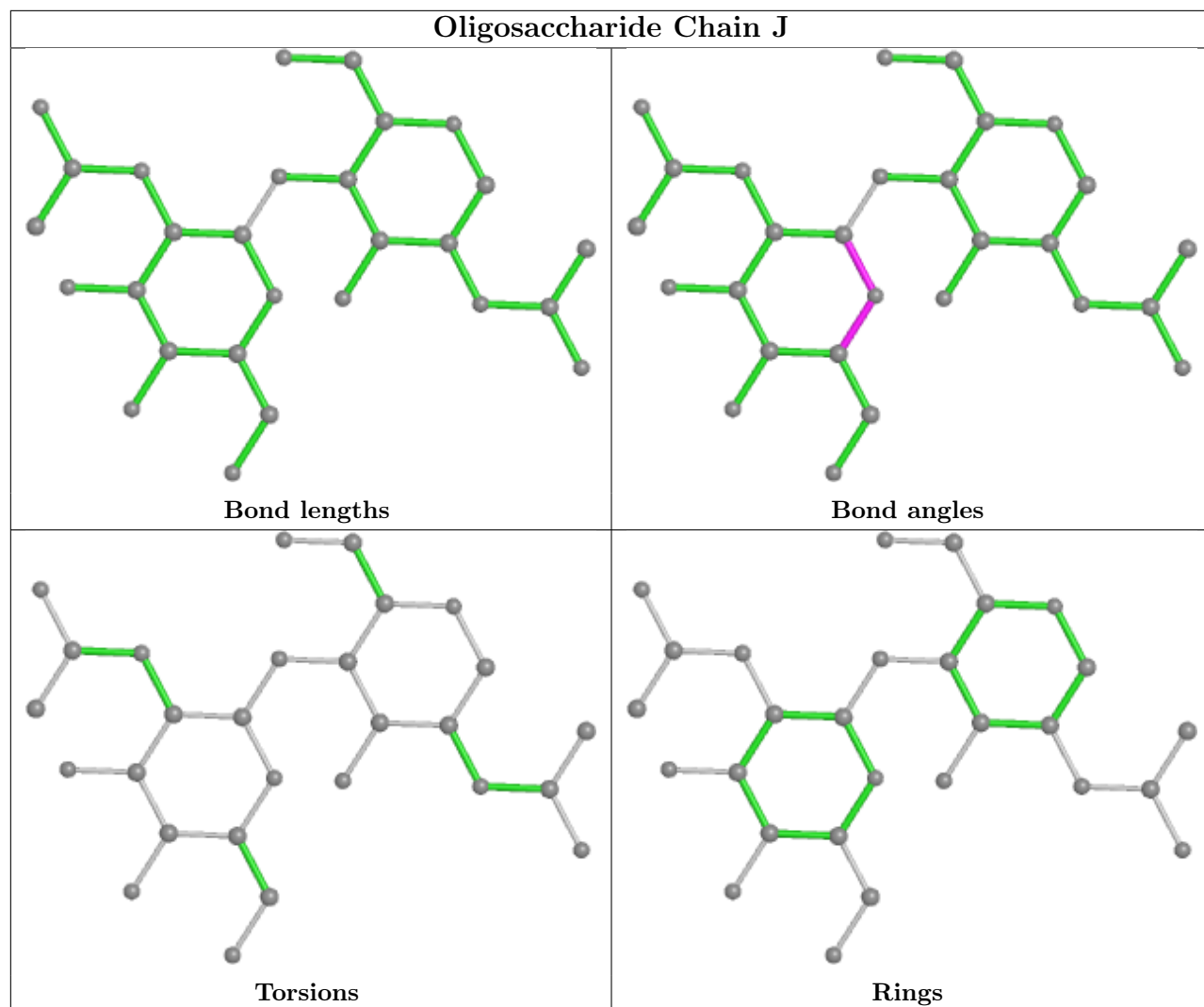
The following is a two-dimensional graphical depiction of Mogul quality analysis of bond lengths, bond angles, torsion angles, and ring geometry for oligosaccharide.

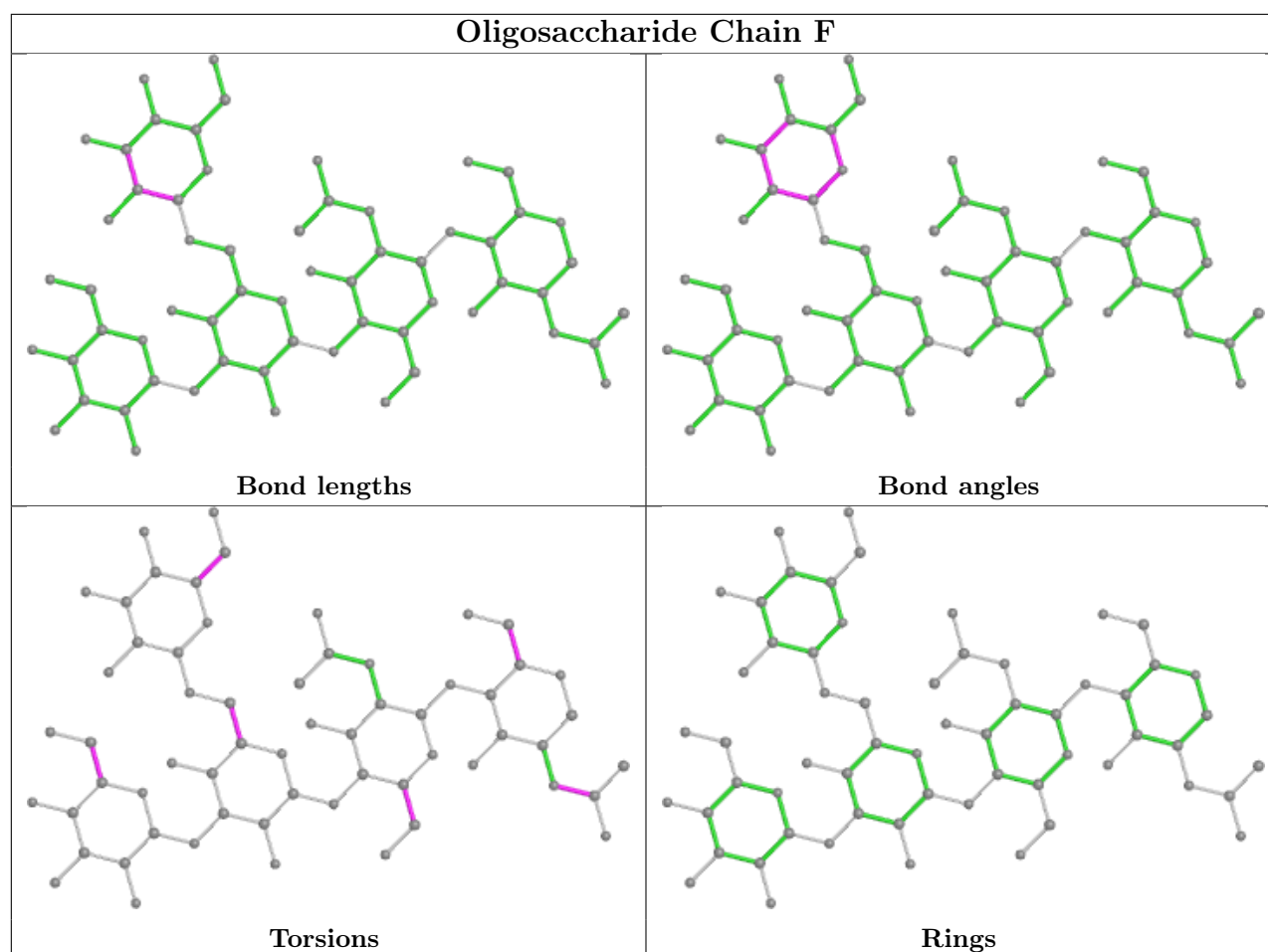












5.6 Ligand geometry [i](#)

12 ligands are modelled in this entry.

In the following table, the Counts columns list the number of bonds (or angles) for which Mogul statistics could be retrieved, the number of bonds (or angles) that are observed in the model and the number of bonds (or angles) that are defined in the Chemical Component Dictionary. The Link column lists molecule types, if any, to which the group is linked. The Z score for a bond length (or angle) is the number of standard deviations the observed value is removed from the expected value. A bond length (or angle) with $|Z| > 2$ is considered an outlier worth inspection. RMSZ is the root-mean-square of all Z scores of the bond lengths (or angles).

Mol	Type	Chain	Res	Link	Bond lengths			Bond angles		
					Counts	RMSZ	$\# Z > 2$	Counts	RMSZ	$\# Z > 2$
10	CLR	C	302	-	31,31,31	0.37	0	48,48,48	1.03	4 (8%)
7	NAG	A	801	1	14,14,15	0.43	0	17,19,21	0.64	1 (5%)
7	NAG	A	804	1	14,14,15	1.07	1 (7%)	17,19,21	2.22	3 (17%)
8	N60	B	501	-	33,35,35	5.26	20 (60%)	47,54,54	1.54	6 (12%)
9	PC1	B	502	-	36,36,53	0.32	0	42,44,61	0.44	0

Mol	Type	Chain	Res	Link	Bond lengths			Bond angles		
					Counts	RMSZ	# Z > 2	Counts	RMSZ	# Z > 2
7	NAG	A	806	1	14,14,15	0.57	0	17,19,21	0.91	1 (5%)
10	CLR	C	301	-	31,31,31	0.65	0	48,48,48	1.25	5 (10%)
10	CLR	C	303	-	31,31,31	0.57	0	48,48,48	0.88	1 (2%)
7	NAG	A	803	1	14,14,15	0.43	0	17,19,21	0.45	0
9	PC1	C	304	-	40,40,53	0.30	0	46,48,61	0.40	0
7	NAG	A	805	1	14,14,15	0.35	0	17,19,21	0.53	0
7	NAG	A	802	1	14,14,15	0.63	1 (7%)	17,19,21	0.94	1 (5%)

In the following table, the Chirals column lists the number of chiral outliers, the number of chiral centers analysed, the number of these observed in the model and the number defined in the Chemical Component Dictionary. Similar counts are reported in the Torsion and Rings columns. '-' means no outliers of that kind were identified.

Mol	Type	Chain	Res	Link	Chirals	Torsions	Rings
10	CLR	C	302	-	-	8/10/68/68	0/4/4/4
7	NAG	A	801	1	-	2/6/23/26	0/1/1/1
7	NAG	A	804	1	-	5/6/23/26	0/1/1/1
8	N60	B	501	-	-	0/30/47/47	0/3/3/3
9	PC1	B	502	-	-	5/40/40/57	-
7	NAG	A	806	1	-	1/6/23/26	0/1/1/1
10	CLR	C	301	-	-	8/10/68/68	0/4/4/4
10	CLR	C	303	-	-	2/10/68/68	0/4/4/4
7	NAG	A	803	1	-	2/6/23/26	0/1/1/1
9	PC1	C	304	-	-	8/44/44/57	-
7	NAG	A	805	1	-	0/6/23/26	0/1/1/1
7	NAG	A	802	1	-	2/6/23/26	0/1/1/1

All (22) bond length outliers are listed below:

Mol	Chain	Res	Type	Atoms	Z	Observed(Å)	Ideal(Å)
8	B	501	N60	C23-C14	11.04	1.54	1.39
8	B	501	N60	C26-C21	9.33	1.54	1.40
8	B	501	N60	C28-C22	8.95	1.54	1.39
8	B	501	N60	C24-C16	8.86	1.53	1.40
8	B	501	N60	C16-C14	7.37	1.50	1.40
8	B	501	N60	C31-C26	7.11	1.53	1.38
8	B	501	N60	C20-N10	7.05	1.43	1.35
8	B	501	N60	C29-C24	7.01	1.53	1.38
8	B	501	N60	C21-C22	6.98	1.50	1.40

Continued on next page...

Continued from previous page...

Mol	Chain	Res	Type	Atoms	Z	Observed(Å)	Ideal(Å)
8	B	501	N60	C27-C23	6.83	1.53	1.38
8	B	501	N60	C32-C28	6.82	1.53	1.38
8	B	501	N60	C29-C27	6.32	1.54	1.38
8	B	501	N60	C32-C31	6.32	1.54	1.38
8	B	501	N60	C19-N11	5.58	1.45	1.34
8	B	501	N60	C15-N09	5.49	1.44	1.34
8	B	501	N60	C16-C21	3.66	1.56	1.49
7	A	804	NAG	C1-C2	3.28	1.57	1.52
8	B	501	N60	C22-N10	3.16	1.46	1.42
8	B	501	N60	O07-C19	-2.94	1.17	1.22
8	B	501	N60	O06-C15	-2.65	1.18	1.22
8	B	501	N60	O08-C20	-2.50	1.18	1.23
7	A	802	NAG	C1-C2	2.08	1.55	1.52

All (22) bond angle outliers are listed below:

Mol	Chain	Res	Type	Atoms	Z	Observed(°)	Ideal(°)
7	A	804	NAG	C2-N2-C7	7.69	133.85	122.90
8	B	501	N60	C12-C19-N11	5.60	123.59	116.92
8	B	501	N60	C25-N11-C19	-4.32	117.40	123.24
7	A	804	NAG	C1-C2-N2	3.77	116.94	110.49
10	C	303	CLR	C16-C17-C13	-3.54	99.58	103.84
7	A	806	NAG	C1-O5-C5	3.37	116.76	112.19
8	B	501	N60	C12-C15-N09	3.30	120.87	116.90
7	A	802	NAG	C2-N2-C7	2.95	127.10	122.90
10	C	301	CLR	C11-C9-C8	-2.82	107.69	111.75
10	C	301	CLR	C14-C8-C9	-2.69	105.49	109.09
10	C	302	CLR	C13-C17-C20	2.55	123.47	119.49
10	C	301	CLR	C1-C10-C9	2.55	112.28	108.73
8	B	501	N60	O07-C19-N11	-2.54	117.54	122.74
10	C	301	CLR	C1-C2-C3	2.51	113.69	110.47
8	B	501	N60	C26-C21-C22	2.45	120.39	117.92
10	C	302	CLR	C17-C13-C14	-2.33	97.31	100.07
7	A	801	NAG	C1-O5-C5	2.26	115.25	112.19
10	C	301	CLR	C17-C13-C14	2.20	102.68	100.07
8	B	501	N60	C25-C30-C33	-2.20	107.61	112.96
10	C	302	CLR	C2-C1-C10	2.15	117.39	112.74
7	A	804	NAG	C8-C7-N2	2.12	119.69	116.10
10	C	302	CLR	C7-C8-C14	-2.02	107.98	110.91

There are no chirality outliers.

All (43) torsion outliers are listed below:

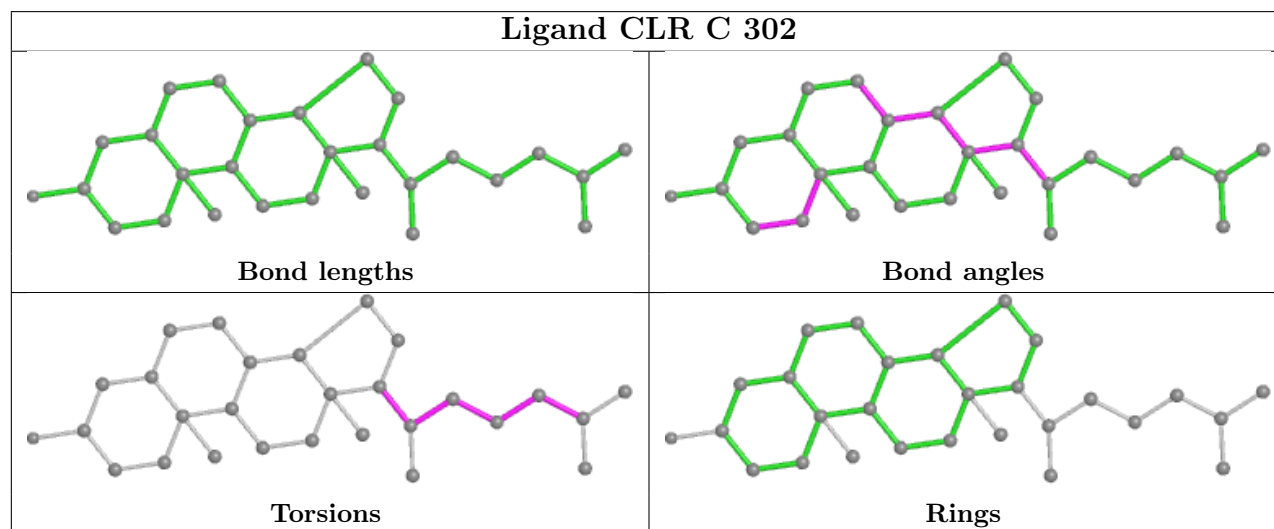
Mol	Chain	Res	Type	Atoms
9	B	502	PC1	C11-O13-P-O14
9	B	502	PC1	C11-O13-P-O11
9	B	502	PC1	C12-C11-O13-P
9	B	502	PC1	O32-C31-O31-C3
9	B	502	PC1	C32-C31-O31-C3
9	C	304	PC1	C11-O13-P-O14
9	C	304	PC1	O22-C21-O21-C2
10	C	302	CLR	C13-C17-C20-C22
10	C	302	CLR	C16-C17-C20-C21
10	C	301	CLR	C13-C17-C20-C21
10	C	302	CLR	C16-C17-C20-C22
10	C	301	CLR	C13-C17-C20-C22
10	C	302	CLR	C20-C22-C23-C24
9	C	304	PC1	C22-C21-O21-C2
10	C	301	CLR	C21-C20-C22-C23
10	C	301	CLR	C16-C17-C20-C21
10	C	301	CLR	C16-C17-C20-C22
7	A	804	NAG	C4-C5-C6-O6
10	C	301	CLR	C17-C20-C22-C23
10	C	303	CLR	C21-C20-C22-C23
10	C	303	CLR	C17-C20-C22-C23
7	A	804	NAG	C8-C7-N2-C2
7	A	804	NAG	O7-C7-N2-C2
7	A	803	NAG	O5-C5-C6-O6
7	A	804	NAG	O5-C5-C6-O6
7	A	806	NAG	O5-C5-C6-O6
10	C	302	CLR	C13-C17-C20-C21
10	C	302	CLR	C22-C23-C24-C25
10	C	301	CLR	C22-C23-C24-C25
7	A	803	NAG	C4-C5-C6-O6
7	A	801	NAG	C4-C5-C6-O6
9	C	304	PC1	C21-C22-C23-C24
9	C	304	PC1	C12-C11-O13-P
9	C	304	PC1	O13-C11-C12-N
9	C	304	PC1	C11-O13-P-O11
7	A	804	NAG	C3-C2-N2-C7
9	C	304	PC1	C23-C24-C25-C26
10	C	302	CLR	C23-C24-C25-C26
7	A	802	NAG	C4-C5-C6-O6
7	A	801	NAG	O5-C5-C6-O6
7	A	802	NAG	C3-C2-N2-C7
10	C	301	CLR	C23-C24-C25-C27
10	C	302	CLR	C21-C20-C22-C23

There are no ring outliers.

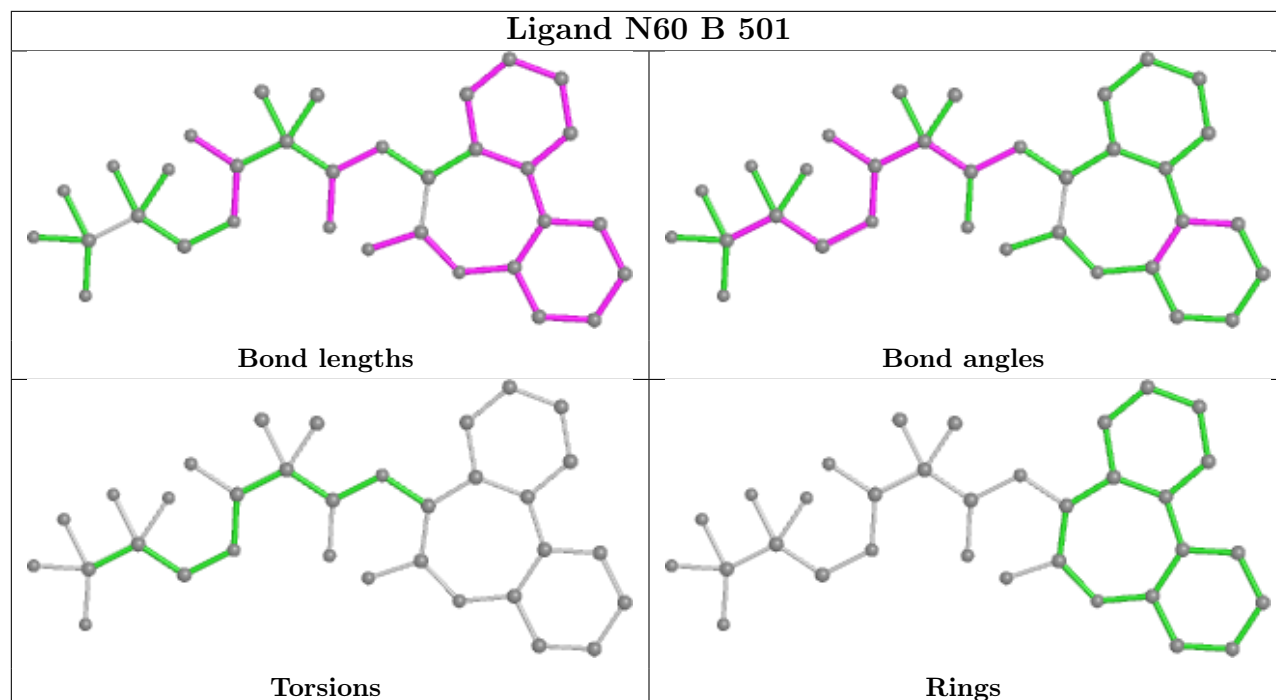
6 monomers are involved in 20 short contacts:

Mol	Chain	Res	Type	Clashes	Symm-Clashes
10	C	302	CLR	12	0
8	B	501	N60	1	0
9	B	502	PC1	1	0
10	C	301	CLR	4	0
10	C	303	CLR	1	0
9	C	304	PC1	1	0

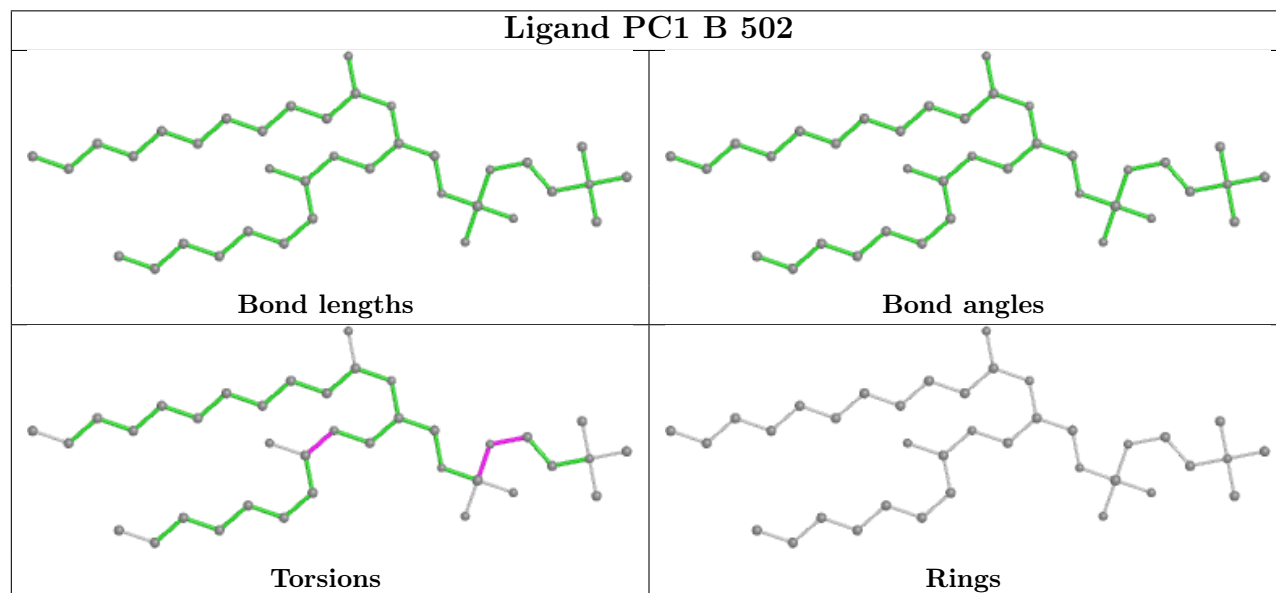
The following is a two-dimensional graphical depiction of Mogul quality analysis of bond lengths, bond angles, torsion angles, and ring geometry for all instances of the Ligand of Interest. In addition, ligands with molecular weight > 250 and outliers as shown on the validation Tables will also be included. For torsion angles, if less than 5% of the Mogul distribution of torsion angles is within 10 degrees of the torsion angle in question, then that torsion angle is considered an outlier. Any bond that is central to one or more torsion angles identified as an outlier by Mogul will be highlighted in the graph. For rings, the root-mean-square deviation (RMSD) between the ring in question and similar rings identified by Mogul is calculated over all ring torsion angles. If the average RMSD is greater than 60 degrees and the minimal RMSD between the ring in question and any Mogul-identified rings is also greater than 60 degrees, then that ring is considered an outlier. The outliers are highlighted in purple. The color gray indicates Mogul did not find sufficient equivalents in the CSD to analyse the geometry.

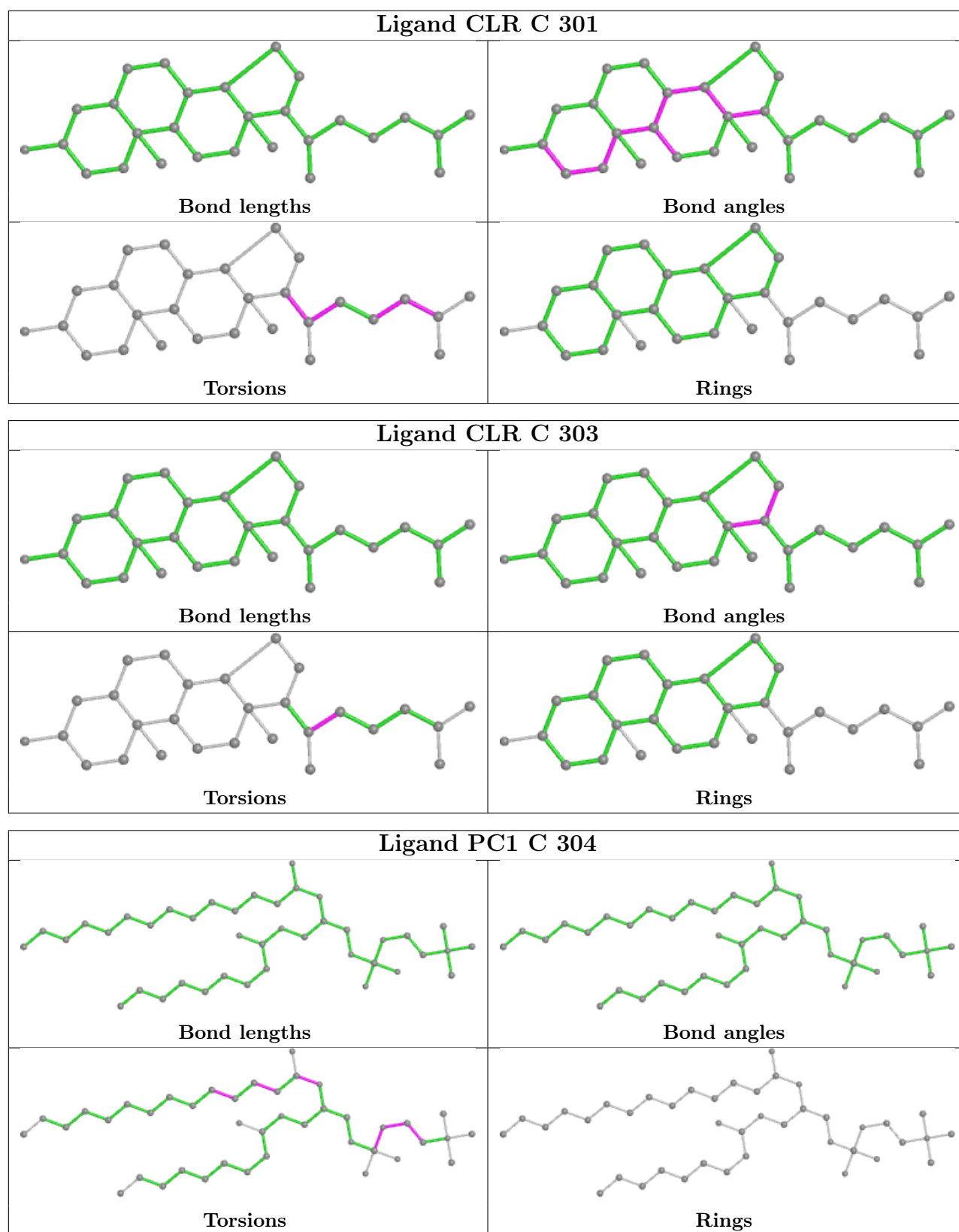


Ligand N60 B 501



Ligand PC1 B 502





5.7 Other polymers [i](#)

There are no such residues in this entry.

5.8 Polymer linkage issues ⓘ

There are no chain breaks in this entry.

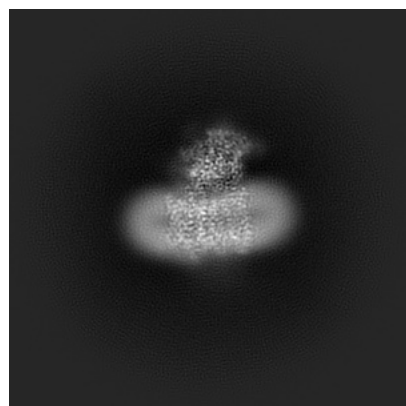
6 Map visualisation [i](#)

This section contains visualisations of the EMDB entry EMD-37106. These allow visual inspection of the internal detail of the map and identification of artifacts.

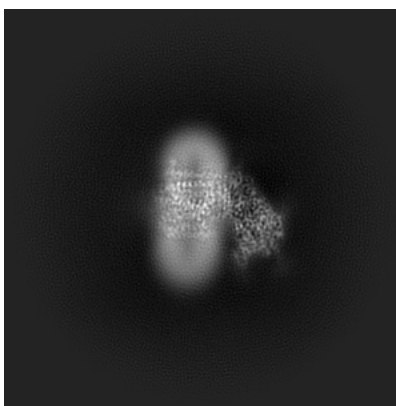
Images derived from a raw map, generated by summing the deposited half-maps, are presented below the corresponding image components of the primary map to allow further visual inspection and comparison with those of the primary map.

6.1 Orthogonal projections [i](#)

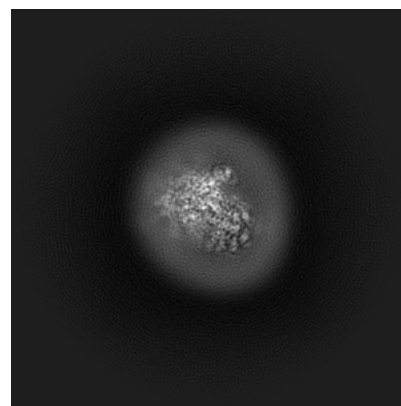
6.1.1 Primary map



X

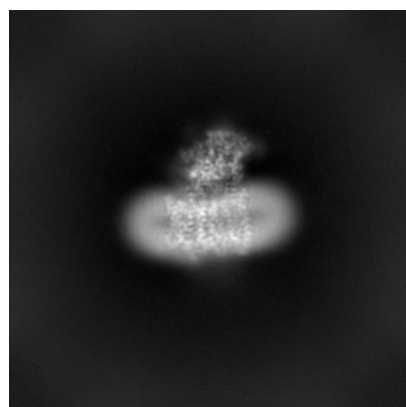


Y

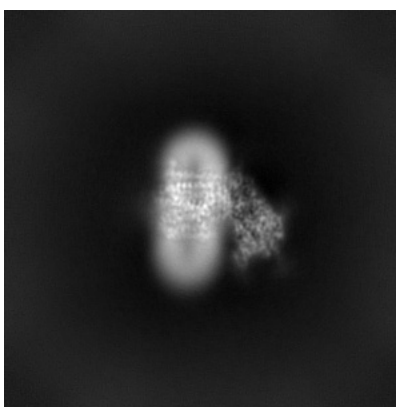


Z

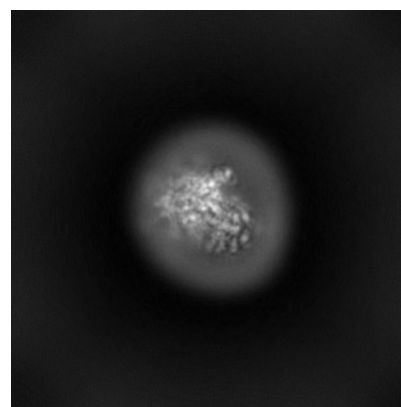
6.1.2 Raw map



X



Y

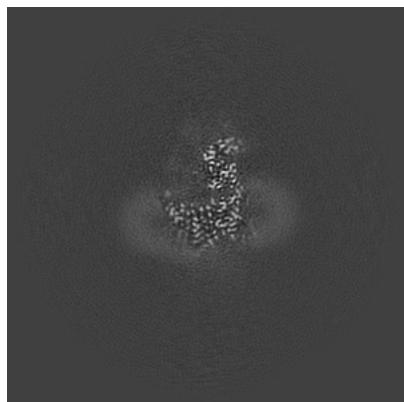


Z

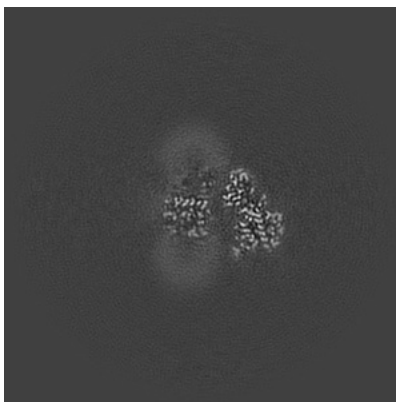
The images above show the map projected in three orthogonal directions.

6.2 Central slices [i](#)

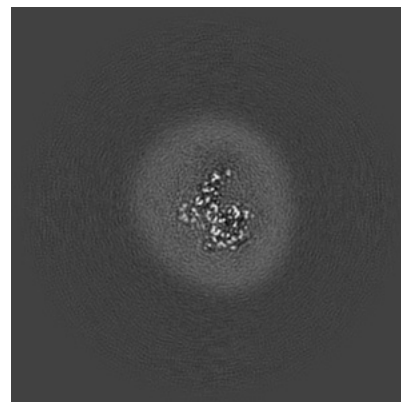
6.2.1 Primary map



X Index: 160

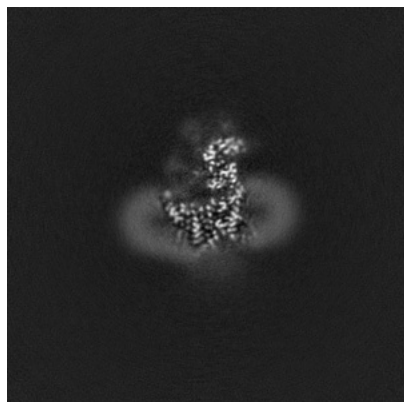


Y Index: 160

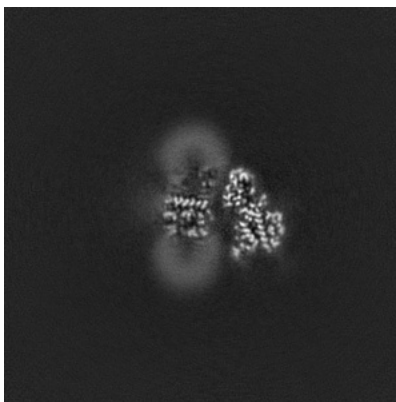


Z Index: 160

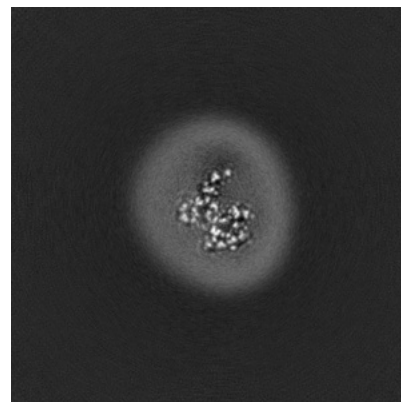
6.2.2 Raw map



X Index: 160



Y Index: 160

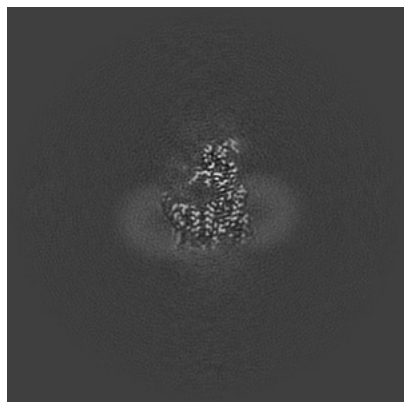


Z Index: 160

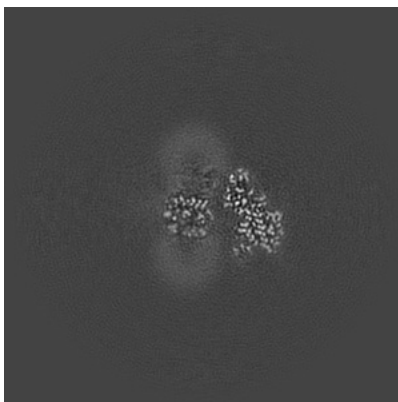
The images above show central slices of the map in three orthogonal directions.

6.3 Largest variance slices [i](#)

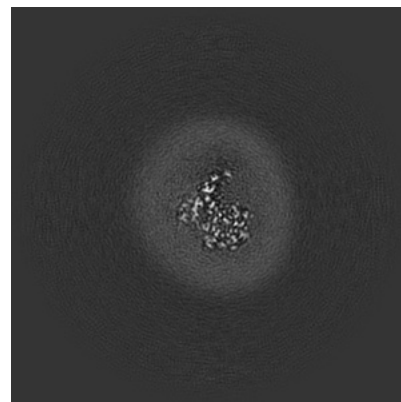
6.3.1 Primary map



X Index: 162

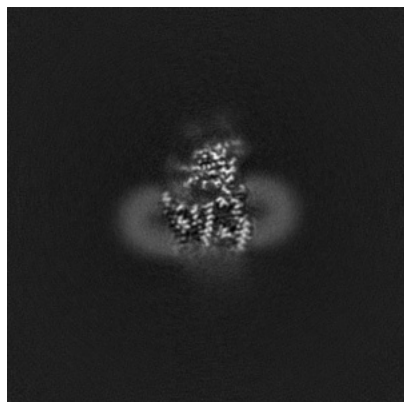


Y Index: 161

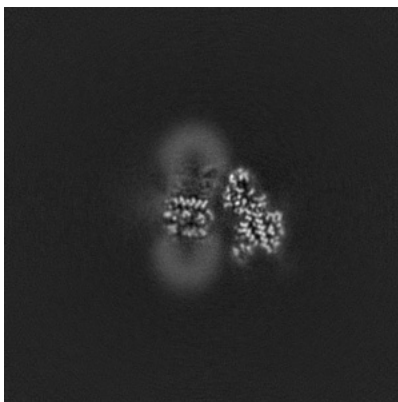


Z Index: 159

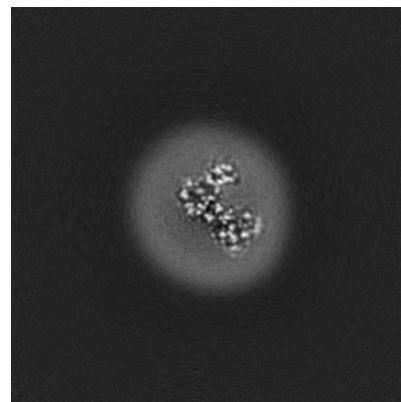
6.3.2 Raw map



X Index: 164



Y Index: 161

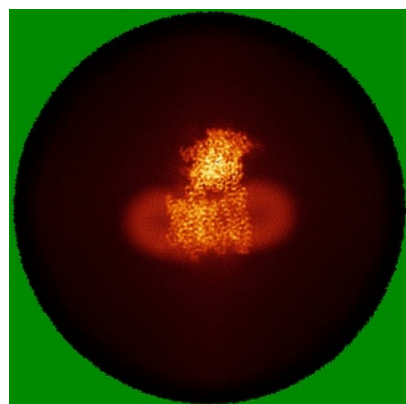


Z Index: 136

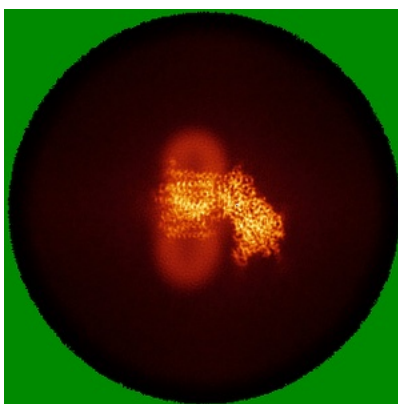
The images above show the largest variance slices of the map in three orthogonal directions.

6.4 Orthogonal standard-deviation projections (False-color) [i](#)

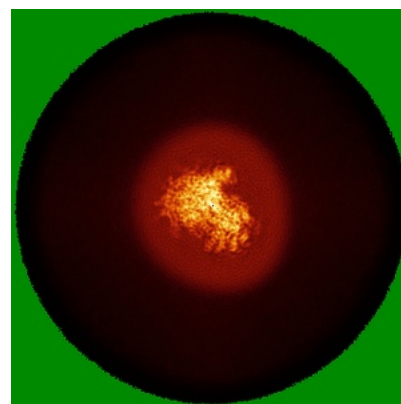
6.4.1 Primary map



X

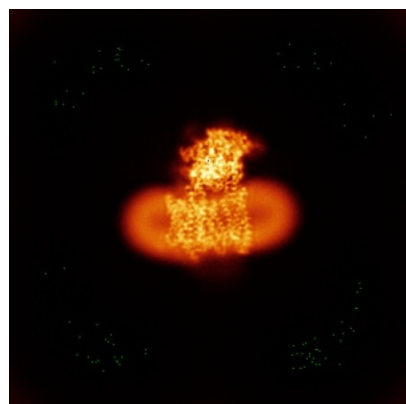


Y

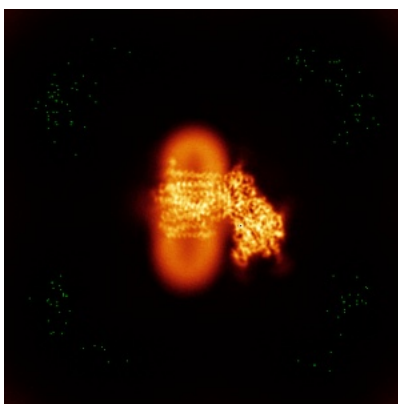


Z

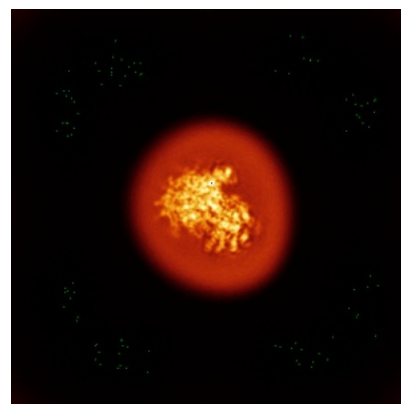
6.4.2 Raw map



X



Y

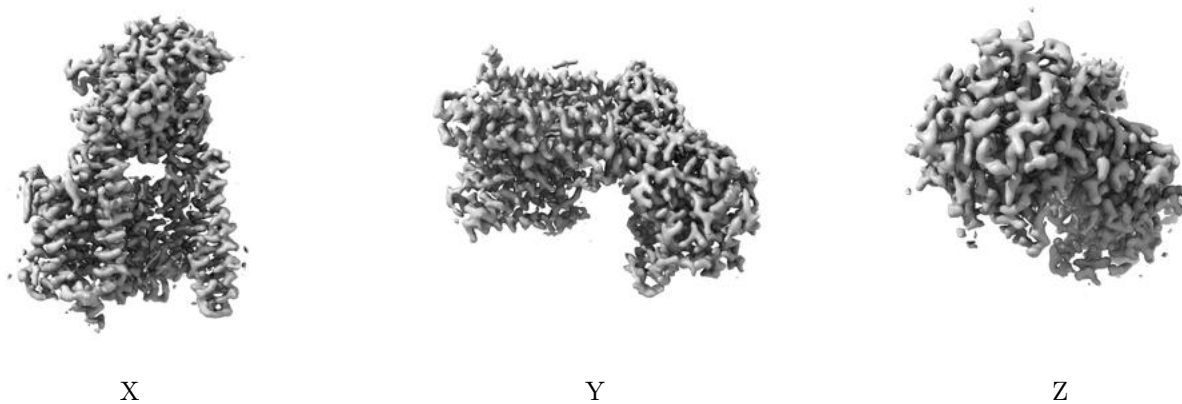


Z

The images above show the map standard deviation projections with false color in three orthogonal directions. Minimum values are shown in green, max in blue, and dark to light orange shades represent small to large values respectively.

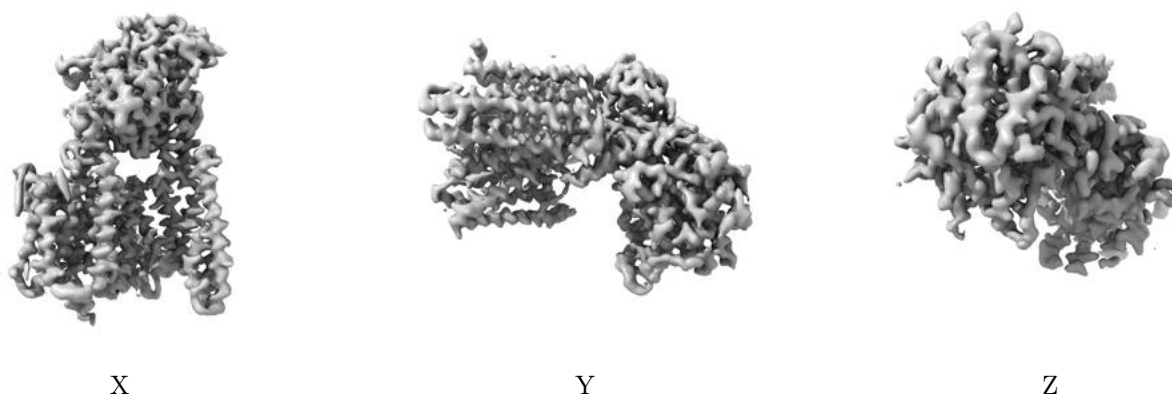
6.5 Orthogonal surface views [i](#)

6.5.1 Primary map



The images above show the 3D surface view of the map at the recommended contour level 0.6. These images, in conjunction with the slice images, may facilitate assessment of whether an appropriate contour level has been provided.

6.5.2 Raw map



These images show the 3D surface of the raw map. The raw map's contour level was selected so that its surface encloses the same volume as the primary map does at its recommended contour level.

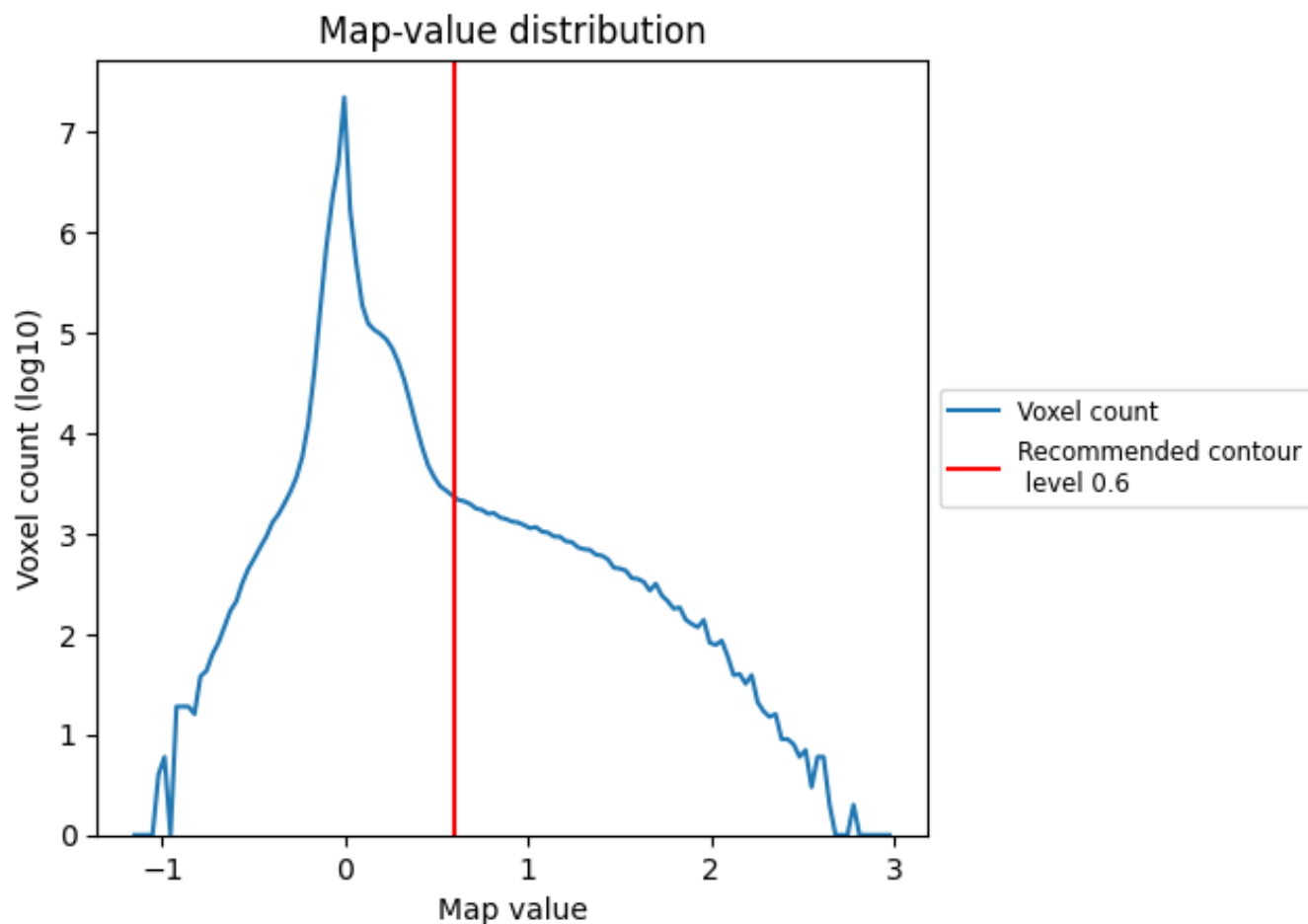
6.6 Mask visualisation [i](#)

This section was not generated. No masks/segmentation were deposited.

7 Map analysis [i](#)

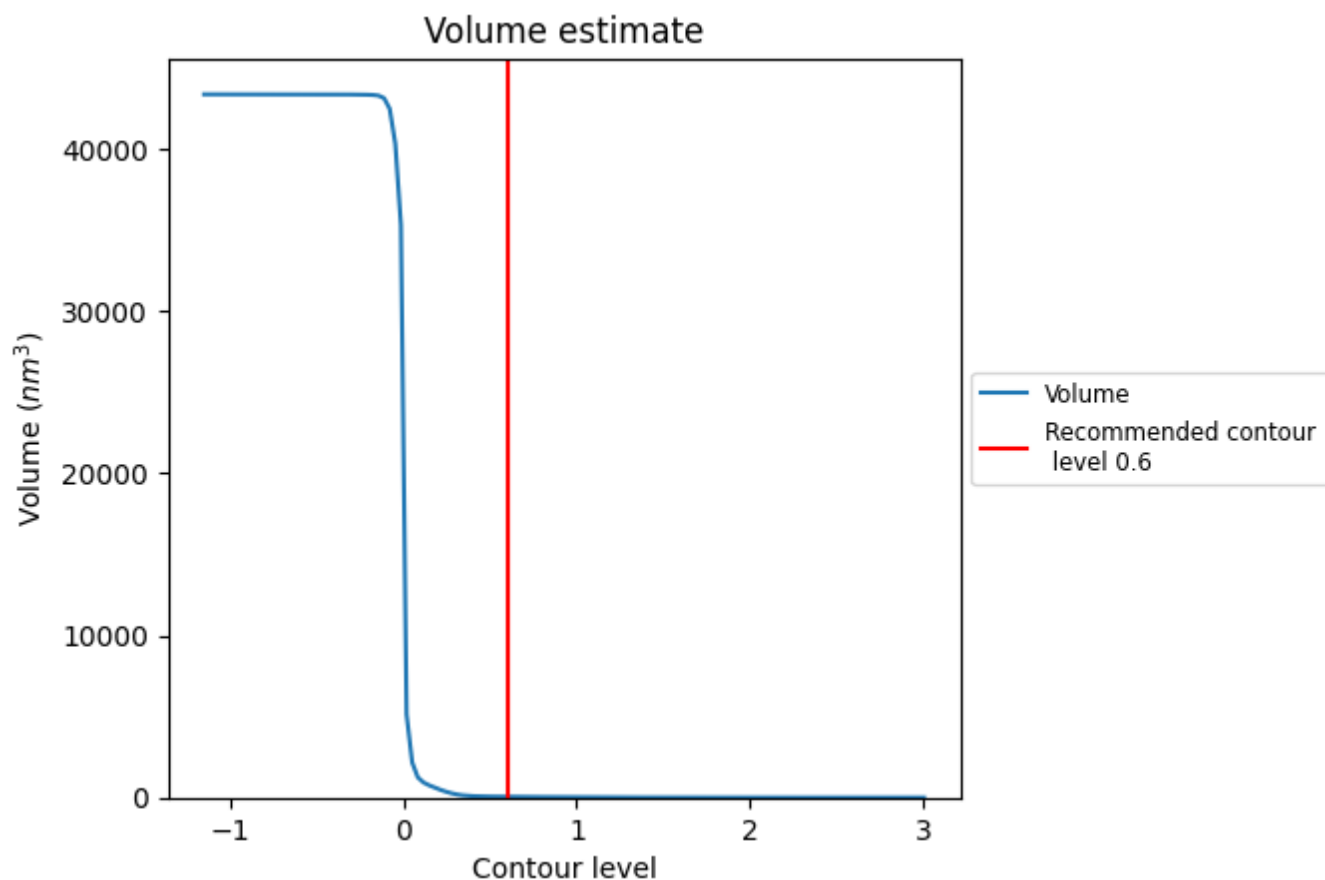
This section contains the results of statistical analysis of the map.

7.1 Map-value distribution [i](#)



The map-value distribution is plotted in 128 intervals along the x-axis. The y-axis is logarithmic. A spike in this graph at zero usually indicates that the volume has been masked.

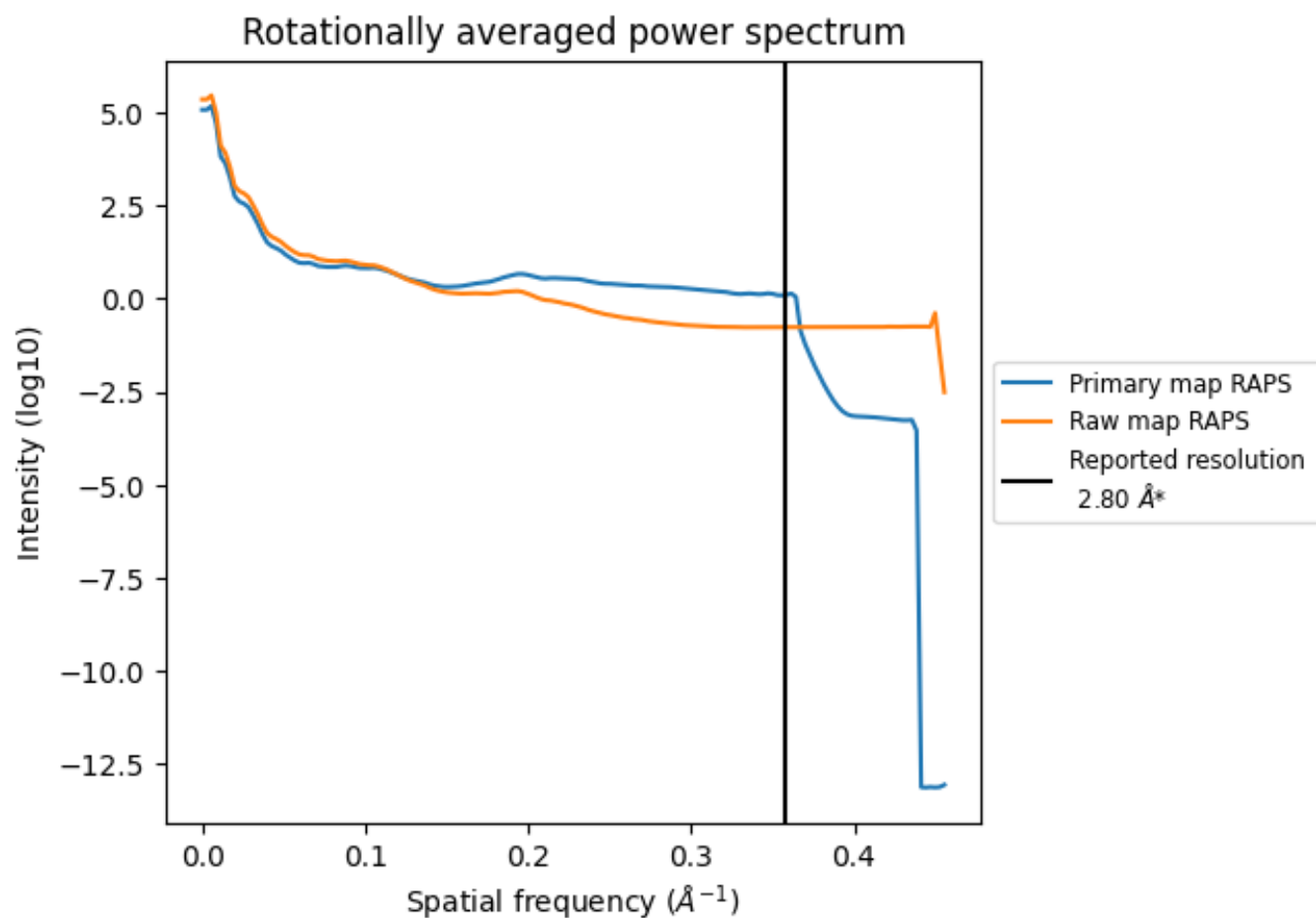
7.2 Volume estimate [i](#)



The volume at the recommended contour level is 50 nm³; this corresponds to an approximate mass of 45 kDa.

The volume estimate graph shows how the enclosed volume varies with the contour level. The recommended contour level is shown as a vertical line and the intersection between the line and the curve gives the volume of the enclosed surface at the given level.

7.3 Rotationally averaged power spectrum ⓘ

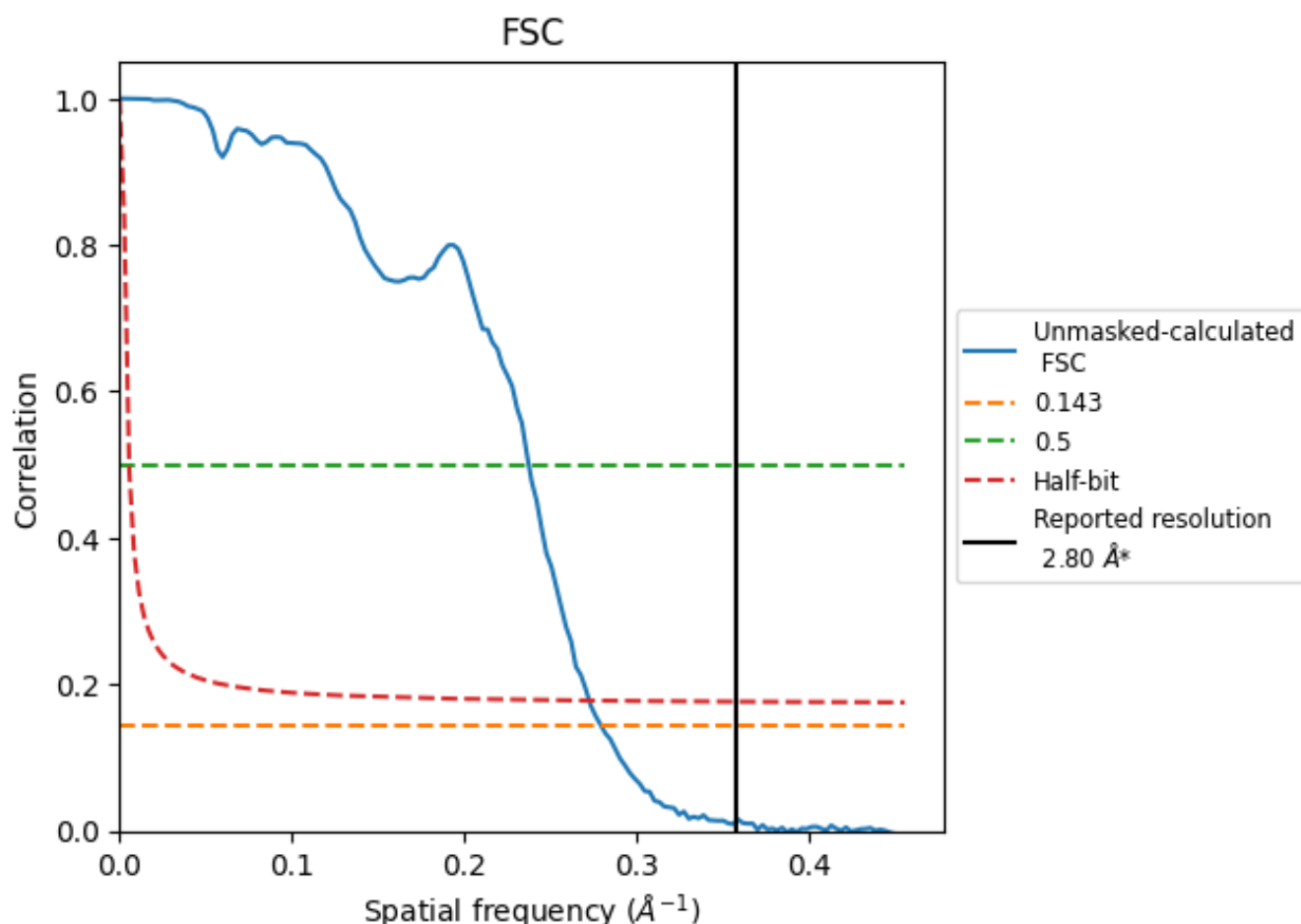


*Reported resolution corresponds to spatial frequency of 0.357 Å⁻¹

8 Fourier-Shell correlation [i](#)

Fourier-Shell Correlation (FSC) is the most commonly used method to estimate the resolution of single-particle and subtomogram-averaged maps. The shape of the curve depends on the imposed symmetry, mask and whether or not the two 3D reconstructions used were processed from a common reference. The reported resolution is shown as a black line. A curve is displayed for the half-bit criterion in addition to lines showing the 0.143 gold standard cut-off and 0.5 cut-off.

8.1 FSC [i](#)



*Reported resolution corresponds to spatial frequency of 0.357 \AA^{-1}

8.2 Resolution estimates [i](#)

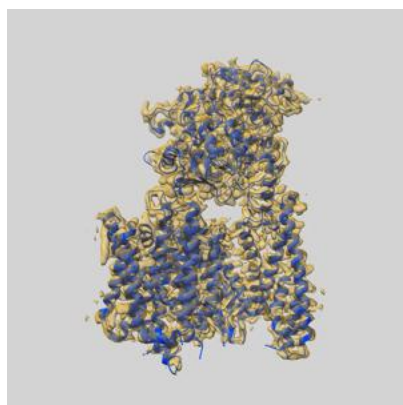
Resolution estimate (Å)	Estimation criterion (FSC cut-off)		
	0.143	0.5	Half-bit
Reported by author	2.80	-	-
Author-provided FSC curve	-	-	-
Unmasked-calculated*	3.58	4.21	3.67

*Resolution estimate based on FSC curve calculated by comparison of deposited half-maps. The value from deposited half-maps intersecting FSC 0.143 CUT-OFF 3.58 differs from the reported value 2.8 by more than 10 %

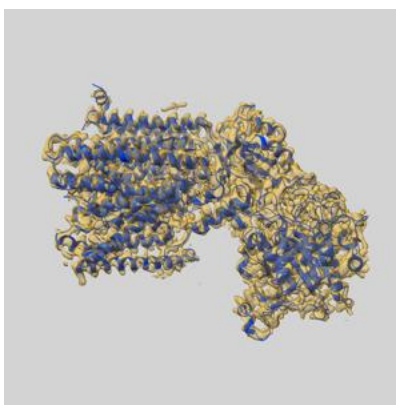
9 Map-model fit [i](#)

This section contains information regarding the fit between EMDB map EMD-37106 and PDB model 8KCO. Per-residue inclusion information can be found in [section 3](#) on [page 9](#).

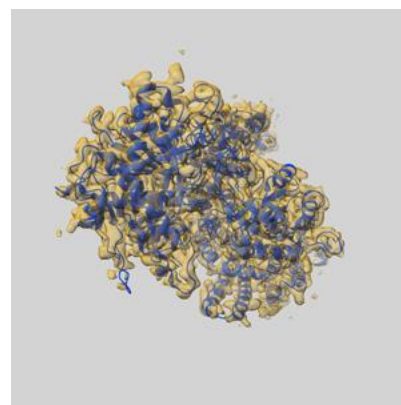
9.1 Map-model overlay [i](#)



X



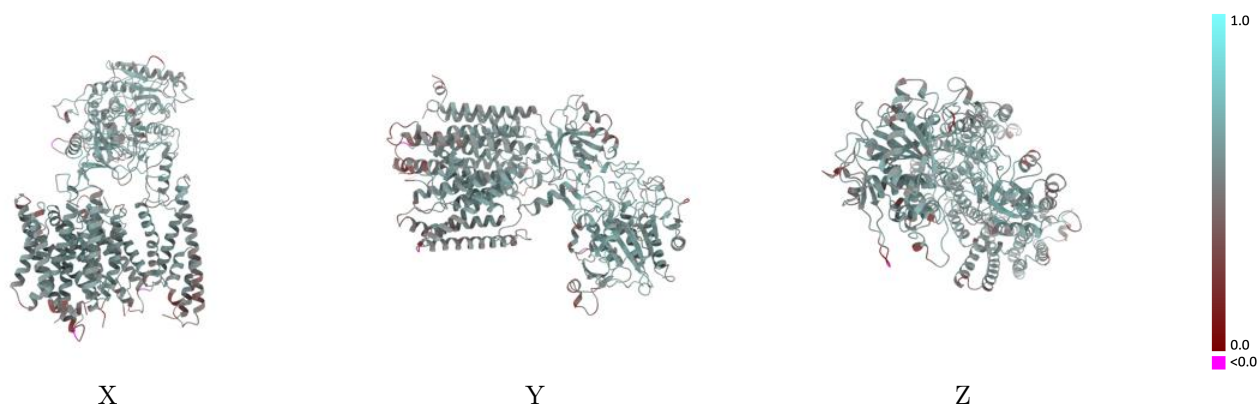
Y



Z

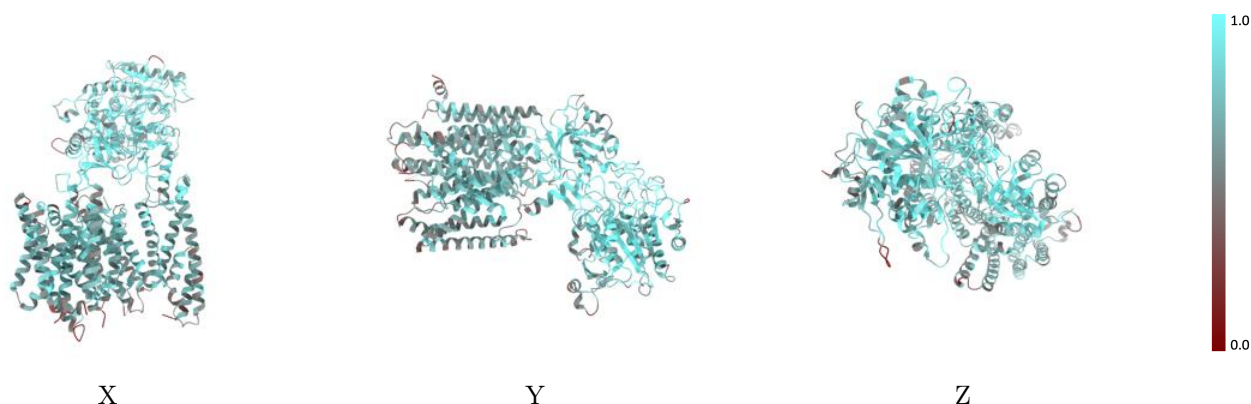
The images above show the 3D surface view of the map at the recommended contour level 0.6 at 50% transparency in yellow overlaid with a ribbon representation of the model coloured in blue. These images allow for the visual assessment of the quality of fit between the atomic model and the map.

9.2 Q-score mapped to coordinate model [i](#)



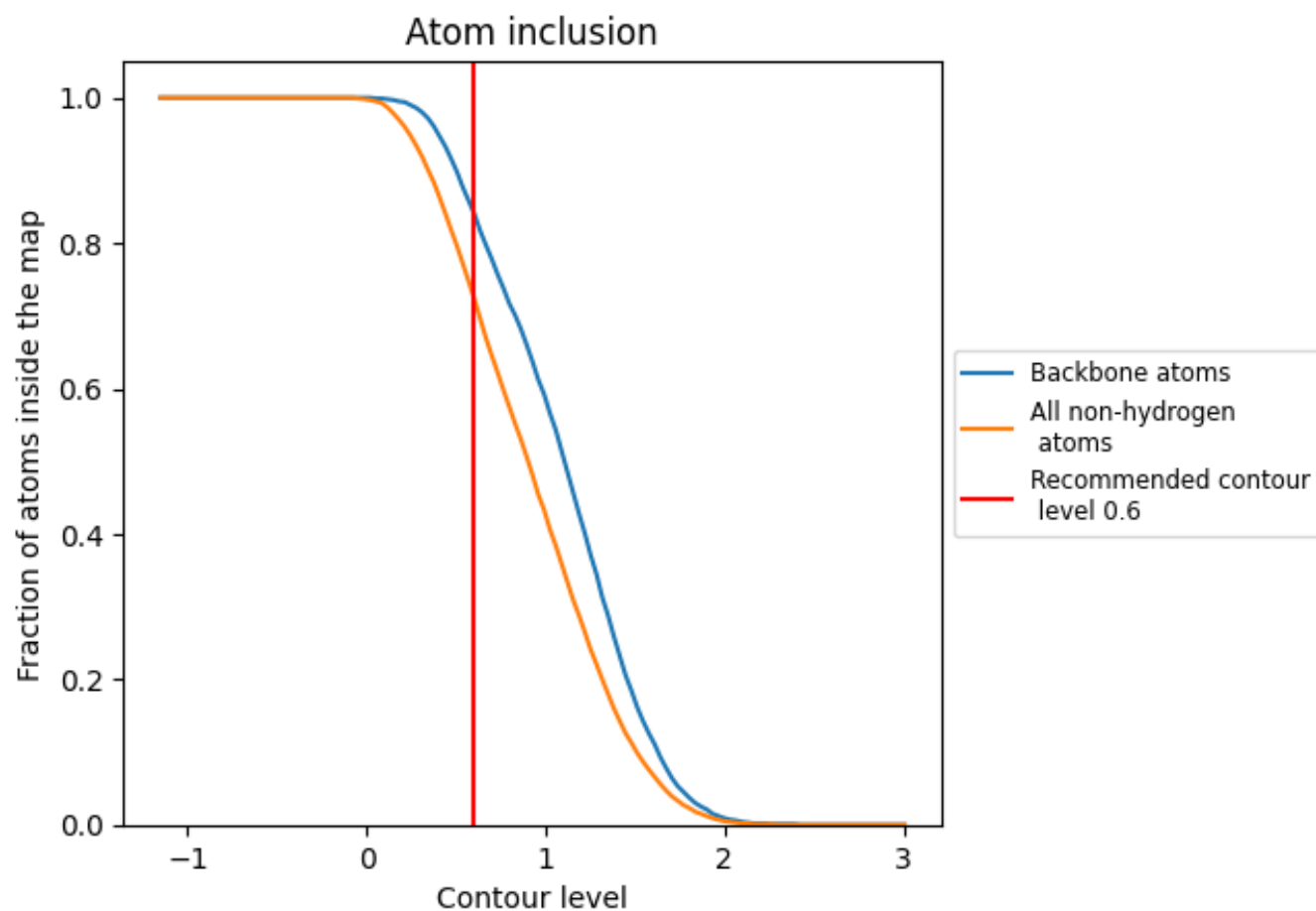
The images above show the model with each residue coloured according to its Q-score. This shows their resolvability in the map with higher Q-score values reflecting better resolvability. Please note: Q-score is calculating the resolvability of atoms, and thus high values are only expected at resolutions at which atoms can be resolved. Low Q-score values may therefore be expected for many entries.

9.3 Atom inclusion mapped to coordinate model [i](#)



The images above show the model with each residue coloured according to its atom inclusion. This shows to what extent they are inside the map at the recommended contour level (0.6).

9.4 Atom inclusion [i](#)



At the recommended contour level, 84% of all backbone atoms, 72% of all non-hydrogen atoms, are inside the map.

9.5 Map-model fit summary ⓘ

The table lists the average atom inclusion at the recommended contour level (0.6) and Q-score for the entire model and for each chain.

Chain	Atom inclusion	Q-score
All	<div></div> 0.7250	<div></div> 0.5360
A	<div></div> 0.7790	<div></div> 0.5520
B	<div></div> 0.6780	<div></div> 0.5280
C	<div></div> 0.6860	<div></div> 0.5270
D	<div></div> 0.6570	<div></div> 0.4890
E	<div></div> 0.4640	<div></div> 0.4700
F	<div></div> 0.5900	<div></div> 0.4850
G	<div></div> 0.6430	<div></div> 0.4880
H	<div></div> 0.6070	<div></div> 0.3850
I	<div></div> 0.3210	<div></div> 0.4240
J	<div></div> 0.6790	<div></div> 0.5360

1.0

0.0

<0.0