



Full wwPDB X-ray Structure Validation Report ⓘ

Nov 10, 2024 – 04:22 PM EST

PDB ID : 1KTS
Title : Thrombin Inhibitor Complex
Authors : Nar, H.
Deposited on : 2002-01-17
Resolution : 2.40 Å(reported)

This is a Full wwPDB X-ray Structure Validation Report for a publicly released PDB entry.

We welcome your comments at validation@mail.wwpdb.org

A user guide is available at

<https://www.wwpdb.org/validation/2017/XrayValidationReportHelp>

with specific help available everywhere you see the ⓘ symbol.

The types of validation reports are described at

<http://www.wwpdb.org/validation/2017/FAQs#types>.

The following versions of software and data (see [references ⓘ](#)) were used in the production of this report:

MolProbity	:	4.02b-467
Mogul	:	2022.3.0, CSD as543be (2022)
Xtriage (Phenix)	:	NOT EXECUTED
EDS	:	NOT EXECUTED
buster-report	:	1.1.7 (2018)
Percentile statistics	:	20231227.v01 (using entries in the PDB archive December 27th 2023)
Ideal geometry (proteins)	:	Engh & Huber (2001)
Ideal geometry (DNA, RNA)	:	Parkinson et al. (1996)
Validation Pipeline (wwPDB-VP)	:	2.39

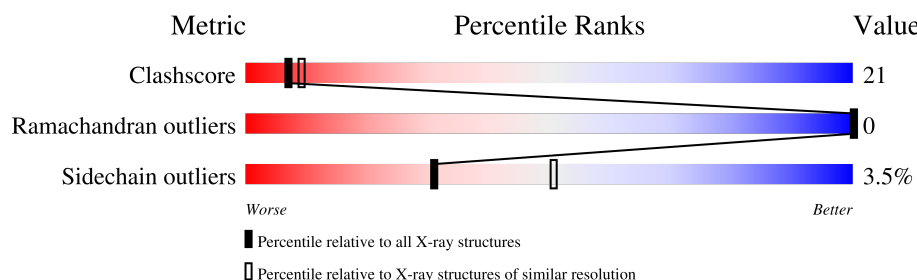
1 Overall quality at a glance

The following experimental techniques were used to determine the structure:

X-RAY DIFFRACTION

The reported resolution of this entry is 2.40 Å.

Percentile scores (ranging between 0-100) for global validation metrics of the entry are shown in the following graphic. The table shows the number of entries on which the scores are based.



Metric	Whole archive (#Entries)	Similar resolution (#Entries, resolution range(Å))
Clashscore	180529	5218 (2.40-2.40)
Ramachandran outliers	177936	5158 (2.40-2.40)
Sidechain outliers	177891	5159 (2.40-2.40)

The table below summarises the geometric issues observed across the polymeric chains and their fit to the electron density. The red, orange, yellow and green segments of the lower bar indicate the fraction of residues that contain outliers for ≥ 3 , 2, 1 and 0 types of geometric quality criteria respectively. A grey segment represents the fraction of residues that are not modelled. The numeric value for each fraction is indicated below the corresponding segment, with a dot representing fractions $\leq 5\%$

Note EDS was not executed.

Mol	Chain	Length	Quality of chain
1	A	36	<div> <div>53%</div> <div>19%</div> <div>•</div> <div>25%</div> </div>
2	B	259	<div> <div>59%</div> <div>36%</div> <div>• •</div> </div>
3	C	11	<div> <div>45%</div> <div>45%</div> <div>9%</div> </div>

2 Entry composition

There are 5 unique types of molecules in this entry. The entry contains 2528 atoms, of which 0 are hydrogens and 0 are deuteriums.

In the tables below, the ZeroOcc column contains the number of atoms modelled with zero occupancy, the AltConf column contains the number of residues with at least one atom in alternate conformation and the Trace column contains the number of residues modelled with at most 2 atoms.

- Molecule 1 is a protein called thrombin.

Mol	Chain	Residues	Atoms					ZeroOcc	AltConf	Trace
1	A	27	Total	C	N	O	S	0	0	0
			223	139	36	47	1			

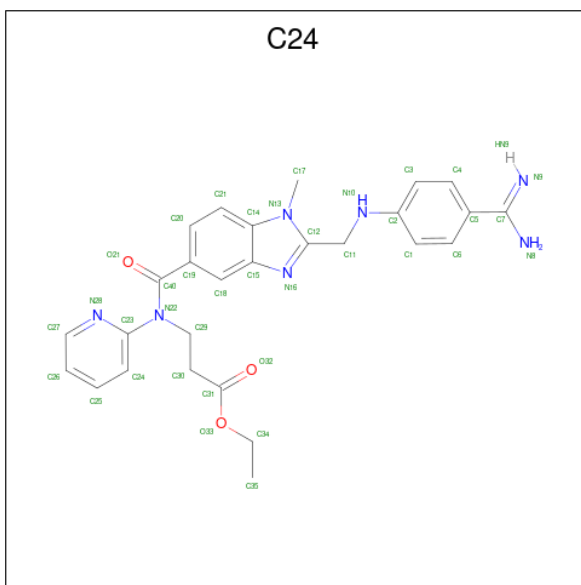
- Molecule 2 is a protein called thrombin.

Mol	Chain	Residues	Atoms					ZeroOcc	AltConf	Trace
2	B	252	Total	C	N	O	S	0	0	0
			2039	1299	360	366	14			

- Molecule 3 is a protein called hirudin IIB.

Mol	Chain	Residues	Atoms					ZeroOcc	AltConf	Trace
3	C	10	Total	C	N	O	S	0	0	0
			94	59	10	24	1			

- Molecule 4 is 3-({2-[(4-CARBAMIMIDOYL-PHENYLAMINO)-METHYL]-3-METHYL-3H-BENZOIMIDAZOLE-5-CARBONYL}-PYRIDIN-2-YL-AMINO)-PROPIONIC ACID ETHYL ESTER (three-letter code: C24) (formula: C₂₇H₂₉N₇O₃).



Mol	Chain	Residues	Atoms				ZeroOcc	AltConf
4	B	1	Total	C	N	O	7	0
			37	27	7	3		

- Molecule 5 is water.

Mol	Chain	Residues	Atoms	ZeroOcc	AltConf
5	A	26	Total O 26 26	0	0
5	B	104	Total O 104 104	0	0
5	C	5	Total O 5 5	0	0

3 Residue-property plots [i](#)

These plots are drawn for all protein, RNA, DNA and oligosaccharide chains in the entry. The first graphic for a chain summarises the proportions of the various outlier classes displayed in the second graphic. The second graphic shows the sequence view annotated by issues in geometry. Residues are color-coded according to the number of geometric quality criteria for which they contain at least one outlier: green = 0, yellow = 1, orange = 2 and red = 3 or more. Stretches of 2 or more consecutive residues without any outlier are shown as a green connector. Residues present in the sample, but not in the model, are shown in grey.

Note EDS was not executed.

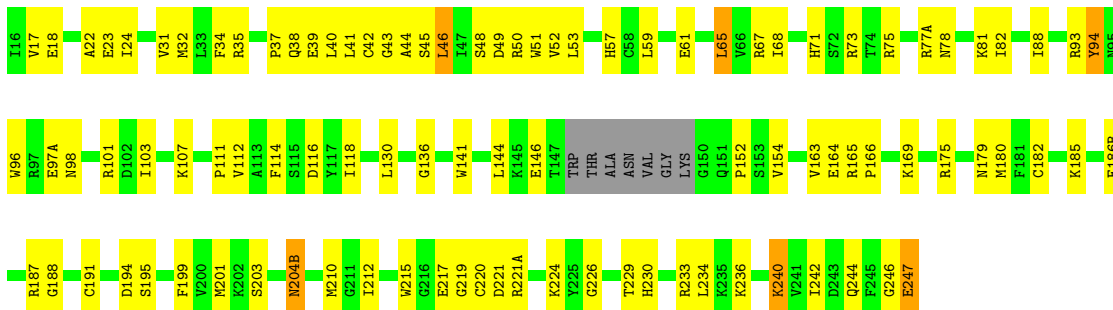
• Molecule 1: thrombin

Chain A: 



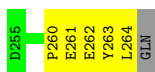
• Molecule 2: thrombin

Chain B: 



• Molecule 3: hirudin IIB

Chain C: 



4 Data and refinement statistics

Xtriage (Phenix) and EDS were not executed - this section is therefore incomplete.

Property	Value	Source
Space group	C 1 2 1	Depositor
Cell constants a, b, c, α , β , γ	69.90Å 71.00Å 72.20Å 90.00° 99.80° 90.00°	Depositor
Resolution (Å)	20.00 – 2.40	Depositor
% Data completeness (in resolution range)	(Not available) (20.00-2.40)	Depositor
R_{merge}	0.06	Depositor
R_{sym}	(Not available)	Depositor
Refinement program	X-PLOR	Depositor
R, R_{free}	0.211 , 0.309	Depositor
Estimated twinning fraction	No twinning to report.	Xtriage
Total number of atoms	2528	wwPDB-VP
Average B, all atoms (Å ²)	34.0	wwPDB-VP

5 Model quality

5.1 Standard geometry

Bond lengths and bond angles in the following residue types are not validated in this section: TYS, C24

The Z score for a bond length (or angle) is the number of standard deviations the observed value is removed from the expected value. A bond length (or angle) with $|Z| > 5$ is considered an outlier worth inspection. RMSZ is the root-mean-square of all Z scores of the bond lengths (or angles).

Mol	Chain	Bond lengths		Bond angles	
		RMSZ	$\# Z > 5$	RMSZ	$\# Z > 5$
1	A	0.45	0/225	0.75	0/299
2	B	0.42	0/2091	0.72	0/2823
3	C	0.48	0/78	0.48	0/103
All	All	0.43	0/2394	0.72	0/3225

There are no bond length outliers.

There are no bond angle outliers.

There are no chirality outliers.

There are no planarity outliers.

5.2 Too-close contacts

In the following table, the Non-H and H(model) columns list the number of non-hydrogen atoms and hydrogen atoms in the chain respectively. The H(added) column lists the number of hydrogen atoms added and optimized by MolProbity. The Clashes column lists the number of clashes within the asymmetric unit, whereas Symm-Clashes lists symmetry-related clashes.

Mol	Chain	Non-H	H(model)	H(added)	Clashes	Symm-Clashes
1	A	223	0	220	5	0
2	B	2039	0	2010	89	0
3	C	94	0	72	3	0
4	B	37	0	28	4	0
5	A	26	0	0	2	0
5	B	104	0	0	17	0
5	C	5	0	0	2	0
All	All	2528	0	2330	97	0

The all-atom clashscore is defined as the number of clashes found per 1000 atoms (including hydrogen atoms). The all-atom clashscore for this structure is 21.

All (97) close contacts within the same asymmetric unit are listed below, sorted by their clash magnitude.

Atom-1	Atom-2	Interatomic distance (Å)	Clash overlap (Å)
2:B:103:ILE:HD13	5:B:572:HOH:O	1.75	0.84
2:B:53:LEU:HD11	2:B:103:ILE:HD11	1.58	0.83
2:B:43:GLY:HA3	5:B:509:HOH:O	1.79	0.81
2:B:73:ARG:HD3	2:B:152:PRO:O	1.82	0.78
1:A:14(G):LEU:HB3	5:A:706:HOH:O	1.83	0.76
2:B:236:LYS:HB2	5:B:537:HOH:O	1.86	0.76
2:B:51:TRP:HZ2	2:B:246:GLY:HA2	1.53	0.74
2:B:50:ARG:HD3	2:B:247:GLU:HB3	1.71	0.72
2:B:114:PHE:HE1	5:B:557:HOH:O	1.73	0.72
2:B:103:ILE:HD12	2:B:212:ILE:HD11	1.74	0.69
2:B:144:LEU:HD21	2:B:152:PRO:HB3	1.75	0.68
5:A:576:HOH:O	2:B:201:MET:HA	1.94	0.67
2:B:81:LYS:NZ	2:B:118:ILE:HD12	2.10	0.66
2:B:93:ARG:O	2:B:101:ARG:HD2	1.95	0.66
2:B:103:ILE:HG21	5:B:572:HOH:O	1.96	0.65
2:B:81:LYS:HZ2	2:B:118:ILE:HD12	1.62	0.64
2:B:35:ARG:HB2	2:B:41:LEU:CD1	2.27	0.63
2:B:35:ARG:HB2	2:B:41:LEU:HD11	1.81	0.62
2:B:49:ASP:HA	5:B:557:HOH:O	1.99	0.62
2:B:46:LEU:HD11	5:B:557:HOH:O	2.02	0.60
2:B:59:LEU:HD22	2:B:88:ILE:HD13	1.84	0.59
2:B:240:LYS:O	2:B:244:GLN:HB2	2.03	0.58
3:C:261:GLU:HG3	5:C:571:HOH:O	2.03	0.58
2:B:42:CYS:HB3	2:B:195:SER:O	2.03	0.58
2:B:61:GLU:HG3	2:B:88:ILE:HG13	1.86	0.58
2:B:68:ILE:HG21	5:B:712:HOH:O	2.04	0.57
1:A:6:LEU:HD21	2:B:116:ASP:HB3	1.88	0.55
2:B:165:ARG:HB2	2:B:166:PRO:HD3	1.87	0.55
2:B:46:LEU:HD22	2:B:48:SER:O	2.08	0.54
2:B:103:ILE:HD12	2:B:212:ILE:CD1	2.37	0.54
2:B:185:LYS:HB2	2:B:186(B):GLU:HG3	1.90	0.53
2:B:24:ILE:HD12	2:B:24:ILE:H	1.74	0.53
2:B:201:MET:SD	2:B:210:MET:HG3	2.50	0.52
2:B:112:VAL:HG21	5:B:712:HOH:O	2.08	0.52
2:B:165:ARG:HB3	2:B:169:LYS:HE2	1.91	0.52
2:B:73:ARG:HG3	2:B:141:TRP:HB3	1.91	0.52
2:B:107:LYS:HZ1	2:B:247:GLU:HB3	1.75	0.52
2:B:18:GLU:HB2	2:B:188:GLY:HA2	1.92	0.51
2:B:35:ARG:O	2:B:38:GLN:HA	2.11	0.51
2:B:67:ARG:HG2	2:B:82:ILE:HG12	1.91	0.51

Continued on next page...

Continued from previous page...

Atom-1	Atom-2	Interatomic distance (Å)	Clash overlap (Å)
2:B:234:LEU:HB2	5:B:572:HOH:O	2.10	0.50
2:B:242:ILE:O	2:B:246:GLY:HA3	2.12	0.50
2:B:136:GLY:HA3	2:B:199:PHE:CZ	2.48	0.49
2:B:51:TRP:HZ2	2:B:246:GLY:CA	2.24	0.49
2:B:229:THR:HG23	5:B:710:HOH:O	2.13	0.49
2:B:230:HIS:ND1	2:B:233:ARG:HG3	2.28	0.49
2:B:204(B):ASN:C	2:B:204(B):ASN:HD22	2.15	0.48
2:B:112:VAL:HG11	5:B:712:HOH:O	2.14	0.48
2:B:94:TYR:CZ	2:B:96:TRP:HB3	2.49	0.48
2:B:18:GLU:HG3	2:B:187:ARG:HG3	1.96	0.47
2:B:179:ASN:HB3	5:B:710:HOH:O	2.13	0.47
2:B:34:PHE:CZ	2:B:38:GLN:HB3	2.50	0.47
2:B:32:MET:HG3	2:B:40:LEU:CD1	2.46	0.46
2:B:32:MET:HB2	2:B:141:TRP:CZ3	2.51	0.46
1:A:14(D):ARG:O	1:A:14(H):GLU:HG3	2.16	0.45
2:B:191:CYS:O	2:B:194:ASP:HB2	2.16	0.45
2:B:34:PHE:HZ	2:B:38:GLN:HB3	1.82	0.45
2:B:230:HIS:CG	2:B:233:ARG:HG3	2.52	0.45
2:B:219:GLY:HA3	2:B:221(A):ARG:NE	2.32	0.45
2:B:59:LEU:HD13	2:B:88:ILE:CG2	2.47	0.45
3:C:260:PRO:HB2	3:C:262:GLU:HG2	1.98	0.45
2:B:45:SER:O	2:B:52:VAL:HA	2.17	0.44
2:B:107:LYS:HZ1	2:B:247:GLU:CB	2.29	0.44
2:B:35:ARG:HB2	2:B:41:LEU:HD13	1.98	0.44
2:B:65:LEU:HA	2:B:65:LEU:HD12	1.78	0.44
2:B:236:LYS:O	2:B:240:LYS:HG2	2.18	0.44
2:B:57:HIS:CE1	2:B:195:SER:HB2	2.52	0.44
4:B:999:C24:H1	5:B:714:HOH:O	2.18	0.44
2:B:37:PRO:O	2:B:39:GLU:HG2	2.17	0.44
2:B:215:TRP:CE3	4:B:999:C24:H24	2.53	0.44
2:B:22:ALA:O	2:B:71:HIS:HE1	2.00	0.44
2:B:112:VAL:HG13	5:B:557:HOH:O	2.18	0.44
2:B:49:ASP:O	2:B:111:PRO:HA	2.18	0.44
2:B:94:TYR:HA	2:B:101:ARG:HB2	1.99	0.44
2:B:236:LYS:HE2	5:B:537:HOH:O	2.16	0.44
3:C:264:LEU:HD11	5:C:722:HOH:O	2.16	0.44
2:B:50:ARG:NE	5:B:580:HOH:O	2.50	0.43
2:B:217:GLU:OE1	2:B:224:LYS:HD2	2.18	0.43
2:B:182:CYS:HA	2:B:226:GLY:O	2.18	0.43
2:B:236:LYS:HD3	2:B:236:LYS:N	2.33	0.43
2:B:17:VAL:HG11	2:B:221:ASP:HB3	1.99	0.43

Continued on next page...

Continued from previous page...

Atom-1	Atom-2	Interatomic distance (Å)	Clash overlap (Å)
2:B:97(A):GLU:OE2	2:B:175:ARG:HD3	2.19	0.43
2:B:146:GLU:HB2	2:B:220:CYS:HB2	2.01	0.43
1:A:7:PHE:HB3	1:A:12:LEU:O	2.18	0.43
2:B:53:LEU:HD11	2:B:103:ILE:CD1	2.39	0.43
2:B:77(A):ARG:O	2:B:78:ASN:HB2	2.19	0.43
2:B:98:ASN:HA	4:B:999:C24:H26	2.00	0.42
1:A:14:ASP:HB2	2:B:23:GLU:OE2	2.20	0.42
2:B:165:ARG:NH2	2:B:180:MET:O	2.53	0.42
2:B:31:VAL:HB	2:B:44:ALA:HB3	2.02	0.41
2:B:164:GLU:HB3	2:B:166:PRO:HD2	2.02	0.41
2:B:203:SER:HB3	2:B:204(B):ASN:ND2	2.36	0.41
4:B:999:C24:N28	4:B:999:C24:H20	2.36	0.41
2:B:130:LEU:HD12	2:B:130:LEU:HA	1.90	0.41
2:B:163:VAL:HB	2:B:182:CYS:SG	2.61	0.40
2:B:59:LEU:HD13	2:B:88:ILE:HG23	2.03	0.40
2:B:71:HIS:CE1	2:B:154:VAL:HG13	2.56	0.40

There are no symmetry-related clashes.

5.3 Torsion angles ⓘ

5.3.1 Protein backbone ⓘ

In the following table, the Percentiles column shows the percent Ramachandran outliers of the chain as a percentile score with respect to all X-ray entries followed by that with respect to entries of similar resolution.

The Analysed column shows the number of residues for which the backbone conformation was analysed, and the total number of residues.

Mol	Chain	Analysed	Favoured	Allowed	Outliers	Percentiles	
1	A	25/36 (69%)	23 (92%)	2 (8%)	0	100	100
2	B	248/259 (96%)	228 (92%)	20 (8%)	0	100	100
3	C	7/11 (64%)	6 (86%)	1 (14%)	0	100	100
All	All	280/306 (92%)	257 (92%)	23 (8%)	0	100	100

There are no Ramachandran outliers to report.

5.3.2 Protein sidechains ⓘ

In the following table, the Percentiles column shows the percent sidechain outliers of the chain as a percentile score with respect to all X-ray entries followed by that with respect to entries of similar resolution.

The Analysed column shows the number of residues for which the sidechain conformation was analysed, and the total number of residues.

Mol	Chain	Analysed	Rotameric	Outliers	Percentiles	
1	A	25/31 (81%)	23 (92%)	2 (8%)	10	16
2	B	220/225 (98%)	213 (97%)	7 (3%)	34	54
3	C	9/10 (90%)	9 (100%)	0	100	100
All	All	254/266 (96%)	245 (96%)	9 (4%)	31	51

All (9) residues with a non-rotameric sidechain are listed below:

Mol	Chain	Res	Type
1	A	6	LEU
1	A	14(F)	LEU
2	B	46	LEU
2	B	65	LEU
2	B	75	ARG
2	B	94	TYR
2	B	204(B)	ASN
2	B	240	LYS
2	B	247	GLU

Sometimes sidechains can be flipped to improve hydrogen bonding and reduce clashes. All (5) such sidechains are listed below:

Mol	Chain	Res	Type
2	B	38	GLN
2	B	78	ASN
2	B	156	GLN
2	B	204(B)	ASN
2	B	239	GLN

5.3.3 RNA ⓘ

There are no RNA molecules in this entry.

5.4 Non-standard residues in protein, DNA, RNA chains [i](#)

1 non-standard protein/DNA/RNA residue is modelled in this entry.

In the following table, the Counts columns list the number of bonds (or angles) for which Mogul statistics could be retrieved, the number of bonds (or angles) that are observed in the model and the number of bonds (or angles) that are defined in the Chemical Component Dictionary. The Link column lists molecule types, if any, to which the group is linked. The Z score for a bond length (or angle) is the number of standard deviations the observed value is removed from the expected value. A bond length (or angle) with $|Z| > 2$ is considered an outlier worth inspection. RMSZ is the root-mean-square of all Z scores of the bond lengths (or angles).

Mol	Type	Chain	Res	Link	Bond lengths			Bond angles		
					Counts	RMSZ	$\# Z > 2$	Counts	RMSZ	$\# Z > 2$
3	TYS	C	263	3	15,16,17	1.31	1 (6%)	15,22,24	0.46	0

In the following table, the Chirals column lists the number of chiral outliers, the number of chiral centers analysed, the number of these observed in the model and the number defined in the Chemical Component Dictionary. Similar counts are reported in the Torsion and Rings columns. '-' means no outliers of that kind were identified.

Mol	Type	Chain	Res	Link	Chirals	Torsions	Rings
3	TYS	C	263	3	-	1/10/11/13	0/1/1/1

All (1) bond length outliers are listed below:

Mol	Chain	Res	Type	Atoms	Z	Observed(Å)	Ideal(Å)
3	C	263	TYS	OH-CZ	-4.57	1.35	1.42

There are no bond angle outliers.

There are no chirality outliers.

All (1) torsion outliers are listed below:

Mol	Chain	Res	Type	Atoms
3	C	263	TYS	O-C-CA-CB

There are no ring outliers.

No monomer is involved in short contacts.

5.5 Carbohydrates [i](#)

There are no oligosaccharides in this entry.

5.6 Ligand geometry

1 ligand is modelled in this entry.

In the following table, the Counts columns list the number of bonds (or angles) for which Mogul statistics could be retrieved, the number of bonds (or angles) that are observed in the model and the number of bonds (or angles) that are defined in the Chemical Component Dictionary. The Link column lists molecule types, if any, to which the group is linked. The Z score for a bond length (or angle) is the number of standard deviations the observed value is removed from the expected value. A bond length (or angle) with $|Z| > 2$ is considered an outlier worth inspection. RMSZ is the root-mean-square of all Z scores of the bond lengths (or angles).

Mol	Type	Chain	Res	Link	Bond lengths			Bond angles		
					Counts	RMSZ	# Z > 2	Counts	RMSZ	# Z > 2
4	C24	B	999	-	37,40,40	2.09	12 (32%)	42,55,55	1.98	16 (38%)

In the following table, the Chirals column lists the number of chiral outliers, the number of chiral centers analysed, the number of these observed in the model and the number defined in the Chemical Component Dictionary. Similar counts are reported in the Torsion and Rings columns. '-' means no outliers of that kind were identified.

Mol	Type	Chain	Res	Link	Chirals	Torsions	Rings
4	C24	B	999	-	-	11/27/29/29	0/4/4/4

All (12) bond length outliers are listed below:

Mol	Chain	Res	Type	Atoms	Z	Observed(Å)	Ideal(Å)
4	B	999	C24	C5-C7	-4.41	1.39	1.47
4	B	999	C24	O33-C31	4.33	1.46	1.33
4	B	999	C24	C27-N28	3.98	1.42	1.34
4	B	999	C24	C23-N22	-3.56	1.35	1.41
4	B	999	C24	C18-C15	-3.51	1.36	1.41
4	B	999	C24	C1-C2	-3.44	1.33	1.39
4	B	999	C24	C21-C14	-3.32	1.34	1.41
4	B	999	C24	C19-C40	-3.24	1.44	1.50
4	B	999	C24	C6-C5	-3.10	1.34	1.39
4	B	999	C24	C3-C2	-3.00	1.34	1.39
4	B	999	C24	C14-C15	-2.59	1.34	1.40
4	B	999	C24	C4-C5	-2.52	1.35	1.39

All (16) bond angle outliers are listed below:

Mol	Chain	Res	Type	Atoms	Z	Observed(°)	Ideal(°)
4	B	999	C24	C20-C19-C18	-4.52	113.75	119.21

Continued on next page...

Continued from previous page...

Mol	Chain	Res	Type	Atoms	Z	Observed(°)	Ideal(°)
4	B	999	C24	N28-C23-N22	4.45	122.45	114.77
4	B	999	C24	C21-C20-C19	3.38	124.78	120.78
4	B	999	C24	C19-C40-N22	3.29	123.59	118.29
4	B	999	C24	C25-C24-C23	2.98	121.72	117.61
4	B	999	C24	C20-C19-C40	2.98	127.93	120.28
4	B	999	C24	C26-C27-N28	-2.91	118.81	123.42
4	B	999	C24	C27-N28-C23	2.89	121.01	116.81
4	B	999	C24	O33-C31-C30	2.84	120.49	111.83
4	B	999	C24	O21-C40-C19	-2.68	114.97	120.29
4	B	999	C24	C18-C15-N16	-2.28	124.30	130.83
4	B	999	C24	C24-C23-N22	-2.24	117.56	121.40
4	B	999	C24	C17-N13-C12	2.21	129.38	125.13
4	B	999	C24	C14-C15-N16	2.16	112.61	107.94
4	B	999	C24	C24-C23-N28	-2.08	119.36	123.46
4	B	999	C24	C20-C21-C14	-2.06	116.84	119.82

There are no chirality outliers.

All (11) torsion outliers are listed below:

Mol	Chain	Res	Type	Atoms
4	B	999	C24	O32-C31-O33-C34
4	B	999	C24	C30-C31-O33-C34
4	B	999	C24	C29-C30-C31-O33
4	B	999	C24	N28-C23-N22-C29
4	B	999	C24	C1-C2-N10-C11
4	B	999	C24	N28-C23-N22-C40
4	B	999	C24	C29-C30-C31-O32
4	B	999	C24	C4-C5-C7-N8
4	B	999	C24	C6-C5-C7-N8
4	B	999	C24	C4-C5-C7-N9
4	B	999	C24	C6-C5-C7-N9

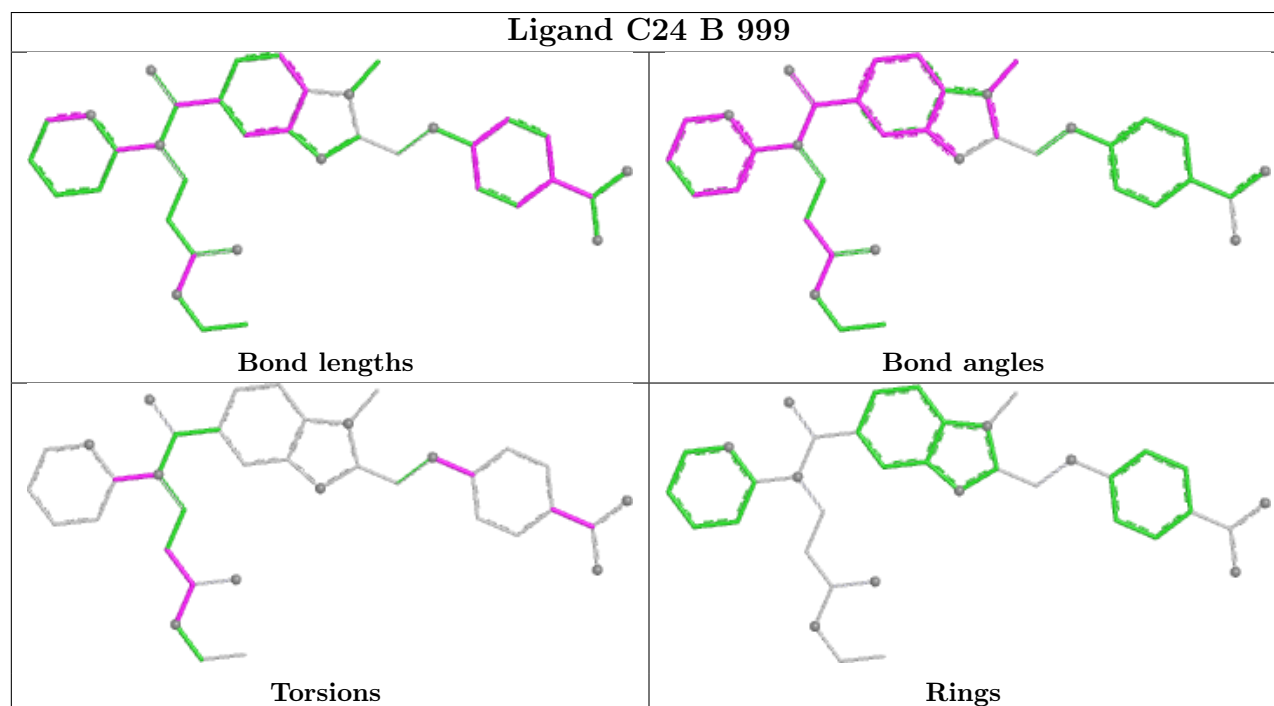
There are no ring outliers.

1 monomer is involved in 4 short contacts:

Mol	Chain	Res	Type	Clashes	Symm-Clashes
4	B	999	C24	4	0

The following is a two-dimensional graphical depiction of Mogul quality analysis of bond lengths, bond angles, torsion angles, and ring geometry for all instances of the Ligand of Interest. In addition, ligands with molecular weight > 250 and outliers as shown on the validation Tables will

also be included. For torsion angles, if less than 5% of the Mogul distribution of torsion angles is within 10 degrees of the torsion angle in question, then that torsion angle is considered an outlier. Any bond that is central to one or more torsion angles identified as an outlier by Mogul will be highlighted in the graph. For rings, the root-mean-square deviation (RMSD) between the ring in question and similar rings identified by Mogul is calculated over all ring torsion angles. If the average RMSD is greater than 60 degrees and the minimal RMSD between the ring in question and any Mogul-identified rings is also greater than 60 degrees, then that ring is considered an outlier. The outliers are highlighted in purple. The color gray indicates Mogul did not find sufficient equivalents in the CSD to analyse the geometry.



5.7 Other polymers [i](#)

There are no such residues in this entry.

5.8 Polymer linkage issues [i](#)

There are no chain breaks in this entry.

6 Fit of model and data [i](#)

6.1 Protein, DNA and RNA chains [i](#)

EDS was not executed - this section is therefore empty.

6.2 Non-standard residues in protein, DNA, RNA chains [i](#)

EDS was not executed - this section is therefore empty.

6.3 Carbohydrates [i](#)

EDS was not executed - this section is therefore empty.

6.4 Ligands [i](#)

EDS was not executed - this section is therefore empty.

6.5 Other polymers [i](#)

EDS was not executed - this section is therefore empty.