



Full wwPDB X-ray Structure Validation Report ⓘ

Apr 14, 2025 – 08:26 PM JST

PDB ID : 9KUE / pdb_00009kue
Title : Crystal structure of the soluble green pigment protein from Tettigonia cantans
Authors : Sluchanko, N.N.; Egorkin, N.A.; Varfolomeeva, L.A.; Popov, V.O.; Boyko, K.M.
Deposited on : 2024-12-03
Resolution : 1.99 Å(reported)

This is a Full wwPDB X-ray Structure Validation Report for a publicly released PDB entry.

We welcome your comments at validation@mail.wwpdb.org

A user guide is available at

<https://www.wwpdb.org/validation/2017/XrayValidationReportHelp>

with specific help available everywhere you see the ⓘ symbol.

The types of validation reports are described at

<http://www.wwpdb.org/validation/2017/FAQs#types>.

The following versions of software and data (see [references ⓘ](#)) were used in the production of this report:

MolProbity	:	4.02b-467
Mogul	:	1.8.5 (274361), CSD as541be (2020)
Xtriage (Phenix)	:	2.0rc1
EDS	:	3.0
buster-report	:	1.1.7 (2018)
Percentile statistics	:	20231227.v01 (using entries in the PDB archive December 27th 2023)
CCP4	:	9.0.006 (Gargrove)
Density-Fitness	:	1.0.12
Ideal geometry (proteins)	:	Engh & Huber (2001)
Ideal geometry (DNA, RNA)	:	Parkinson et al. (1996)
Validation Pipeline (wwPDB-VP)	:	2.42

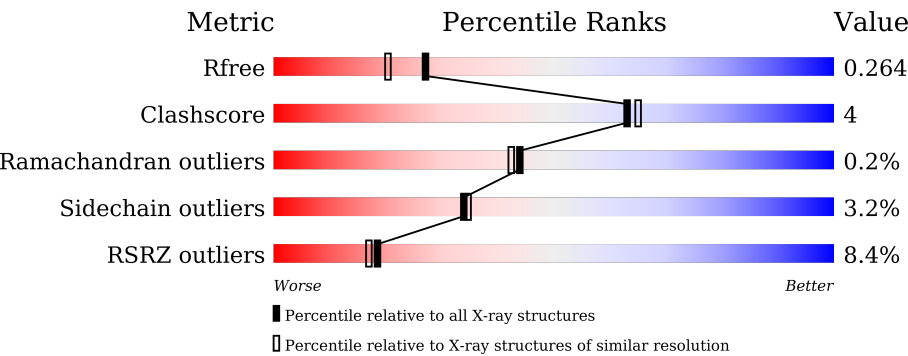
1 Overall quality at a glance i

The following experimental techniques were used to determine the structure:

X-RAY DIFFRACTION

The reported resolution of this entry is 1.99 Å.

Percentile scores (ranging between 0-100) for global validation metrics of the entry are shown in the following graphic. The table shows the number of entries on which the scores are based.



Metric	Whole archive (#Entries)	Similar resolution (#Entries, resolution range(Å))
R_{free}	164625	9409 (2.00-2.00)
Clashscore	180529	10737 (2.00-2.00)
Ramachandran outliers	177936	10628 (2.00-2.00)
Sidechain outliers	177891	10627 (2.00-2.00)
RSRZ outliers	164620	9409 (2.00-2.00)

The table below summarises the geometric issues observed across the polymeric chains and their fit to the electron density. The red, orange, yellow and green segments of the lower bar indicate the fraction of residues that contain outliers for ≥ 3 , 2, 1 and 0 types of geometric quality criteria respectively. A grey segment represents the fraction of residues that are not modelled. The numeric value for each fraction is indicated below the corresponding segment, with a dot representing fractions $\leq 5\%$. The upper red bar (where present) indicates the fraction of residues that have poor fit to the electron density. The numeric value is given above the bar.

Mol	Chain	Length	Quality of chain
1	A	114	<div><div>4%</div><div>89%</div><div>7%</div></div>
1	D	114	<div><div>6%</div><div>89%</div><div>6%</div></div>
2	B	67	<div><div>3%</div><div>94%</div><div>6%</div></div>
2	E	67	<div><div>%</div><div>96%</div><div>.</div></div>
3	C	172	<div><div>%</div><div>93%</div><div>5%</div></div>
3	F	172	<div><div>24%</div><div>88%</div><div>7%</div></div>

2 Entry composition

There are 8 unique types of molecules in this entry. The entry contains 5823 atoms, of which 0 are hydrogens and 0 are deuteriums.

In the tables below, the ZeroOcc column contains the number of atoms modelled with zero occupancy, the AltConf column contains the number of residues with at least one atom in alternate conformation and the Trace column contains the number of residues modelled with at most 2 atoms.

- Molecule 1 is a protein called Dibilinoxanthinin (DBXN).

Mol	Chain	Residues	Atoms					ZeroOcc	AltConf	Trace
1	A	106	Total	C	N	O	S	0	0	0
			802	502	140	157	3			
1	D	107	Total	C	N	O	S	0	0	0
			814	511	141	159	3			

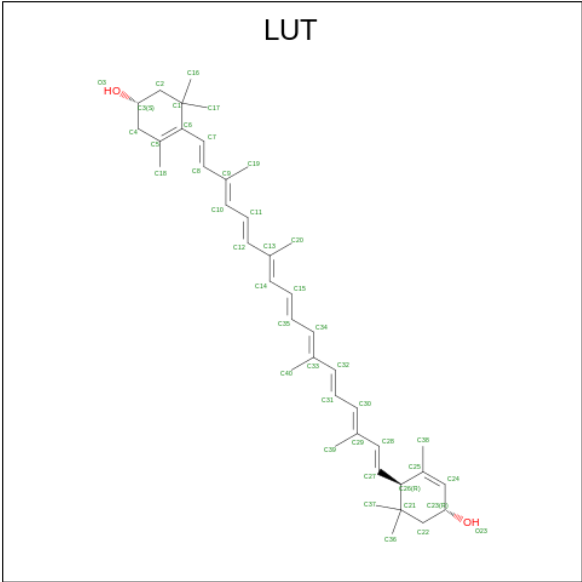
- Molecule 2 is a protein called Dibilinoxanthinin (DBXN).

Mol	Chain	Residues	Atoms					ZeroOcc	AltConf	Trace
2	B	67	Total	C	N	O	S	0	0	0
			539	333	91	113	2			
2	E	67	Total	C	N	O	S	0	0	0
			535	330	90	113	2			

- Molecule 3 is a protein called Dibilinoxanthinin (DBXN).

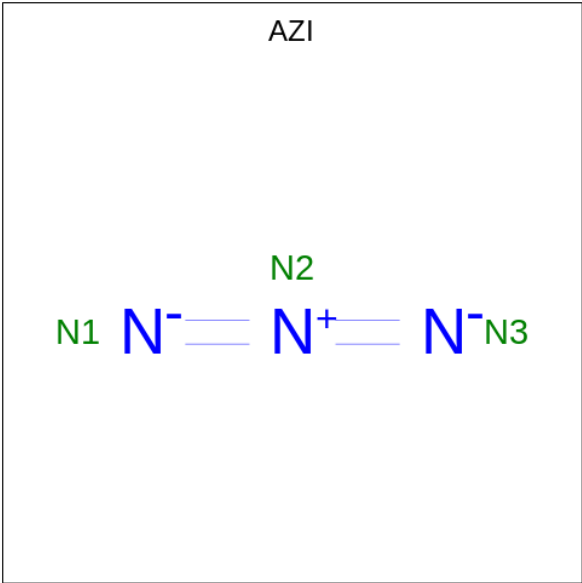
Mol	Chain	Residues	Atoms					ZeroOcc	AltConf	Trace
3	C	169	Total	C	N	O	S	0	0	0
			1291	807	225	256	3			
3	F	168	Total	C	N	O	S	0	0	0
			1278	801	223	251	3			

- Molecule 4 is (3R,3'R,6S)-4,5-DIDEHYDRO-5,6-DIHYDRO-BETA,BETA-CAROTENE-3,3'-DIOL (CCD ID: LUT) (formula: C₄₀H₅₆O₂) (labeled as "Ligand of Interest" by depositor).



Mol	Chain	Residues	Atoms			ZeroOcc	AltConf
4	A	1	Total	C	O	0	0
			42	40	2		
4	D	1	Total	C	O	0	0
			42	40	2		

- Molecule 5 is AZIDE ION (CCD ID: AZI) (formula: N₃).



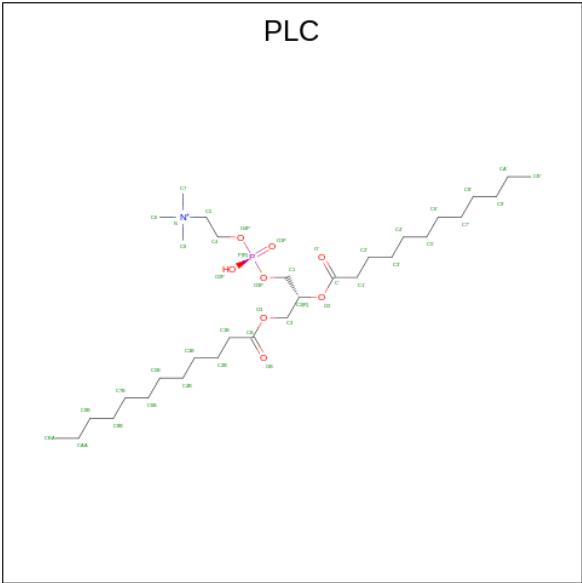
Mol	Chain	Residues	Atoms		ZeroOcc	AltConf
5	A	1	Total	N	0	0
			3	3		
5	B	1	Total	N	0	0
			3	3		

Continued on next page...

Continued from previous page...

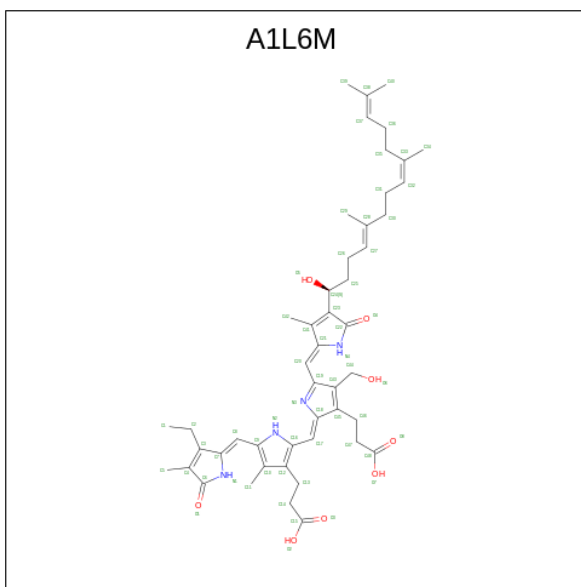
Mol	Chain	Residues	Atoms		ZeroOcc	AltConf
5	C	1	Total	N	0	0
			3	3		
5	D	1	Total	N	0	0
			3	3		
5	E	1	Total	N	0	0
			3	3		
5	E	1	Total	N	0	0
			3	3		

- Molecule 6 is DIUNDECYL PHOSPHATIDYL CHOLINE (CCD ID: PLC) (formula: C₃₂H₆₅NO₈P) (labeled as "Ligand of Interest" by depositor).



Mol	Chain	Residues	Atoms					ZeroOcc	AltConf
6	C	1	Total	C	N	O	P	0	0
			42	32	1	8	1		
6	C	1	Total	C	N	O	P	0	0
			42	32	1	8	1		
6	D	1	Total	C	N	O	P	0	0
			42	32	1	8	1		
6	F	1	Total	C	N	O	P	0	0
			42	32	1	8	1		

- Molecule 7 is 3-[5-[({Z})-(3-ethyl-4-methyl-5-oxidanylidene-pyrrol-2-ylidene)methyl]-2-[({Z})-[4-(hydroxymethyl)-3-(3-hydroxy-3-oxopropyl)-5-[({Z})-[3-methyl-5-oxidanylidene-4-[(1 {S}),4 {E}],8 {Z})]-5,9,13-trimethyl-1-oxidanyl-tetradeca-4,8,12-trienyl]pyrrol-2-ylidene]methyl]pyrrol-2-ylidene]methyl]-4-methyl-1 {H}-pyrrol-3-yl]propanoic acid (CCD ID: A1L6M) (formula: C₄₈H₆₂N₄O₈) (labeled as "Ligand of Interest" by depositor).



Mol	Chain	Residues	Atoms				ZeroOcc	AltConf
7	C	1	Total	C	N	O	0	0
			60	48	4	8		
7	F	1	Total	C	N	O	0	0
			60	48	4	8		

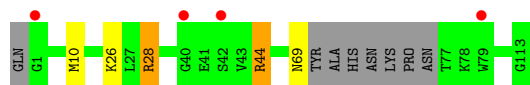
- Molecule 8 is water.

Mol	Chain	Residues	Atoms		ZeroOcc	AltConf
8	A	32	Total	O	0	0
			32	32		
8	B	19	Total	O	0	0
			19	19		
8	C	57	Total	O	0	0
			57	57		
8	D	26	Total	O	0	0
			26	26		
8	E	18	Total	O	0	0
			18	18		
8	F	22	Total	O	0	0
			22	22		

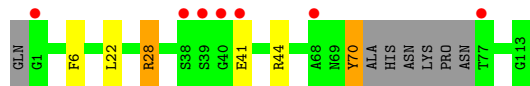
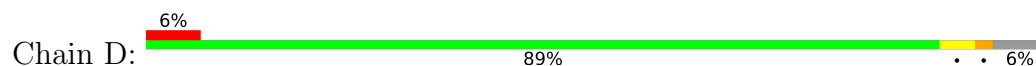
3 Residue-property plots [i](#)

These plots are drawn for all protein, RNA, DNA and oligosaccharide chains in the entry. The first graphic for a chain summarises the proportions of the various outlier classes displayed in the second graphic. The second graphic shows the sequence view annotated by issues in geometry and electron density. Residues are color-coded according to the number of geometric quality criteria for which they contain at least one outlier: green = 0, yellow = 1, orange = 2 and red = 3 or more. A red dot above a residue indicates a poor fit to the electron density ($RSRZ > 2$). Stretches of 2 or more consecutive residues without any outlier are shown as a green connector. Residues present in the sample, but not in the model, are shown in grey.

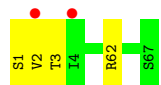
- Molecule 1: Dibilinoxanthinin (DBXN)



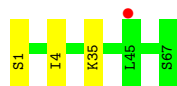
- Molecule 1: Dibilinoxanthinin (DBXN)



- Molecule 2: Dibilinoxanthinin (DBXN)



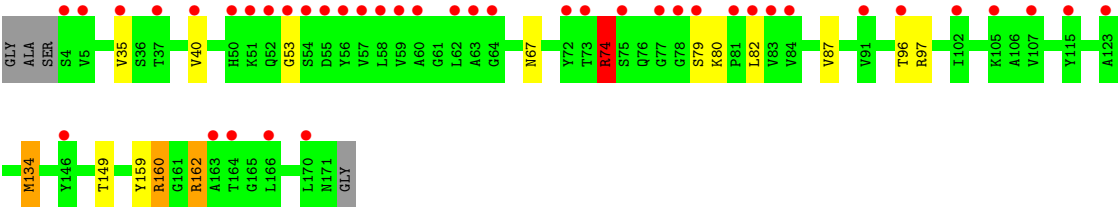
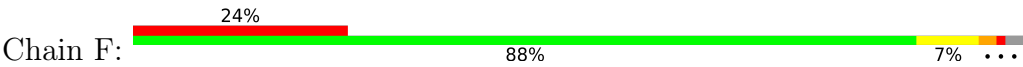
- Molecule 2: Dibilinoxanthinin (DBXN)



- Molecule 3: Dibilinoxanthinin (DBXN)



- Molecule 3: Dibilinoxanthinin (DBXN)



4 Data and refinement statistics

Property	Value	Source
Space group	P 21 21 21	Depositor
Cell constants a, b, c, α , β , γ	47.57Å 87.26Å 167.61Å 90.00° 90.00° 90.00°	Depositor
Resolution (Å)	31.60 – 1.99 31.60 – 1.99	Depositor EDS
% Data completeness (in resolution range)	99.8 (31.60-1.99) 99.8 (31.60-1.99)	Depositor EDS
R_{merge}	0.31	Depositor
R_{sym}	(Not available)	Depositor
$\langle I/\sigma(I) \rangle$ ¹	1.72 (at 2.00Å)	Xtriage
Refinement program	REFMAC 5.8.0430	Depositor
R, R_{free}	0.223 , 0.267 0.228 , 0.264	Depositor DCC
R_{free} test set	2460 reflections (5.05%)	wwPDB-VP
Wilson B-factor (Å ²)	25.7	Xtriage
Anisotropy	0.367	Xtriage
Bulk solvent k_{sol} (e/Å ³), B_{sol} (Å ²)	0.33 , 44.4	EDS
L-test for twinning ²	$\langle L \rangle = 0.45$, $\langle L^2 \rangle = 0.28$	Xtriage
Estimated twinning fraction	No twinning to report.	Xtriage
F_o, F_c correlation	0.94	EDS
Total number of atoms	5823	wwPDB-VP
Average B, all atoms (Å ²)	38.0	wwPDB-VP

Xtriage's analysis on translational NCS is as follows: *The largest off-origin peak in the Patterson function is 5.11% of the height of the origin peak. No significant pseudotranslation is detected.*

¹Intensities estimated from amplitudes.

²Theoretical values of $\langle |L| \rangle$, $\langle L^2 \rangle$ for acentric reflections are 0.5, 0.333 respectively for untwinned datasets, and 0.375, 0.2 for perfectly twinned datasets.

5 Model quality

5.1 Standard geometry

Bond lengths and bond angles in the following residue types are not validated in this section: PLC, AZI, CSD, A1L6M, LUT

The Z score for a bond length (or angle) is the number of standard deviations the observed value is removed from the expected value. A bond length (or angle) with $|Z| > 5$ is considered an outlier worth inspection. RMSZ is the root-mean-square of all Z scores of the bond lengths (or angles).

Mol	Chain	Bond lengths		Bond angles	
		RMSZ	# Z >5	RMSZ	# Z >5
1	A	0.55	0/805	1.02	1/1084 (0.1%)
1	D	0.56	0/818	1.03	2/1102 (0.2%)
2	B	0.57	0/548	0.97	0/738
2	E	0.57	0/544	1.00	0/734
3	C	0.60	0/1319	1.07	2/1801 (0.1%)
3	F	0.55	0/1306	1.11	7/1784 (0.4%)
All	All	0.57	0/5340	1.05	12/7243 (0.2%)

Chiral center outliers are detected by calculating the chiral volume of a chiral center and verifying if the center is modelled as a planar moiety or with the opposite hand. A planarity outlier is detected by checking planarity of atoms in a peptide group, atoms in a mainchain group or atoms of a sidechain that are expected to be planar.

Mol	Chain	#Chirality outliers	#Planarity outliers
1	A	0	1
1	D	0	3
2	B	0	3
3	C	0	2
3	F	0	5
All	All	0	14

There are no bond length outliers.

All (12) bond angle outliers are listed below:

Mol	Chain	Res	Type	Atoms	Z	Observed(°)	Ideal(°)
3	F	134	MET	CG-SD-CE	8.26	113.42	100.20
3	F	162	ARG	NE-CZ-NH2	8.18	124.39	120.30
3	F	160	ARG	NE-CZ-NH1	7.08	123.84	120.30
3	F	160	ARG	CD-NE-CZ	6.83	133.16	123.60
3	C	97	ARG	NE-CZ-NH2	6.43	123.52	120.30

Continued on next page...

Continued from previous page...

Mol	Chain	Res	Type	Atoms	Z	Observed(°)	Ideal(°)
1	D	28	ARG	NE-CZ-NH1	5.92	123.26	120.30
1	A	28	ARG	CG-CD-NE	5.46	123.27	111.80
3	F	160	ARG	CG-CD-NE	5.38	123.09	111.80
3	F	74	ARG	CG-CD-NE	5.27	122.87	111.80
1	D	70	TYR	N-CA-CB	5.22	120.00	110.60
3	F	159	TYR	CB-CG-CD1	5.14	124.08	121.00
3	C	97	ARG	NE-CZ-NH1	-5.01	117.79	120.30

There are no chirality outliers.

All (14) planarity outliers are listed below:

Mol	Chain	Res	Type	Group
1	A	28	ARG	Sidechain
2	B	1	SER	Peptide
2	B	2	VAL	Peptide
2	B	62	ARG	Sidechain
3	C	138	ARG	Sidechain
3	C	170	LEU	Peptide
1	D	28	ARG	Sidechain
1	D	41	GLU	Peptide
1	D	44	ARG	Sidechain
3	F	160	ARG	Sidechain
3	F	162	ARG	Sidechain
3	F	53	GLY	Peptide
3	F	74	ARG	Sidechain
3	F	97	ARG	Sidechain

5.2 Too-close contacts ⓘ

In the following table, the Non-H and H(model) columns list the number of non-hydrogen atoms and hydrogen atoms in the chain respectively. The H(added) column lists the number of hydrogen atoms added and optimized by MolProbity. The Clashes column lists the number of clashes within the asymmetric unit, whereas Symm-Clashes lists symmetry-related clashes.

Mol	Chain	Non-H	H(model)	H(added)	Clashes	Symm-Clashes
1	A	802	0	810	2	0
1	D	814	0	819	2	0
2	B	539	0	520	0	0
2	E	535	0	509	1	0
3	C	1291	0	1241	2	0
3	F	1278	0	1225	2	0

Continued on next page...

Continued from previous page...

Mol	Chain	Non-H	H(model)	H(added)	Clashes	Symm-Clashes
4	A	42	0	56	0	0
4	D	42	0	56	0	0
5	A	3	0	0	0	0
5	B	3	0	0	0	0
5	C	3	0	0	0	0
5	D	3	0	0	0	0
5	E	6	0	0	0	0
6	C	84	0	128	27	0
6	D	42	0	64	6	0
6	F	42	0	64	17	0
7	C	60	0	0	0	0
7	F	60	0	0	0	0
8	A	32	0	0	0	0
8	B	19	0	0	0	0
8	C	57	0	0	0	0
8	D	26	0	0	0	0
8	E	18	0	0	0	0
8	F	22	0	0	0	0
All	All	5823	0	5492	43	0

The all-atom clashscore is defined as the number of clashes found per 1000 atoms (including hydrogen atoms). The all-atom clashscore for this structure is 4.

All (43) close contacts within the same asymmetric unit are listed below, sorted by their clash magnitude.

Atom-1	Atom-2	Interatomic distance (Å)	Clash overlap (Å)
6:C:201:PLC:HTA2	6:C:201:PLC:C6B	1.42	1.32
6:C:201:PLC:H6A2	6:C:201:PLC:CAA	1.52	1.29
6:D:202:PLC:CBA	6:F:201:PLC:H6A2	1.67	1.24
6:C:201:PLC:HEA3	6:F:201:PLC:C7B	1.69	1.21
6:C:201:PLC:CBA	6:F:201:PLC:HTA1	1.75	1.17
6:C:201:PLC:CBA	6:F:201:PLC:H7A2	1.74	1.16
6:C:201:PLC:H4'1	6:C:203:PLC:H5A1	1.10	1.07
6:C:201:PLC:HEA1	6:F:201:PLC:HTA1	1.10	1.07
6:D:202:PLC:HEA3	6:F:201:PLC:H6A2	1.36	1.02
6:C:201:PLC:C4'	6:C:203:PLC:H5A1	1.89	1.01
6:C:201:PLC:HEA1	6:F:201:PLC:CAA	1.94	0.98
6:D:202:PLC:HEA2	6:F:201:PLC:H6A2	1.39	0.98
6:C:201:PLC:H4'1	6:C:203:PLC:C5B	2.03	0.80
6:D:202:PLC:HEA2	6:F:201:PLC:C6B	2.20	0.69
6:C:201:PLC:HEA3	6:F:201:PLC:H7A2	0.81	0.69

Continued on next page...

Continued from previous page...

Atom-1	Atom-2	Interatomic distance (Å)	Clash overlap (Å)
6:C:201:PLC:C6B	6:C:201:PLC:CAA	2.32	0.64
6:C:201:PLC:C3'	6:C:203:PLC:H5A1	2.28	0.63
6:C:201:PLC:CBA	6:F:201:PLC:C7B	2.49	0.61
6:C:201:PLC:CAA	6:F:201:PLC:HTA1	2.31	0.60
6:C:203:PLC:H11	6:C:203:PLC:C1'	2.35	0.56
3:F:35:VAL:HG12	3:F:40:VAL:HG22	1.88	0.56
6:C:203:PLC:C7B	6:C:203:PLC:CBA	2.84	0.55
6:C:201:PLC:HTA2	6:C:201:PLC:H6A2	0.62	0.54
6:C:203:PLC:C1'	6:C:203:PLC:C1	2.84	0.53
6:D:202:PLC:H6A2	6:D:202:PLC:HTA1	1.91	0.51
6:C:201:PLC:H3'2	6:C:203:PLC:H5A1	1.94	0.49
6:C:203:PLC:CBA	6:C:203:PLC:H7A2	2.42	0.49
6:C:203:PLC:H11	6:C:203:PLC:H1'2	1.96	0.47
1:D:22:LEU:HG	3:F:134:MET:HE1	1.96	0.47
6:F:201:PLC:H1'2	6:F:201:PLC:H2	1.53	0.46
6:F:201:PLC:H7A1	6:F:201:PLC:HEA3	1.97	0.45
1:A:44:ARG:HH11	1:A:44:ARG:HB3	1.82	0.45
3:C:158:THR:HA	2:E:4:ILE:HG13	2.00	0.44
6:C:203:PLC:C1	6:C:203:PLC:H1'1	2.46	0.44
6:C:201:PLC:H4'1	6:C:203:PLC:C7B	2.47	0.44
6:F:201:PLC:H1A1	6:F:201:PLC:H4A1	1.51	0.44
6:D:202:PLC:HEA3	6:F:201:PLC:C6B	2.27	0.44
6:C:203:PLC:C7B	6:C:203:PLC:HEA2	2.47	0.43
3:C:44:ASP:HA	3:C:171:ASN:HD21	1.84	0.43
6:C:203:PLC:H1'1	6:C:203:PLC:H2	1.72	0.41
1:A:10:MET:HB3	1:D:6:PHE:HB3	2.02	0.41
6:F:201:PLC:H7A1	6:F:201:PLC:CBA	2.52	0.40
6:C:203:PLC:H7A2	6:C:203:PLC:HEA3	2.02	0.40

There are no symmetry-related clashes.

5.3 Torsion angles [i](#)

5.3.1 Protein backbone [i](#)

In the following table, the Percentiles column shows the percent Ramachandran outliers of the chain as a percentile score with respect to all X-ray entries followed by that with respect to entries of similar resolution.

The Analysed column shows the number of residues for which the backbone conformation was analysed, and the total number of residues.

Mol	Chain	Analysed	Favoured	Allowed	Outliers	Percentiles	
1	A	101/114 (89%)	100 (99%)	1 (1%)	0	100	100
1	D	102/114 (90%)	99 (97%)	3 (3%)	0	100	100
2	B	65/67 (97%)	65 (100%)	0	0	100	100
2	E	65/67 (97%)	65 (100%)	0	0	100	100
3	C	167/172 (97%)	163 (98%)	3 (2%)	1 (1%)	22	17
3	F	166/172 (96%)	163 (98%)	3 (2%)	0	100	100
All	All	666/706 (94%)	655 (98%)	10 (2%)	1 (0%)	44	42

All (1) Ramachandran outliers are listed below:

Mol	Chain	Res	Type
3	C	171	ASN

5.3.2 Protein sidechains ⓘ

In the following table, the Percentiles column shows the percent sidechain outliers of the chain as a percentile score with respect to all X-ray entries followed by that with respect to entries of similar resolution.

The Analysed column shows the number of residues for which the sidechain conformation was analysed, and the total number of residues.

Mol	Chain	Analysed	Rotameric	Outliers	Percentiles	
1	A	86/93 (92%)	83 (96%)	3 (4%)	31	31
1	D	87/93 (94%)	86 (99%)	1 (1%)	70	76
2	B	60/60 (100%)	59 (98%)	1 (2%)	56	61
2	E	59/60 (98%)	57 (97%)	2 (3%)	32	32
3	C	139/141 (99%)	136 (98%)	3 (2%)	47	51
3	F	136/141 (96%)	128 (94%)	8 (6%)	16	13
All	All	567/588 (96%)	549 (97%)	18 (3%)	34	35

All (18) residues with a non-rotameric sidechain are listed below:

Mol	Chain	Res	Type
1	A	26	LYS
1	A	44	ARG
1	A	69	ASN
2	B	3	THR

Continued on next page...

Continued from previous page...

Mol	Chain	Res	Type
3	C	4	SER
3	C	67	ASN
3	C	79	SER
1	D	70	TYR
2	E	1	SER
2	E	35	LYS
3	F	67	ASN
3	F	74	ARG
3	F	79	SER
3	F	80	LYS
3	F	82	LEU
3	F	87	VAL
3	F	96	THR
3	F	149	THR

Sometimes sidechains can be flipped to improve hydrogen bonding and reduce clashes. All (4) such sidechains are listed below:

Mol	Chain	Res	Type
1	A	61	ASN
1	A	103	GLN
2	B	16	GLN
3	C	171	ASN

5.3.3 RNA ⓘ

There are no RNA molecules in this entry.

5.4 Non-standard residues in protein, DNA, RNA chains ⓘ

2 non-standard protein/DNA/RNA residues are modelled in this entry.

In the following table, the Counts columns list the number of bonds (or angles) for which Mogul statistics could be retrieved, the number of bonds (or angles) that are observed in the model and the number of bonds (or angles) that are defined in the Chemical Component Dictionary. The Link column lists molecule types, if any, to which the group is linked. The Z score for a bond length (or angle) is the number of standard deviations the observed value is removed from the expected value. A bond length (or angle) with $|Z| > 2$ is considered an outlier worth inspection. RMSZ is the root-mean-square of all Z scores of the bond lengths (or angles).

Mol	Type	Chain	Res	Link	Bond lengths			Bond angles		
					Counts	RMSZ	$\# Z > 2$	Counts	RMSZ	$\# Z > 2$
1	CSD	A	80	1	3,7,8	0.97	0	1,8,10	1.75	0

Mol	Type	Chain	Res	Link	Bond lengths			Bond angles		
					Counts	RMSZ	# Z > 2	Counts	RMSZ	# Z > 2
1	CSD	D	80	1	3,7,8	0.56	0	1,8,10	0.89	0

In the following table, the Chirals column lists the number of chiral outliers, the number of chiral centers analysed, the number of these observed in the model and the number defined in the Chemical Component Dictionary. Similar counts are reported in the Torsion and Rings columns. '-' means no outliers of that kind were identified.

Mol	Type	Chain	Res	Link	Chirals	Torsions	Rings
1	CSD	A	80	1	-	1/2/6/8	-
1	CSD	D	80	1	-	0/2/6/8	-

There are no bond length outliers.

There are no bond angle outliers.

There are no chirality outliers.

All (1) torsion outliers are listed below:

Mol	Chain	Res	Type	Atoms
1	A	80	CSD	N-CA-CB-SG

There are no ring outliers.

No monomer is involved in short contacts.

5.5 Carbohydrates [i](#)

There are no oligosaccharides in this entry.

5.6 Ligand geometry [i](#)

14 ligands are modelled in this entry.

In the following table, the Counts columns list the number of bonds (or angles) for which Mogul statistics could be retrieved, the number of bonds (or angles) that are observed in the model and the number of bonds (or angles) that are defined in the Chemical Component Dictionary. The Link column lists molecule types, if any, to which the group is linked. The Z score for a bond length (or angle) is the number of standard deviations the observed value is removed from the expected value. A bond length (or angle) with $|Z| > 2$ is considered an outlier worth inspection. RMSZ is the root-mean-square of all Z scores of the bond lengths (or angles).

Mol	Type	Chain	Res	Link	Bond lengths			Bond angles		
					Counts	RMSZ	# Z > 2	Counts	RMSZ	# Z > 2
5	AZI	A	202	-	0,2,2	-	-	0,1,1	-	-
4	LUT	D	201	-	42,43,43	1.69	6 (14%)	51,60,60	1.92	15 (29%)
5	AZI	E	101	-	0,2,2	-	-	0,1,1	-	-
5	AZI	E	102	-	0,2,2	-	-	0,1,1	-	-
5	AZI	B	101	-	0,2,2	-	-	0,1,1	-	-
6	PLC	C	201	-	41,41,41	0.61	0	47,49,49	1.68	8 (17%)
5	AZI	C	204	-	0,2,2	-	-	0,1,1	-	-
4	LUT	A	201	-	42,43,43	1.93	8 (19%)	51,60,60	1.74	15 (29%)
5	AZI	D	203	-	0,2,2	-	-	0,1,1	-	-
7	A1L6M	F	202	-	58,63,63	1.68	9 (15%)	70,88,88	1.86	12 (17%)
6	PLC	F	201	-	41,41,41	0.40	0	47,49,49	0.76	2 (4%)
6	PLC	C	203	-	41,41,41	0.47	0	47,49,49	0.71	1 (2%)
7	A1L6M	C	202	-	58,63,63	1.51	8 (13%)	70,88,88	1.82	12 (17%)
6	PLC	D	202	-	41,41,41	0.52	0	47,49,49	0.74	1 (2%)

In the following table, the Chirals column lists the number of chiral outliers, the number of chiral centers analysed, the number of these observed in the model and the number defined in the Chemical Component Dictionary. Similar counts are reported in the Torsion and Rings columns. '-' means no outliers of that kind were identified.

Mol	Type	Chain	Res	Link	Chirals	Torsions	Rings
4	LUT	D	201	-	-	2/29/67/67	0/2/2/2
6	PLC	C	201	-	-	20/45/45/45	-
4	LUT	A	201	-	-	3/29/67/67	0/2/2/2
7	A1L6M	F	202	-	-	12/48/96/96	0/4/4/4
6	PLC	F	201	-	-	21/45/45/45	-
6	PLC	C	203	-	-	22/45/45/45	-
7	A1L6M	C	202	-	-	11/48/96/96	0/4/4/4
6	PLC	D	202	-	-	15/45/45/45	-

All (31) bond length outliers are listed below:

Mol	Chain	Res	Type	Atoms	Z	Observed(Å)	Ideal(Å)
7	F	202	A1L6M	C17-C18	7.18	1.41	1.35
7	C	202	A1L6M	C17-C18	6.08	1.40	1.35
4	A	201	LUT	C10-C9	5.45	1.43	1.35
4	D	201	LUT	C30-C29	5.20	1.42	1.35
4	A	201	LUT	C34-C33	5.18	1.42	1.35
4	A	201	LUT	C30-C29	4.99	1.42	1.35

Continued on next page...

Continued from previous page...

Mol	Chain	Res	Type	Atoms	Z	Observed(Å)	Ideal(Å)
7	F	202	A1L6M	C19-C43	-4.87	1.38	1.45
4	D	201	LUT	C14-C13	4.80	1.42	1.35
7	F	202	A1L6M	C18-C45	-4.72	1.38	1.45
7	C	202	A1L6M	C18-C45	-4.46	1.38	1.45
4	D	201	LUT	C10-C9	4.41	1.41	1.35
4	A	201	LUT	C14-C13	3.83	1.40	1.35
7	C	202	A1L6M	C19-C43	-3.73	1.39	1.45
4	D	201	LUT	C34-C33	3.22	1.40	1.35
4	A	201	LUT	C35-C34	-3.12	1.33	1.43
7	C	202	A1L6M	C8-C7	3.05	1.40	1.34
7	F	202	A1L6M	C8-C7	3.04	1.40	1.34
7	F	202	A1L6M	C23-C41	2.90	1.41	1.34
7	C	202	A1L6M	O2-C15	-2.87	1.21	1.30
7	C	202	A1L6M	O1-C6	2.82	1.28	1.23
4	A	201	LUT	C28-C29	-2.65	1.40	1.45
7	C	202	A1L6M	O4-C22	2.42	1.28	1.23
7	C	202	A1L6M	C22-C23	-2.42	1.40	1.47
4	D	201	LUT	C11-C10	-2.35	1.36	1.43
7	F	202	A1L6M	O4-C22	2.33	1.28	1.23
4	A	201	LUT	C11-C12	2.26	1.40	1.34
7	F	202	A1L6M	O2-C15	-2.25	1.23	1.30
4	A	201	LUT	C8-C9	-2.23	1.41	1.45
4	D	201	LUT	C5-C6	2.17	1.38	1.34
7	F	202	A1L6M	C22-C23	-2.14	1.40	1.47
7	F	202	A1L6M	C6-C4	-2.07	1.42	1.47

All (66) bond angle outliers are listed below:

Mol	Chain	Res	Type	Atoms	Z	Observed(°)	Ideal(°)
7	F	202	A1L6M	C16-C17-C18	9.35	139.98	128.81
7	C	202	A1L6M	C16-C17-C18	9.25	139.86	128.81
6	C	201	PLC	O2-C'-C1'	7.88	128.48	111.50
4	D	201	LUT	C2-C3-C4	5.01	117.16	110.30
4	A	201	LUT	C19-C9-C10	-4.63	116.44	122.92
4	D	201	LUT	C19-C9-C8	4.60	125.32	118.08
4	D	201	LUT	C19-C9-C10	-4.36	116.82	122.92
7	F	202	A1L6M	C20-C19-C43	4.25	133.12	124.49
7	C	202	A1L6M	C20-C19-C43	3.85	132.31	124.49
4	A	201	LUT	C19-C9-C8	3.81	124.08	118.08
4	D	201	LUT	C39-C29-C28	3.60	123.74	118.08
7	F	202	A1L6M	C21-C20-C19	3.58	136.83	128.08
4	D	201	LUT	C39-C29-C30	-3.52	118.00	122.92

Continued on next page...

Continued from previous page...

Mol	Chain	Res	Type	Atoms	Z	Observed(°)	Ideal(°)
7	F	202	A1L6M	C18-C45-C43	3.44	109.77	106.69
7	C	202	A1L6M	C31-C30-C28	3.41	124.18	112.98
7	C	202	A1L6M	C19-C43-C45	3.36	109.70	106.69
7	F	202	A1L6M	C20-C19-N3	-3.33	117.97	124.93
6	C	201	PLC	C3-C2-C1	3.32	119.63	111.79
7	C	202	A1L6M	C8-C7-N1	-3.17	119.77	130.40
4	A	201	LUT	C39-C29-C28	3.12	123.00	118.08
4	A	201	LUT	C35-C34-C33	3.10	131.74	127.31
6	C	201	PLC	O3-C3-C2	3.05	117.30	108.43
4	A	201	LUT	C15-C14-C13	3.04	131.65	127.31
6	C	201	PLC	O2-C2-C1	-3.03	97.42	108.40
4	D	201	LUT	C35-C34-C33	3.03	131.63	127.31
6	C	201	PLC	O'-C'-C1'	-2.90	112.42	123.73
7	C	202	A1L6M	C47-C46-C45	2.90	120.68	112.63
6	F	201	PLC	O2P-P-O3P	-2.83	94.58	107.75
7	F	202	A1L6M	C8-C7-N1	-2.82	120.93	130.40
7	C	202	A1L6M	C21-C20-C19	2.76	134.83	128.08
7	F	202	A1L6M	C46-C47-C48	2.69	119.39	113.60
7	F	202	A1L6M	C17-C18-N3	-2.68	125.11	128.83
4	A	201	LUT	C36-C21-C26	2.60	113.48	109.55
4	A	201	LUT	C39-C29-C30	-2.57	119.32	122.92
4	D	201	LUT	C18-C5-C6	2.56	127.40	124.53
4	D	201	LUT	C40-C33-C34	-2.54	119.37	122.92
7	F	202	A1L6M	C26-C25-C24	2.54	118.16	114.35
7	C	202	A1L6M	C20-C19-N3	-2.52	119.66	124.93
4	A	201	LUT	C10-C11-C12	2.49	130.99	123.22
6	C	201	PLC	O2-C'-O'	-2.44	117.81	123.70
6	D	202	PLC	O4P-P-O1P	-2.39	99.74	109.07
4	A	201	LUT	C31-C30-C29	2.36	130.68	127.31
4	D	201	LUT	C1-C2-C3	2.31	118.85	113.64
7	C	202	A1L6M	O4-C22-N4	-2.30	119.73	125.08
6	F	201	PLC	O2P-P-O1P	2.28	123.49	112.24
4	D	201	LUT	C7-C8-C9	-2.26	122.82	126.23
4	A	201	LUT	C1-C6-C5	-2.24	119.47	122.61
7	C	202	A1L6M	O1-C6-N1	-2.19	119.98	125.08
6	C	203	PLC	C3-C2-C1	2.19	116.96	111.79
4	D	201	LUT	C31-C30-C29	2.16	130.40	127.31
7	C	202	A1L6M	C18-C45-C43	-2.16	104.75	106.69
7	F	202	A1L6M	C5-C4-C3	2.15	131.96	126.12
4	D	201	LUT	C8-C7-C6	2.15	133.23	127.20
6	C	201	PLC	C3'-C2'-C1'	2.13	120.86	113.19
4	A	201	LUT	C1-C6-C7	2.13	121.81	115.78

Continued on next page...

Continued from previous page...

Mol	Chain	Res	Type	Atoms	Z	Observed(°)	Ideal(°)
4	A	201	LUT	C18-C5-C6	2.13	126.92	124.53
7	C	202	A1L6M	C17-C18-N3	-2.10	125.92	128.83
7	F	202	A1L6M	C24-C23-C22	-2.09	118.05	122.33
4	A	201	LUT	C20-C13-C14	-2.07	120.03	122.92
4	D	201	LUT	C40-C33-C32	2.06	121.33	118.08
7	F	202	A1L6M	C6-C4-C3	-2.06	106.13	108.07
4	A	201	LUT	C1-C2-C3	2.04	118.25	113.64
4	D	201	LUT	C15-C14-C13	2.03	130.21	127.31
6	C	201	PLC	O3P-P-O1P	2.03	117.00	109.07
4	D	201	LUT	C10-C11-C12	2.03	129.55	123.22
4	A	201	LUT	C40-C33-C32	2.00	121.23	118.08

There are no chirality outliers.

All (106) torsion outliers are listed below:

Mol	Chain	Res	Type	Atoms
6	C	203	PLC	C1'-C'-O2-C2
6	C	203	PLC	O'-C'-O2-C2
6	C	203	PLC	C1B-CB-O3-C3
6	C	203	PLC	C1-O3P-P-O4P
6	C	203	PLC	C4-O4P-P-O1P
6	C	203	PLC	C4-O4P-P-O2P
6	C	203	PLC	C4-O4P-P-O3P
6	D	202	PLC	C1-O3P-P-O1P
6	F	201	PLC	C1'-C'-O2-C2
6	F	201	PLC	O'-C'-O2-C2
6	F	201	PLC	C4-O4P-P-O2P
7	C	202	A1L6M	C7-C8-C9-C10
7	C	202	A1L6M	C7-C8-C9-N2
7	F	202	A1L6M	C7-C8-C9-C10
7	F	202	A1L6M	C7-C8-C9-N2
7	F	202	A1L6M	C1-C2-C3-C7
7	F	202	A1L6M	C1-C2-C3-C4
6	C	203	PLC	OB-CB-O3-C3
6	C	201	PLC	C2-C3-O3-CB
6	F	201	PLC	C1B-C2B-C3B-C4B
6	C	201	PLC	C7B-C8B-C9B-CAA
6	F	201	PLC	C2-C3-O3-CB
6	C	201	PLC	C6'-C7'-C8'-C9'
6	F	201	PLC	C7B-C8B-C9B-CAA
6	C	201	PLC	C'-C1'-C2'-C3'
7	C	202	A1L6M	C1-C2-C3-C4

Continued on next page...

Continued from previous page...

Mol	Chain	Res	Type	Atoms
7	C	202	A1L6M	C1-C2-C3-C7
6	D	202	PLC	C3B-C4B-C5B-C6B
4	A	201	LUT	C11-C12-C13-C20
6	D	202	PLC	CB-C1B-C2B-C3B
6	F	201	PLC	C'-C1'-C2'-C3'
6	F	201	PLC	CB-C1B-C2B-C3B
6	C	201	PLC	C6B-C7B-C8B-C9B
6	F	201	PLC	C1-O3P-P-O4P
6	C	203	PLC	C5'-C6'-C7'-C8'
6	F	201	PLC	C3B-C4B-C5B-C6B
6	C	201	PLC	C3'-C4'-C5'-C6'
7	C	202	A1L6M	N3-C19-C20-C21
7	F	202	A1L6M	N3-C19-C20-C21
6	C	203	PLC	C'-C1'-C2'-C3'
6	C	203	PLC	C3B-C4B-C5B-C6B
6	D	202	PLC	C5'-C6'-C7'-C8'
7	C	202	A1L6M	C43-C19-C20-C21
7	F	202	A1L6M	C43-C19-C20-C21
6	C	203	PLC	C4B-C5B-C6B-C7B
6	D	202	PLC	C7'-C8'-C9'-CA'
6	D	202	PLC	C2B-C3B-C4B-C5B
6	F	201	PLC	C4'-C5'-C6'-C7'
6	C	201	PLC	C2B-C3B-C4B-C5B
6	C	203	PLC	C1'-C2'-C3'-C4'
6	C	201	PLC	C5B-C6B-C7B-C8B
6	C	203	PLC	C2'-C3'-C4'-C5'
6	C	203	PLC	C8B-C9B-CAA-CBA
6	F	201	PLC	C5B-C6B-C7B-C8B
6	C	203	PLC	C3'-C4'-C5'-C6'
6	C	201	PLC	C2'-C3'-C4'-C5'
6	D	202	PLC	C7B-C8B-C9B-CAA
6	D	202	PLC	C3'-C4'-C5'-C6'
6	C	201	PLC	OB-CB-O3-C3
6	C	201	PLC	C4B-C5B-C6B-C7B
6	D	202	PLC	C5B-C6B-C7B-C8B
6	C	201	PLC	C8'-C9'-CA'-CB'
6	C	201	PLC	C1'-C2'-C3'-C4'
6	C	201	PLC	CB-C1B-C2B-C3B
4	D	201	LUT	C11-C12-C13-C20
6	D	202	PLC	C8B-C9B-CAA-CBA
6	C	201	PLC	C1B-CB-O3-C3
6	D	202	PLC	C4B-C5B-C6B-C7B

Continued on next page...

Continued from previous page...

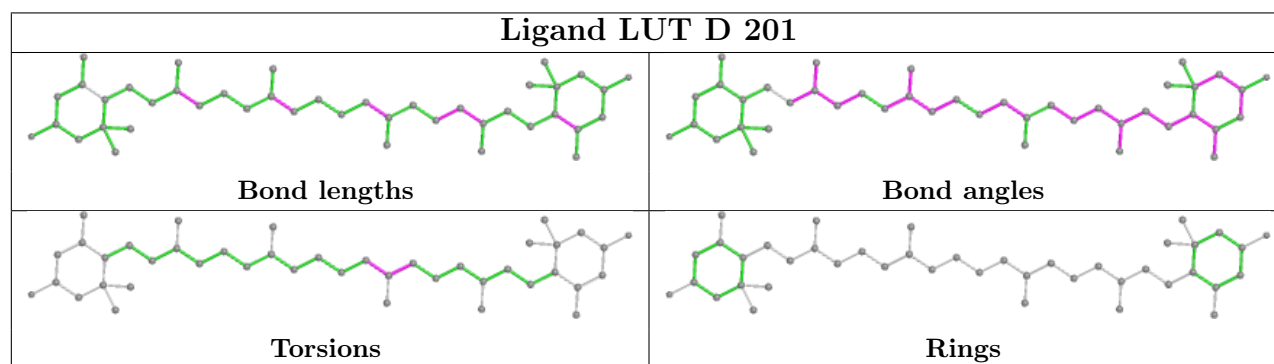
Mol	Chain	Res	Type	Atoms
6	C	203	PLC	C2B-C3B-C4B-C5B
6	F	201	PLC	C8B-C9B-CAA-CBA
6	C	203	PLC	C6B-C7B-C8B-C9B
6	F	201	PLC	C6B-C7B-C8B-C9B
6	C	203	PLC	O3P-C1-C2-C3
6	F	201	PLC	O3P-C1-C2-C3
4	D	201	LUT	C20-C13-C14-C15
6	D	202	PLC	C1B-C2B-C3B-C4B
6	F	201	PLC	O3P-C1-C2-O2
7	F	202	A1L6M	C34-C33-C35-C36
6	F	201	PLC	OB-CB-O3-C3
6	C	203	PLC	C1-O3P-P-O2P
6	F	201	PLC	C1-O3P-P-O1P
6	F	201	PLC	C1-O3P-P-O2P
6	C	203	PLC	O3P-C1-C2-O2
7	C	202	A1L6M	C41-C23-C24-O5
7	F	202	A1L6M	C41-C23-C24-O5
6	C	201	PLC	O4P-C4-C5-N
6	D	202	PLC	O4P-C4-C5-N
7	C	202	A1L6M	N1-C7-C8-C9
6	C	201	PLC	O'-C'-O2-C2
7	F	202	A1L6M	C32-C33-C35-C36
6	C	201	PLC	C8B-C9B-CAA-CBA
6	C	201	PLC	C4'-C5'-C6'-C7'
6	D	202	PLC	C4'-C5'-C6'-C7'
7	F	202	A1L6M	C28-C30-C31-C32
6	F	201	PLC	C1B-CB-O3-C3
6	D	202	PLC	C1'-C2'-C3'-C4'
7	F	202	A1L6M	C13-C14-C15-O2
7	C	202	A1L6M	C34-C33-C35-C36
6	C	203	PLC	C1B-C2B-C3B-C4B
7	F	202	A1L6M	C13-C14-C15-O3
6	C	201	PLC	C1-C2-C3-O3
7	C	202	A1L6M	C27-C28-C30-C31
6	F	201	PLC	C4-O4P-P-O1P
4	A	201	LUT	C1-C6-C7-C8
4	A	201	LUT	C5-C6-C7-C8
7	C	202	A1L6M	C29-C28-C30-C31

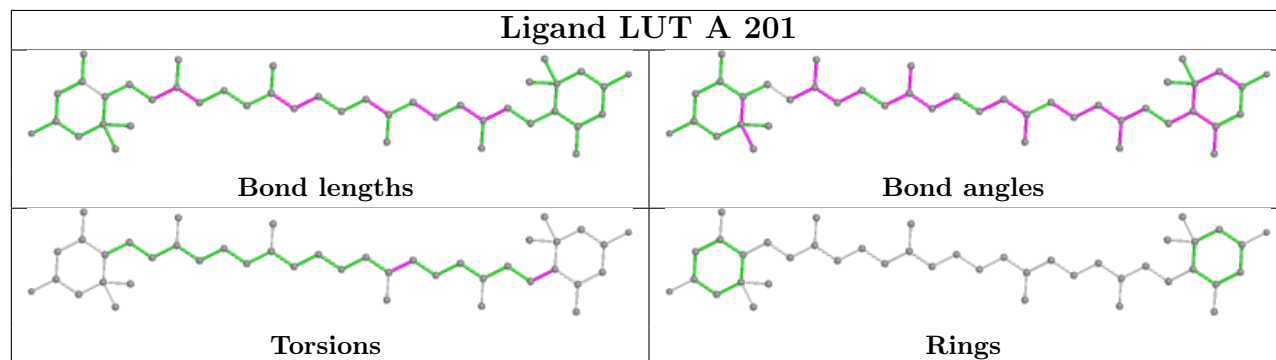
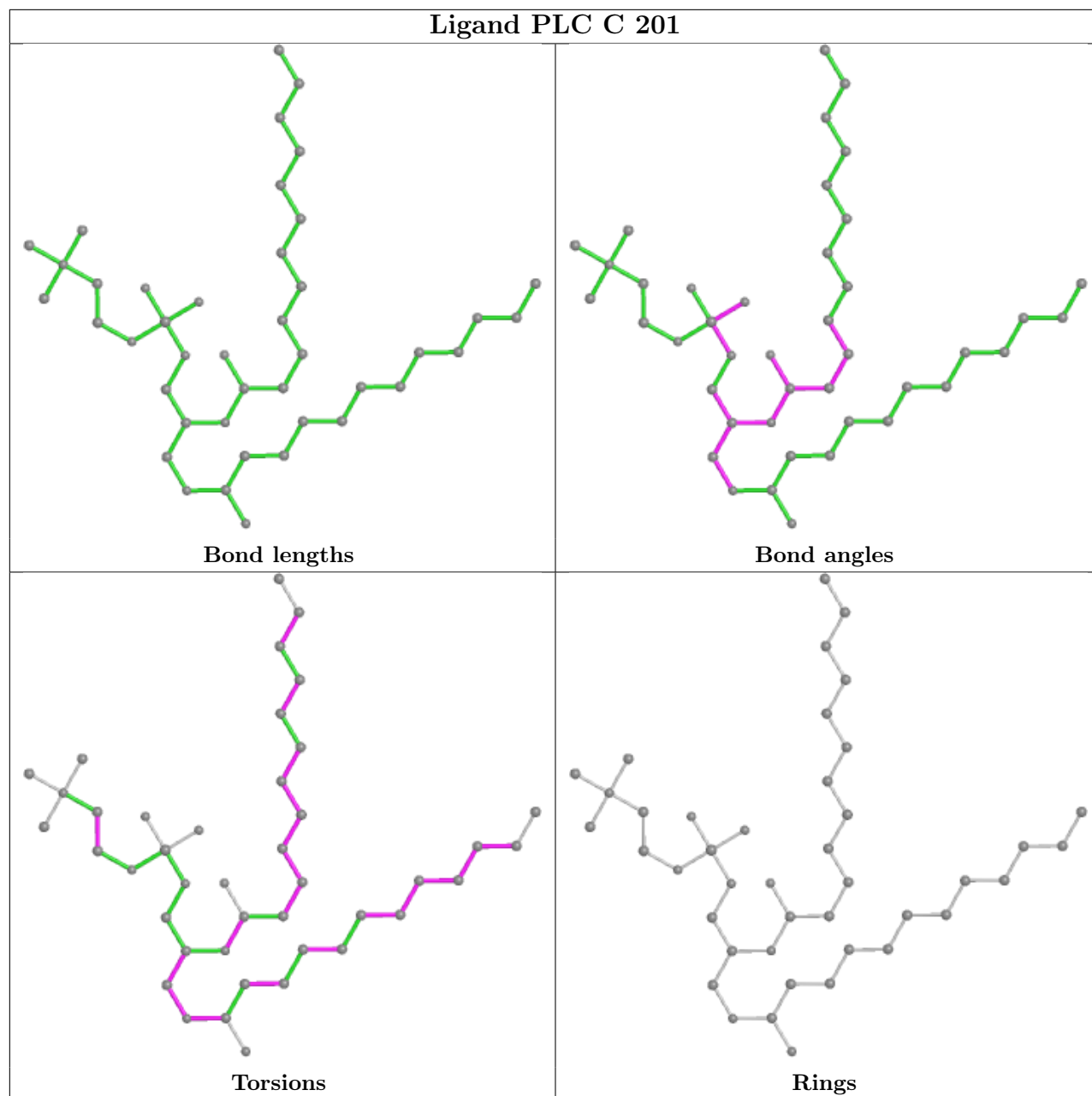
There are no ring outliers.

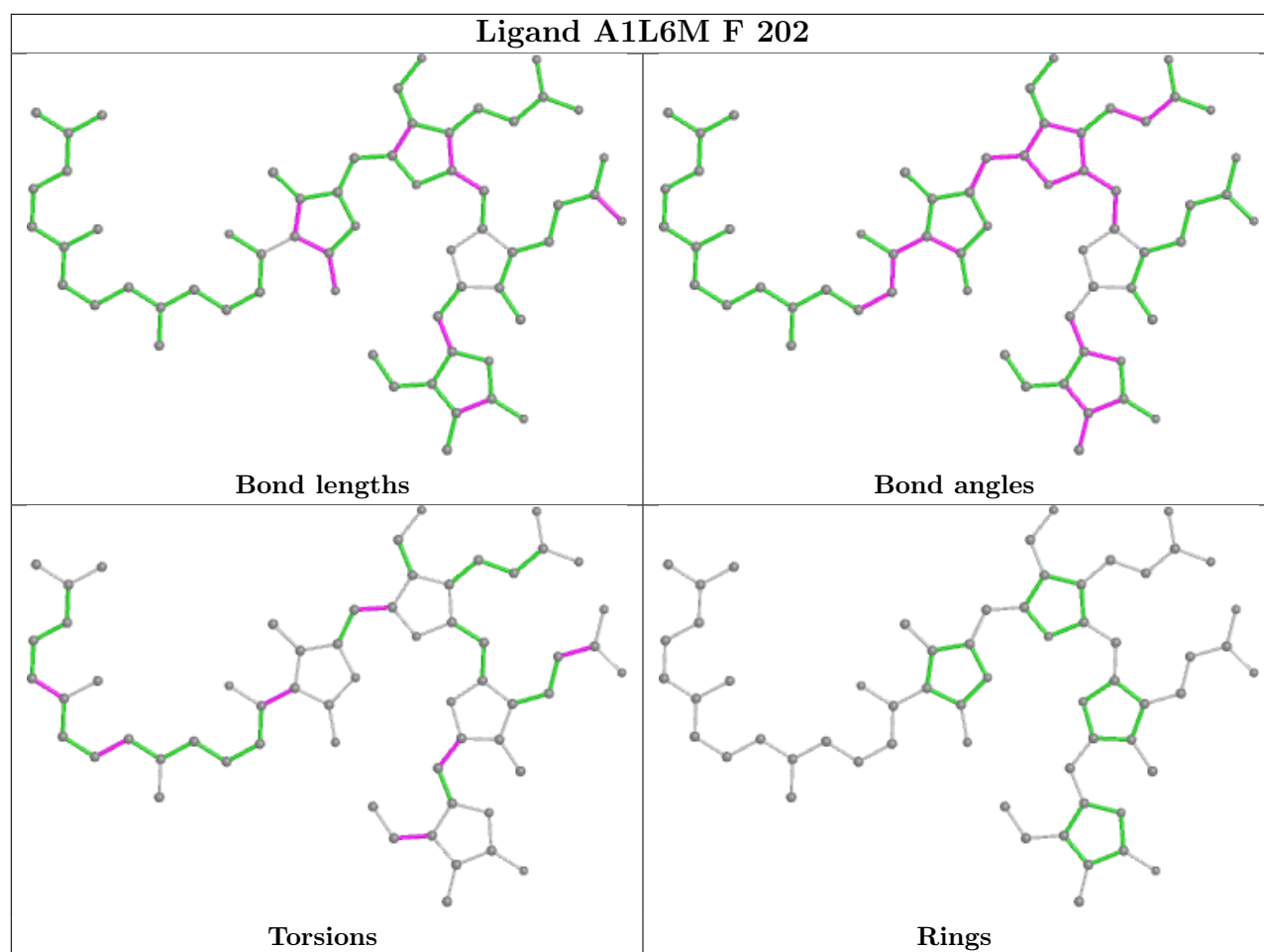
4 monomers are involved in 37 short contacts:

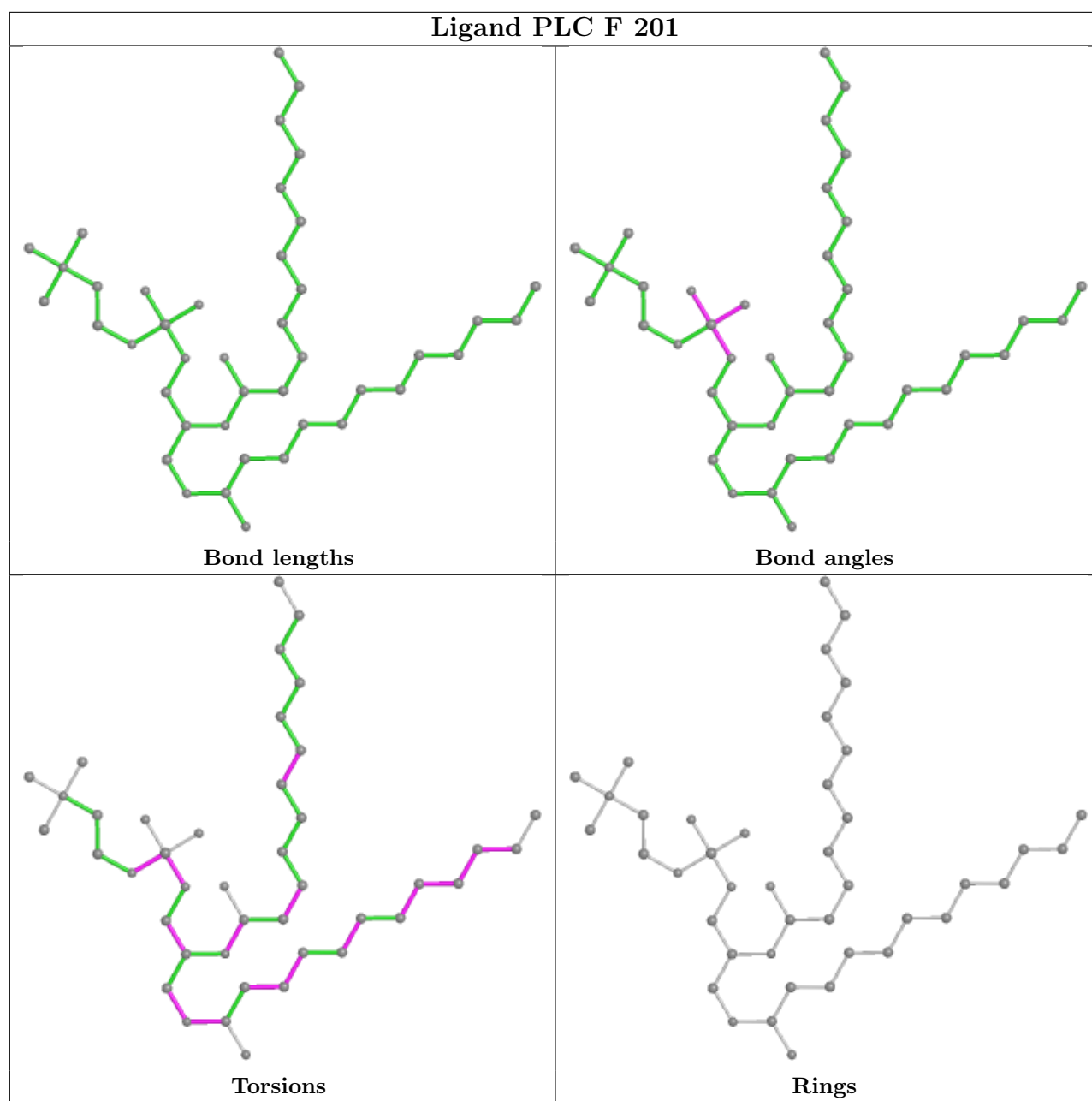
Mol	Chain	Res	Type	Clashes	Symm-Clashes
6	C	201	PLC	18	0
6	F	201	PLC	17	0
6	C	203	PLC	15	0
6	D	202	PLC	6	0

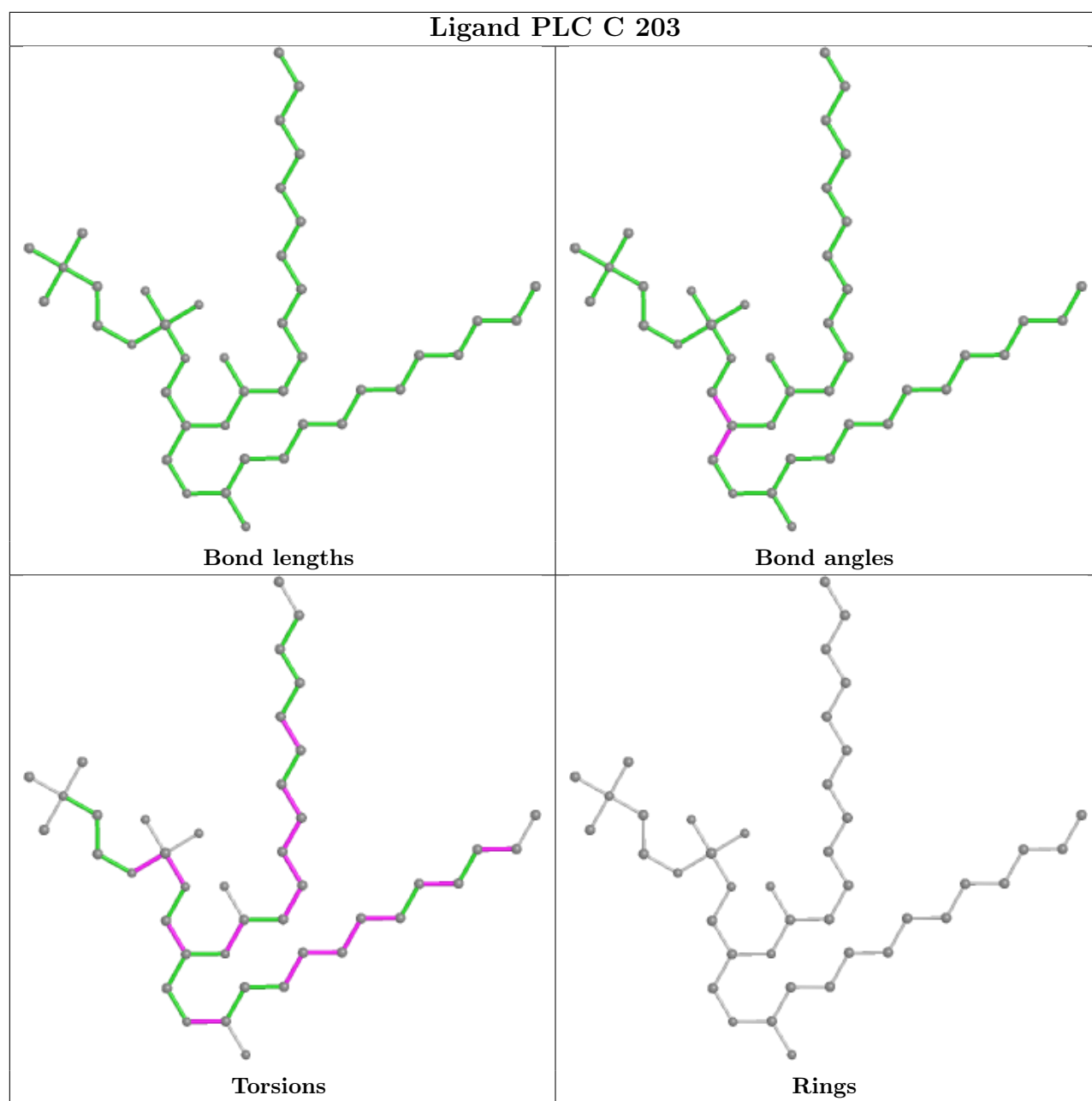
The following is a two-dimensional graphical depiction of Mogul quality analysis of bond lengths, bond angles, torsion angles, and ring geometry for all instances of the Ligand of Interest. In addition, ligands with molecular weight > 250 and outliers as shown on the validation Tables will also be included. For torsion angles, if less than 5% of the Mogul distribution of torsion angles is within 10 degrees of the torsion angle in question, then that torsion angle is considered an outlier. Any bond that is central to one or more torsion angles identified as an outlier by Mogul will be highlighted in the graph. For rings, the root-mean-square deviation (RMSD) between the ring in question and similar rings identified by Mogul is calculated over all ring torsion angles. If the average RMSD is greater than 60 degrees and the minimal RMSD between the ring in question and any Mogul-identified rings is also greater than 60 degrees, then that ring is considered an outlier. The outliers are highlighted in purple. The color gray indicates Mogul did not find sufficient equivalents in the CSD to analyse the geometry.

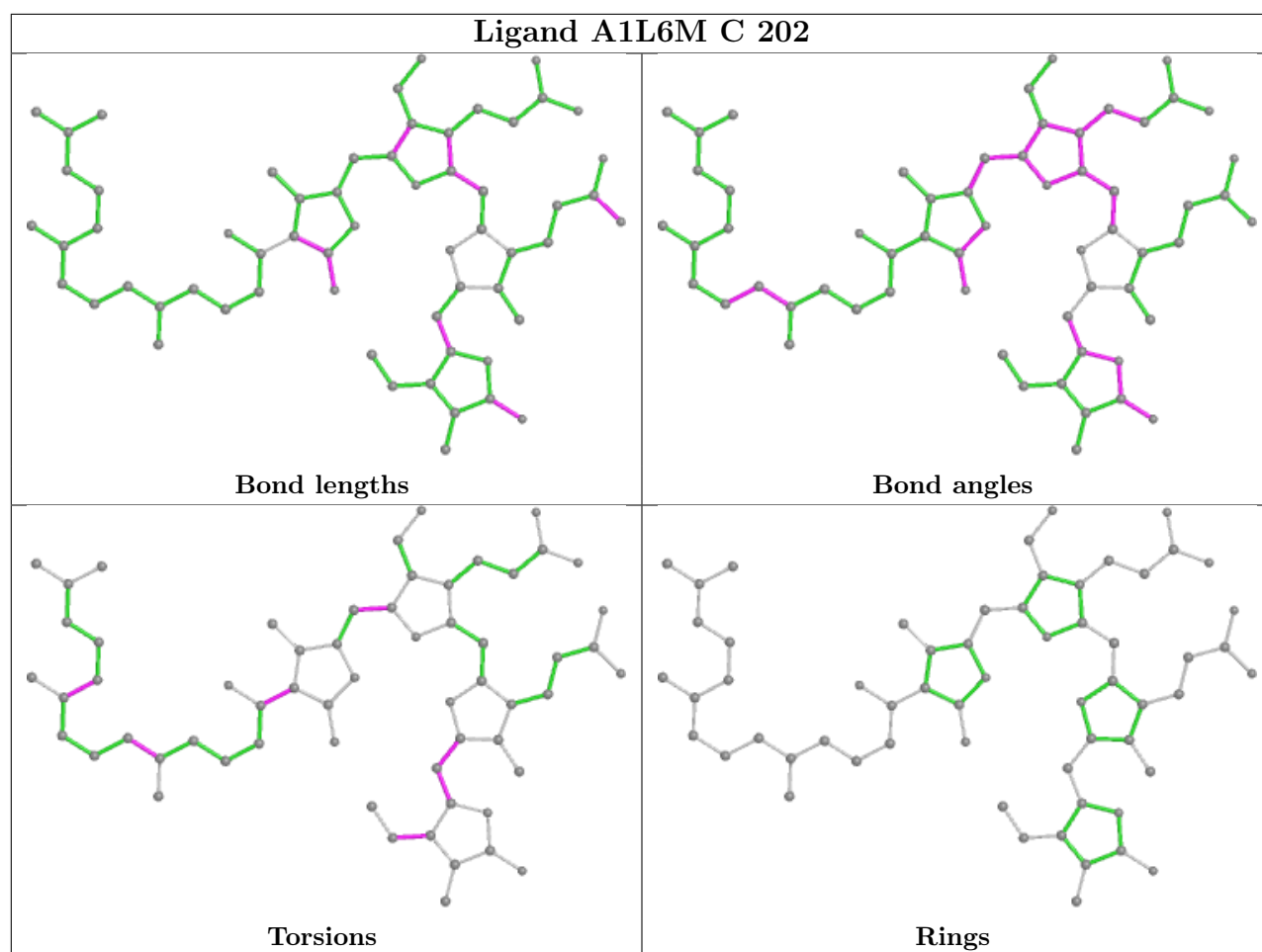


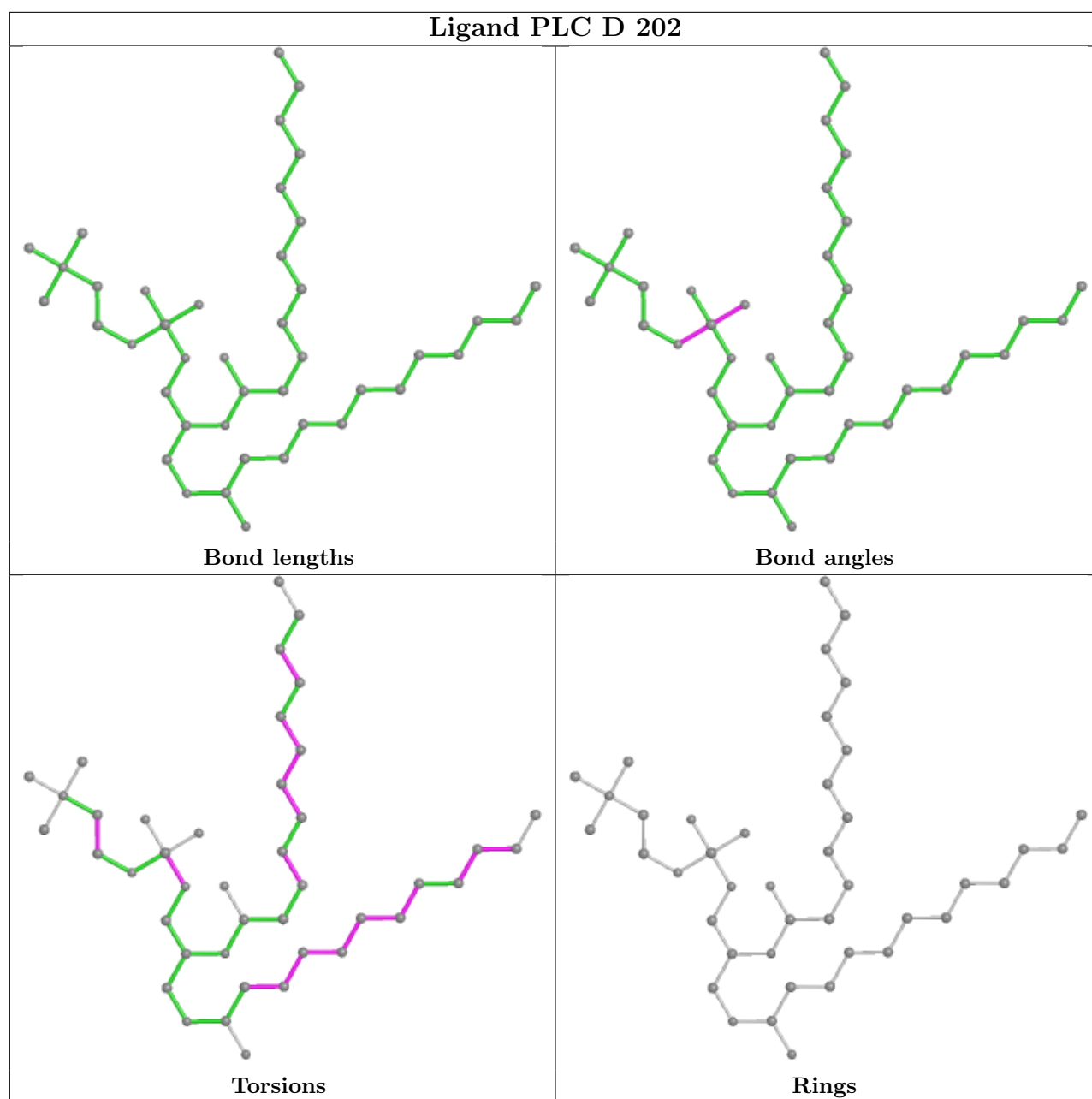












5.7 Other polymers [i](#)

There are no such residues in this entry.

5.8 Polymer linkage issues [i](#)

There are no chain breaks in this entry.

6 Fit of model and data

6.1 Protein, DNA and RNA chains

In the following table, the column labelled ‘#RSRZ> 2’ contains the number (and percentage) of RSRZ outliers, followed by percent RSRZ outliers for the chain as percentile scores relative to all X-ray entries and entries of similar resolution. The OWAB column contains the minimum, median, 95th percentile and maximum values of the occupancy-weighted average B-factor per residue. The column labelled ‘Q< 0.9’ lists the number of (and percentage) of residues with an average occupancy less than 0.9.

Mol	Chain	Analysed	<RSRZ>	#RSRZ>2			OWAB(Å ²)	Q<0.9
1	A	105/114 (92%)	0.18	4 (3%)	44	42	19, 31, 64, 89	1 (0%)
1	D	106/114 (92%)	0.27	7 (6%)	26	24	20, 31, 53, 90	1 (0%)
2	B	67/67 (100%)	0.22	2 (2%)	52	51	20, 35, 53, 74	0
2	E	67/67 (100%)	0.34	1 (1%)	71	70	18, 32, 65, 79	1 (1%)
3	C	169/172 (98%)	-0.01	2 (1%)	76	75	16, 30, 50, 57	0
3	F	168/172 (97%)	1.18	41 (24%)	2	2	17, 59, 88, 112	0
All	All	682/706 (96%)	0.41	57 (8%)	18	17	16, 34, 75, 112	3 (0%)

All (57) RSRZ outliers are listed below:

Mol	Chain	Res	Type	RSRZ
1	A	40	GLY	4.7
3	F	63	ALA	4.3
3	F	53	GLY	4.1
1	D	77	THR	4.0
3	F	72	TYR	3.7
3	F	37	THR	3.6
3	F	78	GLY	3.6
3	F	83	VAL	3.6
1	D	39	SER	3.5
3	F	57	VAL	3.5
3	F	58	LEU	3.5
3	C	5	VAL	3.4
3	F	107	VAL	3.3
3	F	55	ASP	3.3
2	B	2	VAL	3.2
3	F	77	GLY	3.1
3	F	62	LEU	3.1
3	F	82	LEU	3.0
3	F	73	THR	3.0

Continued on next page...

Continued from previous page...

Mol	Chain	Res	Type	RSRZ
3	F	164	THR	3.0
3	F	96	THR	2.9
3	F	59	VAL	2.9
3	F	40	VAL	2.8
3	F	81	PRO	2.8
1	D	1	GLY	2.8
3	F	52	GLN	2.7
1	D	40	GLY	2.7
3	F	56	TYR	2.7
3	F	54	SER	2.7
3	F	60	ALA	2.5
1	A	1	GLY	2.5
3	C	171	ASN	2.4
3	F	51	LYS	2.4
3	F	84	VAL	2.4
3	F	102	ILE	2.4
1	A	79	TRP	2.4
3	F	75	SER	2.3
3	F	79	SER	2.3
3	F	170	LEU	2.3
1	A	42	SER	2.2
3	F	5	VAL	2.2
3	F	146	TYR	2.2
3	F	91	VAL	2.2
3	F	163	ALA	2.1
3	F	166	LEU	2.1
2	B	4	ILE	2.1
3	F	123	ALA	2.1
3	F	105	LYS	2.1
2	E	45	LEU	2.1
3	F	4	SER	2.1
1	D	41	GLU	2.1
3	F	115	TYR	2.1
3	F	50	HIS	2.0
3	F	64	GLY	2.1
3	F	35	VAL	2.0
1	D	68	ALA	2.0
1	D	38	SER	2.0

6.2 Non-standard residues in protein, DNA, RNA chains [i](#)

In the following table, the Atoms column lists the number of modelled atoms in the group and the number defined in the chemical component dictionary. The B-factors column lists the minimum, median, 95th percentile and maximum values of B factors of atoms in the group. The column labelled 'Q< 0.9' lists the number of atoms with occupancy less than 0.9.

Mol	Type	Chain	Res	Atoms	RSCC	RSR	B-factors(Å ²)	Q<0.9
1	CSD	A	80	8/9	0.83	0.13	39,45,53,59	0
1	CSD	D	80	8/9	0.87	0.11	33,41,52,57	0

6.3 Carbohydrates [i](#)

There are no monosaccharides in this entry.

6.4 Ligands [i](#)

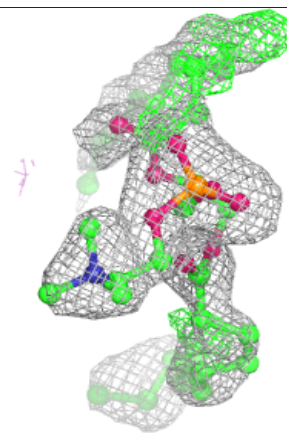
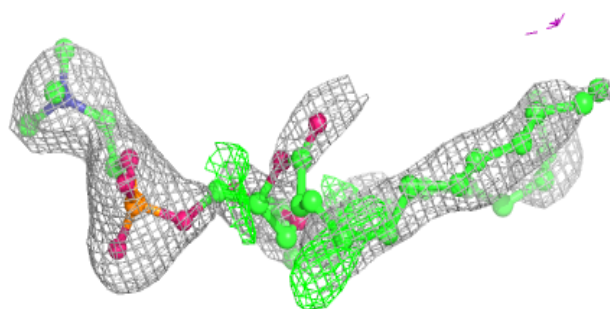
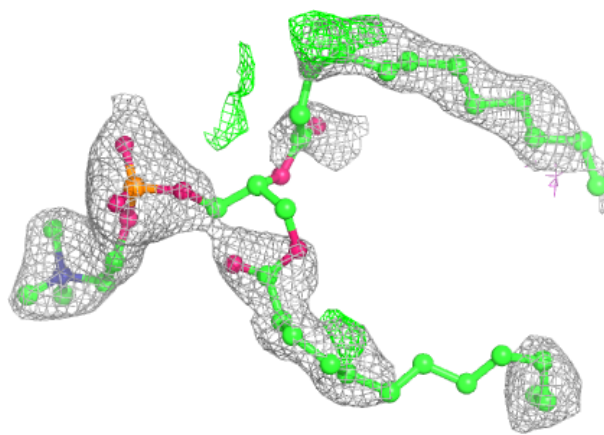
In the following table, the Atoms column lists the number of modelled atoms in the group and the number defined in the chemical component dictionary. The B-factors column lists the minimum, median, 95th percentile and maximum values of B factors of atoms in the group. The column labelled 'Q< 0.9' lists the number of atoms with occupancy less than 0.9.

Mol	Type	Chain	Res	Atoms	RSCC	RSR	B-factors(Å ²)	Q<0.9
5	AZI	C	204	3/3	0.71	0.17	40,40,42,45	0
5	AZI	B	101	3/3	0.79	0.19	36,36,40,54	0
5	AZI	E	102	3/3	0.82	0.17	43,43,46,47	0
5	AZI	D	203	3/3	0.84	0.12	39,39,43,58	0
6	PLC	F	201	42/42	0.84	0.19	34,46,49,53	24
6	PLC	C	203	42/42	0.85	0.17	27,41,47,49	23
4	LUT	A	201	42/42	0.89	0.11	28,33,48,50	0
5	AZI	E	101	3/3	0.90	0.10	25,25,35,41	0
4	LUT	D	201	42/42	0.92	0.09	20,26,50,52	0
7	A1L6M	F	202	60/60	0.93	0.11	21,29,79,82	0
5	AZI	A	202	3/3	0.94	0.10	37,37,37,46	0
6	PLC	C	201	42/42	0.95	0.11	17,27,33,35	23
7	A1L6M	C	202	60/60	0.95	0.09	14,18,67,73	0
6	PLC	D	202	42/42	0.95	0.11	17,27,41,47	12

The following is a graphical depiction of the model fit to experimental electron density of all instances of the Ligand of Interest. In addition, ligands with molecular weight > 250 and outliers as shown on the geometry validation Tables will also be included. Each fit is shown from different orientation to approximate a three-dimensional view.

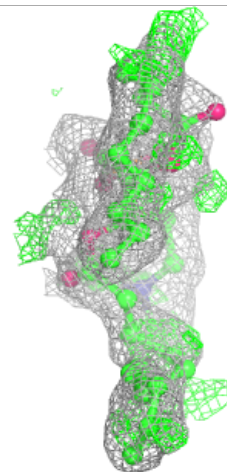
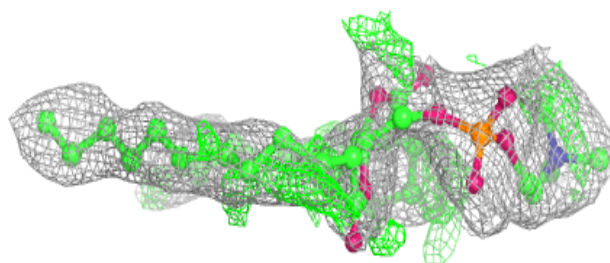
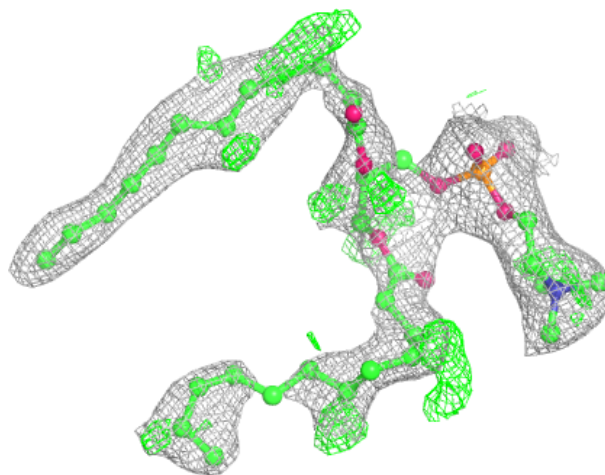
Electron density around PLC F 201:

$2mF_o-DF_c$ (at 0.7 rmsd) in gray
 mF_o-DF_c (at 3 rmsd) in purple (negative)
and green (positive)



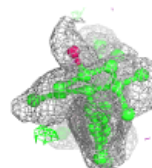
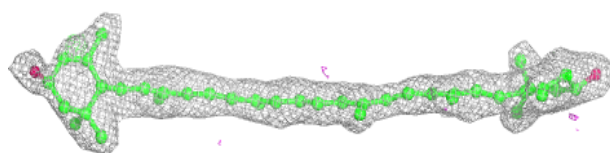
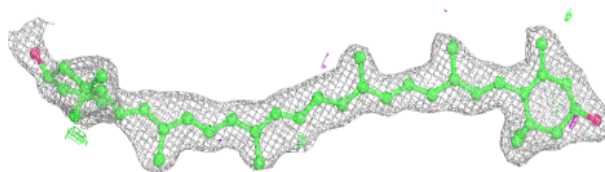
Electron density around PLC C 203:

$2mF_o-DF_c$ (at 0.7 rmsd) in gray
 mF_o-DF_c (at 3 rmsd) in purple (negative)
and green (positive)

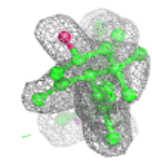
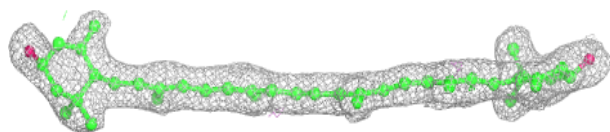
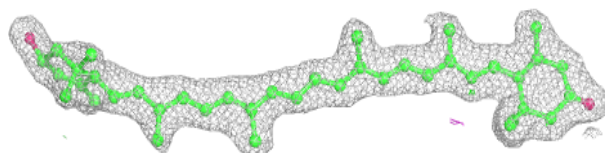


Electron density around LUT A 201:

$2mF_o-DF_c$ (at 0.7 rmsd) in gray
 mF_o-DF_c (at 3 rmsd) in purple (negative)
and green (positive)

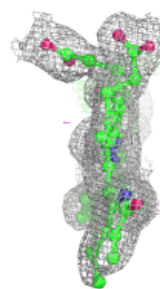
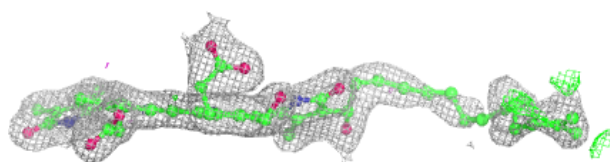
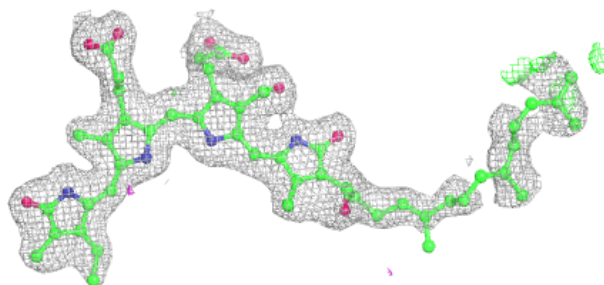
**Electron density around LUT D 201:**

$2mF_o-DF_c$ (at 0.7 rmsd) in gray
 mF_o-DF_c (at 3 rmsd) in purple (negative)
and green (positive)



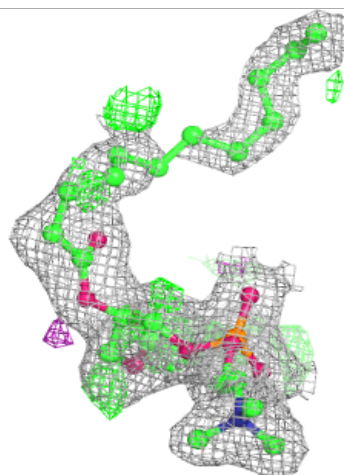
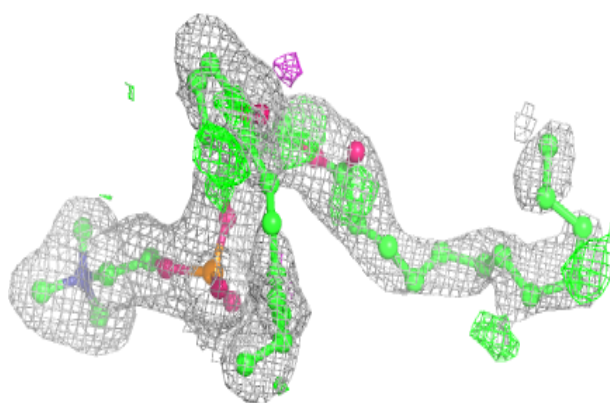
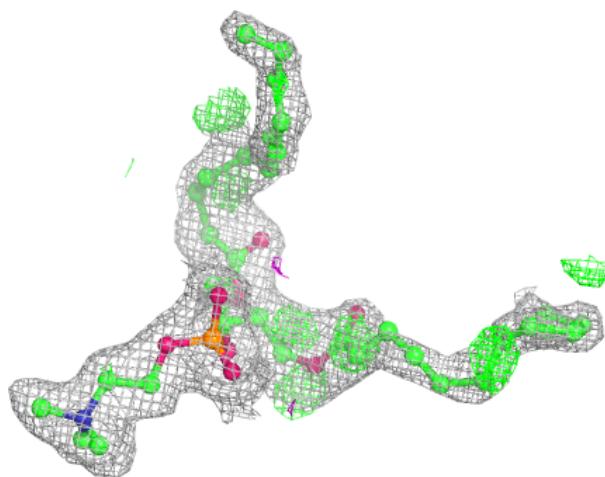
Electron density around A1L6M F 202:

$2mF_o - DF_c$ (at 0.7 rmsd) in gray
 $mF_o - DF_c$ (at 3 rmsd) in purple (negative)
and green (positive)



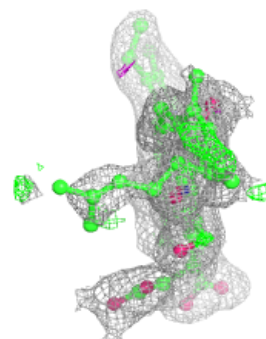
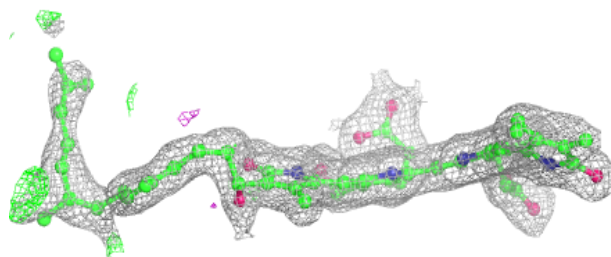
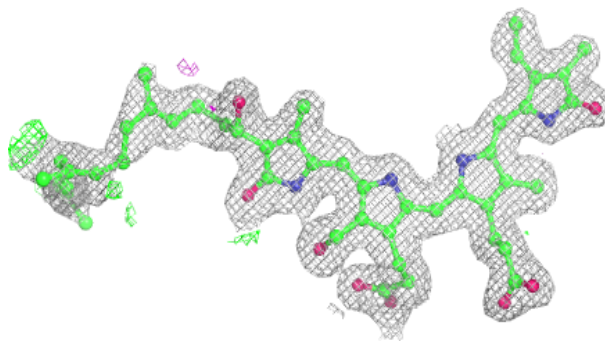
Electron density around PLC C 201:

$2mF_o-DF_c$ (at 0.7 rmsd) in gray
 mF_o-DF_c (at 3 rmsd) in purple (negative)
and green (positive)



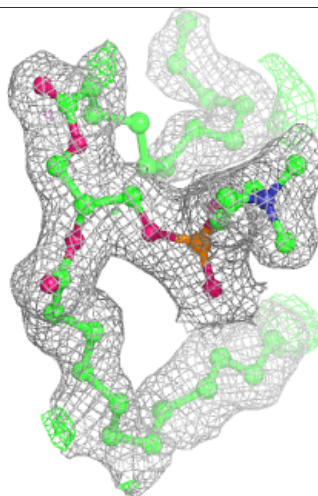
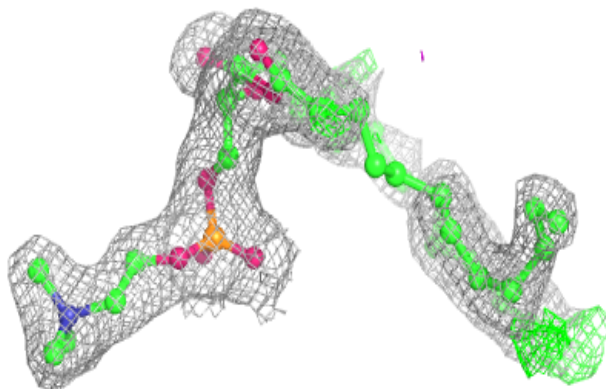
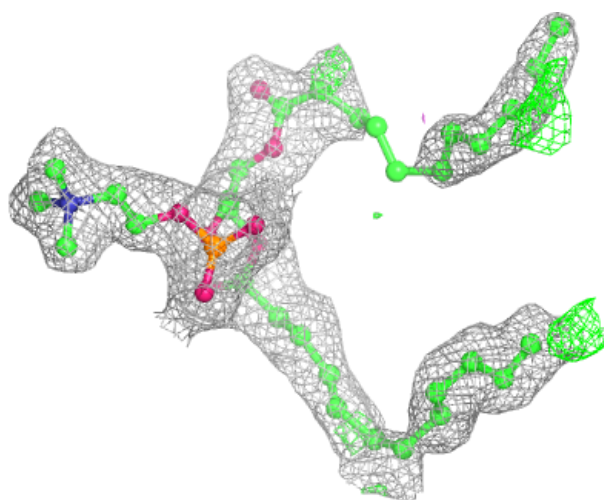
Electron density around A1L6M C 202:

$2mF_o-DF_c$ (at 0.7 rmsd) in gray
 mF_o-DF_c (at 3 rmsd) in purple (negative)
and green (positive)



Electron density around PLC D 202:

$2mF_o-DF_c$ (at 0.7 rmsd) in gray
 mF_o-DF_c (at 3 rmsd) in purple (negative)
and green (positive)



6.5 Other polymers ⓘ

There are no such residues in this entry.