



Full wwPDB X-ray Structure Validation Report ⓘ

Nov 12, 2024 – 10:05 AM EST

PDB ID : 3LN0
Title : Structure of compound 5c-S bound at the active site of COX-2
Authors : Kiefer, J.R.; Kurumbail, R.G.; Stallings, W.C.; Pawlitz, J.L.
Deposited on : 2010-02-01
Resolution : 2.20 Å(reported)

This is a Full wwPDB X-ray Structure Validation Report for a publicly released PDB entry.

We welcome your comments at validation@mail.wwpdb.org

A user guide is available at

<https://www.wwpdb.org/validation/2017/XrayValidationReportHelp>

with specific help available everywhere you see the ⓘ symbol.

The types of validation reports are described at

<http://www.wwpdb.org/validation/2017/FAQs#types>.

The following versions of software and data (see [references ⓘ](#)) were used in the production of this report:

MolProbity : 4.02b-467
Mogul : 2022.3.0, CSD as543be (2022)
Xtriage (Phenix) : 1.20.1
EDS : 3.0
buster-report : 1.1.7 (2018)
Percentile statistics : 20231227.v01 (using entries in the PDB archive December 27th 2023)
CCP4 : 9.0.003 (Gargrove)
Density-Fitness : 1.0.11
Ideal geometry (proteins) : Engh & Huber (2001)
Ideal geometry (DNA, RNA) : Parkinson et al. (1996)
Validation Pipeline (wwPDB-VP) : 2.39

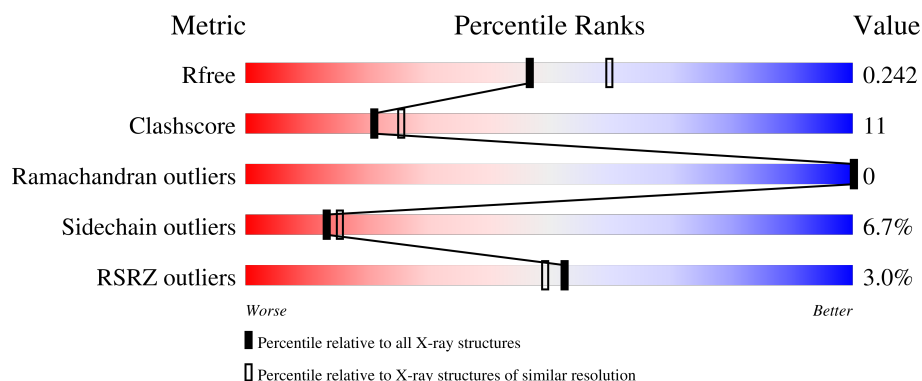
1 Overall quality at a glance

The following experimental techniques were used to determine the structure:

X-RAY DIFFRACTION

The reported resolution of this entry is 2.20 Å.

Percentile scores (ranging between 0-100) for global validation metrics of the entry are shown in the following graphic. The table shows the number of entries on which the scores are based.



Metric	Whole archive (#Entries)	Similar resolution (#Entries, resolution range(Å))
R_{free}	164625	5791 (2.20-2.20)
Clashscore	180529	6634 (2.20-2.20)
Ramachandran outliers	177936	6560 (2.20-2.20)
Sidechain outliers	177891	6561 (2.20-2.20)
RSRZ outliers	164620	5791 (2.20-2.20)

The table below summarises the geometric issues observed across the polymeric chains and their fit to the electron density. The red, orange, yellow and green segments of the lower bar indicate the fraction of residues that contain outliers for ≥ 3 , 2, 1 and 0 types of geometric quality criteria respectively. A grey segment represents the fraction of residues that are not modelled. The numeric value for each fraction is indicated below the corresponding segment, with a dot representing fractions $\leq 5\%$. The upper red bar (where present) indicates the fraction of residues that have poor fit to the electron density. The numeric value is given above the bar.

Mol	Chain	Length	Quality of chain
1	A	587	
1	B	587	
1	C	587	
1	D	587	
2	E	3	

Continued on next page...

Continued from previous page...

Mol	Chain	Length	Quality of chain	
2	F	3	<div><div></div></div>	<div><div></div></div>
2	G	3	<div><div></div></div>	<div><div></div></div>
2	H	3	<div><div></div></div>	<div><div></div></div>

2 Entry composition [i](#)

There are 7 unique types of molecules in this entry. The entry contains 19611 atoms, of which 0 are hydrogens and 0 are deuteriums.

In the tables below, the ZeroOcc column contains the number of atoms modelled with zero occupancy, the AltConf column contains the number of residues with at least one atom in alternate conformation and the Trace column contains the number of residues modelled with at most 2 atoms.

- Molecule 1 is a protein called Prostaglandin G/H synthase 2.

Mol	Chain	Residues	Atoms					ZeroOcc	AltConf	Trace
1	A	552	Total	C	N	O	S	0	0	0
			4474	2885	750	814	25			
1	B	552	Total	C	N	O	S	0	0	0
			4474	2885	750	814	25			
1	C	552	Total	C	N	O	S	0	0	0
			4474	2885	750	814	25			
1	D	552	Total	C	N	O	S	0	0	0
			4474	2885	750	814	25			

- Molecule 2 is an oligosaccharide called 2-acetamido-2-deoxy-beta-D-glucopyranose-(1-4)-2-acetamido-2-deoxy-beta-D-glucopyranose-(1-4)-2-acetamido-2-deoxy-beta-D-glucopyranose.



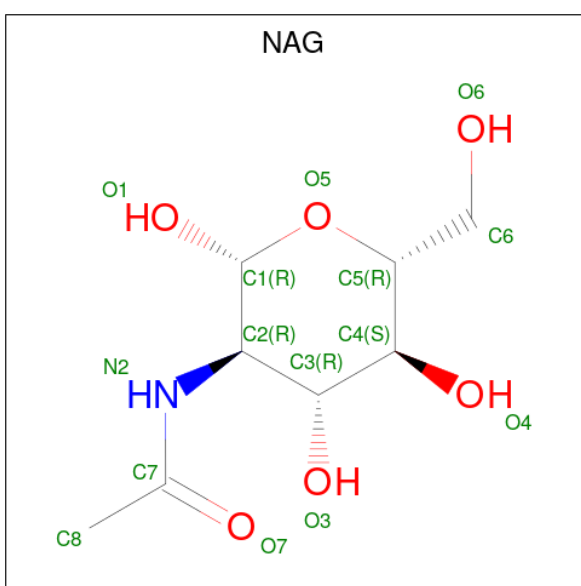
Mol	Chain	Residues	Atoms				ZeroOcc	AltConf	Trace
2	E	3	Total	C	N	O	0	0	0
			42	24	3	15			
2	F	3	Total	C	N	O	0	0	0
			42	24	3	15			
2	G	3	Total	C	N	O	0	0	0
			42	24	3	15			
2	H	3	Total	C	N	O	0	0	0
			42	24	3	15			

- Molecule 3 is PROTOPORPHYRIN IX CONTAINING FE (three-letter code: HEM) (formula: C₃₄H₃₂FeN₄O₄).



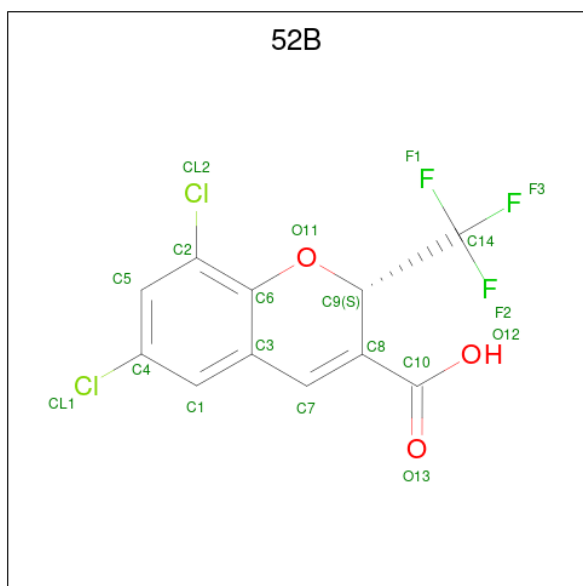
Mol	Chain	Residues	Atoms					ZeroOcc	AltConf
3	A	1	Total 43	C 34	Fe 1	N 4	O 4	0	0
3	B	1	Total 43	C 34	Fe 1	N 4	O 4	0	0
3	C	1	Total 43	C 34	Fe 1	N 4	O 4	0	0
3	D	1	Total 43	C 34	Fe 1	N 4	O 4	0	0

- Molecule 4 is 2-acetamido-2-deoxy-beta-D-glucopyranose (three-letter code: NAG) (formula: $C_8H_{15}NO_6$).



Mol	Chain	Residues	Atoms				ZeroOcc	AltConf
4	A	1	Total	C	N	O	0	0
			14	8	1	5		
4	A	1	Total	C	N	O	0	0
			14	8	1	5		
4	B	1	Total	C	N	O	0	0
			14	8	1	5		
4	B	1	Total	C	N	O	0	0
			14	8	1	5		
4	C	1	Total	C	N	O	0	0
			14	8	1	5		
4	C	1	Total	C	N	O	0	0
			14	8	1	5		
4	D	1	Total	C	N	O	0	0
			14	8	1	5		
4	D	1	Total	C	N	O	0	0
			14	8	1	5		

- Molecule 5 is (2S)-6,8-dichloro-2-(trifluoromethyl)-2H-chromene-3-carboxylic acid (three-letter code: 52B) (formula: $C_{11}H_5Cl_2F_3O_3$).



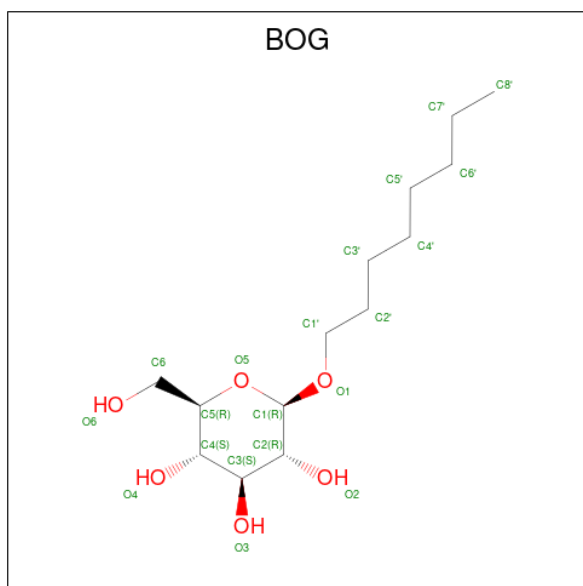
Mol	Chain	Residues	Atoms				ZeroOcc	AltConf
5	A	1	Total	C	Cl	F	O	0
			19	11	2	3	3	
5	B	1	Total	C	Cl	F	O	0
			19	11	2	3	3	
5	C	1	Total	C	Cl	F	O	0
			19	11	2	3	3	

Continued on next page...

Continued from previous page...

Mol	Chain	Residues	Atoms					ZeroOcc	AltConf
5	D	1	Total	C	Cl	F	O	0	0
			19	11	2	3	3		

- Molecule 6 is octyl beta-D-glucopyranoside (three-letter code: BOG) (formula: $C_{14}H_{28}O_6$).



Mol	Chain	Residues	Atoms			ZeroOcc	AltConf
6	A	1	Total	C	O	0	0
			20	14	6		
6	D	1	Total	C	O	0	0
			20	14	6		

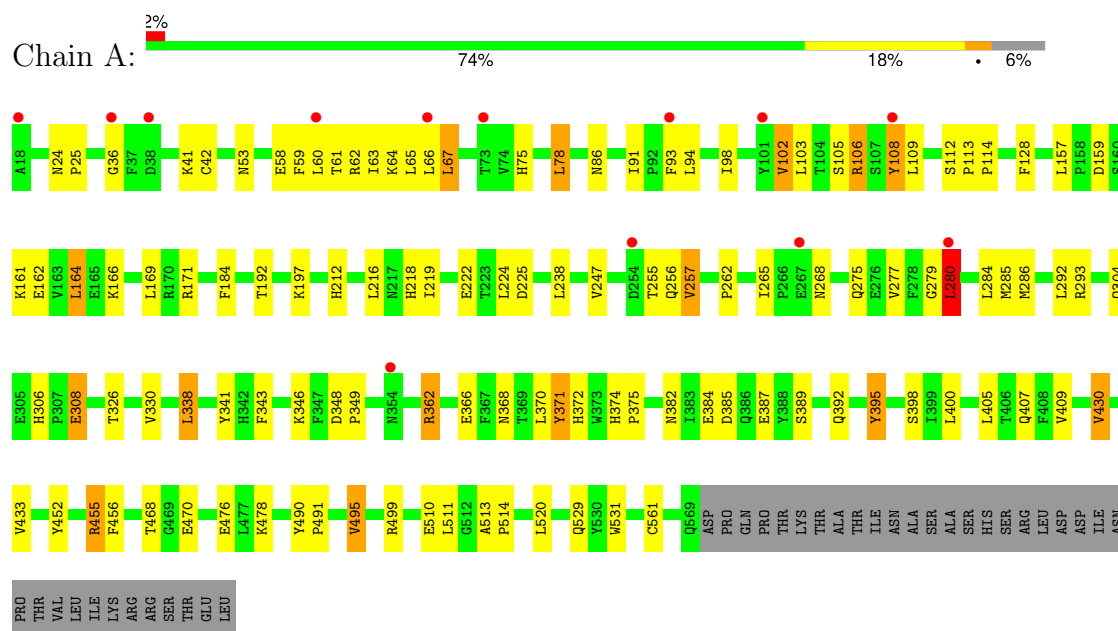
- Molecule 7 is water.

Mol	Chain	Residues	Atoms		ZeroOcc	AltConf
7	A	272	Total	O	0	0
			272	272		
7	B	296	Total	O	0	0
			296	296		
7	C	282	Total	O	0	0
			282	282		
7	D	297	Total	O	0	0
			297	297		

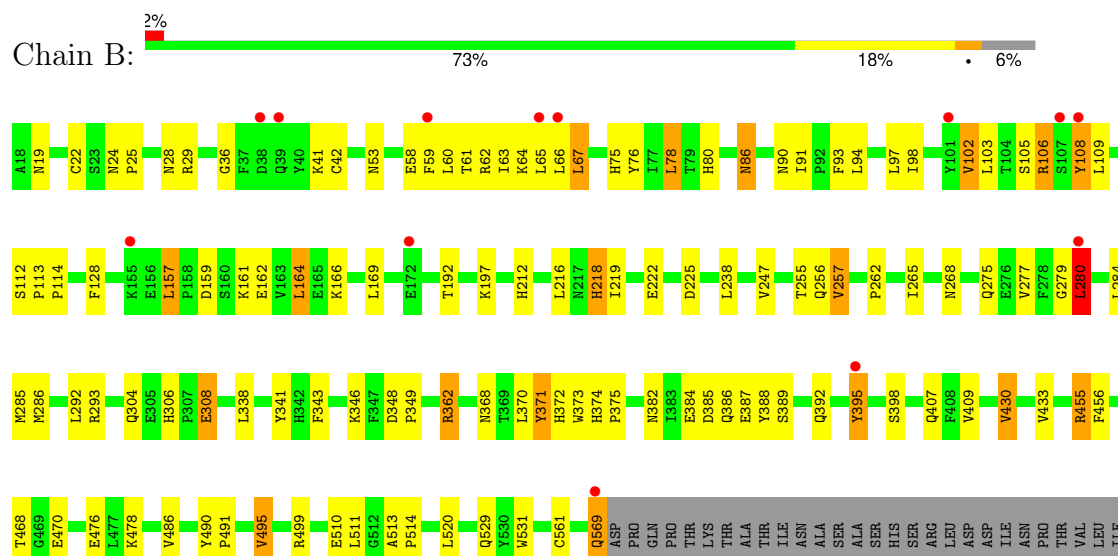
3 Residue-property plots

These plots are drawn for all protein, RNA, DNA and oligosaccharide chains in the entry. The first graphic for a chain summarises the proportions of the various outlier classes displayed in the second graphic. The second graphic shows the sequence view annotated by issues in geometry and electron density. Residues are color-coded according to the number of geometric quality criteria for which they contain at least one outlier: green = 0, yellow = 1, orange = 2 and red = 3 or more. A red dot above a residue indicates a poor fit to the electron density ($RSRZ > 2$). Stretches of 2 or more consecutive residues without any outlier are shown as a green connector. Residues present in the sample, but not in the model, are shown in grey.

• Molecule 1: Prostaglandin G/H synthase 2

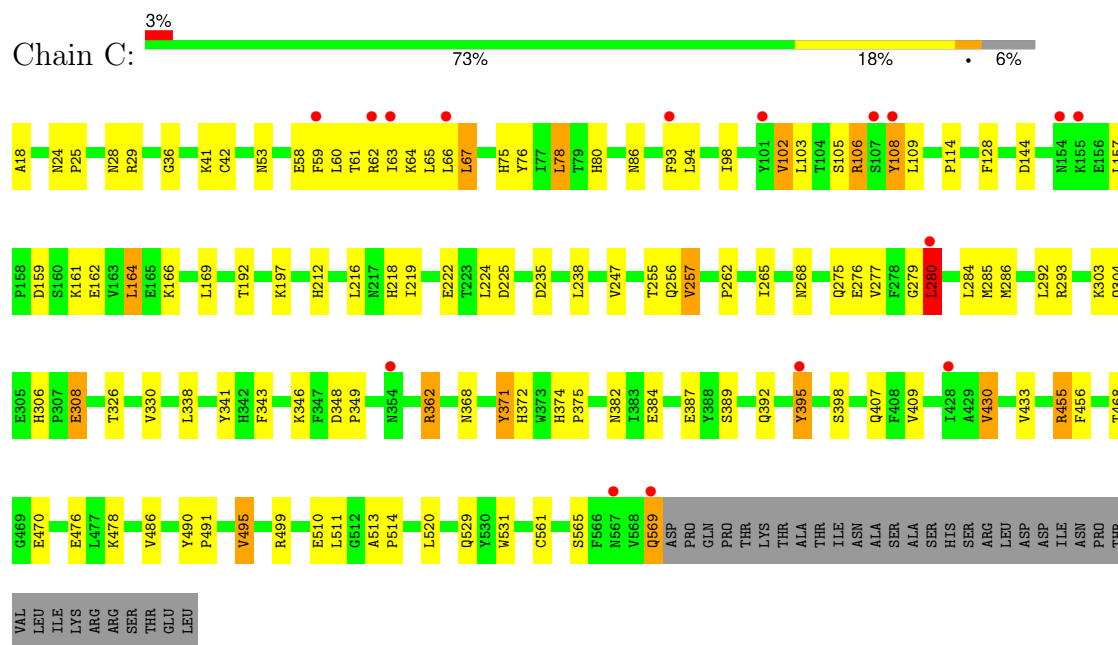


• Molecule 1: Prostaglandin G/H synthase 2

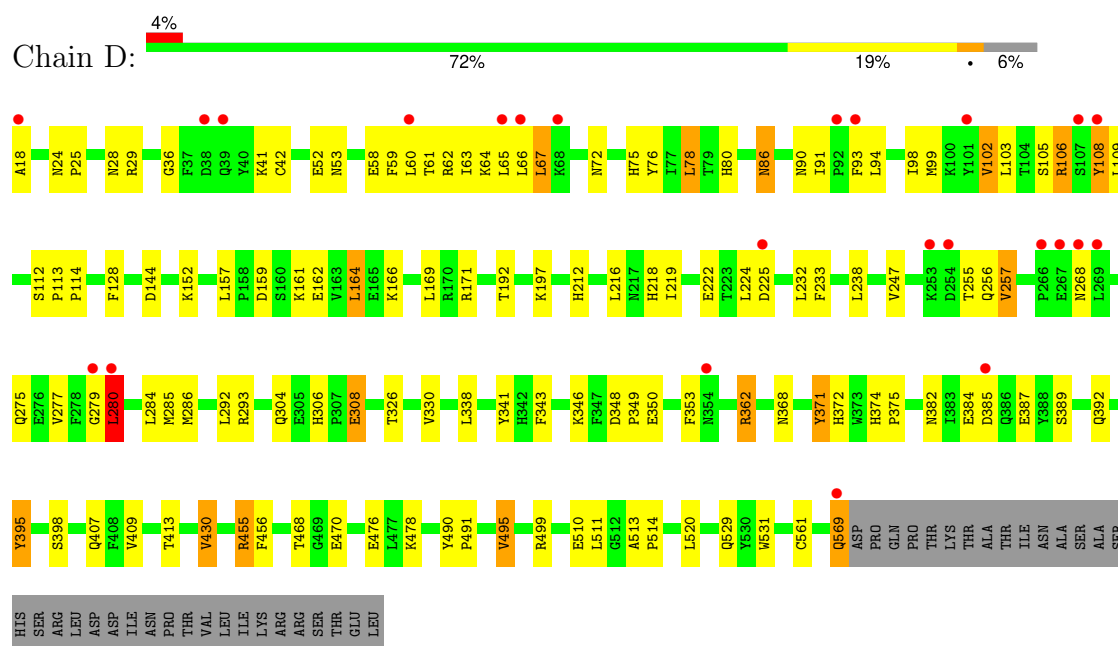


LYS
ARG
ARG
SER
THR
GLU
LEU

• Molecule 1: Prostaglandin G/H synthase 2



• Molecule 1: Prostaglandin G/H synthase 2



• Molecule 2: 2-acetamido-2-deoxy-beta-D-glucopyranose-(1-4)-2-acetamido-2-deoxy-beta-D-glucopyranose-(1-4)-2-acetamido-2-deoxy-beta-D-glucopyranose



- Molecule 2: 2-acetamido-2-deoxy-beta-D-glucopyranose-(1-4)-2-acetamido-2-deoxy-beta-D-glucopyranose-(1-4)-2-acetamido-2-deoxy-beta-D-glucopyranose

Chain F:  33% 67%

NAG1
NAG2
NAG3

- Molecule 2: 2-acetamido-2-deoxy-beta-D-glucopyranose-(1-4)-2-acetamido-2-deoxy-beta-D-glucopyranose-(1-4)-2-acetamido-2-deoxy-beta-D-glucopyranose

Chain G:  33% 67%

NAG1
NAG2
NAG3

- Molecule 2: 2-acetamido-2-deoxy-beta-D-glucopyranose-(1-4)-2-acetamido-2-deoxy-beta-D-glucopyranose-(1-4)-2-acetamido-2-deoxy-beta-D-glucopyranose

Chain H:  33% 67%

NAG1
NAG2
NAG3

4 Data and refinement statistics

Property	Value	Source
Space group	P 21 21 2	Depositor
Cell constants a, b, c, α , β , γ	181.01Å 135.20Å 124.29Å 90.00° 90.00° 90.00°	Depositor
Resolution (Å)	19.96 – 2.20 19.96 – 2.20	Depositor EDS
% Data completeness (in resolution range)	83.5 (19.96-2.20) 83.4 (19.96-2.20)	Depositor EDS
R_{merge}	(Not available)	Depositor
R_{sym}	0.09	Depositor
$\langle I/\sigma(I) \rangle$ ¹	3.00 (at 2.21Å)	Xtrriage
Refinement program	REFMAC 5.4.0067	Depositor
R, R_{free}	0.209 , 0.238 0.213 , 0.242	Depositor DCC
R_{free} test set	12935 reflections (10.04%)	wwPDB-VP
Wilson B-factor (Å ²)	23.9	Xtrriage
Anisotropy	0.130	Xtrriage
Bulk solvent k_{sol} (e/Å ³), B_{sol} (Å ²)	0.35 , 41.0	EDS
L-test for twinning ²	$\langle L \rangle = 0.52$, $\langle L^2 \rangle = 0.35$	Xtrriage
Estimated twinning fraction	No twinning to report.	Xtrriage
F_o, F_c correlation	0.95	EDS
Total number of atoms	19611	wwPDB-VP
Average B, all atoms (Å ²)	30.0	wwPDB-VP

Xtrriage's analysis on translational NCS is as follows: *The analyses of the Patterson function reveals a significant off-origin peak that is 48.68 % of the origin peak, indicating pseudo-translational symmetry. The chance of finding a peak of this or larger height randomly in a structure without pseudo-translational symmetry is equal to 8.3135e-05. The detected translational NCS is most likely also responsible for the elevated intensity ratio.*

¹Intensities estimated from amplitudes.

²Theoretical values of $\langle |L| \rangle$, $\langle L^2 \rangle$ for acentric reflections are 0.5, 0.333 respectively for untwinned datasets, and 0.375, 0.2 for perfectly twinned datasets.

5 Model quality

5.1 Standard geometry

Bond lengths and bond angles in the following residue types are not validated in this section: BOG, NAG, 52B, HEM

The Z score for a bond length (or angle) is the number of standard deviations the observed value is removed from the expected value. A bond length (or angle) with $|Z| > 5$ is considered an outlier worth inspection. RMSZ is the root-mean-square of all Z scores of the bond lengths (or angles).

Mol	Chain	Bond lengths		Bond angles	
		RMSZ	$\# Z > 5$	RMSZ	$\# Z > 5$
1	A	0.43	0/4601	0.56	1/6239 (0.0%)
1	B	0.44	0/4601	0.56	1/6239 (0.0%)
1	C	0.44	0/4601	0.57	1/6239 (0.0%)
1	D	0.45	0/4601	0.56	1/6239 (0.0%)
All	All	0.44	0/18404	0.56	4/24956 (0.0%)

There are no bond length outliers.

All (4) bond angle outliers are listed below:

Mol	Chain	Res	Type	Atoms	Z	Observed(°)	Ideal(°)
1	D	280	LEU	CA-CB-CG	5.97	129.03	115.30
1	A	280	LEU	CA-CB-CG	5.89	128.86	115.30
1	C	280	LEU	CA-CB-CG	5.79	128.62	115.30
1	B	280	LEU	CA-CB-CG	5.66	128.33	115.30

There are no chirality outliers.

There are no planarity outliers.

5.2 Too-close contacts

In the following table, the Non-H and H(model) columns list the number of non-hydrogen atoms and hydrogen atoms in the chain respectively. The H(added) column lists the number of hydrogen atoms added and optimized by MolProbity. The Clashes column lists the number of clashes within the asymmetric unit, whereas Symm-Clashes lists symmetry-related clashes.

Mol	Chain	Non-H	H(model)	H(added)	Clashes	Symm-Clashes
1	A	4474	0	4372	91	0
1	B	4474	0	4373	98	0
1	C	4474	0	4373	91	0

Continued on next page...

Continued from previous page...

Mol	Chain	Non-H	H(model)	H(added)	Clashes	Symm-Clashes
1	D	4474	0	4372	97	0
2	E	42	0	37	4	0
2	F	42	0	37	4	0
2	G	42	0	37	1	0
2	H	42	0	37	3	0
3	A	43	0	30	2	0
3	B	43	0	30	2	0
3	C	43	0	30	2	0
3	D	43	0	30	1	0
4	A	28	0	26	3	0
4	B	28	0	26	3	0
4	C	28	0	26	4	0
4	D	28	0	26	4	0
5	A	19	0	4	0	0
5	B	19	0	4	0	0
5	C	19	0	4	0	0
5	D	19	0	4	0	0
6	A	20	0	28	2	0
6	D	20	0	28	1	0
7	A	272	0	0	0	0
7	B	296	0	0	1	0
7	C	282	0	0	1	0
7	D	297	0	0	2	0
All	All	19611	0	17934	393	0

The all-atom clashscore is defined as the number of clashes found per 1000 atoms (including hydrogen atoms). The all-atom clashscore for this structure is 11.

All (393) close contacts within the same asymmetric unit are listed below, sorted by their clash magnitude.

Atom-1	Atom-2	Interatomic distance (Å)	Clash overlap (Å)
1:B:75:HIS:CE1	1:B:499:ARG:HG2	2.00	0.96
1:C:75:HIS:CE1	1:C:499:ARG:HG2	2.01	0.95
1:D:75:HIS:CE1	1:D:499:ARG:HG2	2.01	0.95
1:A:75:HIS:CE1	1:A:499:ARG:HG2	2.01	0.94
1:B:384:GLU:HG3	1:B:407:GLN:CD	1.88	0.94
1:A:384:GLU:HG3	1:A:407:GLN:CD	1.88	0.93
1:C:384:GLU:HG3	1:C:407:GLN:CD	1.89	0.92
1:D:384:GLU:HG3	1:D:407:GLN:CD	1.90	0.91
1:A:389:SER:OG	1:A:392:GLN:HG3	1.73	0.88
1:D:389:SER:OG	1:D:392:GLN:HG3	1.79	0.81

Continued on next page...

Continued from previous page...

Atom-1	Atom-2	Interatomic distance (Å)	Clash overlap (Å)
1:A:346:LYS:HE3	1:A:348:ASP:HB2	1.63	0.81
1:C:389:SER:OG	1:C:392:GLN:HG3	1.80	0.81
3:D:605:HEM:HHC	3:D:605:HEM:HBB2	1.62	0.81
2:F:2:NAG:H4	2:F:3:NAG:N2	1.95	0.81
1:D:346:LYS:HE3	1:D:348:ASP:HB2	1.63	0.79
1:B:24:ASN:N	1:B:25:PRO:HD3	1.97	0.79
1:B:389:SER:OG	1:B:392:GLN:HG3	1.82	0.79
1:C:346:LYS:HE3	1:C:348:ASP:HB2	1.64	0.78
2:G:2:NAG:H4	2:G:3:NAG:N2	2.00	0.76
1:B:346:LYS:HE3	1:B:348:ASP:HB2	1.65	0.76
2:F:3:NAG:O7	2:F:3:NAG:H3	1.86	0.76
1:D:569:GLN:CD	1:D:569:GLN:H	1.87	0.75
1:B:286:MET:CE	1:B:409:VAL:HG22	2.16	0.75
1:C:24:ASN:N	1:C:25:PRO:HD3	2.01	0.74
1:D:286:MET:CE	1:D:409:VAL:HG22	2.18	0.74
1:B:128:PHE:O	1:B:362:ARG:NH2	2.22	0.73
1:B:306:HIS:HA	1:B:308:GLU:OE2	1.90	0.72
1:C:255:THR:OG1	1:C:257:VAL:HG13	1.90	0.72
1:B:255:THR:OG1	1:B:257:VAL:HG13	1.88	0.71
4:A:661:NAG:O7	4:A:661:NAG:H3	1.91	0.71
1:A:24:ASN:N	1:A:25:PRO:HD3	2.05	0.71
3:A:605:HEM:HHC	3:A:605:HEM:HBB2	1.73	0.70
1:D:128:PHE:O	1:D:362:ARG:NH2	2.25	0.70
1:A:255:THR:OG1	1:A:257:VAL:HG13	1.90	0.70
1:D:24:ASN:N	1:D:25:PRO:HD3	2.06	0.70
4:C:661:NAG:O7	4:C:661:NAG:C3	2.39	0.70
1:C:128:PHE:O	1:C:362:ARG:NH2	2.25	0.70
1:C:53:ASN:ND2	4:C:661:NAG:H61	2.07	0.69
1:A:286:MET:CE	1:A:409:VAL:HG22	2.22	0.69
1:C:306:HIS:HA	1:C:308:GLU:OE2	1.92	0.69
1:C:286:MET:CE	1:C:409:VAL:HG22	2.23	0.69
1:D:306:HIS:HA	1:D:308:GLU:OE2	1.92	0.69
2:F:2:NAG:H4	2:F:3:NAG:HN2	1.57	0.69
1:A:513:ALA:HB3	1:A:514:PRO:HD3	1.75	0.68
1:C:166:LYS:HD3	1:C:476:GLU:OE1	1.93	0.68
4:C:661:NAG:O7	4:C:661:NAG:H3	1.92	0.68
1:A:306:HIS:HA	1:A:308:GLU:OE2	1.93	0.68
1:B:53:ASN:ND2	4:B:661:NAG:H61	2.08	0.68
1:C:286:MET:HE1	1:C:409:VAL:HG22	1.76	0.68
1:C:513:ALA:HB3	1:C:514:PRO:HD3	1.76	0.67
1:D:255:THR:OG1	1:D:257:VAL:HG13	1.94	0.67

Continued on next page...

Continued from previous page...

Atom-1	Atom-2	Interatomic distance (Å)	Clash overlap (Å)
4:D:661:NAG:O7	4:D:661:NAG:H3	1.94	0.67
1:A:128:PHE:O	1:A:362:ARG:NH2	2.27	0.67
1:D:286:MET:HE1	1:D:409:VAL:HG22	1.75	0.67
1:D:166:LYS:HD3	1:D:476:GLU:OE1	1.94	0.66
2:E:2:NAG:H4	2:E:3:NAG:N2	2.09	0.66
1:D:197:LYS:NZ	1:D:222:GLU:HG2	2.11	0.66
1:C:109:LEU:O	1:C:455:ARG:NH2	2.19	0.66
1:B:286:MET:HE1	1:B:409:VAL:HG22	1.76	0.65
1:B:433:VAL:HG13	3:B:605:HEM:HBA1	1.77	0.65
1:B:197:LYS:NZ	1:B:222:GLU:HG2	2.12	0.65
1:B:513:ALA:HB3	1:B:514:PRO:HD3	1.78	0.65
1:A:166:LYS:HD3	1:A:476:GLU:OE1	1.97	0.65
1:B:286:MET:CE	1:B:409:VAL:CG2	2.75	0.65
1:A:197:LYS:HZ1	1:A:222:GLU:HG2	1.61	0.64
1:C:197:LYS:NZ	1:C:222:GLU:HG2	2.14	0.63
4:A:661:NAG:O7	4:A:661:NAG:C3	2.45	0.63
1:D:53:ASN:ND2	4:D:661:NAG:H61	2.13	0.63
1:D:286:MET:CE	1:D:409:VAL:CG2	2.76	0.63
1:D:75:HIS:ND1	1:D:499:ARG:HG2	2.13	0.63
1:A:197:LYS:NZ	1:A:222:GLU:HG2	2.13	0.62
1:D:91:ILE:HD12	1:D:94:LEU:HD12	1.79	0.62
1:A:75:HIS:ND1	1:A:499:ARG:HG2	2.13	0.62
1:B:109:LEU:O	1:B:455:ARG:NH2	2.23	0.62
1:A:286:MET:HE1	1:A:409:VAL:HG22	1.80	0.62
1:B:75:HIS:ND1	1:B:499:ARG:HG2	2.14	0.62
1:D:513:ALA:HB3	1:D:514:PRO:HD3	1.81	0.62
1:B:166:LYS:HD3	1:B:476:GLU:OE1	2.00	0.62
1:A:468:THR:HG22	1:A:495:VAL:HG13	1.81	0.61
1:C:75:HIS:ND1	1:C:499:ARG:HG2	2.14	0.61
1:D:468:THR:HG22	1:D:495:VAL:HG13	1.83	0.61
1:A:109:LEU:O	1:A:455:ARG:NH2	2.22	0.61
4:B:661:NAG:C3	4:B:661:NAG:O7	2.48	0.61
1:C:382:ASN:OD1	1:C:387:GLU:HG2	2.00	0.61
1:D:286:MET:HE1	1:D:409:VAL:CG2	2.30	0.61
4:B:661:NAG:O7	4:B:661:NAG:H3	2.00	0.61
1:B:382:ASN:OD1	1:B:387:GLU:HG2	2.01	0.61
4:D:661:NAG:O7	4:D:661:NAG:C3	2.48	0.60
1:B:197:LYS:HZ1	1:B:222:GLU:HG2	1.65	0.60
1:C:384:GLU:HG3	1:C:407:GLN:CG	2.31	0.60
1:A:384:GLU:HG3	1:A:407:GLN:CG	2.30	0.60
1:D:529:GLN:OE1	1:D:529:GLN:HA	2.01	0.60

Continued on next page...

Continued from previous page...

Atom-1	Atom-2	Interatomic distance (Å)	Clash overlap (Å)
1:C:529:GLN:HA	1:C:529:GLN:OE1	1.99	0.60
1:D:413:THR:HG22	1:D:569:GLN:HE22	1.65	0.60
1:C:468:THR:HG22	1:C:495:VAL:HG13	1.84	0.60
2:E:3:NAG:O7	2:E:3:NAG:H3	2.02	0.59
1:B:286:MET:HE1	1:B:409:VAL:CG2	2.33	0.59
1:C:292:LEU:O	1:C:292:LEU:HD23	2.02	0.59
1:B:384:GLU:HG3	1:B:407:GLN:CG	2.31	0.59
1:A:53:ASN:ND2	4:A:661:NAG:H61	2.18	0.59
1:A:216:LEU:HD13	1:A:219:ILE:HD12	1.85	0.58
1:B:468:THR:HG22	1:B:495:VAL:HG13	1.85	0.58
1:C:216:LEU:HD13	1:C:219:ILE:HD12	1.86	0.58
1:A:60:LEU:HD11	1:A:64:LYS:HE3	1.86	0.58
1:A:292:LEU:O	1:A:292:LEU:HD23	2.03	0.58
1:A:382:ASN:OD1	1:A:387:GLU:HG2	2.04	0.58
1:A:368:ASN:O	1:A:372:HIS:HD2	1.86	0.58
2:H:2:NAG:H4	2:H:3:NAG:N2	2.19	0.58
1:D:197:LYS:HZ1	1:D:222:GLU:HG2	1.68	0.57
1:D:384:GLU:HG3	1:D:407:GLN:CG	2.33	0.57
1:C:60:LEU:HD11	1:C:64:LYS:HE3	1.87	0.57
1:C:197:LYS:HZ1	1:C:222:GLU:HG2	1.69	0.57
1:C:286:MET:CE	1:C:409:VAL:CG2	2.83	0.57
1:C:569:GLN:H	1:C:569:GLN:CD	2.08	0.57
1:D:91:ILE:CD1	1:D:94:LEU:HD12	2.35	0.56
2:E:2:NAG:H4	2:E:3:NAG:HN2	1.69	0.56
1:D:255:THR:O	1:D:256:GLN:HB2	2.04	0.56
1:D:216:LEU:HD13	1:D:219:ILE:HD12	1.87	0.56
1:B:529:GLN:OE1	1:B:529:GLN:HA	2.05	0.56
1:A:529:GLN:OE1	1:A:529:GLN:HA	2.05	0.56
1:C:164:LEU:HD22	1:C:169:LEU:HG	1.87	0.56
1:D:456:PHE:CG	1:D:511:LEU:HD22	2.42	0.55
1:A:346:LYS:HE3	1:A:348:ASP:CB	2.34	0.55
1:B:292:LEU:HD23	1:B:292:LEU:O	2.07	0.55
1:D:60:LEU:HA	1:D:63:ILE:HD13	1.89	0.55
1:B:24:ASN:N	1:B:25:PRO:CD	2.69	0.55
1:D:368:ASN:O	1:D:372:HIS:HD2	1.90	0.55
1:A:164:LEU:HD22	1:A:169:LEU:HG	1.89	0.54
1:C:346:LYS:HE3	1:C:348:ASP:CB	2.36	0.54
1:A:286:MET:CE	1:A:409:VAL:CG2	2.84	0.54
1:B:164:LEU:HD22	1:B:169:LEU:HG	1.89	0.54
1:A:247:VAL:O	1:A:293:ARG:NH1	2.41	0.54
1:D:430:VAL:O	1:D:430:VAL:HG13	2.07	0.54

Continued on next page...

Continued from previous page...

Atom-1	Atom-2	Interatomic distance (Å)	Clash overlap (Å)
1:B:280:LEU:HD22	1:B:395:TYR:HD2	1.73	0.54
1:D:346:LYS:HE3	1:D:348:ASP:CB	2.34	0.54
1:D:382:ASN:OD1	1:D:387:GLU:HG2	2.07	0.54
1:D:109:LEU:O	1:D:455:ARG:NH2	2.23	0.54
1:B:368:ASN:O	1:B:372:HIS:HD2	1.90	0.54
3:C:605:HEM:HHC	3:C:605:HEM:HBB2	1.90	0.54
1:D:60:LEU:HD11	1:D:64:LYS:HE3	1.90	0.53
1:A:430:VAL:HG13	1:A:430:VAL:O	2.09	0.53
1:A:456:PHE:CG	1:A:511:LEU:HD22	2.44	0.53
1:B:216:LEU:HD13	1:B:219:ILE:HD12	1.89	0.53
1:B:456:PHE:CG	1:B:511:LEU:HD22	2.43	0.53
1:C:433:VAL:HG13	3:C:605:HEM:HBA2	1.90	0.53
1:D:164:LEU:HD22	1:D:169:LEU:HG	1.90	0.53
1:A:60:LEU:HA	1:A:63:ILE:HD13	1.89	0.53
1:C:368:ASN:O	1:C:372:HIS:HD2	1.90	0.53
1:D:247:VAL:O	1:D:293:ARG:NH1	2.41	0.53
1:C:247:VAL:O	1:C:293:ARG:NH1	2.40	0.53
1:D:292:LEU:HD23	1:D:292:LEU:O	2.09	0.53
1:A:36:GLY:C	1:B:308:GLU:HG2	2.29	0.53
1:C:60:LEU:HA	1:C:63:ILE:HD13	1.92	0.53
1:C:24:ASN:N	1:C:25:PRO:CD	2.72	0.52
1:B:60:LEU:HD11	1:B:64:LYS:HE3	1.90	0.52
1:C:192:THR:HG21	1:C:371:TYR:CE2	2.44	0.52
1:C:286:MET:HE1	1:C:409:VAL:CG2	2.38	0.52
1:C:308:GLU:HG2	1:D:36:GLY:C	2.30	0.52
1:C:468:THR:HG22	1:C:495:VAL:CG1	2.40	0.52
1:D:98:ILE:HB	1:D:343:PHE:CZ	2.44	0.52
2:H:3:NAG:O7	2:H:3:NAG:H3	2.08	0.52
1:C:159:ASP:OD2	1:C:161:LYS:HB3	2.09	0.52
1:B:192:THR:HG21	1:B:371:TYR:CE2	2.45	0.51
1:B:468:THR:HG22	1:B:495:VAL:CG1	2.41	0.51
1:C:561:CYS:SG	1:C:561:CYS:O	2.68	0.51
1:A:67:LEU:N	1:A:67:LEU:CD1	2.73	0.51
1:B:60:LEU:HA	1:B:63:ILE:HD13	1.92	0.51
1:B:94:LEU:O	1:B:98:ILE:HG12	2.11	0.51
1:B:561:CYS:O	1:B:561:CYS:SG	2.69	0.51
1:B:247:VAL:O	1:B:293:ARG:NH1	2.42	0.51
1:A:192:THR:HG21	1:A:371:TYR:CE2	2.46	0.51
1:B:280:LEU:HD22	1:B:395:TYR:CD2	2.46	0.51
1:B:430:VAL:HG13	1:B:430:VAL:O	2.10	0.51
1:C:456:PHE:CG	1:C:511:LEU:HD22	2.46	0.51

Continued on next page...

Continued from previous page...

Atom-1	Atom-2	Interatomic distance (Å)	Clash overlap (Å)
1:B:346:LYS:HE3	1:B:348:ASP:CB	2.36	0.50
1:C:292:LEU:HD23	1:C:292:LEU:C	2.32	0.50
1:B:67:LEU:N	1:B:67:LEU:CD1	2.74	0.50
1:B:374:HIS:N	1:B:375:PRO:CD	2.74	0.50
1:C:98:ILE:HB	1:C:343:PHE:CZ	2.46	0.50
1:D:59:PHE:O	1:D:63:ILE:CD1	2.59	0.50
1:C:67:LEU:CD1	1:C:67:LEU:N	2.74	0.50
1:C:105:SER:O	1:C:108:TYR:CD2	2.64	0.50
1:D:468:THR:HG22	1:D:495:VAL:CG1	2.42	0.50
1:A:255:THR:O	1:A:256:GLN:HB2	2.11	0.50
1:B:105:SER:O	1:B:108:TYR:CD2	2.65	0.50
1:C:63:ILE:HD12	1:C:63:ILE:H	1.77	0.50
1:C:94:LEU:O	1:C:98:ILE:HG12	2.11	0.50
1:C:280:LEU:HD22	1:C:395:TYR:HD2	1.76	0.50
1:A:561:CYS:O	1:A:561:CYS:SG	2.69	0.50
1:B:159:ASP:OD2	1:B:161:LYS:HB3	2.12	0.50
1:C:18:ALA:HB3	1:C:144:ASP:OD2	2.12	0.50
1:D:159:ASP:OD2	1:D:161:LYS:HB3	2.11	0.50
1:A:159:ASP:OD2	1:A:161:LYS:HB3	2.12	0.49
1:D:374:HIS:N	1:D:375:PRO:CD	2.75	0.49
1:A:384:GLU:CG	1:A:407:GLN:CD	2.74	0.49
1:A:98:ILE:HB	1:A:343:PHE:CZ	2.48	0.49
1:A:326:THR:O	1:A:330:VAL:HG23	2.12	0.49
1:A:212:HIS:CE1	1:A:362:ARG:HD2	2.47	0.49
1:A:308:GLU:HG2	1:B:36:GLY:C	2.33	0.49
1:B:63:ILE:HD12	1:B:63:ILE:H	1.78	0.49
1:C:36:GLY:C	1:D:308:GLU:HG2	2.33	0.49
1:A:105:SER:O	1:A:108:TYR:CD2	2.67	0.48
1:B:98:ILE:HB	1:B:343:PHE:CZ	2.47	0.48
1:C:53:ASN:ND2	4:C:661:NAG:C6	2.76	0.48
1:C:374:HIS:N	1:C:375:PRO:CD	2.76	0.48
1:A:41:LYS:HG3	1:A:42:CYS:N	2.29	0.48
1:A:91:ILE:CD1	1:A:94:LEU:HD12	2.44	0.48
1:C:280:LEU:HD22	1:C:395:TYR:CD2	2.48	0.48
1:D:98:ILE:O	1:D:102:VAL:HG13	2.14	0.48
1:D:413:THR:HG22	1:D:569:GLN:NE2	2.28	0.48
1:A:374:HIS:N	1:A:375:PRO:CD	2.77	0.48
1:B:384:GLU:CG	1:B:407:GLN:CD	2.73	0.48
1:D:61:THR:O	1:D:65:LEU:HG	2.14	0.48
1:B:98:ILE:O	1:B:102:VAL:HG13	2.14	0.48
1:D:63:ILE:H	1:D:63:ILE:HD12	1.79	0.48

Continued on next page...

Continued from previous page...

Atom-1	Atom-2	Interatomic distance (Å)	Clash overlap (Å)
1:D:67:LEU:N	1:D:67:LEU:CD1	2.76	0.48
1:A:63:ILE:HD12	1:A:63:ILE:H	1.79	0.47
1:D:94:LEU:O	1:D:98:ILE:HG12	2.14	0.47
1:A:280:LEU:HD22	1:A:395:TYR:HD2	1.80	0.47
1:D:72:ASN:ND2	7:D:5139:HOH:O	2.47	0.47
1:B:373:TRP:HB2	3:B:605:HEM:HAC	1.97	0.47
1:D:106:ARG:NH2	1:D:510:GLU:OE2	2.47	0.47
2:H:2:NAG:H4	2:H:3:NAG:HN2	1.77	0.47
1:A:292:LEU:HD23	1:A:292:LEU:C	2.35	0.47
1:A:368:ASN:O	1:A:372:HIS:CD2	2.67	0.47
1:B:114:PRO:HG3	1:B:362:ARG:NH1	2.30	0.47
1:C:41:LYS:HG3	1:C:42:CYS:N	2.29	0.47
1:C:114:PRO:HG3	1:C:362:ARG:NH1	2.30	0.47
1:C:430:VAL:HG13	1:C:430:VAL:O	2.14	0.47
1:D:41:LYS:HG3	1:D:42:CYS:N	2.30	0.47
1:D:76:TYR:CE1	1:D:80:HIS:NE2	2.82	0.47
1:B:41:LYS:HG3	1:B:42:CYS:N	2.28	0.47
1:A:468:THR:HG22	1:A:495:VAL:CG1	2.43	0.47
1:B:106:ARG:NH2	1:B:510:GLU:OE2	2.48	0.47
1:D:114:PRO:HG3	1:D:362:ARG:NH1	2.29	0.47
1:C:306:HIS:CA	1:C:308:GLU:OE2	2.63	0.46
1:D:212:HIS:CE1	1:D:362:ARG:HD2	2.50	0.46
1:A:59:PHE:O	1:A:63:ILE:CD1	2.63	0.46
1:B:212:HIS:CE1	1:B:362:ARG:HD2	2.50	0.46
1:A:94:LEU:O	1:A:98:ILE:HG12	2.14	0.46
1:A:114:PRO:HG3	1:A:362:ARG:NH1	2.31	0.46
1:C:62:ARG:O	1:C:66:LEU:HD13	2.14	0.46
1:C:255:THR:O	1:C:256:GLN:HB2	2.14	0.46
1:C:308:GLU:HG2	1:D:36:GLY:O	2.16	0.46
1:D:192:THR:HG21	1:D:371:TYR:CE2	2.50	0.46
1:B:292:LEU:HD23	1:B:292:LEU:C	2.35	0.46
1:B:28:ASN:O	1:B:29:ARG:HB2	2.16	0.46
1:C:98:ILE:O	1:C:102:VAL:HG13	2.15	0.46
1:C:486:VAL:HG12	1:C:486:VAL:O	2.14	0.46
1:D:280:LEU:HD22	1:D:395:TYR:HD2	1.79	0.46
1:B:59:PHE:O	1:B:63:ILE:CD1	2.64	0.46
1:B:255:THR:O	1:B:256:GLN:HB2	2.14	0.46
1:D:108:TYR:CE2	1:D:109:LEU:CD2	2.98	0.46
1:A:98:ILE:O	1:A:102:VAL:HG13	2.15	0.46
3:A:605:HEM:HBB2	3:A:605:HEM:CHC	2.45	0.46
1:D:105:SER:O	1:D:108:TYR:CD2	2.69	0.46

Continued on next page...

Continued from previous page...

Atom-1	Atom-2	Interatomic distance (Å)	Clash overlap (Å)
1:A:216:LEU:HD22	1:A:218:HIS:HE1	1.81	0.46
1:B:61:THR:O	1:B:65:LEU:HG	2.16	0.46
1:D:18:ALA:HB3	1:D:144:ASP:OD2	2.16	0.46
1:C:59:PHE:O	1:C:63:ILE:CD1	2.63	0.45
2:F:2:NAG:C4	2:F:3:NAG:N2	2.72	0.45
1:A:106:ARG:NH2	1:A:510:GLU:OE2	2.49	0.45
1:A:61:THR:O	1:A:65:LEU:HG	2.16	0.45
1:C:212:HIS:CE1	1:C:362:ARG:HD2	2.51	0.45
1:D:326:THR:O	1:D:330:VAL:HG23	2.16	0.45
1:A:58:GLU:O	1:A:61:THR:HB	2.17	0.45
1:C:105:SER:O	1:C:108:TYR:HD2	2.00	0.45
1:D:280:LEU:HD22	1:D:395:TYR:CD2	2.51	0.45
1:A:279:GLY:HA2	1:A:285:MET:HE2	1.97	0.45
1:B:24:ASN:H	1:B:25:PRO:HD3	1.80	0.45
1:C:63:ILE:HD12	1:C:63:ILE:N	2.31	0.45
1:B:62:ARG:O	1:B:66:LEU:HD13	2.17	0.45
1:B:279:GLY:HA2	1:B:285:MET:HE2	1.98	0.45
1:C:106:ARG:NH2	1:C:510:GLU:OE2	2.50	0.45
1:C:159:ASP:HB3	1:C:162:GLU:HB2	1.99	0.45
1:A:306:HIS:CA	1:A:308:GLU:OE2	2.63	0.45
1:B:490:TYR:HB3	1:B:491:PRO:HD3	1.99	0.45
1:C:490:TYR:HB3	1:C:491:PRO:HD3	1.99	0.45
1:C:262:PRO:HG2	1:C:265:ILE:HG12	1.99	0.45
1:D:152:LYS:HE3	7:D:4485:HOH:O	2.15	0.45
1:D:216:LEU:HD22	1:D:218:HIS:HE1	1.81	0.45
1:D:279:GLY:HA2	1:D:285:MET:HE2	1.98	0.44
1:D:292:LEU:HD23	1:D:292:LEU:C	2.37	0.44
1:A:197:LYS:HZ1	1:A:222:GLU:CG	2.29	0.44
1:A:308:GLU:CD	1:A:308:GLU:H	2.19	0.44
1:B:63:ILE:HD12	1:B:63:ILE:N	2.32	0.44
1:D:171:ARG:NH1	6:D:703:BOG:H4'1	2.31	0.44
1:B:306:HIS:CA	1:B:308:GLU:OE2	2.62	0.44
1:B:486:VAL:HG12	1:B:486:VAL:O	2.18	0.44
1:D:349:PRO:HG2	1:D:531:TRP:CD2	2.53	0.44
1:D:159:ASP:HB3	1:D:162:GLU:HB2	2.00	0.44
1:A:62:ARG:O	1:A:66:LEU:HD13	2.17	0.44
1:D:52:GLU:OE1	4:D:661:NAG:H62	2.17	0.44
1:B:262:PRO:HG2	1:B:265:ILE:HG12	2.00	0.44
1:A:280:LEU:HD22	1:A:395:TYR:CD2	2.53	0.44
1:B:159:ASP:HB3	1:B:162:GLU:HB2	1.99	0.44
1:B:216:LEU:HD22	1:B:218:HIS:HE1	1.82	0.44

Continued on next page...

Continued from previous page...

Atom-1	Atom-2	Interatomic distance (Å)	Clash overlap (Å)
1:C:58:GLU:O	1:C:61:THR:HB	2.18	0.44
1:C:61:THR:O	1:C:65:LEU:HG	2.18	0.44
1:C:276:GLU:HG2	7:C:5197:HOH:O	2.16	0.44
1:D:59:PHE:O	1:D:63:ILE:HD12	2.18	0.44
1:D:86:ASN:O	1:D:90:ASN:ND2	2.50	0.44
1:D:108:TYR:CE2	1:D:109:LEU:HD22	2.53	0.44
1:B:157:LEU:HD13	7:B:5093:HOH:O	2.18	0.43
1:B:368:ASN:O	1:B:372:HIS:CD2	2.70	0.43
1:A:108:TYR:CE2	1:A:109:LEU:CD2	3.01	0.43
1:C:216:LEU:HD22	1:C:218:HIS:HE1	1.82	0.43
1:C:308:GLU:CD	1:C:308:GLU:H	2.22	0.43
2:E:3:NAG:O7	2:E:3:NAG:C3	2.66	0.43
1:B:105:SER:O	1:B:108:TYR:HD2	2.01	0.43
1:B:495:VAL:HG13	1:B:495:VAL:O	2.19	0.43
1:C:368:ASN:O	1:C:372:HIS:CD2	2.70	0.43
1:A:286:MET:HE1	1:A:409:VAL:CG2	2.43	0.43
1:A:308:GLU:HG2	1:B:36:GLY:O	2.18	0.43
1:A:108:TYR:CE2	1:A:109:LEU:HD22	2.53	0.43
1:A:400:LEU:HD11	1:A:405:LEU:HD22	2.01	0.43
1:B:349:PRO:HG2	1:B:531:TRP:CD2	2.54	0.43
1:B:384:GLU:HB3	1:B:385:ASP:H	1.50	0.43
1:B:456:PHE:CD2	1:B:511:LEU:HD22	2.53	0.43
1:C:108:TYR:CE2	1:C:109:LEU:HD22	2.54	0.43
1:D:456:PHE:CD2	1:D:511:LEU:HD22	2.54	0.43
1:B:569:GLN:CD	1:B:569:GLN:H	2.22	0.43
1:D:28:ASN:O	1:D:29:ARG:HB2	2.18	0.43
1:D:306:HIS:CA	1:D:308:GLU:OE2	2.64	0.43
1:A:159:ASP:HB3	1:A:162:GLU:HB2	2.01	0.43
1:A:262:PRO:HG2	1:A:265:ILE:HG12	1.99	0.43
1:D:561:CYS:O	1:D:561:CYS:SG	2.77	0.43
1:B:108:TYR:CE2	1:B:109:LEU:CD2	3.02	0.43
1:B:108:TYR:CE2	1:B:109:LEU:HD22	2.54	0.43
1:D:112:SER:HA	1:D:113:PRO:C	2.39	0.43
1:A:171:ARG:HD3	6:A:703:BOG:H5'2	2.00	0.42
1:C:292:LEU:C	1:C:292:LEU:CD2	2.88	0.42
1:D:62:ARG:O	1:D:66:LEU:HD13	2.19	0.42
1:D:78:LEU:HB3	1:D:341:TYR:CD1	2.55	0.42
1:D:58:GLU:O	1:D:61:THR:HB	2.19	0.42
1:D:63:ILE:HD12	1:D:63:ILE:N	2.34	0.42
1:C:235:ASP:OD2	1:C:303:LYS:HE2	2.20	0.42
1:D:384:GLU:HB3	1:D:385:ASP:H	1.48	0.42

Continued on next page...

Continued from previous page...

Atom-1	Atom-2	Interatomic distance (Å)	Clash overlap (Å)
1:A:112:SER:HA	1:A:113:PRO:C	2.40	0.42
1:B:370:LEU:C	1:B:370:LEU:HD12	2.40	0.42
1:A:513:ALA:N	1:A:514:PRO:CD	2.83	0.42
1:B:19:ASN:HB3	1:B:22:CYS:SG	2.59	0.42
1:B:86:ASN:O	1:B:90:ASN:ND2	2.52	0.42
1:B:197:LYS:HZ1	1:B:222:GLU:CG	2.32	0.42
1:C:108:TYR:CE2	1:C:109:LEU:CD2	3.03	0.42
1:D:308:GLU:H	1:D:308:GLU:CD	2.22	0.42
1:A:384:GLU:HB3	1:A:385:ASP:H	1.50	0.42
1:B:511:LEU:N	1:B:511:LEU:HD23	2.35	0.42
1:D:99:MET:HA	1:D:102:VAL:HG13	2.01	0.42
1:A:63:ILE:HD12	1:A:63:ILE:N	2.34	0.42
1:A:91:ILE:HD12	1:A:94:LEU:HD12	2.02	0.41
1:B:386:GLN:HG3	1:B:388:TYR:OH	2.20	0.41
1:B:308:GLU:CD	1:B:308:GLU:H	2.22	0.41
1:A:292:LEU:C	1:A:292:LEU:CD2	2.89	0.41
1:C:78:LEU:HB3	1:C:341:TYR:CD1	2.55	0.41
1:C:349:PRO:HG2	1:C:531:TRP:CD2	2.55	0.41
1:C:456:PHE:CD2	1:C:511:LEU:HD22	2.55	0.41
1:C:513:ALA:N	1:C:514:PRO:CD	2.82	0.41
1:A:59:PHE:O	1:A:63:ILE:HD12	2.20	0.41
1:A:349:PRO:HG2	1:A:531:TRP:CD2	2.55	0.41
1:A:366:GLU:HG2	1:A:452:TYR:CE1	2.55	0.41
1:A:430:VAL:HG22	1:A:433:VAL:CG2	2.51	0.41
1:C:384:GLU:CG	1:C:407:GLN:CD	2.75	0.41
1:D:490:TYR:HB3	1:D:491:PRO:HD3	2.02	0.41
1:A:184:PHE:CZ	1:A:338:LEU:CD1	3.04	0.41
1:B:91:ILE:O	1:B:91:ILE:HG22	2.20	0.41
1:B:97:LEU:O	1:B:97:LEU:HD23	2.20	0.41
1:B:286:MET:HE3	1:B:409:VAL:HG23	2.03	0.41
1:B:58:GLU:O	1:B:61:THR:HB	2.20	0.41
1:A:78:LEU:HB3	1:A:341:TYR:CD1	2.56	0.41
1:B:286:MET:CE	1:B:409:VAL:HG23	2.50	0.41
1:D:76:TYR:CZ	1:D:80:HIS:CD2	3.09	0.41
1:D:286:MET:CE	1:D:409:VAL:HG23	2.51	0.41
1:D:368:ASN:O	1:D:372:HIS:CD2	2.71	0.41
1:A:36:GLY:O	1:B:308:GLU:HG2	2.20	0.41
1:A:105:SER:O	1:A:108:TYR:HD2	2.03	0.41
1:C:279:GLY:HA2	1:C:285:MET:CE	2.51	0.41
1:D:232:LEU:O	1:D:233:PHE:HB2	2.21	0.41
1:B:76:TYR:O	1:B:80:HIS:ND1	2.54	0.40

Continued on next page...

Continued from previous page...

Atom-1	Atom-2	Interatomic distance (Å)	Clash overlap (Å)
1:C:28:ASN:O	1:C:29:ARG:HB2	2.20	0.40
1:D:91:ILE:HB	1:D:94:LEU:HB2	2.03	0.40
1:A:171:ARG:NH1	6:A:703:BOG:H4'1	2.36	0.40
1:C:326:THR:O	1:C:330:VAL:HG23	2.22	0.40
1:C:279:GLY:HA2	1:C:285:MET:HE2	2.04	0.40
1:D:279:GLY:HA2	1:D:285:MET:CE	2.51	0.40
1:A:490:TYR:HB3	1:A:491:PRO:HD3	2.02	0.40
1:B:78:LEU:HB3	1:B:341:TYR:CD1	2.57	0.40
1:C:36:GLY:O	1:D:308:GLU:HG2	2.20	0.40
1:C:76:TYR:O	1:C:80:HIS:ND1	2.55	0.40
1:C:197:LYS:HZ1	1:C:222:GLU:CG	2.34	0.40
1:D:350:GLU:HA	1:D:353:PHE:CD1	2.57	0.40
1:A:370:LEU:HD12	1:A:370:LEU:C	2.42	0.40
1:B:112:SER:HA	1:B:113:PRO:C	2.42	0.40

There are no symmetry-related clashes.

5.3 Torsion angles [i](#)

5.3.1 Protein backbone [i](#)

In the following table, the Percentiles column shows the percent Ramachandran outliers of the chain as a percentile score with respect to all X-ray entries followed by that with respect to entries of similar resolution.

The Analysed column shows the number of residues for which the backbone conformation was analysed, and the total number of residues.

Mol	Chain	Analysed	Favoured	Allowed	Outliers	Percentiles	
1	A	550/587 (94%)	534 (97%)	16 (3%)	0	100	100
1	B	550/587 (94%)	535 (97%)	15 (3%)	0	100	100
1	C	550/587 (94%)	534 (97%)	16 (3%)	0	100	100
1	D	550/587 (94%)	536 (98%)	14 (2%)	0	100	100
All	All	2200/2348 (94%)	2139 (97%)	61 (3%)	0	100	100

There are no Ramachandran outliers to report.

5.3.2 Protein sidechains ⓘ

In the following table, the Percentiles column shows the percent sidechain outliers of the chain as a percentile score with respect to all X-ray entries followed by that with respect to entries of similar resolution.

The Analysed column shows the number of residues for which the sidechain conformation was analysed, and the total number of residues.

Mol	Chain	Analysed	Rotameric	Outliers	Percentiles	
1	A	493/525 (94%)	461 (94%)	32 (6%)	14	16
1	B	493/525 (94%)	460 (93%)	33 (7%)	13	15
1	C	493/525 (94%)	459 (93%)	34 (7%)	13	14
1	D	493/525 (94%)	460 (93%)	33 (7%)	13	15
All	All	1972/2100 (94%)	1840 (93%)	132 (7%)	13	15

All (132) residues with a non-rotameric sidechain are listed below:

Mol	Chain	Res	Type
1	A	67	LEU
1	A	78	LEU
1	A	86	ASN
1	A	93	PHE
1	A	102	VAL
1	A	103	LEU
1	A	106	ARG
1	A	108	TYR
1	A	157	LEU
1	A	164	LEU
1	A	224	LEU
1	A	225	ASP
1	A	238	LEU
1	A	257	VAL
1	A	268	ASN
1	A	275	GLN
1	A	277	VAL
1	A	280	LEU
1	A	284	LEU
1	A	304	GLN
1	A	308	GLU
1	A	338	LEU
1	A	362	ARG
1	A	371	TYR

Continued on next page...

Continued from previous page...

Mol	Chain	Res	Type
1	A	395	TYR
1	A	398	SER
1	A	430	VAL
1	A	455	ARG
1	A	470	GLU
1	A	478	LYS
1	A	495	VAL
1	A	520	LEU
1	B	67	LEU
1	B	78	LEU
1	B	86	ASN
1	B	93	PHE
1	B	102	VAL
1	B	103	LEU
1	B	106	ARG
1	B	108	TYR
1	B	157	LEU
1	B	164	LEU
1	B	218	HIS
1	B	225	ASP
1	B	238	LEU
1	B	257	VAL
1	B	268	ASN
1	B	275	GLN
1	B	277	VAL
1	B	280	LEU
1	B	284	LEU
1	B	304	GLN
1	B	308	GLU
1	B	338	LEU
1	B	362	ARG
1	B	371	TYR
1	B	395	TYR
1	B	398	SER
1	B	430	VAL
1	B	455	ARG
1	B	470	GLU
1	B	478	LYS
1	B	495	VAL
1	B	520	LEU
1	B	569	GLN
1	C	67	LEU

Continued on next page...

Continued from previous page...

Mol	Chain	Res	Type
1	C	78	LEU
1	C	86	ASN
1	C	93	PHE
1	C	102	VAL
1	C	103	LEU
1	C	106	ARG
1	C	108	TYR
1	C	157	LEU
1	C	164	LEU
1	C	224	LEU
1	C	225	ASP
1	C	238	LEU
1	C	257	VAL
1	C	268	ASN
1	C	275	GLN
1	C	277	VAL
1	C	280	LEU
1	C	284	LEU
1	C	304	GLN
1	C	308	GLU
1	C	338	LEU
1	C	362	ARG
1	C	371	TYR
1	C	395	TYR
1	C	398	SER
1	C	430	VAL
1	C	455	ARG
1	C	470	GLU
1	C	478	LYS
1	C	495	VAL
1	C	520	LEU
1	C	565	SER
1	C	569	GLN
1	D	67	LEU
1	D	78	LEU
1	D	86	ASN
1	D	93	PHE
1	D	102	VAL
1	D	103	LEU
1	D	106	ARG
1	D	108	TYR
1	D	157	LEU

Continued on next page...

Continued from previous page...

Mol	Chain	Res	Type
1	D	164	LEU
1	D	224	LEU
1	D	225	ASP
1	D	238	LEU
1	D	257	VAL
1	D	268	ASN
1	D	275	GLN
1	D	277	VAL
1	D	280	LEU
1	D	284	LEU
1	D	304	GLN
1	D	308	GLU
1	D	338	LEU
1	D	362	ARG
1	D	371	TYR
1	D	395	TYR
1	D	398	SER
1	D	430	VAL
1	D	455	ARG
1	D	470	GLU
1	D	478	LYS
1	D	495	VAL
1	D	520	LEU
1	D	569	GLN

Sometimes sidechains can be flipped to improve hydrogen bonding and reduce clashes. All (3) such sidechains are listed below:

Mol	Chain	Res	Type
1	A	75	HIS
1	B	355	GLN
1	D	72	ASN

5.3.3 RNA ⓘ

There are no RNA molecules in this entry.

5.4 Non-standard residues in protein, DNA, RNA chains ⓘ

There are no non-standard protein/DNA/RNA residues in this entry.

5.5 Carbohydrates ⓘ

12 monosaccharides are modelled in this entry.

In the following table, the Counts columns list the number of bonds (or angles) for which Mogul statistics could be retrieved, the number of bonds (or angles) that are observed in the model and the number of bonds (or angles) that are defined in the Chemical Component Dictionary. The Link column lists molecule types, if any, to which the group is linked. The Z score for a bond length (or angle) is the number of standard deviations the observed value is removed from the expected value. A bond length (or angle) with $|Z| > 2$ is considered an outlier worth inspection. RMSZ is the root-mean-square of all Z scores of the bond lengths (or angles).

Mol	Type	Chain	Res	Link	Bond lengths			Bond angles		
					Counts	RMSZ	$\# Z > 2$	Counts	RMSZ	$\# Z > 2$
2	NAG	E	1	1,2	14,14,15	0.54	0	17,19,21	1.48	2 (11%)
2	NAG	E	2	2	14,14,15	0.47	0	17,19,21	1.64	3 (17%)
2	NAG	E	3	2	14,14,15	0.50	0	17,19,21	1.63	1 (5%)
2	NAG	F	1	1,2	14,14,15	0.45	0	17,19,21	1.45	2 (11%)
2	NAG	F	2	2	14,14,15	0.54	0	17,19,21	1.34	2 (11%)
2	NAG	F	3	2	14,14,15	0.46	0	17,19,21	1.66	2 (11%)
2	NAG	G	1	1,2	14,14,15	0.63	0	17,19,21	1.22	2 (11%)
2	NAG	G	2	2	14,14,15	0.57	0	17,19,21	1.04	2 (11%)
2	NAG	G	3	2	14,14,15	0.64	0	17,19,21	1.09	1 (5%)
2	NAG	H	1	1,2	14,14,15	0.48	0	17,19,21	1.71	3 (17%)
2	NAG	H	2	2	14,14,15	0.55	0	17,19,21	1.67	2 (11%)
2	NAG	H	3	2	14,14,15	0.49	0	17,19,21	1.71	1 (5%)

In the following table, the Chirals column lists the number of chiral outliers, the number of chiral centers analysed, the number of these observed in the model and the number defined in the Chemical Component Dictionary. Similar counts are reported in the Torsion and Rings columns. '-' means no outliers of that kind were identified.

Mol	Type	Chain	Res	Link	Chirals	Torsions	Rings
2	NAG	E	1	1,2	-	0/6/23/26	0/1/1/1
2	NAG	E	2	2	-	4/6/23/26	0/1/1/1
2	NAG	E	3	2	-	3/6/23/26	0/1/1/1
2	NAG	F	1	1,2	-	0/6/23/26	0/1/1/1
2	NAG	F	2	2	-	2/6/23/26	0/1/1/1
2	NAG	F	3	2	-	1/6/23/26	0/1/1/1
2	NAG	G	1	1,2	-	0/6/23/26	0/1/1/1
2	NAG	G	2	2	-	2/6/23/26	0/1/1/1
2	NAG	G	3	2	-	2/6/23/26	0/1/1/1

Continued on next page...

Continued from previous page...

Mol	Type	Chain	Res	Link	Chirals	Torsions	Rings
2	NAG	H	1	1,2	-	0/6/23/26	0/1/1/1
2	NAG	H	2	2	-	3/6/23/26	0/1/1/1
2	NAG	H	3	2	-	3/6/23/26	0/1/1/1

There are no bond length outliers.

All (23) bond angle outliers are listed below:

Mol	Chain	Res	Type	Atoms	Z	Observed(°)	Ideal(°)
2	H	3	NAG	C1-O5-C5	5.82	119.98	112.19
2	F	3	NAG	C1-O5-C5	5.68	119.80	112.19
2	E	3	NAG	C1-O5-C5	5.46	119.50	112.19
2	H	2	NAG	O5-C1-C2	-4.36	104.54	111.29
2	H	1	NAG	O5-C1-C2	-4.04	105.03	111.29
2	H	1	NAG	C2-N2-C7	-4.04	117.49	122.90
2	E	2	NAG	O5-C1-C2	-3.93	105.21	111.29
2	F	1	NAG	O5-C1-C2	-3.77	105.45	111.29
2	F	2	NAG	O5-C1-C2	-3.73	105.52	111.29
2	E	1	NAG	O5-C1-C2	-3.57	105.77	111.29
2	E	1	NAG	C2-N2-C7	-3.10	118.75	122.90
2	F	1	NAG	C2-N2-C7	-2.98	118.91	122.90
2	G	2	NAG	O5-C1-C2	-2.94	106.74	111.29
2	G	1	NAG	O5-C1-C2	-2.94	106.74	111.29
2	G	3	NAG	C4-C3-C2	2.85	115.20	111.02
2	H	2	NAG	C2-N2-C7	-2.51	119.54	122.90
2	G	1	NAG	C2-N2-C7	-2.34	119.77	122.90
2	F	2	NAG	C4-C3-C2	-2.32	107.62	111.02
2	G	2	NAG	C4-C3-C2	-2.28	107.68	111.02
2	H	1	NAG	C3-C4-C5	-2.20	106.25	110.23
2	E	2	NAG	O5-C5-C4	2.16	116.08	110.83
2	E	2	NAG	C2-N2-C7	-2.12	120.06	122.90
2	F	3	NAG	C3-C4-C5	2.05	113.95	110.23

There are no chirality outliers.

All (20) torsion outliers are listed below:

Mol	Chain	Res	Type	Atoms
2	E	2	NAG	C1-C2-N2-C7
2	E	3	NAG	C3-C2-N2-C7
2	F	2	NAG	C1-C2-N2-C7
2	F	3	NAG	C3-C2-N2-C7
2	H	2	NAG	C1-C2-N2-C7

Continued on next page...

Continued from previous page...

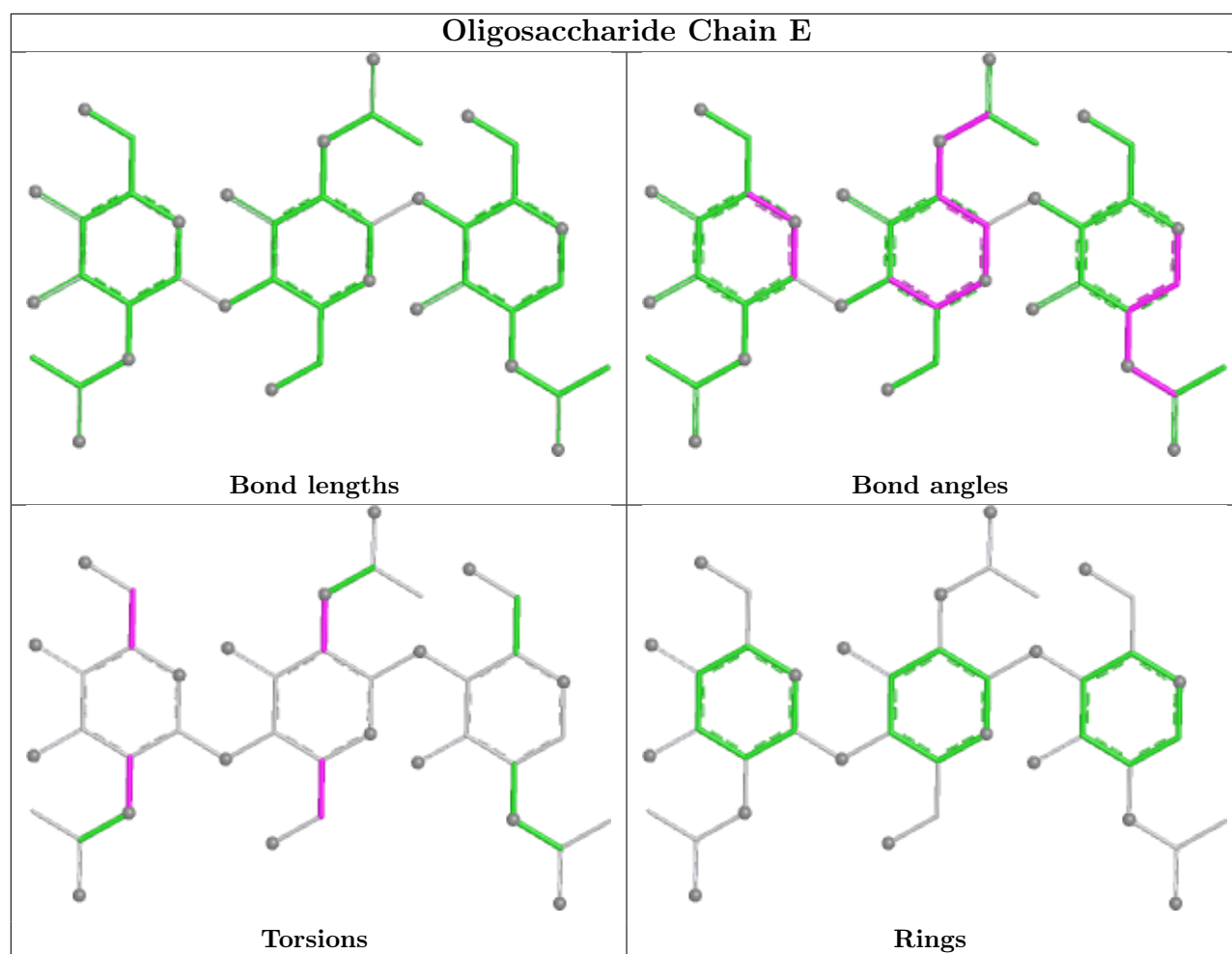
Mol	Chain	Res	Type	Atoms
2	H	3	NAG	C3-C2-N2-C7
2	H	2	NAG	O5-C5-C6-O6
2	E	3	NAG	C4-C5-C6-O6
2	E	2	NAG	O5-C5-C6-O6
2	E	3	NAG	O5-C5-C6-O6
2	H	2	NAG	C4-C5-C6-O6
2	E	2	NAG	C4-C5-C6-O6
2	G	2	NAG	C1-C2-N2-C7
2	H	3	NAG	C8-C7-N2-C2
2	F	2	NAG	C3-C2-N2-C7
2	G	3	NAG	C1-C2-N2-C7
2	E	2	NAG	C3-C2-N2-C7
2	G	2	NAG	C3-C2-N2-C7
2	G	3	NAG	C3-C2-N2-C7
2	H	3	NAG	O7-C7-N2-C2

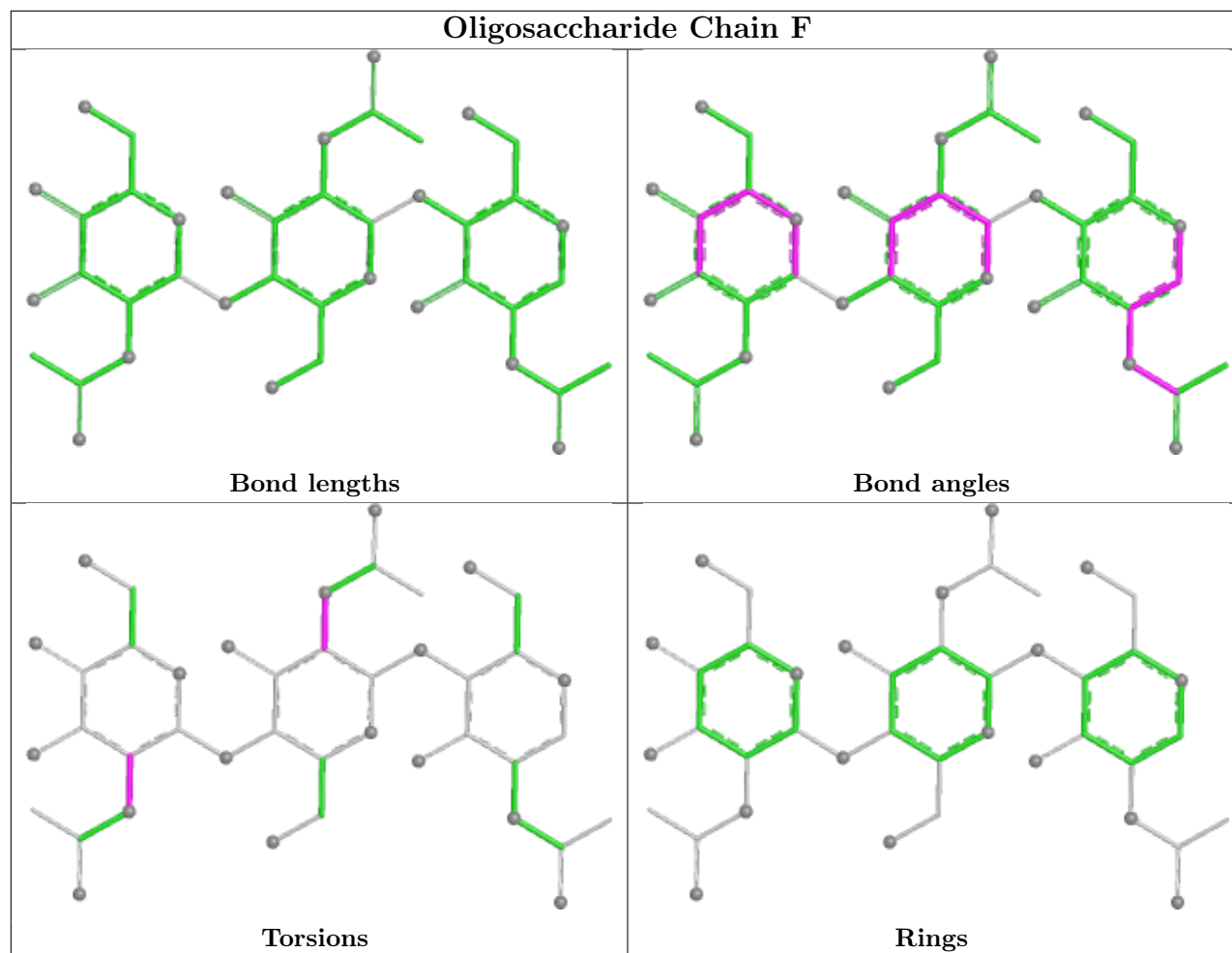
There are no ring outliers.

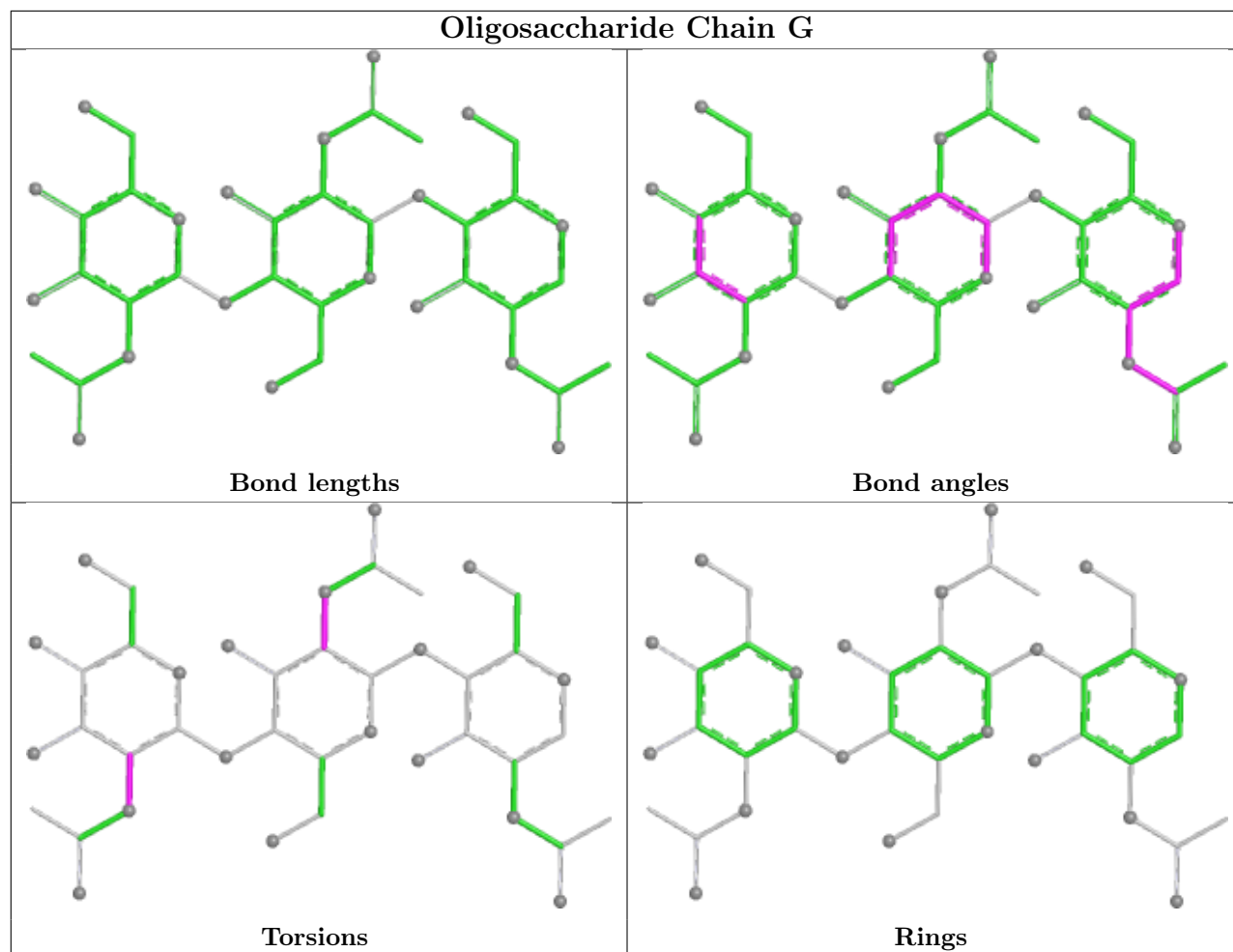
8 monomers are involved in 12 short contacts:

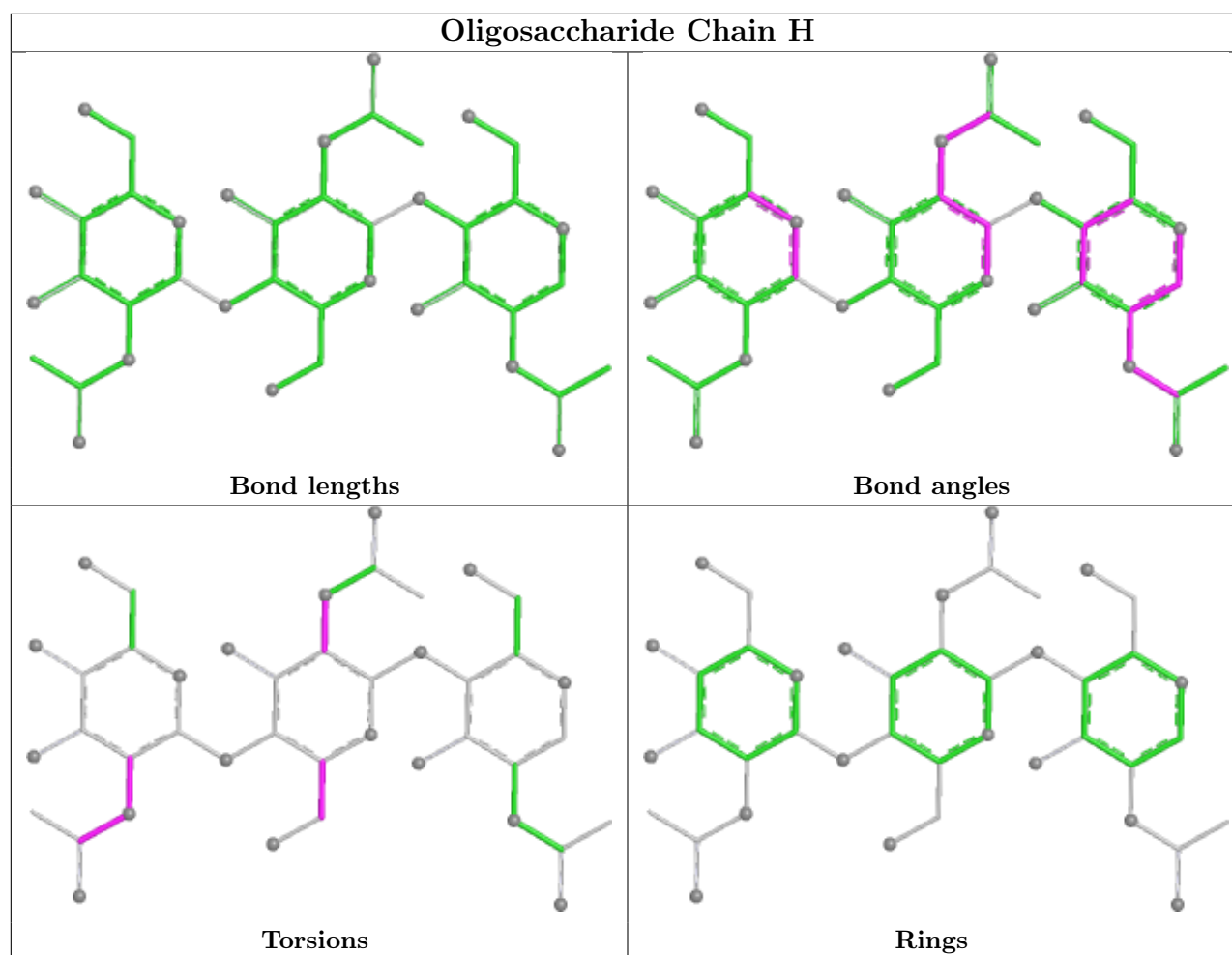
Mol	Chain	Res	Type	Clashes	Symm-Clashes
2	G	3	NAG	1	0
2	F	3	NAG	4	0
2	H	2	NAG	2	0
2	H	3	NAG	3	0
2	F	2	NAG	3	0
2	E	2	NAG	2	0
2	G	2	NAG	1	0
2	E	3	NAG	4	0

The following is a two-dimensional graphical depiction of Mogul quality analysis of bond lengths, bond angles, torsion angles, and ring geometry for oligosaccharide.









5.6 Ligand geometry [i](#)

18 ligands are modelled in this entry.

In the following table, the Counts columns list the number of bonds (or angles) for which Mogul statistics could be retrieved, the number of bonds (or angles) that are observed in the model and the number of bonds (or angles) that are defined in the Chemical Component Dictionary. The Link column lists molecule types, if any, to which the group is linked. The Z score for a bond length (or angle) is the number of standard deviations the observed value is removed from the expected value. A bond length (or angle) with $|Z| > 2$ is considered an outlier worth inspection. RMSZ is the root-mean-square of all Z scores of the bond lengths (or angles).

Mol	Type	Chain	Res	Link	Bond lengths			Bond angles		
					Counts	RMSZ	$\# Z > 2$	Counts	RMSZ	$\# Z > 2$
4	NAG	A	681	1	14,14,15	0.72	0	17,19,21	1.35	3 (17%)
3	HEM	A	605	7,1	42,50,50	1.93	9 (21%)	46,82,82	1.73	12 (26%)
4	NAG	B	681	1	14,14,15	0.60	0	17,19,21	1.37	2 (11%)
5	52B	A	701	-	20,20,20	1.26	1 (5%)	26,31,31	1.74	7 (26%)
4	NAG	B	661	1	14,14,15	0.57	0	17,19,21	1.36	4 (23%)

Mol	Type	Chain	Res	Link	Bond lengths			Bond angles		
					Counts	RMSZ	# Z > 2	Counts	RMSZ	# Z > 2
5	52B	D	701	-	20,20,20	1.31	1 (5%)	26,31,31	1.48	7 (26%)
4	NAG	C	661	1	14,14,15	0.56	0	17,19,21	1.31	1 (5%)
5	52B	C	701	-	20,20,20	1.44	3 (15%)	26,31,31	1.47	7 (26%)
6	BOG	A	703	-	20,20,20	0.39	0	25,25,25	0.74	0
6	BOG	D	703	-	20,20,20	0.41	0	25,25,25	0.74	0
3	HEM	B	605	1	42,50,50	1.91	6 (14%)	46,82,82	1.70	11 (23%)
4	NAG	C	681	1	14,14,15	0.62	0	17,19,21	1.08	1 (5%)
4	NAG	D	681	1	14,14,15	0.60	0	17,19,21	1.32	3 (17%)
4	NAG	D	661	1	14,14,15	0.34	0	17,19,21	1.21	2 (11%)
4	NAG	A	661	1	14,14,15	0.42	0	17,19,21	1.26	1 (5%)
5	52B	B	701	-	20,20,20	1.29	1 (5%)	26,31,31	1.53	6 (23%)
3	HEM	C	605	7,1	42,50,50	1.94	8 (19%)	46,82,82	1.82	10 (21%)
3	HEM	D	605	7,1	42,50,50	1.98	7 (16%)	46,82,82	1.85	11 (23%)

In the following table, the Chirals column lists the number of chiral outliers, the number of chiral centers analysed, the number of these observed in the model and the number defined in the Chemical Component Dictionary. Similar counts are reported in the Torsion and Rings columns. '-' means no outliers of that kind were identified.

Mol	Type	Chain	Res	Link	Chirals	Torsions	Rings
4	NAG	A	681	1	-	2/6/23/26	0/1/1/1
3	HEM	A	605	7,1	-	3/12/54/54	-
4	NAG	B	681	1	-	0/6/23/26	0/1/1/1
5	52B	A	701	-	-	0/10/22/22	0/2/2/2
4	NAG	B	661	1	-	3/6/23/26	0/1/1/1
5	52B	D	701	-	-	0/10/22/22	0/2/2/2
4	NAG	C	661	1	-	1/6/23/26	0/1/1/1
5	52B	C	701	-	-	0/10/22/22	0/2/2/2
6	BOG	A	703	-	-	4/11/31/31	0/1/1/1
6	BOG	D	703	-	-	5/11/31/31	0/1/1/1
3	HEM	B	605	1	-	2/12/54/54	-
4	NAG	C	681	1	-	0/6/23/26	0/1/1/1
4	NAG	D	681	1	-	0/6/23/26	0/1/1/1
4	NAG	D	661	1	-	4/6/23/26	0/1/1/1
4	NAG	A	661	1	-	4/6/23/26	0/1/1/1
5	52B	B	701	-	-	0/10/22/22	0/2/2/2
3	HEM	C	605	7,1	-	2/12/54/54	-
3	HEM	D	605	7,1	-	1/12/54/54	-

All (36) bond length outliers are listed below:

Mol	Chain	Res	Type	Atoms	Z	Observed(Å)	Ideal(Å)
3	D	605	HEM	C3D-C2D	7.59	1.53	1.36
3	A	605	HEM	C3D-C2D	7.47	1.52	1.36
3	B	605	HEM	C3D-C2D	7.38	1.52	1.36
3	C	605	HEM	C3D-C2D	7.00	1.51	1.36
3	C	605	HEM	C3C-C2C	-5.35	1.33	1.40
3	B	605	HEM	C3C-C2C	-4.88	1.33	1.40
3	D	605	HEM	C3C-C2C	-4.87	1.33	1.40
3	A	605	HEM	C3C-C2C	-4.84	1.33	1.40
3	B	605	HEM	C3C-CAC	3.47	1.55	1.47
3	D	605	HEM	C3C-CAC	3.37	1.55	1.47
3	C	605	HEM	C3C-C4C	3.28	1.46	1.41
5	D	701	52B	C10-C8	3.26	1.53	1.48
3	D	605	HEM	C3C-C4C	3.25	1.46	1.41
3	C	605	HEM	C3C-CAC	3.07	1.54	1.47
3	D	605	HEM	FE-NB	3.00	2.14	1.98
3	A	605	HEM	C3C-CAC	2.91	1.54	1.47
3	A	605	HEM	FE-NB	2.79	2.13	1.98
5	C	701	52B	C9-C8	-2.73	1.48	1.51
5	B	701	52B	C10-C8	2.72	1.52	1.48
3	D	605	HEM	CAB-C3B	2.69	1.54	1.47
3	B	605	HEM	CAB-C3B	2.69	1.54	1.47
3	C	605	HEM	CAB-C3B	2.64	1.54	1.47
5	A	701	52B	C10-C8	2.61	1.52	1.48
3	A	605	HEM	CAB-C3B	2.61	1.54	1.47
3	A	605	HEM	C3C-C4C	2.56	1.45	1.41
3	B	605	HEM	FE-NB	2.40	2.11	1.98
3	D	605	HEM	C3B-C2B	-2.30	1.32	1.37
5	C	701	52B	C10-C8	2.28	1.52	1.48
3	C	605	HEM	FE-NB	2.28	2.10	1.98
3	A	605	HEM	C3B-C2B	-2.23	1.32	1.37
5	C	701	52B	C3-C6	-2.23	1.37	1.41
3	A	605	HEM	CMD-C2D	2.10	1.55	1.50
3	A	605	HEM	CMB-C2B	2.09	1.55	1.50
3	C	605	HEM	CMB-C2B	2.08	1.55	1.50
3	B	605	HEM	C3C-C4C	2.03	1.44	1.41
3	C	605	HEM	CMD-C2D	2.01	1.54	1.50

All (88) bond angle outliers are listed below:

Mol	Chain	Res	Type	Atoms	Z	Observed(°)	Ideal(°)
3	C	605	HEM	CBA-CAA-C2A	-5.63	103.08	112.54
3	D	605	HEM	C4D-ND-C1D	5.58	111.82	105.21

Continued on next page...

Continued from previous page...

Mol	Chain	Res	Type	Atoms	Z	Observed(°)	Ideal(°)
3	A	605	HEM	C4D-ND-C1D	5.23	111.40	105.21
3	B	605	HEM	C4D-ND-C1D	5.07	111.21	105.21
3	C	605	HEM	C4D-ND-C1D	4.95	111.07	105.21
3	A	605	HEM	CBA-CAA-C2A	-4.39	105.16	112.54
4	B	681	NAG	C1-O5-C5	-3.75	107.16	112.19
5	A	701	52B	C5-C4-CL1	-3.68	114.55	119.17
5	B	701	52B	C3-C7-C8	-3.56	115.74	121.70
3	B	605	HEM	CBA-CAA-C2A	-3.53	106.61	112.54
3	D	605	HEM	CBA-CAA-C2A	-3.51	106.64	112.54
5	D	701	52B	C3-C7-C8	-3.48	115.86	121.70
3	D	605	HEM	CMA-C3A-C4A	-3.38	123.51	128.46
4	A	661	NAG	C1-O5-C5	3.35	116.68	112.19
3	A	605	HEM	CMA-C3A-C4A	-3.35	123.55	128.46
5	A	701	52B	C1-C4-CL1	3.33	123.34	119.17
5	A	701	52B	C3-C7-C8	-3.30	116.17	121.70
3	C	605	HEM	CMA-C3A-C4A	-3.11	123.90	128.46
4	C	661	NAG	O5-C1-C2	-3.06	106.56	111.29
5	C	701	52B	C3-C7-C8	-3.02	116.64	121.70
5	A	701	52B	C3-C6-C2	2.94	121.00	116.16
5	B	701	52B	C1-C4-CL1	2.93	122.85	119.17
3	A	605	HEM	CBD-CAD-C3D	-2.91	104.49	112.53
3	D	605	HEM	C4B-CHC-C1C	2.86	126.34	122.56
4	A	681	NAG	O5-C5-C4	-2.82	103.96	110.83
5	A	701	52B	C9-C8-C7	2.78	123.70	118.93
3	D	605	HEM	CBD-CAD-C3D	-2.78	104.84	112.53
5	B	701	52B	C9-C8-C7	2.75	123.64	118.93
5	C	701	52B	C7-C8-C10	-2.73	115.06	121.27
3	C	605	HEM	C4B-CHC-C1C	2.72	126.14	122.56
3	D	605	HEM	C3B-C4B-NB	-2.70	107.53	109.47
4	D	661	NAG	C1-O5-C5	2.68	115.78	112.19
4	C	681	NAG	C1-O5-C5	-2.65	108.63	112.19
4	D	681	NAG	O5-C5-C4	-2.64	104.40	110.83
3	C	605	HEM	C4C-CHD-C1D	2.64	126.04	122.56
3	B	605	HEM	C4B-CHC-C1C	2.63	126.03	122.56
4	D	681	NAG	O5-C5-C6	2.62	112.76	107.66
3	C	605	HEM	CMD-C2D-C1D	2.60	129.09	125.03
5	A	701	52B	C7-C8-C10	-2.60	115.36	121.27
3	B	605	HEM	C3B-C4B-NB	-2.54	107.64	109.47
3	B	605	HEM	C1B-NB-C4B	2.54	108.21	105.21
5	B	701	52B	O13-C10-C8	-2.51	115.73	121.59
5	D	701	52B	C3-C6-C2	2.51	120.28	116.16
3	C	605	HEM	CBD-CAD-C3D	-2.49	105.64	112.53

Continued on next page...

Continued from previous page...

Mol	Chain	Res	Type	Atoms	Z	Observed(°)	Ideal(°)
3	A	605	HEM	C4C-CHD-C1D	2.49	125.84	122.56
3	B	605	HEM	C3B-C2B-C1B	2.47	108.27	106.41
5	A	701	52B	O13-C10-C8	-2.47	115.83	121.59
5	C	701	52B	O13-C10-C8	-2.47	115.83	121.59
4	D	681	NAG	C1-O5-C5	-2.46	108.88	112.19
5	D	701	52B	C1-C4-CL1	2.45	122.24	119.17
5	B	701	52B	C3-C6-C2	2.44	120.18	116.16
3	D	605	HEM	C4C-CHD-C1D	2.44	125.78	122.56
4	B	661	NAG	C4-C3-C2	-2.43	107.46	111.02
4	B	661	NAG	C1-O5-C5	2.42	115.43	112.19
3	B	605	HEM	CHC-C4B-C3B	2.40	128.25	124.57
4	A	681	NAG	C3-C4-C5	-2.40	105.88	110.23
4	B	681	NAG	O5-C5-C6	2.38	112.30	107.66
3	B	605	HEM	C1D-C2D-C3D	-2.38	104.48	106.98
4	A	681	NAG	O5-C5-C6	2.37	112.27	107.66
5	C	701	52B	C9-C8-C7	2.37	122.99	118.93
4	B	661	NAG	O5-C1-C2	-2.36	107.63	111.29
3	D	605	HEM	C2C-C3C-C4C	2.36	108.54	106.90
5	C	701	52B	C3-C6-C2	2.33	120.00	116.16
3	B	605	HEM	C4C-CHD-C1D	2.33	125.63	122.56
3	C	605	HEM	C1D-C2D-C3D	-2.32	104.54	106.98
3	A	605	HEM	CMA-C3A-C2A	2.30	129.27	124.94
5	D	701	52B	C9-C8-C7	2.25	122.78	118.93
3	A	605	HEM	C3B-C4B-NB	-2.23	107.87	109.47
5	D	701	52B	F2-C14-C9	2.22	115.70	111.98
5	D	701	52B	C7-C8-C10	-2.21	116.24	121.27
5	C	701	52B	C1-C4-CL1	2.20	121.93	119.17
5	B	701	52B	C5-C4-CL1	-2.20	116.41	119.17
5	D	701	52B	C5-C4-CL1	-2.18	116.43	119.17
3	D	605	HEM	CMA-C3A-C2A	2.18	129.05	124.94
3	D	605	HEM	C3C-C4C-NC	-2.17	106.86	110.94
4	D	661	NAG	O5-C1-C2	-2.15	107.96	111.29
3	A	605	HEM	C3B-C2B-C1B	2.15	108.02	106.41
3	D	605	HEM	O2D-CGD-CBD	2.14	120.78	114.00
3	B	605	HEM	CMA-C3A-C4A	-2.12	125.34	128.46
3	A	605	HEM	C1D-C2D-C3D	-2.10	104.78	106.98
3	A	605	HEM	CHC-C4B-C3B	2.07	127.74	124.57
5	C	701	52B	F1-C14-C9	-2.07	108.52	111.98
4	B	661	NAG	O3-C3-C2	2.05	113.67	109.40
3	C	605	HEM	C3B-C2B-C1B	2.04	107.95	106.41
3	B	605	HEM	CMD-C2D-C1D	2.04	128.23	125.03
3	C	605	HEM	C1B-NB-C4B	2.04	107.62	105.21

Continued on next page...

Continued from previous page...

Mol	Chain	Res	Type	Atoms	Z	Observed(°)	Ideal(°)
3	A	605	HEM	C2C-C3C-C4C	2.03	108.31	106.90
3	A	605	HEM	O1A-CGA-CBA	-2.01	116.71	123.09

There are no chirality outliers.

All (31) torsion outliers are listed below:

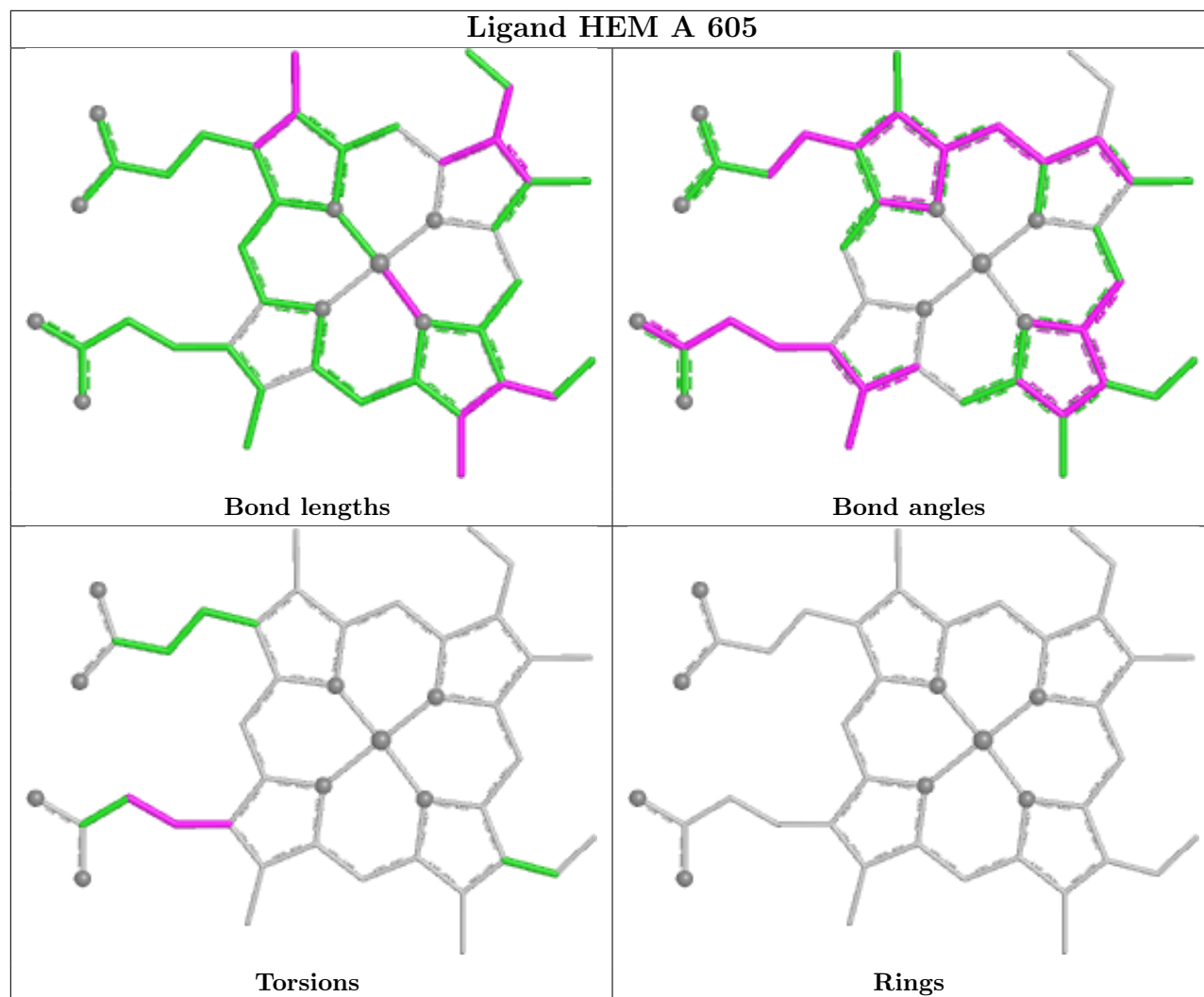
Mol	Chain	Res	Type	Atoms
3	A	605	HEM	C1A-C2A-CAA-CBA
3	A	605	HEM	C3A-C2A-CAA-CBA
4	A	661	NAG	C3-C2-N2-C7
4	B	661	NAG	C3-C2-N2-C7
4	C	661	NAG	C3-C2-N2-C7
4	D	661	NAG	C3-C2-N2-C7
4	B	661	NAG	C4-C5-C6-O6
6	D	703	BOG	O5-C1-O1-C1'
6	D	703	BOG	C2-C1-O1-C1'
4	D	661	NAG	C4-C5-C6-O6
4	B	661	NAG	O5-C5-C6-O6
4	A	681	NAG	O5-C5-C6-O6
6	A	703	BOG	C3'-C4'-C5'-C6'
4	A	661	NAG	C4-C5-C6-O6
6	D	703	BOG	C3'-C4'-C5'-C6'
4	A	681	NAG	C4-C5-C6-O6
6	D	703	BOG	C5'-C6'-C7'-C8'
4	D	661	NAG	O5-C5-C6-O6
3	D	605	HEM	C4B-C3B-CAB-CBB
6	D	703	BOG	C4'-C5'-C6'-C7'
6	A	703	BOG	C5'-C6'-C7'-C8'
6	A	703	BOG	O1-C1'-C2'-C3'
3	A	605	HEM	C2A-CAA-CBA-CGA
3	B	605	HEM	CAA-CBA-CGA-O1A
3	B	605	HEM	CAA-CBA-CGA-O2A
4	A	661	NAG	C1-C2-N2-C7
4	D	661	NAG	C1-C2-N2-C7
6	A	703	BOG	O5-C1-O1-C1'
4	A	661	NAG	O5-C5-C6-O6
3	C	605	HEM	CAA-CBA-CGA-O2A
3	C	605	HEM	CAA-CBA-CGA-O1A

There are no ring outliers.

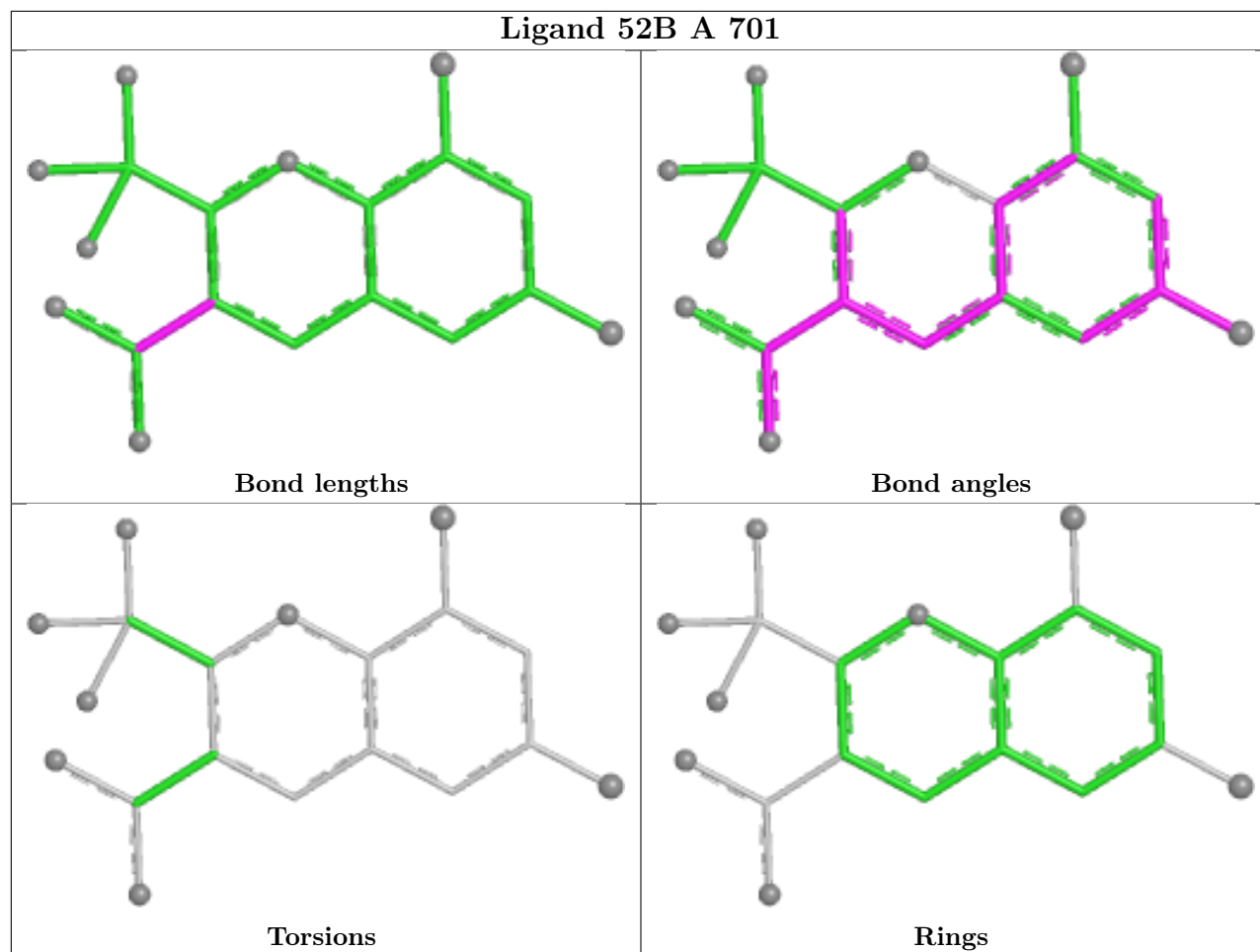
10 monomers are involved in 24 short contacts:

Mol	Chain	Res	Type	Clashes	Symm-Clashes
3	A	605	HEM	2	0
4	B	661	NAG	3	0
4	C	661	NAG	4	0
6	A	703	BOG	2	0
6	D	703	BOG	1	0
3	B	605	HEM	2	0
4	D	661	NAG	4	0
4	A	661	NAG	3	0
3	C	605	HEM	2	0
3	D	605	HEM	1	0

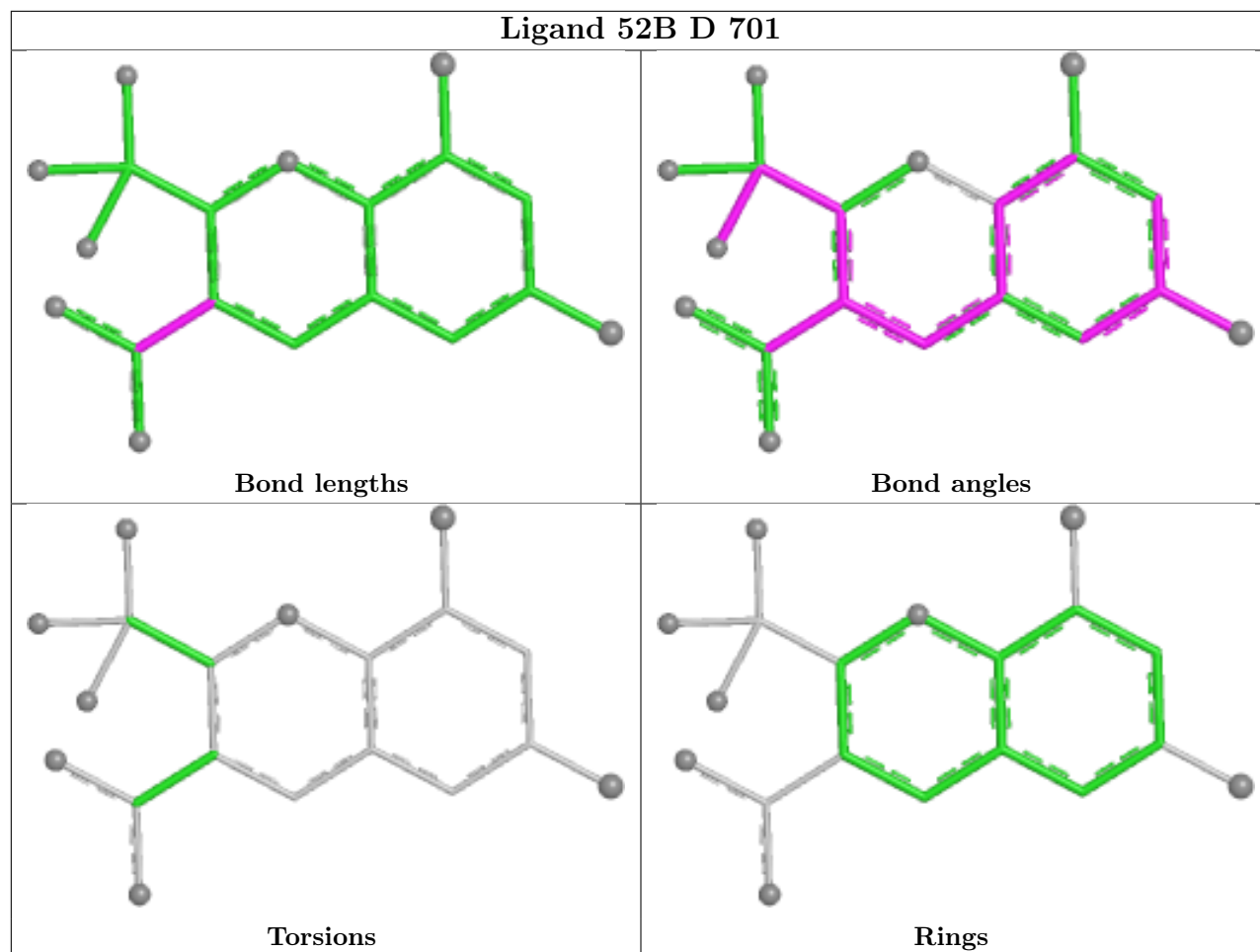
The following is a two-dimensional graphical depiction of Mogul quality analysis of bond lengths, bond angles, torsion angles, and ring geometry for all instances of the Ligand of Interest. In addition, ligands with molecular weight > 250 and outliers as shown on the validation Tables will also be included. For torsion angles, if less than 5% of the Mogul distribution of torsion angles is within 10 degrees of the torsion angle in question, then that torsion angle is considered an outlier. Any bond that is central to one or more torsion angles identified as an outlier by Mogul will be highlighted in the graph. For rings, the root-mean-square deviation (RMSD) between the ring in question and similar rings identified by Mogul is calculated over all ring torsion angles. If the average RMSD is greater than 60 degrees and the minimal RMSD between the ring in question and any Mogul-identified rings is also greater than 60 degrees, then that ring is considered an outlier. The outliers are highlighted in purple. The color gray indicates Mogul did not find sufficient equivalents in the CSD to analyse the geometry.



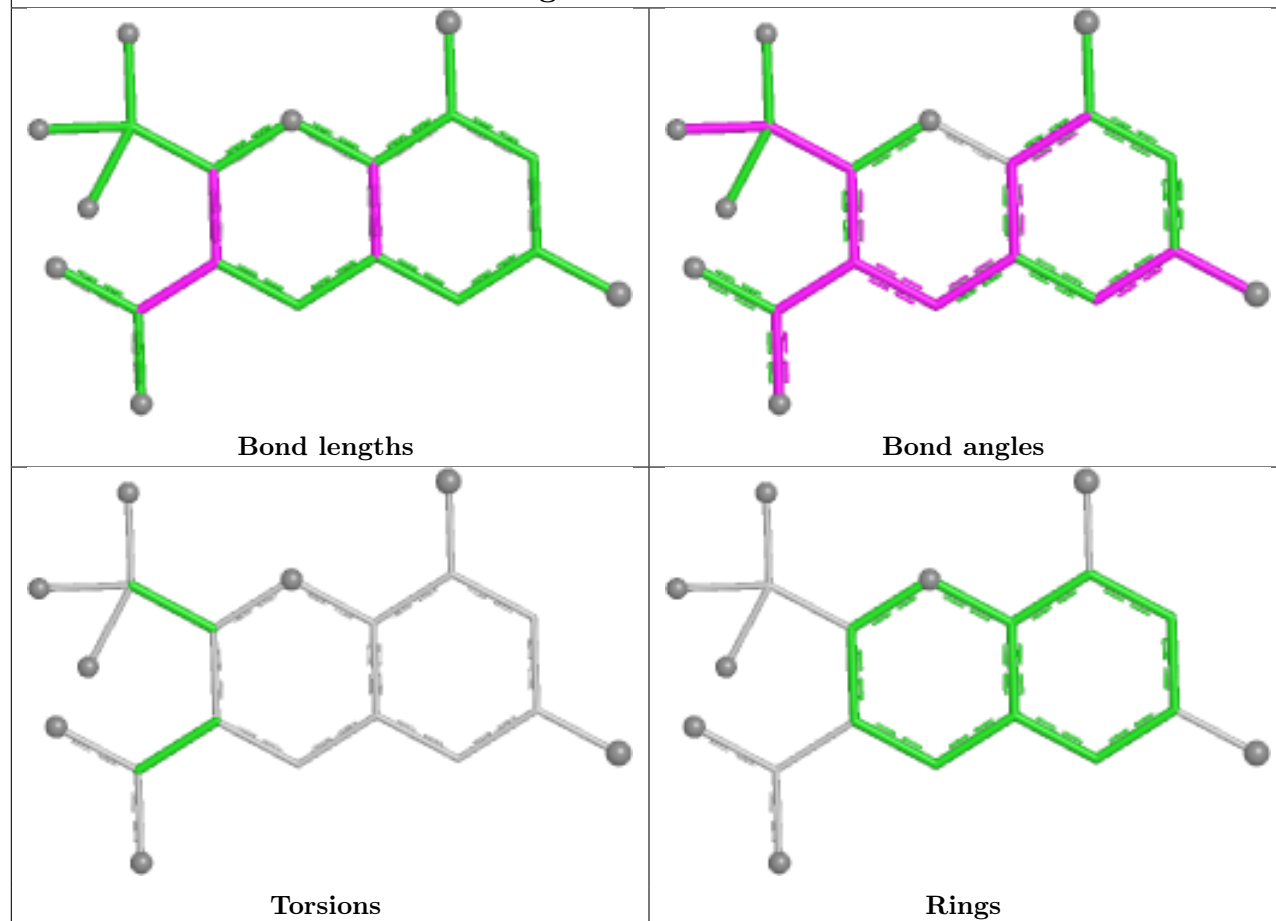
Ligand 52B A 701



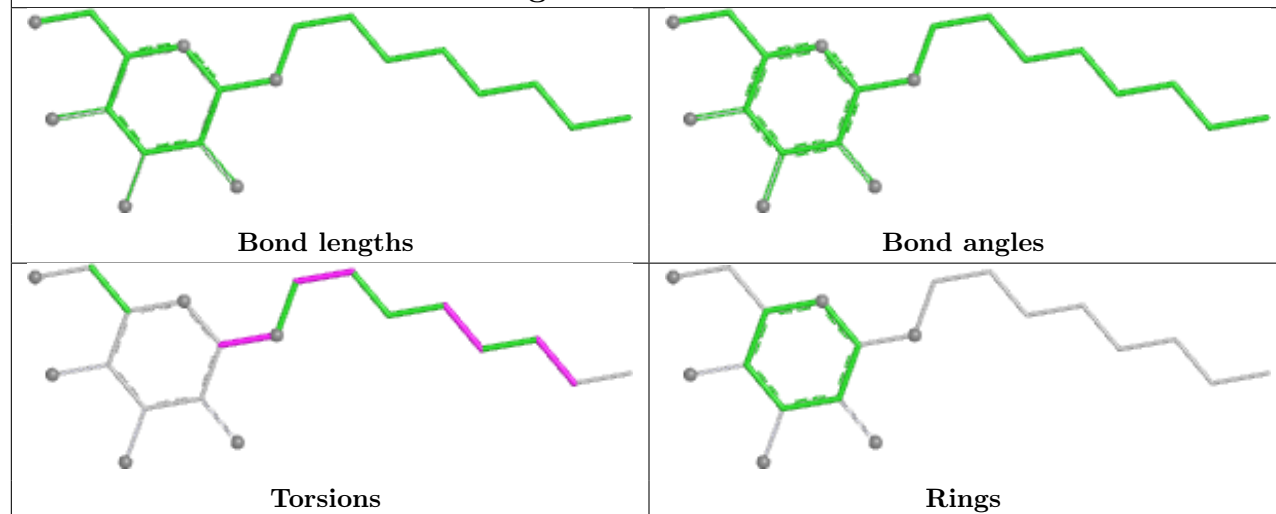
Ligand 52B D 701

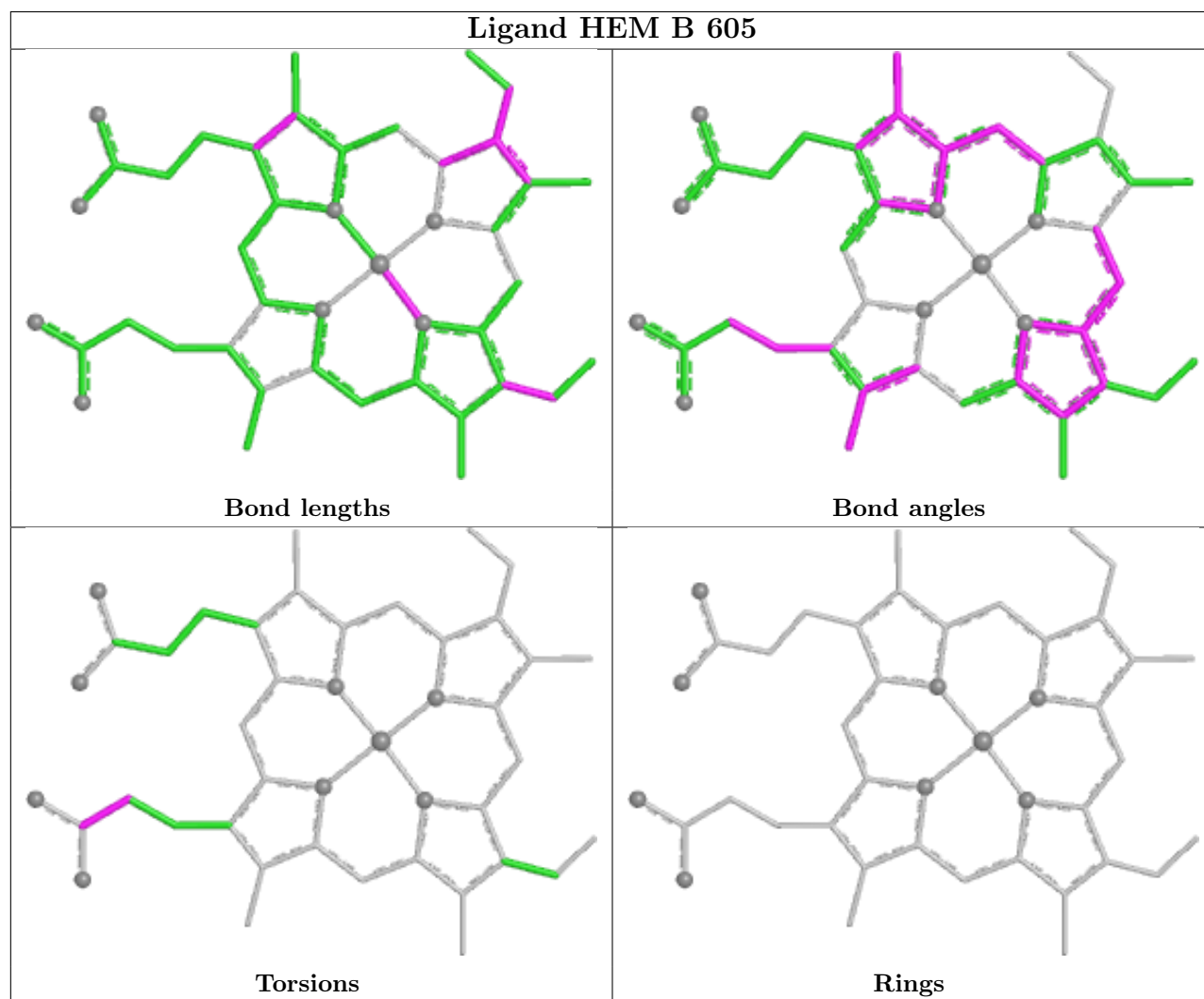
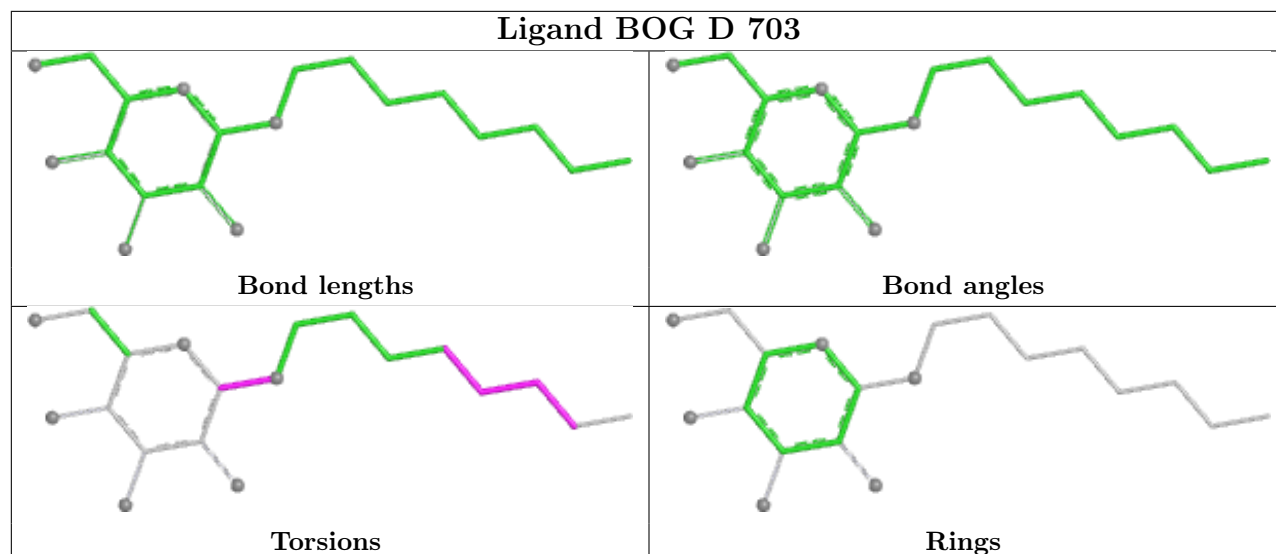


Ligand 52B C 701

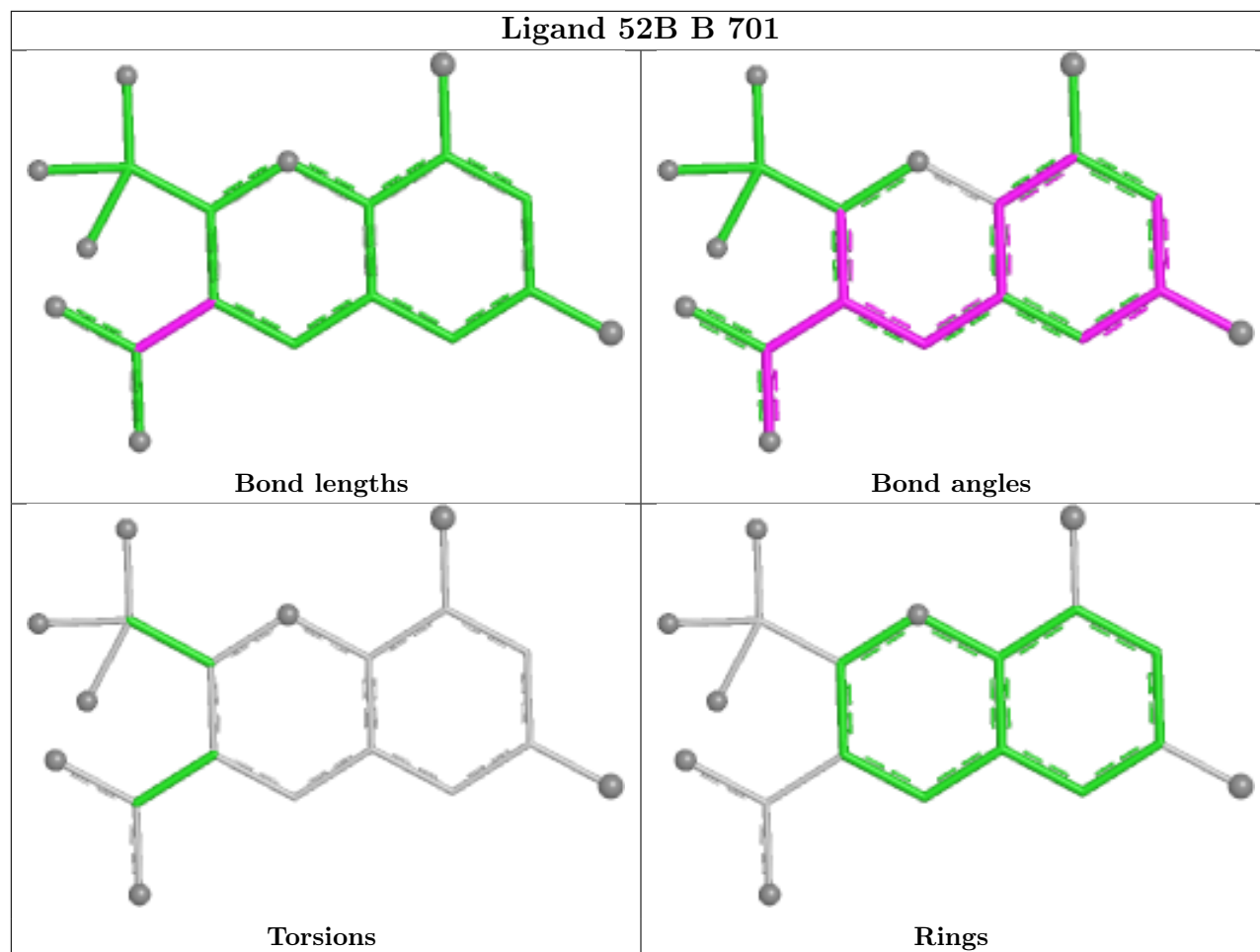


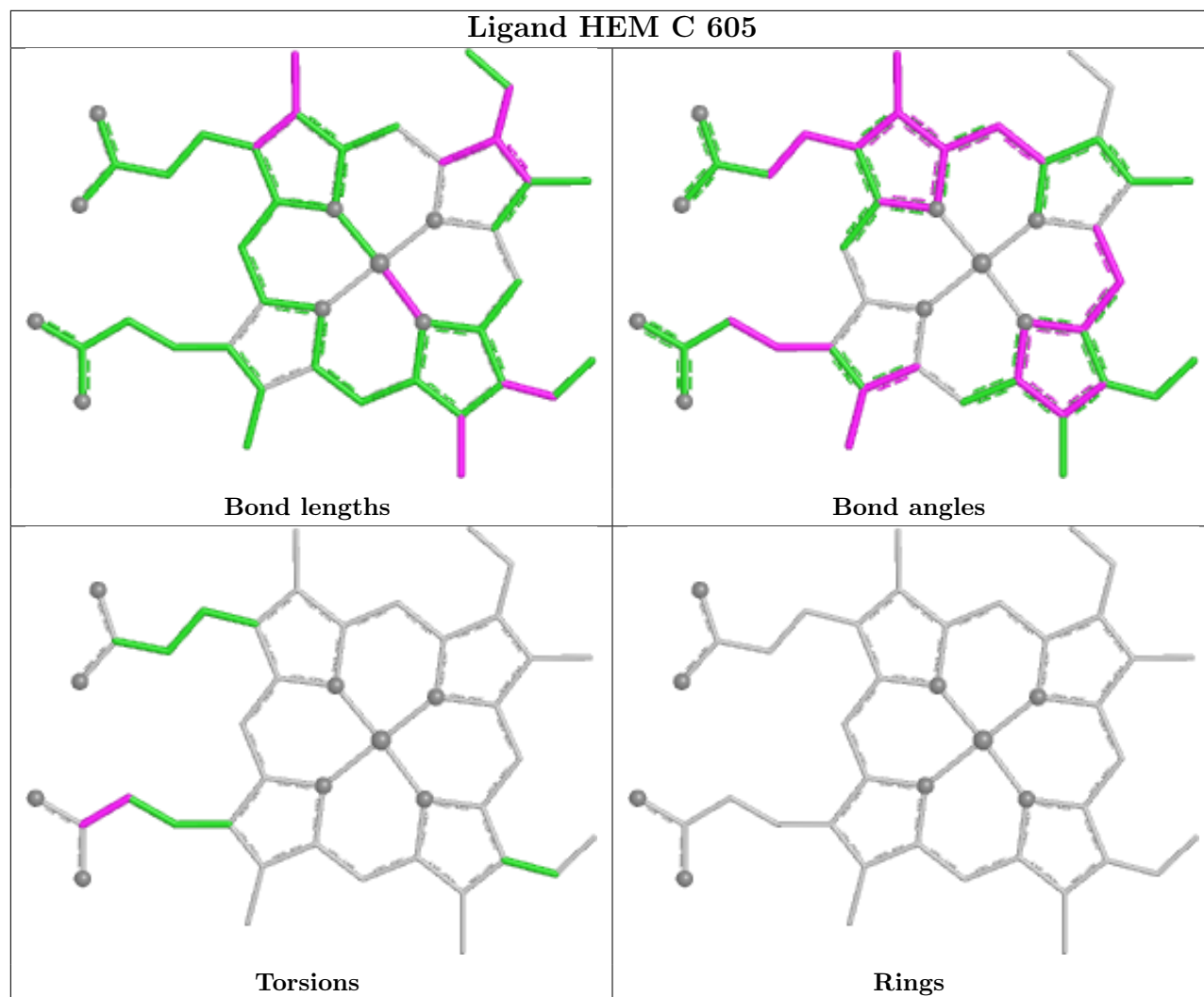
Ligand BOG A 703

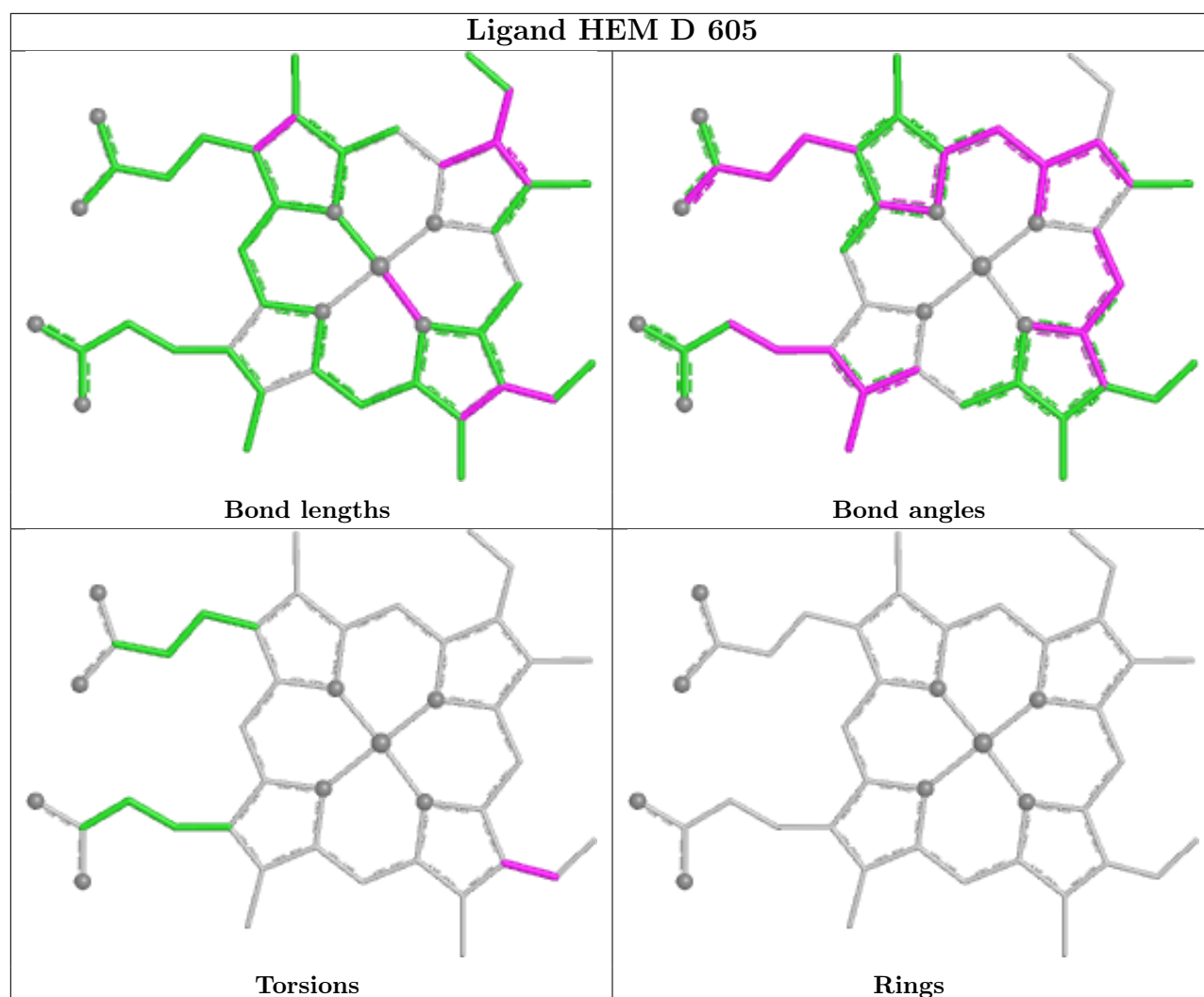




Ligand 52B B 701







5.7 Other polymers [i](#)

There are no such residues in this entry.

5.8 Polymer linkage issues [i](#)

There are no chain breaks in this entry.

6 Fit of model and data ⓘ

6.1 Protein, DNA and RNA chains ⓘ

In the following table, the column labelled ‘#RSRZ> 2’ contains the number (and percentage) of RSRZ outliers, followed by percent RSRZ outliers for the chain as percentile scores relative to all X-ray entries and entries of similar resolution. The OWAB column contains the minimum, median, 95th percentile and maximum values of the occupancy-weighted average B-factor per residue. The column labelled ‘Q< 0.9’ lists the number of (and percentage) of residues with an average occupancy less than 0.9.

Mol	Chain	Analysed	<RSRZ>	#RSRZ>2	OWAB(Å ²)	Q<0.9
1	A	552/587 (94%)	0.01	13 (2%) 59 56	20, 28, 43, 54	0
1	B	552/587 (94%)	0.03	13 (2%) 59 56	20, 29, 43, 54	0
1	C	552/587 (94%)	0.02	16 (2%) 54 51	20, 29, 43, 54	0
1	D	552/587 (94%)	0.09	24 (4%) 40 36	20, 28, 43, 54	0
All	All	2208/2348 (94%)	0.04	66 (2%) 52 49	20, 28, 43, 54	0

All (66) RSRZ outliers are listed below:

Mol	Chain	Res	Type	RSRZ
1	D	254	ASP	5.6
1	C	569	GLN	5.3
1	D	268	ASN	5.1
1	B	569	GLN	4.6
1	D	569	GLN	4.0
1	A	267	GLU	4.0
1	D	266	PRO	3.9
1	C	108	TYR	3.8
1	A	93	PHE	3.8
1	A	354	ASN	3.7
1	B	280	LEU	3.6
1	D	107	SER	3.6
1	B	108	TYR	3.6
1	D	39	GLN	3.5
1	C	280	LEU	3.5
1	D	225	ASP	3.4
1	D	280	LEU	3.3
1	A	254	ASP	3.3
1	D	269	LEU	3.2
1	D	253	LYS	3.2
1	A	108	TYR	3.1

Continued on next page...

Continued from previous page...

Mol	Chain	Res	Type	RSRZ
1	C	66	LEU	3.0
1	D	93	PHE	3.0
1	A	101	TYR	2.9
1	D	68	LYS	2.9
1	B	65	LEU	2.9
1	C	395	TYR	2.8
1	B	66	LEU	2.8
1	A	280	LEU	2.8
1	D	354	ASN	2.7
1	D	108	TYR	2.7
1	D	60	LEU	2.6
1	B	107	SER	2.6
1	D	38	ASP	2.6
1	A	18	ALA	2.6
1	C	155	LYS	2.6
1	B	155	LYS	2.5
1	D	267	GLU	2.5
1	D	101	TYR	2.5
1	A	36	GLY	2.5
1	C	93	PHE	2.5
1	A	60	LEU	2.5
1	A	73	THR	2.5
1	A	38	ASP	2.5
1	A	66	LEU	2.5
1	C	567	ASN	2.5
1	C	354	ASN	2.4
1	C	101	TYR	2.4
1	C	62	ARG	2.4
1	B	172	GLU	2.4
1	C	63	ILE	2.4
1	C	428	ILE	2.4
1	D	279	GLY	2.4
1	D	18	ALA	2.3
1	B	59	PHE	2.3
1	D	65	LEU	2.3
1	C	107	SER	2.2
1	C	154	ASN	2.2
1	C	59	PHE	2.2
1	D	385	ASP	2.2
1	B	39	GLN	2.2
1	D	92	PRO	2.1
1	B	395	TYR	2.0

Continued on next page...

Continued from previous page...

Mol	Chain	Res	Type	RSRZ
1	B	38	ASP	2.0
1	D	66	LEU	2.0
1	B	101	TYR	2.0

6.2 Non-standard residues in protein, DNA, RNA chains [i](#)

There are no non-standard protein/DNA/RNA residues in this entry.

6.3 Carbohydrates [i](#)

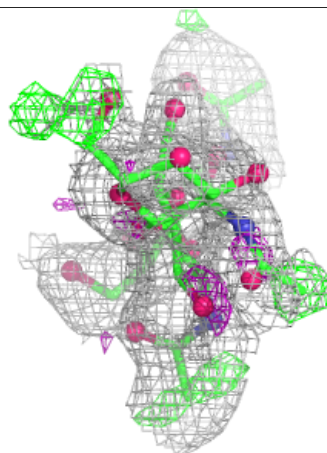
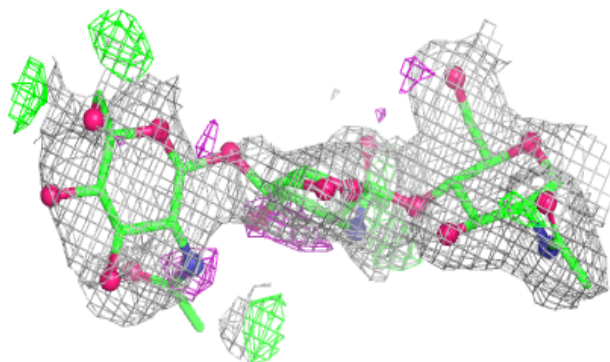
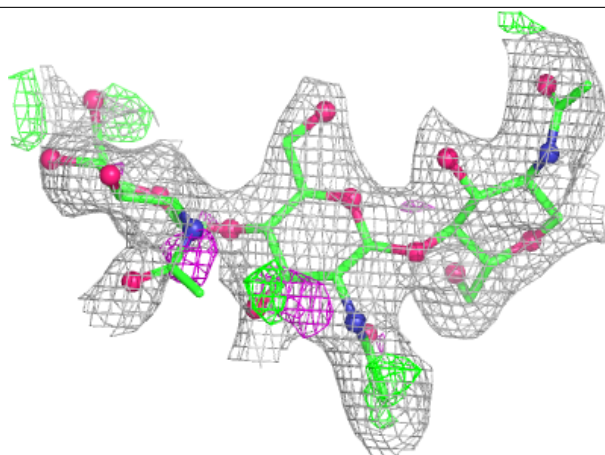
In the following table, the Atoms column lists the number of modelled atoms in the group and the number defined in the chemical component dictionary. The B-factors column lists the minimum, median, 95th percentile and maximum values of B factors of atoms in the group. The column labelled 'Q< 0.9' lists the number of atoms with occupancy less than 0.9.

Mol	Type	Chain	Res	Atoms	RSCC	RSR	B-factors(\AA^2)	Q<0.9
2	NAG	H	3	14/15	0.24	0.22	64,66,68,68	0
2	NAG	F	3	14/15	0.27	0.26	68,71,72,72	0
2	NAG	G	3	14/15	0.37	0.24	68,70,71,72	0
2	NAG	E	3	14/15	0.50	0.19	61,62,65,66	0
2	NAG	H	2	14/15	0.66	0.17	45,51,56,61	0
2	NAG	F	2	14/15	0.68	0.17	50,56,59,64	0
2	NAG	E	2	14/15	0.72	0.16	45,48,53,57	0
2	NAG	G	2	14/15	0.77	0.14	50,55,58,63	0
2	NAG	H	1	14/15	0.92	0.09	32,36,38,44	0
2	NAG	G	1	14/15	0.93	0.10	31,34,38,44	0
2	NAG	E	1	14/15	0.93	0.08	32,36,38,42	0
2	NAG	F	1	14/15	0.94	0.09	31,34,38,44	0

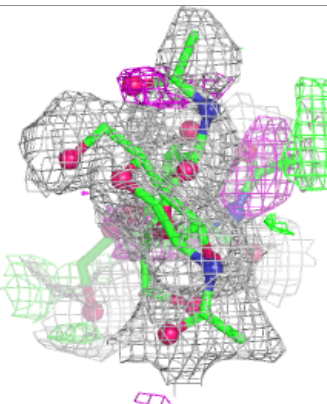
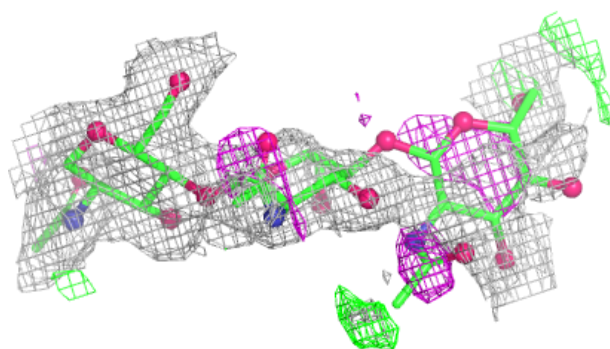
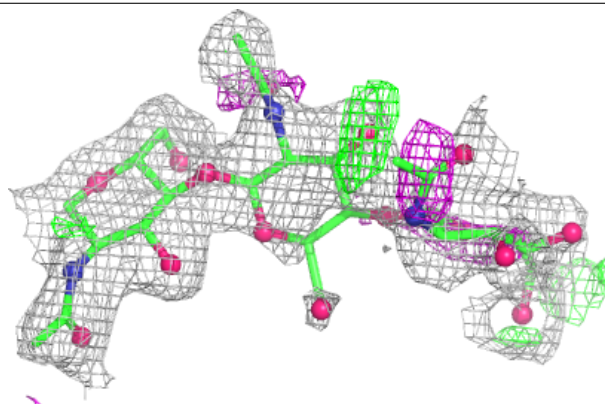
The following is a graphical depiction of the model fit to experimental electron density for oligosaccharide. Each fit is shown from different orientation to approximate a three-dimensional view.

Electron density around Chain E:

$2mF_o-DF_c$ (at 0.7 rmsd) in gray
 mF_o-DF_c (at 3 rmsd) in purple (negative)
and green (positive)

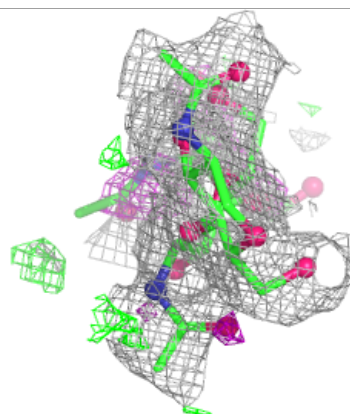
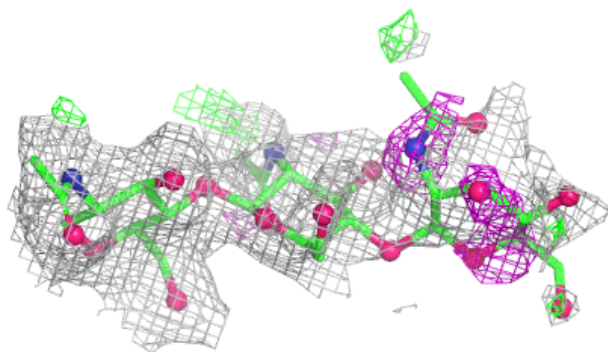
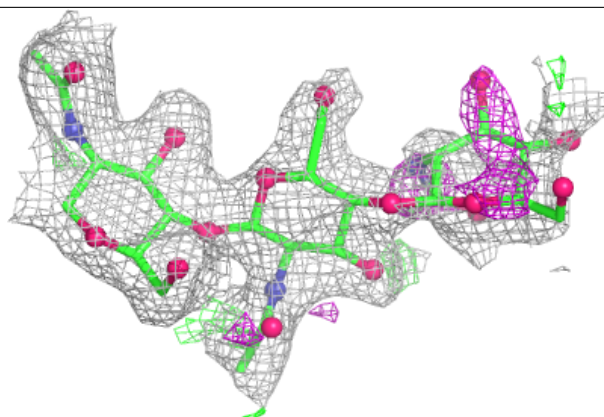
**Electron density around Chain F:**

$2mF_o-DF_c$ (at 0.7 rmsd) in gray
 mF_o-DF_c (at 3 rmsd) in purple (negative)
and green (positive)

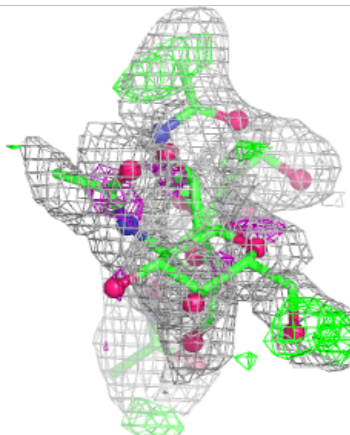
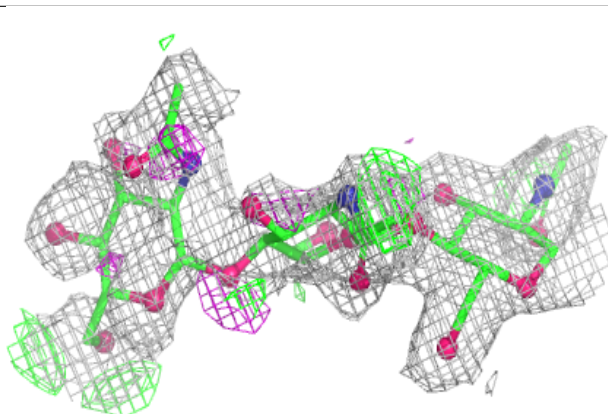
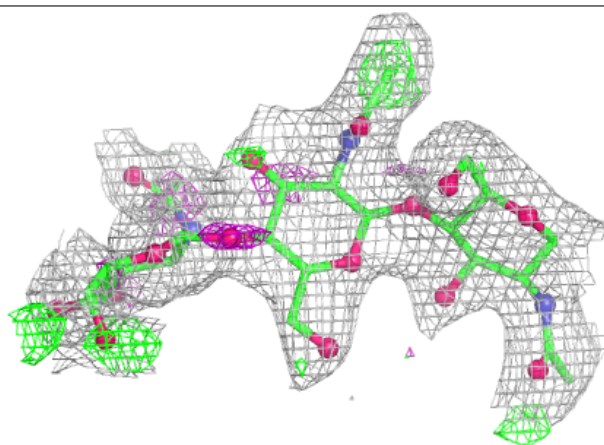


Electron density around Chain G:

$2mF_o-DF_c$ (at 0.7 rmsd) in gray
 mF_o-DF_c (at 3 rmsd) in purple (negative)
and green (positive)

**Electron density around Chain H:**

$2mF_o-DF_c$ (at 0.7 rmsd) in gray
 mF_o-DF_c (at 3 rmsd) in purple (negative)
and green (positive)



6.4 Ligands ⓘ

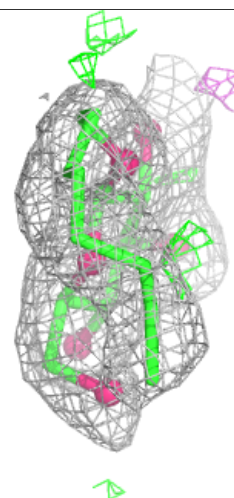
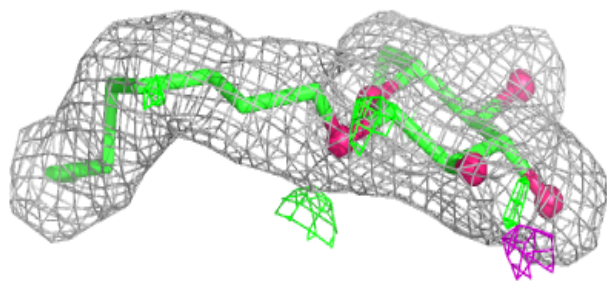
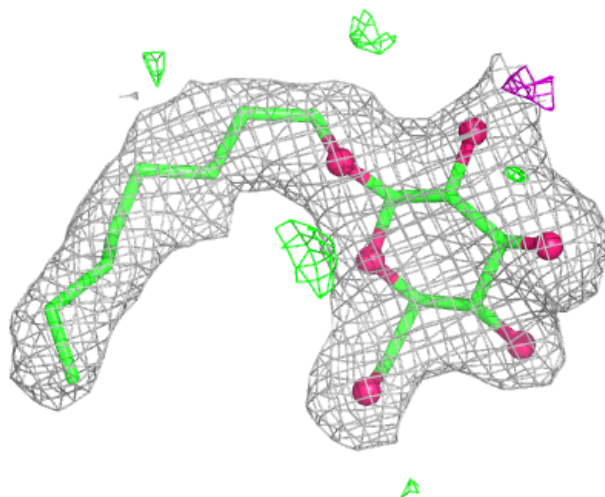
In the following table, the Atoms column lists the number of modelled atoms in the group and the number defined in the chemical component dictionary. The B-factors column lists the minimum, median, 95th percentile and maximum values of B factors of atoms in the group. The column labelled 'Q< 0.9' lists the number of atoms with occupancy less than 0.9.

Mol	Type	Chain	Res	Atoms	RSCC	RSR	B-factors(Å ²)	Q<0.9
4	NAG	C	681	14/15	0.69	0.16	50,54,56,56	0
4	NAG	B	681	14/15	0.71	0.15	48,53,54,55	0
4	NAG	B	661	14/15	0.71	0.15	49,53,55,56	0
4	NAG	C	661	14/15	0.72	0.16	51,55,57,57	0
4	NAG	A	661	14/15	0.74	0.14	50,53,54,55	0
4	NAG	D	661	14/15	0.77	0.14	49,52,53,54	0
4	NAG	D	681	14/15	0.79	0.14	45,47,48,49	0
4	NAG	A	681	14/15	0.80	0.13	46,49,52,52	0
6	BOG	D	703	20/20	0.92	0.09	27,31,39,39	0
6	BOG	A	703	20/20	0.93	0.09	24,26,37,37	0
5	52B	A	701	19/19	0.95	0.07	25,26,34,34	0
5	52B	B	701	19/19	0.95	0.06	24,27,32,34	0
3	HEM	B	605	43/43	0.96	0.09	23,26,38,43	0
5	52B	D	701	19/19	0.96	0.06	22,26,34,35	0
5	52B	C	701	19/19	0.97	0.06	24,25,31,32	0
3	HEM	C	605	43/43	0.97	0.08	21,25,38,43	0
3	HEM	D	605	43/43	0.97	0.08	21,24,36,42	0
3	HEM	A	605	43/43	0.97	0.08	21,25,37,40	0

The following is a graphical depiction of the model fit to experimental electron density of all instances of the Ligand of Interest. In addition, ligands with molecular weight > 250 and outliers as shown on the geometry validation Tables will also be included. Each fit is shown from different orientation to approximate a three-dimensional view.

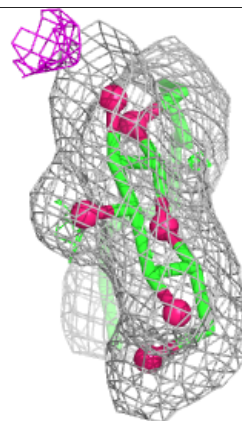
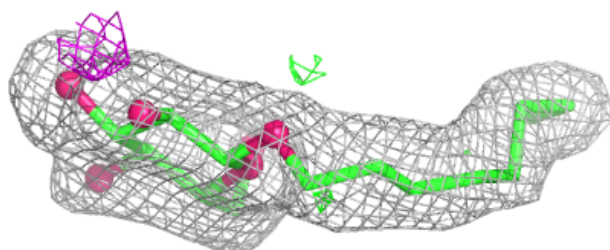
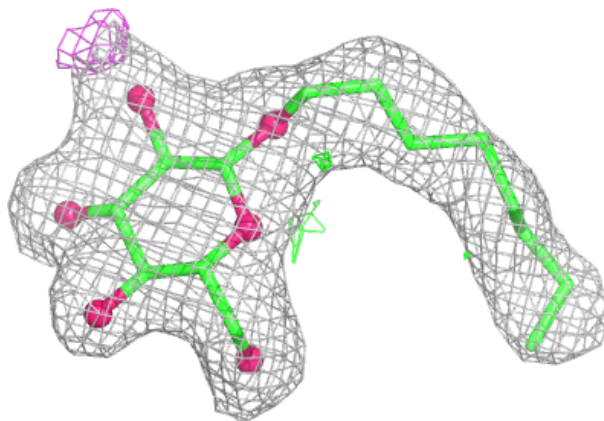
Electron density around BOG D 703:

$2mF_o-DF_c$ (at 0.7 rmsd) in gray
 mF_o-DF_c (at 3 rmsd) in purple (negative)
and green (positive)



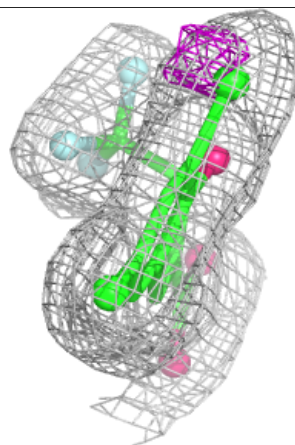
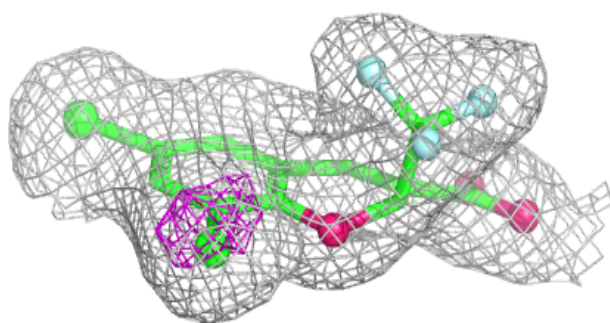
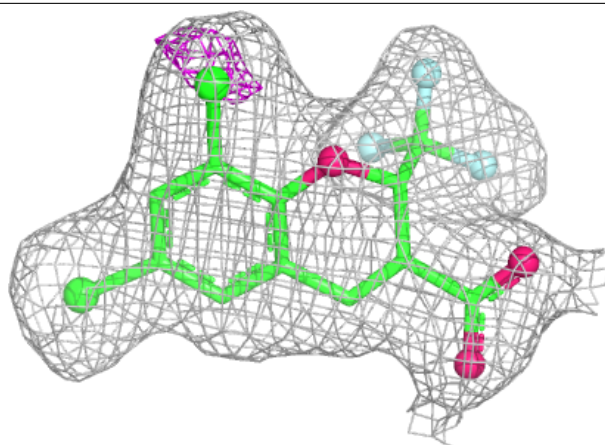
Electron density around BOG A 703:

$2mF_o - DF_c$ (at 0.7 rmsd) in gray
 $mF_o - DF_c$ (at 3 rmsd) in purple (negative)
and green (positive)



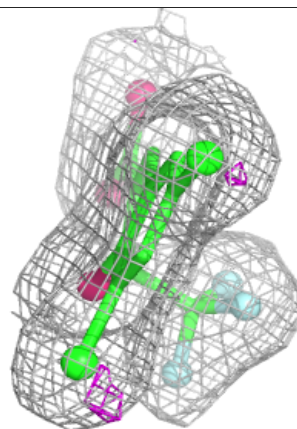
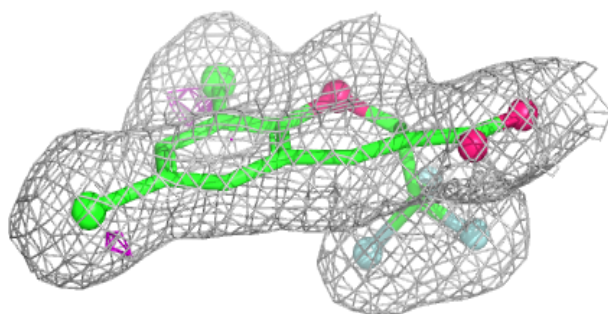
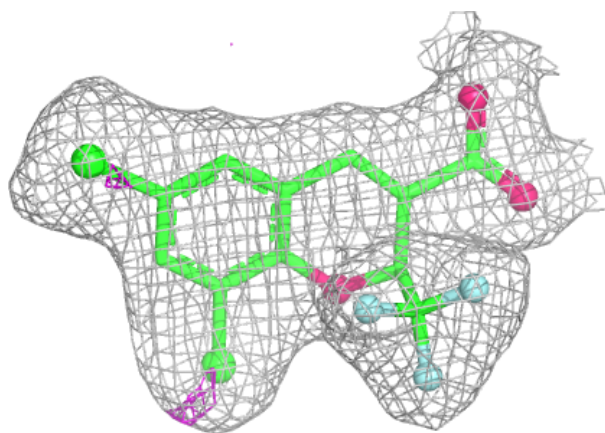
Electron density around 52B A 701:

$2mF_o-DF_c$ (at 0.7 rmsd) in gray
 mF_o-DF_c (at 3 rmsd) in purple (negative)
and green (positive)



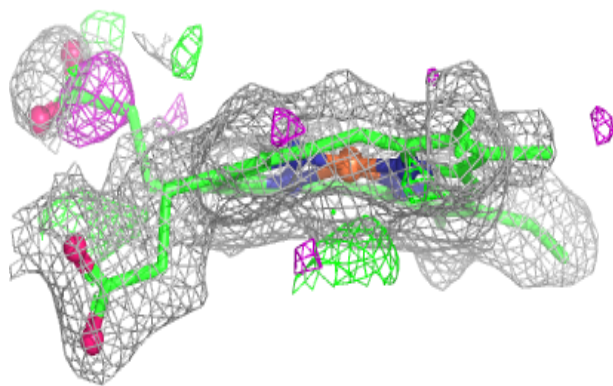
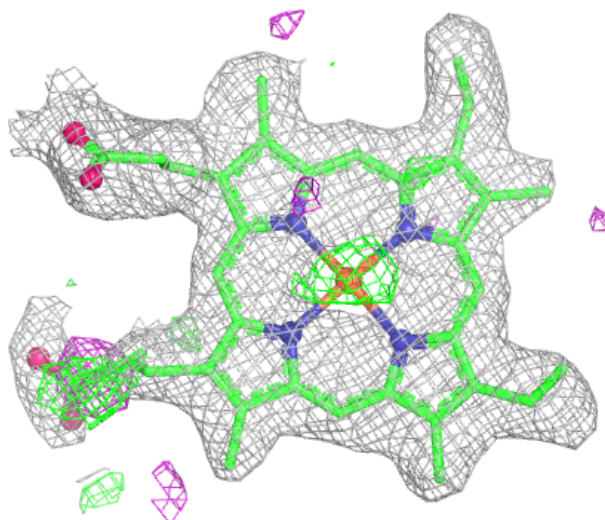
Electron density around 52B B 701:

$2mF_o-DF_c$ (at 0.7 rmsd) in gray
 mF_o-DF_c (at 3 rmsd) in purple (negative)
and green (positive)



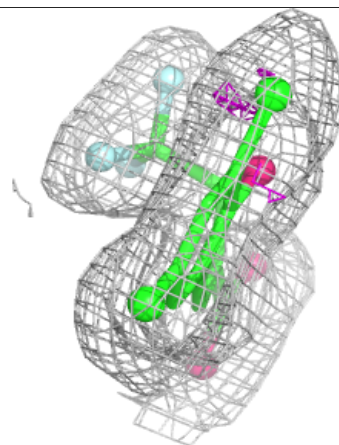
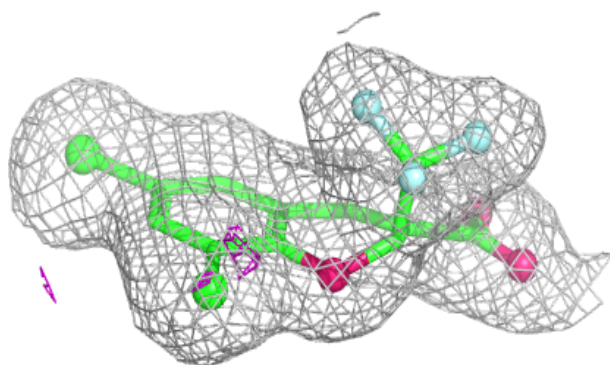
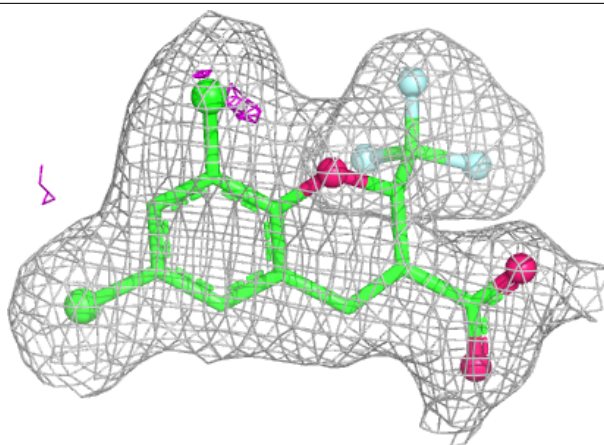
Electron density around HEM B 605:

$2mF_o-DF_c$ (at 0.7 rmsd) in gray
 mF_o-DF_c (at 3 rmsd) in purple (negative)
and green (positive)



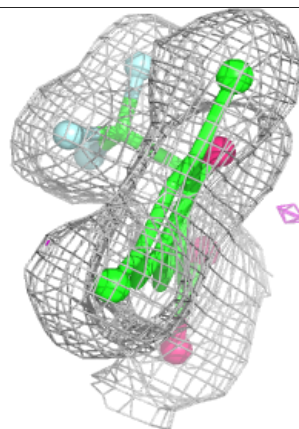
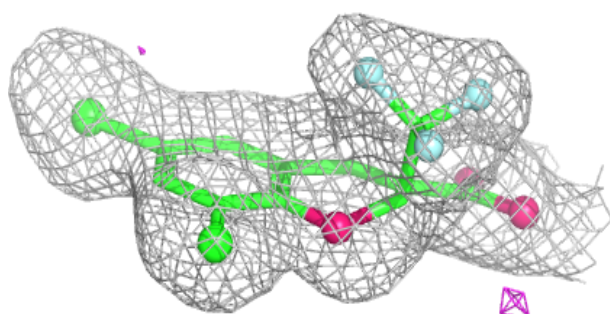
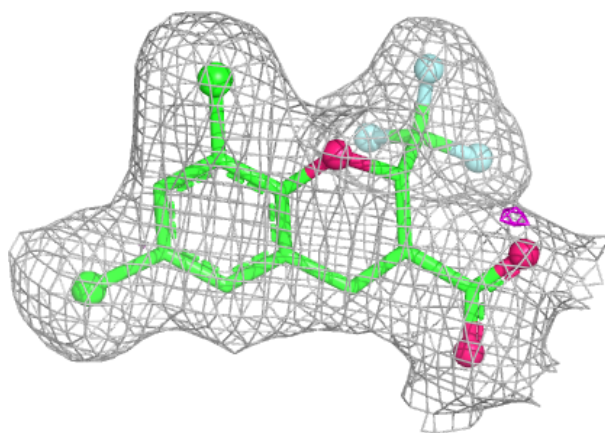
Electron density around 52B D 701:

$2mF_o - DF_c$ (at 0.7 rmsd) in gray
 $mF_o - DF_c$ (at 3 rmsd) in purple (negative)
and green (positive)



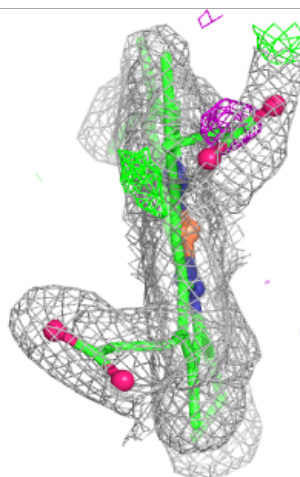
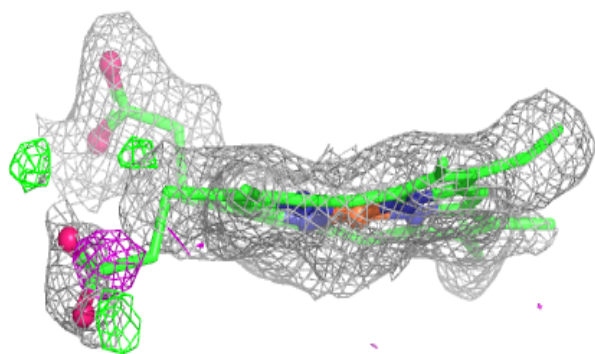
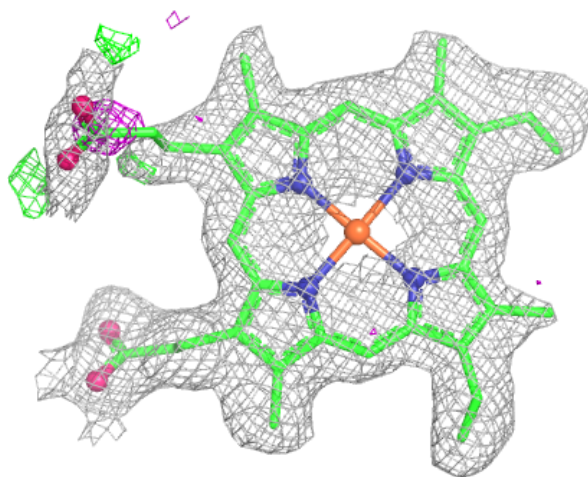
Electron density around 52B C 701:

$2mF_o - DF_c$ (at 0.7 rmsd) in gray
 $mF_o - DF_c$ (at 3 rmsd) in purple (negative)
and green (positive)



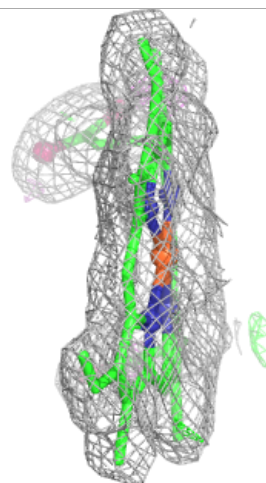
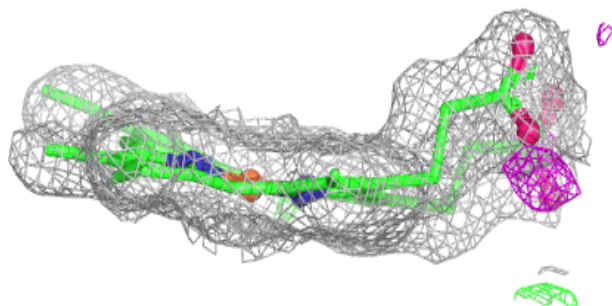
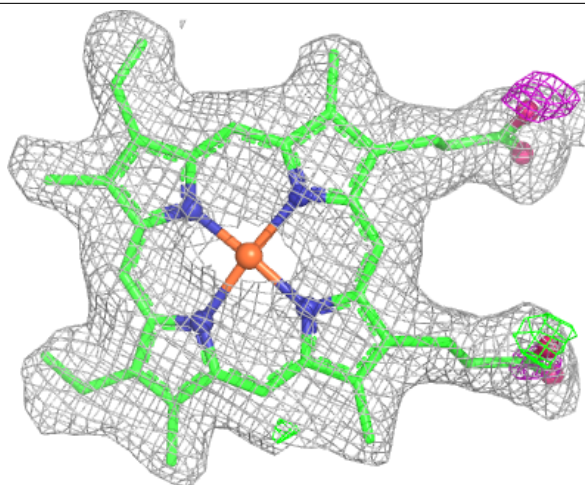
Electron density around HEM C 605:

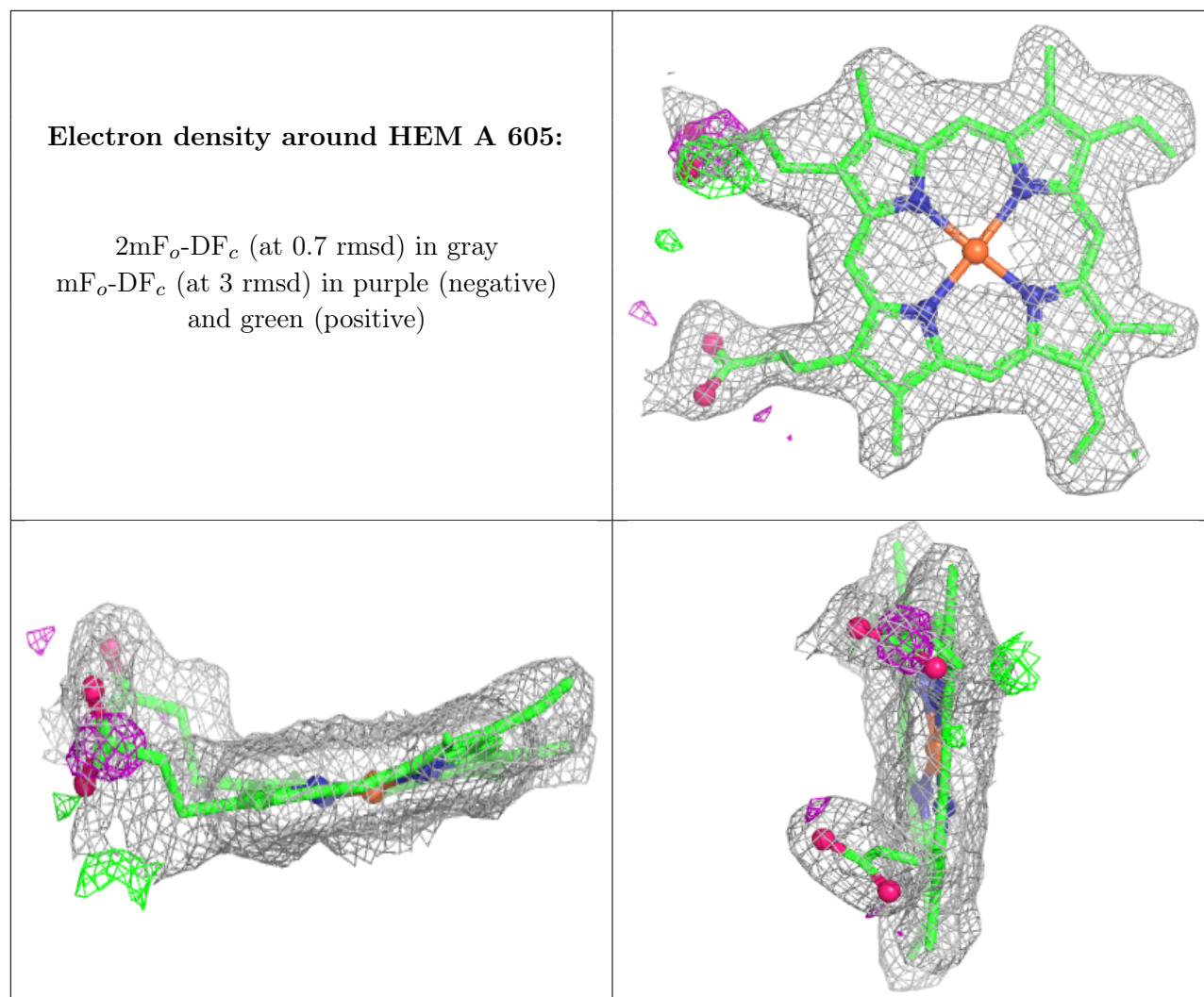
$2mF_o-DF_c$ (at 0.7 rmsd) in gray
 mF_o-DF_c (at 3 rmsd) in purple (negative)
and green (positive)



Electron density around HEM D 605:

$2mF_o-DF_c$ (at 0.7 rmsd) in gray
 mF_o-DF_c (at 3 rmsd) in purple (negative)
and green (positive)





6.5 Other polymers ⓘ

There are no such residues in this entry.