



Full wwPDB X-ray Structure Validation Report ⓘ

Mar 17, 2025 – 01:45 PM JST

PDB ID : 9LO7
Title : The crystal structure of PDE4D with 2317b
Authors : Huag, Y.-Y.; Wu, D.; Luo, H.-B.
Deposited on : 2025-01-22
Resolution : 2.20 Å(reported)

This is a Full wwPDB X-ray Structure Validation Report for a publicly released PDB entry.

We welcome your comments at validation@mail.wwpdb.org

A user guide is available at

<https://www.wwpdb.org/validation/2017/XrayValidationReportHelp>

with specific help available everywhere you see the ⓘ symbol.

The types of validation reports are described at

<http://www.wwpdb.org/validation/2017/FAQs#types>.

The following versions of software and data (see [references ⓘ](#)) were used in the production of this report:

MolProbity : 4.02b-467
Mogul : 1.8.5 (274361), CSD as541be (2020)
Xtriage (Phenix) : 1.21
EDS : 3.0
buster-report : 1.1.7 (2018)
Percentile statistics : 20231227.v01 (using entries in the PDB archive December 27th 2023)
CCP4 : 9.0.004 (Gargrove)
Density-Fitness : 1.0.11
Ideal geometry (proteins) : Engh & Huber (2001)
Ideal geometry (DNA, RNA) : Parkinson et al. (1996)
Validation Pipeline (wwPDB-VP) : 2.41.2

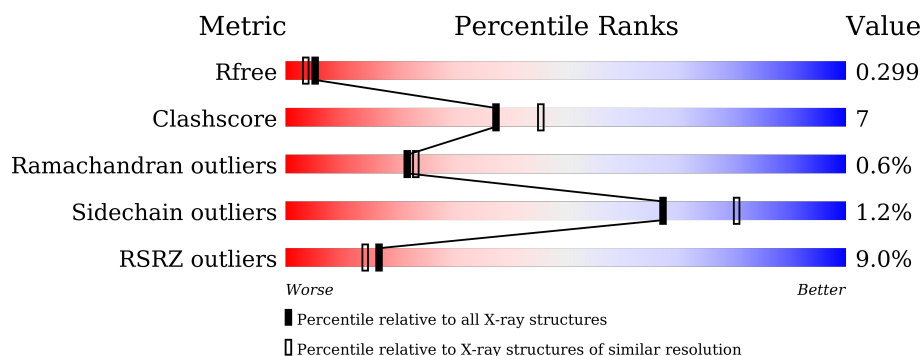
1 Overall quality at a glance

The following experimental techniques were used to determine the structure:

X-RAY DIFFRACTION

The reported resolution of this entry is 2.20 Å.

Percentile scores (ranging between 0-100) for global validation metrics of the entry are shown in the following graphic. The table shows the number of entries on which the scores are based.



Metric	Whole archive (#Entries)	Similar resolution (#Entries, resolution range(Å))
R_{free}	164625	5791 (2.20-2.20)
Clashscore	180529	6634 (2.20-2.20)
Ramachandran outliers	177936	6560 (2.20-2.20)
Sidechain outliers	177891	6561 (2.20-2.20)
RSRZ outliers	164620	5791 (2.20-2.20)

The table below summarises the geometric issues observed across the polymeric chains and their fit to the electron density. The red, orange, yellow and green segments of the lower bar indicate the fraction of residues that contain outliers for ≥ 3 , 2, 1 and 0 types of geometric quality criteria respectively. A grey segment represents the fraction of residues that are not modelled. The numeric value for each fraction is indicated below the corresponding segment, with a dot representing fractions $\leq 5\%$. The upper red bar (where present) indicates the fraction of residues that have poor fit to the electron density. The numeric value is given above the bar.

Mol	Chain	Length	Quality of chain
1	A	506	 % 57% 8% 36%
1	B	506	 11% 51% 12% 37%

2 Entry composition

There are 5 unique types of molecules in this entry. The entry contains 5571 atoms, of which 0 are hydrogens and 0 are deuteriums.

In the tables below, the ZeroOcc column contains the number of atoms modelled with zero occupancy, the AltConf column contains the number of residues with at least one atom in alternate conformation and the Trace column contains the number of residues modelled with at most 2 atoms.

- Molecule 1 is a protein called 3',5'-cyclic-AMP phosphodiesterase 4D.

Mol	Chain	Residues	Atoms					ZeroOcc	AltConf	Trace
1	A	324	Total	C	N	O	S	0	0	0
			2622	1659	448	501	14			
1	B	321	Total	C	N	O	S	0	0	0
			2596	1645	444	493	14			

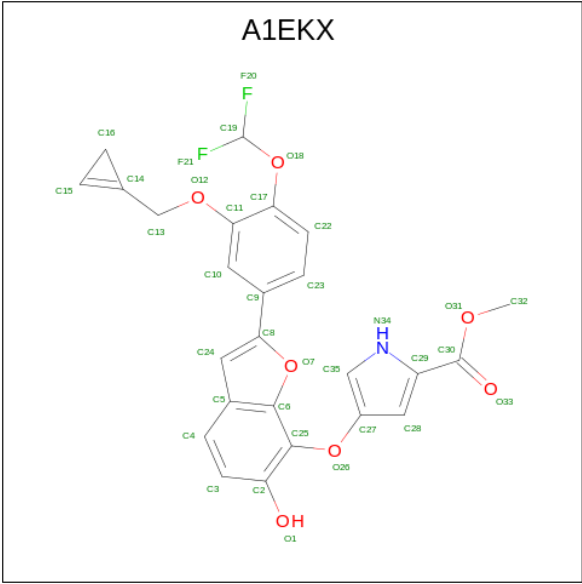
- Molecule 2 is ZINC ION (three-letter code: ZN) (formula: Zn).

Mol	Chain	Residues	Atoms		ZeroOcc	AltConf
2	A	1	Total	Zn	0	0
			1	1		
2	B	1	Total	Zn	0	0
			1	1		

- Molecule 3 is MAGNESIUM ION (three-letter code: MG) (formula: Mg).

Mol	Chain	Residues	Atoms		ZeroOcc	AltConf
3	A	1	Total	Mg	0	0
			1	1		
3	B	1	Total	Mg	0	0
			1	1		

- Molecule 4 is methyl 4-[[2-[4-[bis(fluoranyl)methoxy]-3-(cyclopropen-1-ylmethoxy)phenyl]-6-oxidanyl-1-benzofuran-7-yl]oxy]-1 {H}-pyrrole-2-carboxylate (three-letter code: A1EKX) (formula: C₂₅H₁₉F₂NO₇) (labeled as "Ligand of Interest" by depositor).



Mol	Chain	Residues	Atoms					ZeroOcc	AltConf
4	A	1	Total	C	F	N	O	0	0
			35	25	2	1	7		
4	B	1	Total	C	F	N	O	0	0
			35	25	2	1	7		

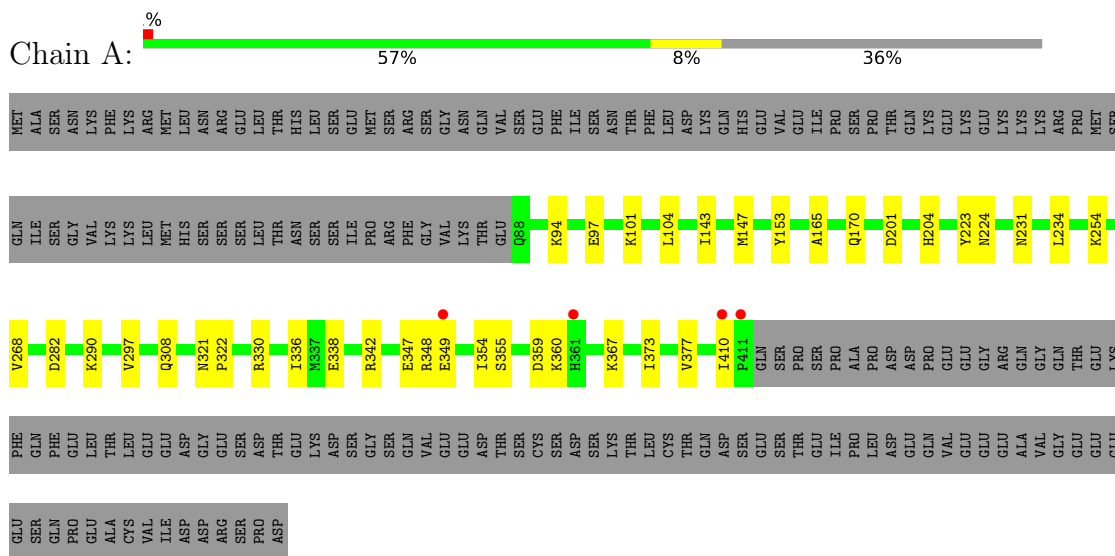
- Molecule 5 is water.

Mol	Chain	Residues	Atoms		ZeroOcc	AltConf
5	A	147	Total	O	0	0
			147	147		
5	B	132	Total	O	0	0
			132	132		

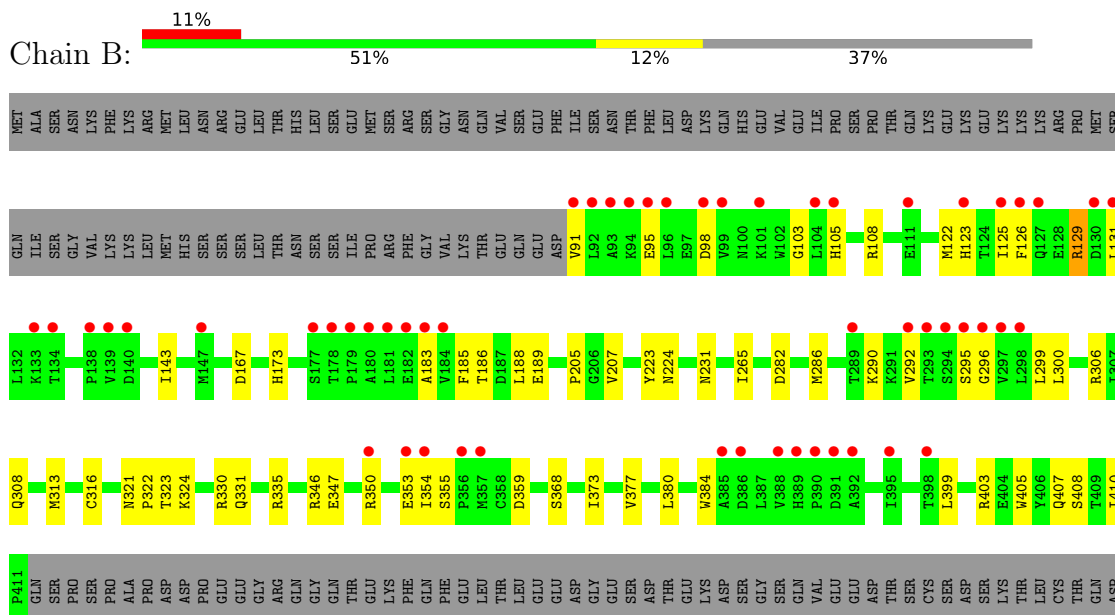
3 Residue-property plots

These plots are drawn for all protein, RNA, DNA and oligosaccharide chains in the entry. The first graphic for a chain summarises the proportions of the various outlier classes displayed in the second graphic. The second graphic shows the sequence view annotated by issues in geometry and electron density. Residues are color-coded according to the number of geometric quality criteria for which they contain at least one outlier: green = 0, yellow = 1, orange = 2 and red = 3 or more. A red dot above a residue indicates a poor fit to the electron density ($RSRZ > 2$). Stretches of 2 or more consecutive residues without any outlier are shown as a green connector. Residues present in the sample, but not in the model, are shown in grey.

• Molecule 1: 3',5'-cyclic-AMP phosphodiesterase 4D



• Molecule 1: 3',5'-cyclic-AMP phosphodiesterase 4D



SER	GLU	SER	THR	GLU	ILE	PRO	LEU	ASP	GLU	GLN	VAL	GLU	GLU	GLU	ALA	VAL	GLY	GLU	GLU	GLU	GLU	SER	SER	GLN	PRO	GLU	ALA	CYS	VAL	ILE	ASP	ASP	ARG	SER	PRO	ASP
-----	-----	-----	-----	-----	-----	-----	-----	-----	-----	-----	-----	-----	-----	-----	-----	-----	-----	-----	-----	-----	-----	-----	-----	-----	-----	-----	-----	-----	-----	-----	-----	-----	-----	-----	-----	-----

4 Data and refinement statistics

Property	Value	Source
Space group	P 21 21 21	Depositor
Cell constants a, b, c, α , β , γ	57.35Å 79.69Å 162.30Å 90.00° 90.00° 90.00°	Depositor
Resolution (Å)	22.47 – 2.20 22.47 – 2.20	Depositor EDS
% Data completeness (in resolution range)	97.9 (22.47-2.20) 97.8 (22.47-2.20)	Depositor EDS
R_{merge}	0.15	Depositor
R_{sym}	(Not available)	Depositor
$\langle I/\sigma(I) \rangle$ ¹	3.45 (at 2.19Å)	Xtriage
Refinement program	REFMAC V8, PHENIX 1.10_2155	Depositor
R, R_{free}	0.224 , 0.293 0.231 , 0.299	Depositor DCC
R_{free} test set	1946 reflections (5.05%)	wwPDB-VP
Wilson B-factor (Å ²)	19.6	Xtriage
Anisotropy	0.167	Xtriage
Bulk solvent k_{sol} (e/Å ³), B_{sol} (Å ²)	0.38 , 47.1	EDS
L-test for twinning ²	$\langle L \rangle = 0.46$, $\langle L^2 \rangle = 0.29$	Xtriage
Estimated twinning fraction	No twinning to report.	Xtriage
F_o, F_c correlation	0.91	EDS
Total number of atoms	5571	wwPDB-VP
Average B, all atoms (Å ²)	28.0	wwPDB-VP

Xtriage's analysis on translational NCS is as follows: *The largest off-origin peak in the Patterson function is 4.41% of the height of the origin peak. No significant pseudotranslation is detected.*

¹Intensities estimated from amplitudes.

²Theoretical values of $\langle |L| \rangle$, $\langle L^2 \rangle$ for acentric reflections are 0.5, 0.333 respectively for untwinned datasets, and 0.375, 0.2 for perfectly twinned datasets.

5 Model quality

5.1 Standard geometry

Bond lengths and bond angles in the following residue types are not validated in this section: A1EKX, MG, ZN

The Z score for a bond length (or angle) is the number of standard deviations the observed value is removed from the expected value. A bond length (or angle) with $|Z| > 5$ is considered an outlier worth inspection. RMSZ is the root-mean-square of all Z scores of the bond lengths (or angles).

Mol	Chain	Bond lengths		Bond angles	
		RMSZ	$\# Z > 5$	RMSZ	$\# Z > 5$
1	A	0.42	0/2676	0.56	0/3636
1	B	0.39	0/2650	0.55	0/3601
All	All	0.41	0/5326	0.55	0/7237

There are no bond length outliers.

There are no bond angle outliers.

There are no chirality outliers.

There are no planarity outliers.

5.2 Too-close contacts

In the following table, the Non-H and H(model) columns list the number of non-hydrogen atoms and hydrogen atoms in the chain respectively. The H(added) column lists the number of hydrogen atoms added and optimized by MolProbity. The Clashes column lists the number of clashes within the asymmetric unit, whereas Symm-Clashes lists symmetry-related clashes.

Mol	Chain	Non-H	H(model)	H(added)	Clashes	Symm-Clashes
1	A	2622	0	2578	23	2
1	B	2596	0	2560	50	2
2	A	1	0	0	0	0
2	B	1	0	0	0	0
3	A	1	0	0	0	0
3	B	1	0	0	0	0
4	A	35	0	0	1	0
4	B	35	0	0	1	0
5	A	147	0	0	6	0
5	B	132	0	0	5	0
All	All	5571	0	5138	72	2

The all-atom clashscore is defined as the number of clashes found per 1000 atoms (including hydrogen atoms). The all-atom clashscore for this structure is 7.

All (72) close contacts within the same asymmetric unit are listed below, sorted by their clash magnitude.

Atom-1	Atom-2	Interatomic distance (Å)	Clash overlap (Å)
1:B:316:CYS:SG	5:B:774:HOH:O	2.04	1.13
1:A:282:ASP:HB3	1:A:308:GLN:NE2	1.94	0.81
1:B:105:HIS:HB3	1:B:108:ARG:HG3	1.65	0.77
1:B:125:ILE:HD11	1:B:173:HIS:ND1	2.00	0.76
1:B:122:MET:O	1:B:125:ILE:HG22	1.87	0.73
1:B:129:ARG:HB2	1:B:131:LEU:HG	1.70	0.72
1:A:290:LYS:NZ	5:A:701:HOH:O	2.21	0.72
1:A:147:MET:HG2	5:A:767:HOH:O	1.90	0.71
1:B:306:ARG:NH1	5:B:702:HOH:O	2.27	0.68
1:B:186:THR:HG23	1:B:188:LEU:H	1.60	0.67
1:B:368:SER:HB3	4:B:603:A1EKX:C16	2.29	0.63
1:B:380:LEU:HG	5:B:774:HOH:O	1.99	0.62
1:B:185:PHE:HE1	1:B:306:ARG:HG3	1.67	0.60
1:B:125:ILE:HG23	1:B:126:PHE:HD1	1.68	0.58
1:B:290:LYS:HE2	1:B:292:VAL:HG22	1.86	0.57
1:A:282:ASP:HB3	1:A:308:GLN:HE22	1.65	0.57
1:B:185:PHE:CE1	1:B:306:ARG:HG3	2.39	0.57
1:B:126:PHE:CD1	1:B:131:LEU:HD12	2.40	0.56
1:B:347:GLU:OE2	1:B:355:SER:OG	2.21	0.56
1:B:123:HIS:CD2	1:B:143:ILE:HD11	2.40	0.56
1:B:167:ASP:OD1	1:B:324:LYS:NZ	2.40	0.55
1:B:186:THR:HG22	1:B:189:GLU:HG3	1.88	0.55
1:A:354:ILE:HG12	5:A:705:HOH:O	2.07	0.54
1:B:282:ASP:HB3	1:B:308:GLN:NE2	2.23	0.53
1:A:347:GLU:OE2	1:A:355:SER:OG	2.26	0.53
1:B:105:HIS:O	1:B:108:ARG:HB2	2.09	0.53
1:A:348:ARG:HA	5:A:729:HOH:O	2.08	0.53
1:A:367:LYS:HG2	1:A:410:ILE:HD13	1.90	0.53
1:B:125:ILE:HD11	1:B:173:HIS:CG	2.45	0.52
1:B:282:ASP:O	1:B:308:GLN:NE2	2.44	0.50
1:A:354:ILE:HG21	1:A:359:ASP:HB2	1.94	0.50
1:A:338:GLU:OE2	1:A:342:ARG:NH2	2.42	0.50
1:A:373:ILE:HA	1:A:377:VAL:HB	1.95	0.48
1:A:94:LYS:O	1:A:97:GLU:HB2	2.14	0.48
1:B:205:PRO:HG2	1:B:207:VAL:HG22	1.96	0.48
1:B:186:THR:HG23	1:B:188:LEU:N	2.28	0.47
1:B:223:TYR:CE1	1:B:231:ASN:HB3	2.50	0.47

Continued on next page...

Continued from previous page...

Atom-1	Atom-2	Interatomic distance (Å)	Clash overlap (Å)
1:B:373:ILE:HA	1:B:377:VAL:HB	1.96	0.47
1:A:104:LEU:HD22	1:A:170:GLN:HG3	1.97	0.46
1:B:286:MET:HE3	1:B:286:MET:HB2	1.58	0.46
1:B:353:GLU:HG2	5:B:787:HOH:O	2.15	0.46
1:B:323:THR:HG22	1:B:399:LEU:HB2	1.98	0.45
1:B:95:GLU:O	1:B:98:ASP:HB2	2.17	0.45
1:B:331:GLN:NE2	1:B:335:ARG:HE	2.14	0.45
1:B:346:ARG:O	1:B:350:ARG:HG3	2.17	0.45
1:B:186:THR:CG2	1:B:189:GLU:H	2.30	0.45
1:B:105:HIS:HB3	1:B:108:ARG:CG	2.39	0.45
1:A:201:ASP:O	1:A:204:HIS:HB2	2.17	0.45
1:A:234:LEU:HG	1:A:268:VAL:HG11	1.99	0.44
1:A:321:ASN:HB2	1:A:322:PRO:HD3	1.98	0.44
1:B:186:THR:HG22	1:B:189:GLU:CG	2.47	0.44
1:B:313:MET:HB2	1:B:384:TRP:CH2	2.52	0.44
1:B:125:ILE:HG23	1:B:126:PHE:CD1	2.51	0.43
1:B:321:ASN:HB2	1:B:322:PRO:HD3	2.00	0.43
1:A:336:ILE:HD12	1:A:336:ILE:HA	1.85	0.43
1:B:330:ARG:HD3	1:B:405:TRP:CH2	2.53	0.43
1:B:123:HIS:HD2	5:B:802:HOH:O	2.02	0.42
1:B:407:GLN:HA	1:B:410:ILE:HD12	2.01	0.42
1:A:143:ILE:O	1:A:147:MET:HG3	2.19	0.42
1:B:282:ASP:HB3	1:B:308:GLN:CD	2.39	0.42
4:A:603:A1EKX:C35	5:A:831:HOH:O	2.67	0.42
1:A:153:TYR:CZ	1:A:165:ALA:HB2	2.56	0.41
1:B:122:MET:HA	1:B:125:ILE:HG22	2.03	0.41
1:B:125:ILE:O	1:B:129:ARG:HG3	2.19	0.41
1:B:183:ALA:C	1:B:185:PHE:H	2.23	0.41
1:A:101:LYS:HG2	5:A:818:HOH:O	2.20	0.41
1:A:224:ASN:O	1:B:265:ILE:HD13	2.21	0.41
1:B:354:ILE:HG21	1:B:359:ASP:HB2	2.00	0.41
1:B:300:LEU:HD13	1:B:306:ARG:HA	2.02	0.41
1:A:223:TYR:CE1	1:A:231:ASN:HB3	2.56	0.41
1:B:129:ARG:HH21	1:B:173:HIS:CE1	2.39	0.41
1:A:234:LEU:HB3	1:B:224:ASN:OD1	2.21	0.40

All (2) symmetry-related close contacts are listed below. The label for Atom-2 includes the symmetry operator and encoded unit-cell translations to be applied.

Atom-1	Atom-2	Interatomic distance (Å)	Clash overlap (Å)
1:A:330:ARG:NH2	1:B:408:SER:O[2_455]	1.67	0.53

Continued on next page...

Continued from previous page...

Atom-1	Atom-2	Interatomic distance (Å)	Clash overlap (Å)
1:A:330:ARG:NH2	1:B:408:SER:C[2_455]	2.17	0.03

5.3 Torsion angles [i](#)

5.3.1 Protein backbone [i](#)

In the following table, the Percentiles column shows the percent Ramachandran outliers of the chain as a percentile score with respect to all X-ray entries followed by that with respect to entries of similar resolution.

The Analysed column shows the number of residues for which the backbone conformation was analysed, and the total number of residues.

Mol	Chain	Analysed	Favoured	Allowed	Outliers	Percentiles	
1	A	322/506 (64%)	313 (97%)	8 (2%)	1 (0%)	37	42
1	B	319/506 (63%)	290 (91%)	26 (8%)	3 (1%)	14	14
All	All	641/1012 (63%)	603 (94%)	34 (5%)	4 (1%)	22	23

All (4) Ramachandran outliers are listed below:

Mol	Chain	Res	Type
1	B	295	SER
1	B	296	GLY
1	A	349	GLU
1	B	103	GLY

5.3.2 Protein sidechains [i](#)

In the following table, the Percentiles column shows the percent sidechain outliers of the chain as a percentile score with respect to all X-ray entries followed by that with respect to entries of similar resolution.

The Analysed column shows the number of residues for which the sidechain conformation was analysed, and the total number of residues.

Mol	Chain	Analysed	Rotameric	Outliers	Percentiles	
1	A	296/466 (64%)	293 (99%)	3 (1%)	73	84
1	B	293/466 (63%)	289 (99%)	4 (1%)	62	77
All	All	589/932 (63%)	582 (99%)	7 (1%)	67	80

All (7) residues with a non-rotameric sidechain are listed below:

Mol	Chain	Res	Type
1	A	254	LYS
1	A	297	VAL
1	A	360	LYS
1	B	91	VAL
1	B	129	ARG
1	B	299	LEU
1	B	403	ARG

Sometimes sidechains can be flipped to improve hydrogen bonding and reduce clashes. All (4) such sidechains are listed below:

Mol	Chain	Res	Type
1	A	331	GLN
1	B	123	HIS
1	B	308	GLN
1	B	331	GLN

5.3.3 RNA [i](#)

There are no RNA molecules in this entry.

5.4 Non-standard residues in protein, DNA, RNA chains [i](#)

There are no non-standard protein/DNA/RNA residues in this entry.

5.5 Carbohydrates [i](#)

There are no oligosaccharides in this entry.

5.6 Ligand geometry [i](#)

Of 6 ligands modelled in this entry, 4 are monoatomic - leaving 2 for Mogul analysis.

In the following table, the Counts columns list the number of bonds (or angles) for which Mogul statistics could be retrieved, the number of bonds (or angles) that are observed in the model and the number of bonds (or angles) that are defined in the Chemical Component Dictionary. The Link column lists molecule types, if any, to which the group is linked. The Z score for a bond length (or angle) is the number of standard deviations the observed value is removed from the expected value. A bond length (or angle) with $|Z| > 2$ is considered an outlier worth inspection. RMSZ is the root-mean-square of all Z scores of the bond lengths (or angles).

Mol	Type	Chain	Res	Link	Bond lengths			Bond angles		
					Counts	RMSZ	# Z > 2	Counts	RMSZ	# Z > 2
4	A1EKX	B	603	-	32,39,39	2.94	10 (31%)	36,56,56	1.71	6 (16%)
4	A1EKX	A	603	-	32,39,39	3.02	14 (43%)	36,56,56	1.89	9 (25%)

In the following table, the Chirals column lists the number of chiral outliers, the number of chiral centers analysed, the number of these observed in the model and the number defined in the Chemical Component Dictionary. Similar counts are reported in the Torsion and Rings columns. '-' means no outliers of that kind were identified.

Mol	Type	Chain	Res	Link	Chirals	Torsions	Rings
4	A1EKX	B	603	-	-	2/17/25/25	0/5/5/5
4	A1EKX	A	603	-	-	3/17/25/25	0/5/5/5

All (24) bond length outliers are listed below:

Mol	Chain	Res	Type	Atoms	Z	Observed(Å)	Ideal(Å)
4	A	603	A1EKX	C28-C29	10.19	1.58	1.39
4	B	603	A1EKX	C28-C29	9.90	1.57	1.39
4	A	603	A1EKX	C29-N34	5.59	1.54	1.37
4	B	603	A1EKX	C29-N34	5.49	1.54	1.37
4	B	603	A1EKX	C16-C14	-4.84	1.38	1.48
4	A	603	A1EKX	C9-C8	4.82	1.54	1.46
4	B	603	A1EKX	C9-C8	4.65	1.54	1.46
4	A	603	A1EKX	C16-C14	-4.48	1.39	1.48
4	B	603	A1EKX	C35-C27	4.32	1.63	1.40
4	A	603	A1EKX	C35-C27	4.27	1.63	1.40
4	B	603	A1EKX	O31-C30	4.13	1.42	1.33
4	A	603	A1EKX	O31-C30	3.93	1.42	1.33
4	B	603	A1EKX	C29-C30	-3.60	1.43	1.50
4	B	603	A1EKX	O26-C27	3.57	1.47	1.39
4	A	603	A1EKX	O26-C27	3.56	1.47	1.39
4	A	603	A1EKX	C29-C30	-3.35	1.44	1.50
4	A	603	A1EKX	O18-C17	2.78	1.42	1.37
4	A	603	A1EKX	O1-C2	2.58	1.41	1.36
4	A	603	A1EKX	C4-C3	2.53	1.41	1.36
4	A	603	A1EKX	O12-C11	2.40	1.42	1.37
4	B	603	A1EKX	O1-C2	2.39	1.41	1.36
4	B	603	A1EKX	C4-C3	2.36	1.41	1.36
4	A	603	A1EKX	O26-C25	2.31	1.44	1.39
4	A	603	A1EKX	C35-N34	-2.24	1.32	1.36

All (15) bond angle outliers are listed below:

Mol	Chain	Res	Type	Atoms	Z	Observed(°)	Ideal(°)
4	A	603	A1EKX	C28-C29-C30	-5.54	112.38	128.39
4	B	603	A1EKX	C28-C29-C30	-5.29	113.08	128.39
4	A	603	A1EKX	O31-C30-C29	4.67	120.08	112.49
4	B	603	A1EKX	O31-C30-C29	4.18	119.28	112.49
4	A	603	A1EKX	C27-O26-C25	-3.62	112.10	118.54
4	A	603	A1EKX	C10-C9-C8	-3.59	115.89	120.42
4	B	603	A1EKX	C13-O12-C11	-3.07	111.25	117.60
4	A	603	A1EKX	C13-O12-C11	-2.88	111.65	117.60
4	A	603	A1EKX	C23-C9-C8	2.82	123.99	120.42
4	B	603	A1EKX	C27-O26-C25	-2.81	113.54	118.54
4	B	603	A1EKX	C10-C9-C8	-2.80	116.89	120.42
4	A	603	A1EKX	O12-C11-C17	2.75	121.40	115.73
4	A	603	A1EKX	O12-C11-C10	-2.29	118.31	123.58
4	A	603	A1EKX	O31-C30-O33	-2.15	119.25	123.45
4	B	603	A1EKX	O12-C11-C17	2.07	120.02	115.73

There are no chirality outliers.

All (5) torsion outliers are listed below:

Mol	Chain	Res	Type	Atoms
4	A	603	A1EKX	C28-C29-C30-O33
4	A	603	A1EKX	C28-C29-C30-O31
4	B	603	A1EKX	C2-C25-O26-C27
4	B	603	A1EKX	C6-C25-O26-C27
4	A	603	A1EKX	C6-C25-O26-C27

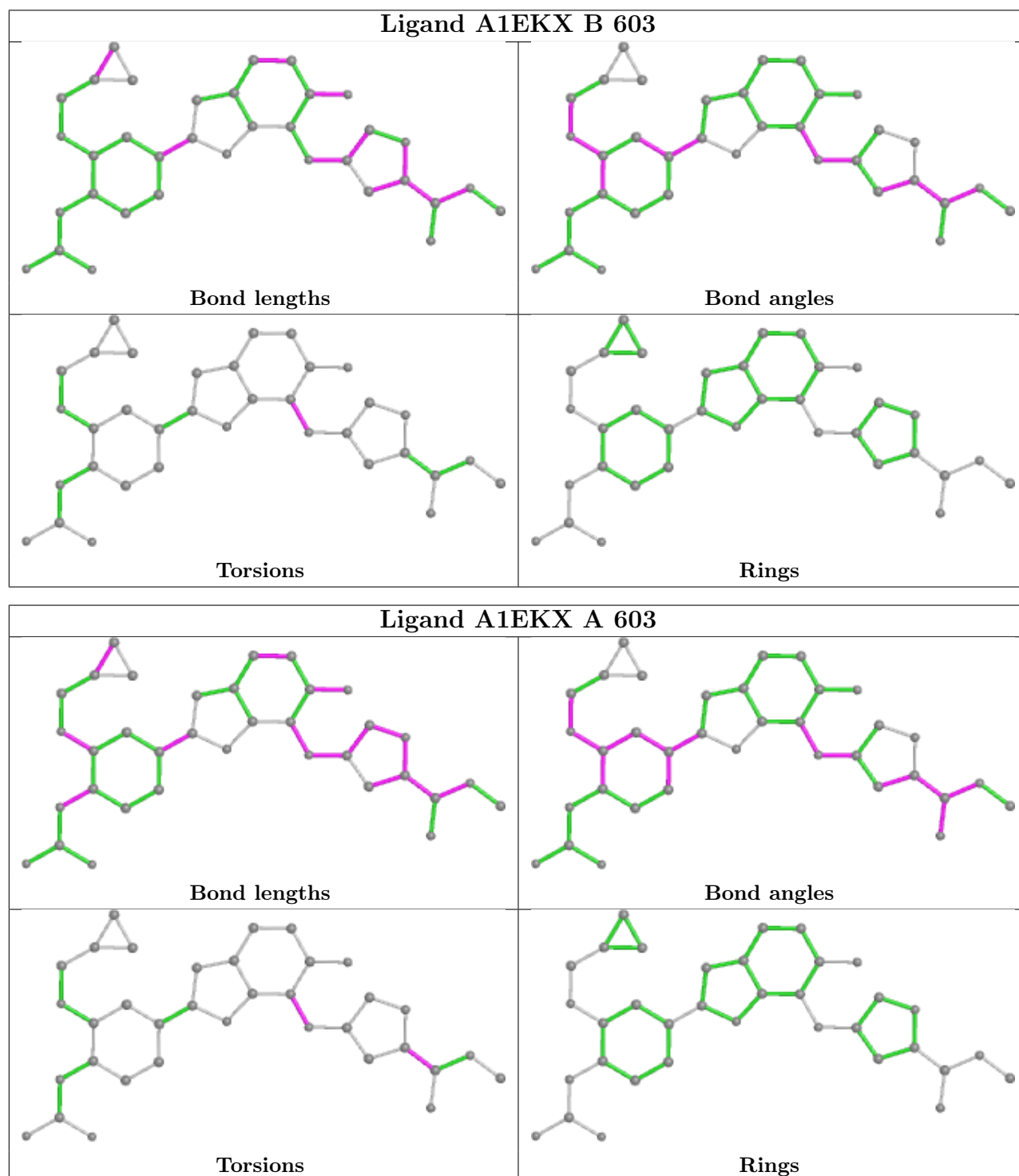
There are no ring outliers.

2 monomers are involved in 2 short contacts:

Mol	Chain	Res	Type	Clashes	Symm-Clashes
4	B	603	A1EKX	1	0
4	A	603	A1EKX	1	0

The following is a two-dimensional graphical depiction of Mogul quality analysis of bond lengths, bond angles, torsion angles, and ring geometry for all instances of the Ligand of Interest. In addition, ligands with molecular weight > 250 and outliers as shown on the validation Tables will also be included. For torsion angles, if less than 5% of the Mogul distribution of torsion angles is within 10 degrees of the torsion angle in question, then that torsion angle is considered an outlier. Any bond that is central to one or more torsion angles identified as an outlier by Mogul will be highlighted in the graph. For rings, the root-mean-square deviation (RMSD) between the ring in question and similar rings identified by Mogul is calculated over all ring torsion angles. If the average RMSD is greater than 60 degrees and the minimal RMSD between the ring in question and any Mogul-identified rings is also greater than 60 degrees, then that ring is considered an outlier.

The outliers are highlighted in purple. The color gray indicates Mogul did not find sufficient equivalents in the CSD to analyse the geometry.



5.7 Other polymers ⓘ

There are no such residues in this entry.

5.8 Polymer linkage issues ⓘ

There are no chain breaks in this entry.

6 Fit of model and data

6.1 Protein, DNA and RNA chains

In the following table, the column labelled ‘#RSRZ > 2’ contains the number (and percentage) of RSRZ outliers, followed by percent RSRZ outliers for the chain as percentile scores relative to all X-ray entries and entries of similar resolution. The OWAB column contains the minimum, median, 95th percentile and maximum values of the occupancy-weighted average B-factor per residue. The column labelled ‘Q < 0.9’ lists the number of (and percentage) of residues with an average occupancy less than 0.9.

Mol	Chain	Analysed	<RSRZ>	#RSRZ>2	OWAB(Å ²)	Q<0.9
1	A	324/506 (64%)	-0.35	4 (1%) 76 73	7, 18, 43, 60	0
1	B	321/506 (63%)	0.79	54 (16%) 5 4	10, 34, 65, 78	0
All	All	645/1012 (63%)	0.22	58 (8%) 17 14	7, 24, 59, 78	0

All (58) RSRZ outliers are listed below:

Mol	Chain	Res	Type	RSRZ
1	B	91	VAL	4.6
1	B	99	VAL	3.9
1	B	184	VAL	3.9
1	B	385	ALA	3.8
1	B	294	SER	3.7
1	B	297	VAL	3.7
1	B	390	PRO	3.6
1	B	178	THR	3.6
1	B	127	GLN	3.5
1	B	293	THR	3.5
1	B	296	GLY	3.5
1	B	125	ILE	3.5
1	B	92	LEU	3.4
1	B	392	ALA	3.4
1	B	123	HIS	3.3
1	B	130	ASP	3.1
1	B	295	SER	3.1
1	B	389	HIS	3.0
1	A	411	PRO	3.0
1	B	182	GLU	2.9
1	B	95	GLU	2.9
1	B	126	PHE	2.8
1	B	134	THR	2.8
1	B	292	VAL	2.8

Continued on next page...

Continued from previous page...

Mol	Chain	Res	Type	RSRZ
1	B	183	ALA	2.8
1	B	289	THR	2.8
1	B	357	MET	2.8
1	B	388	VAL	2.8
1	B	395	ILE	2.7
1	B	104	LEU	2.7
1	B	353	GLU	2.6
1	B	93	ALA	2.6
1	B	98	ASP	2.6
1	B	181	LEU	2.5
1	B	298	LEU	2.5
1	A	361	HIS	2.5
1	B	177	SER	2.5
1	B	94	LYS	2.5
1	B	180	ALA	2.5
1	B	398	THR	2.5
1	A	410	ILE	2.5
1	B	96	LEU	2.4
1	B	131	LEU	2.4
1	B	139	VAL	2.4
1	B	179	PRO	2.4
1	B	386	ASP	2.3
1	B	111	GLU	2.3
1	B	391	ASP	2.2
1	B	133	LYS	2.2
1	B	105	HIS	2.2
1	B	350	ARG	2.1
1	A	349	GLU	2.1
1	B	101	LYS	2.1
1	B	140	ASP	2.1
1	B	354	ILE	2.1
1	B	356	PRO	2.1
1	B	147	MET	2.1
1	B	138	PRO	2.0

6.2 Non-standard residues in protein, DNA, RNA chains ⓘ

There are no non-standard protein/DNA/RNA residues in this entry.

6.3 Carbohydrates [i](#)

There are no monosaccharides in this entry.

6.4 Ligands [i](#)

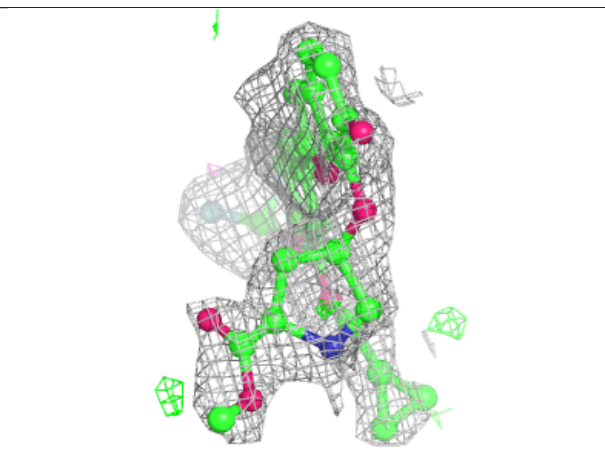
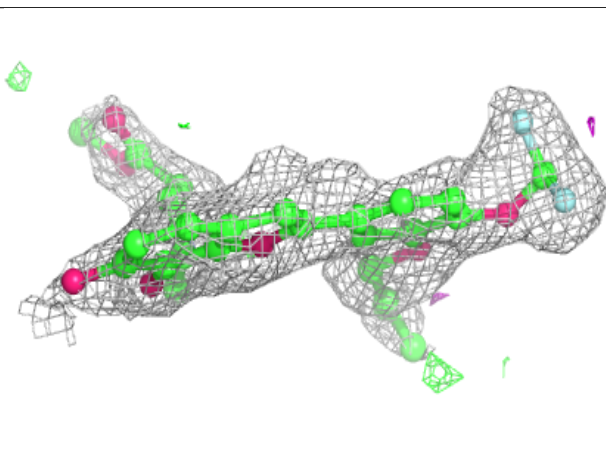
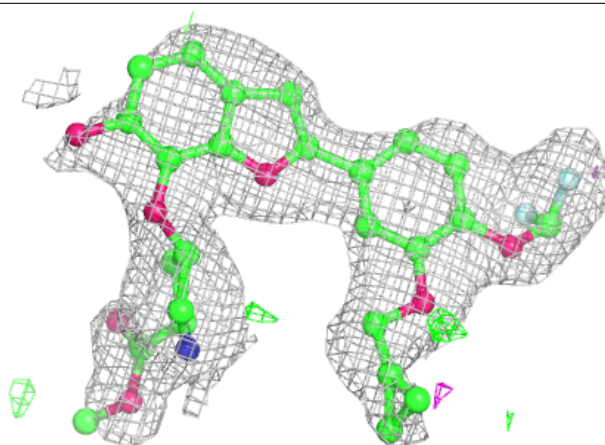
In the following table, the Atoms column lists the number of modelled atoms in the group and the number defined in the chemical component dictionary. The B-factors column lists the minimum, median, 95th percentile and maximum values of B factors of atoms in the group. The column labelled 'Q< 0.9' lists the number of atoms with occupancy less than 0.9.

Mol	Type	Chain	Res	Atoms	RSCC	RSR	B-factors(\AA^2)	Q<0.9
4	A1EKX	B	603	35/35	0.86	0.12	20,36,55,60	0
4	A1EKX	A	603	35/35	0.87	0.12	19,29,51,55	0
3	MG	B	602	1/1	0.96	0.02	13,13,13,13	0
3	MG	A	602	1/1	0.99	0.02	7,7,7,7	0
2	ZN	B	601	1/1	0.99	0.01	21,21,21,21	0
2	ZN	A	601	1/1	1.00	0.01	12,12,12,12	0

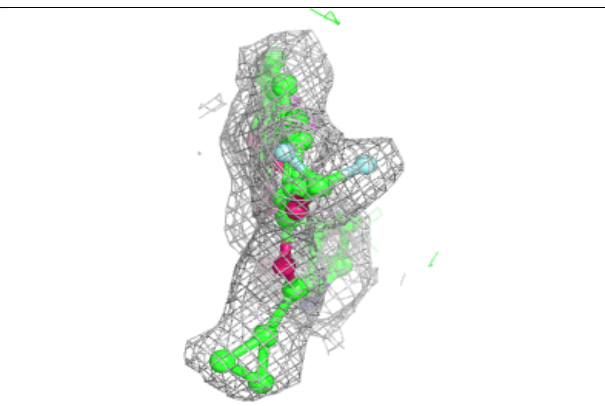
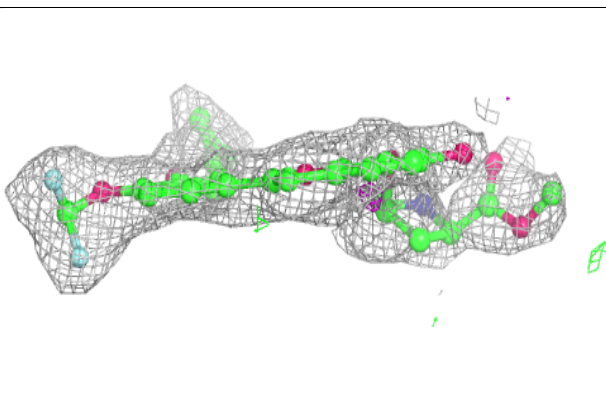
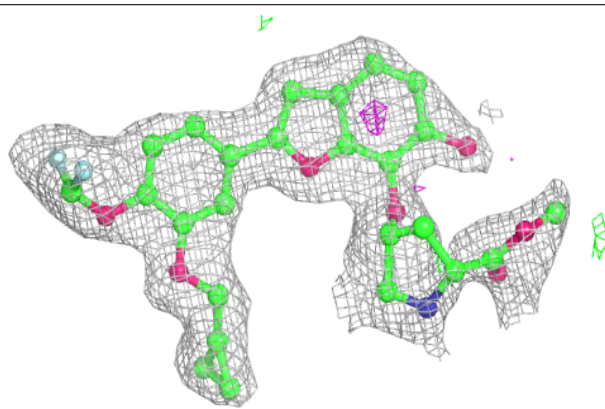
The following is a graphical depiction of the model fit to experimental electron density of all instances of the Ligand of Interest. In addition, ligands with molecular weight > 250 and outliers as shown on the geometry validation Tables will also be included. Each fit is shown from different orientation to approximate a three-dimensional view.

Electron density around A1EKX B 603:

$2mF_o-DF_c$ (at 0.7 rmsd) in gray
 mF_o-DF_c (at 3 rmsd) in purple (negative)
and green (positive)

**Electron density around A1EKX A 603:**

$2mF_o-DF_c$ (at 0.7 rmsd) in gray
 mF_o-DF_c (at 3 rmsd) in purple (negative)
and green (positive)



6.5 Other polymers ⓘ

There are no such residues in this entry.