



## wwPDB EM Validation Summary Report ⓘ

Jul 9, 2025 – 06:15 PM EDT

PDB ID : 9MDJ / pdb\_00009mdj  
EMDB ID : EMD-48172  
Title : Clostridioides difficile Transferase B Component Dimer in Complex with the A Component  
Authors : Sheedlo, M.J.; Mullard, R.M.  
Deposited on : 2024-12-05  
Resolution : 5.17 Å(reported)

This is a wwPDB EM Validation Summary Report for a publicly released PDB entry.

We welcome your comments at [validation@mail.wwpdb.org](mailto:validation@mail.wwpdb.org)

A user guide is available at

<https://www.wwpdb.org/validation/2017/EMValidationReportHelp>  
with specific help available everywhere you see the ⓘ symbol.

The types of validation reports are described at

<http://www.wwpdb.org/validation/2017/FAQs#types>.

---

The following versions of software and data (see [references ⓘ](#)) were used in the production of this report:

EMDB validation analysis : 0.0.1.dev118  
MolProbity : 4-5-2 with Phenix2.0rc1  
Percentile statistics : 20231227.v01 (using entries in the PDB archive December 27th 2023)  
MapQ : 1.9.13  
Ideal geometry (proteins) : Engh & Huber (2001)  
Ideal geometry (DNA, RNA) : Parkinson et al. (1996)  
Validation Pipeline (wwPDB-VP) : 2.44

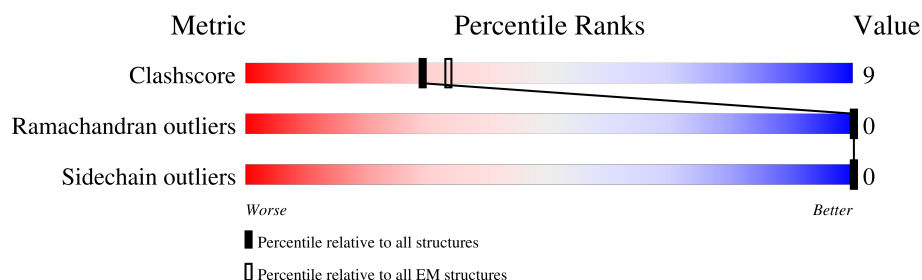
# 1 Overall quality at a glance

The following experimental techniques were used to determine the structure:

*ELECTRON MICROSCOPY*

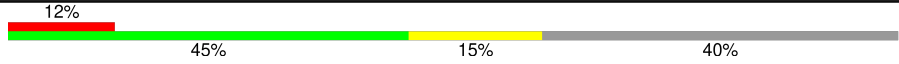
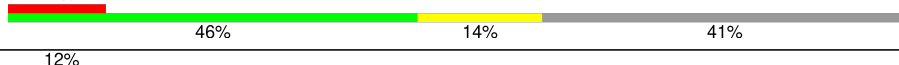
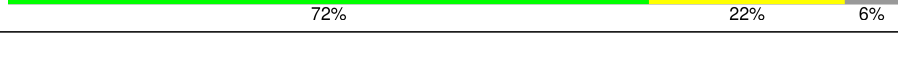
The reported resolution of this entry is 5.17 Å.

Percentile scores (ranging between 0-100) for global validation metrics of the entry are shown in the following graphic. The table shows the number of entries on which the scores are based.



Metric	Whole archive (#Entries)	EM structures (#Entries)
Clashscore	210492	15764
Ramachandran outliers	207382	16835
Sidechain outliers	206894	16415

The table below summarises the geometric issues observed across the polymeric chains and their fit to the map. The red, orange, yellow and green segments of the bar indicate the fraction of residues that contain outliers for  $\geq 3$ , 2, 1 and 0 types of geometric quality criteria respectively. A grey segment represents the fraction of residues that are not modelled. The numeric value for each fraction is indicated below the corresponding segment, with a dot representing fractions  $\leq 5\%$ . The upper red bar (where present) indicates the fraction of residues that have poor fit to the EM map (all-atom inclusion  $< 40\%$ ). The numeric value is given above the bar.

Mol	Chain	Length	Quality of chain
1	A	876	
1	B	876	
2	Z	424	

## 2 Entry composition

There are 3 unique types of molecules in this entry. The entry contains 11358 atoms, of which 0 are hydrogens and 0 are deuteriums.

In the tables below, the AltConf column contains the number of residues with at least one atom in alternate conformation and the Trace column contains the number of residues modelled with at most 2 atoms.

- Molecule 1 is a protein called Adp-ribosyltransferase binding component.

Mol	Chain	Residues	Atoms					AltConf	Trace
1	A	523	Total	C	N	O	S	0	0
			4076	2545	664	862	5		
1	B	520	Total	C	N	O	S	0	0
			4057	2532	659	860	6		

- Molecule 2 is a protein called Cdta (Adp-ribosyltransferase enzymatic component).

Mol	Chain	Residues	Atoms					AltConf	Trace
2	Z	397	Total	C	N	O	S	0	0
			3219	2049	537	628	5		

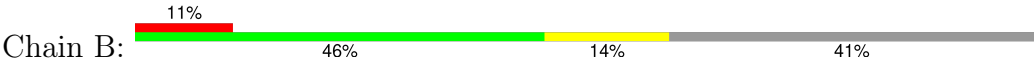
- Molecule 3 is CALCIUM ION (CCD ID: CA) (formula: Ca).

Mol	Chain	Residues	Atoms		AltConf
3	A	3	Total	Ca	0
			3	3	
3	B	3	Total	Ca	0
			3	3	



LEU  
LEU  
VAL  
LEU  
SER  
VAL  
ASP

● Molecule 1: Adp-ribosyltransferase binding component



MET  
LYS  
ILE  
GLN  
MET  
MET  
ARG  
ASN  
LYS  
LYS  
VAL  
LEU  
MET  
SER  
PHE  
LEU  
THR  
THR  
THR  
ALA  
ASN  
LEU  
ILE  
VAL  
SER  
GLN  
ALA  
LYS  
LEU  
VAL  
TYR  
PRO  
VAL  
LYS  
VAL  
TYR  
ALA  
GLN  
THR  
SER  
THR  
SER  
ASN  
HIS  
SER  
ASN  
LYS  
ILE  
LYS  
TRP  
LYS  
GLU  
ILE  
VAL  
ARG

THR  
ASP  
GLU  
HIS  
PHE  
LYS  
ASP  
LEU  
LEU  
MET  
ALA  
PRO  
ILE  
SER  
THR  
LYS  
ASP  
GLY  
THR  
ASN  
VAL  
LEU  
LYS  
VAL  
LYS  
VAL  
TYR  
ASP  
VAL  
LEU  
LEU  
ALA  
THR  
ASP  
LYS  
GLU  
PHE  
SER  
PHE  
GLN  
LYS  
GLY  
LEU  
LYS  
VAL  
GLY  
MET  
MET  
LYS  
LYS  
VAL  
ASN

ASP  
ASP  
VAL  
LEU  
GLN  
VAL  
ASN  
THR  
GLU  
SER  
THR  
ILE  
SER  
LYS  
THR  
LEU  
ASP  
LEU  
ASP  
GLY  
THR  
VAL  
LEU  
ASN  
GLY  
SER  
GLY  
SER  
ILE  
SER  
ASP  
GLY  
THR  
TRP  
ASP  
LEU  
GLY  
SER  
SER  
PRO  
ILE  
GLU  
ASP  
PRO  
SER  
ASN  
SER  
LEU  
SER  
THR  
GLY  
MET  
LYS  
LYS  
ILE  
PHE

PRO  
GLU  
GLU  
ASN  
LEU  
PHE  
LEU  
ARG  
THR  
TYR  
ASN  
SER  
ILE  
GLU  
LYS  
ASP  
PRO  
PHE  
ILE  
PRO  
ASN  
ASN  
PHE  
PHE  
ASP  
PRO  
LYS  
VAL  
LEU  
MET  
SER  
ASP  
GLU  
ASP  
GLU  
ASN  
LEU  
GLY  
SER  
D218  
D228  
E231  
R232  
N233  
G234  
K238  
D238  
L240  
I241  
A242  
V243  
D247  
S248  
F249  
A250  
Y254  
K255

K256  
E263  
S264  
N265  
Y271  
D272  
D273  
Y274  
E275  
K276  
G279  
S280  
F281  
D282  
K283  
A284  
A289  
R290  
D291  
P292  
L293  
Y294  
A295  
A296  
Y297  
V300  
G301  
V302  
G303  
M304  
E305  
K306  
L307  
I308  
N312  
E313  
HIS  
ALA  
SER  
THR  
ASP  
G320  
K321  
S324  
R325  
T328  
N329  
T332  
E333  
S334

A337  
A338  
V339  
T354  
T355  
N356  
H359  
T360  
T361  
D362  
N363  
S364  
T365  
A366  
E373  
S374  
W375  
S380  
I381  
N382  
K383  
G384  
E385  
S386  
A387  
Y388  
I389  
N390  
N392  
V393  
R394  
Y395  
Y396  
N397  
A401  
P402  
T407  
P408  
T409  
T410  
L414  
D415  
G416  
D417  
T418  
L419  
S420  
T421  
I422  
K423  
A424

Q428  
L433  
S434  
P435  
G436  
D437  
P440  
K441  
L444  
S445  
P446  
N450  
T451  
H452  
D453  
S456  
S457  
I460  
P461  
I462  
M463  
Y464  
D465  
Q466  
L470  
K474  
Q475  
I476  
E479  
T480  
T481  
Q482  
V483  
S484  
G485  
N486  
F487  
K490  
N491  
S499  
G500  
N501  
S502  
W503  
S504  
D505  
Y506  
I507

S508  
Q509  
A515  
D520  
Q536  
D537  
P538  
E539  
D540  
T546  
I547  
G548  
E549  
E552  
K553  
A557  
S574  
D581  
T584  
Y601  
M609  
K614  
T615  
P616  
F622  
T638  
S646  
K649  
L650  
N651  
G652  
E653  
T658  
K667  
F671  
S672  
G673  
Y674  
S675  
K676  
D677

P678  
LEU  
THR  
SER  
N682  
I685  
V686  
K687  
I688  
K689  
A690  
K691  
Y697  
E701  
Y704  
S708  
T714  
I721  
E722  
I723  
T724  
L725  
I726  
G729  
T730  
T731  
M735  
L736  
T739  
N742  
S743  
E746  
ILE  
LEU  
ASP  
GLU  
THR  
LEU  
GLN  
TYR  
SER  
VAL  
GLU  
ALA  
THR  
GLU  
LEU  
GLN  
TYR  
SER  
VAL  
LEU  
SER  
PHE  
ILE  
LYS  
ASP  
THR  
ILE  
GLY  
THR  
LYS  
ILE  
MET

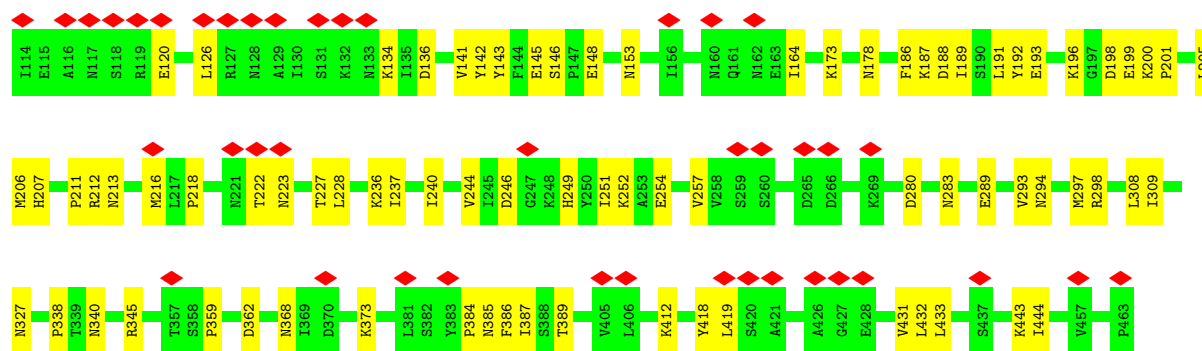
ASP  
ALA  
HIS  
LYS  
SER  
TYR  
PHE  
ALA  
ASP  
LEU  
ASP  
PRO  
ASN  
GLN  
PHE  
ALA  
ASN  
PRO  
LYS  
THR  
SER  
THR  
GLY  
ASN  
VAL  
ASN  
THR  
LEU  
ARG  
ILE  
TYR  
GLY  
MET  
TYR  
PHE  
PHE  
ALA  
PRO  
THR  
ASN  
ILE  
GLN  
THR  
MET  
THR  
ASN  
LYS  
GLU  
ALA  
LEU  
ASP  
ARG  
ILE  
TYR  
ILE  
ALA  
THR  
THR  
PRO  
ARG  
VAL  
GLU  
ALA  
THR  
THR  
LEU  
GLN  
TYR  
SER  
GLY  
PHE  
LYS  
ASP  
THR  
ILE  
GLY  
THR  
LYS  
ASP

LYS  
GLU  
MET  
ARG  
ASN  
TYR  
LEU  
ASN  
GLY  
ASP  
PRO  
ASN  
GLN  
PHE  
ALA  
ASN  
PRO  
LYS  
THR  
SER  
THR  
GLY  
ASN  
VAL  
ASN  
THR  
LEU  
ARG  
ILE  
TYR  
GLY  
MET  
TYR  
PHE  
PHE  
ALA  
PRO  
THR  
ASN  
ILE  
GLN  
THR  
MET  
THR  
ASN  
LYS  
GLU  
ALA  
LEU  
ASP  
ARG  
ILE  
TYR  
ILE  
ALA  
THR  
THR  
PRO  
ARG  
VAL  
GLU  
ALA  
THR  
THR  
LEU  
GLN  
TYR  
SER  
GLY  
PHE  
LYS  
ASP  
THR  
ILE  
GLY  
THR  
LYS  
ASP

● Molecule 2: Cdta (Adp-ribosyltransferase enzymatic component)



TYR  
SER  
GLU  
LYS  
VAL  
CYS  
ASN  
THR  
THR  
THR  
LYS  
LYS  
ALA  
PRO  
ILE  
GLU  
ARG  
PRO  
GLU  
ASP  
PHE  
LEU  
LYS  
LYS  
LYS  
GLY  
LYS  
ALA  
K67  
E70  
R71  
E72  
E73  
A74  
E75  
R76  
I77  
E78  
Q79  
R80  
L81  
E82  
R83  
S84  
E85  
R86  
L89  
E90  
S91  
Y92  
K93  
K94  
Y102  
Y110  
D111  
Y112  
Q113



## 4 Experimental information

Property	Value	Source
EM reconstruction method	SINGLE PARTICLE	Depositor
Imposed symmetry	POINT, Not provided	
Number of particles used	21744	Depositor
Resolution determination method	FSC 0.143 CUT-OFF	Depositor
CTF correction method	PHASE FLIPPING AND AMPLITUDE CORRECTION	Depositor
Microscope	TFS KRIOS	Depositor
Voltage (kV)	300	Depositor
Electron dose ( $e^-/\text{\AA}^2$ )	50	Depositor
Minimum defocus (nm)	500	Depositor
Maximum defocus (nm)	1500	Depositor
Magnification	Not provided	
Image detector	GATAN K3 BIOQUANTUM (6k x 4k)	Depositor
Maximum map value	0.921	Depositor
Minimum map value	-0.195	Depositor
Average map value	0.003	Depositor
Map value standard deviation	0.031	Depositor
Recommended contour level	0.2	Depositor
Map size (Å)	292.4, 292.4, 292.4	wwPDB
Map dimensions	340, 340, 340	wwPDB
Map angles (°)	90.0, 90.0, 90.0	wwPDB
Pixel spacing (Å)	0.85999995, 0.85999995, 0.85999995	Depositor

## 5 Model quality [i](#)

### 5.1 Standard geometry [i](#)

Bond lengths and bond angles in the following residue types are not validated in this section: CA

The Z score for a bond length (or angle) is the number of standard deviations the observed value is removed from the expected value. A bond length (or angle) with  $|Z| > 5$  is considered an outlier worth inspection. RMSZ is the root-mean-square of all Z scores of the bond lengths (or angles).

Mol	Chain	Bond lengths		Bond angles	
		RMSZ	# Z  >5	RMSZ	# Z  >5
1	A	0.20	0/4145	0.52	0/5626
1	B	0.19	0/4126	0.50	0/5598
2	Z	0.16	0/3288	0.45	0/4437
All	All	0.19	0/11559	0.49	0/15661

There are no bond length outliers.

There are no bond angle outliers.

There are no chirality outliers.

There are no planarity outliers.

### 5.2 Too-close contacts [i](#)

In the following table, the Non-H and H(model) columns list the number of non-hydrogen atoms and hydrogen atoms in the chain respectively. The H(added) column lists the number of hydrogen atoms added and optimized by MolProbity. The Clashes column lists the number of clashes within the asymmetric unit, whereas Symm-Clashes lists symmetry-related clashes.

Mol	Chain	Non-H	H(model)	H(added)	Clashes	Symm-Clashes
1	A	4076	0	3964	79	0
1	B	4057	0	3933	72	0
2	Z	3219	0	3198	54	0
3	A	3	0	0	0	0
3	B	3	0	0	0	0
All	All	11358	0	11095	205	0

The all-atom clashscore is defined as the number of clashes found per 1000 atoms (including hydrogen atoms). The all-atom clashscore for this structure is 9.

The worst 5 of 205 close contacts within the same asymmetric unit are listed below, sorted by



their clash magnitude.

Atom-1	Atom-2	Interatomic distance (Å)	Clash overlap (Å)
1:A:675:SER:O	1:A:704:TYR:HA	1.63	0.95
1:B:386:SER:HA	1:B:462:ILE:O	1.73	0.87
2:Z:136:ASP:O	2:Z:212:ARG:NH1	2.26	0.69
1:A:441:LYS:H	1:A:444:LEU:HD12	1.59	0.66
1:B:337:ALA:HA	1:B:742:ASN:HD21	1.61	0.64

There are no symmetry-related clashes.

## 5.3 Torsion angles [i](#)

### 5.3.1 Protein backbone [i](#)

In the following table, the Percentiles column shows the percent Ramachandran outliers of the chain as a percentile score with respect to all PDB entries followed by that with respect to all EM entries.

The Analysed column shows the number of residues for which the backbone conformation was analysed, and the total number of residues.

Mol	Chain	Analysed	Favoured	Allowed	Outliers	Percentiles	
1	A	517/876 (59%)	477 (92%)	40 (8%)	0	100	100
1	B	514/876 (59%)	490 (95%)	24 (5%)	0	100	100
2	Z	395/424 (93%)	386 (98%)	9 (2%)	0	100	100
All	All	1426/2176 (66%)	1353 (95%)	73 (5%)	0	100	100

There are no Ramachandran outliers to report.

### 5.3.2 Protein sidechains [i](#)

In the following table, the Percentiles column shows the percent sidechain outliers of the chain as a percentile score with respect to all PDB entries followed by that with respect to all EM entries.

The Analysed column shows the number of residues for which the sidechain conformation was analysed, and the total number of residues.

Mol	Chain	Analysed	Rotameric	Outliers	Percentiles	
1	A	462/790 (58%)	462 (100%)	0	100	100

*Continued on next page...*

*Continued from previous page...*

Mol	Chain	Analysed	Rotameric	Outliers	Percentiles	
1	B	460/790 (58%)	460 (100%)	0	100	100
2	Z	357/382 (94%)	357 (100%)	0	100	100
All	All	1279/1962 (65%)	1279 (100%)	0	100	100

There are no protein residues with a non-rotameric sidechain to report.

Sometimes sidechains can be flipped to improve hydrogen bonding and reduce clashes. 5 of 6 such sidechains are listed below:

Mol	Chain	Res	Type
1	B	742	ASN
2	Z	183	GLN
2	Z	385	ASN
1	A	392	ASN
1	A	260	ASN

### 5.3.3 RNA [i](#)

There are no RNA molecules in this entry.

## 5.4 Non-standard residues in protein, DNA, RNA chains [i](#)

There are no non-standard protein/DNA/RNA residues in this entry.

## 5.5 Carbohydrates [i](#)

There are no oligosaccharides in this entry.

## 5.6 Ligand geometry [i](#)

Of 6 ligands modelled in this entry, 6 are monoatomic - leaving 0 for Mogul analysis.

There are no bond length outliers.

There are no bond angle outliers.

There are no chirality outliers.

There are no torsion outliers.

There are no ring outliers.

No monomer is involved in short contacts.

## 5.7 Other polymers [i](#)

There are no such residues in this entry.

## 5.8 Polymer linkage issues [i](#)

There are no chain breaks in this entry.

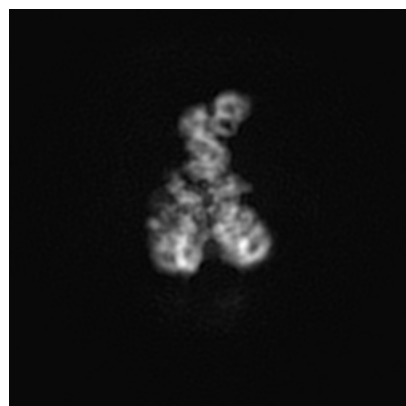
## 6 Map visualisation [i](#)

This section contains visualisations of the EMDB entry EMD-48172. These allow visual inspection of the internal detail of the map and identification of artifacts.

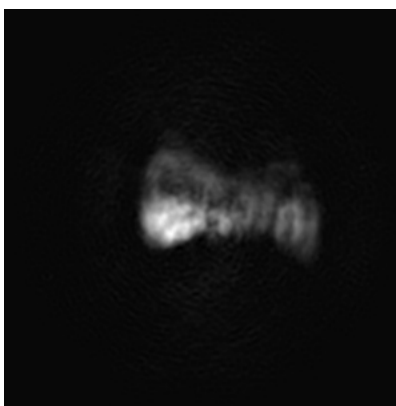
Images derived from a raw map, generated by summing the deposited half-maps, are presented below the corresponding image components of the primary map to allow further visual inspection and comparison with those of the primary map.

### 6.1 Orthogonal projections [i](#)

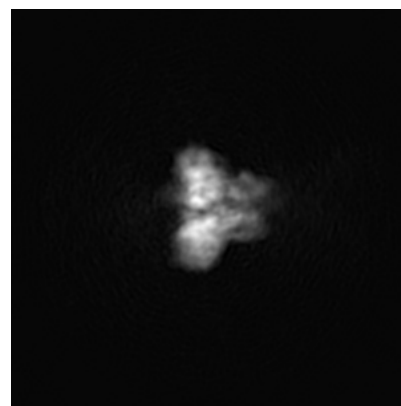
#### 6.1.1 Primary map



X

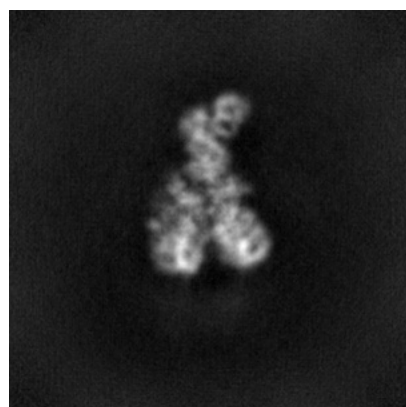


Y

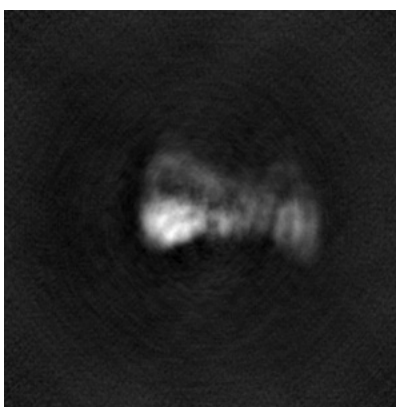


Z

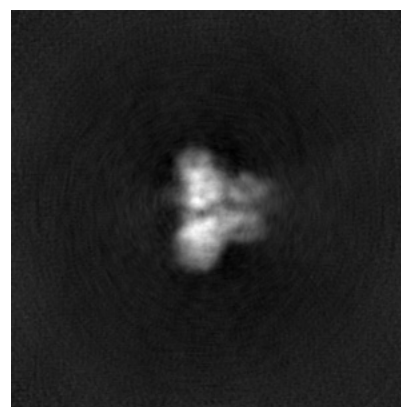
#### 6.1.2 Raw map



X



Y

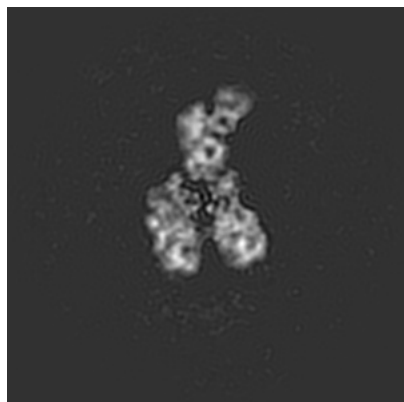


Z

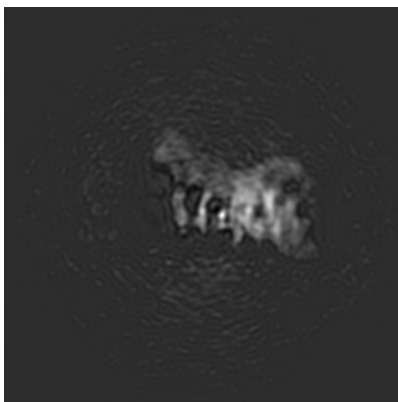
The images above show the map projected in three orthogonal directions.

## 6.2 Central slices [i](#)

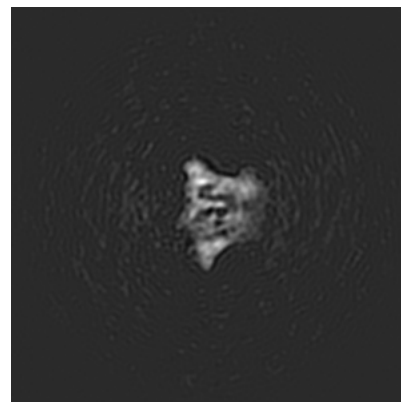
### 6.2.1 Primary map



X Index: 170

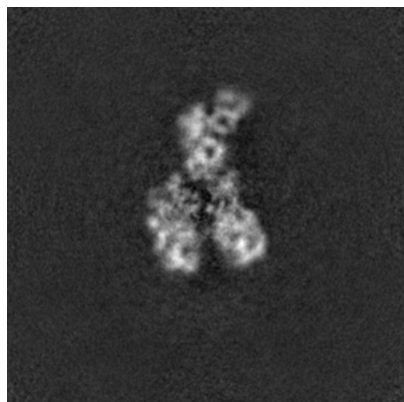


Y Index: 170

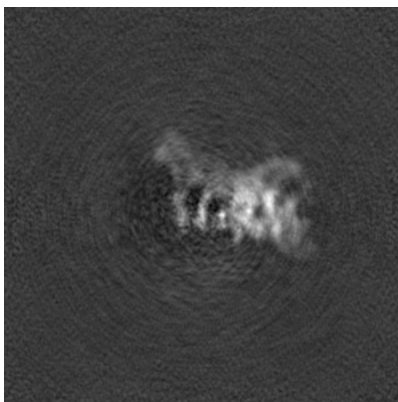


Z Index: 170

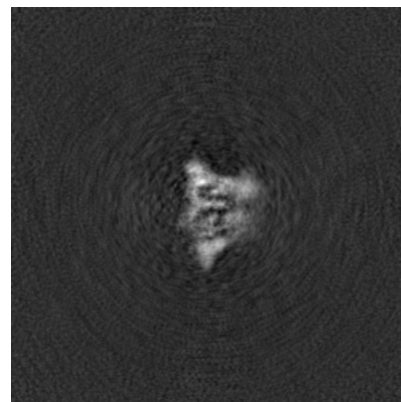
### 6.2.2 Raw map



X Index: 170



Y Index: 170

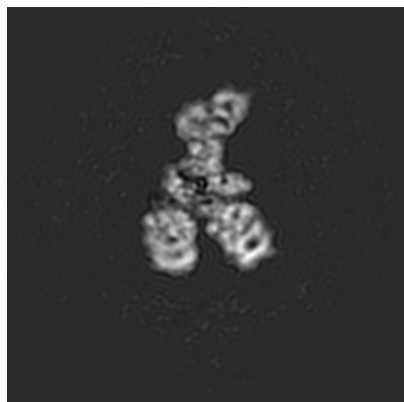


Z Index: 170

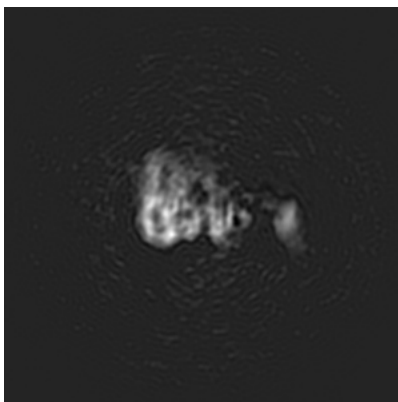
The images above show central slices of the map in three orthogonal directions.

## 6.3 Largest variance slices [i](#)

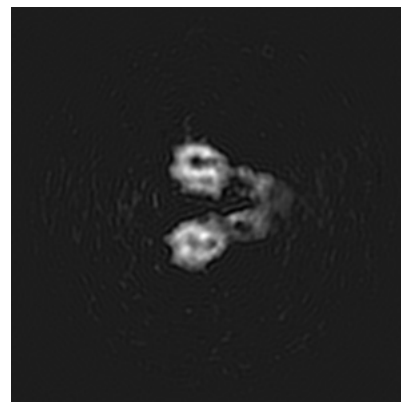
### 6.3.1 Primary map



X Index: 157

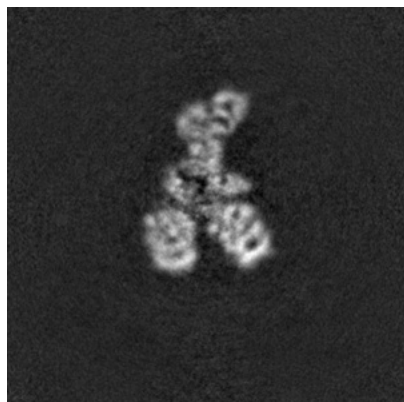


Y Index: 147

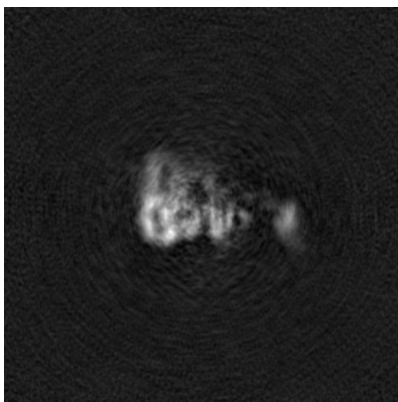


Z Index: 138

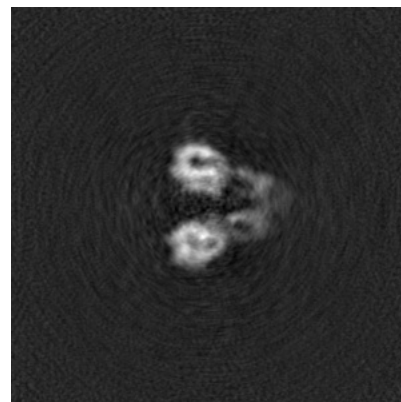
### 6.3.2 Raw map



X Index: 157



Y Index: 147

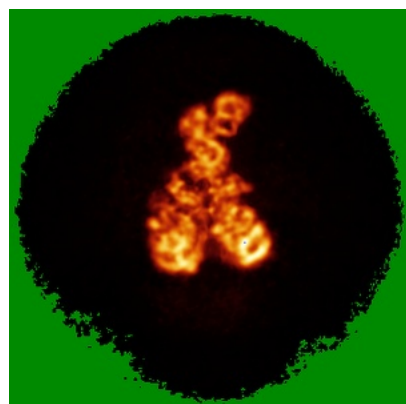


Z Index: 138

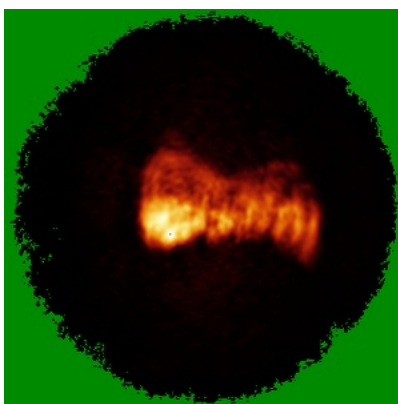
The images above show the largest variance slices of the map in three orthogonal directions.

## 6.4 Orthogonal standard-deviation projections (False-color) [i](#)

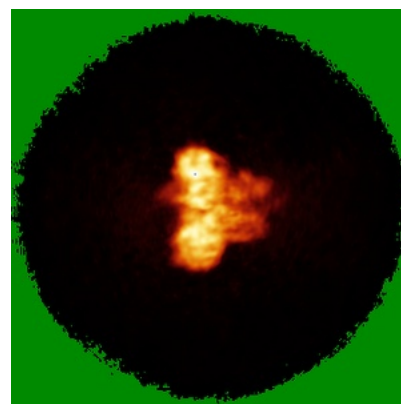
### 6.4.1 Primary map



X

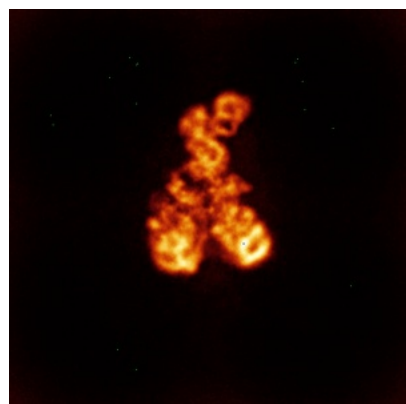


Y

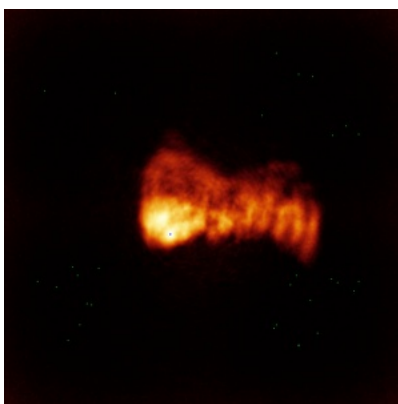


Z

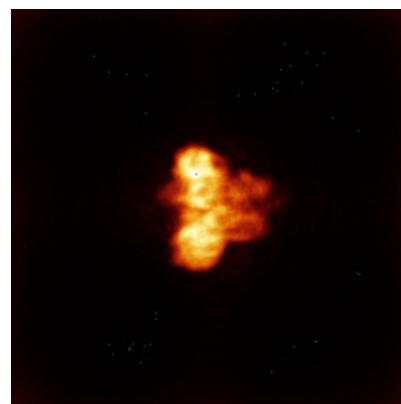
### 6.4.2 Raw map



X



Y

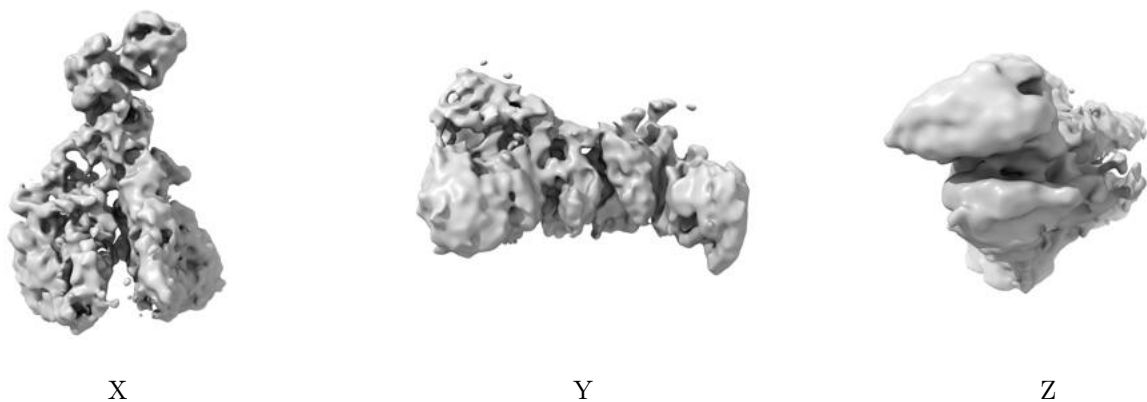


Z

The images above show the map standard deviation projections with false color in three orthogonal directions. Minimum values are shown in green, max in blue, and dark to light orange shades represent small to large values respectively.

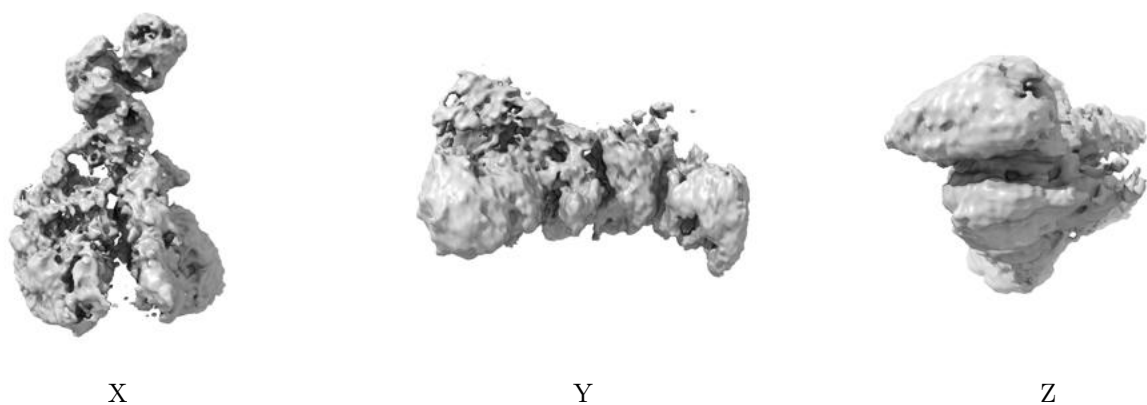
## 6.5 Orthogonal surface views [i](#)

### 6.5.1 Primary map



The images above show the 3D surface view of the map at the recommended contour level 0.2. These images, in conjunction with the slice images, may facilitate assessment of whether an appropriate contour level has been provided.

### 6.5.2 Raw map



These images show the 3D surface of the raw map. The raw map's contour level was selected so that its surface encloses the same volume as the primary map does at its recommended contour level.

## 6.6 Mask visualisation [i](#)

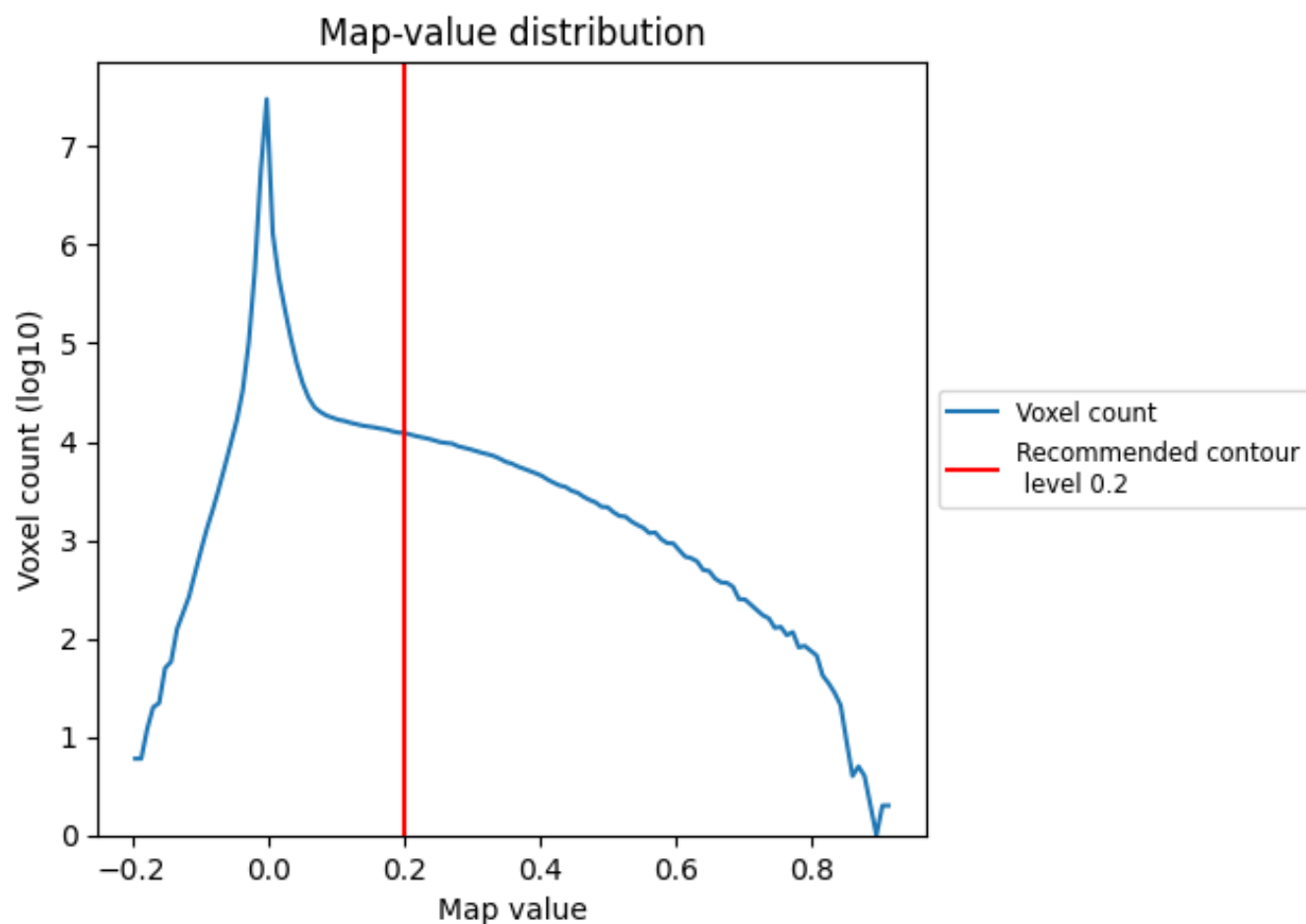
This section was not generated. No masks/segmentation were deposited.



## 7 Map analysis [i](#)

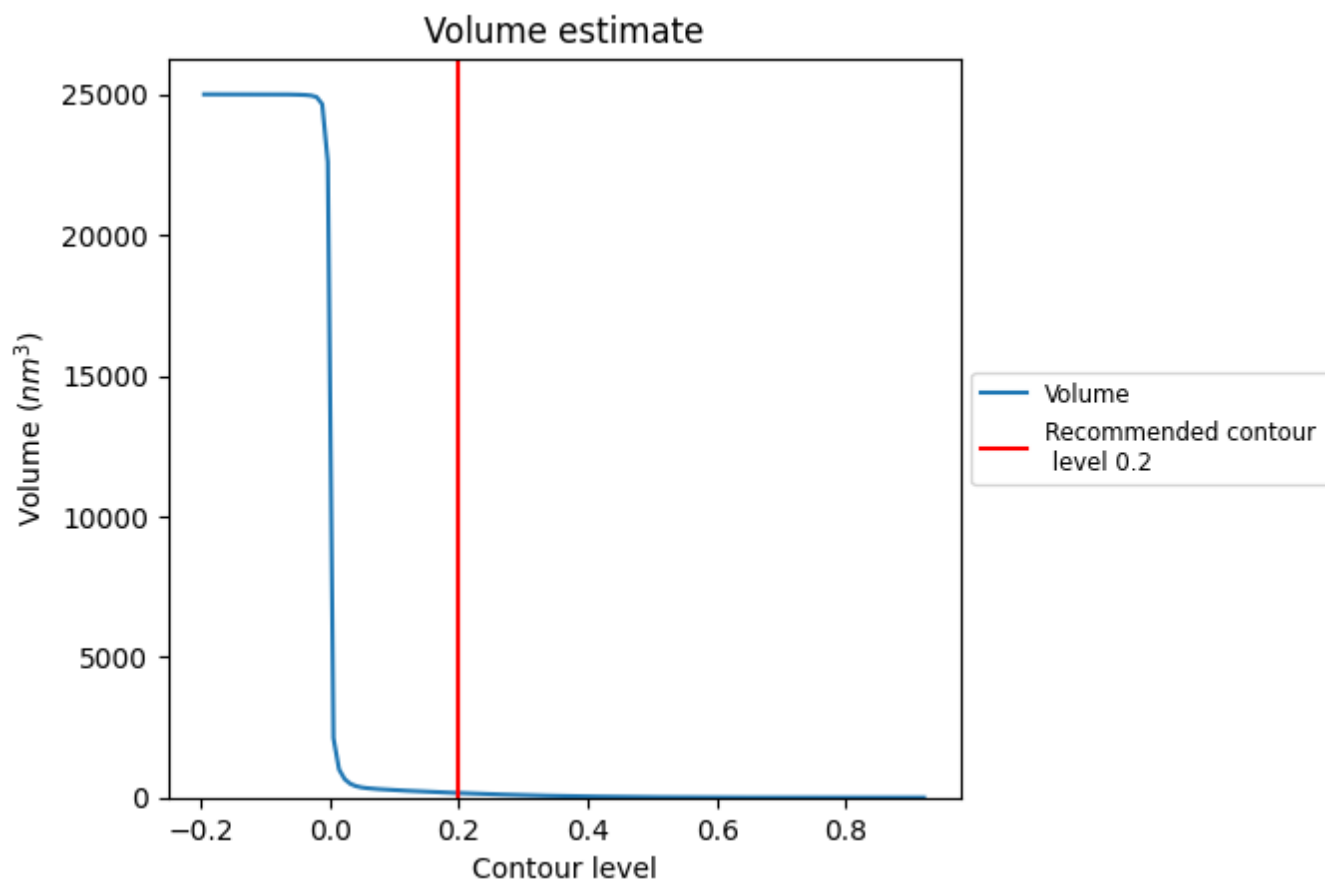
This section contains the results of statistical analysis of the map.

### 7.1 Map-value distribution [i](#)



The map-value distribution is plotted in 128 intervals along the x-axis. The y-axis is logarithmic. A spike in this graph at zero usually indicates that the volume has been masked.

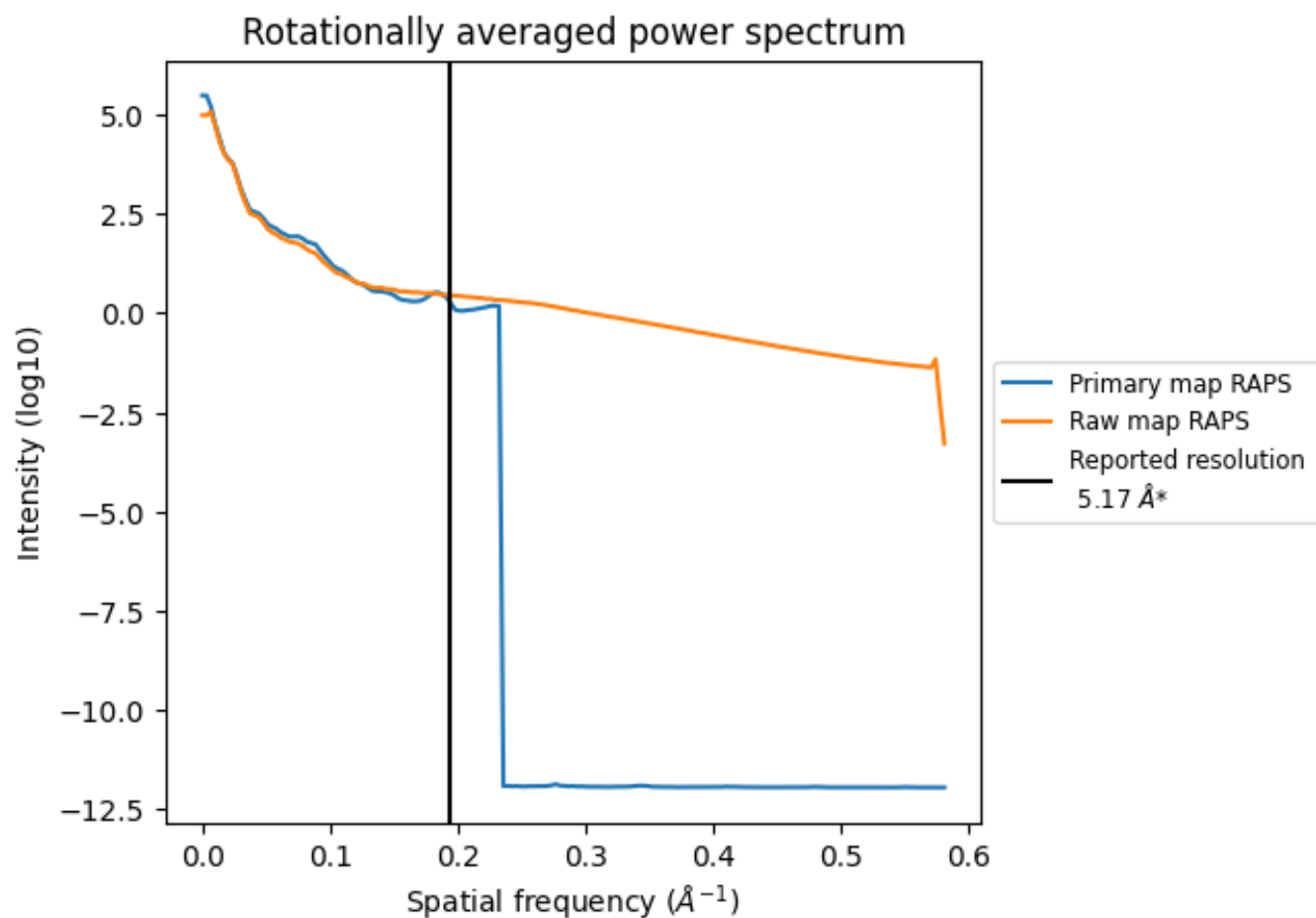
## 7.2 Volume estimate [i](#)



The volume at the recommended contour level is 161 nm<sup>3</sup>; this corresponds to an approximate mass of 146 kDa.

The volume estimate graph shows how the enclosed volume varies with the contour level. The recommended contour level is shown as a vertical line and the intersection between the line and the curve gives the volume of the enclosed surface at the given level.

### 7.3 Rotationally averaged power spectrum ⓘ

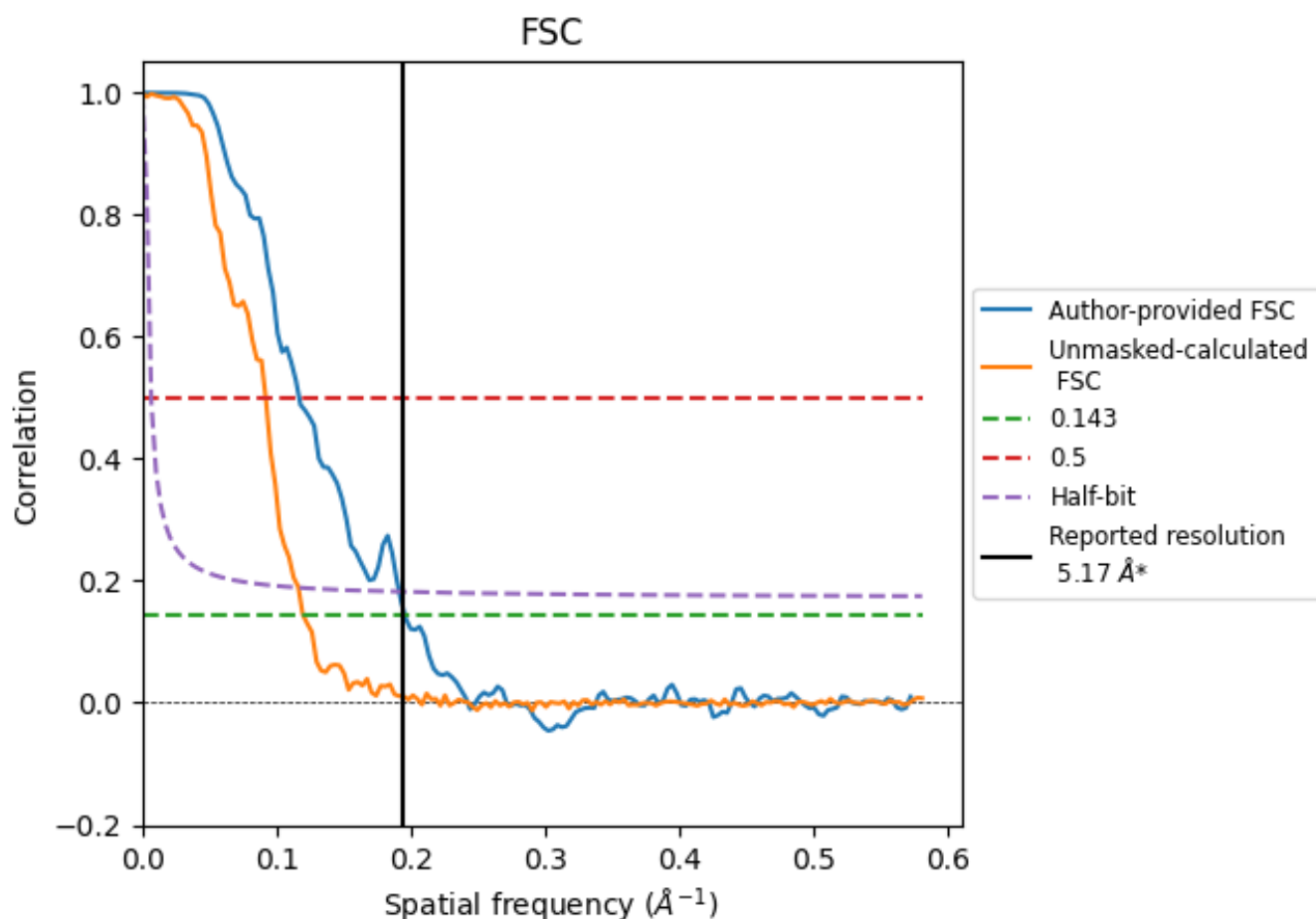


\*Reported resolution corresponds to spatial frequency of 0.193 Å<sup>-1</sup>

## 8 Fourier-Shell correlation [i](#)

Fourier-Shell Correlation (FSC) is the most commonly used method to estimate the resolution of single-particle and subtomogram-averaged maps. The shape of the curve depends on the imposed symmetry, mask and whether or not the two 3D reconstructions used were processed from a common reference. The reported resolution is shown as a black line. A curve is displayed for the half-bit criterion in addition to lines showing the 0.143 gold standard cut-off and 0.5 cut-off.

### 8.1 FSC [i](#)



\*Reported resolution corresponds to spatial frequency of 0.193 Å<sup>-1</sup>

## 8.2 Resolution estimates [i](#)

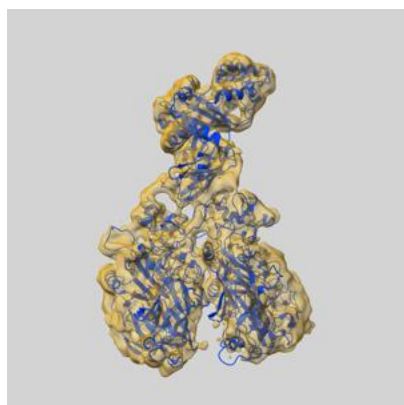
Resolution estimate (Å)	Estimation criterion (FSC cut-off)		
	0.143	0.5	Half-bit
Reported by author	5.17	-	-
Author-provided FSC curve	5.10	8.55	5.22
Unmasked-calculated*	8.33	10.86	8.59

\*Resolution estimate based on FSC curve calculated by comparison of deposited half-maps. The value from deposited half-maps intersecting FSC 0.143 CUT-OFF 8.33 differs from the reported value 5.17 by more than 10 %

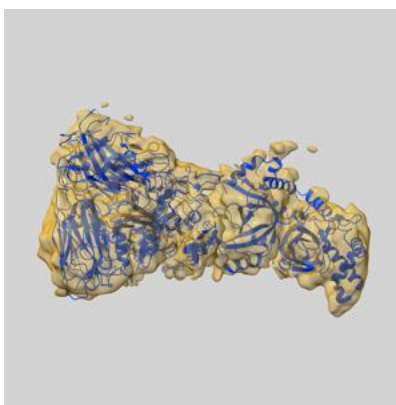
## 9 Map-model fit [i](#)

This section contains information regarding the fit between EMDB map EMD-48172 and PDB model 9MDJ. Per-residue inclusion information can be found in [section 3](#) on [page 4](#).

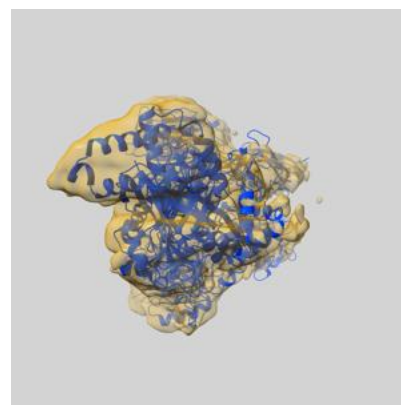
### 9.1 Map-model overlay [i](#)



X



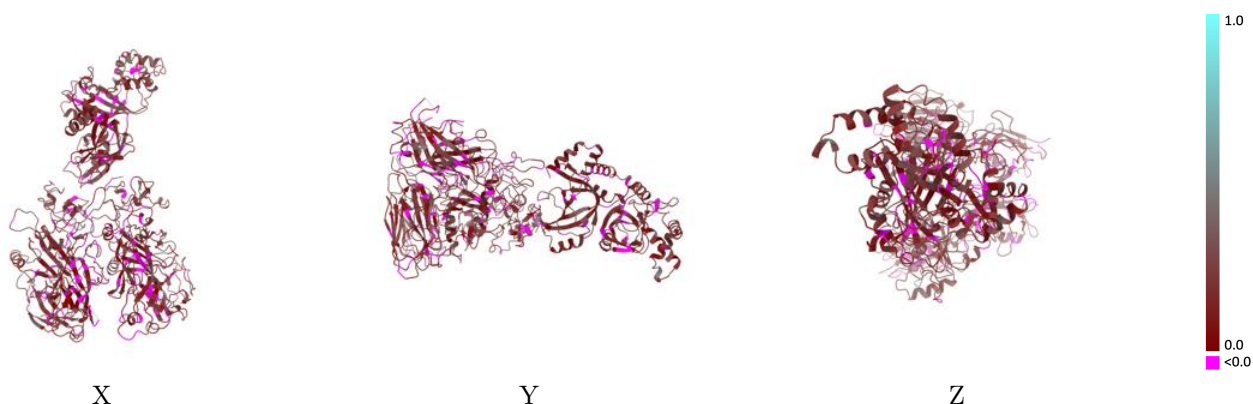
Y



Z

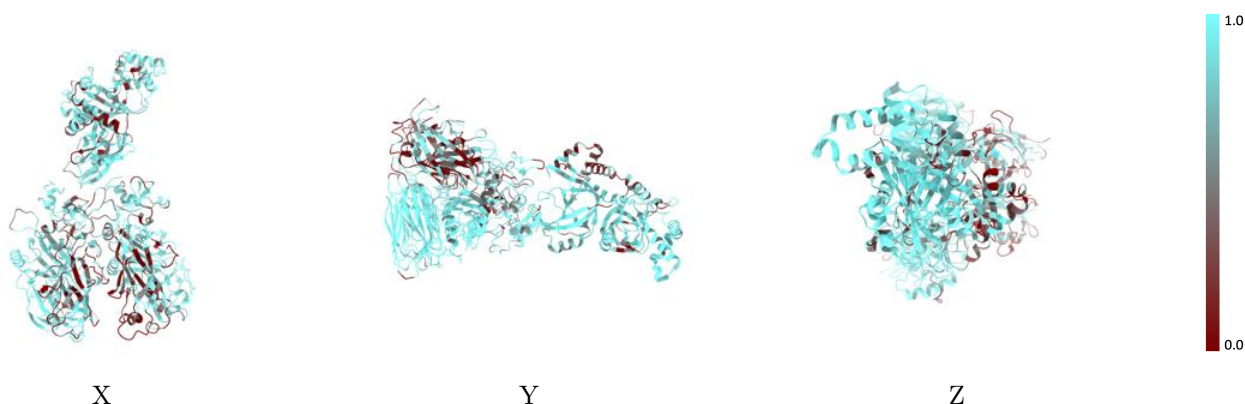
The images above show the 3D surface view of the map at the recommended contour level 0.2 at 50% transparency in yellow overlaid with a ribbon representation of the model coloured in blue. These images allow for the visual assessment of the quality of fit between the atomic model and the map.

## 9.2 Q-score mapped to coordinate model [i](#)



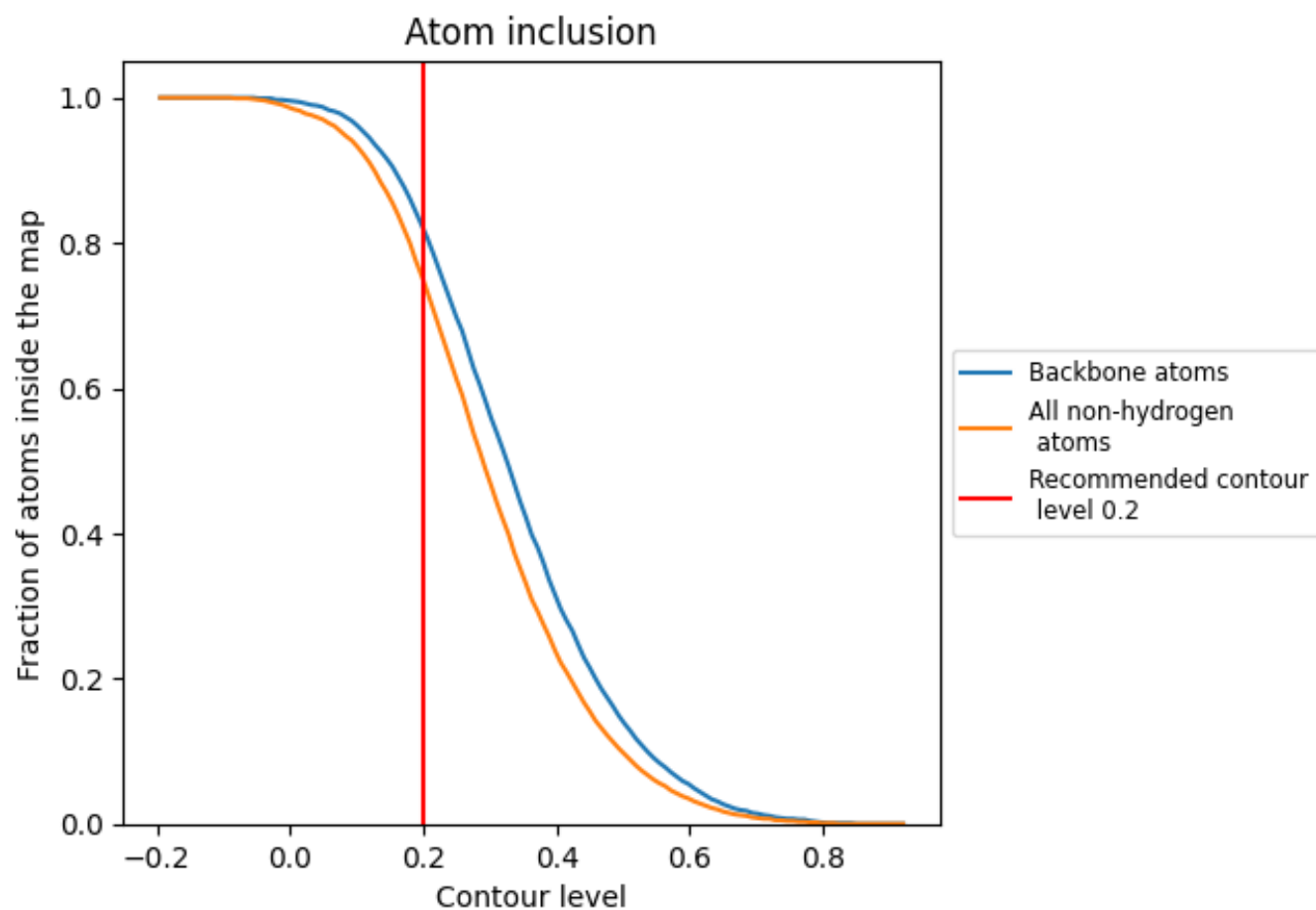
The images above show the model with each residue coloured according to its Q-score. This shows their resolvability in the map with higher Q-score values reflecting better resolvability. Please note: Q-score is calculating the resolvability of atoms, and thus high values are only expected at resolutions at which atoms can be resolved. Low Q-score values may therefore be expected for many entries.

## 9.3 Atom inclusion mapped to coordinate model [i](#)



The images above show the model with each residue coloured according to its atom inclusion. This shows to what extent they are inside the map at the recommended contour level (0.2).

## 9.4 Atom inclusion ⓘ



At the recommended contour level, 82% of all backbone atoms, 75% of all non-hydrogen atoms, are inside the map.



9.5 Map-model fit summary ⓘ

The table lists the average atom inclusion at the recommended contour level (0.2) and Q-score for the entire model and for each chain.

Chain	Atom inclusion	Q-score
All	<div></div> 0.7490	<div></div> 0.1600
A	<div></div> 0.7280	<div></div> 0.1630
B	<div></div> 0.7450	<div></div> 0.1550
Z	<div></div> 0.7830	<div></div> 0.1640

