



Full wwPDB X-ray Structure Validation Report ⓘ

Jun 17, 2024 – 12:06 AM EDT

PDB ID : 5MSQ
Title : Structure of the A domain of carboxylic acid reductase (CAR) from *Nocardia iowensis* in complex with AMP and iodide
Authors : Dunstan, M.S.; Leys, D.
Deposited on : 2017-01-05
Resolution : 1.74 Å(reported)

This is a Full wwPDB X-ray Structure Validation Report for a publicly released PDB entry.

We welcome your comments at validation@mail.wwpdb.org

A user guide is available at

<https://www.wwpdb.org/validation/2017/XrayValidationReportHelp>

with specific help available everywhere you see the ⓘ symbol.

The types of validation reports are described at

<http://www.wwpdb.org/validation/2017/FAQs#types>.

The following versions of software and data (see [references ⓘ](#)) were used in the production of this report:

MolProbity	:	4.02b-467
Mogul	:	1.8.5 (274361), CSD as541be (2020)
Xtriage (Phenix)	:	1.13
EDS	:	2.37.1
buster-report	:	1.1.7 (2018)
Percentile statistics	:	20191225.v01 (using entries in the PDB archive December 25th 2019)
Refmac	:	5.8.0158
CCP4	:	7.0.044 (Gargrove)
Ideal geometry (proteins)	:	Engh & Huber (2001)
Ideal geometry (DNA, RNA)	:	Parkinson et al. (1996)
Validation Pipeline (wwPDB-VP)	:	2.37.1

Continued from previous page...

Mol	Type	Chain	Res	Chirality	Geometry	Clashes	Electron density
3	IOD	A	1205	-	-	X	-

2 Entry composition [i](#)

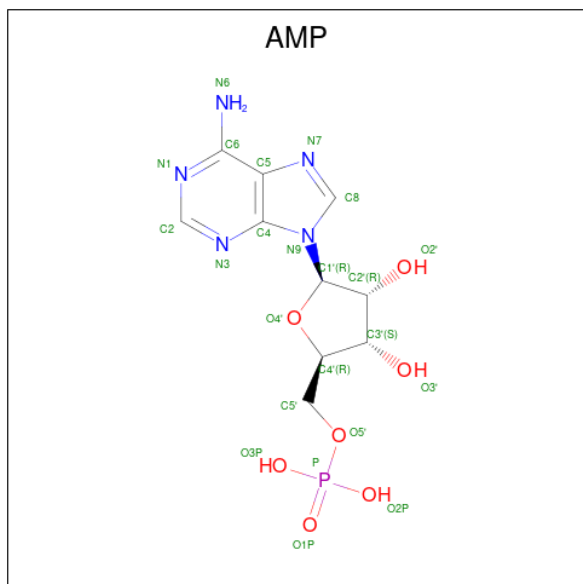
There are 4 unique types of molecules in this entry. The entry contains 5679 atoms, of which 0 are hydrogens and 0 are deuteriums.

In the tables below, the ZeroOcc column contains the number of atoms modelled with zero occupancy, the AltConf column contains the number of residues with at least one atom in alternate conformation and the Trace column contains the number of residues modelled with at most 2 atoms.

- Molecule 1 is a protein called Carboxylic acid reductase.

Mol	Chain	Residues	Atoms					ZeroOcc	AltConf	Trace
1	A	631	Total	C	N	O	S	0	0	0
			4894	3092	855	933	14			

- Molecule 2 is ADENOSINE MONOPHOSPHATE (three-letter code: AMP) (formula: $C_{10}H_{14}N_5O_7P$).



Mol	Chain	Residues	Atoms					ZeroOcc	AltConf
2	A	1	Total	C	N	O	P	0	0
			23	10	5	7	1		

- Molecule 3 is IODIDE ION (three-letter code: IOD) (formula: I).

Mol	Chain	Residues	Atoms	ZeroOcc	AltConf
3	A	5	Total 5 I 5	0	0

- Molecule 4 is water.

Mol	Chain	Residues	Atoms		ZeroOcc	AltConf
4	A	757	Total 757	O 757	0	0

4 Data and refinement statistics

Property	Value	Source
Space group	P 1 21 1	Depositor
Cell constants a, b, c, α , β , γ	52.42Å 102.61Å 66.39Å 90.00° 97.88° 90.00°	Depositor
Resolution (Å)	65.76 – 1.74 65.76 – 1.74	Depositor EDS
% Data completeness (in resolution range)	88.7 (65.76-1.74) 88.5 (65.76-1.74)	Depositor EDS
R_{merge}	0.08	Depositor
R_{sym}	(Not available)	Depositor
$\langle I/\sigma(I) \rangle$ ¹	2.11 (at 1.74Å)	Xtriage
Refinement program	PHENIX 1.8.4_1496	Depositor
R, R_{free}	0.175 , 0.208 0.176 , 0.208	Depositor DCC
R_{free} test set	3137 reflections (4.84%)	wwPDB-VP
Wilson B-factor (Å ²)	18.4	Xtriage
Anisotropy	0.039	Xtriage
Bulk solvent k_{sol} (e/Å ³), B_{sol} (Å ²)	0.40 , 49.9	EDS
L-test for twinning ²	$\langle L \rangle = 0.48$, $\langle L^2 \rangle = 0.31$	Xtriage
Estimated twinning fraction	No twinning to report.	Xtriage
F_o, F_c correlation	0.95	EDS
Total number of atoms	5679	wwPDB-VP
Average B, all atoms (Å ²)	23.0	wwPDB-VP

Xtriage's analysis on translational NCS is as follows: *The largest off-origin peak in the Patterson function is 4.39% of the height of the origin peak. No significant pseudotranslation is detected.*

¹Intensities estimated from amplitudes.

²Theoretical values of $\langle |L| \rangle$, $\langle L^2 \rangle$ for acentric reflections are 0.5, 0.333 respectively for untwinned datasets, and 0.375, 0.2 for perfectly twinned datasets.

5 Model quality [i](#)

5.1 Standard geometry [i](#)

Bond lengths and bond angles in the following residue types are not validated in this section: IOD, AMP

The Z score for a bond length (or angle) is the number of standard deviations the observed value is removed from the expected value. A bond length (or angle) with $|Z| > 5$ is considered an outlier worth inspection. RMSZ is the root-mean-square of all Z scores of the bond lengths (or angles).

Mol	Chain	Bond lengths		Bond angles	
		RMSZ	$\# Z > 5$	RMSZ	$\# Z > 5$
1	A	0.36	0/4989	0.56	1/6786 (0.0%)

There are no bond length outliers.

All (1) bond angle outliers are listed below:

Mol	Chain	Res	Type	Atoms	Z	Observed($^{\circ}$)	Ideal($^{\circ}$)
1	A	456	ARG	C-N-CD	6.10	141.20	128.40

There are no chirality outliers.

There are no planarity outliers.

5.2 Too-close contacts [i](#)

In the following table, the Non-H and H(model) columns list the number of non-hydrogen atoms and hydrogen atoms in the chain respectively. The H(added) column lists the number of hydrogen atoms added and optimized by MolProbity. The Clashes column lists the number of clashes within the asymmetric unit, whereas Symm-Clashes lists symmetry-related clashes.

Mol	Chain	Non-H	H(model)	H(added)	Clashes	Symm-Clashes
1	A	4894	0	4879	94	0
2	A	23	0	12	1	0
3	A	5	0	0	5	0
4	A	757	0	0	37	8
All	All	5679	0	4891	95	8

The all-atom clashscore is defined as the number of clashes found per 1000 atoms (including hydrogen atoms). The all-atom clashscore for this structure is 10.

All (95) close contacts within the same asymmetric unit are listed below, sorted by their clash

magnitude.

Atom-1	Atom-2	Interatomic distance (Å)	Clash overlap (Å)
1:A:76:ARG:NH2	4:A:1302:HOH:O	1.95	1.00
1:A:456:ARG:HG3	1:A:457:PRO:HD3	1.51	0.93
1:A:80:ARG:NH1	4:A:1305:HOH:O	2.01	0.93
1:A:43:ARG:NH2	1:A:246:ASP:O	2.05	0.90
1:A:91:ARG:NH1	4:A:1307:HOH:O	2.08	0.87
1:A:477:ARG:HH11	1:A:477:ARG:HG2	1.40	0.86
1:A:456:ARG:CG	1:A:457:PRO:HD3	2.06	0.85
1:A:564:ARG:NE	4:A:1303:HOH:O	1.98	0.85
1:A:564:ARG:NH2	4:A:1303:HOH:O	2.00	0.84
1:A:37:VAL:HG13	1:A:47:ILE:HD12	1.63	0.78
1:A:595:ARG:NH2	4:A:1311:HOH:O	2.12	0.78
1:A:69:ASN:ND2	4:A:1312:HOH:O	2.16	0.77
1:A:157:ILE:HD12	1:A:254:TYR:CE2	2.22	0.74
1:A:401:GLU:OE2	4:A:1306:HOH:O	2.06	0.74
1:A:456:ARG:HG3	1:A:457:PRO:CD	2.17	0.73
1:A:67:GLU:OE2	1:A:80:ARG:NH1	2.20	0.73
1:A:257:GLY:HA3	4:A:1389:HOH:O	1.88	0.72
1:A:495:ASP:OD1	1:A:510:ARG:HD2	1.88	0.72
1:A:373:ARG:NE	4:A:1315:HOH:O	2.23	0.71
1:A:31:GLU:H	1:A:31:GLU:CD	1.97	0.68
1:A:202:ARG:NH1	4:A:1321:HOH:O	2.27	0.68
1:A:596:ASP:OD1	4:A:1310:HOH:O	2.12	0.68
3:A:1202:IOD:I	4:A:1926:HOH:O	2.82	0.67
1:A:477:ARG:HH11	1:A:477:ARG:CG	2.08	0.67
1:A:456:ARG:CB	1:A:457:PRO:HD3	2.24	0.66
1:A:564:ARG:CZ	4:A:1303:HOH:O	2.29	0.65
1:A:132:ASP:OD2	1:A:304:ARG:NH2	2.29	0.64
1:A:580:GLN:HG2	4:A:1403:HOH:O	1.98	0.63
1:A:209:ARG:NH1	4:A:1326:HOH:O	2.31	0.63
1:A:456:ARG:HB3	1:A:457:PRO:HD3	1.80	0.63
1:A:510:ARG:HD3	2:A:1201:AMP:O2'	1.98	0.62
1:A:222:GLU:OE1	1:A:230:ARG:NH2	2.30	0.61
1:A:598:LEU:HG	1:A:633:MET:HE1	1.81	0.61
1:A:68:LEU:HD11	3:A:1204:IOD:I	2.72	0.60
1:A:564:ARG:HD2	4:A:1308:HOH:O	2.03	0.58
1:A:354:TYR:HB2	1:A:379:LEU:HD11	1.84	0.58
1:A:456:ARG:HB3	1:A:457:PRO:CD	2.34	0.57
1:A:60:ALA:HB2	1:A:90:TYR:CD1	2.40	0.56
1:A:202:ARG:NH2	4:A:1323:HOH:O	2.29	0.56
1:A:284:GLY:O	1:A:286:SER:N	2.39	0.56
1:A:477:ARG:NE	4:A:1340:HOH:O	2.38	0.56

Continued on next page...

Continued from previous page...

Atom-1	Atom-2	Interatomic distance (Å)	Clash overlap (Å)
1:A:564:ARG:NH1	4:A:1331:HOH:O	2.33	0.54
1:A:456:ARG:CB	1:A:457:PRO:CD	2.85	0.54
1:A:370:THR:HG22	4:A:1789:HOH:O	2.08	0.54
1:A:448:GLU:H	1:A:448:GLU:CD	2.11	0.54
1:A:483:GLU:HG2	4:A:1578:HOH:O	2.07	0.54
1:A:80:ARG:NE	4:A:1343:HOH:O	2.40	0.53
1:A:64:ARG:HG3	1:A:321:ALA:HB2	1.90	0.53
1:A:195:HIS:HB3	3:A:1204:IOD:I	2.79	0.53
1:A:31:GLU:HG2	4:A:1330:HOH:O	2.07	0.53
1:A:399:ALA:HB3	4:A:1395:HOH:O	2.08	0.53
1:A:479:GLU:HB2	3:A:1205:IOD:I	2.78	0.52
1:A:496:ILE:HD11	1:A:511:ARG:HG2	1.91	0.52
1:A:456:ARG:N	4:A:1349:HOH:O	2.41	0.52
1:A:403:LYS:NZ	1:A:416:ASP:HB2	2.25	0.51
1:A:202:ARG:HD3	4:A:1321:HOH:O	2.11	0.50
1:A:598:LEU:HG	1:A:633:MET:CE	2.40	0.50
1:A:277:GLN:HG3	4:A:1868:HOH:O	2.11	0.50
1:A:418:TYR:HB3	1:A:428:LEU:HB2	1.94	0.50
1:A:468:GLU:CD	4:A:1338:HOH:O	2.51	0.49
1:A:28:ARG:HA	1:A:289:VAL:HG22	1.93	0.49
1:A:68:LEU:HD13	1:A:197:GLU:HB2	1.94	0.49
1:A:17:LEU:HD11	1:A:387:ARG:HG3	1.95	0.48
1:A:191:VAL:HG21	1:A:205:PHE:HD1	1.79	0.48
1:A:202:ARG:CZ	4:A:1321:HOH:O	2.60	0.48
1:A:564:ARG:NH1	4:A:1308:HOH:O	2.10	0.47
1:A:286:SER:HA	4:A:1691:HOH:O	2.15	0.47
1:A:359:ASP:CG	4:A:1317:HOH:O	2.54	0.47
1:A:144:PRO:HD2	1:A:252:LEU:O	2.14	0.46
1:A:282:LEU:HD21	1:A:392:VAL:HG21	1.97	0.46
1:A:185:THR:N	1:A:186:PRO:CD	2.79	0.46
1:A:270:ARG:HG2	4:A:1468:HOH:O	2.15	0.46
1:A:52:MET:HG3	1:A:94:TRP:CE3	2.50	0.46
1:A:477:ARG:CG	1:A:477:ARG:NH1	2.71	0.46
1:A:258:SER:OG	1:A:512:ASN:OD1	2.20	0.46
1:A:457:PRO:HD2	4:A:1514:HOH:O	2.16	0.45
1:A:14:ILE:HG12	1:A:389:LEU:HD22	1.98	0.45
1:A:147:ALA:HB1	1:A:172:HIS:CE1	2.53	0.44
1:A:43:ARG:NH2	1:A:243:ASP:O	2.51	0.43
1:A:292:ASN:HB2	1:A:310:VAL:HG21	2.00	0.43
1:A:191:VAL:HG21	1:A:205:PHE:CD1	2.54	0.43
1:A:292:ASN:CB	1:A:310:VAL:HG21	2.49	0.43

Continued on next page...

Continued from previous page...

Atom-1	Atom-2	Interatomic distance (Å)	Clash overlap (Å)
1:A:537:LEU:N	1:A:537:LEU:HD12	2.33	0.43
1:A:263:LYS:HG2	4:A:1340:HOH:O	2.18	0.43
1:A:68:LEU:HD13	1:A:197:GLU:CB	2.49	0.43
1:A:480:VAL:HG23	3:A:1205:IOD:I	2.89	0.42
1:A:396:ALA:HB1	1:A:397:PRO:HD2	2.02	0.42
1:A:412:LEU:HB2	1:A:413:PRO:CD	2.49	0.42
1:A:170:PRO:HD3	1:A:192:PHE:O	2.20	0.42
1:A:464:LEU:HB3	1:A:490:PHE:HB3	2.00	0.42
1:A:482:ALA:O	4:A:1313:HOH:O	2.22	0.41
1:A:71:ASP:O	1:A:75:GLY:N	2.53	0.41
1:A:160:GLU:OE2	1:A:477:ARG:NH2	2.40	0.41
1:A:18:PHE:HD2	1:A:28:ARG:NH1	2.18	0.40
1:A:144:PRO:HB2	1:A:299:SER:HA	2.03	0.40

All (8) symmetry-related close contacts are listed below. The label for Atom-2 includes the symmetry operator and encoded unit-cell translations to be applied.

Atom-1	Atom-2	Interatomic distance (Å)	Clash overlap (Å)
4:A:1308:HOH:O	4:A:1327:HOH:O[1_554]	2.05	0.15
4:A:1985:HOH:O	4:A:2010:HOH:O[2_546]	2.06	0.14
4:A:1766:HOH:O	4:A:1927:HOH:O[2_555]	2.08	0.12
4:A:1873:HOH:O	4:A:1886:HOH:O[1_556]	2.12	0.08
4:A:1848:HOH:O	4:A:1994:HOH:O[2_556]	2.13	0.07
4:A:1818:HOH:O	4:A:2001:HOH:O[1_554]	2.17	0.03
4:A:1458:HOH:O	4:A:1508:HOH:O[1_554]	2.18	0.02
4:A:1417:HOH:O	4:A:1977:HOH:O[1_655]	2.19	0.01

5.3 Torsion angles ⓘ

5.3.1 Protein backbone ⓘ

In the following table, the Percentiles column shows the percent Ramachandran outliers of the chain as a percentile score with respect to all X-ray entries followed by that with respect to entries of similar resolution.

The Analysed column shows the number of residues for which the backbone conformation was analysed, and the total number of residues.

Mol	Chain	Analysed	Favoured	Allowed	Outliers	Percentiles
1	A	629/1174 (54%)	614 (98%)	12 (2%)	3 (0%)	29 12

All (3) Ramachandran outliers are listed below:

Mol	Chain	Res	Type
1	A	285	ASN
1	A	456	ARG
1	A	258	SER

5.3.2 Protein sidechains [i](#)

In the following table, the Percentiles column shows the percent sidechain outliers of the chain as a percentile score with respect to all X-ray entries followed by that with respect to entries of similar resolution.

The Analysed column shows the number of residues for which the sidechain conformation was analysed, and the total number of residues.

Mol	Chain	Analysed	Rotameric	Outliers	Percentiles
1	A	514/949 (54%)	509 (99%)	5 (1%)	76 63

All (5) residues with a non-rotameric sidechain are listed below:

Mol	Chain	Res	Type
1	A	31	GLU
1	A	304	ARG
1	A	370	THR
1	A	519	GLN
1	A	596	ASP

Sometimes sidechains can be flipped to improve hydrogen bonding and reduce clashes. All (2) such sidechains are listed below:

Mol	Chain	Res	Type
1	A	294	ASN
1	A	458	HIS

5.3.3 RNA [i](#)

There are no RNA molecules in this entry.

5.4 Non-standard residues in protein, DNA, RNA chains [i](#)

There are no non-standard protein/DNA/RNA residues in this entry.

5.5 Carbohydrates [i](#)

There are no monosaccharides in this entry.

5.6 Ligand geometry [i](#)

Of 6 ligands modelled in this entry, 5 are monoatomic - leaving 1 for Mogul analysis.

In the following table, the Counts columns list the number of bonds (or angles) for which Mogul statistics could be retrieved, the number of bonds (or angles) that are observed in the model and the number of bonds (or angles) that are defined in the Chemical Component Dictionary. The Link column lists molecule types, if any, to which the group is linked. The Z score for a bond length (or angle) is the number of standard deviations the observed value is removed from the expected value. A bond length (or angle) with $|Z| > 2$ is considered an outlier worth inspection. RMSZ is the root-mean-square of all Z scores of the bond lengths (or angles).

Mol	Type	Chain	Res	Link	Bond lengths			Bond angles		
					Counts	RMSZ	# $ Z > 2$	Counts	RMSZ	# $ Z > 2$
2	AMP	A	1201	-	22,25,25	1.11	3 (13%)	25,38,38	1.24	4 (16%)

In the following table, the Chirals column lists the number of chiral outliers, the number of chiral centers analysed, the number of these observed in the model and the number defined in the Chemical Component Dictionary. Similar counts are reported in the Torsion and Rings columns. '-' means no outliers of that kind were identified.

Mol	Type	Chain	Res	Link	Chirals	Torsions	Rings
2	AMP	A	1201	-	-	0/6/26/26	0/3/3/3

All (3) bond length outliers are listed below:

Mol	Chain	Res	Type	Atoms	Z	Observed(Å)	Ideal(Å)
2	A	1201	AMP	C6-N6	3.29	1.46	1.34
2	A	1201	AMP	C5-C4	2.26	1.46	1.40
2	A	1201	AMP	C2-N1	-2.14	1.29	1.33

All (4) bond angle outliers are listed below:

Mol	Chain	Res	Type	Atoms	Z	Observed(°)	Ideal(°)
2	A	1201	AMP	O3P-P-O5'	2.56	113.54	106.73
2	A	1201	AMP	O3P-P-O2P	-2.54	97.92	107.64
2	A	1201	AMP	C4-C5-N7	-2.33	106.97	109.40
2	A	1201	AMP	O2P-P-O1P	2.20	119.30	110.68

There are no chirality outliers.

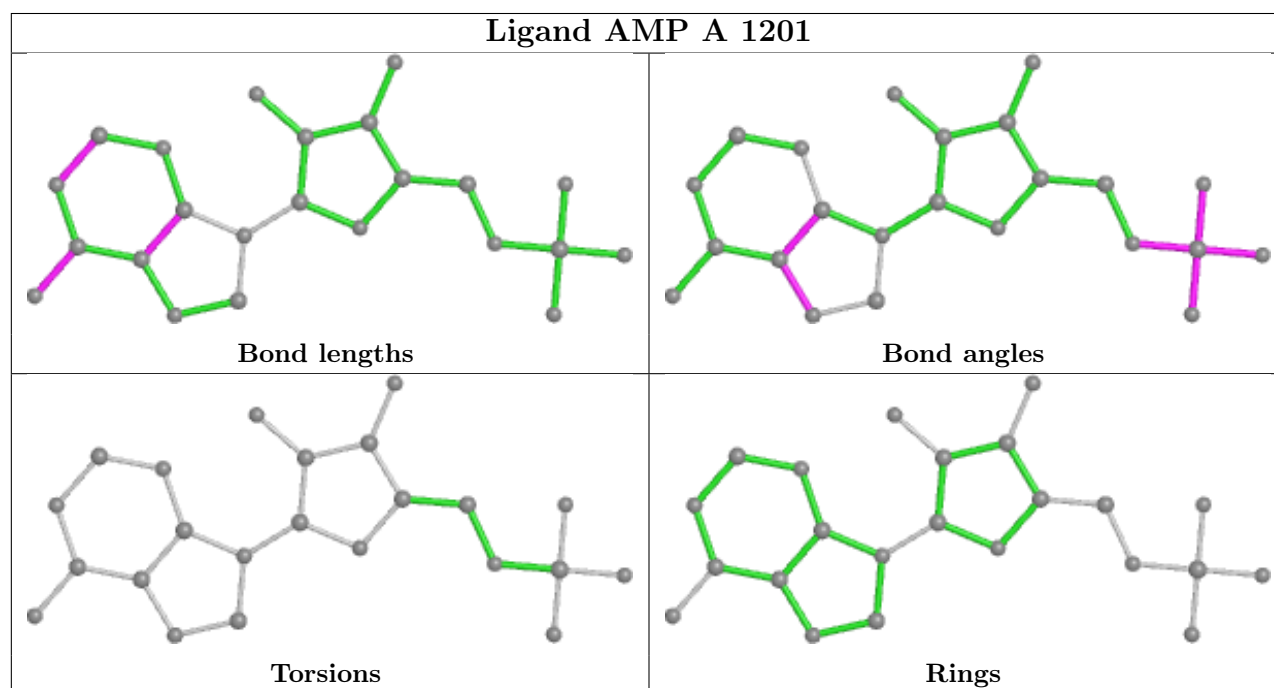
There are no torsion outliers.

There are no ring outliers.

1 monomer is involved in 1 short contact:

Mol	Chain	Res	Type	Clashes	Symm-Clashes
2	A	1201	AMP	1	0

The following is a two-dimensional graphical depiction of Mogul quality analysis of bond lengths, bond angles, torsion angles, and ring geometry for all instances of the Ligand of Interest. In addition, ligands with molecular weight > 250 and outliers as shown on the validation Tables will also be included. For torsion angles, if less than 5% of the Mogul distribution of torsion angles is within 10 degrees of the torsion angle in question, then that torsion angle is considered an outlier. Any bond that is central to one or more torsion angles identified as an outlier by Mogul will be highlighted in the graph. For rings, the root-mean-square deviation (RMSD) between the ring in question and similar rings identified by Mogul is calculated over all ring torsion angles. If the average RMSD is greater than 60 degrees and the minimal RMSD between the ring in question and any Mogul-identified rings is also greater than 60 degrees, then that ring is considered an outlier. The outliers are highlighted in purple. The color gray indicates Mogul did not find sufficient equivalents in the CSD to analyse the geometry.



5.7 Other polymers [i](#)

There are no such residues in this entry.

5.8 Polymer linkage issues ⓘ

There are no chain breaks in this entry.

6 Fit of model and data [i](#)

6.1 Protein, DNA and RNA chains [i](#)

In the following table, the column labelled ‘#RSRZ> 2’ contains the number (and percentage) of RSRZ outliers, followed by percent RSRZ outliers for the chain as percentile scores relative to all X-ray entries and entries of similar resolution. The OWAB column contains the minimum, median, 95th percentile and maximum values of the occupancy-weighted average B-factor per residue. The column labelled ‘Q< 0.9’ lists the number of (and percentage) of residues with an average occupancy less than 0.9.

Mol	Chain	Analysed	<RSRZ>	#RSRZ>2	OWAB(Å ²)	Q<0.9
1	A	631/1174 (53%)	-0.01	11 (1%) 70 76	12, 20, 35, 58	0

All (11) RSRZ outliers are listed below:

Mol	Chain	Res	Type	RSRZ
1	A	258	SER	9.4
1	A	257	GLY	5.4
1	A	284	GLY	4.7
1	A	260	GLY	4.6
1	A	259	THR	4.5
1	A	282	LEU	4.3
1	A	285	ASN	3.7
1	A	40	PRO	3.4
1	A	456	ARG	3.2
1	A	281	MET	2.3
1	A	147	ALA	2.2

6.2 Non-standard residues in protein, DNA, RNA chains [i](#)

There are no non-standard protein/DNA/RNA residues in this entry.

6.3 Carbohydrates [i](#)

There are no monosaccharides in this entry.

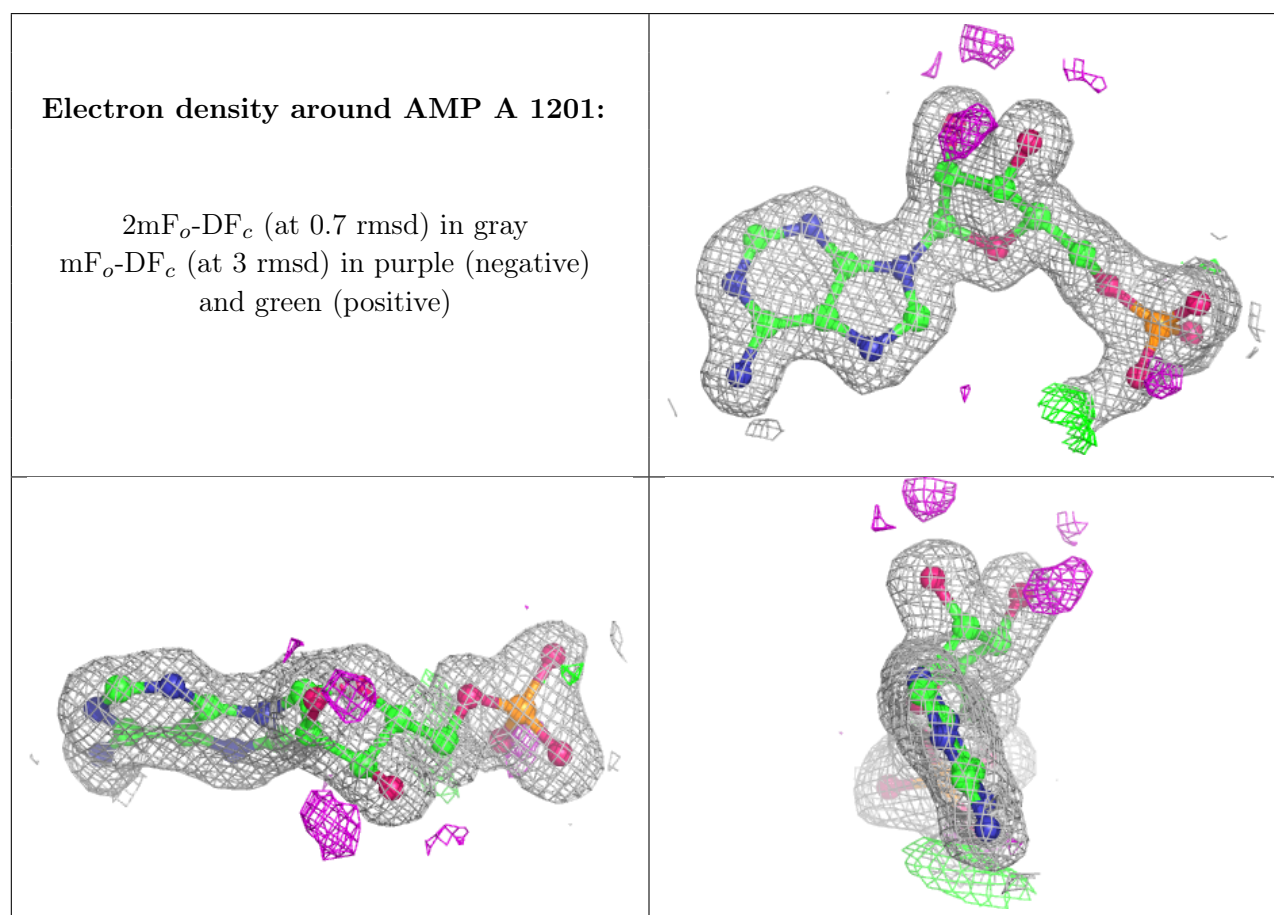
6.4 Ligands [i](#)

In the following table, the Atoms column lists the number of modelled atoms in the group and the number defined in the chemical component dictionary. The B-factors column lists the minimum,

median, 95th percentile and maximum values of B factors of atoms in the group. The column labelled 'Q< 0.9' lists the number of atoms with occupancy less than 0.9.

Mol	Type	Chain	Res	Atoms	RSCC	RSR	B-factors(\AA^2)	Q<0.9
2	AMP	A	1201	23/23	0.97	0.08	15,18,21,27	0
3	IOD	A	1202	1/1	0.99	0.11	17,17,17,17	1
3	IOD	A	1203	1/1	0.99	0.08	23,23,23,23	1
3	IOD	A	1205	1/1	0.99	0.09	19,19,19,19	1
3	IOD	A	1206	1/1	0.99	0.08	25,25,25,25	1
3	IOD	A	1204	1/1	1.00	0.08	24,24,24,24	1

The following is a graphical depiction of the model fit to experimental electron density of all instances of the Ligand of Interest. In addition, ligands with molecular weight > 250 and outliers as shown on the geometry validation Tables will also be included. Each fit is shown from different orientation to approximate a three-dimensional view.



6.5 Other polymers ⓘ

There are no such residues in this entry.