



# Full wwPDB X-ray Structure Validation Report ⓘ

Sep 29, 2025 – 02:25 PM EDT

PDB ID : 9MSR / pdb\_00009msr  
Title : BDTX-1535 in complex with WT EGFR  
Authors : Damghani, T.; Heppner, D.E.  
Deposited on : 2025-01-10  
Resolution : 1.93 Å(reported)

This is a Full wwPDB X-ray Structure Validation Report for a publicly released PDB entry.

We welcome your comments at [validation@mail.wwpdb.org](mailto:validation@mail.wwpdb.org)

A user guide is available at

<https://www.wwpdb.org/validation/2017/XrayValidationReportHelp>

with specific help available everywhere you see the ⓘ symbol.

The types of validation reports are described at

<http://www.wwpdb.org/validation/2017/FAQs#types>.

---

The following versions of software and data (see [references ⓘ](#)) were used in the production of this report:

MolProbity : 4-5-2 with Phenix2.0  
Mogul : 2022.3.0, CSD as543be (2022)  
Xtriage (Phenix) : 2.0  
EDS : 3.0  
buster-report : 1.1.7 (2018)  
Percentile statistics : 20231227.v01 (using entries in the PDB archive December 27th 2023)  
CCP4 : 9.0.010 (Gargrove)  
Density-Fitness : 1.0.12  
Ideal geometry (proteins) : Engh & Huber (2001)  
Ideal geometry (DNA, RNA) : Parkinson et al. (1996)  
Validation Pipeline (wwPDB-VP) : 2.46

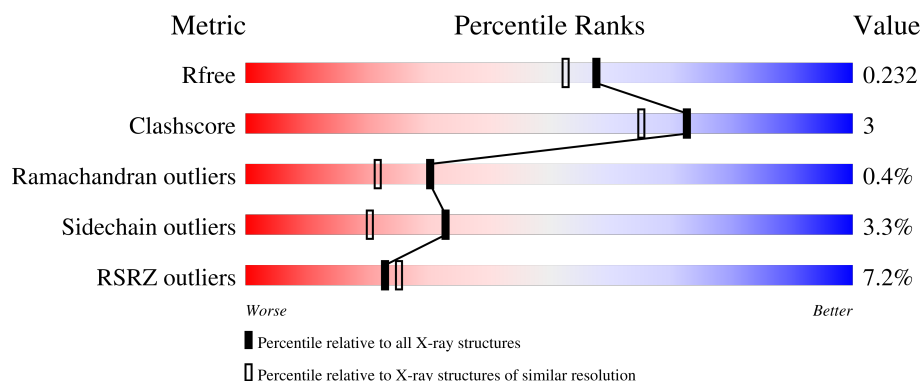
# 1 Overall quality at a glance

The following experimental techniques were used to determine the structure:

*X-RAY DIFFRACTION*

The reported resolution of this entry is 1.93 Å.

Percentile scores (ranging between 0-100) for global validation metrics of the entry are shown in the following graphic. The table shows the number of entries on which the scores are based.



Metric	Whole archive (#Entries)	Similar resolution (#Entries, resolution range(Å))
$R_{free}$	164625	1306 (1.94-1.94)
Clashscore	180529	1400 (1.94-1.94)
Ramachandran outliers	177936	1387 (1.94-1.94)
Sidechain outliers	177891	1387 (1.94-1.94)
RSRZ outliers	164620	1306 (1.94-1.94)

The table below summarises the geometric issues observed across the polymeric chains and their fit to the electron density. The red, orange, yellow and green segments of the lower bar indicate the fraction of residues that contain outliers for  $\geq 3$ , 2, 1 and 0 types of geometric quality criteria respectively. A grey segment represents the fraction of residues that are not modelled. The numeric value for each fraction is indicated below the corresponding segment, with a dot representing fractions  $\leq 5\%$ . The upper red bar (where present) indicates the fraction of residues that have poor fit to the electron density. The numeric value is given above the bar.

Mol	Chain	Length	Quality of chain
1	A	327	

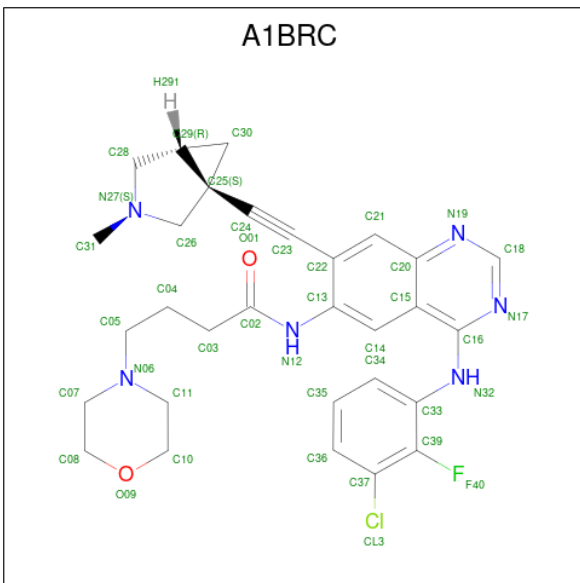


In the tables below, the ZeroOcc column contains the number of atoms modelled with zero occupancy, the AltConf column contains the number of residues with at least one atom in alternate conformation and the Trace column contains the number of residues modelled with at most 2 atoms.

- Molecule 1 is a protein called Epidermal growth factor receptor.

Mol	Chain	Residues	Atoms					ZeroOcc	AltConf	Trace
1	A	277	Total	C	N	O	S	0	0	0
			2213	1423	370	404	16			

- Molecule 2 is N-[4-(3-chloro-2-fluoroanilino)-7-[[[(1S,5R)-3-methyl-3-azabicyclo[3.1.0]hexan-1-yl]ethynyl]quinazolin-6-yl]-4-(morpholin-4-yl)butanamide (CCD ID: A1BRC) (formula: C<sub>30</sub>H<sub>32</sub>ClFN<sub>6</sub>O<sub>2</sub>) (labeled as "Ligand of Interest" by depositor).



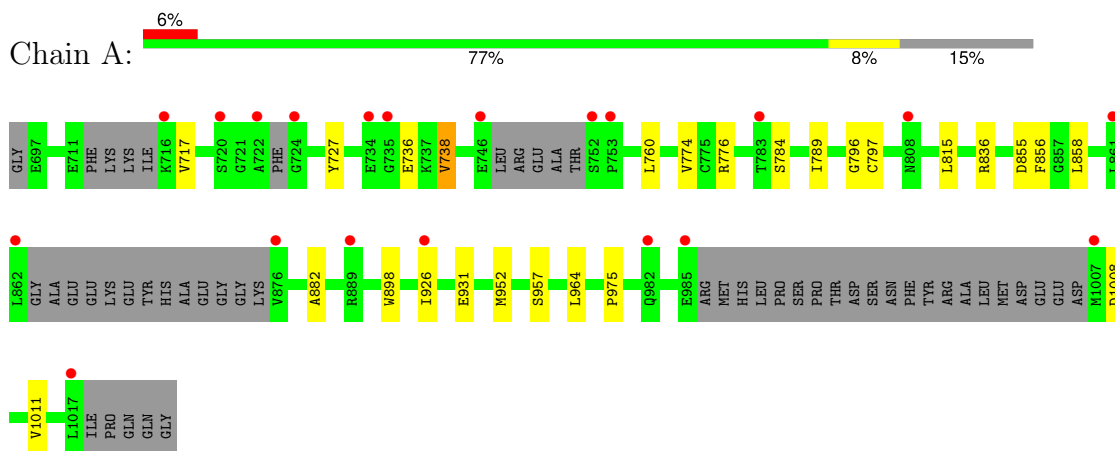
Mol	Chain	Residues	Atoms						ZeroOcc	AltConf
2	A	1	Total	C	Cl	F	N	O	0	0
			40	30	1	1	6	2		

- Molecule 3 is water.

Mol	Chain	Residues	Atoms	ZeroOcc	AltConf
3	A	108	Total O 108 108	0	0

i

- Molecule 1: Epidermal growth factor receptor



## 4 Data and refinement statistics

Property	Value	Source
Space group	I 2 3	Depositor
Cell constants a, b, c, $\alpha$ , $\beta$ , $\gamma$	145.78Å 145.78Å 145.78Å 90.00° 90.00° 90.00°	Depositor
Resolution (Å)	46.10 – 1.93 46.10 – 1.93	Depositor EDS
% Data completeness (in resolution range)	93.6 (46.10-1.93) 93.6 (46.10-1.93)	Depositor EDS
$R_{merge}$	0.12	Depositor
$R_{sym}$	(Not available)	Depositor
$\langle I/\sigma(I) \rangle$ <sup>1</sup>	1.65 (at 1.94Å)	Xtriage
Refinement program	PHENIX 1.21_5207	Depositor
R, $R_{free}$	0.197 , 0.231 0.198 , 0.232	Depositor DCC
$R_{free}$ test set	1867 reflections (4.82%)	wwPDB-VP
Wilson B-factor (Å <sup>2</sup> )	28.0	Xtriage
Anisotropy	0.000	Xtriage
Bulk solvent $k_{sol}$ (e/Å <sup>3</sup> ), $B_{sol}$ (Å <sup>2</sup> )	0.37 , 43.3	EDS
L-test for twinning <sup>2</sup>	$\langle  L  \rangle = 0.49$ , $\langle L^2 \rangle = 0.32$	Xtriage
Estimated twinning fraction	0.028 for -l,-k,-h	Xtriage
$F_o, F_c$ correlation	0.95	EDS
Total number of atoms	2361	wwPDB-VP
Average B, all atoms (Å <sup>2</sup> )	34.0	wwPDB-VP

Xtriage's analysis on translational NCS is as follows: *The largest off-origin peak in the Patterson function is 2.80% of the height of the origin peak. No significant pseudotranslation is detected.*

<sup>1</sup>Intensities estimated from amplitudes.

<sup>2</sup>Theoretical values of  $\langle |L| \rangle$ ,  $\langle L^2 \rangle$  for acentric reflections are 0.5, 0.333 respectively for untwinned datasets, and 0.375, 0.2 for perfectly twinned datasets.

## 5 Model quality

### 5.1 Standard geometry

Bond lengths and bond angles in the following residue types are not validated in this section: A1BRC

The Z score for a bond length (or angle) is the number of standard deviations the observed value is removed from the expected value. A bond length (or angle) with  $|Z| > 5$  is considered an outlier worth inspection. RMSZ is the root-mean-square of all Z scores of the bond lengths (or angles).

Mol	Chain	Bond lengths		Bond angles	
		RMSZ	$\# Z  > 5$	RMSZ	$\# Z  > 5$
1	A	0.59	0/2256	0.67	0/3052

There are no bond length outliers.

There are no bond angle outliers.

There are no chirality outliers.

There are no planarity outliers.

### 5.2 Too-close contacts

In the following table, the Non-H and H(model) columns list the number of non-hydrogen atoms and hydrogen atoms in the chain respectively. The H(added) column lists the number of hydrogen atoms added and optimized by MolProbity. The Clashes column lists the number of clashes within the asymmetric unit, whereas Symm-Clashes lists symmetry-related clashes.

Mol	Chain	Non-H	H(model)	H(added)	Clashes	Symm-Clashes
1	A	2213	0	2251	12	0
2	A	40	0	0	5	0
3	A	108	0	0	2	0
All	All	2361	0	2251	14	0

The all-atom clashscore is defined as the number of clashes found per 1000 atoms (including hydrogen atoms). The all-atom clashscore for this structure is 3.

All (14) close contacts within the same asymmetric unit are listed below, sorted by their clash magnitude.

Atom-1	Atom-2	Interatomic distance (Å)	Clash overlap (Å)
1:A:797:CYS:SG	2:A:1101:A1BRC:C04	2.24	1.26

*Continued on next page...*

Continued from previous page...

Atom-1	Atom-2	Interatomic distance (Å)	Clash overlap (Å)
2:A:1101:A1BRC:N06	3:A:1202:HOH:O	2.31	0.61
1:A:797:CYS:SG	2:A:1101:A1BRC:C03	2.94	0.55
1:A:738:VAL:HG22	1:A:1011:VAL:HG21	1.91	0.52
1:A:717:VAL:HG22	1:A:727:TYR:CE1	2.46	0.51
1:A:776:ARG:HH11	1:A:776:ARG:HB3	1.77	0.50
1:A:796:GLY:HA2	2:A:1101:A1BRC:C23	2.43	0.49
2:A:1101:A1BRC:C05	3:A:1202:HOH:O	2.61	0.47
1:A:774:VAL:HG13	1:A:856:PHE:HZ	1.80	0.46
1:A:815:LEU:HD12	1:A:975:PRO:HB3	1.99	0.45
1:A:882:ALA:HA	1:A:898:TRP:CD2	2.55	0.42
1:A:836:ARG:HD3	1:A:858:LEU:O	2.19	0.42
1:A:952:MET:HE3	1:A:957:SER:HB3	2.02	0.42
1:A:789:ILE:HD12	1:A:789:ILE:N	2.36	0.41

There are no symmetry-related clashes.

## 5.3 Torsion angles [i](#)

### 5.3.1 Protein backbone [i](#)

In the following table, the Percentiles column shows the percent Ramachandran outliers of the chain as a percentile score with respect to all X-ray entries followed by that with respect to entries of similar resolution.

The Analysed column shows the number of residues for which the backbone conformation was analysed, and the total number of residues.

Mol	Chain	Analysed	Favoured	Allowed	Outliers	Percentiles	
1	A	265/327 (81%)	260 (98%)	4 (2%)	1 (0%)	30	22

All (1) Ramachandran outliers are listed below:

Mol	Chain	Res	Type
1	A	784	SER

### 5.3.2 Protein sidechains [i](#)

In the following table, the Percentiles column shows the percent sidechain outliers of the chain as a percentile score with respect to all X-ray entries followed by that with respect to entries of similar resolution.

The Analysed column shows the number of residues for which the sidechain conformation was analysed, and the total number of residues.

Mol	Chain	Analysed	Rotameric	Outliers	Percentiles	
1	A	246/287 (86%)	238 (97%)	8 (3%)	33	20

All (8) residues with a non-rotameric sidechain are listed below:

Mol	Chain	Res	Type
1	A	736	GLU
1	A	738	VAL
1	A	760	LEU
1	A	855	ASP
1	A	926	ILE
1	A	931	GLU
1	A	964	LEU
1	A	1008	ASP

Sometimes sidechains can be flipped to improve hydrogen bonding and reduce clashes. There are no such sidechains identified.

### 5.3.3 RNA [i](#)

There are no RNA molecules in this entry.

## 5.4 Non-standard residues in protein, DNA, RNA chains [i](#)

There are no non-standard protein/DNA/RNA residues in this entry.

## 5.5 Carbohydrates [i](#)

There are no oligosaccharides in this entry.

## 5.6 Ligand geometry [i](#)

1 ligand is modelled in this entry.

In the following table, the Counts columns list the number of bonds (or angles) for which Mogul statistics could be retrieved, the number of bonds (or angles) that are observed in the model and the number of bonds (or angles) that are defined in the Chemical Component Dictionary. The Link column lists molecule types, if any, to which the group is linked. The Z score for a bond length (or angle) is the number of standard deviations the observed value is removed from the



expected value. A bond length (or angle) with  $|Z| > 2$  is considered an outlier worth inspection. RMSZ is the root-mean-square of all Z scores of the bond lengths (or angles).

Mol	Type	Chain	Res	Link	Bond lengths			Bond angles		
					Counts	RMSZ	$\# Z  > 2$	Counts	RMSZ	$\# Z  > 2$
2	A1BRC	A	1101	-	43,45,45	2.79	16 (37%)	58,65,65	4.23	26 (44%)

In the following table, the Chirals column lists the number of chiral outliers, the number of chiral centers analysed, the number of these observed in the model and the number defined in the Chemical Component Dictionary. Similar counts are reported in the Torsion and Rings columns. '-' means no outliers of that kind were identified.

Mol	Type	Chain	Res	Link	Chirals	Torsions	Rings
2	A1BRC	A	1101	-	-	4/17/45/45	0/6/6/6

All (16) bond length outliers are listed below:

Mol	Chain	Res	Type	Atoms	Z	Observed(Å)	Ideal(Å)
2	A	1101	A1BRC	C05-N06	-8.95	1.27	1.47
2	A	1101	A1BRC	C22-C23	7.27	1.57	1.43
2	A	1101	A1BRC	C16-N32	6.66	1.46	1.36
2	A	1101	A1BRC	C02-N12	6.09	1.48	1.35
2	A	1101	A1BRC	C04-C03	-3.71	1.38	1.52
2	A	1101	A1BRC	C11-N06	-2.91	1.39	1.46
2	A	1101	A1BRC	C15-C20	-2.82	1.38	1.42
2	A	1101	A1BRC	C23-C24	2.80	1.23	1.19
2	A	1101	A1BRC	C04-C05	2.80	1.62	1.51
2	A	1101	A1BRC	F40-C39	2.78	1.38	1.34
2	A	1101	A1BRC	C37-CL3	2.70	1.80	1.73
2	A	1101	A1BRC	C33-N32	2.52	1.46	1.39
2	A	1101	A1BRC	C21-C22	2.31	1.42	1.37
2	A	1101	A1BRC	C33-C39	2.19	1.42	1.38
2	A	1101	A1BRC	C07-N06	-2.19	1.41	1.46
2	A	1101	A1BRC	C21-C20	2.12	1.45	1.41

All (26) bond angle outliers are listed below:

Mol	Chain	Res	Type	Atoms	Z	Observed(°)	Ideal(°)
2	A	1101	A1BRC	C26-C25-C30	17.24	137.47	115.06
2	A	1101	A1BRC	C30-C29-C28	14.83	140.76	116.10
2	A	1101	A1BRC	O01-C02-C03	-8.76	106.15	122.02
2	A	1101	A1BRC	C03-C02-N12	7.92	128.38	114.59
2	A	1101	A1BRC	C16-C15-C20	6.85	119.91	115.86
2	A	1101	A1BRC	C04-C05-N06	6.23	131.45	113.93

*Continued on next page...*

*Continued from previous page...*

Mol	Chain	Res	Type	Atoms	Z	Observed(°)	Ideal(°)
2	A	1101	A1BRC	C25-C26-N27	5.89	109.61	103.82
2	A	1101	A1BRC	C14-C15-C16	-5.27	120.56	124.84
2	A	1101	A1BRC	C18-N17-C16	5.06	120.53	116.60
2	A	1101	A1BRC	C15-C16-N17	-4.53	117.99	121.35
2	A	1101	A1BRC	N19-C18-N17	-4.38	122.72	128.67
2	A	1101	A1BRC	C18-N19-C20	4.18	120.18	115.43
2	A	1101	A1BRC	C15-C20-N19	-3.99	118.59	122.82
2	A	1101	A1BRC	C04-C03-C02	3.81	123.76	113.19
2	A	1101	A1BRC	C28-N27-C26	3.48	108.14	104.34
2	A	1101	A1BRC	C33-N32-C16	-2.91	119.68	128.85
2	A	1101	A1BRC	C39-C33-N32	2.72	122.32	117.03
2	A	1101	A1BRC	C11-N06-C07	2.71	114.68	108.84
2	A	1101	A1BRC	C25-C30-C29	-2.59	60.14	61.44
2	A	1101	A1BRC	C30-C25-C29	2.43	60.25	58.55
2	A	1101	A1BRC	C14-C13-C22	2.40	122.71	118.73
2	A	1101	A1BRC	F40-C39-C33	2.36	122.03	118.28
2	A	1101	A1BRC	C13-N12-C02	-2.28	118.97	126.61
2	A	1101	A1BRC	C33-C39-C37	-2.04	119.57	121.42
2	A	1101	A1BRC	C21-C22-C13	-2.04	117.96	119.85
2	A	1101	A1BRC	C39-C37-CL3	-2.03	118.14	119.44

There are no chirality outliers.

All (4) torsion outliers are listed below:

Mol	Chain	Res	Type	Atoms
2	A	1101	A1BRC	C22-C23-C24-C25
2	A	1101	A1BRC	C34-C33-N32-C16
2	A	1101	A1BRC	C02-C03-C04-C05
2	A	1101	A1BRC	C39-C33-N32-C16

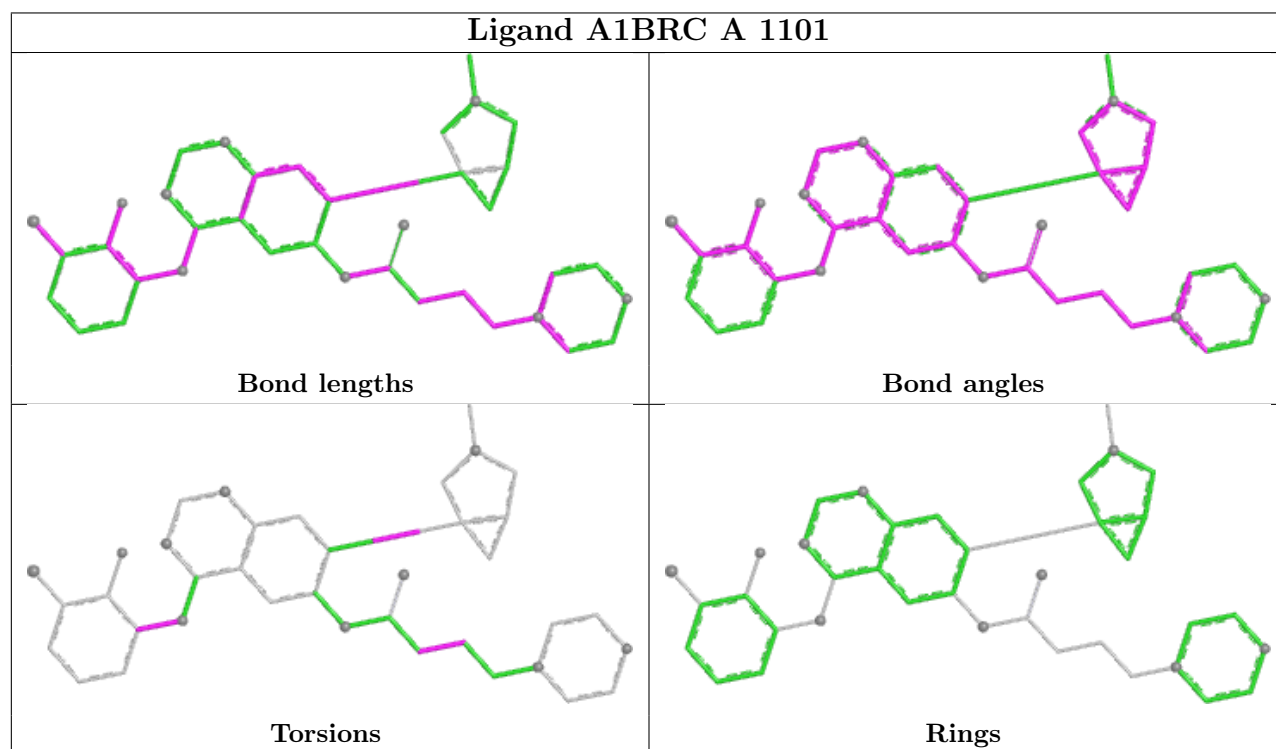
There are no ring outliers.

1 monomer is involved in 5 short contacts:

Mol	Chain	Res	Type	Clashes	Symm-Clashes
2	A	1101	A1BRC	5	0

The following is a two-dimensional graphical depiction of Mogul quality analysis of bond lengths, bond angles, torsion angles, and ring geometry for all instances of the Ligand of Interest. In addition, ligands with molecular weight > 250 and outliers as shown on the validation Tables will also be included. For torsion angles, if less than 5% of the Mogul distribution of torsion angles is within 10 degrees of the torsion angle in question, then that torsion angle is considered an outlier. Any bond that is central to one or more torsion angles identified as an outlier by Mogul will be

highlighted in the graph. For rings, the root-mean-square deviation (RMSD) between the ring in question and similar rings identified by Mogul is calculated over all ring torsion angles. If the average RMSD is greater than 60 degrees and the minimal RMSD between the ring in question and any Mogul-identified rings is also greater than 60 degrees, then that ring is considered an outlier. The outliers are highlighted in purple. The color gray indicates Mogul did not find sufficient equivalents in the CSD to analyse the geometry.



## 5.7 Other polymers [i](#)

There are no such residues in this entry.

## 5.8 Polymer linkage issues [i](#)

There are no chain breaks in this entry.

## 6 Fit of model and data [i](#)

### 6.1 Protein, DNA and RNA chains [i](#)

In the following table, the column labelled ‘#RSRZ > 2’ contains the number (and percentage) of RSRZ outliers, followed by percent RSRZ outliers for the chain as percentile scores relative to all X-ray entries and entries of similar resolution. The OWAB column contains the minimum, median, 95<sup>th</sup> percentile and maximum values of the occupancy-weighted average B-factor per residue. The column labelled ‘Q < 0.9’ lists the number of (and percentage) of residues with an average occupancy less than 0.9.

Mol	Chain	Analysed	<RSRZ>	#RSRZ > 2		OWAB(Å <sup>2</sup> )	Q < 0.9
1	A	277/327 (84%)	0.25	20 (7%)	23 25	20, 30, 60, 75	0

All (20) RSRZ outliers are listed below:

Mol	Chain	Res	Type	RSRZ
1	A	1007	MET	4.5
1	A	724	GLY	3.8
1	A	722	ALA	3.7
1	A	876	VAL	3.6
1	A	861	LEU	3.5
1	A	783	THR	3.4
1	A	735	GLY	3.3
1	A	862	LEU	3.3
1	A	985	GLU	3.1
1	A	720	SER	3.0
1	A	1017	LEU	2.8
1	A	889	ARG	2.7
1	A	926	ILE	2.4
1	A	753	PRO	2.4
1	A	808	ASN	2.3
1	A	716	LYS	2.2
1	A	752	SER	2.2
1	A	982	GLN	2.2
1	A	734	GLU	2.1
1	A	746	GLU	2.0

### 6.2 Non-standard residues in protein, DNA, RNA chains [i](#)

There are no non-standard protein/DNA/RNA residues in this entry.

## 6.3 Carbohydrates [i](#)

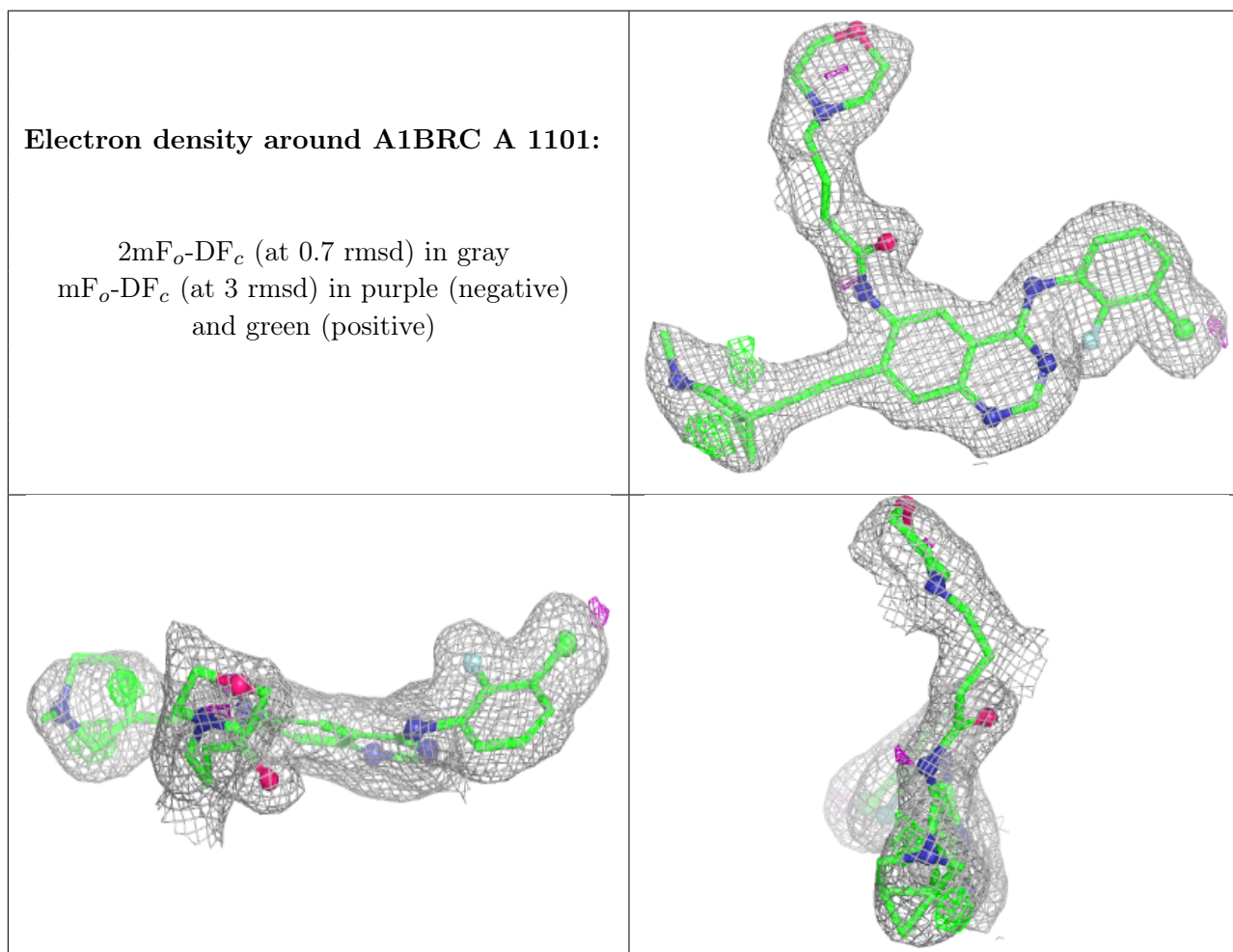
There are no oligosaccharides in this entry.

## 6.4 Ligands [i](#)

In the following table, the Atoms column lists the number of modelled atoms in the group and the number defined in the chemical component dictionary. The B-factors column lists the minimum, median, 95<sup>th</sup> percentile and maximum values of B factors of atoms in the group. The column labelled 'Q< 0.9' lists the number of atoms with occupancy less than 0.9.

Mol	Type	Chain	Res	Atoms	RSCC	RSR	B-factors(Å <sup>2</sup> )	Q<0.9
2	A1BRC	A	1101	40/40	0.95	0.10	23,32,59,65	0

The following is a graphical depiction of the model fit to experimental electron density of all instances of the Ligand of Interest. In addition, ligands with molecular weight > 250 and outliers as shown on the geometry validation Tables will also be included. Each fit is shown from different orientation to approximate a three-dimensional view.



## 6.5 Other polymers [i](#)

There are no such residues in this entry.