



wwPDB X-ray Structure Validation Summary Report ⓘ

Nov 18, 2025 – 11:35 AM EST

PDB ID : 9MWN / pdb_00009mwn
Title : Structure of human endothelial nitric oxide synthase heme domain bound with N-(4-(2-((3-(thiophene-2-carboximidamido)benzyl)amino)ethyl)phenyl)thiophene-2-carboximidamide
Authors : Li, H.; Poulos, T.L.
Deposited on : 2025-01-17
Resolution : 2.00 Å(reported)

This is a wwPDB X-ray Structure Validation Summary Report for a publicly released PDB entry.

We welcome your comments at validation@mail.wwpdb.org

A user guide is available at

<https://www.wwpdb.org/validation/2017/XrayValidationReportHelp>

with specific help available everywhere you see the ⓘ symbol.

The types of validation reports are described at

<http://www.wwpdb.org/validation/2017/FAQs#types>.

The following versions of software and data (see [references ⓘ](#)) were used in the production of this report:

MolProbity	:	4-5-2 with Phenix2.0
Mogul	:	2022.3.0, CSD as543be (2022)
Xtriage (Phenix)	:	2.0
EDS	:	3.0
buster-report	:	1.1.7 (2018)
Percentile statistics	:	20231227.v01 (using entries in the PDB archive December 27th 2023)
CCP4	:	9.0.010 (Gargrove)
Density-Fitness	:	1.0.12
Ideal geometry (proteins)	:	Engh & Huber (2001)
Ideal geometry (DNA, RNA)	:	Parkinson et al. (1996)
Validation Pipeline (wwPDB-VP)	:	2.46

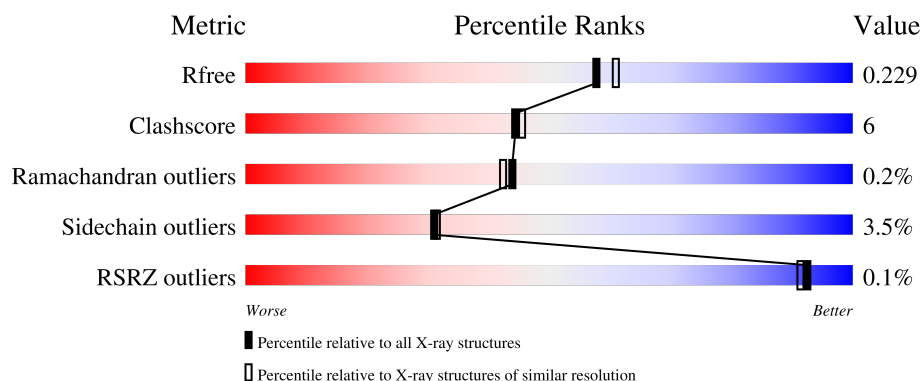
1 Overall quality at a glance

The following experimental techniques were used to determine the structure:

X-RAY DIFFRACTION

The reported resolution of this entry is 2.00 Å.

Percentile scores (ranging between 0-100) for global validation metrics of the entry are shown in the following graphic. The table shows the number of entries on which the scores are based.



Metric	Whole archive (#Entries)	Similar resolution (#Entries, resolution range(Å))
R_{free}	164625	9409 (2.00-2.00)
Clashscore	180529	10737 (2.00-2.00)
Ramachandran outliers	177936	10628 (2.00-2.00)
Sidechain outliers	177891	10627 (2.00-2.00)
RSRZ outliers	164620	9409 (2.00-2.00)

The table below summarises the geometric issues observed across the polymeric chains and their fit to the electron density. The red, orange, yellow and green segments of the lower bar indicate the fraction of residues that contain outliers for ≥ 3 , 2, 1 and 0 types of geometric quality criteria respectively. A grey segment represents the fraction of residues that are not modelled. The numeric value for each fraction is indicated below the corresponding segment, with a dot representing fractions $\leq 5\%$. The upper red bar (where present) indicates the fraction of residues that have poor fit to the electron density. The numeric value is given above the bar.

Mol	Chain	Length	Quality of chain
1	A	441	
1	B	441	
1	C	441	
1	D	441	

2 Entry composition

There are 11 unique types of molecules in this entry. The entry contains 14197 atoms, of which 0 are hydrogens and 0 are deuteriums.

In the tables below, the ZeroOcc column contains the number of atoms modelled with zero occupancy, the AltConf column contains the number of residues with at least one atom in alternate conformation and the Trace column contains the number of residues modelled with at most 2 atoms.

- Molecule 1 is a protein called Nitric oxide synthase 3.

Mol	Chain	Residues	Atoms					ZeroOcc	AltConf	Trace
1	A	400	Total	C	N	O	S	0	1	0
			3199	2038	563	582	16			
1	B	403	Total	C	N	O	S	0	2	0
			3224	2054	567	587	16			
1	C	400	Total	C	N	O	S	0	1	0
			3199	2038	563	582	16			
1	D	402	Total	C	N	O	S	0	2	0
			3214	2048	565	585	16			

There are 4 discrepancies between the modelled and reference sequences:

Chain	Residue	Modelled	Actual	Comment	Reference
A	298	GLU	ASP	variant	UNP P29474
B	298	GLU	ASP	variant	UNP P29474
C	298	GLU	ASP	variant	UNP P29474
D	298	GLU	ASP	variant	UNP P29474

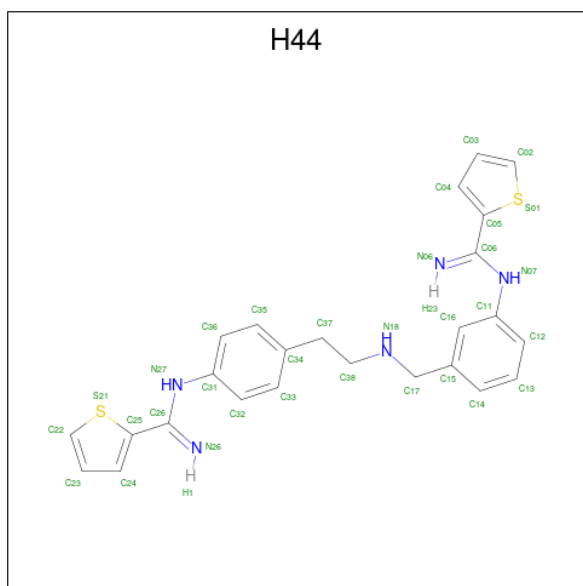
- Molecule 2 is PROTOPORPHYRIN IX CONTAINING FE (CCD ID: HEM) (formula: $C_{34}H_{32}FeN_4O_4$).



-
- The chemical structure of H4B (Hydroxybenzoylserine) is shown with stereochemistry. The molecule consists of a benzoyl group attached to a serine derivative. The stereochemistry is indicated by wedges and dashes: the hydroxyl group (OH) on the serine ring is shown with a wedge bond, and the hydroxyl group (OH) on the benzoyl group is shown with a dashed bond. The atom numbering is as follows: N1, N2, N3, N4, N5, N6, N7, N8, N9, N10, N11, N12, N13, N14, N15, N16, N17, N18, N19, N20, N21, N22, N23, N24, N25, N26, N27, N28, N29, N30, N31, N32, N33, N34, N35, N36, N37, N38, N39, N40, N41, N42, N43, N44, N45, N46, N47, N48, N49, N50, N51, N52, N53, N54, N55, N56, N57, N58, N59, N60, N61, N62, N63, N64, N65, N66, N67, N68, N69, N70, N71, N72, N73, N74, N75, N76, N77, N78, N79, N80, N81, N82, N83, N84, N85, N86, N87, N88, N89, N90, N91, N92, N93, N94, N95, N96, N97, N98, N99, N100, N101, N102, N103, N104, N105, N106, N107, N108, N109, N110, N111, N112, N113, N114, N115, N116, N117, N118, N119, N120, N121, N122, N123, N124, N125, N126, N127, N128, N129, N130, N131, N132, N133, N134, N135, N136, N137, N138, N139, N140, N141, N142, N143, N144, N145, N146, N147, N148, N149, N150, N151, N152, N153, N154, N155, N156, N157, N158, N159, N160, N161, N162, N163, N164, N165, N166, N167, N168, N169, N170, N171, N172, N173, N174, N175, N176, N177, N178, N179, N180, N181, N182, N183, N184, N185, N186, N187, N188, N189, N190, N191, N192, N193, N194, N195, N196, N197, N198, N199, N200, N201, N202, N203, N204, N205, N206, N207, N208, N209, N210, N211, N212, N213, N214, N215, N216, N217, N218, N219, N220, N221, N222, N223, N224, N225, N226, N227, N228, N229, N230, N231, N232, N233, N234, N235, N236, N237, N238, N239, N240, N241, N242, N243, N244, N245, N246, N247, N248, N249, N250, N251, N252, N253, N254, N255, N256, N257, N258, N259, N260, N261, N262, N263, N264, N265, N266, N267, N268, N269, N270, N271, N272, N273, N274, N275, N276, N277, N278, N279, N280, N281, N282, N283, N284, N285, N286, N287, N288, N289, N290, N291, N292, N293, N294, N295, N296, N297, N298, N299, N300, N301, N302, N303, N304, N305, N306, N307, N308, N309, N310, N311, N312, N313, N314, N315, N316, N317, N318, N319, N320, N321, N322, N323, N324, N325, N326, N327, N328, N329, N330, N331, N332, N333, N334, N335, N336, N337, N338, N339, N340, N341, N342, N343, N344, N345, N346, N347, N348, N349, N350, N351, N352, N353, N354, N355, N356, N357, N358, N359, N360, N361, N362, N363, N364, N365, N366, N367, N368, N369, N370, N371, N372, N373, N374, N375, N376, N377, N378, N379, N380, N381, N382, N383, N384, N385, N386, N387, N388, N389, N390, N391, N392, N393, N394, N395, N396, N397, N398, N399, N400, N401, N402, N403, N404, N405, N406, N407, N408, N409, N410, N411, N412, N413, N414, N415, N416, N417, N418, N419, N420, N421, N422, N423, N424, N425, N426, N427, N428, N429, N430, N431, N432, N433, N434, N435, N436, N437, N438, N439, N440, N441, N442, N443, N444, N445, N446, N447, N448, N449, N450, N451, N452, N453, N454, N455, N456, N457, N458, N459, N460, N461, N462, N463, N464, N465, N466, N467, N468, N469, N470, N471, N472, N473, N474, N475, N476, N477, N478, N479, N480, N481, N482, N483, N484, N485, N486, N487, N488, N489, N490, N491, N492, N493, N494, N495, N496, N497, N498, N499, N500, N501, N502, N503, N504, N505, N506, N507, N508, N509, N510, N511, N512, N513, N514, N515, N516, N517, N518, N519, N520, N521, N522, N523, N524, N525, N526, N527, N528, N529, N530, N531, N532, N533, N534, N535, N536, N537, N538, N539, N540, N541, N542, N543, N544, N545, N546, N547, N548, N549, N550, N551, N552, N553, N554, N555, N556, N557, N558, N559, N560, N561, N562, N563, N564, N565, N566, N567, N568, N569, N570, N571, N572, N573, N574, N575, N576, N577, N578, N579, N580, N581, N582, N583, N584, N585, N586, N587, N588, N589, N590, N591, N592, N593, N594, N595, N596, N597, N598, N599, N600, N601, N602, N603, N604, N605, N606, N607, N608, N609, N610, N611, N612, N613, N614, N615, N616, N617, N618, N619, N620, N621, N622, N623, N624, N625, N626, N627, N628, N629, N630, N631, N632, N633, N634, N635, N636, N637, N638, N639, N640, N641, N642, N643, N644, N645, N646, N647, N648, N649, N650, N651, N652, N653, N654, N655, N656, N657, N658, N659, N660, N661, N662, N663, N664, N665, N666, N667, N668, N669, N670, N671, N672, N673, N674, N675, N676, N677, N678, N679, N680, N681, N682, N683, N684, N685, N686, N687, N688, N689, N690, N691, N692, N693, N694, N695, N696, N697, N698, N699, N700, N701, N702, N703, N704, N705, N706, N707, N708, N709, N710, N711, N712, N713, N714, N715, N716, N717, N718, N719, N720, N721, N722, N723, N724, N725, N726, N727, N728, N729, N730, N731, N732, N733, N734, N735, N736, N737, N738, N739, N740, N741, N742, N743, N744, N745, N746, N747, N748, N749, N750, N751, N752, N753, N754, N755, N756, N757, N758, N759, N760, N761, N762, N763, N764, N765, N766, N767, N768, N769, N770, N771, N772, N773, N774, N775, N776, N777, N778, N779, N780, N781, N782, N783, N784, N785, N786, N787, N788, N789, N790, N791, N792, N793, N794, N795, N796, N797, N798, N799, N800, N801, N802, N803, N804, N805, N806, N807, N808, N809, N810, N811, N812, N813, N814, N815

Mol	Chain	Residues	Atoms	ZeroOcc	AltConf
3	A	1	Total C N O 17 9 5 3	0	0
3	B	1	Total C N O 17 9 5 3	0	0
3	C	1	Total C N O 17 9 5 3	0	0
3	D	1	Total C N O 17 9 5 3	0	0

- Molecule 4 is N-(4-{2-[(3-{[(E)-imino(thiophen-2-yl)methyl]amino}benzyl)amino]ethyl}phenyl)thiophene-2-carboximidamide (CCD ID: H44) (formula: C₂₅H₂₅N₅S₂) (labeled as "Ligand of Interest" by depositor).



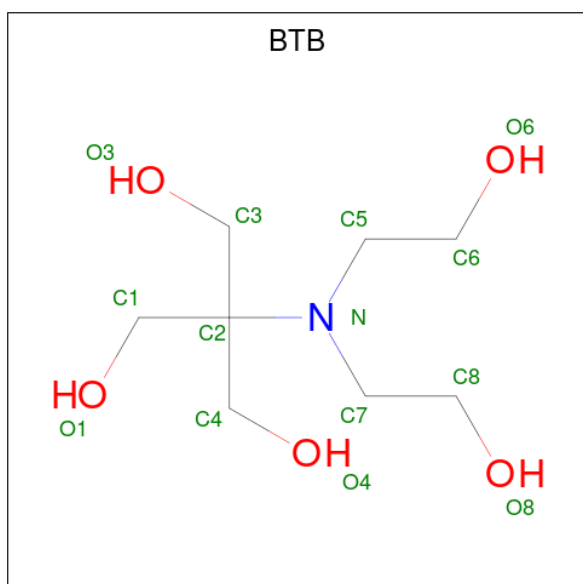
Mol	Chain	Residues	Atoms	ZeroOcc	AltConf
4	A	1	Total C N S 32 25 5 2	0	0
4	B	1	Total C N S 32 25 5 2	0	0
4	C	1	Total C N S 32 25 5 2	0	0
4	D	1	Total C N S 32 25 5 2	0	0

- Molecule 5 is ACETATE ION (CCD ID: ACT) (formula: C₂H₃O₂).



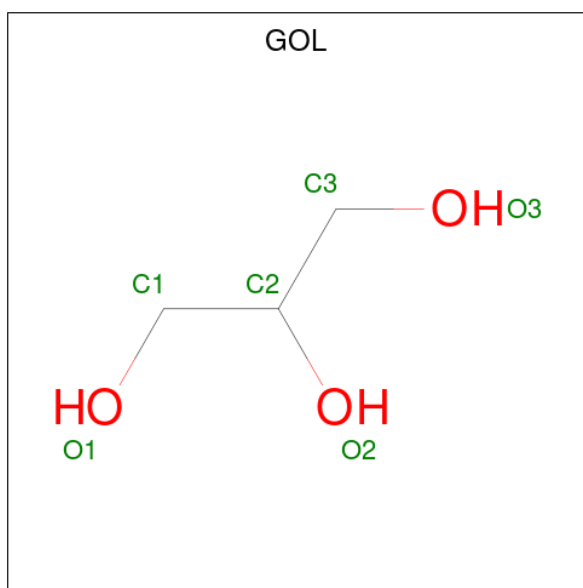
Mol	Chain	Residues	Atoms			ZeroOcc	AltConf
5	A	1	Total	C	O	0	0
			4	2	2		
5	B	1	Total	C	O	0	0
			4	2	2		
5	C	1	Total	C	O	0	0
			4	2	2		
5	D	1	Total	C	O	0	0
			4	2	2		

- Molecule 6 is 2-[BIS-(2-HYDROXY-ETHYL)-AMINO]-2-HYDROXYMETHYL-PROPAN E-1,3-DIOL (CCD ID: BTB) (formula: $C_8H_{19}NO_5$).



Mol	Chain	Residues	Atoms				ZeroOcc	AltConf
6	A	1	Total	C	N	O	0	0
			14	8	1	5		
6	A	1	Total	C	N	O	0	0
			14	8	1	5		
6	B	1	Total	C	N	O	0	0
			14	8	1	5		
6	B	1	Total	C	N	O	0	0
			14	8	1	5		
6	C	1	Total	C	N	O	0	0
			14	8	1	5		
6	C	1	Total	C	N	O	0	0
			14	8	1	5		
6	D	1	Total	C	N	O	0	0
			14	8	1	5		
6	D	1	Total	C	N	O	0	0
			14	8	1	5		

- Molecule 7 is GLYCEROL (CCD ID: GOL) (formula: $C_3H_8O_3$).



Mol	Chain	Residues	Atoms			ZeroOcc	AltConf
7	A	1	Total	C	O	0	0
			6	3	3		
7	C	1	Total	C	O	0	0
			6	3	3		
7	D	1	Total	C	O	0	0
			6	3	3		

- Molecule 8 is CHLORIDE ION (CCD ID: CL) (formula: Cl).

Mol	Chain	Residues	Atoms	ZeroOcc	AltConf
8	A	1	Total Cl 1 1	0	0
8	B	1	Total Cl 1 1	0	0
8	C	1	Total Cl 1 1	0	0
8	D	1	Total Cl 1 1	0	0

- Molecule 9 is GADOLINIUM ATOM (CCD ID: GD) (formula: Gd).

Mol	Chain	Residues	Atoms	ZeroOcc	AltConf
9	A	1	Total Gd 1 1	0	0
9	B	1	Total Gd 1 1	0	0
9	D	1	Total Gd 1 1	0	0

- Molecule 10 is ZINC ION (CCD ID: ZN) (formula: Zn).

Mol	Chain	Residues	Atoms	ZeroOcc	AltConf
10	A	1	Total Zn 1 1	0	0
10	C	1	Total Zn 1 1	0	0

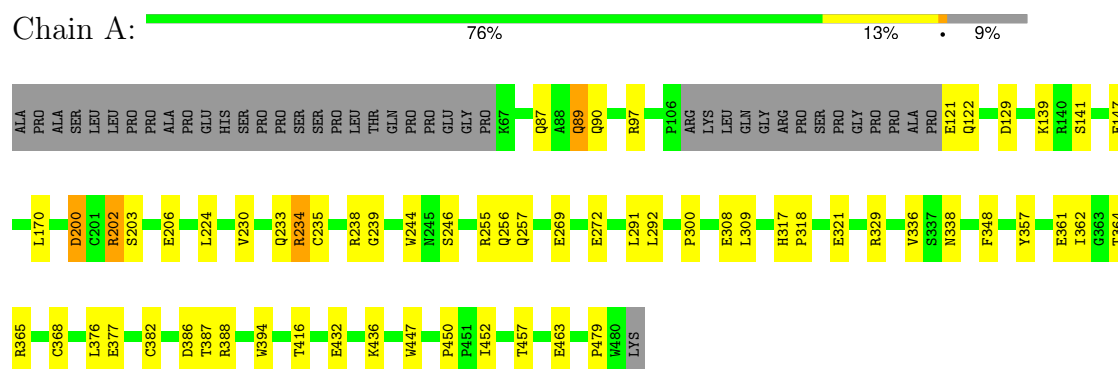
- Molecule 11 is water.

Mol	Chain	Residues	Atoms	ZeroOcc	AltConf
11	A	208	Total O 208 208	0	0
11	B	254	Total O 254 254	0	0
11	C	142	Total O 142 142	0	0
11	D	234	Total O 234 234	0	0

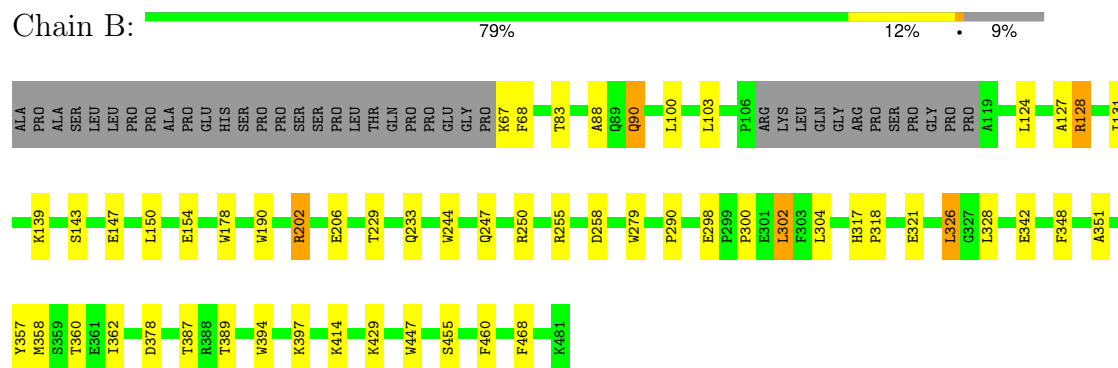
3 Residue-property plots

These plots are drawn for all protein, RNA, DNA and oligosaccharide chains in the entry. The first graphic for a chain summarises the proportions of the various outlier classes displayed in the second graphic. The second graphic shows the sequence view annotated by issues in geometry and electron density. Residues are color-coded according to the number of geometric quality criteria for which they contain at least one outlier: green = 0, yellow = 1, orange = 2 and red = 3 or more. A red dot above a residue indicates a poor fit to the electron density ($RSRZ > 2$). Stretches of 2 or more consecutive residues without any outlier are shown as a green connector. Residues present in the sample, but not in the model, are shown in grey.

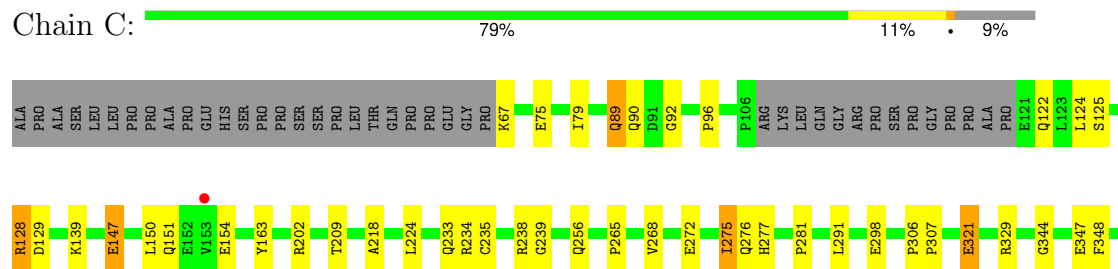
• Molecule 1: Nitric oxide synthase 3



• Molecule 1: Nitric oxide synthase 3

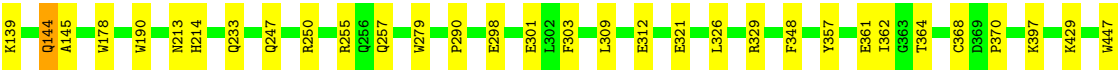
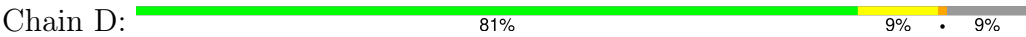


• Molecule 1: Nitric oxide synthase 3





● Molecule 1: Nitric oxide synthase 3



4 Data and refinement statistics

Property	Value	Source
Space group	P 1 21 1	Depositor
Cell constants a, b, c, α , β , γ	59.64Å 151.73Å 108.31Å 90.00° 90.88° 90.00°	Depositor
Resolution (Å)	29.38 – 2.00 29.38 – 2.00	Depositor EDS
% Data completeness (in resolution range)	99.8 (29.38-2.00) 99.9 (29.38-2.00)	Depositor EDS
R_{merge}	0.15	Depositor
R_{sym}	(Not available)	Depositor
$\langle I/\sigma(I) \rangle$ ¹	1.57 (at 2.00Å)	Xtriage
Refinement program	PHENIX (1.11.1_2575: ???)	Depositor
R, R_{free}	0.192 , 0.234 0.187 , 0.229	Depositor DCC
R_{free} test set	6544 reflections (3.45%)	wwPDB-VP
Wilson B-factor (Å ²)	26.5	Xtriage
Anisotropy	0.501	Xtriage
Bulk solvent k_{sol} (e/Å ³), B_{sol} (Å ²)	0.36 , 39.0	EDS
L-test for twinning ²	$\langle L \rangle = 0.46$, $\langle L^2 \rangle = 0.29$	Xtriage
Estimated twinning fraction	0.118 for h,-k,-l	Xtriage
F_o, F_c correlation	0.96	EDS
Total number of atoms	14197	wwPDB-VP
Average B, all atoms (Å ²)	42.0	wwPDB-VP

Xtriage's analysis on translational NCS is as follows: *The largest off-origin peak in the Patterson function is 3.23% of the height of the origin peak. No significant pseudotranslation is detected.*

¹Intensities estimated from amplitudes.

²Theoretical values of $\langle |L| \rangle$, $\langle L^2 \rangle$ for acentric reflections are 0.5, 0.333 respectively for untwinned datasets, and 0.375, 0.2 for perfectly twinned datasets.

5 Model quality [i](#)

5.1 Standard geometry [i](#)

Bond lengths and bond angles in the following residue types are not validated in this section: H4B, CL, H44, ACT, BTB, GOL, HEM, ZN, GD

The Z score for a bond length (or angle) is the number of standard deviations the observed value is removed from the expected value. A bond length (or angle) with $|Z| > 5$ is considered an outlier worth inspection. RMSZ is the root-mean-square of all Z scores of the bond lengths (or angles).

Mol	Chain	Bond lengths		Bond angles	
		RMSZ	$\# Z > 5$	RMSZ	$\# Z > 5$
1	A	0.29	0/3293	0.48	0/4487
1	B	0.36	0/3322	0.55	0/4525
1	C	0.26	0/3293	0.45	0/4487
1	D	0.34	0/3312	0.51	0/4514
All	All	0.31	0/13220	0.50	0/18013

There are no bond length outliers.

There are no bond angle outliers.

There are no chirality outliers.

There are no planarity outliers.

5.2 Too-close contacts [i](#)

In the following table, the Non-H and H(model) columns list the number of non-hydrogen atoms and hydrogen atoms in the chain respectively. The H(added) column lists the number of hydrogen atoms added and optimized by MolProbity. The Clashes column lists the number of clashes within the asymmetric unit, whereas Symm-Clashes lists symmetry-related clashes.

Mol	Chain	Non-H	H(model)	H(added)	Clashes	Symm-Clashes
1	A	3199	0	3104	35	0
1	B	3224	0	3134	33	0
1	C	3199	0	3104	29	0
1	D	3214	0	3121	31	0
2	A	43	0	30	2	0
2	B	43	0	30	4	0
2	C	43	0	30	3	0
2	D	43	0	30	3	0
3	A	17	0	15	2	0

Continued on next page...

Continued from previous page...

Mol	Chain	Non-H	H(model)	H(added)	Clashes	Symm-Clashes
3	B	17	0	15	1	0
3	C	17	0	15	0	0
3	D	17	0	15	1	0
4	A	32	0	23	5	0
4	B	32	0	23	2	0
4	C	32	0	23	1	0
4	D	32	0	23	3	0
5	A	4	0	3	0	0
5	B	4	0	3	0	0
5	C	4	0	3	1	0
5	D	4	0	3	0	0
6	A	28	0	37	7	0
6	B	28	0	37	9	0
6	C	28	0	38	3	0
6	D	28	0	37	6	0
7	A	6	0	8	0	0
7	C	6	0	8	0	0
7	D	6	0	8	0	0
8	A	1	0	0	0	0
8	B	1	0	0	0	0
8	C	1	0	0	0	0
8	D	1	0	0	0	0
9	A	1	0	0	0	0
9	B	1	0	0	0	0
9	D	1	0	0	0	0
10	A	1	0	0	0	0
10	C	1	0	0	0	0
11	A	208	0	0	1	0
11	B	254	0	0	4	0
11	C	142	0	0	2	0
11	D	234	0	0	4	0
All	All	14197	0	12920	156	0

The all-atom clashscore is defined as the number of clashes found per 1000 atoms (including hydrogen atoms). The all-atom clashscore for this structure is 6.

The worst 5 of 156 close contacts within the same asymmetric unit are listed below, sorted by their clash magnitude.

Atom-1	Atom-2	Interatomic distance (Å)	Clash overlap (Å)
1:C:275:ILE:HD11	1:C:281:PRO:HB3	1.59	0.83
2:B:501:HEM:HHC	2:B:501:HEM:HBB2	1.70	0.73

Continued on next page...

Continued from previous page...

Atom-1	Atom-2	Interatomic distance (Å)	Clash overlap (Å)
2:B:501:HEM:HBC2	2:B:501:HEM:HMC2	1.74	0.70
1:B:128:ARG:HG3	1:B:150:LEU:HD22	1.72	0.70
1:D:144:GLN:HG2	1:D:145:ALA:H	1.56	0.69

There are no symmetry-related clashes.

5.3 Torsion angles [i](#)

5.3.1 Protein backbone [i](#)

In the following table, the Percentiles column shows the percent Ramachandran outliers of the chain as a percentile score with respect to all X-ray entries followed by that with respect to entries of similar resolution.

The Analysed column shows the number of residues for which the backbone conformation was analysed, and the total number of residues.

Mol	Chain	Analysed	Favoured	Allowed	Outliers	Percentiles	
1	A	397/441 (90%)	388 (98%)	8 (2%)	1 (0%)	37	35
1	B	401/441 (91%)	391 (98%)	9 (2%)	1 (0%)	44	42
1	C	397/441 (90%)	382 (96%)	14 (4%)	1 (0%)	37	35
1	D	400/441 (91%)	387 (97%)	13 (3%)	0	100	100
All	All	1595/1764 (90%)	1548 (97%)	44 (3%)	3 (0%)	44	42

All (3) Ramachandran outliers are listed below:

Mol	Chain	Res	Type
1	B	255	ARG
1	C	276	GLN
1	A	239	GLY

5.3.2 Protein sidechains [i](#)

In the following table, the Percentiles column shows the percent sidechain outliers of the chain as a percentile score with respect to all X-ray entries followed by that with respect to entries of similar resolution.

The Analysed column shows the number of residues for which the sidechain conformation was analysed, and the total number of residues.

Mol	Chain	Analysed	Rotameric	Outliers	Percentiles	
1	A	341/374 (91%)	324 (95%)	17 (5%)	20	18
1	B	344/374 (92%)	334 (97%)	10 (3%)	37	39
1	C	341/374 (91%)	325 (95%)	16 (5%)	22	20
1	D	343/374 (92%)	338 (98%)	5 (2%)	60	66
All	All	1369/1496 (92%)	1321 (96%)	48 (4%)	31	31

5 of 48 residues with a non-rotameric sidechain are listed below:

Mol	Chain	Res	Type
1	C	89	GLN
1	C	202	ARG
1	C	122	GLN
1	C	129	ASP
1	C	256	GLN

Sometimes sidechains can be flipped to improve hydrogen bonding and reduce clashes. 5 of 6 such sidechains are listed below:

Mol	Chain	Res	Type
1	B	408	HIS
1	C	233	GLN
1	D	276	GLN
1	A	164	GLN
1	A	89	GLN

5.3.3 RNA ⓘ

There are no RNA molecules in this entry.

5.4 Non-standard residues in protein, DNA, RNA chains ⓘ

There are no non-standard protein/DNA/RNA residues in this entry.

5.5 Carbohydrates ⓘ

There are no oligosaccharides in this entry.

5.6 Ligand geometry

Of 36 ligands modelled in this entry, 9 are monoatomic - leaving 27 for Mogul analysis.

In the following table, the Counts columns list the number of bonds (or angles) for which Mogul statistics could be retrieved, the number of bonds (or angles) that are observed in the model and the number of bonds (or angles) that are defined in the Chemical Component Dictionary. The Link column lists molecule types, if any, to which the group is linked. The Z score for a bond length (or angle) is the number of standard deviations the observed value is removed from the expected value. A bond length (or angle) with $|Z| > 2$ is considered an outlier worth inspection. RMSZ is the root-mean-square of all Z scores of the bond lengths (or angles).

Mol	Type	Chain	Res	Link	Bond lengths			Bond angles		
					Counts	RMSZ	# Z > 2	Counts	RMSZ	# Z > 2
3	H4B	A	502	-	16,18,18	0.99	0	14,26,26	2.48	5 (35%)
7	GOL	C	507	-	5,5,5	0.39	0	5,5,5	0.41	0
3	H4B	B	502	-	16,18,18	0.80	0	14,26,26	2.47	7 (50%)
2	HEM	A	501	1	42,50,50	1.47	5 (11%)	46,82,82	1.77	10 (21%)
2	HEM	C	501	1	42,50,50	1.52	6 (14%)	46,82,82	1.72	12 (26%)
4	H44	D	503	-	35,35,35	1.18	6 (17%)	29,46,46	2.50	8 (27%)
5	ACT	A	504	-	3,3,3	1.11	0	3,3,3	0.80	0
5	ACT	B	504	-	3,3,3	1.22	0	3,3,3	1.06	0
2	HEM	B	501	1	42,50,50	1.48	5 (11%)	46,82,82	1.77	9 (19%)
3	H4B	C	502	-	16,18,18	0.90	0	14,26,26	2.33	5 (35%)
2	HEM	D	501	1	42,50,50	1.53	8 (19%)	46,82,82	1.93	15 (32%)
6	BTB	A	506	-	13,13,13	0.51	0	7,16,16	0.74	0
6	BTB	C	506	-	13,13,13	0.36	0	7,16,16	0.53	0
4	H44	A	503	-	35,35,35	1.34	6 (17%)	29,46,46	2.23	6 (20%)
4	H44	C	503	-	35,35,35	1.27	6 (17%)	29,46,46	2.22	5 (17%)
6	BTB	D	505	9	13,13,13	0.34	0	7,16,16	0.51	0
5	ACT	D	504	-	3,3,3	1.19	0	3,3,3	1.63	1 (33%)
7	GOL	A	507	-	5,5,5	0.33	0	5,5,5	0.43	0
6	BTB	B	505	9	13,13,13	0.38	0	7,16,16	0.57	0
6	BTB	B	506	-	13,13,13	0.50	0	7,16,16	1.11	1 (14%)
3	H4B	D	502	-	16,18,18	0.79	0	14,26,26	2.49	5 (35%)
6	BTB	D	506	-	13,13,13	0.50	0	7,16,16	0.63	0
4	H44	B	503	-	35,35,35	1.24	5 (14%)	29,46,46	2.57	9 (31%)
7	GOL	D	507	-	5,5,5	0.36	0	5,5,5	0.38	0
5	ACT	C	504	-	3,3,3	0.94	0	3,3,3	1.23	1 (33%)
6	BTB	C	505	-	13,13,13	0.60	0	7,16,16	1.05	0
6	BTB	A	505	9	13,13,13	0.42	0	7,16,16	0.57	0

In the following table, the Chirals column lists the number of chiral outliers, the number of chiral centers analysed, the number of these observed in the model and the number defined in the Chemical Component Dictionary. Similar counts are reported in the Torsion and Rings columns. '-' means no outliers of that kind were identified.

Mol	Type	Chain	Res	Link	Chirals	Torsions	Rings
3	H4B	A	502	-	-	0/8/17/17	0/2/2/2
7	GOL	C	507	-	-	2/4/4/4	-
3	H4B	B	502	-	-	0/8/17/17	0/2/2/2
2	HEM	A	501	1	-	0/12/54/54	-
2	HEM	C	501	1	-	2/12/54/54	-
4	H44	D	503	-	-	4/15/23/23	0/4/4/4
2	HEM	B	501	1	-	0/12/54/54	-
3	H4B	C	502	-	-	0/8/17/17	0/2/2/2
2	HEM	D	501	1	-	1/12/54/54	-
6	BTB	C	506	-	-	4/21/21/21	-
6	BTB	A	506	-	-	8/21/21/21	-
4	H44	A	503	-	-	5/15/23/23	0/4/4/4
4	H44	C	503	-	-	3/15/23/23	0/4/4/4
6	BTB	D	505	9	-	3/21/21/21	-
7	GOL	A	507	-	-	4/4/4/4	-
6	BTB	B	505	9	-	4/21/21/21	-
6	BTB	B	506	-	-	11/21/21/21	-
3	H4B	D	502	-	-	0/8/17/17	0/2/2/2
6	BTB	D	506	-	-	5/21/21/21	-
4	H44	B	503	-	-	6/15/23/23	0/4/4/4
7	GOL	D	507	-	-	2/4/4/4	-
6	BTB	C	505	-	-	8/21/21/21	-
6	BTB	A	505	9	-	4/21/21/21	-

The worst 5 of 47 bond length outliers are listed below:

Mol	Chain	Res	Type	Atoms	Z	Observed(Å)	Ideal(Å)
2	B	501	HEM	C3C-C2C	-4.14	1.34	1.40
2	A	501	HEM	C3C-C2C	-3.83	1.35	1.40
2	C	501	HEM	C3C-C2C	-3.38	1.35	1.40
2	B	501	HEM	C3C-CAC	3.36	1.55	1.47
2	D	501	HEM	C3C-CAC	3.33	1.55	1.47

The worst 5 of 99 bond angle outliers are listed below:

Mol	Chain	Res	Type	Atoms	Z	Observed(°)	Ideal(°)
4	B	503	H44	C23-C22-S21	-7.68	106.75	112.98
4	D	503	H44	C23-C22-S21	-7.55	106.86	112.98
4	B	503	H44	C03-C02-S01	-7.54	106.86	112.98
4	C	503	H44	C23-C22-S21	-7.46	106.92	112.98
4	C	503	H44	C03-C02-S01	-7.43	106.95	112.98

There are no chirality outliers.

5 of 76 torsion outliers are listed below:

Mol	Chain	Res	Type	Atoms
4	A	503	H44	C34-C37-C38-N18
4	C	503	H44	C34-C37-C38-N18
4	D	503	H44	C34-C37-C38-N18
6	A	505	BTB	O1-C1-C2-C3
6	A	505	BTB	O1-C1-C2-C4

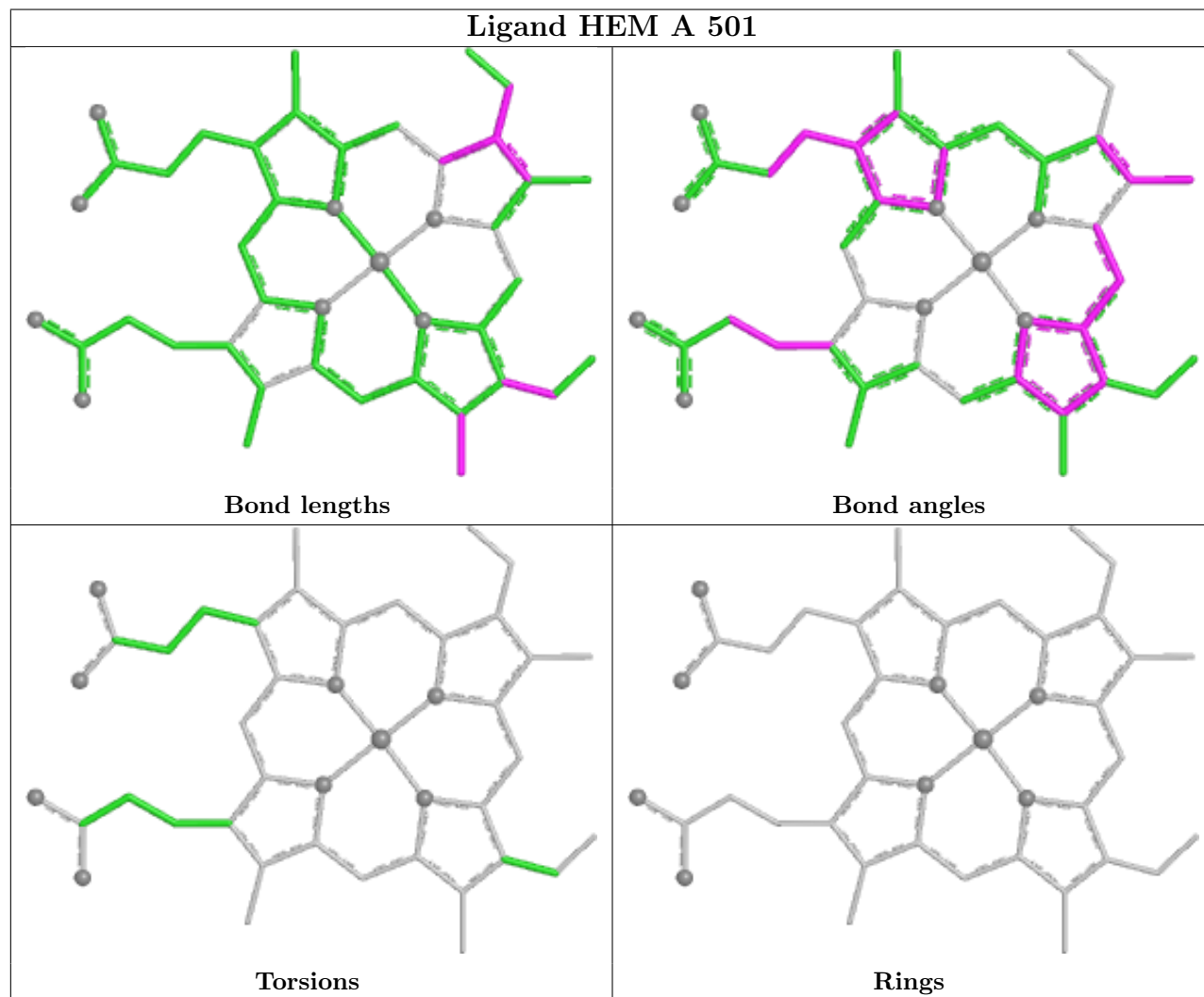
There are no ring outliers.

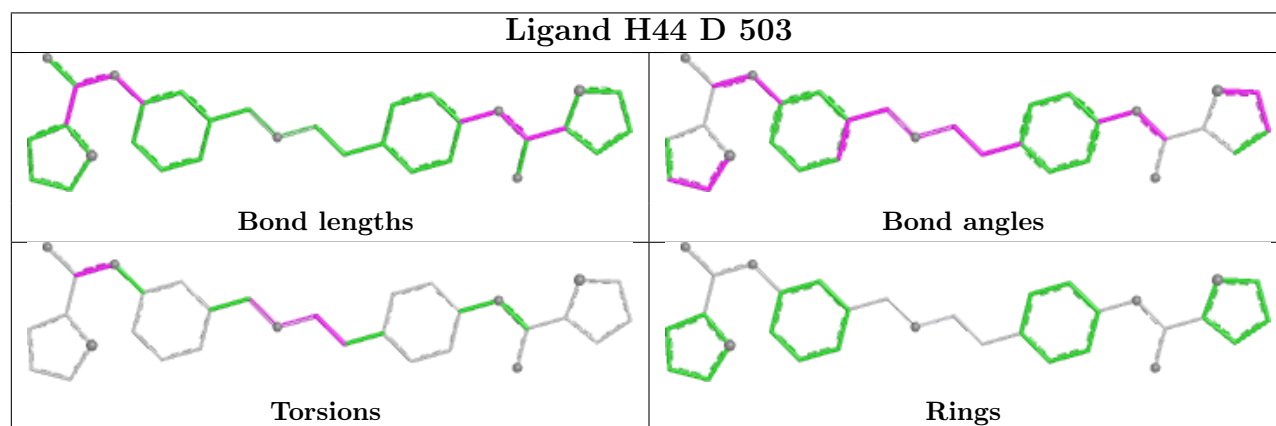
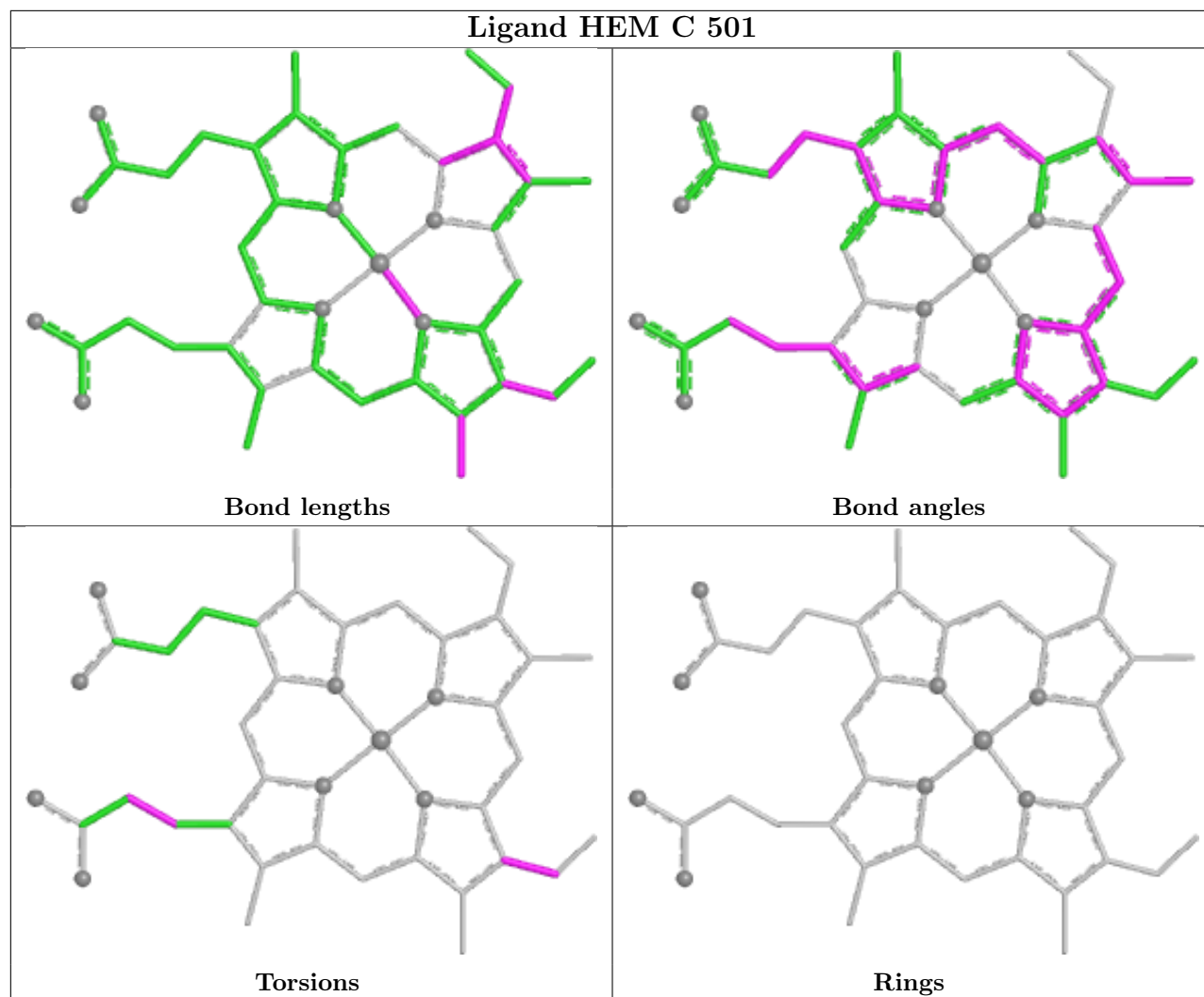
20 monomers are involved in 51 short contacts:

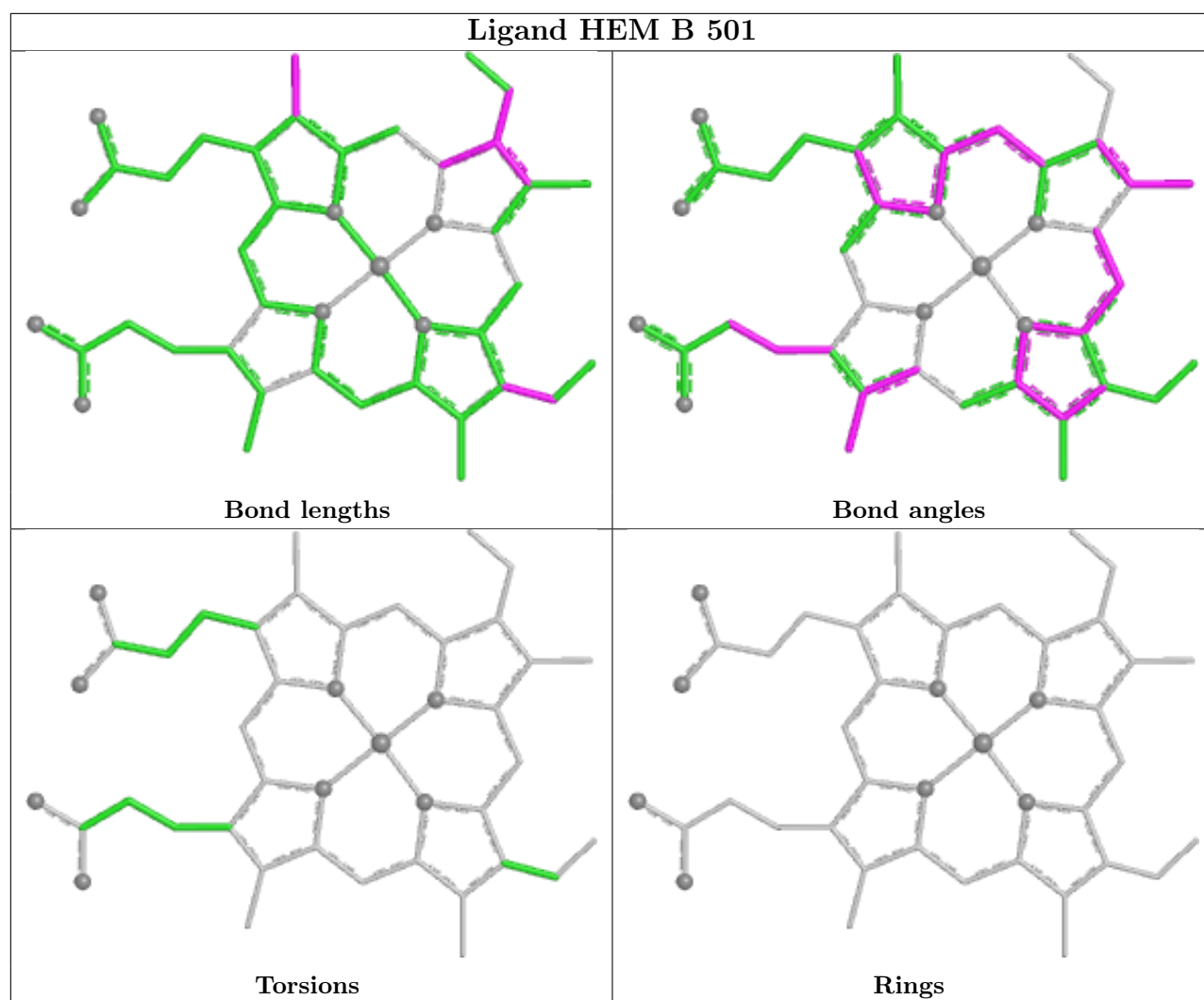
Mol	Chain	Res	Type	Clashes	Symm-Clashes
3	A	502	H4B	2	0
3	B	502	H4B	1	0
2	A	501	HEM	2	0
2	C	501	HEM	3	0
4	D	503	H44	3	0
2	B	501	HEM	4	0
2	D	501	HEM	3	0
6	A	506	BTB	3	0
6	C	506	BTB	2	0
4	A	503	H44	5	0
4	C	503	H44	1	0
6	D	505	BTB	3	0
6	B	505	BTB	6	0
6	B	506	BTB	3	0
3	D	502	H4B	1	0
6	D	506	BTB	3	0
4	B	503	H44	2	0
5	C	504	ACT	1	0
6	C	505	BTB	1	0
6	A	505	BTB	4	0

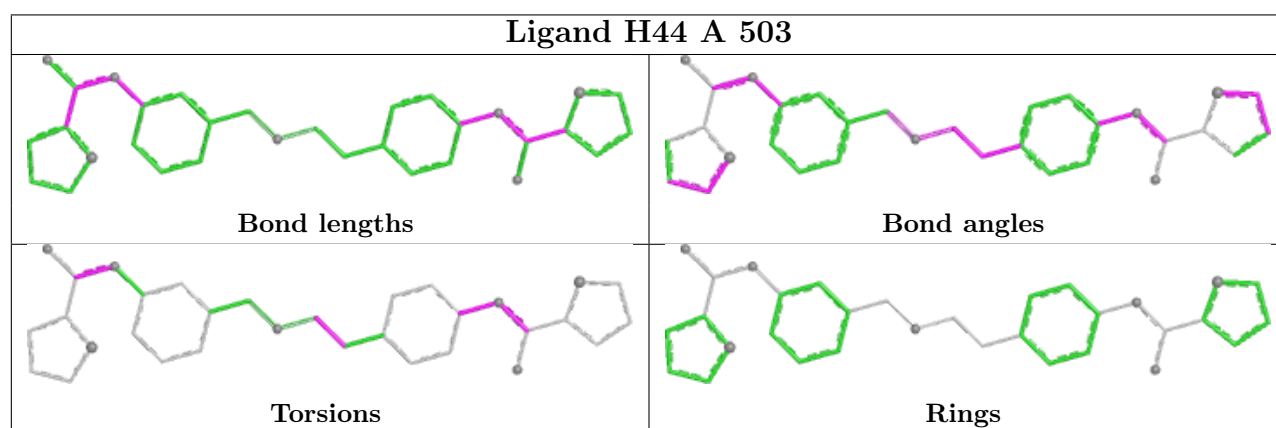
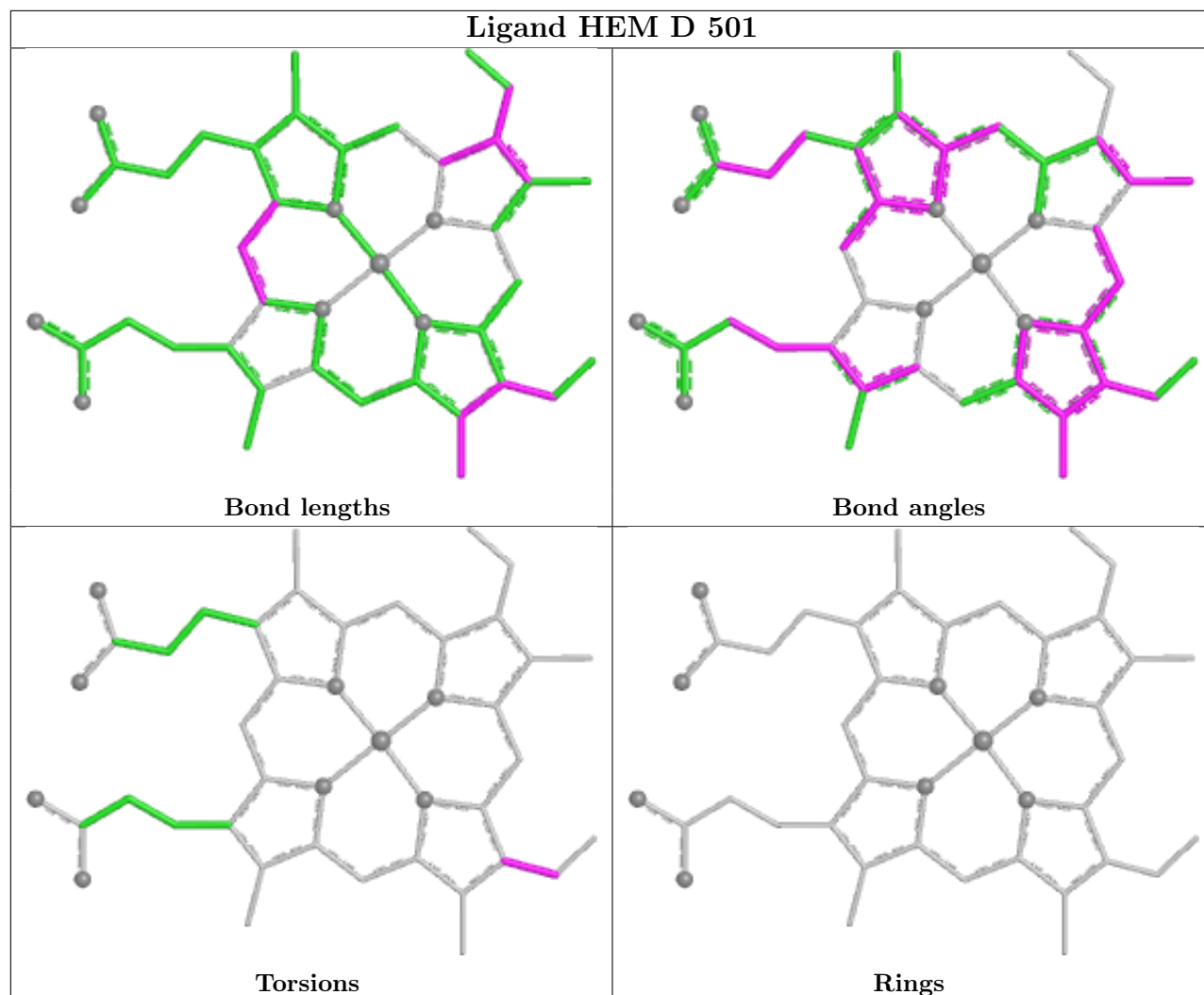
The following is a two-dimensional graphical depiction of Mogul quality analysis of bond lengths, bond angles, torsion angles, and ring geometry for all instances of the Ligand of Interest. In

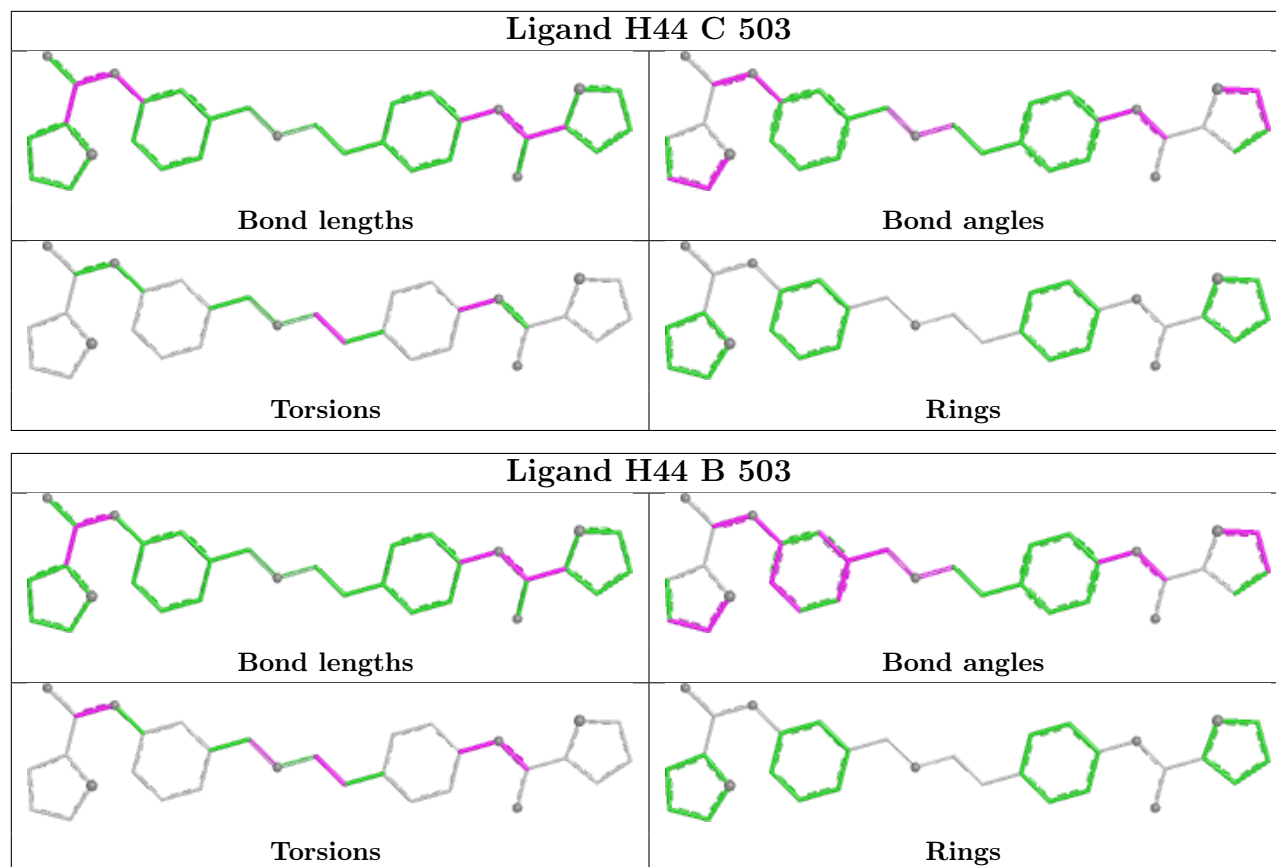
addition, ligands with molecular weight > 250 and outliers as shown on the validation Tables will also be included. For torsion angles, if less than 5% of the Mogul distribution of torsion angles is within 10 degrees of the torsion angle in question, then that torsion angle is considered an outlier. Any bond that is central to one or more torsion angles identified as an outlier by Mogul will be highlighted in the graph. For rings, the root-mean-square deviation (RMSD) between the ring in question and similar rings identified by Mogul is calculated over all ring torsion angles. If the average RMSD is greater than 60 degrees and the minimal RMSD between the ring in question and any Mogul-identified rings is also greater than 60 degrees, then that ring is considered an outlier. The outliers are highlighted in purple. The color gray indicates Mogul did not find sufficient equivalents in the CSD to analyse the geometry.











5.7 Other polymers [i](#)

There are no such residues in this entry.

5.8 Polymer linkage issues [i](#)

There are no chain breaks in this entry.

6 Fit of model and data [i](#)

6.1 Protein, DNA and RNA chains [i](#)

In the following table, the column labelled ‘#RSRZ> 2’ contains the number (and percentage) of RSRZ outliers, followed by percent RSRZ outliers for the chain as percentile scores relative to all X-ray entries and entries of similar resolution. The OWAB column contains the minimum, median, 95th percentile and maximum values of the occupancy-weighted average B-factor per residue. The column labelled ‘Q< 0.9’ lists the number of (and percentage) of residues with an average occupancy less than 0.9.

Mol	Chain	Analysed	<RSRZ>	#RSRZ>2		OWAB(Å ²)	Q<0.9
1	A	400/441 (90%)	-1.35	0	100 100	18, 41, 80, 109	1 (0%)
1	B	403/441 (91%)	-1.63	0	100 100	14, 30, 56, 109	2 (0%)
1	C	400/441 (90%)	-0.89	1 (0%)	90 89	18, 50, 101, 124	1 (0%)
1	D	402/441 (91%)	-1.58	0	100 100	15, 31, 62, 111	2 (0%)
All	All	1605/1764 (90%)	-1.36	1 (0%)	92 91	14, 36, 85, 124	6 (0%)

All (1) RSRZ outliers are listed below:

Mol	Chain	Res	Type	RSRZ
1	C	153	VAL	2.3

6.2 Non-standard residues in protein, DNA, RNA chains [i](#)

There are no non-standard protein/DNA/RNA residues in this entry.

6.3 Carbohydrates [i](#)

There are no oligosaccharides in this entry.

6.4 Ligands [i](#)

In the following table, the Atoms column lists the number of modelled atoms in the group and the number defined in the chemical component dictionary. The B-factors column lists the minimum, median, 95th percentile and maximum values of B factors of atoms in the group. The column labelled ‘Q< 0.9’ lists the number of atoms with occupancy less than 0.9.

Mol	Type	Chain	Res	Atoms	RSCC	RSR	B-factors(Å ²)	Q<0.9
7	GOL	C	507	6/6	0.95	0.07	65,71,83,86	0

Continued on next page...

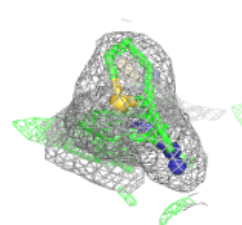
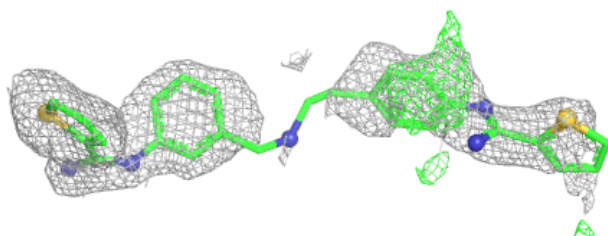
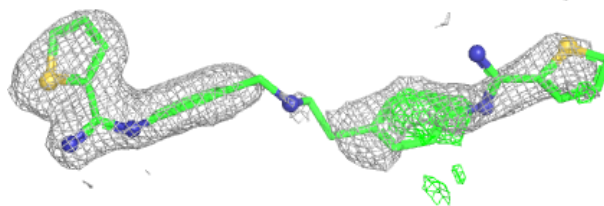
Continued from previous page...

Mol	Type	Chain	Res	Atoms	RSCC	RSR	B-factors(\AA^2)	Q<0.9
7	GOL	D	507	6/6	0.95	0.05	66,68,68,71	0
6	BTB	B	506	14/14	0.97	0.06	66,74,81,81	0
4	H44	C	503	32/32	0.98	0.08	30,78,110,112	0
6	BTB	C	505	14/14	0.98	0.06	57,71,77,83	0
6	BTB	C	506	14/14	0.98	0.04	61,74,83,83	0
6	BTB	D	506	14/14	0.98	0.04	53,68,73,74	0
7	GOL	A	507	6/6	0.98	0.04	43,56,59,60	0
6	BTB	A	505	14/14	0.98	0.06	50,63,69,71	0
6	BTB	A	506	14/14	0.98	0.04	47,63,72,74	0
4	H44	A	503	32/32	0.99	0.06	21,65,109,112	0
4	H44	B	503	32/32	0.99	0.06	13,56,117,121	0
3	H4B	B	502	17/17	0.99	0.03	19,25,30,31	0
6	BTB	D	505	14/14	0.99	0.04	25,51,68,76	0
4	H44	D	503	32/32	0.99	0.06	18,54,121,123	0
3	H4B	C	502	17/17	0.99	0.03	27,36,45,48	0
3	H4B	D	502	17/17	0.99	0.02	15,28,34,38	0
6	BTB	B	505	14/14	0.99	0.04	30,53,66,73	0
9	GD	A	509	1/1	0.99	0.04	141,141,141,141	0
2	HEM	A	501	43/43	1.00	0.02	16,31,39,41	0
2	HEM	B	501	43/43	1.00	0.02	9,17,27,40	0
5	ACT	A	504	4/4	1.00	0.06	35,49,56,61	0
5	ACT	B	504	4/4	1.00	0.04	42,47,52,53	0
5	ACT	C	504	4/4	1.00	0.03	26,40,50,54	0
5	ACT	D	504	4/4	1.00	0.04	26,39,47,57	0
2	HEM	C	501	43/43	1.00	0.03	24,40,48,53	0
2	HEM	D	501	43/43	1.00	0.02	8,18,27,37	0
8	CL	A	508	1/1	1.00	0.03	39,39,39,39	0
8	CL	B	507	1/1	1.00	0.03	36,36,36,36	0
8	CL	C	508	1/1	1.00	0.02	54,54,54,54	0
8	CL	D	508	1/1	1.00	0.02	37,37,37,37	0
3	H4B	A	502	17/17	1.00	0.02	19,27,37,37	0
9	GD	B	508	1/1	1.00	0.01	47,47,47,47	0
9	GD	D	509	1/1	1.00	0.01	41,41,41,41	0
10	ZN	A	510	1/1	1.00	0.01	28,28,28,28	0
10	ZN	C	509	1/1	1.00	0.01	34,34,34,34	0

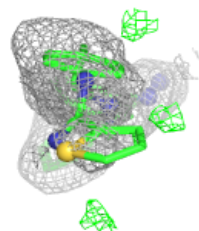
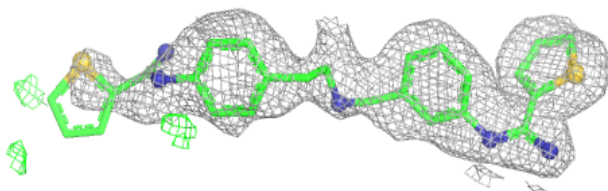
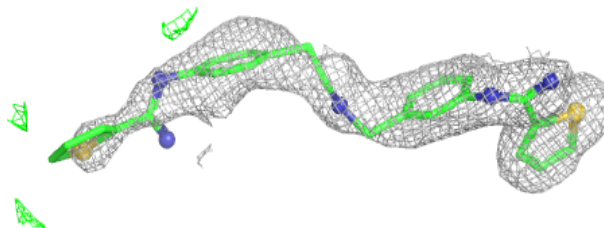
The following is a graphical depiction of the model fit to experimental electron density of all instances of the Ligand of Interest. In addition, ligands with molecular weight > 250 and outliers as shown on the geometry validation Tables will also be included. Each fit is shown from different orientation to approximate a three-dimensional view.

Electron density around H44 C 503:

$2mF_o-DF_c$ (at 0.7 rmsd) in gray
 mF_o-DF_c (at 3 rmsd) in purple (negative)
and green (positive)

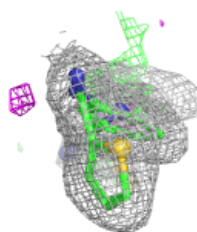
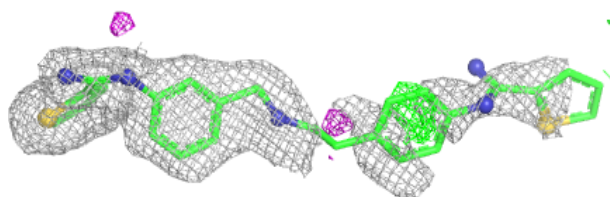
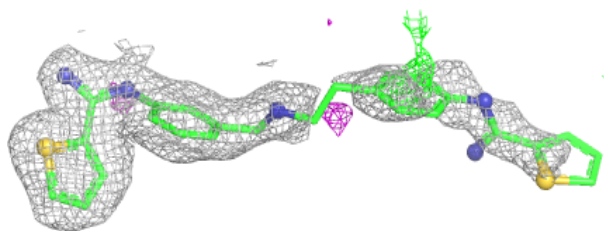
**Electron density around H44 A 503:**

$2mF_o-DF_c$ (at 0.7 rmsd) in gray
 mF_o-DF_c (at 3 rmsd) in purple (negative)
and green (positive)

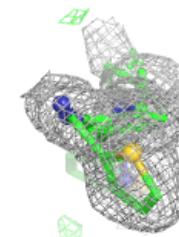
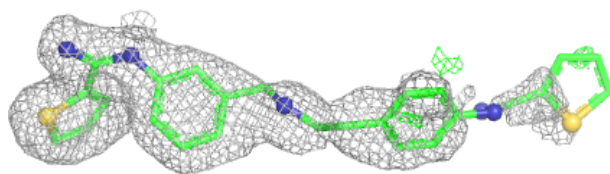
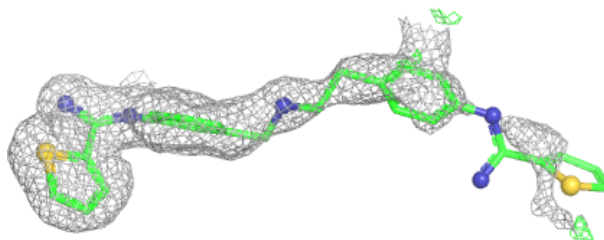


Electron density around H44 B 503:

$2mF_o-DF_c$ (at 0.7 rmsd) in gray
 mF_o-DF_c (at 3 rmsd) in purple (negative)
and green (positive)

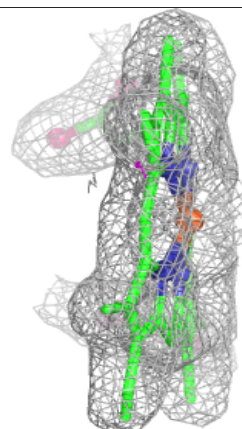
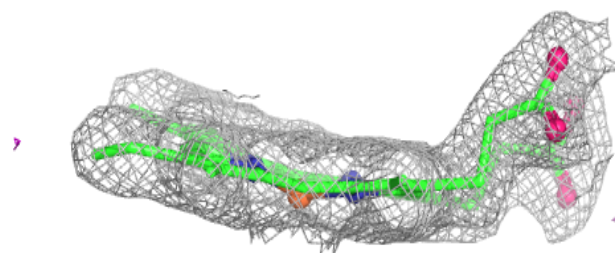
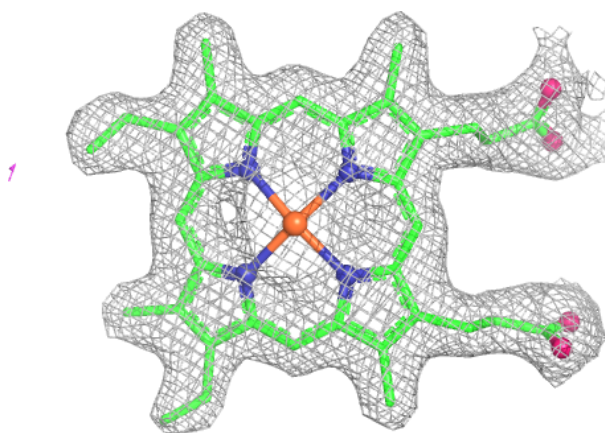
**Electron density around H44 D 503:**

$2mF_o-DF_c$ (at 0.7 rmsd) in gray
 mF_o-DF_c (at 3 rmsd) in purple (negative)
and green (positive)



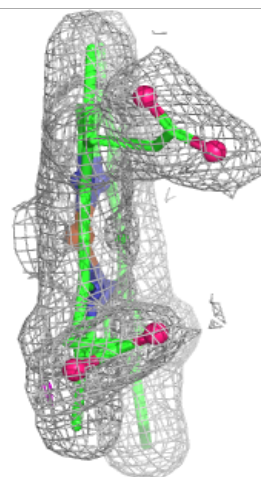
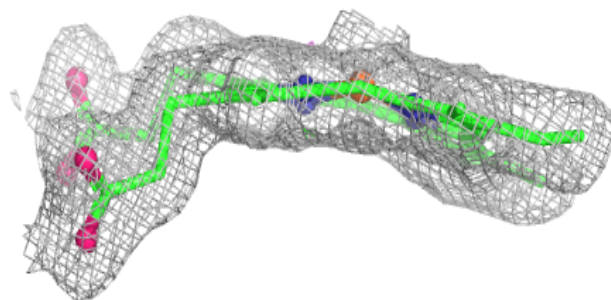
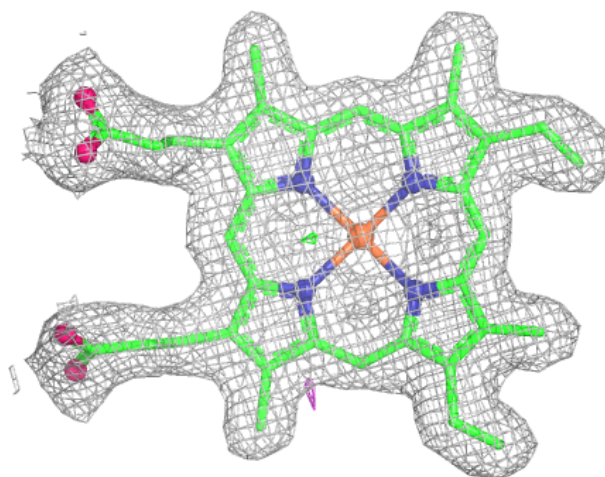
Electron density around HEM A 501:

$2mF_o-DF_c$ (at 0.7 rmsd) in gray
 mF_o-DF_c (at 3 rmsd) in purple (negative)
and green (positive)



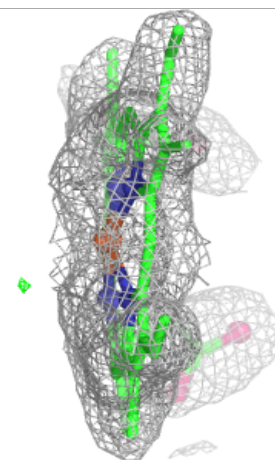
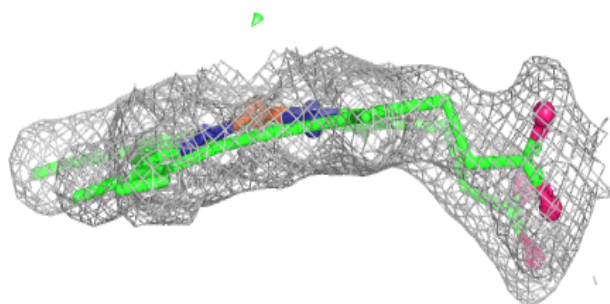
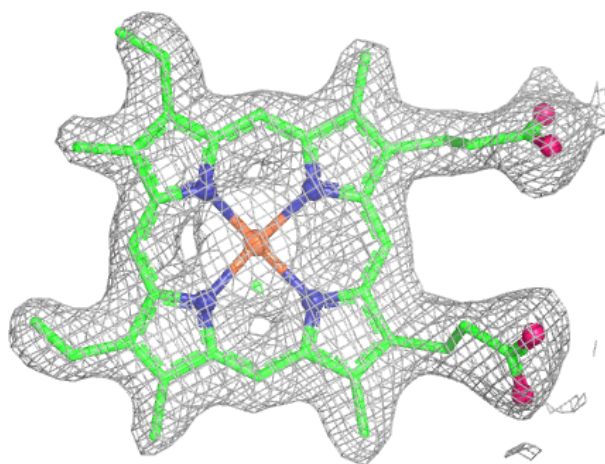
Electron density around HEM B 501:

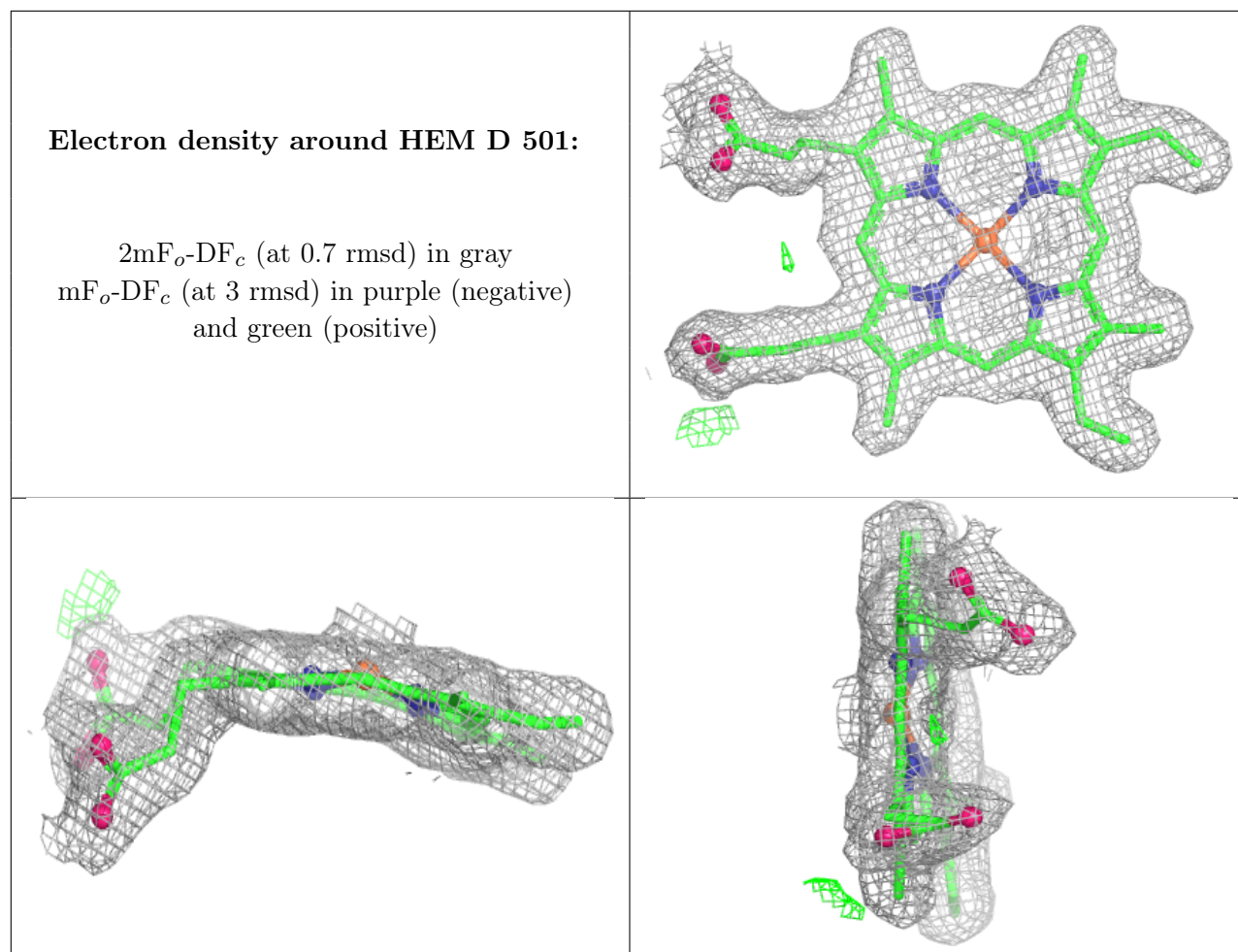
$2mF_o-DF_c$ (at 0.7 rmsd) in gray
 mF_o-DF_c (at 3 rmsd) in purple (negative)
and green (positive)



Electron density around HEM C 501:

$2mF_o-DF_c$ (at 0.7 rmsd) in gray
 mF_o-DF_c (at 3 rmsd) in purple (negative)
and green (positive)





6.5 Other polymers [i](#)

There are no such residues in this entry.