



Full wwPDB X-ray Structure Validation Report ⓘ

Nov 17, 2024 – 06:19 PM EST

PDB ID : 4N1I
Title : Crystal Structure of the alpha-L-arabinofuranosidase UmAbf62A from
Ustilago maidys
Authors : Siguier, B.; Dumon, C.; Mourey, L.; Tranier, S.
Deposited on : 2013-10-04
Resolution : 1.00 Å(reported)

This is a Full wwPDB X-ray Structure Validation Report for a publicly released PDB entry.

We welcome your comments at validation@mail.wwpdb.org

A user guide is available at

<https://www.wwpdb.org/validation/2017/XrayValidationReportHelp>

with specific help available everywhere you see the ⓘ symbol.

The types of validation reports are described at

<http://www.wwpdb.org/validation/2017/FAQs#types>.

The following versions of software and data (see [references ⓘ](#)) were used in the production of this report:

MolProbity	:	4.02b-467
Mogul	:	2022.3.0, CSD as543be (2022)
Xtriage (Phenix)	:	1.20.1
EDS	:	3.0
Percentile statistics	:	20231227.v01 (using entries in the PDB archive December 27th 2023)
CCP4	:	9.0.003 (Gargrove)
Density-Fitness	:	1.0.11
Ideal geometry (proteins)	:	Engh & Huber (2001)
Ideal geometry (DNA, RNA)	:	Parkinson et al. (1996)
Validation Pipeline (wwPDB-VP)	:	2.39

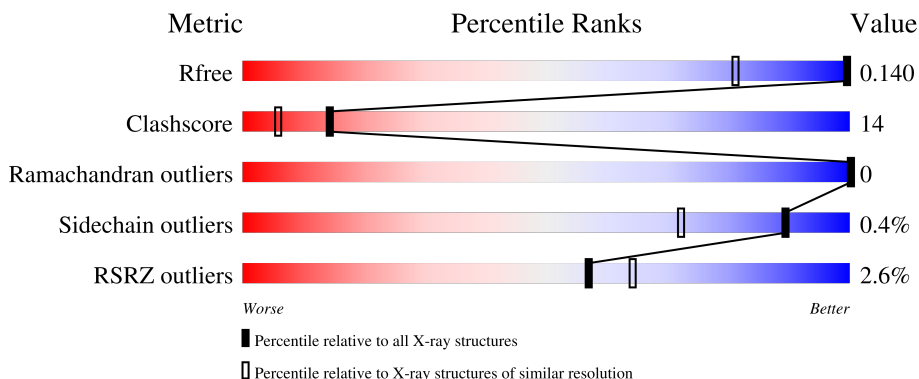
1 Overall quality at a glance

The following experimental techniques were used to determine the structure:

X-RAY DIFFRACTION


The reported resolution of this entry is 1.00 Å.

Percentile scores (ranging between 0-100) for global validation metrics of the entry are shown in the following graphic. The table shows the number of entries on which the scores are based.



Metric	Whole archive (#Entries)	Similar resolution (#Entries, resolution range(Å))
R_{free}	164625	1205 (1.04-0.96)
Clashscore	180529	1363 (1.04-0.96)
Ramachandran outliers	177936	1301 (1.04-0.96)
Sidechain outliers	177891	1302 (1.04-0.96)
RSRZ outliers	164620	1203 (1.04-0.96)

The table below summarises the geometric issues observed across the polymeric chains and their fit to the electron density. The red, orange, yellow and green segments of the lower bar indicate the fraction of residues that contain outliers for ≥ 3 , 2, 1 and 0 types of geometric quality criteria respectively. A grey segment represents the fraction of residues that are not modelled. The numeric value for each fraction is indicated below the corresponding segment, with a dot representing fractions $\leq 5\%$. The upper red bar (where present) indicates the fraction of residues that have poor fit to the electron density. The numeric value is given above the bar.

Mol	Chain	Length	Quality of chain
1	A	334	

The following table lists non-polymeric compounds, carbohydrate monomers and non-standard residues in protein, DNA, RNA chains that are outliers for geometric or electron-density-fit criteria:

Mol	Type	Chain	Res	Chirality	Geometry	Clashes	Electron density
3	GOL	A	403[A]	-	-	X	-

Continued on next page...

Continued from previous page...

Mol	Type	Chain	Res	Chirality	Geometry	Clashes	Electron density
3	GOL	A	405[B]	-	X	-	-
4	TRS	A	406	-	-	X	-
5	1PE	A	407	-	X	-	-

2 Entry composition

There are 6 unique types of molecules in this entry. The entry contains 3167 atoms, of which 0 are hydrogens and 0 are deuteriums.

In the tables below, the ZeroOcc column contains the number of atoms modelled with zero occupancy, the AltConf column contains the number of residues with at least one atom in alternate conformation and the Trace column contains the number of residues modelled with at most 2 atoms.

- Molecule 1 is a protein called alpha-L-arabinofuranosidase UmAbf62A.

Mol	Chain	Residues	Atoms					ZeroOcc	AltConf	Trace
1	A	312	Total	C	N	O	S	8	29	0
			2631	1684	436	503	8			

There are 23 discrepancies between the modelled and reference sequences:

Chain	Residue	Modelled	Actual	Comment	Reference
A	312	GLY	-	expression tag	UNP Q4P6F4
A	313	LEU	-	expression tag	UNP Q4P6F4
A	314	GLU	-	expression tag	UNP Q4P6F4
A	315	GLN	-	expression tag	UNP Q4P6F4
A	316	LYS	-	expression tag	UNP Q4P6F4
A	317	LEU	-	expression tag	UNP Q4P6F4
A	318	ILE	-	expression tag	UNP Q4P6F4
A	319	SER	-	expression tag	UNP Q4P6F4
A	320	GLU	-	expression tag	UNP Q4P6F4
A	321	GLU	-	expression tag	UNP Q4P6F4
A	322	ASP	-	expression tag	UNP Q4P6F4
A	323	LEU	-	expression tag	UNP Q4P6F4
A	324	ASN	-	expression tag	UNP Q4P6F4
A	325	SER	-	expression tag	UNP Q4P6F4
A	326	ALA	-	expression tag	UNP Q4P6F4
A	327	VAL	-	expression tag	UNP Q4P6F4
A	328	ASP	-	expression tag	UNP Q4P6F4
A	329	HIS	-	expression tag	UNP Q4P6F4
A	330	HIS	-	expression tag	UNP Q4P6F4
A	331	HIS	-	expression tag	UNP Q4P6F4
A	332	HIS	-	expression tag	UNP Q4P6F4
A	333	HIS	-	expression tag	UNP Q4P6F4
A	334	HIS	-	expression tag	UNP Q4P6F4

- Molecule 2 is CALCIUM ION (three-letter code: CA) (formula: Ca).

Mol	Chain	Residues	Atoms		ZeroOcc	AltConf
2	A	1	Total	Ca	0	0
			1	1		

- Molecule 3 is GLYCEROL (three-letter code: GOL) (formula: $C_3H_8O_3$).



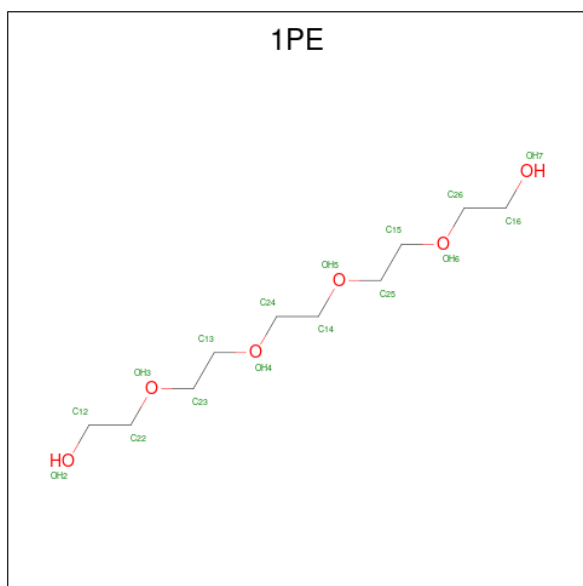
Mol	Chain	Residues	Atoms			ZeroOcc	AltConf
3	A	1	Total	C	O	0	0
			6	3	3		
3	A	1	Total	C	O	0	1
			18	9	9		
3	A	1	Total	C	O	0	0
			6	3	3		
3	A	1	Total	C	O	0	1
			12	6	6		

- Molecule 4 is 2-AMINO-2-HYDROXYMETHYL-PROPANE-1,3-DIOL (three-letter code: TRS) (formula: $C_4H_{12}NO_3$).



Mol	Chain	Residues	Atoms			ZeroOcc	AltConf
4	A	1	Total	C	N	O	
			8	4	1	3	
							0
							0

- Molecule 5 is PENTAETHYLENE GLYCOL (three-letter code: 1PE) (formula: $C_{10}H_{22}O_6$).



Mol	Chain	Residues	Atoms			ZeroOcc	AltConf
5	A	1	Total	C	O		
			7	4	3		
						0	
							0

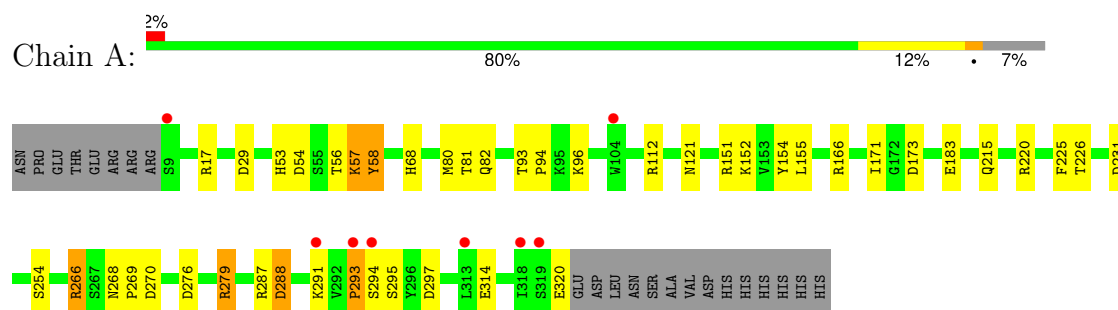
- Molecule 6 is water.

Mol	Chain	Residues	Atoms		ZeroOcc	AltConf
6	A	478	Total 478	O 478	0	0

3 Residue-property plots [i](#)

These plots are drawn for all protein, RNA, DNA and oligosaccharide chains in the entry. The first graphic for a chain summarises the proportions of the various outlier classes displayed in the second graphic. The second graphic shows the sequence view annotated by issues in geometry and electron density. Residues are color-coded according to the number of geometric quality criteria for which they contain at least one outlier: green = 0, yellow = 1, orange = 2 and red = 3 or more. A red dot above a residue indicates a poor fit to the electron density ($RSRZ > 2$). Stretches of 2 or more consecutive residues without any outlier are shown as a green connector. Residues present in the sample, but not in the model, are shown in grey.

- Molecule 1: alpha-L-arabinofuranosidase UmAbf62A



4 Data and refinement statistics

Property	Value	Source
Space group	P 21 21 21	Depositor
Cell constants a, b, c, α , β , γ	60.28Å 65.90Å 68.37Å 90.00° 90.00° 90.00°	Depositor
Resolution (Å)	37.30 – 1.00 37.30 – 1.00	Depositor EDS
% Data completeness (in resolution range)	99.5 (37.30-1.00) 99.4 (37.30-1.00)	Depositor EDS
R_{merge}	0.10	Depositor
R_{sym}	(Not available)	Depositor
$\langle I/\sigma(I) \rangle$ ¹	1.65 (at 1.00Å)	Xtriage
Refinement program	REFMAC 5.7.0032	Depositor
R, R_{free}	0.114 , 0.139 0.114 , 0.140	Depositor DCC
R_{free} test set	7283 reflections (5.00%)	wwPDB-VP
Wilson B-factor (Å ²)	5.6	Xtriage
Anisotropy	0.276	Xtriage
Bulk solvent k_{sol} (e/Å ³), B_{sol} (Å ²)	0.35 , 42.4	EDS
L-test for twinning ²	$\langle L \rangle = 0.48$, $\langle L^2 \rangle = 0.31$	Xtriage
Estimated twinning fraction	0.019 for -h,l,k	Xtriage
F_o, F_c correlation	0.98	EDS
Total number of atoms	3167	wwPDB-VP
Average B, all atoms (Å ²)	10.0	wwPDB-VP

Xtriage's analysis on translational NCS is as follows: *The largest off-origin peak in the Patterson function is 5.27% of the height of the origin peak. No significant pseudotranslation is detected.*

¹Intensities estimated from amplitudes.

²Theoretical values of $\langle |L| \rangle$, $\langle L^2 \rangle$ for acentric reflections are 0.5, 0.333 respectively for untwinned datasets, and 0.375, 0.2 for perfectly twinned datasets.

5 Model quality

5.1 Standard geometry

Bond lengths and bond angles in the following residue types are not validated in this section: GOL, TRS, 1PE, CA

The Z score for a bond length (or angle) is the number of standard deviations the observed value is removed from the expected value. A bond length (or angle) with $|Z| > 5$ is considered an outlier worth inspection. RMSZ is the root-mean-square of all Z scores of the bond lengths (or angles).

Mol	Chain	Bond lengths		Bond angles	
		RMSZ	$\# Z > 5$	RMSZ	$\# Z > 5$
1	A	1.05	6/2745 (0.2%)	1.12	23/3741 (0.6%)

Chiral center outliers are detected by calculating the chiral volume of a chiral center and verifying if the center is modelled as a planar moiety or with the opposite hand. A planarity outlier is detected by checking planarity of atoms in a peptide group, atoms in a mainchain group or atoms of a sidechain that are expected to be planar.

Mol	Chain	#Chirality outliers	#Planarity outliers
1	A	0	1

All (6) bond length outliers are listed below:

Mol	Chain	Res	Type	Atoms	Z	Observed(Å)	Ideal(Å)
1	A	254	SER	CB-OG	6.32	1.50	1.42
1	A	320	GLU	CD-OE2	-6.25	1.18	1.25
1	A	314	GLU	CD-OE2	5.91	1.32	1.25
1	A	58[A]	TYR	CG-CD1	-5.38	1.32	1.39
1	A	58[B]	TYR	CG-CD1	-5.38	1.32	1.39
1	A	293	PRO	CG-CD	5.03	1.67	1.50

All (23) bond angle outliers are listed below:

Mol	Chain	Res	Type	Atoms	Z	Observed(°)	Ideal(°)
1	A	17	ARG	NE-CZ-NH1	9.77	125.19	120.30
1	A	57[A]	LYS	CD-CE-NZ	9.59	133.75	111.70
1	A	57[B]	LYS	CD-CE-NZ	9.59	133.75	111.70
1	A	155	LEU	CB-CG-CD1	-8.48	96.58	111.00
1	A	17	ARG	NE-CZ-NH2	-7.53	116.54	120.30
1	A	58[A]	TYR	CB-CG-CD1	-7.27	116.64	121.00
1	A	58[B]	TYR	CB-CG-CD1	-7.27	116.64	121.00

Continued on next page...

Continued from previous page...

Mol	Chain	Res	Type	Atoms	Z	Observed(°)	Ideal(°)
1	A	297	ASP	CB-CG-OD1	6.16	123.84	118.30
1	A	320	GLU	OE1-CD-OE2	-5.90	116.22	123.30
1	A	166	ARG	NE-CZ-NH1	5.81	123.21	120.30
1	A	288	ASP	CB-CG-OD1	5.65	123.39	118.30
1	A	57[A]	LYS	CB-CG-CD	5.57	126.07	111.60
1	A	57[B]	LYS	CB-CG-CD	5.57	126.07	111.60
1	A	266	ARG	NE-CZ-NH1	5.52	123.06	120.30
1	A	171	ILE	CB-CG1-CD1	5.38	128.97	113.90
1	A	166	ARG	CD-NE-CZ	5.28	130.99	123.60
1	A	173	ASP	CB-CG-OD1	5.26	123.03	118.30
1	A	297	ASP	CB-CG-OD2	-5.24	113.58	118.30
1	A	96	LYS	CB-CG-CD	5.24	125.22	111.60
1	A	279[A]	ARG	NE-CZ-NH1	5.11	122.85	120.30
1	A	279[B]	ARG	NE-CZ-NH1	5.11	122.85	120.30
1	A	29[A]	ASP	CB-CG-OD2	-5.03	113.77	118.30
1	A	29[B]	ASP	CB-CG-OD2	-5.03	113.77	118.30

There are no chirality outliers.

All (1) planarity outliers are listed below:

Mol	Chain	Res	Type	Group
1	A	266	ARG	Sidechain

5.2 Too-close contacts

In the following table, the Non-H and H(model) columns list the number of non-hydrogen atoms and hydrogen atoms in the chain respectively. The H(added) column lists the number of hydrogen atoms added and optimized by MolProbity. The Clashes column lists the number of clashes within the asymmetric unit, whereas Symm-Clashes lists symmetry-related clashes.

Mol	Chain	Non-H	H(model)	H(added)	Clashes	Symm-Clashes
1	A	2631	0	2553	62	0
2	A	1	0	0	0	0
3	A	42	0	51	18	0
4	A	8	0	12	14	0
5	A	7	0	9	5	0
6	A	478	0	0	33	1
All	All	3167	0	2625	74	1

The all-atom clashscore is defined as the number of clashes found per 1000 atoms (including hydrogen atoms). The all-atom clashscore for this structure is 14.

All (74) close contacts within the same asymmetric unit are listed below, sorted by their clash magnitude.

Atom-1	Atom-2	Interatomic distance (Å)	Clash overlap (Å)
1:A:215[A]:GLN:NE2	4:A:406:TRS:O2	1.65	1.28
3:A:403[C]:GOL:H2	6:A:1234:HOH:O	1.00	1.16
1:A:279[B]:ARG:NH1	6:A:1047:HOH:O	1.77	1.11
3:A:403[B]:GOL:H2	6:A:1234:HOH:O	0.82	0.99
1:A:220:ARG:HH21	4:A:406:TRS:H31	1.29	0.96
1:A:154[B]:TYR:OH	6:A:1247:HOH:O	1.86	0.92
1:A:58[A]:TYR:CE1	3:A:403[A]:GOL:H31	2.10	0.87
1:A:58[A]:TYR:CZ	3:A:403[A]:GOL:H2	2.12	0.85
1:A:58[A]:TYR:OH	3:A:403[A]:GOL:H2	1.78	0.84
4:A:406:TRS:H11	6:A:1192:HOH:O	1.88	0.73
1:A:151:ARG:NH2	6:A:1247:HOH:O	2.22	0.73
1:A:226:THR:OG1	3:A:405[B]:GOL:H32	1.90	0.72
1:A:215[A]:GLN:HE22	4:A:406:TRS:C2	2.03	0.71
1:A:53:HIS:HE1	6:A:832:HOH:O	1.72	0.70
1:A:226:THR:OG1	3:A:405[A]:GOL:H11	1.92	0.69
3:A:402:GOL:O1	4:A:406:TRS:H32	1.92	0.69
4:A:406:TRS:C1	6:A:1192:HOH:O	2.40	0.68
1:A:93[B]:THR:HG21	6:A:959:HOH:O	1.91	0.68
1:A:58[A]:TYR:CZ	3:A:403[A]:GOL:C2	2.78	0.67
1:A:293:PRO:HG2	6:A:1162:HOH:O	1.94	0.67
4:A:406:TRS:H21	6:A:1082:HOH:O	1.96	0.65
1:A:82[B]:GLN:HG2	1:A:112[B]:ARG:NH2	2.12	0.65
1:A:220:ARG:HH21	4:A:406:TRS:C3	2.07	0.65
1:A:215[A]:GLN:CD	4:A:406:TRS:O2	2.34	0.64
1:A:287:ARG:CZ	6:A:1162:HOH:O	2.45	0.64
1:A:53:HIS:NE2	5:A:407:1PE:H121	2.13	0.63
1:A:53:HIS:HD2	1:A:54:ASP:O	1.82	0.63
1:A:215[A]:GLN:NE2	4:A:406:TRS:O3	2.33	0.62
1:A:152:LYS:HE3	1:A:154[A]:TYR:OH	1.98	0.62
1:A:81:THR:H	1:A:121:ASN:HD21	1.46	0.62
3:A:403[C]:GOL:C2	6:A:1234:HOH:O	1.84	0.61
1:A:152:LYS:HE3	6:A:1247:HOH:O	2.00	0.61
1:A:57[B]:LYS:HE3	6:A:1277:HOH:O	2.00	0.61
1:A:220:ARG:HE	4:A:406:TRS:H22	1.66	0.60
1:A:288:ASP:OD2	1:A:291:LYS:HG3	2.01	0.60
1:A:215[B]:GLN:OE1	4:A:406:TRS:O3	2.19	0.59
1:A:68:HIS:HE1	6:A:1237:HOH:O	1.86	0.57
1:A:81:THR:H	1:A:121:ASN:ND2	2.02	0.57
1:A:58[A]:TYR:CE1	3:A:403[A]:GOL:C3	2.86	0.57
1:A:268[B]:ASN:HB2	1:A:269:PRO:HD2	1.87	0.56

Continued on next page...

Continued from previous page...

Atom-1	Atom-2	Interatomic distance (Å)	Clash overlap (Å)
1:A:295:SER:CA	6:A:1130:HOH:O	2.53	0.56
1:A:151:ARG:CZ	6:A:1247:HOH:O	2.53	0.56
1:A:287:ARG:NE	6:A:1162:HOH:O	2.38	0.56
1:A:220:ARG:HE	4:A:406:TRS:C2	2.19	0.55
3:A:403[B]:GOL:O2	6:A:1246:HOH:O	2.14	0.55
3:A:403[B]:GOL:C2	6:A:1234:HOH:O	1.68	0.55
5:A:407:1PE:H131	6:A:968:HOH:O	2.07	0.54
1:A:225:PHE:HE2	3:A:404:GOL:H31	1.73	0.53
1:A:183[B]:GLU:HG2	6:A:976:HOH:O	2.09	0.52
1:A:57[B]:LYS:HD2	6:A:1277:HOH:O	2.09	0.51
1:A:56:THR:O	5:A:407:1PE:C13	2.58	0.51
1:A:57[B]:LYS:CD	6:A:1277:HOH:O	2.60	0.50
1:A:80:MET:HA	1:A:121:ASN:HD21	1.77	0.50
1:A:154[A]:TYR:OH	1:A:231:ASP:HB3	2.12	0.50
4:A:406:TRS:C2	6:A:1082:HOH:O	2.58	0.49
1:A:295:SER:N	6:A:1130:HOH:O	2.45	0.49
1:A:53:HIS:CE1	5:A:407:1PE:H121	2.47	0.49
1:A:56:THR:O	5:A:407:1PE:H132	2.13	0.48
1:A:58[A]:TYR:CZ	3:A:403[A]:GOL:C3	2.97	0.48
1:A:58[A]:TYR:CZ	3:A:403[A]:GOL:H31	2.49	0.47
1:A:58[A]:TYR:CE2	3:A:403[A]:GOL:H11	2.50	0.46
1:A:82[A]:GLN:NE2	6:A:884:HOH:O	2.47	0.46
1:A:93[B]:THR:OG1	1:A:94:PRO:HD3	2.16	0.46
1:A:68:HIS:HD2	6:A:1015:HOH:O	1.99	0.45
1:A:93[B]:THR:HG22	6:A:1033:HOH:O	2.16	0.45
1:A:53:HIS:CD2	1:A:54:ASP:O	2.67	0.44
1:A:268[B]:ASN:ND2	1:A:270:ASP:H	2.14	0.44
1:A:82[B]:GLN:HG2	1:A:112[B]:ARG:HH21	1.82	0.43
3:A:403[C]:GOL:O2	6:A:1246:HOH:O	2.20	0.42
1:A:57[B]:LYS:CE	6:A:1277:HOH:O	2.63	0.42
1:A:268[B]:ASN:HD21	1:A:270:ASP:CG	2.24	0.41
1:A:82[B]:GLN:CG	1:A:112[B]:ARG:HH21	2.34	0.40
1:A:276:ASP:OD2	1:A:279[A]:ARG:NE	2.36	0.40
1:A:279[A]:ARG:NH1	6:A:984:HOH:O	2.54	0.40

All (1) symmetry-related close contacts are listed below. The label for Atom-2 includes the symmetry operator and encoded unit-cell translations to be applied.

Atom-1	Atom-2	Interatomic distance (Å)	Clash overlap (Å)
6:A:1260:HOH:O	6:A:1261:HOH:O[2_664]	2.18	0.02

5.3 Torsion angles [i](#)

5.3.1 Protein backbone [i](#)

In the following table, the Percentiles column shows the percent Ramachandran outliers of the chain as a percentile score with respect to all X-ray entries followed by that with respect to entries of similar resolution.

The Analysed column shows the number of residues for which the backbone conformation was analysed, and the total number of residues.

Mol	Chain	Analysed	Favoured	Allowed	Outliers	Percentiles	
1	A	340/334 (102%)	326 (96%)	14 (4%)	0	100	100

There are no Ramachandran outliers to report.

5.3.2 Protein sidechains [i](#)

In the following table, the Percentiles column shows the percent sidechain outliers of the chain as a percentile score with respect to all X-ray entries followed by that with respect to entries of similar resolution.

The Analysed column shows the number of residues for which the sidechain conformation was analysed, and the total number of residues.

Mol	Chain	Analysed	Rotameric	Outliers	Percentiles	
1	A	288/279 (103%)	287 (100%)	1 (0%)	91	73

All (1) residues with a non-rotameric sidechain are listed below:

Mol	Chain	Res	Type
1	A	294	SER

Sometimes sidechains can be flipped to improve hydrogen bonding and reduce clashes. All (3) such sidechains are listed below:

Mol	Chain	Res	Type
1	A	53	HIS
1	A	68	HIS
1	A	121	ASN

5.3.3 RNA [i](#)

There are no RNA molecules in this entry.

5.4 Non-standard residues in protein, DNA, RNA chains [i](#)

There are no non-standard protein/DNA/RNA residues in this entry.

5.5 Carbohydrates [i](#)

There are no oligosaccharides in this entry.

5.6 Ligand geometry [i](#)

Of 10 ligands modelled in this entry, 1 is monoatomic - leaving 9 for Mogul analysis.

In the following table, the Counts columns list the number of bonds (or angles) for which Mogul statistics could be retrieved, the number of bonds (or angles) that are observed in the model and the number of bonds (or angles) that are defined in the Chemical Component Dictionary. The Link column lists molecule types, if any, to which the group is linked. The Z score for a bond length (or angle) is the number of standard deviations the observed value is removed from the expected value. A bond length (or angle) with $|Z| > 2$ is considered an outlier worth inspection. RMSZ is the root-mean-square of all Z scores of the bond lengths (or angles).

Mol	Type	Chain	Res	Link	Bond lengths			Bond angles		
					Counts	RMSZ	# $ Z > 2$	Counts	RMSZ	# $ Z > 2$
3	GOL	A	402	-	5,5,5	1.91	2 (40%)	5,5,5	0.73	0
3	GOL	A	403[C]	-	5,5,5	2.38	1 (20%)	5,5,5	1.60	1 (20%)
3	GOL	A	404	-	5,5,5	0.62	0	5,5,5	1.71	1 (20%)
3	GOL	A	403[B]	-	5,5,5	3.33	1 (20%)	5,5,5	1.73	2 (40%)
4	TRS	A	406	-	7,7,7	0.90	0	9,9,9	1.64	2 (22%)
5	1PE	A	407	-	6,6,15	0.65	0	5,5,14	2.24	2 (40%)
3	GOL	A	405[B]	-	5,5,5	2.32	2 (40%)	5,5,5	2.34	3 (60%)
3	GOL	A	403[A]	-	5,5,5	0.69	0	5,5,5	0.24	0
3	GOL	A	405[A]	-	5,5,5	1.25	0	5,5,5	1.51	0

In the following table, the Chirals column lists the number of chiral outliers, the number of chiral centers analysed, the number of these observed in the model and the number defined in the Chemical Component Dictionary. Similar counts are reported in the Torsion and Rings columns. '-' means no outliers of that kind were identified.

Mol	Type	Chain	Res	Link	Chirals	Torsions	Rings
3	GOL	A	402	-	-	0/4/4/4	-
3	GOL	A	403[C]	-	-	1/4/4/4	-
3	GOL	A	404	-	-	0/4/4/4	-
3	GOL	A	403[B]	-	-	0/4/4/4	-

Continued on next page...

Continued from previous page...

Mol	Type	Chain	Res	Link	Chirals	Torsions	Rings
4	TRS	A	406	-	-	4/9/9/9	-
5	1PE	A	407	-	-	4/4/4/13	-
3	GOL	A	405[B]	-	-	4/4/4/4	-
3	GOL	A	403[A]	-	-	0/4/4/4	-
3	GOL	A	405[A]	-	-	3/4/4/4	-

All (6) bond length outliers are listed below:

Mol	Chain	Res	Type	Atoms	Z	Observed(Å)	Ideal(Å)
3	A	403[B]	GOL	O2-C2	-7.10	1.22	1.43
3	A	403[C]	GOL	O2-C2	-5.21	1.28	1.43
3	A	405[B]	GOL	O2-C2	3.24	1.52	1.43
3	A	402	GOL	O3-C3	3.20	1.55	1.42
3	A	405[B]	GOL	O1-C1	-3.07	1.29	1.42
3	A	402	GOL	O1-C1	2.37	1.52	1.42

All (11) bond angle outliers are listed below:

Mol	Chain	Res	Type	Atoms	Z	Observed(°)	Ideal(°)
5	A	407	1PE	OH3-C22-C12	-3.93	92.80	110.11
4	A	406	TRS	C3-C-C1	-3.43	101.53	110.66
3	A	405[B]	GOL	O3-C3-C2	-3.24	95.78	110.38
3	A	403[C]	GOL	O2-C2-C3	2.99	121.57	109.18
3	A	403[B]	GOL	C3-C2-C1	2.79	122.01	111.80
3	A	404	GOL	O1-C1-C2	2.71	122.58	110.38
3	A	405[B]	GOL	O1-C1-C2	2.65	122.30	110.38
3	A	405[B]	GOL	C3-C2-C1	-2.63	102.16	111.80
4	A	406	TRS	C2-C-N	2.49	114.51	108.17
5	A	407	1PE	OH2-C12-C22	2.38	125.83	111.82
3	A	403[B]	GOL	O3-C3-C2	-2.17	100.59	110.38

There are no chirality outliers.

All (16) torsion outliers are listed below:

Mol	Chain	Res	Type	Atoms
3	A	405[A]	GOL	C1-C2-C3-O3
3	A	405[B]	GOL	O1-C1-C2-O2
3	A	405[B]	GOL	O1-C1-C2-C3
4	A	406	TRS	C2-C-C1-O1
4	A	406	TRS	N-C-C1-O1

Continued on next page...

Continued from previous page...

Mol	Chain	Res	Type	Atoms
3	A	405[A]	GOL	O2-C2-C3-O3
3	A	405[A]	GOL	O1-C1-C2-C3
3	A	405[B]	GOL	C1-C2-C3-O3
5	A	407	1PE	OH4-C13-C23-OH3
5	A	407	1PE	OH2-C12-C22-OH3
4	A	406	TRS	C3-C-C1-O1
3	A	405[B]	GOL	O2-C2-C3-O3
4	A	406	TRS	C3-C-C2-O2
3	A	403[C]	GOL	O2-C2-C3-O3
5	A	407	1PE	C13-C23-OH3-C22
5	A	407	1PE	C12-C22-OH3-C23

There are no ring outliers.

9 monomers are involved in 36 short contacts:

Mol	Chain	Res	Type	Clashes	Symm-Clashes
3	A	402	GOL	1	0
3	A	403[C]	GOL	3	0
3	A	404	GOL	1	0
3	A	403[B]	GOL	3	0
4	A	406	TRS	14	0
5	A	407	1PE	5	0
3	A	405[B]	GOL	1	0
3	A	403[A]	GOL	8	0
3	A	405[A]	GOL	1	0

5.7 Other polymers [i](#)

There are no such residues in this entry.

5.8 Polymer linkage issues [i](#)

There are no chain breaks in this entry.

6 Fit of model and data [i](#)

6.1 Protein, DNA and RNA chains [i](#)

In the following table, the column labelled ‘#RSRZ> 2’ contains the number (and percentage) of RSRZ outliers, followed by percent RSRZ outliers for the chain as percentile scores relative to all X-ray entries and entries of similar resolution. The OWAB column contains the minimum, median, 95th percentile and maximum values of the occupancy-weighted average B-factor per residue. The column labelled ‘Q< 0.9’ lists the number of (and percentage) of residues with an average occupancy less than 0.9.

Mol	Chain	Analysed	<RSRZ>	#RSRZ>2	OWAB(Å ²)	Q<0.9
1	A	312/334 (93%)	-0.46	8 (2%) 57 64	2, 6, 15, 39	31 (9%)

All (8) RSRZ outliers are listed below:

Mol	Chain	Res	Type	RSRZ
1	A	318	ILE	6.1
1	A	293	PRO	3.4
1	A	291	LYS	2.9
1	A	313	LEU	2.7
1	A	9	SER	2.7
1	A	319	SER	2.7
1	A	294	SER	2.6
1	A	104	TRP	2.0

6.2 Non-standard residues in protein, DNA, RNA chains [i](#)

There are no non-standard protein/DNA/RNA residues in this entry.

6.3 Carbohydrates [i](#)

There are no monosaccharides in this entry.

6.4 Ligands [i](#)

In the following table, the Atoms column lists the number of modelled atoms in the group and the number defined in the chemical component dictionary. The B-factors column lists the minimum, median, 95th percentile and maximum values of B factors of atoms in the group. The column labelled ‘Q< 0.9’ lists the number of atoms with occupancy less than 0.9.

Mol	Type	Chain	Res	Atoms	RSCC	RSR	B-factors(\AA^2)	Q<0.9
5	1PE	A	407	7/16	0.83	0.14	20,22,35,37	0
4	TRS	A	406	8/8	0.89	0.16	7,16,24,29	8
3	GOL	A	405[A]	6/6	0.93	0.10	4,9,19,26	6
3	GOL	A	405[B]	6/6	0.93	0.10	6,10,13,19	6
3	GOL	A	404	6/6	0.94	0.12	7,18,33,38	0
3	GOL	A	402	6/6	0.96	0.07	11,13,17,18	0
3	GOL	A	403[C]	6/6	0.97	0.09	2,4,6,6	6
3	GOL	A	403[A]	6/6	0.97	0.09	2,2,3,4	6
3	GOL	A	403[B]	6/6	0.97	0.09	3,5,5,6	6
2	CA	A	401	1/1	1.00	0.01	2,2,2,2	0

6.5 Other polymers [i](#)

There are no such residues in this entry.