



wwPDB EM Validation Summary Report ⓘ

May 10, 2025 – 12:21 PM EDT

PDB ID : 9NOR / pdb_00009nor
EMDB ID : EMD-49608
Title : Human sweet taste receptor composed of TAS1R2 and TAS1R3 GPCRs from the combined datasets
Authors : Juen, Z.; Lu, Z.; Yu, R.; Chang, A.N.; Wang, B.; Fitzpatrick, A.W.P.; Zuker, C.S.
Deposited on : 2025-03-10
Resolution : 3.40 Å(reported)

This is a wwPDB EM Validation Summary Report for a publicly released PDB entry.

We welcome your comments at validation@mail.wwpdb.org

A user guide is available at

<https://www.wwpdb.org/validation/2017/EMValidationReportHelp>
with specific help available everywhere you see the ⓘ symbol.

The types of validation reports are described at

<http://www.wwpdb.org/validation/2017/FAQs#types>.

The following versions of software and data (see [references ⓘ](#)) were used in the production of this report:

EMDB validation analysis : 0.0.1.dev118
Mogul : 2022.3.0, CSD as543be (2022)
MolProbity : 4-5-2 with Phenix2.0rc1
Percentile statistics : 20231227.v01 (using entries in the PDB archive December 27th 2023)
MapQ : 1.9.13
Ideal geometry (proteins) : Engh & Huber (2001)
Ideal geometry (DNA, RNA) : Parkinson et al. (1996)
Validation Pipeline (wwPDB-VP) : 2.43.1

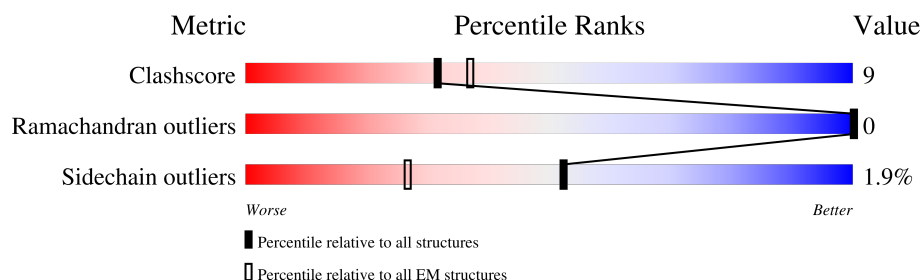
1 Overall quality at a glance

The following experimental techniques were used to determine the structure:

ELECTRON MICROSCOPY

The reported resolution of this entry is 3.40 Å.

Percentile scores (ranging between 0-100) for global validation metrics of the entry are shown in the following graphic. The table shows the number of entries on which the scores are based.



Metric	Whole archive (#Entries)	EM structures (#Entries)
Clashscore	210492	15764
Ramachandran outliers	207382	16835
Sidechain outliers	206894	16415

The table below summarises the geometric issues observed across the polymeric chains and their fit to the map. The red, orange, yellow and green segments of the bar indicate the fraction of residues that contain outliers for ≥ 3 , 2, 1 and 0 types of geometric quality criteria respectively. A grey segment represents the fraction of residues that are not modelled. The numeric value for each fraction is indicated below the corresponding segment, with a dot representing fractions $\leq 5\%$. The upper red bar (where present) indicates the fraction of residues that have poor fit to the EM map (all-atom inclusion $< 40\%$). The numeric value is given above the bar.

Mol	Chain	Length	Quality of chain
1	B	859	
2	A	848	

2 Entry composition

There are 3 unique types of molecules in this entry. The entry contains 12555 atoms, of which 0 are hydrogens and 0 are deuteriums.

In the tables below, the AltConf column contains the number of residues with at least one atom in alternate conformation and the Trace column contains the number of residues modelled with at most 2 atoms.

- Molecule 1 is a protein called Taste receptor type 1 member 3.

Mol	Chain	Residues	Atoms					AltConf	Trace
			Total	C	N	O	S		
1	B	780	6059	3900	1050	1060	49	0	0

There are 28 discrepancies between the modelled and reference sequences:

Chain	Residue	Modelled	Actual	Comment	Reference
B	-6	MET	-	expression tag	UNP Q7RTX0
B	-5	LYS	-	expression tag	UNP Q7RTX0
B	-4	THR	-	expression tag	UNP Q7RTX0
B	-3	ILE	-	expression tag	UNP Q7RTX0
B	-2	ILE	-	expression tag	UNP Q7RTX0
B	-1	ALA	-	expression tag	UNP Q7RTX0
B	0	LEU	-	expression tag	UNP Q7RTX0
B	1	SER	-	expression tag	UNP Q7RTX0
B	2	TYR	-	expression tag	UNP Q7RTX0
B	3	ILE	-	expression tag	UNP Q7RTX0
B	4	PHE	-	expression tag	UNP Q7RTX0
B	5	CYS	-	expression tag	UNP Q7RTX0
B	6	LEU	-	expression tag	UNP Q7RTX0
B	7	VAL	-	expression tag	UNP Q7RTX0
B	8	PHE	-	expression tag	UNP Q7RTX0
B	9	ALA	-	expression tag	UNP Q7RTX0
B	10	ASP	-	expression tag	UNP Q7RTX0
B	11	TYR	-	expression tag	UNP Q7RTX0
B	12	LYS	-	expression tag	UNP Q7RTX0
B	13	ASP	-	expression tag	UNP Q7RTX0
B	14	ASP	-	expression tag	UNP Q7RTX0
B	15	ASP	-	expression tag	UNP Q7RTX0
B	16	ASP	-	expression tag	UNP Q7RTX0
B	17	LYS	-	expression tag	UNP Q7RTX0
B	18	ALA	-	expression tag	UNP Q7RTX0
B	19	ALA	-	expression tag	UNP Q7RTX0
B	20	ALA	-	expression tag	UNP Q7RTX0
B	757	ARG	CYS	conflict	UNP Q7RTX0

- Molecule 2 is a protein called Taste receptor type 1 member 2.

Mol	Chain	Residues	Atoms					AltConf	Trace
2	A	785	Total	C	N	O	S	0	0
			6272	4066	1027	1131	48		

There are 27 discrepancies between the modelled and reference sequences:

Chain	Residue	Modelled	Actual	Comment	Reference
A	-8	MET	-	expression tag	UNP Q8TE23
A	-7	LYS	-	expression tag	UNP Q8TE23
A	-6	THR	-	expression tag	UNP Q8TE23
A	-5	ILE	-	expression tag	UNP Q8TE23
A	-4	ILE	-	expression tag	UNP Q8TE23
A	-3	ALA	-	expression tag	UNP Q8TE23
A	-2	LEU	-	expression tag	UNP Q8TE23
A	-1	SER	-	expression tag	UNP Q8TE23
A	0	TYR	-	expression tag	UNP Q8TE23
A	1	ILE	-	expression tag	UNP Q8TE23
A	2	PHE	-	expression tag	UNP Q8TE23
A	3	CYS	-	expression tag	UNP Q8TE23
A	4	LEU	-	expression tag	UNP Q8TE23
A	5	VAL	-	expression tag	UNP Q8TE23
A	6	PHE	-	expression tag	UNP Q8TE23
A	7	ALA	-	expression tag	UNP Q8TE23
A	8	TYR	-	expression tag	UNP Q8TE23
A	9	PRO	-	expression tag	UNP Q8TE23
A	10	TYR	-	expression tag	UNP Q8TE23
A	11	ASP	-	expression tag	UNP Q8TE23
A	12	VAL	-	expression tag	UNP Q8TE23
A	13	PRO	-	expression tag	UNP Q8TE23
A	14	ASP	-	expression tag	UNP Q8TE23
A	15	TYR	-	expression tag	UNP Q8TE23
A	16	ALA	-	expression tag	UNP Q8TE23
A	17	ALA	-	expression tag	UNP Q8TE23
A	18	ALA	-	expression tag	UNP Q8TE23

- Molecule 3 is 2-acetamido-2-deoxy-beta-D-glucopyranose (CCD ID: NAG) (formula: C₈H₁₅NO₆).

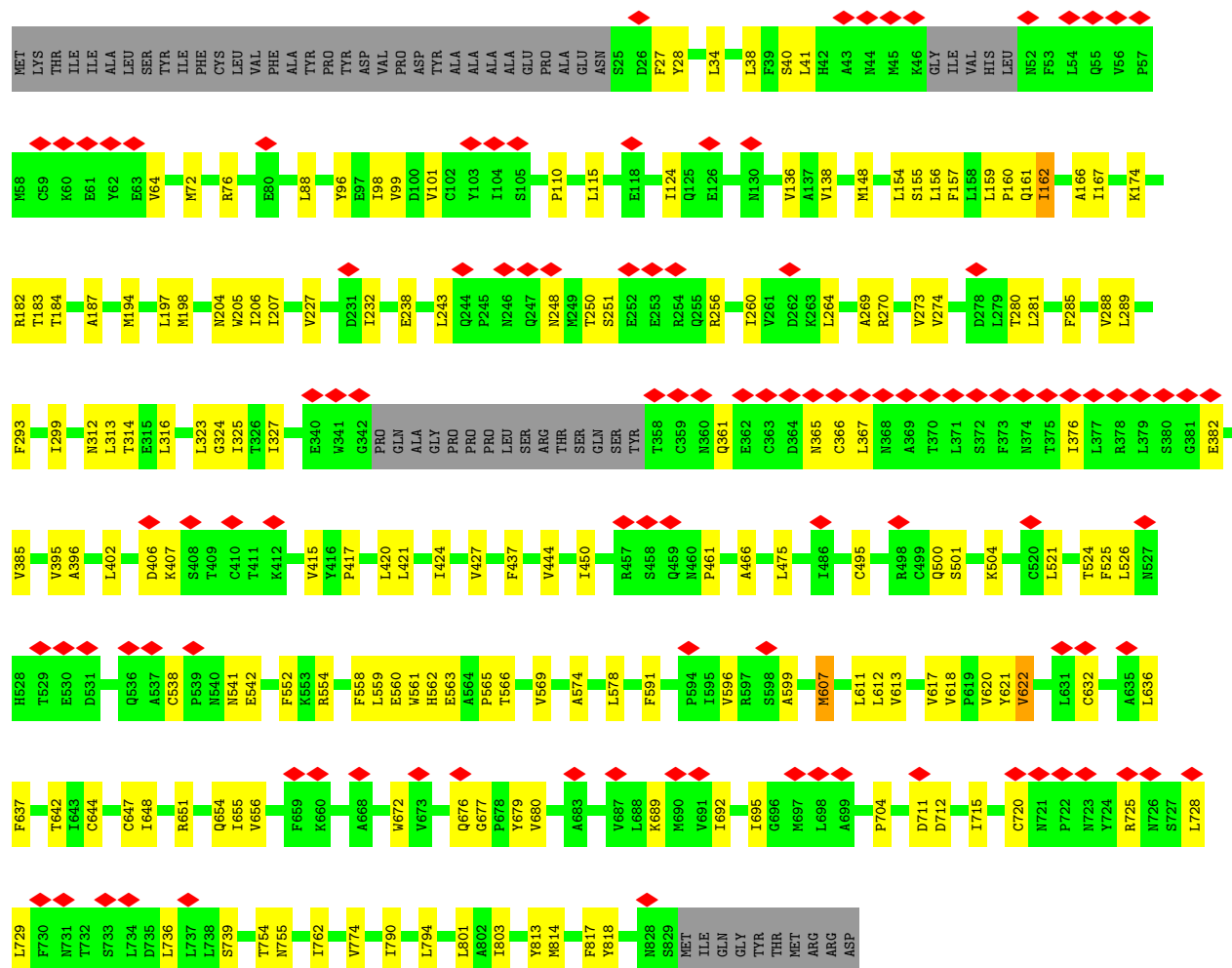


Mol	Chain	Residues	Atoms				AltConf
			Total	C	N	O	
3	B	1	14	8	1	5	0
3	B	1	14	8	1	5	0
3	B	1	14	8	1	5	0
3	B	1	14	8	1	5	0
3	B	1	14	8	1	5	0
3	B	1	14	8	1	5	0
3	B	1	14	8	1	5	0
3	B	1	14	8	1	5	0
3	A	1	14	8	1	5	0
3	A	1	14	8	1	5	0
3	A	1	14	8	1	5	0
3	A	1	14	8	1	5	0
3	A	1	14	8	1	5	0
3	A	1	14	8	1	5	0

Continued on next page...

Continued from previous page...

Mol	Chain	Residues	Atoms				AltConf
3	A	1	Total	C	N	O	0
			14	8	1	5	
3	A	1	Total	C	N	O	0
			14	8	1	5	



4 Experimental information

Property	Value	Source
EM reconstruction method	SINGLE PARTICLE	Depositor
Imposed symmetry	POINT, Not provided	
Number of particles used	108519	Depositor
Resolution determination method	FSC 0.143 CUT-OFF	Depositor
CTF correction method	NONE	Depositor
Microscope	TFS KRIOS	Depositor
Voltage (kV)	300	Depositor
Electron dose ($e^-/\text{\AA}^2$)	59	Depositor
Minimum defocus (nm)	1200	Depositor
Maximum defocus (nm)	2000	Depositor
Magnification	Not provided	
Image detector	GATAN K3 BIOQUANTUM (6k x 4k)	Depositor
Maximum map value	2.227	Depositor
Minimum map value	-0.158	Depositor
Average map value	0.006	Depositor
Map value standard deviation	0.021	Depositor
Recommended contour level	0.18	Depositor
Map size (\AA)	364.58902, 367.05804, 366.23505	wwPDB
Map dimensions	443, 446, 445	wwPDB
Map angles ($^\circ$)	90.0, 90.0, 90.0	wwPDB
Pixel spacing (\AA)	0.8230001, 0.8230001, 0.82300013	Depositor

5 Model quality

5.1 Standard geometry

Bond lengths and bond angles in the following residue types are not validated in this section: NAG

The Z score for a bond length (or angle) is the number of standard deviations the observed value is removed from the expected value. A bond length (or angle) with $|Z| > 5$ is considered an outlier worth inspection. RMSZ is the root-mean-square of all Z scores of the bond lengths (or angles).

Mol	Chain	Bond lengths		Bond angles	
		RMSZ	$\# Z > 5$	RMSZ	$\# Z > 5$
1	B	0.24	0/6218	0.38	0/8468
2	A	0.15	0/6435	0.33	0/8774
All	All	0.20	0/12653	0.36	0/17242

There are no bond length outliers.

There are no bond angle outliers.

There are no chirality outliers.

There are no planarity outliers.

5.2 Too-close contacts

In the following table, the Non-H and H(model) columns list the number of non-hydrogen atoms and hydrogen atoms in the chain respectively. The H(added) column lists the number of hydrogen atoms added and optimized by MolProbity. The Clashes column lists the number of clashes within the asymmetric unit, whereas Symm-Clashes lists symmetry-related clashes.

Mol	Chain	Non-H	H(model)	H(added)	Clashes	Symm-Clashes
1	B	6059	0	6022	105	0
2	A	6272	0	6206	111	0
3	A	112	0	104	2	0
3	B	112	0	104	0	0
All	All	12555	0	12436	213	0

The all-atom clashscore is defined as the number of clashes found per 1000 atoms (including hydrogen atoms). The all-atom clashscore for this structure is 9.

The worst 5 of 213 close contacts within the same asymmetric unit are listed below, sorted by their clash magnitude.

Atom-1	Atom-2	Interatomic distance (Å)	Clash overlap (Å)
2:A:38:LEU:HD22	2:A:101:VAL:CG1	1.86	1.06
2:A:38:LEU:HD22	2:A:101:VAL:HG11	1.05	1.04
1:B:54:ARG:NH2	2:A:155:SER:O	1.89	1.04
2:A:38:LEU:CD2	2:A:101:VAL:HG11	1.96	0.96
2:A:136:VAL:HG12	2:A:420:LEU:HD22	1.63	0.80

There are no symmetry-related clashes.

5.3 Torsion angles [i](#)

5.3.1 Protein backbone [i](#)

In the following table, the Percentiles column shows the percent Ramachandran outliers of the chain as a percentile score with respect to all PDB entries followed by that with respect to all EM entries.

The Analysed column shows the number of residues for which the backbone conformation was analysed, and the total number of residues.

Mol	Chain	Analysed	Favoured	Allowed	Outliers	Percentiles	
1	B	772/859 (90%)	749 (97%)	23 (3%)	0	100	100
2	A	779/848 (92%)	757 (97%)	22 (3%)	0	100	100
All	All	1551/1707 (91%)	1506 (97%)	45 (3%)	0	100	100

There are no Ramachandran outliers to report.

5.3.2 Protein sidechains [i](#)

In the following table, the Percentiles column shows the percent sidechain outliers of the chain as a percentile score with respect to all PDB entries followed by that with respect to all EM entries.

The Analysed column shows the number of residues for which the sidechain conformation was analysed, and the total number of residues.

Mol	Chain	Analysed	Rotameric	Outliers	Percentiles	
1	B	655/712 (92%)	642 (98%)	13 (2%)	50	70
2	A	708/760 (93%)	695 (98%)	13 (2%)	54	73
All	All	1363/1472 (93%)	1337 (98%)	26 (2%)	52	71

5 of 26 residues with a non-rotameric sidechain are listed below:

Mol	Chain	Res	Type
2	A	558	PHE
2	A	607	MET
2	A	711	ASP
2	A	562	HIS
2	A	612	LEU

Sometimes sidechains can be flipped to improve hydrogen bonding and reduce clashes. 5 of 7 such sidechains are listed below:

Mol	Chain	Res	Type
2	A	190	HIS
2	A	540	ASN
2	A	654	GLN
2	A	592	GLN
1	B	637	GLN

5.3.3 RNA [i](#)

There are no RNA molecules in this entry.

5.4 Non-standard residues in protein, DNA, RNA chains [i](#)

There are no non-standard protein/DNA/RNA residues in this entry.

5.5 Carbohydrates [i](#)

There are no oligosaccharides in this entry.

5.6 Ligand geometry [i](#)

16 ligands are modelled in this entry.

In the following table, the Counts columns list the number of bonds (or angles) for which Mogul statistics could be retrieved, the number of bonds (or angles) that are observed in the model and the number of bonds (or angles) that are defined in the Chemical Component Dictionary. The Link column lists molecule types, if any, to which the group is linked. The Z score for a bond length (or angle) is the number of standard deviations the observed value is removed from the expected value. A bond length (or angle) with $|Z| > 2$ is considered an outlier worth inspection. RMSZ is the root-mean-square of all Z scores of the bond lengths (or angles).

Mol	Type	Chain	Res	Link	Bond lengths			Bond angles		
					Counts	RMSZ	# Z > 2	Counts	RMSZ	# Z > 2
3	NAG	A	907	2	14,14,15	0.72	0	17,19,21	1.15	1 (5%)
3	NAG	A	905	2	14,14,15	0.81	1 (7%)	17,19,21	2.28	3 (17%)
3	NAG	B	906	1	14,14,15	0.70	0	17,19,21	0.86	0
3	NAG	A	906	2	14,14,15	0.85	1 (7%)	17,19,21	1.27	1 (5%)
3	NAG	A	902	2	14,14,15	0.83	1 (7%)	17,19,21	1.70	3 (17%)
3	NAG	A	908	2	14,14,15	0.72	0	17,19,21	0.84	0
3	NAG	B	904	1	14,14,15	0.68	0	17,19,21	1.22	1 (5%)
3	NAG	B	905	1	14,14,15	0.72	0	17,19,21	0.89	1 (5%)
3	NAG	B	907	1	14,14,15	0.74	0	17,19,21	0.87	0
3	NAG	A	903	2	14,14,15	0.76	0	17,19,21	1.18	1 (5%)
3	NAG	B	901	1	14,14,15	0.71	0	17,19,21	0.77	0
3	NAG	B	902	1	14,14,15	0.73	0	17,19,21	0.80	0
3	NAG	A	904	2	14,14,15	0.70	0	17,19,21	0.79	0
3	NAG	B	903	1	14,14,15	0.70	0	17,19,21	1.17	1 (5%)
3	NAG	A	901	2	14,14,15	0.70	0	17,19,21	1.16	1 (5%)
3	NAG	B	908	1	14,14,15	0.71	0	17,19,21	0.95	1 (5%)

In the following table, the Chirals column lists the number of chiral outliers, the number of chiral centers analysed, the number of these observed in the model and the number defined in the Chemical Component Dictionary. Similar counts are reported in the Torsion and Rings columns. '-' means no outliers of that kind were identified.

Mol	Type	Chain	Res	Link	Chirals	Torsions	Rings
3	NAG	A	907	2	-	2/6/23/26	0/1/1/1
3	NAG	A	905	2	-	5/6/23/26	0/1/1/1
3	NAG	B	906	1	-	3/6/23/26	0/1/1/1
3	NAG	A	906	2	-	2/6/23/26	0/1/1/1
3	NAG	A	902	2	-	0/6/23/26	0/1/1/1
3	NAG	A	908	2	-	2/6/23/26	0/1/1/1
3	NAG	B	904	1	-	2/6/23/26	0/1/1/1
3	NAG	B	905	1	-	2/6/23/26	0/1/1/1
3	NAG	B	907	1	-	2/6/23/26	0/1/1/1
3	NAG	A	903	2	-	4/6/23/26	0/1/1/1
3	NAG	B	901	1	-	0/6/23/26	0/1/1/1
3	NAG	B	902	1	-	0/6/23/26	0/1/1/1
3	NAG	A	904	2	-	0/6/23/26	0/1/1/1
3	NAG	B	903	1	-	2/6/23/26	0/1/1/1
3	NAG	A	901	2	-	2/6/23/26	0/1/1/1

Continued on next page...

Continued from previous page...

Mol	Type	Chain	Res	Link	Chirals	Torsions	Rings
3	NAG	B	908	1	-	3/6/23/26	0/1/1/1

All (3) bond length outliers are listed below:

Mol	Chain	Res	Type	Atoms	Z	Observed(Å)	Ideal(Å)
3	A	906	NAG	C1-C2	2.24	1.55	1.52
3	A	902	NAG	C1-C2	2.11	1.55	1.52
3	A	905	NAG	C1-C2	2.01	1.55	1.52

The worst 5 of 14 bond angle outliers are listed below:

Mol	Chain	Res	Type	Atoms	Z	Observed(°)	Ideal(°)
3	A	905	NAG	C2-N2-C7	8.16	133.83	122.90
3	A	902	NAG	C1-O5-C5	5.57	119.65	112.19
3	A	906	NAG	C2-N2-C7	3.25	127.25	122.90
3	B	903	NAG	C2-N2-C7	3.24	127.24	122.90
3	A	901	NAG	C2-N2-C7	3.24	127.24	122.90

There are no chirality outliers.

5 of 31 torsion outliers are listed below:

Mol	Chain	Res	Type	Atoms
3	B	905	NAG	C8-C7-N2-C2
3	B	905	NAG	O7-C7-N2-C2
3	B	906	NAG	C8-C7-N2-C2
3	B	906	NAG	O7-C7-N2-C2
3	B	907	NAG	C8-C7-N2-C2

There are no ring outliers.

1 monomer is involved in 2 short contacts:

Mol	Chain	Res	Type	Clashes	Symm-Clashes
3	A	906	NAG	2	0

5.7 Other polymers

There are no such residues in this entry.

5.8 Polymer linkage issues ⓘ

There are no chain breaks in this entry.

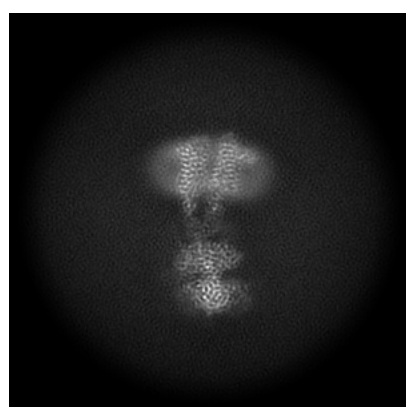
6 Map visualisation [i](#)

This section contains visualisations of the EMDB entry EMD-49608. These allow visual inspection of the internal detail of the map and identification of artifacts.

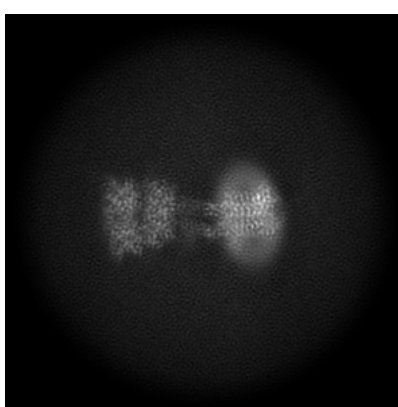
No raw map or half-maps were deposited for this entry and therefore no images, graphs, etc. pertaining to the raw map can be shown.

6.1 Orthogonal projections [i](#)

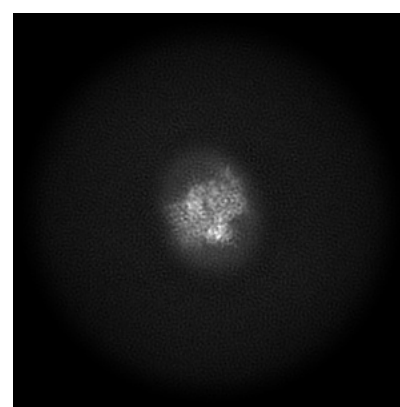
6.1.1 Primary map



X



Y

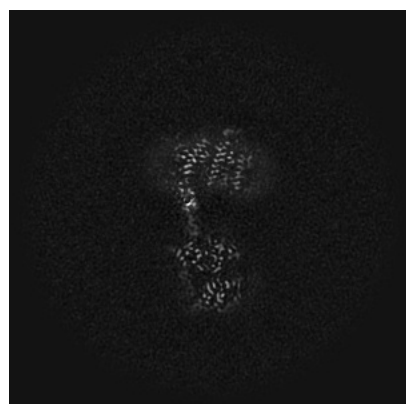


Z

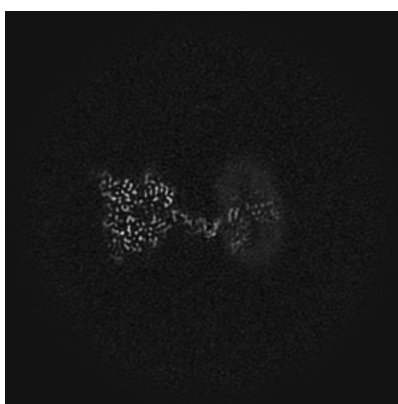
The images above show the map projected in three orthogonal directions.

6.2 Central slices [i](#)

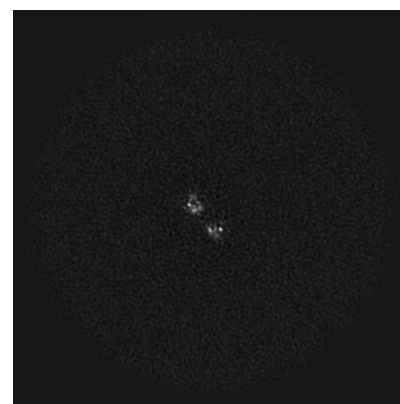
6.2.1 Primary map



X Index: 221



Y Index: 223

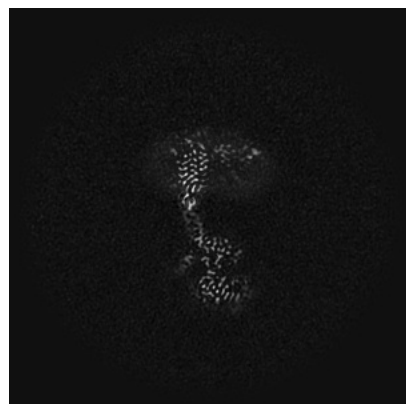


Z Index: 222

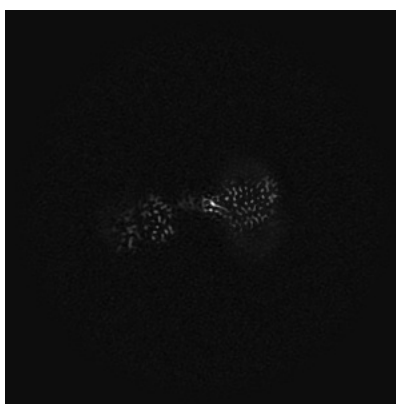
The images above show central slices of the map in three orthogonal directions.

6.3 Largest variance slices [i](#)

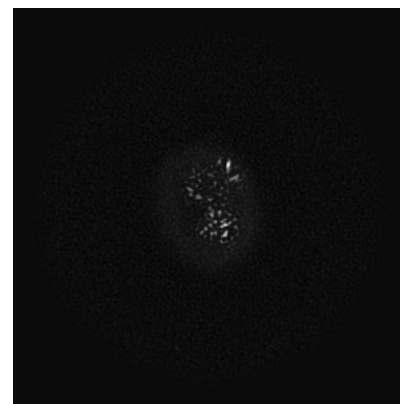
6.3.1 Primary map



X Index: 231



Y Index: 200



Z Index: 282

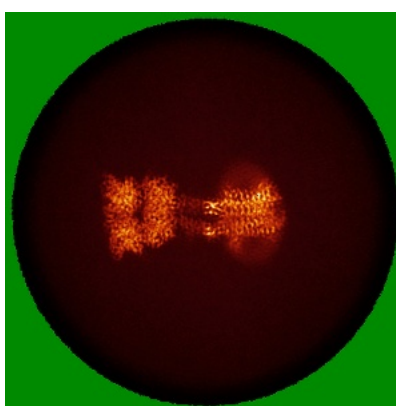
The images above show the largest variance slices of the map in three orthogonal directions.

6.4 Orthogonal standard-deviation projections (False-color) [i](#)

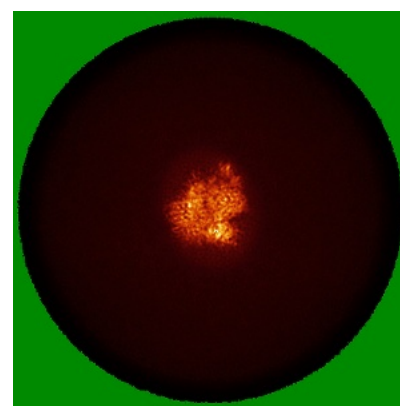
6.4.1 Primary map



X



Y

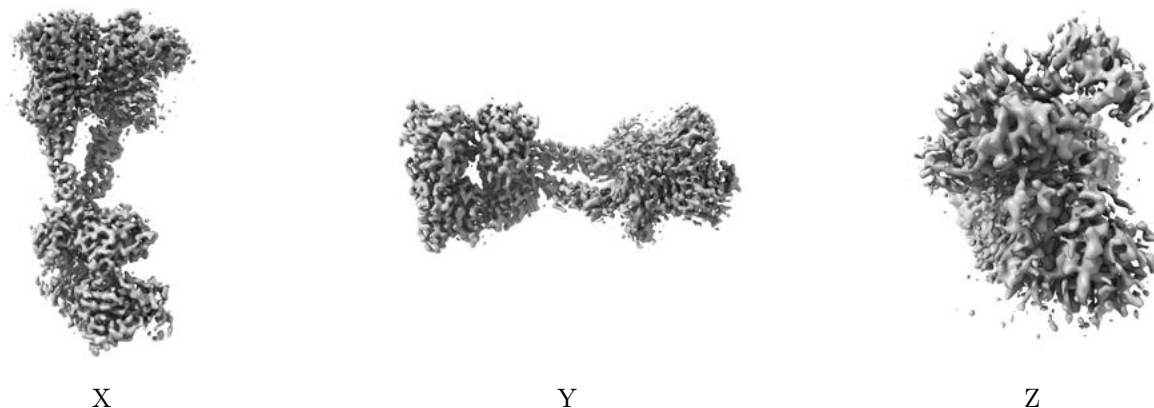


Z

The images above show the map standard deviation projections with false color in three orthogonal directions. Minimum values are shown in green, max in blue, and dark to light orange shades represent small to large values respectively.

6.5 Orthogonal surface views [i](#)

6.5.1 Primary map



The images above show the 3D surface view of the map at the recommended contour level 0.18. These images, in conjunction with the slice images, may facilitate assessment of whether an appropriate contour level has been provided.

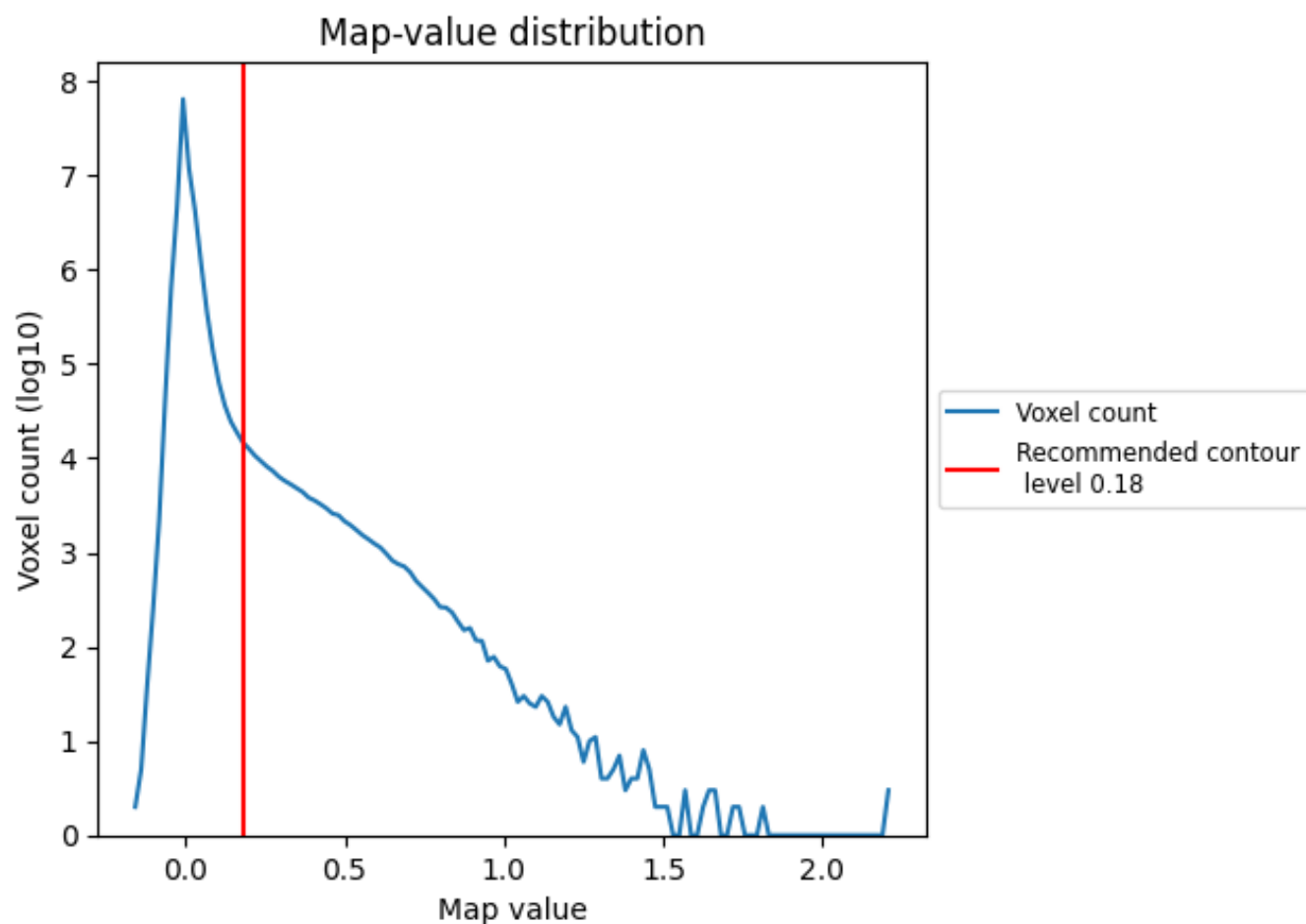
6.6 Mask visualisation [i](#)

This section was not generated. No masks/segmentation were deposited.

7 Map analysis [i](#)

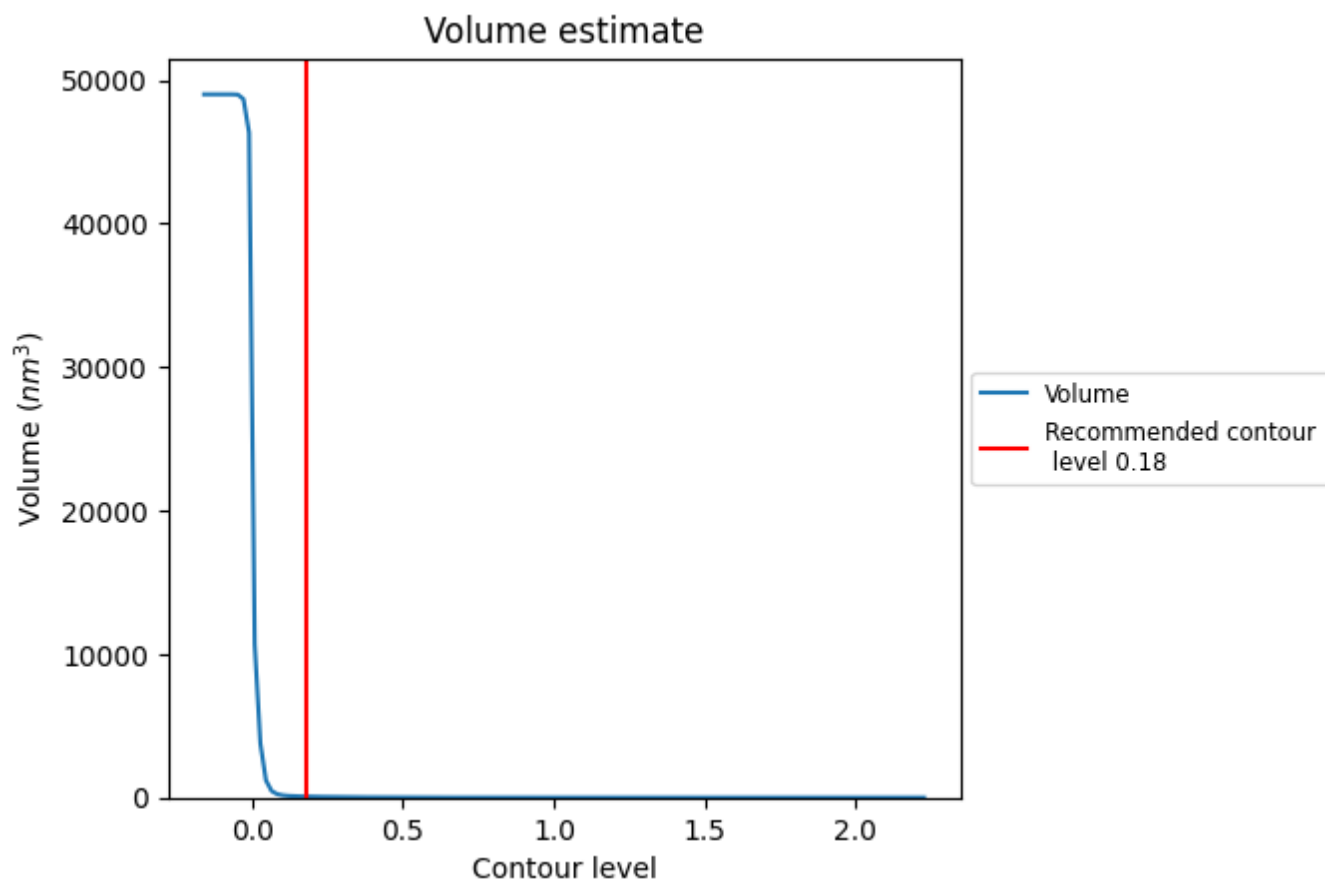
This section contains the results of statistical analysis of the map.

7.1 Map-value distribution [i](#)



The map-value distribution is plotted in 128 intervals along the x-axis. The y-axis is logarithmic. A spike in this graph at zero usually indicates that the volume has been masked.

7.2 Volume estimate [i](#)



The volume at the recommended contour level is 71 nm³; this corresponds to an approximate mass of 64 kDa.

The volume estimate graph shows how the enclosed volume varies with the contour level. The recommended contour level is shown as a vertical line and the intersection between the line and the curve gives the volume of the enclosed surface at the given level.

7.3 Rotationally averaged power spectrum [i](#)

This section was not generated. The rotationally averaged power spectrum is only generated for cubic maps.

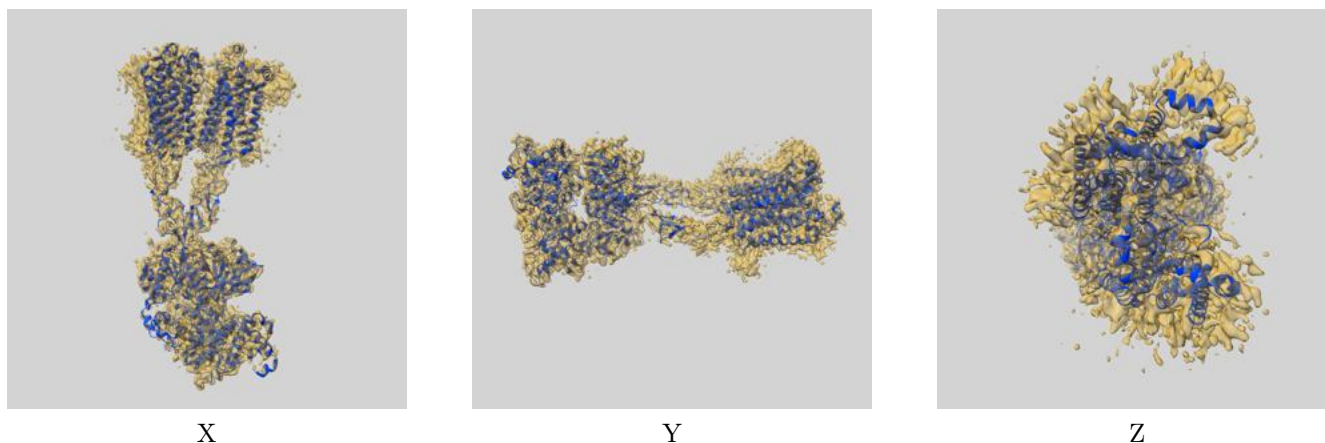
8 Fourier-Shell correlation

This section was not generated. No FSC curve or half-maps provided.

9 Map-model fit [i](#)

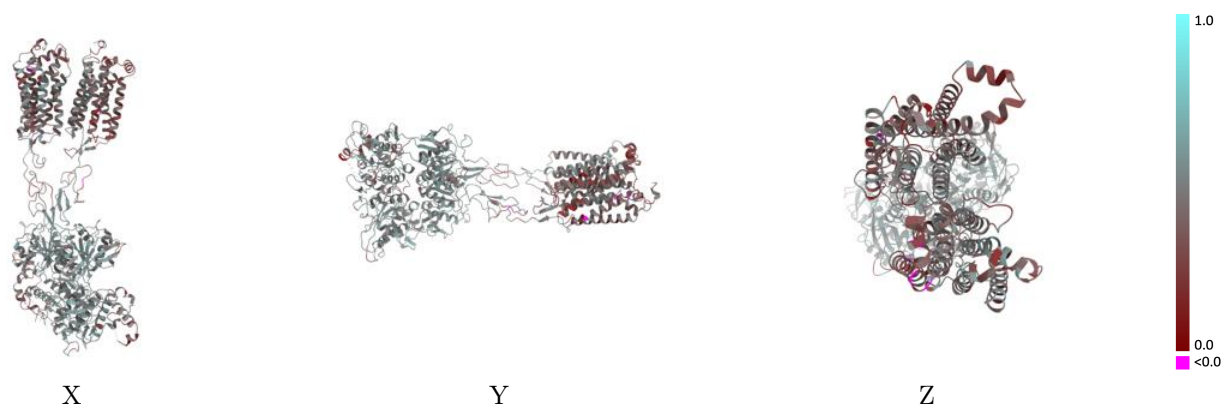
This section contains information regarding the fit between EMDB map EMD-49608 and PDB model 9NOR. Per-residue inclusion information can be found in [section 3](#) on [page 7](#).

9.1 Map-model overlay [i](#)



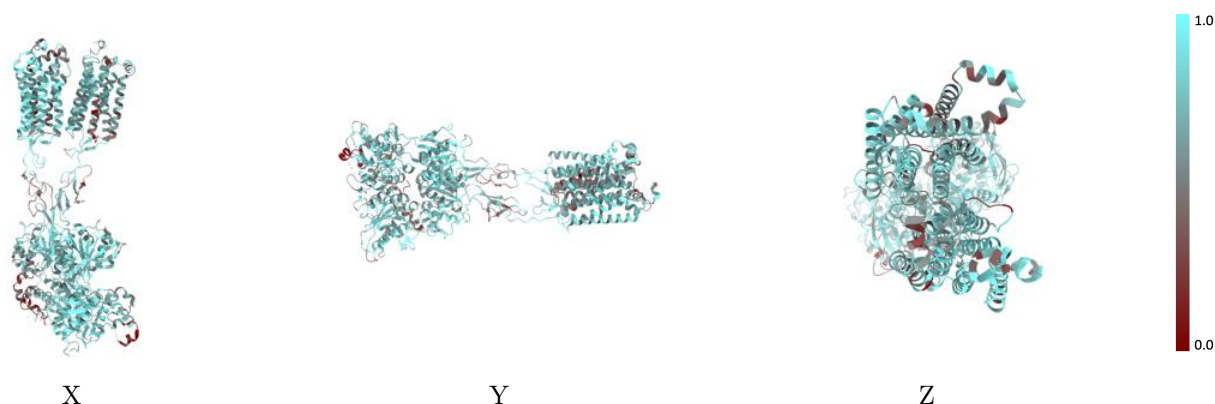
The images above show the 3D surface view of the map at the recommended contour level 0.18 at 50% transparency in yellow overlaid with a ribbon representation of the model coloured in blue. These images allow for the visual assessment of the quality of fit between the atomic model and the map.

9.2 Q-score mapped to coordinate model [i](#)



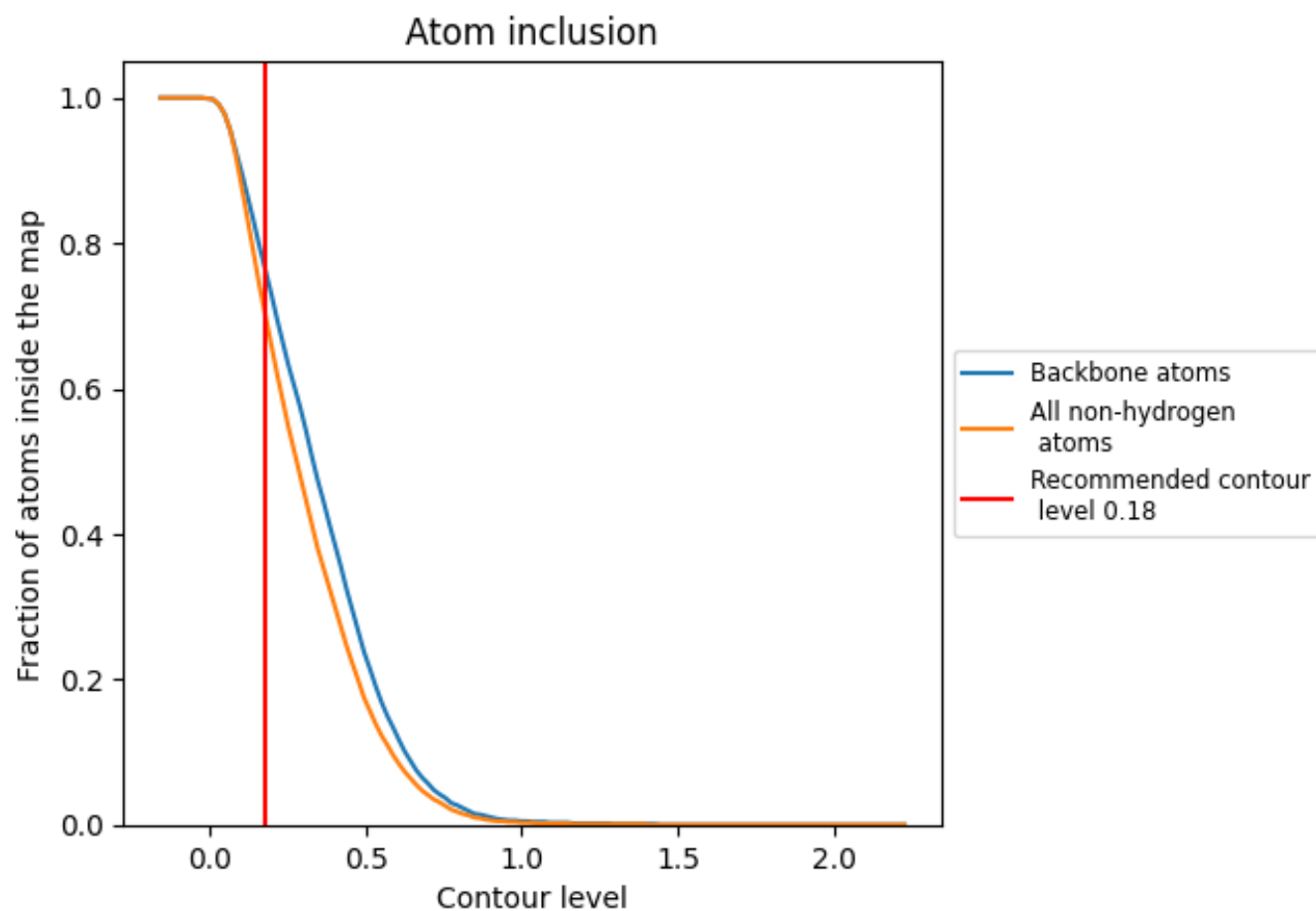
The images above show the model with each residue coloured according its Q-score. This shows their resolvability in the map with higher Q-score values reflecting better resolvability. Please note: Q-score is calculating the resolvability of atoms, and thus high values are only expected at resolutions at which atoms can be resolved. Low Q-score values may therefore be expected for many entries.

9.3 Atom inclusion mapped to coordinate model [i](#)



The images above show the model with each residue coloured according to its atom inclusion. This shows to what extent they are inside the map at the recommended contour level (0.18).

9.4 Atom inclusion [i](#)



At the recommended contour level, 76% of all backbone atoms, 70% of all non-hydrogen atoms, are inside the map.

9.5 Map-model fit summary ⓘ

The table lists the average atom inclusion at the recommended contour level (0.18) and Q-score for the entire model and for each chain.

Chain	Atom inclusion	Q-score
All	<div></div> 0.6960	<div></div> 0.4560
A	<div></div> 0.6730	<div></div> 0.4470
B	<div></div> 0.7200	<div></div> 0.4640

