



Full wwPDB X-ray Structure Validation Report ⓘ

Nov 9, 2025 – 08:07 PM EST

PDB ID : 9O06 / pdb_00009o06
Title : Structure of human MAIT A-F7 TCR in complex with human MR1-10-formylmethylflavin
Authors : Abdelaal, M.; Rossjohn, J.; Awad, W.
Deposited on : 2025-04-02
Resolution : 2.00 Å(reported)

This is a Full wwPDB X-ray Structure Validation Report for a publicly released PDB entry.

We welcome your comments at validation@mail.wwpdb.org

A user guide is available at

<https://www.wwpdb.org/validation/2017/XrayValidationReportHelp>

with specific help available everywhere you see the ⓘ symbol.

The types of validation reports are described at

<http://www.wwpdb.org/validation/2017/FAQs#types>.

The following versions of software and data (see [references ⓘ](#)) were used in the production of this report:

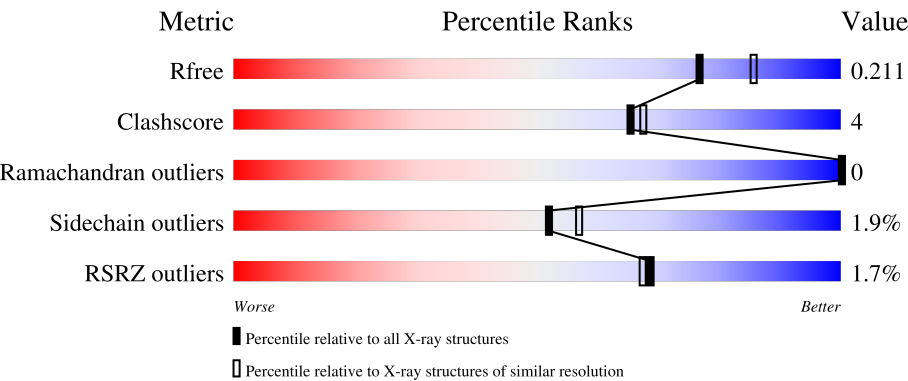
MolProbity : 4-5-2 with Phenix2.0
Mogul : 2022.3.0, CSD as543be (2022)
Xtriage (Phenix) : 2.0
EDS : 3.0
buster-report : 1.1.7 (2018)
Percentile statistics : 20231227.v01 (using entries in the PDB archive December 27th 2023)
CCP4 : 9.0.010 (Gargrove)
Density-Fitness : 1.0.12
Ideal geometry (proteins) : Engh & Huber (2001)
Ideal geometry (DNA, RNA) : Parkinson et al. (1996)
Validation Pipeline (wwPDB-VP) : 2.46

1 Overall quality at a glance i

The following experimental techniques were used to determine the structure:
X-RAY DIFFRACTION

The reported resolution of this entry is 2.00 Å.

Percentile scores (ranging between 0-100) for global validation metrics of the entry are shown in the following graphic. The table shows the number of entries on which the scores are based.



Metric	Whole archive (#Entries)	Similar resolution (#Entries, resolution range(Å))
R _{free}	164625	9409 (2.00-2.00)
Clashscore	180529	10737 (2.00-2.00)
Ramachandran outliers	177936	10628 (2.00-2.00)
Sidechain outliers	177891	10627 (2.00-2.00)
RSRZ outliers	164620	9409 (2.00-2.00)

The table below summarises the geometric issues observed across the polymeric chains and their fit to the electron density. The red, orange, yellow and green segments of the lower bar indicate the fraction of residues that contain outliers for ≥ 3 , 2, 1 and 0 types of geometric quality criteria respectively. A grey segment represents the fraction of residues that are not modelled. The numeric value for each fraction is indicated below the corresponding segment, with a dot representing fractions $\leq 5\%$. The upper red bar (where present) indicates the fraction of residues that have poor fit to the electron density. The numeric value is given above the bar.

Mol	Chain	Length	Quality of chain
1	A	271	<div><div>%</div><div>85%12%..</div></div>
1	C	271	<div><div>2%</div><div>92%7%.</div></div>
2	B	100	<div><div>%</div><div>86%11%..</div></div>
2	F	100	<div><div>%</div><div>90%9%.</div></div>
3	D	204	<div><div>4%</div><div>83%10%7%</div></div>

Continued on next page...

Continued from previous page...

Mol	Chain	Length	Quality of chain
3	G	204	<div><div></div><div>90%</div><div>8%</div><div></div></div>
4	E	246	<div><div>2%</div><div></div><div>88%</div><div>10%</div><div></div></div>
4	H	246	<div><div>%</div><div></div><div>91%</div><div>8%</div><div></div></div>

2 Entry composition

There are 8 unique types of molecules in this entry. The entry contains 14159 atoms, of which 0 are hydrogens and 0 are deuteriums.

In the tables below, the ZeroOcc column contains the number of atoms modelled with zero occupancy, the AltConf column contains the number of residues with at least one atom in alternate conformation and the Trace column contains the number of residues modelled with at most 2 atoms.

- Molecule 1 is a protein called Major histocompatibility complex class I-related gene protein.

Mol	Chain	Residues	Atoms					ZeroOcc	AltConf	Trace
1	A	265	Total	C	N	O	S	0	9	0
			2203	1414	379	398	12			
1	C	267	Total	C	N	O	S	0	12	0
			2243	1448	380	403	12			

There are 4 discrepancies between the modelled and reference sequences:

Chain	Residue	Modelled	Actual	Comment	Reference
A	0	MET	-	initiating methionine	UNP Q95460
A	261	SER	CYS	engineered mutation	UNP Q95460
C	0	MET	-	initiating methionine	UNP Q95460
C	261	SER	CYS	engineered mutation	UNP Q95460

- Molecule 2 is a protein called Beta-2-microglobulin.

Mol	Chain	Residues	Atoms					ZeroOcc	AltConf	Trace
2	B	98	Total	C	N	O	S	0	2	0
			789	507	132	147	3			
2	F	100	Total	C	N	O	S	0	3	0
			831	532	139	156	4			

There are 2 discrepancies between the modelled and reference sequences:

Chain	Residue	Modelled	Actual	Comment	Reference
B	0	MET	-	initiating methionine	UNP P61769
F	0	MET	-	initiating methionine	UNP P61769

- Molecule 3 is a protein called TCR-alpha.

Mol	Chain	Residues	Atoms					ZeroOcc	AltConf	Trace
3	D	190	Total	C	N	O	S	0	6	0
			1467	938	232	287	10			

Continued on next page...

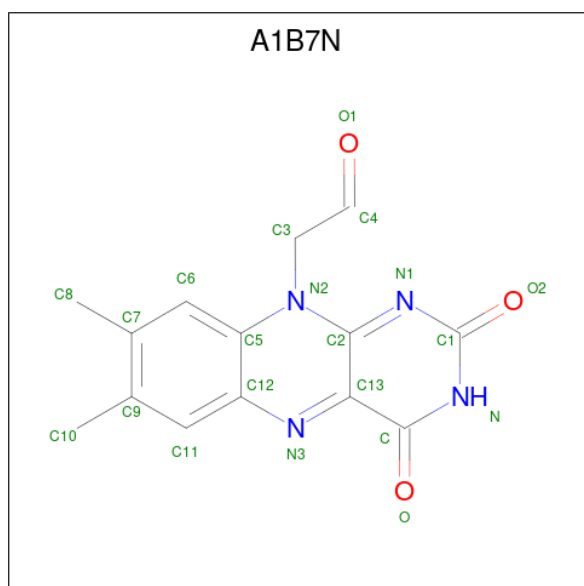
Continued from previous page...

Mol	Chain	Residues	Atoms					ZeroOcc	AltConf	Trace
3	G	200	Total	C	N	O	S	0	13	0
			1612	1023	255	324	10			

- Molecule 4 is a protein called TCR-beta.

Mol	Chain	Residues	Atoms					ZeroOcc	AltConf	Trace
4	E	241	Total	C	N	O	S	0	5	0
			1878	1188	318	362	10			
4	H	245	Total	C	N	O	S	0	9	0
			1940	1225	332	369	14			

- Molecule 5 is (7,8-dimethyl-2,4-dioxo-3,4-dihydrobenzo[g]pteridin-10(2H)-yl)acetaldehyde (CCD ID: A1B7N) (formula: C₁₄H₁₂N₄O₃) (labeled as "Ligand of Interest" by depositor).



Mol	Chain	Residues	Atoms				ZeroOcc	AltConf
5	A	1	Total	C	N	O	0	1
			42	28	8	6		
5	C	1	Total	C	N	O	0	1
			42	28	8	6		

- Molecule 6 is GLYCEROL (CCD ID: GOL) (formula: C₃H₈O₃).



Mol	Chain	Residues	Atoms			ZeroOcc	AltConf
6	A	1	Total	C	O	0	0
			6	3	3		
6	A	1	Total	C	O	0	0
			6	3	3		
6	F	1	Total	C	O	0	0
			6	3	3		
6	F	1	Total	C	O	0	0
			6	3	3		

- Molecule 7 is SODIUM ION (CCD ID: NA) (formula: Na).

Mol	Chain	Residues	Atoms		ZeroOcc	AltConf
7	F	1	Total	Na	0	0
			1	1		
7	H	1	Total	Na	0	0
			1	1		

- Molecule 8 is water.

Mol	Chain	Residues	Atoms		ZeroOcc	AltConf
8	A	201	Total	O	0	0
			201	201		
8	B	58	Total	O	0	0
			58	58		
8	C	171	Total	O	0	0
			171	171		

Continued on next page...

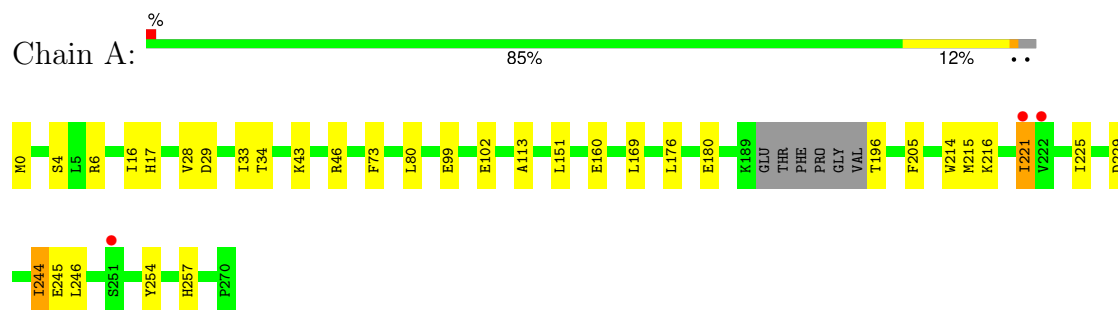
Continued from previous page...

Mol	Chain	Residues	Atoms		ZeroOcc	AltConf
8	D	78	Total 78	O 78	0	0
8	E	78	Total 78	O 78	0	0
8	F	87	Total 87	O 87	0	0
8	G	202	Total 202	O 202	0	0
8	H	211	Total 211	O 211	0	0

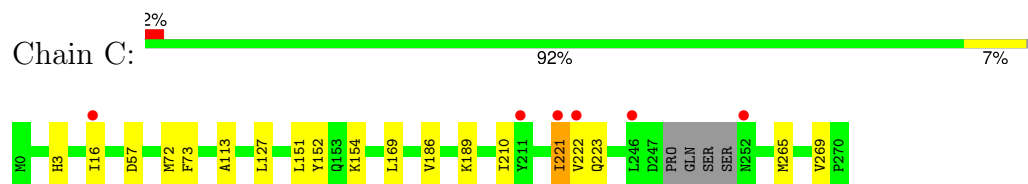
3 Residue-property plots [i](#)

These plots are drawn for all protein, RNA, DNA and oligosaccharide chains in the entry. The first graphic for a chain summarises the proportions of the various outlier classes displayed in the second graphic. The second graphic shows the sequence view annotated by issues in geometry and electron density. Residues are color-coded according to the number of geometric quality criteria for which they contain at least one outlier: green = 0, yellow = 1, orange = 2 and red = 3 or more. A red dot above a residue indicates a poor fit to the electron density ($RSRZ > 2$). Stretches of 2 or more consecutive residues without any outlier are shown as a green connector. Residues present in the sample, but not in the model, are shown in grey.

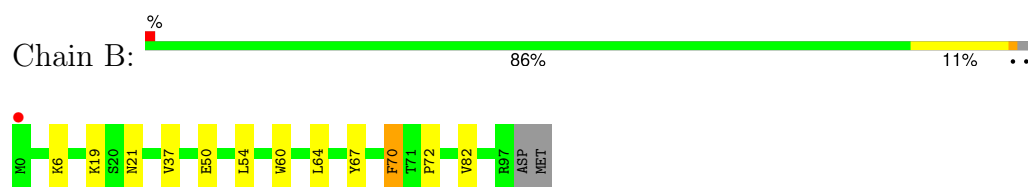
- Molecule 1: Major histocompatibility complex class I-related gene protein



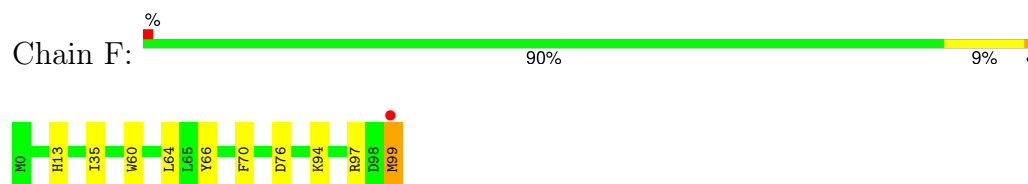
- Molecule 1: Major histocompatibility complex class I-related gene protein



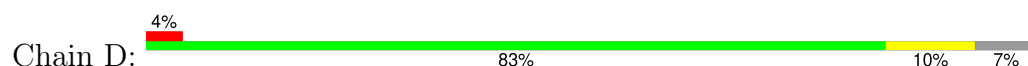
- Molecule 2: Beta-2-microglobulin

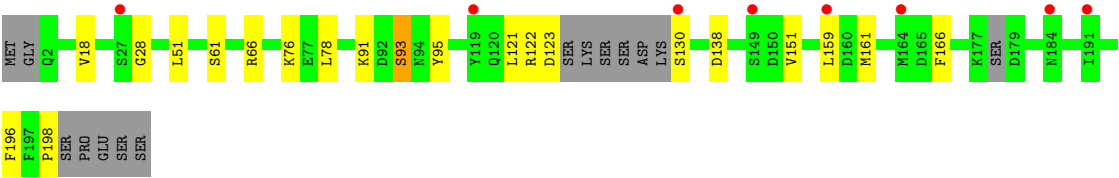


- Molecule 2: Beta-2-microglobulin

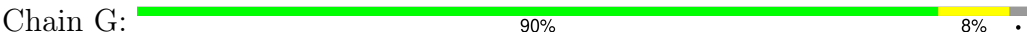


- Molecule 3: TCR-alpha

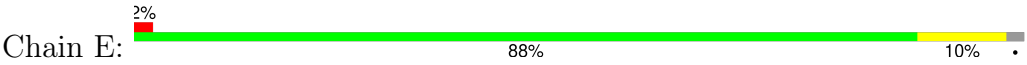




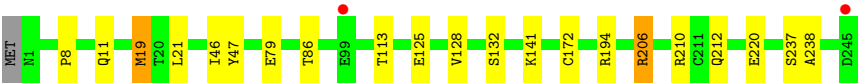
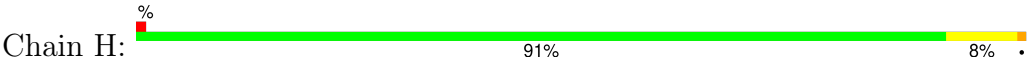
● Molecule 3: TCR-alpha



● Molecule 4: TCR-beta



● Molecule 4: TCR-beta



4 Data and refinement statistics

Property	Value	Source
Space group	C 1 2 1	Depositor
Cell constants a, b, c, α , β , γ	217.42Å 70.32Å 143.28Å 90.00° 104.63° 90.00°	Depositor
Resolution (Å)	48.16 – 2.00 48.16 – 2.00	Depositor EDS
% Data completeness (in resolution range)	99.5 (48.16-2.00) 99.7 (48.16-2.00)	Depositor EDS
R_{merge}	(Not available)	Depositor
R_{sym}	(Not available)	Depositor
$\langle I/\sigma(I) \rangle$ ¹	1.92 (at 2.00Å)	Xtriage
Refinement program	PHENIX 1.21_5207	Depositor
R, R_{free}	0.173 , 0.210 0.174 , 0.211	Depositor DCC
R_{free} test set	7157 reflections (5.05%)	wwPDB-VP
Wilson B-factor (Å ²)	39.1	Xtriage
Anisotropy	0.396	Xtriage
Bulk solvent k_{sol} (e/Å ³), B_{sol} (Å ²)	0.33 , 51.5	EDS
L-test for twinning ²	$\langle L \rangle = 0.49$, $\langle L^2 \rangle = 0.32$	Xtriage
Estimated twinning fraction	No twinning to report.	Xtriage
F_o, F_c correlation	0.97	EDS
Total number of atoms	14159	wwPDB-VP
Average B, all atoms (Å ²)	53.0	wwPDB-VP

Xtriage's analysis on translational NCS is as follows: *The largest off-origin peak in the Patterson function is 3.63% of the height of the origin peak. No significant pseudotranslation is detected.*

¹Intensities estimated from amplitudes.

²Theoretical values of $\langle |L| \rangle$, $\langle L^2 \rangle$ for acentric reflections are 0.5, 0.333 respectively for untwinned datasets, and 0.375, 0.2 for perfectly twinned datasets.

5 Model quality

5.1 Standard geometry

Bond lengths and bond angles in the following residue types are not validated in this section: GOL, NA, A1B7N

The Z score for a bond length (or angle) is the number of standard deviations the observed value is removed from the expected value. A bond length (or angle) with $|Z| > 5$ is considered an outlier worth inspection. RMSZ is the root-mean-square of all Z scores of the bond lengths (or angles).

Mol	Chain	Bond lengths		Bond angles	
		RMSZ	# Z >5	RMSZ	# Z >5
1	A	0.33	0/2293	0.48	0/3117
1	C	0.28	0/2350	0.45	0/3196
2	B	0.24	0/818	0.42	0/1117
2	F	0.29	0/863	0.45	0/1173
3	D	0.27	0/1517	0.46	0/2062
3	G	0.33	0/1688	0.53	0/2289
4	E	0.24	0/1944	0.46	0/2655
4	H	0.31	0/2018	0.52	0/2747
All	All	0.29	0/13491	0.48	0/18356

There are no bond length outliers.

There are no bond angle outliers.

There are no chirality outliers.

There are no planarity outliers.

5.2 Too-close contacts

In the following table, the Non-H and H(model) columns list the number of non-hydrogen atoms and hydrogen atoms in the chain respectively. The H(added) column lists the number of hydrogen atoms added and optimized by MolProbity. The Clashes column lists the number of clashes within the asymmetric unit, whereas Symm-Clashes lists symmetry-related clashes.

Mol	Chain	Non-H	H(model)	H(added)	Clashes	Symm-Clashes
1	A	2203	0	2099	23	0
1	C	2243	0	2152	15	0
2	B	789	0	723	7	0
2	F	831	0	788	7	0
3	D	1467	0	1351	12	0

Continued on next page...

Continued from previous page...

Mol	Chain	Non-H	H(model)	H(added)	Clashes	Symm-Clashes
3	G	1612	0	1547	13	0
4	E	1878	0	1738	12	0
4	H	1940	0	1830	17	0
5	A	42	0	0	2	0
5	C	42	0	0	0	0
6	A	12	0	16	0	0
6	F	12	0	16	1	0
7	F	1	0	0	0	0
7	H	1	0	0	0	0
8	A	201	0	0	2	0
8	B	58	0	0	0	0
8	C	171	0	0	4	0
8	D	78	0	0	1	0
8	E	78	0	0	0	0
8	F	87	0	0	1	0
8	G	202	0	0	5	0
8	H	211	0	0	3	0
All	All	14159	0	12260	93	0

The all-atom clashscore is defined as the number of clashes found per 1000 atoms (including hydrogen atoms). The all-atom clashscore for this structure is 4.

All (93) close contacts within the same asymmetric unit are listed below, sorted by their clash magnitude.

Atom-1	Atom-2	Interatomic distance (Å)	Clash overlap (Å)
3:D:66[B]:ARG:NH1	8:D:301:HOH:O	2.20	0.74
3:G:92:ASP:HB3	3:G:98[B]:ILE:HD11	1.73	0.70
1:A:43:LYS:NZ	5:A:301[A]:A1B7N:O	2.27	0.68
1:A:160:GLU:OE2	8:A:401:HOH:O	2.12	0.68
3:G:9[B]:GLU:HG2	3:G:104:LYS:HB3	1.77	0.67
4:H:125:GLU:OE2	8:H:401:HOH:O	2.11	0.67
3:G:164:MET:HE1	4:H:141:LYS:HE3	1.79	0.64
1:A:216:LYS:HB2	1:A:221:ILE:HD13	1.80	0.64
3:G:108[A]:LYS:NZ	8:G:302:HOH:O	2.32	0.62
4:H:172[B]:CYS:SG	4:H:194:ARG:HD3	2.40	0.61
1:C:72:MET:HE1	8:C:528:HOH:O	2.01	0.60
2:F:76:ASP:O	2:F:97:ARG:NH2	2.34	0.60
3:D:28:GLY:HA3	3:D:93[A]:SER:OG	2.02	0.59
1:A:43:LYS:NZ	5:A:301[B]:A1B7N:O	2.36	0.58
3:G:159[B]:LEU:HB2	4:H:172[B]:CYS:SG	2.45	0.57
3:G:167:LYS:NZ	8:G:303:HOH:O	2.32	0.56

Continued on next page...

Continued from previous page...

Atom-1	Atom-2	Interatomic distance (Å)	Clash overlap (Å)
4:H:141:LYS:NZ	8:H:406:HOH:O	2.35	0.56
1:A:215:MET:HG3	1:A:257:HIS:CD2	2.41	0.56
3:G:2:GLN:NE2	3:G:98[A]:ILE:HD11	2.22	0.55
4:H:11:GLN:HG2	4:H:19[B]:MET:HE2	1.89	0.55
1:A:0:MET:SD	1:A:169[A]:LEU:HD21	2.47	0.54
1:A:169[B]:LEU:HD23	1:A:176:LEU:HD13	1.90	0.54
2:B:54:LEU:HA	2:B:64[A]:LEU:HD13	1.90	0.53
1:A:113:ALA:HB2	2:B:60:TRP:CE2	2.43	0.53
4:E:128:VAL:HG23	4:E:238:ALA:HB3	1.90	0.53
3:D:159:LEU:HD11	4:E:196:ARG:HB2	1.90	0.53
1:A:216:LYS:NZ	1:A:254:TYR:OH	2.35	0.53
1:A:229:ASP:OD2	2:B:6:LYS:NZ	2.34	0.52
1:C:127:LEU:HD21	1:C:154:LYS:HD2	1.91	0.52
4:E:118:LEU:HD13	4:E:218:LEU:HD22	1.92	0.52
4:E:136:ILE:HG23	4:E:199:ALA:HB1	1.91	0.52
1:A:6[A]:ARG:NH2	1:A:29:ASP:O	2.34	0.51
3:D:121:LEU:O	3:D:130:SER:N	2.44	0.51
1:C:186:VAL:HG11	1:C:269:VAL:HG22	1.93	0.50
1:A:0:MET:O	1:A:102:GLU:HG2	2.12	0.50
8:C:457:HOH:O	4:H:206[B]:ARG:HG3	2.12	0.50
1:C:189:LYS:NZ	2:F:99:MET:HE3	2.27	0.49
1:C:210:ILE:O	4:H:206[B]:ARG:HD2	2.13	0.49
3:D:18:VAL:HG12	3:D:78:LEU:HD21	1.95	0.48
2:B:37:VAL:HG22	2:B:82:VAL:HG22	1.95	0.48
3:G:184[A]:ASN:ND2	8:G:308:HOH:O	2.46	0.48
4:H:212:GLN:HG3	4:H:237[B]:SER:OG	2.14	0.47
2:F:13:HIS:HE1	8:F:266:HOH:O	1.97	0.47
3:D:161:MET:HE3	3:D:166:PHE:HD2	1.80	0.46
2:B:21:ASN:HB3	2:B:70:PHE:CE1	2.50	0.46
4:H:86:THR:HG23	4:H:113:THR:HA	1.97	0.46
3:G:92:ASP:HB3	3:G:98[B]:ILE:CD1	2.44	0.45
1:A:214:TRP:H	1:A:225:ILE:HD13	1.81	0.45
1:C:151:LEU:HD22	3:D:51:LEU:HD12	1.99	0.45
4:E:95:VAL:HG12	4:E:96:TRP:CD1	2.51	0.45
1:C:265[B]:MET:HG3	8:C:515:HOH:O	2.16	0.45
3:D:196:PHE:CE2	3:D:198:PRO:HG3	2.52	0.45
1:A:33:ILE:HG13	1:A:34[B]:THR:HG22	2.00	0.44
4:E:46:ILE:HG22	4:E:47:TYR:HD1	1.82	0.44
1:A:244:ILE:HD13	1:A:245:GLU:N	2.32	0.44
4:H:79:GLU:N	8:H:407:HOH:O	2.49	0.44
2:B:19:LYS:O	2:B:72:PRO:HD2	2.16	0.44

Continued on next page...

Continued from previous page...

Atom-1	Atom-2	Interatomic distance (Å)	Clash overlap (Å)
3:D:91:LYS:HG2	3:D:95:TYR:HA	2.00	0.44
1:C:189:LYS:HZ3	2:F:99:MET:HE3	1.83	0.44
1:A:4:SER:HB3	1:A:99:GLU:HG2	1.99	0.44
2:F:64[B]:LEU:HD22	2:F:66:TYR:HE1	1.82	0.44
3:G:96[B]:GLN:NE2	8:G:313:HOH:O	2.50	0.44
3:D:76:LYS:HE2	3:D:76:LYS:HB3	1.84	0.44
1:A:46:ARG:HD3	1:A:46:ARG:HA	1.70	0.43
3:G:125:LYS:NZ	8:G:316:HOH:O	2.51	0.43
1:A:196:THR:HG22	1:A:246:LEU:HD12	2.00	0.43
1:C:113:ALA:HB2	2:F:60:TRP:CE2	2.53	0.43
1:C:221:ILE:HG23	1:C:223:GLN:H	1.83	0.43
4:H:8:PRO:HD2	4:H:21:LEU:HD22	1.99	0.43
3:D:28:GLY:HA3	3:D:93[B]:SER:HB3	2.00	0.43
1:A:151:LEU:HD22	3:G:51:LEU:HD12	2.00	0.43
4:E:83:PRO:HA	4:E:114:VAL:HB	2.01	0.43
1:C:152:TYR:CD1	4:E:100:GLY:HA3	2.55	0.42
1:C:221:ILE:HG23	1:C:223:GLN:N	2.35	0.42
4:E:29:HIS:HE1	4:E:105:PHE:CD1	2.38	0.42
2:F:94:LYS:O	6:F:102:GOL:H11	2.20	0.42
4:H:210:ARG:NE	4:H:212:GLN:OE1	2.42	0.42
1:C:210:ILE:O	4:H:206[A]:ARG:HG2	2.19	0.41
4:E:26[A]:ASP:OD1	4:E:72:ARG:HD2	2.20	0.41
4:E:148:ALA:HB2	4:E:213:VAL:HG21	2.03	0.41
4:E:155:HIS:HB3	4:E:216:TYR:HB2	2.01	0.41
3:D:122:ARG:O	3:D:123:ASP:HB2	2.21	0.41
3:G:17:ILE:HG12	3:G:76:LYS:HA	2.03	0.41
1:A:43:LYS:HE2	8:A:498:HOH:O	2.20	0.41
1:A:28:VAL:HG23	1:A:33:ILE:HD13	2.02	0.41
1:A:180:GLU:O	1:A:205:PHE:HA	2.21	0.41
1:C:3:HIS:CD2	1:C:169[A]:LEU:HD21	2.55	0.41
2:B:50:GLU:HB2	2:B:67:TYR:CE2	2.56	0.41
4:H:46:ILE:HG22	4:H:47:TYR:HD2	1.85	0.41
1:C:265[B]:MET:HE1	8:C:517:HOH:O	2.21	0.40
4:H:128:VAL:HG23	4:H:238:ALA:HB3	2.03	0.40
1:A:16:ILE:HG22	1:A:17:HIS:H	1.87	0.40

There are no symmetry-related clashes.

5.3 Torsion angles

5.3.1 Protein backbone

In the following table, the Percentiles column shows the percent Ramachandran outliers of the chain as a percentile score with respect to all X-ray entries followed by that with respect to entries of similar resolution.

The Analysed column shows the number of residues for which the backbone conformation was analysed, and the total number of residues.

Mol	Chain	Analysed	Favoured	Allowed	Outliers	Percentiles	
1	A	270/271 (100%)	264 (98%)	6 (2%)	0	100	100
1	C	276/271 (102%)	272 (99%)	4 (1%)	0	100	100
2	B	98/100 (98%)	98 (100%)	0	0	100	100
2	F	101/100 (101%)	100 (99%)	1 (1%)	0	100	100
3	D	190/204 (93%)	183 (96%)	7 (4%)	0	100	100
3	G	211/204 (103%)	206 (98%)	5 (2%)	0	100	100
4	E	244/246 (99%)	237 (97%)	7 (3%)	0	100	100
4	H	252/246 (102%)	248 (98%)	4 (2%)	0	100	100
All	All	1642/1642 (100%)	1608 (98%)	34 (2%)	0	100	100

There are no Ramachandran outliers to report.

5.3.2 Protein sidechains

In the following table, the Percentiles column shows the percent sidechain outliers of the chain as a percentile score with respect to all X-ray entries followed by that with respect to entries of similar resolution.

The Analysed column shows the number of residues for which the sidechain conformation was analysed, and the total number of residues.

Mol	Chain	Analysed	Rotameric	Outliers	Percentiles	
1	A	234/241 (97%)	230 (98%)	4 (2%)	56	61
1	C	239/241 (99%)	233 (98%)	6 (2%)	42	45
2	B	84/95 (88%)	83 (99%)	1 (1%)	67	73
2	F	93/95 (98%)	90 (97%)	3 (3%)	34	35
3	D	155/181 (86%)	150 (97%)	5 (3%)	34	35
3	G	186/181 (103%)	184 (99%)	2 (1%)	70	76

Continued on next page...

Continued from previous page...

Mol	Chain	Analysed	Rotameric	Outliers	Percentiles	
4	E	199/212 (94%)	197 (99%)	2 (1%)	73	78
4	H	209/212 (99%)	203 (97%)	6 (3%)	37	39
All	All	1399/1458 (96%)	1370 (98%)	29 (2%)	52	53

All (29) residues with a non-rotameric sidechain are listed below:

Mol	Chain	Res	Type
1	A	73	PHE
1	A	80	LEU
1	A	221	ILE
1	A	244	ILE
2	B	70	PHE
1	C	16	ILE
1	C	57[A]	ASP
1	C	57[B]	ASP
1	C	73	PHE
1	C	221	ILE
1	C	222	VAL
3	D	61	SER
3	D	93[A]	SER
3	D	93[B]	SER
3	D	138	ASP
3	D	151	VAL
4	E	178	LEU
4	E	200	THR
2	F	35	ILE
2	F	70	PHE
2	F	99	MET
3	G	162	ARG
3	G	201	GLU
4	H	19[A]	MET
4	H	19[B]	MET
4	H	132	SER
4	H	206[A]	ARG
4	H	206[B]	ARG
4	H	220	GLU

Sometimes sidechains can be flipped to improve hydrogen bonding and reduce clashes. All (21) such sidechains are listed below:

Mol	Chain	Res	Type
1	A	93	GLN
1	A	141	GLN
1	C	70	GLN
1	C	81	GLN
1	C	93	GLN
1	C	137	HIS
1	C	141	GLN
1	C	187	ASN
1	C	203	HIS
3	D	37	GLN
3	D	94	ASN
4	E	22	GLN
4	E	37	GLN
4	E	212	GLN
3	G	19	GLN
3	G	21	ASN
3	G	94	ASN
3	G	120	GLN
4	H	168	HIS
4	H	185	ASN
4	H	234	GLN

5.3.3 RNA [i](#)

There are no RNA molecules in this entry.

5.4 Non-standard residues in protein, DNA, RNA chains [i](#)

There are no non-standard protein/DNA/RNA residues in this entry.

5.5 Carbohydrates [i](#)

There are no oligosaccharides in this entry.

5.6 Ligand geometry [i](#)

Of 10 ligands modelled in this entry, 2 are monoatomic - leaving 8 for Mogul analysis.

In the following table, the Counts columns list the number of bonds (or angles) for which Mogul statistics could be retrieved, the number of bonds (or angles) that are observed in the model and the number of bonds (or angles) that are defined in the Chemical Component Dictionary. The

Link column lists molecule types, if any, to which the group is linked. The Z score for a bond length (or angle) is the number of standard deviations the observed value is removed from the expected value. A bond length (or angle) with $|Z| > 2$ is considered an outlier worth inspection. RMSZ is the root-mean-square of all Z scores of the bond lengths (or angles).

Mol	Type	Chain	Res	Link	Bond lengths			Bond angles		
					Counts	RMSZ	$\# Z > 2$	Counts	RMSZ	$\# Z > 2$
6	GOL	A	303	-	5,5,5	0.21	0	5,5,5	0.56	0
6	GOL	F	101	-	5,5,5	0.17	0	5,5,5	0.53	0
5	A1B7N	A	301[B]	-	23,23,23	0.46	0	33,34,34	0.37	0
5	A1B7N	A	301[A]	-	23,23,23	0.39	0	33,34,34	0.33	0
5	A1B7N	C	301[B]	-	23,23,23	0.39	0	33,34,34	0.35	0
6	GOL	A	302	-	5,5,5	0.24	0	5,5,5	0.44	0
5	A1B7N	C	301[A]	-	23,23,23	0.39	0	33,34,34	0.36	0
6	GOL	F	102	-	5,5,5	0.31	0	5,5,5	0.94	0

In the following table, the Chirals column lists the number of chiral outliers, the number of chiral centers analysed, the number of these observed in the model and the number defined in the Chemical Component Dictionary. Similar counts are reported in the Torsion and Rings columns. '-' means no outliers of that kind were identified.

Mol	Type	Chain	Res	Link	Chirals	Torsions	Rings
6	GOL	A	303	-	-	4/4/4/4	-
6	GOL	F	101	-	-	2/4/4/4	-
5	A1B7N	A	301[B]	-	-	0/2/3/3	0/3/3/3
5	A1B7N	A	301[A]	-	-	0/2/3/3	0/3/3/3
5	A1B7N	C	301[B]	-	-	0/2/3/3	0/3/3/3
6	GOL	A	302	-	-	0/4/4/4	-
5	A1B7N	C	301[A]	-	-	1/2/3/3	0/3/3/3
6	GOL	F	102	-	-	2/4/4/4	-

There are no bond length outliers.

There are no bond angle outliers.

There are no chirality outliers.

All (9) torsion outliers are listed below:

Mol	Chain	Res	Type	Atoms
6	F	101	GOL	C1-C2-C3-O3
6	F	102	GOL	C1-C2-C3-O3
6	F	101	GOL	O2-C2-C3-O3
6	A	303	GOL	C1-C2-C3-O3
6	F	102	GOL	O2-C2-C3-O3

Continued on next page...

Continued from previous page...

Mol	Chain	Res	Type	Atoms
6	A	303	GOL	O1-C1-C2-C3
6	A	303	GOL	O1-C1-C2-O2
6	A	303	GOL	O2-C2-C3-O3
5	C	301[A]	A1B7N	C4-C3-N2-C5

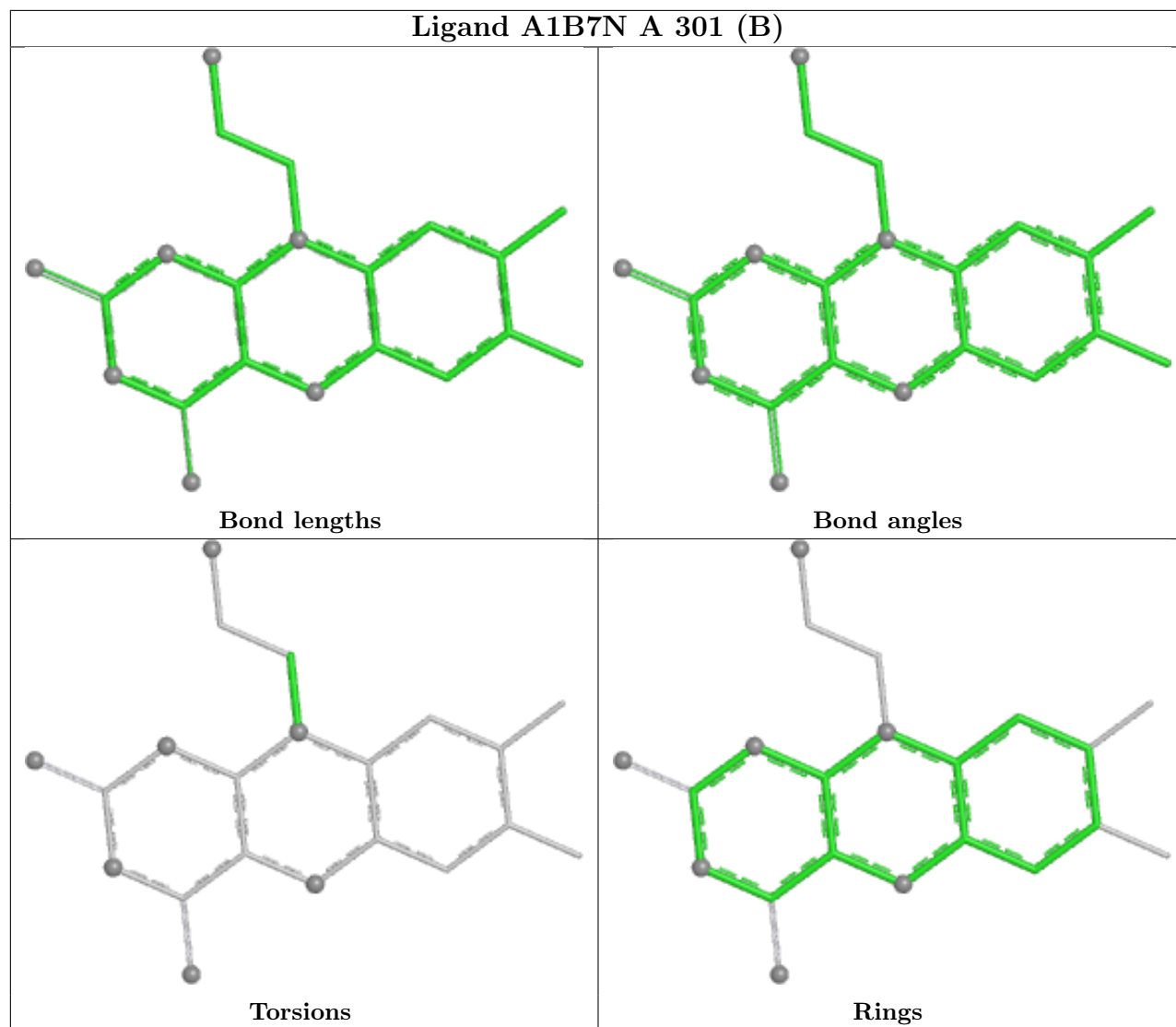
There are no ring outliers.

3 monomers are involved in 3 short contacts:

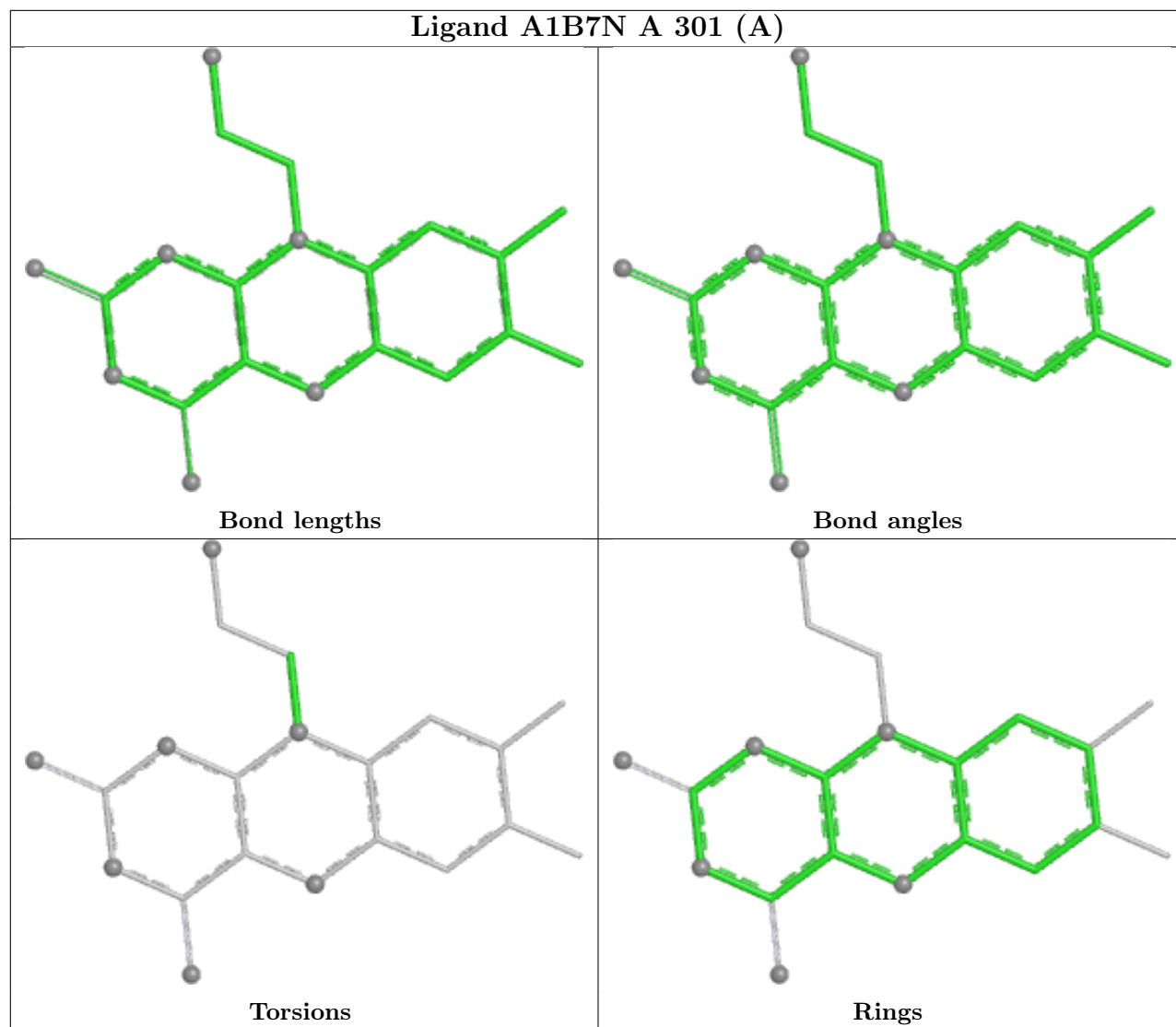
Mol	Chain	Res	Type	Clashes	Symm-Clashes
5	A	301[B]	A1B7N	1	0
5	A	301[A]	A1B7N	1	0
6	F	102	GOL	1	0

The following is a two-dimensional graphical depiction of Mogul quality analysis of bond lengths, bond angles, torsion angles, and ring geometry for all instances of the Ligand of Interest. In addition, ligands with molecular weight > 250 and outliers as shown on the validation Tables will also be included. For torsion angles, if less than 5% of the Mogul distribution of torsion angles is within 10 degrees of the torsion angle in question, then that torsion angle is considered an outlier. Any bond that is central to one or more torsion angles identified as an outlier by Mogul will be highlighted in the graph. For rings, the root-mean-square deviation (RMSD) between the ring in question and similar rings identified by Mogul is calculated over all ring torsion angles. If the average RMSD is greater than 60 degrees and the minimal RMSD between the ring in question and any Mogul-identified rings is also greater than 60 degrees, then that ring is considered an outlier. The outliers are highlighted in purple. The color gray indicates Mogul did not find sufficient equivalents in the CSD to analyse the geometry.

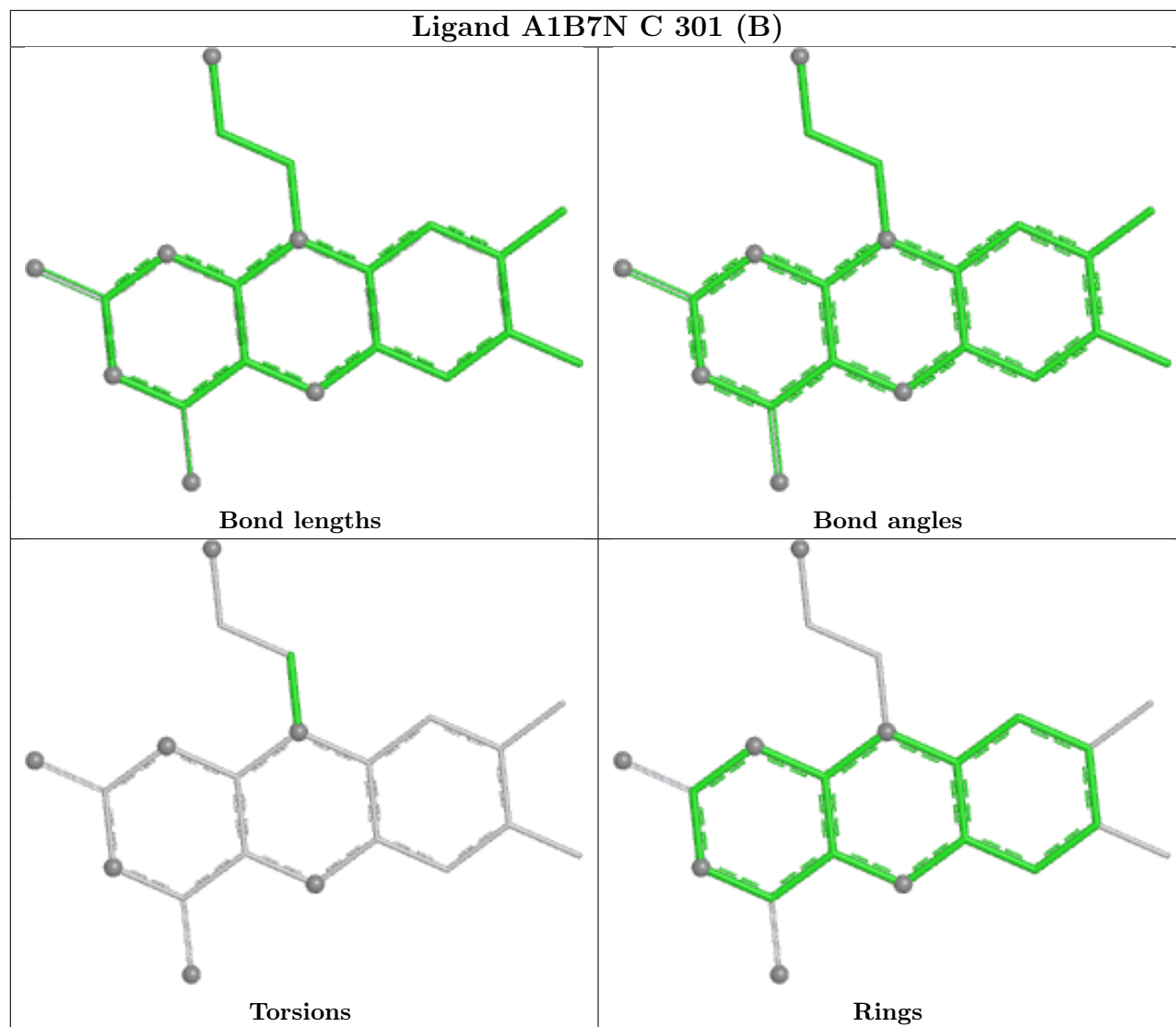
Ligand A1B7N A 301 (B)

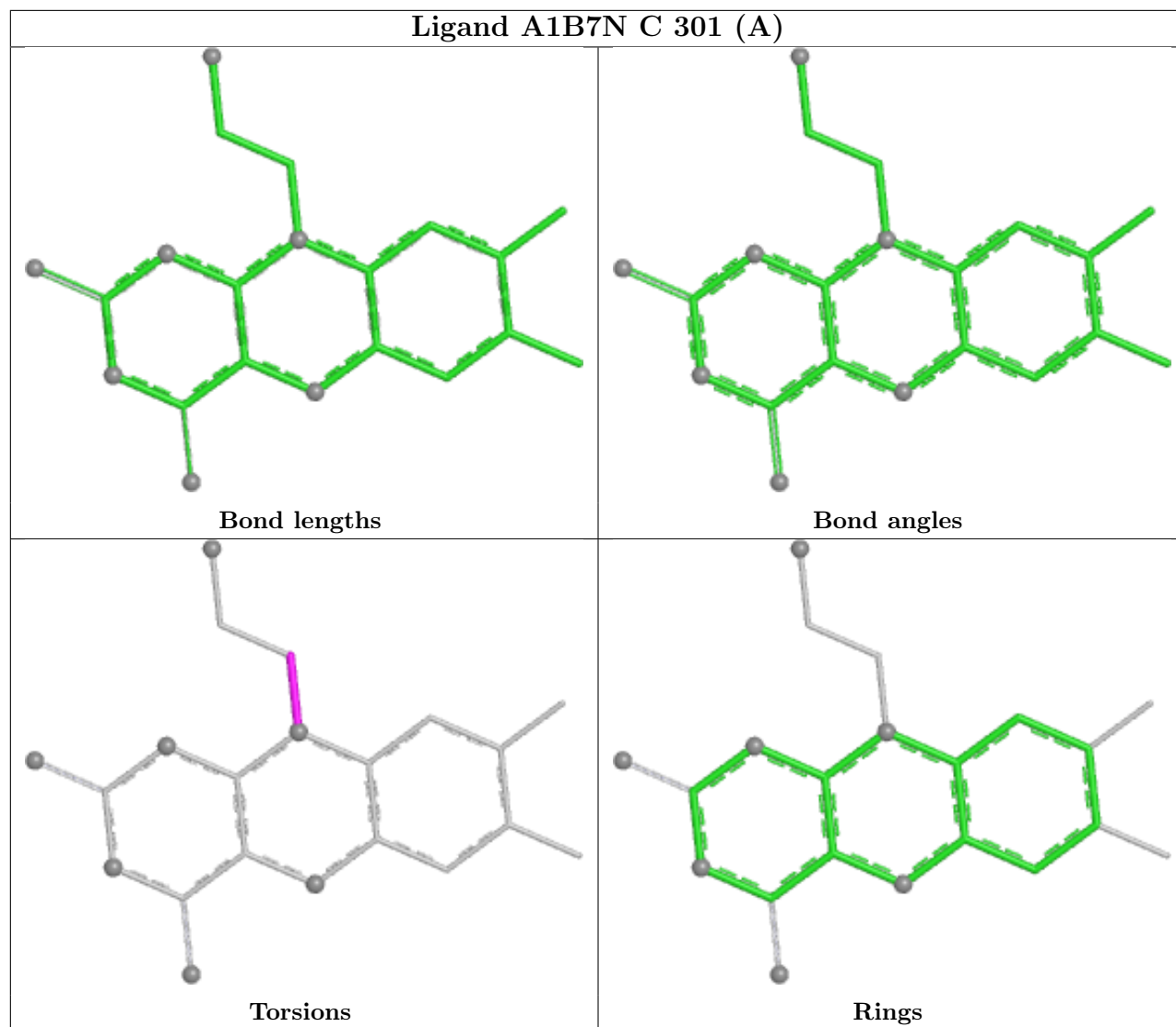


Ligand A1B7N A 301 (A)



Ligand A1B7N C 301 (B)





5.7 Other polymers [i](#)

There are no such residues in this entry.

5.8 Polymer linkage issues [i](#)

There are no chain breaks in this entry.

6 Fit of model and data ⓘ

6.1 Protein, DNA and RNA chains ⓘ

In the following table, the column labelled ‘#RSRZ > 2’ contains the number (and percentage) of RSRZ outliers, followed by percent RSRZ outliers for the chain as percentile scores relative to all X-ray entries and entries of similar resolution. The OWAB column contains the minimum, median, 95th percentile and maximum values of the occupancy-weighted average B-factor per residue. The column labelled ‘Q < 0.9’ lists the number of (and percentage) of residues with an average occupancy less than 0.9.

Mol	Chain	Analysed	<RSRZ>	#RSRZ>2	OWAB(Å ²)	Q<0.9
1	A	265/271 (97%)	-0.16	3 (1%) 77 76	20, 46, 84, 97	9 (3%)
1	C	267/271 (98%)	-0.13	6 (2%) 62 60	22, 44, 73, 92	13 (4%)
2	B	98/100 (98%)	0.24	1 (1%) 79 78	29, 66, 95, 98	2 (2%)
2	F	100/100 (100%)	-0.29	1 (1%) 79 78	26, 49, 73, 77	3 (3%)
3	D	190/204 (93%)	0.30	8 (4%) 41 39	27, 61, 99, 117	8 (4%)
3	G	200/204 (98%)	-0.31	0 100 100	22, 40, 63, 86	19 (9%)
4	E	241/246 (97%)	0.33	6 (2%) 58 57	32, 63, 106, 119	7 (2%)
4	H	245/246 (99%)	-0.28	2 (0%) 82 82	26, 43, 65, 91	14 (5%)
All	All	1606/1642 (97%)	-0.05	27 (1%) 69 67	20, 48, 90, 119	75 (4%)

All (27) RSRZ outliers are listed below:

Mol	Chain	Res	Type	RSRZ
3	D	149	SER	3.1
1	A	251	SER	3.0
1	C	222	VAL	2.9
4	E	161	TRP	2.7
4	E	162	VAL	2.6
1	C	211[A]	TYR	2.6
3	D	27	SER	2.6
4	E	167	VAL	2.5
3	D	191	ILE	2.5
1	C	252	ASN	2.5
3	D	184	ASN	2.4
2	F	99	MET	2.4
4	E	200	THR	2.3
4	H	245	ASP	2.2
1	C	16	ILE	2.2
3	D	119	TYR	2.2

Continued on next page...

Continued from previous page...

Mol	Chain	Res	Type	RSRZ
1	A	221	ILE	2.2
1	C	221	ILE	2.2
3	D	159	LEU	2.1
4	E	243	ARG	2.1
4	E	208	HIS	2.1
1	C	246	LEU	2.1
1	A	222	VAL	2.0
3	D	130	SER	2.0
2	B	0	MET	2.0
3	D	164	MET	2.0
4	H	99	GLU	2.0

6.2 Non-standard residues in protein, DNA, RNA chains [i](#)

There are no non-standard protein/DNA/RNA residues in this entry.

6.3 Carbohydrates [i](#)

There are no oligosaccharides in this entry.

6.4 Ligands [i](#)

In the following table, the Atoms column lists the number of modelled atoms in the group and the number defined in the chemical component dictionary. The B-factors column lists the minimum, median, 95th percentile and maximum values of B factors of atoms in the group. The column labelled 'Q< 0.9' lists the number of atoms with occupancy less than 0.9.

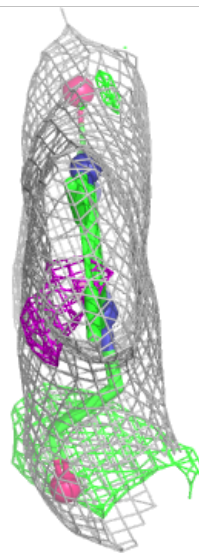
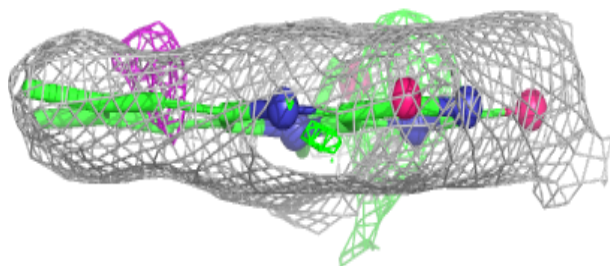
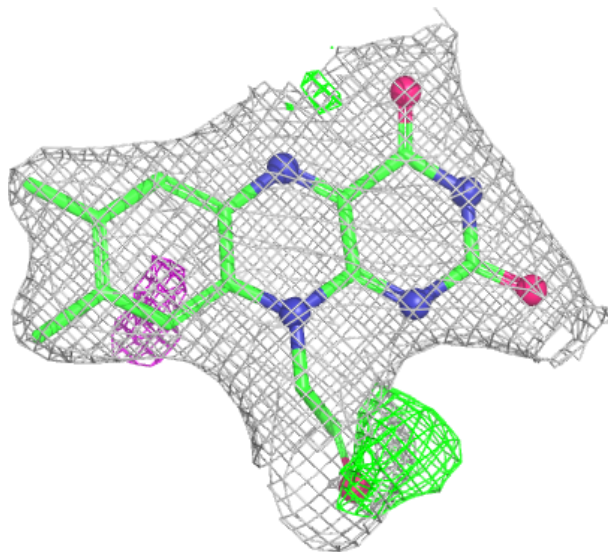
Mol	Type	Chain	Res	Atoms	RSCC	RSR	B-factors(Å ²)	Q<0.9
5	A1B7N	C	301[A]	21/21	0.89	0.12	41,46,48,49	21
5	A1B7N	C	301[B]	21/21	0.89	0.12	41,46,49,51	21
5	A1B7N	A	301[A]	21/21	0.92	0.09	32,36,38,39	21
5	A1B7N	A	301[B]	21/21	0.92	0.09	32,35,39,47	21
6	GOL	F	101	6/6	0.92	0.10	48,55,60,69	0
6	GOL	F	102	6/6	0.93	0.10	45,49,56,60	0
6	GOL	A	302	6/6	0.94	0.09	44,53,57,58	0
6	GOL	A	303	6/6	0.94	0.10	44,47,49,52	0
7	NA	F	103	1/1	0.95	0.08	52,52,52,52	0
7	NA	H	301	1/1	0.99	0.03	47,47,47,47	0

The following is a graphical depiction of the model fit to experimental electron density of all

instances of the Ligand of Interest. In addition, ligands with molecular weight > 250 and outliers as shown on the geometry validation Tables will also be included. Each fit is shown from different orientation to approximate a three-dimensional view.

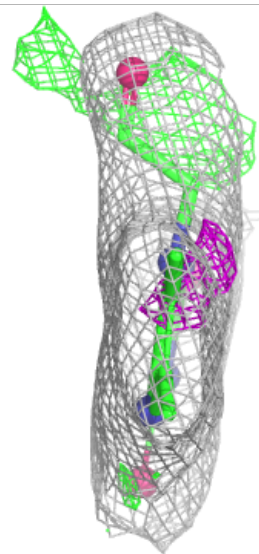
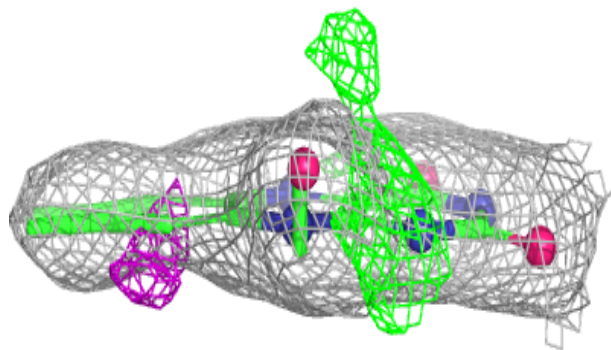
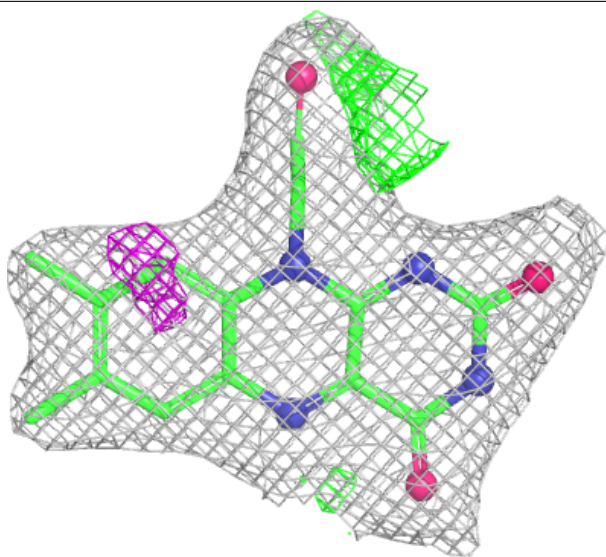
Electron density around A1B7N C 301 (A):

$2mF_o-DF_c$ (at 0.7 rmsd) in gray
 mF_o-DF_c (at 3 rmsd) in purple (negative)
and green (positive)



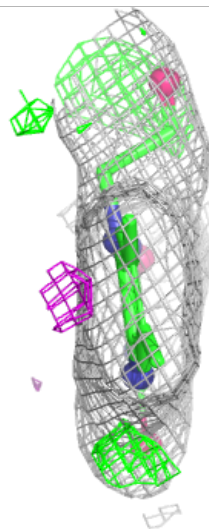
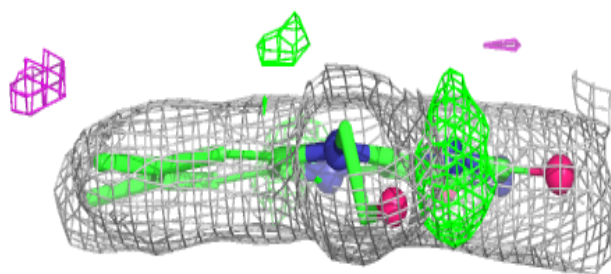
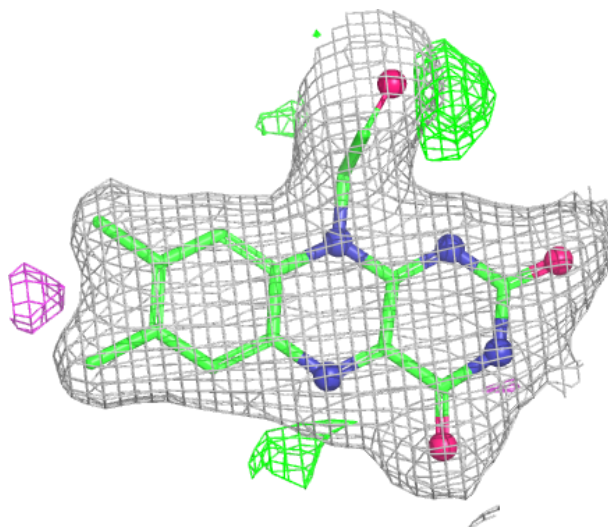
Electron density around A1B7N C 301 (B):

$2mF_o-DF_c$ (at 0.7 rmsd) in gray
 mF_o-DF_c (at 3 rmsd) in purple (negative)
and green (positive)



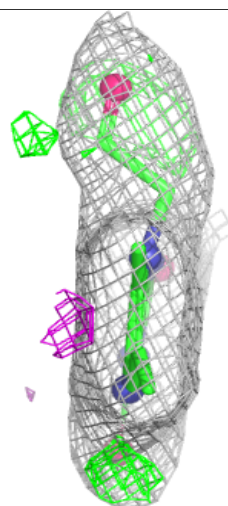
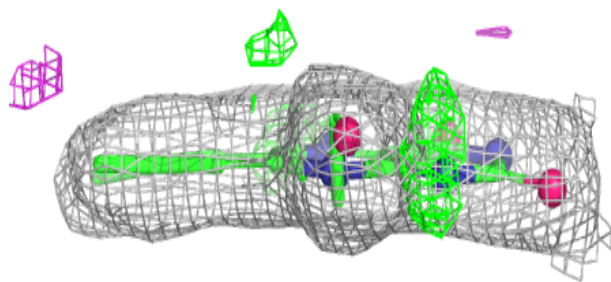
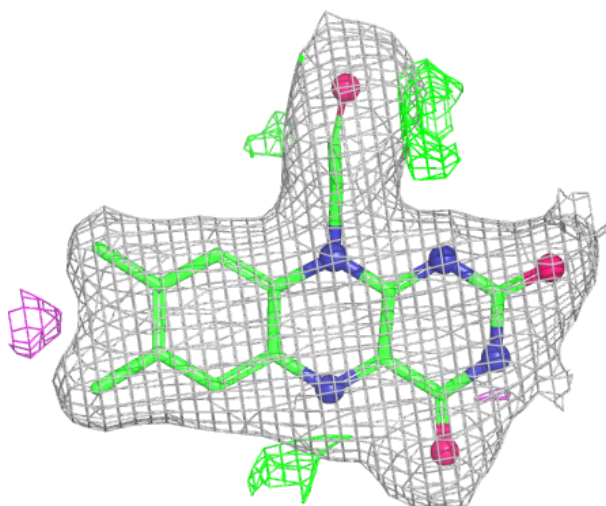
Electron density around A1B7N A 301 (A):

$2mF_o-DF_c$ (at 0.7 rmsd) in gray
 mF_o-DF_c (at 3 rmsd) in purple (negative)
and green (positive)



Electron density around A1B7N A 301 (B):

$2mF_o-DF_c$ (at 0.7 rmsd) in gray
 mF_o-DF_c (at 3 rmsd) in purple (negative)
and green (positive)



6.5 Other polymers ⓘ

There are no such residues in this entry.