



# Full wwPDB X-ray Structure Validation Report ⓘ

Dec 1, 2025 – 08:05 PM EST

PDB ID : 9OAY / pdb\_00009oay  
Title : TNA polymerase, 8-64, ternary complex  
Authors : Lee, J.J.; Maola, V.A.; Chim, N.; Chaput, J.C.  
Deposited on : 2025-04-21  
Resolution : 2.38 Å(reported)

This is a Full wwPDB X-ray Structure Validation Report for a publicly released PDB entry.

We welcome your comments at [validation@mail.wwpdb.org](mailto:validation@mail.wwpdb.org)

A user guide is available at

<https://www.wwpdb.org/validation/2017/XrayValidationReportHelp>

with specific help available everywhere you see the ⓘ symbol.

The types of validation reports are described at

<http://www.wwpdb.org/validation/2017/FAQs#types>.

---

The following versions of software and data (see [references ⓘ](#)) were used in the production of this report:

MolProbity : 4-5-2 with Phenix2.0  
Mogul : 2022.3.0, CSD as543be (2022)  
Xtriage (Phenix) : 2.0  
EDS : 3.0  
buster-report : 1.1.7 (2018)  
Percentile statistics : 20231227.v01 (using entries in the PDB archive December 27th 2023)  
CCP4 : 9.0.010 (Gargrove)  
Density-Fitness : 1.0.12  
Ideal geometry (proteins) : Engh & Huber (2001)  
Ideal geometry (DNA, RNA) : Parkinson et al. (1996)  
Validation Pipeline (wwPDB-VP) : 2.46

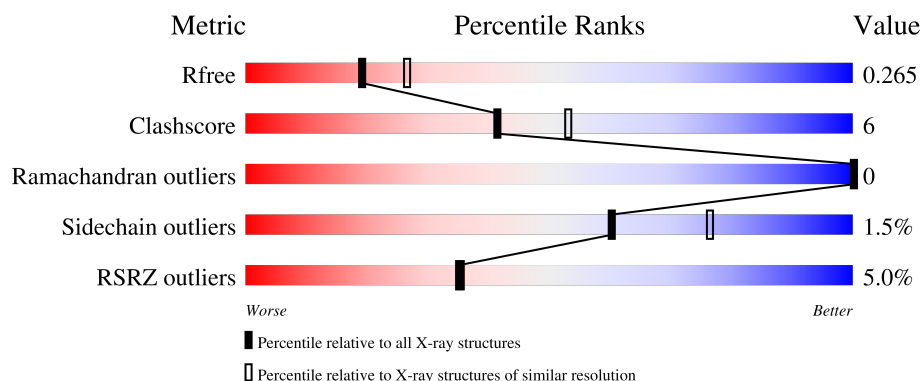
# 1 Overall quality at a glance

The following experimental techniques were used to determine the structure:

## *X-RAY DIFFRACTION*

The reported resolution of this entry is 2.38 Å.

Percentile scores (ranging between 0-100) for global validation metrics of the entry are shown in the following graphic. The table shows the number of entries on which the scores are based.



Metric	Whole archive (#Entries)	Similar resolution (#Entries, resolution range(Å))
$R_{free}$	164625	6699 (2.40-2.36)
Clashscore	180529	7414 (2.40-2.36)
Ramachandran outliers	177936	7337 (2.40-2.36)
Sidechain outliers	177891	7338 (2.40-2.36)
RSRZ outliers	164620	6699 (2.40-2.36)

The table below summarises the geometric issues observed across the polymeric chains and their fit to the electron density. The red, orange, yellow and green segments of the lower bar indicate the fraction of residues that contain outliers for  $\geq 3$ , 2, 1 and 0 types of geometric quality criteria respectively. A grey segment represents the fraction of residues that are not modelled. The numeric value for each fraction is indicated below the corresponding segment, with a dot representing fractions  $\leq 5\%$ . The upper red bar (where present) indicates the fraction of residues that have poor fit to the electron density. The numeric value is given above the bar.

Mol	Chain	Length	Quality of chain
1	A	750	<div> <div>5%</div> <div> <div></div> <div>82%</div> <div>17%</div> </div> </div>
2	T	21	<div> <div>5%</div> <div> <div></div> <div>52%</div> <div>38%</div> <div>10%</div> </div> </div>
3	P	12	<div> <div>8%</div> <div> <div></div> <div>50%</div> <div>50%</div> </div> </div>

The following table lists non-polymeric compounds, carbohydrate monomers and non-standard residues in protein, DNA, RNA chains that are outliers for geometric or electron-density-fit criteria:

Mol	Type	Chain	Res	Chirality	Geometry	Clashes	Electron density
6	IOD	A	803	-	-	X	-

## 2 Entry composition [i](#)

There are 8 unique types of molecules in this entry. The entry contains 6875 atoms, of which 0 are hydrogens and 0 are deuteriums.

In the tables below, the ZeroOcc column contains the number of atoms modelled with zero occupancy, the AltConf column contains the number of residues with at least one atom in alternate conformation and the Trace column contains the number of residues modelled with at most 2 atoms.

- Molecule 1 is a protein called 8-64, TNA polymerase.

Mol	Chain	Residues	Atoms					ZeroOcc	AltConf	Trace
1	A	750	Total	C	N	O	S	0	0	0
			6142	3954	1041	1132	15			

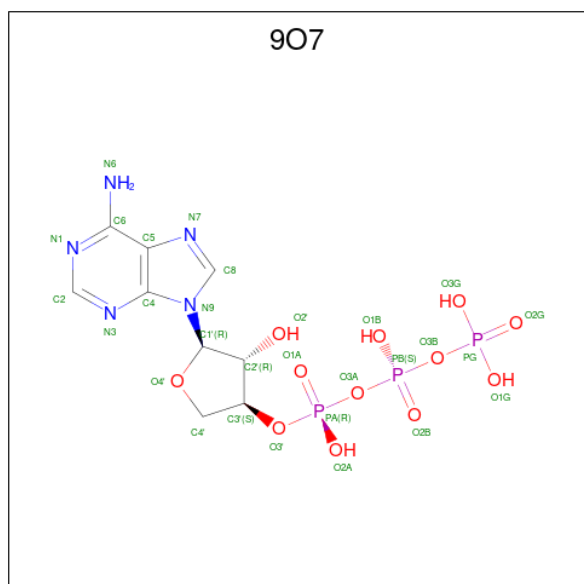
- Molecule 2 is a DNA chain called Template.

Mol	Chain	Residues	Atoms					ZeroOcc	AltConf	Trace
2	T	19	Total	C	N	O	P	0	0	0
			389	184	71	115	19			

- Molecule 3 is a DNA chain called Primer.

Mol	Chain	Residues	Atoms					ZeroOcc	AltConf	Trace
3	P	12	Total	C	N	O	P	0	0	0
			244	115	46	71	12			

- Molecule 4 is [(3 {S},4 {R},5 {R})-5-(6-aminopurin-9-yl)-4-oxidanyl-oxolan-3-yl] [oxidanyl(phosphonooxy)phosphoryl] hydrogen phosphate (CCD ID: 9O7) (formula: C<sub>9</sub>H<sub>14</sub>N<sub>5</sub>O<sub>12</sub>P<sub>3</sub>).



Mol	Chain	Residues	Atoms					ZeroOcc	AltConf
4	A	1	Total	C	N	O	P	0	0
			29	9	5	12	3		

- Molecule 5 is MAGNESIUM ION (CCD ID: MG) (formula: Mg).

Mol	Chain	Residues	Atoms		ZeroOcc	AltConf
5	A	1	Total	Mg	0	0
			1	1		

- Molecule 6 is IODIDE ION (CCD ID: IOD) (formula: I).

Mol	Chain	Residues	Atoms		ZeroOcc	AltConf
6	A	1	Total	I	0	0
			1	1		

- Molecule 7 is CHLORIDE ION (CCD ID: CL) (formula: Cl).

Mol	Chain	Residues	Atoms		ZeroOcc	AltConf
7	A	1	Total	Cl	0	0
			1	1		

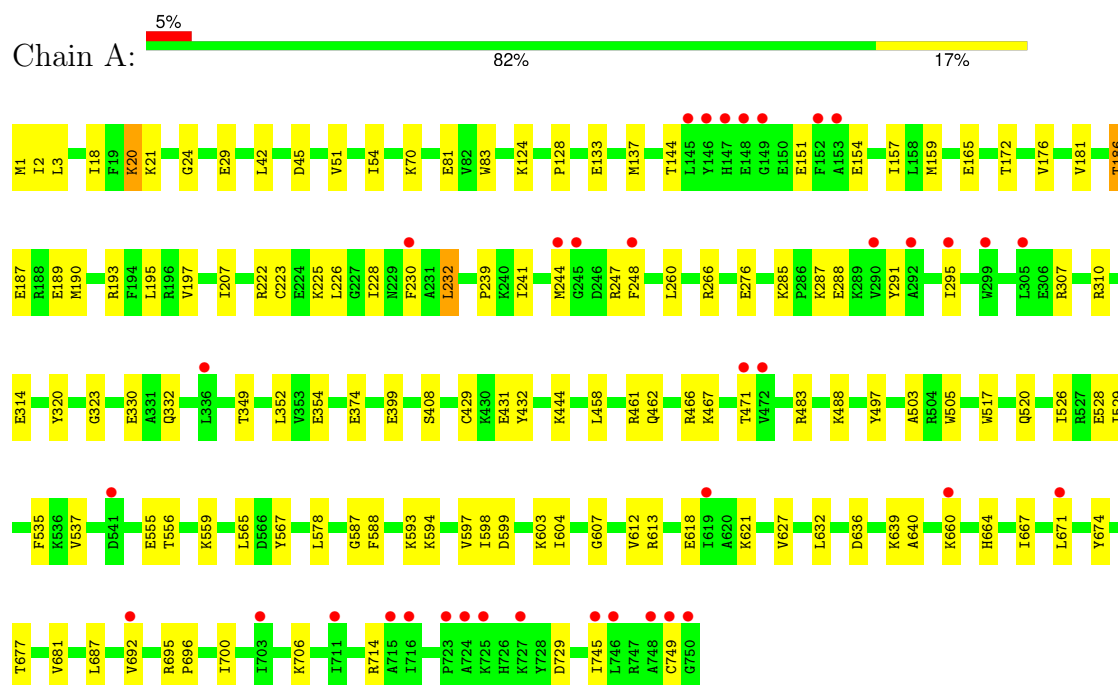
- Molecule 8 is water.

Mol	Chain	Residues	Atoms		ZeroOcc	AltConf
8	A	60	Total	O	0	0
			60	60		
8	T	5	Total	O	0	0
			5	5		
8	P	3	Total	O	0	0
			3	3		

### 3 Residue-property plots

These plots are drawn for all protein, RNA, DNA and oligosaccharide chains in the entry. The first graphic for a chain summarises the proportions of the various outlier classes displayed in the second graphic. The second graphic shows the sequence view annotated by issues in geometry and electron density. Residues are color-coded according to the number of geometric quality criteria for which they contain at least one outlier: green = 0, yellow = 1, orange = 2 and red = 3 or more. A red dot above a residue indicates a poor fit to the electron density ( $RSRZ > 2$ ). Stretches of 2 or more consecutive residues without any outlier are shown as a green connector. Residues present in the sample, but not in the model, are shown in grey.

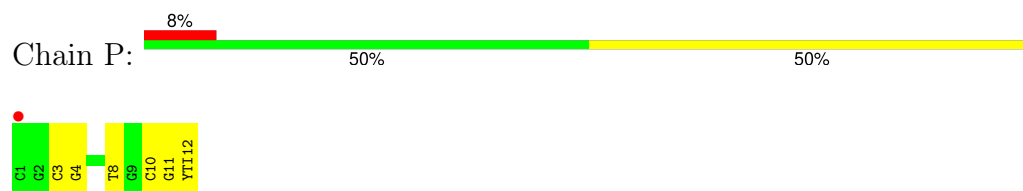
- Molecule 1: 8-64, TNA polymerase



- Molecule 2: Template



- Molecule 3: Primer



## 4 Data and refinement statistics

Property	Value	Source
Space group	P 21 21 21	Depositor
Cell constants a, b, c, $\alpha$ , $\beta$ , $\gamma$	77.71Å 101.53Å 110.67Å 90.00° 90.00° 90.00°	Depositor
Resolution (Å)	48.59 – 2.38 48.59 – 2.38	Depositor EDS
% Data completeness (in resolution range)	99.9 (48.59-2.38) 99.9 (48.59-2.38)	Depositor EDS
$R_{merge}$	0.07	Depositor
$R_{sym}$	(Not available)	Depositor
$\langle I/\sigma(I) \rangle$ <sup>1</sup>	1.72 (at 2.37Å)	Xtriage
Refinement program	PHENIX 1.20.1_4487	Depositor
R, $R_{free}$	0.216 , 0.266 0.216 , 0.265	Depositor DCC
$R_{free}$ test set	1994 reflections (5.57%)	wwPDB-VP
Wilson B-factor (Å <sup>2</sup> )	46.9	Xtriage
Anisotropy	0.401	Xtriage
Bulk solvent $k_{sol}$ (e/Å <sup>3</sup> ), $B_{sol}$ (Å <sup>2</sup> )	0.35 , 44.3	EDS
L-test for twinning <sup>2</sup>	$\langle  L  \rangle = 0.50$ , $\langle L^2 \rangle = 0.33$	Xtriage
Estimated twinning fraction	No twinning to report.	Xtriage
$F_o, F_c$ correlation	0.94	EDS
Total number of atoms	6875	wwPDB-VP
Average B, all atoms (Å <sup>2</sup> )	59.0	wwPDB-VP

Xtriage's analysis on translational NCS is as follows: *The largest off-origin peak in the Patterson function is 4.24% of the height of the origin peak. No significant pseudotranslation is detected.*

<sup>1</sup>Intensities estimated from amplitudes.

<sup>2</sup>Theoretical values of  $\langle |L| \rangle$ ,  $\langle L^2 \rangle$  for acentric reflections are 0.5, 0.333 respectively for untwinned datasets, and 0.375, 0.2 for perfectly twinned datasets.

## 5 Model quality [i](#)

### 5.1 Standard geometry [i](#)

Bond lengths and bond angles in the following residue types are not validated in this section: 9O7, MG, YTI, IOD, CL

The Z score for a bond length (or angle) is the number of standard deviations the observed value is removed from the expected value. A bond length (or angle) with  $|Z| > 5$  is considered an outlier worth inspection. RMSZ is the root-mean-square of all Z scores of the bond lengths (or angles).

Mol	Chain	Bond lengths		Bond angles	
		RMSZ	$\# Z  > 5$	RMSZ	$\# Z  > 5$
1	A	0.14	1/6281 (0.0%)	0.28	0/8479
2	T	0.20	0/435	0.40	0/669
3	P	0.20	0/253	0.35	0/388
All	All	0.15	1/6969 (0.0%)	0.29	0/9536

All (1) bond length outliers are listed below:

Mol	Chain	Res	Type	Atoms	Z	Observed(Å)	Ideal(Å)
1	A	520	GLN	CD-OE1	5.02	1.33	1.23

There are no bond angle outliers.

There are no chirality outliers.

There are no planarity outliers.

### 5.2 Too-close contacts [i](#)

In the following table, the Non-H and H(model) columns list the number of non-hydrogen atoms and hydrogen atoms in the chain respectively. The H(added) column lists the number of hydrogen atoms added and optimized by MolProbity. The Clashes column lists the number of clashes within the asymmetric unit, whereas Symm-Clashes lists symmetry-related clashes.

Mol	Chain	Non-H	H(model)	H(added)	Clashes	Symm-Clashes
1	A	6142	0	6172	78	1
2	T	389	0	214	5	0
3	P	244	0	122	6	0
4	A	29	0	0	1	0
5	A	1	0	0	0	0
6	A	1	0	0	2	0
7	A	1	0	0	0	0

*Continued on next page...*



*Continued from previous page...*

Mol	Chain	Non-H	H(model)	H(added)	Clashes	Symm-Clashes
8	A	60	0	0	1	0
8	P	3	0	0	0	0
8	T	5	0	0	0	0
All	All	6875	0	6508	84	1

The all-atom clashscore is defined as the number of clashes found per 1000 atoms (including hydrogen atoms). The all-atom clashscore for this structure is 6.

All (84) close contacts within the same asymmetric unit are listed below, sorted by their clash magnitude.

Atom-1	Atom-2	Interatomic distance (Å)	Clash overlap (Å)
1:A:714:ARG:NH1	1:A:729:ASP:OD2	2.20	0.74
1:A:1:MET:HE3	1:A:133:GLU:HB2	1.75	0.68
1:A:222:ARG:HH11	1:A:226:LEU:HD11	1.61	0.64
2:T:10:DA:N1	3:P:12:YTI:N3	2.46	0.63
1:A:627:VAL:HG22	1:A:640:ALA:HB1	1.80	0.62
2:T:5:DC:H2''	2:T:6:DA:O5'	2.03	0.59
1:A:223:CYS:HA	1:A:228:ILE:HD12	1.84	0.58
1:A:45:ASP:OD1	1:A:70:LYS:NZ	2.35	0.58
1:A:613:ARG:O	1:A:621:LYS:NZ	2.36	0.58
1:A:137:MET:HB3	1:A:207:ILE:HD11	1.86	0.57
1:A:374:GLU:CD	1:A:374:GLU:H	2.13	0.57
1:A:613:ARG:HG2	3:P:10:DC:H5'	1.88	0.56
1:A:186:THR:HG23	1:A:189:GLU:H	1.69	0.56
1:A:467:LYS:O	1:A:471:THR:OG1	2.19	0.55
2:T:4:DG:H2'	2:T:4:DG:N3	2.23	0.54
1:A:21:LYS:HE3	1:A:24:GLY:HA2	1.88	0.54
1:A:288:GLU:OE2	1:A:307:ARG:NH2	2.31	0.54
1:A:587:GLY:HA3	1:A:597:VAL:HG12	1.91	0.52
1:A:2:ILE:HB	1:A:128:PRO:HA	1.92	0.51
1:A:431:GLU:HG2	1:A:444:LYS:HB2	1.91	0.51
1:A:671:LEU:HD12	1:A:671:LEU:H	1.75	0.51
1:A:667:ILE:HD11	1:A:700:ILE:HD11	1.94	0.50
1:A:165:GLU:HG2	1:A:320:TYR:OH	2.11	0.50
1:A:461:ARG:HD3	6:A:803:IOD:I	2.83	0.49
1:A:674:TYR:OH	3:P:8:DT:OP1	2.29	0.49
1:A:151:GLU:HB2	1:A:154:GLU:HG3	1.94	0.49
1:A:555:GLU:O	1:A:559:LYS:HG2	2.13	0.48
1:A:354:GLU:OE1	1:A:497:TYR:OH	2.30	0.48
1:A:497:TYR:HE1	1:A:505:TRP:HB2	1.77	0.48
1:A:159:MET:HG3	1:A:172:THR:HB	1.96	0.48

*Continued on next page...*

*Continued from previous page...*

Atom-1	Atom-2	Interatomic distance (Å)	Clash overlap (Å)
1:A:232:LEU:HB2	1:A:239:PRO:HD3	1.95	0.48
1:A:244:MET:HE3	1:A:244:MET:HB2	1.81	0.48
1:A:247:ARG:HG3	1:A:248:PHE:H	1.78	0.48
1:A:588:PHE:HZ	1:A:745:ILE:HD13	1.79	0.47
1:A:310:ARG:NH1	1:A:314:GLU:OE1	2.48	0.47
1:A:565:LEU:HD22	1:A:578:LEU:HB3	1.97	0.47
1:A:687:LEU:HB3	1:A:692:VAL:HB	1.96	0.47
1:A:664:HIS:HA	1:A:700:ILE:O	2.15	0.47
1:A:695:ARG:HG2	1:A:696:PRO:N	2.29	0.47
1:A:612:VAL:HG23	3:P:10:DC:H5"	1.97	0.47
1:A:408:SER:HA	4:A:801:9O7:PB	2.55	0.47
1:A:20:LYS:HE2	1:A:29:GLU:HG3	1.96	0.46
1:A:599:ASP:OD1	1:A:603:LYS:N	2.46	0.46
1:A:677:THR:HG23	1:A:681:VAL:HG12	1.96	0.46
1:A:186:THR:OG1	1:A:187:GLU:N	2.49	0.46
1:A:42:LEU:HD22	1:A:83:TRP:CD1	2.51	0.46
1:A:526:ILE:HG23	1:A:537:VAL:HG21	1.97	0.45
1:A:349:THR:HA	1:A:352:LEU:HD12	1.99	0.45
3:P:3:DC:H2"	3:P:4:DG:C8	2.52	0.45
1:A:157:ILE:O	1:A:190:MET:HE1	2.18	0.43
1:A:632:LEU:HD23	1:A:632:LEU:HA	1.89	0.43
1:A:81:GLU:OE2	8:A:901:HOH:O	2.21	0.43
1:A:232:LEU:HD12	1:A:239:PRO:HG3	2.01	0.43
1:A:695:ARG:HH11	1:A:695:ARG:HG3	1.82	0.43
2:T:20:DC:H2"	2:T:21:DG:C8	2.53	0.43
1:A:276:GLU:HG3	1:A:287:LYS:HG2	1.99	0.43
1:A:291:TYR:O	1:A:295:ILE:HG13	2.19	0.43
1:A:488:LYS:HA	6:A:803:IOD:I	2.89	0.42
1:A:598:ILE:HG13	1:A:604:ILE:HG12	2.01	0.42
1:A:18:ILE:HB	1:A:29:GLU:HB2	2.02	0.42
1:A:528:GLU:HG2	1:A:567:TYR:HE2	1.84	0.42
1:A:497:TYR:CZ	1:A:503:ALA:HB1	2.55	0.42
1:A:225:LYS:HD3	1:A:225:LYS:HA	1.75	0.42
1:A:176:VAL:HB	1:A:181:VAL:HG11	2.00	0.42
1:A:529:ILE:HG12	1:A:535:PHE:HB2	2.02	0.41
1:A:636:ASP:CG	1:A:639:LYS:HB2	2.45	0.41
1:A:706:LYS:HA	1:A:706:LYS:HD2	1.83	0.41
1:A:193:ARG:O	1:A:197:VAL:HG23	2.20	0.41
1:A:241:ILE:HG22	1:A:248:PHE:CD1	2.55	0.41
1:A:639:LYS:HB2	1:A:639:LYS:HE2	1.89	0.41
1:A:458:LEU:O	1:A:462:GLN:HG2	2.21	0.41

*Continued on next page...*

Continued from previous page...

Atom-1	Atom-2	Interatomic distance (Å)	Clash overlap (Å)
2:T:18:DC:H2"	2:T:19:DG:C8	2.54	0.41
1:A:594:LYS:HA	1:A:607:GLY:O	2.21	0.41
1:A:195:LEU:HB2	1:A:230:PHE:HE1	1.86	0.41
1:A:195:LEU:HB2	1:A:230:PHE:CE1	2.55	0.41
1:A:429:CYS:HB2	1:A:432:TYR:CZ	2.56	0.41
1:A:51:VAL:HA	1:A:54:ILE:HD12	2.03	0.41
1:A:266:ARG:NH2	1:A:330:GLU:OE1	2.54	0.41
1:A:593:LYS:HE2	3:P:11:DG:N3	2.35	0.41
1:A:332:GLN:HE22	1:A:483:ARG:HH21	1.69	0.40
1:A:618:GLU:HB3	1:A:660:LYS:HA	2.02	0.40
1:A:159:MET:HE3	1:A:159:MET:HB2	1.95	0.40
1:A:18:ILE:HG22	1:A:20:LYS:HG2	2.04	0.40
1:A:260:LEU:HD21	1:A:323:GLY:HA2	2.04	0.40

All (1) symmetry-related close contacts are listed below. The label for Atom-2 includes the symmetry operator and encoded unit-cell translations to be applied.

Atom-1	Atom-2	Interatomic distance (Å)	Clash overlap (Å)
1:A:399:GLU:OE1	1:A:466:ARG:NH1[4_555]	2.15	0.05

## 5.3 Torsion angles [i](#)

### 5.3.1 Protein backbone [i](#)

In the following table, the Percentiles column shows the percent Ramachandran outliers of the chain as a percentile score with respect to all X-ray entries followed by that with respect to entries of similar resolution.

The Analysed column shows the number of residues for which the backbone conformation was analysed, and the total number of residues.

Mol	Chain	Analysed	Favoured	Allowed	Outliers	Percentiles	
1	A	748/750 (100%)	724 (97%)	24 (3%)	0	100	100

There are no Ramachandran outliers to report.

### 5.3.2 Protein sidechains [i](#)

In the following table, the Percentiles column shows the percent sidechain outliers of the chain as a percentile score with respect to all X-ray entries followed by that with respect to entries of similar

resolution.

The Analysed column shows the number of residues for which the sidechain conformation was analysed, and the total number of residues.

Mol	Chain	Analysed	Rotameric	Outliers	Percentiles	
1	A	648/648 (100%)	638 (98%)	10 (2%)	60	76

All (10) residues with a non-rotameric sidechain are listed below:

Mol	Chain	Res	Type
1	A	3	LEU
1	A	20	LYS
1	A	124	LYS
1	A	144	THR
1	A	186	THR
1	A	232	LEU
1	A	285	LYS
1	A	517	TRP
1	A	556	THR
1	A	749	CYS

Sometimes sidechains can be flipped to improve hydrogen bonding and reduce clashes. All (1) such sidechains are listed below:

Mol	Chain	Res	Type
1	A	339	GLN

### 5.3.3 RNA [i](#)

There are no RNA molecules in this entry.

## 5.4 Non-standard residues in protein, DNA, RNA chains [i](#)

There are no non-standard protein/DNA/RNA residues in this entry.

### 5.5 Carbohydrates [i](#)

There are no oligosaccharides in this entry.

## 5.6 Ligand geometry

Of 4 ligands modelled in this entry, 3 are monoatomic - leaving 1 for Mogul analysis.

In the following table, the Counts columns list the number of bonds (or angles) for which Mogul statistics could be retrieved, the number of bonds (or angles) that are observed in the model and the number of bonds (or angles) that are defined in the Chemical Component Dictionary. The Link column lists molecule types, if any, to which the group is linked. The Z score for a bond length (or angle) is the number of standard deviations the observed value is removed from the expected value. A bond length (or angle) with  $|Z| > 2$  is considered an outlier worth inspection. RMSZ is the root-mean-square of all Z scores of the bond lengths (or angles).

Mol	Type	Chain	Res	Link	Bond lengths			Bond angles		
					Counts	RMSZ	# Z  > 2	Counts	RMSZ	# Z  > 2
4	9O7	A	801	5	26,31,31	4.91	10 (38%)	29,49,49	2.14	10 (34%)

In the following table, the Chirals column lists the number of chiral outliers, the number of chiral centers analysed, the number of these observed in the model and the number defined in the Chemical Component Dictionary. Similar counts are reported in the Torsion and Rings columns. '-' means no outliers of that kind were identified.

Mol	Type	Chain	Res	Link	Chirals	Torsions	Rings
4	9O7	A	801	5	-	6/17/34/34	0/3/3/3

All (10) bond length outliers are listed below:

Mol	Chain	Res	Type	Atoms	Z	Observed(Å)	Ideal(Å)
4	A	801	9O7	PB-O3A	19.98	1.81	1.59
4	A	801	9O7	PA-O3'	10.12	1.90	1.59
4	A	801	9O7	O3'-C3'	-5.46	1.34	1.46
4	A	801	9O7	PA-O3A	-4.18	1.55	1.59
4	A	801	9O7	C4-N3	4.16	1.41	1.35
4	A	801	9O7	PB-O3B	-4.00	1.55	1.59
4	A	801	9O7	C2-N1	3.23	1.39	1.33
4	A	801	9O7	C4'-C3'	3.19	1.58	1.52
4	A	801	9O7	C2-N3	2.77	1.36	1.32
4	A	801	9O7	C6-N6	2.03	1.41	1.34

All (10) bond angle outliers are listed below:

Mol	Chain	Res	Type	Atoms	Z	Observed(°)	Ideal(°)
4	A	801	9O7	O3A-PB-O2B	-5.60	93.85	110.70
4	A	801	9O7	O2A-PA-O3A	4.04	118.19	107.27
4	A	801	9O7	O3'-PA-O1A	-3.98	97.10	109.81

*Continued on next page...*

*Continued from previous page...*

Mol	Chain	Res	Type	Atoms	Z	Observed(°)	Ideal(°)
4	A	801	9O7	O2A-PA-O3'	-3.82	91.14	106.70
4	A	801	9O7	C1'-N9-C4	3.10	132.09	126.64
4	A	801	9O7	O1B-PB-O3A	-3.02	99.12	107.27
4	A	801	9O7	O1B-PB-O3B	2.73	114.66	107.27
4	A	801	9O7	O3A-PA-O1A	2.29	117.60	110.70
4	A	801	9O7	O1G-PG-O3B	2.19	111.98	104.64
4	A	801	9O7	O3B-PG-O2G	-2.05	100.25	111.04

There are no chirality outliers.

All (6) torsion outliers are listed below:

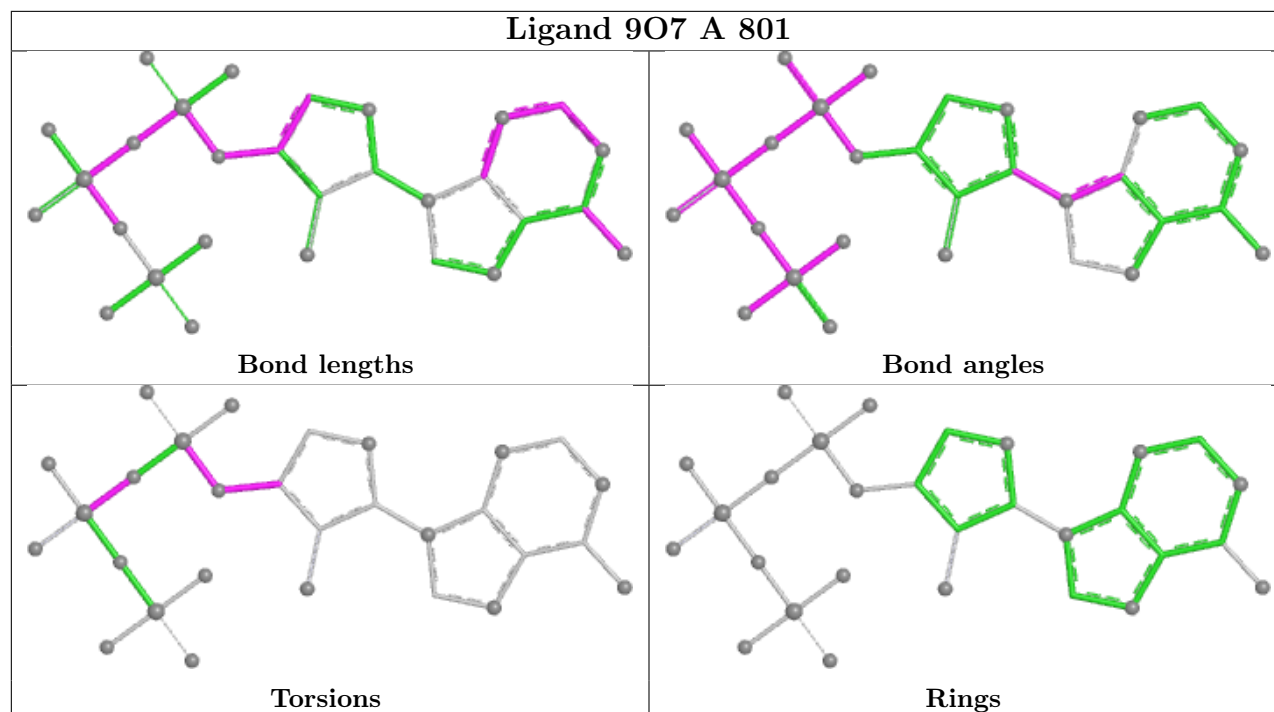
Mol	Chain	Res	Type	Atoms
4	A	801	9O7	C3'-O3'-PA-O3A
4	A	801	9O7	C2'-C3'-O3'-PA
4	A	801	9O7	C3'-O3'-PA-O1A
4	A	801	9O7	C4'-C3'-O3'-PA
4	A	801	9O7	C3'-O3'-PA-O2A
4	A	801	9O7	PA-O3A-PB-O1B

There are no ring outliers.

1 monomer is involved in 1 short contact:

Mol	Chain	Res	Type	Clashes	Symm-Clashes
4	A	801	9O7	1	0

The following is a two-dimensional graphical depiction of Mogul quality analysis of bond lengths, bond angles, torsion angles, and ring geometry for all instances of the Ligand of Interest. In addition, ligands with molecular weight > 250 and outliers as shown on the validation Tables will also be included. For torsion angles, if less than 5% of the Mogul distribution of torsion angles is within 10 degrees of the torsion angle in question, then that torsion angle is considered an outlier. Any bond that is central to one or more torsion angles identified as an outlier by Mogul will be highlighted in the graph. For rings, the root-mean-square deviation (RMSD) between the ring in question and similar rings identified by Mogul is calculated over all ring torsion angles. If the average RMSD is greater than 60 degrees and the minimal RMSD between the ring in question and any Mogul-identified rings is also greater than 60 degrees, then that ring is considered an outlier. The outliers are highlighted in purple. The color gray indicates Mogul did not find sufficient equivalents in the CSD to analyse the geometry.



## 5.7 Other polymers [i](#)

There are no such residues in this entry.

## 5.8 Polymer linkage issues [i](#)

There are no chain breaks in this entry.

## 6 Fit of model and data

### 6.1 Protein, DNA and RNA chains

In the following table, the column labelled ‘#RSRZ > 2’ contains the number (and percentage) of RSRZ outliers, followed by percent RSRZ outliers for the chain as percentile scores relative to all X-ray entries and entries of similar resolution. The OWAB column contains the minimum, median, 95<sup>th</sup> percentile and maximum values of the occupancy-weighted average B-factor per residue. The column labelled ‘Q < 0.9’ lists the number of (and percentage) of residues with an average occupancy less than 0.9.

Mol	Chain	Analysed	<RSRZ>	#RSRZ>2	OWAB(Å <sup>2</sup> )	Q<0.9
1	A	750/750 (100%)	0.37	37 (4%) 36 36	32, 54, 94, 139	0
2	T	19/21 (90%)	0.23	1 (5%) 33 33	40, 70, 123, 128	0
3	P	11/12 (91%)	0.09	1 (9%) 16 16	49, 69, 112, 147	0
All	All	780/783 (99%)	0.36	39 (5%) 35 35	32, 55, 95, 147	0

All (39) RSRZ outliers are listed below:

Mol	Chain	Res	Type	RSRZ
1	A	152	PHE	5.3
1	A	149	GLY	5.3
1	A	750	GLY	4.0
1	A	748	ALA	4.0
1	A	299	TRP	3.6
1	A	295	ILE	3.4
1	A	472	VAL	3.3
1	A	147	HIS	3.3
1	A	146	TYR	3.3
1	A	248	PHE	3.0
1	A	692	VAL	2.8
1	A	715	ALA	2.8
1	A	746	LEU	2.8
1	A	290	VAL	2.7
1	A	471	THR	2.7
1	A	148	GLU	2.7
1	A	230	PHE	2.7
1	A	541	ASP	2.7
1	A	153	ALA	2.6
1	A	619	ILE	2.5
1	A	292	ALA	2.5
1	A	727	LYS	2.5
1	A	749	CYS	2.4

*Continued on next page...*



*Continued from previous page...*

Mol	Chain	Res	Type	RSRZ
3	P	1	DC	2.4
1	A	725	LYS	2.4
2	T	8	DG	2.3
1	A	244	MET	2.3
1	A	145	LEU	2.3
1	A	305	LEU	2.3
1	A	336	LEU	2.3
1	A	660	LYS	2.2
1	A	724	ALA	2.2
1	A	716	ILE	2.2
1	A	671	LEU	2.2
1	A	245	GLY	2.1
1	A	711	ILE	2.1
1	A	703	ILE	2.0
1	A	745	ILE	2.0
1	A	723	PRO	2.0

## 6.2 Non-standard residues in protein, DNA, RNA chains [i](#)

There are no non-standard protein/DNA/RNA residues in this entry.

## 6.3 Carbohydrates [i](#)

There are no oligosaccharides in this entry.

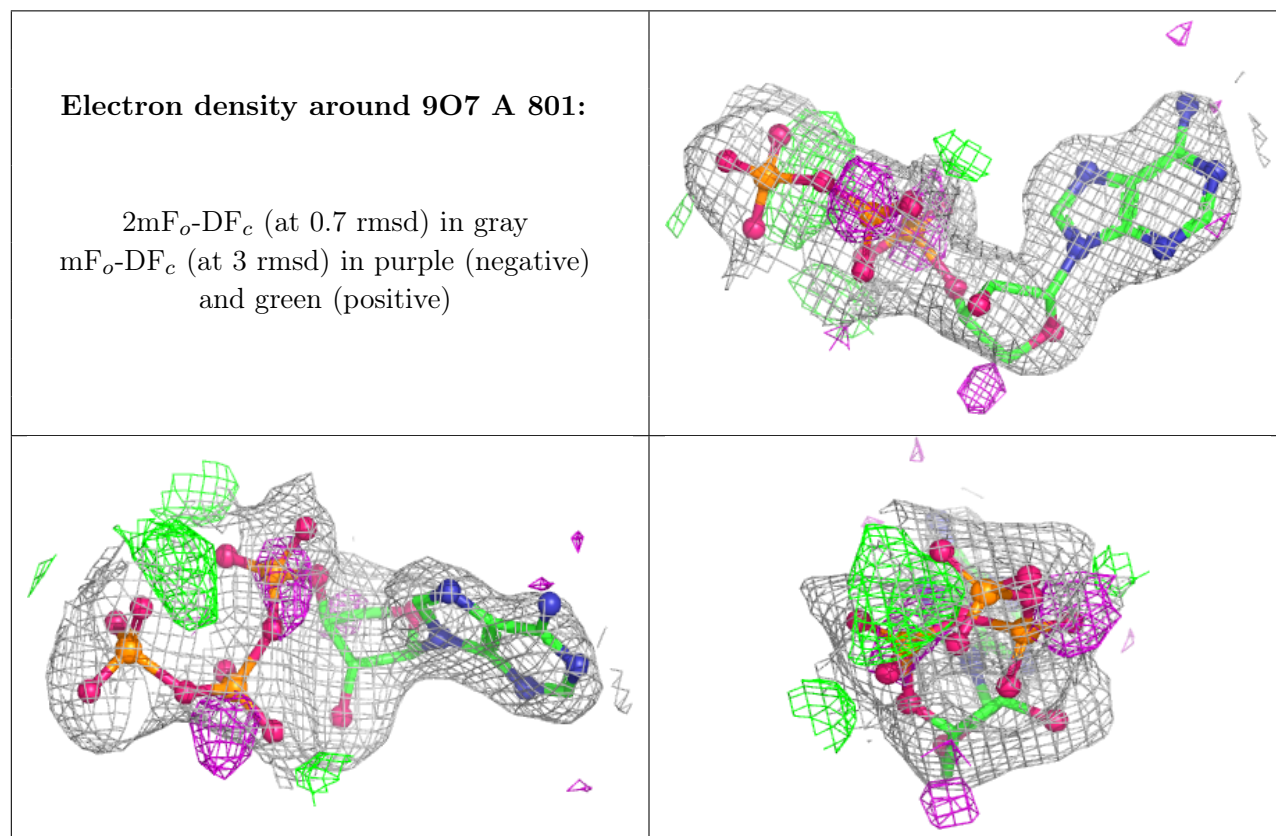
## 6.4 Ligands [i](#)

In the following table, the Atoms column lists the number of modelled atoms in the group and the number defined in the chemical component dictionary. The B-factors column lists the minimum, median, 95<sup>th</sup> percentile and maximum values of B factors of atoms in the group. The column labelled 'Q< 0.9' lists the number of atoms with occupancy less than 0.9.

Mol	Type	Chain	Res	Atoms	RSCC	RSR	B-factors(Å <sup>2</sup> )	Q<0.9
4	9O7	A	801	29/29	0.81	0.12	45,53,71,75	0
6	IOD	A	803	1/1	0.86	0.32	160,160,160,160	1
7	CL	A	804	1/1	0.94	0.16	67,67,67,67	0
5	MG	A	802	1/1	0.96	0.08	45,45,45,45	0

The following is a graphical depiction of the model fit to experimental electron density of all instances of the Ligand of Interest. In addition, ligands with molecular weight > 250 and outliers

as shown on the geometry validation Tables will also be included. Each fit is shown from different orientation to approximate a three-dimensional view.



## 6.5 Other polymers ⓘ

There are no such residues in this entry.