



# Full wwPDB X-ray Structure Validation Report ⓘ

Nov 13, 2024 – 12:47 PM EST

PDB ID : 4OPY  
Title : Room temperature crystal structure of stabilized TEM-1 beta-lactamase variant v.13 carrying R164S mutation  
Authors : Dellus-Gur, E.; Elias, M.; Fraser, J.S.; Tawfik, D.S.  
Deposited on : 2014-02-07  
Resolution : 1.75 Å(reported)

This is a Full wwPDB X-ray Structure Validation Report for a publicly released PDB entry.

We welcome your comments at [validation@mail.wwpdb.org](mailto:validation@mail.wwpdb.org)

A user guide is available at

<https://www.wwpdb.org/validation/2017/XrayValidationReportHelp>

with specific help available everywhere you see the ⓘ symbol.

The types of validation reports are described at

<http://www.wwpdb.org/validation/2017/FAQs#types>.

---

The following versions of software and data (see [references ⓘ](#)) were used in the production of this report:

MolProbity	:	4.02b-467
Mogul	:	2022.3.0, CSD as543be (2022)
Xtriage (Phenix)	:	1.20.1
EDS	:	3.0
Percentile statistics	:	20231227.v01 (using entries in the PDB archive December 27th 2023)
CCP4	:	9.0.003 (Gargrove)
Density-Fitness	:	1.0.11
Ideal geometry (proteins)	:	Engh & Huber (2001)
Ideal geometry (DNA, RNA)	:	Parkinson et al. (1996)
Validation Pipeline (wwPDB-VP)	:	2.39

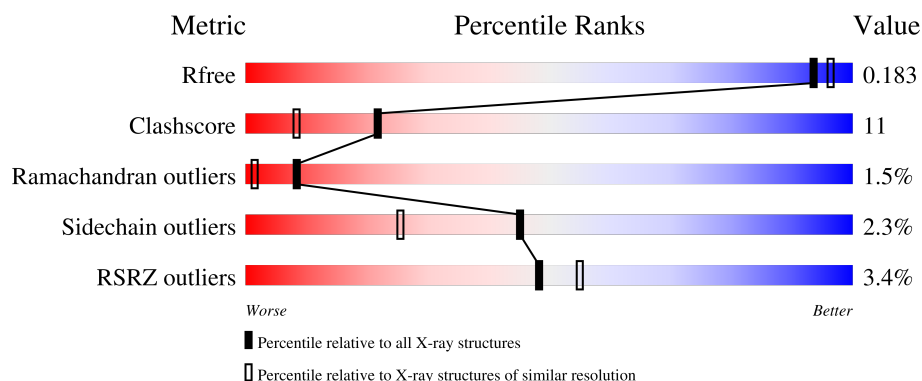
# 1 Overall quality at a glance

The following experimental techniques were used to determine the structure:

*X-RAY DIFFRACTION*

The reported resolution of this entry is 1.75 Å.

Percentile scores (ranging between 0-100) for global validation metrics of the entry are shown in the following graphic. The table shows the number of entries on which the scores are based.



Metric	Whole archive (#Entries)	Similar resolution (#Entries, resolution range(Å))
$R_{free}$	164625	2888 (1.76-1.76)
Clashscore	180529	3097 (1.76-1.76)
Ramachandran outliers	177936	3072 (1.76-1.76)
Sidechain outliers	177891	3072 (1.76-1.76)
RSRZ outliers	164620	2887 (1.76-1.76)

The table below summarises the geometric issues observed across the polymeric chains and their fit to the electron density. The red, orange, yellow and green segments of the lower bar indicate the fraction of residues that contain outliers for  $\geq 3$ , 2, 1 and 0 types of geometric quality criteria respectively. A grey segment represents the fraction of residues that are not modelled. The numeric value for each fraction is indicated below the corresponding segment, with a dot representing fractions  $\leq 5\%$ . The upper red bar (where present) indicates the fraction of residues that have poor fit to the electron density. The numeric value is given above the bar.

Mol	Chain	Length	Quality of chain
1	A	263	 3% 83% 14% ..

## 2 Entry composition

There are 5 unique types of molecules in this entry. The entry contains 2259 atoms, of which 0 are hydrogens and 0 are deuteriums.

In the tables below, the ZeroOcc column contains the number of atoms modelled with zero occupancy, the AltConf column contains the number of residues with at least one atom in alternate conformation and the Trace column contains the number of residues modelled with at most 2 atoms.

- Molecule 1 is a protein called Extended spectrum beta-lactamase TEM-63.

Mol	Chain	Residues	Atoms					ZeroOcc	AltConf	Trace
1	A	263	Total	C	N	O	S	0	17	0
			2102	1316	362	413	11			

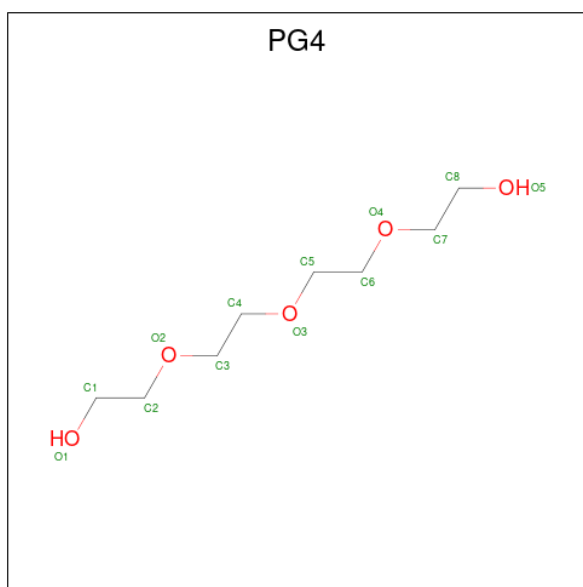
There are 7 discrepancies between the modelled and reference sequences:

Chain	Residue	Modelled	Actual	Comment	Reference
A	41	GLY	ALA	engineered mutation	UNP Q9AGJ5
A	51	ALA	ASN	engineered mutation	UNP Q9AGJ5
A	103	GLU	LYS	engineered mutation	UNP Q9AGJ5
A	119	GLY	ARG	engineered mutation	UNP Q9AGJ5
A	183	VAL	ALA	engineered mutation	UNP Q9AGJ5
A	200	ALA	LEU	engineered mutation	UNP Q9AGJ5
A	262	MET	THR	engineered mutation	UNP Q9AGJ5

- Molecule 2 is CALCIUM ION (three-letter code: CA) (formula: Ca).

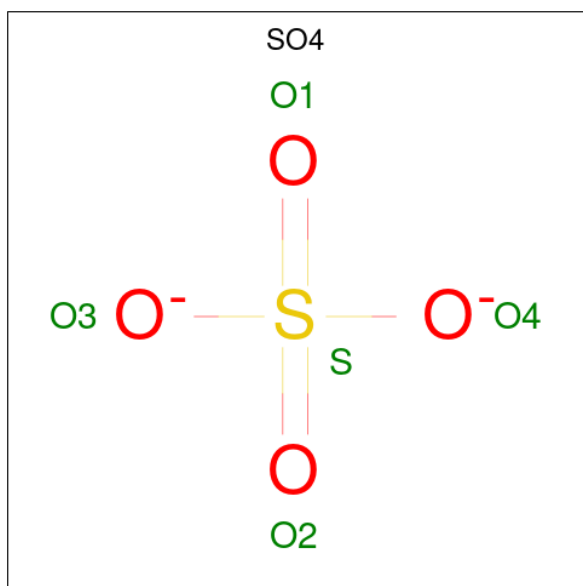
Mol	Chain	Residues	Atoms		ZeroOcc	AltConf
2	A	1	Total	Ca	0	0
			1	1		

- Molecule 3 is TETRAETHYLENE GLYCOL (three-letter code: PG4) (formula: C<sub>8</sub>H<sub>18</sub>O<sub>5</sub>).



Mol	Chain	Residues	Atoms			ZeroOcc	AltConf
3	A	1	Total	C	O	0	0
			13	8	5		

- Molecule 4 is SULFATE ION (three-letter code: SO4) (formula: O<sub>4</sub>S).



Mol	Chain	Residues	Atoms			ZeroOcc	AltConf
4	A	1	Total	O	S	0	0
			5	4	1		

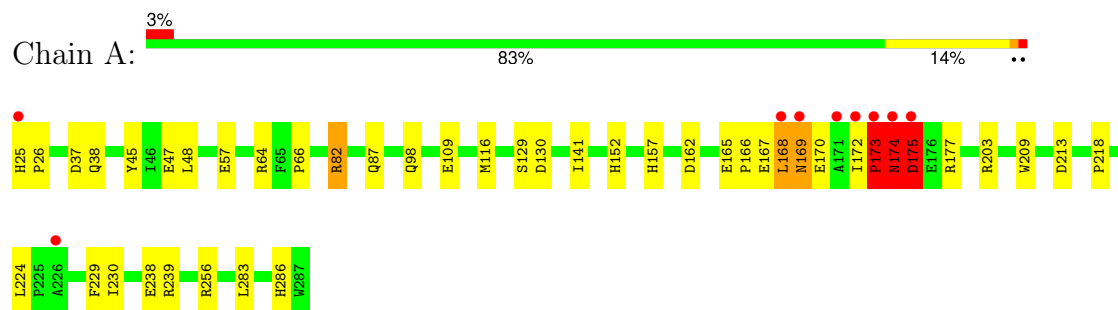
- Molecule 5 is water.

Mol	Chain	Residues	Atoms		ZeroOcc	AltConf
5	A	138	Total 138	O 138	0	0

### 3 Residue-property plots

These plots are drawn for all protein, RNA, DNA and oligosaccharide chains in the entry. The first graphic for a chain summarises the proportions of the various outlier classes displayed in the second graphic. The second graphic shows the sequence view annotated by issues in geometry and electron density. Residues are color-coded according to the number of geometric quality criteria for which they contain at least one outlier: green = 0, yellow = 1, orange = 2 and red = 3 or more. A red dot above a residue indicates a poor fit to the electron density ( $RSRZ > 2$ ). Stretches of 2 or more consecutive residues without any outlier are shown as a green connector. Residues present in the sample, but not in the model, are shown in grey.

- Molecule 1: Extended spectrum beta-lactamase TEM-63



## 4 Data and refinement statistics

Property	Value	Source
Space group	C 1 2 1	Depositor
Cell constants a, b, c, $\alpha$ , $\beta$ , $\gamma$	154.96Å 47.07Å 34.97Å 90.00° 93.17° 90.00°	Depositor
Resolution (Å)	77.36 – 1.75 77.36 – 1.75	Depositor EDS
% Data completeness (in resolution range)	97.0 (77.36-1.75) 97.0 (77.36-1.75)	Depositor EDS
$R_{merge}$	(Not available)	Depositor
$R_{sym}$	(Not available)	Depositor
$\langle I/\sigma(I) \rangle$ <sup>1</sup>	2.57 (at 1.75Å)	Xtriage
Refinement program	REFMAC 5.7.0032	Depositor
R, $R_{free}$	0.140 , 0.178 0.151 , 0.183	Depositor DCC
$R_{free}$ test set	1241 reflections (5.00%)	wwPDB-VP
Wilson B-factor (Å <sup>2</sup> )	16.2	Xtriage
Anisotropy	0.115	Xtriage
Bulk solvent $k_{sol}$ (e/Å <sup>3</sup> ), $B_{sol}$ (Å <sup>2</sup> )	0.37 , 44.6	EDS
L-test for twinning <sup>2</sup>	$\langle  L  \rangle = 0.49$ , $\langle L^2 \rangle = 0.32$	Xtriage
Estimated twinning fraction	No twinning to report.	Xtriage
$F_o, F_c$ correlation	0.97	EDS
Total number of atoms	2259	wwPDB-VP
Average B, all atoms (Å <sup>2</sup> )	22.0	wwPDB-VP

Xtriage's analysis on translational NCS is as follows: *The largest off-origin peak in the Patterson function is 8.15% of the height of the origin peak. No significant pseudotranslation is detected.*

<sup>1</sup>Intensities estimated from amplitudes.

<sup>2</sup>Theoretical values of  $\langle |L| \rangle$ ,  $\langle L^2 \rangle$  for acentric reflections are 0.5, 0.333 respectively for untwinned datasets, and 0.375, 0.2 for perfectly twinned datasets.

## 5 Model quality

### 5.1 Standard geometry

Bond lengths and bond angles in the following residue types are not validated in this section: CA, SO4, PG4

The Z score for a bond length (or angle) is the number of standard deviations the observed value is removed from the expected value. A bond length (or angle) with  $|Z| > 5$  is considered an outlier worth inspection. RMSZ is the root-mean-square of all Z scores of the bond lengths (or angles).

Mol	Chain	Bond lengths		Bond angles	
		RMSZ	$\# Z  > 5$	RMSZ	$\# Z  > 5$
1	A	1.14	4/2188 (0.2%)	1.13	12/2962 (0.4%)

Chiral center outliers are detected by calculating the chiral volume of a chiral center and verifying if the center is modelled as a planar moiety or with the opposite hand. A planarity outlier is detected by checking planarity of atoms in a peptide group, atoms in a mainchain group or atoms of a sidechain that are expected to be planar.

Mol	Chain	#Chirality outliers	#Planarity outliers
1	A	0	1

All (4) bond length outliers are listed below:

Mol	Chain	Res	Type	Atoms	Z	Observed(Å)	Ideal(Å)
1	A	109	GLU	CD-OE2	-5.70	1.19	1.25
1	A	209	TRP	CE3-CZ3	5.26	1.47	1.38
1	A	229	PHE	CG-CD1	5.01	1.46	1.38
1	A	218	PRO	N-CA	5.00	1.55	1.47

All (12) bond angle outliers are listed below:

Mol	Chain	Res	Type	Atoms	Z	Observed(°)	Ideal(°)
1	A	203	ARG	NE-CZ-NH1	8.88	124.74	120.30
1	A	82	ARG	NE-CZ-NH2	6.76	123.68	120.30
1	A	256	ARG	NE-CZ-NH2	-6.56	117.02	120.30
1	A	48	LEU	CA-CB-CG	6.07	129.25	115.30
1	A	162	ASP	CB-CG-OD2	6.00	123.70	118.30
1	A	45	TYR	CB-CG-CD2	5.93	124.56	121.00
1	A	213	ASP	CB-CG-OD1	5.77	123.50	118.30
1	A	45	TYR	CB-CG-CD1	-5.67	117.60	121.00
1	A	130	ASP	CB-CG-OD2	5.63	123.37	118.30

*Continued on next page...*



*Continued from previous page...*

Mol	Chain	Res	Type	Atoms	Z	Observed(°)	Ideal(°)
1	A	175	ASP	N-CA-C	-5.30	96.68	111.00
1	A	64	ARG	NE-CZ-NH2	-5.04	117.78	120.30
1	A	116	MET	CG-SD-CE	5.02	108.23	100.20

There are no chirality outliers.

All (1) planarity outliers are listed below:

Mol	Chain	Res	Type	Group
1	A	174	ASN	Peptide

## 5.2 Too-close contacts ⓘ

In the following table, the Non-H and H(model) columns list the number of non-hydrogen atoms and hydrogen atoms in the chain respectively. The H(added) column lists the number of hydrogen atoms added and optimized by MolProbity. The Clashes column lists the number of clashes within the asymmetric unit, whereas Symm-Clashes lists symmetry-related clashes.

Mol	Chain	Non-H	H(model)	H(added)	Clashes	Symm-Clashes
1	A	2102	0	2123	45	0
2	A	1	0	0	0	0
3	A	13	0	18	1	0
4	A	5	0	0	0	0
5	A	138	0	0	12	1
All	All	2259	0	2141	45	1

The all-atom clashscore is defined as the number of clashes found per 1000 atoms (including hydrogen atoms). The all-atom clashscore for this structure is 11.

All (45) close contacts within the same asymmetric unit are listed below, sorted by their clash magnitude.

Atom-1	Atom-2	Interatomic distance (Å)	Clash overlap (Å)
1:A:152[B]:HIS:CE1	1:A:157:HIS:HD2	1.60	1.18
1:A:152[B]:HIS:CE1	1:A:157:HIS:CD2	2.42	1.07
1:A:57[A]:GLU:OE1	5:A:513:HOH:O	1.87	0.93
1:A:152[B]:HIS:ND1	1:A:157:HIS:HD2	1.71	0.87
1:A:173:PRO:HD2	1:A:239[B]:ARG:HD3	1.61	0.82
1:A:152[A]:HIS:CD2	5:A:453:HOH:O	2.32	0.81
1:A:37[A]:ASP:OD1	5:A:487:HOH:O	2.06	0.73
1:A:175:ASP:N	1:A:175:ASP:OD1	2.21	0.71

*Continued on next page...*

Continued from previous page...

Atom-1	Atom-2	Interatomic distance (Å)	Clash overlap (Å)
1:A:172:ILE:HG22	1:A:173:PRO:HD3	1.77	0.67
1:A:37[B]:ASP:OD1	5:A:493:HOH:O	2.13	0.65
1:A:170:GLU:O	1:A:172:ILE:HG13	1.98	0.64
1:A:152[B]:HIS:ND1	1:A:157:HIS:CD2	2.61	0.61
1:A:173:PRO:HD2	1:A:239[B]:ARG:CD	2.31	0.61
1:A:152[B]:HIS:NE2	1:A:157:HIS:CD2	2.70	0.60
1:A:177:ARG:HD3	5:A:530:HOH:O	2.02	0.60
1:A:173:PRO:HD2	1:A:239[A]:ARG:HD2	1.86	0.55
1:A:173:PRO:HG2	5:A:529:HOH:O	2.07	0.55
1:A:66:PRO:HG3	1:A:172:ILE:HG21	1.89	0.54
1:A:173:PRO:HG2	1:A:239[A]:ARG:CD	2.40	0.51
1:A:239[A]:ARG:HD3	5:A:529:HOH:O	2.10	0.51
1:A:87[A]:GLN:OE1	3:A:302:PG4:H61	2.11	0.50
1:A:174:ASN:HB3	1:A:175:ASP:O	2.12	0.49
1:A:169:ASN:HA	5:A:521:HOH:O	2.12	0.49
1:A:173:PRO:HD3	5:A:527:HOH:O	2.12	0.49
1:A:152[B]:HIS:CG	1:A:157:HIS:CD2	3.00	0.49
1:A:47[A]:GLU:OE2	1:A:283:LEU:HD21	2.12	0.48
1:A:173:PRO:HA	1:A:174:ASN:HA	1.39	0.47
1:A:168:LEU:O	1:A:170:GLU:N	2.48	0.46
1:A:174:ASN:C	1:A:175:ASP:O	2.52	0.45
1:A:170:GLU:HA	1:A:238:GLU:HG3	2.00	0.44
1:A:37[B]:ASP:HA	5:A:494:HOH:O	2.17	0.44
1:A:173:PRO:CG	5:A:529:HOH:O	2.66	0.44
1:A:172:ILE:HG22	1:A:173:PRO:CD	2.47	0.43
1:A:82:ARG:HD2	1:A:141:ILE:HG22	2.01	0.43
1:A:152[B]:HIS:CD2	1:A:157:HIS:CD2	3.06	0.43
1:A:165:GLU:OE1	1:A:166:PRO:HA	2.18	0.43
1:A:174:ASN:HB3	1:A:175:ASP:C	2.39	0.43
1:A:25:HIS:N	1:A:26:PRO:HD2	2.34	0.42
1:A:172:ILE:H	1:A:239[B]:ARG:HD2	1.85	0.42
1:A:224:LEU:HD11	1:A:230:ILE:HB	2.02	0.42
1:A:172:ILE:O	1:A:174:ASN:C	2.57	0.41
1:A:37[A]:ASP:HA	5:A:494:HOH:O	2.19	0.41

All (1) symmetry-related close contacts are listed below. The label for Atom-2 includes the symmetry operator and encoded unit-cell translations to be applied.

Atom-1	Atom-2	Interatomic distance (Å)	Clash overlap (Å)
5:A:533:HOH:O	5:A:536:HOH:O[1_554]	1.74	0.46

## 5.3 Torsion angles

### 5.3.1 Protein backbone

In the following table, the Percentiles column shows the percent Ramachandran outliers of the chain as a percentile score with respect to all X-ray entries followed by that with respect to entries of similar resolution.

The Analysed column shows the number of residues for which the backbone conformation was analysed, and the total number of residues.

Mol	Chain	Analysed	Favoured	Allowed	Outliers	Percentiles
1	A	278/263 (106%)	269 (97%)	5 (2%)	4 (1%)	9 2

All (4) Ramachandran outliers are listed below:

Mol	Chain	Res	Type
1	A	169	ASN
1	A	175	ASP
1	A	173	PRO
1	A	168	LEU

### 5.3.2 Protein sidechains

In the following table, the Percentiles column shows the percent sidechain outliers of the chain as a percentile score with respect to all X-ray entries followed by that with respect to entries of similar resolution.

The Analysed column shows the number of residues for which the sidechain conformation was analysed, and the total number of residues.

Mol	Chain	Analysed	Rotameric	Outliers	Percentiles
1	A	232/215 (108%)	227 (98%)	5 (2%)	47 27

All (5) residues with a non-rotameric sidechain are listed below:

Mol	Chain	Res	Type
1	A	129	SER
1	A	167	GLU
1	A	173	PRO
1	A	174	ASN
1	A	175	ASP

Sometimes sidechains can be flipped to improve hydrogen bonding and reduce clashes. All (4) such sidechains are listed below:

Mol	Chain	Res	Type
1	A	25	HIS
1	A	153	ASN
1	A	157	HIS
1	A	286	HIS

### 5.3.3 RNA [i](#)

There are no RNA molecules in this entry.

## 5.4 Non-standard residues in protein, DNA, RNA chains [i](#)

There are no non-standard protein/DNA/RNA residues in this entry.

## 5.5 Carbohydrates [i](#)

There are no oligosaccharides in this entry.

## 5.6 Ligand geometry [i](#)

Of 3 ligands modelled in this entry, 1 is monoatomic - leaving 2 for Mogul analysis.

In the following table, the Counts columns list the number of bonds (or angles) for which Mogul statistics could be retrieved, the number of bonds (or angles) that are observed in the model and the number of bonds (or angles) that are defined in the Chemical Component Dictionary. The Link column lists molecule types, if any, to which the group is linked. The Z score for a bond length (or angle) is the number of standard deviations the observed value is removed from the expected value. A bond length (or angle) with  $|Z| > 2$  is considered an outlier worth inspection. RMSZ is the root-mean-square of all Z scores of the bond lengths (or angles).

Mol	Type	Chain	Res	Link	Bond lengths			Bond angles		
					Counts	RMSZ	$\# Z  > 2$	Counts	RMSZ	$\# Z  > 2$
4	SO4	A	303	-	4,4,4	0.43	0	6,6,6	0.07	0
3	PG4	A	302	-	12,12,12	0.49	0	11,11,11	0.78	0

In the following table, the Chirals column lists the number of chiral outliers, the number of chiral centers analysed, the number of these observed in the model and the number defined in the Chemical Component Dictionary. Similar counts are reported in the Torsion and Rings columns. '-' means no outliers of that kind were identified.

Mol	Type	Chain	Res	Link	Chirals	Torsions	Rings
3	PG4	A	302	-	-	7/10/10/10	-

There are no bond length outliers.

There are no bond angle outliers.

There are no chirality outliers.

All (7) torsion outliers are listed below:

Mol	Chain	Res	Type	Atoms
3	A	302	PG4	O1-C1-C2-O2
3	A	302	PG4	O2-C3-C4-O3
3	A	302	PG4	C8-C7-O4-C6
3	A	302	PG4	C6-C5-O3-C4
3	A	302	PG4	C3-C4-O3-C5
3	A	302	PG4	C1-C2-O2-C3
3	A	302	PG4	C4-C3-O2-C2

There are no ring outliers.

1 monomer is involved in 1 short contact:

Mol	Chain	Res	Type	Clashes	Symm-Clashes
3	A	302	PG4	1	0

## 5.7 Other polymers [i](#)

There are no such residues in this entry.

## 5.8 Polymer linkage issues [i](#)

There are no chain breaks in this entry.

## 6 Fit of model and data [i](#)

### 6.1 Protein, DNA and RNA chains [i](#)

In the following table, the column labelled ‘#RSRZ> 2’ contains the number (and percentage) of RSRZ outliers, followed by percent RSRZ outliers for the chain as percentile scores relative to all X-ray entries and entries of similar resolution. The OWAB column contains the minimum, median, 95<sup>th</sup> percentile and maximum values of the occupancy-weighted average B-factor per residue. The column labelled ‘Q< 0.9’ lists the number of (and percentage) of residues with an average occupancy less than 0.9.

Mol	Chain	Analysed	<RSRZ>	#RSRZ>2		OWAB(Å <sup>2</sup> )	Q<0.9
1	A	263/263 (100%)	-0.32	9 (3%)	48 55	8, 17, 37, 102	20 (7%)

All (9) RSRZ outliers are listed below:

Mol	Chain	Res	Type	RSRZ
1	A	25	HIS	6.0
1	A	171	ALA	5.0
1	A	169	ASN	4.4
1	A	172	ILE	3.5
1	A	168	LEU	3.3
1	A	173	PRO	3.1
1	A	175	ASP	2.5
1	A	174	ASN	2.5
1	A	226	ALA	2.3

### 6.2 Non-standard residues in protein, DNA, RNA chains [i](#)

There are no non-standard protein/DNA/RNA residues in this entry.

### 6.3 Carbohydrates [i](#)

There are no monosaccharides in this entry.

### 6.4 Ligands [i](#)

In the following table, the Atoms column lists the number of modelled atoms in the group and the number defined in the chemical component dictionary. The B-factors column lists the minimum, median, 95<sup>th</sup> percentile and maximum values of B factors of atoms in the group. The column labelled ‘Q< 0.9’ lists the number of atoms with occupancy less than 0.9.

Mol	Type	Chain	Res	Atoms	RSCC	RSR	B-factors( $\text{\AA}^2$ )	Q<0.9
3	PG4	A	302	13/13	0.82	0.17	38,40,49,49	13
4	SO4	A	303	5/5	0.95	0.11	25,26,27,42	0
2	CA	A	301	1/1	0.99	0.04	14,14,14,14	1

## 6.5 Other polymers [i](#)

There are no such residues in this entry.