



wwPDB X-ray Structure Validation Summary Report ⓘ

Oct 28, 2024 – 02:37 AM EDT

PDB ID : 2OSU
Title : Probable glutaminase from *Bacillus subtilis* complexed with 6-diazo-5-oxo-L-norleucine
Authors : Kim, Y.; Dementieva, I.; Vinokour, E.; Collart, F.; Joachimiak, A.; Midwest Center for Structural Genomics (MCSG)
Deposited on : 2007-02-06
Resolution : 2.29 Å(reported)

This is a wwPDB X-ray Structure Validation Summary Report for a publicly released PDB entry.

We welcome your comments at validation@mail.wwpdb.org

A user guide is available at

<https://www.wwpdb.org/validation/2017/XrayValidationReportHelp>

with specific help available everywhere you see the ⓘ symbol.

The types of validation reports are described at

<http://www.wwpdb.org/validation/2017/FAQs#types>.

The following versions of software and data (see [references ⓘ](#)) were used in the production of this report:

MolProbity	:	4.02b-467
Mogul	:	2022.3.0, CSD as543be (2022)
Xtriage (Phenix)	:	1.20.1
EDS	:	3.0
Percentile statistics	:	20231227.v01 (using entries in the PDB archive December 27th 2023)
CCP4	:	9.0.003 (Gargrove)
Density-Fitness	:	1.0.11
Ideal geometry (proteins)	:	Engh & Huber (2001)
Ideal geometry (DNA, RNA)	:	Parkinson et al. (1996)
Validation Pipeline (wwPDB-VP)	:	2.39

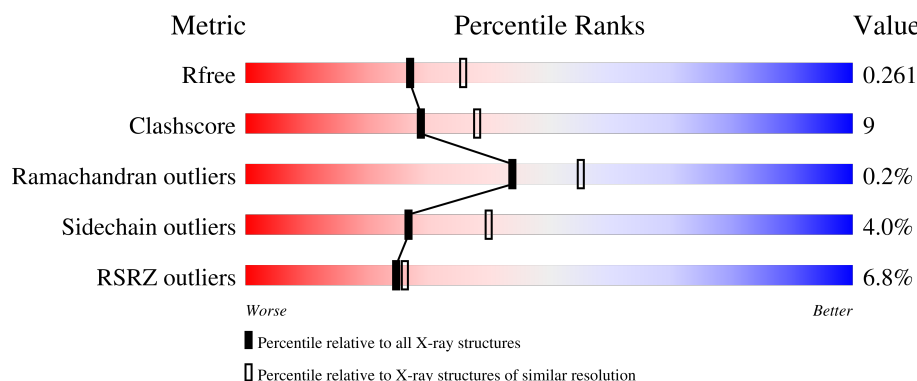
1 Overall quality at a glance

The following experimental techniques were used to determine the structure:

X-RAY DIFFRACTION


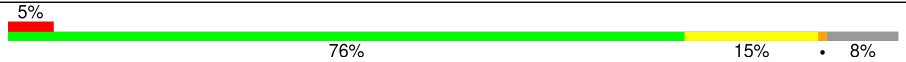
The reported resolution of this entry is 2.29 Å.

Percentile scores (ranging between 0-100) for global validation metrics of the entry are shown in the following graphic. The table shows the number of entries on which the scores are based.



Metric	Whole archive (#Entries)	Similar resolution (#Entries, resolution range(Å))
R_{free}	164625	5963 (2.30-2.30)
Clashscore	180529	6698 (2.30-2.30)
Ramachandran outliers	177936	6640 (2.30-2.30)
Sidechain outliers	177891	6640 (2.30-2.30)
RSRZ outliers	164620	5963 (2.30-2.30)

The table below summarises the geometric issues observed across the polymeric chains and their fit to the electron density. The red, orange, yellow and green segments of the lower bar indicate the fraction of residues that contain outliers for ≥ 3 , 2, 1 and 0 types of geometric quality criteria respectively. A grey segment represents the fraction of residues that are not modelled. The numeric value for each fraction is indicated below the corresponding segment, with a dot representing fractions $\leq 5\%$. The upper red bar (where present) indicates the fraction of residues that have poor fit to the electron density. The numeric value is given above the bar.

Mol	Chain	Length	Quality of chain
1	A	330	
1	B	330	

The following table lists non-polymeric compounds, carbohydrate monomers and non-standard residues in protein, DNA, RNA chains that are outliers for geometric or electron-density-fit criteria:

Mol	Type	Chain	Res	Chirality	Geometry	Clashes	Electron density
2	DON	B	401	-	-	X	-

2 Entry composition

There are 3 unique types of molecules in this entry. The entry contains 5030 atoms, of which 0 are hydrogens and 0 are deuteriums.

In the tables below, the ZeroOcc column contains the number of atoms modelled with zero occupancy, the AltConf column contains the number of residues with at least one atom in alternate conformation and the Trace column contains the number of residues modelled with at most 2 atoms.

- Molecule 1 is a protein called Glutaminase 1.

Mol	Chain	Residues	Atoms						ZeroOcc	AltConf	Trace
1	A	306	Total	C	N	O	S	Se	0	3	0
			2388	1530	396	444	6	12			
1	B	303	Total	C	N	O	S	Se	0	5	0
			2386	1527	393	448	6	12			

There are 30 discrepancies between the modelled and reference sequences:

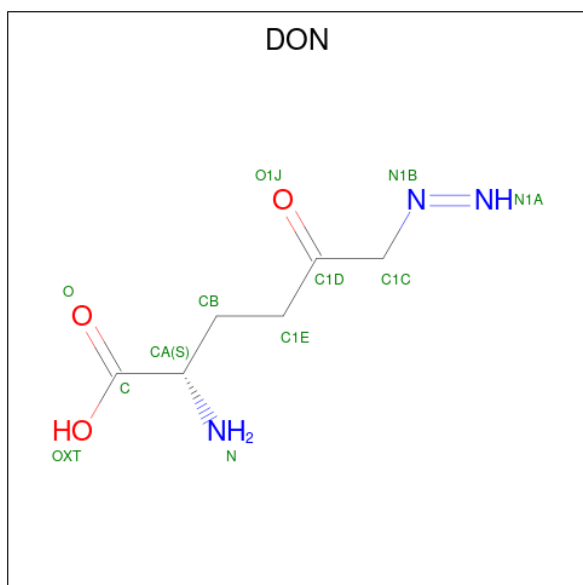
Chain	Residue	Modelled	Actual	Comment	Reference
A	-2	SER	-	expression tag	UNP O31465
A	-1	ASN	-	expression tag	UNP O31465
A	0	ALA	-	expression tag	UNP O31465
A	1	MSE	MET	modified residue	UNP O31465
A	60	MSE	MET	modified residue	UNP O31465
A	72	MSE	MET	modified residue	UNP O31465
A	86	MSE	MET	modified residue	UNP O31465
A	124	MSE	MET	modified residue	UNP O31465
A	152	MSE	MET	modified residue	UNP O31465
A	207	MSE	MET	modified residue	UNP O31465
A	247	MSE	MET	modified residue	UNP O31465
A	252	MSE	MET	modified residue	UNP O31465
A	276	MSE	MET	modified residue	UNP O31465
A	313	MSE	MET	modified residue	UNP O31465
A	318	MSE	MET	modified residue	UNP O31465
B	-2	SER	-	expression tag	UNP O31465
B	-1	ASN	-	expression tag	UNP O31465
B	0	ALA	-	expression tag	UNP O31465
B	1	MSE	MET	modified residue	UNP O31465
B	60	MSE	MET	modified residue	UNP O31465
B	72	MSE	MET	modified residue	UNP O31465
B	86	MSE	MET	modified residue	UNP O31465
B	124	MSE	MET	modified residue	UNP O31465
B	152	MSE	MET	modified residue	UNP O31465
B	207	MSE	MET	modified residue	UNP O31465

Continued on next page...

Continued from previous page...

Chain	Residue	Modelled	Actual	Comment	Reference
B	247	MSE	MET	modified residue	UNP O31465
B	252	MSE	MET	modified residue	UNP O31465
B	276	MSE	MET	modified residue	UNP O31465
B	313	MSE	MET	modified residue	UNP O31465
B	318	MSE	MET	modified residue	UNP O31465

- Molecule 2 is 6-DIAZENYL-5-OXO-L-NORLEUCINE (three-letter code: DON) (formula: $C_6H_{11}N_3O_3$).



Mol	Chain	Residues	Atoms				ZeroOcc	AltConf
2	A	1	Total	C	N	O	0	0
			12	6	3	3		
2	B	1	Total	C	N	O	0	0
			12	6	3	3		

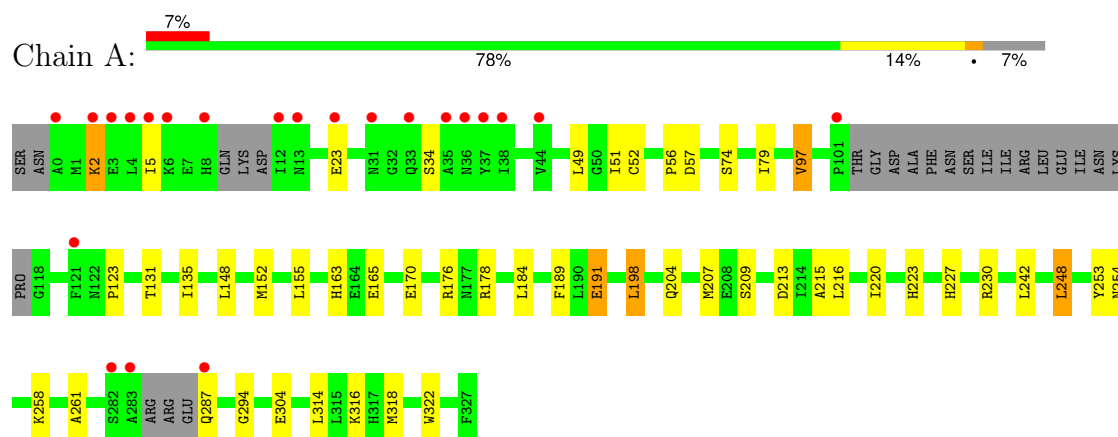
- Molecule 3 is water.

Mol	Chain	Residues	Atoms		ZeroOcc	AltConf
3	A	128	Total	O	0	0
			128	128		
3	B	104	Total	O	0	0
			104	104		

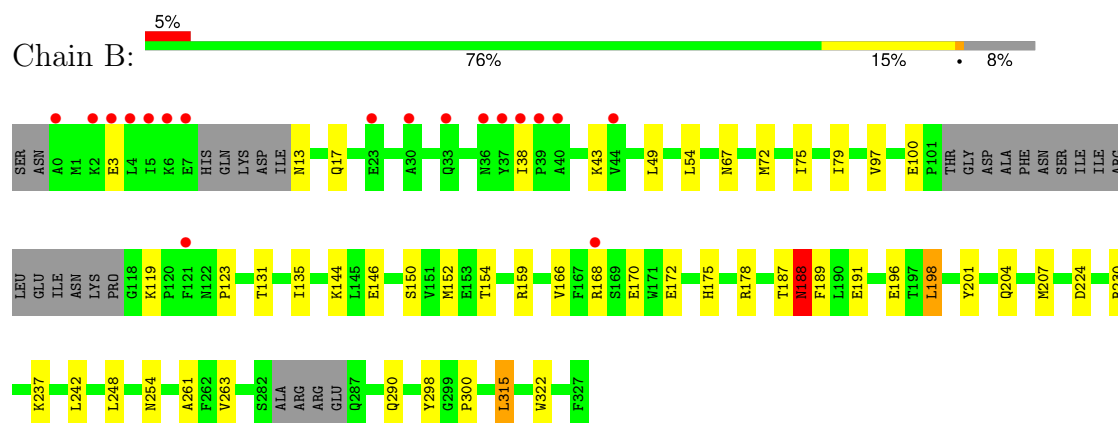
3 Residue-property plots [i](#)

These plots are drawn for all protein, RNA, DNA and oligosaccharide chains in the entry. The first graphic for a chain summarises the proportions of the various outlier classes displayed in the second graphic. The second graphic shows the sequence view annotated by issues in geometry and electron density. Residues are color-coded according to the number of geometric quality criteria for which they contain at least one outlier: green = 0, yellow = 1, orange = 2 and red = 3 or more. A red dot above a residue indicates a poor fit to the electron density ($RSRZ > 2$). Stretches of 2 or more consecutive residues without any outlier are shown as a green connector. Residues present in the sample, but not in the model, are shown in grey.

• Molecule 1: Glutaminase 1



• Molecule 1: Glutaminase 1



4 Data and refinement statistics

Property	Value	Source
Space group	P 21 21 2	Depositor
Cell constants a, b, c, α , β , γ	71.25Å 184.70Å 51.42Å 90.00° 90.00° 90.00°	Depositor
Resolution (Å)	34.52 – 2.29 34.52 – 2.29	Depositor EDS
% Data completeness (in resolution range)	97.6 (34.52-2.29) 97.5 (34.52-2.29)	Depositor EDS
R_{merge}	0.14	Depositor
R_{sym}	(Not available)	Depositor
$\langle I/\sigma(I) \rangle$ ¹	2.14 (at 2.29Å)	Xtriage
Refinement program	REFMAC 5.2.0019	Depositor
R, R_{free}	0.194 , 0.252 0.219 , 0.261	Depositor DCC
R_{free} test set	3072 reflections (10.01%)	wwPDB-VP
Wilson B-factor (Å ²)	28.9	Xtriage
Anisotropy	0.695	Xtriage
Bulk solvent k_{sol} (e/Å ³), B_{sol} (Å ²)	0.35 , 33.6	EDS
L-test for twinning ²	$\langle L \rangle = 0.49$, $\langle L^2 \rangle = 0.33$	Xtriage
Estimated twinning fraction	No twinning to report.	Xtriage
F_o, F_c correlation	0.93	EDS
Total number of atoms	5030	wwPDB-VP
Average B, all atoms (Å ²)	32.0	wwPDB-VP

Xtriage's analysis on translational NCS is as follows: *The analyses of the Patterson function reveals a significant off-origin peak that is 40.33 % of the origin peak, indicating pseudo-translational symmetry. The chance of finding a peak of this or larger height randomly in a structure without pseudo-translational symmetry is equal to 2.7820e-04. The detected translational NCS is most likely also responsible for the elevated intensity ratio.*

¹Intensities estimated from amplitudes.

²Theoretical values of $\langle |L| \rangle$, $\langle L^2 \rangle$ for acentric reflections are 0.5, 0.333 respectively for untwinned datasets, and 0.375, 0.2 for perfectly twinned datasets.

5 Model quality [i](#)

5.1 Standard geometry [i](#)

Bond lengths and bond angles in the following residue types are not validated in this section: DON

The Z score for a bond length (or angle) is the number of standard deviations the observed value is removed from the expected value. A bond length (or angle) with $|Z| > 5$ is considered an outlier worth inspection. RMSZ is the root-mean-square of all Z scores of the bond lengths (or angles).

Mol	Chain	Bond lengths		Bond angles	
		RMSZ	$\# Z > 5$	RMSZ	$\# Z > 5$
1	A	0.70	3/2430 (0.1%)	0.71	1/3271 (0.0%)
1	B	0.71	2/2427 (0.1%)	0.71	2/3266 (0.1%)
All	All	0.71	5/4857 (0.1%)	0.71	3/6537 (0.0%)

All (5) bond length outliers are listed below:

Mol	Chain	Res	Type	Atoms	Z	Observed(Å)	Ideal(Å)
1	B	3	GLU	CD-OE1	13.89	1.41	1.25
1	A	2	LYS	CG-CD	10.65	1.88	1.52
1	A	2	LYS	CD-CE	5.89	1.66	1.51
1	B	3	GLU	CG-CD	5.82	1.60	1.51
1	A	2	LYS	CE-NZ	5.13	1.61	1.49

All (3) bond angle outliers are listed below:

Mol	Chain	Res	Type	Atoms	Z	Observed(°)	Ideal(°)
1	B	3	GLU	OE1-CD-OE2	6.78	131.44	123.30
1	B	3	GLU	CG-CD-OE1	-6.45	105.40	118.30
1	A	2	LYS	CG-CD-CE	-5.06	96.72	111.90

There are no chirality outliers.

There are no planarity outliers.

5.2 Too-close contacts [i](#)

In the following table, the Non-H and H(model) columns list the number of non-hydrogen atoms and hydrogen atoms in the chain respectively. The H(added) column lists the number of hydrogen atoms added and optimized by MolProbity. The Clashes column lists the number of clashes within the asymmetric unit, whereas Symm-Clashes lists symmetry-related clashes.

Mol	Chain	Non-H	H(model)	H(added)	Clashes	Symm-Clashes
1	A	2388	0	2366	37	0
1	B	2386	0	2354	50	0
2	A	12	0	10	2	0
2	B	12	0	10	8	0
3	A	128	0	0	5	0
3	B	104	0	0	9	0
All	All	5030	0	4740	82	0

The all-atom clashscore is defined as the number of clashes found per 1000 atoms (including hydrogen atoms). The all-atom clashscore for this structure is 9.

The worst 5 of 82 close contacts within the same asymmetric unit are listed below, sorted by their clash magnitude.

Atom-1	Atom-2	Interatomic distance (Å)	Clash overlap (Å)
1:A:2:LYS:CD	1:A:2:LYS:CG	1.88	1.52
1:A:135:ILE:HG22	1:A:191:GLU:HG3	1.29	1.12
1:A:253:TYR:HE2	3:A:518:HOH:O	1.52	0.91
1:A:253:TYR:CE2	3:A:518:HOH:O	2.25	0.90
1:B:178:ARG:CZ	3:B:412:HOH:O	2.24	0.86

There are no symmetry-related clashes.

5.3 Torsion angles [i](#)

5.3.1 Protein backbone [i](#)

In the following table, the Percentiles column shows the percent Ramachandran outliers of the chain as a percentile score with respect to all X-ray entries followed by that with respect to entries of similar resolution.

The Analysed column shows the number of residues for which the backbone conformation was analysed, and the total number of residues.

Mol	Chain	Analysed	Favoured	Allowed	Outliers	Percentiles	
1	A	301/330 (91%)	287 (95%)	14 (5%)	0	100	100
1	B	300/330 (91%)	289 (96%)	10 (3%)	1 (0%)	37	47
All	All	601/660 (91%)	576 (96%)	24 (4%)	1 (0%)	44	55

All (1) Ramachandran outliers are listed below:

Mol	Chain	Res	Type
1	B	188	ASN

5.3.2 Protein sidechains ⓘ

In the following table, the Percentiles column shows the percent sidechain outliers of the chain as a percentile score with respect to all X-ray entries followed by that with respect to entries of similar resolution.

The Analysed column shows the number of residues for which the sidechain conformation was analysed, and the total number of residues.

Mol	Chain	Analysed	Rotameric	Outliers	Percentiles	
1	A	253/260 (97%)	241 (95%)	12 (5%)	22	32
1	B	253/260 (97%)	245 (97%)	8 (3%)	34	50
All	All	506/520 (97%)	486 (96%)	20 (4%)	27	40

5 of 20 residues with a non-rotameric sidechain are listed below:

Mol	Chain	Res	Type
1	B	49	LEU
1	B	188	ASN
1	B	315	LEU
1	B	198	LEU
1	A	191	GLU

Sometimes sidechains can be flipped to improve hydrogen bonding and reduce clashes. 5 of 13 such sidechains are listed below:

Mol	Chain	Res	Type
1	B	126	ASN
1	B	175	HIS
1	B	307	ASN
1	B	254	ASN
1	B	287	GLN

5.3.3 RNA ⓘ

There are no RNA molecules in this entry.

5.4 Non-standard residues in protein, DNA, RNA chains [i](#)

There are no non-standard protein/DNA/RNA residues in this entry.

5.5 Carbohydrates [i](#)

There are no oligosaccharides in this entry.

5.6 Ligand geometry [i](#)

2 ligands are modelled in this entry.

In the following table, the Counts columns list the number of bonds (or angles) for which Mogul statistics could be retrieved, the number of bonds (or angles) that are observed in the model and the number of bonds (or angles) that are defined in the Chemical Component Dictionary. The Link column lists molecule types, if any, to which the group is linked. The Z score for a bond length (or angle) is the number of standard deviations the observed value is removed from the expected value. A bond length (or angle) with $|Z| > 2$ is considered an outlier worth inspection. RMSZ is the root-mean-square of all Z scores of the bond lengths (or angles).

Mol	Type	Chain	Res	Link	Bond lengths			Bond angles		
					Counts	RMSZ	# Z > 2	Counts	RMSZ	# Z > 2
2	DON	B	401	-	8,11,11	1.62	1 (12%)	8,13,13	2.12	4 (50%)
2	DON	A	401	-	8,11,11	1.49	1 (12%)	8,13,13	0.91	0

In the following table, the Chirals column lists the number of chiral outliers, the number of chiral centers analysed, the number of these observed in the model and the number defined in the Chemical Component Dictionary. Similar counts are reported in the Torsion and Rings columns. '-' means no outliers of that kind were identified.

Mol	Type	Chain	Res	Link	Chirals	Torsions	Rings
2	DON	B	401	-	-	5/10/12/12	-
2	DON	A	401	-	-	9/10/12/12	-

All (2) bond length outliers are listed below:

Mol	Chain	Res	Type	Atoms	Z	Observed(Å)	Ideal(Å)
2	B	401	DON	C1C-N1B	-3.57	1.32	1.48
2	A	401	DON	C1C-N1B	-3.54	1.32	1.48

All (4) bond angle outliers are listed below:

Mol	Chain	Res	Type	Atoms	Z	Observed(°)	Ideal(°)
2	B	401	DON	C1E-C1D-C1C	4.04	126.33	117.30
2	B	401	DON	O1J-C1D-C1C	-2.53	115.55	122.09
2	B	401	DON	CB-C1E-C1D	-2.33	109.50	114.61
2	B	401	DON	CB-CA-C	2.24	116.38	110.45

There are no chirality outliers.

5 of 14 torsion outliers are listed below:

Mol	Chain	Res	Type	Atoms
2	A	401	DON	O-C-CA-N
2	A	401	DON	C-CA-CB-C1E
2	A	401	DON	N-CA-CB-C1E
2	A	401	DON	C1D-C1E-CB-CA
2	B	401	DON	C1D-C1E-CB-CA

There are no ring outliers.

2 monomers are involved in 10 short contacts:

Mol	Chain	Res	Type	Clashes	Symm-Clashes
2	B	401	DON	8	0
2	A	401	DON	2	0

5.7 Other polymers [i](#)

There are no such residues in this entry.

5.8 Polymer linkage issues [i](#)

There are no chain breaks in this entry.

6 Fit of model and data [i](#)

6.1 Protein, DNA and RNA chains [i](#)

In the following table, the column labelled ‘#RSRZ> 2’ contains the number (and percentage) of RSRZ outliers, followed by percent RSRZ outliers for the chain as percentile scores relative to all X-ray entries and entries of similar resolution. The OWAB column contains the minimum, median, 95th percentile and maximum values of the occupancy-weighted average B-factor per residue. The column labelled ‘Q< 0.9’ lists the number of (and percentage) of residues with an average occupancy less than 0.9.

Mol	Chain	Analysed	<RSRZ>	#RSRZ>2	OWAB(Å ²)	Q<0.9
1	A	294/330 (89%)	0.41	22 (7%) 22 23	13, 29, 57, 70	3 (1%)
1	B	291/330 (88%)	0.35	18 (6%) 28 29	15, 27, 59, 66	5 (1%)
All	All	585/660 (88%)	0.38	40 (6%) 25 26	13, 28, 59, 70	8 (1%)

The worst 5 of 40 RSRZ outliers are listed below:

Mol	Chain	Res	Type	RSRZ
1	B	5	ILE	4.5
1	B	37	TYR	4.4
1	A	44	VAL	4.1
1	A	8	HIS	4.0
1	A	5	ILE	4.0

6.2 Non-standard residues in protein, DNA, RNA chains [i](#)

There are no non-standard protein/DNA/RNA residues in this entry.

6.3 Carbohydrates [i](#)

There are no monosaccharides in this entry.

6.4 Ligands [i](#)

In the following table, the Atoms column lists the number of modelled atoms in the group and the number defined in the chemical component dictionary. The B-factors column lists the minimum, median, 95th percentile and maximum values of B factors of atoms in the group. The column labelled ‘Q< 0.9’ lists the number of atoms with occupancy less than 0.9.

Mol	Type	Chain	Res	Atoms	RSCC	RSR	B-factors(\AA^2)	Q<0.9
2	DON	A	401	12/12	0.53	0.30	69,74,77,77	0
2	DON	B	401	12/12	0.63	0.29	77,78,80,80	0

6.5 Other polymers [i](#)

There are no such residues in this entry.