



wwPDB X-ray Structure Validation Summary Report ⓘ

Dec 15, 2024 – 03:36 AM EST

PDB ID : 3OWM
Title : Structure of the Thioalkalivibrio nitratireducens cytochrome c nitrite reductase in a complex with hydroxylamine
Authors : Trofimov, A.A.; Polyakov, K.M.; Boyko, K.M.; Tikhonova, T.V.; Lamzin, V.S.; Bourenkov, G.P.; Popov, V.O.
Deposited on : 2010-09-20
Resolution : 1.65 Å(reported)

This is a wwPDB X-ray Structure Validation Summary Report for a publicly released PDB entry.

We welcome your comments at validation@mail.wwpdb.org

A user guide is available at

<https://www.wwpdb.org/validation/2017/XrayValidationReportHelp>

with specific help available everywhere you see the ⓘ symbol.

The types of validation reports are described at

<http://www.wwpdb.org/validation/2017/FAQs#types>.

The following versions of software and data (see [references ⓘ](#)) were used in the production of this report:

MolProbity	:	4.02b-467
Mogul	:	2022.3.0, CSD as543be (2022)
Xtriage (Phenix)	:	1.21
EDS	:	3.0
buster-report	:	1.1.7 (2018)
Percentile statistics	:	20231227.v01 (using entries in the PDB archive December 27th 2023)
CCP4	:	9.0.004 (Gargrove)
Density-Fitness	:	1.0.11
Ideal geometry (proteins)	:	Engh & Huber (2001)
Ideal geometry (DNA, RNA)	:	Parkinson et al. (1996)
Validation Pipeline (wwPDB-VP)	:	2.40

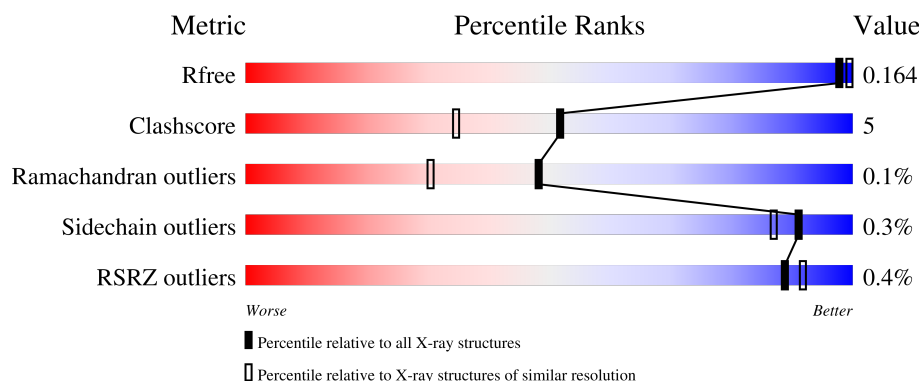
1 Overall quality at a glance

The following experimental techniques were used to determine the structure:

X-RAY DIFFRACTION

The reported resolution of this entry is 1.65 Å.

Percentile scores (ranging between 0-100) for global validation metrics of the entry are shown in the following graphic. The table shows the number of entries on which the scores are based.



Metric	Whole archive (#Entries)	Similar resolution (#Entries, resolution range(Å))
R_{free}	164625	2328 (1.66-1.66)
Clashscore	180529	2515 (1.66-1.66)
Ramachandran outliers	177936	2475 (1.66-1.66)
Sidechain outliers	177891	2475 (1.66-1.66)
RSRZ outliers	164620	2328 (1.66-1.66)

The table below summarises the geometric issues observed across the polymeric chains and their fit to the electron density. The red, orange, yellow and green segments of the lower bar indicate the fraction of residues that contain outliers for ≥ 3 , 2, 1 and 0 types of geometric quality criteria respectively. A grey segment represents the fraction of residues that are not modelled. The numeric value for each fraction is indicated below the corresponding segment, with a dot representing fractions $\leq 5\%$. The upper red bar (where present) indicates the fraction of residues that have poor fit to the electron density. The numeric value is given above the bar.

Mol	Chain	Length	Quality of chain
1	A	519	<div> <div style="width: 94%;"></div> <div style="width: 6%;"></div> </div> <div>94% 6%</div>
1	B	519	<div> <div style="width: 94%;"></div> <div style="width: 6%;"></div> </div> <div>94% 6%</div>

The following table lists non-polymeric compounds, carbohydrate monomers and non-standard residues in protein, DNA, RNA chains that are outliers for geometric or electron-density-fit criteria:

Mol	Type	Chain	Res	Chirality	Geometry	Clashes	Electron density
6	PG6	B	527	-	-	X	-

2 Entry composition i

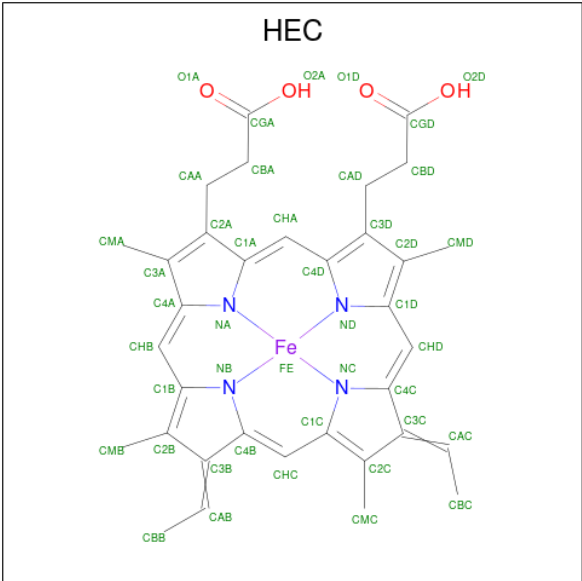
There are 9 unique types of molecules in this entry. The entry contains 10414 atoms, of which 0 are hydrogens and 0 are deuteriums.

In the tables below, the ZeroOcc column contains the number of atoms modelled with zero occupancy, the AltConf column contains the number of residues with at least one atom in alternate conformation and the Trace column contains the number of residues modelled with at most 2 atoms.

- Molecule 1 is a protein called Eight-heme nitrite reductase.

Mol	Chain	Residues	Atoms					ZeroOcc	AltConf	Trace
1	A	519	Total	C	N	O	S	0	22	1
			4167	2586	756	786	39			
1	B	519	Total	C	N	O	S	0	21	1
			4172	2586	761	787	38			

- Molecule 2 is HEME C (three-letter code: HEC) (formula: $C_{34}H_{34}FeN_4O_4$).



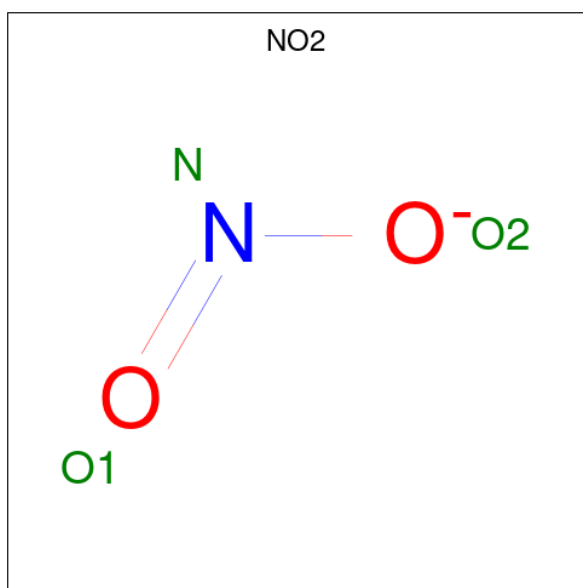
Mol	Chain	Residues	Atoms					ZeroOcc	AltConf
2	A	1	Total	C	Fe	N	O	0	0
			43	34	1	4	4		
2	A	1	Total	C	Fe	N	O	0	0
			43	34	1	4	4		
2	A	1	Total	C	Fe	N	O	0	0
			43	34	1	4	4		
2	A	1	Total	C	Fe	N	O	0	1
			43	34	1	4	4		

Continued on next page...

Continued from previous page...

Mol	Chain	Residues	Atoms					ZeroOcc	AltConf
2	A	1	Total	C	Fe	N	O	0	0
			43	34	1	4	4		
2	A	1	Total	C	Fe	N	O	0	0
			43	34	1	4	4		
2	A	1	Total	C	Fe	N	O	0	0
			43	34	1	4	4		
2	A	1	Total	C	Fe	N	O	0	0
			43	34	1	4	4		
2	B	1	Total	C	Fe	N	O	0	0
			43	34	1	4	4		
2	B	1	Total	C	Fe	N	O	0	0
			43	34	1	4	4		
2	B	1	Total	C	Fe	N	O	0	0
			43	34	1	4	4		
2	B	1	Total	C	Fe	N	O	0	1
			43	34	1	4	4		
2	B	1	Total	C	Fe	N	O	0	0
			43	34	1	4	4		
2	B	1	Total	C	Fe	N	O	0	0
			43	34	1	4	4		
2	B	1	Total	C	Fe	N	O	0	0
			43	34	1	4	4		
2	B	1	Total	C	Fe	N	O	0	0
			43	34	1	4	4		

- Molecule 3 is NITRITE ION (three-letter code: NO2) (formula: NO₂).

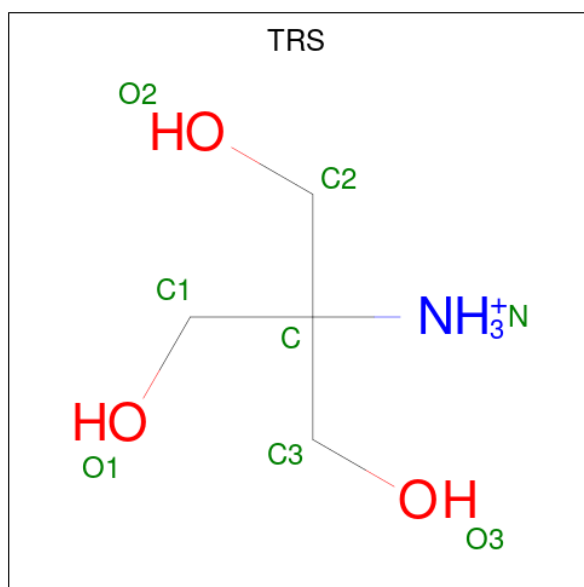


Mol	Chain	Residues	Atoms			ZeroOcc	AltConf
3	A	1	Total	N	O	0	0
			2	1	1		
3	B	1	Total	N	O	0	0
			2	1	1		

- Molecule 4 is CALCIUM ION (three-letter code: CA) (formula: Ca).

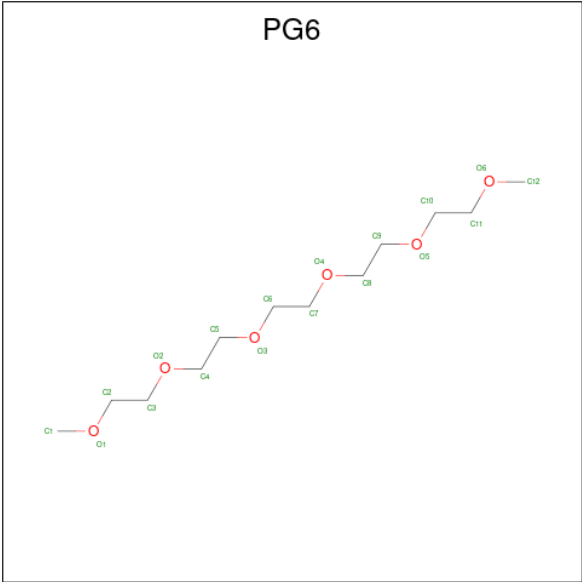
Mol	Chain	Residues	Atoms		ZeroOcc	AltConf
4	A	3	Total	Ca	0	0
			3	3		
4	B	3	Total	Ca	0	0
			3	3		

- Molecule 5 is 2-AMINO-2-HYDROXYMETHYL-PROPANE-1,3-DIOL (three-letter code: TRS) (formula: C₄H₁₂NO₃).



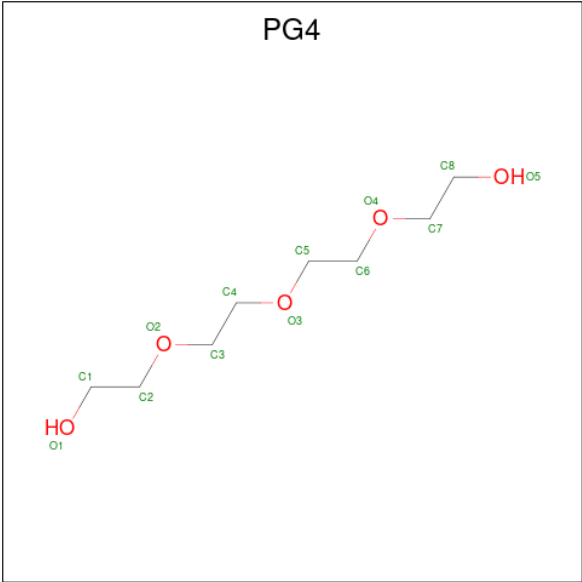
Mol	Chain	Residues	Atoms				ZeroOcc	AltConf
5	A	1	Total	C	N	O	0	0
			8	4	1	3		
5	B	1	Total	C	N	O	0	0
			8	4	1	3		

- Molecule 6 is 1-(2-METHOXY-ETHOXY)-2-{2-[2-(2-METHOXY-ETHOXY)-ETHOXY]-ETHANE (three-letter code: PG6) (formula: C₁₂H₂₆O₆).



Mol	Chain	Residues	Atoms			ZeroOcc	AltConf
6	A	1	Total	C	O	0	0
			13	8	5		
6	A	1	Total	C	O	0	0
			7	5	2		
6	A	1	Total	C	O	0	0
			6	4	2		
6	B	1	Total	C	O	0	0
			7	4	3		
6	B	1	Total	C	O	0	0
			4	2	2		
6	B	1	Total	C	O	0	0
			7	4	3		
6	B	1	Total	C	O	0	0
			4	2	2		

- Molecule 7 is TETRAETHYLENE GLYCOL (three-letter code: PG4) (formula: C₈H₁₈O₅).



Mol	Chain	Residues	Atoms			ZeroOcc	AltConf
7	A	1	Total	C	O	0	0
			7	4	3		
7	A	1	Total	C	O	0	0
			7	4	3		
7	A	1	Total	C	O	0	0
			6	4	2		
7	A	1	Total	C	O	0	0
			4	2	2		
7	A	1	Total	C	O	0	0
			5	3	2		
7	A	1	Total	C	O	0	0
			6	4	2		
7	B	1	Total	C	O	0	0
			5	3	2		
7	B	1	Total	C	O	0	0
			6	4	2		
7	B	1	Total	C	O	0	0
			7	4	3		
7	B	1	Total	C	O	0	0
			7	4	3		
7	B	1	Total	C	O	0	0
			4	2	2		
7	B	1	Total	C	O	0	0
			5	3	2		

- Molecule 8 is SODIUM ION (three-letter code: NA) (formula: Na).

Mol	Chain	Residues	Atoms		ZeroOcc	AltConf
8	A	1	Total 1	Na 1	0	0

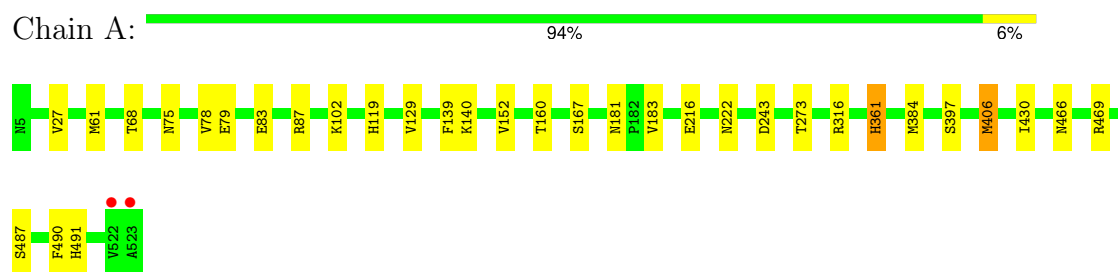
- Molecule 9 is water.

Mol	Chain	Residues	Atoms		ZeroOcc	AltConf
9	A	614	Total 614	O 614	0	0
9	B	629	Total 629	O 629	0	0

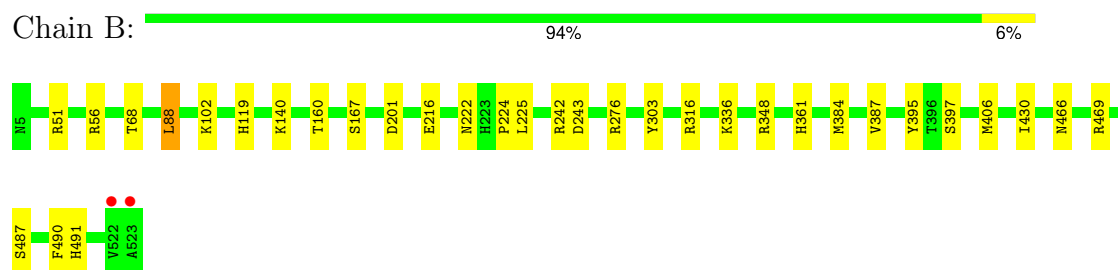
3 Residue-property plots [i](#)

These plots are drawn for all protein, RNA, DNA and oligosaccharide chains in the entry. The first graphic for a chain summarises the proportions of the various outlier classes displayed in the second graphic. The second graphic shows the sequence view annotated by issues in geometry and electron density. Residues are color-coded according to the number of geometric quality criteria for which they contain at least one outlier: green = 0, yellow = 1, orange = 2 and red = 3 or more. A red dot above a residue indicates a poor fit to the electron density ($RSRZ > 2$). Stretches of 2 or more consecutive residues without any outlier are shown as a green connector. Residues present in the sample, but not in the model, are shown in grey.

- Molecule 1: Eight-heme nitrite reductase



- Molecule 1: Eight-heme nitrite reductase



4 Data and refinement statistics

Property	Value	Source
Space group	P 21 3	Depositor
Cell constants a, b, c, α , β , γ	192.53Å 192.53Å 192.53Å 90.00° 90.00° 90.00°	Depositor
Resolution (Å)	12.00 – 1.65 12.00 – 1.65	Depositor EDS
% Data completeness (in resolution range)	99.7 (12.00-1.65) 99.7 (12.00-1.65)	Depositor EDS
R_{merge}	0.06	Depositor
R_{sym}	(Not available)	Depositor
$\langle I/\sigma(I) \rangle$ ¹	3.77 (at 1.65Å)	Xtriage
Refinement program	REFMAC 5.5.0072	Depositor
R, R_{free}	0.139 , 0.154 0.151 , 0.164	Depositor DCC
R_{free} test set	14237 reflections (5.05%)	wwPDB-VP
Wilson B-factor (Å ²)	16.0	Xtriage
Anisotropy	0.000	Xtriage
Bulk solvent k_{sol} (e/Å ³), B_{sol} (Å ²)	0.41 , 49.9	EDS
L-test for twinning ²	$\langle L \rangle = 0.50$, $\langle L^2 \rangle = 0.33$	Xtriage
Estimated twinning fraction	0.046 for l,-k,h	Xtriage
F_o, F_c correlation	0.97	EDS
Total number of atoms	10414	wwPDB-VP
Average B, all atoms (Å ²)	18.0	wwPDB-VP

Xtriage's analysis on translational NCS is as follows: *The largest off-origin peak in the Patterson function is 1.98% of the height of the origin peak. No significant pseudotranslation is detected.*

¹Intensities estimated from amplitudes.

²Theoretical values of $\langle |L| \rangle$, $\langle L^2 \rangle$ for acentric reflections are 0.5, 0.333 respectively for untwinned datasets, and 0.375, 0.2 for perfectly twinned datasets.

5 Model quality

5.1 Standard geometry

Bond lengths and bond angles in the following residue types are not validated in this section: PG6, CA, PG4, NO2, NA, HEC, TRS

The Z score for a bond length (or angle) is the number of standard deviations the observed value is removed from the expected value. A bond length (or angle) with $|Z| > 5$ is considered an outlier worth inspection. RMSZ is the root-mean-square of all Z scores of the bond lengths (or angles).

Mol	Chain	Bond lengths		Bond angles	
		RMSZ	$\# Z > 5$	RMSZ	$\# Z > 5$
1	A	0.69	0/4397	0.78	3/5960 (0.1%)
1	B	0.72	0/4391	0.81	7/5952 (0.1%)
All	All	0.70	0/8788	0.79	10/11912 (0.1%)

There are no bond length outliers.

The worst 5 of 10 bond angle outliers are listed below:

Mol	Chain	Res	Type	Atoms	Z	Observed(°)	Ideal(°)
1	B	56	ARG	NE-CZ-NH2	-7.19	116.71	120.30
1	A	87	ARG	NE-CZ-NH1	6.68	123.64	120.30
1	B	201	ASP	CB-CG-OD1	6.02	123.72	118.30
1	A	87	ARG	NE-CZ-NH2	-5.93	117.34	120.30
1	A	243	ASP	CB-CG-OD1	5.46	123.21	118.30

There are no chirality outliers.

There are no planarity outliers.

5.2 Too-close contacts

In the following table, the Non-H and H(model) columns list the number of non-hydrogen atoms and hydrogen atoms in the chain respectively. The H(added) column lists the number of hydrogen atoms added and optimized by MolProbity. The Clashes column lists the number of clashes within the asymmetric unit, whereas Symm-Clashes lists symmetry-related clashes.

Mol	Chain	Non-H	H(model)	H(added)	Clashes	Symm-Clashes
1	A	4167	0	3873	28	0
1	B	4172	0	3877	40	0
2	A	344	0	212	9	0
2	B	344	0	212	5	0

Continued on next page...

Continued from previous page...

Mol	Chain	Non-H	H(model)	H(added)	Clashes	Symm-Clashes
3	A	2	0	0	1	0
3	B	2	0	0	1	0
4	A	3	0	0	0	0
4	B	3	0	0	0	0
5	A	8	0	12	0	0
5	B	8	0	12	0	0
6	A	26	0	31	3	0
6	B	22	0	24	19	0
7	A	35	0	42	2	0
7	B	34	0	40	1	0
8	A	1	0	0	0	0
9	A	614	0	0	12	0
9	B	629	0	0	10	0
All	All	10414	0	8335	85	0

The all-atom clashscore is defined as the number of clashes found per 1000 atoms (including hydrogen atoms). The all-atom clashscore for this structure is 5.

The worst 5 of 85 close contacts within the same asymmetric unit are listed below, sorted by their clash magnitude.

Atom-1	Atom-2	Interatomic distance (Å)	Clash overlap (Å)
1:B:348[B]:ARG:NH2	6:B:527:PG6:O3	1.70	1.25
1:B:348[B]:ARG:HE	6:B:527:PG6:H41	1.05	1.18
1:B:222[A]:ASN:ND2	9:B:1102:HOH:O	1.80	1.14
1:B:348[A]:ARG:NH2	6:B:526:PG6:O5	1.82	1.12
1:B:348[B]:ARG:HH21	6:B:527:PG6:C5	1.63	1.11

There are no symmetry-related clashes.

5.3 Torsion angles ⓘ

5.3.1 Protein backbone ⓘ

In the following table, the Percentiles column shows the percent Ramachandran outliers of the chain as a percentile score with respect to all X-ray entries followed by that with respect to entries of similar resolution.

The Analysed column shows the number of residues for which the backbone conformation was analysed, and the total number of residues.

Mol	Chain	Analysed	Favoured	Allowed	Outliers	Percentiles	
1	A	540/519 (104%)	516 (96%)	23 (4%)	1 (0%)	44	27
1	B	538/519 (104%)	514 (96%)	24 (4%)	0	100	100
All	All	1078/1038 (104%)	1030 (96%)	47 (4%)	1 (0%)	48	30

All (1) Ramachandran outliers are listed below:

Mol	Chain	Res	Type
1	A	361	HIS

5.3.2 Protein sidechains ⓘ

In the following table, the Percentiles column shows the percent sidechain outliers of the chain as a percentile score with respect to all X-ray entries followed by that with respect to entries of similar resolution.

The Analysed column shows the number of residues for which the sidechain conformation was analysed, and the total number of residues.

Mol	Chain	Analysed	Rotameric	Outliers	Percentiles	
1	A	455/438 (104%)	450 (99%)	5 (1%)	70	54
1	B	454/438 (104%)	452 (100%)	2 (0%)	89	84
All	All	909/876 (104%)	902 (99%)	7 (1%)	91	68

5 of 7 residues with a non-rotameric sidechain are listed below:

Mol	Chain	Res	Type
1	A	406[A]	MET
1	A	406[B]	MET
1	B	88[B]	LEU
1	B	88[A]	LEU
1	A	61[C]	MET

Sometimes sidechains can be flipped to improve hydrogen bonding and reduce clashes. 5 of 11 such sidechains are listed below:

Mol	Chain	Res	Type
1	B	267	GLN
1	B	413	ASN
1	B	495	GLN
1	B	466	ASN
1	A	466	ASN

5.3.3 RNA ⓘ

There are no RNA molecules in this entry.

5.4 Non-standard residues in protein, DNA, RNA chains ⓘ

There are no non-standard protein/DNA/RNA residues in this entry.

5.5 Carbohydrates ⓘ

There are no oligosaccharides in this entry.

5.6 Ligand geometry ⓘ

Of 46 ligands modelled in this entry, 7 are monoatomic - leaving 39 for Mogul analysis.

In the following table, the Counts columns list the number of bonds (or angles) for which Mogul statistics could be retrieved, the number of bonds (or angles) that are observed in the model and the number of bonds (or angles) that are defined in the Chemical Component Dictionary. The Link column lists molecule types, if any, to which the group is linked. The Z score for a bond length (or angle) is the number of standard deviations the observed value is removed from the expected value. A bond length (or angle) with $|Z| > 2$ is considered an outlier worth inspection. RMSZ is the root-mean-square of all Z scores of the bond lengths (or angles).

Mol	Type	Chain	Res	Link	Bond lengths			Bond angles		
					Counts	RMSZ	# $ Z > 2$	Counts	RMSZ	# $ Z > 2$
7	PG4	A	532	-	3,3,12	0.40	0	2,2,11	0.41	0
2	HEC	A	1004	3,9,1	32,50,50	2.02	5 (15%)	30,82,82	2.12	6 (20%)
7	PG4	A	531	-	5,5,12	0.49	0	4,4,11	0.38	0
6	PG6	A	529	-	5,5,17	0.63	0	4,4,16	0.53	0
7	PG4	A	530	-	6,6,12	0.37	0	5,5,11	0.26	0
6	PG6	A	528	-	6,6,17	0.57	0	5,5,16	0.50	0
2	HEC	A	1002	1	32,50,50	1.83	4 (12%)	30,82,82	2.10	5 (16%)
6	PG6	A	526	-	12,12,17	0.60	0	11,11,16	0.55	0
7	PG4	B	532	-	6,6,12	0.31	0	5,5,11	0.49	0
3	NO2	A	1	2	0,1,2	-	-	-	-	-
7	PG4	B	531	-	5,5,12	0.50	0	4,4,11	0.44	0
6	PG6	B	529	-	6,6,17	0.43	0	5,5,16	0.46	0
2	HEC	A	1001	1	32,50,50	2.20	7 (21%)	30,82,82	2.25	9 (30%)
2	HEC	A	1008	1	32,50,50	2.21	7 (21%)	30,82,82	2.39	9 (30%)
2	HEC	A	1003	1	32,50,50	2.04	5 (15%)	30,82,82	2.25	7 (23%)
7	PG4	B	528	-	4,4,12	0.97	0	3,3,11	0.14	0

Mol	Type	Chain	Res	Link	Bond lengths			Bond angles		
					Counts	RMSZ	# Z > 2	Counts	RMSZ	# Z > 2
6	PG6	B	526	-	6,6,17	0.51	0	5,5,16	0.26	0
2	HEC	B	1002	1	32,50,50	1.95	5 (15%)	30,82,82	2.17	6 (20%)
7	PG4	A	533	-	4,4,12	0.33	0	3,3,11	0.29	0
6	PG6	B	530	-	3,3,17	0.51	0	2,2,16	0.06	0
7	PG4	A	534	-	5,5,12	0.52	0	4,4,11	0.12	0
2	HEC	B	1001	1	32,50,50	1.98	6 (18%)	30,82,82	2.48	9 (30%)
2	HEC	A	1005	1	32,50,50	2.05	6 (18%)	30,82,82	2.31	9 (30%)
2	HEC	B	1008	1	32,50,50	2.28	3 (9%)	30,82,82	2.63	11 (36%)
2	HEC	B	1003	1,8	32,50,50	2.09	6 (18%)	30,82,82	2.42	11 (36%)
7	PG4	B	535	-	4,4,12	0.38	0	3,3,11	0.36	0
7	PG4	A	527	-	6,6,12	0.57	0	5,5,11	0.59	0
7	PG4	B	533	-	6,6,12	0.47	0	5,5,11	0.40	0
5	TRS	B	524	-	7,7,7	0.30	0	9,9,9	0.21	0
3	NO2	B	1	2	0,1,2	-	-	-	-	-
2	HEC	B	1005	1	32,50,50	2.20	5 (15%)	30,82,82	2.55	11 (36%)
2	HEC	A	1006	4,1	32,50,50	2.02	3 (9%)	30,82,82	2.36	7 (23%)
2	HEC	B	1006	4,1	32,50,50	2.02	6 (18%)	30,82,82	2.29	7 (23%)
6	PG6	B	527	-	3,3,17	0.69	0	2,2,16	0.09	0
5	TRS	A	524	-	7,7,7	0.36	0	9,9,9	0.10	0
7	PG4	B	534	-	3,3,12	0.46	0	2,2,11	0.27	0
2	HEC	B	1004	3,9,1	32,50,50	1.89	5 (15%)	30,82,82	2.04	5 (16%)

In the following table, the Chirals column lists the number of chiral outliers, the number of chiral centers analysed, the number of these observed in the model and the number defined in the Chemical Component Dictionary. Similar counts are reported in the Torsion and Rings columns. '-' means no outliers of that kind were identified.

Mol	Type	Chain	Res	Link	Chirals	Torsions	Rings
7	PG4	A	532	-	-	1/1/1/10	-
2	HEC	A	1004	3,9,1	-	2/10/54/54	-
7	PG4	A	531	-	-	3/3/3/10	-
6	PG6	A	529	-	-	1/3/3/15	-
7	PG4	A	530	-	-	2/4/4/10	-
6	PG6	A	528	-	-	2/4/4/15	-
2	HEC	A	1002	1	-	2/10/54/54	-
6	PG6	A	526	-	-	1/10/10/15	-
7	PG4	B	532	-	-	3/4/4/10	-
7	PG4	B	531	-	-	2/3/3/10	-
6	PG6	B	529	-	-	3/4/4/15	-

Continued on next page...

Continued from previous page...

Mol	Type	Chain	Res	Link	Chirals	Torsions	Rings
2	HEC	A	1001	1	-	4/10/54/54	-
2	HEC	A	1008	1	-	4/10/54/54	-
2	HEC	A	1003	1	-	2/10/54/54	-
7	PG4	B	528	-	-	1/2/2/10	-
6	PG6	B	526	-	-	1/4/4/15	-
2	HEC	B	1002	1	-	2/10/54/54	-
7	PG4	A	533	-	-	2/2/2/10	-
6	PG6	B	530	-	-	0/1/1/15	-
7	PG4	A	534	-	-	1/3/3/10	-
2	HEC	B	1001	1	-	2/10/54/54	-
2	HEC	A	1005	1	-	3/10/54/54	-
2	HEC	B	1008	1	-	4/10/54/54	-
2	HEC	B	1003	1,8	-	3/10/54/54	-
7	PG4	B	535	-	-	2/2/2/10	-
7	PG4	A	527	-	-	1/4/4/10	-
7	PG4	B	533	-	-	2/4/4/10	-
5	TRS	B	524	-	-	9/9/9/9	-
2	HEC	B	1005	1	-	4/10/54/54	-
2	HEC	A	1006	4,1	-	0/10/54/54	-
2	HEC	B	1006	4,1	-	0/10/54/54	-
6	PG6	B	527	-	-	1/1/1/15	-
5	TRS	A	524	-	-	9/9/9/9	-
7	PG4	B	534	-	-	0/1/1/10	-
2	HEC	B	1004	3,9,1	-	2/10/54/54	-

The worst 5 of 73 bond length outliers are listed below:

Mol	Chain	Res	Type	Atoms	Z	Observed(Å)	Ideal(Å)
2	B	1008	HEC	C2B-C3B	-8.56	1.31	1.40
2	B	1005	HEC	C3C-C2C	-7.79	1.32	1.40
2	A	1008	HEC	C2B-C3B	-6.98	1.32	1.40
2	A	1003	HEC	C2B-C3B	-6.92	1.33	1.40
2	A	1006	HEC	C3C-C2C	-6.84	1.33	1.40

The worst 5 of 112 bond angle outliers are listed below:

Mol	Chain	Res	Type	Atoms	Z	Observed(°)	Ideal(°)
2	A	1008	HEC	CBB-CAB-C3B	-8.55	107.48	127.49
2	A	1006	HEC	CBB-CAB-C3B	-8.30	108.08	127.49

Continued on next page...

Continued from previous page...

Mol	Chain	Res	Type	Atoms	Z	Observed(°)	Ideal(°)
2	B	1005	HEC	CBB-CAB-C3B	-8.26	108.16	127.49
2	B	1003	HEC	CBB-CAB-C3B	-8.09	108.55	127.49
2	B	1006	HEC	CBB-CAB-C3B	-7.94	108.91	127.49

There are no chirality outliers.

5 of 81 torsion outliers are listed below:

Mol	Chain	Res	Type	Atoms
5	A	524	TRS	C2-C-C1-O1
5	A	524	TRS	C3-C-C1-O1
5	A	524	TRS	N-C-C1-O1
5	A	524	TRS	C1-C-C2-O2
5	A	524	TRS	C3-C-C2-O2

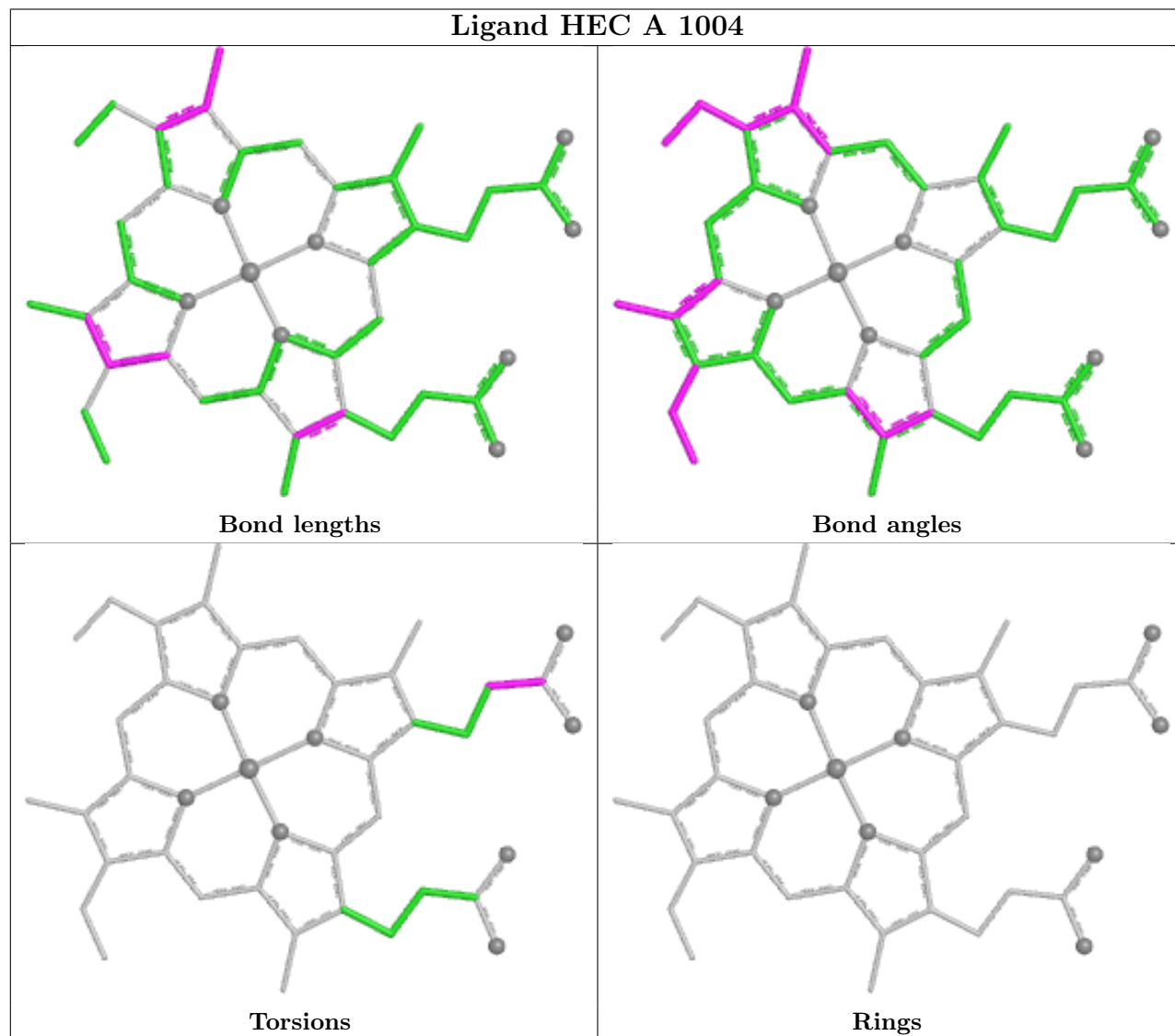
There are no ring outliers.

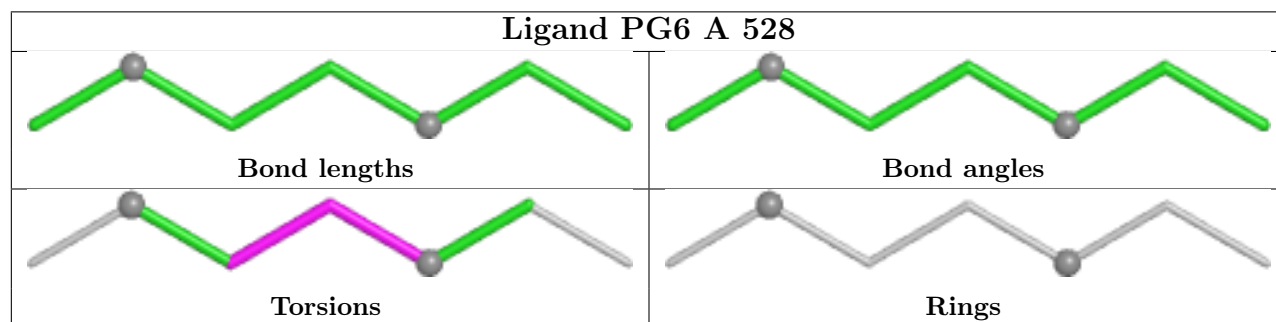
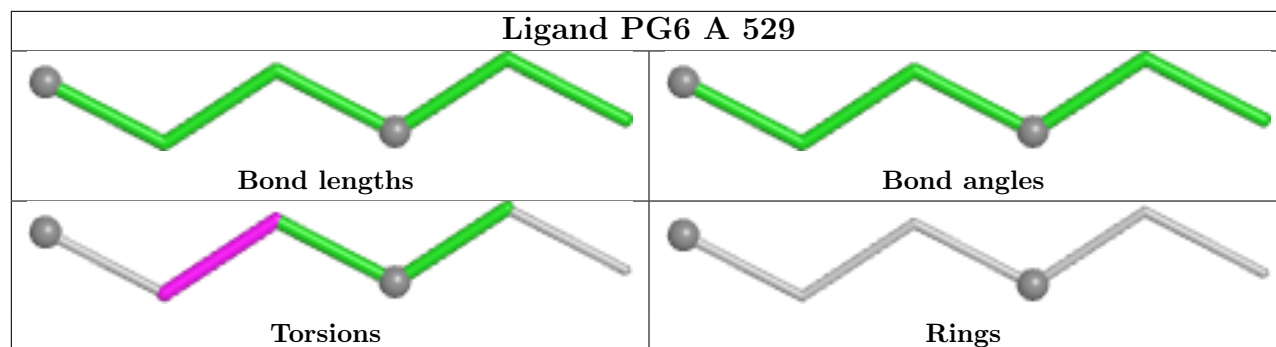
19 monomers are involved in 41 short contacts:

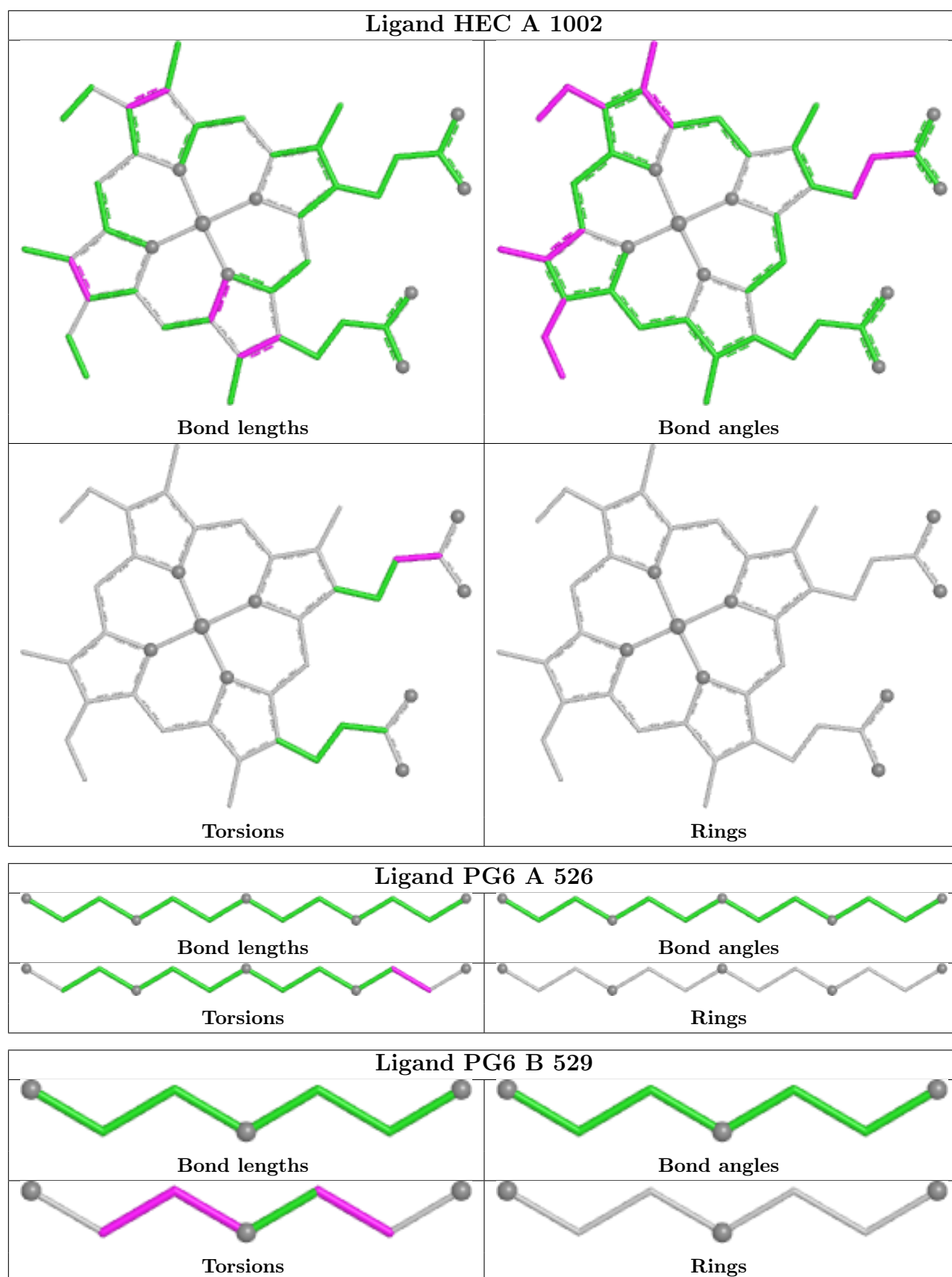
Mol	Chain	Res	Type	Clashes	Symm-Clashes
2	A	1004	HEC	2	0
6	A	528	PG6	3	0
2	A	1002	HEC	2	0
3	A	1	NO2	1	0
6	B	529	PG6	3	0
2	A	1001	HEC	2	0
2	A	1008	HEC	1	0
2	A	1003	HEC	1	0
6	B	526	PG6	4	0
2	B	1002	HEC	1	0
2	B	1008	HEC	1	0
2	B	1003	HEC	1	0
7	A	527	PG4	2	0
3	B	1	NO2	1	0
2	A	1006	HEC	1	0
2	B	1006	HEC	1	0
6	B	527	PG6	12	0
7	B	534	PG4	1	0
2	B	1004	HEC	1	0

The following is a two-dimensional graphical depiction of Mogul quality analysis of bond lengths, bond angles, torsion angles, and ring geometry for all instances of the Ligand of Interest. In addition, ligands with molecular weight > 250 and outliers as shown on the validation Tables will also be included. For torsion angles, if less than 5% of the Mogul distribution of torsion angles is

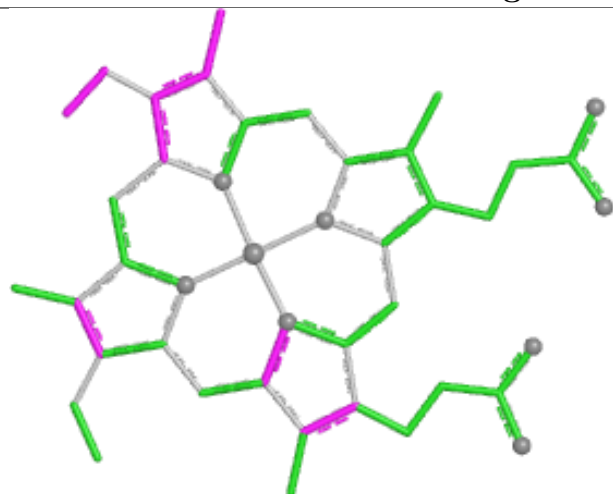
within 10 degrees of the torsion angle in question, then that torsion angle is considered an outlier. Any bond that is central to one or more torsion angles identified as an outlier by Mogul will be highlighted in the graph. For rings, the root-mean-square deviation (RMSD) between the ring in question and similar rings identified by Mogul is calculated over all ring torsion angles. If the average RMSD is greater than 60 degrees and the minimal RMSD between the ring in question and any Mogul-identified rings is also greater than 60 degrees, then that ring is considered an outlier. The outliers are highlighted in purple. The color gray indicates Mogul did not find sufficient equivalents in the CSD to analyse the geometry.



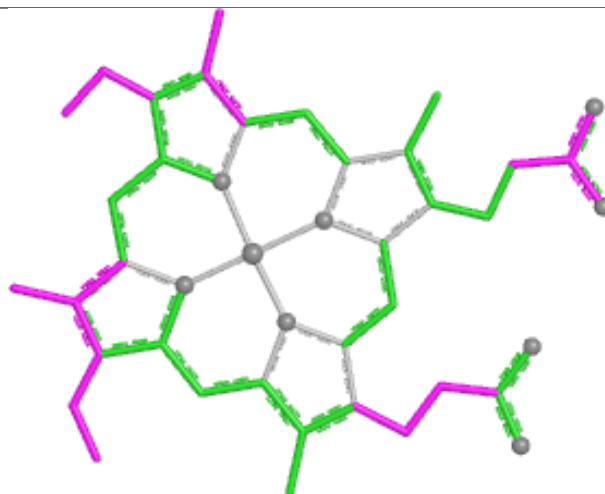




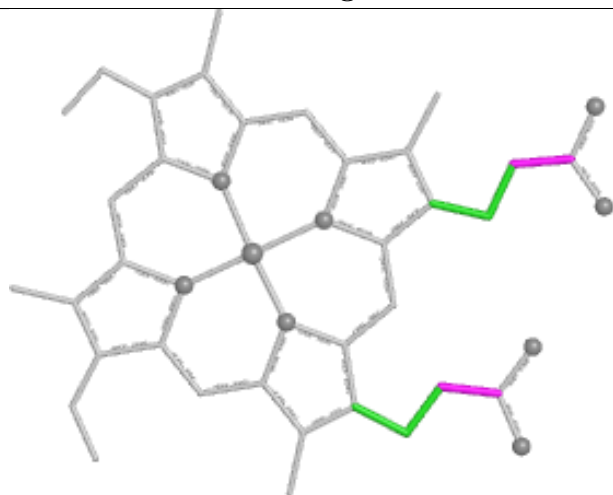
Ligand HEC A 1001



Bond lengths



Bond angles

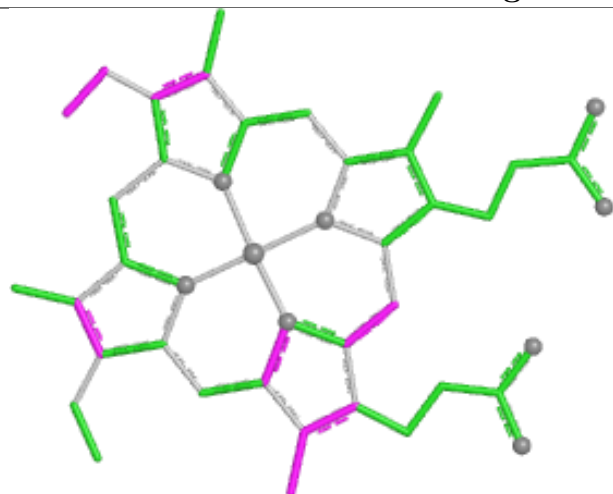


Torsions

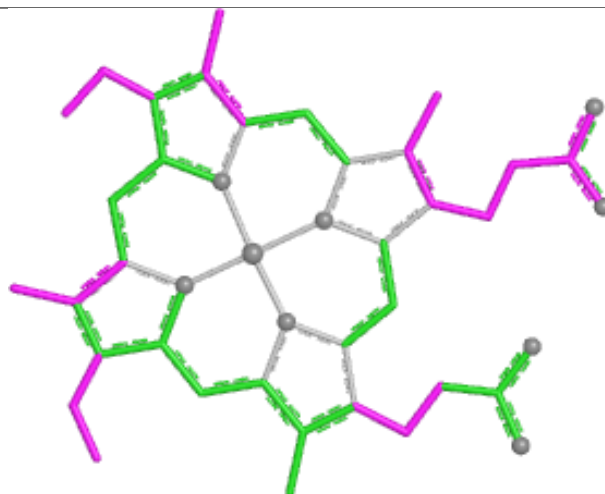


Rings

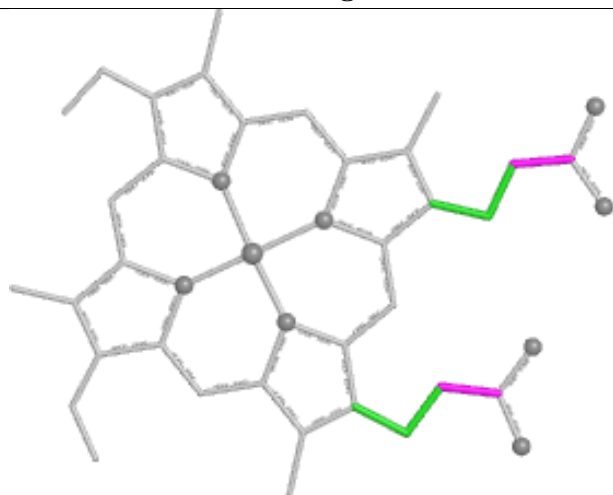
Ligand HEC A 1008



Bond lengths



Bond angles

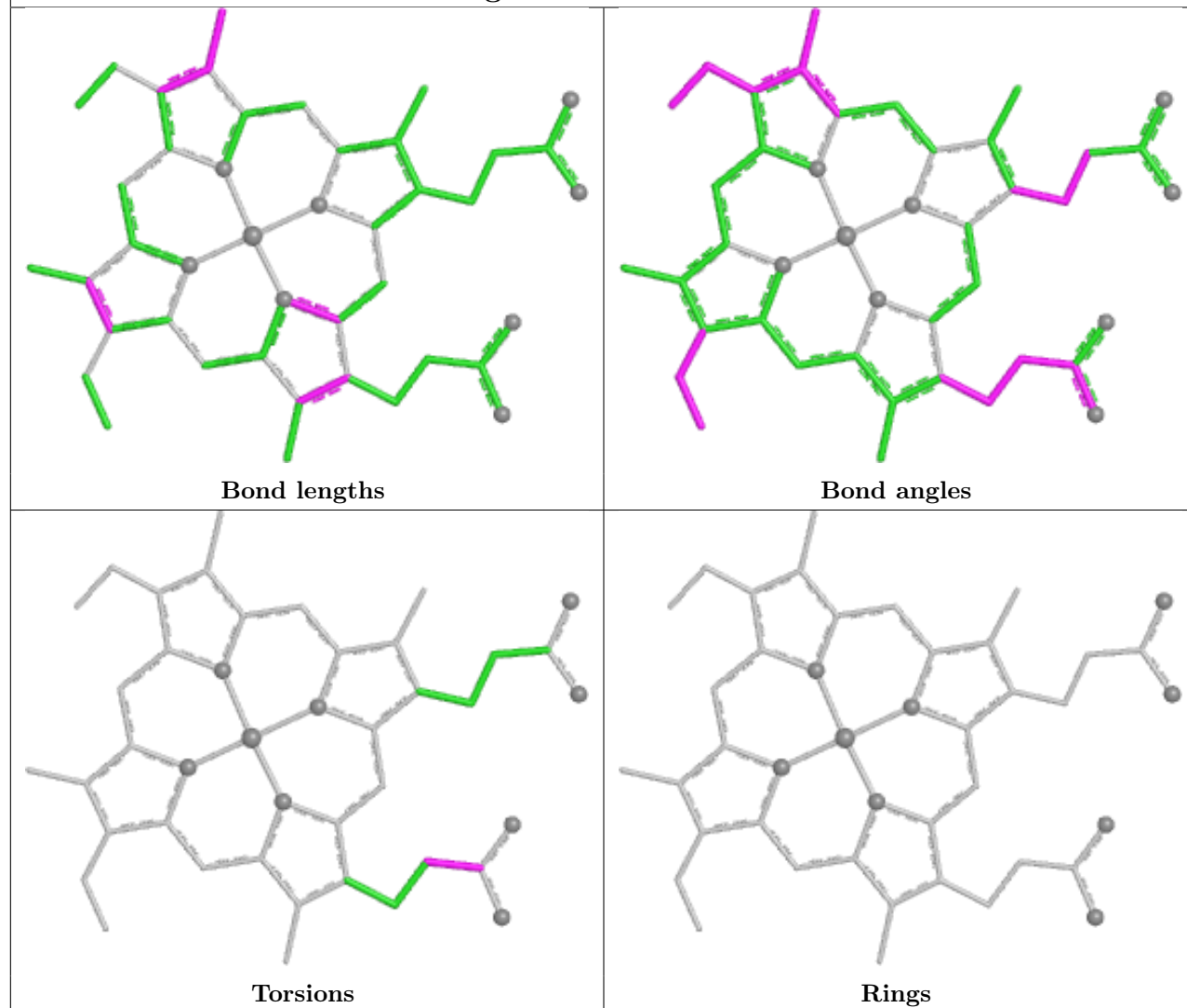


Torsions

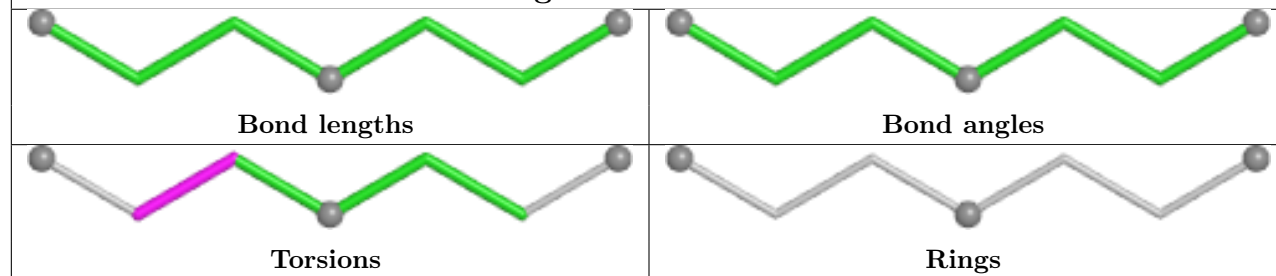


Rings

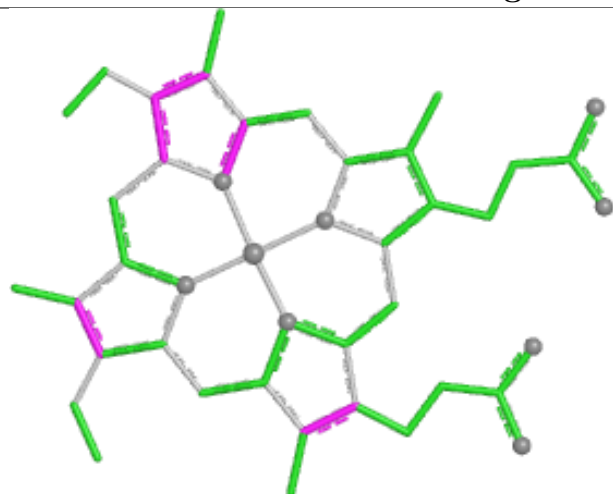
Ligand HEC A 1003



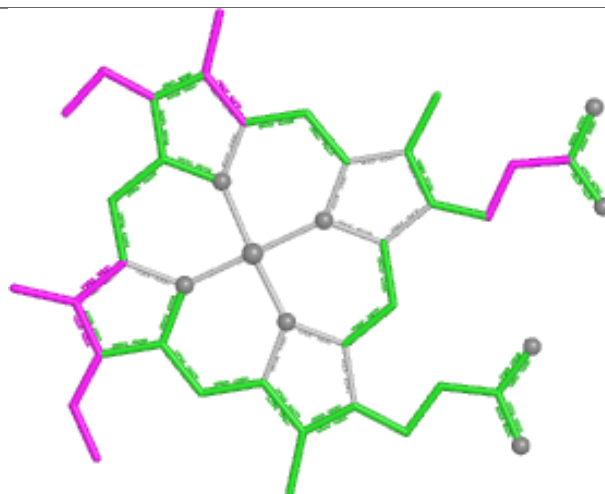
Ligand PG6 B 526



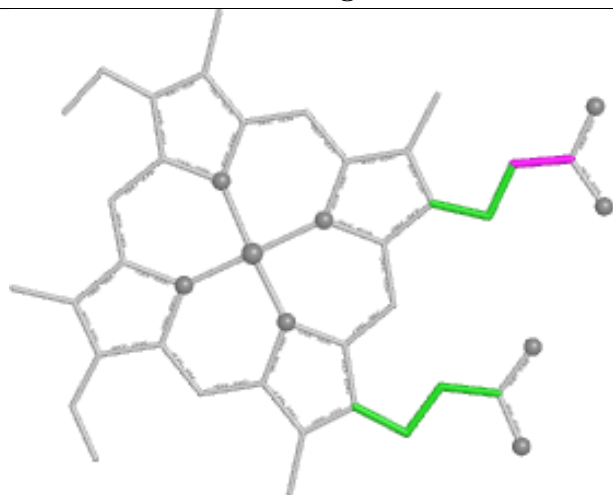
Ligand HEC B 1002



Bond lengths



Bond angles

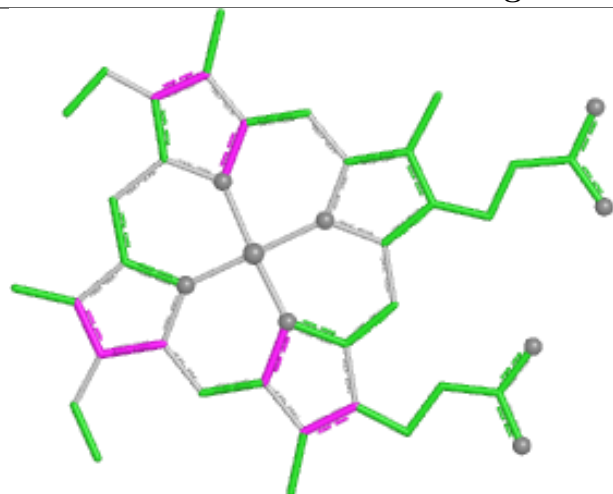


Torsions

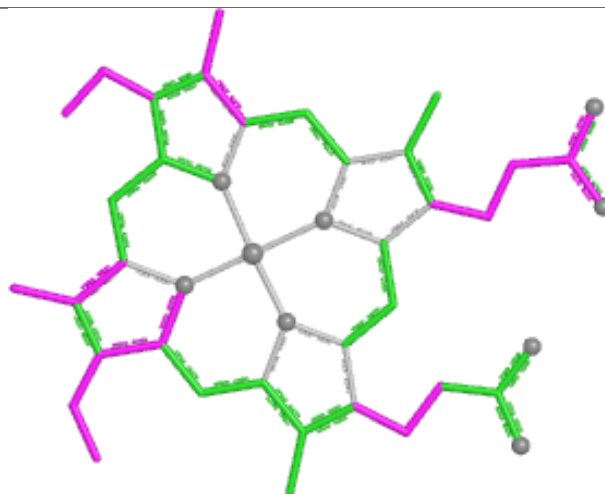


Rings

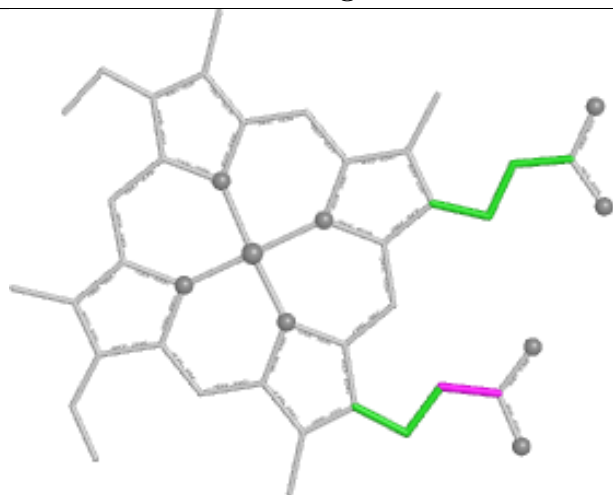
Ligand HEC B 1001



Bond lengths



Bond angles

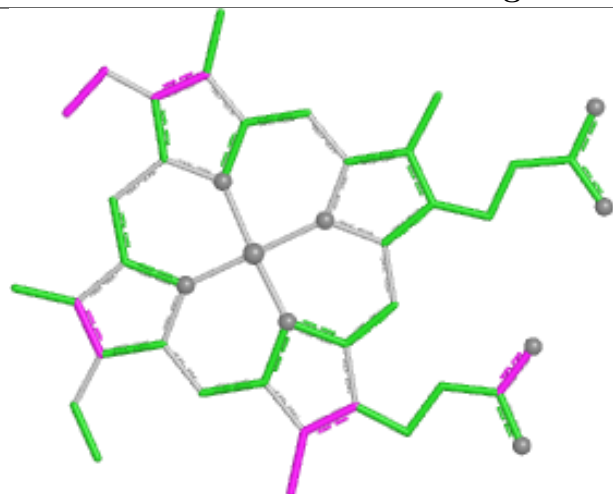


Torsions

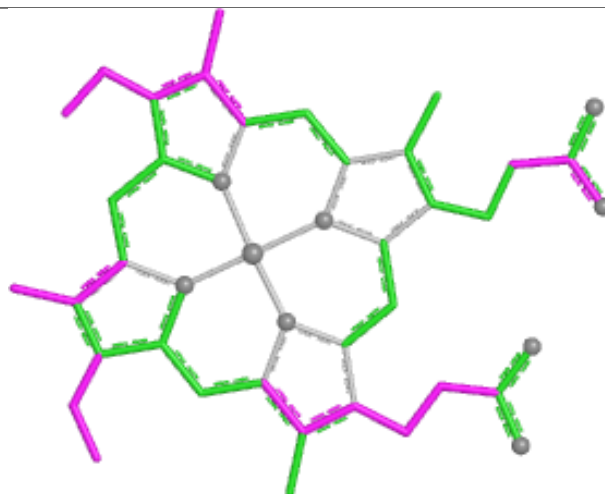


Rings

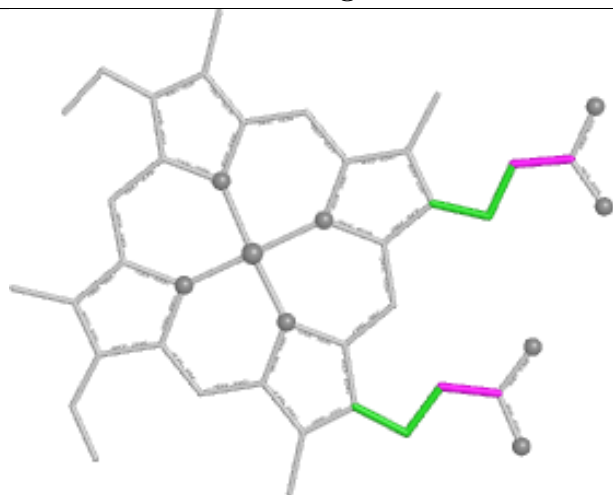
Ligand HEC A 1005



Bond lengths



Bond angles

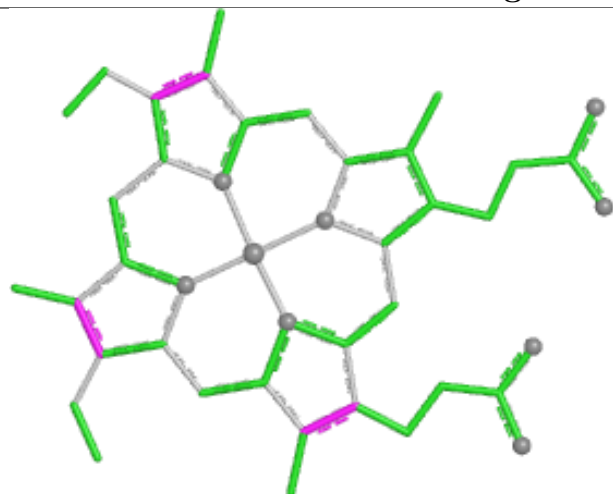


Torsions

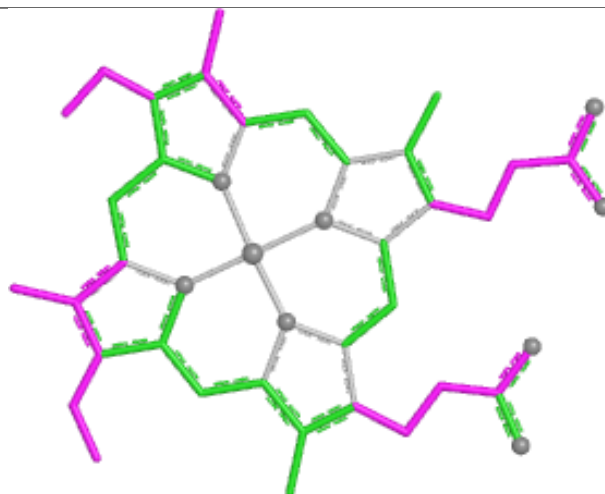


Rings

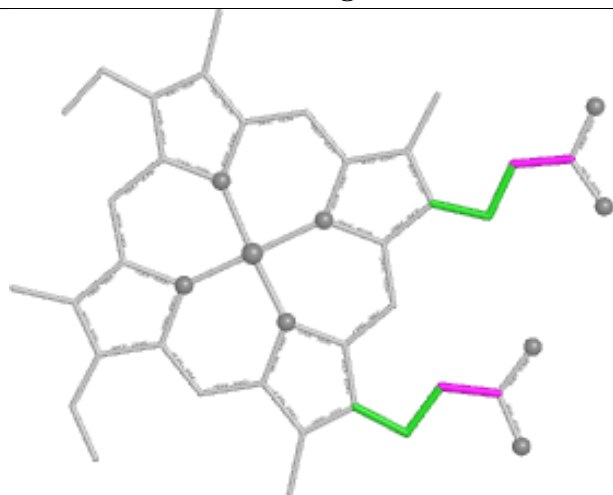
Ligand HEC B 1008



Bond lengths



Bond angles

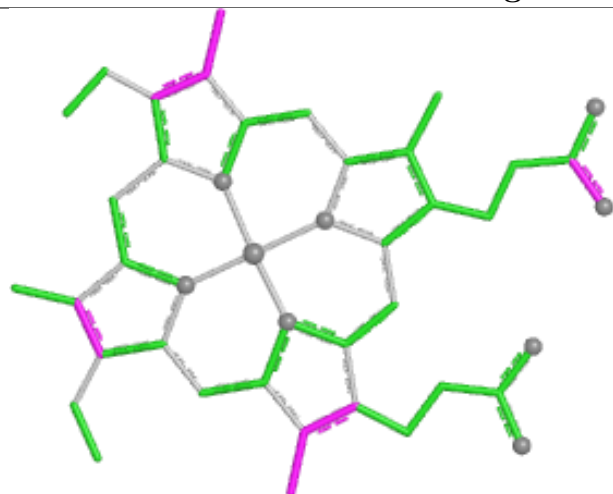


Torsions

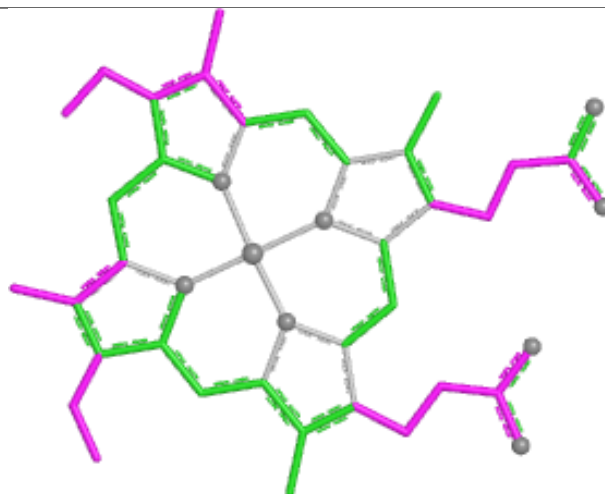


Rings

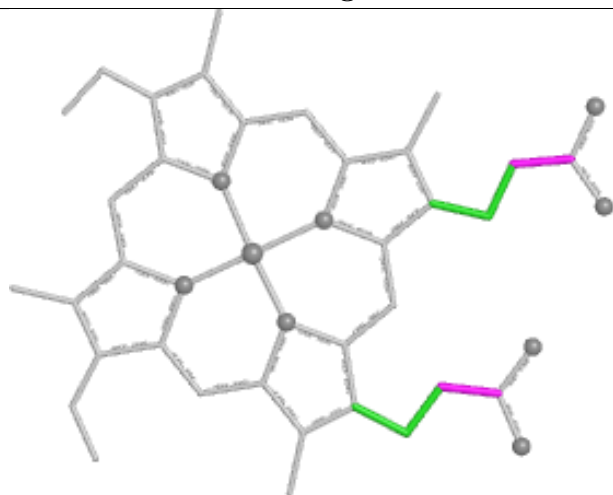
Ligand HEC B 1003



Bond lengths



Bond angles

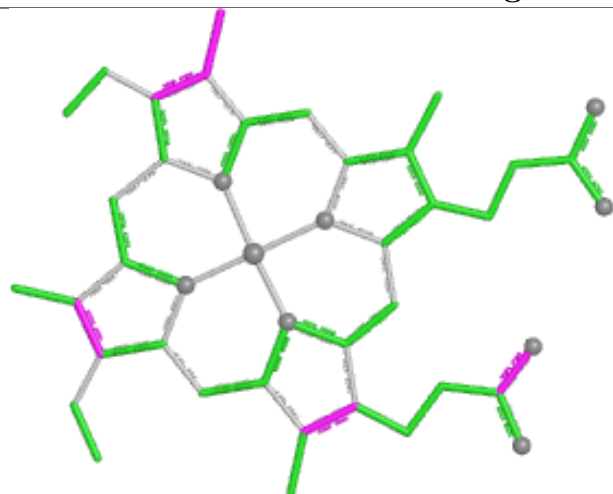


Torsions

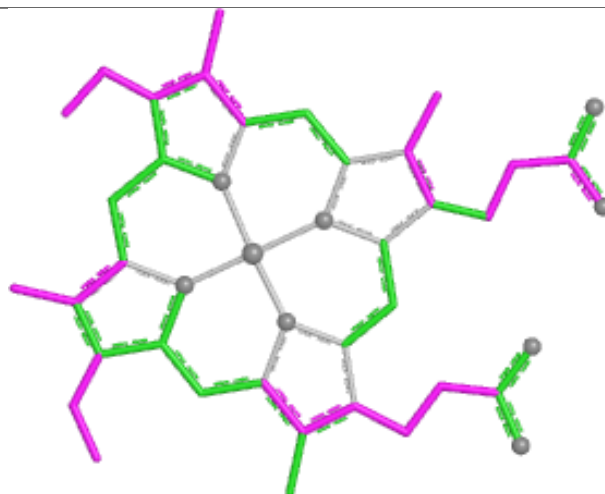


Rings

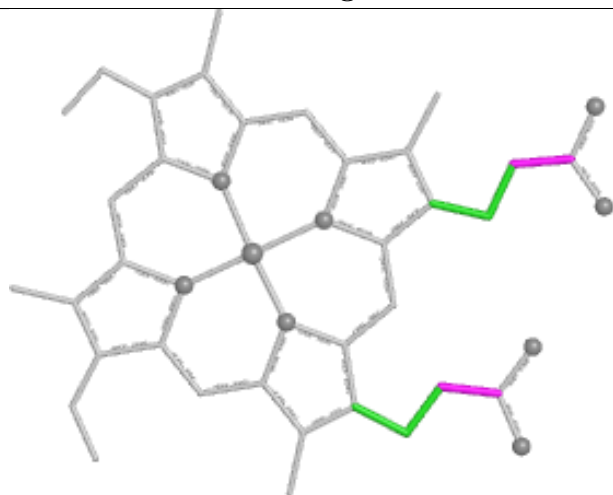
Ligand HEC B 1005



Bond lengths



Bond angles

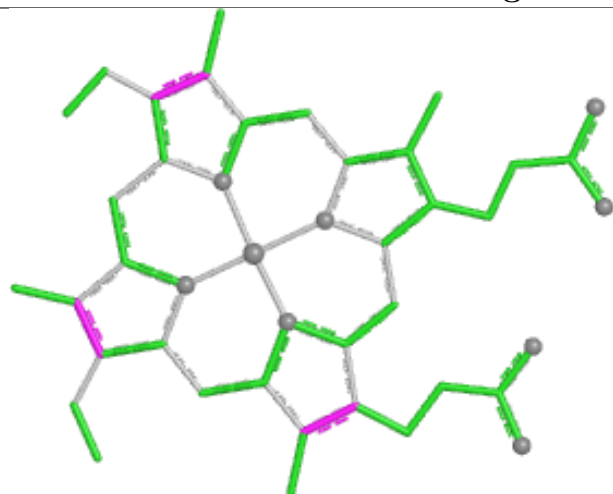


Torsions

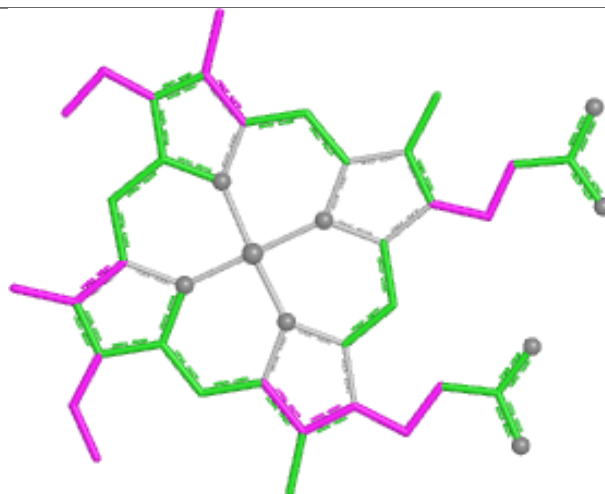


Rings

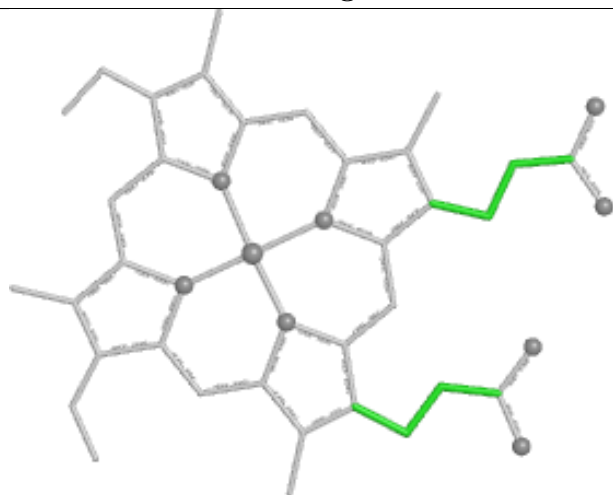
Ligand HEC A 1006



Bond lengths



Bond angles

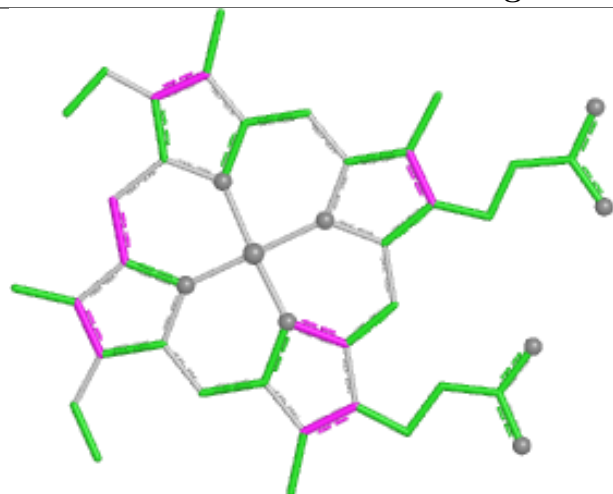


Torsions

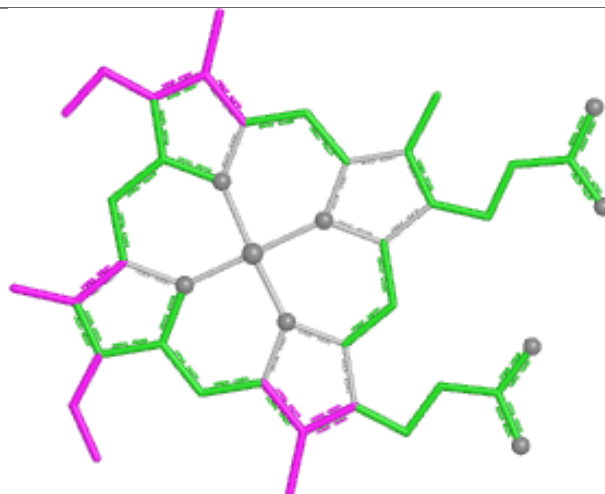


Rings

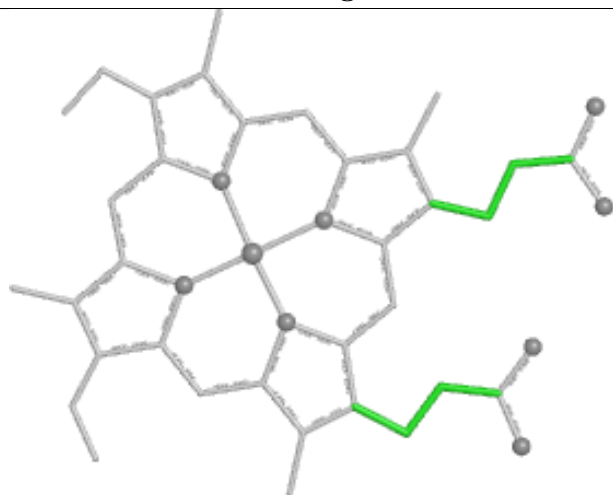
Ligand HEC B 1006



Bond lengths



Bond angles

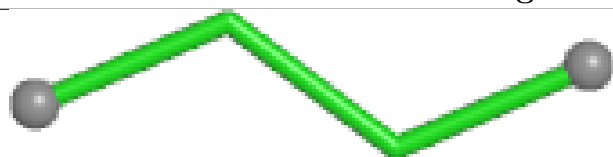


Torsions

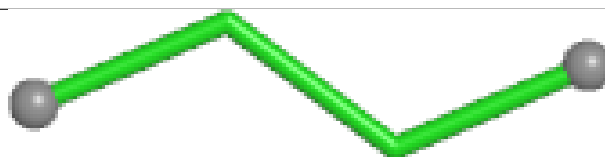


Rings

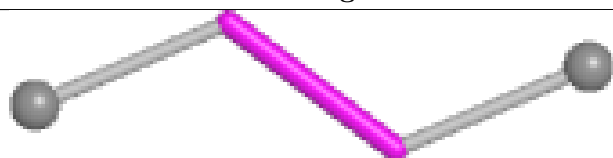
Ligand PG6 B 527



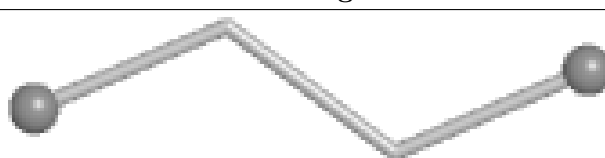
Bond lengths



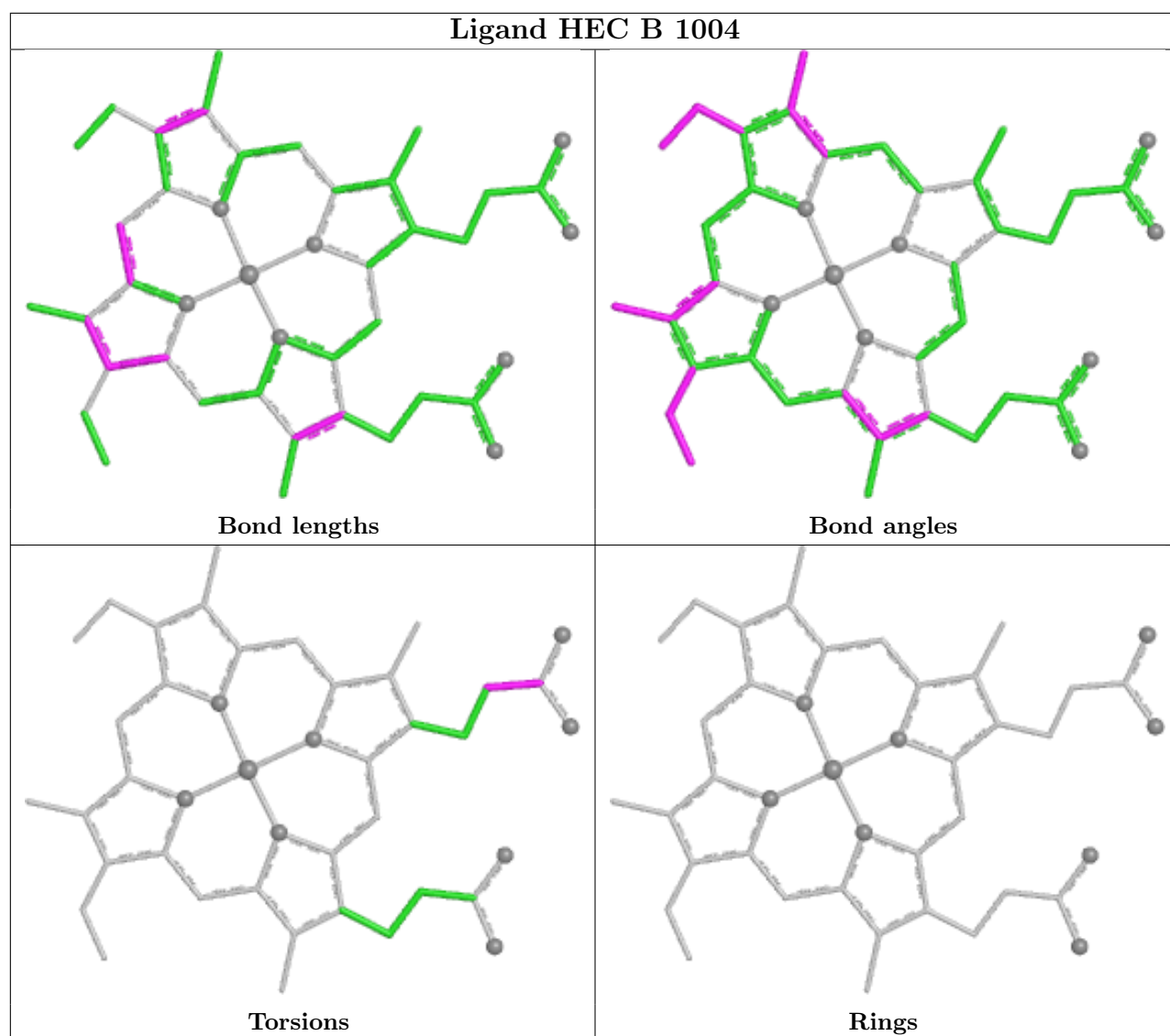
Bond angles



Torsions



Rings



5.7 Other polymers [i](#)

There are no such residues in this entry.

5.8 Polymer linkage issues [i](#)

There are no chain breaks in this entry.

6 Fit of model and data [i](#)

6.1 Protein, DNA and RNA chains [i](#)

In the following table, the column labelled ‘#RSRZ > 2’ contains the number (and percentage) of RSRZ outliers, followed by percent RSRZ outliers for the chain as percentile scores relative to all X-ray entries and entries of similar resolution. The OWAB column contains the minimum, median, 95th percentile and maximum values of the occupancy-weighted average B-factor per residue. The column labelled ‘Q < 0.9’ lists the number of (and percentage) of residues with an average occupancy less than 0.9.

Mol	Chain	Analysed	<RSRZ>	#RSRZ>2	OWAB(Å ²)	Q<0.9
1	A	519/519 (100%)	-0.69	2 (0%) 89 92	9, 16, 27, 47	21 (4%)
1	B	519/519 (100%)	-0.75	2 (0%) 89 92	9, 15, 27, 44	20 (3%)
All	All	1038/1038 (100%)	-0.72	4 (0%) 89 92	9, 16, 27, 47	41 (3%)

All (4) RSRZ outliers are listed below:

Mol	Chain	Res	Type	RSRZ
1	A	523	ALA	5.6
1	A	522	VAL	5.2
1	B	522	VAL	4.5
1	B	523	ALA	2.1

6.2 Non-standard residues in protein, DNA, RNA chains [i](#)

There are no non-standard protein/DNA/RNA residues in this entry.

6.3 Carbohydrates [i](#)

There are no monosaccharides in this entry.

6.4 Ligands [i](#)

In the following table, the Atoms column lists the number of modelled atoms in the group and the number defined in the chemical component dictionary. The B-factors column lists the minimum, median, 95th percentile and maximum values of B factors of atoms in the group. The column labelled ‘Q < 0.9’ lists the number of atoms with occupancy less than 0.9.

Mol	Type	Chain	Res	Atoms	RSCC	RSR	B-factors(Å ²)	Q<0.9
6	PG6	A	528	7/18	0.65	0.32	29,31,34,34	7

Continued on next page...

Continued from previous page...

Mol	Type	Chain	Res	Atoms	RSCC	RSR	B-factors(\AA^2)	Q<0.9
7	PG4	A	533	5/13	0.69	0.37	32,33,34,35	5
7	PG4	A	531	6/13	0.73	0.18	50,51,52,54	0
7	PG4	B	533	7/13	0.74	0.17	57,57,58,60	0
7	PG4	A	534	6/13	0.75	0.17	54,54,55,56	0
6	PG6	B	529	7/18	0.79	0.29	26,27,31,31	7
7	PG4	B	531	6/13	0.80	0.20	49,50,54,54	0
7	PG4	B	528	5/13	0.80	0.18	21,31,35,39	0
7	PG4	B	532	7/13	0.81	0.31	34,35,39,40	7
6	PG6	A	526	13/18	0.81	0.14	39,42,47,49	0
7	PG4	B	534	4/13	0.81	0.15	49,51,51,53	0
6	PG6	B	527	4/18	0.82	0.25	18,21,22,28	4
6	PG6	B	526	7/18	0.82	0.28	20,24,24,25	7
6	PG6	A	529	6/18	0.83	0.14	32,36,37,37	0
5	TRS	A	524	8/8	0.85	0.19	38,38,38,39	8
6	PG6	B	530	4/18	0.85	0.12	35,35,35,37	0
7	PG4	B	535	5/13	0.85	0.16	47,48,49,50	0
7	PG4	A	530	7/13	0.86	0.16	53,53,55,57	0
8	NA	A	4	1/1	0.86	0.12	32,32,32,32	1
7	PG4	A	532	4/13	0.88	0.13	34,44,44,48	0
4	CA	B	3	1/1	0.88	0.10	25,25,25,25	1
7	PG4	A	527	7/13	0.90	0.12	23,34,47,50	0
4	CA	A	3	1/1	0.91	0.14	25,25,25,25	1
5	TRS	B	524	8/8	0.92	0.15	31,31,31,31	8
3	NO2	B	1	2/3	0.95	0.13	13,13,13,17	2
2	HEC	A	1008	43/43	0.98	0.06	14,17,28,37	0
2	HEC	B	1007[A]	43/43	0.98	0.05	9,10,13,14	3
4	CA	B	525	1/1	0.98	0.15	24,24,24,24	1
2	HEC	B	1001	43/43	0.98	0.06	15,19,23,24	0
2	HEC	A	1007[A]	43/43	0.98	0.05	11,12,14,15	3
2	HEC	A	1004	43/43	0.99	0.04	10,13,15,18	0
3	NO2	A	1	2/3	0.99	0.07	16,16,16,19	2
2	HEC	A	1005	43/43	0.99	0.04	9,12,20,26	0
4	CA	A	2	1/1	0.99	0.03	14,14,14,14	0
2	HEC	A	1002	43/43	0.99	0.04	12,13,15,17	0
4	CA	B	2	1/1	0.99	0.03	12,12,12,12	0
2	HEC	A	1003	43/43	0.99	0.06	10,12,23,32	0
2	HEC	A	1001	43/43	0.99	0.05	12,15,19,23	0
2	HEC	B	1004	43/43	0.99	0.04	9,11,14,16	0
2	HEC	B	1005	43/43	0.99	0.04	8,11,19,24	0
2	HEC	B	1006	43/43	0.99	0.04	8,10,12,13	0
2	HEC	A	1006	43/43	0.99	0.04	10,11,13,14	0
2	HEC	B	1008	43/43	0.99	0.05	12,16,25,33	0

Continued on next page...

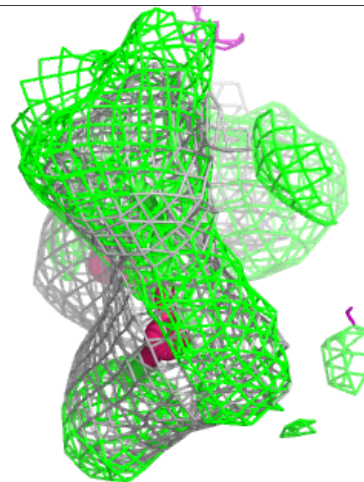
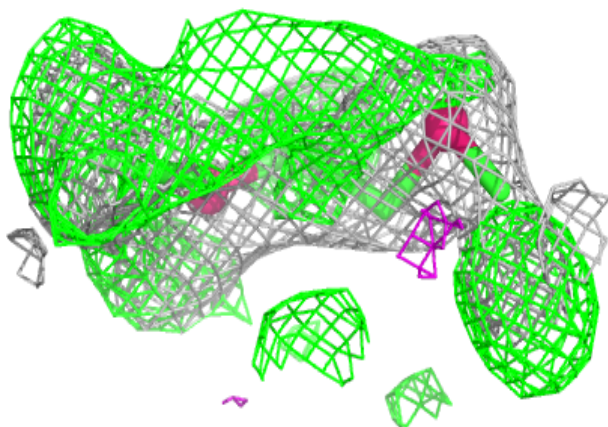
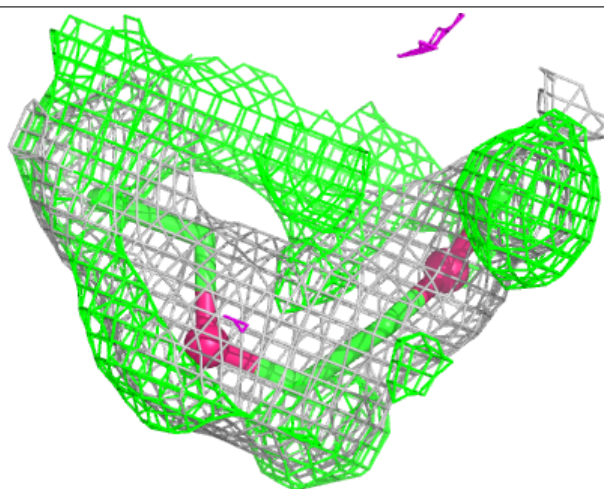
Continued from previous page...

Mol	Type	Chain	Res	Atoms	RSCC	RSR	B-factors(\AA^2)	Q<0.9
2	HEC	B	1002	43/43	0.99	0.04	12,14,16,18	0
2	HEC	B	1003	43/43	0.99	0.05	10,13,25,35	0
4	CA	A	525	1/1	1.00	0.14	25,25,25,25	1

The following is a graphical depiction of the model fit to experimental electron density of all instances of the Ligand of Interest. In addition, ligands with molecular weight > 250 and outliers as shown on the geometry validation Tables will also be included. Each fit is shown from different orientation to approximate a three-dimensional view.

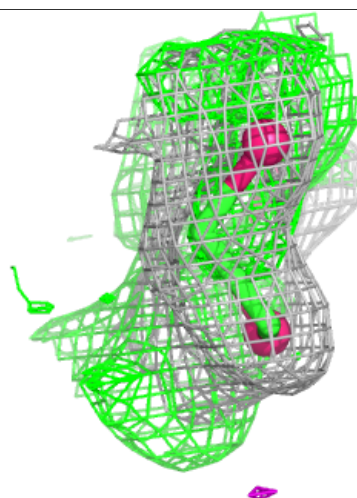
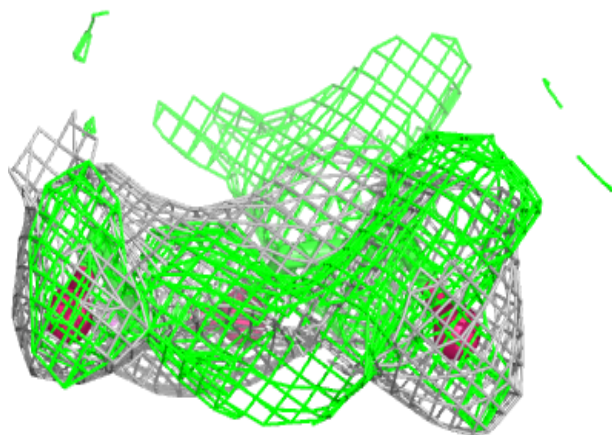
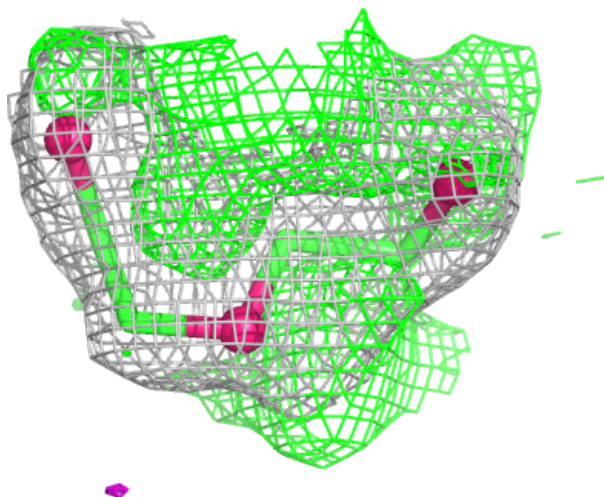
Electron density around PG6 A 528:

2mF_o-DF_c (at 0.7 rmsd) in gray
mF_o-DF_c (at 3 rmsd) in purple (negative)
and green (positive)



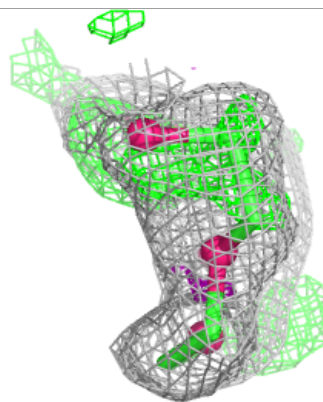
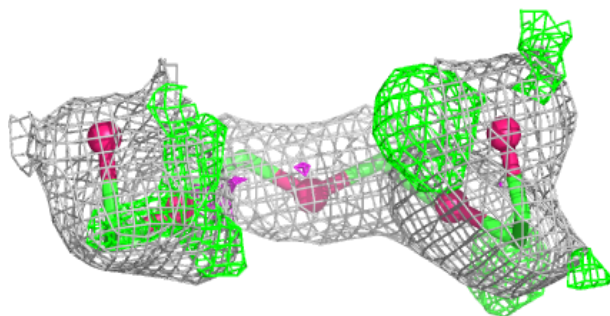
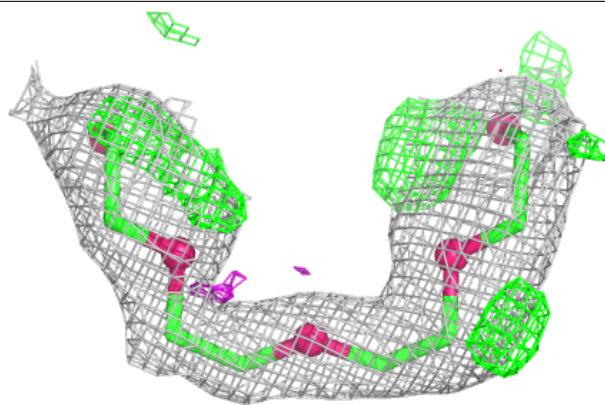
Electron density around PG6 B 529:

$2mF_o-DF_c$ (at 0.7 rmsd) in gray
 mF_o-DF_c (at 3 rmsd) in purple (negative)
and green (positive)

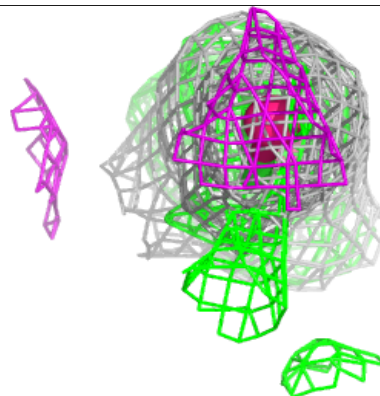
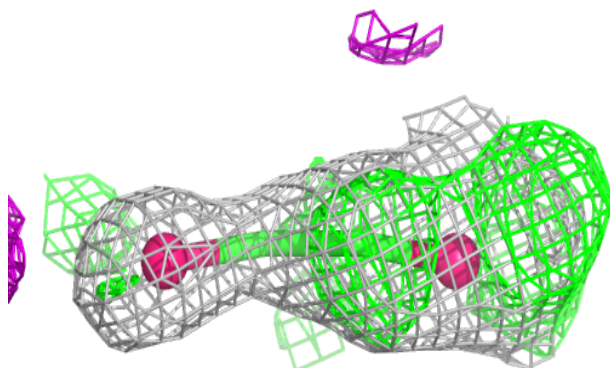
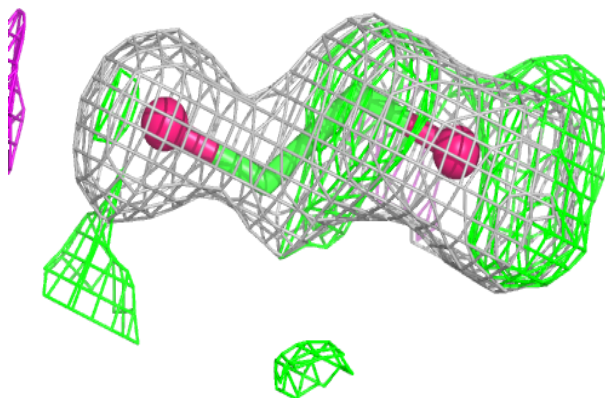


Electron density around PG6 A 526:

$2mF_o-DF_c$ (at 0.7 rmsd) in gray
 mF_o-DF_c (at 3 rmsd) in purple (negative)
and green (positive)

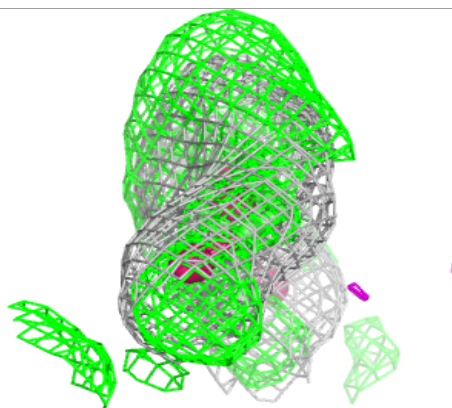
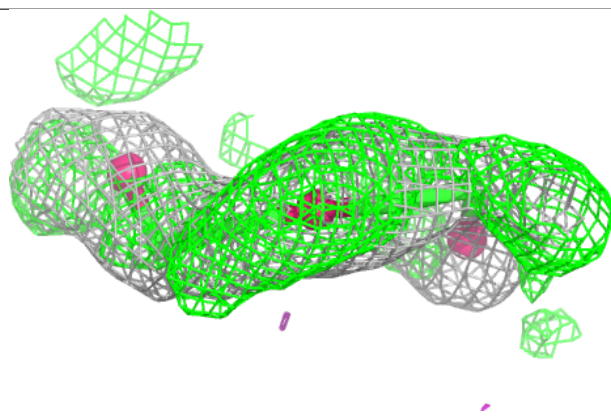
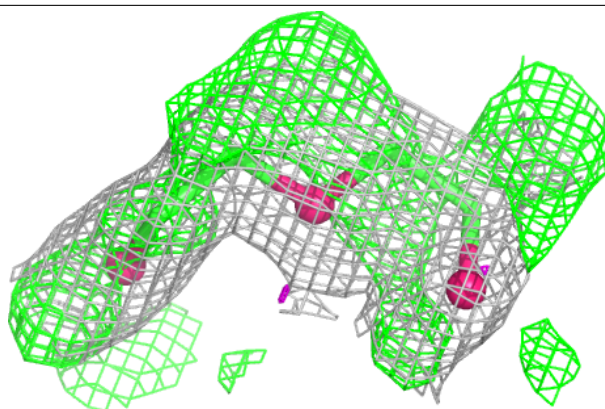
**Electron density around PG6 B 527:**

$2mF_o-DF_c$ (at 0.7 rmsd) in gray
 mF_o-DF_c (at 3 rmsd) in purple (negative)
and green (positive)



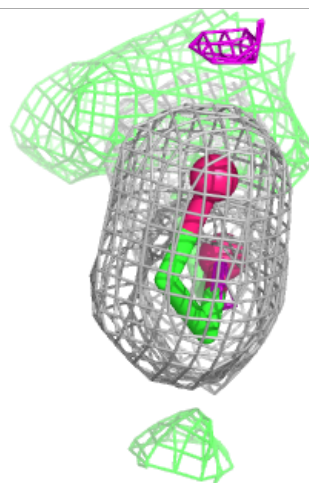
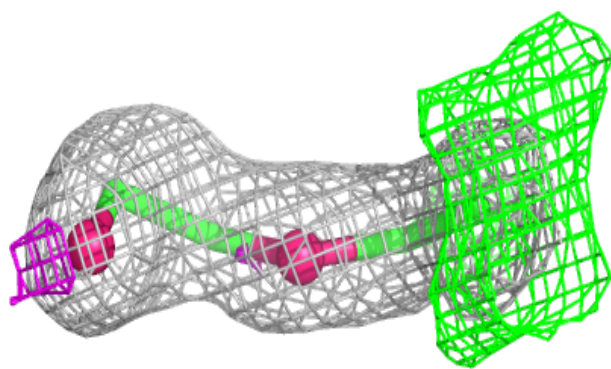
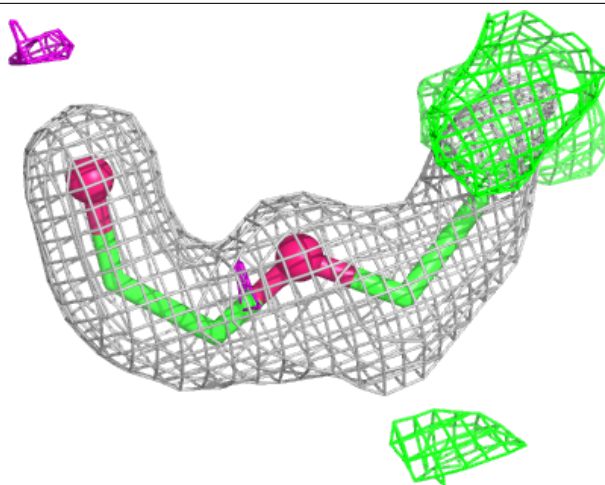
Electron density around PG6 B 526:

$2mF_o-DF_c$ (at 0.7 rmsd) in gray
 mF_o-DF_c (at 3 rmsd) in purple (negative)
and green (positive)



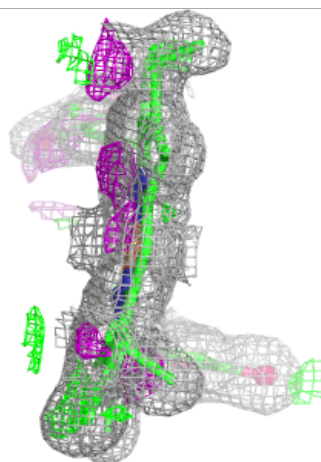
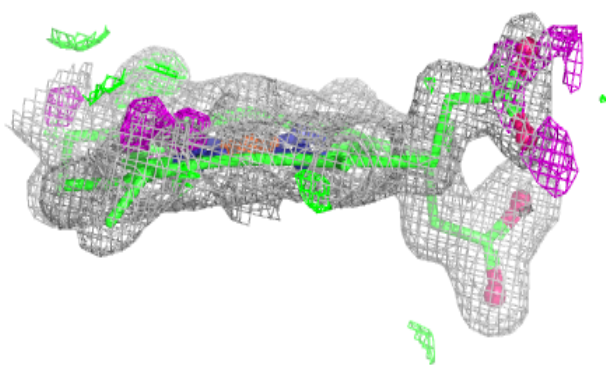
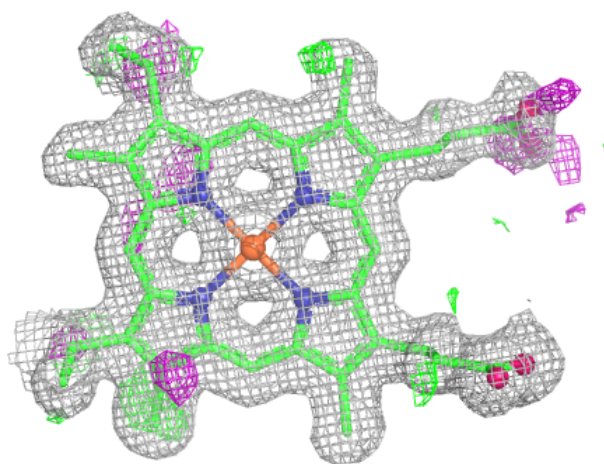
Electron density around PG6 A 529:

$2mF_o-DF_c$ (at 0.7 rmsd) in gray
 mF_o-DF_c (at 3 rmsd) in purple (negative)
and green (positive)



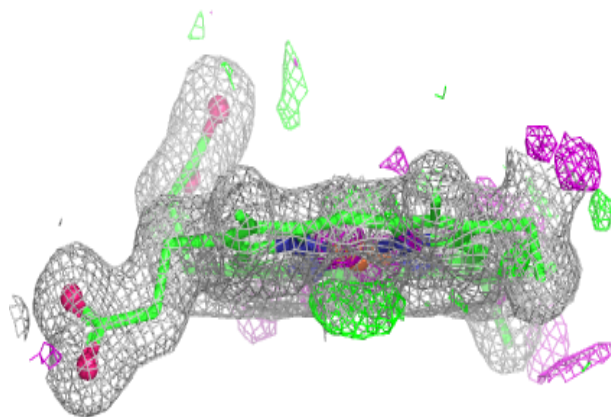
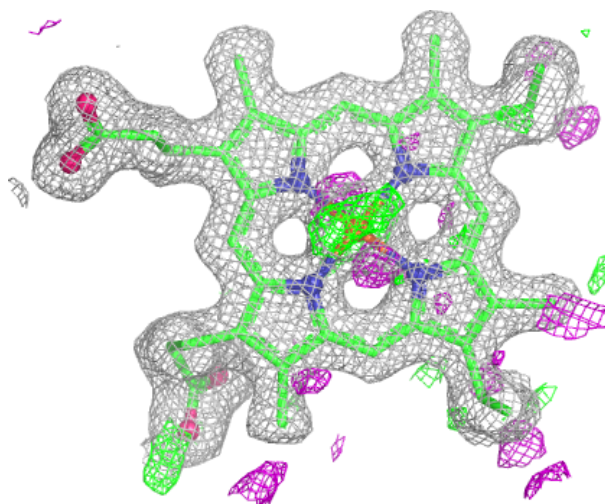
Electron density around HEC A 1008:

$2mF_o-DF_c$ (at 0.7 rmsd) in gray
 mF_o-DF_c (at 3 rmsd) in purple (negative)
and green (positive)



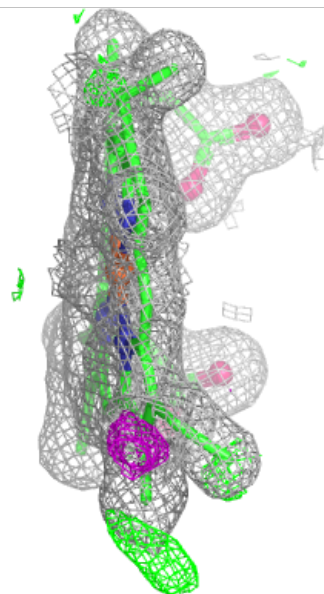
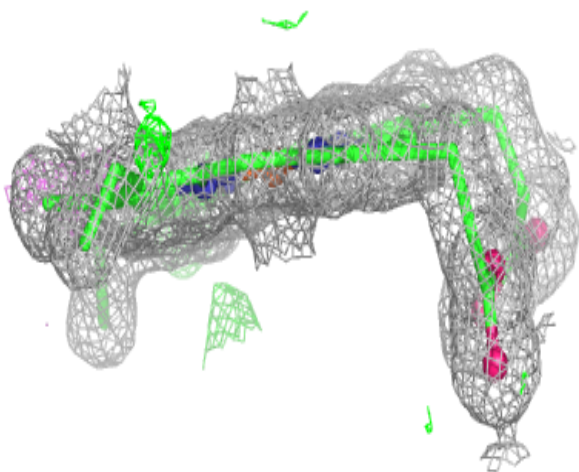
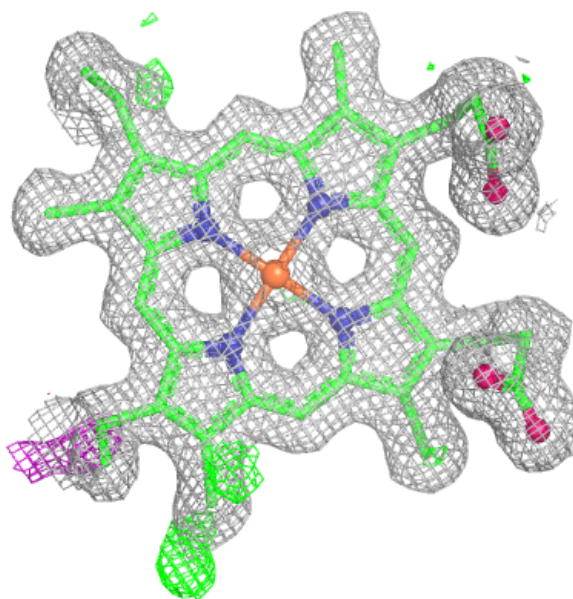
Electron density around HEC B 1001:

$2mF_o-DF_c$ (at 0.7 rmsd) in gray
 mF_o-DF_c (at 3 rmsd) in purple (negative)
and green (positive)



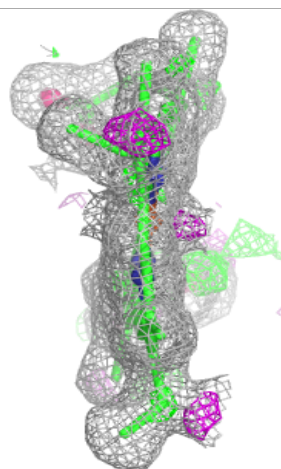
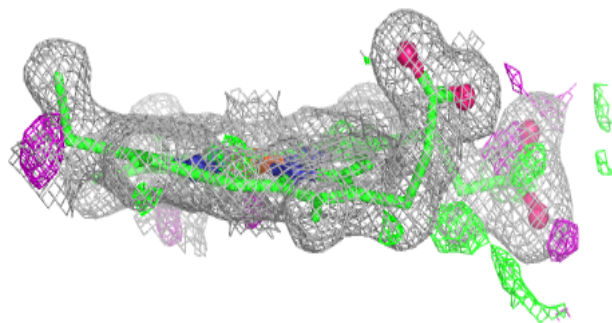
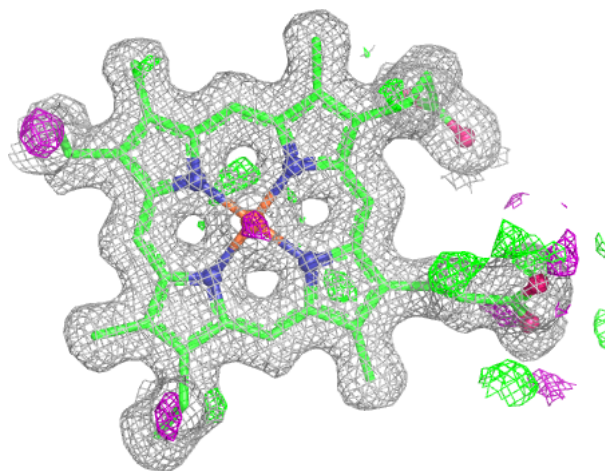
Electron density around HEC A 1004:

$2mF_o-DF_c$ (at 0.7 rmsd) in gray
 mF_o-DF_c (at 3 rmsd) in purple (negative)
and green (positive)



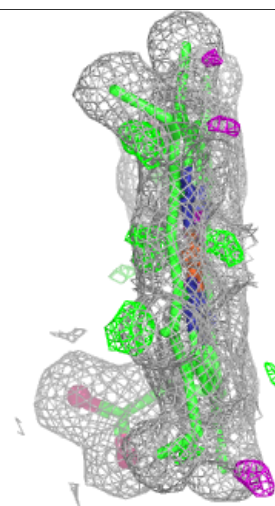
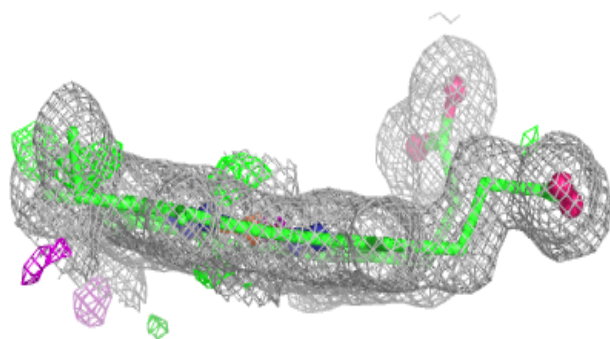
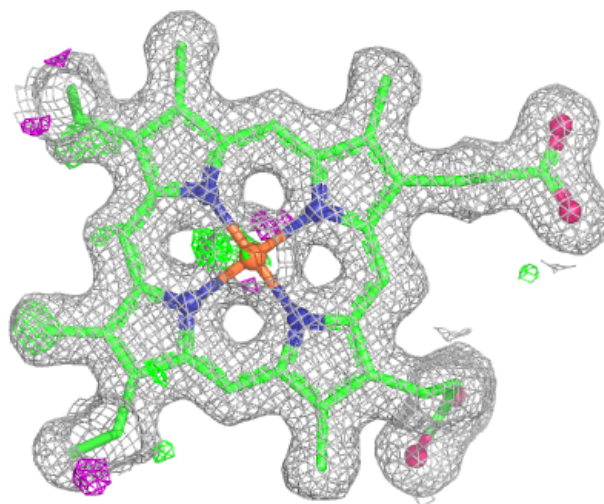
Electron density around HEC A 1005:

$2mF_o-DF_c$ (at 0.7 rmsd) in gray
 mF_o-DF_c (at 3 rmsd) in purple (negative)
and green (positive)



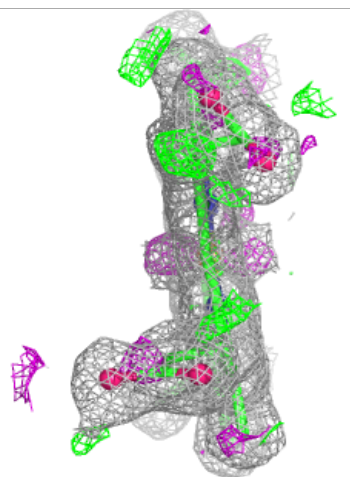
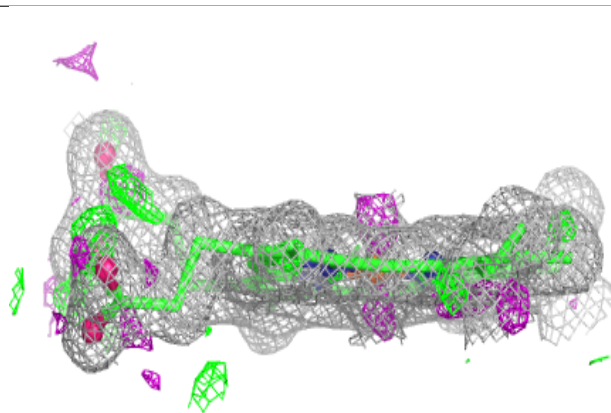
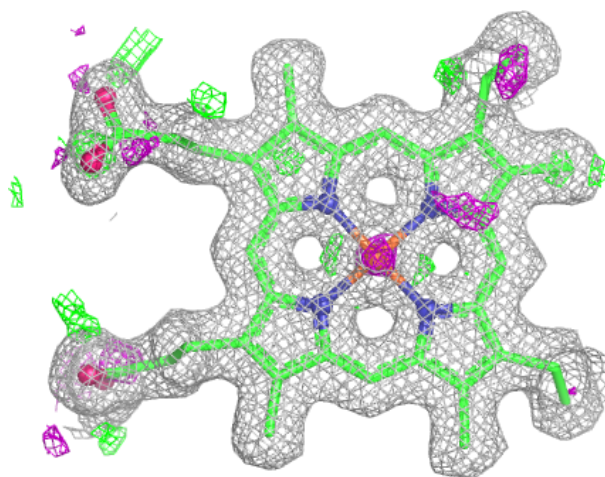
Electron density around HEC A 1002:

$2mF_o-DF_c$ (at 0.7 rmsd) in gray
 mF_o-DF_c (at 3 rmsd) in purple (negative)
and green (positive)



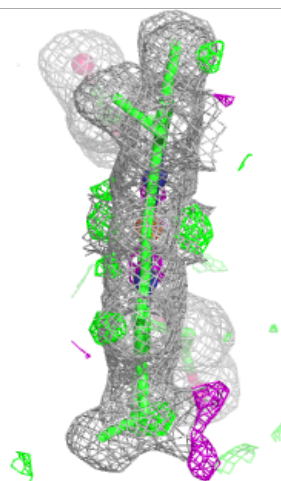
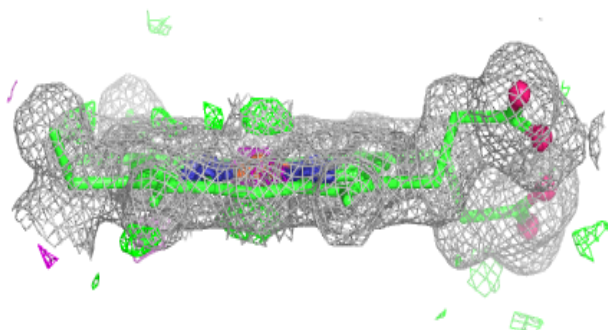
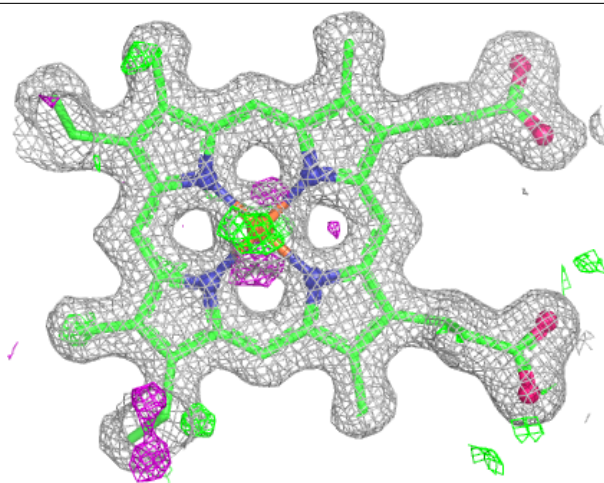
Electron density around HEC A 1003:

$2mF_o-DF_c$ (at 0.7 rmsd) in gray
 mF_o-DF_c (at 3 rmsd) in purple (negative)
and green (positive)



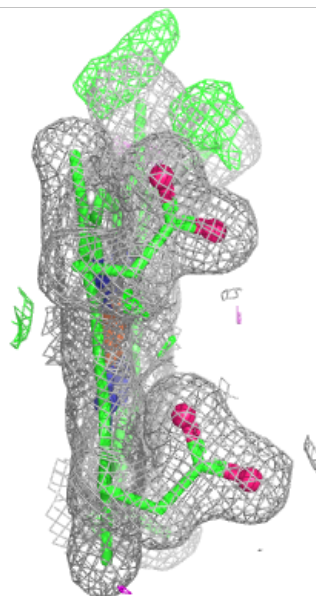
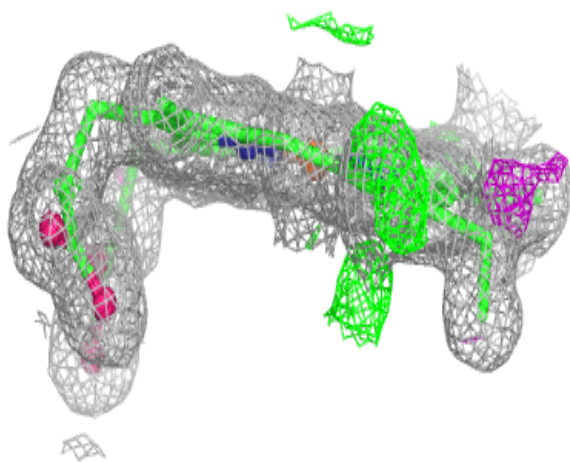
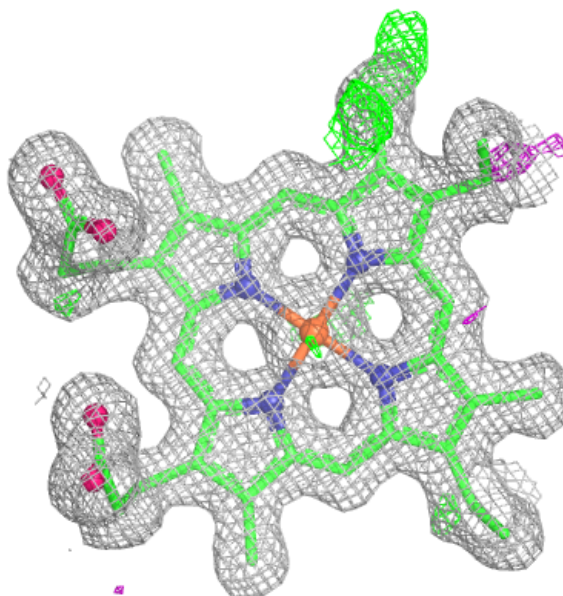
Electron density around HEC A 1001:

$2mF_o-DF_c$ (at 0.7 rmsd) in gray
 mF_o-DF_c (at 3 rmsd) in purple (negative)
and green (positive)



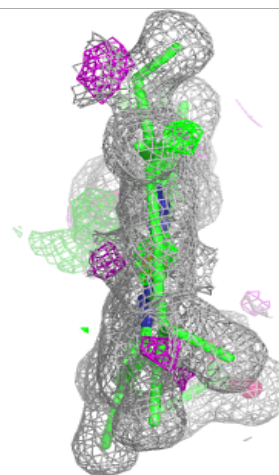
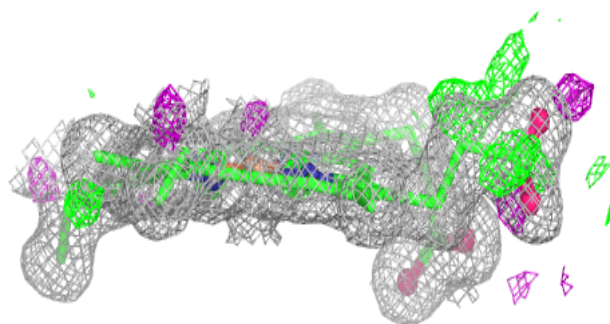
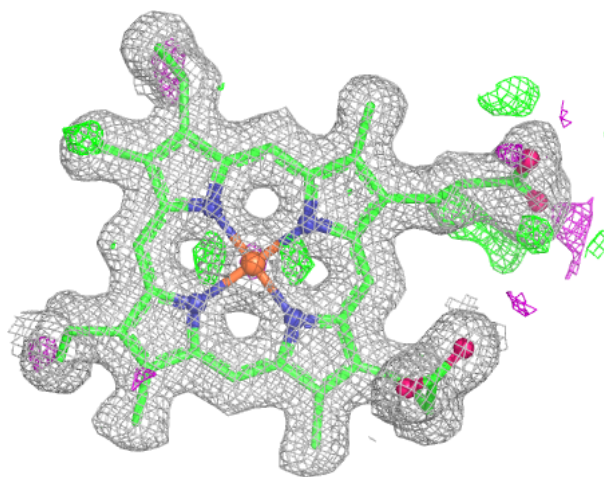
Electron density around HEC B 1004:

$2mF_o-DF_c$ (at 0.7 rmsd) in gray
 mF_o-DF_c (at 3 rmsd) in purple (negative)
and green (positive)



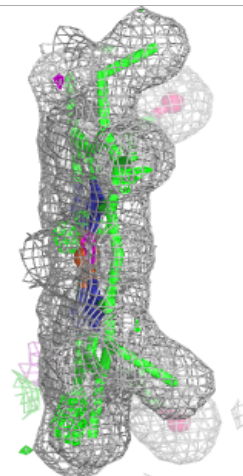
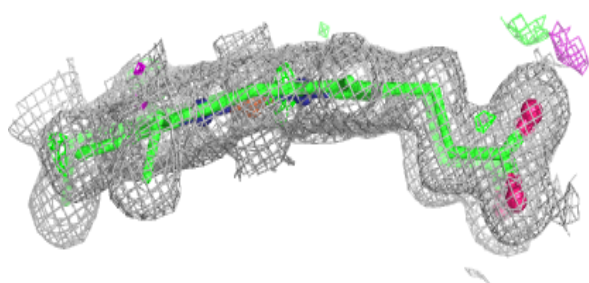
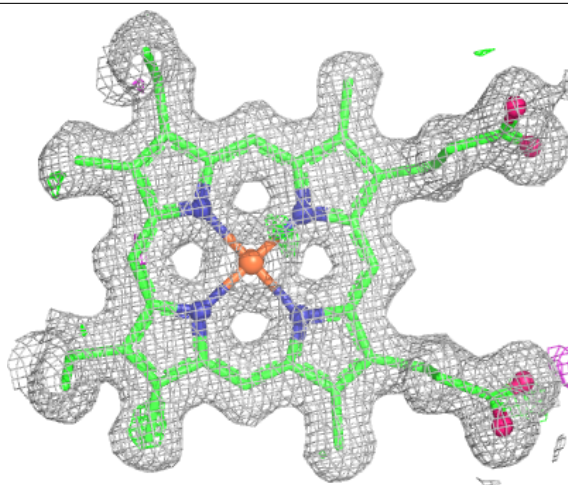
Electron density around HEC B 1005:

$2mF_o-DF_c$ (at 0.7 rmsd) in gray
 mF_o-DF_c (at 3 rmsd) in purple (negative)
and green (positive)



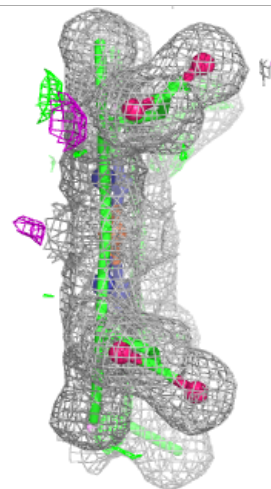
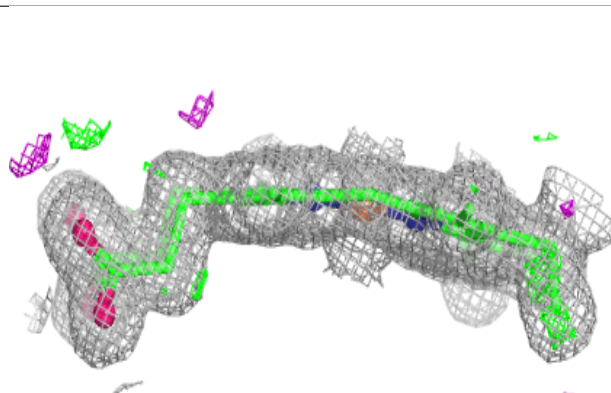
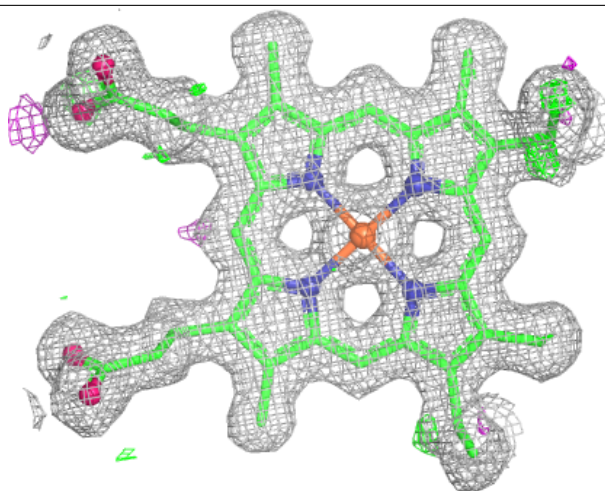
Electron density around HEC B 1006:

$2mF_o-DF_c$ (at 0.7 rmsd) in gray
 mF_o-DF_c (at 3 rmsd) in purple (negative)
and green (positive)



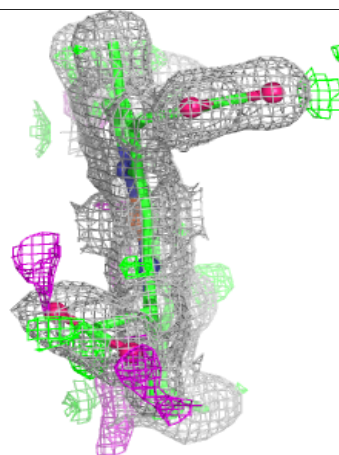
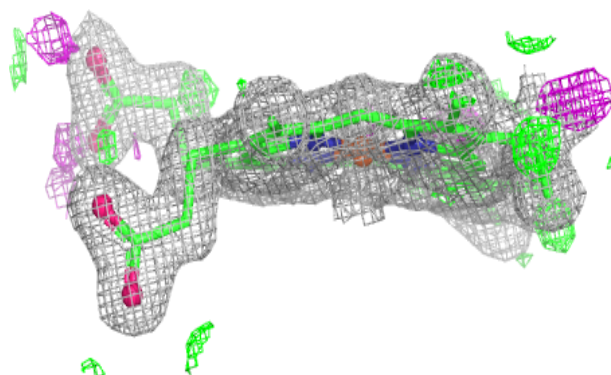
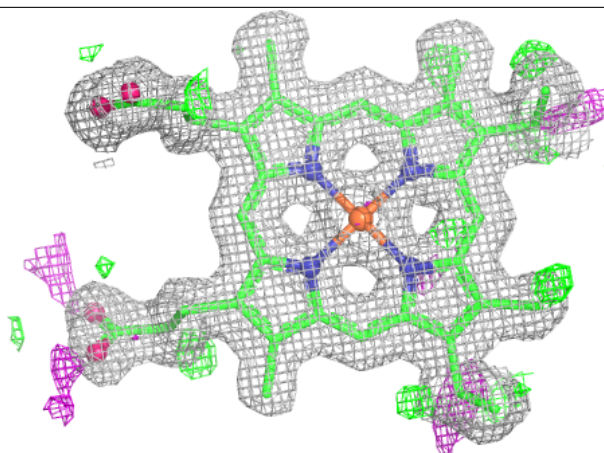
Electron density around HEC A 1006:

$2mF_o-DF_c$ (at 0.7 rmsd) in gray
 mF_o-DF_c (at 3 rmsd) in purple (negative)
and green (positive)



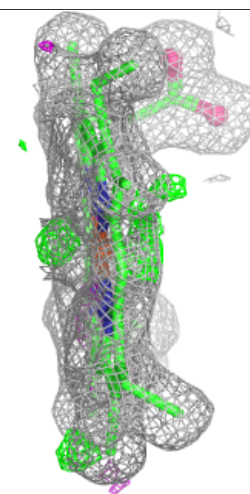
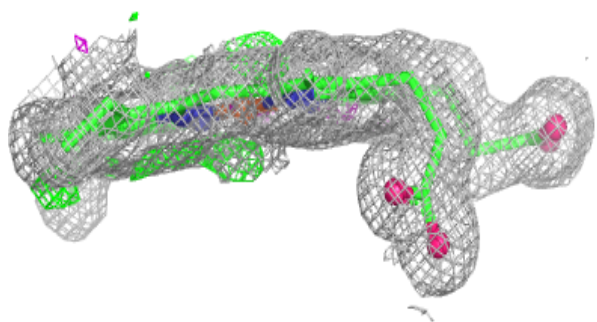
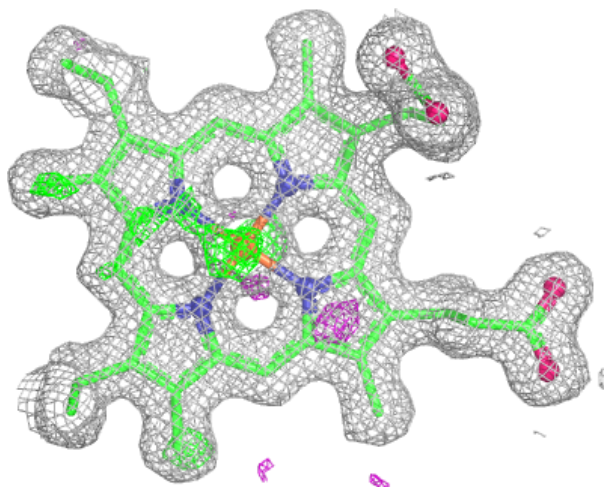
Electron density around HEC B 1008:

$2mF_o-DF_c$ (at 0.7 rmsd) in gray
 mF_o-DF_c (at 3 rmsd) in purple (negative)
and green (positive)



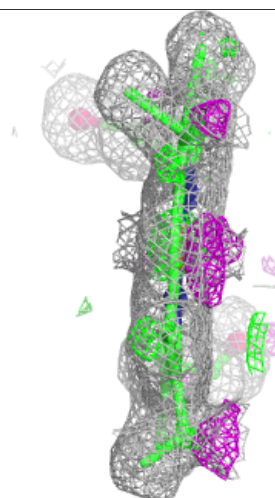
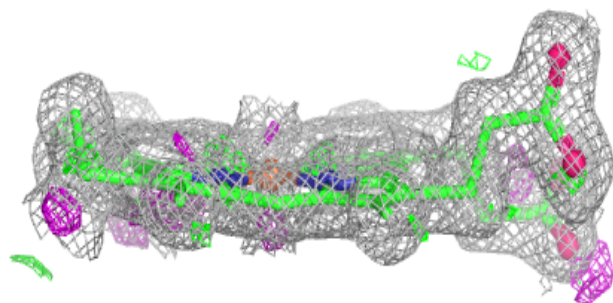
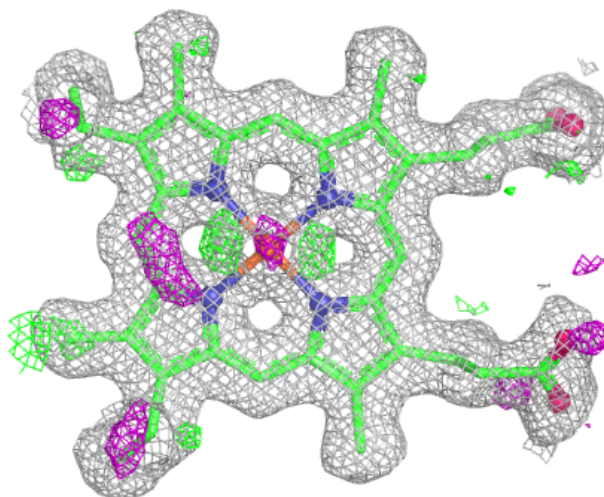
Electron density around HEC B 1002:

$2mF_o-DF_c$ (at 0.7 rmsd) in gray
 mF_o-DF_c (at 3 rmsd) in purple (negative)
and green (positive)



Electron density around HEC B 1003:

$2mF_o-DF_c$ (at 0.7 rmsd) in gray
 mF_o-DF_c (at 3 rmsd) in purple (negative)
and green (positive)



6.5 Other polymers ⓘ

There are no such residues in this entry.