



wwPDB X-ray Structure Validation Summary Report ⓘ

Oct 29, 2024 – 08:42 PM EDT

PDB ID : 4Q0T
Title : Free form of TvNiR, low dose data set
Authors : Lazarenko, V.A.; Polyakov, K.M.; Trofimov, A.A.; Popov, A.N.; Tikhonova, T.V.; Tikhonov, A.V.; Popov, V.O.
Deposited on : 2014-04-02
Resolution : 1.70 Å(reported)

This is a wwPDB X-ray Structure Validation Summary Report for a publicly released PDB entry.

We welcome your comments at validation@mail.wwpdb.org

A user guide is available at

<https://www.wwpdb.org/validation/2017/XrayValidationReportHelp>

with specific help available everywhere you see the ⓘ symbol.

The types of validation reports are described at

<http://www.wwpdb.org/validation/2017/FAQs#types>.

The following versions of software and data (see [references ⓘ](#)) were used in the production of this report:

MolProbity : 4.02b-467
Mogul : 2022.3.0, CSD as543be (2022)
Xtriage (Phenix) : 1.20.1
EDS : 3.0
buster-report : 1.1.7 (2018)
Percentile statistics : 20231227.v01 (using entries in the PDB archive December 27th 2023)
CCP4 : 9.0.003 (Gargrove)
Density-Fitness : 1.0.11
Ideal geometry (proteins) : Engh & Huber (2001)
Ideal geometry (DNA, RNA) : Parkinson et al. (1996)
Validation Pipeline (wwPDB-VP) : 2.39

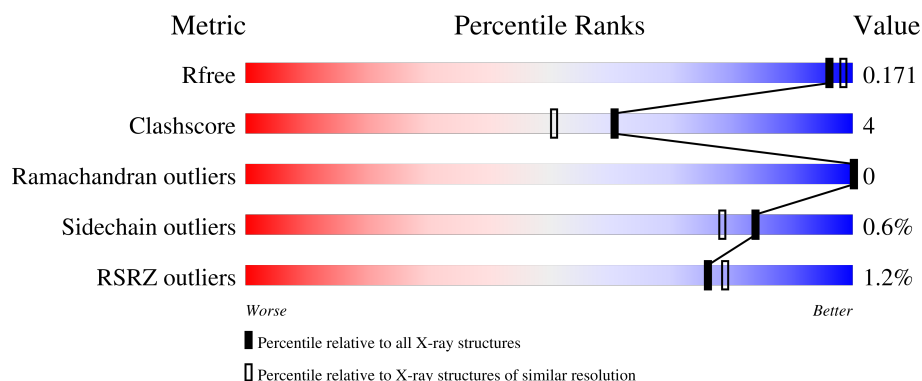
1 Overall quality at a glance

The following experimental techniques were used to determine the structure:

X-RAY DIFFRACTION

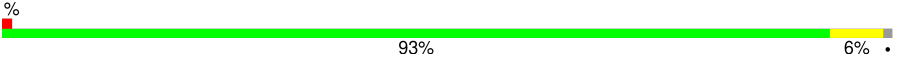

The reported resolution of this entry is 1.70 Å.

Percentile scores (ranging between 0-100) for global validation metrics of the entry are shown in the following graphic. The table shows the number of entries on which the scores are based.



Metric	Whole archive (#Entries)	Similar resolution (#Entries, resolution range(Å))
R_{free}	164625	5161 (1.70-1.70)
Clashscore	180529	5671 (1.70-1.70)
Ramachandran outliers	177936	5594 (1.70-1.70)
Sidechain outliers	177891	5594 (1.70-1.70)
RSRZ outliers	164620	5159 (1.70-1.70)

The table below summarises the geometric issues observed across the polymeric chains and their fit to the electron density. The red, orange, yellow and green segments of the lower bar indicate the fraction of residues that contain outliers for ≥ 3 , 2, 1 and 0 types of geometric quality criteria respectively. A grey segment represents the fraction of residues that are not modelled. The numeric value for each fraction is indicated below the corresponding segment, with a dot representing fractions $\leq 5\%$. The upper red bar (where present) indicates the fraction of residues that have poor fit to the electron density. The numeric value is given above the bar.

Mol	Chain	Length	Quality of chain
1	A	524	 % 93% 6% .
1	B	524	 % 92% 7% .

2 Entry composition [i](#)

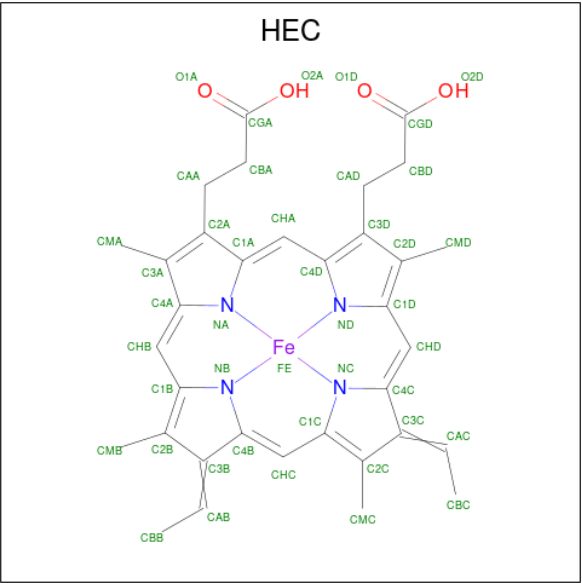
There are 7 unique types of molecules in this entry. The entry contains 10390 atoms, of which 0 are hydrogens and 0 are deuteriums.

In the tables below, the ZeroOcc column contains the number of atoms modelled with zero occupancy, the AltConf column contains the number of residues with at least one atom in alternate conformation and the Trace column contains the number of residues modelled with at most 2 atoms.

- Molecule 1 is a protein called Eight-heme nitrite reductase.

Mol	Chain	Residues	Atoms					ZeroOcc	AltConf	Trace
1	A	520	Total	C	N	O	S	0	20	0
			4165	2583	759	787	36			
1	B	520	Total	C	N	O	S	0	24	0
			4186	2594	763	793	36			

- Molecule 2 is HEME C (three-letter code: HEC) (formula: $C_{34}H_{34}FeN_4O_4$).



Mol	Chain	Residues	Atoms					ZeroOcc	AltConf
2	A	1	Total	C	Fe	N	O	0	0
			43	34	1	4	4		
2	A	1	Total	C	Fe	N	O	0	0
			43	34	1	4	4		
2	A	1	Total	C	Fe	N	O	0	0
			43	34	1	4	4		
2	A	1	Total	C	Fe	N	O	0	0
			43	34	1	4	4		

Continued on next page...

Continued from previous page...

Mol	Chain	Residues	Atoms					ZeroOcc	AltConf
2	A	1	Total 39	C 32	Fe 1	N 4	O 2	0	0
2	A	1	Total 43	C 34	Fe 1	N 4	O 4	0	0
2	A	1	Total 43	C 34	Fe 1	N 4	O 4	0	0
2	A	1	Total 43	C 34	Fe 1	N 4	O 4	0	0
2	B	1	Total 43	C 34	Fe 1	N 4	O 4	0	0
2	B	1	Total 43	C 34	Fe 1	N 4	O 4	0	0
2	B	1	Total 43	C 34	Fe 1	N 4	O 4	0	0
2	B	1	Total 43	C 34	Fe 1	N 4	O 4	0	0
2	B	1	Total 39	C 32	Fe 1	N 4	O 2	0	0
2	B	1	Total 43	C 34	Fe 1	N 4	O 4	0	0
2	B	1	Total 43	C 34	Fe 1	N 4	O 4	0	0
2	B	1	Total 43	C 34	Fe 1	N 4	O 4	0	0

- Molecule 3 is CALCIUM ION (three-letter code: CA) (formula: Ca).

Mol	Chain	Residues	Atoms		ZeroOcc	AltConf
3	A	1	Total	Ca	0	0
			1	1		
3	B	1	Total	Ca	0	0
			1	1		

- Molecule 4 is (4S)-2-METHYL-2,4-PENTANEDIOL (three-letter code: MPD) (formula: C₆H₁₄O₂).



Mol	Chain	Residues	Atoms			ZeroOcc	AltConf
4	A	1	Total	C	O	0	0
			8	6	2		
4	B	1	Total	C	O	0	0
			8	6	2		

- Molecule 5 is GLYCEROL (three-letter code: GOL) (formula: $C_3H_8O_3$).



Mol	Chain	Residues	Atoms			ZeroOcc	AltConf
5	B	1	Total	C	O	0	0
			6	3	3		

- Molecule 6 is CITRIC ACID (three-letter code: CIT) (formula: $C_6H_8O_7$).



Mol	Chain	Residues	Atoms			ZeroOcc	AltConf
6	B	1	Total	C	O	0	0
			13	6	7		

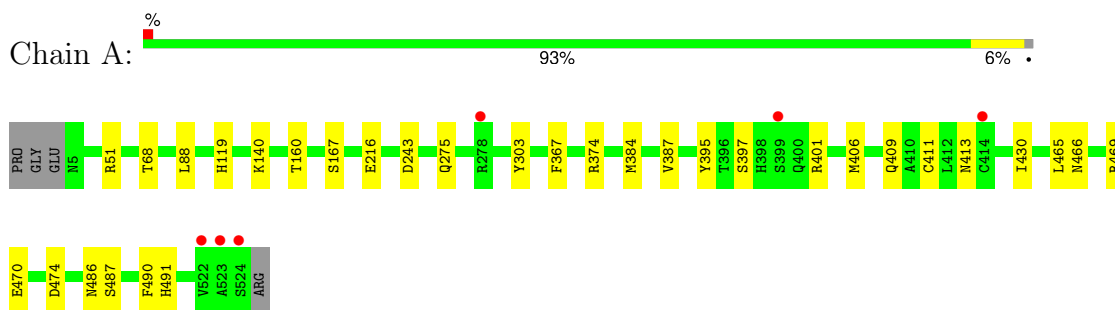
- Molecule 7 is water.

Mol	Chain	Residues	Atoms		ZeroOcc	AltConf
7	A	661	Total	O	0	0
			661	661		
7	B	661	Total	O	0	0
			661	661		

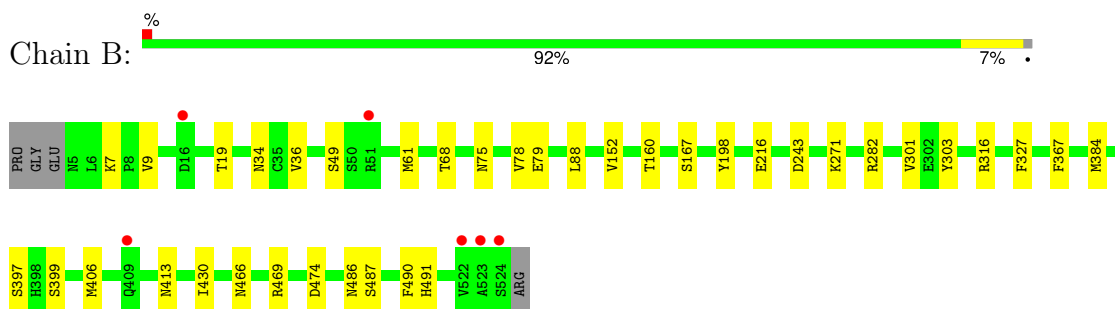
3 Residue-property plots [i](#)

These plots are drawn for all protein, RNA, DNA and oligosaccharide chains in the entry. The first graphic for a chain summarises the proportions of the various outlier classes displayed in the second graphic. The second graphic shows the sequence view annotated by issues in geometry and electron density. Residues are color-coded according to the number of geometric quality criteria for which they contain at least one outlier: green = 0, yellow = 1, orange = 2 and red = 3 or more. A red dot above a residue indicates a poor fit to the electron density ($RSRZ > 2$). Stretches of 2 or more consecutive residues without any outlier are shown as a green connector. Residues present in the sample, but not in the model, are shown in grey.

- Molecule 1: Eight-heme nitrite reductase



- Molecule 1: Eight-heme nitrite reductase



4 Data and refinement statistics

Property	Value	Source
Space group	P 21 3	Depositor
Cell constants a, b, c, α , β , γ	195.48Å 195.48Å 195.48Å 90.00° 90.00° 90.00°	Depositor
Resolution (Å)	59.01 – 1.70 59.01 – 1.70	Depositor EDS
% Data completeness (in resolution range)	99.1 (59.01-1.70) 99.1 (59.01-1.70)	Depositor EDS
R_{merge}	0.07	Depositor
R_{sym}	(Not available)	Depositor
$\langle I/\sigma(I) \rangle$ ¹	1.74 (at 1.65Å)	Xtriage
Refinement program	REFMAC 5.7.0029	Depositor
R, R_{free}	0.158 , 0.170 0.158 , 0.171	Depositor DCC
R_{free} test set	13505 reflections (5.03%)	wwPDB-VP
Wilson B-factor (Å ²)	16.6	Xtriage
Anisotropy	0.000	Xtriage
Bulk solvent k_{sol} (e/Å ³), B_{sol} (Å ²)	0.38 , 48.7	EDS
L-test for twinning ²	$\langle L \rangle = 0.48$, $\langle L^2 \rangle = 0.31$	Xtriage
Estimated twinning fraction	0.021 for l,-k,h	Xtriage
F_o, F_c correlation	0.97	EDS
Total number of atoms	10390	wwPDB-VP
Average B, all atoms (Å ²)	18.0	wwPDB-VP

Xtriage's analysis on translational NCS is as follows: *The largest off-origin peak in the Patterson function is 2.39% of the height of the origin peak. No significant pseudotranslation is detected.*

¹Intensities estimated from amplitudes.

²Theoretical values of $\langle |L| \rangle$, $\langle L^2 \rangle$ for acentric reflections are 0.5, 0.333 respectively for untwinned datasets, and 0.375, 0.2 for perfectly twinned datasets.

5 Model quality [i](#)

5.1 Standard geometry [i](#)

Bond lengths and bond angles in the following residue types are not validated in this section: MPD, GOL, HEC, CA, CIT

The Z score for a bond length (or angle) is the number of standard deviations the observed value is removed from the expected value. A bond length (or angle) with $|Z| > 5$ is considered an outlier worth inspection. RMSZ is the root-mean-square of all Z scores of the bond lengths (or angles).

Mol	Chain	Bond lengths		Bond angles	
		RMSZ	# Z >5	RMSZ	# Z >5
1	A	0.64	0/4383	0.73	2/5945 (0.0%)
1	B	0.66	0/4426	0.74	2/6000 (0.0%)
All	All	0.65	0/8809	0.73	4/11945 (0.0%)

There are no bond length outliers.

All (4) bond angle outliers are listed below:

Mol	Chain	Res	Type	Atoms	Z	Observed(°)	Ideal(°)
1	A	243	ASP	CB-CG-OD1	5.88	123.59	118.30
1	B	243	ASP	CB-CG-OD1	5.54	123.28	118.30
1	B	282	ARG	NE-CZ-NH1	5.41	123.01	120.30
1	A	51	ARG	NE-CZ-NH2	-5.09	117.75	120.30

There are no chirality outliers.

There are no planarity outliers.

5.2 Too-close contacts [i](#)

In the following table, the Non-H and H(model) columns list the number of non-hydrogen atoms and hydrogen atoms in the chain respectively. The H(added) column lists the number of hydrogen atoms added and optimized by MolProbity. The Clashes column lists the number of clashes within the asymmetric unit, whereas Symm-Clashes lists symmetry-related clashes.

Mol	Chain	Non-H	H(model)	H(added)	Clashes	Symm-Clashes
1	A	4165	0	3862	29	0
1	B	4186	0	3888	34	0
2	A	340	0	236	8	0
2	B	340	0	236	8	0
3	A	1	0	0	0	0

Continued on next page...

Continued from previous page...

Mol	Chain	Non-H	H(model)	H(added)	Clashes	Symm-Clashes
3	B	1	0	0	0	0
4	A	8	0	14	0	0
4	B	8	0	14	0	0
5	B	6	0	8	3	0
6	B	13	0	5	1	0
7	A	661	0	0	14	0
7	B	661	0	0	8	0
All	All	10390	0	8263	71	0

The all-atom clashscore is defined as the number of clashes found per 1000 atoms (including hydrogen atoms). The all-atom clashscore for this structure is 4.

The worst 5 of 71 close contacts within the same asymmetric unit are listed below, sorted by their clash magnitude.

Atom-1	Atom-2	Interatomic distance (Å)	Clash overlap (Å)
1:A:409[B]:GLN:NE2	7:A:952:HOH:O	1.58	1.31
1:B:413[B]:ASN:ND2	7:B:1136:HOH:O	1.67	1.23
1:A:474[B]:ASP:OD2	7:A:1102:HOH:O	1.69	1.07
1:B:474[A]:ASP:OD2	7:B:1127:HOH:O	1.69	1.07
1:A:413[B]:ASN:OD1	7:A:1111:HOH:O	1.79	1.00

There are no symmetry-related clashes.

5.3 Torsion angles [i](#)

5.3.1 Protein backbone [i](#)

In the following table, the Percentiles column shows the percent Ramachandran outliers of the chain as a percentile score with respect to all X-ray entries followed by that with respect to entries of similar resolution.

The Analysed column shows the number of residues for which the backbone conformation was analysed, and the total number of residues.

Mol	Chain	Analysed	Favoured	Allowed	Outliers	Percentiles	
1	A	538/524 (103%)	513 (95%)	25 (5%)	0	100	100
1	B	542/524 (103%)	516 (95%)	26 (5%)	0	100	100
All	All	1080/1048 (103%)	1029 (95%)	51 (5%)	0	100	100

There are no Ramachandran outliers to report.

5.3.2 Protein sidechains ⓘ

In the following table, the Percentiles column shows the percent sidechain outliers of the chain as a percentile score with respect to all X-ray entries followed by that with respect to entries of similar resolution.

The Analysed column shows the number of residues for which the sidechain conformation was analysed, and the total number of residues.

Mol	Chain	Analysed	Rotameric	Outliers	Percentiles	
1	A	453/442 (102%)	450 (99%)	3 (1%)	81	75
1	B	459/442 (104%)	453 (99%)	6 (1%)	65	52
All	All	912/884 (103%)	903 (99%)	9 (1%)	84	64

5 of 9 residues with a non-rotameric sidechain are listed below:

Mol	Chain	Res	Type
1	B	406[A]	MET
1	B	406[B]	MET
1	B	61[A]	MET
1	B	61[B]	MET
1	B	88[A]	LEU

Sometimes sidechains can be flipped to improve hydrogen bonding and reduce clashes. All (5) such sidechains are listed below:

Mol	Chain	Res	Type
1	A	138	GLN
1	A	190	GLN
1	A	466	ASN
1	B	138	GLN
1	B	466	ASN

5.3.3 RNA ⓘ

There are no RNA molecules in this entry.

5.4 Non-standard residues in protein, DNA, RNA chains ⓘ

There are no non-standard protein/DNA/RNA residues in this entry.

5.5 Carbohydrates [i](#)

There are no oligosaccharides in this entry.

5.6 Ligand geometry [i](#)

Of 22 ligands modelled in this entry, 2 are monoatomic - leaving 20 for Mogul analysis.

In the following table, the Counts columns list the number of bonds (or angles) for which Mogul statistics could be retrieved, the number of bonds (or angles) that are observed in the model and the number of bonds (or angles) that are defined in the Chemical Component Dictionary. The Link column lists molecule types, if any, to which the group is linked. The Z score for a bond length (or angle) is the number of standard deviations the observed value is removed from the expected value. A bond length (or angle) with $|Z| > 2$ is considered an outlier worth inspection. RMSZ is the root-mean-square of all Z scores of the bond lengths (or angles).

Mol	Type	Chain	Res	Link	Bond lengths			Bond angles		
					Counts	RMSZ	# Z > 2	Counts	RMSZ	# Z > 2
2	HEC	B	605	1	28,46,50	2.20	11 (39%)	27,77,82	3.05	11 (40%)
2	HEC	A	601	1,7	32,50,50	1.75	6 (18%)	30,82,82	2.23	8 (26%)
4	MPD	A	610	-	7,7,7	0.52	0	9,10,10	0.79	0
2	HEC	B	604	1	32,50,50	1.79	7 (21%)	30,82,82	2.84	9 (30%)
2	HEC	A	607	1	32,50,50	1.67	5 (15%)	30,82,82	2.70	9 (30%)
2	HEC	B	603	1	32,50,50	1.66	4 (12%)	30,82,82	2.99	14 (46%)
2	HEC	A	602	1	32,50,50	1.57	6 (18%)	30,82,82	2.67	10 (33%)
2	HEC	A	606	1	32,50,50	1.84	6 (18%)	30,82,82	2.55	8 (26%)
2	HEC	A	603	1	32,50,50	1.87	6 (18%)	30,82,82	2.96	12 (40%)
2	HEC	B	602	1	32,50,50	1.58	7 (21%)	30,82,82	2.71	13 (43%)
2	HEC	B	606	1	32,50,50	1.86	9 (28%)	30,82,82	2.38	8 (26%)
2	HEC	B	607	1	32,50,50	1.60	5 (15%)	30,82,82	2.67	9 (30%)
2	HEC	A	605	1	28,46,50	2.30	11 (39%)	27,77,82	2.85	9 (33%)
2	HEC	A	608	1	32,50,50	1.85	8 (25%)	30,82,82	2.72	12 (40%)
6	CIT	B	612	-	12,12,12	1.08	0	17,17,17	1.11	1 (5%)
2	HEC	A	604	1	32,50,50	1.73	7 (21%)	30,82,82	2.86	9 (30%)
2	HEC	B	601	1,7	32,50,50	1.73	6 (18%)	30,82,82	2.49	6 (20%)
5	GOL	B	611	-	5,5,5	0.39	0	5,5,5	0.28	0
4	MPD	B	610	-	7,7,7	0.49	0	9,10,10	0.81	0
2	HEC	B	608	1	32,50,50	1.98	9 (28%)	30,82,82	2.88	8 (26%)

In the following table, the Chirals column lists the number of chiral outliers, the number of chiral centers analysed, the number of these observed in the model and the number defined in the

Chemical Component Dictionary. Similar counts are reported in the Torsion and Rings columns.
'-' means no outliers of that kind were identified.

Mol	Type	Chain	Res	Link	Chirals	Torsions	Rings
2	HEC	B	605	1	-	0/5/49/54	-
2	HEC	A	601	1,7	-	2/10/54/54	-
4	MPD	A	610	-	-	0/5/5/5	-
2	HEC	B	604	1	-	0/10/54/54	-
2	HEC	A	607	1	-	2/10/54/54	-
2	HEC	B	603	1	-	0/10/54/54	-
2	HEC	A	602	1	-	4/10/54/54	-
2	HEC	A	606	1	-	2/10/54/54	-
2	HEC	A	603	1	-	2/10/54/54	-
2	HEC	B	602	1	-	4/10/54/54	-
2	HEC	B	606	1	-	2/10/54/54	-
2	HEC	B	607	1	-	2/10/54/54	-
2	HEC	A	605	1	-	0/5/49/54	-
2	HEC	A	608	1	-	4/10/54/54	-
6	CIT	B	612	-	-	3/16/16/16	-
2	HEC	A	604	1	-	0/10/54/54	-
2	HEC	B	601	1,7	-	2/10/54/54	-
5	GOL	B	611	-	-	2/4/4/4	-
4	MPD	B	610	-	-	0/5/5/5	-
2	HEC	B	608	1	-	4/10/54/54	-

The worst 5 of 113 bond length outliers are listed below:

Mol	Chain	Res	Type	Atoms	Z	Observed(Å)	Ideal(Å)
2	B	606	HEC	C2B-C3B	5.57	1.47	1.40
2	A	607	HEC	C2B-C3B	5.42	1.46	1.40
2	B	604	HEC	C3C-C2C	5.39	1.46	1.40
2	B	608	HEC	C2B-C3B	5.36	1.46	1.40
2	A	605	HEC	C2B-C3B	5.33	1.46	1.40

The worst 5 of 156 bond angle outliers are listed below:

Mol	Chain	Res	Type	Atoms	Z	Observed(°)	Ideal(°)
2	B	602	HEC	CBB-CAB-C3B	-8.19	108.33	127.49
2	A	604	HEC	CBB-CAB-C3B	-8.08	108.58	127.49
2	B	604	HEC	CBB-CAB-C3B	-8.05	108.66	127.49
2	B	601	HEC	CBB-CAB-C3B	-7.58	109.75	127.49
2	A	602	HEC	CBB-CAB-C3B	-7.55	109.82	127.49

There are no chirality outliers.

5 of 35 torsion outliers are listed below:

Mol	Chain	Res	Type	Atoms
5	B	611	GOL	C1-C2-C3-O3
6	B	612	CIT	C1-C2-C3-C6
6	B	612	CIT	C1-C2-C3-O7
6	B	612	CIT	C1-C2-C3-C4
2	A	601	HEC	CAA-CBA-CGA-O2A

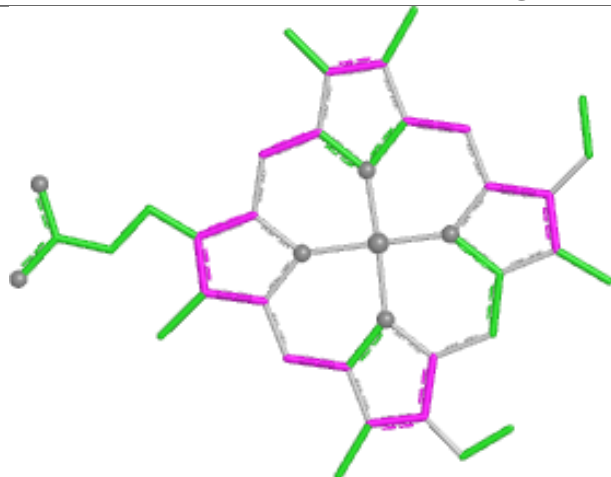
There are no ring outliers.

13 monomers are involved in 20 short contacts:

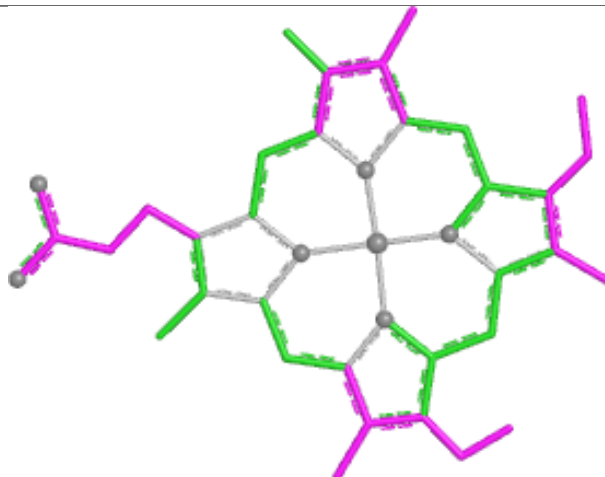
Mol	Chain	Res	Type	Clashes	Symm-Clashes
2	B	605	HEC	1	0
2	A	601	HEC	1	0
2	B	604	HEC	4	0
2	A	607	HEC	1	0
2	B	603	HEC	1	0
2	A	606	HEC	1	0
2	A	603	HEC	2	0
2	B	606	HEC	2	0
2	A	605	HEC	1	0
6	B	612	CIT	1	0
2	A	604	HEC	3	0
2	B	601	HEC	1	0
5	B	611	GOL	3	0

The following is a two-dimensional graphical depiction of Mogul quality analysis of bond lengths, bond angles, torsion angles, and ring geometry for all instances of the Ligand of Interest. In addition, ligands with molecular weight > 250 and outliers as shown on the validation Tables will also be included. For torsion angles, if less than 5% of the Mogul distribution of torsion angles is within 10 degrees of the torsion angle in question, then that torsion angle is considered an outlier. Any bond that is central to one or more torsion angles identified as an outlier by Mogul will be highlighted in the graph. For rings, the root-mean-square deviation (RMSD) between the ring in question and similar rings identified by Mogul is calculated over all ring torsion angles. If the average RMSD is greater than 60 degrees and the minimal RMSD between the ring in question and any Mogul-identified rings is also greater than 60 degrees, then that ring is considered an outlier. The outliers are highlighted in purple. The color gray indicates Mogul did not find sufficient equivalents in the CSD to analyse the geometry.

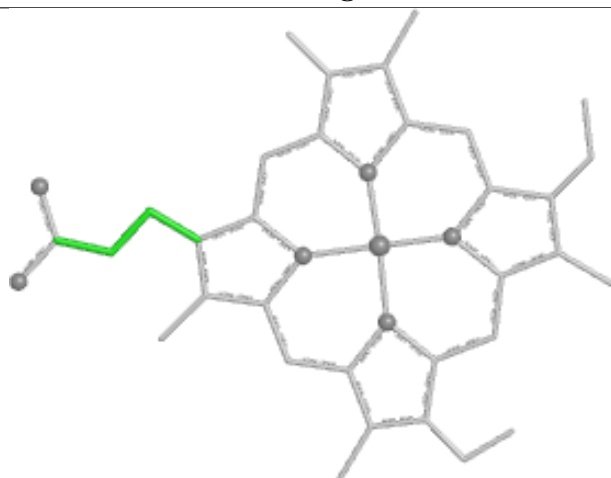
Ligand HEC B 605



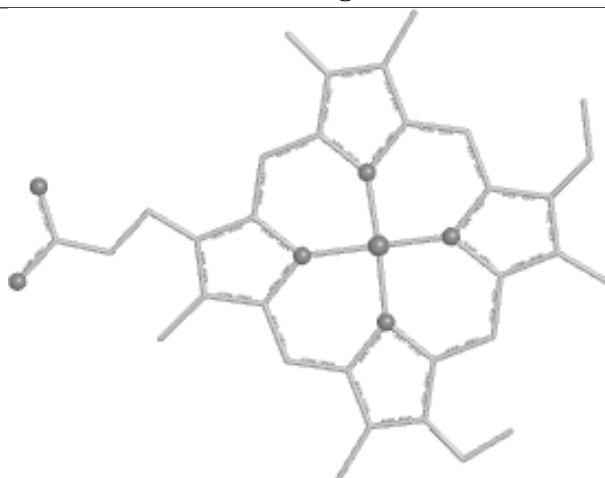
Bond lengths



Bond angles

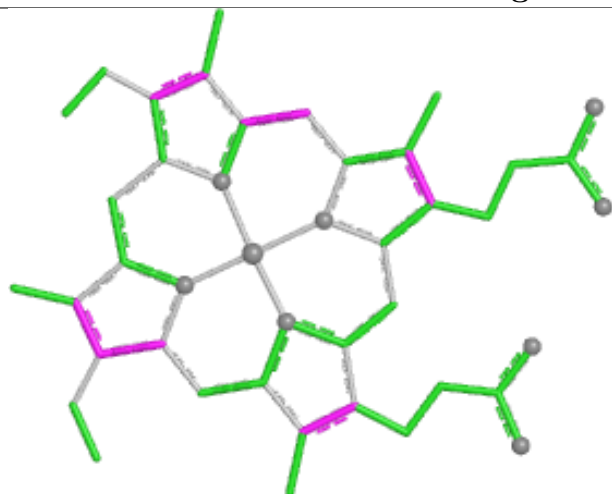


Torsions

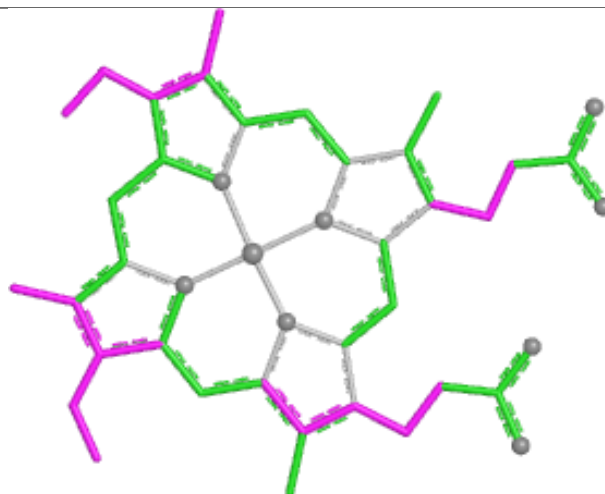


Rings

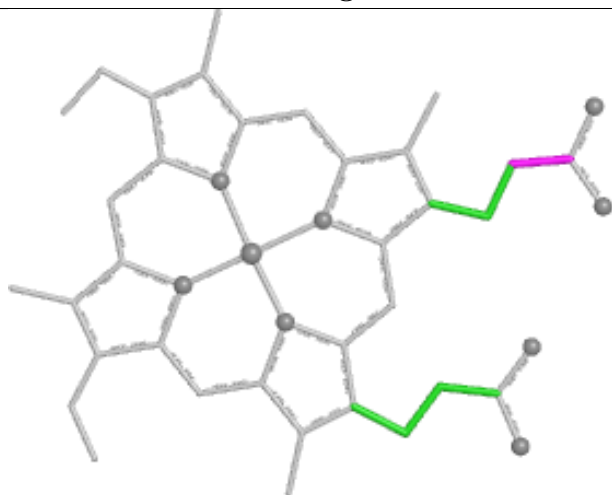
Ligand HEC A 601



Bond lengths



Bond angles

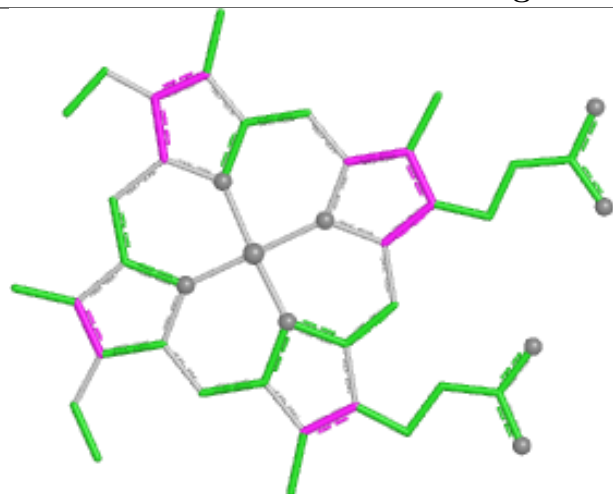


Torsions

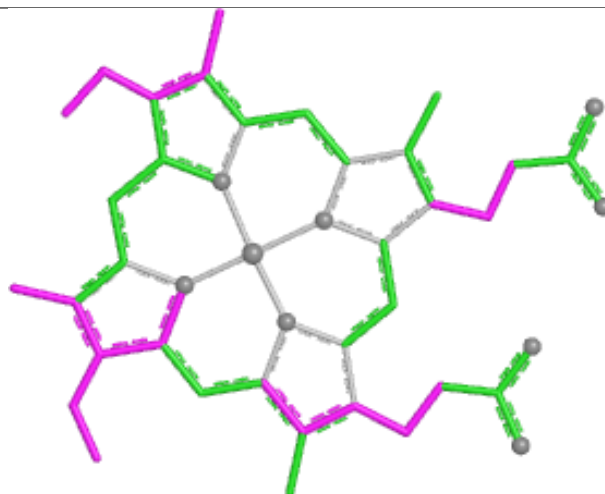


Rings

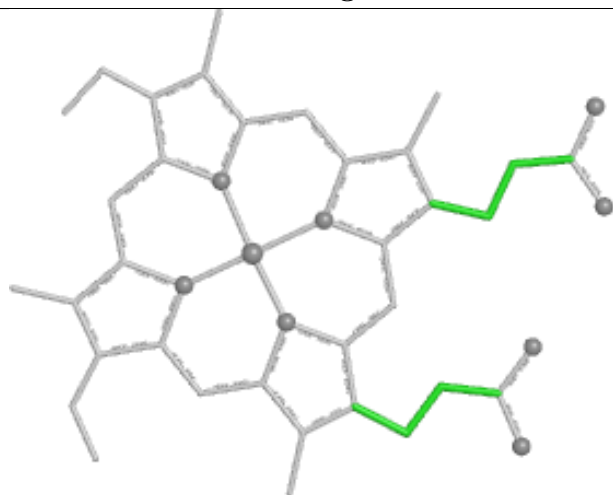
Ligand HEC B 604



Bond lengths



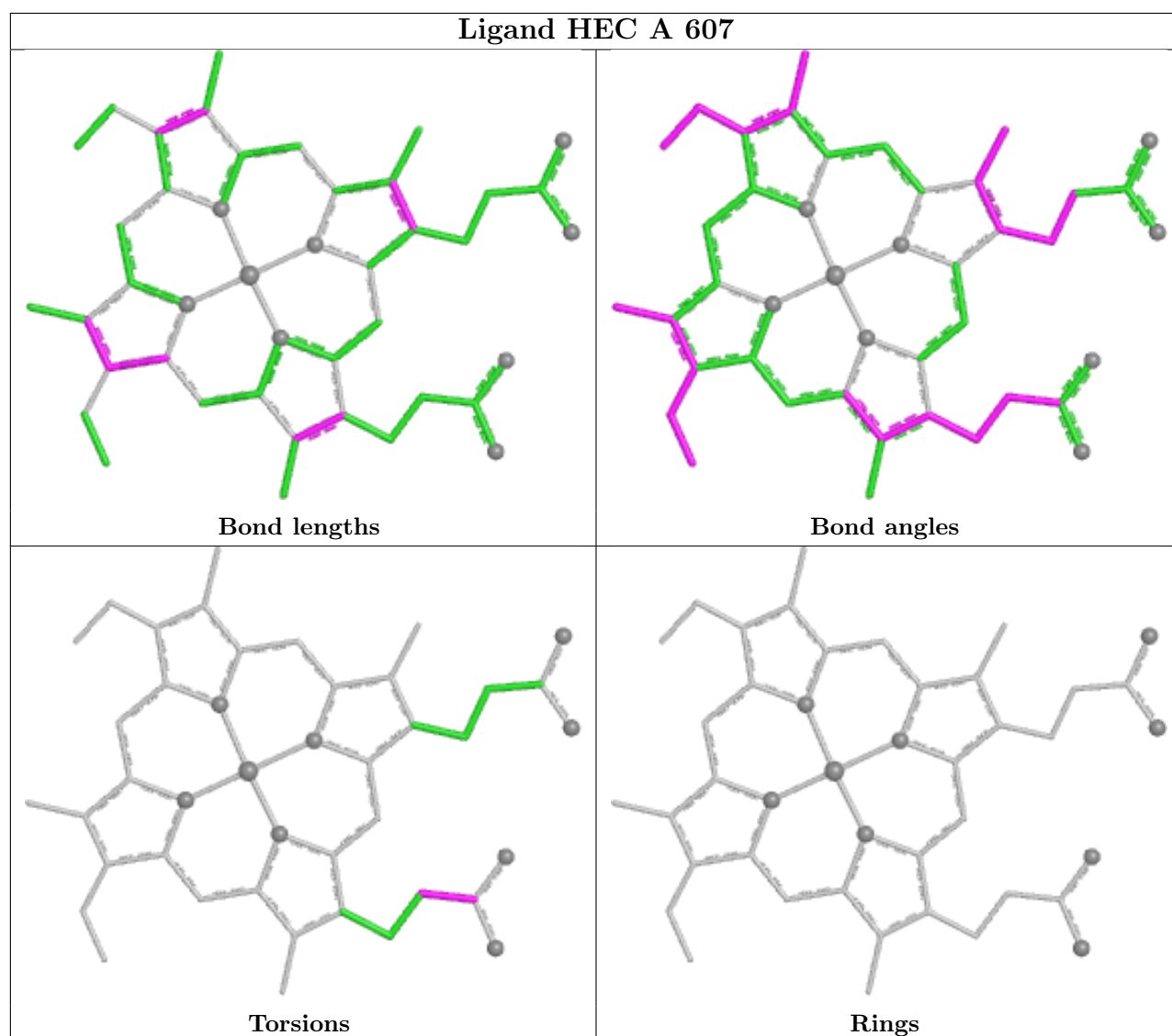
Bond angles



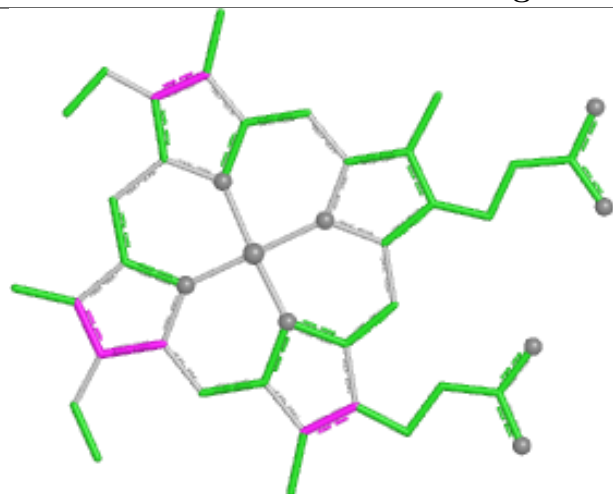
Torsions



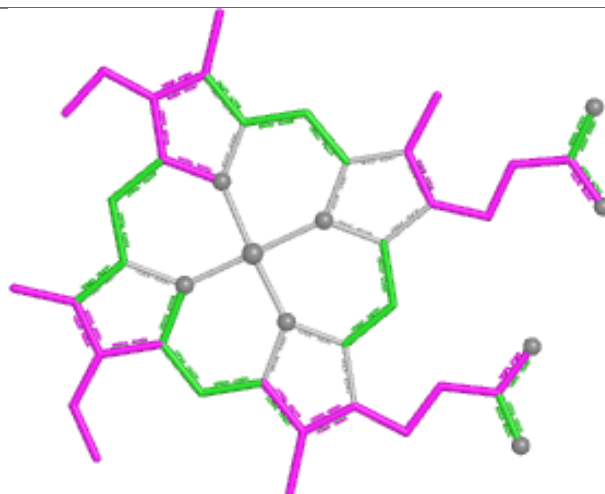
Rings



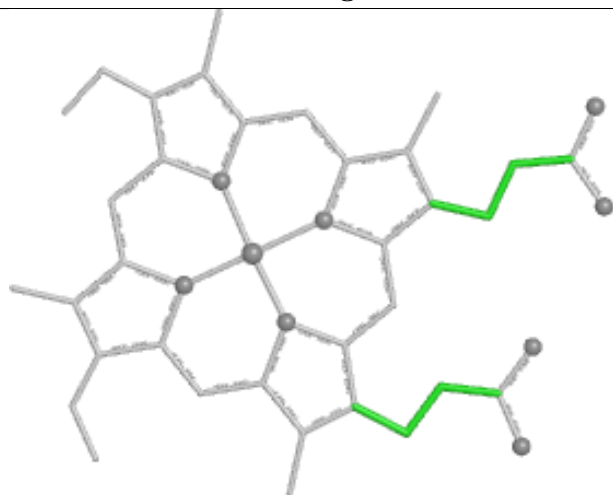
Ligand HEC B 603



Bond lengths



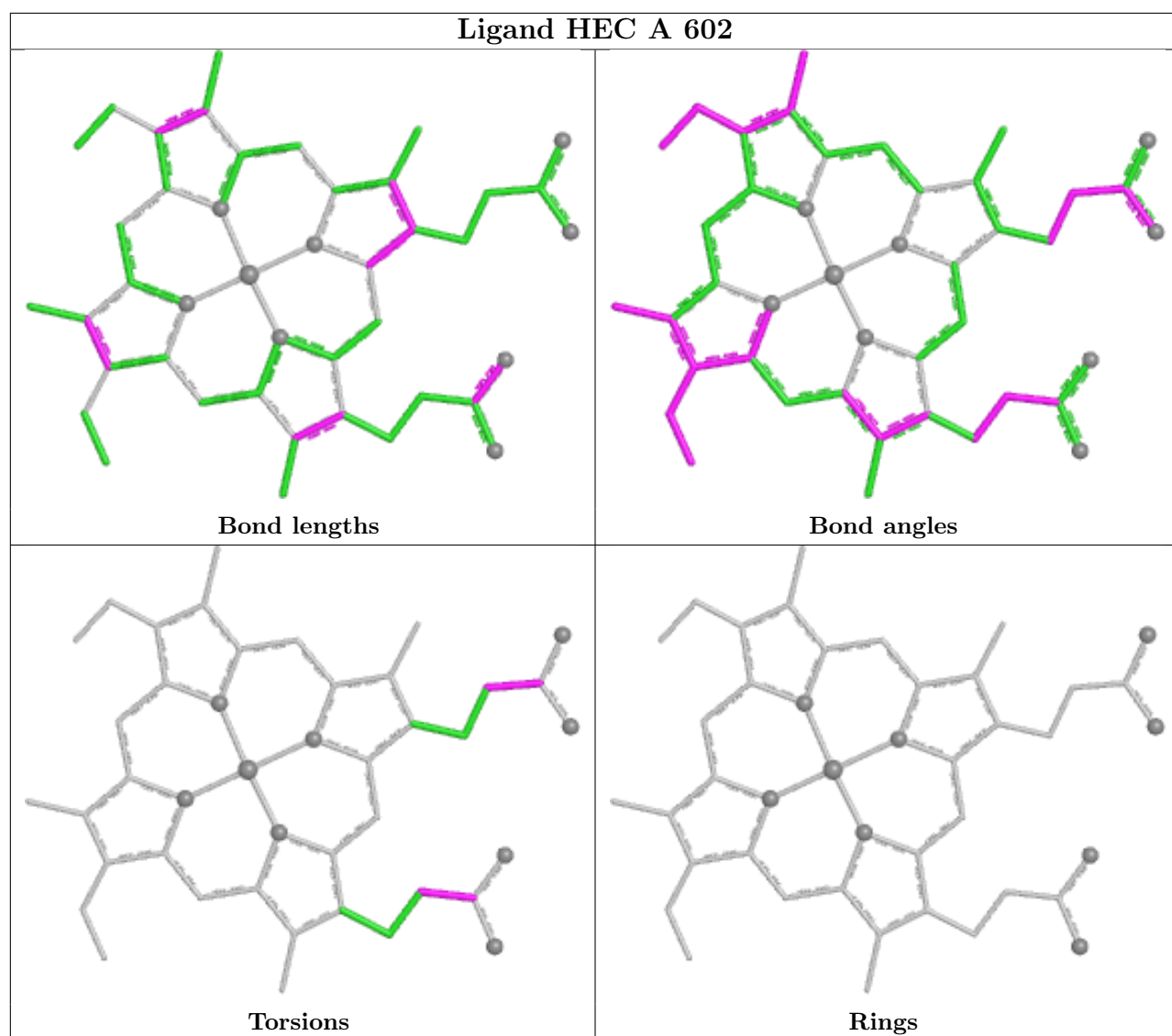
Bond angles

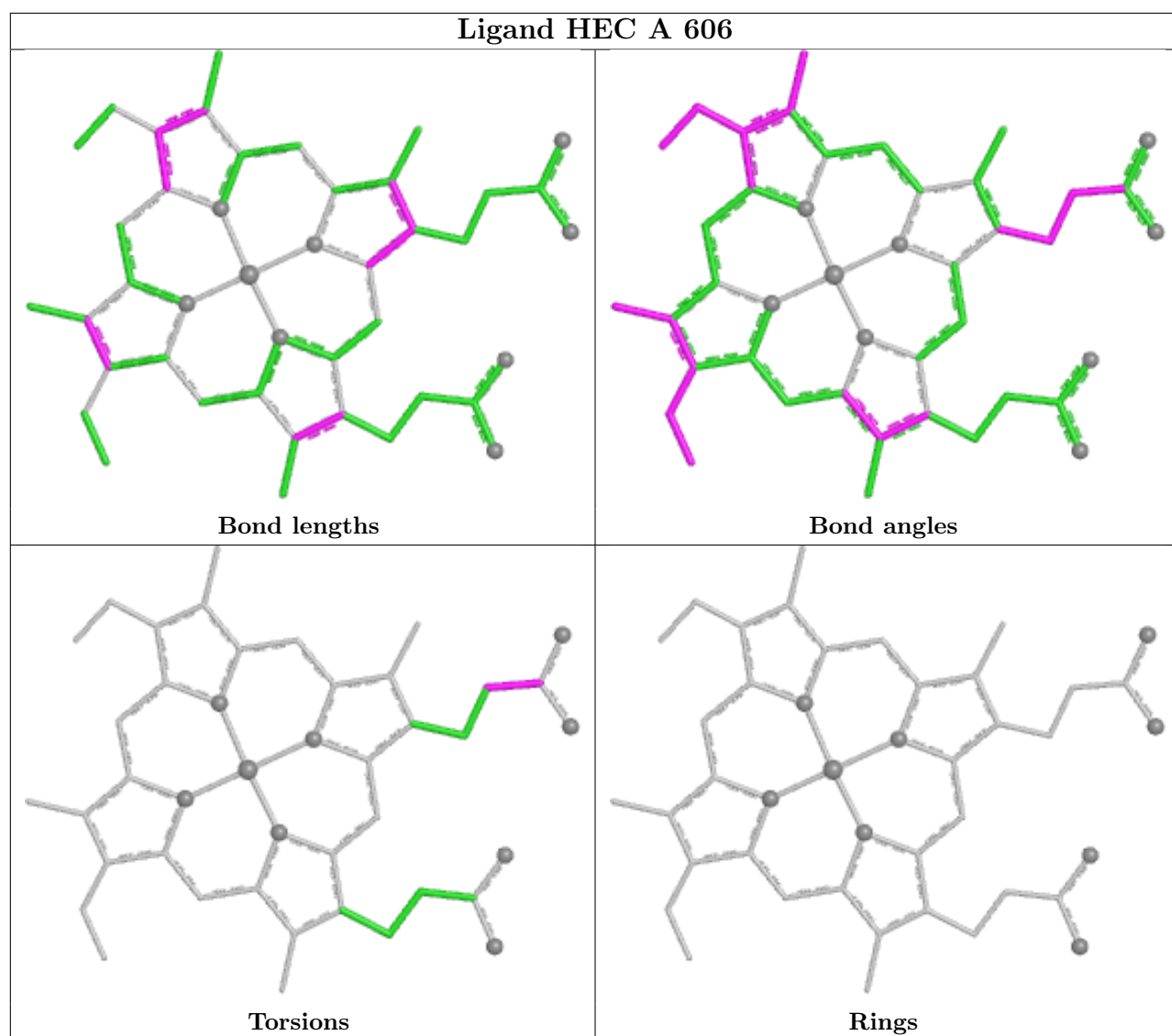


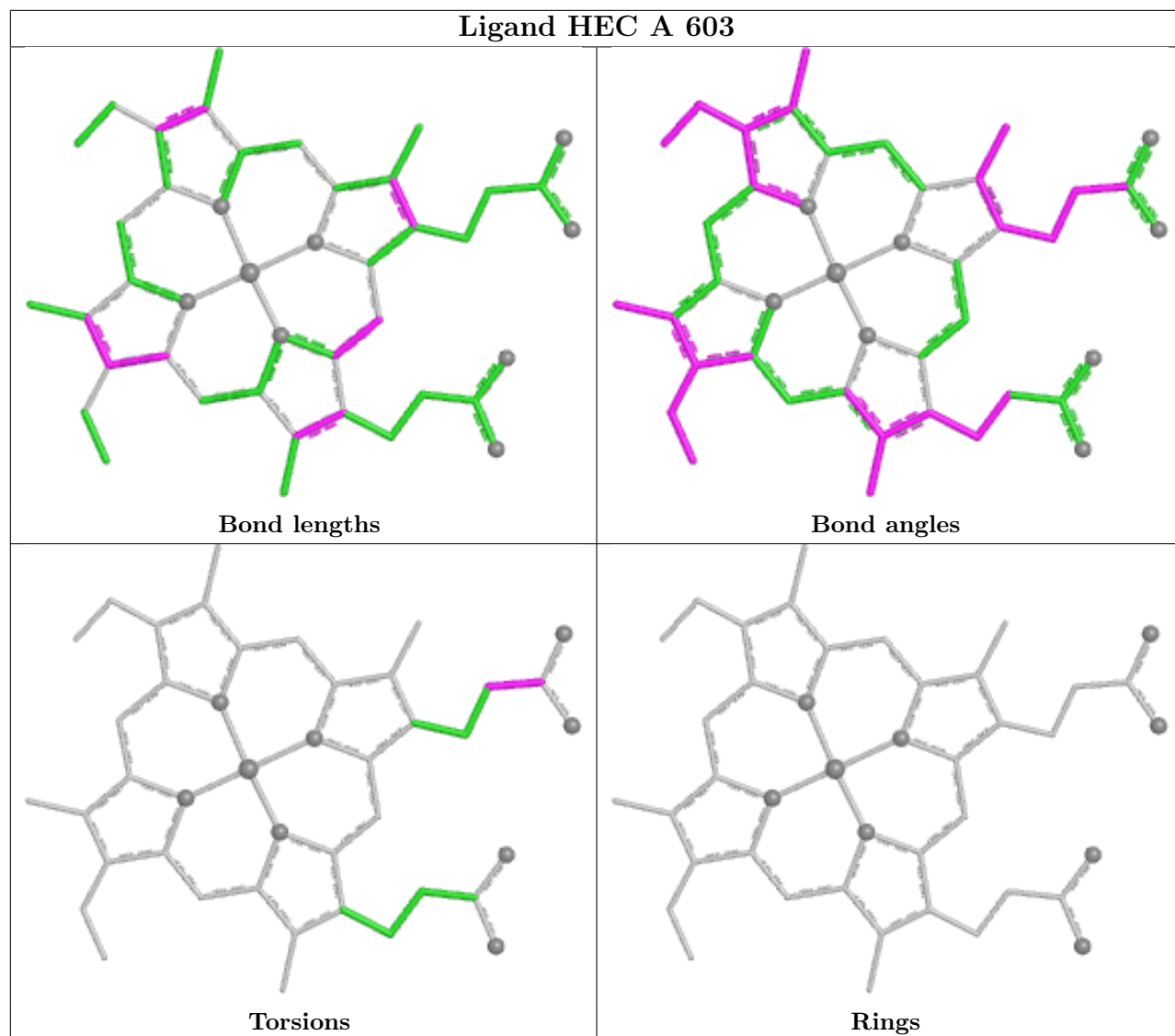
Torsions



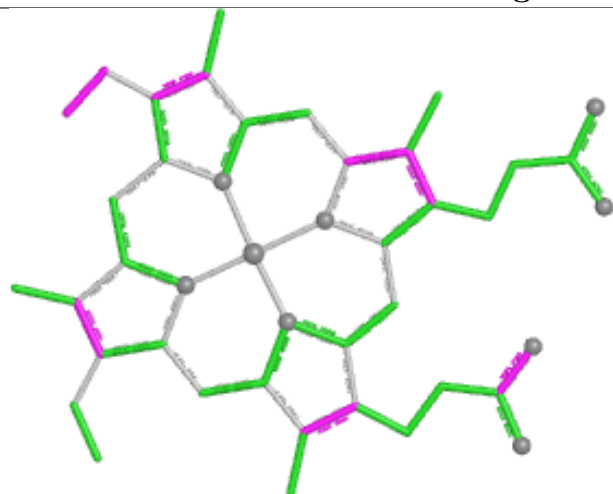
Rings



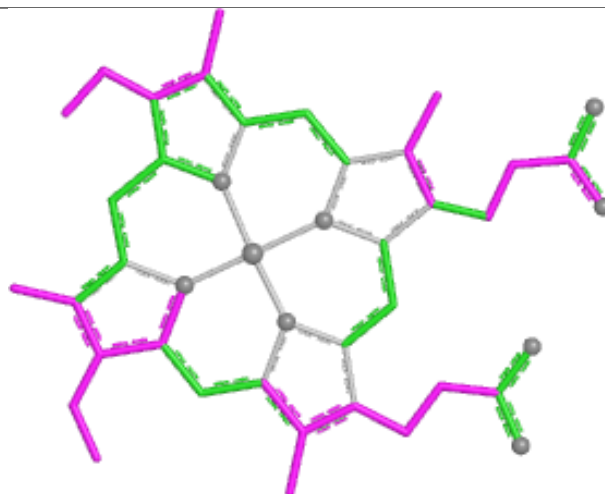




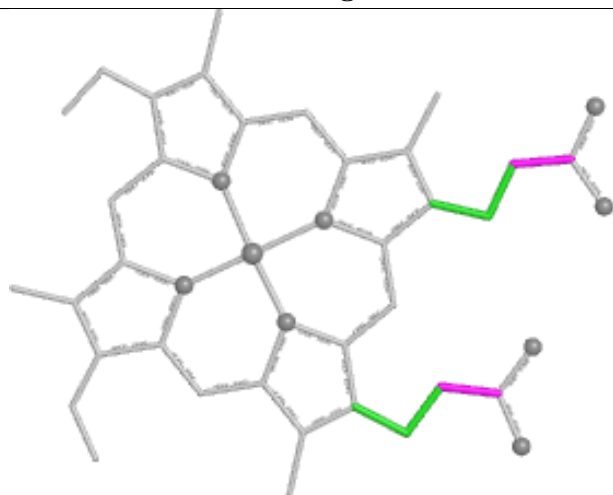
Ligand HEC B 602



Bond lengths



Bond angles

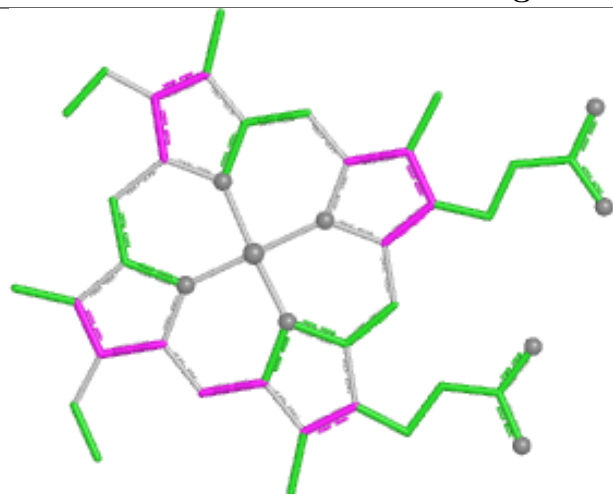


Torsions

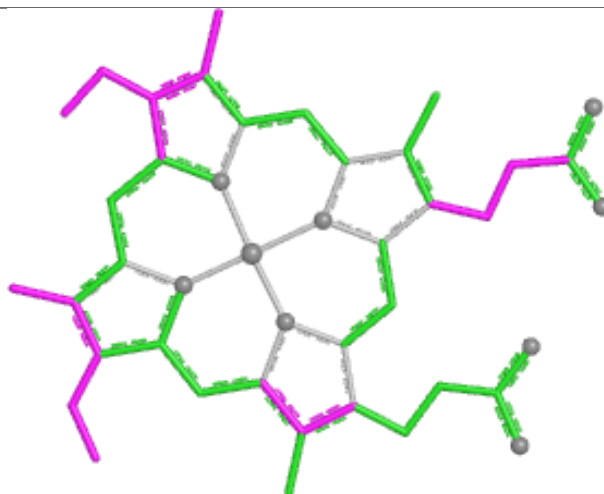


Rings

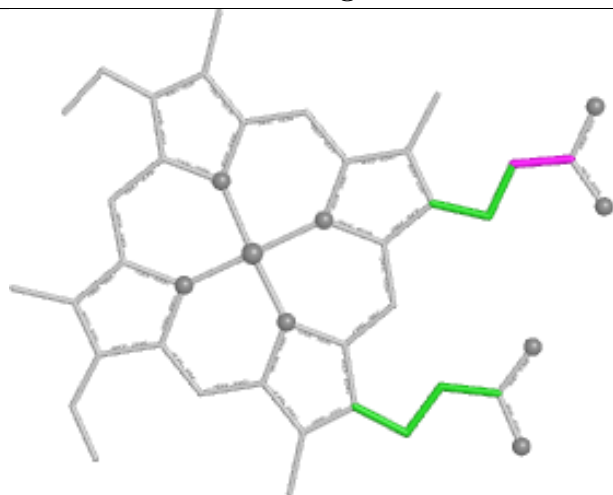
Ligand HEC B 606



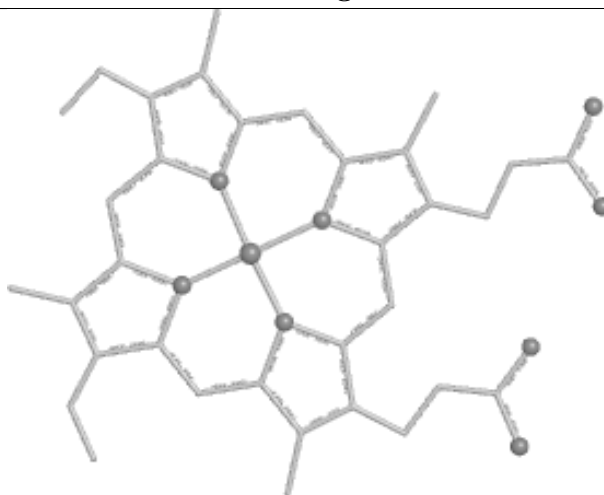
Bond lengths



Bond angles

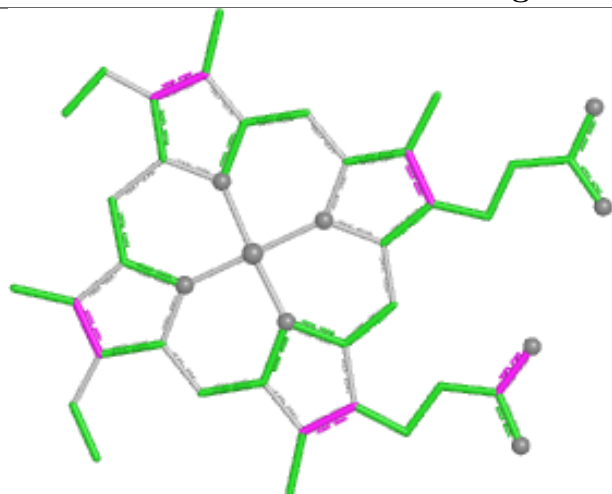


Torsions

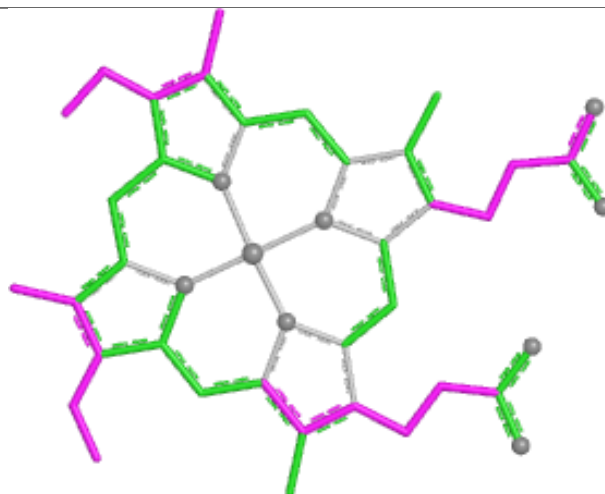


Rings

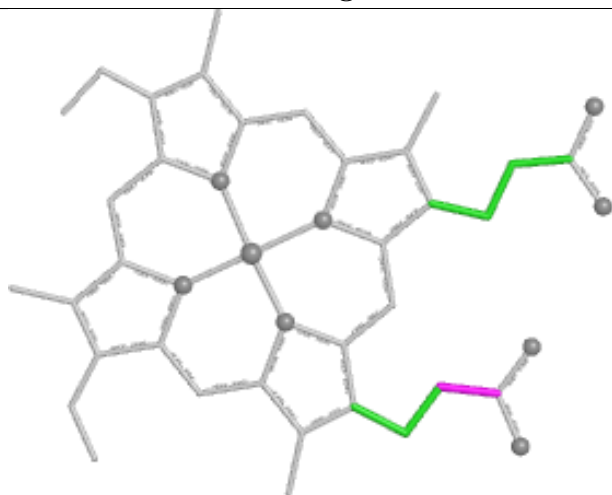
Ligand HEC B 607



Bond lengths



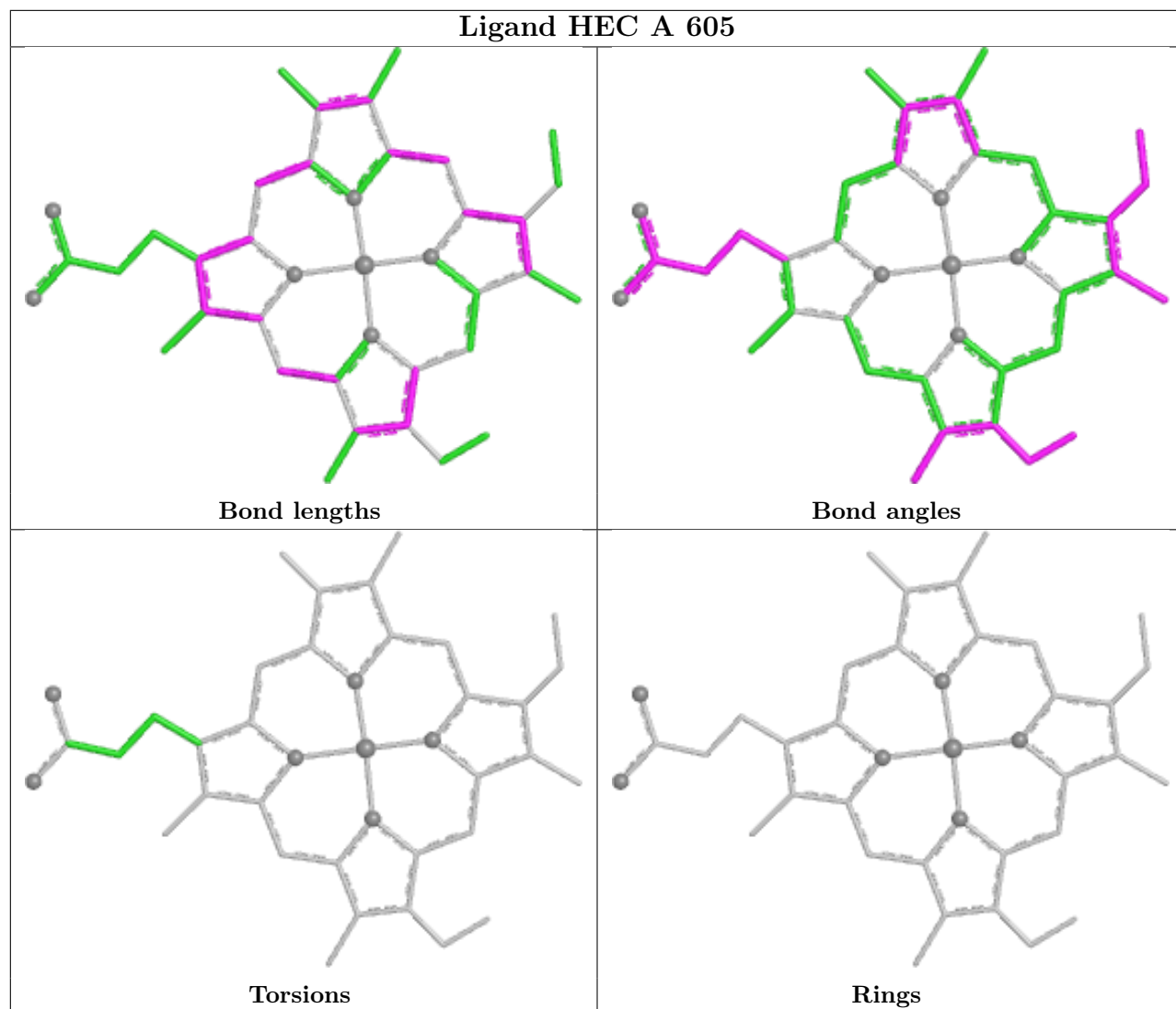
Bond angles



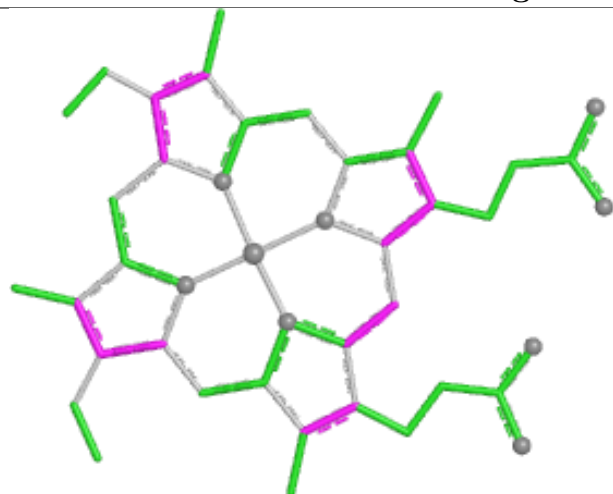
Torsions



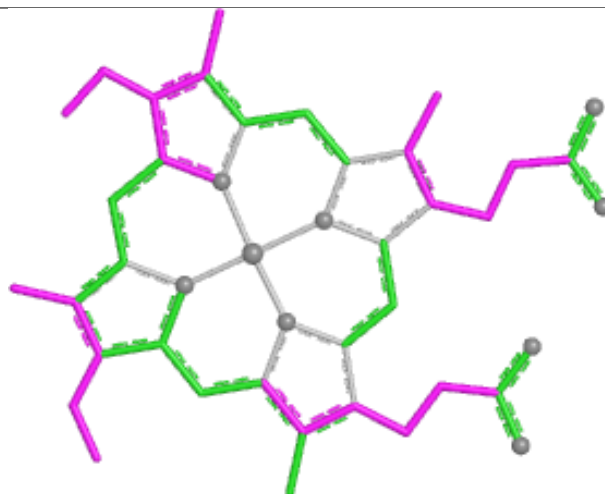
Rings



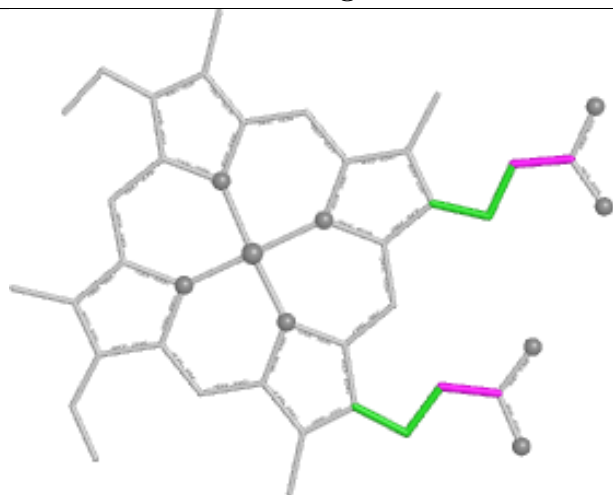
Ligand HEC A 608



Bond lengths



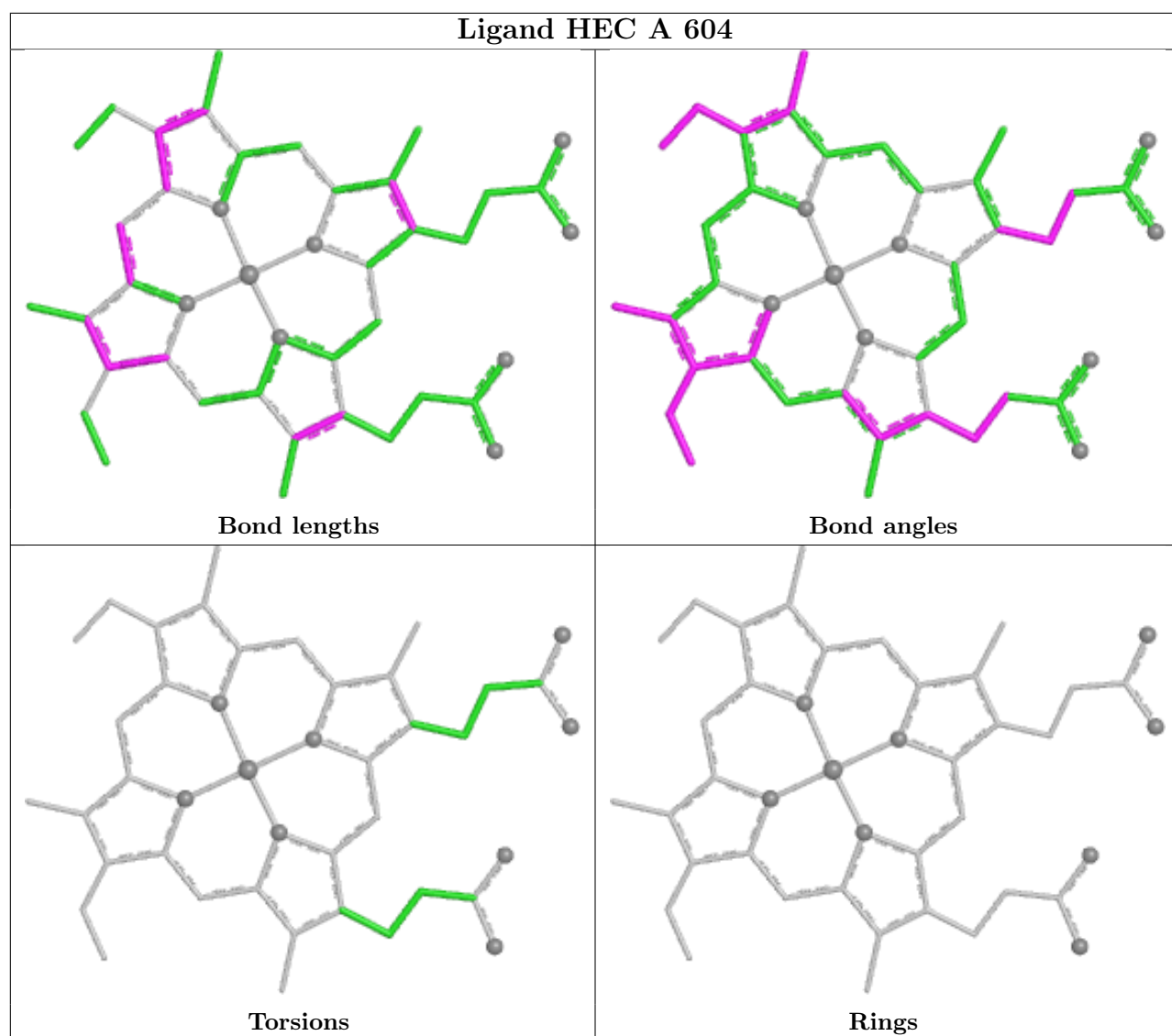
Bond angles



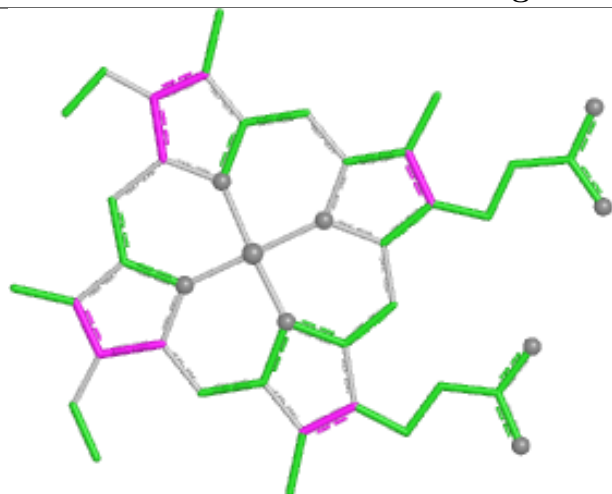
Torsions



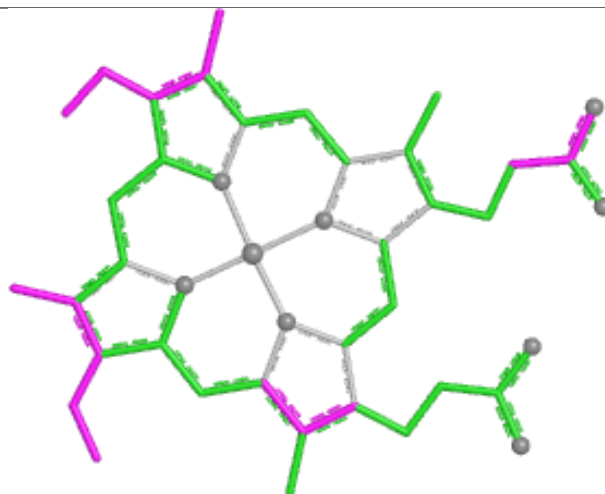
Rings



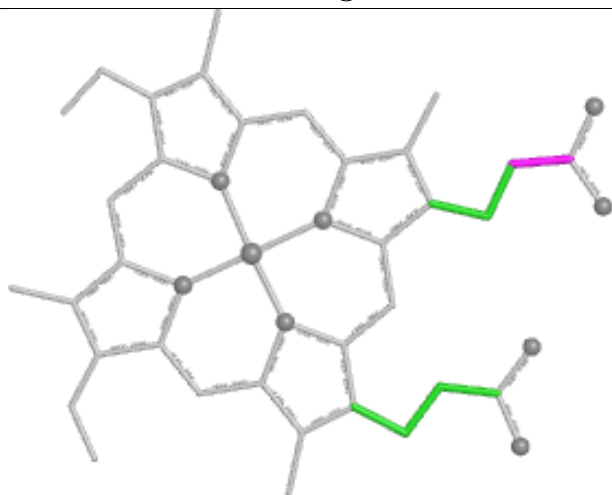
Ligand HEC B 601



Bond lengths



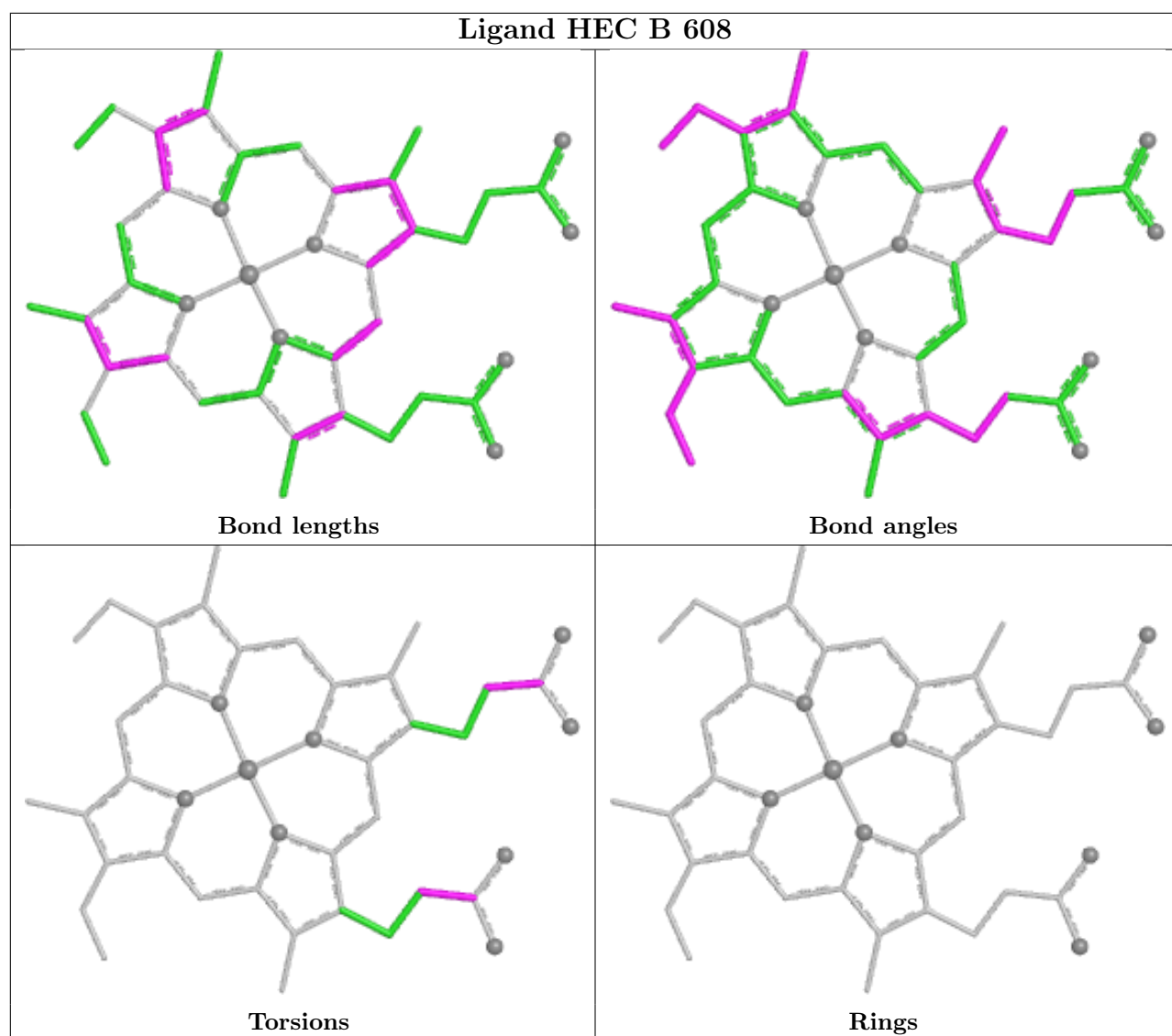
Bond angles



Torsions



Rings



5.7 Other polymers [i](#)

There are no such residues in this entry.

5.8 Polymer linkage issues [i](#)

There are no chain breaks in this entry.

6 Fit of model and data [i](#)

6.1 Protein, DNA and RNA chains [i](#)

In the following table, the column labelled ‘#RSRZ> 2’ contains the number (and percentage) of RSRZ outliers, followed by percent RSRZ outliers for the chain as percentile scores relative to all X-ray entries and entries of similar resolution. The OWAB column contains the minimum, median, 95th percentile and maximum values of the occupancy-weighted average B-factor per residue. The column labelled ‘Q< 0.9’ lists the number of (and percentage) of residues with an average occupancy less than 0.9.

Mol	Chain	Analysed	<RSRZ>	#RSRZ>2	OWAB(Å ²)	Q<0.9
1	A	520/524 (99%)	-0.42	6 (1%) 76 79	10, 17, 27, 51	19 (3%)
1	B	520/524 (99%)	-0.48	6 (1%) 76 79	10, 15, 27, 48	21 (4%)
All	All	1040/1048 (99%)	-0.45	12 (1%) 76 79	10, 16, 27, 51	40 (3%)

The worst 5 of 12 RSRZ outliers are listed below:

Mol	Chain	Res	Type	RSRZ
1	A	524	SER	4.8
1	B	524	SER	4.6
1	B	523	ALA	3.8
1	A	523	ALA	2.9
1	A	522	VAL	2.4

6.2 Non-standard residues in protein, DNA, RNA chains [i](#)

There are no non-standard protein/DNA/RNA residues in this entry.

6.3 Carbohydrates [i](#)

There are no monosaccharides in this entry.

6.4 Ligands [i](#)

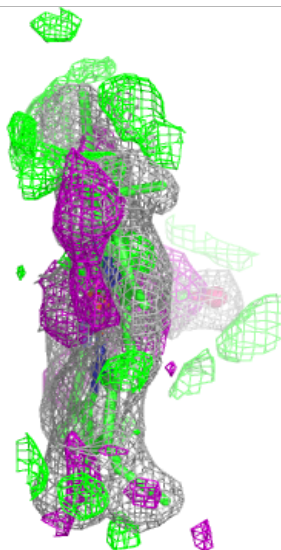
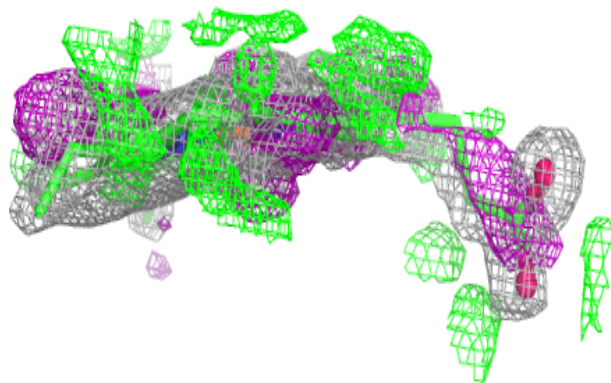
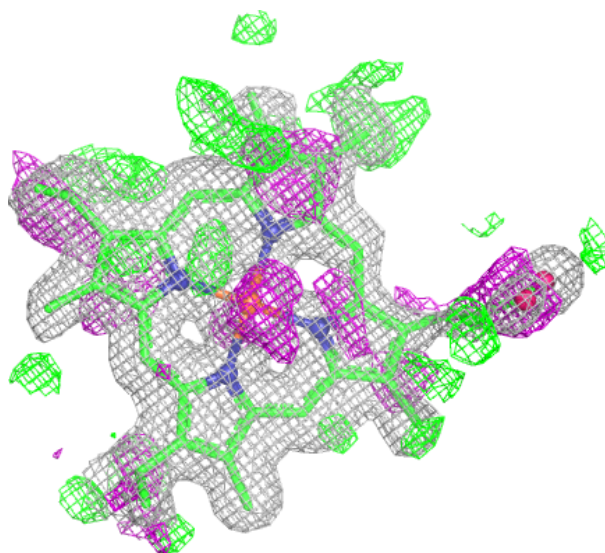
In the following table, the Atoms column lists the number of modelled atoms in the group and the number defined in the chemical component dictionary. The B-factors column lists the minimum, median, 95th percentile and maximum values of B factors of atoms in the group. The column labelled ‘Q< 0.9’ lists the number of atoms with occupancy less than 0.9.

Mol	Type	Chain	Res	Atoms	RSCC	RSR	B-factors(\AA^2)	Q<0.9
5	GOL	B	611	6/6	0.83	0.21	42,44,47,48	0
6	CIT	B	612	13/13	0.88	0.12	21,24,25,25	13
4	MPD	A	610	8/8	0.92	0.12	19,22,24,24	0
4	MPD	B	610	8/8	0.94	0.10	18,21,24,24	0
2	HEC	A	605	39/43	0.95	0.15	21,29,42,45	0
2	HEC	B	605	39/43	0.95	0.14	19,28,40,42	0
2	HEC	A	608	43/43	0.98	0.07	14,16,23,29	0
2	HEC	A	607	43/43	0.98	0.06	12,13,23,34	0
2	HEC	B	607	43/43	0.98	0.06	11,12,23,33	0
2	HEC	B	608	43/43	0.98	0.06	15,18,21,25	0
2	HEC	B	603	43/43	0.99	0.04	8,10,11,12	0
2	HEC	B	604	43/43	0.99	0.05	9,10,13,16	0
2	HEC	A	604	43/43	0.99	0.05	11,12,14,17	0
2	HEC	B	606	43/43	0.99	0.05	12,14,16,16	0
2	HEC	A	601	43/43	0.99	0.05	11,13,14,16	0
2	HEC	A	606	43/43	0.99	0.05	12,14,15,17	0
3	CA	A	609	1/1	0.99	0.09	18,18,18,18	0
3	CA	B	609	1/1	0.99	0.05	16,16,16,16	0
2	HEC	A	602	43/43	0.99	0.05	10,12,17,24	0
2	HEC	A	603	43/43	0.99	0.05	10,11,12,13	0
2	HEC	B	601	43/43	0.99	0.04	10,11,12,13	0
2	HEC	B	602	43/43	0.99	0.06	10,11,17,24	0

The following is a graphical depiction of the model fit to experimental electron density of all instances of the Ligand of Interest. In addition, ligands with molecular weight > 250 and outliers as shown on the geometry validation Tables will also be included. Each fit is shown from different orientation to approximate a three-dimensional view.

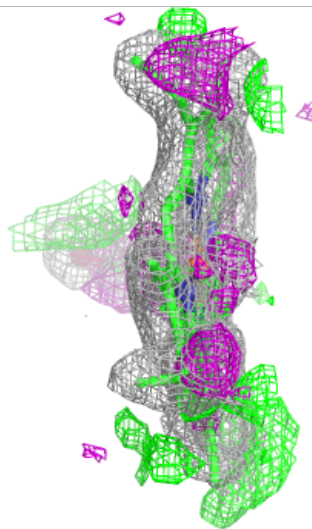
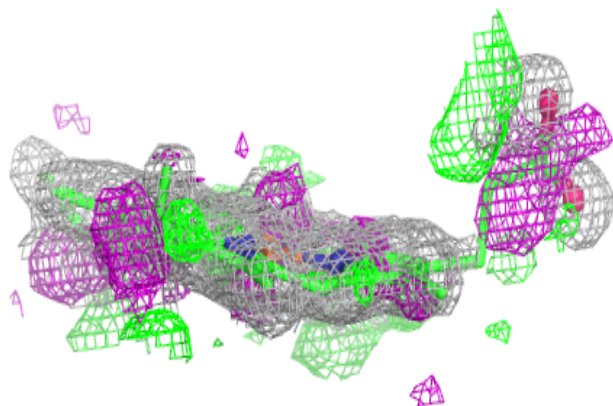
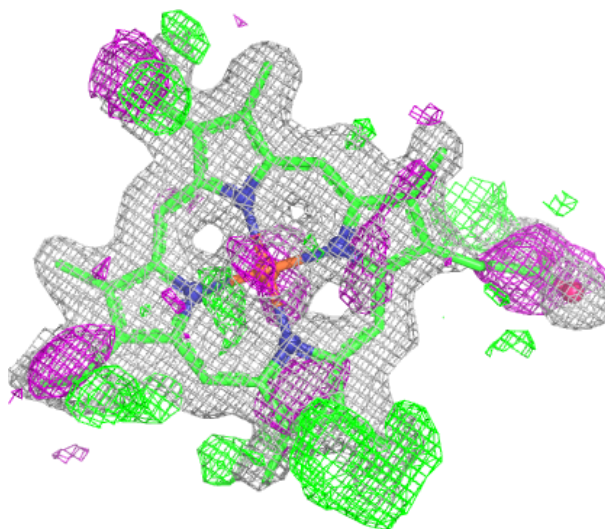
Electron density around HEC A 605:

$2mF_o-DF_c$ (at 0.7 rmsd) in gray
 mF_o-DF_c (at 3 rmsd) in purple (negative)
and green (positive)



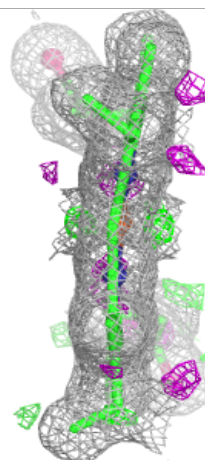
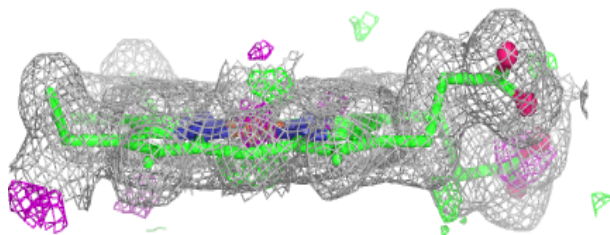
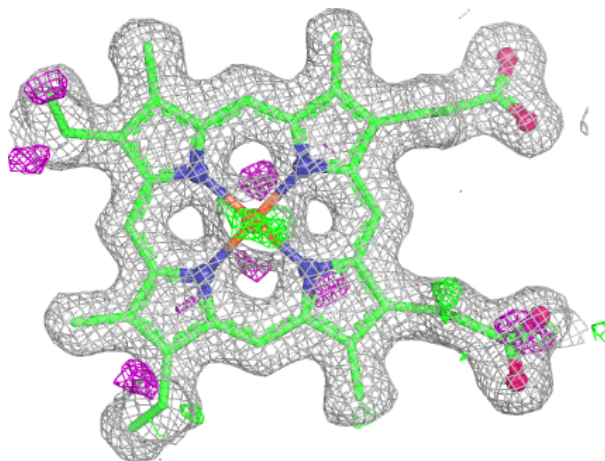
Electron density around HEC B 605:

$2mF_o-DF_c$ (at 0.7 rmsd) in gray
 mF_o-DF_c (at 3 rmsd) in purple (negative)
and green (positive)



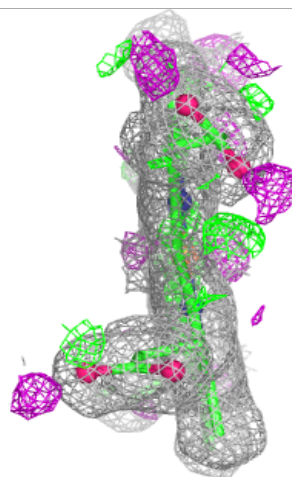
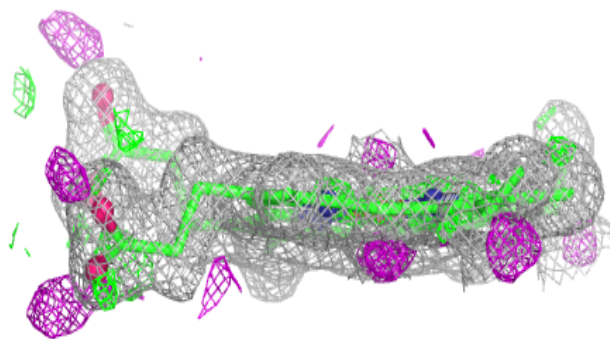
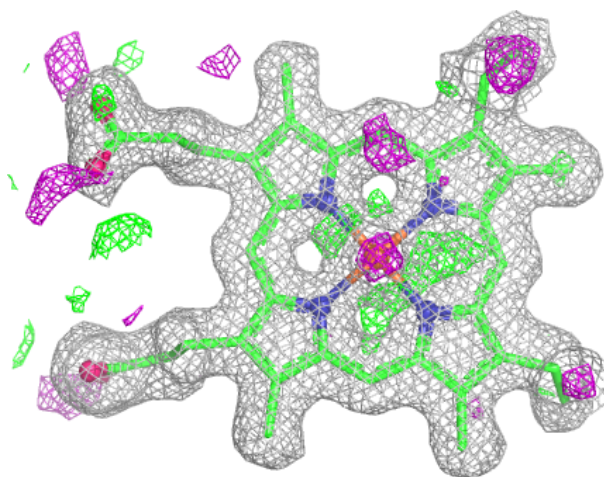
Electron density around HEC A 608:

$2mF_o-DF_c$ (at 0.7 rmsd) in gray
 mF_o-DF_c (at 3 rmsd) in purple (negative)
and green (positive)



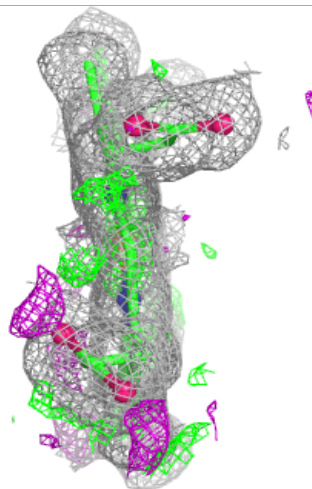
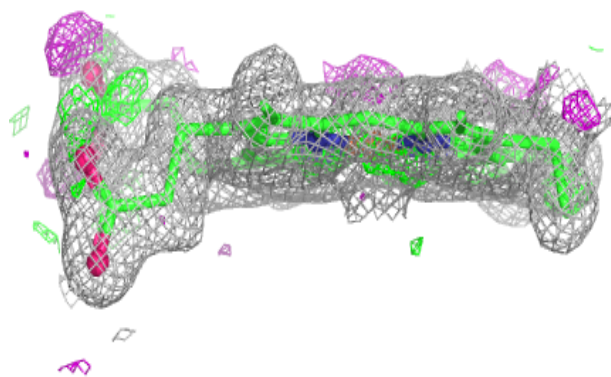
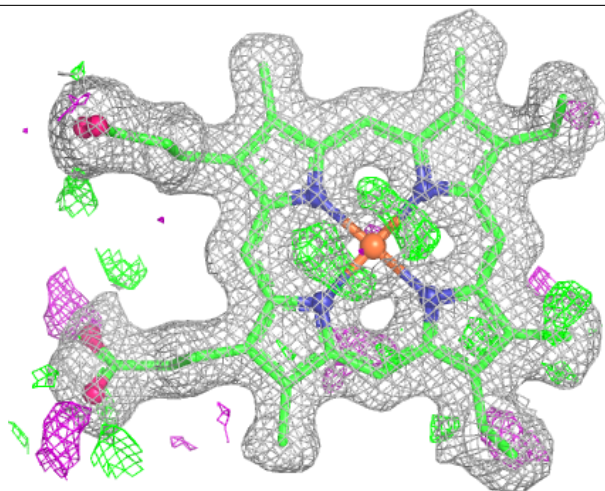
Electron density around HEC A 607:

$2mF_o-DF_c$ (at 0.7 rmsd) in gray
 mF_o-DF_c (at 3 rmsd) in purple (negative)
and green (positive)



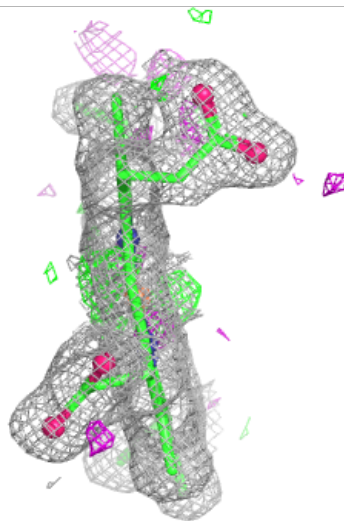
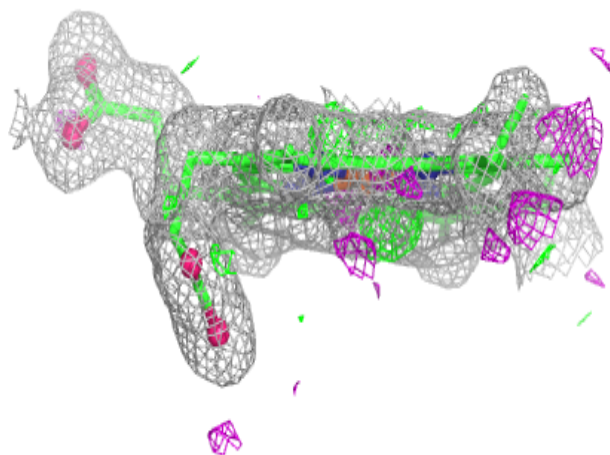
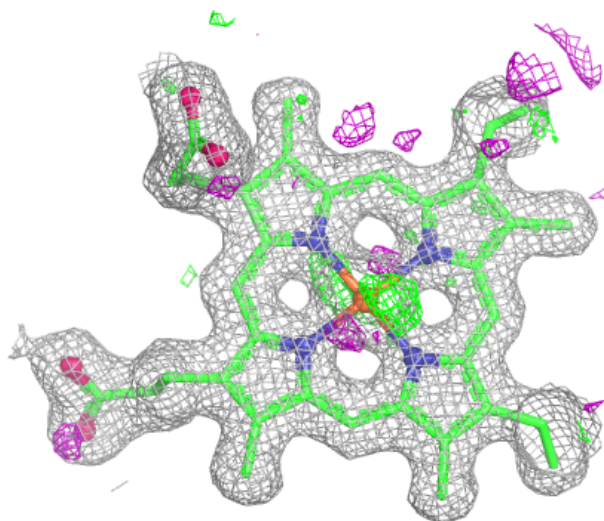
Electron density around HEC B 607:

$2mF_o-DF_c$ (at 0.7 rmsd) in gray
 mF_o-DF_c (at 3 rmsd) in purple (negative)
and green (positive)



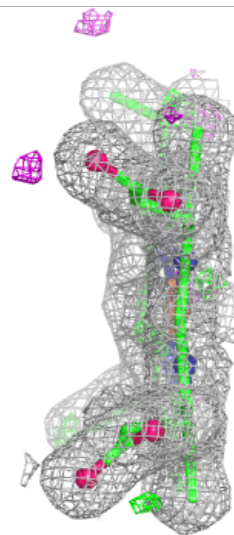
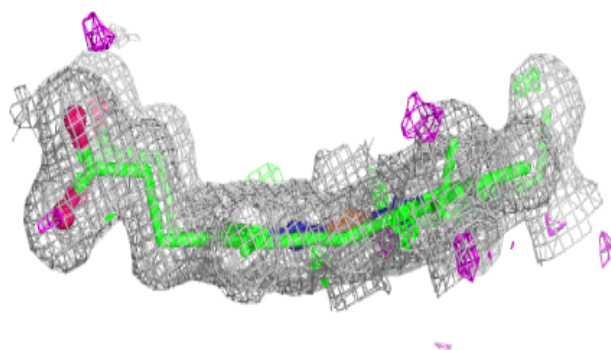
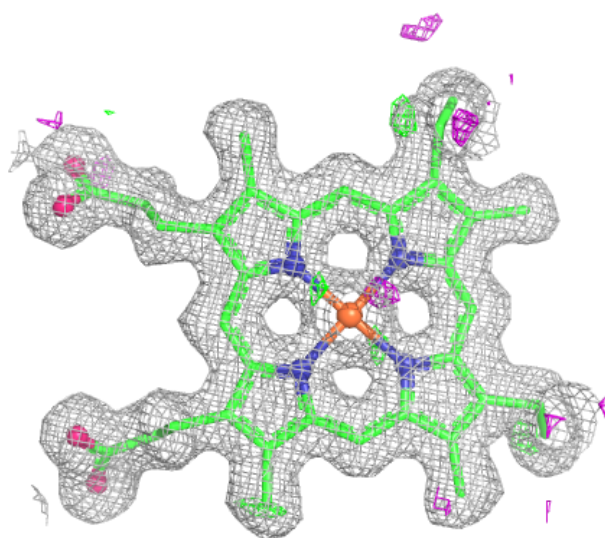
Electron density around HEC B 608:

$2mF_o-DF_c$ (at 0.7 rmsd) in gray
 mF_o-DF_c (at 3 rmsd) in purple (negative)
and green (positive)



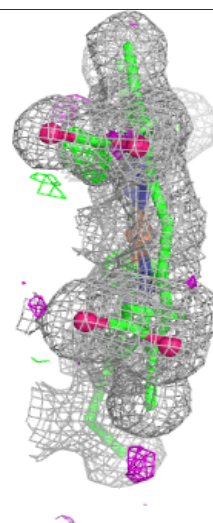
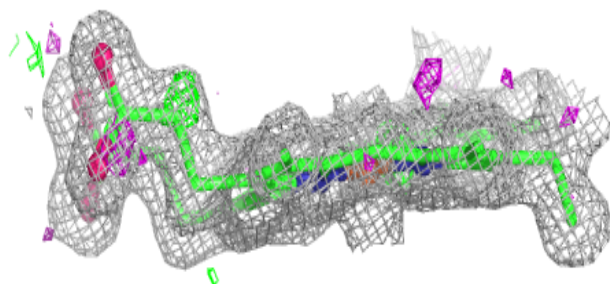
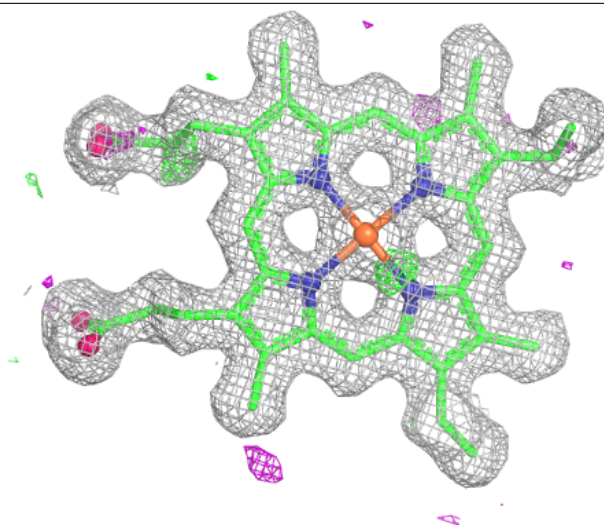
Electron density around HEC B 603:

$2mF_o-DF_c$ (at 0.7 rmsd) in gray
 mF_o-DF_c (at 3 rmsd) in purple (negative)
and green (positive)



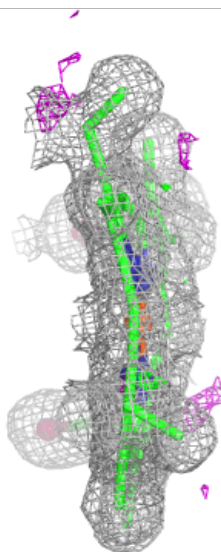
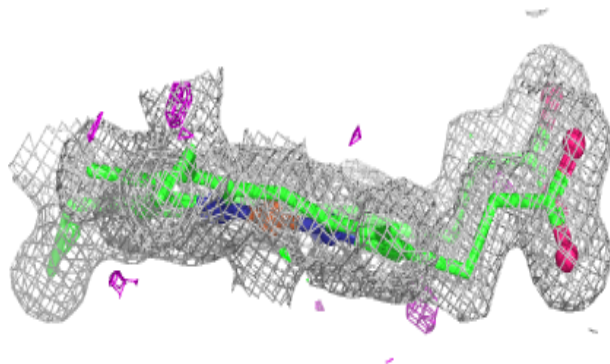
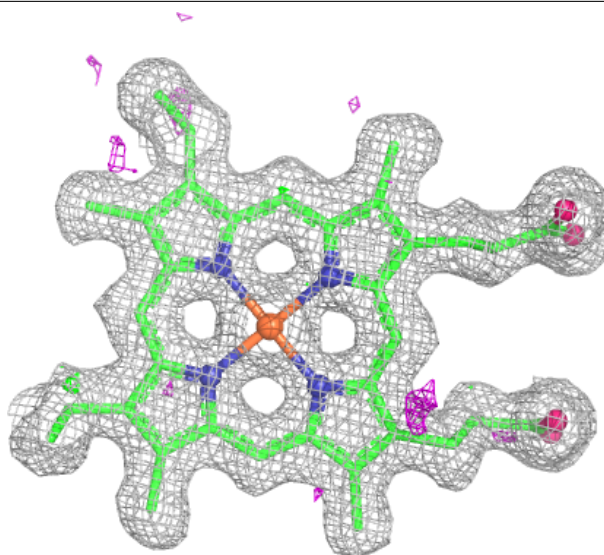
Electron density around HEC B 604:

$2mF_o-DF_c$ (at 0.7 rmsd) in gray
 mF_o-DF_c (at 3 rmsd) in purple (negative)
and green (positive)



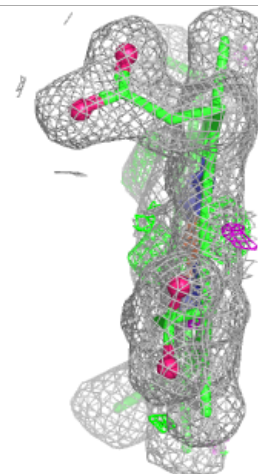
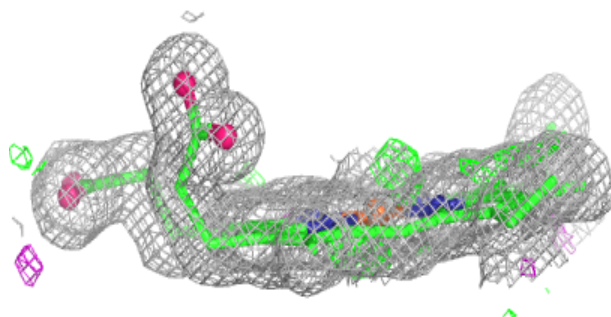
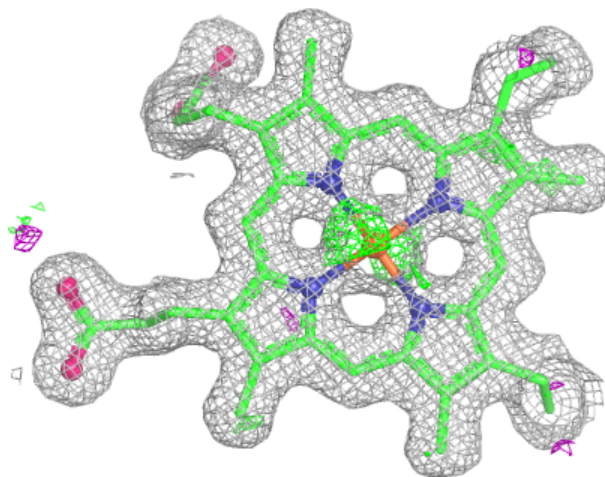
Electron density around HEC A 604:

$2mF_o-DF_c$ (at 0.7 rmsd) in gray
 mF_o-DF_c (at 3 rmsd) in purple (negative)
and green (positive)



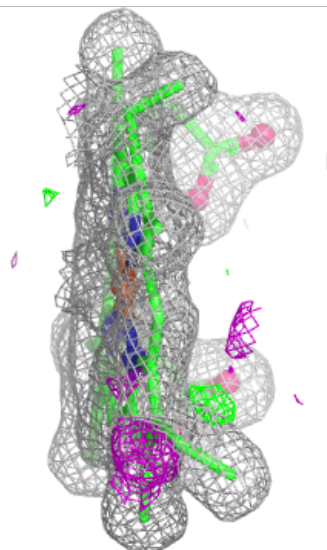
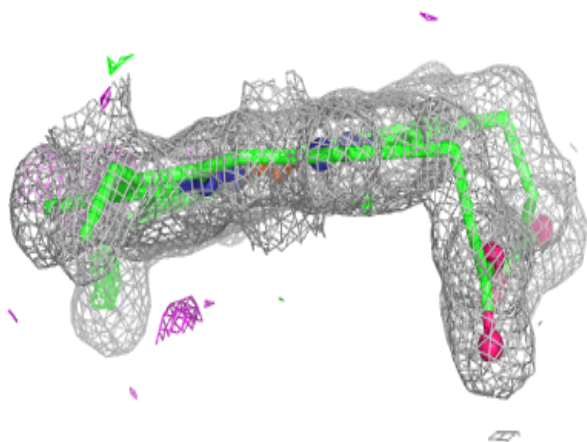
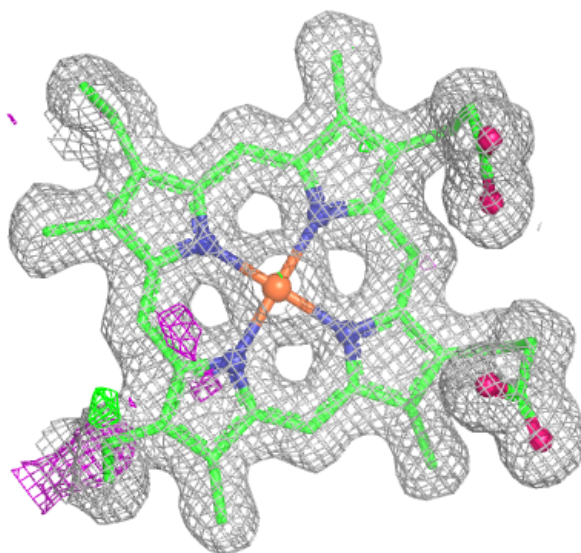
Electron density around HEC B 606:

$2mF_o-DF_c$ (at 0.7 rmsd) in gray
 mF_o-DF_c (at 3 rmsd) in purple (negative)
and green (positive)



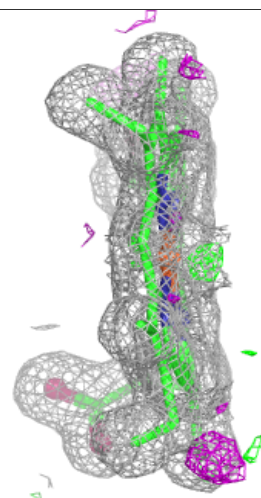
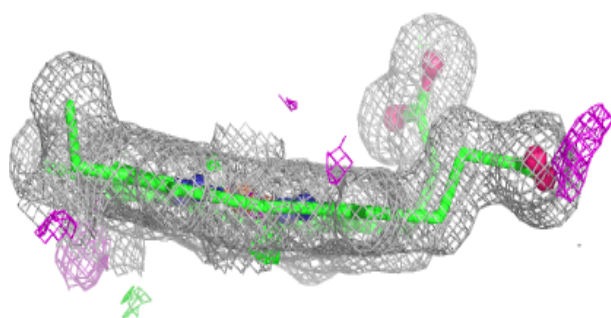
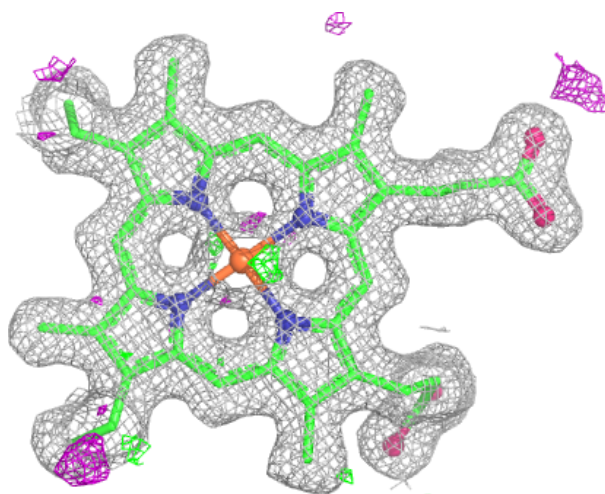
Electron density around HEC A 601:

$2mF_o-DF_c$ (at 0.7 rmsd) in gray
 mF_o-DF_c (at 3 rmsd) in purple (negative)
and green (positive)



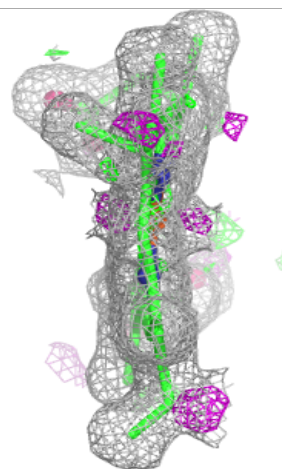
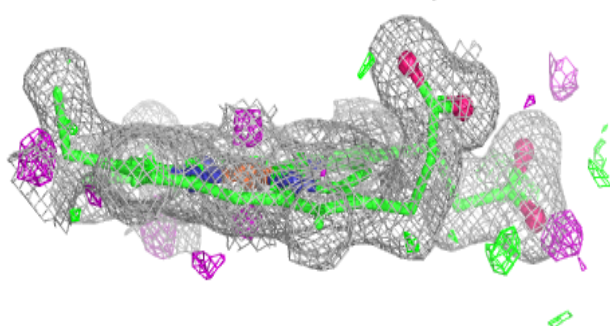
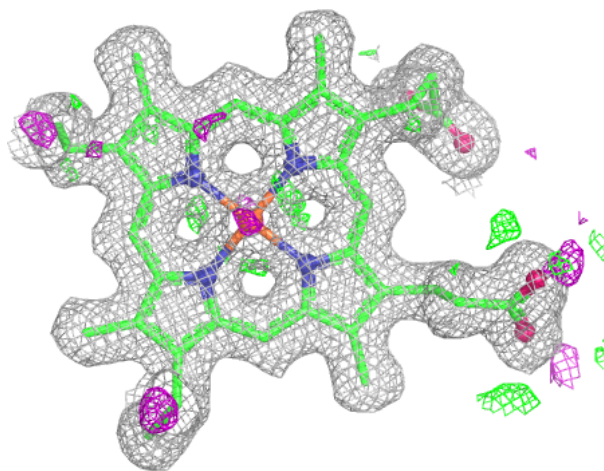
Electron density around HEC A 606:

$2mF_o-DF_c$ (at 0.7 rmsd) in gray
 mF_o-DF_c (at 3 rmsd) in purple (negative)
and green (positive)



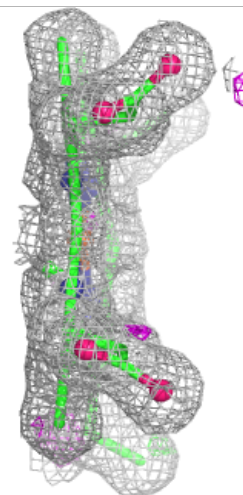
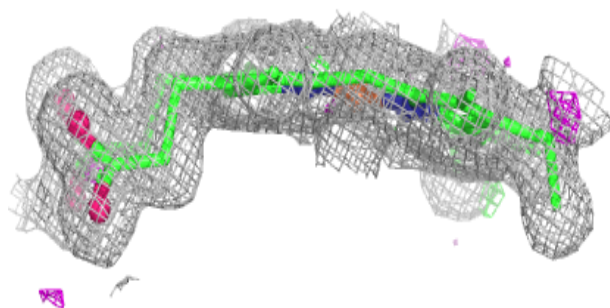
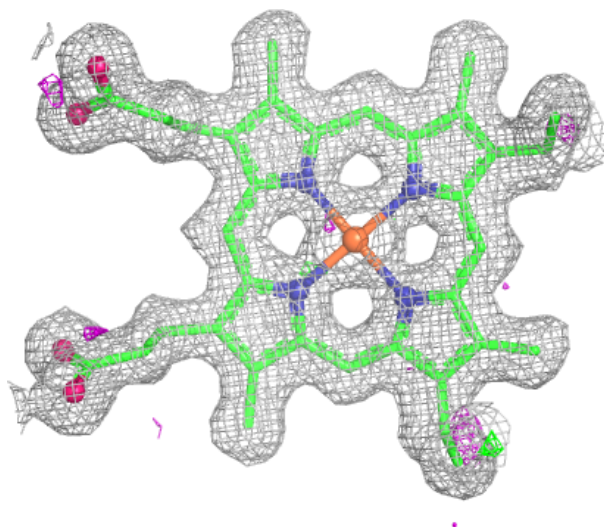
Electron density around HEC A 602:

$2mF_o-DF_c$ (at 0.7 rmsd) in gray
 mF_o-DF_c (at 3 rmsd) in purple (negative)
and green (positive)



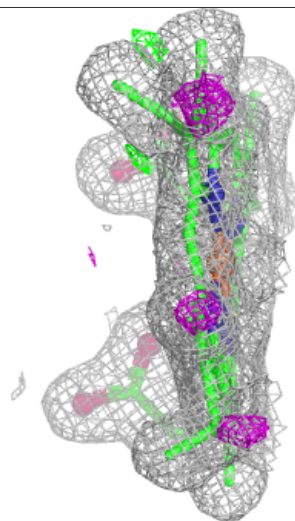
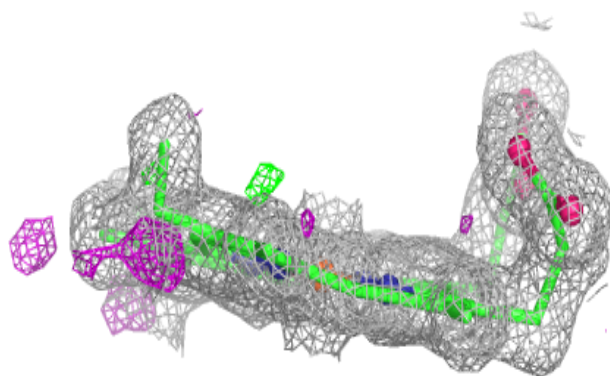
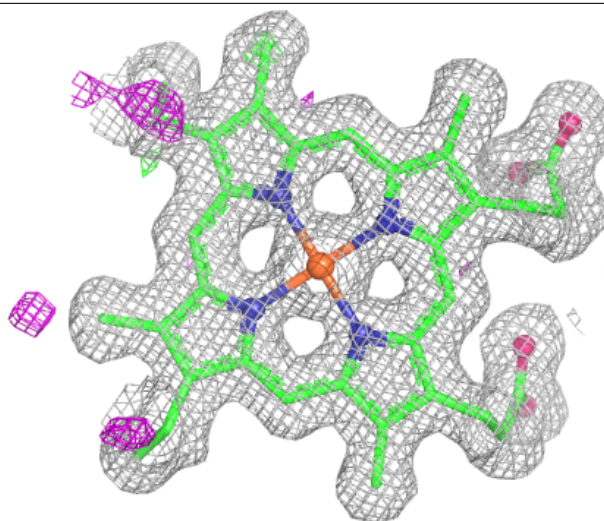
Electron density around HEC A 603:

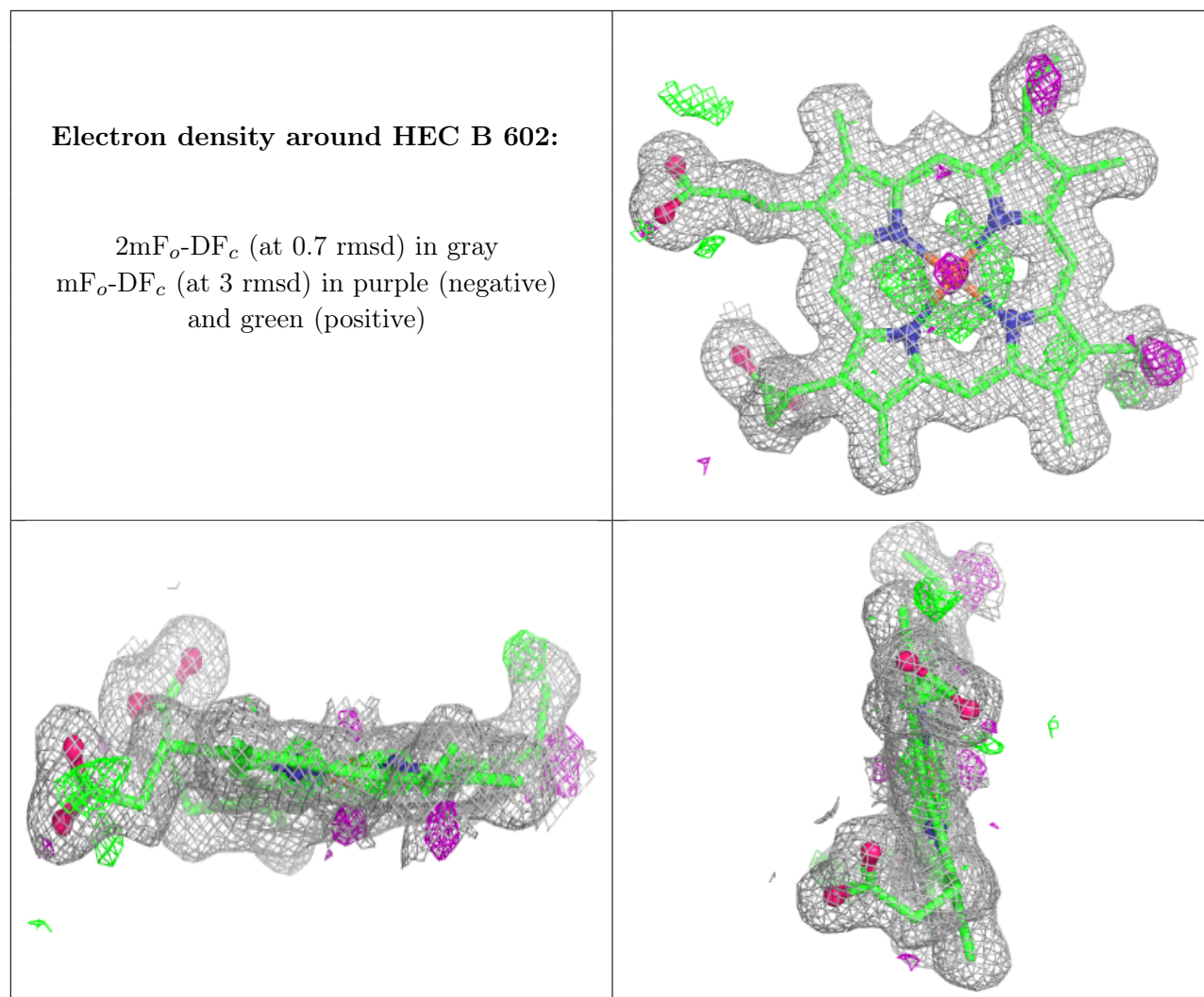
$2mF_o-DF_c$ (at 0.7 rmsd) in gray
 mF_o-DF_c (at 3 rmsd) in purple (negative)
and green (positive)



Electron density around HEC B 601:

$2mF_o-DF_c$ (at 0.7 rmsd) in gray
 mF_o-DF_c (at 3 rmsd) in purple (negative)
and green (positive)





6.5 Other polymers ⓘ

There are no such residues in this entry.