



Full wwPDB X-ray Structure Validation Report ⓘ

Sep 2, 2025 – 12:16 PM EDT

PDB ID : 9Q4O / pdb_00009q4o
Title : Structure of human neuronal nitric oxide synthase R354A/G357D mutant heme domain bound with 6-((5-(2-(4,4-difluoropiperidin-1-yl)ethyl-2,3-difluorophenoxy)methyl)-4-methylpyridin-2-amine
Authors : Li, H.; Poulos, T.L.
Deposited on : 2025-08-20
Resolution : 2.12 Å(reported)

This is a Full wwPDB X-ray Structure Validation Report for a publicly released PDB entry.

We welcome your comments at validation@mail.wwpdb.org

A user guide is available at

<https://www.wwpdb.org/validation/2017/XrayValidationReportHelp>

with specific help available everywhere you see the ⓘ symbol.

The types of validation reports are described at

<http://www.wwpdb.org/validation/2017/FAQs#types>.

The following versions of software and data (see [references ⓘ](#)) were used in the production of this report:

MolProbity	:	4-5-2 with Phenix2.0rc1
Mogul	:	2022.3.0, CSD as543be (2022)
Xtriage (Phenix)	:	2.0rc1
EDS	:	3.0
buster-report	:	1.1.7 (2018)
Percentile statistics	:	20231227.v01 (using entries in the PDB archive December 27th 2023)
CCP4	:	9.0.006 (Gargrove)
Density-Fitness	:	1.0.12
Ideal geometry (proteins)	:	Engh & Huber (2001)
Ideal geometry (DNA, RNA)	:	Parkinson et al. (1996)
Validation Pipeline (wwPDB-VP)	:	2.45.1

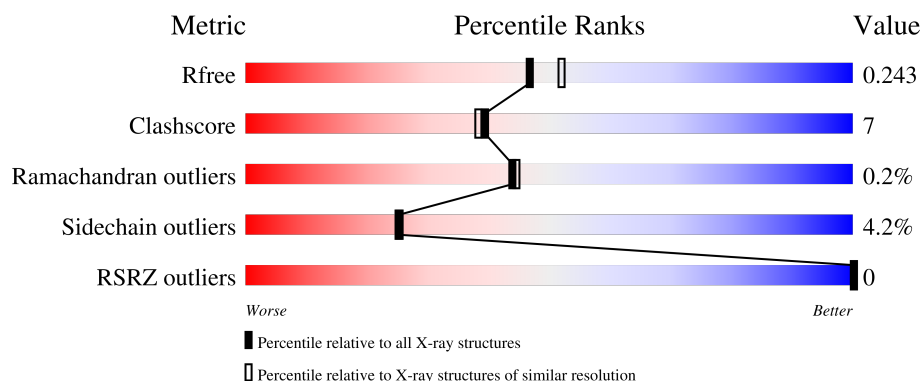
1 Overall quality at a glance

The following experimental techniques were used to determine the structure:

X-RAY DIFFRACTION

The reported resolution of this entry is 2.12 Å.

Percentile scores (ranging between 0-100) for global validation metrics of the entry are shown in the following graphic. The table shows the number of entries on which the scores are based.



Metric	Whole archive (#Entries)	Similar resolution (#Entries, resolution range(Å))
R_{free}	164625	7689 (2.14-2.10)
Clashscore	180529	8431 (2.14-2.10)
Ramachandran outliers	177936	8366 (2.14-2.10)
Sidechain outliers	177891	8367 (2.14-2.10)
RSRZ outliers	164620	7689 (2.14-2.10)

The table below summarises the geometric issues observed across the polymeric chains and their fit to the electron density. The red, orange, yellow and green segments of the lower bar indicate the fraction of residues that contain outliers for ≥ 3 , 2, 1 and 0 types of geometric quality criteria respectively. A grey segment represents the fraction of residues that are not modelled. The numeric value for each fraction is indicated below the corresponding segment, with a dot representing fractions $\leq 5\%$. The upper red bar (where present) indicates the fraction of residues that have poor fit to the electron density. The numeric value is given above the bar.

Mol	Chain	Length	Quality of chain
1	A	423	 79% 18% ..
1	B	423	 78% 17% ..
1	C	423	 82% 16% ..
1	D	423	 79% 17% .

2 Entry composition

There are 7 unique types of molecules in this entry. The entry contains 14509 atoms, of which 0 are hydrogens and 0 are deuteriums.

In the tables below, the ZeroOcc column contains the number of atoms modelled with zero occupancy, the AltConf column contains the number of residues with at least one atom in alternate conformation and the Trace column contains the number of residues modelled with at most 2 atoms.

- Molecule 1 is a protein called Nitric oxide synthase, brain.

Mol	Chain	Residues	Atoms					ZeroOcc	AltConf	Trace
1	A	419	Total	C	N	O	S	0	5	0
			3435	2197	589	627	22			
1	B	412	Total	C	N	O	S	0	2	0
			3365	2158	573	613	21			
1	C	418	Total	C	N	O	S	0	3	0
			3417	2186	585	625	21			
1	D	410	Total	C	N	O	S	0	1	0
			3346	2145	571	609	21			

There are 16 discrepancies between the modelled and reference sequences:

Chain	Residue	Modelled	Actual	Comment	Reference
A	354	ALA	ARG	engineered mutation	UNP P29475
A	357	ASP	GLY	engineered mutation	UNP P29475
A	723	LEU	-	expression tag	UNP P29475
A	724	VAL	-	expression tag	UNP P29475
B	354	ALA	ARG	engineered mutation	UNP P29475
B	357	ASP	GLY	engineered mutation	UNP P29475
B	723	LEU	-	expression tag	UNP P29475
B	724	VAL	-	expression tag	UNP P29475
C	354	ALA	ARG	engineered mutation	UNP P29475
C	357	ASP	GLY	engineered mutation	UNP P29475
C	723	LEU	-	expression tag	UNP P29475
C	724	VAL	-	expression tag	UNP P29475
D	354	ALA	ARG	engineered mutation	UNP P29475
D	357	ASP	GLY	engineered mutation	UNP P29475
D	723	LEU	-	expression tag	UNP P29475
D	724	VAL	-	expression tag	UNP P29475

- Molecule 2 is PROTOPORPHYRIN IX CONTAINING FE (CCD ID: HEM) (formula: $C_{34}H_{32}FeN_4O_4$).



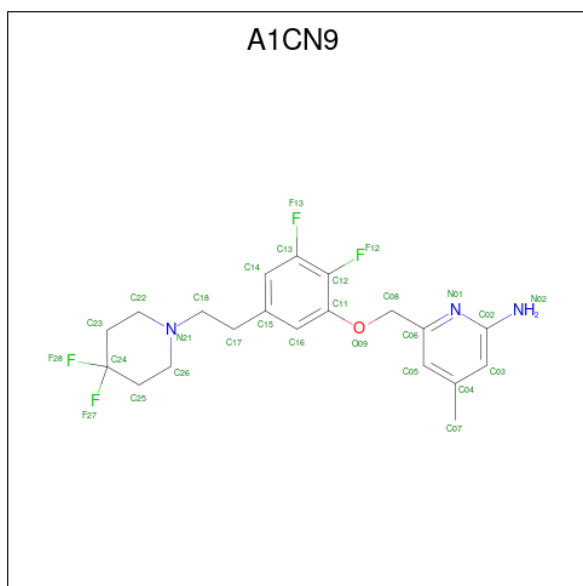
Mol	Chain	Residues	Atoms					ZeroOcc	AltConf
2	A	1	Total 43	C 34	Fe 1	N 4	O 4	0	0
2	B	1	Total 43	C 34	Fe 1	N 4	O 4	0	0
2	C	1	Total 43	C 34	Fe 1	N 4	O 4	0	0
2	D	1	Total 43	C 34	Fe 1	N 4	O 4	0	0

- Molecule 3 is 5,6,7,8-TETRAHYDROBIOPTERIN (CCD ID: H4B) (formula: C₉H₁₅N₅O₃).



Mol	Chain	Residues	Atoms				ZeroOcc	AltConf
3	A	1	Total	C	N	O	0	0
			17	9	5	3		
3	A	1	Total	C	N	O	0	0
			17	9	5	3		
3	C	1	Total	C	N	O	0	0
			17	9	5	3		
3	D	1	Total	C	N	O	0	0
			17	9	5	3		

- Molecule 4 is 6-(5-[2-(4,4-difluoropiperidin-1-yl)ethyl]-2,3-difluorophenoxy)methyl)-4-methylpyridin-2-amine (CCD ID: A1CN9) (formula: C₂₀H₂₃F₄N₃O) (labeled as "Ligand of Interest" by depositor).



Mol	Chain	Residues	Atoms					ZeroOcc	AltConf
4	A	1	Total	C	F	N	O	0	0
			28	20	4	3	1		
4	B	1	Total	C	F	N	O	0	0
			28	20	4	3	1		
4	C	1	Total	C	F	N	O	0	0
			28	20	4	3	1		
4	D	1	Total	C	F	N	O	0	0
			28	20	4	3	1		

- Molecule 5 is GLYCEROL (CCD ID: GOL) (formula: C₃H₈O₃).



Mol	Chain	Residues	Atoms			ZeroOcc	AltConf
5	A	1	Total	C	O	0	0
			6	3	3		
5	A	1	Total	C	O	0	0
			6	3	3		
5	B	1	Total	C	O	0	0
			6	3	3		
5	C	1	Total	C	O	0	0
			6	3	3		
5	C	1	Total	C	O	0	0
			6	3	3		
5	D	1	Total	C	O	0	0
			6	3	3		

- Molecule 6 is ZINC ION (CCD ID: ZN) (formula: Zn).

Mol	Chain	Residues	Atoms		ZeroOcc	AltConf
6	A	1	Total	Zn	0	0
			1	1		
6	C	1	Total	Zn	0	0
			1	1		

- Molecule 7 is water.

Mol	Chain	Residues	Atoms		ZeroOcc	AltConf
7	A	119	Total	O	0	0
			119	119		

Continued on next page...

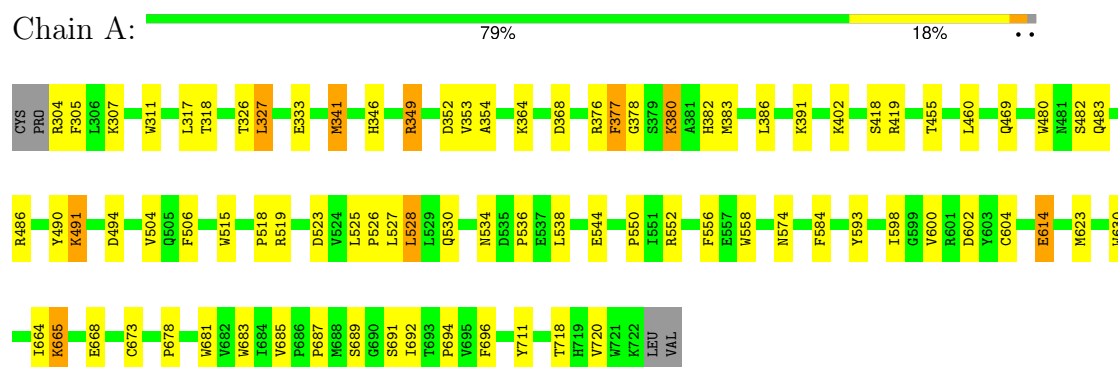
Continued from previous page...

Mol	Chain	Residues	Atoms		ZeroOcc	AltConf
7	B	139	Total 139	O 139	0	0
7	C	129	Total 129	O 129	0	0
7	D	169	Total 169	O 169	0	0

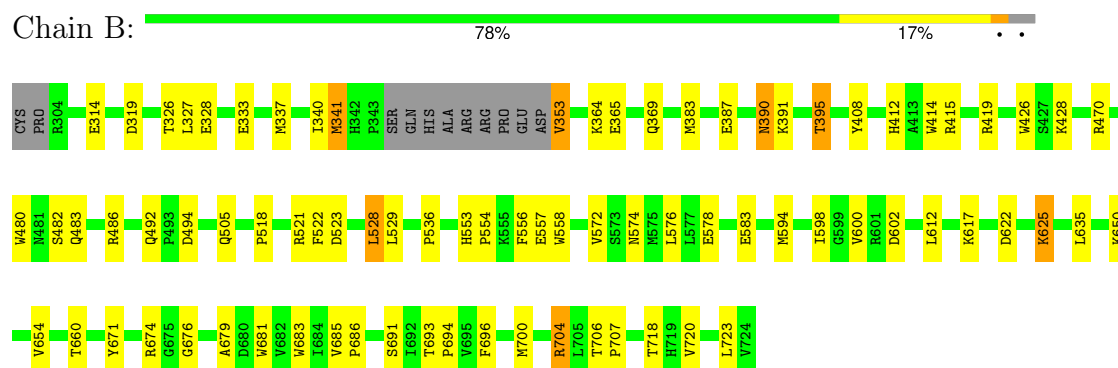
3 Residue-property plots

These plots are drawn for all protein, RNA, DNA and oligosaccharide chains in the entry. The first graphic for a chain summarises the proportions of the various outlier classes displayed in the second graphic. The second graphic shows the sequence view annotated by issues in geometry and electron density. Residues are color-coded according to the number of geometric quality criteria for which they contain at least one outlier: green = 0, yellow = 1, orange = 2 and red = 3 or more. A red dot above a residue indicates a poor fit to the electron density ($RSRZ > 2$). Stretches of 2 or more consecutive residues without any outlier are shown as a green connector. Residues present in the sample, but not in the model, are shown in grey.

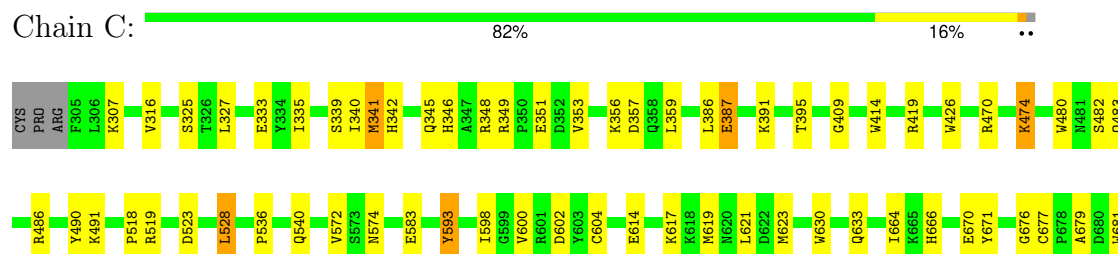
• Molecule 1: Nitric oxide synthase, brain

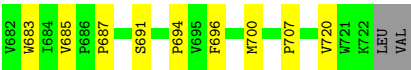


• Molecule 1: Nitric oxide synthase, brain

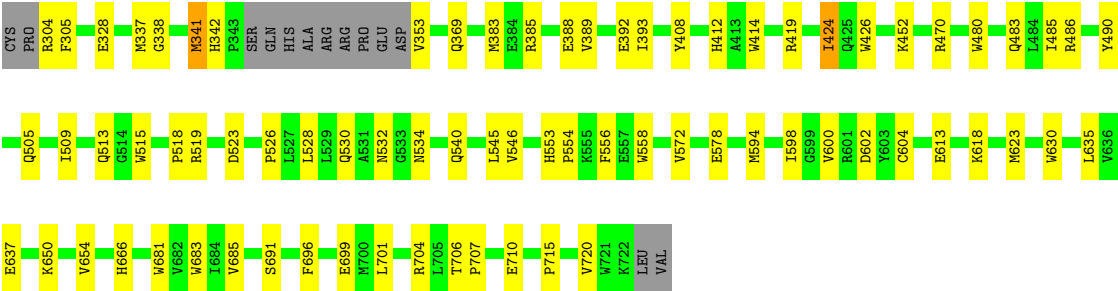
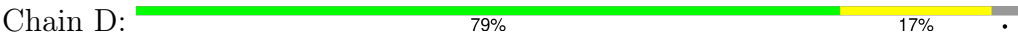


• Molecule 1: Nitric oxide synthase, brain





● Molecule 1: Nitric oxide synthase, brain



4 Data and refinement statistics

Property	Value	Source
Space group	P 1 21 1	Depositor
Cell constants a, b, c, α , β , γ	51.74Å 163.32Å 117.41Å 90.00° 90.00° 90.00°	Depositor
Resolution (Å)	49.39 – 2.12 49.39 – 2.12	Depositor EDS
% Data completeness (in resolution range)	96.7 (49.39-2.12) 96.9 (49.39-2.12)	Depositor EDS
R_{merge}	0.23	Depositor
R_{sym}	(Not available)	Depositor
$\langle I/\sigma(I) \rangle$ ¹	1.10 (at 2.12Å)	Xtriage
Refinement program	PHENIX (1.11.1_2575: ???)	Depositor
R, R_{free}	0.197 , 0.251 0.187 , 0.243	Depositor DCC
R_{free} test set	5434 reflections (3.16%)	wwPDB-VP
Wilson B-factor (Å ²)	42.3	Xtriage
Anisotropy	0.803	Xtriage
Bulk solvent k_{sol} (e/Å ³), B_{sol} (Å ²)	0.36 , 39.8	EDS
L-test for twinning ²	$\langle L \rangle = 0.51$, $\langle L^2 \rangle = 0.35$	Xtriage
Estimated twinning fraction	0.447 for h,-k,-l	Xtriage
F_o, F_c correlation	0.98	EDS
Total number of atoms	14509	wwPDB-VP
Average B, all atoms (Å ²)	53.0	wwPDB-VP

Xtriage's analysis on translational NCS is as follows: *The largest off-origin peak in the Patterson function is 3.95% of the height of the origin peak. No significant pseudotranslation is detected.*

¹Intensities estimated from amplitudes.

²Theoretical values of $\langle |L| \rangle$, $\langle L^2 \rangle$ for acentric reflections are 0.5, 0.333 respectively for untwinned datasets, and 0.375, 0.2 for perfectly twinned datasets.

5 Model quality [i](#)

5.1 Standard geometry [i](#)

Bond lengths and bond angles in the following residue types are not validated in this section: ZN, H4B, HEM, GOL, A1CN9

The Z score for a bond length (or angle) is the number of standard deviations the observed value is removed from the expected value. A bond length (or angle) with $|Z| > 5$ is considered an outlier worth inspection. RMSZ is the root-mean-square of all Z scores of the bond lengths (or angles).

Mol	Chain	Bond lengths		Bond angles	
		RMSZ	# Z >5	RMSZ	# Z >5
1	A	0.30	0/3548	0.49	0/4816
1	B	0.32	0/3466	0.52	0/4702
1	C	0.31	0/3524	0.50	0/4783
1	D	0.35	0/3444	0.53	0/4673
All	All	0.32	0/13982	0.51	0/18974

Chiral center outliers are detected by calculating the chiral volume of a chiral center and verifying if the center is modelled as a planar moiety or with the opposite hand. A planarity outlier is detected by checking planarity of atoms in a peptide group, atoms in a mainchain group or atoms of a sidechain that are expected to be planar.

Mol	Chain	#Chirality outliers	#Planarity outliers
1	C	0	1

There are no bond length outliers.

There are no bond angle outliers.

There are no chirality outliers.

All (1) planarity outliers are listed below:

Mol	Chain	Res	Type	Group
1	C	593	TYR	Peptide

5.2 Too-close contacts [i](#)

In the following table, the Non-H and H(model) columns list the number of non-hydrogen atoms and hydrogen atoms in the chain respectively. The H(added) column lists the number of hydrogen atoms added and optimized by MolProbity. The Clashes column lists the number of clashes within the asymmetric unit, whereas Symm-Clashes lists symmetry-related clashes.

Mol	Chain	Non-H	H(model)	H(added)	Clashes	Symm-Clashes
1	A	3435	0	3352	51	0
1	B	3365	0	3286	46	0
1	C	3417	0	3327	43	0
1	D	3346	0	3261	46	0
2	A	43	0	30	3	0
2	B	43	0	30	2	0
2	C	43	0	30	3	0
2	D	43	0	30	2	0
3	A	34	0	30	0	0
3	C	17	0	15	0	0
3	D	17	0	15	0	0
4	A	28	0	0	1	0
4	B	28	0	0	0	0
4	C	28	0	0	1	0
4	D	28	0	0	1	0
5	A	12	0	16	0	0
5	B	6	0	8	1	0
5	C	12	0	16	0	0
5	D	6	0	8	0	0
6	A	1	0	0	0	0
6	C	1	0	0	0	0
7	A	119	0	0	3	0
7	B	139	0	0	2	0
7	C	129	0	0	3	0
7	D	169	0	0	1	0
All	All	14509	0	13454	180	0

The all-atom clashscore is defined as the number of clashes found per 1000 atoms (including hydrogen atoms). The all-atom clashscore for this structure is 7.

All (180) close contacts within the same asymmetric unit are listed below, sorted by their clash magnitude.

Atom-1	Atom-2	Interatomic distance (Å)	Clash overlap (Å)
1:C:528:LEU:HD22	1:C:536:PRO:HB2	1.64	0.78
1:B:704:ARG:HH11	1:B:704:ARG:HB3	1.49	0.77
1:A:528:LEU:HD22	1:A:536:PRO:HB2	1.69	0.75
1:A:544:GLU:OE2	7:A:901:HOH:O	2.05	0.73
1:A:378:GLY:HA2	1:A:383:MET:HE2	1.68	0.73
1:B:528:LEU:HD22	1:B:536:PRO:HB2	1.68	0.73
1:D:613:GLU:HG3	1:D:623:MET:HE1	1.72	0.71
2:A:801:HEM:HMC2	2:A:801:HEM:HBC2	1.72	0.71
2:C:801:HEM:HBC2	2:C:801:HEM:HMC2	1.73	0.69

Continued on next page...

Continued from previous page...

Atom-1	Atom-2	Interatomic distance (Å)	Clash overlap (Å)
1:D:342:HIS:NE2	7:D:902:HOH:O	2.27	0.67
2:D:801:HEM:HBC2	2:D:801:HEM:HMC2	1.76	0.67
1:B:337:MET:HB3	1:B:340:ILE:HG13	1.77	0.66
2:B:801:HEM:HMC2	2:B:801:HEM:HBC2	1.77	0.66
1:D:518:PRO:HG2	1:D:523:ASP:CG	2.20	0.66
2:D:801:HEM:HBB2	2:D:801:HEM:HHC	1.81	0.62
1:A:515:TRP:CE2	1:A:526:PRO:HD3	2.35	0.61
1:D:485:ILE:HD13	1:D:546:VAL:HG13	1.82	0.61
1:B:518:PRO:HG2	1:B:523:ASP:CG	2.27	0.60
1:B:327:LEU:HG	1:B:328:GLU:H	1.67	0.60
1:C:474:LYS:NZ	7:C:902:HOH:O	2.33	0.60
2:B:801:HEM:HBB2	2:B:801:HEM:HHC	1.84	0.60
1:A:304:ARG:HG2	1:A:305:PHE:HD2	1.66	0.59
1:C:327:LEU:HD21	1:C:348:ARG:HG3	1.85	0.58
1:A:364:LYS:NZ	1:A:368:ASP:OD2	2.36	0.58
1:B:419:ARG:HD3	1:B:683:TRP:CD2	2.39	0.57
1:A:673[B]:CYS:SG	7:A:988:HOH:O	2.58	0.56
1:C:480:TRP:HB2	1:C:528:LEU:HB3	1.87	0.56
1:D:483:GLN:OE1	1:D:486:ARG:HD2	2.06	0.56
2:C:801:HEM:HHC	2:C:801:HEM:HBB2	1.87	0.56
1:B:480:TRP:HB2	1:B:528:LEU:HB3	1.88	0.55
1:C:387:GLU:O	1:C:391:LYS:HG2	2.06	0.55
1:C:593:TYR:CD1	1:C:598:ILE:HD11	2.42	0.55
2:A:801:HEM:HBB2	2:A:801:HEM:HHC	1.89	0.55
1:A:518:PRO:HG2	1:A:523:ASP:CG	2.30	0.55
1:D:414:TRP:CE3	1:D:426:TRP:HA	2.42	0.55
1:B:674:ARG:HH21	5:B:803:GOL:H32	1.72	0.54
1:A:689:SER:HB3	1:A:692:ILE:HD11	1.89	0.54
1:A:380:LYS:HE2	1:A:380:LYS:H	1.73	0.53
1:C:687:PRO:HB2	1:D:691:SER:HB3	1.89	0.53
1:D:556:PHE:HB3	1:D:558:TRP:CE2	2.44	0.53
1:B:414:TRP:CE3	1:B:426:TRP:HA	2.44	0.53
1:D:598:ILE:HA	1:D:602:ASP:HB2	1.90	0.52
1:C:482:SER:HA	1:C:574:ASN:HB3	1.91	0.52
1:B:556:PHE:HB3	1:B:558:TRP:CE2	2.45	0.52
1:D:385:ARG:NH1	1:D:388:GLU:OE1	2.38	0.52
1:A:311:TRP:CE2	1:B:341:MET:HE3	2.45	0.52
1:B:600:VAL:HG13	1:B:635:LEU:HD11	1.92	0.52
1:C:325:SER:OG	7:C:901:HOH:O	2.19	0.52
1:C:419:ARG:HD3	1:C:683:TRP:CD2	2.44	0.52
1:A:530:GLN:HG3	1:A:534:ASN:O	2.11	0.51

Continued on next page...

Continued from previous page...

Atom-1	Atom-2	Interatomic distance (Å)	Clash overlap (Å)
1:A:598:ILE:HA	1:A:602:ASP:HB2	1.92	0.51
1:C:666:HIS:NE2	7:C:903:HOH:O	2.34	0.51
1:C:483:GLN:OE1	1:C:486:ARG:HD2	2.10	0.51
1:B:408:TYR:CE1	1:B:412:HIS:CE1	2.99	0.51
1:B:681:TRP:CZ2	1:B:685:VAL:HG21	2.46	0.51
1:B:679:ALA:HB3	1:B:700:MET:HB3	1.93	0.51
1:A:380:LYS:HE2	1:A:380:LYS:N	2.26	0.50
1:C:600:VAL:O	1:C:604:CYS:HB2	2.11	0.50
1:D:691:SER:HA	1:D:696:PHE:CG	2.46	0.50
1:D:623:MET:HA	1:D:630:TRP:CD1	2.47	0.50
1:B:390:ASN:ND2	7:B:901:HOH:O	2.32	0.50
1:D:353:VAL:HG12	1:D:470:ARG:HD3	1.93	0.50
1:B:691:SER:HA	1:B:696:PHE:CG	2.47	0.49
1:D:681:TRP:CZ2	1:D:685:VAL:HG21	2.47	0.49
1:B:327:LEU:HG	1:B:328:GLU:N	2.26	0.49
1:B:391:LYS:O	1:B:395:THR:OG1	2.31	0.49
1:C:679:ALA:HB3	1:C:700:MET:HB3	1.94	0.49
1:A:711:TYR:OH	2:A:801:HEM:O1D	2.20	0.48
1:B:387:GLU:OE2	1:B:391:LYS:HE3	2.13	0.48
1:D:490:TYR:CE1	1:D:519:ARG:HA	2.48	0.48
1:C:490:TYR:CE1	1:C:519:ARG:HA	2.48	0.48
1:A:691:SER:HA	1:A:696:PHE:CG	2.49	0.48
1:B:364:LYS:NZ	7:B:907:HOH:O	2.46	0.48
1:C:614:GLU:HA	1:C:617:LYS:HD2	1.96	0.48
1:B:594:MET:HA	1:B:654:VAL:O	2.14	0.48
1:C:598:ILE:HA	1:C:602:ASP:HB2	1.95	0.47
1:B:660:THR:OG1	1:B:694:PRO:HD2	2.13	0.47
1:A:483:GLN:OE1	1:A:486:ARG:HD2	2.15	0.47
1:A:491:LYS:HD2	1:A:504:VAL:HG11	1.97	0.47
1:C:691:SER:HA	1:C:696:PHE:CG	2.49	0.47
1:B:681:TRP:CE2	1:B:685:VAL:HG21	2.50	0.47
1:D:623:MET:HE3	1:D:630:TRP:CZ3	2.49	0.47
1:D:681:TRP:CE2	1:D:685:VAL:HG21	2.49	0.47
1:D:706:THR:HA	1:D:707:PRO:C	2.39	0.47
1:C:518:PRO:HG2	1:C:523:ASP:CG	2.39	0.47
1:C:335:ILE:HD11	1:D:701:LEU:HD13	1.95	0.46
1:D:424:ILE:HD12	1:D:666:HIS:HB2	1.97	0.46
1:C:623:MET:HE3	1:C:630:TRP:CZ3	2.50	0.46
1:D:419:ARG:HD3	1:D:683:TRP:CD2	2.50	0.46
1:A:391:LYS:NZ	1:D:305:PHE:HE1	2.14	0.45
1:C:633:GLN:NE2	1:D:637:GLU:OE2	2.49	0.45

Continued on next page...

Continued from previous page...

Atom-1	Atom-2	Interatomic distance (Å)	Clash overlap (Å)
1:D:594:MET:HA	1:D:654:VAL:O	2.16	0.45
1:C:664:ILE:HG13	1:C:694:PRO:HB2	1.98	0.45
1:B:553:HIS:CG	1:B:554:PRO:HD2	2.51	0.45
1:B:706:THR:HA	1:B:707:PRO:C	2.41	0.45
1:D:408:TYR:CE1	1:D:412:HIS:CE1	3.04	0.45
1:D:369:GLN:HG2	1:D:408:TYR:OH	2.17	0.45
1:B:415:ARG:CZ	1:B:674:ARG:HD2	2.46	0.45
1:B:483:GLN:OE1	1:B:486:ARG:HD3	2.16	0.45
1:C:671:TYR:CE2	1:C:676:GLY:HA2	2.51	0.45
1:A:327:LEU:HD12	1:A:346:HIS:O	2.17	0.45
1:B:576:LEU:HD21	1:B:583:GLU:HB3	1.99	0.45
1:D:558:TRP:CE3	1:D:618:LYS:HD3	2.52	0.45
1:A:349:ARG:NH2	1:A:352:ASP:O	2.49	0.45
1:B:327:LEU:HB3	1:B:704:ARG:NH1	2.32	0.44
1:C:307:LYS:HD3	1:C:316:VAL:HG11	1.98	0.44
1:A:378:GLY:HA3	1:C:345:GLN:O	2.17	0.44
1:B:598:ILE:HA	1:B:602:ASP:HB2	1.99	0.44
1:A:419:ARG:HD3	1:A:683:TRP:CD2	2.52	0.44
1:A:490:TYR:CE1	1:A:519:ARG:HA	2.53	0.44
1:A:600:VAL:O	1:A:604:CYS:HB2	2.17	0.44
1:A:664:ILE:HG13	1:A:694:PRO:HB2	1.99	0.44
1:D:553:HIS:CG	1:D:554:PRO:HD2	2.53	0.44
1:C:470:ARG:HD2	1:C:583:GLU:OE1	2.17	0.44
1:C:681:TRP:CZ2	1:C:685:VAL:HG21	2.52	0.44
1:A:349:ARG:HH22	1:A:354:ALA:H	1.65	0.44
1:D:483:GLN:HG3	1:D:572:VAL:HA	2.00	0.44
1:A:418[B]:SER:OG	1:A:678:PRO:HB2	2.18	0.43
1:A:556:PHE:HB3	1:A:558:TRP:CE2	2.53	0.43
1:B:482:SER:HA	1:B:574:ASN:HB3	2.00	0.43
1:B:483:GLN:HG3	1:B:572:VAL:HA	1.99	0.43
1:A:527:LEU:O	1:A:538:LEU:HA	2.18	0.43
1:A:483:GLN:HG2	4:A:803:A1CN9:C12	2.48	0.43
1:C:333:GLU:O	1:D:328:GLU:HA	2.18	0.43
1:A:376:ARG:HA	1:C:346:HIS:HE2	1.83	0.43
1:D:483:GLN:HG2	4:D:803:A1CN9:C13	2.49	0.43
1:A:480:TRP:HB2	1:A:528:LEU:HB3	1.99	0.43
1:B:492:GLN:HB2	1:B:494:ASP:OD1	2.19	0.43
1:B:671:TYR:CD2	1:B:676:GLY:HA2	2.53	0.43
1:C:414:TRP:CE3	1:C:426:TRP:HA	2.54	0.43
1:B:622:ASP:OD1	1:B:625:LYS:HE3	2.18	0.43
1:A:307:LYS:HA	1:A:317:LEU:O	2.19	0.42

Continued on next page...

Continued from previous page...

Atom-1	Atom-2	Interatomic distance (Å)	Clash overlap (Å)
1:A:333:GLU:O	1:B:328:GLU:HA	2.19	0.42
1:B:319:ASP:HB2	1:B:671:TYR:HE2	1.83	0.42
1:B:353:VAL:HG12	1:B:470:ARG:HD3	2.00	0.42
1:A:318:THR:HG21	1:C:395:THR:HG22	2.01	0.42
1:A:664:ILE:O	1:A:668:GLU:HG3	2.19	0.42
1:B:480:TRP:CZ2	1:B:536:PRO:HG3	2.54	0.42
1:B:486:ARG:HE	1:B:486:ARG:HB3	1.68	0.42
1:C:671:TYR:CD2	1:C:676:GLY:HA2	2.54	0.42
1:D:341:MET:HG2	1:D:342:HIS:CD2	2.55	0.42
1:D:600:VAL:O	1:D:604:CYS:HB2	2.20	0.42
1:D:704:ARG:HH21	1:D:710:GLU:CD	2.28	0.42
1:A:681:TRP:CZ2	1:A:685:VAL:HG21	2.55	0.42
1:C:340:ILE:HA	1:D:699:GLU:HG2	2.01	0.42
1:D:452:LYS:HB2	1:D:545:LEU:HD22	2.01	0.42
1:D:556:PHE:HB3	1:D:558:TRP:NE1	2.34	0.42
1:A:482:SER:HA	1:A:574:ASN:HB3	2.02	0.42
1:D:600:VAL:HA	1:D:635:LEU:HD11	2.02	0.42
1:C:483:GLN:HG3	1:C:572:VAL:HA	2.01	0.42
1:C:619:MET:HE2	1:C:621:LEU:HD21	2.02	0.41
1:A:550:PRO:O	1:A:552:ARG:NH2	2.51	0.41
1:C:409:GLY:HA2	1:C:707:PRO:HG2	2.02	0.41
1:B:612:LEU:HD23	1:B:612:LEU:HA	1.84	0.41
1:B:686:PRO:HG2	1:B:693:THR:HG21	2.02	0.41
1:A:506:PHE:HD2	1:A:525:LEU:HD13	1.85	0.41
1:D:480:TRP:CE2	1:D:715:PRO:HB2	2.55	0.41
1:A:687:PRO:HB2	1:B:691:SER:HB3	2.02	0.41
1:B:521:ARG:HG2	1:B:522:PHE:CE1	2.55	0.41
1:D:389:VAL:O	1:D:393:ILE:HG13	2.21	0.41
1:A:377:PHE:HA	1:A:382:HIS:ND1	2.36	0.41
1:A:341:MET:HB2	1:A:341:MET:HE2	1.83	0.41
1:A:391:LYS:HZ1	1:D:305:PHE:HE1	1.69	0.41
1:A:455:THR:HA	1:A:460:LEU:HD22	2.03	0.41
1:A:614:GLU:HB2	7:A:946:HOH:O	2.21	0.41
1:C:483:GLN:HG2	4:C:803:A1CN9:C12	2.50	0.41
1:C:687:PRO:CB	1:D:691:SER:HB3	2.51	0.41
1:A:469:GLN:HB3	1:A:584:PHE:CE2	2.56	0.41
1:C:670:GLU:HB2	1:C:677:CYS:HB2	2.03	0.41
1:D:530:GLN:HG3	1:D:534:ASN:O	2.21	0.41
1:A:665:LYS:O	1:A:665:LYS:HE3	2.21	0.41
1:C:339:SER:O	1:D:699:GLU:HG2	2.21	0.41
1:B:529:LEU:O	1:B:536:PRO:HA	2.21	0.40

Continued on next page...

Continued from previous page...

Atom-1	Atom-2	Interatomic distance (Å)	Clash overlap (Å)
1:C:341:MET:HG2	1:C:342:HIS:NE2	2.36	0.40
1:D:509:ILE:O	1:D:513:GLN:HG2	2.21	0.40
2:C:801:HEM:HBC2	2:C:801:HEM:CMC	2.48	0.40
1:A:593:TYR:CD1	1:A:598:ILE:HD11	2.56	0.40
1:D:515:TRP:CE2	1:D:526:PRO:HD3	2.56	0.40
1:A:623:MET:HE3	1:A:630:TRP:CZ3	2.57	0.40

There are no symmetry-related clashes.

5.3 Torsion angles [i](#)

5.3.1 Protein backbone [i](#)

In the following table, the Percentiles column shows the percent Ramachandran outliers of the chain as a percentile score with respect to all X-ray entries followed by that with respect to entries of similar resolution.

The Analysed column shows the number of residues for which the backbone conformation was analysed, and the total number of residues.

Mol	Chain	Analysed	Favoured	Allowed	Outliers	Percentiles	
1	A	422/423 (100%)	402 (95%)	19 (4%)	1 (0%)	44	44
1	B	410/423 (97%)	400 (98%)	10 (2%)	0	100	100
1	C	419/423 (99%)	402 (96%)	16 (4%)	1 (0%)	44	44
1	D	407/423 (96%)	396 (97%)	10 (2%)	1 (0%)	44	44
All	All	1658/1692 (98%)	1600 (96%)	55 (3%)	3 (0%)	44	44

All (3) Ramachandran outliers are listed below:

Mol	Chain	Res	Type
1	C	351	GLU
1	A	377	PHE
1	D	338	GLY

5.3.2 Protein sidechains [i](#)

In the following table, the Percentiles column shows the percent sidechain outliers of the chain as a percentile score with respect to all X-ray entries followed by that with respect to entries of similar resolution.

The Analysed column shows the number of residues for which the sidechain conformation was analysed, and the total number of residues.

Mol	Chain	Analysed	Rotameric	Outliers	Percentiles	
1	A	379/378 (100%)	364 (96%)	15 (4%)	27	27
1	B	370/378 (98%)	348 (94%)	22 (6%)	16	14
1	C	376/378 (100%)	364 (97%)	12 (3%)	34	36
1	D	367/378 (97%)	354 (96%)	13 (4%)	31	32
All	All	1492/1512 (99%)	1430 (96%)	62 (4%)	25	25

All (62) residues with a non-rotameric sidechain are listed below:

Mol	Chain	Res	Type
1	A	326	THR
1	A	327	LEU
1	A	341	MET
1	A	349	ARG
1	A	353	VAL
1	A	380	LYS
1	A	386	LEU
1	A	402	LYS
1	A	491	LYS
1	A	494	ASP
1	A	528	LEU
1	A	614	GLU
1	A	665	LYS
1	A	718	THR
1	A	720	VAL
1	B	314	GLU
1	B	326	THR
1	B	333	GLU
1	B	341	MET
1	B	353	VAL
1	B	365	GLU
1	B	369	GLN
1	B	383	MET
1	B	390	ASN
1	B	395	THR
1	B	428	LYS
1	B	505	GLN
1	B	528	LEU
1	B	557	GLU
1	B	578	GLU

Continued on next page...

Continued from previous page...

Mol	Chain	Res	Type
1	B	617	LYS
1	B	625	LYS
1	B	650	LYS
1	B	704	ARG
1	B	718	THR
1	B	720	VAL
1	B	723	LEU
1	C	341	MET
1	C	349	ARG
1	C	353	VAL
1	C	356	LYS
1	C	359	LEU
1	C	386	LEU
1	C	387	GLU
1	C	474	LYS
1	C	491	LYS
1	C	528	LEU
1	C	540	GLN
1	C	720	VAL
1	D	304	ARG
1	D	337	MET
1	D	341	MET
1	D	383	MET
1	D	392	GLU
1	D	424	ILE
1	D	505	GLN
1	D	528	LEU
1	D	532	ASN
1	D	540	GLN
1	D	578	GLU
1	D	650	LYS
1	D	720	VAL

Sometimes sidechains can be flipped to improve hydrogen bonding and reduce clashes. All (14) such sidechains are listed below:

Mol	Chain	Res	Type
1	A	369	GLN
1	A	441	HIS
1	A	633	GLN
1	A	719	HIS
1	B	505	GLN
1	B	540	GLN

Continued on next page...

Continued from previous page...

Mol	Chain	Res	Type
1	C	345	GLN
1	C	441	HIS
1	C	503	ASN
1	C	512	GLN
1	C	513	GLN
1	C	606	ASN
1	D	513	GLN
1	D	606	ASN

5.3.3 RNA [i](#)

There are no RNA molecules in this entry.

5.4 Non-standard residues in protein, DNA, RNA chains [i](#)

There are no non-standard protein/DNA/RNA residues in this entry.

5.5 Carbohydrates [i](#)

There are no oligosaccharides in this entry.

5.6 Ligand geometry [i](#)

Of 20 ligands modelled in this entry, 2 are monoatomic - leaving 18 for Mogul analysis.

In the following table, the Counts columns list the number of bonds (or angles) for which Mogul statistics could be retrieved, the number of bonds (or angles) that are observed in the model and the number of bonds (or angles) that are defined in the Chemical Component Dictionary. The Link column lists molecule types, if any, to which the group is linked. The Z score for a bond length (or angle) is the number of standard deviations the observed value is removed from the expected value. A bond length (or angle) with $|Z| > 2$ is considered an outlier worth inspection. RMSZ is the root-mean-square of all Z scores of the bond lengths (or angles).

Mol	Type	Chain	Res	Link	Bond lengths			Bond angles		
					Counts	RMSZ	$\# Z > 2$	Counts	RMSZ	$\# Z > 2$
5	GOL	B	803	-	5,5,5	0.39	0	5,5,5	0.28	0
3	H4B	C	802	-	16,18,18	0.78	0	14,26,26	2.38	4 (28%)
5	GOL	D	804	-	5,5,5	0.38	0	5,5,5	0.38	0
2	HEM	B	801	1	42,50,50	1.46	6 (14%)	46,82,82	1.93	9 (19%)
5	GOL	C	805	-	5,5,5	0.24	0	5,5,5	0.74	0

Mol	Type	Chain	Res	Link	Bond lengths			Bond angles		
					Counts	RMSZ	# Z > 2	Counts	RMSZ	# Z > 2
3	H4B	A	807	-	16,18,18	0.72	0	14,26,26	2.16	4 (28%)
3	H4B	D	802	-	16,18,18	0.69	0	14,26,26	2.24	5 (35%)
2	HEM	C	801	1	42,50,50	1.45	5 (11%)	46,82,82	1.70	5 (10%)
5	GOL	C	804	-	5,5,5	0.39	0	5,5,5	0.28	0
3	H4B	A	802	-	16,18,18	0.82	0	14,26,26	2.38	5 (35%)
4	A1CN9	B	802	-	30,30,30	0.59	0	39,43,43	1.95	6 (15%)
2	HEM	A	801	1	42,50,50	1.48	6 (14%)	46,82,82	1.74	7 (15%)
5	GOL	A	804	-	5,5,5	0.37	0	5,5,5	0.15	0
5	GOL	A	805	-	5,5,5	0.25	0	5,5,5	0.67	0
2	HEM	D	801	1	42,50,50	1.53	5 (11%)	46,82,82	1.60	8 (17%)
4	A1CN9	A	803	-	30,30,30	0.61	0	39,43,43	1.73	7 (17%)
4	A1CN9	D	803	-	30,30,30	0.63	0	39,43,43	2.13	6 (15%)
4	A1CN9	C	803	-	30,30,30	0.67	0	39,43,43	1.85	8 (20%)

In the following table, the Chirals column lists the number of chiral outliers, the number of chiral centers analysed, the number of these observed in the model and the number defined in the Chemical Component Dictionary. Similar counts are reported in the Torsion and Rings columns. '-' means no outliers of that kind were identified.

Mol	Type	Chain	Res	Link	Chirals	Torsions	Rings
5	GOL	B	803	-	-	0/4/4/4	-
3	H4B	C	802	-	-	0/8/17/17	0/2/2/2
5	GOL	D	804	-	-	2/4/4/4	-
2	HEM	B	801	1	-	0/12/54/54	-
5	GOL	C	805	-	-	0/4/4/4	-
3	H4B	A	807	-	-	0/8/17/17	0/2/2/2
3	H4B	D	802	-	-	0/8/17/17	0/2/2/2
2	HEM	C	801	1	-	2/12/54/54	-
5	GOL	C	804	-	-	2/4/4/4	-
3	H4B	A	802	-	-	0/8/17/17	0/2/2/2
4	A1CN9	B	802	-	-	2/10/22/22	0/3/3/3
2	HEM	A	801	1	-	0/12/54/54	-
5	GOL	A	804	-	-	2/4/4/4	-
5	GOL	A	805	-	-	2/4/4/4	-
2	HEM	D	801	1	-	1/12/54/54	-
4	A1CN9	A	803	-	-	0/10/22/22	0/3/3/3
4	A1CN9	D	803	-	-	2/10/22/22	0/3/3/3
4	A1CN9	C	803	-	-	0/10/22/22	0/3/3/3

All (22) bond length outliers are listed below:

Mol	Chain	Res	Type	Atoms	Z	Observed(Å)	Ideal(Å)
2	A	801	HEM	C3C-C2C	-4.51	1.34	1.40
2	D	801	HEM	C3C-C2C	-4.44	1.34	1.40
2	C	801	HEM	C3C-C2C	-4.20	1.34	1.40
2	B	801	HEM	C3C-C2C	-3.66	1.35	1.40
2	D	801	HEM	C3C-C4C	3.41	1.46	1.41
2	D	801	HEM	C3C-CAC	3.28	1.55	1.47
2	B	801	HEM	C3C-CAC	3.24	1.54	1.47
2	A	801	HEM	CAB-C3B	3.16	1.55	1.47
2	B	801	HEM	CAB-C3B	3.14	1.55	1.47
2	C	801	HEM	C3C-CAC	3.12	1.54	1.47
2	D	801	HEM	CAB-C3B	3.12	1.55	1.47
2	A	801	HEM	C3C-CAC	3.00	1.54	1.47
2	C	801	HEM	CAB-C3B	2.96	1.55	1.47
2	B	801	HEM	C3C-C4C	2.94	1.45	1.41
2	C	801	HEM	CMB-C2B	2.33	1.55	1.50
2	C	801	HEM	CMD-C2D	2.23	1.55	1.50
2	A	801	HEM	CMB-C2B	2.19	1.55	1.50
2	A	801	HEM	CMD-C2D	2.17	1.55	1.50
2	D	801	HEM	CMB-C2B	2.14	1.55	1.50
2	B	801	HEM	CMB-C2B	2.11	1.55	1.50
2	A	801	HEM	C3C-C4C	2.06	1.44	1.41
2	B	801	HEM	CMD-C2D	2.00	1.54	1.50

All (74) bond angle outliers are listed below:

Mol	Chain	Res	Type	Atoms	Z	Observed(°)	Ideal(°)
4	D	803	A1CN9	C08-O09-C11	7.50	132.62	117.76
2	B	801	HEM	CBA-CAA-C2A	-7.37	100.15	112.54
2	A	801	HEM	CBA-CAA-C2A	-6.69	101.29	112.54
2	C	801	HEM	CBA-CAA-C2A	-6.54	101.53	112.54
4	B	802	A1CN9	C02-N01-C06	6.27	122.76	118.07
3	A	802	H4B	C8A-C4A-C4	6.03	119.99	114.50
4	B	802	A1CN9	C08-O09-C11	5.85	129.33	117.76
4	D	803	A1CN9	C02-N01-C06	5.82	122.42	118.07
3	C	802	H4B	C8A-C4A-C4	5.72	119.71	114.50
2	D	801	HEM	CBA-CAA-C2A	-5.54	103.22	112.54
2	B	801	HEM	C4B-CHC-C1C	5.39	129.67	122.56
3	D	802	H4B	C8A-C4A-C4	5.38	119.39	114.50
4	A	803	A1CN9	C08-O09-C11	5.38	128.40	117.76
4	C	803	A1CN9	C08-O09-C11	5.06	127.78	117.76
3	A	807	H4B	C8A-C4A-C4	5.02	119.07	114.50
4	C	803	A1CN9	C02-N01-C06	4.95	121.78	118.07

Continued on next page...

Continued from previous page...

Mol	Chain	Res	Type	Atoms	Z	Observed(°)	Ideal(°)
4	D	803	A1CN9	O09-C08-C06	-4.79	96.32	109.56
4	D	803	A1CN9	C25-C24-C23	-4.23	110.14	114.33
4	C	803	A1CN9	C25-C24-C23	-4.21	110.16	114.33
2	C	801	HEM	C4B-CHC-C1C	4.07	127.93	122.56
4	A	803	A1CN9	C02-N01-C06	4.01	121.07	118.07
2	A	801	HEM	C4B-CHC-C1C	3.98	127.81	122.56
2	D	801	HEM	C4B-CHC-C1C	3.92	127.74	122.56
4	A	803	A1CN9	C25-C24-C23	-3.75	110.61	114.33
4	B	802	A1CN9	C25-C24-C23	-3.69	110.67	114.33
3	D	802	H4B	C2-N3-C4	3.58	120.94	115.96
3	C	802	H4B	C2-N3-C4	3.56	120.92	115.96
4	B	802	A1CN9	O09-C08-C06	-3.52	99.84	109.56
2	C	801	HEM	CBD-CAD-C3D	-3.43	103.06	112.53
3	C	802	H4B	N1-C2-N3	-3.27	120.47	125.48
3	A	807	H4B	C2-N3-C4	3.23	120.46	115.96
2	A	801	HEM	CBD-CAD-C3D	-3.21	103.66	112.53
3	A	807	H4B	N1-C2-N3	-3.15	120.66	125.48
2	B	801	HEM	CBD-CAD-C3D	-3.14	103.84	112.53
3	D	802	H4B	N1-C2-N3	-3.07	120.78	125.48
3	A	802	H4B	N1-C2-N3	-3.06	120.80	125.48
4	B	802	A1CN9	C05-C06-N01	-3.03	119.27	122.73
3	A	802	H4B	C2-N3-C4	3.01	120.15	115.96
4	C	803	A1CN9	C25-C26-N21	-2.96	108.14	111.16
4	C	803	A1CN9	O09-C11-C12	2.90	120.29	115.92
4	A	803	A1CN9	O09-C08-C06	-2.88	101.60	109.56
4	C	803	A1CN9	C05-C06-N01	-2.87	119.45	122.73
4	A	803	A1CN9	O09-C11-C12	2.79	120.14	115.92
4	A	803	A1CN9	C25-C26-N21	-2.78	108.32	111.16
2	B	801	HEM	CMA-C3A-C4A	-2.75	124.43	128.46
4	A	803	A1CN9	C05-C06-N01	-2.70	119.66	122.73
2	B	801	HEM	CMC-C2C-C3C	2.67	130.03	124.68
4	D	803	A1CN9	C05-C06-N01	-2.66	119.70	122.73
2	D	801	HEM	C3B-C2B-C1B	2.59	108.36	106.41
3	A	802	H4B	N2-C2-N3	2.55	121.05	117.22
3	A	802	H4B	C2-N1-C8A	2.54	120.62	114.59
4	B	802	A1CN9	C25-C26-N21	-2.52	108.58	111.16
2	D	801	HEM	CHD-C1D-ND	2.50	127.13	124.44
2	D	801	HEM	CMA-C3A-C4A	-2.46	124.86	128.46
3	C	802	H4B	C2-N1-C8A	2.43	120.38	114.59
2	B	801	HEM	CHA-C4D-ND	2.41	127.36	124.37
2	A	801	HEM	C3B-C4B-NB	-2.41	107.74	109.47
2	B	801	HEM	C3D-C4D-ND	-2.40	107.54	110.17

Continued on next page...

Continued from previous page...

Mol	Chain	Res	Type	Atoms	Z	Observed(°)	Ideal(°)
4	D	803	A1CN9	C25-C26-N21	-2.38	108.73	111.16
2	C	801	HEM	C3B-C4B-NB	-2.38	107.76	109.47
3	A	807	H4B	C2-N1-C8A	2.34	120.14	114.59
2	A	801	HEM	CMA-C3A-C4A	-2.28	125.12	128.46
2	A	801	HEM	CHA-C4D-ND	2.19	127.09	124.37
2	C	801	HEM	CMA-C3A-C4A	-2.18	125.26	128.46
2	B	801	HEM	C3B-C2B-C1B	2.18	108.05	106.41
4	C	803	A1CN9	F12-C12-C11	2.16	122.17	119.22
3	D	802	H4B	C2-N1-C8A	2.16	119.72	114.59
2	D	801	HEM	C3D-C4D-ND	-2.14	107.82	110.17
3	D	802	H4B	N2-C2-N3	2.11	120.38	117.22
4	C	803	A1CN9	C08-C06-N01	2.10	119.94	115.69
2	D	801	HEM	CMC-C2C-C3C	2.05	128.77	124.68
2	A	801	HEM	C3D-C4D-ND	-2.02	107.96	110.17
2	D	801	HEM	CHA-C4D-ND	2.01	126.86	124.37
2	B	801	HEM	CHD-C1D-ND	2.01	126.59	124.44

There are no chirality outliers.

All (15) torsion outliers are listed below:

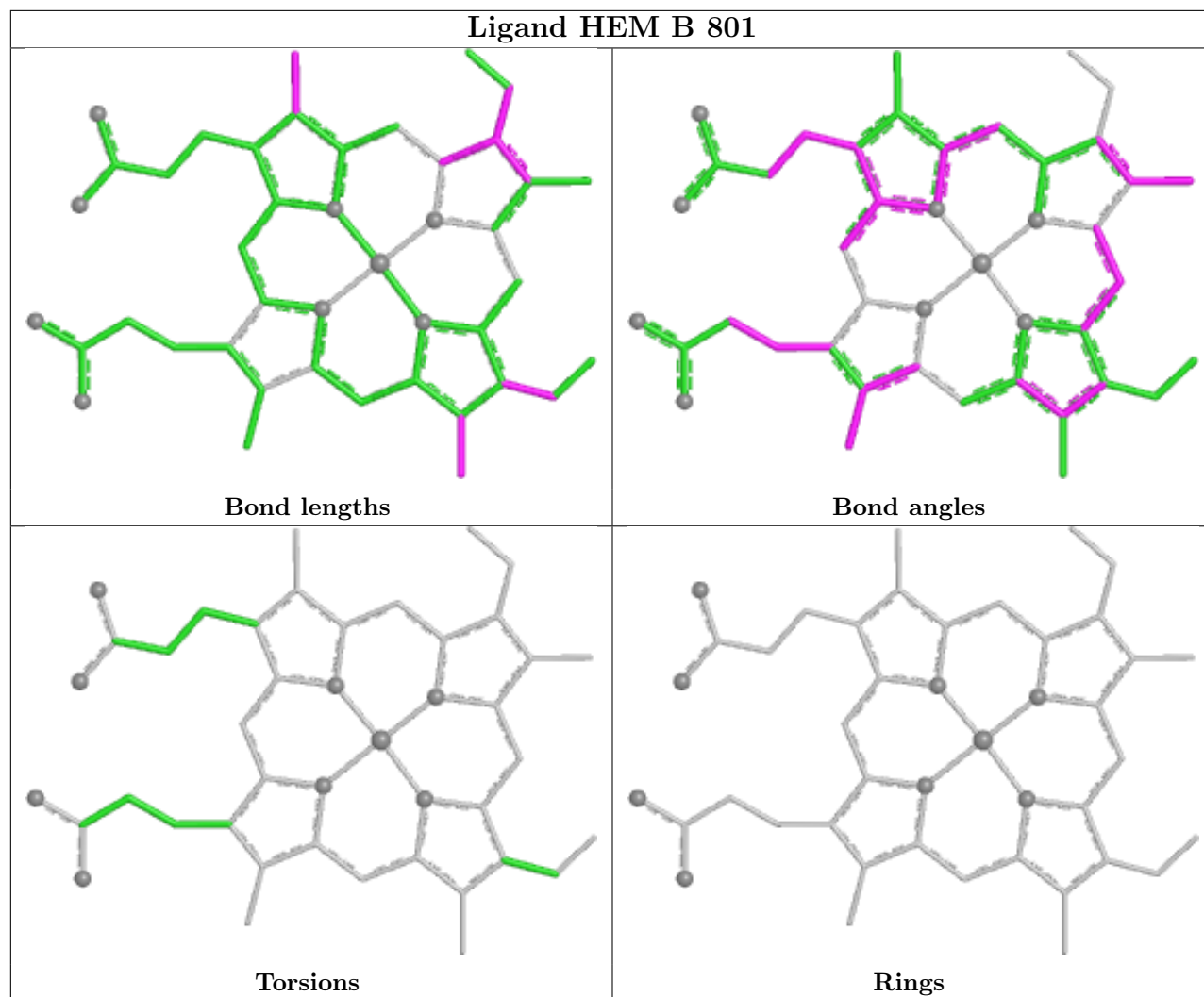
Mol	Chain	Res	Type	Atoms
5	A	804	GOL	O1-C1-C2-C3
5	C	804	GOL	O1-C1-C2-C3
5	D	804	GOL	O1-C1-C2-C3
5	A	805	GOL	O1-C1-C2-C3
5	A	804	GOL	O1-C1-C2-O2
5	C	804	GOL	O1-C1-C2-O2
5	D	804	GOL	O1-C1-C2-O2
5	A	805	GOL	O1-C1-C2-O2
2	D	801	HEM	C4B-C3B-CAB-CBB
4	B	802	A1CN9	C16-C15-C17-C18
4	B	802	A1CN9	C14-C15-C17-C18
4	D	803	A1CN9	C16-C15-C17-C18
4	D	803	A1CN9	C14-C15-C17-C18
2	C	801	HEM	CAA-CBA-CGA-O2A
2	C	801	HEM	CAA-CBA-CGA-O1A

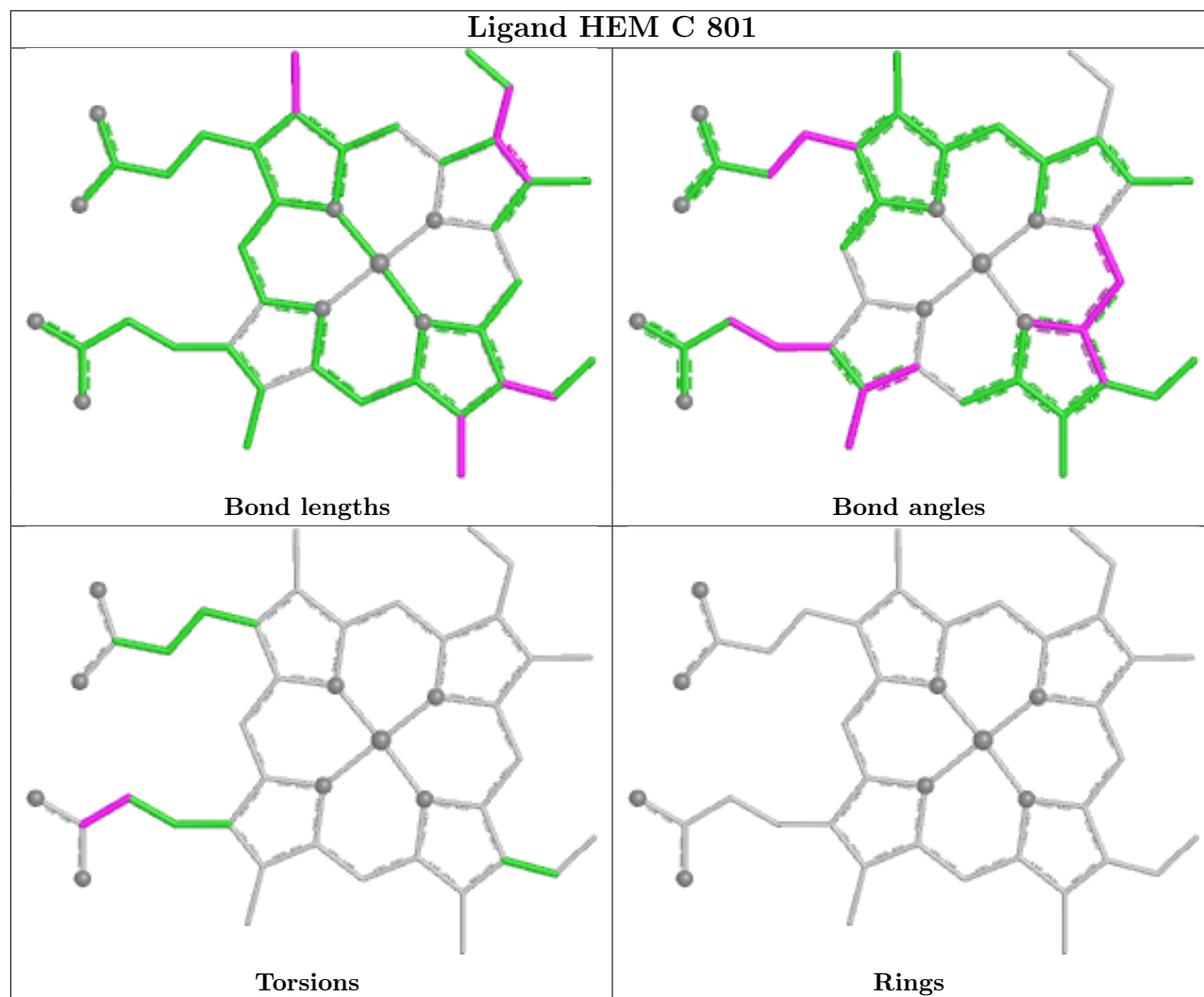
There are no ring outliers.

8 monomers are involved in 14 short contacts:

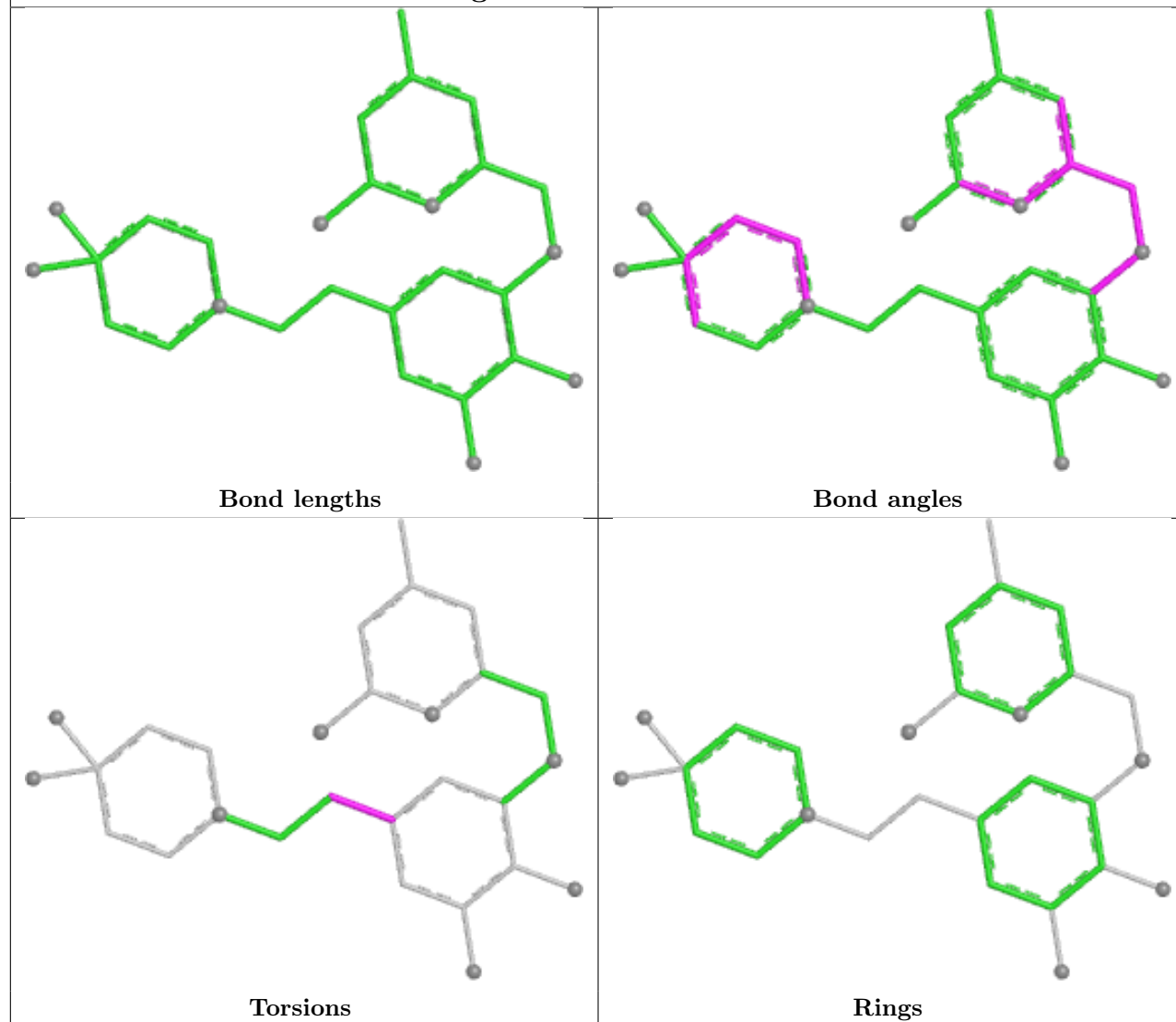
Mol	Chain	Res	Type	Clashes	Symm-Clashes
5	B	803	GOL	1	0
2	B	801	HEM	2	0
2	C	801	HEM	3	0
2	A	801	HEM	3	0
2	D	801	HEM	2	0
4	A	803	A1CN9	1	0
4	D	803	A1CN9	1	0
4	C	803	A1CN9	1	0

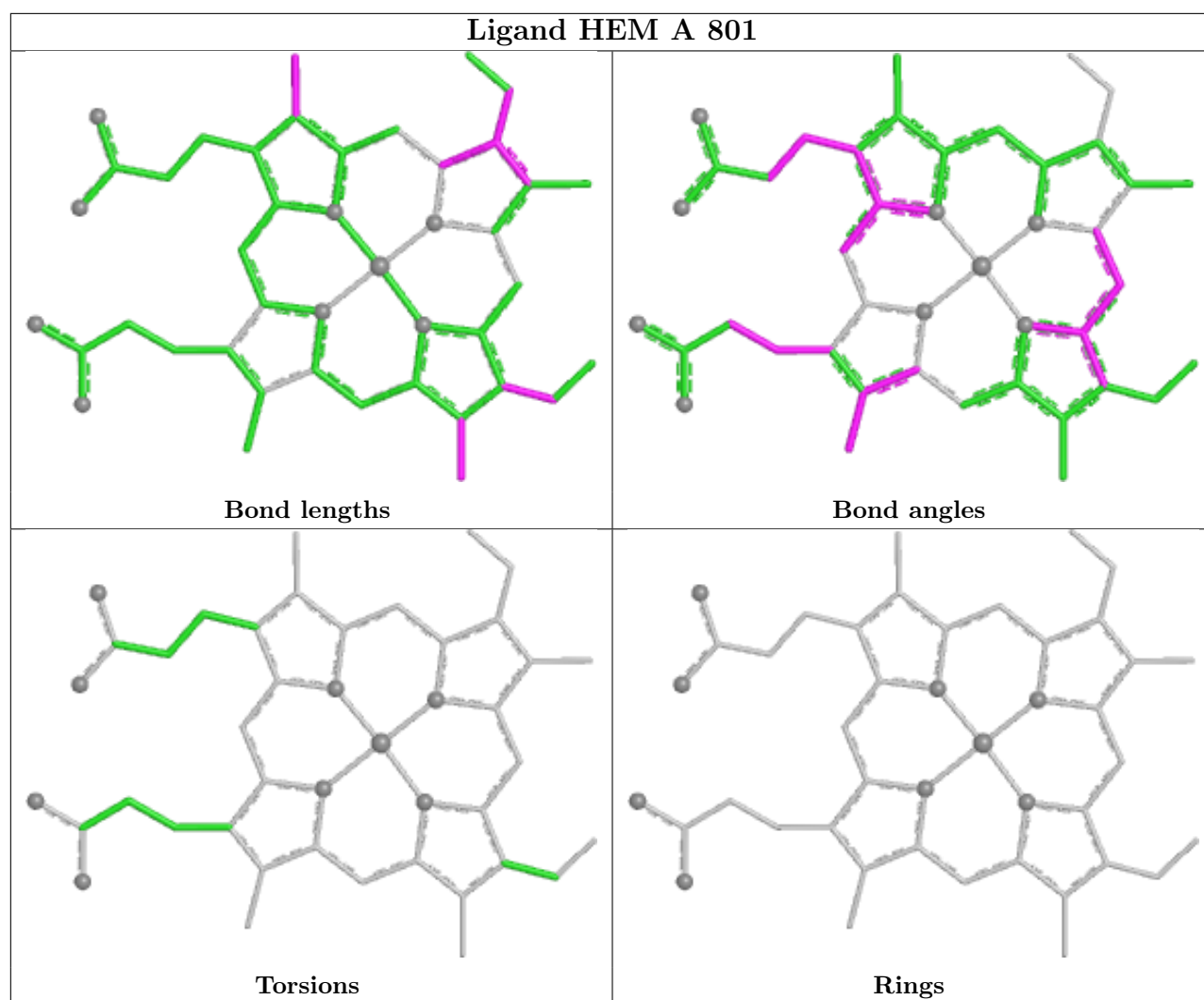
The following is a two-dimensional graphical depiction of Mogul quality analysis of bond lengths, bond angles, torsion angles, and ring geometry for all instances of the Ligand of Interest. In addition, ligands with molecular weight > 250 and outliers as shown on the validation Tables will also be included. For torsion angles, if less than 5% of the Mogul distribution of torsion angles is within 10 degrees of the torsion angle in question, then that torsion angle is considered an outlier. Any bond that is central to one or more torsion angles identified as an outlier by Mogul will be highlighted in the graph. For rings, the root-mean-square deviation (RMSD) between the ring in question and similar rings identified by Mogul is calculated over all ring torsion angles. If the average RMSD is greater than 60 degrees and the minimal RMSD between the ring in question and any Mogul-identified rings is also greater than 60 degrees, then that ring is considered an outlier. The outliers are highlighted in purple. The color gray indicates Mogul did not find sufficient equivalents in the CSD to analyse the geometry.

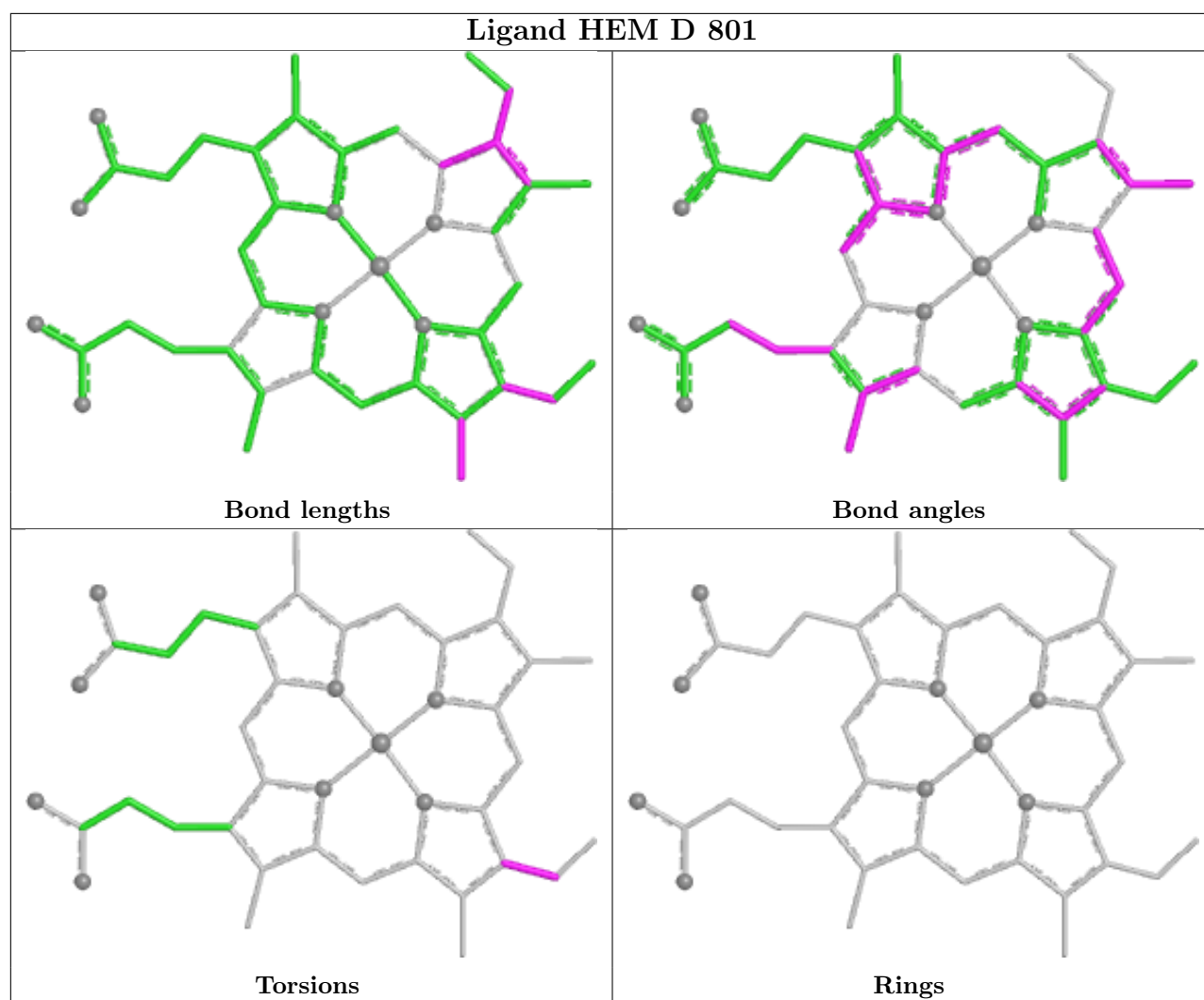




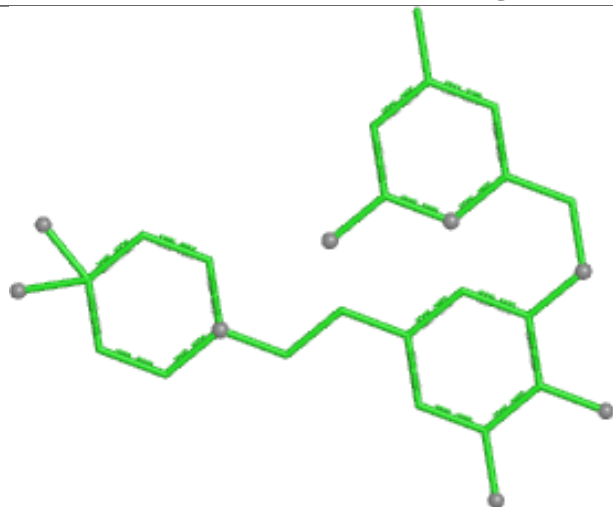
Ligand A1CN9 B 802



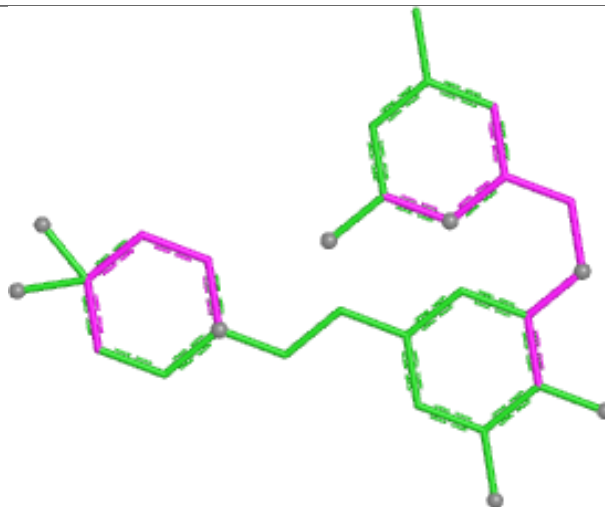




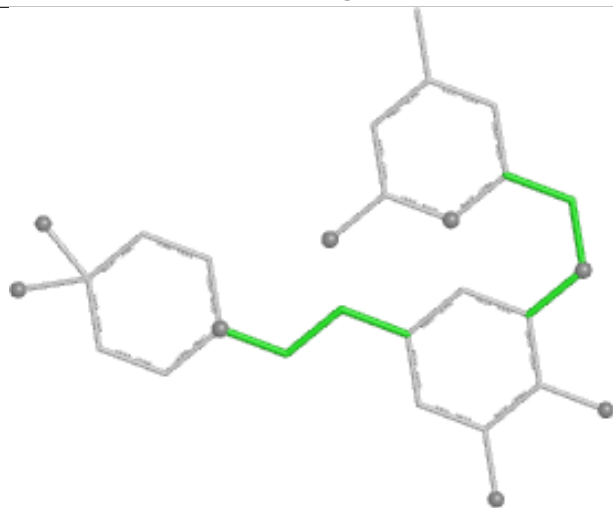
Ligand A1CN9 A 803



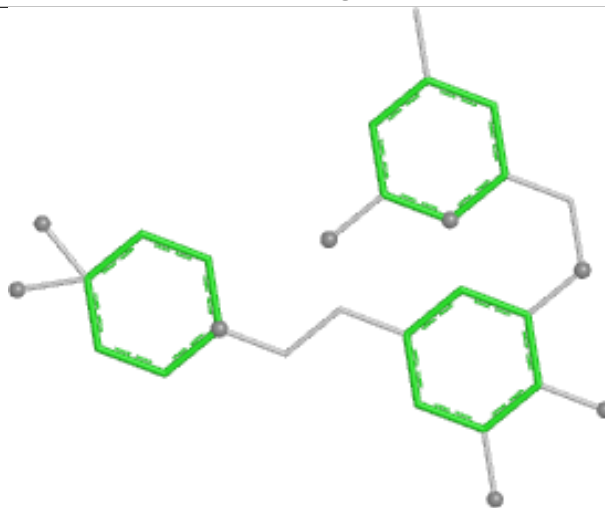
Bond lengths



Bond angles

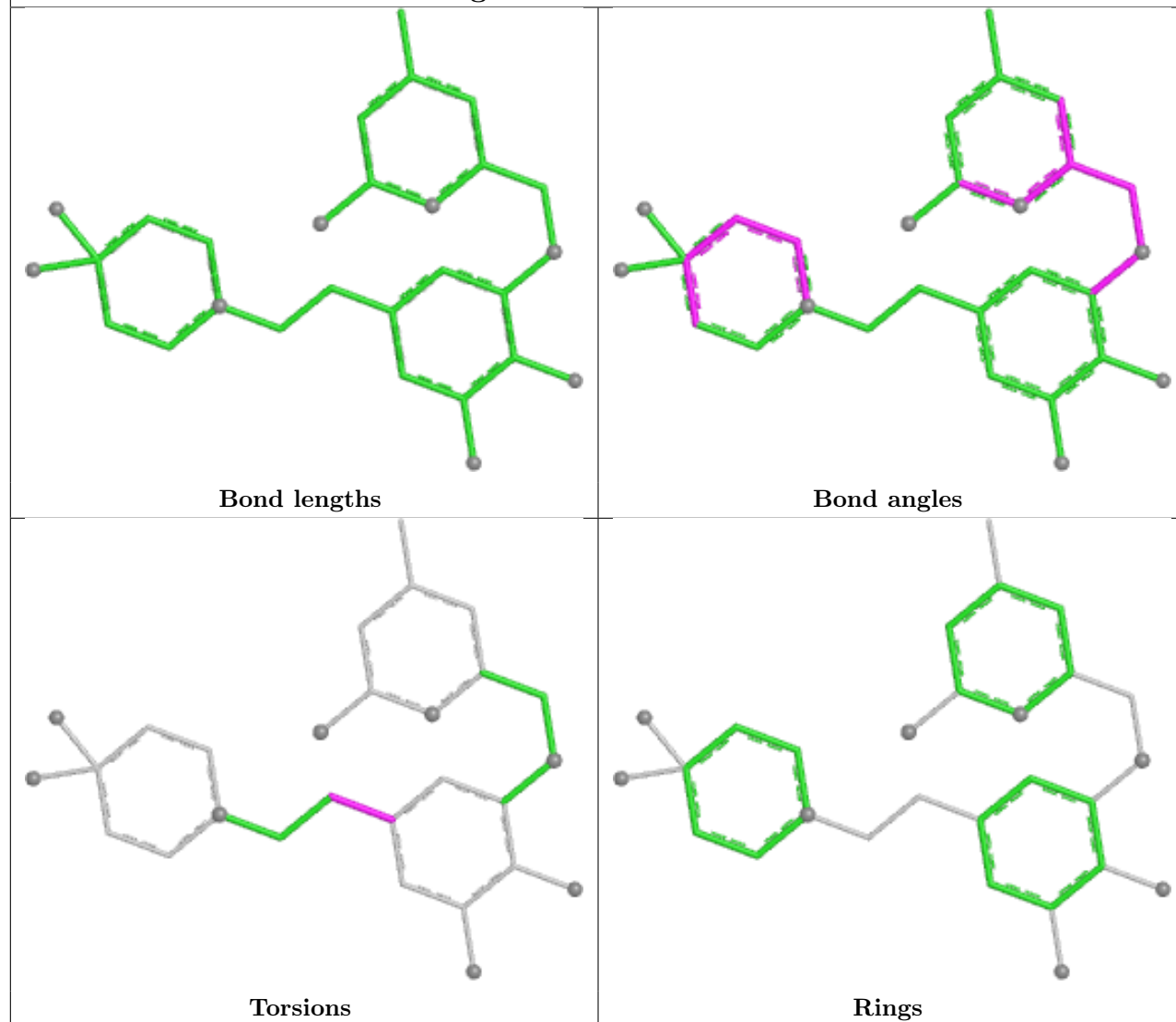


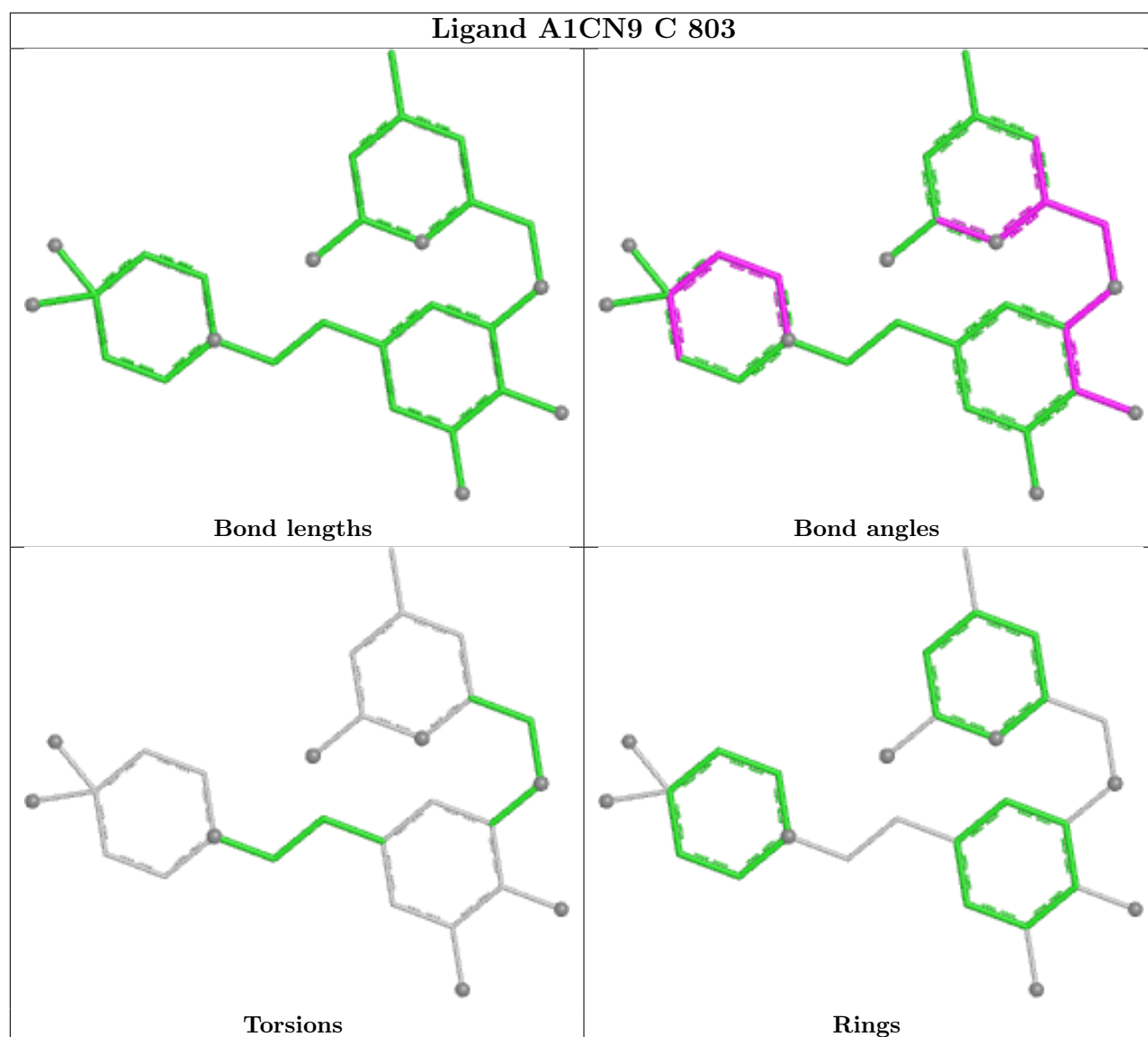
Torsions



Rings

Ligand A1CN9 D 803





5.7 Other polymers [i](#)

There are no such residues in this entry.

5.8 Polymer linkage issues [i](#)

There are no chain breaks in this entry.

6 Fit of model and data [i](#)

6.1 Protein, DNA and RNA chains [i](#)

In the following table, the column labelled ‘#RSRZ > 2’ contains the number (and percentage) of RSRZ outliers, followed by percent RSRZ outliers for the chain as percentile scores relative to all X-ray entries and entries of similar resolution. The OWAB column contains the minimum, median, 95th percentile and maximum values of the occupancy-weighted average B-factor per residue. The column labelled ‘Q < 0.9’ lists the number of (and percentage) of residues with an average occupancy less than 0.9.

Mol	Chain	Analysed	<RSRZ>	#RSRZ>2	OWAB(Å ²)	Q<0.9
1	A	419/423 (99%)	-1.48	0 100 100	24, 52, 88, 128	5 (1%)
1	B	412/423 (97%)	-1.53	0 100 100	26, 47, 78, 106	2 (0%)
1	C	418/423 (98%)	-1.48	0 100 100	25, 51, 88, 135	3 (0%)
1	D	410/423 (96%)	-1.53	0 100 100	25, 46, 74, 100	1 (0%)
All	All	1659/1692 (98%)	-1.50	0 100 100	24, 49, 83, 135	11 (0%)

There are no RSRZ outliers to report.

6.2 Non-standard residues in protein, DNA, RNA chains [i](#)

There are no non-standard protein/DNA/RNA residues in this entry.

6.3 Carbohydrates [i](#)

There are no oligosaccharides in this entry.

6.4 Ligands [i](#)

In the following table, the Atoms column lists the number of modelled atoms in the group and the number defined in the chemical component dictionary. The B-factors column lists the minimum, median, 95th percentile and maximum values of B factors of atoms in the group. The column labelled ‘Q < 0.9’ lists the number of atoms with occupancy less than 0.9.

Mol	Type	Chain	Res	Atoms	RSCC	RSR	B-factors(Å ²)	Q<0.9
3	H4B	A	807	17/17	0.99	0.03	43,48,53,54	0
3	H4B	C	802	17/17	0.99	0.03	39,46,51,52	0
3	H4B	D	802	17/17	0.99	0.03	38,47,54,56	0
4	A1CN9	B	802	28/28	0.99	0.04	36,76,104,104	0

Continued on next page...

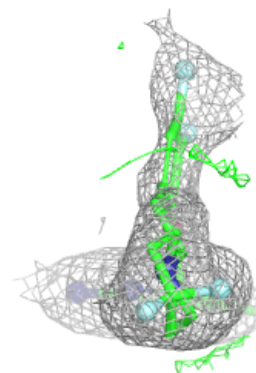
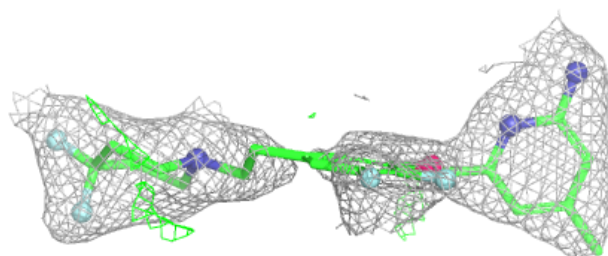
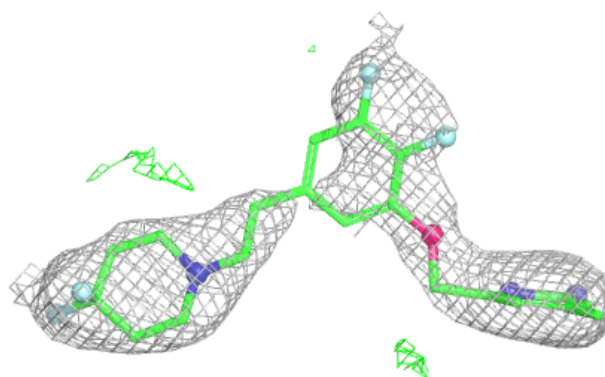
Continued from previous page...

Mol	Type	Chain	Res	Atoms	RSCC	RSR	B-factors(\AA^2)	Q<0.9
4	A1CN9	D	803	28/28	0.99	0.04	30,75,98,107	0
5	GOL	A	804	6/6	0.99	0.05	86,91,91,92	0
5	GOL	A	805	6/6	0.99	0.04	53,57,62,70	0
5	GOL	B	803	6/6	0.99	0.05	67,74,82,84	0
5	GOL	C	804	6/6	0.99	0.04	78,85,87,87	0
5	GOL	C	805	6/6	0.99	0.03	57,64,72,78	0
5	GOL	D	804	6/6	0.99	0.05	65,74,80,82	0
3	H4B	A	802	17/17	1.00	0.02	35,43,51,53	0
2	HEM	A	801	43/43	1.00	0.03	26,41,53,56	0
2	HEM	B	801	43/43	1.00	0.03	32,43,55,67	0
2	HEM	C	801	43/43	1.00	0.03	34,40,56,61	0
4	A1CN9	A	803	28/28	1.00	0.03	32,71,90,98	0
2	HEM	D	801	43/43	1.00	0.03	27,37,53,66	0
4	A1CN9	C	803	28/28	1.00	0.03	38,64,93,97	0
6	ZN	A	806	1/1	1.00	0.01	42,42,42,42	0
6	ZN	C	806	1/1	1.00	0.00	40,40,40,40	0

The following is a graphical depiction of the model fit to experimental electron density of all instances of the Ligand of Interest. In addition, ligands with molecular weight > 250 and outliers as shown on the geometry validation Tables will also be included. Each fit is shown from different orientation to approximate a three-dimensional view.

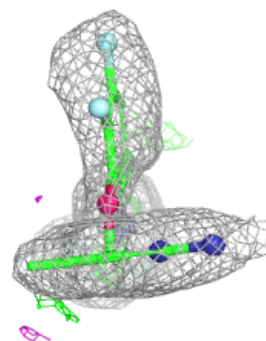
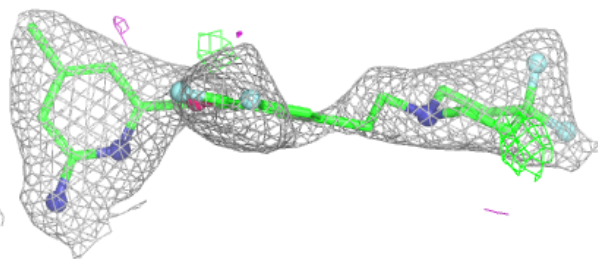
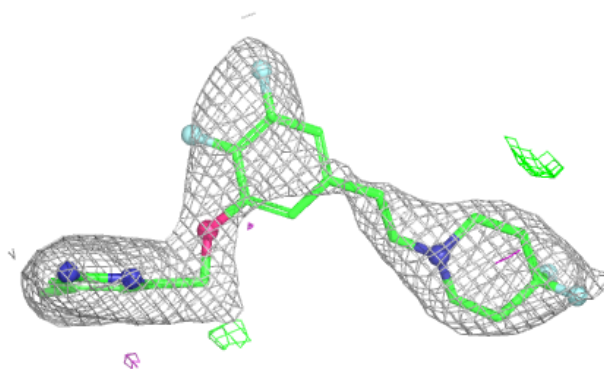
Electron density around A1CN9 B 802:

2mF_o-DF_c (at 0.7 rmsd) in gray
mF_o-DF_c (at 3 rmsd) in purple (negative)
and green (positive)



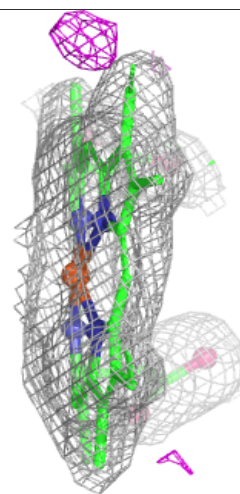
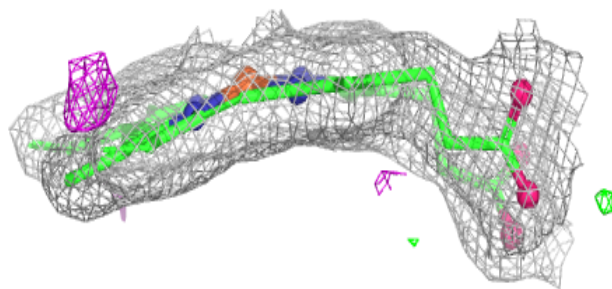
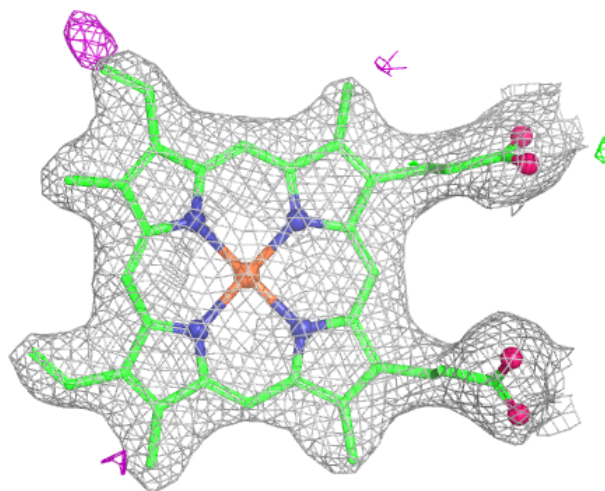
Electron density around A1CN9 D 803:

$2mF_o-DF_c$ (at 0.7 rmsd) in gray
 mF_o-DF_c (at 3 rmsd) in purple (negative)
and green (positive)



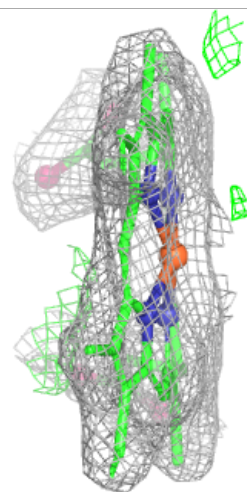
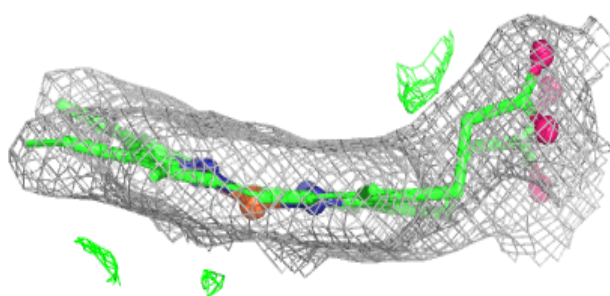
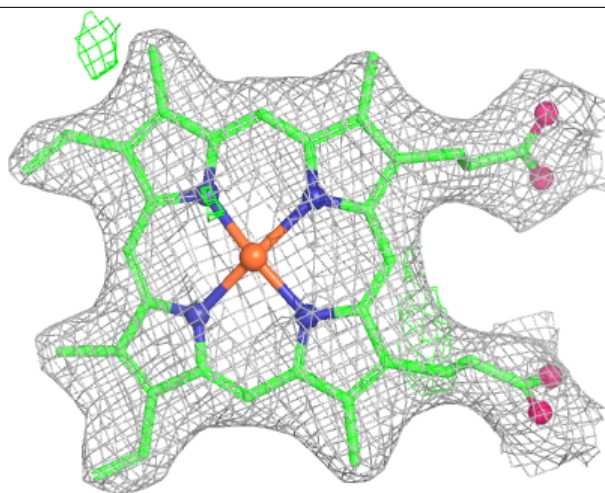
Electron density around HEM A 801:

$2mF_o-DF_c$ (at 0.7 rmsd) in gray
 mF_o-DF_c (at 3 rmsd) in purple (negative)
and green (positive)



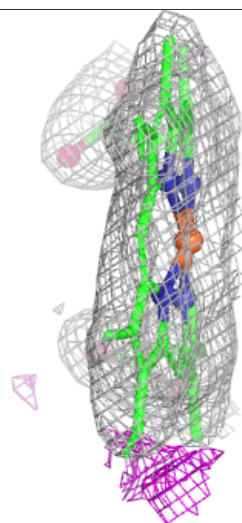
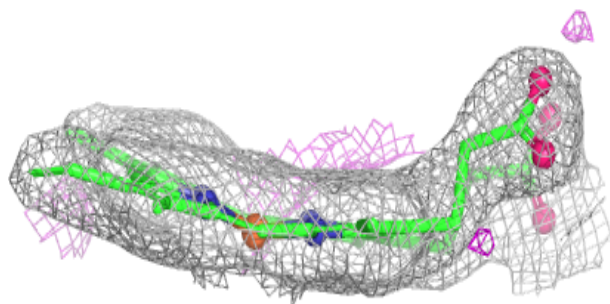
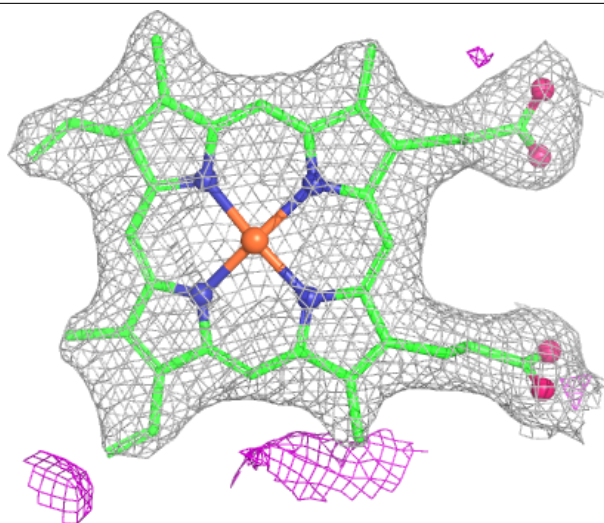
Electron density around HEM B 801:

$2mF_o-DF_c$ (at 0.7 rmsd) in gray
 mF_o-DF_c (at 3 rmsd) in purple (negative)
and green (positive)



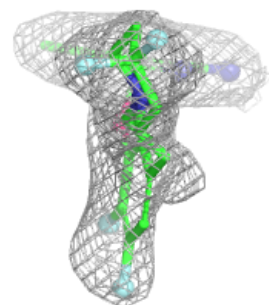
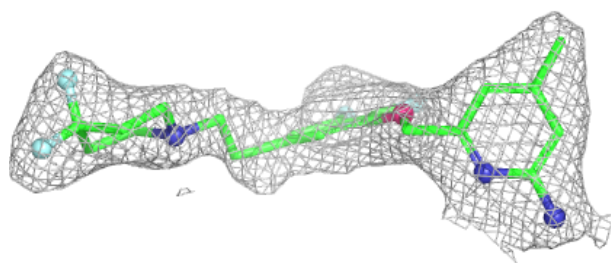
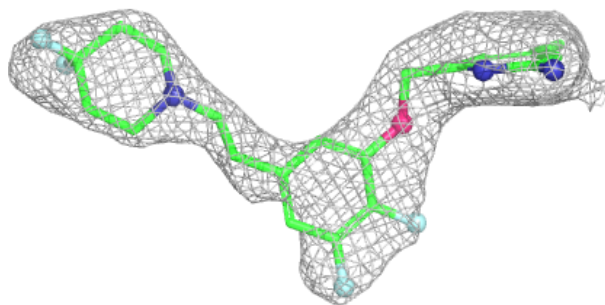
Electron density around HEM C 801:

$2mF_o-DF_c$ (at 0.7 rmsd) in gray
 mF_o-DF_c (at 3 rmsd) in purple (negative)
and green (positive)



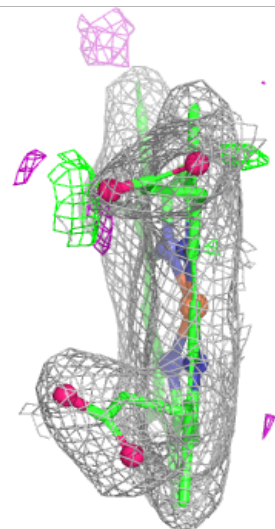
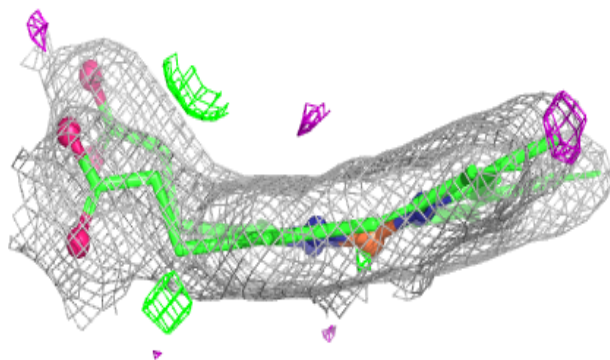
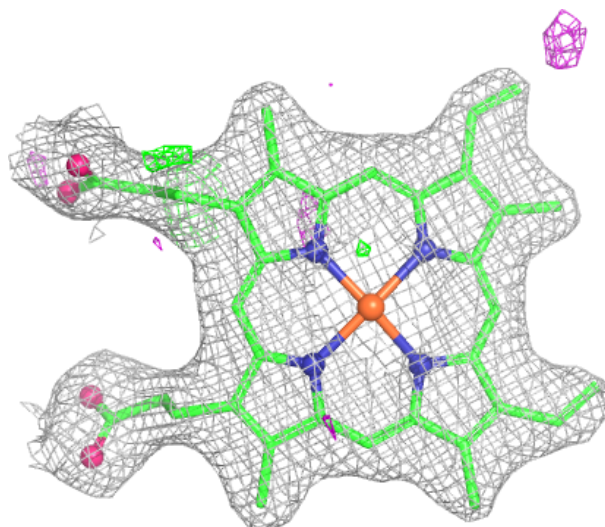
Electron density around A1CN9 A 803:

$2mF_o-DF_c$ (at 0.7 rmsd) in gray
 mF_o-DF_c (at 3 rmsd) in purple (negative)
and green (positive)



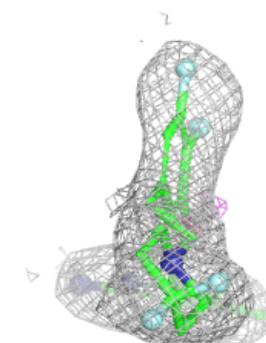
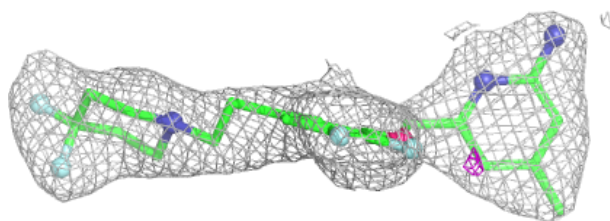
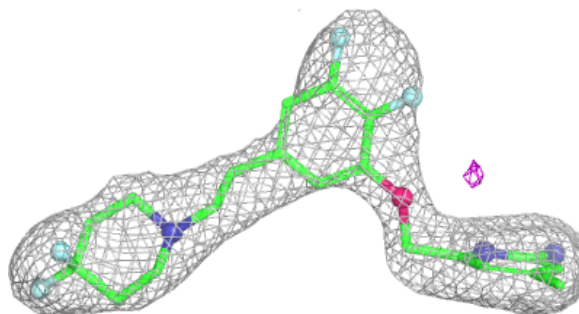
Electron density around HEM D 801:

$2mF_o-DF_c$ (at 0.7 rmsd) in gray
 mF_o-DF_c (at 3 rmsd) in purple (negative)
and green (positive)



Electron density around A1CN9 C 803:

$2mF_o-DF_c$ (at 0.7 rmsd) in gray
 mF_o-DF_c (at 3 rmsd) in purple (negative)
and green (positive)



6.5 Other polymers [i](#)

There are no such residues in this entry.