



Full wwPDB X-ray Structure Validation Report ⓘ

Aug 25, 2025 – 01:21 am BST

PDB ID : 9QAU / pdb_00009qau
Title : Human angiotensin-1 converting enzyme N-domain in complex with perindoprilat
Authors : Gregory, K.S.; Acharya, K.R.
Deposited on : 2025-02-28
Resolution : 2.00 Å(reported)

This is a Full wwPDB X-ray Structure Validation Report for a publicly released PDB entry.

We welcome your comments at validation@mail.wwpdb.org

A user guide is available at

<https://www.wwpdb.org/validation/2017/XrayValidationReportHelp>

with specific help available everywhere you see the ⓘ symbol.

The types of validation reports are described at

<http://www.wwpdb.org/validation/2017/FAQs#types>.

The following versions of software and data (see [references ⓘ](#)) were used in the production of this report:

MolProbity	:	4-5-2 with Phenix2.0rc1
Mogul	:	1.8.4, CSD as541be (2020)
Xtriage (Phenix)	:	2.0rc1
EDS	:	3.0
buster-report	:	1.1.7 (2018)
Percentile statistics	:	20231227.v01 (using entries in the PDB archive December 27th 2023)
CCP4	:	9.0.006 (Gargrove)
Density-Fitness	:	1.0.12
Ideal geometry (proteins)	:	Engh & Huber (2001)
Ideal geometry (DNA, RNA)	:	Parkinson et al. (1996)
Validation Pipeline (wwPDB-VP)	:	2.45.1

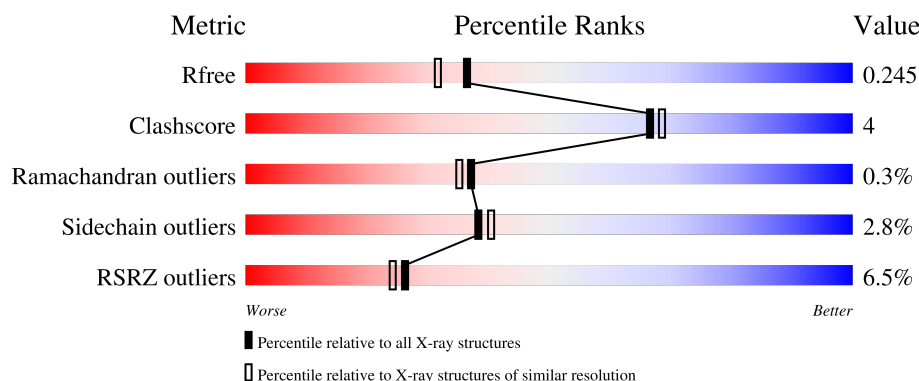
1 Overall quality at a glance

The following experimental techniques were used to determine the structure:

X-RAY DIFFRACTION

The reported resolution of this entry is 2.00 Å.

Percentile scores (ranging between 0-100) for global validation metrics of the entry are shown in the following graphic. The table shows the number of entries on which the scores are based.



Metric	Whole archive (#Entries)	Similar resolution (#Entries, resolution range(Å))
R_{free}	164625	9409 (2.00-2.00)
Clashscore	180529	10737 (2.00-2.00)
Ramachandran outliers	177936	10628 (2.00-2.00)
Sidechain outliers	177891	10627 (2.00-2.00)
RSRZ outliers	164620	9409 (2.00-2.00)

The table below summarises the geometric issues observed across the polymeric chains and their fit to the electron density. The red, orange, yellow and green segments of the lower bar indicate the fraction of residues that contain outliers for ≥ 3 , 2, 1 and 0 types of geometric quality criteria respectively. A grey segment represents the fraction of residues that are not modelled. The numeric value for each fraction is indicated below the corresponding segment, with a dot representing fractions $\leq 5\%$. The upper red bar (where present) indicates the fraction of residues that have poor fit to the electron density. The numeric value is given above the bar.

Mol	Chain	Length	Quality of chain
1	A	608	<div> <div style="width: 100%; height: 10px; background: linear-gradient(to right, red, orange, yellow, green);"></div> <div style="display: flex; justify-content: space-between; margin-top: 5px;"> 11% 89% 10% </div> </div>
1	B	608	<div> <div style="width: 100%; height: 10px; background: linear-gradient(to right, red, orange, yellow, green);"></div> <div style="display: flex; justify-content: space-between; margin-top: 5px;"> 11% 86% 10% </div> </div>
2	G	3	<div> <div style="width: 100%; height: 10px; background: linear-gradient(to right, yellow, green);"></div> <div style="display: flex; justify-content: space-between; margin-top: 5px;"> 100% </div> </div>
3	F	2	<div> <div style="width: 100%; height: 10px; background: linear-gradient(to right, orange, green);"></div> <div style="display: flex; justify-content: space-between; margin-top: 5px;"> 100% </div> </div>

2 Entry composition [i](#)

There are 12 unique types of molecules in this entry. The entry contains 10714 atoms, of which 0 are hydrogens and 0 are deuteriums.

In the tables below, the ZeroOcc column contains the number of atoms modelled with zero occupancy, the AltConf column contains the number of residues with at least one atom in alternate conformation and the Trace column contains the number of residues modelled with at most 2 atoms.

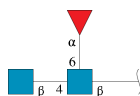
- Molecule 1 is a protein called Angiotensin-converting enzyme, soluble form.

Mol	Chain	Residues	Atoms					ZeroOcc	AltConf	Trace
1	A	603	Total	C	N	O	S	0	1	0
			4934	3171	846	898	19			
1	B	599	Total	C	N	O	S	0	2	0
			4906	3150	843	894	19			

There are 16 discrepancies between the modelled and reference sequences:

Chain	Residue	Modelled	Actual	Comment	Reference
A	9	GLN	ASN	engineered mutation	UNP P12821
A	25	GLN	ASN	engineered mutation	UNP P12821
A	82	GLN	ASN	engineered mutation	UNP P12821
A	117	GLN	ASN	engineered mutation	UNP P12821
A	289	GLN	ASN	engineered mutation	UNP P12821
A	341	ALA	LYS	engineered mutation	UNP P12821
A	545	ARG	GLN	engineered mutation	UNP P12821
A	576	LEU	PRO	engineered mutation	UNP P12821
B	9	GLN	ASN	engineered mutation	UNP P12821
B	25	GLN	ASN	engineered mutation	UNP P12821
B	82	GLN	ASN	engineered mutation	UNP P12821
B	117	GLN	ASN	engineered mutation	UNP P12821
B	289	GLN	ASN	engineered mutation	UNP P12821
B	341	ALA	LYS	engineered mutation	UNP P12821
B	545	ARG	GLN	engineered mutation	UNP P12821
B	576	LEU	PRO	engineered mutation	UNP P12821

- Molecule 2 is an oligosaccharide called 2-acetamido-2-deoxy-beta-D-glucopyranose-(1-4)-[alpha-L-fucopyranose-(1-6)]2-acetamido-2-deoxy-beta-D-glucopyranose.



Mol	Chain	Residues	Atoms				ZeroOcc	AltConf	Trace
2	G	3	Total	C	N	O	0	0	0
			38	22	2	14			

- Molecule 3 is an oligosaccharide called 2-acetamido-2-deoxy-beta-D-glucopyranose-(1-4)-2-acetamido-2-deoxy-beta-D-glucopyranose.

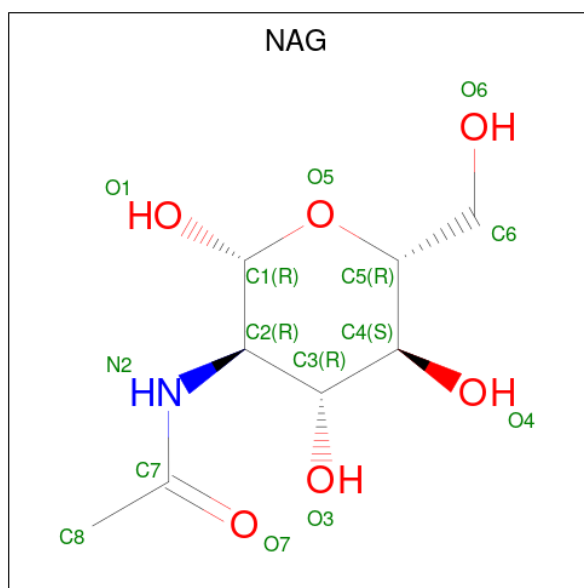


Mol	Chain	Residues	Atoms				ZeroOcc	AltConf	Trace
3	F	2	Total	C	N	O	0	0	0
			28	16	2	10			

- Molecule 4 is ZINC ION (CCD ID: ZN) (formula: Zn) (labeled as "Ligand of Interest" by depositor).

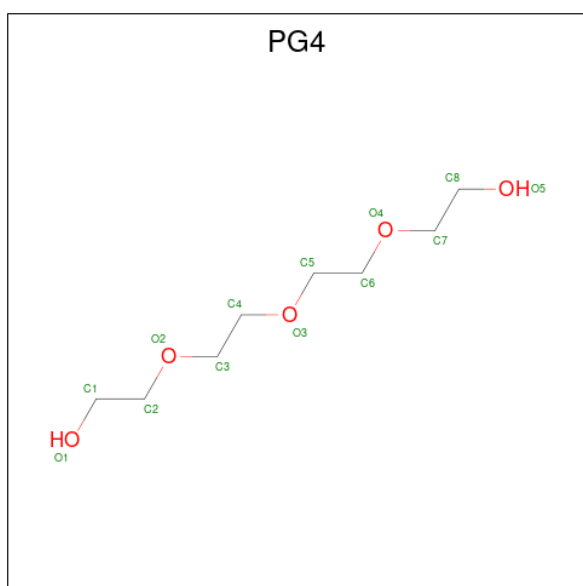
Mol	Chain	Residues	Atoms		ZeroOcc	AltConf
4	A	1	Total	Zn	0	0
			1	1		
4	B	1	Total	Zn	0	0
			1	1		

- Molecule 5 is 2-acetamido-2-deoxy-beta-D-glucopyranose (CCD ID: NAG) (formula: C₈H₁₅NO₆).



Mol	Chain	Residues	Atoms				ZeroOcc	AltConf
5	A	1	Total	C	N	O	0	0
			14	8	1	5		
5	A	1	Total	C	N	O	0	0
			14	8	1	5		
5	B	1	Total	C	N	O	0	0
			14	8	1	5		
5	B	1	Total	C	N	O	0	0
			14	8	1	5		

- Molecule 6 is TETRAETHYLENE GLYCOL (CCD ID: PG4) (formula: $C_8H_{18}O_5$).



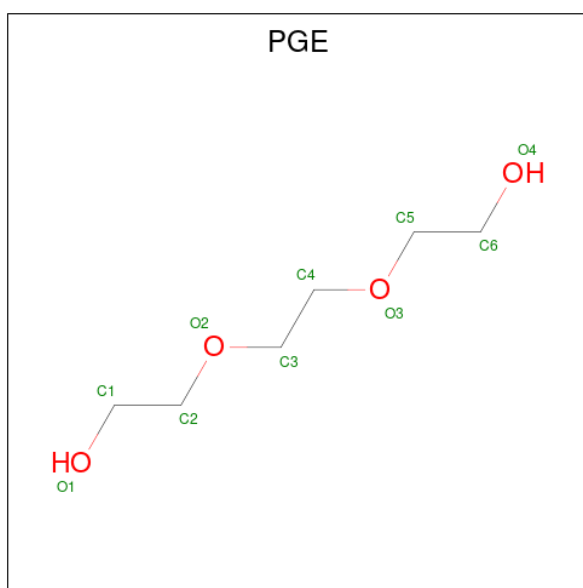
Mol	Chain	Residues	Atoms			ZeroOcc	AltConf
6	A	1	Total	C	O	0	0
			13	8	5		
6	B	1	Total	C	O	0	0
			13	8	5		

- Molecule 7 is 1,2-ETHANEDIOL (CCD ID: EDO) (formula: $C_2H_6O_2$).



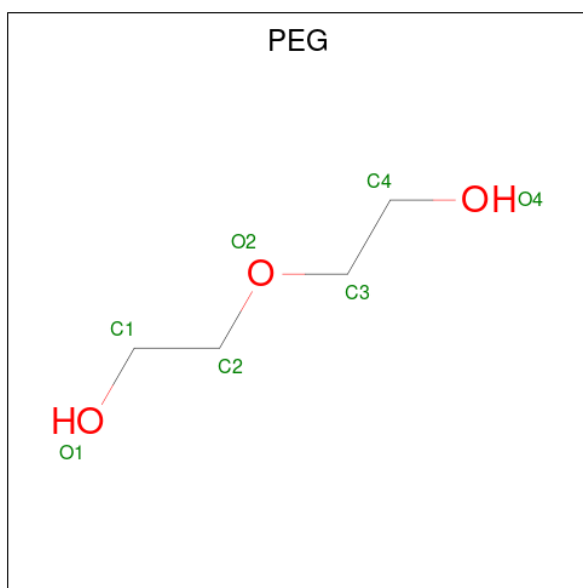
Mol	Chain	Residues	Atoms			ZeroOcc	AltConf
7	A	1	Total	C	O	0	0
			4	2	2		
7	B	1	Total	C	O	0	0
			4	2	2		

- Molecule 8 is TRIETHYLENE GLYCOL (CCD ID: PGE) (formula: $C_6H_{14}O_4$).



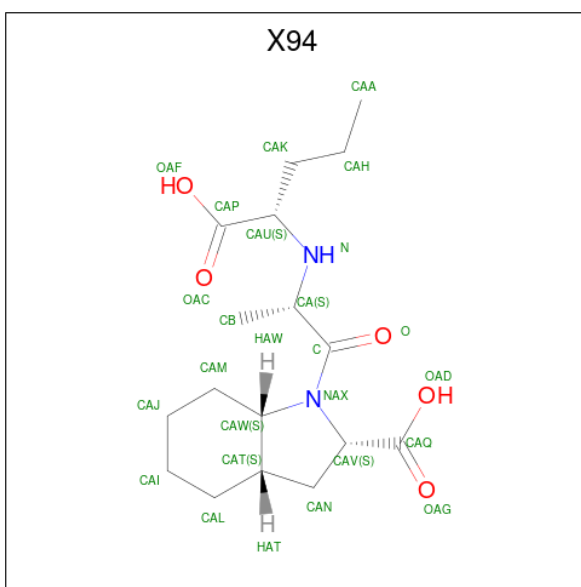
Mol	Chain	Residues	Atoms			ZeroOcc	AltConf
8	A	1	Total	C	O	0	0
			10	6	4		
8	B	1	Total	C	O	0	0
			10	6	4		

- Molecule 9 is DI(HYDROXYETHYL)ETHER (CCD ID: PEG) (formula: $C_4H_{10}O_3$).



Mol	Chain	Residues	Atoms			ZeroOcc	AltConf
9	A	1	Total	C	O	0	0
			7	4	3		
9	B	1	Total	C	O	0	0
			7	4	3		
9	B	1	Total	C	O	0	0
			7	4	3		
9	B	1	Total	C	O	0	0
			7	4	3		

- Molecule 10 is PERINDOPRILAT (CCD ID: X94) (formula: $C_{17}H_{28}N_2O_5$) (labeled as "Ligand of Interest" by depositor).



Mol	Chain	Residues	Atoms				ZeroOcc	AltConf
10	A	1	Total	C	N	O	0	0
			24	17	2	5		
10	B	1	Total	C	N	O	0	0
			24	17	2	5		

- Molecule 11 is CHLORIDE ION (CCD ID: CL) (formula: Cl).

Mol	Chain	Residues	Atoms		ZeroOcc	AltConf
11	A	1	Total	Cl	0	0
			1	1		
11	B	1	Total	Cl	0	0
			1	1		

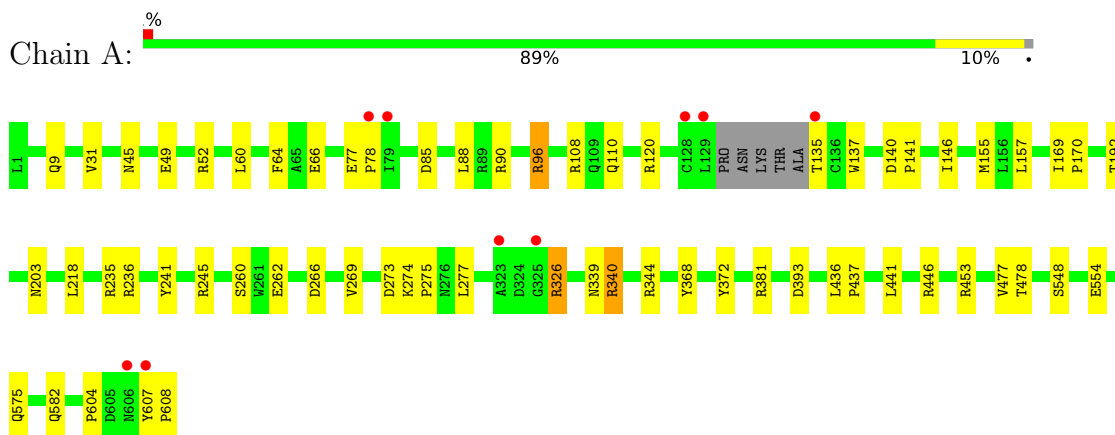
- Molecule 12 is water.

Mol	Chain	Residues	Atoms		ZeroOcc	AltConf
12	A	392	Total	O	0	0
			392	392		
12	B	226	Total	O	0	0
			226	226		

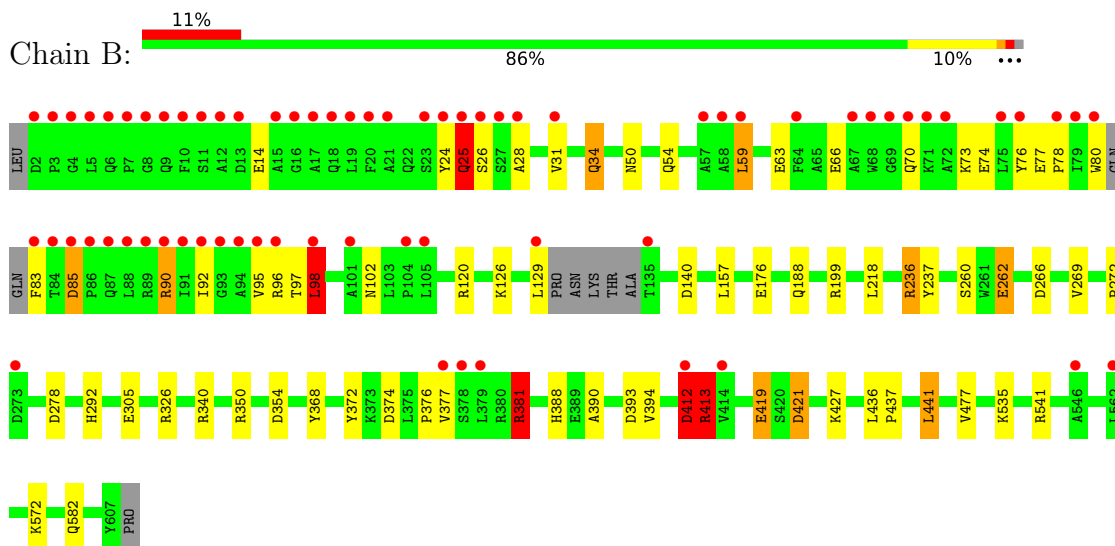
3 Residue-property plots

These plots are drawn for all protein, RNA, DNA and oligosaccharide chains in the entry. The first graphic for a chain summarises the proportions of the various outlier classes displayed in the second graphic. The second graphic shows the sequence view annotated by issues in geometry and electron density. Residues are color-coded according to the number of geometric quality criteria for which they contain at least one outlier: green = 0, yellow = 1, orange = 2 and red = 3 or more. A red dot above a residue indicates a poor fit to the electron density ($RSRZ > 2$). Stretches of 2 or more consecutive residues without any outlier are shown as a green connector. Residues present in the sample, but not in the model, are shown in grey.

- Molecule 1: Angiotensin-converting enzyme, soluble form



- Molecule 1: Angiotensin-converting enzyme, soluble form



- Molecule 2: 2-acetamido-2-deoxy-beta-D-glucopyranose-(1-4)-[alpha-L-fucopyranose-(1-6)]2-acetamido-2-deoxy-beta-D-glucopyranose



MAG1
MAG2
FUC3

- Molecule 3: 2-acetamido-2-deoxy-beta-D-glucopyranose-(1-4)-2-acetamido-2-deoxy-beta-D-glucopyranose

Chain F:

100%

MAG1
MAG2

4 Data and refinement statistics

Property	Value	Source
Space group	P 1	Depositor
Cell constants a, b, c, α , β , γ	73.29Å 77.63Å 83.15Å 88.64° 64.17° 74.83°	Depositor
Resolution (Å)	64.51 – 2.00 64.51 – 2.00	Depositor EDS
% Data completeness (in resolution range)	99.1 (64.51-2.00) 93.2 (64.51-2.00)	Depositor EDS
R_{merge}	(Not available)	Depositor
R_{sym}	(Not available)	Depositor
$\langle I/\sigma(I) \rangle$ ¹	1.33 (at 2.00Å)	Xtriage
Refinement program	REFMAC 5.8.0425	Depositor
R, R_{free}	0.200 , 0.234 0.210 , 0.245	Depositor DCC
R_{free} test set	5303 reflections (4.95%)	wwPDB-VP
Wilson B-factor (Å ²)	24.7	Xtriage
Anisotropy	0.177	Xtriage
Bulk solvent k_{sol} (e/Å ³), B_{sol} (Å ²)	0.36 , 46.3	EDS
L-test for twinning ²	$\langle L \rangle = 0.50$, $\langle L^2 \rangle = 0.33$	Xtriage
Estimated twinning fraction	No twinning to report.	Xtriage
F_o, F_c correlation	0.94	EDS
Total number of atoms	10714	wwPDB-VP
Average B, all atoms (Å ²)	35.0	wwPDB-VP

Xtriage's analysis on translational NCS is as follows: *The largest off-origin peak in the Patterson function is 6.72% of the height of the origin peak. No significant pseudotranslation is detected.*

¹Intensities estimated from amplitudes.

²Theoretical values of $\langle |L| \rangle$, $\langle L^2 \rangle$ for acentric reflections are 0.5, 0.333 respectively for untwinned datasets, and 0.375, 0.2 for perfectly twinned datasets.

5 Model quality

5.1 Standard geometry

Bond lengths and bond angles in the following residue types are not validated in this section: PEG, X94, PGE, ZN, PG4, FUC, CL, EDO, NAG

The Z score for a bond length (or angle) is the number of standard deviations the observed value is removed from the expected value. A bond length (or angle) with $|Z| > 5$ is considered an outlier worth inspection. RMSZ is the root-mean-square of all Z scores of the bond lengths (or angles).

Mol	Chain	Bond lengths		Bond angles	
		RMSZ	# Z >5	RMSZ	# Z >5
1	A	0.74	0/5089	1.16	8/6933 (0.1%)
1	B	0.67	0/5059	1.18	20/6890 (0.3%)
All	All	0.70	0/10148	1.17	28/13823 (0.2%)

Chiral center outliers are detected by calculating the chiral volume of a chiral center and verifying if the center is modelled as a planar moiety or with the opposite hand. A planarity outlier is detected by checking planarity of atoms in a peptide group, atoms in a mainchain group or atoms of a sidechain that are expected to be planar.

Mol	Chain	#Chirality outliers	#Planarity outliers
1	A	0	6
1	B	0	7
All	All	0	13

There are no bond length outliers.

All (28) bond angle outliers are listed below:

Mol	Chain	Res	Type	Atoms	Z	Observed(°)	Ideal(°)
1	B	419	GLU	N-CA-CB	9.22	123.44	110.07
1	B	354	ASP	CA-CB-CG	8.46	121.06	112.60
1	B	54	GLN	CB-CA-C	8.37	125.07	110.85
1	A	393	ASP	CA-CB-CG	7.72	120.32	112.60
1	B	393	ASP	CA-CB-CG	7.55	120.15	112.60
1	B	419	GLU	CB-CA-C	-7.41	99.19	110.90
1	B	85	ASP	CA-CB-CG	7.18	119.78	112.60
1	A	478	THR	CA-CB-OG1	-6.64	99.64	109.60
1	B	98	LEU	N-CA-CB	6.46	120.97	110.32
1	B	262	GLU	CB-CG-CD	6.44	123.55	112.60
1	B	54	GLN	N-CA-CB	-6.36	100.75	110.16
1	A	554	GLU	CB-CA-C	-6.19	100.33	110.85

Continued on next page...

Continued from previous page...

Mol	Chain	Res	Type	Atoms	Z	Observed(°)	Ideal(°)
1	B	25	GLN	CB-CA-C	6.13	122.89	110.38
1	A	582	GLN	CB-CA-C	-6.09	101.32	110.88
1	B	421	ASP	CA-CB-CG	5.81	118.41	112.60
1	B	412	ASP	CA-CB-CG	5.74	118.34	112.60
1	A	575	GLN	N-CA-CB	-5.69	100.51	109.78
1	A	203	ASN	CA-CB-CG	-5.63	106.97	112.60
1	B	83	PHE	CA-CB-CG	5.60	119.40	113.80
1	B	582	GLN	CB-CA-C	-5.51	102.22	110.88
1	A	192	THR	CA-CB-OG1	-5.47	101.39	109.60
1	A	446	ARG	CB-CA-C	5.38	120.00	110.85
1	B	50	ASN	CB-CA-C	5.37	119.98	110.85
1	B	140	ASP	CA-CB-CG	5.33	117.93	112.60
1	B	272	PRO	N-CA-C	5.16	120.63	113.98
1	B	266	ASP	CA-CB-CG	5.10	117.70	112.60
1	B	572	LYS	N-CA-CB	-5.09	102.62	110.16
1	B	278	ASP	CA-CB-CG	5.04	117.64	112.60

There are no chirality outliers.

All (13) planarity outliers are listed below:

Mol	Chain	Res	Type	Group
1	A	120	ARG	Sidechain
1	A	236	ARG	Sidechain
1	A	245	ARG	Sidechain
1	A	340	ARG	Sidechain
1	A	90	ARG	Sidechain
1	A	96	ARG	Sidechain
1	B	120	ARG	Sidechain
1	B	236	ARG	Sidechain
1	B	350	ARG	Sidechain
1	B	381	ARG	Sidechain
1	B	90	ARG	Sidechain
1	B	97	THR	Peptide
1	B	98	LEU	Peptide

5.2 Too-close contacts ⓘ

In the following table, the Non-H and H(model) columns list the number of non-hydrogen atoms and hydrogen atoms in the chain respectively. The H(added) column lists the number of hydrogen atoms added and optimized by MolProbity. The Clashes column lists the number of clashes within the asymmetric unit, whereas Symm-Clashes lists symmetry-related clashes.

Mol	Chain	Non-H	H(model)	H(added)	Clashes	Symm-Clashes
1	A	4934	0	4714	32	0
1	B	4906	0	4671	35	0
2	G	38	0	34	0	0
3	F	28	0	25	2	0
4	A	1	0	0	0	0
4	B	1	0	0	0	0
5	A	28	0	26	0	0
5	B	28	0	26	0	0
6	A	13	0	18	0	0
6	B	13	0	18	1	0
7	A	4	0	6	0	0
7	B	4	0	6	0	0
8	A	10	0	14	1	0
8	B	10	0	14	0	0
9	A	7	0	10	2	0
9	B	21	0	30	1	0
10	A	24	0	26	1	0
10	B	24	0	26	1	0
11	A	1	0	0	0	0
11	B	1	0	0	0	0
12	A	392	0	0	4	0
12	B	226	0	0	3	0
All	All	10714	0	9664	72	0

The all-atom clashscore is defined as the number of clashes found per 1000 atoms (including hydrogen atoms). The all-atom clashscore for this structure is 4.

All (72) close contacts within the same asymmetric unit are listed below, sorted by their clash magnitude.

Atom-1	Atom-2	Interatomic distance (Å)	Clash overlap (Å)
1:A:77:GLU:OE2	1:A:96:ARG:NH2	2.15	0.79
1:A:77:GLU:HA	1:A:77:GLU:OE1	1.84	0.77
1:B:292:HIS:NE2	6:B:705:PG4:H72	2.00	0.77
1:B:59:LEU:O	1:B:63:GLU:HG3	1.86	0.76
10:A:708:X94:HB1C	10:A:708:X94:HAM2	1.77	0.66
1:B:66:GLU:O	1:B:70:GLN:OE1	2.14	0.65
1:B:176:GLU:OE1	12:B:801:HOH:O	2.14	0.64
1:B:14:GLU:OE2	1:B:85:ASP:HB3	1.98	0.64
1:B:412:ASP:O	1:B:413:ARG:HB2	1.99	0.62
1:A:235:ARG:NH1	12:A:803:HOH:O	2.32	0.62
1:A:260:SER:OG	1:A:262:GLU:OE1	2.16	0.60
1:A:274:LYS:HB3	1:A:275:PRO:HD2	1.84	0.59

Continued on next page...

Continued from previous page...

Atom-1	Atom-2	Interatomic distance (Å)	Clash overlap (Å)
1:B:236:ARG:O	1:B:236:ARG:HD3	2.03	0.59
1:A:137:TRP:CH2	1:A:155:MET:HE1	2.38	0.58
10:B:709:X94:HAM2	10:B:709:X94:HB1C	1.85	0.58
1:B:236:ARG:HG3	1:B:237:TYR:CD2	2.39	0.56
1:B:236:ARG:HD3	1:B:236:ARG:C	2.32	0.55
1:A:110:GLN:OE1	12:A:801:HOH:O	2.18	0.54
1:A:137:TRP:CZ3	1:A:155:MET:HE1	2.42	0.54
1:B:157:LEU:HD11	1:B:477:VAL:HG13	1.90	0.53
1:A:241:TYR:OH	1:A:604:PRO:HA	2.10	0.52
3:F:1:NAG:C6	3:F:2:NAG:H82	2.37	0.52
1:B:28:ALA:HB3	1:B:377:VAL:HG21	1.90	0.52
1:A:9:GLN:NE2	12:A:813:HOH:O	2.42	0.52
1:A:9:GLN:HG3	12:A:1147:HOH:O	2.09	0.51
1:B:59:LEU:O	1:B:63:GLU:CG	2.58	0.51
1:A:60:LEU:HD23	1:A:60:LEU:O	2.12	0.50
1:B:390:ALA:O	1:B:394:VAL:HG23	2.12	0.50
1:B:412:ASP:OD1	1:B:412:ASP:N	2.45	0.49
1:A:66:GLU:CD	1:A:108:ARG:HH22	2.21	0.49
1:B:305:GLU:O	1:B:541:ARG:NH1	2.46	0.49
1:B:76:TYR:O	1:B:80:TRP:HD1	1.95	0.48
1:B:427:LYS:NZ	12:B:815:HOH:O	2.45	0.48
1:B:340:ARG:HD3	1:B:374:ASP:OD1	2.14	0.48
1:A:157:LEU:HD11	1:A:477:VAL:HG13	1.95	0.47
3:F:1:NAG:H62	3:F:2:NAG:H82	1.96	0.47
1:B:260:SER:OG	1:B:262:GLU:OE1	2.30	0.46
1:A:169:ILE:HB	1:A:170:PRO:HD3	1.98	0.46
1:B:31:VAL:O	1:B:34:GLN:HG3	2.15	0.46
1:B:427:LYS:HE2	12:B:898:HOH:O	2.16	0.46
1:A:77:GLU:N	1:A:78:PRO:CD	2.79	0.46
1:B:66:GLU:HG2	1:B:70:GLN:OE1	2.16	0.46
1:B:25:GLN:CD	1:B:376:PRO:HB3	2.41	0.46
1:A:260:SER:HG	1:A:262:GLU:CD	2.21	0.45
1:A:260:SER:CB	1:A:262:GLU:OE1	2.65	0.45
1:A:344:ARG:HH22	9:A:707:PEG:C1	2.28	0.45
1:B:218:LEU:HD13	1:B:436:LEU:HD13	1.98	0.45
1:B:24:TYR:CE1	1:B:95:VAL:HG23	2.52	0.44
1:B:381:ARG:HA	1:B:381:ARG:HE	1.81	0.44
1:A:137:TRP:CZ3	1:A:155:MET:CE	2.99	0.44
1:A:218:LEU:HD13	1:A:436:LEU:HD13	1.99	0.44
1:B:73:LYS:HD2	1:B:96:ARG:HG2	2.00	0.43
8:A:706:PGE:H62	8:A:706:PGE:H42	1.67	0.43

Continued on next page...

Continued from previous page...

Atom-1	Atom-2	Interatomic distance (Å)	Clash overlap (Å)
1:B:73:LYS:HE3	1:B:96:ARG:HG3	2.01	0.43
1:B:260:SER:HG	1:B:262:GLU:CD	2.26	0.42
1:A:31:VAL:HG21	1:A:64:PHE:CD1	2.54	0.42
1:A:49:GLU:OE1	1:A:52:ARG:NH2	2.52	0.42
1:A:436:LEU:N	1:A:437:PRO:HD2	2.34	0.42
1:B:199:ARG:NH1	9:B:708:PEG:H42	2.35	0.42
1:A:85:ASP:HB3	1:A:88:LEU:HB3	2.01	0.42
1:A:344:ARG:HH22	9:A:707:PEG:H11	1.85	0.42
1:A:607:TYR:CD1	1:A:608:PRO:HA	2.55	0.41
1:B:77:GLU:N	1:B:78:PRO:CD	2.83	0.41
1:A:140:ASP:HA	1:A:141:PRO:HA	1.78	0.41
1:A:146:ILE:HD13	1:A:155:MET:HE2	2.02	0.41
1:B:92:ILE:HA	1:B:95:VAL:HG12	2.02	0.41
1:A:277:LEU:HA	1:A:277:LEU:HD23	1.87	0.41
1:A:381:ARG:HG3	1:A:548:SER:HB3	2.02	0.41
1:B:436:LEU:N	1:B:437:PRO:HD2	2.36	0.41
1:B:441:LEU:C	1:B:441:LEU:HD12	2.45	0.41
1:A:339:ASN:O	1:A:340:ARG:HB2	2.19	0.40
1:B:102:ASN:HB3	1:B:188:GLN:HG3	2.02	0.40

There are no symmetry-related clashes.

5.3 Torsion angles [i](#)

5.3.1 Protein backbone [i](#)

In the following table, the Percentiles column shows the percent Ramachandran outliers of the chain as a percentile score with respect to all X-ray entries followed by that with respect to entries of similar resolution.

The Analysed column shows the number of residues for which the backbone conformation was analysed, and the total number of residues.

Mol	Chain	Analysed	Favoured	Allowed	Outliers	Percentiles	
1	A	600/608 (99%)	588 (98%)	10 (2%)	2 (0%)	37	35
1	B	595/608 (98%)	582 (98%)	11 (2%)	2 (0%)	37	35
All	All	1195/1216 (98%)	1170 (98%)	21 (2%)	4 (0%)	37	35

All (4) Ramachandran outliers are listed below:

Mol	Chain	Res	Type
1	B	413	ARG
1	A	326	ARG
1	B	326	ARG
1	A	45	ASN

5.3.2 Protein sidechains ⓘ

In the following table, the Percentiles column shows the percent sidechain outliers of the chain as a percentile score with respect to all X-ray entries followed by that with respect to entries of similar resolution.

The Analysed column shows the number of residues for which the sidechain conformation was analysed, and the total number of residues.

Mol	Chain	Analysed	Rotameric	Outliers	Percentiles	
1	A	519/522 (99%)	510 (98%)	9 (2%)	56	61
1	B	515/522 (99%)	495 (96%)	20 (4%)	27	27
All	All	1034/1044 (99%)	1005 (97%)	29 (3%)	38	40

All (29) residues with a non-rotameric sidechain are listed below:

Mol	Chain	Res	Type
1	A	135	THR
1	A	266	ASP
1	A	269	VAL
1	A	273	ASP
1	A	326	ARG
1	A	368	TYR
1	A	372	TYR
1	A	441	LEU
1	A	453	ARG
1	B	25	GLN
1	B	26	SER
1	B	34	GLN
1	B	59	LEU
1	B	74	GLU
1	B	90	ARG
1	B	98	LEU
1	B	126	LYS
1	B	129	LEU
1	B	269	VAL
1	B	368	TYR

Continued on next page...

Continued from previous page...

Mol	Chain	Res	Type
1	B	372	TYR
1	B	381	ARG
1	B	388	HIS
1	B	412	ASP
1	B	413	ARG
1	B	419	GLU
1	B	421	ASP
1	B	441	LEU
1	B	535	LYS

Sometimes sidechains can be flipped to improve hydrogen bonding and reduce clashes. All (15) such sidechains are listed below:

Mol	Chain	Res	Type
1	A	9	GLN
1	A	54	GLN
1	A	82	GLN
1	A	110	GLN
1	A	444	GLN
1	A	582	GLN
1	A	600	HIS
1	B	18	GLN
1	B	25	GLN
1	B	30	GLN
1	B	102	ASN
1	B	263	ASN
1	B	371	GLN
1	B	444	GLN
1	B	588	ASN

5.3.3 RNA ⓘ

There are no RNA molecules in this entry.

5.4 Non-standard residues in protein, DNA, RNA chains ⓘ

There are no non-standard protein/DNA/RNA residues in this entry.

5.5 Carbohydrates ⓘ

5 monosaccharides are modelled in this entry.

In the following table, the Counts columns list the number of bonds (or angles) for which Mogul statistics could be retrieved, the number of bonds (or angles) that are observed in the model and the number of bonds (or angles) that are defined in the Chemical Component Dictionary. The Link column lists molecule types, if any, to which the group is linked. The Z score for a bond length (or angle) is the number of standard deviations the observed value is removed from the expected value. A bond length (or angle) with $|Z| > 2$ is considered an outlier worth inspection. RMSZ is the root-mean-square of all Z scores of the bond lengths (or angles).

Mol	Type	Chain	Res	Link	Bond lengths			Bond angles		
					Counts	RMSZ	$\# Z > 2$	Counts	RMSZ	$\# Z > 2$
3	NAG	F	1	1,3	14,14,15	0.45	0	17,19,21	2.00	3 (17%)
3	NAG	F	2	3	14,14,15	0.32	0	17,19,21	1.06	3 (17%)
2	NAG	G	1	1,2	14,14,15	0.58	0	17,19,21	1.51	4 (23%)
2	NAG	G	2	2	14,14,15	0.41	0	17,19,21	1.10	2 (11%)
2	FUC	G	3	2	10,10,11	0.73	0	14,14,16	1.55	3 (21%)

In the following table, the Chirals column lists the number of chiral outliers, the number of chiral centers analysed, the number of these observed in the model and the number defined in the Chemical Component Dictionary. Similar counts are reported in the Torsion and Rings columns. '-' means no outliers of that kind were identified.

Mol	Type	Chain	Res	Link	Chirals	Torsions	Rings
3	NAG	F	1	1,3	-	5/6/23/26	0/1/1/1
3	NAG	F	2	3	-	2/6/23/26	0/1/1/1
2	NAG	G	1	1,2	-	2/6/23/26	0/1/1/1
2	NAG	G	2	2	-	4/6/23/26	0/1/1/1
2	FUC	G	3	2	-	-	0/1/1/1

There are no bond length outliers.

All (15) bond angle outliers are listed below:

Mol	Chain	Res	Type	Atoms	Z	Observed(°)	Ideal(°)
3	F	1	NAG	C1-C2-N2	5.35	119.63	110.49
3	F	1	NAG	C1-O5-C5	5.24	119.29	112.19
3	F	1	NAG	C2-N2-C7	3.11	127.33	122.90
2	G	1	NAG	O4-C4-C5	3.02	116.79	109.30
2	G	3	FUC	C3-C4-C5	2.96	114.38	109.77
2	G	3	FUC	O3-C3-C2	-2.95	104.34	109.99
2	G	3	FUC	O5-C1-C2	-2.95	106.22	110.77
2	G	2	NAG	C2-N2-C7	2.63	126.65	122.90
2	G	1	NAG	C6-C5-C4	2.28	118.35	113.00
2	G	1	NAG	O4-C4-C3	-2.25	105.15	110.35

Continued on next page...

Continued from previous page...

Mol	Chain	Res	Type	Atoms	Z	Observed(°)	Ideal(°)
3	F	2	NAG	C2-N2-C7	2.24	126.09	122.90
2	G	2	NAG	C1-O5-C5	2.24	115.22	112.19
3	F	2	NAG	C1-C2-N2	2.13	114.14	110.49
3	F	2	NAG	O4-C4-C3	-2.12	105.46	110.35
2	G	1	NAG	C3-C4-C5	-2.02	106.63	110.24

There are no chirality outliers.

All (13) torsion outliers are listed below:

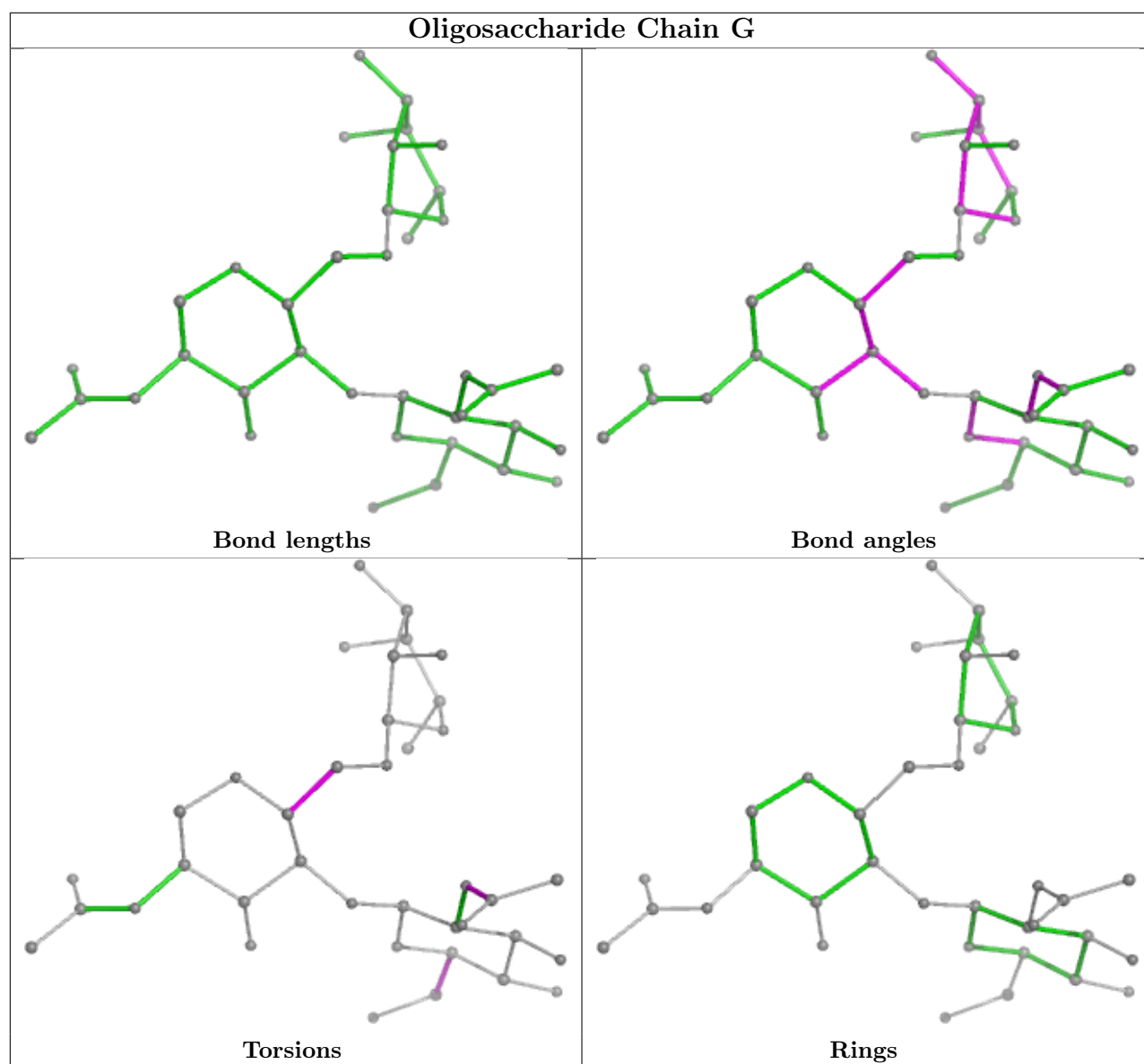
Mol	Chain	Res	Type	Atoms
2	G	2	NAG	C8-C7-N2-C2
2	G	2	NAG	O7-C7-N2-C2
3	F	2	NAG	C8-C7-N2-C2
3	F	2	NAG	O7-C7-N2-C2
2	G	2	NAG	O5-C5-C6-O6
2	G	1	NAG	C4-C5-C6-O6
3	F	1	NAG	C8-C7-N2-C2
2	G	1	NAG	O5-C5-C6-O6
2	G	2	NAG	C4-C5-C6-O6
3	F	1	NAG	O7-C7-N2-C2
3	F	1	NAG	C1-C2-N2-C7
3	F	1	NAG	C4-C5-C6-O6
3	F	1	NAG	O5-C5-C6-O6

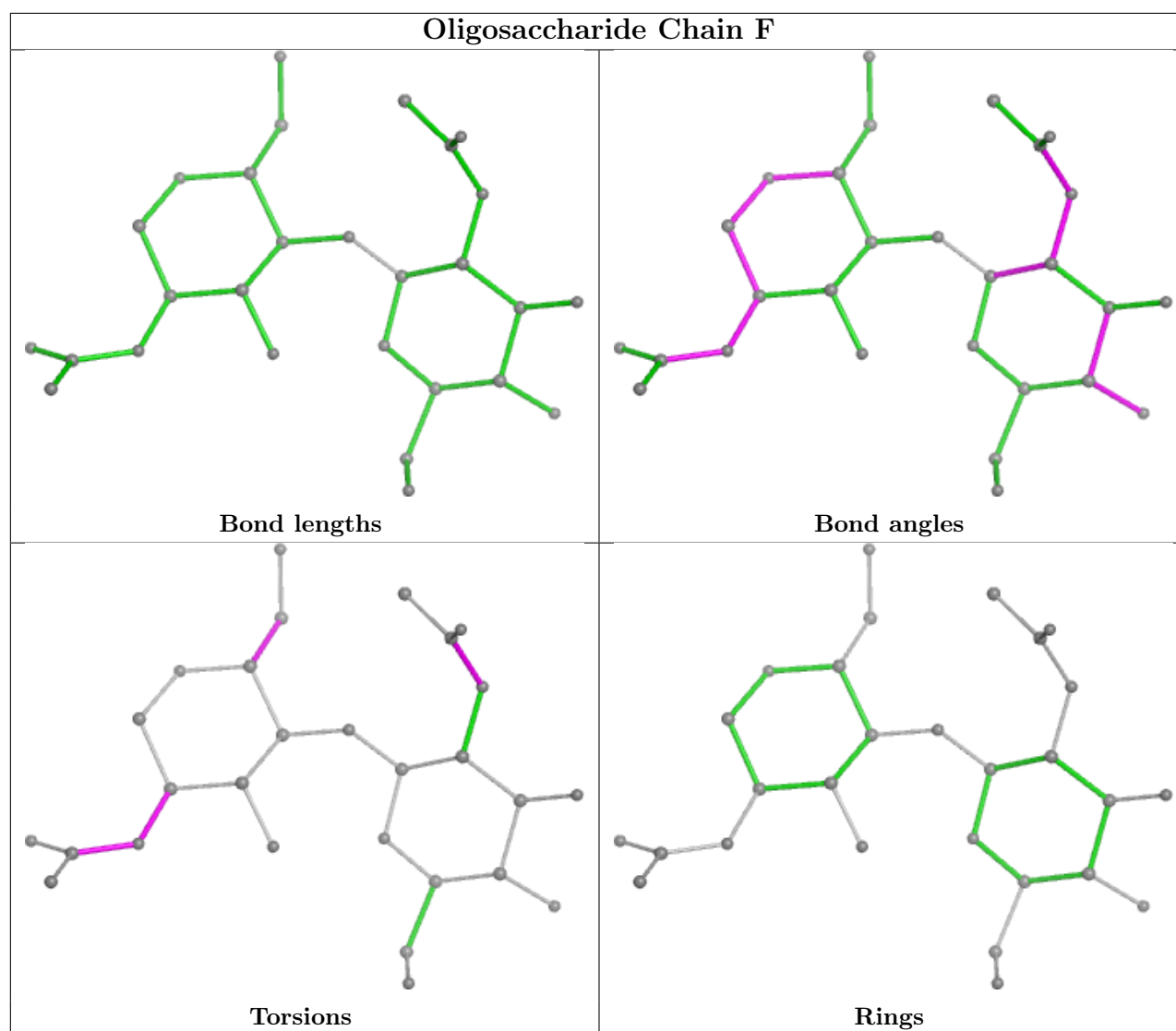
There are no ring outliers.

2 monomers are involved in 2 short contacts:

Mol	Chain	Res	Type	Clashes	Symm-Clashes
3	F	2	NAG	2	0
3	F	1	NAG	2	0

The following is a two-dimensional graphical depiction of Mogul quality analysis of bond lengths, bond angles, torsion angles, and ring geometry for oligosaccharide.





5.6 Ligand geometry [i](#)

Of 20 ligands modelled in this entry, 4 are monoatomic - leaving 16 for Mogul analysis.

In the following table, the Counts columns list the number of bonds (or angles) for which Mogul statistics could be retrieved, the number of bonds (or angles) that are observed in the model and the number of bonds (or angles) that are defined in the Chemical Component Dictionary. The Link column lists molecule types, if any, to which the group is linked. The Z score for a bond length (or angle) is the number of standard deviations the observed value is removed from the expected value. A bond length (or angle) with $|Z| > 2$ is considered an outlier worth inspection. RMSZ is the root-mean-square of all Z scores of the bond lengths (or angles).

Mol	Type	Chain	Res	Link	Bond lengths			Bond angles		
					Counts	RMSZ	$\# Z > 2$	Counts	RMSZ	$\# Z > 2$
10	X94	B	709	4	25,25,25	0.83	1 (4%)	32,35,35	1.82	5 (15%)
5	NAG	B	711	1	14,14,15	0.54	0	17,19,21	1.64	4 (23%)

Mol	Type	Chain	Res	Link	Bond lengths			Bond angles		
					Counts	RMSZ	# Z > 2	Counts	RMSZ	# Z > 2
8	PGE	A	706	-	9,9,9	0.44	0	8,8,8	0.41	0
9	PEG	B	708	-	6,6,6	0.41	0	5,5,5	0.32	0
8	PGE	B	704	-	9,9,9	0.22	0	8,8,8	0.18	0
10	X94	A	708	4	25,25,25	0.64	0	32,35,35	1.39	5 (15%)
5	NAG	A	702	1	14,14,15	0.46	0	17,19,21	1.06	1 (5%)
7	EDO	B	707	-	3,3,3	0.17	0	2,2,2	0.53	0
9	PEG	A	707	-	6,6,6	0.30	0	5,5,5	0.18	0
5	NAG	A	703	1	14,14,15	0.63	0	17,19,21	1.59	3 (17%)
5	NAG	B	702	1	14,14,15	0.80	0	17,19,21	2.16	3 (17%)
6	PG4	A	704	-	12,12,12	0.61	0	11,11,11	0.45	0
9	PEG	B	703	-	6,6,6	0.35	0	5,5,5	0.60	0
7	EDO	A	705	-	3,3,3	0.13	0	2,2,2	0.33	0
9	PEG	B	706	-	6,6,6	0.46	0	5,5,5	0.35	0
6	PG4	B	705	-	12,12,12	0.54	0	11,11,11	0.64	0

In the following table, the Chirals column lists the number of chiral outliers, the number of chiral centers analysed, the number of these observed in the model and the number defined in the Chemical Component Dictionary. Similar counts are reported in the Torsion and Rings columns. '-' means no outliers of that kind were identified.

Mol	Type	Chain	Res	Link	Chirals	Torsions	Rings
10	X94	B	709	4	-	1/23/46/46	0/2/2/2
5	NAG	B	711	1	-	4/6/23/26	0/1/1/1
8	PGE	A	706	-	-	6/7/7/7	-
9	PEG	B	708	-	-	1/4/4/4	-
8	PGE	B	704	-	-	4/7/7/7	-
10	X94	A	708	4	-	2/23/46/46	0/2/2/2
5	NAG	A	702	1	-	4/6/23/26	0/1/1/1
7	EDO	B	707	-	-	1/1/1/1	-
9	PEG	A	707	-	-	2/4/4/4	-
5	NAG	A	703	1	-	3/6/23/26	0/1/1/1
5	NAG	B	702	1	-	4/6/23/26	0/1/1/1
6	PG4	A	704	-	-	4/10/10/10	-
9	PEG	B	703	-	-	2/4/4/4	-
7	EDO	A	705	-	-	1/1/1/1	-
9	PEG	B	706	-	-	2/4/4/4	-
6	PG4	B	705	-	-	5/10/10/10	-

All (1) bond length outliers are listed below:

Mol	Chain	Res	Type	Atoms	Z	Observed(Å)	Ideal(Å)
10	B	709	X94	OAD-CAQ	-3.00	1.20	1.30

All (21) bond angle outliers are listed below:

Mol	Chain	Res	Type	Atoms	Z	Observed(°)	Ideal(°)
10	B	709	X94	CAK-CAU-CAP	-6.80	93.95	110.35
5	B	702	NAG	C1-O5-C5	5.59	119.77	112.19
5	B	702	NAG	C1-C2-N2	5.28	119.51	110.49
5	B	711	NAG	C1-C2-N2	-4.24	103.25	110.49
5	A	703	NAG	C1-C2-N2	3.92	117.19	110.49
10	B	709	X94	OAC-CAP-CAU	-3.52	110.71	122.26
10	A	708	X94	CAI-CAL-CAT	3.51	117.92	111.93
5	A	703	NAG	C1-O5-C5	3.50	116.93	112.19
10	A	708	X94	OAC-CAP-CAU	-3.18	111.83	122.26
10	B	709	X94	O-C-NAX	-3.07	117.02	121.68
10	A	708	X94	CAJ-CAI-CAL	2.88	117.29	111.42
5	B	711	NAG	O5-C1-C2	2.69	115.53	111.29
10	A	708	X94	CAI-CAJ-CAM	2.60	116.72	111.42
5	B	711	NAG	O5-C5-C4	-2.58	104.56	110.83
5	A	702	NAG	O4-C4-C5	2.44	115.36	109.30
5	A	703	NAG	C2-N2-C7	2.37	126.27	122.90
5	B	711	NAG	C4-C3-C2	2.36	114.48	111.02
10	A	708	X94	OAF-CAP-CAU	2.28	120.98	113.40
10	B	709	X94	OAF-CAP-CAU	2.22	120.79	113.40
5	B	702	NAG	O4-C4-C3	-2.20	105.26	110.35
10	B	709	X94	CAM-CAW-CAT	2.16	115.85	113.04

There are no chirality outliers.

All (46) torsion outliers are listed below:

Mol	Chain	Res	Type	Atoms
9	B	703	PEG	C1-C2-O2-C3
8	A	706	PGE	C6-C5-O3-C4
5	B	711	NAG	O5-C5-C6-O6
9	A	707	PEG	O1-C1-C2-O2
5	A	703	NAG	O5-C5-C6-O6
5	A	702	NAG	C8-C7-N2-C2
8	A	706	PGE	O2-C3-C4-O3
5	B	711	NAG	C4-C5-C6-O6
9	B	703	PEG	O1-C1-C2-O2
5	A	703	NAG	C4-C5-C6-O6
5	A	702	NAG	O7-C7-N2-C2

Continued on next page...

Continued from previous page...

Mol	Chain	Res	Type	Atoms
5	B	711	NAG	C8-C7-N2-C2
5	B	711	NAG	O7-C7-N2-C2
6	B	705	PG4	O3-C5-C6-O4
9	B	706	PEG	O1-C1-C2-O2
5	B	702	NAG	C4-C5-C6-O6
10	B	709	X94	CAH-CAK-CAU-N
5	B	702	NAG	O5-C5-C6-O6
6	A	704	PG4	O3-C5-C6-O4
8	B	704	PGE	O3-C5-C6-O4
5	A	702	NAG	O5-C5-C6-O6
7	B	707	EDO	O1-C1-C2-O2
8	A	706	PGE	O3-C5-C6-O4
8	B	704	PGE	O1-C1-C2-O2
7	A	705	EDO	O1-C1-C2-O2
6	A	704	PG4	C1-C2-O2-C3
6	B	705	PG4	O1-C1-C2-O2
6	B	705	PG4	C6-C5-O3-C4
8	A	706	PGE	C1-C2-O2-C3
8	A	706	PGE	C4-C3-O2-C2
9	B	708	PEG	C1-C2-O2-C3
5	A	702	NAG	C4-C5-C6-O6
9	B	706	PEG	C1-C2-O2-C3
6	A	704	PG4	O4-C7-C8-O5
6	A	704	PG4	C6-C5-O3-C4
5	A	703	NAG	C3-C2-N2-C7
6	B	705	PG4	C8-C7-O4-C6
9	A	707	PEG	C4-C3-O2-C2
10	A	708	X94	OAC-CAP-CAU-N
5	B	702	NAG	C1-C2-N2-C7
8	B	704	PGE	C4-C3-O2-C2
10	A	708	X94	OAF-CAP-CAU-N
8	B	704	PGE	C3-C4-O3-C5
5	B	702	NAG	C3-C2-N2-C7
8	A	706	PGE	O1-C1-C2-O2
6	B	705	PG4	C5-C6-O4-C7

There are no ring outliers.

6 monomers are involved in 7 short contacts:

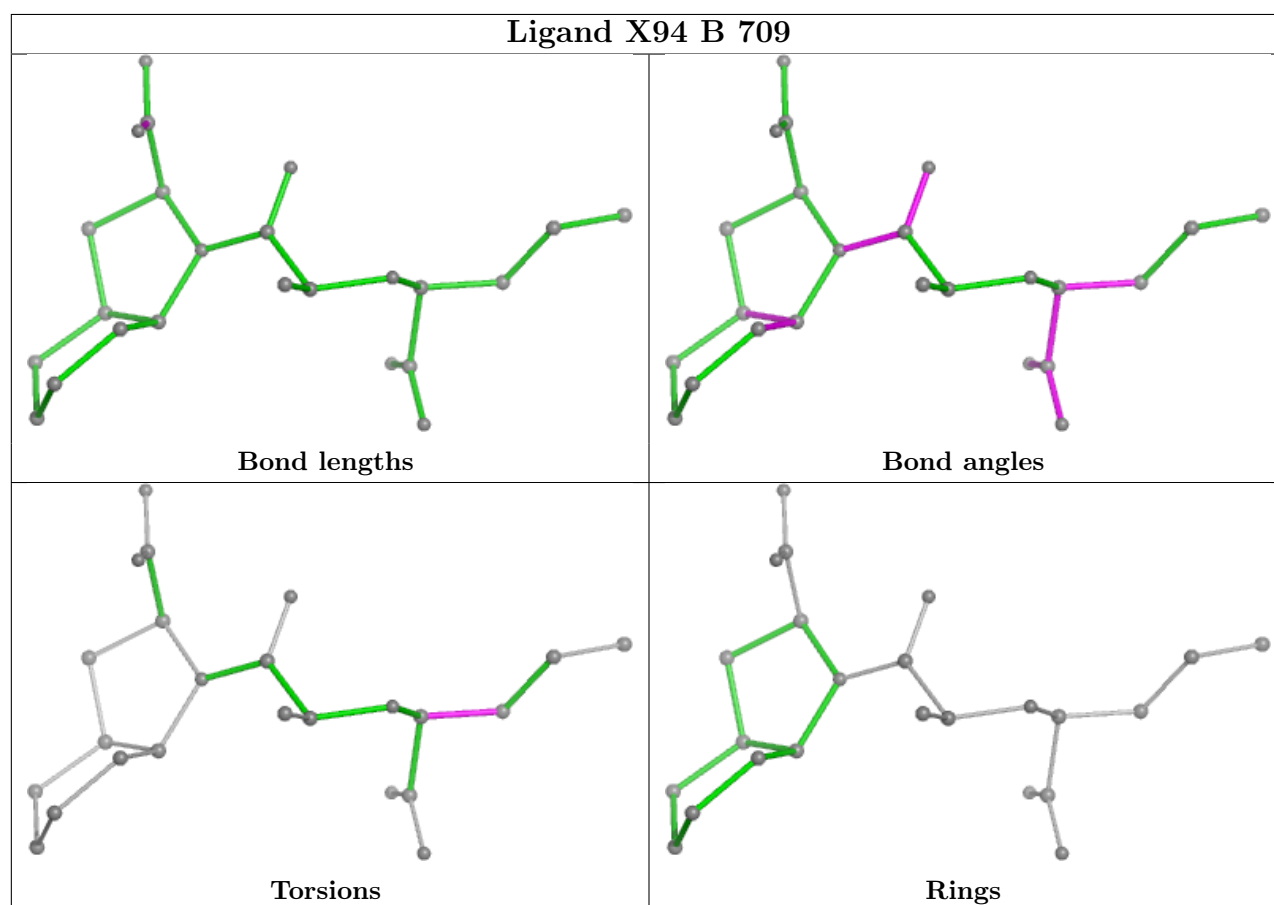
Mol	Chain	Res	Type	Clashes	Symm-Clashes
10	B	709	X94	1	0
8	A	706	PGE	1	0

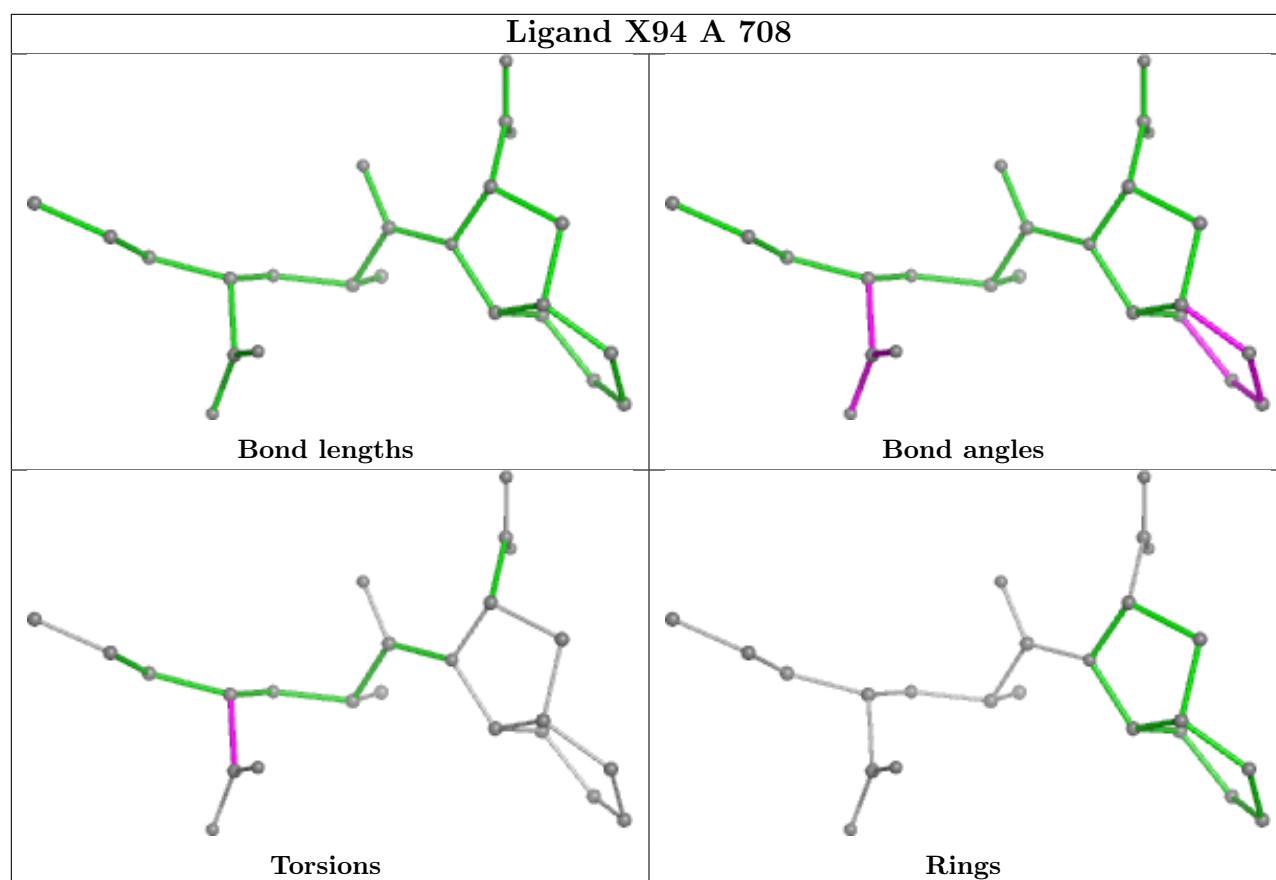
Continued on next page...

Continued from previous page...

Mol	Chain	Res	Type	Clashes	Symm-Clashes
9	B	708	PEG	1	0
10	A	708	X94	1	0
9	A	707	PEG	2	0
6	B	705	PG4	1	0

The following is a two-dimensional graphical depiction of Mogul quality analysis of bond lengths, bond angles, torsion angles, and ring geometry for all instances of the Ligand of Interest. In addition, ligands with molecular weight > 250 and outliers as shown on the validation Tables will also be included. For torsion angles, if less than 5% of the Mogul distribution of torsion angles is within 10 degrees of the torsion angle in question, then that torsion angle is considered an outlier. Any bond that is central to one or more torsion angles identified as an outlier by Mogul will be highlighted in the graph. For rings, the root-mean-square deviation (RMSD) between the ring in question and similar rings identified by Mogul is calculated over all ring torsion angles. If the average RMSD is greater than 60 degrees and the minimal RMSD between the ring in question and any Mogul-identified rings is also greater than 60 degrees, then that ring is considered an outlier. The outliers are highlighted in purple. The color gray indicates Mogul did not find sufficient equivalents in the CSD to analyse the geometry.





5.7 Other polymers [i](#)

There are no such residues in this entry.

5.8 Polymer linkage issues [i](#)

There are no chain breaks in this entry.

6 Fit of model and data [i](#)

6.1 Protein, DNA and RNA chains [i](#)

In the following table, the column labelled ‘#RSRZ> 2’ contains the number (and percentage) of RSRZ outliers, followed by percent RSRZ outliers for the chain as percentile scores relative to all X-ray entries and entries of similar resolution. The OWAB column contains the minimum, median, 95th percentile and maximum values of the occupancy-weighted average B-factor per residue. The column labelled ‘Q< 0.9’ lists the number of (and percentage) of residues with an average occupancy less than 0.9.

Mol	Chain	Analysed	<RSRZ>	#RSRZ>2	OWAB(Å ²)	Q<0.9
1	A	603/608 (99%)	-0.21	9 (1%) 71 70	9, 27, 49, 74	1 (0%)
1	B	599/608 (98%)	0.43	69 (11%) 11 10	15, 37, 78, 105	2 (0%)
All	All	1202/1216 (98%)	0.11	78 (6%) 26 24	9, 31, 68, 105	3 (0%)

All (78) RSRZ outliers are listed below:

Mol	Chain	Res	Type	RSRZ
1	B	17	ALA	5.8
1	A	129	LEU	5.7
1	B	129	LEU	5.6
1	B	91	ILE	5.5
1	B	8	GLY	5.1
1	B	15	ALA	5.0
1	B	20	PHE	4.8
1	B	5	LEU	4.7
1	B	83	PHE	4.7
1	B	80	TRP	4.6
1	B	11	SER	4.5
1	B	378	SER	4.4
1	B	92	ILE	4.4
1	B	19	LEU	4.3
1	B	75	LEU	4.3
1	B	93	GLY	4.2
1	B	10	PHE	4.2
1	B	98	LEU	4.1
1	A	325	GLY	4.1
1	B	88	LEU	4.1
1	B	24	TYR	4.0
1	B	64	PHE	4.0
1	B	135	THR	3.9
1	B	21	ALA	3.7

Continued on next page...

Continued from previous page...

Mol	Chain	Res	Type	RSRZ
1	B	76	TYR	3.7
1	B	78	PRO	3.7
1	B	4	GLY	3.6
1	B	101	ALA	3.6
1	B	31	VAL	3.5
1	B	13	ASP	3.5
1	B	79	ILE	3.5
1	B	84	THR	3.4
1	B	377	VAL	3.2
1	B	68	TRP	3.2
1	B	95	VAL	3.1
1	B	72	ALA	3.1
1	B	379	LEU	3.1
1	B	71	LYS	3.1
1	B	27	SER	3.0
1	B	86	PRO	3.0
1	B	105	LEU	3.0
1	B	69	GLY	2.9
1	B	70	GLN	2.9
1	A	78	PRO	2.9
1	A	606	ASN	2.9
1	B	16	GLY	2.9
1	B	414	VAL	2.8
1	B	90	ARG	2.8
1	B	546	ALA	2.8
1	B	94	ALA	2.7
1	B	6	GLN	2.7
1	B	25	GLN	2.7
1	B	9	GLN	2.7
1	A	607	TYR	2.7
1	B	26	SER	2.7
1	A	135	THR	2.7
1	B	67	ALA	2.6
1	B	18	GLN	2.6
1	B	87	GLN	2.5
1	B	96	ARG	2.5
1	B	57	ALA	2.5
1	B	7	PRO	2.4
1	A	79	ILE	2.4
1	B	28	ALA	2.4
1	B	59	LEU	2.4
1	B	562	LEU	2.4

Continued on next page...

Continued from previous page...

Mol	Chain	Res	Type	RSRZ
1	B	12	ALA	2.3
1	B	3	PRO	2.3
1	A	323	ALA	2.3
1	B	85	ASP	2.3
1	B	23	SER	2.3
1	B	412	ASP	2.2
1	B	58	ALA	2.2
1	A	128	CYS	2.2
1	B	89	ARG	2.1
1	B	104	PRO	2.0
1	B	2	ASP	2.0
1	B	273	ASP	2.0

6.2 Non-standard residues in protein, DNA, RNA chains ⓘ

There are no non-standard protein/DNA/RNA residues in this entry.

6.3 Carbohydrates ⓘ

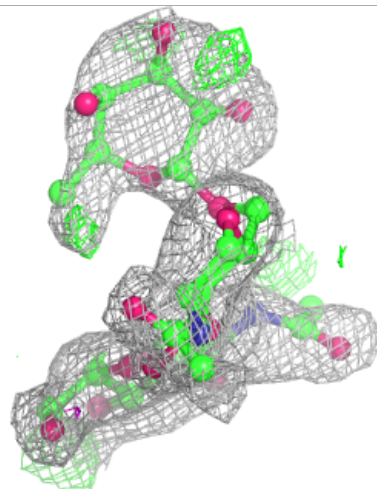
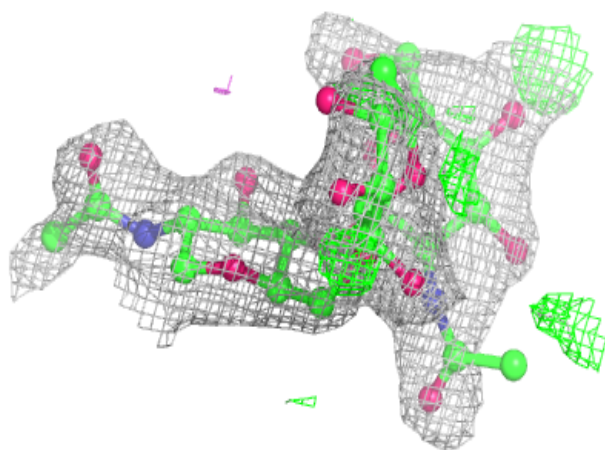
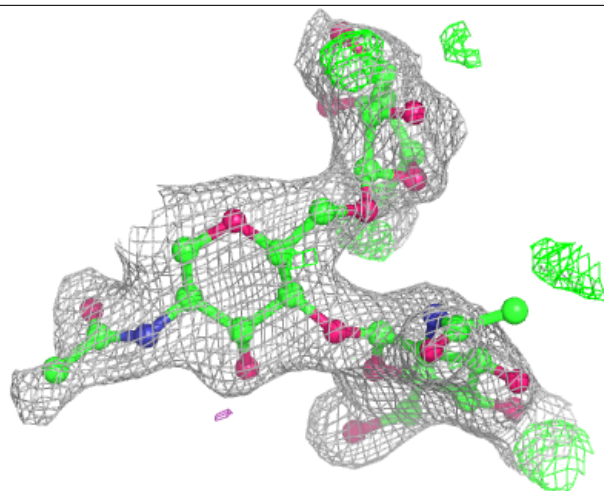
In the following table, the Atoms column lists the number of modelled atoms in the group and the number defined in the chemical component dictionary. The B-factors column lists the minimum, median, 95th percentile and maximum values of B factors of atoms in the group. The column labelled 'Q< 0.9' lists the number of atoms with occupancy less than 0.9.

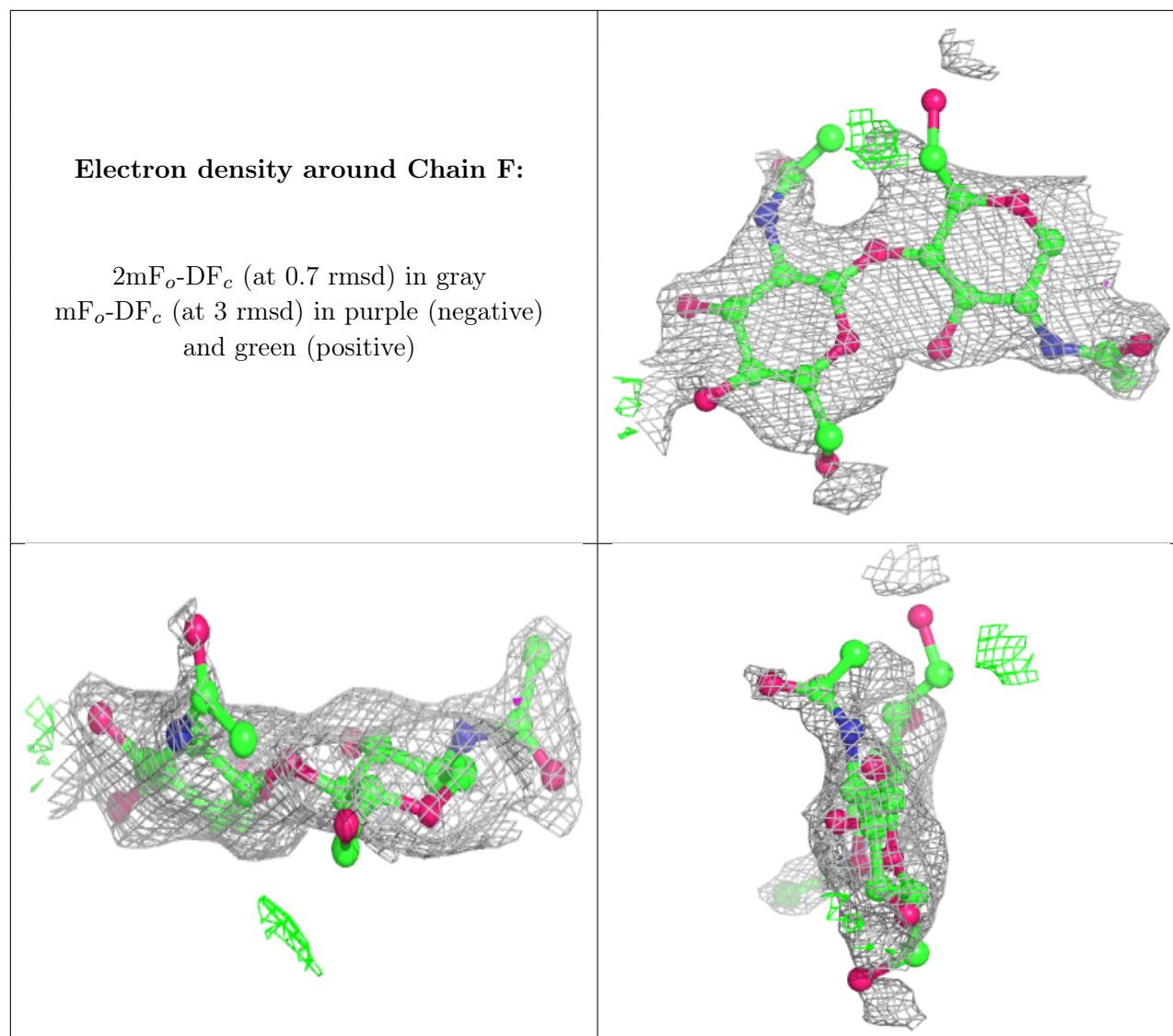
Mol	Type	Chain	Res	Atoms	RSCC	RSR	B-factors(Å ²)	Q<0.9
2	NAG	G	1	14/15	-	-	31,40,51,58	0
2	NAG	G	2	14/15	-	-	39,45,57,64	0
2	FUC	G	3	10/11	-	-	44,55,58,59	10
3	NAG	F	1	14/15	-	-	43,56,72,73	0
3	NAG	F	2	14/15	-	-	54,66,73,74	0

The following is a graphical depiction of the model fit to experimental electron density for oligosaccharide. Each fit is shown from different orientation to approximate a three-dimensional view.

Electron density around Chain G:

$2mF_o-DF_c$ (at 0.7 rmsd) in gray
 mF_o-DF_c (at 3 rmsd) in purple (negative)
and green (positive)





6.4 Ligands [i](#)

In the following table, the Atoms column lists the number of modelled atoms in the group and the number defined in the chemical component dictionary. The B-factors column lists the minimum, median, 95th percentile and maximum values of B factors of atoms in the group. The column labelled 'Q< 0.9' lists the number of atoms with occupancy less than 0.9.

Mol	Type	Chain	Res	Atoms	RSCC	RSR	B-factors(Å ²)	Q<0.9
5	NAG	B	711	14/15	0.68	0.17	48,76,90,92	0
5	NAG	B	702	14/15	0.78	0.10	39,42,48,54	0
9	PEG	A	707	7/7	0.78	0.17	66,67,72,72	0
9	PEG	B	708	7/7	0.79	0.17	55,57,61,61	0
9	PEG	B	706	7/7	0.83	0.17	48,53,60,61	0
7	EDO	A	705	4/4	0.84	0.11	41,42,43,43	0
5	NAG	A	702	14/15	0.84	0.10	50,52,56,56	0

Continued on next page...

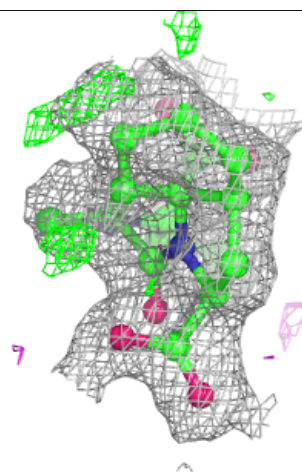
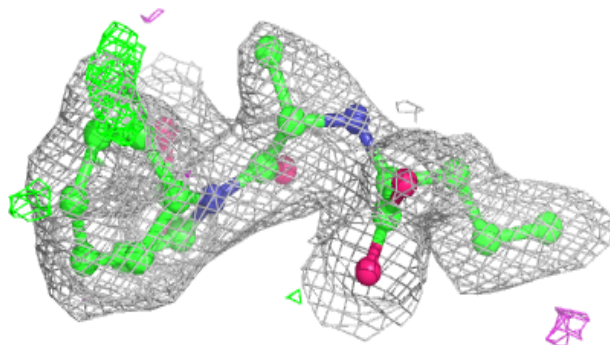
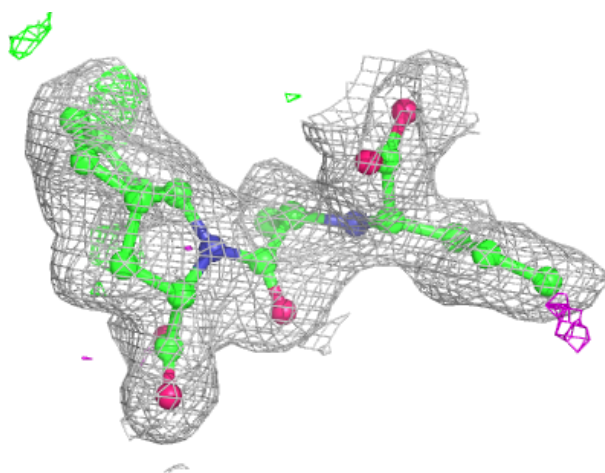
Continued from previous page...

Mol	Type	Chain	Res	Atoms	RSCC	RSR	B-factors(\AA^2)	Q<0.9
8	PGE	B	704	10/10	0.87	0.13	49,55,68,70	0
8	PGE	A	706	10/10	0.88	0.14	47,53,60,62	0
5	NAG	A	703	14/15	0.89	0.09	33,36,38,43	0
6	PG4	A	704	13/13	0.89	0.12	39,44,52,54	0
7	EDO	B	707	4/4	0.90	0.14	52,55,55,58	0
6	PG4	B	705	13/13	0.90	0.14	51,56,58,59	0
9	PEG	B	703	7/7	0.91	0.12	50,51,54,55	0
10	X94	A	708	24/24	0.93	0.09	19,27,33,36	0
10	X94	B	709	24/24	0.95	0.08	22,26,31,33	0
11	CL	B	710	1/1	0.96	0.07	26,26,26,26	0
11	CL	A	709	1/1	0.98	0.07	17,17,17,17	0
4	ZN	A	701	1/1	0.99	0.01	17,17,17,17	0
4	ZN	B	701	1/1	1.00	0.02	22,22,22,22	0

The following is a graphical depiction of the model fit to experimental electron density of all instances of the Ligand of Interest. In addition, ligands with molecular weight > 250 and outliers as shown on the geometry validation Tables will also be included. Each fit is shown from different orientation to approximate a three-dimensional view.

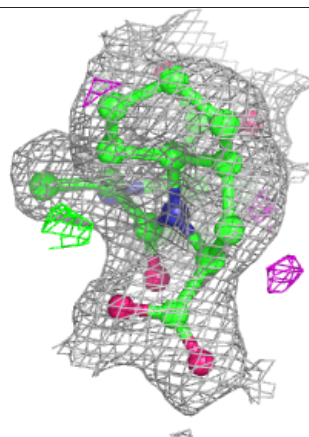
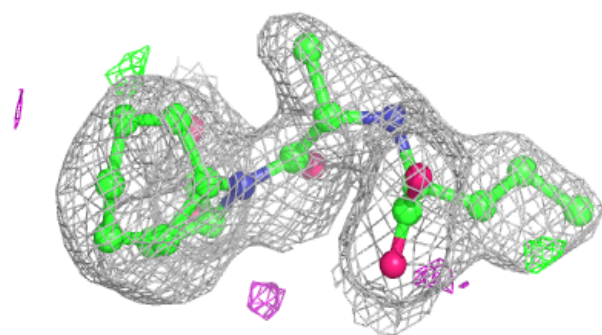
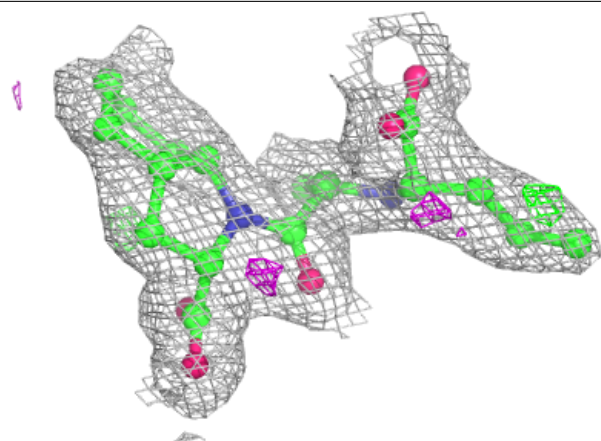
Electron density around X94 A 708:

2mF_o-DF_c (at 0.7 rmsd) in gray
mF_o-DF_c (at 3 rmsd) in purple (negative)
and green (positive)



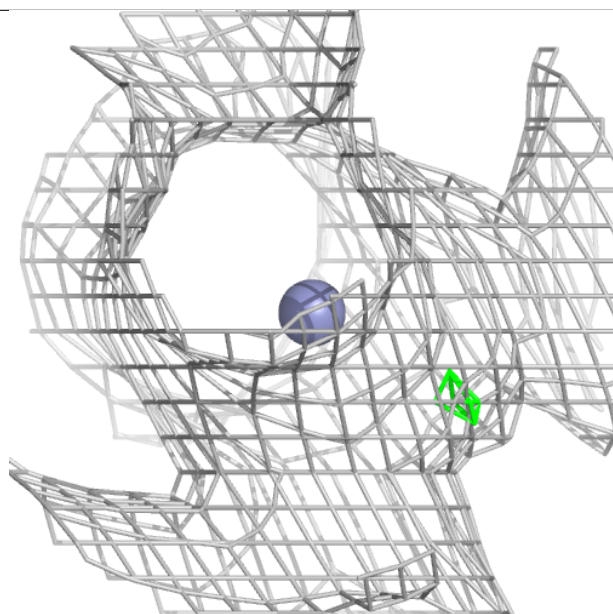
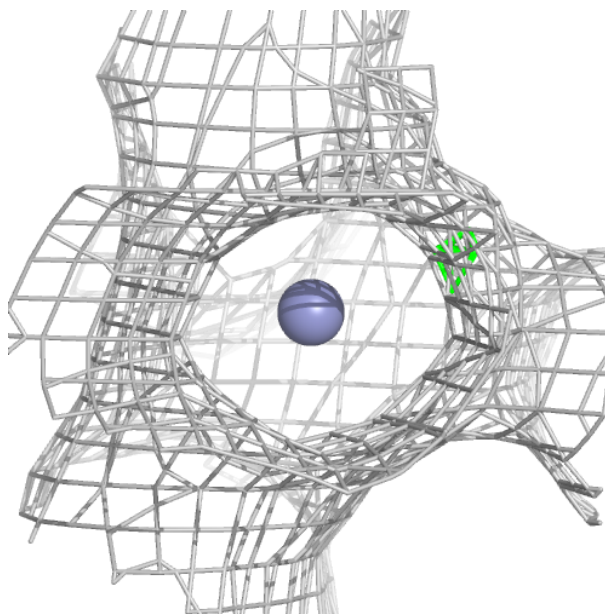
Electron density around X94 B 709:

$2mF_o-DF_c$ (at 0.7 rmsd) in gray
 mF_o-DF_c (at 3 rmsd) in purple (negative)
and green (positive)



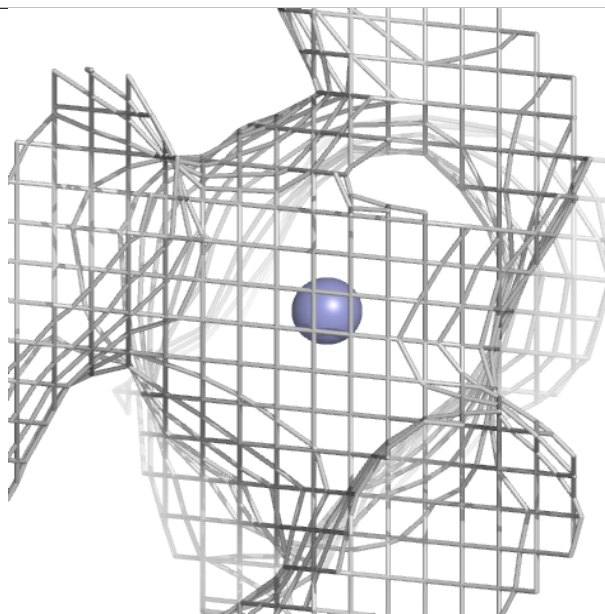
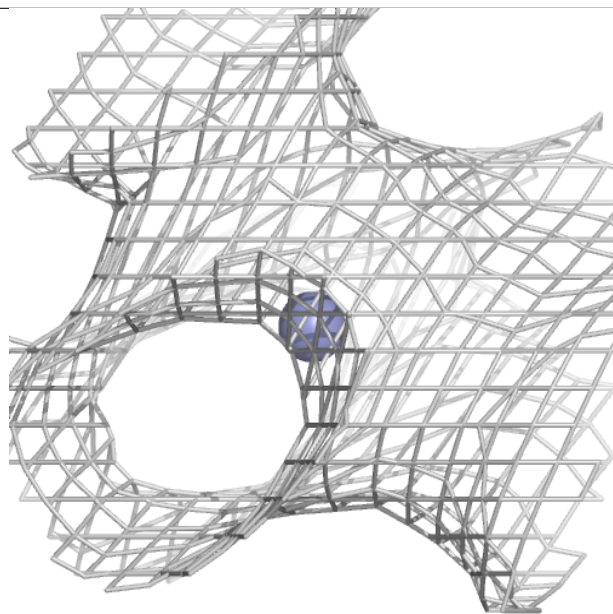
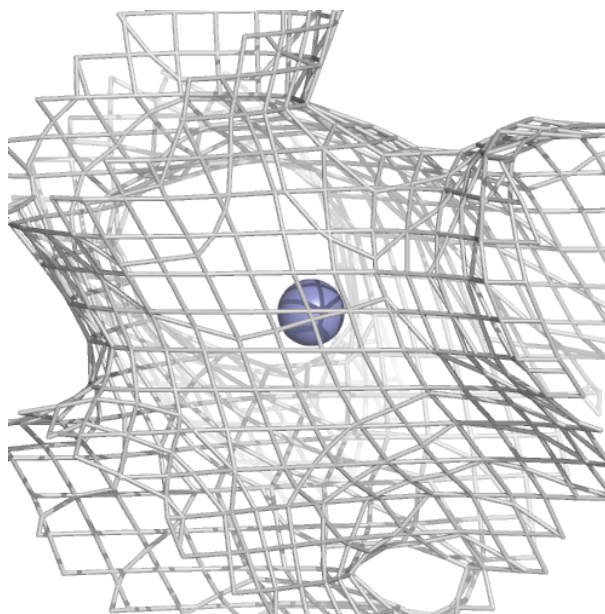
Electron density around ZN A 701:

$2mF_o-DF_c$ (at 0.7 rmsd) in gray
 mF_o-DF_c (at 3 rmsd) in purple (negative)
and green (positive)



Electron density around ZN B 701:

$2mF_o-DF_c$ (at 0.7 rmsd) in gray
 mF_o-DF_c (at 3 rmsd) in purple (negative)
and green (positive)



6.5 Other polymers [i](#)

There are no such residues in this entry.