



wwPDB EM Validation Summary Report ⓘ

Jun 17, 2025 – 04:40 pm BST

PDB ID : 9QE0 / pdb_00009qe0
EMDB ID : EMD-53035
Title : Neobacillus vireti Wadjet-II JetABC dimer
Authors : Roisne-Hamelin, F.; Gruber, S.
Deposited on : 2025-03-07
Resolution : 6.71 Å(reported)
Based on initial model : .

This is a wwPDB EM Validation Summary Report for a publicly released PDB entry.

We welcome your comments at validation@mail.wwpdb.org

A user guide is available at

<https://www.wwpdb.org/validation/2017/EMValidationReportHelp>
with specific help available everywhere you see the ⓘ symbol.

The types of validation reports are described at

<http://www.wwpdb.org/validation/2017/FAQs#types>.

The following versions of software and data (see [references ⓘ](#)) were used in the production of this report:

EMDB validation analysis : 0.0.1.dev118
MolProbity : 4-5-2 with Phenix2.0rc1
Percentile statistics : 20231227.v01 (using entries in the PDB archive December 27th 2023)
MapQ : 1.9.13
Ideal geometry (proteins) : Engh & Huber (2001)
Ideal geometry (DNA, RNA) : Parkinson et al. (1996)
Validation Pipeline (wwPDB-VP) : 2.44

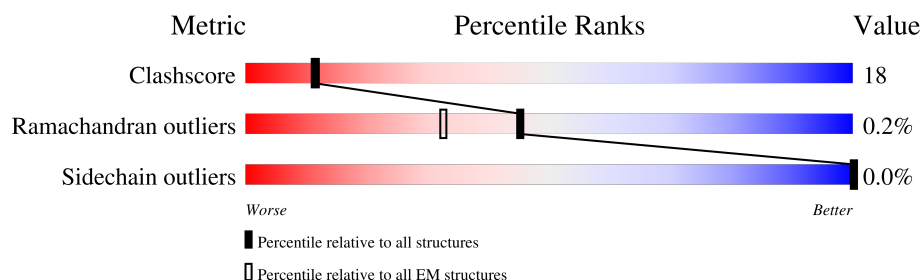
1 Overall quality at a glance

The following experimental techniques were used to determine the structure:

ELECTRON MICROSCOPY

The reported resolution of this entry is 6.71 Å.

Percentile scores (ranging between 0-100) for global validation metrics of the entry are shown in the following graphic. The table shows the number of entries on which the scores are based.



Metric	Whole archive (#Entries)	EM structures (#Entries)
Clashscore	210492	15764
Ramachandran outliers	207382	16835
Sidechain outliers	206894	16415

The table below summarises the geometric issues observed across the polymeric chains and their fit to the map. The red, orange, yellow and green segments of the bar indicate the fraction of residues that contain outliers for ≥ 3 , 2, 1 and 0 types of geometric quality criteria respectively. A grey segment represents the fraction of residues that are not modelled. The numeric value for each fraction is indicated below the corresponding segment, with a dot representing fractions $\leq 5\%$. The upper red bar (where present) indicates the fraction of residues that have poor fit to the EM map (all-atom inclusion $< 40\%$). The numeric value is given above the bar.

Mol	Chain	Length	Quality of chain
1	A	1371	<div> <div>14%</div> <div>67%</div> <div>33%</div> </div>
1	B	1371	<div> <div>18%</div> <div>64%</div> <div>34%</div> <div>..</div> </div>
1	F	1371	<div> <div>14%</div> <div>65%</div> <div>35%</div> <div>.</div> </div>
1	G	1371	<div> <div>17%</div> <div>62%</div> <div>36%</div> <div>..</div> </div>
2	D	389	<div> <div>61%</div> <div>37%</div> <div>..</div> </div>
2	H	389	<div> <div>58%</div> <div>40%</div> <div>..</div> </div>
3	E	500	<div> <div>5%</div> <div>75%</div> <div>24%</div> <div>.</div> </div>
3	J	500	<div> <div>6%</div> <div>77%</div> <div>22%</div> <div>.</div> </div>

2 Entry composition [i](#)

There are 3 unique types of molecules in this entry. The entry contains 119074 atoms, of which 58942 are hydrogens and 0 are deuteriums.

In the tables below, the AltConf column contains the number of residues with at least one atom in alternate conformation and the Trace column contains the number of residues modelled with at most 2 atoms.

- Molecule 1 is a protein called JetC.

Mol	Chain	Residues	Atoms						AltConf	Trace
1	A	1370	Total	C	H	N	O	S	0	0
			22536	7168	11156	1969	2212	31		
1	B	1356	Total	C	H	N	O	S	0	0
			22323	7099	11057	1951	2185	31		
1	F	1370	Total	C	H	N	O	S	0	0
			22536	7168	11156	1969	2212	31		
1	G	1356	Total	C	H	N	O	S	0	0
			22323	7099	11057	1951	2185	31		

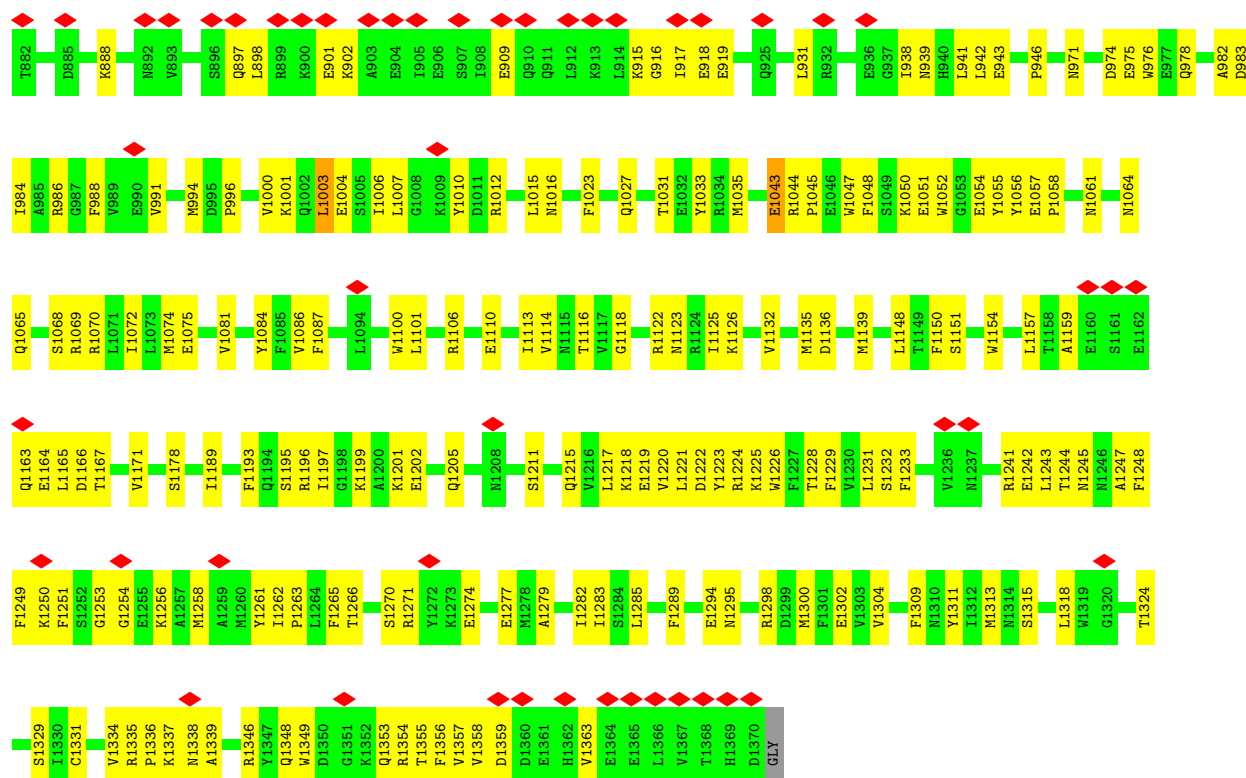
- Molecule 2 is a protein called JetB.

Mol	Chain	Residues	Atoms						AltConf	Trace
2	D	384	Total	C	H	N	O	S	0	0
			6381	2076	3137	549	605	14		
2	H	384	Total	C	H	N	O	S	0	0
			6381	2076	3137	549	605	14		

- Molecule 3 is a protein called JetA.

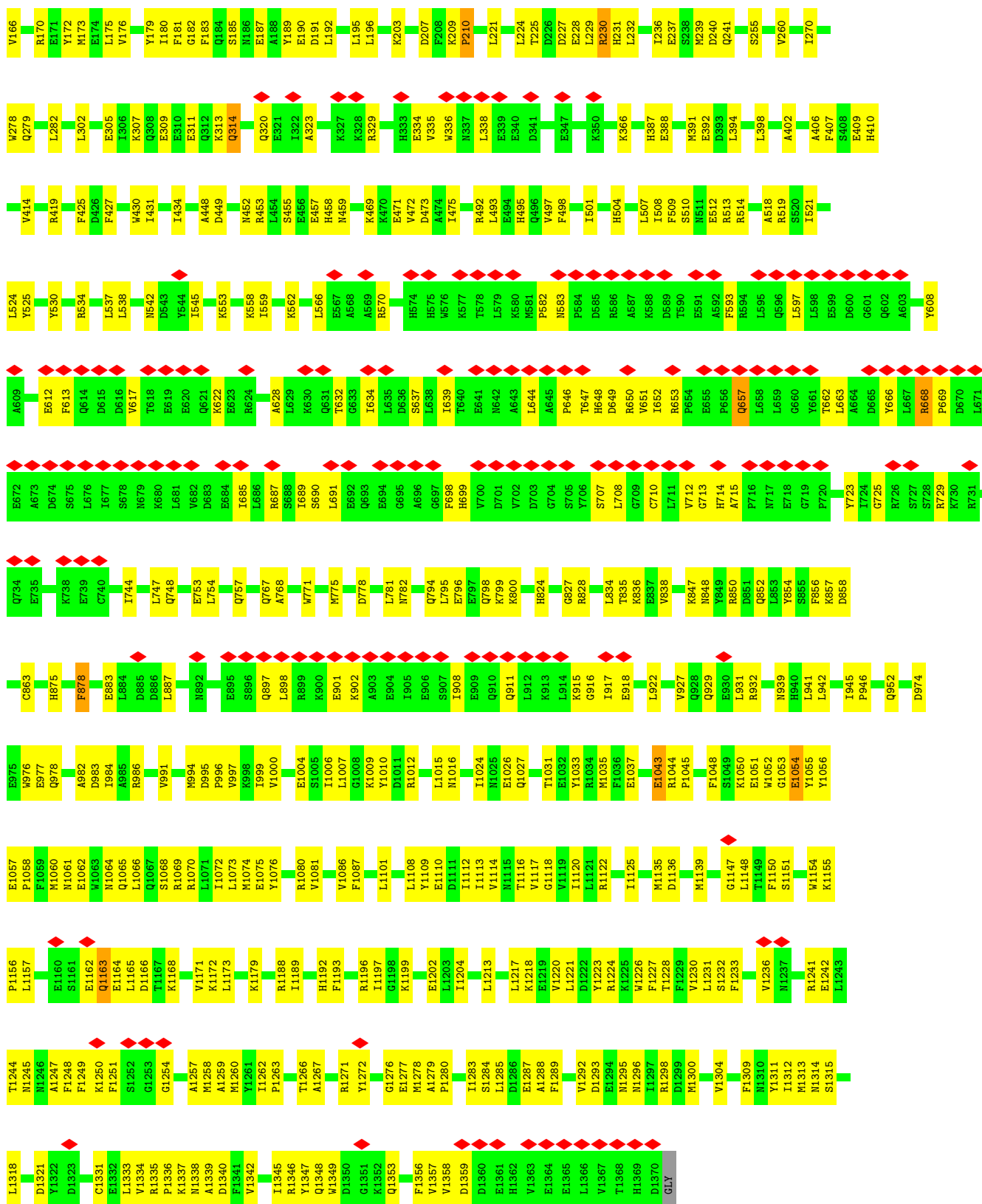
Mol	Chain	Residues	Atoms						AltConf	Trace
3	E	495	Total	C	H	N	O	S	0	0
			8297	2645	4121	725	788	18		
3	J	495	Total	C	H	N	O	S	0	0
			8297	2645	4121	725	788	18		



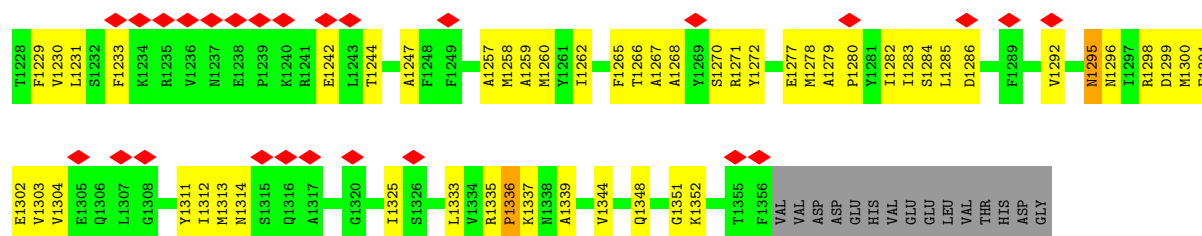


• Molecule 1: JetC



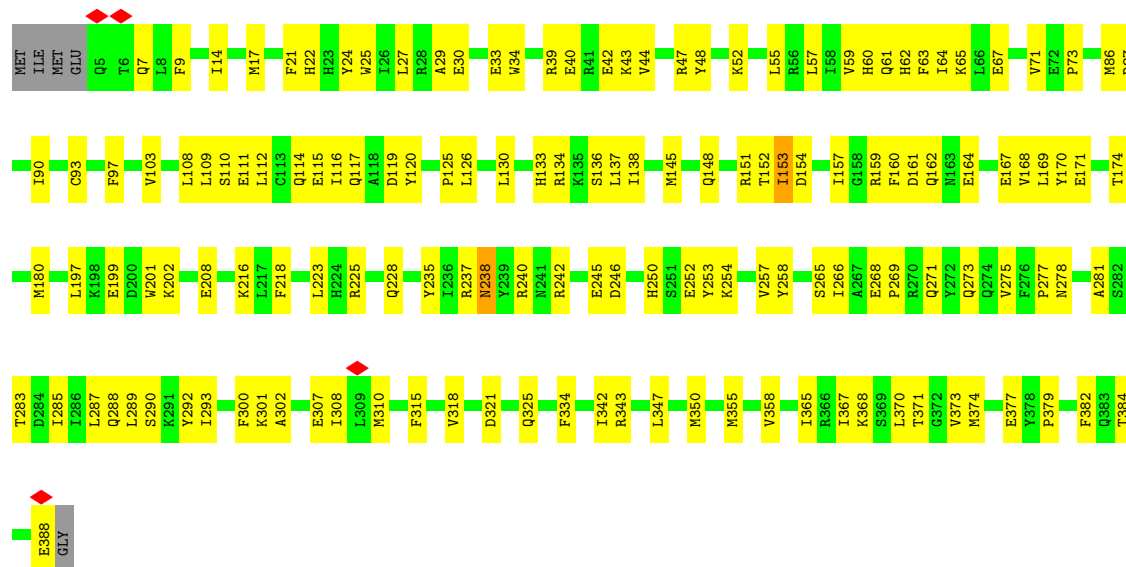






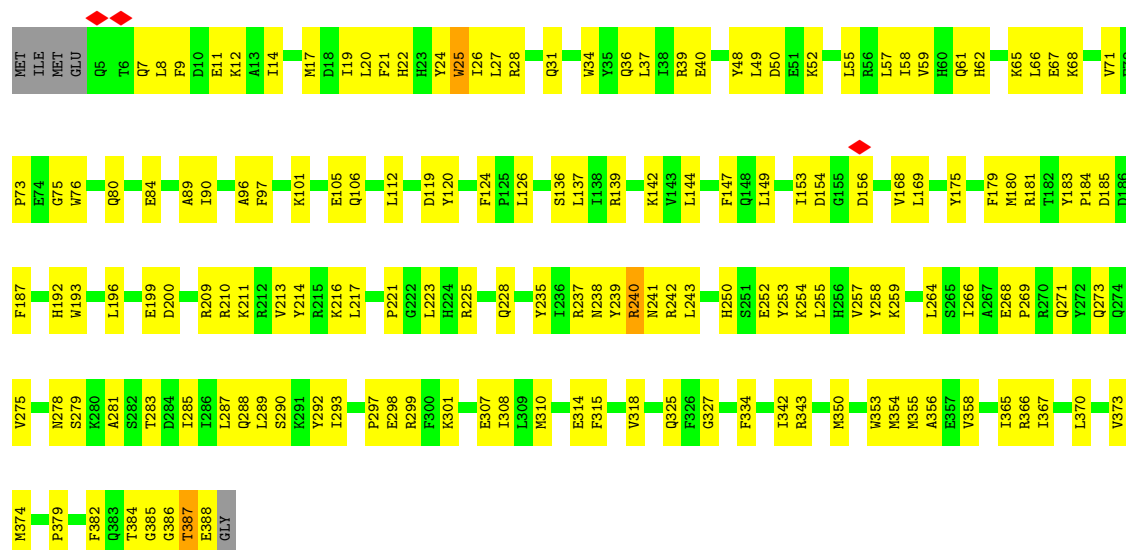
• Molecule 2: JetB

Chain D: 61% 37%

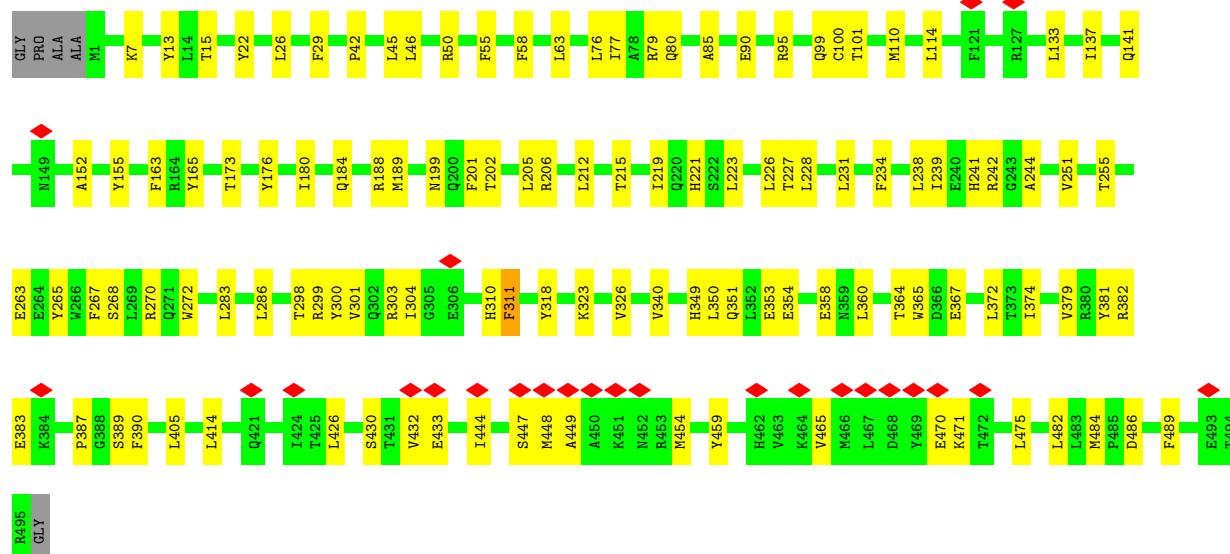
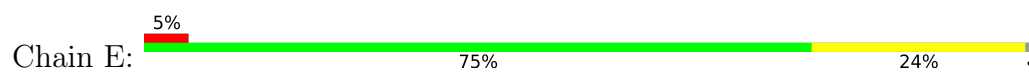


• Molecule 2: JetB

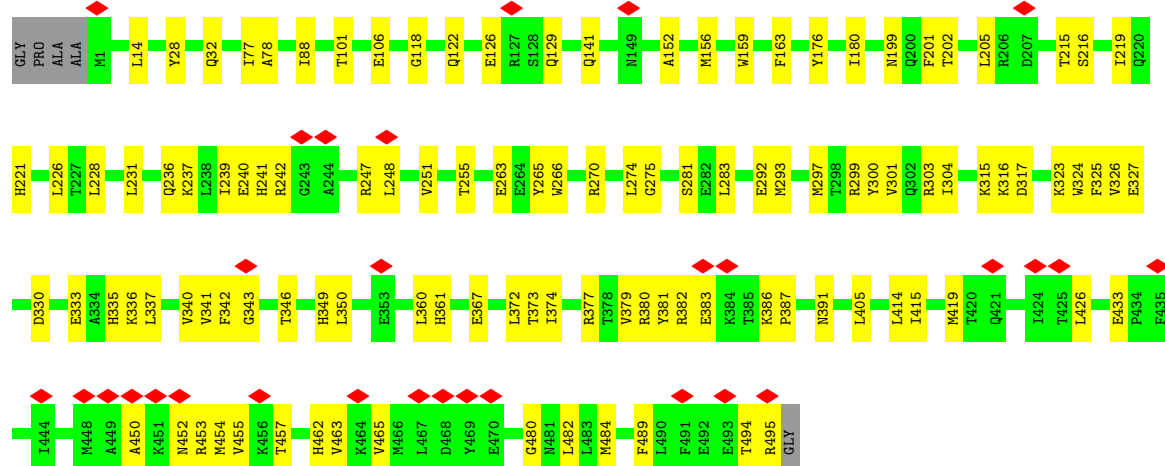
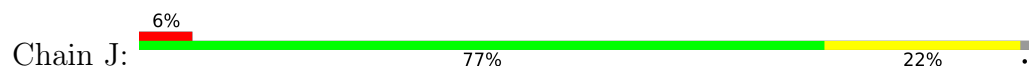
Chain H: 58% 40%



• Molecule 3: JetA



• Molecule 3: JetA



4 Experimental information

Property	Value	Source
EM reconstruction method	SINGLE PARTICLE	Depositor
Imposed symmetry	POINT, C2	Depositor
Number of particles used	15908	Depositor
Resolution determination method	FSC 0.143 CUT-OFF	Depositor
CTF correction method	PHASE FLIPPING AND AMPLITUDE CORRECTION	Depositor
Microscope	TFS KRIOS	Depositor
Voltage (kV)	300	Depositor
Electron dose ($e^-/\text{\AA}^2$)	40	Depositor
Minimum defocus (nm)	800	Depositor
Maximum defocus (nm)	2600	Depositor
Magnification	Not provided	
Image detector	FEI FALCON IV (4k x 4k)	Depositor
Maximum map value	0.676	Depositor
Minimum map value	-0.278	Depositor
Average map value	0.000	Depositor
Map value standard deviation	0.017	Depositor
Recommended contour level	0.117	Depositor
Map size (Å)	580.0, 580.0, 580.0	wwPDB
Map dimensions	400, 400, 400	wwPDB
Map angles (°)	90.0, 90.0, 90.0	wwPDB
Pixel spacing (Å)	1.45, 1.45, 1.45	Depositor

5 Model quality

5.1 Standard geometry

The Z score for a bond length (or angle) is the number of standard deviations the observed value is removed from the expected value. A bond length (or angle) with $|Z| > 5$ is considered an outlier worth inspection. RMSZ is the root-mean-square of all Z scores of the bond lengths (or angles).

Mol	Chain	Bond lengths		Bond angles	
		RMSZ	$\# Z > 5$	RMSZ	$\# Z > 5$
1	A	0.26	0/11593	0.67	2/15607 (0.0%)
1	B	0.27	0/11477	0.72	15/15447 (0.1%)
1	F	0.28	0/11593	0.73	5/15607 (0.0%)
1	G	0.28	0/11477	0.82	25/15447 (0.2%)
2	D	0.28	0/3325	0.83	8/4484 (0.2%)
2	H	0.30	0/3325	0.83	7/4484 (0.2%)
3	E	0.19	0/4261	0.43	0/5740
3	J	0.18	0/4261	0.40	0/5740
All	All	0.26	0/61312	0.71	62/82556 (0.1%)

Chiral center outliers are detected by calculating the chiral volume of a chiral center and verifying if the center is modelled as a planar moiety or with the opposite hand. A planarity outlier is detected by checking planarity of atoms in a peptide group, atoms in a mainchain group or atoms of a sidechain that are expected to be planar.

Mol	Chain	#Chirality outliers	#Planarity outliers
1	A	0	4
1	B	0	5
1	F	0	3
1	G	0	4
2	D	0	1
All	All	0	17

There are no bond length outliers.

The worst 5 of 62 bond angle outliers are listed below:

Mol	Chain	Res	Type	Atoms	Z	Observed(°)	Ideal(°)
2	H	327	GLY	N-CA-C	9.63	125.85	113.24
1	B	850	ARG	CA-CB-CG	7.22	128.55	114.10
1	A	1003	LEU	N-CA-C	7.00	121.13	112.59
2	H	384	THR	CA-C-N	6.93	134.99	121.41
2	H	384	THR	C-N-CA	6.93	134.99	121.41

There are no chirality outliers.

5 of 17 planarity outliers are listed below:

Mol	Chain	Res	Type	Group
1	A	10	ASN	Peptide
1	A	1163	GLN	Peptide
1	A	4	GLU	Peptide
1	A	420	HIS	Peptide
1	B	4	GLU	Peptide

5.2 Too-close contacts

In the following table, the Non-H and H(model) columns list the number of non-hydrogen atoms and hydrogen atoms in the chain respectively. The H(added) column lists the number of hydrogen atoms added and optimized by MolProbity. The Clashes column lists the number of clashes within the asymmetric unit, whereas Symm-Clashes lists symmetry-related clashes.

Mol	Chain	Non-H	H(model)	H(added)	Clashes	Symm-Clashes
1	A	11380	11156	11154	382	0
1	B	11266	11057	11056	439	0
1	F	11380	11156	11154	446	0
1	G	11266	11057	11056	454	0
2	D	3244	3137	3135	147	0
2	H	3244	3137	3135	144	0
3	E	4176	4121	4122	114	0
3	J	4176	4121	4122	105	0
All	All	60132	58942	58934	2096	0

The all-atom clashscore is defined as the number of clashes found per 1000 atoms (including hydrogen atoms). The all-atom clashscore for this structure is 18.

The worst 5 of 2096 close contacts within the same asymmetric unit are listed below, sorted by their clash magnitude.

Atom-1	Atom-2	Interatomic distance (Å)	Clash overlap (Å)
2:D:347:LEU:HD13	2:D:358:VAL:HG21	1.28	1.16
3:E:212:LEU:HD21	3:E:283:LEU:HD11	1.40	1.01
1:G:1348:GLN:O	3:J:482:LEU:HD12	1.61	1.00
2:D:293:ILE:HD13	2:D:310:MET:HE3	1.46	0.96
1:F:1165:LEU:HD12	1:F:1192:HIS:HA	1.51	0.91

There are no symmetry-related clashes.

5.3 Torsion angles

5.3.1 Protein backbone

In the following table, the Percentiles column shows the percent Ramachandran outliers of the chain as a percentile score with respect to all PDB entries followed by that with respect to all EM entries.

The Analysed column shows the number of residues for which the backbone conformation was analysed, and the total number of residues.

Mol	Chain	Analysed	Favoured	Allowed	Outliers	Percentiles	
1	A	1368/1371 (100%)	1315 (96%)	51 (4%)	2 (0%)	48	83
1	B	1354/1371 (99%)	1297 (96%)	54 (4%)	3 (0%)	44	78
1	F	1368/1371 (100%)	1310 (96%)	54 (4%)	4 (0%)	37	73
1	G	1354/1371 (99%)	1288 (95%)	63 (5%)	3 (0%)	44	78
2	D	382/389 (98%)	366 (96%)	16 (4%)	0	100	100
2	H	382/389 (98%)	363 (95%)	16 (4%)	3 (1%)	16	55
3	E	493/500 (99%)	458 (93%)	34 (7%)	1 (0%)	44	78
3	J	493/500 (99%)	456 (92%)	37 (8%)	0	100	100
All	All	7194/7262 (99%)	6853 (95%)	325 (4%)	16 (0%)	45	78

5 of 16 Ramachandran outliers are listed below:

Mol	Chain	Res	Type
3	E	311	PHE
1	F	1054	GLU
2	H	240	ARG
1	F	3	THR
1	A	1043	GLU

5.3.2 Protein sidechains

In the following table, the Percentiles column shows the percent sidechain outliers of the chain as a percentile score with respect to all PDB entries followed by that with respect to all EM entries.

The Analysed column shows the number of residues for which the sidechain conformation was analysed, and the total number of residues.

Mol	Chain	Analysed	Rotameric	Outliers	Percentiles	
1	A	1240/1240 (100%)	1240 (100%)	0	100	100

Continued on next page...

Continued from previous page...

Mol	Chain	Analysed	Rotameric	Outliers	Percentiles	
1	B	1226/1240 (99%)	1226 (100%)	0	100	100
1	F	1240/1240 (100%)	1239 (100%)	1 (0%)	92	95
1	G	1226/1240 (99%)	1226 (100%)	0	100	100
2	D	348/352 (99%)	348 (100%)	0	100	100
2	H	348/352 (99%)	348 (100%)	0	100	100
3	E	458/459 (100%)	458 (100%)	0	100	100
3	J	458/459 (100%)	458 (100%)	0	100	100
All	All	6544/6582 (99%)	6543 (100%)	1 (0%)	100	100

All (1) residues with a non-rotameric sidechain are listed below:

Mol	Chain	Res	Type
1	F	314	GLN

Sometimes sidechains can be flipped to improve hydrogen bonding and reduce clashes. 5 of 52 such sidechains are listed below:

Mol	Chain	Res	Type
3	E	33	HIS
1	F	279	GLN
2	H	224	HIS
3	E	84	ASN
3	E	256	ASN

5.3.3 RNA ⓘ

There are no RNA molecules in this entry.

5.4 Non-standard residues in protein, DNA, RNA chains ⓘ

There are no non-standard protein/DNA/RNA residues in this entry.

5.5 Carbohydrates ⓘ

There are no oligosaccharides in this entry.

5.6 Ligand geometry [i](#)

There are no ligands in this entry.

5.7 Other polymers [i](#)

There are no such residues in this entry.

5.8 Polymer linkage issues [i](#)

There are no chain breaks in this entry.

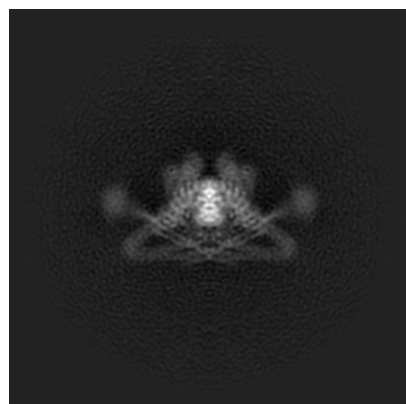
6 Map visualisation [i](#)

This section contains visualisations of the EMDB entry EMD-53035. These allow visual inspection of the internal detail of the map and identification of artifacts.

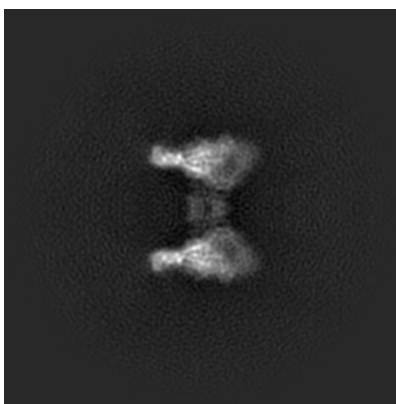
Images derived from a raw map, generated by summing the deposited half-maps, are presented below the corresponding image components of the primary map to allow further visual inspection and comparison with those of the primary map.

6.1 Orthogonal projections [i](#)

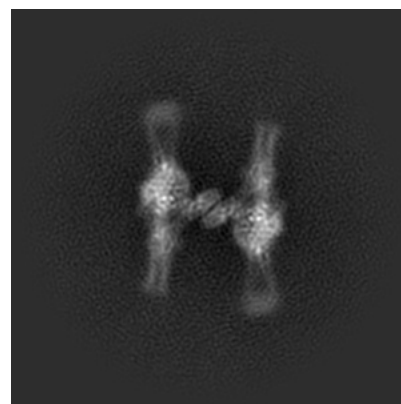
6.1.1 Primary map



X

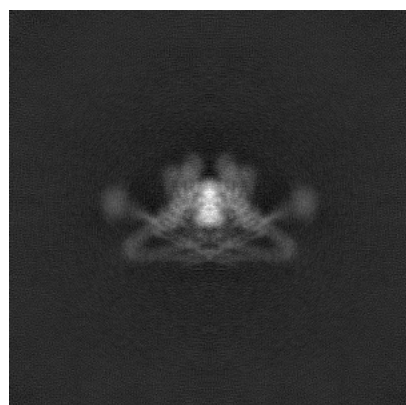


Y

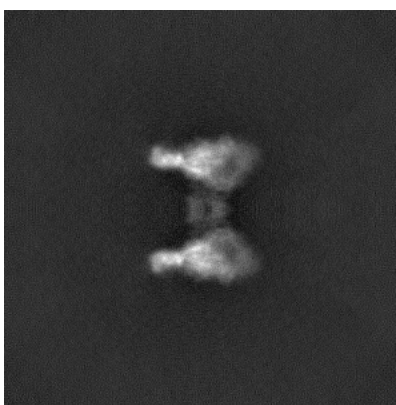


Z

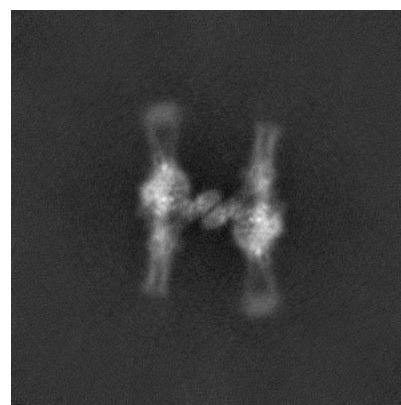
6.1.2 Raw map



X



Y

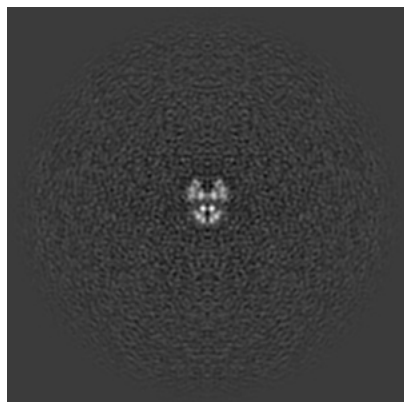


Z

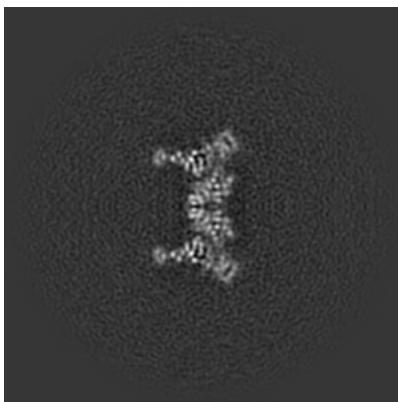
The images above show the map projected in three orthogonal directions.

6.2 Central slices [i](#)

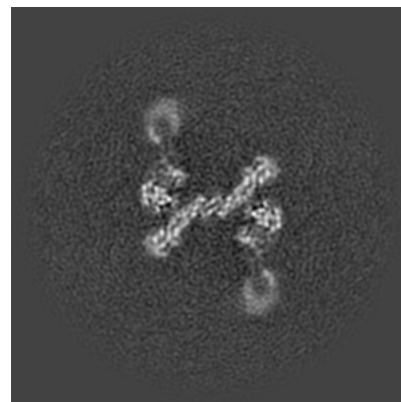
6.2.1 Primary map



X Index: 200

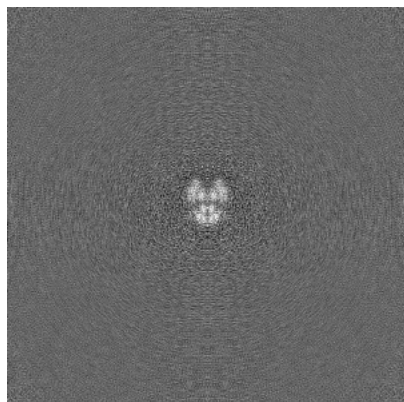


Y Index: 200

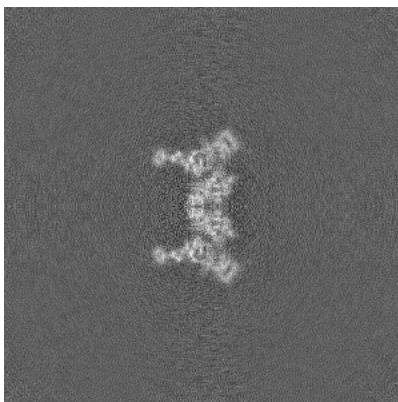


Z Index: 200

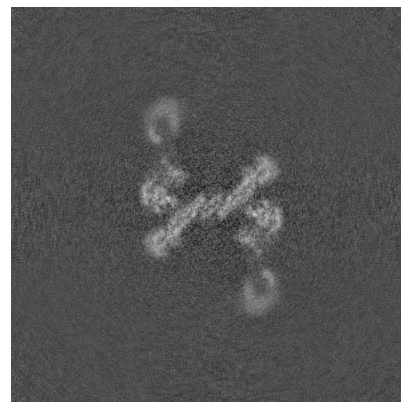
6.2.2 Raw map



X Index: 200



Y Index: 200

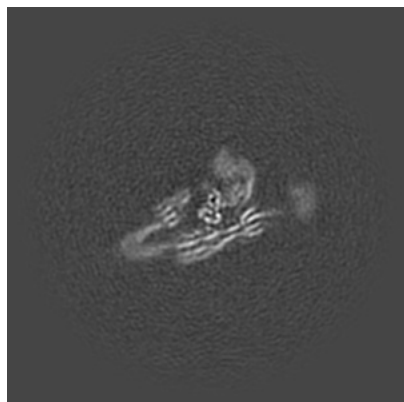


Z Index: 200

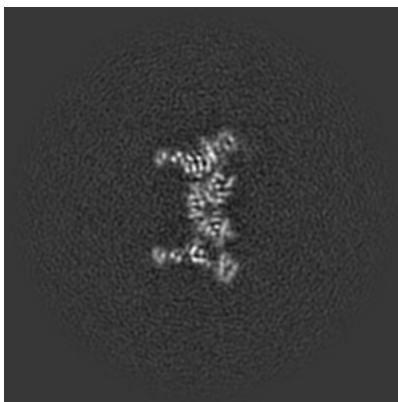
The images above show central slices of the map in three orthogonal directions.

6.3 Largest variance slices [i](#)

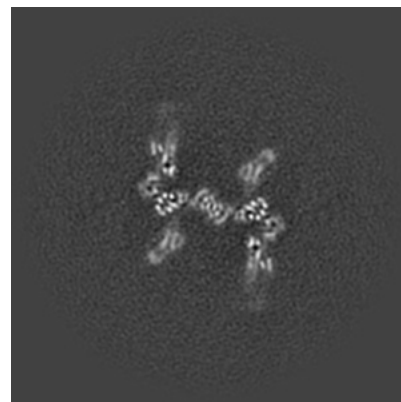
6.3.1 Primary map



X Index: 153



Y Index: 198

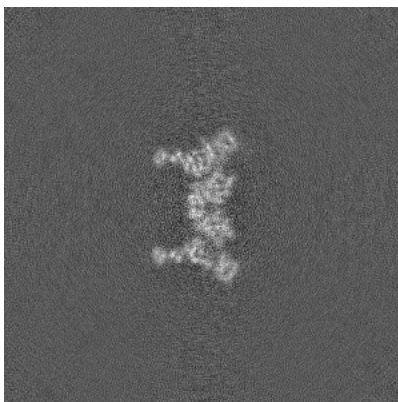


Z Index: 190

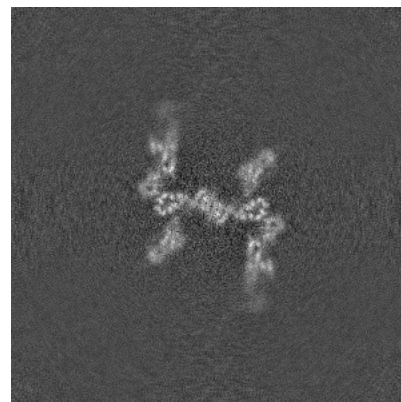
6.3.2 Raw map



X Index: 248



Y Index: 199

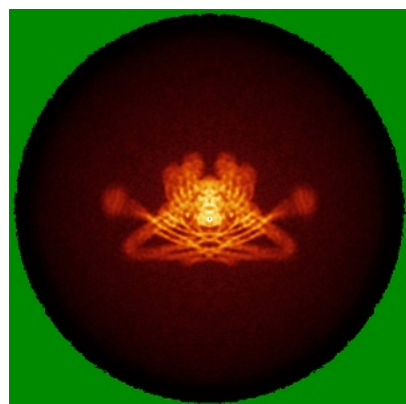


Z Index: 191

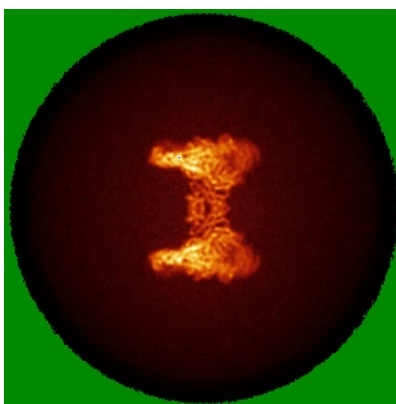
The images above show the largest variance slices of the map in three orthogonal directions.

6.4 Orthogonal standard-deviation projections (False-color) [i](#)

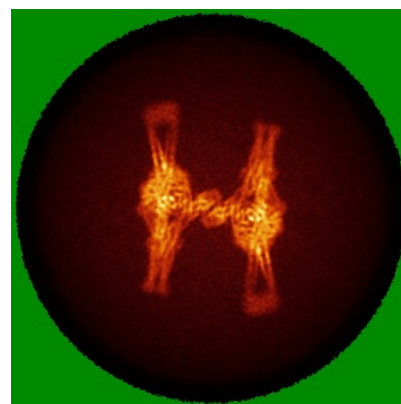
6.4.1 Primary map



X

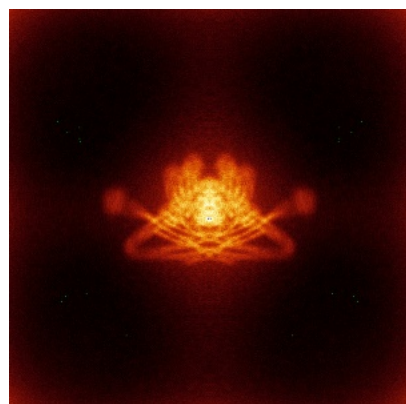


Y

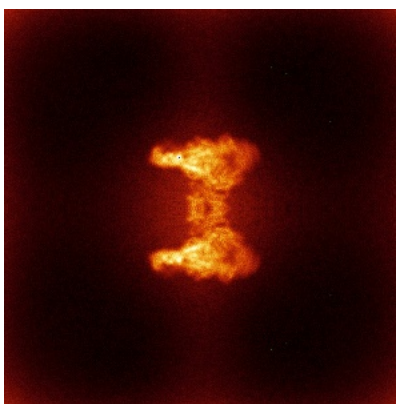


Z

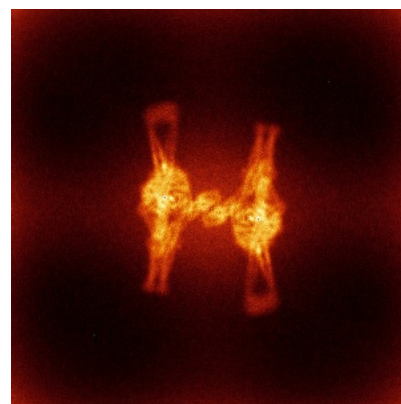
6.4.2 Raw map



X



Y



Z

The images above show the map standard deviation projections with false color in three orthogonal directions. Minimum values are shown in green, max in blue, and dark to light orange shades represent small to large values respectively.

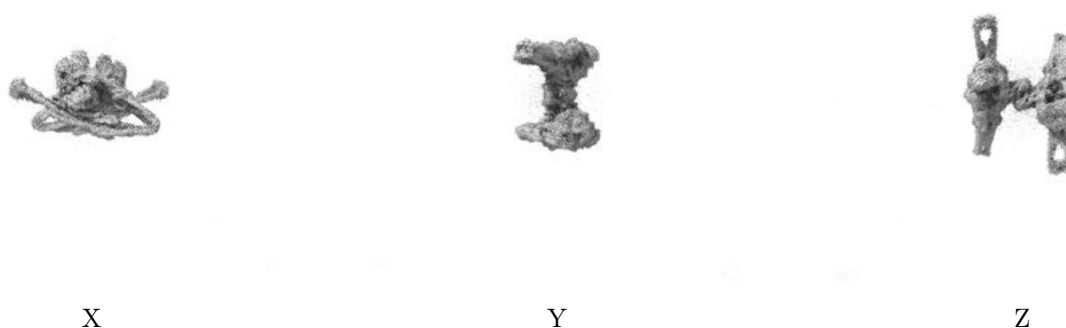
6.5 Orthogonal surface views [i](#)

6.5.1 Primary map



The images above show the 3D surface view of the map at the recommended contour level 0.117. These images, in conjunction with the slice images, may facilitate assessment of whether an appropriate contour level has been provided.

6.5.2 Raw map



These images show the 3D surface of the raw map. The raw map's contour level was selected so that its surface encloses the same volume as the primary map does at its recommended contour level.

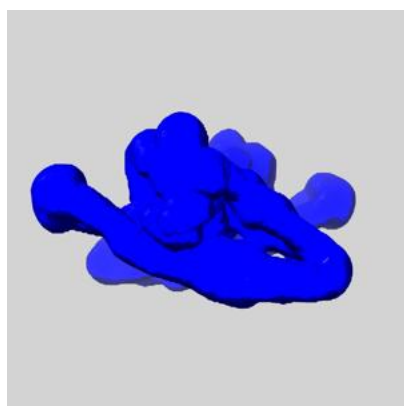
6.6 Mask visualisation [i](#)

This section shows the 3D surface view of the primary map at 50% transparency overlaid with the specified mask at 0% transparency

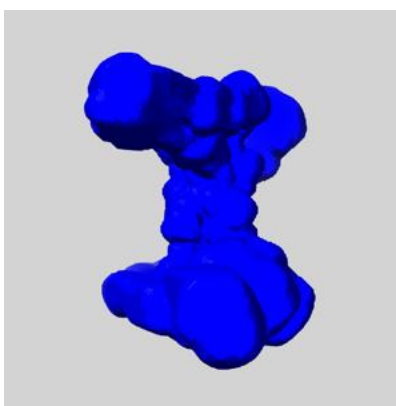
A mask typically either:

- Encompasses the whole structure
- Separates out a domain, a functional unit, a monomer or an area of interest from a larger structure

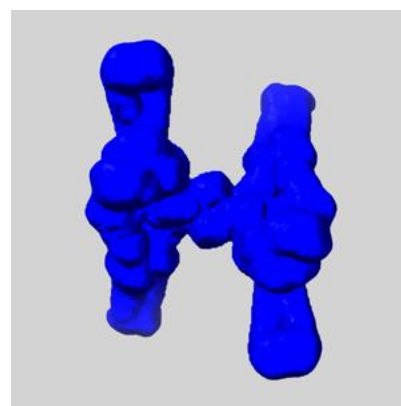
6.6.1 emd_53035_msk_1.map [i](#)



X



Y

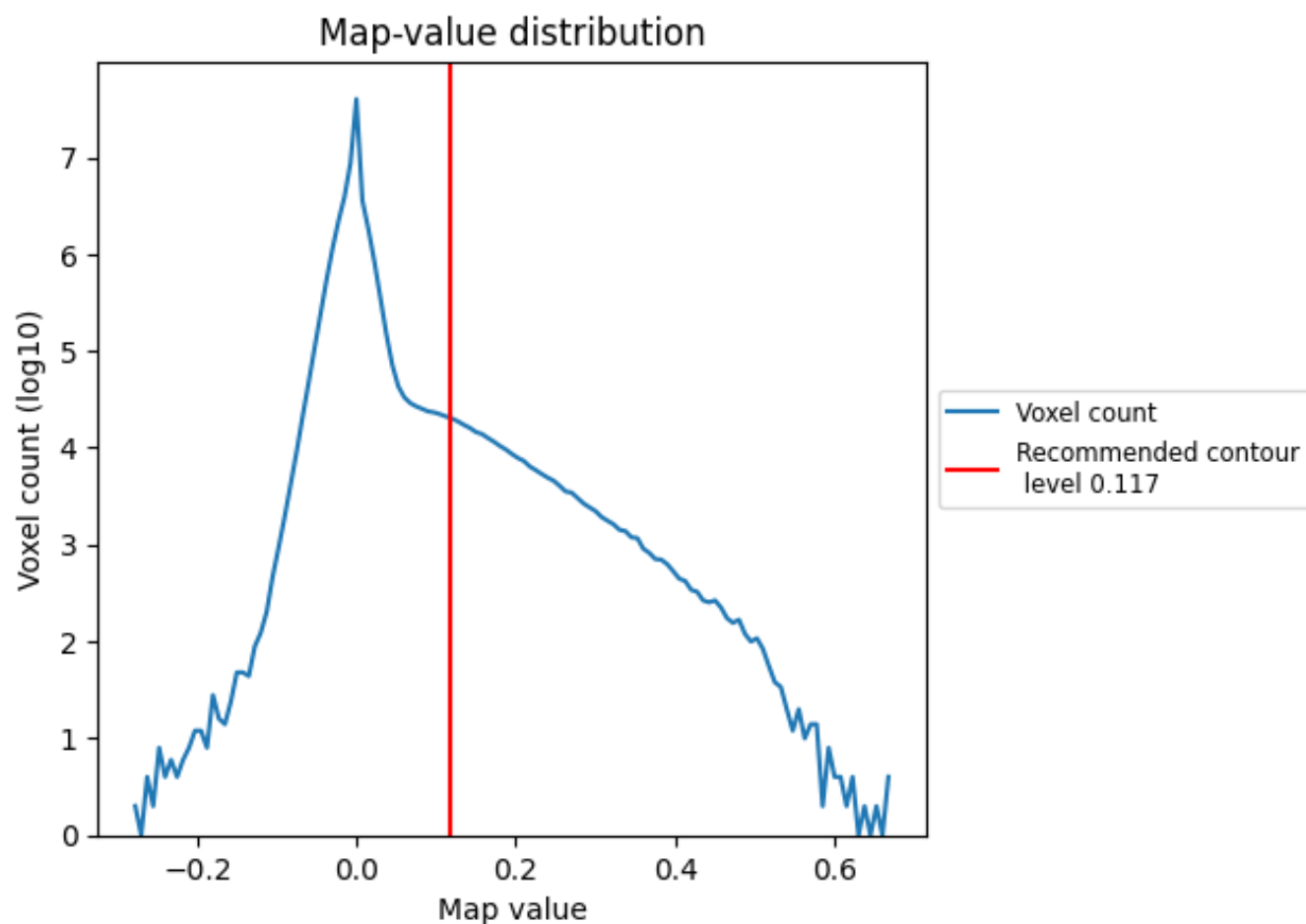


Z

7 Map analysis [i](#)

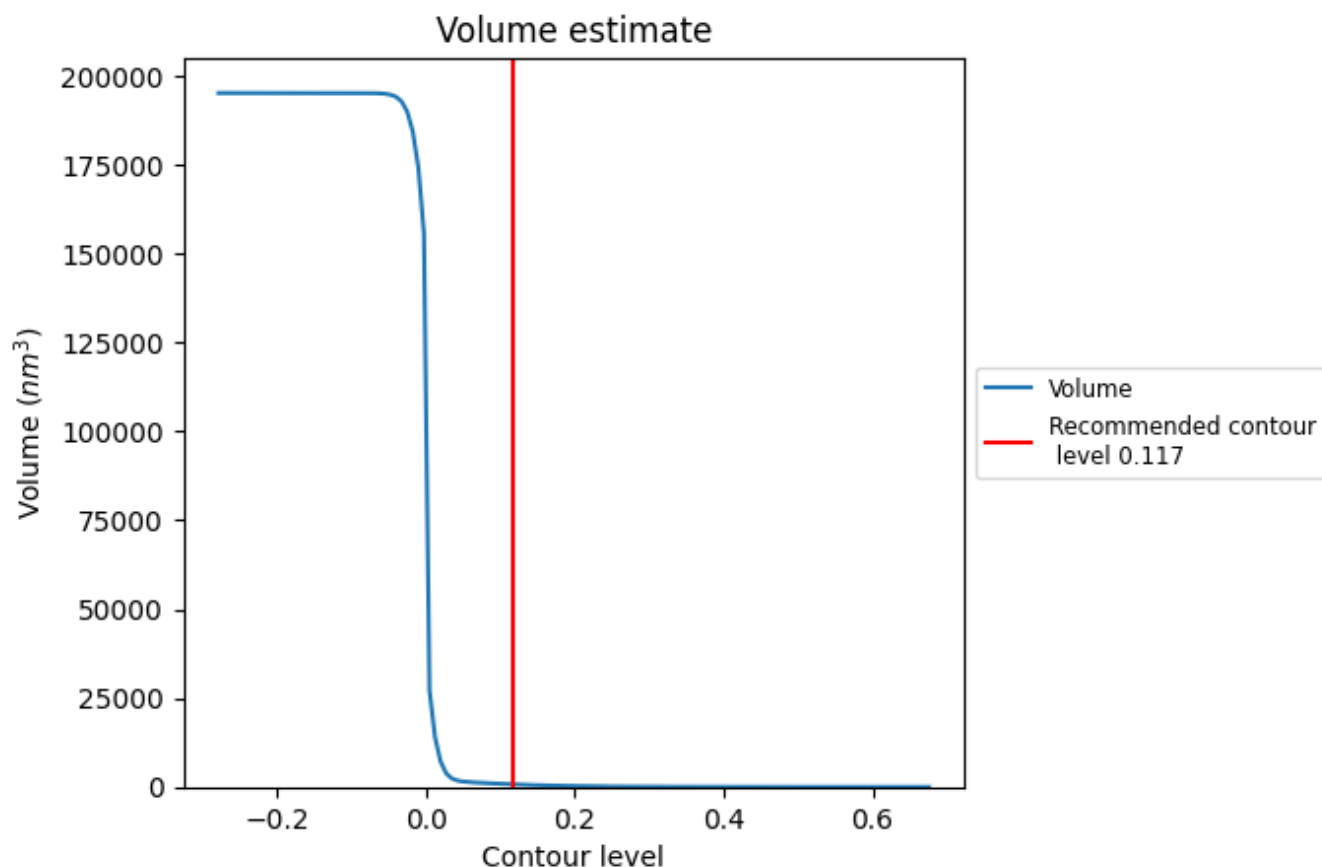
This section contains the results of statistical analysis of the map.

7.1 Map-value distribution [i](#)



The map-value distribution is plotted in 128 intervals along the x-axis. The y-axis is logarithmic. A spike in this graph at zero usually indicates that the volume has been masked.

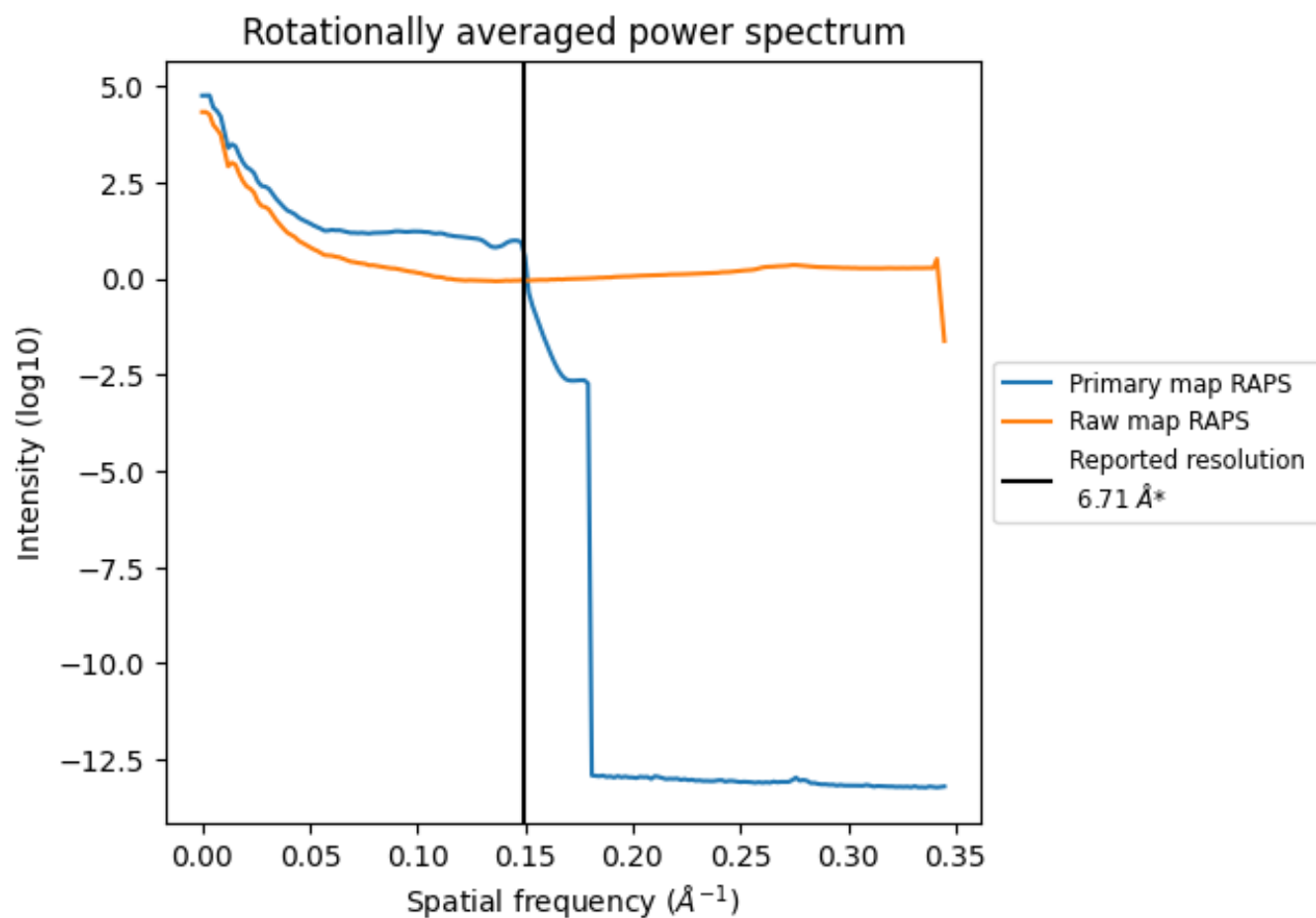
7.2 Volume estimate [i](#)



The volume at the recommended contour level is 744 nm^3 ; this corresponds to an approximate mass of 672 kDa.

The volume estimate graph shows how the enclosed volume varies with the contour level. The recommended contour level is shown as a vertical line and the intersection between the line and the curve gives the volume of the enclosed surface at the given level.

7.3 Rotationally averaged power spectrum ⓘ

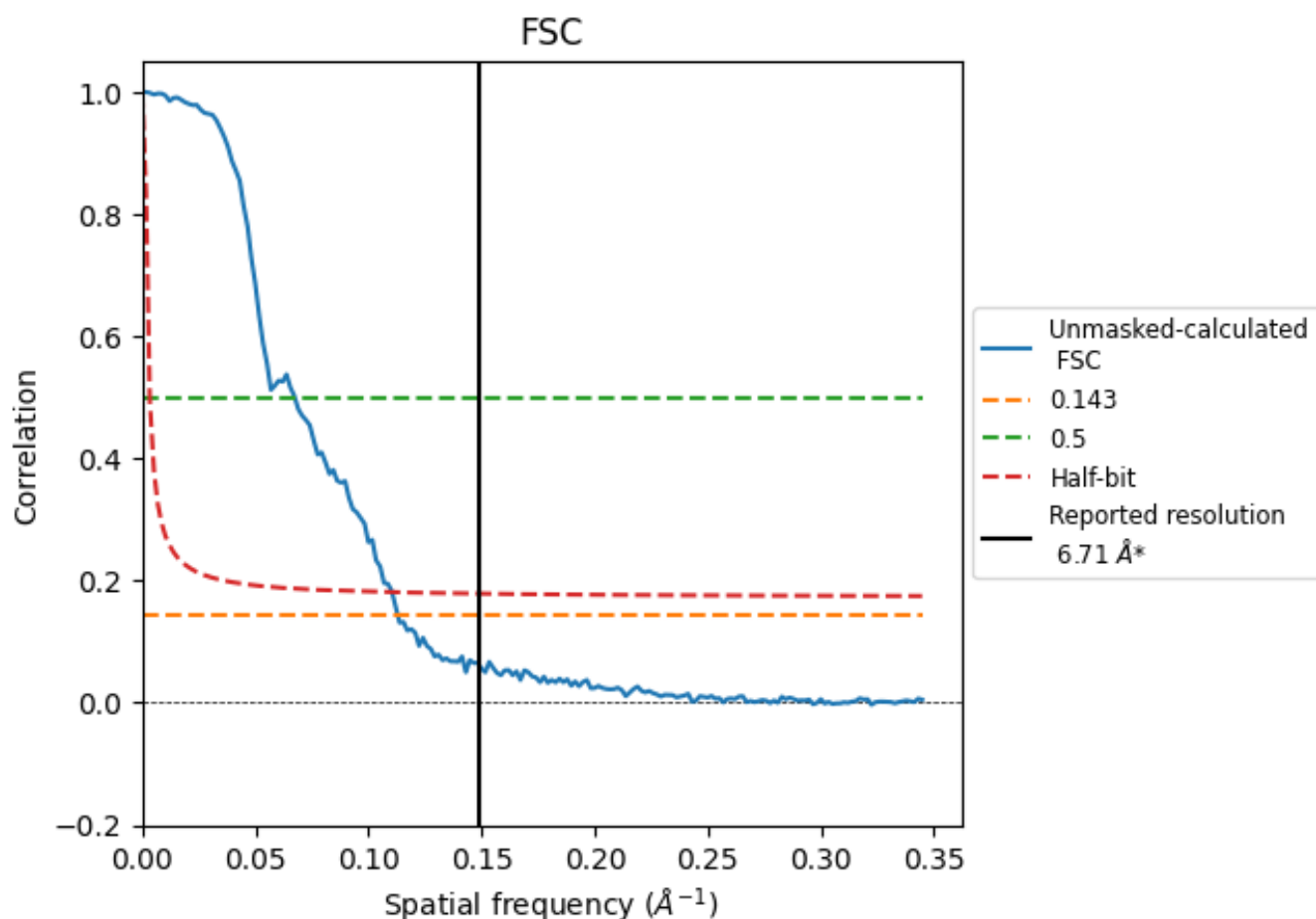


*Reported resolution corresponds to spatial frequency of 0.149 Å⁻¹

8 Fourier-Shell correlation [i](#)

Fourier-Shell Correlation (FSC) is the most commonly used method to estimate the resolution of single-particle and subtomogram-averaged maps. The shape of the curve depends on the imposed symmetry, mask and whether or not the two 3D reconstructions used were processed from a common reference. The reported resolution is shown as a black line. A curve is displayed for the half-bit criterion in addition to lines showing the 0.143 gold standard cut-off and 0.5 cut-off.

8.1 FSC [i](#)



*Reported resolution corresponds to spatial frequency of 0.149 Å⁻¹

8.2 Resolution estimates [i](#)

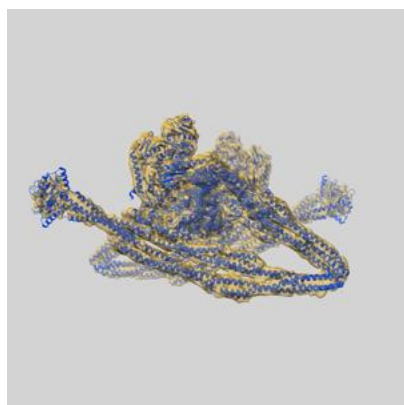
Resolution estimate (Å)	Estimation criterion (FSC cut-off)		
	0.143	0.5	Half-bit
Reported by author	6.71	-	-
Author-provided FSC curve	-	-	-
Unmasked-calculated*	8.85	14.84	9.05

*Resolution estimate based on FSC curve calculated by comparison of deposited half-maps. The value from deposited half-maps intersecting FSC 0.143 CUT-OFF 8.85 differs from the reported value 6.71 by more than 10 %

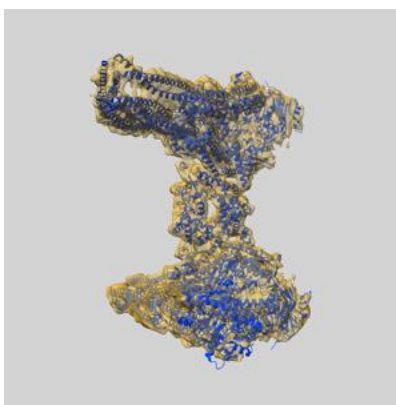
9 Map-model fit [i](#)

This section contains information regarding the fit between EMDB map EMD-53035 and PDB model 9QE0. Per-residue inclusion information can be found in [section 3](#) on [page 4](#).

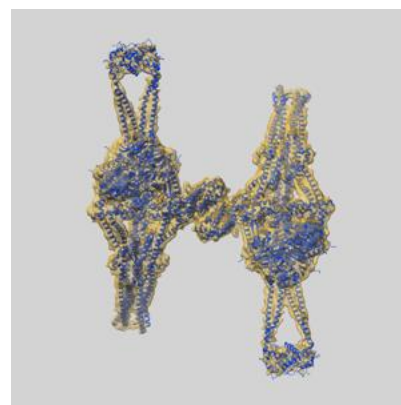
9.1 Map-model overlay [i](#)



X



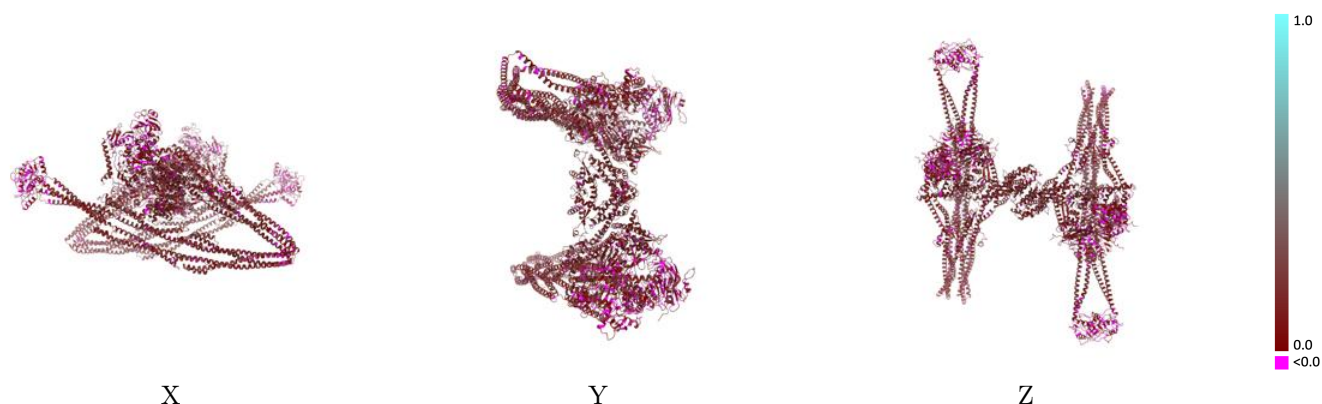
Y



Z

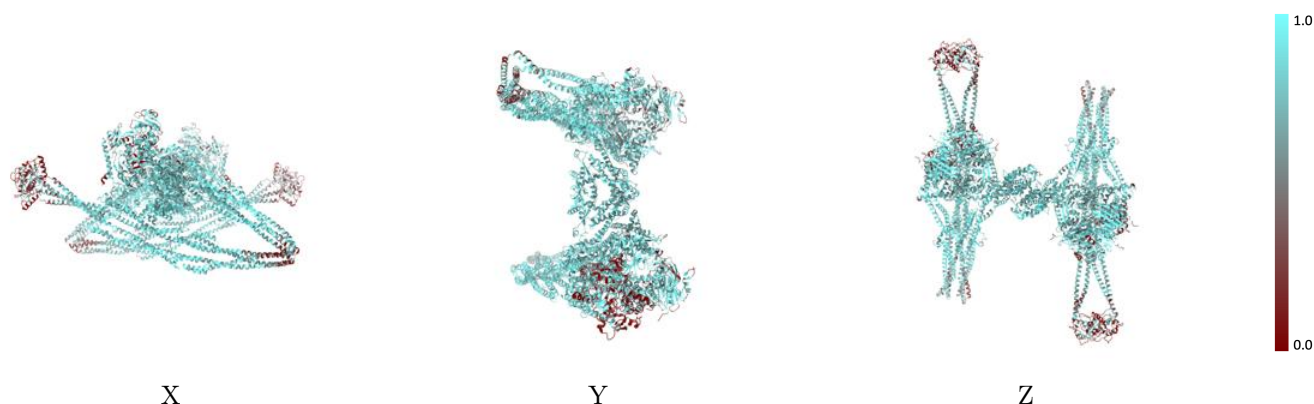
The images above show the 3D surface view of the map at the recommended contour level 0.117 at 50% transparency in yellow overlaid with a ribbon representation of the model coloured in blue. These images allow for the visual assessment of the quality of fit between the atomic model and the map.

9.2 Q-score mapped to coordinate model [i](#)



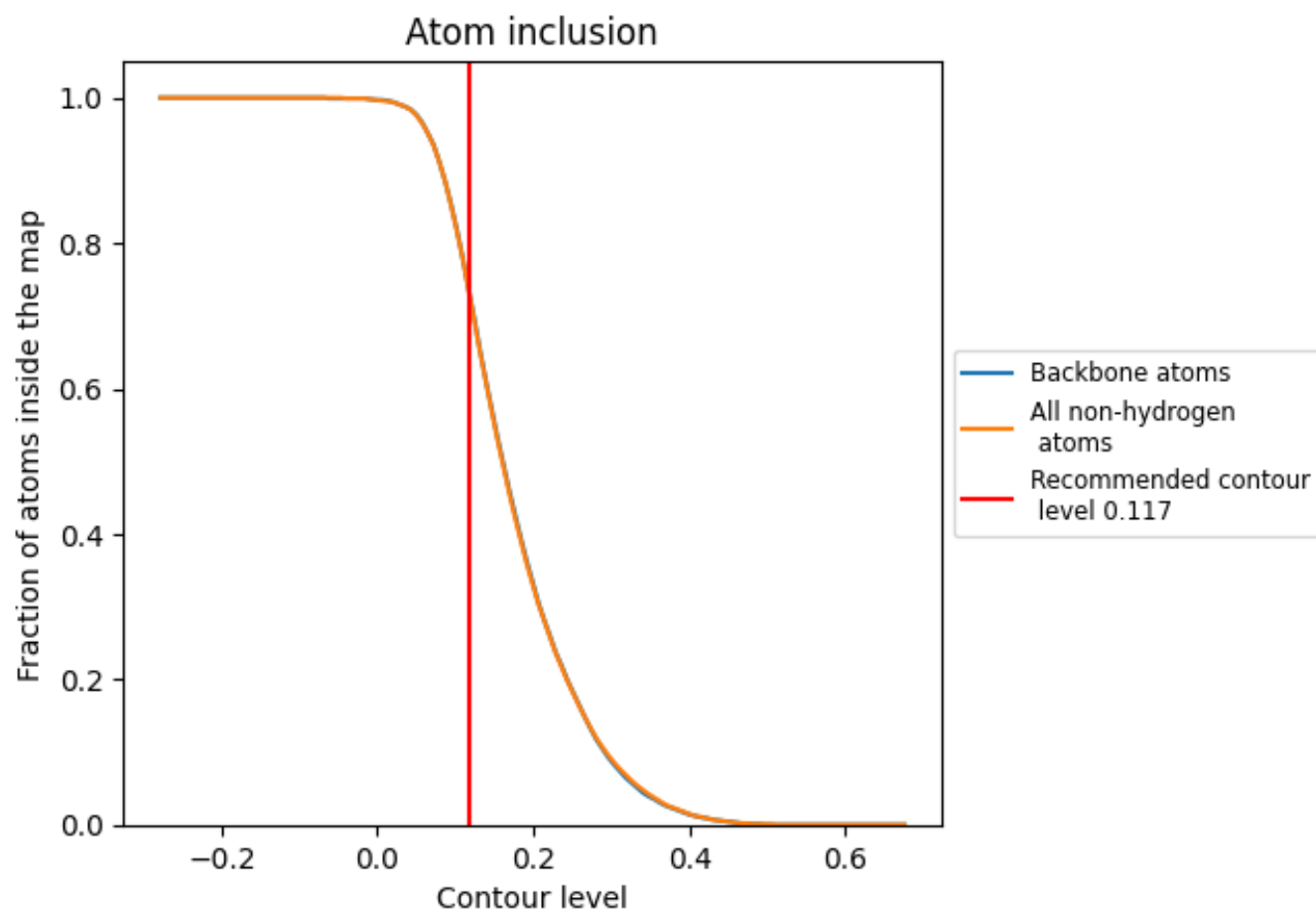
The images above show the model with each residue coloured according to its Q-score. This shows their resolvability in the map with higher Q-score values reflecting better resolvability. Please note: Q-score is calculating the resolvability of atoms, and thus high values are only expected at resolutions at which atoms can be resolved. Low Q-score values may therefore be expected for many entries.

9.3 Atom inclusion mapped to coordinate model [i](#)



The images above show the model with each residue coloured according to its atom inclusion. This shows to what extent they are inside the map at the recommended contour level (0.117).

9.4 Atom inclusion [i](#)



At the recommended contour level, 74% of all backbone atoms, 74% of all non-hydrogen atoms, are inside the map.

9.5 Map-model fit summary ⓘ

The table lists the average atom inclusion at the recommended contour level (0.117) and Q-score for the entire model and for each chain.

Chain	Atom inclusion	Q-score
All	<div></div> 0.7350	<div></div> 0.1490
A	<div></div> 0.7260	<div></div> 0.1500
B	<div></div> 0.6990	<div></div> 0.1310
D	<div></div> 0.8220	<div></div> 0.1750
E	<div></div> 0.8090	<div></div> 0.1680
F	<div></div> 0.7260	<div></div> 0.1510
G	<div></div> 0.7110	<div></div> 0.1330
H	<div></div> 0.8230	<div></div> 0.1760
J	<div></div> 0.8040	<div></div> 0.1680

1.0

0.0

<0.0