



wwPDB X-ray Structure Validation Summary Report ⓘ

Apr 27, 2024 – 06:19 pm BST

PDB ID : 1QM5
Title : Phosphorylase recognition and phosphorylysis of its oligosaccharide substrate:
answers to a long outstanding question
Authors : Watson, K.A.; McCleverty, C.; Geremia, S.; Cottaz, S.; Driguez, H.; Johnson,
L.N.
Deposited on : 1999-09-20
Resolution : 2.00 Å(reported)

This is a wwPDB X-ray Structure Validation Summary Report for a publicly released PDB entry.

We welcome your comments at validation@mail.wwpdb.org

A user guide is available at

<https://www.wwpdb.org/validation/2017/XrayValidationReportHelp>

with specific help available everywhere you see the ⓘ symbol.

The types of validation reports are described at

<http://www.wwpdb.org/validation/2017/FAQs#types>.

The following versions of software and data (see [references ⓘ](#)) were used in the production of this report:

MolProbity	:	4.02b-467
Mogul	:	1.8.4, CSD as541be (2020)
Xtriage (Phenix)	:	NOT EXECUTED
EDS	:	NOT EXECUTED
Percentile statistics	:	20191225.v01 (using entries in the PDB archive December 25th 2019)
Ideal geometry (proteins)	:	Engh & Huber (2001)
Ideal geometry (DNA, RNA)	:	Parkinson et al. (1996)
Validation Pipeline (wwPDB-VP)	:	2.36.2

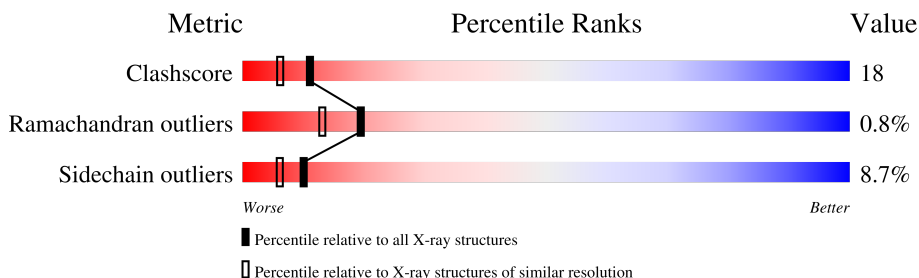
1 Overall quality at a glance

The following experimental techniques were used to determine the structure:

X-RAY DIFFRACTION

The reported resolution of this entry is 2.00 Å.

Percentile scores (ranging between 0-100) for global validation metrics of the entry are shown in the following graphic. The table shows the number of entries on which the scores are based.



Metric	Whole archive (#Entries)	Similar resolution (#Entries, resolution range(Å))
Clashscore	141614	9178 (2.00-2.00)
Ramachandran outliers	138981	9054 (2.00-2.00)
Sidechain outliers	138945	9053 (2.00-2.00)

The table below summarises the geometric issues observed across the polymeric chains and their fit to the electron density. The red, orange, yellow and green segments of the lower bar indicate the fraction of residues that contain outliers for ≥ 3 , 2, 1 and 0 types of geometric quality criteria respectively. A grey segment represents the fraction of residues that are not modelled. The numeric value for each fraction is indicated below the corresponding segment, with a dot representing fractions $\leq 5\%$.

Note EDS was not executed.

Mol	Chain	Length	Quality of chain
1	A	796	
1	B	796	
2	C	4	
2	D	4	

The following table lists non-polymeric compounds, carbohydrate monomers and non-standard residues in protein, DNA, RNA chains that are outliers for geometric or electron-density-fit criteria:

Mol	Type	Chain	Res	Chirality	Geometry	Clashes	Electron density
2	GLC	C	1	X	-	-	-
2	SGC	C	4	X	-	-	-
2	GLC	D	1	X	-	-	-
2	SGC	D	4	X	-	-	-
3	PO4	A	900	-	X	X	-
3	PO4	B	900	-	X	X	-
5	PLP	A	999	-	X	-	-
5	PLP	B	999	-	X	-	-

2 Entry composition [i](#)

There are 6 unique types of molecules in this entry. The entry contains 13662 atoms, of which 0 are hydrogens and 0 are deuteriums.

In the tables below, the ZeroOcc column contains the number of atoms modelled with zero occupancy, the AltConf column contains the number of residues with at least one atom in alternate conformation and the Trace column contains the number of residues modelled with at most 2 atoms.

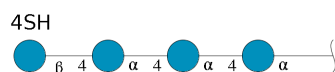
- Molecule 1 is a protein called MALTODEXTRIN PHOSPHORYLASE.

Mol	Chain	Residues	Atoms					ZeroOcc	AltConf	Trace
1	A	796	Total	C	N	O	S	0	0	0
			6378	4068	1127	1163	20			
1	B	796	Total	C	N	O	S	0	0	0
			6378	4068	1127	1163	20			

There are 16 discrepancies between the modelled and reference sequences:

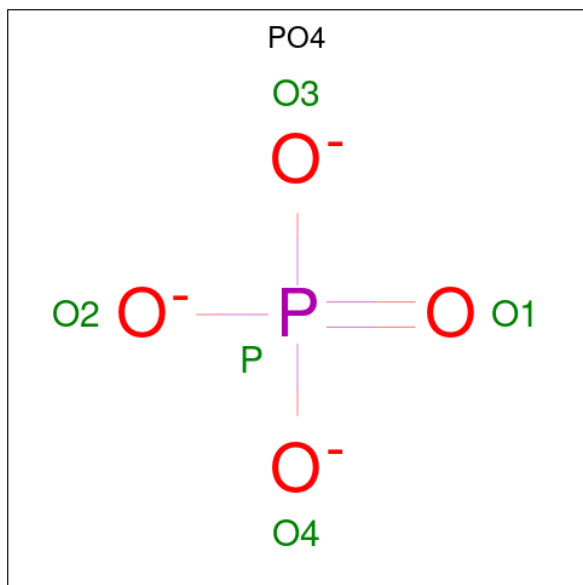
Chain	Residue	Modelled	Actual	Comment	Reference
A	293	LYS	GLU	conflict	UNP P00490
A	487	GLU	VAL	conflict	UNP P00490
A	489	PHE	LEU	conflict	UNP P00490
A	497	ASP	GLN	conflict	UNP P00490
A	498	GLN	LEU	conflict	UNP P00490
A	501	GLU	VAL	conflict	UNP P00490
A	521	GLU	ASP	conflict	UNP P00490
A	547	HIS	ARG	conflict	UNP P00490
B	293	LYS	GLU	conflict	UNP P00490
B	487	GLU	VAL	conflict	UNP P00490
B	489	PHE	LEU	conflict	UNP P00490
B	497	ASP	GLN	conflict	UNP P00490
B	498	GLN	LEU	conflict	UNP P00490
B	501	GLU	VAL	conflict	UNP P00490
B	521	GLU	ASP	conflict	UNP P00490
B	547	HIS	ARG	conflict	UNP P00490

- Molecule 2 is an oligosaccharide called 4-thio-beta-D-glucopyranose-(1-4)-alpha-D-glucopyranose-(1-4)-alpha-D-glucopyranose-(1-4)-alpha-D-glucopyranose.



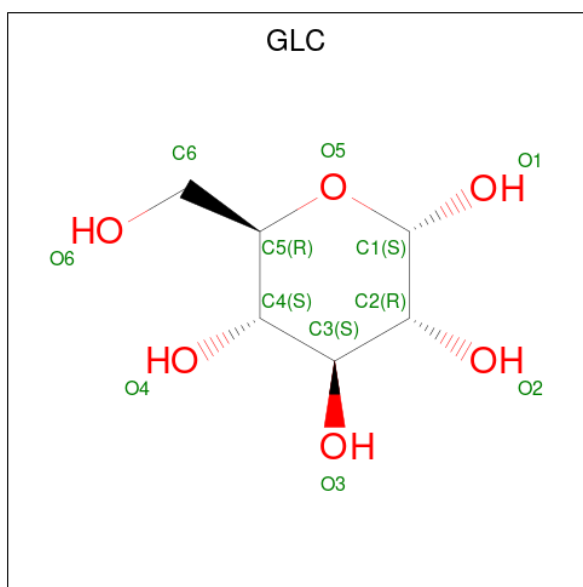
Mol	Chain	Residues	Atoms				ZeroOcc	AltConf	Trace
2	C	4	Total	C	O	S	0	0	0
			45	24	20	1			
2	D	4	Total	C	O	S	0	0	0
			45	24	20	1			

- Molecule 3 is PHOSPHATE ION (three-letter code: PO4) (formula: O_4P).



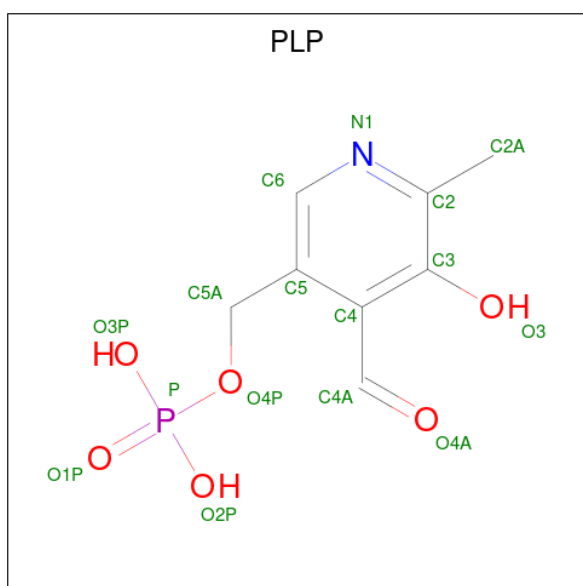
Mol	Chain	Residues	Atoms			ZeroOcc	AltConf
3	A	1	Total	O	P	0	0
			5	4	1		
3	B	1	Total	O	P	0	0
			5	4	1		

- Molecule 4 is alpha-D-glucopyranose (three-letter code: GLC) (formula: $C_6H_{12}O_6$).



Mol	Chain	Residues	Atoms			ZeroOcc	AltConf
4	A	1	Total	C	O	0	0
			11	6	5		
4	B	1	Total	C	O	0	0
			11	6	5		

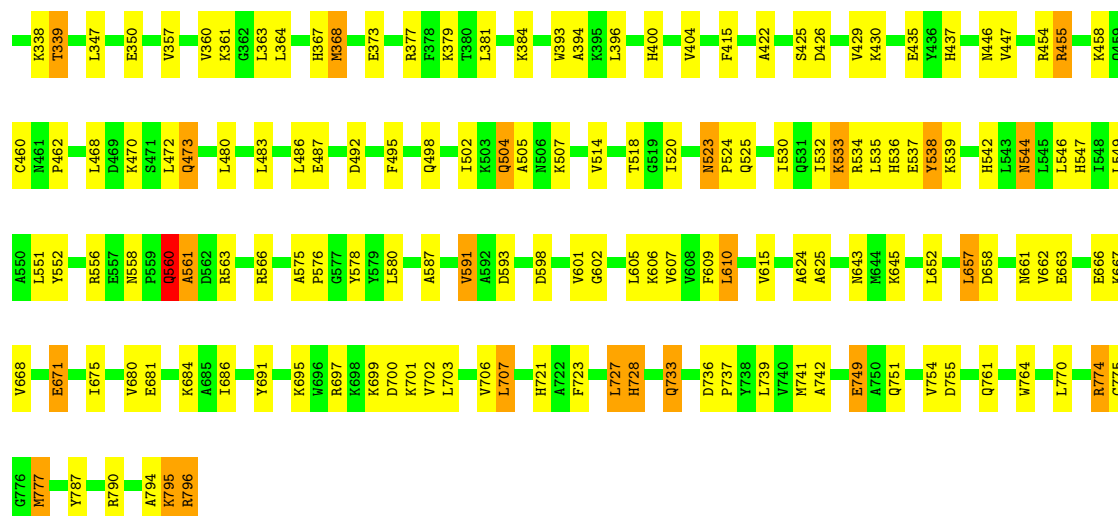
- Molecule 5 is PYRIDOXAL-5'-PHOSPHATE (three-letter code: PLP) (formula: $C_8H_{10}NO_6P$).



Mol	Chain	Residues	Atoms					ZeroOcc	AltConf
5	A	1	Total	C	N	O	P	0	0
			15	8	1	5	1		
5	B	1	Total	C	N	O	P	0	0
			15	8	1	5	1		

- Molecule 6 is water.

Mol	Chain	Residues	Atoms		ZeroOcc	AltConf
6	A	377	Total 377	O 377	0	0
6	B	377	Total 377	O 377	0	0



- Molecule 2: 4-thio-beta-D-glucopyranose-(1-4)-alpha-D-glucopyranose-(1-4)-alpha-D-glucopyranose-(1-4)-alpha-D-glucopyranose

Chain C: 25% 25% 50%



- Molecule 2: 4-thio-beta-D-glucopyranose-(1-4)-alpha-D-glucopyranose-(1-4)-alpha-D-glucopyranose-(1-4)-alpha-D-glucopyranose

Chain D: 25% 25% 50%



4 Data and refinement statistics

Xtriage (Phenix) and EDS were not executed - this section is therefore incomplete.

Property	Value	Source
Space group	P 1 21 1	Depositor
Cell constants a, b, c, α , β , γ	107.41Å 61.50Å 132.38Å 90.00° 105.03° 90.00°	Depositor
Resolution (Å)	50.00 – 2.00	Depositor
% Data completeness (in resolution range)	80.0 (50.00-2.00)	Depositor
R_{merge}	0.10	Depositor
R_{sym}	(Not available)	Depositor
Refinement program	X-PLOR 3.5	Depositor
R, R_{free}	0.228 , 0.261	Depositor
Estimated twinning fraction	No twinning to report.	Xtriage
Total number of atoms	13662	wwPDB-VP
Average B, all atoms (Å ²)	26.0	wwPDB-VP

5 Model quality [i](#)

5.1 Standard geometry [i](#)

Bond lengths and bond angles in the following residue types are not validated in this section: SGC, PLP, GLC, PO4

The Z score for a bond length (or angle) is the number of standard deviations the observed value is removed from the expected value. A bond length (or angle) with $|Z| > 5$ is considered an outlier worth inspection. RMSZ is the root-mean-square of all Z scores of the bond lengths (or angles).

Mol	Chain	Bond lengths		Bond angles	
		RMSZ	$\# Z > 5$	RMSZ	$\# Z > 5$
1	A	0.37	0/6528	0.60	0/8853
1	B	0.37	0/6528	0.60	0/8853
All	All	0.37	0/13056	0.60	0/17706

There are no bond length outliers.

There are no bond angle outliers.

There are no chirality outliers.

There are no planarity outliers.

5.2 Too-close contacts [i](#)

In the following table, the Non-H and H(model) columns list the number of non-hydrogen atoms and hydrogen atoms in the chain respectively. The H(added) column lists the number of hydrogen atoms added and optimized by MolProbity. The Clashes column lists the number of clashes within the asymmetric unit, whereas Symm-Clashes lists symmetry-related clashes.

Mol	Chain	Non-H	H(model)	H(added)	Clashes	Symm-Clashes
1	A	6378	0	6308	227	0
1	B	6378	0	6308	238	0
2	C	45	0	38	2	0
2	D	45	0	38	2	0
3	A	5	0	0	2	0
3	B	5	0	0	2	0
4	A	11	0	10	0	0
4	B	11	0	10	0	0
5	A	15	0	7	2	0
5	B	15	0	7	2	0
6	A	377	0	0	20	0

Continued on next page...

Continued from previous page...

Mol	Chain	Non-H	H(model)	H(added)	Clashes	Symm-Clashes
6	B	377	0	0	26	0
All	All	13662	0	12726	461	0

The all-atom clashscore is defined as the number of clashes found per 1000 atoms (including hydrogen atoms). The all-atom clashscore for this structure is 18.

The worst 5 of 461 close contacts within the same asymmetric unit are listed below, sorted by their clash magnitude.

Atom-1	Atom-2	Interatomic distance (Å)	Clash overlap (Å)
1:B:473:GLN:CG	6:B:2227:HOH:O	1.91	1.15
1:A:728:HIS:HB3	1:A:733:GLN:NE2	1.72	1.04
1:B:657:LEU:HD13	1:B:662:VAL:HG12	1.41	1.03
1:B:728:HIS:HB3	1:B:733:GLN:NE2	1.72	1.02
1:A:657:LEU:HD13	1:A:662:VAL:HG12	1.41	1.01

There are no symmetry-related clashes.

5.3 Torsion angles [i](#)

5.3.1 Protein backbone [i](#)

In the following table, the Percentiles column shows the percent Ramachandran outliers of the chain as a percentile score with respect to all X-ray entries followed by that with respect to entries of similar resolution.

The Analysed column shows the number of residues for which the backbone conformation was analysed, and the total number of residues.

Mol	Chain	Analysed	Favoured	Allowed	Outliers	Percentiles	
1	A	794/796 (100%)	753 (95%)	35 (4%)	6 (1%)	19	13
1	B	794/796 (100%)	753 (95%)	35 (4%)	6 (1%)	19	13
All	All	1588/1592 (100%)	1506 (95%)	70 (4%)	12 (1%)	19	13

5 of 12 Ramachandran outliers are listed below:

Mol	Chain	Res	Type
1	A	218	ARG
1	A	795	LYS
1	B	795	LYS

Continued on next page...

Continued from previous page...

Mol	Chain	Res	Type
1	A	2	GLN
1	B	2	GLN

5.3.2 Protein sidechains ⓘ

In the following table, the Percentiles column shows the percent sidechain outliers of the chain as a percentile score with respect to all X-ray entries followed by that with respect to entries of similar resolution.

The Analysed column shows the number of residues for which the sidechain conformation was analysed, and the total number of residues.

Mol	Chain	Analysed	Rotameric	Outliers	Percentiles
1	A	665/667 (100%)	607 (91%)	58 (9%)	10 6
1	B	665/667 (100%)	607 (91%)	58 (9%)	10 6
All	All	1330/1334 (100%)	1214 (91%)	116 (9%)	10 6

5 of 116 residues with a non-rotameric sidechain are listed below:

Mol	Chain	Res	Type
1	A	796	ARG
1	B	749	GLU
1	B	172	ASN
1	B	733	GLN
1	B	607	VAL

Sometimes sidechains can be flipped to improve hydrogen bonding and reduce clashes. 5 of 62 such sidechains are listed below:

Mol	Chain	Res	Type
1	A	678	HIS
1	B	531	GLN
1	B	80	ASN
1	B	523	ASN
1	B	678	HIS

5.3.3 RNA ⓘ

There are no RNA molecules in this entry.

5.4 Non-standard residues in protein, DNA, RNA chains ⓘ

There are no non-standard protein/DNA/RNA residues in this entry.

5.5 Carbohydrates ⓘ

8 monosaccharides are modelled in this entry.

In the following table, the Counts columns list the number of bonds (or angles) for which Mogul statistics could be retrieved, the number of bonds (or angles) that are observed in the model and the number of bonds (or angles) that are defined in the Chemical Component Dictionary. The Link column lists molecule types, if any, to which the group is linked. The Z score for a bond length (or angle) is the number of standard deviations the observed value is removed from the expected value. A bond length (or angle) with $|Z| > 2$ is considered an outlier worth inspection. RMSZ is the root-mean-square of all Z scores of the bond lengths (or angles).

Mol	Type	Chain	Res	Link	Bond lengths			Bond angles		
					Counts	RMSZ	$\# Z > 2$	Counts	RMSZ	$\# Z > 2$
2	GLC	C	1	2	12,12,12	0.42	0	17,17,17	0.33	0
2	GLC	C	2	2	11,11,12	0.51	0	15,15,17	0.69	1 (6%)
2	GLC	C	3	2	11,11,12	0.46	0	15,15,17	0.64	1 (6%)
2	SGC	C	4	3,2	10,11,12	0.86	1 (10%)	12,15,17	0.84	0
2	GLC	D	1	2	12,12,12	0.43	0	17,17,17	0.34	0
2	GLC	D	2	2	11,11,12	0.51	0	15,15,17	0.69	1 (6%)
2	GLC	D	3	2	11,11,12	0.46	0	15,15,17	0.64	1 (6%)
2	SGC	D	4	3,2	10,11,12	0.87	1 (10%)	12,15,17	0.84	0

In the following table, the Chirals column lists the number of chiral outliers, the number of chiral centers analysed, the number of these observed in the model and the number defined in the Chemical Component Dictionary. Similar counts are reported in the Torsion and Rings columns. '-' means no outliers of that kind were identified.

Mol	Type	Chain	Res	Link	Chirals	Torsions	Rings
2	GLC	C	1	2	1/1/5/5	0/2/22/22	0/1/1/1
2	GLC	C	2	2	-	0/2/19/22	0/1/1/1
2	GLC	C	3	2	-	0/2/19/22	0/1/1/1
2	SGC	C	4	3,2	1/1/4/5	0/2/19/22	0/1/1/1
2	GLC	D	1	2	1/1/5/5	0/2/22/22	0/1/1/1
2	GLC	D	2	2	-	0/2/19/22	0/1/1/1
2	GLC	D	3	2	-	0/2/19/22	0/1/1/1
2	SGC	D	4	3,2	1/1/4/5	0/2/19/22	0/1/1/1

All (2) bond length outliers are listed below:

Mol	Chain	Res	Type	Atoms	Z	Observed(Å)	Ideal(Å)
2	D	4	SGC	C5-C4	2.11	1.54	1.53
2	C	4	SGC	C5-C4	2.04	1.54	1.53

All (4) bond angle outliers are listed below:

Mol	Chain	Res	Type	Atoms	Z	Observed(°)	Ideal(°)
2	D	2	GLC	C1-O5-C5	2.47	115.54	112.19
2	C	2	GLC	C1-O5-C5	2.47	115.53	112.19
2	C	3	GLC	C1-O5-C5	2.07	114.99	112.19
2	D	3	GLC	C1-O5-C5	2.04	114.96	112.19

All (4) chirality outliers are listed below:

Mol	Chain	Res	Type	Atom
2	C	1	GLC	C1
2	C	4	SGC	C1
2	D	1	GLC	C1
2	D	4	SGC	C1

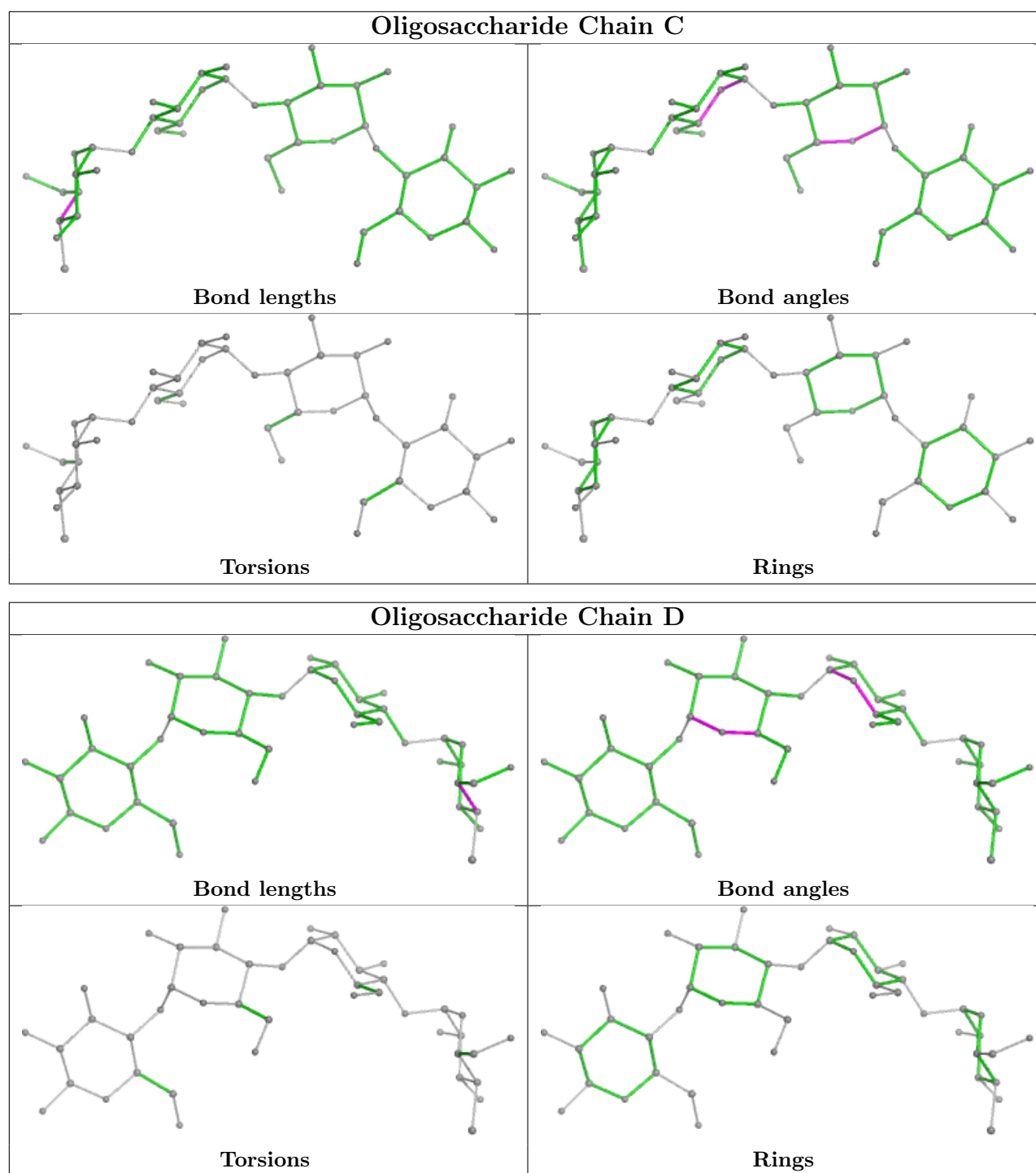
There are no torsion outliers.

There are no ring outliers.

4 monomers are involved in 4 short contacts:

Mol	Chain	Res	Type	Clashes	Symm-Clashes
2	D	4	SGC	1	0
2	D	2	GLC	1	0
2	C	2	GLC	1	0
2	C	4	SGC	1	0

The following is a two-dimensional graphical depiction of Mogul quality analysis of bond lengths, bond angles, torsion angles, and ring geometry for oligosaccharide.



5.6 Ligand geometry [i](#)

6 ligands are modelled in this entry.

In the following table, the Counts columns list the number of bonds (or angles) for which Mogul statistics could be retrieved, the number of bonds (or angles) that are observed in the model and the number of bonds (or angles) that are defined in the Chemical Component Dictionary. The Link column lists molecule types, if any, to which the group is linked. The Z score for a bond

length (or angle) is the number of standard deviations the observed value is removed from the expected value. A bond length (or angle) with $|Z| > 2$ is considered an outlier worth inspection. RMSZ is the root-mean-square of all Z scores of the bond lengths (or angles).

Mol	Type	Chain	Res	Link	Bond lengths			Bond angles		
					Counts	RMSZ	# Z > 2	Counts	RMSZ	# Z > 2
5	PLP	B	999	-	15,15,16	2.27	7 (46%)	20,22,23	3.38	11 (55%)
4	GLC	B	998	-	11,11,12	0.48	0	15,15,17	1.04	2 (13%)
3	PO4	B	900	2	4,4,4	2.92	3 (75%)	6,6,6	2.20	4 (66%)
4	GLC	A	998	-	11,11,12	0.48	0	15,15,17	1.04	2 (13%)
3	PO4	A	900	2	4,4,4	2.92	3 (75%)	6,6,6	2.20	4 (66%)
5	PLP	A	999	-	15,15,16	2.27	7 (46%)	20,22,23	3.38	11 (55%)

In the following table, the Chirals column lists the number of chiral outliers, the number of chiral centers analysed, the number of these observed in the model and the number defined in the Chemical Component Dictionary. Similar counts are reported in the Torsion and Rings columns. '-' means no outliers of that kind were identified.

Mol	Type	Chain	Res	Link	Chirals	Torsions	Rings
5	PLP	B	999	-	-	1/6/6/8	0/1/1/1
5	PLP	A	999	-	-	1/6/6/8	0/1/1/1
4	GLC	B	998	-	-	0/2/19/22	0/1/1/1
4	GLC	A	998	-	-	0/2/19/22	0/1/1/1

The worst 5 of 20 bond length outliers are listed below:

Mol	Chain	Res	Type	Atoms	Z	Observed(Å)	Ideal(Å)
5	B	999	PLP	C4A-C4	-4.88	1.41	1.51
5	A	999	PLP	C4A-C4	-4.88	1.41	1.51
5	A	999	PLP	P-O4P	-3.98	1.47	1.60
5	B	999	PLP	P-O4P	-3.97	1.47	1.60
3	A	900	PO4	P-O1	3.54	1.59	1.50

The worst 5 of 34 bond angle outliers are listed below:

Mol	Chain	Res	Type	Atoms	Z	Observed(°)	Ideal(°)
5	A	999	PLP	C3-C4-C5	7.24	126.56	118.74
5	B	999	PLP	C3-C4-C5	7.23	126.55	118.74
5	B	999	PLP	C4A-C4-C5	-6.64	114.10	120.94
5	A	999	PLP	C4A-C4-C5	-6.60	114.13	120.94
5	A	999	PLP	C4A-C4-C3	-6.28	109.86	120.50

There are no chirality outliers.

All (2) torsion outliers are listed below:

Mol	Chain	Res	Type	Atoms
5	A	999	PLP	C6-C5-C5A-O4P
5	B	999	PLP	C6-C5-C5A-O4P

There are no ring outliers.

4 monomers are involved in 8 short contacts:

Mol	Chain	Res	Type	Clashes	Symm-Clashes
5	B	999	PLP	2	0
3	B	900	PO4	2	0
3	A	900	PO4	2	0
5	A	999	PLP	2	0

5.7 Other polymers [i](#)

There are no such residues in this entry.

5.8 Polymer linkage issues [i](#)

There are no chain breaks in this entry.

6 Fit of model and data

6.1 Protein, DNA and RNA chains

EDS was not executed - this section is therefore empty.

6.2 Non-standard residues in protein, DNA, RNA chains

EDS was not executed - this section is therefore empty.

6.3 Carbohydrates

EDS was not executed - this section is therefore empty.

6.4 Ligands

EDS was not executed - this section is therefore empty.

6.5 Other polymers

EDS was not executed - this section is therefore empty.