



wwPDB X-ray Structure Validation Summary Report ⓘ

Nov 4, 2024 – 04:29 PM EST

PDB ID : 2QMX
Title : The crystal structure of L-Phe inhibited prephenate dehydratase from *Chlorobium tepidum* TLS
Authors : Tan, K.; Li, H.; Clancy, S.; Joachimiak, A.; Midwest Center for Structural Genomics (MCSG)
Deposited on : 2007-07-17
Resolution : 2.30 Å(reported)

This is a wwPDB X-ray Structure Validation Summary Report for a publicly released PDB entry.

We welcome your comments at validation@mail.wwpdb.org

A user guide is available at

<https://www.wwpdb.org/validation/2017/XrayValidationReportHelp>

with specific help available everywhere you see the ⓘ symbol.

The types of validation reports are described at

<http://www.wwpdb.org/validation/2017/FAQs#types>.

The following versions of software and data (see [references ⓘ](#)) were used in the production of this report:

MolProbity	:	4.02b-467
Mogul	:	2022.3.0, CSD as543be (2022)
Xtriage (Phenix)	:	1.20.1
EDS	:	3.0
Percentile statistics	:	20231227.v01 (using entries in the PDB archive December 27th 2023)
CCP4	:	9.0.003 (Gargrove)
Density-Fitness	:	1.0.11
Ideal geometry (proteins)	:	Engh & Huber (2001)
Ideal geometry (DNA, RNA)	:	Parkinson et al. (1996)
Validation Pipeline (wwPDB-VP)	:	2.39

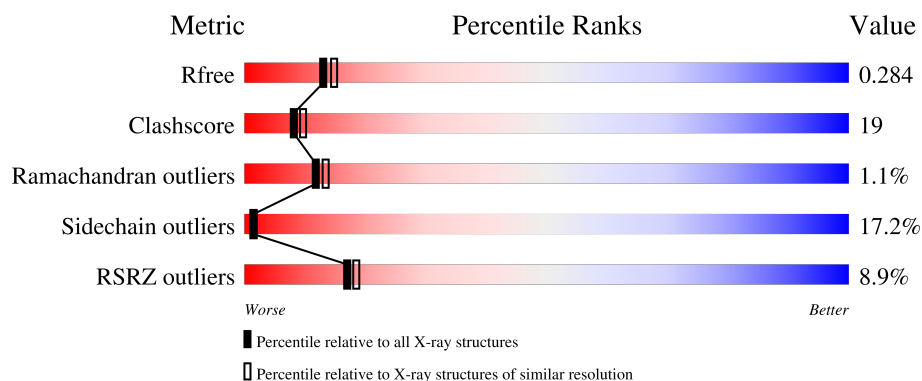
1 Overall quality at a glance

The following experimental techniques were used to determine the structure:

X-RAY DIFFRACTION

The reported resolution of this entry is 2.30 Å.

Percentile scores (ranging between 0-100) for global validation metrics of the entry are shown in the following graphic. The table shows the number of entries on which the scores are based.



Metric	Whole archive (#Entries)	Similar resolution (#Entries, resolution range(Å))
R_{free}	164625	5963 (2.30-2.30)
Clashscore	180529	6698 (2.30-2.30)
Ramachandran outliers	177936	6640 (2.30-2.30)
Sidechain outliers	177891	6640 (2.30-2.30)
RSRZ outliers	164620	5963 (2.30-2.30)

The table below summarises the geometric issues observed across the polymeric chains and their fit to the electron density. The red, orange, yellow and green segments of the lower bar indicate the fraction of residues that contain outliers for ≥ 3 , 2, 1 and 0 types of geometric quality criteria respectively. A grey segment represents the fraction of residues that are not modelled. The numeric value for each fraction is indicated below the corresponding segment, with a dot representing fractions $\leq 5\%$. The upper red bar (where present) indicates the fraction of residues that have poor fit to the electron density. The numeric value is given above the bar.

Mol	Chain	Length	Quality of chain
1	A	283	<div> <div>11%</div> <div>57%</div> <div>34%</div> <div>6%</div> <div>..</div> </div>
1	B	283	<div> <div>7%</div> <div>58%</div> <div>28%</div> <div>10%</div> <div>..</div> </div>

The following table lists non-polymeric compounds, carbohydrate monomers and non-standard residues in protein, DNA, RNA chains that are outliers for geometric or electron-density-fit criteria:

Mol	Type	Chain	Res	Chirality	Geometry	Clashes	Electron density
2	ACT	A	301	-	-	X	-
4	EDO	B	282	-	-	X	-

2 Entry composition [i](#)

There are 5 unique types of molecules in this entry. The entry contains 4478 atoms, of which 0 are hydrogens and 0 are deuteriums.

In the tables below, the ZeroOcc column contains the number of atoms modelled with zero occupancy, the AltConf column contains the number of residues with at least one atom in alternate conformation and the Trace column contains the number of residues modelled with at most 2 atoms.

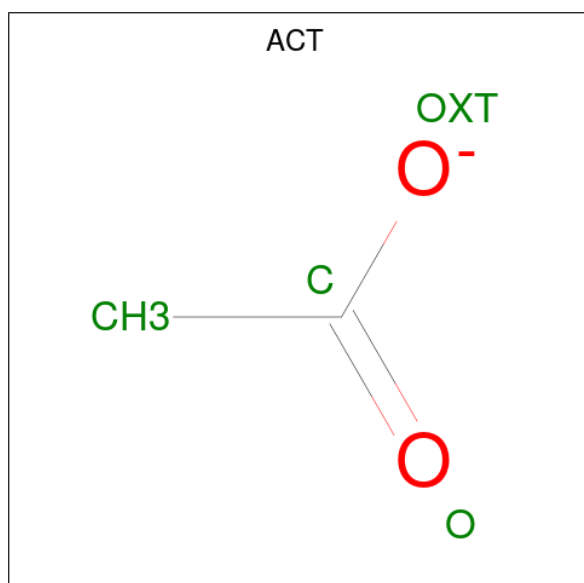
- Molecule 1 is a protein called Prephenate dehydratase.

Mol	Chain	Residues	Atoms						ZeroOcc	AltConf	Trace
1	A	278	Total	C	N	O	S	Se	0	1	0
			2185	1391	379	408	4	3			
1	B	278	Total	C	N	O	S	Se	0	0	0
			2179	1386	378	408	4	3			

There are 6 discrepancies between the modelled and reference sequences:

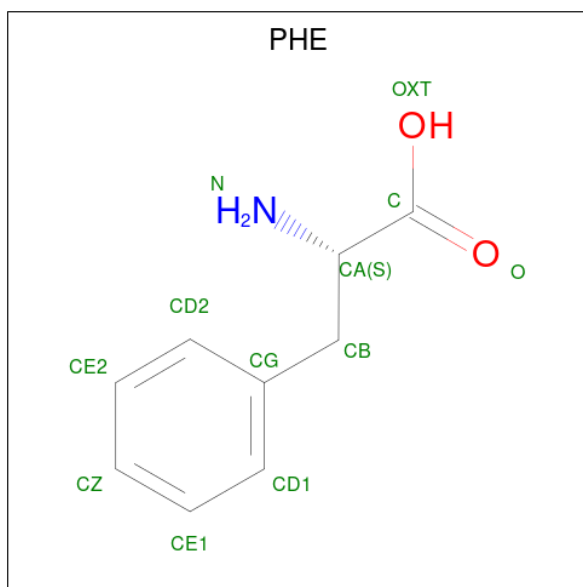
Chain	Residue	Modelled	Actual	Comment	Reference
A	-2	SER	-	cloning artifact	UNP Q8KBW6
A	-1	ASN	-	cloning artifact	UNP Q8KBW6
A	0	ALA	-	cloning artifact	UNP Q8KBW6
B	-2	SER	-	cloning artifact	UNP Q8KBW6
B	-1	ASN	-	cloning artifact	UNP Q8KBW6
B	0	ALA	-	cloning artifact	UNP Q8KBW6

- Molecule 2 is ACETATE ION (three-letter code: ACT) (formula: $C_2H_3O_2$).



Mol	Chain	Residues	Atoms			ZeroOcc	AltConf
2	A	1	Total	C	O	0	0
			4	2	2		
2	A	1	Total	C	O	0	0
			4	2	2		

- Molecule 3 is PHENYLALANINE (three-letter code: PHE) (formula: $C_9H_{11}NO_2$).



Mol	Chain	Residues	Atoms				ZeroOcc	AltConf
3	A	1	Total	C	N	O	0	0
			12	9	1	2		
3	A	1	Total	C	N	O	0	0
			12	9	1	2		

- Molecule 4 is 1,2-ETHANEDIOL (three-letter code: EDO) (formula: $C_2H_6O_2$).



Mol	Chain	Residues	Atoms	ZeroOcc	AltConf
4	A	1	Total C O 4 2 2	0	0
4	A	1	Total C O 4 2 2	0	0
4	A	1	Total C O 4 2 2	0	0
4	A	1	Total C O 4 2 2	0	0
4	A	1	Total C O 4 2 2	0	0
4	A	1	Total C O 4 2 2	0	0
4	A	1	Total C O 4 2 2	0	0
4	A	1	Total C O 4 2 2	0	0
4	B	1	Total C O 4 2 2	0	0
4	B	1	Total C O 4 2 2	0	0
4	B	1	Total C O 4 2 2	0	0

- Molecule 5 is water.

Mol	Chain	Residues	Atoms	ZeroOcc	AltConf
5	A	24	Total O 24 24	0	0

Continued on next page...

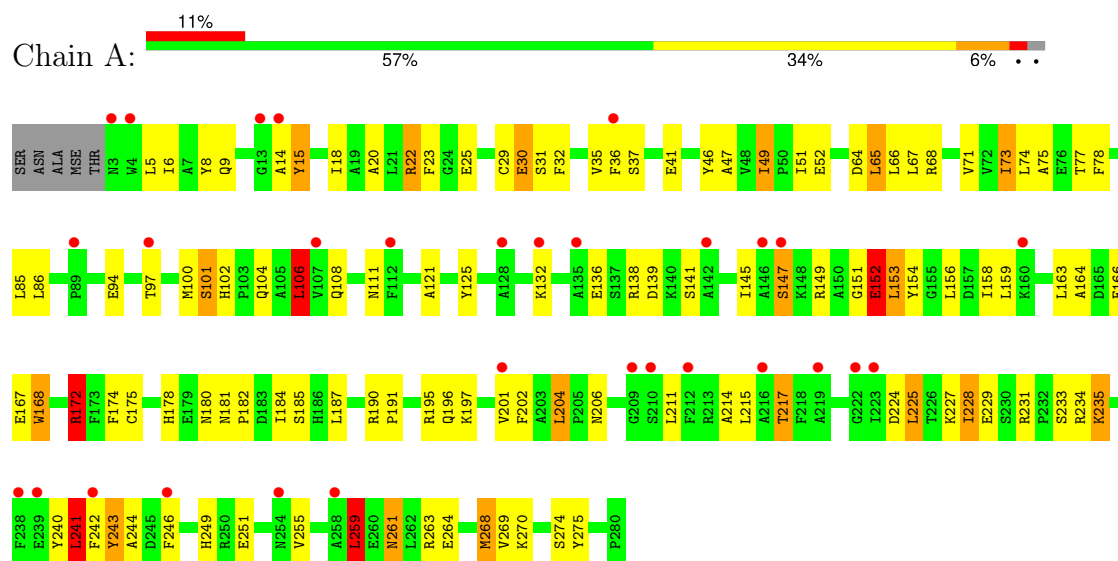
Continued from previous page...

Mol	Chain	Residues	Atoms		ZeroOcc	AltConf
5	B	14	Total	O	0	0
			14	14		

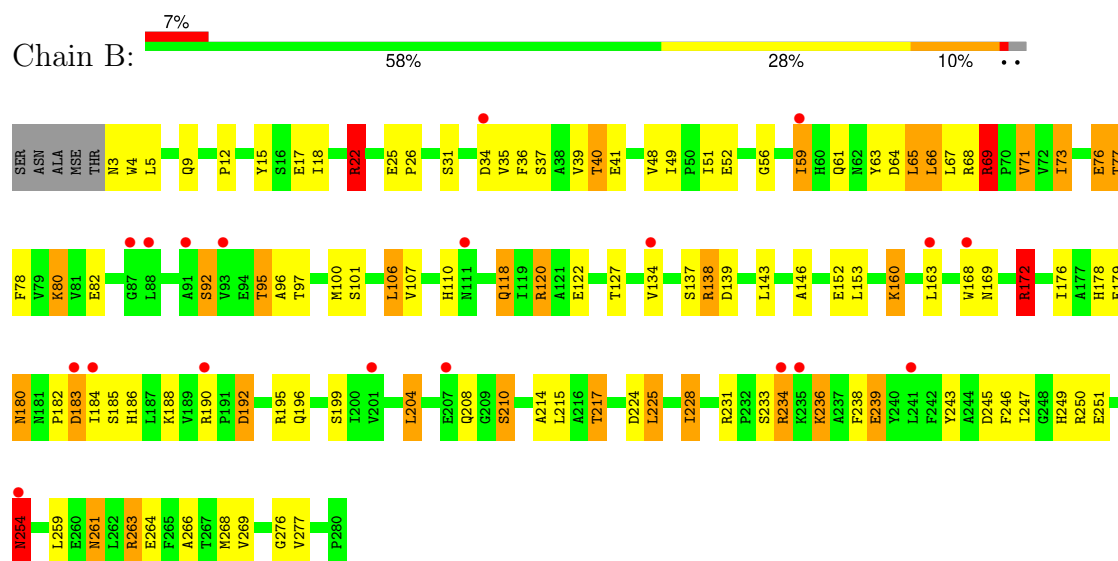
3 Residue-property plots [i](#)

These plots are drawn for all protein, RNA, DNA and oligosaccharide chains in the entry. The first graphic for a chain summarises the proportions of the various outlier classes displayed in the second graphic. The second graphic shows the sequence view annotated by issues in geometry and electron density. Residues are color-coded according to the number of geometric quality criteria for which they contain at least one outlier: green = 0, yellow = 1, orange = 2 and red = 3 or more. A red dot above a residue indicates a poor fit to the electron density ($RSRZ > 2$). Stretches of 2 or more consecutive residues without any outlier are shown as a green connector. Residues present in the sample, but not in the model, are shown in grey.

• Molecule 1: Prephenate dehydratase



• Molecule 1: Prephenate dehydratase



4 Data and refinement statistics

Property	Value	Source
Space group	P 21 21 2	Depositor
Cell constants a, b, c, α , β , γ	86.87Å 127.89Å 56.59Å 90.00° 90.00° 90.00°	Depositor
Resolution (Å)	41.13 – 2.30 41.13 – 2.30	Depositor EDS
% Data completeness (in resolution range)	82.6 (41.13-2.30) 82.6 (41.13-2.30)	Depositor EDS
R_{merge}	0.07	Depositor
R_{sym}	(Not available)	Depositor
$\langle I/\sigma(I) \rangle$ ¹	4.72 (at 2.29Å)	Xtriage
Refinement program	REFMAC 5.2.0019	Depositor
R, R_{free}	0.219 , 0.289 0.219 , 0.284	Depositor DCC
R_{free} test set	1347 reflections (5.67%)	wwPDB-VP
Wilson B-factor (Å ²)	57.7	Xtriage
Anisotropy	0.092	Xtriage
Bulk solvent k_{sol} (e/Å ³), B_{sol} (Å ²)	0.32 , 56.5	EDS
L-test for twinning ²	$\langle L \rangle = 0.47$, $\langle L^2 \rangle = 0.31$	Xtriage
Estimated twinning fraction	No twinning to report.	Xtriage
F_o, F_c correlation	0.93	EDS
Total number of atoms	4478	wwPDB-VP
Average B, all atoms (Å ²)	60.0	wwPDB-VP

Xtriage's analysis on translational NCS is as follows: *The largest off-origin peak in the Patterson function is 4.05% of the height of the origin peak. No significant pseudotranslation is detected.*

¹Intensities estimated from amplitudes.

²Theoretical values of $\langle |L| \rangle$, $\langle L^2 \rangle$ for acentric reflections are 0.5, 0.333 respectively for untwinned datasets, and 0.375, 0.2 for perfectly twinned datasets.

5 Model quality

5.1 Standard geometry

Bond lengths and bond angles in the following residue types are not validated in this section: EDO, ACT

The Z score for a bond length (or angle) is the number of standard deviations the observed value is removed from the expected value. A bond length (or angle) with $|Z| > 5$ is considered an outlier worth inspection. RMSZ is the root-mean-square of all Z scores of the bond lengths (or angles).

Mol	Chain	Bond lengths		Bond angles	
		RMSZ	$\# Z > 5$	RMSZ	$\# Z > 5$
1	A	1.18	8/2233 (0.4%)	1.16	10/3020 (0.3%)
1	B	1.10	1/2225 (0.0%)	1.19	16/3012 (0.5%)
All	All	1.14	9/4458 (0.2%)	1.18	26/6032 (0.4%)

Chiral center outliers are detected by calculating the chiral volume of a chiral center and verifying if the center is modelled as a planar moiety or with the opposite hand. A planarity outlier is detected by checking planarity of atoms in a peptide group, atoms in a mainchain group or atoms of a sidechain that are expected to be planar.

Mol	Chain	#Chirality outliers	#Planarity outliers
1	B	0	2

The worst 5 of 9 bond length outliers are listed below:

Mol	Chain	Res	Type	Atoms	Z	Observed(Å)	Ideal(Å)
1	A	94	GLU	CD-OE2	8.89	1.35	1.25
1	A	243	TYR	CE1-CZ	6.30	1.46	1.38
1	A	240	TYR	CE1-CZ	6.10	1.46	1.38
1	A	125	TYR	CE2-CZ	5.92	1.46	1.38
1	A	185	SER	CB-OG	5.85	1.49	1.42

The worst 5 of 26 bond angle outliers are listed below:

Mol	Chain	Res	Type	Atoms	Z	Observed(°)	Ideal(°)
1	B	22	ARG	NE-CZ-NH1	10.37	125.48	120.30
1	A	22	ARG	NE-CZ-NH1	9.88	125.24	120.30
1	A	172	ARG	NE-CZ-NH1	9.47	125.03	120.30
1	A	172	ARG	NE-CZ-NH2	-9.28	115.66	120.30
1	A	22	ARG	NE-CZ-NH2	-8.07	116.27	120.30

There are no chirality outliers.

All (2) planarity outliers are listed below:

Mol	Chain	Res	Type	Group
1	B	3	ASN	Peptide
1	B	77	THR	Mainchain

5.2 Too-close contacts

In the following table, the Non-H and H(model) columns list the number of non-hydrogen atoms and hydrogen atoms in the chain respectively. The H(added) column lists the number of hydrogen atoms added and optimized by MolProbity. The Clashes column lists the number of clashes within the asymmetric unit, whereas Symm-Clashes lists symmetry-related clashes.

Mol	Chain	Non-H	H(model)	H(added)	Clashes	Symm-Clashes
1	A	2185	0	2159	90	0
1	B	2179	0	2146	85	0
2	A	8	0	6	2	0
3	A	24	0	16	2	0
4	A	32	0	48	2	0
4	B	12	0	18	6	0
5	A	24	0	0	1	0
5	B	14	0	0	1	0
All	All	4478	0	4393	169	0

The all-atom clashscore is defined as the number of clashes found per 1000 atoms (including hydrogen atoms). The all-atom clashscore for this structure is 19.

The worst 5 of 169 close contacts within the same asymmetric unit are listed below, sorted by their clash magnitude.

Atom-1	Atom-2	Interatomic distance (Å)	Clash overlap (Å)
1:B:92:SER:HB3	1:B:95:THR:HB	1.45	0.98
1:B:69:ARG:HH21	1:B:69:ARG:HG2	1.36	0.91
1:A:73:ILE:HD13	1:A:174:PHE:CD1	2.09	0.87
1:B:100:MSE:HE3	1:B:134:VAL:HG23	1.60	0.82
1:B:71:VAL:HG21	1:B:176:ILE:HD12	1.62	0.81

There are no symmetry-related clashes.

5.3 Torsion angles [i](#)

5.3.1 Protein backbone [i](#)

In the following table, the Percentiles column shows the percent Ramachandran outliers of the chain as a percentile score with respect to all X-ray entries followed by that with respect to entries of similar resolution.

The Analysed column shows the number of residues for which the backbone conformation was analysed, and the total number of residues.

Mol	Chain	Analysed	Favoured	Allowed	Outliers	Percentiles	
1	A	277/283 (98%)	254 (92%)	22 (8%)	1 (0%)	30	39
1	B	276/283 (98%)	255 (92%)	16 (6%)	5 (2%)	7	6
All	All	553/566 (98%)	509 (92%)	38 (7%)	6 (1%)	12	13

5 of 6 Ramachandran outliers are listed below:

Mol	Chain	Res	Type
1	B	40	THR
1	B	196	GLN
1	B	250	ARG
1	B	254	ASN
1	A	152	GLU

5.3.2 Protein sidechains [i](#)

In the following table, the Percentiles column shows the percent sidechain outliers of the chain as a percentile score with respect to all X-ray entries followed by that with respect to entries of similar resolution.

The Analysed column shows the number of residues for which the sidechain conformation was analysed, and the total number of residues.

Mol	Chain	Analysed	Rotameric	Outliers	Percentiles	
1	A	230/229 (100%)	195 (85%)	35 (15%)	2	2
1	B	229/229 (100%)	185 (81%)	44 (19%)	1	1
All	All	459/458 (100%)	380 (83%)	79 (17%)	1	1

5 of 79 residues with a non-rotameric sidechain are listed below:

Mol	Chain	Res	Type
1	B	153	LEU

Continued on next page...

Continued from previous page...

Mol	Chain	Res	Type
1	B	228	ILE
1	B	172	ARG
1	B	199	SER
1	B	254	ASN

Sometimes sidechains can be flipped to improve hydrogen bonding and reduce clashes. 5 of 11 such sidechains are listed below:

Mol	Chain	Res	Type
1	B	110	HIS
1	B	178	HIS
1	B	254	ASN
1	B	249	HIS
1	B	9	GLN

5.3.3 RNA [i](#)

There are no RNA molecules in this entry.

5.4 Non-standard residues in protein, DNA, RNA chains [i](#)

There are no non-standard protein/DNA/RNA residues in this entry.

5.5 Carbohydrates [i](#)

There are no oligosaccharides in this entry.

5.6 Ligand geometry [i](#)

15 ligands are modelled in this entry.

In the following table, the Counts columns list the number of bonds (or angles) for which Mogul statistics could be retrieved, the number of bonds (or angles) that are observed in the model and the number of bonds (or angles) that are defined in the Chemical Component Dictionary. The Link column lists molecule types, if any, to which the group is linked. The Z score for a bond length (or angle) is the number of standard deviations the observed value is removed from the expected value. A bond length (or angle) with $|Z| > 2$ is considered an outlier worth inspection. RMSZ is the root-mean-square of all Z scores of the bond lengths (or angles).

Mol	Type	Chain	Res	Link	Bond lengths			Bond angles		
					Counts	RMSZ	# Z > 2	Counts	RMSZ	# Z > 2
4	EDO	A	307	-	3,3,3	0.55	0	2,2,2	0.31	0
4	EDO	A	311	-	3,3,3	0.49	0	2,2,2	0.32	0
4	EDO	A	309	-	3,3,3	0.67	0	2,2,2	0.25	0
4	EDO	A	306	-	3,3,3	0.54	0	2,2,2	0.13	0
3	PHE	A	304	-	11,12,12	1.32	2 (18%)	11,15,15	0.92	1 (9%)
4	EDO	B	283	-	3,3,3	0.77	0	2,2,2	0.23	0
4	EDO	A	310	-	3,3,3	0.71	0	2,2,2	0.29	0
4	EDO	B	282	-	3,3,3	0.58	0	2,2,2	0.55	0
4	EDO	A	305	-	3,3,3	0.47	0	2,2,2	0.35	0
3	PHE	A	303	-	11,12,12	1.06	1 (9%)	11,15,15	0.78	1 (9%)
4	EDO	A	308	-	3,3,3	0.57	0	2,2,2	0.24	0
4	EDO	A	312	-	3,3,3	0.59	0	2,2,2	0.36	0
2	ACT	A	302	-	3,3,3	0.76	0	3,3,3	1.77	2 (66%)
4	EDO	B	281	-	3,3,3	0.76	0	2,2,2	0.27	0
2	ACT	A	301	-	3,3,3	0.84	0	3,3,3	1.13	0

In the following table, the Chirals column lists the number of chiral outliers, the number of chiral centers analysed, the number of these observed in the model and the number defined in the Chemical Component Dictionary. Similar counts are reported in the Torsion and Rings columns. '-' means no outliers of that kind were identified.

Mol	Type	Chain	Res	Link	Chirals	Torsions	Rings
4	EDO	A	307	-	-	1/1/1/1	-
4	EDO	A	311	-	-	1/1/1/1	-
4	EDO	A	309	-	-	0/1/1/1	-
4	EDO	A	306	-	-	1/1/1/1	-
3	PHE	A	304	-	-	0/8/8/8	0/1/1/1
4	EDO	B	283	-	-	1/1/1/1	-
4	EDO	A	310	-	-	1/1/1/1	-
4	EDO	B	282	-	-	1/1/1/1	-
4	EDO	A	305	-	-	0/1/1/1	-
4	EDO	A	308	-	-	0/1/1/1	-
4	EDO	A	312	-	-	0/1/1/1	-
4	EDO	B	281	-	-	1/1/1/1	-
3	PHE	A	303	-	-	0/8/8/8	0/1/1/1

All (3) bond length outliers are listed below:

Mol	Chain	Res	Type	Atoms	Z	Observed(Å)	Ideal(Å)
3	A	304	PHE	CZ-CE1	3.25	1.45	1.38
3	A	303	PHE	CZ-CE1	2.37	1.43	1.38
3	A	304	PHE	OXT-C	-2.29	1.23	1.30

All (4) bond angle outliers are listed below:

Mol	Chain	Res	Type	Atoms	Z	Observed(°)	Ideal(°)
3	A	304	PHE	OXT-C-O	-2.64	118.09	124.08
3	A	303	PHE	OXT-C-O	-2.41	118.61	124.08
2	A	302	ACT	OXT-C-O	-2.23	113.76	122.03
2	A	302	ACT	OXT-C-CH3	2.11	123.92	115.05

There are no chirality outliers.

5 of 7 torsion outliers are listed below:

Mol	Chain	Res	Type	Atoms
4	A	310	EDO	O1-C1-C2-O2
4	B	281	EDO	O1-C1-C2-O2
4	B	282	EDO	O1-C1-C2-O2
4	A	307	EDO	O1-C1-C2-O2
4	A	306	EDO	O1-C1-C2-O2

There are no ring outliers.

6 monomers are involved in 12 short contacts:

Mol	Chain	Res	Type	Clashes	Symm-Clashes
4	A	306	EDO	2	0
3	A	304	PHE	1	0
4	B	283	EDO	1	0
4	B	282	EDO	5	0
3	A	303	PHE	1	0
2	A	301	ACT	2	0

5.7 Other polymers [i](#)

There are no such residues in this entry.

5.8 Polymer linkage issues [i](#)

There are no chain breaks in this entry.

6 Fit of model and data [i](#)

6.1 Protein, DNA and RNA chains [i](#)

In the following table, the column labelled ‘#RSRZ> 2’ contains the number (and percentage) of RSRZ outliers, followed by percent RSRZ outliers for the chain as percentile scores relative to all X-ray entries and entries of similar resolution. The OWAB column contains the minimum, median, 95th percentile and maximum values of the occupancy-weighted average B-factor per residue. The column labelled ‘Q< 0.9’ lists the number of (and percentage) of residues with an average occupancy less than 0.9.

Mol	Chain	Analysed	<RSRZ>	#RSRZ>2	OWAB(Å ²)	Q<0.9
1	A	275/283 (97%)	0.80	30 (10%) 12 13	35, 59, 71, 79	1 (0%)
1	B	275/283 (97%)	0.73	19 (6%) 24 26	49, 58, 73, 83	0
All	All	550/566 (97%)	0.76	49 (8%) 17 18	35, 59, 72, 83	1 (0%)

The worst 5 of 49 RSRZ outliers are listed below:

Mol	Chain	Res	Type	RSRZ
1	B	168	TRP	4.0
1	B	87	GLY	3.4
1	B	59	ILE	3.4
1	B	241	LEU	3.2
1	B	134	VAL	3.2

6.2 Non-standard residues in protein, DNA, RNA chains [i](#)

There are no non-standard protein/DNA/RNA residues in this entry.

6.3 Carbohydrates [i](#)

There are no monosaccharides in this entry.

6.4 Ligands [i](#)

In the following table, the Atoms column lists the number of modelled atoms in the group and the number defined in the chemical component dictionary. The B-factors column lists the minimum, median, 95th percentile and maximum values of B factors of atoms in the group. The column labelled ‘Q< 0.9’ lists the number of atoms with occupancy less than 0.9.

Mol	Type	Chain	Res	Atoms	RSCC	RSR	B-factors(\AA^2)	Q<0.9
4	EDO	A	305	4/4	0.65	0.18	84,86,87,87	0
4	EDO	B	283	4/4	0.65	0.18	73,74,76,77	0
2	ACT	A	302	4/4	0.69	0.18	75,75,75,76	0
4	EDO	A	309	4/4	0.75	0.18	78,79,79,80	0
2	ACT	A	301	4/4	0.76	0.18	74,74,75,76	0
4	EDO	A	311	4/4	0.76	0.14	76,78,78,79	0
4	EDO	A	308	4/4	0.76	0.15	74,78,80,84	0
4	EDO	A	307	4/4	0.78	0.13	89,92,93,94	0
4	EDO	A	310	4/4	0.80	0.12	70,75,77,79	0
4	EDO	A	306	4/4	0.82	0.13	63,64,65,65	0
3	PHE	A	303	12/12	0.83	0.12	47,48,51,52	0
4	EDO	B	281	4/4	0.84	0.14	69,70,72,74	0
4	EDO	A	312	4/4	0.84	0.14	64,69,70,70	0
4	EDO	B	282	4/4	0.85	0.21	44,56,59,64	0
3	PHE	A	304	12/12	0.89	0.10	45,49,51,52	0

6.5 Other polymers [i](#)

There are no such residues in this entry.