



# Full wwPDB X-ray Structure Validation Report ⓘ

Nov 3, 2024 – 07:41 am GMT

PDB ID : 1QNQ  
Title : The 3-D structure of a Trichoderma reesei b-mannanase from glycoside hydrolase family 5  
Authors : Sabini, E.; Schubert, H.; Murshudov, G.; Wilson, K.S.; Siika-Aho, M.; Penttila, M.  
Deposited on : 1999-10-20  
Resolution : 1.65 Å(reported)

This is a Full wwPDB X-ray Structure Validation Report for a publicly released PDB entry.

We welcome your comments at [validation@mail.wwpdb.org](mailto:validation@mail.wwpdb.org)

A user guide is available at

<https://www.wwpdb.org/validation/2017/XrayValidationReportHelp>

with specific help available everywhere you see the ⓘ symbol.

The types of validation reports are described at

<http://www.wwpdb.org/validation/2017/FAQs#types>.

---

The following versions of software and data (see [references ⓘ](#)) were used in the production of this report:

MolProbity	:	4.02b-467
Mogul	:	1.8.4, CSD as541be (2020)
Xtriage (Phenix)	:	NOT EXECUTED
EDS	:	NOT EXECUTED
buster-report	:	1.1.7 (2018)
Percentile statistics	:	20231227.v01 (using entries in the PDB archive December 27th 2023)
Ideal geometry (proteins)	:	Engh & Huber (2001)
Ideal geometry (DNA, RNA)	:	Parkinson et al. (1996)
Validation Pipeline (wwPDB-VP)	:	2.39

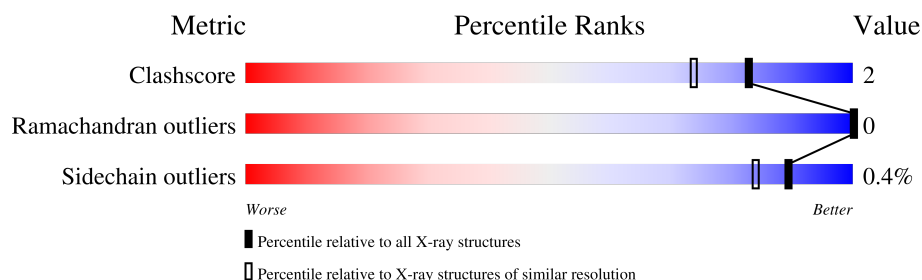
# 1 Overall quality at a glance

The following experimental techniques were used to determine the structure:

*X-RAY DIFFRACTION*

The reported resolution of this entry is 1.65 Å.

Percentile scores (ranging between 0-100) for global validation metrics of the entry are shown in the following graphic. The table shows the number of entries on which the scores are based.



Metric	Whole archive (#Entries)	Similar resolution (#Entries, resolution range(Å))
Clashscore	180529	2515 (1.66-1.66)
Ramachandran outliers	177936	2475 (1.66-1.66)
Sidechain outliers	177891	2475 (1.66-1.66)

The table below summarises the geometric issues observed across the polymeric chains and their fit to the electron density. The red, orange, yellow and green segments of the lower bar indicate the fraction of residues that contain outliers for  $\geq 3$ , 2, 1 and 0 types of geometric quality criteria respectively. A grey segment represents the fraction of residues that are not modelled. The numeric value for each fraction is indicated below the corresponding segment, with a dot representing fractions  $\leq 5\%$ .

Note EDS was not executed.

Mol	Chain	Length	Quality of chain
1	A	344	 96%

## 2 Entry composition [i](#)

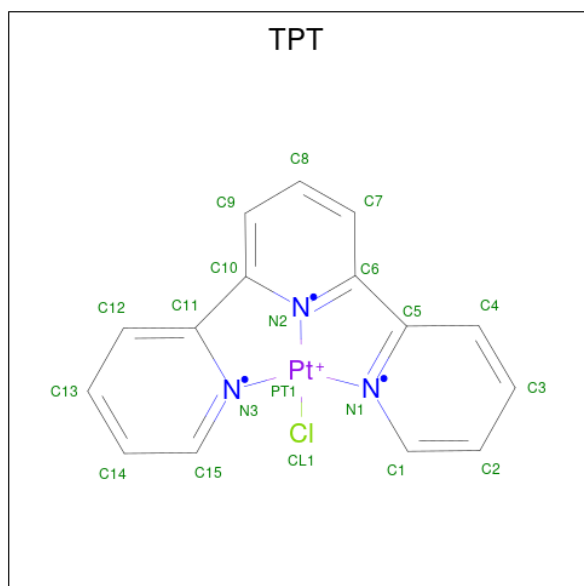
There are 5 unique types of molecules in this entry. The entry contains 3433 atoms, of which 0 are hydrogens and 0 are deuteriums.

In the tables below, the ZeroOcc column contains the number of atoms modelled with zero occupancy, the AltConf column contains the number of residues with at least one atom in alternate conformation and the Trace column contains the number of residues modelled with at most 2 atoms.

- Molecule 1 is a protein called ENDO-1,4-B-D-MANNANASE.

Mol	Chain	Residues	Atoms					ZeroOcc	AltConf	Trace
1	A	344	Total	C	N	O	S	0	5	0
			2675	1690	446	529	10			

- Molecule 2 is 2,2':6',2''-TERPYRIDINE PLATINUM(II) Chloride (three-letter code: TPT) (formula:  $C_{15}H_{11}ClN_3Pt$ ).



Mol	Chain	Residues	Atoms				ZeroOcc	AltConf
2	A	1	Total	C	N	Pt	0	0
			19	15	3	1		
2	A	1	Total	C	N	Pt	0	0
			19	15	3	1		

- Molecule 3 is SULFATE ION (three-letter code: SO4) (formula:  $O_4S$ ).



Mol	Chain	Residues	Atoms			ZeroOcc	AltConf
3	A	1	Total	O	S	0	0
			5	4	1		
3	A	1	Total	O	S	0	0
			5	4	1		

- Molecule 4 is 2-acetamido-2-deoxy-beta-D-glucopyranose (three-letter code: NAG) (formula:  $C_8H_{15}NO_6$ ).



Mol	Chain	Residues	Atoms				ZeroOcc	AltConf
4	A	1	Total	C	N	O	0	0
			14	8	1	5		

Continued on next page...

*Continued from previous page...*

Mol	Chain	Residues	Atoms				ZeroOcc	AltConf
4	A	1	Total	C	N	O	0	0
			14	8	1	5		
4	A	1	Total	C	N	O	0	0
			14	8	1	5		
4	A	1	Total	C	N	O	0	0
			14	8	1	5		

- Molecule 5 is water.

Mol	Chain	Residues	Atoms		ZeroOcc	AltConf
5	A	654	Total	O	0	0
			654	654		

### 3 Residue-property plots [i](#)

These plots are drawn for all protein, RNA, DNA and oligosaccharide chains in the entry. The first graphic for a chain summarises the proportions of the various outlier classes displayed in the second graphic. The second graphic shows the sequence view annotated by issues in geometry. Residues are color-coded according to the number of geometric quality criteria for which they contain at least one outlier: green = 0, yellow = 1, orange = 2 and red = 3 or more. Stretches of 2 or more consecutive residues without any outlier are shown as a green connector. Residues present in the sample, but not in the model, are shown in grey.

Note EDS was not executed.

- Molecule 1: ENDO-1,4-B-D-MANNANASE

Chain A:  96%



## 4 Data and refinement statistics

Xtriage (Phenix) and EDS were not executed - this section is therefore incomplete.

Property	Value	Source
Space group	P 1 21 1	Depositor
Cell constants a, b, c, $\alpha$ , $\beta$ , $\gamma$	51.13Å 54.29Å 61.05Å 90.00° 110.21° 90.00°	Depositor
Resolution (Å)	20.00 – 1.65	Depositor
% Data completeness (in resolution range)	91.0 (20.00-1.65)	Depositor
$R_{merge}$	0.04	Depositor
$R_{sym}$	(Not available)	Depositor
Refinement program	REFMAC	Depositor
R, $R_{free}$	0.115 , 0.160	Depositor
Estimated twinning fraction	No twinning to report.	Xtriage
Total number of atoms	3433	wwPDB-VP
Average B, all atoms (Å <sup>2</sup> )	15.0	wwPDB-VP

## 5 Model quality

### 5.1 Standard geometry

Bond lengths and bond angles in the following residue types are not validated in this section: NAG, SO4, TPT

The Z score for a bond length (or angle) is the number of standard deviations the observed value is removed from the expected value. A bond length (or angle) with  $|Z| > 5$  is considered an outlier worth inspection. RMSZ is the root-mean-square of all Z scores of the bond lengths (or angles).

Mol	Chain	Bond lengths		Bond angles	
		RMSZ	$\# Z  > 5$	RMSZ	$\# Z  > 5$
1	A	0.66	0/2780	1.24	11/3804 (0.3%)

There are no bond length outliers.

All (11) bond angle outliers are listed below:

Mol	Chain	Res	Type	Atoms	Z	Observed(°)	Ideal(°)
1	A	145	ARG	NE-CZ-NH2	-12.76	113.92	120.30
1	A	298	ARG	CD-NE-CZ	7.87	134.62	123.60
1	A	298	ARG	NE-CZ-NH1	7.61	124.11	120.30
1	A	298	ARG	NE-CZ-NH2	-7.40	116.60	120.30
1	A	94	TYR	CA-CB-CG	6.06	124.91	113.40
1	A	310	ASP	CB-CG-OD2	6.02	123.72	118.30
1	A	222	GLU	OE1-CD-OE2	-5.82	116.32	123.30
1	A	276	GLU	CG-CD-OE1	5.48	129.25	118.30
1	A	145	ARG	NE-CZ-NH1	5.44	123.02	120.30
1	A	87	ASP	CB-CG-OD1	5.08	122.87	118.30
1	A	15	ASP	CB-CG-OD1	5.03	122.83	118.30

There are no chirality outliers.

There are no planarity outliers.

### 5.2 Too-close contacts

In the following table, the Non-H and H(model) columns list the number of non-hydrogen atoms and hydrogen atoms in the chain respectively. The H(added) column lists the number of hydrogen atoms added and optimized by MolProbity. The Clashes column lists the number of clashes within the asymmetric unit, whereas Symm-Clashes lists symmetry-related clashes.



Mol	Chain	Non-H	H(model)	H(added)	Clashes	Symm-Clashes
1	A	2675	0	2450	4	0
2	A	38	0	22	7	0
3	A	10	0	0	0	0
4	A	56	0	51	1	0
5	A	654	0	0	9	1
All	All	3433	0	2523	12	1

The all-atom clashscore is defined as the number of clashes found per 1000 atoms (including hydrogen atoms). The all-atom clashscore for this structure is 2.

All (12) close contacts within the same asymmetric unit are listed below, sorted by their clash magnitude.

Atom-1	Atom-2	Interatomic distance (Å)	Clash overlap (Å)
2:A:402:TPT:C10	5:A:2619:HOH:O	2.17	0.91
2:A:402:TPT:N2	5:A:2619:HOH:O	2.16	0.78
2:A:401:TPT:N2	5:A:2619:HOH:O	2.17	0.76
2:A:401:TPT:C6	5:A:2619:HOH:O	2.37	0.72
2:A:401:TPT:C5	5:A:2619:HOH:O	2.39	0.70
2:A:401:TPT:N1	5:A:2619:HOH:O	2.29	0.65
2:A:402:TPT:C11	5:A:2619:HOH:O	2.41	0.64
1:A:226:PHE:O	1:A:230[B]:VAL:HG23	2.03	0.59
1:A:321:ASP:HB2	1:A:322:PRO:CD	2.37	0.54
4:A:433:NAG:H83	5:A:2148:HOH:O	2.12	0.49
1:A:146:LYS:HE3	1:A:146:LYS:HB3	1.81	0.43
1:A:233:LYS:HD3	5:A:2278:HOH:O	2.19	0.42

All (1) symmetry-related close contacts are listed below. The label for Atom-2 includes the symmetry operator and encoded unit-cell translations to be applied.

Atom-1	Atom-2	Interatomic distance (Å)	Clash overlap (Å)
5:A:2066:HOH:O	5:A:2353:HOH:O[2_555]	2.10	0.10

## 5.3 Torsion angles [i](#)

### 5.3.1 Protein backbone [i](#)

In the following table, the Percentiles column shows the percent Ramachandran outliers of the chain as a percentile score with respect to all X-ray entries followed by that with respect to entries of similar resolution.

The Analysed column shows the number of residues for which the backbone conformation was

analysed, and the total number of residues.

Mol	Chain	Analysed	Favoured	Allowed	Outliers	Percentiles	
1	A	347/344 (101%)	337 (97%)	10 (3%)	0	100	100

There are no Ramachandran outliers to report.

### 5.3.2 Protein sidechains ⓘ

In the following table, the Percentiles column shows the percent sidechain outliers of the chain as a percentile score with respect to all X-ray entries followed by that with respect to entries of similar resolution.

The Analysed column shows the number of residues for which the sidechain conformation was analysed, and the total number of residues.

Mol	Chain	Analysed	Rotameric	Outliers	Percentiles	
1	A	287/282 (102%)	286 (100%)	1 (0%)	91	87

All (1) residues with a non-rotameric sidechain are listed below:

Mol	Chain	Res	Type
1	A	56	TRP

Sometimes sidechains can be flipped to improve hydrogen bonding and reduce clashes. All (5) such sidechains are listed below:

Mol	Chain	Res	Type
1	A	97	GLN
1	A	125	ASN
1	A	231	GLN
1	A	281	GLN
1	A	331	ASN

### 5.3.3 RNA ⓘ

There are no RNA molecules in this entry.

## 5.4 Non-standard residues in protein, DNA, RNA chains ⓘ

There are no non-standard protein/DNA/RNA residues in this entry.

## 5.5 Carbohydrates [i](#)

There are no oligosaccharides in this entry.

## 5.6 Ligand geometry [i](#)

8 ligands are modelled in this entry.

In the following table, the Counts columns list the number of bonds (or angles) for which Mogul statistics could be retrieved, the number of bonds (or angles) that are observed in the model and the number of bonds (or angles) that are defined in the Chemical Component Dictionary. The Link column lists molecule types, if any, to which the group is linked. The Z score for a bond length (or angle) is the number of standard deviations the observed value is removed from the expected value. A bond length (or angle) with  $|Z| > 2$  is considered an outlier worth inspection. RMSZ is the root-mean-square of all Z scores of the bond lengths (or angles).

Mol	Type	Chain	Res	Link	Bond lengths			Bond angles		
					Counts	RMSZ	# Z  > 2	Counts	RMSZ	# Z  > 2
2	TPT	A	402	5	16,23,24	1.07	1 (6%)	24,35,38	1.58	5 (20%)
4	NAG	A	430	1	14,14,15	1.33	1 (7%)	17,19,21	2.67	5 (29%)
3	SO4	A	412	-	4,4,4	0.76	0	6,6,6	0.67	0
4	NAG	A	431	1	14,14,15	1.15	1 (7%)	17,19,21	1.48	2 (11%)
4	NAG	A	432	1	14,14,15	1.34	2 (14%)	17,19,21	2.50	3 (17%)
4	NAG	A	433	1	14,14,15	1.23	1 (7%)	17,19,21	1.27	3 (17%)
3	SO4	A	411	-	4,4,4	0.67	0	6,6,6	0.31	0
2	TPT	A	401	5	16,23,24	0.75	0	24,35,38	1.51	3 (12%)

In the following table, the Chirals column lists the number of chiral outliers, the number of chiral centers analysed, the number of these observed in the model and the number defined in the Chemical Component Dictionary. Similar counts are reported in the Torsion and Rings columns. '-' means no outliers of that kind were identified.

Mol	Type	Chain	Res	Link	Chirals	Torsions	Rings
2	TPT	A	402	5	-	-	0/5/5/5
4	NAG	A	430	1	-	0/6/23/26	0/1/1/1
4	NAG	A	431	1	-	0/6/23/26	0/1/1/1
4	NAG	A	432	1	-	2/6/23/26	0/1/1/1
4	NAG	A	433	1	-	0/6/23/26	0/1/1/1
2	TPT	A	401	5	-	-	0/5/5/5

All (6) bond length outliers are listed below:

Mol	Chain	Res	Type	Atoms	Z	Observed(Å)	Ideal(Å)
4	A	432	NAG	O7-C7	-3.46	1.15	1.23
4	A	433	NAG	O7-C7	-3.42	1.15	1.23
4	A	430	NAG	O7-C7	-3.20	1.16	1.23
4	A	431	NAG	O7-C7	-2.96	1.16	1.23
2	A	402	TPT	C7-C6	2.23	1.43	1.39
4	A	432	NAG	C2-N2	2.04	1.49	1.46

All (21) bond angle outliers are listed below:

Mol	Chain	Res	Type	Atoms	Z	Observed(°)	Ideal(°)
4	A	432	NAG	C1-O5-C5	7.89	122.89	112.19
4	A	430	NAG	C1-O5-C5	7.35	122.14	112.19
4	A	432	NAG	O5-C1-C2	5.46	119.91	111.29
2	A	401	TPT	C6-N2-C10	-5.18	116.95	123.89
4	A	430	NAG	O5-C1-C2	4.30	118.07	111.29
4	A	430	NAG	C6-C5-C4	-4.09	103.43	113.00
2	A	402	TPT	C8-C7-C6	-3.99	113.36	119.25
4	A	430	NAG	C3-C4-C5	3.85	117.10	110.24
4	A	431	NAG	O5-C1-C2	3.35	116.57	111.29
4	A	431	NAG	O3-C3-C2	-2.92	103.42	109.47
2	A	401	TPT	C5-C6-N2	-2.76	109.11	114.69
2	A	402	TPT	C9-C8-C7	2.53	123.84	120.25
4	A	430	NAG	O3-C3-C4	-2.49	104.58	110.35
4	A	433	NAG	C4-C3-C2	-2.27	107.69	111.02
2	A	401	TPT	C15-C14-C13	-2.27	115.46	118.85
4	A	433	NAG	C1-O5-C5	2.24	115.23	112.19
2	A	402	TPT	C15-N3-C11	-2.19	115.78	119.08
4	A	433	NAG	C2-N2-C7	-2.18	119.80	122.90
4	A	432	NAG	C4-C3-C2	-2.12	107.92	111.02
2	A	402	TPT	C12-C11-N3	2.09	124.37	120.17
2	A	402	TPT	C14-C13-C12	-2.07	117.04	120.19

There are no chirality outliers.

All (2) torsion outliers are listed below:

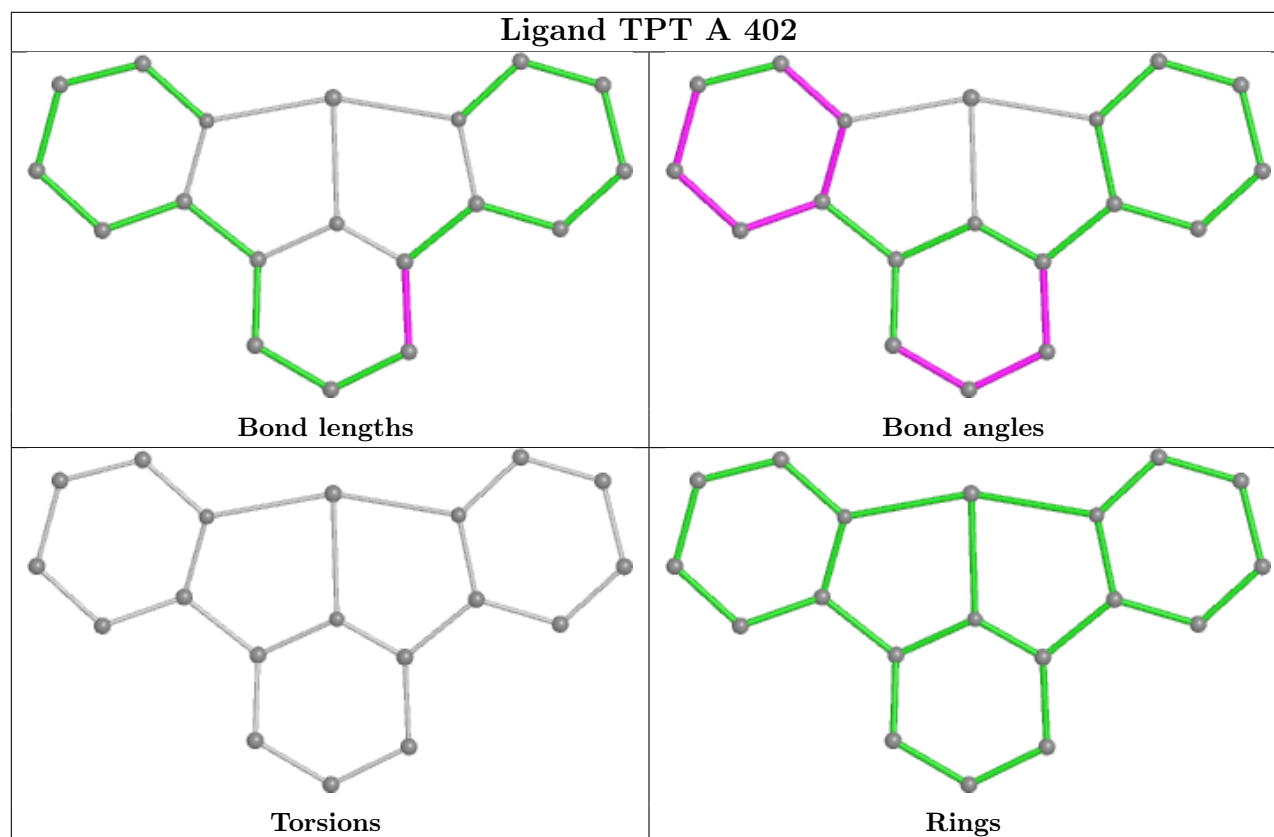
Mol	Chain	Res	Type	Atoms
4	A	432	NAG	C8-C7-N2-C2
4	A	432	NAG	O7-C7-N2-C2

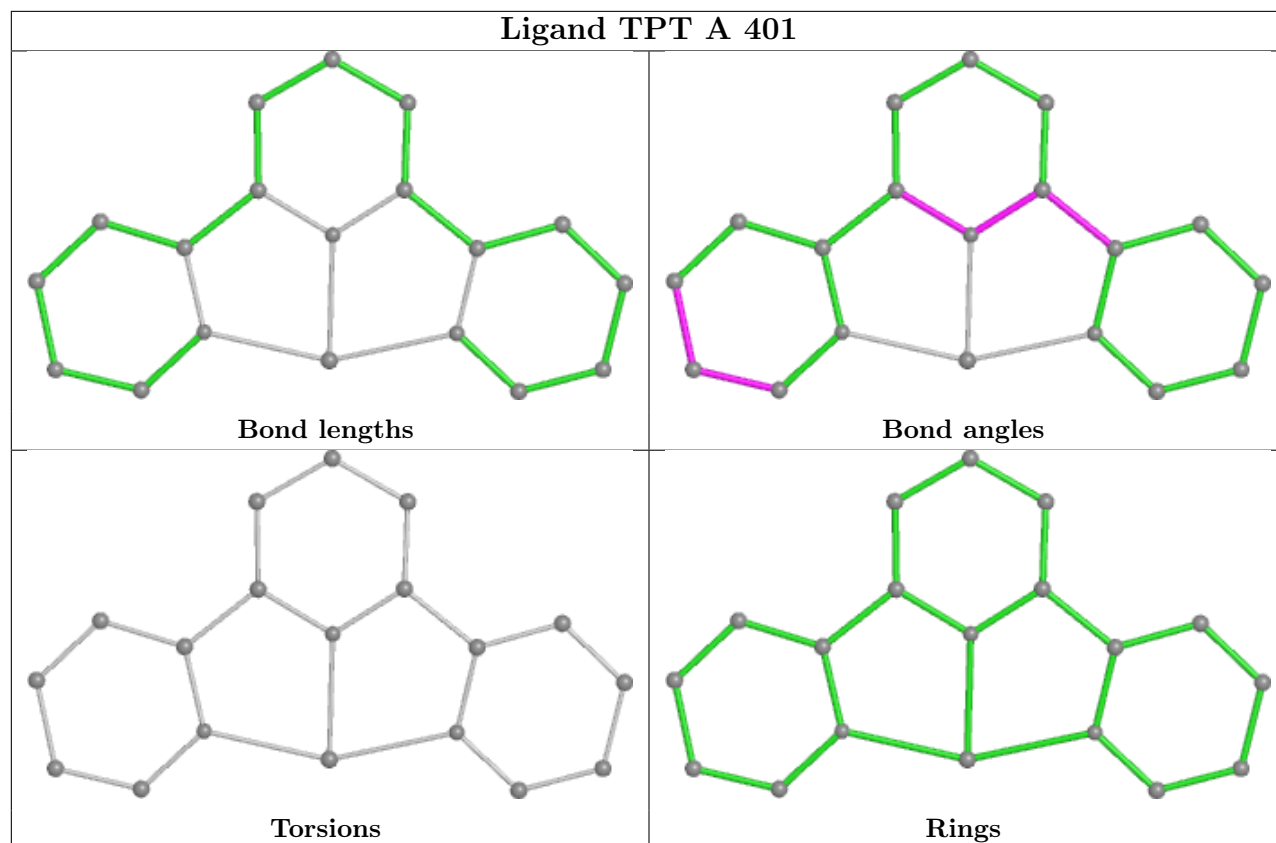
There are no ring outliers.

3 monomers are involved in 8 short contacts:

Mol	Chain	Res	Type	Clashes	Symm-Clashes
2	A	402	TPT	3	0
4	A	433	NAG	1	0
2	A	401	TPT	4	0

The following is a two-dimensional graphical depiction of Mogul quality analysis of bond lengths, bond angles, torsion angles, and ring geometry for all instances of the Ligand of Interest. In addition, ligands with molecular weight > 250 and outliers as shown on the validation Tables will also be included. For torsion angles, if less than 5% of the Mogul distribution of torsion angles is within 10 degrees of the torsion angle in question, then that torsion angle is considered an outlier. Any bond that is central to one or more torsion angles identified as an outlier by Mogul will be highlighted in the graph. For rings, the root-mean-square deviation (RMSD) between the ring in question and similar rings identified by Mogul is calculated over all ring torsion angles. If the average RMSD is greater than 60 degrees and the minimal RMSD between the ring in question and any Mogul-identified rings is also greater than 60 degrees, then that ring is considered an outlier. The outliers are highlighted in purple. The color gray indicates Mogul did not find sufficient equivalents in the CSD to analyse the geometry.





## 5.7 Other polymers [i](#)

There are no such residues in this entry.

## 5.8 Polymer linkage issues [i](#)

There are no chain breaks in this entry.

## 6 Fit of model and data [i](#)

### 6.1 Protein, DNA and RNA chains [i](#)

EDS was not executed - this section is therefore empty.

### 6.2 Non-standard residues in protein, DNA, RNA chains [i](#)

EDS was not executed - this section is therefore empty.

### 6.3 Carbohydrates [i](#)

EDS was not executed - this section is therefore empty.

### 6.4 Ligands [i](#)

EDS was not executed - this section is therefore empty.

### 6.5 Other polymers [i](#)

EDS was not executed - this section is therefore empty.