



Full wwPDB X-ray Structure Validation Report ⓘ

Apr 14, 2025 – 11:18 am BST

PDB ID : 8QSC / pdb_00008qsc
Title : Ternary structure of 14-3-3s, ARAF phosphopeptide (pS214) and compound 22 (1083853).
Authors : Konstantinidou, M.; Vickery, H.; Pennings, M.A.M.; Virta, J.; Visser, E.J.; Oetelaar, M.C.M.; Overmans, M.; Neitz, J.; Ottmann, C.; Brunsveld, L.; Arkin, M.R.
Deposited on : 2023-10-10
Resolution : 1.80 Å(reported)

This is a Full wwPDB X-ray Structure Validation Report for a publicly released PDB entry.

We welcome your comments at validation@mail.wwpdb.org

A user guide is available at

<https://www.wwpdb.org/validation/2017/XrayValidationReportHelp>

with specific help available everywhere you see the ⓘ symbol.

The types of validation reports are described at

<http://www.wwpdb.org/validation/2017/FAQs#types>.

The following versions of software and data (see [references](#) ①) were used in the production of this report:

MolProbity	:	4.02b-467
Mogul	:	1.8.4, CSD as541be (2020)
Xtriage (Phenix)	:	1.13
EDS	:	3.0
buster-report	:	1.1.7 (2018)
Percentile statistics	:	20231227.v01 (using entries in the PDB archive December 27th 2023)
CCP4	:	9.0.003 (Gargrove)
Density-Fitness	:	1.0.11
Ideal geometry (proteins)	:	Engh & Huber (2001)
Ideal geometry (DNA, RNA)	:	Parkinson et al. (1996)
Validation Pipeline (wwPDB-VP)	:	2.42

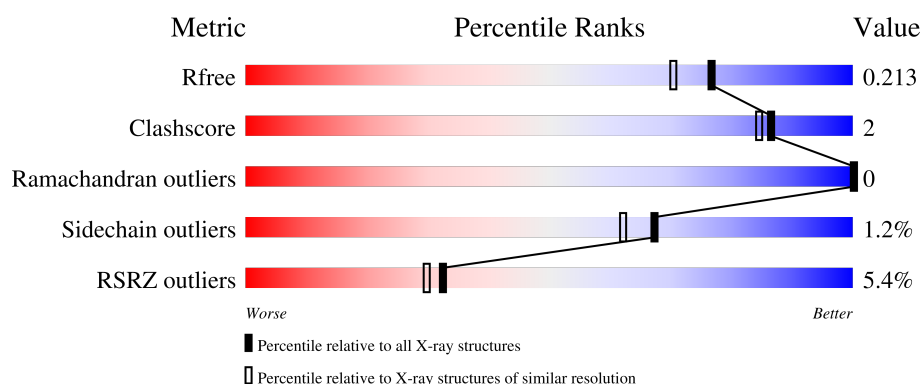
1 Overall quality at a glance

The following experimental techniques were used to determine the structure:

X-RAY DIFFRACTION

The reported resolution of this entry is 1.80 Å.

Percentile scores (ranging between 0-100) for global validation metrics of the entry are shown in the following graphic. The table shows the number of entries on which the scores are based.



Metric	Whole archive (#Entries)	Similar resolution (#Entries, resolution range(Å))
R_{free}	164625	7108 (1.80-1.80)
Clashscore	180529	8162 (1.80-1.80)
Ramachandran outliers	177936	8077 (1.80-1.80)
Sidechain outliers	177891	8076 (1.80-1.80)
RSRZ outliers	164620	7108 (1.80-1.80)

The table below summarises the geometric issues observed across the polymeric chains and their fit to the electron density. The red, orange, yellow and green segments of the lower bar indicate the fraction of residues that contain outliers for ≥ 3 , 2, 1 and 0 types of geometric quality criteria respectively. A grey segment represents the fraction of residues that are not modelled. The numeric value for each fraction is indicated below the corresponding segment, with a dot representing fractions $\leq 5\%$. The upper red bar (where present) indicates the fraction of residues that have poor fit to the electron density. The numeric value is given above the bar.

Mol	Chain	Length	Quality of chain
1	A	236	<div> <div>3%</div> <div>89%</div> <div>6%</div> <div>.</div> </div>
1	J	236	<div> <div>7%</div> <div>93%</div> <div>6%</div> </div>
2	H	11	<div> <div>9%</div> <div>91%</div> <div>9%</div> </div>
2	S	11	<div> <div>9%</div> <div>91%</div> <div>9%</div> </div>

2 Entry composition

There are 6 unique types of molecules in this entry. The entry contains 4292 atoms, of which 0 are hydrogens and 0 are deuteriums.

In the tables below, the ZeroOcc column contains the number of atoms modelled with zero occupancy, the AltConf column contains the number of residues with at least one atom in alternate conformation and the Trace column contains the number of residues modelled with at most 2 atoms.

- Molecule 1 is a protein called 14-3-3 protein sigma.

Mol	Chain	Residues	Atoms					ZeroOcc	AltConf	Trace
1	A	226	Total	C	N	O	S	0	0	0
			1785	1116	302	356	11			
1	J	235	Total	C	N	O	S	0	0	0
			1853	1154	313	375	11			

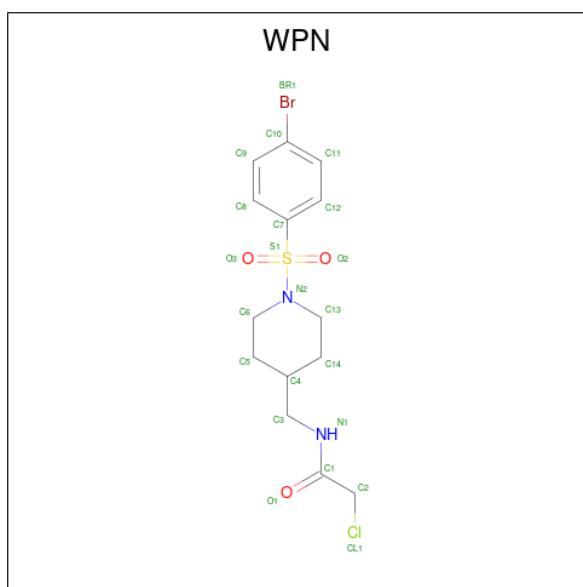
There are 10 discrepancies between the modelled and reference sequences:

Chain	Residue	Modelled	Actual	Comment	Reference
A	-4	GLY	-	expression tag	UNP P31947
A	-3	ALA	-	expression tag	UNP P31947
A	-2	MET	-	expression tag	UNP P31947
A	-1	GLY	-	expression tag	UNP P31947
A	0	SER	-	expression tag	UNP P31947
J	-4	GLY	-	expression tag	UNP P31947
J	-3	ALA	-	expression tag	UNP P31947
J	-2	MET	-	expression tag	UNP P31947
J	-1	GLY	-	expression tag	UNP P31947
J	0	SER	-	expression tag	UNP P31947

- Molecule 2 is a protein called ARAF peptide pS214.

Mol	Chain	Residues	Atoms					ZeroOcc	AltConf	Trace
2	H	11	Total	C	N	O	P S	0	0	0
			90	51	17	20	1 1			
2	S	11	Total	C	N	O	P S	0	0	0
			90	51	17	20	1 1			

- Molecule 3 is {N}-[[1-(4-bromophenyl)sulfonylpiperidin-4-yl]methyl]-2-chloranyl-ethanamide (CCD ID: WPN) (formula: C₁₄H₁₈BrClN₂O₃S) (labeled as "Ligand of Interest" by depositor).



Mol	Chain	Residues	Atoms					ZeroOcc	AltConf
3	A	1	Total	Br	C	N	O	S	
			21	1	14	2	3	1	0
3	J	1	Total	Br	C	N	O	S	
			21	1	14	2	3	1	0

- Molecule 4 is MAGNESIUM ION (CCD ID: MG) (formula: Mg).

Mol	Chain	Residues	Atoms		ZeroOcc	AltConf
4	A	3	Total	Mg		
			3	3	0	0
4	J	2	Total	Mg		
			2	2	0	0

- Molecule 5 is CHLORIDE ION (CCD ID: CL) (formula: Cl).

Mol	Chain	Residues	Atoms		ZeroOcc	AltConf
5	A	1	Total	Cl		
			1	1	0	0
5	J	1	Total	Cl		
			1	1	0	0

- Molecule 6 is water.

Mol	Chain	Residues	Atoms		ZeroOcc	AltConf
6	A	223	Total	O		
			223	223	0	0

Continued on next page...

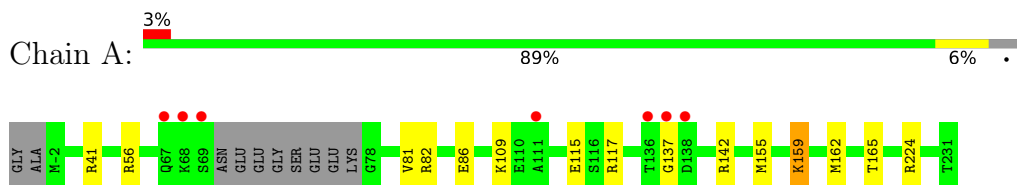
Continued from previous page...

Mol	Chain	Residues	Atoms		ZeroOcc	AltConf
6	H	18	Total 18	O 18	0	0
6	J	170	Total 170	O 170	0	0
6	S	14	Total 14	O 14	0	0

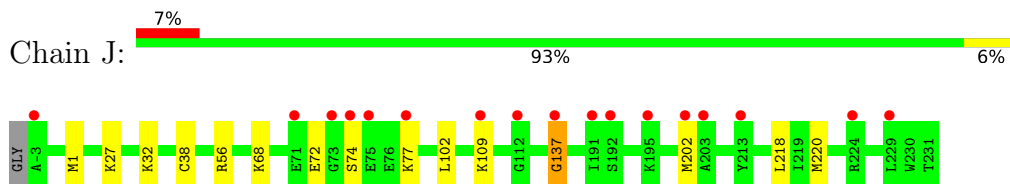
3 Residue-property plots [i](#)

These plots are drawn for all protein, RNA, DNA and oligosaccharide chains in the entry. The first graphic for a chain summarises the proportions of the various outlier classes displayed in the second graphic. The second graphic shows the sequence view annotated by issues in geometry and electron density. Residues are color-coded according to the number of geometric quality criteria for which they contain at least one outlier: green = 0, yellow = 1, orange = 2 and red = 3 or more. A red dot above a residue indicates a poor fit to the electron density ($RSRZ > 2$). Stretches of 2 or more consecutive residues without any outlier are shown as a green connector. Residues present in the sample, but not in the model, are shown in grey.

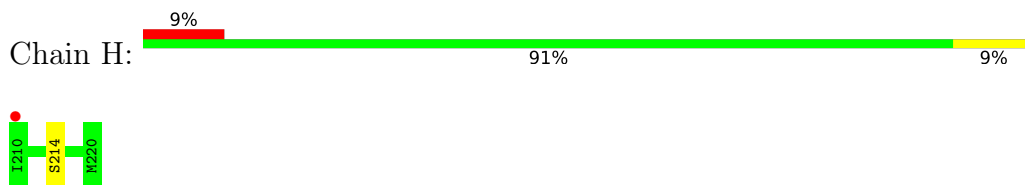
- Molecule 1: 14-3-3 protein sigma



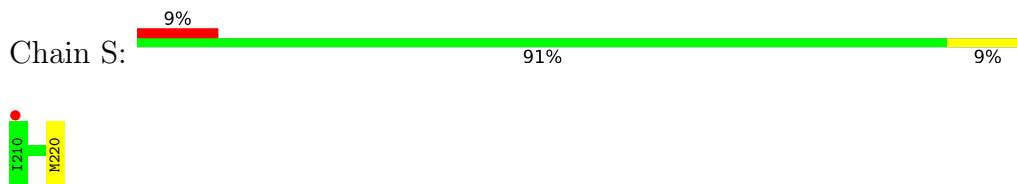
- Molecule 1: 14-3-3 protein sigma



- Molecule 2: ARAF peptide pS214



- Molecule 2: ARAF peptide pS214



4 Data and refinement statistics

Property	Value	Source
Space group	P 2 21 21	Depositor
Cell constants a, b, c, α , β , γ	60.85Å 89.58Å 117.55Å 90.00° 90.00° 90.00°	Depositor
Resolution (Å)	42.31 – 1.80 42.31 – 1.80	Depositor EDS
% Data completeness (in resolution range)	99.5 (42.31-1.80) 99.5 (42.31-1.80)	Depositor EDS
R_{merge}	(Not available)	Depositor
R_{sym}	(Not available)	Depositor
$\langle I/\sigma(I) \rangle$ ¹	4.38 (at 1.79Å)	Xtriage
Refinement program	REFMAC 5	Depositor
R, R_{free}	0.175 , 0.204 0.189 , 0.213	Depositor DCC
R_{free} test set	3057 reflections (5.08%)	wwPDB-VP
Wilson B-factor (Å ²)	24.4	Xtriage
Anisotropy	0.115	Xtriage
Bulk solvent k_{sol} (e/Å ³), B_{sol} (Å ²)	0.36 , 35.8	EDS
L-test for twinning ²	$\langle L \rangle = 0.50$, $\langle L^2 \rangle = 0.33$	Xtriage
Estimated twinning fraction	No twinning to report.	Xtriage
F_o, F_c correlation	0.96	EDS
Total number of atoms	4292	wwPDB-VP
Average B, all atoms (Å ²)	28.0	wwPDB-VP

Xtriage's analysis on translational NCS is as follows: *The largest off-origin peak in the Patterson function is 4.19% of the height of the origin peak. No significant pseudotranslation is detected.*

¹Intensities estimated from amplitudes.

²Theoretical values of $\langle |L| \rangle$, $\langle L^2 \rangle$ for acentric reflections are 0.5, 0.333 respectively for untwinned datasets, and 0.375, 0.2 for perfectly twinned datasets.

5 Model quality [i](#)

5.1 Standard geometry [i](#)

Bond lengths and bond angles in the following residue types are not validated in this section: CL, WPN, SEP, MG

The Z score for a bond length (or angle) is the number of standard deviations the observed value is removed from the expected value. A bond length (or angle) with $|Z| > 5$ is considered an outlier worth inspection. RMSZ is the root-mean-square of all Z scores of the bond lengths (or angles).

Mol	Chain	Bond lengths		Bond angles	
		RMSZ	# Z >5	RMSZ	# Z >5
1	A	0.71	0/1810	0.74	0/2432
1	J	0.68	0/1879	0.75	0/2525
2	H	0.66	0/80	0.79	0/105
2	S	0.60	0/80	0.77	0/105
All	All	0.69	0/3849	0.75	0/5167

Chiral center outliers are detected by calculating the chiral volume of a chiral center and verifying if the center is modelled as a planar moiety or with the opposite hand. A planarity outlier is detected by checking planarity of atoms in a peptide group, atoms in a mainchain group or atoms of a sidechain that are expected to be planar.

Mol	Chain	#Chirality outliers	#Planarity outliers
1	A	0	7
1	J	0	2
All	All	0	9

There are no bond length outliers.

There are no bond angle outliers.

There are no chirality outliers.

All (9) planarity outliers are listed below:

Mol	Chain	Res	Type	Group
1	A	117	ARG	Sidechain
1	A	137	GLY	Peptide
1	A	142	ARG	Sidechain
1	A	224	ARG	Sidechain
1	A	41	ARG	Sidechain
1	A	56	ARG	Sidechain
1	A	82	ARG	Sidechain

Continued on next page...

Continued from previous page...

Mol	Chain	Res	Type	Group
1	J	137	GLY	Peptide
1	J	56	ARG	Sidechain

5.2 Too-close contacts

In the following table, the Non-H and H(model) columns list the number of non-hydrogen atoms and hydrogen atoms in the chain respectively. The H(added) column lists the number of hydrogen atoms added and optimized by MolProbity. The Clashes column lists the number of clashes within the asymmetric unit, whereas Symm-Clashes lists symmetry-related clashes.

Mol	Chain	Non-H	H(model)	H(added)	Clashes	Symm-Clashes
1	A	1785	0	1770	4	0
1	J	1853	0	1828	9	0
2	H	90	0	83	0	0
2	S	90	0	83	2	0
3	A	21	0	0	0	0
3	J	21	0	0	4	0
4	A	3	0	0	0	0
4	J	2	0	0	0	0
5	A	1	0	0	0	0
5	J	1	0	0	0	0
6	A	223	0	0	2	0
6	H	18	0	0	0	0
6	J	170	0	0	2	0
6	S	14	0	0	0	0
All	All	4292	0	3764	15	0

The all-atom clashscore is defined as the number of clashes found per 1000 atoms (including hydrogen atoms). The all-atom clashscore for this structure is 2.

All (15) close contacts within the same asymmetric unit are listed below, sorted by their clash magnitude.

Atom-1	Atom-2	Interatomic distance (Å)	Clash overlap (Å)
1:J:38:CYS:SG	3:J:301:WPN:C2	2.15	1.35
1:J:137:GLY:HA3	6:J:526:HOH:O	1.74	0.86
1:A:86:GLU:HG2	6:A:581:HOH:O	1.81	0.79
1:A:81:VAL:HG23	6:A:553:HOH:O	1.97	0.64
1:J:68:LYS:NZ	6:J:404:HOH:O	2.38	0.56
1:J:38:CYS:SG	3:J:301:WPN:C1	2.92	0.55
1:J:74:SER:HB2	1:J:77:LYS:HZ2	1.72	0.55

Continued on next page...

Continued from previous page...

Atom-1	Atom-2	Interatomic distance (Å)	Clash overlap (Å)
1:J:1:MET:O	1:J:32:LYS:CE	2.62	0.48
3:J:301:WPN:BR1	2:S:220:MET:CE	3.17	0.47
3:J:301:WPN:BR1	2:S:220:MET:HE2	2.69	0.47
1:J:202:MET:N	1:J:220:MET:HE3	2.32	0.45
1:J:72:GLU:OE1	1:J:77:LYS:NZ	2.33	0.43
1:J:27:LYS:HG3	1:J:102:LEU:HD21	2.02	0.42
1:A:155:MET:O	1:A:159:LYS:HD3	2.20	0.42
1:A:115:GLU:HA	1:A:162:MET:CE	2.51	0.40

There are no symmetry-related clashes.

5.3 Torsion angles [i](#)

5.3.1 Protein backbone [i](#)

In the following table, the Percentiles column shows the percent Ramachandran outliers of the chain as a percentile score with respect to all X-ray entries followed by that with respect to entries of similar resolution.

The Analysed column shows the number of residues for which the backbone conformation was analysed, and the total number of residues.

Mol	Chain	Analysed	Favoured	Allowed	Outliers	Percentiles	
1	A	222/236 (94%)	220 (99%)	2 (1%)	0	100	100
1	J	233/236 (99%)	231 (99%)	2 (1%)	0	100	100
2	H	8/11 (73%)	8 (100%)	0	0	100	100
2	S	8/11 (73%)	8 (100%)	0	0	100	100
All	All	471/494 (95%)	467 (99%)	4 (1%)	0	100	100

There are no Ramachandran outliers to report.

5.3.2 Protein sidechains [i](#)

In the following table, the Percentiles column shows the percent sidechain outliers of the chain as a percentile score with respect to all X-ray entries followed by that with respect to entries of similar resolution.

The Analysed column shows the number of residues for which the sidechain conformation was analysed, and the total number of residues.

Mol	Chain	Analysed	Rotameric	Outliers	Percentiles	
1	A	191/198 (96%)	188 (98%)	3 (2%)	58	50
1	J	198/198 (100%)	196 (99%)	2 (1%)	73	68
2	H	10/10 (100%)	10 (100%)	0	100	100
2	S	10/10 (100%)	10 (100%)	0	100	100
All	All	409/416 (98%)	404 (99%)	5 (1%)	67	62

All (5) residues with a non-rotameric sidechain are listed below:

Mol	Chain	Res	Type
1	A	109	LYS
1	A	159	LYS
1	A	165	THR
1	J	109	LYS
1	J	218	LEU

Sometimes sidechains can be flipped to improve hydrogen bonding and reduce clashes. All (2) such sidechains are listed below:

Mol	Chain	Res	Type
1	J	70	ASN
1	J	106	HIS

5.3.3 RNA ⓘ

There are no RNA molecules in this entry.

5.4 Non-standard residues in protein, DNA, RNA chains ⓘ

2 non-standard protein/DNA/RNA residues are modelled in this entry.

In the following table, the Counts columns list the number of bonds (or angles) for which Mogul statistics could be retrieved, the number of bonds (or angles) that are observed in the model and the number of bonds (or angles) that are defined in the Chemical Component Dictionary. The Link column lists molecule types, if any, to which the group is linked. The Z score for a bond length (or angle) is the number of standard deviations the observed value is removed from the expected value. A bond length (or angle) with $|Z| > 2$ is considered an outlier worth inspection. RMSZ is the root-mean-square of all Z scores of the bond lengths (or angles).

Mol	Type	Chain	Res	Link	Bond lengths			Bond angles		
					Counts	RMSZ	$\# Z > 2$	Counts	RMSZ	$\# Z > 2$
2	SEP	S	214	2	8,9,10	0.85	0	8,12,14	0.67	0

Mol	Type	Chain	Res	Link	Bond lengths			Bond angles		
					Counts	RMSZ	$\# Z > 2$	Counts	RMSZ	$\# Z > 2$
2	SEP	H	214	2	8,9,10	0.87	0	8,12,14	1.36	1 (12%)

In the following table, the Chirals column lists the number of chiral outliers, the number of chiral centers analysed, the number of these observed in the model and the number defined in the Chemical Component Dictionary. Similar counts are reported in the Torsion and Rings columns. '-' means no outliers of that kind were identified.

Mol	Type	Chain	Res	Link	Chirals	Torsions	Rings
2	SEP	S	214	2	-	0/5/8/10	-
2	SEP	H	214	2	-	0/5/8/10	-

There are no bond length outliers.

All (1) bond angle outliers are listed below:

Mol	Chain	Res	Type	Atoms	Z	Observed($^{\circ}$)	Ideal($^{\circ}$)
2	H	214	SEP	O3P-P-OG	-2.97	98.83	106.73

There are no chirality outliers.

There are no torsion outliers.

There are no ring outliers.

No monomer is involved in short contacts.

5.5 Carbohydrates [i](#)

There are no oligosaccharides in this entry.

5.6 Ligand geometry [i](#)

Of 9 ligands modelled in this entry, 7 are monoatomic - leaving 2 for Mogul analysis.

In the following table, the Counts columns list the number of bonds (or angles) for which Mogul statistics could be retrieved, the number of bonds (or angles) that are observed in the model and the number of bonds (or angles) that are defined in the Chemical Component Dictionary. The Link column lists molecule types, if any, to which the group is linked. The Z score for a bond length (or angle) is the number of standard deviations the observed value is removed from the expected value. A bond length (or angle) with $|Z| > 2$ is considered an outlier worth inspection. RMSZ is the root-mean-square of all Z scores of the bond lengths (or angles).

Mol	Type	Chain	Res	Link	Bond lengths			Bond angles		
					Counts	RMSZ	# Z > 2	Counts	RMSZ	# Z > 2
3	WPN	J	301	-	22,22,23	0.80	1 (4%)	31,31,32	0.76	1 (3%)
3	WPN	A	301	1	22,22,23	0.64	0	31,31,32	1.78	6 (19%)

In the following table, the Chirals column lists the number of chiral outliers, the number of chiral centers analysed, the number of these observed in the model and the number defined in the Chemical Component Dictionary. Similar counts are reported in the Torsion and Rings columns. '-' means no outliers of that kind were identified.

Mol	Type	Chain	Res	Link	Chirals	Torsions	Rings
3	WPN	J	301	-	-	0/17/27/29	0/2/2/2
3	WPN	A	301	1	-	2/17/27/29	0/2/2/2

All (1) bond length outliers are listed below:

Mol	Chain	Res	Type	Atoms	Z	Observed(Å)	Ideal(Å)
3	J	301	WPN	C2-C1	2.57	1.55	1.50

All (7) bond angle outliers are listed below:

Mol	Chain	Res	Type	Atoms	Z	Observed(°)	Ideal(°)
3	A	301	WPN	C14-C4-C5	5.34	122.38	109.33
3	A	301	WPN	C4-C3-N1	3.77	119.83	112.73
3	A	301	WPN	C5-C6-N2	3.42	114.08	109.43
3	A	301	WPN	C5-C4-C3	2.58	116.97	111.47
3	A	301	WPN	C7-S1-N2	-2.48	104.35	107.30
3	A	301	WPN	C6-N2-S1	-2.26	112.94	117.05
3	J	301	WPN	O2-S1-C7	2.08	110.67	108.05

There are no chirality outliers.

All (2) torsion outliers are listed below:

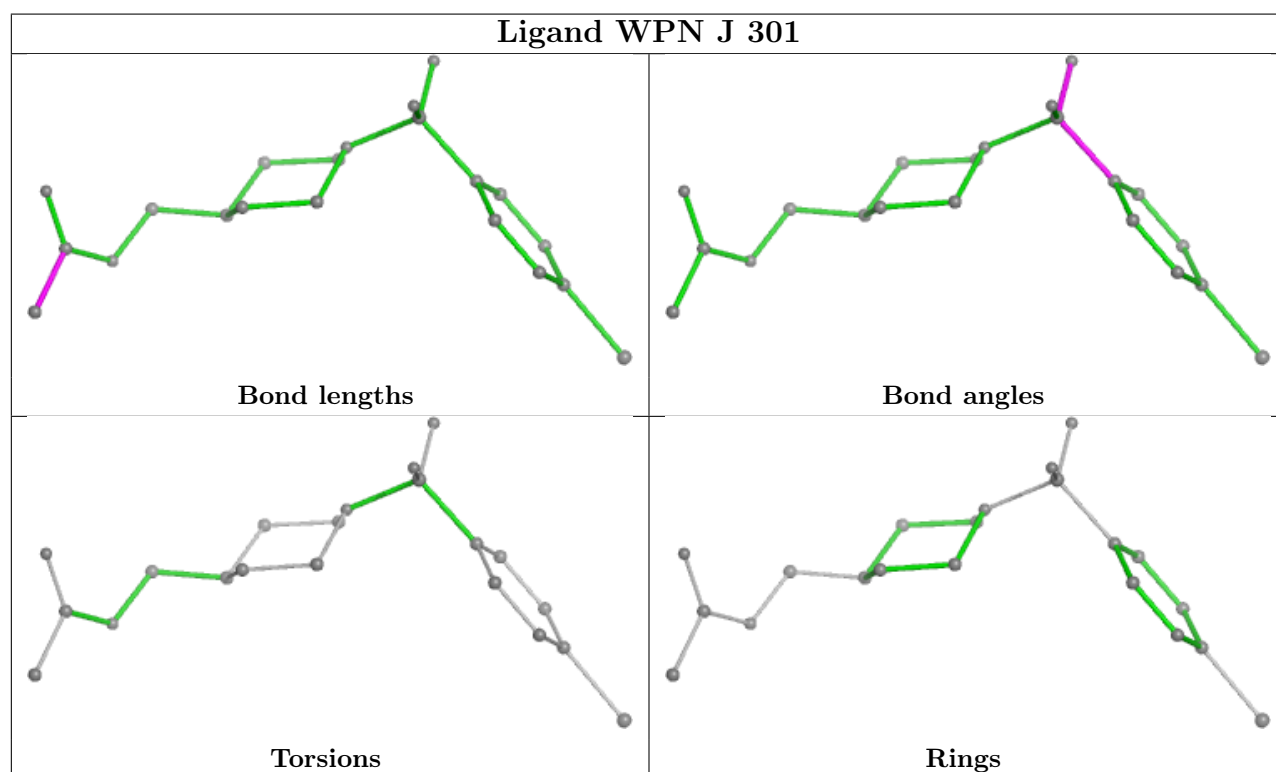
Mol	Chain	Res	Type	Atoms
3	A	301	WPN	N1-C3-C4-C5
3	A	301	WPN	N1-C3-C4-C14

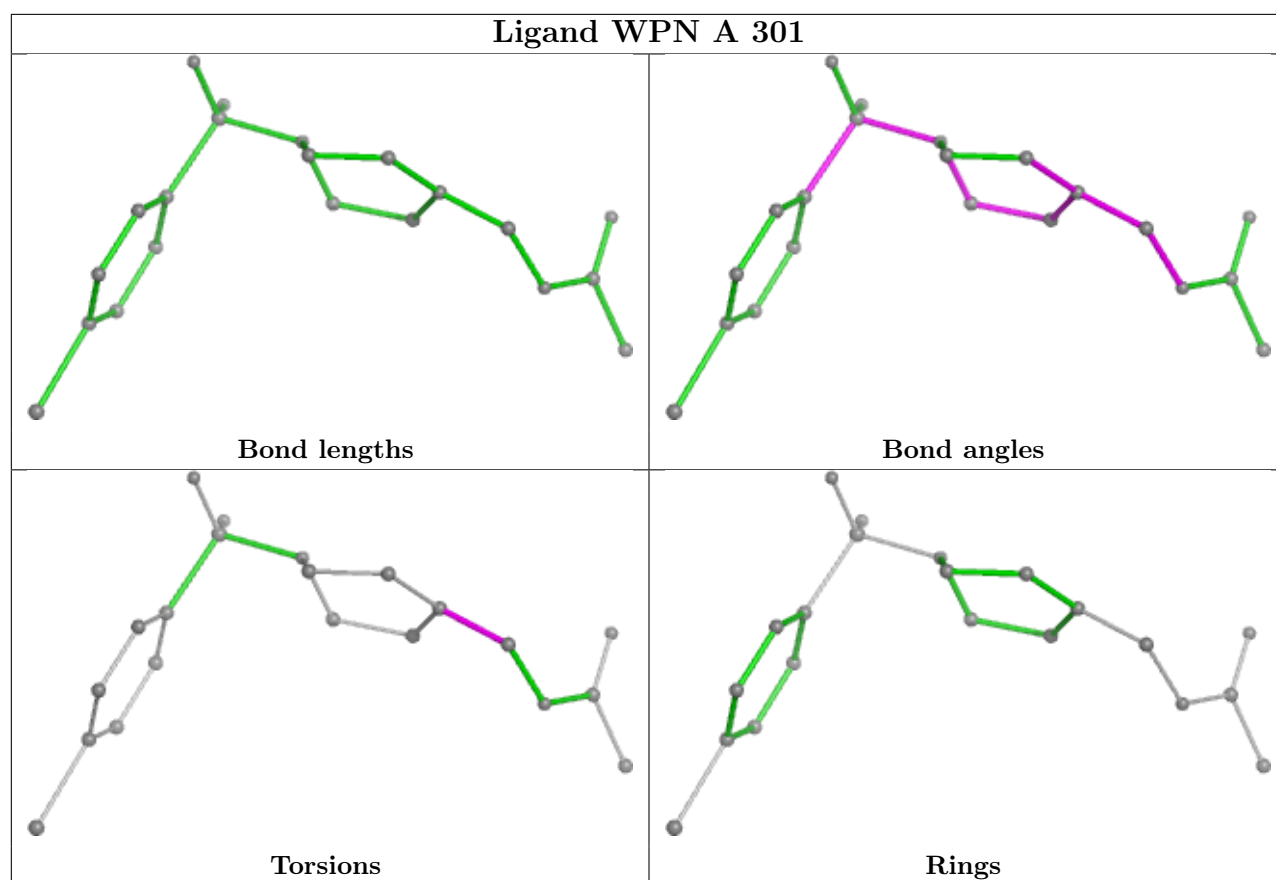
There are no ring outliers.

1 monomer is involved in 4 short contacts:

Mol	Chain	Res	Type	Clashes	Symm-Clashes
3	J	301	WPN	4	0

The following is a two-dimensional graphical depiction of Mogul quality analysis of bond lengths, bond angles, torsion angles, and ring geometry for all instances of the Ligand of Interest. In addition, ligands with molecular weight > 250 and outliers as shown on the validation Tables will also be included. For torsion angles, if less than 5% of the Mogul distribution of torsion angles is within 10 degrees of the torsion angle in question, then that torsion angle is considered an outlier. Any bond that is central to one or more torsion angles identified as an outlier by Mogul will be highlighted in the graph. For rings, the root-mean-square deviation (RMSD) between the ring in question and similar rings identified by Mogul is calculated over all ring torsion angles. If the average RMSD is greater than 60 degrees and the minimal RMSD between the ring in question and any Mogul-identified rings is also greater than 60 degrees, then that ring is considered an outlier. The outliers are highlighted in purple. The color gray indicates Mogul did not find sufficient equivalents in the CSD to analyse the geometry.





5.7 Other polymers [i](#)

There are no such residues in this entry.

5.8 Polymer linkage issues [i](#)

There are no chain breaks in this entry.

6 Fit of model and data

6.1 Protein, DNA and RNA chains

In the following table, the column labelled ‘#RSRZ > 2’ contains the number (and percentage) of RSRZ outliers, followed by percent RSRZ outliers for the chain as percentile scores relative to all X-ray entries and entries of similar resolution. The OWAB column contains the minimum, median, 95th percentile and maximum values of the occupancy-weighted average B-factor per residue. The column labelled ‘Q < 0.9’ lists the number of (and percentage) of residues with an average occupancy less than 0.9.

Mol	Chain	Analysed	<RSRZ>	#RSRZ>2	OWAB(Å ²)	Q<0.9
1	A	226/236 (95%)	-0.18	7 (3%) 51 49	14, 22, 47, 71	0
1	J	235/236 (99%)	0.29	17 (7%) 23 20	17, 26, 56, 69	0
2	H	10/11 (90%)	0.17	1 (10%) 14 11	17, 22, 36, 43	0
2	S	10/11 (90%)	0.25	1 (10%) 14 11	23, 31, 43, 58	0
All	All	481/494 (97%)	0.07	26 (5%) 32 30	14, 24, 54, 71	0

All (26) RSRZ outliers are listed below:

Mol	Chain	Res	Type	RSRZ
1	A	69	SER	4.7
1	J	203	ALA	4.4
1	J	74	SER	4.0
1	J	-3	ALA	3.9
1	A	138	ASP	3.7
1	A	137	GLY	3.7
2	S	210	ILE	3.6
1	J	71	GLU	3.5
1	J	77	LYS	3.3
1	A	111	ALA	3.2
1	J	109	LYS	3.1
1	A	136	THR	2.9
1	J	137	GLY	2.7
1	J	195	LYS	2.7
1	A	68	LYS	2.6
1	J	75	GLU	2.6
1	J	213	TYR	2.5
1	J	191	ILE	2.5
1	A	67	GLN	2.5
1	J	73	GLY	2.3
1	J	112	GLY	2.3

Continued on next page...

Continued from previous page...

Mol	Chain	Res	Type	RSRZ
1	J	229	LEU	2.2
2	H	210	ILE	2.2
1	J	192	SER	2.1
1	J	224	ARG	2.1
1	J	202	MET	2.0

6.2 Non-standard residues in protein, DNA, RNA chains [i](#)

In the following table, the Atoms column lists the number of modelled atoms in the group and the number defined in the chemical component dictionary. The B-factors column lists the minimum, median, 95th percentile and maximum values of B factors of atoms in the group. The column labelled 'Q< 0.9' lists the number of atoms with occupancy less than 0.9.

Mol	Type	Chain	Res	Atoms	RSCC	RSR	B-factors(Å ²)	Q<0.9
2	SEP	S	214	10/11	0.98	0.06	18,22,24,26	0
2	SEP	H	214	10/11	0.99	0.03	14,15,16,16	0

6.3 Carbohydrates [i](#)

There are no monosaccharides in this entry.

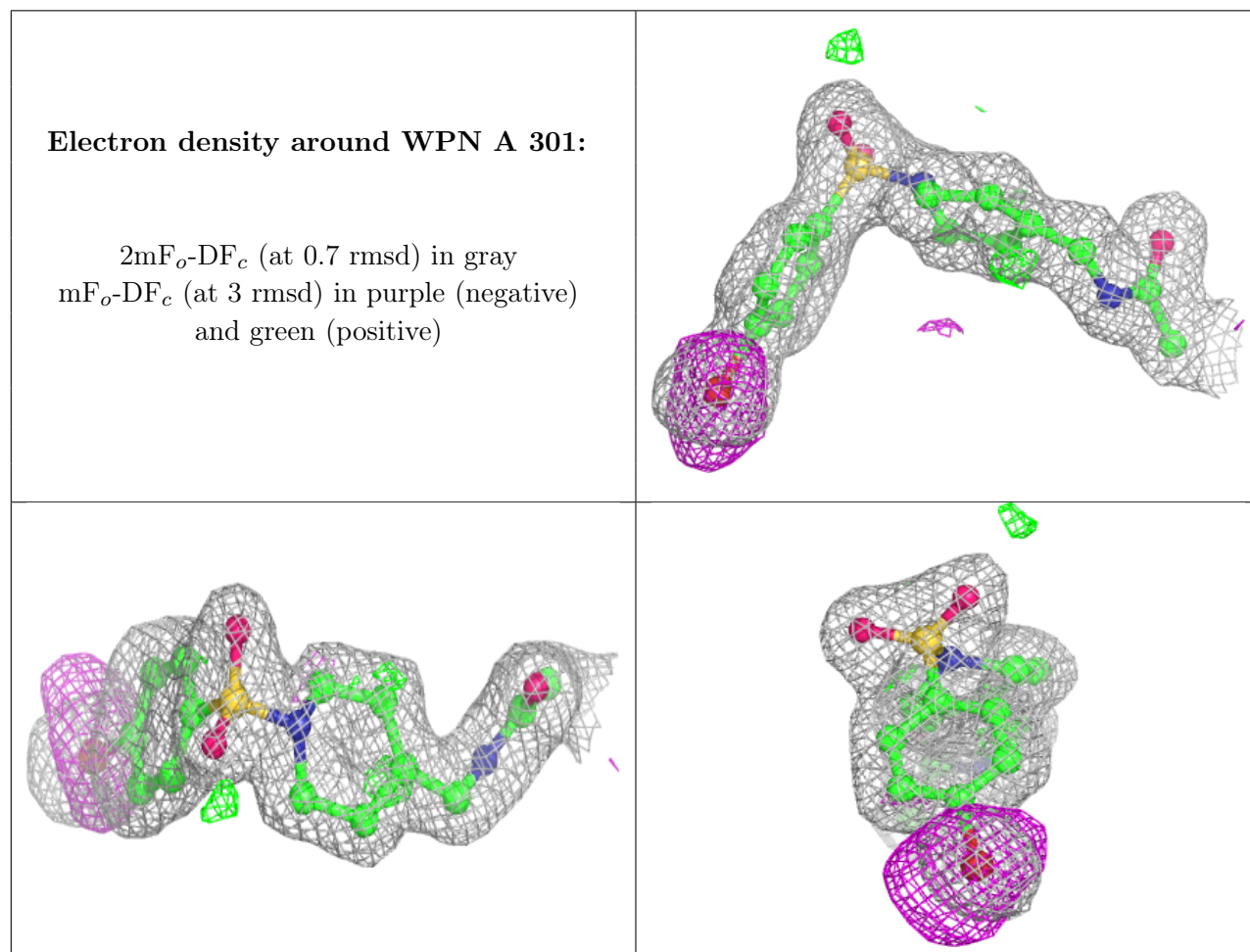
6.4 Ligands [i](#)

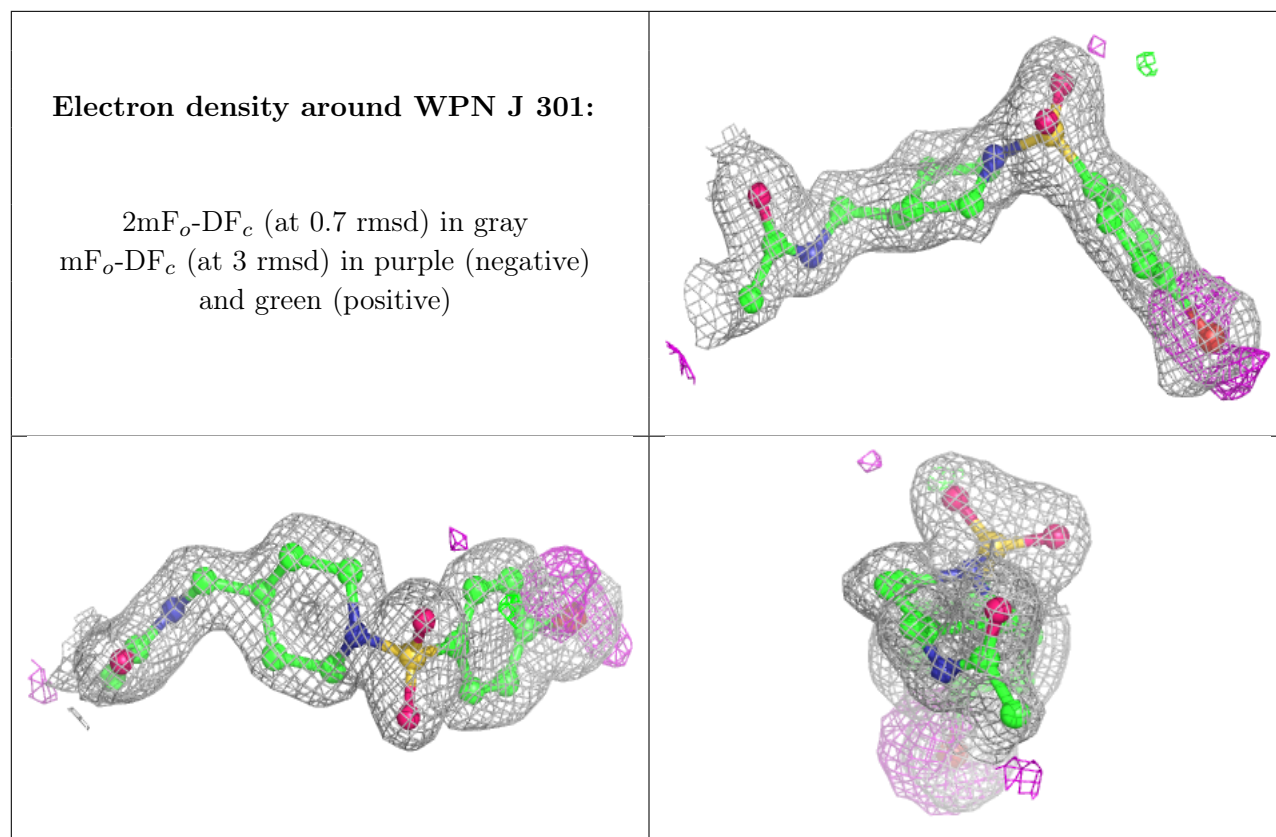
In the following table, the Atoms column lists the number of modelled atoms in the group and the number defined in the chemical component dictionary. The B-factors column lists the minimum, median, 95th percentile and maximum values of B factors of atoms in the group. The column labelled 'Q< 0.9' lists the number of atoms with occupancy less than 0.9.

Mol	Type	Chain	Res	Atoms	RSCC	RSR	B-factors(Å ²)	Q<0.9
4	MG	J	304	1/1	0.58	0.25	62,62,62,62	0
4	MG	A	303	1/1	0.67	0.18	68,68,68,68	0
4	MG	J	303	1/1	0.76	0.13	37,37,37,37	0
3	WPN	A	301	21/22	0.95	0.09	20,23,27,44	0
3	WPN	J	301	21/22	0.95	0.09	23,27,30,88	0
4	MG	A	302	1/1	0.95	0.08	39,39,39,39	0
4	MG	A	304	1/1	0.97	0.07	49,49,49,49	0
5	CL	A	305	1/1	0.99	0.06	24,24,24,24	0
5	CL	J	302	1/1	0.99	0.04	26,26,26,26	0

The following is a graphical depiction of the model fit to experimental electron density of all instances of the Ligand of Interest. In addition, ligands with molecular weight > 250 and outliers

as shown on the geometry validation Tables will also be included. Each fit is shown from different orientation to approximate a three-dimensional view.





6.5 Other polymers [i](#)

There are no such residues in this entry.