



wwPDB EM Validation Summary Report ⓘ

Oct 15, 2025 – 01:34 am BST

PDB ID : 9QX2 / pdb_00009qx2
EMDB ID : EMD-53434
Title : Cryo-EM structure of the C. elegans UBR4/KCMF1 complex (N-term focused refinement)
Authors : Grabarczyk, D.B.; Clausen, T.
Deposited on : 2025-04-15
Resolution : 5.70 Å(reported)

This is a wwPDB EM Validation Summary Report for a publicly released PDB entry.

We welcome your comments at validation@mail.wwpdb.org

A user guide is available at

<https://www.wwpdb.org/validation/2017/EMValidationReportHelp>
with specific help available everywhere you see the ⓘ symbol.

The types of validation reports are described at

<http://www.wwpdb.org/validation/2017/FAQs#types>.

The following versions of software and data (see [references ⓘ](#)) were used in the production of this report:

EMDB validation analysis : 0.0.1.dev129
MolProbity : 4-5-2 with Phenix2.0
Percentile statistics : 20231227.v01 (using entries in the PDB archive December 27th 2023)
EM percentile statistics : 202505.v01 (Using data in the EMDB archive up until May 2025)
MapQ : 1.9.13
Ideal geometry (proteins) : Engh & Huber (2001)
Ideal geometry (DNA, RNA) : Parkinson et al. (1996)
Validation Pipeline (wwPDB-VP) : 2.46

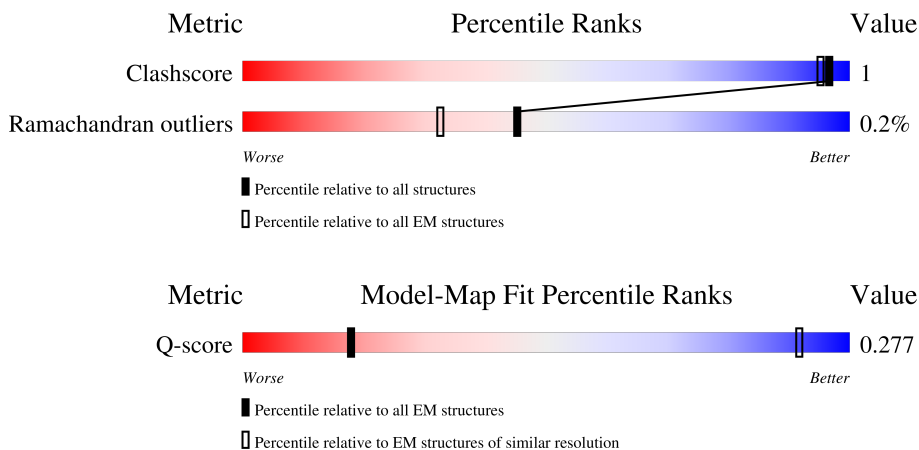
1 Overall quality at a glance

The following experimental techniques were used to determine the structure:

ELECTRON MICROSCOPY



The reported resolution of this entry is 5.70 Å.

Percentile scores (ranging between 0-100) for global validation metrics of the entry are shown in the following graphic. The table shows the number of entries on which the scores are based.



Metric	Whole archive (#Entries)	EM structures (#Entries)	Similar EM resolution (#Entries, resolution range(Å))
Clashscore	210492	15764	-
Ramachandran outliers	207382	16835	-
Q-score	-	25397	503 (5.20 - 6.20)

The table below summarises the geometric issues observed across the polymeric chains and their fit to the map. The red, orange, yellow and green segments of the bar indicate the fraction of residues that contain outliers for ≥ 3 , 2, 1 and 0 types of geometric quality criteria respectively. A grey segment represents the fraction of residues that are not modelled. The numeric value for each fraction is indicated below the corresponding segment, with a dot representing fractions $\leq 5\%$. The upper red bar (where present) indicates the fraction of residues that have poor fit to the EM map (all-atom inclusion $< 40\%$). The numeric value is given above the bar.

Mol	Chain	Length	Quality of chain
1	A	4284	 22% 78%
1	B	4284	 22% 78%

2 Entry composition

There is only 1 type of molecule in this entry. The entry contains 9410 atoms, of which 0 are hydrogens and 0 are deuteriums.

In the tables below, the AltConf column contains the number of residues with at least one atom in alternate conformation and the Trace column contains the number of residues modelled with at most 2 atoms.

- Molecule 1 is a protein called UBR-type domain-containing protein.

Mol	Chain	Residues	Atoms				AltConf	Trace
1	A	947	Total	C	N	O	0	0
			4705	2811	947	947		
1	B	947	Total	C	N	O	0	0
			4705	2811	947	947		

There are 132 discrepancies between the modelled and reference sequences:

Chain	Residue	Modelled	Actual	Comment	Reference
A	4212	GLY	-	expression tag	UNP A0A0S4XR36
A	4213	SER	-	expression tag	UNP A0A0S4XR36
A	4214	LEU	-	expression tag	UNP A0A0S4XR36
A	4215	GLU	-	expression tag	UNP A0A0S4XR36
A	4216	VAL	-	expression tag	UNP A0A0S4XR36
A	4217	LEU	-	expression tag	UNP A0A0S4XR36
A	4218	PHE	-	expression tag	UNP A0A0S4XR36
A	4219	GLN	-	expression tag	UNP A0A0S4XR36
A	4220	GLY	-	expression tag	UNP A0A0S4XR36
A	4221	PRO	-	expression tag	UNP A0A0S4XR36
A	4222	ALA	-	expression tag	UNP A0A0S4XR36
A	4223	GLU	-	expression tag	UNP A0A0S4XR36
A	4224	ALA	-	expression tag	UNP A0A0S4XR36
A	4225	ALA	-	expression tag	UNP A0A0S4XR36
A	4226	ALA	-	expression tag	UNP A0A0S4XR36
A	4227	LYS	-	expression tag	UNP A0A0S4XR36
A	4228	GLU	-	expression tag	UNP A0A0S4XR36
A	4229	ALA	-	expression tag	UNP A0A0S4XR36
A	4230	ALA	-	expression tag	UNP A0A0S4XR36
A	4231	ALA	-	expression tag	UNP A0A0S4XR36
A	4232	LYS	-	expression tag	UNP A0A0S4XR36
A	4233	GLU	-	expression tag	UNP A0A0S4XR36
A	4234	ALA	-	expression tag	UNP A0A0S4XR36
A	4235	ALA	-	expression tag	UNP A0A0S4XR36
A	4236	ALA	-	expression tag	UNP A0A0S4XR36
A	4237	LYS	-	expression tag	UNP A0A0S4XR36

Continued on next page...

Continued from previous page...

Chain	Residue	Modelled	Actual	Comment	Reference
A	4238	GLU	-	expression tag	UNP A0A0S4XR36
A	4239	ALA	-	expression tag	UNP A0A0S4XR36
A	4240	ALA	-	expression tag	UNP A0A0S4XR36
A	4241	ALA	-	expression tag	UNP A0A0S4XR36
A	4242	LYS	-	expression tag	UNP A0A0S4XR36
A	4243	ALA	-	expression tag	UNP A0A0S4XR36
A	4244	LEU	-	expression tag	UNP A0A0S4XR36
A	4245	GLU	-	expression tag	UNP A0A0S4XR36
A	4246	ALA	-	expression tag	UNP A0A0S4XR36
A	4247	GLU	-	expression tag	UNP A0A0S4XR36
A	4248	ALA	-	expression tag	UNP A0A0S4XR36
A	4249	ALA	-	expression tag	UNP A0A0S4XR36
A	4250	ALA	-	expression tag	UNP A0A0S4XR36
A	4251	LYS	-	expression tag	UNP A0A0S4XR36
A	4252	GLU	-	expression tag	UNP A0A0S4XR36
A	4253	ALA	-	expression tag	UNP A0A0S4XR36
A	4254	ALA	-	expression tag	UNP A0A0S4XR36
A	4255	ALA	-	expression tag	UNP A0A0S4XR36
A	4256	LYS	-	expression tag	UNP A0A0S4XR36
A	4257	GLU	-	expression tag	UNP A0A0S4XR36
A	4258	ALA	-	expression tag	UNP A0A0S4XR36
A	4259	ALA	-	expression tag	UNP A0A0S4XR36
A	4260	ALA	-	expression tag	UNP A0A0S4XR36
A	4261	LYS	-	expression tag	UNP A0A0S4XR36
A	4262	GLU	-	expression tag	UNP A0A0S4XR36
A	4263	ALA	-	expression tag	UNP A0A0S4XR36
A	4264	ALA	-	expression tag	UNP A0A0S4XR36
A	4265	ALA	-	expression tag	UNP A0A0S4XR36
A	4266	LYS	-	expression tag	UNP A0A0S4XR36
A	4267	ALA	-	expression tag	UNP A0A0S4XR36
A	4268	HIS	-	expression tag	UNP A0A0S4XR36
A	4269	HIS	-	expression tag	UNP A0A0S4XR36
A	4270	HIS	-	expression tag	UNP A0A0S4XR36
A	4271	HIS	-	expression tag	UNP A0A0S4XR36
A	4272	HIS	-	expression tag	UNP A0A0S4XR36
A	4273	HIS	-	expression tag	UNP A0A0S4XR36
A	4274	HIS	-	expression tag	UNP A0A0S4XR36
A	4275	HIS	-	expression tag	UNP A0A0S4XR36
A	4276	HIS	-	expression tag	UNP A0A0S4XR36
A	4277	HIS	-	expression tag	UNP A0A0S4XR36
B	4212	GLY	-	expression tag	UNP A0A0S4XR36
B	4213	SER	-	expression tag	UNP A0A0S4XR36

Continued on next page...

Continued from previous page...

Chain	Residue	Modelled	Actual	Comment	Reference
B	4214	LEU	-	expression tag	UNP A0A0S4XR36
B	4215	GLU	-	expression tag	UNP A0A0S4XR36
B	4216	VAL	-	expression tag	UNP A0A0S4XR36
B	4217	LEU	-	expression tag	UNP A0A0S4XR36
B	4218	PHE	-	expression tag	UNP A0A0S4XR36
B	4219	GLN	-	expression tag	UNP A0A0S4XR36
B	4220	GLY	-	expression tag	UNP A0A0S4XR36
B	4221	PRO	-	expression tag	UNP A0A0S4XR36
B	4222	ALA	-	expression tag	UNP A0A0S4XR36
B	4223	GLU	-	expression tag	UNP A0A0S4XR36
B	4224	ALA	-	expression tag	UNP A0A0S4XR36
B	4225	ALA	-	expression tag	UNP A0A0S4XR36
B	4226	ALA	-	expression tag	UNP A0A0S4XR36
B	4227	LYS	-	expression tag	UNP A0A0S4XR36
B	4228	GLU	-	expression tag	UNP A0A0S4XR36
B	4229	ALA	-	expression tag	UNP A0A0S4XR36
B	4230	ALA	-	expression tag	UNP A0A0S4XR36
B	4231	ALA	-	expression tag	UNP A0A0S4XR36
B	4232	LYS	-	expression tag	UNP A0A0S4XR36
B	4233	GLU	-	expression tag	UNP A0A0S4XR36
B	4234	ALA	-	expression tag	UNP A0A0S4XR36
B	4235	ALA	-	expression tag	UNP A0A0S4XR36
B	4236	ALA	-	expression tag	UNP A0A0S4XR36
B	4237	LYS	-	expression tag	UNP A0A0S4XR36
B	4238	GLU	-	expression tag	UNP A0A0S4XR36
B	4239	ALA	-	expression tag	UNP A0A0S4XR36
B	4240	ALA	-	expression tag	UNP A0A0S4XR36
B	4241	ALA	-	expression tag	UNP A0A0S4XR36
B	4242	LYS	-	expression tag	UNP A0A0S4XR36
B	4243	ALA	-	expression tag	UNP A0A0S4XR36
B	4244	LEU	-	expression tag	UNP A0A0S4XR36
B	4245	GLU	-	expression tag	UNP A0A0S4XR36
B	4246	ALA	-	expression tag	UNP A0A0S4XR36
B	4247	GLU	-	expression tag	UNP A0A0S4XR36
B	4248	ALA	-	expression tag	UNP A0A0S4XR36
B	4249	ALA	-	expression tag	UNP A0A0S4XR36
B	4250	ALA	-	expression tag	UNP A0A0S4XR36
B	4251	LYS	-	expression tag	UNP A0A0S4XR36
B	4252	GLU	-	expression tag	UNP A0A0S4XR36
B	4253	ALA	-	expression tag	UNP A0A0S4XR36
B	4254	ALA	-	expression tag	UNP A0A0S4XR36
B	4255	ALA	-	expression tag	UNP A0A0S4XR36

Continued on next page...

Continued from previous page...

Chain	Residue	Modelled	Actual	Comment	Reference
B	4256	LYS	-	expression tag	UNP A0A0S4XR36
B	4257	GLU	-	expression tag	UNP A0A0S4XR36
B	4258	ALA	-	expression tag	UNP A0A0S4XR36
B	4259	ALA	-	expression tag	UNP A0A0S4XR36
B	4260	ALA	-	expression tag	UNP A0A0S4XR36
B	4261	LYS	-	expression tag	UNP A0A0S4XR36
B	4262	GLU	-	expression tag	UNP A0A0S4XR36
B	4263	ALA	-	expression tag	UNP A0A0S4XR36
B	4264	ALA	-	expression tag	UNP A0A0S4XR36
B	4265	ALA	-	expression tag	UNP A0A0S4XR36
B	4266	LYS	-	expression tag	UNP A0A0S4XR36
B	4267	ALA	-	expression tag	UNP A0A0S4XR36
B	4268	HIS	-	expression tag	UNP A0A0S4XR36
B	4269	HIS	-	expression tag	UNP A0A0S4XR36
B	4270	HIS	-	expression tag	UNP A0A0S4XR36
B	4271	HIS	-	expression tag	UNP A0A0S4XR36
B	4272	HIS	-	expression tag	UNP A0A0S4XR36
B	4273	HIS	-	expression tag	UNP A0A0S4XR36
B	4274	HIS	-	expression tag	UNP A0A0S4XR36
B	4275	HIS	-	expression tag	UNP A0A0S4XR36
B	4276	HIS	-	expression tag	UNP A0A0S4XR36
B	4277	HIS	-	expression tag	UNP A0A0S4XR36





[illegible]

- Molecule 1: UBR-type domain-containing protein

Chain B: 22% 78%

[illegible]





CYS	ASP	THR	LYS	ALA
ASN	SER	THR	THR	ALA
VAL	ASN	VAL	ARG	ALA
ILE	ASN	LEU	GLY	LYS
THR	GLN	ARG	PHE	GLU
PRO	SER	ALA	GLU	ALA
ILE	GLY	VAL	VAL	ALA
ILE	GLY	ILE	ASP	ALA
SER	ASN	ASP	ASP	ALA
MET	GLY	PHE	LYS	LYS
GLY	GLY	ASP	GLU	GLU
ARG	ARG	ALA	SER	GLU
VAL	GLU	ALA	ASP	ALA
VAL	SER	THR	ASN	ALA
ASN	ASN	ILE	ILE	ALA
ILE	MET	GLY	LEU	LYS
GLY	GLN	ALA	PRO	LYS
ALA	TYR	PRO	CYS	LEU
TRP	ALA	GLU	GLU	GLU
ILE	LEU	ALA	ASP	ALA
ASP	ILE	THR	VAL	GLU
ALA	LEU	ASP	ALA	ALA
ALA	HIS	GLY	GLU	ALA
LEU	HIS	PHE	ALA	ALA
HIS	LEU	LYS	PHE	LYS
ARG	LEU	LYS	ASP	ALA
PHE	GLY	PRO	GLU	GLU
GLU	ILE	THR	VAL	ALA
ASN	THR	LEU	THR	ALA
ASN	LEU	MET	GLY	ALA
ASP	PRO	THR	ALA	LYS
GLY	ALA	TRP	ILE	GLU
ARG	ASP	ALA	ALA	ALA
VAL	ALA	PHE	ASP	ALA
SER	GLU	VAL	ASP	LYS
GLY	LEU	ASP	VAL	ALA
LEU	GLU	ALA	ASN	ALA
ALA	ILE	TYR	PHE	LYS
ALA	ALA	ILE	LEU	ALA
HIS	SER	ASN	ALA	LYS
VAL	PRO	PRO	LYS	ALA
ASN	ASN	ILE	ILE	HIS
ARG	ARG	ILE	LYS	HIS
ASN	LEU	THR	ILE	HIS
PHE	ALA	ALA	GLN	HIS
VAL	PHE	GLY	GLY	HIS
PHE	VAL	GLU	SER	HIS
VAL	LEU	ASP	LEU	HIS
ASP	PHE	ARG	GLU	HIS
THR	THR	ILE	VAL	HIS
GLU	GLU	LEU	LEU	HIS
CYS	ASN	TRP	PHE	HIS
ASN	LEU	THR	GLN	
LEU	ALA	ALA	GLY	
ILE	THR	ARG	GLY	
THR	ALA	GLU	PRO	
ASN	ASP	THR	ALA	
GLY	TRP	LEU	GLU	
VAL	ASN	VAL	ALA	
ASP	ASP	VAL	ALA	
ARG	ASP	THR	ALA	
ALA	ASP	GLU	ALA	
VAL	ASP	THR	ALA	
SER	GLU	ASP	ALA	
GLY	LEU	THR	ALA	
ILE	ASN	VAL	ALA	
ALA	LEU	ASP	ALA	
ALA	HIS	GLY	ALA	
LEU	HIS	PHE	ALA	
HIS	LEU	LYS	PHE	
ARG	LEU	LYS	ASP	
PHE	GLY	PRO	GLU	
GLU	ILE	THR	ALA	
ASN	ASN	ILE	LYS	
SER	SER	THR	ALA	
THR	ASN	VAL	ALA	
ASP	ASP	GLU	ALA	
GLN	GLN	THR	ALA	
ARG	ARG	ILE	LYS	
ASN	ASN	ASP	ILE	
SER	ASN	THR	GLU	
THR	THR	THR	LYS	
ALA	ALA	ALA	GLU	
ASP	ASP	THR	ALA	
LEU	LEU	ILE	LYS	
THR	THR	THR	ILE	
ASN	ASN	ASN	GLU	
SER	SER	SER	GLU	
THR	THR	THR	LYS	
ILE	ASN	THR	ALA	
ASP	ASP	VAL	ALA	
GLN	GLN	GLU	ALA	
ARG	ARG	THR	ALA	
ASN	ASN	THR	LYS	
SER	SER	ASN	GLU	

4 Experimental information

Property	Value	Source
EM reconstruction method	SINGLE PARTICLE	Depositor
Imposed symmetry	POINT, C2	Depositor
Number of particles used	82358	Depositor
Resolution determination method	FSC 0.143 CUT-OFF	Depositor
CTF correction method	PHASE FLIPPING AND AMPLITUDE CORRECTION	Depositor
Microscope	TFS KRIOS	Depositor
Voltage (kV)	300	Depositor
Electron dose ($e^-/\text{\AA}^2$)	50	Depositor
Minimum defocus (nm)	800	Depositor
Maximum defocus (nm)	2000	Depositor
Magnification	Not provided	
Image detector	FEI FALCON IV (4k x 4k)	Depositor
Maximum map value	0.027	Depositor
Minimum map value	-0.018	Depositor
Average map value	-0.000	Depositor
Map value standard deviation	0.001	Depositor
Recommended contour level	0.00376	Depositor
Map size (Å)	486.912, 486.912, 486.912	wwPDB
Map dimensions	384, 384, 384	wwPDB
Map angles (°)	90.0, 90.0, 90.0	wwPDB
Pixel spacing (Å)	1.268, 1.268, 1.268	Depositor

5 Model quality [i](#)

5.1 Standard geometry [i](#)

The Z score for a bond length (or angle) is the number of standard deviations the observed value is removed from the expected value. A bond length (or angle) with $|Z| > 5$ is considered an outlier worth inspection. RMSZ is the root-mean-square of all Z scores of the bond lengths (or angles).

Mol	Chain	Bond lengths		Bond angles	
		RMSZ	$\# Z > 5$	RMSZ	$\# Z > 5$
1	A	0.40	0/4696	0.60	1/6542 (0.0%)
1	B	0.40	0/4696	0.59	1/6542 (0.0%)
All	All	0.40	0/9392	0.60	2/13084 (0.0%)

There are no bond length outliers.

All (2) bond angle outliers are listed below:

Mol	Chain	Res	Type	Atoms	Z	Observed(°)	Ideal(°)
1	B	808	ARG	O-C-N	-5.57	116.21	122.12
1	A	808	ARG	O-C-N	-5.56	116.22	122.12

There are no chirality outliers.

There are no planarity outliers.

5.2 Too-close contacts [i](#)

In the following table, the Non-H and H(model) columns list the number of non-hydrogen atoms and hydrogen atoms in the chain respectively. The H(added) column lists the number of hydrogen atoms added and optimized by MolProbity. The Clashes column lists the number of clashes within the asymmetric unit, whereas Symm-Clashes lists symmetry-related clashes.

Mol	Chain	Non-H	H(model)	H(added)	Clashes	Symm-Clashes
1	A	4705	0	2037	5	0
1	B	4705	0	2037	4	0
All	All	9410	0	4074	9	0

The all-atom clashscore is defined as the number of clashes found per 1000 atoms (including hydrogen atoms). The all-atom clashscore for this structure is 1.

The worst 5 of 9 close contacts within the same asymmetric unit are listed below, sorted by their clash magnitude.

Atom-1	Atom-2	Interatomic distance (Å)	Clash overlap (Å)
1:A:808:ARG:O	1:A:809:ILE:C	2.25	0.79
1:B:808:ARG:O	1:B:809:ILE:C	2.25	0.78
1:B:808:ARG:O	1:B:810:ALA:N	2.25	0.70
1:A:808:ARG:O	1:A:810:ALA:N	2.25	0.69
1:B:744:THR:HA	1:B:838:GLY:HA3	1.90	0.53

There are no symmetry-related clashes.

5.3 Torsion angles [i](#)

5.3.1 Protein backbone [i](#)

In the following table, the Percentiles column shows the percent Ramachandran outliers of the chain as a percentile score with respect to all PDB entries followed by that with respect to all EM entries.

The Analysed column shows the number of residues for which the backbone conformation was analysed, and the total number of residues.

Mol	Chain	Analysed	Favoured	Allowed	Outliers	Percentiles	
1	A	929/4284 (22%)	893 (96%)	34 (4%)	2 (0%)	44	78
1	B	929/4284 (22%)	893 (96%)	34 (4%)	2 (0%)	44	78
All	All	1858/8568 (22%)	1786 (96%)	68 (4%)	4 (0%)	45	78

All (4) Ramachandran outliers are listed below:

Mol	Chain	Res	Type
1	A	809	ILE
1	B	809	ILE
1	A	1000	HIS
1	B	1000	HIS

5.3.2 Protein sidechains [i](#)

There are no protein residues with a non-rotameric sidechain to report in this entry.

5.3.3 RNA [i](#)

There are no RNA molecules in this entry.

5.4 Non-standard residues in protein, DNA, RNA chains [i](#)

There are no non-standard protein/DNA/RNA residues in this entry.

5.5 Carbohydrates [i](#)

There are no oligosaccharides in this entry.

5.6 Ligand geometry [i](#)

There are no ligands in this entry.

5.7 Other polymers [i](#)

There are no such residues in this entry.

5.8 Polymer linkage issues [i](#)

There are no chain breaks in this entry.

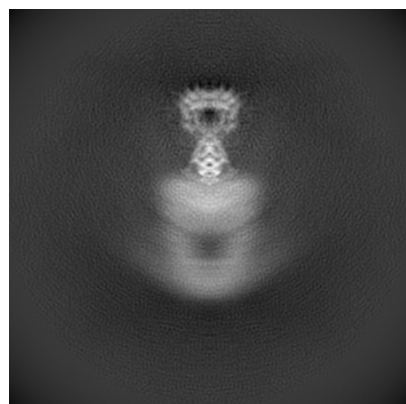
6 Map visualisation [i](#)

This section contains visualisations of the EMDB entry EMD-53434. These allow visual inspection of the internal detail of the map and identification of artifacts.

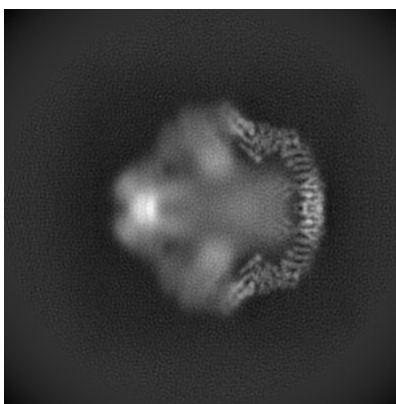
Images derived from a raw map, generated by summing the deposited half-maps, are presented below the corresponding image components of the primary map to allow further visual inspection and comparison with those of the primary map.

6.1 Orthogonal projections [i](#)

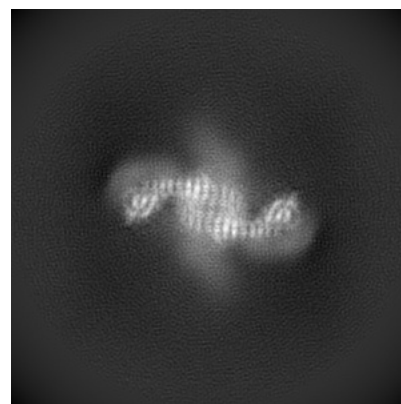
6.1.1 Primary map



X

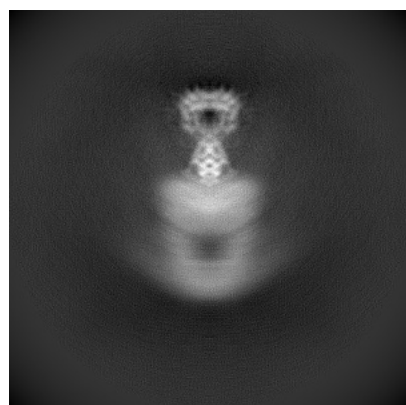


Y

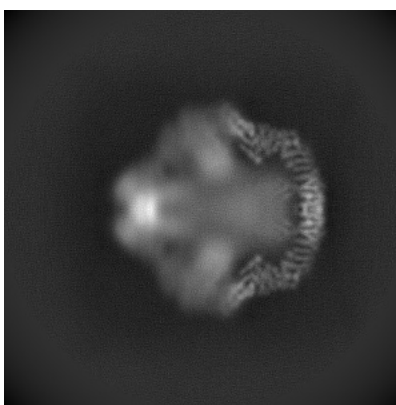


Z

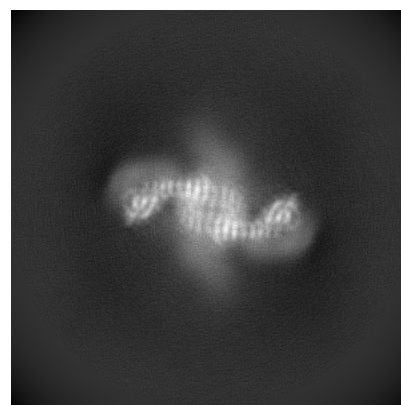
6.1.2 Raw map



X



Y

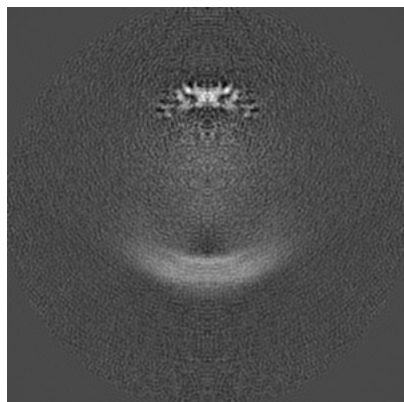


Z

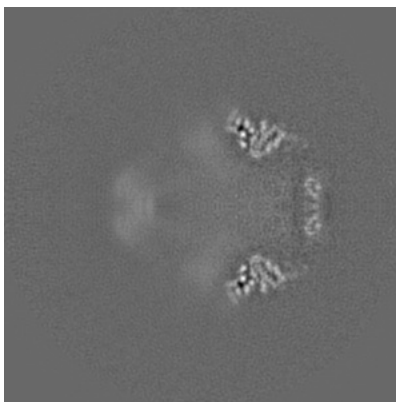
The images above show the map projected in three orthogonal directions.

6.2 Central slices [i](#)

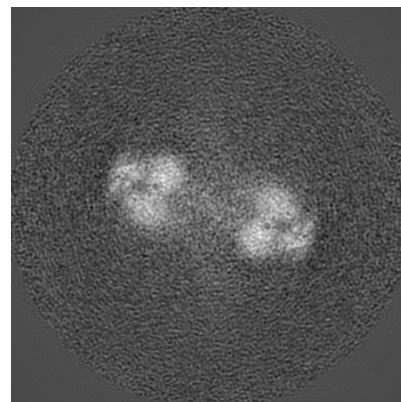
6.2.1 Primary map



X Index: 192

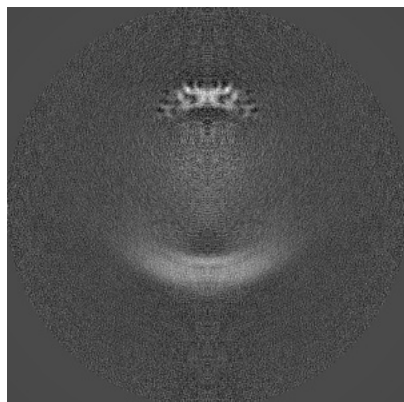


Y Index: 192

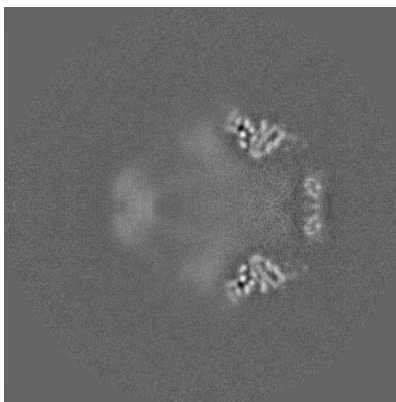


Z Index: 192

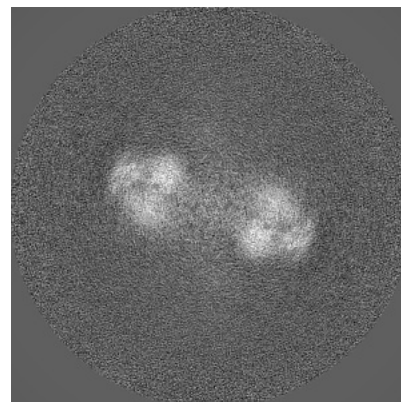
6.2.2 Raw map



X Index: 192



Y Index: 192

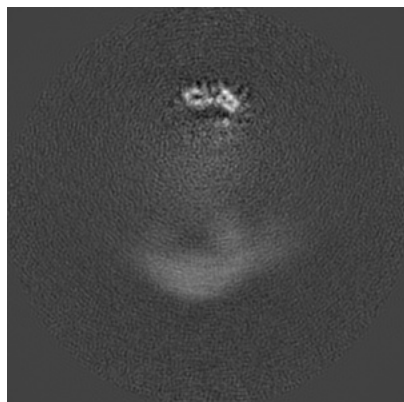


Z Index: 192

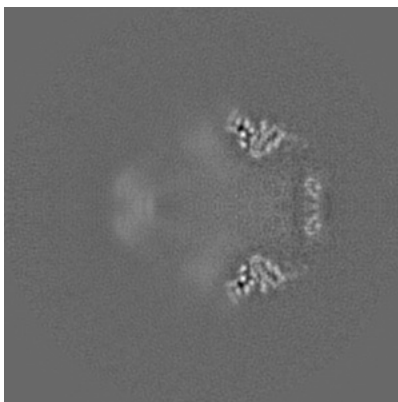
The images above show central slices of the map in three orthogonal directions.

6.3 Largest variance slices [i](#)

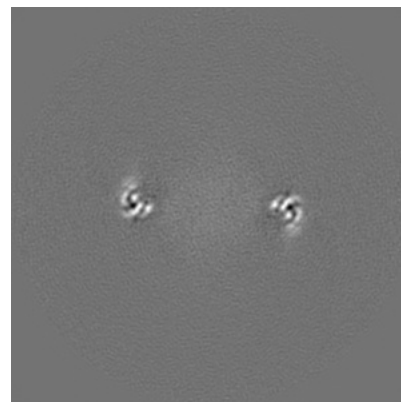
6.3.1 Primary map



X Index: 179

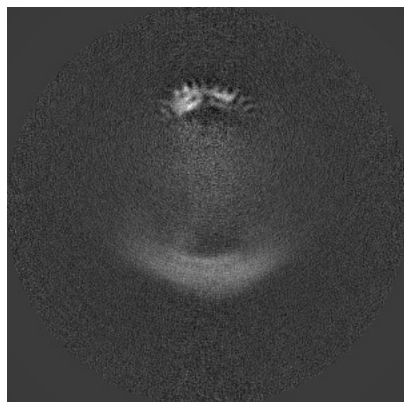


Y Index: 192

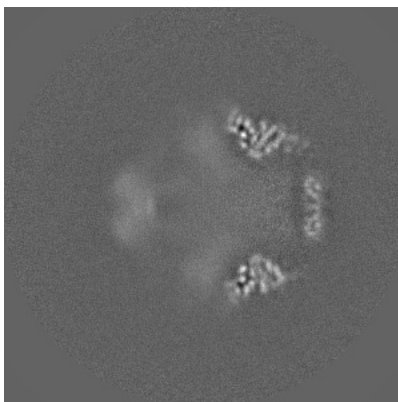


Z Index: 228

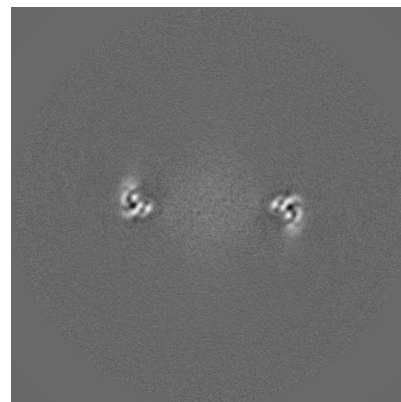
6.3.2 Raw map



X Index: 197



Y Index: 191

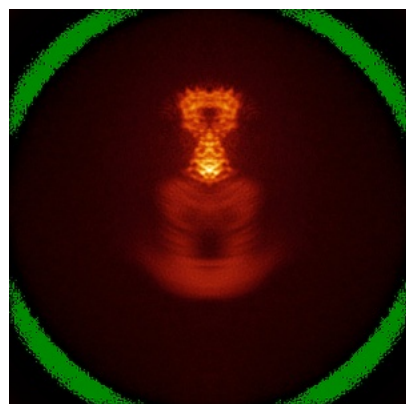


Z Index: 228

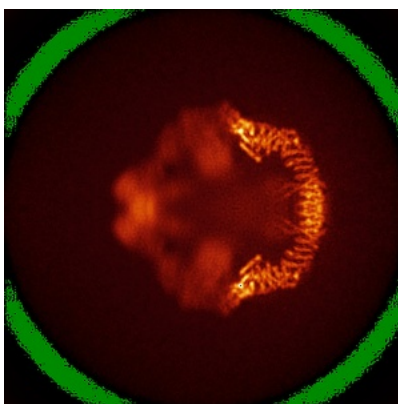
The images above show the largest variance slices of the map in three orthogonal directions.

6.4 Orthogonal standard-deviation projections (False-color) [i](#)

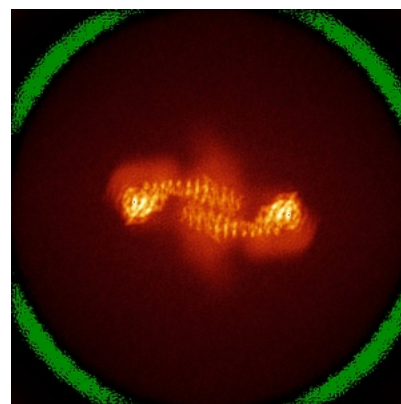
6.4.1 Primary map



X

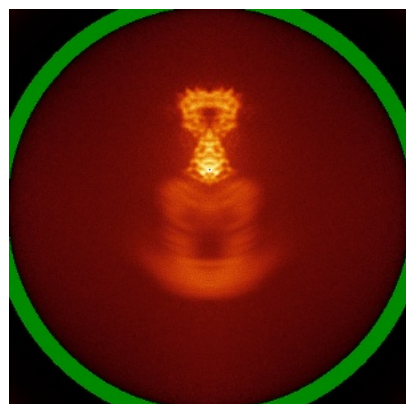


Y

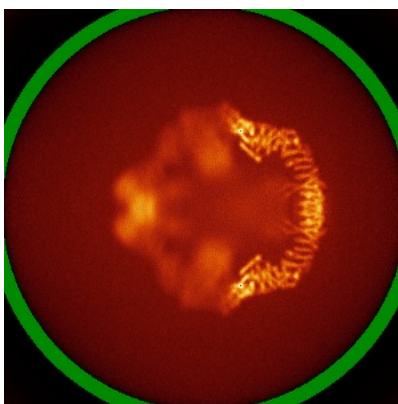


Z

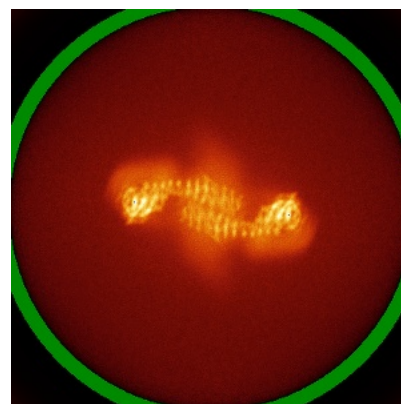
6.4.2 Raw map



X



Y

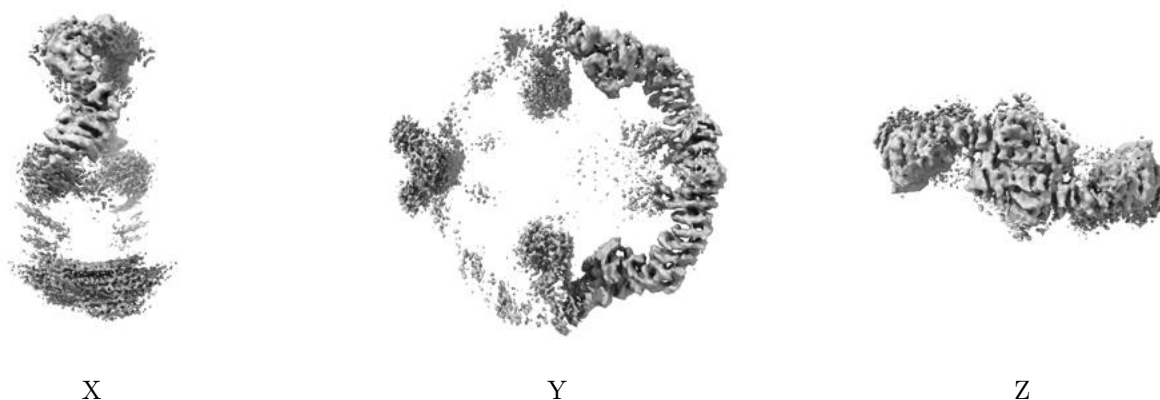


Z

The images above show the map standard deviation projections with false color in three orthogonal directions. Minimum values are shown in green, max in blue, and dark to light orange shades represent small to large values respectively.

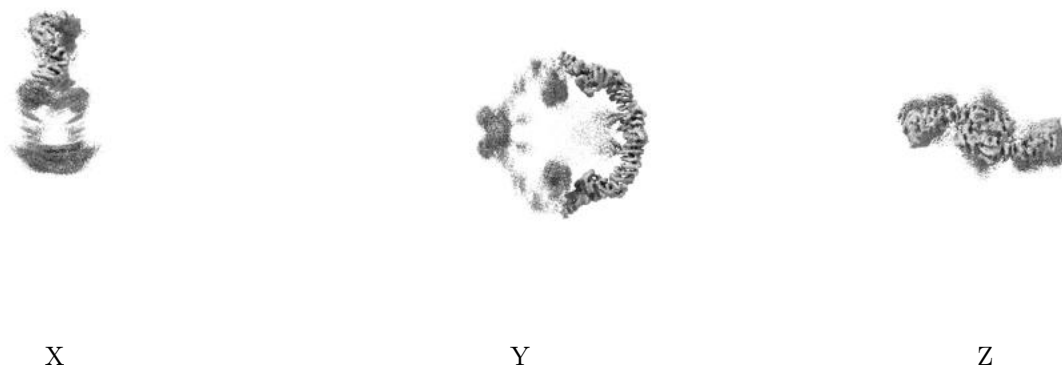
6.5 Orthogonal surface views [i](#)

6.5.1 Primary map



The images above show the 3D surface view of the map at the recommended contour level 0.00376. These images, in conjunction with the slice images, may facilitate assessment of whether an appropriate contour level has been provided.

6.5.2 Raw map



These images show the 3D surface of the raw map. The raw map's contour level was selected so that its surface encloses the same volume as the primary map does at its recommended contour level.

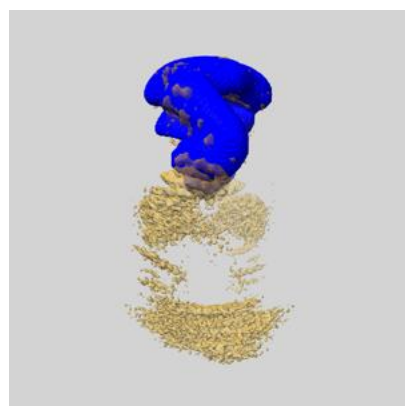
6.6 Mask visualisation [i](#)

This section shows the 3D surface view of the primary map at 50% transparency overlaid with the specified mask at 0% transparency

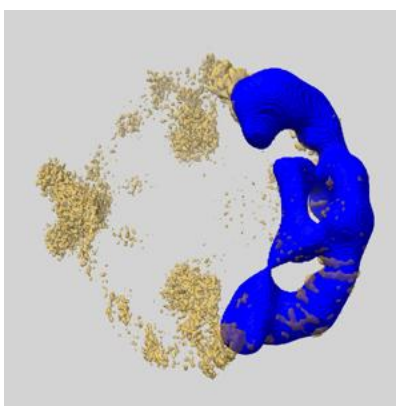
A mask typically either:

- Encompasses the whole structure
- Separates out a domain, a functional unit, a monomer or an area of interest from a larger structure

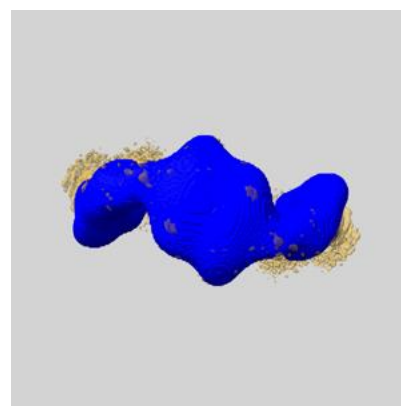
6.6.1 emd_53434_msk_1.map [i](#)



X



Y

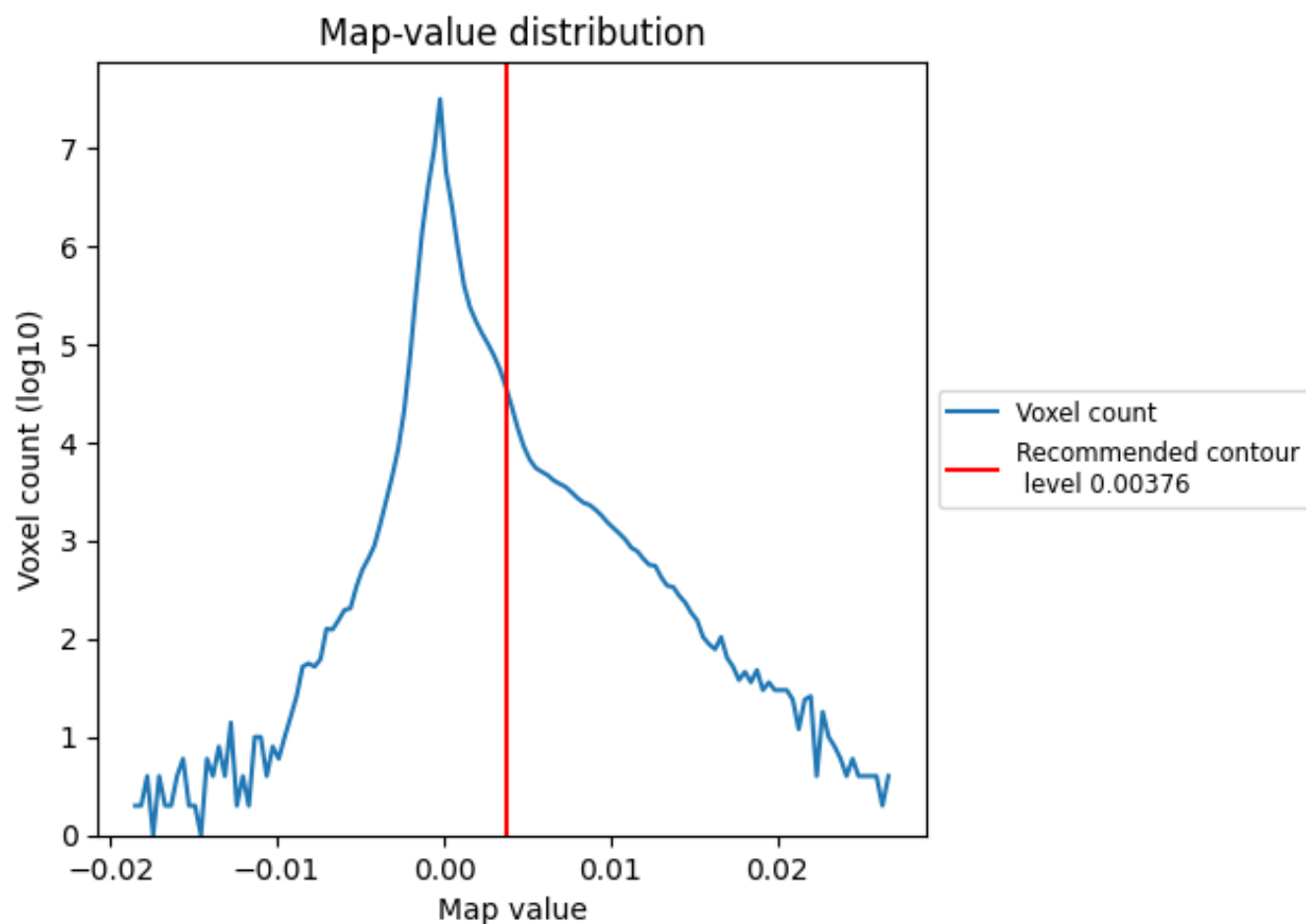


Z

7 Map analysis [i](#)

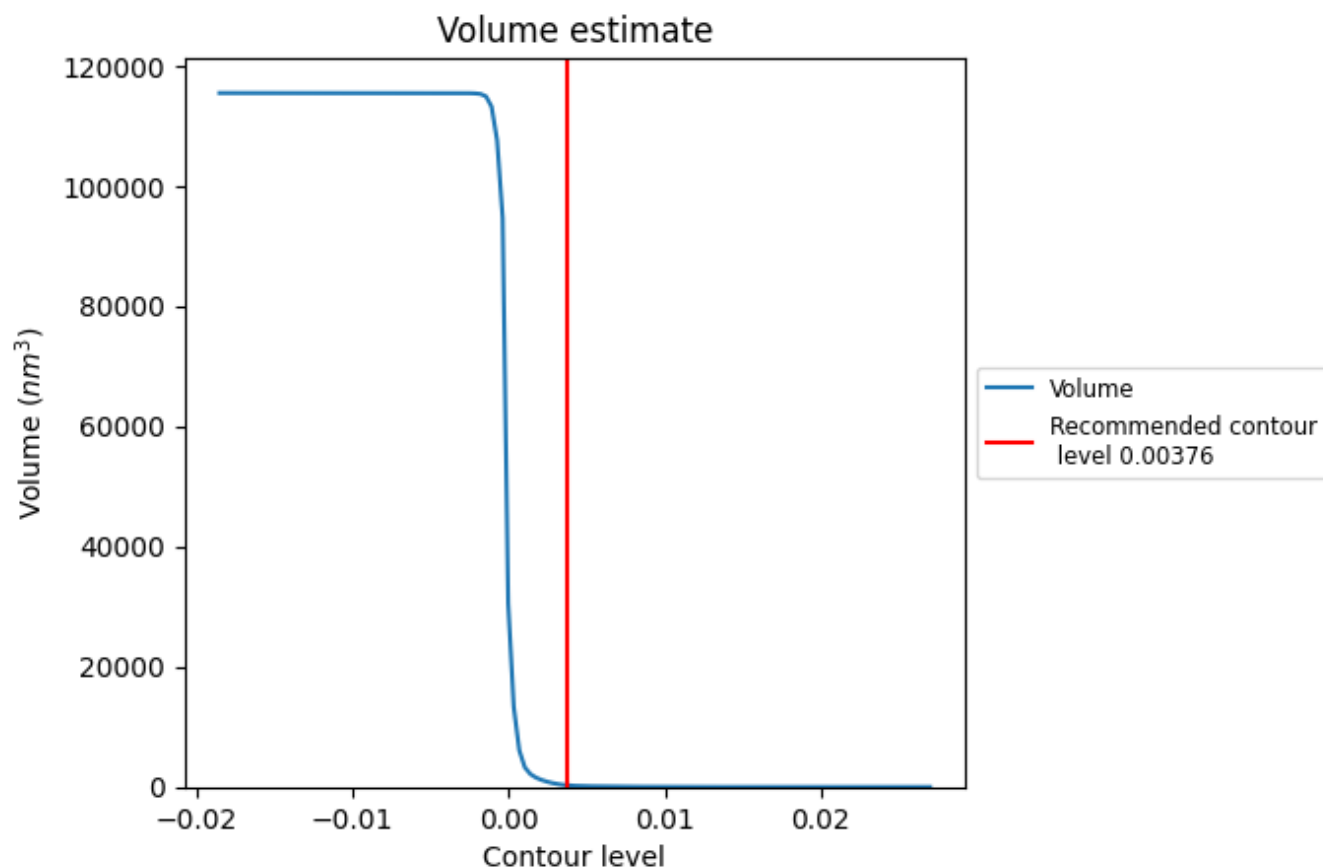
This section contains the results of statistical analysis of the map.

7.1 Map-value distribution [i](#)



The map-value distribution is plotted in 128 intervals along the x-axis. The y-axis is logarithmic. A spike in this graph at zero usually indicates that the volume has been masked.

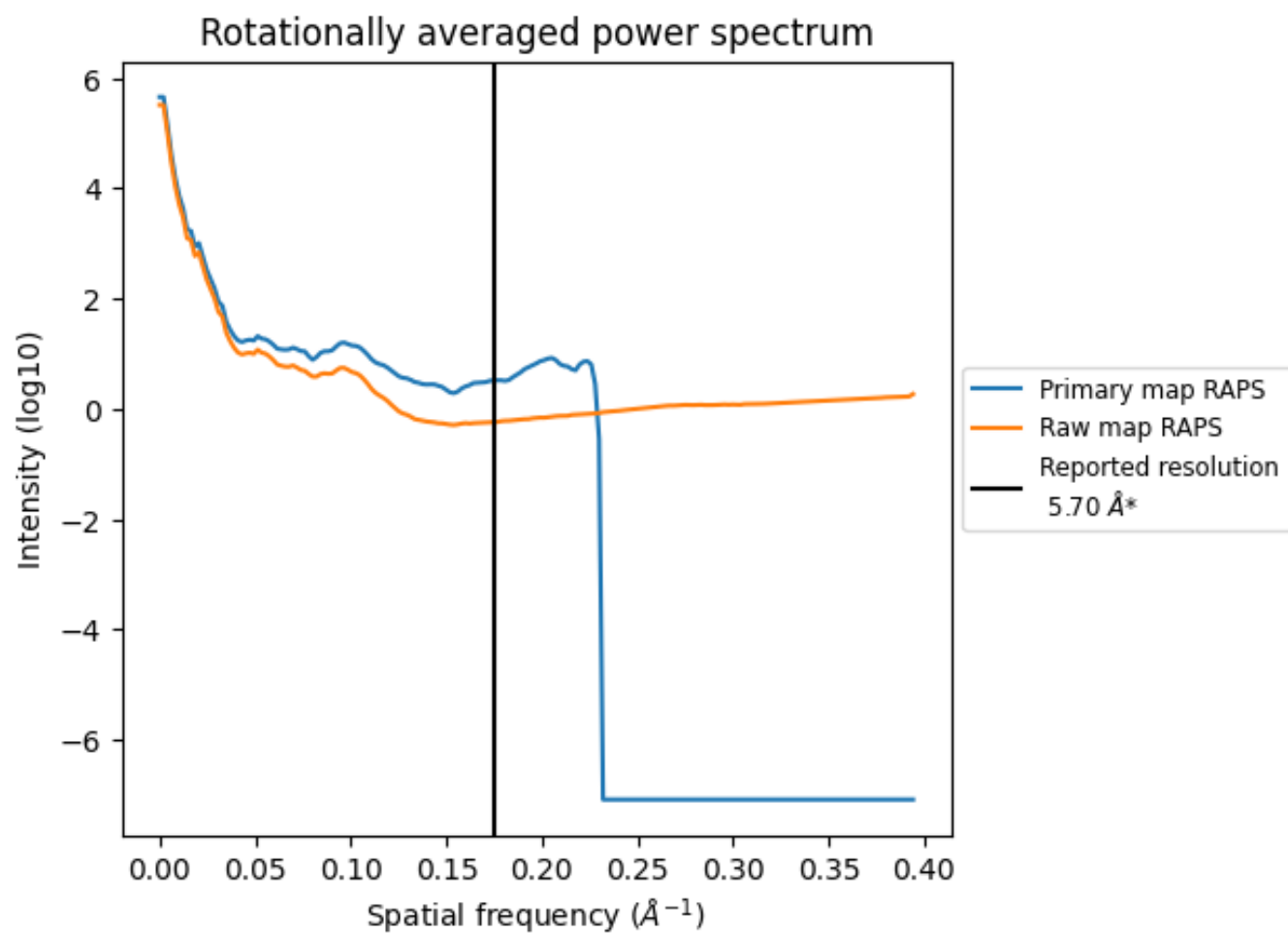
7.2 Volume estimate [i](#)



The volume at the recommended contour level is 279 nm³; this corresponds to an approximate mass of 252 kDa.

The volume estimate graph shows how the enclosed volume varies with the contour level. The recommended contour level is shown as a vertical line and the intersection between the line and the curve gives the volume of the enclosed surface at the given level.

7.3 Rotationally averaged power spectrum ⓘ

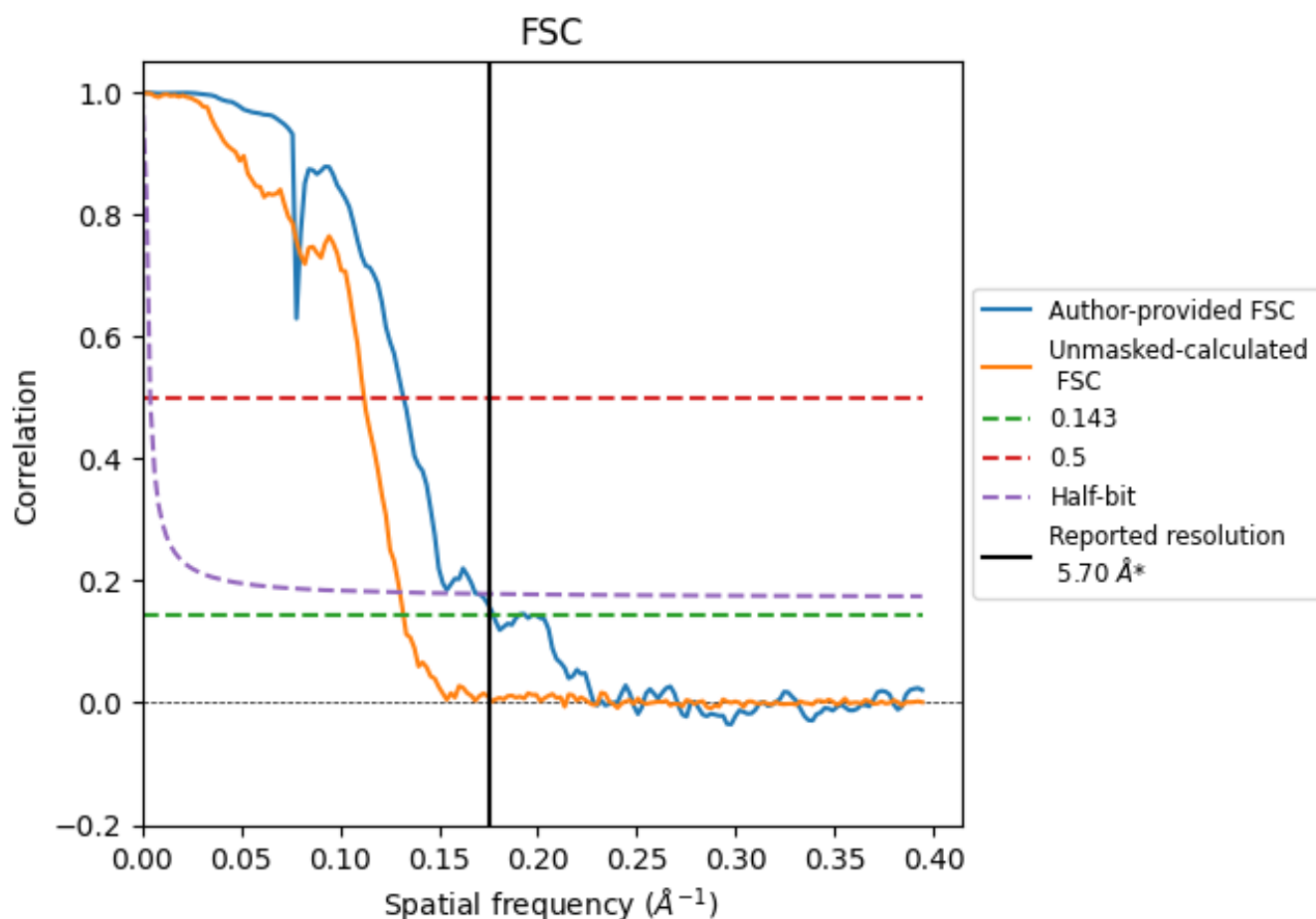


*Reported resolution corresponds to spatial frequency of 0.175 Å⁻¹

8 Fourier-Shell correlation [i](#)

Fourier-Shell Correlation (FSC) is the most commonly used method to estimate the resolution of single-particle and subtomogram-averaged maps. The shape of the curve depends on the imposed symmetry, mask and whether or not the two 3D reconstructions used were processed from a common reference. The reported resolution is shown as a black line. A curve is displayed for the half-bit criterion in addition to lines showing the 0.143 gold standard cut-off and 0.5 cut-off.

8.1 FSC [i](#)



*Reported resolution corresponds to spatial frequency of 0.175 \AA^{-1}

8.2 Resolution estimates [i](#)

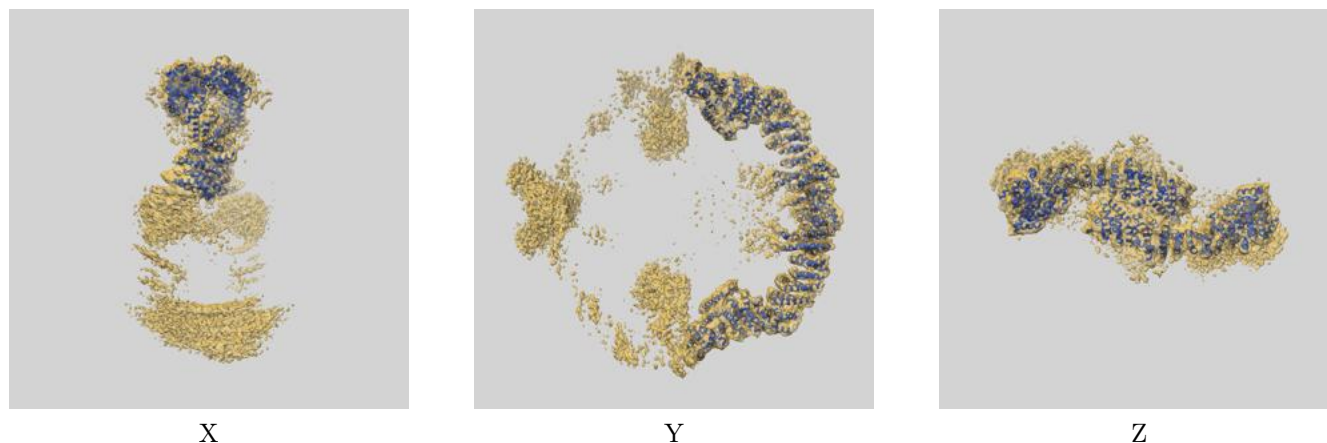
Resolution estimate (Å)	Estimation criterion (FSC cut-off)		
	0.143	0.5	Half-bit
Reported by author	5.70	-	-
Author-provided FSC curve	5.63	7.57	5.90
Unmasked-calculated*	7.57	8.92	7.67

*Resolution estimate based on FSC curve calculated by comparison of deposited half-maps. The value from deposited half-maps intersecting FSC 0.143 CUT-OFF 7.57 differs from the reported value 5.7 by more than 10 %

9 Map-model fit [i](#)

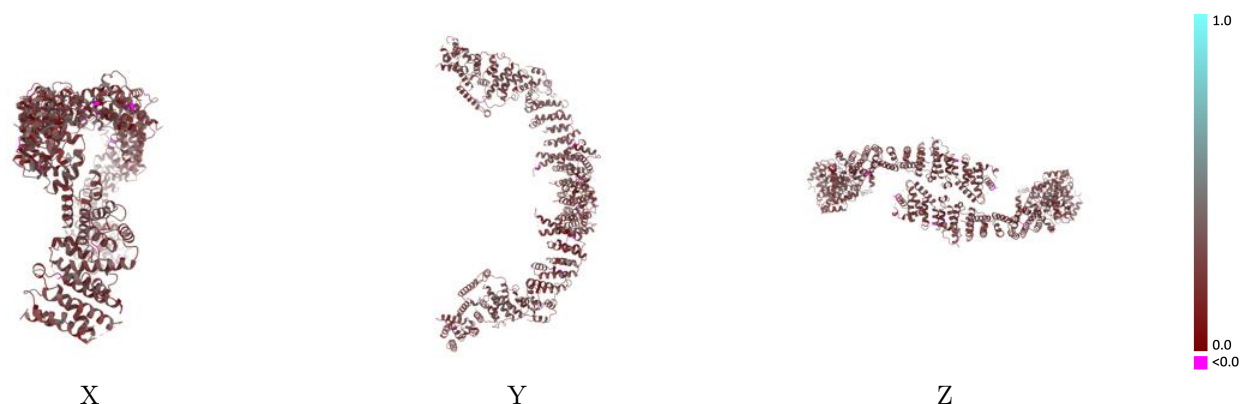
This section contains information regarding the fit between EMDB map EMD-53434 and PDB model 9QX2. Per-residue inclusion information can be found in [section 3](#) on [page 7](#).

9.1 Map-model overlay [i](#)



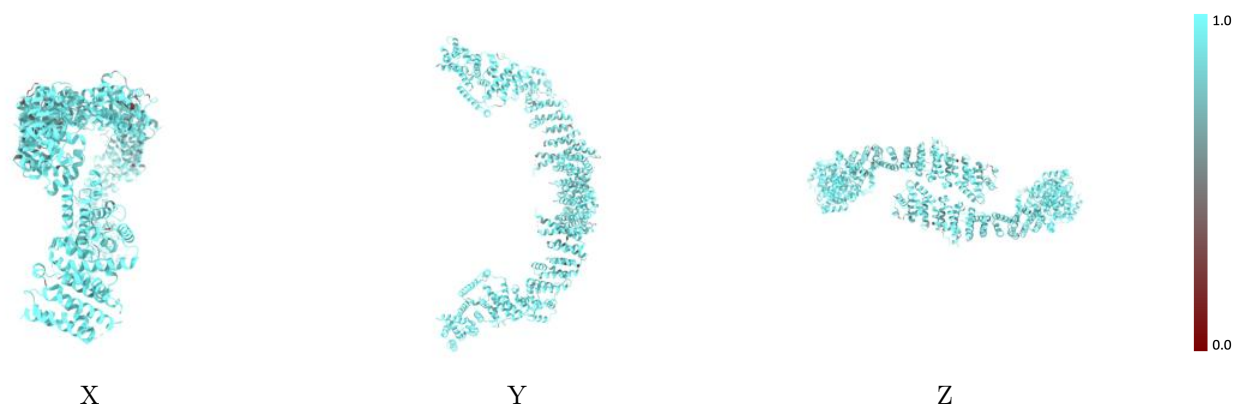
The images above show the 3D surface view of the map at the recommended contour level 0.00376 at 50% transparency in yellow overlaid with a ribbon representation of the model coloured in blue. These images allow for the visual assessment of the quality of fit between the atomic model and the map.

9.2 Q-score mapped to coordinate model [i](#)



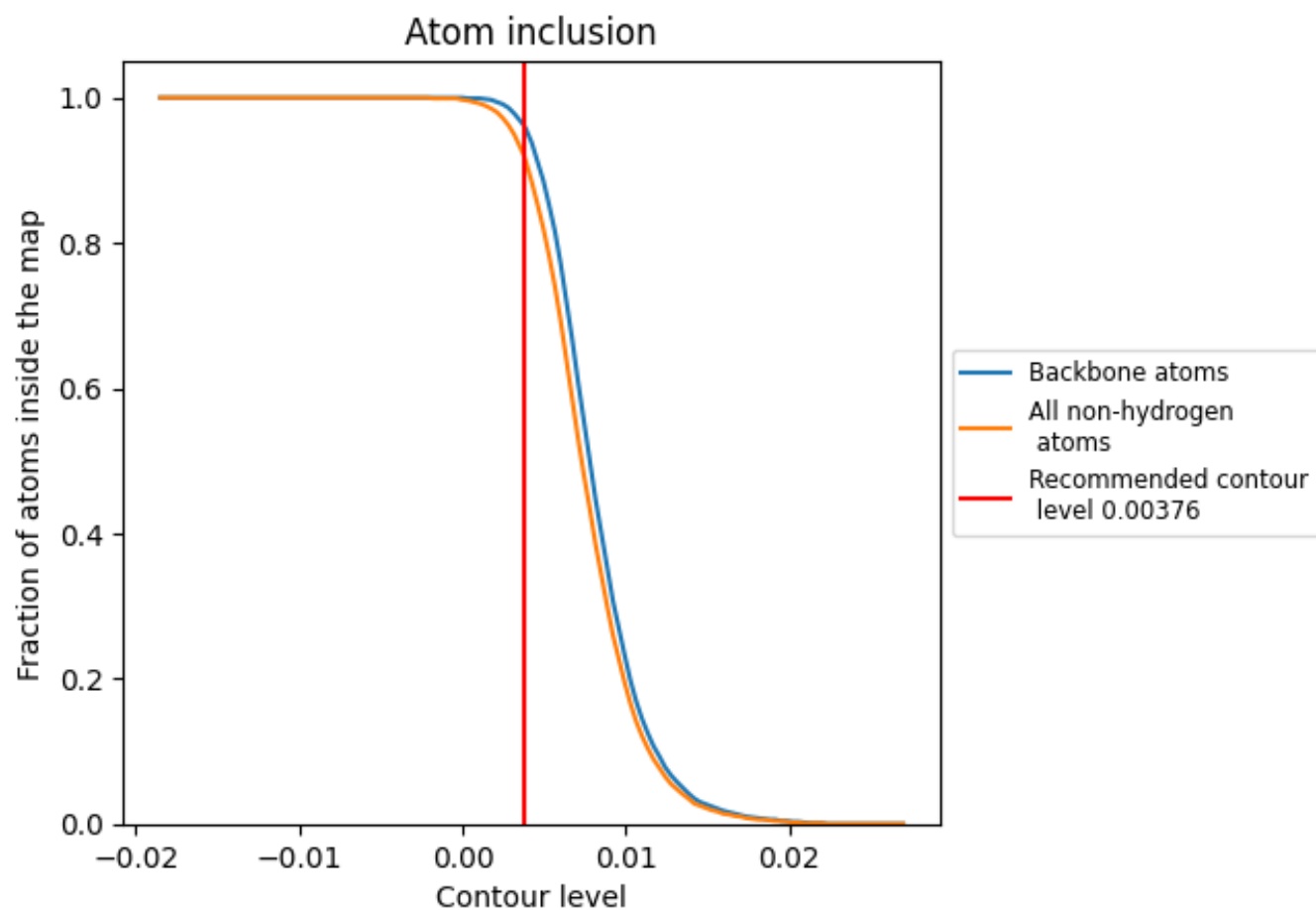
The images above show the model with each residue coloured according its Q-score. This shows their resolvability in the map with higher Q-score values reflecting better resolvability. Please note: Q-score is calculating the resolvability of atoms, and thus high values are only expected at resolutions at which atoms can be resolved. Low Q-score values may therefore be expected for many entries.

9.3 Atom inclusion mapped to coordinate model [i](#)



The images above show the model with each residue coloured according to its atom inclusion. This shows to what extent they are inside the map at the recommended contour level (0.00376).

9.4 Atom inclusion [i](#)



At the recommended contour level, 96% of all backbone atoms, 92% of all non-hydrogen atoms, are inside the map.

9.5 Map-model fit summary ⓘ

The table lists the average atom inclusion at the recommended contour level (0.00376) and Q-score for the entire model and for each chain.

Chain	Atom inclusion	Q-score
All	<div></div> 0.9210	<div></div> 0.2770
A	<div></div> 0.9230	<div></div> 0.2780
B	<div></div> 0.9180	<div></div> 0.2760

