



Full wwPDB X-ray Structure Validation Report ⓘ

Nov 11, 2024 – 05:17 AM EST

PDB ID : 4R16
Title : Structure of UDP-D-MANNAc dehydrogenase from *Pyrococcus horikoshii*
Authors : Pampa, K.J.; Lokanath, N.K.; Rai, R.V.; Kunishima, N.
Deposited on : 2014-08-04
Resolution : 1.55 Å (reported)

This is a Full wwPDB X-ray Structure Validation Report for a publicly released PDB entry.

We welcome your comments at validation@mail.wwpdb.org

A user guide is available at

<https://www.wwpdb.org/validation/2017/XrayValidationReportHelp>

with specific help available everywhere you see the ⓘ symbol.

The types of validation reports are described at

<http://www.wwpdb.org/validation/2017/FAQs#types>.

The following versions of software and data (see [references ⓘ](#)) were used in the production of this report:

MolProbity	:	4.02b-467
Mogul	:	2022.3.0, CSD as543be (2022)
Xtriage (Phenix)	:	1.20.1
EDS	:	3.0
buster-report	:	1.1.7 (2018)
Percentile statistics	:	20231227.v01 (using entries in the PDB archive December 27th 2023)
CCP4	:	9.0.003 (Gargrove)
Density-Fitness	:	1.0.11
Ideal geometry (proteins)	:	Engh & Huber (2001)
Ideal geometry (DNA, RNA)	:	Parkinson et al. (1996)
Validation Pipeline (wwPDB-VP)	:	2.39

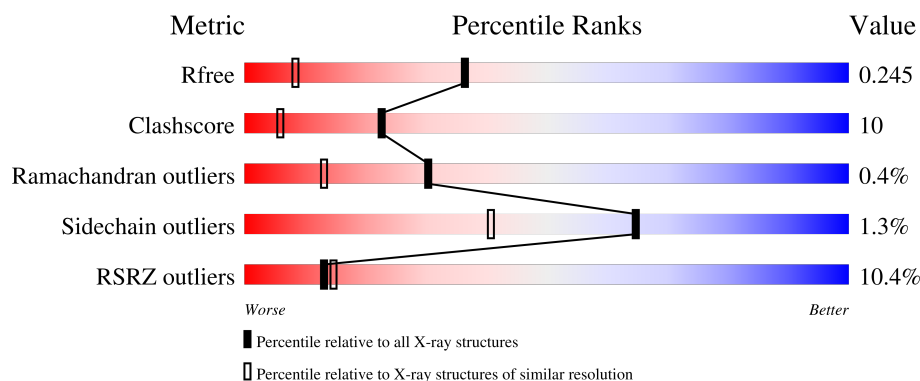
1 Overall quality at a glance

The following experimental techniques were used to determine the structure:

X-RAY DIFFRACTION

The reported resolution of this entry is 1.55 Å.

Percentile scores (ranging between 0-100) for global validation metrics of the entry are shown in the following graphic. The table shows the number of entries on which the scores are based.



Metric	Whole archive (#Entries)	Similar resolution (#Entries, resolution range(Å))
R_{free}	164625	1935 (1.56-1.56)
Clashscore	180529	2073 (1.56-1.56)
Ramachandran outliers	177936	2037 (1.56-1.56)
Sidechain outliers	177891	2034 (1.56-1.56)
RSRZ outliers	164620	1935 (1.56-1.56)

The table below summarises the geometric issues observed across the polymeric chains and their fit to the electron density. The red, orange, yellow and green segments of the lower bar indicate the fraction of residues that contain outliers for ≥ 3 , 2, 1 and 0 types of geometric quality criteria respectively. A grey segment represents the fraction of residues that are not modelled. The numeric value for each fraction is indicated below the corresponding segment, with a dot representing fractions $\leq 5\%$. The upper red bar (where present) indicates the fraction of residues that have poor fit to the electron density. The numeric value is given above the bar.

Mol	Chain	Length	Quality of chain
1	A	418	<div> <div>9%</div> <div>82%</div> <div>17%</div> </div>
1	B	418	<div> <div>11%</div> <div>79%</div> <div>20%</div> <div>.</div> </div>

2 Entry composition [i](#)

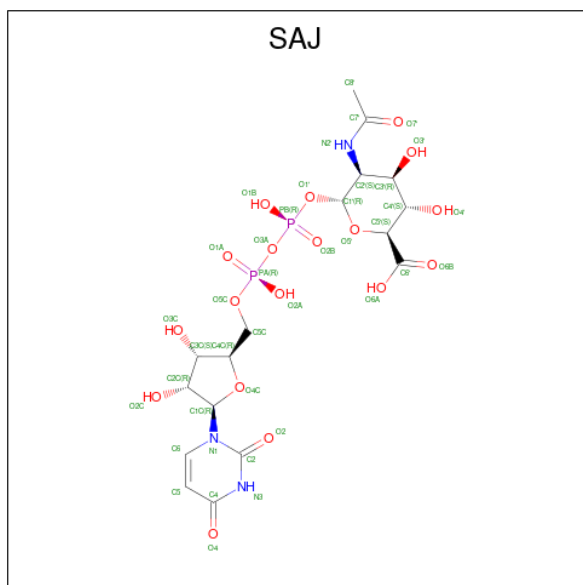
There are 3 unique types of molecules in this entry. The entry contains 7590 atoms, of which 0 are hydrogens and 0 are deuteriums.

In the tables below, the ZeroOcc column contains the number of atoms modelled with zero occupancy, the AltConf column contains the number of residues with at least one atom in alternate conformation and the Trace column contains the number of residues modelled with at most 2 atoms.

- Molecule 1 is a protein called 418aa long hypothetical UDP-N-acetyl-D-mannosaminuronic acid dehydrogenase.

Mol	Chain	Residues	Atoms						ZeroOcc	AltConf	Trace
1	A	418	Total	C	N	O	S	Se	0	0	0
			3249	2072	569	597	2	9			
1	B	418	Total	C	N	O	S	Se	0	0	0
			3249	2072	569	597	2	9			

- Molecule 2 is (2S,3S,4R,5S,6R)-5-acetamido-6-[[[(2R,3S,4R,5R)-5-[2,4-bis(oxidanylidene)pyrimidin-1-yl]-3,4-bis(oxidanyl)oxolan-2-yl]methoxy-oxidanyl-phosphoryl]oxy-oxidanyl-phosphoryl]oxy-3,4-bis(oxidanyl)oxane-2-carboxylic acid (three-letter code: SAJ) (formula: C₁₇H₂₅N₃O₁₈P₂).



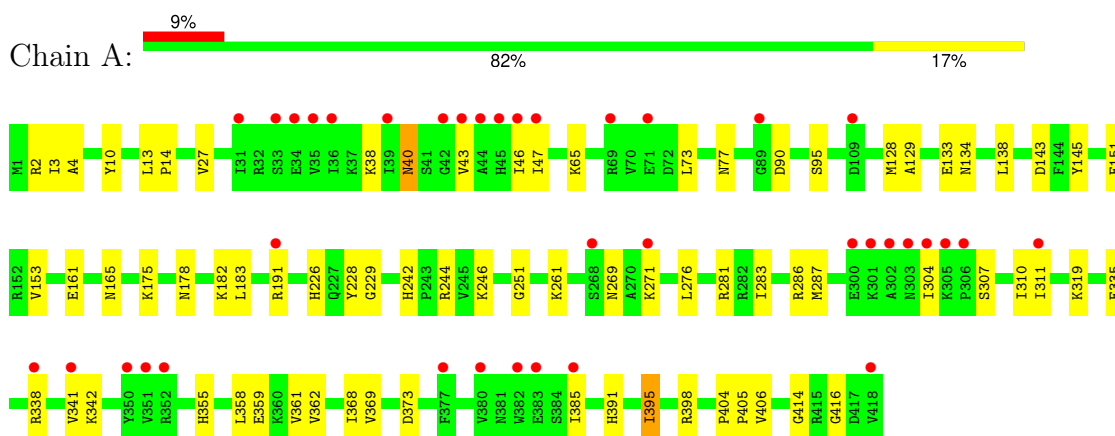
- Molecule 3 is water.

Mol	Chain	Residues	Atoms		ZeroOcc	AltConf
3	A	494	Total 494	O 494	0	0
3	B	518	Total 518	O 518	0	0

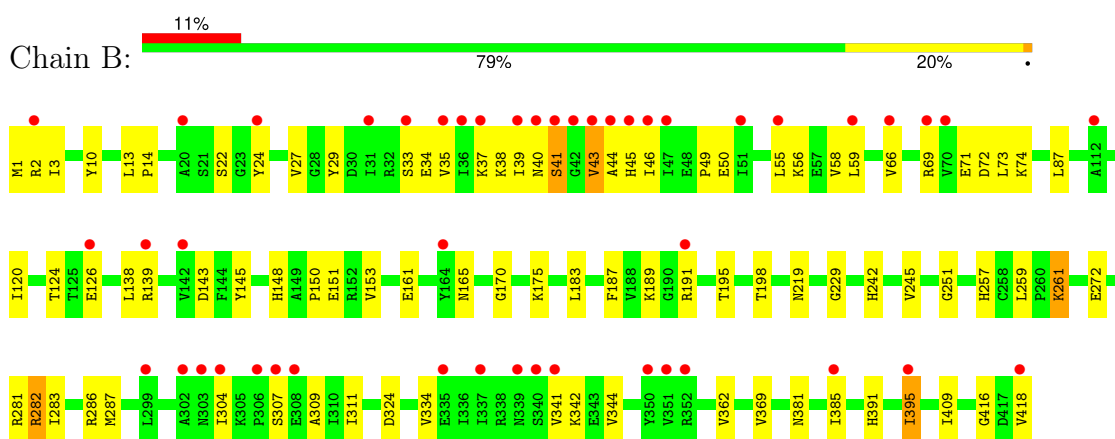
3 Residue-property plots

These plots are drawn for all protein, RNA, DNA and oligosaccharide chains in the entry. The first graphic for a chain summarises the proportions of the various outlier classes displayed in the second graphic. The second graphic shows the sequence view annotated by issues in geometry and electron density. Residues are color-coded according to the number of geometric quality criteria for which they contain at least one outlier: green = 0, yellow = 1, orange = 2 and red = 3 or more. A red dot above a residue indicates a poor fit to the electron density ($RSRZ > 2$). Stretches of 2 or more consecutive residues without any outlier are shown as a green connector. Residues present in the sample, but not in the model, are shown in grey.

- Molecule 1: 418aa long hypothetical UDP-N-acetyl-D-mannosaminuronic acid dehydrogenase



- Molecule 1: 418aa long hypothetical UDP-N-acetyl-D-mannosaminuronic acid dehydrogenase



4 Data and refinement statistics

Property	Value	Source
Space group	P 1	Depositor
Cell constants a, b, c, α , β , γ	54.03Å 74.65Å 73.56Å 66.20° 70.40° 75.20°	Depositor
Resolution (Å)	40.00 – 1.55 40.00 – 1.55	Depositor EDS
% Data completeness (in resolution range)	95.4 (40.00-1.55) 95.4 (40.00-1.55)	Depositor EDS
R_{merge}	(Not available)	Depositor
R_{sym}	(Not available)	Depositor
$\langle I/\sigma(I) \rangle$ ¹	2.15 (at 1.55Å)	Xtriage
Refinement program	CNS 1.1	Depositor
R, R_{free}	0.224 , 0.251 0.220 , 0.245	Depositor DCC
R_{free} test set	6902 reflections (5.08%)	wwPDB-VP
Wilson B-factor (Å ²)	15.9	Xtriage
Anisotropy	0.415	Xtriage
Bulk solvent k_{sol} (e/Å ³), B_{sol} (Å ²)	0.36 , 41.8	EDS
L-test for twinning ²	$\langle L \rangle = 0.46$, $\langle L^2 \rangle = 0.29$	Xtriage
Estimated twinning fraction	No twinning to report.	Xtriage
F_o, F_c correlation	0.94	EDS
Total number of atoms	7590	wwPDB-VP
Average B, all atoms (Å ²)	23.0	wwPDB-VP

Xtriage's analysis on translational NCS is as follows: *The largest off-origin peak in the Patterson function is 10.30% of the height of the origin peak. No significant pseudotranslation is detected.*

¹Intensities estimated from amplitudes.

²Theoretical values of $\langle |L| \rangle$, $\langle L^2 \rangle$ for acentric reflections are 0.5, 0.333 respectively for untwinned datasets, and 0.375, 0.2 for perfectly twinned datasets.

5 Model quality [i](#)

5.1 Standard geometry [i](#)

Bond lengths and bond angles in the following residue types are not validated in this section: SAJ

The Z score for a bond length (or angle) is the number of standard deviations the observed value is removed from the expected value. A bond length (or angle) with $|Z| > 5$ is considered an outlier worth inspection. RMSZ is the root-mean-square of all Z scores of the bond lengths (or angles).

Mol	Chain	Bond lengths		Bond angles	
		RMSZ	$\# Z > 5$	RMSZ	$\# Z > 5$
1	A	0.29	0/3298	0.58	0/4445
1	B	0.29	0/3298	0.59	1/4445 (0.0%)
All	All	0.29	0/6596	0.58	1/8890 (0.0%)

There are no bond length outliers.

All (1) bond angle outliers are listed below:

Mol	Chain	Res	Type	Atoms	Z	Observed(°)	Ideal(°)
1	B	409	ILE	N-CA-C	-5.20	96.97	111.00

There are no chirality outliers.

There are no planarity outliers.

5.2 Too-close contacts [i](#)

In the following table, the Non-H and H(model) columns list the number of non-hydrogen atoms and hydrogen atoms in the chain respectively. The H(added) column lists the number of hydrogen atoms added and optimized by MolProbity. The Clashes column lists the number of clashes within the asymmetric unit, whereas Symm-Clashes lists symmetry-related clashes.

Mol	Chain	Non-H	H(model)	H(added)	Clashes	Symm-Clashes
1	A	3249	0	3348	61	0
1	B	3249	0	3348	77	0
2	A	40	0	23	0	0
2	B	40	0	23	0	0
3	A	494	0	0	12	0
3	B	518	0	0	8	0
All	All	7590	0	6742	137	0

The all-atom clashscore is defined as the number of clashes found per 1000 atoms (including hydrogen atoms). The all-atom clashscore for this structure is 10.

All (137) close contacts within the same asymmetric unit are listed below, sorted by their clash magnitude.

Atom-1	Atom-2	Interatomic distance (Å)	Clash overlap (Å)
1:A:251:GLY:O	1:A:287:MSE:HG2	1.52	1.07
1:A:242:HIS:HD2	1:A:244:ARG:H	1.19	0.87
1:A:369:VAL:HG22	1:A:395:ILE:HG21	1.57	0.85
1:B:369:VAL:HG22	1:B:395:ILE:CG2	2.09	0.83
1:B:369:VAL:HG22	1:B:395:ILE:HG21	1.60	0.81
1:A:2:ARG:H	1:A:77:ASN:HD22	1.26	0.81
1:B:311:ILE:HG12	1:B:341:VAL:HG11	1.65	0.78
1:A:369:VAL:HG22	1:A:395:ILE:CG2	2.12	0.78
1:B:148:HIS:NE2	1:B:150:PRO:HG3	1.99	0.77
1:A:311:ILE:N	1:A:311:ILE:HD12	2.01	0.74
1:A:226:HIS:CE1	1:A:414:GLY:H	2.05	0.74
1:B:1:MSE:HG2	3:B:718:HOH:O	1.87	0.73
1:A:3:ILE:HD11	1:A:183:LEU:HD11	1.73	0.69
1:A:362:VAL:HG21	1:A:385:ILE:HG23	1.73	0.69
1:A:395:ILE:HB	3:A:971:HOH:O	1.92	0.69
1:B:55:LEU:O	1:B:59:LEU:HD13	1.92	0.68
1:A:13:LEU:HB3	1:A:14:PRO:HD3	1.77	0.66
1:A:10:TYR:HA	1:A:46:ILE:CD1	2.26	0.66
1:B:286:ARG:HG3	1:B:287:MSE:HE2	1.79	0.65
1:B:39:ILE:HG21	1:B:66:VAL:HG11	1.78	0.65
1:B:13:LEU:HB3	1:B:14:PRO:HD3	1.79	0.64
1:B:71:GLU:OE2	1:B:74:LYS:HD2	1.96	0.64
1:B:151:GLU:HG3	1:B:153:VAL:HG22	1.79	0.64
1:B:283:ILE:O	1:B:287:MSE:HE3	1.99	0.63
1:A:226:HIS:HE1	1:A:414:GLY:H	1.45	0.62
1:A:369:VAL:HA	1:A:395:ILE:HG23	1.82	0.61
1:A:369:VAL:HA	1:A:395:ILE:CG2	2.30	0.61
1:B:304:ILE:HD11	1:B:391:HIS:CD2	2.35	0.61
1:B:259:LEU:N	1:B:259:LEU:HD12	2.17	0.60
1:B:175:LYS:HG3	3:B:758:HOH:O	2.01	0.59
1:A:395:ILE:HG23	1:A:395:ILE:O	2.02	0.59
1:B:395:ILE:C	1:B:395:ILE:HD13	2.23	0.59
1:B:161:GLU:O	1:B:165:ASN:HB2	2.03	0.59
1:B:334:VAL:HG13	1:B:344:VAL:HG11	1.85	0.59
1:B:40:ASN:O	1:B:41:SER:HB2	2.02	0.58
1:B:145:TYR:CE1	1:B:175:LYS:HD3	2.39	0.58
1:B:369:VAL:HA	1:B:395:ILE:HG23	1.85	0.57

Continued on next page...

Continued from previous page...

Atom-1	Atom-2	Interatomic distance (Å)	Clash overlap (Å)
1:B:2:ARG:HD2	3:B:763:HOH:O	2.05	0.56
1:A:10:TYR:HA	1:A:46:ILE:HD13	1.88	0.56
1:B:257:HIS:HE1	1:B:324:ASP:OD2	1.88	0.56
1:B:219:ASN:HD21	1:B:251:GLY:H	1.54	0.56
1:B:1:MSE:HE3	1:B:24:TYR:CE1	2.42	0.55
1:B:259:LEU:HD12	1:B:259:LEU:H	1.71	0.55
1:B:161:GLU:HB3	1:B:165:ASN:ND2	2.22	0.55
1:B:148:HIS:CD2	1:B:150:PRO:HG3	2.42	0.55
1:B:40:ASN:O	1:B:41:SER:CB	2.55	0.55
1:A:246:LYS:HE2	3:A:1032:HOH:O	2.06	0.54
1:A:395:ILE:C	1:A:395:ILE:HD13	2.28	0.54
1:B:138:LEU:HB3	1:B:143:ASP:HB2	1.89	0.53
1:B:369:VAL:HA	1:B:395:ILE:CG2	2.38	0.53
1:A:2:ARG:H	1:A:77:ASN:ND2	2.02	0.52
1:B:362:VAL:HG21	1:B:385:ILE:HG23	1.91	0.52
1:A:311:ILE:HD13	1:A:341:VAL:HG21	1.91	0.52
1:B:151:GLU:OE2	1:B:153:VAL:HG13	2.09	0.52
1:A:355:HIS:HA	3:A:1019:HOH:O	2.09	0.51
1:B:10:TYR:HA	1:B:46:ILE:CD1	2.40	0.51
1:B:1:MSE:HE3	1:B:24:TYR:HE1	1.76	0.51
1:B:381:ASN:O	1:B:385:ILE:HD13	2.10	0.51
1:B:49:PRO:O	1:B:50:GLU:HB2	2.10	0.51
1:B:35:VAL:O	1:B:39:ILE:HG13	2.11	0.51
1:A:368:ILE:O	1:A:395:ILE:HG22	2.11	0.51
1:B:58:VAL:HG23	1:B:59:LEU:HD12	1.92	0.50
1:B:242:HIS:HB3	1:B:245:VAL:HB	1.93	0.50
1:A:178:ASN:O	1:A:182:LYS:HG2	2.10	0.50
1:B:34:GLU:O	1:B:38:LYS:HG3	2.10	0.50
1:B:307:SER:O	1:B:342:LYS:HB2	2.11	0.50
1:B:395:ILE:HG23	1:B:395:ILE:O	2.12	0.50
1:A:47:ILE:O	1:A:47:ILE:HG13	2.12	0.50
1:B:45:HIS:CD2	1:B:45:HIS:H	2.29	0.50
1:B:151:GLU:CG	1:B:153:VAL:HG22	2.42	0.50
1:B:170:GLY:HA2	1:B:195:THR:O	2.12	0.49
1:B:3:ILE:HD11	1:B:183:LEU:HD11	1.94	0.49
1:B:2:ARG:NH2	1:B:27:VAL:HG21	2.28	0.49
1:A:27:VAL:HG22	1:A:65:LYS:HD3	1.95	0.49
1:B:286:ARG:HG3	1:B:287:MSE:CE	2.43	0.49
1:B:229:GLY:HA2	1:B:416:GLY:O	2.13	0.49
1:B:33:SER:O	1:B:37:LYS:HG3	2.13	0.49
1:B:259:LEU:H	1:B:259:LEU:CD1	2.26	0.48

Continued on next page...

Continued from previous page...

Atom-1	Atom-2	Interatomic distance (Å)	Clash overlap (Å)
1:B:69:ARG:HB2	1:B:72:ASP:OD2	2.14	0.48
1:B:1:MSE:HB2	1:B:24:TYR:CE1	2.49	0.48
1:A:269:ASN:HB3	3:A:781:HOH:O	2.13	0.48
1:A:4:ALA:HB1	1:A:73:LEU:HD22	1.96	0.47
1:B:309:ALA:O	1:B:341:VAL:HG13	2.14	0.47
1:A:134:ASN:HB3	3:A:799:HOH:O	2.15	0.47
1:B:43:VAL:HA	1:B:55:LEU:HD23	1.96	0.47
1:A:191:ARG:HD2	3:A:753:HOH:O	2.13	0.47
1:A:271:LYS:HE3	3:A:822:HOH:O	2.14	0.47
1:A:406:VAL:HG23	3:A:798:HOH:O	2.15	0.47
1:A:359:GLU:CD	1:A:359:GLU:H	2.19	0.46
1:B:126:GLU:HG2	3:B:607:HOH:O	2.16	0.46
1:B:43:VAL:HG11	1:B:56:LYS:HG3	1.97	0.46
1:A:358:LEU:O	1:A:361:VAL:HG12	2.17	0.45
1:B:29:TYR:HB2	1:B:73:LEU:HD21	1.98	0.45
1:B:362:VAL:HG21	1:B:385:ILE:CG2	2.47	0.45
1:B:282:ARG:HA	1:B:282:ARG:HE	1.81	0.44
1:A:276:LEU:C	1:A:276:LEU:HD23	2.38	0.44
1:A:319:LYS:HD3	3:A:688:HOH:O	2.17	0.44
1:B:139:ARG:HD2	1:B:139:ARG:N	2.32	0.43
1:B:272:GLU:CD	3:B:1118:HOH:O	2.56	0.43
1:B:286:ARG:CG	1:B:287:MSE:HE2	2.48	0.43
1:A:145:TYR:CE1	1:A:175:LYS:HD3	2.53	0.43
1:A:311:ILE:N	1:A:311:ILE:CD1	2.71	0.43
1:A:283:ILE:O	1:A:286:ARG:HG2	2.18	0.43
1:A:304:ILE:HD11	1:A:391:HIS:CG	2.53	0.43
1:A:10:TYR:HA	1:A:46:ILE:HD12	1.98	0.43
1:A:27:VAL:HG22	1:A:65:LYS:CG	2.48	0.43
1:A:40:ASN:HD22	1:A:40:ASN:HA	1.63	0.43
1:B:309:ALA:O	1:B:341:VAL:CG1	2.67	0.43
1:A:151:GLU:OE1	1:A:153:VAL:HG13	2.18	0.43
1:B:87:LEU:HG	1:B:261:LYS:HB2	2.01	0.42
1:B:304:ILE:HD11	1:B:391:HIS:CG	2.54	0.42
1:B:418:VAL:O	1:B:418:VAL:HG23	2.19	0.42
1:A:161:GLU:HB3	1:A:165:ASN:ND2	2.34	0.42
1:B:151:GLU:HG3	1:B:153:VAL:H	1.84	0.42
1:A:310:ILE:C	1:A:311:ILE:HD12	2.39	0.42
1:A:228:TYR:O	1:B:198:THR:HG21	2.20	0.42
1:B:282:ARG:HD2	3:B:621:HOH:O	2.20	0.42
1:A:38:LYS:HE3	1:A:43:VAL:CG1	2.49	0.42
1:A:129:ALA:O	1:A:133:GLU:HG3	2.20	0.42

Continued on next page...

Continued from previous page...

Atom-1	Atom-2	Interatomic distance (Å)	Clash overlap (Å)
1:A:229:GLY:HA2	1:A:416:GLY:O	2.20	0.42
1:A:404:PRO:HA	1:A:405:PRO:HD3	1.85	0.42
1:B:191:ARG:HD2	3:B:666:HOH:O	2.19	0.41
1:A:226:HIS:HD2	3:A:626:HOH:O	2.02	0.41
1:A:307:SER:O	1:A:342:LYS:HB2	2.21	0.41
1:B:259:LEU:N	1:B:259:LEU:CD1	2.82	0.41
1:A:95:SER:HA	3:A:1037:HOH:O	2.21	0.41
1:A:287:MSE:HA	1:A:287:MSE:HE2	2.02	0.41
1:A:319:LYS:HE2	3:A:690:HOH:O	2.21	0.41
1:A:373:ASP:HB3	1:A:398:ARG:HB3	2.03	0.41
1:A:335:GLU:HA	1:A:338:ARG:HE	1.86	0.41
1:A:38:LYS:HD2	1:A:43:VAL:O	2.22	0.40
1:A:128:MSE:HA	1:A:128:MSE:HE2	2.03	0.40
1:B:189:LYS:HB3	3:B:827:HOH:O	2.21	0.40
1:A:138:LEU:HB3	1:A:143:ASP:HB2	2.02	0.40
1:B:120:ILE:HD12	1:B:124:THR:HB	2.03	0.40
1:B:1:MSE:HB2	1:B:24:TYR:CD1	2.56	0.40
1:B:22:SER:OG	1:B:187:PHE:HB3	2.22	0.40

There are no symmetry-related clashes.

5.3 Torsion angles ⓘ

5.3.1 Protein backbone ⓘ

In the following table, the Percentiles column shows the percent Ramachandran outliers of the chain as a percentile score with respect to all X-ray entries followed by that with respect to entries of similar resolution.

The Analysed column shows the number of residues for which the backbone conformation was analysed, and the total number of residues.

Mol	Chain	Analysed	Favoured	Allowed	Outliers	Percentiles	
1	A	416/418 (100%)	403 (97%)	13 (3%)	0	100	100
1	B	416/418 (100%)	398 (96%)	15 (4%)	3 (1%)	19	5
All	All	832/836 (100%)	801 (96%)	28 (3%)	3 (0%)	30	13

All (3) Ramachandran outliers are listed below:

Mol	Chain	Res	Type
1	B	43	VAL
1	B	44	ALA
1	B	41	SER

5.3.2 Protein sidechains [i](#)

In the following table, the Percentiles column shows the percent sidechain outliers of the chain as a percentile score with respect to all X-ray entries followed by that with respect to entries of similar resolution.

The Analysed column shows the number of residues for which the sidechain conformation was analysed, and the total number of residues.

Mol	Chain	Analysed	Rotameric	Outliers	Percentiles	
1	A	348/339 (103%)	343 (99%)	5 (1%)	62	37
1	B	348/339 (103%)	344 (99%)	4 (1%)	70	49
All	All	696/678 (103%)	687 (99%)	9 (1%)	65	41

All (9) residues with a non-rotameric sidechain are listed below:

Mol	Chain	Res	Type
1	A	40	ASN
1	A	90	ASP
1	A	261	LYS
1	A	281	ARG
1	A	395	ILE
1	B	261	LYS
1	B	281	ARG
1	B	282	ARG
1	B	395	ILE

Sometimes sidechains can be flipped to improve hydrogen bonding and reduce clashes. All (14) such sidechains are listed below:

Mol	Chain	Res	Type
1	A	40	ASN
1	A	77	ASN
1	A	226	HIS
1	A	242	HIS
1	A	303	ASN
1	A	327	ASN
1	A	339	ASN

Continued on next page...

Continued from previous page...

Mol	Chain	Res	Type
1	B	40	ASN
1	B	45	HIS
1	B	219	ASN
1	B	257	HIS
1	B	303	ASN
1	B	327	ASN
1	B	399	ASN

5.3.3 RNA ⓘ

There are no RNA molecules in this entry.

5.4 Non-standard residues in protein, DNA, RNA chains ⓘ

There are no non-standard protein/DNA/RNA residues in this entry.

5.5 Carbohydrates ⓘ

There are no oligosaccharides in this entry.

5.6 Ligand geometry ⓘ

2 ligands are modelled in this entry.

In the following table, the Counts columns list the number of bonds (or angles) for which Mogul statistics could be retrieved, the number of bonds (or angles) that are observed in the model and the number of bonds (or angles) that are defined in the Chemical Component Dictionary. The Link column lists molecule types, if any, to which the group is linked. The Z score for a bond length (or angle) is the number of standard deviations the observed value is removed from the expected value. A bond length (or angle) with $|Z| > 2$ is considered an outlier worth inspection. RMSZ is the root-mean-square of all Z scores of the bond lengths (or angles).

Mol	Type	Chain	Res	Link	Bond lengths			Bond angles		
					Counts	RMSZ	$\# Z > 2$	Counts	RMSZ	$\# Z > 2$
2	SAJ	A	501	-	41,42,42	1.82	10 (24%)	60,64,64	1.87	13 (21%)
2	SAJ	B	501	-	41,42,42	1.89	11 (26%)	60,64,64	1.88	13 (21%)

In the following table, the Chirals column lists the number of chiral outliers, the number of chiral centers analysed, the number of these observed in the model and the number defined in the Chemical Component Dictionary. Similar counts are reported in the Torsion and Rings columns.

'-' means no outliers of that kind were identified.

Mol	Type	Chain	Res	Link	Chirals	Torsions	Rings
2	SAJ	A	501	-	-	4/28/65/65	0/3/3/3
2	SAJ	B	501	-	-	4/28/65/65	0/3/3/3

All (21) bond length outliers are listed below:

Mol	Chain	Res	Type	Atoms	Z	Observed(Å)	Ideal(Å)
2	B	501	SAJ	PB-O3A	5.96	1.65	1.59
2	A	501	SAJ	PB-O3A	5.27	1.65	1.59
2	B	501	SAJ	O6B-C6'	5.20	1.37	1.22
2	A	501	SAJ	O6B-C6'	5.19	1.37	1.22
2	A	501	SAJ	PB-O1'	3.69	1.70	1.59
2	B	501	SAJ	PB-O1'	3.36	1.69	1.59
2	A	501	SAJ	C2-N1	2.86	1.42	1.38
2	B	501	SAJ	C1'-C2'	-2.82	1.48	1.53
2	B	501	SAJ	C2-N1	2.82	1.42	1.38
2	A	501	SAJ	C7'-N2'	2.72	1.43	1.34
2	B	501	SAJ	C7'-N2'	2.72	1.43	1.34
2	A	501	SAJ	C1'-C2'	-2.53	1.49	1.53
2	B	501	SAJ	PB-O1B	-2.40	1.44	1.55
2	B	501	SAJ	PA-O3A	2.35	1.62	1.59
2	B	501	SAJ	O5'-C5'	2.26	1.47	1.43
2	A	501	SAJ	PB-O1B	-2.25	1.44	1.55
2	B	501	SAJ	C6-C5	2.24	1.40	1.35
2	A	501	SAJ	O6A-C6'	2.19	1.37	1.30
2	A	501	SAJ	O5'-C5'	2.19	1.47	1.43
2	A	501	SAJ	C6-C5	2.14	1.40	1.35
2	B	501	SAJ	O6A-C6'	2.01	1.37	1.30

All (26) bond angle outliers are listed below:

Mol	Chain	Res	Type	Atoms	Z	Observed(°)	Ideal(°)
2	B	501	SAJ	O5'-C1'-O1'	-7.94	100.99	111.36
2	A	501	SAJ	O5'-C1'-O1'	-7.74	101.25	111.36
2	A	501	SAJ	O1'-PB-O2B	-4.43	95.65	109.81
2	B	501	SAJ	O1'-PB-O2B	-4.37	95.85	109.81
2	B	501	SAJ	O6A-C6'-O6B	4.34	133.93	124.08
2	A	501	SAJ	O6A-C6'-O6B	4.32	133.88	124.08
2	B	501	SAJ	O4-C4-C5	-3.74	118.71	125.16
2	A	501	SAJ	O4-C4-C5	-3.72	118.74	125.16
2	B	501	SAJ	O5'-C1'-C2'	3.09	116.43	110.59
2	A	501	SAJ	O5'-C1'-C2'	3.01	116.29	110.59

Continued on next page...

Continued from previous page...

Mol	Chain	Res	Type	Atoms	Z	Observed(°)	Ideal(°)
2	B	501	SAJ	O4-C4-N3	2.85	123.41	119.27
2	A	501	SAJ	O4-C4-N3	2.71	123.20	119.27
2	A	501	SAJ	O6B-C6'-C5'	-2.65	111.25	120.81
2	A	501	SAJ	C6-N1-C2	-2.62	117.81	121.00
2	B	501	SAJ	O6B-C6'-C5'	-2.62	111.36	120.81
2	B	501	SAJ	C6-N1-C2	-2.61	117.81	121.00
2	A	501	SAJ	C3'-C2'-N2'	-2.38	106.23	110.62
2	A	501	SAJ	C5-C4-N3	2.32	118.05	114.80
2	A	501	SAJ	C2C-C1C-N1	2.27	119.56	113.25
2	B	501	SAJ	C5-C4-N3	2.20	117.89	114.80
2	A	501	SAJ	O1B-PB-O1'	2.12	115.34	106.70
2	B	501	SAJ	C3'-C2'-N2'	-2.12	106.72	110.62
2	B	501	SAJ	O1B-PB-O1'	2.12	115.31	106.70
2	B	501	SAJ	C2C-C1C-N1	2.06	118.99	113.25
2	A	501	SAJ	N3-C2-N1	2.05	117.56	114.89
2	B	501	SAJ	C6-C5-C4	-2.04	116.93	119.53

There are no chirality outliers.

All (8) torsion outliers are listed below:

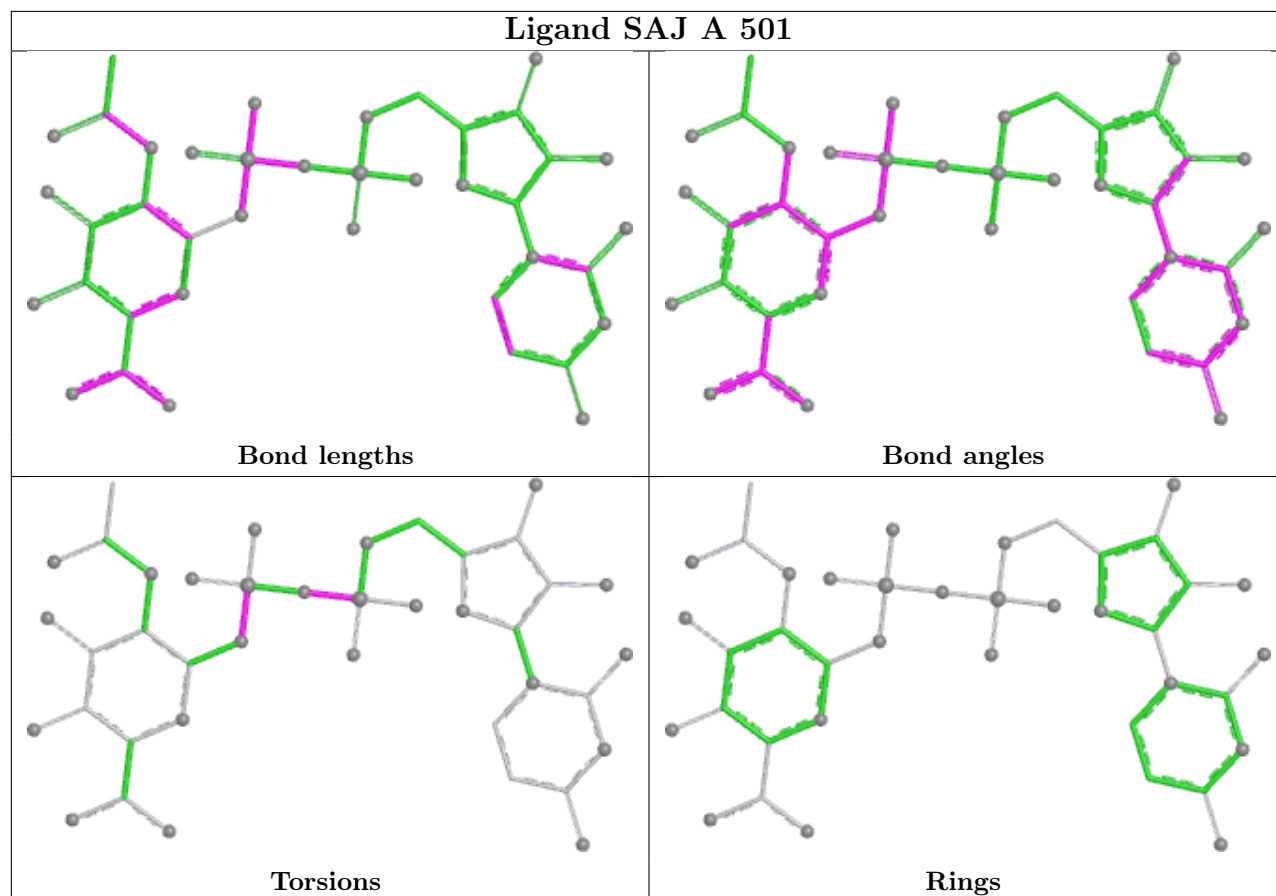
Mol	Chain	Res	Type	Atoms
2	A	501	SAJ	C1'-O1'-PB-O1B
2	A	501	SAJ	C1'-O1'-PB-O2B
2	A	501	SAJ	PB-O3A-PA-O2A
2	B	501	SAJ	PB-O3A-PA-O2A
2	A	501	SAJ	PB-O3A-PA-O1A
2	B	501	SAJ	PB-O3A-PA-O1A
2	B	501	SAJ	C1'-O1'-PB-O1B
2	B	501	SAJ	C1'-O1'-PB-O2B

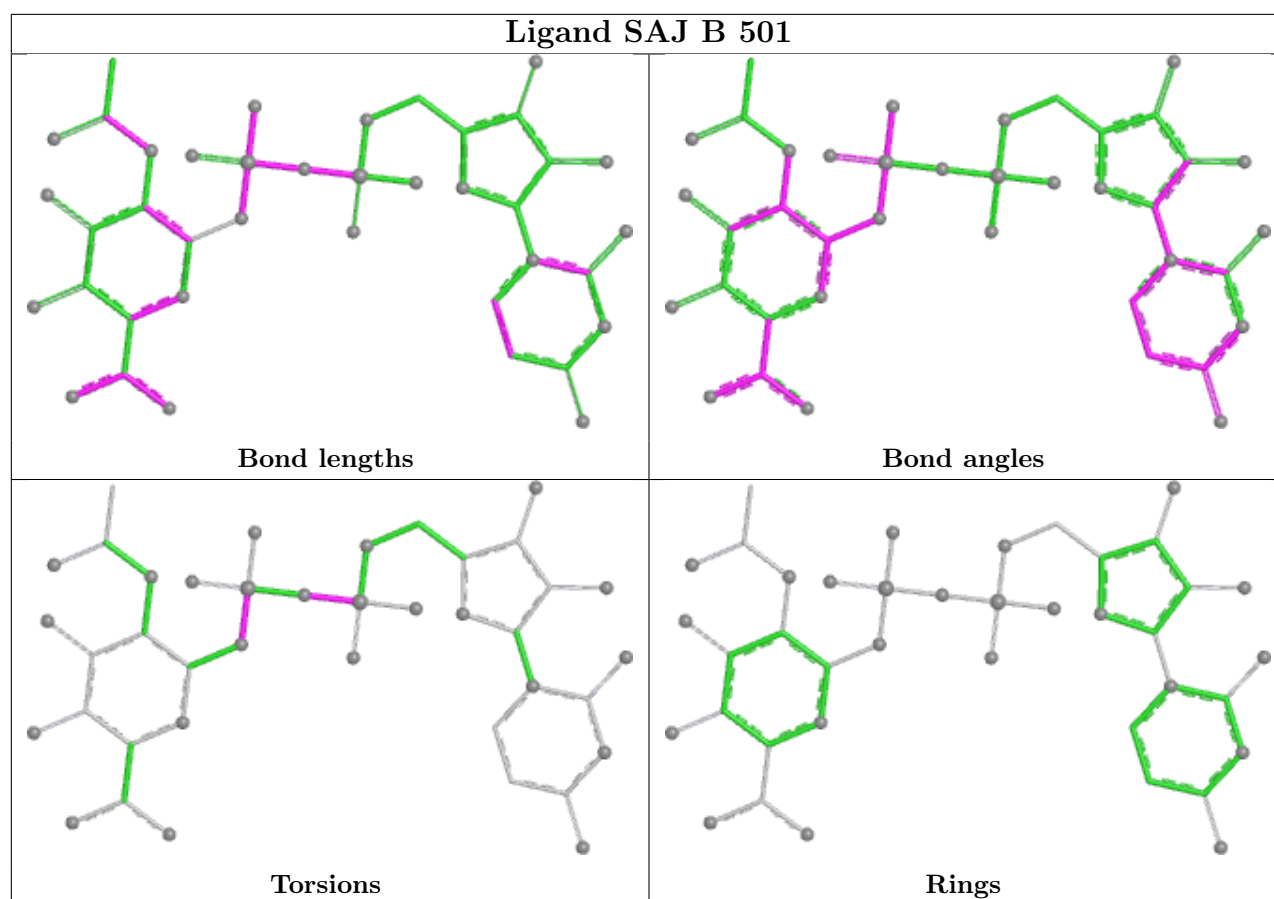
There are no ring outliers.

No monomer is involved in short contacts.

The following is a two-dimensional graphical depiction of Mogul quality analysis of bond lengths, bond angles, torsion angles, and ring geometry for all instances of the Ligand of Interest. In addition, ligands with molecular weight > 250 and outliers as shown on the validation Tables will also be included. For torsion angles, if less than 5% of the Mogul distribution of torsion angles is within 10 degrees of the torsion angle in question, then that torsion angle is considered an outlier. Any bond that is central to one or more torsion angles identified as an outlier by Mogul will be highlighted in the graph. For rings, the root-mean-square deviation (RMSD) between the ring in question and similar rings identified by Mogul is calculated over all ring torsion angles. If the average RMSD is greater than 60 degrees and the minimal RMSD between the ring in question and

any Mogul-identified rings is also greater than 60 degrees, then that ring is considered an outlier. The outliers are highlighted in purple. The color gray indicates Mogul did not find sufficient equivalents in the CSD to analyse the geometry.





5.7 Other polymers [i](#)

There are no such residues in this entry.

5.8 Polymer linkage issues [i](#)

There are no chain breaks in this entry.

6 Fit of model and data

6.1 Protein, DNA and RNA chains

In the following table, the column labelled ‘#RSRZ> 2’ contains the number (and percentage) of RSRZ outliers, followed by percent RSRZ outliers for the chain as percentile scores relative to all X-ray entries and entries of similar resolution. The OWAB column contains the minimum, median, 95th percentile and maximum values of the occupancy-weighted average B-factor per residue. The column labelled ‘Q< 0.9’ lists the number of (and percentage) of residues with an average occupancy less than 0.9.

Mol	Chain	Analysed	<RSRZ>	#RSRZ>2	OWAB(Å ²)	Q<0.9
1	A	409/418 (97%)	0.46	38 (9%) 16 18	10, 19, 37, 48	0
1	B	409/418 (97%)	0.75	47 (11%) 11 13	10, 22, 39, 51	0
All	All	818/836 (97%)	0.61	85 (10%) 13 15	10, 20, 38, 51	0

All (85) RSRZ outliers are listed below:

Mol	Chain	Res	Type	RSRZ
1	B	43	VAL	6.3
1	B	44	ALA	5.4
1	B	42	GLY	5.2
1	B	41	SER	4.9
1	B	304	ILE	4.6
1	A	44	ALA	4.6
1	A	47	ILE	4.5
1	A	304	ILE	4.5
1	B	341	VAL	4.3
1	B	36	ILE	4.3
1	A	383	GLU	3.9
1	B	40	ASN	3.9
1	B	302	ALA	3.8
1	B	39	ILE	3.7
1	B	51	ILE	3.7
1	B	306	PRO	3.6
1	B	31	ILE	3.5
1	A	303	ASN	3.4
1	B	303	ASN	3.4
1	B	139	ARG	3.4
1	A	31	ILE	3.4
1	A	42	GLY	3.3
1	A	36	ILE	3.3
1	A	302	ALA	3.2

Continued on next page...

Continued from previous page...

Mol	Chain	Res	Type	RSRZ
1	A	305	LYS	3.2
1	B	46	ILE	3.2
1	A	69	ARG	3.1
1	A	39	ILE	3.1
1	A	418	VAL	3.1
1	A	34	GLU	3.1
1	A	351	VAL	3.0
1	A	306	PRO	3.0
1	A	338	ARG	3.0
1	A	382	TRP	2.9
1	B	395	ILE	2.8
1	B	351	VAL	2.8
1	A	350	TYR	2.8
1	B	191	ARG	2.7
1	B	37	LYS	2.7
1	B	350	TYR	2.7
1	B	340	SER	2.7
1	A	352	ARG	2.7
1	B	385	ILE	2.7
1	B	418	VAL	2.7
1	B	339	ASN	2.6
1	B	24	TYR	2.6
1	A	33	SER	2.6
1	B	45	HIS	2.5
1	B	35	VAL	2.5
1	B	142	VAL	2.5
1	A	35	VAL	2.4
1	A	71	GLU	2.4
1	B	164	TYR	2.4
1	B	69	ARG	2.4
1	B	308	GLU	2.4
1	B	55	LEU	2.4
1	A	43	VAL	2.4
1	A	385	ILE	2.3
1	A	46	ILE	2.3
1	B	33	SER	2.3
1	B	307	SER	2.3
1	B	126	GLU	2.3
1	B	335	GLU	2.3
1	A	89	GLY	2.3
1	A	300	GLU	2.2
1	B	299	LEU	2.2

Continued on next page...

Continued from previous page...

Mol	Chain	Res	Type	RSRZ
1	A	301	LYS	2.2
1	B	66	VAL	2.1
1	B	20	ALA	2.1
1	B	59	LEU	2.1
1	B	352	ARG	2.1
1	A	45	HIS	2.1
1	A	341	VAL	2.1
1	B	70	VAL	2.1
1	B	2	ARG	2.1
1	A	311	ILE	2.1
1	B	47	ILE	2.1
1	A	191	ARG	2.1
1	A	109	ASP	2.1
1	A	377	PHE	2.1
1	B	337	ILE	2.1
1	A	271	LYS	2.0
1	B	112	ALA	2.0
1	A	268	SER	2.0
1	A	380	VAL	2.0

6.2 Non-standard residues in protein, DNA, RNA chains [i](#)

There are no non-standard protein/DNA/RNA residues in this entry.

6.3 Carbohydrates [i](#)

There are no monosaccharides in this entry.

6.4 Ligands [i](#)

In the following table, the Atoms column lists the number of modelled atoms in the group and the number defined in the chemical component dictionary. The B-factors column lists the minimum, median, 95th percentile and maximum values of B factors of atoms in the group. The column labelled 'Q< 0.9' lists the number of atoms with occupancy less than 0.9.

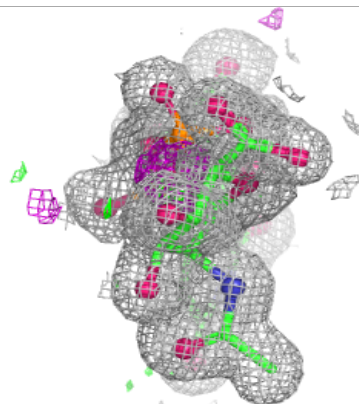
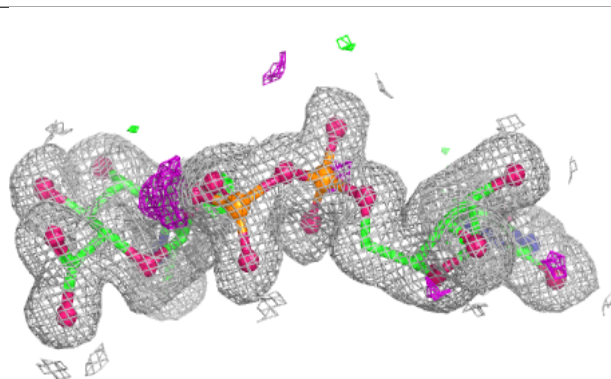
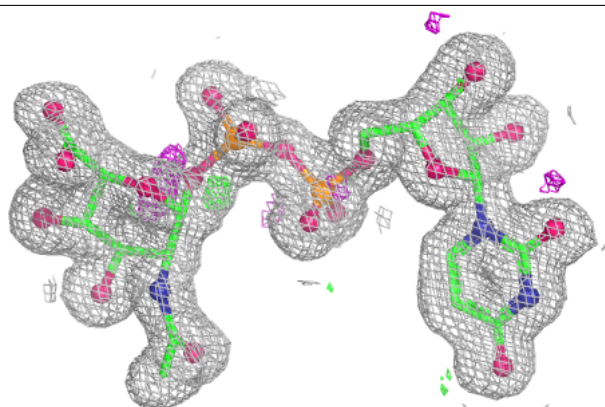
Mol	Type	Chain	Res	Atoms	RSCC	RSR	B-factors(\AA^2)	Q<0.9
2	SAJ	A	501	40/40	0.95	0.08	16,20,21,21	0
2	SAJ	B	501	40/40	0.96	0.07	15,20,21,21	0

The following is a graphical depiction of the model fit to experimental electron density of all

instances of the Ligand of Interest. In addition, ligands with molecular weight > 250 and outliers as shown on the geometry validation Tables will also be included. Each fit is shown from different orientation to approximate a three-dimensional view.

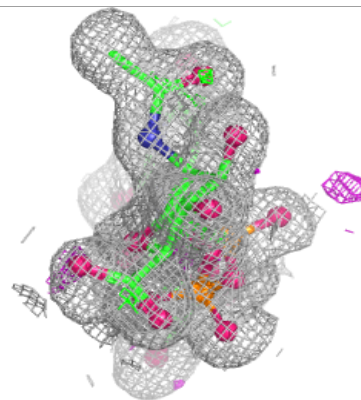
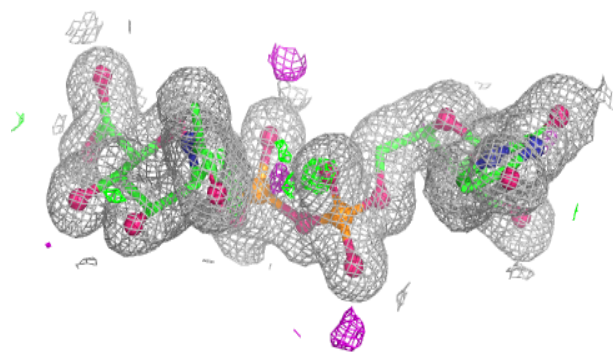
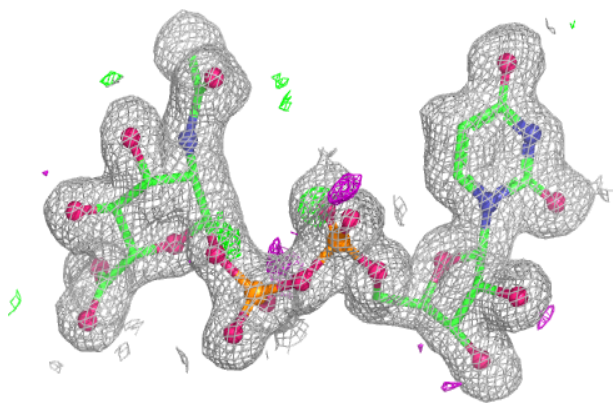
Electron density around SAJ A 501:

$2mF_o-DF_c$ (at 0.7 rmsd) in gray
 mF_o-DF_c (at 3 rmsd) in purple (negative)
and green (positive)



Electron density around SAJ B 501:

$2mF_o-DF_c$ (at 0.7 rmsd) in gray
 mF_o-DF_c (at 3 rmsd) in purple (negative)
and green (positive)



6.5 Other polymers [i](#)

There are no such residues in this entry.