



wwPDB X-ray Structure Validation Summary Report ⓘ

Oct 22, 2024 – 06:04 AM EDT

PDB ID : 3S6G
Title : Crystal structures of Seleno-substituted mutant mmNAGS in space group P212121
Authors : Shi, D.; Li, Y.; Cabrera-Luque, J.; Jin, Z.; Yu, X.; Allewell, N.M.; Tuchman, M.
Deposited on : 2011-05-25
Resolution : 2.67 Å(reported)

This is a wwPDB X-ray Structure Validation Summary Report for a publicly released PDB entry.

We welcome your comments at validation@mail.wwpdb.org

A user guide is available at

<https://www.wwpdb.org/validation/2017/XrayValidationReportHelp>

with specific help available everywhere you see the ⓘ symbol.

The types of validation reports are described at

<http://www.wwpdb.org/validation/2017/FAQs#types>.

The following versions of software and data (see [references ⓘ](#)) were used in the production of this report:

MolProbity	:	4.02b-467
Mogul	:	2022.3.0, CSD as543be (2022)
Xtriage (Phenix)	:	1.20.1
EDS	:	3.0
buster-report	:	1.1.7 (2018)
Percentile statistics	:	20231227.v01 (using entries in the PDB archive December 27th 2023)
CCP4	:	9.0.003 (Gargrove)
Density-Fitness	:	1.0.11
Ideal geometry (proteins)	:	Engh & Huber (2001)
Ideal geometry (DNA, RNA)	:	Parkinson et al. (1996)
Validation Pipeline (wwPDB-VP)	:	2.39

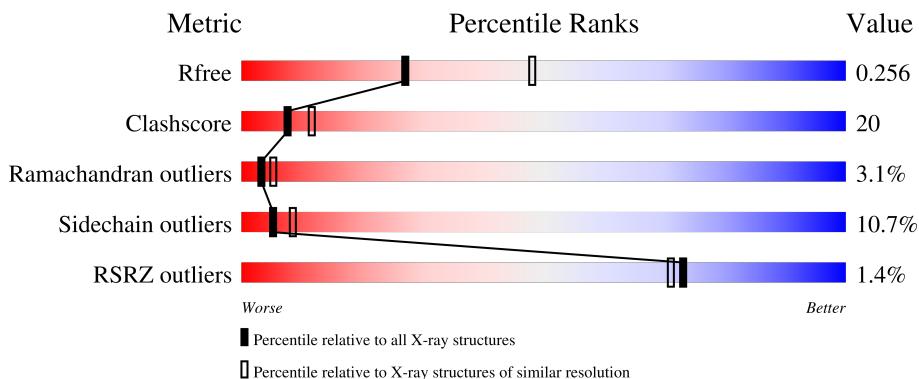
1 Overall quality at a glance ⓘ

The following experimental techniques were used to determine the structure:

X-RAY DIFFRACTION

The reported resolution of this entry is 2.67 Å.

Percentile scores (ranging between 0-100) for global validation metrics of the entry are shown in the following graphic. The table shows the number of entries on which the scores are based.



Metric	Whole archive (#Entries)	Similar resolution (#Entries, resolution range(Å))
R_{free}	164625	1003 (2.66-2.66)
Clashscore	180529	1063 (2.66-2.66)
Ramachandran outliers	177936	1052 (2.66-2.66)
Sidechain outliers	177891	1052 (2.66-2.66)
RSRZ outliers	164620	1003 (2.66-2.66)

The table below summarises the geometric issues observed across the polymeric chains and their fit to the electron density. The red, orange, yellow and green segments of the lower bar indicate the fraction of residues that contain outliers for ≥ 3 , 2, 1 and 0 types of geometric quality criteria respectively. A grey segment represents the fraction of residues that are not modelled. The numeric value for each fraction is indicated below the corresponding segment, with a dot representing fractions $\leq 5\%$. The upper red bar (where present) indicates the fraction of residues that have poor fit to the electron density. The numeric value is given above the bar.

Mol	Chain	Length	Quality of chain
1	A	460	<div> <div>0%</div> <div> <div>64%</div> <div>25%</div> <div>6%</div> <div>5%</div> </div> </div>
1	B	460	<div> <div>0%</div> <div> <div>57%</div> <div>31%</div> <div>6%</div> <div>5%</div> </div> </div>
1	X	460	<div> <div>2%</div> <div> <div>64%</div> <div>25%</div> <div>• • 5%</div> </div> </div>
1	Y	460	<div> <div>0%</div> <div> <div>53%</div> <div>31%</div> <div>5%</div> <div>11%</div> </div> </div>

2 Entry composition

There are 6 unique types of molecules in this entry. The entry contains 13303 atoms, of which 0 are hydrogens and 0 are deuteriums.

In the tables below, the ZeroOcc column contains the number of atoms modelled with zero occupancy, the AltConf column contains the number of residues with at least one atom in alternate conformation and the Trace column contains the number of residues modelled with at most 2 atoms.

- Molecule 1 is a protein called N-acetylglutamate kinase / N-acetylglutamate synthase.

Mol	Chain	Residues	Atoms						ZeroOcc	AltConf	Trace
1	A	436	Total	C	N	O	S	Se	0	1	0
			3349	2104	605	631	2	7			
1	B	435	Total	C	N	O	S	Se	0	0	0
			3334	2094	601	630	2	7			
1	X	435	Total	C	N	O	S	Se	0	0	0
			3334	2094	601	630	2	7			
1	Y	408	Total	C	N	O	S	Se	0	0	0
			3127	1969	560	589	2	7			

There are 92 discrepancies between the modelled and reference sequences:

Chain	Residue	Modelled	Actual	Comment	Reference
A	-19	MSE	-	expression tag	UNP Q0ASS9
A	-18	GLY	-	expression tag	UNP Q0ASS9
A	-17	SER	-	expression tag	UNP Q0ASS9
A	-16	SER	-	expression tag	UNP Q0ASS9
A	-15	HIS	-	expression tag	UNP Q0ASS9
A	-14	HIS	-	expression tag	UNP Q0ASS9
A	-13	HIS	-	expression tag	UNP Q0ASS9
A	-12	HIS	-	expression tag	UNP Q0ASS9
A	-11	HIS	-	expression tag	UNP Q0ASS9
A	-10	HIS	-	expression tag	UNP Q0ASS9
A	-9	SER	-	expression tag	UNP Q0ASS9
A	-8	SER	-	expression tag	UNP Q0ASS9
A	-7	GLY	-	expression tag	UNP Q0ASS9
A	-6	LEU	-	expression tag	UNP Q0ASS9
A	-5	VAL	-	expression tag	UNP Q0ASS9
A	-4	PRO	-	expression tag	UNP Q0ASS9
A	-3	ARG	-	expression tag	UNP Q0ASS9
A	-2	GLY	-	expression tag	UNP Q0ASS9
A	-1	SER	-	expression tag	UNP Q0ASS9
A	0	HIS	-	expression tag	UNP Q0ASS9
A	106	MSE	ILE	engineered mutation	UNP Q0ASS9

Continued on next page...

Continued from previous page...

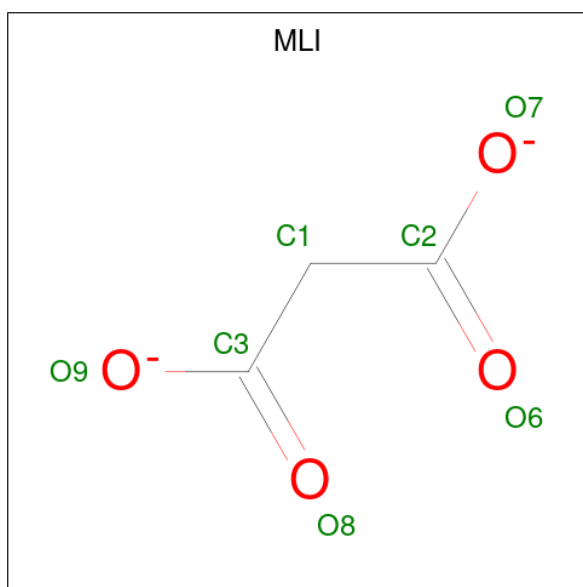
Chain	Residue	Modelled	Actual	Comment	Reference
A	294	MSE	ILE	engineered mutation	UNP Q0ASS9
A	376	MSE	LEU	engineered mutation	UNP Q0ASS9
B	-19	MSE	-	expression tag	UNP Q0ASS9
B	-18	GLY	-	expression tag	UNP Q0ASS9
B	-17	SER	-	expression tag	UNP Q0ASS9
B	-16	SER	-	expression tag	UNP Q0ASS9
B	-15	HIS	-	expression tag	UNP Q0ASS9
B	-14	HIS	-	expression tag	UNP Q0ASS9
B	-13	HIS	-	expression tag	UNP Q0ASS9
B	-12	HIS	-	expression tag	UNP Q0ASS9
B	-11	HIS	-	expression tag	UNP Q0ASS9
B	-10	HIS	-	expression tag	UNP Q0ASS9
B	-9	SER	-	expression tag	UNP Q0ASS9
B	-8	SER	-	expression tag	UNP Q0ASS9
B	-7	GLY	-	expression tag	UNP Q0ASS9
B	-6	LEU	-	expression tag	UNP Q0ASS9
B	-5	VAL	-	expression tag	UNP Q0ASS9
B	-4	PRO	-	expression tag	UNP Q0ASS9
B	-3	ARG	-	expression tag	UNP Q0ASS9
B	-2	GLY	-	expression tag	UNP Q0ASS9
B	-1	SER	-	expression tag	UNP Q0ASS9
B	0	HIS	-	expression tag	UNP Q0ASS9
B	106	MSE	ILE	engineered mutation	UNP Q0ASS9
B	294	MSE	ILE	engineered mutation	UNP Q0ASS9
B	376	MSE	LEU	engineered mutation	UNP Q0ASS9
X	-19	MSE	-	expression tag	UNP Q0ASS9
X	-18	GLY	-	expression tag	UNP Q0ASS9
X	-17	SER	-	expression tag	UNP Q0ASS9
X	-16	SER	-	expression tag	UNP Q0ASS9
X	-15	HIS	-	expression tag	UNP Q0ASS9
X	-14	HIS	-	expression tag	UNP Q0ASS9
X	-13	HIS	-	expression tag	UNP Q0ASS9
X	-12	HIS	-	expression tag	UNP Q0ASS9
X	-11	HIS	-	expression tag	UNP Q0ASS9
X	-10	HIS	-	expression tag	UNP Q0ASS9
X	-9	SER	-	expression tag	UNP Q0ASS9
X	-8	SER	-	expression tag	UNP Q0ASS9
X	-7	GLY	-	expression tag	UNP Q0ASS9
X	-6	LEU	-	expression tag	UNP Q0ASS9
X	-5	VAL	-	expression tag	UNP Q0ASS9
X	-4	PRO	-	expression tag	UNP Q0ASS9
X	-3	ARG	-	expression tag	UNP Q0ASS9

Continued on next page...

Continued from previous page...

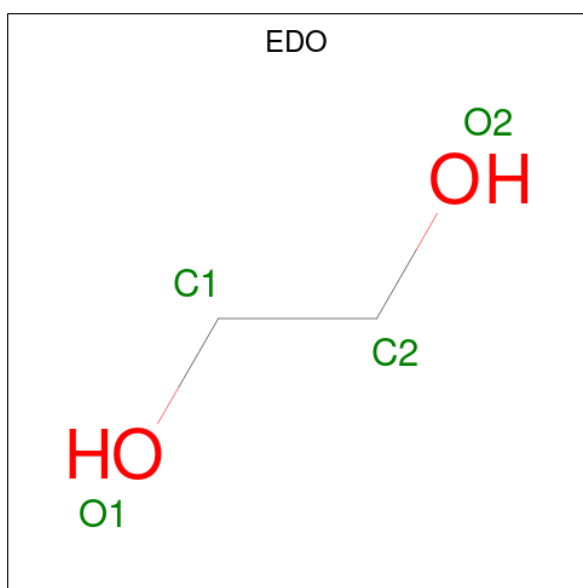
Chain	Residue	Modelled	Actual	Comment	Reference
X	-2	GLY	-	expression tag	UNP Q0ASS9
X	-1	SER	-	expression tag	UNP Q0ASS9
X	0	HIS	-	expression tag	UNP Q0ASS9
X	106	MSE	ILE	engineered mutation	UNP Q0ASS9
X	294	MSE	ILE	engineered mutation	UNP Q0ASS9
X	376	MSE	LEU	engineered mutation	UNP Q0ASS9
Y	-19	MSE	-	expression tag	UNP Q0ASS9
Y	-18	GLY	-	expression tag	UNP Q0ASS9
Y	-17	SER	-	expression tag	UNP Q0ASS9
Y	-16	SER	-	expression tag	UNP Q0ASS9
Y	-15	HIS	-	expression tag	UNP Q0ASS9
Y	-14	HIS	-	expression tag	UNP Q0ASS9
Y	-13	HIS	-	expression tag	UNP Q0ASS9
Y	-12	HIS	-	expression tag	UNP Q0ASS9
Y	-11	HIS	-	expression tag	UNP Q0ASS9
Y	-10	HIS	-	expression tag	UNP Q0ASS9
Y	-9	SER	-	expression tag	UNP Q0ASS9
Y	-8	SER	-	expression tag	UNP Q0ASS9
Y	-7	GLY	-	expression tag	UNP Q0ASS9
Y	-6	LEU	-	expression tag	UNP Q0ASS9
Y	-5	VAL	-	expression tag	UNP Q0ASS9
Y	-4	PRO	-	expression tag	UNP Q0ASS9
Y	-3	ARG	-	expression tag	UNP Q0ASS9
Y	-2	GLY	-	expression tag	UNP Q0ASS9
Y	-1	SER	-	expression tag	UNP Q0ASS9
Y	0	HIS	-	expression tag	UNP Q0ASS9
Y	106	MSE	ILE	engineered mutation	UNP Q0ASS9
Y	294	MSE	ILE	engineered mutation	UNP Q0ASS9
Y	376	MSE	LEU	engineered mutation	UNP Q0ASS9

- Molecule 2 is MALONATE ION (three-letter code: MLI) (formula: C₃H₂O₄).



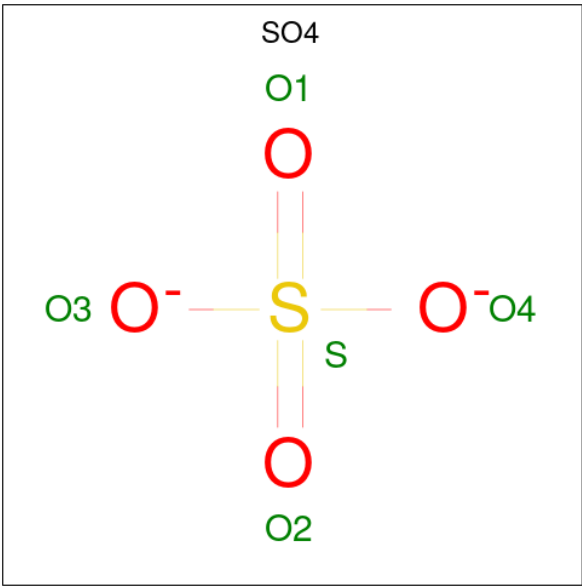
Mol	Chain	Residues	Atoms			ZeroOcc	AltConf
2	A	1	Total	C	O	0	0
			7	3	4		
2	Y	1	Total	C	O	0	0
			7	3	4		

- Molecule 3 is 1,2-ETHANEDIOL (three-letter code: EDO) (formula: $C_2H_6O_2$).



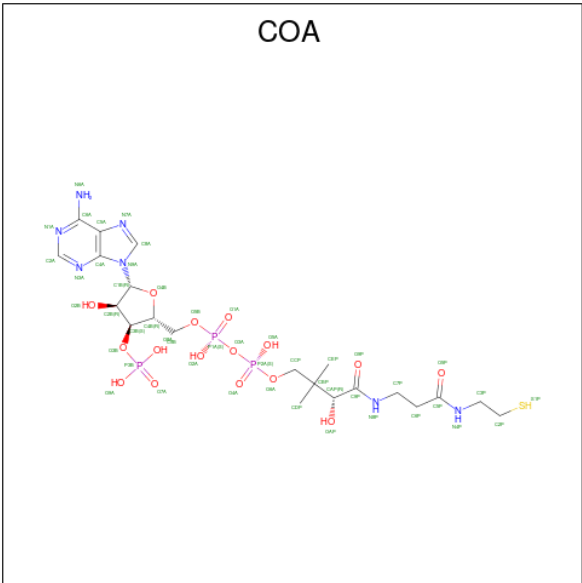
Mol	Chain	Residues	Atoms			ZeroOcc	AltConf
3	A	1	Total	C	O	0	0
			4	2	2		
3	Y	1	Total	C	O	0	0
			4	2	2		

- Molecule 4 is SULFATE ION (three-letter code: SO4) (formula: O₄S).



Mol	Chain	Residues	Atoms			ZeroOcc	AltConf
4	X	1	Total	O	S	0	0
			5	4	1		

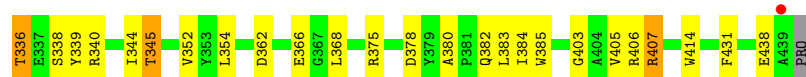
- Molecule 5 is COENZYME A (three-letter code: COA) (formula: C₂₁H₃₆N₇O₁₆P₃S).



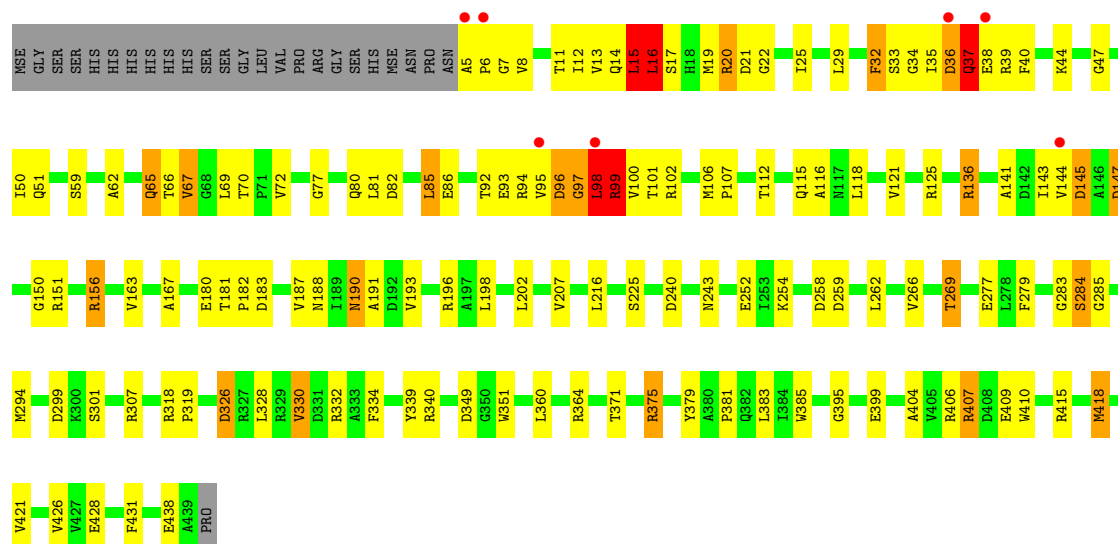
Mol	Chain	Residues	Atoms					ZeroOcc	AltConf	
5	Y	1	Total	C	N	O	P	S	0	0
			48	21	7	16	3	1		

- Molecule 6 is water.

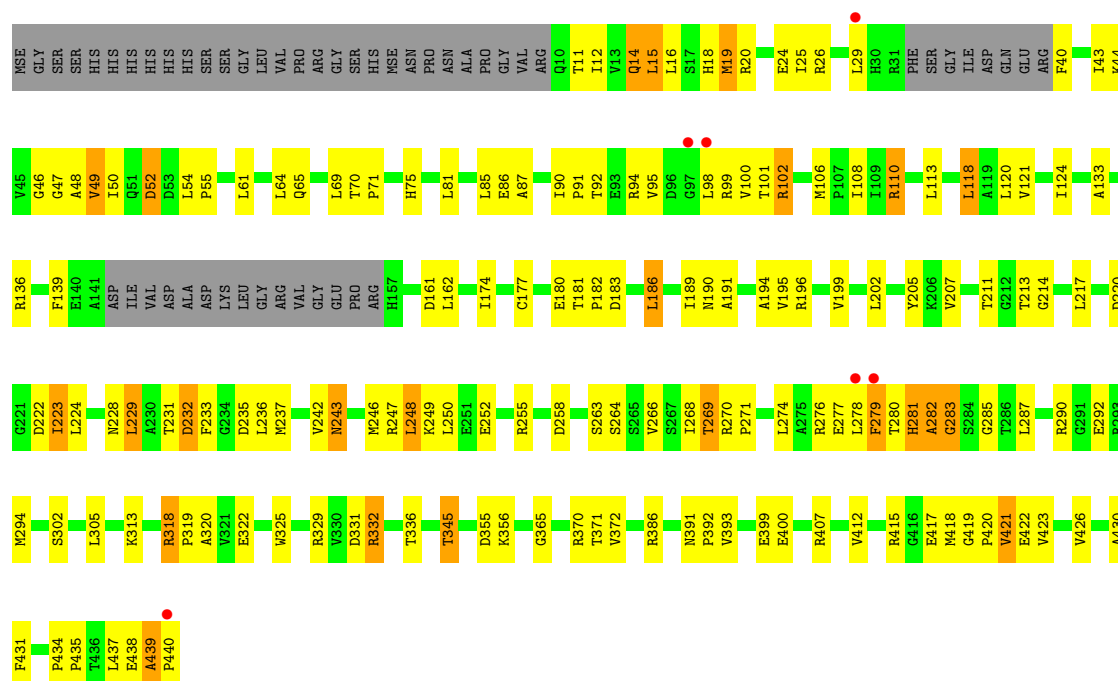
Mol	Chain	Residues	Atoms		ZeroOcc	AltConf
6	A	23	Total 23	O 23	0	0
6	B	14	Total 14	O 14	0	0
6	X	33	Total 33	O 33	0	0
6	Y	14	Total 14	O 14	0	0



• Molecule 1: N-acetylglutamate kinase / N-acetylglutamate synthase



• Molecule 1: N-acetylglutamate kinase / N-acetylglutamate synthase



4 Data and refinement statistics

Property	Value	Source
Space group	P 21 21 21	Depositor
Cell constants a, b, c, α , β , γ	113.43Å 117.47Å 149.30Å 90.00° 90.00° 90.00°	Depositor
Resolution (Å)	37.97 – 2.67 37.97 – 2.67	Depositor EDS
% Data completeness (in resolution range)	95.4 (37.97-2.67) 95.1 (37.97-2.67)	Depositor EDS
R_{merge}	0.07	Depositor
R_{sym}	(Not available)	Depositor
$\langle I/\sigma(I) \rangle$ ¹	2.26 (at 2.69Å)	Xtriage
Refinement program	PHENIX 1.6.4_486	Depositor
R, R_{free}	0.183 , 0.256 0.179 , 0.256	Depositor DCC
R_{free} test set	2006 reflections (3.51%)	wwPDB-VP
Wilson B-factor (Å ²)	59.4	Xtriage
Anisotropy	0.383	Xtriage
Bulk solvent k_{sol} (e/Å ³), B_{sol} (Å ²)	0.31 , 72.0	EDS
L-test for twinning ²	$\langle L \rangle = 0.49$, $\langle L^2 \rangle = 0.32$	Xtriage
Estimated twinning fraction	0.016 for k,h,-l	Xtriage
F_o, F_c correlation	0.96	EDS
Total number of atoms	13303	wwPDB-VP
Average B, all atoms (Å ²)	82.0	wwPDB-VP

Xtriage's analysis on translational NCS is as follows: *The largest off-origin peak in the Patterson function is 6.38% of the height of the origin peak. No significant pseudotranslation is detected.*

¹Intensities estimated from amplitudes.

²Theoretical values of $\langle |L| \rangle$, $\langle L^2 \rangle$ for acentric reflections are 0.5, 0.333 respectively for untwinned datasets, and 0.375, 0.2 for perfectly twinned datasets.

5 Model quality [i](#)

5.1 Standard geometry [i](#)

Bond lengths and bond angles in the following residue types are not validated in this section: MLI, COA, EDO, SO4

The Z score for a bond length (or angle) is the number of standard deviations the observed value is removed from the expected value. A bond length (or angle) with $|Z| > 5$ is considered an outlier worth inspection. RMSZ is the root-mean-square of all Z scores of the bond lengths (or angles).

Mol	Chain	Bond lengths		Bond angles	
		RMSZ	$\# Z > 5$	RMSZ	$\# Z > 5$
1	A	0.45	0/3405	0.63	0/4615
1	B	0.36	0/3386	0.55	0/4589
1	X	0.47	0/3386	0.65	0/4589
1	Y	0.41	0/3175	0.60	0/4303
All	All	0.43	0/13352	0.61	0/18096

There are no bond length outliers.

There are no bond angle outliers.

There are no chirality outliers.

There are no planarity outliers.

5.2 Too-close contacts [i](#)

In the following table, the Non-H and H(model) columns list the number of non-hydrogen atoms and hydrogen atoms in the chain respectively. The H(added) column lists the number of hydrogen atoms added and optimized by MolProbity. The Clashes column lists the number of clashes within the asymmetric unit, whereas Symm-Clashes lists symmetry-related clashes.

Mol	Chain	Non-H	H(model)	H(added)	Clashes	Symm-Clashes
1	A	3349	0	3346	112	0
1	B	3334	0	3326	141	0
1	X	3334	0	3326	142	0
1	Y	3127	0	3120	143	0
2	A	7	0	2	0	0
2	Y	7	0	2	0	0
3	A	4	0	6	2	0
3	Y	4	0	6	0	0
4	X	5	0	0	0	0

Continued on next page...

Continued from previous page...

Mol	Chain	Non-H	H(model)	H(added)	Clashes	Symm-Clashes
5	Y	48	0	30	5	0
6	A	23	0	0	1	0
6	B	14	0	0	0	0
6	X	33	0	0	2	0
6	Y	14	0	0	1	0
All	All	13303	0	13164	522	0

The all-atom clashscore is defined as the number of clashes found per 1000 atoms (including hydrogen atoms). The all-atom clashscore for this structure is 20.

The worst 5 of 522 close contacts within the same asymmetric unit are listed below, sorted by their clash magnitude.

Atom-1	Atom-2	Interatomic distance (Å)	Clash overlap (Å)
1:Y:418:MSE:HG3	1:Y:423:VAL:HG13	1.39	1.04
1:Y:332:ARG:H	1:Y:345:THR:HG22	1.23	1.03
1:B:405:VAL:HG13	5:Y:441:COA:H132	1.39	1.02
1:A:327:ARG:HG2	1:A:327:ARG:HH11	1.24	1.02
1:X:36:ASP:HB2	1:X:39:ARG:HG3	1.41	1.01

There are no symmetry-related clashes.

5.3 Torsion angles [i](#)

5.3.1 Protein backbone [i](#)

In the following table, the Percentiles column shows the percent Ramachandran outliers of the chain as a percentile score with respect to all X-ray entries followed by that with respect to entries of similar resolution.

The Analysed column shows the number of residues for which the backbone conformation was analysed, and the total number of residues.

Mol	Chain	Analysed	Favoured	Allowed	Outliers	Percentiles
1	A	435/460 (95%)	394 (91%)	29 (7%)	12 (3%)	4 6
1	B	433/460 (94%)	378 (87%)	39 (9%)	16 (4%)	2 4
1	X	433/460 (94%)	394 (91%)	26 (6%)	13 (3%)	3 5
1	Y	402/460 (87%)	352 (88%)	39 (10%)	11 (3%)	4 6
All	All	1703/1840 (93%)	1518 (89%)	133 (8%)	52 (3%)	3 5

5 of 52 Ramachandran outliers are listed below:

Mol	Chain	Res	Type
1	A	77	GLY
1	A	95	VAL
1	A	96	ASP
1	A	144	VAL
1	B	38	GLU

5.3.2 Protein sidechains ⓘ

In the following table, the Percentiles column shows the percent sidechain outliers of the chain as a percentile score with respect to all X-ray entries followed by that with respect to entries of similar resolution.

The Analysed column shows the number of residues for which the sidechain conformation was analysed, and the total number of residues.

Mol	Chain	Analysed	Rotameric	Outliers	Percentiles	
1	A	346/357 (97%)	303 (88%)	43 (12%)	4	5
1	B	344/357 (96%)	309 (90%)	35 (10%)	6	9
1	X	344/357 (96%)	311 (90%)	33 (10%)	7	10
1	Y	323/357 (90%)	289 (90%)	34 (10%)	5	9
All	All	1357/1428 (95%)	1212 (89%)	145 (11%)	5	8

5 of 145 residues with a non-rotameric sidechain are listed below:

Mol	Chain	Res	Type
1	Y	110	ARG
1	Y	421	VAL
1	Y	177	CYS
1	Y	263	SER
1	B	54	LEU

Sometimes sidechains can be flipped to improve hydrogen bonding and reduce clashes. 5 of 22 such sidechains are listed below:

Mol	Chain	Res	Type
1	B	190	ASN
1	X	188	ASN
1	X	14	GLN
1	X	190	ASN
1	A	188	ASN

5.3.3 RNA ⓘ

There are no RNA molecules in this entry.

5.4 Non-standard residues in protein, DNA, RNA chains ⓘ

There are no non-standard protein/DNA/RNA residues in this entry.

5.5 Carbohydrates ⓘ

There are no oligosaccharides in this entry.

5.6 Ligand geometry ⓘ

6 ligands are modelled in this entry.

In the following table, the Counts columns list the number of bonds (or angles) for which Mogul statistics could be retrieved, the number of bonds (or angles) that are observed in the model and the number of bonds (or angles) that are defined in the Chemical Component Dictionary. The Link column lists molecule types, if any, to which the group is linked. The Z score for a bond length (or angle) is the number of standard deviations the observed value is removed from the expected value. A bond length (or angle) with $|Z| > 2$ is considered an outlier worth inspection. RMSZ is the root-mean-square of all Z scores of the bond lengths (or angles).

Mol	Type	Chain	Res	Link	Bond lengths			Bond angles		
					Counts	RMSZ	$\# Z > 2$	Counts	RMSZ	$\# Z > 2$
2	MLI	A	441	-	6,6,6	1.13	0	7,7,7	1.47	1 (14%)
3	EDO	Y	443	-	3,3,3	0.44	0	2,2,2	0.40	0
5	COA	Y	441	-	43,50,50	2.63	11 (25%)	56,75,75	2.79	10 (17%)
3	EDO	A	442	-	3,3,3	0.45	0	2,2,2	0.41	0
2	MLI	Y	442	-	6,6,6	1.15	0	7,7,7	1.43	1 (14%)
4	SO4	X	441	-	4,4,4	0.26	0	6,6,6	0.18	0

In the following table, the Chirals column lists the number of chiral outliers, the number of chiral centers analysed, the number of these observed in the model and the number defined in the Chemical Component Dictionary. Similar counts are reported in the Torsion and Rings columns. '-' means no outliers of that kind were identified.

Mol	Type	Chain	Res	Link	Chirals	Torsions	Rings
2	MLI	A	441	-	-	2/4/4/4	-
5	COA	Y	441	-	-	23/44/64/64	0/3/3/3
3	EDO	A	442	-	-	1/1/1/1	-

Continued on next page...

Continued from previous page...

Mol	Type	Chain	Res	Link	Chirals	Torsions	Rings
2	MLI	Y	442	-	-	0/4/4/4	-
3	EDO	Y	443	-	-	1/1/1/1	-

The worst 5 of 11 bond length outliers are listed below:

Mol	Chain	Res	Type	Atoms	Z	Observed(Å)	Ideal(Å)
5	Y	441	COA	C2A-N3A	9.69	1.47	1.32
5	Y	441	COA	C9P-N8P	6.81	1.49	1.33
5	Y	441	COA	C5P-N4P	5.94	1.47	1.33
5	Y	441	COA	O4B-C1B	4.46	1.46	1.40
5	Y	441	COA	C2A-N1A	4.39	1.41	1.33

The worst 5 of 12 bond angle outliers are listed below:

Mol	Chain	Res	Type	Atoms	Z	Observed(°)	Ideal(°)
5	Y	441	COA	O4B-C1B-N9A	14.74	128.29	108.75
5	Y	441	COA	C4B-O4B-C1B	-7.18	103.35	109.92
5	Y	441	COA	N3A-C2A-N1A	-6.69	119.59	128.67
5	Y	441	COA	O6A-CCP-CBP	5.38	119.20	110.55
5	Y	441	COA	O2B-C2B-C3B	4.06	122.55	111.19

There are no chirality outliers.

5 of 27 torsion outliers are listed below:

Mol	Chain	Res	Type	Atoms
5	Y	441	COA	C2B-C3B-O3B-P3B
5	Y	441	COA	C5B-O5B-P1A-O1A
5	Y	441	COA	C5B-O5B-P1A-O3A
5	Y	441	COA	CAP-CBP-CCP-O6A
5	Y	441	COA	O9P-C9P-CAP-CBP

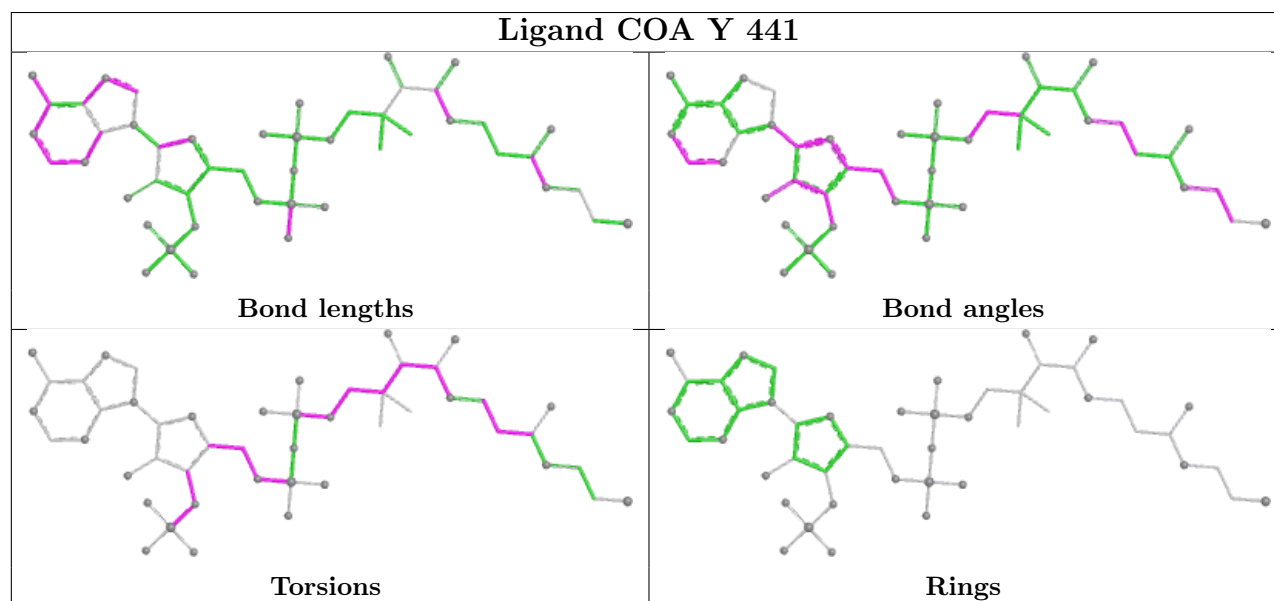
There are no ring outliers.

2 monomers are involved in 7 short contacts:

Mol	Chain	Res	Type	Clashes	Symm-Clashes
5	Y	441	COA	5	0
3	A	442	EDO	2	0

The following is a two-dimensional graphical depiction of Mogul quality analysis of bond lengths, bond angles, torsion angles, and ring geometry for all instances of the Ligand of Interest. In addition, ligands with molecular weight > 250 and outliers as shown on the validation Tables will

also be included. For torsion angles, if less than 5% of the Mogul distribution of torsion angles is within 10 degrees of the torsion angle in question, then that torsion angle is considered an outlier. Any bond that is central to one or more torsion angles identified as an outlier by Mogul will be highlighted in the graph. For rings, the root-mean-square deviation (RMSD) between the ring in question and similar rings identified by Mogul is calculated over all ring torsion angles. If the average RMSD is greater than 60 degrees and the minimal RMSD between the ring in question and any Mogul-identified rings is also greater than 60 degrees, then that ring is considered an outlier. The outliers are highlighted in purple. The color gray indicates Mogul did not find sufficient equivalents in the CSD to analyse the geometry.



5.7 Other polymers ⓘ

There are no such residues in this entry.

5.8 Polymer linkage issues ⓘ

There are no chain breaks in this entry.

6 Fit of model and data [i](#)

6.1 Protein, DNA and RNA chains [i](#)

In the following table, the column labelled ‘#RSRZ> 2’ contains the number (and percentage) of RSRZ outliers, followed by percent RSRZ outliers for the chain as percentile scores relative to all X-ray entries and entries of similar resolution. The OWAB column contains the minimum, median, 95th percentile and maximum values of the occupancy-weighted average B-factor per residue. The column labelled ‘Q< 0.9’ lists the number of (and percentage) of residues with an average occupancy less than 0.9.

Mol	Chain	Analysed	<RSRZ>	#RSRZ>2	OWAB(Å ²)	Q<0.9
1	A	429/460 (93%)	-0.54	6 (1%) 73 71	27, 64, 125, 185	1 (0%)
1	B	428/460 (93%)	-0.32	5 (1%) 76 73	48, 88, 165, 210	0
1	X	428/460 (93%)	-0.58	7 (1%) 70 68	39, 64, 108, 185	0
1	Y	401/460 (87%)	-0.36	6 (1%) 71 69	41, 76, 174, 250	0
All	All	1686/1840 (91%)	-0.45	24 (1%) 73 71	27, 74, 149, 250	1 (0%)

The worst 5 of 24 RSRZ outliers are listed below:

Mol	Chain	Res	Type	RSRZ
1	A	10	GLN	3.9
1	X	144	VAL	3.5
1	X	5	ALA	3.4
1	A	90	ILE	3.4
1	B	98	LEU	3.2

6.2 Non-standard residues in protein, DNA, RNA chains [i](#)

There are no non-standard protein/DNA/RNA residues in this entry.

6.3 Carbohydrates [i](#)

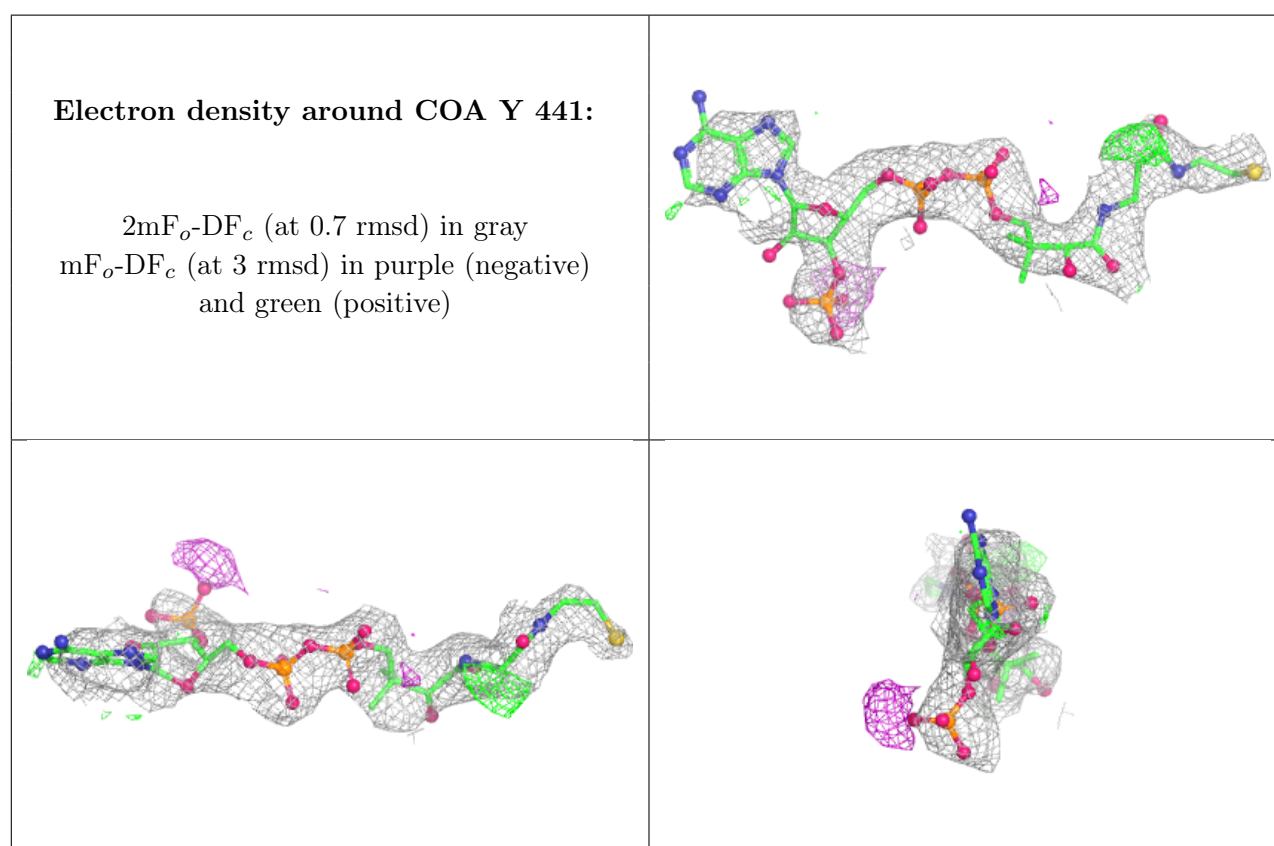
There are no monosaccharides in this entry.

6.4 Ligands [i](#)

In the following table, the Atoms column lists the number of modelled atoms in the group and the number defined in the chemical component dictionary. The B-factors column lists the minimum, median, 95th percentile and maximum values of B factors of atoms in the group. The column labelled ‘Q< 0.9’ lists the number of atoms with occupancy less than 0.9.

Mol	Type	Chain	Res	Atoms	RSCC	RSR	B-factors(\AA^2)	Q<0.9
4	SO4	X	441	5/5	0.67	0.12	140,141,150,152	0
2	MLI	A	441	7/7	0.80	0.12	61,78,96,102	0
5	COA	Y	441	48/48	0.80	0.14	62,119,217,293	0
2	MLI	Y	442	7/7	0.86	0.11	86,91,107,110	0
3	EDO	Y	443	4/4	0.90	0.18	86,90,91,95	0
3	EDO	A	442	4/4	0.93	0.14	60,69,77,79	0

The following is a graphical depiction of the model fit to experimental electron density of all instances of the Ligand of Interest. In addition, ligands with molecular weight > 250 and outliers as shown on the geometry validation Tables will also be included. Each fit is shown from different orientation to approximate a three-dimensional view.



6.5 Other polymers [i](#)

There are no such residues in this entry.