



Full wwPDB X-ray Structure Validation Report ⓘ

Jun 22, 2024 – 10:47 AM EDT

PDB ID : 6SBB
Title : Structure of type II terpene cyclase MstE from Scytonema (apo)
Authors : Moosmann, P.; Ecker, F.; Leopold-Messer, S.; Cahn, J.K.B.; Groll, M.; Piel, J.
Deposited on : 2019-07-19
Resolution : 1.95 Å(reported)

This is a Full wwPDB X-ray Structure Validation Report for a publicly released PDB entry.

We welcome your comments at validation@mail.wwpdb.org

A user guide is available at

<https://www.wwpdb.org/validation/2017/XrayValidationReportHelp>

with specific help available everywhere you see the ⓘ symbol.

The types of validation reports are described at

<http://www.wwpdb.org/validation/2017/FAQs#types>.

The following versions of software and data (see [references ⓘ](#)) were used in the production of this report:

MolProbity	:	4.02b-467
Mogul	:	2022.3.0, CSD as543be (2022)
Xtriage (Phenix)	:	1.20.1
EDS	:	2.37.1
Percentile statistics	:	20191225.v01 (using entries in the PDB archive December 25th 2019)
Refmac	:	5.8.0158
CCP4	:	7.0.044 (Gargrove)
Ideal geometry (proteins)	:	Engh & Huber (2001)
Ideal geometry (DNA, RNA)	:	Parkinson et al. (1996)
Validation Pipeline (wwPDB-VP)	:	2.37.1

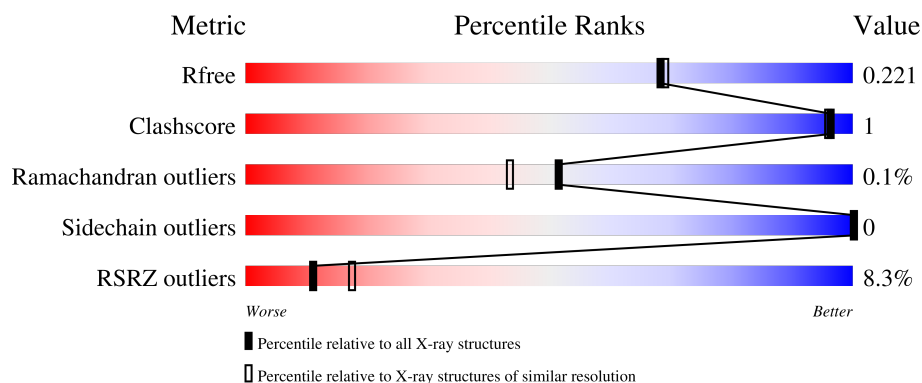
1 Overall quality at a glance

The following experimental techniques were used to determine the structure:

X-RAY DIFFRACTION

The reported resolution of this entry is 1.95 Å.

Percentile scores (ranging between 0-100) for global validation metrics of the entry are shown in the following graphic. The table shows the number of entries on which the scores are based.



Metric	Whole archive (#Entries)	Similar resolution (#Entries, resolution range(Å))
R_{free}	130704	2580 (1.96-1.96)
Clashscore	141614	2705 (1.96-1.96)
Ramachandran outliers	138981	2678 (1.96-1.96)
Sidechain outliers	138945	2678 (1.96-1.96)
RSRZ outliers	127900	2539 (1.96-1.96)

The table below summarises the geometric issues observed across the polymeric chains and their fit to the electron density. The red, orange, yellow and green segments of the lower bar indicate the fraction of residues that contain outliers for ≥ 3 , 2, 1 and 0 types of geometric quality criteria respectively. A grey segment represents the fraction of residues that are not modelled. The numeric value for each fraction is indicated below the corresponding segment, with a dot representing fractions $\leq 5\%$. The upper red bar (where present) indicates the fraction of residues that have poor fit to the electron density. The numeric value is given above the bar.

Mol	Chain	Length	Quality of chain
1	A	367	<div> <div>8%</div> <div>92%</div> <div>5%</div> </div>
1	B	367	<div> <div>8%</div> <div>91%</div> <div>7%</div> </div>

2 Entry composition [i](#)

There are 5 unique types of molecules in this entry. The entry contains 5608 atoms, of which 0 are hydrogens and 0 are deuteriums.

In the tables below, the ZeroOcc column contains the number of atoms modelled with zero occupancy, the AltConf column contains the number of residues with at least one atom in alternate conformation and the Trace column contains the number of residues modelled with at most 2 atoms.

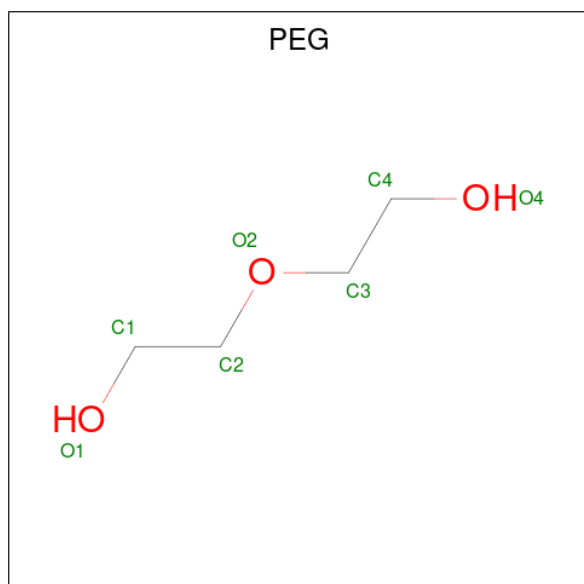
- Molecule 1 is a protein called MstE.

Mol	Chain	Residues	Atoms					ZeroOcc	AltConf	Trace
1	A	347	Total	C	N	O	S	0	0	0
			2714	1729	474	503	8			
1	B	340	Total	C	N	O	S	0	0	0
			2658	1692	466	492	8			

There are 4 discrepancies between the modelled and reference sequences:

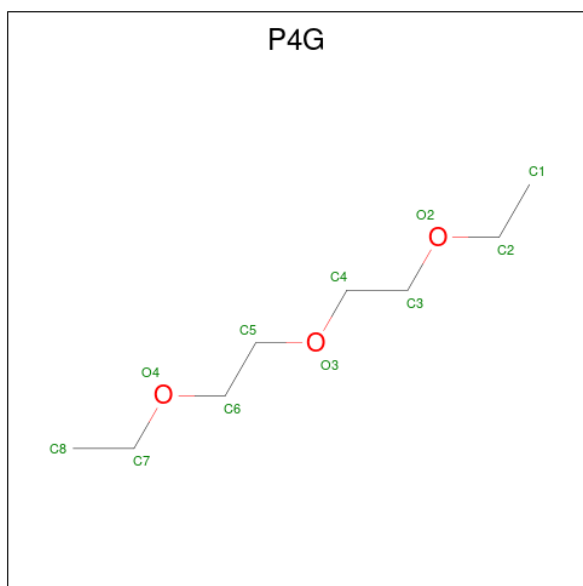
Chain	Residue	Modelled	Actual	Comment	Reference
A	0	GLY	-	expression tag	UNP A0A2D1CM82
A	1	SER	-	expression tag	UNP A0A2D1CM82
B	0	GLY	-	expression tag	UNP A0A2D1CM82
B	1	SER	-	expression tag	UNP A0A2D1CM82

- Molecule 2 is DI(HYDROXYETHYL)ETHER (three-letter code: PEG) (formula: C₄H₁₀O₃).



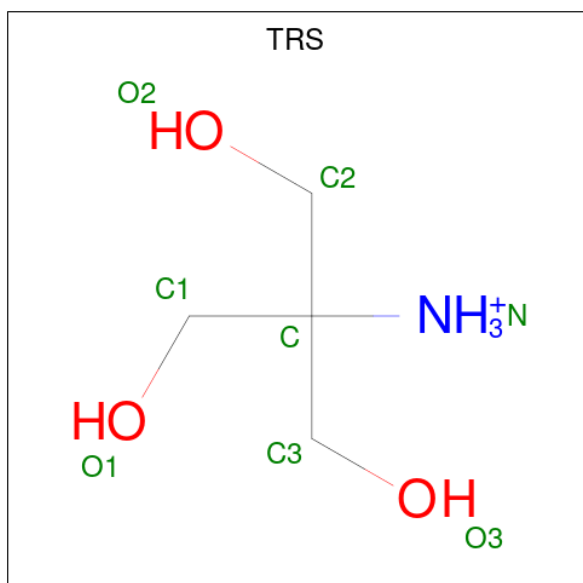
Mol	Chain	Residues	Atoms			ZeroOcc	AltConf
2	A	1	Total	C	O	0	0
			7	4	3		

- Molecule 3 is 1-ETHOXY-2-(2-ETHOXYETHOXY)ETHANE (three-letter code: P4G) (formula: $C_8H_{18}O_3$).



Mol	Chain	Residues	Atoms			ZeroOcc	AltConf
3	A	1	Total	C	O	0	0
			11	8	3		

- Molecule 4 is 2-AMINO-2-HYDROXYMETHYL-PROPANE-1,3-DIOL (three-letter code: TRS) (formula: $C_4H_{12}NO_3$).



Mol	Chain	Residues	Atoms				ZeroOcc	AltConf
4	A	1	Total	C	N	O	0	0
			8	4	1	3		

- Molecule 5 is water.

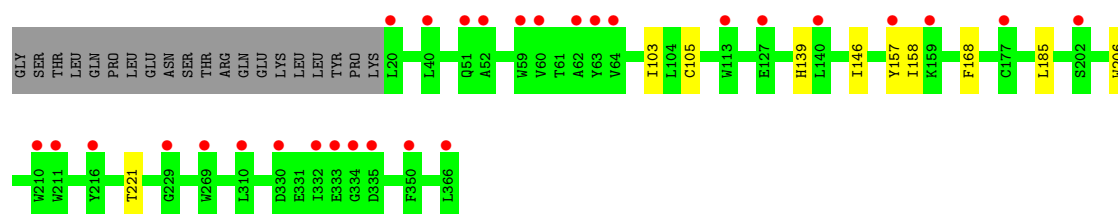
Mol	Chain	Residues	Atoms		ZeroOcc	AltConf
5	A	101	Total	O	0	0
			101	101		
5	B	109	Total	O	0	0
			109	109		

3 Residue-property plots [i](#)

These plots are drawn for all protein, RNA, DNA and oligosaccharide chains in the entry. The first graphic for a chain summarises the proportions of the various outlier classes displayed in the second graphic. The second graphic shows the sequence view annotated by issues in geometry and electron density. Residues are color-coded according to the number of geometric quality criteria for which they contain at least one outlier: green = 0, yellow = 1, orange = 2 and red = 3 or more. A red dot above a residue indicates a poor fit to the electron density ($RSRZ > 2$). Stretches of 2 or more consecutive residues without any outlier are shown as a green connector. Residues present in the sample, but not in the model, are shown in grey.

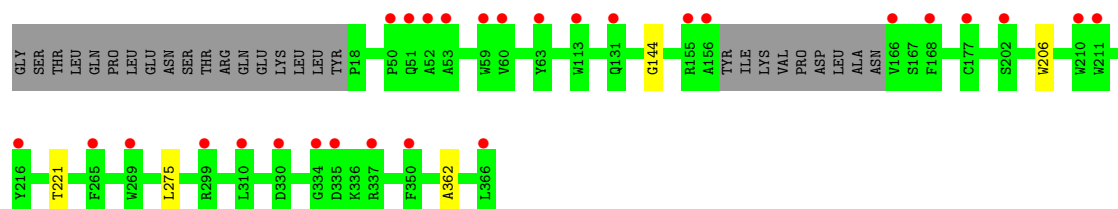
- Molecule 1: MstE

Chain A: 



- Molecule 1: MstE

Chain B: 



4 Data and refinement statistics

Property	Value	Source
Space group	P 1	Depositor
Cell constants a, b, c, α , β , γ	48.46Å 48.58Å 77.99Å 89.04° 99.97° 101.86°	Depositor
Resolution (Å)	30.00 – 1.95 29.59 – 1.95	Depositor EDS
% Data completeness (in resolution range)	92.2 (30.00-1.95) 92.2 (29.59-1.95)	Depositor EDS
R_{merge}	0.05	Depositor
R_{sym}	(Not available)	Depositor
$\langle I/\sigma(I) \rangle$ ¹	1.65 (at 1.95Å)	Xtriage
Refinement program	REFMAC 5.8.0158	Depositor
R, R_{free}	0.173 , 0.206 0.187 , 0.221	Depositor DCC
R_{free} test set	2304 reflections (5.00%)	wwPDB-VP
Wilson B-factor (Å ²)	37.6	Xtriage
Anisotropy	0.178	Xtriage
Bulk solvent k_{sol} (e/Å ³), B_{sol} (Å ²)	0.41 , 53.5	EDS
L-test for twinning ²	$\langle L \rangle = 0.52$, $\langle L^2 \rangle = 0.35$	Xtriage
Estimated twinning fraction	No twinning to report.	Xtriage
F_o, F_c correlation	0.97	EDS
Total number of atoms	5608	wwPDB-VP
Average B, all atoms (Å ²)	44.0	wwPDB-VP

Xtriage's analysis on translational NCS is as follows: *The largest off-origin peak in the Patterson function is 7.40% of the height of the origin peak. No significant pseudotranslation is detected.*

¹Intensities estimated from amplitudes.

²Theoretical values of $\langle |L| \rangle$, $\langle L^2 \rangle$ for acentric reflections are 0.5, 0.333 respectively for untwinned datasets, and 0.375, 0.2 for perfectly twinned datasets.

5 Model quality

5.1 Standard geometry

Bond lengths and bond angles in the following residue types are not validated in this section: P4G, TRS, PEG

The Z score for a bond length (or angle) is the number of standard deviations the observed value is removed from the expected value. A bond length (or angle) with $|Z| > 5$ is considered an outlier worth inspection. RMSZ is the root-mean-square of all Z scores of the bond lengths (or angles).

Mol	Chain	Bond lengths		Bond angles	
		RMSZ	$\# Z > 5$	RMSZ	$\# Z > 5$
1	A	0.38	0/2793	0.55	0/3819
1	B	0.37	0/2735	0.52	0/3736
All	All	0.38	0/5528	0.54	0/7555

There are no bond length outliers.

There are no bond angle outliers.

There are no chirality outliers.

There are no planarity outliers.

5.2 Too-close contacts

In the following table, the Non-H and H(model) columns list the number of non-hydrogen atoms and hydrogen atoms in the chain respectively. The H(added) column lists the number of hydrogen atoms added and optimized by MolProbity. The Clashes column lists the number of clashes within the asymmetric unit, whereas Symm-Clashes lists symmetry-related clashes.

Mol	Chain	Non-H	H(model)	H(added)	Clashes	Symm-Clashes
1	A	2714	0	2587	8	0
1	B	2658	0	2532	2	0
2	A	7	0	10	0	0
3	A	11	0	18	1	0
4	A	8	0	12	0	0
5	A	101	0	0	0	0
5	B	109	0	0	0	0
All	All	5608	0	5159	10	0

The all-atom clashscore is defined as the number of clashes found per 1000 atoms (including hydrogen atoms). The all-atom clashscore for this structure is 1.

All (10) close contacts within the same asymmetric unit are listed below, sorted by their clash magnitude.

Atom-1	Atom-2	Interatomic distance (Å)	Clash overlap (Å)
1:A:103:ILE:O	1:A:157:TYR:HE1	1.08	1.28
1:A:103:ILE:O	1:A:157:TYR:CE1	1.94	1.19
1:A:158:ILE:HD11	1:A:168:PHE:HZ	1.56	0.70
1:A:105:CYS:HB3	1:A:157:TYR:CD2	2.36	0.60
1:A:158:ILE:HD11	1:A:168:PHE:CZ	2.37	0.57
1:A:139:HIS:HB2	1:A:146:ILE:HD11	1.94	0.48
1:A:185:LEU:HD23	3:A:402:P4G:H12	1.97	0.46
1:B:206:TRP:CE2	1:B:221:THR:HG21	2.51	0.45
1:A:206:TRP:CE2	1:A:221:THR:HG21	2.52	0.45
1:B:275:LEU:HD21	1:B:362:ALA:HA	1.99	0.44

There are no symmetry-related clashes.

5.3 Torsion angles [i](#)

5.3.1 Protein backbone [i](#)

In the following table, the Percentiles column shows the percent Ramachandran outliers of the chain as a percentile score with respect to all X-ray entries followed by that with respect to entries of similar resolution.

The Analysed column shows the number of residues for which the backbone conformation was analysed, and the total number of residues.

Mol	Chain	Analysed	Favoured	Allowed	Outliers	Percentiles	
1	A	345/367 (94%)	338 (98%)	7 (2%)	0	100	100
1	B	336/367 (92%)	328 (98%)	7 (2%)	1 (0%)	41	30
All	All	681/734 (93%)	666 (98%)	14 (2%)	1 (0%)	51	43

All (1) Ramachandran outliers are listed below:

Mol	Chain	Res	Type
1	B	144	GLY

5.3.2 Protein sidechains [i](#)

In the following table, the Percentiles column shows the percent sidechain outliers of the chain as a percentile score with respect to all X-ray entries followed by that with respect to entries of similar

resolution.

The Analysed column shows the number of residues for which the sidechain conformation was analysed, and the total number of residues.

Mol	Chain	Analysed	Rotameric	Outliers	Percentiles	
1	A	271/290 (93%)	271 (100%)	0	100	100
1	B	265/290 (91%)	265 (100%)	0	100	100
All	All	536/580 (92%)	536 (100%)	0	100	100

There are no protein residues with a non-rotameric sidechain to report.

Sometimes sidechains can be flipped to improve hydrogen bonding and reduce clashes. There are no such sidechains identified.

5.3.3 RNA ⓘ

There are no RNA molecules in this entry.

5.4 Non-standard residues in protein, DNA, RNA chains ⓘ

There are no non-standard protein/DNA/RNA residues in this entry.

5.5 Carbohydrates ⓘ

There are no monosaccharides in this entry.

5.6 Ligand geometry ⓘ

3 ligands are modelled in this entry.

In the following table, the Counts columns list the number of bonds (or angles) for which Mogul statistics could be retrieved, the number of bonds (or angles) that are observed in the model and the number of bonds (or angles) that are defined in the Chemical Component Dictionary. The Link column lists molecule types, if any, to which the group is linked. The Z score for a bond length (or angle) is the number of standard deviations the observed value is removed from the expected value. A bond length (or angle) with $|Z| > 2$ is considered an outlier worth inspection. RMSZ is the root-mean-square of all Z scores of the bond lengths (or angles).

Mol	Type	Chain	Res	Link	Bond lengths			Bond angles		
					Counts	RMSZ	$\# Z > 2$	Counts	RMSZ	$\# Z > 2$
3	P4G	A	402	-	10,10,10	0.46	0	9,9,9	0.49	0
2	PEG	A	401	-	6,6,6	0.47	0	5,5,5	0.30	0

Mol	Type	Chain	Res	Link	Bond lengths			Bond angles		
					Counts	RMSZ	# Z > 2	Counts	RMSZ	# Z > 2
4	TRS	A	403	-	7,7,7	0.70	0	9,9,9	1.48	3 (33%)

In the following table, the Chirals column lists the number of chiral outliers, the number of chiral centers analysed, the number of these observed in the model and the number defined in the Chemical Component Dictionary. Similar counts are reported in the Torsion and Rings columns. '-' means no outliers of that kind were identified.

Mol	Type	Chain	Res	Link	Chirals	Torsions	Rings
3	P4G	A	402	-	-	6/8/8/8	-
2	PEG	A	401	-	-	0/4/4/4	-
4	TRS	A	403	-	-	3/9/9/9	-

There are no bond length outliers.

All (3) bond angle outliers are listed below:

Mol	Chain	Res	Type	Atoms	Z	Observed(°)	Ideal(°)
4	A	403	TRS	O2-C2-C	-2.75	103.21	110.88
4	A	403	TRS	O1-C1-C	-2.27	104.54	110.88
4	A	403	TRS	C2-C-C1	-2.09	105.08	110.66

There are no chirality outliers.

All (9) torsion outliers are listed below:

Mol	Chain	Res	Type	Atoms
4	A	403	TRS	C1-C-C3-O3
4	A	403	TRS	C2-C-C3-O3
4	A	403	TRS	N-C-C3-O3
3	A	402	P4G	O3-C5-C6-O4
3	A	402	P4G	C4-C3-O2-C2
3	A	402	P4G	C5-C6-O4-C7
3	A	402	P4G	O2-C3-C4-O3
3	A	402	P4G	C1-C2-O2-C3
3	A	402	P4G	C3-C4-O3-C5

There are no ring outliers.

1 monomer is involved in 1 short contact:

Mol	Chain	Res	Type	Clashes	Symm-Clashes
3	A	402	P4G	1	0

5.7 Other polymers [i](#)

There are no such residues in this entry.

5.8 Polymer linkage issues [i](#)

There are no chain breaks in this entry.

6 Fit of model and data

6.1 Protein, DNA and RNA chains

In the following table, the column labelled ‘#RSRZ > 2’ contains the number (and percentage) of RSRZ outliers, followed by percent RSRZ outliers for the chain as percentile scores relative to all X-ray entries and entries of similar resolution. The OWAB column contains the minimum, median, 95th percentile and maximum values of the occupancy-weighted average B-factor per residue. The column labelled ‘Q < 0.9’ lists the number of (and percentage) of residues with an average occupancy less than 0.9.

Mol	Chain	Analysed	<RSRZ>	#RSRZ>2	OWAB(Å ²)	Q<0.9
1	A	347/367 (94%)	0.37	29 (8%) 11 17	28, 41, 67, 89	0
1	B	340/367 (92%)	0.33	28 (8%) 11 18	27, 42, 67, 82	0
All	All	687/734 (93%)	0.35	57 (8%) 11 17	27, 41, 67, 89	0

All (57) RSRZ outliers are listed below:

Mol	Chain	Res	Type	RSRZ
1	B	52	ALA	7.4
1	B	166	VAL	5.8
1	A	334	GLY	4.9
1	A	40	LEU	4.5
1	A	157	TYR	4.4
1	A	335	ASP	4.3
1	B	51	GLN	4.1
1	A	59	TRP	3.8
1	B	59	TRP	3.7
1	B	211	TRP	3.4
1	B	155	ARG	3.3
1	B	60	VAL	3.3
1	A	333	GLU	3.3
1	B	335	ASP	3.2
1	A	63	TYR	3.2
1	A	366	LEU	3.1
1	A	210	TRP	3.1
1	B	63	TYR	3.1
1	B	334	GLY	3.1
1	A	51	GLN	3.0
1	A	350	PHE	3.0
1	A	159	LYS	3.0
1	A	216	TYR	3.0
1	A	211	TRP	2.9

Continued on next page...

Continued from previous page...

Mol	Chain	Res	Type	RSRZ
1	B	202	SER	2.8
1	A	20	LEU	2.7
1	B	53	ALA	2.7
1	A	332	ILE	2.7
1	A	330	ASP	2.7
1	A	113	TRP	2.6
1	B	156	ALA	2.6
1	A	60	VAL	2.6
1	B	131	GLN	2.5
1	B	310	LEU	2.5
1	A	177	CYS	2.5
1	B	337	ARG	2.4
1	B	210	TRP	2.4
1	B	216	TYR	2.4
1	A	269	TRP	2.3
1	A	202	SER	2.3
1	B	50	PRO	2.3
1	A	62	ALA	2.3
1	B	113	TRP	2.2
1	B	350	PHE	2.2
1	B	330	ASP	2.2
1	A	64	VAL	2.2
1	B	265	PHE	2.2
1	A	229	GLY	2.1
1	A	140	LEU	2.1
1	B	366	LEU	2.1
1	A	52	ALA	2.1
1	B	299	ARG	2.0
1	A	310	LEU	2.0
1	A	127	GLU	2.0
1	B	168	PHE	2.0
1	B	269	TRP	2.0
1	B	177	CYS	2.0

6.2 Non-standard residues in protein, DNA, RNA chains ⓘ

There are no non-standard protein/DNA/RNA residues in this entry.

6.3 Carbohydrates ⓘ

There are no monosaccharides in this entry.

6.4 Ligands [i](#)

In the following table, the Atoms column lists the number of modelled atoms in the group and the number defined in the chemical component dictionary. The B-factors column lists the minimum, median, 95th percentile and maximum values of B factors of atoms in the group. The column labelled 'Q< 0.9' lists the number of atoms with occupancy less than 0.9.

Mol	Type	Chain	Res	Atoms	RSCC	RSR	B-factors(\AA^2)	Q<0.9
3	P4G	A	402	11/11	0.78	0.20	59,62,80,80	0
2	PEG	A	401	7/7	0.89	0.22	44,46,49,49	0
4	TRS	A	403	8/8	0.90	0.29	53,55,57,61	0

6.5 Other polymers [i](#)

There are no such residues in this entry.