



Full wwPDB X-ray Structure Validation Report ⓘ

Nov 11, 2024 – 09:42 PM EST

PDB ID : 1SDD
Title : Crystal Structure of Bovine Factor Vai
Authors : Adams, T.E.; Hockin, M.F.; Mann, K.G.; Everse, S.J.
Deposited on : 2004-02-13
Resolution : 2.80 Å(reported)

This is a Full wwPDB X-ray Structure Validation Report for a publicly released PDB entry.

We welcome your comments at validation@mail.wwpdb.org

A user guide is available at

<https://www.wwpdb.org/validation/2017/XrayValidationReportHelp>

with specific help available everywhere you see the ⓘ symbol.

The types of validation reports are described at

<http://www.wwpdb.org/validation/2017/FAQs#types>.

The following versions of software and data (see [references ⓘ](#)) were used in the production of this report:

MolProbity : 4.02b-467
Mogul : 2022.3.0, CSD as543be (2022)
Xtriage (Phenix) : 1.20.1
EDS : 3.0
Percentile statistics : 20231227.v01 (using entries in the PDB archive December 27th 2023)
CCP4 : 9.0.003 (Gargrove)
Density-Fitness : 1.0.11
Ideal geometry (proteins) : Engh & Huber (2001)
Ideal geometry (DNA, RNA) : Parkinson et al. (1996)
Validation Pipeline (wwPDB-VP) : 2.39

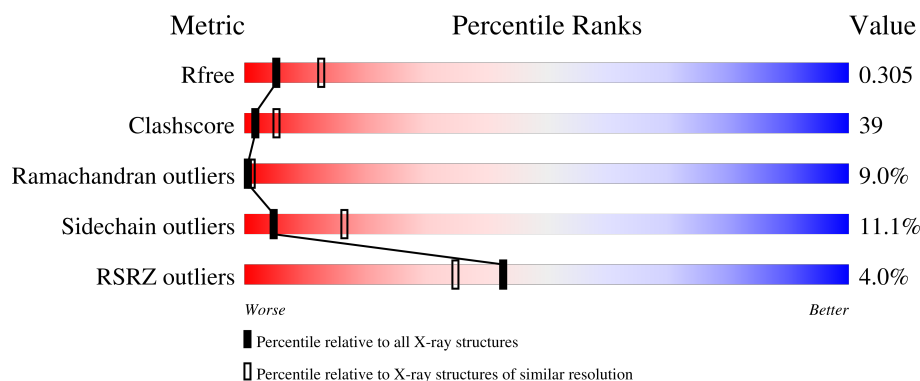
1 Overall quality at a glance

The following experimental techniques were used to determine the structure:

X-RAY DIFFRACTION

The reported resolution of this entry is 2.80 Å.

Percentile scores (ranging between 0-100) for global validation metrics of the entry are shown in the following graphic. The table shows the number of entries on which the scores are based.



Metric	Whole archive (#Entries)	Similar resolution (#Entries, resolution range(Å))
R_{free}	164625	3657 (2.80-2.80)
Clashscore	180529	4123 (2.80-2.80)
Ramachandran outliers	177936	4071 (2.80-2.80)
Sidechain outliers	177891	4073 (2.80-2.80)
RSRZ outliers	164620	3659 (2.80-2.80)

The table below summarises the geometric issues observed across the polymeric chains and their fit to the electron density. The red, orange, yellow and green segments of the lower bar indicate the fraction of residues that contain outliers for ≥ 3 , 2, 1 and 0 types of geometric quality criteria respectively. A grey segment represents the fraction of residues that are not modelled. The numeric value for each fraction is indicated below the corresponding segment, with a dot representing fractions $\leq 5\%$. The upper red bar (where present) indicates the fraction of residues that have poor fit to the electron density. The numeric value is given above the bar.

Mol	Chain	Length	Quality of chain
1	A	306	
2	B	647	

The following table lists non-polymeric compounds, carbohydrate monomers and non-standard residues in protein, DNA, RNA chains that are outliers for geometric or electron-density-fit criteria:

Mol	Type	Chain	Res	Chirality	Geometry	Clashes	Electron density
3	NAG	B	2187	X	-	-	-
3	NAG	B	2189	X	-	-	-

2 Entry composition [i](#)

There are 6 unique types of molecules in this entry. The entry contains 7271 atoms, of which 0 are hydrogens and 0 are deuteriums.

In the tables below, the ZeroOcc column contains the number of atoms modelled with zero occupancy, the AltConf column contains the number of residues with at least one atom in alternate conformation and the Trace column contains the number of residues modelled with at most 2 atoms.

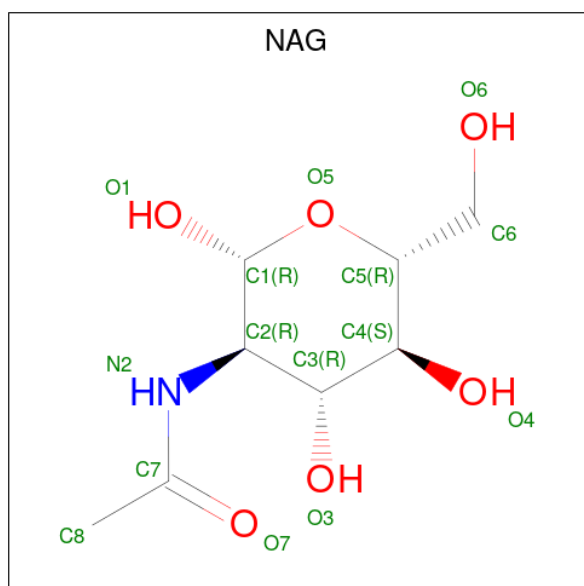
- Molecule 1 is a protein called Coagulation factor V.

Mol	Chain	Residues	Atoms					ZeroOcc	AltConf	Trace
1	A	268	Total	C	N	O	S	0	0	0
			2132	1366	356	398	12			

- Molecule 2 is a protein called Coagulation factor V.

Mol	Chain	Residues	Atoms					ZeroOcc	AltConf	Trace
2	B	601	Total	C	N	O	S	0	0	0
			4878	3127	840	888	23			

- Molecule 3 is 2-acetamido-2-deoxy-beta-D-glucopyranose (three-letter code: NAG) (formula: $C_8H_{15}NO_6$).



Mol	Chain	Residues	Atoms				ZeroOcc	AltConf
3	A	1	Total	C	N	O	0	0
			14	8	1	5		
3	A	1	Total	C	N	O	0	0
			14	8	1	5		

Continued on next page...

Continued from previous page...

Mol	Chain	Residues	Atoms				ZeroOcc	AltConf
3	B	1	Total	C	N	O	0	0
			14	8	1	5		
3	B	1	Total	C	N	O	0	0
			14	8	1	5		
3	B	1	Total	C	N	O	0	0
			14	8	1	5		

- Molecule 4 is CALCIUM ION (three-letter code: CA) (formula: Ca).

Mol	Chain	Residues	Atoms		ZeroOcc	AltConf
4	A	1	Total	Ca	0	0
			1	1		

- Molecule 5 is COPPER (II) ION (three-letter code: CU) (formula: Cu).

Mol	Chain	Residues	Atoms		ZeroOcc	AltConf
5	B	1	Total	Cu	0	0
			1	1		

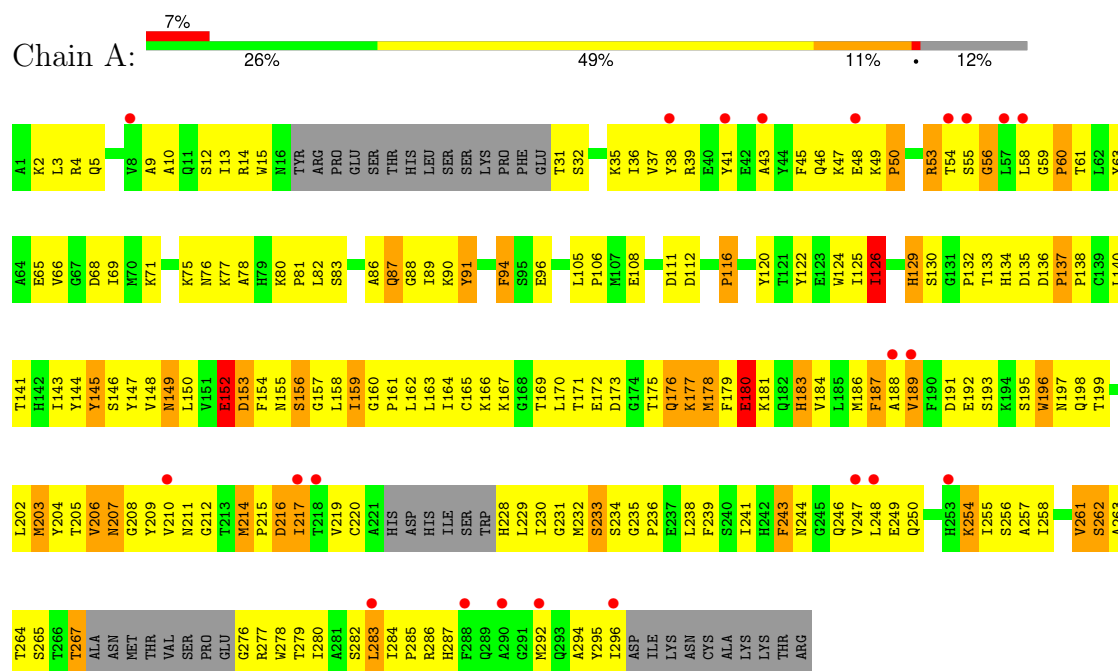
- Molecule 6 is water.

Mol	Chain	Residues	Atoms		ZeroOcc	AltConf
6	A	47	Total	O	0	0
			47	47		
6	B	142	Total	O	0	0
			142	142		

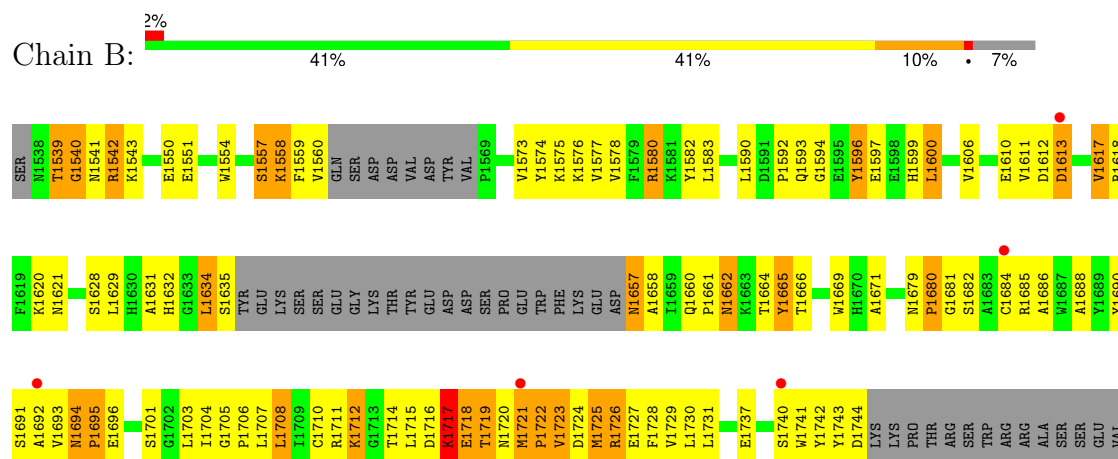
3 Residue-property plots

These plots are drawn for all protein, RNA, DNA and oligosaccharide chains in the entry. The first graphic for a chain summarises the proportions of the various outlier classes displayed in the second graphic. The second graphic shows the sequence view annotated by issues in geometry and electron density. Residues are color-coded according to the number of geometric quality criteria for which they contain at least one outlier: green = 0, yellow = 1, orange = 2 and red = 3 or more. A red dot above a residue indicates a poor fit to the electron density ($RSRZ > 2$). Stretches of 2 or more consecutive residues without any outlier are shown as a green connector. Residues present in the sample, but not in the model, are shown in grey.

• Molecule 1: Coagulation factor V



• Molecule 2: Coagulation factor V



L2171 L2172 L2173 L2174 L2175	L2176 L2177 L2178 L2179 L2180 L2181 L2182	TYR	K2088	E2016	P1920	K1837	LYS		
			L2017	W1921	L1843	N1760			
			Q2010	M1926	D1844			H1765	
			G2019	Q1927	T1845				M1770
			V2022	K1928	E1846				
V2096	C2025	L1931	G1848	Y1772	L1774				
T2097	S2026	I1935	E1849	N1773		L1775			
Q2098	T2027	L1935	I1850	Y1774	L1776				
G2099	C2100	G2030	Q1851	E1851		L1777			
K2101	G2030	Q1938	R1852	R1852	Y1780				
E2106	G2034	G1939	E1853	E1853		E1781			
W2107	K2035	H1942	G1854	G1854	Q1782				
Y2108	I2036	Y1943	M1855	M1855		E1783			
V2109	E2037	L1944	Q1856	Q1856	W1794				
K2110	N2038	K1945	I1861	I1861		Y1785			
S2111	K2039	P1946	R1864	R1864	R1786				
Y2112	Q2040	T1950	L1789	L1787		L1787			
T2113	S2044	E1951	K1867	K1867	H1788				
D2118	S2045	E1951	M1868	M1868		L1790			
T2121	F2046	D1959	P1869	P1869	N1791				
D2122	K2048	R1960	M1870	M1870		L1792			
W2123	S2049	G1871	G1871	G1871	G1793				
K2124	W2050	Y1963	L1872	L1872		G1794			
R2125	W2051	R1964	L1876	L1876	D1797				
Y2126	G2052	I1965	I1877	I1877		I1798			
R2127	N2053	F1966	E1886	E1886	Y1801				
N2132	Y2054	G1967	F1887	F1887		H1802			
	W2055	N1969	W1888	W1888	H1803				
	F2058	S1970	G1889	G1889		H1804			
N2140	L2062	N1973	Y1890	Y1890	G1805				
N2141	N2063	V1974	Y1891	Y1891		Q1806			
N2142	N2063	M1975	E1892	E1892	T1807				
V2143	R2067	E1988	K1894	K1894		L1808			
R2144	N2069	N1991	L1895	L1895	L1809				
G2145	N2069	D1992	A1896	A1896		E1810			
H2146	W2071	P1993	L1897	L1897	E1811				
V2147	Q2072	P1993	L1898	L1898		G1812			
K2148	A2073	R1998	N1900	N1900	T1813				
F2151	N2152	K2074	Y1999	Y1999		Q1814			
N2152	P2153	A2075	N2076	N2076	H1816				
P2153	F2154	N2077	R2001	R2001		H1817			
L2155	T2155	N2078	S2003	S2003	Q1819				
T2160	R2161	N2079	P2004	P2004		G1819			
T2162	K2080	W2081	Y2008	Y2008	L1821				
K2165	L2082	Q2083	K2010	K2010		L1822			
T2166	W2167	I2084	P2011	P2011	L1823				
N2168	D2085	N2086	R2014	R2014		H1831			
Q2169	S2170	L2086	L2015	L2015	E1832				
S2170	L2087	L2086	L2015	L2015		M1833			
					K1834				
						A1835			
					G1836				
						L1837			
					L1838				
						L1839			
					L1840				
						L1841			
					L1842				
						L1843			
					L1844				
						L1845			
					L1846				
						L1847			
					L1848				
						L1849			
					L1850				
						L1851			
					L1852				
						L1853			
					L1854				
						L1855			
					L1856				
						L1857			
					L1858				
						L1859			
					L1860				
						L1861			
					L1862				
						L1863			
					L1864				
						L1865			
					L1866				
						L1867			
					L1868				
						L1869			
					L1870				
						L1871			
					L1872				
						L1873			
					L1874				
						L1875			
					L1876				
						L1877			
					L1878				
						L1879			
					L1880				
						L1881			
					L1882				
						L1883			
					L1884				
						L1885			
					L1886				
						L1887			
					L1888				
						L1889			
					L1890				
						L1891			
					L1892				
						L1893			
					L1894				
						L1895			
					L1896				
						L1897			
					L1898				
						L1899			
					L1900				
						L1901			
					L1902				
						L1903			
					L1904				
						L1905			
					L1906				
						L1907			
					L1908				
						L1909			
					L1910				
						L1911			
					L1912				
						L1913			
					L1914				
						L1915			
					L1916				
						L1917			
					L1918				
						L1919			
					L1920				
						L1921			
					L1922				
						L1923			
					L1924				
						L1925			
					L1926				
						L1927			
					L1928				
						L1929			
					L1930				
						L1931			
					L1932				
						L1933			
					L1934				
						L1935			
					L1936				
						L1937			
					L1938				
						L1939			
					L1940				
						L1941			
					L1942				
						L1943			
					L1944				
						L1945			
					L1946				
						L1947			
					L1948				
						L1949			
					L1950				
						L1951			
					L1952				
						L1953			
					L1954				
						L1955			
					L1956				
						L1957			
					L1958				
						L1959			
					L1960				
						L1961			
					L1962				
						L1963			
					L1964				
						L1965			
					L1966				
						L1967			
					L1968				
						L1969			
					L1970				
						L1971			
					L1972				
						L1973			
					L1974				
						L1975			
					L1976				
						L1977			
					L1978				
						L1979			
					L1980				
						L1981			
					L1982				
						L1983			
					L1984				
						L1985			
					L1986				
						L1987			
					L1988				
						L1989			
					L1990				
						L1991			
					L1992				
						L1993			
					L1994				
						L1995			
					L1996				
						L1997			
					L1998				
						L1999			
					L2000				
						L2001			
					L2002				
						L2003			
					L2004				
						L2005			
					L2006				
						L2007			
					L2008				
						L2009			
					L2010				
						L2011			
					L2012				
						L2013			
					L2014				
						L2015			
					L2016				
						L2017			
					L2018				
						L2019			
					L2020				
						L2021			
					L2022				
						L2023			
					L2024				
						L2025			
					L2026				
						L2027			
					L2028				
						L2029			
					L2030				
						L2031			
					L2032				
						L2033			
					L2034				
						L2035			
					L2036				
						L2037			
					L2038				
						L2039			
					L2040				
						L2041			
					L2042				
						L2043			
					L2044				
						L2045			
					L2046				
						L2047			
					L2048				
						L2049			
					L2050				
						L2051			
					L2052				
						L2053			
					L2054				
						L2055			
					L2056				
						L2057			
					L2058				
						L2059			
					L2060				
						L2061			
					L2062				
						L2063			
					L2064				
						L2065			
					L2066				
						L2067			
					L2068				
						L2069			
					L2070				
						L2071			
					L2072				
						L2073			
					L2074				
						L2075			
					L2076				
						L2077			
					L2078				
						L2079			
					L2080				
						L2081			
					L2082				
						L2083			
					L2084				

4 Data and refinement statistics

Property	Value	Source
Space group	P 21 21 21	Depositor
Cell constants a, b, c, α , β , γ	63.37Å 86.56Å 229.20Å 90.00° 90.00° 90.00°	Depositor
Resolution (Å)	30.00 – 2.80 30.00 – 2.81	Depositor EDS
% Data completeness (in resolution range)	90.1 (30.00-2.80) 90.5 (30.00-2.81)	Depositor EDS
R_{merge}	0.05	Depositor
R_{sym}	0.05	Depositor
$\langle I/\sigma(I) \rangle$ ¹	4.22 (at 2.80Å)	Xtriage
Refinement program	CNS	Depositor
R, R_{free}	0.252 , 0.296 0.248 , 0.305	Depositor DCC
R_{free} test set	918 reflections (3.19%)	wwPDB-VP
Wilson B-factor (Å ²)	70.0	Xtriage
Anisotropy	0.086	Xtriage
Bulk solvent k_{sol} (e/Å ³), B_{sol} (Å ²)	0.30 , 73.5	EDS
L-test for twinning ²	$\langle L \rangle = 0.48$, $\langle L^2 \rangle = 0.31$	Xtriage
Estimated twinning fraction	No twinning to report.	Xtriage
F_o, F_c correlation	0.92	EDS
Total number of atoms	7271	wwPDB-VP
Average B, all atoms (Å ²)	67.0	wwPDB-VP

Xtriage's analysis on translational NCS is as follows: *The largest off-origin peak in the Patterson function is 3.64% of the height of the origin peak. No significant pseudotranslation is detected.*

¹Intensities estimated from amplitudes.

²Theoretical values of $\langle |L| \rangle$, $\langle L^2 \rangle$ for acentric reflections are 0.5, 0.333 respectively for untwinned datasets, and 0.375, 0.2 for perfectly twinned datasets.

5 Model quality

5.1 Standard geometry

Bond lengths and bond angles in the following residue types are not validated in this section: CA, NAG, CU

The Z score for a bond length (or angle) is the number of standard deviations the observed value is removed from the expected value. A bond length (or angle) with $|Z| > 5$ is considered an outlier worth inspection. RMSZ is the root-mean-square of all Z scores of the bond lengths (or angles).

Mol	Chain	Bond lengths		Bond angles	
		RMSZ	$\# Z > 5$	RMSZ	$\# Z > 5$
1	A	0.35	0/2188	0.60	0/2960
2	B	0.46	0/5012	0.70	2/6792 (0.0%)
All	All	0.43	0/7200	0.67	2/9752 (0.0%)

Chiral center outliers are detected by calculating the chiral volume of a chiral center and verifying if the center is modelled as a planar moiety or with the opposite hand. A planarity outlier is detected by checking planarity of atoms in a peptide group, atoms in a mainchain group or atoms of a sidechain that are expected to be planar.

Mol	Chain	#Chirality outliers	#Planarity outliers
2	B	0	1

There are no bond length outliers.

All (2) bond angle outliers are listed below:

Mol	Chain	Res	Type	Atoms	Z	Observed($^{\circ}$)	Ideal($^{\circ}$)
2	B	1847	VAL	N-CA-C	-6.63	93.11	111.00
2	B	2014	ARG	N-CA-C	-6.47	93.53	111.00

There are no chirality outliers.

All (1) planarity outliers are listed below:

Mol	Chain	Res	Type	Group
2	B	1890	TYR	Sidechain

5.2 Too-close contacts

In the following table, the Non-H and H(model) columns list the number of non-hydrogen atoms and hydrogen atoms in the chain respectively. The H(added) column lists the number of hydrogen

atoms added and optimized by MolProbity. The Clashes column lists the number of clashes within the asymmetric unit, whereas Symm-Clashes lists symmetry-related clashes.

Mol	Chain	Non-H	H(model)	H(added)	Clashes	Symm-Clashes
1	A	2132	0	2074	198	0
2	B	4878	0	4767	357	0
3	A	28	0	26	3	0
3	B	42	0	39	11	0
4	A	1	0	0	0	0
5	B	1	0	0	0	0
6	A	47	0	0	1	0
6	B	142	0	0	3	0
All	All	7271	0	6906	549	0

The all-atom clashscore is defined as the number of clashes found per 1000 atoms (including hydrogen atoms). The all-atom clashscore for this structure is 39.

All (549) close contacts within the same asymmetric unit are listed below, sorted by their clash magnitude.

Atom-1	Atom-2	Interatomic distance (Å)	Clash overlap (Å)
2:B:1992:ASP:HB3	2:B:1993:PRO:HD3	1.13	1.13
2:B:2152:ASN:HB2	2:B:2153:PRO:HD3	1.22	1.10
2:B:1721:MET:HG3	2:B:1786:ARG:HH22	1.01	1.08
2:B:1914:THR:HB	2:B:1920:PRO:HD2	1.38	1.05
1:A:264:THR:HG21	2:B:1822:PRO:HG3	1.44	0.98
2:B:1597:GLU:HB2	2:B:1600:LEU:HD22	1.46	0.97
2:B:1542:ARG:H	2:B:1542:ARG:CZ	1.78	0.96
2:B:1992:ASP:CB	2:B:1993:PRO:HD3	1.93	0.95
2:B:1721:MET:HG3	2:B:1786:ARG:NH2	1.81	0.94
1:A:229:LEU:HD23	1:A:241:ILE:HD12	1.51	0.92
2:B:1542:ARG:H	2:B:1542:ARG:NE	1.69	0.91
2:B:1580:ARG:HG2	2:B:1580:ARG:HH11	1.30	0.91
2:B:2067:ARG:HA	2:B:2067:ARG:HH11	1.33	0.90
2:B:1894:LYS:H	2:B:1894:LYS:HE2	1.40	0.85
2:B:1628:SER:O	2:B:1691:SER:HA	1.77	0.84
2:B:1893:PRO:HD2	2:B:1894:LYS:NZ	1.92	0.84
2:B:2152:ASN:HB2	2:B:2153:PRO:CD	2.08	0.83
1:A:198:GLN:HB2	3:A:2185:NAG:H81	1.59	0.82
1:A:140:LEU:HA	1:A:267:THR:HG21	1.62	0.82
2:B:2030:GLY:HA3	2:B:2036:ILE:HG13	1.61	0.82
1:A:4:ARG:HH22	1:A:170:LEU:HD23	1.45	0.81
1:A:91:TYR:CE1	1:A:96:GLU:HG3	2.17	0.80
2:B:1721:MET:CG	2:B:1786:ARG:HH22	1.91	0.80

Continued on next page...

Continued from previous page...

Atom-1	Atom-2	Interatomic distance (Å)	Clash overlap (Å)
2:B:1911:LYS:HD2	2:B:1911:LYS:O	1.83	0.79
2:B:2096:VAL:HG23	2:B:2178:PHE:HE1	1.48	0.79
2:B:1992:ASP:HB3	2:B:1993:PRO:CD	2.07	0.79
2:B:2111:SER:HB2	2:B:2166:THR:HG22	1.63	0.78
2:B:2162:ILE:HD12	2:B:2162:ILE:N	1.99	0.78
2:B:1721:MET:HE1	2:B:1723:VAL:HB	1.66	0.77
2:B:1905:ASN:H	2:B:1905:ASN:HD22	1.32	0.77
2:B:1893:PRO:HD2	2:B:1894:LYS:HZ1	1.50	0.76
2:B:2083:GLN:HB3	2:B:2161:ARG:HG2	1.67	0.76
1:A:197:ASN:HD21	3:A:2185:NAG:H4	1.50	0.76
2:B:1808:LEU:HB3	2:B:1831:LEU:HD12	1.68	0.76
2:B:2168:ASN:C	2:B:2168:ASN:HD22	1.90	0.75
1:A:232:MET:HA	1:A:262:SER:O	1.87	0.75
2:B:2096:VAL:HG23	2:B:2178:PHE:CE1	2.21	0.75
2:B:1917:ASN:HD21	2:B:1919:GLU:HB2	1.52	0.75
1:A:167:LYS:H	1:A:167:LYS:HD2	1.51	0.75
1:A:279:THR:HA	1:A:295:TYR:HA	1.69	0.73
2:B:1593:GLN:HG3	2:B:1597:GLU:HG3	1.70	0.73
2:B:2152:ASN:CB	2:B:2153:PRO:HD3	2.11	0.73
1:A:161:PRO:HG2	1:A:184:VAL:HG11	1.69	0.73
2:B:1680:PRO:HG2	2:B:1813:THR:HA	1.70	0.73
2:B:1580:ARG:HG2	2:B:1580:ARG:NH1	1.95	0.73
2:B:2071:TRP:O	2:B:2172:ALA:HA	1.88	0.73
2:B:1692:ALA:O	2:B:1695:PRO:HD3	1.89	0.72
1:A:141:THR:OG1	1:A:267:THR:HB	1.89	0.72
2:B:1685:ARG:HD2	2:B:1686:ALA:H	1.55	0.71
1:A:133:THR:HG22	1:A:134:HIS:H	1.55	0.71
2:B:2126:TYR:OH	2:B:2153:PRO:HD2	1.91	0.71
1:A:162:LEU:O	1:A:163:LEU:HD23	1.91	0.70
2:B:1706:PRO:HB3	2:B:1729:VAL:HG11	1.73	0.70
1:A:202:LEU:HD23	1:A:203:MET:H	1.57	0.70
2:B:2101:LYS:HD3	2:B:2144:ARG:NH2	2.07	0.69
2:B:2055:TRP:HB2	2:B:2072:GLN:HB2	1.73	0.69
1:A:159:ILE:HD13	1:A:186:MET:SD	2.32	0.68
2:B:1915:GLU:C	2:B:1917:ASN:H	1.95	0.68
1:A:80:LYS:NZ	1:A:152:GLU:HG2	2.08	0.68
1:A:146:SER:HB3	1:A:153:ASP:OD1	1.93	0.68
1:A:264:THR:CG2	2:B:1822:PRO:HG3	2.21	0.68
2:B:1577:VAL:HG22	2:B:1703:LEU:HD21	1.75	0.67
2:B:1680:PRO:O	3:B:2188:NAG:H62	1.94	0.67
2:B:1725:MET:HG2	2:B:1726:ARG:N	2.10	0.67

Continued on next page...

Continued from previous page...

Atom-1	Atom-2	Interatomic distance (Å)	Clash overlap (Å)
1:A:37:VAL:HG11	1:A:39:ARG:NH1	2.10	0.66
2:B:2168:ASN:HD22	2:B:2169:GLN:N	1.93	0.66
2:B:1742:TYR:C	2:B:1744:ASP:H	1.98	0.65
2:B:1541:ASN:HA	2:B:1542:ARG:HH21	1.61	0.65
2:B:2101:LYS:NZ	2:B:2144:ARG:HH22	1.94	0.65
1:A:37:VAL:HG11	1:A:39:ARG:HH11	1.60	0.65
2:B:2110:LYS:HB2	2:B:2166:THR:HG23	1.78	0.65
2:B:1542:ARG:NE	2:B:1542:ARG:N	2.44	0.65
2:B:2111:SER:CB	2:B:2166:THR:HG22	2.26	0.65
1:A:71:LYS:HB2	1:A:71:LYS:NZ	2.12	0.65
2:B:1998:ARG:HD3	2:B:1999:TYR:CE1	2.32	0.65
1:A:206:VAL:O	1:A:207:ASN:HB2	1.96	0.65
2:B:1543:LYS:HD2	6:B:2358:HOH:O	1.97	0.65
2:B:2092:ILE:HG22	2:B:2151:PHE:HE2	1.62	0.64
2:B:1724:ASP:O	2:B:1725:MET:O	2.15	0.64
2:B:1664:THR:HG22	2:B:1665:TYR:H	1.63	0.64
2:B:1821:TRP:HZ3	2:B:1823:LEU:HD23	1.62	0.63
2:B:2002:ILE:HD12	2:B:2015:LEU:HD22	1.80	0.63
2:B:1890:TYR:HB3	2:B:1904:TYR:CE2	2.34	0.63
2:B:1927:GLN:C	2:B:1998:ARG:HE	2.01	0.63
2:B:1721:MET:CE	2:B:1723:VAL:HB	2.28	0.63
2:B:1803:PHE:CD2	2:B:1808:LEU:HD11	2.34	0.63
2:B:1969:ASN:OD1	3:B:2189:NAG:N2	2.30	0.63
1:A:132:PRO:HA	1:A:140:LEU:HD11	1.79	0.63
1:A:255:ILE:HD11	1:A:258:ILE:HG12	1.79	0.63
2:B:1541:ASN:OD1	2:B:1542:ARG:NH2	2.31	0.63
2:B:1931:LEU:HD12	2:B:2022:VAL:HA	1.80	0.63
2:B:2091:LYS:O	2:B:2179:GLY:HA3	1.99	0.62
1:A:4:ARG:NH2	1:A:170:LEU:HD23	2.13	0.62
1:A:38:TYR:O	1:A:39:ARG:HD2	2.00	0.62
2:B:2090:LYS:HE2	2:B:2181:ASP:OD2	1.98	0.62
2:B:1963:TRP:CZ3	2:B:2001:ARG:HB2	2.34	0.62
2:B:1894:LYS:H	2:B:1894:LYS:CE	2.11	0.62
2:B:1898:LEU:HD22	2:B:1938:GLN:OE1	1.99	0.62
1:A:76:ASN:ND2	1:A:116:PRO:HA	2.14	0.61
1:A:161:PRO:HG3	1:A:230:ILE:CD1	2.30	0.61
2:B:1727:GLU:CD	2:B:1786:ARG:HH21	2.04	0.61
1:A:231:GLY:O	1:A:239:PHE:HE2	1.84	0.61
2:B:1662:ASN:HB2	3:B:2187:NAG:H5	1.81	0.61
1:A:48:GLU:HG3	1:A:50:PRO:HD3	1.82	0.61
2:B:1765:HIS:HD2	2:B:1850:ILE:HG23	1.66	0.61

Continued on next page...

Continued from previous page...

Atom-1	Atom-2	Interatomic distance (Å)	Clash overlap (Å)
2:B:2076:ASN:OD1	2:B:2170:SER:HA	2.00	0.61
2:B:2110:LYS:HD3	2:B:2167:TRP:O	2.00	0.61
2:B:1610:GLU:O	2:B:1613:ASP:HB2	2.01	0.61
2:B:2049:SER:HB2	2:B:2051:TRP:CE3	2.35	0.61
2:B:1543:LYS:HD2	2:B:1719:THR:HG21	1.83	0.60
2:B:1725:MET:HG2	2:B:1726:ARG:H	1.65	0.60
1:A:203:MET:O	1:A:205:THR:HG23	2.01	0.60
2:B:1803:PHE:CE1	2:B:1843:LEU:HD13	2.35	0.60
2:B:2109:VAL:HG21	2:B:2173:LEU:HG	1.83	0.60
2:B:1629:LEU:HD22	2:B:1669:TRP:HH2	1.64	0.60
2:B:1681:GLY:HA2	3:B:2188:NAG:H62	1.81	0.60
2:B:1662:ASN:HB2	3:B:2187:NAG:C5	2.32	0.60
2:B:1844:ASP:HB2	2:B:1851:GLN:HG3	1.84	0.60
1:A:90:LYS:NZ	2:B:1807:THR:HB	2.17	0.59
2:B:1780:TYR:O	2:B:1783:GLU:HB3	2.03	0.59
1:A:87:GLN:HG3	1:A:87:GLN:O	2.03	0.59
2:B:1685:ARG:HD2	2:B:1686:ALA:N	2.17	0.59
2:B:2008:TYR:O	2:B:2009:ASN:HB2	2.01	0.59
2:B:2092:ILE:HB	2:B:2155:ILE:HB	1.84	0.59
1:A:278:TRP:O	1:A:296:ILE:N	2.34	0.59
2:B:2037:GLU:O	2:B:2040:GLN:HB2	2.03	0.59
1:A:80:LYS:HZ1	1:A:152:GLU:HG2	1.66	0.59
2:B:1631:ALA:HB2	2:B:1669:TRP:CH2	2.38	0.59
1:A:236:PRO:HG3	2:B:1850:ILE:HD11	1.83	0.59
1:A:206:VAL:HG11	1:A:294:ALA:HB2	1.83	0.59
2:B:1731:LEU:HD12	2:B:1790:LEU:O	2.03	0.59
2:B:2055:TRP:CB	2:B:2072:GLN:HB2	2.31	0.58
2:B:1551:GLU:OE2	2:B:1741:TRP:CH2	2.56	0.58
2:B:1620:LYS:O	2:B:1621:ASN:HB3	2.03	0.58
2:B:1680:PRO:HG2	2:B:1813:THR:CA	2.33	0.58
1:A:206:VAL:O	1:A:206:VAL:HG12	2.03	0.58
1:A:158:LEU:O	1:A:159:ILE:HB	2.03	0.58
2:B:1912:LEU:HD23	2:B:2011:PRO:HG3	1.86	0.58
2:B:1988:GLU:H	2:B:1988:GLU:CD	2.07	0.58
1:A:14:ARG:HG3	1:A:32:SER:HB3	1.86	0.58
2:B:2167:TRP:CZ3	2:B:2171:ILE:HD11	2.39	0.58
1:A:167:LYS:HD2	1:A:167:LYS:N	2.19	0.57
2:B:1765:HIS:CD2	2:B:1850:ILE:HG23	2.39	0.57
2:B:1634:LEU:HD23	2:B:1635:SER:N	2.19	0.57
2:B:1803:PHE:HD2	2:B:1808:LEU:HD11	1.69	0.57
1:A:197:ASN:HD21	3:A:2185:NAG:C4	2.16	0.57

Continued on next page...

Continued from previous page...

Atom-1	Atom-2	Interatomic distance (Å)	Clash overlap (Å)
2:B:1942:HIS:HD1	2:B:1943:TYR:HD1	1.51	0.57
1:A:186:MET:HG2	1:A:186:MET:O	2.03	0.57
1:A:229:LEU:N	1:A:229:LEU:HD12	2.20	0.57
2:B:1887:PHE:CD1	2:B:1887:PHE:N	2.73	0.56
1:A:143:ILE:CG2	1:A:265:SER:HB3	2.35	0.56
2:B:2081:TRP:CZ3	2:B:2083:GLN:HG2	2.39	0.56
1:A:90:LYS:HZ1	2:B:1807:THR:HB	1.69	0.56
1:A:132:PRO:HG3	1:A:140:LEU:HG	1.87	0.56
2:B:1596:TYR:HD2	2:B:1596:TYR:N	2.04	0.56
1:A:186:MET:O	1:A:188:ALA:N	2.38	0.56
2:B:1959:ASP:O	2:B:1960:ARG:CB	2.54	0.56
1:A:145:TYR:N	1:A:145:TYR:CD1	2.73	0.56
2:B:1629:LEU:HD22	2:B:1669:TRP:CH2	2.39	0.56
2:B:1911:LYS:HD2	2:B:1911:LYS:C	2.26	0.56
1:A:60:PRO:HD2	1:A:144:TYR:OH	2.05	0.56
1:A:75:LYS:HE3	1:A:77:LYS:HE3	1.86	0.56
1:A:133:THR:HG22	1:A:134:HIS:N	2.21	0.56
1:A:171:THR:HG22	1:A:173:ASP:H	1.70	0.56
1:A:212:GLY:HA2	1:A:214:MET:SD	2.46	0.56
2:B:1704:ILE:CD1	2:B:1792:LEU:HD12	2.36	0.56
1:A:9:ALA:HB1	1:A:75:LYS:O	2.06	0.55
2:B:1912:LEU:O	2:B:1914:THR:N	2.38	0.55
2:B:1992:ASP:CB	2:B:1993:PRO:CD	2.75	0.55
1:A:284:ILE:O	1:A:286:ARG:N	2.39	0.55
2:B:1596:TYR:N	2:B:1596:TYR:CD2	2.74	0.55
2:B:1892:GLU:O	2:B:1895:LEU:HB2	2.06	0.55
2:B:2110:LYS:HD3	2:B:2167:TRP:C	2.26	0.55
1:A:238:LEU:H	1:A:238:LEU:HD23	1.71	0.55
1:A:248:LEU:HD11	1:A:256:SER:O	2.06	0.55
2:B:1596:TYR:CE2	2:B:1597:GLU:HG2	2.41	0.55
2:B:1657:ASN:C	2:B:1657:ASN:HD22	2.10	0.55
1:A:86:ALA:HB2	1:A:124:TRP:CH2	2.41	0.55
1:A:71:LYS:HB2	1:A:71:LYS:HZ2	1.72	0.55
1:A:189:VAL:HB	1:A:204:TYR:HD1	1.72	0.55
2:B:1543:LYS:HE2	2:B:1543:LYS:HA	1.87	0.55
2:B:1543:LYS:CD	2:B:1719:THR:HG21	2.37	0.55
1:A:66:VAL:HG21	1:A:167:LYS:HE3	1.89	0.55
1:A:138:PRO:HG2	1:A:179:PHE:CE2	2.41	0.55
1:A:249:GLU:OE2	1:A:254:LYS:HB3	2.07	0.55
1:A:250:GLN:OE1	1:A:255:ILE:HD13	2.06	0.55
2:B:2025:CYS:SG	2:B:2091:LYS:HD3	2.47	0.55

Continued on next page...

Continued from previous page...

Atom-1	Atom-2	Interatomic distance (Å)	Clash overlap (Å)
2:B:2048:LYS:HG2	2:B:2054:TYR:HD2	1.70	0.55
2:B:2112:TYR:CD2	2:B:2112:TYR:N	2.74	0.55
1:A:91:TYR:CZ	1:A:96:GLU:HG3	2.40	0.54
1:A:261:VAL:O	1:A:263:ALA:N	2.41	0.54
1:A:278:TRP:HB2	1:A:296:ILE:HD12	1.89	0.54
2:B:1681:GLY:HA3	2:B:1811:ASN:OD1	2.08	0.54
2:B:1704:ILE:HD13	2:B:1731:LEU:HD22	1.88	0.54
2:B:1782:GLN:NE2	2:B:1834:LYS:HE2	2.23	0.54
2:B:1906:ALA:HB2	2:B:2014:ARG:HG3	1.89	0.54
2:B:2071:TRP:HE3	2:B:2173:LEU:HB2	1.72	0.54
2:B:1606:VAL:HG22	2:B:1606:VAL:O	2.08	0.54
1:A:38:TYR:C	1:A:39:ARG:HD2	2.28	0.54
2:B:1596:TYR:HD2	2:B:1596:TYR:H	1.55	0.54
2:B:2039:LYS:HZ3	2:B:2039:LYS:H	1.55	0.54
2:B:1817:GLN:HE21	2:B:1817:GLN:HA	1.73	0.53
2:B:2121:THR:HB	6:B:2267:HOH:O	2.08	0.53
1:A:177:LYS:HE3	1:A:178:MET:HE3	1.88	0.53
1:A:214:MET:SD	1:A:214:MET:N	2.80	0.53
2:B:1577:VAL:HG13	2:B:1703:LEU:HG	1.90	0.53
2:B:2077:ASN:O	2:B:2167:TRP:HH2	1.90	0.53
1:A:13:ILE:O	1:A:13:ILE:HG13	2.06	0.53
2:B:1810:GLU:O	2:B:1815:GLN:HA	2.08	0.53
2:B:1870:MET:HG2	2:B:1926:MET:HE1	1.91	0.53
1:A:232:MET:O	1:A:233:SER:HB2	2.08	0.53
2:B:2062:LEU:O	2:B:2063:ASN:HB2	2.09	0.53
1:A:69:ILE:O	1:A:69:ILE:HG22	2.09	0.53
1:A:183:HIS:O	1:A:228:HIS:HB2	2.09	0.53
1:A:261:VAL:HG23	1:A:264:THR:CG2	2.38	0.53
2:B:1912:LEU:HB3	2:B:2011:PRO:HG2	1.91	0.53
1:A:233:SER:HB2	1:A:239:PHE:HZ	1.74	0.52
2:B:2038:ASN:C	2:B:2040:GLN:H	2.12	0.52
1:A:36:ILE:HG12	1:A:156:SER:OG	2.08	0.52
2:B:2054:TYR:N	2:B:2054:TYR:CD1	2.77	0.52
2:B:2086:LEU:CD1	2:B:2092:ILE:HD11	2.39	0.52
2:B:2109:VAL:CG2	2:B:2173:LEU:HG	2.39	0.52
1:A:47:LYS:HG2	1:A:48:GLU:N	2.25	0.52
2:B:1809:LEU:O	2:B:1831:LEU:HB2	2.10	0.52
2:B:1835:ALA:HB1	2:B:1861:ILE:HD13	1.92	0.52
2:B:1887:PHE:CE2	2:B:1892:GLU:HG2	2.44	0.52
1:A:37:VAL:HG12	1:A:38:TYR:N	2.24	0.52
2:B:1742:TYR:C	2:B:1744:ASP:N	2.63	0.52

Continued on next page...

Continued from previous page...

Atom-1	Atom-2	Interatomic distance (Å)	Clash overlap (Å)
1:A:56:GLY:HA3	1:A:207:ASN:O	2.10	0.52
1:A:196:TRP:HE3	1:A:196:TRP:HA	1.75	0.52
1:A:212:GLY:O	1:A:214:MET:HG3	2.09	0.52
2:B:1551:GLU:OE2	2:B:1741:TRP:HH2	1.92	0.52
2:B:1959:ASP:O	2:B:1960:ARG:HB2	2.09	0.52
2:B:2039:LYS:HZ3	2:B:2039:LYS:N	2.08	0.52
2:B:2101:LYS:HZ3	2:B:2144:ARG:HH22	1.57	0.52
1:A:87:GLN:HG2	1:A:143:ILE:HG13	1.91	0.52
1:A:177:LYS:C	1:A:179:PHE:H	2.13	0.52
2:B:1610:GLU:HA	2:B:1710:CYS:O	2.10	0.52
1:A:132:PRO:HB2	1:A:166:LYS:HE2	1.90	0.51
2:B:1905:ASN:O	2:B:2014:ARG:HD3	2.10	0.51
2:B:2125:PRO:O	2:B:2127:ARG:HG3	2.10	0.51
1:A:49:LYS:O	1:A:50:PRO:O	2.29	0.51
2:B:1912:LEU:C	2:B:1914:THR:H	2.13	0.51
2:B:1921:TRP:C	2:B:1921:TRP:CD1	2.84	0.51
1:A:58:LEU:HD11	1:A:161:PRO:HD3	1.92	0.51
1:A:196:TRP:HA	1:A:196:TRP:CE3	2.45	0.51
1:A:206:VAL:O	1:A:207:ASN:CB	2.58	0.51
2:B:2086:LEU:HD13	2:B:2092:ILE:HD11	1.92	0.51
1:A:187:PHE:CE2	1:A:241:ILE:HG12	2.45	0.51
2:B:2069:ASN:O	2:B:2070:ALA:HB2	2.11	0.51
3:B:2187:NAG:O3	3:B:2187:NAG:H83	2.11	0.51
1:A:155:ASN:C	1:A:157:GLY:H	2.12	0.51
2:B:1714:THR:O	2:B:1722:PRO:CD	2.59	0.51
2:B:1960:ARG:HD2	2:B:1960:ARG:O	2.10	0.51
2:B:1991:ILE:HG22	2:B:1991:ILE:O	2.11	0.51
2:B:1664:THR:HG22	2:B:1665:TYR:N	2.24	0.51
2:B:1781:GLU:OE2	2:B:1864:ARG:HB2	2.10	0.51
2:B:2075:ALA:C	2:B:2076:ASN:HD22	2.14	0.51
2:B:2083:GLN:HB3	2:B:2161:ARG:CG	2.38	0.51
1:A:167:LYS:H	1:A:167:LYS:CD	2.21	0.51
1:A:177:LYS:HG2	1:A:178:MET:N	2.26	0.51
2:B:1679:ASN:HB2	2:B:1680:PRO:HD3	1.93	0.51
2:B:1818:LEU:N	2:B:1818:LEU:HD22	2.25	0.51
1:A:90:LYS:HD2	1:A:130:SER:HB3	1.92	0.50
2:B:1812:GLY:C	2:B:1814:GLN:H	2.13	0.50
2:B:2038:ASN:O	2:B:2040:GLN:N	2.41	0.50
2:B:1618:ARG:HH11	2:B:1664:THR:HG21	1.77	0.50
2:B:2086:LEU:O	2:B:2088:LYS:N	2.44	0.50
2:B:1694:ASN:C	2:B:1694:ASN:HD22	2.14	0.50

Continued on next page...

Continued from previous page...

Atom-1	Atom-2	Interatomic distance (Å)	Clash overlap (Å)
2:B:1731:LEU:HB2	2:B:1790:LEU:CD1	2.42	0.50
2:B:1789:LEU:HD12	2:B:1831:LEU:HD21	1.92	0.50
2:B:1965:ILE:HG21	2:B:1974:VAL:HG11	1.93	0.50
1:A:165:CYS:SG	1:A:170:LEU:HD13	2.51	0.50
2:B:1789:LEU:CD1	2:B:1831:LEU:HD21	2.42	0.50
2:B:2086:LEU:C	2:B:2088:LYS:H	2.14	0.50
2:B:1721:MET:HE2	2:B:1786:ARG:HH12	1.77	0.50
2:B:1917:ASN:ND2	2:B:1919:GLU:HB2	2.24	0.50
1:A:177:LYS:O	1:A:179:PHE:N	2.44	0.50
2:B:1784:TRP:CD2	3:B:2188:NAG:H81	2.46	0.50
2:B:2168:ASN:C	2:B:2168:ASN:ND2	2.63	0.50
1:A:105:LEU:HB3	1:A:106:PRO:HD2	1.94	0.50
2:B:2048:LYS:HG2	2:B:2054:TYR:CD2	2.47	0.49
1:A:180:GLU:OE1	1:A:181:LYS:HB2	2.12	0.49
2:B:1931:LEU:O	2:B:2019:GLY:HA3	2.12	0.49
1:A:3:LEU:C	1:A:3:LEU:HD23	2.32	0.49
1:A:254:LYS:HD3	1:A:254:LYS:C	2.32	0.49
2:B:1575:LYS:HE2	2:B:1741:TRP:CE3	2.48	0.49
2:B:1730:LEU:HD22	2:B:1730:LEU:N	2.27	0.49
2:B:1723:VAL:HG12	2:B:1724:ASP:N	2.28	0.49
1:A:149:ASN:C	1:A:149:ASN:HD22	2.16	0.49
1:A:83:SER:HB3	1:A:112:ASP:O	2.13	0.49
1:A:247:VAL:HG22	1:A:247:VAL:O	2.12	0.49
2:B:1657:ASN:HD22	2:B:1658:ALA:N	2.11	0.49
2:B:1740:SER:OG	2:B:1741:TRP:CD1	2.66	0.49
2:B:1550:GLU:OE2	2:B:1582:TYR:HE1	1.96	0.49
2:B:1617:VAL:HG21	2:B:1629:LEU:HD13	1.94	0.49
2:B:1870:MET:HG2	2:B:1926:MET:CE	2.43	0.49
2:B:1935:ILE:HD11	2:B:2002:ILE:HD13	1.95	0.49
1:A:37:VAL:CG1	1:A:39:ARG:HH11	2.24	0.48
2:B:1919:GLU:HB3	2:B:1920:PRO:HD3	1.95	0.48
1:A:126:ILE:HG13	1:A:126:ILE:O	2.12	0.48
1:A:36:ILE:N	1:A:156:SER:O	2.39	0.48
1:A:229:LEU:HD23	1:A:241:ILE:CD1	2.32	0.48
2:B:1554:TRP:O	2:B:1573:VAL:HA	2.13	0.48
2:B:1723:VAL:O	2:B:1724:ASP:C	2.51	0.48
1:A:147:TYR:O	1:A:149:ASN:N	2.47	0.48
1:A:189:VAL:HB	1:A:204:TYR:CD1	2.48	0.48
2:B:1590:LEU:O	2:B:1592:PRO:HD3	2.14	0.48
1:A:125:ILE:O	1:A:125:ILE:HG22	2.12	0.48
2:B:1540:GLY:HA2	2:B:1612:ASP:O	2.13	0.48

Continued on next page...

Continued from previous page...

Atom-1	Atom-2	Interatomic distance (Å)	Clash overlap (Å)
2:B:1574:TYR:CD1	2:B:1737:GLU:HG3	2.48	0.48
2:B:1742:TYR:O	2:B:1744:ASP:N	2.46	0.48
2:B:1843:LEU:O	2:B:1856:GLN:HA	2.12	0.48
2:B:1914:THR:CB	2:B:1920:PRO:HD2	2.27	0.48
1:A:179:PHE:O	1:A:180:GLU:O	2.32	0.48
1:A:233:SER:O	1:A:235:GLY:N	2.43	0.48
2:B:1915:GLU:C	2:B:1917:ASN:N	2.65	0.48
1:A:161:PRO:HG3	1:A:230:ILE:HD12	1.94	0.48
2:B:1821:TRP:CZ3	2:B:1823:LEU:HA	2.49	0.48
2:B:1914:THR:HB	2:B:1920:PRO:CD	2.27	0.48
2:B:2099:GLY:HA3	2:B:2108:TYR:HB3	1.96	0.48
1:A:248:LEU:HD23	1:A:248:LEU:H	1.78	0.48
2:B:1716:ASP:O	2:B:1719:THR:N	2.47	0.48
1:A:145:TYR:HE2	1:A:150:LEU:HD22	1.79	0.48
1:A:282:SER:O	1:A:284:ILE:N	2.47	0.48
2:B:1550:GLU:OE2	2:B:1582:TYR:CE1	2.67	0.47
1:A:212:GLY:C	1:A:214:MET:SD	2.93	0.47
1:A:47:LYS:HG2	1:A:48:GLU:H	1.78	0.47
2:B:1612:ASP:HB2	2:B:1712:LYS:HZ3	1.78	0.47
2:B:1804:HIS:O	2:B:1806:GLN:HG2	2.15	0.47
2:B:1898:LEU:O	2:B:1899:ASN:HB2	2.14	0.47
1:A:143:ILE:C	1:A:143:ILE:HD12	2.34	0.47
1:A:250:GLN:CD	1:A:255:ILE:HD13	2.34	0.47
2:B:1721:MET:CE	2:B:1786:ARG:HH12	2.28	0.47
2:B:1831:LEU:N	2:B:1831:LEU:HD23	2.29	0.47
2:B:2049:SER:HB2	2:B:2051:TRP:CZ3	2.49	0.47
2:B:1557:SER:O	2:B:1558:LYS:C	2.53	0.47
2:B:1787:LEU:HD21	2:B:1833:MET:HB3	1.95	0.47
2:B:2076:ASN:HD22	2:B:2076:ASN:N	2.12	0.47
2:B:1868:MET:HE1	2:B:2027:THR:HA	1.95	0.47
1:A:53:ARG:HH22	1:A:217:ILE:HG12	1.78	0.47
2:B:1710:CYS:SG	2:B:1715:LEU:HD21	2.54	0.47
2:B:1770:MET:HE3	2:B:1774:LEU:HD12	1.96	0.47
2:B:1854:GLY:O	2:B:1856:GLN:N	2.46	0.47
2:B:1926:MET:C	2:B:1928:LYS:H	2.16	0.47
1:A:87:GLN:O	1:A:87:GLN:CG	2.62	0.47
1:A:149:ASN:HD22	1:A:150:LEU:N	2.12	0.47
2:B:1576:LYS:HD2	2:B:1701:SER:O	2.14	0.47
2:B:1797:ASP:O	2:B:1798:ILE:O	2.33	0.47
2:B:1844:ASP:HB2	2:B:1851:GLN:CG	2.45	0.47
2:B:1899:ASN:O	2:B:1900:ASN:C	2.53	0.47

Continued on next page...

Continued from previous page...

Atom-1	Atom-2	Interatomic distance (Å)	Clash overlap (Å)
2:B:2106:GLU:CD	2:B:2143:VAL:HG21	2.36	0.47
2:B:2121:THR:O	2:B:2122:ASP:HB2	2.14	0.47
2:B:2162:ILE:N	2:B:2162:ILE:CD1	2.69	0.47
2:B:1618:ARG:HD2	2:B:1664:THR:CG2	2.45	0.47
2:B:1629:LEU:CD2	2:B:1669:TRP:HH2	2.27	0.47
1:A:65:GLU:HB2	1:A:68:ASP:OD1	2.14	0.47
1:A:147:TYR:CD1	1:A:150:LEU:HD21	2.50	0.47
2:B:1771:ILE:HG13	2:B:1771:ILE:O	2.15	0.47
2:B:1905:ASN:HD22	2:B:1905:ASN:N	1.99	0.47
2:B:1802:HIS:HB3	2:B:1844:ASP:OD1	2.14	0.46
2:B:2044:SER:HB3	2:B:2081:TRP:CE2	2.50	0.46
1:A:81:PRO:O	1:A:82:LEU:HD23	2.15	0.46
1:A:161:PRO:HG3	1:A:230:ILE:HD11	1.98	0.46
1:A:177:LYS:HG2	1:A:178:MET:HE2	1.97	0.46
2:B:1812:GLY:C	2:B:1814:GLN:N	2.69	0.46
2:B:2110:LYS:CB	2:B:2166:THR:HG23	2.44	0.46
2:B:2047:LYS:O	2:B:2048:LYS:HG3	2.15	0.46
2:B:2046:PHE:HA	2:B:2072:GLN:O	2.15	0.46
2:B:1539:THR:O	2:B:1541:ASN:N	2.48	0.46
2:B:1599:HIS:NE2	2:B:1728:PHE:HD1	2.14	0.46
2:B:1714:THR:O	2:B:1722:PRO:HD2	2.14	0.46
2:B:1722:PRO:HG2	2:B:1723:VAL:H	1.80	0.46
2:B:1912:LEU:C	2:B:1914:THR:N	2.69	0.46
1:A:136:ASP:HB2	1:A:137:PRO:HD2	1.97	0.46
2:B:1557:SER:O	2:B:1560:VAL:HG12	2.15	0.46
2:B:1814:GLN:HG2	2:B:1816:HIS:NE2	2.31	0.46
2:B:2068:VAL:HG23	2:B:2068:VAL:O	2.16	0.46
1:A:205:THR:O	1:A:206:VAL:HG23	2.16	0.46
2:B:1770:MET:CE	2:B:1774:LEU:HD12	2.46	0.46
1:A:36:ILE:HD12	1:A:78:ALA:HB1	1.98	0.46
2:B:1872:LEU:HG	2:B:1877:ILE:HD12	1.98	0.46
2:B:1893:PRO:HD2	2:B:1894:LYS:HZ3	1.74	0.46
1:A:243:PHE:CE1	1:A:280:ILE:HD13	2.51	0.45
2:B:1724:ASP:OD2	2:B:1786:ARG:HB2	2.16	0.45
2:B:2055:TRP:CG	2:B:2072:GLN:HB2	2.50	0.45
1:A:71:LYS:NZ	1:A:71:LYS:CB	2.79	0.45
1:A:169:THR:O	1:A:177:LYS:HB2	2.15	0.45
2:B:2050:TRP:H	2:B:2050:TRP:HE3	1.63	0.45
2:B:1583:LEU:HD21	2:B:1973:ASN:HD21	1.81	0.45
2:B:1836:SER:O	2:B:1837:LYS:HB2	2.15	0.45
1:A:80:LYS:HZ3	1:A:152:GLU:HG2	1.78	0.45

Continued on next page...

Continued from previous page...

Atom-1	Atom-2	Interatomic distance (Å)	Clash overlap (Å)
1:A:94:PHE:HE2	2:B:2182:MET:CE	2.30	0.45
2:B:1803:PHE:CD1	2:B:1843:LEU:HD13	2.52	0.45
2:B:1942:HIS:ND1	2:B:1943:TYR:HD1	2.14	0.45
1:A:59:GLY:O	1:A:60:PRO:O	2.35	0.45
1:A:187:PHE:HD1	1:A:187:PHE:H	1.65	0.45
1:A:239:PHE:HD1	1:A:287:HIS:CE1	2.34	0.45
2:B:1870:MET:HG3	6:B:2199:HOH:O	2.16	0.45
2:B:1632:HIS:HB3	2:B:1688:ALA:O	2.16	0.45
2:B:1791:ASN:HB2	2:B:1823:LEU:HD13	1.98	0.45
2:B:1801:VAL:O	2:B:1801:VAL:HG23	2.14	0.45
2:B:1939:GLY:O	2:B:2014:ARG:NE	2.46	0.45
2:B:2049:SER:OG	2:B:2053:ASN:HB2	2.16	0.45
1:A:255:ILE:HD12	1:A:257:ALA:O	2.16	0.45
2:B:1611:VAL:O	2:B:1612:ASP:HB2	2.16	0.45
2:B:2140:ASN:HA	2:B:2147:VAL:HG21	1.99	0.45
1:A:238:LEU:HD23	1:A:238:LEU:N	2.32	0.45
2:B:1631:ALA:HB2	2:B:1669:TRP:CZ2	2.52	0.45
1:A:10:ALA:O	1:A:77:LYS:HB2	2.17	0.44
1:A:89:ILE:HD11	1:A:164:ILE:HD11	1.99	0.44
2:B:1618:ARG:HD2	2:B:1664:THR:HG22	1.99	0.44
1:A:229:LEU:N	1:A:229:LEU:CD1	2.80	0.44
1:A:261:VAL:HG23	1:A:264:THR:HG23	2.00	0.44
1:A:133:THR:HG21	2:B:1815:GLN:HB2	1.99	0.44
2:B:1716:ASP:O	2:B:1718:GLU:N	2.50	0.44
2:B:1726:ARG:HA	2:B:1726:ARG:HD3	1.62	0.44
2:B:1704:ILE:HD11	2:B:1792:LEU:HD12	1.99	0.44
2:B:1871:GLY:HA3	2:B:1876:LEU:HB2	2.00	0.44
2:B:2123:TRP:CZ3	2:B:2161:ARG:HG3	2.53	0.44
2:B:2000:ILE:HG13	2:B:2017:LEU:HD13	1.99	0.44
1:A:108:GLU:O	1:A:111:ASP:OD1	2.35	0.44
1:A:219:VAL:HG12	1:A:220:CYS:N	2.32	0.44
2:B:1686:ALA:HA	2:B:1708:LEU:HD12	2.00	0.44
1:A:35:LYS:NZ	1:A:192:GLU:OE1	2.46	0.44
1:A:161:PRO:CG	1:A:184:VAL:HG11	2.43	0.44
2:B:1832:GLU:HG3	3:B:2188:NAG:O7	2.17	0.44
2:B:2067:ARG:HH11	2:B:2067:ARG:CA	2.17	0.44
2:B:2092:ILE:HG22	2:B:2151:PHE:CE2	2.48	0.44
2:B:2112:TYR:N	2:B:2112:TYR:HD2	2.16	0.44
1:A:204:TYR:HB3	1:A:292:MET:SD	2.57	0.43
2:B:1657:ASN:C	2:B:1657:ASN:ND2	2.70	0.43
2:B:1790:LEU:O	2:B:1790:LEU:HD12	2.18	0.43

Continued on next page...

Continued from previous page...

Atom-1	Atom-2	Interatomic distance (Å)	Clash overlap (Å)
2:B:1900:ASN:OD1	2:B:1905:ASN:HB2	2.18	0.43
2:B:1939:GLY:O	2:B:2014:ARG:NH2	2.50	0.43
1:A:152:GLU:O	1:A:153:ASP:C	2.56	0.43
2:B:1926:MET:O	2:B:1927:GLN:HB2	2.18	0.43
1:A:136:ASP:OD2	1:A:140:LEU:HD21	2.18	0.43
2:B:1722:PRO:HG2	2:B:1723:VAL:N	2.32	0.43
1:A:87:GLN:CG	1:A:143:ILE:HG13	2.49	0.43
1:A:133:THR:CG2	1:A:134:HIS:H	2.22	0.43
1:A:163:LEU:HD22	1:A:228:HIS:CE1	2.53	0.43
1:A:209:TYR:CD2	1:A:214:MET:HB3	2.53	0.43
2:B:1872:LEU:HB2	2:B:2016:GLU:OE2	2.18	0.43
2:B:1950:THR:O	2:B:1951:GLU:HB2	2.18	0.43
1:A:143:ILE:HD12	1:A:144:TYR:N	2.34	0.43
2:B:1944:LEU:O	2:B:1946:PRO:HD3	2.19	0.43
2:B:2070:ALA:HB1	2:B:2173:LEU:O	2.18	0.43
1:A:146:SER:CB	1:A:153:ASP:OD1	2.64	0.43
2:B:1894:LYS:N	2:B:1894:LYS:CD	2.82	0.43
2:B:2049:SER:C	2:B:2051:TRP:H	2.22	0.43
2:B:1927:GLN:CA	2:B:1998:ARG:HE	2.32	0.43
2:B:2162:ILE:HD12	2:B:2162:ILE:H	1.79	0.43
1:A:133:THR:HB	1:A:136:ASP:OD1	2.19	0.42
1:A:276:GLY:O	1:A:277:ARG:HG2	2.19	0.42
2:B:1706:PRO:CB	2:B:1729:VAL:HG11	2.47	0.42
2:B:2054:TYR:O	2:B:2068:VAL:HG21	2.18	0.42
2:B:2098:GLN:HA	2:B:2140:ASN:ND2	2.34	0.42
1:A:39:ARG:HB3	1:A:48:GLU:OE2	2.19	0.42
2:B:1868:MET:CE	2:B:2027:THR:HA	2.48	0.42
2:B:1914:THR:HG21	2:B:2004:PRO:O	2.19	0.42
2:B:1935:ILE:HD11	2:B:2002:ILE:CD1	2.49	0.42
2:B:2016:GLU:OE2	2:B:2016:GLU:HA	2.18	0.42
1:A:154:PHE:CD1	1:A:232:MET:HG2	2.55	0.42
2:B:1876:LEU:HD22	2:B:2148:LYS:HB2	2.01	0.42
1:A:181:LYS:HA	6:A:2276:HOH:O	2.20	0.42
2:B:1967:LYS:HG2	2:B:1968:GLY:N	2.34	0.42
1:A:248:LEU:HG	1:A:248:LEU:O	2.18	0.42
1:A:280:ILE:HB	1:A:294:ALA:O	2.20	0.42
1:A:287:HIS:O	1:A:292:MET:HB2	2.19	0.42
2:B:1594:GLY:H	2:B:1596:TYR:HE2	1.68	0.42
2:B:2155:ILE:HG21	2:B:2160:ILE:HD11	2.02	0.42
1:A:191:ASP:C	1:A:191:ASP:OD2	2.57	0.42
1:A:83:SER:HB2	1:A:122:TYR:OH	2.20	0.42

Continued on next page...

Continued from previous page...

Atom-1	Atom-2	Interatomic distance (Å)	Clash overlap (Å)
2:B:1557:SER:O	2:B:1560:VAL:N	2.50	0.42
2:B:1716:ASP:O	2:B:1717:LYS:C	2.58	0.42
2:B:1784:TRP:CZ2	2:B:1834:LYS:HB2	2.55	0.42
2:B:1817:GLN:HA	2:B:1817:GLN:NE2	2.33	0.42
2:B:1895:LEU:O	2:B:1897:ARG:N	2.51	0.42
2:B:2081:TRP:HZ3	2:B:2083:GLN:HG2	1.82	0.42
1:A:15:TRP:CH2	1:A:208:GLY:HA3	2.55	0.42
2:B:1632:HIS:HB2	2:B:1690:TYR:CE1	2.55	0.42
2:B:1969:ASN:OD1	3:B:2189:NAG:H3	2.19	0.42
2:B:2037:GLU:HB3	2:B:2039:LYS:HE2	2.02	0.42
2:B:2167:TRP:CE3	2:B:2171:ILE:HD11	2.55	0.42
1:A:133:THR:H	1:A:136:ASP:CG	2.23	0.42
1:A:171:THR:HG22	1:A:172:GLU:N	2.34	0.41
2:B:1714:THR:O	2:B:1722:PRO:HD3	2.20	0.41
2:B:1913:SER:O	2:B:1915:GLU:OE2	2.38	0.41
2:B:2044:SER:HB3	2:B:2081:TRP:NE1	2.35	0.41
2:B:2101:LYS:CD	2:B:2144:ARG:NH2	2.81	0.41
1:A:53:ARG:HG3	1:A:53:ARG:O	2.20	0.41
2:B:1893:PRO:C	2:B:1895:LEU:H	2.23	0.41
1:A:153:ASP:HA	1:A:158:LEU:HD12	2.02	0.41
2:B:1618:ARG:HD3	2:B:1666:THR:OG1	2.19	0.41
2:B:1802:HIS:N	2:B:1844:ASP:O	2.47	0.41
2:B:2034:GLY:O	2:B:2035:LYS:C	2.59	0.41
2:B:2085:ASP:C	2:B:2087:LEU:H	2.22	0.41
1:A:160:GLY:HA2	1:A:161:PRO:HD3	1.84	0.41
2:B:1662:ASN:CB	3:B:2187:NAG:H5	2.49	0.41
2:B:1724:ASP:C	2:B:1725:MET:O	2.58	0.41
1:A:66:VAL:O	1:A:66:VAL:HG23	2.20	0.41
1:A:89:ILE:CG2	1:A:90:LYS:N	2.83	0.41
1:A:254:LYS:HD3	1:A:254:LYS:O	2.21	0.41
2:B:1692:ALA:O	2:B:1693:VAL:C	2.59	0.41
2:B:1813:THR:HG22	2:B:1813:THR:O	2.21	0.41
2:B:1970:SER:HG	2:B:1975:MET:HA	1.86	0.41
1:A:191:ASP:OD2	1:A:193:SER:CB	2.69	0.41
1:A:216:ASP:HB3	1:A:295:TYR:O	2.21	0.41
2:B:1820:VAL:HG11	2:B:1846:GLU:OE2	2.20	0.41
2:B:1998:ARG:NH1	2:B:1999:TYR:OH	2.54	0.41
1:A:176:GLN:HB3	1:A:180:GLU:HA	2.02	0.41
1:A:179:PHE:N	1:A:179:PHE:CD1	2.89	0.41
2:B:1557:SER:HB3	2:B:1771:ILE:HD11	2.01	0.41
2:B:1578:VAL:HA	2:B:1703:LEU:HD23	2.03	0.41

Continued on next page...

Continued from previous page...

Atom-1	Atom-2	Interatomic distance (Å)	Clash overlap (Å)
2:B:1740:SER:OG	2:B:1741:TRP:HD1	2.04	0.41
1:A:135:ASP:OD1	1:A:135:ASP:O	2.39	0.41
2:B:1704:ILE:HG12	2:B:1705:GLY:N	2.36	0.41
2:B:1817:GLN:HE21	2:B:1817:GLN:CA	2.32	0.41
2:B:1818:LEU:N	2:B:1818:LEU:CD2	2.84	0.41
2:B:1851:GLN:HE21	2:B:1851:GLN:C	2.24	0.41
1:A:12:SER:HA	1:A:35:LYS:O	2.21	0.41
2:B:1694:ASN:O	2:B:1695:PRO:C	2.58	0.41
2:B:1914:THR:CG2	2:B:2004:PRO:O	2.69	0.41
1:A:31:THR:HB	1:A:32:SER:H	1.67	0.40
1:A:202:LEU:HD23	1:A:203:MET:N	2.30	0.40
2:B:1886:GLU:OE1	2:B:1911:LYS:HE3	2.20	0.40
2:B:1894:LYS:H	2:B:1894:LYS:CD	2.35	0.40
2:B:2003:SER:HA	2:B:2004:PRO:HD3	1.85	0.40
2:B:2083:GLN:HA	2:B:2160:ILE:O	2.21	0.40
2:B:2089:ILE:HD11	2:B:2118:ASP:OD2	2.21	0.40
2:B:2151:PHE:O	2:B:2152:ASN:C	2.58	0.40
1:A:36:ILE:O	1:A:156:SER:O	2.39	0.40
1:A:37:VAL:CG1	1:A:38:TYR:N	2.83	0.40
1:A:55:SER:O	1:A:56:GLY:O	2.40	0.40
1:A:133:THR:N	1:A:136:ASP:OD1	2.55	0.40
1:A:192:GLU:HB3	1:A:199:THR:OG1	2.22	0.40
2:B:1789:LEU:HD13	2:B:1801:VAL:HG21	2.03	0.40
2:B:1969:ASN:CG	3:B:2189:NAG:HN2	2.21	0.40
2:B:1557:SER:O	2:B:1559:PHE:N	2.55	0.40
2:B:2045:SER:HB2	2:B:2074:LYS:HB3	2.02	0.40
1:A:15:TRP:O	1:A:32:SER:HA	2.20	0.40
1:A:129:HIS:ND1	1:A:129:HIS:C	2.75	0.40
1:A:175:THR:HG22	1:A:176:GLN:N	2.36	0.40
1:A:155:ASN:C	1:A:157:GLY:N	2.75	0.40
1:A:244:ASN:HB3	1:A:278:TRP:CE3	2.56	0.40
2:B:1721:MET:HE3	2:B:1724:ASP:HB3	2.03	0.40
2:B:1770:MET:HG2	2:B:1773:ASN:O	2.22	0.40
2:B:2058:PHE:CD1	2:B:2058:PHE:C	2.95	0.40

There are no symmetry-related clashes.

5.3 Torsion angles ⓘ

5.3.1 Protein backbone ⓘ

In the following table, the Percentiles column shows the percent Ramachandran outliers of the chain as a percentile score with respect to all X-ray entries followed by that with respect to entries of similar resolution.

The Analysed column shows the number of residues for which the backbone conformation was analysed, and the total number of residues.

Mol	Chain	Analysed	Favoured	Allowed	Outliers	Percentiles	
1	A	260/306 (85%)	178 (68%)	46 (18%)	36 (14%)	0	0
2	B	593/647 (92%)	479 (81%)	73 (12%)	41 (7%)	1	2
All	All	853/953 (90%)	657 (77%)	119 (14%)	77 (9%)	0	1

All (77) Ramachandran outliers are listed below:

Mol	Chain	Res	Type
1	A	50	PRO
1	A	60	PRO
1	A	180	GLU
1	A	187	PHE
1	A	206	VAL
1	A	207	ASN
1	A	210	VAL
1	A	233	SER
1	A	262	SER
1	A	285	PRO
2	B	1680	PRO
2	B	1682	SER
2	B	1723	VAL
2	B	1725	MET
2	B	1867	LYS
2	B	1970	SER
2	B	2050	TRP
2	B	2067	ARG
1	A	56	GLY
1	A	61	THR
1	A	159	ILE
1	A	178	MET
1	A	246	GLN
1	A	283	LEU
2	B	1540	GLY

Continued on next page...

Continued from previous page...

Mol	Chain	Res	Type
2	B	1558	LYS
2	B	1662	ASN
2	B	1671	ALA
2	B	1695	PRO
2	B	1717	LYS
2	B	1719	THR
2	B	1848	GLY
2	B	1889	GLY
2	B	1913	SER
2	B	2039	LYS
2	B	2087	LEU
1	A	53	ARG
1	A	88	GLY
1	A	148	VAL
1	A	153	ASP
1	A	203	MET
1	A	216	ASP
2	B	1634	LEU
2	B	1665	TYR
2	B	1722	PRO
2	B	1794	GLY
2	B	1846	GLU
2	B	1896	ALA
2	B	2078	ASN
1	A	2	LYS
1	A	41	TYR
1	A	43	ALA
1	A	116	PRO
1	A	156	SER
1	A	195	SER
1	A	215	PRO
2	B	1712	LYS
2	B	1797	ASP
2	B	1798	ILE
2	B	1837	LYS
2	B	1918	PRO
2	B	1993	PRO
2	B	2122	ASP
1	A	152	GLU
1	A	177	LYS
1	A	234	SER
2	B	1557	SER

Continued on next page...

Continued from previous page...

Mol	Chain	Res	Type
2	B	1914	THR
2	B	2009	ASN
1	A	45	PHE
1	A	137	PRO
2	B	1743	TYR
2	B	1942	HIS
2	B	1960	ARG
1	A	217	ILE
2	B	1661	PRO
1	A	126	ILE

5.3.2 Protein sidechains ⓘ

In the following table, the Percentiles column shows the percent sidechain outliers of the chain as a percentile score with respect to all X-ray entries followed by that with respect to entries of similar resolution.

The Analysed column shows the number of residues for which the sidechain conformation was analysed, and the total number of residues.

Mol	Chain	Analysed	Rotameric	Outliers	Percentiles	
1	A	233/269 (87%)	208 (89%)	25 (11%)	5	17
2	B	526/570 (92%)	467 (89%)	59 (11%)	5	16
All	All	759/839 (90%)	675 (89%)	84 (11%)	5	16

All (84) residues with a non-rotameric sidechain are listed below:

Mol	Chain	Res	Type
1	A	5	GLN
1	A	46	GLN
1	A	54	THR
1	A	63	TYR
1	A	87	GLN
1	A	91	TYR
1	A	94	PHE
1	A	120	TYR
1	A	126	ILE
1	A	129	HIS
1	A	145	TYR
1	A	149	ASN
1	A	152	GLU

Continued on next page...

Continued from previous page...

Mol	Chain	Res	Type
1	A	176	GLN
1	A	180	GLU
1	A	183	HIS
1	A	189	VAL
1	A	196	TRP
1	A	211	ASN
1	A	214	MET
1	A	243	PHE
1	A	254	LYS
1	A	261	VAL
1	A	267	THR
1	A	283	LEU
2	B	1539	THR
2	B	1542	ARG
2	B	1580	ARG
2	B	1596	TYR
2	B	1600	LEU
2	B	1613	ASP
2	B	1617	VAL
2	B	1657	ASN
2	B	1660	GLN
2	B	1684	CYS
2	B	1694	ASN
2	B	1696	GLU
2	B	1707	LEU
2	B	1708	LEU
2	B	1711	ARG
2	B	1717	LYS
2	B	1718	GLU
2	B	1720	ASN
2	B	1721	MET
2	B	1726	ARG
2	B	1790	LEU
2	B	1797	ASP
2	B	1808	LEU
2	B	1823	LEU
2	B	1831	LEU
2	B	1832	GLU
2	B	1845	THR
2	B	1851	GLN
2	B	1852	ARG
2	B	1887	PHE

Continued on next page...

Continued from previous page...

Mol	Chain	Res	Type
2	B	1890	TYR
2	B	1894	LYS
2	B	1895	LEU
2	B	1898	LEU
2	B	1900	ASN
2	B	1905	ASN
2	B	1911	LYS
2	B	1914	THR
2	B	1915	GLU
2	B	1918	PRO
2	B	1921	TRP
2	B	1928	LYS
2	B	1931	LEU
2	B	2039	LYS
2	B	2054	TYR
2	B	2067	ARG
2	B	2079	ASN
2	B	2089	ILE
2	B	2097	THR
2	B	2112	TYR
2	B	2113	THR
2	B	2132	MET
2	B	2140	ASN
2	B	2141	ASN
2	B	2143	VAL
2	B	2146	HIS
2	B	2165	LYS
2	B	2168	ASN
2	B	2175	LEU

Sometimes sidechains can be flipped to improve hydrogen bonding and reduce clashes. All (30) such sidechains are listed below:

Mol	Chain	Res	Type
1	A	5	GLN
1	A	11	GLN
1	A	73	HIS
1	A	103	HIS
1	A	142	HIS
1	A	149	ASN
1	A	155	ASN
1	A	176	GLN
1	A	242	HIS

Continued on next page...

Continued from previous page...

Mol	Chain	Res	Type
2	B	1632	HIS
2	B	1657	ASN
2	B	1694	ASN
2	B	1720	ASN
2	B	1782	GLN
2	B	1804	HIS
2	B	1814	GLN
2	B	1815	GLN
2	B	1817	GLN
2	B	1851	GLN
2	B	1905	ASN
2	B	1917	ASN
2	B	1927	GLN
2	B	2009	ASN
2	B	2023	ASN
2	B	2065	GLN
2	B	2076	ASN
2	B	2079	ASN
2	B	2083	GLN
2	B	2115	HIS
2	B	2168	ASN

5.3.3 RNA [i](#)

There are no RNA molecules in this entry.

5.4 Non-standard residues in protein, DNA, RNA chains [i](#)

There are no non-standard protein/DNA/RNA residues in this entry.

5.5 Carbohydrates [i](#)

There are no oligosaccharides in this entry.

5.6 Ligand geometry [i](#)

Of 7 ligands modelled in this entry, 2 are monoatomic - leaving 5 for Mogul analysis.

In the following table, the Counts columns list the number of bonds (or angles) for which Mogul statistics could be retrieved, the number of bonds (or angles) that are observed in the model and the number of bonds (or angles) that are defined in the Chemical Component Dictionary. The

Link column lists molecule types, if any, to which the group is linked. The Z score for a bond length (or angle) is the number of standard deviations the observed value is removed from the expected value. A bond length (or angle) with $|Z| > 2$ is considered an outlier worth inspection. RMSZ is the root-mean-square of all Z scores of the bond lengths (or angles).

Mol	Type	Chain	Res	Link	Bond lengths			Bond angles		
					Counts	RMSZ	$\# Z > 2$	Counts	RMSZ	$\# Z > 2$
3	NAG	A	2186	1	14,14,15	0.53	0	17,19,21	0.70	0
3	NAG	A	2185	1	14,14,15	0.67	0	17,19,21	0.70	0
3	NAG	B	2187	2	14,14,15	0.61	0	17,19,21	0.79	0
3	NAG	B	2188	2	14,14,15	0.58	0	17,19,21	0.78	1 (5%)
3	NAG	B	2189	2	14,14,15	0.66	0	17,19,21	0.68	0

In the following table, the Chirals column lists the number of chiral outliers, the number of chiral centers analysed, the number of these observed in the model and the number defined in the Chemical Component Dictionary. Similar counts are reported in the Torsion and Rings columns. '-' means no outliers of that kind were identified.

Mol	Type	Chain	Res	Link	Chirals	Torsions	Rings
3	NAG	A	2186	1	-	4/6/23/26	0/1/1/1
3	NAG	A	2185	1	-	3/6/23/26	0/1/1/1
3	NAG	B	2187	2	1/1/5/7	4/6/23/26	0/1/1/1
3	NAG	B	2188	2	-	2/6/23/26	0/1/1/1
3	NAG	B	2189	2	1/1/5/7	2/6/23/26	0/1/1/1

There are no bond length outliers.

All (1) bond angle outliers are listed below:

Mol	Chain	Res	Type	Atoms	Z	Observed(°)	Ideal(°)
3	B	2188	NAG	C2-N2-C7	-2.21	119.94	122.90

All (2) chirality outliers are listed below:

Mol	Chain	Res	Type	Atom
3	B	2187	NAG	C1
3	B	2189	NAG	C1

All (15) torsion outliers are listed below:

Mol	Chain	Res	Type	Atoms
3	A	2185	NAG	C8-C7-N2-C2
3	A	2185	NAG	O7-C7-N2-C2

Continued on next page...

Continued from previous page...

Mol	Chain	Res	Type	Atoms
3	A	2186	NAG	C8-C7-N2-C2
3	A	2186	NAG	O7-C7-N2-C2
3	B	2187	NAG	C8-C7-N2-C2
3	B	2187	NAG	O7-C7-N2-C2
3	B	2189	NAG	C4-C5-C6-O6
3	B	2189	NAG	O5-C5-C6-O6
3	A	2186	NAG	O5-C5-C6-O6
3	A	2186	NAG	C4-C5-C6-O6
3	B	2188	NAG	C8-C7-N2-C2
3	B	2188	NAG	O7-C7-N2-C2
3	A	2185	NAG	C4-C5-C6-O6
3	B	2187	NAG	C4-C5-C6-O6
3	B	2187	NAG	O5-C5-C6-O6

There are no ring outliers.

4 monomers are involved in 14 short contacts:

Mol	Chain	Res	Type	Clashes	Symm-Clashes
3	A	2185	NAG	3	0
3	B	2187	NAG	4	0
3	B	2188	NAG	4	0
3	B	2189	NAG	3	0

5.7 Other polymers [i](#)

There are no such residues in this entry.

5.8 Polymer linkage issues [i](#)

There are no chain breaks in this entry.

6 Fit of model and data

6.1 Protein, DNA and RNA chains

In the following table, the column labelled ‘#RSRZ > 2’ contains the number (and percentage) of RSRZ outliers, followed by percent RSRZ outliers for the chain as percentile scores relative to all X-ray entries and entries of similar resolution. The OWAB column contains the minimum, median, 95th percentile and maximum values of the occupancy-weighted average B-factor per residue. The column labelled ‘Q < 0.9’ lists the number of (and percentage) of residues with an average occupancy less than 0.9.

Mol	Chain	Analysed	<RSRZ>	#RSRZ>2	OWAB(Å ²)	Q<0.9
1	A	268/306 (87%)	0.81	22 (8%) 19 14	48, 89, 127, 136	0
2	B	601/647 (92%)	-0.05	13 (2%) 62 53	26, 54, 91, 112	0
All	All	869/953 (91%)	0.22	35 (4%) 43 35	26, 64, 116, 136	0

All (35) RSRZ outliers are listed below:

Mol	Chain	Res	Type	RSRZ
1	A	247	VAL	5.6
2	B	1721	MET	4.3
1	A	217	ILE	3.7
1	A	188	ALA	3.4
1	A	54	THR	3.3
1	A	218	THR	3.2
1	A	248	LEU	2.7
1	A	288	PHE	2.7
1	A	189	VAL	2.6
1	A	290	ALA	2.6
2	B	1793	GLY	2.6
2	B	1992	ASP	2.6
1	A	58	LEU	2.5
2	B	2111	SER	2.5
1	A	43	ALA	2.5
1	A	292	MET	2.5
2	B	1613	ASP	2.5
2	B	2050	TRP	2.4
1	A	283	LEU	2.4
2	B	1798	ILE	2.4
1	A	38	TYR	2.3
1	A	48	GLU	2.3
1	A	57	LEU	2.3
1	A	8	VAL	2.3

Continued on next page...

Continued from previous page...

Mol	Chain	Res	Type	RSRZ
1	A	253	HIS	2.2
2	B	1692	ALA	2.2
1	A	55	SER	2.2
2	B	1846	GLU	2.1
2	B	1740	SER	2.1
1	A	41	TYR	2.1
2	B	2073	ALA	2.0
2	B	2052	GLY	2.0
1	A	296	ILE	2.0
1	A	210	VAL	2.0
2	B	1684	CYS	2.0

6.2 Non-standard residues in protein, DNA, RNA chains [i](#)

There are no non-standard protein/DNA/RNA residues in this entry.

6.3 Carbohydrates [i](#)

There are no monosaccharides in this entry.

6.4 Ligands [i](#)

In the following table, the Atoms column lists the number of modelled atoms in the group and the number defined in the chemical component dictionary. The B-factors column lists the minimum, median, 95th percentile and maximum values of B factors of atoms in the group. The column labelled 'Q<0.9' lists the number of atoms with occupancy less than 0.9.

Mol	Type	Chain	Res	Atoms	RSCC	RSR	B-factors(\AA^2)	Q<0.9
3	NAG	A	2185	14/15	0.28	0.14	127,128,129,130	0
3	NAG	B	2187	14/15	0.66	0.12	94,98,101,101	0
3	NAG	A	2186	14/15	0.80	0.12	86,88,90,91	0
3	NAG	B	2189	14/15	0.82	0.12	70,72,74,76	0
3	NAG	B	2188	14/15	0.88	0.10	73,74,76,78	0
4	CA	A	2184	1/1	0.93	0.07	68,68,68,68	0
5	CU	B	2190	1/1	0.96	0.09	65,65,65,65	0

6.5 Other polymers [i](#)

There are no such residues in this entry.