



## Full wwPDB EM Validation Report ⓘ

Oct 28, 2025 – 06:24 pm GMT

PDB ID : 9SE5 / pdb\_00009se5  
EMDB ID : EMD-54802  
Title : Mouse otoferlin (216-1931) in the lipid-free, Ca<sup>2+</sup>-bound state, "open" conformation (class 2)  
Authors : Cretu, C.; Moser, T.  
Deposited on : 2025-08-15  
Resolution : 3.43 Å(reported)  
Based on initial model : .

This is a Full wwPDB EM Validation Report for a publicly released PDB entry.

We welcome your comments at [validation@mail.wwpdb.org](mailto:validation@mail.wwpdb.org)

A user guide is available at

<https://www.wwpdb.org/validation/2017/EMValidationReportHelp>  
with specific help available everywhere you see the ⓘ symbol.

The types of validation reports are described at

<http://www.wwpdb.org/validation/2017/FAQs#types>.

---

The following versions of software and data (see [references ⓘ](#)) were used in the production of this report:

EMDB validation analysis : 0.0.1.dev129  
MolProbity : 4-5-2 with Phenix2.0  
Percentile statistics : 20231227.v01 (using entries in the PDB archive December 27th 2023)  
EM percentile statistics : 202505.v01 (Using data in the EMDB archive up until May 2025)  
MapQ : 1.9.13  
Ideal geometry (proteins) : Engh & Huber (2001)  
Ideal geometry (DNA, RNA) : Parkinson et al. (1996)  
Validation Pipeline (wwPDB-VP) : 2.46

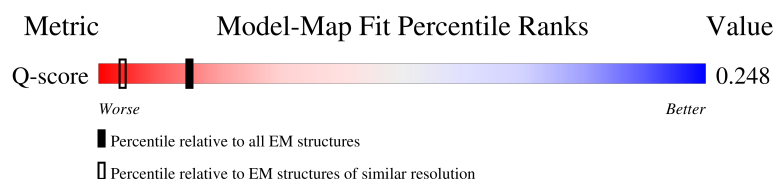
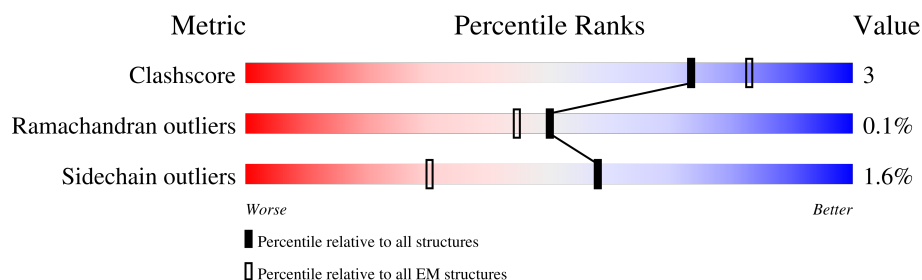
# 1 Overall quality at a glance

The following experimental techniques were used to determine the structure:

*ELECTRON MICROSCOPY*

The reported resolution of this entry is 3.43 Å.

Percentile scores (ranging between 0-100) for global validation metrics of the entry are shown in the following graphic. The table shows the number of entries on which the scores are based.



Metric	Whole archive (#Entries)	EM structures (#Entries)	Similar EM resolution (#Entries, resolution range(Å))
Clashscore	210492	15764	-
Ramachandran outliers	207382	16835	-
Sidechain outliers	206894	16415	-
Q-score	-	25397	13927 ( 2.93 - 3.93 )

The table below summarises the geometric issues observed across the polymeric chains and their fit to the map. The red, orange, yellow and green segments of the bar indicate the fraction of residues that contain outliers for  $\geq 3$ , 2, 1 and 0 types of geometric quality criteria respectively. A grey segment represents the fraction of residues that are not modelled. The numeric value for each fraction is indicated below the corresponding segment, with a dot representing fractions  $\leq 5\%$ . The upper red bar (where present) indicates the fraction of residues that have poor fit to the EM map (all-atom inclusion  $< 40\%$ ). The numeric value is given above the bar.

Mol	Chain	Length	Quality of chain
1	A	1767	<div> <div>14%</div> <div>75%</div> <div>9%</div> <div>16%</div> </div>

## 2 Entry composition

There are 2 unique types of molecules in this entry. The entry contains 11944 atoms, of which 0 are hydrogens and 0 are deuteriums.

In the tables below, the AltConf column contains the number of residues with at least one atom in alternate conformation and the Trace column contains the number of residues modelled with at most 2 atoms.

- Molecule 1 is a protein called Otoferlin.

Mol	Chain	Residues	Atoms					AltConf	Trace
1	A	1483	Total	C	N	O	S	0	0
			11939	7596	2051	2230	62		

There are 51 discrepancies between the modelled and reference sequences:

Chain	Residue	Modelled	Actual	Comment	Reference
A	165	MET	-	initiating methionine	UNP A0A0R4J1K2
A	166	ALA	-	expression tag	UNP A0A0R4J1K2
A	167	SER	-	expression tag	UNP A0A0R4J1K2
A	168	TRP	-	expression tag	UNP A0A0R4J1K2
A	169	SER	-	expression tag	UNP A0A0R4J1K2
A	170	HIS	-	expression tag	UNP A0A0R4J1K2
A	171	PRO	-	expression tag	UNP A0A0R4J1K2
A	172	GLN	-	expression tag	UNP A0A0R4J1K2
A	173	PHE	-	expression tag	UNP A0A0R4J1K2
A	174	GLU	-	expression tag	UNP A0A0R4J1K2
A	175	LYS	-	expression tag	UNP A0A0R4J1K2
A	176	GLY	-	expression tag	UNP A0A0R4J1K2
A	177	GLY	-	expression tag	UNP A0A0R4J1K2
A	178	GLY	-	expression tag	UNP A0A0R4J1K2
A	179	SER	-	expression tag	UNP A0A0R4J1K2
A	180	GLY	-	expression tag	UNP A0A0R4J1K2
A	181	GLY	-	expression tag	UNP A0A0R4J1K2
A	182	GLY	-	expression tag	UNP A0A0R4J1K2
A	183	SER	-	expression tag	UNP A0A0R4J1K2
A	184	GLY	-	expression tag	UNP A0A0R4J1K2
A	185	GLY	-	expression tag	UNP A0A0R4J1K2
A	186	GLY	-	expression tag	UNP A0A0R4J1K2
A	187	SER	-	expression tag	UNP A0A0R4J1K2
A	188	TRP	-	expression tag	UNP A0A0R4J1K2
A	189	SER	-	expression tag	UNP A0A0R4J1K2
A	190	HIS	-	expression tag	UNP A0A0R4J1K2
A	191	PRO	-	expression tag	UNP A0A0R4J1K2
A	192	GLN	-	expression tag	UNP A0A0R4J1K2

*Continued on next page...*

*Continued from previous page...*

Chain	Residue	Modelled	Actual	Comment	Reference
A	193	PHE	-	expression tag	UNP A0A0R4J1K2
A	194	GLU	-	expression tag	UNP A0A0R4J1K2
A	195	LYS	-	expression tag	UNP A0A0R4J1K2
A	196	LEU	-	expression tag	UNP A0A0R4J1K2
A	197	GLU	-	expression tag	UNP A0A0R4J1K2
A	198	VAL	-	expression tag	UNP A0A0R4J1K2
A	199	LEU	-	expression tag	UNP A0A0R4J1K2
A	200	PHE	-	expression tag	UNP A0A0R4J1K2
A	201	GLN	-	expression tag	UNP A0A0R4J1K2
A	202	GLY	-	expression tag	UNP A0A0R4J1K2
A	203	PRO	-	expression tag	UNP A0A0R4J1K2
A	204	GLY	-	expression tag	UNP A0A0R4J1K2
A	205	SER	-	expression tag	UNP A0A0R4J1K2
A	206	GLY	-	expression tag	UNP A0A0R4J1K2
A	207	ASP	-	expression tag	UNP A0A0R4J1K2
A	208	LYS	-	expression tag	UNP A0A0R4J1K2
A	209	ASP	-	expression tag	UNP A0A0R4J1K2
A	210	CYS	-	expression tag	UNP A0A0R4J1K2
A	211	GLU	-	expression tag	UNP A0A0R4J1K2
A	212	GLN	-	expression tag	UNP A0A0R4J1K2
A	213	SER	-	expression tag	UNP A0A0R4J1K2
A	214	ASN	-	expression tag	UNP A0A0R4J1K2
A	215	ALA	-	expression tag	UNP A0A0R4J1K2

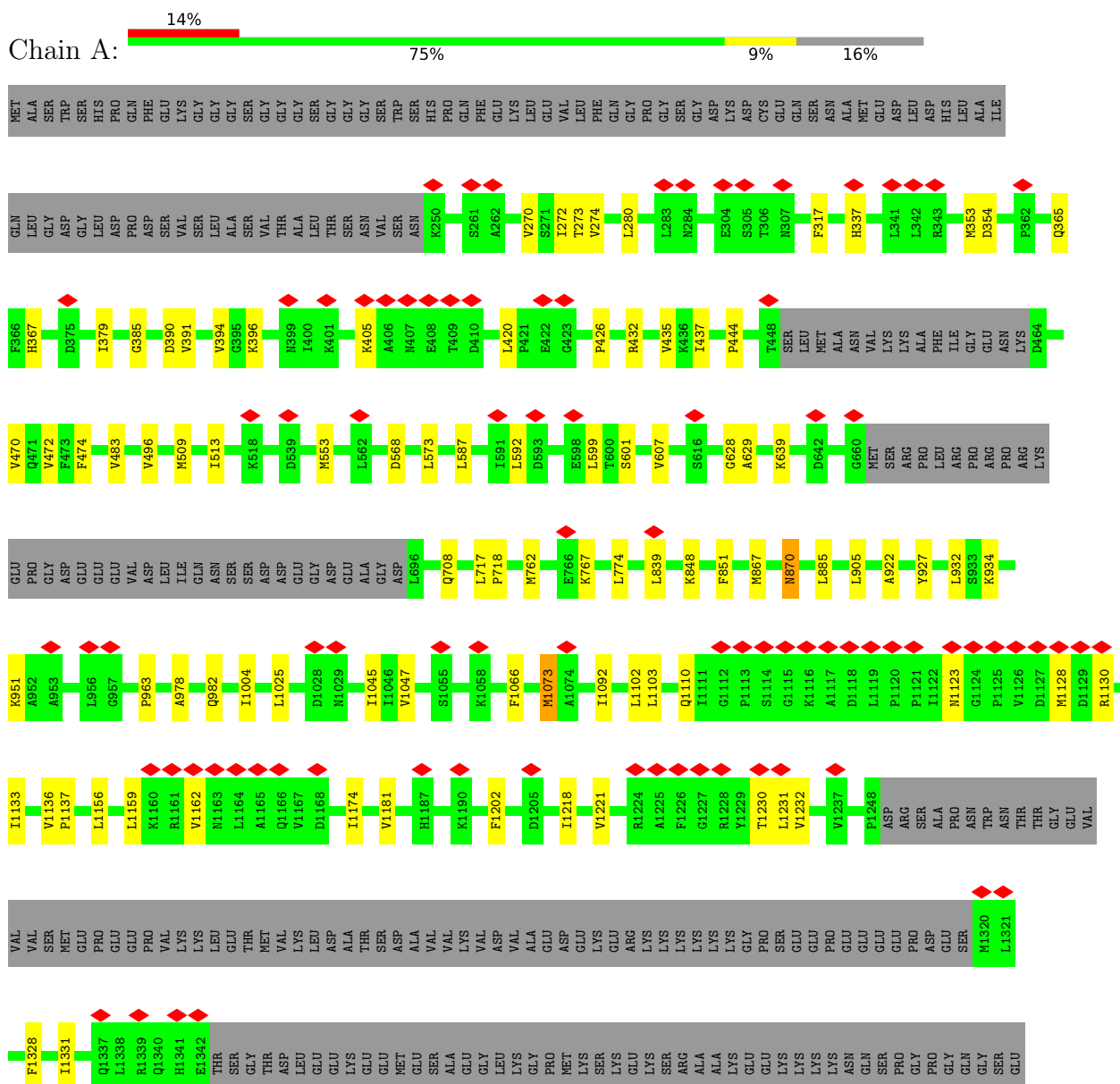
- Molecule 2 is CALCIUM ION (CCD ID: CA) (formula: Ca) (labeled as "Ligand of Interest" by depositor).

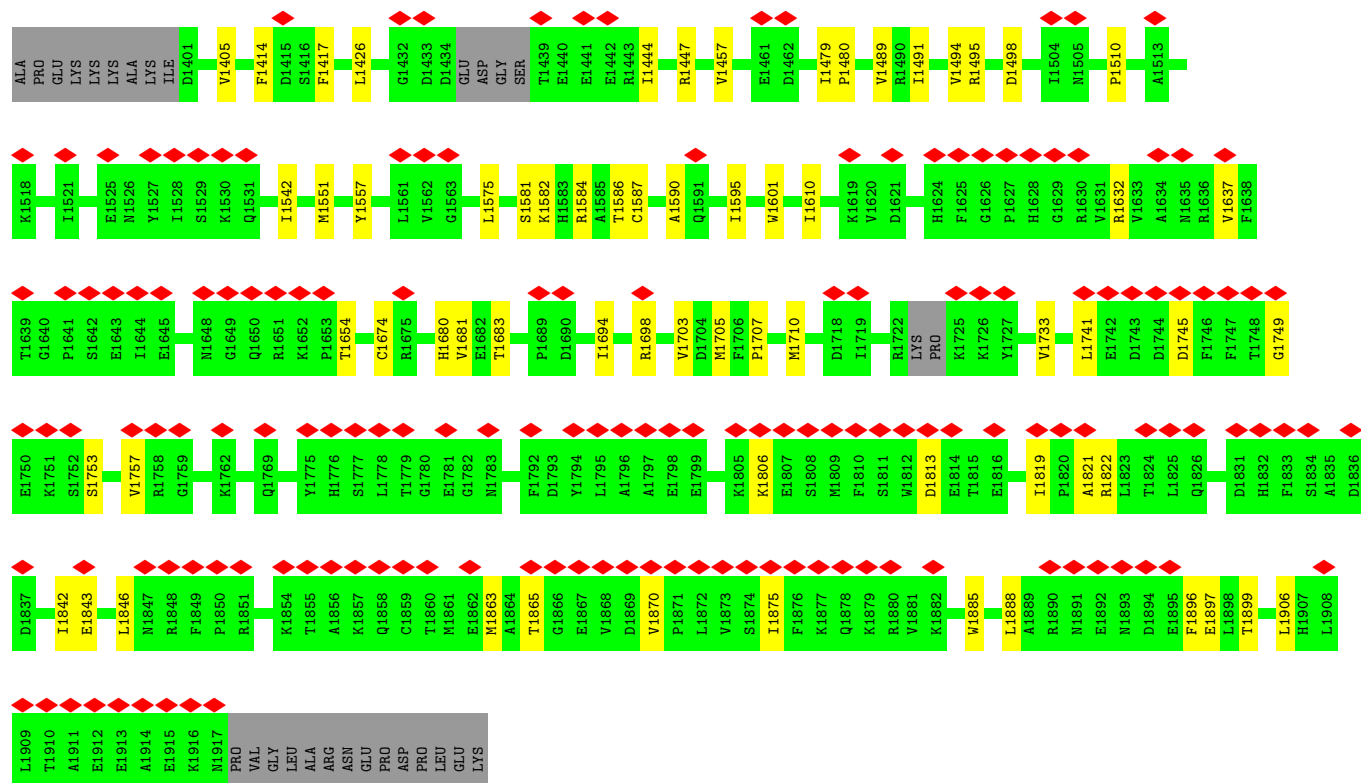
Mol	Chain	Residues	Atoms	AltConf
2	A	5	Total Ca 5 5	0

### 3 Residue-property plots

These plots are drawn for all protein, RNA, DNA and oligosaccharide chains in the entry. The first graphic for a chain summarises the proportions of the various outlier classes displayed in the second graphic. The second graphic shows the sequence view annotated by issues in geometry and atom inclusion in map density. Residues are color-coded according to the number of geometric quality criteria for which they contain at least one outlier: green = 0, yellow = 1, orange = 2 and red = 3 or more. A red diamond above a residue indicates a poor fit to the EM map for this residue (all-atom inclusion < 40%). Stretches of 2 or more consecutive residues without any outlier are shown as a green connector. Residues present in the sample, but not in the model, are shown in grey.

#### • Molecule 1: Otoferlin





## 4 Experimental information

Property	Value	Source
EM reconstruction method	SINGLE PARTICLE	Depositor
Imposed symmetry	POINT, C1	Depositor
Number of particles used	91966	Depositor
Resolution determination method	FSC 0.143 CUT-OFF	Depositor
CTF correction method	PHASE FLIPPING AND AMPLITUDE CORRECTION	Depositor
Microscope	TFS KRIOS	Depositor
Voltage (kV)	300	Depositor
Electron dose ( $e^-/\text{\AA}^2$ )	38.13	Depositor
Minimum defocus (nm)	1100	Depositor
Maximum defocus (nm)	2300	Depositor
Magnification	165000	Depositor
Image detector	FEI FALCON IV (4k x 4k)	Depositor
Maximum map value	0.013	Depositor
Minimum map value	-0.006	Depositor
Average map value	-0.000	Depositor
Map value standard deviation	0.000	Depositor
Recommended contour level	0.0013	Depositor
Map size (Å)	259.2, 259.2, 259.2	wwPDB
Map dimensions	360, 360, 360	wwPDB
Map angles (°)	90.0, 90.0, 90.0	wwPDB
Pixel spacing (Å)	0.72, 0.72, 0.72	Depositor

## 5 Model quality [i](#)

### 5.1 Standard geometry [i](#)

Bond lengths and bond angles in the following residue types are not validated in this section: CA

The Z score for a bond length (or angle) is the number of standard deviations the observed value is removed from the expected value. A bond length (or angle) with  $|Z| > 5$  is considered an outlier worth inspection. RMSZ is the root-mean-square of all Z scores of the bond lengths (or angles).

Mol	Chain	Bond lengths		Bond angles	
		RMSZ	$\# Z  > 5$	RMSZ	$\# Z  > 5$
1	A	0.20	0/12228	0.54	3/16549 (0.0%)

Chiral center outliers are detected by calculating the chiral volume of a chiral center and verifying if the center is modelled as a planar moiety or with the opposite hand. A planarity outlier is detected by checking planarity of atoms in a peptide group, atoms in a mainchain group or atoms of a sidechain that are expected to be planar.

Mol	Chain	#Chirality outliers	#Planarity outliers
1	A	0	1

There are no bond length outliers.

All (3) bond angle outliers are listed below:

Mol	Chain	Res	Type	Atoms	Z	Observed( $^{\circ}$ )	Ideal( $^{\circ}$ )
1	A	1414	PHE	CA-C-N	5.44	131.93	121.54
1	A	1414	PHE	C-N-CA	5.44	131.93	121.54
1	A	1073	MET	CB-CG-SD	5.03	127.78	112.70

There are no chirality outliers.

All (1) planarity outliers are listed below:

Mol	Chain	Res	Type	Group
1	A	1680	HIS	Peptide

### 5.2 Too-close contacts [i](#)

In the following table, the Non-H and H(model) columns list the number of non-hydrogen atoms and hydrogen atoms in the chain respectively. The H(added) column lists the number of hydrogen atoms added and optimized by MolProbity. The Clashes column lists the number of clashes within



the asymmetric unit, whereas Symm-Clashes lists symmetry-related clashes.

Mol	Chain	Non-H	H(model)	H(added)	Clashes	Symm-Clashes
1	A	11939	0	11752	73	0
2	A	5	0	0	0	0
All	All	11944	0	11752	73	0

The all-atom clashscore is defined as the number of clashes found per 1000 atoms (including hydrogen atoms). The all-atom clashscore for this structure is 3.

All (73) close contacts within the same asymmetric unit are listed below, sorted by their clash magnitude.

Atom-1	Atom-2	Interatomic distance (Å)	Clash overlap (Å)
1:A:353:MET:HE3	1:A:354:ASP:H	1.58	0.67
1:A:1584:ARG:HH12	1:A:1610:ILE:HD12	1.59	0.67
1:A:1584:ARG:HH21	1:A:1587:CYS:HB3	1.62	0.65
1:A:365:GLN:HE22	1:A:367:HIS:HB2	1.61	0.63
1:A:1822:ARG:HH21	1:A:1843:GLU:HG2	1.64	0.61
1:A:1745:ASP:HB3	1:A:1749:GLY:H	1.67	0.59
1:A:394:VAL:HG11	1:A:1694:ILE:HD11	1.86	0.58
1:A:1181:VAL:HB	1:A:1202:PHE:HB3	1.86	0.57
1:A:1479:ILE:HD12	1:A:1480:PRO:HD2	1.86	0.57
1:A:1707:PRO:HG2	1:A:1710:MET:HG2	1.86	0.56
1:A:1491:ILE:HG12	1:A:1703:VAL:HG12	1.87	0.55
1:A:1863:MET:HA	1:A:1870:VAL:HG21	1.89	0.55
1:A:496:VAL:HG22	1:A:607:VAL:HG22	1.90	0.54
1:A:1156:LEU:HB3	1:A:1159:LEU:HD11	1.89	0.54
1:A:474:PHE:HB2	1:A:509:MET:HG2	1.89	0.54
1:A:1575:LEU:HD13	1:A:1705:MET:HE1	1.89	0.54
1:A:629:ALA:HB3	1:A:927:TYR:HB3	1.89	0.53
1:A:1426:LEU:HB2	1:A:1447:ARG:HA	1.91	0.51
1:A:1806:LYS:HE2	1:A:1813:ASP:HA	1.93	0.51
1:A:1842:ILE:HG12	1:A:1885:TRP:HE1	1.74	0.51
1:A:568:ASP:HB2	1:A:573:LEU:HD12	1.93	0.51
1:A:1447:ARG:HH21	1:A:1551:MET:HE3	1.75	0.51
1:A:1092:ILE:HD11	1:A:1102:LEU:HB2	1.93	0.50
1:A:272:ILE:HG12	1:A:391:VAL:HG22	1.93	0.50
1:A:1821:ALA:HB1	1:A:1846:LEU:HD23	1.93	0.50
1:A:932:LEU:HD13	1:A:934:LYS:HE2	1.93	0.50
1:A:1221:VAL:HG12	1:A:1231:LEU:HA	1.94	0.49
1:A:1130:ARG:HB3	1:A:1133:ILE:HB	1.93	0.49
1:A:1162:VAL:HG21	1:A:1232:VAL:HG22	1.94	0.49
1:A:1159:LEU:HD23	1:A:1232:VAL:HG11	1.94	0.49

*Continued on next page...*

*Continued from previous page...*

Atom-1	Atom-2	Interatomic distance (Å)	Clash overlap (Å)
1:A:951:LYS:HG3	1:A:963:PRO:HA	1.93	0.48
1:A:470:VAL:HG22	1:A:513:ILE:HG12	1.95	0.48
1:A:1328:PHE:HA	1:A:1331:ILE:HG22	1.96	0.48
1:A:1405:VAL:HG22	1:A:1681:VAL:HG22	1.95	0.47
1:A:1888:LEU:HD22	1:A:1896:PHE:HB3	1.97	0.47
1:A:1073:MET:HA	1:A:1110:GLN:HG2	1.95	0.47
1:A:628:GLY:HA2	1:A:927:TYR:O	2.15	0.47
1:A:848:LYS:O	1:A:851:PHE:HB3	2.13	0.47
1:A:978:ALA:HB3	1:A:1025:LEU:HB2	1.96	0.47
1:A:1489:VAL:HG22	1:A:1542:ILE:HB	1.97	0.46
1:A:1045:ILE:HD11	1:A:1066:PHE:HB3	1.97	0.45
1:A:1683:THR:HG22	1:A:1698:ARG:HB2	1.98	0.45
1:A:1897:GLU:HG3	1:A:1899:THR:HG23	1.99	0.45
1:A:270:VAL:HG12	1:A:317:PHE:HB2	1.99	0.44
1:A:905:LEU:HG	1:A:922:ALA:HB3	1.99	0.44
1:A:280:LEU:HD23	1:A:385:GLY:HA3	2.00	0.44
1:A:1590:ALA:H	1:A:1601:TRP:HZ3	1.66	0.44
1:A:870:ASN:C	1:A:870:ASN:HD22	2.24	0.44
1:A:1174:ILE:HG12	1:A:1218:ILE:HG22	1.98	0.44
1:A:379:ILE:HD11	1:A:601:SER:HA	2.00	0.44
1:A:1494:VAL:HG12	1:A:1495:ARG:HG3	2.00	0.43
1:A:405:LYS:HB2	1:A:1498:ASP:HB3	2.01	0.43
1:A:432:ARG:HG3	1:A:592:LEU:HD22	2.01	0.43
1:A:1582:LYS:HD3	1:A:1674:CYS:HB2	2.01	0.42
1:A:1123:ASN:HB2	1:A:1137:PRO:HB3	2.00	0.42
1:A:420:LEU:HD11	1:A:426:PRO:HA	2.01	0.42
1:A:762:MET:HE3	1:A:767:LYS:HB3	2.01	0.42
1:A:1632:ARG:HG2	1:A:1637:VAL:HG22	2.01	0.42
1:A:273:THR:HG22	1:A:390:ASP:HB3	2.02	0.42
1:A:639:LYS:H	1:A:639:LYS:HG3	1.63	0.42
1:A:708:GLN:HG2	1:A:718:PRO:HG3	2.02	0.42
1:A:1510:PRO:HA	1:A:1557:TYR:O	2.20	0.42
1:A:1741:LEU:HA	1:A:1753:SER:HB2	2.00	0.42
1:A:437:ILE:HG13	1:A:470:VAL:HG11	2.02	0.41
1:A:435:VAL:HG12	1:A:587:LEU:HG	2.02	0.41
1:A:553:MET:HE3	1:A:553:MET:HB2	1.76	0.41
1:A:396:LYS:HA	1:A:396:LYS:HD3	1.84	0.41
1:A:982:GLN:HB3	1:A:1103:LEU:HG	2.03	0.41
1:A:1417:PHE:HB3	1:A:1581:SER:HB2	2.03	0.41
1:A:1444:ILE:HD13	1:A:1444:ILE:HA	1.85	0.41
1:A:1875:ILE:HG12	1:A:1906:LEU:HD22	2.03	0.40

*Continued on next page...*

*Continued from previous page...*

Atom-1	Atom-2	Interatomic distance (Å)	Clash overlap (Å)
1:A:774:LEU:HD12	1:A:774:LEU:HA	1.92	0.40
1:A:1136:VAL:HA	1:A:1137:PRO:HD3	1.97	0.40

There are no symmetry-related clashes.

## 5.3 Torsion angles [i](#)

### 5.3.1 Protein backbone [i](#)

In the following table, the Percentiles column shows the percent Ramachandran outliers of the chain as a percentile score with respect to all PDB entries followed by that with respect to all EM entries.

The Analysed column shows the number of residues for which the backbone conformation was analysed, and the total number of residues.

Mol	Chain	Analysed	Favoured	Allowed	Outliers	Percentiles
1	A	1469/1767 (83%)	1420 (97%)	47 (3%)	2 (0%)	48 79

All (2) Ramachandran outliers are listed below:

Mol	Chain	Res	Type
1	A	1004	ILE
1	A	444	PRO

### 5.3.2 Protein sidechains [i](#)

In the following table, the Percentiles column shows the percent sidechain outliers of the chain as a percentile score with respect to all PDB entries followed by that with respect to all EM entries.

The Analysed column shows the number of residues for which the sidechain conformation was analysed, and the total number of residues.

Mol	Chain	Analysed	Rotameric	Outliers	Percentiles
1	A	1312/1550 (85%)	1291 (98%)	21 (2%)	58 76

All (21) residues with a non-rotameric sidechain are listed below:

Mol	Chain	Res	Type
1	A	274	VAL
1	A	337	HIS
1	A	472	VAL
1	A	483	VAL
1	A	599	LEU
1	A	717	LEU
1	A	839	LEU
1	A	867	MET
1	A	870	ASN
1	A	885	LEU
1	A	1047	VAL
1	A	1128	MET
1	A	1230	THR
1	A	1457	VAL
1	A	1586	THR
1	A	1595	ILE
1	A	1654	THR
1	A	1733	VAL
1	A	1757	VAL
1	A	1819	ILE
1	A	1865	THR

Sometimes sidechains can be flipped to improve hydrogen bonding and reduce clashes. All (15) such sidechains are listed below:

Mol	Chain	Res	Type
1	A	365	GLN
1	A	552	ASN
1	A	596	ASN
1	A	858	HIS
1	A	959	HIS
1	A	972	GLN
1	A	979	HIS
1	A	1005	ASN
1	A	1029	ASN
1	A	1213	HIS
1	A	1583	HIS
1	A	1596	HIS
1	A	1735	ASN
1	A	1769	GLN
1	A	1783	ASN

### 5.3.3 RNA [i](#)

There are no RNA molecules in this entry.

### 5.4 Non-standard residues in protein, DNA, RNA chains [i](#)

There are no non-standard protein/DNA/RNA residues in this entry.

### 5.5 Carbohydrates [i](#)

There are no oligosaccharides in this entry.

### 5.6 Ligand geometry [i](#)

Of 5 ligands modelled in this entry, 5 are monoatomic - leaving 0 for Mogul analysis.

There are no bond length outliers.

There are no bond angle outliers.

There are no chirality outliers.

There are no torsion outliers.

There are no ring outliers.

No monomer is involved in short contacts.

### 5.7 Other polymers [i](#)

There are no such residues in this entry.

### 5.8 Polymer linkage issues [i](#)

There are no chain breaks in this entry.

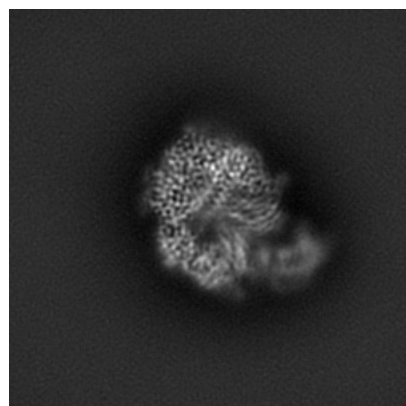
## 6 Map visualisation [i](#)

This section contains visualisations of the EMDB entry EMD-54802. These allow visual inspection of the internal detail of the map and identification of artifacts.

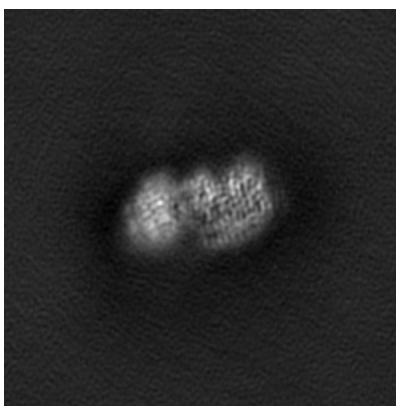
Images derived from a raw map, generated by summing the deposited half-maps, are presented below the corresponding image components of the primary map to allow further visual inspection and comparison with those of the primary map.

### 6.1 Orthogonal projections [i](#)

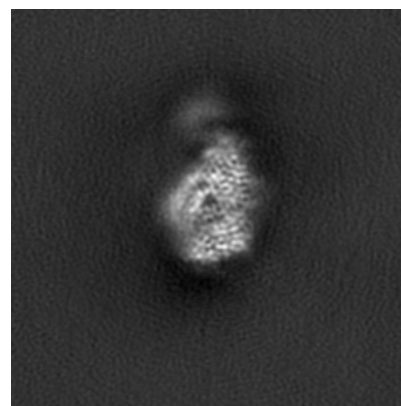
#### 6.1.1 Primary map



X

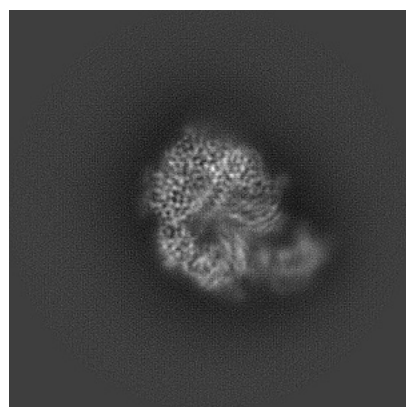


Y

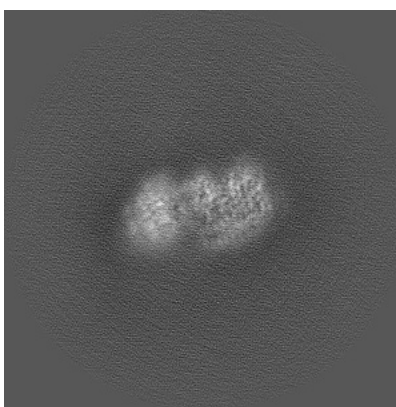


Z

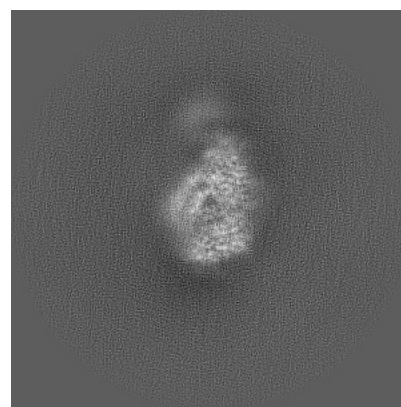
#### 6.1.2 Raw map



X



Y

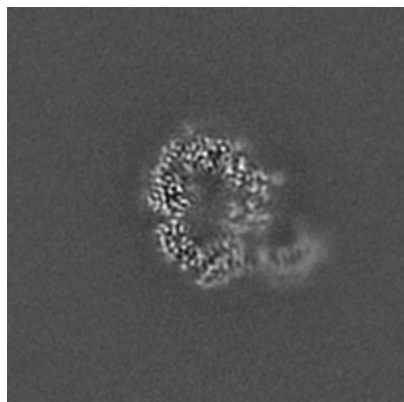


Z

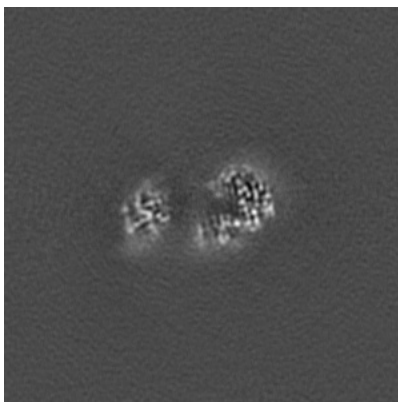
The images above show the map projected in three orthogonal directions.

## 6.2 Central slices [i](#)

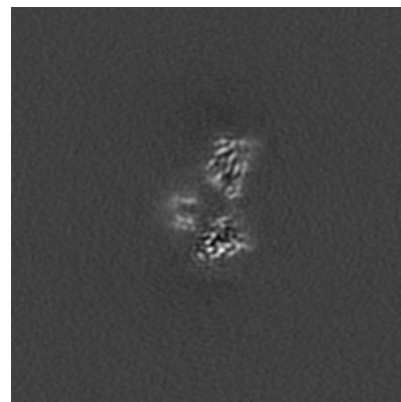
### 6.2.1 Primary map



X Index: 180

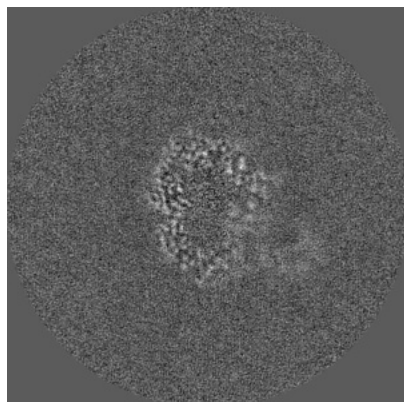


Y Index: 180

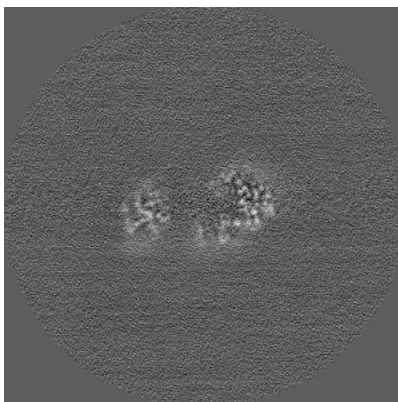


Z Index: 180

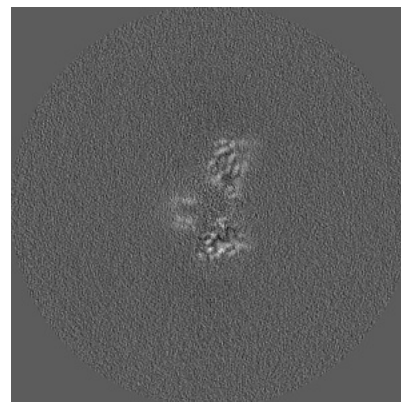
### 6.2.2 Raw map



X Index: 180



Y Index: 180



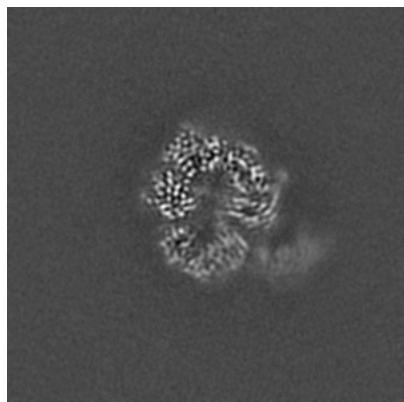
Z Index: 180

The images above show central slices of the map in three orthogonal directions.

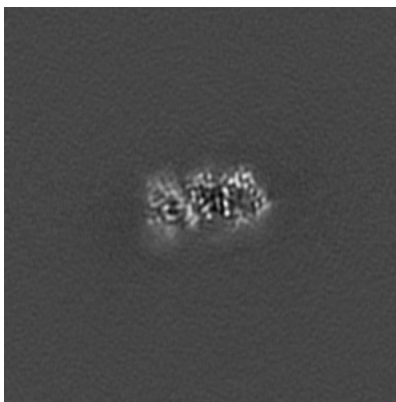


## 6.3 Largest variance slices [i](#)

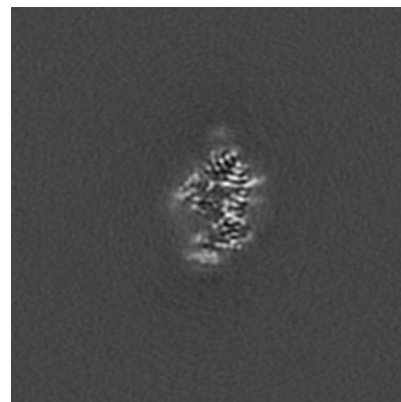
### 6.3.1 Primary map



X Index: 188

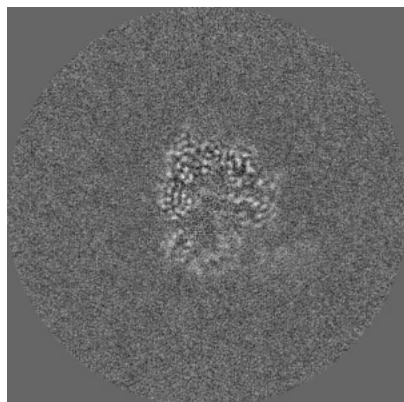


Y Index: 149

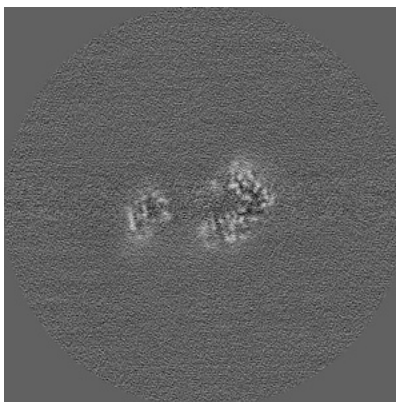


Z Index: 211

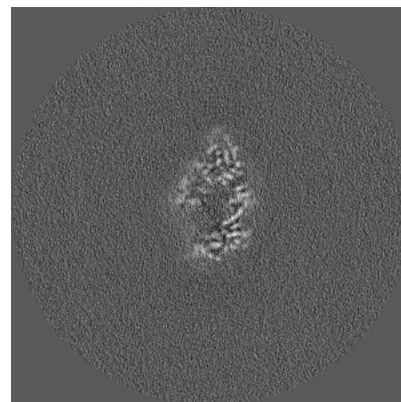
### 6.3.2 Raw map



X Index: 191



Y Index: 185



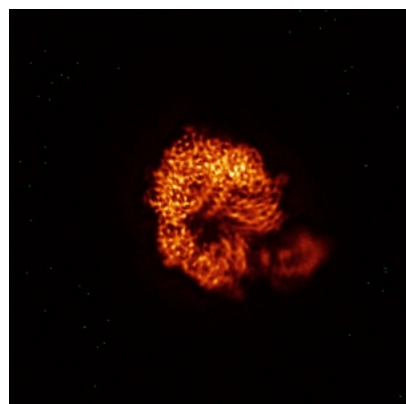
Z Index: 205

The images above show the largest variance slices of the map in three orthogonal directions.

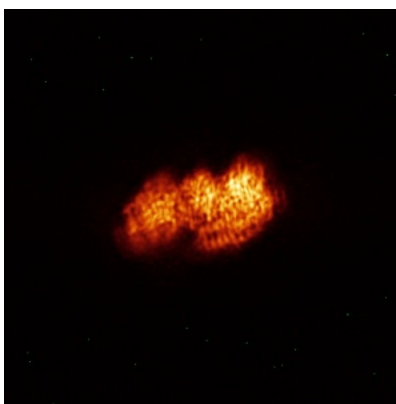


## 6.4 Orthogonal standard-deviation projections (False-color) ⓘ

### 6.4.1 Primary map



X

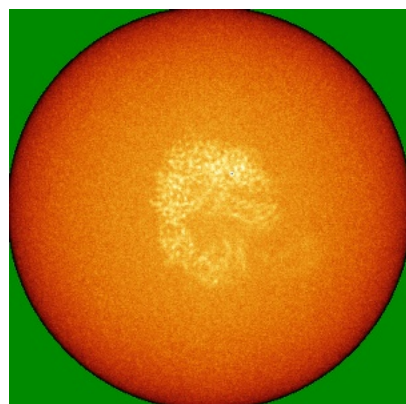


Y

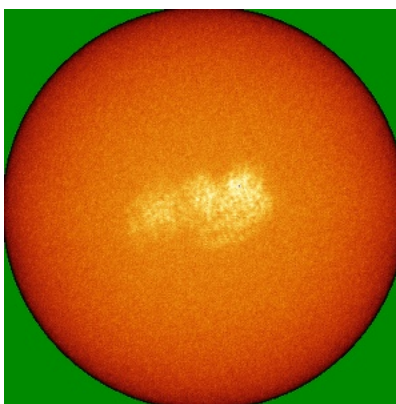


Z

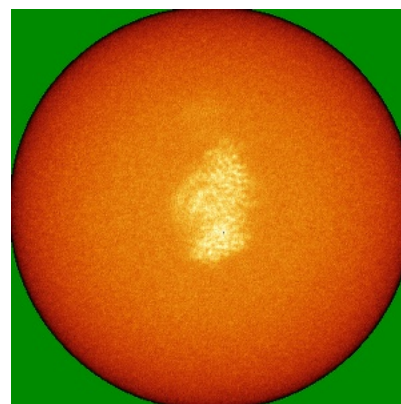
### 6.4.2 Raw map



X



Y

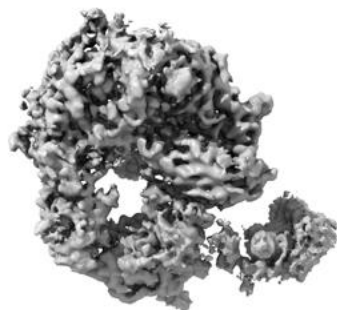


Z

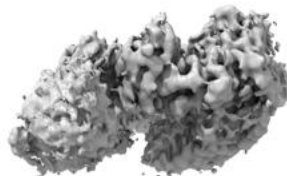
The images above show the map standard deviation projections with false color in three orthogonal directions. Minimum values are shown in green, max in blue, and dark to light orange shades represent small to large values respectively.

## 6.5 Orthogonal surface views [i](#)

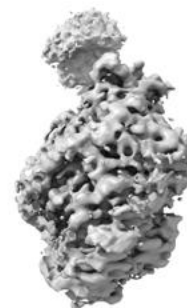
### 6.5.1 Primary map



X



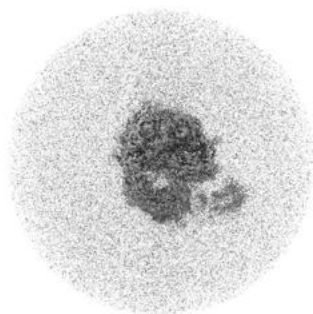
Y



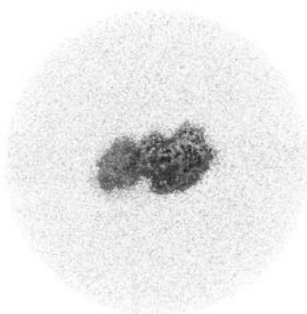
Z

The images above show the 3D surface view of the map at the recommended contour level 0.0013. These images, in conjunction with the slice images, may facilitate assessment of whether an appropriate contour level has been provided.

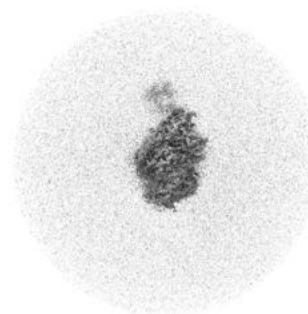
### 6.5.2 Raw map



X



Y



Z

These images show the 3D surface of the raw map. The raw map's contour level was selected so that its surface encloses the same volume as the primary map does at its recommended contour level.

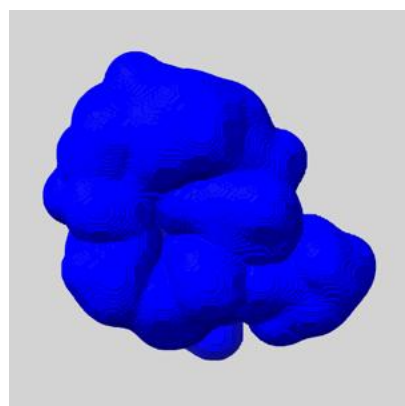
## 6.6 Mask visualisation [i](#)

This section shows the 3D surface view of the primary map at 50% transparency overlaid with the specified mask at 0% transparency

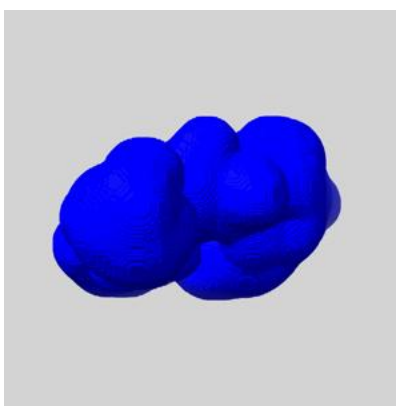
A mask typically either:

- Encompasses the whole structure
- Separates out a domain, a functional unit, a monomer or an area of interest from a larger structure

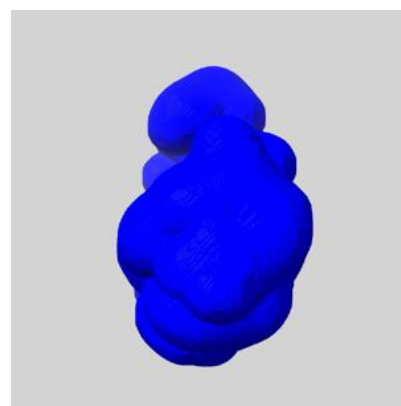
### 6.6.1 emd\_54802\_msk\_1.map [i](#)



X



Y

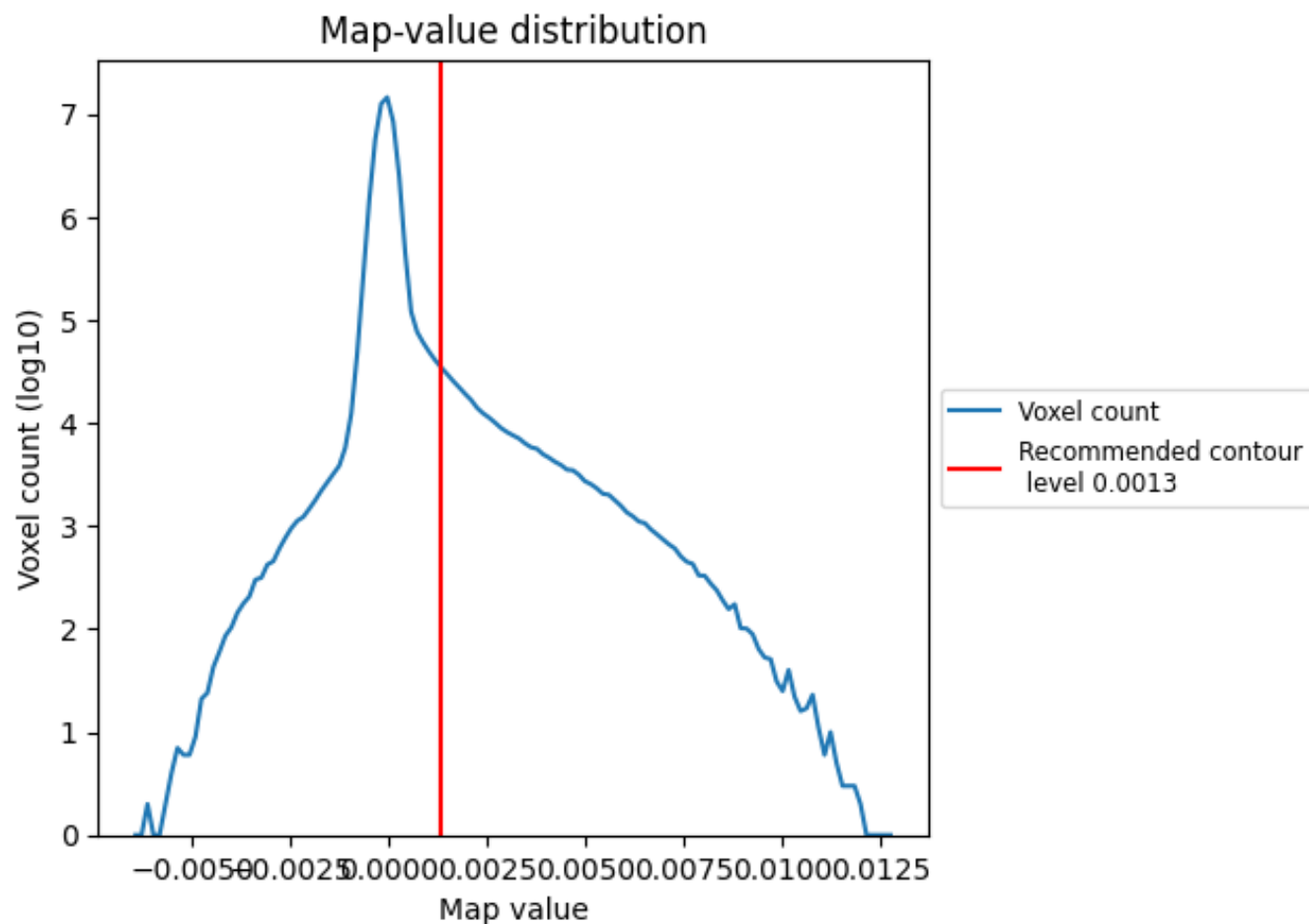


Z

## 7 Map analysis [i](#)

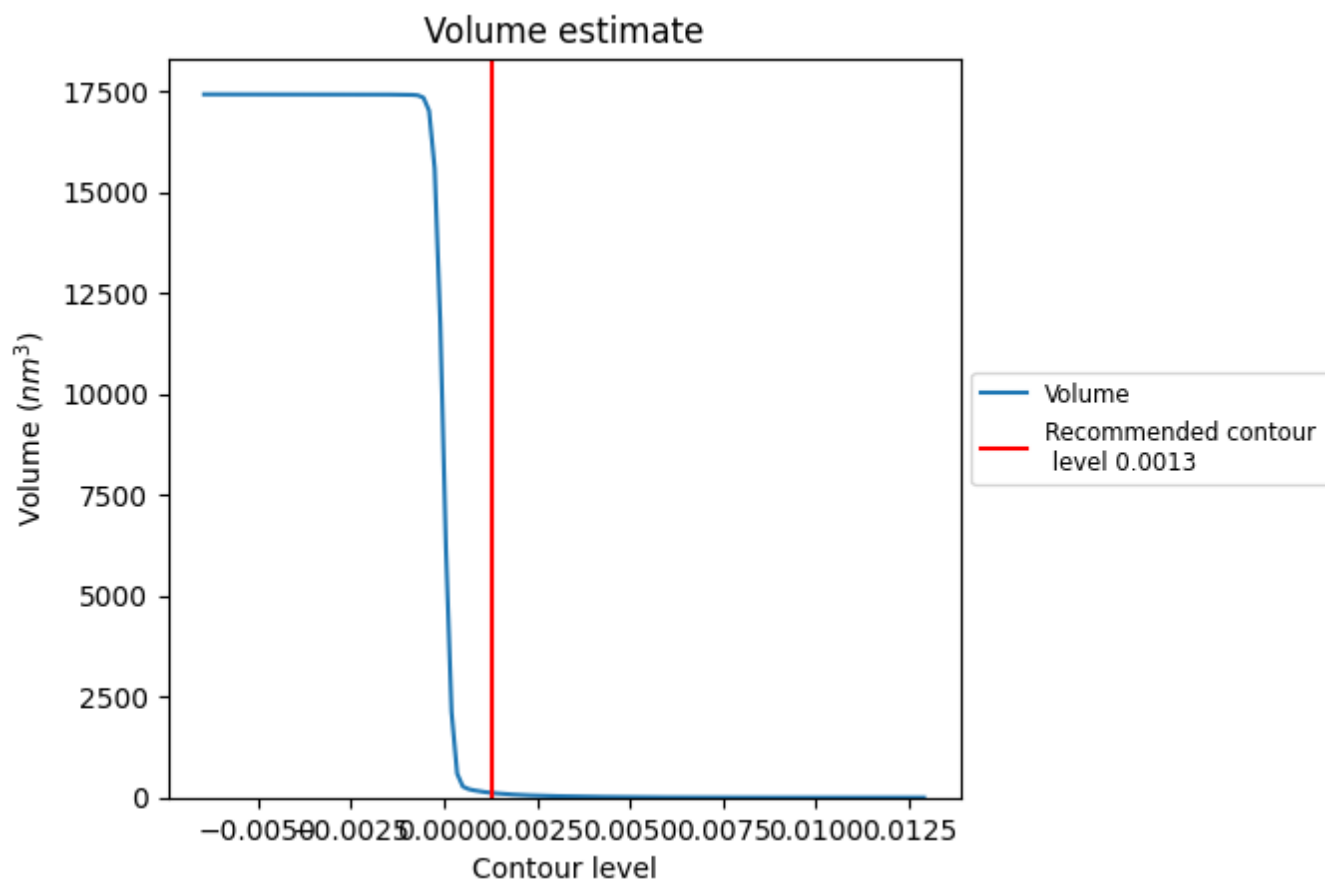
This section contains the results of statistical analysis of the map.

### 7.1 Map-value distribution [i](#)



The map-value distribution is plotted in 128 intervals along the x-axis. The y-axis is logarithmic. A spike in this graph at zero usually indicates that the volume has been masked.

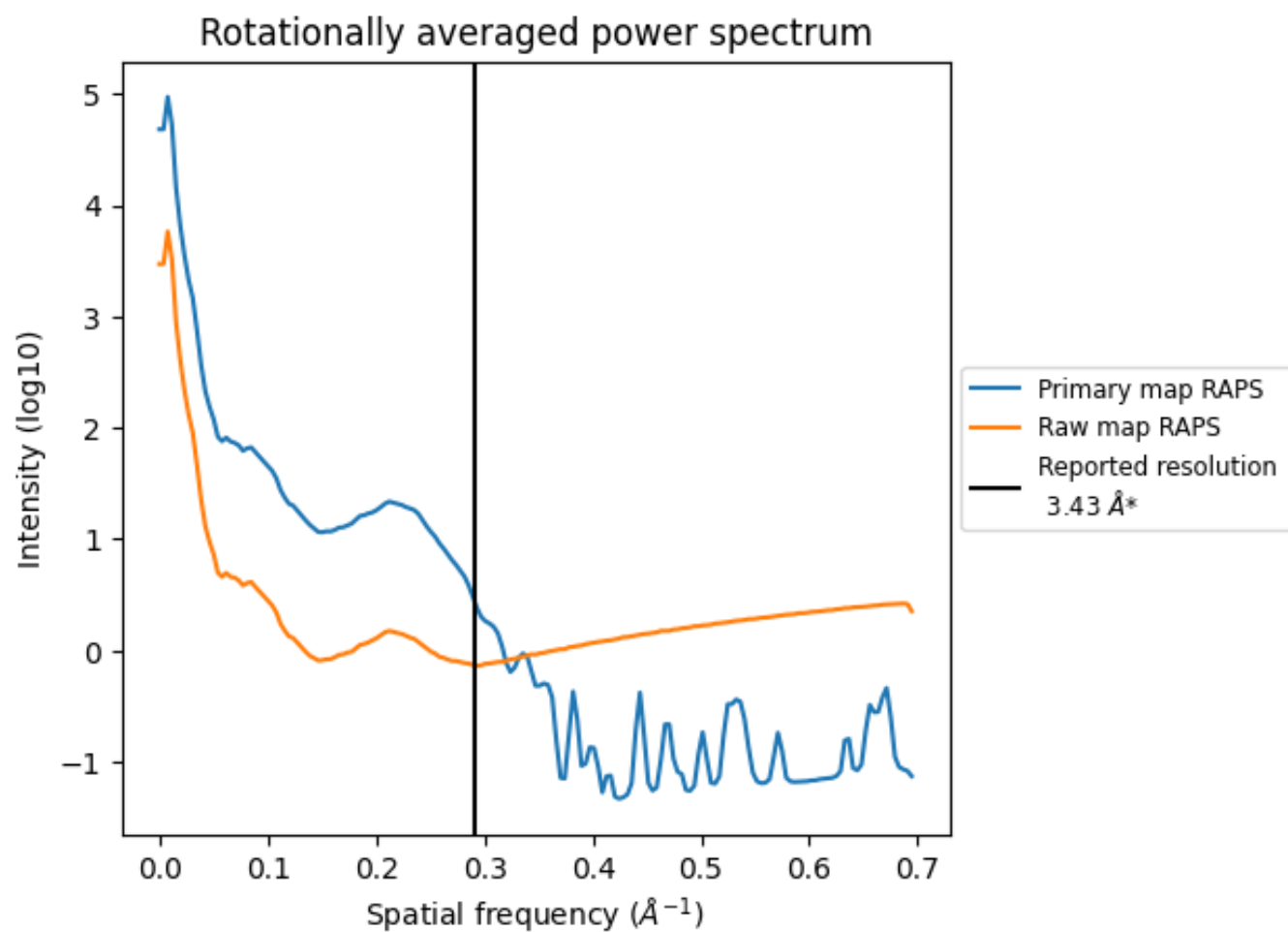
## 7.2 Volume estimate [i](#)



The volume at the recommended contour level is 114  $\text{nm}^3$ ; this corresponds to an approximate mass of 103 kDa.

The volume estimate graph shows how the enclosed volume varies with the contour level. The recommended contour level is shown as a vertical line and the intersection between the line and the curve gives the volume of the enclosed surface at the given level.

### 7.3 Rotationally averaged power spectrum ⓘ

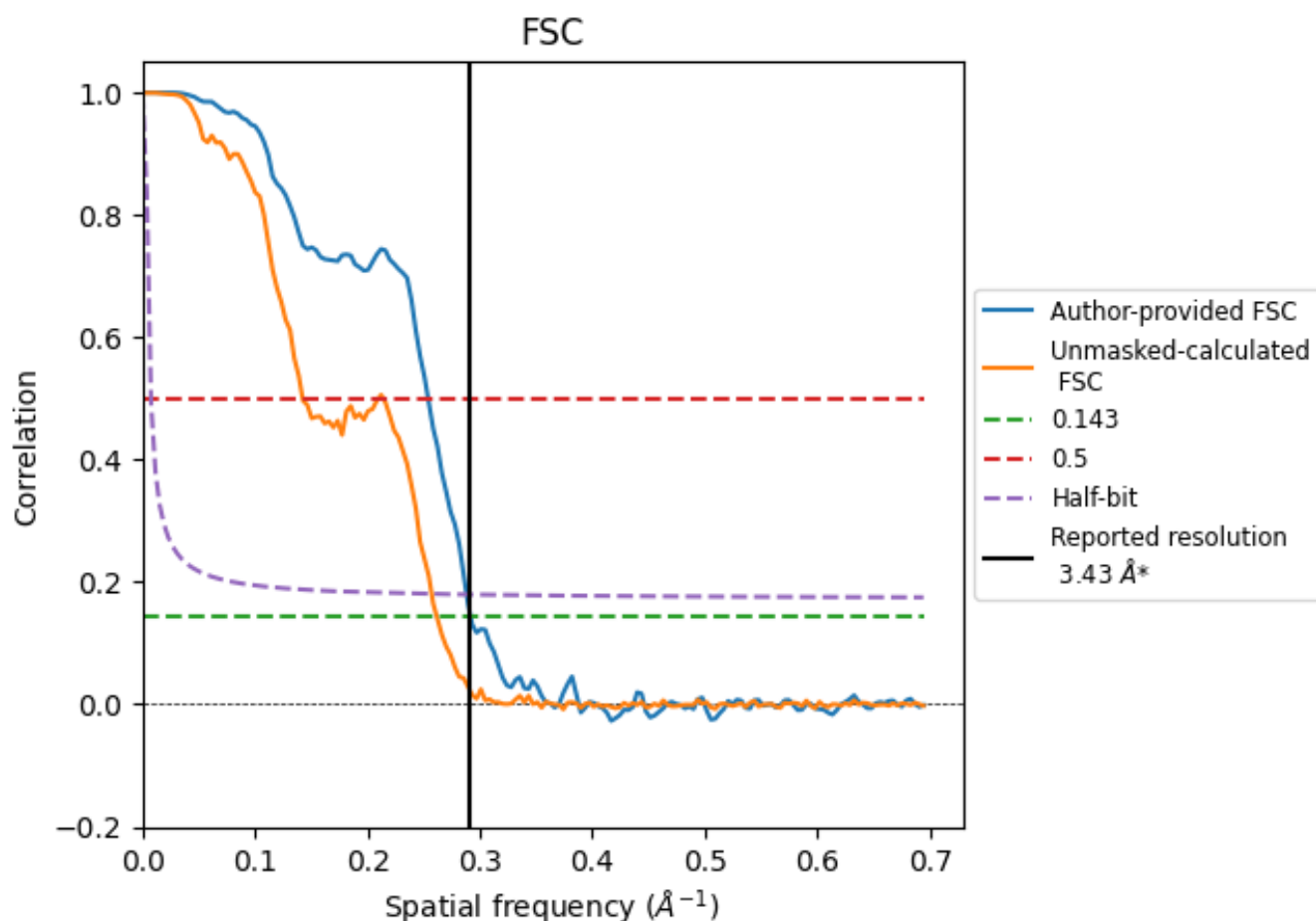


\*Reported resolution corresponds to spatial frequency of 0.292 Å<sup>-1</sup>

## 8 Fourier-Shell correlation [i](#)

Fourier-Shell Correlation (FSC) is the most commonly used method to estimate the resolution of single-particle and subtomogram-averaged maps. The shape of the curve depends on the imposed symmetry, mask and whether or not the two 3D reconstructions used were processed from a common reference. The reported resolution is shown as a black line. A curve is displayed for the half-bit criterion in addition to lines showing the 0.143 gold standard cut-off and 0.5 cut-off.

### 8.1 FSC [i](#)



\*Reported resolution corresponds to spatial frequency of 0.292  $\text{\AA}^{-1}$

## 8.2 Resolution estimates [i](#)

Resolution estimate (Å)	Estimation criterion (FSC cut-off)		
	0.143	0.5	Half-bit
Reported by author	3.43	-	-
Author-provided FSC curve	3.43	3.94	3.47
Unmasked-calculated*	3.82	7.02	3.89

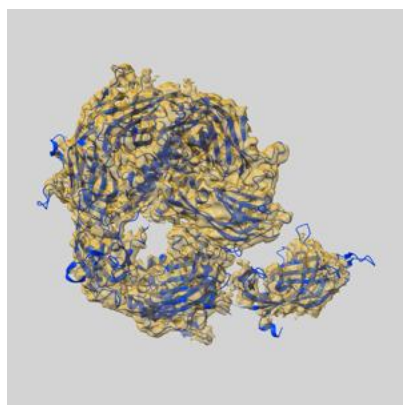
\*Resolution estimate based on FSC curve calculated by comparison of deposited half-maps. The value from deposited half-maps intersecting FSC 0.143 CUT-OFF 3.82 differs from the reported value 3.43 by more than 10 %



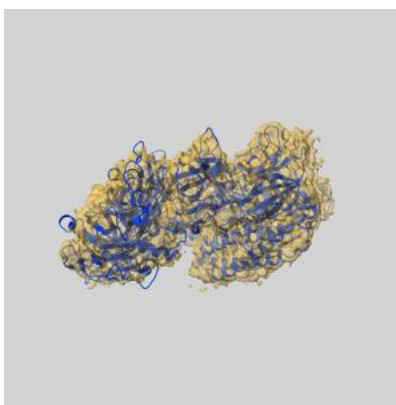
## 9 Map-model fit [i](#)

This section contains information regarding the fit between EMDB map EMD-54802 and PDB model 9SE5. Per-residue inclusion information can be found in section [3](#) on page [5](#).

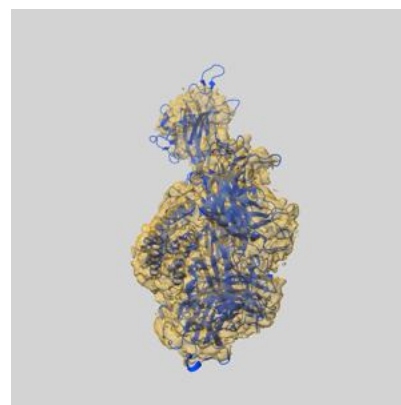
### 9.1 Map-model overlay [i](#)



X



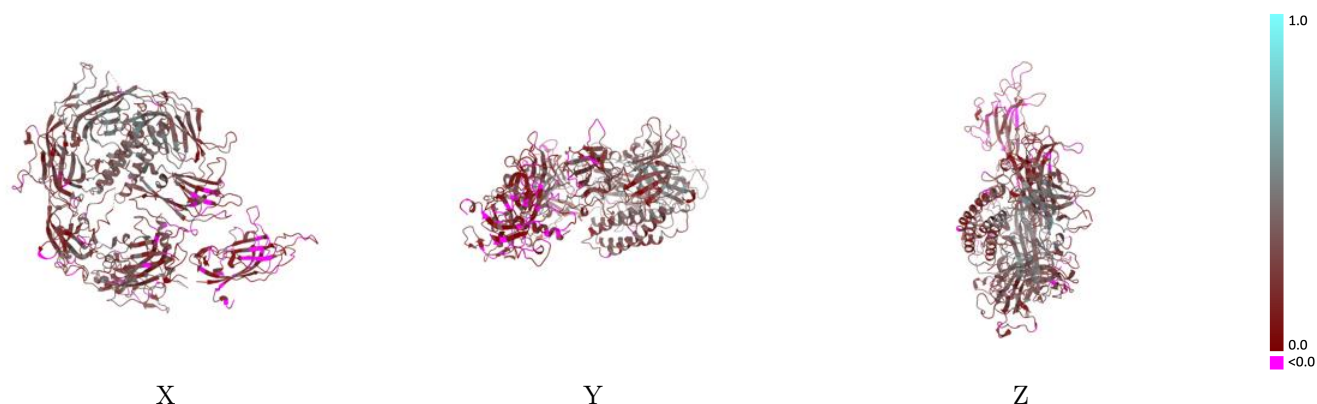
Y



Z

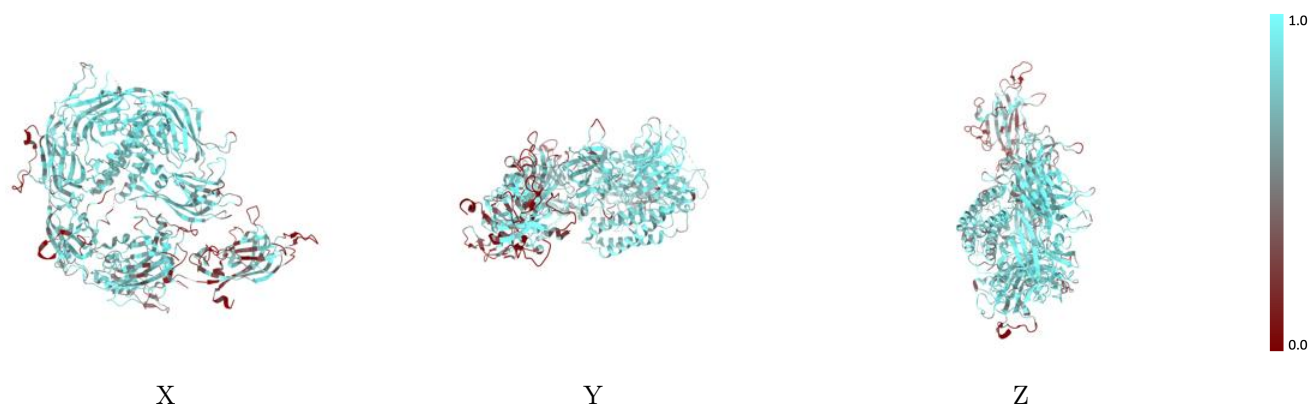
The images above show the 3D surface view of the map at the recommended contour level 0.0013 at 50% transparency in yellow overlaid with a ribbon representation of the model coloured in blue. These images allow for the visual assessment of the quality of fit between the atomic model and the map.

## 9.2 Q-score mapped to coordinate model [i](#)



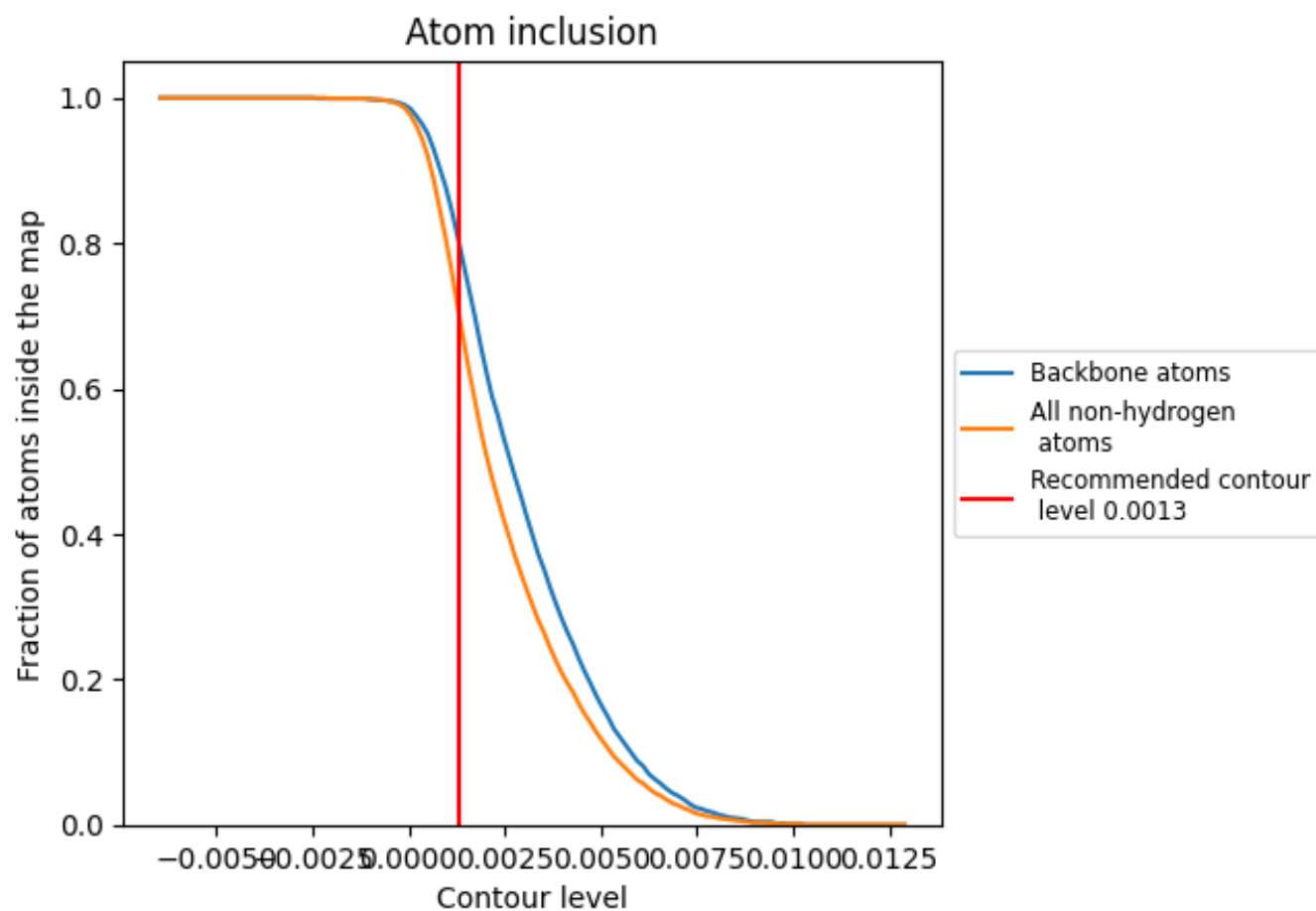
The images above show the model with each residue coloured according to its Q-score. This shows their resolvability in the map with higher Q-score values reflecting better resolvability. Please note: Q-score is calculating the resolvability of atoms, and thus high values are only expected at resolutions at which atoms can be resolved. Low Q-score values may therefore be expected for many entries.

## 9.3 Atom inclusion mapped to coordinate model [i](#)



The images above show the model with each residue coloured according to its atom inclusion. This shows to what extent they are inside the map at the recommended contour level (0.0013).

## 9.4 Atom inclusion [i](#)



At the recommended contour level, 80% of all backbone atoms, 70% of all non-hydrogen atoms, are inside the map.

9.5 Map-model fit summary ⓘ

The table lists the average atom inclusion at the recommended contour level (0.0013) and Q-score for the entire model and for each chain.

Chain	Atom inclusion	Q-score
All	<div></div> 0.7050	<div></div> 0.2480
A	<div></div> 0.7050	<div></div> 0.2480

