



Full wwPDB EM Validation Report ⓘ

Oct 20, 2024 – 06:59 PM EDT

PDB ID : 7SP8
EMDB ID : EMD-25368
Title : Chlorella virus Hyaluronan Synthase bound to UDP-GlcNAc
Authors : Maloney, F.P.; Kuklewicz, J.; Zimmer, J.
Deposited on : 2021-11-02
Resolution : 2.70 Å(reported)

This is a Full wwPDB EM Validation Report for a publicly released PDB entry.

We welcome your comments at validation@mail.wwpdb.org

A user guide is available at

<https://www.wwpdb.org/validation/2017/EMValidationReportHelp>

with specific help available everywhere you see the ⓘ symbol.

The types of validation reports are described at

<http://www.wwpdb.org/validation/2017/FAQs#types>.

The following versions of software and data (see [references ⓘ](#)) were used in the production of this report:

EMDB validation analysis : 0.0.1.dev113
Mogul : 2022.3.0, CSD as543be (2022)
MolProbity : 4.02b-467
buster-report : 1.1.7 (2018)
Percentile statistics : 20231227.v01 (using entries in the PDB archive December 27th 2023)
MapQ : 1.9.13
Ideal geometry (proteins) : Engh & Huber (2001)
Ideal geometry (DNA, RNA) : Parkinson et al. (1996)
Validation Pipeline (wwPDB-VP) : 2.39

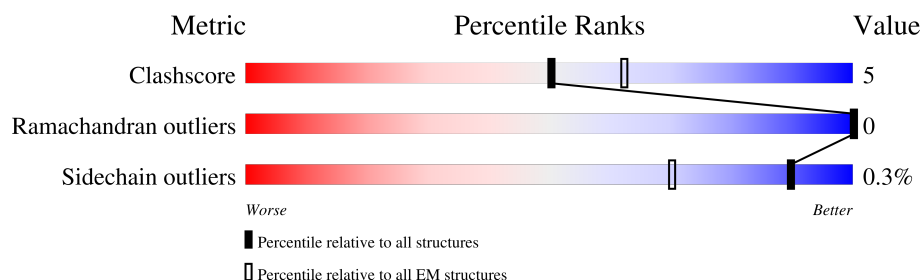
1 Overall quality at a glance

The following experimental techniques were used to determine the structure:

ELECTRON MICROSCOPY

The reported resolution of this entry is 2.70 Å.

Percentile scores (ranging between 0-100) for global validation metrics of the entry are shown in the following graphic. The table shows the number of entries on which the scores are based.



Metric	Whole archive (#Entries)	EM structures (#Entries)
Clashscore	210492	15764
Ramachandran outliers	207382	16835
Sidechain outliers	206894	16415

The table below summarises the geometric issues observed across the polymeric chains and their fit to the map. The red, orange, yellow and green segments of the bar indicate the fraction of residues that contain outliers for ≥ 3 , 2, 1 and 0 types of geometric quality criteria respectively. A grey segment represents the fraction of residues that are not modelled. The numeric value for each fraction is indicated below the corresponding segment, with a dot representing fractions $\leq 5\%$. The upper red bar (where present) indicates the fraction of residues that have poor fit to the EM map (all-atom inclusion $< 40\%$). The numeric value is given above the bar.

Mol	Chain	Length	Quality of chain
1	A	570	 8% 75% 13% 12%
2	B	134	 8% 80% 13% 7%
3	C	137	 8% 76% 9% 14%

2 Entry composition

There are 7 unique types of molecules in this entry. The entry contains 6090 atoms, of which 0 are hydrogens and 0 are deuteriums.

In the tables below, the AltConf column contains the number of residues with at least one atom in alternate conformation and the Trace column contains the number of residues modelled with at most 2 atoms.

- Molecule 1 is a protein called Hyaluronan synthase.

Mol	Chain	Residues	Atoms					AltConf	Trace
1	A	500	Total	C	N	O	S	1	0
			4088	2681	661	720	26		

There are 11 discrepancies between the modelled and reference sequences:

Chain	Residue	Modelled	Actual	Comment	Reference
A	0	MET	-	initiating methionine	UNP M1H2Q1
A	1	GLY	-	expression tag	UNP M1H2Q1
A	302	ASN	ASP	engineered mutation	UNP M1H2Q1
A	562	LEU	-	expression tag	UNP M1H2Q1
A	563	GLU	-	expression tag	UNP M1H2Q1
A	564	HIS	-	expression tag	UNP M1H2Q1
A	565	HIS	-	expression tag	UNP M1H2Q1
A	566	HIS	-	expression tag	UNP M1H2Q1
A	567	HIS	-	expression tag	UNP M1H2Q1
A	568	HIS	-	expression tag	UNP M1H2Q1
A	569	HIS	-	expression tag	UNP M1H2Q1

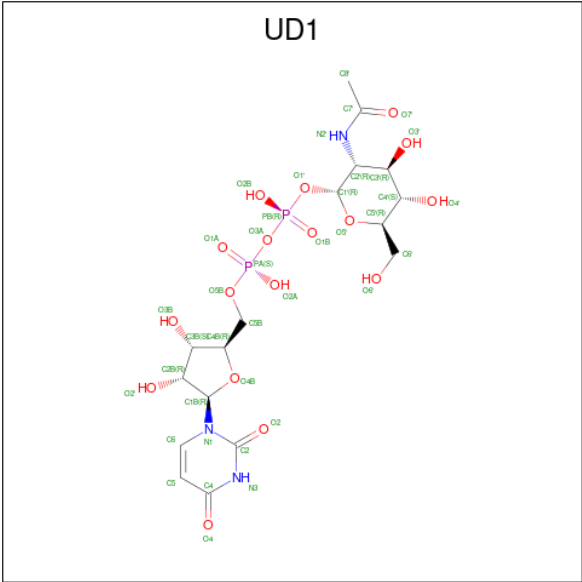
- Molecule 2 is a protein called Nanobody 872.

Mol	Chain	Residues	Atoms					AltConf	Trace
2	B	124	Total	C	N	O	S	0	0
			950	591	165	190	4		

- Molecule 3 is a protein called Nanobody 881.

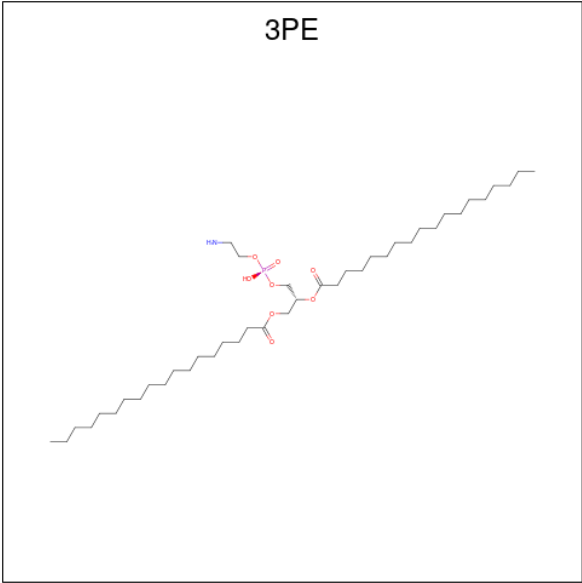
Mol	Chain	Residues	Atoms					AltConf	Trace
3	C	118	Total	C	N	O	S	0	0
			925	574	169	177	5		

- Molecule 4 is URIDINE-DIPHOSPHATE-N-ACETYLGLUCOSAMINE (three-letter code: UD1) (formula: C₁₇H₂₇N₃O₁₇P₂) (labeled as "Ligand of Interest" by depositor).



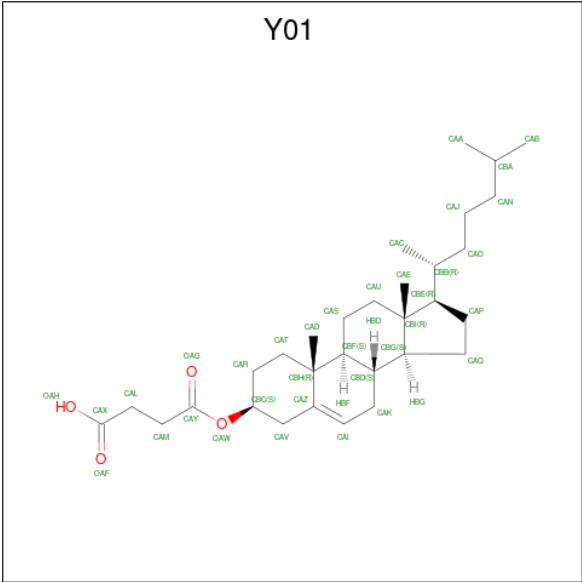
Mol	Chain	Residues	Atoms					AltConf
4	A	1	Total	C	N	O	P	0
			39	17	3	17	2	

- Molecule 5 is 1,2-Distearoyl-sn-glycerophosphoethanolamine (three-letter code: 3PE) (formula: $C_{41}H_{82}NO_8P$).



Mol	Chain	Residues	Atoms					AltConf
5	A	1	Total	C	N	O	P	0
			51	41	1	8	1	

- Molecule 6 is CHOLESTEROL HEMISUCCINATE (three-letter code: Y01) (formula: $C_{31}H_{50}O_4$).



Mol	Chain	Residues	Atoms			AltConf
6	A	1	Total	C	O	0
			35	31	4	

- Molecule 7 is MANGANESE (II) ION (three-letter code: MN) (formula: Mn) (labeled as "Ligand of Interest" by depositor).

Mol	Chain	Residues	Atoms		AltConf
7	A	2	Total	Mn	0
			2	2	

4 Experimental information

Property	Value	Source
EM reconstruction method	SINGLE PARTICLE	Depositor
Imposed symmetry	POINT, C1	Depositor
Number of particles used	105056	Depositor
Resolution determination method	FSC 0.143 CUT-OFF	Depositor
CTF correction method	PHASE FLIPPING AND AMPLITUDE CORRECTION	Depositor
Microscope	FEI TITAN KRIOS	Depositor
Voltage (kV)	300	Depositor
Electron dose ($e^-/\text{\AA}^2$)	51	Depositor
Minimum defocus (nm)	1000	Depositor
Maximum defocus (nm)	2000	Depositor
Magnification	81000	Depositor
Image detector	GATAN K3 (6k x 4k)	Depositor
Maximum map value	30.059	Depositor
Minimum map value	-11.116	Depositor
Average map value	-0.001	Depositor
Map value standard deviation	0.791	Depositor
Recommended contour level	6.55	Depositor
Map size (Å)	276.48, 276.48, 276.48	wwPDB
Map dimensions	256, 256, 256	wwPDB
Map angles (°)	90.0, 90.0, 90.0	wwPDB
Pixel spacing (Å)	1.08, 1.08, 1.08	Depositor

5 Model quality [i](#)

5.1 Standard geometry [i](#)

Bond lengths and bond angles in the following residue types are not validated in this section: Y01, UD1, 3PE, MN

The Z score for a bond length (or angle) is the number of standard deviations the observed value is removed from the expected value. A bond length (or angle) with $|Z| > 5$ is considered an outlier worth inspection. RMSZ is the root-mean-square of all Z scores of the bond lengths (or angles).

Mol	Chain	Bond lengths		Bond angles	
		RMSZ	$\# Z > 5$	RMSZ	$\# Z > 5$
1	A	0.24	0/4199	0.43	0/5710
2	B	0.24	0/968	0.52	0/1308
3	C	0.25	0/945	0.54	0/1274
All	All	0.24	0/6112	0.46	0/8292

There are no bond length outliers.

There are no bond angle outliers.

There are no chirality outliers.

There are no planarity outliers.

5.2 Too-close contacts [i](#)

In the following table, the Non-H and H(model) columns list the number of non-hydrogen atoms and hydrogen atoms in the chain respectively. The H(added) column lists the number of hydrogen atoms added and optimized by MolProbity. The Clashes column lists the number of clashes within the asymmetric unit, whereas Symm-Clashes lists symmetry-related clashes.

Mol	Chain	Non-H	H(model)	H(added)	Clashes	Symm-Clashes
1	A	4088	0	4070	46	0
2	B	950	0	914	11	0
3	C	925	0	874	8	0
4	A	39	0	25	3	0
5	A	51	0	82	4	0
6	A	35	0	49	0	0
7	A	2	0	0	0	0
All	All	6090	0	6014	65	0

The all-atom clashscore is defined as the number of clashes found per 1000 atoms (including hydrogen atoms). The all-atom clashscore for this structure is 5.

All (65) close contacts within the same asymmetric unit are listed below, sorted by their clash magnitude.

Atom-1	Atom-2	Interatomic distance (Å)	Clash overlap (Å)
2:B:86:LYS:HD3	2:B:87:PRO:HD2	1.64	0.79
1:A:397:GLN:HG2	5:A:602:3PE:H2H2	1.81	0.63
1:A:80:ASN:HB2	1:A:112:ASN:HB2	1.81	0.62
2:B:90:THR:HG23	2:B:121:THR:HA	1.82	0.60
1:A:331:ASN:HB3	1:A:334:ARG:HE	1.66	0.59
1:A:307:ASN:ND2	1:A:349:GLU:OE1	2.35	0.59
1:A:412:SER:HB3	1:A:425:PHE:HA	1.84	0.59
3:C:39:ARG:HB3	3:C:45:ARG:HG3	1.86	0.58
1:A:80:ASN:O	1:A:112:ASN:ND2	2.38	0.57
1:A:342:TRP:HE1	4:A:601:UD1:H6'1	1.70	0.56
2:B:40:ALA:HB3	2:B:43:LYS:HG2	1.88	0.55
1:A:205:VAL:HB	1:A:325:TRP:HB2	1.89	0.55
1:A:308:GLU:OE1	1:A:312:ARG:NH1	2.40	0.55
1:A:121:ASP:HB2	1:A:174:HIS:HA	1.88	0.55
2:B:2:VAL:HG12	2:B:26:GLY:HA3	1.88	0.54
2:B:38:ARG:NH1	2:B:89:ASP:OD2	2.39	0.54
1:A:338:GLN:NE2	4:A:601:UD1:O1B	2.42	0.53
3:C:33:THR:HB	3:C:98:ARG:HB3	1.91	0.52
1:A:259:GLN:HB3	1:A:265:VAL:HA	1.92	0.50
1:A:501:ASP:OD1	2:B:98:ARG:NH2	2.45	0.49
1:A:405:THR:O	1:A:409:ILE:HG12	2.13	0.48
1:A:178:ARG:NH2	1:A:287:TRP:O	2.40	0.48
1:A:218:LEU:HD23	1:A:224:ILE:HG22	1.95	0.48
1:A:346:TRP:O	1:A:350:ILE:HG23	2.13	0.47
2:B:38:ARG:HG3	2:B:48:VAL:HG21	1.96	0.47
1:A:84:VAL:HG21	1:A:215:VAL:HG11	1.96	0.46
1:A:398:THR:HG21	1:A:510:ALA:HA	1.98	0.46
1:A:307:ASN:O	1:A:311:MET:HG3	2.15	0.46
1:A:51:LEU:O	1:A:55:ILE:HG12	2.15	0.46
1:A:423:LYS:HD3	1:A:537:ASN:HA	1.96	0.46
3:C:39:ARG:HG2	3:C:94:TYR:HE2	1.81	0.45
1:A:247:ARG:NH1	1:A:251:ALA:HB2	2.31	0.45
1:A:378:PHE:O	1:A:382:MET:HG2	2.17	0.44
1:A:44:SER:O	1:A:48:VAL:HG23	2.17	0.44
1:A:51:LEU:HD21	1:A:407:VAL:HG22	1.98	0.44
1:A:148:VAL:HG12	1:A:150:CYS:H	1.82	0.44
1:A:109:GLU:HG3	1:A:208:LYS:HB3	1.99	0.44
1:A:266:GLN:HE21	1:A:303[B]:ARG:NH2	2.15	0.44
1:A:202:SER:HG	4:A:601:UD1:HO3A	1.66	0.44
1:A:544:GLU:O	1:A:547:GLU:N	2.50	0.44

Continued on next page...

Continued from previous page...

Atom-1	Atom-2	Interatomic distance (Å)	Clash overlap (Å)
1:A:395:ARG:HD3	1:A:506:GLN:HE21	1.82	0.44
1:A:263:LYS:HB3	1:A:315:LYS:HB3	1.99	0.44
3:C:19:ARG:HG3	3:C:81:GLU:HB3	2.00	0.44
2:B:72:ASP:OD1	2:B:73:ASN:N	2.52	0.43
2:B:86:LYS:HB3	2:B:89:ASP:OD1	2.18	0.43
5:A:602:3PE:H322	5:A:602:3PE:H352	1.69	0.43
3:C:6:GLU:HA	3:C:22:CYS:HA	2.01	0.43
1:A:359:LYS:HE2	1:A:359:LYS:HB3	1.67	0.42
1:A:139:ASN:H	3:C:101:ARG:HB3	1.85	0.42
1:A:200:ILE:HD12	1:A:206:LEU:HD21	2.01	0.42
1:A:403:VAL:O	1:A:407:VAL:HG23	2.20	0.42
1:A:478:ILE:HA	1:A:481:MET:HE2	2.02	0.42
2:B:19:LYS:HD2	2:B:79:SER:HB3	2.02	0.42
1:A:439:ILE:HD12	1:A:439:ILE:H	1.85	0.41
1:A:263:LYS:HB2	1:A:315:LYS:HD3	2.03	0.41
1:A:506:GLN:OE1	2:B:56:THR:OG1	2.30	0.41
3:C:4:LEU:HD11	3:C:97:LEU:HB2	2.02	0.41
1:A:250:SER:HB2	1:A:415:LEU:HD11	2.02	0.41
1:A:360:HIS:HB3	1:A:363:SER:HB2	2.02	0.41
1:A:408:THR:HB	1:A:428:VAL:HA	2.02	0.41
1:A:434:TYR:CD1	1:A:438:MET:HG3	2.55	0.41
3:C:72:ASP:OD1	3:C:74:THR:HG22	2.22	0.40
1:A:423:LYS:HD3	1:A:537:ASN:HD22	1.86	0.40
5:A:602:3PE:H351	5:A:602:3PE:H3A2	2.02	0.40
5:A:602:3PE:H3C1	5:A:602:3PE:H392	1.93	0.40

There are no symmetry-related clashes.

5.3 Torsion angles ⓘ

5.3.1 Protein backbone ⓘ

In the following table, the Percentiles column shows the percent Ramachandran outliers of the chain as a percentile score with respect to all PDB entries followed by that with respect to all EM entries.

The Analysed column shows the number of residues for which the backbone conformation was analysed, and the total number of residues.

Mol	Chain	Analysed	Favoured	Allowed	Outliers	Percentiles	
1	A	497/570 (87%)	490 (99%)	7 (1%)	0	100	100

Continued on next page...

Continued from previous page...

Mol	Chain	Analysed	Favoured	Allowed	Outliers	Percentiles	
2	B	122/134 (91%)	119 (98%)	3 (2%)	0	100	100
3	C	114/137 (83%)	113 (99%)	1 (1%)	0	100	100
All	All	733/841 (87%)	722 (98%)	11 (2%)	0	100	100

There are no Ramachandran outliers to report.

5.3.2 Protein sidechains ⓘ

In the following table, the Percentiles column shows the percent sidechain outliers of the chain as a percentile score with respect to all PDB entries followed by that with respect to all EM entries.

The Analysed column shows the number of residues for which the sidechain conformation was analysed, and the total number of residues.

Mol	Chain	Analysed	Rotameric	Outliers	Percentiles	
1	A	441/492 (90%)	439 (100%)	2 (0%)	86	95
2	B	99/108 (92%)	99 (100%)	0	100	100
3	C	93/110 (84%)	92 (99%)	1 (1%)	70	87
All	All	633/710 (89%)	630 (100%)	3 (0%)	90	95

All (3) residues with a non-rotameric sidechain are listed below:

Mol	Chain	Res	Type
1	A	303[A]	ARG
1	A	303[B]	ARG
3	C	45	ARG

Sometimes sidechains can be flipped to improve hydrogen bonding and reduce clashes. All (3) such sidechains are listed below:

Mol	Chain	Res	Type
1	A	266	GLN
1	A	338	GLN
1	A	537	ASN

5.3.3 RNA ⓘ

There are no RNA molecules in this entry.

5.4 Non-standard residues in protein, DNA, RNA chains [i](#)

There are no non-standard protein/DNA/RNA residues in this entry.

5.5 Carbohydrates [i](#)

There are no oligosaccharides in this entry.

5.6 Ligand geometry [i](#)

Of 5 ligands modelled in this entry, 2 are monoatomic - leaving 3 for Mogul analysis.

In the following table, the Counts columns list the number of bonds (or angles) for which Mogul statistics could be retrieved, the number of bonds (or angles) that are observed in the model and the number of bonds (or angles) that are defined in the Chemical Component Dictionary. The Link column lists molecule types, if any, to which the group is linked. The Z score for a bond length (or angle) is the number of standard deviations the observed value is removed from the expected value. A bond length (or angle) with $|Z| > 2$ is considered an outlier worth inspection. RMSZ is the root-mean-square of all Z scores of the bond lengths (or angles).

Mol	Type	Chain	Res	Link	Bond lengths			Bond angles		
					Counts	RMSZ	# Z > 2	Counts	RMSZ	# Z > 2
6	Y01	A	603	-	38,38,38	2.51	13 (34%)	57,57,57	2.98	29 (50%)
4	UD1	A	601	7	40,41,41	3.48	21 (52%)	59,62,62	1.43	8 (13%)
5	3PE	A	602	-	50,50,50	0.88	4 (8%)	53,55,55	1.09	2 (3%)

In the following table, the Chirals column lists the number of chiral outliers, the number of chiral centers analysed, the number of these observed in the model and the number defined in the Chemical Component Dictionary. Similar counts are reported in the Torsion and Rings columns. '-' means no outliers of that kind were identified.

Mol	Type	Chain	Res	Link	Chirals	Torsions	Rings
6	Y01	A	603	-	-	11/19/77/77	0/4/4/4
4	UD1	A	601	7	-	10/26/63/63	0/3/3/3
5	3PE	A	602	-	-	15/54/54/54	-

All (38) bond length outliers are listed below:

Mol	Chain	Res	Type	Atoms	Z	Observed(Å)	Ideal(Å)
4	A	601	UD1	C3B-C2B	-8.33	1.30	1.53
4	A	601	UD1	C2-N1	7.48	1.50	1.38
4	A	601	UD1	C2-N3	7.24	1.50	1.38

Continued on next page...

Continued from previous page...

Mol	Chain	Res	Type	Atoms	Z	Observed(Å)	Ideal(Å)
4	A	601	UD1	PB-O3A	6.53	1.66	1.59
4	A	601	UD1	PA-O3A	6.23	1.66	1.59
6	A	603	Y01	CBD-CBG	5.96	1.64	1.53
4	A	601	UD1	C6-C5	5.96	1.48	1.35
6	A	603	Y01	CBH-CBF	5.25	1.64	1.56
4	A	601	UD1	O4B-C1B	-5.06	1.30	1.42
6	A	603	Y01	CAV-CAZ	4.96	1.61	1.51
4	A	601	UD1	O4B-C4B	4.69	1.55	1.45
6	A	603	Y01	CAL-CAX	4.46	1.60	1.50
6	A	603	Y01	CAV-CBC	4.38	1.61	1.52
4	A	601	UD1	C4-N3	4.32	1.46	1.38
4	A	601	UD1	C7'-N2'	3.91	1.47	1.34
6	A	603	Y01	CAK-CAI	3.52	1.57	1.50
6	A	603	Y01	CBI-CBE	3.49	1.61	1.55
4	A	601	UD1	C5B-C4B	-3.31	1.41	1.51
6	A	603	Y01	CBB-CBE	3.31	1.60	1.54
4	A	601	UD1	O5'-C1'	3.30	1.50	1.41
6	A	603	Y01	OAW-CAY	3.08	1.43	1.34
4	A	601	UD1	C2'-N2'	3.03	1.50	1.45
6	A	603	Y01	CAK-CBD	2.99	1.57	1.53
4	A	601	UD1	C2B-C1B	2.96	1.62	1.53
4	A	601	UD1	C6-N1	2.88	1.45	1.38
6	A	603	Y01	CAM-CAY	2.81	1.58	1.50
4	A	601	UD1	O3B-C3B	2.79	1.49	1.43
6	A	603	Y01	CBD-CBF	2.72	1.58	1.53
4	A	601	UD1	O4-C4	-2.69	1.19	1.24
4	A	601	UD1	PB-O1'	2.68	1.67	1.59
5	A	602	3PE	O21-C2	-2.66	1.40	1.46
4	A	601	UD1	C5-C4	2.59	1.49	1.43
5	A	602	3PE	O31-C31	2.39	1.40	1.33
4	A	601	UD1	C3'-C2'	-2.39	1.48	1.53
6	A	603	Y01	CAT-CBH	2.24	1.58	1.54
4	A	601	UD1	O2-C2	-2.23	1.19	1.23
5	A	602	3PE	O31-C3	-2.16	1.40	1.45
5	A	602	3PE	O21-C21	2.15	1.40	1.34

All (39) bond angle outliers are listed below:

Mol	Chain	Res	Type	Atoms	Z	Observed(°)	Ideal(°)
6	A	603	Y01	CAV-CAZ-CAI	8.20	131.68	120.57
6	A	603	Y01	CBC-CAV-CAZ	7.52	122.56	111.45
6	A	603	Y01	CBG-CBI-CBE	6.28	107.30	100.10

Continued on next page...

Continued from previous page...

Mol	Chain	Res	Type	Atoms	Z	Observed(°)	Ideal(°)
6	A	603	Y01	OAW-CAY-CAM	5.96	124.36	111.48
6	A	603	Y01	CAV-CAZ-CBH	-5.78	109.02	116.42
4	A	601	UD1	C4-N3-C2	-5.49	119.79	126.61
6	A	603	Y01	CAK-CBD-CBG	4.27	116.98	110.93
6	A	603	Y01	CAE-CBI-CAU	-4.22	104.38	110.61
6	A	603	Y01	CAD-CBH-CAZ	-4.22	101.94	108.38
6	A	603	Y01	CAQ-CBG-CBI	-4.13	98.99	103.84
6	A	603	Y01	CAR-CBC-CAV	-4.00	105.41	110.97
5	A	602	3PE	O21-C21-C22	3.97	120.08	111.48
6	A	603	Y01	OAW-CBC-CAV	3.87	116.00	108.04
4	A	601	UD1	N3-C2-N1	3.76	119.78	114.89
6	A	603	Y01	CAT-CBH-CAZ	3.76	115.22	108.74
6	A	603	Y01	CAE-CBI-CBE	-3.69	104.98	111.68
4	A	601	UD1	C5-C4-N3	3.56	119.79	114.80
6	A	603	Y01	CAD-CBH-CBF	-3.53	107.70	111.66
6	A	603	Y01	OAW-CAY-OAG	-3.49	115.56	123.70
6	A	603	Y01	CAU-CBI-CBE	3.43	121.65	116.60
6	A	603	Y01	CAQ-CBG-CBD	3.23	124.26	119.10
6	A	603	Y01	CAP-CBE-CBI	-3.09	100.21	103.84
4	A	601	UD1	O4-C4-C5	-2.94	120.09	125.16
6	A	603	Y01	CBF-CBD-CBG	2.71	112.63	109.09
5	A	602	3PE	O31-C31-C32	2.66	119.95	111.83
6	A	603	Y01	CAC-CBB-CBE	-2.56	109.04	112.88
6	A	603	Y01	CAR-CAT-CBH	2.56	118.23	112.78
6	A	603	Y01	CAO-CBB-CBE	2.56	115.63	110.33
6	A	603	Y01	CAP-CAQ-CBG	2.55	110.14	105.14
6	A	603	Y01	CBH-CAZ-CAI	-2.48	119.30	122.93
6	A	603	Y01	CAT-CBH-CBF	2.48	112.01	108.74
4	A	601	UD1	O5'-C1'-O1'	-2.44	108.18	111.36
6	A	603	Y01	CAK-CAI-CAZ	2.37	129.02	125.02
4	A	601	UD1	C8'-C7'-N2'	2.33	119.99	116.12
4	A	601	UD1	C3B-C2B-C1B	2.11	105.45	101.46
6	A	603	Y01	CBI-CBE-CBB	-2.08	116.28	119.50
6	A	603	Y01	CBF-CBH-CAZ	2.07	112.68	109.65
6	A	603	Y01	CAD-CBH-CAT	-2.07	106.29	109.43
4	A	601	UD1	O2-C2-N1	-2.06	120.12	122.80

There are no chirality outliers.

All (36) torsion outliers are listed below:

Mol	Chain	Res	Type	Atoms
4	A	601	UD1	C1'-O1'-PB-O3A

Continued on next page...

Continued from previous page...

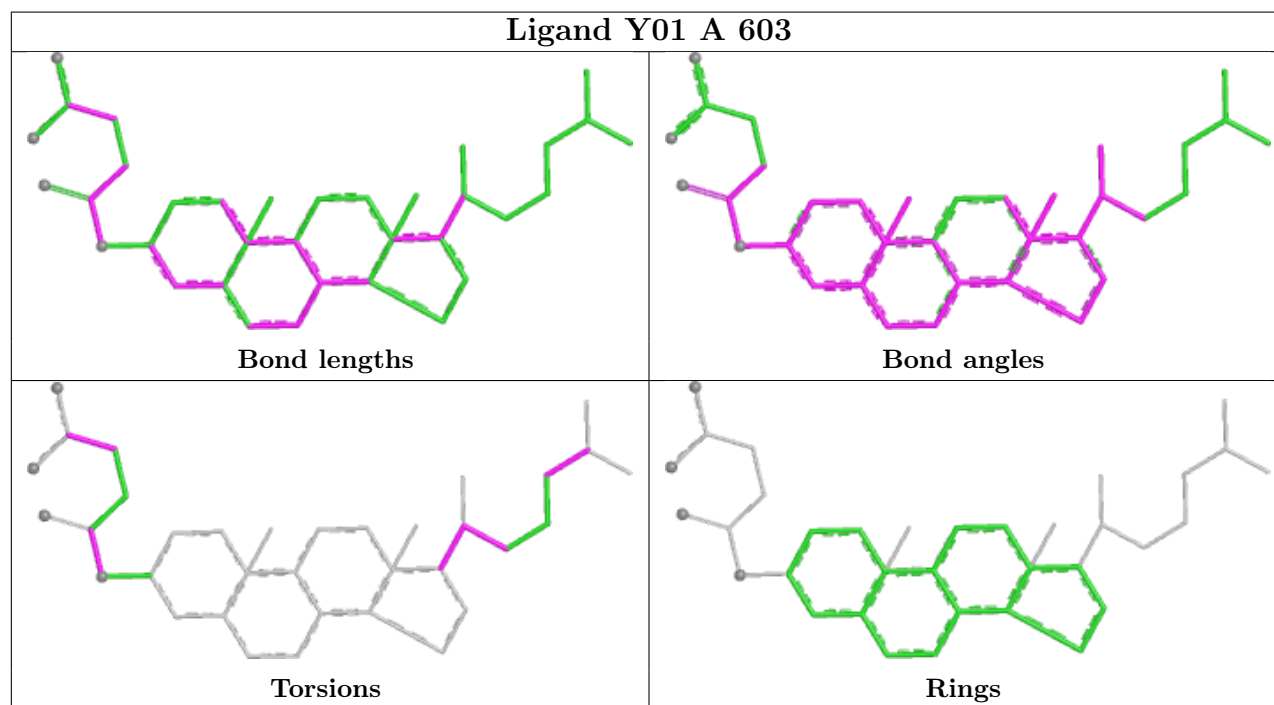
Mol	Chain	Res	Type	Atoms
4	A	601	UD1	C1'-O1'-PB-O1B
5	A	602	3PE	O22-C21-O21-C2
5	A	602	3PE	O32-C31-O31-C3
5	A	602	3PE	C32-C31-O31-C3
5	A	602	3PE	C22-C21-O21-C2
6	A	603	Y01	CAJ-CAO-CBB-CAC
4	A	601	UD1	C3B-C4B-C5B-O5B
4	A	601	UD1	O4B-C4B-C5B-O5B
6	A	603	Y01	CAM-CAY-OAW-CBC
6	A	603	Y01	OAG-CAY-OAW-CBC
6	A	603	Y01	CAJ-CAN-CBA-CAA
6	A	603	Y01	CAJ-CAN-CBA-CAB
5	A	602	3PE	C37-C38-C39-C3A
5	A	602	3PE	C35-C36-C37-C38
5	A	602	3PE	C36-C37-C38-C39
5	A	602	3PE	C31-C32-C33-C34
5	A	602	3PE	C21-C22-C23-C24
6	A	603	Y01	CAO-CBB-CBE-CBI
4	A	601	UD1	PB-O3A-PA-O5B
5	A	602	3PE	O11-C1-C2-C3
6	A	603	Y01	CAC-CBB-CBE-CBI
5	A	602	3PE	O11-C1-C2-O21
5	A	602	3PE	C1-O11-P-O12
5	A	602	3PE	C1-O11-P-O13
5	A	602	3PE	C1-O11-P-O14
6	A	603	Y01	CAJ-CAO-CBB-CBE
4	A	601	UD1	C4'-C5'-C6'-O6'
6	A	603	Y01	CAM-CAL-CAX-OAH
6	A	603	Y01	CAO-CBB-CBE-CAP
6	A	603	Y01	CAM-CAL-CAX-OAF
4	A	601	UD1	C1'-O1'-PB-O2B
5	A	602	3PE	C28-C29-C2A-C2B
4	A	601	UD1	C2B-C1B-N1-C6
4	A	601	UD1	O4B-C1B-N1-C6
4	A	601	UD1	PB-O3A-PA-O1A

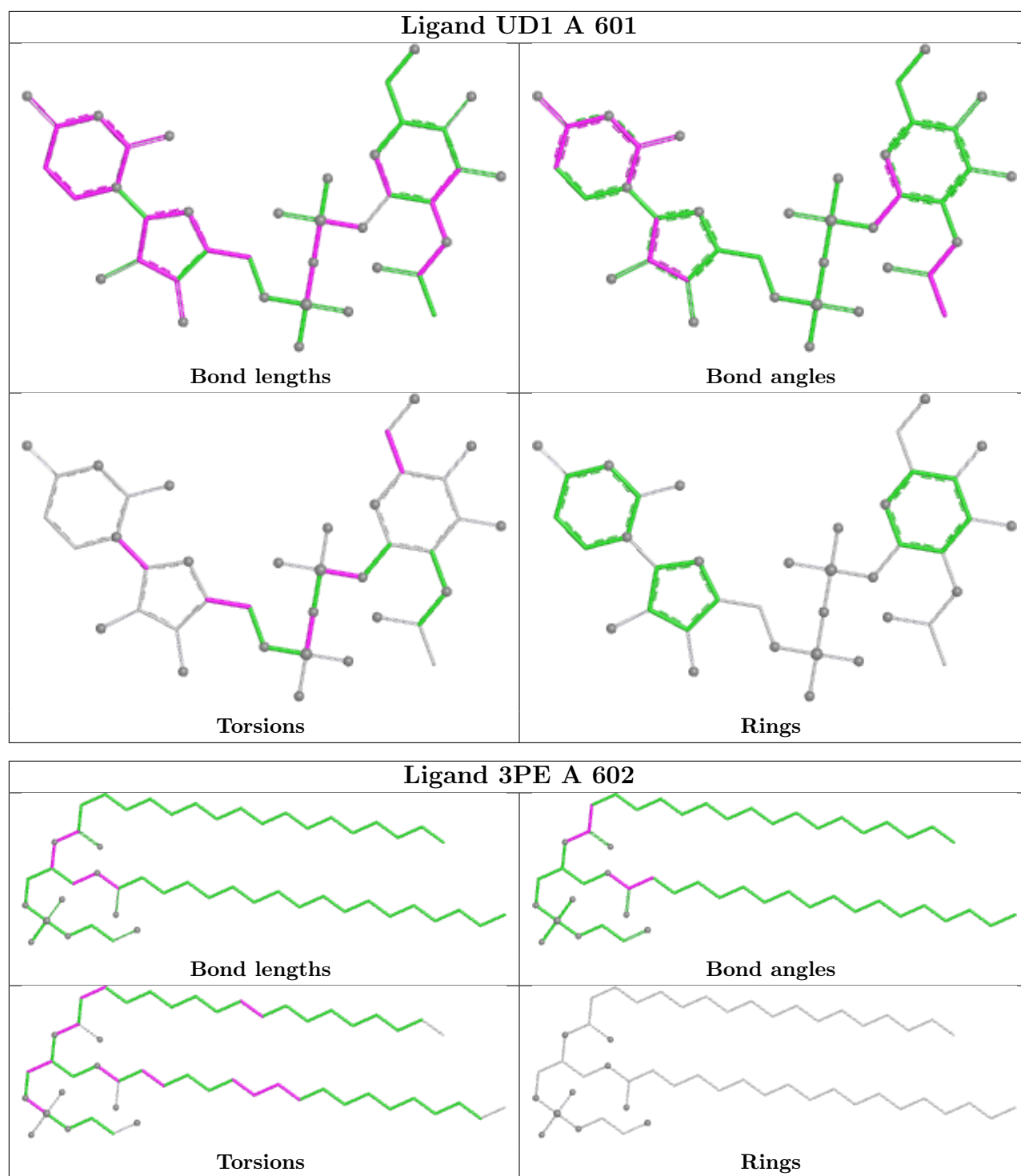
There are no ring outliers.

2 monomers are involved in 7 short contacts:

Mol	Chain	Res	Type	Clashes	Symm-Clashes
4	A	601	UD1	3	0
5	A	602	3PE	4	0

The following is a two-dimensional graphical depiction of Mogul quality analysis of bond lengths, bond angles, torsion angles, and ring geometry for all instances of the Ligand of Interest. In addition, ligands with molecular weight > 250 and outliers as shown on the validation Tables will also be included. For torsion angles, if less than 5% of the Mogul distribution of torsion angles is within 10 degrees of the torsion angle in question, then that torsion angle is considered an outlier. Any bond that is central to one or more torsion angles identified as an outlier by Mogul will be highlighted in the graph. For rings, the root-mean-square deviation (RMSD) between the ring in question and similar rings identified by Mogul is calculated over all ring torsion angles. If the average RMSD is greater than 60 degrees and the minimal RMSD between the ring in question and any Mogul-identified rings is also greater than 60 degrees, then that ring is considered an outlier. The outliers are highlighted in purple. The color gray indicates Mogul did not find sufficient equivalents in the CSD to analyse the geometry.





5.7 Other polymers ⓘ

There are no such residues in this entry.

5.8 Polymer linkage issues ⓘ

There are no chain breaks in this entry.

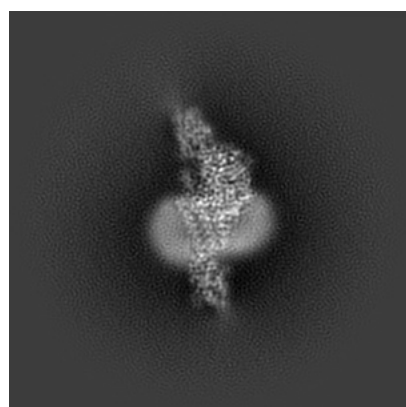
6 Map visualisation [i](#)

This section contains visualisations of the EMDB entry EMD-25368. These allow visual inspection of the internal detail of the map and identification of artifacts.

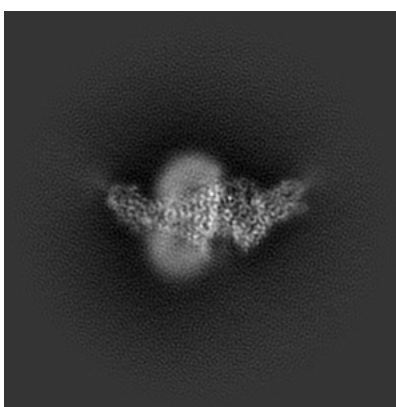
No raw map or half-maps were deposited for this entry and therefore no images, graphs, etc. pertaining to the raw map can be shown.

6.1 Orthogonal projections [i](#)

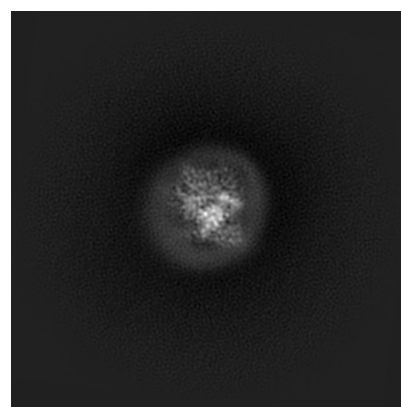
6.1.1 Primary map



X



Y

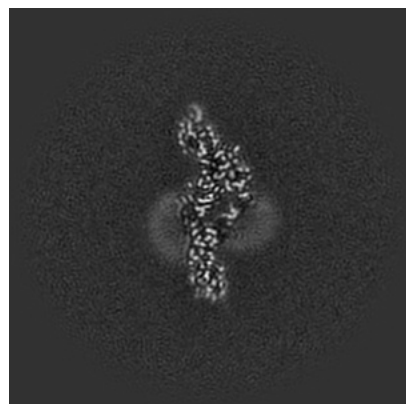


Z

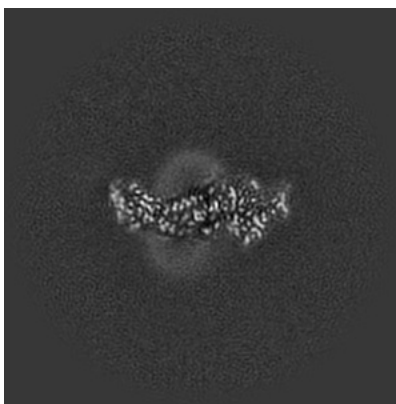
The images above show the map projected in three orthogonal directions.

6.2 Central slices [i](#)

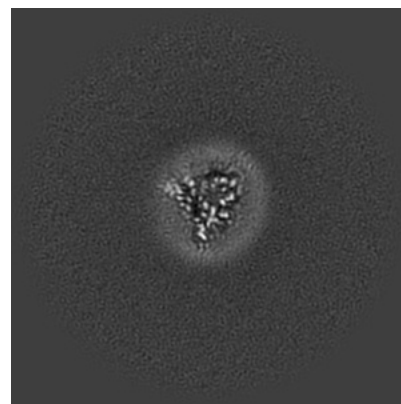
6.2.1 Primary map



X Index: 128



Y Index: 128

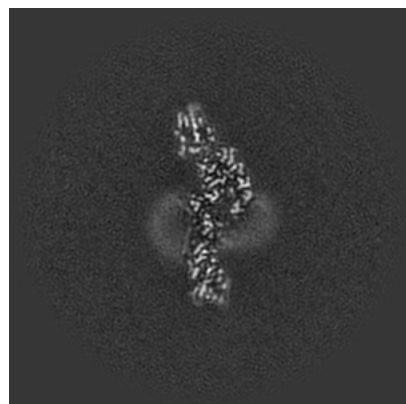


Z Index: 128

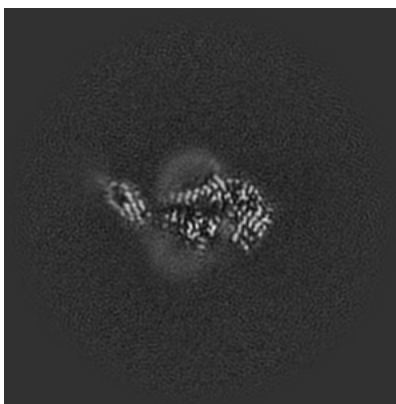
The images above show central slices of the map in three orthogonal directions.

6.3 Largest variance slices [i](#)

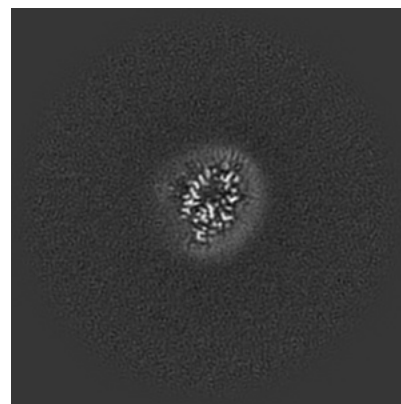
6.3.1 Primary map



X Index: 131



Y Index: 135

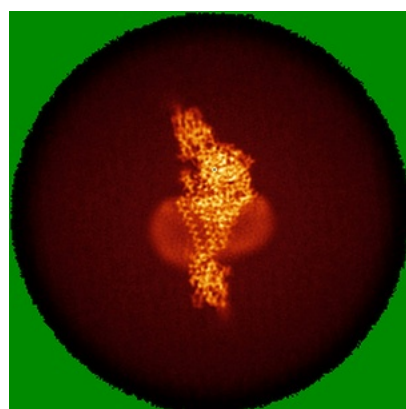


Z Index: 132

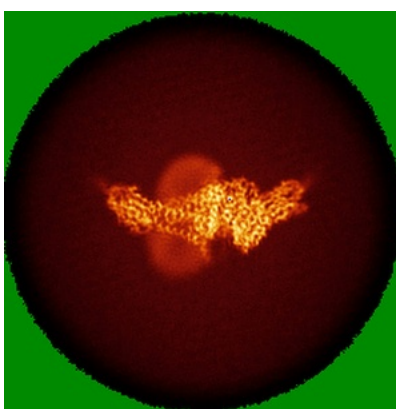
The images above show the largest variance slices of the map in three orthogonal directions.

6.4 Orthogonal standard-deviation projections (False-color) [i](#)

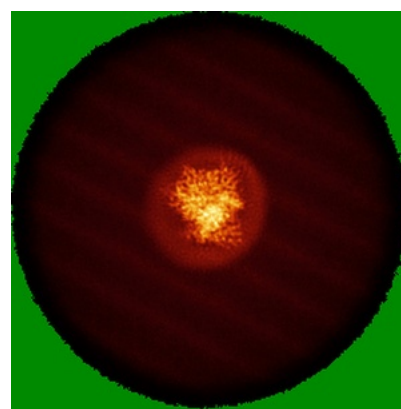
6.4.1 Primary map



X



Y

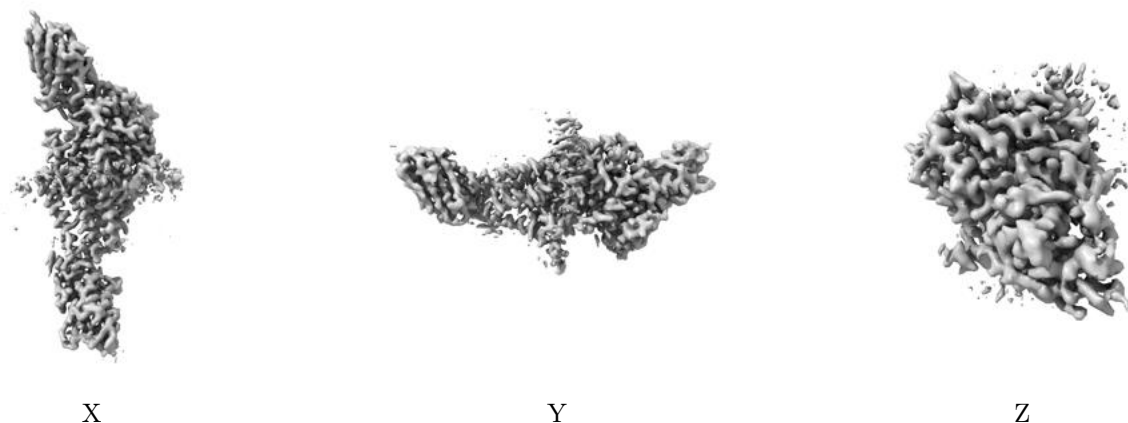


Z

The images above show the map standard deviation projections with false color in three orthogonal directions. Minimum values are shown in green, max in blue, and dark to light orange shades represent small to large values respectively.

6.5 Orthogonal surface views [i](#)

6.5.1 Primary map



The images above show the 3D surface view of the map at the recommended contour level 6.55. These images, in conjunction with the slice images, may facilitate assessment of whether an appropriate contour level has been provided.

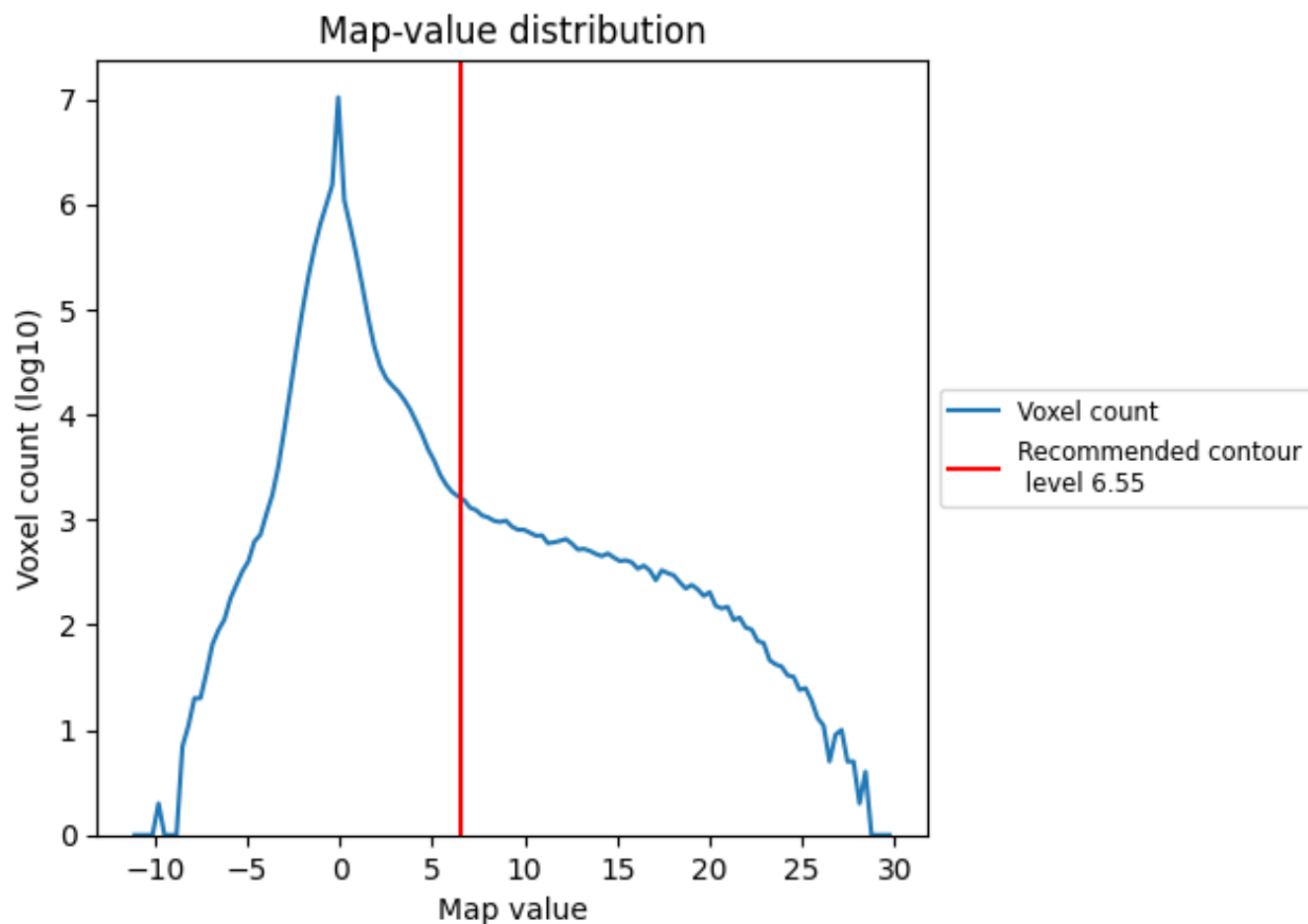
6.6 Mask visualisation [i](#)

This section was not generated. No masks/segmentation were deposited.

7 Map analysis [i](#)

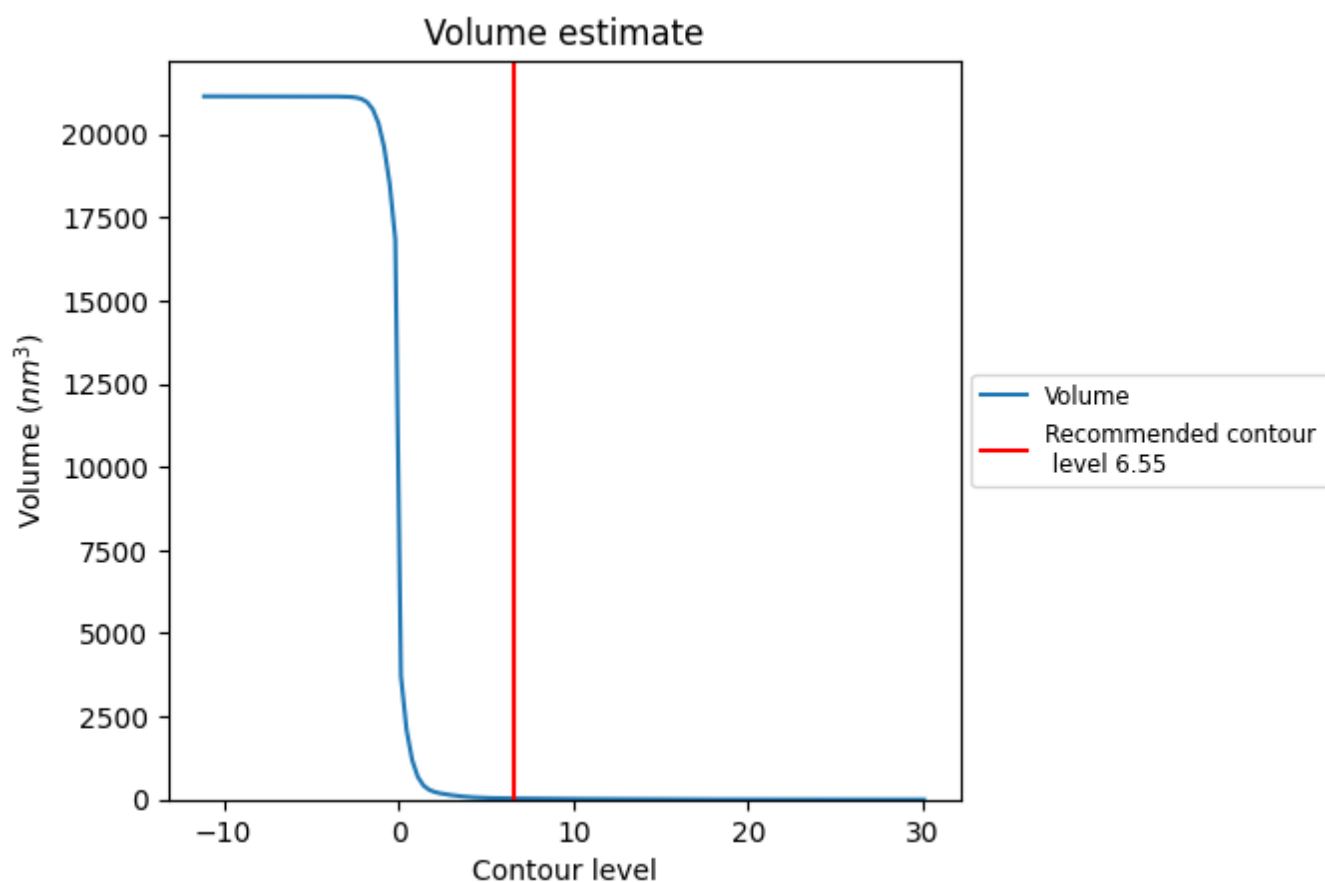
This section contains the results of statistical analysis of the map.

7.1 Map-value distribution [i](#)



The map-value distribution is plotted in 128 intervals along the x-axis. The y-axis is logarithmic. A spike in this graph at zero usually indicates that the volume has been masked.

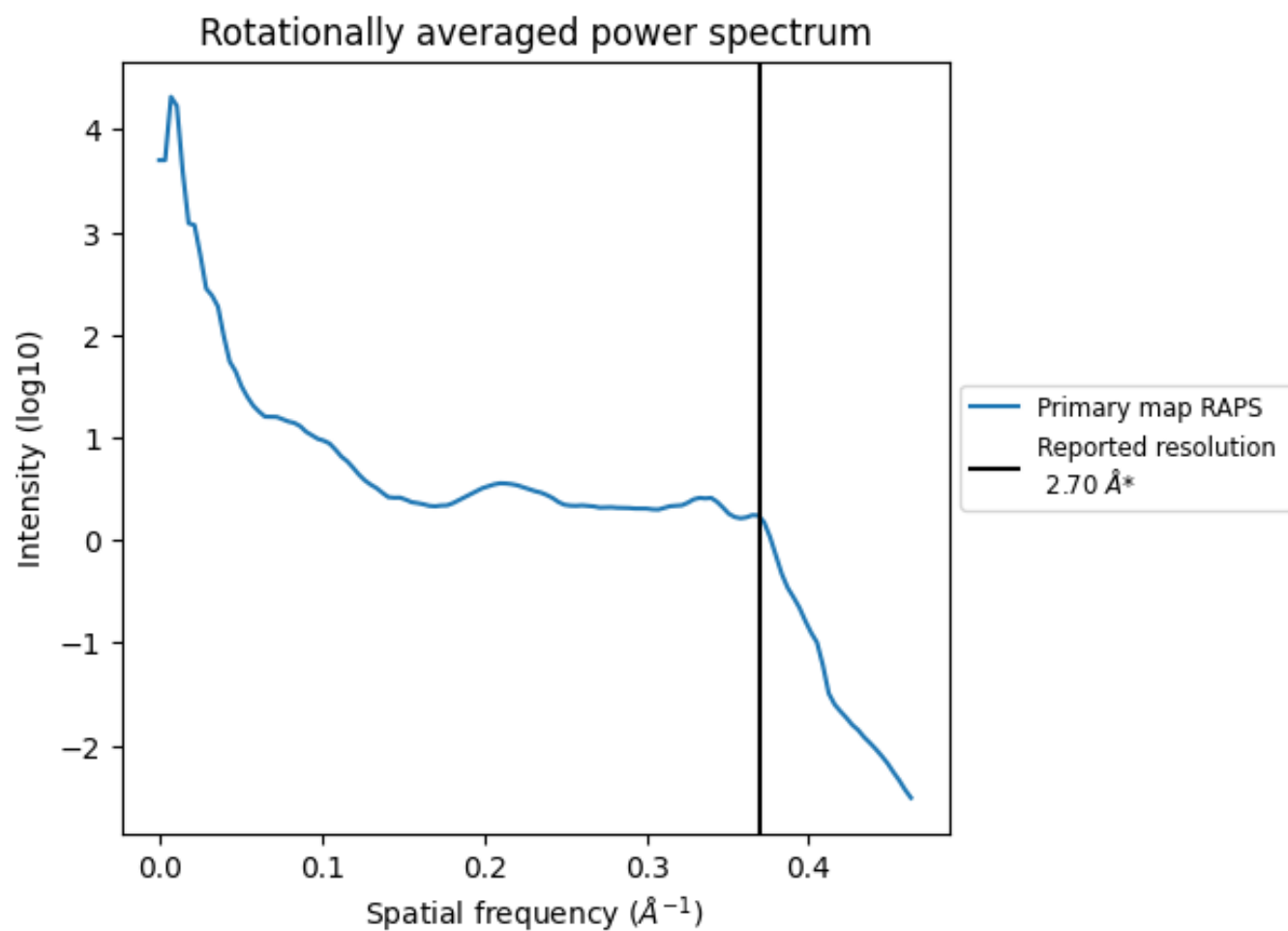
7.2 Volume estimate [i](#)



The volume at the recommended contour level is 34 nm³; this corresponds to an approximate mass of 31 kDa.

The volume estimate graph shows how the enclosed volume varies with the contour level. The recommended contour level is shown as a vertical line and the intersection between the line and the curve gives the volume of the enclosed surface at the given level.

7.3 Rotationally averaged power spectrum ⓘ

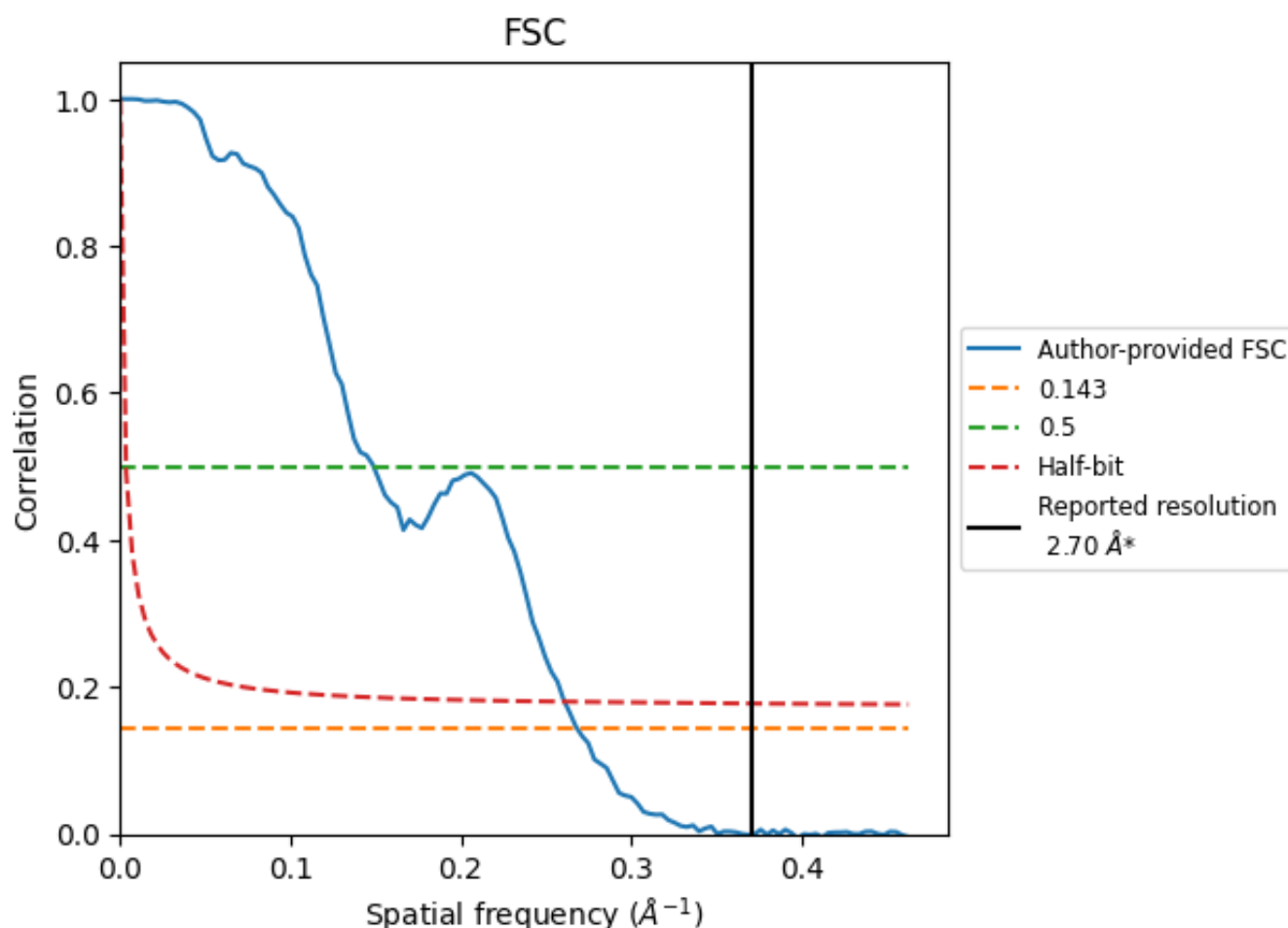


*Reported resolution corresponds to spatial frequency of 0.370 Å⁻¹

8 Fourier-Shell correlation [i](#)

Fourier-Shell Correlation (FSC) is the most commonly used method to estimate the resolution of single-particle and subtomogram-averaged maps. The shape of the curve depends on the imposed symmetry, mask and whether or not the two 3D reconstructions used were processed from a common reference. The reported resolution is shown as a black line. A curve is displayed for the half-bit criterion in addition to lines showing the 0.143 gold standard cut-off and 0.5 cut-off.

8.1 FSC [i](#)



*Reported resolution corresponds to spatial frequency of 0.370 Å⁻¹

8.2 Resolution estimates [i](#)

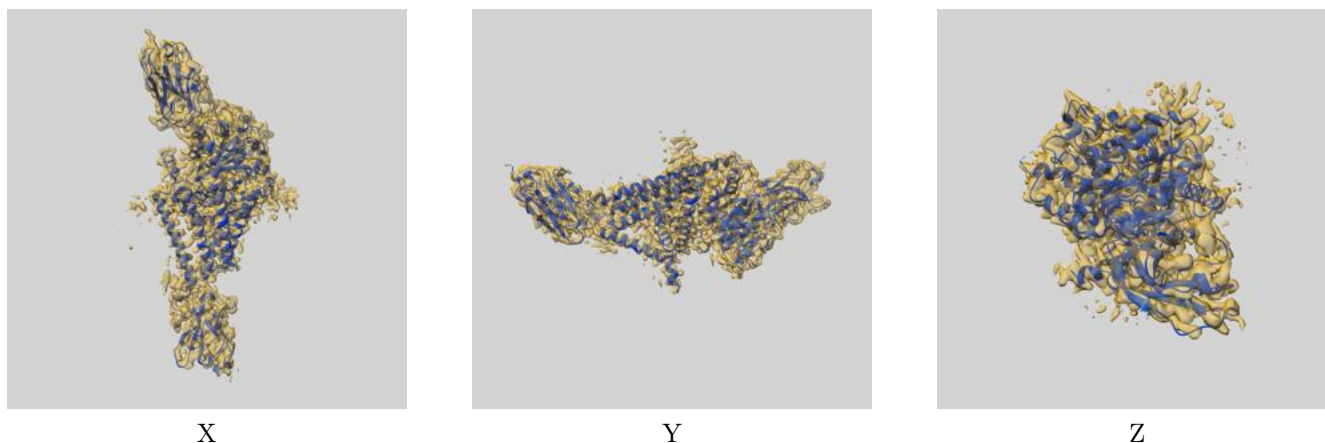
Resolution estimate (Å)	Estimation criterion (FSC cut-off)		
	0.143	0.5	Half-bit
Reported by author	2.70	-	-
Author-provided FSC curve	3.73	6.72	3.83
Unmasked-calculated*	-	-	-

*Resolution estimate based on FSC curve calculated by comparison of deposited half-maps. The value from author-provided FSC intersecting FSC 0.143 CUT-OFF 3.73 differs from the reported value 2.7 by more than 10 %

9 Map-model fit [i](#)

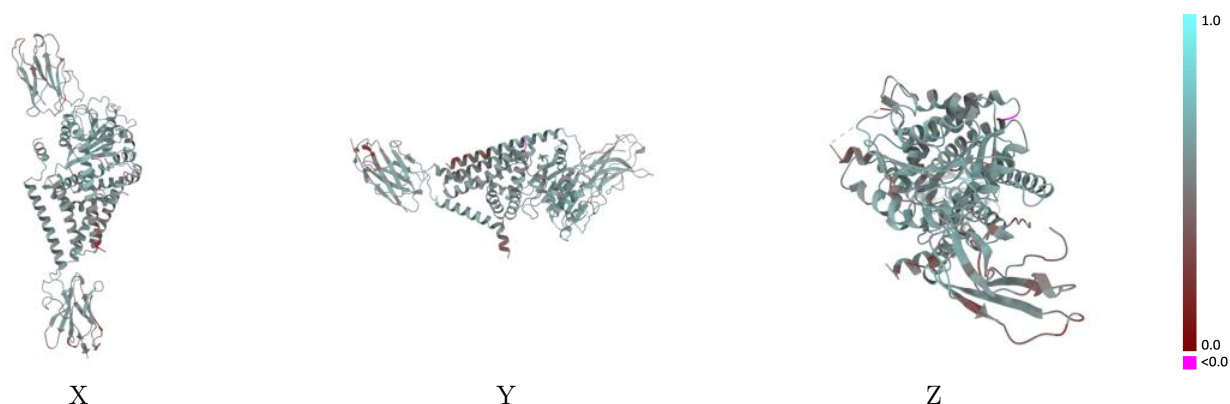
This section contains information regarding the fit between EMDB map EMD-25368 and PDB model 7SP8. Per-residue inclusion information can be found in [section 3](#) on [page 6](#).

9.1 Map-model overlay [i](#)



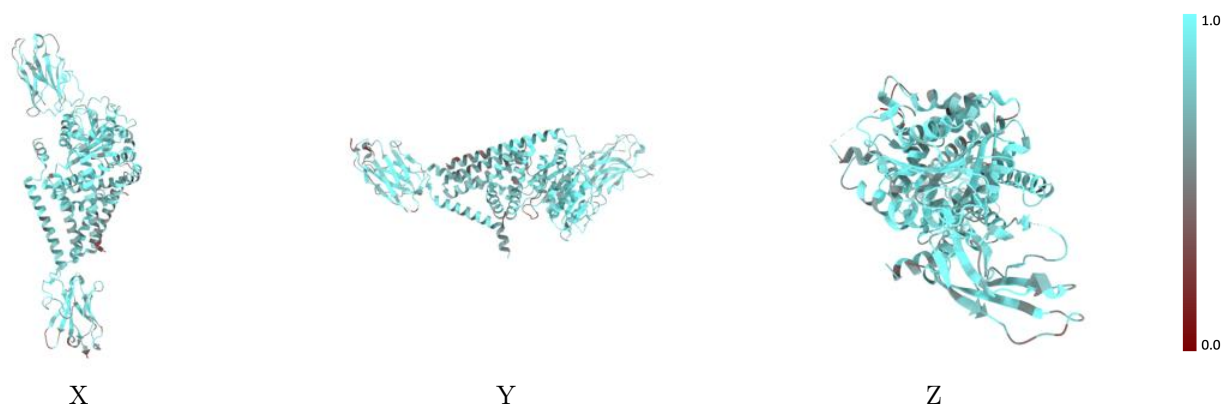
The images above show the 3D surface view of the map at the recommended contour level 6.55 at 50% transparency in yellow overlaid with a ribbon representation of the model coloured in blue. These images allow for the visual assessment of the quality of fit between the atomic model and the map.

9.2 Q-score mapped to coordinate model [i](#)



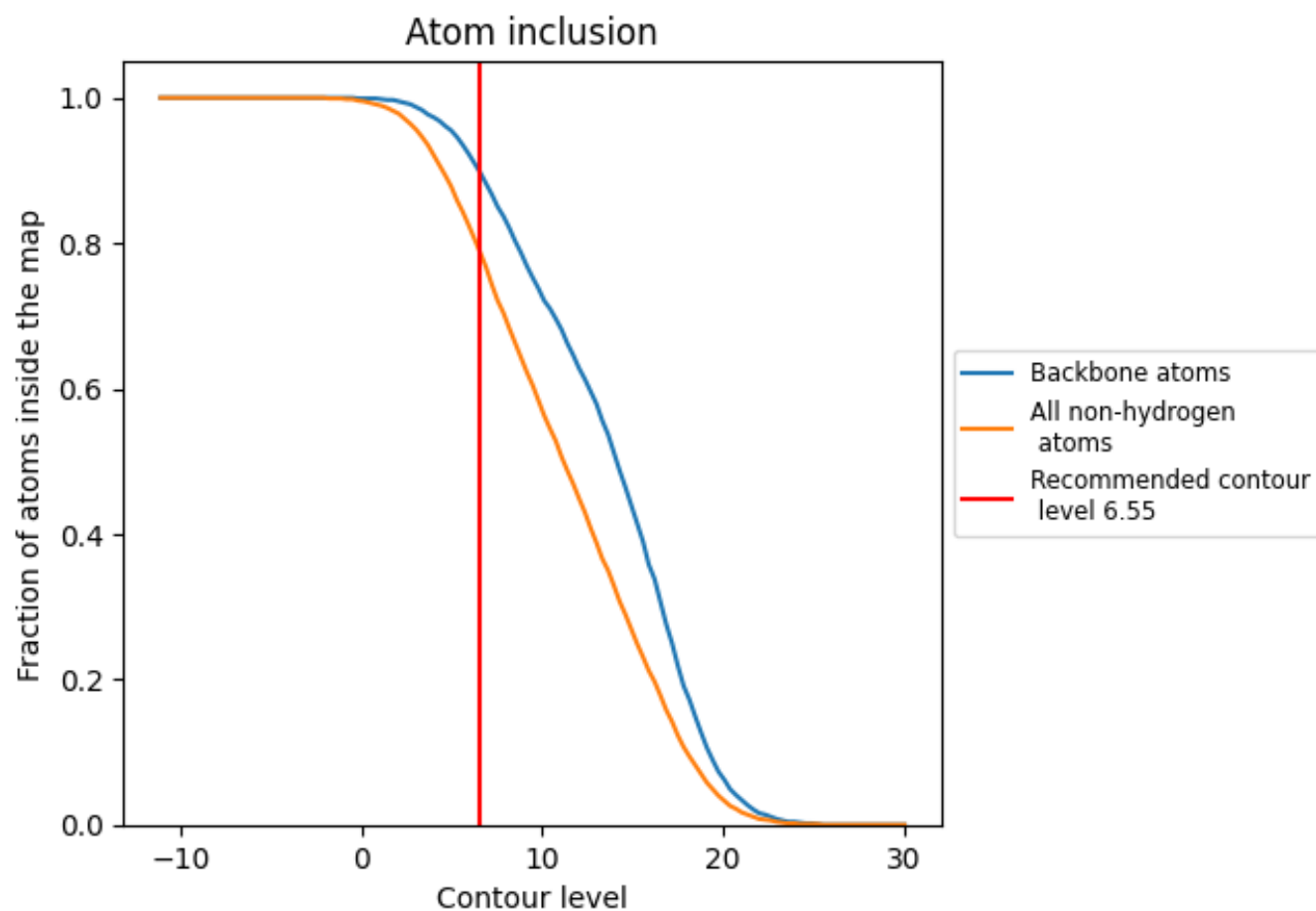
The images above show the model with each residue coloured according to its Q-score. This shows their resolvability in the map with higher Q-score values reflecting better resolvability. Please note: Q-score is calculating the resolvability of atoms, and thus high values are only expected at resolutions at which atoms can be resolved. Low Q-score values may therefore be expected for many entries.

9.3 Atom inclusion mapped to coordinate model [i](#)



The images above show the model with each residue coloured according to its atom inclusion. This shows to what extent they are inside the map at the recommended contour level (6.55).

9.4 Atom inclusion [i](#)



At the recommended contour level, 90% of all backbone atoms, 79% of all non-hydrogen atoms, are inside the map.

9.5 Map-model fit summary ⓘ

The table lists the average atom inclusion at the recommended contour level (6.55) and Q-score for the entire model and for each chain.

Chain	Atom inclusion	Q-score
All	<div></div> 0.7890	<div></div> 0.5360
A	<div></div> 0.7940	<div></div> 0.5490
B	<div></div> 0.7640	<div></div> 0.5140
C	<div></div> 0.7860	<div></div> 0.5010

