



Full wwPDB X-ray Structure Validation Report ⓘ

Mar 10, 2025 – 06:53 PM EDT

PDB ID : 8UHH
Title : anti-Phosphohistidine Fab hSC44.ck.elbow.20.N32F
Authors : Kalagiri, R.; Stanfield, R.L.; Hunter, T.; Wilson, I.A.
Deposited on : 2023-10-09
Resolution : 1.84 Å(reported)

This is a Full wwPDB X-ray Structure Validation Report for a publicly released PDB entry.

We welcome your comments at validation@mail.wwpdb.org

A user guide is available at

<https://www.wwpdb.org/validation/2017/XrayValidationReportHelp>

with specific help available everywhere you see the ⓘ symbol.

The types of validation reports are described at

<http://www.wwpdb.org/validation/2017/FAQs#types>.

The following versions of software and data (see [references ⓘ](#)) were used in the production of this report:

MolProbity : 4.02b-467
Mogul : 2022.3.0, CSD as543be (2022)
Xtriage (Phenix) : 1.21
EDS : 3.0
Percentile statistics : 20231227.v01 (using entries in the PDB archive December 27th 2023)
CCP4 : 9.0.004 (Gargrove)
Density-Fitness : 1.0.11
Ideal geometry (proteins) : Engh & Huber (2001)
Ideal geometry (DNA, RNA) : Parkinson et al. (1996)
Validation Pipeline (wwPDB-VP) : 2.41.4

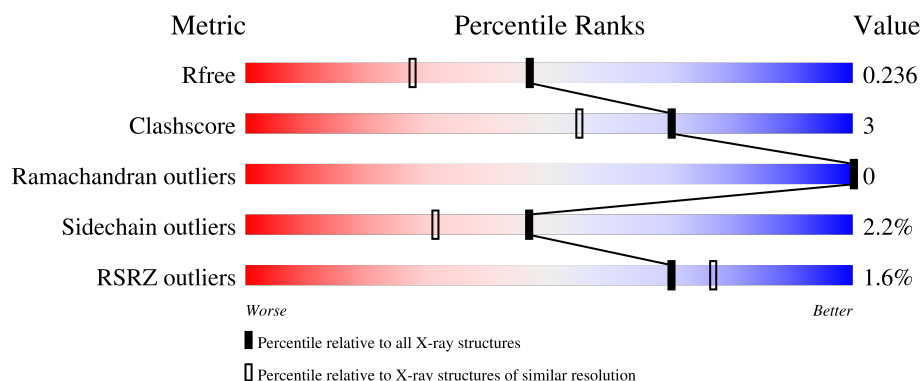
1 Overall quality at a glance

The following experimental techniques were used to determine the structure:

X-RAY DIFFRACTION

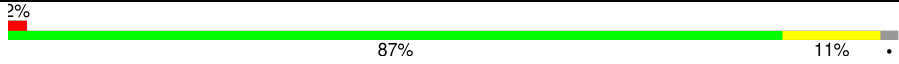
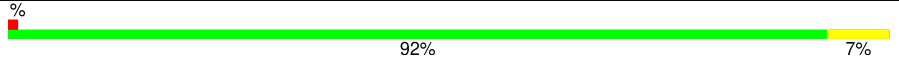
The reported resolution of this entry is 1.84 Å.

Percentile scores (ranging between 0-100) for global validation metrics of the entry are shown in the following graphic. The table shows the number of entries on which the scores are based.



Metric	Whole archive (#Entries)	Similar resolution (#Entries, resolution range(Å))
R_{free}	164625	1150 (1.84-1.84)
Clashscore	180529	1248 (1.84-1.84)
Ramachandran outliers	177936	1240 (1.84-1.84)
Sidechain outliers	177891	1240 (1.84-1.84)
RSRZ outliers	164620	1149 (1.84-1.84)

The table below summarises the geometric issues observed across the polymeric chains and their fit to the electron density. The red, orange, yellow and green segments of the lower bar indicate the fraction of residues that contain outliers for ≥ 3 , 2, 1 and 0 types of geometric quality criteria respectively. A grey segment represents the fraction of residues that are not modelled. The numeric value for each fraction is indicated below the corresponding segment, with a dot representing fractions $\leq 5\%$. The upper red bar (where present) indicates the fraction of residues that have poor fit to the electron density. The numeric value is given above the bar.

Mol	Chain	Length	Quality of chain
1	H	224	
2	L	218	

2 Entry composition [i](#)

There are 6 unique types of molecules in this entry. The entry contains 7122 atoms, of which 3306 are hydrogens and 0 are deuteriums.

In the tables below, the ZeroOcc column contains the number of atoms modelled with zero occupancy, the AltConf column contains the number of residues with at least one atom in alternate conformation and the Trace column contains the number of residues modelled with at most 2 atoms.

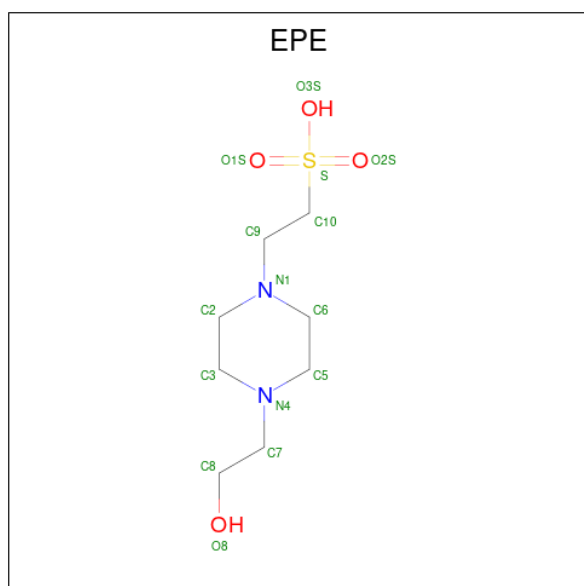
- Molecule 1 is a protein called hSC44.ck.elbow.20.N32F Fab heavy chain.

Mol	Chain	Residues	Atoms						ZeroOcc	AltConf	Trace
1	H	219	Total	C	H	N	O	S	0	3	0
			3279	1037	1640	281	315	6			

- Molecule 2 is a protein called hSC44.ck.elbow.20.N32F Fab light chain.

Mol	Chain	Residues	Atoms						ZeroOcc	AltConf	Trace
2	L	218	Total	C	H	N	O	S	0	4	0
			3340	1066	1643	282	341	8			

- Molecule 3 is 4-(2-HYDROXYETHYL)-1-PIPERAZINE ETHANESULFONIC ACID (three-letter code: EPE) (formula: C₈H₁₈N₂O₄S).



Mol	Chain	Residues	Atoms						ZeroOcc	AltConf
3	H	1	Total	C	H	N	O	S	0	0
			32	8	17	2	4	1		

- Molecule 4 is 1,2-ETHANEDIOL (three-letter code: EDO) (formula: C₂H₆O₂).



Mol	Chain	Residues	Atoms				ZeroOcc	AltConf
4	H	1	Total	C	H	O	0	0
			10	2	6	2		

- Molecule 5 is CHLORIDE ION (three-letter code: CL) (formula: Cl).

Mol	Chain	Residues	Atoms		ZeroOcc	AltConf
5	H	1	Total	Cl	0	0
			1	1		
5	L	1	Total	Cl	0	0
			1	1		

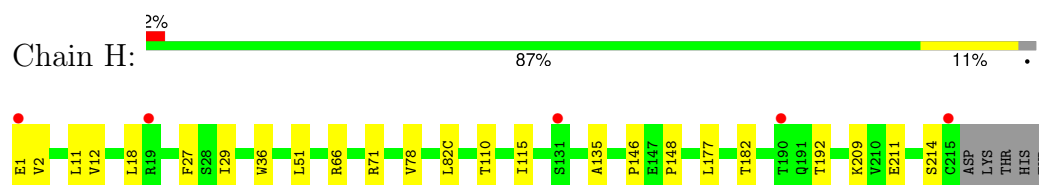
- Molecule 6 is water.

Mol	Chain	Residues	Atoms		ZeroOcc	AltConf
6	H	210	Total	O	0	0
			210	210		
6	L	249	Total	O	0	0
			249	249		

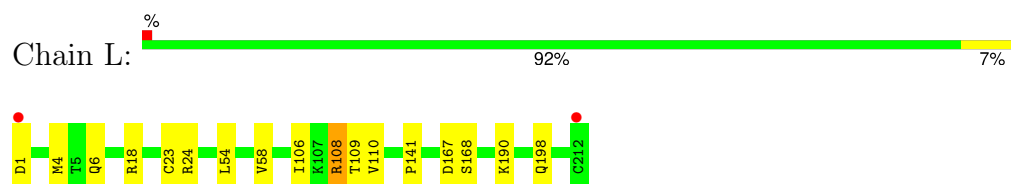
3 Residue-property plots [i](#)

These plots are drawn for all protein, RNA, DNA and oligosaccharide chains in the entry. The first graphic for a chain summarises the proportions of the various outlier classes displayed in the second graphic. The second graphic shows the sequence view annotated by issues in geometry and electron density. Residues are color-coded according to the number of geometric quality criteria for which they contain at least one outlier: green = 0, yellow = 1, orange = 2 and red = 3 or more. A red dot above a residue indicates a poor fit to the electron density ($RSRZ > 2$). Stretches of 2 or more consecutive residues without any outlier are shown as a green connector. Residues present in the sample, but not in the model, are shown in grey.

- Molecule 1: hSC44.ck.elbow.20.N32F Fab heavy chain



- Molecule 2: hSC44.ck.elbow.20.N32F Fab light chain



4 Data and refinement statistics

Property	Value	Source
Space group	P 21 21 21	Depositor
Cell constants a, b, c, α , β , γ	48.57Å 72.07Å 152.19Å 90.00° 90.00° 90.00°	Depositor
Resolution (Å)	46.27 – 1.84 46.27 – 1.84	Depositor EDS
% Data completeness (in resolution range)	98.8 (46.27-1.84) 98.7 (46.27-1.84)	Depositor EDS
R_{merge}	0.10	Depositor
R_{sym}	0.10	Depositor
$\langle I/\sigma(I) \rangle$ ¹	1.25 (at 1.84Å)	Xtriage
Refinement program	PHENIX 1.19.2_4158	Depositor
R, R_{free}	0.204 , 0.236 0.204 , 0.236	Depositor DCC
R_{free} test set	2343 reflections (4.94%)	wwPDB-VP
Wilson B-factor (Å ²)	25.4	Xtriage
Anisotropy	0.359	Xtriage
Bulk solvent k_{sol} (e/Å ³), B_{sol} (Å ²)	0.37 , 33.5	EDS
L-test for twinning ²	$\langle L \rangle = 0.49$, $\langle L^2 \rangle = 0.32$	Xtriage
Estimated twinning fraction	No twinning to report.	Xtriage
F_o, F_c correlation	0.96	EDS
Total number of atoms	7122	wwPDB-VP
Average B, all atoms (Å ²)	33.0	wwPDB-VP

Xtriage's analysis on translational NCS is as follows: *The largest off-origin peak in the Patterson function is 4.75% of the height of the origin peak. No significant pseudotranslation is detected.*

¹Intensities estimated from amplitudes.

²Theoretical values of $\langle |L| \rangle$, $\langle L^2 \rangle$ for acentric reflections are 0.5, 0.333 respectively for untwinned datasets, and 0.375, 0.2 for perfectly twinned datasets.

5 Model quality

5.1 Standard geometry

Bond lengths and bond angles in the following residue types are not validated in this section: EDO, EPE, CL

The Z score for a bond length (or angle) is the number of standard deviations the observed value is removed from the expected value. A bond length (or angle) with $|Z| > 5$ is considered an outlier worth inspection. RMSZ is the root-mean-square of all Z scores of the bond lengths (or angles).

Mol	Chain	Bond lengths		Bond angles	
		RMSZ	$\# Z > 5$	RMSZ	$\# Z > 5$
1	H	0.35	0/1685	0.60	0/2292
2	L	0.37	0/1747	0.60	0/2370
All	All	0.36	0/3432	0.60	0/4662

There are no bond length outliers.

There are no bond angle outliers.

There are no chirality outliers.

There are no planarity outliers.

5.2 Too-close contacts

In the following table, the Non-H and H(model) columns list the number of non-hydrogen atoms and hydrogen atoms in the chain respectively. The H(added) column lists the number of hydrogen atoms added and optimized by MolProbity. The Clashes column lists the number of clashes within the asymmetric unit, whereas Symm-Clashes lists symmetry-related clashes.

Mol	Chain	Non-H	H(model)	H(added)	Clashes	Symm-Clashes
1	H	1639	1640	1640	14	0
2	L	1697	1643	1643	8	0
3	H	15	17	17	0	0
4	H	4	6	6	0	0
5	H	1	0	0	0	0
5	L	1	0	0	0	0
6	H	210	0	0	2	0
6	L	249	0	0	2	0
All	All	3816	3306	3306	22	0

The all-atom clashscore is defined as the number of clashes found per 1000 atoms (including hydrogen atoms). The all-atom clashscore for this structure is 3.

All (22) close contacts within the same asymmetric unit are listed below, sorted by their clash magnitude.

Atom-1	Atom-2	Interatomic distance (Å)	Clash overlap (Å)
1:H:66:ARG:HG2	6:H:421:HOH:O	1.94	0.67
1:H:1:GLU:N	6:H:403:HOH:O	2.34	0.59
2:L:6:GLN:HG3	2:L:23[B]:CYS:SG	2.43	0.58
1:H:2:VAL:HG23	1:H:27:PHE:CD1	2.38	0.58
2:L:108:ARG:HD3	2:L:109:THR:O	2.04	0.57
2:L:18:ARG:NH1	6:L:402:HOH:O	2.32	0.55
2:L:110:VAL:HG22	2:L:141:PRO:HD3	1.91	0.52
1:H:177:LEU:C	1:H:177:LEU:HD12	2.32	0.49
2:L:4:MET:HB3	2:L:23[A]:CYS:SG	2.52	0.49
1:H:192:THR:HG23	1:H:209:LYS:HE2	1.96	0.48
1:H:11:LEU:HD23	1:H:110:THR:HB	1.96	0.47
1:H:12:VAL:HG11	1:H:82(C):LEU:HD12	1.96	0.47
1:H:29:ILE:HG12	1:H:78:VAL:HG23	1.97	0.46
1:H:115:ILE:HD13	1:H:146:PRO:HD3	2.00	0.44
2:L:167:ASP:OD1	2:L:168:SER:N	2.51	0.43
2:L:198:GLN:HB2	6:L:538:HOH:O	2.20	0.42
1:H:51:LEU:CD2	1:H:71:ARG:HB2	2.49	0.42
1:H:18:LEU:HD12	1:H:18:LEU:C	2.40	0.42
1:H:2:VAL:HG23	1:H:27:PHE:HD1	1.84	0.41
2:L:54:LEU:HD11	2:L:58:VAL:CG1	2.50	0.41
1:H:135:ALA:O	1:H:182:THR:HA	2.21	0.41
1:H:36:TRP:HE1	1:H:78:VAL:HG12	1.86	0.40

There are no symmetry-related clashes.

5.3 Torsion angles [i](#)

5.3.1 Protein backbone [i](#)

In the following table, the Percentiles column shows the percent Ramachandran outliers of the chain as a percentile score with respect to all X-ray entries followed by that with respect to entries of similar resolution.

The Analysed column shows the number of residues for which the backbone conformation was analysed, and the total number of residues.

Mol	Chain	Analysed	Favoured	Allowed	Outliers	Percentiles	
1	H	220/224 (98%)	218 (99%)	2 (1%)	0	100	100
2	L	220/218 (101%)	215 (98%)	5 (2%)	0	100	100

Continued on next page...

Continued from previous page...

Mol	Chain	Analysed	Favoured	Allowed	Outliers	Percentiles	
All	All	440/442 (100%)	433 (98%)	7 (2%)	0	100	100

There are no Ramachandran outliers to report.

5.3.2 Protein sidechains ⓘ

In the following table, the Percentiles column shows the percent sidechain outliers of the chain as a percentile score with respect to all X-ray entries followed by that with respect to entries of similar resolution.

The Analysed column shows the number of residues for which the sidechain conformation was analysed, and the total number of residues.

Mol	Chain	Analysed	Rotameric	Outliers	Percentiles	
1	H	183/185 (99%)	180 (98%)	3 (2%)	58	44
2	L	192/188 (102%)	186 (97%)	6 (3%)	35	18
All	All	375/373 (100%)	366 (98%)	9 (2%)	47	27

All (9) residues with a non-rotameric sidechain are listed below:

Mol	Chain	Res	Type
1	H	148	PRO
1	H	211	GLU
1	H	214	SER
2	L	1	ASP
2	L	24	ARG
2	L	106	ILE
2	L	108	ARG
2	L	190[A]	LYS
2	L	190[B]	LYS

Sometimes sidechains can be flipped to improve hydrogen bonding and reduce clashes. There are no such sidechains identified.

5.3.3 RNA ⓘ

There are no RNA molecules in this entry.

5.4 Non-standard residues in protein, DNA, RNA chains [i](#)

There are no non-standard protein/DNA/RNA residues in this entry.

5.5 Carbohydrates [i](#)

There are no oligosaccharides in this entry.

5.6 Ligand geometry [i](#)

Of 4 ligands modelled in this entry, 2 are monoatomic - leaving 2 for Mogul analysis.

In the following table, the Counts columns list the number of bonds (or angles) for which Mogul statistics could be retrieved, the number of bonds (or angles) that are observed in the model and the number of bonds (or angles) that are defined in the Chemical Component Dictionary. The Link column lists molecule types, if any, to which the group is linked. The Z score for a bond length (or angle) is the number of standard deviations the observed value is removed from the expected value. A bond length (or angle) with $|Z| > 2$ is considered an outlier worth inspection. RMSZ is the root-mean-square of all Z scores of the bond lengths (or angles).

Mol	Type	Chain	Res	Link	Bond lengths			Bond angles		
					Counts	RMSZ	$\# Z > 2$	Counts	RMSZ	$\# Z > 2$
4	EDO	H	302	-	3,3,3	0.47	0	2,2,2	0.16	0
3	EPE	H	301	-	15,15,15	0.61	0	19,20,20	1.41	4 (21%)

In the following table, the Chirals column lists the number of chiral outliers, the number of chiral centers analysed, the number of these observed in the model and the number defined in the Chemical Component Dictionary. Similar counts are reported in the Torsion and Rings columns. '-' means no outliers of that kind were identified.

Mol	Type	Chain	Res	Link	Chirals	Torsions	Rings
4	EDO	H	302	-	-	1/1/1/1	-
3	EPE	H	301	-	-	2/9/19/19	0/1/1/1

There are no bond length outliers.

All (4) bond angle outliers are listed below:

Mol	Chain	Res	Type	Atoms	Z	Observed(°)	Ideal(°)
3	H	301	EPE	C5-N4-C3	3.48	116.33	108.84
3	H	301	EPE	C7-N4-C5	2.86	118.86	111.24
3	H	301	EPE	O3S-S-C10	2.02	109.96	106.00
3	H	301	EPE	C7-N4-C3	2.00	116.57	111.24

There are no chirality outliers.

All (3) torsion outliers are listed below:

Mol	Chain	Res	Type	Atoms
3	H	301	EPE	S-C10-C9-N1
3	H	301	EPE	N4-C7-C8-O8
4	H	302	EDO	O1-C1-C2-O2

There are no ring outliers.

No monomer is involved in short contacts.

5.7 Other polymers [i](#)

There are no such residues in this entry.

5.8 Polymer linkage issues [i](#)

There are no chain breaks in this entry.

6 Fit of model and data [i](#)

6.1 Protein, DNA and RNA chains [i](#)

In the following table, the column labelled ‘#RSRZ > 2’ contains the number (and percentage) of RSRZ outliers, followed by percent RSRZ outliers for the chain as percentile scores relative to all X-ray entries and entries of similar resolution. The OWAB column contains the minimum, median, 95th percentile and maximum values of the occupancy-weighted average B-factor per residue. The column labelled ‘Q < 0.9’ lists the number of (and percentage) of residues with an average occupancy less than 0.9.

Mol	Chain	Analysed	<RSRZ>	#RSRZ>2	OWAB(Å ²)	Q<0.9
1	H	219/224 (97%)	0.02	5 (2%) 61 66	16, 30, 55, 68	3 (1%)
2	L	218/218 (100%)	0.05	2 (0%) 81 87	14, 30, 52, 79	4 (1%)
All	All	437/442 (98%)	0.04	7 (1%) 70 77	14, 30, 53, 79	7 (1%)

All (7) RSRZ outliers are listed below:

Mol	Chain	Res	Type	RSRZ
2	L	1	ASP	3.5
2	L	212	CYS	3.3
1	H	19[A]	ARG	3.2
1	H	215	CYS	2.5
1	H	1	GLU	2.4
1	H	190	THR	2.3
1	H	131	SER	2.3

6.2 Non-standard residues in protein, DNA, RNA chains [i](#)

There are no non-standard protein/DNA/RNA residues in this entry.

6.3 Carbohydrates [i](#)

There are no monosaccharides in this entry.

6.4 Ligands [i](#)

In the following table, the Atoms column lists the number of modelled atoms in the group and the number defined in the chemical component dictionary. The B-factors column lists the minimum, median, 95th percentile and maximum values of B factors of atoms in the group. The column labelled ‘Q < 0.9’ lists the number of atoms with occupancy less than 0.9.

Mol	Type	Chain	Res	Atoms	RSCC	RSR	B-factors(\AA^2)	Q<0.9
4	EDO	H	302	4/4	0.87	0.13	25,32,37,39	0
3	EPE	H	301	15/15	0.95	0.10	18,33,65,70	0
5	CL	H	303	1/1	0.98	0.03	16,16,16,16	0
5	CL	L	301	1/1	0.98	0.04	23,23,23,23	0

6.5 Other polymers [i](#)

There are no such residues in this entry.