



# Full wwPDB X-ray Structure Validation Report ⓘ

Sep 15, 2025 – 02:49 PM JST

PDB ID : 9UHC / pdb\_00009uhc  
Title : FGFR1 kinase domain with a covalent inhibitor 9p  
Authors : Chen, X.J.; Chen, Y.H.  
Deposited on : 2025-04-14  
Resolution : 1.88 Å(reported)

This is a Full wwPDB X-ray Structure Validation Report for a publicly released PDB entry.

We welcome your comments at [validation@mail.wwpdb.org](mailto:validation@mail.wwpdb.org)

A user guide is available at

<https://www.wwpdb.org/validation/2017/XrayValidationReportHelp>

with specific help available everywhere you see the ⓘ symbol.

The types of validation reports are described at

<http://www.wwpdb.org/validation/2017/FAQs#types>.

---

The following versions of software and data (see [references ⓘ](#)) were used in the production of this report:

MolProbity : 4-5-2 with Phenix2.0rc1  
Mogul : 1.8.5 (274361), CSD as541be (2020)  
Xtriage (Phenix) : 2.0rc1  
EDS : 3.0  
buster-report : 1.1.7 (2018)  
Percentile statistics : 20231227.v01 (using entries in the PDB archive December 27th 2023)  
CCP4 : 9.0.006 (Gargrove)  
Density-Fitness : 1.0.12  
Ideal geometry (proteins) : Engh & Huber (2001)  
Ideal geometry (DNA, RNA) : Parkinson et al. (1996)  
Validation Pipeline (wwPDB-VP) : 2.45.1

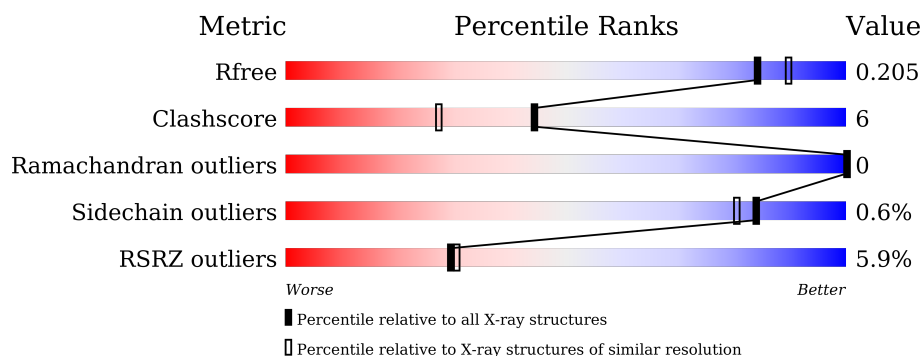
# 1 Overall quality at a glance

The following experimental techniques were used to determine the structure:

*X-RAY DIFFRACTION*

The reported resolution of this entry is 1.88 Å.

Percentile scores (ranging between 0-100) for global validation metrics of the entry are shown in the following graphic. The table shows the number of entries on which the scores are based.



Metric	Whole archive (#Entries)	Similar resolution (#Entries, resolution range(Å))
$R_{free}$	164625	1090 (1.88-1.88)
Clashscore	180529	1144 (1.88-1.88)
Ramachandran outliers	177936	1135 (1.88-1.88)
Sidechain outliers	177891	1135 (1.88-1.88)
RSRZ outliers	164620	1090 (1.88-1.88)

The table below summarises the geometric issues observed across the polymeric chains and their fit to the electron density. The red, orange, yellow and green segments of the lower bar indicate the fraction of residues that contain outliers for  $\geq 3$ , 2, 1 and 0 types of geometric quality criteria respectively. A grey segment represents the fraction of residues that are not modelled. The numeric value for each fraction is indicated below the corresponding segment, with a dot representing fractions  $\leq 5\%$ . The upper red bar (where present) indicates the fraction of residues that have poor fit to the electron density. The numeric value is given above the bar.

Mol	Chain	Length	Quality of chain
1	A	310	<div> <div>2%</div> <div>92%</div> <div>7%</div> </div>
1	B	310	<div> <div>10%</div> <div>80%</div> <div>13%</div> <div>7%</div> </div>

## 2 Entry composition

There are 4 unique types of molecules in this entry. The entry contains 5220 atoms, of which 0 are hydrogens and 0 are deuteriums.

In the tables below, the ZeroOcc column contains the number of atoms modelled with zero occupancy, the AltConf column contains the number of residues with at least one atom in alternate conformation and the Trace column contains the number of residues modelled with at most 2 atoms.

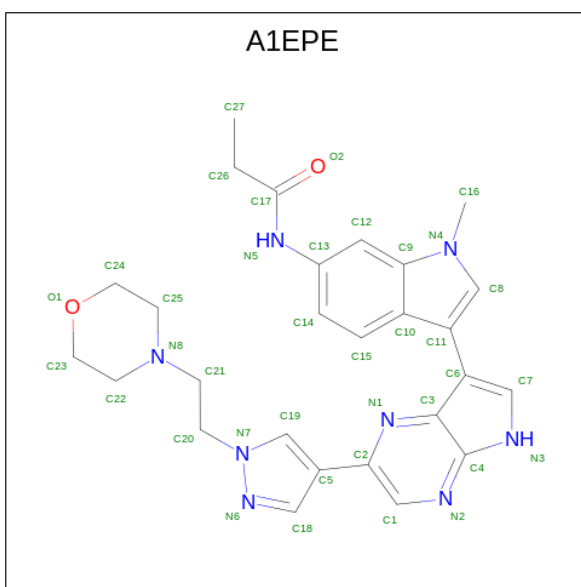
- Molecule 1 is a protein called Fibroblast growth factor receptor 1.

Mol	Chain	Residues	Atoms					ZeroOcc	AltConf	Trace
1	A	309	Total	C	N	O	S	0	0	0
			2421	1537	413	453	18			
1	B	288	Total	C	N	O	S	0	0	0
			2249	1431	385	415	18			

There are 6 discrepancies between the modelled and reference sequences:

Chain	Residue	Modelled	Actual	Comment	Reference
A	456	GLY	-	expression tag	UNP P11362
A	457	PRO	-	expression tag	UNP P11362
A	584	SER	CYS	conflict	UNP P11362
B	456	GLY	-	expression tag	UNP P11362
B	457	PRO	-	expression tag	UNP P11362
B	584	SER	CYS	conflict	UNP P11362

- Molecule 2 is {N}-[1-methyl-3-[2-[1-(2-morpholin-4-ylethyl)pyrazol-4-yl]-5 {H}-pyrrolo[2,3-b]pyrazin-7-yl]indol-6-yl]propanamide (CCD ID: A1EPE) (formula: C<sub>27</sub>H<sub>30</sub>N<sub>8</sub>O<sub>2</sub>) (labeled as "Ligand of Interest" by depositor).



Mol	Chain	Residues	Atoms				ZeroOcc	AltConf
2	A	1	Total	C	N	O	0	0
			37	27	8	2		
2	B	1	Total	C	N	O	0	0
			37	27	8	2		

- Molecule 3 is SULFATE ION (CCD ID: SO4) (formula: O<sub>4</sub>S).



Mol	Chain	Residues	Atoms			ZeroOcc	AltConf
3	A	1	Total	O	S	0	0
			5	4	1		
3	A	1	Total	O	S	0	0
			5	4	1		

*Continued on next page...*

*Continued from previous page...*

Mol	Chain	Residues	Atoms			ZeroOcc	AltConf
3	A	1	Total	O	S	0	0
			5	4	1		
3	A	1	Total	O	S	0	0
			5	4	1		
3	A	1	Total	O	S	0	0
			5	4	1		
3	B	1	Total	O	S	0	0
			5	4	1		

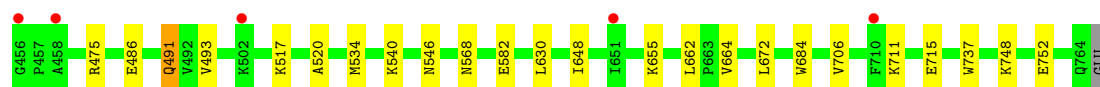
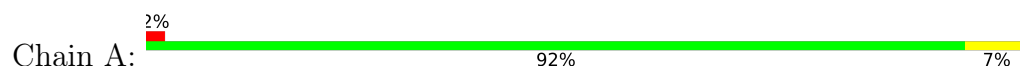
- Molecule 4 is water.

Mol	Chain	Residues	Atoms		ZeroOcc	AltConf
4	A	277	Total	O	0	0
			277	277		
4	B	169	Total	O	0	0
			169	169		

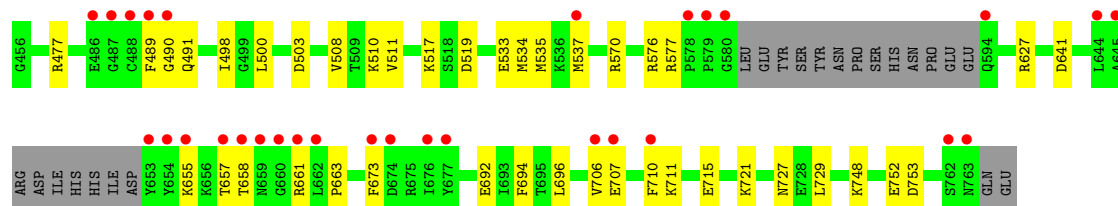
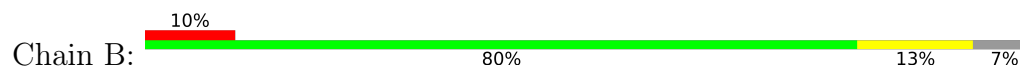
### 3 Residue-property plots [i](#)

These plots are drawn for all protein, RNA, DNA and oligosaccharide chains in the entry. The first graphic for a chain summarises the proportions of the various outlier classes displayed in the second graphic. The second graphic shows the sequence view annotated by issues in geometry and electron density. Residues are color-coded according to the number of geometric quality criteria for which they contain at least one outlier: green = 0, yellow = 1, orange = 2 and red = 3 or more. A red dot above a residue indicates a poor fit to the electron density ( $RSRZ > 2$ ). Stretches of 2 or more consecutive residues without any outlier are shown as a green connector. Residues present in the sample, but not in the model, are shown in grey.

- Molecule 1: Fibroblast growth factor receptor 1



- Molecule 1: Fibroblast growth factor receptor 1



## 4 Data and refinement statistics

Property	Value	Source
Space group	C 1 2 1	Depositor
Cell constants a, b, c, $\alpha$ , $\beta$ , $\gamma$	212.44Å 49.78Å 66.95Å 90.00° 107.50° 90.00°	Depositor
Resolution (Å)	50.65 – 1.88 50.65 – 1.88	Depositor EDS
% Data completeness (in resolution range)	99.9 (50.65-1.88) 99.9 (50.65-1.88)	Depositor EDS
$R_{merge}$	0.11	Depositor
$R_{sym}$	(Not available)	Depositor
$\langle I/\sigma(I) \rangle$ <sup>1</sup>	2.37 (at 1.88Å)	Xtriage
Refinement program	PHENIX (1.19.2_4158: ???)	Depositor
R, $R_{free}$	0.171 , 0.205 0.171 , 0.205	Depositor DCC
$R_{free}$ test set	2656 reflections (4.87%)	wwPDB-VP
Wilson B-factor (Å <sup>2</sup> )	19.6	Xtriage
Anisotropy	0.454	Xtriage
Bulk solvent $k_{sol}$ (e/Å <sup>3</sup> ), $B_{sol}$ (Å <sup>2</sup> )	0.38 , 45.2	EDS
L-test for twinning <sup>2</sup>	$\langle  L  \rangle = 0.50$ , $\langle L^2 \rangle = 0.33$	Xtriage
Estimated twinning fraction	0.013 for -h-2*k,l	Xtriage
$F_o, F_c$ correlation	0.96	EDS
Total number of atoms	5220	wwPDB-VP
Average B, all atoms (Å <sup>2</sup> )	25.0	wwPDB-VP

Xtriage's analysis on translational NCS is as follows: *The largest off-origin peak in the Patterson function is 5.06% of the height of the origin peak. No significant pseudotranslation is detected.*

<sup>1</sup>Intensities estimated from amplitudes.

<sup>2</sup>Theoretical values of  $\langle |L| \rangle$ ,  $\langle L^2 \rangle$  for acentric reflections are 0.5, 0.333 respectively for untwinned datasets, and 0.375, 0.2 for perfectly twinned datasets.

## 5 Model quality [i](#)

### 5.1 Standard geometry [i](#)

Bond lengths and bond angles in the following residue types are not validated in this section: A1EPE, SO4

The Z score for a bond length (or angle) is the number of standard deviations the observed value is removed from the expected value. A bond length (or angle) with  $|Z| > 5$  is considered an outlier worth inspection. RMSZ is the root-mean-square of all Z scores of the bond lengths (or angles).

Mol	Chain	Bond lengths		Bond angles	
		RMSZ	$\# Z  > 5$	RMSZ	$\# Z  > 5$
1	A	0.51	0/2477	0.63	1/3362 (0.0%)
1	B	0.43	0/2296	0.62	1/3109 (0.0%)
All	All	0.47	0/4773	0.63	2/6471 (0.0%)

There are no bond length outliers.

All (2) bond angle outliers are listed below:

Mol	Chain	Res	Type	Atoms	Z	Observed(°)	Ideal(°)
1	B	657	THR	CB-CA-C	-9.13	94.13	109.48
1	A	491	GLN	CA-CB-CG	6.71	127.51	114.10

There are no chirality outliers.

There are no planarity outliers.

### 5.2 Too-close contacts [i](#)

In the following table, the Non-H and H(model) columns list the number of non-hydrogen atoms and hydrogen atoms in the chain respectively. The H(added) column lists the number of hydrogen atoms added and optimized by MolProbity. The Clashes column lists the number of clashes within the asymmetric unit, whereas Symm-Clashes lists symmetry-related clashes.

Mol	Chain	Non-H	H(model)	H(added)	Clashes	Symm-Clashes
1	A	2421	0	2371	17	0
1	B	2249	0	2231	37	0
2	A	37	0	0	0	0
2	B	37	0	0	1	0
3	A	25	0	0	1	0
3	B	5	0	0	0	0
4	A	277	0	0	4	2

*Continued on next page...*



*Continued from previous page...*

Mol	Chain	Non-H	H(model)	H(added)	Clashes	Symm-Clashes
4	B	169	0	0	5	2
All	All	5220	0	4602	55	2

The all-atom clashscore is defined as the number of clashes found per 1000 atoms (including hydrogen atoms). The all-atom clashscore for this structure is 6.

All (55) close contacts within the same asymmetric unit are listed below, sorted by their clash magnitude.

Atom-1	Atom-2	Interatomic distance (Å)	Clash overlap (Å)
1:B:673:PHE:HE1	1:B:710:PHE:HD1	1.27	0.81
1:B:477:ARG:HG2	1:B:498:ILE:HG23	1.67	0.74
1:B:711:LYS:O	1:B:715:GLU:HG3	1.88	0.74
1:B:627:ARG:HH11	1:B:661:ARG:HG2	1.51	0.73
3:A:804:SO4:O1	4:A:901:HOH:O	2.06	0.72
1:B:491:GLN:O	4:B:901:HOH:O	2.11	0.69
1:B:627:ARG:NH1	1:B:661:ARG:HG2	2.07	0.68
1:B:517:LYS:HG3	1:B:519:ASP:OD1	1.92	0.68
1:B:673:PHE:CE1	1:B:710:PHE:HD1	2.14	0.62
1:A:540:LYS:NZ	4:A:904:HOH:O	2.32	0.62
1:B:533:GLU:O	1:B:537:MET:HG3	2.04	0.58
1:A:711:LYS:O	1:A:715:GLU:HG3	2.04	0.57
1:B:577:ARG:HA	1:B:696:LEU:HD23	1.89	0.55
1:B:753:ASP:OD2	4:B:902:HOH:O	2.18	0.54
1:A:582:GLU:N	1:A:582:GLU:OE2	2.39	0.54
1:A:662:LEU:HD13	1:A:706:VAL:HG21	1.88	0.54
1:B:534:MET:HE3	1:B:537:MET:HE3	1.89	0.53
1:B:641:ASP:OD1	2:B:801:A1EPE:N5	2.41	0.53
1:A:486:GLU:OE1	1:A:491:GLN:OE1	2.26	0.53
1:A:491:GLN:HG3	4:A:1157:HOH:O	2.08	0.52
1:B:748:LYS:NZ	1:B:752:GLU:OE2	2.42	0.51
1:A:475:ARG:HD3	4:A:989:HOH:O	2.12	0.50
1:A:517:LYS:HG2	1:A:520:ALA:HB2	1.95	0.48
1:B:498:ILE:HD12	1:B:508:VAL:HG22	1.95	0.47
1:B:576:ARG:HG3	1:B:576:ARG:HH11	1.78	0.47
1:B:627:ARG:HD3	1:B:661:ARG:HG2	1.96	0.47
1:B:503:ASP:OD1	1:B:503:ASP:N	2.48	0.46
1:B:721:LYS:NZ	1:B:727:ASN:OD1	2.44	0.46
1:B:748:LYS:O	1:B:752:GLU:HG3	2.16	0.45
1:B:627:ARG:HG2	4:B:932:HOH:O	2.14	0.45
1:A:748:LYS:O	1:A:752:GLU:HG3	2.16	0.45
1:B:510:LYS:HE3	4:B:1057:HOH:O	2.16	0.45

*Continued on next page...*

Continued from previous page...

Atom-1	Atom-2	Interatomic distance (Å)	Clash overlap (Å)
1:A:664:VAL:CG2	1:A:672:LEU:HD21	2.47	0.45
1:A:664:VAL:HG23	1:A:672:LEU:HD21	1.99	0.45
1:B:535:MET:HE3	4:B:1037:HOH:O	2.16	0.44
1:B:570:ARG:HD3	1:B:661:ARG:NH2	2.33	0.44
1:B:534:MET:HE3	1:B:534:MET:HA	1.99	0.43
1:B:627:ARG:HD3	1:B:661:ARG:CG	2.49	0.43
1:A:534:MET:HA	1:A:534:MET:HE2	2.01	0.42
1:B:673:PHE:HE1	1:B:710:PHE:CD1	2.19	0.42
1:B:707:GLU:HA	1:B:710:PHE:HD2	1.83	0.42
1:A:540:LYS:HE2	1:A:546:ASN:HB3	2.01	0.42
1:A:655:LYS:NZ	1:A:655:LYS:HB3	2.33	0.42
1:B:661:ARG:O	1:B:663:PRO:HD3	2.19	0.42
1:B:655:LYS:HD3	1:B:706:VAL:HG21	2.01	0.42
1:B:694:PHE:CZ	1:B:729:LEU:HD13	2.55	0.41
1:A:648:ILE:HD12	1:A:648:ILE:HA	1.90	0.41
1:B:500:LEU:HD11	1:B:511:VAL:HG11	2.02	0.41
1:A:568:ASN:HA	1:A:630:LEU:HD23	2.03	0.41
1:B:477:ARG:HG2	1:B:498:ILE:CG2	2.45	0.41
1:B:570:ARG:NH1	1:B:692:GLU:OE2	2.54	0.41
1:B:627:ARG:HD3	1:B:661:ARG:NE	2.35	0.41
1:B:490:GLY:HA2	1:B:517:LYS:HD3	2.03	0.41
1:A:684:TRP:CE3	1:A:737:TRP:HA	2.57	0.40
1:B:707:GLU:H	1:B:707:GLU:CD	2.29	0.40

All (2) symmetry-related close contacts are listed below. The label for Atom-2 includes the symmetry operator and encoded unit-cell translations to be applied.

Atom-1	Atom-2	Interatomic distance (Å)	Clash overlap (Å)
4:A:1173:HOH:O	4:B:1064:HOH:O[1_554]	2.12	0.08
4:A:964:HOH:O	4:B:914:HOH:O[4_445]	2.16	0.04

## 5.3 Torsion angles [i](#)

### 5.3.1 Protein backbone [i](#)

In the following table, the Percentiles column shows the percent Ramachandran outliers of the chain as a percentile score with respect to all X-ray entries followed by that with respect to entries of similar resolution.

The Analysed column shows the number of residues for which the backbone conformation was

analysed, and the total number of residues.

Mol	Chain	Analysed	Favoured	Allowed	Outliers	Percentiles	
1	A	307/310 (99%)	305 (99%)	2 (1%)	0	100	100
1	B	282/310 (91%)	275 (98%)	7 (2%)	0	100	100
All	All	589/620 (95%)	580 (98%)	9 (2%)	0	100	100

There are no Ramachandran outliers to report.

### 5.3.2 Protein sidechains ⓘ

In the following table, the Percentiles column shows the percent sidechain outliers of the chain as a percentile score with respect to all X-ray entries followed by that with respect to entries of similar resolution.

The Analysed column shows the number of residues for which the sidechain conformation was analysed, and the total number of residues.

Mol	Chain	Analysed	Rotameric	Outliers	Percentiles	
1	A	261/271 (96%)	260 (100%)	1 (0%)	89	86
1	B	241/271 (89%)	239 (99%)	2 (1%)	79	74
All	All	502/542 (93%)	499 (99%)	3 (1%)	84	80

All (3) residues with a non-rotameric sidechain are listed below:

Mol	Chain	Res	Type
1	A	493	VAL
1	B	489	PHE
1	B	658	THR

Sometimes sidechains can be flipped to improve hydrogen bonding and reduce clashes. All (2) such sidechains are listed below:

Mol	Chain	Res	Type
1	A	743	GLN
1	A	764	GLN

### 5.3.3 RNA ⓘ

There are no RNA molecules in this entry.

## 5.4 Non-standard residues in protein, DNA, RNA chains [i](#)

There are no non-standard protein/DNA/RNA residues in this entry.

## 5.5 Carbohydrates [i](#)

There are no oligosaccharides in this entry.

## 5.6 Ligand geometry [i](#)

8 ligands are modelled in this entry.

In the following table, the Counts columns list the number of bonds (or angles) for which Mogul statistics could be retrieved, the number of bonds (or angles) that are observed in the model and the number of bonds (or angles) that are defined in the Chemical Component Dictionary. The Link column lists molecule types, if any, to which the group is linked. The Z score for a bond length (or angle) is the number of standard deviations the observed value is removed from the expected value. A bond length (or angle) with  $|Z| > 2$  is considered an outlier worth inspection. RMSZ is the root-mean-square of all Z scores of the bond lengths (or angles).

Mol	Type	Chain	Res	Link	Bond lengths			Bond angles		
					Counts	RMSZ	$\# Z  > 2$	Counts	RMSZ	$\# Z  > 2$
2	A1EPE	B	801	1	37,42,42	3.07	18 (48%)	39,60,60	2.20	15 (38%)
2	A1EPE	A	801	1	37,42,42	2.85	16 (43%)	39,60,60	2.41	18 (46%)
3	SO4	B	802	-	4,4,4	0.13	0	6,6,6	0.18	0
3	SO4	A	803	-	4,4,4	0.21	0	6,6,6	0.52	0
3	SO4	A	806	-	4,4,4	0.22	0	6,6,6	0.36	0
3	SO4	A	802	-	4,4,4	0.22	0	6,6,6	0.34	0
3	SO4	A	804	-	4,4,4	0.13	0	6,6,6	0.47	0
3	SO4	A	805	-	4,4,4	0.38	0	6,6,6	1.11	0

In the following table, the Chirals column lists the number of chiral outliers, the number of chiral centers analysed, the number of these observed in the model and the number defined in the Chemical Component Dictionary. Similar counts are reported in the Torsion and Rings columns. '-' means no outliers of that kind were identified.

Mol	Type	Chain	Res	Link	Chirals	Torsions	Rings
2	A1EPE	B	801	1	-	3/13/27/27	0/6/6/6
2	A1EPE	A	801	1	-	2/13/27/27	0/6/6/6

All (34) bond length outliers are listed below:

Mol	Chain	Res	Type	Atoms	Z	Observed(Å)	Ideal(Å)
2	A	801	A1EPE	C4-N3	6.77	1.47	1.34
2	B	801	A1EPE	C21-N8	-6.44	1.32	1.47
2	B	801	A1EPE	C8-C11	-6.19	1.30	1.38
2	A	801	A1EPE	C21-N8	-5.97	1.33	1.47
2	B	801	A1EPE	C4-N3	5.96	1.45	1.34
2	B	801	A1EPE	C4-N2	-5.89	1.29	1.37
2	A	801	A1EPE	C22-N8	-5.74	1.31	1.46
2	A	801	A1EPE	C8-C11	-5.62	1.30	1.38
2	B	801	A1EPE	C22-N8	-5.40	1.32	1.46
2	B	801	A1EPE	C25-N8	-4.78	1.33	1.46
2	A	801	A1EPE	C4-N2	-4.73	1.30	1.37
2	A	801	A1EPE	C25-N8	-4.55	1.34	1.46
2	A	801	A1EPE	C1-N2	4.37	1.38	1.31
2	B	801	A1EPE	C19-N7	4.12	1.39	1.35
2	B	801	A1EPE	C1-N2	3.87	1.38	1.31
2	A	801	A1EPE	C19-N7	3.81	1.39	1.35
2	B	801	A1EPE	C17-N5	3.78	1.44	1.35
2	B	801	A1EPE	C3-C4	3.72	1.50	1.40
2	B	801	A1EPE	C5-C2	3.67	1.54	1.48
2	A	801	A1EPE	C3-C4	3.46	1.50	1.40
2	B	801	A1EPE	C13-N5	3.32	1.48	1.41
2	A	801	A1EPE	C3-N1	-3.00	1.31	1.37
2	B	801	A1EPE	O2-C17	-2.84	1.17	1.23
2	A	801	A1EPE	C15-C14	2.75	1.42	1.36
2	B	801	A1EPE	C3-N1	-2.74	1.31	1.37
2	A	801	A1EPE	C2-N1	2.72	1.37	1.33
2	B	801	A1EPE	C1-C2	2.58	1.47	1.39
2	A	801	A1EPE	C13-N5	2.49	1.46	1.41
2	B	801	A1EPE	C14-C13	2.35	1.43	1.39
2	A	801	A1EPE	C11-C6	2.31	1.57	1.49
2	A	801	A1EPE	C17-N5	2.23	1.40	1.35
2	B	801	A1EPE	C11-C6	2.20	1.57	1.49
2	A	801	A1EPE	O2-C17	-2.17	1.18	1.23
2	B	801	A1EPE	C15-C14	2.08	1.41	1.36

All (33) bond angle outliers are listed below:

Mol	Chain	Res	Type	Atoms	Z	Observed(°)	Ideal(°)
2	A	801	A1EPE	C2-C1-N2	-5.37	119.38	123.65
2	A	801	A1EPE	C2-N1-C3	-4.79	114.58	118.26
2	B	801	A1EPE	C8-C11-C10	4.42	120.11	108.07
2	A	801	A1EPE	C18-N6-N7	4.41	108.83	104.23
2	B	801	A1EPE	C6-C7-N3	-4.38	100.45	108.91

*Continued on next page...*

*Continued from previous page...*

Mol	Chain	Res	Type	Atoms	Z	Observed(°)	Ideal(°)
2	B	801	A1EPE	C8-C11-C6	-4.36	119.89	125.91
2	A	801	A1EPE	C1-C2-N1	4.30	124.39	120.79
2	A	801	A1EPE	C13-C12-C9	-4.21	115.27	120.01
2	A	801	A1EPE	C8-C11-C10	3.93	118.79	108.07
2	B	801	A1EPE	C6-C3-C4	-3.86	99.77	106.55
2	B	801	A1EPE	C18-N6-N7	3.79	108.18	104.23
2	B	801	A1EPE	C2-N1-C3	-3.67	115.44	118.26
2	B	801	A1EPE	C25-N8-C22	3.63	117.00	108.83
2	A	801	A1EPE	C6-C7-N3	-3.55	102.05	108.91
2	A	801	A1EPE	C8-C11-C6	-3.18	121.52	125.91
2	B	801	A1EPE	C23-C22-N8	3.16	114.90	110.10
2	B	801	A1EPE	C20-N7-C19	-3.05	122.64	129.82
2	A	801	A1EPE	C1-C2-C5	-2.88	118.25	122.06
2	A	801	A1EPE	C14-C13-C12	2.85	123.61	119.33
2	A	801	A1EPE	C27-C26-C17	-2.84	104.29	113.30
2	A	801	A1EPE	C11-C8-N4	-2.59	103.50	108.53
2	A	801	A1EPE	C6-C3-C4	-2.44	102.26	106.55
2	A	801	A1EPE	C20-C21-N8	-2.43	106.32	112.51
2	A	801	A1EPE	C20-N7-C19	-2.37	124.25	129.82
2	B	801	A1EPE	C11-C8-N4	-2.29	104.09	108.53
2	B	801	A1EPE	C14-C13-C12	2.23	122.69	119.33
2	B	801	A1EPE	C15-C10-C11	2.20	138.79	135.63
2	B	801	A1EPE	C13-C12-C9	-2.15	117.59	120.01
2	B	801	A1EPE	C24-C25-N8	2.11	113.31	110.10
2	A	801	A1EPE	C15-C10-C11	2.10	138.63	135.63
2	B	801	A1EPE	C20-C21-N8	-2.07	107.25	112.51
2	A	801	A1EPE	C16-N4-C8	2.07	128.78	124.90
2	A	801	A1EPE	C21-C20-N7	2.05	114.28	110.83

There are no chirality outliers.

All (5) torsion outliers are listed below:

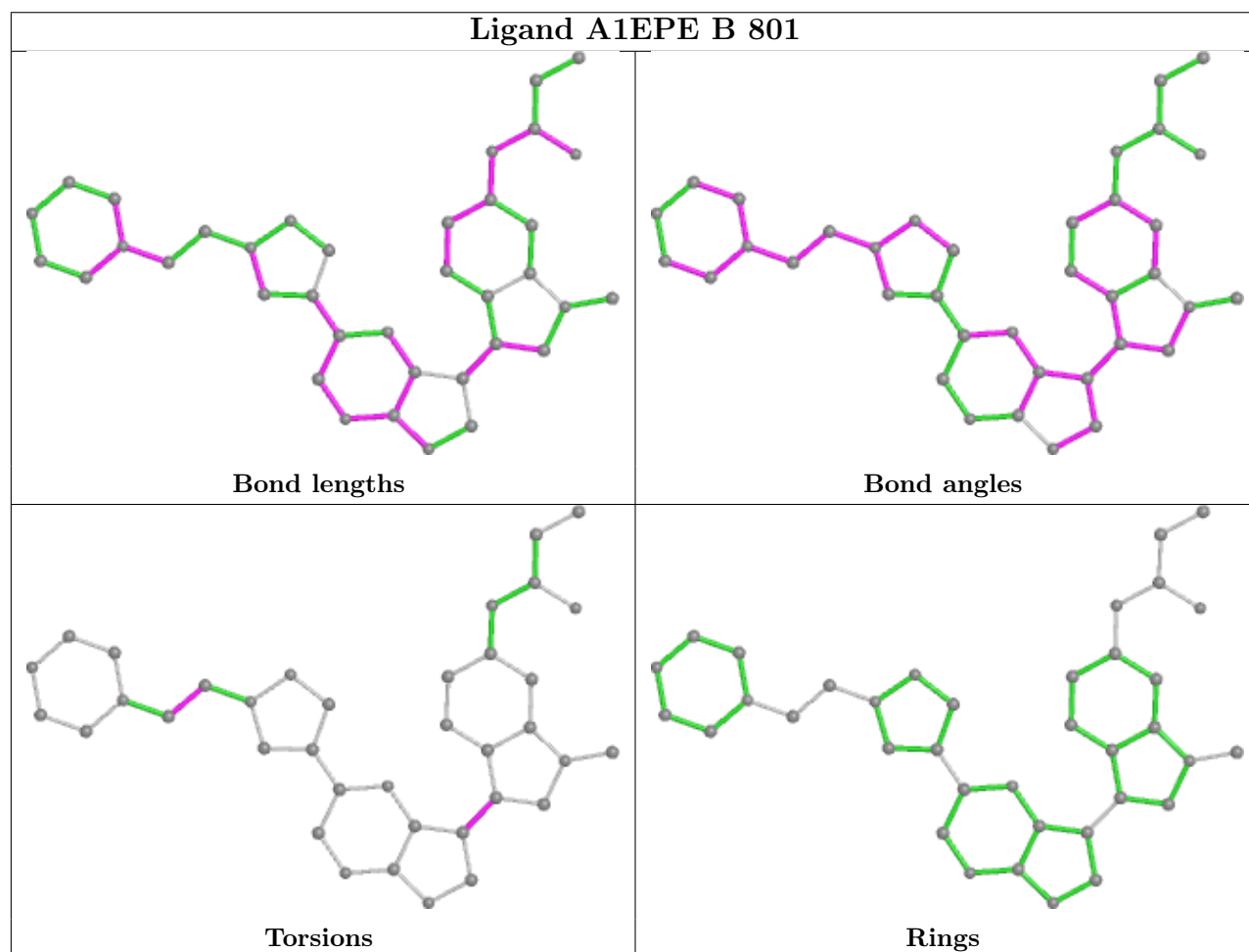
Mol	Chain	Res	Type	Atoms
2	A	801	A1EPE	C10-C11-C6-C3
2	B	801	A1EPE	C10-C11-C6-C3
2	B	801	A1EPE	N7-C20-C21-N8
2	A	801	A1EPE	C8-C11-C6-C7
2	B	801	A1EPE	C8-C11-C6-C7

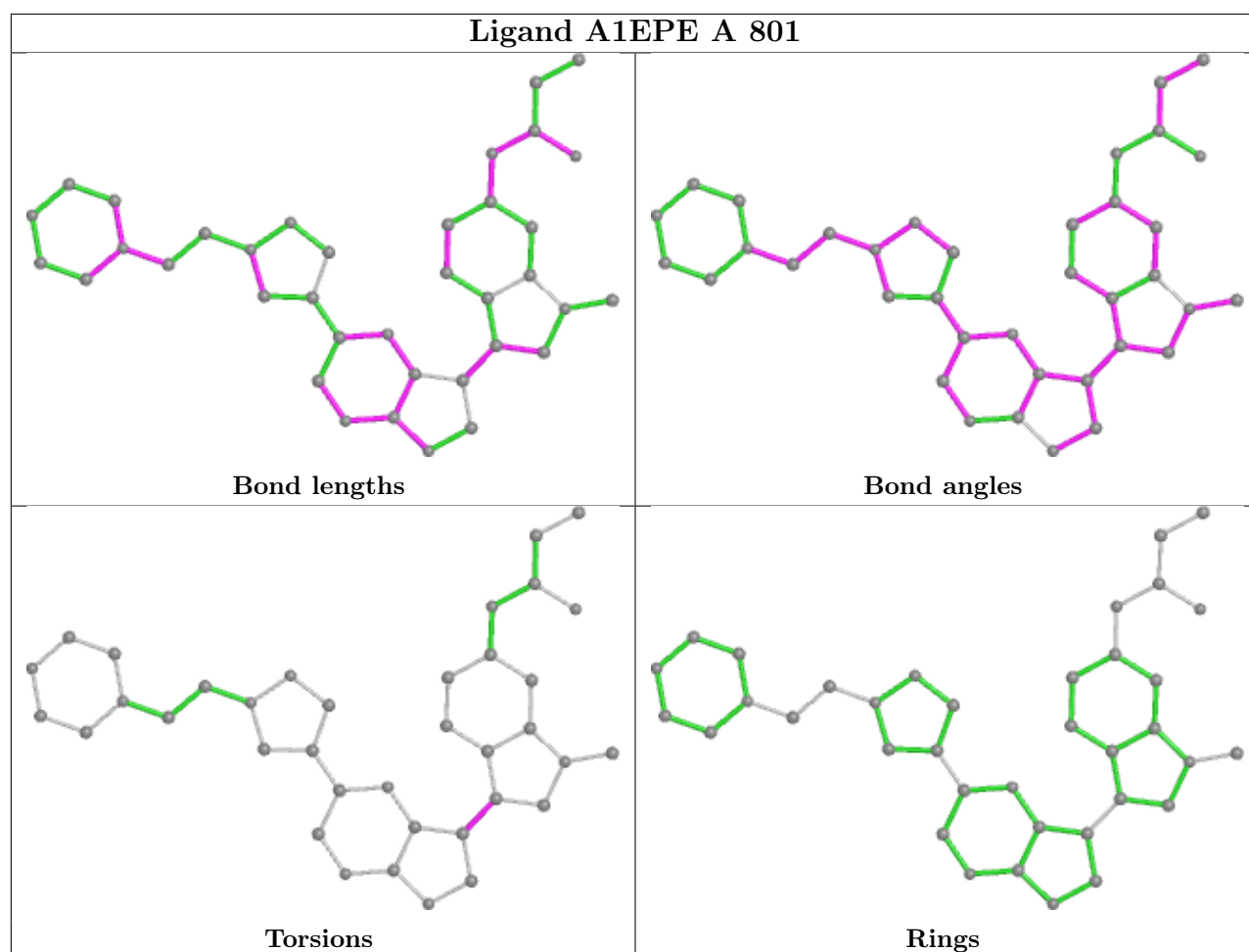
There are no ring outliers.

2 monomers are involved in 2 short contacts:

Mol	Chain	Res	Type	Clashes	Symm-Clashes
2	B	801	A1EPE	1	0
3	A	804	SO4	1	0

The following is a two-dimensional graphical depiction of Mogul quality analysis of bond lengths, bond angles, torsion angles, and ring geometry for all instances of the Ligand of Interest. In addition, ligands with molecular weight > 250 and outliers as shown on the validation Tables will also be included. For torsion angles, if less than 5% of the Mogul distribution of torsion angles is within 10 degrees of the torsion angle in question, then that torsion angle is considered an outlier. Any bond that is central to one or more torsion angles identified as an outlier by Mogul will be highlighted in the graph. For rings, the root-mean-square deviation (RMSD) between the ring in question and similar rings identified by Mogul is calculated over all ring torsion angles. If the average RMSD is greater than 60 degrees and the minimal RMSD between the ring in question and any Mogul-identified rings is also greater than 60 degrees, then that ring is considered an outlier. The outliers are highlighted in purple. The color gray indicates Mogul did not find sufficient equivalents in the CSD to analyse the geometry.





## 5.7 Other polymers [i](#)

There are no such residues in this entry.

## 5.8 Polymer linkage issues [i](#)

There are no chain breaks in this entry.



## 6 Fit of model and data

### 6.1 Protein, DNA and RNA chains

In the following table, the column labelled ‘#RSRZ> 2’ contains the number (and percentage) of RSRZ outliers, followed by percent RSRZ outliers for the chain as percentile scores relative to all X-ray entries and entries of similar resolution. The OWAB column contains the minimum, median, 95<sup>th</sup> percentile and maximum values of the occupancy-weighted average B-factor per residue. The column labelled ‘Q< 0.9’ lists the number of (and percentage) of residues with an average occupancy less than 0.9.

Mol	Chain	Analysed	<RSRZ>	#RSRZ>2	OWAB(Å <sup>2</sup> )	Q<0.9
1	A	309/310 (99%)	-0.24	5 (1%) 70 75	9, 19, 39, 63	0
1	B	288/310 (92%)	0.30	30 (10%) 13 15	12, 24, 60, 90	0
All	All	597/620 (96%)	0.02	35 (5%) 29 30	9, 21, 47, 90	0

All (35) RSRZ outliers are listed below:

Mol	Chain	Res	Type	RSRZ
1	B	489	PHE	6.3
1	B	653	TYR	5.8
1	B	654	TYR	5.6
1	B	579	PRO	5.1
1	A	456	GLY	4.9
1	B	660	GLY	4.3
1	B	487	GLY	4.1
1	B	658	THR	3.7
1	B	673	PHE	3.5
1	B	661	ARG	3.4
1	A	458	ALA	3.3
1	B	486	GLU	3.3
1	B	488	CYS	3.2
1	B	578	PRO	3.2
1	B	710	PHE	3.2
1	B	594	GLN	3.1
1	B	645	ALA	3.1
1	B	659	ASN	3.1
1	B	657	THR	3.1
1	B	580	GLY	2.9
1	B	655	LYS	2.9
1	B	763	ASN	2.9
1	A	651	ILE	2.7
1	B	662	LEU	2.6

*Continued on next page...*

*Continued from previous page...*

Mol	Chain	Res	Type	RSRZ
1	B	762	SER	2.5
1	B	490	GLY	2.5
1	B	676	ILE	2.3
1	B	537	MET	2.3
1	A	502	LYS	2.2
1	B	706	VAL	2.2
1	A	710	PHE	2.2
1	B	674	ASP	2.2
1	B	707	GLU	2.1
1	B	644	LEU	2.0
1	B	677	TYR	2.0

## 6.2 Non-standard residues in protein, DNA, RNA chains [i](#)

There are no non-standard protein/DNA/RNA residues in this entry.

## 6.3 Carbohydrates [i](#)

There are no oligosaccharides in this entry.

## 6.4 Ligands [i](#)

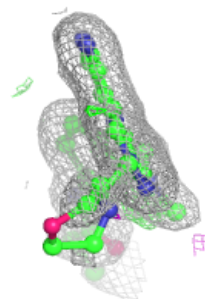
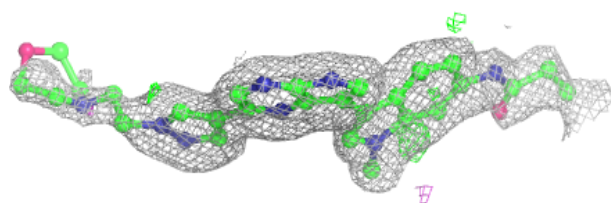
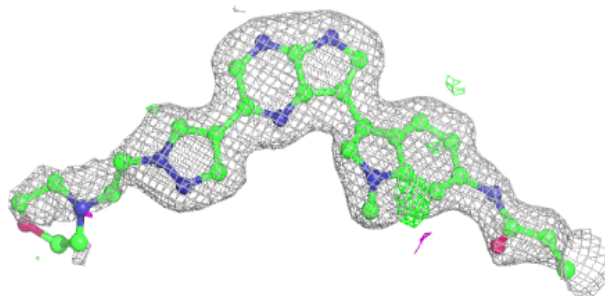
In the following table, the Atoms column lists the number of modelled atoms in the group and the number defined in the chemical component dictionary. The B-factors column lists the minimum, median, 95<sup>th</sup> percentile and maximum values of B factors of atoms in the group. The column labelled 'Q< 0.9' lists the number of atoms with occupancy less than 0.9.

Mol	Type	Chain	Res	Atoms	RSCC	RSR	B-factors( $\text{\AA}^2$ )	Q<0.9
3	SO4	A	806	5/5	0.71	0.14	39,39,58,89	0
3	SO4	A	805	5/5	0.74	0.16	44,54,57,74	0
3	SO4	B	802	5/5	0.84	0.10	51,67,70,86	0
3	SO4	A	802	5/5	0.91	0.11	32,37,54,60	0
2	A1EPE	B	801	37/37	0.94	0.11	15,26,73,80	0
2	A1EPE	A	801	37/37	0.96	0.08	9,18,48,50	0
3	SO4	A	804	5/5	0.99	0.04	23,25,27,28	0
3	SO4	A	803	5/5	0.99	0.05	23,24,26,38	0

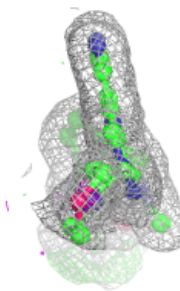
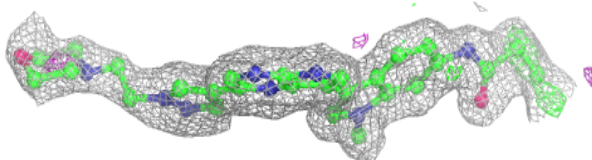
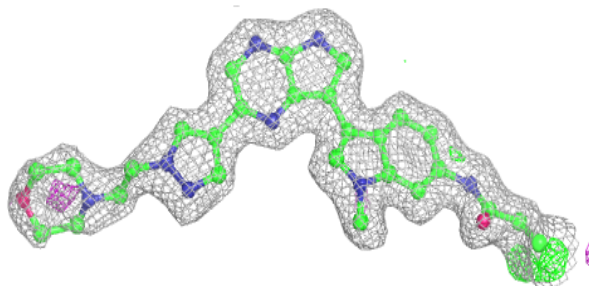
The following is a graphical depiction of the model fit to experimental electron density of all instances of the Ligand of Interest. In addition, ligands with molecular weight > 250 and outliers as shown on the geometry validation Tables will also be included. Each fit is shown from different orientation to approximate a three-dimensional view.

**Electron density around A1EPE B 801:**

$2mF_o-DF_c$  (at 0.7 rmsd) in gray  
 $mF_o-DF_c$  (at 3 rmsd) in purple (negative)  
and green (positive)

**Electron density around A1EPE A 801:**

$2mF_o-DF_c$  (at 0.7 rmsd) in gray  
 $mF_o-DF_c$  (at 3 rmsd) in purple (negative)  
and green (positive)



## 6.5 Other polymers [i](#)

There are no such residues in this entry.