



# wwPDB X-ray Structure Validation Summary Report ⓘ

Jun 25, 2024 – 08:32 PM EDT

PDB ID : 6UMH  
Title : Crystal structure of erenumab Fab-a  
Authors : Mohr, C.  
Deposited on : 2019-10-09  
Resolution : 2.15 Å(reported)

This is a wwPDB X-ray Structure Validation Summary Report for a publicly released PDB entry.

We welcome your comments at [validation@mail.wwpdb.org](mailto:validation@mail.wwpdb.org)

A user guide is available at

<https://www.wwpdb.org/validation/2017/XrayValidationReportHelp>

with specific help available everywhere you see the ⓘ symbol.

The types of validation reports are described at

<http://www.wwpdb.org/validation/2017/FAQs#types>.

---

The following versions of software and data (see [references ⓘ](#)) were used in the production of this report:

MolProbity	:	4.02b-467
Mogul	:	1.8.5 (274361), CSD as541be (2020)
Xtriage (Phenix)	:	1.13
EDS	:	2.37.1
Percentile statistics	:	20191225.v01 (using entries in the PDB archive December 25th 2019)
Refmac	:	5.8.0158
CCP4	:	7.0.044 (Gargrove)
Ideal geometry (proteins)	:	Engh & Huber (2001)
Ideal geometry (DNA, RNA)	:	Parkinson et al. (1996)
Validation Pipeline (wwPDB-VP)	:	2.37.1

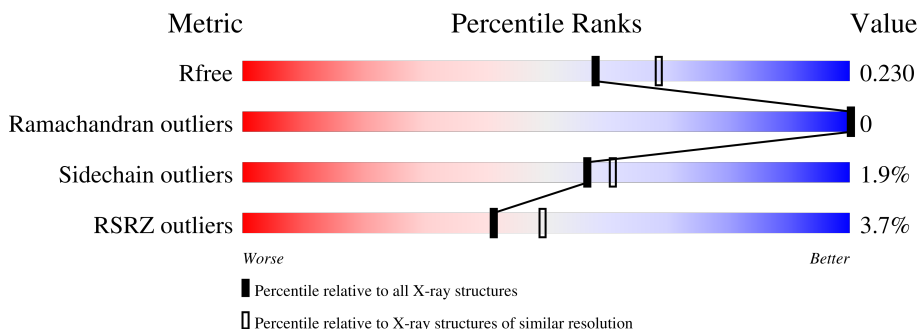
# 1 Overall quality at a glance

The following experimental techniques were used to determine the structure:

## *X-RAY DIFFRACTION*

The reported resolution of this entry is 2.15 Å.

Percentile scores (ranging between 0-100) for global validation metrics of the entry are shown in the following graphic. The table shows the number of entries on which the scores are based.



Metric	Whole archive (#Entries)	Similar resolution (#Entries, resolution range(Å))
$R_{free}$	130704	1479 (2.16-2.16)
Ramachandran outliers	138981	1560 (2.16-2.16)
Sidechain outliers	138945	1559 (2.16-2.16)
RSRZ outliers	127900	1456 (2.16-2.16)

The table below summarises the geometric issues observed across the polymeric chains and their fit to the electron density. The red, orange, yellow and green segments of the lower bar indicate the fraction of residues that contain outliers for  $\geq 3$ , 2, 1 and 0 types of geometric quality criteria respectively. A grey segment represents the fraction of residues that are not modelled. The numeric value for each fraction is indicated below the corresponding segment, with a dot representing fractions  $\leq 5\%$ . The upper red bar (where present) indicates the fraction of residues that have poor fit to the electron density. The numeric value is given above the bar.

Mol	Chain	Length	Quality of chain
1	H	237	<div> <div>3%</div> <div>96%</div> <div>..</div> </div>
1	h	237	<div> <div>5%</div> <div>96%</div> <div>..</div> </div>
2	L	216	<div> <div>%</div> <div>98%</div> <div>..</div> </div>
2	l	216	<div> <div>5%</div> <div>98%</div> <div>..</div> </div>

## 2 Entry composition [i](#)

There are 6 unique types of molecules in this entry. The entry contains 7055 atoms, of which 0 are hydrogens and 0 are deuteriums.

In the tables below, the ZeroOcc column contains the number of atoms modelled with zero occupancy, the AltConf column contains the number of residues with at least one atom in alternate conformation and the Trace column contains the number of residues modelled with at most 2 atoms.

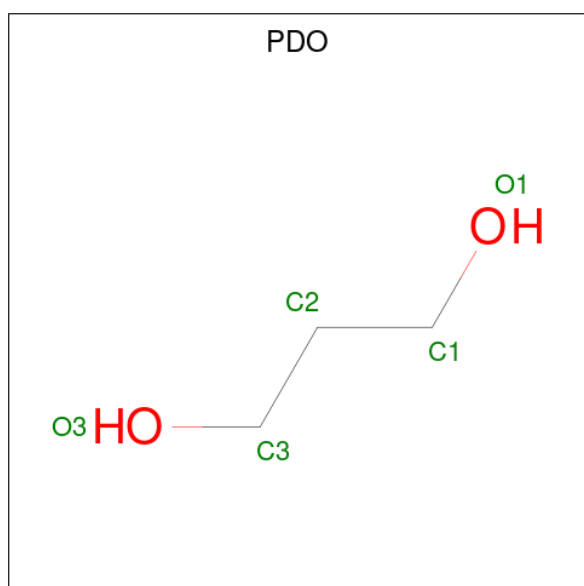
- Molecule 1 is a protein called erenumab Fab heavy chain, IgG1.

Mol	Chain	Residues	Atoms					ZeroOcc	AltConf	Trace
1	H	232	Total	C	N	O	S	0	0	0
			1754	1110	297	340	7			
1	h	232	Total	C	N	O	S	0	0	0
			1754	1110	297	340	7			

- Molecule 2 is a protein called erenumab Fab light chain, IgG1.

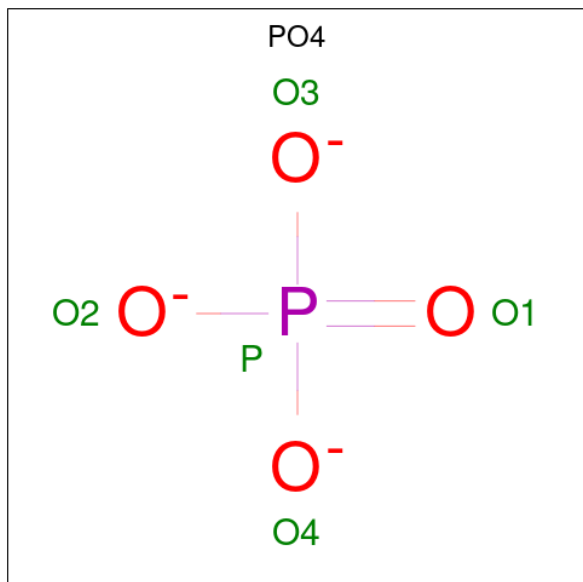
Mol	Chain	Residues	Atoms					ZeroOcc	AltConf	Trace
2	L	214	Total	C	N	O	S	0	0	0
			1592	996	268	324	4			
2	l	213	Total	C	N	O	S	0	0	0
			1583	991	266	322	4			

- Molecule 3 is 1,3-PROPANDIOL (three-letter code: PDO) (formula: C<sub>3</sub>H<sub>8</sub>O<sub>2</sub>).



Mol	Chain	Residues	Atoms			ZeroOcc	AltConf
3	H	1	Total	C	O	0	0
			5	3	2		
3	H	1	Total	C	O	0	0
			5	3	2		
3	L	1	Total	C	O	0	0
			5	3	2		
3	h	1	Total	C	O	0	0
			5	3	2		
3	h	1	Total	C	O	0	0
			5	3	2		
3	l	1	Total	C	O	0	0
			5	3	2		

- Molecule 4 is PHOSPHATE ION (three-letter code: PO4) (formula: O<sub>4</sub>P).



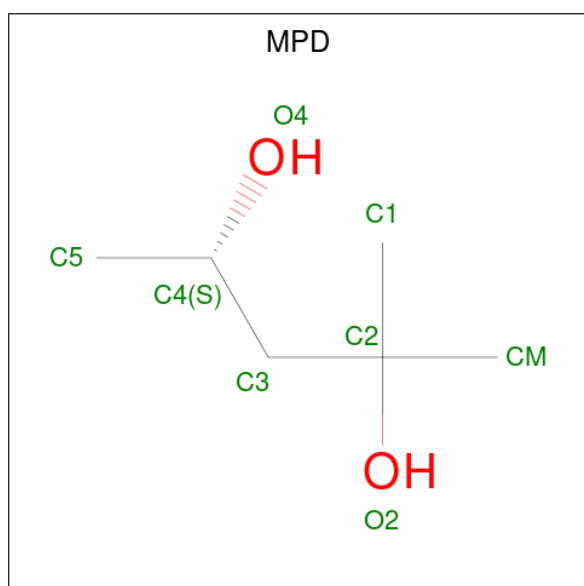
Mol	Chain	Residues	Atoms			ZeroOcc	AltConf
4	H	1	Total	O	P	0	0
			5	4	1		
4	H	1	Total	O	P	0	0
			5	4	1		
4	L	1	Total	O	P	0	0
			5	4	1		
4	L	1	Total	O	P	0	0
			5	4	1		
4	L	1	Total	O	P	0	0
			5	4	1		
4	L	1	Total	O	P	0	0
			5	4	1		

*Continued on next page...*

*Continued from previous page...*

Mol	Chain	Residues	Atoms			ZeroOcc	AltConf
4	h	1	Total	O	P	0	0
			5	4	1		
4	h	1	Total	O	P	0	0
			5	4	1		
4	l	1	Total	O	P	0	0
			5	4	1		
4	l	1	Total	O	P	0	0
			5	4	1		

- Molecule 5 is (4S)-2-METHYL-2,4-PENTANEDIOL (three-letter code: MPD) (formula: C<sub>6</sub>H<sub>14</sub>O<sub>2</sub>).



Mol	Chain	Residues	Atoms			ZeroOcc	AltConf
5	L	1	Total	C	O	0	0
			8	6	2		
5	l	1	Total	C	O	0	0
			8	6	2		

- Molecule 6 is water.

Mol	Chain	Residues	Atoms		ZeroOcc	AltConf
6	H	91	Total	O	0	0
			91	91		
6	L	76	Total	O	0	0
			76	76		
6	h	68	Total	O	0	0
			68	68		

*Continued on next page...*

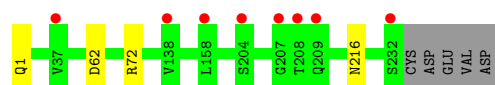
*Continued from previous page...*

Mol	Chain	Residues	Atoms		ZeroOcc	AltConf
6	1	41	Total	O	0	0
			41	41		

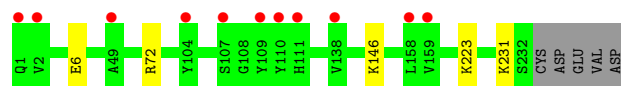
### 3 Residue-property plots [i](#)

These plots are drawn for all protein, RNA, DNA and oligosaccharide chains in the entry. The first graphic for a chain summarises the proportions of the various outlier classes displayed in the second graphic. The second graphic shows the sequence view annotated by issues in geometry and electron density. Residues are color-coded according to the number of geometric quality criteria for which they contain at least one outlier: green = 0, yellow = 1, orange = 2 and red = 3 or more. A red dot above a residue indicates a poor fit to the electron density ( $RSRZ > 2$ ). Stretches of 2 or more consecutive residues without any outlier are shown as a green connector. Residues present in the sample, but not in the model, are shown in grey.

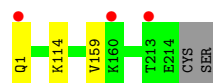
- Molecule 1: erenumab Fab heavy chain, IgG1



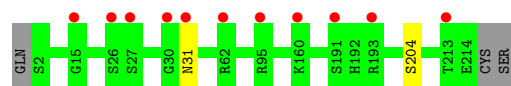
- Molecule 1: erenumab Fab heavy chain, IgG1



- Molecule 2: erenumab Fab light chain, IgG1



- Molecule 2: erenumab Fab light chain, IgG1



## 4 Data and refinement statistics

Property	Value	Source
Space group	C 1 2 1	Depositor
Cell constants a, b, c, $\alpha$ , $\beta$ , $\gamma$	124.27Å 55.91Å 170.09Å 90.00° 110.93° 90.00°	Depositor
Resolution (Å)	30.00 – 2.15 29.57 – 2.15	Depositor EDS
% Data completeness (in resolution range)	97.7 (30.00-2.15) 97.7 (29.57-2.15)	Depositor EDS
$R_{merge}$	0.07	Depositor
$R_{sym}$	(Not available)	Depositor
$\langle I/\sigma(I) \rangle$ <sup>1</sup>	2.47 (at 2.16Å)	Xtriage
Refinement program	REFMAC 5.8.0073	Depositor
R, $R_{free}$	0.185 , 0.224 0.192 , 0.230	Depositor DCC
$R_{free}$ test set	2846 reflections (4.88%)	wwPDB-VP
Wilson B-factor (Å <sup>2</sup> )	39.6	Xtriage
Anisotropy	0.425	Xtriage
Bulk solvent $k_{sol}$ (e/Å <sup>3</sup> ), $B_{sol}$ (Å <sup>2</sup> )	0.32 , 40.1	EDS
L-test for twinning <sup>2</sup>	$\langle  L  \rangle = 0.49$ , $\langle L^2 \rangle = 0.32$	Xtriage
Estimated twinning fraction	0.013 for h,-k,-h-l	Xtriage
$F_o, F_c$ correlation	0.96	EDS
Total number of atoms	7055	wwPDB-VP
Average B, all atoms (Å <sup>2</sup> )	46.0	wwPDB-VP

Xtriage's analysis on translational NCS is as follows: *The largest off-origin peak in the Patterson function is 4.65% of the height of the origin peak. No significant pseudotranslation is detected.*

<sup>1</sup>Intensities estimated from amplitudes.

<sup>2</sup>Theoretical values of  $\langle |L| \rangle$ ,  $\langle L^2 \rangle$  for acentric reflections are 0.5, 0.333 respectively for untwinned datasets, and 0.375, 0.2 for perfectly twinned datasets.



## 5 Model quality [i](#)

### 5.1 Standard geometry [i](#)

Bond lengths and bond angles in the following residue types are not validated in this section: PDO, MPD, PO4

The Z score for a bond length (or angle) is the number of standard deviations the observed value is removed from the expected value. A bond length (or angle) with  $|Z| > 5$  is considered an outlier worth inspection. RMSZ is the root-mean-square of all Z scores of the bond lengths (or angles).

Mol	Chain	Bond lengths		Bond angles	
		RMSZ	$\# Z  > 5$	RMSZ	$\# Z  > 5$
1	H	0.42	0/1798	0.62	0/2444
1	h	0.39	0/1798	0.59	0/2444
2	L	0.44	0/1630	0.60	0/2226
2	l	0.39	0/1621	0.61	0/2214
All	All	0.41	0/6847	0.60	0/9328

There are no bond length outliers.

There are no bond angle outliers.

There are no chirality outliers.

There are no planarity outliers.

### 5.2 Too-close contacts [i](#)

Due to software issues we are unable to calculate clashes - this section is therefore empty.

### 5.3 Torsion angles [i](#)

#### 5.3.1 Protein backbone [i](#)

In the following table, the Percentiles column shows the percent Ramachandran outliers of the chain as a percentile score with respect to all X-ray entries followed by that with respect to entries of similar resolution.

The Analysed column shows the number of residues for which the backbone conformation was analysed, and the total number of residues.

Mol	Chain	Analysed	Favoured	Allowed	Outliers	Percentiles	
1	H	230/237 (97%)	225 (98%)	5 (2%)	0	100	100

*Continued on next page...*

*Continued from previous page...*

Mol	Chain	Analysed	Favoured	Allowed	Outliers	Percentiles	
1	h	230/237 (97%)	225 (98%)	5 (2%)	0	100	100
2	L	212/216 (98%)	209 (99%)	3 (1%)	0	100	100
2	l	211/216 (98%)	206 (98%)	5 (2%)	0	100	100
All	All	883/906 (98%)	865 (98%)	18 (2%)	0	100	100

There are no Ramachandran outliers to report.

### 5.3.2 Protein sidechains ⓘ

In the following table, the Percentiles column shows the percent sidechain outliers of the chain as a percentile score with respect to all X-ray entries followed by that with respect to entries of similar resolution.

The Analysed column shows the number of residues for which the sidechain conformation was analysed, and the total number of residues.

Mol	Chain	Analysed	Rotameric	Outliers	Percentiles	
1	H	196/201 (98%)	192 (98%)	4 (2%)	55	59
1	h	196/201 (98%)	191 (97%)	5 (3%)	46	47
2	L	180/182 (99%)	177 (98%)	3 (2%)	60	65
2	l	179/182 (98%)	177 (99%)	2 (1%)	73	78
All	All	751/766 (98%)	737 (98%)	14 (2%)	57	61

5 of 14 residues with a non-rotameric sidechain are listed below:

Mol	Chain	Res	Type
1	h	6	GLU
1	h	72	ARG
2	l	204	SER
1	h	231	LYS
2	l	31	ASN

Sometimes sidechains can be flipped to improve hydrogen bonding and reduce clashes. 5 of 7 such sidechains are listed below:

Mol	Chain	Res	Type
1	h	1	GLN
2	l	31	ASN
2	l	112	GLN

*Continued on next page...*

*Continued from previous page...*

Mol	Chain	Res	Type
2	I	32	ASN
1	H	209	GLN

### 5.3.3 RNA [i](#)

There are no RNA molecules in this entry.

## 5.4 Non-standard residues in protein, DNA, RNA chains [i](#)

There are no non-standard protein/DNA/RNA residues in this entry.

## 5.5 Carbohydrates [i](#)

There are no monosaccharides in this entry.

## 5.6 Ligand geometry [i](#)

18 ligands are modelled in this entry.

In the following table, the Counts columns list the number of bonds (or angles) for which Mogul statistics could be retrieved, the number of bonds (or angles) that are observed in the model and the number of bonds (or angles) that are defined in the Chemical Component Dictionary. The Link column lists molecule types, if any, to which the group is linked. The Z score for a bond length (or angle) is the number of standard deviations the observed value is removed from the expected value. A bond length (or angle) with  $|Z| > 2$  is considered an outlier worth inspection. RMSZ is the root-mean-square of all Z scores of the bond lengths (or angles).

Mol	Type	Chain	Res	Link	Bond lengths			Bond angles		
					Counts	RMSZ	$\# Z  > 2$	Counts	RMSZ	$\# Z  > 2$
4	PO4	H	304	-	4,4,4	0.81	0	6,6,6	0.53	0
4	PO4	L	305	-	4,4,4	1.28	0	6,6,6	0.53	0
5	MPD	I	301	-	7,7,7	0.33	0	9,10,10	0.20	0
4	PO4	L	304	-	4,4,4	0.77	0	6,6,6	0.35	0
3	PDO	h	301	-	4,4,4	0.20	0	3,3,3	0.40	0
3	PDO	h	302	-	4,4,4	0.39	0	3,3,3	0.40	0
3	PDO	H	302	-	4,4,4	0.24	0	3,3,3	0.62	0
4	PO4	H	303	-	4,4,4	0.79	0	6,6,6	0.48	0
4	PO4	h	303	-	4,4,4	0.82	0	6,6,6	0.52	0
5	MPD	L	301	-	7,7,7	0.22	0	9,10,10	0.25	0
3	PDO	H	301	-	4,4,4	0.30	0	3,3,3	0.39	0
4	PO4	L	303	-	4,4,4	0.82	0	6,6,6	0.77	0

Mol	Type	Chain	Res	Link	Bond lengths			Bond angles		
					Counts	RMSZ	# Z  > 2	Counts	RMSZ	# Z  > 2
4	PO4	L	306	-	4,4,4	0.73	0	6,6,6	0.53	0
3	PDO	l	302	-	4,4,4	0.34	0	3,3,3	0.36	0
4	PO4	l	304	-	4,4,4	0.71	0	6,6,6	0.65	0
3	PDO	L	302	-	4,4,4	0.38	0	3,3,3	0.36	0
4	PO4	h	304	-	4,4,4	0.91	0	6,6,6	0.37	0
4	PO4	l	303	-	4,4,4	1.00	0	6,6,6	0.70	0

In the following table, the Chirals column lists the number of chiral outliers, the number of chiral centers analysed, the number of these observed in the model and the number defined in the Chemical Component Dictionary. Similar counts are reported in the Torsion and Rings columns. '-' means no outliers of that kind were identified.

Mol	Type	Chain	Res	Link	Chirals	Torsions	Rings
5	MPD	l	301	-	-	0/5/5/5	-
3	PDO	h	301	-	-	1/2/2/2	-
3	PDO	h	302	-	-	2/2/2/2	-
3	PDO	H	302	-	-	0/2/2/2	-
5	MPD	L	301	-	-	0/5/5/5	-
3	PDO	H	301	-	-	2/2/2/2	-
3	PDO	l	302	-	-	1/2/2/2	-
3	PDO	L	302	-	-	0/2/2/2	-

There are no bond length outliers.

There are no bond angle outliers.

There are no chirality outliers.

5 of 6 torsion outliers are listed below:

Mol	Chain	Res	Type	Atoms
3	h	301	PDO	O1-C1-C2-C3
3	h	302	PDO	O1-C1-C2-C3
3	l	302	PDO	C1-C2-C3-O3
3	H	301	PDO	C1-C2-C3-O3
3	H	301	PDO	O1-C1-C2-C3

There are no ring outliers.

No monomer is involved in short contacts.

## 5.7 Other polymers

There are no such residues in this entry.

## 5.8 Polymer linkage issues ⓘ

There are no chain breaks in this entry.

## 6 Fit of model and data [i](#)

### 6.1 Protein, DNA and RNA chains [i](#)

In the following table, the column labelled ‘#RSRZ> 2’ contains the number (and percentage) of RSRZ outliers, followed by percent RSRZ outliers for the chain as percentile scores relative to all X-ray entries and entries of similar resolution. The OWAB column contains the minimum, median, 95<sup>th</sup> percentile and maximum values of the occupancy-weighted average B-factor per residue. The column labelled ‘Q< 0.9’ lists the number of (and percentage) of residues with an average occupancy less than 0.9.

Mol	Chain	Analysed	<RSRZ>	#RSRZ>2	OWAB(Å <sup>2</sup> )	Q<0.9
1	H	232/237 (97%)	0.12	8 (3%) 45 53	28, 40, 64, 79	0
1	h	232/237 (97%)	0.22	11 (4%) 31 41	31, 45, 67, 96	0
2	L	214/216 (99%)	0.01	3 (1%) 75 80	28, 40, 58, 86	0
2	l	213/216 (98%)	0.24	11 (5%) 27 35	31, 52, 79, 89	0
All	All	891/906 (98%)	0.15	33 (3%) 41 49	28, 44, 70, 96	0

The worst 5 of 33 RSRZ outliers are listed below:

Mol	Chain	Res	Type	RSRZ
1	h	110	TYR	8.8
2	L	1	GLN	5.3
2	l	26	SER	4.3
2	L	160	LYS	4.0
2	l	30	GLY	3.8

### 6.2 Non-standard residues in protein, DNA, RNA chains [i](#)

There are no non-standard protein/DNA/RNA residues in this entry.

### 6.3 Carbohydrates [i](#)

There are no monosaccharides in this entry.

### 6.4 Ligands [i](#)

In the following table, the Atoms column lists the number of modelled atoms in the group and the number defined in the chemical component dictionary. The B-factors column lists the minimum, median, 95<sup>th</sup> percentile and maximum values of B factors of atoms in the group. The column labelled ‘Q< 0.9’ lists the number of atoms with occupancy less than 0.9.

Mol	Type	Chain	Res	Atoms	RSCC	RSR	B-factors( $\text{\AA}^2$ )	Q<0.9
4	PO4	h	304	5/5	0.57	0.28	85,87,97,99	0
3	PDO	h	302	5/5	0.74	0.19	57,58,63,63	0
4	PO4	l	304	5/5	0.80	0.19	71,73,80,86	0
3	PDO	H	301	5/5	0.82	0.54	57,61,67,71	0
3	PDO	L	302	5/5	0.86	0.32	47,54,58,61	0
4	PO4	L	306	5/5	0.88	0.22	77,79,84,90	0
4	PO4	L	305	5/5	0.89	0.31	90,93,96,97	0
3	PDO	l	302	5/5	0.89	0.32	62,65,65,67	0
4	PO4	L	304	5/5	0.91	0.16	55,58,60,66	0
5	MPD	L	301	8/8	0.92	0.18	50,52,53,53	0
4	PO4	H	304	5/5	0.93	0.32	86,92,94,95	0
5	MPD	l	301	8/8	0.95	0.14	40,40,43,45	0
3	PDO	H	302	5/5	0.96	0.15	37,37,38,40	0
3	PDO	h	301	5/5	0.96	0.17	40,40,43,44	0
4	PO4	l	303	5/5	0.97	0.09	47,49,51,51	0
4	PO4	h	303	5/5	0.97	0.10	50,54,58,59	0
4	PO4	H	303	5/5	0.98	0.09	46,52,53,54	0
4	PO4	L	303	5/5	0.99	0.10	40,41,43,44	0

## 6.5 Other polymers ⓘ

There are no such residues in this entry.