



Full wwPDB X-ray Structure Validation Report ⓘ

Dec 15, 2024 – 08:49 AM EST

PDB ID : 6VD5
Title : Crystal Structure of Dehaloperoxidase B in Complex with cofactor Iron(III) Mesoporphyrin IX and Substrate Trichlorophenol
Authors : Ghiladi, R.A.; de Serrano, V.S.; Malewschik, T.
Deposited on : 2019-12-23
Resolution : 1.64 Å(reported)

This is a Full wwPDB X-ray Structure Validation Report for a publicly released PDB entry.

We welcome your comments at validation@mail.wwpdb.org

A user guide is available at

<https://www.wwpdb.org/validation/2017/XrayValidationReportHelp>

with specific help available everywhere you see the ⓘ symbol.

The types of validation reports are described at

<http://www.wwpdb.org/validation/2017/FAQs#types>.

The following versions of software and data (see [references ⓘ](#)) were used in the production of this report:

MolProbity : 4.02b-467
Mogul : 2022.3.0, CSD as543be (2022)
Xtriage (Phenix) : 1.21
EDS : 3.0
buster-report : 1.1.7 (2018)
Percentile statistics : 20231227.v01 (using entries in the PDB archive December 27th 2023)
CCP4 : 9.0.004 (Gargrove)
Density-Fitness : 1.0.11
Ideal geometry (proteins) : Engh & Huber (2001)
Ideal geometry (DNA, RNA) : Parkinson et al. (1996)
Validation Pipeline (wwPDB-VP) : 2.40

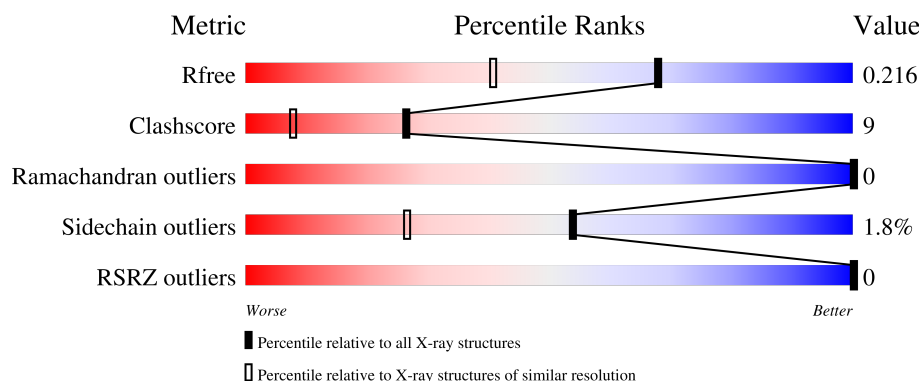
1 Overall quality at a glance

The following experimental techniques were used to determine the structure:

X-RAY DIFFRACTION



The reported resolution of this entry is 1.64 Å.

Percentile scores (ranging between 0-100) for global validation metrics of the entry are shown in the following graphic. The table shows the number of entries on which the scores are based.



Metric	Whole archive (#Entries)	Similar resolution (#Entries, resolution range(Å))
R_{free}	164625	1015 (1.64-1.64)
Clashscore	180529	1093 (1.64-1.64)
Ramachandran outliers	177936	1077 (1.64-1.64)
Sidechain outliers	177891	1077 (1.64-1.64)
RSRZ outliers	164620	1015 (1.64-1.64)

The table below summarises the geometric issues observed across the polymeric chains and their fit to the electron density. The red, orange, yellow and green segments of the lower bar indicate the fraction of residues that contain outliers for ≥ 3 , 2, 1 and 0 types of geometric quality criteria respectively. A grey segment represents the fraction of residues that are not modelled. The numeric value for each fraction is indicated below the corresponding segment, with a dot representing fractions $\leq 5\%$. The upper red bar (where present) indicates the fraction of residues that have poor fit to the electron density. The numeric value is given above the bar.

Mol	Chain	Length	Quality of chain
1	A	137	
1	B	137	

The following table lists non-polymeric compounds, carbohydrate monomers and non-standard residues in protein, DNA, RNA chains that are outliers for geometric or electron-density-fit criteria:

Mol	Type	Chain	Res	Chirality	Geometry	Clashes	Electron density
2	MH0	A	201	-	X	-	-
2	MH0	B	303	-	X	-	-

2 Entry composition [i](#)

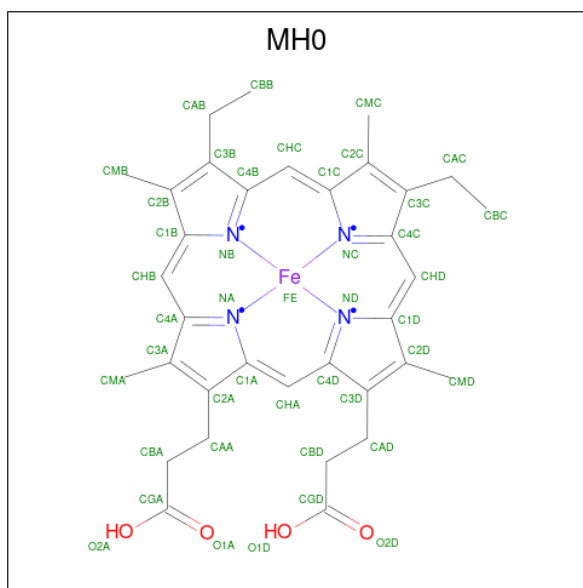
There are 6 unique types of molecules in this entry. The entry contains 2763 atoms, of which 0 are hydrogens and 0 are deuteriums.

In the tables below, the ZeroOcc column contains the number of atoms modelled with zero occupancy, the AltConf column contains the number of residues with at least one atom in alternate conformation and the Trace column contains the number of residues modelled with at most 2 atoms.

- Molecule 1 is a protein called Dehaloperoxidase B.

Mol	Chain	Residues	Atoms					ZeroOcc	AltConf	Trace
1	A	133	Total	C	N	O	S	0	28	0
			1248	781	214	244	9			
1	B	132	Total	C	N	O	S	0	26	0
			1214	759	203	243	9			

- Molecule 2 is Mesoheme (three-letter code: MH0) (formula: $C_{34}H_{36}FeN_4O_4$) (labeled as "Ligand of Interest" by depositor).



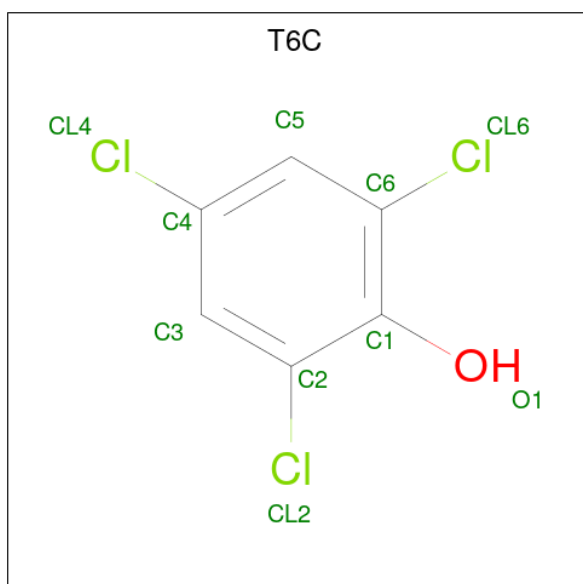
Mol	Chain	Residues	Atoms					ZeroOcc	AltConf
2	A	1	Total	C	Fe	N	O	0	0
			39	32	1	4	2		
2	B	1	Total	C	Fe	N	O	0	0
			39	32	1	4	2		

- Molecule 3 is 1,2-ETHANEDIOL (three-letter code: EDO) (formula: $C_2H_6O_2$).



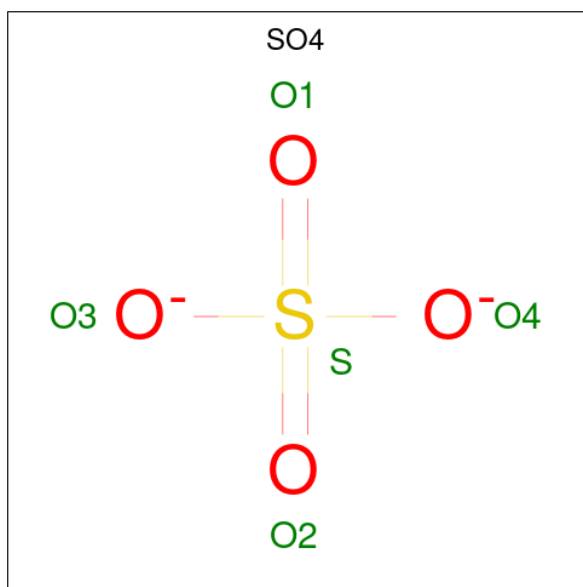
Mol	Chain	Residues	Atoms			ZeroOcc	AltConf
3	A	1	Total	C	O	0	0
			4	2	2		
3	A	1	Total	C	O	0	0
			4	2	2		
3	A	1	Total	C	O	0	0
			4	2	2		
3	B	1	Total	C	O	0	0
			4	2	2		

- Molecule 4 is 2,4,6-trichlorophenol (three-letter code: T6C) (formula: $C_6H_3Cl_3O$) (labeled as "Ligand of Interest" by depositor).



Mol	Chain	Residues	Atoms				ZeroOcc	AltConf
4	A	1	Total	C	Cl	O	0	0
			10	6	3	1		
4	B	1	Total	C	Cl	O	0	0
			10	6	3	1		

- Molecule 5 is SULFATE ION (three-letter code: SO4) (formula: O₄S).



Mol	Chain	Residues	Atoms			ZeroOcc	AltConf
5	A	1	Total	O	S	0	0
			5	4	1		
5	A	1	Total	O	S	0	0
			5	4	1		
5	A	1	Total	O	S	0	0
			5	4	1		
5	B	1	Total	O	S	0	0
			5	4	1		


- Molecule 6 is water.

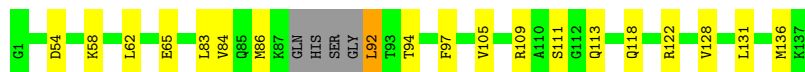
Mol	Chain	Residues	Atoms		ZeroOcc	AltConf
6	A	86	Total	O	0	1
			87	87		
6	B	80	Total	O	0	0
			80	80		

3 Residue-property plots


These plots are drawn for all protein, RNA, DNA and oligosaccharide chains in the entry. The first graphic for a chain summarises the proportions of the various outlier classes displayed in the second graphic. The second graphic shows the sequence view annotated by issues in geometry and electron density. Residues are color-coded according to the number of geometric quality criteria for which they contain at least one outlier: green = 0, yellow = 1, orange = 2 and red = 3 or more. A red dot above a residue indicates a poor fit to the electron density ($RSRZ > 2$). Stretches of 2 or more consecutive residues without any outlier are shown as a green connector. Residues present in the sample, but not in the model, are shown in grey.

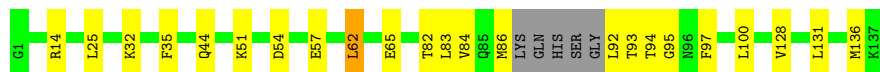
- Molecule 1: Dehaloperoxidase B

Chain A:  83% 13% ..



- Molecule 1: Dehaloperoxidase B

Chain B:  80% 16% ..



4 Data and refinement statistics

Property	Value	Source
Space group	P 21 21 21	Depositor
Cell constants a, b, c, α , β , γ	59.26Å 68.00Å 67.99Å 90.00° 90.00° 90.00°	Depositor
Resolution (Å)	34.00 – 1.64 34.00 – 1.64	Depositor EDS
% Data completeness (in resolution range)	98.9 (34.00-1.64) 98.9 (34.00-1.64)	Depositor EDS
R_{merge}	(Not available)	Depositor
R_{sym}	(Not available)	Depositor
$\langle I/\sigma(I) \rangle$ ¹	2.14 (at 1.64Å)	Xtriage
Refinement program	PHENIX dev_3699	Depositor
R, R_{free}	0.179 , 0.214 0.183 , 0.216	Depositor DCC
R_{free} test set	1671 reflections (4.95%)	wwPDB-VP
Wilson B-factor (Å ²)	22.1	Xtriage
Anisotropy	0.265	Xtriage
Bulk solvent k_{sol} (e/Å ³), B_{sol} (Å ²)	0.36 , 34.6	EDS
L-test for twinning ²	$\langle L \rangle = 0.49$, $\langle L^2 \rangle = 0.32$	Xtriage
Estimated twinning fraction	0.476 for -h,l,k	Xtriage
F_o, F_c correlation	0.97	EDS
Total number of atoms	2763	wwPDB-VP
Average B, all atoms (Å ²)	32.0	wwPDB-VP

Xtriage's analysis on translational NCS is as follows: *The largest off-origin peak in the Patterson function is 8.00% of the height of the origin peak. No significant pseudotranslation is detected.*

¹Intensities estimated from amplitudes.

²Theoretical values of $\langle |L| \rangle$, $\langle L^2 \rangle$ for acentric reflections are 0.5, 0.333 respectively for untwinned datasets, and 0.375, 0.2 for perfectly twinned datasets.

5 Model quality

5.1 Standard geometry

Bond lengths and bond angles in the following residue types are not validated in this section: MH0, T6C, EDO, SO4

The Z score for a bond length (or angle) is the number of standard deviations the observed value is removed from the expected value. A bond length (or angle) with $|Z| > 5$ is considered an outlier worth inspection. RMSZ is the root-mean-square of all Z scores of the bond lengths (or angles).

Mol	Chain	Bond lengths		Bond angles	
		RMSZ	# Z >5	RMSZ	# Z >5
1	A	0.35	0/1284	0.52	0/1714
1	B	0.34	0/1258	0.52	0/1683
All	All	0.34	0/2542	0.52	0/3397

There are no bond length outliers.

There are no bond angle outliers.

There are no chirality outliers.

There are no planarity outliers.

5.2 Too-close contacts

In the following table, the Non-H and H(model) columns list the number of non-hydrogen atoms and hydrogen atoms in the chain respectively. The H(added) column lists the number of hydrogen atoms added and optimized by MolProbity. The Clashes column lists the number of clashes within the asymmetric unit, whereas Symm-Clashes lists symmetry-related clashes.

Mol	Chain	Non-H	H(model)	H(added)	Clashes	Symm-Clashes
1	A	1248	0	1205	19	0
1	B	1214	0	1170	22	0
2	A	39	0	28	11	0
2	B	39	0	30	12	0
3	A	12	0	18	2	0
3	B	4	0	6	0	0
4	A	10	0	3	1	0
4	B	10	0	3	1	0
5	A	15	0	0	0	0
5	B	5	0	0	0	0
6	A	87	0	0	4	0

Continued on next page...

Continued from previous page...

Mol	Chain	Non-H	H(model)	H(added)	Clashes	Symm-Clashes
6	B	80	0	0	4	0
All	All	2763	0	2463	47	0

The all-atom clashscore is defined as the number of clashes found per 1000 atoms (including hydrogen atoms). The all-atom clashscore for this structure is 9.

All (47) close contacts within the same asymmetric unit are listed below, sorted by their clash magnitude.

Atom-1	Atom-2	Interatomic distance (Å)	Clash overlap (Å)
1:A:86:MET:HE1	2:A:201:MH0:H14	1.62	0.82
1:B:54[B]:ASP:OD2	6:B:401:HOH:O	2.00	0.78
1:A:97[B]:PHE:HZ	2:A:201:MH0:H19	1.50	0.77
1:A:62:LEU:HD22	6:A:342:HOH:O	1.90	0.72
1:A:65[B]:GLU:OE1	6:A:301:HOH:O	2.09	0.70
1:B:100:LEU:HD23	2:B:303:MH0:H23	1.75	0.69
1:A:97[B]:PHE:CZ	2:A:201:MH0:H19	2.29	0.68
1:B:97:PHE:HA	2:B:303:MH0:H21	1.77	0.66
1:A:122:ARG:NH1	6:A:302:HOH:O	2.28	0.66
2:B:303:MH0:H4	2:B:303:MH0:H28	1.78	0.65
1:B:65:GLU:OE1	6:B:402:HOH:O	2.14	0.64
1:B:25:LEU:HD22	1:B:32[B]:LYS:HG2	1.80	0.63
4:B:302:T6C:H2	2:B:303:MH0:C4D	2.30	0.61
1:B:93:THR:HG22	1:B:95:GLY:H	1.65	0.61
1:B:100:LEU:CD2	2:B:303:MH0:H23	2.32	0.58
1:B:97:PHE:HA	2:B:303:MH0:CMC	2.32	0.58
1:B:83:LEU:HD22	2:B:303:MH0:H14	1.88	0.55
2:A:201:MH0:H28	2:A:201:MH0:H4	1.88	0.55
1:A:111[A]:SER:HB2	3:A:205:EDO:H21	1.88	0.54
1:B:92:LEU:HG	1:B:93:THR:H	1.73	0.54
1:A:62:LEU:HG	2:A:201:MH0:H15	1.89	0.53
1:A:105:VAL:O	1:A:109[A]:ARG:HG3	2.08	0.53
1:B:92:LEU:HD21	2:B:303:MH0:CHD	2.40	0.52
1:A:58:LYS:O	1:A:62:LEU:HD22	2.12	0.50
1:A:131:LEU:HD22	1:A:136:MET:HE3	1.96	0.48
1:B:97:PHE:CD2	2:B:303:MH0:H22	2.47	0.48
2:A:201:MH0:C4D	4:A:204:T6C:H3	2.42	0.48
1:B:84:VAL:HG22	1:B:136:MET:HB2	1.95	0.47
1:B:97:PHE:HE2	2:B:303:MH0:H19	1.80	0.46
2:A:201:MH0:H10	2:A:201:MH0:H7	1.98	0.46
1:B:62[B]:LEU:HG	6:B:449:HOH:O	2.17	0.45
1:A:94:THR:HB	1:A:128:VAL:HG13	1.99	0.45

Continued on next page...

Continued from previous page...

Atom-1	Atom-2	Interatomic distance (Å)	Clash overlap (Å)
1:B:131:LEU:HD22	1:B:136:MET:HE3	1.99	0.44
1:A:97[B]:PHE:CZ	2:A:201:MH0:CHC	3.01	0.43
1:B:35:PHE:CZ	2:B:303:MH0:H31	2.53	0.43
1:A:83:LEU:HD13	2:A:201:MH0:H20	2.01	0.43
1:A:92:LEU:HD11	2:A:201:MH0:CHD	2.48	0.43
1:B:14[B]:ARG:HA	1:B:57[B]:GLU:HG3	2.01	0.43
1:B:51:LYS:NZ	6:B:406:HOH:O	2.48	0.43
1:B:94:THR:HB	1:B:128:VAL:HG13	2.00	0.43
1:A:84:VAL:HG22	1:A:136:MET:HB2	2.02	0.42
1:B:82:THR:O	1:B:86:MET:HG3	2.20	0.42
1:A:62:LEU:CD2	6:A:342:HOH:O	2.59	0.41
1:A:54:ASP:O	1:A:58:LYS:HG3	2.19	0.41
1:B:97:PHE:CG	2:B:303:MH0:H22	2.56	0.41
1:A:113[A]:GLN:OE1	3:A:205:EDO:H22	2.20	0.40
2:A:201:MH0:H13	2:A:201:MH0:H16	1.94	0.40

There are no symmetry-related clashes.

5.3 Torsion angles

5.3.1 Protein backbone

In the following table, the Percentiles column shows the percent Ramachandran outliers of the chain as a percentile score with respect to all X-ray entries followed by that with respect to entries of similar resolution.

The Analysed column shows the number of residues for which the backbone conformation was analysed, and the total number of residues.

Mol	Chain	Analysed	Favoured	Allowed	Outliers	Percentiles	
1	A	157/137 (115%)	155 (99%)	2 (1%)	0	100	100
1	B	154/137 (112%)	152 (99%)	2 (1%)	0	100	100
All	All	311/274 (114%)	307 (99%)	4 (1%)	0	100	100

There are no Ramachandran outliers to report.

5.3.2 Protein sidechains

In the following table, the Percentiles column shows the percent sidechain outliers of the chain as a percentile score with respect to all X-ray entries followed by that with respect to entries of similar

resolution.

The Analysed column shows the number of residues for which the sidechain conformation was analysed, and the total number of residues.

Mol	Chain	Analysed	Rotameric	Outliers	Percentiles	
1	A	136/116 (117%)	133 (98%)	3 (2%)	47	18
1	B	135/116 (116%)	131 (97%)	4 (3%)	36	10
All	All	271/232 (117%)	264 (97%)	7 (3%)	54	13

All (7) residues with a non-rotameric sidechain are listed below:

Mol	Chain	Res	Type
1	A	92	LEU
1	A	118[A]	GLN
1	A	118[B]	GLN
1	B	44[A]	GLN
1	B	44[B]	GLN
1	B	62[A]	LEU
1	B	62[B]	LEU

Sometimes sidechains can be flipped to improve hydrogen bonding and reduce clashes. All (1) such sidechains are listed below:

Mol	Chain	Res	Type
1	B	96	ASN

5.3.3 RNA ⓘ

There are no RNA molecules in this entry.

5.4 Non-standard residues in protein, DNA, RNA chains ⓘ

There are no non-standard protein/DNA/RNA residues in this entry.

5.5 Carbohydrates ⓘ

There are no oligosaccharides in this entry.

5.6 Ligand geometry

12 ligands are modelled in this entry.

In the following table, the Counts columns list the number of bonds (or angles) for which Mogul statistics could be retrieved, the number of bonds (or angles) that are observed in the model and the number of bonds (or angles) that are defined in the Chemical Component Dictionary. The Link column lists molecule types, if any, to which the group is linked. The Z score for a bond length (or angle) is the number of standard deviations the observed value is removed from the expected value. A bond length (or angle) with $|Z| > 2$ is considered an outlier worth inspection. RMSZ is the root-mean-square of all Z scores of the bond lengths (or angles).

Mol	Type	Chain	Res	Link	Bond lengths			Bond angles		
					Counts	RMSZ	$\# Z > 2$	Counts	RMSZ	$\# Z > 2$
3	EDO	A	205	-	3,3,3	0.46	0	2,2,2	0.19	0
4	T6C	B	302	-	10,10,10	1.15	1 (10%)	14,14,14	0.87	0
5	SO4	A	206	-	4,4,4	0.20	0	6,6,6	0.19	0
2	MH0	A	201	-	46,46,50	5.93	33 (71%)	63,77,82	4.28	41 (65%)
5	SO4	A	207	-	4,4,4	0.26	0	6,6,6	0.11	0
4	T6C	A	204	-	10,10,10	1.10	0	14,14,14	0.77	0
3	EDO	A	202	-	3,3,3	0.61	0	2,2,2	0.62	0
2	MH0	B	303	-	46,46,50	5.89	32 (69%)	63,77,82	4.31	39 (61%)
5	SO4	B	304	-	4,4,4	0.33	0	6,6,6	0.17	0
3	EDO	B	301	-	3,3,3	0.52	0	2,2,2	0.71	0
3	EDO	A	203	-	3,3,3	0.36	0	2,2,2	0.53	0
5	SO4	A	208	-	4,4,4	0.21	0	6,6,6	0.32	0

In the following table, the Chirals column lists the number of chiral outliers, the number of chiral centers analysed, the number of these observed in the model and the number defined in the Chemical Component Dictionary. Similar counts are reported in the Torsion and Rings columns. '-' means no outliers of that kind were identified.

Mol	Type	Chain	Res	Link	Chirals	Torsions	Rings
3	EDO	A	205	-	-	0/1/1/1	-
4	T6C	B	302	-	-	-	0/1/1/1
2	MH0	A	201	-	-	4/9/49/54	-
4	T6C	A	204	-	-	-	0/1/1/1
3	EDO	A	202	-	-	0/1/1/1	-
2	MH0	B	303	-	-	7/9/49/54	-
3	EDO	B	301	-	-	0/1/1/1	-
3	EDO	A	203	-	-	0/1/1/1	-

All (66) bond length outliers are listed below:

Mol	Chain	Res	Type	Atoms	Z	Observed(Å)	Ideal(Å)
2	A	201	MH0	C3D-C2D	15.89	1.67	1.36
2	B	303	MH0	C3D-C2D	15.76	1.67	1.36
2	A	201	MH0	C4C-C3C	12.51	1.66	1.45
2	B	303	MH0	C4B-NB	12.04	1.62	1.38
2	A	201	MH0	C4B-NB	11.67	1.61	1.38
2	B	303	MH0	C4C-C3C	11.53	1.64	1.45
2	A	201	MH0	C1B-NB	-10.96	1.21	1.40
2	B	303	MH0	C1B-NB	-10.86	1.21	1.40
2	B	303	MH0	C1D-C2D	-10.66	1.22	1.44
2	A	201	MH0	C1D-C2D	-10.46	1.23	1.44
2	A	201	MH0	C4C-NC	-9.49	1.20	1.38
2	B	303	MH0	C4C-NC	-9.47	1.20	1.38
2	B	303	MH0	C3B-C2B	8.39	1.54	1.36
2	A	201	MH0	C1D-ND	-8.25	1.26	1.40
2	B	303	MH0	C1D-ND	-8.21	1.26	1.40
2	A	201	MH0	C3B-C2B	8.16	1.54	1.36
2	B	303	MH0	CHD-C1D	-7.74	1.23	1.38
2	B	303	MH0	C3C-C2C	-7.61	1.20	1.36
2	A	201	MH0	CHD-C1D	-7.37	1.23	1.38
2	A	201	MH0	CHC-C4B	-7.02	1.23	1.39
2	A	201	MH0	C3C-C2C	-6.80	1.22	1.36
2	A	201	MH0	CHA-C4D	6.75	1.54	1.39
2	B	303	MH0	CHC-C4B	-6.71	1.23	1.39
2	B	303	MH0	CHA-C4D	6.61	1.54	1.39
2	A	201	MH0	C4A-C3A	-6.37	1.31	1.44
2	A	201	MH0	CHD-C4C	6.23	1.53	1.39
2	A	201	MH0	CMC-C2C	6.09	1.63	1.50
2	B	303	MH0	CHD-C4C	5.99	1.52	1.39
2	B	303	MH0	C4A-C3A	-5.92	1.32	1.44
2	B	303	MH0	CHC-C1C	-5.60	1.27	1.38
2	A	201	MH0	CHC-C1C	-5.59	1.27	1.38
2	B	303	MH0	C1A-C2A	-5.52	1.35	1.45
2	B	303	MH0	CHB-C4A	5.30	1.51	1.39
2	A	201	MH0	C4D-ND	5.23	1.49	1.38
2	A	201	MH0	C1A-C2A	-5.18	1.36	1.45
2	B	303	MH0	C4D-ND	5.09	1.48	1.38
2	A	201	MH0	CHB-C4A	5.06	1.50	1.39
2	A	201	MH0	FE-NB	5.00	2.25	1.98
2	B	303	MH0	FE-NB	4.96	2.25	1.98
2	B	303	MH0	CMC-C2C	4.89	1.60	1.50
2	B	303	MH0	C1A-NA	-4.84	1.31	1.40
2	A	201	MH0	C1A-NA	-4.80	1.32	1.40
2	A	201	MH0	CAA-C2A	4.58	1.63	1.51

Continued on next page...

Continued from previous page...

Mol	Chain	Res	Type	Atoms	Z	Observed(Å)	Ideal(Å)
2	B	303	MH0	CAA-C2A	4.52	1.63	1.51
2	B	303	MH0	C4D-C3D	-4.42	1.35	1.44
2	A	201	MH0	C4D-C3D	-4.41	1.35	1.44
2	A	201	MH0	CAB-C3B	-4.10	1.40	1.51
2	B	303	MH0	CAB-C3B	-4.05	1.40	1.51
2	B	303	MH0	O2A-CGA	-3.91	1.17	1.30
2	A	201	MH0	O2A-CGA	-3.88	1.18	1.30
2	A	201	MH0	CHB-C1B	-3.50	1.31	1.38
2	B	303	MH0	C1B-C2B	-3.32	1.37	1.44
2	A	201	MH0	C1B-C2B	-3.20	1.38	1.44
2	B	303	MH0	CHB-C1B	-3.12	1.32	1.38
2	A	201	MH0	FE-NA	3.04	2.15	1.98
2	B	303	MH0	FE-NA	3.00	2.14	1.98
2	B	303	MH0	O1A-CGA	2.64	1.30	1.22
2	A	201	MH0	FE-ND	-2.63	1.83	1.98
2	B	303	MH0	FE-ND	-2.60	1.83	1.98
2	A	201	MH0	CMA-C3A	2.58	1.56	1.50
2	A	201	MH0	O1A-CGA	2.58	1.30	1.22
2	B	303	MH0	CMA-C3A	2.49	1.55	1.50
2	B	303	MH0	C4B-C3B	-2.46	1.40	1.45
2	A	201	MH0	C4B-C3B	-2.40	1.41	1.45
2	A	201	MH0	CBB-CAB	-2.15	1.42	1.51
4	B	302	T6C	C2-CL2	2.09	1.78	1.73

All (80) bond angle outliers are listed below:

Mol	Chain	Res	Type	Atoms	Z	Observed(°)	Ideal(°)
2	B	303	MH0	C3B-C4B-NB	-13.20	97.60	110.35
2	A	201	MH0	C3B-C4B-NB	-12.93	97.86	110.35
2	A	201	MH0	C4D-C3D-C2D	-12.31	95.64	107.09
2	B	303	MH0	C4D-C3D-C2D	-12.25	95.69	107.09
2	B	303	MH0	C2D-C1D-ND	8.91	120.08	109.84
2	A	201	MH0	C2D-C1D-ND	8.43	119.53	109.84
2	B	303	MH0	C1C-C2C-C3C	8.38	115.80	106.98
2	A	201	MH0	CMD-C2D-C1D	7.41	136.61	125.03
2	A	201	MH0	C1C-C2C-C3C	7.31	114.67	106.98
2	B	303	MH0	CMD-C2D-C1D	7.30	136.45	125.03
2	A	201	MH0	CHC-C4B-C3B	6.95	134.91	124.77
2	B	303	MH0	C1B-NB-C4B	6.23	112.58	105.21
2	B	303	MH0	CHC-C4B-C3B	6.18	133.79	124.77
2	B	303	MH0	CAD-C3D-C4D	6.09	134.55	125.03
2	A	201	MH0	C1C-NC-C4C	6.06	112.39	105.21

Continued on next page...

Continued from previous page...

Mol	Chain	Res	Type	Atoms	Z	Observed(°)	Ideal(°)
2	B	303	MH0	C4A-C3A-C2A	6.03	113.32	106.98
2	A	201	MH0	CAD-C3D-C4D	5.98	134.38	125.03
2	B	303	MH0	C1C-NC-C4C	5.96	112.26	105.21
2	A	201	MH0	C1B-NB-C4B	5.74	112.01	105.21
2	A	201	MH0	C4A-C3A-C2A	5.63	112.90	106.98
2	A	201	MH0	C2B-C1B-NB	5.54	116.20	109.84
2	B	303	MH0	CMA-C3A-C4A	5.31	133.33	125.03
2	A	201	MH0	CAB-C3B-C2B	-5.15	118.10	127.56
2	A	201	MH0	CHA-C1A-NA	-4.94	118.25	124.37
2	B	303	MH0	C2C-C1C-NC	-4.92	104.18	109.84
2	B	303	MH0	O2A-CGA-O1A	-4.92	110.67	123.33
2	A	201	MH0	O2A-CGA-O1A	-4.87	110.81	123.33
2	B	303	MH0	C2B-C1B-NB	4.85	115.41	109.84
2	A	201	MH0	CMD-C2D-C3D	-4.83	116.72	126.75
2	B	303	MH0	CMA-C3A-C2A	-4.73	113.35	126.15
2	B	303	MH0	CMD-C2D-C3D	-4.61	117.17	126.75
2	B	303	MH0	C3A-C4A-NA	-4.49	104.71	109.90
2	B	303	MH0	CHA-C1A-NA	-4.37	118.96	124.37
2	A	201	MH0	C1B-C2B-C3B	-4.33	102.43	106.98
2	A	201	MH0	CAB-C3B-C4B	4.28	130.36	124.79
2	B	303	MH0	C4C-C3C-C2C	-4.28	100.66	106.89
2	A	201	MH0	CHB-C4A-NA	4.27	129.02	124.42
2	A	201	MH0	C4C-C3C-C2C	-4.22	100.75	106.89
2	A	201	MH0	C2C-C1C-NC	-4.06	105.17	109.84
2	B	303	MH0	CBB-CAB-C3B	3.95	123.12	112.42
2	A	201	MH0	C4B-CHC-C1C	3.92	134.17	125.69
2	B	303	MH0	CHC-C4B-NB	3.90	128.62	124.42
2	B	303	MH0	CAA-C2A-C1A	3.79	131.30	124.70
2	A	201	MH0	CHB-C1B-C2B	-3.77	116.23	126.95
2	B	303	MH0	C3D-C4D-ND	3.77	114.26	109.90
2	B	303	MH0	CHD-C4C-NC	3.76	128.47	124.42
2	A	201	MH0	CMC-C2C-C1C	-3.75	119.17	125.03
2	B	303	MH0	CAC-C3C-C4C	3.71	129.62	124.79
2	A	201	MH0	CBB-CAB-C3B	3.70	122.45	112.42
2	B	303	MH0	C1B-C2B-C3B	-3.69	103.09	106.98
2	A	201	MH0	C3A-C4A-NA	-3.68	105.65	109.90
2	A	201	MH0	C3D-C4D-ND	3.66	114.13	109.90
2	B	303	MH0	CHB-C1B-C2B	-3.60	116.73	126.95
2	A	201	MH0	CMA-C3A-C4A	3.58	130.63	125.03
2	A	201	MH0	CMA-C3A-C2A	-3.58	116.47	126.15
2	A	201	MH0	C1A-C2A-C3A	-3.56	101.71	106.89
2	B	303	MH0	C1A-C2A-C3A	-3.53	101.75	106.89

Continued on next page...

Continued from previous page...

Mol	Chain	Res	Type	Atoms	Z	Observed(°)	Ideal(°)
2	A	201	MH0	CMB-C2B-C1B	3.51	130.52	125.03
2	A	201	MH0	CAC-C3C-C4C	3.50	129.34	124.79
2	A	201	MH0	C3C-C4C-NC	-3.46	107.01	110.35
2	A	201	MH0	CAA-C2A-C1A	3.40	130.61	124.70
2	B	303	MH0	C3C-C4C-NC	-3.37	107.10	110.35
2	B	303	MH0	CHB-C4A-NA	3.34	128.02	124.42
2	B	303	MH0	CHD-C1D-C2D	-3.30	117.57	126.95
2	B	303	MH0	CAB-C3B-C2B	-3.29	121.52	127.56
2	B	303	MH0	CMC-C2C-C1C	-3.19	120.05	125.03
2	A	201	MH0	C4B-C3B-C2B	3.16	111.50	106.89
2	B	303	MH0	C2A-C1A-NA	3.08	113.54	110.17
2	A	201	MH0	CHD-C1D-C2D	-3.06	118.26	126.95
2	B	303	MH0	C4B-C3B-C2B	3.03	111.31	106.89
2	A	201	MH0	C2A-C1A-NA	3.02	113.48	110.17
2	B	303	MH0	C4B-CHC-C1C	2.86	131.87	125.69
2	B	303	MH0	CHB-C1B-NB	2.82	127.85	124.37
2	A	201	MH0	CHC-C4B-NB	2.60	127.23	124.42
2	A	201	MH0	CHB-C1B-NB	2.59	127.57	124.37
2	B	303	MH0	CMB-C2B-C1B	2.50	128.94	125.03
2	A	201	MH0	CHD-C4C-NC	2.33	126.93	124.42
2	A	201	MH0	CHA-C4D-C3D	-2.24	121.50	125.03
2	A	201	MH0	CAA-CBA-CGA	-2.23	107.74	113.67
2	B	303	MH0	CHA-C4D-C3D	-2.19	121.56	125.03

There are no chirality outliers.

All (11) torsion outliers are listed below:

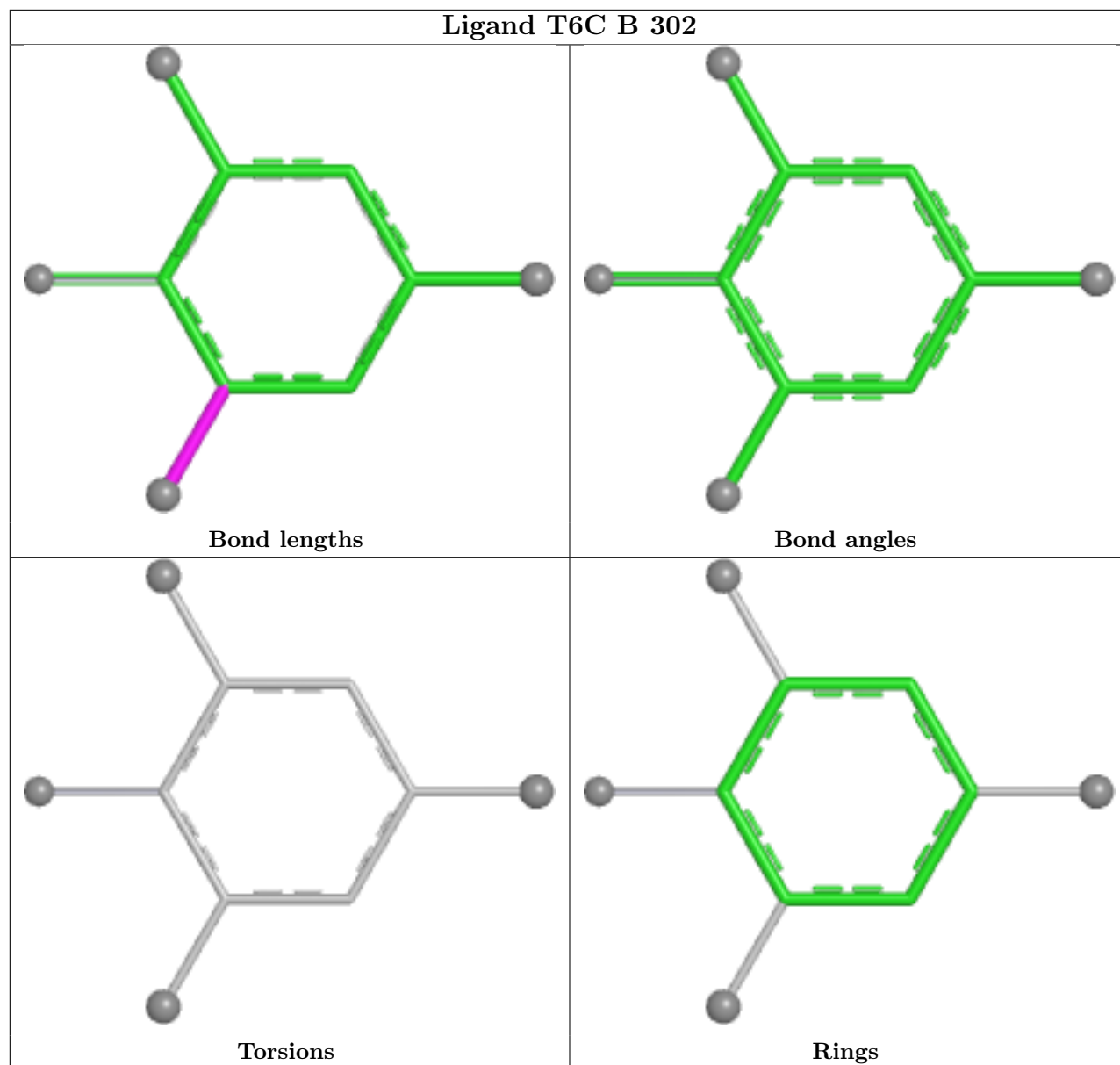
Mol	Chain	Res	Type	Atoms
2	A	201	MH0	C2C-C3C-CAC-CBC
2	B	303	MH0	C2C-C3C-CAC-CBC
2	A	201	MH0	C4C-C3C-CAC-CBC
2	B	303	MH0	C4C-C3C-CAC-CBC
2	B	303	MH0	C2A-CAA-CBA-CGA
2	B	303	MH0	C2B-C3B-CAB-CBB
2	B	303	MH0	C4B-C3B-CAB-CBB
2	A	201	MH0	CAA-CBA-CGA-O2A
2	B	303	MH0	CAA-CBA-CGA-O1A
2	B	303	MH0	CAA-CBA-CGA-O2A
2	A	201	MH0	CAA-CBA-CGA-O1A

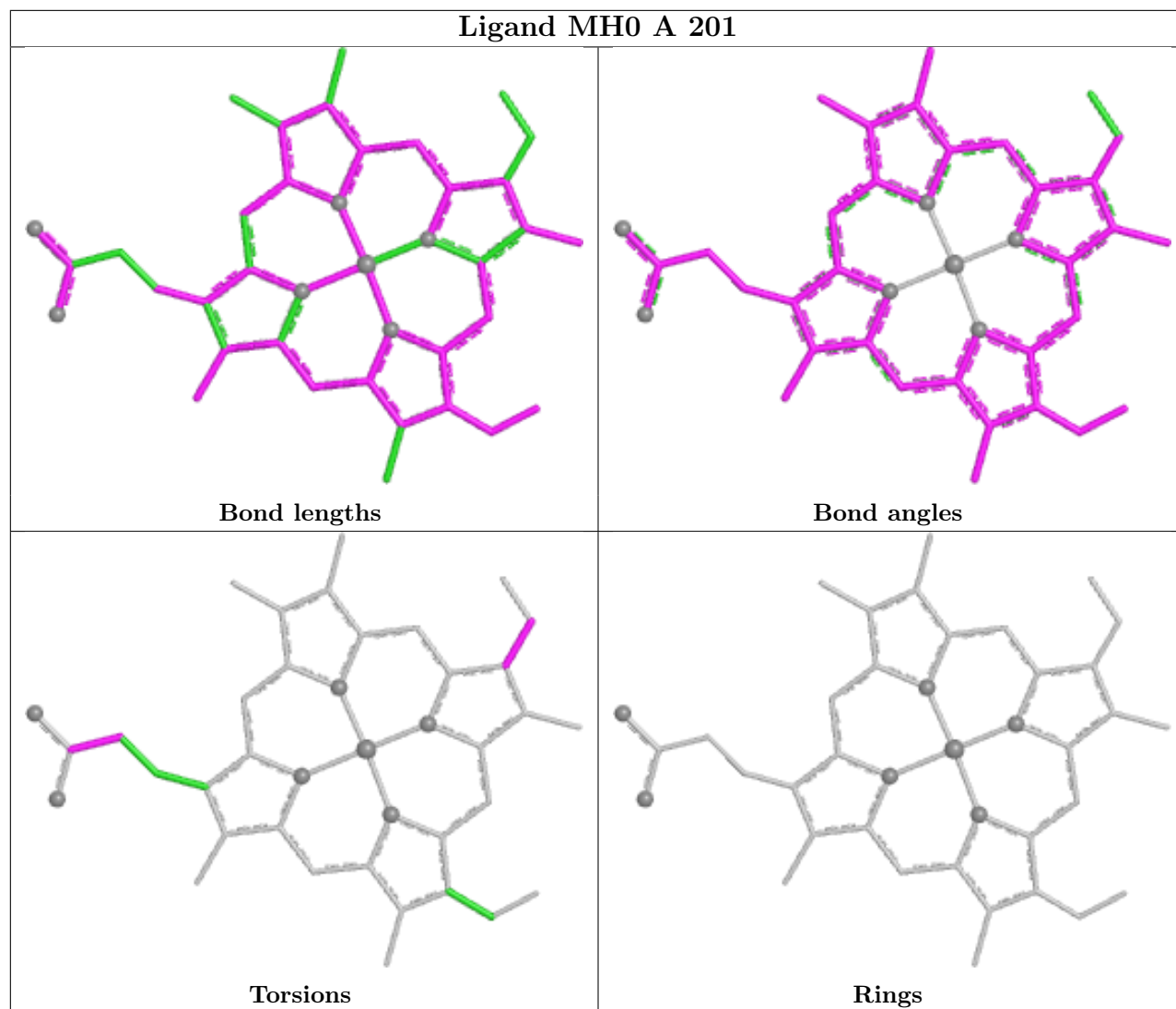
There are no ring outliers.

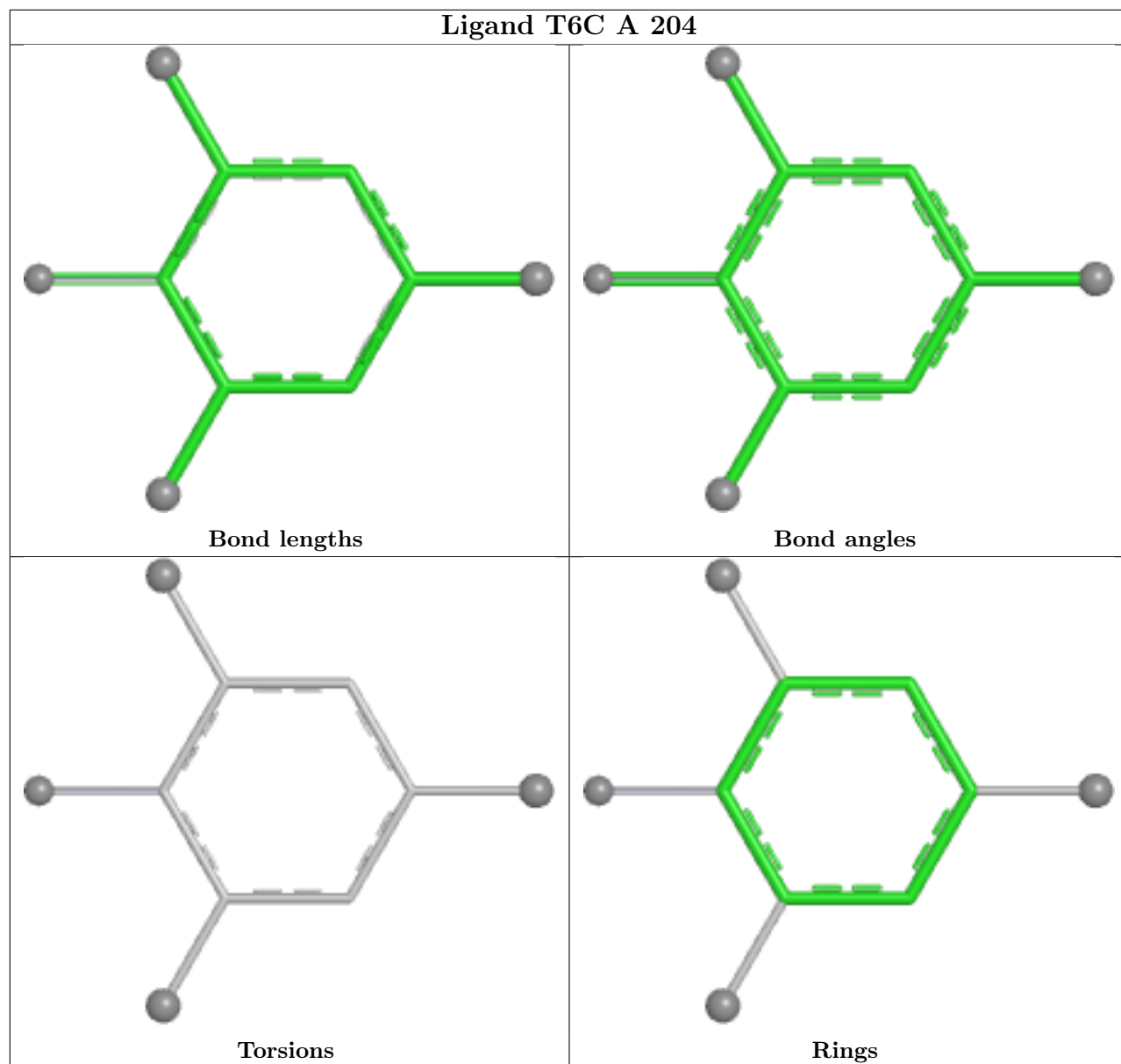
5 monomers are involved in 25 short contacts:

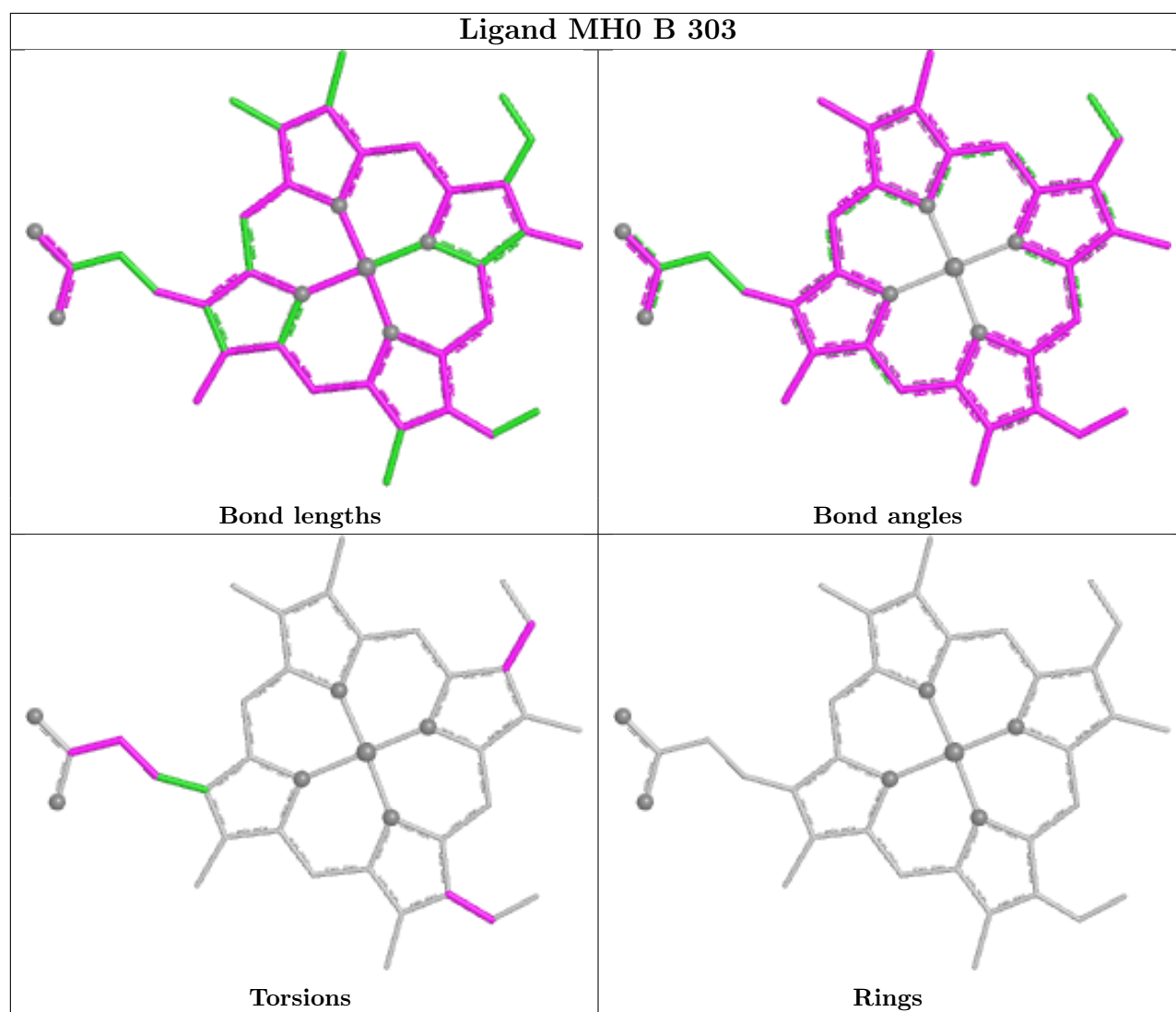
Mol	Chain	Res	Type	Clashes	Symm-Clashes
3	A	205	EDO	2	0
4	B	302	T6C	1	0
2	A	201	MH0	11	0
4	A	204	T6C	1	0
2	B	303	MH0	12	0

The following is a two-dimensional graphical depiction of Mogul quality analysis of bond lengths, bond angles, torsion angles, and ring geometry for all instances of the Ligand of Interest. In addition, ligands with molecular weight > 250 and outliers as shown on the validation Tables will also be included. For torsion angles, if less than 5% of the Mogul distribution of torsion angles is within 10 degrees of the torsion angle in question, then that torsion angle is considered an outlier. Any bond that is central to one or more torsion angles identified as an outlier by Mogul will be highlighted in the graph. For rings, the root-mean-square deviation (RMSD) between the ring in question and similar rings identified by Mogul is calculated over all ring torsion angles. If the average RMSD is greater than 60 degrees and the minimal RMSD between the ring in question and any Mogul-identified rings is also greater than 60 degrees, then that ring is considered an outlier. The outliers are highlighted in purple. The color gray indicates Mogul did not find sufficient equivalents in the CSD to analyse the geometry.









5.7 Other polymers [i](#)

There are no such residues in this entry.

5.8 Polymer linkage issues [i](#)

There are no chain breaks in this entry.

6 Fit of model and data [i](#)

6.1 Protein, DNA and RNA chains [i](#)

In the following table, the column labelled ‘#RSRZ> 2’ contains the number (and percentage) of RSRZ outliers, followed by percent RSRZ outliers for the chain as percentile scores relative to all X-ray entries and entries of similar resolution. The OWAB column contains the minimum, median, 95th percentile and maximum values of the occupancy-weighted average B-factor per residue. The column labelled ‘Q< 0.9’ lists the number of (and percentage) of residues with an average occupancy less than 0.9.

Mol	Chain	Analysed	<RSRZ>	#RSRZ>2	OWAB(Å ²)	Q<0.9
1	A	133/137 (97%)	-0.78	0 100 100	10, 23, 52, 80	28 (21%)
1	B	132/137 (96%)	-0.74	0 100 100	10, 23, 48, 81	26 (19%)
All	All	265/274 (96%)	-0.76	0 100 100	10, 23, 51, 81	54 (20%)

There are no RSRZ outliers to report.

6.2 Non-standard residues in protein, DNA, RNA chains [i](#)

There are no non-standard protein/DNA/RNA residues in this entry.

6.3 Carbohydrates [i](#)

There are no monosaccharides in this entry.

6.4 Ligands [i](#)

In the following table, the Atoms column lists the number of modelled atoms in the group and the number defined in the chemical component dictionary. The B-factors column lists the minimum, median, 95th percentile and maximum values of B factors of atoms in the group. The column labelled ‘Q< 0.9’ lists the number of atoms with occupancy less than 0.9.

Mol	Type	Chain	Res	Atoms	RSCC	RSR	B-factors(Å ²)	Q<0.9
2	MH0	A	201	39/43	0.95	0.13	85,112,124,128	39
2	MH0	B	303	39/43	0.95	0.14	75,98,111,117	39
3	EDO	A	205	4/4	0.97	0.09	51,56,56,71	0
5	SO4	A	208	5/5	0.97	0.08	19,27,32,36	5
3	EDO	A	202	4/4	0.98	0.06	20,21,23,30	0
3	EDO	B	301	4/4	0.98	0.05	21,22,22,30	0
4	T6C	A	204	10/10	0.98	0.06	34,41,50,51	0

Continued on next page...

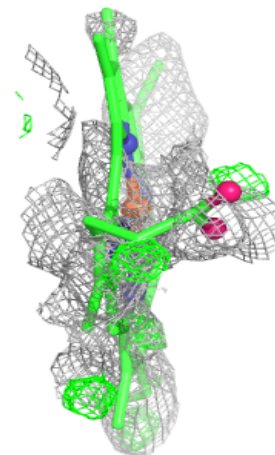
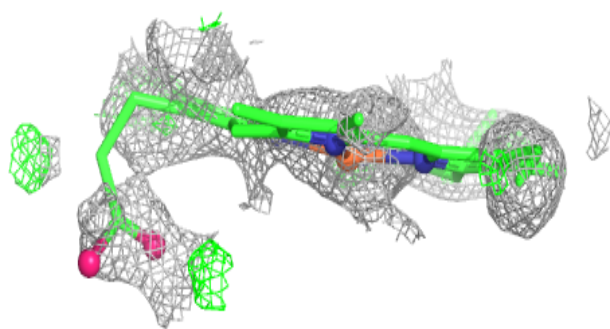
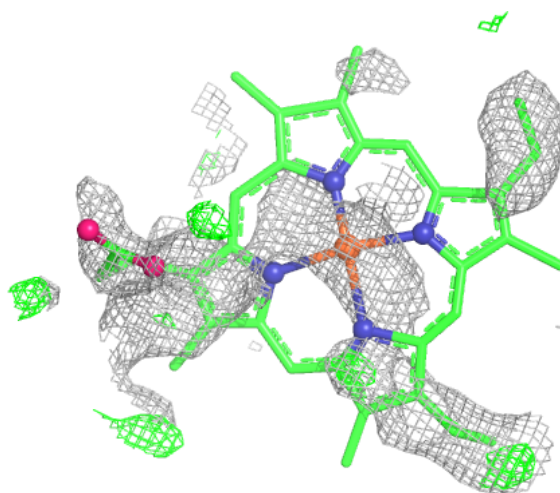
Continued from previous page...

Mol	Type	Chain	Res	Atoms	RSCC	RSR	B-factors(\AA^2)	Q<0.9
3	EDO	A	203	4/4	0.98	0.06	23,30,31,35	0
5	SO4	B	304	5/5	0.98	0.08	20,29,34,39	5
5	SO4	A	207	5/5	0.99	0.03	25,29,34,45	0
4	T6C	B	302	10/10	0.99	0.05	32,42,48,51	0
5	SO4	A	206	5/5	0.99	0.04	26,29,36,43	0

The following is a graphical depiction of the model fit to experimental electron density of all instances of the Ligand of Interest. In addition, ligands with molecular weight > 250 and outliers as shown on the geometry validation Tables will also be included. Each fit is shown from different orientation to approximate a three-dimensional view.

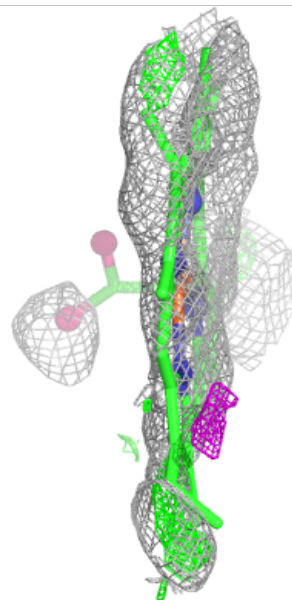
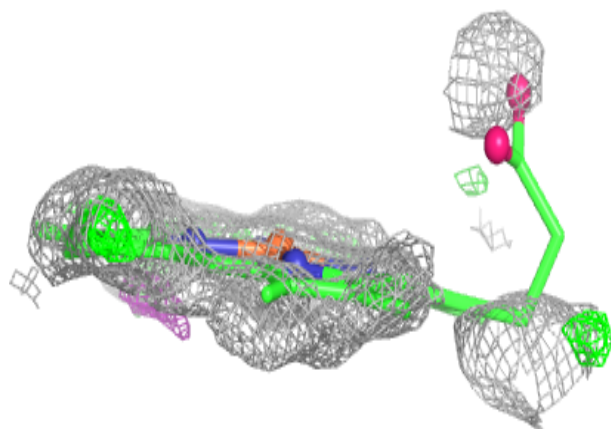
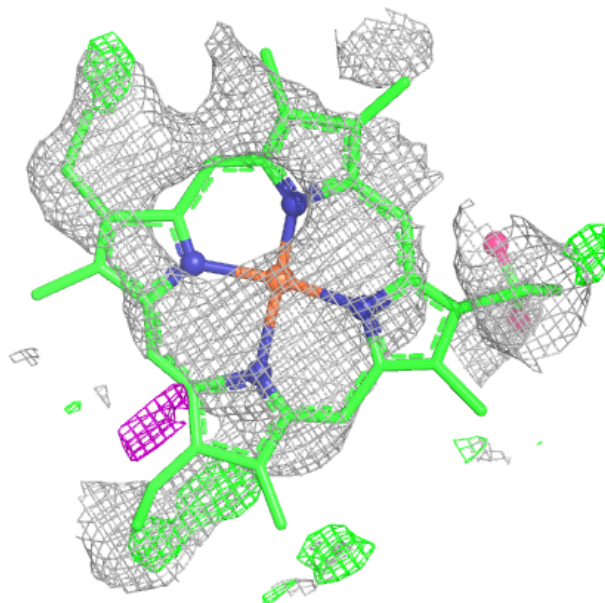
Electron density around MH0 A 201:

2mF_o-DF_c (at 0.7 rmsd) in gray
mF_o-DF_c (at 3 rmsd) in purple (negative)
and green (positive)



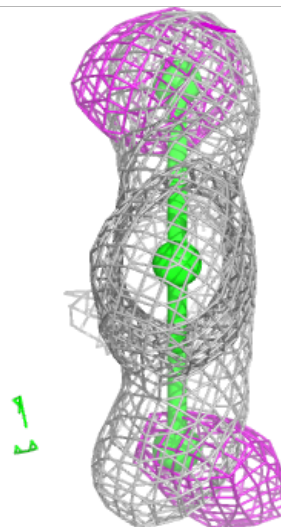
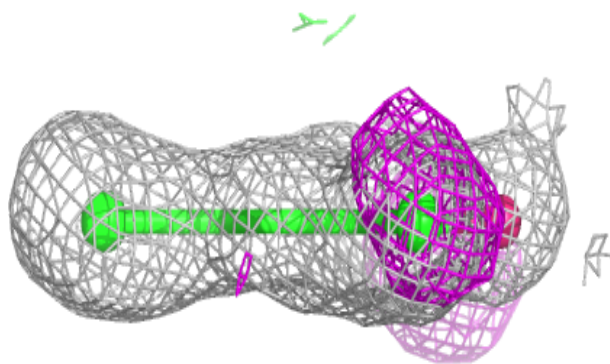
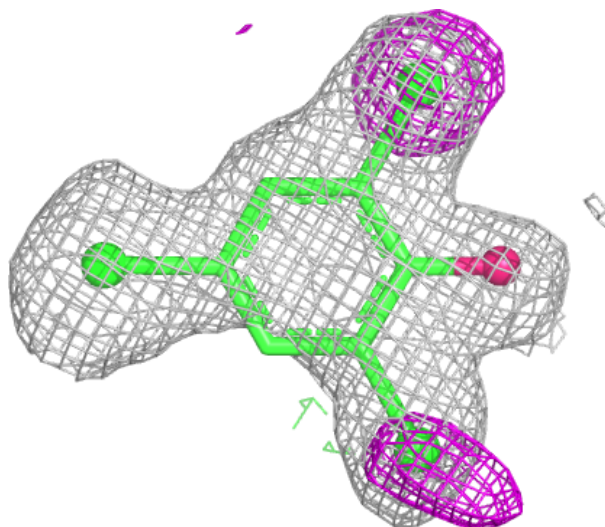
Electron density around MH0 B 303:

$2mF_o-DF_c$ (at 0.7 rmsd) in gray
 mF_o-DF_c (at 3 rmsd) in purple (negative)
and green (positive)



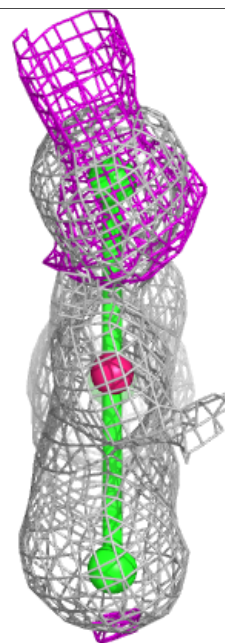
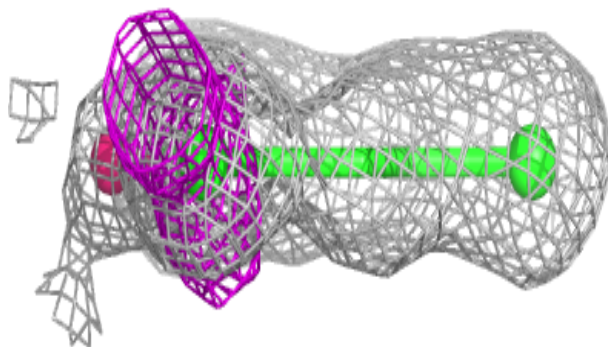
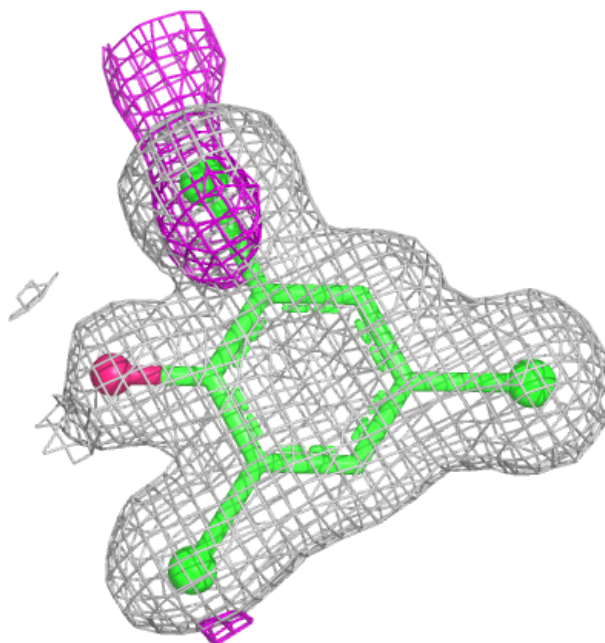
Electron density around T6C A 204:

$2mF_o-DF_c$ (at 0.7 rmsd) in gray
 mF_o-DF_c (at 3 rmsd) in purple (negative)
and green (positive)



Electron density around T6C B 302:

$2mF_o-DF_c$ (at 0.7 rmsd) in gray
 mF_o-DF_c (at 3 rmsd) in purple (negative)
and green (positive)



6.5 Other polymers ⓘ

There are no such residues in this entry.