



Full wwPDB EM Validation Report ⓘ

Oct 12, 2024 – 10:44 PM EDT

PDB ID : 6VHH
EMDB ID : EMD-21205
Title : Human Teneurin-2 and human Latrophilin-3 binary complex
Authors : Xie, Y.; Li, J.; Arac, D.; Zhao, M.
Deposited on : 2020-01-09
Resolution : 2.97 Å(reported)

This is a Full wwPDB EM Validation Report for a publicly released PDB entry.

We welcome your comments at validation@mail.wwpdb.org

A user guide is available at

<https://www.wwpdb.org/validation/2017/EMValidationReportHelp>

with specific help available everywhere you see the ⓘ symbol.

The types of validation reports are described at

<http://www.wwpdb.org/validation/2017/FAQs#types>.

The following versions of software and data (see [references ⓘ](#)) were used in the production of this report:

EMDB validation analysis : 0.0.1.dev113
Mogul : 2022.3.0, CSD as543be (2022)
MolProbity : 4.02b-467
Percentile statistics : 20231227.v01 (using entries in the PDB archive December 27th 2023)
MapQ : 1.9.13
Ideal geometry (proteins) : Engh & Huber (2001)
Ideal geometry (DNA, RNA) : Parkinson et al. (1996)
Validation Pipeline (wwPDB-VP) : 2.39

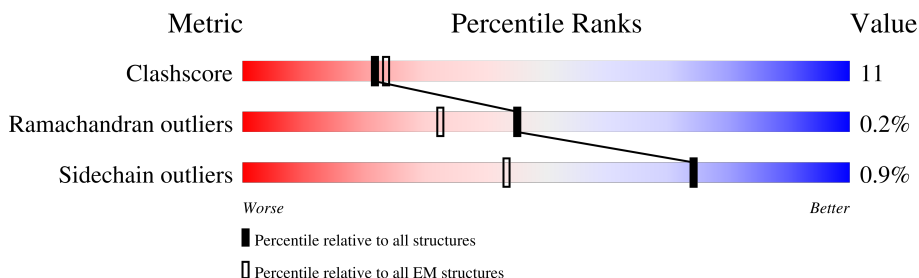
1 Overall quality at a glance

The following experimental techniques were used to determine the structure:

ELECTRON MICROSCOPY

The reported resolution of this entry is 2.97 Å.

Percentile scores (ranging between 0-100) for global validation metrics of the entry are shown in the following graphic. The table shows the number of entries on which the scores are based.



Metric	Whole archive (#Entries)	EM structures (#Entries)
Clashscore	210492	15764
Ramachandran outliers	207382	16835
Sidechain outliers	206894	16415

The table below summarises the geometric issues observed across the polymeric chains and their fit to the map. The red, orange, yellow and green segments of the bar indicate the fraction of residues that contain outliers for ≥ 3 , 2, 1 and 0 types of geometric quality criteria respectively. A grey segment represents the fraction of residues that are not modelled. The numeric value for each fraction is indicated below the corresponding segment, with a dot representing fractions $\leq 5\%$. The upper red bar (where present) indicates the fraction of residues that have poor fit to the EM map (all-atom inclusion $< 40\%$). The numeric value is given above the bar.

Mol	Chain	Length	Quality of chain
1	A	1928	
2	B	852	
3	C	3	
4	D	3	
5	E	2	
5	F	2	
5	G	2	

The following table lists non-polymeric compounds, carbohydrate monomers and non-standard

residues in protein, DNA, RNA chains that are outliers for geometric or electron-density-fit criteria:

Mol	Type	Chain	Res	Chirality	Geometry	Clashes	Electron density
3	NAG	C	2	X	-	-	-
5	NAG	E	1	X	-	-	-
6	NAG	A	2705	X	-	-	-

2 Entry composition

There are 6 unique types of molecules in this entry. The entry contains 14219 atoms, of which 0 are hydrogens and 0 are deuteriums.

In the tables below, the AltConf column contains the number of residues with at least one atom in alternate conformation and the Trace column contains the number of residues modelled with at most 2 atoms.

- Molecule 1 is a protein called Teneurin-2.

Mol	Chain	Residues	Atoms					AltConf	Trace
1	A	1723	Total	C	N	O	S	0	0
			13243	8404	2304	2484	51		

There are 9 discrepancies between the modelled and reference sequences:

Chain	Residue	Modelled	Actual	Comment	Reference
A	1728	SER	ASN	conflict	UNP Q9NT68
A	2345	GLY	ASP	conflict	UNP Q9NT68
A	2403	LYS	THR	conflict	UNP Q9NT68
A	2649	HIS	-	expression tag	UNP Q9NT68
A	2650	HIS	-	expression tag	UNP Q9NT68
A	2651	HIS	-	expression tag	UNP Q9NT68
A	2652	HIS	-	expression tag	UNP Q9NT68
A	2653	HIS	-	expression tag	UNP Q9NT68
A	2654	HIS	-	expression tag	UNP Q9NT68

- Molecule 2 is a protein called Adhesion G protein-coupled receptor L3.

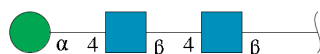
Mol	Chain	Residues	Atoms					AltConf	Trace
2	B	98	Total	C	N	O	S	0	0
			772	479	129	153	11		

There are 6 discrepancies between the modelled and reference sequences:

Chain	Residue	Modelled	Actual	Comment	Reference
B	867	HIS	-	expression tag	UNP Q9HAR2
B	868	HIS	-	expression tag	UNP Q9HAR2
B	869	HIS	-	expression tag	UNP Q9HAR2
B	870	HIS	-	expression tag	UNP Q9HAR2
B	871	HIS	-	expression tag	UNP Q9HAR2
B	872	HIS	-	expression tag	UNP Q9HAR2

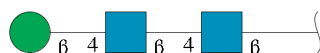
- Molecule 3 is an oligosaccharide called alpha-D-mannopyranose-(1-4)-2-acetamido-2-deoxy-

beta-D-glucopyranose-(1-4)-2-acetamido-2-deoxy-beta-D-glucopyranose.



Mol	Chain	Residues	Atoms				AltConf	Trace
3	C	3	Total	C	N	O	0	0
			39	22	2	15		

- Molecule 4 is an oligosaccharide called beta-D-mannopyranose-(1-4)-2-acetamido-2-deoxy-beta-D-glucopyranose-(1-4)-2-acetamido-2-deoxy-beta-D-glucopyranose.



Mol	Chain	Residues	Atoms				AltConf	Trace
4	D	3	Total	C	N	O	0	0
			39	22	2	15		

- Molecule 5 is an oligosaccharide called 2-acetamido-2-deoxy-beta-D-glucopyranose-(1-4)-2-acetamido-2-deoxy-beta-D-glucopyranose.

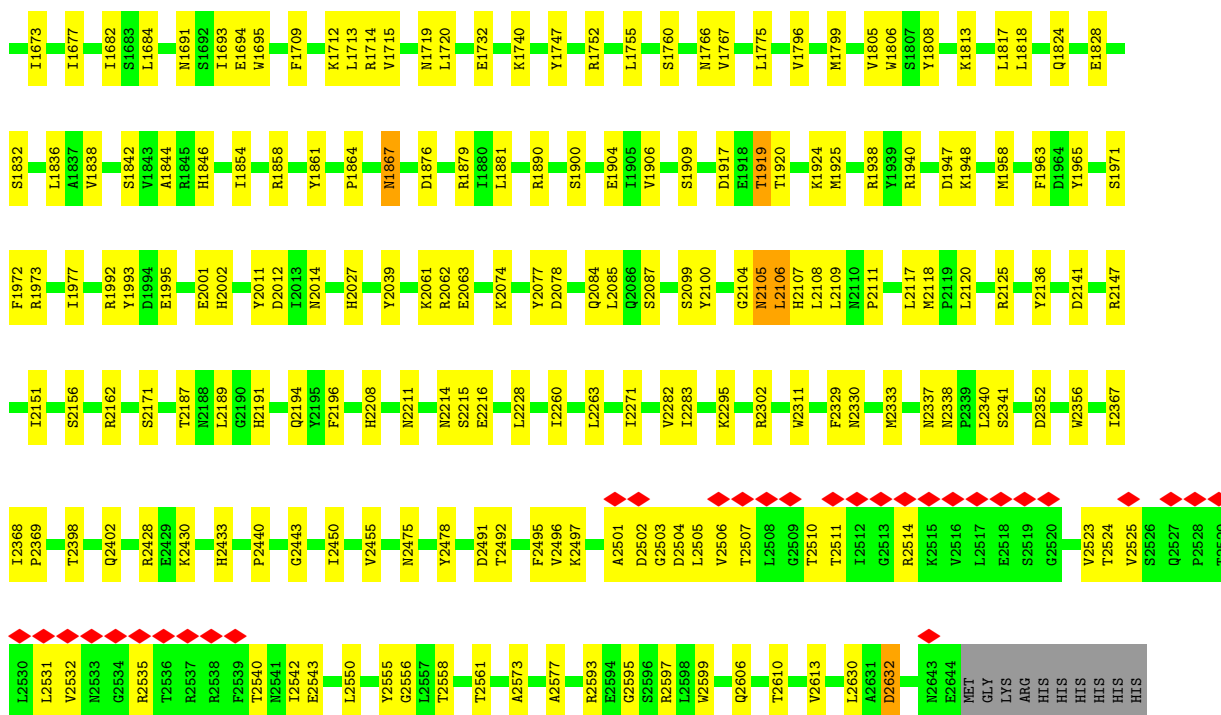


Mol	Chain	Residues	Atoms				AltConf	Trace
5	E	2	Total	C	N	O	0	0
			28	16	2	10		
5	F	2	Total	C	N	O	0	0
			28	16	2	10		
5	G	2	Total	C	N	O	0	0
			28	16	2	10		

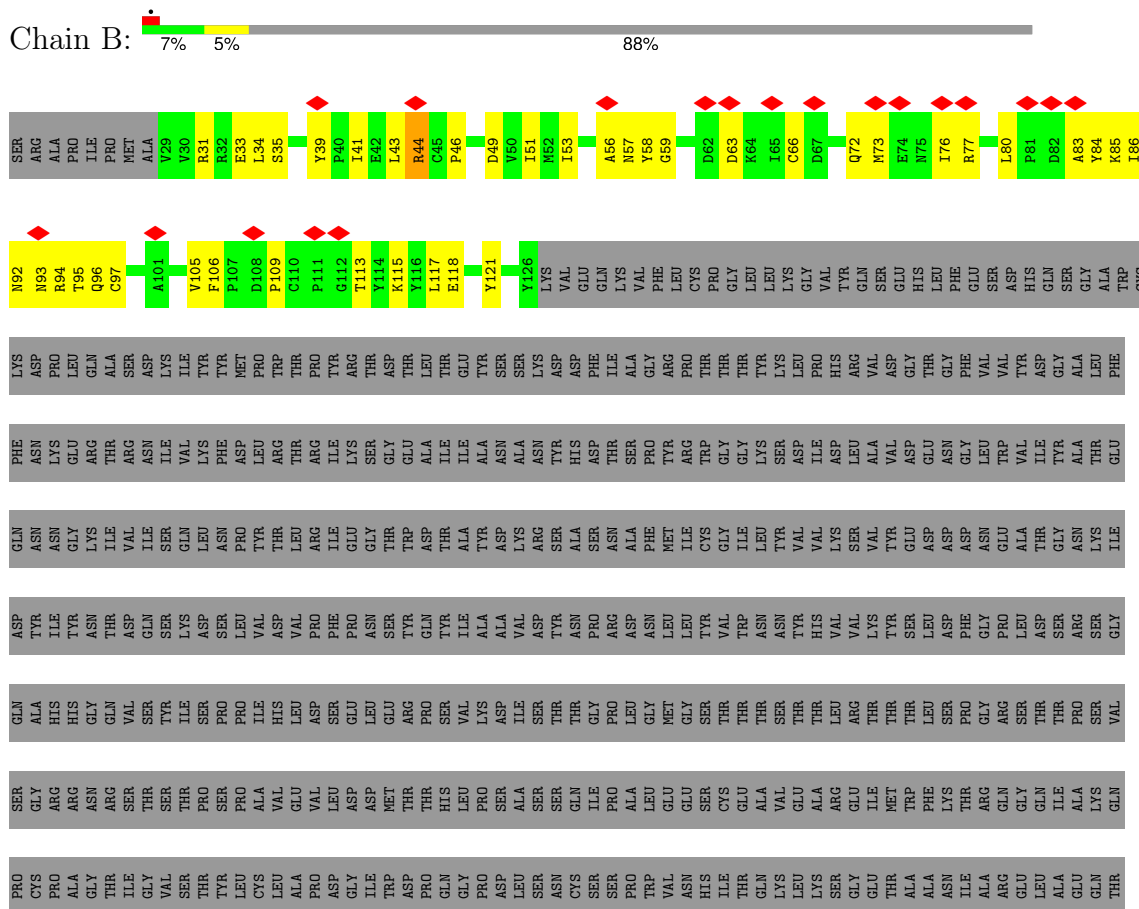
- Molecule 6 is 2-acetamido-2-deoxy-beta-D-glucopyranose (three-letter code: NAG) (formula: C₈H₁₅NO₆).



Mol	Chain	Residues	Atoms				AltConf
6	A	1	Total	C	N	O	0
			14	8	1	5	
6	A	1	Total	C	N	O	0
			14	8	1	5	
6	A	1	Total	C	N	O	0
			14	8	1	5	



• Molecule 2: Adhesion G protein-coupled receptor L3



[illegible]

- Molecule 3: alpha-D-mannopyranose-(1-4)-2-acetamido-2-deoxy-beta-D-glucopyranose-(1-4)-2-acetamido-2-deoxy-beta-D-glucopyranose

Chain C: 33% 33% 33%



- Molecule 4: beta-D-mannopyranose-(1-4)-2-acetamido-2-deoxy-beta-D-glucopyranose-(1-4)-2-acetamido-2-deoxy-beta-D-glucopyranose

Chain D:  67% 33%



- Molecule 5: 2-acetamido-2-deoxy-beta-D-glucopyranose-(1-4)-2-acetamido-2-deoxy-beta-D-glucopyranose

Chain E:  100%



- Molecule 5: 2-acetamido-2-deoxy-beta-D-glucopyranose-(1-4)-2-acetamido-2-deoxy-beta-D-glucopyranose

Chain F: 100%



- Molecule 5: 2-acetamido-2-deoxy-beta-D-glucopyranose-(1-4)-2-acetamido-2-deoxy-beta-D-glucopyranose

Chain G: 50% 50%



4 Experimental information

Property	Value	Source
EM reconstruction method	SINGLE PARTICLE	Depositor
Imposed symmetry	POINT, C1	Depositor
Number of particles used	436208	Depositor
Resolution determination method	FSC 0.143 CUT-OFF	Depositor
CTF correction method	PHASE FLIPPING ONLY; CTF correction was done in Relion reconstruction	Depositor
Microscope	FEI TITAN KRIOS	Depositor
Voltage (kV)	300	Depositor
Electron dose ($e^-/\text{\AA}^2$)	60.1	Depositor
Minimum defocus (nm)	Not provided	
Maximum defocus (nm)	Not provided	
Magnification	81000	Depositor
Image detector	GATAN K3 BIOQUANTUM (6k x 4k)	Depositor
Maximum map value	0.059	Depositor
Minimum map value	-0.026	Depositor
Average map value	-0.000	Depositor
Map value standard deviation	0.002	Depositor
Recommended contour level	0.01	Depositor
Map size (Å)	276.48, 276.48, 276.48	wwPDB
Map dimensions	256, 256, 256	wwPDB
Map angles (°)	90.0, 90.0, 90.0	wwPDB
Pixel spacing (Å)	1.08, 1.08, 1.08	Depositor

5 Model quality

5.1 Standard geometry

Bond lengths and bond angles in the following residue types are not validated in this section: MAN, NAG, BMA

The Z score for a bond length (or angle) is the number of standard deviations the observed value is removed from the expected value. A bond length (or angle) with $|Z| > 5$ is considered an outlier worth inspection. RMSZ is the root-mean-square of all Z scores of the bond lengths (or angles).

Mol	Chain	Bond lengths		Bond angles	
		RMSZ	$\# Z > 5$	RMSZ	$\# Z > 5$
1	A	0.75	0/13529	0.62	0/18390
2	B	0.42	0/789	0.56	0/1075
All	All	0.74	0/14318	0.61	0/19465

There are no bond length outliers.

There are no bond angle outliers.

There are no chirality outliers.

There are no planarity outliers.

5.2 Too-close contacts

In the following table, the Non-H and H(model) columns list the number of non-hydrogen atoms and hydrogen atoms in the chain respectively. The H(added) column lists the number of hydrogen atoms added and optimized by MolProbity. The Clashes column lists the number of clashes within the asymmetric unit, whereas Symm-Clashes lists symmetry-related clashes.

Mol	Chain	Non-H	H(model)	H(added)	Clashes	Symm-Clashes
1	A	13243	0	12817	272	0
2	B	772	0	723	29	0
3	C	39	0	34	7	0
4	D	39	0	34	0	0
5	E	28	0	25	6	0
5	F	28	0	25	0	0
5	G	28	0	25	2	0
6	A	42	0	39	3	0
All	All	14219	0	13722	319	0

The all-atom clashscore is defined as the number of clashes found per 1000 atoms (including hydrogen atoms). The all-atom clashscore for this structure is 11.

All (319) close contacts within the same asymmetric unit are listed below, sorted by their clash magnitude.

Atom-1	Atom-2	Interatomic distance (Å)	Clash overlap (Å)
1:A:2099:SER:HB3	1:A:2108:LEU:HB3	1.43	0.99
3:C:1:NAG:H83	3:C:1:NAG:H3	1.47	0.95
1:A:1060:TRP:NE1	1:A:1541:LEU:HD11	1.85	0.91
1:A:1060:TRP:CD1	1:A:1541:LEU:HD11	2.08	0.89
1:A:1760:SER:HB3	1:A:2012:ASP:OD2	1.77	0.85
1:A:2106:LEU:CD2	1:A:2109:LEU:HD23	2.06	0.84
1:A:1958:MET:SD	1:A:2194:GLN:NE2	2.49	0.84
1:A:2525:VAL:HG12	1:A:2542:ILE:HG12	1.61	0.82
1:A:1662:PHE:HD1	1:A:1677:ILE:HG21	1.45	0.82
2:B:105:VAL:HG13	2:B:106:PHE:HD2	1.45	0.81
1:A:2330:ASN:HB3	1:A:2333:MET:HB2	1.64	0.80
1:A:1760:SER:CB	1:A:2012:ASP:OD2	2.29	0.80
1:A:1713:LEU:HD21	1:A:2368:ILE:HD11	1.65	0.79
1:A:1367:THR:HB	1:A:1420:PRO:HD2	1.67	0.77
2:B:72:GLN:HG3	2:B:113:THR:HA	1.67	0.76
1:A:2577:ALA:HB2	1:A:2632:ASP:HA	1.69	0.74
5:E:2:NAG:O7	5:E:2:NAG:O4	2.05	0.74
1:A:1535:VAL:HA	1:A:1541:LEU:HA	1.69	0.73
1:A:1379:THR:HG22	1:A:1381:ASN:H	1.53	0.73
1:A:2107:HIS:HA	1:A:2120:LEU:HB2	1.71	0.73
1:A:1309:ASN:ND2	1:A:1348:LEU:O	2.22	0.72
5:G:1:NAG:O7	5:G:1:NAG:O3	2.05	0.72
1:A:1314:ILE:HG13	1:A:1320:VAL:HG22	1.71	0.71
3:C:1:NAG:H3	3:C:1:NAG:C8	2.20	0.71
1:A:2475:ASN:O	1:A:2497:LYS:NZ	2.23	0.71
3:C:1:NAG:H82	3:C:1:NAG:C1	2.20	0.71
1:A:2061:LYS:NZ	1:A:2063:GLU:OE2	2.20	0.70
1:A:1940:ARG:NH1	1:A:1947:ASP:OD1	2.25	0.70
3:C:2:NAG:O7	3:C:2:NAG:O3	2.06	0.69
1:A:2556:GLY:HA3	1:A:2561:THR:HG21	1.75	0.69
1:A:1165:LEU:HD22	1:A:1174:LEU:HD11	1.75	0.69
1:A:2211:ASN:O	1:A:2215:SER:HA	1.92	0.68
2:B:56:ALA:HB3	2:B:84:TYR:HA	1.75	0.68
1:A:1919:THR:HG23	1:A:1920:THR:HG23	1.76	0.67
1:A:1992:ARG:HG2	1:A:2002:HIS:HB3	1.76	0.67
1:A:2106:LEU:HD13	1:A:2106:LEU:O	1.94	0.67
1:A:2106:LEU:O	1:A:2106:LEU:HD22	1.94	0.66
1:A:1691:ASN:HD22	1:A:2369:PRO:HG3	1.59	0.66
1:A:1048:GLN:HE21	1:A:1084:PHE:HZ	1.44	0.66
1:A:1511:LYS:HD3	1:A:1513:ARG:HH22	1.59	0.66

Continued on next page...

Continued from previous page...

Atom-1	Atom-2	Interatomic distance (Å)	Clash overlap (Å)
1:A:1233:ARG:NH2	1:A:1291:PRO:O	2.20	0.65
1:A:1513:ARG:HG3	1:A:1522:HIS:CE1	2.33	0.64
1:A:1906:VAL:HG11	1:A:2630:LEU:HD11	1.78	0.64
1:A:2106:LEU:HD23	1:A:2109:LEU:HD23	1.79	0.64
1:A:2108:LEU:HD11	1:A:2117:LEU:HB3	1.78	0.64
1:A:2524:THR:HB	1:A:2543:GLU:HG2	1.79	0.64
5:E:1:NAG:H3	5:E:1:NAG:O7	1.97	0.64
1:A:2106:LEU:HD21	1:A:2109:LEU:HD23	1.77	0.64
2:B:80:LEU:HD13	2:B:109:PRO:HB3	1.79	0.64
1:A:1992:ARG:HG2	1:A:2002:HIS:CB	2.28	0.63
1:A:1178:ASP:OD1	1:A:1181:SER:N	2.26	0.63
1:A:2338:ASN:ND2	1:A:2341:SER:OG	2.30	0.63
1:A:1995:GLU:H	1:A:1995:GLU:CD	2.00	0.63
1:A:2505:LEU:HD13	1:A:2511:THR:HA	1.80	0.63
1:A:1448:LYS:HG2	1:A:1449:PRO:HD2	1.79	0.63
1:A:2450:ILE:HG12	1:A:2455:VAL:HG22	1.81	0.63
1:A:2105:ASN:OD1	1:A:2330:ASN:ND2	2.32	0.62
1:A:1693:ILE:HD12	1:A:1715:VAL:HG22	1.80	0.62
1:A:2187:THR:HG23	1:A:2189:LEU:H	1.64	0.62
1:A:1767:VAL:HG11	1:A:1775:LEU:HD22	1.82	0.61
1:A:1026:SER:HB3	1:A:1042:LYS:HG2	1.82	0.61
1:A:1438:ASN:O	1:A:1440:ARG:N	2.34	0.61
1:A:1186:ARG:O	1:A:1201:GLU:N	2.33	0.61
1:A:1133:TYR:HE1	1:A:1142:ARG:HD2	1.64	0.61
1:A:916:PRO:HG2	1:A:934:THR:HG22	1.81	0.61
1:A:1177:SER:HB2	1:A:1235:ILE:HD11	1.83	0.61
1:A:1405:TYR:HB2	1:A:1438:ASN:ND2	2.16	0.61
1:A:1483:VAL:HG23	1:A:1484:THR:HG23	1.83	0.61
2:B:43:LEU:HB2	2:B:97:CYS:HB3	1.83	0.60
1:A:1102:ARG:NH2	1:A:1103:SER:O	2.34	0.60
1:A:1383:GLU:N	1:A:1383:GLU:OE1	2.35	0.60
2:B:53:ILE:H	2:B:92:ASN:HD21	1.49	0.60
1:A:1846:HIS:HB3	1:A:1861:TYR:HE1	1.66	0.60
1:A:1230:MET:HB2	1:A:1247:ASP:HB3	1.83	0.59
2:B:35:SER:OG	2:B:39:TYR:O	2.20	0.59
1:A:1365:THR:HB	1:A:1423:LEU:HD11	1.85	0.59
2:B:44:ARG:HA	2:B:95:THR:O	2.03	0.59
1:A:2214:ASN:O	1:A:2216:GLU:N	2.36	0.58
1:A:1155:LEU:HD23	1:A:1159:PRO:HG3	1.85	0.58
1:A:2108:LEU:HG	1:A:2117:LEU:HD22	1.84	0.58
5:G:1:NAG:HO3	5:G:1:NAG:C7	2.12	0.58

Continued on next page...

Continued from previous page...

Atom-1	Atom-2	Interatomic distance (Å)	Clash overlap (Å)
2:B:105:VAL:HG13	2:B:106:PHE:CD2	2.33	0.58
1:A:935:GLN:HE22	1:A:1599:ARG:HE	1.50	0.57
1:A:2106:LEU:CD1	1:A:2106:LEU:H	2.17	0.57
1:A:2531:LEU:HA	1:A:2535:ARG:O	2.03	0.57
1:A:1832:SER:O	1:A:1832:SER:OG	2.21	0.57
1:A:1009:LYS:HB3	1:A:1049:GLY:O	2.05	0.57
1:A:1118:LEU:HB2	1:A:1136:ASP:OD1	2.05	0.57
1:A:1906:VAL:CG1	1:A:2630:LEU:HD11	2.33	0.57
1:A:1123:ALA:HB3	1:A:1135:GLY:HA3	1.87	0.56
1:A:2398:THR:O	1:A:2402:GLN:HG3	2.05	0.56
1:A:983:MET:HB2	1:A:1026:SER:OG	2.04	0.56
1:A:1963:PHE:HB3	1:A:1977:ILE:HD11	1.87	0.56
2:B:63:ASP:O	2:B:73:MET:HG2	2.05	0.56
1:A:1210:CYS:HB3	1:A:1228:THR:HG21	1.89	0.55
1:A:1806:TRP:HB3	1:A:1817:LEU:HD11	1.89	0.55
1:A:1413:THR:HG21	1:A:1647:ASN:HB2	1.89	0.55
1:A:1864:PRO:HD2	1:A:2125:ARG:HG2	1.89	0.55
1:A:1095:ILE:HB	1:A:1147:ARG:HH12	1.72	0.54
1:A:1186:ARG:HD2	1:A:1187:VAL:O	2.07	0.54
1:A:1879:ARG:NH2	1:A:1900:SER:O	2.40	0.54
1:A:1509:SER:OG	1:A:1511:LYS:NZ	2.38	0.54
1:A:2558:THR:O	1:A:2561:THR:HG22	2.06	0.54
1:A:1184:ILE:HD11	1:A:1232:PRO:HB2	1.88	0.54
1:A:1369:GLU:HG2	1:A:1419:SER:OG	2.07	0.54
3:C:1:NAG:C8	3:C:1:NAG:C1	2.85	0.54
5:E:2:NAG:H5	5:E:2:NAG:N2	2.23	0.53
1:A:1376:ARG:HG2	1:A:1386:LEU:HA	1.89	0.53
1:A:1569:GLU:OE2	1:A:2428:ARG:NH2	2.41	0.53
1:A:1067:ILE:HG22	1:A:1076:HIS:HB2	1.91	0.53
1:A:1236:ALA:HB1	1:A:1296:VAL:HG23	1.90	0.53
1:A:2136:TYR:CZ	1:A:2147:ARG:HD3	2.44	0.53
1:A:1228:THR:O	1:A:1252:ARG:NH1	2.41	0.53
1:A:1250:MET:HB3	1:A:1266:SER:HB2	1.91	0.53
1:A:1309:ASN:HD21	1:A:1349:GLU:HA	1.73	0.53
1:A:1965:TYR:CE1	1:A:1977:ILE:HD13	2.44	0.53
1:A:2106:LEU:H	1:A:2106:LEU:HD12	1.74	0.52
2:B:117:LEU:HD12	2:B:118:GLU:H	1.73	0.52
1:A:1439:ILE:HD12	1:A:1439:ILE:H	1.74	0.52
1:A:1116:ASN:OD1	1:A:1141:ARG:NH2	2.36	0.52
1:A:1140:ILE:HB	1:A:1153:LEU:HB2	1.91	0.52
2:B:33:GLU:HB3	2:B:41:ILE:HD11	1.92	0.52

Continued on next page...

Continued from previous page...

Atom-1	Atom-2	Interatomic distance (Å)	Clash overlap (Å)
1:A:1867:ASN:OD1	1:A:1867:ASN:N	2.38	0.52
1:A:2106:LEU:CD1	1:A:2106:LEU:N	2.73	0.52
1:A:1085:LEU:HD13	1:A:1673:ILE:HD11	1.91	0.51
1:A:1995:GLU:OE1	1:A:1995:GLU:N	2.26	0.51
1:A:1282:ASP:O	1:A:1286:VAL:HG23	2.10	0.51
1:A:2062:ARG:NH2	1:A:2340:LEU:HD22	2.25	0.51
1:A:2063:GLU:HG2	1:A:2074:LYS:HG3	1.92	0.51
2:B:83:ALA:HA	2:B:86:ILE:HD12	1.93	0.51
1:A:1448:LYS:CG	1:A:1449:PRO:HD2	2.41	0.51
1:A:2503:GLY:O	1:A:2506:VAL:HG22	2.10	0.51
1:A:1541:LEU:HD12	1:A:1541:LEU:O	2.10	0.51
1:A:1799:MET:HG3	1:A:1805:VAL:HG12	1.91	0.51
1:A:1890:ARG:NE	1:A:2141:ASP:OD2	2.43	0.51
1:A:1342:LEU:O	1:A:1346:SER:OG	2.29	0.51
2:B:51:ILE:HG12	2:B:94:ARG:O	2.11	0.51
1:A:956:ARG:HG2	1:A:1051:GLU:OE1	2.11	0.50
1:A:2504:ASP:O	1:A:2507:THR:HG22	2.11	0.50
1:A:1220:ASP:OD1	1:A:1221:GLY:N	2.45	0.50
2:B:58:TYR:CE2	2:B:115:LYS:HD2	2.47	0.50
1:A:1054:PRO:HB3	1:A:1067:ILE:HB	1.92	0.50
1:A:1168:ASP:OD2	1:A:1170:VAL:HG22	2.11	0.50
1:A:1418:ASN:OD1	1:A:1437:GLY:HA3	2.11	0.50
1:A:1694:GLU:OE2	1:A:1714:ARG:HD2	2.11	0.50
1:A:1557:ASP:O	1:A:1560:THR:OG1	2.30	0.50
1:A:2606:GLN:O	1:A:2610:THR:OG1	2.28	0.50
2:B:86:ILE:O	2:B:90:ARG:HD3	2.11	0.50
2:B:34:LEU:HD23	2:B:35:SER:N	2.27	0.50
1:A:1506:ASN:HD21	1:A:1752:ARG:HD3	1.76	0.50
1:A:1971:SER:HB3	1:A:1973:ARG:HG3	1.93	0.50
1:A:1224:ALA:HA	1:A:1260:ILE:HB	1.94	0.49
1:A:1579:ASP:OD1	1:A:1579:ASP:N	2.38	0.49
1:A:934:THR:O	1:A:936:VAL:N	2.46	0.49
1:A:1026:SER:CB	1:A:1042:LYS:HG2	2.43	0.49
6:A:2705:NAG:H5	6:A:2705:NAG:N2	2.27	0.49
1:A:1096:MET:HG2	1:A:1097:GLY:H	1.78	0.49
1:A:2524:THR:O	1:A:2542:ILE:HA	2.10	0.49
1:A:1102:ARG:HB3	1:A:1117:LYS:HD2	1.94	0.49
1:A:1992:ARG:HG3	1:A:2001:GLU:HG2	1.94	0.49
1:A:1218:CYS:HB3	1:A:1228:THR:HB	1.95	0.49
1:A:1309:ASN:ND2	1:A:1349:GLU:HA	2.28	0.49
1:A:976:ASN:O	1:A:1031:TYR:HD1	1.96	0.48

Continued on next page...

Continued from previous page...

Atom-1	Atom-2	Interatomic distance (Å)	Clash overlap (Å)
1:A:2501:ALA:O	1:A:2505:LEU:N	2.34	0.48
1:A:922:SER:H	1:A:938:HIS:HD2	1.60	0.48
1:A:1695:TRP:CZ2	1:A:1713:LEU:HD13	2.48	0.48
1:A:1283:VAL:HG12	1:A:1320:VAL:HG23	1.95	0.48
1:A:1767:VAL:CG1	1:A:1775:LEU:HD22	2.43	0.48
3:C:1:NAG:C8	3:C:1:NAG:C3	2.86	0.48
1:A:1321:SER:OG	1:A:1322:ILE:N	2.47	0.48
1:A:1164:TYR:CE1	1:A:1233:ARG:HB3	2.49	0.47
1:A:1430:THR:HG23	1:A:1445:SER:HB3	1.95	0.47
1:A:1712:LYS:HB3	1:A:1719:ASN:HD21	1.79	0.47
1:A:1828:GLU:O	1:A:1836:LEU:HB3	2.14	0.47
1:A:1890:ARG:HG2	1:A:2141:ASP:OD2	2.13	0.47
1:A:1909:SER:O	1:A:1909:SER:OG	2.29	0.47
1:A:2105:ASN:OD1	1:A:2105:ASN:N	2.47	0.47
5:E:1:NAG:H5	5:E:1:NAG:N2	2.29	0.47
1:A:939:GLU:OE2	1:A:1576:TYR:OH	2.29	0.47
1:A:1297:ASN:HA	1:A:1356:ILE:HG21	1.97	0.47
1:A:1483:VAL:HG12	1:A:1709:PHE:CE2	2.50	0.47
1:A:1760:SER:OG	1:A:2012:ASP:OD2	2.32	0.47
6:A:2705:NAG:O7	6:A:2705:NAG:H3	2.12	0.47
1:A:1253:LYS:HB3	1:A:1261:SER:HB3	1.95	0.47
1:A:2147:ARG:NH2	1:A:2295:LYS:HB2	2.30	0.47
1:A:1187:VAL:HA	1:A:1200:SER:HA	1.96	0.47
1:A:1371:LYS:HG2	1:A:1394:CYS:O	2.15	0.47
1:A:1591:THR:OG1	1:A:1876:ASP:OD2	2.23	0.47
1:A:1662:PHE:CD1	1:A:1677:ILE:HG21	2.36	0.47
1:A:2104:GLY:O	1:A:2337:ASN:ND2	2.38	0.47
3:C:2:NAG:HO3	3:C:2:NAG:C7	2.17	0.47
1:A:1357:SER:HA	1:A:1425:VAL:HG11	1.97	0.47
1:A:1755:LEU:HD12	1:A:1766:ASN:HB3	1.95	0.47
1:A:1166:ALA:O	1:A:1174:LEU:HD12	2.15	0.47
1:A:1693:ILE:HD11	1:A:2369:PRO:HD2	1.97	0.47
1:A:2085:LEU:O	1:A:2100:TYR:HE2	1.98	0.47
1:A:2228:LEU:HD22	1:A:2283:ILE:HD12	1.97	0.46
1:A:2502:ASP:O	1:A:2506:VAL:HG13	2.15	0.46
1:A:1004:THR:HG23	1:A:1004:THR:O	2.15	0.46
1:A:1572:TRP:CZ2	1:A:1590:PRO:HD2	2.49	0.46
5:E:2:NAG:N2	5:E:2:NAG:C5	2.78	0.46
1:A:2187:THR:HG22	1:A:2191:HIS:H	1.79	0.46
1:A:2497:LYS:HD3	1:A:2555:TYR:CE1	2.51	0.46
1:A:1349:GLU:OE2	1:A:1372:ILE:HG21	2.15	0.46

Continued on next page...

Continued from previous page...

Atom-1	Atom-2	Interatomic distance (Å)	Clash overlap (Å)
1:A:1224:ALA:N	1:A:1258:GLY:O	2.44	0.46
1:A:1160:ALA:HB3	1:A:1180:ASN:CG	2.36	0.46
1:A:1940:ARG:HH21	1:A:1948:LYS:HD2	1.81	0.46
1:A:2440:PRO:HB2	1:A:2443:GLY:H	1.81	0.46
1:A:1246:VAL:HG21	1:A:1291:PRO:HG2	1.97	0.46
2:B:57:ASN:OD1	2:B:58:TYR:N	2.49	0.46
1:A:1153:LEU:HD11	1:A:1187:VAL:HG12	1.98	0.46
1:A:1572:TRP:CE2	1:A:1590:PRO:HD2	2.51	0.46
1:A:1720:LEU:HD13	1:A:2367:ILE:HD12	1.97	0.46
2:B:76:ILE:HG23	2:B:77:ARG:HD3	1.98	0.46
1:A:1097:GLY:HA3	1:A:1440:ARG:HB3	1.97	0.45
1:A:1294:LEU:HD23	1:A:1303:LEU:HD21	1.98	0.45
1:A:1246:VAL:HG23	1:A:1251:ILE:HG12	1.97	0.45
1:A:1613:ASN:OD1	1:A:1614:ARG:N	2.49	0.45
2:B:43:LEU:O	2:B:96:GLN:HA	2.16	0.45
2:B:86:ILE:HG23	2:B:90:ARG:CZ	2.47	0.45
1:A:2084:GLN:HG2	1:A:2337:ASN:HB2	1.99	0.45
1:A:2430:LYS:HB2	1:A:2433:HIS:HB2	1.97	0.45
1:A:1451:LEU:HD22	1:A:1455:ASN:HA	1.98	0.45
1:A:1667:HIS:HD2	1:A:1668:VAL:H	1.64	0.45
1:A:1482:LEU:HD21	1:A:1667:HIS:CE1	2.51	0.45
1:A:2062:ARG:NH2	1:A:2077:TYR:OH	2.49	0.45
1:A:2151:ILE:HD13	1:A:2593:ARG:HG2	1.97	0.45
1:A:2100:TYR:CE1	1:A:2106:LEU:HB3	2.52	0.45
1:A:2196:PHE:HB2	1:A:2208:HIS:HB2	1.99	0.45
1:A:2491:ASP:OD1	1:A:2491:ASP:N	2.50	0.44
1:A:1246:VAL:HB	1:A:1294:LEU:HD11	2.00	0.44
1:A:1732:GLU:OE1	1:A:1747:TYR:OH	2.22	0.44
1:A:1179:THR:O	1:A:1182:ARG:HD3	2.16	0.44
1:A:2505:LEU:HD22	1:A:2510:THR:O	2.17	0.44
2:B:85:LYS:HD2	2:B:85:LYS:HA	1.83	0.44
1:A:1250:MET:HB2	1:A:1264:LEU:O	2.18	0.44
1:A:1858:ARG:NH2	1:A:2491:ASP:HB3	2.32	0.44
1:A:1438:ASN:C	1:A:1440:ARG:H	2.20	0.44
1:A:2014:ASN:N	1:A:2014:ASN:ND2	2.65	0.44
1:A:2523:VAL:HA	1:A:2543:GLU:O	2.18	0.44
1:A:1925:MET:HG3	1:A:1938:ARG:NE	2.32	0.44
1:A:1163:TYR:HB2	1:A:1177:SER:O	2.18	0.44
1:A:1222:GLY:O	1:A:1260:ILE:N	2.47	0.43
1:A:1282:ASP:HB3	1:A:1285:GLN:HB2	2.00	0.43
1:A:1682:ILE:HD12	1:A:2369:PRO:HG2	2.00	0.43

Continued on next page...

Continued from previous page...

Atom-1	Atom-2	Interatomic distance (Å)	Clash overlap (Å)
1:A:2108:LEU:CD1	1:A:2117:LEU:HB3	2.48	0.43
1:A:2532:VAL:O	1:A:2535:ARG:HB2	2.18	0.43
2:B:92:ASN:O	2:B:93:ASN:HB2	2.18	0.43
2:B:31:ARG:NH1	2:B:44:ARG:O	2.52	0.43
1:A:1239:LYS:HE3	1:A:1301:ASN:HD21	1.84	0.43
1:A:1439:ILE:O	1:A:1439:ILE:HG22	2.19	0.43
1:A:1492:THR:HB	1:A:1501:GLU:HB3	2.00	0.43
1:A:2162:ARG:NH1	1:A:2171:SER:OG	2.52	0.43
1:A:1104:ILE:C	1:A:1106:CYS:H	2.21	0.43
1:A:2302:ARG:HB3	1:A:2311:TRP:CE3	2.53	0.43
1:A:1103:SER:OG	1:A:1104:ILE:N	2.51	0.43
1:A:1838:VAL:HG11	1:A:2329:PHE:CZ	2.53	0.43
1:A:2099:SER:CB	1:A:2108:LEU:HB3	2.31	0.43
1:A:2492:THR:HG23	1:A:2550:LEU:HD22	2.01	0.43
1:A:1133:TYR:CE1	1:A:1142:ARG:HD2	2.50	0.43
1:A:1377:GLN:O	1:A:1384:ILE:HG13	2.19	0.43
1:A:984:VAL:HG22	1:A:1025:VAL:HG12	2.01	0.43
1:A:1838:VAL:HG11	1:A:2329:PHE:HZ	1.84	0.43
1:A:2478:TYR:HB2	1:A:2496:VAL:HG22	1.99	0.43
1:A:2595:GLY:O	1:A:2597:ARG:N	2.52	0.43
1:A:1139:TYR:O	1:A:1141:ARG:HG3	2.19	0.42
1:A:1813:LYS:HD2	1:A:1813:LYS:HA	1.69	0.42
1:A:2011:TYR:OH	1:A:2027:HIS:CD2	2.72	0.42
1:A:2352:ASP:O	1:A:2356:TRP:HD1	2.02	0.42
1:A:1160:ALA:HB3	1:A:1180:ASN:OD1	2.18	0.42
1:A:1171:SER:O	1:A:1173:SER:N	2.45	0.42
1:A:1167:VAL:HA	1:A:1173:SER:O	2.19	0.42
2:B:59:GLY:HA2	2:B:115:LYS:HD3	2.01	0.42
1:A:1854:ILE:HD13	1:A:2495:PHE:HZ	1.85	0.42
1:A:2260:ILE:HD13	1:A:2260:ILE:HA	1.83	0.42
1:A:2573:ALA:HB1	1:A:2632:ASP:HB3	2.02	0.42
1:A:1796:VAL:HA	1:A:1808:TYR:HB2	2.01	0.42
2:B:43:LEU:O	2:B:97:CYS:N	2.53	0.42
2:B:59:GLY:O	2:B:115:LYS:HB2	2.18	0.42
1:A:1166:ALA:HB2	1:A:1235:ILE:HB	2.02	0.42
1:A:1168:ASP:HA	1:A:1237:VAL:HG11	2.02	0.42
1:A:1917:ASP:HB3	1:A:1924:LYS:HD3	2.01	0.42
1:A:2078:ASP:HB3	1:A:2087:SER:OG	2.20	0.41
1:A:1890:ARG:HD3	1:A:2156:SER:HA	2.02	0.41
1:A:2106:LEU:HD13	1:A:2106:LEU:N	2.35	0.41
1:A:1077:LYS:HB3	1:A:1077:LYS:HE2	1.82	0.41

Continued on next page...

Continued from previous page...

Atom-1	Atom-2	Interatomic distance (Å)	Clash overlap (Å)
1:A:2106:LEU:HD21	1:A:2109:LEU:CD2	2.46	0.41
1:A:1009:LYS:HD2	1:A:1049:GLY:O	2.20	0.41
1:A:1407:GLY:HA3	1:A:1415:ALA:HA	2.02	0.41
1:A:2514:ARG:HG3	1:A:2524:THR:OG1	2.20	0.41
1:A:1713:LEU:CD2	1:A:2368:ILE:HD11	2.42	0.41
1:A:1818:LEU:HD12	1:A:1824:GLN:HB3	2.02	0.41
1:A:2014:ASN:N	1:A:2014:ASN:HD22	2.17	0.41
1:A:1993:TYR:CD2	1:A:1993:TYR:N	2.89	0.41
1:A:2501:ALA:HB2	1:A:2540:THR:HG21	2.03	0.41
1:A:1408:ASP:O	1:A:1409:ASP:HB2	2.21	0.41
1:A:1553:LEU:HB2	1:A:1567:SER:OG	2.20	0.41
5:E:2:NAG:HO4	5:E:2:NAG:C7	2.22	0.41
1:A:922:SER:OG	1:A:928:ASN:O	2.24	0.41
1:A:2282:VAL:HG23	1:A:2283:ILE:HG13	2.01	0.41
1:A:1152:ILE:HG13	1:A:1153:LEU:N	2.35	0.41
1:A:1261:SER:OG	1:A:1262:THR:N	2.51	0.41
1:A:1383:GLU:HG2	1:A:1625:SER:OG	2.21	0.41
1:A:1635:GLN:O	1:A:1636:ASP:C	2.60	0.41
1:A:1684:LEU:HD11	1:A:1972:PHE:CE1	2.55	0.41
1:A:1740:LYS:HE2	1:A:1740:LYS:HB3	1.76	0.41
1:A:1092:ILE:HB	1:A:1412:ALA:HB2	2.03	0.41
1:A:1614:ARG:HH12	1:A:1881:LEU:HD21	1.86	0.41
6:A:2705:NAG:N2	6:A:2705:NAG:C5	2.82	0.41
2:B:43:LEU:HG	2:B:121:TYR:CE1	2.55	0.41
1:A:1413:THR:HG21	1:A:1647:ASN:CB	2.50	0.40
1:A:2111:PRO:HD3	1:A:2118:MET:HG2	2.03	0.40
1:A:2263:LEU:HD22	1:A:2271:ILE:HD13	2.03	0.40
1:A:2599:TRP:CZ3	1:A:2613:VAL:HG21	2.56	0.40
1:A:1183:ARG:HA	1:A:1229:LEU:HD12	2.03	0.40
1:A:1341:LYS:O	1:A:1384:ILE:HG22	2.22	0.40
2:B:49:ASP:O	2:B:95:THR:HG22	2.21	0.40
1:A:1362:LEU:HB3	1:A:1378:VAL:HB	2.02	0.40
1:A:1842:SER:O	1:A:1844:ALA:N	2.53	0.40

There are no symmetry-related clashes.

5.3 Torsion angles ⓘ

5.3.1 Protein backbone ⓘ

In the following table, the Percentiles column shows the percent Ramachandran outliers of the chain as a percentile score with respect to all PDB entries followed by that with respect to all EM entries.

The Analysed column shows the number of residues for which the backbone conformation was analysed, and the total number of residues.

Mol	Chain	Analysed	Favoured	Allowed	Outliers	Percentiles	
1	A	1717/1928 (89%)	1586 (92%)	130 (8%)	1 (0%)	48	79
2	B	96/852 (11%)	82 (85%)	12 (12%)	2 (2%)	5	25
All	All	1813/2780 (65%)	1668 (92%)	142 (8%)	3 (0%)	45	74

All (3) Ramachandran outliers are listed below:

Mol	Chain	Res	Type
2	B	66	CYS
2	B	46	PRO
1	A	1439	ILE

5.3.2 Protein sidechains ⓘ

In the following table, the Percentiles column shows the percent sidechain outliers of the chain as a percentile score with respect to all PDB entries followed by that with respect to all EM entries.

The Analysed column shows the number of residues for which the sidechain conformation was analysed, and the total number of residues.

Mol	Chain	Analysed	Rotameric	Outliers	Percentiles	
1	A	1390/1678 (83%)	1378 (99%)	12 (1%)	75	88
2	B	88/749 (12%)	87 (99%)	1 (1%)	70	86
All	All	1478/2427 (61%)	1465 (99%)	13 (1%)	74	88

All (13) residues with a non-rotameric sidechain are listed below:

Mol	Chain	Res	Type
1	A	1100	ARG
1	A	1161	HIS
1	A	1365	THR

Continued on next page...

Continued from previous page...

Mol	Chain	Res	Type
1	A	1395	ASP
1	A	1541	LEU
1	A	1867	ASN
1	A	1904	GLU
1	A	1919	THR
1	A	2039	TYR
1	A	2105	ASN
1	A	2106	LEU
1	A	2632	ASP
2	B	44	ARG

Sometimes sidechains can be flipped to improve hydrogen bonding and reduce clashes. All (21) such sidechains are listed below:

Mol	Chain	Res	Type
1	A	935	GLN
1	A	1000	ASN
1	A	1048	GLN
1	A	1065	HIS
1	A	1309	ASN
1	A	1438	ASN
1	A	1476	HIS
1	A	1506	ASN
1	A	1508	ASN
1	A	1522	HIS
1	A	1667	HIS
1	A	1691	ASN
1	A	1719	ASN
1	A	1779	GLN
1	A	2014	ASN
1	A	2192	HIS
1	A	2212	HIS
1	A	2338	ASN
1	A	2348	ASN
1	A	2363	GLN
2	B	92	ASN

5.3.3 RNA ⓘ

There are no RNA molecules in this entry.

5.4 Non-standard residues in protein, DNA, RNA chains ⓘ

There are no non-standard protein/DNA/RNA residues in this entry.

5.5 Carbohydrates ⓘ

12 monosaccharides are modelled in this entry.

In the following table, the Counts columns list the number of bonds (or angles) for which Mogul statistics could be retrieved, the number of bonds (or angles) that are observed in the model and the number of bonds (or angles) that are defined in the Chemical Component Dictionary. The Link column lists molecule types, if any, to which the group is linked. The Z score for a bond length (or angle) is the number of standard deviations the observed value is removed from the expected value. A bond length (or angle) with $|Z| > 2$ is considered an outlier worth inspection. RMSZ is the root-mean-square of all Z scores of the bond lengths (or angles).

Mol	Type	Chain	Res	Link	Bond lengths			Bond angles		
					Counts	RMSZ	# Z > 2	Counts	RMSZ	# Z > 2
3	NAG	C	1	3,1	14,14,15	0.42	0	17,19,21	1.11	3 (17%)
3	NAG	C	2	3	14,14,15	0.34	0	17,19,21	0.86	0
3	MAN	C	3	3	11,11,12	0.22	0	15,15,17	0.70	0
4	NAG	D	1	4,1	14,14,15	0.31	0	17,19,21	0.71	1 (5%)
4	NAG	D	2	4	14,14,15	0.28	0	17,19,21	0.52	0
4	BMA	D	3	4	11,11,12	0.21	0	15,15,17	0.56	0
5	NAG	E	1	5,1	14,14,15	0.30	0	17,19,21	0.68	0
5	NAG	E	2	5	14,14,15	0.28	0	17,19,21	0.62	0
5	NAG	F	1	5,1	14,14,15	0.28	0	17,19,21	0.59	0
5	NAG	F	2	5	14,14,15	0.27	0	17,19,21	0.53	0
5	NAG	G	1	5,1	14,14,15	0.29	0	17,19,21	0.45	0
5	NAG	G	2	5	14,14,15	0.29	0	17,19,21	0.67	0

In the following table, the Chirals column lists the number of chiral outliers, the number of chiral centers analysed, the number of these observed in the model and the number defined in the Chemical Component Dictionary. Similar counts are reported in the Torsion and Rings columns. '-' means no outliers of that kind were identified.

Mol	Type	Chain	Res	Link	Chirals	Torsions	Rings
3	NAG	C	1	3,1	-	5/6/23/26	0/1/1/1
3	NAG	C	2	3	1/1/5/7	3/6/23/26	0/1/1/1
3	MAN	C	3	3	-	0/2/19/22	0/1/1/1
4	NAG	D	1	4,1	-	0/6/23/26	0/1/1/1
4	NAG	D	2	4	-	3/6/23/26	0/1/1/1
4	BMA	D	3	4	-	0/2/19/22	0/1/1/1

Continued on next page...

Continued from previous page...

Mol	Type	Chain	Res	Link	Chirals	Torsions	Rings
5	NAG	E	1	5,1	1/1/5/7	2/6/23/26	0/1/1/1
5	NAG	E	2	5	-	3/6/23/26	0/1/1/1
5	NAG	F	1	5,1	-	0/6/23/26	0/1/1/1
5	NAG	F	2	5	-	3/6/23/26	0/1/1/1
5	NAG	G	1	5,1	-	1/6/23/26	0/1/1/1
5	NAG	G	2	5	-	2/6/23/26	0/1/1/1

There are no bond length outliers.

All (4) bond angle outliers are listed below:

Mol	Chain	Res	Type	Atoms	Z	Observed(°)	Ideal(°)
3	C	1	NAG	C3-C4-C5	-2.37	105.93	110.23
3	C	1	NAG	C1-O5-C5	2.20	115.13	112.19
3	C	1	NAG	O5-C5-C4	-2.16	105.58	110.83
4	D	1	NAG	C1-O5-C5	2.13	115.04	112.19

All (2) chirality outliers are listed below:

Mol	Chain	Res	Type	Atom
3	C	2	NAG	C1
5	E	1	NAG	C1

All (22) torsion outliers are listed below:

Mol	Chain	Res	Type	Atoms
4	D	2	NAG	C1-C2-N2-C7
5	E	2	NAG	C3-C2-N2-C7
5	E	2	NAG	C8-C7-N2-C2
5	E	2	NAG	O7-C7-N2-C2
5	F	2	NAG	C3-C2-N2-C7
5	F	2	NAG	C8-C7-N2-C2
5	F	2	NAG	O7-C7-N2-C2
5	G	2	NAG	C1-C2-N2-C7
3	C	1	NAG	C8-C7-N2-C2
3	C	1	NAG	O7-C7-N2-C2
5	E	1	NAG	O5-C5-C6-O6
3	C	2	NAG	O5-C5-C6-O6
3	C	1	NAG	O5-C5-C6-O6
3	C	2	NAG	C3-C2-N2-C7
5	E	1	NAG	C3-C2-N2-C7

Continued on next page...

Continued from previous page...

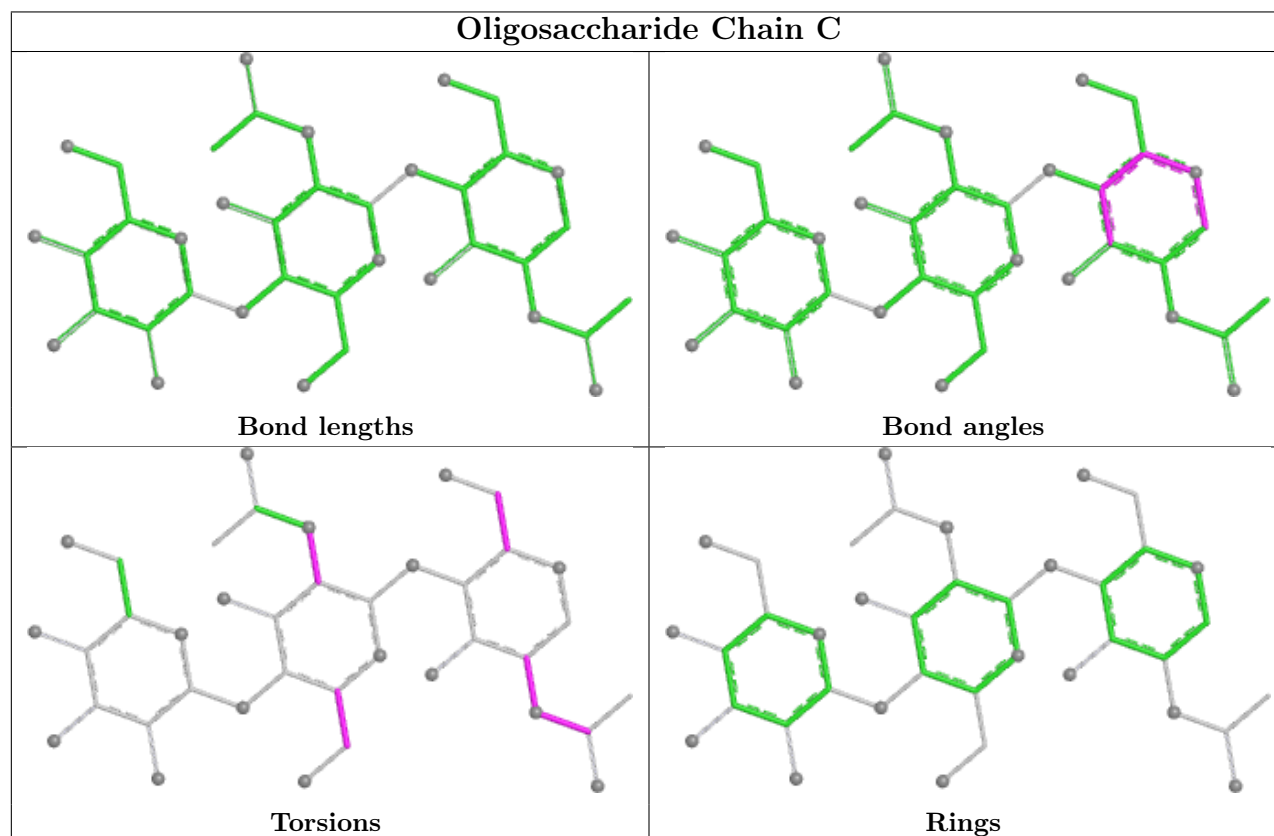
Mol	Chain	Res	Type	Atoms
5	G	1	NAG	C3-C2-N2-C7
4	D	2	NAG	C8-C7-N2-C2
3	C	1	NAG	C1-C2-N2-C7
4	D	2	NAG	O7-C7-N2-C2
3	C	2	NAG	C1-C2-N2-C7
3	C	1	NAG	C3-C2-N2-C7
5	G	2	NAG	C3-C2-N2-C7

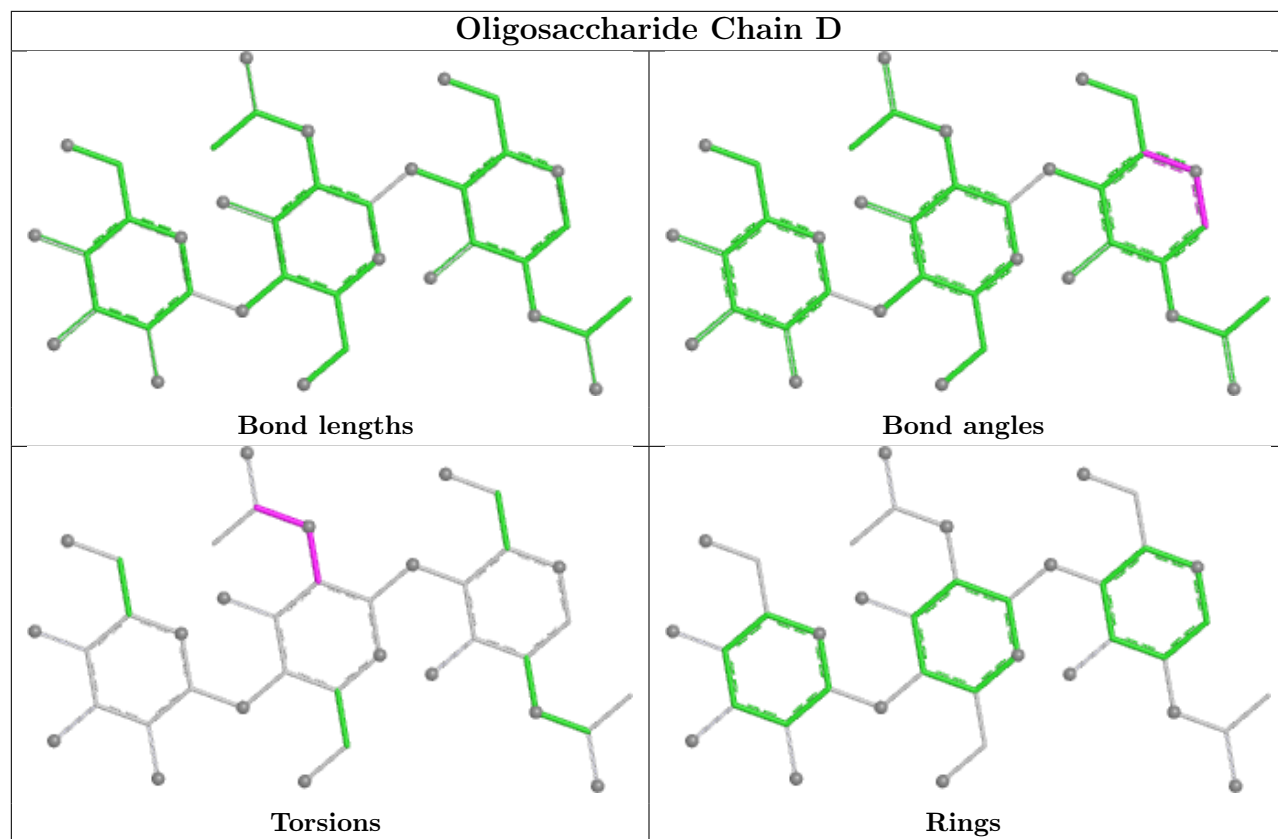
There are no ring outliers.

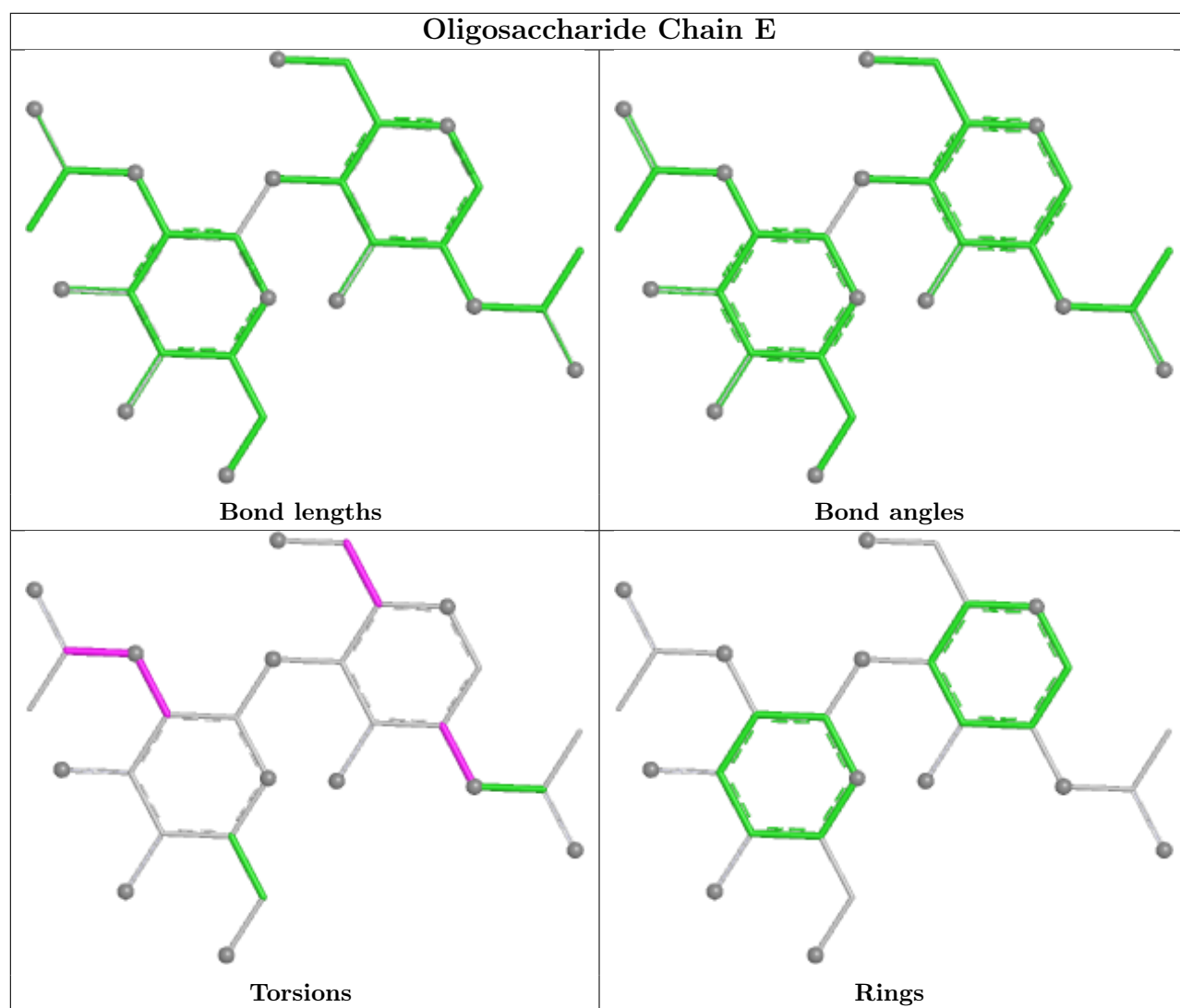
5 monomers are involved in 15 short contacts:

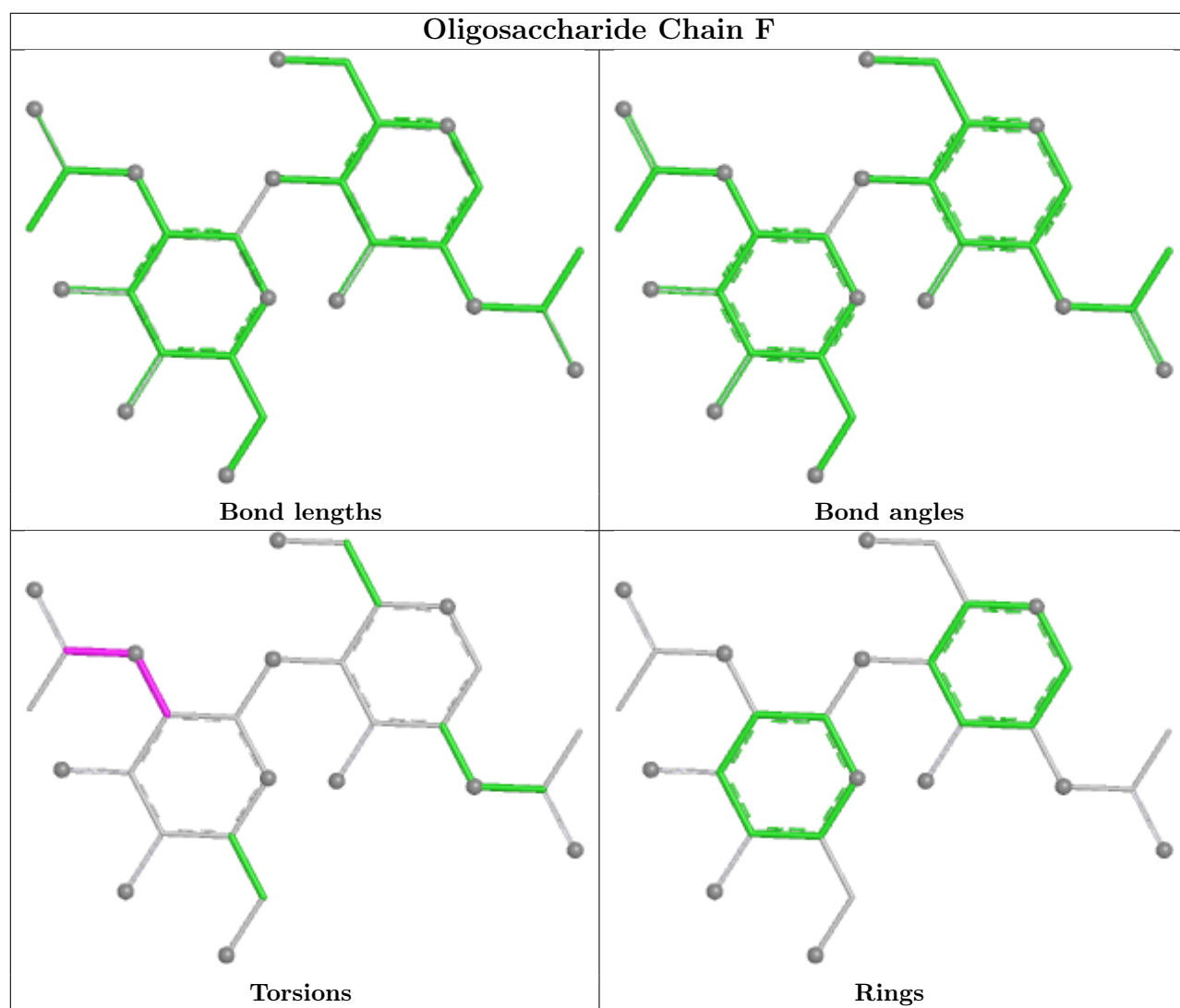
Mol	Chain	Res	Type	Clashes	Symm-Clashes
5	G	1	NAG	2	0
5	E	1	NAG	2	0
3	C	2	NAG	2	0
5	E	2	NAG	4	0
3	C	1	NAG	5	0

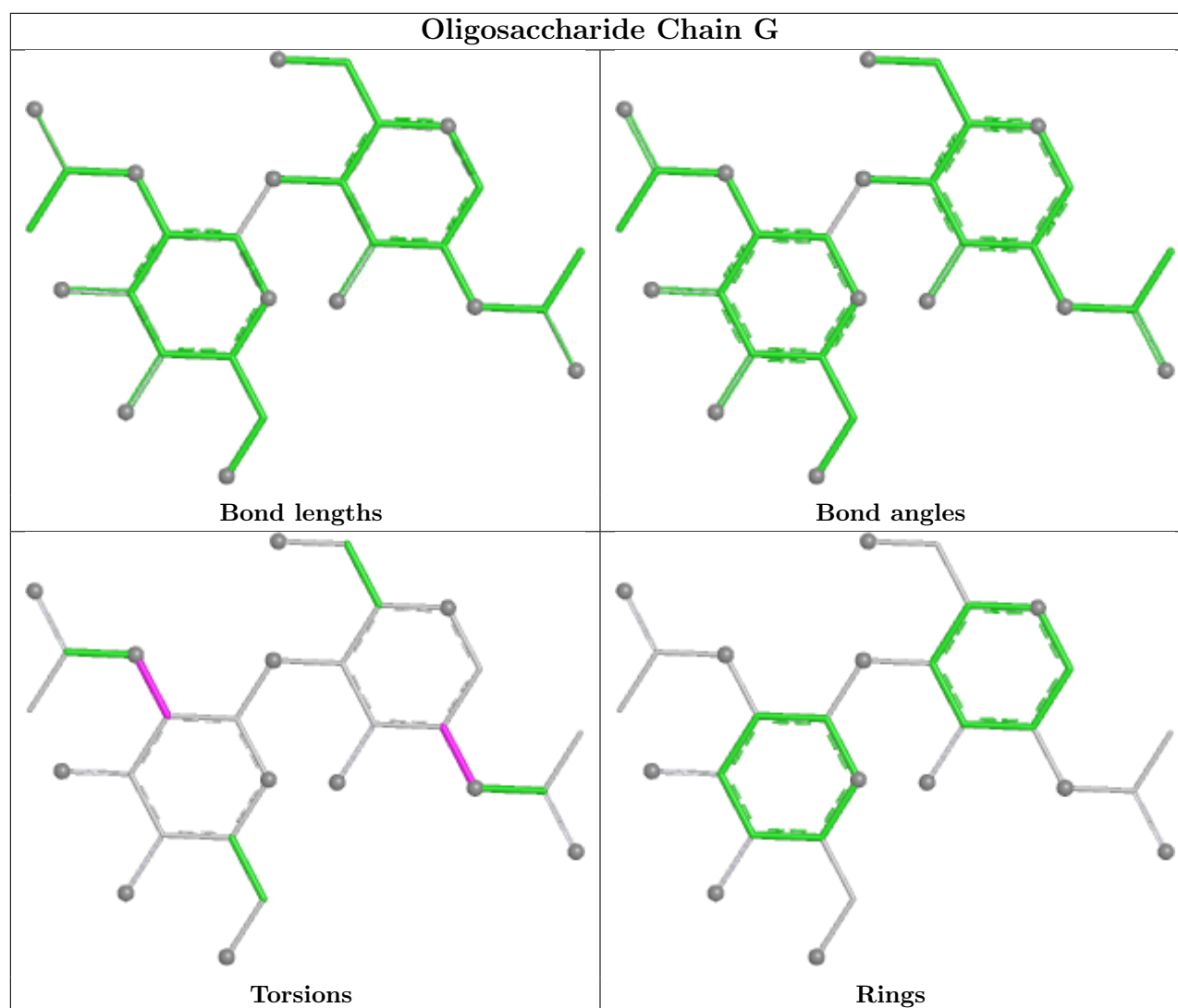
The following is a two-dimensional graphical depiction of Mogul quality analysis of bond lengths, bond angles, torsion angles, and ring geometry for oligosaccharide.











5.6 Ligand geometry [i](#)

3 ligands are modelled in this entry.

In the following table, the Counts columns list the number of bonds (or angles) for which Mogul statistics could be retrieved, the number of bonds (or angles) that are observed in the model and the number of bonds (or angles) that are defined in the Chemical Component Dictionary. The Link column lists molecule types, if any, to which the group is linked. The Z score for a bond length (or angle) is the number of standard deviations the observed value is removed from the expected value. A bond length (or angle) with $|Z| > 2$ is considered an outlier worth inspection. RMSZ is the root-mean-square of all Z scores of the bond lengths (or angles).

Mol	Type	Chain	Res	Link	Bond lengths			Bond angles		
					Counts	RMSZ	$\# Z > 2$	Counts	RMSZ	$\# Z > 2$
6	NAG	A	2704	1	14,14,15	0.29	0	17,19,21	0.53	0
6	NAG	A	2705	1	14,14,15	0.27	0	17,19,21	0.66	0
6	NAG	A	2706	1	14,14,15	0.29	0	17,19,21	0.63	0

In the following table, the Chirals column lists the number of chiral outliers, the number of chiral centers analysed, the number of these observed in the model and the number defined in the Chemical Component Dictionary. Similar counts are reported in the Torsion and Rings columns. '-' means no outliers of that kind were identified.

Mol	Type	Chain	Res	Link	Chirals	Torsions	Rings
6	NAG	A	2704	1	-	4/6/23/26	0/1/1/1
6	NAG	A	2705	1	1/1/5/7	4/6/23/26	0/1/1/1
6	NAG	A	2706	1	-	2/6/23/26	0/1/1/1

There are no bond length outliers.

There are no bond angle outliers.

All (1) chirality outliers are listed below:

Mol	Chain	Res	Type	Atom
6	A	2705	NAG	C1

All (10) torsion outliers are listed below:

Mol	Chain	Res	Type	Atoms
6	A	2704	NAG	C3-C2-N2-C7
6	A	2704	NAG	C8-C7-N2-C2
6	A	2704	NAG	O7-C7-N2-C2
6	A	2705	NAG	C3-C2-N2-C7
6	A	2705	NAG	C8-C7-N2-C2
6	A	2705	NAG	O7-C7-N2-C2
6	A	2705	NAG	O5-C5-C6-O6
6	A	2704	NAG	O5-C5-C6-O6
6	A	2706	NAG	C1-C2-N2-C7
6	A	2706	NAG	C3-C2-N2-C7

There are no ring outliers.

1 monomer is involved in 3 short contacts:

Mol	Chain	Res	Type	Clashes	Symm-Clashes
6	A	2705	NAG	3	0

5.7 Other polymers ⓘ

There are no such residues in this entry.

5.8 Polymer linkage issues ⓘ

There are no chain breaks in this entry.

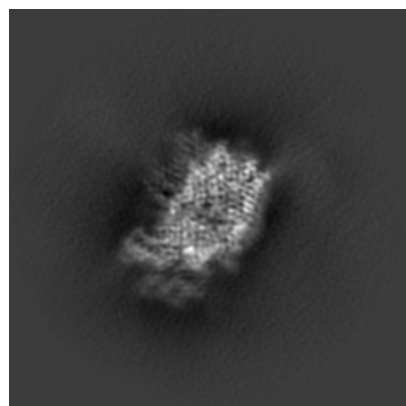
6 Map visualisation [i](#)

This section contains visualisations of the EMDB entry EMD-21205. These allow visual inspection of the internal detail of the map and identification of artifacts.

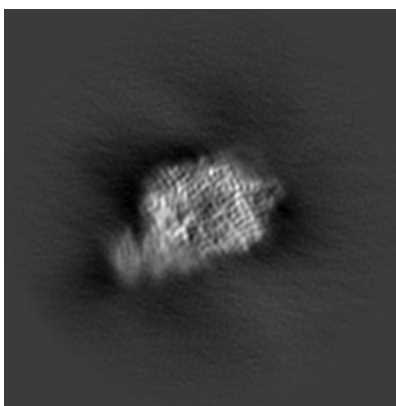
Images derived from a raw map, generated by summing the deposited half-maps, are presented below the corresponding image components of the primary map to allow further visual inspection and comparison with those of the primary map.

6.1 Orthogonal projections [i](#)

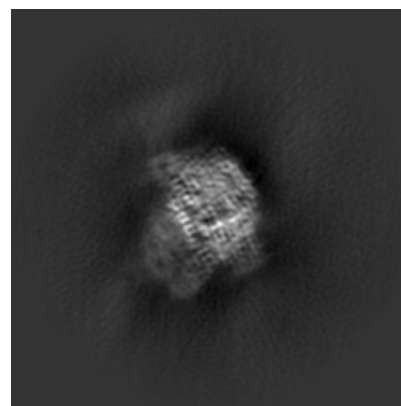
6.1.1 Primary map



X

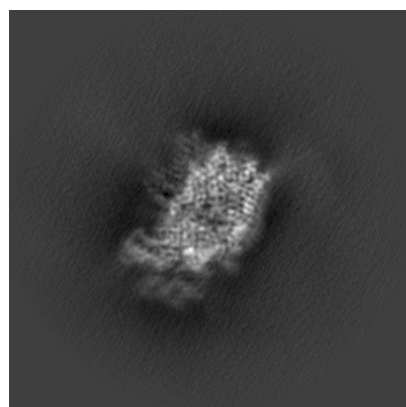


Y

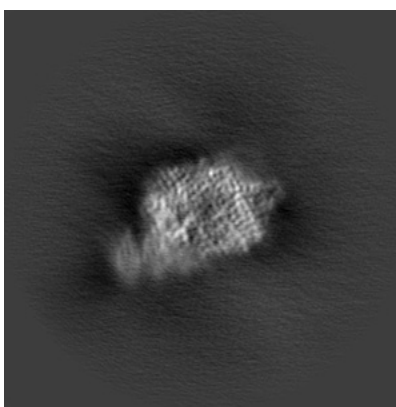


Z

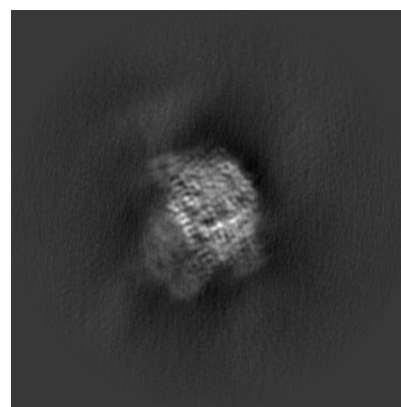
6.1.2 Raw map



X



Y

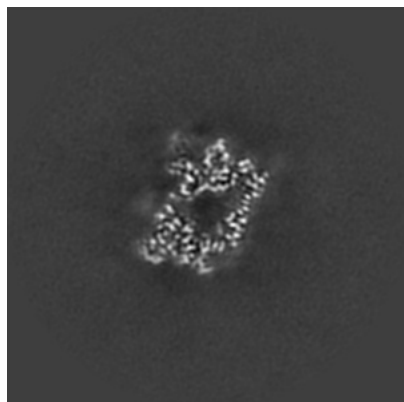


Z

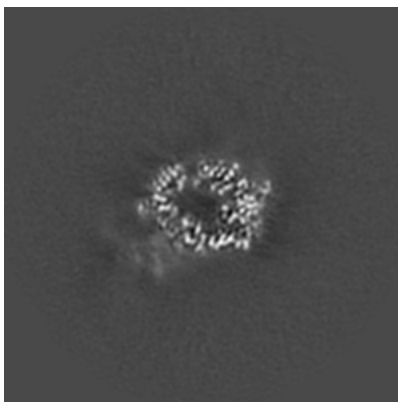
The images above show the map projected in three orthogonal directions.

6.2 Central slices [i](#)

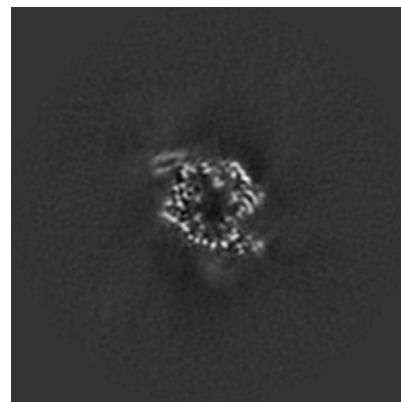
6.2.1 Primary map



X Index: 128

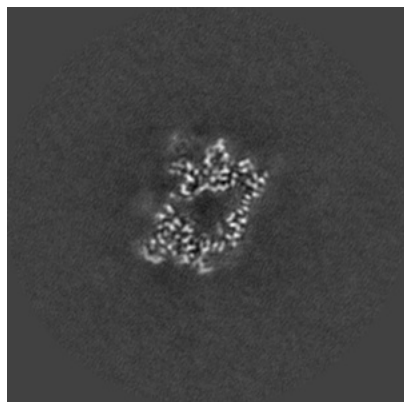


Y Index: 128

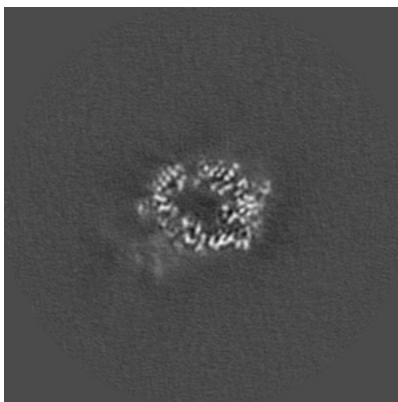


Z Index: 128

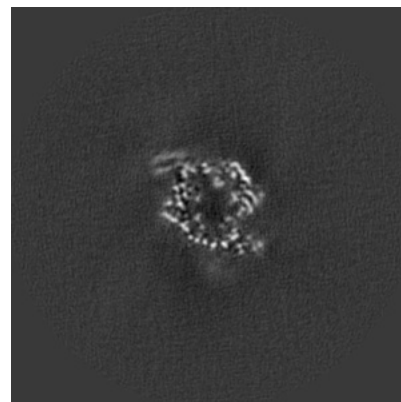
6.2.2 Raw map



X Index: 128



Y Index: 128

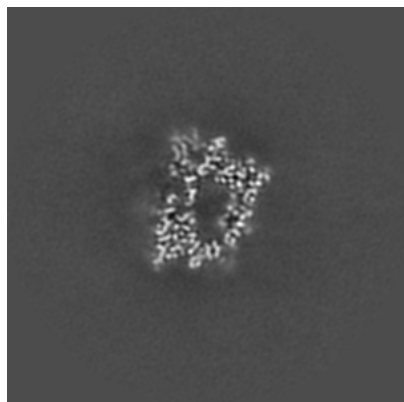


Z Index: 128

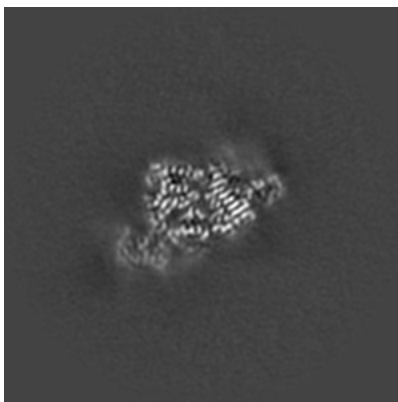
The images above show central slices of the map in three orthogonal directions.

6.3 Largest variance slices [i](#)

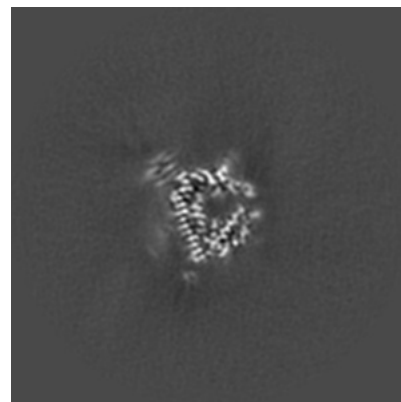
6.3.1 Primary map



X Index: 133

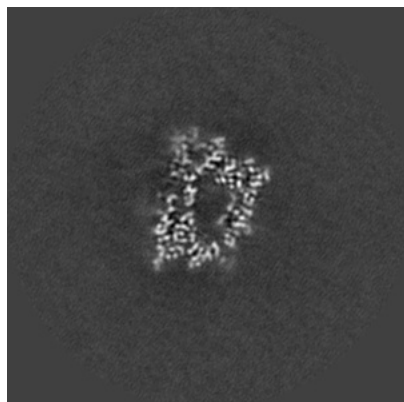


Y Index: 116

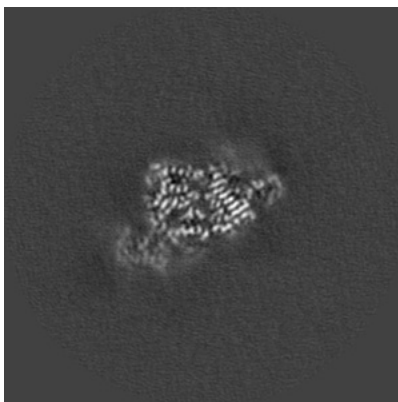


Z Index: 116

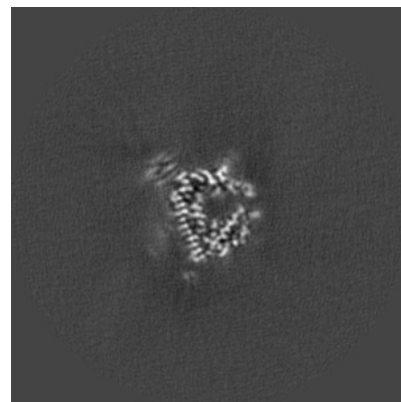
6.3.2 Raw map



X Index: 134



Y Index: 116

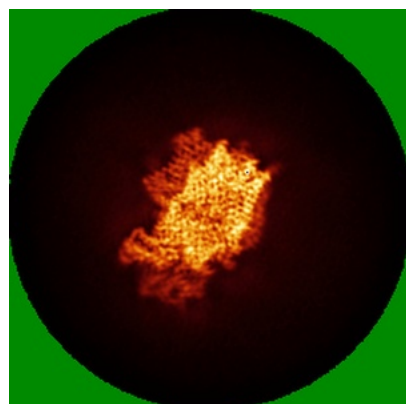


Z Index: 116

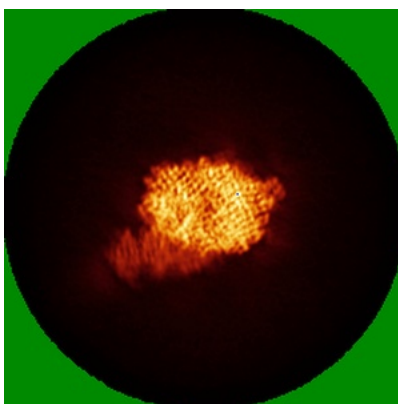
The images above show the largest variance slices of the map in three orthogonal directions.

6.4 Orthogonal standard-deviation projections (False-color) [i](#)

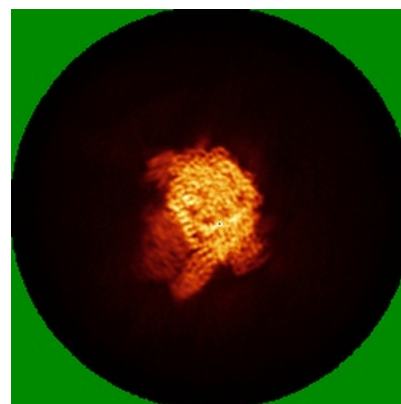
6.4.1 Primary map



X

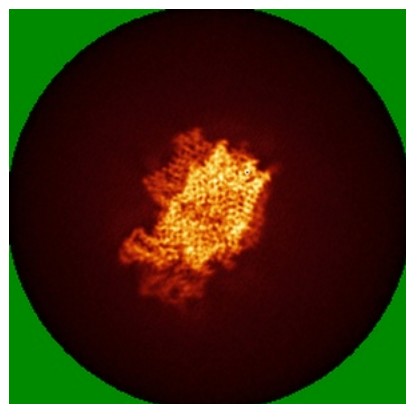


Y

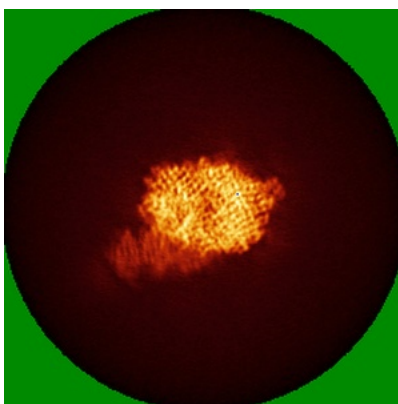


Z

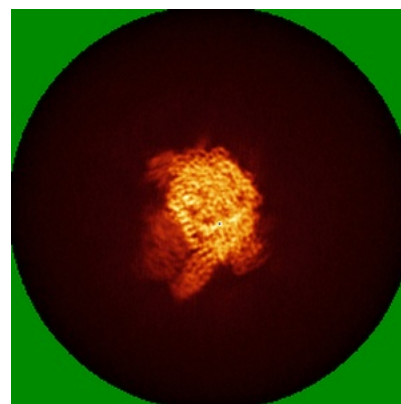
6.4.2 Raw map



X



Y

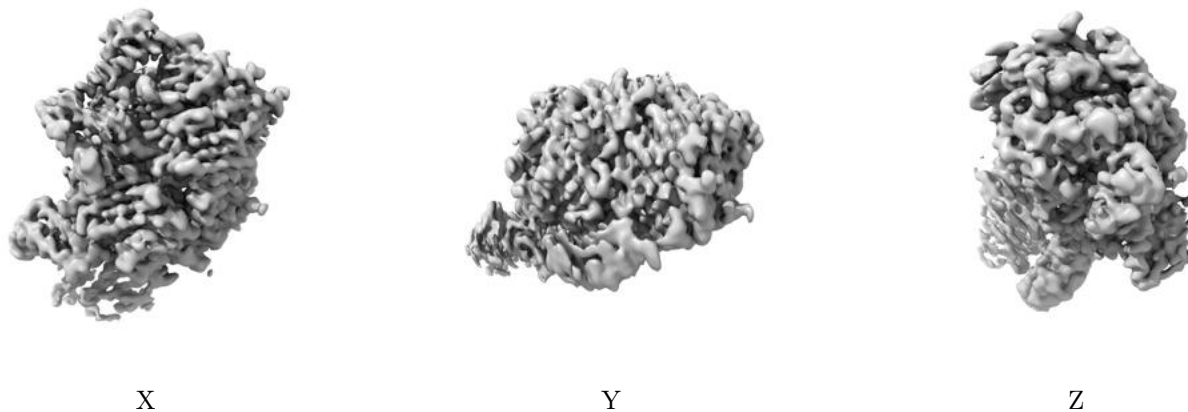


Z

The images above show the map standard deviation projections with false color in three orthogonal directions. Minimum values are shown in green, max in blue, and dark to light orange shades represent small to large values respectively.

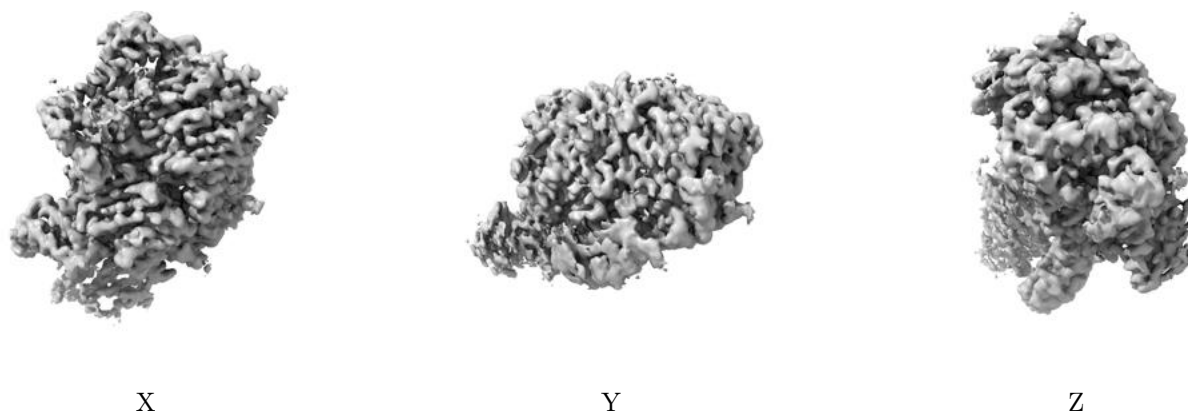
6.5 Orthogonal surface views [i](#)

6.5.1 Primary map



The images above show the 3D surface view of the map at the recommended contour level 0.01. These images, in conjunction with the slice images, may facilitate assessment of whether an appropriate contour level has been provided.

6.5.2 Raw map



These images show the 3D surface of the raw map. The raw map's contour level was selected so that its surface encloses the same volume as the primary map does at its recommended contour level.

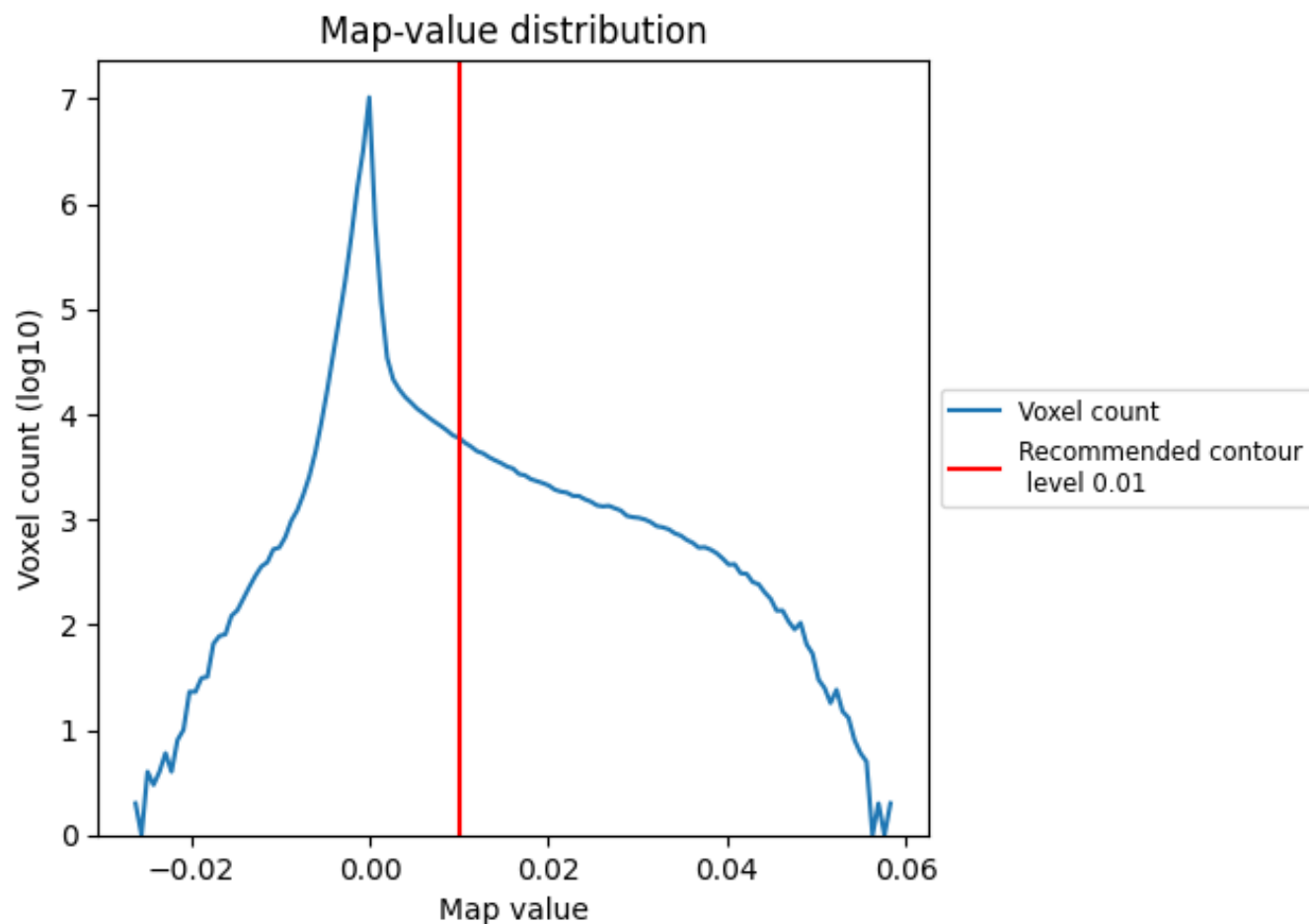
6.6 Mask visualisation [i](#)

This section was not generated. No masks/segmentation were deposited.

7 Map analysis [i](#)

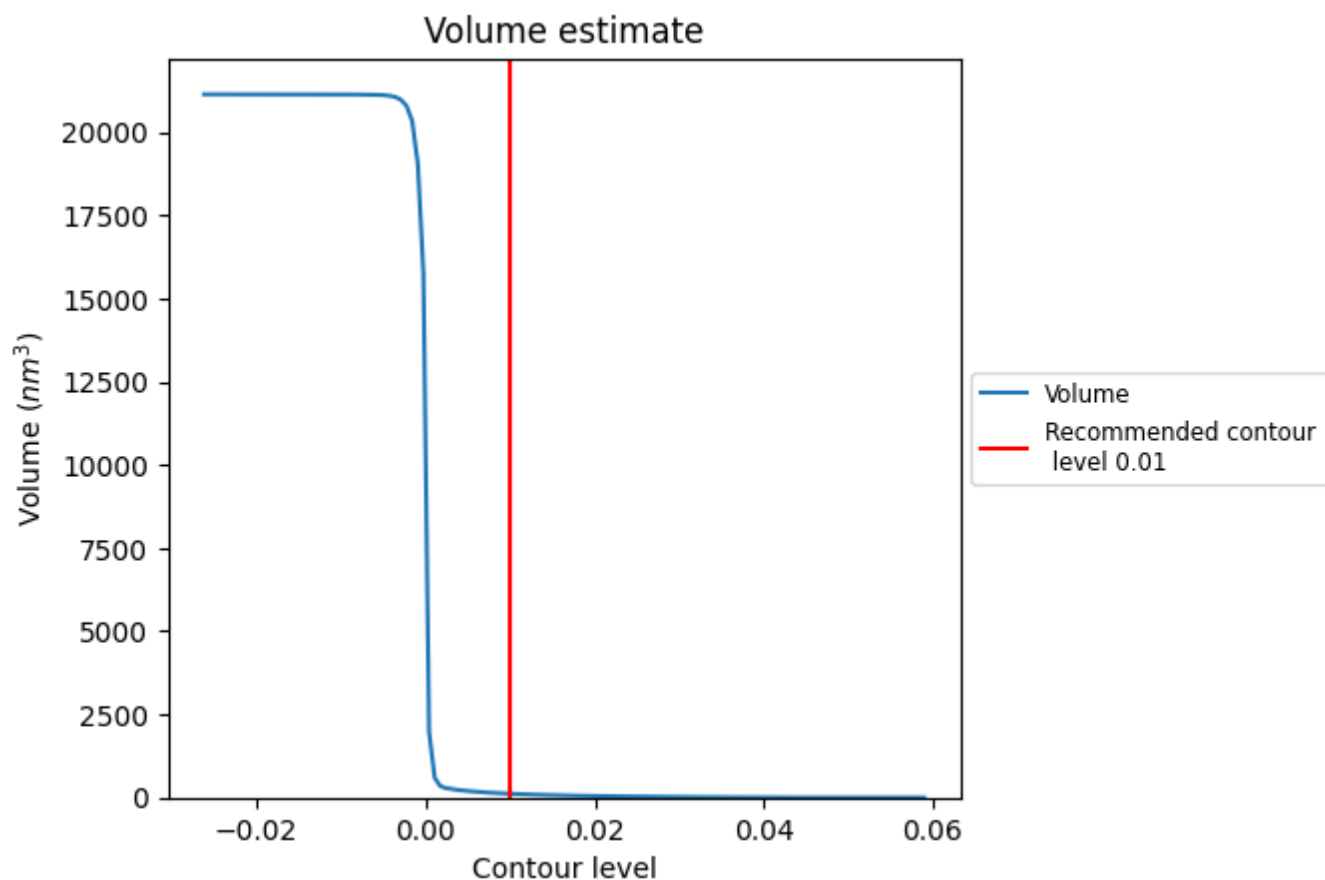
This section contains the results of statistical analysis of the map.

7.1 Map-value distribution [i](#)



The map-value distribution is plotted in 128 intervals along the x-axis. The y-axis is logarithmic. A spike in this graph at zero usually indicates that the volume has been masked.

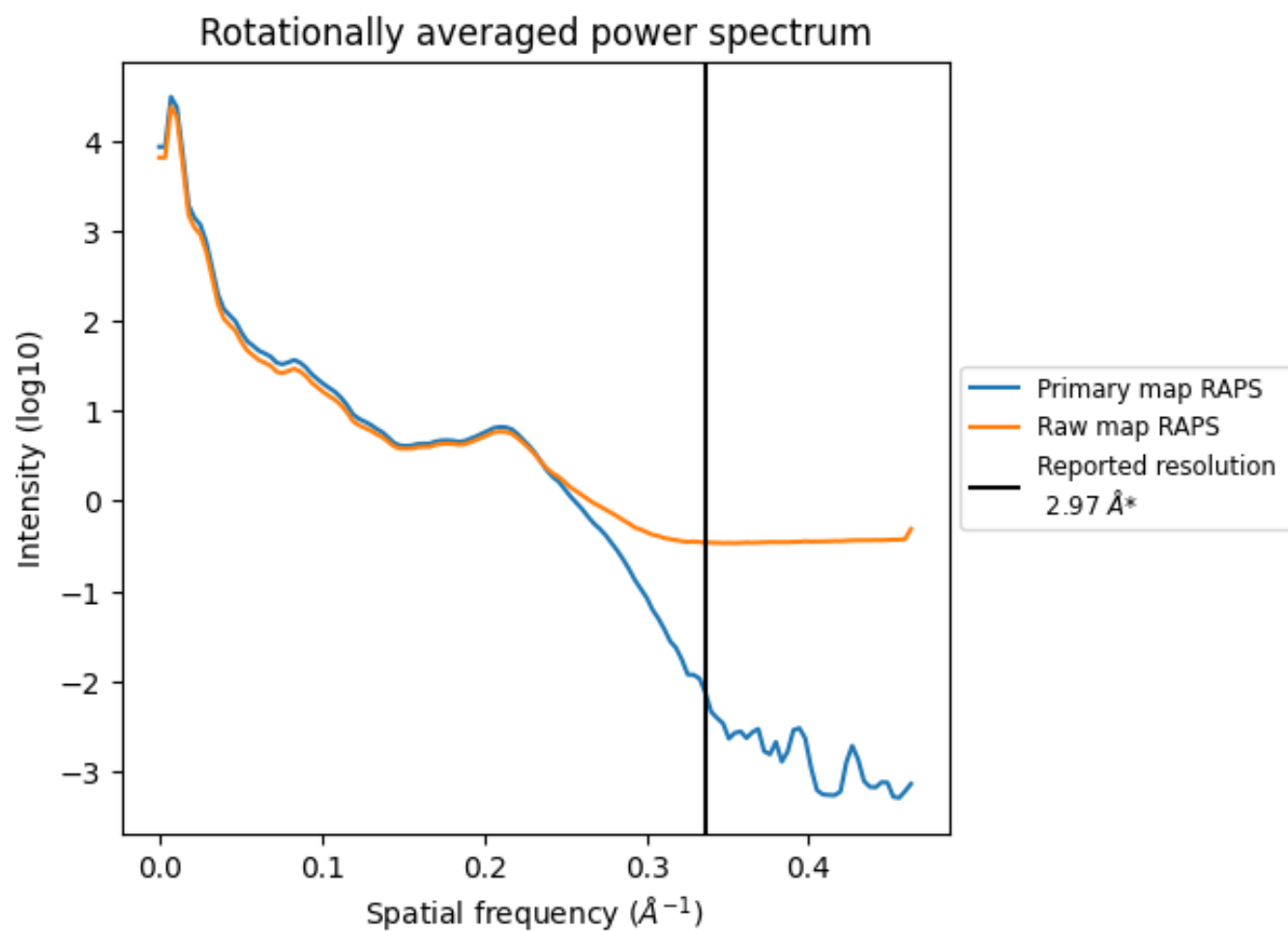
7.2 Volume estimate [i](#)



The volume at the recommended contour level is 114 nm^3 ; this corresponds to an approximate mass of 103 kDa.

The volume estimate graph shows how the enclosed volume varies with the contour level. The recommended contour level is shown as a vertical line and the intersection between the line and the curve gives the volume of the enclosed surface at the given level.

7.3 Rotationally averaged power spectrum ⓘ

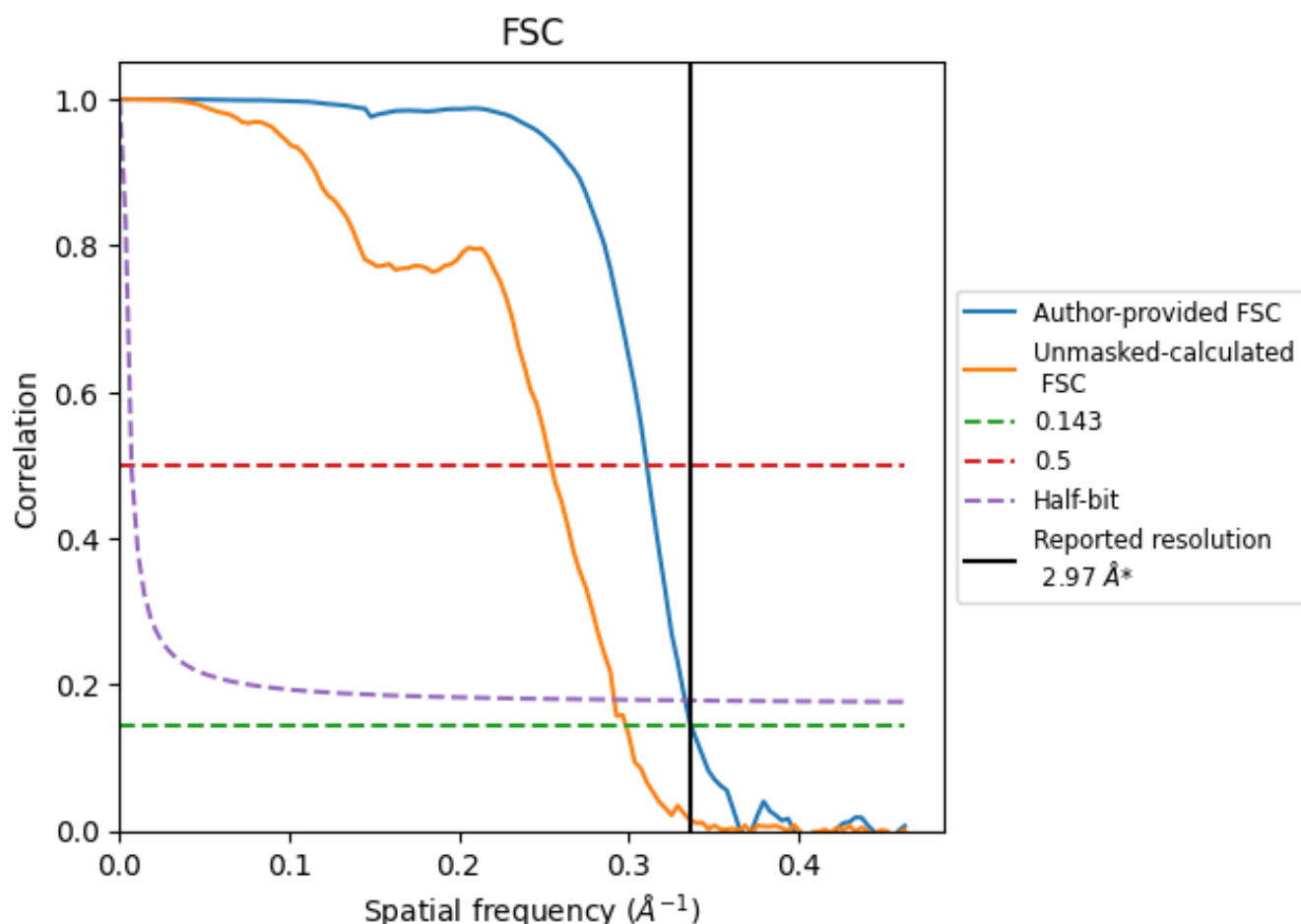


*Reported resolution corresponds to spatial frequency of 0.337 Å⁻¹

8 Fourier-Shell correlation [i](#)

Fourier-Shell Correlation (FSC) is the most commonly used method to estimate the resolution of single-particle and subtomogram-averaged maps. The shape of the curve depends on the imposed symmetry, mask and whether or not the two 3D reconstructions used were processed from a common reference. The reported resolution is shown as a black line. A curve is displayed for the half-bit criterion in addition to lines showing the 0.143 gold standard cut-off and 0.5 cut-off.

8.1 FSC [i](#)



*Reported resolution corresponds to spatial frequency of 0.337 \AA^{-1}

8.2 Resolution estimates [i](#)

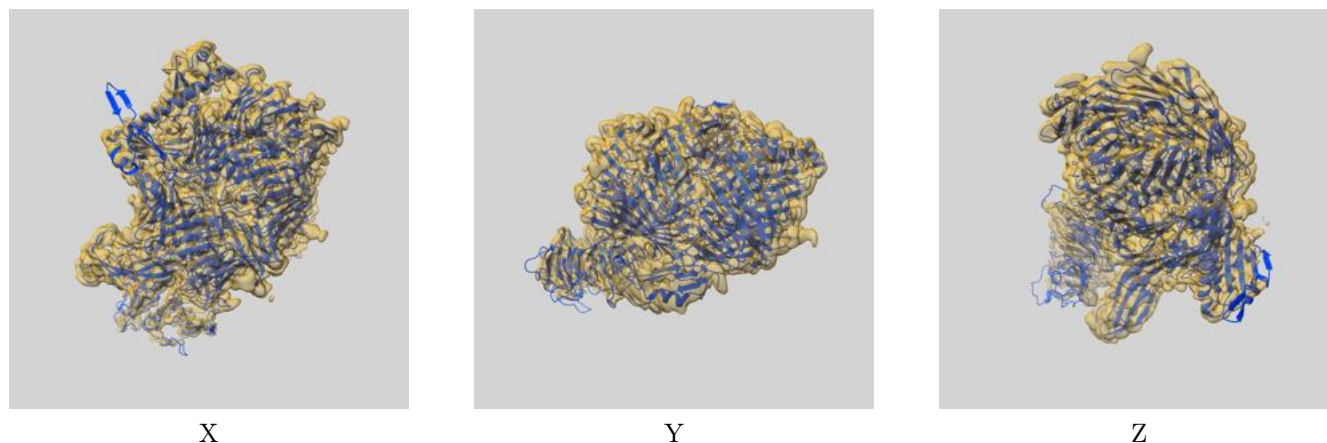
Resolution estimate (Å)	Estimation criterion (FSC cut-off)		
	0.143	0.5	Half-bit
Reported by author	2.97	-	-
Author-provided FSC curve	2.97	3.22	3.00
Unmasked-calculated*	3.35	3.93	3.43

*Resolution estimate based on FSC curve calculated by comparison of deposited half-maps. The value from deposited half-maps intersecting FSC 0.143 CUT-OFF 3.35 differs from the reported value 2.97 by more than 10 %

9 Map-model fit [i](#)

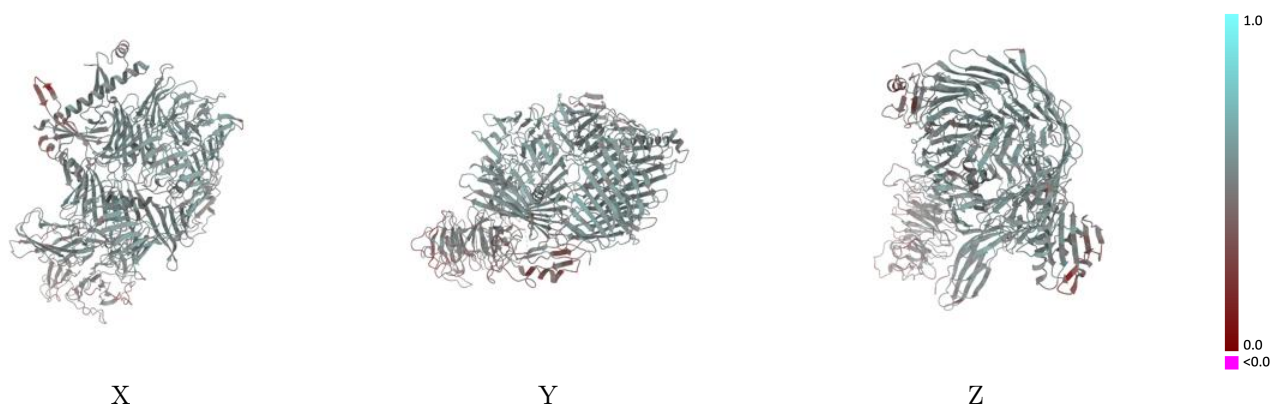
This section contains information regarding the fit between EMDB map EMD-21205 and PDB model 6VHH. Per-residue inclusion information can be found in [section 3](#) on [page 7](#).

9.1 Map-model overlay [i](#)



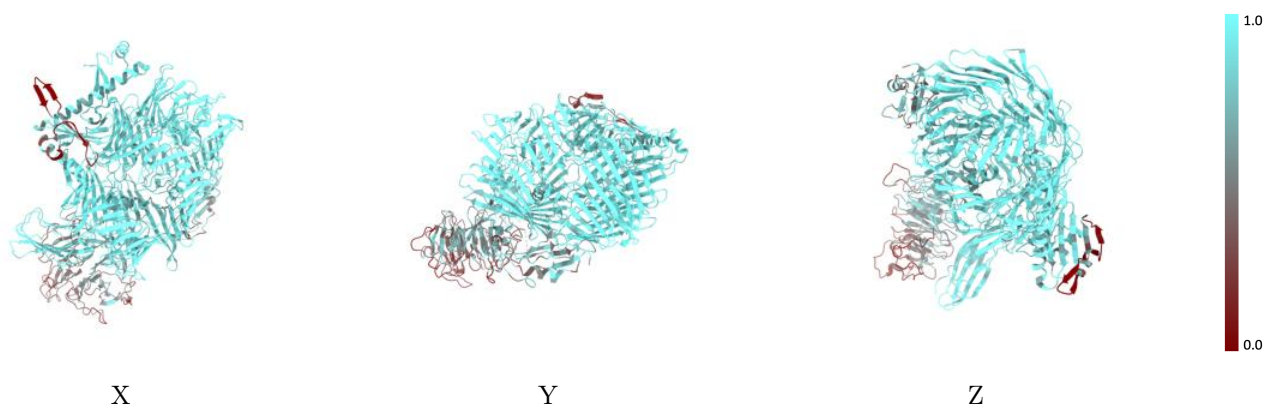
The images above show the 3D surface view of the map at the recommended contour level 0.01 at 50% transparency in yellow overlaid with a ribbon representation of the model coloured in blue. These images allow for the visual assessment of the quality of fit between the atomic model and the map.

9.2 Q-score mapped to coordinate model [i](#)



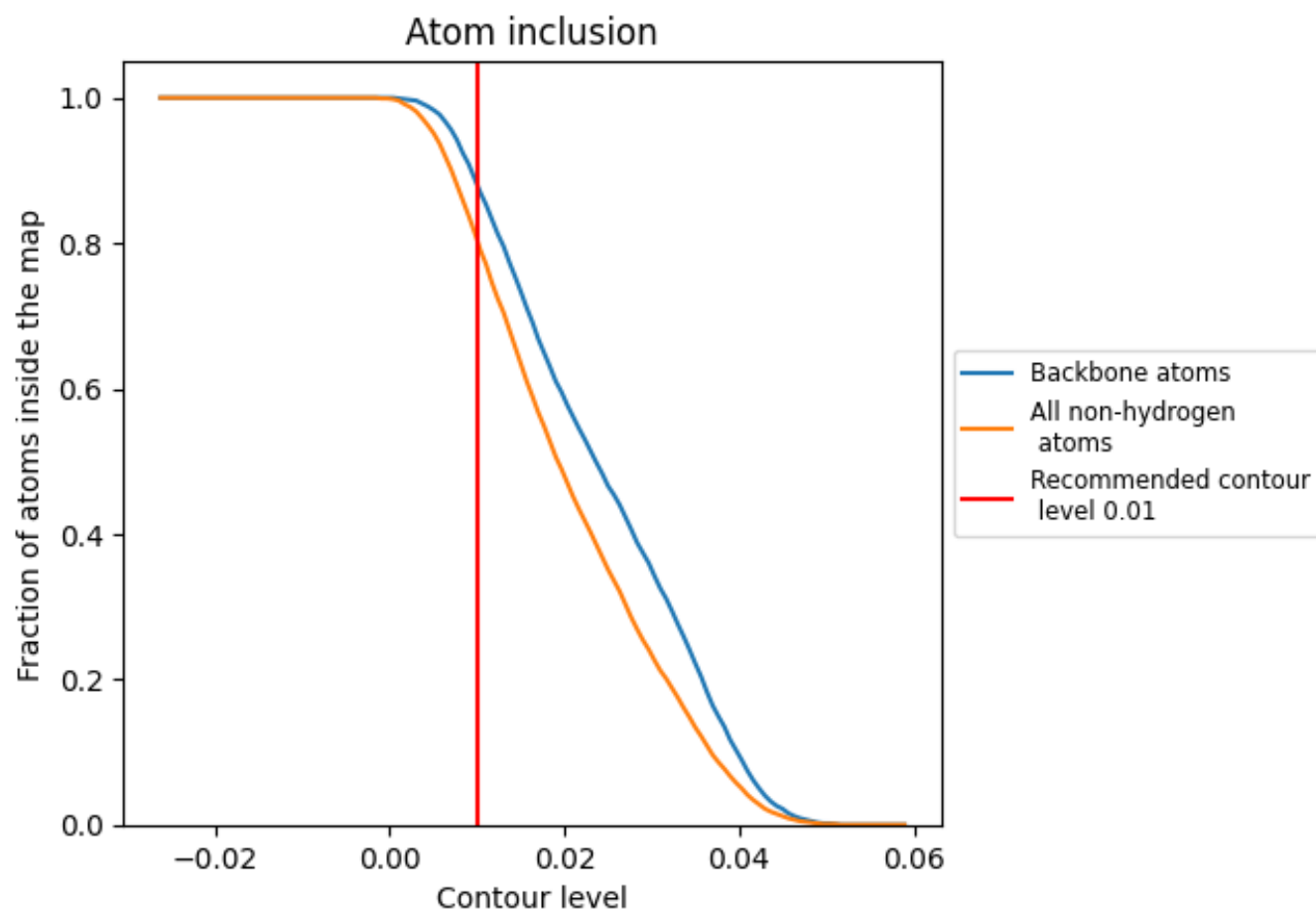
The images above show the model with each residue coloured according to its Q-score. This shows their resolvability in the map with higher Q-score values reflecting better resolvability. Please note: Q-score is calculating the resolvability of atoms, and thus high values are only expected at resolutions at which atoms can be resolved. Low Q-score values may therefore be expected for many entries.

9.3 Atom inclusion mapped to coordinate model [i](#)



The images above show the model with each residue coloured according to its atom inclusion. This shows to what extent they are inside the map at the recommended contour level (0.01).

9.4 Atom inclusion [i](#)



At the recommended contour level, 88% of all backbone atoms, 81% of all non-hydrogen atoms, are inside the map.

9.5 Map-model fit summary ⓘ

The table lists the average atom inclusion at the recommended contour level (0.01) and Q-score for the entire model and for each chain.

Chain	Atom inclusion	Q-score
All	<div><div></div>0.8060</div>	<div><div></div>0.5020</div>
A	<div><div></div>0.8160</div>	<div><div></div>0.5080</div>
B	<div><div></div>0.6230</div>	<div><div></div>0.4090</div>
C	<div><div></div>0.7440</div>	<div><div></div>0.4220</div>
D	<div><div></div>1.0000</div>	<div><div></div>0.5050</div>
E	<div><div></div>0.8570</div>	<div><div></div>0.3770</div>
F	<div><div></div>0.8210</div>	<div><div></div>0.4880</div>
G	<div><div></div>0.8210</div>	<div><div></div>0.4830</div>

1.0

0.0

<0.0