



Full wwPDB EM Validation Report ⓘ

Nov 18, 2025 – 12:22 PM JST

PDB ID : 9VNT / pdb_00009vnt
EMDB ID : EMD-65217
Title : Cryo-EM structure of a human flippase mutant ATP11C Q79E-CDC50A in PtdSer-occluded E2P-A1F state
Authors : Qian, Y.; Abe, K.
Deposited on : 2025-07-01
Resolution : 2.51 Å(reported)

This is a Full wwPDB EM Validation Report for a publicly released PDB entry.

We welcome your comments at validation@mail.wwpdb.org

A user guide is available at

<https://www.wwpdb.org/validation/2017/EMValidationReportHelp>
with specific help available everywhere you see the ⓘ symbol.

The types of validation reports are described at

<http://www.wwpdb.org/validation/2017/FAQs#types>.

The following versions of software and data (see [references ⓘ](#)) were used in the production of this report:

EMDB validation analysis : 0.0.1.dev129
Mogul : 1.8.5 (274361), CSD as541be (2020)
MolProbity : 4-5-2 with Phenix2.0
buster-report : 1.1.7 (2018)
Percentile statistics : 20231227.v01 (using entries in the PDB archive December 27th 2023)
EM percentile statistics : 202505.v01 (Using data in the EMDB archive up until May 2025)
MapQ : 1.9.13
Ideal geometry (proteins) : Engh & Huber (2001)
Ideal geometry (DNA, RNA) : Parkinson et al. (1996)
Validation Pipeline (wwPDB-VP) : 2.46

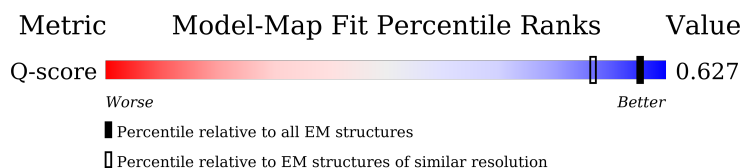
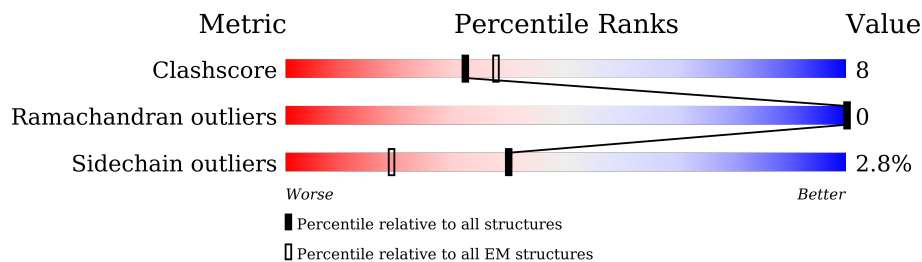
1 Overall quality at a glance

The following experimental techniques were used to determine the structure:

ELECTRON MICROSCOPY

The reported resolution of this entry is 2.51 Å.

Percentile scores (ranging between 0-100) for global validation metrics of the entry are shown in the following graphic. The table shows the number of entries on which the scores are based.



Metric	Whole archive (#Entries)	EM structures (#Entries)	Similar EM resolution (#Entries, resolution range(Å))
Clashscore	210492	15764	-
Ramachandran outliers	207382	16835	-
Sidechain outliers	206894	16415	-
Q-score	-	25397	7159 (2.01 - 3.01)

The table below summarises the geometric issues observed across the polymeric chains and their fit to the map. The red, orange, yellow and green segments of the bar indicate the fraction of residues that contain outliers for ≥ 3 , 2, 1 and 0 types of geometric quality criteria respectively. A grey segment represents the fraction of residues that are not modelled. The numeric value for each fraction is indicated below the corresponding segment, with a dot representing fractions $\leq 5\%$. The upper red bar (where present) indicates the fraction of residues that have poor fit to the EM map (all-atom inclusion $< 40\%$). The numeric value is given above the bar.

Mol	Chain	Length	Quality of chain
1	A	1073	
2	C	324	
3	B	3	

2 Entry composition [i](#)

There are 8 unique types of molecules in this entry. The entry contains 9286 atoms, of which 81 are hydrogens and 0 are deuteriums.

In the tables below, the AltConf column contains the number of residues with at least one atom in alternate conformation and the Trace column contains the number of residues modelled with at most 2 atoms.

- Molecule 1 is a protein called Phospholipid-transporting ATPase IG.

Mol	Chain	Residues	Atoms					AltConf	Trace
1	A	805	Total	C	N	O	S	0	0
			6509	4254	1041	1181	33		

There are 2 discrepancies between the modelled and reference sequences:

Chain	Residue	Modelled	Actual	Comment	Reference
A	79	GLU	GLN	engineered mutation	UNP Q8NB49
A	111	TRP	CYS	variant	UNP Q8NB49

- Molecule 2 is a protein called Cell cycle control protein 50A.

Mol	Chain	Residues	Atoms					AltConf	Trace
2	C	320	Total	C	N	O	S	0	0
			2582	1678	434	458	12		

There are 3 discrepancies between the modelled and reference sequences:

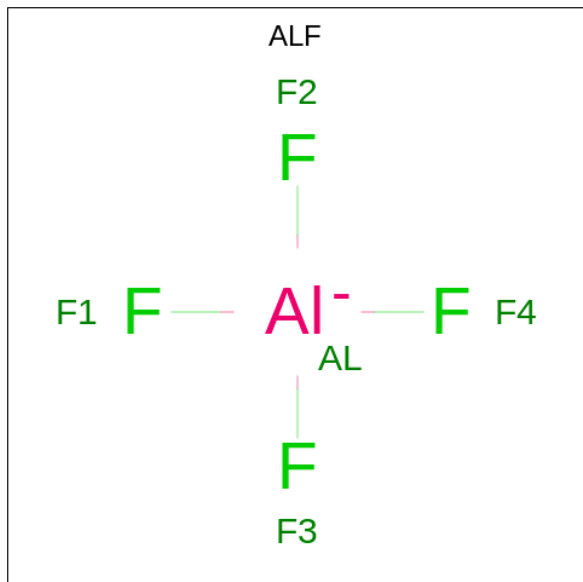
Chain	Residue	Modelled	Actual	Comment	Reference
C	175	MET	ALA	variant	UNP Q9NV96
C	190	GLN	ASN	variant	UNP Q9NV96
C	292	TRP	SER	variant	UNP Q9NV96

- Molecule 3 is an oligosaccharide called alpha-D-mannopyranose-(1-4)-2-acetamido-2-deoxy-beta-D-glucopyranose-(1-4)-2-acetamido-2-deoxy-beta-D-glucopyranose.



Mol	Chain	Residues	Atoms				AltConf	Trace
3	B	3	Total	C	N	O	0	0
			39	22	2	15		

- Molecule 4 is TETRAFLUOROALUMINATE ION (CCD ID: ALF) (formula: AlF_4) (labeled as "Ligand of Interest" by depositor).

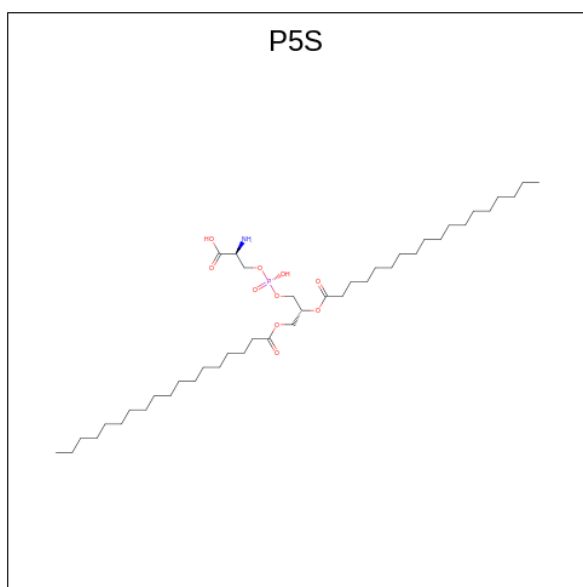


Mol	Chain	Residues	Atoms			AltConf
4	A	1	Total	Al	F	0
			5	1	4	

- Molecule 5 is MAGNESIUM ION (CCD ID: MG) (formula: Mg) (labeled as "Ligand of Interest" by depositor).

Mol	Chain	Residues	Atoms		AltConf
5	A	1	Total	Mg	0
			1	1	

- Molecule 6 is O-[(R)-{[(2R)-2,3-bis(octadecanoyloxy)propyl]oxy}(hydroxy)phosphoryl]-L-serine (CCD ID: P5S) (formula: $\text{C}_{42}\text{H}_{82}\text{NO}_{10}\text{P}$) (labeled as "Ligand of Interest" by depositor).



Mol	Chain	Residues	Atoms					AltConf	
6	A	1	Total	C	H	N	O	P	0
			135	42	81	1	10	1	

- Molecule 7 is 2-acetamido-2-deoxy-beta-D-glucopyranose (CCD ID: NAG) (formula: $C_8H_{15}NO_6$) (labeled as "Ligand of Interest" by depositor).



Mol	Chain	Residues	Atoms				AltConf
7	C	1	Total	C	N	O	0
			14	8	1	5	

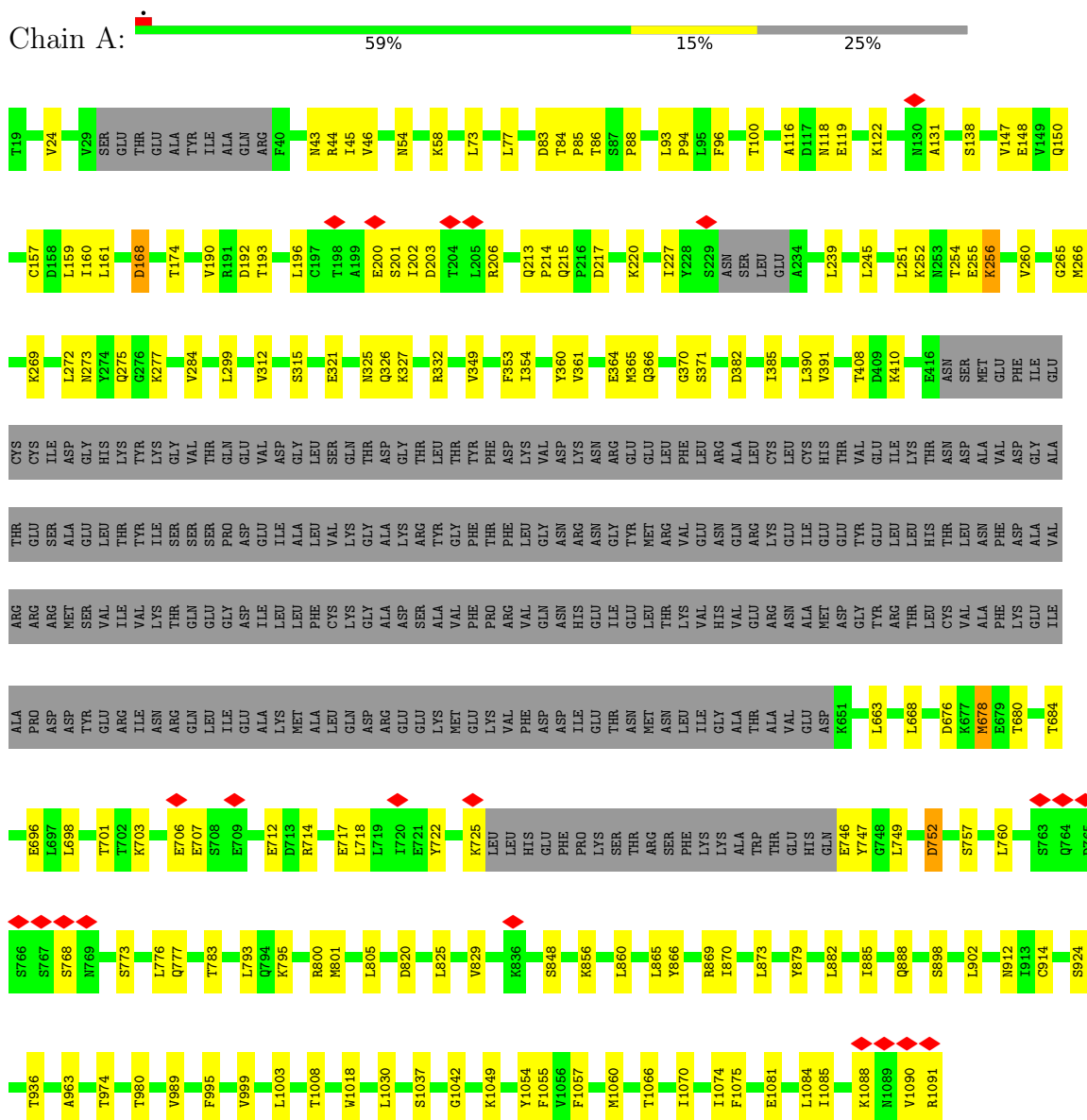
- Molecule 8 is water.

Mol	Chain	Residues	Atoms		AltConf
8	A	1	Total 1	O 1	0

3 Residue-property plots

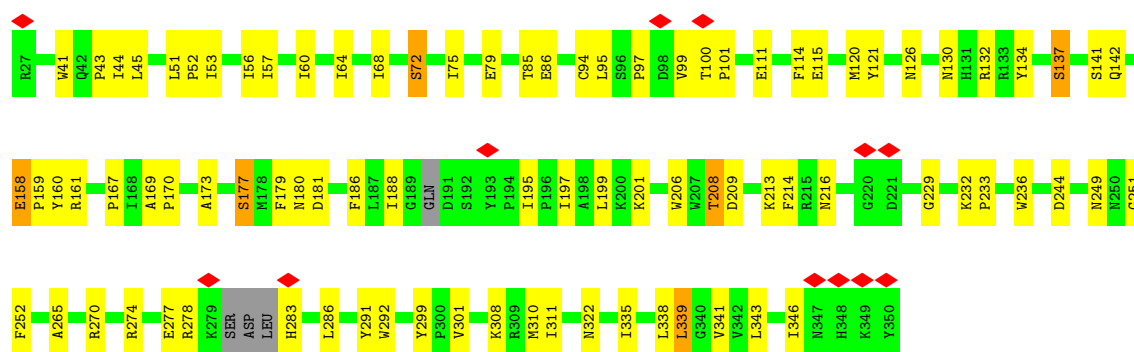
These plots are drawn for all protein, RNA, DNA and oligosaccharide chains in the entry. The first graphic for a chain summarises the proportions of the various outlier classes displayed in the second graphic. The second graphic shows the sequence view annotated by issues in geometry and atom inclusion in map density. Residues are color-coded according to the number of geometric quality criteria for which they contain at least one outlier: green = 0, yellow = 1, orange = 2 and red = 3 or more. A red diamond above a residue indicates a poor fit to the EM map for this residue (all-atom inclusion < 40%). Stretches of 2 or more consecutive residues without any outlier are shown as a green connector. Residues present in the sample, but not in the model, are shown in grey.

• Molecule 1: Phospholipid-transporting ATPase IG



• Molecule 2: Cell cycle control protein 50A

Chain C:  72% 25% ..



- Molecule 3: alpha-D-mannopyranose-(1-4)-2-acetamido-2-deoxy-beta-D-glucopyranose-(1-4)-2-acetamido-2-deoxy-beta-D-glucopyranose

Chain B:  33% 67%



4 Experimental information

Property	Value	Source
EM reconstruction method	SINGLE PARTICLE	Depositor
Imposed symmetry	POINT, Not provided	
Number of particles used	105729	Depositor
Resolution determination method	FSC 0.143 CUT-OFF	Depositor
CTF correction method	PHASE FLIPPING AND AMPLITUDE CORRECTION	Depositor
Microscope	JEOL CRYO ARM 300	Depositor
Voltage (kV)	300	Depositor
Electron dose ($e^-/\text{\AA}^2$)	60	Depositor
Minimum defocus (nm)	1200	Depositor
Maximum defocus (nm)	1600	Depositor
Magnification	60000	Depositor
Image detector	GATAN K3 (6k x 4k)	Depositor
Maximum map value	3.397	Depositor
Minimum map value	-1.884	Depositor
Average map value	-0.004	Depositor
Map value standard deviation	0.066	Depositor
Recommended contour level	0.5	Depositor
Map size (Å)	338.4, 338.4, 338.4	wwPDB
Map dimensions	450, 450, 450	wwPDB
Map angles (°)	90.0, 90.0, 90.0	wwPDB
Pixel spacing (Å)	0.752, 0.752, 0.752	Depositor

5 Model quality

5.1 Standard geometry

Bond lengths and bond angles in the following residue types are not validated in this section: ALF, MG, MAN, P5S, NAG

The Z score for a bond length (or angle) is the number of standard deviations the observed value is removed from the expected value. A bond length (or angle) with $|Z| > 5$ is considered an outlier worth inspection. RMSZ is the root-mean-square of all Z scores of the bond lengths (or angles).

Mol	Chain	Bond lengths		Bond angles	
		RMSZ	$\# Z > 5$	RMSZ	$\# Z > 5$
1	A	0.16	0/6662	0.47	0/9031
2	C	0.22	1/2657 (0.0%)	0.56	4/3611 (0.1%)
All	All	0.18	1/9319 (0.0%)	0.50	4/12642 (0.0%)

Chiral center outliers are detected by calculating the chiral volume of a chiral center and verifying if the center is modelled as a planar moiety or with the opposite hand. A planarity outlier is detected by checking planarity of atoms in a peptide group, atoms in a mainchain group or atoms of a sidechain that are expected to be planar.

Mol	Chain	#Chirality outliers	#Planarity outliers
2	C	0	1

All (1) bond length outliers are listed below:

Mol	Chain	Res	Type	Atoms	Z	Observed(Å)	Ideal(Å)
2	C	52	PRO	CG-CD	-5.43	1.32	1.50

All (4) bond angle outliers are listed below:

Mol	Chain	Res	Type	Atoms	Z	Observed(°)	Ideal(°)
2	C	52	PRO	N-CD-CG	-9.67	88.69	103.20
2	C	52	PRO	CA-N-CD	-6.07	103.50	112.00
2	C	53	ILE	N-CA-C	-5.59	108.40	113.71
2	C	52	PRO	CA-CB-CG	-5.30	94.42	104.50

There are no chirality outliers.

All (1) planarity outliers are listed below:

Mol	Chain	Res	Type	Group
2	C	158	GLU	Peptide

5.2 Too-close contacts [i](#)

In the following table, the Non-H and H(model) columns list the number of non-hydrogen atoms and hydrogen atoms in the chain respectively. The H(added) column lists the number of hydrogen atoms added and optimized by MolProbity. The Clashes column lists the number of clashes within the asymmetric unit, whereas Symm-Clashes lists symmetry-related clashes.

Mol	Chain	Non-H	H(model)	H(added)	Clashes	Symm-Clashes
1	A	6509	0	6538	105	0
2	C	2582	0	2555	58	0
3	B	39	0	34	1	0
4	A	5	0	0	0	0
5	A	1	0	0	0	0
6	A	54	81	80	3	0
7	C	14	0	13	0	0
8	A	1	0	0	0	0
All	All	9205	81	9220	155	0

The all-atom clashscore is defined as the number of clashes found per 1000 atoms (including hydrogen atoms). The all-atom clashscore for this structure is 8.

All (155) close contacts within the same asymmetric unit are listed below, sorted by their clash magnitude.

Atom-1	Atom-2	Interatomic distance (Å)	Clash overlap (Å)
1:A:275:GLN:OE1	1:A:800:ARG:NH1	2.19	0.75
1:A:912:ASN:HB2	6:A:1103:P5S:O13	1.90	0.71
2:C:216:ASN:ND2	2:C:251:GLY:O	2.23	0.71
2:C:278:ARG:NH2	2:C:283:HIS:O	2.23	0.70
1:A:1049:LYS:HA	1:A:1049:LYS:HE3	1.75	0.69
2:C:99:VAL:HG22	2:C:101:PRO:HD2	1.73	0.69
1:A:371:SER:HB3	1:A:391:VAL:HG11	1.75	0.68
1:A:299:LEU:HB2	1:A:354:ILE:HD11	1.75	0.68
2:C:301:VAL:HG21	2:C:308:LYS:HG3	1.76	0.67
1:A:980:THR:HB	2:C:322:ASN:HB2	1.76	0.67
2:C:111:GLU:CD	2:C:111:GLU:H	2.04	0.66
1:A:714:ARG:HH12	1:A:718:LEU:HD21	1.62	0.65
2:C:137:SER:HB3	2:C:173:ALA:H	1.62	0.65
1:A:43:ASN:ND2	1:A:138:SER:O	2.30	0.64
2:C:120:MET:HE1	2:C:199:LEU:HD13	1.80	0.64

Continued on next page...

Continued from previous page...

Atom-1	Atom-2	Interatomic distance (Å)	Clash overlap (Å)
2:C:79:GLU:OE1	2:C:270:ARG:NH2	2.31	0.64
2:C:169:ALA:HB3	2:C:170:PRO:HD3	1.79	0.64
1:A:321:GLU:OE2	1:A:332:ARG:NE	2.31	0.64
2:C:100:THR:HG23	2:C:101:PRO:HD3	1.79	0.63
1:A:698:LEU:HD22	1:A:718:LEU:HD22	1.80	0.62
1:A:321:GLU:HG2	1:A:326:GLN:HA	1.83	0.61
1:A:251:LEU:HD11	1:A:254:THR:HB	1.82	0.60
1:A:312:VAL:O	1:A:315:SER:OG	2.19	0.60
1:A:277:LYS:HD3	1:A:825:LEU:HD22	1.83	0.59
2:C:120:MET:HE3	2:C:274:ARG:HB2	1.84	0.59
1:A:325:ASN:HB3	2:C:134:TYR:HD1	1.67	0.59
1:A:1085:ILE:HD12	2:C:45:LEU:HD12	1.85	0.58
1:A:196:LEU:HD23	1:A:201:SER:HA	1.85	0.58
1:A:284:VAL:HG11	1:A:870:ILE:HG12	1.86	0.58
1:A:43:ASN:HA	1:A:265:GLY:H	1.67	0.58
1:A:1090:VAL:HG22	1:A:1091:ARG:HG2	1.85	0.58
2:C:180:ASN:HD22	3:B:1:NAG:H83	1.68	0.57
2:C:114:PHE:HB2	2:C:286:LEU:HB2	1.87	0.57
1:A:206:ARG:H	1:A:206:ARG:HD2	1.69	0.57
1:A:898:SER:HB2	2:C:132:ARG:HB3	1.87	0.57
1:A:269:LYS:O	1:A:273:ASN:ND2	2.34	0.57
1:A:382:ASP:HB3	1:A:385:ILE:HG12	1.87	0.57
1:A:160:ILE:HD12	1:A:239:LEU:HD13	1.87	0.56
1:A:1055:PHE:HB2	2:C:208:THR:HG21	1.88	0.56
1:A:1060:MET:HG3	1:A:1066:THR:HG21	1.87	0.56
1:A:1018:TRP:HB2	2:C:41:TRP:HB3	1.88	0.55
2:C:142:GLN:NE2	2:C:169:ALA:O	2.40	0.55
2:C:170:PRO:HD2	2:C:233:PRO:HD3	1.89	0.55
1:A:760:LEU:HD21	1:A:801:MET:HE2	1.88	0.55
2:C:177:SER:O	2:C:299:TYR:OH	2.20	0.54
2:C:158:GLU:HA	2:C:161:ARG:HB2	1.88	0.54
1:A:974:THR:HG21	1:A:999:VAL:HG22	1.89	0.54
2:C:85:THR:HA	2:C:95:LEU:HD11	1.89	0.54
1:A:717:GLU:O	1:A:722:TYR:HB2	2.08	0.53
1:A:214:PRO:HB2	1:A:272:LEU:HD11	1.89	0.53
2:C:173:ALA:O	2:C:177:SER:OG	2.27	0.52
2:C:277:GLU:OE1	2:C:277:GLU:N	2.34	0.52
1:A:118:ASN:HB3	1:A:122:LYS:NZ	2.24	0.52
2:C:232:LYS:NZ	2:C:236:TRP:O	2.34	0.52
2:C:121:TYR:HB2	2:C:311:ILE:HB	1.91	0.52
2:C:179:PHE:CZ	2:C:181:ASP:HB2	2.45	0.52

Continued on next page...

Continued from previous page...

Atom-1	Atom-2	Interatomic distance (Å)	Clash overlap (Å)
1:A:773:SER:O	1:A:777:GLN:HG3	2.10	0.52
1:A:273:ASN:HA	1:A:793:LEU:HB2	1.91	0.51
1:A:192:ASP:HB2	1:A:227:ILE:HD12	1.92	0.51
1:A:1042:GLY:N	1:A:1054:TYR:O	2.44	0.51
1:A:370:GLY:O	1:A:866:TYR:OH	2.16	0.51
1:A:148:GLU:OE2	1:A:150:GLN:NE2	2.43	0.51
1:A:85:PRO:HD2	1:A:349:VAL:HG12	1.92	0.51
1:A:217:ASP:O	1:A:269:LYS:NZ	2.30	0.50
1:A:213:GLN:HE21	1:A:214:PRO:HD2	1.76	0.50
1:A:410:LYS:HG3	1:A:684:THR:HG21	1.92	0.50
1:A:701:THR:HA	1:A:752:ASP:HB2	1.94	0.50
1:A:44:ARG:NH1	1:A:46:VAL:HG22	2.27	0.50
1:A:795:LYS:NZ	1:A:820:ASP:OD1	2.37	0.49
1:A:882:LEU:HD23	1:A:963:ALA:HB3	1.95	0.49
1:A:914:CYS:HA	6:A:1103:P5S:H50	1.94	0.49
1:A:1081:GLU:O	1:A:1085:ILE:HG23	2.12	0.49
2:C:115:GLU:O	2:C:278:ARG:NH1	2.46	0.49
1:A:678:MET:HE1	1:A:703:LYS:HE3	1.94	0.48
1:A:255:GLU:HG3	1:A:256:LYS:N	2.27	0.48
2:C:158:GLU:HG2	2:C:158:GLU:O	2.13	0.48
2:C:186:PHE:HB2	2:C:292:TRP:HB2	1.96	0.48
1:A:83:ASP:OD2	1:A:84:THR:N	2.47	0.48
1:A:131:ALA:HB2	1:A:202:ILE:HD11	1.95	0.48
1:A:366:GLN:HG3	1:A:924:SER:HB3	1.96	0.48
1:A:116:ALA:O	1:A:119:GLU:HG3	2.13	0.48
1:A:96:PHE:O	1:A:100:THR:HG23	2.14	0.48
2:C:72:SER:HA	2:C:75:ILE:HD12	1.95	0.47
2:C:335:ILE:O	2:C:339:LEU:HD23	2.14	0.47
1:A:361:VAL:O	1:A:365:MET:HG3	2.14	0.47
1:A:865:LEU:HD13	1:A:869:ARG:NH2	2.29	0.47
2:C:197:ILE:HD11	2:C:291:TYR:HE2	1.80	0.47
1:A:215:GLN:NE2	1:A:220:LYS:O	2.49	0.46
1:A:1075:PHE:CE2	2:C:57:ILE:HD13	2.51	0.46
1:A:118:ASN:HB3	1:A:122:LYS:HZ3	1.81	0.46
2:C:310:MET:HE3	2:C:310:MET:HB3	1.78	0.46
1:A:161:LEU:HD13	1:A:245:LEU:HD11	1.96	0.45
1:A:1055:PHE:CB	2:C:208:THR:HG21	2.46	0.45
2:C:233:PRO:HD2	2:C:236:TRP:CD1	2.51	0.45
1:A:43:ASN:HB3	1:A:265:GLY:H	1.81	0.45
1:A:725:LYS:HB3	1:A:725:LYS:HE3	1.74	0.45
2:C:209:ASP:HA	2:C:213:LYS:HB3	1.99	0.45

Continued on next page...

Continued from previous page...

Atom-1	Atom-2	Interatomic distance (Å)	Clash overlap (Å)
1:A:663:LEU:HD22	1:A:668:LEU:HD12	1.99	0.45
1:A:168:ASP:N	1:A:168:ASP:OD1	2.50	0.45
1:A:1070:ILE:O	1:A:1074:ILE:HG13	2.17	0.45
2:C:214:PHE:HB3	2:C:252:PHE:O	2.16	0.45
1:A:1042:GLY:HA2	1:A:1055:PHE:CE1	2.52	0.44
1:A:1084:LEU:O	1:A:1088:LYS:HG2	2.18	0.44
1:A:856:LYS:O	1:A:860:LEU:HB2	2.17	0.44
1:A:678:MET:HB3	1:A:678:MET:HE3	1.86	0.44
1:A:321:GLU:HG3	1:A:327:LYS:HG3	2.00	0.43
2:C:270:ARG:HH12	2:C:311:ILE:HG21	1.84	0.43
1:A:84:THR:OG1	1:A:86:THR:O	2.30	0.43
1:A:706:GLU:O	1:A:707:GLU:HG2	2.19	0.43
1:A:1088:LYS:HB3	1:A:1088:LYS:HE2	1.83	0.43
2:C:201:LYS:H	2:C:201:LYS:HG2	1.58	0.43
1:A:776:LEU:HD13	1:A:805:LEU:HD21	2.00	0.43
1:A:888:GLN:HG3	1:A:902:LEU:H	1.84	0.43
2:C:64:ILE:O	2:C:68:ILE:HG23	2.18	0.43
2:C:44:ILE:HD12	2:C:44:ILE:HA	1.82	0.43
2:C:188:ILE:HD11	2:C:292:TRP:CD2	2.53	0.43
1:A:43:ASN:OD1	1:A:43:ASN:N	2.43	0.43
1:A:676:ASP:OD2	1:A:680:THR:OG1	2.34	0.43
1:A:776:LEU:HD23	1:A:776:LEU:HA	1.79	0.43
2:C:100:THR:CG2	2:C:101:PRO:HD3	2.47	0.42
1:A:202:ILE:HD12	1:A:202:ILE:O	2.18	0.42
2:C:79:GLU:HG2	2:C:311:ILE:HG13	2.02	0.42
2:C:130:ASN:ND2	2:C:265:ALA:O	2.52	0.42
1:A:147:VAL:HB	1:A:159:LEU:HD21	2.00	0.42
1:A:1008:THR:HG21	1:A:1030:LEU:HG	2.00	0.42
2:C:335:ILE:O	2:C:335:ILE:HG22	2.20	0.42
1:A:93:LEU:N	1:A:94:PRO:HD2	2.35	0.42
1:A:696:GLU:N	1:A:746:GLU:O	2.44	0.42
1:A:1037:SER:HB3	1:A:1057:PHE:CG	2.54	0.42
2:C:167:PRO:HD2	2:C:229:GLY:O	2.20	0.42
2:C:206:TRP:HB2	2:C:209:ASP:CG	2.45	0.41
2:C:339:LEU:HD13	2:C:339:LEU:HA	1.88	0.41
1:A:200:GLU:O	1:A:203:ASP:HB2	2.20	0.41
1:A:698:LEU:O	1:A:749:LEU:HD12	2.21	0.41
2:C:159:PRO:HB2	2:C:160:TYR:CE2	2.55	0.41
1:A:54:ASN:O	1:A:58:LYS:HB2	2.21	0.41
1:A:252:LYS:HB3	1:A:252:LYS:HE3	1.77	0.41
1:A:747:TYR:O	1:A:783:THR:HG22	2.21	0.41

Continued on next page...

Continued from previous page...

Atom-1	Atom-2	Interatomic distance (Å)	Clash overlap (Å)
1:A:94:PRO:HB3	6:A:1103:P5S:H20	2.03	0.41
2:C:94:CYS:HA	2:C:97:PRO:HG3	2.03	0.41
2:C:244:ASP:HB3	2:C:249:ASN:O	2.21	0.41
1:A:190:VAL:HB	1:A:193:THR:OG1	2.21	0.41
1:A:360:TYR:O	1:A:364:GLU:HG2	2.20	0.41
1:A:995:PHE:O	1:A:999:VAL:HG23	2.21	0.41
2:C:56:ILE:O	2:C:60:ILE:HG13	2.21	0.41
1:A:45:ILE:HA	1:A:266:MET:HE3	2.03	0.40
1:A:73:LEU:O	1:A:77:LEU:HG	2.21	0.40
1:A:84:THR:HG21	1:A:88:PRO:HG3	2.02	0.40
1:A:353:PHE:HB2	1:A:885:ILE:HD11	2.03	0.40
1:A:714:ARG:HA	1:A:714:ARG:HD2	1.96	0.40
1:A:873:LEU:HB2	1:A:924:SER:OG	2.22	0.40
1:A:174:THR:HG23	1:A:252:LYS:HG3	2.03	0.40
1:A:390:LEU:HB3	1:A:848:SER:HB3	2.04	0.40
2:C:41:TRP:CZ2	2:C:43:PRO:HB3	2.57	0.40
1:A:24:VAL:HG22	1:A:260:VAL:HG21	2.02	0.40

There are no symmetry-related clashes.

5.3 Torsion angles

5.3.1 Protein backbone

In the following table, the Percentiles column shows the percent Ramachandran outliers of the chain as a percentile score with respect to all PDB entries followed by that with respect to all EM entries.

The Analysed column shows the number of residues for which the backbone conformation was analysed, and the total number of residues.

Mol	Chain	Analysed	Favoured	Allowed	Outliers	Percentiles	
1	A	795/1073 (74%)	766 (96%)	29 (4%)	0	100	100
2	C	314/324 (97%)	298 (95%)	16 (5%)	0	100	100
All	All	1109/1397 (79%)	1064 (96%)	45 (4%)	0	100	100

There are no Ramachandran outliers to report.

5.3.2 Protein sidechains ⓘ

In the following table, the Percentiles column shows the percent sidechain outliers of the chain as a percentile score with respect to all PDB entries followed by that with respect to all EM entries.

The Analysed column shows the number of residues for which the sidechain conformation was analysed, and the total number of residues.

Mol	Chain	Analysed	Rotameric	Outliers	Percentiles	
1	A	719/955 (75%)	705 (98%)	14 (2%)	52	77
2	C	284/289 (98%)	270 (95%)	14 (5%)	21	42
All	All	1003/1244 (81%)	975 (97%)	28 (3%)	40	65

All (28) residues with a non-rotameric sidechain are listed below:

Mol	Chain	Res	Type
1	A	157	CYS
1	A	168	ASP
1	A	256	LYS
1	A	408	THR
1	A	678	MET
1	A	712	GLU
1	A	752	ASP
1	A	757	SER
1	A	768	SER
1	A	829	VAL
1	A	879	TYR
1	A	936	THR
1	A	989	VAL
1	A	1003	LEU
2	C	51	LEU
2	C	72	SER
2	C	86	GLU
2	C	126	ASN
2	C	137	SER
2	C	141	SER
2	C	177	SER
2	C	195	ILE
2	C	208	THR
2	C	338	LEU
2	C	339	LEU
2	C	341	VAL
2	C	343	LEU

Continued on next page...

Continued from previous page...

Mol	Chain	Res	Type
2	C	346	ILE

Sometimes sidechains can be flipped to improve hydrogen bonding and reduce clashes. All (9) such sidechains are listed below:

Mol	Chain	Res	Type
1	A	27	HIS
1	A	187	HIS
1	A	213	GLN
1	A	694	ASN
1	A	794	GLN
1	A	979	GLN
1	A	1022	ASN
2	C	42	GLN
2	C	211	ASN

5.3.3 RNA ⓘ

There are no RNA molecules in this entry.

5.4 Non-standard residues in protein, DNA, RNA chains ⓘ

There are no non-standard protein/DNA/RNA residues in this entry.

5.5 Carbohydrates ⓘ

3 monosaccharides are modelled in this entry.

In the following table, the Counts columns list the number of bonds (or angles) for which Mogul statistics could be retrieved, the number of bonds (or angles) that are observed in the model and the number of bonds (or angles) that are defined in the Chemical Component Dictionary. The Link column lists molecule types, if any, to which the group is linked. The Z score for a bond length (or angle) is the number of standard deviations the observed value is removed from the expected value. A bond length (or angle) with $|Z| > 2$ is considered an outlier worth inspection. RMSZ is the root-mean-square of all Z scores of the bond lengths (or angles).

Mol	Type	Chain	Res	Link	Bond lengths			Bond angles		
					Counts	RMSZ	$\# Z > 2$	Counts	RMSZ	$\# Z > 2$
3	NAG	B	1	3,2	14,14,15	0.26	0	17,19,21	0.47	0
3	NAG	B	2	3	14,14,15	0.31	0	17,19,21	0.43	0
3	MAN	B	3	3	11,11,12	0.81	0	15,15,17	1.11	1 (6%)

In the following table, the Chirals column lists the number of chiral outliers, the number of chiral centers analysed, the number of these observed in the model and the number defined in the Chemical Component Dictionary. Similar counts are reported in the Torsion and Rings columns. '-' means no outliers of that kind were identified.

Mol	Type	Chain	Res	Link	Chirals	Torsions	Rings
3	NAG	B	1	3,2	-	2/6/23/26	0/1/1/1
3	NAG	B	2	3	-	0/6/23/26	0/1/1/1
3	MAN	B	3	3	-	0/2/19/22	1/1/1/1

There are no bond length outliers.

All (1) bond angle outliers are listed below:

Mol	Chain	Res	Type	Atoms	Z	Observed(°)	Ideal(°)
3	B	3	MAN	C1-O5-C5	3.10	116.39	112.19

There are no chirality outliers.

All (2) torsion outliers are listed below:

Mol	Chain	Res	Type	Atoms
3	B	1	NAG	C8-C7-N2-C2
3	B	1	NAG	O7-C7-N2-C2

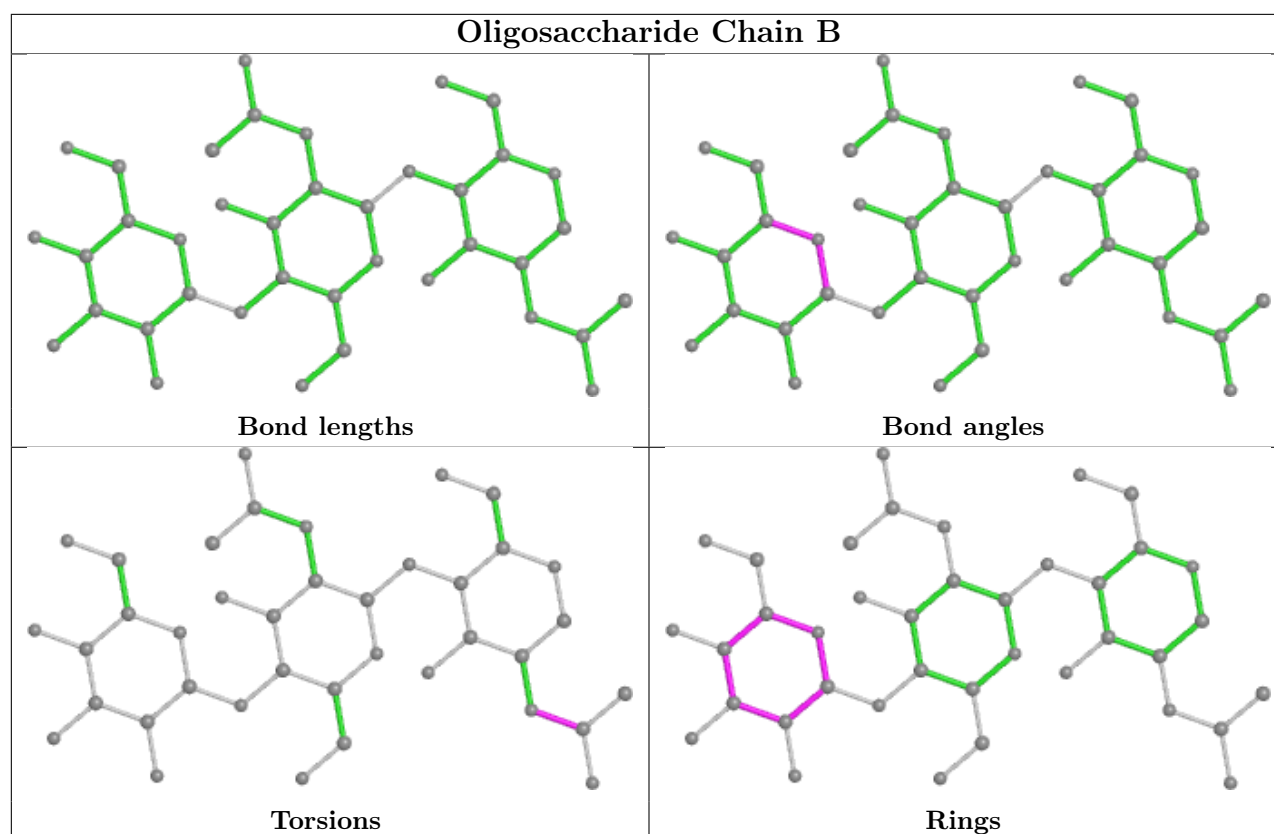
All (1) ring outliers are listed below:

Mol	Chain	Res	Type	Atoms
3	B	3	MAN	C1-C2-C3-C4-C5-O5

1 monomer is involved in 1 short contact:

Mol	Chain	Res	Type	Clashes	Symm-Clashes
3	B	1	NAG	1	0

The following is a two-dimensional graphical depiction of Mogul quality analysis of bond lengths, bond angles, torsion angles, and ring geometry for oligosaccharide.



5.6 Ligand geometry [i](#)

Of 4 ligands modelled in this entry, 1 is monoatomic - leaving 3 for Mogul analysis.

In the following table, the Counts columns list the number of bonds (or angles) for which Mogul statistics could be retrieved, the number of bonds (or angles) that are observed in the model and the number of bonds (or angles) that are defined in the Chemical Component Dictionary. The Link column lists molecule types, if any, to which the group is linked. The Z score for a bond length (or angle) is the number of standard deviations the observed value is removed from the expected value. A bond length (or angle) with $|Z| > 2$ is considered an outlier worth inspection. RMSZ is the root-mean-square of all Z scores of the bond lengths (or angles).

Mol	Type	Chain	Res	Link	Bond lengths			Bond angles		
					Counts	RMSZ	$\# Z > 2$	Counts	RMSZ	$\# Z > 2$
7	NAG	C	401	2	14,14,15	0.39	0	17,19,21	0.51	0
4	ALF	A	1101	1	0,4,4	-	-	-		
6	P5S	A	1103	-	52,53,53	0.51	0	56,60,60	0.64	2 (3%)

In the following table, the Chirals column lists the number of chiral outliers, the number of chiral centers analysed, the number of these observed in the model and the number defined in the Chemical Component Dictionary. Similar counts are reported in the Torsion and Rings columns. '-' means no outliers of that kind were identified.

Mol	Type	Chain	Res	Link	Chirals	Torsions	Rings
7	NAG	C	401	2	-	2/6/23/26	0/1/1/1
6	P5S	A	1103	-	-	33/59/59/59	-

There are no bond length outliers.

All (2) bond angle outliers are listed below:

Mol	Chain	Res	Type	Atoms	Z	Observed(°)	Ideal(°)
6	A	1103	P5S	O15-P12-O16	2.19	117.92	107.75
6	A	1103	P5S	OG-P12-O13	-2.09	100.89	109.07

There are no chirality outliers.

All (35) torsion outliers are listed below:

Mol	Chain	Res	Type	Atoms
6	A	1103	P5S	O-C-CA-CB
6	A	1103	P5S	OXT-C-CA-CB
6	A	1103	P5S	C3-O16-P12-O15
6	A	1103	P5S	C20-C17-O19-C1
7	C	401	NAG	O5-C5-C6-O6
7	C	401	NAG	C4-C5-C6-O6
6	A	1103	P5S	O18-C17-O19-C1
6	A	1103	P5S	C38-C39-C40-C41
6	A	1103	P5S	C3-O16-P12-OG
6	A	1103	P5S	C31-C32-C33-C34
6	A	1103	P5S	C23-C24-C25-C26
6	A	1103	P5S	C48-C49-C50-C51
6	A	1103	P5S	C21-C22-C23-C24
6	A	1103	P5S	C28-C29-C30-C31
6	A	1103	P5S	C39-C40-C41-C42
6	A	1103	P5S	C50-C51-C52-C53
6	A	1103	P5S	C49-C50-C51-C52
6	A	1103	P5S	C44-C45-C46-C48
6	A	1103	P5S	C46-C48-C49-C50
6	A	1103	P5S	C39-C38-O37-C2
6	A	1103	P5S	O19-C1-C2-C3
6	A	1103	P5S	O19-C1-C2-O37
6	A	1103	P5S	O47-C38-O37-C2
6	A	1103	P5S	C24-C25-C26-C27
6	A	1103	P5S	C53-C54-C55-C56
6	A	1103	P5S	N-CA-CB-OG
6	A	1103	P5S	C3-O16-P12-O13
6	A	1103	P5S	C32-C33-C34-C35

Continued on next page...

Continued from previous page...

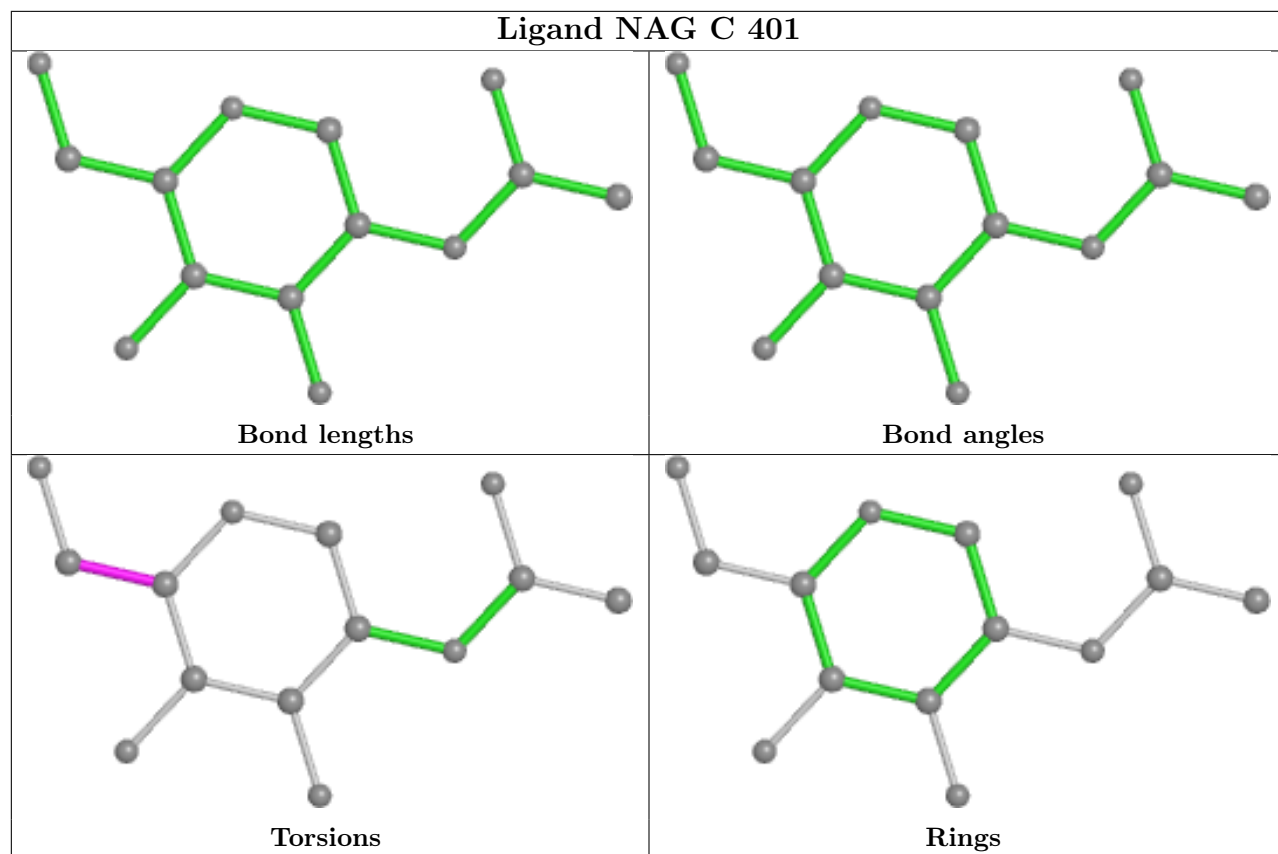
Mol	Chain	Res	Type	Atoms
6	A	1103	P5S	C20-C21-C22-C23
6	A	1103	P5S	C51-C52-C53-C54
6	A	1103	P5S	C29-C30-C31-C32
6	A	1103	P5S	C33-C34-C35-C36
6	A	1103	P5S	C2-C1-O19-C17
6	A	1103	P5S	C52-C53-C54-C55
6	A	1103	P5S	C26-C27-C28-C29

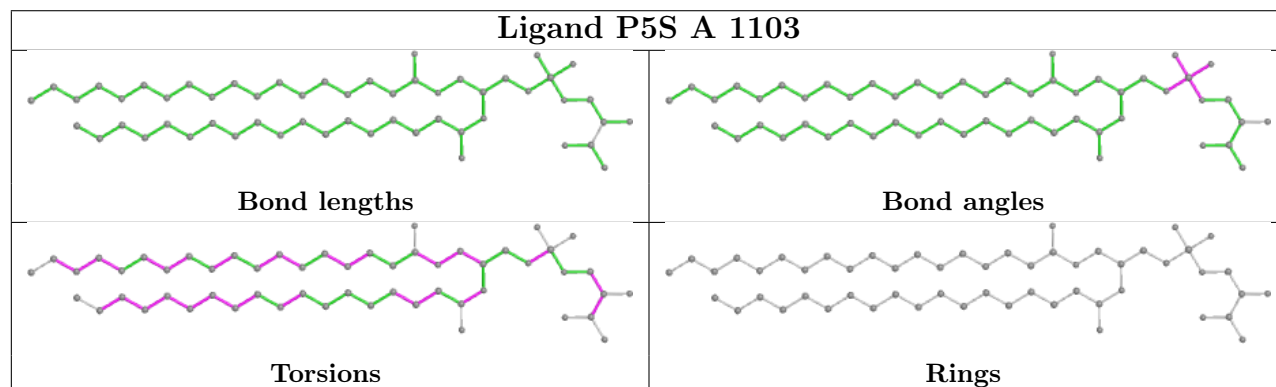
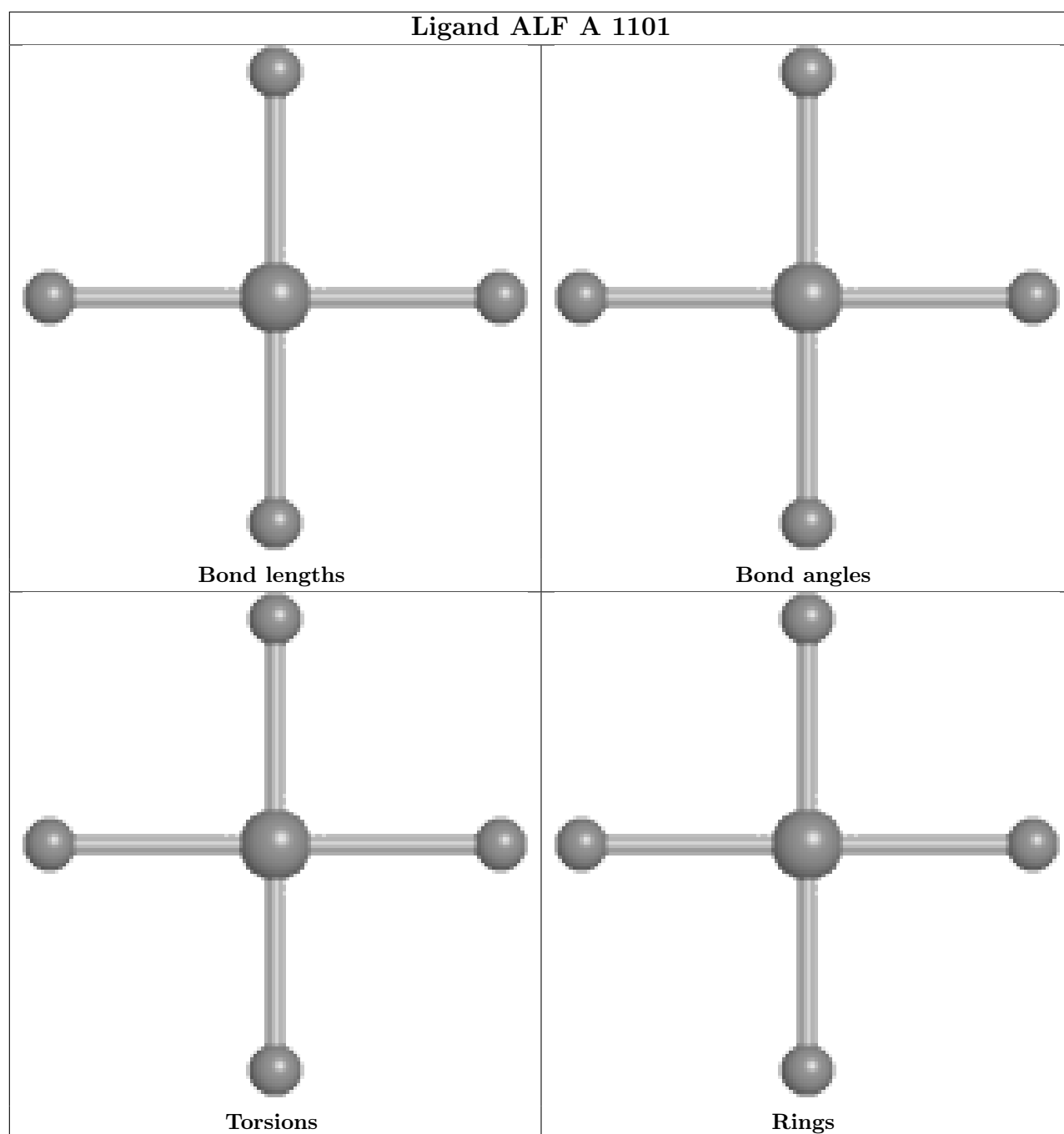
There are no ring outliers.

1 monomer is involved in 3 short contacts:

Mol	Chain	Res	Type	Clashes	Symm-Clashes
6	A	1103	P5S	3	0

The following is a two-dimensional graphical depiction of Mogul quality analysis of bond lengths, bond angles, torsion angles, and ring geometry for all instances of the Ligand of Interest. In addition, ligands with molecular weight > 250 and outliers as shown on the validation Tables will also be included. For torsion angles, if less than 5% of the Mogul distribution of torsion angles is within 10 degrees of the torsion angle in question, then that torsion angle is considered an outlier. Any bond that is central to one or more torsion angles identified as an outlier by Mogul will be highlighted in the graph. For rings, the root-mean-square deviation (RMSD) between the ring in question and similar rings identified by Mogul is calculated over all ring torsion angles. If the average RMSD is greater than 60 degrees and the minimal RMSD between the ring in question and any Mogul-identified rings is also greater than 60 degrees, then that ring is considered an outlier. The outliers are highlighted in purple. The color gray indicates Mogul did not find sufficient equivalents in the CSD to analyse the geometry.





5.7 Other polymers

There are no such residues in this entry.

5.8 Polymer linkage issues

There are no chain breaks in this entry.

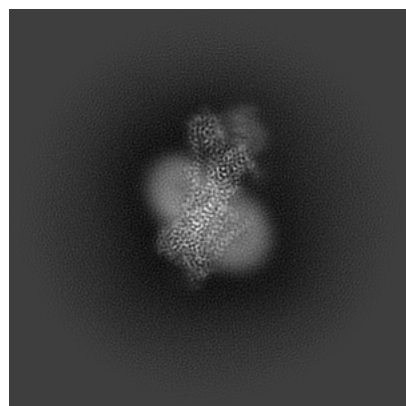
6 Map visualisation [i](#)

This section contains visualisations of the EMDB entry EMD-65217. These allow visual inspection of the internal detail of the map and identification of artifacts.

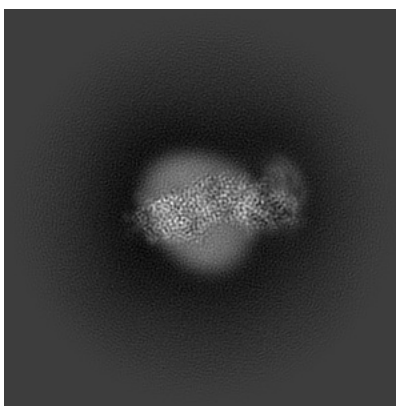
Images derived from a raw map, generated by summing the deposited half-maps, are presented below the corresponding image components of the primary map to allow further visual inspection and comparison with those of the primary map.

6.1 Orthogonal projections [i](#)

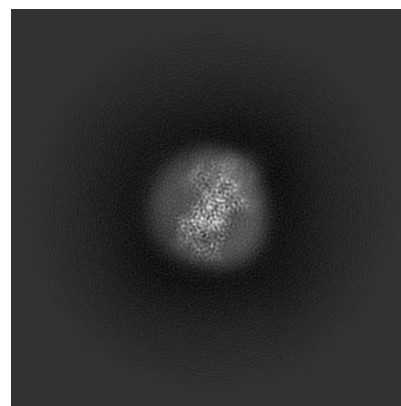
6.1.1 Primary map



X

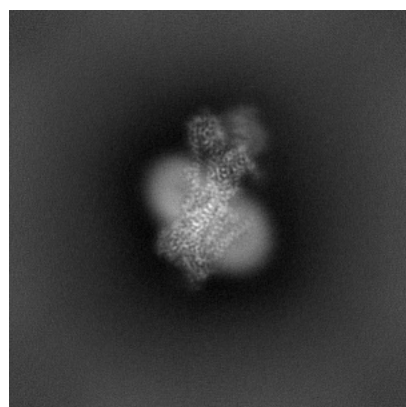


Y

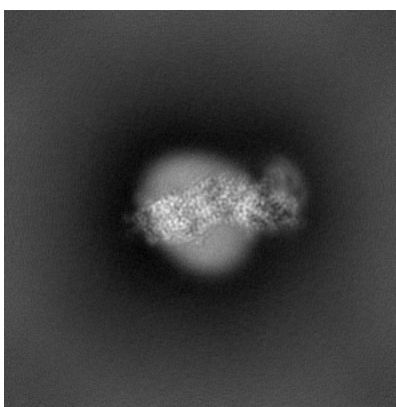


Z

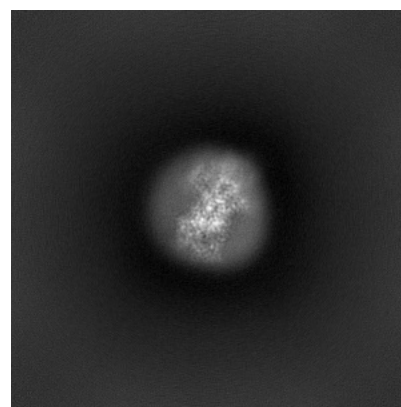
6.1.2 Raw map



X



Y

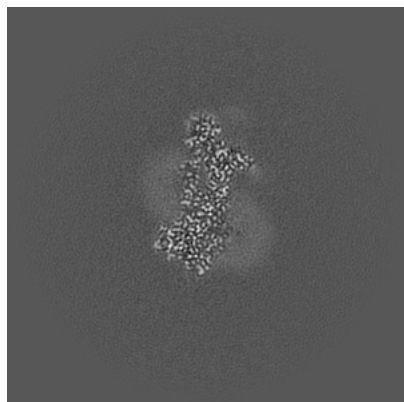


Z

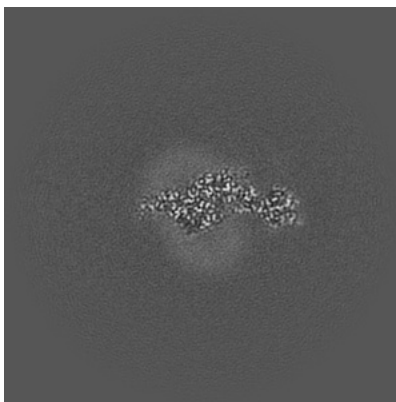
The images above show the map projected in three orthogonal directions.

6.2 Central slices [i](#)

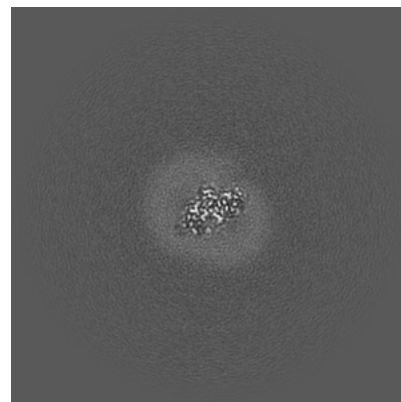
6.2.1 Primary map



X Index: 225

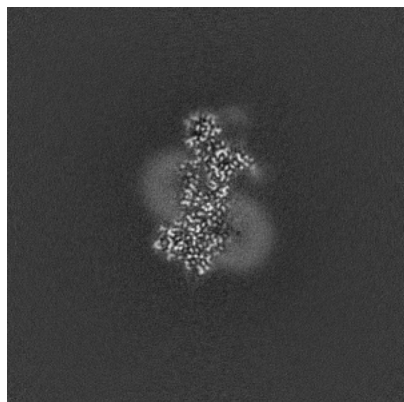


Y Index: 225

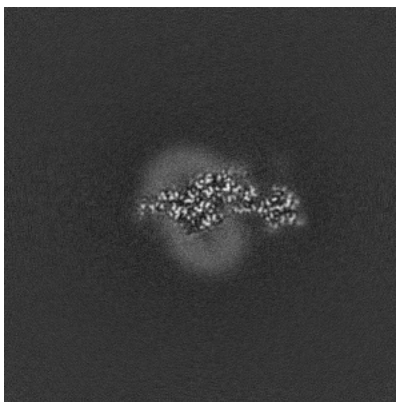


Z Index: 225

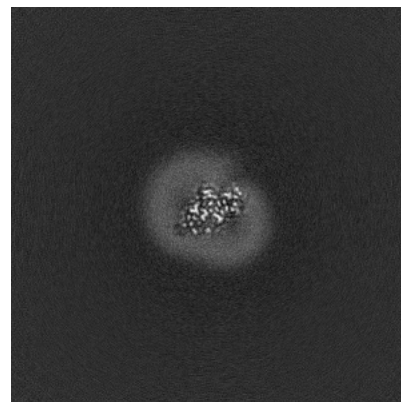
6.2.2 Raw map



X Index: 225



Y Index: 225

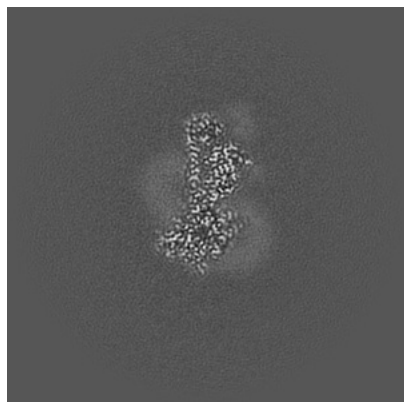


Z Index: 225

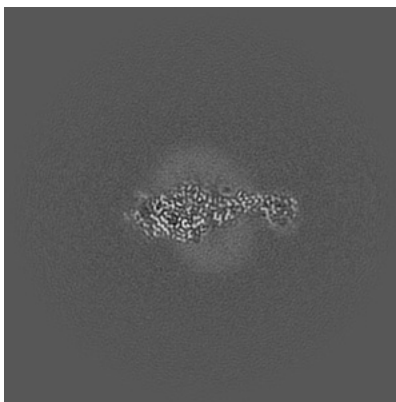
The images above show central slices of the map in three orthogonal directions.

6.3 Largest variance slices [i](#)

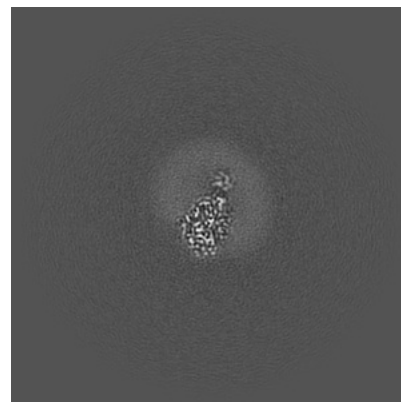
6.3.1 Primary map



X Index: 232

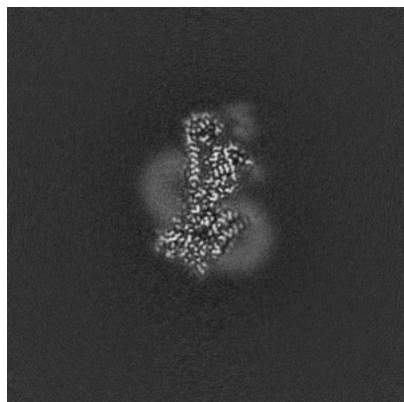


Y Index: 211

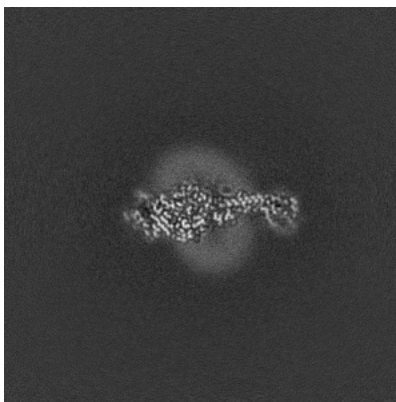


Z Index: 199

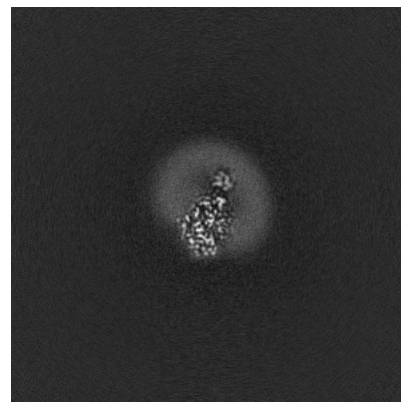
6.3.2 Raw map



X Index: 232



Y Index: 211

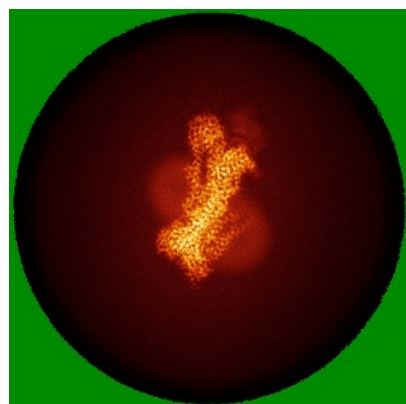


Z Index: 199

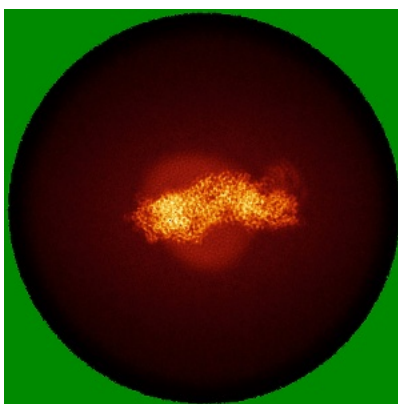
The images above show the largest variance slices of the map in three orthogonal directions.

6.4 Orthogonal standard-deviation projections (False-color) [i](#)

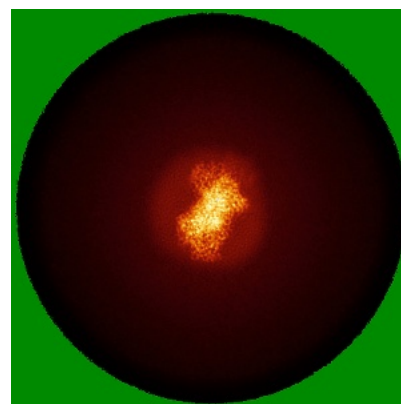
6.4.1 Primary map



X

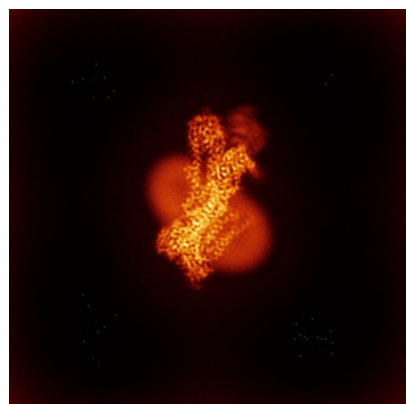


Y

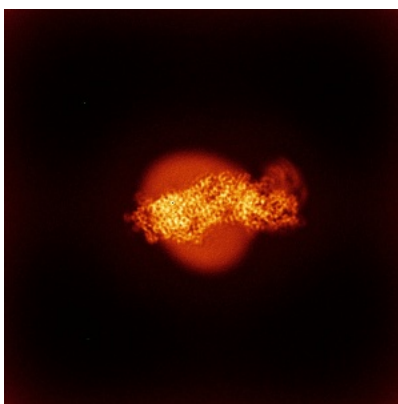


Z

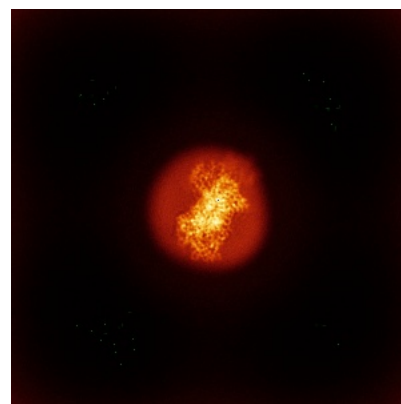
6.4.2 Raw map



X



Y

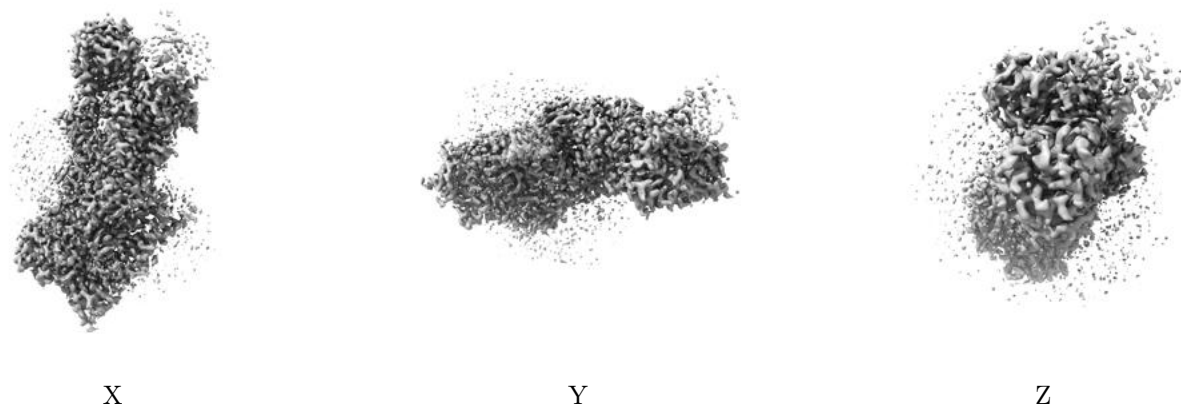


Z

The images above show the map standard deviation projections with false color in three orthogonal directions. Minimum values are shown in green, max in blue, and dark to light orange shades represent small to large values respectively.

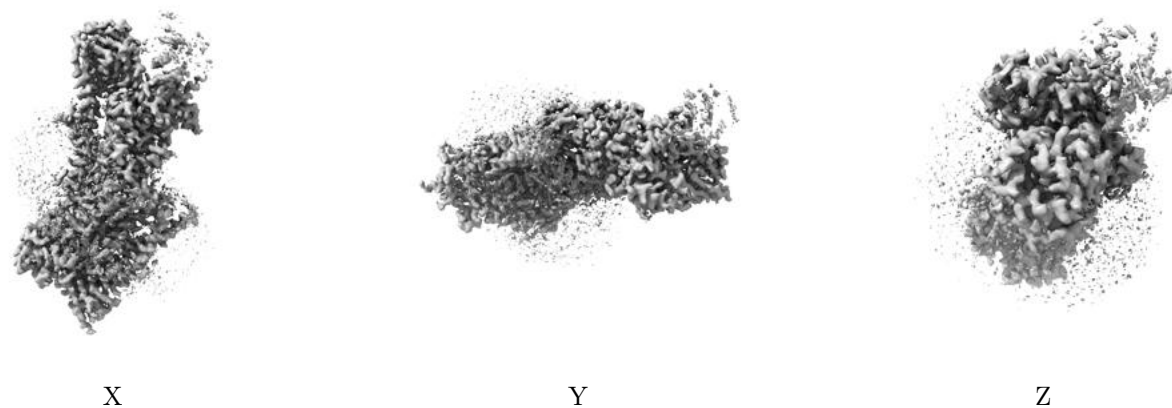
6.5 Orthogonal surface views [i](#)

6.5.1 Primary map



The images above show the 3D surface view of the map at the recommended contour level 0.5. These images, in conjunction with the slice images, may facilitate assessment of whether an appropriate contour level has been provided.

6.5.2 Raw map



These images show the 3D surface of the raw map. The raw map's contour level was selected so that its surface encloses the same volume as the primary map does at its recommended contour level.

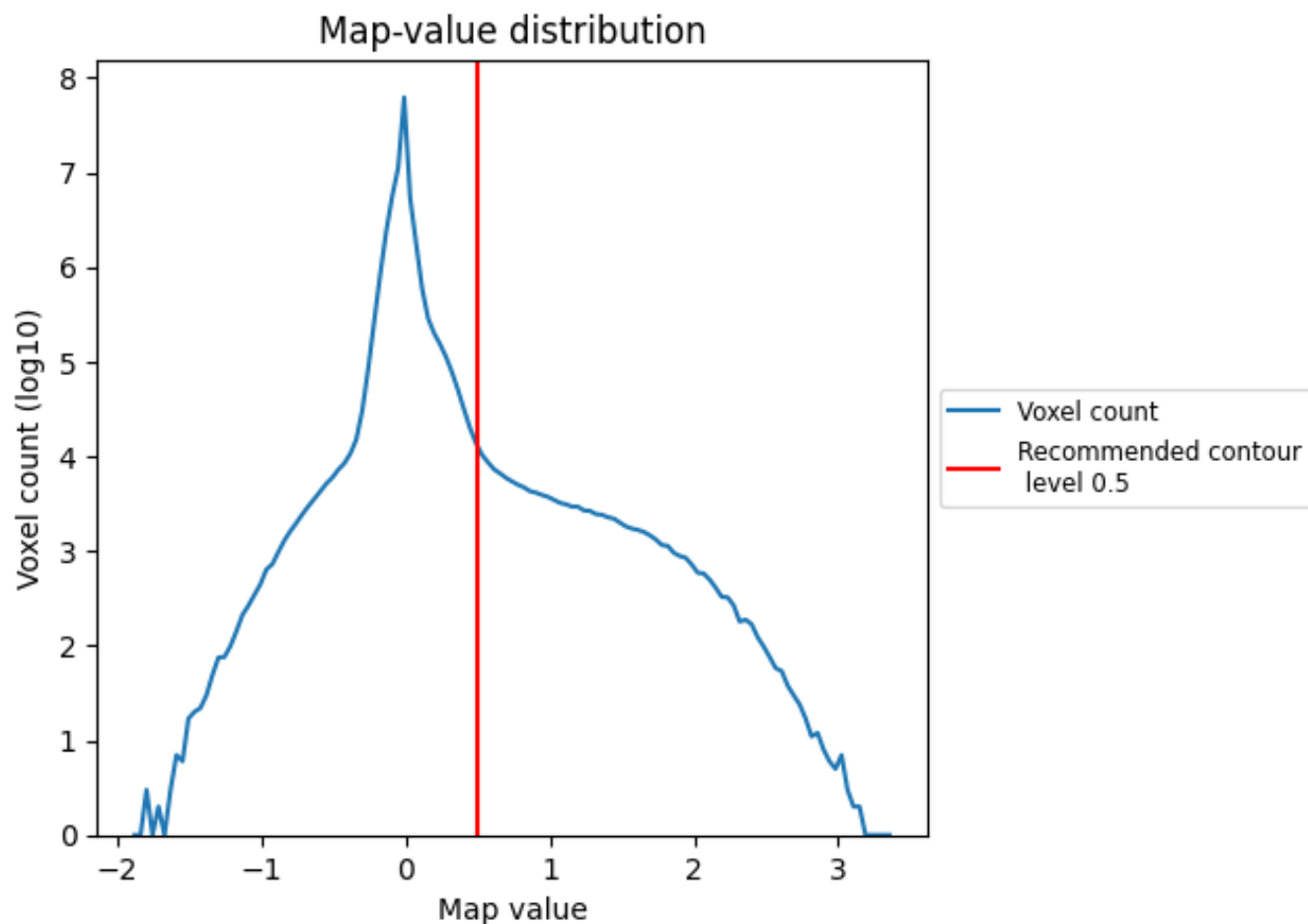
6.6 Mask visualisation [i](#)

This section was not generated. No masks/segmentation were deposited.

7 Map analysis [i](#)

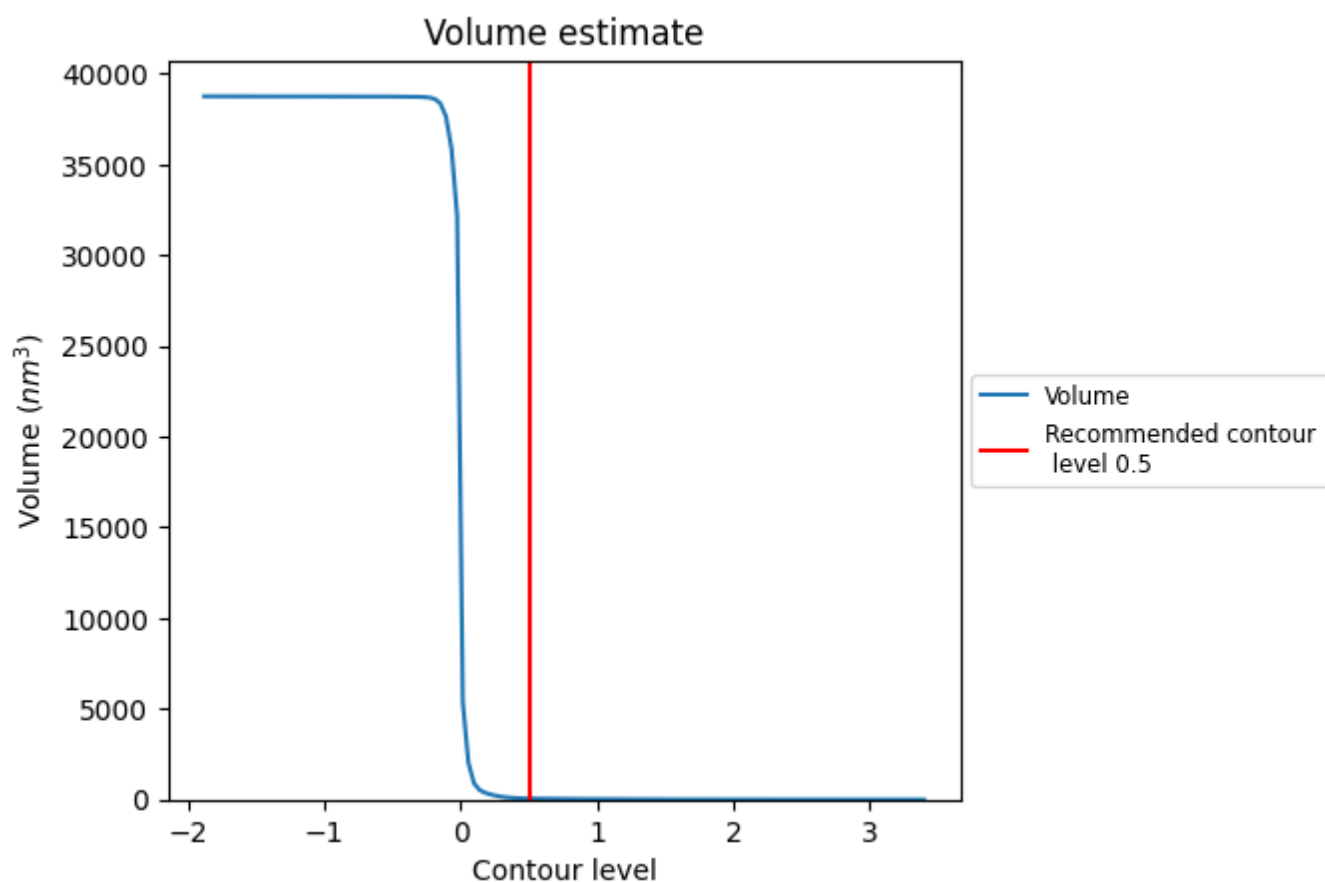
This section contains the results of statistical analysis of the map.

7.1 Map-value distribution [i](#)



The map-value distribution is plotted in 128 intervals along the x-axis. The y-axis is logarithmic. A spike in this graph at zero usually indicates that the volume has been masked.

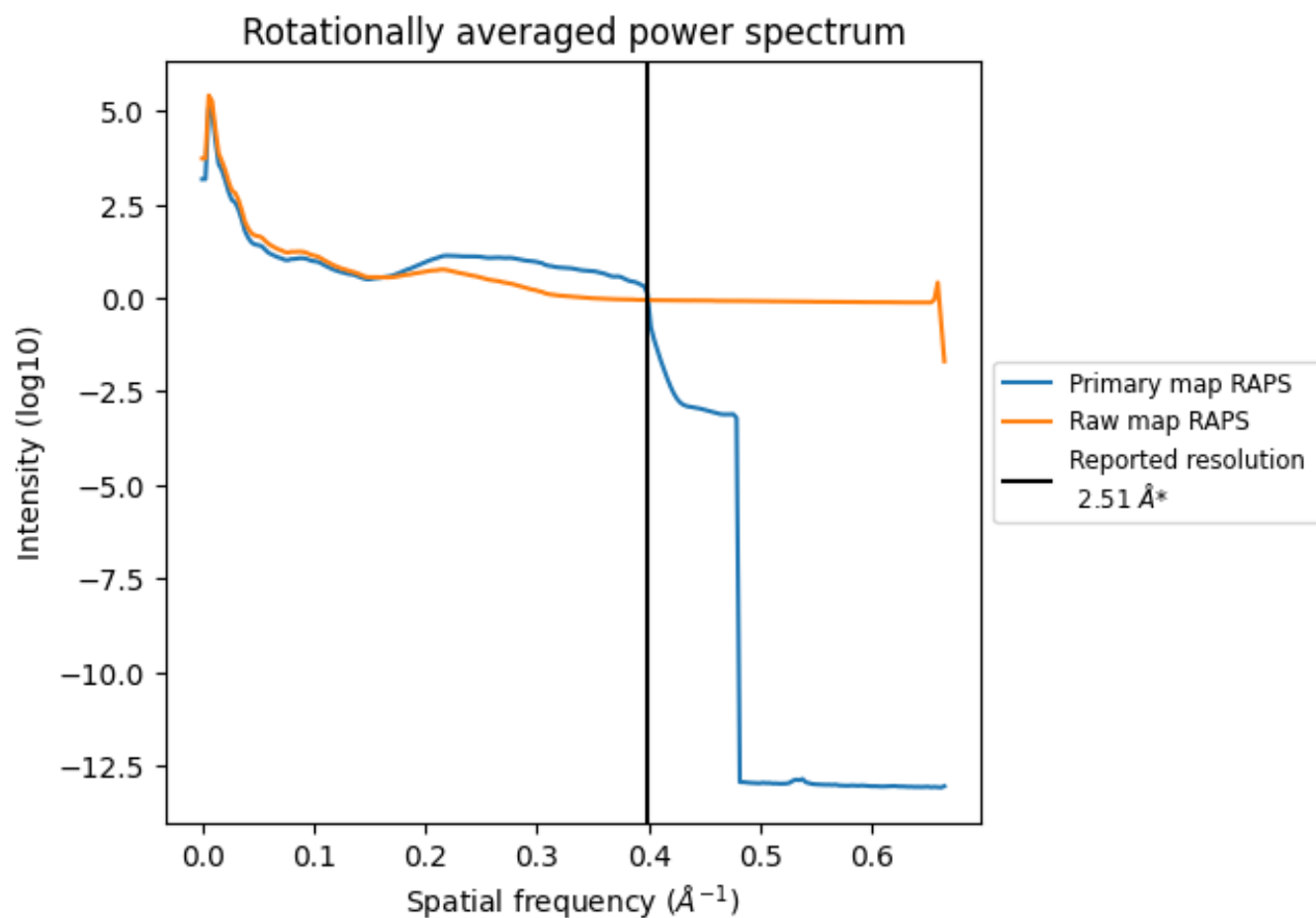
7.2 Volume estimate [i](#)



The volume at the recommended contour level is 56 nm³; this corresponds to an approximate mass of 50 kDa.

The volume estimate graph shows how the enclosed volume varies with the contour level. The recommended contour level is shown as a vertical line and the intersection between the line and the curve gives the volume of the enclosed surface at the given level.

7.3 Rotationally averaged power spectrum ⓘ

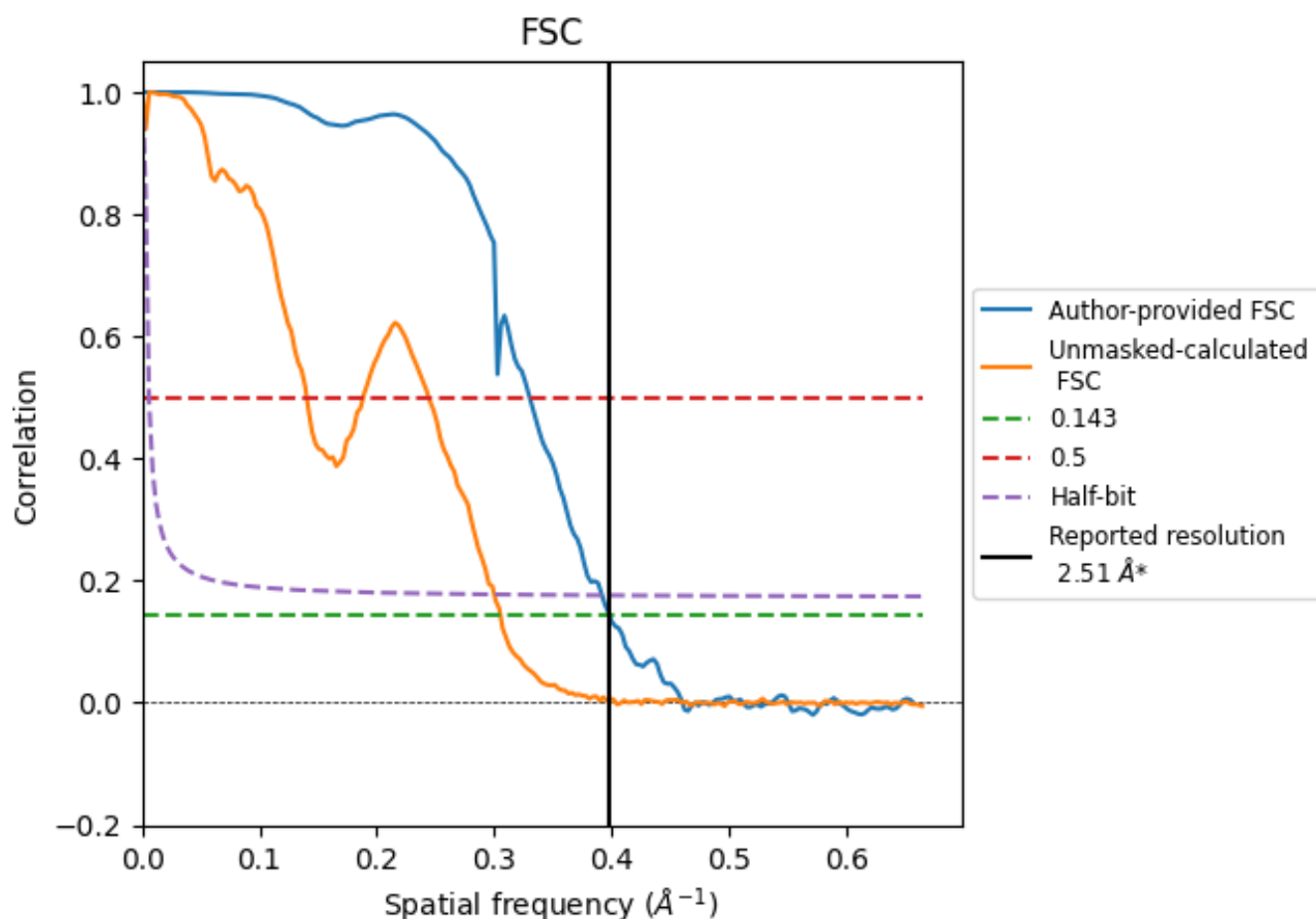


*Reported resolution corresponds to spatial frequency of 0.398 \AA^{-1}

8 Fourier-Shell correlation [i](#)

Fourier-Shell Correlation (FSC) is the most commonly used method to estimate the resolution of single-particle and subtomogram-averaged maps. The shape of the curve depends on the imposed symmetry, mask and whether or not the two 3D reconstructions used were processed from a common reference. The reported resolution is shown as a black line. A curve is displayed for the half-bit criterion in addition to lines showing the 0.143 gold standard cut-off and 0.5 cut-off.

8.1 FSC [i](#)



*Reported resolution corresponds to spatial frequency of 0.398 \AA^{-1}

8.2 Resolution estimates [i](#)

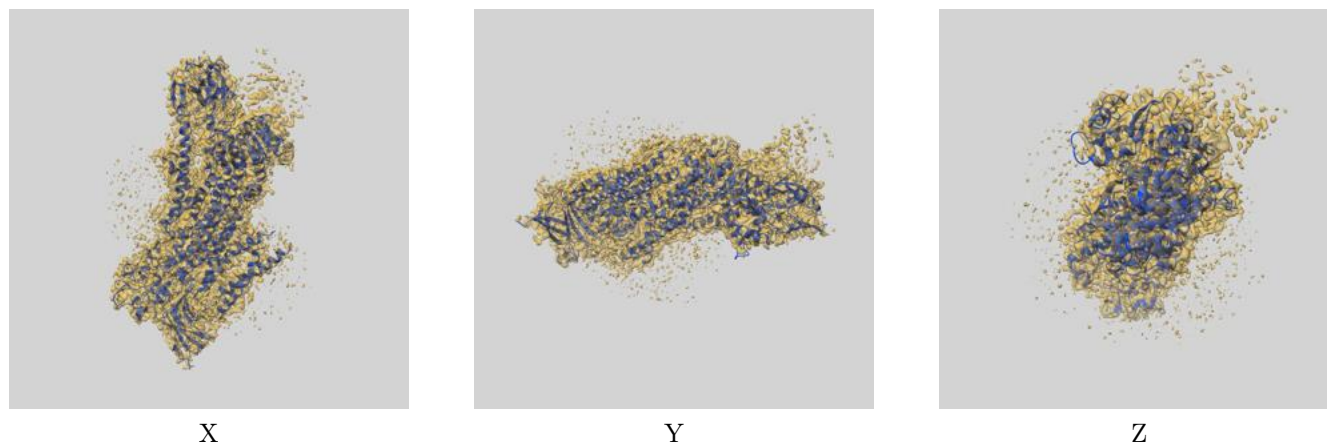
Resolution estimate (Å)	Estimation criterion (FSC cut-off)		
	0.143	0.5	Half-bit
Reported by author	2.51	-	-
Author-provided FSC curve	2.51	3.03	2.55
Unmasked-calculated*	3.27	7.13	3.33

*Resolution estimate based on FSC curve calculated by comparison of deposited half-maps. The value from deposited half-maps intersecting FSC 0.143 CUT-OFF 3.27 differs from the reported value 2.51 by more than 10 %

9 Map-model fit [i](#)

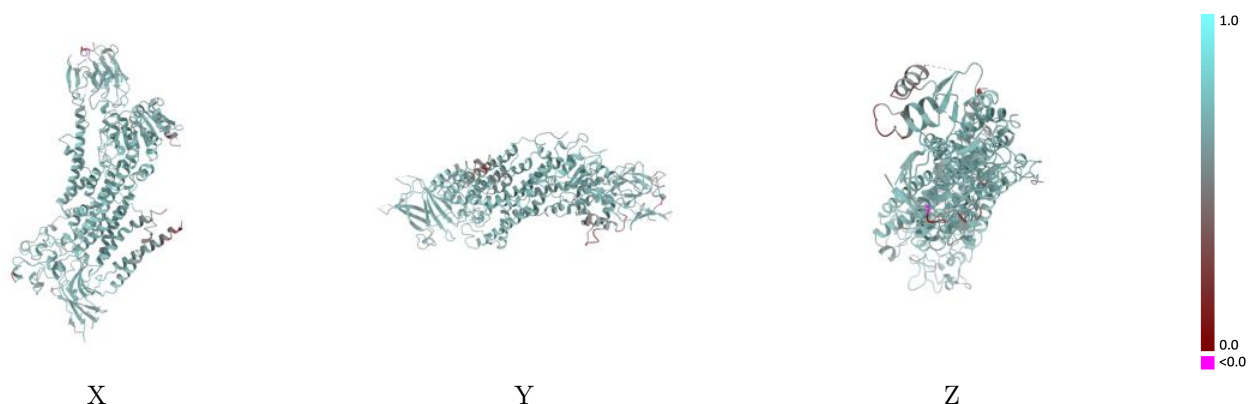
This section contains information regarding the fit between EMDB map EMD-65217 and PDB model 9VNT. Per-residue inclusion information can be found in [section 3](#) on [page 7](#).

9.1 Map-model overlay [i](#)



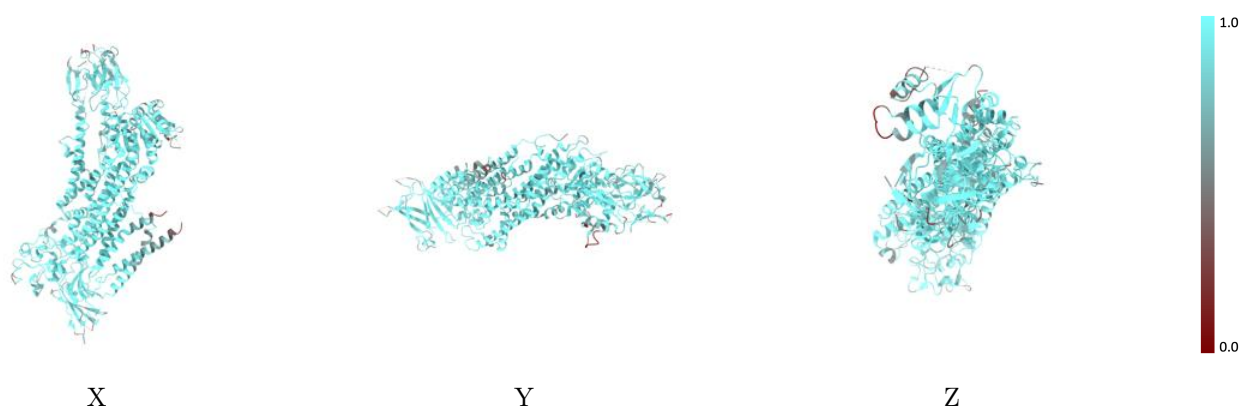
The images above show the 3D surface view of the map at the recommended contour level 0.5 at 50% transparency in yellow overlaid with a ribbon representation of the model coloured in blue. These images allow for the visual assessment of the quality of fit between the atomic model and the map.

9.2 Q-score mapped to coordinate model [i](#)



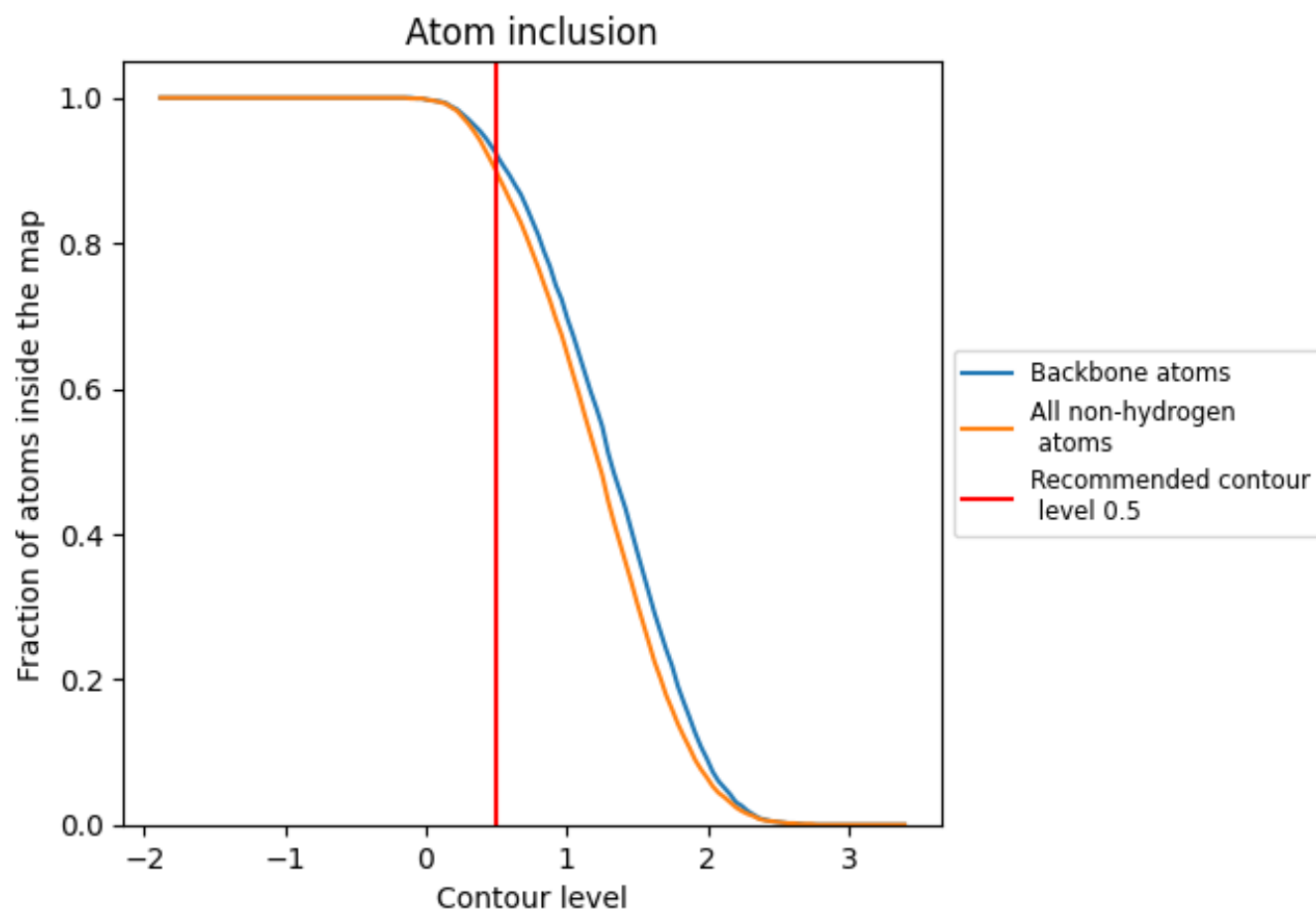
The images above show the model with each residue coloured according to its Q-score. This shows their resolvability in the map with higher Q-score values reflecting better resolvability. Please note: Q-score is calculating the resolvability of atoms, and thus high values are only expected at resolutions at which atoms can be resolved. Low Q-score values may therefore be expected for many entries.

9.3 Atom inclusion mapped to coordinate model [i](#)



The images above show the model with each residue coloured according to its atom inclusion. This shows to what extent they are inside the map at the recommended contour level (0.5).

9.4 Atom inclusion [i](#)



At the recommended contour level, 92% of all backbone atoms, 90% of all non-hydrogen atoms, are inside the map.

9.5 Map-model fit summary ⓘ

The table lists the average atom inclusion at the recommended contour level (0.5) and Q-score for the entire model and for each chain.

Chain	Atom inclusion	Q-score
All	<div></div> 0.8990	<div></div> 0.6270
A	<div></div> 0.9060	<div></div> 0.6320
B	<div></div> 0.8970	<div></div> 0.6160
C	<div></div> 0.8810	<div></div> 0.6160

