



## Full wwPDB EM Validation Report ⓘ

Oct 20, 2024 – 12:14 AM JST

PDB ID : 8WJL  
EMDB ID : EMD-37584  
Title : Cryo-EM structure of 6-subunit Smc5/6 hinge region  
Authors : Li, Q.; Zhang, J.; Zhang, X.; Cheng, T.; Wang, Z.; Jin, D.; Chen, Z.; Wang, L.  
Deposited on : 2023-09-26  
Resolution : 6.15 Å(reported)

This is a Full wwPDB EM Validation Report for a publicly released PDB entry.

We welcome your comments at [validation@mail.wwpdb.org](mailto:validation@mail.wwpdb.org)

A user guide is available at

<https://www.wwpdb.org/validation/2017/EMValidationReportHelp>  
with specific help available everywhere you see the ⓘ symbol.

The types of validation reports are described at

<http://www.wwpdb.org/validation/2017/FAQs#types>.

---

The following versions of software and data (see [references ⓘ](#)) were used in the production of this report:

EMDB validation analysis : 0.0.1.dev113  
MolProbity : 4.02b-467  
Percentile statistics : 20231227.v01 (using entries in the PDB archive December 27th 2023)  
MapQ : 1.9.13  
Ideal geometry (proteins) : Engh & Huber (2001)  
Ideal geometry (DNA, RNA) : Parkinson et al. (1996)  
Validation Pipeline (wwPDB-VP) : 2.39

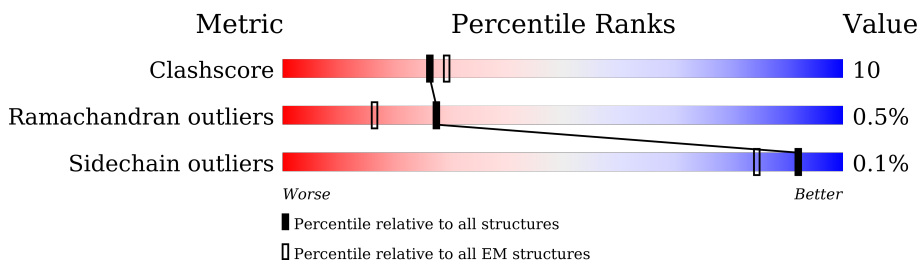
# 1 Overall quality at a glance

The following experimental techniques were used to determine the structure:

*ELECTRON MICROSCOPY*

The reported resolution of this entry is 6.15 Å.

Percentile scores (ranging between 0-100) for global validation metrics of the entry are shown in the following graphic. The table shows the number of entries on which the scores are based.



Metric	Whole archive (#Entries)	EM structures (#Entries)
Clashscore	210492	15764
Ramachandran outliers	207382	16835
Sidechain outliers	206894	16415

The table below summarises the geometric issues observed across the polymeric chains and their fit to the map. The red, orange, yellow and green segments of the bar indicate the fraction of residues that contain outliers for  $\geq 3$ , 2, 1 and 0 types of geometric quality criteria respectively. A grey segment represents the fraction of residues that are not modelled. The numeric value for each fraction is indicated below the corresponding segment, with a dot representing fractions  $\leq 5\%$ . The upper red bar (where present) indicates the fraction of residues that have poor fit to the EM map (all-atom inclusion  $< 40\%$ ). The numeric value is given above the bar.

Mol	Chain	Length	Quality of chain
1	B	1114	 33% 8% 59%
2	A	1093	 31% 10% 58%
3	C	267	 54% 18% 28%

## 2 Entry composition

There are 3 unique types of molecules in this entry. The entry contains 17995 atoms, of which 9066 are hydrogens and 0 are deuteriums.

In the tables below, the AltConf column contains the number of residues with at least one atom in alternate conformation and the Trace column contains the number of residues modelled with at most 2 atoms.

- Molecule 1 is a protein called Structural maintenance of chromosomes protein 6.

Mol	Chain	Residues	Atoms						AltConf	Trace
1	B	458	Total	C	H	N	O	S	0	0
			7491	2292	3763	686	738	12		

- Molecule 2 is a protein called Structural maintenance of chromosomes protein 5.

Mol	Chain	Residues	Atoms						AltConf	Trace
2	A	454	Total	C	H	N	O	S	0	0
			7500	2302	3818	659	708	13		

- Molecule 3 is a protein called E3 SUMO-protein ligase MMS21.

Mol	Chain	Residues	Atoms						AltConf	Trace
3	C	192	Total	C	H	N	O	S	0	0
			3004	942	1485	250	315	12		



ASN	ARG	LYS	ILE	GLY	THR	THR	LEU	ILE	VAL	LYS	LYS	LEU	LYS	ASP	ILE	ALA	ARG	THR	GLN	THR	THR	ILE	ILE	ILE	THR	PRO	GLN	ASP	ASP	GLY	ILE	LYS	ALA	ASP	ASP	ILE	ILE	ILE	GLY	VAL	SER	SER	SER	GLY	ILE	ILE	HIS	ARG	ARG	ASP	ASP	GLU	GLU	ARG	GLN	ASN	ASN	ASN	SER	ASN	PHE	ASN	THR	TYR	ASN
-----	-----	-----	-----	-----	-----	-----	-----	-----	-----	-----	-----	-----	-----	-----	-----	-----	-----	-----	-----	-----	-----	-----	-----	-----	-----	-----	-----	-----	-----	-----	-----	-----	-----	-----	-----	-----	-----	-----	-----	-----	-----	-----	-----	-----	-----	-----	-----	-----	-----	-----	-----	-----	-----	-----	-----	-----	-----	-----	-----	-----	-----	-----	-----	-----	-----

- Molecule 2: Structural maintenance of chromosomes protein 5



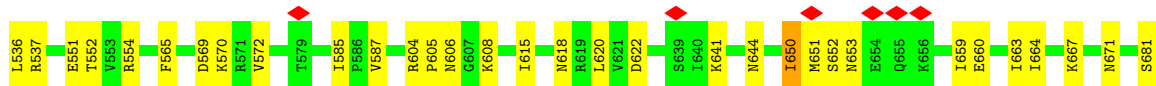
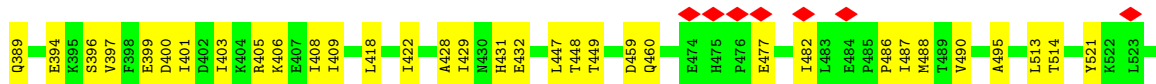
MET	THR	SER	LEU	ILE	ASP	LEU	GLY	ARG	TYR	VAL	GLU	ARG	THR	HIS	HIS	GLY	GLU	ASP	THR	GLU	PRO	ARG	SER	LYS	ARG	VAL	LYS	ILE	ALA	LYS	PRO	ASP	LEU	SER	SER	PHE	GLN	PRO	GLY	SER	ILE	ILE	LYS	ARG	VAL	GLN	ASP	PHE	THR	THR	LEU	THR	GLU	PHE	ASN	LEU
-----	-----	-----	-----	-----	-----	-----	-----	-----	-----	-----	-----	-----	-----	-----	-----	-----	-----	-----	-----	-----	-----	-----	-----	-----	-----	-----	-----	-----	-----	-----	-----	-----	-----	-----	-----	-----	-----	-----	-----	-----	-----	-----	-----	-----	-----	-----	-----	-----	-----	-----	-----	-----	-----	-----	-----	-----

SER	PRO	SER	ASN	MET	ILE	ILE	GLY	PRO	ASN	SER	SER	THR	PHE	VAL	CYS	LYS	GLY	LEU	ALA	GLY	LYS	PRO	GLU	TYR	ILE	GLY	ARG	SER	LYS	VAL	LYS	GLU	ASP	PHE	ILE	LYS	ASN	GLY	GLN	ASP	VAL	SER	LYS	LYS	ILE	LEU	ASN	LYS	ASN	SER	PRO
-----	-----	-----	-----	-----	-----	-----	-----	-----	-----	-----	-----	-----	-----	-----	-----	-----	-----	-----	-----	-----	-----	-----	-----	-----	-----	-----	-----	-----	-----	-----	-----	-----	-----	-----	-----	-----	-----	-----	-----	-----	-----	-----	-----	-----	-----	-----	-----	-----	-----	-----	-----

ASN	VAL	THR	ASP	ILE	GLU	TYR	ILE	ASP	ALA	ARG	ASP	GLU	THR	ILE	LYS	THR	THR	THR	ARG	SER	LYS	ARG	ARG	ARG	SER	SER	ASP	TYR	LEU	ILE	ASN	ASN	ASP	GLN	VAL	VAL	SER	SER	GLU	GLY	SER	SER	VAL	VAL	THR	LYS	THR	LEU	VAL	VAL	GLN	LEU	LEU	CYS	PHE	LEU
-----	-----	-----	-----	-----	-----	-----	-----	-----	-----	-----	-----	-----	-----	-----	-----	-----	-----	-----	-----	-----	-----	-----	-----	-----	-----	-----	-----	-----	-----	-----	-----	-----	-----	-----	-----	-----	-----	-----	-----	-----	-----	-----	-----	-----	-----	-----	-----	-----	-----	-----	-----	-----	-----	-----	-----	-----

SER	GLN	GLU	ARG	VAL	GLU	GLU	PHE	ALA	ALA	ARG	LEU	LYS	SER	SER	VAL	LYS	LEU	LEU	VAL	GLU	THR	ILE	ARG	SER	ILE	ASP	ALA	SER	LEU	LEU	ASP	VAL	LEU	GLN	GLY	ASN	GLU	GLN	SER	LEU	GLN	LYS	LYS	ALA	LYS	VAL	ILE	HIS	LEU	ARG
-----	-----	-----	-----	-----	-----	-----	-----	-----	-----	-----	-----	-----	-----	-----	-----	-----	-----	-----	-----	-----	-----	-----	-----	-----	-----	-----	-----	-----	-----	-----	-----	-----	-----	-----	-----	-----	-----	-----	-----	-----	-----	-----	-----	-----	-----	-----	-----	-----	-----	-----

GLN  
GLU  
SER  
SER  
ASP  
LYS  
LEU  
ARG  
LYS  
SER  
VAL  
GLU  
SER  
LEU  
ARG  
SER  
ASP  
PHE  
GLN  
ASN  
LYS  
LYS  
GLY  
GLU  
ILE  
GLU  
LEU  
HIS  
SER  
GLN  
LEU  
LEU  
PRO  
TYR  
LYS  
VAL  
VAL  
LYS  
ASP  
HIS  
LYS  
GLU  
LYS  
LEU  
ASN  
ILE  
TYR  
LYS  
LYS  
GLU  
GLY  
TYR  
GLU  
LEU  
ASN  
ILE  
TYR  
LYS  
LYS  
GLU  
GLY  
TYR  
GLU  
ARG  
ALA  
LYS  
ALA  
ASN  
LEU  
ARG  
ALA  
ILE  
LEU



N682	Q683	Q684	H706	N709	K712	K713	K714	K715	T716	R726	E727	A736	V740	S741	Q742	K743	L754	R759	M769	L772	K773	N774	C775	Q776	L779	ILE	SER	THR	GLN	ILE	LEU	GLN	PHE	GLU	ALA	GLN	ASN	MET	ASP	ASP	VAL	SER	MET	ASN	ASP	VAL	ILE	ILE	GLY	PRO
------	------	------	------	------	------	------	------	------	------	------	------	------	------	------	------	------	------	------	------	------	------	------	------	------	------	-----	-----	-----	-----	-----	-----	-----	-----	-----	-----	-----	-----	-----	-----	-----	-----	-----	-----	-----	-----	-----	-----	-----	-----	-----

PHE	ASN	GLU	GLU	ARG	GLU	ALA	ASP	LEU	LYS	SER	GLN	TYR	GLY	ASP	LYS	LYS	PHE	VAL	LYS	LYS	GLU	GLU	MET	MET	ASP	ARG	THR	PRO	GLU	PHE	GLN	GLN	SER	TRP	MET	ARG	GLU	ILE	ARG	SER	TYR	ASP	ASN	VAL	ALA	GLU	LYS	TYR	ASN	PHE	ASN
-----	-----	-----	-----	-----	-----	-----	-----	-----	-----	-----	-----	-----	-----	-----	-----	-----	-----	-----	-----	-----	-----	-----	-----	-----	-----	-----	-----	-----	-----	-----	-----	-----	-----	-----	-----	-----	-----	-----	-----	-----	-----	-----	-----	-----	-----	-----	-----	-----	-----	-----	-----

LEU SER PHE VAL GLN ASP VAL LEU LEU ASP LYS LEU GLU SER GLU ILE ALA MET VAL ASN HIS ASP GLU ASP SER SER ALA VAL THR ILE LEU LEU ASP GLN VAL THR GLU ALA LEU ARG GLU LEU LEU GLU HIS THR VAL PRO GLN GLN SER SER LYS ASP LEU LEU THR ILE LYS ALA LYS LEU LYS GLU ASP HIS

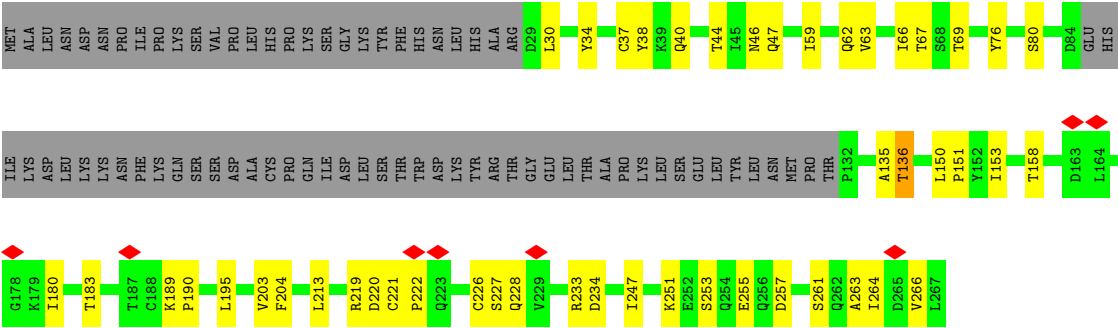
ALA VAL LEU LEU GLU PRO PRO LYS LEU ASP ASP ASP ILE ILE SER SER SER ALA ALA ARG ARG PHE LEU LEU ASN ASN VAL VAL GLY SER SER GLY GLY GLY ALA ALA VAL ARG ARG LEU LEU LYS LYS PRO PRO LYS LYS ASP ASP TYR TYR LEU LEU ILE ILE MET MET VAL VAL LYS LYS PHE ARG ARG ASP ASP ASN ASN ALA ALA PRO PRO LEU LEU LYS LYS LYS LYS LEU LEU

SER	HIS	THR	GLN	SER	GLY	GLU	ARG	ALA	VAL	SER	THR	VAL	LEU	TYR	MET	ILE	ALA	LEU	GLN	GLU	PHE	THR	SER	ALA	PRO	PHE	ARG	VAL	VAL	ASP	GLU	ILE	ASN	GLN	GLY	MET	ASP	SER	ARG	ASN	ALA	VAL	GLU	VAL	LEU	ILE	VAL	HIS	LYS	ALA	MET	VAL	GLU	ASN	ALA	CYS	THR	SER
-----	-----	-----	-----	-----	-----	-----	-----	-----	-----	-----	-----	-----	-----	-----	-----	-----	-----	-----	-----	-----	-----	-----	-----	-----	-----	-----	-----	-----	-----	-----	-----	-----	-----	-----	-----	-----	-----	-----	-----	-----	-----	-----	-----	-----	-----	-----	-----	-----	-----	-----	-----	-----	-----	-----	-----	-----	-----	-----

GLN	TYR	PHE	LEU	ILE	THR	PRO	LYS	LEU	LEU	THR	GLY	HIS	TYR	GLU	LYS	MET	ARG	ILE	HIS	CYS	VAL	MET	ALA	GLY	TRP	ILE	PRO	ASN	PRO	GLU	ASP	PRO	LYS	MET	ILE	HIS	PHE	GLY	THR	SER	ASN	TYR	SER	PHE
-----	-----	-----	-----	-----	-----	-----	-----	-----	-----	-----	-----	-----	-----	-----	-----	-----	-----	-----	-----	-----	-----	-----	-----	-----	-----	-----	-----	-----	-----	-----	-----	-----	-----	-----	-----	-----	-----	-----	-----	-----	-----	-----	-----	-----

- Molecule 3: E3 SUMO-protein ligase MMS21





## 4 Experimental information

Property	Value	Source
EM reconstruction method	SINGLE PARTICLE	Depositor
Imposed symmetry	POINT, Not provided	
Number of particles used	179509	Depositor
Resolution determination method	FSC 0.143 CUT-OFF	Depositor
CTF correction method	PHASE FLIPPING AND AMPLITUDE CORRECTION	Depositor
Microscope	FEI TITAN KRIOS	Depositor
Voltage (kV)	300	Depositor
Electron dose ( $e^-/\text{\AA}^2$ )	50	Depositor
Minimum defocus (nm)	1200	Depositor
Maximum defocus (nm)	2200	Depositor
Magnification	Not provided	
Image detector	GATAN K3 (6k x 4k)	Depositor
Maximum map value	7.263	Depositor
Minimum map value	-4.323	Depositor
Average map value	-0.001	Depositor
Map value standard deviation	0.056	Depositor
Recommended contour level	0.3	Depositor
Map size (Å)	680.96, 680.96, 680.96	wwPDB
Map dimensions	320, 320, 320	wwPDB
Map angles (°)	90.0, 90.0, 90.0	wwPDB
Pixel spacing (Å)	2.128, 2.128, 2.128	Depositor

## 5 Model quality [i](#)

### 5.1 Standard geometry [i](#)

The Z score for a bond length (or angle) is the number of standard deviations the observed value is removed from the expected value. A bond length (or angle) with  $|Z| > 5$  is considered an outlier worth inspection. RMSZ is the root-mean-square of all Z scores of the bond lengths (or angles).

Mol	Chain	Bond lengths		Bond angles	
		RMSZ	# Z  >5	RMSZ	# Z  >5
1	B	0.23	0/3762	0.51	0/5036
2	A	0.24	0/3725	0.50	0/4994
3	C	0.25	0/1543	0.49	0/2093
All	All	0.24	0/9030	0.51	0/12123

There are no bond length outliers.

There are no bond angle outliers.

There are no chirality outliers.

There are no planarity outliers.

### 5.2 Too-close contacts [i](#)

In the following table, the Non-H and H(model) columns list the number of non-hydrogen atoms and hydrogen atoms in the chain respectively. The H(added) column lists the number of hydrogen atoms added and optimized by MolProbity. The Clashes column lists the number of clashes within the asymmetric unit, whereas Symm-Clashes lists symmetry-related clashes.

Mol	Chain	Non-H	H(model)	H(added)	Clashes	Symm-Clashes
1	B	3728	3763	3761	61	0
2	A	3682	3818	3816	92	0
3	C	1519	1485	1484	42	0
All	All	8929	9066	9061	178	0

The all-atom clashscore is defined as the number of clashes found per 1000 atoms (including hydrogen atoms). The all-atom clashscore for this structure is 10.

All (178) close contacts within the same asymmetric unit are listed below, sorted by their clash magnitude.

Atom-1	Atom-2	Interatomic distance (Å)	Clash overlap (Å)
3:C:183:THR:OG1	3:C:189:LYS:O	1.90	0.89

*Continued on next page...*



*Continued from previous page...*

Atom-1	Atom-2	Interatomic distance (Å)	Clash overlap (Å)
2:A:713:LYS:O	2:A:716:THR:OG1	1.95	0.83
1:B:611:THR:OG1	1:B:636:ILE:O	1.95	0.82
3:C:66:ILE:O	3:C:69:THR:OG1	1.98	0.82
2:A:394:GLU:OE1	2:A:397:VAL:N	2.14	0.80
3:C:233:ARG:NH1	3:C:234:ASP:OD2	2.15	0.79
1:B:716:ARG:NH1	1:B:717:ASP:OD1	2.16	0.78
2:A:514:THR:HG21	2:A:572:VAL:HG13	1.66	0.77
3:C:76:TYR:O	3:C:80:SER:OG	2.03	0.75
1:B:491:ASN:O	1:B:494:VAL:HG12	1.87	0.74
3:C:135:ALA:O	3:C:136:THR:OG1	2.02	0.73
3:C:195:LEU:N	3:C:204:PHE:O	2.22	0.72
2:A:477:GLU:N	2:A:477:GLU:OE1	2.23	0.71
2:A:650:ILE:HG22	2:A:651:MET:HG3	1.73	0.71
1:B:386:LEU:HD22	1:B:809:TYR:CZ	2.26	0.70
1:B:411:ARG:O	1:B:414:VAL:HG22	1.92	0.69
1:B:676:ARG:NH1	2:A:521:TYR:OH	2.24	0.69
2:A:759:ARG:NH1	3:C:62:GLN:OE1	2.26	0.69
1:B:696:ASN:OD1	1:B:700:TYR:N	2.27	0.67
2:A:447:LEU:O	2:A:448:THR:OG1	2.11	0.67
2:A:338:ILE:HD12	2:A:341:ILE:HD11	1.75	0.66
1:B:380:GLN:N	1:B:380:GLN:OE1	2.29	0.66
1:B:411:ARG:NH2	1:B:414:VAL:HG11	2.12	0.65
3:C:63:VAL:O	3:C:67:THR:HG23	1.97	0.65
2:A:482:ILE:HG22	2:A:513:LEU:HB3	1.80	0.64
3:C:150:LEU:O	3:C:153:ILE:HG22	1.97	0.64
1:B:803:GLN:NE2	1:B:807:GLU:OE1	2.33	0.62
2:A:373:ILE:HD11	3:C:264:ILE:HD11	1.82	0.62
1:B:758:VAL:O	1:B:761:VAL:HG23	2.01	0.61
1:B:810:ASP:OD1	1:B:811:SER:N	2.34	0.61
1:B:494:VAL:O	1:B:494:VAL:HG13	2.01	0.60
1:B:755:LYS:CE	2:A:408:ILE:HD11	2.31	0.60
2:A:449:THR:HG21	2:A:495:ALA:HB2	1.84	0.60
2:A:536:LEU:O	2:A:537:ARG:NH1	2.36	0.59
1:B:598:PHE:N	1:B:625:CYS:SG	2.76	0.59
1:B:702:LYS:NZ	1:B:706:GLU:OE2	2.33	0.58
2:A:775:CYS:SG	3:C:34:TYR:OH	2.57	0.58
3:C:158:THR:HG23	3:C:180:ILE:HG21	1.85	0.58
3:C:158:THR:HG23	3:C:158:THR:O	2.03	0.58
2:A:345:LEU:HD13	3:C:44:THR:HG22	1.84	0.58
1:B:446:LEU:HB3	1:B:754:LEU:HD11	1.86	0.57
1:B:748:ASN:O	1:B:752:THR:HG23	2.05	0.57

*Continued on next page...*

*Continued from previous page...*

Atom-1	Atom-2	Interatomic distance (Å)	Clash overlap (Å)
1:B:474:ILE:HD12	1:B:726:VAL:HB	1.87	0.56
2:A:345:LEU:HD22	3:C:44:THR:HG22	1.86	0.56
2:A:659:ILE:HG22	2:A:660:GLU:N	2.20	0.56
1:B:386:LEU:HD22	1:B:809:TYR:OH	2.06	0.56
2:A:569:ASP:OD1	2:A:570:LYS:N	2.39	0.56
2:A:604:ARG:N	2:A:608:LYS:O	2.36	0.54
3:C:195:LEU:O	3:C:203:VAL:HG23	2.08	0.54
1:B:760:LYS:O	1:B:762:VAL:N	2.41	0.54
2:A:618:ASN:ND2	2:A:641:LYS:O	2.40	0.53
2:A:667:LYS:NZ	2:A:671:ASN:OD1	2.42	0.53
2:A:486:PRO:O	2:A:490:VAL:N	2.36	0.52
1:B:418:ASN:OD1	1:B:774:ARG:NH1	2.42	0.52
2:A:660:GLU:OE1	2:A:663:ILE:HD12	2.09	0.52
2:A:346:ASN:C	2:A:347:THR:HG1	2.10	0.52
2:A:369:LEU:HD13	2:A:736:ALA:CB	2.38	0.52
3:C:46:ASN:OD1	3:C:47:GLN:N	2.42	0.52
1:B:382:ALA:HB1	1:B:809:TYR:CD1	2.44	0.52
3:C:40:GLN:O	3:C:44:THR:HG23	2.09	0.52
1:B:503:ASN:O	1:B:505:THR:N	2.42	0.51
2:A:406:LYS:O	2:A:409:ILE:HG22	2.10	0.51
1:B:468:LYS:O	1:B:471:GLU:HG2	2.11	0.51
2:A:401:ILE:HG22	2:A:405:ARG:HD3	1.93	0.51
1:B:734:ASP:OD2	1:B:735:GLY:N	2.44	0.51
2:A:403:ILE:O	2:A:406:LYS:HG2	2.10	0.51
2:A:487:ILE:HG23	2:A:488:MET:SD	2.51	0.51
1:B:776:ASN:OD1	1:B:777:GLN:N	2.44	0.51
2:A:418:LEU:O	2:A:422:ILE:HD12	2.11	0.51
2:A:331:PHE:CZ	2:A:779:LEU:HD13	2.46	0.50
2:A:352:VAL:HA	2:A:754:LEU:HD21	1.94	0.50
3:C:76:TYR:O	3:C:80:SER:CB	2.60	0.49
1:B:387:ARG:HE	2:A:353:ILE:HD11	1.78	0.49
2:A:388:ALA:O	2:A:389:GLN:HB2	2.12	0.49
2:A:659:ILE:HG22	2:A:660:GLU:H	1.76	0.49
2:A:759:ARG:NH1	3:C:62:GLN:O	2.45	0.49
1:B:720:GLU:O	1:B:724:SER:N	2.40	0.48
1:B:415:ASP:OD2	1:B:419:LYS:NZ	2.32	0.48
2:A:448:THR:O	2:A:449:THR:HG23	2.13	0.48
2:A:774:ASN:O	2:A:776:GLN:NE2	2.46	0.48
1:B:644:GLU:HG3	1:B:645:ALA:H	1.78	0.48
2:A:371:ALA:O	2:A:374:ILE:HG22	2.14	0.48
2:A:682:ASN:OD1	2:A:683:GLN:N	2.47	0.48

*Continued on next page...*

*Continued from previous page...*

Atom-1	Atom-2	Interatomic distance (Å)	Clash overlap (Å)
1:B:626:LEU:HD11	1:B:630:LEU:HD12	1.96	0.47
1:B:755:LYS:NZ	2:A:408:ILE:HD11	2.29	0.47
2:A:343:GLU:O	2:A:347:THR:HG23	2.14	0.47
1:B:721:GLU:O	1:B:725:GLU:N	2.45	0.47
1:B:730:LEU:HA	1:B:733:ILE:HG12	1.96	0.47
1:B:387:ARG:NH1	1:B:391:SER:OG	2.48	0.47
1:B:543:ARG:HG2	1:B:544:LYS:H	1.80	0.47
2:A:742:GLN:HA	2:A:742:GLN:OE1	2.15	0.47
3:C:247:ILE:H	3:C:247:ILE:HD12	1.79	0.47
3:C:253:SER:O	3:C:257:ASP:N	2.38	0.47
2:A:651:MET:O	2:A:653:ASN:N	2.48	0.46
3:C:30:LEU:H	3:C:30:LEU:HD23	1.80	0.46
2:A:490:VAL:HG21	2:A:572:VAL:HG11	1.96	0.46
3:C:37:CYS:SG	3:C:38:TYR:N	2.88	0.46
1:B:708:GLU:N	1:B:708:GLU:OE1	2.49	0.46
1:B:511:ASP:OD1	1:B:512:ARG:N	2.49	0.46
2:A:351:GLU:OE2	2:A:351:GLU:N	2.37	0.46
2:A:429:ILE:O	2:A:432:GLU:HG2	2.16	0.46
3:C:263:ALA:O	3:C:266:VAL:HG12	2.16	0.46
1:B:755:LYS:HZ1	2:A:408:ILE:HD11	1.80	0.45
2:A:743:LYS:HA	2:A:743:LYS:HE2	1.98	0.45
1:B:533:ILE:O	1:B:533:ILE:HG22	2.16	0.45
2:A:565:PHE:CE2	2:A:587:VAL:HG11	2.50	0.45
1:B:403:ALA:O	1:B:407:ILE:HG12	2.16	0.45
2:A:394:GLU:OE1	2:A:396:SER:N	2.50	0.45
2:A:775:CYS:SG	2:A:776:GLN:N	2.89	0.45
1:B:372:VAL:HG22	1:B:372:VAL:O	2.16	0.45
1:B:420:THR:HG21	1:B:770:LYS:HD3	1.99	0.45
2:A:726:ARG:NH2	2:A:727:GLU:OE2	2.49	0.45
2:A:406:LYS:HA	2:A:409:ILE:HG22	1.98	0.45
3:C:150:LEU:N	3:C:151:PRO:HD2	2.32	0.45
1:B:520:THR:HG23	1:B:582:CYS:SG	2.56	0.45
2:A:736:ALA:O	2:A:740:VAL:HG22	2.17	0.45
3:C:226:CYS:SG	3:C:227:SER:N	2.89	0.45
1:B:822:GLU:N	1:B:822:GLU:OE1	2.48	0.44
2:A:359:ASN:OD1	2:A:360:GLU:N	2.50	0.44
3:C:150:LEU:N	3:C:151:PRO:CD	2.80	0.44
1:B:646:ARG:NH2	1:B:674:GLY:O	2.48	0.44
2:A:490:VAL:CG2	2:A:572:VAL:HG11	2.47	0.44
2:A:482:ILE:HG22	2:A:513:LEU:CB	2.45	0.44
3:C:251:LYS:O	3:C:255:GLU:OE1	2.35	0.44

*Continued on next page...*

*Continued from previous page...*

Atom-1	Atom-2	Interatomic distance (Å)	Clash overlap (Å)
1:B:731:LYS:O	1:B:734:ASP:OD2	2.36	0.44
1:B:795:ILE:HA	1:B:798:ILE:HG12	2.00	0.44
2:A:620:LEU:HD21	2:A:622:ASP:OD1	2.18	0.44
3:C:59:ILE:O	3:C:63:VAL:HG22	2.18	0.44
3:C:189:LYS:HB3	3:C:190:PRO:HD2	1.99	0.44
2:A:348:ILE:O	2:A:352:VAL:HG23	2.18	0.44
2:A:681:SER:O	2:A:684:LYS:HG3	2.18	0.44
1:B:658:MET:CB	1:B:672:SER:HA	2.47	0.43
3:C:228:GLN:OE1	3:C:228:GLN:N	2.49	0.43
1:B:446:LEU:CB	1:B:754:LEU:HD11	2.49	0.43
2:A:345:LEU:HD22	3:C:44:THR:CG2	2.48	0.43
1:B:387:ARG:HE	2:A:353:ILE:CD1	2.30	0.43
1:B:547:GLU:HG2	1:B:701:LEU:HD13	2.01	0.43
2:A:551:GLU:OE1	2:A:554:ARG:NH1	2.52	0.43
2:A:373:ILE:HD11	3:C:264:ILE:CD1	2.48	0.43
2:A:644:ASN:ND2	2:A:652:SER:OG	2.51	0.43
2:A:706:HIS:O	2:A:709:ASN:HB2	2.19	0.43
2:A:490:VAL:HG12	2:A:490:VAL:O	2.19	0.43
2:A:769:MET:HB2	2:A:772:LEU:HD12	2.00	0.43
1:B:808:GLN:NE2	1:B:812:THR:HG21	2.34	0.43
2:A:372:THR:O	2:A:376:THR:HG23	2.18	0.43
1:B:389:VAL:HG23	1:B:390:LYS:N	2.33	0.42
2:A:335:LYS:O	2:A:338:ILE:HG22	2.18	0.42
2:A:447:LEU:HD11	2:A:664:ILE:HG21	2.01	0.42
1:B:530:THR:HG23	1:B:595:LEU:H	1.84	0.42
1:B:776:ASN:O	1:B:779:GLN:HG3	2.19	0.42
3:C:213:LEU:HD11	3:C:219:ARG:HB3	2.01	0.42
2:A:774:ASN:O	2:A:775:CYS:SG	2.77	0.42
3:C:59:ILE:HG23	3:C:150:LEU:HD23	2.01	0.42
1:B:623:ILE:HG22	1:B:627:PHE:CE2	2.54	0.42
2:A:740:VAL:HG23	2:A:741:SER:N	2.34	0.42
3:C:221:CYS:SG	3:C:222:PRO:HD2	2.60	0.42
2:A:459:ASP:OD1	2:A:460:GLN:N	2.53	0.42
3:C:261:SER:O	3:C:264:ILE:HG22	2.19	0.42
2:A:604:ARG:CG	2:A:605:PRO:HD2	2.49	0.42
2:A:405:ARG:HA	2:A:408:ILE:HG12	2.00	0.41
2:A:399:GLU:O	2:A:403:ILE:HG12	2.20	0.41
2:A:552:THR:HG22	2:A:552:THR:O	2.20	0.41
2:A:712:ARG:HA	2:A:715:TYR:CE1	2.55	0.41
2:A:604:ARG:O	2:A:606:ASN:N	2.54	0.41
1:B:597:GLN:NE2	1:B:598:PHE:O	2.54	0.41

*Continued on next page...*

Continued from previous page...

Atom-1	Atom-2	Interatomic distance (Å)	Clash overlap (Å)
2:A:345:LEU:CD1	3:C:44:THR:HG22	2.49	0.41
2:A:428:ALA:HA	2:A:431:HIS:CD2	2.56	0.41
2:A:340:GLU:O	2:A:344:LYS:HG3	2.20	0.41
2:A:585:ILE:HA	2:A:615:ILE:HD12	2.03	0.41
2:A:331:PHE:CD1	2:A:331:PHE:N	2.87	0.40
2:A:335:LYS:HA	2:A:338:ILE:HG22	2.02	0.40
2:A:400:ASP:HA	2:A:403:ILE:HG12	2.02	0.40
1:B:588:ILE:HG23	1:B:589:PRO:HD2	2.03	0.40
2:A:345:LEU:CD2	3:C:44:THR:HG22	2.50	0.40
1:B:467:VAL:HB	1:B:733:ILE:HD13	2.04	0.40
2:A:759:ARG:NH2	3:C:62:GLN:O	2.54	0.40
2:A:335:LYS:O	2:A:339:ASN:OD1	2.39	0.40
3:C:219:ARG:HE	3:C:220:ASP:H	1.69	0.40

There are no symmetry-related clashes.

## 5.3 Torsion angles [i](#)

### 5.3.1 Protein backbone [i](#)

In the following table, the Percentiles column shows the percent Ramachandran outliers of the chain as a percentile score with respect to all PDB entries followed by that with respect to all EM entries.

The Analysed column shows the number of residues for which the backbone conformation was analysed, and the total number of residues.

Mol	Chain	Analysed	Favoured	Allowed	Outliers	Percentiles	
1	B	454/1114 (41%)	415 (91%)	38 (8%)	1 (0%)	44	78
2	A	452/1093 (41%)	409 (90%)	40 (9%)	3 (1%)	19	57
3	C	188/267 (70%)	160 (85%)	27 (14%)	1 (0%)	25	65
All	All	1094/2474 (44%)	984 (90%)	105 (10%)	5 (0%)	27	65

All (5) Ramachandran outliers are listed below:

Mol	Chain	Res	Type
1	B	761	VAL
2	A	650	ILE
2	A	346	ASN
2	A	775	CYS

Continued on next page...

*Continued from previous page...*

Mol	Chain	Res	Type
3	C	136	THR

### 5.3.2 Protein sidechains [i](#)

In the following table, the Percentiles column shows the percent sidechain outliers of the chain as a percentile score with respect to all PDB entries followed by that with respect to all EM entries.

The Analysed column shows the number of residues for which the sidechain conformation was analysed, and the total number of residues.

Mol	Chain	Analysed	Rotameric	Outliers	Percentiles	
1	B	417/1003 (42%)	417 (100%)	0	100	100
2	A	418/1003 (42%)	417 (100%)	1 (0%)	92	94
3	C	179/248 (72%)	179 (100%)	0	100	100
All	All	1014/2254 (45%)	1013 (100%)	1 (0%)	92	95

All (1) residues with a non-rotameric sidechain are listed below:

Mol	Chain	Res	Type
2	A	684	LYS

Sometimes sidechains can be flipped to improve hydrogen bonding and reduce clashes. All (3) such sidechains are listed below:

Mol	Chain	Res	Type
1	B	469	ASN
2	A	431	HIS
3	C	165	GLN

### 5.3.3 RNA [i](#)

There are no RNA molecules in this entry.

## 5.4 Non-standard residues in protein, DNA, RNA chains [i](#)

There are no non-standard protein/DNA/RNA residues in this entry.

## 5.5 Carbohydrates [i](#)

There are no oligosaccharides in this entry.

## 5.6 Ligand geometry [i](#)

There are no ligands in this entry.

## 5.7 Other polymers [i](#)

There are no such residues in this entry.

## 5.8 Polymer linkage issues [i](#)

There are no chain breaks in this entry.

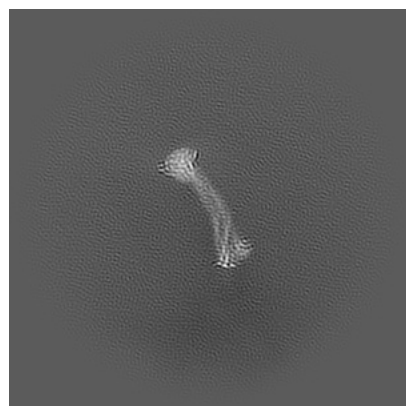
## 6 Map visualisation [i](#)

This section contains visualisations of the EMDB entry EMD-37584. These allow visual inspection of the internal detail of the map and identification of artifacts.

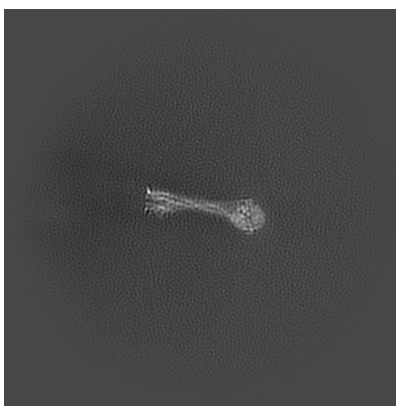
Images derived from a raw map, generated by summing the deposited half-maps, are presented below the corresponding image components of the primary map to allow further visual inspection and comparison with those of the primary map.

### 6.1 Orthogonal projections [i](#)

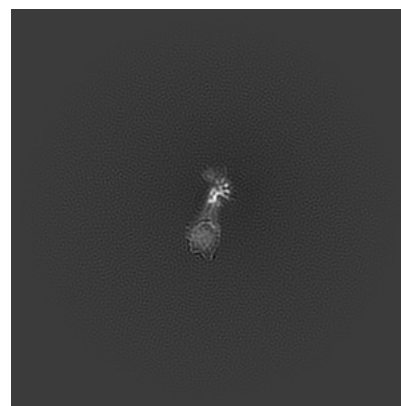
#### 6.1.1 Primary map



X

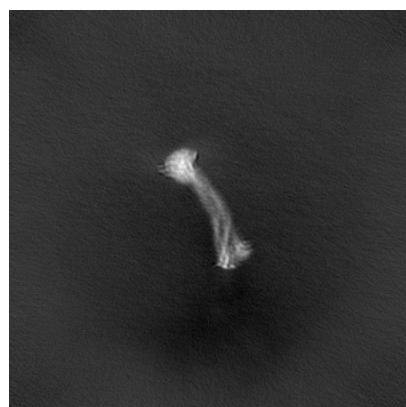


Y



Z

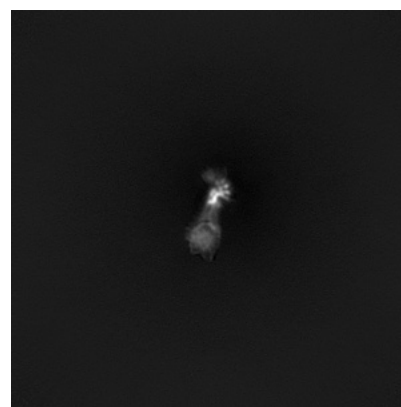
#### 6.1.2 Raw map



X



Y



Z

The images above show the map projected in three orthogonal directions.

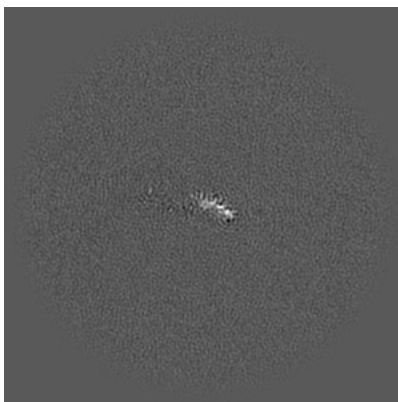


## 6.2 Central slices [i](#)

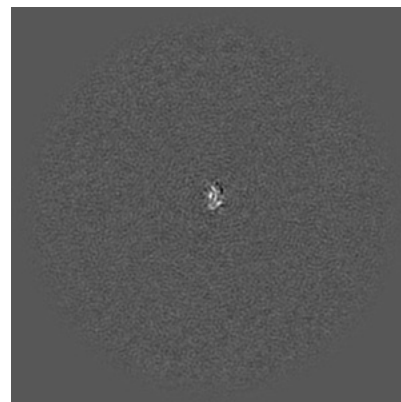
### 6.2.1 Primary map



X Index: 160



Y Index: 160



Z Index: 160

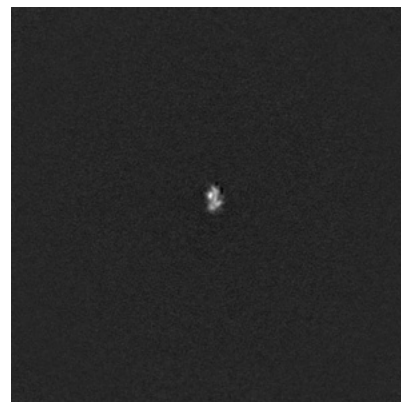
### 6.2.2 Raw map



X Index: 160



Y Index: 160



Z Index: 160

The images above show central slices of the map in three orthogonal directions.

## 6.3 Largest variance slices [i](#)

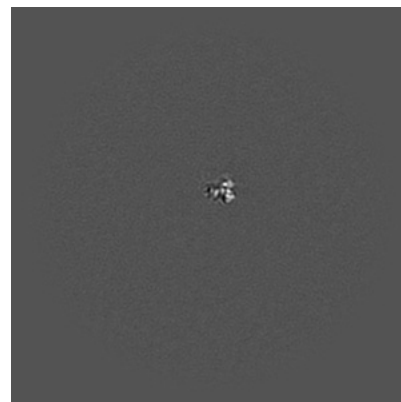
### 6.3.1 Primary map



X Index: 160



Y Index: 173



Z Index: 115

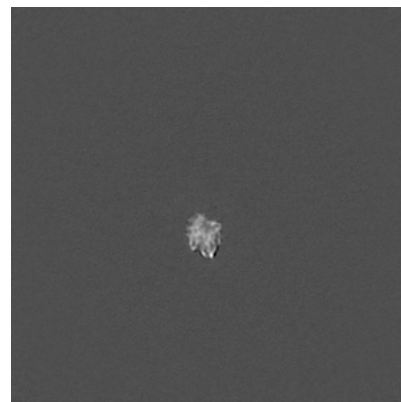
### 6.3.2 Raw map



X Index: 162



Y Index: 173



Z Index: 191

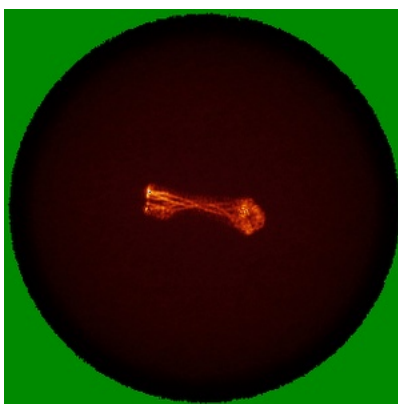
The images above show the largest variance slices of the map in three orthogonal directions.

## 6.4 Orthogonal standard-deviation projections (False-color) ⓘ

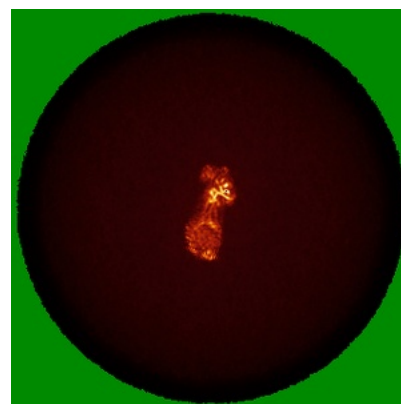
### 6.4.1 Primary map



X



Y

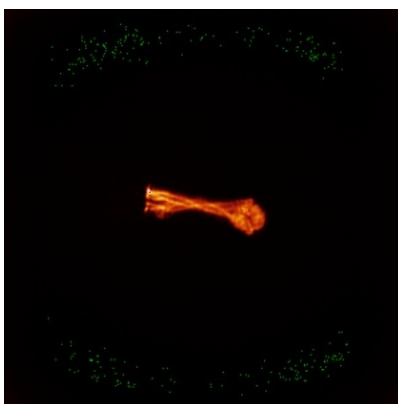


Z

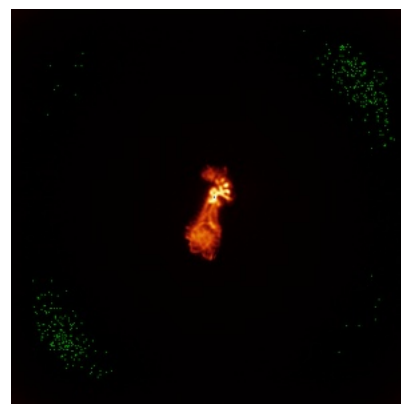
### 6.4.2 Raw map



X



Y

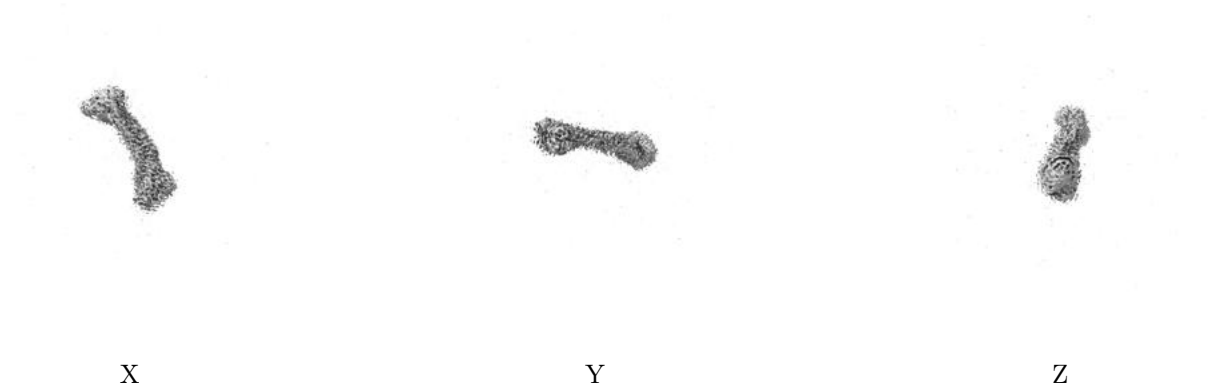


Z

The images above show the map standard deviation projections with false color in three orthogonal directions. Minimum values are shown in green, max in blue, and dark to light orange shades represent small to large values respectively.

## 6.5 Orthogonal surface views [i](#)

### 6.5.1 Primary map



The images above show the 3D surface view of the map at the recommended contour level 0.3. These images, in conjunction with the slice images, may facilitate assessment of whether an appropriate contour level has been provided.

### 6.5.2 Raw map



These images show the 3D surface of the raw map. The raw map's contour level was selected so that its surface encloses the same volume as the primary map does at its recommended contour level.

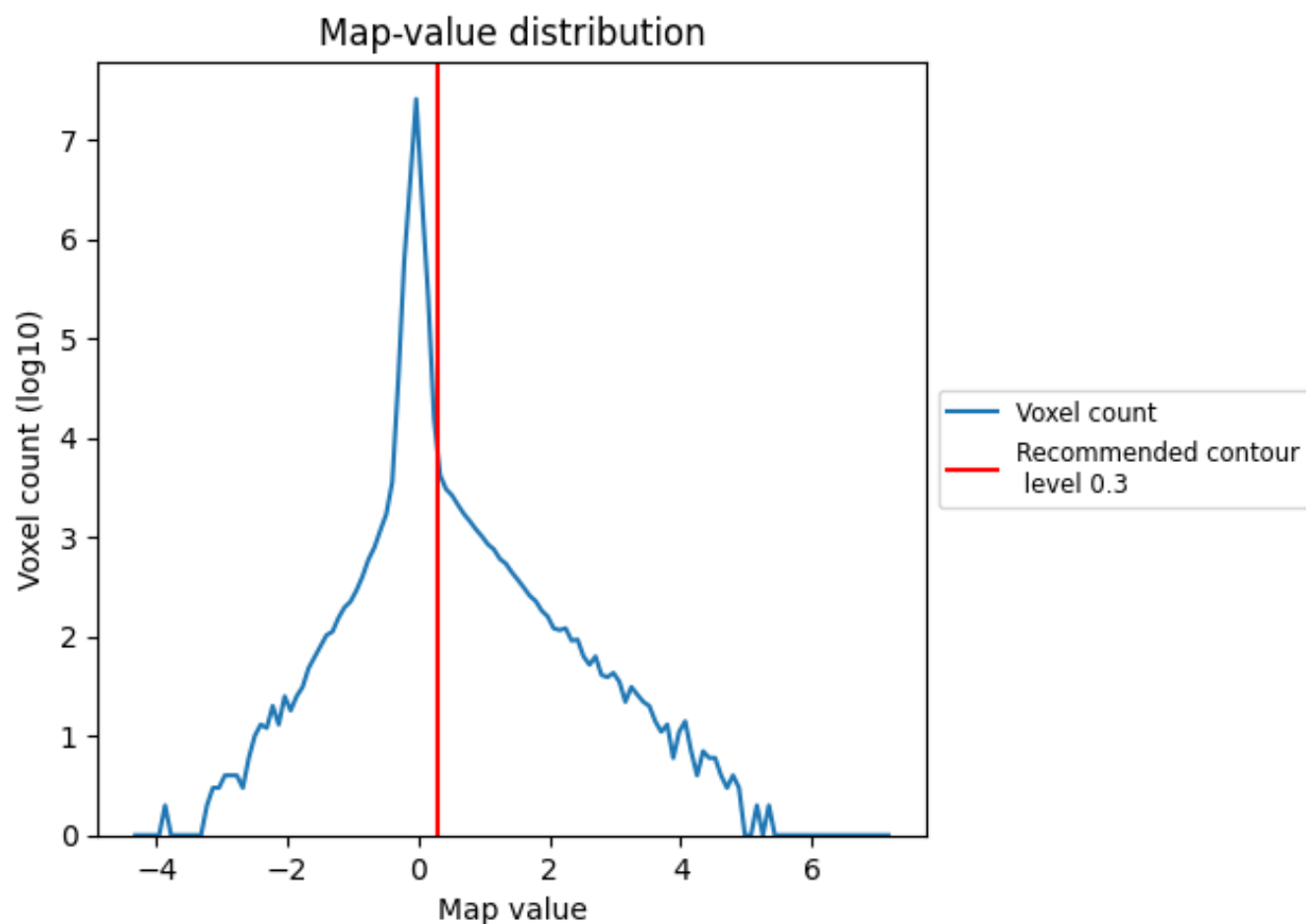
## 6.6 Mask visualisation [i](#)

This section was not generated. No masks/segmentation were deposited.

## 7 Map analysis [i](#)

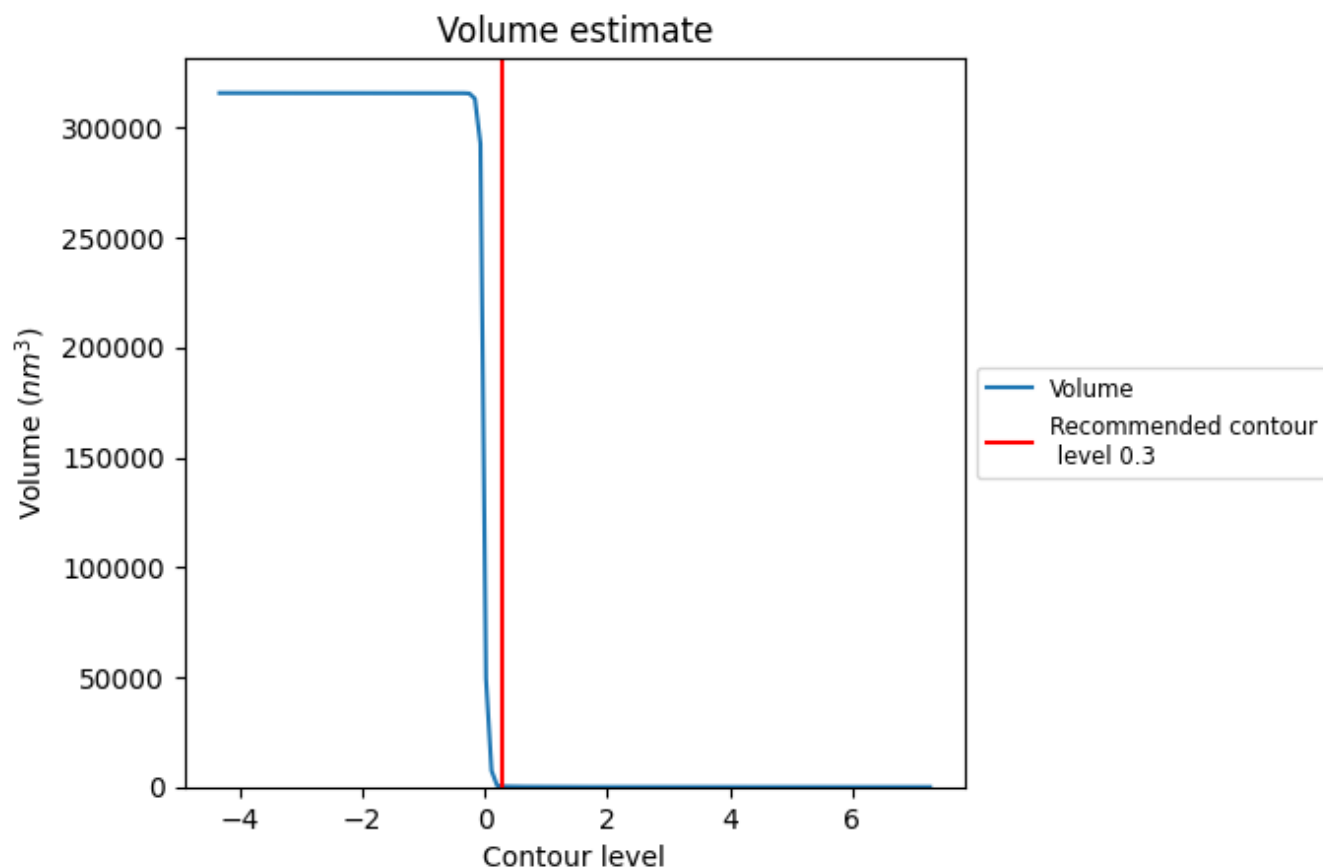
This section contains the results of statistical analysis of the map.

### 7.1 Map-value distribution [i](#)



The map-value distribution is plotted in 128 intervals along the x-axis. The y-axis is logarithmic. A spike in this graph at zero usually indicates that the volume has been masked.

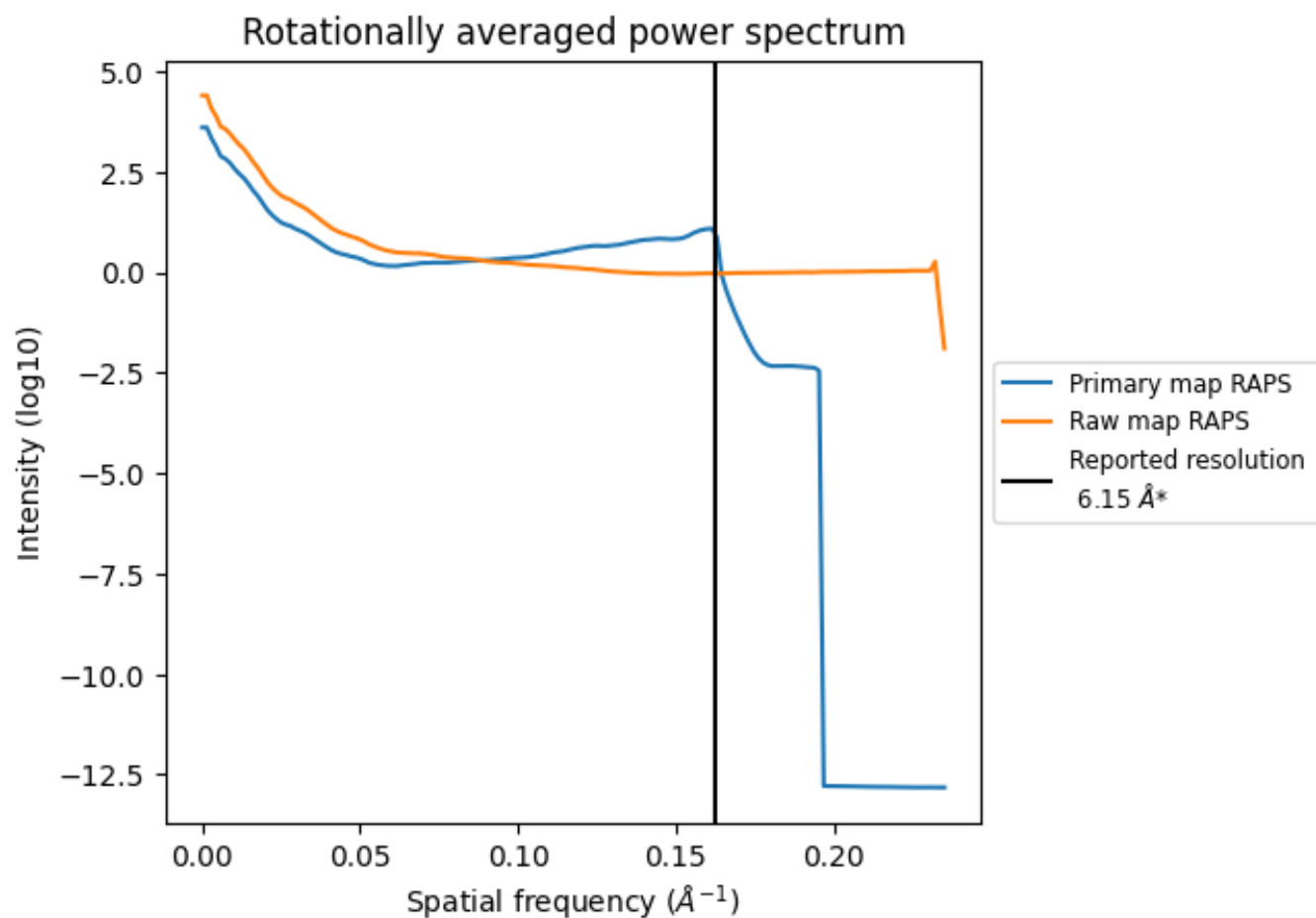
## 7.2 Volume estimate [i](#)



The volume at the recommended contour level is 246  $\text{nm}^3$ ; this corresponds to an approximate mass of 222 kDa.

The volume estimate graph shows how the enclosed volume varies with the contour level. The recommended contour level is shown as a vertical line and the intersection between the line and the curve gives the volume of the enclosed surface at the given level.

### 7.3 Rotationally averaged power spectrum ⓘ

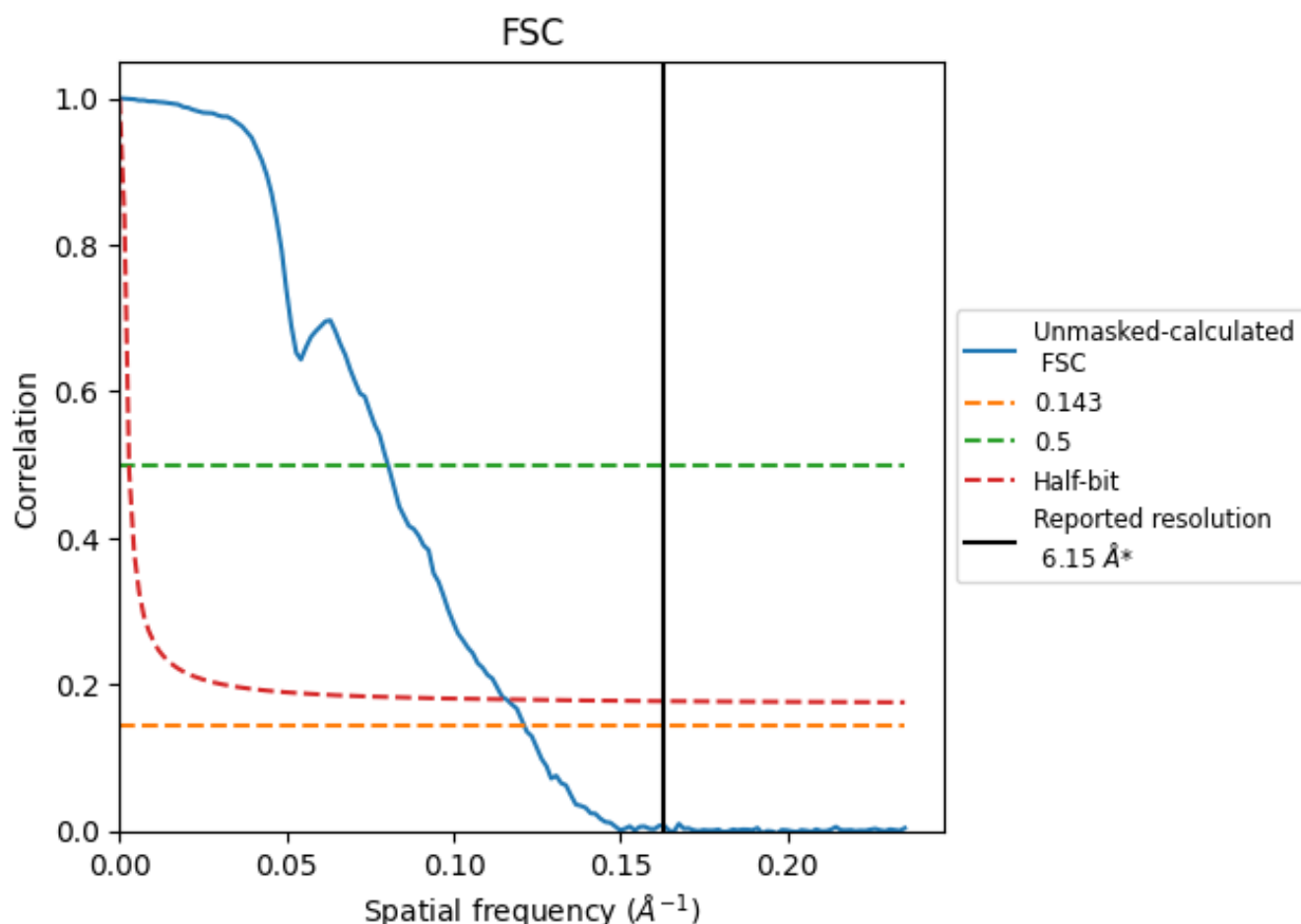


\*Reported resolution corresponds to spatial frequency of 0.163 Å<sup>-1</sup>

## 8 Fourier-Shell correlation [i](#)

Fourier-Shell Correlation (FSC) is the most commonly used method to estimate the resolution of single-particle and subtomogram-averaged maps. The shape of the curve depends on the imposed symmetry, mask and whether or not the two 3D reconstructions used were processed from a common reference. The reported resolution is shown as a black line. A curve is displayed for the half-bit criterion in addition to lines showing the 0.143 gold standard cut-off and 0.5 cut-off.

### 8.1 FSC [i](#)



\*Reported resolution corresponds to spatial frequency of 0.163  $\text{\AA}^{-1}$



## 8.2 Resolution estimates [i](#)

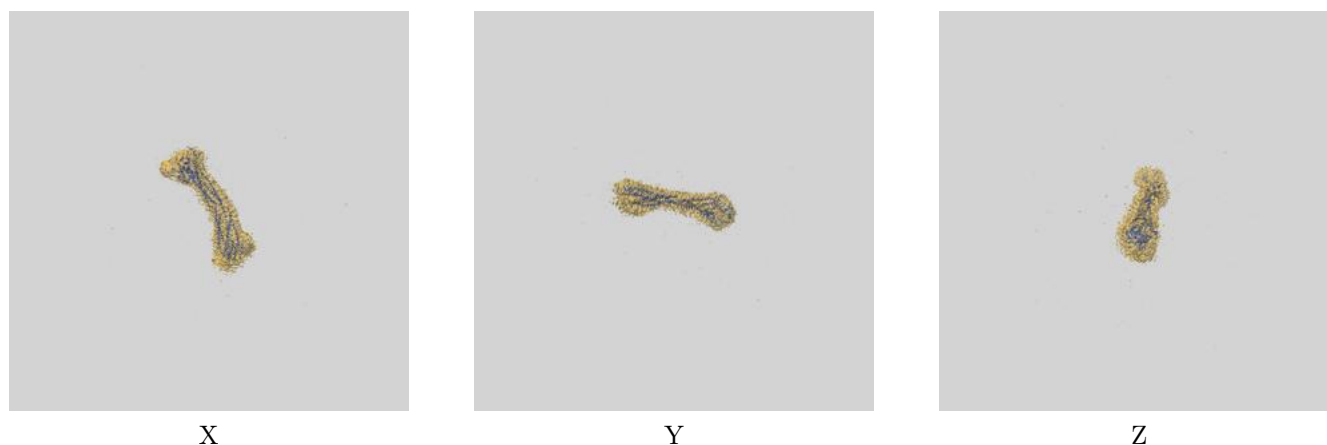
Resolution estimate (Å)	Estimation criterion (FSC cut-off)		
	0.143	0.5	Half-bit
Reported by author	6.15	-	-
Author-provided FSC curve	-	-	-
Unmasked-calculated*	8.25	12.45	8.63

\*Resolution estimate based on FSC curve calculated by comparison of deposited half-maps. The value from deposited half-maps intersecting FSC 0.143 CUT-OFF 8.25 differs from the reported value 6.15 by more than 10 %

## 9 Map-model fit [i](#)

This section contains information regarding the fit between EMDB map EMD-37584 and PDB model 8WJL. Per-residue inclusion information can be found in [section 3](#) on [page 4](#).

### 9.1 Map-model overlay [i](#)



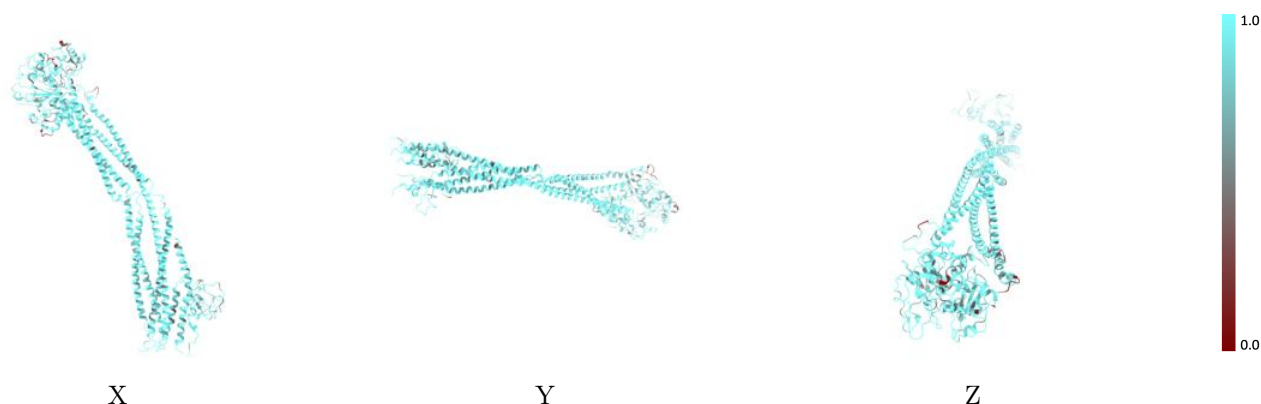
The images above show the 3D surface view of the map at the recommended contour level 0.3 at 50% transparency in yellow overlaid with a ribbon representation of the model coloured in blue. These images allow for the visual assessment of the quality of fit between the atomic model and the map.

## 9.2 Q-score mapped to coordinate model [i](#)



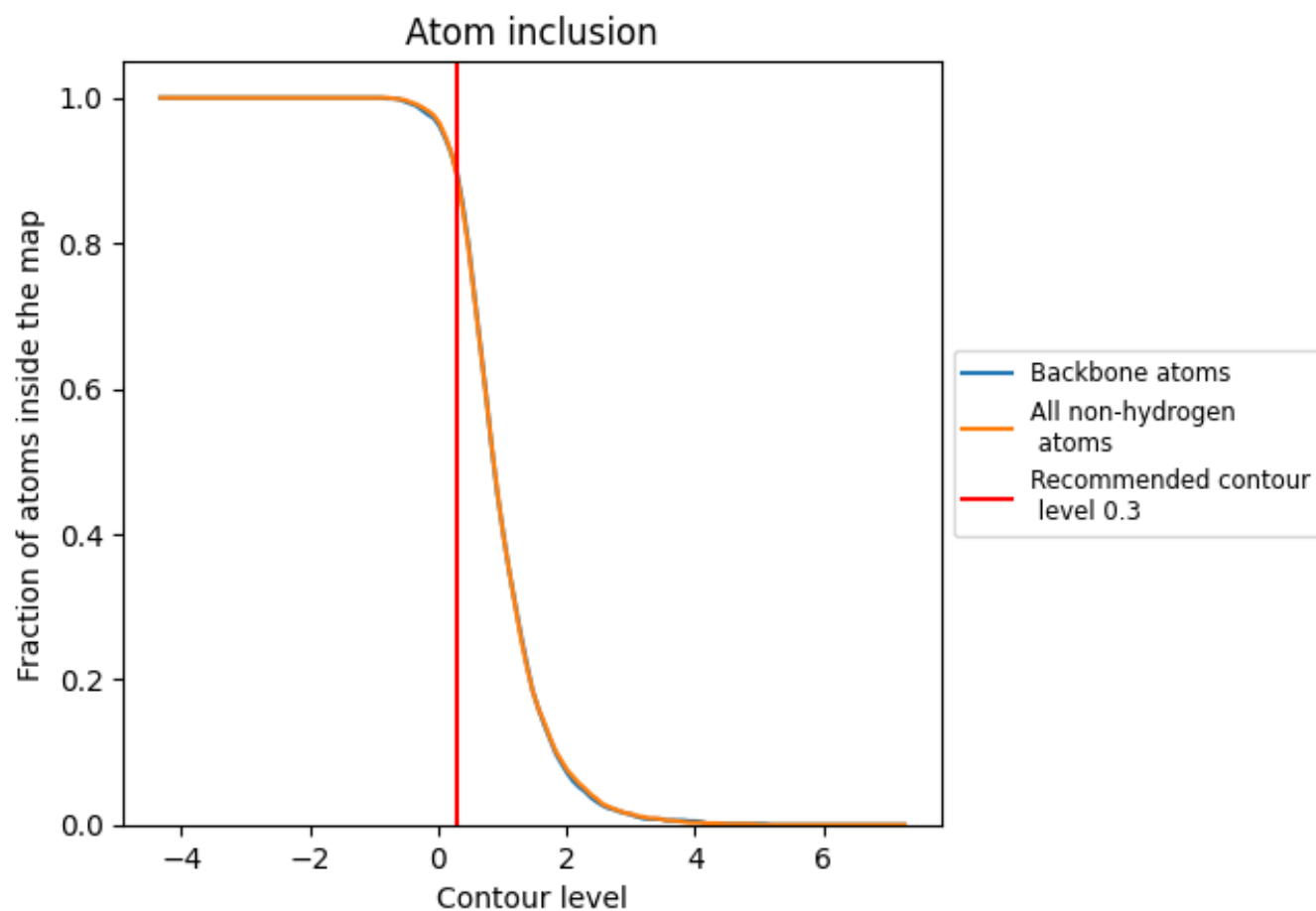
The images above show the model with each residue coloured according to its Q-score. This shows their resolvability in the map with higher Q-score values reflecting better resolvability. Please note: Q-score is calculating the resolvability of atoms, and thus high values are only expected at resolutions at which atoms can be resolved. Low Q-score values may therefore be expected for many entries.

## 9.3 Atom inclusion mapped to coordinate model [i](#)



The images above show the model with each residue coloured according to its atom inclusion. This shows to what extent they are inside the map at the recommended contour level (0.3).

## 9.4 Atom inclusion [i](#)



At the recommended contour level, 89% of all backbone atoms, 89% of all non-hydrogen atoms, are inside the map.

9.5 Map-model fit summary ⓘ

The table lists the average atom inclusion at the recommended contour level (0.3) and Q-score for the entire model and for each chain.

Chain	Atom inclusion	Q-score
All	<div></div> 0.8900	<div></div> 0.1890
A	<div></div> 0.9050	<div></div> 0.1870
B	<div></div> 0.8880	<div></div> 0.1870
C	<div></div> 0.8720	<div></div> 0.2020

