



Full wwPDB EM Validation Report ⓘ

Oct 28, 2024 – 01:09 PM JST

PDB ID : 8WJQ
EMDB ID : EMD-37589
Title : Cryo-EM structure of URAT1(R477S)-Urate complex
Authors : Qian, H.W.; He, J.J.
Deposited on : 2023-09-26
Resolution : 3.80 Å(reported)

This is a Full wwPDB EM Validation Report for a publicly released PDB entry.

We welcome your comments at validation@mail.wwpdb.org

A user guide is available at

<https://www.wwpdb.org/validation/2017/EMValidationReportHelp>

with specific help available everywhere you see the ⓘ symbol.

The types of validation reports are described at

<http://www.wwpdb.org/validation/2017/FAQs#types>.

The following versions of software and data (see [references ⓘ](#)) were used in the production of this report:

EMDB validation analysis : **FAILED**
Mogul : 1.8.5 (274361), CSD as541be (2020)
MolProbity : 4.02b-467
buster-report : 1.1.7 (2018)
Percentile statistics : 20231227.v01 (using entries in the PDB archive December 27th 2023)
MapQ : **FAILED**
Ideal geometry (proteins) : Engh & Huber (2001)
Ideal geometry (DNA, RNA) : Parkinson et al. (1996)
Validation Pipeline (wwPDB-VP) : 2.39

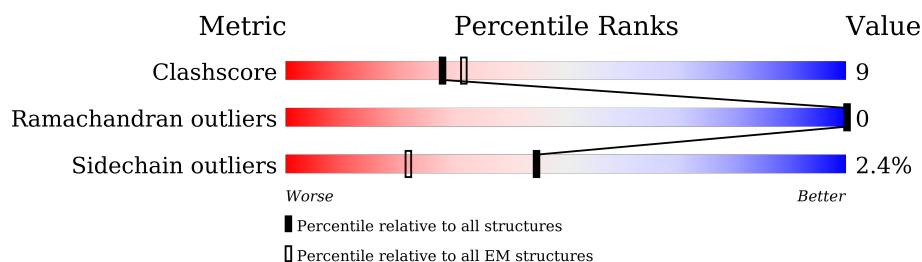
1 Overall quality at a glance

The following experimental techniques were used to determine the structure:

ELECTRON MICROSCOPY


The reported resolution of this entry is 3.80 Å.

Percentile scores (ranging between 0-100) for global validation metrics of the entry are shown in the following graphic. The table shows the number of entries on which the scores are based.



Metric	Whole archive (#Entries)	EM structures (#Entries)
Clashscore	210492	15764
Ramachandran outliers	207382	16835
Sidechain outliers	206894	16415

The table below summarises the geometric issues observed across the polymeric chains and their fit to the map. The red, orange, yellow and green segments of the bar indicate the fraction of residues that contain outliers for ≥ 3 , 2, 1 and 0 types of geometric quality criteria respectively. A grey segment represents the fraction of residues that are not modelled. The numeric value for each fraction is indicated below the corresponding segment, with a dot representing fractions $\leq 5\%$.

Mol	Chain	Length	Quality of chain
1	A	538	

2 Entry composition [i](#)

There are 2 unique types of molecules in this entry. The entry contains 3999 atoms, of which 0 are hydrogens and 0 are deuteriums.

In the tables below, the AltConf column contains the number of residues with at least one atom in alternate conformation and the Trace column contains the number of residues modelled with at most 2 atoms.

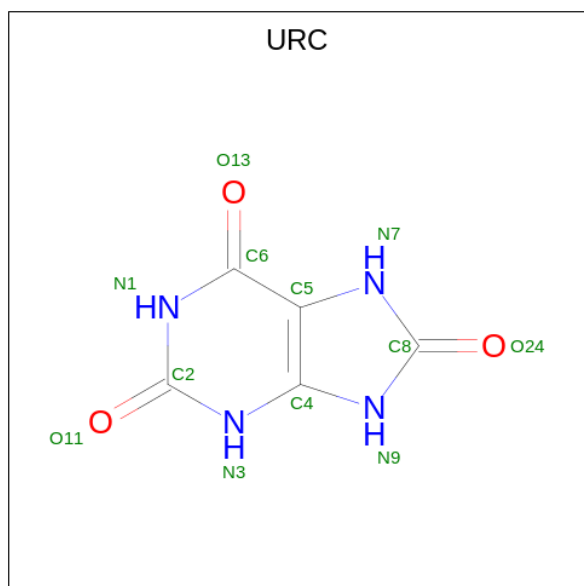
- Molecule 1 is a protein called Solute carrier family 22 member 12.

Mol	Chain	Residues	Atoms					AltConf	Trace
			Total	C	N	O	S		
1	A	530	3987	2594	672	691	30	0	0

There is a discrepancy between the modelled and reference sequences:

Chain	Residue	Modelled	Actual	Comment	Reference
A	477	SER	ARG	conflict	UNP Q96S37

- Molecule 2 is URIC ACID (three-letter code: URC) (formula: $C_5H_4N_4O_3$) (labeled as "Ligand of Interest" by depositor).

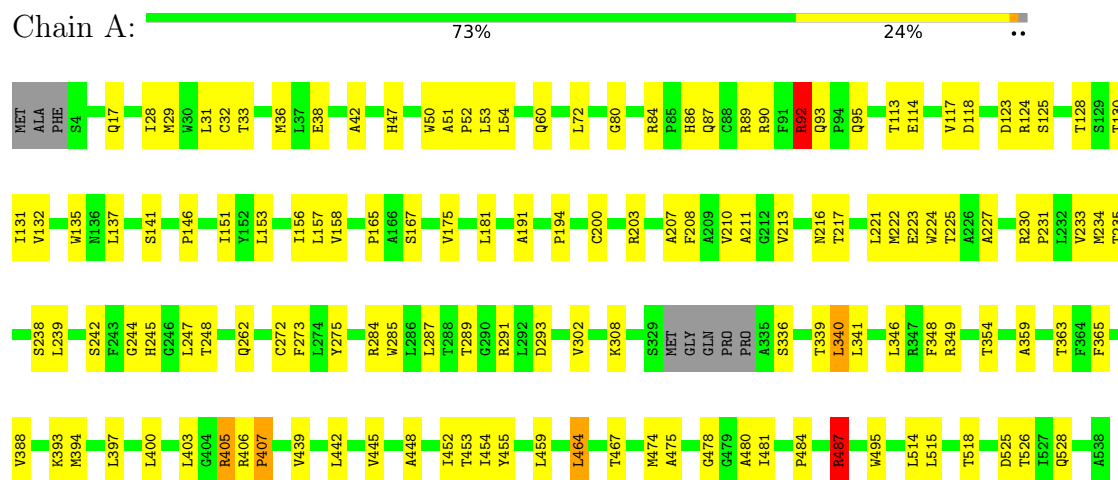


Mol	Chain	Residues	Atoms				AltConf
			Total	C	N	O	
2	A	1	12	5	4	3	0

3 Residue-property plots [i](#)

These plots are drawn for all protein, RNA, DNA and oligosaccharide chains in the entry. The first graphic for a chain summarises the proportions of the various outlier classes displayed in the second graphic. The second graphic shows the sequence view annotated by issues in geometry. Residues are color-coded according to the number of geometric quality criteria for which they contain at least one outlier: green = 0, yellow = 1, orange = 2 and red = 3 or more. Stretches of 2 or more consecutive residues without any outlier are shown as a green connector. Residues present in the sample, but not in the model, are shown in grey.

- Molecule 1: Solute carrier family 22 member 12



4 Experimental information

Property	Value	Source
EM reconstruction method	SINGLE PARTICLE	Depositor
Imposed symmetry	POINT, Not provided	
Number of particles used	392817	Depositor
Resolution determination method	FSC 0.143 CUT-OFF	Depositor
CTF correction method	NONE	Depositor
Microscope	FEI TITAN KRIOS	Depositor
Voltage (kV)	300	Depositor
Electron dose ($e^-/\text{\AA}^2$)	50	Depositor
Minimum defocus (nm)	1500	Depositor
Maximum defocus (nm)	1700	Depositor
Magnification	Not provided	
Image detector	GATAN K3 BIOQUANTUM (6k x 4k)	Depositor

5 Model quality [i](#)

5.1 Standard geometry [i](#)

Bond lengths and bond angles in the following residue types are not validated in this section: URC

The Z score for a bond length (or angle) is the number of standard deviations the observed value is removed from the expected value. A bond length (or angle) with $|Z| > 5$ is considered an outlier worth inspection. RMSZ is the root-mean-square of all Z scores of the bond lengths (or angles).

Mol	Chain	Bond lengths		Bond angles	
		RMSZ	$\# Z > 5$	RMSZ	$\# Z > 5$
1	A	0.40	3/4086 (0.1%)	0.83	16/5582 (0.3%)

Chiral center outliers are detected by calculating the chiral volume of a chiral center and verifying if the center is modelled as a planar moiety or with the opposite hand. A planarity outlier is detected by checking planarity of atoms in a peptide group, atoms in a mainchain group or atoms of a sidechain that are expected to be planar.

Mol	Chain	#Chirality outliers	#Planarity outliers
1	A	0	2

All (3) bond length outliers are listed below:

Mol	Chain	Res	Type	Atoms	Z	Observed(Å)	Ideal(Å)
1	A	146	PRO	CG-CD	-8.11	1.23	1.50
1	A	194	PRO	CG-CD	-6.72	1.28	1.50
1	A	146	PRO	N-CD	5.57	1.55	1.47

All (16) bond angle outliers are listed below:

Mol	Chain	Res	Type	Atoms	Z	Observed(°)	Ideal(°)
1	A	146	PRO	CA-N-CD	-13.59	92.47	111.50
1	A	194	PRO	CA-N-CD	-12.48	94.02	111.50
1	A	146	PRO	N-CD-CG	-8.53	90.41	103.20
1	A	114	GLU	CA-CB-CG	7.11	129.04	113.40
1	A	194	PRO	N-CD-CG	-6.88	92.88	103.20
1	A	92	ARG	CG-CD-NE	6.81	126.10	111.80
1	A	123	ASP	CB-CG-OD1	6.66	124.30	118.30
1	A	407	PRO	CA-N-CD	-6.30	102.68	111.50
1	A	93	GLN	CA-CB-CG	5.67	125.87	113.40
1	A	95	GLN	CA-CB-CG	5.51	125.53	113.40

Continued on next page...

Continued from previous page...

Mol	Chain	Res	Type	Atoms	Z	Observed(°)	Ideal(°)
1	A	287	LEU	CA-CB-CG	5.43	127.79	115.30
1	A	464	LEU	CA-CB-CG	5.42	127.77	115.30
1	A	92	ARG	N-CA-CB	5.34	120.21	110.60
1	A	92	ARG	CA-CB-CG	5.33	125.13	113.40
1	A	340	LEU	CA-CB-CG	5.10	127.04	115.30
1	A	518	THR	C-N-CA	5.03	134.28	121.70

There are no chirality outliers.

All (2) planarity outliers are listed below:

Mol	Chain	Res	Type	Group
1	A	291	ARG	Sidechain
1	A	487	ARG	Sidechain

5.2 Too-close contacts ⓘ

In the following table, the Non-H and H(model) columns list the number of non-hydrogen atoms and hydrogen atoms in the chain respectively. The H(added) column lists the number of hydrogen atoms added and optimized by MolProbity. The Clashes column lists the number of clashes within the asymmetric unit, whereas Symm-Clashes lists symmetry-related clashes.

Mol	Chain	Non-H	H(model)	H(added)	Clashes	Symm-Clashes
1	A	3987	0	4049	76	0
2	A	12	0	4	0	0
All	All	3999	0	4053	76	0

The all-atom clashscore is defined as the number of clashes found per 1000 atoms (including hydrogen atoms). The all-atom clashscore for this structure is 9.

All (76) close contacts within the same asymmetric unit are listed below, sorted by their clash magnitude.

Atom-1	Atom-2	Interatomic distance (Å)	Clash overlap (Å)
1:A:38:GLU:HB2	1:A:203:ARG:HH21	1.57	0.70
1:A:137:LEU:HD13	1:A:141:SER:HB3	1.75	0.69
1:A:50:TRP:O	1:A:90:ARG:NH1	2.28	0.66
1:A:28:ILE:HD11	1:A:217:THR:HG21	1.81	0.62
1:A:191:ALA:HB2	1:A:262:GLN:HG2	1.80	0.62
1:A:242:SER:HB2	1:A:393:LYS:HZ2	1.65	0.61
1:A:165:PRO:HD3	1:A:467:THR:HG22	1.84	0.58

Continued on next page...

Continued from previous page...

Atom-1	Atom-2	Interatomic distance (Å)	Clash overlap (Å)
1:A:238:SER:O	1:A:393:LYS:NZ	2.32	0.58
1:A:32:CYS:SG	1:A:245:HIS:ND1	2.77	0.56
1:A:53:LEU:HD21	1:A:72:LEU:HD22	1.88	0.56
1:A:17:GLN:OE1	1:A:17:GLN:N	2.36	0.56
1:A:156:ILE:HG13	1:A:211:ALA:HB2	1.88	0.56
1:A:207:ALA:HA	1:A:210:VAL:HG12	1.87	0.56
1:A:31:LEU:HD11	1:A:213:VAL:HG11	1.87	0.55
1:A:167:SER:HA	1:A:175:VAL:HG21	1.89	0.55
1:A:181:LEU:HB2	1:A:273:PHE:CE2	2.41	0.55
1:A:36:MET:HB3	1:A:248:THR:HG21	1.89	0.54
1:A:484:PRO:HA	1:A:487:ARG:HG3	1.87	0.54
1:A:346:LEU:HD22	1:A:464:LEU:HD11	1.90	0.53
1:A:52:PRO:HD3	1:A:90:ARG:HH12	1.74	0.52
1:A:157:LEU:HG	1:A:474:MET:HG3	1.91	0.52
1:A:388:VAL:HG11	1:A:439:VAL:HG13	1.91	0.52
1:A:359:ALA:O	1:A:363:THR:OG1	2.22	0.52
1:A:47:HIS:H	1:A:87:GLN:HE22	1.57	0.51
1:A:32:CYS:HB3	1:A:244:GLY:HA3	1.92	0.51
1:A:400:LEU:HD22	1:A:405:ARG:HG3	1.92	0.51
1:A:42:ALA:HB2	1:A:131:ILE:HD11	1.93	0.50
1:A:525:ASP:OD2	1:A:526:THR:N	2.46	0.49
1:A:33:THR:HA	1:A:248:THR:OG1	2.12	0.49
1:A:151:ILE:HG21	1:A:200:CYS:SG	2.53	0.48
1:A:231:PRO:HA	1:A:454:ILE:HD11	1.95	0.48
1:A:348:PHE:HZ	1:A:514:LEU:HG	1.79	0.48
1:A:130:THR:OG1	1:A:132:VAL:HG12	2.14	0.48
1:A:349:ARG:HD3	1:A:459:LEU:HG	1.96	0.48
1:A:175:VAL:HB	1:A:216:ASN:HD21	1.78	0.48
1:A:354:THR:HG23	1:A:475:ALA:HB2	1.95	0.47
1:A:117:VAL:HG23	1:A:118:ASP:OD1	2.15	0.46
1:A:234:MET:CE	1:A:453:THR:HG23	2.46	0.46
1:A:80:GLY:N	1:A:84:ARG:O	2.44	0.46
1:A:478:GLY:HA2	1:A:481:ILE:HG22	1.96	0.46
1:A:235:THR:O	1:A:239:LEU:HG	2.16	0.46
1:A:223:GLU:OE1	1:A:284:ARG:HD2	2.15	0.45
1:A:336:SER:O	1:A:339:THR:OG1	2.27	0.45
1:A:158:VAL:HG13	1:A:208:PHE:HE1	1.81	0.45
1:A:221:LEU:HD22	1:A:233:VAL:HG11	1.98	0.45
1:A:47:HIS:H	1:A:87:GLN:NE2	2.14	0.45
1:A:29:MET:O	1:A:33:THR:HG23	2.17	0.44
1:A:90:ARG:HE	1:A:92:ARG:HA	1.82	0.44

Continued on next page...

Continued from previous page...

Atom-1	Atom-2	Interatomic distance (Å)	Clash overlap (Å)
1:A:224:TRP:CH2	1:A:302:VAL:HG11	2.52	0.44
1:A:442:LEU:HA	1:A:445:VAL:HG12	1.99	0.44
1:A:90:ARG:NE	1:A:92:ARG:HA	2.33	0.44
1:A:86:HIS:CD2	1:A:89:ARG:HG2	2.53	0.43
1:A:51:ALA:HA	1:A:90:ARG:NH1	2.34	0.43
1:A:235:THR:HG21	1:A:397:LEU:HB2	1.99	0.43
1:A:221:LEU:HD23	1:A:221:LEU:HA	1.69	0.43
1:A:406:ARG:HD2	1:A:407:PRO:HD3	2.01	0.43
1:A:89:ARG:HH21	1:A:113:THR:HG23	1.84	0.42
1:A:221:LEU:O	1:A:225:THR:OG1	2.25	0.42
1:A:285:TRP:O	1:A:289:THR:HG23	2.19	0.42
1:A:340:LEU:HD22	1:A:341:LEU:HD22	2.01	0.42
1:A:124:ARG:NH2	1:A:128:THR:OG1	2.42	0.42
1:A:227:ALA:HA	1:A:230:ARG:HG3	2.02	0.42
1:A:53:LEU:O	1:A:60:GLN:NE2	2.53	0.42
1:A:29:MET:HE3	1:A:247:LEU:HD22	2.02	0.42
1:A:308:LYS:HD2	1:A:308:LYS:HA	1.81	0.42
1:A:272:CYS:HA	1:A:275:TYR:CE2	2.55	0.42
1:A:526:THR:HG23	1:A:528:GLN:N	2.35	0.42
1:A:132:VAL:HA	1:A:137:LEU:HB2	2.01	0.41
1:A:51:ALA:HB3	1:A:54:LEU:HD12	2.03	0.41
1:A:153:LEU:HD13	1:A:480:ALA:HB1	2.03	0.41
1:A:153:LEU:HA	1:A:156:ILE:HG22	2.03	0.41
1:A:403:LEU:HG	1:A:407:PRO:HB2	2.02	0.41
1:A:224:TRP:HH2	1:A:302:VAL:HG11	1.86	0.40
1:A:448:ALA:O	1:A:452:ILE:HG13	2.21	0.40
1:A:455:TYR:OH	1:A:515:LEU:HB3	2.22	0.40
1:A:89:ARG:HB3	1:A:113:THR:OG1	2.22	0.40

There are no symmetry-related clashes.

5.3 Torsion angles ⓘ

5.3.1 Protein backbone ⓘ

In the following table, the Percentiles column shows the percent Ramachandran outliers of the chain as a percentile score with respect to all PDB entries followed by that with respect to all EM entries.

The Analysed column shows the number of residues for which the backbone conformation was analysed, and the total number of residues.

Mol	Chain	Analysed	Favoured	Allowed	Outliers	Percentiles	
1	A	526/538 (98%)	507 (96%)	19 (4%)	0	100	100

There are no Ramachandran outliers to report.

5.3.2 Protein sidechains ⓘ

In the following table, the Percentiles column shows the percent sidechain outliers of the chain as a percentile score with respect to all PDB entries followed by that with respect to all EM entries.

The Analysed column shows the number of residues for which the sidechain conformation was analysed, and the total number of residues.

Mol	Chain	Analysed	Rotameric	Outliers	Percentiles	
1	A	414/429 (96%)	404 (98%)	10 (2%)	44	62

All (10) residues with a non-rotameric sidechain are listed below:

Mol	Chain	Res	Type
1	A	92	ARG
1	A	125	SER
1	A	135	TRP
1	A	222	MET
1	A	293	ASP
1	A	365	PHE
1	A	394	MET
1	A	405	ARG
1	A	487	ARG
1	A	495	TRP

Sometimes sidechains can be flipped to improve hydrogen bonding and reduce clashes. There are no such sidechains identified.

5.3.3 RNA ⓘ

There are no RNA molecules in this entry.

5.4 Non-standard residues in protein, DNA, RNA chains ⓘ

There are no non-standard protein/DNA/RNA residues in this entry.

5.5 Carbohydrates

There are no oligosaccharides in this entry.

5.6 Ligand geometry

1 ligand is modelled in this entry.

In the following table, the Counts columns list the number of bonds (or angles) for which Mogul statistics could be retrieved, the number of bonds (or angles) that are observed in the model and the number of bonds (or angles) that are defined in the Chemical Component Dictionary. The Link column lists molecule types, if any, to which the group is linked. The Z score for a bond length (or angle) is the number of standard deviations the observed value is removed from the expected value. A bond length (or angle) with $|Z| > 2$ is considered an outlier worth inspection. RMSZ is the root-mean-square of all Z scores of the bond lengths (or angles).

Mol	Type	Chain	Res	Link	Bond lengths			Bond angles		
					Counts	RMSZ	$\# Z > 2$	Counts	RMSZ	$\# Z > 2$
2	URC	A	601	-	8,13,13	5.04	7 (87%)	5,19,19	8.96	4 (80%)

In the following table, the Chirals column lists the number of chiral outliers, the number of chiral centers analysed, the number of these observed in the model and the number defined in the Chemical Component Dictionary. Similar counts are reported in the Torsion and Rings columns. '-' means no outliers of that kind were identified.

Mol	Type	Chain	Res	Link	Chirals	Torsions	Rings
2	URC	A	601	-	-	-	0/2/2/2

All (7) bond length outliers are listed below:

Mol	Chain	Res	Type	Atoms	Z	Observed(Å)	Ideal(Å)
2	A	601	URC	C4-N9	7.48	1.48	1.34
2	A	601	URC	C6-N1	6.25	1.43	1.33
2	A	601	URC	C4-N3	5.94	1.46	1.35
2	A	601	URC	C5-C6	5.44	1.50	1.41
2	A	601	URC	C2-N3	4.69	1.47	1.38
2	A	601	URC	C2-N1	3.98	1.46	1.38
2	A	601	URC	O13-C6	-2.24	1.18	1.24

All (4) bond angle outliers are listed below:

Mol	Chain	Res	Type	Atoms	Z	Observed(°)	Ideal(°)
2	A	601	URC	C4-N9-C8	18.31	112.23	101.12
2	A	601	URC	C2-N1-C6	5.73	119.98	115.14

Continued on next page...

Continued from previous page...

Mol	Chain	Res	Type	Atoms	Z	Observed(°)	Ideal(°)
2	A	601	URC	C4-C5-N7	-5.08	104.32	109.47
2	A	601	URC	C5-C6-N1	-2.62	119.85	123.43

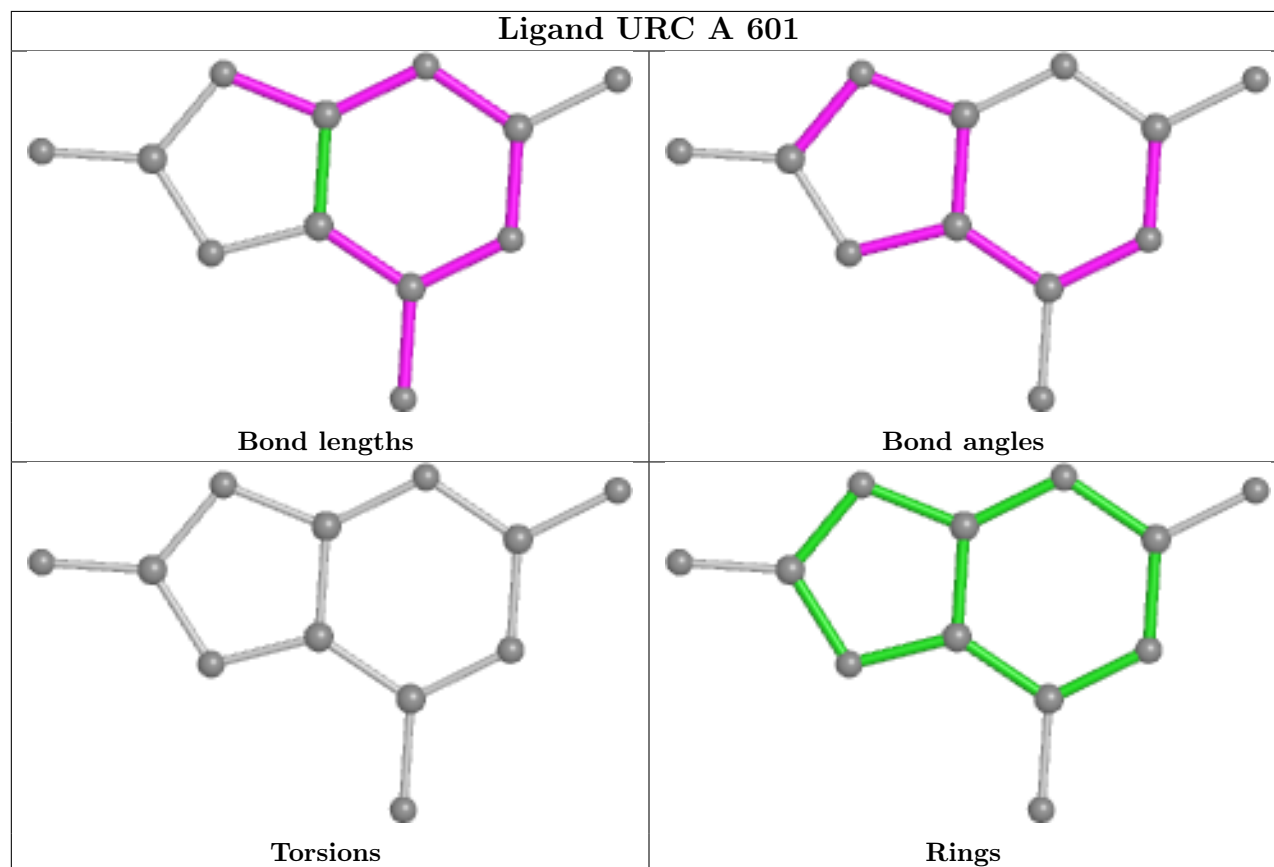
There are no chirality outliers.

There are no torsion outliers.

There are no ring outliers.

No monomer is involved in short contacts.

The following is a two-dimensional graphical depiction of Mogul quality analysis of bond lengths, bond angles, torsion angles, and ring geometry for all instances of the Ligand of Interest. In addition, ligands with molecular weight > 250 and outliers as shown on the validation Tables will also be included. For torsion angles, if less than 5% of the Mogul distribution of torsion angles is within 10 degrees of the torsion angle in question, then that torsion angle is considered an outlier. Any bond that is central to one or more torsion angles identified as an outlier by Mogul will be highlighted in the graph. For rings, the root-mean-square deviation (RMSD) between the ring in question and similar rings identified by Mogul is calculated over all ring torsion angles. If the average RMSD is greater than 60 degrees and the minimal RMSD between the ring in question and any Mogul-identified rings is also greater than 60 degrees, then that ring is considered an outlier. The outliers are highlighted in purple. The color gray indicates Mogul did not find sufficient equivalents in the CSD to analyse the geometry.



5.7 Other polymers [i](#)

There are no such residues in this entry.

5.8 Polymer linkage issues [i](#)

There are no chain breaks in this entry.