



Full wwPDB NMR Structure Validation Report ⓘ

Dec 25, 2024 – 04:20 PM EST

PDB ID : 6WQL
BMRB ID : 30749
Title : Solution structure of the seed peptide C2 (VBP-1) from pumpkin
Authors : Payne, C.P.; Rosengren, K.J.
Deposited on : 2020-04-29

This is a Full wwPDB NMR Structure Validation Report for a publicly released PDB entry.

We welcome your comments at validation@mail.wwpdb.org

A user guide is available at

<https://www.wwpdb.org/validation/2017/NMRValidationReportHelp>

with specific help available everywhere you see the ⓘ symbol.

The types of validation reports are described at

<http://www.wwpdb.org/validation/2017/FAQs#types>.

The following versions of software and data (see [references ⓘ](#)) were used in the production of this report:

MolProbity : 4.02b-467
Mogul : 2022.3.0, CSD as543be (2022)
Percentile statistics : 20231227.v01 (using entries in the PDB archive December 27th 2023)
wwPDB-RCI : v_1n_11_5_13_A (Berjanski et al., 2005)
PANAV : Wang et al. (2010)
wwPDB-ShiftChecker : v1.2
BMRB Restraints Analysis : v1.2
Ideal geometry (proteins) : Engh & Huber (2001)
Ideal geometry (DNA, RNA) : Parkinson et al. (1996)
Validation Pipeline (wwPDB-VP) : 2.40

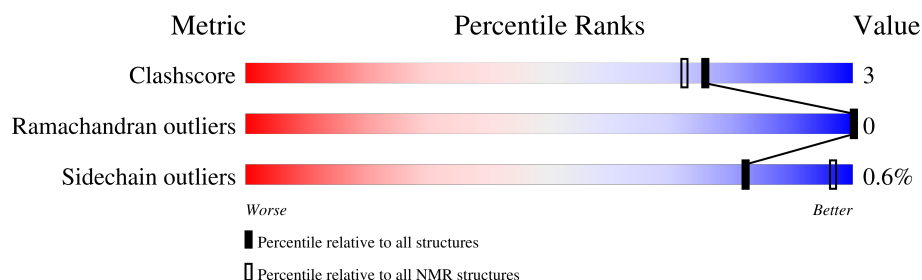
1 Overall quality at a glance

The following experimental techniques were used to determine the structure:

SOLUTION NMR

The overall completeness of chemical shifts assignment is 66%.

Percentile scores (ranging between 0-100) for global validation metrics of the entry are shown in the following graphic. The table shows the number of entries on which the scores are based.



Metric	Whole archive (#Entries)	NMR archive (#Entries)
Clashscore	210492	14027
Ramachandran outliers	207382	12486
Sidechain outliers	206894	12463

The table below summarises the geometric issues observed across the polymeric chains and their fit to the experimental data. The red, orange, yellow and green segments indicate the fraction of residues that contain outliers for ≥ 3 , 2, 1 and 0 types of geometric quality criteria. A cyan segment indicates the fraction of residues that are not part of the well-defined cores, and a grey segment represents the fraction of residues that are not modelled. The numeric value for each fraction is indicated below the corresponding segment, with a dot representing fractions $\leq 5\%$

Mol	Chain	Length	Quality of chain
1	A	49	

2 Ensemble composition and analysis

This entry contains 20 models. Model 6 is the overall representative, medoid model (most similar to other models). The authors have identified model 1 as representative, based on the following criterion: *lowest energy*.

The following residues are included in the computation of the global validation metrics.

Well-defined (core) protein residues			
Well-defined core	Residue range (total)	Backbone RMSD (Å)	Medoid model
1	A:5-A:38 (34)	0.66	6

Ill-defined regions of proteins are excluded from the global statistics.

Ligands and non-protein polymers are included in the analysis.

The models can be grouped into 2 clusters and 4 single-model clusters were found.

Cluster number	Models
1	1, 3, 5, 6, 7, 10, 13, 14, 17, 18, 19
2	4, 8, 12, 15, 20
Single-model clusters	2; 9; 11; 16

3 Entry composition

There is only 1 type of molecule in this entry. The entry contains 788 atoms, of which 383 are hydrogens and 0 are deuteriums.

- Molecule 1 is a protein called Seed peptide C2 (VBP-1).

Mol	Chain	Residues	Atoms						Trace
1	A	49	Total	C	H	N	O	S	0
			788	234	383	85	82	4	

There is a discrepancy between the modelled and reference sequences:

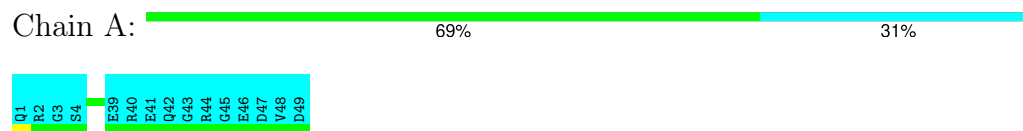
Chain	Residue	Modelled	Actual	Comment	Reference
A	1	PCA	-	expression tag	UNP Q9ZWI3

4 Residue-property plots

4.1 Average score per residue in the NMR ensemble

These plots are provided for all protein, RNA, DNA and oligosaccharide chains in the entry. The first graphic is the same as shown in the summary in section 1 of this report. The second graphic shows the sequence where residues are colour-coded according to the number of geometric quality criteria for which they contain at least one outlier: green = 0, yellow = 1, orange = 2 and red = 3 or more. Stretches of 2 or more consecutive residues without any outliers are shown as green connectors. Residues which are classified as ill-defined in the NMR ensemble, are shown in cyan with an underline colour-coded according to the previous scheme. Residues which were present in the experimental sample, but not modelled in the final structure are shown in grey.

- Molecule 1: Seed peptide C2 (VBP-1)

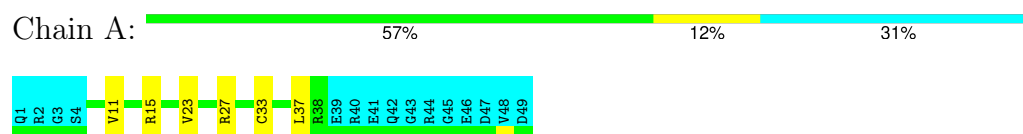


4.2 Scores per residue for each member of the ensemble

Colouring as in section 4.1 above.

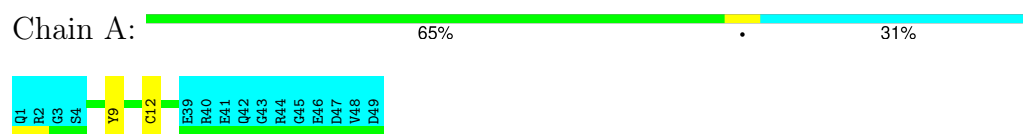
4.2.1 Score per residue for model 1

- Molecule 1: Seed peptide C2 (VBP-1)



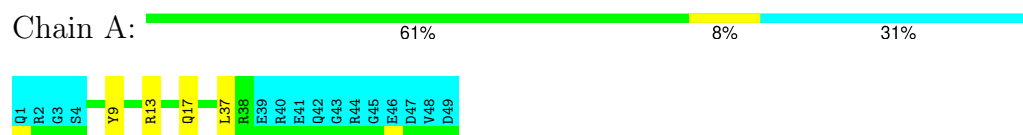
4.2.2 Score per residue for model 2

- Molecule 1: Seed peptide C2 (VBP-1)



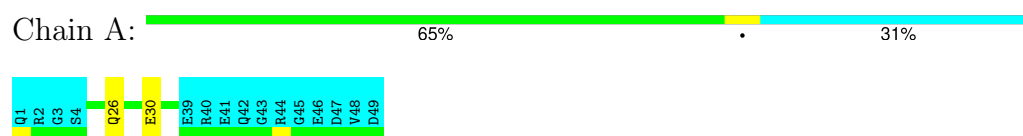
4.2.3 Score per residue for model 3

- Molecule 1: Seed peptide C2 (VBP-1)



4.2.4 Score per residue for model 4

- Molecule 1: Seed peptide C2 (VBP-1)



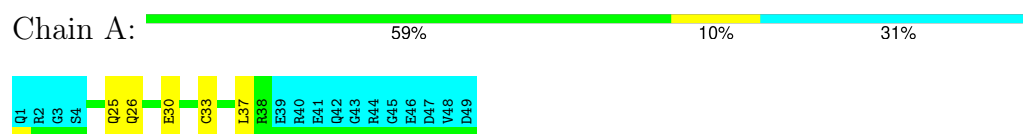
4.2.5 Score per residue for model 5

- Molecule 1: Seed peptide C2 (VBP-1)



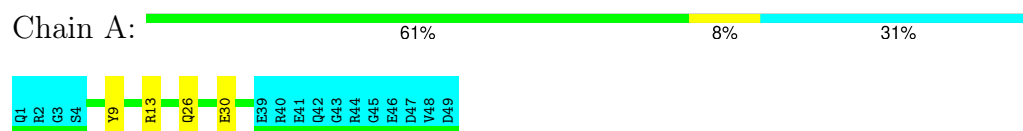
4.2.6 Score per residue for model 6 (medoid)

- Molecule 1: Seed peptide C2 (VBP-1)



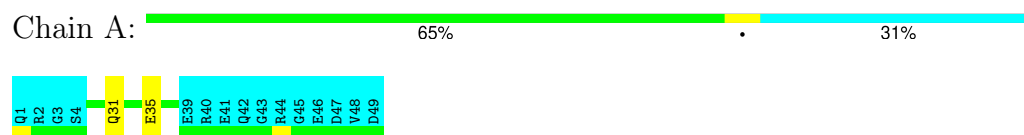
4.2.7 Score per residue for model 7

- Molecule 1: Seed peptide C2 (VBP-1)



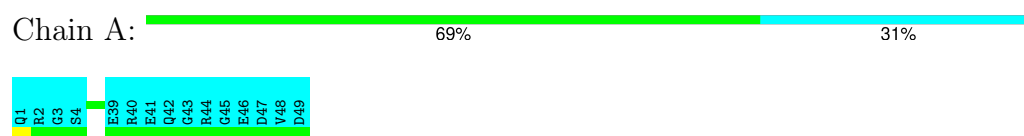
4.2.8 Score per residue for model 8

- Molecule 1: Seed peptide C2 (VBP-1)



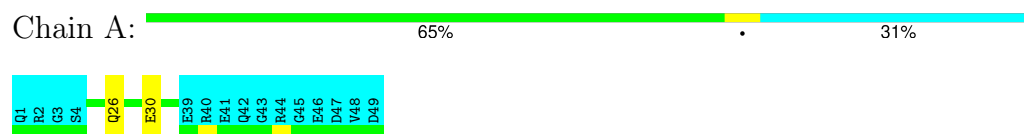
4.2.9 Score per residue for model 9

- Molecule 1: Seed peptide C2 (VBP-1)



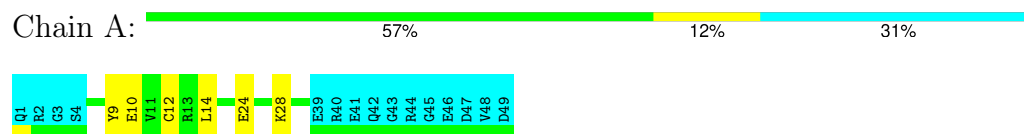
4.2.10 Score per residue for model 10

- Molecule 1: Seed peptide C2 (VBP-1)



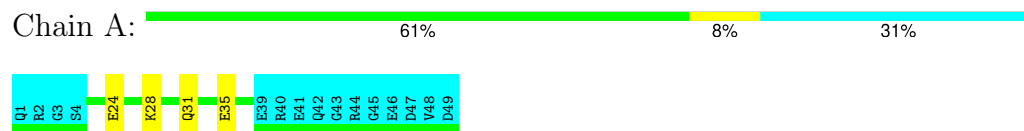
4.2.11 Score per residue for model 11

- Molecule 1: Seed peptide C2 (VBP-1)



4.2.12 Score per residue for model 12

- Molecule 1: Seed peptide C2 (VBP-1)



4.2.13 Score per residue for model 13

- Molecule 1: Seed peptide C2 (VBP-1)



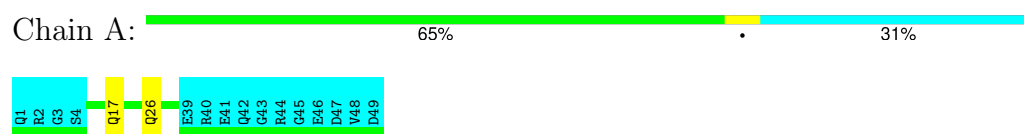
4.2.14 Score per residue for model 14

- Molecule 1: Seed peptide C2 (VBP-1)



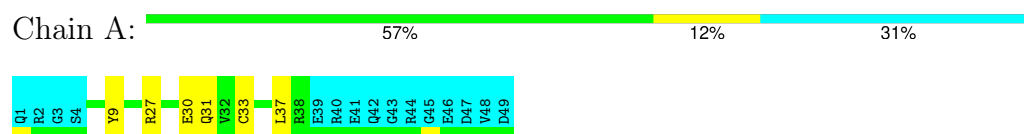
4.2.15 Score per residue for model 15

- Molecule 1: Seed peptide C2 (VBP-1)



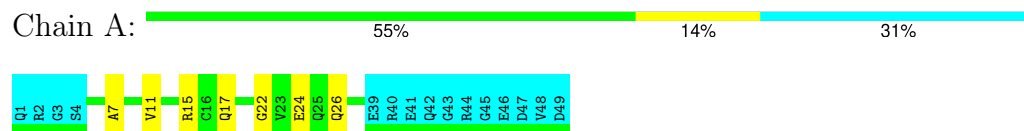
4.2.16 Score per residue for model 16

- Molecule 1: Seed peptide C2 (VBP-1)



4.2.17 Score per residue for model 17

- Molecule 1: Seed peptide C2 (VBP-1)



4.2.18 Score per residue for model 18

- Molecule 1: Seed peptide C2 (VBP-1)



4.2.19 Score per residue for model 19

- Molecule 1: Seed peptide C2 (VBP-1)



4.2.20 Score per residue for model 20

- Molecule 1: Seed peptide C2 (VBP-1)



5 Refinement protocol and experimental data overview

The models were refined using the following method: *simulated annealing*.

Of the 50 calculated structures, 20 were deposited, based on the following criterion: *structures with the lowest energy*.

The following table shows the software used for structure solution, optimisation and refinement.

Software name	Classification	Version
CYANA	structure calculation	3.97
CNS	structure calculation	1.2
CNS	refinement	1.2

The following table shows chemical shift validation statistics as aggregates over all chemical shift files. Detailed validation can be found in section 7 of this report.

Chemical shift file(s)	working_cs.cif
Number of chemical shift lists	1
Total number of shifts	456
Number of shifts mapped to atoms	456
Number of unparsed shifts	0
Number of shifts with mapping errors	0
Number of shifts with mapping warnings	0
Assignment completeness (well-defined parts)	66%

6 Model quality

6.1 Standard geometry

Bond lengths and bond angles in the following residue types are not validated in this section: PCA

There are no covalent bond-length or bond-angle outliers.

Chiral center outliers are detected by calculating the chiral volume of a chiral center and verifying if the center is modelled as a planar moiety or with the opposite hand. A planarity outlier is detected by checking planarity of atoms in a peptide group, atoms in a mainchain group or atoms of a sidechain that are expected to be planar.

Mol	Chain	Chirality	Planarity
1	A	0.0±0.0	0.1±0.4
All	All	0	3

There are no bond-length outliers.

There are no bond-angle outliers.

There are no chirality outliers.

All unique planar outliers are listed below.

Mol	Chain	Res	Type	Group	Models (Total)
1	A	36	ARG	Sidechain	3

6.2 Too-close contacts

In the following table, the Non-H and H(model) columns list the number of non-hydrogen atoms and hydrogen atoms in each chain respectively. The H(added) column lists the number of hydrogen atoms added and optimized by MolProbity. The Clashes column lists the number of clashes averaged over the ensemble.

Mol	Chain	Non-H	H(model)	H(added)	Clashes
1	A	286	281	281	2±1
All	All	5720	5620	5620	33

The all-atom clashscore is defined as the number of clashes found per 1000 atoms (including hydrogen atoms). The all-atom clashscore for this structure is 3.

All unique clashes are listed below, sorted by their clash magnitude.

Atom-1	Atom-2	Clash(Å)	Distance(Å)	Models	
				Worst	Total
1:A:17:GLN:HA	1:A:26:GLN:NE2	0.54	2.17	17	2
1:A:23:VAL:O	1:A:27:ARG:HG2	0.53	2.03	1	1
1:A:30:GLU:HA	1:A:33:CYS:SG	0.50	2.47	16	1
1:A:11:VAL:O	1:A:15:ARG:HG3	0.48	2.09	1	1
1:A:9:TYR:O	1:A:12:CYS:HB3	0.47	2.08	2	2
1:A:24:GLU:O	1:A:28:LYS:HG2	0.47	2.09	12	2
1:A:31:GLN:O	1:A:35:GLU:HG3	0.47	2.10	8	3
1:A:22:GLY:O	1:A:26:GLN:HG2	0.47	2.10	19	3
1:A:7:ALA:O	1:A:11:VAL:HG23	0.46	2.10	17	2
1:A:11:VAL:O	1:A:15:ARG:HG2	0.44	2.12	17	1
1:A:10:GLU:O	1:A:14:LEU:HG	0.44	2.12	11	1
1:A:27:ARG:O	1:A:31:GLN:HG2	0.44	2.11	16	1
1:A:26:GLN:O	1:A:30:GLU:HG3	0.43	2.13	7	5
1:A:33:CYS:O	1:A:37:LEU:HD23	0.42	2.13	6	3
1:A:9:TYR:CD1	1:A:37:LEU:HD22	0.42	2.49	16	2
1:A:27:ARG:O	1:A:30:GLU:HG2	0.41	2.16	14	1
1:A:13:ARG:O	1:A:17:GLN:HG2	0.41	2.16	3	1
1:A:9:TYR:O	1:A:13:ARG:HG3	0.41	2.15	7	1

6.3 Torsion angles [i](#)

6.3.1 Protein backbone [i](#)

In the following table, the Percentiles column shows the percent Ramachandran outliers of the chain as a percentile score with respect to all PDB entries followed by that with respect to all NMR entries. The Analysed column shows the number of residues for which the backbone conformation was analysed and the total number of residues.

Mol	Chain	Analysed	Favoured	Allowed	Outliers	Percentiles	
1	A	34/49 (69%)	34±0 (99±1%)	0±0 (1±1%)	0±0 (0±0%)	100	100
All	All	680/980 (69%)	676 (99%)	4 (1%)	0 (0%)	100	100

There are no Ramachandran outliers.

6.3.2 Protein sidechains [i](#)

In the following table, the Percentiles column shows the percent sidechain outliers of the chain as a percentile score with respect to all PDB entries followed by that with respect to all NMR entries. The Analysed column shows the number of residues for which the sidechain conformation was analysed and the total number of residues.

Mol	Chain	Analysed	Rotameric	Outliers	Percentiles
1	A	31/42 (74%)	31±0 (99±1%)	0±0 (1±1%)	82 97
All	All	620/840 (74%)	616 (99%)	4 (1%)	82 97

All 3 unique residues with a non-rotameric sidechain are listed below. They are sorted by the frequency of occurrence in the ensemble.

Mol	Chain	Res	Type	Models (Total)
1	A	24	GLU	2
1	A	25	GLN	1
1	A	21	ARG	1

6.3.3 RNA ⓘ

There are no RNA molecules in this entry.

6.4 Non-standard residues in protein, DNA, RNA chains ⓘ

1 non-standard protein/DNA/RNA residue is modelled in this entry.

In the following table, the Counts columns list the number of bonds for which Mogul statistics could be retrieved, the number of bonds that are observed in the model and the number of bonds that are defined in the chemical component dictionary. The Link column lists molecule types, if any, to which the group is linked. The Z score for a bond length is the number of standard deviations the observed value is removed from the expected value. A bond length with $|Z| > 2$ is considered an outlier worth inspection. RMSZ is the average root-mean-square of all Z scores of the bond lengths.

Mol	Type	Chain	Res	Link	Bond lengths		
					Counts	RMSZ	#Z>2
1	PCA	A	1	1	7,8,9	0.59±0.06	0±0 (0±0%)

In the following table, the Counts columns list the number of angles for which Mogul statistics could be retrieved, the number of angles that are observed in the model and the number of angles that are defined in the chemical component dictionary. The Link column lists molecule types, if any, to which the group is linked. The Z score for a bond angle is the number of standard deviations the observed value is removed from the expected value. A bond angle with $|Z| > 2$ is considered an outlier worth inspection. RMSZ is the average root-mean-square of all Z scores of the bond angles.

Mol	Type	Chain	Res	Link	Bond angles		
					Counts	RMSZ	#Z>2
1	PCA	A	1	1	9,10,12	1.27±0.07	1±1 (9±8%)

In the following table, the Chirals column lists the number of chiral outliers, the number of chiral centers analysed, the number of these observed in the model and the number defined in the chemical component dictionary. Similar counts are reported in the Torsion and Rings columns. '-' means no outliers of that kind were identified.

Mol	Type	Chain	Res	Link	Chirals	Torsions	Rings
1	PCA	A	1	1	-	0±0,0,11,13	0±0,1,1,1

There are no bond-length outliers.

All unique angle outliers are listed below. They are sorted according to the Z-score of the worst occurrence in the ensemble.

Mol	Chain	Res	Type	Atoms	Z	Observed(°)	Ideal(°)	Models	
								Worst	Total
1	A	1	PCA	CB-CA-C	2.50	109.23	112.66	13	11
1	A	1	PCA	OE-CD-CG	2.20	122.79	126.72	2	6

There are no chirality outliers.

There are no torsion outliers.

There are no ring outliers.

6.5 Carbohydrates [i](#)

There are no oligosaccharides in this entry.

6.6 Ligand geometry [i](#)

There are no ligands in this entry.

6.7 Other polymers [i](#)

There are no such molecules in this entry.

6.8 Polymer linkage issues [i](#)

There are no chain breaks in this entry.

7 Chemical shift validation [i](#)

The completeness of assignment taking into account all chemical shift lists is 66% for the well-defined parts and 66% for the entire structure.

7.1 Chemical shift list 1

File name: working_cs.cif

Chemical shift list name: C2_cs.str

7.1.1 Bookkeeping [i](#)

The following table shows the results of parsing the chemical shift list and reports the number of nuclei with statistically unusual chemical shifts.

Total number of shifts	456
Number of shifts mapped to atoms	456
Number of unparsed shifts	0
Number of shifts with mapping errors	0
Number of shifts with mapping warnings	0
Number of shift outliers (ShiftChecker)	0

7.1.2 Chemical shift referencing [i](#)

The following table shows the suggested chemical shift referencing corrections.

Nucleus	# values	Correction \pm precision, ppm	Suggested action
$^{13}\text{C}_\alpha$	46	0.09 ± 0.51	None needed (< 0.5 ppm)
$^{13}\text{C}_\beta$	19	—	None (insufficient data)
$^{13}\text{C}'$	0	—	None (insufficient data)
^{15}N	42	-0.14 ± 0.27	None needed (< 0.5 ppm)

7.1.3 Completeness of resonance assignments [i](#)

The following table shows the completeness of the chemical shift assignments for the well-defined regions of the structure. The overall completeness is 66%, i.e. 334 atoms were assigned a chemical shift out of a possible 504. 0 out of 6 assigned methyl groups (LEU and VAL) were assigned stereospecifically.

	Total	^1H	^{13}C	^{15}N
Backbone	130/169 (77%)	68/68 (100%)	33/68 (49%)	29/33 (88%)
Sidechain	200/326 (61%)	168/205 (82%)	32/95 (34%)	0/26 (0%)

Continued on next page...

Continued from previous page...

	Total	¹ H	¹³ C	¹⁵ N
Aromatic	4/9 (44%)	4/4 (100%)	0/5 (0%)	0/0 (—%)
Overall	334/504 (66%)	240/277 (87%)	65/168 (39%)	29/59 (49%)

The following table shows the completeness of the chemical shift assignments for the full structure. The overall completeness is 66%, i.e. 448 atoms were assigned a chemical shift out of a possible 683. 0 out of 7 assigned methyl groups (LEU and VAL) were assigned stereospecifically.

	Total	¹ H	¹³ C	¹⁵ N
Backbone	187/242 (77%)	99/99 (100%)	46/96 (48%)	42/47 (89%)
Sidechain	257/432 (59%)	218/269 (81%)	39/127 (31%)	0/36 (0%)
Aromatic	4/9 (44%)	4/4 (100%)	0/5 (0%)	0/0 (—%)
Overall	448/683 (66%)	321/372 (86%)	85/228 (37%)	42/83 (51%)

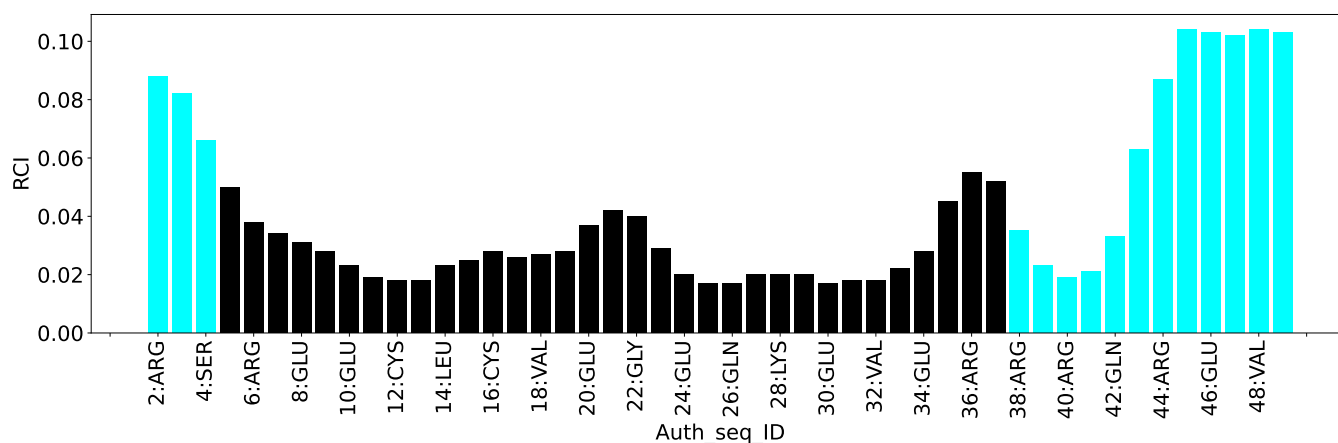
7.1.4 Statistically unusual chemical shifts [i](#)

There are no statistically unusual chemical shifts.

7.1.5 Random Coil Index (RCI) plots [i](#)

The image below reports *random coil index* values for the protein chains in the structure. The height of each bar gives a probability of a given residue to be disordered, as predicted from the available chemical shifts and the amino acid sequence. A value above 0.2 is an indication of significant predicted disorder. The colour of the bar shows whether the residue is in the well-defined core (black) or in the ill-defined residue ranges (cyan), as described in section 2 on ensemble composition. If well-defined core and ill-defined regions are not identified then it is shown as gray bars.

Random coil index (RCI) for chain A:



8 NMR restraints analysis [i](#)

8.1 Conformationally restricting restraints [i](#)

The following table provides the summary of experimentally observed NMR restraints in different categories. Restraints are classified into different categories based on the sequence separation of the atoms involved.

Description	Value
Total distance restraints	498
Intra-residue ($ i-j =0$)	230
Sequential ($ i-j =1$)	127
Medium range ($ i-j >1$ and $ i-j <5$)	64
Long range ($ i-j \geq 5$)	41
Inter-chain	0
Hydrogen bond restraints	36
Disulfide bond restraints	0
Total dihedral-angle restraints	76
Number of unmapped restraints	0
Number of restraints per residue	11.7
Number of long range restraints per residue ¹	0.8

¹Long range hydrogen bonds and disulfide bonds are counted as long range restraints while calculating the number of long range restraints per residue

8.2 Residual restraint violations [i](#)

This section provides the overview of the restraint violations analysis. The violations are binned as small, medium and large violations based on its absolute value. Average number of violations per model is calculated by dividing the total number of violations in each bin by the size of the ensemble.

8.2.1 Average number of distance violations per model [i](#)

Distance violations less than 0.1 Å are not included in the calculation.

Bins (Å)	Average number of violations per model	Max (Å)
0.1-0.2 (Small)	1.8	0.2
0.2-0.5 (Medium)	0.1	0.22
>0.5 (Large)	0.2	0.6

8.2.2 Average number of dihedral-angle violations per model [i](#)

Dihedral-angle violations less than 1° are not included in the calculation.

Bins (°)	Average number of violations per model	Max (°)
1.0-10.0 (Small)	1.1	1.8
10.0-20.0 (Medium)	None	None
>20.0 (Large)	None	None

9 Distance violation analysis ⓘ

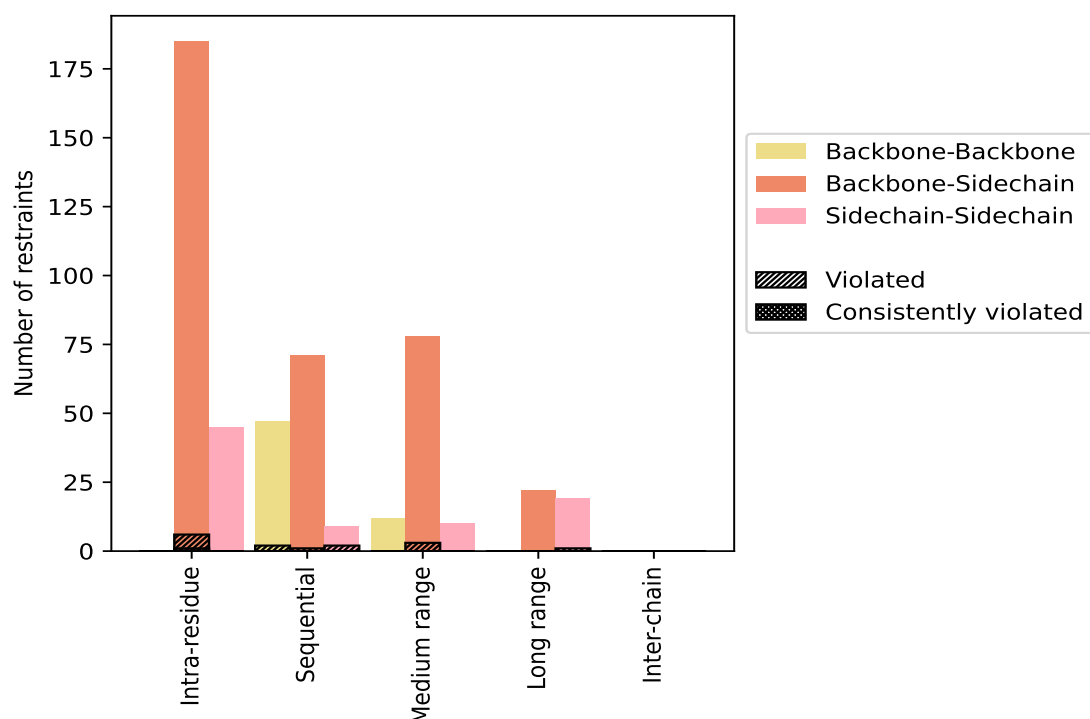
9.1 Summary of distance violations ⓘ

The following table shows the summary of distance violations in different restraint categories based on the sequence separation of the atoms involved. Each category is further sub-divided into three sub-categories based on the atoms involved. Violations less than 0.1 Å are not included in the statistics.

Restrains type	Count	% ¹	Violated ³			Consistently Violated ⁴		
			Count	% ²	% ¹	Count	% ²	% ¹
Intra-residue ($ i-j =0$)	230	46.2	6	2.6	1.2	1	0.4	0.2
Backbone-Backbone	0	0.0	0	0.0	0.0	0	0.0	0.0
Backbone-Sidechain	185	37.1	6	3.2	1.2	1	0.5	0.2
Sidechain-Sidechain	45	9.0	0	0.0	0.0	0	0.0	0.0
Sequential ($ i-j =1$)	127	25.5	5	3.9	1.0	0	0.0	0.0
Backbone-Backbone	47	9.4	2	4.3	0.4	0	0.0	0.0
Backbone-Sidechain	71	14.3	1	1.4	0.2	0	0.0	0.0
Sidechain-Sidechain	9	1.8	2	22.2	0.4	0	0.0	0.0
Medium range ($ i-j >1$ & $ i-j <5$)	64	12.9	3	4.7	0.6	0	0.0	0.0
Backbone-Backbone	12	2.4	0	0.0	0.0	0	0.0	0.0
Backbone-Sidechain	42	8.4	3	7.1	0.6	0	0.0	0.0
Sidechain-Sidechain	10	2.0	0	0.0	0.0	0	0.0	0.0
Long range ($ i-j \geq 5$)	41	8.2	1	2.4	0.2	0	0.0	0.0
Backbone-Backbone	0	0.0	0	0.0	0.0	0	0.0	0.0
Backbone-Sidechain	22	4.4	0	0.0	0.0	0	0.0	0.0
Sidechain-Sidechain	19	3.8	1	5.3	0.2	0	0.0	0.0
Inter-chain	0	0.0	0	0.0	0.0	0	0.0	0.0
Backbone-Backbone	0	0.0	0	0.0	0.0	0	0.0	0.0
Backbone-Sidechain	0	0.0	0	0.0	0.0	0	0.0	0.0
Sidechain-Sidechain	0	0.0	0	0.0	0.0	0	0.0	0.0
Hydrogen bond	36	7.2	0	0.0	0.0	0	0.0	0.0
Disulfide bond	0	0.0	0	0.0	0.0	0	0.0	0.0
Total	498	100.0	15	3.0	3.0	1	0.2	0.2
Backbone-Backbone	59	11.8	2	3.4	0.4	0	0.0	0.0
Backbone-Sidechain	356	71.5	10	2.8	2.0	1	0.3	0.2
Sidechain-Sidechain	83	16.7	3	3.6	0.6	0	0.0	0.0

¹ percentage calculated with respect to the total number of distance restraints, ² percentage calculated with respect to the number of restraints in a particular restraint category, ³ violated in at least one model, ⁴ violated in all the models

9.1.1 Bar chart : Distribution of distance restraints and violations [i](#)



Violated and consistently violated restraints are shown using different hatch patterns in their respective categories. The hydrogen bonds and disulfied bonds are counted in their appropriate category on the x-axis

9.2 Distance violation statistics for each model [i](#)

The following table provides the distance violation statistics for each model in the ensemble. Violations less than 0.1 Å are not included in the statistics.

Model ID	Number of violations						Mean (Å)	Max (Å)	SD ⁶ (Å)	Median (Å)
	IR ¹	SQ ²	MR ³	LR ⁴	IC ⁵	Total				
1	1	0	0	0	0	1	0.13	0.13	0.0	0.13
2	1	2	1	1	0	5	0.24	0.54	0.15	0.18
3	1	1	1	1	0	4	0.14	0.2	0.04	0.12
4	3	0	1	0	0	4	0.13	0.18	0.03	0.12
5	1	1	0	0	0	2	0.4	0.6	0.2	0.4
6	1	0	0	0	0	1	0.18	0.18	0.0	0.18
7	3	0	0	0	0	3	0.14	0.2	0.04	0.12
8	1	0	0	0	0	1	0.16	0.16	0.0	0.16
9	1	2	0	0	0	3	0.16	0.21	0.04	0.16
10	2	1	0	0	0	3	0.13	0.15	0.02	0.14

Continued on next page...

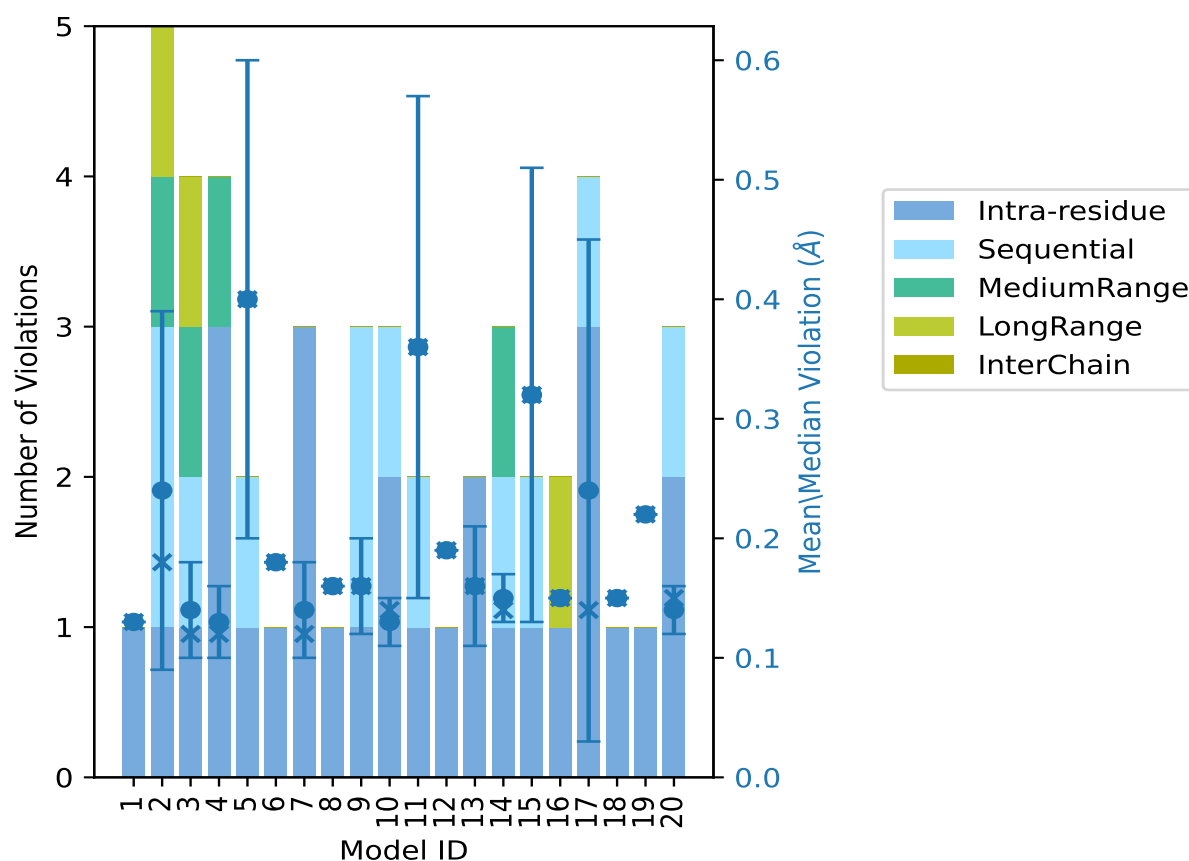
Continued from previous page...

Model ID	Number of violations						Mean (Å)	Max (Å)	SD ⁶ (Å)	Median (Å)
	IR ¹	SQ ²	MR ³	LR ⁴	IC ⁵	Total				
11	1	1	0	0	0	2	0.36	0.57	0.21	0.36
12	1	0	0	0	0	1	0.19	0.19	0.0	0.19
13	2	0	0	0	0	2	0.16	0.2	0.05	0.16
14	1	1	1	0	0	3	0.15	0.17	0.02	0.14
15	1	1	0	0	0	2	0.32	0.51	0.19	0.32
16	1	0	0	1	0	2	0.15	0.15	0.0	0.15
17	3	1	0	0	0	4	0.24	0.6	0.21	0.14
18	1	0	0	0	0	1	0.15	0.15	0.0	0.15
19	1	0	0	0	0	1	0.22	0.22	0.0	0.22
20	2	1	0	0	0	3	0.14	0.17	0.02	0.15

¹Intra-residue restraints, ²Sequential restraints, ³Medium range restraints, ⁴Long range restraints,

⁵Inter-chain restraints, ⁶Standard deviation

9.2.1 Bar graph : Distance Violation statistics for each model ⓘ



The mean(dot),median(x) and the standard deviation are shown in blue with respect to the y axis on the right

9.3 Distance violation statistics for the ensemble

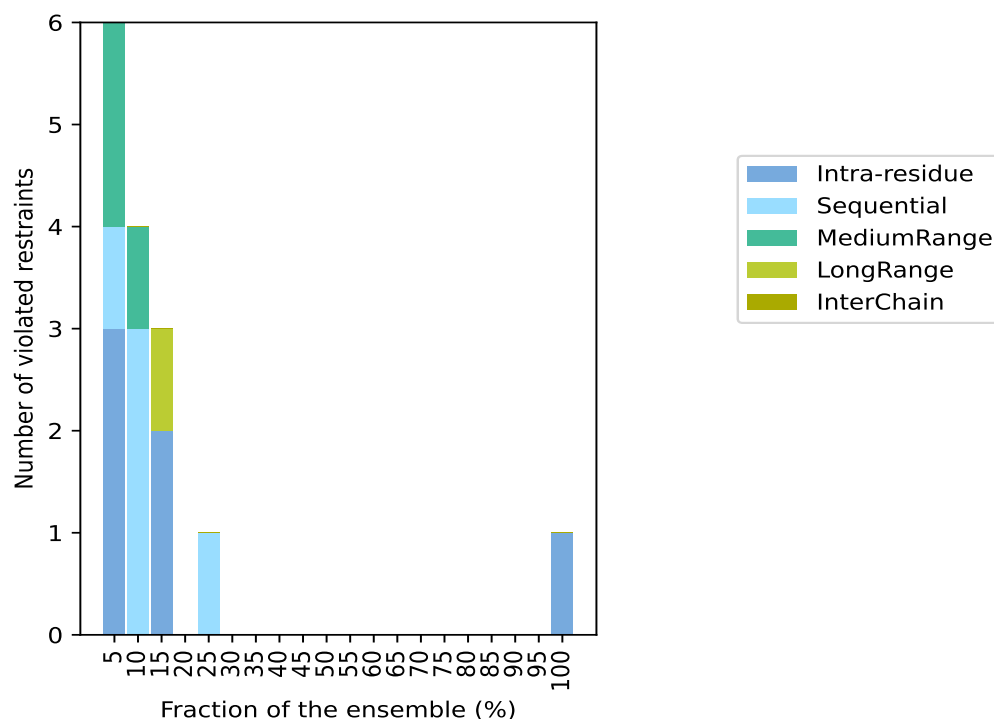
Violation analysis may find that some restraints are violated in few models and some are violated in most of models. The following table provides this information as number of violated restraints for a given fraction of the ensemble. In total, 447(IR:224, SQ:122, MR:61, LR:40, IC:0) restraints are not violated in the ensemble.

Number of violated restraints						Fraction of the ensemble	
IR ¹	SQ ²	MR ³	LR ⁴	IC ⁵	Total	Count ⁶	%
3	1	2	0	0	6	1	5.0
0	3	1	0	0	4	2	10.0
2	0	0	1	0	3	3	15.0
0	0	0	0	0	0	4	20.0
0	1	0	0	0	1	5	25.0
0	0	0	0	0	0	6	30.0
0	0	0	0	0	0	7	35.0
0	0	0	0	0	0	8	40.0
0	0	0	0	0	0	9	45.0
0	0	0	0	0	0	10	50.0
0	0	0	0	0	0	11	55.0
0	0	0	0	0	0	12	60.0
0	0	0	0	0	0	13	65.0
0	0	0	0	0	0	14	70.0
0	0	0	0	0	0	15	75.0
0	0	0	0	0	0	16	80.0
0	0	0	0	0	0	17	85.0
0	0	0	0	0	0	18	90.0
0	0	0	0	0	0	19	95.0
1	0	0	0	0	1	20	100.0

¹Intra-residue restraints, ²Sequential restraints, ³Medium range restraints, ⁴Long range restraints,

⁵Inter-chain restraints, ⁶ Number of models with violations

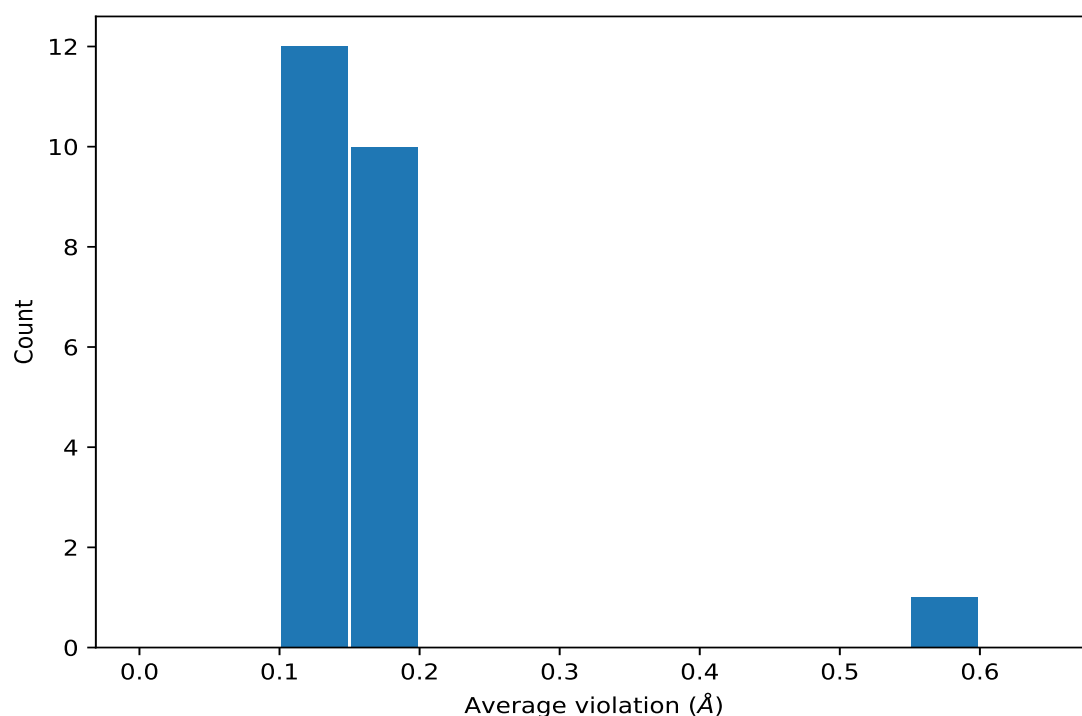
9.3.1 Bar graph : Distance violation statistics for the ensemble [i](#)



9.4 Most violated distance restraints in the ensemble [i](#)

9.4.1 Histogram : Distribution of mean distance violations [i](#)

The following histogram shows the distribution of the average value of the violation. The average is calculated for each restraint that is violated in more than one model over all the violated models in the ensemble



9.4.2 Table: Most violated distance restraints [i](#)

The following table provides the mean and the standard deviation of the violation for each restraint sorted by number of violated models and the mean value. The Key (restraint list ID, restraint ID) is the unique identifier for a given restraint. Rows with same key represent combinatorial or ambiguous restraints and are counted as a single restraint.

Key	Atom-1	Atom-2	Models ¹	Mean (Å)	SD ¹ (Å)	Median (Å)
(2,335)	1:1:A:PCA:HA	1:1:A:PCA:HG3	20	0.17	0.03	0.17
(2,333)	1:1:A:PCA:HG3	1:2:A:ARG:H	5	0.56	0.03	0.57
(2,187)	1:9:A:TYR:HE1	1:37:A:LEU:HG	3	0.13	0.02	0.14
(2,187)	1:9:A:TYR:HE2	1:37:A:LEU:HG	3	0.13	0.02	0.14
(2,307)	1:44:A:ARG:H	1:44:A:ARG:HD2	3	0.11	0.0	0.11
(2,307)	1:44:A:ARG:H	1:44:A:ARG:HD3	3	0.11	0.0	0.11
(2,230)	1:18:A:VAL:HA	1:18:A:VAL:HG11	3	0.1	0.0	0.1
(2,230)	1:18:A:VAL:HA	1:18:A:VAL:HG12	3	0.1	0.0	0.1
(2,230)	1:18:A:VAL:HA	1:18:A:VAL:HG13	3	0.1	0.0	0.1
(2,399)	1:19:A:ALA:HB1	1:20:A:GLU:HG2	2	0.18	0.02	0.18
(2,399)	1:19:A:ALA:HB1	1:20:A:GLU:HG3	2	0.18	0.02	0.18
(2,399)	1:19:A:ALA:HB2	1:20:A:GLU:HG2	2	0.18	0.02	0.18
(2,399)	1:19:A:ALA:HB2	1:20:A:GLU:HG3	2	0.18	0.02	0.18
(2,399)	1:19:A:ALA:HB3	1:20:A:GLU:HG2	2	0.18	0.02	0.18
(2,399)	1:19:A:ALA:HB3	1:20:A:GLU:HG3	2	0.18	0.02	0.18
(2,204)	1:37:A:LEU:HD11	1:40:A:ARG:H	2	0.16	0.02	0.16

Continued on next page...

Continued from previous page...

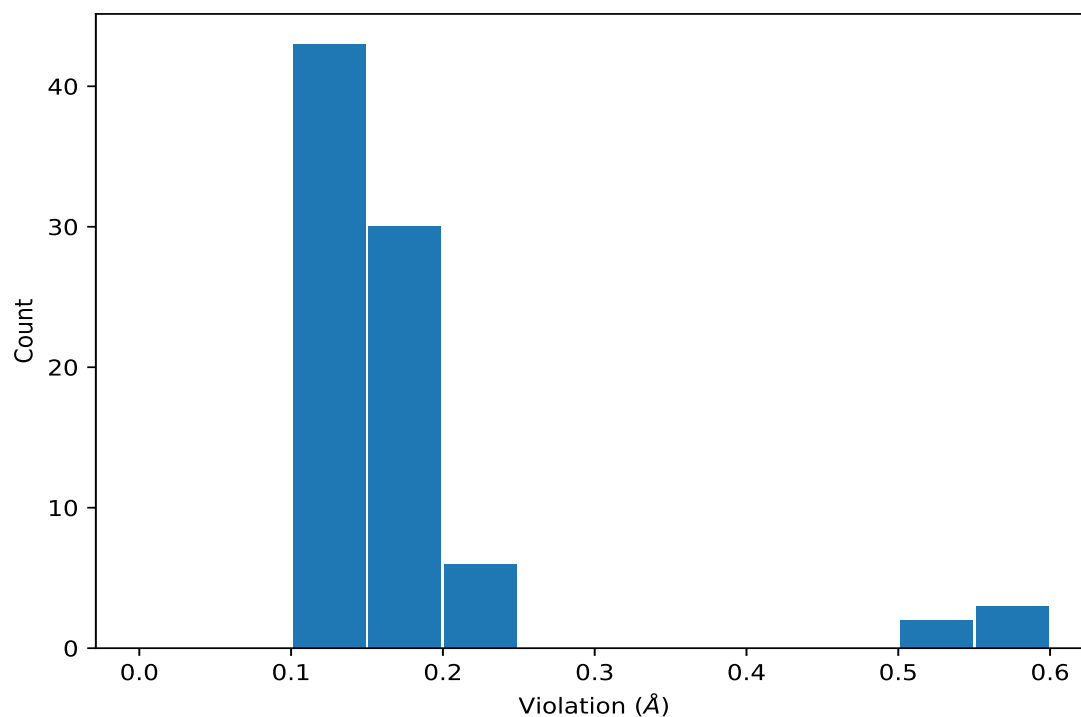
Key	Atom-1	Atom-2	Models ¹	Mean (Å)	SD ¹ (Å)	Median (Å)
(2,204)	1:37:A:LEU:HD12	1:40:A:ARG:H	2	0.16	0.02	0.16
(2,204)	1:37:A:LEU:HD13	1:40:A:ARG:H	2	0.16	0.02	0.16
(2,212)	1:9:A:TYR:HE1	1:10:A:GLU:HB2	2	0.14	0.0	0.14
(2,212)	1:9:A:TYR:HE1	1:10:A:GLU:HB3	2	0.14	0.0	0.14
(2,212)	1:9:A:TYR:HE2	1:10:A:GLU:HB2	2	0.14	0.0	0.14
(2,212)	1:9:A:TYR:HE2	1:10:A:GLU:HB3	2	0.14	0.0	0.14
(2,113)	1:21:A:ARG:HA	1:22:A:GLY:H	2	0.13	0.02	0.13

¹Number of violated models, ²Standard deviation

9.5 All violated distance restraints [i](#)

9.5.1 Histogram : Distribution of distance violations [i](#)

The following histogram shows the distribution of the absolute value of the violation for all violated restraints in the ensemble.



9.5.2 Table : All distance violations [i](#)

The following table lists the absolute value of the violation for each restraint in the ensemble sorted by its value. The Key (restraint list ID, restraint ID) is the unique identifier for a given restraint. Rows with same key represent combinatorial or ambiguous restraints and are counted as a single restraint.

Key	Atom-1	Atom-2	Model ID	Violation (Å)
(2,333)	1:1:A:PCA:HG3	1:2:A:ARG:H	5	0.6
(2,333)	1:1:A:PCA:HG3	1:2:A:ARG:H	17	0.6
(2,333)	1:1:A:PCA:HG3	1:2:A:ARG:H	11	0.57
(2,333)	1:1:A:PCA:HG3	1:2:A:ARG:H	2	0.54
(2,333)	1:1:A:PCA:HG3	1:2:A:ARG:H	15	0.51
(2,335)	1:1:A:PCA:HA	1:1:A:PCA:HG3	19	0.22
(2,335)	1:1:A:PCA:HA	1:1:A:PCA:HG3	9	0.21
(2,335)	1:1:A:PCA:HA	1:1:A:PCA:HG3	3	0.2
(2,335)	1:1:A:PCA:HA	1:1:A:PCA:HG3	5	0.2
(2,335)	1:1:A:PCA:HA	1:1:A:PCA:HG3	7	0.2
(2,335)	1:1:A:PCA:HA	1:1:A:PCA:HG3	13	0.2
(2,399)	1:19:A:ALA:HB1	1:20:A:GLU:HG2	2	0.19
(2,399)	1:19:A:ALA:HB1	1:20:A:GLU:HG3	2	0.19
(2,399)	1:19:A:ALA:HB2	1:20:A:GLU:HG2	2	0.19
(2,399)	1:19:A:ALA:HB2	1:20:A:GLU:HG3	2	0.19
(2,399)	1:19:A:ALA:HB3	1:20:A:GLU:HG2	2	0.19
(2,399)	1:19:A:ALA:HB3	1:20:A:GLU:HG3	2	0.19
(2,335)	1:1:A:PCA:HA	1:1:A:PCA:HG3	12	0.19
(2,335)	1:1:A:PCA:HA	1:1:A:PCA:HG3	6	0.18
(2,205)	1:37:A:LEU:HD21	1:40:A:ARG:H	2	0.18
(2,205)	1:37:A:LEU:HD22	1:40:A:ARG:H	2	0.18
(2,205)	1:37:A:LEU:HD23	1:40:A:ARG:H	2	0.18
(2,204)	1:37:A:LEU:HD11	1:40:A:ARG:H	4	0.18
(2,204)	1:37:A:LEU:HD12	1:40:A:ARG:H	4	0.18
(2,204)	1:37:A:LEU:HD13	1:40:A:ARG:H	4	0.18
(2,335)	1:1:A:PCA:HA	1:1:A:PCA:HG3	2	0.17
(2,335)	1:1:A:PCA:HA	1:1:A:PCA:HG3	14	0.17
(2,335)	1:1:A:PCA:HA	1:1:A:PCA:HG3	17	0.17
(2,335)	1:1:A:PCA:HA	1:1:A:PCA:HG3	20	0.17
(2,399)	1:19:A:ALA:HB1	1:20:A:GLU:HG2	9	0.16
(2,399)	1:19:A:ALA:HB1	1:20:A:GLU:HG3	9	0.16
(2,399)	1:19:A:ALA:HB2	1:20:A:GLU:HG2	9	0.16
(2,399)	1:19:A:ALA:HB2	1:20:A:GLU:HG3	9	0.16
(2,399)	1:19:A:ALA:HB3	1:20:A:GLU:HG2	9	0.16
(2,399)	1:19:A:ALA:HB3	1:20:A:GLU:HG3	9	0.16
(2,335)	1:1:A:PCA:HA	1:1:A:PCA:HG3	8	0.16
(2,335)	1:1:A:PCA:HA	1:1:A:PCA:HG3	18	0.15
(2,187)	1:9:A:TYR:HE1	1:37:A:LEU:HG	16	0.15
(2,187)	1:9:A:TYR:HE2	1:37:A:LEU:HG	16	0.15
(2,113)	1:21:A:ARG:HA	1:22:A:GLY:H	20	0.15
(2,64)	1:47:A:ASP:H	1:47:A:ASP:HB2	10	0.15
(2,335)	1:1:A:PCA:HA	1:1:A:PCA:HG3	4	0.14
(2,335)	1:1:A:PCA:HA	1:1:A:PCA:HG3	10	0.14

Continued on next page...

Continued from previous page...

Key	Atom-1	Atom-2	Model ID	Violation (Å)
(2,335)	1:1:A:PCA:HA	1:1:A:PCA:HG3	11	0.14
(2,335)	1:1:A:PCA:HA	1:1:A:PCA:HG3	16	0.14
(2,212)	1:9:A:TYR:HE1	1:10:A:GLU:HB2	3	0.14
(2,212)	1:9:A:TYR:HE1	1:10:A:GLU:HB3	3	0.14
(2,212)	1:9:A:TYR:HE2	1:10:A:GLU:HB2	3	0.14
(2,212)	1:9:A:TYR:HE2	1:10:A:GLU:HB3	3	0.14
(2,212)	1:9:A:TYR:HE1	1:10:A:GLU:HB2	14	0.14
(2,212)	1:9:A:TYR:HE1	1:10:A:GLU:HB3	14	0.14
(2,212)	1:9:A:TYR:HE2	1:10:A:GLU:HB2	14	0.14
(2,212)	1:9:A:TYR:HE2	1:10:A:GLU:HB3	14	0.14
(2,187)	1:9:A:TYR:HE1	1:37:A:LEU:HG	2	0.14
(2,187)	1:9:A:TYR:HE2	1:37:A:LEU:HG	2	0.14
(2,335)	1:1:A:PCA:HA	1:1:A:PCA:HG3	1	0.13
(2,335)	1:1:A:PCA:HA	1:1:A:PCA:HG3	15	0.13
(2,204)	1:37:A:LEU:HD11	1:40:A:ARG:H	14	0.13
(2,204)	1:37:A:LEU:HD12	1:40:A:ARG:H	14	0.13
(2,204)	1:37:A:LEU:HD13	1:40:A:ARG:H	14	0.13
(2,121)	1:24:A:GLU:H	1:24:A:GLU:HG2	7	0.12
(2,121)	1:24:A:GLU:H	1:24:A:GLU:HG3	7	0.12
(2,307)	1:44:A:ARG:H	1:44:A:ARG:HD2	4	0.11
(2,307)	1:44:A:ARG:H	1:44:A:ARG:HD3	4	0.11
(2,307)	1:44:A:ARG:H	1:44:A:ARG:HD2	13	0.11
(2,307)	1:44:A:ARG:H	1:44:A:ARG:HD3	13	0.11
(2,230)	1:18:A:VAL:HA	1:18:A:VAL:HG11	20	0.11
(2,230)	1:18:A:VAL:HA	1:18:A:VAL:HG12	20	0.11
(2,230)	1:18:A:VAL:HA	1:18:A:VAL:HG13	20	0.11
(2,187)	1:9:A:TYR:HE1	1:37:A:LEU:HG	3	0.11
(2,187)	1:9:A:TYR:HE2	1:37:A:LEU:HG	3	0.11
(2,113)	1:21:A:ARG:HA	1:22:A:GLY:H	10	0.11
(2,307)	1:44:A:ARG:H	1:44:A:ARG:HD2	17	0.1
(2,307)	1:44:A:ARG:H	1:44:A:ARG:HD3	17	0.1
(2,262)	1:26:A:GLN:HA	1:29:A:CYS:HB3	3	0.1
(2,230)	1:18:A:VAL:HA	1:18:A:VAL:HG11	4	0.1
(2,230)	1:18:A:VAL:HA	1:18:A:VAL:HG12	4	0.1
(2,230)	1:18:A:VAL:HA	1:18:A:VAL:HG13	4	0.1
(2,230)	1:18:A:VAL:HA	1:18:A:VAL:HG11	17	0.1
(2,230)	1:18:A:VAL:HA	1:18:A:VAL:HG12	17	0.1
(2,230)	1:18:A:VAL:HA	1:18:A:VAL:HG13	17	0.1
(2,73)	1:47:A:ASP:H	1:48:A:VAL:H	9	0.1
(2,67)	1:46:A:GLU:H	1:46:A:GLU:HB2	7	0.1
(2,67)	1:46:A:GLU:H	1:46:A:GLU:HB3	7	0.1

10 Dihedral-angle violation analysis [i](#)

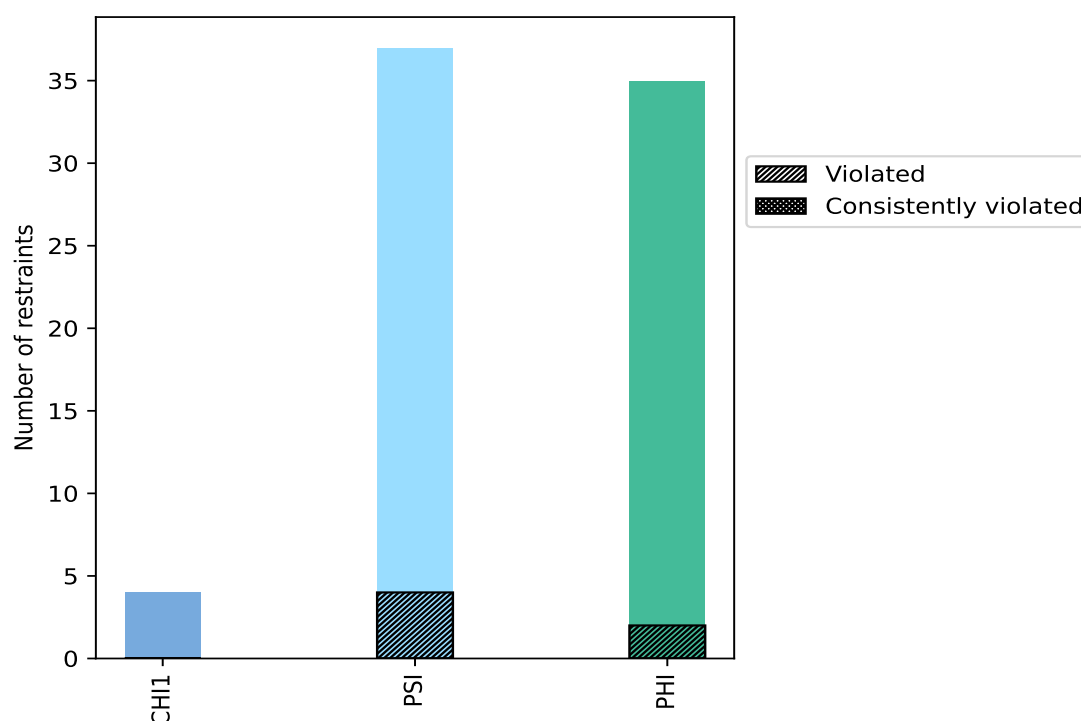
10.1 Summary of dihedral-angle violations [i](#)

The following table provides the summary of dihedral-angle violations in different dihedral-angle types. Violations less than 1° are not included in the calculation.

Angle type	Count	% ¹	Violated ³			Consistently Violated ⁴		
			Count	% ²	% ¹	Count	% ²	% ¹
CHI1	4	5.3	0	0.0	0.0	0	0.0	0.0
PSI	37	48.7	4	10.8	5.3	0	0.0	0.0
PHI	35	46.1	2	5.7	2.6	0	0.0	0.0
Total	76	100.0	6	7.9	7.9	0	0.0	0.0

¹ percentage calculated with respect to total number of dihedral-angle restraints, ² percentage calculated with respect to number of restraints in a particular dihedral-angle type, ³ violated in at least one model, ⁴ violated in all the models

10.1.1 Bar chart : Distribution of dihedral-angles and violations [i](#)



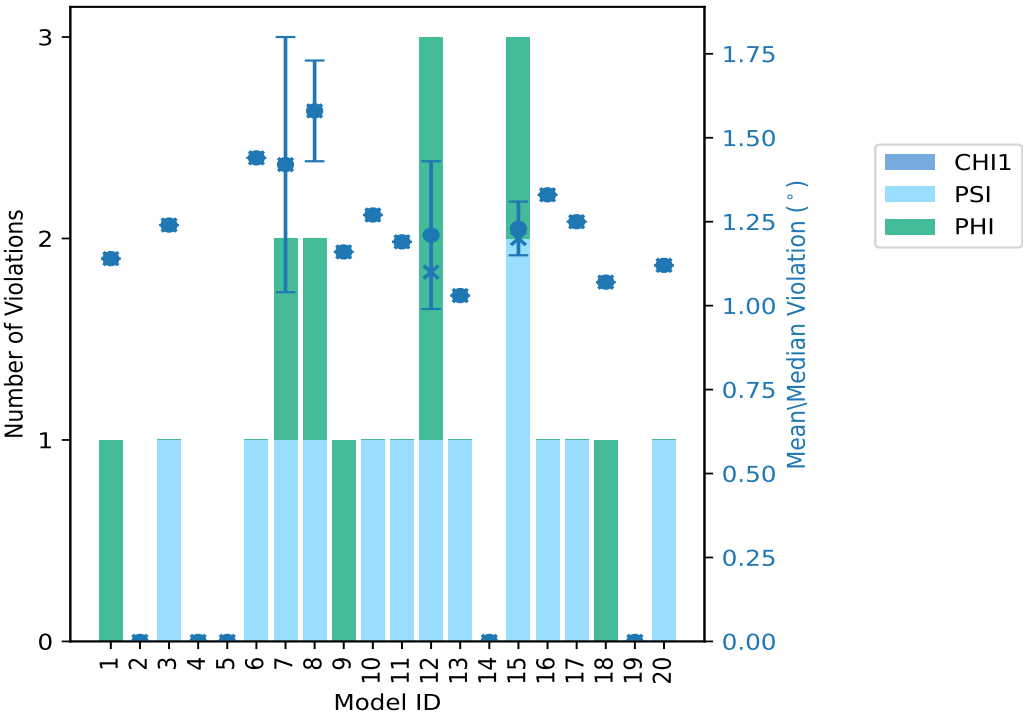
Violated and consistently violated restraints are shown using different hatch patterns in their respective categories

10.2 Dihedral-angle violation statistics for each model

The following table provides the dihedral-angle violation statistics for each model in the ensemble. Violations less than 1° are not included in the statistics.

Model ID	Number of violations				Mean (°)	Max (°)	SD (°)	Median (°)
	CHI1	PSI	PHI	Total				
1	0	0	1	1	1.14	1.14	0.0	1.14
2	0	0	0	0	0.0	0.0	0.0	0.0
3	0	1	0	1	1.24	1.24	0.0	1.24
4	0	0	0	0	0.0	0.0	0.0	0.0
5	0	0	0	0	0.0	0.0	0.0	0.0
6	0	1	0	1	1.44	1.44	0.0	1.44
7	0	1	1	2	1.42	1.8	0.38	1.42
8	0	1	1	2	1.58	1.72	0.15	1.58
9	0	0	1	1	1.16	1.16	0.0	1.16
10	0	1	0	1	1.27	1.27	0.0	1.27
11	0	1	0	1	1.19	1.19	0.0	1.19
12	0	1	2	3	1.21	1.52	0.22	1.1
13	0	1	0	1	1.03	1.03	0.0	1.03
14	0	0	0	0	0.0	0.0	0.0	0.0
15	0	2	1	3	1.23	1.35	0.08	1.2
16	0	1	0	1	1.33	1.33	0.0	1.33
17	0	1	0	1	1.25	1.25	0.0	1.25
18	0	0	1	1	1.07	1.07	0.0	1.07
19	0	0	0	0	0.0	0.0	0.0	0.0
20	0	1	0	1	1.12	1.12	0.0	1.12

10.2.1 Bar graph : Dihedral violation statistics for each model [i](#)



The mean(dot),median(x) and the standard deviation are shown in blue with respect to the y axis on the right

10.3 Dihedral-angle violation statistics for the ensemble [i](#)

Violation analysis may find that some restraints are violated in very few models and some are violated in most of models. The following table provides this information as number of violated restraints for a given fraction of ensemble.

Number of violated restraints				Fraction of the ensemble	
CHI1	PSI	PHI	Total	Count ¹	%
0	2	0	2	1	5.0
0	1	1	2	2	10.0
0	0	0	0	3	15.0
0	0	0	0	4	20.0
0	0	0	0	5	25.0
0	0	1	1	6	30.0
0	0	0	0	7	35.0
0	0	0	0	8	40.0
0	1	0	1	9	45.0
0	0	0	0	10	50.0
0	0	0	0	11	55.0

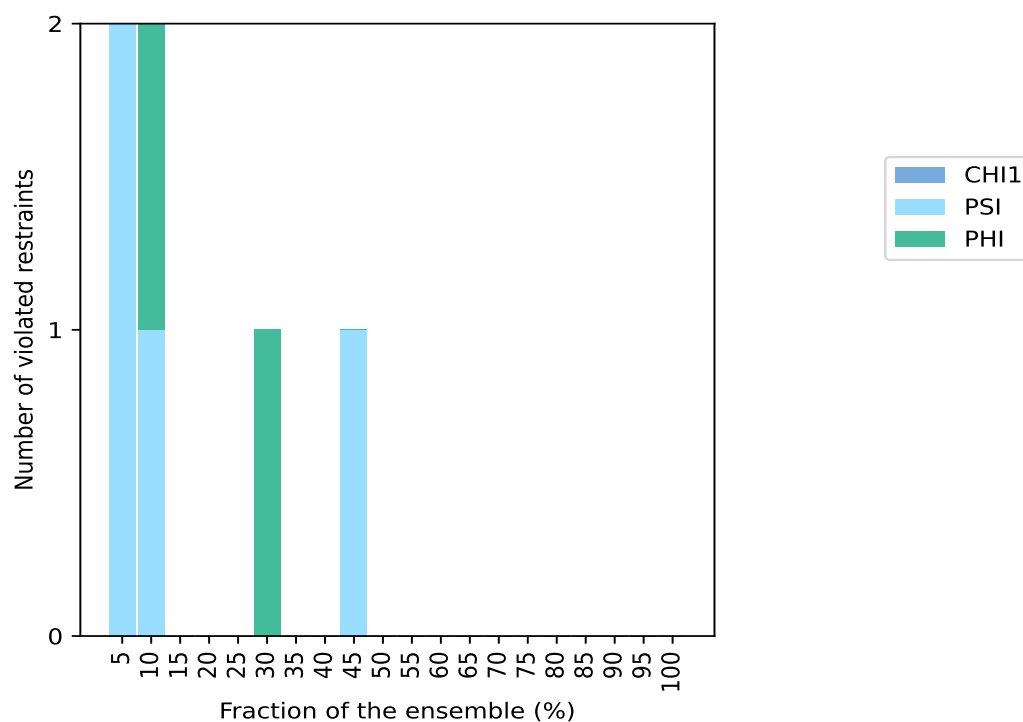
Continued on next page...

Continued from previous page...

Number of violated restraints				Fraction of the ensemble	
CHI1	PSI	PHI	Total	Count ¹	%
0	0	0	0	12	60.0
0	0	0	0	13	65.0
0	0	0	0	14	70.0
0	0	0	0	15	75.0
0	0	0	0	16	80.0
0	0	0	0	17	85.0
0	0	0	0	18	90.0
0	0	0	0	19	95.0
0	0	0	0	20	100.0

¹ Number of models with violations

10.3.1 Bar graph : Dihedral-angle Violation statistics for the ensemble [i](#)

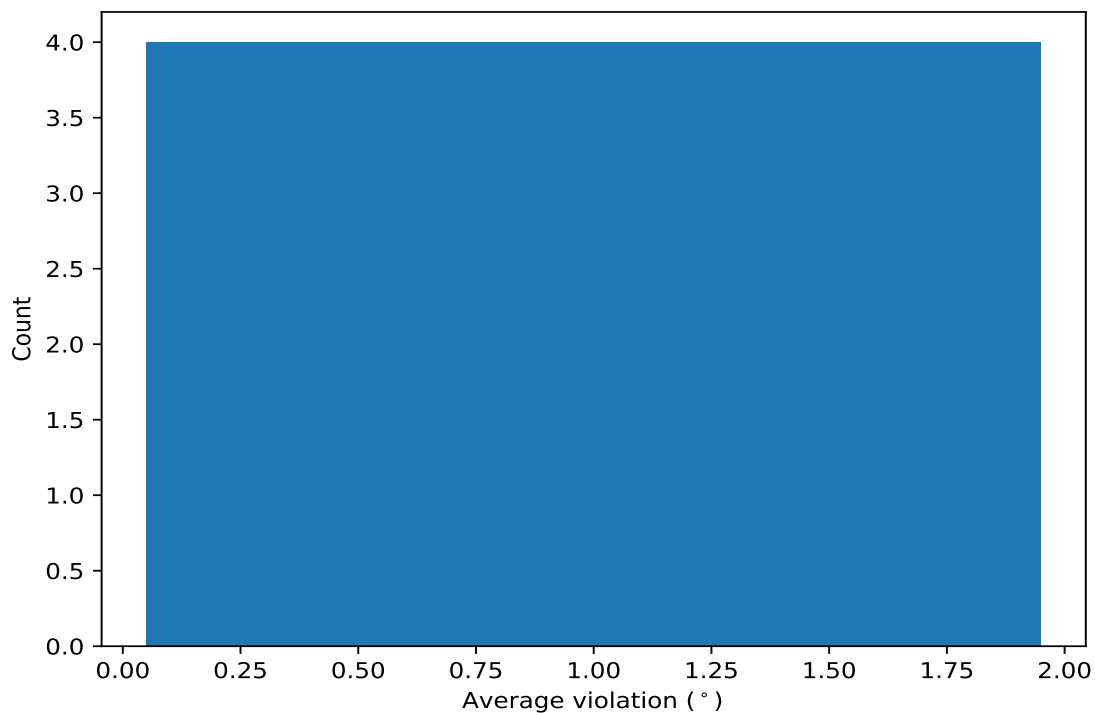


10.4 Most violated dihedral-angle restraints in the ensemble [i](#)

10.4.1 Histogram : Distribution of mean dihedral-angle violations [i](#)

The following histogram shows the distribution of the average value of the violation. The average is calculated for each restraint that is violated in more than one model over all the violated models

in the ensemble



10.4.2 Table: Most violated dihedral-angle restraints [i](#)

The following table provides the mean and the standard deviation of the violation for each restraint sorted by number of violated models and the mean value. The Key (restraint list ID, restraint ID) is the unique identifier for a given restraint.

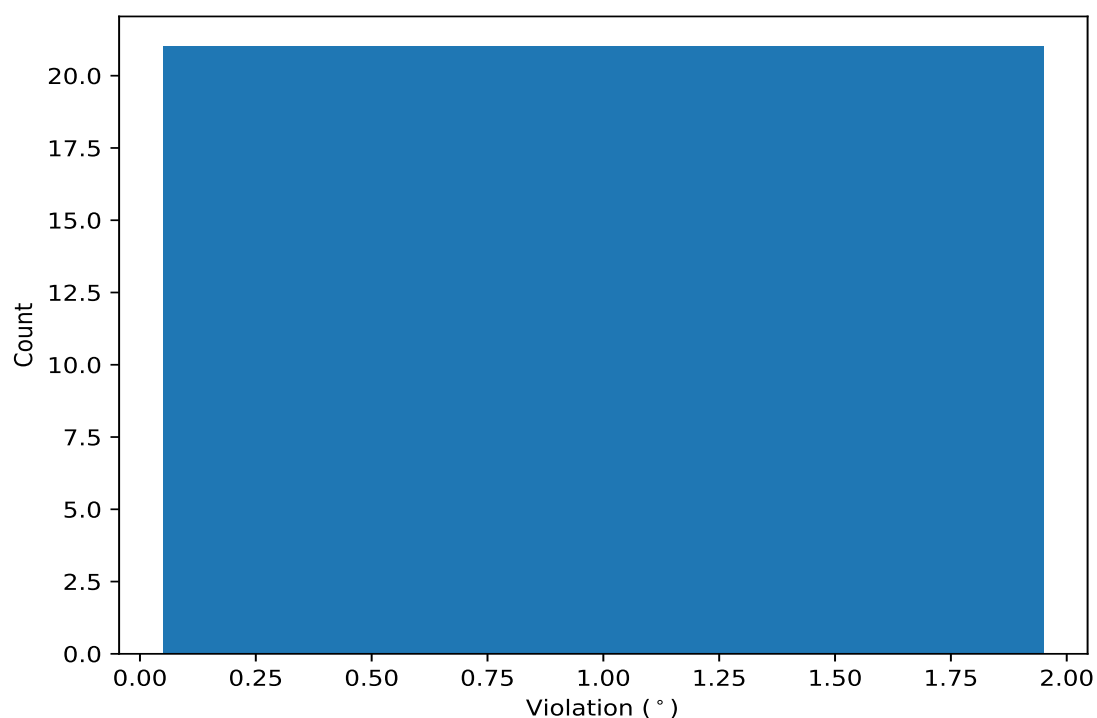
Key	Atom-1	Atom-2	Atom-3	Atom-4	Models ¹	Mean	SD ²	Median
(1,33)	1:22:A:GLY:N	1:22:A:GLY:CA	1:22:A:GLY:C	1:23:A:VAL:N	9	1.28	0.19	1.25
(1,71)	1:41:A:GLU:C	1:42:A:GLN:N	1:42:A:GLN:CA	1:42:A:GLN:C	6	1.32	0.25	1.25
(1,30)	1:18:A:VAL:C	1:19:A:ALA:N	1:19:A:ALA:CA	1:19:A:ALA:C	2	1.33	0.19	1.33
(1,31)	1:19:A:ALA:N	1:19:A:ALA:CA	1:19:A:ALA:C	1:20:A:GLU:N	2	1.11	0.09	1.11

¹ Number of violated models, ²Standard deviation, All angle values are in degree (°)

10.5 All violated dihedral-angle restraints [i](#)

10.5.1 Histogram : Distribution of violations [i](#)

The following histogram shows the distribution of the absolute value of the violation for all violated restraints in the ensemble.



10.5.2 Table: All violated dihedral-angle restraints [i](#)

The following table lists the absolute value of the violation for each restraint in the ensemble sorted by its value. The Key (restraint list ID, restraint ID) is the unique identifier for a given restraint.

Key	Atom-1	Atom-2	Atom-3	Atom-4	Model ID	Violation (°)
(1,71)	1:41:A:GLU:C	1:42:A:GLN:N	1:42:A:GLN:CA	1:42:A:GLN:C	7	1.8
(1,33)	1:22:A:GLY:N	1:22:A:GLY:CA	1:22:A:GLY:C	1:23:A:VAL:N	8	1.72
(1,30)	1:18:A:VAL:C	1:19:A:ALA:N	1:19:A:ALA:CA	1:19:A:ALA:C	12	1.52
(1,33)	1:22:A:GLY:N	1:22:A:GLY:CA	1:22:A:GLY:C	1:23:A:VAL:N	6	1.44
(1,71)	1:41:A:GLU:C	1:42:A:GLN:N	1:42:A:GLN:CA	1:42:A:GLN:C	8	1.43
(1,71)	1:41:A:GLU:C	1:42:A:GLN:N	1:42:A:GLN:CA	1:42:A:GLN:C	15	1.35
(1,33)	1:22:A:GLY:N	1:22:A:GLY:CA	1:22:A:GLY:C	1:23:A:VAL:N	16	1.33
(1,33)	1:22:A:GLY:N	1:22:A:GLY:CA	1:22:A:GLY:C	1:23:A:VAL:N	10	1.27
(1,33)	1:22:A:GLY:N	1:22:A:GLY:CA	1:22:A:GLY:C	1:23:A:VAL:N	17	1.25
(1,33)	1:22:A:GLY:N	1:22:A:GLY:CA	1:22:A:GLY:C	1:23:A:VAL:N	3	1.24
(1,31)	1:19:A:ALA:N	1:19:A:ALA:CA	1:19:A:ALA:C	1:20:A:GLU:N	15	1.2
(1,66)	1:39:A:GLU:N	1:39:A:GLU:CA	1:39:A:GLU:C	1:40:A:ARG:N	11	1.19
(1,71)	1:41:A:GLU:C	1:42:A:GLN:N	1:42:A:GLN:CA	1:42:A:GLN:C	9	1.16
(1,33)	1:22:A:GLY:N	1:22:A:GLY:CA	1:22:A:GLY:C	1:23:A:VAL:N	15	1.15
(1,30)	1:18:A:VAL:C	1:19:A:ALA:N	1:19:A:ALA:CA	1:19:A:ALA:C	1	1.14
(1,33)	1:22:A:GLY:N	1:22:A:GLY:CA	1:22:A:GLY:C	1:23:A:VAL:N	20	1.12
(1,71)	1:41:A:GLU:C	1:42:A:GLN:N	1:42:A:GLN:CA	1:42:A:GLN:C	12	1.1
(1,71)	1:41:A:GLU:C	1:42:A:GLN:N	1:42:A:GLN:CA	1:42:A:GLN:C	18	1.07
(1,72)	1:42:A:GLN:N	1:42:A:GLN:CA	1:42:A:GLN:C	1:43:A:GLY:N	7	1.04
(1,33)	1:22:A:GLY:N	1:22:A:GLY:CA	1:22:A:GLY:C	1:23:A:VAL:N	13	1.03
(1,31)	1:19:A:ALA:N	1:19:A:ALA:CA	1:19:A:ALA:C	1:20:A:GLU:N	12	1.02