



Full wwPDB EM Validation Report ⓘ

Apr 21, 2025 – 12:23 AM JST

PDB ID : 8WW6 / pdb_00008ww6
EMDB ID : EMD-37882
Title : Structure of ATP-rs-Form AsfvPrimPol Hexamer
Authors : Shi, T.H.; Guo, Y.Y.; Yan, R.H.
Deposited on : 2023-10-25
Resolution : 3.73 Å(reported)

This is a Full wwPDB EM Validation Report for a publicly released PDB entry.

We welcome your comments at validation@mail.wwpdb.org

A user guide is available at

<https://www.wwpdb.org/validation/2017/EMValidationReportHelp>

with specific help available everywhere you see the ⓘ symbol.

The types of validation reports are described at

<http://www.wwpdb.org/validation/2017/FAQs#types>.

The following versions of software and data (see [references ⓘ](#)) were used in the production of this report:

EMDB validation analysis : 0.0.1.dev117
Mogul : 1.8.5 (274361), CSD as541be (2020)
MolProbity : 4.02b-467
buster-report : 1.1.7 (2018)
Percentile statistics : 20231227.v01 (using entries in the PDB archive December 27th 2023)
MapQ : 1.9.13
Ideal geometry (proteins) : Engh & Huber (2001)
Ideal geometry (DNA, RNA) : Parkinson et al. (1996)
Validation Pipeline (wwPDB-VP) : 2.42

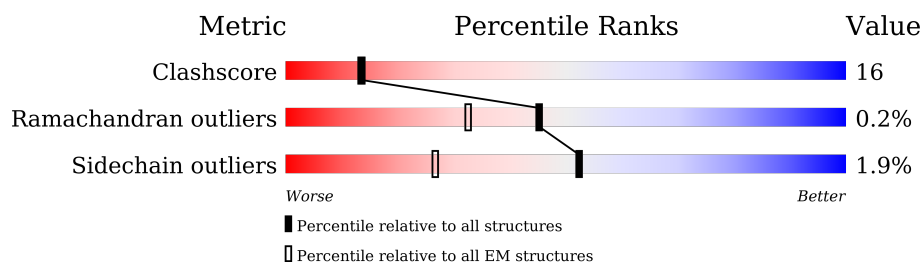
1 Overall quality at a glance

The following experimental techniques were used to determine the structure:

ELECTRON MICROSCOPY

The reported resolution of this entry is 3.73 Å.

Percentile scores (ranging between 0-100) for global validation metrics of the entry are shown in the following graphic. The table shows the number of entries on which the scores are based.



Metric	Whole archive (#Entries)	EM structures (#Entries)
Clashscore	210492	15764
Ramachandran outliers	207382	16835
Sidechain outliers	206894	16415

The table below summarises the geometric issues observed across the polymeric chains and their fit to the map. The red, orange, yellow and green segments of the bar indicate the fraction of residues that contain outliers for ≥ 3 , 2, 1 and 0 types of geometric quality criteria respectively. A grey segment represents the fraction of residues that are not modelled. The numeric value for each fraction is indicated below the corresponding segment, with a dot representing fractions $\leq 5\%$. The upper red bar (where present) indicates the fraction of residues that have poor fit to the EM map (all-atom inclusion $< 40\%$). The numeric value is given above the bar.

Mol	Chain	Length	Quality of chain
1	H	25	
2	I	4	
3	A	972	
3	B	972	
3	C	972	
3	D	972	
3	E	972	
3	F	972	

2 Entry composition

There are 5 unique types of molecules in this entry. The entry contains 32825 atoms, of which 0 are hydrogens and 0 are deuteriums.

In the tables below, the AltConf column contains the number of residues with at least one atom in alternate conformation and the Trace column contains the number of residues modelled with at most 2 atoms.

- Molecule 1 is a DNA chain called DNA (25-MER).

Mol	Chain	Residues	Atoms					AltConf	Trace
1	H	25	Total	C	N	O	P	0	0
			500	250	50	175	25		

- Molecule 2 is a DNA chain called DNA (5'-D(P*AP*AP*AP*A)-3').

Mol	Chain	Residues	Atoms					AltConf	Trace
2	I	4	Total	C	N	O	P	0	0
			84	40	20	20	4		

- Molecule 3 is a protein called Putative primase C962R.

Mol	Chain	Residues	Atoms					AltConf	Trace
3	B	646	Total	C	N	O	S	0	0
			5347	3449	909	963	26		
3	A	646	Total	C	N	O	S	0	0
			5347	3449	909	963	26		
3	C	646	Total	C	N	O	S	0	0
			5347	3449	909	963	26		
3	D	644	Total	C	N	O	S	0	0
			5333	3440	907	961	25		
3	E	643	Total	C	N	O	S	0	0
			5328	3436	906	960	26		
3	F	646	Total	C	N	O	S	0	0
			5347	3449	909	963	26		

There are 60 discrepancies between the modelled and reference sequences:

Chain	Residue	Modelled	Actual	Comment	Reference
B	963	LEU	-	expression tag	UNP A0A2X0TKI6
B	964	GLU	-	expression tag	UNP A0A2X0TKI6
B	965	ASP	-	expression tag	UNP A0A2X0TKI6
B	966	TYR	-	expression tag	UNP A0A2X0TKI6
B	967	LYS	-	expression tag	UNP A0A2X0TKI6

Continued on next page...

Continued from previous page...

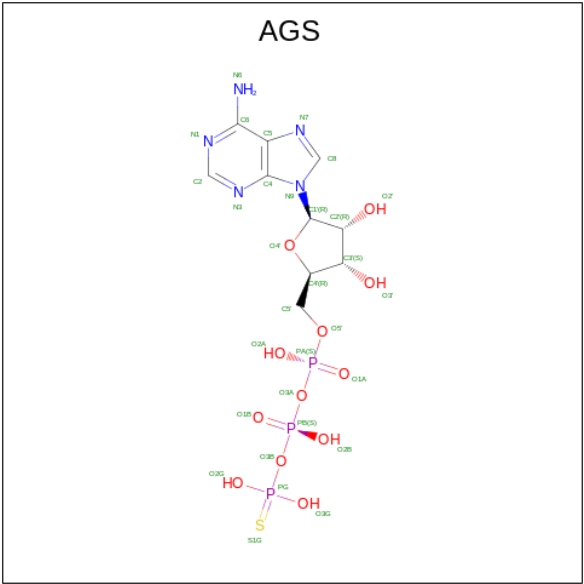
Chain	Residue	Modelled	Actual	Comment	Reference
B	968	ASP	-	expression tag	UNP A0A2X0TKI6
B	969	ASP	-	expression tag	UNP A0A2X0TKI6
B	970	ASP	-	expression tag	UNP A0A2X0TKI6
B	971	ASP	-	expression tag	UNP A0A2X0TKI6
B	972	LYS	-	expression tag	UNP A0A2X0TKI6
A	963	LEU	-	expression tag	UNP A0A2X0TKI6
A	964	GLU	-	expression tag	UNP A0A2X0TKI6
A	965	ASP	-	expression tag	UNP A0A2X0TKI6
A	966	TYR	-	expression tag	UNP A0A2X0TKI6
A	967	LYS	-	expression tag	UNP A0A2X0TKI6
A	968	ASP	-	expression tag	UNP A0A2X0TKI6
A	969	ASP	-	expression tag	UNP A0A2X0TKI6
A	970	ASP	-	expression tag	UNP A0A2X0TKI6
A	971	ASP	-	expression tag	UNP A0A2X0TKI6
A	972	LYS	-	expression tag	UNP A0A2X0TKI6
C	963	LEU	-	expression tag	UNP A0A2X0TKI6
C	964	GLU	-	expression tag	UNP A0A2X0TKI6
C	965	ASP	-	expression tag	UNP A0A2X0TKI6
C	966	TYR	-	expression tag	UNP A0A2X0TKI6
C	967	LYS	-	expression tag	UNP A0A2X0TKI6
C	968	ASP	-	expression tag	UNP A0A2X0TKI6
C	969	ASP	-	expression tag	UNP A0A2X0TKI6
C	970	ASP	-	expression tag	UNP A0A2X0TKI6
C	971	ASP	-	expression tag	UNP A0A2X0TKI6
C	972	LYS	-	expression tag	UNP A0A2X0TKI6
D	963	LEU	-	expression tag	UNP A0A2X0TKI6
D	964	GLU	-	expression tag	UNP A0A2X0TKI6
D	965	ASP	-	expression tag	UNP A0A2X0TKI6
D	966	TYR	-	expression tag	UNP A0A2X0TKI6
D	967	LYS	-	expression tag	UNP A0A2X0TKI6
D	968	ASP	-	expression tag	UNP A0A2X0TKI6
D	969	ASP	-	expression tag	UNP A0A2X0TKI6
D	970	ASP	-	expression tag	UNP A0A2X0TKI6
D	971	ASP	-	expression tag	UNP A0A2X0TKI6
D	972	LYS	-	expression tag	UNP A0A2X0TKI6
E	963	LEU	-	expression tag	UNP A0A2X0TKI6
E	964	GLU	-	expression tag	UNP A0A2X0TKI6
E	965	ASP	-	expression tag	UNP A0A2X0TKI6
E	966	TYR	-	expression tag	UNP A0A2X0TKI6
E	967	LYS	-	expression tag	UNP A0A2X0TKI6
E	968	ASP	-	expression tag	UNP A0A2X0TKI6
E	969	ASP	-	expression tag	UNP A0A2X0TKI6

Continued on next page...

Continued from previous page...

Chain	Residue	Modelled	Actual	Comment	Reference
E	970	ASP	-	expression tag	UNP A0A2X0TKI6
E	971	ASP	-	expression tag	UNP A0A2X0TKI6
E	972	LYS	-	expression tag	UNP A0A2X0TKI6
F	963	LEU	-	expression tag	UNP A0A2X0TKI6
F	964	GLU	-	expression tag	UNP A0A2X0TKI6
F	965	ASP	-	expression tag	UNP A0A2X0TKI6
F	966	TYR	-	expression tag	UNP A0A2X0TKI6
F	967	LYS	-	expression tag	UNP A0A2X0TKI6
F	968	ASP	-	expression tag	UNP A0A2X0TKI6
F	969	ASP	-	expression tag	UNP A0A2X0TKI6
F	970	ASP	-	expression tag	UNP A0A2X0TKI6
F	971	ASP	-	expression tag	UNP A0A2X0TKI6
F	972	LYS	-	expression tag	UNP A0A2X0TKI6

- Molecule 4 is PHOSPHOTHIOPHOSPHORIC ACID-ADENYLATE ESTER (CCD ID: AGS) (formula: C₁₀H₁₆N₅O₁₂P₃S).



Mol	Chain	Residues	Atoms						AltConf
4	B	1	Total	C	N	O	P	S	0
			31	10	5	12	3	1	
4	A	1	Total	C	N	O	P	S	0
			31	10	5	12	3	1	
4	C	1	Total	C	N	O	P	S	0
			31	10	5	12	3	1	
4	D	1	Total	C	N	O	P	S	0
			31	10	5	12	3	1	

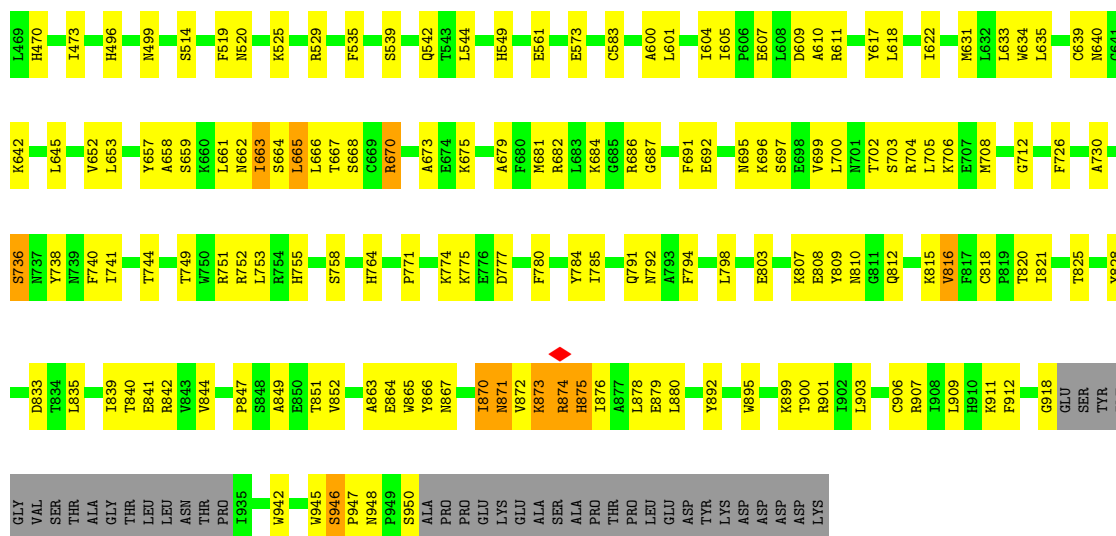
Continued on next page...

Continued from previous page...

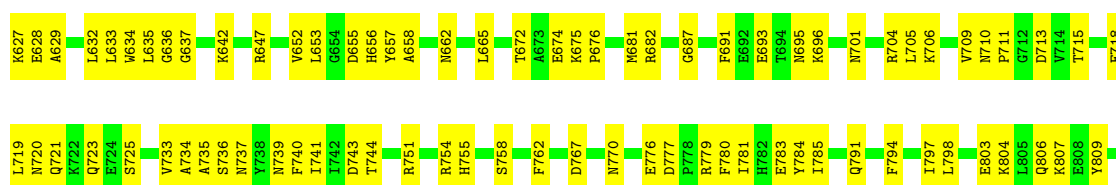
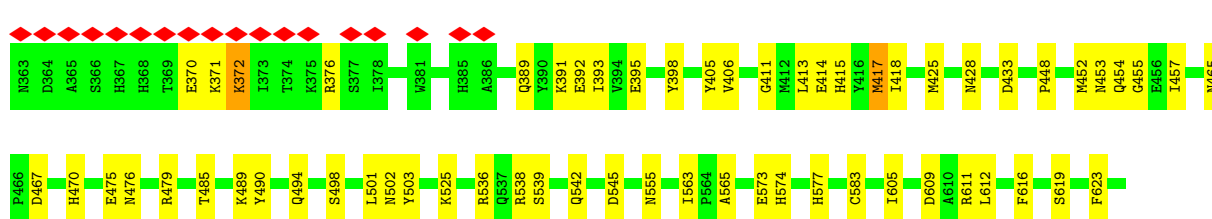
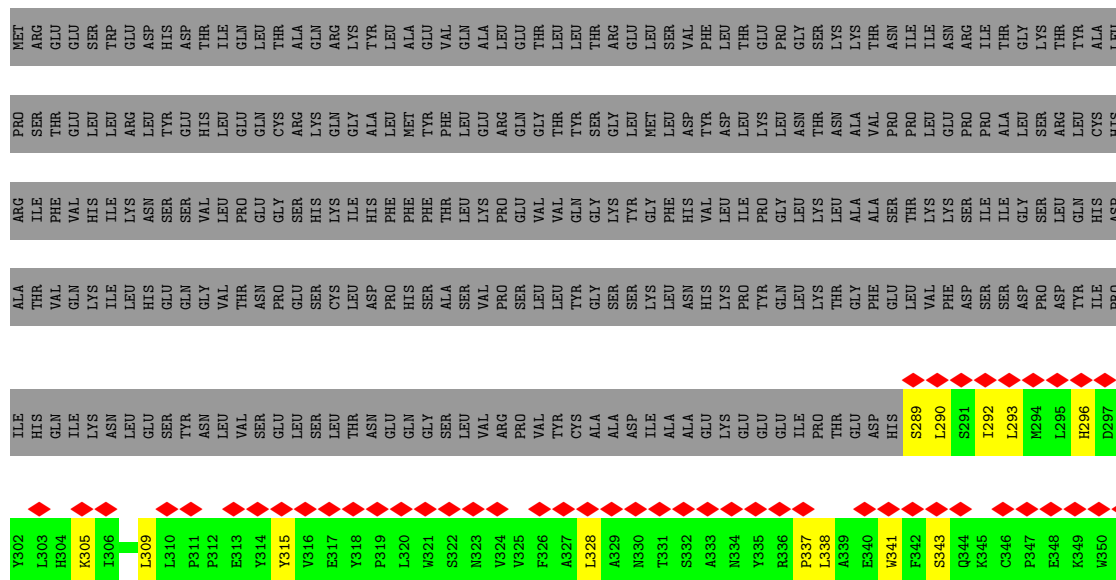
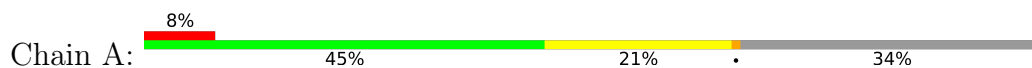
Mol	Chain	Residues	Atoms						AltConf
4	E	1	Total	C	N	O	P	S	0
			31	10	5	12	3	1	
4	F	1	Total	C	N	O	P	S	0
			31	10	5	12	3	1	

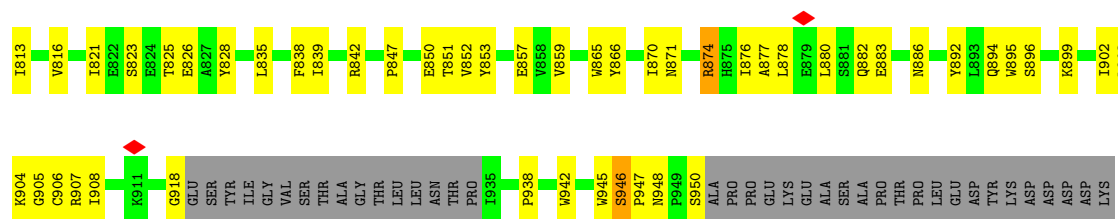
- Molecule 5 is MAGNESIUM ION (CCD ID: MG) (formula: Mg).

Mol	Chain	Residues	Atoms		AltConf
5	B	1	Total	Mg	0
			1	1	
5	A	1	Total	Mg	0
			1	1	
5	C	1	Total	Mg	0
			1	1	
5	D	1	Total	Mg	0
			1	1	
5	E	1	Total	Mg	0
			1	1	
5	F	1	Total	Mg	0
			1	1	

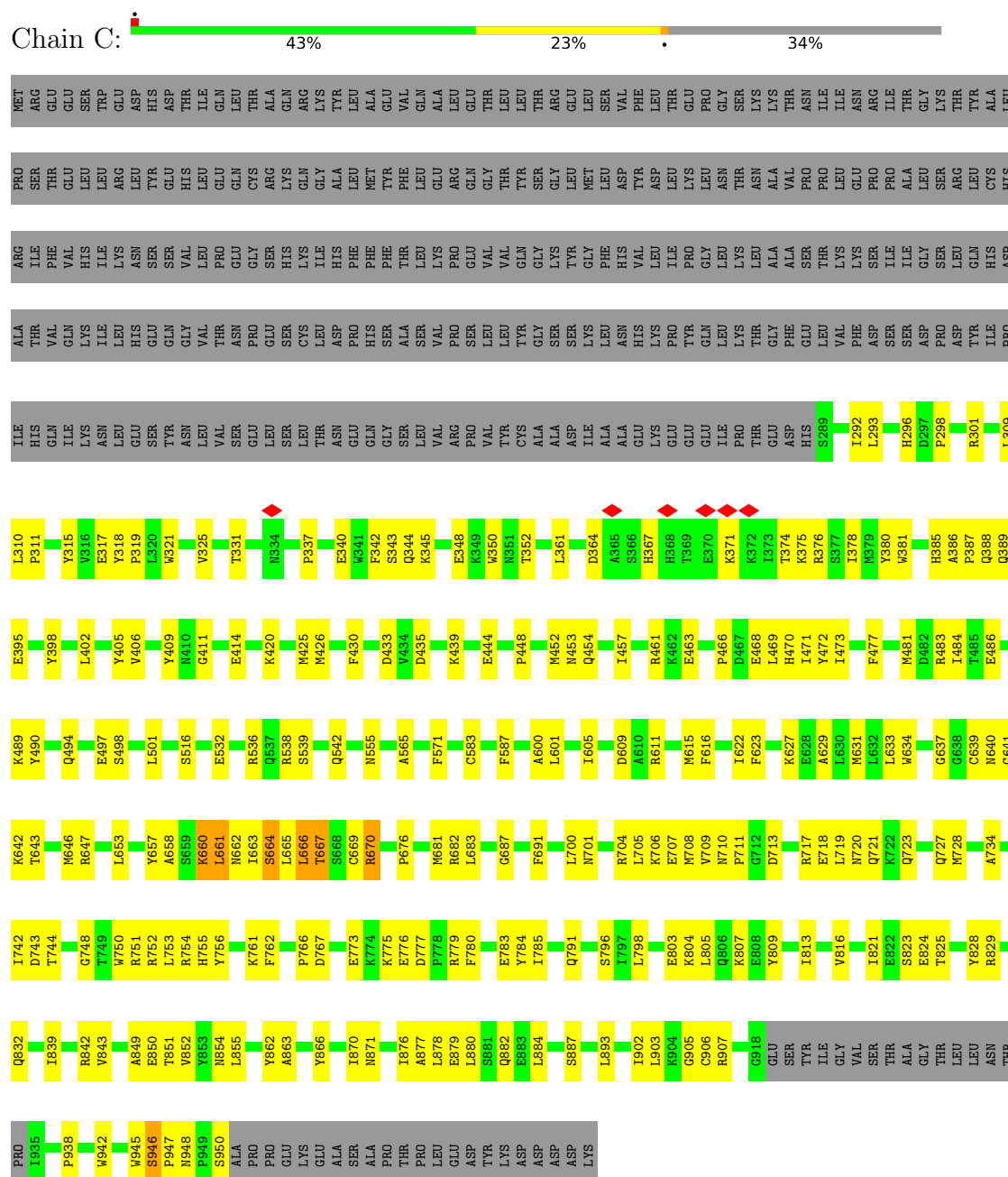


• Molecule 3: Putative primase C962R



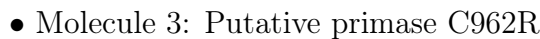


• Molecule 3: Putative primase C962R

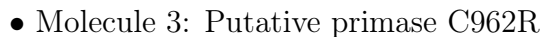


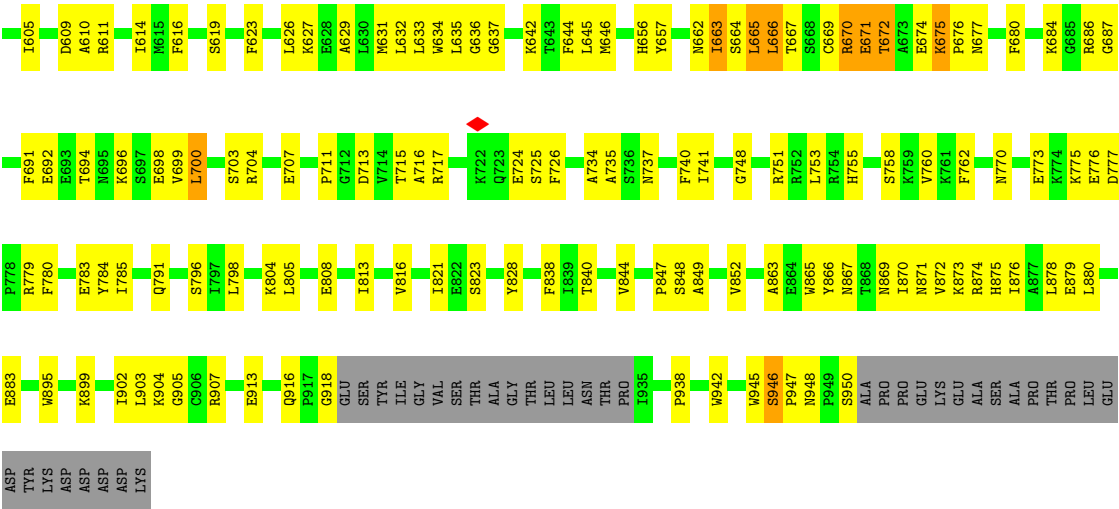
• Molecule 3: Putative primase C962R





ALA	THR	VAL	GLN	LYS	ILE	LEU	HIS	GLY	GLN	THR	ASN	GLY	GLY	THR	PRO	GLN	LEU	LEU	LEU	GLY	THR	GLY	ASP	ASP	THR	ILE	PRO
ARG	ILE	VAL	GLN	LYS	ILE	LEU	ASN	VAL	SER	PRO	GLY	LEU	LEU	LEU	GLY	LEU	LEU	LEU	LEU	GLY	THR	GLY	ASP	ASP	THR	ILE	PRO
PRO	SER	THR	GLU	LEU	LEU	ARG	LEU	HIS	GLY	GLN	LEU	ASN	THR	THR	PRO	GLY	LEU	LEU	LEU	GLY	THR	GLY	ASP	ASP	THR	ILE	PRO
MET	ARG	GLU	GLU	TRP	GLU	ASP	HIS	THR	ASP	THR	GLN	LEU	GLN	LYS	TYR	ALA	LEU	GLU	GLU	THR	LEU	LEU	GLY	THR	LYS	ALA	PRO





4 Experimental information

Property	Value	Source
EM reconstruction method	SINGLE PARTICLE	Depositor
Imposed symmetry	POINT, Not provided	
Number of particles used	38908	Depositor
Resolution determination method	FSC 0.143 CUT-OFF	Depositor
CTF correction method	PHASE FLIPPING AND AMPLITUDE CORRECTION	Depositor
Microscope	FEI TITAN KRIOS	Depositor
Voltage (kV)	300	Depositor
Electron dose ($e^-/\text{\AA}^2$)	50	Depositor
Minimum defocus (nm)	1200	Depositor
Maximum defocus (nm)	2200	Depositor
Magnification	Not provided	
Image detector	GATAN K3 BIOQUANTUM (6k x 4k)	Depositor
Maximum map value	1.164	Depositor
Minimum map value	-0.441	Depositor
Average map value	-0.003	Depositor
Map value standard deviation	0.038	Depositor
Recommended contour level	0.18	Depositor
Map size (\AA)	420.48, 420.48, 420.48	wwPDB
Map dimensions	384, 384, 384	wwPDB
Map angles ($^\circ$)	90.0, 90.0, 90.0	wwPDB
Pixel spacing (\AA)	1.095, 1.095, 1.095	Depositor

5 Model quality [i](#)

5.1 Standard geometry [i](#)

Bond lengths and bond angles in the following residue types are not validated in this section: AGS, MG

The Z score for a bond length (or angle) is the number of standard deviations the observed value is removed from the expected value. A bond length (or angle) with $|Z| > 5$ is considered an outlier worth inspection. RMSZ is the root-mean-square of all Z scores of the bond lengths (or angles).

Mol	Chain	Bond lengths		Bond angles	
		RMSZ	# Z >5	RMSZ	# Z >5
1	H	0.52	0/549	1.32	0/846
2	I	0.43	0/95	0.66	0/144
3	A	0.26	0/5503	0.46	0/7458
3	B	0.26	0/5503	0.46	0/7458
3	C	0.27	0/5503	0.48	0/7458
3	D	0.27	0/5489	0.48	0/7439
3	E	0.27	0/5483	0.48	0/7430
3	F	0.27	0/5503	0.47	0/7458
All	All	0.27	0/33628	0.50	0/45691

There are no bond length outliers.

There are no bond angle outliers.

There are no chirality outliers.

There are no planarity outliers.

5.2 Too-close contacts [i](#)

In the following table, the Non-H and H(model) columns list the number of non-hydrogen atoms and hydrogen atoms in the chain respectively. The H(added) column lists the number of hydrogen atoms added and optimized by MolProbity. The Clashes column lists the number of clashes within the asymmetric unit, whereas Symm-Clashes lists symmetry-related clashes.

Mol	Chain	Non-H	H(model)	H(added)	Clashes	Symm-Clashes
1	H	500	0	301	15	0
2	I	84	0	45	3	0
3	A	5347	0	5216	151	0
3	B	5347	0	5217	199	0
3	C	5347	0	5217	171	0

Continued on next page...

Continued from previous page...

Mol	Chain	Non-H	H(model)	H(added)	Clashes	Symm-Clashes
3	D	5333	0	5202	184	0
3	E	5328	0	5196	161	0
3	F	5347	0	5217	165	0
4	A	31	0	12	7	0
4	B	31	0	12	7	0
4	C	31	0	12	6	0
4	D	31	0	12	5	0
4	E	31	0	12	6	0
4	F	31	0	12	4	0
5	A	1	0	0	0	0
5	B	1	0	0	0	0
5	C	1	0	0	0	0
5	D	1	0	0	0	0
5	E	1	0	0	0	0
5	F	1	0	0	0	0
All	All	32825	0	31683	1020	0

The all-atom clashscore is defined as the number of clashes found per 1000 atoms (including hydrogen atoms). The all-atom clashscore for this structure is 16.

All (1020) close contacts within the same asymmetric unit are listed below, sorted by their clash magnitude.

Atom-1	Atom-2	Interatomic distance (Å)	Clash overlap (Å)
3:B:874:ARG:HH21	3:B:875:HIS:C	1.63	1.01
3:F:667:THR:HA	3:F:700:LEU:HB3	1.48	0.95
3:C:667:THR:HB	3:C:700:LEU:HB3	1.48	0.95
3:D:294:MET:HG3	3:D:301:ARG:HG3	1.51	0.90
3:B:294:MET:HG3	3:B:301:ARG:HG2	1.52	0.88
3:B:681:MET:SD	3:B:684:LYS:NZ	2.48	0.86
3:C:866:TYR:HB2	3:C:870:ILE:HG12	1.59	0.85
3:B:600:ALA:HB1	4:B:1001:AGS:HN62	1.39	0.84
3:B:870:ILE:HA	3:C:877:ALA:HB2	1.59	0.83
3:F:852:VAL:HG21	3:F:903:LEU:HB3	1.63	0.81
3:D:325:VAL:HG21	3:D:358:LEU:HD11	1.60	0.80
3:B:331:THR:HG21	3:B:375:LYS:HB2	1.64	0.80
3:C:854:ASN:H	3:C:902:ILE:HG13	1.48	0.78
3:B:911:LYS:HG3	3:B:912:PHE:H	1.48	0.78
3:F:777:ASP:HB3	3:F:780:PHE:HB2	1.66	0.78
3:A:370:GLU:HG2	3:A:372:LYS:H	1.50	0.77
3:A:777:ASP:HB3	3:A:780:PHE:HB2	1.67	0.76
3:C:498:SER:HA	3:C:501:LEU:HD13	1.68	0.76

Continued on next page...

Continued from previous page...

Atom-1	Atom-2	Interatomic distance (Å)	Clash overlap (Å)
3:C:622:ILE:HD11	3:C:798:LEU:HB3	1.66	0.76
3:F:642:LYS:HE2	3:F:735:ALA:HB1	1.66	0.76
3:E:640:ASN:HD21	3:E:758:SER:HB3	1.51	0.75
3:D:415:HIS:HB3	3:D:527:VAL:HA	1.67	0.75
3:B:663:ILE:HA	3:B:691:PHE:CD2	2.22	0.75
3:C:653:LEU:HD23	3:C:658:ALA:HB2	1.68	0.75
3:F:662:ASN:HB3	3:F:665:LEU:HD22	1.66	0.75
3:B:842:ARG:HG3	3:B:909:LEU:HG	1.68	0.74
3:D:344:GLN:HA	3:D:347:PRO:HB3	1.69	0.74
3:C:893:LEU:HA	3:C:903:LEU:HA	1.68	0.74
3:B:386:ALA:HB1	3:B:389:GLN:HE21	1.53	0.74
3:A:850:GLU:HG2	3:A:905:GLY:HA3	1.69	0.73
3:D:303:LEU:HD23	3:D:306:ILE:HD11	1.71	0.73
3:D:296:HIS:CE1	3:D:297:ASP:OD1	2.41	0.73
3:F:298:PRO:HA	3:F:301:ARG:HD3	1.70	0.73
3:C:331:THR:HG21	3:C:375:LYS:HG2	1.70	0.72
3:E:871:ASN:HB2	3:F:874:ARG:HH22	1.52	0.72
3:F:874:ARG:NH1	3:F:875:HIS:O	2.23	0.72
3:B:293:LEU:HD21	3:B:337:PRO:HB2	1.72	0.72
3:D:294:MET:HA	3:D:301:ARG:HD2	1.71	0.72
3:F:605:ILE:O	3:F:611:ARG:NH1	2.23	0.72
3:A:762:PHE:HB3	3:A:776:GLU:HG3	1.72	0.71
3:E:874:ARG:NH1	3:E:875:HIS:O	2.23	0.71
3:B:741:ILE:HD11	3:C:878:LEU:HD11	1.72	0.71
3:F:748:GLY:HA2	3:F:751:ARG:HD3	1.73	0.71
3:F:406:VAL:HG13	3:F:411:GLY:HA2	1.73	0.70
3:D:600:ALA:HB1	4:D:1001:AGS:HN62	1.57	0.70
3:E:677:ASN:H	3:E:717:ARG:HG2	1.57	0.70
3:C:876:ILE:HB	3:C:879:GLU:HG3	1.72	0.70
3:A:718:GLU:OE1	3:A:721:GLN:NE2	2.23	0.70
3:C:767:ASP:H	3:C:773:GLU:HG2	1.57	0.70
3:D:392:GLU:O	3:D:396:GLN:NE2	2.24	0.70
3:A:672:THR:O	3:A:704:ARG:NH1	2.25	0.70
3:C:750:TRP:O	3:C:829:ARG:NH1	2.25	0.69
3:C:425:MET:SD	3:C:472:TYR:OH	2.49	0.69
3:F:306:ILE:HA	3:F:309:LEU:HD12	1.74	0.69
3:B:697:SER:HA	3:B:738:TYR:HB3	1.75	0.69
3:A:413:LEU:HD13	3:A:418:ILE:HD11	1.74	0.69
3:C:468:GLU:HA	3:C:471:ILE:HG12	1.73	0.69
3:C:340:GLU:O	3:C:344:GLN:NE2	2.26	0.69
3:C:785:ILE:O	3:C:791:GLN:NE2	2.22	0.69

Continued on next page...

Continued from previous page...

Atom-1	Atom-2	Interatomic distance (Å)	Clash overlap (Å)
3:F:671:GLU:HG3	3:F:675:LYS:HE2	1.74	0.69
3:F:699:VAL:HB	3:F:741:ILE:HB	1.74	0.69
3:E:315:TYR:O	3:E:321:TRP:NE1	2.20	0.68
3:A:498:SER:HA	3:A:501:LEU:HD13	1.75	0.68
3:D:371:LYS:NZ	3:D:573:GLU:OE2	2.26	0.68
3:C:661:LEU:HB3	3:C:691:PHE:CE1	2.28	0.68
3:C:605:ILE:O	3:C:611:ARG:NH1	2.27	0.68
3:E:388:GLN:HA	3:E:391:LYS:HZ3	1.58	0.68
3:E:330:ASN:ND2	3:E:373:ILE:O	2.27	0.67
3:E:310:LEU:HD21	3:E:382:ALA:HA	1.76	0.67
3:E:315:TYR:HE2	3:E:346:CYS:H	1.42	0.67
3:C:293:LEU:HD21	3:C:337:PRO:HB2	1.75	0.67
3:B:895:TRP:HA	3:B:901:ARG:HA	1.74	0.67
3:A:642:LYS:HD3	3:A:735:ALA:HB1	1.76	0.67
3:B:863:ALA:HA	3:B:866:TYR:CZ	2.30	0.67
3:A:785:ILE:O	3:A:791:GLN:NE2	2.25	0.67
3:A:636:GLY:HA3	3:A:758:SER:HB3	1.76	0.67
3:E:387:PRO:HA	3:E:390:TYR:HE1	1.58	0.67
3:E:629:ALA:HB2	3:E:711:PRO:HD3	1.77	0.67
3:C:433:ASP:OD1	3:C:536:ARG:NH1	2.28	0.66
3:E:448:PRO:HG3	3:E:457:ILE:HD11	1.77	0.66
3:B:703:SER:HB3	3:A:695:ASN:HB3	1.77	0.66
3:B:871:ASN:HD22	3:C:876:ILE:HA	1.59	0.66
3:A:448:PRO:HG3	3:A:457:ILE:HD11	1.76	0.66
3:E:785:ILE:O	3:E:791:GLN:NE2	2.23	0.66
3:A:433:ASP:OD1	3:A:536:ARG:NH1	2.29	0.66
3:A:681:MET:HG3	3:A:718:GLU:HB2	1.77	0.66
3:F:691:PHE:HB2	3:F:734:ALA:HA	1.76	0.66
3:F:375:LYS:O	3:F:376:ARG:HG2	1.95	0.66
3:D:379:MET:O	3:D:383:HIS:ND1	2.29	0.66
3:A:635:LEU:HD23	3:A:755:HIS:HE2	1.60	0.65
3:E:301:ARG:O	3:E:304:HIS:ND1	2.28	0.65
3:B:600:ALA:HB1	4:B:1001:AGS:N6	2.09	0.65
3:B:751:ARG:NH2	4:A:1001:AGS:S1G	2.69	0.65
3:E:902:ILE:O	3:E:904:LYS:NZ	2.28	0.65
3:F:667:THR:HA	3:F:700:LEU:CB	2.25	0.65
3:A:376:ARG:HD2	3:A:428:ASN:HB2	1.78	0.65
3:F:326:PHE:O	3:F:330:ASN:ND2	2.30	0.65
3:D:521:ASP:OD2	3:E:530:GLN:NE2	2.30	0.65
3:F:448:PRO:HG3	3:F:457:ILE:HD11	1.79	0.65
3:A:874:ARG:HH22	3:F:872:VAL:H	1.45	0.65

Continued on next page...

Continued from previous page...

Atom-1	Atom-2	Interatomic distance (Å)	Clash overlap (Å)
3:D:415:HIS:HA	3:D:527:VAL:HG22	1.77	0.65
3:D:603:ASP:HB3	3:D:774:LYS:HE3	1.77	0.65
3:E:365:ALA:O	3:E:368:HIS:ND1	2.29	0.65
3:D:776:GLU:HA	4:D:1001:AGS:H1'	1.79	0.65
3:F:913:GLU:HG3	3:F:916:GLN:HE22	1.61	0.65
3:B:301:ARG:HH11	3:B:301:ARG:HA	1.62	0.64
3:C:727:GLN:NE2	3:C:728:MET:O	2.30	0.64
3:B:849:ALA:HB1	3:B:907:ARG:HH21	1.63	0.64
3:F:669:CYS:HB2	3:F:704:ARG:HG2	1.79	0.64
3:A:490:TYR:O	3:A:494:GLN:NE2	2.30	0.64
3:A:605:ILE:O	3:A:611:ARG:NH1	2.31	0.64
3:D:312:PRO:HA	3:D:345:LYS:NZ	2.13	0.64
3:B:668:SER:HB3	3:B:705:LEU:HD21	1.78	0.64
3:C:639:CYS:SG	3:D:751:ARG:NH2	2.70	0.64
3:D:678:SER:HB3	3:D:719:LEU:HB2	1.78	0.64
3:C:555:ASN:ND2	3:C:583:CYS:SG	2.70	0.64
3:B:368:HIS:NE2	3:B:370:GLU:OE2	2.26	0.63
3:B:874:ARG:NH2	3:B:875:HIS:C	2.44	0.63
3:A:779:ARG:NH1	3:A:784:TYR:OH	2.30	0.63
3:D:851:THR:OG1	3:D:907:ARG:NH1	2.32	0.63
3:E:605:ILE:O	3:E:611:ARG:NH1	2.31	0.63
3:C:466:PRO:HB2	3:C:469:LEU:HB3	1.80	0.63
3:C:375:LYS:O	3:C:376:ARG:HG2	1.98	0.63
3:E:442:TRP:NE1	3:E:532:GLU:OE2	2.30	0.63
3:C:701:ASN:ND2	3:C:743:ASP:O	2.31	0.63
3:D:293:LEU:HA	3:D:296:HIS:ND1	2.14	0.63
1:H:6:DT:H5''	3:A:719:LEU:HD11	1.79	0.63
3:B:668:SER:HA	3:B:670:ARG:HH21	1.63	0.63
3:A:853:TYR:HB2	3:A:857:GLU:HG2	1.81	0.63
3:A:675:LYS:HB2	3:A:676:PRO:HD3	1.80	0.62
3:C:600:ALA:HB1	4:C:1001:AGS:HN62	1.62	0.62
3:B:605:ILE:O	3:B:611:ARG:NH1	2.32	0.62
3:B:687:GLY:HA2	3:B:730:ALA:HA	1.81	0.62
4:B:1001:AGS:H8	4:B:1001:AGS:H5'2	1.81	0.62
3:F:674:GLU:O	3:F:717:ARG:HG2	1.99	0.62
3:A:637:GLY:O	3:A:737:ASN:ND2	2.33	0.62
3:B:874:ARG:NH2	3:B:875:HIS:O	2.29	0.62
1:H:23:DT:O4	2:I:2:DA:N6	2.33	0.62
3:B:370:GLU:HB2	3:B:372:LYS:HD3	1.81	0.62
3:A:706:LYS:O	3:A:710:ASN:ND2	2.33	0.62
3:F:785:ILE:O	3:F:791:GLN:NE2	2.23	0.62

Continued on next page...

Continued from previous page...

Atom-1	Atom-2	Interatomic distance (Å)	Clash overlap (Å)
3:C:850:GLU:HA	3:C:905:GLY:HA2	1.82	0.62
3:D:302:TYR:HA	3:D:305:LYS:HD2	1.80	0.62
3:D:670:ARG:HA	3:D:704:ARG:HH22	1.64	0.62
3:E:777:ASP:HB3	3:E:780:PHE:HB2	1.81	0.61
3:B:376:ARG:NH2	3:B:428:ASN:O	2.27	0.61
3:A:293:LEU:HD21	3:A:337:PRO:HB2	1.82	0.61
3:C:435:ASP:OD1	3:C:439:LYS:N	2.29	0.61
3:D:290:LEU:HA	3:D:293:LEU:HD12	1.81	0.61
3:D:839:ILE:O	3:D:843:VAL:N	2.24	0.61
3:B:359:GLU:OE1	3:B:363:ASN:ND2	2.34	0.61
3:F:539:SER:HB2	3:F:542:GLN:HE22	1.65	0.61
3:F:672:THR:HG23	3:F:675:LYS:H	1.64	0.61
3:B:665:LEU:HD12	3:B:670:ARG:HH12	1.64	0.61
3:D:854:ASN:HD22	3:D:900:THR:HG22	1.65	0.61
3:E:467:ASP:OD1	3:E:468:GLU:N	2.33	0.61
3:C:706:LYS:O	3:C:710:ASN:ND2	2.33	0.61
3:D:867:ASN:HB3	3:D:872:VAL:HG12	1.82	0.61
3:B:293:LEU:HB2	3:B:301:ARG:HH22	1.64	0.61
3:D:307:LEU:HD21	3:D:342:PHE:HD1	1.66	0.61
3:E:750:TRP:CD2	3:E:829:ARG:HD2	2.36	0.61
3:F:662:ASN:O	3:F:665:LEU:HB2	2.00	0.61
3:F:779:ARG:NH1	3:F:784:TYR:OH	2.34	0.61
3:B:496:HIS:CE1	3:B:499:ASN:HD21	2.19	0.61
3:D:290:LEU:HD13	3:D:341:TRP:CD2	2.35	0.61
3:B:699:VAL:HA	3:B:741:ILE:HB	1.81	0.61
3:E:691:PHE:HB2	3:E:734:ALA:HA	1.83	0.60
3:F:775:LYS:NZ	3:F:776:GLU:O	2.33	0.60
3:E:395:GLU:HA	3:E:398:TYR:CZ	2.36	0.60
3:C:720:ASN:O	3:C:721:GLN:NE2	2.34	0.60
3:E:777:ASP:O	4:E:1001:AGS:O2'	2.20	0.60
3:B:871:ASN:HB2	3:B:873:LYS:HZ3	1.67	0.60
3:E:610:ALA:HB2	3:E:820:THR:HG21	1.84	0.60
3:A:539:SER:HB2	3:A:542:GLN:HE22	1.67	0.60
3:B:289:SER:HB3	3:B:292:ILE:HB	1.82	0.60
3:C:661:LEU:HB3	3:C:691:PHE:HE1	1.67	0.60
3:B:863:ALA:HA	3:B:866:TYR:CE2	2.36	0.59
3:C:666:LEU:HD12	3:C:700:LEU:HD13	1.83	0.59
3:C:777:ASP:HB3	3:C:780:PHE:HB2	1.84	0.59
3:F:762:PHE:HB3	3:F:776:GLU:HG3	1.84	0.59
3:B:290:LEU:HD12	3:B:341:TRP:HB2	1.85	0.59
3:C:946:SER:HB2	3:C:950:SER:HA	1.84	0.59

Continued on next page...

Continued from previous page...

Atom-1	Atom-2	Interatomic distance (Å)	Clash overlap (Å)
3:E:405:TYR:CD2	3:E:417:MET:HB2	2.38	0.59
3:B:467:ASP:OD1	3:B:468:GLU:N	2.35	0.59
3:D:302:TYR:CE1	3:D:306:ILE:HD13	2.37	0.59
3:D:898:ASN:O	3:D:900:THR:OG1	2.20	0.59
3:C:539:SER:HB2	3:C:542:GLN:HE22	1.68	0.59
3:F:684:LYS:HD3	3:F:726:PHE:HB2	1.85	0.59
3:B:302:TYR:HA	3:B:305:LYS:HE2	1.83	0.59
3:B:700:LEU:HB3	3:B:705:LEU:HD11	1.85	0.59
3:A:877:ALA:HB2	3:F:870:ILE:HA	1.85	0.59
3:A:892:TYR:HD2	3:A:904:LYS:HB2	1.68	0.59
3:E:583:CYS:O	3:E:792:ASN:ND2	2.36	0.59
4:F:1001:AGS:O2B	4:F:1001:AGS:O1A	2.20	0.59
3:E:755:HIS:HB3	3:E:825:THR:HA	1.85	0.58
3:A:293:LEU:O	3:A:296:HIS:NE2	2.36	0.58
3:F:338:LEU:HA	3:F:341:TRP:HD1	1.68	0.58
3:F:387:PRO:HA	3:F:390:TYR:HE1	1.69	0.58
3:B:818:CYS:SG	3:B:820:THR:OG1	2.61	0.58
3:A:642:LYS:NZ	3:A:736:SER:O	2.37	0.58
3:C:629:ALA:HB2	3:C:711:PRO:HD3	1.86	0.58
3:D:848:SER:OG	3:D:907:ARG:NH1	2.37	0.58
3:D:852:VAL:HG11	3:D:903:LEU:HB3	1.84	0.58
3:E:350:TRP:O	3:E:355:LYS:N	2.29	0.58
3:A:405:TYR:CD2	3:A:417:MET:HB2	2.38	0.58
3:D:491:HIS:HB3	3:D:504:TYR:HE2	1.67	0.58
3:D:605:ILE:O	3:D:611:ARG:NH1	2.37	0.58
3:C:849:ALA:HB1	3:C:907:ARG:HB2	1.85	0.58
3:B:840:THR:HA	3:B:844:VAL:HB	1.86	0.57
3:D:487:HIS:CE1	3:D:491:HIS:CE1	2.92	0.57
3:C:863:ALA:HA	3:C:866:TYR:CE2	2.39	0.57
3:D:659:SER:HB2	3:D:682:ARG:HH11	1.68	0.57
4:F:1001:AGS:H8	4:F:1001:AGS:H5'2	1.85	0.57
3:E:303:LEU:HA	3:E:306:ILE:HG12	1.86	0.57
3:E:895:TRP:HB2	3:E:899:LYS:HA	1.87	0.57
3:F:777:ASP:O	4:F:1001:AGS:O2'	2.23	0.57
3:E:659:SER:HB2	3:E:682:ARG:HH21	1.68	0.57
3:A:657:TYR:O	3:A:687:GLY:N	2.38	0.57
3:C:870:ILE:HG13	3:C:871:ASN:N	2.18	0.57
3:D:892:TYR:HB2	3:D:904:LYS:HB2	1.86	0.57
3:C:292:ILE:O	3:C:296:HIS:ND1	2.31	0.57
3:C:395:GLU:HA	3:C:398:TYR:CZ	2.39	0.57
1:H:3:DT:H2''	1:H:4:DT:C6	2.40	0.57

Continued on next page...

Continued from previous page...

Atom-1	Atom-2	Interatomic distance (Å)	Clash overlap (Å)
3:B:946:SER:HB3	3:B:947:PRO:HD2	1.85	0.57
3:F:636:GLY:HA2	3:F:758:SER:HB3	1.87	0.57
3:F:946:SER:HB2	3:F:950:SER:HA	1.86	0.57
1:H:14:DT:H2"	1:H:15:DT:C6	2.40	0.56
3:B:851:THR:N	3:B:906:CYS:O	2.36	0.56
3:D:878:LEU:O	3:D:882:GLN:NE2	2.36	0.56
3:E:470:HIS:HE1	3:E:528:ILE:HD13	1.71	0.56
3:B:395:GLU:HA	3:B:398:TYR:CZ	2.40	0.56
3:A:475:GLU:O	3:A:479:ARG:NH1	2.38	0.56
3:F:433:ASP:OD1	3:F:536:ARG:NH1	2.37	0.56
3:F:675:LYS:HD2	3:F:676:PRO:HD2	1.87	0.56
3:B:634:TRP:HZ3	3:B:758:SER:HB2	1.70	0.56
3:B:852:VAL:HG11	3:B:903:LEU:HB3	1.86	0.56
3:C:348:GLU:O	3:C:352:THR:N	2.37	0.56
3:D:653:LEU:HD23	3:D:658:ALA:HB2	1.87	0.56
3:A:414:GLU:OE2	3:F:520:ASN:HA	2.05	0.56
3:D:290:LEU:HD13	3:D:341:TRP:CG	2.40	0.56
3:D:371:LYS:HZ1	3:D:574:HIS:HA	1.70	0.56
3:F:325:VAL:HG21	3:F:358:LEU:HD21	1.88	0.56
3:B:290:LEU:HA	3:B:293:LEU:HD12	1.87	0.56
3:A:298:PRO:O	3:A:301:ARG:NH1	2.39	0.56
3:A:720:ASN:ND2	3:A:721:GLN:OE1	2.39	0.56
3:D:521:ASP:OD1	3:D:525:LYS:NZ	2.34	0.56
3:D:872:VAL:O	3:E:874:ARG:NH2	2.39	0.56
3:B:878:LEU:HD11	3:A:870:ILE:HG23	1.88	0.56
4:E:1001:AGS:H8	4:E:1001:AGS:H5'2	1.88	0.56
3:D:834:THR:OG1	3:D:862:TYR:OH	2.20	0.55
3:E:325:VAL:HG13	3:E:362:TRP:HE3	1.70	0.55
3:E:699:VAL:HA	3:E:741:ILE:HB	1.87	0.55
3:E:912:PHE:HE1	3:F:902:ILE:HD13	1.70	0.55
3:F:902:ILE:O	3:F:904:LYS:NZ	2.39	0.55
3:A:305:LYS:HD2	3:A:393:ILE:HG23	1.88	0.55
3:E:365:ALA:HA	3:E:368:HIS:HB3	1.88	0.55
3:B:652:VAL:HG21	3:B:794:PHE:HD2	1.70	0.55
3:B:777:ASP:HB3	3:B:780:PHE:HB2	1.89	0.55
3:B:874:ARG:NH2	3:B:876:ILE:HA	2.21	0.55
3:E:657:TYR:O	3:E:687:GLY:N	2.36	0.55
3:B:635:LEU:HD23	3:B:755:HIS:NE2	2.22	0.55
3:C:402:LEU:HD22	3:C:484:ILE:HG13	1.89	0.55
3:C:448:PRO:HG3	3:C:457:ILE:HD11	1.88	0.55
3:F:493:SER:OG	3:F:494:GLN:NE2	2.40	0.55

Continued on next page...

Continued from previous page...

Atom-1	Atom-2	Interatomic distance (Å)	Clash overlap (Å)
3:C:842:ARG:NH2	3:D:853:TYR:OH	2.39	0.55
3:D:680:PHE:HZ	3:D:704:ARG:HG2	1.71	0.55
3:B:809:TYR:CE1	3:B:815:LYS:HB2	2.41	0.55
3:A:675:LYS:HE2	3:F:676:PRO:O	2.06	0.55
3:A:545:ASP:OD1	3:A:577:HIS:N	2.32	0.55
3:D:378:ILE:HA	3:D:381:TRP:HE3	1.71	0.55
3:D:388:GLN:OE1	3:D:391:LYS:NZ	2.39	0.55
3:B:617:TYR:HD2	3:B:618:LEU:HD22	1.71	0.55
3:F:663:ILE:HA	3:F:691:PHE:CG	2.42	0.55
3:A:563:ILE:HD11	3:A:806:GLN:HB3	1.89	0.55
4:A:1001:AGS:O2B	4:A:1001:AGS:O1A	2.25	0.55
3:C:852:VAL:HG11	3:C:903:LEU:HB3	1.89	0.55
3:B:301:ARG:HH11	3:B:304:HIS:HB2	1.72	0.54
3:D:859:VAL:HG13	3:D:880:LEU:HD12	1.88	0.54
3:F:657:TYR:O	3:F:687:GLY:N	2.32	0.54
3:B:604:ILE:HD13	3:B:645:LEU:HD21	1.90	0.54
3:C:876:ILE:HG22	3:C:878:LEU:H	1.71	0.54
3:D:298:PRO:HA	3:D:301:ARG:NE	2.22	0.54
3:C:600:ALA:HB1	4:C:1001:AGS:N6	2.22	0.54
3:C:828:TYR:OH	3:C:832:GLN:NE2	2.39	0.54
3:D:301:ARG:H	3:D:301:ARG:HD3	1.73	0.54
3:E:668:SER:H	3:E:703:SER:HB2	1.71	0.54
3:B:682:ARG:NH2	3:C:723:GLN:O	2.41	0.54
3:B:712:GLY:HA2	3:A:647:ARG:HH12	1.72	0.54
3:F:848:SER:HB3	3:F:918:GLY:HA2	1.88	0.54
3:B:670:ARG:H	3:B:670:ARG:HE	1.55	0.54
3:B:874:ARG:HH22	3:B:876:ILE:HA	1.72	0.54
3:C:609:ASP:OD1	3:C:609:ASP:N	2.41	0.54
3:D:326:PHE:HE1	3:D:361:LEU:HB3	1.73	0.54
3:E:636:GLY:HA3	3:E:640:ASN:ND2	2.22	0.54
3:E:945:TRP:HZ3	3:E:947:PRO:HA	1.73	0.54
3:C:641:GLY:H	4:C:1001:AGS:PB	2.30	0.54
3:C:804:LYS:HA	3:C:807:LYS:HE2	1.90	0.54
3:F:669:CYS:HB3	3:F:703:SER:HB2	1.89	0.54
3:F:453:ASN:OD1	3:F:454:GLN:N	2.39	0.54
3:E:895:TRP:HB3	3:E:901:ARG:HA	1.90	0.54
3:F:387:PRO:HA	3:F:390:TYR:CE1	2.43	0.54
3:F:715:THR:HA	3:F:725:SER:HA	1.90	0.54
3:D:636:GLY:HA3	3:D:757:ARG:HG3	1.90	0.53
3:D:706:LYS:HD2	3:D:706:LYS:N	2.22	0.53
3:E:309:LEU:HD22	3:E:389:GLN:HG3	1.89	0.53

Continued on next page...

Continued from previous page...

Atom-1	Atom-2	Interatomic distance (Å)	Clash overlap (Å)
3:F:363:ASN:O	3:F:367:HIS:ND1	2.32	0.53
3:E:613:TRP:CD1	3:E:818:CYS:HB3	2.42	0.53
3:B:673:ALA:H	3:B:675:LYS:HE3	1.72	0.53
3:D:434:VAL:H	3:D:536:ARG:HH12	1.54	0.53
3:F:740:PHE:O	3:F:828:TYR:OH	2.26	0.53
3:B:326:PHE:HB3	3:B:372:LYS:HD2	1.90	0.53
3:A:629:ALA:HB2	3:A:711:PRO:HD3	1.90	0.53
3:A:767:ASP:OD1	3:A:770:ASN:ND2	2.38	0.53
3:D:866:TYR:HE2	3:D:873:LYS:HG2	1.73	0.53
3:C:463:GLU:OE2	3:D:538:ARG:NH2	2.41	0.53
3:D:839:ILE:HG23	3:D:843:VAL:HB	1.91	0.53
3:E:894:GLN:H	3:E:904:LYS:HG2	1.73	0.53
3:F:849:ALA:HB1	3:F:907:ARG:HH21	1.74	0.53
1:H:13:DT:H1'	1:H:14:DT:H5'	1.91	0.53
3:B:810:ASN:O	3:B:812:GLN:NE2	2.41	0.53
4:A:1001:AGS:O1A	4:A:1001:AGS:O2G	2.26	0.53
3:C:637:GLY:H	3:C:640:ASN:HB2	1.74	0.53
3:D:453:ASN:OD1	3:D:454:GLN:N	2.37	0.53
3:D:642:LYS:HG2	4:D:1001:AGS:O1B	2.08	0.53
3:E:299:GLU:O	3:E:303:LEU:HG	2.09	0.53
3:B:406:VAL:HG23	3:B:411:GLY:HA2	1.91	0.53
3:B:634:TRP:CZ3	3:B:642:LYS:HE3	2.43	0.53
3:D:290:LEU:HD11	3:D:304:HIS:HD2	1.73	0.53
3:B:583:CYS:O	3:B:792:ASN:ND2	2.42	0.53
3:C:616:PHE:HA	3:C:805:LEU:HD11	1.91	0.53
3:E:297:ASP:HB3	3:E:299:GLU:HG3	1.90	0.53
3:E:781:ILE:HD12	4:E:1001:AGS:H3'	1.91	0.53
3:B:653:LEU:HD23	3:B:658:ALA:HB2	1.90	0.52
3:C:634:TRP:HB3	3:C:756:TYR:HB3	1.92	0.52
3:F:663:ILE:O	3:F:667:THR:HG23	2.10	0.52
3:D:290:LEU:HA	3:D:293:LEU:CD1	2.39	0.52
1:H:22:DT:O4	2:I:3:DA:N6	2.43	0.52
3:B:291:SER:HA	3:B:294:MET:HE3	1.92	0.52
3:B:663:ILE:HA	3:B:691:PHE:CE2	2.43	0.52
3:A:652:VAL:HG21	3:A:794:PHE:HD2	1.74	0.52
3:C:371:LYS:H	3:C:371:LYS:HD2	1.74	0.52
3:C:490:TYR:O	3:C:494:GLN:NE2	2.42	0.52
3:A:376:ARG:HH21	3:A:573:GLU:HG3	1.74	0.52
3:C:701:ASN:HD21	3:C:744:THR:HB	1.75	0.52
3:E:493:SER:OG	3:E:494:GLN:NE2	2.43	0.52
3:B:867:ASN:OD1	3:B:872:VAL:HA	2.08	0.52

Continued on next page...

Continued from previous page...

Atom-1	Atom-2	Interatomic distance (Å)	Clash overlap (Å)
3:A:701:ASN:HA	3:A:705:LEU:HD22	1.90	0.52
3:E:683:LEU:HA	3:E:686:ARG:HB2	1.90	0.52
3:A:634:TRP:HZ3	3:A:758:SER:HB2	1.73	0.52
3:C:315:TYR:HA	3:C:321:TRP:HB2	1.91	0.52
3:E:292:ILE:HA	3:E:295:LEU:HB2	1.92	0.52
3:C:663:ILE:HB	3:C:691:PHE:HB3	1.90	0.52
3:D:448:PRO:HG3	3:D:457:ILE:HD11	1.91	0.52
3:E:388:GLN:HA	3:E:391:LYS:NZ	2.22	0.52
3:A:315:TYR:OH	3:A:343:SER:O	2.27	0.52
3:F:326:PHE:HZ	3:F:361:LEU:HD12	1.75	0.52
3:B:318:TYR:HA	3:B:321:TRP:NE1	2.23	0.52
3:B:876:ILE:HG13	3:A:871:ASN:HB3	1.91	0.52
3:A:555:ASN:ND2	3:A:583:CYS:SG	2.82	0.52
3:C:707:GLU:OE1	3:C:707:GLU:N	2.31	0.52
3:F:378:ILE:HA	3:F:381:TRP:HD1	1.75	0.52
3:F:716:ALA:HB2	3:F:726:PHE:HD1	1.75	0.52
3:B:290:LEU:H	3:B:290:LEU:HD22	1.75	0.51
3:B:290:LEU:HB3	3:B:341:TRP:CE3	2.45	0.51
3:E:866:TYR:HH	3:E:875:HIS:CD2	2.25	0.51
3:F:677:ASN:OD1	3:F:680:PHE:N	2.43	0.51
4:A:1001:AGS:O2B	4:A:1001:AGS:O2G	2.27	0.51
3:D:633:LEU:HD12	3:D:734:ALA:HB3	1.92	0.51
3:B:668:SER:HB2	3:B:704:ARG:HB2	1.90	0.51
3:E:387:PRO:HA	3:E:390:TYR:CE1	2.42	0.51
3:E:702:THR:HA	3:E:705:LEU:HB3	1.92	0.51
3:B:398:TYR:CE2	3:B:425:MET:HG3	2.45	0.51
3:A:398:TYR:CD2	3:A:425:MET:HG3	2.45	0.51
3:D:312:PRO:HA	3:D:345:LYS:HZ2	1.75	0.51
3:D:376:ARG:NH2	3:D:428:ASN:O	2.43	0.51
3:D:621:ALA:HB1	3:D:688:TYR:HB2	1.93	0.51
3:B:622:ILE:HD11	3:B:798:LEU:HB3	1.93	0.51
3:B:755:HIS:HB3	3:B:825:THR:HA	1.92	0.51
3:D:318:TYR:HA	3:D:321:TRP:HB3	1.93	0.51
3:D:946:SER:HB3	3:D:947:PRO:HD2	1.92	0.51
3:D:660:LYS:NZ	3:D:692:GLU:OE2	2.33	0.51
3:C:657:TYR:O	3:C:687:GLY:N	2.34	0.51
3:D:290:LEU:HD22	3:D:341:TRP:NE1	2.26	0.51
3:D:323:ASN:OD1	3:D:324:VAL:N	2.43	0.51
3:D:410:ASN:N	3:D:410:ASN:OD1	2.40	0.51
3:E:750:TRP:CE3	3:E:829:ARG:HD2	2.46	0.51
3:F:398:TYR:CE1	3:F:425:MET:HA	2.45	0.51

Continued on next page...

Continued from previous page...

Atom-1	Atom-2	Interatomic distance (Å)	Clash overlap (Å)
3:B:808:GLU:O	3:B:810:ASN:N	2.43	0.51
3:A:395:GLU:HA	3:A:398:TYR:CZ	2.46	0.51
3:A:691:PHE:HB2	3:A:734:ALA:HA	1.92	0.51
3:F:339:ALA:O	3:F:343:SER:N	2.36	0.51
3:F:852:VAL:HG11	3:F:903:LEU:H	1.75	0.51
3:A:415:HIS:CD2	3:A:415:HIS:H	2.28	0.51
3:C:676:PRO:HD3	3:C:717:ARG:HH12	1.75	0.51
3:C:713:ASP:OD1	3:C:713:ASP:N	2.43	0.51
3:C:748:GLY:HA2	3:C:751:ARG:HG2	1.93	0.51
3:F:616:PHE:HB3	3:F:805:LEU:HD12	1.93	0.51
3:B:697:SER:HB2	3:C:878:LEU:HD13	1.93	0.50
3:A:619:SER:HA	3:A:798:LEU:HD11	1.93	0.50
3:A:635:LEU:HD23	3:A:755:HIS:NE2	2.26	0.50
3:C:643:THR:HA	3:C:646:MET:HE2	1.92	0.50
3:F:663:ILE:HA	3:F:691:PHE:CD1	2.47	0.50
3:A:609:ASP:N	3:A:609:ASP:OD1	2.43	0.50
3:A:632:LEU:HB3	3:A:733:VAL:HG12	1.93	0.50
3:C:386:ALA:HB1	3:C:389:GLN:HE21	1.75	0.50
3:C:780:PHE:HA	3:C:784:TYR:HD2	1.77	0.50
3:E:636:GLY:HA3	3:E:640:ASN:HD22	1.74	0.50
1:H:16:DT:H2'	1:H:17:DT:O4'	2.11	0.50
3:F:637:GLY:O	3:F:737:ASN:ND2	2.44	0.50
3:B:405:TYR:CD2	3:B:417:MET:HB2	2.47	0.50
3:C:425:MET:HG3	3:C:426:MET:HG2	1.94	0.50
3:C:662:ASN:HD22	3:C:665:LEU:HG	1.75	0.50
3:D:634:TRP:HB3	3:D:756:TYR:HB3	1.92	0.50
3:D:854:ASN:HA	3:D:903:LEU:H	1.76	0.50
1:H:9:DT:H2'	1:H:10:DT:C6	2.46	0.50
3:C:343:SER:HB3	3:C:350:TRP:HD1	1.76	0.50
3:C:664:SER:HA	3:C:667:THR:HG23	1.94	0.50
3:D:822:GLU:HA	3:D:825:THR:HB	1.93	0.50
3:E:602:GLN:HB2	3:E:942:TRP:CZ2	2.47	0.50
3:B:414:GLU:HG3	3:B:415:HIS:H	1.77	0.50
3:A:838:PHE:HE1	3:A:842:ARG:HD2	1.76	0.50
3:C:640:ASN:HB3	4:C:1001:AGS:O1B	2.12	0.50
3:D:539:SER:HB2	3:D:542:GLN:HE22	1.77	0.50
3:E:304:HIS:HB2	3:E:341:TRP:CZ3	2.46	0.50
3:F:359:GLU:O	3:F:363:ASN:ND2	2.43	0.50
3:B:290:LEU:HD13	3:B:290:LEU:N	2.26	0.50
3:B:381:TRP:HA	3:B:384:LYS:HG2	1.94	0.50
3:E:305:LYS:O	3:E:309:LEU:HG	2.12	0.50

Continued on next page...

Continued from previous page...

Atom-1	Atom-2	Interatomic distance (Å)	Clash overlap (Å)
3:E:640:ASN:ND2	3:E:758:SER:HB3	2.23	0.50
3:B:448:PRO:HG3	3:B:457:ILE:HD11	1.93	0.50
3:C:946:SER:HB3	3:C:947:PRO:HD2	1.94	0.50
3:B:684:LYS:HE3	3:B:726:PHE:CG	2.47	0.49
3:B:946:SER:HB2	3:B:950:SER:HA	1.94	0.49
3:A:628:GLU:OE2	3:A:813:ILE:N	2.45	0.49
3:A:674:GLU:OE1	3:A:676:PRO:HD2	2.11	0.49
3:C:387:PRO:HA	3:C:390:TYR:HE1	1.76	0.49
3:C:750:TRP:HE3	3:C:829:ARG:HH11	1.60	0.49
3:C:766:PRO:HG3	3:C:775:LYS:HB2	1.92	0.49
3:D:764:HIS:HA	3:D:775:LYS:HD2	1.94	0.49
3:E:330:ASN:HB3	3:E:374:THR:HG22	1.92	0.49
3:B:438:GLY:O	3:B:439:LYS:HD3	2.11	0.49
3:C:643:THR:HB	3:C:647:ARG:HH22	1.76	0.49
3:C:755:HIS:HD1	3:C:828:TYR:HB2	1.78	0.49
3:F:813:ILE:O	3:F:816:VAL:HG12	2.12	0.49
3:F:840:THR:HG22	3:F:844:VAL:HG11	1.94	0.49
3:F:895:TRP:CD1	3:F:899:LYS:HD3	2.46	0.49
3:A:662:ASN:HB3	3:A:665:LEU:HD23	1.95	0.49
3:A:751:ARG:O	3:A:754:ARG:NH1	2.44	0.49
3:C:477:PHE:O	3:C:481:MET:HG2	2.12	0.49
3:D:838:PHE:O	3:D:841:GLU:HG3	2.12	0.49
3:B:635:LEU:HD13	3:B:736:SER:O	2.12	0.49
3:D:312:PRO:O	3:D:316:VAL:HG23	2.12	0.49
3:D:843:VAL:HG12	3:D:844:VAL:HG23	1.92	0.49
3:E:755:HIS:O	3:E:824:GLU:HB3	2.13	0.49
3:E:838:PHE:HB2	3:E:865:TRP:CZ3	2.47	0.49
3:A:616:PHE:HZ	3:A:804:LYS:HE3	1.76	0.49
3:D:641:GLY:HA2	4:D:1001:AGS:O1A	2.12	0.49
3:D:895:TRP:HB3	3:D:901:ARG:HA	1.94	0.49
3:E:292:ILE:HB	3:E:296:HIS:CE1	2.48	0.49
3:E:707:GLU:OE1	3:E:707:GLU:N	2.38	0.49
3:F:663:ILE:HG12	3:F:694:THR:HG22	1.94	0.49
3:C:342:PHE:O	3:C:345:LYS:HG2	2.12	0.49
3:D:755:HIS:HB3	3:D:825:THR:HA	1.95	0.49
3:E:656:HIS:O	3:E:686:ARG:NH1	2.45	0.49
3:F:293:LEU:HD11	3:F:337:PRO:HB2	1.94	0.49
3:B:519:PHE:HE2	3:C:409:TYR:CZ	2.31	0.49
3:B:665:LEU:HD21	3:B:679:ALA:HB1	1.94	0.49
3:B:708:MET:HE2	3:B:708:MET:HA	1.94	0.49
3:A:755:HIS:HB3	3:A:825:THR:HA	1.94	0.49

Continued on next page...

Continued from previous page...

Atom-1	Atom-2	Interatomic distance (Å)	Clash overlap (Å)
3:D:398:TYR:CE2	3:D:425:MET:HG3	2.48	0.49
3:D:609:ASP:OD1	3:D:610:ALA:N	2.44	0.49
3:F:938:PRO:HG3	3:F:942:TRP:HB3	1.94	0.49
3:B:634:TRP:CH2	3:B:642:LYS:HG2	2.48	0.49
3:D:666:LEU:HD12	3:D:705:LEU:HB2	1.95	0.49
3:D:702:THR:HA	3:D:705:LEU:HD23	1.94	0.49
3:E:623:PHE:HB3	3:E:627:LYS:HE2	1.94	0.49
4:E:1001:AGS:O3A	4:E:1001:AGS:O2G	2.30	0.49
3:A:852:VAL:HG22	3:A:908:ILE:HD11	1.95	0.49
3:C:601:LEU:HD11	3:C:615:MET:HE1	1.95	0.49
3:C:623:PHE:HB3	3:C:627:LYS:HE2	1.94	0.49
3:D:344:GLN:HB2	3:D:347:PRO:HG3	1.95	0.49
3:B:604:ILE:HD11	4:B:1001:AGS:HN61	1.77	0.48
3:D:911:LYS:HD2	3:D:912:PHE:N	2.28	0.48
3:E:470:HIS:CE1	3:E:528:ILE:HD13	2.48	0.48
3:E:638:GLY:O	4:E:1001:AGS:O2G	2.30	0.48
3:B:332:SER:OG	3:B:334:ASN:OD1	2.31	0.48
3:B:667:THR:HA	3:B:700:LEU:HG	1.95	0.48
3:B:764:HIS:O	3:B:775:LYS:NZ	2.46	0.48
3:B:871:ASN:HB2	3:B:873:LYS:NZ	2.29	0.48
3:B:874:ARG:HE	3:B:875:HIS:N	2.11	0.48
3:F:669:CYS:H	3:F:703:SER:HB2	1.78	0.48
3:D:296:HIS:CE1	3:D:297:ASP:CG	2.86	0.48
3:D:350:TRP:HZ3	3:D:355:LYS:HD3	1.78	0.48
3:D:544:LEU:HD21	3:D:577:HIS:HB3	1.94	0.48
3:E:635:LEU:HD21	3:E:739:ASN:HA	1.95	0.48
3:F:642:LYS:O	3:F:646:MET:HG2	2.13	0.48
3:B:292:ILE:HG23	3:B:296:HIS:CE1	2.49	0.48
3:B:336:ARG:HD2	3:B:362:TRP:CD1	2.48	0.48
3:A:946:SER:HB3	3:A:947:PRO:HD2	1.96	0.48
3:D:703:SER:O	3:D:704:ARG:HB2	2.12	0.48
3:E:322:SER:O	3:E:326:PHE:HD1	1.97	0.48
3:E:371:LYS:HE2	3:E:574:HIS:HA	1.96	0.48
3:E:865:TRP:CE3	3:E:866:TYR:HB3	2.49	0.48
3:E:867:ASN:HB3	3:E:872:VAL:HG12	1.96	0.48
3:F:295:LEU:N	3:F:301:ARG:HH21	2.12	0.48
3:F:383:HIS:HA	3:F:390:TYR:CZ	2.48	0.48
3:B:609:ASP:OD1	3:B:609:ASP:N	2.44	0.48
3:A:847:PRO:HD2	3:A:918:GLY:HA3	1.95	0.48
3:C:395:GLU:OE2	3:C:483:ARG:NH1	2.38	0.48
3:D:629:ALA:HB2	3:D:711:PRO:HD3	1.96	0.48

Continued on next page...

Continued from previous page...

Atom-1	Atom-2	Interatomic distance (Å)	Clash overlap (Å)
3:B:670:ARG:H	3:B:670:ARG:NE	2.12	0.48
3:C:762:PHE:HB3	3:C:776:GLU:HG3	1.96	0.48
3:E:383:HIS:HA	3:E:390:TYR:CE1	2.48	0.48
3:E:401:ILE:O	3:E:404:GLU:HG2	2.13	0.48
3:B:808:GLU:HG3	3:B:809:TYR:CD2	2.48	0.48
3:E:395:GLU:HA	3:E:398:TYR:CE1	2.49	0.48
3:B:290:LEU:HA	3:B:293:LEU:CD1	2.44	0.48
3:A:895:TRP:HB2	3:A:899:LYS:HA	1.96	0.48
3:E:374:THR:OG1	3:E:573:GLU:OE1	2.32	0.48
3:F:867:ASN:HA	3:F:871:ASN:O	2.12	0.48
3:D:321:TRP:CZ2	3:D:358:LEU:HD22	2.49	0.48
3:E:315:TYR:CE1	3:E:343:SER:HA	2.49	0.48
3:F:296:HIS:O	3:F:301:ARG:NH1	2.47	0.48
1:H:4:DT:H4'	1:H:5:DT:H5'	1.96	0.47
3:D:913:GLU:HB3	3:D:916:GLN:OE1	2.12	0.47
3:E:944:GLU:HG3	3:E:945:TRP:N	2.29	0.47
3:F:663:ILE:HA	3:F:691:PHE:CD2	2.49	0.47
3:B:866:TYR:CE1	3:B:873:LYS:HG2	2.49	0.47
3:C:660:LYS:NZ	3:D:715:THR:H	2.12	0.47
3:D:320:LEU:O	3:D:324:VAL:HG22	2.13	0.47
3:F:849:ALA:O	3:F:905:GLY:HA2	2.14	0.47
3:B:755:HIS:HD1	3:B:828:TYR:HB2	1.78	0.47
3:A:371:LYS:HE3	3:A:574:HIS:CD2	2.48	0.47
3:A:850:GLU:HA	3:A:905:GLY:HA3	1.95	0.47
3:D:359:GLU:OE1	3:D:360:LYS:NZ	2.40	0.47
3:E:466:PRO:HB2	3:E:469:LEU:HB3	1.95	0.47
3:E:914:THR:H	3:E:916:GLN:HE22	1.62	0.47
3:B:307:LEU:HA	3:B:310:LEU:HD23	1.96	0.47
3:A:538:ARG:HH12	3:F:461:ARG:HH22	1.62	0.47
3:C:298:PRO:O	3:C:301:ARG:HG2	2.14	0.47
3:D:321:TRP:CH2	3:D:358:LEU:HB2	2.49	0.47
3:F:299:GLU:HA	3:F:302:TYR:CE2	2.48	0.47
3:B:780:PHE:HA	3:B:784:TYR:HD2	1.79	0.47
3:B:835:LEU:O	3:B:839:ILE:HG12	2.15	0.47
3:A:406:VAL:HG13	3:A:411:GLY:HA2	1.97	0.47
3:C:444:GLU:OE1	3:C:461:ARG:NH2	2.41	0.47
3:B:293:LEU:HB2	3:B:301:ARG:NH2	2.29	0.47
3:B:427:GLY:HA2	3:B:535:PHE:CE2	2.50	0.47
3:B:712:GLY:HA2	3:A:647:ARG:NH1	2.29	0.47
3:B:911:LYS:HG3	3:B:912:PHE:N	2.22	0.47
3:A:309:LEU:HB3	3:A:389:GLN:NE2	2.29	0.47

Continued on next page...

Continued from previous page...

Atom-1	Atom-2	Interatomic distance (Å)	Clash overlap (Å)
3:A:616:PHE:O	3:A:619:SER:OG	2.22	0.47
3:A:938:PRO:HG3	3:A:942:TRP:HB3	1.97	0.47
3:C:378:ILE:HA	3:C:381:TRP:HE3	1.79	0.47
3:D:834:THR:HG1	3:D:862:TYR:HH	1.58	0.47
3:E:292:ILE:HD11	3:E:337:PRO:HG2	1.95	0.47
3:E:321:TRP:O	3:E:325:VAL:HG23	2.14	0.47
3:F:435:ASP:OD1	3:F:439:LYS:N	2.30	0.47
3:F:755:HIS:HD1	3:F:828:TYR:HB2	1.78	0.47
3:B:321:TRP:HA	3:B:324:VAL:HG12	1.96	0.47
3:E:318:TYR:O	3:E:321:TRP:HB2	2.15	0.47
3:B:899:LYS:O	3:B:900:THR:OG1	2.28	0.47
3:A:715:THR:HA	3:A:725:SER:HA	1.97	0.47
3:A:883:GLU:HA	3:A:886:ASN:HB2	1.96	0.47
3:C:298:PRO:HA	3:C:301:ARG:HG2	1.97	0.47
3:C:779:ARG:NH1	3:C:784:TYR:OH	2.48	0.47
3:D:661:LEU:HB2	3:D:691:PHE:HE1	1.79	0.47
3:D:671:GLU:HB3	3:D:675:LYS:HE3	1.97	0.47
3:E:336:ARG:O	3:E:340:GLU:HG2	2.15	0.47
3:E:706:LYS:HA	3:E:709:VAL:HB	1.97	0.47
3:B:771:PRO:O	3:B:774:LYS:NZ	2.38	0.47
3:F:466:PRO:HB2	3:F:469:LEU:HB3	1.95	0.47
3:F:670:ARG:HH22	3:F:671:GLU:HG2	1.80	0.47
3:B:639:CYS:HA	4:B:1001:AGS:O3A	2.15	0.46
3:B:873:LYS:HB3	3:B:873:LYS:HE3	1.30	0.46
3:A:835:LEU:O	3:A:839:ILE:HG12	2.15	0.46
3:D:676:PRO:HB2	3:D:720:ASN:H	1.80	0.46
3:E:821:ILE:HD12	3:E:822:GLU:H	1.79	0.46
3:B:539:SER:HA	3:B:542:GLN:HE22	1.80	0.46
3:B:631:MET:HB3	3:B:753:LEU:HD23	1.97	0.46
3:A:392:GLU:HA	3:A:395:GLU:HB3	1.97	0.46
3:D:290:LEU:HD22	3:D:341:TRP:CD1	2.51	0.46
3:E:461:ARG:NH2	3:F:538:ARG:HH12	2.14	0.46
3:F:619:SER:HA	3:F:798:LEU:HD12	1.95	0.46
3:C:631:MET:O	3:C:754:ARG:N	2.44	0.46
3:C:641:GLY:HA2	4:C:1001:AGS:O1A	2.15	0.46
3:D:502:ASN:OD1	3:D:503:TYR:N	2.48	0.46
3:E:671:GLU:HB2	3:E:675:LYS:HB2	1.97	0.46
3:E:884:LEU:O	3:E:887:SER:OG	2.32	0.46
3:A:563:ILE:HD13	3:A:807:LYS:HG2	1.98	0.46
3:E:631:MET:HB3	3:E:753:LEU:HD23	1.97	0.46
3:A:777:ASP:H	4:A:1001:AGS:H1'	1.80	0.46

Continued on next page...

Continued from previous page...

Atom-1	Atom-2	Interatomic distance (Å)	Clash overlap (Å)
3:C:293:LEU:HA	3:C:296:HIS:HE1	1.80	0.46
3:C:681:MET:HG2	3:C:718:GLU:HG3	1.98	0.46
3:C:839:ILE:HA	3:C:843:VAL:HG22	1.97	0.46
3:C:854:ASN:OD1	3:C:855:LEU:N	2.48	0.46
3:E:354:GLY:HA2	3:E:357:LYS:HG2	1.98	0.46
3:F:631:MET:HB3	3:F:753:LEU:HD23	1.96	0.46
3:F:633:LEU:HD21	3:F:740:PHE:HD2	1.81	0.46
3:B:303:LEU:HA	3:B:306:ILE:HG12	1.97	0.46
3:C:532:GLU:N	3:C:532:GLU:OE1	2.49	0.46
3:F:380:TYR:HD1	3:F:384:LYS:HZ2	1.62	0.46
3:C:380:TYR:CE2	3:C:571:PHE:HB3	2.51	0.46
3:D:327:ALA:HB2	3:D:373:ILE:HD11	1.98	0.46
3:E:315:TYR:C	3:E:321:TRP:HE1	2.15	0.46
3:E:829:ARG:HH11	3:E:829:ARG:HA	1.81	0.46
3:F:777:ASP:H	4:F:1001:AGS:H1'	1.81	0.46
3:B:388:GLN:O	3:B:391:LYS:HG2	2.15	0.46
3:A:635:LEU:HD13	3:A:736:SER:O	2.16	0.46
3:D:433:ASP:HB3	3:D:541:ILE:HG13	1.98	0.46
3:E:354:GLY:O	3:E:358:LEU:HB3	2.16	0.46
3:A:894:GLN:HG3	3:A:895:TRP:H	1.81	0.46
3:D:676:PRO:HA	3:D:717:ARG:HB3	1.96	0.46
3:F:946:SER:HB3	3:F:947:PRO:HD2	1.97	0.46
3:B:601:LEU:HD22	3:B:942:TRP:HH2	1.80	0.46
3:B:640:ASN:HB3	3:B:642:LYS:HG3	1.97	0.46
3:B:695:ASN:OD1	3:B:696:LYS:N	2.48	0.46
3:D:303:LEU:HA	3:D:306:ILE:HG12	1.98	0.46
3:D:693:GLU:HG2	4:D:1001:AGS:S1G	2.56	0.46
3:E:693:GLU:OE1	3:E:737:ASN:N	2.45	0.46
3:F:344:GLN:HA	3:F:347:PRO:HB3	1.97	0.46
3:F:398:TYR:CZ	3:F:425:MET:HA	2.50	0.46
3:F:468:GLU:HA	3:F:471:ILE:HG12	1.96	0.46
3:B:301:ARG:HA	3:B:301:ARG:HD3	1.30	0.45
3:B:301:ARG:NH1	3:B:304:HIS:HB2	2.31	0.45
3:A:616:PHE:CZ	3:A:804:LYS:HE3	2.50	0.45
3:D:812:GLN:HB2	3:D:815:LYS:HE2	1.97	0.45
3:D:883:GLU:O	3:D:887:SER:N	2.49	0.45
3:A:328:LEU:HD11	3:A:338:LEU:HD22	1.99	0.45
3:A:847:PRO:HA	3:A:906:CYS:HB2	1.97	0.45
3:E:678:SER:O	3:E:681:MET:HG3	2.16	0.45
3:A:876:ILE:HG23	3:A:878:LEU:HG	1.99	0.45
3:B:661:LEU:HB2	3:B:691:PHE:HE1	1.82	0.45

Continued on next page...

Continued from previous page...

Atom-1	Atom-2	Interatomic distance (Å)	Clash overlap (Å)
3:C:783:GLU:O	3:C:784:TYR:HB2	2.16	0.45
3:D:330:ASN:HB3	3:D:374:THR:HG22	1.98	0.45
3:E:753:LEU:O	3:E:754:ARG:NH1	2.37	0.45
1:H:5:DT:OP1	3:C:717:ARG:NH2	2.49	0.45
3:B:663:ILE:HG22	3:B:692:GLU:H	1.82	0.45
3:A:470:HIS:HE1	3:A:525:LYS:NZ	2.14	0.45
3:C:405:TYR:OH	3:C:420:LYS:HD2	2.17	0.45
3:C:682:ARG:O	3:C:683:LEU:HB2	2.17	0.45
3:E:634:TRP:CH2	3:E:642:LYS:HB3	2.52	0.45
3:F:675:LYS:HE3	3:F:675:LYS:HB3	1.40	0.45
3:B:607:GLU:HB2	3:B:610:ALA:HB3	1.99	0.45
3:B:702:THR:O	3:B:706:LYS:HG2	2.17	0.45
3:A:838:PHE:HB2	3:A:865:TRP:CZ3	2.52	0.45
3:C:293:LEU:HA	3:C:296:HIS:CE1	2.52	0.45
3:C:587:PHE:HA	3:C:796:SER:HB3	1.97	0.45
3:D:332:SER:OG	3:D:334:ASN:OD1	2.23	0.45
3:D:848:SER:HB3	3:D:906:CYS:HA	1.98	0.45
3:D:945:TRP:O	3:D:950:SER:OG	2.34	0.45
3:E:849:ALA:O	3:E:906:CYS:N	2.49	0.45
3:E:610:ALA:HB2	3:E:820:THR:CG2	2.47	0.45
3:F:587:PHE:HA	3:F:796:SER:HB3	1.98	0.45
3:B:849:ALA:HB3	3:B:907:ARG:HB2	1.98	0.45
3:A:713:ASP:OD1	3:A:725:SER:OG	2.34	0.45
4:A:1001:AGS:H8	4:A:1001:AGS:H5'2	1.98	0.45
3:C:642:LYS:HG2	4:C:1001:AGS:O1B	2.17	0.45
3:D:557:VAL:HG13	3:D:568:ILE:HB	1.99	0.45
3:E:587:PHE:HA	3:E:796:SER:HB3	1.98	0.45
3:B:633:LEU:HD13	3:B:740:PHE:CD2	2.51	0.45
3:D:633:LEU:O	3:D:755:HIS:HA	2.17	0.45
3:D:780:PHE:HA	3:D:784:TYR:CD2	2.52	0.45
3:F:666:LEU:HD22	3:F:666:LEU:HA	1.79	0.45
3:B:876:ILE:O	3:B:878:LEU:N	2.49	0.45
3:A:882:GLN:N	3:A:882:GLN:OE1	2.50	0.45
3:C:321:TRP:O	3:C:325:VAL:HG23	2.17	0.45
3:C:780:PHE:HA	3:C:784:TYR:CD2	2.52	0.45
3:C:850:GLU:HG2	3:C:905:GLY:HA2	1.99	0.45
3:D:842:ARG:HG3	3:D:843:VAL:HG23	1.99	0.45
3:E:742:ILE:O	3:E:832:GLN:HG3	2.17	0.45
3:F:635:LEU:HD23	3:F:755:HIS:NE2	2.31	0.45
3:B:525:LYS:HD3	3:B:525:LYS:C	2.37	0.44
3:B:945:TRP:CH2	3:B:948:ASN:HA	2.51	0.44

Continued on next page...

Continued from previous page...

Atom-1	Atom-2	Interatomic distance (Å)	Clash overlap (Å)
3:C:809:TYR:CZ	3:C:816:VAL:HG23	2.52	0.44
3:D:682:ARG:HH21	3:E:722:LYS:NZ	2.15	0.44
3:E:307:LEU:HD13	3:E:342:PHE:HD1	1.82	0.44
3:F:866:TYR:HA	3:F:869:ASN:HB3	1.98	0.44
3:B:293:LEU:HD13	3:B:338:LEU:HB2	1.98	0.44
3:A:693:GLU:OE1	3:A:737:ASN:N	2.50	0.44
3:D:311:PRO:HG2	3:D:314:TYR:CZ	2.53	0.44
3:D:681:MET:HG3	3:D:718:GLU:HA	1.98	0.44
3:E:301:ARG:HA	3:E:304:HIS:ND1	2.32	0.44
3:E:511:PHE:O	3:E:515:LYS:HG3	2.18	0.44
3:A:859:VAL:HA	3:A:880:LEU:HD12	2.00	0.44
3:B:327:ALA:HB1	3:B:378:ILE:HD11	2.00	0.44
3:B:435:ASP:OD1	3:B:435:ASP:N	2.50	0.44
3:B:780:PHE:HA	3:B:784:TYR:CD2	2.52	0.44
3:A:635:LEU:O	3:A:758:SER:N	2.35	0.44
3:A:655:ASP:OD1	3:A:656:HIS:N	2.51	0.44
3:C:662:ASN:ND2	3:C:665:LEU:HG	2.32	0.44
3:D:680:PHE:CZ	3:D:704:ARG:HG2	2.51	0.44
3:F:644:PHE:HD2	3:F:645:LEU:HD22	1.83	0.44
3:F:694:THR:HG21	3:F:740:PHE:CE1	2.53	0.44
3:F:713:ASP:OD2	3:F:725:SER:OG	2.35	0.44
3:F:863:ALA:HA	3:F:866:TYR:CE1	2.53	0.44
3:B:847:PRO:HD2	3:B:918:GLY:HA2	1.98	0.44
3:A:309:LEU:HD13	3:A:389:GLN:HG3	2.00	0.44
3:C:709:VAL:HG11	3:C:752:ARG:HB3	1.99	0.44
3:D:347:PRO:HB2	3:D:350:TRP:NE1	2.33	0.44
3:D:509:LYS:O	3:D:512:GLU:HG3	2.17	0.44
3:E:383:HIS:HA	3:E:390:TYR:CZ	2.52	0.44
3:F:663:ILE:HD12	3:F:691:PHE:CD2	2.53	0.44
3:F:838:PHE:HB2	3:F:865:TRP:CZ3	2.53	0.44
3:F:840:THR:HA	3:F:844:VAL:HB	1.99	0.44
3:B:375:LYS:O	3:B:376:ARG:HG2	2.17	0.44
3:A:623:PHE:HB3	3:A:627:LYS:HE2	1.98	0.44
3:A:945:TRP:O	3:A:950:SER:OG	2.27	0.44
3:D:320:LEU:HA	3:D:323:ASN:ND2	2.32	0.44
3:E:653:LEU:HD23	3:E:658:ALA:HB2	2.00	0.44
3:F:601:LEU:HD22	3:F:942:TRP:HH2	1.82	0.44
3:F:609:ASP:OD1	3:F:610:ALA:N	2.49	0.44
3:F:629:ALA:HB2	3:F:711:PRO:HD3	2.00	0.44
1:H:17:DT:H2'	1:H:18:DT:O4'	2.18	0.44
3:A:398:TYR:CE2	3:A:425:MET:HG3	2.53	0.44

Continued on next page...

Continued from previous page...

Atom-1	Atom-2	Interatomic distance (Å)	Clash overlap (Å)
3:C:653:LEU:HG	3:C:657:TYR:HB2	2.00	0.44
3:D:616:PHE:CD1	3:D:805:LEU:HD12	2.53	0.44
3:E:381:TRP:HD1	3:E:384:LYS:HE2	1.81	0.44
3:E:465:ASN:O	3:E:467:ASP:N	2.50	0.44
3:E:837:ARG:O	3:E:841:GLU:CB	2.66	0.44
3:F:694:THR:HG21	3:F:740:PHE:CZ	2.53	0.44
3:B:445:PHE:HB2	3:B:460:TRP:CZ3	2.52	0.44
3:B:866:TYR:O	3:B:871:ASN:N	2.51	0.44
3:A:740:PHE:O	3:A:828:TYR:OH	2.35	0.44
3:C:691:PHE:HD2	3:C:734:ALA:HB2	1.83	0.44
3:C:851:THR:N	3:C:906:CYS:O	2.48	0.44
3:E:779:ARG:HB2	3:E:783:GLU:HG3	2.00	0.44
3:F:671:GLU:HG3	3:F:675:LYS:CE	2.46	0.44
3:B:330:ASN:HD22	3:B:374:THR:HG22	1.83	0.44
3:B:659:SER:HB3	3:B:686:ARG:NH1	2.33	0.44
3:D:909:LEU:HB2	3:D:913:GLU:HB2	1.99	0.44
3:E:671:GLU:C	3:E:672:THR:HG1	2.21	0.44
3:F:326:PHE:CZ	3:F:361:LEU:HD12	2.53	0.44
3:F:375:LYS:HG3	3:F:376:ARG:H	1.83	0.44
3:F:665:LEU:HD12	3:F:665:LEU:HA	1.81	0.44
3:B:294:MET:HE2	3:B:301:ARG:HE	1.82	0.43
3:B:301:ARG:HA	3:B:301:ARG:NH1	2.31	0.43
3:B:653:LEU:HG	3:B:657:TYR:HB2	2.00	0.43
3:B:809:TYR:CE2	3:B:816:VAL:HG23	2.52	0.43
3:B:874:ARG:HH21	3:B:876:ILE:N	2.13	0.43
3:A:485:THR:HG22	3:A:489:LYS:NZ	2.33	0.43
3:C:660:LYS:HB3	3:C:660:LYS:HE2	1.33	0.43
3:B:661:LEU:HB2	3:B:691:PHE:CE1	2.53	0.43
3:A:290:LEU:HD13	3:A:341:TRP:CD2	2.53	0.43
3:A:794:PHE:HA	3:A:797:ILE:HD12	1.99	0.43
3:C:470:HIS:O	3:C:473:ILE:HG22	2.18	0.43
3:D:314:TYR:CD1	3:D:320:LEU:HD13	2.53	0.43
3:E:830:LYS:HA	3:E:830:LYS:HD3	1.68	0.43
3:E:867:ASN:HA	3:E:871:ASN:O	2.19	0.43
3:F:670:ARG:HB3	3:F:671:GLU:H	1.52	0.43
1:H:4:DT:H1'	1:H:5:DT:C6	2.53	0.43
3:B:301:ARG:CZ	3:B:341:TRP:HZ3	2.32	0.43
3:B:304:HIS:HA	3:B:307:LEU:CD2	2.48	0.43
3:B:604:ILE:CD1	4:B:1001:AGS:HN61	2.31	0.43
3:B:841:GLU:CD	3:B:865:TRP:HE1	2.22	0.43
3:A:414:GLU:OE1	3:F:519:PHE:HB3	2.18	0.43

Continued on next page...

Continued from previous page...

Atom-1	Atom-2	Interatomic distance (Å)	Clash overlap (Å)
3:D:813:ILE:O	3:D:816:VAL:HG12	2.17	0.43
3:E:317:GLU:HB2	3:E:320:LEU:HD12	2.00	0.43
3:E:406:VAL:HG13	3:E:411:GLY:HA2	2.00	0.43
3:F:372:LYS:O	3:F:374:THR:HG23	2.18	0.43
3:B:847:PRO:HB2	3:B:892:TYR:CE1	2.53	0.43
3:A:356:GLU:HG2	3:A:359:GLU:HB3	2.00	0.43
3:C:705:LEU:O	3:C:709:VAL:HG23	2.18	0.43
3:D:470:HIS:O	3:D:473:ILE:HG22	2.19	0.43
3:D:520:ASN:OD1	3:D:522:SER:N	2.51	0.43
3:F:616:PHE:HD1	3:F:805:LEU:HB2	1.82	0.43
3:F:674:GLU:O	3:F:717:ARG:NH1	2.52	0.43
3:D:380:TYR:CZ	3:D:384:LYS:HD3	2.53	0.43
3:E:336:ARG:HB3	3:E:337:PRO:HD3	1.99	0.43
3:B:413:LEU:HA	3:B:417:MET:SD	2.59	0.43
3:B:833:ASP:OD1	3:B:833:ASP:N	2.51	0.43
3:B:874:ARG:NH2	3:B:876:ILE:N	2.67	0.43
3:A:476:ASN:HA	3:A:479:ARG:NH2	2.33	0.43
3:C:704:ARG:HB3	3:C:708:MET:HE1	2.01	0.43
3:D:302:TYR:CZ	3:D:306:ILE:HD13	2.54	0.43
3:D:387:PRO:HA	3:D:390:TYR:CE1	2.53	0.43
3:D:447:LEU:HD23	3:D:447:LEU:HA	1.85	0.43
3:B:336:ARG:HD2	3:B:362:TRP:HD1	1.83	0.43
3:E:372:LYS:O	3:E:374:THR:HG23	2.19	0.43
3:E:609:ASP:OD1	3:E:609:ASP:N	2.51	0.43
3:F:414:GLU:HG3	3:F:415:HIS:H	1.84	0.43
3:F:667:THR:CA	3:F:700:LEU:HB3	2.34	0.43
3:F:699:VAL:CB	3:F:741:ILE:HB	2.44	0.43
3:F:876:ILE:O	3:F:879:GLU:HG2	2.18	0.43
3:B:374:THR:OG1	3:B:573:GLU:OE1	2.30	0.43
3:B:633:LEU:HD13	3:B:740:PHE:HD2	1.83	0.43
3:C:676:PRO:HB3	3:C:717:ARG:HB3	2.01	0.43
3:D:746:ASP:OD1	3:D:746:ASP:N	2.49	0.43
3:D:818:CYS:HB3	3:D:821:ILE:HG22	2.01	0.43
3:E:601:LEU:HD11	3:E:615:MET:SD	2.59	0.43
3:F:847:PRO:HD2	3:F:918:GLY:HA3	2.01	0.43
3:B:301:ARG:NH2	3:B:341:TRP:HZ3	2.17	0.43
3:A:454:GLN:OE1	3:A:455:GLY:N	2.51	0.43
3:A:865:TRP:CE3	3:A:866:TYR:HB3	2.53	0.43
3:D:855:LEU:O	3:D:859:VAL:HG23	2.19	0.43
3:E:378:ILE:HD12	3:E:378:ILE:H	1.84	0.43
3:F:663:ILE:HG22	3:F:692:GLU:HG2	1.99	0.43

Continued on next page...

Continued from previous page...

Atom-1	Atom-2	Interatomic distance (Å)	Clash overlap (Å)
3:B:668:SER:HB3	3:B:705:LEU:CD2	2.48	0.43
3:B:785:ILE:O	3:B:791:GLN:NE2	2.28	0.43
3:A:715:THR:HB	3:A:725:SER:HB2	2.01	0.43
3:D:303:LEU:CD2	3:D:306:ILE:HD11	2.45	0.43
3:E:634:TRP:HB3	3:E:756:TYR:HB3	2.00	0.43
3:E:833:ASP:OD1	3:E:833:ASP:N	2.51	0.43
3:B:803:GLU:HB3	3:B:807:LYS:NZ	2.34	0.42
3:B:874:ARG:NH2	3:B:876:ILE:CA	2.82	0.42
3:A:502:ASN:OD1	3:A:503:TYR:N	2.51	0.42
3:A:870:ILE:HG22	3:A:871:ASN:ND2	2.34	0.42
3:C:430:PHE:CE2	3:C:469:LEU:HD13	2.54	0.42
3:D:867:ASN:HA	3:D:871:ASN:O	2.19	0.42
3:E:702:THR:HB	3:E:706:LYS:NZ	2.34	0.42
3:F:528:ILE:HD13	3:F:528:ILE:HA	1.87	0.42
3:F:602:GLN:O	3:F:611:ARG:NH1	2.51	0.42
3:F:633:LEU:HD21	3:F:740:PHE:CD2	2.54	0.42
3:F:821:ILE:C	3:F:823:SER:H	2.22	0.42
3:C:486:GLU:HA	3:C:489:LYS:HG2	2.01	0.42
3:C:945:TRP:CH2	3:C:948:ASN:HA	2.55	0.42
3:D:314:TYR:CD1	3:D:314:TYR:N	2.87	0.42
3:E:528:ILE:O	3:E:532:GLU:HG2	2.18	0.42
3:F:634:TRP:CH2	3:F:642:LYS:HG2	2.53	0.42
3:B:842:ARG:NH1	3:B:864:GLU:OE2	2.53	0.42
3:A:695:ASN:OD1	3:A:696:LYS:N	2.52	0.42
3:C:779:ARG:HB2	3:C:783:GLU:HG3	2.00	0.42
3:D:699:VAL:HG23	3:D:741:ILE:HB	2.02	0.42
3:D:706:LYS:NZ	3:D:749:THR:HA	2.34	0.42
3:F:294:MET:HA	3:F:301:ARG:HE	1.85	0.42
3:F:315:TYR:CE1	3:F:343:SER:HA	2.54	0.42
3:B:413:LEU:HG	3:B:514:SER:HB3	2.01	0.42
3:A:414:GLU:N	3:A:417:MET:SD	2.92	0.42
3:A:851:THR:HG21	3:A:907:ARG:HH12	1.83	0.42
3:D:292:ILE:O	3:D:295:LEU:HG	2.18	0.42
3:D:293:LEU:H	3:D:293:LEU:HG	1.53	0.42
3:D:360:LYS:HA	3:D:360:LYS:HD3	1.85	0.42
3:E:523:PHE:O	3:E:527:VAL:HG23	2.19	0.42
3:B:314:TYR:O	3:B:320:LEU:HD22	2.19	0.42
3:B:700:LEU:HD13	3:B:740:PHE:HB3	2.02	0.42
3:A:682:ARG:HA	3:A:682:ARG:HD3	1.89	0.42
3:C:821:ILE:C	3:C:823:SER:H	2.23	0.42
3:D:711:PRO:O	3:D:712:GLY:C	2.57	0.42

Continued on next page...

Continued from previous page...

Atom-1	Atom-2	Interatomic distance (Å)	Clash overlap (Å)
3:F:405:TYR:CD1	3:F:417:MET:HG2	2.55	0.42
3:F:616:PHE:CD1	3:F:805:LEU:HB2	2.54	0.42
3:F:783:GLU:O	3:F:784:TYR:HB2	2.20	0.42
3:F:902:ILE:HB	3:F:904:LYS:HZ1	1.85	0.42
3:B:662:ASN:HB3	3:B:665:LEU:HD13	2.01	0.42
3:A:633:LEU:O	3:A:755:HIS:HA	2.19	0.42
3:C:309:LEU:HD22	3:C:389:GLN:HG3	2.02	0.42
3:C:364:ASP:HA	3:C:367:HIS:NE2	2.34	0.42
3:C:761:LYS:HE2	3:C:761:LYS:HB2	1.91	0.42
3:E:821:ILE:HD13	3:E:821:ILE:HA	1.81	0.42
3:F:760:VAL:HG13	3:F:773:GLU:HA	2.01	0.42
3:F:873:LYS:HA	3:F:873:LYS:HD2	1.84	0.42
3:B:470:HIS:O	3:B:473:ILE:HG22	2.19	0.42
3:B:818:CYS:HB3	3:B:821:ILE:HG22	2.01	0.42
3:A:945:TRP:CH2	3:A:948:ASN:HA	2.54	0.42
3:C:854:ASN:N	3:C:902:ILE:HG13	2.26	0.42
3:D:631:MET:HB3	3:D:753:LEU:HD13	2.02	0.42
3:D:821:ILE:C	3:D:823:SER:H	2.23	0.42
3:E:783:GLU:O	3:E:784:TYR:HB2	2.20	0.42
3:F:478:SER:OG	3:F:479:ARG:NH2	2.52	0.42
3:F:880:LEU:HD13	3:F:883:GLU:HB3	2.01	0.42
3:A:701:ASN:ND2	3:A:743:ASP:O	2.50	0.42
3:A:783:GLU:O	3:A:784:TYR:HB2	2.20	0.42
3:D:425:MET:HE1	3:D:472:TYR:HE2	1.85	0.42
3:D:701:ASN:OD1	3:D:744:THR:HB	2.20	0.42
3:E:519:PHE:HD1	3:F:416:TYR:HB3	1.84	0.42
3:E:671:GLU:HG2	3:E:672:THR:N	2.35	0.42
3:F:707:GLU:OE1	3:F:707:GLU:N	2.37	0.42
3:B:744:THR:HG21	3:B:749:THR:HG21	2.01	0.42
3:A:371:LYS:HE3	3:A:574:HIS:CG	2.55	0.42
3:A:701:ASN:ND2	3:A:744:THR:HB	2.35	0.42
3:E:304:HIS:HA	3:E:307:LEU:HG	2.02	0.42
3:E:691:PHE:HD2	3:E:734:ALA:HB2	1.85	0.42
3:F:804:LYS:O	3:F:808:GLU:HG2	2.20	0.42
3:A:465:ASN:O	3:A:467:ASP:N	2.53	0.42
3:A:894:GLN:HB2	3:A:904:LYS:NZ	2.35	0.42
3:D:330:ASN:HB2	3:D:374:THR:HA	2.01	0.42
3:D:359:GLU:HB3	3:D:360:LYS:NZ	2.34	0.42
3:D:896:SER:HB3	3:D:902:ILE:HD12	2.02	0.42
3:F:770:ASN:HB3	3:F:773:GLU:HG3	2.00	0.42
1:H:3:DT:H1'	1:H:4:DT:O5'	2.19	0.41

Continued on next page...

Continued from previous page...

Atom-1	Atom-2	Interatomic distance (Å)	Clash overlap (Å)
3:A:653:LEU:HD22	3:A:658:ALA:HB2	2.02	0.41
3:C:565:ALA:N	3:C:803:GLU:OE2	2.53	0.41
3:C:669:CYS:SG	3:C:670:ARG:N	2.93	0.41
3:E:476:ASN:HA	3:E:479:ARG:HE	1.85	0.41
3:F:311:PRO:HG3	3:F:385:HIS:NE2	2.35	0.41
3:F:904:LYS:HD3	3:F:904:LYS:HA	1.69	0.41
3:B:293:LEU:H	3:B:293:LEU:HG	1.56	0.41
3:A:896:SER:HB3	3:A:902:ILE:HD12	2.02	0.41
3:C:367:HIS:O	3:C:367:HIS:ND1	2.52	0.41
3:C:742:ILE:H	3:C:832:GLN:CD	2.24	0.41
3:D:587:PHE:HA	3:D:796:SER:HB3	2.01	0.41
3:D:717:ARG:HA	3:D:717:ARG:HD2	1.80	0.41
3:E:307:LEU:HD13	3:E:342:PHE:CD1	2.54	0.41
3:E:350:TRP:CZ2	3:E:355:LYS:HD3	2.55	0.41
3:E:355:LYS:HD2	3:E:355:LYS:HA	1.83	0.41
3:E:947:PRO:O	3:E:950:SER:OG	2.23	0.41
3:F:876:ILE:HG22	3:F:878:LEU:H	1.85	0.41
3:F:945:TRP:CH2	3:F:948:ASN:HA	2.55	0.41
1:H:4:DT:H1'	1:H:5:DT:N1	2.35	0.41
3:A:693:GLU:CD	3:A:737:ASN:H	2.24	0.41
3:A:706:LYS:HA	3:A:709:VAL:HG12	2.02	0.41
3:A:779:ARG:HB2	3:A:783:GLU:HG3	2.01	0.41
3:D:370:GLU:CD	3:D:372:LYS:H	2.23	0.41
3:D:631:MET:HB2	3:D:709:VAL:HG22	2.02	0.41
3:D:736:SER:OG	3:D:737:ASN:N	2.54	0.41
3:D:909:LEU:HD23	3:D:909:LEU:H	1.85	0.41
3:F:358:LEU:HA	3:F:361:LEU:HB2	2.01	0.41
3:F:656:HIS:O	3:F:686:ARG:NH1	2.53	0.41
3:B:290:LEU:HD12	3:B:341:TRP:CG	2.55	0.41
3:A:781:ILE:HD12	4:A:1001:AGS:H3'	2.02	0.41
3:C:516:SER:HB3	3:D:412:MET:SD	2.60	0.41
3:D:653:LEU:HG	3:D:657:TYR:HB2	2.01	0.41
3:D:882:GLN:H	3:D:882:GLN:HG2	1.70	0.41
3:E:873:LYS:HD2	3:E:873:LYS:HA	1.90	0.41
2:I:2:DA:H2''	2:I:3:DA:C8	2.56	0.41
3:B:544:LEU:HD23	3:B:544:LEU:HA	1.91	0.41
3:C:406:VAL:HG13	3:C:411:GLY:HA2	2.03	0.41
3:C:884:LEU:O	3:C:887:SER:OG	2.28	0.41
3:D:387:PRO:HA	3:D:390:TYR:HE1	1.84	0.41
3:D:497:GLU:OE1	3:D:498:SER:N	2.53	0.41
3:D:853:TYR:CG	3:D:853:TYR:O	2.73	0.41

Continued on next page...

Continued from previous page...

Atom-1	Atom-2	Interatomic distance (Å)	Clash overlap (Å)
3:E:715:THR:OG1	3:E:723:GLN:HB2	2.20	0.41
3:F:605:ILE:HD13	3:F:611:ARG:HA	2.03	0.41
3:B:289:SER:O	3:B:293:LEU:HG	2.21	0.41
3:B:697:SER:CB	3:C:878:LEU:HD13	2.50	0.41
3:A:634:TRP:CZ3	3:A:758:SER:HB2	2.55	0.41
3:A:780:PHE:HA	3:A:784:TYR:HD2	1.85	0.41
3:D:307:LEU:HD22	3:D:341:TRP:CZ3	2.56	0.41
3:E:414:GLU:N	3:E:417:MET:SD	2.92	0.41
3:E:501:LEU:O	3:E:505:LYS:HD2	2.20	0.41
1:H:3:DT:H4'	1:H:4:DT:OP1	2.18	0.41
3:C:633:LEU:HD21	3:C:753:LEU:HD12	2.01	0.41
3:D:293:LEU:HD13	3:D:338:LEU:HD13	2.03	0.41
3:D:411:GLY:O	3:D:413:LEU:HG	2.20	0.41
3:D:468:GLU:HA	3:D:471:ILE:HG22	2.01	0.41
3:D:739:ASN:N	3:D:739:ASN:OD1	2.52	0.41
3:E:302:TYR:O	3:E:306:ILE:HG23	2.21	0.41
3:E:414:GLU:HG3	3:E:415:HIS:H	1.84	0.41
3:B:403:ALA:HA	3:B:406:VAL:HG12	2.01	0.41
3:C:361:LEU:HA	3:C:364:ASP:OD2	2.21	0.41
3:C:452:MET:HG2	3:C:453:ASN:O	2.21	0.41
3:C:704:ARG:O	3:C:708:MET:HE2	2.21	0.41
3:C:755:HIS:ND1	3:C:824:GLU:OE1	2.54	0.41
3:C:755:HIS:HB3	3:C:825:THR:HA	2.02	0.41
3:D:783:GLU:O	3:D:784:TYR:HB2	2.21	0.41
3:F:666:LEU:HB2	3:F:691:PHE:CE2	2.56	0.41
3:F:716:ALA:N	3:F:724:GLU:O	2.53	0.41
3:B:549:HIS:ND1	3:B:561:GLU:HA	2.35	0.41
3:B:879:GLU:HG2	3:B:880:LEU:N	2.36	0.41
3:A:414:GLU:CD	3:A:415:HIS:N	2.74	0.41
3:A:804:LYS:HE2	3:A:945:TRP:HB2	2.03	0.41
3:A:823:SER:O	3:A:826:GLU:HG3	2.21	0.41
3:C:310:LEU:HD23	3:C:310:LEU:HA	1.93	0.41
3:C:311:PRO:HG3	3:C:385:HIS:CD2	2.56	0.41
3:C:317:GLU:O	3:C:321:TRP:HB3	2.21	0.41
3:C:345:LYS:O	3:C:345:LYS:HG3	2.21	0.41
3:C:386:ALA:HB1	3:C:389:GLN:NE2	2.36	0.41
3:C:453:ASN:OD1	3:C:454:GLN:N	2.51	0.41
3:C:461:ARG:CZ	3:D:538:ARG:HH12	2.33	0.41
3:C:676:PRO:HB2	3:C:719:LEU:H	1.85	0.41
3:C:753:LEU:O	3:C:754:ARG:NE	2.54	0.41
3:C:938:PRO:HG3	3:C:942:TRP:HB3	2.02	0.41

Continued on next page...

Continued from previous page...

Atom-1	Atom-2	Interatomic distance (Å)	Clash overlap (Å)
3:D:301:ARG:O	3:D:304:HIS:HB3	2.20	0.41
3:D:613:TRP:HZ3	3:D:632:LEU:HD12	1.85	0.41
3:E:314:TYR:HA	3:E:320:LEU:HD13	2.02	0.41
3:E:343:SER:HB3	3:E:350:TRP:CD1	2.56	0.41
3:E:804:LYS:HE3	3:E:804:LYS:HB3	1.82	0.41
3:F:491:HIS:HB3	3:F:504:TYR:CE2	2.56	0.41
3:F:666:LEU:HB2	3:F:691:PHE:HE2	1.85	0.41
3:A:565:ALA:N	3:A:803:GLU:OE2	2.36	0.41
3:A:739:ASN:N	3:A:739:ASN:OD1	2.52	0.41
3:D:336:ARG:HD2	3:D:362:TRP:CD1	2.56	0.41
3:E:425:MET:HE3	3:E:472:TYR:OH	2.21	0.41
3:E:697:SER:OG	3:E:739:ASN:OD1	2.27	0.41
3:E:779:ARG:O	3:E:783:GLU:HG3	2.20	0.41
3:E:818:CYS:O	3:E:821:ILE:HG22	2.21	0.41
3:E:941:LYS:O	3:E:944:GLU:HG2	2.20	0.41
3:F:299:GLU:HA	3:F:302:TYR:CD2	2.56	0.41
3:F:675:LYS:O	3:F:676:PRO:C	2.58	0.41
3:B:304:HIS:O	3:B:307:LEU:HG	2.21	0.40
3:B:337:PRO:O	3:B:341:TRP:N	2.49	0.40
3:B:600:ALA:CB	4:B:1001:AGS:HN62	2.22	0.40
3:B:706:LYS:HA	3:B:752:ARG:HH22	1.86	0.40
3:B:878:LEU:HD22	3:A:741:ILE:HD12	2.03	0.40
3:A:809:TYR:CZ	3:A:816:VAL:HG23	2.56	0.40
3:C:374:THR:OG1	3:C:375:LYS:N	2.55	0.40
3:C:878:LEU:HA	3:C:882:GLN:OE1	2.22	0.40
3:D:855:LEU:HD23	3:D:881:SER:HA	2.03	0.40
3:E:456:GLU:HA	3:E:459:LYS:HE2	2.03	0.40
3:E:534:LEU:HD23	3:E:534:LEU:HA	1.85	0.40
3:F:307:LEU:HB3	3:F:342:PHE:HE1	1.87	0.40
3:F:614:ILE:HD12	3:F:632:LEU:HD11	2.03	0.40
3:F:623:PHE:HB3	3:F:627:LYS:HE2	2.03	0.40
3:B:290:LEU:HD12	3:B:341:TRP:CB	2.51	0.40
3:A:391:LYS:HE3	3:A:391:LYS:HB3	1.96	0.40
3:A:612:LEU:HD22	3:A:945:TRP:HD1	1.85	0.40
3:C:862:TYR:CG	3:C:880:LEU:HD21	2.56	0.40
3:D:296:HIS:CG	3:D:297:ASP:N	2.89	0.40
3:D:847:PRO:HD2	3:D:918:GLY:HA2	2.03	0.40
3:E:476:ASN:HA	3:E:479:ARG:HH21	1.87	0.40
3:B:376:ARG:HE	3:B:428:ASN:HA	1.87	0.40
3:B:426:MET:HG2	3:B:426:MET:O	2.21	0.40
3:A:289:SER:HA	3:A:292:ILE:HD12	2.04	0.40

Continued on next page...

Continued from previous page...

Atom-1	Atom-2	Interatomic distance (Å)	Clash overlap (Å)
3:A:452:MET:HG2	3:A:453:ASN:O	2.21	0.40
3:D:756:TYR:CG	3:D:757:ARG:N	2.90	0.40
3:E:780:PHE:HB3	4:E:1001:AGS:O2'	2.22	0.40
3:B:461:ARG:CZ	3:C:538:ARG:HH12	2.34	0.40
3:B:520:ASN:ND2	3:C:414:GLU:OE2	2.54	0.40
3:A:672:THR:HA	3:A:704:ARG:HH12	1.86	0.40
3:A:780:PHE:HA	3:A:784:TYR:CD2	2.57	0.40
3:A:821:ILE:C	3:A:823:SER:H	2.24	0.40
3:C:497:GLU:OE1	3:C:498:SER:N	2.54	0.40
3:C:804:LYS:HE3	3:C:804:LYS:HB3	1.78	0.40
3:C:813:ILE:O	3:C:816:VAL:HG12	2.22	0.40
3:B:438:GLY:C	3:B:439:LYS:HD3	2.41	0.40
3:A:852:VAL:HG21	3:A:903:LEU:HD23	2.04	0.40
3:C:318:TYR:N	3:C:319:PRO:HD2	2.37	0.40
3:C:676:PRO:HD3	3:C:717:ARG:NH1	2.36	0.40
3:C:707:GLU:HA	3:C:710:ASN:HD21	1.87	0.40
3:F:626:LEU:HD11	3:F:711:PRO:HB2	2.03	0.40
3:F:636:GLY:HA3	3:F:642:LYS:HD2	2.02	0.40

There are no symmetry-related clashes.

5.3 Torsion angles [i](#)

5.3.1 Protein backbone [i](#)

In the following table, the Percentiles column shows the percent Ramachandran outliers of the chain as a percentile score with respect to all PDB entries followed by that with respect to all EM entries.

The Analysed column shows the number of residues for which the backbone conformation was analysed, and the total number of residues.

Mol	Chain	Analysed	Favoured	Allowed	Outliers	Percentiles	
3	A	642/972 (66%)	590 (92%)	50 (8%)	2 (0%)	37	67
3	B	642/972 (66%)	585 (91%)	55 (9%)	2 (0%)	37	67
3	C	642/972 (66%)	590 (92%)	50 (8%)	2 (0%)	37	67
3	D	640/972 (66%)	578 (90%)	60 (9%)	2 (0%)	37	67
3	E	639/972 (66%)	565 (88%)	74 (12%)	0	100	100
3	F	642/972 (66%)	574 (89%)	67 (10%)	1 (0%)	44	72

Continued on next page...

Continued from previous page...

Mol	Chain	Analysed	Favoured	Allowed	Outliers	Percentiles
All	All	3847/5832 (66%)	3482 (90%)	356 (9%)	9 (0%)	45 72

All (9) Ramachandran outliers are listed below:

Mol	Chain	Res	Type
3	D	844	VAL
3	B	946	SER
3	A	372	LYS
3	C	388	GLN
3	C	946	SER
3	D	946	SER
3	F	946	SER
3	B	816	VAL
3	A	946	SER

5.3.2 Protein sidechains ⓘ

In the following table, the Percentiles column shows the percent sidechain outliers of the chain as a percentile score with respect to all PDB entries followed by that with respect to all EM entries.

The Analysed column shows the number of residues for which the sidechain conformation was analysed, and the total number of residues.

Mol	Chain	Analysed	Rotameric	Outliers	Percentiles
3	A	581/879 (66%)	577 (99%)	4 (1%)	81 88
3	B	581/879 (66%)	562 (97%)	19 (3%)	33 57
3	C	581/879 (66%)	575 (99%)	6 (1%)	73 82
3	D	579/879 (66%)	559 (96%)	20 (4%)	31 56
3	E	579/879 (66%)	573 (99%)	6 (1%)	73 82
3	F	581/879 (66%)	569 (98%)	12 (2%)	48 67
All	All	3482/5274 (66%)	3415 (98%)	67 (2%)	52 70

All (67) residues with a non-rotameric sidechain are listed below:

Mol	Chain	Res	Type
3	B	289	SER
3	B	290	LEU
3	B	292	ILE

Continued on next page...

Continued from previous page...

Mol	Chain	Res	Type
3	B	293	LEU
3	B	294	MET
3	B	296	HIS
3	B	301	ARG
3	B	529	ARG
3	B	663	ILE
3	B	664	SER
3	B	665	LEU
3	B	666	LEU
3	B	670	ARG
3	B	736	SER
3	B	870	ILE
3	B	871	ASN
3	B	873	LYS
3	B	874	ARG
3	B	875	HIS
3	A	301	ARG
3	A	417	MET
3	A	723	GLN
3	A	874	ARG
3	C	660	LYS
3	C	661	LEU
3	C	664	SER
3	C	666	LEU
3	C	667	THR
3	C	670	ARG
3	D	289	SER
3	D	293	LEU
3	D	294	MET
3	D	296	HIS
3	D	299	GLU
3	D	301	ARG
3	D	302	TYR
3	D	305	LYS
3	D	309	LEU
3	D	310	LEU
3	D	317	GLU
3	D	320	LEU
3	D	410	ASN
3	D	418	ILE
3	D	696	LYS
3	D	703	SER

Continued on next page...

Continued from previous page...

Mol	Chain	Res	Type
3	D	705	LEU
3	D	706	LYS
3	D	708	MET
3	D	830	LYS
3	E	479	ARG
3	E	820	THR
3	E	821	ILE
3	E	828	TYR
3	E	829	ARG
3	E	874	ARG
3	F	357	LYS
3	F	663	ILE
3	F	664	SER
3	F	665	LEU
3	F	666	LEU
3	F	670	ARG
3	F	671	GLU
3	F	672	THR
3	F	675	LYS
3	F	696	LYS
3	F	698	GLU
3	F	700	LEU

Sometimes sidechains can be flipped to improve hydrogen bonding and reduce clashes. All (22) such sidechains are listed below:

Mol	Chain	Res	Type
3	B	308	ASN
3	B	389	GLN
3	B	496	HIS
3	B	871	ASN
3	A	470	HIS
3	A	555	ASN
3	A	710	ASN
3	C	344	GLN
3	C	487	HIS
3	C	491	HIS
3	C	555	ASN
3	C	695	ASN
3	C	701	ASN
3	C	721	GLN
3	D	396	GLN
3	D	491	HIS

Continued on next page...

Continued from previous page...

Mol	Chain	Res	Type
3	E	494	GLN
3	E	640	ASN
3	E	869	ASN
3	F	494	GLN
3	F	875	HIS
3	F	916	GLN

5.3.3 RNA ⓘ

There are no RNA molecules in this entry.

5.4 Non-standard residues in protein, DNA, RNA chains ⓘ

There are no non-standard protein/DNA/RNA residues in this entry.

5.5 Carbohydrates ⓘ

There are no oligosaccharides in this entry.

5.6 Ligand geometry ⓘ

Of 12 ligands modelled in this entry, 6 are monoatomic - leaving 6 for Mogul analysis.

In the following table, the Counts columns list the number of bonds (or angles) for which Mogul statistics could be retrieved, the number of bonds (or angles) that are observed in the model and the number of bonds (or angles) that are defined in the Chemical Component Dictionary. The Link column lists molecule types, if any, to which the group is linked. The Z score for a bond length (or angle) is the number of standard deviations the observed value is removed from the expected value. A bond length (or angle) with $|Z| > 2$ is considered an outlier worth inspection. RMSZ is the root-mean-square of all Z scores of the bond lengths (or angles).

Mol	Type	Chain	Res	Link	Bond lengths			Bond angles		
					Counts	RMSZ	$\# Z > 2$	Counts	RMSZ	$\# Z > 2$
4	AGS	B	1001	5	26,33,33	1.87	3 (11%)	26,52,52	1.45	4 (15%)
4	AGS	D	1001	5	26,33,33	1.87	2 (7%)	26,52,52	1.48	4 (15%)
4	AGS	C	1001	5	26,33,33	1.87	3 (11%)	26,52,52	1.48	4 (15%)
4	AGS	E	1001	5	26,33,33	0.72	1 (3%)	26,52,52	1.06	2 (7%)
4	AGS	F	1001	5	26,33,33	0.71	1 (3%)	26,52,52	1.11	2 (7%)
4	AGS	A	1001	5	26,33,33	0.72	1 (3%)	26,52,52	1.10	2 (7%)

In the following table, the Chirals column lists the number of chiral outliers, the number of chiral centers analysed, the number of these observed in the model and the number defined in the Chemical Component Dictionary. Similar counts are reported in the Torsion and Rings columns. '-' means no outliers of that kind were identified.

Mol	Type	Chain	Res	Link	Chirals	Torsions	Rings
4	AGS	B	1001	5	-	9/17/38/38	0/3/3/3
4	AGS	D	1001	5	-	8/17/38/38	0/3/3/3
4	AGS	C	1001	5	-	7/17/38/38	0/3/3/3
4	AGS	E	1001	5	-	7/17/38/38	0/3/3/3
4	AGS	F	1001	5	-	7/17/38/38	0/3/3/3
4	AGS	A	1001	5	-	10/17/38/38	0/3/3/3

All (11) bond length outliers are listed below:

Mol	Chain	Res	Type	Atoms	Z	Observed(Å)	Ideal(Å)
4	B	1001	AGS	PG-S1G	7.91	2.07	1.90
4	C	1001	AGS	PG-S1G	7.90	2.07	1.90
4	D	1001	AGS	PG-S1G	7.90	2.07	1.90
4	C	1001	AGS	C5-C4	2.44	1.47	1.40
4	D	1001	AGS	C5-C4	2.43	1.47	1.40
4	B	1001	AGS	C5-C4	2.40	1.47	1.40
4	F	1001	AGS	PG-S1G	2.13	1.95	1.90
4	A	1001	AGS	PG-S1G	2.12	1.95	1.90
4	E	1001	AGS	PG-S1G	2.08	1.95	1.90
4	B	1001	AGS	PG-O2G	2.04	1.61	1.54
4	C	1001	AGS	PG-O3G	-2.01	1.48	1.54

All (18) bond angle outliers are listed below:

Mol	Chain	Res	Type	Atoms	Z	Observed(°)	Ideal(°)
4	F	1001	AGS	PA-O3A-PB	-4.23	118.31	132.83
4	A	1001	AGS	PA-O3A-PB	-4.08	118.82	132.83
4	E	1001	AGS	PA-O3A-PB	-3.76	119.92	132.83
4	C	1001	AGS	C3'-C2'-C1'	3.33	105.99	100.98
4	D	1001	AGS	C3'-C2'-C1'	3.28	105.92	100.98
4	B	1001	AGS	C3'-C2'-C1'	3.20	105.79	100.98
4	B	1001	AGS	N3-C2-N1	-3.19	123.69	128.68
4	C	1001	AGS	N3-C2-N1	-3.12	123.80	128.68
4	D	1001	AGS	N3-C2-N1	-3.12	123.81	128.68
4	D	1001	AGS	PA-O3A-PB	-2.73	123.47	132.83
4	C	1001	AGS	PA-O3A-PB	-2.63	123.79	132.83
4	D	1001	AGS	C4-C5-N7	-2.50	106.79	109.40

Continued on next page...

Continued from previous page...

Mol	Chain	Res	Type	Atoms	Z	Observed(°)	Ideal(°)
4	C	1001	AGS	C4-C5-N7	-2.48	106.81	109.40
4	B	1001	AGS	PA-O3A-PB	-2.46	124.38	132.83
4	B	1001	AGS	C4-C5-N7	-2.44	106.85	109.40
4	F	1001	AGS	C5-C6-N6	2.28	123.81	120.35
4	A	1001	AGS	C5-C6-N6	2.26	123.79	120.35
4	E	1001	AGS	C5-C6-N6	2.22	123.73	120.35

There are no chirality outliers.

All (48) torsion outliers are listed below:

Mol	Chain	Res	Type	Atoms
4	B	1001	AGS	C5'-O5'-PA-O2A
4	B	1001	AGS	C5'-O5'-PA-O3A
4	B	1001	AGS	C3'-C4'-C5'-O5'
4	A	1001	AGS	C5'-O5'-PA-O1A
4	A	1001	AGS	C5'-O5'-PA-O2A
4	A	1001	AGS	O4'-C4'-C5'-O5'
4	A	1001	AGS	C3'-C4'-C5'-O5'
4	C	1001	AGS	C5'-O5'-PA-O1A
4	D	1001	AGS	C5'-O5'-PA-O2A
4	D	1001	AGS	C5'-O5'-PA-O3A
4	E	1001	AGS	C3'-C4'-C5'-O5'
4	F	1001	AGS	C5'-O5'-PA-O1A
4	F	1001	AGS	C5'-O5'-PA-O2A
4	F	1001	AGS	C5'-O5'-PA-O3A
4	F	1001	AGS	O4'-C4'-C5'-O5'
4	F	1001	AGS	C3'-C4'-C5'-O5'
4	C	1001	AGS	O4'-C4'-C5'-O5'
4	C	1001	AGS	C3'-C4'-C5'-O5'
4	D	1001	AGS	O4'-C4'-C5'-O5'
4	D	1001	AGS	C3'-C4'-C5'-O5'
4	E	1001	AGS	O4'-C4'-C5'-O5'
4	A	1001	AGS	C4'-C5'-O5'-PA
4	B	1001	AGS	O4'-C4'-C5'-O5'
4	E	1001	AGS	C4'-C5'-O5'-PA
4	F	1001	AGS	C4'-C5'-O5'-PA
4	B	1001	AGS	PG-O3B-PB-O3A
4	D	1001	AGS	C4'-C5'-O5'-PA
4	B	1001	AGS	PB-O3A-PA-O1A
4	A	1001	AGS	PB-O3A-PA-O1A
4	E	1001	AGS	PB-O3A-PA-O1A
4	E	1001	AGS	PG-O3B-PB-O3A

Continued on next page...

Continued from previous page...

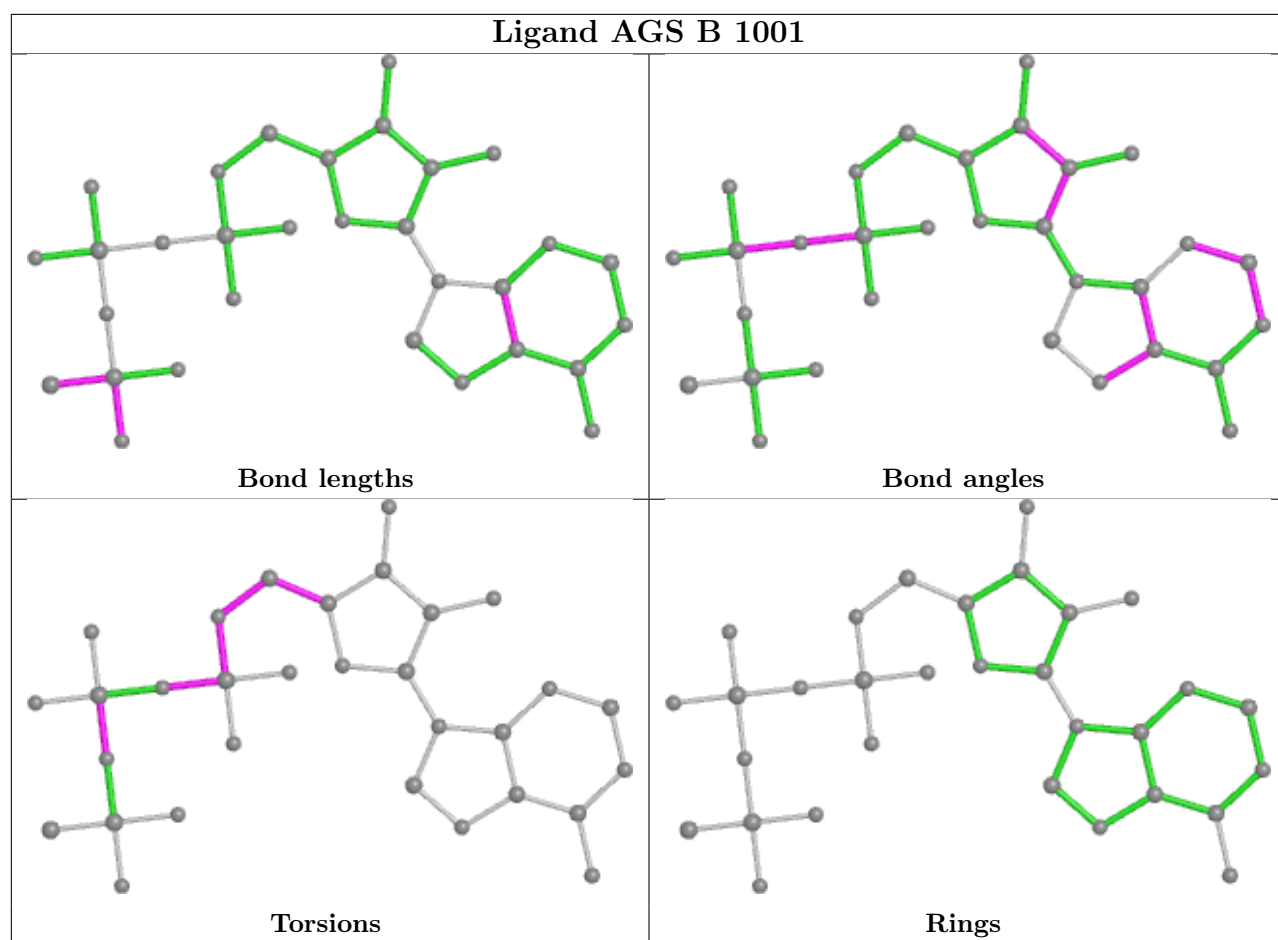
Mol	Chain	Res	Type	Atoms
4	C	1001	AGS	C5'-O5'-PA-O2A
4	E	1001	AGS	PA-O3A-PB-O2B
4	B	1001	AGS	C4'-C5'-O5'-PA
4	C	1001	AGS	C4'-C5'-O5'-PA
4	A	1001	AGS	PG-O3B-PB-O1B
4	A	1001	AGS	PB-O3B-PG-O2G
4	C	1001	AGS	PB-O3B-PG-O3G
4	D	1001	AGS	PB-O3A-PA-O1A
4	F	1001	AGS	PA-O3A-PB-O1B
4	B	1001	AGS	PG-O3B-PB-O2B
4	E	1001	AGS	PG-O3B-PB-O2B
4	A	1001	AGS	C5'-O5'-PA-O3A
4	C	1001	AGS	C5'-O5'-PA-O3A
4	B	1001	AGS	PB-O3A-PA-O2A
4	A	1001	AGS	PA-O3A-PB-O1B
4	D	1001	AGS	PB-O3A-PA-O2A
4	D	1001	AGS	PG-O3B-PB-O3A

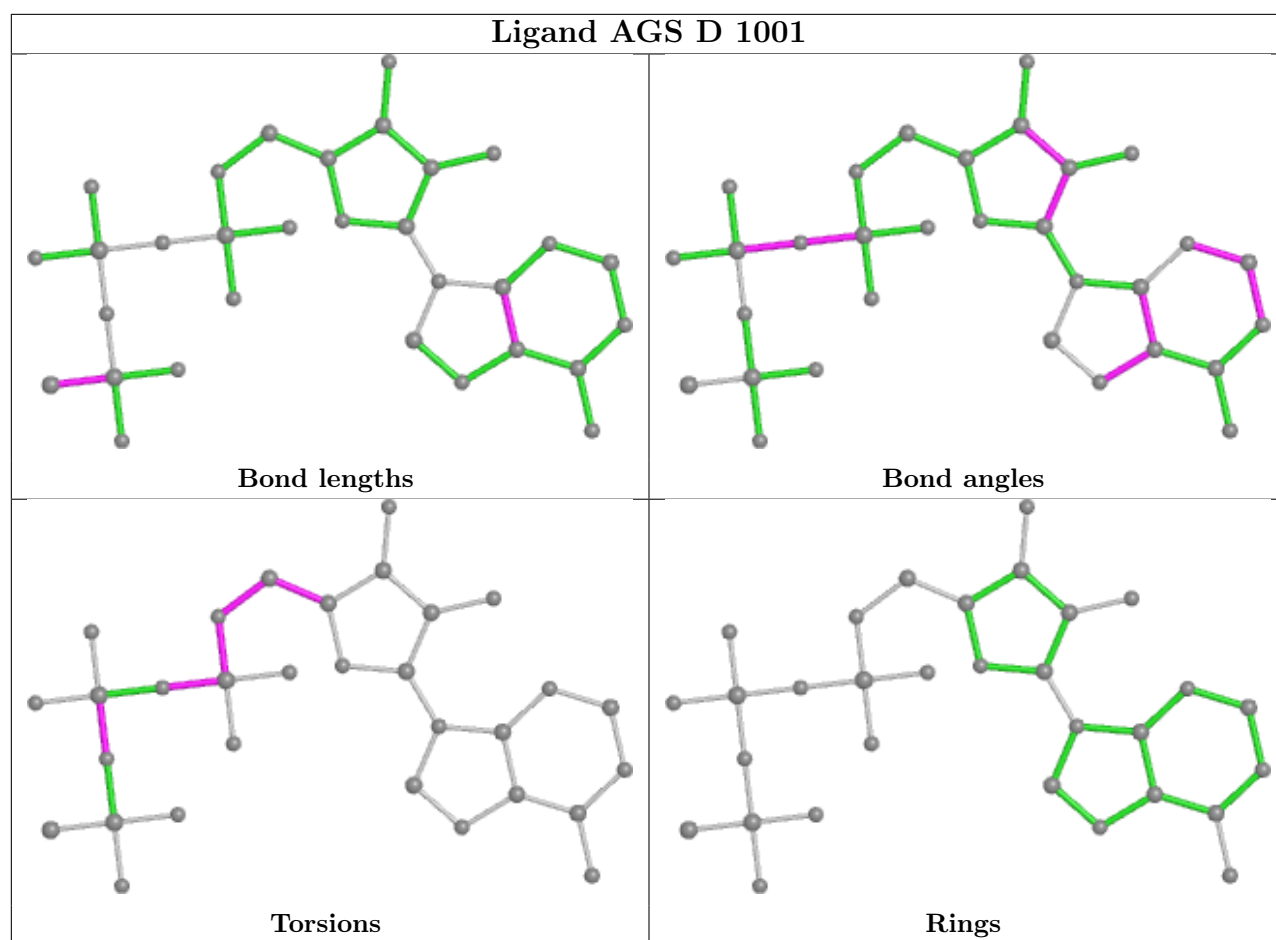
There are no ring outliers.

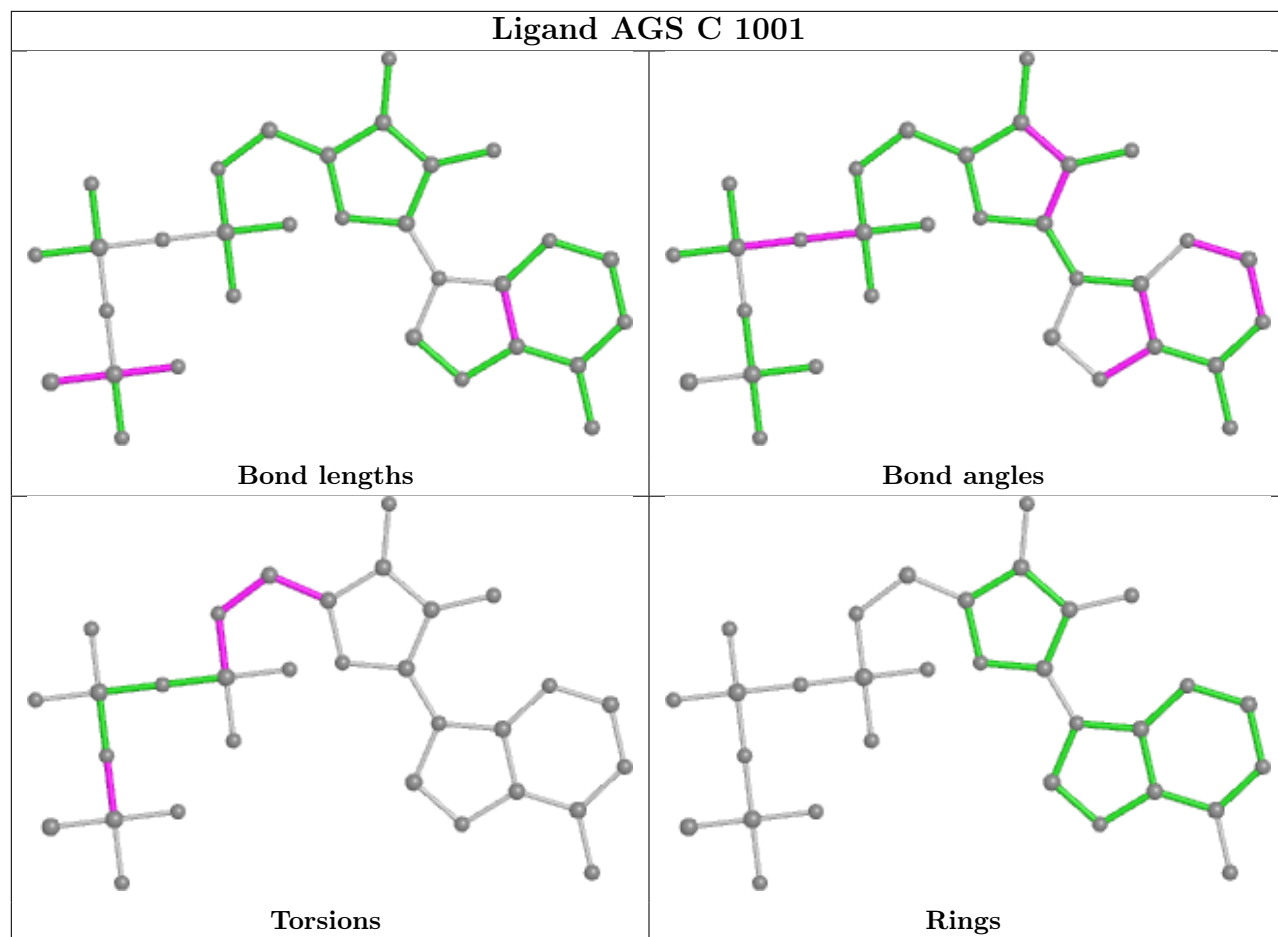
6 monomers are involved in 35 short contacts:

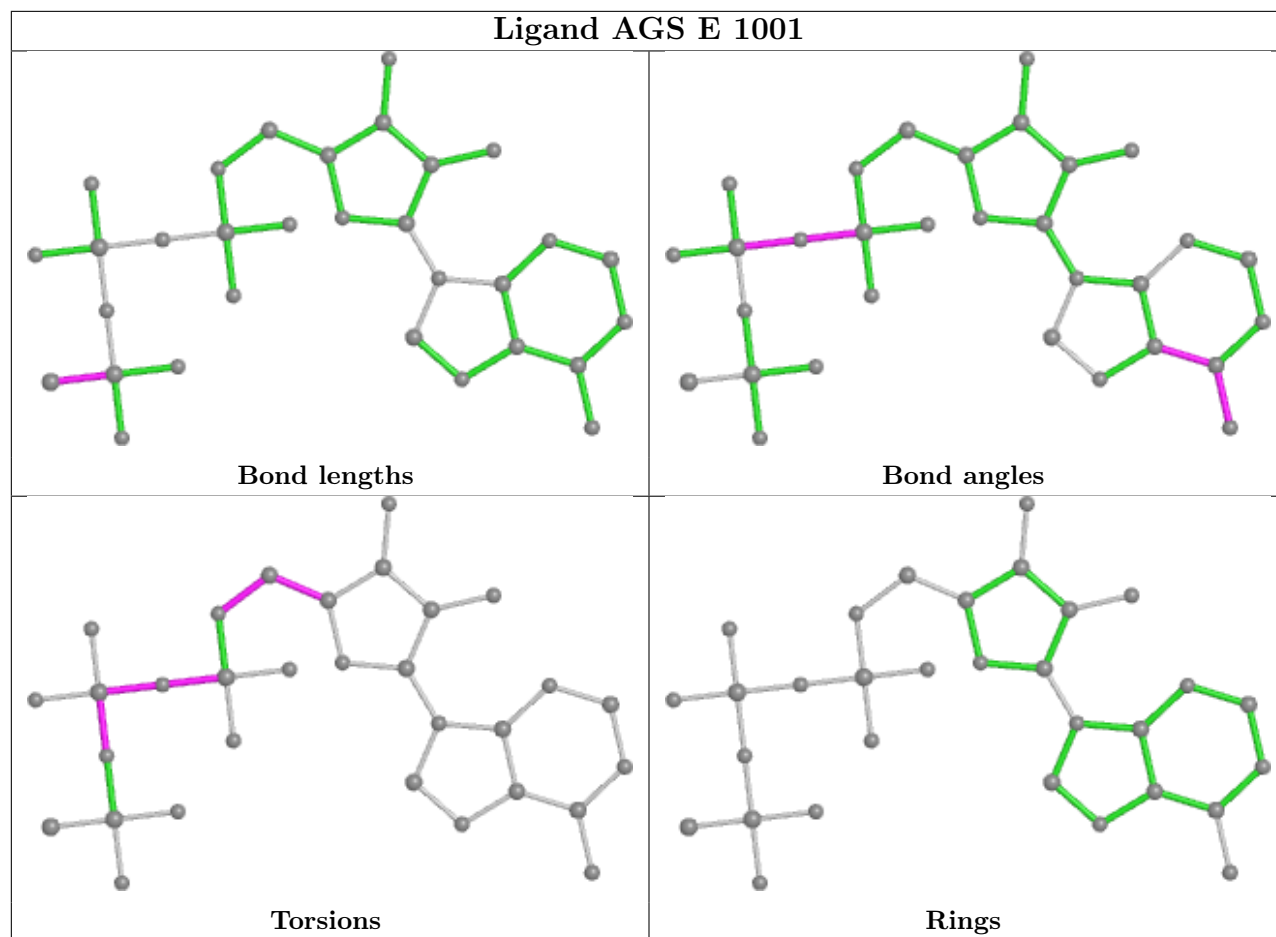
Mol	Chain	Res	Type	Clashes	Symm-Clashes
4	B	1001	AGS	7	0
4	D	1001	AGS	5	0
4	C	1001	AGS	6	0
4	E	1001	AGS	6	0
4	F	1001	AGS	4	0
4	A	1001	AGS	7	0

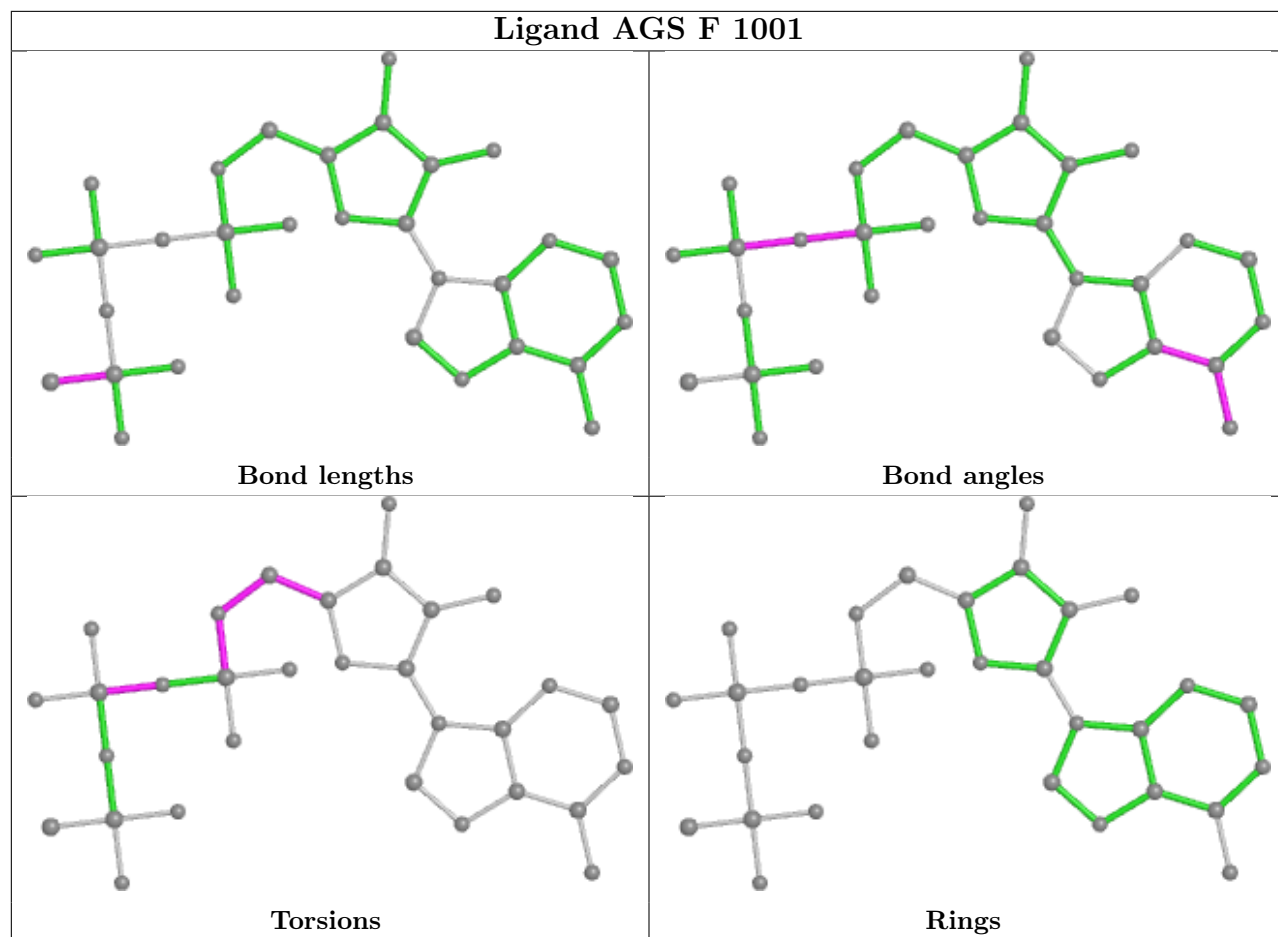
The following is a two-dimensional graphical depiction of Mogul quality analysis of bond lengths, bond angles, torsion angles, and ring geometry for all instances of the Ligand of Interest. In addition, ligands with molecular weight > 250 and outliers as shown on the validation Tables will also be included. For torsion angles, if less than 5% of the Mogul distribution of torsion angles is within 10 degrees of the torsion angle in question, then that torsion angle is considered an outlier. Any bond that is central to one or more torsion angles identified as an outlier by Mogul will be highlighted in the graph. For rings, the root-mean-square deviation (RMSD) between the ring in question and similar rings identified by Mogul is calculated over all ring torsion angles. If the average RMSD is greater than 60 degrees and the minimal RMSD between the ring in question and any Mogul-identified rings is also greater than 60 degrees, then that ring is considered an outlier. The outliers are highlighted in purple. The color gray indicates Mogul did not find sufficient equivalents in the CSD to analyse the geometry.

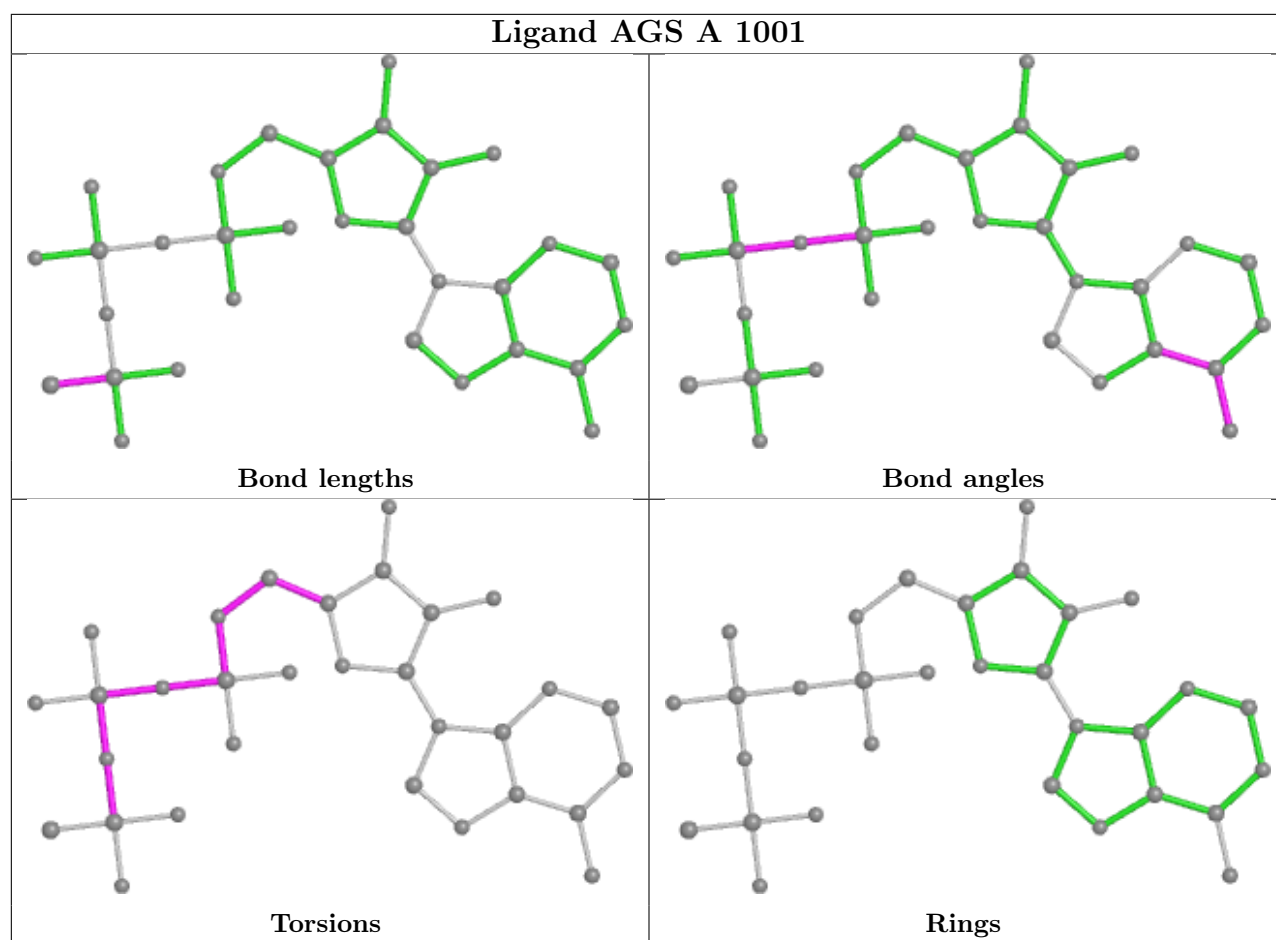












5.7 Other polymers [i](#)

There are no such residues in this entry.

5.8 Polymer linkage issues [i](#)

There are no chain breaks in this entry.

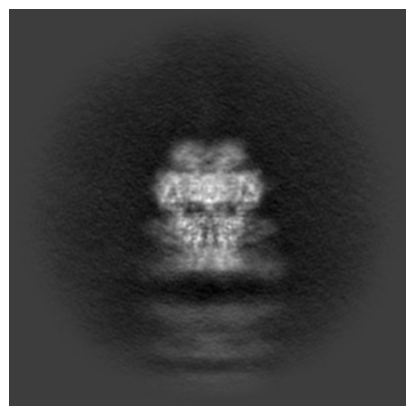
6 Map visualisation [i](#)

This section contains visualisations of the EMDB entry EMD-37882. These allow visual inspection of the internal detail of the map and identification of artifacts.

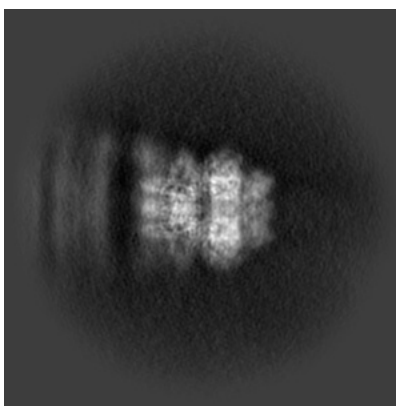
Images derived from a raw map, generated by summing the deposited half-maps, are presented below the corresponding image components of the primary map to allow further visual inspection and comparison with those of the primary map.

6.1 Orthogonal projections [i](#)

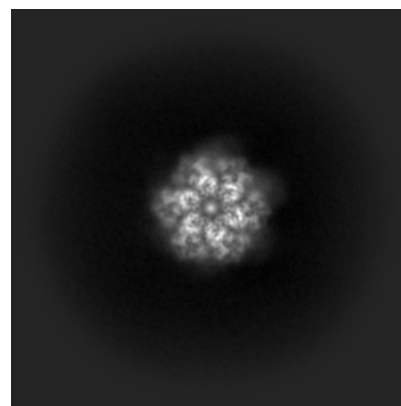
6.1.1 Primary map



X

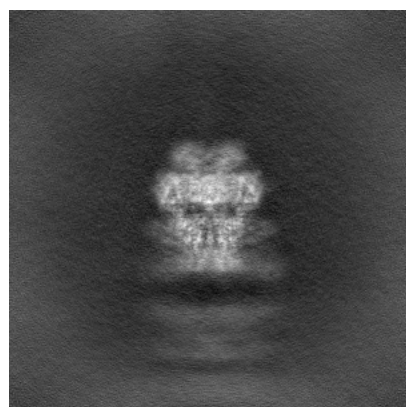


Y

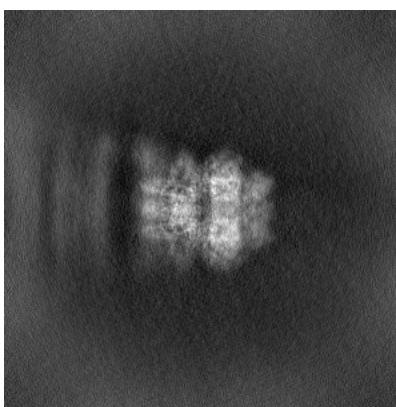


Z

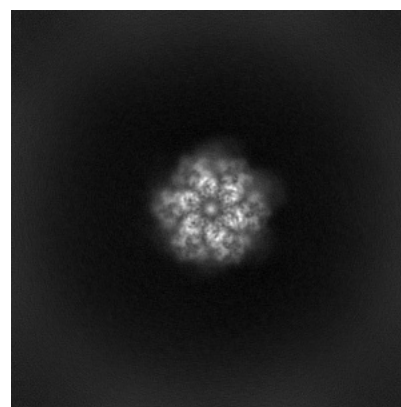
6.1.2 Raw map



X



Y

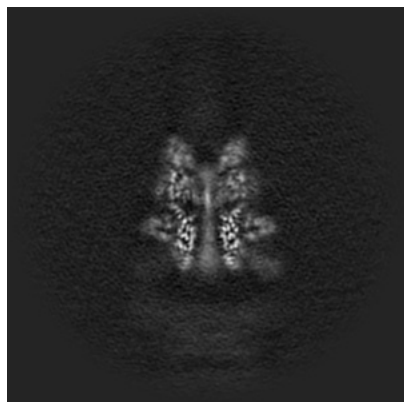


Z

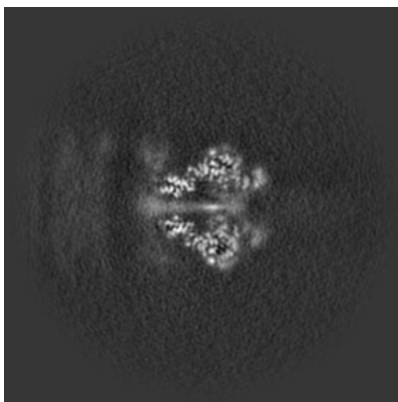
The images above show the map projected in three orthogonal directions.

6.2 Central slices [i](#)

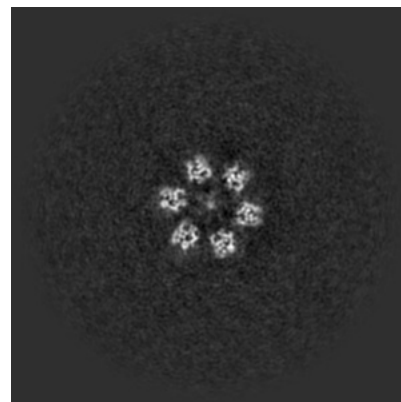
6.2.1 Primary map



X Index: 192

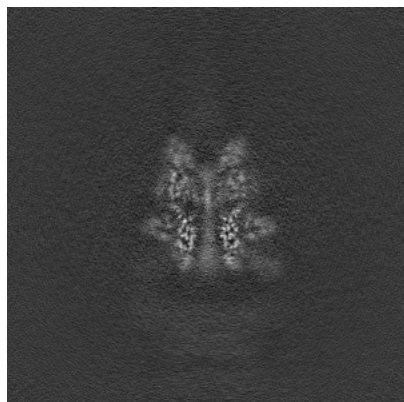


Y Index: 192

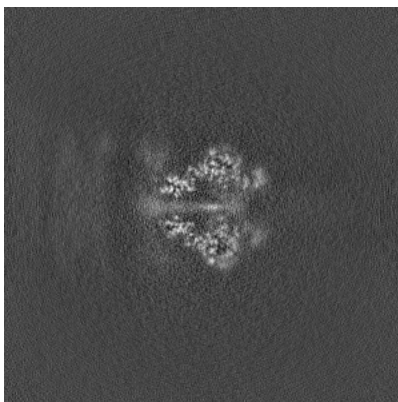


Z Index: 192

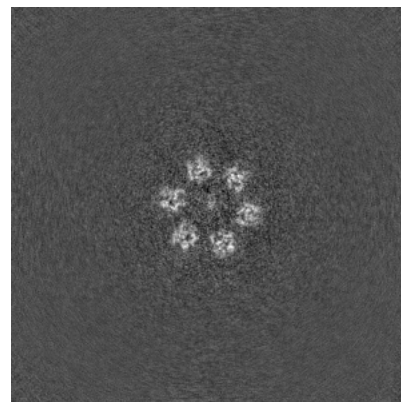
6.2.2 Raw map



X Index: 192



Y Index: 192

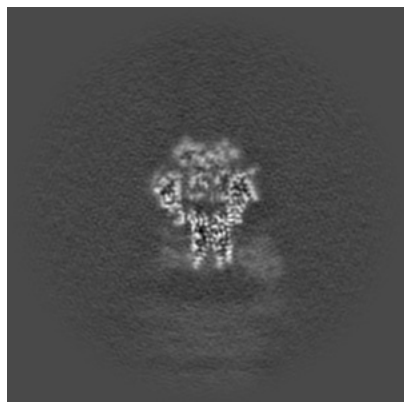


Z Index: 192

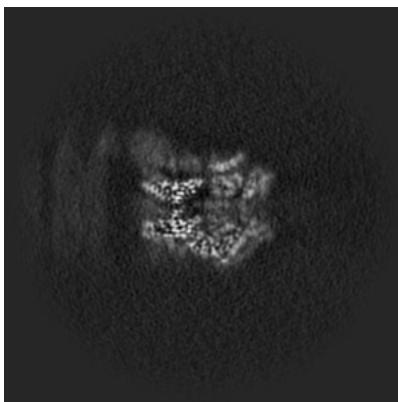
The images above show central slices of the map in three orthogonal directions.

6.3 Largest variance slices [i](#)

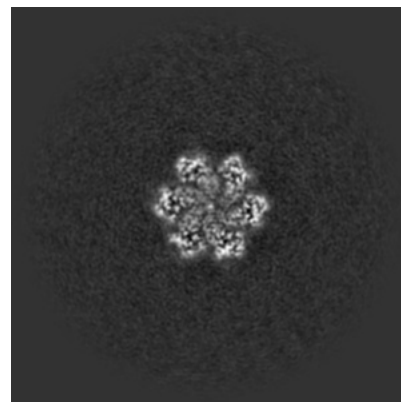
6.3.1 Primary map



X Index: 211

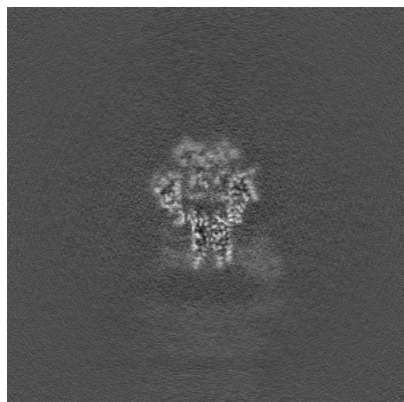


Y Index: 203

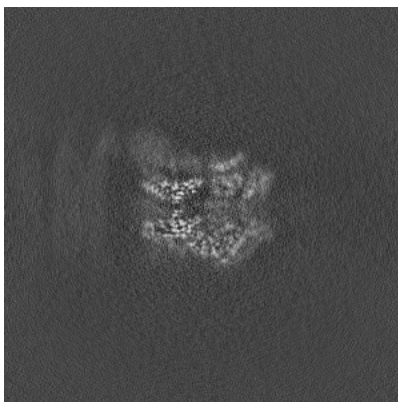


Z Index: 201

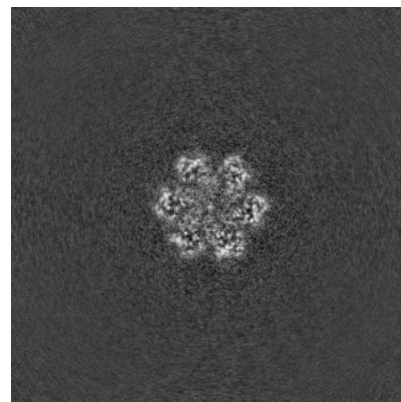
6.3.2 Raw map



X Index: 211



Y Index: 203

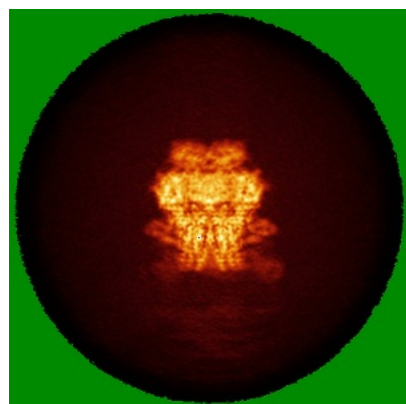


Z Index: 201

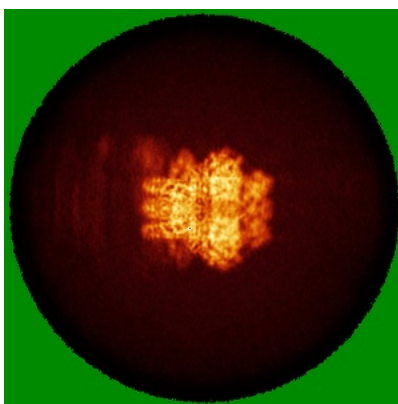
The images above show the largest variance slices of the map in three orthogonal directions.

6.4 Orthogonal standard-deviation projections (False-color) [i](#)

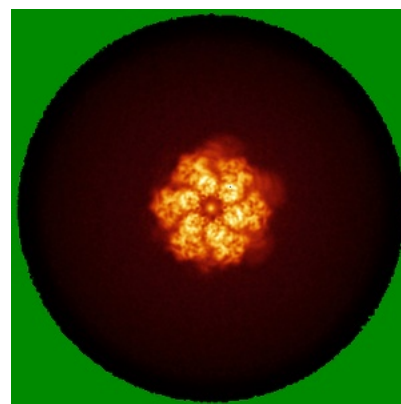
6.4.1 Primary map



X

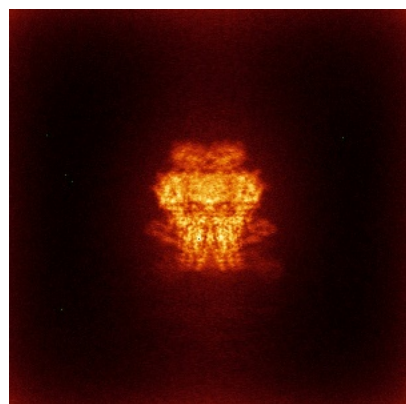


Y

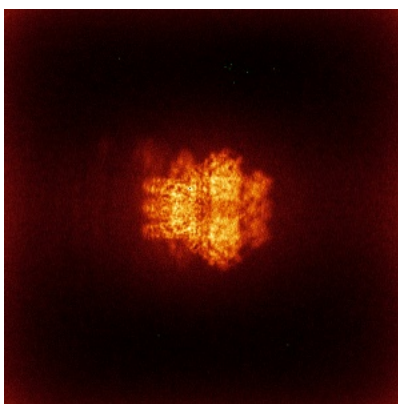


Z

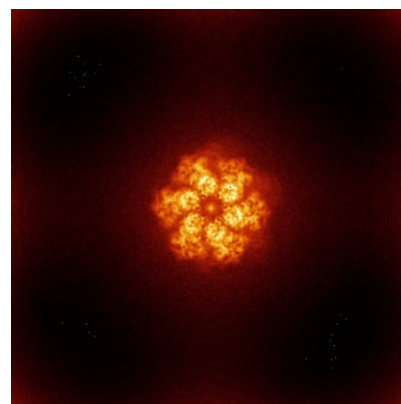
6.4.2 Raw map



X



Y

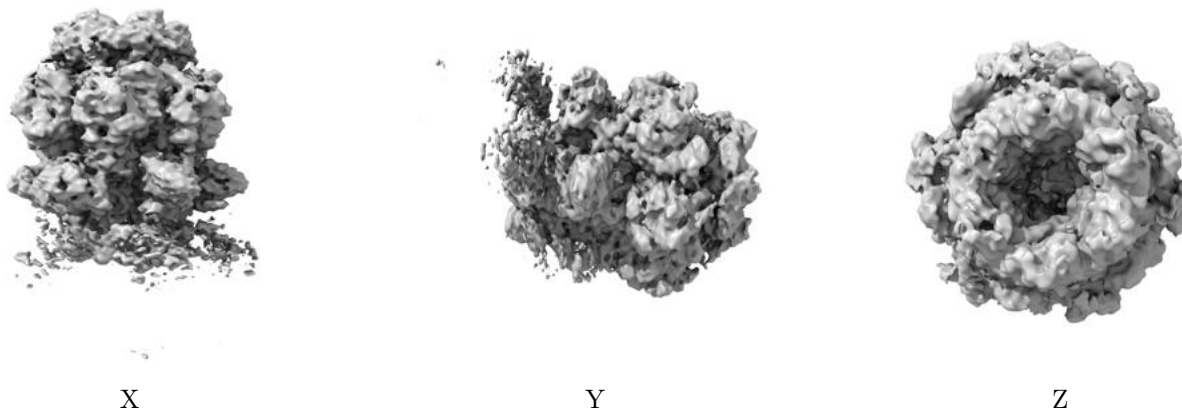


Z

The images above show the map standard deviation projections with false color in three orthogonal directions. Minimum values are shown in green, max in blue, and dark to light orange shades represent small to large values respectively.

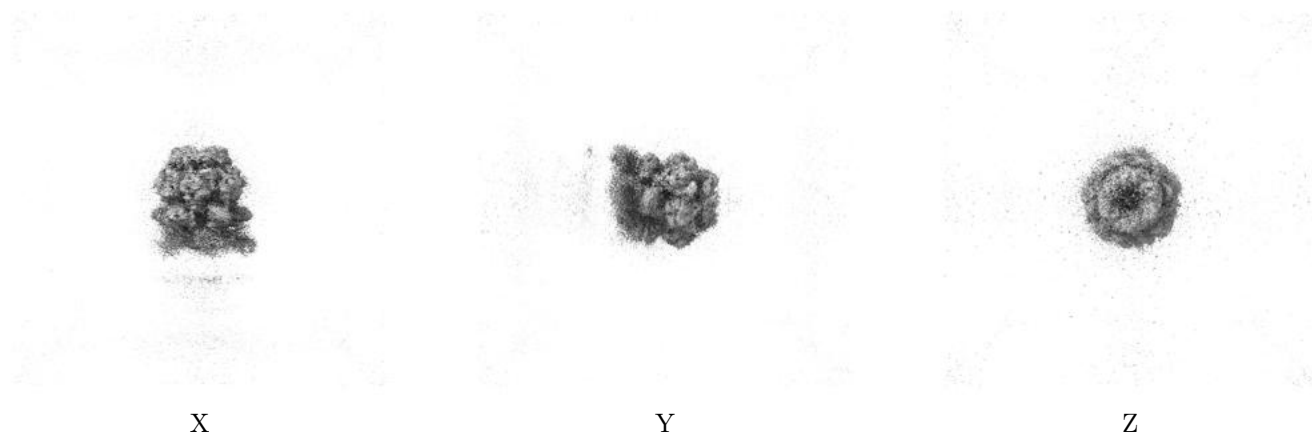
6.5 Orthogonal surface views [i](#)

6.5.1 Primary map



The images above show the 3D surface view of the map at the recommended contour level 0.18. These images, in conjunction with the slice images, may facilitate assessment of whether an appropriate contour level has been provided.

6.5.2 Raw map



These images show the 3D surface of the raw map. The raw map's contour level was selected so that its surface encloses the same volume as the primary map does at its recommended contour level.

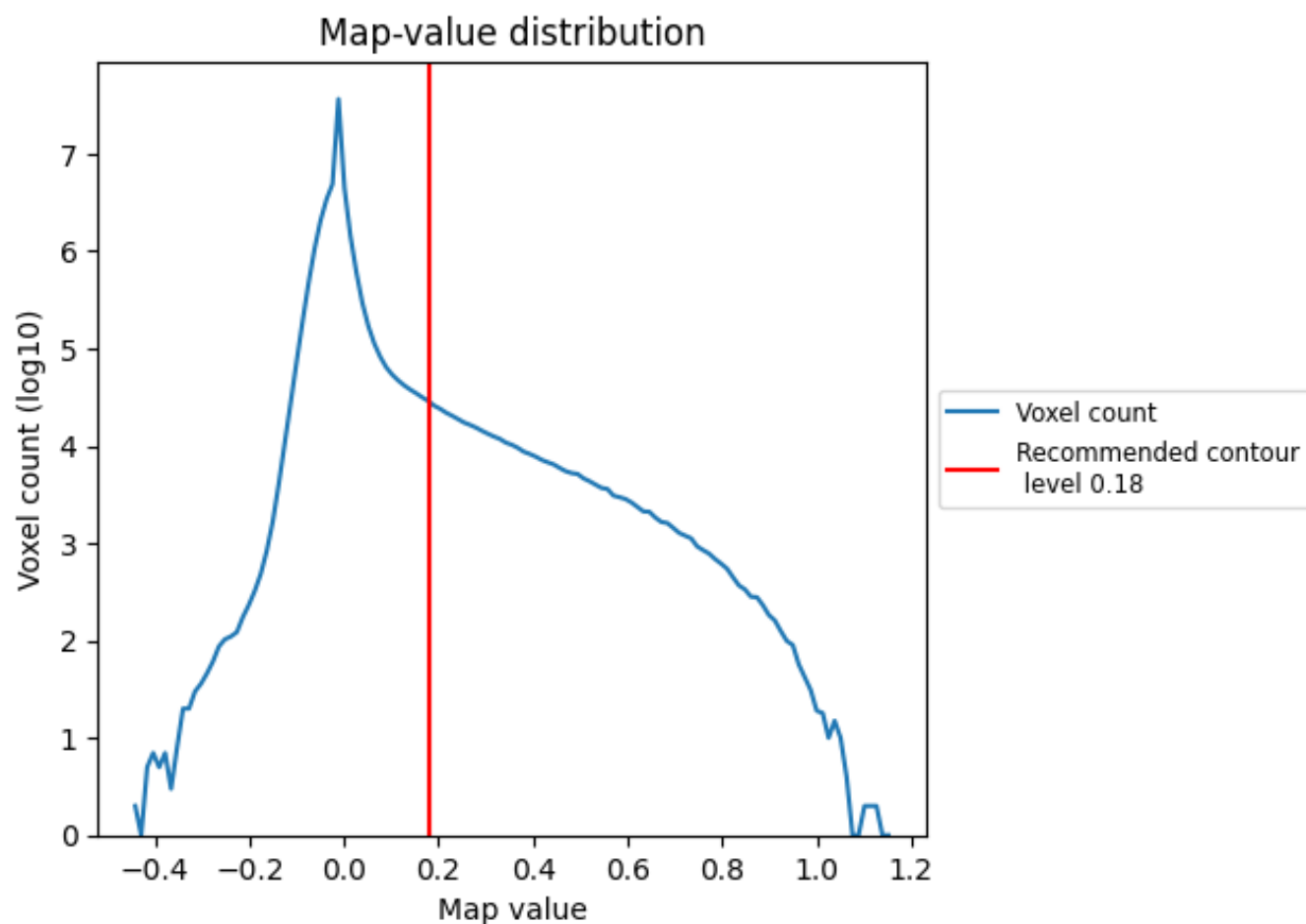
6.6 Mask visualisation [i](#)

This section was not generated. No masks/segmentation were deposited.

7 Map analysis [i](#)

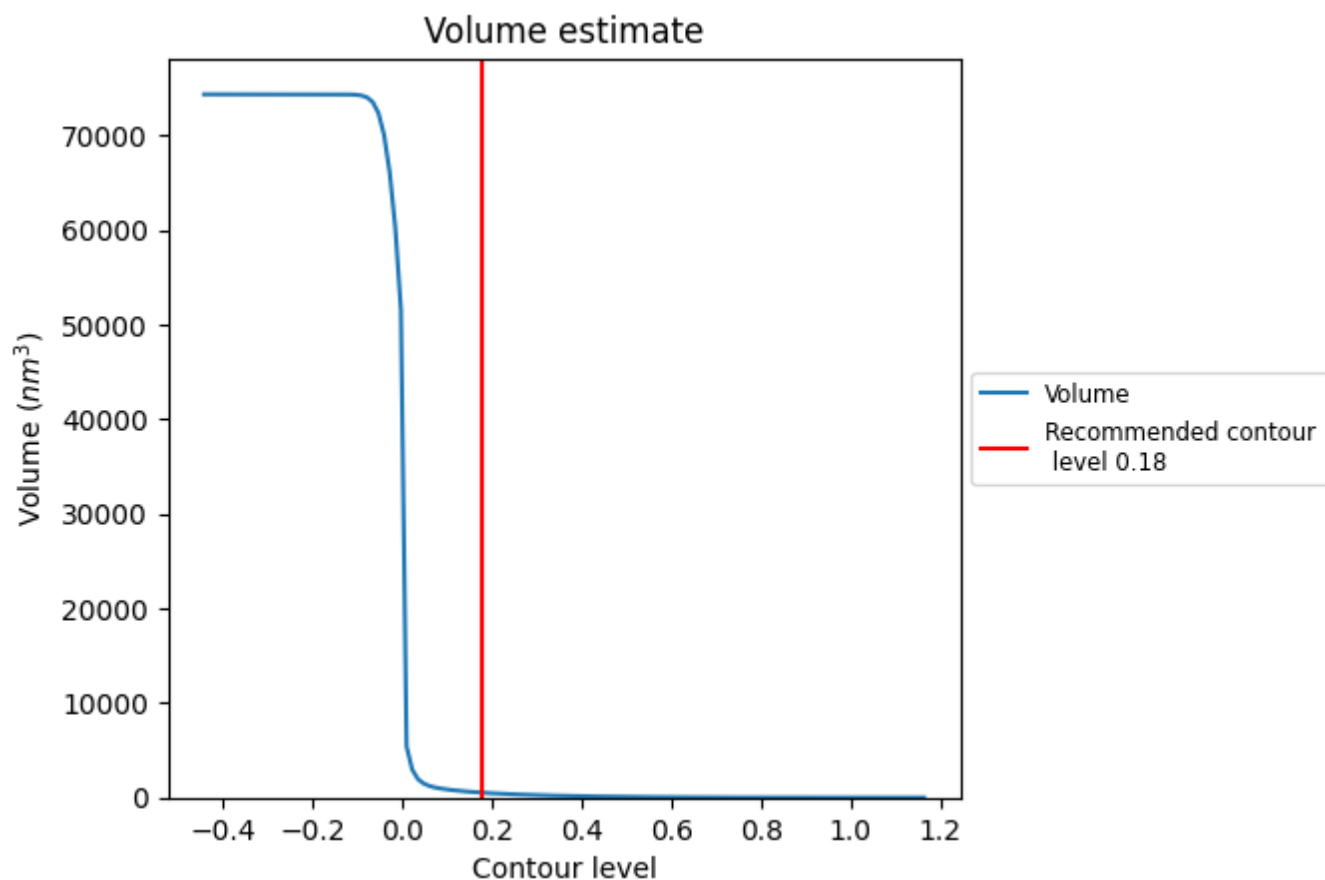
This section contains the results of statistical analysis of the map.

7.1 Map-value distribution [i](#)



The map-value distribution is plotted in 128 intervals along the x-axis. The y-axis is logarithmic. A spike in this graph at zero usually indicates that the volume has been masked.

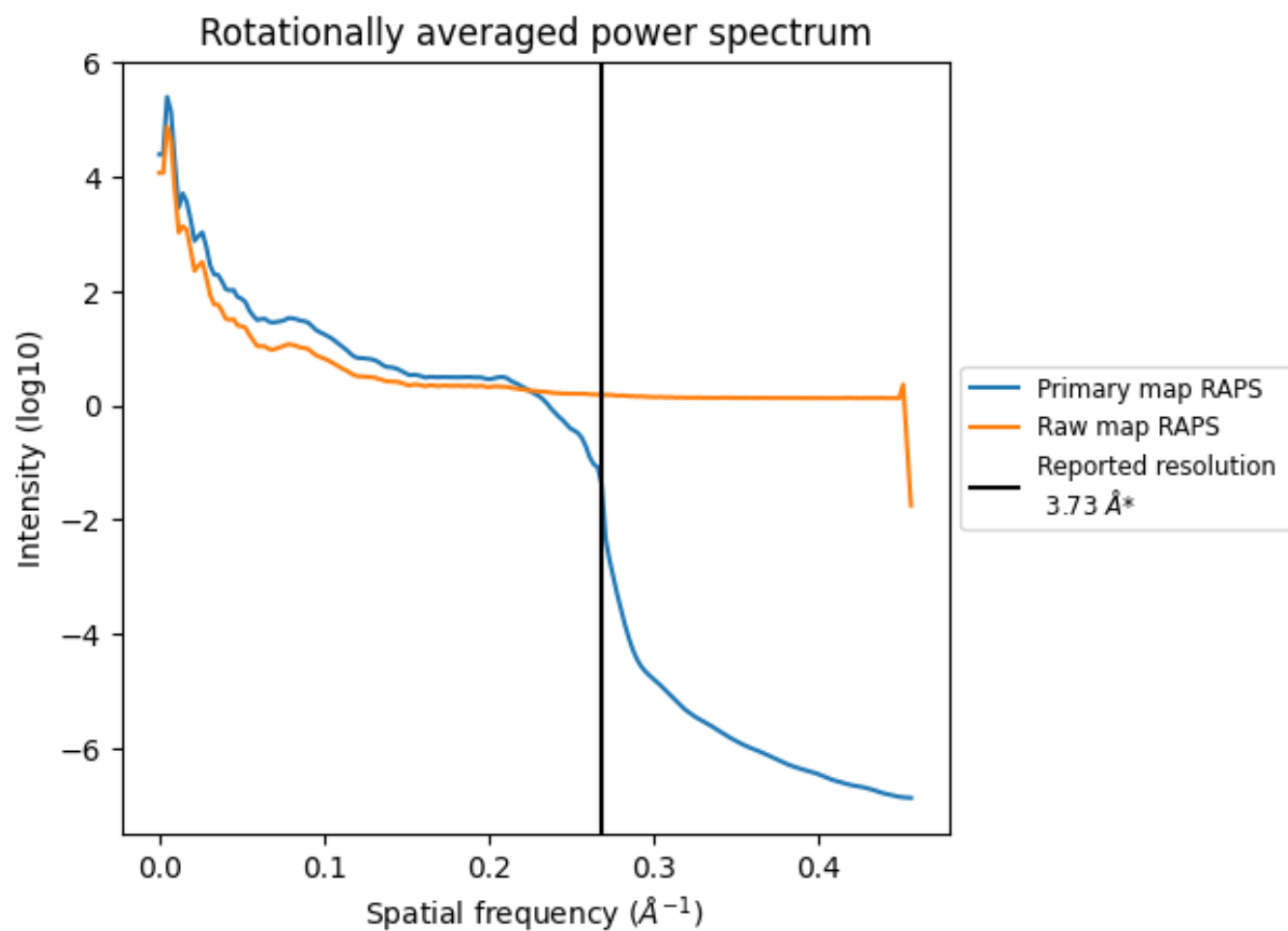
7.2 Volume estimate [i](#)



The volume at the recommended contour level is 512 nm³; this corresponds to an approximate mass of 463 kDa.

The volume estimate graph shows how the enclosed volume varies with the contour level. The recommended contour level is shown as a vertical line and the intersection between the line and the curve gives the volume of the enclosed surface at the given level.

7.3 Rotationally averaged power spectrum ⓘ

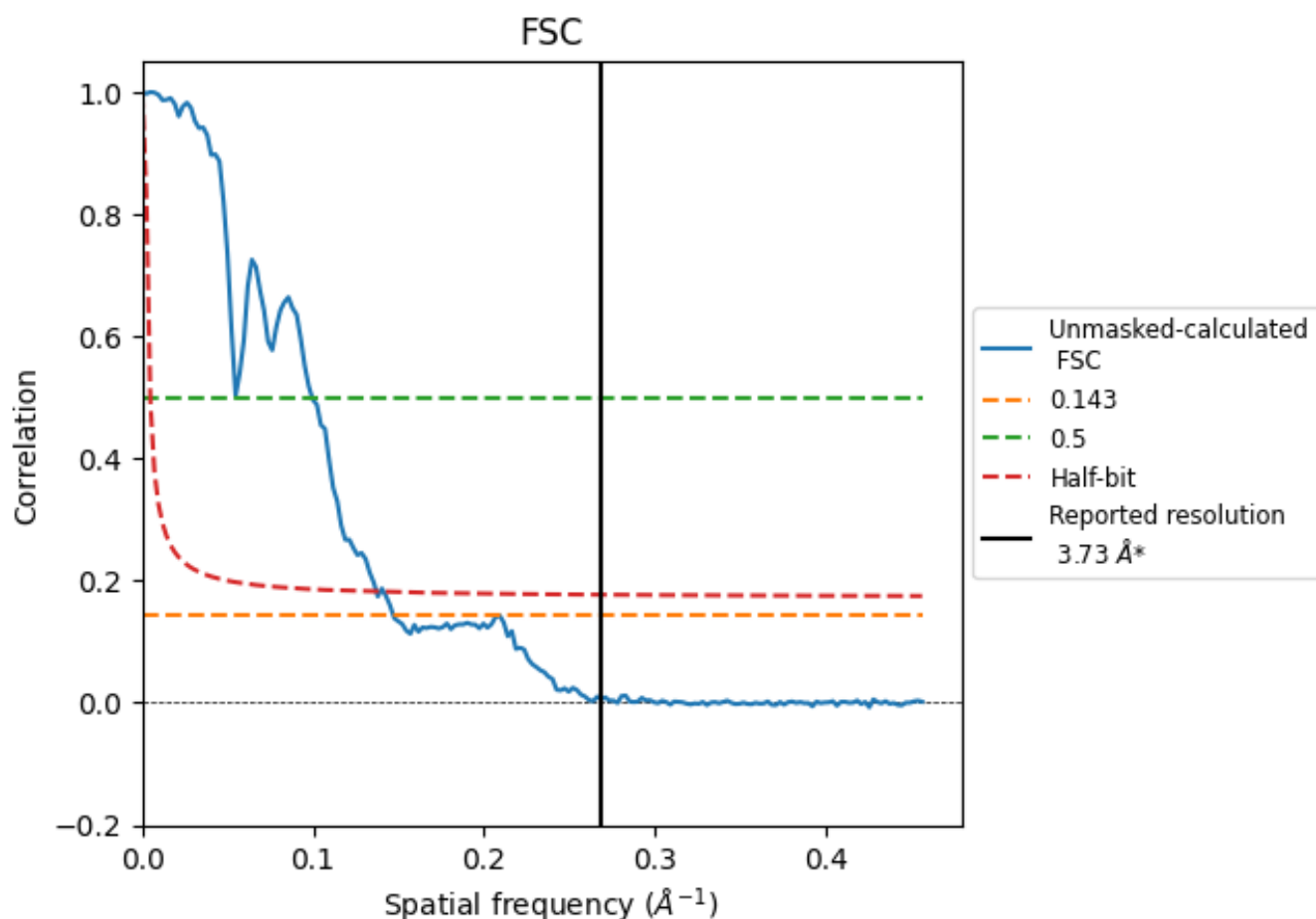


*Reported resolution corresponds to spatial frequency of 0.268 \AA^{-1}

8 Fourier-Shell correlation [i](#)

Fourier-Shell Correlation (FSC) is the most commonly used method to estimate the resolution of single-particle and subtomogram-averaged maps. The shape of the curve depends on the imposed symmetry, mask and whether or not the two 3D reconstructions used were processed from a common reference. The reported resolution is shown as a black line. A curve is displayed for the half-bit criterion in addition to lines showing the 0.143 gold standard cut-off and 0.5 cut-off.

8.1 FSC [i](#)



*Reported resolution corresponds to spatial frequency of 0.268 \AA^{-1}

8.2 Resolution estimates [i](#)

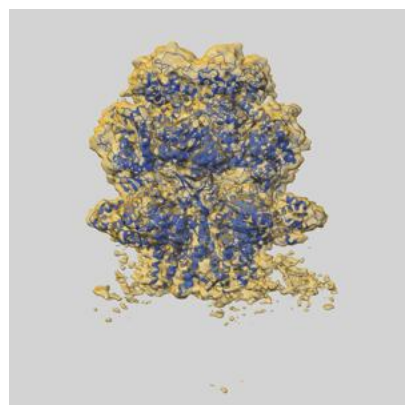
Resolution estimate (Å)	Estimation criterion (FSC cut-off)		
	0.143	0.5	Half-bit
Reported by author	3.73	-	-
Author-provided FSC curve	-	-	-
Unmasked-calculated*	6.81	10.05	7.29

*Resolution estimate based on FSC curve calculated by comparison of deposited half-maps. The value from deposited half-maps intersecting FSC 0.143 CUT-OFF 6.81 differs from the reported value 3.73 by more than 10 %

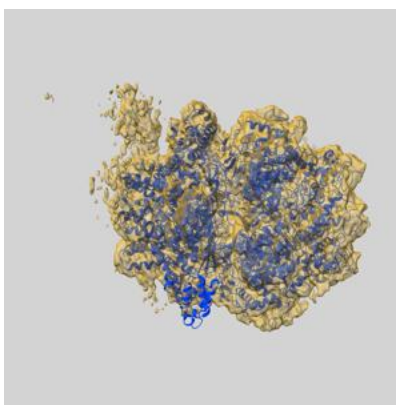
9 Map-model fit [i](#)

This section contains information regarding the fit between EMDB map EMD-37882 and PDB model 8WW6. Per-residue inclusion information can be found in section [3](#) on page [7](#).

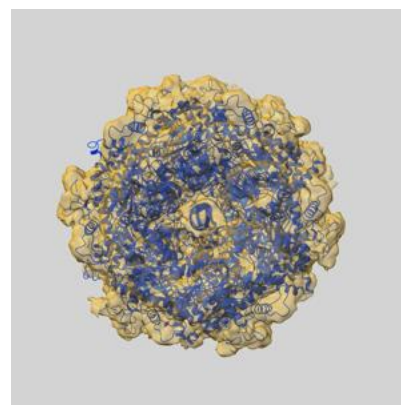
9.1 Map-model overlay [i](#)



X



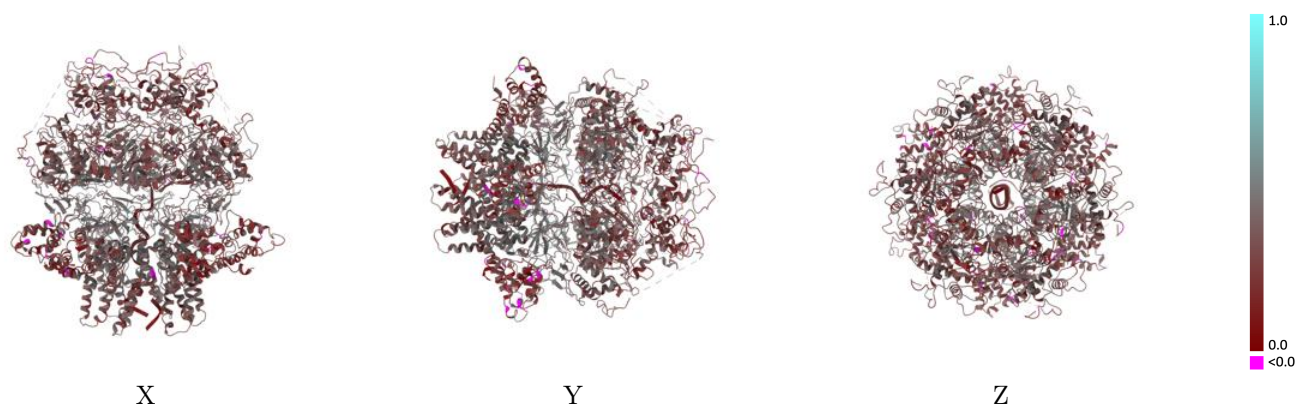
Y



Z

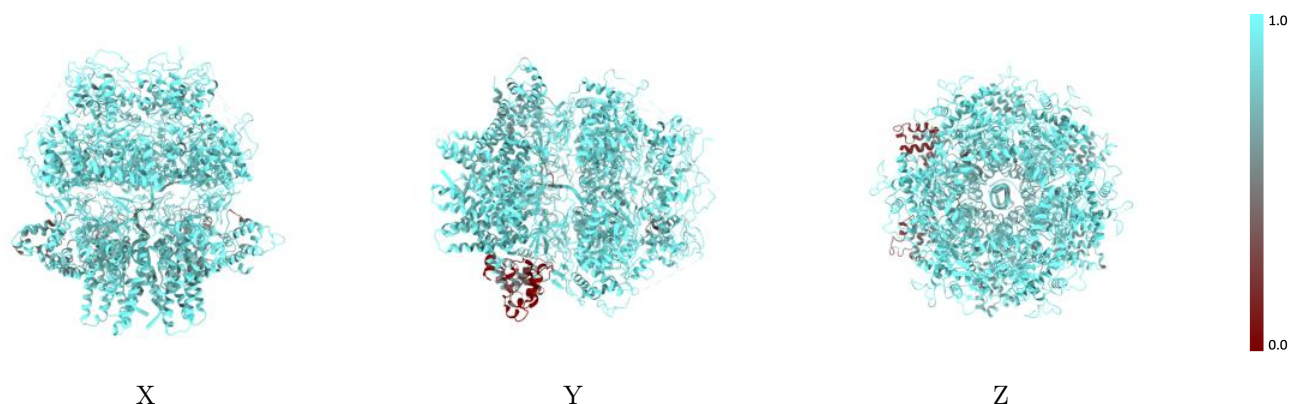
The images above show the 3D surface view of the map at the recommended contour level 0.18 at 50% transparency in yellow overlaid with a ribbon representation of the model coloured in blue. These images allow for the visual assessment of the quality of fit between the atomic model and the map.

9.2 Q-score mapped to coordinate model [i](#)



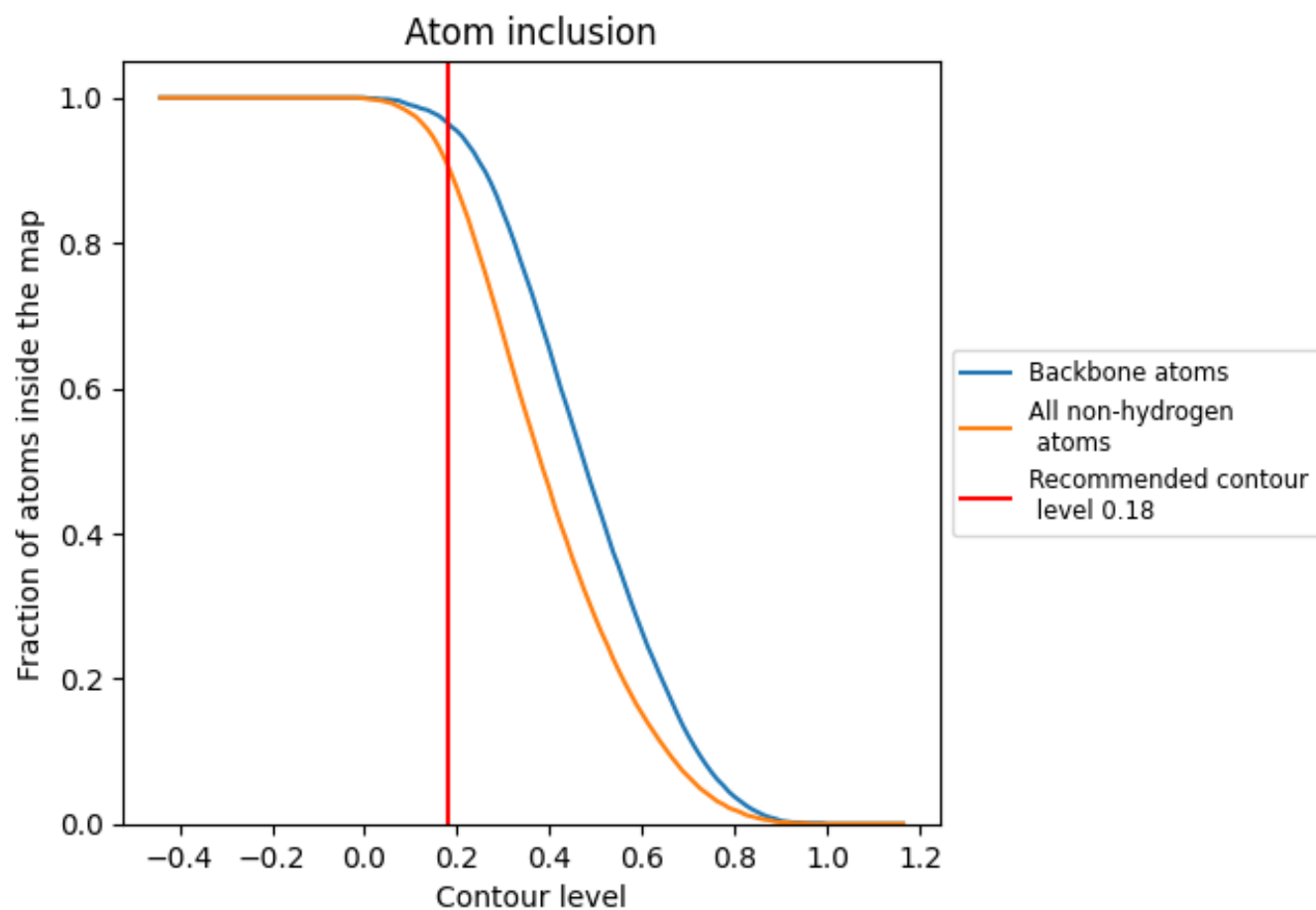
The images above show the model with each residue coloured according to its Q-score. This shows their resolvability in the map with higher Q-score values reflecting better resolvability. Please note: Q-score is calculating the resolvability of atoms, and thus high values are only expected at resolutions at which atoms can be resolved. Low Q-score values may therefore be expected for many entries.

9.3 Atom inclusion mapped to coordinate model [i](#)



The images above show the model with each residue coloured according to its atom inclusion. This shows to what extent they are inside the map at the recommended contour level (0.18).

9.4 Atom inclusion [i](#)



At the recommended contour level, 96% of all backbone atoms, 91% of all non-hydrogen atoms, are inside the map.

9.5 Map-model fit summary ⓘ

The table lists the average atom inclusion at the recommended contour level (0.18) and Q-score for the entire model and for each chain.

Chain	Atom inclusion	Q-score
All	<div><div></div></div> 0.9070	<div><div></div></div> 0.3260
A	<div><div></div></div> 0.8340	<div><div></div></div> 0.3170
B	<div><div></div></div> 0.8770	<div><div></div></div> 0.3250
C	<div><div></div></div> 0.9350	<div><div></div></div> 0.3340
D	<div><div></div></div> 0.9310	<div><div></div></div> 0.3390
E	<div><div></div></div> 0.9300	<div><div></div></div> 0.3360
F	<div><div></div></div> 0.9430	<div><div></div></div> 0.3270
H	<div><div></div></div> 0.8280	<div><div></div></div> 0.1500
I	<div><div></div></div> 0.9880	<div><div></div></div> 0.1090

1.0

0.0

<0.0