



# Full wwPDB X-ray Structure Validation Report ⓘ

Jun 12, 2024 – 01:51 PM EDT

PDB ID : 2XM1  
Title : BtGH84 in complex with N-acetyl gluconolactam  
Authors : He, Y.; Davies, G.J.  
Deposited on : 2010-07-22  
Resolution : 2.00 Å(reported)

This is a Full wwPDB X-ray Structure Validation Report for a publicly released PDB entry.

We welcome your comments at [validation@mail.wwpdb.org](mailto:validation@mail.wwpdb.org)

A user guide is available at

<https://www.wwpdb.org/validation/2017/XrayValidationReportHelp>

with specific help available everywhere you see the ⓘ symbol.

The types of validation reports are described at

<http://www.wwpdb.org/validation/2017/FAQs#types>.

---

The following versions of software and data (see [references ⓘ](#)) were used in the production of this report:

MolProbity : 4.02b-467  
Mogul : 2022.3.0, CSD as543be (2022)  
Xtriage (Phenix) : 1.20.1  
EDS : 2.36.2  
Percentile statistics : 20191225.v01 (using entries in the PDB archive December 25th 2019)  
Refmac : 5.8.0158  
CCP4 : 7.0.044 (Gargrove)  
Ideal geometry (proteins) : Engh & Huber (2001)  
Ideal geometry (DNA, RNA) : Parkinson et al. (1996)  
Validation Pipeline (wwPDB-VP) : 2.36.2

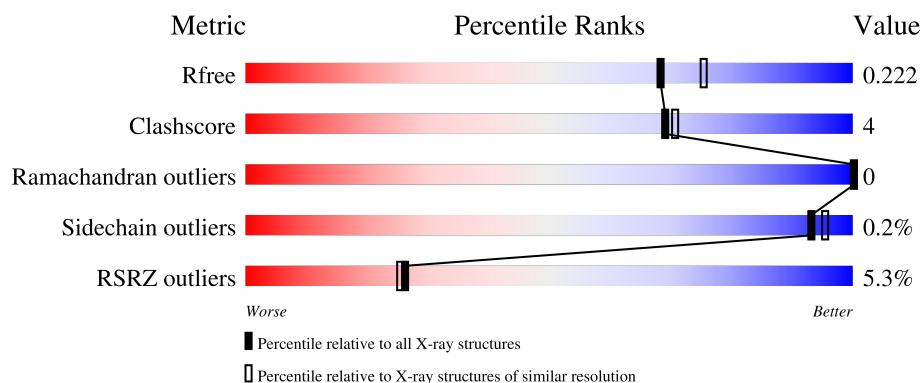
# 1 Overall quality at a glance

The following experimental techniques were used to determine the structure:

*X-RAY DIFFRACTION*

The reported resolution of this entry is 2.00 Å.

Percentile scores (ranging between 0-100) for global validation metrics of the entry are shown in the following graphic. The table shows the number of entries on which the scores are based.



Metric	Whole archive (#Entries)	Similar resolution (#Entries, resolution range(Å))
$R_{free}$	130704	8085 (2.00-2.00)
Clashscore	141614	9178 (2.00-2.00)
Ramachandran outliers	138981	9054 (2.00-2.00)
Sidechain outliers	138945	9053 (2.00-2.00)
RSRZ outliers	127900	7900 (2.00-2.00)

The table below summarises the geometric issues observed across the polymeric chains and their fit to the electron density. The red, orange, yellow and green segments of the lower bar indicate the fraction of residues that contain outliers for  $\geq 3$ , 2, 1 and 0 types of geometric quality criteria respectively. A grey segment represents the fraction of residues that are not modelled. The numeric value for each fraction is indicated below the corresponding segment, with a dot representing fractions  $\leq 5\%$ . The upper red bar (where present) indicates the fraction of residues that have poor fit to the electron density. The numeric value is given above the bar.

Mol	Chain	Length	Quality of chain
1	A	716	<div> <div>4%</div> <div>83%</div> <div>7%</div> <div>10%</div> </div>
1	B	716	<div> <div>5%</div> <div>84%</div> <div>6%</div> <div>10%</div> </div>

## 2 Entry composition [i](#)

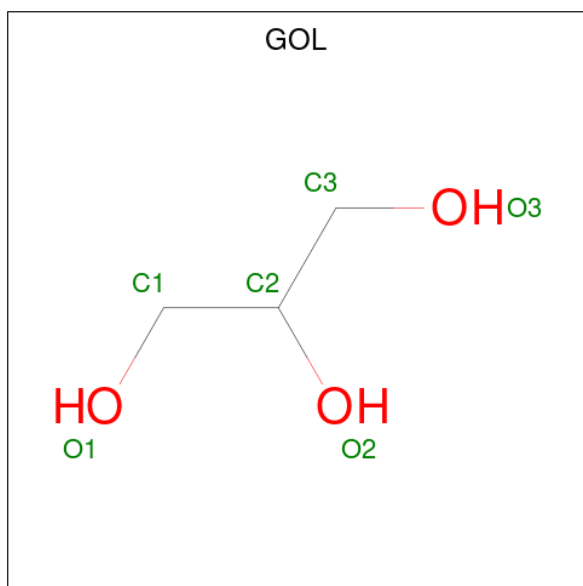
There are 4 unique types of molecules in this entry. The entry contains 11613 atoms, of which 0 are hydrogens and 0 are deuteriums.

In the tables below, the ZeroOcc column contains the number of atoms modelled with zero occupancy, the AltConf column contains the number of residues with at least one atom in alternate conformation and the Trace column contains the number of residues modelled with at most 2 atoms.

- Molecule 1 is a protein called O-GLCNACASE BT\_4395.

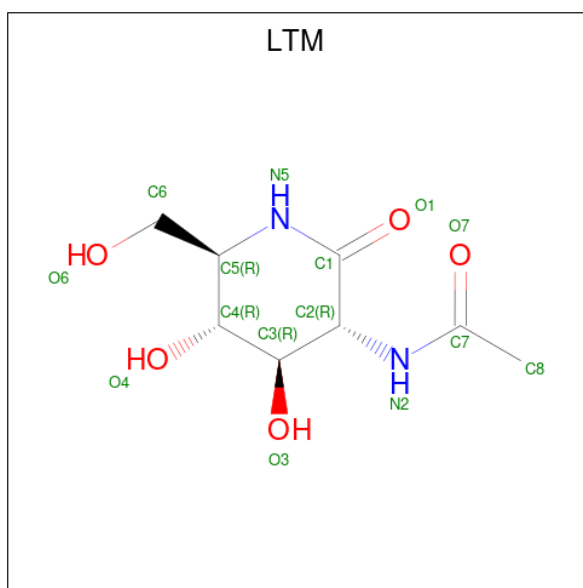
Mol	Chain	Residues	Atoms					ZeroOcc	AltConf	Trace
1	A	645	Total	C	N	O	S	0	7	0
			5277	3388	887	982	20			
1	B	643	Total	C	N	O	S	0	3	0
			5237	3360	881	977	19			

- Molecule 2 is GLYCEROL (three-letter code: GOL) (formula: C<sub>3</sub>H<sub>8</sub>O<sub>3</sub>).



Mol	Chain	Residues	Atoms			ZeroOcc	AltConf
2	A	1	Total	C	O	0	0
			6	3	3		
2	A	1	Total	C	O	0	0
			6	3	3		
2	B	1	Total	C	O	0	0
			6	3	3		
2	B	1	Total	C	O	0	0
			6	3	3		

- Molecule 3 is N-ACETYL GLUCONOLACTAM (three-letter code: LTM) (formula:  $C_8H_{14}N_2O_5$ ).



Mol	Chain	Residues	Atoms				ZeroOcc	AltConf
3	A	1	Total	C	N	O	0	0
			15	8	2	5		
3	B	1	Total	C	N	O	0	0
			15	8	2	5		

- Molecule 4 is water.

Mol	Chain	Residues	Atoms		ZeroOcc	AltConf
4	A	527	Total	O	0	0
			527	527		
4	B	518	Total	O	0	0
			518	518		



## 4 Data and refinement statistics

Property	Value	Source
Space group	P 1	Depositor
Cell constants a, b, c, $\alpha$ , $\beta$ , $\gamma$	51.40Å 94.08Å 99.46Å 104.70° 94.02° 102.92°	Depositor
Resolution (Å)	47.84 – 2.00 47.67 – 2.00	Depositor EDS
% Data completeness (in resolution range)	97.4 (47.84-2.00) 97.4 (47.67-2.00)	Depositor EDS
$R_{merge}$	0.04	Depositor
$R_{sym}$	(Not available)	Depositor
$\langle I/\sigma(I) \rangle$ <sup>1</sup>	4.00 (at 2.00Å)	Xtriage
Refinement program	REFMAC 5.5.0109	Depositor
R, $R_{free}$	0.180 , 0.220 0.185 , 0.222	Depositor DCC
$R_{free}$ test set	5719 reflections (4.99%)	wwPDB-VP
Wilson B-factor (Å <sup>2</sup> )	21.5	Xtriage
Anisotropy	0.032	Xtriage
Bulk solvent $k_{sol}$ (e/Å <sup>3</sup> ), $B_{sol}$ (Å <sup>2</sup> )	0.37 , 48.7	EDS
L-test for twinning <sup>2</sup>	$\langle  L  \rangle = 0.50$ , $\langle L^2 \rangle = 0.33$	Xtriage
Estimated twinning fraction	No twinning to report.	Xtriage
$F_o, F_c$ correlation	0.94	EDS
Total number of atoms	11613	wwPDB-VP
Average B, all atoms (Å <sup>2</sup> )	25.0	wwPDB-VP

Xtriage's analysis on translational NCS is as follows: *The largest off-origin peak in the Patterson function is 4.87% of the height of the origin peak. No significant pseudotranslation is detected.*

<sup>1</sup>Intensities estimated from amplitudes.

<sup>2</sup>Theoretical values of  $\langle |L| \rangle$ ,  $\langle L^2 \rangle$  for acentric reflections are 0.5, 0.333 respectively for untwinned datasets, and 0.375, 0.2 for perfectly twinned datasets.

## 5 Model quality

### 5.1 Standard geometry

Bond lengths and bond angles in the following residue types are not validated in this section: GOL, LTM

The Z score for a bond length (or angle) is the number of standard deviations the observed value is removed from the expected value. A bond length (or angle) with  $|Z| > 5$  is considered an outlier worth inspection. RMSZ is the root-mean-square of all Z scores of the bond lengths (or angles).

Mol	Chain	Bond lengths		Bond angles	
		RMSZ	$\# Z  > 5$	RMSZ	$\# Z  > 5$
1	A	0.65	0/5429	0.60	0/7350
1	B	0.64	0/5376	0.61	0/7282
All	All	0.64	0/10805	0.61	0/14632

There are no bond length outliers.

There are no bond angle outliers.

There are no chirality outliers.

There are no planarity outliers.

### 5.2 Too-close contacts

In the following table, the Non-H and H(model) columns list the number of non-hydrogen atoms and hydrogen atoms in the chain respectively. The H(added) column lists the number of hydrogen atoms added and optimized by MolProbity. The Clashes column lists the number of clashes within the asymmetric unit, whereas Symm-Clashes lists symmetry-related clashes.

Mol	Chain	Non-H	H(model)	H(added)	Clashes	Symm-Clashes
1	A	5277	0	5216	39	0
1	B	5237	0	5164	38	0
2	A	12	0	16	0	0
2	B	12	0	16	0	0
3	A	15	0	14	0	0
3	B	15	0	14	0	0
4	A	527	0	0	7	0
4	B	518	0	0	3	0
All	All	11613	0	10440	77	0

The all-atom clashscore is defined as the number of clashes found per 1000 atoms (including hydrogen atoms). The all-atom clashscore for this structure is 4.

All (77) close contacts within the same asymmetric unit are listed below, sorted by their clash magnitude.

Atom-1	Atom-2	Interatomic distance (Å)	Clash overlap (Å)
1:A:441[B]:MET:HG2	4:A:2393:HOH:O	1.57	1.04
1:A:519:ARG:CG	1:A:519:ARG:HH21	1.90	0.83
1:A:454:PHE:HZ	1:A:572:VAL:HG12	1.44	0.83
1:B:454:PHE:HZ	1:B:572:VAL:CG1	1.93	0.81
1:A:593:HIS:HD2	1:A:636:ASP:H	1.36	0.73
1:B:454:PHE:CZ	1:B:572:VAL:HG13	2.23	0.72
1:B:454:PHE:HZ	1:B:572:VAL:HG12	1.55	0.70
1:B:15:GLN:HG3	1:B:118:GLU:HG2	1.71	0.70
1:A:454:PHE:CZ	1:A:572:VAL:HG12	2.27	0.69
1:B:454:PHE:CZ	1:B:572:VAL:CG1	2.75	0.69
1:A:519:ARG:HH21	1:A:519:ARG:HG2	1.58	0.68
1:B:604:ASN:N	4:B:2496:HOH:O	2.28	0.66
1:A:444:GLN:HB3	1:A:445:PRO:HD3	1.77	0.65
1:B:536:GLN:HG2	1:B:590:TYR:CD1	2.34	0.62
1:B:439:GLU:H	1:B:441[B]:MET:HE3	1.66	0.60
1:B:593:HIS:HD2	1:B:636:ASP:H	1.49	0.60
1:B:51:SER:OG	1:B:52:LYS:N	2.34	0.60
1:A:454:PHE:CZ	1:A:572:VAL:CG1	2.84	0.60
1:A:519:ARG:HG3	1:A:519:ARG:NH2	2.16	0.59
1:A:593:HIS:HE1	4:A:2493:HOH:O	1.86	0.58
1:A:519:ARG:CG	1:A:519:ARG:NH2	2.54	0.58
1:B:355:VAL:O	1:B:399:THR:HG23	2.03	0.57
1:A:340:PHE:O	1:A:371:THR:OG1	2.25	0.55
1:B:454:PHE:HZ	1:B:572:VAL:HG13	1.61	0.55
1:A:50:SER:HB2	4:A:2022:HOH:O	2.07	0.54
1:B:340:PHE:O	1:B:371:THR:OG1	2.26	0.54
1:B:26:GLN:HE21	1:B:52:LYS:HA	1.75	0.52
1:A:87:GLU:H	1:A:87:GLU:CD	2.15	0.50
1:B:23:ALA:HA	1:B:48:LYS:HD2	1.92	0.50
1:A:331:LYS:NZ	4:A:2314:HOH:O	2.43	0.50
1:B:593:HIS:CD2	1:B:636:ASP:H	2.30	0.49
1:A:593:HIS:CD2	1:A:636:ASP:H	2.23	0.49
1:A:708:GLN:N	4:A:2520:HOH:O	2.46	0.49
1:B:354:PRO:HB2	1:B:399:THR:HG22	1.93	0.49
1:A:125:PRO:HB3	1:A:392:TRP:CE3	2.48	0.48
1:A:581:ASN:HB3	4:A:2484:HOH:O	2.13	0.48
1:B:308:MET:HA	1:B:335:TYR:O	2.13	0.48
1:A:23:ALA:HA	1:A:48:LYS:HG3	1.94	0.47
1:B:173:ALA:HA	1:B:174:PRO:HA	1.62	0.47
1:A:557:ALA:HB1	1:A:561:ILE:HB	1.96	0.46

*Continued on next page...*



*Continued from previous page...*

Atom-1	Atom-2	Interatomic distance (Å)	Clash overlap (Å)
1:A:261:ILE:O	1:A:265:PHE:HB3	2.15	0.46
1:A:454:PHE:CE2	1:A:572:VAL:HG13	2.51	0.46
1:A:519:ARG:HH21	1:A:519:ARG:HG3	1.70	0.45
1:A:536:GLN:HG2	1:A:590:TYR:CD1	2.50	0.45
1:B:98:ARG:HG2	1:B:102:TYR:CE2	2.52	0.45
1:A:224:ALA:O	1:A:228[B]:LYS:HG2	2.18	0.44
1:B:608:GLN:HB2	1:B:615:LEU:CD1	2.48	0.44
1:A:25:TYR:CE2	1:A:50:SER:HB3	2.53	0.44
1:A:420:CYS:HA	1:A:423[A]:MET:HE3	2.00	0.44
1:A:591:MET:HG3	1:A:593:HIS:O	2.18	0.43
1:B:536:GLN:HG2	1:B:590:TYR:CE1	2.53	0.43
1:A:340:PHE:CG	1:A:341:PRO:HA	2.53	0.43
1:A:461:ASP:HB2	4:A:2412:HOH:O	2.18	0.43
1:A:81:TYR:CZ	1:A:123:ASP:HB3	2.53	0.43
1:B:693:ARG:HG2	4:B:2510:HOH:O	2.18	0.43
1:A:308:MET:HA	1:A:335:TYR:O	2.19	0.42
1:B:608:GLN:HB2	1:B:615:LEU:HD11	2.00	0.42
1:B:340:PHE:CG	1:B:341:PRO:HA	2.54	0.42
1:B:527:LYS:HA	1:B:527:LYS:HE2	2.02	0.42
1:B:21:LEU:HD12	1:B:22:PRO:HD2	2.01	0.42
1:A:238:ALA:HA	1:A:276:VAL:O	2.20	0.42
1:B:470:TYR:OH	4:B:2418:HOH:O	2.21	0.41
1:B:613:ARG:HH11	1:B:613:ARG:HG3	1.85	0.41
1:B:238:ALA:HA	1:B:276:VAL:O	2.20	0.41
1:B:557:ALA:HB1	1:B:561:ILE:HB	2.02	0.41
1:B:532:LYS:HA	1:B:532:LYS:HD2	1.93	0.41
1:B:536:GLN:HG2	1:B:590:TYR:CG	2.56	0.41
1:A:647:ASN:CB	1:A:708:GLN:HG2	2.51	0.41
1:B:25:TYR:CZ	1:B:45:LEU:HD13	2.55	0.41
1:B:613:ARG:HG3	1:B:613:ARG:NH1	2.36	0.41
1:A:393:ASN:HD21	1:A:396:LYS:NZ	2.19	0.40
1:A:498:TRP:CD1	1:A:554:VAL:HG13	2.57	0.40
1:A:605:LEU:HA	1:A:606:PRO:HD3	1.97	0.40
1:B:354:PRO:HB2	1:B:399:THR:CG2	2.51	0.40
1:A:170:TYR:HB2	1:A:180:TYR:CE1	2.57	0.40
1:B:615:LEU:HD12	1:B:615:LEU:C	2.42	0.40
1:B:356:TYR:HB3	1:B:399:THR:HG21	2.03	0.40

There are no symmetry-related clashes.

## 5.3 Torsion angles

### 5.3.1 Protein backbone

In the following table, the Percentiles column shows the percent Ramachandran outliers of the chain as a percentile score with respect to all X-ray entries followed by that with respect to entries of similar resolution.

The Analysed column shows the number of residues for which the backbone conformation was analysed, and the total number of residues.

Mol	Chain	Analysed	Favoured	Allowed	Outliers	Percentiles	
1	A	640/716 (89%)	618 (97%)	22 (3%)	0	100	100
1	B	634/716 (88%)	617 (97%)	17 (3%)	0	100	100
All	All	1274/1432 (89%)	1235 (97%)	39 (3%)	0	100	100

There are no Ramachandran outliers to report.

### 5.3.2 Protein sidechains

In the following table, the Percentiles column shows the percent sidechain outliers of the chain as a percentile score with respect to all X-ray entries followed by that with respect to entries of similar resolution.

The Analysed column shows the number of residues for which the sidechain conformation was analysed, and the total number of residues.

Mol	Chain	Analysed	Rotameric	Outliers	Percentiles	
1	A	575/630 (91%)	574 (100%)	1 (0%)	93	95
1	B	569/630 (90%)	568 (100%)	1 (0%)	93	95
All	All	1144/1260 (91%)	1142 (100%)	2 (0%)	93	95

All (2) residues with a non-rotameric sidechain are listed below:

Mol	Chain	Res	Type
1	A	11	GLN
1	B	519	ARG

Sometimes sidechains can be flipped to improve hydrogen bonding and reduce clashes. All (13) such sidechains are listed below:

Mol	Chain	Res	Type
1	A	26	GLN

*Continued on next page...*

*Continued from previous page...*

Mol	Chain	Res	Type
1	A	189	GLN
1	A	349	HIS
1	A	393	ASN
1	A	425	ASN
1	A	593	HIS
1	B	26	GLN
1	B	254	GLN
1	B	274	GLN
1	B	306	GLN
1	B	459	ASN
1	B	543	GLN
1	B	593	HIS

### 5.3.3 RNA [i](#)

There are no RNA molecules in this entry.

### 5.4 Non-standard residues in protein, DNA, RNA chains [i](#)

There are no non-standard protein/DNA/RNA residues in this entry.

### 5.5 Carbohydrates [i](#)

There are no monosaccharides in this entry.

### 5.6 Ligand geometry [i](#)

6 ligands are modelled in this entry.

In the following table, the Counts columns list the number of bonds (or angles) for which Mogul statistics could be retrieved, the number of bonds (or angles) that are observed in the model and the number of bonds (or angles) that are defined in the Chemical Component Dictionary. The Link column lists molecule types, if any, to which the group is linked. The Z score for a bond length (or angle) is the number of standard deviations the observed value is removed from the expected value. A bond length (or angle) with  $|Z| > 2$  is considered an outlier worth inspection. RMSZ is the root-mean-square of all Z scores of the bond lengths (or angles).

Mol	Type	Chain	Res	Link	Bond lengths			Bond angles		
					Counts	RMSZ	$\# Z  > 2$	Counts	RMSZ	$\# Z  > 2$
2	GOL	B	1718	-	5,5,5	0.41	0	5,5,5	0.25	0
3	LTM	B	1716	-	15,15,15	1.00	1 (6%)	18,21,21	1.74	4 (22%)

Mol	Type	Chain	Res	Link	Bond lengths			Bond angles		
					Counts	RMSZ	# Z  > 2	Counts	RMSZ	# Z  > 2
3	LTM	A	1717	-	15,15,15	1.04	1 (6%)	18,21,21	1.84	7 (38%)
2	GOL	A	1716	-	5,5,5	0.42	0	5,5,5	0.45	0
2	GOL	B	1717	-	5,5,5	0.42	0	5,5,5	0.39	0
2	GOL	A	1718	-	5,5,5	0.41	0	5,5,5	0.40	0

In the following table, the Chirals column lists the number of chiral outliers, the number of chiral centers analysed, the number of these observed in the model and the number defined in the Chemical Component Dictionary. Similar counts are reported in the Torsion and Rings columns. '-' means no outliers of that kind were identified.

Mol	Type	Chain	Res	Link	Chirals	Torsions	Rings
2	GOL	B	1718	-	-	4/4/4/4	-
3	LTM	B	1716	-	-	1/6/26/26	0/1/1/1
3	LTM	A	1717	-	-	1/6/26/26	0/1/1/1
2	GOL	A	1716	-	-	2/4/4/4	-
2	GOL	B	1717	-	-	1/4/4/4	-
2	GOL	A	1718	-	-	2/4/4/4	-

All (2) bond length outliers are listed below:

Mol	Chain	Res	Type	Atoms	Z	Observed(Å)	Ideal(Å)
3	A	1717	LTM	C1-N5	2.85	1.37	1.33
3	B	1716	LTM	C1-N5	2.25	1.37	1.33

All (11) bond angle outliers are listed below:

Mol	Chain	Res	Type	Atoms	Z	Observed(°)	Ideal(°)
3	B	1716	LTM	O1-C1-N5	-4.57	116.63	122.67
3	A	1717	LTM	O1-C1-N5	-4.42	116.81	122.67
3	A	1717	LTM	C3-C4-C5	-2.94	106.70	111.02
3	B	1716	LTM	C5-N5-C1	-2.78	117.06	125.58
3	A	1717	LTM	C5-N5-C1	-2.75	117.14	125.58
3	B	1716	LTM	C3-C4-C5	-2.68	107.09	111.02
3	A	1717	LTM	C4-C5-N5	-2.20	106.71	110.47
3	A	1717	LTM	O6-C6-C5	-2.12	105.97	111.10
3	A	1717	LTM	C2-N2-C7	-2.11	118.20	121.82
3	B	1716	LTM	C3-C2-N2	-2.07	108.94	112.26
3	A	1717	LTM	O3-C3-C2	-2.06	104.80	108.98

There are no chirality outliers.

All (11) torsion outliers are listed below:

Mol	Chain	Res	Type	Atoms
2	A	1716	GOL	C1-C2-C3-O3
2	B	1718	GOL	C1-C2-C3-O3
2	B	1718	GOL	O2-C2-C3-O3
2	A	1718	GOL	O1-C1-C2-O2
2	A	1718	GOL	O1-C1-C2-C3
2	B	1718	GOL	O1-C1-C2-C3
2	A	1716	GOL	O2-C2-C3-O3
2	B	1718	GOL	O1-C1-C2-O2
3	A	1717	LTM	C1-C2-N2-C7
3	B	1716	LTM	C1-C2-N2-C7
2	B	1717	GOL	O1-C1-C2-O2

There are no ring outliers.

No monomer is involved in short contacts.

## 5.7 Other polymers [i](#)

There are no such residues in this entry.

## 5.8 Polymer linkage issues [i](#)

There are no chain breaks in this entry.

## 6 Fit of model and data

### 6.1 Protein, DNA and RNA chains

In the following table, the column labelled ‘#RSRZ > 2’ contains the number (and percentage) of RSRZ outliers, followed by percent RSRZ outliers for the chain as percentile scores relative to all X-ray entries and entries of similar resolution. The OWAB column contains the minimum, median, 95<sup>th</sup> percentile and maximum values of the occupancy-weighted average B-factor per residue. The column labelled ‘Q < 0.9’ lists the number of (and percentage) of residues with an average occupancy less than 0.9.

Mol	Chain	Analysed	<RSRZ>	#RSRZ>2	OWAB(Å <sup>2</sup> )	Q<0.9
1	A	645/716 (90%)	-0.12	29 (4%) 33 32	11, 21, 47, 61	0
1	B	643/716 (89%)	-0.14	39 (6%) 21 20	10, 20, 52, 64	0
All	All	1288/1432 (89%)	-0.13	68 (5%) 26 25	10, 21, 49, 64	0

All (68) RSRZ outliers are listed below:

Mol	Chain	Res	Type	RSRZ
1	A	49	GLN	5.1
1	A	54	GLY	4.9
1	A	24	VAL	4.6
1	B	680	LEU	4.6
1	A	23	ALA	4.5
1	A	694	PHE	4.4
1	A	47	GLY	4.4
1	B	47	GLY	4.2
1	B	693	ARG	3.9
1	B	646	ILE	3.9
1	A	52	LYS	3.8
1	A	51	SER	3.7
1	A	53	LYS	3.7
1	A	454	PHE	3.7
1	B	52	LYS	3.5
1	B	49	GLN	3.5
1	B	682	ALA	3.5
1	B	53	LYS	3.5
1	B	54	GLY	3.4
1	B	16	ASN	3.4
1	B	24	VAL	3.4
1	B	21	LEU	3.3
1	B	454	PHE	3.3
1	A	46	SER	3.1

*Continued on next page...*

*Continued from previous page...*

Mol	Chain	Res	Type	RSRZ
1	B	51	SER	3.1
1	B	694	PHE	3.1
1	A	50	SER	3.1
1	A	680	LEU	3.0
1	B	631	VAL	3.0
1	B	46	SER	2.9
1	B	683	GLY	2.8
1	A	48	LYS	2.8
1	B	286	TRP	2.8
1	A	648	PHE	2.7
1	A	583	HIS	2.7
1	A	456	GLU	2.7
1	A	113	ASP	2.7
1	A	25	TYR	2.6
1	B	457	GLY	2.6
1	B	681	SER	2.6
1	A	692	VAL	2.6
1	B	605	LEU	2.6
1	B	618	PRO	2.6
1	B	709	PHE	2.6
1	B	113	ASP	2.5
1	B	595	MET	2.5
1	B	685	GLN	2.5
1	A	681	SER	2.5
1	B	23	ALA	2.4
1	A	21	LEU	2.4
1	B	50	SER	2.4
1	B	645	GLN	2.3
1	B	644	ILE	2.3
1	A	22	PRO	2.2
1	B	684	LEU	2.2
1	A	693	ARG	2.2
1	B	22	PRO	2.2
1	B	583	HIS	2.2
1	B	87	GLU	2.2
1	B	88	LYS	2.1
1	A	87	GLU	2.1
1	A	685	GLN	2.1
1	B	617	SER	2.1
1	B	638	ILE	2.0
1	B	688	PRO	2.0
1	A	252[A]	GLN	2.0

*Continued on next page...*

*Continued from previous page...*

Mol	Chain	Res	Type	RSRZ
1	A	581	ASN	2.0
1	A	682	ALA	2.0

## 6.2 Non-standard residues in protein, DNA, RNA chains [i](#)

There are no non-standard protein/DNA/RNA residues in this entry.

## 6.3 Carbohydrates [i](#)

There are no monosaccharides in this entry.

## 6.4 Ligands [i](#)

In the following table, the Atoms column lists the number of modelled atoms in the group and the number defined in the chemical component dictionary. The B-factors column lists the minimum, median, 95<sup>th</sup> percentile and maximum values of B factors of atoms in the group. The column labelled 'Q<0.9' lists the number of atoms with occupancy less than 0.9.

Mol	Type	Chain	Res	Atoms	RSCC	RSR	B-factors( $\text{\AA}^2$ )	Q<0.9
2	GOL	B	1718	6/6	0.83	0.14	59,60,60,61	0
2	GOL	A	1716	6/6	0.90	0.16	33,38,39,44	0
2	GOL	A	1718	6/6	0.92	0.13	36,39,40,41	0
2	GOL	B	1717	6/6	0.94	0.13	35,36,36,37	0
3	LTM	A	1717	15/15	0.98	0.10	13,15,16,18	0
3	LTM	B	1716	15/15	0.98	0.10	11,13,15,18	0

## 6.5 Other polymers [i](#)

There are no such residues in this entry.