



# Full wwPDB X-ray Structure Validation Report ⓘ

Sep 16, 2025 – 12:05 PM EDT

PDB ID : 9Y8B / pdb\_00009y8b  
Title : Human p38 ALPHA MAPK:MW164 pyridazine inhibitor complex  
Authors : Brunzelle, J.S.; Shuvalova, L.; Roy, S.M.; Watterson, D.M.  
Deposited on : 2025-09-11  
Resolution : 1.97 Å(reported)

This is a Full wwPDB X-ray Structure Validation Report for a publicly released PDB entry.

We welcome your comments at [validation@mail.wwpdb.org](mailto:validation@mail.wwpdb.org)

A user guide is available at

<https://www.wwpdb.org/validation/2017/XrayValidationReportHelp>

with specific help available everywhere you see the ⓘ symbol.

The types of validation reports are described at

<http://www.wwpdb.org/validation/2017/FAQs#types>.

---

The following versions of software and data (see [references ⓘ](#)) were used in the production of this report:

MolProbity : 4-5-2 with Phenix2.0rc1  
Mogul : 2022.3.0, CSD as543be (2022)  
Xtriage (Phenix) : 2.0rc1  
EDS : 3.0  
Percentile statistics : 20231227.v01 (using entries in the PDB archive December 27th 2023)  
CCP4 : 9.0.006 (Gargrove)  
Density-Fitness : 1.0.12  
Ideal geometry (proteins) : Engh & Huber (2001)  
Ideal geometry (DNA, RNA) : Parkinson et al. (1996)  
Validation Pipeline (wwPDB-VP) : 2.45.1

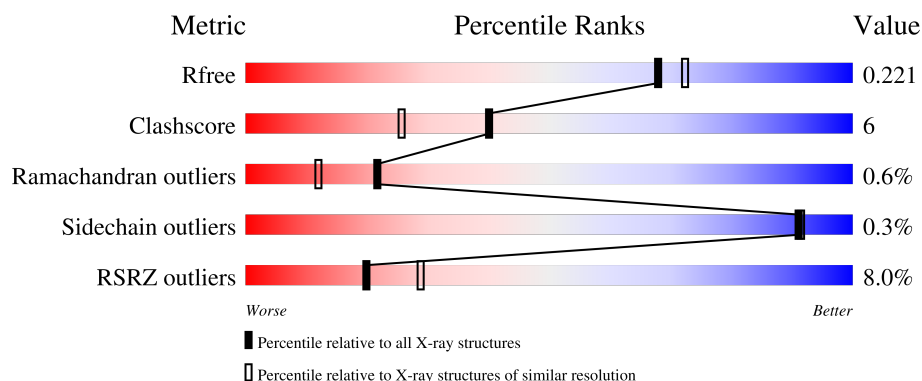
# 1 Overall quality at a glance

The following experimental techniques were used to determine the structure:

*X-RAY DIFFRACTION*


The reported resolution of this entry is 1.97 Å.

Percentile scores (ranging between 0-100) for global validation metrics of the entry are shown in the following graphic. The table shows the number of entries on which the scores are based.



Metric	Whole archive (#Entries)	Similar resolution (#Entries, resolution range(Å))
$R_{free}$	164625	1356 (1.98-1.98)
Clashscore	180529	1437 (1.98-1.98)
Ramachandran outliers	177936	1426 (1.98-1.98)
Sidechain outliers	177891	1426 (1.98-1.98)
RSRZ outliers	164620	1356 (1.98-1.98)

The table below summarises the geometric issues observed across the polymeric chains and their fit to the electron density. The red, orange, yellow and green segments of the lower bar indicate the fraction of residues that contain outliers for  $\geq 3$ , 2, 1 and 0 types of geometric quality criteria respectively. A grey segment represents the fraction of residues that are not modelled. The numeric value for each fraction is indicated below the corresponding segment, with a dot representing fractions  $\leq 5\%$ . The upper red bar (where present) indicates the fraction of residues that have poor fit to the electron density. The numeric value is given above the bar.

Mol	Chain	Length	Quality of chain
1	A	360	

## 2 Entry composition [i](#)

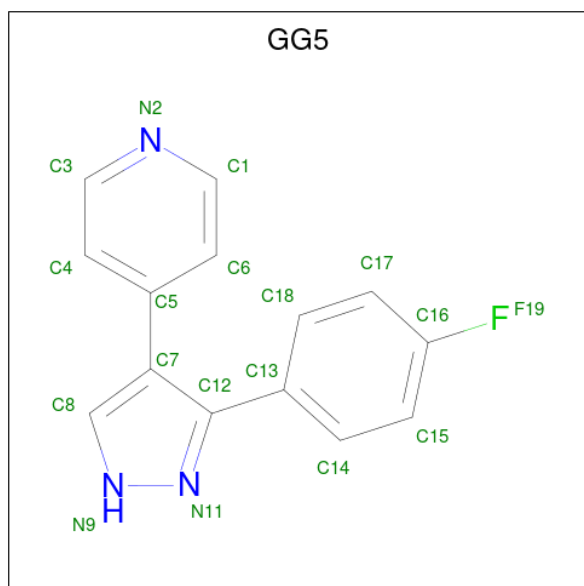
There are 4 unique types of molecules in this entry. The entry contains 5733 atoms, of which 2755 are hydrogens and 0 are deuteriums.

In the tables below, the ZeroOcc column contains the number of atoms modelled with zero occupancy, the AltConf column contains the number of residues with at least one atom in alternate conformation and the Trace column contains the number of residues modelled with at most 2 atoms.

- Molecule 1 is a protein called Mitogen-activated protein kinase 14.

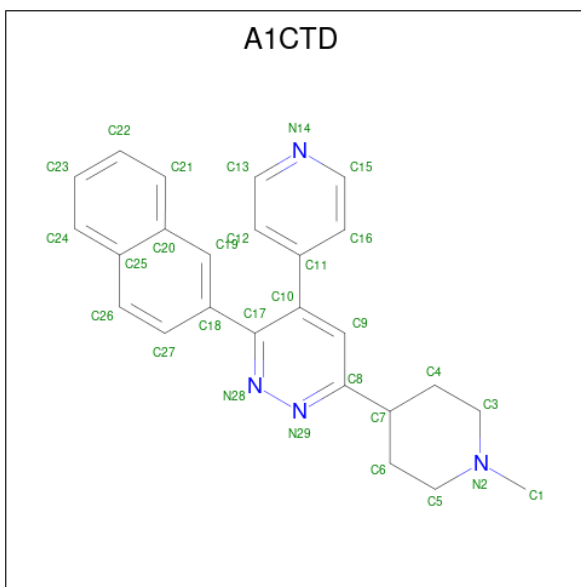
Mol	Chain	Residues	Atoms						ZeroOcc	AltConf	Trace
			Total	C	H	N	O	S			
1	A	338	5473	1758	2735	468	500	12	0	2	0

- Molecule 2 is 4-[3-(4-FLUOROPHENYL)-1H-PYRAZOL-4-YL]PYRIDINE (CCD ID: GG5) (formula: C<sub>14</sub>H<sub>10</sub>FN<sub>3</sub>).



Mol	Chain	Residues	Atoms					ZeroOcc	AltConf
			Total	C	F	H	N		
2	A	1	28	14	1	10	3	0	0
2	A	1	28	14	1	10	3	0	0

- Molecule 3 is (3P)-6-(1-methylpiperidin-4-yl)-3-(naphthalen-2-yl)-4-(pyridin-4-yl)pyridazine (CCD ID: A1CTD) (formula: C<sub>25</sub>H<sub>24</sub>N<sub>4</sub>).



Mol	Chain	Residues	Atoms		ZeroOcc	AltConf
3	A	1	Total	C N	0	0
			29	25 4		

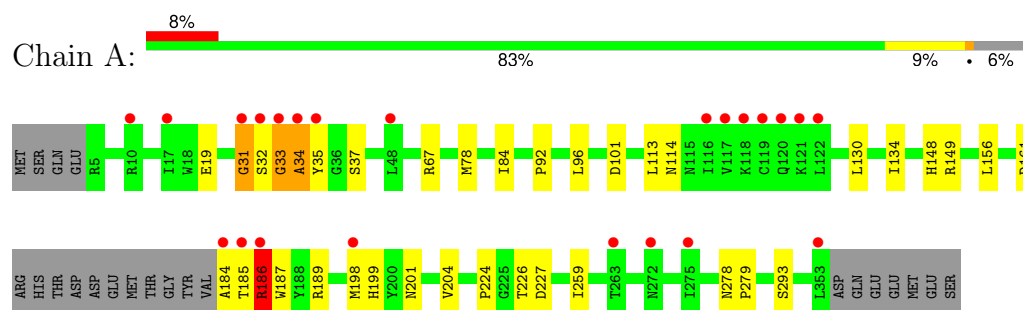
- Molecule 4 is water.

Mol	Chain	Residues	Atoms		ZeroOcc	AltConf
4	A	172	Total	O	0	3
			175	175		

### 3 Residue-property plots [i](#)

These plots are drawn for all protein, RNA, DNA and oligosaccharide chains in the entry. The first graphic for a chain summarises the proportions of the various outlier classes displayed in the second graphic. The second graphic shows the sequence view annotated by issues in geometry and electron density. Residues are color-coded according to the number of geometric quality criteria for which they contain at least one outlier: green = 0, yellow = 1, orange = 2 and red = 3 or more. A red dot above a residue indicates a poor fit to the electron density ( $RSRZ > 2$ ). Stretches of 2 or more consecutive residues without any outlier are shown as a green connector. Residues present in the sample, but not in the model, are shown in grey.

- Molecule 1: Mitogen-activated protein kinase 14



## 4 Data and refinement statistics

Property	Value	Source
Space group	P 21 21 21	Depositor
Cell constants a, b, c, $\alpha$ , $\beta$ , $\gamma$	67.04Å 74.76Å 79.51Å 90.00° 90.00° 90.00°	Depositor
Resolution (Å)	49.91 – 1.97 49.91 – 1.97	Depositor EDS
% Data completeness (in resolution range)	97.0 (49.91-1.97) 93.4 (49.91-1.97)	Depositor EDS
$R_{merge}$	0.12	Depositor
$R_{sym}$	(Not available)	Depositor
$\langle I/\sigma(I) \rangle$ <sup>1</sup>	2.19 (at 1.97Å)	Xtriage
Refinement program	PHENIX (1.20.1_4487: ???)	Depositor
R, $R_{free}$	0.181 , 0.221 0.187 , 0.221	Depositor DCC
$R_{free}$ test set	1412 reflections (4.79%)	wwPDB-VP
Wilson B-factor (Å <sup>2</sup> )	29.7	Xtriage
Anisotropy	0.394	Xtriage
Bulk solvent $k_{sol}$ (e/Å <sup>3</sup> ), $B_{sol}$ (Å <sup>2</sup> )	0.40 , 53.6	EDS
L-test for twinning <sup>2</sup>	$\langle  L  \rangle = 0.48$ , $\langle L^2 \rangle = 0.31$	Xtriage
Estimated twinning fraction	No twinning to report.	Xtriage
$F_o, F_c$ correlation	0.95	EDS
Total number of atoms	5733	wwPDB-VP
Average B, all atoms (Å <sup>2</sup> )	47.0	wwPDB-VP

Xtriage's analysis on translational NCS is as follows: *The largest off-origin peak in the Patterson function is 6.62% of the height of the origin peak. No significant pseudotranslation is detected.*

<sup>1</sup>Intensities estimated from amplitudes.

<sup>2</sup>Theoretical values of  $\langle |L| \rangle$ ,  $\langle L^2 \rangle$  for acentric reflections are 0.5, 0.333 respectively for untwinned datasets, and 0.375, 0.2 for perfectly twinned datasets.

## 5 Model quality [i](#)

### 5.1 Standard geometry [i](#)

Bond lengths and bond angles in the following residue types are not validated in this section: GG5, A1CTD

The Z score for a bond length (or angle) is the number of standard deviations the observed value is removed from the expected value. A bond length (or angle) with  $|Z| > 5$  is considered an outlier worth inspection. RMSZ is the root-mean-square of all Z scores of the bond lengths (or angles).

Mol	Chain	Bond lengths		Bond angles	
		RMSZ	$\# Z  > 5$	RMSZ	$\# Z  > 5$
1	A	0.34	0/2805	0.54	2/3808 (0.1%)

Chiral center outliers are detected by calculating the chiral volume of a chiral center and verifying if the center is modelled as a planar moiety or with the opposite hand. A planarity outlier is detected by checking planarity of atoms in a peptide group, atoms in a mainchain group or atoms of a sidechain that are expected to be planar.

Mol	Chain	#Chirality outliers	#Planarity outliers
1	A	0	3

There are no bond length outliers.

All (2) bond angle outliers are listed below:

Mol	Chain	Res	Type	Atoms	Z	Observed( $^{\circ}$ )	Ideal( $^{\circ}$ )
1	A	31	GLY	CA-C-O	-6.19	116.22	121.66
1	A	33	GLY	CA-C-O	-5.77	116.09	120.76

There are no chirality outliers.

All (3) planarity outliers are listed below:

Mol	Chain	Res	Type	Group
1	A	186	ARG	Sidechain
1	A	31	GLY	Mainchain

### 5.2 Too-close contacts [i](#)

In the following table, the Non-H and H(model) columns list the number of non-hydrogen atoms and hydrogen atoms in the chain respectively. The H(added) column lists the number of hydrogen atoms added and optimized by MolProbity. The Clashes column lists the number of clashes within

the asymmetric unit, whereas Symm-Clashes lists symmetry-related clashes.

Mol	Chain	Non-H	H(model)	H(added)	Clashes	Symm-Clashes
1	A	2738	2735	2743	36	0
2	A	36	20	20	1	0
3	A	29	0	0	0	0
4	A	175	0	0	4	0
All	All	2978	2755	2763	36	0

The all-atom clashscore is defined as the number of clashes found per 1000 atoms (including hydrogen atoms). The all-atom clashscore for this structure is 6.

All (36) close contacts within the same asymmetric unit are listed below, sorted by their clash magnitude.

Atom-1	Atom-2	Interatomic distance (Å)	Clash overlap (Å)
1:A:78:MET:HG3	1:A:169:PHE:CE1	2.26	0.71
1:A:184:ALA:HA	1:A:226:THR:HA	1.76	0.66
1:A:293:SER:H	2:A:401:GG5:HN9	1.46	0.63
1:A:149:ARG:HD2	4:A:528:HOH:O	2.02	0.60
1:A:84:ILE:HG22	1:A:169:PHE:HE2	1.70	0.57
1:A:101:ASP:OD2	4:A:598[B]:HOH:O	2.18	0.56
1:A:78:MET:HG3	1:A:169:PHE:CZ	2.40	0.56
1:A:186:ARG:HB3	1:A:189:ARG:HG3	1.89	0.54
1:A:184:ALA:HB1	1:A:187:TRP:HE1	1.73	0.54
1:A:198:MET:HE2	1:A:199:HIS:NE2	2.24	0.52
1:A:185:THR:CG2	1:A:227:ASP:HA	2.40	0.51
1:A:185:THR:HG23	1:A:227:ASP:HA	1.93	0.51
1:A:148:HIS:CD2	1:A:169:PHE:HA	2.46	0.51
1:A:114:ASN:OD1	1:A:114:ASN:C	2.54	0.50
1:A:35:TYR:CD1	1:A:67:ARG:CZ	2.95	0.50
1:A:201:ASN:ND2	4:A:507:HOH:O	2.45	0.49
1:A:201:ASN:O	1:A:204:VAL:HG22	2.15	0.46
1:A:32[B]:SER:HA	1:A:37:SER:HA	1.98	0.46
1:A:32[A]:SER:HA	1:A:37:SER:HA	1.98	0.46
1:A:33:GLY:O	1:A:34:ALA:HB3	2.15	0.45
1:A:185:THR:O	1:A:186:ARG:C	2.59	0.45
1:A:19:GLU:HG2	1:A:92:PRO:HB3	1.99	0.45
1:A:278:ASN:OD1	1:A:279:PRO:HD2	2.17	0.45
1:A:35:TYR:CE1	1:A:67:ARG:NH1	2.86	0.43
1:A:187:TRP:CD1	1:A:224:PRO:HA	2.53	0.43
1:A:134:ILE:HD11	1:A:156:LEU:HD13	1.99	0.43
1:A:96:LEU:C	1:A:96:LEU:HD13	2.43	0.42
1:A:161:ASP:OD1	4:A:501:HOH:O	2.21	0.42

*Continued on next page...*



*Continued from previous page...*

Atom-1	Atom-2	Interatomic distance (Å)	Clash overlap (Å)
1:A:259:ILE:HD13	1:A:259:ILE:HA	1.91	0.42
1:A:113:LEU:HD11	1:A:130:LEU:HD13	2.01	0.41
1:A:35:TYR:CD1	1:A:67:ARG:NH1	2.88	0.41
1:A:184:ALA:HB1	1:A:187:TRP:NE1	2.35	0.41
1:A:96:LEU:HD13	1:A:96:LEU:O	2.21	0.41
1:A:198:MET:HE2	1:A:199:HIS:CE1	2.56	0.40
1:A:186:ARG:CZ	1:A:186:ARG:HA	2.51	0.40
1:A:186:ARG:HG2	1:A:189:ARG:HG2	2.03	0.40

There are no symmetry-related clashes.

## 5.3 Torsion angles [i](#)

### 5.3.1 Protein backbone [i](#)

In the following table, the Percentiles column shows the percent Ramachandran outliers of the chain as a percentile score with respect to all X-ray entries followed by that with respect to entries of similar resolution.

The Analysed column shows the number of residues for which the backbone conformation was analysed, and the total number of residues.

Mol	Chain	Analysed	Favoured	Allowed	Outliers	Percentiles	
1	A	336/360 (93%)	327 (97%)	7 (2%)	2 (1%)	22	12

All (2) Ramachandran outliers are listed below:

Mol	Chain	Res	Type
1	A	34	ALA
1	A	186	ARG

### 5.3.2 Protein sidechains [i](#)

In the following table, the Percentiles column shows the percent sidechain outliers of the chain as a percentile score with respect to all X-ray entries followed by that with respect to entries of similar resolution.

The Analysed column shows the number of residues for which the sidechain conformation was analysed, and the total number of residues.

Mol	Chain	Analysed	Rotameric	Outliers	Percentiles	
1	A	301/320 (94%)	300 (100%)	1 (0%)	91	91

All (1) residues with a non-rotameric sidechain are listed below:

Mol	Chain	Res	Type
1	A	186	ARG

Sometimes sidechains can be flipped to improve hydrogen bonding and reduce clashes. All (5) such sidechains are listed below:

Mol	Chain	Res	Type
1	A	11	GLN
1	A	199	HIS
1	A	228	HIS
1	A	231	GLN
1	A	272	ASN

### 5.3.3 RNA [i](#)

There are no RNA molecules in this entry.

## 5.4 Non-standard residues in protein, DNA, RNA chains [i](#)

There are no non-standard protein/DNA/RNA residues in this entry.

## 5.5 Carbohydrates [i](#)

There are no oligosaccharides in this entry.

## 5.6 Ligand geometry [i](#)

3 ligands are modelled in this entry.

In the following table, the Counts columns list the number of bonds (or angles) for which Mogul statistics could be retrieved, the number of bonds (or angles) that are observed in the model and the number of bonds (or angles) that are defined in the Chemical Component Dictionary. The Link column lists molecule types, if any, to which the group is linked. The Z score for a bond length (or angle) is the number of standard deviations the observed value is removed from the expected value. A bond length (or angle) with  $|Z| > 2$  is considered an outlier worth inspection. RMSZ is the root-mean-square of all Z scores of the bond lengths (or angles).

Mol	Type	Chain	Res	Link	Bond lengths			Bond angles		
					Counts	RMSZ	# Z  > 2	Counts	RMSZ	# Z  > 2
3	A1CTD	A	402	-	33,33,33	0.44	0	44,46,46	0.39	0
2	GG5	A	401	-	19,20,20	1.19	1 (5%)	15,27,27	0.87	1 (6%)
2	GG5	A	403	-	19,20,20	1.25	1 (5%)	15,27,27	0.99	1 (6%)

In the following table, the Chirals column lists the number of chiral outliers, the number of chiral centers analysed, the number of these observed in the model and the number defined in the Chemical Component Dictionary. Similar counts are reported in the Torsion and Rings columns. '-' means no outliers of that kind were identified.

Mol	Type	Chain	Res	Link	Chirals	Torsions	Rings
3	A1CTD	A	402	-	-	0/12/22/22	0/5/5/5
2	GG5	A	401	-	-	1/3/8/8	0/3/3/3
2	GG5	A	403	-	-	0/3/8/8	0/3/3/3

All (2) bond length outliers are listed below:

Mol	Chain	Res	Type	Atoms	Z	Observed(Å)	Ideal(Å)
2	A	403	GG5	C1-N2	-3.39	1.33	1.37
2	A	401	GG5	C1-N2	-3.17	1.33	1.37

All (2) bond angle outliers are listed below:

Mol	Chain	Res	Type	Atoms	Z	Observed(°)	Ideal(°)
2	A	401	GG5	C15-C16-C17	2.50	122.16	118.60
2	A	403	GG5	C15-C16-C17	2.31	121.89	118.60

There are no chirality outliers.

All (1) torsion outliers are listed below:

Mol	Chain	Res	Type	Atoms
2	A	401	GG5	C4-C5-C7-C12

There are no ring outliers.

1 monomer is involved in 1 short contact:

Mol	Chain	Res	Type	Clashes	Symm-Clashes
2	A	401	GG5	1	0

## 5.7 Other polymers [i](#)

There are no such residues in this entry.

## 5.8 Polymer linkage issues [i](#)

There are no chain breaks in this entry.

## 6 Fit of model and data

### 6.1 Protein, DNA and RNA chains

In the following table, the column labelled ‘#RSRZ> 2’ contains the number (and percentage) of RSRZ outliers, followed by percent RSRZ outliers for the chain as percentile scores relative to all X-ray entries and entries of similar resolution. The OWAB column contains the minimum, median, 95<sup>th</sup> percentile and maximum values of the occupancy-weighted average B-factor per residue. The column labelled ‘Q< 0.9’ lists the number of (and percentage) of residues with an average occupancy less than 0.9.

Mol	Chain	Analysed	<RSRZ>	#RSRZ>2		OWAB(Å <sup>2</sup> )	Q<0.9
1	A	338/360 (93%)	0.52	27 (7%)	20 29	22, 43, 85, 137	2 (0%)

All (27) RSRZ outliers are listed below:

Mol	Chain	Res	Type	RSRZ
1	A	184	ALA	11.0
1	A	185	THR	7.9
1	A	117	VAL	5.4
1	A	172	ALA	5.2
1	A	33	GLY	5.1
1	A	35	TYR	4.7
1	A	353	LEU	4.3
1	A	34	ALA	3.8
1	A	186	ARG	3.8
1	A	169	PHE	3.7
1	A	170	GLY	3.2
1	A	116	ILE	3.2
1	A	119	CYS	3.1
1	A	122	LEU	3.1
1	A	31	GLY	2.9
1	A	48	LEU	2.8
1	A	171	LEU	2.8
1	A	17	ILE	2.6
1	A	272	ASN	2.5
1	A	198	MET	2.5
1	A	32[A]	SER	2.3
1	A	263	THR	2.2
1	A	120	GLN	2.2
1	A	10	ARG	2.2
1	A	118	LYS	2.2
1	A	275	ILE	2.2
1	A	121	LYS	2.0

## 6.2 Non-standard residues in protein, DNA, RNA chains [i](#)

There are no non-standard protein/DNA/RNA residues in this entry.

## 6.3 Carbohydrates [i](#)

There are no oligosaccharides in this entry.

## 6.4 Ligands [i](#)

In the following table, the Atoms column lists the number of modelled atoms in the group and the number defined in the chemical component dictionary. The B-factors column lists the minimum, median, 95<sup>th</sup> percentile and maximum values of B factors of atoms in the group. The column labelled 'Q< 0.9' lists the number of atoms with occupancy less than 0.9.

Mol	Type	Chain	Res	Atoms	RSCC	RSR	B-factors( $\text{\AA}^2$ )	Q<0.9
2	GG5	A	403	18/18	0.83	0.14	36,47,59,65	0
2	GG5	A	401	18/18	0.92	0.08	27,34,44,48	0
3	A1CTD	A	402	29/29	0.92	0.12	21,31,61,83	0

## 6.5 Other polymers [i](#)

There are no such residues in this entry.