



Full wwPDB X-ray Structure Validation Report ⓘ

Jun 26, 2024 – 08:57 AM EDT

PDB ID : 6YHW
Title : Co-crystals in the P212121 space group, of a beta-cyclodextrin spacers by triazole heptyl from alpha-D-mannose, with FimH lectin at 2.00 Å resolution.
Authors : de Ruyck, J.; Bouckaert, J.
Deposited on : 2020-03-31
Resolution : 1.96 Å(reported)

This is a Full wwPDB X-ray Structure Validation Report for a publicly released PDB entry.

We welcome your comments at validation@mail.wwpdb.org

A user guide is available at

<https://www.wwpdb.org/validation/2017/XrayValidationReportHelp>

with specific help available everywhere you see the ⓘ symbol.

The types of validation reports are described at

<http://www.wwpdb.org/validation/2017/FAQs#types>.

The following versions of software and data (see [references ⓘ](#)) were used in the production of this report:

MolProbity	:	4.02b-467
Mogul	:	1.8.5 (274361), CSD as541be (2020)
Xtriage (Phenix)	:	1.13
EDS	:	2.37.1
buster-report	:	1.1.7 (2018)
Percentile statistics	:	20191225.v01 (using entries in the PDB archive December 25th 2019)
Refmac	:	5.8.0158
CCP4	:	7.0.044 (Gargrove)
Ideal geometry (proteins)	:	Engh & Huber (2001)
Ideal geometry (DNA, RNA)	:	Parkinson et al. (1996)
Validation Pipeline (wwPDB-VP)	:	2.37.1

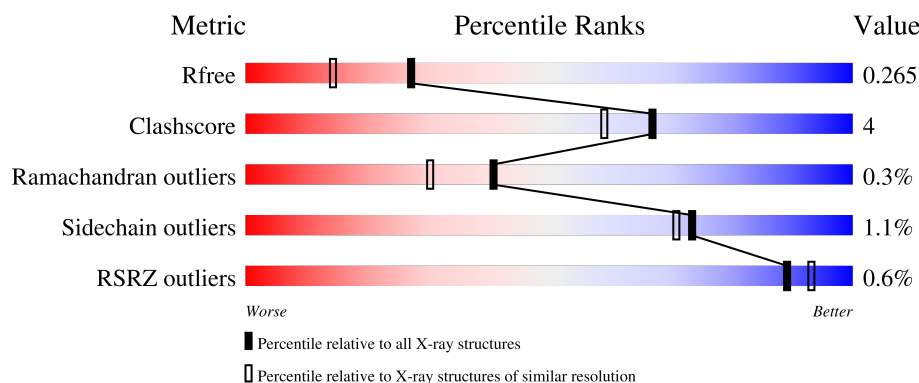
1 Overall quality at a glance

The following experimental techniques were used to determine the structure:

X-RAY DIFFRACTION





The reported resolution of this entry is 1.96 Å.

Percentile scores (ranging between 0-100) for global validation metrics of the entry are shown in the following graphic. The table shows the number of entries on which the scores are based.



Metric	Whole archive (#Entries)	Similar resolution (#Entries, resolution range(Å))
R_{free}	130704	2580 (1.96-1.96)
Clashscore	141614	2705 (1.96-1.96)
Ramachandran outliers	138981	2678 (1.96-1.96)
Sidechain outliers	138945	2678 (1.96-1.96)
RSRZ outliers	127900	2539 (1.96-1.96)

The table below summarises the geometric issues observed across the polymeric chains and their fit to the electron density. The red, orange, yellow and green segments of the lower bar indicate the fraction of residues that contain outliers for ≥ 3 , 2, 1 and 0 types of geometric quality criteria respectively. A grey segment represents the fraction of residues that are not modelled. The numeric value for each fraction is indicated below the corresponding segment, with a dot representing fractions $\leq 5\%$. The upper red bar (where present) indicates the fraction of residues that have poor fit to the electron density. The numeric value is given above the bar.

Mol	Chain	Length	Quality of chain
1	A	300	
1	B	300	
2	C	7	
2	D	7	

The following table lists non-polymeric compounds, carbohydrate monomers and non-standard

residues in protein, DNA, RNA chains that are outliers for geometric or electron-density-fit criteria:

Mol	Type	Chain	Res	Chirality	Geometry	Clashes	Electron density
2	GLC	C	1	-	-	-	X
2	GLC	C	2	-	-	-	X
2	GLC	C	3	-	-	-	X
2	GLC	C	4	-	-	-	X
2	GLC	C	5	-	-	-	X
2	GLC	C	6	-	-	-	X
2	GLC	C	7	-	-	-	X
2	GLC	D	3	-	-	-	X
2	GLC	D	4	-	-	-	X
2	GLC	D	5	-	-	-	X
2	GLC	D	6	-	-	-	X
3	TA5	A	502	-	-	-	X

2 Entry composition [i](#)

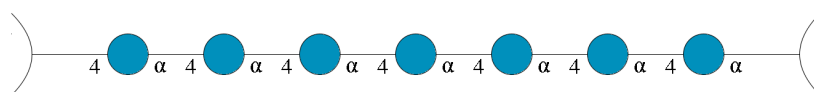
There are 6 unique types of molecules in this entry. The entry contains 5478 atoms, of which 2530 are hydrogens and 0 are deuteriums.

In the tables below, the ZeroOcc column contains the number of atoms modelled with zero occupancy, the AltConf column contains the number of residues with at least one atom in alternate conformation and the Trace column contains the number of residues modelled with at most 2 atoms.

- Molecule 1 is a protein called FimH.

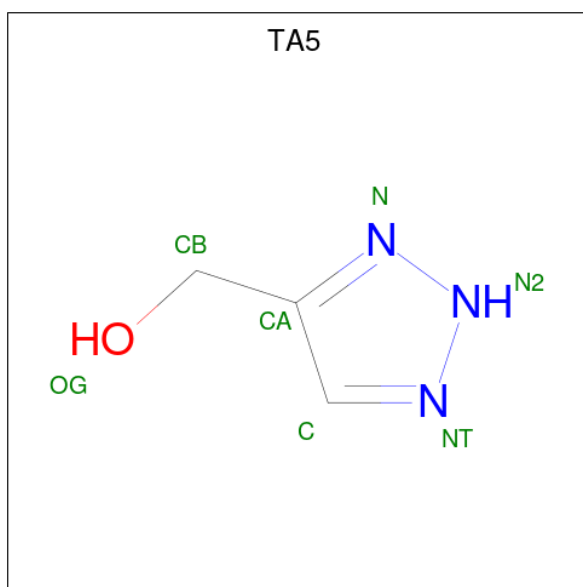
Mol	Chain	Residues	Atoms						ZeroOcc	AltConf	Trace
1	A	159	Total	C	H	N	O	S	0	0	1
			2359	763	1163	198	233	2			
1	B	159	Total	C	H	N	O	S	0	0	1
			2359	763	1163	198	233	2			

- Molecule 2 is an oligosaccharide called Cycloheptakis-(1-4)-(alpha-D-glucopyranose).



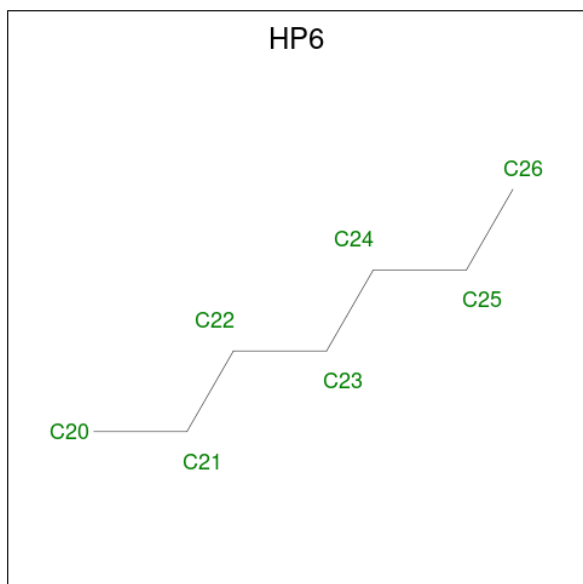
Mol	Chain	Residues	Atoms				ZeroOcc	AltConf	Trace
2	C	7	Total	C	H	O	0	0	0
			145	42	69	34			
2	D	7	Total	C	H	O	0	0	0
			145	42	69	34			

- Molecule 3 is 2H-1,2,3-TRIAZOL-4-YLMETHANOL (three-letter code: TA5) (formula: C₃H₅N₃O) (labeled as "Ligand of Interest" by depositor).



Mol	Chain	Residues	Atoms					ZeroOcc	AltConf
3	A	1	Total	C	H	N	O	0	0
			12	3	5	3	1		
3	B	1	Total	C	H	N	O	0	0
			12	3	5	3	1		

- Molecule 4 is HEPTANE (three-letter code: HP6) (formula: C_7H_{16}) (labeled as "Ligand of Interest" by depositor).



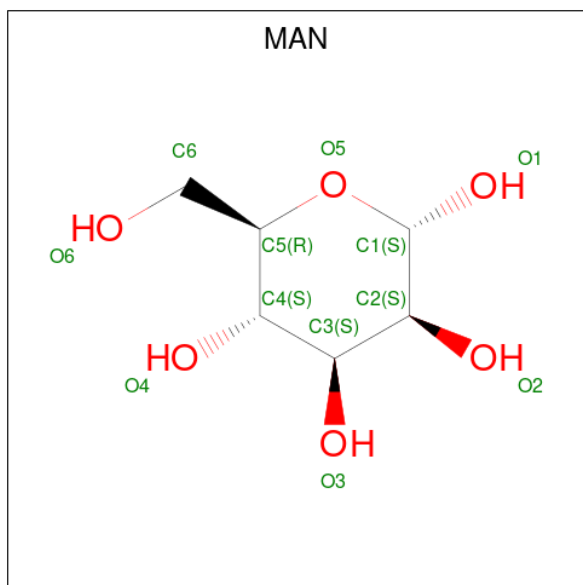
Mol	Chain	Residues	Atoms			ZeroOcc	AltConf
4	A	1	Total	C	H	0	0
			23	7	16		

Continued on next page...

Continued from previous page...

Mol	Chain	Residues	Atoms			ZeroOcc	AltConf
4	B	1	Total	C	H	0	0
			23	7	16		

- Molecule 5 is alpha-D-mannopyranose (three-letter code: MAN) (formula: $C_6H_{12}O_6$) (labeled as "Ligand of Interest" by depositor).



Mol	Chain	Residues	Atoms				ZeroOcc	AltConf
5	A	1	Total	C	H	O	0	0
			24	6	12	6		
5	B	1	Total	C	H	O	0	0
			24	6	12	6		

- Molecule 6 is water.

Mol	Chain	Residues	Atoms		ZeroOcc	AltConf
6	A	180	Total	O	0	2
			182	182		
6	B	170	Total	O	0	0
			170	170		

4 Data and refinement statistics

Property	Value	Source
Space group	P 21 21 21	Depositor
Cell constants a, b, c, α , β , γ	63.28Å 68.07Å 95.78Å 90.00° 90.00° 90.00°	Depositor
Resolution (Å)	46.35 – 1.96 46.35 – 1.96	Depositor EDS
% Data completeness (in resolution range)	98.9 (46.35-1.96) 98.9 (46.35-1.96)	Depositor EDS
R_{merge}	0.12	Depositor
R_{sym}	(Not available)	Depositor
$\langle I/\sigma(I) \rangle$ ¹	2.08 (at 1.97Å)	Xtriage
Refinement program	PHENIX 1.11.1 _2575	Depositor
R, R_{free}	0.212 , 0.264 0.215 , 0.265	Depositor DCC
R_{free} test set	1515 reflections (5.05%)	wwPDB-VP
Wilson B-factor (Å ²)	18.6	Xtriage
Anisotropy	1.018	Xtriage
Bulk solvent k_{sol} (e/Å ³), B_{sol} (Å ²)	0.43 , 62.0	EDS
L-test for twinning ²	$\langle L \rangle = 0.53$, $\langle L^2 \rangle = 0.36$	Xtriage
Estimated twinning fraction	No twinning to report.	Xtriage
F_o, F_c correlation	0.95	EDS
Total number of atoms	5478	wwPDB-VP
Average B, all atoms (Å ²)	28.0	wwPDB-VP

Xtriage's analysis on translational NCS is as follows: *The analyses of the Patterson function reveals a significant off-origin peak that is 48.02 % of the origin peak, indicating pseudo-translational symmetry. The chance of finding a peak of this or larger height randomly in a structure without pseudo-translational symmetry is equal to 9.1253e-05. The detected translational NCS is most likely also responsible for the elevated intensity ratio.*

¹Intensities estimated from amplitudes.

²Theoretical values of $\langle |L| \rangle$, $\langle L^2 \rangle$ for acentric reflections are 0.5, 0.333 respectively for untwinned datasets, and 0.375, 0.2 for perfectly twinned datasets.

5 Model quality

5.1 Standard geometry

Bond lengths and bond angles in the following residue types are not validated in this section: TA5, GLC, HP6, MAN

The Z score for a bond length (or angle) is the number of standard deviations the observed value is removed from the expected value. A bond length (or angle) with $|Z| > 5$ is considered an outlier worth inspection. RMSZ is the root-mean-square of all Z scores of the bond lengths (or angles).

Mol	Chain	Bond lengths		Bond angles	
		RMSZ	$\# Z > 5$	RMSZ	$\# Z > 5$
1	A	0.34	0/1226	0.55	0/1686
1	B	0.38	0/1226	0.59	0/1686
All	All	0.36	0/2452	0.57	0/3372

There are no bond length outliers.

There are no bond angle outliers.

There are no chirality outliers.

There are no planarity outliers.

5.2 Too-close contacts

In the following table, the Non-H and H(model) columns list the number of non-hydrogen atoms and hydrogen atoms in the chain respectively. The H(added) column lists the number of hydrogen atoms added and optimized by MolProbity. The Clashes column lists the number of clashes within the asymmetric unit, whereas Symm-Clashes lists symmetry-related clashes.

Mol	Chain	Non-H	H(model)	H(added)	Clashes	Symm-Clashes
1	A	1196	1163	1164	6	1
1	B	1196	1163	1166	11	1
2	C	76	69	60	1	1
2	D	76	69	60	2	1
3	A	7	5	2	0	0
3	B	7	5	2	0	0
4	A	7	16	14	0	0
4	B	7	16	14	0	0
5	A	12	12	11	0	0
5	B	12	12	11	0	0
6	A	182	0	0	2	5

Continued on next page...

Continued from previous page...

Mol	Chain	Non-H	H(model)	H(added)	Clashes	Symm-Clashes
6	B	170	0	0	3	6
All	All	2948	2530	2504	20	8

The all-atom clashscore is defined as the number of clashes found per 1000 atoms (including hydrogen atoms). The all-atom clashscore for this structure is 4.

All (20) close contacts within the same asymmetric unit are listed below, sorted by their clash magnitude.

Atom-1	Atom-2	Interatomic distance (Å)	Clash overlap (Å)
1:B:3:CYS:SG	1:B:44:CYS:SG	2.45	0.89
6:A:601:HOH:O	2:C:5:GLC:O3	1.90	0.88
2:D:5:GLC:O3	2:D:6:GLC:O2	1.94	0.74
6:B:601:HOH:O	2:D:3:GLC:O6	2.10	0.70
1:B:4:LYS:NZ	6:B:602:HOH:O	2.25	0.67
1:B:7:ASN:OD1	1:B:8:GLY:N	2.42	0.53
1:B:3:CYS:HG	1:B:44:CYS:CB	2.18	0.51
1:B:3:CYS:SG	1:B:44:CYS:CB	2.99	0.50
1:B:3:CYS:SG	1:B:44:CYS:HB3	2.56	0.45
1:B:6:ALA:O	1:B:7:ASN:CG	2.56	0.43
1:A:74:THR:HG23	6:A:708:HOH:O	2.18	0.43
1:B:6:ALA:O	1:B:7:ASN:CB	2.66	0.43
1:B:7:ASN:OD1	1:B:7:ASN:C	2.57	0.43
1:A:7:ASN:OD1	1:A:7:ASN:C	2.57	0.42
1:B:98:ARG:HD3	6:B:654:HOH:O	2.18	0.42
1:A:76:LYS:HE2	1:A:79:GLY:HA2	2.02	0.42
1:B:5:THR:HA	1:B:41:GLN:O	2.20	0.41
1:A:39:SER:O	1:A:102:PRO:HB3	2.20	0.41
1:A:89:GLU:OE2	1:A:132:ARG:HD3	2.21	0.40
1:A:55:TYR:HB3	1:A:92:ARG:CD	2.52	0.40

All (8) symmetry-related close contacts are listed below. The label for Atom-2 includes the symmetry operator and encoded unit-cell translations to be applied.

Atom-1	Atom-2	Interatomic distance (Å)	Clash overlap (Å)
6:A:748:HOH:O	6:B:755:HOH:O[4_478]	1.88	0.32
6:A:763:HOH:O	6:B:737:HOH:O[4_478]	1.89	0.31
6:A:756:HOH:O	6:B:755:HOH:O[4_478]	1.92	0.28
6:B:704:HOH:O	6:B:715:HOH:O[2_675]	2.01	0.19
6:A:700:HOH:O	6:B:636:HOH:O[2_574]	2.04	0.16
1:A:121:LYS:NZ	2:D:3:GLC:O3[1_554]	2.06	0.14

Continued on next page...

Continued from previous page...

Atom-1	Atom-2	Interatomic distance (Å)	Clash overlap (Å)
1:B:149:TYR:OH	2:C:4:GLC:O3[1_655]	2.06	0.14
6:A:732:HOH:O	6:B:670:HOH:O[2_574]	2.12	0.08

5.3 Torsion angles [i](#)

5.3.1 Protein backbone [i](#)

In the following table, the Percentiles column shows the percent Ramachandran outliers of the chain as a percentile score with respect to all X-ray entries followed by that with respect to entries of similar resolution.

The Analysed column shows the number of residues for which the backbone conformation was analysed, and the total number of residues.

Mol	Chain	Analysed	Favoured	Allowed	Outliers	Percentiles	
1	A	157/300 (52%)	154 (98%)	3 (2%)	0	100	100
1	B	157/300 (52%)	153 (98%)	3 (2%)	1 (1%)	25	14
All	All	314/600 (52%)	307 (98%)	6 (2%)	1 (0%)	41	30

All (1) Ramachandran outliers are listed below:

Mol	Chain	Res	Type
1	B	7	ASN

5.3.2 Protein sidechains [i](#)

In the following table, the Percentiles column shows the percent sidechain outliers of the chain as a percentile score with respect to all X-ray entries followed by that with respect to entries of similar resolution.

The Analysed column shows the number of residues for which the sidechain conformation was analysed, and the total number of residues.

Mol	Chain	Analysed	Rotameric	Outliers	Percentiles	
1	A	133/244 (54%)	132 (99%)	1 (1%)	81	80
1	B	133/244 (54%)	131 (98%)	2 (2%)	65	60
All	All	266/488 (54%)	263 (99%)	3 (1%)	73	71

All (3) residues with a non-rotameric sidechain are listed below:

Mol	Chain	Res	Type
1	A	48	TYR
1	B	48	TYR
1	B	98	ARG

Sometimes sidechains can be flipped to improve hydrogen bonding and reduce clashes. There are no such sidechains identified.

5.3.3 RNA ⓘ

There are no RNA molecules in this entry.

5.4 Non-standard residues in protein, DNA, RNA chains ⓘ

There are no non-standard protein/DNA/RNA residues in this entry.

5.5 Carbohydrates ⓘ

14 monosaccharides are modelled in this entry.

In the following table, the Counts columns list the number of bonds (or angles) for which Mogul statistics could be retrieved, the number of bonds (or angles) that are observed in the model and the number of bonds (or angles) that are defined in the Chemical Component Dictionary. The Link column lists molecule types, if any, to which the group is linked. The Z score for a bond length (or angle) is the number of standard deviations the observed value is removed from the expected value. A bond length (or angle) with $|Z| > 2$ is considered an outlier worth inspection. RMSZ is the root-mean-square of all Z scores of the bond lengths (or angles).

Mol	Type	Chain	Res	Link	Bond lengths			Bond angles		
					Counts	RMSZ	$\# Z > 2$	Counts	RMSZ	$\# Z > 2$
2	GLC	C	1	2	11,11,12	0.38	0	15,15,17	0.42	0
2	GLC	C	2	2,3	10,10,12	0.37	0	14,14,17	0.63	0
2	GLC	C	3	2	11,11,12	0.35	0	15,15,17	0.42	0
2	GLC	C	4	2	11,11,12	0.37	0	15,15,17	0.76	0
2	GLC	C	5	2	11,11,12	0.38	0	15,15,17	0.50	0
2	GLC	C	6	2	11,11,12	0.37	0	15,15,17	0.50	0
2	GLC	C	7	2	11,11,12	0.35	0	15,15,17	0.48	0
2	GLC	D	1	2	11,11,12	0.34	0	15,15,17	0.51	0
2	GLC	D	2	2,3	10,10,12	0.36	0	14,14,17	0.73	0
2	GLC	D	3	2	11,11,12	0.35	0	15,15,17	0.75	0
2	GLC	D	4	2	11,11,12	0.48	0	15,15,17	1.09	0
2	GLC	D	5	2	11,11,12	0.47	0	15,15,17	1.28	3 (20%)
2	GLC	D	6	2	11,11,12	0.47	0	15,15,17	0.82	1 (6%)

Mol	Type	Chain	Res	Link	Bond lengths			Bond angles		
					Counts	RMSZ	# Z > 2	Counts	RMSZ	# Z > 2
2	GLC	D	7	2	11,11,12	0.38	0	15,15,17	0.49	0

In the following table, the Chirals column lists the number of chiral outliers, the number of chiral centers analysed, the number of these observed in the model and the number defined in the Chemical Component Dictionary. Similar counts are reported in the Torsion and Rings columns. '-' means no outliers of that kind were identified.

Mol	Type	Chain	Res	Link	Chirals	Torsions	Rings
2	GLC	C	1	2	-	0/2/19/22	0/1/1/1
2	GLC	C	2	2,3	-	-	0/1/1/1
2	GLC	C	3	2	-	0/2/19/22	0/1/1/1
2	GLC	C	4	2	-	0/2/19/22	0/1/1/1
2	GLC	C	5	2	-	0/2/19/22	0/1/1/1
2	GLC	C	6	2	-	0/2/19/22	0/1/1/1
2	GLC	C	7	2	-	0/2/19/22	0/1/1/1
2	GLC	D	1	2	-	0/2/19/22	0/1/1/1
2	GLC	D	2	2,3	-	-	0/1/1/1
2	GLC	D	3	2	-	0/2/19/22	0/1/1/1
2	GLC	D	4	2	-	0/2/19/22	0/1/1/1
2	GLC	D	5	2	-	0/2/19/22	0/1/1/1
2	GLC	D	6	2	-	0/2/19/22	0/1/1/1
2	GLC	D	7	2	-	0/2/19/22	0/1/1/1

There are no bond length outliers.

All (4) bond angle outliers are listed below:

Mol	Chain	Res	Type	Atoms	Z	Observed(°)	Ideal(°)
2	D	5	GLC	C1-O5-C5	2.93	116.16	112.19
2	D	5	GLC	O4-C4-C3	-2.70	104.10	110.35
2	D	6	GLC	C1-C2-C3	2.51	112.76	109.67
2	D	5	GLC	C2-C3-C4	-2.10	107.26	110.89

There are no chirality outliers.

There are no torsion outliers.

There are no ring outliers.

5 monomers are involved in 5 short contacts:

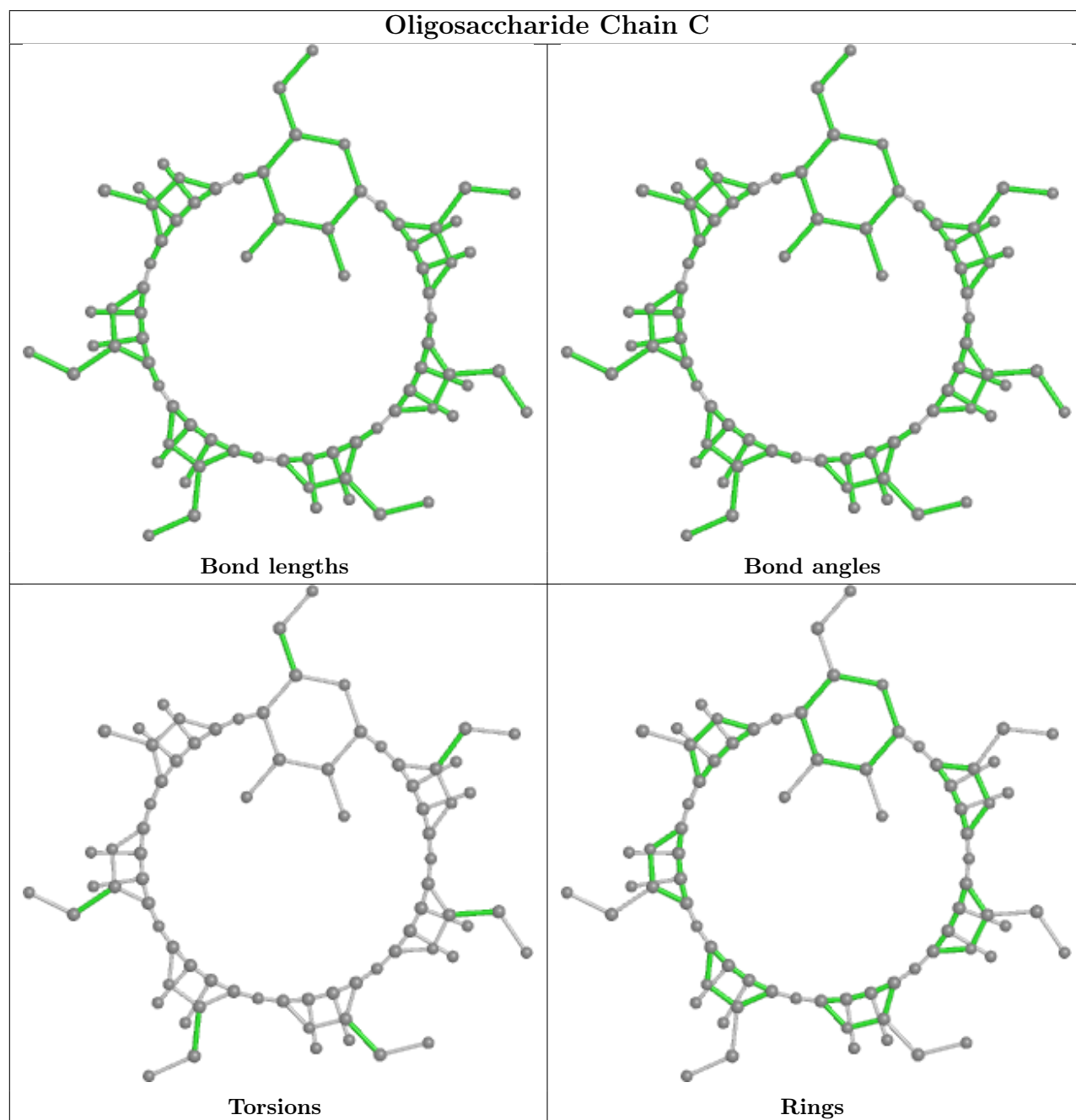
Mol	Chain	Res	Type	Clashes	Symm-Clashes
2	D	6	GLC	1	0
2	C	5	GLC	1	0

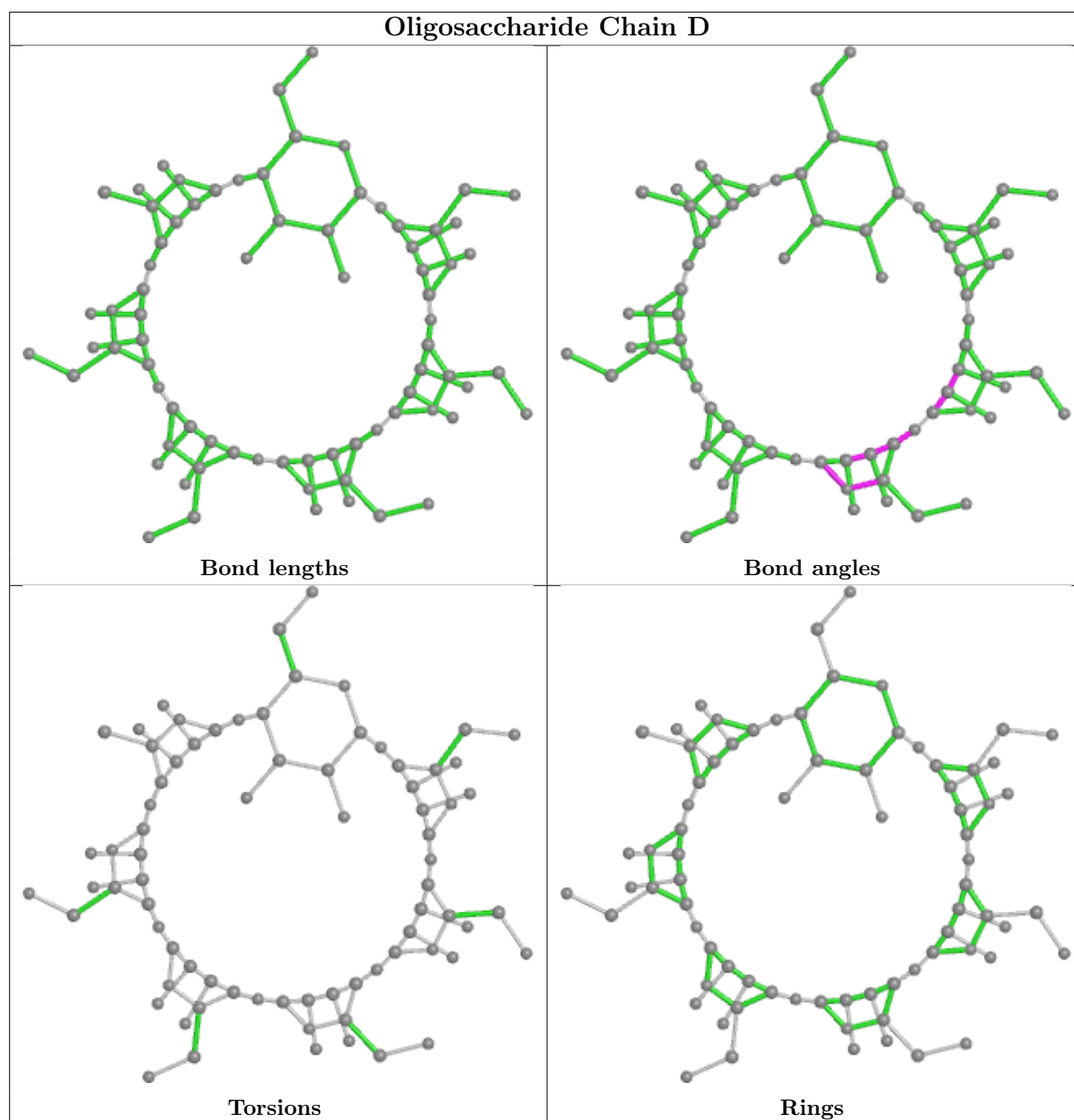
Continued on next page...

Continued from previous page...

Mol	Chain	Res	Type	Clashes	Symm-Clashes
2	D	5	GLC	1	0
2	C	4	GLC	0	1
2	D	3	GLC	1	1

The following is a two-dimensional graphical depiction of Mogul quality analysis of bond lengths, bond angles, torsion angles, and ring geometry for oligosaccharide.





5.6 Ligand geometry [i](#)

6 ligands are modelled in this entry.

In the following table, the Counts columns list the number of bonds (or angles) for which Mogul statistics could be retrieved, the number of bonds (or angles) that are observed in the model and the number of bonds (or angles) that are defined in the Chemical Component Dictionary. The Link column lists molecule types, if any, to which the group is linked. The Z score for a bond length (or angle) is the number of standard deviations the observed value is removed from the expected value. A bond length (or angle) with $|Z| > 2$ is considered an outlier worth inspection. RMSZ is the root-mean-square of all Z scores of the bond lengths (or angles).

Mol	Type	Chain	Res	Link	Bond lengths			Bond angles		
					Counts	RMSZ	# Z > 2	Counts	RMSZ	# Z > 2
5	MAN	B	504	4	12,12,12	0.81	0	17,17,17	0.83	0
5	MAN	A	504	4	12,12,12	0.81	0	17,17,17	0.79	0
3	TA5	B	502	2,4	6,7,7	0.83	0	4,8,8	2.22	3 (75%)
3	TA5	A	502	2,4	6,7,7	0.89	0	4,8,8	1.73	2 (50%)
4	HP6	B	503	5,3	6,6,6	0.28	0	5,5,5	0.94	0
4	HP6	A	503	5,3	6,6,6	0.33	0	5,5,5	0.63	0

In the following table, the Chirals column lists the number of chiral outliers, the number of chiral centers analysed, the number of these observed in the model and the number defined in the Chemical Component Dictionary. Similar counts are reported in the Torsion and Rings columns. '-' means no outliers of that kind were identified.

Mol	Type	Chain	Res	Link	Chirals	Torsions	Rings
5	MAN	B	504	4	-	0/2/22/22	0/1/1/1
5	MAN	A	504	4	-	0/2/22/22	0/1/1/1
3	TA5	B	502	2,4	-	0/0/2/2	0/1/1/1
3	TA5	A	502	2,4	-	0/0/2/2	0/1/1/1
4	HP6	B	503	5,3	-	0/4/4/4	-
4	HP6	A	503	5,3	-	0/4/4/4	-

There are no bond length outliers.

All (5) bond angle outliers are listed below:

Mol	Chain	Res	Type	Atoms	Z	Observed(°)	Ideal(°)
3	B	502	TA5	N-N2-NT	-2.83	107.72	111.24
3	B	502	TA5	OG-CB-CA	-2.43	106.75	112.10
3	B	502	TA5	C-CA-N	-2.39	107.79	111.34
3	A	502	TA5	N-N2-NT	-2.27	108.42	111.24
3	A	502	TA5	C-CA-N	-2.16	108.12	111.34

There are no chirality outliers.

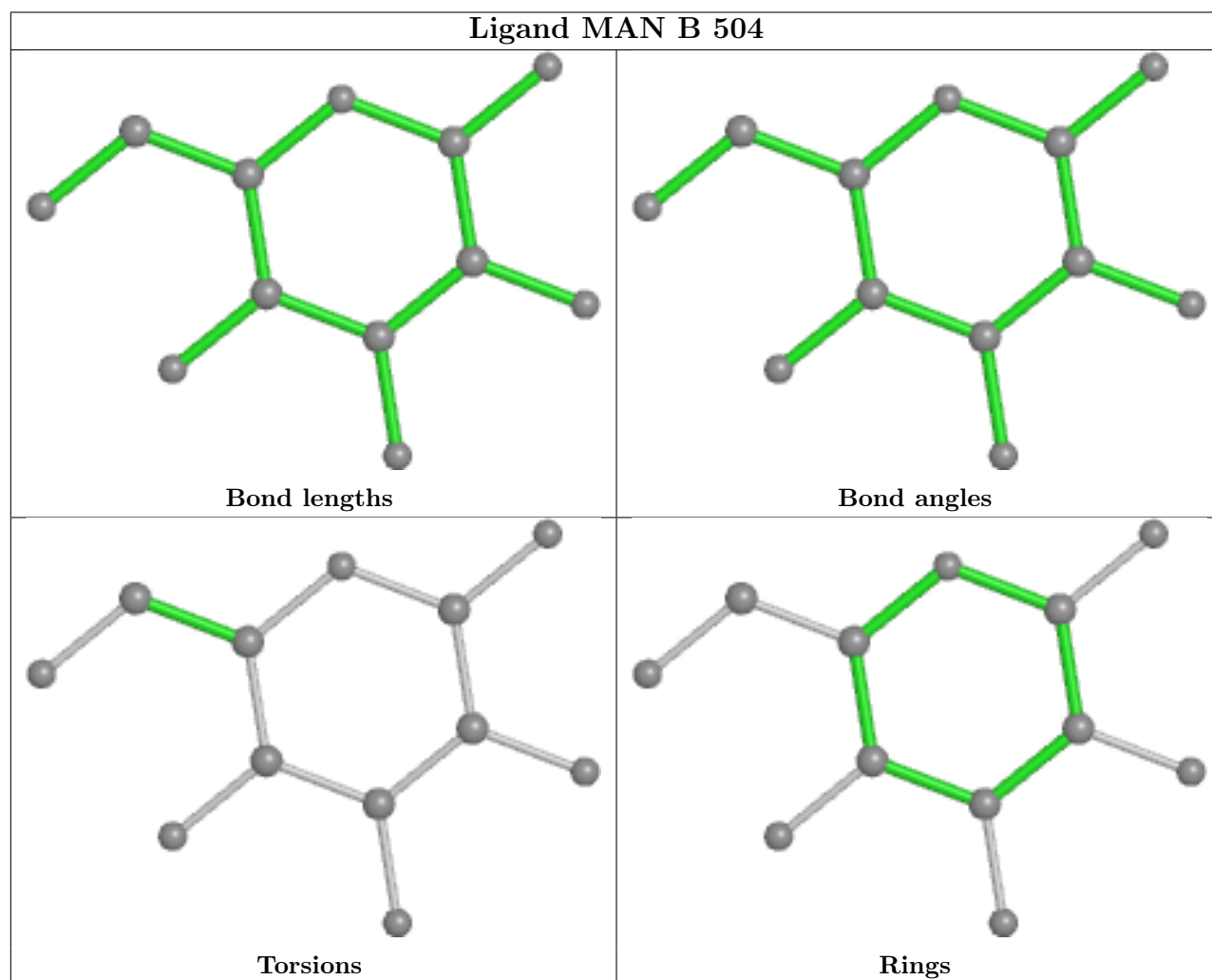
There are no torsion outliers.

There are no ring outliers.

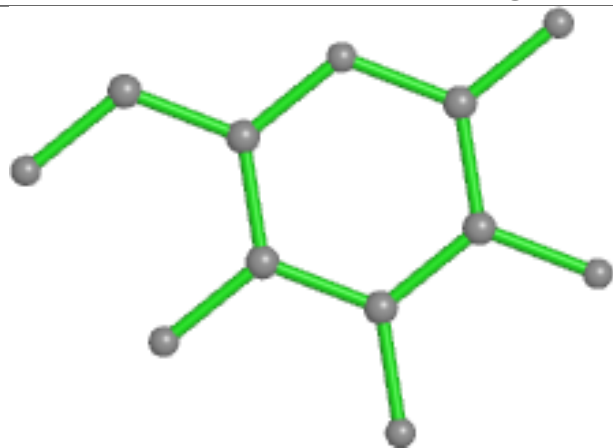
No monomer is involved in short contacts.

The following is a two-dimensional graphical depiction of Mogul quality analysis of bond lengths, bond angles, torsion angles, and ring geometry for all instances of the Ligand of Interest. In addition, ligands with molecular weight > 250 and outliers as shown on the validation Tables will also be included. For torsion angles, if less than 5% of the Mogul distribution of torsion angles is within 10 degrees of the torsion angle in question, then that torsion angle is considered an outlier. Any bond that is central to one or more torsion angles identified as an outlier by Mogul will be

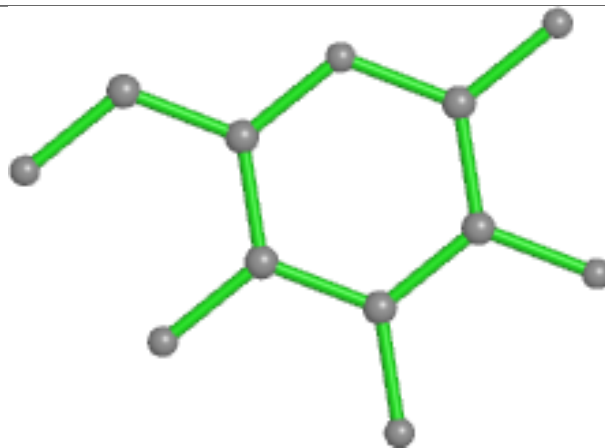
highlighted in the graph. For rings, the root-mean-square deviation (RMSD) between the ring in question and similar rings identified by Mogul is calculated over all ring torsion angles. If the average RMSD is greater than 60 degrees and the minimal RMSD between the ring in question and any Mogul-identified rings is also greater than 60 degrees, then that ring is considered an outlier. The outliers are highlighted in purple. The color gray indicates Mogul did not find sufficient equivalents in the CSD to analyse the geometry.



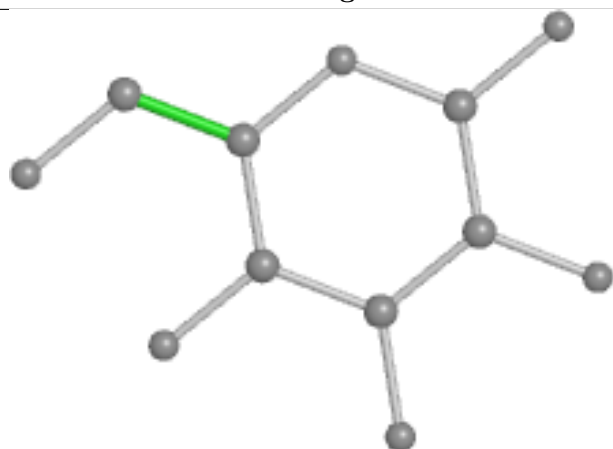
Ligand MAN A 504



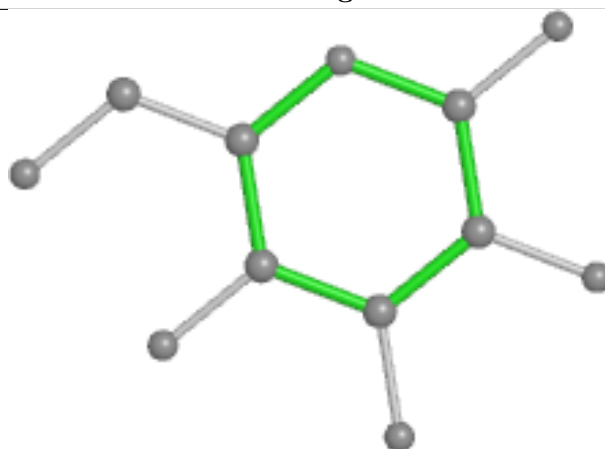
Bond lengths



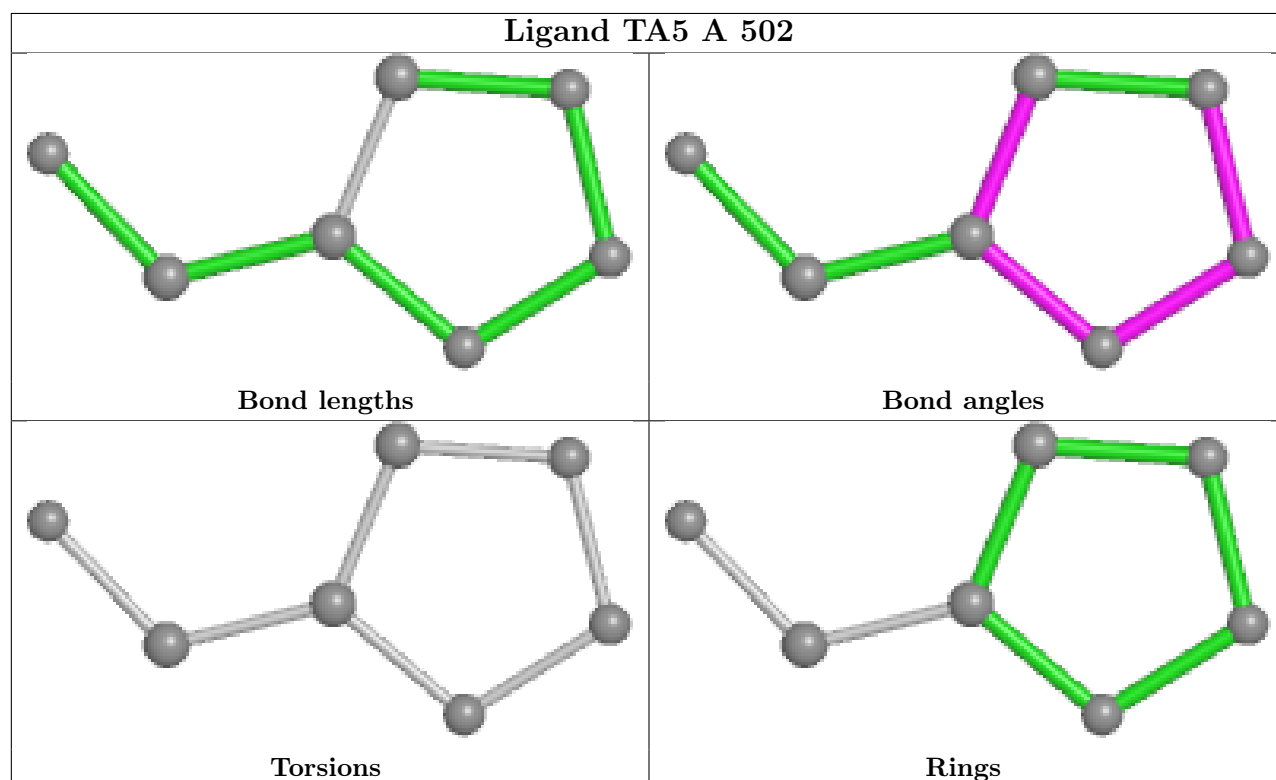
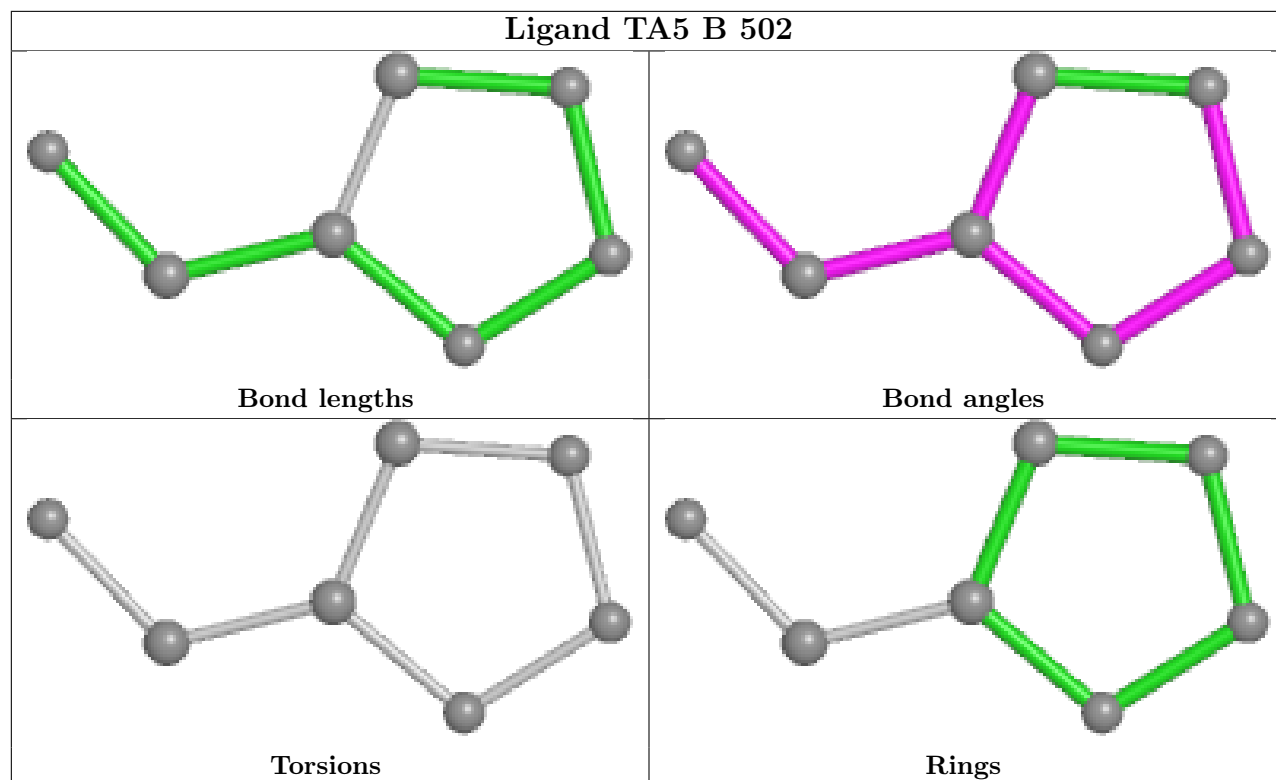
Bond angles

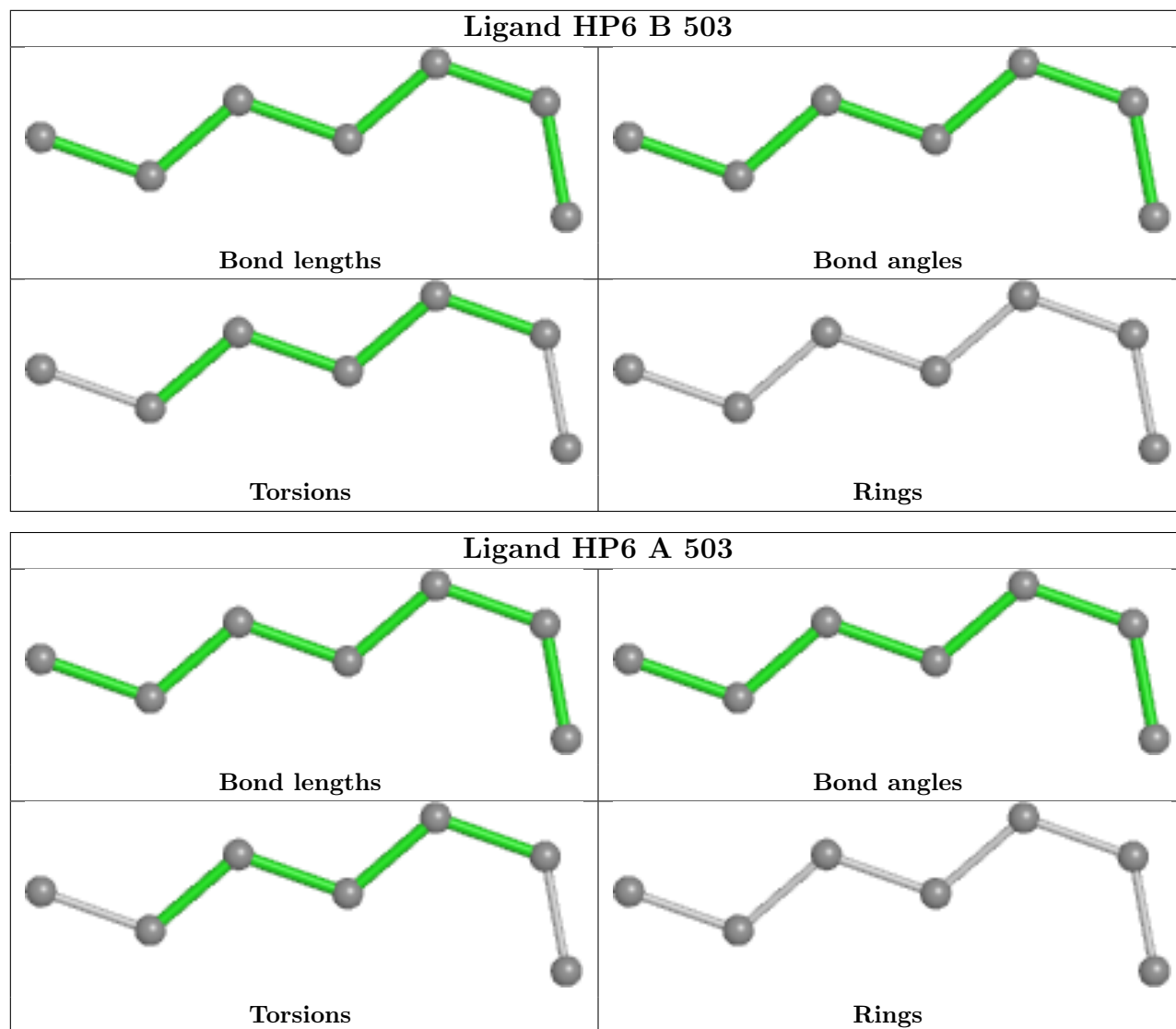


Torsions



Rings





5.7 Other polymers [i](#)

There are no such residues in this entry.

5.8 Polymer linkage issues [i](#)

There are no chain breaks in this entry.

6 Fit of model and data [i](#)

6.1 Protein, DNA and RNA chains [i](#)

In the following table, the column labelled ‘#RSRZ > 2’ contains the number (and percentage) of RSRZ outliers, followed by percent RSRZ outliers for the chain as percentile scores relative to all X-ray entries and entries of similar resolution. The OWAB column contains the minimum, median, 95th percentile and maximum values of the occupancy-weighted average B-factor per residue. The column labelled ‘Q < 0.9’ lists the number of (and percentage) of residues with an average occupancy less than 0.9.

Mol	Chain	Analysed	<RSRZ>	#RSRZ>2	OWAB(Å ²)	Q<0.9
1	A	159/300 (53%)	0.33	1 (0%) 89 93	15, 20, 30, 40	1 (0%)
1	B	159/300 (53%)	0.29	1 (0%) 89 93	15, 20, 29, 45	0
All	All	318/600 (53%)	0.31	2 (0%) 89 93	15, 20, 29, 45	1 (0%)

All (2) RSRZ outliers are listed below:

Mol	Chain	Res	Type	RSRZ
1	A	44	CYS	9.3
1	B	7	ASN	2.6

6.2 Non-standard residues in protein, DNA, RNA chains [i](#)

There are no non-standard protein/DNA/RNA residues in this entry.

6.3 Carbohydrates [i](#)

In the following table, the Atoms column lists the number of modelled atoms in the group and the number defined in the chemical component dictionary. The B-factors column lists the minimum, median, 95th percentile and maximum values of B factors of atoms in the group. The column labelled ‘Q < 0.9’ lists the number of atoms with occupancy less than 0.9.

Mol	Type	Chain	Res	Atoms	RSCC	RSR	B-factors(Å ²)	Q<0.9
2	GLC	C	1	11/12	0.04	0.95	112,125,148,153	0
2	GLC	C	4	11/12	0.04	0.92	63,88,105,111	0
2	GLC	C	2	10/12	0.12	0.51	85,105,126,133	0
2	GLC	D	5	11/12	0.15	0.85	69,86,104,110	0
2	GLC	C	5	11/12	0.17	0.72	67,97,119,121	0
2	GLC	C	7	11/12	0.18	0.54	111,121,141,146	0
2	GLC	D	6	11/12	0.24	0.64	82,101,122,122	0

Continued on next page...

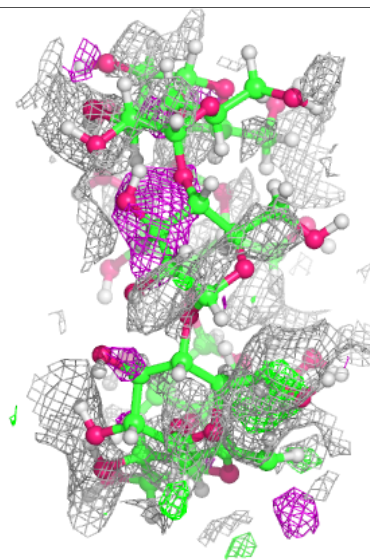
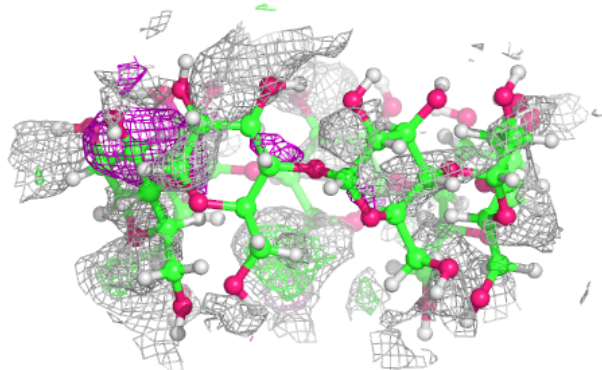
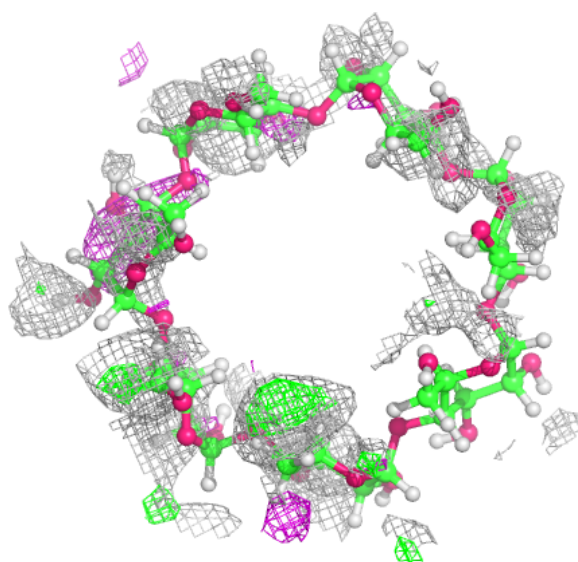
Continued from previous page...

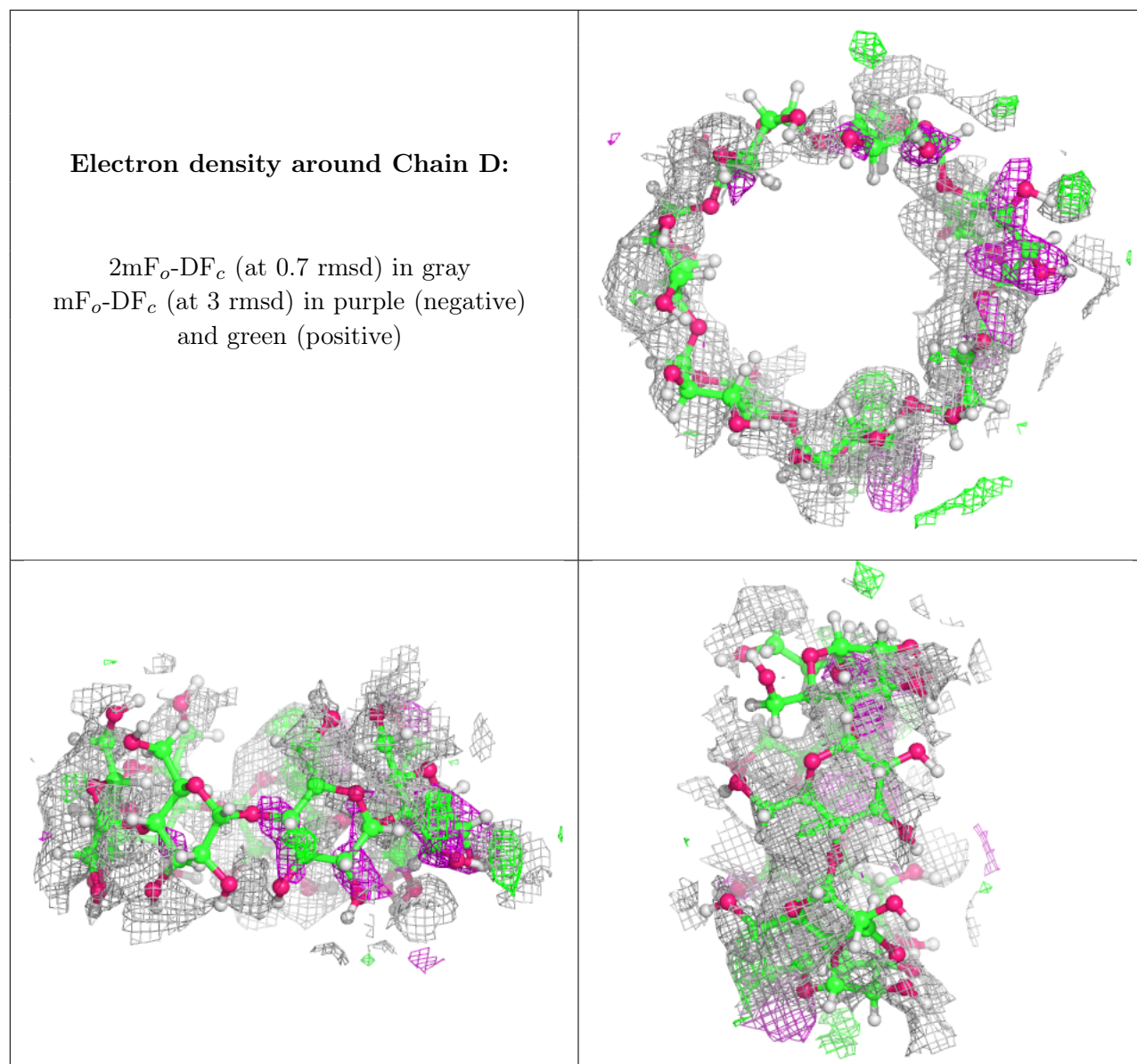
Mol	Type	Chain	Res	Atoms	RSCC	RSR	B-factors(\AA^2)	Q<0.9
2	GLC	D	2	10/12	0.27	0.29	61,73,89,91	0
2	GLC	D	1	11/12	0.30	0.34	81,94,112,115	0
2	GLC	D	4	11/12	0.31	0.65	69,79,92,95	0
2	GLC	D	7	11/12	0.32	0.36	94,101,120,121	0
2	GLC	C	6	11/12	0.33	0.66	102,117,133,148	0
2	GLC	C	3	11/12	0.36	0.65	68,88,105,110	0
2	GLC	D	3	11/12	0.50	0.44	57,72,86,92	0

The following is a graphical depiction of the model fit to experimental electron density for oligosaccharide. Each fit is shown from different orientation to approximate a three-dimensional view.

Electron density around Chain C:

2mF_o-DF_c (at 0.7 rmsd) in gray
mF_o-DF_c (at 3 rmsd) in purple (negative)
and green (positive)





6.4 Ligands ⓘ

In the following table, the Atoms column lists the number of modelled atoms in the group and the number defined in the chemical component dictionary. The B-factors column lists the minimum, median, 95th percentile and maximum values of B factors of atoms in the group. The column labelled 'Q<0.9' lists the number of atoms with occupancy less than 0.9.

Mol	Type	Chain	Res	Atoms	RSCC	RSR	B-factors(Å ²)	Q<0.9
3	TA5	A	502	7/7	0.66	0.44	49,67,87,98	0
3	TA5	B	502	7/7	0.73	0.28	34,46,64,74	0
4	HP6	A	503	7/7	0.89	0.16	22,32,49,49	0
4	HP6	B	503	7/7	0.91	0.20	19,25,39,39	0
5	MAN	A	504	12/12	0.95	0.12	16,19,23,28	0

Continued on next page...

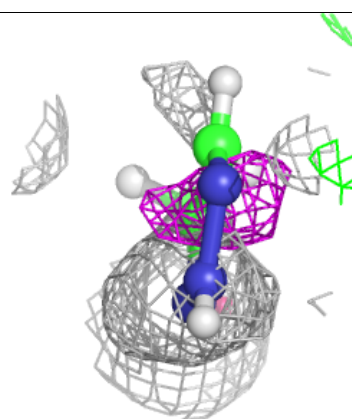
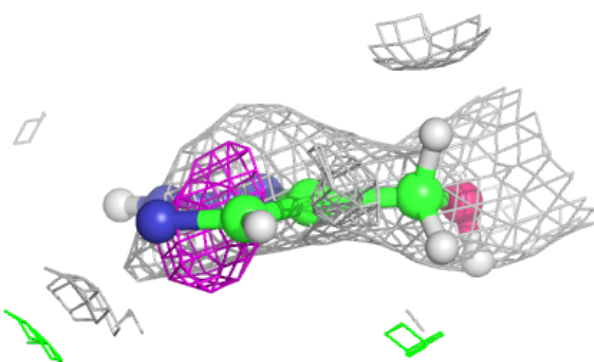
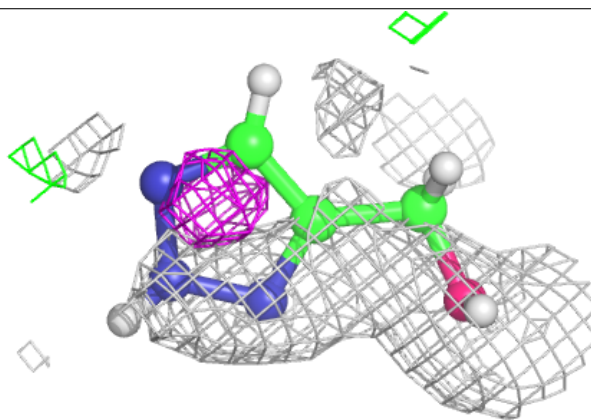
Continued from previous page...

Mol	Type	Chain	Res	Atoms	RSCC	RSR	B-factors(\AA^2)	Q<0.9
5	MAN	B	504	12/12	0.95	0.11	15,18,21,22	0

The following is a graphical depiction of the model fit to experimental electron density of all instances of the Ligand of Interest. In addition, ligands with molecular weight > 250 and outliers as shown on the geometry validation Tables will also be included. Each fit is shown from different orientation to approximate a three-dimensional view.

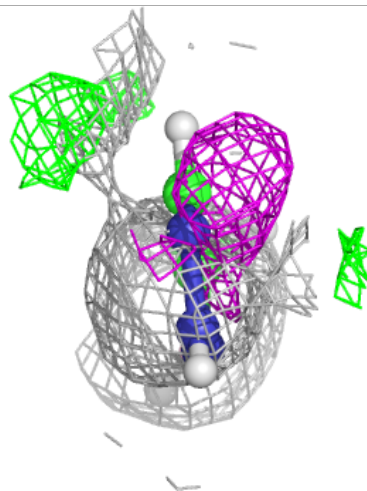
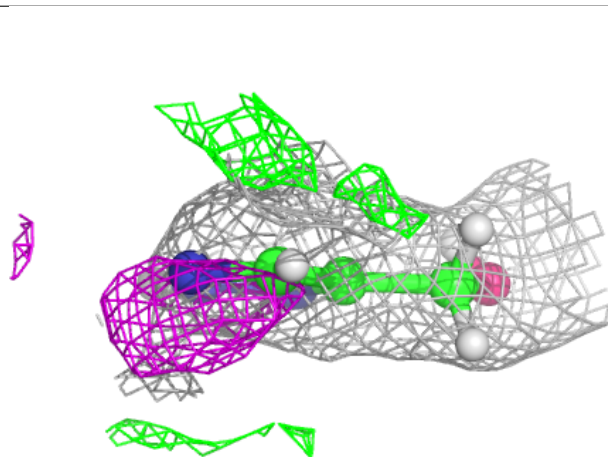
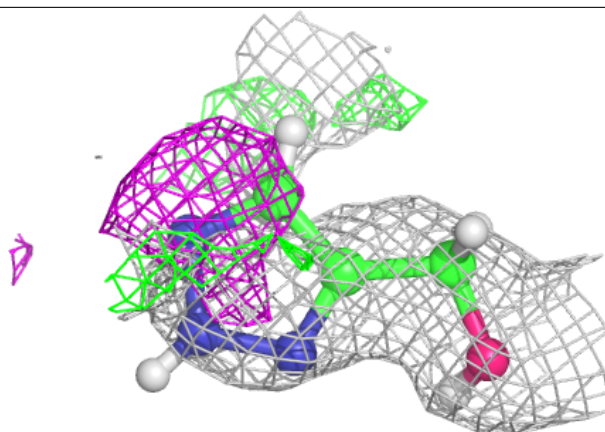
Electron density around TA5 A 502:

2mF_o-DF_c (at 0.7 rmsd) in gray
mF_o-DF_c (at 3 rmsd) in purple (negative)
and green (positive)



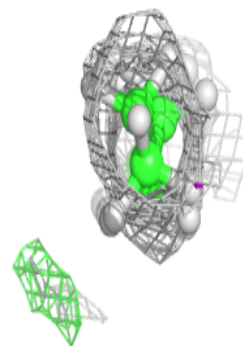
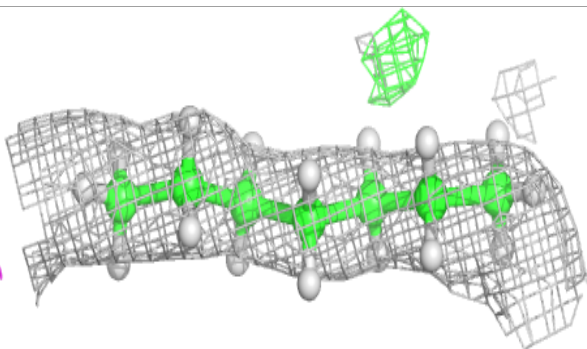
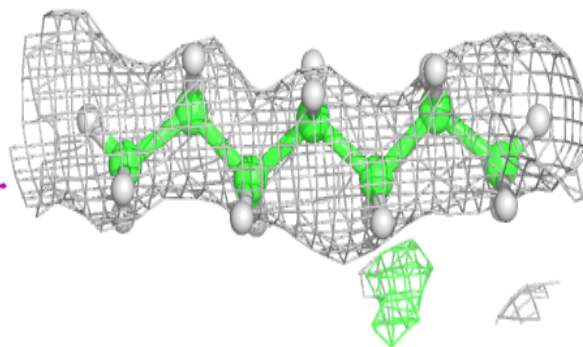
Electron density around TA5 B 502:

$2mF_o-DF_c$ (at 0.7 rmsd) in gray
 mF_o-DF_c (at 3 rmsd) in purple (negative)
and green (positive)

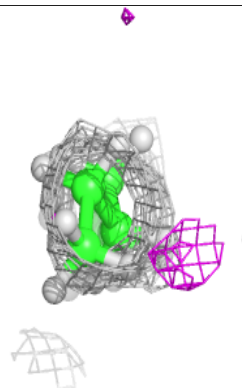
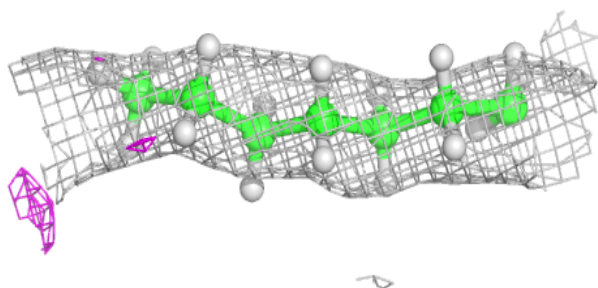
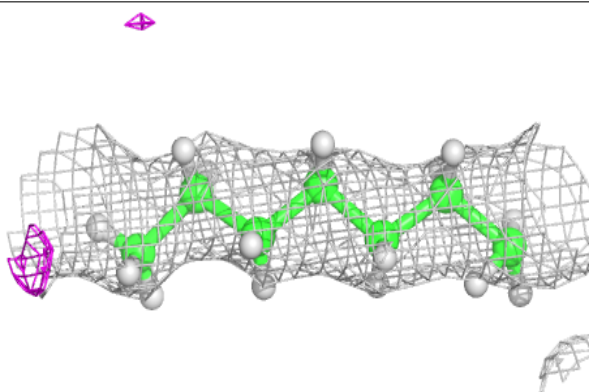


Electron density around HP6 A 503:

$2mF_o-DF_c$ (at 0.7 rmsd) in gray
 mF_o-DF_c (at 3 rmsd) in purple (negative)
and green (positive)

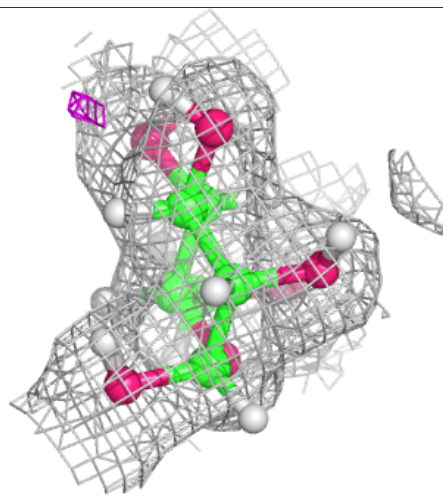
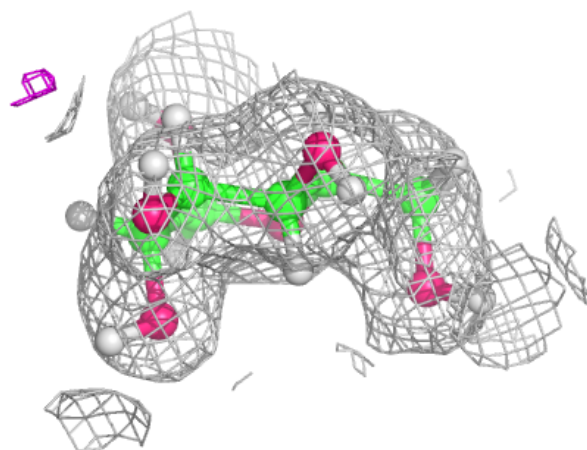
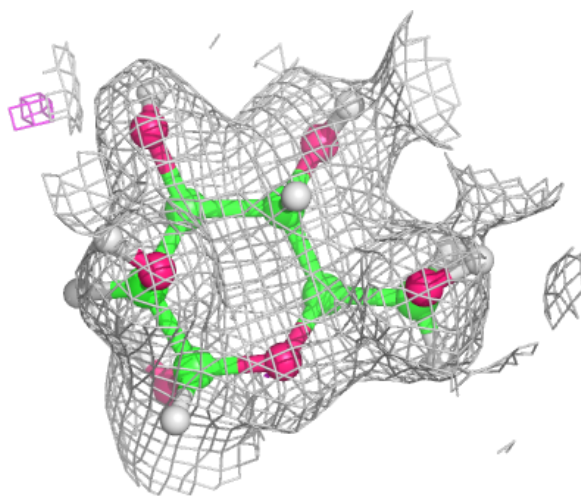
**Electron density around HP6 B 503:**

$2mF_o-DF_c$ (at 0.7 rmsd) in gray
 mF_o-DF_c (at 3 rmsd) in purple (negative)
and green (positive)



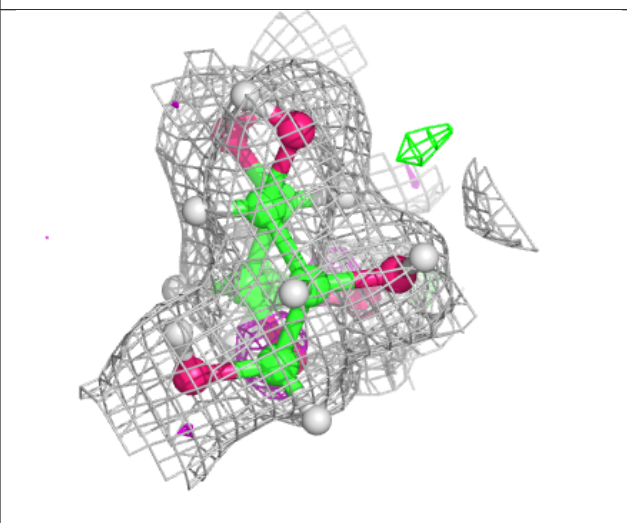
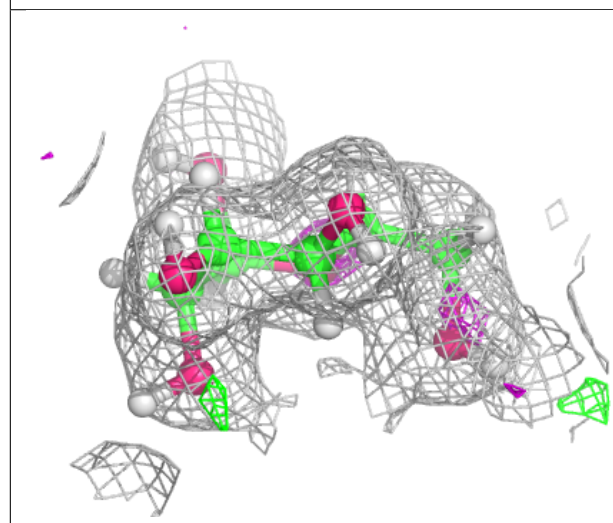
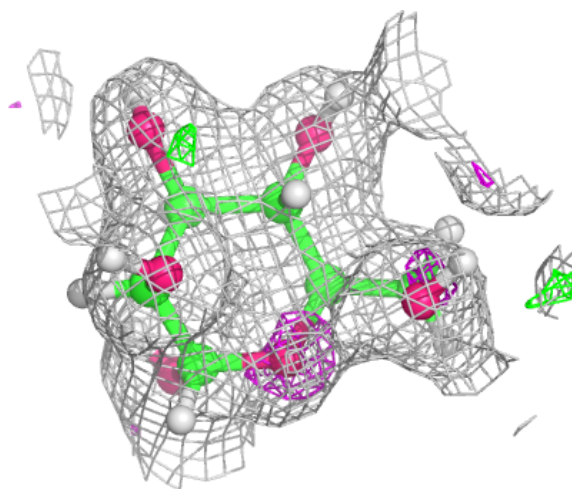
Electron density around MAN A 504:

$2mF_o-DF_c$ (at 0.7 rmsd) in gray
 mF_o-DF_c (at 3 rmsd) in purple (negative)
and green (positive)



Electron density around MAN B 504:

$2mF_o-DF_c$ (at 0.7 rmsd) in gray
 mF_o-DF_c (at 3 rmsd) in purple (negative)
and green (positive)



6.5 Other polymers [i](#)

There are no such residues in this entry.