



wwPDB X-ray Structure Validation Summary Report ⓘ

Oct 13, 2025 – 02:08 PM EDT

PDB ID : 9YL5 / pdb_00009yl5
Title : Crystal Structure of 6,7-dimethyl-8-ribityllumazine synthase from Bordetella pertussis in complex with 5-amino-6-(D-ribitylamino)uracil
Authors : Seattle Structural Genomics Center for Infectious Disease (SSGCID)
Deposited on : 2025-10-08
Resolution : 2.56 Å(reported)

This is a wwPDB X-ray Structure Validation Summary Report for a publicly released PDB entry.

We welcome your comments at validation@mail.wwpdb.org

A user guide is available at

<https://www.wwpdb.org/validation/2017/XrayValidationReportHelp>

with specific help available everywhere you see the ⓘ symbol.

The types of validation reports are described at

<http://www.wwpdb.org/validation/2017/FAQs#types>.

The following versions of software and data (see [references ⓘ](#)) were used in the production of this report:

MolProbity : 4-5-2 with Phenix2.0
Mogul : 2022.3.0, CSD as543be (2022)
Xtriage (Phenix) : 2.0
EDS : 3.0
buster-report : 1.1.7 (2018)
Percentile statistics : 20231227.v01 (using entries in the PDB archive December 27th 2023)
CCP4 : 9.0.010 (Gargrove)
Density-Fitness : 1.0.12
Ideal geometry (proteins) : Engh & Huber (2001)
Ideal geometry (DNA, RNA) : Parkinson et al. (1996)
Validation Pipeline (wwPDB-VP) : 2.46

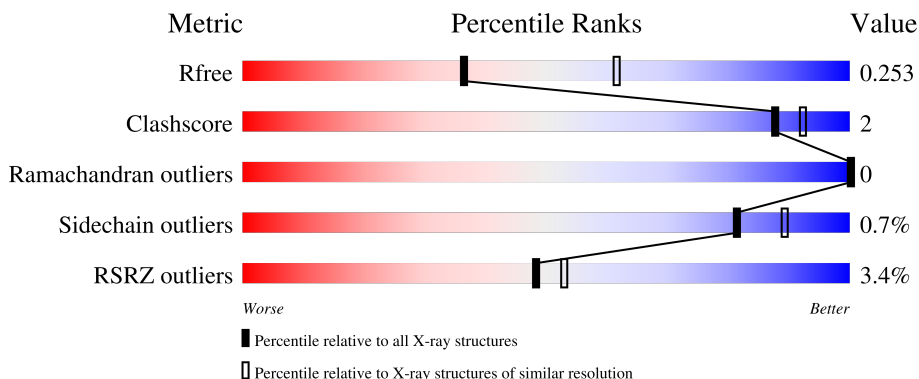
1 Overall quality at a glance

The following experimental techniques were used to determine the structure:

X-RAY DIFFRACTION

The reported resolution of this entry is 2.56 Å.

Percentile scores (ranging between 0-100) for global validation metrics of the entry are shown in the following graphic. The table shows the number of entries on which the scores are based.



Metric	Whole archive (#Entries)	Similar resolution (#Entries, resolution range(Å))
R_{free}	164625	1685 (2.58-2.54)
Clashscore	180529	1779 (2.58-2.54)
Ramachandran outliers	177936	1766 (2.58-2.54)
Sidechain outliers	177891	1766 (2.58-2.54)
RSRZ outliers	164620	1685 (2.58-2.54)

The table below summarises the geometric issues observed across the polymeric chains and their fit to the electron density. The red, orange, yellow and green segments of the lower bar indicate the fraction of residues that contain outliers for ≥ 3 , 2, 1 and 0 types of geometric quality criteria respectively. A grey segment represents the fraction of residues that are not modelled. The numeric value for each fraction is indicated below the corresponding segment, with a dot representing fractions $\leq 5\%$. The upper red bar (where present) indicates the fraction of residues that have poor fit to the electron density. The numeric value is given above the bar.

Mol	Chain	Length	Quality of chain
1	A	163	
1	B	163	
1	C	163	
1	D	163	
1	E	163	

2 Entry composition

There are 4 unique types of molecules in this entry. The entry contains 5652 atoms, of which 0 are hydrogens and 0 are deuteriums.

In the tables below, the ZeroOcc column contains the number of atoms modelled with zero occupancy, the AltConf column contains the number of residues with at least one atom in alternate conformation and the Trace column contains the number of residues modelled with at most 2 atoms.

- Molecule 1 is a protein called 6,7-dimethyl-8-ribityllumazine synthase.

Mol	Chain	Residues	Atoms					ZeroOcc	AltConf	Trace
1	A	154	Total	C	N	O	S	0	0	0
			1114	696	193	219	6			
1	B	153	Total	C	N	O	S	0	0	0
			1096	686	187	217	6			
1	C	153	Total	C	N	O	S	0	0	0
			1108	692	191	219	6			
1	D	153	Total	C	N	O	S	0	0	0
			1093	684	188	215	6			
1	E	152	Total	C	N	O	S	0	0	0
			1092	683	188	215	6			

There are 40 discrepancies between the modelled and reference sequences:

Chain	Residue	Modelled	Actual	Comment	Reference
A	-7	MET	-	initiating methionine	UNP Q7VTN4
A	-6	ALA	-	expression tag	UNP Q7VTN4
A	-5	HIS	-	expression tag	UNP Q7VTN4
A	-4	HIS	-	expression tag	UNP Q7VTN4
A	-3	HIS	-	expression tag	UNP Q7VTN4
A	-2	HIS	-	expression tag	UNP Q7VTN4
A	-1	HIS	-	expression tag	UNP Q7VTN4
A	0	HIS	-	expression tag	UNP Q7VTN4
B	-7	MET	-	initiating methionine	UNP Q7VTN4
B	-6	ALA	-	expression tag	UNP Q7VTN4
B	-5	HIS	-	expression tag	UNP Q7VTN4
B	-4	HIS	-	expression tag	UNP Q7VTN4
B	-3	HIS	-	expression tag	UNP Q7VTN4
B	-2	HIS	-	expression tag	UNP Q7VTN4
B	-1	HIS	-	expression tag	UNP Q7VTN4
B	0	HIS	-	expression tag	UNP Q7VTN4
C	-7	MET	-	initiating methionine	UNP Q7VTN4
C	-6	ALA	-	expression tag	UNP Q7VTN4
C	-5	HIS	-	expression tag	UNP Q7VTN4

Continued on next page...

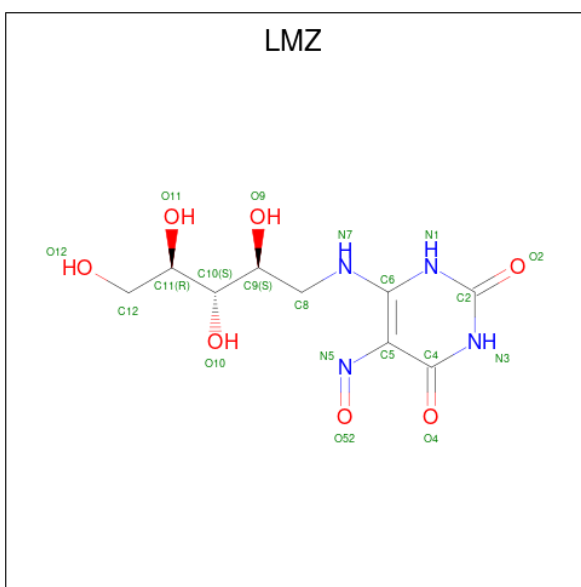
Continued from previous page...

Chain	Residue	Modelled	Actual	Comment	Reference
C	-4	HIS	-	expression tag	UNP Q7VTN4
C	-3	HIS	-	expression tag	UNP Q7VTN4
C	-2	HIS	-	expression tag	UNP Q7VTN4
C	-1	HIS	-	expression tag	UNP Q7VTN4
C	0	HIS	-	expression tag	UNP Q7VTN4
D	-7	MET	-	initiating methionine	UNP Q7VTN4
D	-6	ALA	-	expression tag	UNP Q7VTN4
D	-5	HIS	-	expression tag	UNP Q7VTN4
D	-4	HIS	-	expression tag	UNP Q7VTN4
D	-3	HIS	-	expression tag	UNP Q7VTN4
D	-2	HIS	-	expression tag	UNP Q7VTN4
D	-1	HIS	-	expression tag	UNP Q7VTN4
D	0	HIS	-	expression tag	UNP Q7VTN4
E	-7	MET	-	initiating methionine	UNP Q7VTN4
E	-6	ALA	-	expression tag	UNP Q7VTN4
E	-5	HIS	-	expression tag	UNP Q7VTN4
E	-4	HIS	-	expression tag	UNP Q7VTN4
E	-3	HIS	-	expression tag	UNP Q7VTN4
E	-2	HIS	-	expression tag	UNP Q7VTN4
E	-1	HIS	-	expression tag	UNP Q7VTN4
E	0	HIS	-	expression tag	UNP Q7VTN4

- Molecule 2 is CHLORIDE ION (CCD ID: CL) (formula: Cl).

Mol	Chain	Residues	Atoms	ZeroOcc	AltConf
2	A	6	Total Cl 6 6	0	0
2	B	3	Total Cl 3 3	0	0
2	C	3	Total Cl 3 3	0	0
2	D	3	Total Cl 3 3	0	0
2	E	3	Total Cl 3 3	0	0

- Molecule 3 is 5-NITROSO-6-RIBITYL-AMINO-2,4(1H,3H)-PYRIMIDINEDIONE (CCD ID: LMZ) (formula: C₉H₁₄N₄O₇) (labeled as "Ligand of Interest" by depositor).



Mol	Chain	Residues	Atoms				ZeroOcc	AltConf
3	A	1	Total	C	N	O	0	0
			20	9	4	7		
3	B	1	Total	C	N	O	0	0
			20	9	4	7		
3	C	1	Total	C	N	O	0	0
			20	9	4	7		
3	D	1	Total	C	N	O	0	0
			20	9	4	7		
3	E	1	Total	C	N	O	0	0
			20	9	4	7		

- Molecule 4 is water.

Mol	Chain	Residues	Atoms		ZeroOcc	AltConf
4	A	4	Total	O	0	0
			4	4		
4	B	6	Total	O	0	0
			6	6		
4	C	6	Total	O	0	0
			6	6		
4	D	8	Total	O	0	0
			8	8		
4	E	7	Total	O	0	0
			7	7		

- Molecule 1: 6,7-dimethyl-8-ribityllumazine synthase



- | Site | Residue | Conservation | Phylogenetic | Structural | Functional |
|------|---------|--------------|--------------|------------|------------|
| Met | Met | 100% | 100% | 100% | 100% |
| Ala | Ala | 100% | 100% | 100% | 100% |
| His | His | 100% | 100% | 100% | 100% |
| His | His | 100% | 100% | 100% | 100% |
| His | His | 100% | 100% | 100% | 100% |
| His | His | 100% | 100% | 100% | 100% |
| His | His | 100% | 100% | 100% | 100% |
| His | His | 100% | 100% | 100% | 100% |
| M1 | Met | 100% | 100% | 100% | 100% |
| N2 | Met | 100% | 100% | 100% | 100% |
| G12 | Gly | 100% | 100% | 100% | 100% |
| L15 | Leu | 100% | 100% | 100% | 100% |
| I19 | Ile | 100% | 100% | 100% | 100% |
| E47 | Asp | 100% | 100% | 100% | 100% |
| P66 | Pro | 100% | 100% | 100% | 100% |
| E70 | Asp | 100% | 100% | 100% | 100% |
| S71 | Ser | 100% | 100% | 100% | 100% |
| Y72 | Tyr | 100% | 100% | 100% | 100% |
| I78 | Ile | 100% | 100% | 100% | 100% |
| V140 | Val | 100% | 100% | 100% | 100% |
| A148 | Ala | 100% | 100% | 100% | 100% |
| E152 | Asp | 100% | 100% | 100% | 100% |
| P153 | Pro | 100% | 100% | 100% | 100% |
| GLU | Glu | 100% | 100% | 100% | 100% |

-
- | Category | Count |
|----------|-------|
| MET | 1 |
| ALA | 1 |
| HIS | 1 |
| HIS | 1 |
| HIS | 1 |
| HIS | 1 |
| HIS | 1 |
| HO | 1 |
| M1 | 1 |
| M2 | 1 |
| P3 | 1 |
| P4 | 1 |
| Y4 | 1 |
| I5 | 1 |
| L6 | 1 |
| G12 | 1 |
| L15 | 1 |
| E39 | 1 |
| R67 | 1 |
| E70 | 1 |
| E73 | 1 |
| R104 | 1 |
| A135 | 1 |
| A148 | 1 |
| E152 | 1 |
| PRO | 1 |
| GLU | 1 |
| GLU | 1 |

-
- | Residue | Count |
|---------|-------|
| MET | 1 |
| ALA | 1 |
| HIS | 1 |
| HIS | 1 |
| HIS | 1 |
| HIS | 1 |
| HIS | 1 |
| HO | 1 |
| M1 | 1 |
| Y4 | 1 |
| G12 | 1 |
| L15 | 1 |
| I28 | 1 |
| P56 | 1 |
| R67 | 1 |
| A82 | 1 |
| V140 | 1 |
| E152 | 1 |
| PRO | 1 |
| GLU | 1 |
| GLU | 1 |

-
- | Amino Acid | Count |
|------------|-------|
| MET | 1 |
| ALA | 0 |
| HIS | 4 |
| HIS | 4 |
| HIS | 4 |
| HIS | 4 |
| M1 | 2 |
| N2 | 1 |
| P3 | 2 |
| Y4 | 1 |
| I5 | 2 |
| I28 | 1 |
| E38 | 1 |
| K42 | 1 |
| M51 | 1 |
| V63 | 1 |
| R67 | 2 |
| F74 | 2 |
| A82 | 1 |
| V140 | 1 |
| E152 | 1 |
| P80 | 1 |
| GLU | 2 |
| GLU | 2 |

4 Data and refinement statistics

Property	Value	Source
Space group	I 1 2 1	Depositor
Cell constants a, b, c, α , β , γ	97.13Å 75.06Å 180.12Å 90.00° 105.57° 90.00°	Depositor
Resolution (Å)	74.43 – 2.56 74.43 – 2.56	Depositor EDS
% Data completeness (in resolution range)	98.8 (74.43-2.56) 98.8 (74.43-2.56)	Depositor EDS
R_{merge}	0.12	Depositor
R_{sym}	(Not available)	Depositor
$\langle I/\sigma(I) \rangle$ ¹	2.18 (at 2.55Å)	Xtriage
Refinement program	PHENIX (2.0_5833: ???)	Depositor
R, R_{free}	0.201 , 0.248 0.208 , 0.253	Depositor DCC
R_{free} test set	2015 reflections (5.03%)	wwPDB-VP
Wilson B-factor (Å ²)	51.3	Xtriage
Anisotropy	0.568	Xtriage
Bulk solvent k_{sol} (e/Å ³), B_{sol} (Å ²)	0.34 , 43.2	EDS
L-test for twinning ²	$\langle L \rangle = 0.52$, $\langle L^2 \rangle = 0.35$	Xtriage
Estimated twinning fraction	No twinning to report.	Xtriage
F_o, F_c correlation	0.95	EDS
Total number of atoms	5652	wwPDB-VP
Average B, all atoms (Å ²)	63.0	wwPDB-VP

Xtriage's analysis on translational NCS is as follows: *The largest off-origin peak in the Patterson function is 10.42% of the height of the origin peak. No significant pseudotranslation is detected.*

¹Intensities estimated from amplitudes.

²Theoretical values of $\langle |L| \rangle$, $\langle L^2 \rangle$ for acentric reflections are 0.5, 0.333 respectively for untwinned datasets, and 0.375, 0.2 for perfectly twinned datasets.

5 Model quality [i](#)

5.1 Standard geometry [i](#)

Bond lengths and bond angles in the following residue types are not validated in this section: LMZ, CL

The Z score for a bond length (or angle) is the number of standard deviations the observed value is removed from the expected value. A bond length (or angle) with $|Z| > 5$ is considered an outlier worth inspection. RMSZ is the root-mean-square of all Z scores of the bond lengths (or angles).

Mol	Chain	Bond lengths		Bond angles	
		RMSZ	$\# Z > 5$	RMSZ	$\# Z > 5$
1	A	0.36	0/1126	0.53	0/1531
1	B	0.35	0/1108	0.47	0/1509
1	C	0.40	0/1119	0.49	0/1520
1	D	0.36	0/1104	0.47	0/1502
1	E	0.37	0/1103	0.46	0/1500
All	All	0.37	0/5560	0.48	0/7562

Chiral center outliers are detected by calculating the chiral volume of a chiral center and verifying if the center is modelled as a planar moiety or with the opposite hand. A planarity outlier is detected by checking planarity of atoms in a peptide group, atoms in a mainchain group or atoms of a sidechain that are expected to be planar.

Mol	Chain	#Chirality outliers	#Planarity outliers
1	A	0	1

There are no bond length outliers.

There are no bond angle outliers.

There are no chirality outliers.

All (1) planarity outliers are listed below:

Mol	Chain	Res	Type	Group
1	A	67	ARG	Sidechain

5.2 Too-close contacts [i](#)

In the following table, the Non-H and H(model) columns list the number of non-hydrogen atoms and hydrogen atoms in the chain respectively. The H(added) column lists the number of hydrogen atoms added and optimized by MolProbity. The Clashes column lists the number of clashes within the asymmetric unit, whereas Symm-Clashes lists symmetry-related clashes.

Mol	Chain	Non-H	H(model)	H(added)	Clashes	Symm-Clashes
1	A	1114	0	1108	4	0
1	B	1096	0	1080	5	0
1	C	1108	0	1101	7	0
1	D	1093	0	1080	5	0
1	E	1092	0	1084	7	0
2	A	6	0	0	0	0
2	B	3	0	0	0	0
2	C	3	0	0	0	0
2	D	3	0	0	0	0
2	E	3	0	0	0	0
3	A	20	0	14	0	0
3	B	20	0	14	0	0
3	C	20	0	14	0	0
3	D	20	0	14	0	0
3	E	20	0	14	0	0
4	A	4	0	0	0	0
4	B	6	0	0	0	0
4	C	6	0	0	0	0
4	D	8	0	0	0	0
4	E	7	0	0	0	0
All	All	5652	0	5523	21	0

The all-atom clashscore is defined as the number of clashes found per 1000 atoms (including hydrogen atoms). The all-atom clashscore for this structure is 2.

The worst 5 of 21 close contacts within the same asymmetric unit are listed below, sorted by their clash magnitude.

Atom-1	Atom-2	Interatomic distance (Å)	Clash overlap (Å)
1:E:3:PRO:O	1:E:5:ILE:HD12	2.06	0.55
1:E:51:MET:HE3	1:E:74:PHE:HZ	1.71	0.55
1:C:5:ILE:HG13	1:C:5:ILE:O	2.07	0.55
1:B:148:ALA:HB1	1:D:67:ARG:HH12	1.75	0.51
1:C:39:GLU:HG3	1:C:135:ALA:HB1	1.91	0.51

There are no symmetry-related clashes.

5.3 Torsion angles

5.3.1 Protein backbone

In the following table, the Percentiles column shows the percent Ramachandran outliers of the chain as a percentile score with respect to all X-ray entries followed by that with respect to entries of similar resolution.

The Analysed column shows the number of residues for which the backbone conformation was analysed, and the total number of residues.

Mol	Chain	Analysed	Favoured	Allowed	Outliers	Percentiles	
1	A	152/163 (93%)	151 (99%)	1 (1%)	0	100	100
1	B	151/163 (93%)	150 (99%)	1 (1%)	0	100	100
1	C	151/163 (93%)	149 (99%)	2 (1%)	0	100	100
1	D	151/163 (93%)	149 (99%)	2 (1%)	0	100	100
1	E	150/163 (92%)	147 (98%)	3 (2%)	0	100	100
All	All	755/815 (93%)	746 (99%)	9 (1%)	0	100	100

There are no Ramachandran outliers to report.

5.3.2 Protein sidechains

In the following table, the Percentiles column shows the percent sidechain outliers of the chain as a percentile score with respect to all X-ray entries followed by that with respect to entries of similar resolution.

The Analysed column shows the number of residues for which the sidechain conformation was analysed, and the total number of residues.

Mol	Chain	Analysed	Rotameric	Outliers	Percentiles	
1	A	110/122 (90%)	109 (99%)	1 (1%)	75	86
1	B	107/122 (88%)	106 (99%)	1 (1%)	75	86
1	C	109/122 (89%)	109 (100%)	0	100	100
1	D	106/122 (87%)	105 (99%)	1 (1%)	75	86
1	E	107/122 (88%)	106 (99%)	1 (1%)	75	86
All	All	539/610 (88%)	535 (99%)	4 (1%)	81	89

All (4) residues with a non-rotameric sidechain are listed below:

Mol	Chain	Res	Type
1	A	1	MET
1	B	47	GLU
1	D	1	MET
1	E	1	MET

Sometimes sidechains can be flipped to improve hydrogen bonding and reduce clashes. All (5) such sidechains are listed below:

Mol	Chain	Res	Type
1	A	25	ASN
1	A	127	GLN
1	D	30	GLN
1	D	90	HIS
1	E	90	HIS

5.3.3 RNA [i](#)

There are no RNA molecules in this entry.

5.4 Non-standard residues in protein, DNA, RNA chains [i](#)

There are no non-standard protein/DNA/RNA residues in this entry.

5.5 Carbohydrates [i](#)

There are no oligosaccharides in this entry.

5.6 Ligand geometry [i](#)

Of 23 ligands modelled in this entry, 18 are monoatomic - leaving 5 for Mogul analysis.

In the following table, the Counts columns list the number of bonds (or angles) for which Mogul statistics could be retrieved, the number of bonds (or angles) that are observed in the model and the number of bonds (or angles) that are defined in the Chemical Component Dictionary. The Link column lists molecule types, if any, to which the group is linked. The Z score for a bond length (or angle) is the number of standard deviations the observed value is removed from the expected value. A bond length (or angle) with $|Z| > 2$ is considered an outlier worth inspection. RMSZ is the root-mean-square of all Z scores of the bond lengths (or angles).

Mol	Type	Chain	Res	Link	Bond lengths			Bond angles		
					Counts	RMSZ	$\# Z > 2$	Counts	RMSZ	$\# Z > 2$
3	LMZ	E	204	-	18,20,20	1.43	2 (11%)	22,27,27	3.46	4 (18%)

Mol	Type	Chain	Res	Link	Bond lengths			Bond angles		
					Counts	RMSZ	# Z > 2	Counts	RMSZ	# Z > 2
3	LMZ	B	204	-	18,20,20	1.23	2 (11%)	22,27,27	3.42	4 (18%)
3	LMZ	D	204	-	18,20,20	1.35	2 (11%)	22,27,27	3.51	4 (18%)
3	LMZ	A	207	-	18,20,20	1.38	2 (11%)	22,27,27	3.56	5 (22%)
3	LMZ	C	204	-	18,20,20	1.34	2 (11%)	22,27,27	3.50	4 (18%)

In the following table, the Chirals column lists the number of chiral outliers, the number of chiral centers analysed, the number of these observed in the model and the number defined in the Chemical Component Dictionary. Similar counts are reported in the Torsion and Rings columns. '-' means no outliers of that kind were identified.

Mol	Type	Chain	Res	Link	Chirals	Torsions	Rings
3	LMZ	E	204	-	-	0/17/17/17	0/1/1/1
3	LMZ	B	204	-	-	0/17/17/17	0/1/1/1
3	LMZ	D	204	-	-	0/17/17/17	0/1/1/1
3	LMZ	A	207	-	-	0/17/17/17	0/1/1/1
3	LMZ	C	204	-	-	0/17/17/17	0/1/1/1

The worst 5 of 10 bond length outliers are listed below:

Mol	Chain	Res	Type	Atoms	Z	Observed(Å)	Ideal(Å)
3	E	204	LMZ	C6-N7	4.69	1.41	1.34
3	A	207	LMZ	C6-N7	4.37	1.41	1.34
3	D	204	LMZ	C6-N7	4.32	1.41	1.34
3	C	204	LMZ	C6-N7	4.31	1.41	1.34
3	B	204	LMZ	C6-N7	3.75	1.40	1.34

The worst 5 of 21 bond angle outliers are listed below:

Mol	Chain	Res	Type	Atoms	Z	Observed(°)	Ideal(°)
3	A	207	LMZ	C2-N3-C4	13.56	126.55	115.09
3	E	204	LMZ	C2-N3-C4	13.54	126.53	115.09
3	B	204	LMZ	C2-N3-C4	13.41	126.42	115.09
3	D	204	LMZ	C2-N3-C4	13.25	126.28	115.09
3	C	204	LMZ	C2-N3-C4	13.09	126.14	115.09

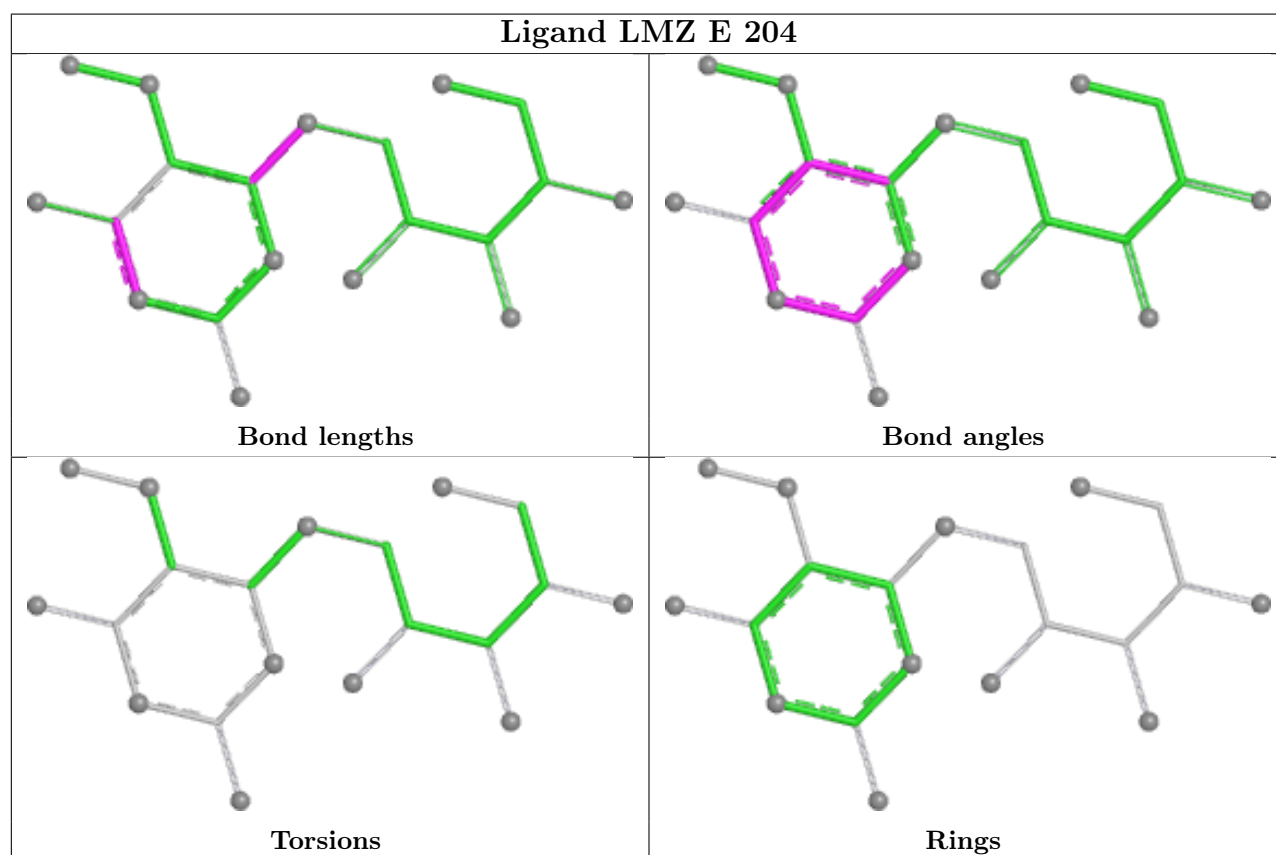
There are no chirality outliers.

There are no torsion outliers.

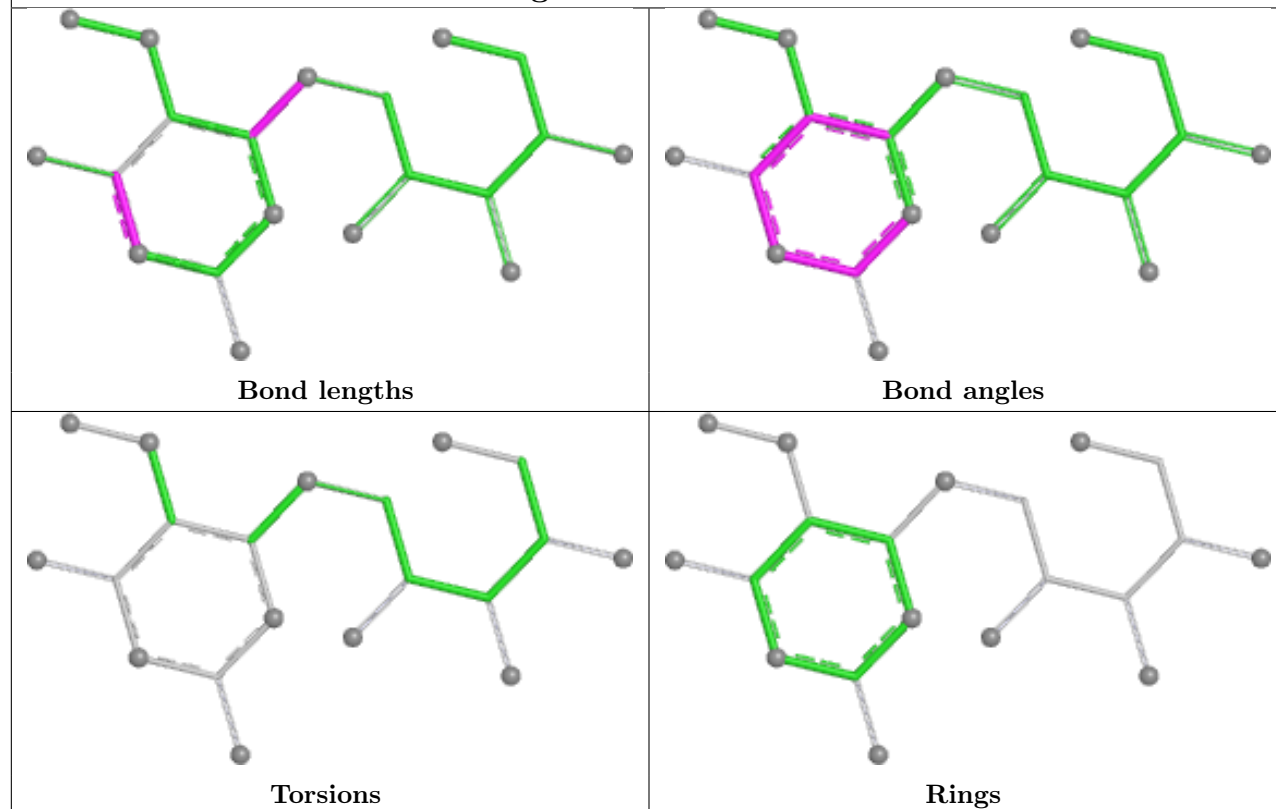
There are no ring outliers.

No monomer is involved in short contacts.

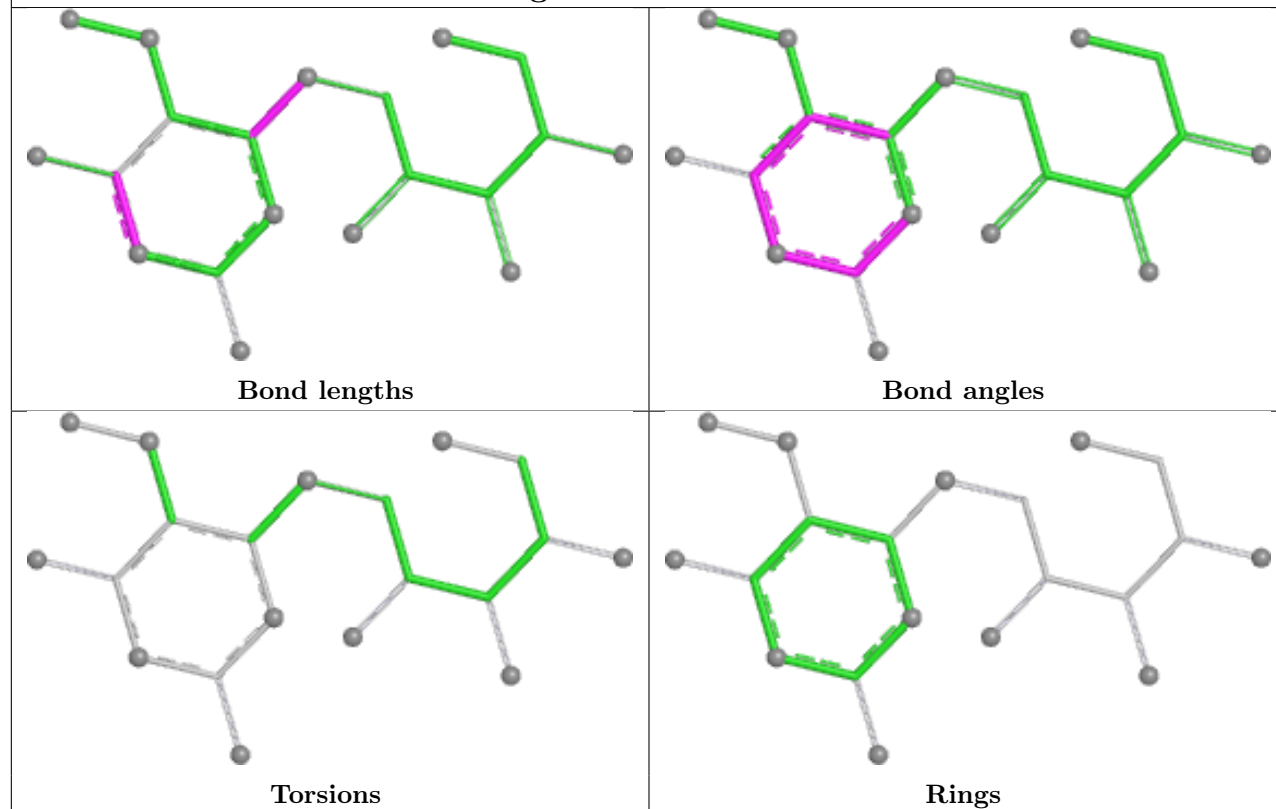
The following is a two-dimensional graphical depiction of Mogul quality analysis of bond lengths, bond angles, torsion angles, and ring geometry for all instances of the Ligand of Interest. In addition, ligands with molecular weight > 250 and outliers as shown on the validation Tables will also be included. For torsion angles, if less than 5% of the Mogul distribution of torsion angles is within 10 degrees of the torsion angle in question, then that torsion angle is considered an outlier. Any bond that is central to one or more torsion angles identified as an outlier by Mogul will be highlighted in the graph. For rings, the root-mean-square deviation (RMSD) between the ring in question and similar rings identified by Mogul is calculated over all ring torsion angles. If the average RMSD is greater than 60 degrees and the minimal RMSD between the ring in question and any Mogul-identified rings is also greater than 60 degrees, then that ring is considered an outlier. The outliers are highlighted in purple. The color gray indicates Mogul did not find sufficient equivalents in the CSD to analyse the geometry.



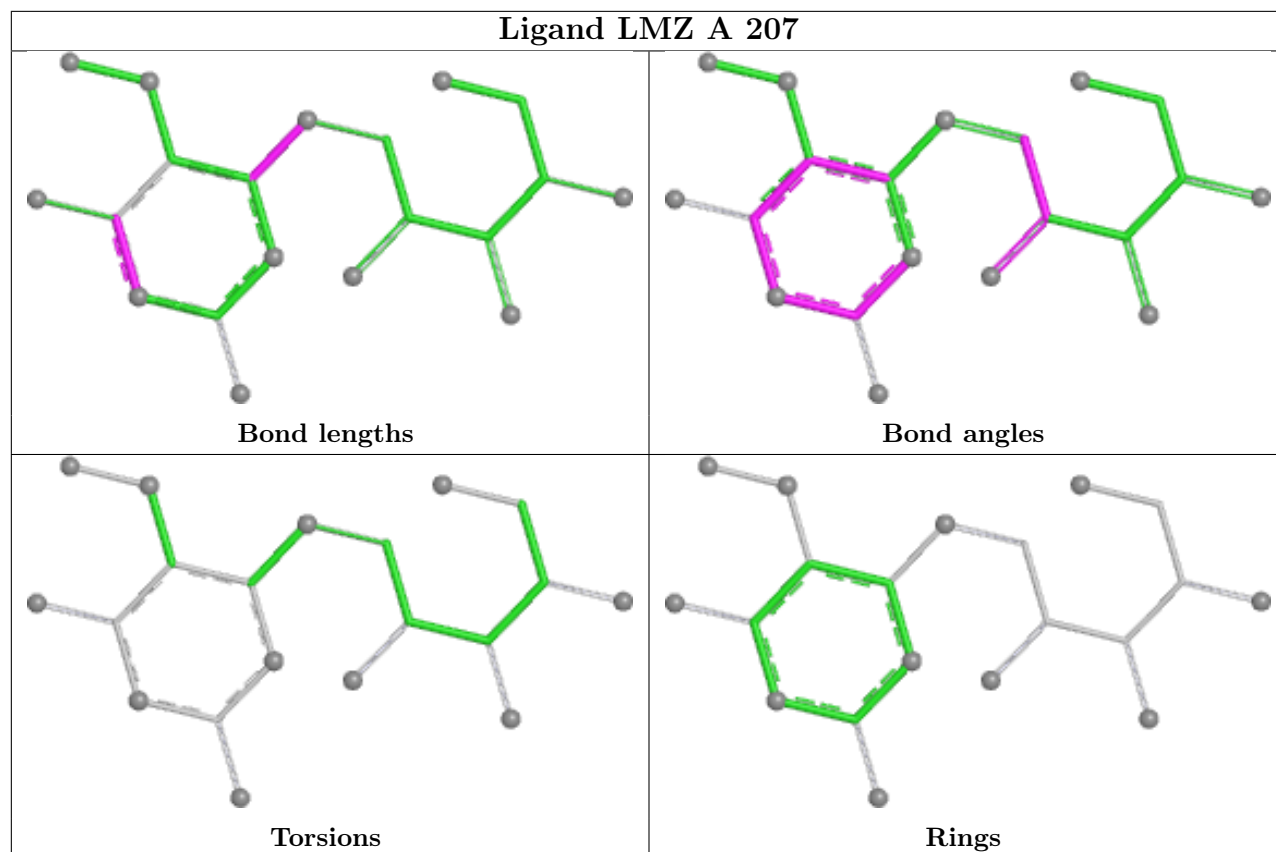
Ligand LMZ B 204



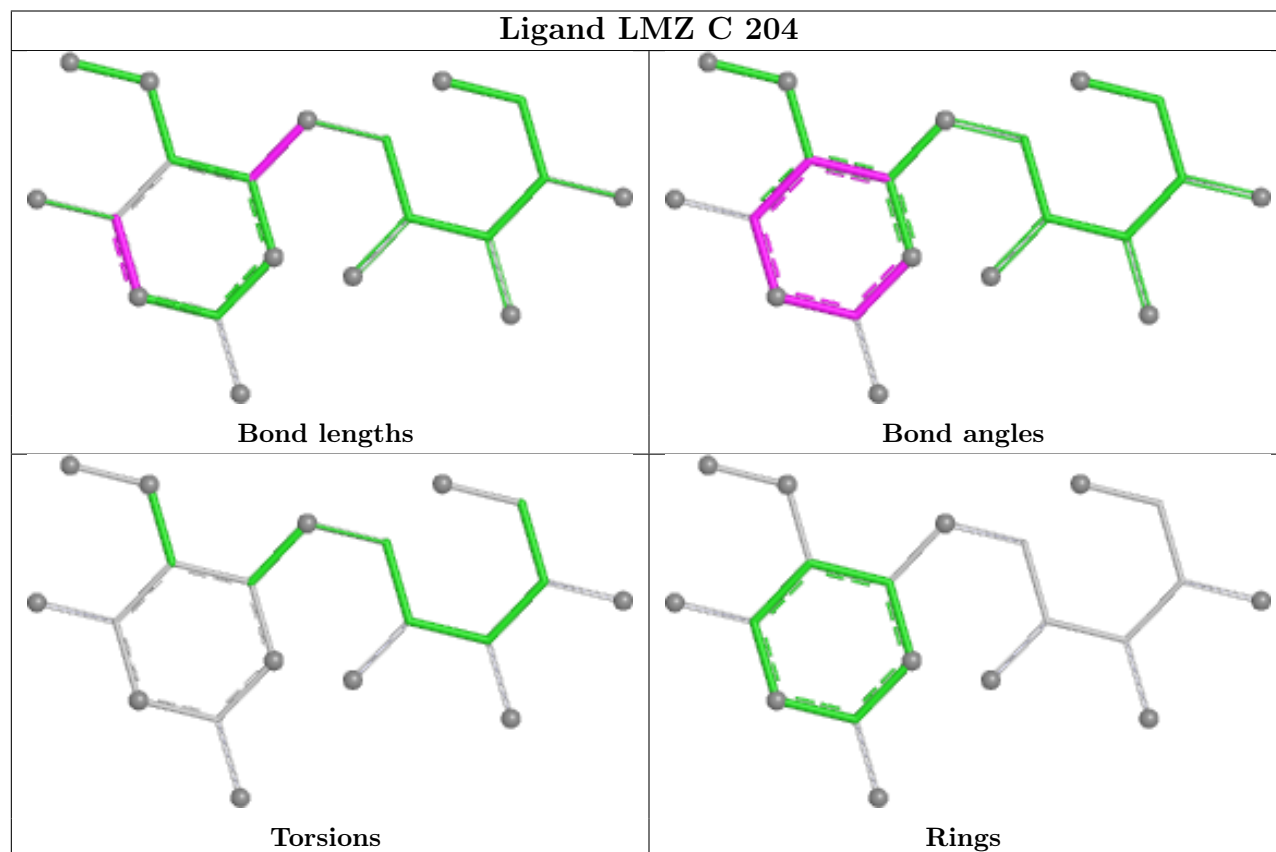
Ligand LMZ D 204



Ligand LMZ A 207



Ligand LMZ C 204



5.7 Other polymers [i](#)

There are no such residues in this entry.

5.8 Polymer linkage issues [i](#)

There are no chain breaks in this entry.

6 Fit of model and data [i](#)

6.1 Protein, DNA and RNA chains [i](#)

In the following table, the column labelled ‘#RSRZ > 2’ contains the number (and percentage) of RSRZ outliers, followed by percent RSRZ outliers for the chain as percentile scores relative to all X-ray entries and entries of similar resolution. The OWAB column contains the minimum, median, 95th percentile and maximum values of the occupancy-weighted average B-factor per residue. The column labelled ‘Q < 0.9’ lists the number of (and percentage) of residues with an average occupancy less than 0.9.

Mol	Chain	Analysed	<RSRZ>	#RSRZ>2	OWAB(Å ²)	Q<0.9
1	A	154/163 (94%)	0.13	6 (3%) 44 49	42, 58, 82, 99	0
1	B	153/163 (93%)	0.16	6 (3%) 44 49	44, 63, 86, 105	0
1	C	153/163 (93%)	0.17	8 (5%) 34 38	43, 57, 87, 117	0
1	D	153/163 (93%)	0.28	3 (1%) 64 69	43, 63, 89, 100	0
1	E	152/163 (93%)	0.28	3 (1%) 64 69	43, 64, 88, 102	0
All	All	765/815 (93%)	0.20	26 (3%) 48 53	42, 61, 88, 117	0

The worst 5 of 26 RSRZ outliers are listed below:

Mol	Chain	Res	Type	RSRZ
1	A	153	PRO	6.5
1	B	153	PRO	6.0
1	D	152	GLU	5.0
1	E	152	GLU	5.0
1	C	0	HIS	4.8

6.2 Non-standard residues in protein, DNA, RNA chains [i](#)

There are no non-standard protein/DNA/RNA residues in this entry.

6.3 Carbohydrates [i](#)

There are no oligosaccharides in this entry.

6.4 Ligands [i](#)

In the following table, the Atoms column lists the number of modelled atoms in the group and the number defined in the chemical component dictionary. The B-factors column lists the minimum,

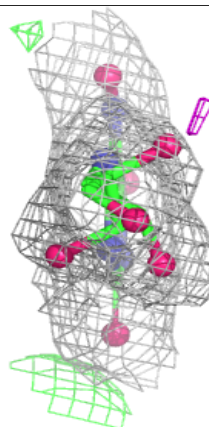
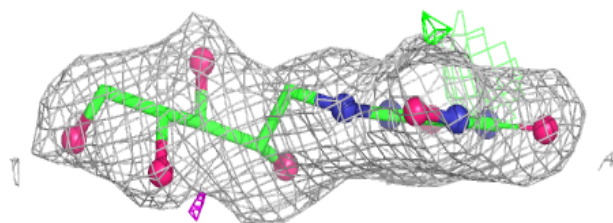
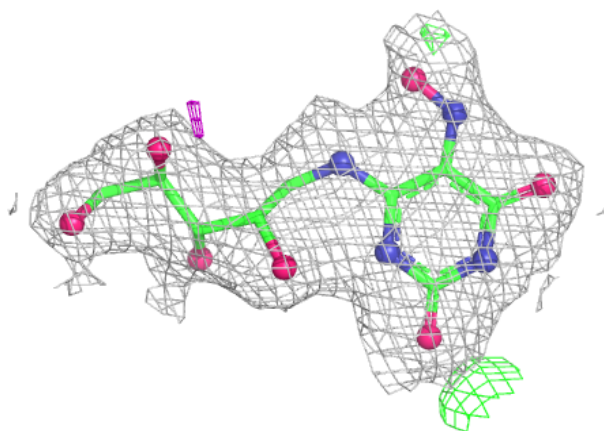
median, 95th percentile and maximum values of B factors of atoms in the group. The column labelled 'Q< 0.9' lists the number of atoms with occupancy less than 0.9.

Mol	Type	Chain	Res	Atoms	RSCC	RSR	B-factors(Å ²)	Q<0.9
2	CL	A	206	1/1	0.72	0.33	102,102,102,102	0
2	CL	B	203	1/1	0.82	0.19	81,81,81,81	0
2	CL	D	201	1/1	0.82	0.12	85,85,85,85	0
2	CL	D	203	1/1	0.83	0.15	84,84,84,84	0
2	CL	C	201	1/1	0.87	0.15	77,77,77,77	0
2	CL	E	203	1/1	0.87	0.19	93,93,93,93	0
2	CL	A	204	1/1	0.89	0.31	98,98,98,98	0
2	CL	A	201	1/1	0.89	0.14	80,80,80,80	0
2	CL	D	202	1/1	0.89	0.12	85,85,85,85	0
2	CL	B	202	1/1	0.89	0.15	70,70,70,70	0
2	CL	E	202	1/1	0.89	0.13	82,82,82,82	0
2	CL	A	202	1/1	0.89	0.14	79,79,79,79	0
2	CL	C	202	1/1	0.90	0.21	85,85,85,85	0
2	CL	A	203	1/1	0.91	0.13	75,75,75,75	0
2	CL	C	203	1/1	0.92	0.10	94,94,94,94	0
3	LMZ	A	207	20/20	0.93	0.09	47,54,61,71	0
2	CL	A	205	1/1	0.94	0.12	90,90,90,90	0
3	LMZ	B	204	20/20	0.94	0.09	46,53,61,70	0
3	LMZ	D	204	20/20	0.94	0.10	47,55,62,71	0
3	LMZ	E	204	20/20	0.94	0.09	45,52,62,66	0
2	CL	E	201	1/1	0.95	0.10	75,75,75,75	0
2	CL	B	201	1/1	0.96	0.10	76,76,76,76	0
3	LMZ	C	204	20/20	0.96	0.07	39,47,53,66	0

The following is a graphical depiction of the model fit to experimental electron density of all instances of the Ligand of Interest. In addition, ligands with molecular weight > 250 and outliers as shown on the geometry validation Tables will also be included. Each fit is shown from different orientation to approximate a three-dimensional view.

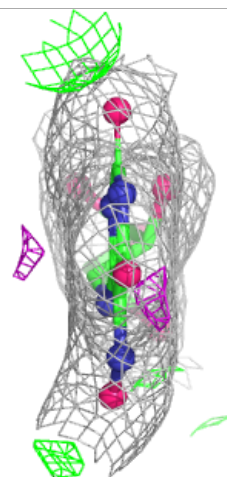
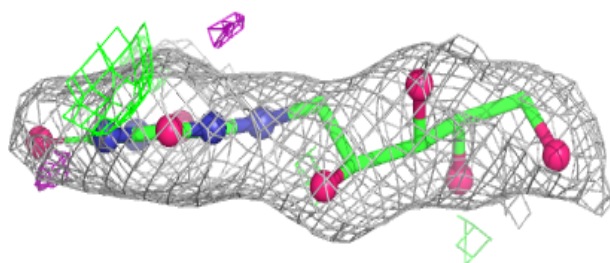
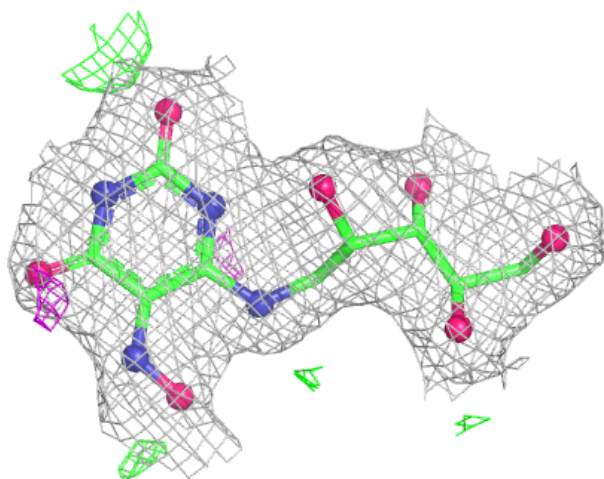
Electron density around LMZ A 207:

$2mF_o - DF_c$ (at 0.7 rmsd) in gray
 $mF_o - DF_c$ (at 3 rmsd) in purple (negative)
and green (positive)



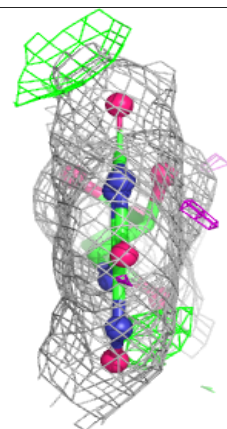
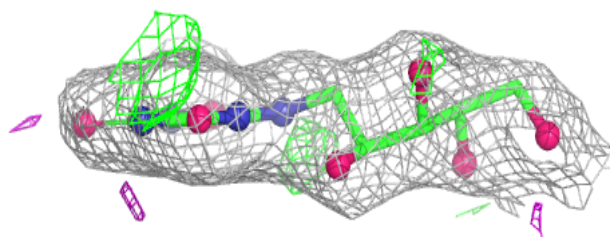
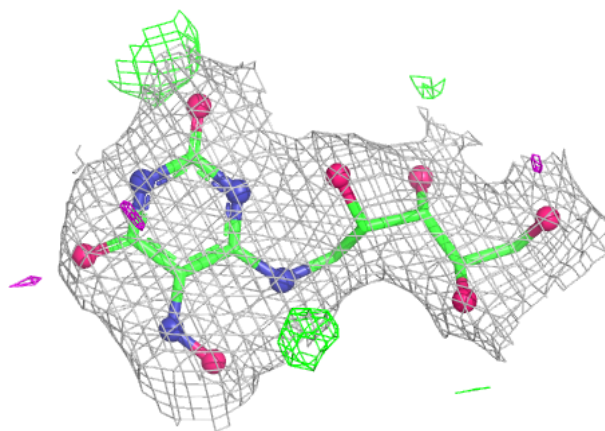
Electron density around LMZ B 204:

$2mF_o-DF_c$ (at 0.7 rmsd) in gray
 mF_o-DF_c (at 3 rmsd) in purple (negative)
and green (positive)



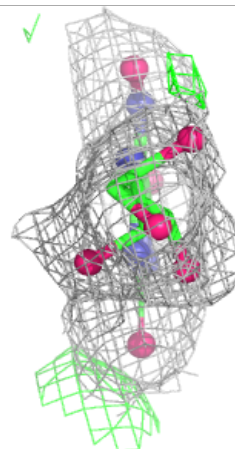
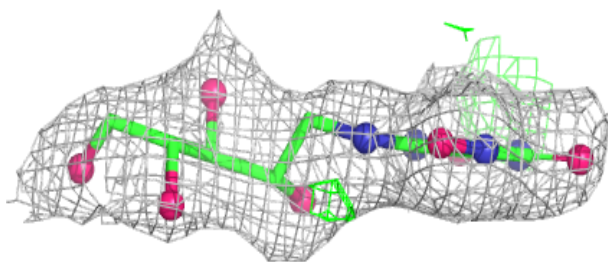
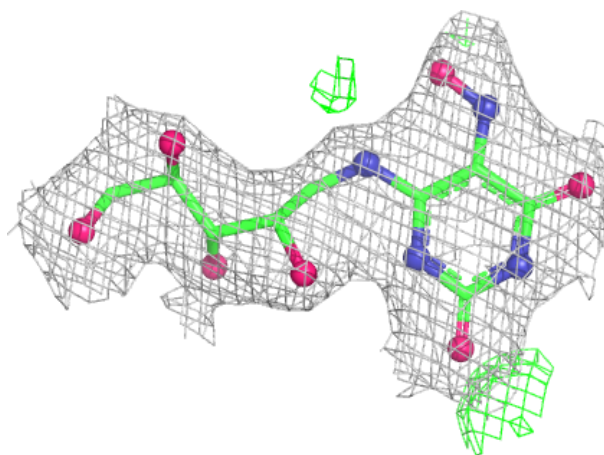
Electron density around LMZ D 204:

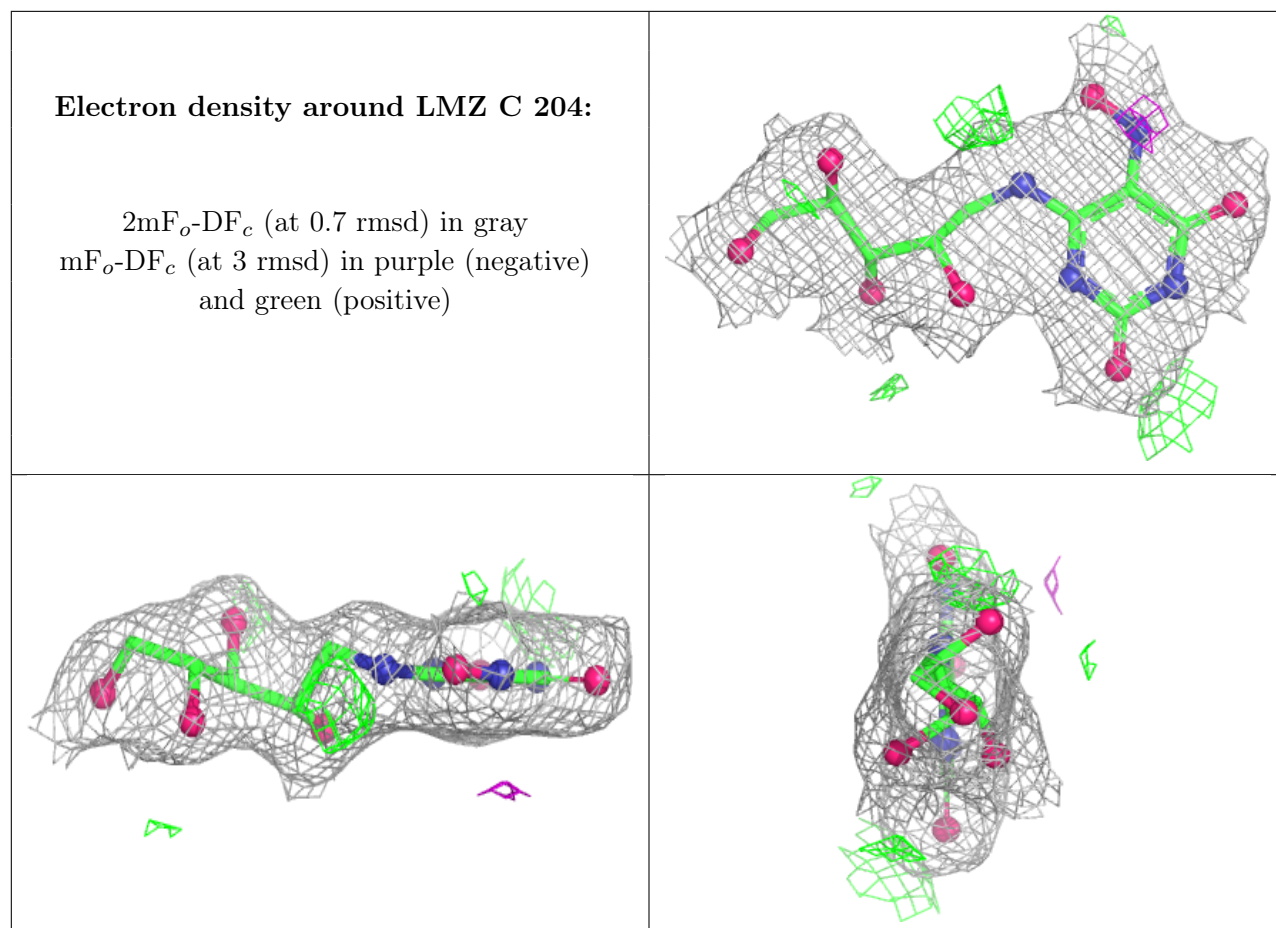
$2mF_o - DF_c$ (at 0.7 rmsd) in gray
 $mF_o - DF_c$ (at 3 rmsd) in purple (negative)
and green (positive)



Electron density around LMZ E 204:

$2mF_o-DF_c$ (at 0.7 rmsd) in gray
 mF_o-DF_c (at 3 rmsd) in purple (negative)
and green (positive)





6.5 Other polymers ⓘ

There are no such residues in this entry.