



## Full wwPDB EM Validation Report ⓘ

Nov 24, 2025 – 01:16 PM EST

PDB ID : 9YOL / pdb\_00009yol  
EMDB ID : EMD-73261  
Title : Tra1 module of ctSAGA  
Authors : Mattoo, R.U.H.; Chen, D.H.; Bushnell, D.A.; Tamir, S.; Kornberg, R.D.  
Deposited on : 2025-10-13  
Resolution : 2.60 Å(reported)

This is a Full wwPDB EM Validation Report for a publicly released PDB entry.

We welcome your comments at [validation@mail.wwpdb.org](mailto:validation@mail.wwpdb.org)

A user guide is available at

<https://www.wwpdb.org/validation/2017/EMValidationReportHelp>

with specific help available everywhere you see the ⓘ symbol.

The types of validation reports are described at

<http://www.wwpdb.org/validation/2017/FAQs#types>.

---

The following versions of software and data (see [references ⓘ](#)) were used in the production of this report:

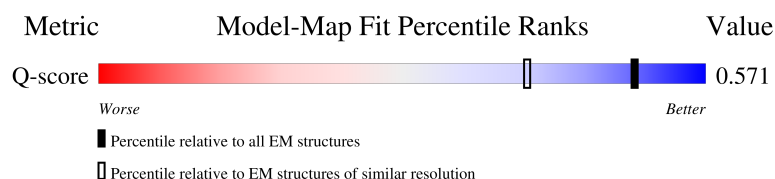
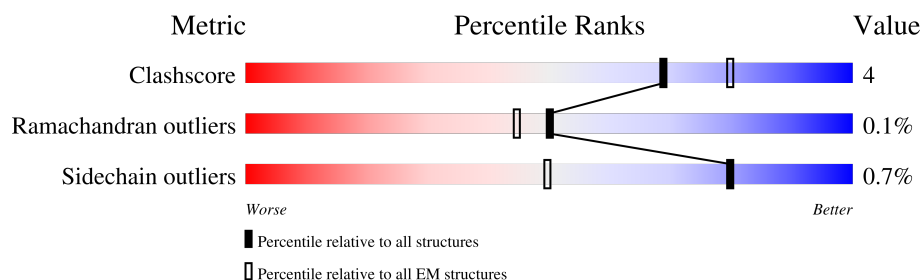
EMDB validation analysis : 0.0.1.dev129  
MolProbity : 4-5-2 with Phenix2.0  
Percentile statistics : 20231227.v01 (using entries in the PDB archive December 27th 2023)  
EM percentile statistics : 202505.v01 (Using data in the EMDB archive up until May 2025)  
MapQ : 1.9.13  
Ideal geometry (proteins) : Engh & Huber (2001)  
Ideal geometry (DNA, RNA) : Parkinson et al. (1996)  
Validation Pipeline (wwPDB-VP) : 2.46

# 1 Overall quality at a glance

The following experimental techniques were used to determine the structure:  
*ELECTRON MICROSCOPY*

The reported resolution of this entry is 2.60 Å.

Percentile scores (ranging between 0-100) for global validation metrics of the entry are shown in the following graphic. The table shows the number of entries on which the scores are based.



Metric	Whole archive (#Entries)	EM structures (#Entries)	Similar EM resolution (#Entries, resolution range(Å))
Clashscore	210492	15764	-
Ramachandran outliers	207382	16835	-
Sidechain outliers	206894	16415	-
Q-score	-	25397	8728 ( 2.10 - 3.10 )

The table below summarises the geometric issues observed across the polymeric chains and their fit to the map. The red, orange, yellow and green segments of the bar indicate the fraction of residues that contain outliers for  $\geq 3$ , 2, 1 and 0 types of geometric quality criteria respectively. A grey segment represents the fraction of residues that are not modelled. The numeric value for each fraction is indicated below the corresponding segment, with a dot representing fractions  $\leq 5\%$ . The upper red bar (where present) indicates the fraction of residues that have poor fit to the EM map (all-atom inclusion  $< 40\%$ ). The numeric value is given above the bar.

Mol	Chain	Length	Quality of chain
1	Q	1273	 98%
2	B	1192	 92%
3	C	433	 83%
4	H	485	 93%

*Continued on next page...*

Continued from previous page...

Mol	Chain	Length	Quality of chain
5	I	770	<div><div></div><div>5%</div><div></div><div>94%</div></div>
6	A	3893	<div><div></div><div>17%</div><div></div><div>84%</div><div></div><div>9%</div><div></div><div>7%</div></div>

## 2 Entry composition [i](#)

There are 6 unique types of molecules in this entry. The entry contains 62724 atoms, of which 31230 are hydrogens and 0 are deuteriums.

In the tables below, the AltConf column contains the number of residues with at least one atom in alternate conformation and the Trace column contains the number of residues modelled with at most 2 atoms.

- Molecule 1 is a protein called SCA7 domain-containing protein.

Mol	Chain	Residues	Atoms					AltConf	Trace
1	Q	24	Total	C	H	N	O	0	0
			387	120	193	39	35		

- Molecule 2 is a protein called Spt20-like SEP domain-containing protein.

Mol	Chain	Residues	Atoms					AltConf	Trace	
2	B	92	Total	C	H	N	O	S	0	0
			1479	510	685	135	147	2		

- Molecule 3 is a protein called Chains: C.

Mol	Chain	Residues	Atoms						AltConf	Trace
3	C	72	Total	C	H	N	O	S	0	0
			1130	371	547	97	111	4		

- Molecule 4 is a protein called Putative transcriptional coactivator HFI1 protein.

Mol	Chain	Residues	Atoms					AltConf	Trace	
4	H	33	Total	C	H	N	O	S	0	0
			534	169	267	46	49	3		

- Molecule 5 is a protein called Transcription initiation factor TFIID subunit 12.

Mol	Chain	Residues	Atoms					AltConf	Trace	
5	I	46	Total	C	H	N	O	S	0	0
			563	218	226	59	59	1		

- Molecule 6 is a protein called Non-specific serine/threonine protein kinase.

Mol	Chain	Residues	Atoms						AltConf	Trace
6	A	3617	Total	C	H	N	O	S	0	0
			58631	18801	29312	5108	5266	144		





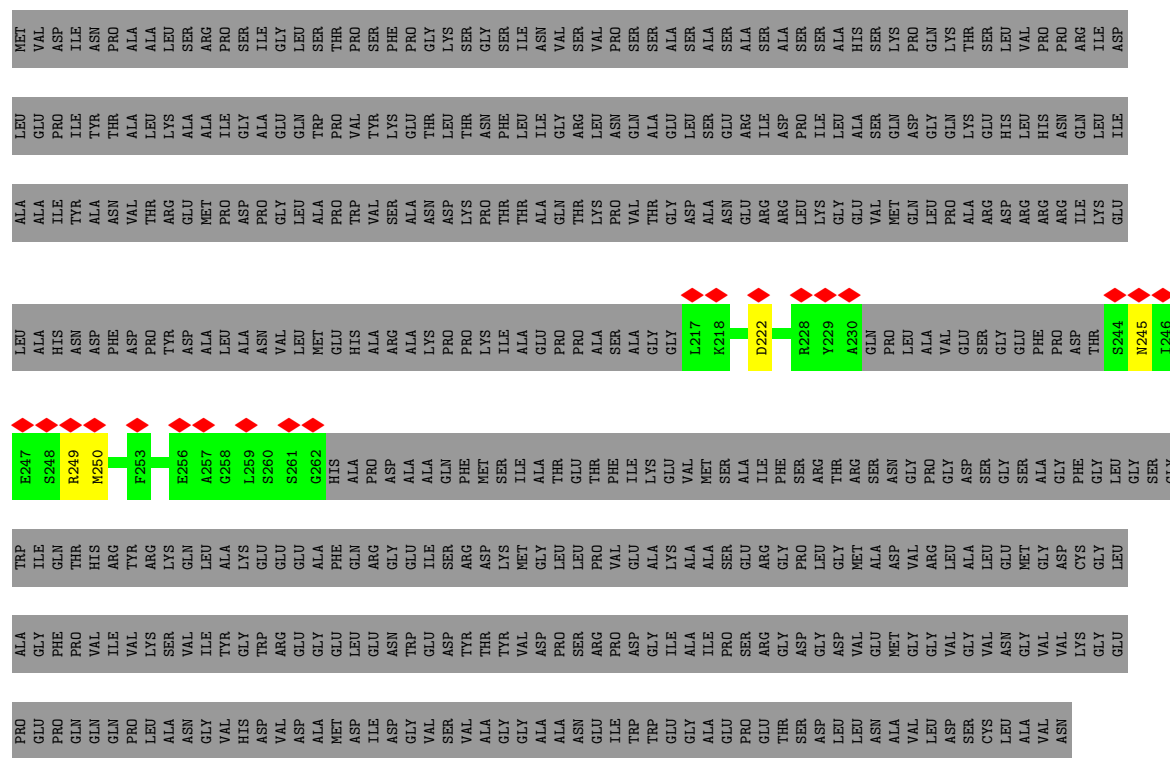
[illegible]

- Molecule 3: Chains: C

[illegible]

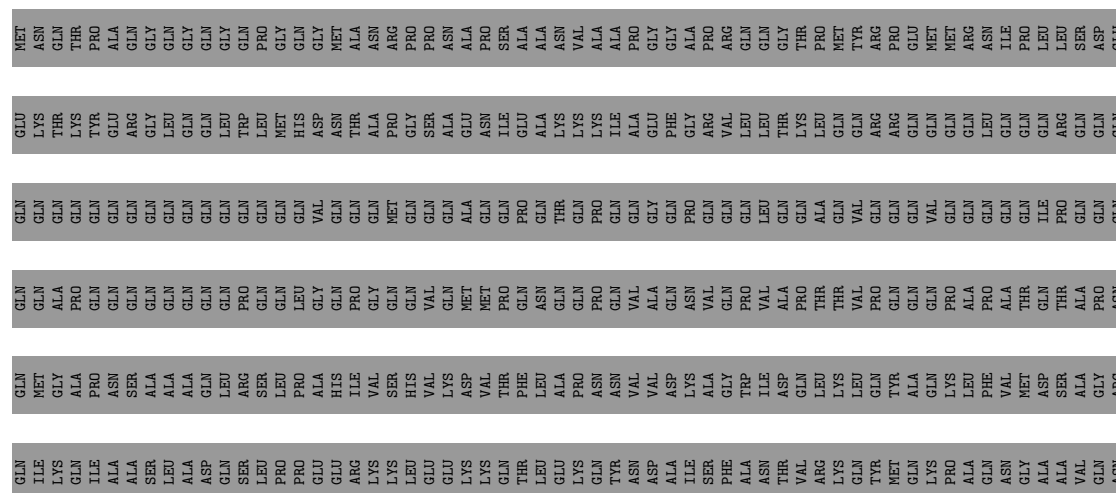
- Molecule 4: Putative transcriptional coactivator HFI1 protein

Chain H:  6% 93%



- Molecule 5: Transcription initiation factor TFIID subunit 12

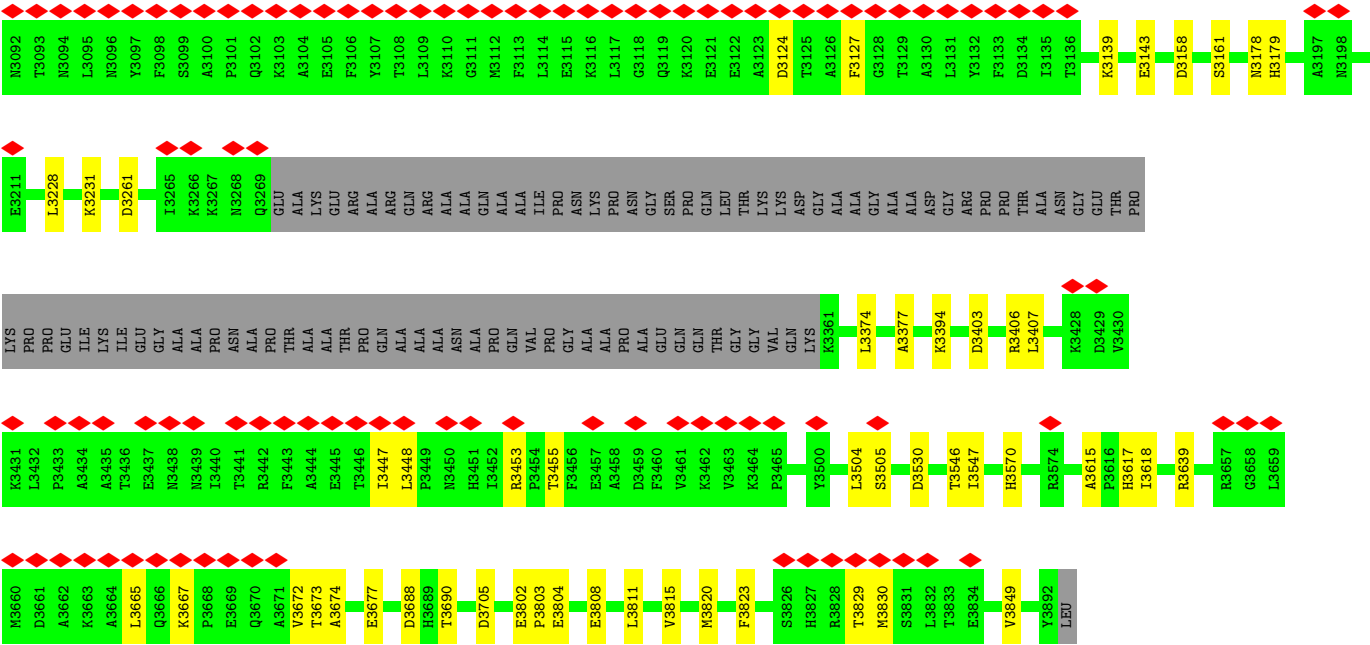
Chain I:  5% • 94%











## 4 Experimental information

Property	Value	Source
EM reconstruction method	SINGLE PARTICLE	Depositor
Imposed symmetry	POINT, Not provided	
Number of particles used	1886619	Depositor
Resolution determination method	FSC 0.143 CUT-OFF	Depositor
CTF correction method	NONE	Depositor
Microscope	TFS KRIOS	Depositor
Voltage (kV)	300	Depositor
Electron dose ( $e^-/\text{\AA}^2$ )	68.9	Depositor
Minimum defocus (nm)	1200	Depositor
Maximum defocus (nm)	2500	Depositor
Magnification	Not provided	
Image detector	GATAN K3 BIOQUANTUM (6k x 4k)	Depositor
Maximum map value	8.598	Depositor
Minimum map value	-5.619	Depositor
Average map value	0.007	Depositor
Map value standard deviation	0.156	Depositor
Recommended contour level	0.8	Depositor
Map size ( $\text{\AA}$ )	374.76, 374.76, 374.76	wwPDB
Map dimensions	360, 360, 360	wwPDB
Map angles ( $^\circ$ )	90.0, 90.0, 90.0	wwPDB
Pixel spacing ( $\text{\AA}$ )	1.041, 1.041, 1.041	Depositor

## 5 Model quality [i](#)

### 5.1 Standard geometry [i](#)

The Z score for a bond length (or angle) is the number of standard deviations the observed value is removed from the expected value. A bond length (or angle) with  $|Z| > 5$  is considered an outlier worth inspection. RMSZ is the root-mean-square of all Z scores of the bond lengths (or angles).

Mol	Chain	Bond lengths		Bond angles	
		RMSZ	# Z  >5	RMSZ	# Z  >5
1	Q	0.05	0/196	0.16	0/262
2	B	0.12	0/817	0.26	0/1101
3	C	0.11	0/598	0.22	0/804
4	H	0.11	0/270	0.23	0/357
5	I	0.10	0/347	0.27	0/474
6	A	0.11	0/29994	0.27	0/40664
All	All	0.11	0/32222	0.26	0/43662

Chiral center outliers are detected by calculating the chiral volume of a chiral center and verifying if the center is modelled as a planar moiety or with the opposite hand. A planarity outlier is detected by checking planarity of atoms in a peptide group, atoms in a mainchain group or atoms of a sidechain that are expected to be planar.

Mol	Chain	#Chirality outliers	#Planarity outliers
6	A	0	1

There are no bond length outliers.

There are no bond angle outliers.

There are no chirality outliers.

All (1) planarity outliers are listed below:

Mol	Chain	Res	Type	Group
6	A	2682	ARG	Peptide

### 5.2 Too-close contacts [i](#)

In the following table, the Non-H and H(model) columns list the number of non-hydrogen atoms and hydrogen atoms in the chain respectively. The H(added) column lists the number of hydrogen atoms added and optimized by MolProbity. The Clashes column lists the number of clashes within the asymmetric unit, whereas Symm-Clashes lists symmetry-related clashes.

Mol	Chain	Non-H	H(model)	H(added)	Clashes	Symm-Clashes
1	Q	194	193	192	0	0
2	B	794	685	747	7	0
3	C	583	547	544	7	0
4	H	267	267	265	2	0
5	I	337	226	350	7	0
6	A	29319	29312	29602	206	0
All	All	31494	31230	31700	221	0

The all-atom clashscore is defined as the number of clashes found per 1000 atoms (including hydrogen atoms). The all-atom clashscore for this structure is 4.

All (221) close contacts within the same asymmetric unit are listed below, sorted by their clash magnitude.

Atom-1	Atom-2	Interatomic distance (Å)	Clash overlap (Å)
5:I:628:TYR:OH	6:A:2756:ASP:OD1	1.92	0.88
6:A:798:GLY:O	6:A:805:TYR:OH	1.95	0.82
6:A:509:SER:OG	6:A:556:ASP:OD1	1.96	0.82
2:B:228:THR:O	6:A:2765:ARG:NH2	2.12	0.81
6:A:1888:HIS:O	6:A:1928:TYR:OH	1.98	0.81
5:I:598:LEU:HB3	5:I:599:PRO:HD3	1.64	0.80
5:I:603:VAL:O	5:I:604:LEU:HB2	1.83	0.77
2:B:217:PRO:O	6:A:2739:ARG:NH1	2.20	0.75
6:A:1194:TYR:CD2	6:A:3504:LEU:HD21	2.23	0.73
6:A:1991:GLU:OE1	6:A:1997:GLN:NE2	2.26	0.68
2:B:220:ILE:O	6:A:2765:ARG:NH1	2.27	0.68
6:A:1194:TYR:HD2	6:A:3504:LEU:HD21	1.59	0.67
6:A:1619:THR:HG21	6:A:1632:LEU:HD22	1.76	0.67
6:A:1497:LEU:HD21	6:A:1511:LEU:HD22	1.76	0.67
6:A:435:GLN:O	6:A:439:THR:HG23	1.95	0.66
6:A:3403:ASP:OD1	6:A:3406:ARG:NH2	2.28	0.66
6:A:2493:GLU:OE2	6:A:2497:ARG:NH1	2.29	0.65
6:A:1800:TYR:O	6:A:1810:LYS:NZ	2.29	0.65
6:A:347:LEU:HD12	6:A:348:PRO:N	2.12	0.64
3:C:147:GLU:OE2	3:C:393:ARG:NH2	2.31	0.63
6:A:3665:LEU:O	6:A:3667:LYS:NZ	2.21	0.63
6:A:158:HIS:O	6:A:162:SER:OG	2.17	0.63
6:A:1619:THR:HG21	6:A:1632:LEU:CD2	2.29	0.62
6:A:1250:ARG:NH1	6:A:1253:GLN:OE1	2.32	0.62
6:A:1401:GLU:N	6:A:1401:GLU:OE1	2.34	0.61
6:A:1988:LEU:HD13	6:A:2001:ILE:HD11	1.81	0.61
6:A:1444:THR:O	6:A:1448:VAL:HG23	2.00	0.61
6:A:1631:PHE:O	6:A:1635:VAL:HG23	2.01	0.61

*Continued on next page...*

*Continued from previous page...*

Atom-1	Atom-2	Interatomic distance (Å)	Clash overlap (Å)
6:A:3530:ASP:OD1	6:A:3530:ASP:N	2.34	0.61
6:A:3804:GLU:N	6:A:3804:GLU:OE1	2.35	0.60
6:A:1436:PHE:O	6:A:1445:ARG:NH1	2.35	0.60
6:A:152:ASP:OD1	6:A:153:ILE:N	2.35	0.59
6:A:124:ALA:O	6:A:128:VAL:HG22	2.03	0.59
6:A:867:GLY:O	6:A:871:VAL:HG23	2.02	0.59
6:A:1785:SER:OG	6:A:1787:ASP:O	2.21	0.59
6:A:2424:SER:O	6:A:2467:ARG:NH2	2.35	0.59
6:A:3504:LEU:HD23	6:A:3505:SER:N	2.19	0.58
6:A:3448:LEU:O	6:A:3453:ARG:NH1	2.36	0.58
6:A:3158:ASP:O	6:A:3161:SER:OG	2.20	0.58
6:A:3688:ASP:OD2	6:A:3690:THR:OG1	2.20	0.58
6:A:1596:HIS:O	6:A:1597:HIS:ND1	2.37	0.57
6:A:3829:THR:OG1	6:A:3830:MET:N	2.38	0.57
3:C:154:GLU:OE1	3:C:154:GLU:N	2.38	0.56
6:A:134:LEU:O	6:A:138:ASP:N	2.36	0.56
6:A:1511:LEU:HD23	6:A:1566:ILE:HD13	1.88	0.56
6:A:183:VAL:HG22	6:A:248:PHE:CZ	2.39	0.56
6:A:2211:ASN:O	6:A:2215:VAL:HG23	2.06	0.56
6:A:139:ASN:O	6:A:143:VAL:HG13	2.06	0.56
3:C:137:GLU:N	3:C:137:GLU:OE1	2.38	0.55
6:A:179:LEU:O	6:A:183:VAL:HG23	2.06	0.55
6:A:180:ASP:OD1	6:A:181:LYS:N	2.39	0.55
6:A:54:ARG:NH2	6:A:55:ASP:OD1	2.40	0.55
6:A:2181:VAL:HG11	6:A:2212:THR:HG21	1.87	0.55
6:A:1691:ASN:O	6:A:1691:ASN:ND2	2.40	0.54
6:A:2449:PRO:O	6:A:2450:THR:OG1	2.22	0.54
6:A:1475:LEU:HD23	6:A:1481:LEU:HD21	1.90	0.54
2:B:425:ASP:OD2	2:B:428:LEU:HD12	2.08	0.54
6:A:3546:THR:HG22	6:A:3547:ILE:H	1.73	0.54
6:A:140:GLU:HA	6:A:143:VAL:HG22	1.90	0.53
6:A:2205:LEU:O	6:A:2209:ILE:HG13	2.09	0.53
6:A:3673:THR:HG22	6:A:3677:GLU:OE2	2.08	0.53
6:A:1737:MET:HE2	6:A:1761:ILE:HD11	1.88	0.53
6:A:2298:SER:OG	6:A:2299:GLU:N	2.42	0.53
6:A:3228:LEU:HD12	6:A:3228:LEU:O	2.09	0.53
6:A:2343:MET:O	6:A:2347:GLN:HG3	2.08	0.53
6:A:971:HIS:CG	6:A:971:HIS:O	2.62	0.53
4:H:222:ASP:OD2	4:H:222:ASP:C	2.50	0.53
6:A:879:GLU:OE2	6:A:924:ARG:NH1	2.41	0.53
6:A:3615:ALA:HB3	6:A:3618:ILE:HD12	1.91	0.53

*Continued on next page...*

*Continued from previous page...*

Atom-1	Atom-2	Interatomic distance (Å)	Clash overlap (Å)
6:A:69:PHE:O	6:A:73:VAL:HG22	2.10	0.52
6:A:273:VAL:O	6:A:277:VAL:HG23	2.09	0.52
6:A:813:GLU:HG2	6:A:1411:ARG:NH2	2.24	0.52
3:C:135:TRP:CD1	3:C:156:THR:HG21	2.45	0.52
5:I:599:PRO:HD3	6:A:2940:HIS:NE2	2.25	0.52
6:A:2467:ARG:O	6:A:2468:THR:HG22	2.10	0.51
6:A:971:HIS:O	6:A:971:HIS:ND1	2.43	0.51
4:H:245:ASN:O	4:H:249:ARG:HG3	2.09	0.51
6:A:1700:GLU:OE1	6:A:1700:GLU:N	2.43	0.51
6:A:800:LYS:O	6:A:800:LYS:HG2	2.10	0.51
6:A:1572:ASP:OD2	6:A:1572:ASP:C	2.53	0.51
6:A:393:ASP:OD2	6:A:393:ASP:C	2.53	0.50
6:A:507:LYS:NZ	6:A:538:ASP:OD2	2.27	0.50
6:A:1146:ASN:O	6:A:1152:ARG:NH1	2.43	0.50
6:A:1377:ASP:OD1	6:A:1377:ASP:N	2.44	0.50
6:A:434:GLU:N	6:A:434:GLU:OE1	2.45	0.50
6:A:139:ASN:O	6:A:143:VAL:HG22	2.12	0.50
6:A:2335:ILE:HG22	6:A:2339:ILE:HD13	1.94	0.50
6:A:441:GLU:OE2	6:A:445:ARG:NH2	2.45	0.49
5:I:602:LYS:O	5:I:603:VAL:HB	2.12	0.49
6:A:169:LEU:HD13	6:A:172:ILE:HD11	1.94	0.49
6:A:1899:ILE:HD11	6:A:1924:PHE:CD2	2.48	0.49
6:A:2785:GLU:CD	6:A:2785:GLU:H	2.21	0.49
6:A:949:VAL:O	6:A:949:VAL:HG12	2.12	0.49
2:B:235:TYR:CG	2:B:236:PRO:HD2	2.47	0.49
6:A:2176:ASN:OD1	6:A:2177:VAL:HG23	2.13	0.49
6:A:548:SER:OG	6:A:553:ARG:NH2	2.44	0.49
6:A:1296:LEU:O	6:A:1300:VAL:HG23	2.12	0.49
6:A:3820:MET:HE3	6:A:3820:MET:HA	1.95	0.48
6:A:427:VAL:O	6:A:427:VAL:CG1	2.61	0.48
6:A:465:LEU:HD13	6:A:571:GLY:HA3	1.96	0.48
6:A:41:THR:O	6:A:45:VAL:HG23	2.13	0.48
6:A:106:ILE:O	6:A:110:LEU:N	2.43	0.48
6:A:3178:ASN:O	6:A:3179:HIS:ND1	2.46	0.48
6:A:131:LEU:HB3	6:A:150:LEU:HD21	1.95	0.48
6:A:1737:MET:CE	6:A:1761:ILE:HD11	2.44	0.48
6:A:2058:ARG:C	6:A:2058:ARG:HD2	2.39	0.48
6:A:1235:TYR:CE1	6:A:3505:SER:HA	2.49	0.47
6:A:3043:LEU:HD13	6:A:3046:VAL:HG21	1.96	0.47
6:A:291:GLN:NE2	6:A:360:ASP:OD1	2.48	0.47
6:A:3447:ILE:O	6:A:3447:ILE:HG22	2.15	0.47

*Continued on next page...*



*Continued from previous page...*

Atom-1	Atom-2	Interatomic distance (Å)	Clash overlap (Å)
3:C:135:TRP:CD1	3:C:139:CYS:HG	2.33	0.47
6:A:1475:LEU:CD2	6:A:1481:LEU:HD21	2.44	0.47
6:A:1939:TYR:HH	6:A:2004:TYR:HE2	1.62	0.47
6:A:376:ILE:HG21	6:A:419:MET:HE1	1.97	0.47
6:A:968:PHE:CE2	6:A:972:LEU:HD12	2.50	0.47
6:A:1803:LYS:H	6:A:1803:LYS:HD2	1.78	0.47
6:A:3802:GLU:CB	6:A:3803:PRO:HD3	2.45	0.47
6:A:2351:ALA:O	6:A:2355:VAL:HG23	2.15	0.46
6:A:806:LYS:HB2	6:A:806:LYS:HE2	1.71	0.46
6:A:2021:MET:O	6:A:2025:GLN:HG3	2.14	0.46
6:A:179:LEU:HD21	6:A:283:ALA:HB2	1.96	0.46
6:A:363:ARG:NH2	6:A:1870:ASP:OD2	2.49	0.46
6:A:1711:GLU:OE2	6:A:1711:GLU:O	2.33	0.46
6:A:183:VAL:HG22	6:A:248:PHE:HZ	1.81	0.46
6:A:3407:LEU:CD1	6:A:3447:ILE:HG21	2.46	0.46
6:A:1638:HIS:O	6:A:1645:ARG:NH2	2.49	0.46
6:A:3808:GLU:HG2	6:A:3849:VAL:HG21	1.97	0.46
6:A:97:GLN:O	6:A:101:ASN:ND2	2.44	0.46
6:A:2580:ILE:O	6:A:2584:VAL:HG22	2.16	0.46
6:A:3231:LYS:O	6:A:3231:LYS:HG2	2.16	0.46
6:A:2431:GLU:O	6:A:2435:GLU:HG3	2.16	0.45
6:A:560:ASP:N	6:A:560:ASP:OD1	2.48	0.45
6:A:950:ASP:OD2	6:A:3639:ARG:NH2	2.49	0.45
2:B:464:GLU:OE2	6:A:2799:ARG:NH2	2.49	0.45
6:A:2225:ASP:OD1	6:A:2226:ARG:N	2.49	0.45
6:A:308:VAL:HG22	6:A:318:PHE:HE2	1.82	0.45
6:A:179:LEU:C	6:A:179:LEU:HD12	2.42	0.45
6:A:2181:VAL:CG1	6:A:2212:THR:HG21	2.45	0.45
6:A:3570:HIS:O	6:A:3617:HIS:O	2.33	0.45
2:B:425:ASP:OD2	6:A:2741:SER:OG	2.34	0.44
6:A:2303:TRP:O	6:A:2307:ILE:HG13	2.17	0.44
6:A:1873:ARG:O	6:A:1876:VAL:HG22	2.17	0.44
3:C:135:TRP:HD1	3:C:156:THR:HG21	1.81	0.44
3:C:137:GLU:OE2	3:C:303:ARG:NH2	2.50	0.44
6:A:2212:THR:O	6:A:2216:VAL:HG13	2.17	0.44
6:A:150:LEU:HD22	6:A:168:PHE:CZ	2.52	0.44
6:A:2105:HIS:CE1	6:A:2167:LEU:HD11	2.52	0.44
6:A:2165:GLY:O	6:A:2168:VAL:HG22	2.18	0.44
6:A:57:LEU:O	6:A:61:THR:HG23	2.18	0.44
6:A:1400:ASP:OD1	6:A:1420:ARG:NH2	2.50	0.44
6:A:2873:ALA:O	6:A:2878:ARG:NH1	2.46	0.44

*Continued on next page...*

*Continued from previous page...*

Atom-1	Atom-2	Interatomic distance (Å)	Clash overlap (Å)
6:A:943:VAL:HG13	6:A:3705:ASP:HB3	2.00	0.44
6:A:730:SER:O	6:A:731:ALA:HB3	2.17	0.44
6:A:2013:TYR:O	6:A:2016:ARG:NH1	2.50	0.44
6:A:6:ILE:O	6:A:10:VAL:HG23	2.17	0.43
6:A:1605:TYR:CE1	6:A:1635:VAL:HG22	2.54	0.43
6:A:2105:HIS:O	6:A:2109:ARG:HG3	2.19	0.43
6:A:144:ILE:HG23	6:A:145:LEU:HD12	2.00	0.43
6:A:347:LEU:HD12	6:A:348:PRO:CA	2.49	0.43
6:A:783:MET:SD	6:A:831:GLU:HG3	2.59	0.43
6:A:1478:THR:HG23	6:A:1479:THR:N	2.33	0.43
6:A:2216:VAL:HA	6:A:2219:VAL:HG12	2.00	0.43
6:A:1497:LEU:CD2	6:A:1511:LEU:HD22	2.48	0.43
6:A:2215:VAL:O	6:A:2219:VAL:HG12	2.19	0.43
6:A:1176:VAL:N	6:A:1177:PRO:HD2	2.34	0.43
6:A:1353:LEU:O	6:A:1361:GLN:NE2	2.46	0.43
6:A:2985:TRP:O	6:A:2989:VAL:HG23	2.19	0.43
6:A:161:MET:SD	6:A:161:MET:O	2.77	0.43
6:A:1552:GLU:N	6:A:1552:GLU:OE1	2.52	0.43
6:A:2779:GLU:OE1	6:A:2791:TYR:OH	2.31	0.43
6:A:1769:THR:HG23	6:A:1770:PRO:HD2	2.00	0.43
6:A:2476:PHE:O	6:A:2480:VAL:HG23	2.18	0.43
6:A:183:VAL:HG22	6:A:248:PHE:CE1	2.54	0.42
6:A:3124:ASP:HA	6:A:3127:PHE:CZ	2.55	0.42
6:A:605:THR:O	6:A:609:VAL:HG23	2.19	0.42
6:A:2033:PRO:N	6:A:2034:PRO:CD	2.81	0.42
6:A:2413:PHE:O	6:A:2416:VAL:HG12	2.19	0.42
6:A:236:GLN:OE1	6:A:239:ARG:NH1	2.52	0.42
6:A:461:ALA:O	6:A:465:LEU:HG	2.19	0.42
6:A:1534:VAL:HG23	6:A:1563:VAL:HG11	2.02	0.42
6:A:3667:LYS:HG2	6:A:3672:VAL:HA	2.01	0.42
6:A:2598:ILE:HG21	6:A:2603:GLU:OE2	2.19	0.42
6:A:3139:LYS:O	6:A:3143:GLU:HG2	2.20	0.42
6:A:2394:LYS:O	6:A:2398:VAL:HG23	2.20	0.42
6:A:3006:LEU:HD12	6:A:3006:LEU:O	2.20	0.42
6:A:3051:LEU:O	6:A:3054:ILE:HG22	2.20	0.42
6:A:3228:LEU:HD12	6:A:3228:LEU:C	2.45	0.42
6:A:3374:LEU:O	6:A:3377:ALA:O	2.37	0.42
6:A:2384:ASP:O	6:A:2388:GLN:HG2	2.20	0.42
6:A:898:ILE:O	6:A:902:MET:HG2	2.20	0.41
6:A:150:LEU:HD22	6:A:168:PHE:HZ	1.85	0.41
6:A:2055:GLU:OE1	6:A:2164:TRP:NE1	2.53	0.41

*Continued on next page...*

*Continued from previous page...*

Atom-1	Atom-2	Interatomic distance (Å)	Clash overlap (Å)
6:A:1434:GLU:H	6:A:1434:GLU:CD	2.28	0.41
5:I:617:ASN:O	5:I:618:ILE:HD13	2.20	0.41
6:A:1341:LYS:HG2	6:A:1345:LEU:HD12	2.01	0.41
6:A:2862:GLN:O	6:A:2865:THR:OG1	2.34	0.41
6:A:2160:GLN:HB3	6:A:2161:PRO:HD2	2.03	0.41
6:A:1309:HIS:O	6:A:1315:ARG:NH1	2.43	0.41
5:I:605:HIS:NE2	6:A:2906:GLU:OE2	2.44	0.41
6:A:144:ILE:HG23	6:A:145:LEU:N	2.34	0.41
6:A:2059:VAL:HG21	6:A:2163:TYR:CE1	2.56	0.41
6:A:2828:GLU:H	6:A:2828:GLU:CD	2.29	0.41
6:A:3823:PHE:HB3	6:A:3829:THR:HG22	2.01	0.41
6:A:280:ILE:HD11	6:A:332:LEU:HB2	2.02	0.41
6:A:347:LEU:HD12	6:A:347:LEU:C	2.46	0.41
6:A:683:ILE:CG2	6:A:684:PRO:HD3	2.51	0.41
6:A:1028:LEU:N	6:A:1029:PRO:CD	2.84	0.41
6:A:346:PHE:C	6:A:348:PRO:HD2	2.46	0.41
6:A:949:VAL:O	6:A:949:VAL:CG1	2.68	0.41
6:A:57:LEU:O	6:A:61:THR:N	2.53	0.41
6:A:809:LEU:HB3	6:A:810:PRO:HD3	2.03	0.41
6:A:2386:GLU:O	6:A:2390:ASN:ND2	2.52	0.41
6:A:3811:LEU:O	6:A:3815:VAL:HG23	2.21	0.40
6:A:6:ILE:HA	6:A:9:VAL:HG22	2.04	0.40
6:A:454:THR:O	6:A:454:THR:HG22	2.21	0.40
6:A:2175:PRO:HA	6:A:2178:THR:HG22	2.02	0.40
6:A:2298:SER:OG	6:A:2299:GLU:OE1	2.40	0.40
6:A:2565:ASN:N	6:A:2566:PRO:CD	2.84	0.40
6:A:3672:VAL:HG12	6:A:3674:ALA:H	1.86	0.40
6:A:699:ILE:HB	6:A:700:PRO:HD3	2.03	0.40
6:A:427:VAL:O	6:A:427:VAL:HG12	2.20	0.40

There are no symmetry-related clashes.

## 5.3 Torsion angles

### 5.3.1 Protein backbone

In the following table, the Percentiles column shows the percent Ramachandran outliers of the chain as a percentile score with respect to all PDB entries followed by that with respect to all EM entries.

The Analysed column shows the number of residues for which the backbone conformation was analysed, and the total number of residues.

Mol	Chain	Analysed	Favoured	Allowed	Outliers	Percentiles	
1	Q	22/1273 (2%)	22 (100%)	0	0	100	100
2	B	84/1192 (7%)	82 (98%)	2 (2%)	0	100	100
3	C	66/433 (15%)	61 (92%)	5 (8%)	0	100	100
4	H	29/485 (6%)	29 (100%)	0	0	100	100
5	I	42/770 (6%)	39 (93%)	3 (7%)	0	100	100
6	A	3595/3893 (92%)	3466 (96%)	127 (4%)	2 (0%)	48	71
All	All	3838/8046 (48%)	3699 (96%)	137 (4%)	2 (0%)	50	71

All (2) Ramachandran outliers are listed below:

Mol	Chain	Res	Type
6	A	2683	PRO
6	A	2959	VAL

### 5.3.2 Protein sidechains ⓘ

In the following table, the Percentiles column shows the percent sidechain outliers of the chain as a percentile score with respect to all PDB entries followed by that with respect to all EM entries.

The Analysed column shows the number of residues for which the sidechain conformation was analysed, and the total number of residues.

Mol	Chain	Analysed	Rotameric	Outliers	Percentiles	
1	Q	19/1047 (2%)	19 (100%)	0	100	100
2	B	87/928 (9%)	86 (99%)	1 (1%)	70	86
3	C	61/377 (16%)	61 (100%)	0	100	100
4	H	29/387 (8%)	28 (97%)	1 (3%)	32	58
5	I	37/620 (6%)	36 (97%)	1 (3%)	40	66
6	A	3195/3412 (94%)	3175 (99%)	20 (1%)	84	94
All	All	3428/6771 (51%)	3405 (99%)	23 (1%)	80	93

All (23) residues with a non-rotameric sidechain are listed below:

Mol	Chain	Res	Type
2	B	416	GLU
4	H	250	MET
5	I	629	THR

*Continued on next page...*

*Continued from previous page...*

Mol	Chain	Res	Type
6	A	449	ASP
6	A	470	CYS
6	A	510	LYS
6	A	644	MET
6	A	652	SER
6	A	907	ASP
6	A	1046	VAL
6	A	1372	MET
6	A	1459	ASP
6	A	1532	GLU
6	A	1751	LEU
6	A	1809	MET
6	A	1909	ASP
6	A	1921	ILE
6	A	2696	THR
6	A	2978	MET
6	A	2988	LEU
6	A	3261	ASP
6	A	3394	LYS
6	A	3455	THR

Sometimes sidechains can be flipped to improve hydrogen bonding and reduce clashes. All (31) such sidechains are listed below:

Mol	Chain	Res	Type
6	A	114	GLN
6	A	178	GLN
6	A	409	HIS
6	A	541	ASN
6	A	567	ASN
6	A	998	GLN
6	A	1006	GLN
6	A	1468	ASN
6	A	1554	ASN
6	A	1651	ASN
6	A	1660	ASN
6	A	1686	GLN
6	A	1724	ASN
6	A	1730	HIS
6	A	1913	ASN
6	A	2025	GLN
6	A	2105	HIS
6	A	2329	HIS

*Continued on next page...*

*Continued from previous page...*

Mol	Chain	Res	Type
6	A	2357	HIS
6	A	2388	GLN
6	A	2569	GLN
6	A	2684	ASN
6	A	2822	GLN
6	A	3050	GLN
6	A	3076	HIS
6	A	3155	ASN
6	A	3439	ASN
6	A	3622	GLN
6	A	3641	HIS
6	A	3745	ASN
6	A	3775	ASN

### 5.3.3 RNA [i](#)

There are no RNA molecules in this entry.

### 5.4 Non-standard residues in protein, DNA, RNA chains [i](#)

There are no non-standard protein/DNA/RNA residues in this entry.

### 5.5 Carbohydrates [i](#)

There are no oligosaccharides in this entry.

### 5.6 Ligand geometry [i](#)

There are no ligands in this entry.

### 5.7 Other polymers [i](#)

There are no such residues in this entry.

### 5.8 Polymer linkage issues [i](#)

There are no chain breaks in this entry.

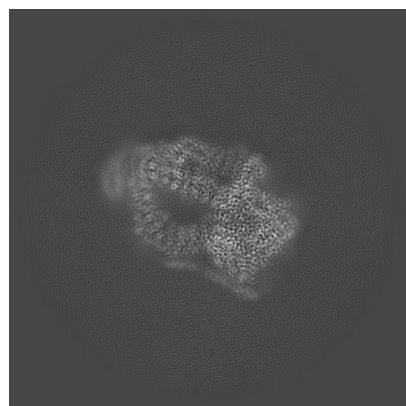
## 6 Map visualisation [i](#)

This section contains visualisations of the EMDB entry EMD-73261. These allow visual inspection of the internal detail of the map and identification of artifacts.

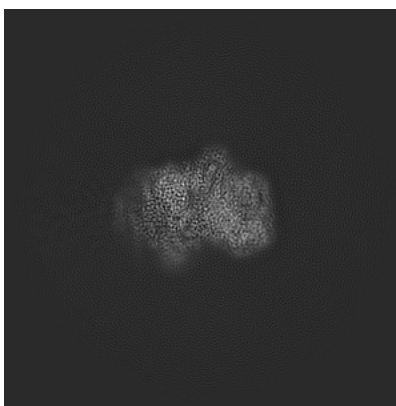
Images derived from a raw map, generated by summing the deposited half-maps, are presented below the corresponding image components of the primary map to allow further visual inspection and comparison with those of the primary map.

### 6.1 Orthogonal projections [i](#)

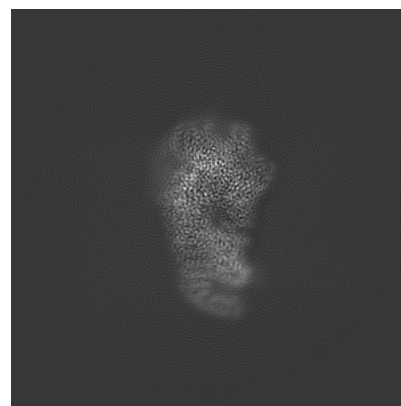
#### 6.1.1 Primary map



X

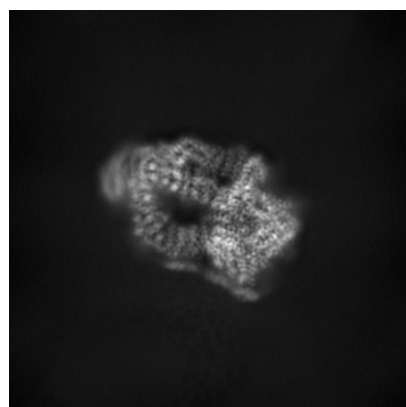


Y

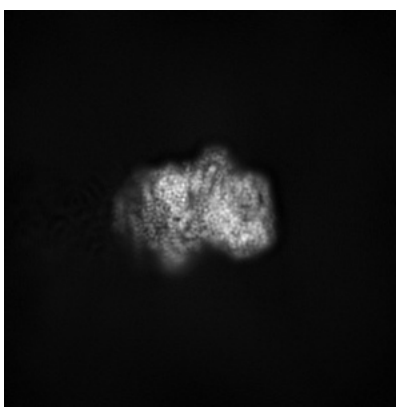


Z

#### 6.1.2 Raw map



X



Y



Z

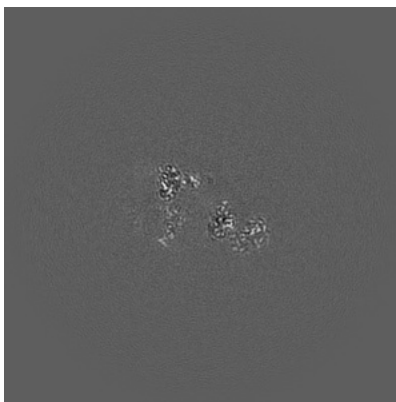
The images above show the map projected in three orthogonal directions.

## 6.2 Central slices [i](#)

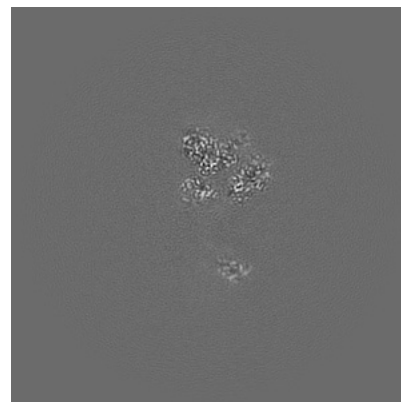
### 6.2.1 Primary map



X Index: 180

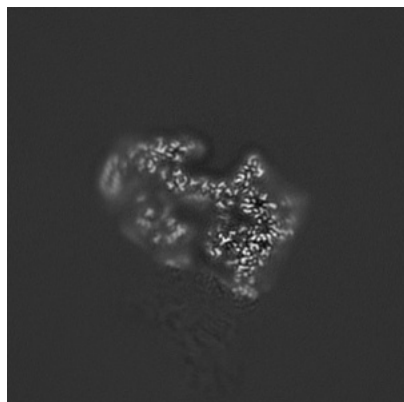


Y Index: 180

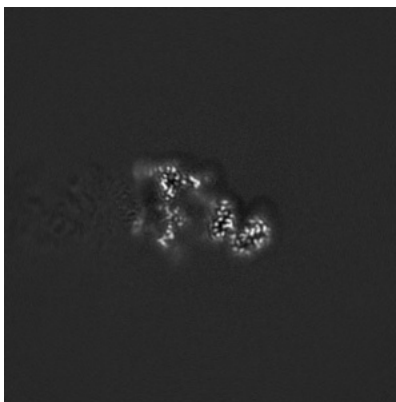


Z Index: 180

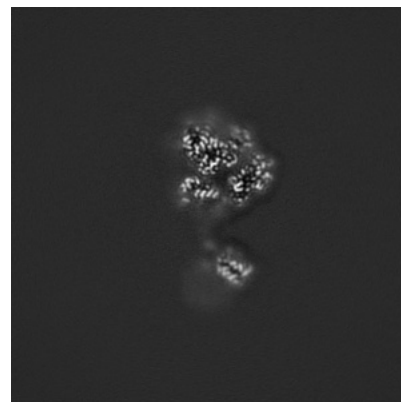
### 6.2.2 Raw map



X Index: 180



Y Index: 180



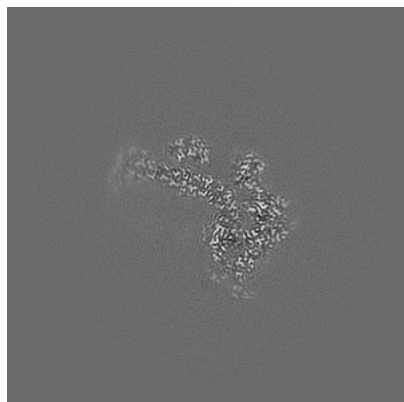
Z Index: 180

The images above show central slices of the map in three orthogonal directions.

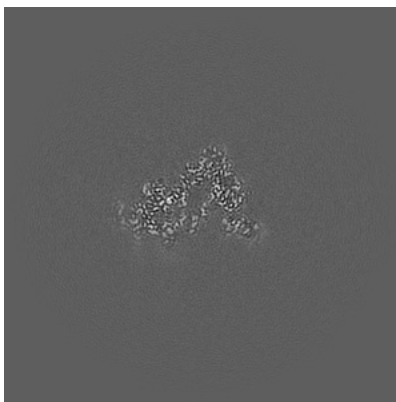


## 6.3 Largest variance slices [i](#)

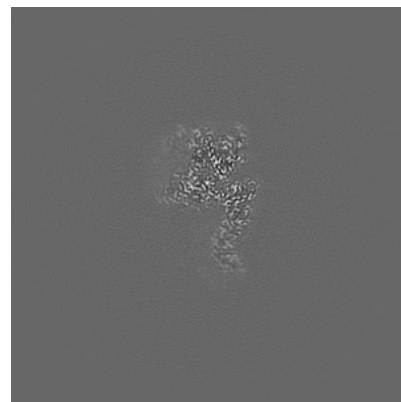
### 6.3.1 Primary map



X Index: 167

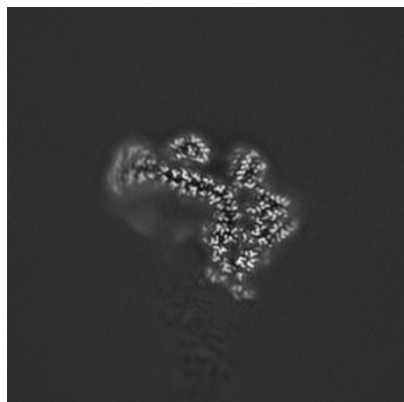


Y Index: 210

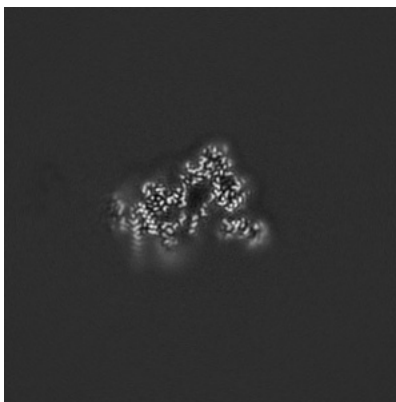


Z Index: 153

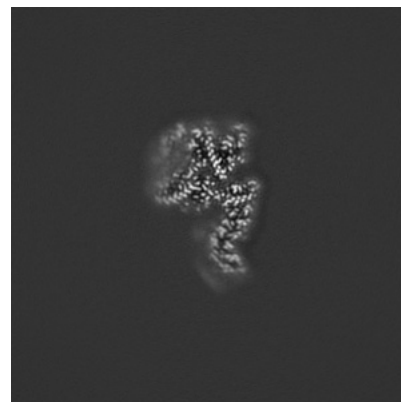
### 6.3.2 Raw map



X Index: 166



Y Index: 210

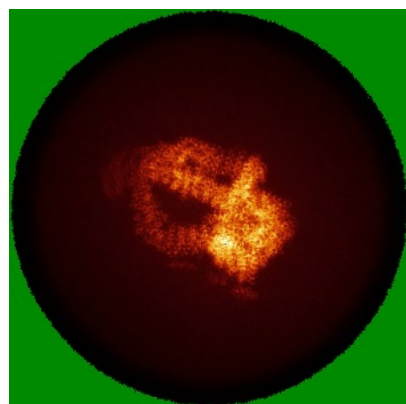


Z Index: 153

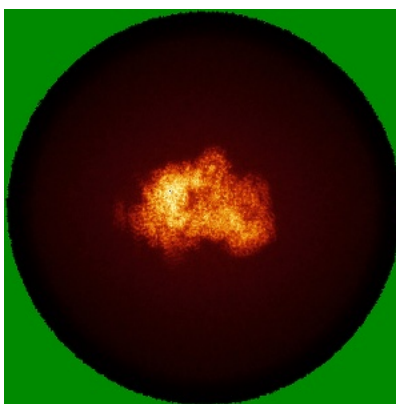
The images above show the largest variance slices of the map in three orthogonal directions.

## 6.4 Orthogonal standard-deviation projections (False-color) ⓘ

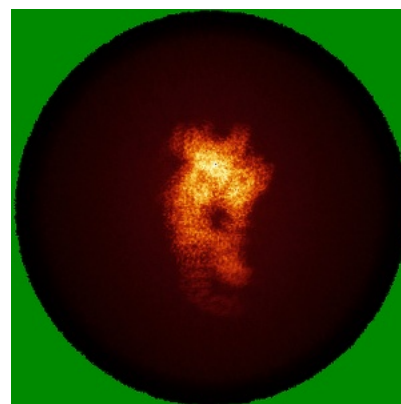
### 6.4.1 Primary map



X

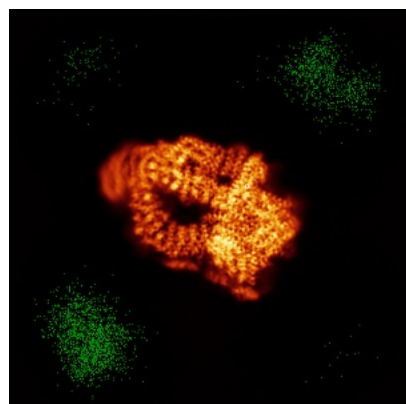


Y

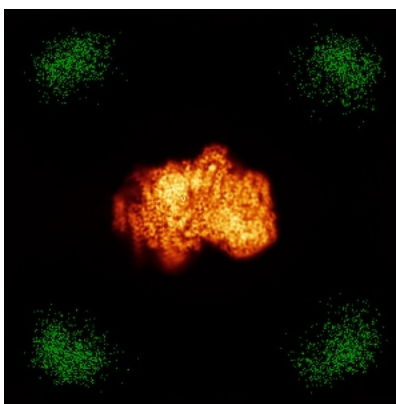


Z

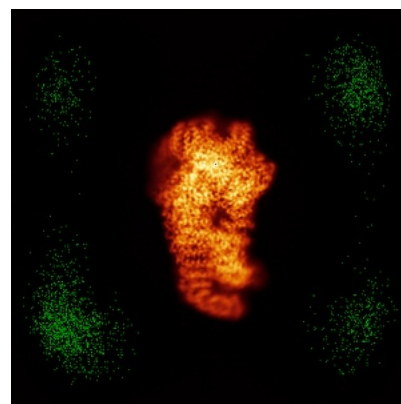
### 6.4.2 Raw map



X



Y

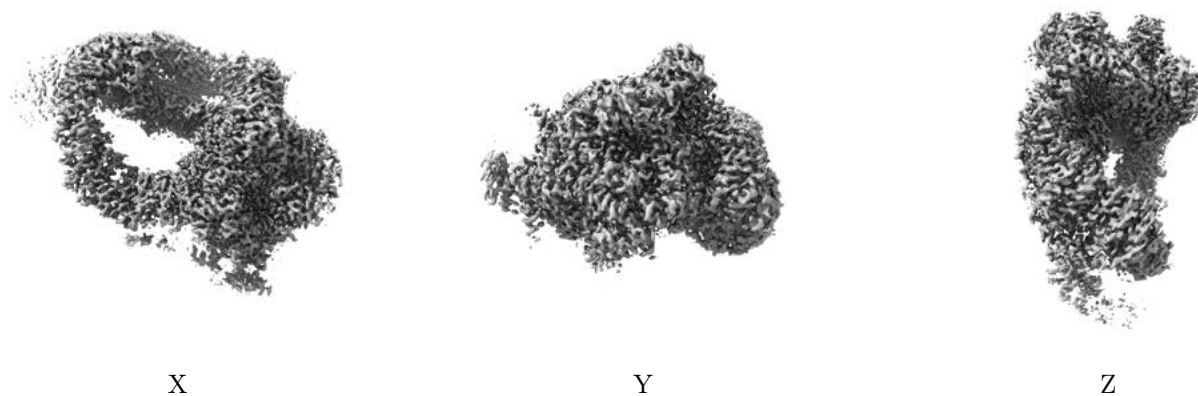


Z

The images above show the map standard deviation projections with false color in three orthogonal directions. Minimum values are shown in green, max in blue, and dark to light orange shades represent small to large values respectively.

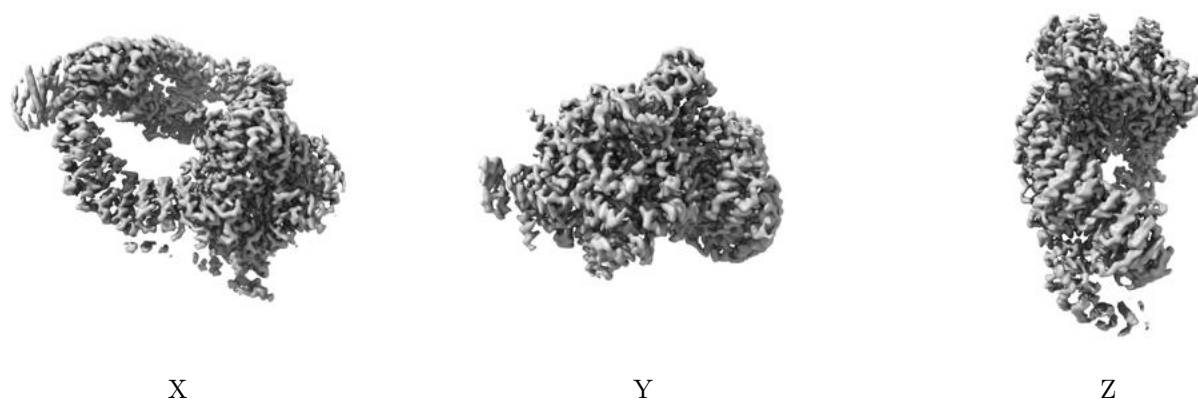
## 6.5 Orthogonal surface views [i](#)

### 6.5.1 Primary map



The images above show the 3D surface view of the map at the recommended contour level 0.8. These images, in conjunction with the slice images, may facilitate assessment of whether an appropriate contour level has been provided.

### 6.5.2 Raw map



These images show the 3D surface of the raw map. The raw map's contour level was selected so that its surface encloses the same volume as the primary map does at its recommended contour level.

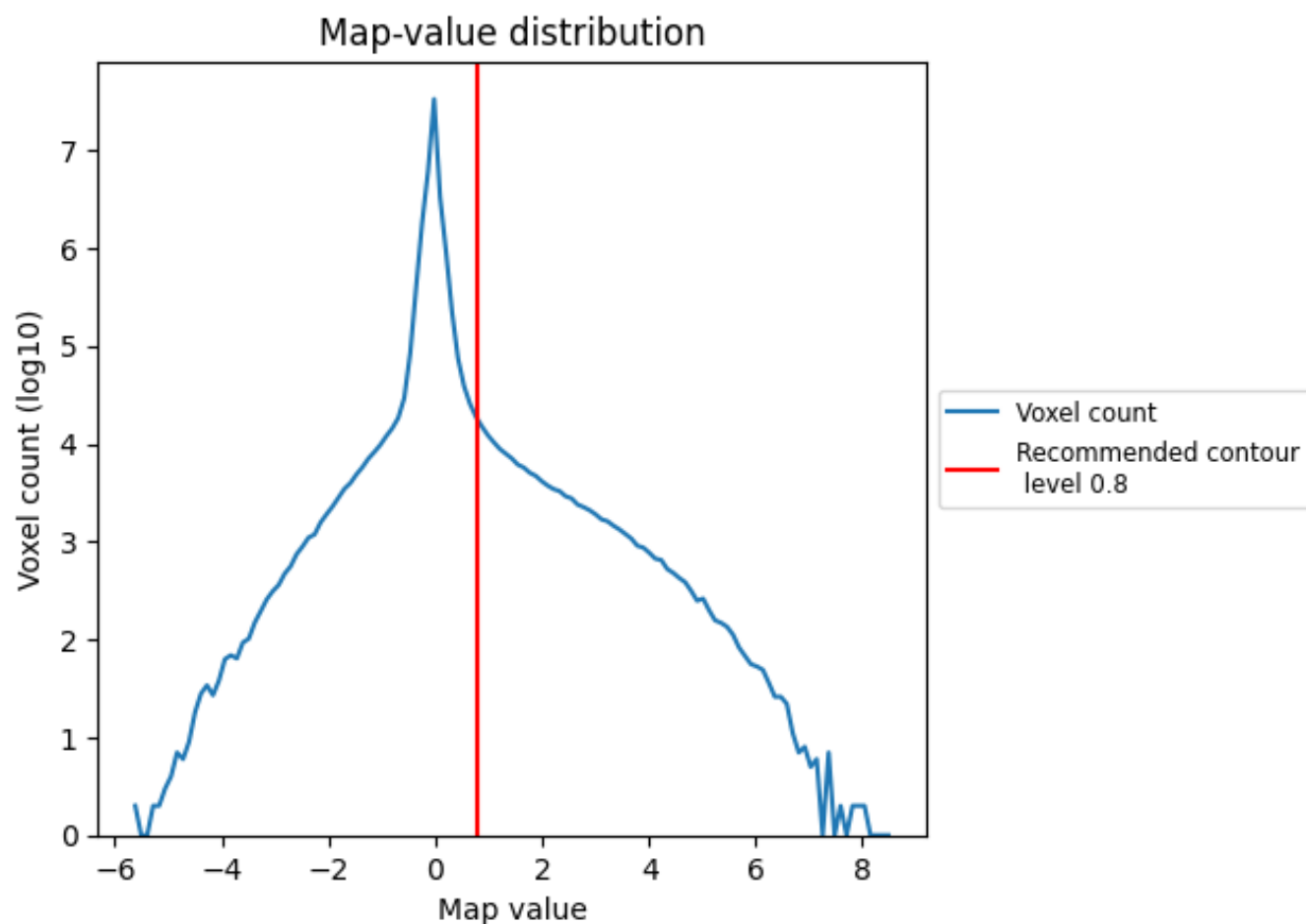
## 6.6 Mask visualisation [i](#)

This section was not generated. No masks/segmentation were deposited.

## 7 Map analysis [i](#)

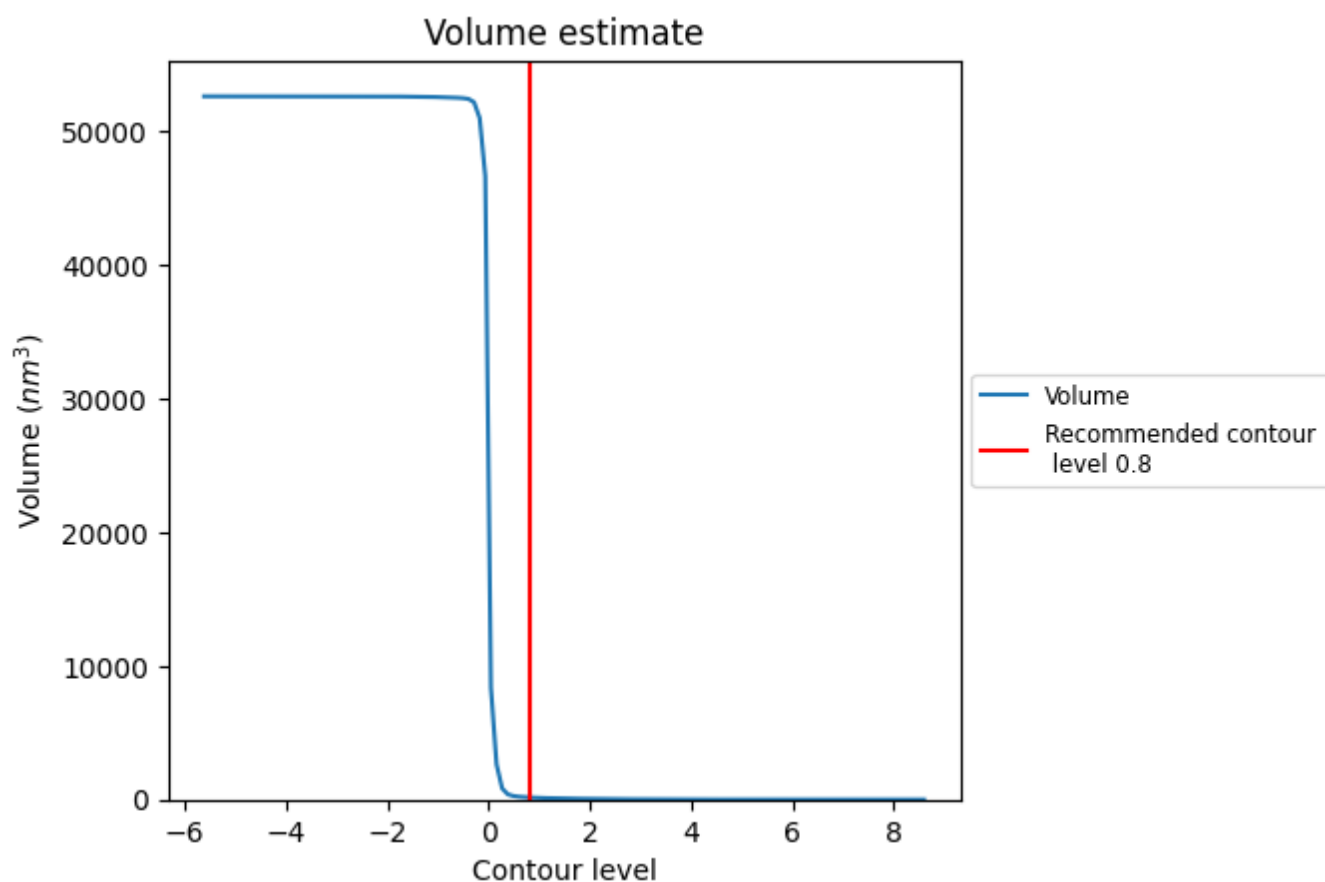
This section contains the results of statistical analysis of the map.

### 7.1 Map-value distribution [i](#)



The map-value distribution is plotted in 128 intervals along the x-axis. The y-axis is logarithmic. A spike in this graph at zero usually indicates that the volume has been masked.

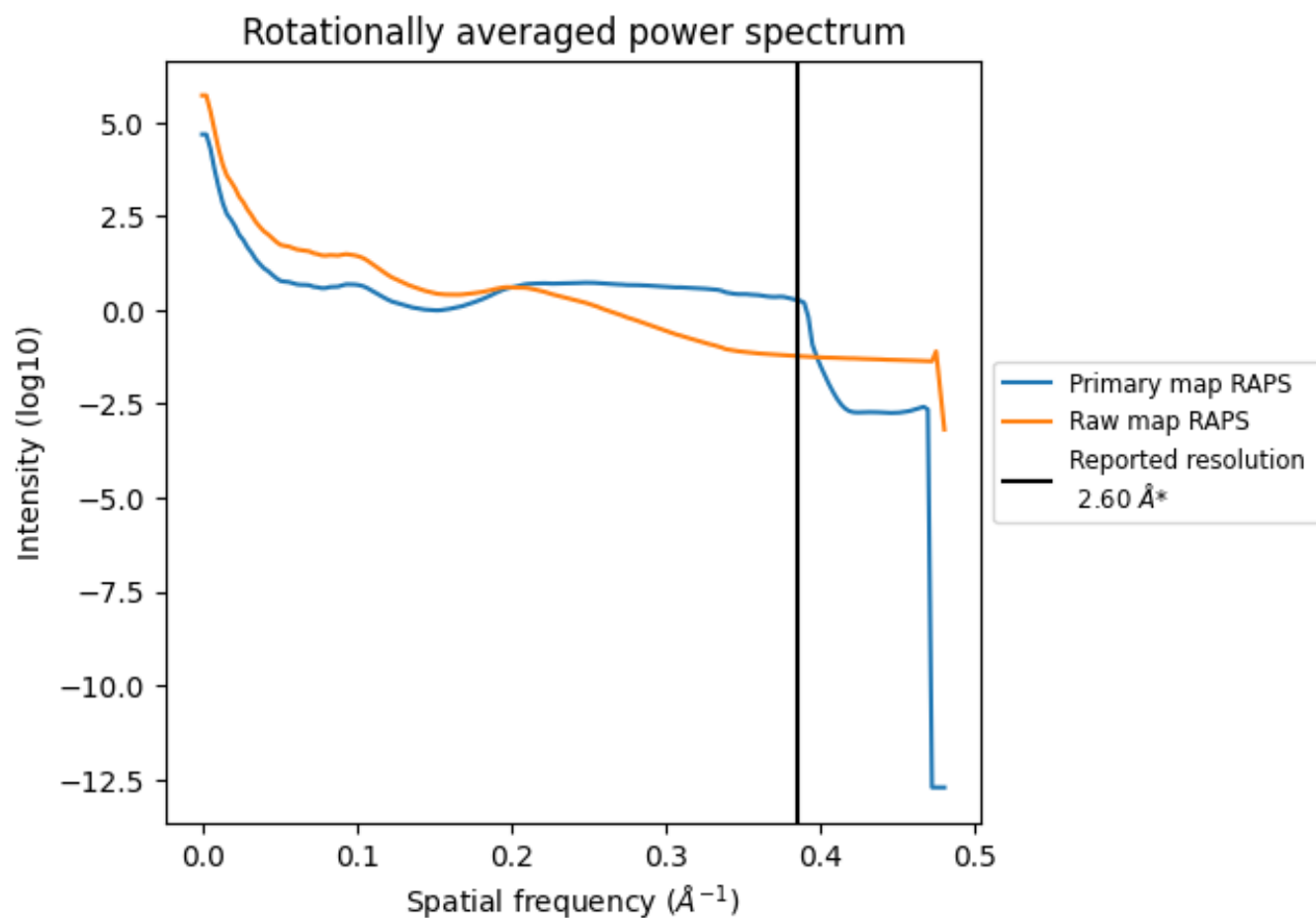
## 7.2 Volume estimate [i](#)



The volume at the recommended contour level is 158 nm<sup>3</sup>; this corresponds to an approximate mass of 143 kDa.

The volume estimate graph shows how the enclosed volume varies with the contour level. The recommended contour level is shown as a vertical line and the intersection between the line and the curve gives the volume of the enclosed surface at the given level.

### 7.3 Rotationally averaged power spectrum ⓘ

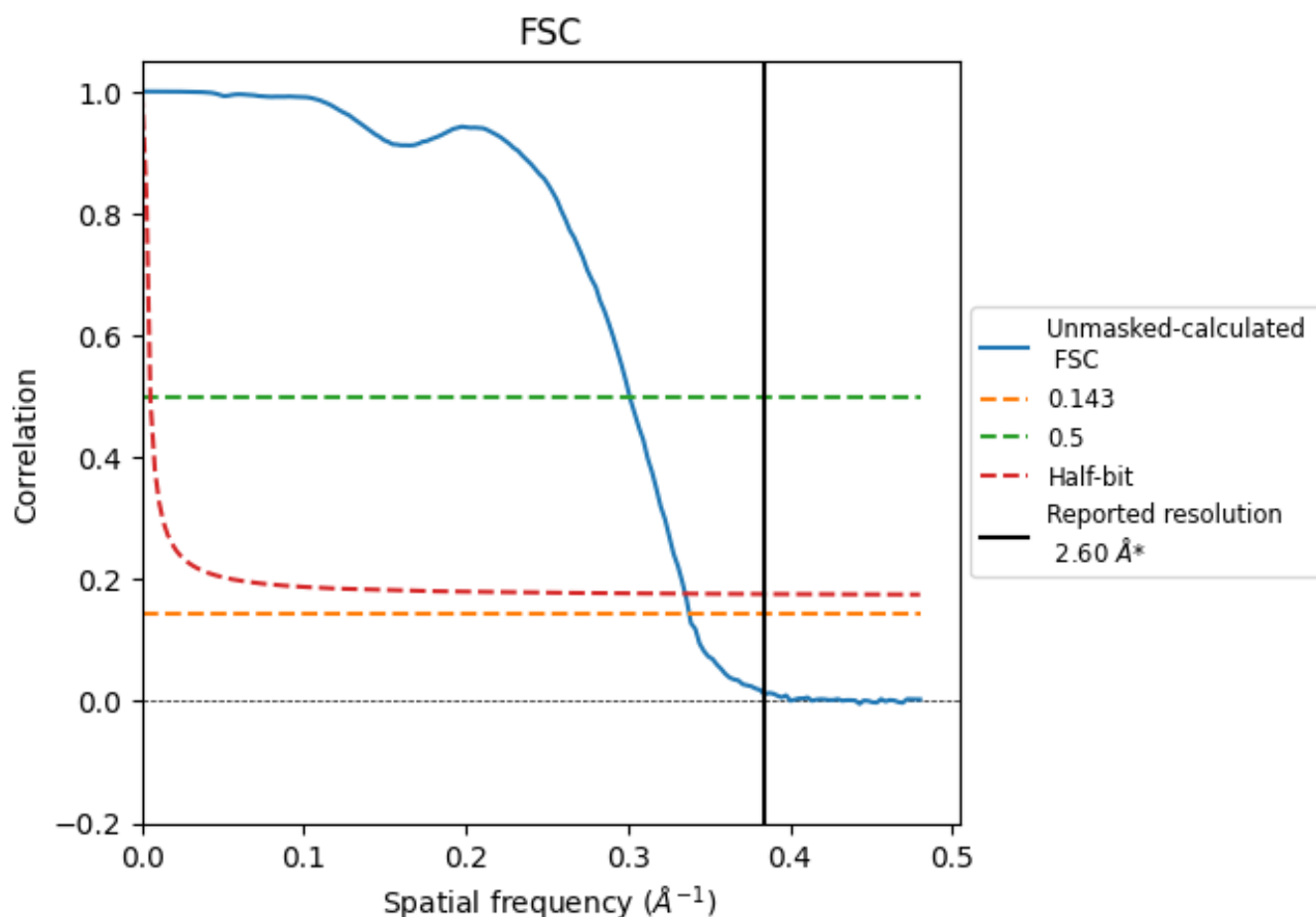


\*Reported resolution corresponds to spatial frequency of 0.385 Å<sup>-1</sup>

## 8 Fourier-Shell correlation [i](#)

Fourier-Shell Correlation (FSC) is the most commonly used method to estimate the resolution of single-particle and subtomogram-averaged maps. The shape of the curve depends on the imposed symmetry, mask and whether or not the two 3D reconstructions used were processed from a common reference. The reported resolution is shown as a black line. A curve is displayed for the half-bit criterion in addition to lines showing the 0.143 gold standard cut-off and 0.5 cut-off.

### 8.1 FSC [i](#)



\*Reported resolution corresponds to spatial frequency of 0.385 Å<sup>-1</sup>

## 8.2 Resolution estimates [i](#)

Resolution estimate (Å)	Estimation criterion (FSC cut-off)		
	0.143	0.5	Half-bit
Reported by author	2.60	-	-
Author-provided FSC curve	-	-	-
Unmasked-calculated*	2.96	3.32	2.98

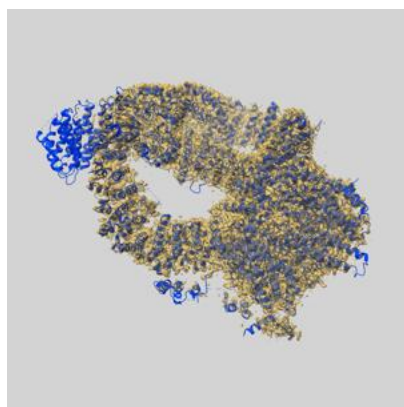
\*Resolution estimate based on FSC curve calculated by comparison of deposited half-maps. The value from deposited half-maps intersecting FSC 0.143 CUT-OFF 2.96 differs from the reported value 2.6 by more than 10 %



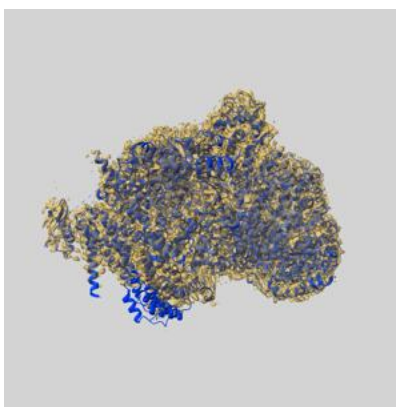
## 9 Map-model fit [i](#)

This section contains information regarding the fit between EMDB map EMD-73261 and PDB model 9YOL. Per-residue inclusion information can be found in [section 3](#) on [page 5](#).

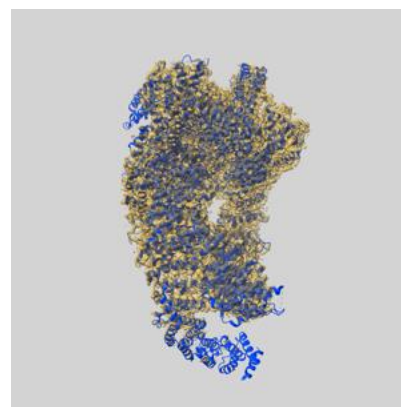
### 9.1 Map-model overlay [i](#)



X



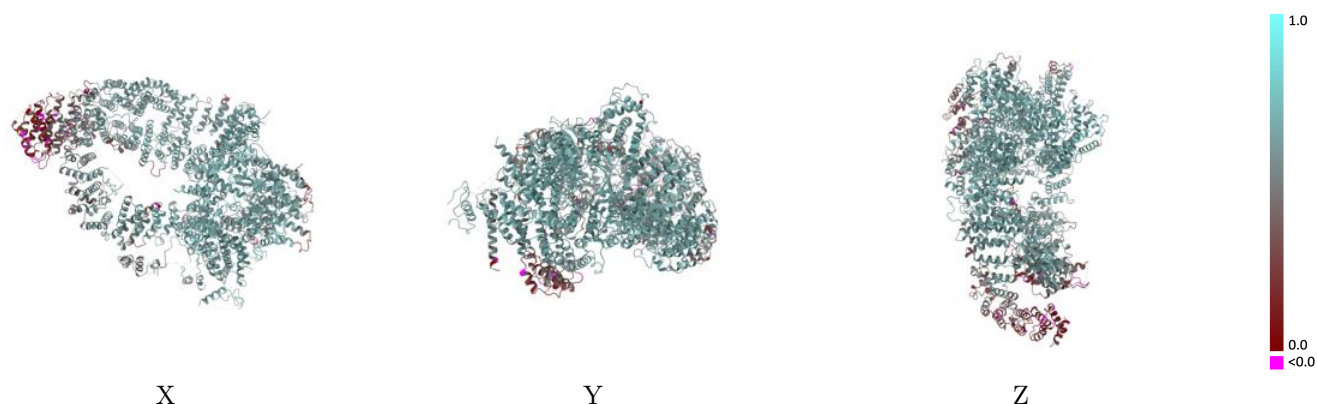
Y



Z

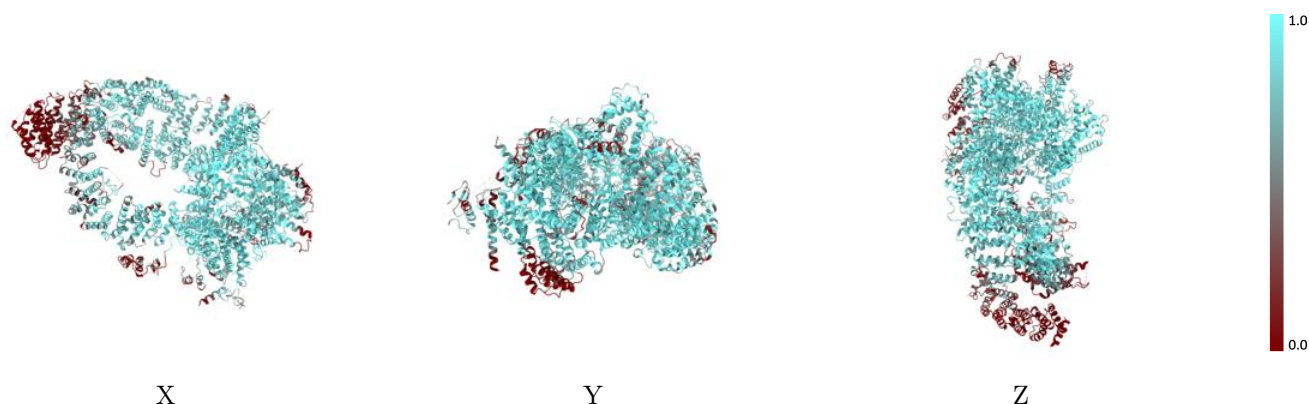
The images above show the 3D surface view of the map at the recommended contour level 0.8 at 50% transparency in yellow overlaid with a ribbon representation of the model coloured in blue. These images allow for the visual assessment of the quality of fit between the atomic model and the map.

## 9.2 Q-score mapped to coordinate model [i](#)



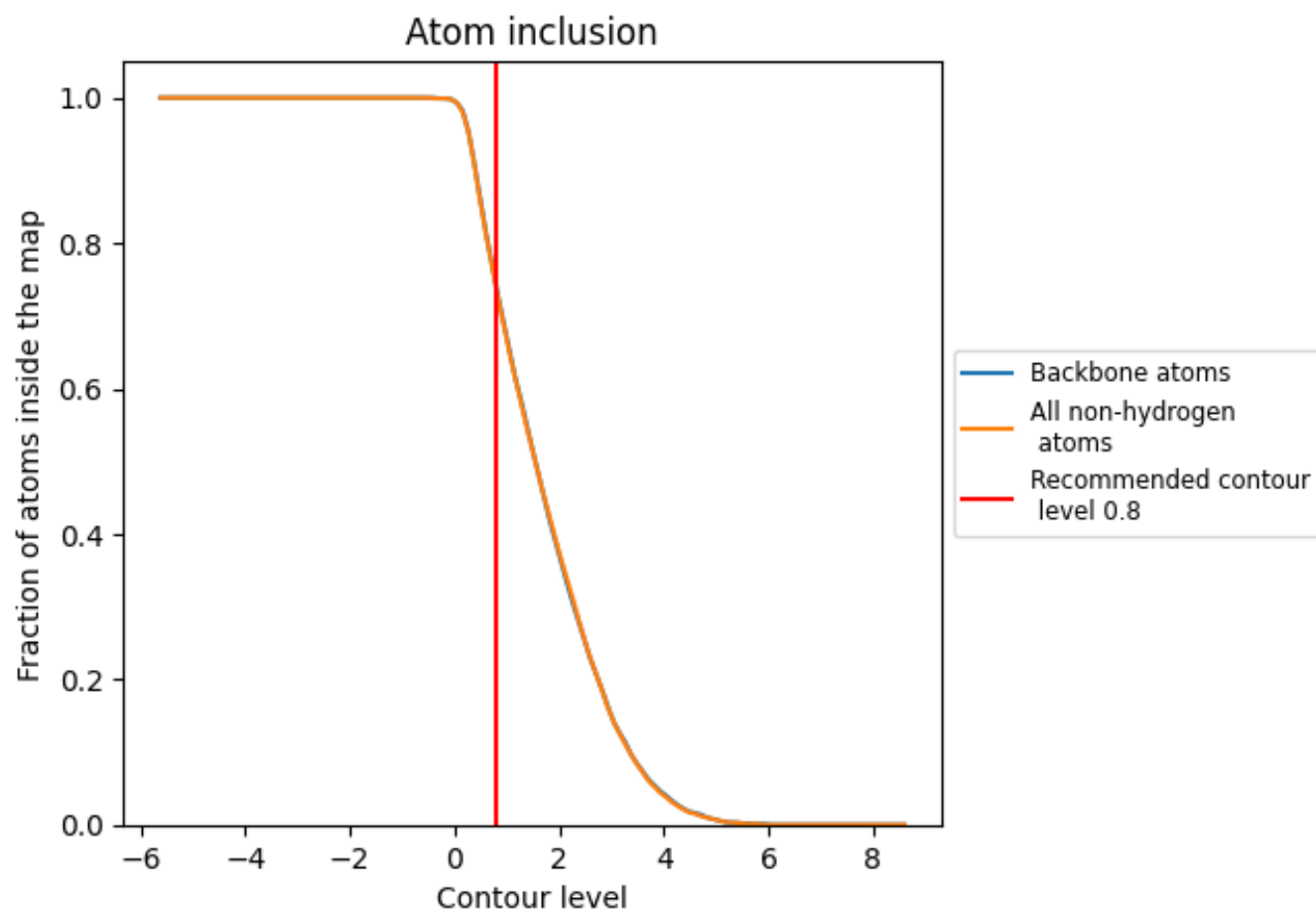
The images above show the model with each residue coloured according its Q-score. This shows their resolvability in the map with higher Q-score values reflecting better resolvability. Please note: Q-score is calculating the resolvability of atoms, and thus high values are only expected at resolutions at which atoms can be resolved. Low Q-score values may therefore be expected for many entries.

## 9.3 Atom inclusion mapped to coordinate model [i](#)



The images above show the model with each residue coloured according to its atom inclusion. This shows to what extent they are inside the map at the recommended contour level (0.8).

## 9.4 Atom inclusion [i](#)



At the recommended contour level, 74% of all backbone atoms, 74% of all non-hydrogen atoms, are inside the map.

9.5 Map-model fit summary ⓘ

The table lists the average atom inclusion at the recommended contour level (0.8) and Q-score for the entire model and for each chain.

Chain	Atom inclusion	Q-score
All	<div></div> 0.7370	<div></div> 0.5710
A	<div></div> 0.7570	<div></div> 0.5720
B	<div></div> 0.7210	<div></div> 0.5840
C	<div></div> 0.2060	<div></div> 0.4570
H	<div></div> 0.3860	<div></div> 0.5470
I	<div></div> 0.8470	<div></div> 0.6230
Q	<div></div> 0.4340	<div></div> 0.5750

1.0  
0.0  
-0.0