



Full wwPDB X-ray Structure Validation Report ⓘ

Jun 16, 2024 – 10:27 AM EDT

PDB ID : 4Z3K
Title : Human sepiapterin reductase in complex with the cofactor NADP⁺ and the tryptophan metabolite xanthurenic acid
Authors : Johnsson, K.
Deposited on : 2015-03-31
Resolution : 2.35 Å(reported)

This is a Full wwPDB X-ray Structure Validation Report for a publicly released PDB entry.

We welcome your comments at validation@mail.wwpdb.org

A user guide is available at

<https://www.wwpdb.org/validation/2017/XrayValidationReportHelp>

with specific help available everywhere you see the ⓘ symbol.

The types of validation reports are described at

<http://www.wwpdb.org/validation/2017/FAQs#types>.

The following versions of software and data (see [references ⓘ](#)) were used in the production of this report:

MolProbity	:	4.02b-467
Mogul	:	1.8.5 (274361), CSD as541be (2020)
Xtriage (Phenix)	:	1.13
EDS	:	2.37.1
buster-report	:	1.1.7 (2018)
Percentile statistics	:	20191225.v01 (using entries in the PDB archive December 25th 2019)
Refmac	:	5.8.0158
CCP4	:	7.0.044 (Gargrove)
Ideal geometry (proteins)	:	Engh & Huber (2001)
Ideal geometry (DNA, RNA)	:	Parkinson et al. (1996)
Validation Pipeline (wwPDB-VP)	:	2.37.1

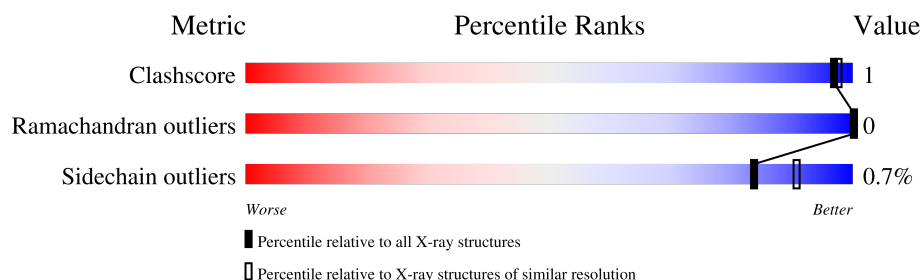
1 Overall quality at a glance

The following experimental techniques were used to determine the structure:

X-RAY DIFFRACTION

The reported resolution of this entry is 2.35 Å.

Percentile scores (ranging between 0-100) for global validation metrics of the entry are shown in the following graphic. The table shows the number of entries on which the scores are based.



Metric	Whole archive (#Entries)	Similar resolution (#Entries, resolution range(Å))
Clashscore	141614	1232 (2.36-2.36)
Ramachandran outliers	138981	1211 (2.36-2.36)
Sidechain outliers	138945	1212 (2.36-2.36)

The table below summarises the geometric issues observed across the polymeric chains and their fit to the electron density. The red, orange, yellow and green segments of the lower bar indicate the fraction of residues that contain outliers for ≥ 3 , 2, 1 and 0 types of geometric quality criteria respectively. A grey segment represents the fraction of residues that are not modelled. The numeric value for each fraction is indicated below the corresponding segment, with a dot representing fractions $\leq 5\%$.

Mol	Chain	Length	Quality of chain
1	A	275	91% 7%
1	B	275	92% 7%
1	C	275	91% 7%
1	D	275	90% 7%

2 Entry composition

There are 6 unique types of molecules in this entry. The entry contains 8214 atoms, of which 0 are hydrogens and 0 are deuteriums.

In the tables below, the ZeroOcc column contains the number of atoms modelled with zero occupancy, the AltConf column contains the number of residues with at least one atom in alternate conformation and the Trace column contains the number of residues modelled with at most 2 atoms.

- Molecule 1 is a protein called Sepiapterin reductase.

Mol	Chain	Residues	Atoms					ZeroOcc	AltConf	Trace
1	A	257	Total	C	N	O	S	0	1	0
			1942	1223	344	365	10			
1	B	257	Total	C	N	O	S	0	1	0
			1942	1223	344	365	10			
1	C	257	Total	C	N	O	S	0	1	0
			1942	1223	344	365	10			
1	D	257	Total	C	N	O	S	0	1	0
			1942	1223	344	365	10			

There are 56 discrepancies between the modelled and reference sequences:

Chain	Residue	Modelled	Actual	Comment	Reference
A	-16	MET	-	initiating methionine	UNP P35270
A	-15	HIS	-	expression tag	UNP P35270
A	-14	HIS	-	expression tag	UNP P35270
A	-13	HIS	-	expression tag	UNP P35270
A	-12	HIS	-	expression tag	UNP P35270
A	-11	HIS	-	expression tag	UNP P35270
A	-10	HIS	-	expression tag	UNP P35270
A	-9	GLU	-	expression tag	UNP P35270
A	-8	ASN	-	expression tag	UNP P35270
A	-7	LEU	-	expression tag	UNP P35270
A	-6	TYR	-	expression tag	UNP P35270
A	-5	PHE	-	expression tag	UNP P35270
A	-4	GLN	-	expression tag	UNP P35270
A	-3	GLY	-	expression tag	UNP P35270
B	-16	MET	-	initiating methionine	UNP P35270
B	-15	HIS	-	expression tag	UNP P35270
B	-14	HIS	-	expression tag	UNP P35270
B	-13	HIS	-	expression tag	UNP P35270
B	-12	HIS	-	expression tag	UNP P35270
B	-11	HIS	-	expression tag	UNP P35270
B	-10	HIS	-	expression tag	UNP P35270

Continued on next page...

Continued from previous page...

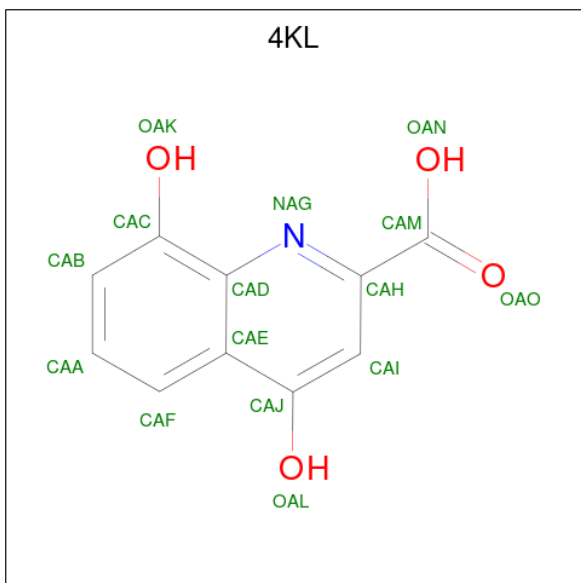
Chain	Residue	Modelled	Actual	Comment	Reference
B	-9	GLU	-	expression tag	UNP P35270
B	-8	ASN	-	expression tag	UNP P35270
B	-7	LEU	-	expression tag	UNP P35270
B	-6	TYR	-	expression tag	UNP P35270
B	-5	PHE	-	expression tag	UNP P35270
B	-4	GLN	-	expression tag	UNP P35270
B	-3	GLY	-	expression tag	UNP P35270
C	-16	MET	-	initiating methionine	UNP P35270
C	-15	HIS	-	expression tag	UNP P35270
C	-14	HIS	-	expression tag	UNP P35270
C	-13	HIS	-	expression tag	UNP P35270
C	-12	HIS	-	expression tag	UNP P35270
C	-11	HIS	-	expression tag	UNP P35270
C	-10	HIS	-	expression tag	UNP P35270
C	-9	GLU	-	expression tag	UNP P35270
C	-8	ASN	-	expression tag	UNP P35270
C	-7	LEU	-	expression tag	UNP P35270
C	-6	TYR	-	expression tag	UNP P35270
C	-5	PHE	-	expression tag	UNP P35270
C	-4	GLN	-	expression tag	UNP P35270
C	-3	GLY	-	expression tag	UNP P35270
D	-16	MET	-	initiating methionine	UNP P35270
D	-15	HIS	-	expression tag	UNP P35270
D	-14	HIS	-	expression tag	UNP P35270
D	-13	HIS	-	expression tag	UNP P35270
D	-12	HIS	-	expression tag	UNP P35270
D	-11	HIS	-	expression tag	UNP P35270
D	-10	HIS	-	expression tag	UNP P35270
D	-9	GLU	-	expression tag	UNP P35270
D	-8	ASN	-	expression tag	UNP P35270
D	-7	LEU	-	expression tag	UNP P35270
D	-6	TYR	-	expression tag	UNP P35270
D	-5	PHE	-	expression tag	UNP P35270
D	-4	GLN	-	expression tag	UNP P35270
D	-3	GLY	-	expression tag	UNP P35270

- Molecule 2 is NADP NICOTINAMIDE-ADENINE-DINUCLEOTIDE PHOSPHATE (three-letter code: NAP) (formula: C₂₁H₂₈N₇O₁₇P₃).



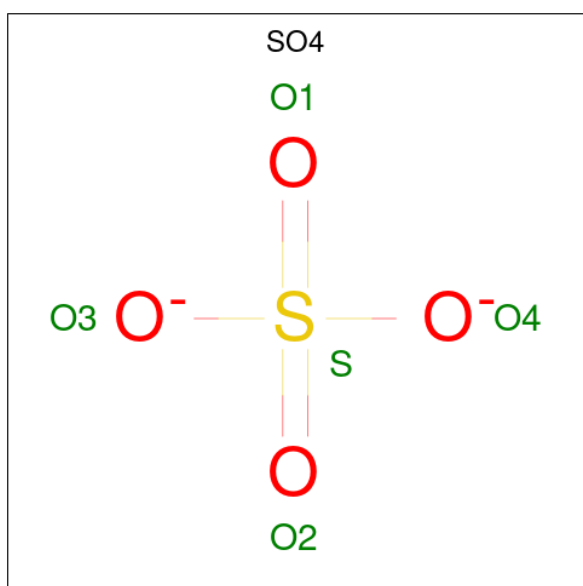
Mol	Chain	Residues	Atoms					ZeroOcc	AltConf
2	A	1	Total 48	C 21	N 7	O 17	P 3	0	0
2	B	1	Total 48	C 21	N 7	O 17	P 3	0	0
2	C	1	Total 48	C 21	N 7	O 17	P 3	0	0
2	D	1	Total 48	C 21	N 7	O 17	P 3	0	0

- Molecule 3 is Xanthuric acid (three-letter code: 4KL) (formula: $\text{C}_{10}\text{H}_7\text{NO}_4$).



Mol	Chain	Residues	Atoms				ZeroOcc	AltConf
3	A	1	Total	C	N	O	0	0
			15	10	1	4		
3	B	1	Total	C	N	O	0	0
			15	10	1	4		
3	C	1	Total	C	N	O	0	0
			15	10	1	4		
3	D	1	Total	C	N	O	0	0
			15	10	1	4		

- Molecule 4 is SULFATE ION (three-letter code: SO4) (formula: O₄S).



Mol	Chain	Residues	Atoms			ZeroOcc	AltConf
4	A	1	Total	O	S	0	0
			5	4	1		
4	B	1	Total	O	S	0	0
			5	4	1		
4	B	1	Total	O	S	0	0
			5	4	1		
4	C	1	Total	O	S	0	0
			5	4	1		
4	C	1	Total	O	S	0	0
			5	4	1		
4	D	1	Total	O	S	0	0
			5	4	1		

- Molecule 5 is 1,2-ETHANEDIOL (three-letter code: EDO) (formula: C₂H₆O₂).



Mol	Chain	Residues	Atoms			ZeroOcc	AltConf
5	B	1	Total	C	O	0	0
			4	2	2		


- Molecule 6 is water.

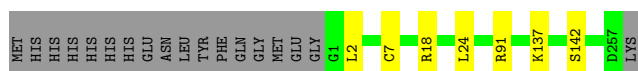
Mol	Chain	Residues	Atoms		ZeroOcc	AltConf
6	A	46	Total	O	0	0
			46	46		
6	B	29	Total	O	0	0
			29	29		
6	C	37	Total	O	0	0
			37	37		
6	D	48	Total	O	0	0
			48	48		

3 Residue-property plots [i](#)

These plots are drawn for all protein, RNA, DNA and oligosaccharide chains in the entry. The first graphic for a chain summarises the proportions of the various outlier classes displayed in the second graphic. The second graphic shows the sequence view annotated by issues in geometry. Residues are color-coded according to the number of geometric quality criteria for which they contain at least one outlier: green = 0, yellow = 1, orange = 2 and red = 3 or more. Stretches of 2 or more consecutive residues without any outlier are shown as a green connector. Residues present in the sample, but not in the model, are shown in grey.

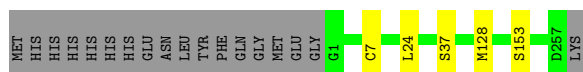
- Molecule 1: Sepiapterin reductase

Chain A:  91% 7%




- Molecule 1: Sepiapterin reductase

Chain B:  92% 7%




- Molecule 1: Sepiapterin reductase

Chain C:  91% 7%



- Molecule 1: Sepiapterin reductase

Chain D:  90% 7%



4 Data and refinement statistics

Property	Value	Source
Space group	P 61	Depositor
Cell constants a, b, c, α , β , γ	143.96Å 143.96Å 180.74Å 90.00° 90.00° 120.00°	Depositor
Resolution (Å)	124.68 – 2.35 47.12 – 1.80	Depositor EDS
% Data completeness (in resolution range)	100.0 (124.68-2.35) 99.5 (47.12-1.80)	Depositor EDS
R_{merge}	(Not available)	Depositor
R_{sym}	0.11	Depositor
$\langle I/\sigma(I) \rangle$ ¹	-0.13 (at 1.79Å)	Xtriage
Refinement program	REFMAC 5.8.0107	Depositor
R, R_{free}	0.181 , 0.214 0.191 , (Not available)	Depositor DCC
R_{free} test set	No test flags present.	wwPDB-VP
Wilson B-factor (Å ²)	23.8	Xtriage
Anisotropy	0.085	Xtriage
Bulk solvent k_{sol} (e/Å ³), B_{sol} (Å ²)	0.32 , 34.0	EDS
L-test for twinning ²	$\langle L \rangle = 0.49$, $\langle L^2 \rangle = 0.32$	Xtriage
Estimated twinning fraction	0.044 for h,-h-k,-l	Xtriage
F_o, F_c correlation	0.91	EDS
Total number of atoms	8214	wwPDB-VP
Average B, all atoms (Å ²)	49.0	wwPDB-VP

Xtriage's analysis on translational NCS is as follows: *The largest off-origin peak in the Patterson function is 3.07% of the height of the origin peak. No significant pseudotranslation is detected.*

¹Intensities estimated from amplitudes.

²Theoretical values of $\langle |L| \rangle$, $\langle L^2 \rangle$ for acentric reflections are 0.5, 0.333 respectively for untwinned datasets, and 0.375, 0.2 for perfectly twinned datasets.

5 Model quality [i](#)

5.1 Standard geometry [i](#)

Bond lengths and bond angles in the following residue types are not validated in this section: SO4, 4KL, EDO, NAP

The Z score for a bond length (or angle) is the number of standard deviations the observed value is removed from the expected value. A bond length (or angle) with $|Z| > 5$ is considered an outlier worth inspection. RMSZ is the root-mean-square of all Z scores of the bond lengths (or angles).

Mol	Chain	Bond lengths		Bond angles	
		RMSZ	$\# Z > 5$	RMSZ	$\# Z > 5$
1	A	0.98	0/1969	0.70	0/2664
1	B	0.89	1/1969 (0.1%)	0.63	0/2664
1	C	1.07	0/1969	0.73	1/2664 (0.0%)
1	D	0.97	0/1969	0.69	0/2664
All	All	0.98	1/7876 (0.0%)	0.69	1/10656 (0.0%)

All (1) bond length outliers are listed below:

Mol	Chain	Res	Type	Atoms	Z	Observed(Å)	Ideal(Å)
1	B	37	SER	CB-OG	5.38	1.49	1.42

All (1) bond angle outliers are listed below:

Mol	Chain	Res	Type	Atoms	Z	Observed(°)	Ideal(°)
1	C	14	ARG	NE-CZ-NH1	6.47	123.53	120.30

There are no chirality outliers.

There are no planarity outliers.

5.2 Too-close contacts [i](#)

In the following table, the Non-H and H(model) columns list the number of non-hydrogen atoms and hydrogen atoms in the chain respectively. The H(added) column lists the number of hydrogen atoms added and optimized by MolProbity. The Clashes column lists the number of clashes within the asymmetric unit, whereas Symm-Clashes lists symmetry-related clashes.

Mol	Chain	Non-H	H(model)	H(added)	Clashes	Symm-Clashes
1	A	1942	0	2007	2	0
1	B	1942	0	2007	2	0

Continued on next page...

Continued from previous page...

Mol	Chain	Non-H	H(model)	H(added)	Clashes	Symm-Clashes
1	C	1942	0	2007	6	0
1	D	1942	0	2007	5	0
2	A	48	0	25	0	0
2	B	48	0	25	1	0
2	C	48	0	25	1	0
2	D	48	0	25	1	0
3	A	15	0	6	0	0
3	B	15	0	6	0	0
3	C	15	0	5	0	0
3	D	15	0	5	0	0
4	A	5	0	0	0	0
4	B	10	0	0	0	0
4	C	10	0	0	0	0
4	D	5	0	0	0	0
5	B	4	0	6	0	0
6	A	46	0	0	0	0
6	B	29	0	0	0	0
6	C	37	0	0	0	0
6	D	48	0	0	0	0
All	All	8214	0	8156	15	0

The all-atom clashscore is defined as the number of clashes found per 1000 atoms (including hydrogen atoms). The all-atom clashscore for this structure is 1.

All (15) close contacts within the same asymmetric unit are listed below, sorted by their clash magnitude.

Atom-1	Atom-2	Interatomic distance (Å)	Clash overlap (Å)
1:A:7[B]:CYS:SG	1:A:24:LEU:HD21	2.33	0.68
1:C:79:ALA:O	1:C:83:LEU:HD12	1.94	0.66
1:C:80:LEU:HA	1:C:83:LEU:CD1	2.25	0.65
1:A:2:LEU:O	1:A:91:ARG:HD2	1.99	0.63
1:B:7[B]:CYS:SG	1:B:24:LEU:HD21	2.39	0.62
1:C:80:LEU:HA	1:C:83:LEU:HD13	1.85	0.56
1:B:153:SER:O	2:B:301:NAP:H6N	2.06	0.55
1:D:18:ARG:NH1	1:D:50:GLU:OE2	2.46	0.49
1:D:7[B]:CYS:HA	1:D:93:LEU:O	2.13	0.49
1:C:153:SER:O	2:C:301:NAP:H6N	2.19	0.43
1:D:77:LEU:O	1:D:80:LEU:HB2	2.18	0.43
1:C:77:LEU:O	1:C:80:LEU:HB3	2.19	0.42
1:D:153:SER:O	2:D:301:NAP:H6N	2.20	0.41
1:C:63:VAL:HG11	1:C:76:LEU:HA	2.02	0.41

Continued on next page...

Continued from previous page...

Atom-1	Atom-2	Interatomic distance (Å)	Clash overlap (Å)
1:D:146:ASN:C	1:D:146:ASN:OD1	2.59	0.40

There are no symmetry-related clashes.

5.3 Torsion angles [i](#)

5.3.1 Protein backbone [i](#)

In the following table, the Percentiles column shows the percent Ramachandran outliers of the chain as a percentile score with respect to all X-ray entries followed by that with respect to entries of similar resolution.

The Analysed column shows the number of residues for which the backbone conformation was analysed, and the total number of residues.

Mol	Chain	Analysed	Favoured	Allowed	Outliers	Percentiles	
1	A	256/275 (93%)	251 (98%)	5 (2%)	0	100	100
1	B	256/275 (93%)	252 (98%)	4 (2%)	0	100	100
1	C	256/275 (93%)	252 (98%)	4 (2%)	0	100	100
1	D	256/275 (93%)	253 (99%)	3 (1%)	0	100	100
All	All	1024/1100 (93%)	1008 (98%)	16 (2%)	0	100	100

There are no Ramachandran outliers to report.

5.3.2 Protein sidechains [i](#)

In the following table, the Percentiles column shows the percent sidechain outliers of the chain as a percentile score with respect to all X-ray entries followed by that with respect to entries of similar resolution.

The Analysed column shows the number of residues for which the sidechain conformation was analysed, and the total number of residues.

Mol	Chain	Analysed	Rotameric	Outliers	Percentiles	
1	A	210/225 (93%)	207 (99%)	3 (1%)	67	78
1	B	210/225 (93%)	209 (100%)	1 (0%)	88	94
1	C	210/225 (93%)	210 (100%)	0	100	100
1	D	210/225 (93%)	208 (99%)	2 (1%)	76	85

Continued on next page...

Continued from previous page...

Mol	Chain	Analysed	Rotameric	Outliers	Percentiles	
All	All	840/900 (93%)	834 (99%)	6 (1%)	84	91

All (6) residues with a non-rotameric sidechain are listed below:

Mol	Chain	Res	Type
1	A	18	ARG
1	A	137	LYS
1	A	142	SER
1	B	128	MET
1	D	142	SER
1	D	220	GLN

Sometimes sidechains can be flipped to improve hydrogen bonding and reduce clashes. All (1) such sidechains are listed below:

Mol	Chain	Res	Type
1	A	220	GLN

5.3.3 RNA [i](#)

There are no RNA molecules in this entry.

5.4 Non-standard residues in protein, DNA, RNA chains [i](#)

There are no non-standard protein/DNA/RNA residues in this entry.

5.5 Carbohydrates [i](#)

There are no monosaccharides in this entry.

5.6 Ligand geometry [i](#)

15 ligands are modelled in this entry.

In the following table, the Counts columns list the number of bonds (or angles) for which Mogul statistics could be retrieved, the number of bonds (or angles) that are observed in the model and the number of bonds (or angles) that are defined in the Chemical Component Dictionary. The Link column lists molecule types, if any, to which the group is linked. The Z score for a bond length (or angle) is the number of standard deviations the observed value is removed from the

expected value. A bond length (or angle) with $|Z| > 2$ is considered an outlier worth inspection. RMSZ is the root-mean-square of all Z scores of the bond lengths (or angles).

Mol	Type	Chain	Res	Link	Bond lengths			Bond angles		
					Counts	RMSZ	$\# Z > 2$	Counts	RMSZ	$\# Z > 2$
5	EDO	B	305	-	3,3,3	0.60	0	2,2,2	0.25	0
3	4KL	D	302	-	16,16,16	2.12	2 (12%)	23,23,23	1.16	2 (8%)
2	NAP	C	301	-	45,52,52	1.04	4 (8%)	56,80,80	1.28	5 (8%)
2	NAP	A	801	-	45,52,52	1.16	3 (6%)	56,80,80	1.28	6 (10%)
3	4KL	B	302	-	16,16,16	2.49	1 (6%)	23,23,23	1.30	2 (8%)
4	SO4	A	803	-	4,4,4	0.42	0	6,6,6	0.26	0
4	SO4	D	303	-	4,4,4	0.37	0	6,6,6	0.36	0
3	4KL	C	302	-	16,16,16	2.66	3 (18%)	23,23,23	1.28	2 (8%)
4	SO4	B	304	-	4,4,4	0.46	0	6,6,6	0.37	0
4	SO4	C	303	-	4,4,4	0.51	0	6,6,6	0.19	0
4	SO4	B	303	-	4,4,4	0.44	0	6,6,6	0.44	0
2	NAP	B	301	-	45,52,52	1.12	4 (8%)	56,80,80	1.26	6 (10%)
3	4KL	A	802	-	16,16,16	2.39	1 (6%)	23,23,23	1.27	2 (8%)
2	NAP	D	301	-	45,52,52	1.43	5 (11%)	56,80,80	1.35	8 (14%)
4	SO4	C	304	-	4,4,4	0.25	0	6,6,6	0.36	0

In the following table, the Chirals column lists the number of chiral outliers, the number of chiral centers analysed, the number of these observed in the model and the number defined in the Chemical Component Dictionary. Similar counts are reported in the Torsion and Rings columns. '-' means no outliers of that kind were identified.

Mol	Type	Chain	Res	Link	Chirals	Torsions	Rings
5	EDO	B	305	-	-	0/1/1/1	-
3	4KL	D	302	-	-	0/4/4/4	0/2/2/2
2	NAP	C	301	-	-	8/31/67/67	0/5/5/5
2	NAP	A	801	-	-	6/31/67/67	0/5/5/5
3	4KL	B	302	-	-	0/4/4/4	0/2/2/2
3	4KL	C	302	-	-	0/4/4/4	0/2/2/2
2	NAP	B	301	-	-	9/31/67/67	0/5/5/5
3	4KL	A	802	-	-	0/4/4/4	0/2/2/2
2	NAP	D	301	-	-	6/31/67/67	0/5/5/5

All (23) bond length outliers are listed below:

Mol	Chain	Res	Type	Atoms	Z	Observed(Å)	Ideal(Å)
3	B	302	4KL	CAH-CAM	-9.31	1.37	1.50
3	C	302	4KL	CAH-CAM	-9.22	1.37	1.50

Continued on next page...

Continued from previous page...

Mol	Chain	Res	Type	Atoms	Z	Observed(Å)	Ideal(Å)
3	A	802	4KL	CAH-CAM	-8.90	1.38	1.50
3	D	302	4KL	CAH-CAM	-6.60	1.41	1.50
2	D	301	NAP	O4D-C1D	4.86	1.47	1.41
2	A	801	NAP	C2A-N3A	3.89	1.38	1.32
2	B	301	NAP	O4D-C1D	3.65	1.46	1.41
2	D	301	NAP	O4B-C1B	3.35	1.45	1.41
2	A	801	NAP	P2B-O2B	2.81	1.64	1.59
2	D	301	NAP	P2B-O3X	-2.37	1.45	1.54
2	B	301	NAP	C2A-N3A	2.36	1.35	1.32
2	D	301	NAP	C2D-C1D	-2.33	1.50	1.53
2	B	301	NAP	C3B-C2B	-2.31	1.47	1.52
2	C	301	NAP	P2B-O2B	2.31	1.63	1.59
3	C	302	4KL	OAO-CAM	2.28	1.29	1.22
2	C	301	NAP	C2N-N1N	2.27	1.37	1.35
3	D	302	4KL	OAN-CAM	-2.24	1.23	1.30
2	C	301	NAP	C2A-N3A	2.23	1.35	1.32
2	C	301	NAP	O7N-C7N	-2.22	1.19	1.24
3	C	302	4KL	OAK-CAC	2.19	1.42	1.36
2	D	301	NAP	C4A-N3A	-2.09	1.32	1.35
2	B	301	NAP	O4B-C4B	-2.09	1.40	1.45
2	A	801	NAP	C2A-N1A	2.04	1.37	1.33

All (33) bond angle outliers are listed below:

Mol	Chain	Res	Type	Atoms	Z	Observed(°)	Ideal(°)
2	A	801	NAP	N3A-C2A-N1A	-4.68	121.36	128.68
2	B	301	NAP	N3A-C2A-N1A	-4.03	122.38	128.68
2	C	301	NAP	C3N-C7N-N7N	3.96	122.50	117.75
2	D	301	NAP	N3A-C2A-N1A	-3.84	122.67	128.68
2	C	301	NAP	N3A-C2A-N1A	-3.68	122.93	128.68
2	C	301	NAP	O7N-C7N-C3N	-3.60	115.33	119.63
3	A	802	4KL	CAC-CAD-NAG	3.56	120.92	117.33
2	D	301	NAP	C3N-C7N-N7N	3.27	121.68	117.75
2	A	801	NAP	C3N-C7N-N7N	3.26	121.67	117.75
2	A	801	NAP	C1B-N9A-C4A	-3.08	121.23	126.64
3	B	302	4KL	CAC-CAD-NAG	3.05	120.40	117.33
3	B	302	4KL	OAN-CAM-CAH	2.89	121.27	114.69
3	C	302	4KL	CAC-CAD-NAG	2.75	120.10	117.33
3	C	302	4KL	OAN-CAM-CAH	2.65	120.72	114.69
2	B	301	NAP	O2A-PA-O1A	2.55	124.82	112.24
2	D	301	NAP	O3D-C3D-C4D	-2.53	103.72	111.05
2	C	301	NAP	O2A-PA-O1A	2.34	123.83	112.24

Continued on next page...

Continued from previous page...

Mol	Chain	Res	Type	Atoms	Z	Observed(°)	Ideal(°)
3	D	302	4KL	CAH-NAG-CAD	2.34	122.17	117.24
2	B	301	NAP	C6N-N1N-C2N	-2.34	119.84	121.97
2	B	301	NAP	C3N-C7N-N7N	2.32	120.54	117.75
2	D	301	NAP	O2A-PA-O1A	2.29	123.55	112.24
2	B	301	NAP	O4D-C1D-C2D	-2.29	103.58	106.93
2	C	301	NAP	O2N-PN-O1N	2.28	123.52	112.24
2	D	301	NAP	C6N-N1N-C2N	-2.15	120.02	121.97
2	A	801	NAP	O2X-P2B-O1X	2.14	119.06	110.68
2	A	801	NAP	O7N-C7N-C3N	-2.13	117.09	119.63
3	D	302	4KL	OAN-CAM-OAO	-2.10	118.69	123.35
2	D	301	NAP	O4D-C1D-C2D	-2.09	103.88	106.93
2	B	301	NAP	C1B-N9A-C4A	-2.05	123.03	126.64
3	A	802	4KL	OAN-CAM-CAH	2.05	119.36	114.69
2	D	301	NAP	O7N-C7N-C3N	-2.02	117.21	119.63
2	A	801	NAP	C5A-C6A-N6A	-2.02	117.28	120.35
2	D	301	NAP	O2N-PN-O1N	2.02	122.21	112.24

There are no chirality outliers.

All (29) torsion outliers are listed below:

Mol	Chain	Res	Type	Atoms
2	A	801	NAP	C5D-O5D-PN-O1N
2	A	801	NAP	C5D-O5D-PN-O2N
2	A	801	NAP	O4D-C1D-N1N-C2N
2	B	301	NAP	C5D-O5D-PN-O1N
2	B	301	NAP	C5D-O5D-PN-O2N
2	B	301	NAP	O4D-C1D-N1N-C2N
2	B	301	NAP	O4D-C1D-N1N-C6N
2	C	301	NAP	C5D-O5D-PN-O1N
2	C	301	NAP	C5D-O5D-PN-O2N
2	C	301	NAP	O4D-C1D-N1N-C2N
2	C	301	NAP	O4D-C1D-N1N-C6N
2	D	301	NAP	C2B-O2B-P2B-O3X
2	D	301	NAP	O4D-C1D-N1N-C2N
2	D	301	NAP	O4D-C1D-N1N-C6N
2	D	301	NAP	C2D-C1D-N1N-C6N
2	A	801	NAP	C2B-O2B-P2B-O3X
2	C	301	NAP	C2B-O2B-P2B-O3X
2	B	301	NAP	O4B-C4B-C5B-O5B
2	A	801	NAP	O4B-C4B-C5B-O5B
2	A	801	NAP	C5D-O5D-PN-O3
2	B	301	NAP	C2B-O2B-P2B-O2X

Continued on next page...

Continued from previous page...

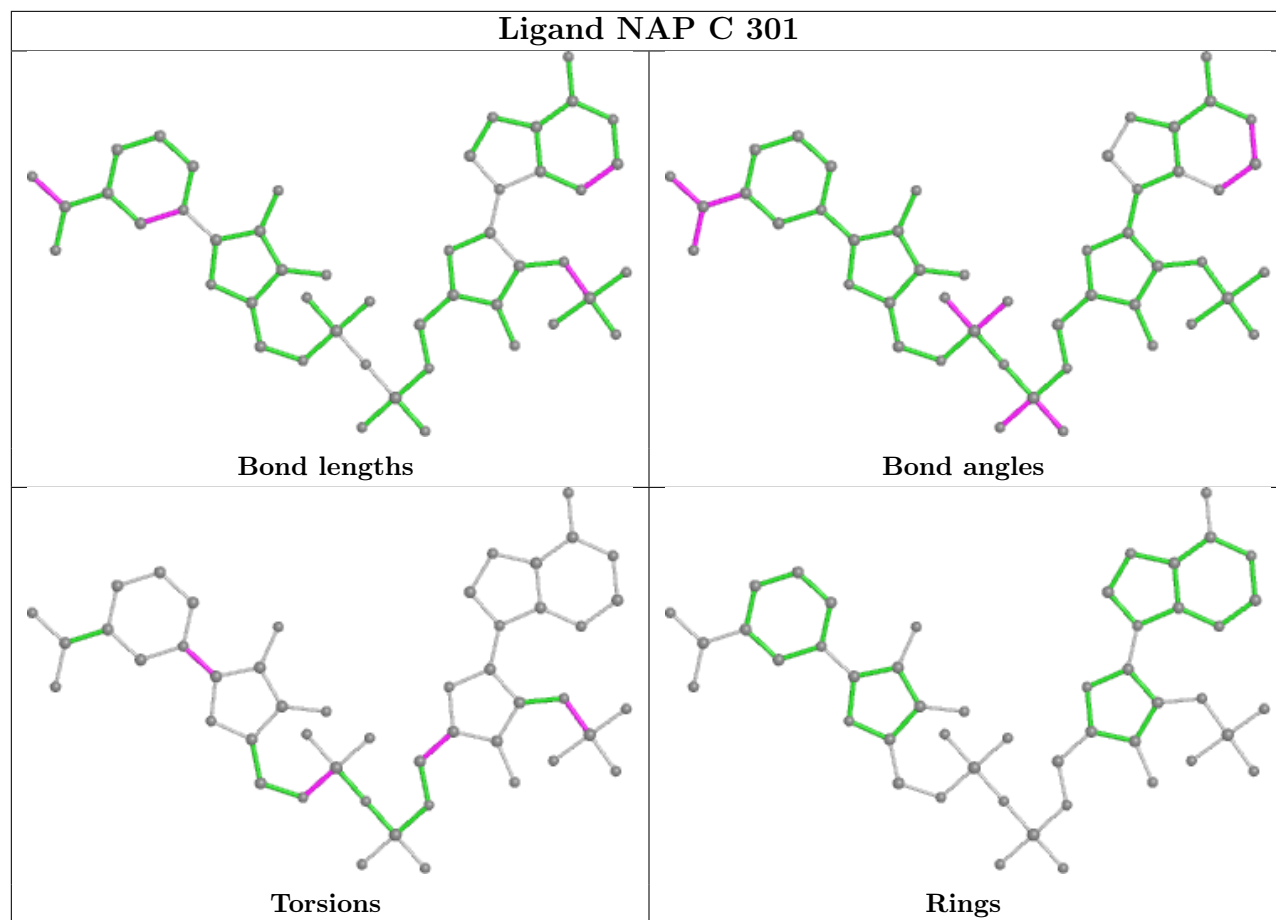
Mol	Chain	Res	Type	Atoms
2	B	301	NAP	C5D-O5D-PN-O3
2	B	301	NAP	C2D-C1D-N1N-C6N
2	C	301	NAP	C5D-O5D-PN-O3
2	C	301	NAP	C2D-C1D-N1N-C6N
2	C	301	NAP	O4B-C4B-C5B-O5B
2	B	301	NAP	PA-O3-PN-O2N
2	D	301	NAP	PN-O3-PA-O2A
2	D	301	NAP	O4B-C4B-C5B-O5B

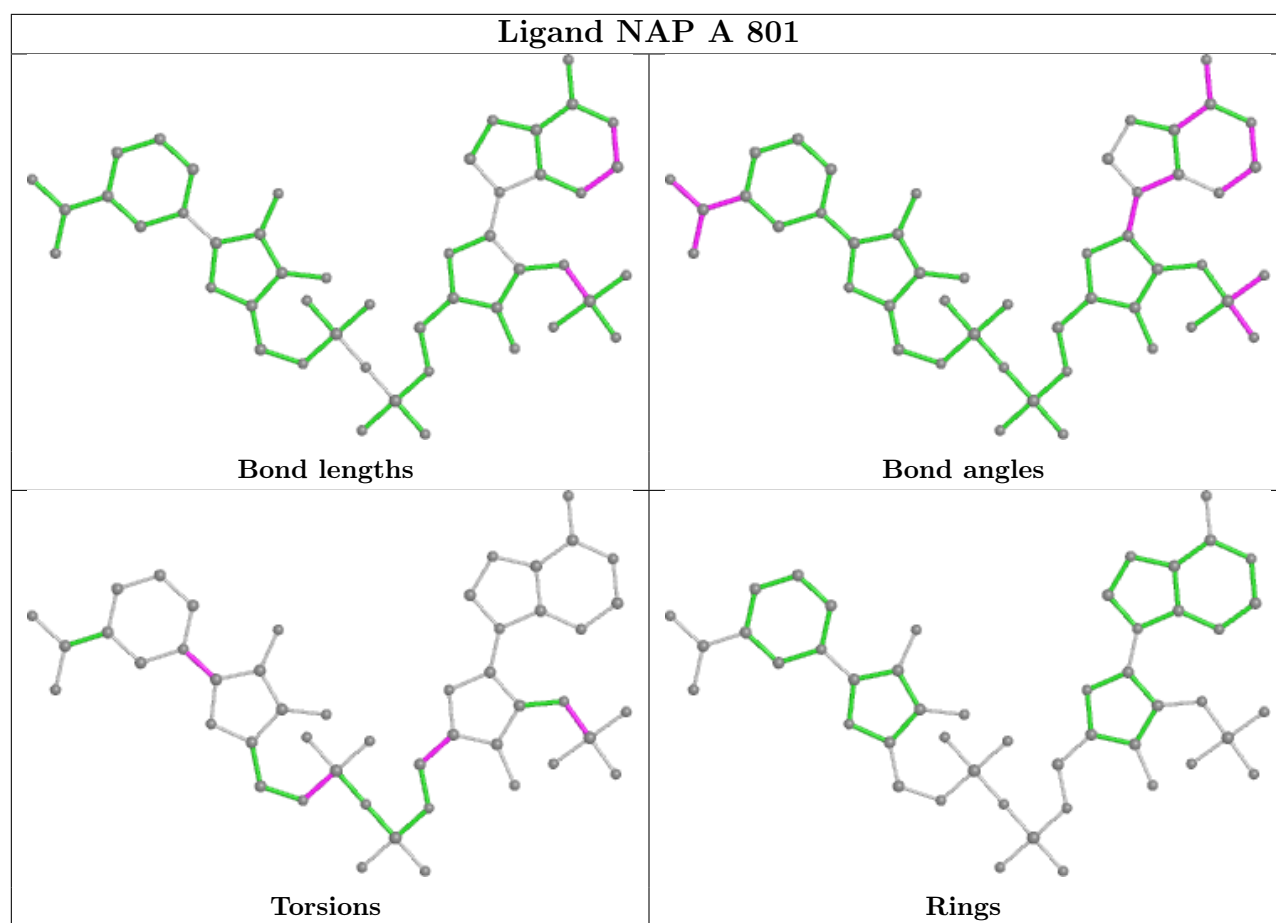
There are no ring outliers.

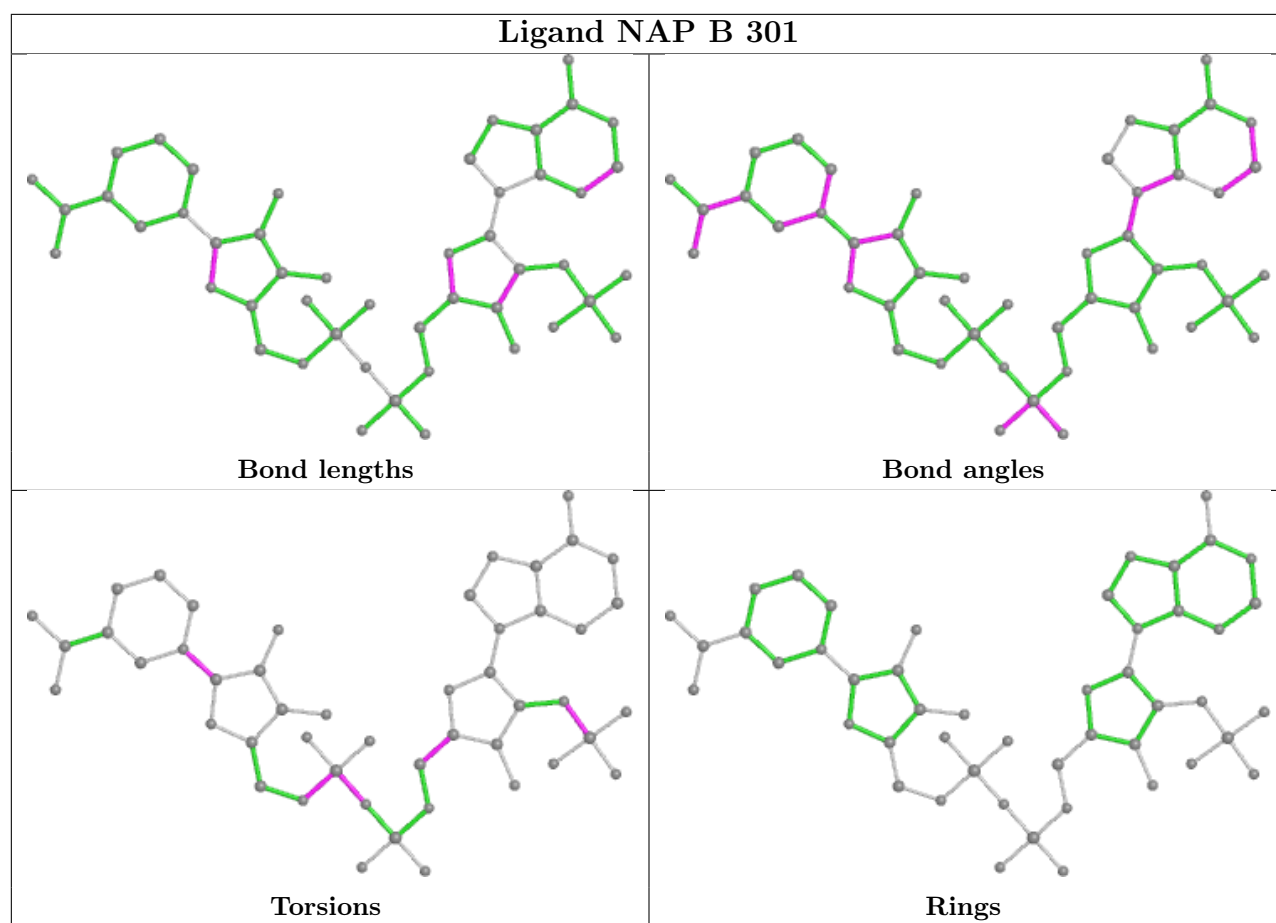
3 monomers are involved in 3 short contacts:

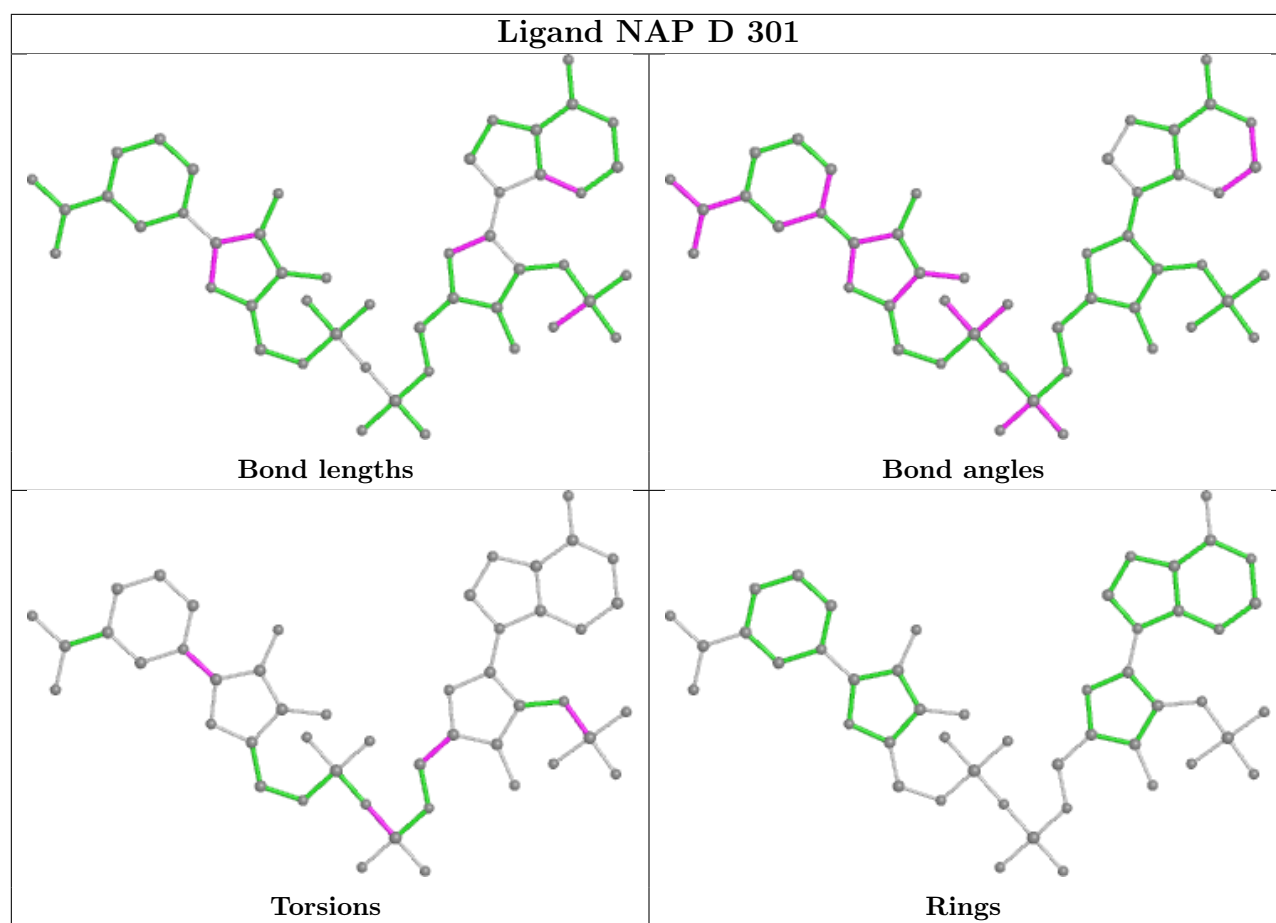
Mol	Chain	Res	Type	Clashes	Symm-Clashes
2	C	301	NAP	1	0
2	B	301	NAP	1	0
2	D	301	NAP	1	0

The following is a two-dimensional graphical depiction of Mogul quality analysis of bond lengths, bond angles, torsion angles, and ring geometry for all instances of the Ligand of Interest. In addition, ligands with molecular weight > 250 and outliers as shown on the validation Tables will also be included. For torsion angles, if less than 5% of the Mogul distribution of torsion angles is within 10 degrees of the torsion angle in question, then that torsion angle is considered an outlier. Any bond that is central to one or more torsion angles identified as an outlier by Mogul will be highlighted in the graph. For rings, the root-mean-square deviation (RMSD) between the ring in question and similar rings identified by Mogul is calculated over all ring torsion angles. If the average RMSD is greater than 60 degrees and the minimal RMSD between the ring in question and any Mogul-identified rings is also greater than 60 degrees, then that ring is considered an outlier. The outliers are highlighted in purple. The color gray indicates Mogul did not find sufficient equivalents in the CSD to analyse the geometry.









5.7 Other polymers [i](#)

There are no such residues in this entry.

5.8 Polymer linkage issues [i](#)

There are no chain breaks in this entry.

6 Fit of model and data [i](#)

6.1 Protein, DNA and RNA chains [i](#)

Unable to reproduce the depositors R factor - this section is therefore empty.

6.2 Non-standard residues in protein, DNA, RNA chains [i](#)

Unable to reproduce the depositors R factor - this section is therefore empty.

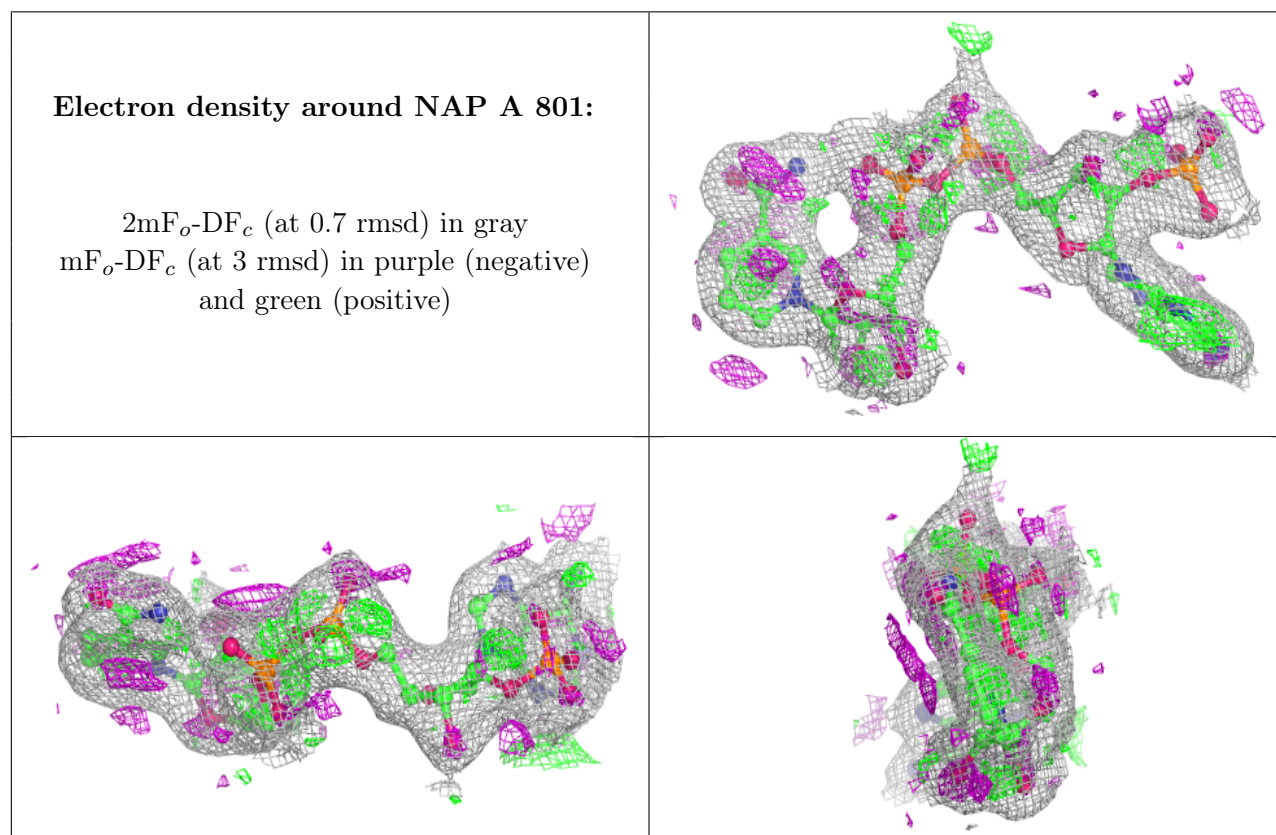
6.3 Carbohydrates [i](#)

Unable to reproduce the depositors R factor - this section is therefore empty.

6.4 Ligands [i](#)

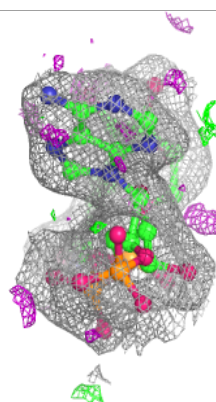
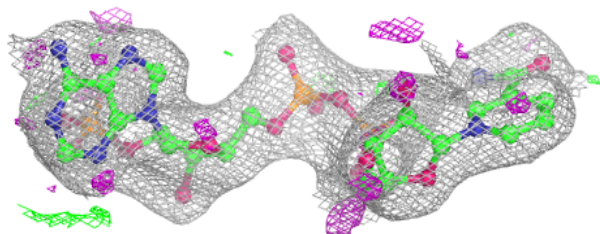
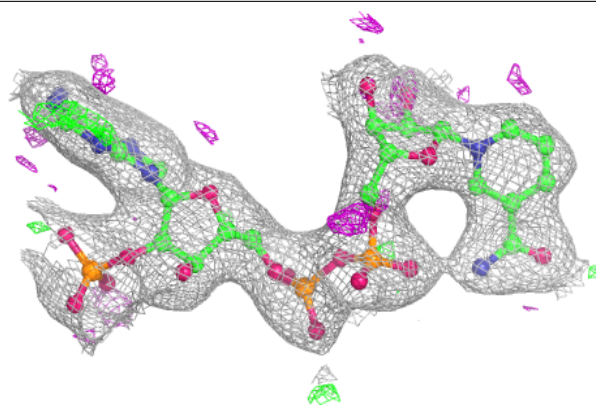
Unable to reproduce the depositors R factor - this section is therefore empty.

The following is a graphical depiction of the model fit to experimental electron density of all instances of the Ligand of Interest. In addition, ligands with molecular weight > 250 and outliers as shown on the geometry validation Tables will also be included. Each fit is shown from different orientation to approximate a three-dimensional view.

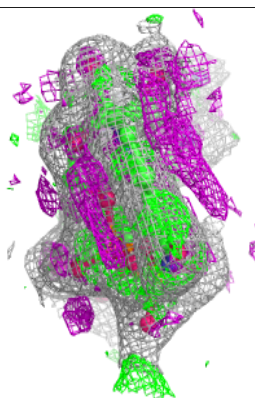
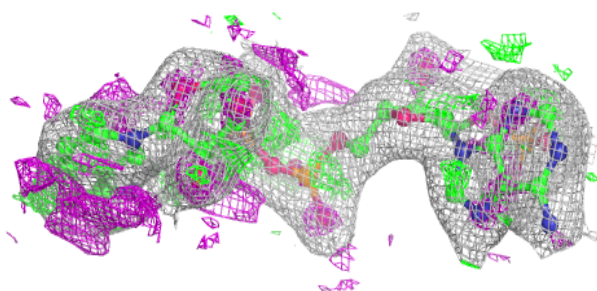
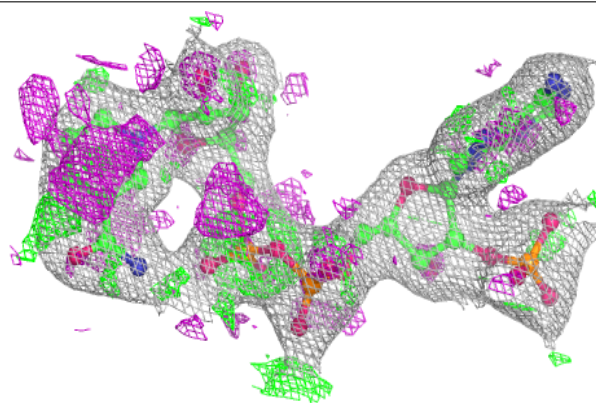


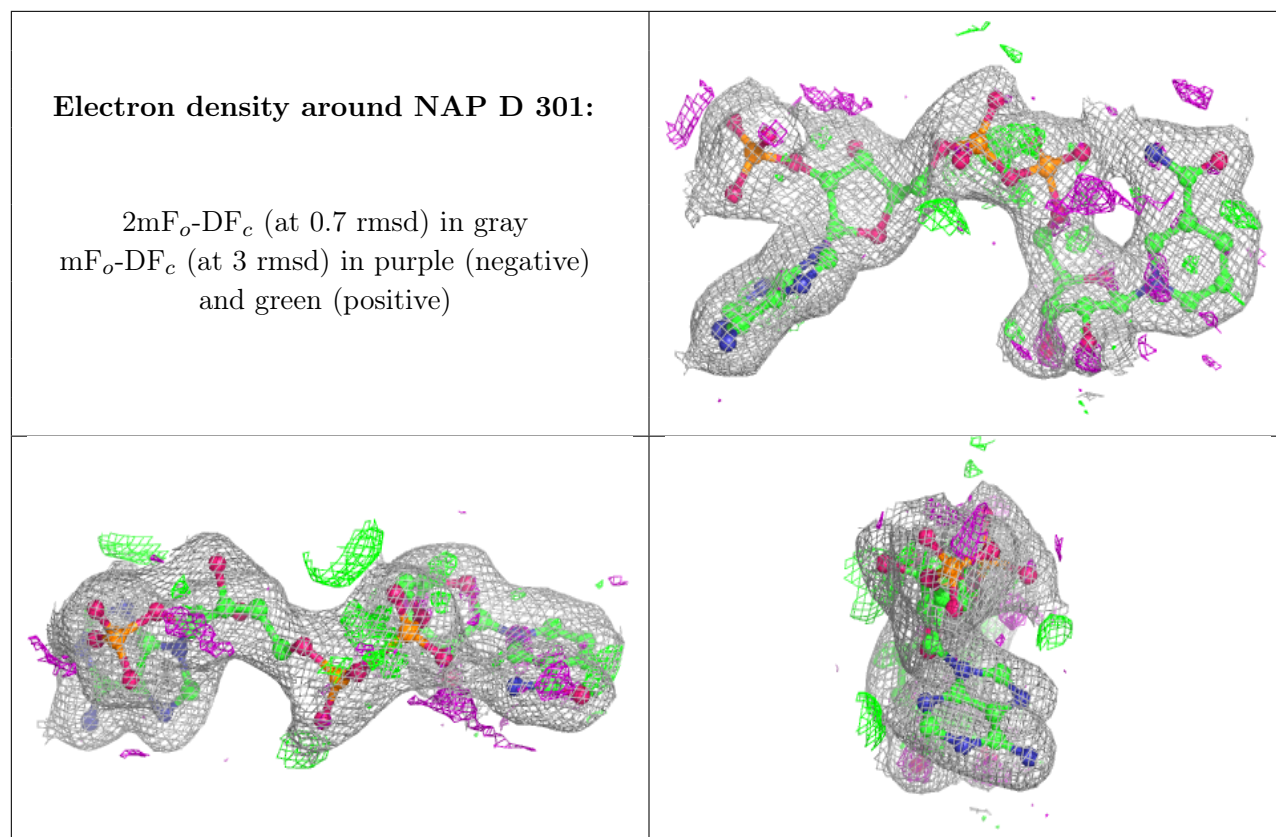
Electron density around NAP B 301:

$2mF_o-DF_c$ (at 0.7 rmsd) in gray
 mF_o-DF_c (at 3 rmsd) in purple (negative)
and green (positive)

**Electron density around NAP C 301:**

$2mF_o-DF_c$ (at 0.7 rmsd) in gray
 mF_o-DF_c (at 3 rmsd) in purple (negative)
and green (positive)





6.5 Other polymers [i](#)

Unable to reproduce the depositors R factor - this section is therefore empty.