



Full wwPDB EM Validation Report ⓘ

Feb 5, 2025 – 10:37 AM JST

PDB ID : 8Z6W
EMDB ID : EMD-39806
Title : Structure of EG.5.1 S trimer with 3 down-RBDs complex with antibody CYFN1006-2.
Authors : Wang, Y.J.; Sun, L.
Deposited on : 2024-04-19
Resolution : 3.04 Å(reported)

This is a Full wwPDB EM Validation Report for a publicly released PDB entry.

We welcome your comments at validation@mail.wwpdb.org

A user guide is available at

<https://www.wwpdb.org/validation/2017/EMValidationReportHelp>
with specific help available everywhere you see the ⓘ symbol.

The types of validation reports are described at

<http://www.wwpdb.org/validation/2017/FAQs#types>.

The following versions of software and data (see [references ⓘ](#)) were used in the production of this report:

EMDB validation analysis : 0.0.1.dev113
MolProbity : 4.02b-467
Percentile statistics : 20231227.v01 (using entries in the PDB archive December 27th 2023)
MapQ : 1.9.13
Ideal geometry (proteins) : Engh & Huber (2001)
Ideal geometry (DNA, RNA) : Parkinson et al. (1996)
Validation Pipeline (wwPDB-VP) : 2.40

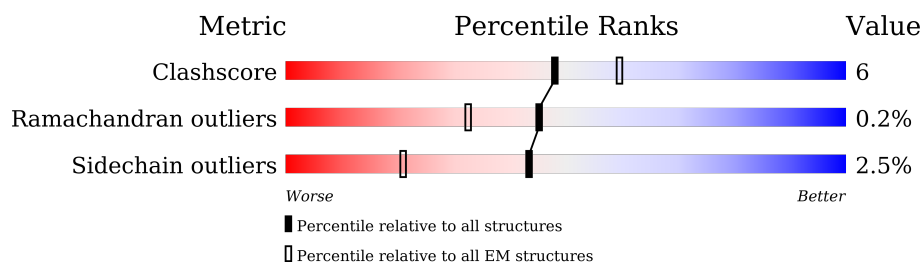
1 Overall quality at a glance

The following experimental techniques were used to determine the structure:

ELECTRON MICROSCOPY

The reported resolution of this entry is 3.04 Å.

Percentile scores (ranging between 0-100) for global validation metrics of the entry are shown in the following graphic. The table shows the number of entries on which the scores are based.



Metric	Whole archive (#Entries)	EM structures (#Entries)
Clashscore	210492	15764
Ramachandran outliers	207382	16835
Sidechain outliers	206894	16415

The table below summarises the geometric issues observed across the polymeric chains and their fit to the map. The red, orange, yellow and green segments of the bar indicate the fraction of residues that contain outliers for ≥ 3 , 2, 1 and 0 types of geometric quality criteria respectively. A grey segment represents the fraction of residues that are not modelled. The numeric value for each fraction is indicated below the corresponding segment, with a dot representing fractions $\leq 5\%$. The upper red bar (where present) indicates the fraction of residues that have poor fit to the EM map (all-atom inclusion $< 40\%$). The numeric value is given above the bar.

Mol	Chain	Length	Quality of chain
1	A	1295	
1	B	1295	
1	C	1295	
2	J	215	
2	K	215	
2	L	215	
3	G	218	
3	H	218	

Continued on next page...

Continued from previous page...

Mol	Chain	Length	Quality of chain
3	I	218	<div><div></div><div>5%</div><div>83%</div><div>17%</div></div>

2 Entry composition

There are 3 unique types of molecules in this entry. The entry contains 34950 atoms, of which 0 are hydrogens and 0 are deuteriums.

In the tables below, the AltConf column contains the number of residues with at least one atom in alternate conformation and the Trace column contains the number of residues modelled with at most 2 atoms.

- Molecule 1 is a protein called Spike glycoprotein,Fibritin,Expression Tag.

Mol	Chain	Residues	Atoms					AltConf	Trace
1	B	1087	Total	C	N	O	S	0	0
			8502	5432	1416	1616	38		
1	A	1087	Total	C	N	O	S	0	0
			8502	5432	1416	1616	38		
1	C	1087	Total	C	N	O	S	0	0
			8502	5432	1416	1616	38		

There are 237 discrepancies between the modelled and reference sequences:

Chain	Residue	Modelled	Actual	Comment	Reference
B	-6	MET	-	initiating methionine	UNP P0DTC2
B	-5	PRO	-	expression tag	UNP P0DTC2
B	-4	MET	-	expression tag	UNP P0DTC2
B	-3	GLY	-	expression tag	UNP P0DTC2
B	-2	SER	-	expression tag	UNP P0DTC2
B	-1	LEU	-	expression tag	UNP P0DTC2
B	0	GLN	-	expression tag	UNP P0DTC2
B	1	PRO	-	expression tag	UNP P0DTC2
B	2	LEU	-	expression tag	UNP P0DTC2
B	3	ALA	-	expression tag	UNP P0DTC2
B	4	THR	-	expression tag	UNP P0DTC2
B	5	LEU	-	expression tag	UNP P0DTC2
B	6	TYR	-	expression tag	UNP P0DTC2
B	7	LEU	-	expression tag	UNP P0DTC2
B	8	LEU	-	expression tag	UNP P0DTC2
B	9	GLY	-	expression tag	UNP P0DTC2
B	10	MET	-	expression tag	UNP P0DTC2
B	11	LEU	-	expression tag	UNP P0DTC2
B	12	VAL	-	expression tag	UNP P0DTC2
B	13	ALA	-	expression tag	UNP P0DTC2
B	14	SER	-	expression tag	UNP P0DTC2
B	15	VAL	-	expression tag	UNP P0DTC2
B	16	LEU	-	expression tag	UNP P0DTC2
B	17	ALA	-	expression tag	UNP P0DTC2

Continued on next page...

Continued from previous page...

Chain	Residue	Modelled	Actual	Comment	Reference
B	23	ILE	THR	variant	UNP P0DTC2
B	?	-	LEU	deletion	UNP P0DTC2
B	?	-	PRO	deletion	UNP P0DTC2
B	?	-	PRO	deletion	UNP P0DTC2
B	28	SER	ALA	variant	UNP P0DTC2
B	53	HIS	GLN	variant	UNP P0DTC2
B	84	ALA	VAL	variant	UNP P0DTC2
B	143	ASP	GLY	variant	UNP P0DTC2
B	?	-	TYR	deletion	UNP P0DTC2
B	146	GLN	HIS	variant	UNP P0DTC2
B	183	GLU	GLN	variant	UNP P0DTC2
B	213	GLU	VAL	variant	UNP P0DTC2
B	252	VAL	GLY	variant	UNP P0DTC2
B	339	HIS	GLY	variant	UNP P0DTC2
B	346	THR	ARG	variant	UNP P0DTC2
B	368	ILE	LEU	variant	UNP P0DTC2
B	371	PHE	SER	variant	UNP P0DTC2
B	373	PRO	SER	variant	UNP P0DTC2
B	375	PHE	SER	variant	UNP P0DTC2
B	376	ALA	THR	variant	UNP P0DTC2
B	405	ASN	ASP	variant	UNP P0DTC2
B	408	SER	ARG	variant	UNP P0DTC2
B	417	ASN	LYS	variant	UNP P0DTC2
B	440	LYS	ASN	variant	UNP P0DTC2
B	445	PRO	VAL	variant	UNP P0DTC2
B	446	SER	GLY	variant	UNP P0DTC2
B	456	LEU	PHE	variant	UNP P0DTC2
B	460	LYS	ASN	variant	UNP P0DTC2
B	477	ASN	SER	variant	UNP P0DTC2
B	478	LYS	THR	conflict	UNP P0DTC2
B	484	ALA	GLU	variant	UNP P0DTC2
B	486	PRO	PHE	variant	UNP P0DTC2
B	490	SER	PHE	variant	UNP P0DTC2
B	498	ARG	GLN	variant	UNP P0DTC2
B	501	TYR	ASN	variant	UNP P0DTC2
B	505	HIS	TYR	conflict	UNP P0DTC2
B	614	GLY	ASP	variant	UNP P0DTC2
B	655	TYR	HIS	variant	UNP P0DTC2
B	679	LYS	ASN	variant	UNP P0DTC2
B	681	HIS	PRO	variant	UNP P0DTC2
B	682	GLY	ARG	conflict	UNP P0DTC2
B	683	SER	ARG	conflict	UNP P0DTC2

Continued on next page...

Continued from previous page...

Chain	Residue	Modelled	Actual	Comment	Reference
B	685	SER	ARG	conflict	UNP P0DTC2
B	764	LYS	ASN	variant	UNP P0DTC2
B	796	TYR	ASP	variant	UNP P0DTC2
B	817	PRO	PHE	conflict	UNP P0DTC2
B	892	PRO	ALA	conflict	UNP P0DTC2
B	899	PRO	ALA	conflict	UNP P0DTC2
B	942	PRO	ALA	conflict	UNP P0DTC2
B	954	HIS	GLN	variant	UNP P0DTC2
B	969	LYS	ASN	variant	UNP P0DTC2
B	986	PRO	LYS	variant	UNP P0DTC2
B	987	PRO	VAL	variant	UNP P0DTC2
B	1209	GLY	-	linker	UNP P0DTC2
B	1210	SER	-	linker	UNP P0DTC2
A	-6	MET	-	initiating methionine	UNP P0DTC2
A	-5	PRO	-	expression tag	UNP P0DTC2
A	-4	MET	-	expression tag	UNP P0DTC2
A	-3	GLY	-	expression tag	UNP P0DTC2
A	-2	SER	-	expression tag	UNP P0DTC2
A	-1	LEU	-	expression tag	UNP P0DTC2
A	0	GLN	-	expression tag	UNP P0DTC2
A	1	PRO	-	expression tag	UNP P0DTC2
A	2	LEU	-	expression tag	UNP P0DTC2
A	3	ALA	-	expression tag	UNP P0DTC2
A	4	THR	-	expression tag	UNP P0DTC2
A	5	LEU	-	expression tag	UNP P0DTC2
A	6	TYR	-	expression tag	UNP P0DTC2
A	7	LEU	-	expression tag	UNP P0DTC2
A	8	LEU	-	expression tag	UNP P0DTC2
A	9	GLY	-	expression tag	UNP P0DTC2
A	10	MET	-	expression tag	UNP P0DTC2
A	11	LEU	-	expression tag	UNP P0DTC2
A	12	VAL	-	expression tag	UNP P0DTC2
A	13	ALA	-	expression tag	UNP P0DTC2
A	14	SER	-	expression tag	UNP P0DTC2
A	15	VAL	-	expression tag	UNP P0DTC2
A	16	LEU	-	expression tag	UNP P0DTC2
A	17	ALA	-	expression tag	UNP P0DTC2
A	23	ILE	THR	variant	UNP P0DTC2
A	?	-	LEU	deletion	UNP P0DTC2
A	?	-	PRO	deletion	UNP P0DTC2
A	?	-	PRO	deletion	UNP P0DTC2
A	28	SER	ALA	variant	UNP P0DTC2

Continued on next page...

Continued from previous page...

Chain	Residue	Modelled	Actual	Comment	Reference
A	53	HIS	GLN	variant	UNP P0DTC2
A	84	ALA	VAL	variant	UNP P0DTC2
A	143	ASP	GLY	variant	UNP P0DTC2
A	?	-	TYR	deletion	UNP P0DTC2
A	146	GLN	HIS	variant	UNP P0DTC2
A	183	GLU	GLN	variant	UNP P0DTC2
A	213	GLU	VAL	variant	UNP P0DTC2
A	252	VAL	GLY	variant	UNP P0DTC2
A	339	HIS	GLY	variant	UNP P0DTC2
A	346	THR	ARG	variant	UNP P0DTC2
A	368	ILE	LEU	variant	UNP P0DTC2
A	371	PHE	SER	variant	UNP P0DTC2
A	373	PRO	SER	variant	UNP P0DTC2
A	375	PHE	SER	variant	UNP P0DTC2
A	376	ALA	THR	variant	UNP P0DTC2
A	405	ASN	ASP	variant	UNP P0DTC2
A	408	SER	ARG	variant	UNP P0DTC2
A	417	ASN	LYS	variant	UNP P0DTC2
A	440	LYS	ASN	variant	UNP P0DTC2
A	445	PRO	VAL	variant	UNP P0DTC2
A	446	SER	GLY	variant	UNP P0DTC2
A	456	LEU	PHE	variant	UNP P0DTC2
A	460	LYS	ASN	variant	UNP P0DTC2
A	477	ASN	SER	variant	UNP P0DTC2
A	478	LYS	THR	conflict	UNP P0DTC2
A	484	ALA	GLU	variant	UNP P0DTC2
A	486	PRO	PHE	variant	UNP P0DTC2
A	490	SER	PHE	variant	UNP P0DTC2
A	498	ARG	GLN	variant	UNP P0DTC2
A	501	TYR	ASN	variant	UNP P0DTC2
A	505	HIS	TYR	conflict	UNP P0DTC2
A	614	GLY	ASP	variant	UNP P0DTC2
A	655	TYR	HIS	variant	UNP P0DTC2
A	679	LYS	ASN	variant	UNP P0DTC2
A	681	HIS	PRO	variant	UNP P0DTC2
A	682	GLY	ARG	conflict	UNP P0DTC2
A	683	SER	ARG	conflict	UNP P0DTC2
A	685	SER	ARG	conflict	UNP P0DTC2
A	764	LYS	ASN	variant	UNP P0DTC2
A	796	TYR	ASP	variant	UNP P0DTC2
A	817	PRO	PHE	conflict	UNP P0DTC2
A	892	PRO	ALA	conflict	UNP P0DTC2

Continued on next page...

Continued from previous page...

Chain	Residue	Modelled	Actual	Comment	Reference
A	899	PRO	ALA	conflict	UNP P0DTC2
A	942	PRO	ALA	conflict	UNP P0DTC2
A	954	HIS	GLN	variant	UNP P0DTC2
A	969	LYS	ASN	variant	UNP P0DTC2
A	986	PRO	LYS	variant	UNP P0DTC2
A	987	PRO	VAL	variant	UNP P0DTC2
A	1209	GLY	-	linker	UNP P0DTC2
A	1210	SER	-	linker	UNP P0DTC2
C	-6	MET	-	initiating methionine	UNP P0DTC2
C	-5	PRO	-	expression tag	UNP P0DTC2
C	-4	MET	-	expression tag	UNP P0DTC2
C	-3	GLY	-	expression tag	UNP P0DTC2
C	-2	SER	-	expression tag	UNP P0DTC2
C	-1	LEU	-	expression tag	UNP P0DTC2
C	0	GLN	-	expression tag	UNP P0DTC2
C	1	PRO	-	expression tag	UNP P0DTC2
C	2	LEU	-	expression tag	UNP P0DTC2
C	3	ALA	-	expression tag	UNP P0DTC2
C	4	THR	-	expression tag	UNP P0DTC2
C	5	LEU	-	expression tag	UNP P0DTC2
C	6	TYR	-	expression tag	UNP P0DTC2
C	7	LEU	-	expression tag	UNP P0DTC2
C	8	LEU	-	expression tag	UNP P0DTC2
C	9	GLY	-	expression tag	UNP P0DTC2
C	10	MET	-	expression tag	UNP P0DTC2
C	11	LEU	-	expression tag	UNP P0DTC2
C	12	VAL	-	expression tag	UNP P0DTC2
C	13	ALA	-	expression tag	UNP P0DTC2
C	14	SER	-	expression tag	UNP P0DTC2
C	15	VAL	-	expression tag	UNP P0DTC2
C	16	LEU	-	expression tag	UNP P0DTC2
C	17	ALA	-	expression tag	UNP P0DTC2
C	23	ILE	THR	variant	UNP P0DTC2
C	?	-	LEU	deletion	UNP P0DTC2
C	?	-	PRO	deletion	UNP P0DTC2
C	?	-	PRO	deletion	UNP P0DTC2
C	28	SER	ALA	variant	UNP P0DTC2
C	53	HIS	GLN	variant	UNP P0DTC2
C	84	ALA	VAL	variant	UNP P0DTC2
C	143	ASP	GLY	variant	UNP P0DTC2
C	?	-	TYR	deletion	UNP P0DTC2
C	146	GLN	HIS	variant	UNP P0DTC2

Continued on next page...

Continued from previous page...

Chain	Residue	Modelled	Actual	Comment	Reference
C	183	GLU	GLN	variant	UNP P0DTC2
C	213	GLU	VAL	variant	UNP P0DTC2
C	252	VAL	GLY	variant	UNP P0DTC2
C	339	HIS	GLY	variant	UNP P0DTC2
C	346	THR	ARG	variant	UNP P0DTC2
C	368	ILE	LEU	variant	UNP P0DTC2
C	371	PHE	SER	variant	UNP P0DTC2
C	373	PRO	SER	variant	UNP P0DTC2
C	375	PHE	SER	variant	UNP P0DTC2
C	376	ALA	THR	variant	UNP P0DTC2
C	405	ASN	ASP	variant	UNP P0DTC2
C	408	SER	ARG	variant	UNP P0DTC2
C	417	ASN	LYS	variant	UNP P0DTC2
C	440	LYS	ASN	variant	UNP P0DTC2
C	445	PRO	VAL	variant	UNP P0DTC2
C	446	SER	GLY	variant	UNP P0DTC2
C	456	LEU	PHE	variant	UNP P0DTC2
C	460	LYS	ASN	variant	UNP P0DTC2
C	477	ASN	SER	variant	UNP P0DTC2
C	478	LYS	THR	conflict	UNP P0DTC2
C	484	ALA	GLU	variant	UNP P0DTC2
C	486	PRO	PHE	variant	UNP P0DTC2
C	490	SER	PHE	variant	UNP P0DTC2
C	498	ARG	GLN	variant	UNP P0DTC2
C	501	TYR	ASN	variant	UNP P0DTC2
C	505	HIS	TYR	conflict	UNP P0DTC2
C	614	GLY	ASP	variant	UNP P0DTC2
C	655	TYR	HIS	variant	UNP P0DTC2
C	679	LYS	ASN	variant	UNP P0DTC2
C	681	HIS	PRO	variant	UNP P0DTC2
C	682	GLY	ARG	conflict	UNP P0DTC2
C	683	SER	ARG	conflict	UNP P0DTC2
C	685	SER	ARG	conflict	UNP P0DTC2
C	764	LYS	ASN	variant	UNP P0DTC2
C	796	TYR	ASP	variant	UNP P0DTC2
C	817	PRO	PHE	conflict	UNP P0DTC2
C	892	PRO	ALA	conflict	UNP P0DTC2
C	899	PRO	ALA	conflict	UNP P0DTC2
C	942	PRO	ALA	conflict	UNP P0DTC2
C	954	HIS	GLN	variant	UNP P0DTC2
C	969	LYS	ASN	variant	UNP P0DTC2
C	986	PRO	LYS	variant	UNP P0DTC2

Continued on next page...

Continued from previous page...

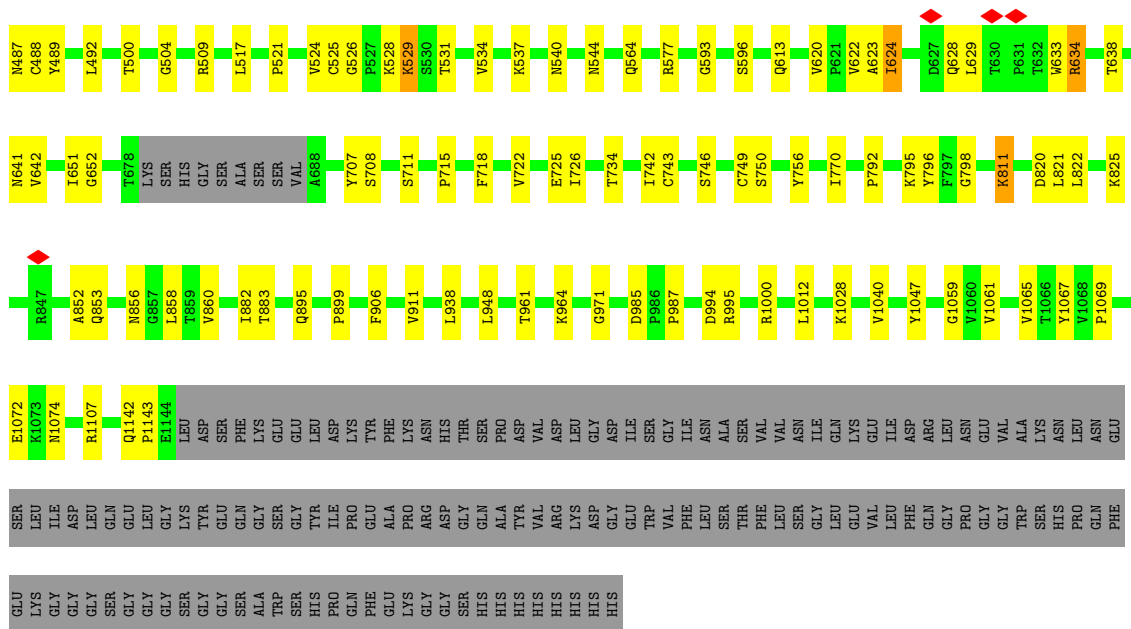
Chain	Residue	Modelled	Actual	Comment	Reference
C	987	PRO	VAL	variant	UNP P0DTC2
C	1209	GLY	-	linker	UNP P0DTC2
C	1210	SER	-	linker	UNP P0DTC2

- Molecule 2 is a protein called CYFN1006-2 light chain.

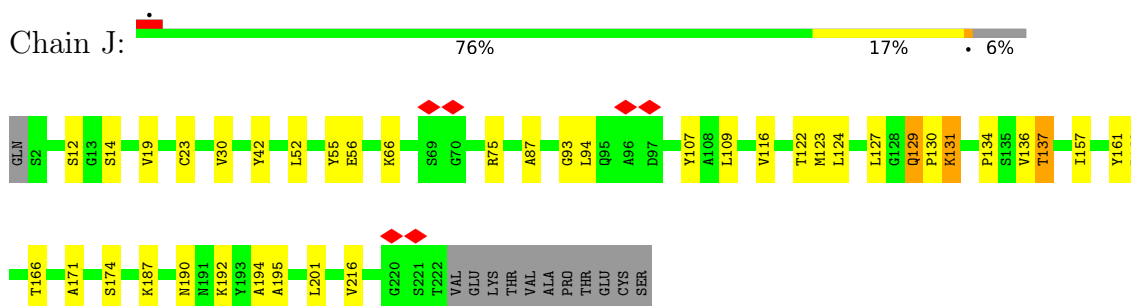
Mol	Chain	Residues	Atoms					AltConf	Trace
2	J	203	Total	C	N	O	S	0	0
			1502	938	251	306	7		
2	K	203	Total	C	N	O	S	0	0
			1502	938	251	306	7		
2	L	203	Total	C	N	O	S	0	0
			1502	938	251	306	7		

- Molecule 3 is a protein called CYFN1006-2 heavy chain.

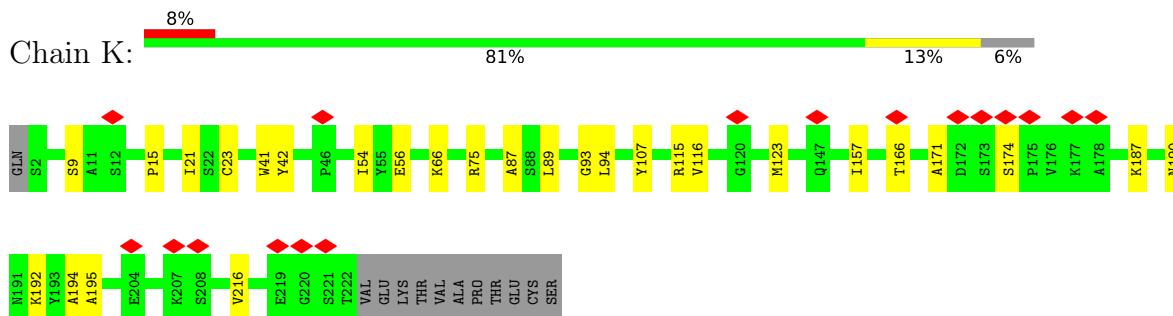
Mol	Chain	Residues	Atoms					AltConf	Trace
3	G	218	Total	C	N	O	S	0	0
			1646	1050	268	320	8		
3	H	218	Total	C	N	O	S	0	0
			1646	1050	268	320	8		
3	I	218	Total	C	N	O	S	0	0
			1646	1050	268	320	8		



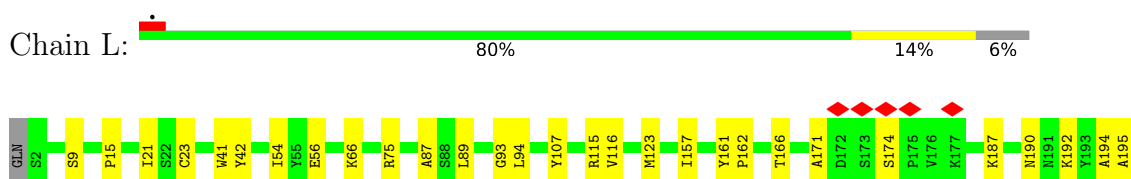
- Molecule 2: CYFN1006-2 light chain

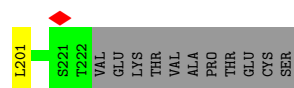


- Molecule 2: CYFN1006-2 light chain

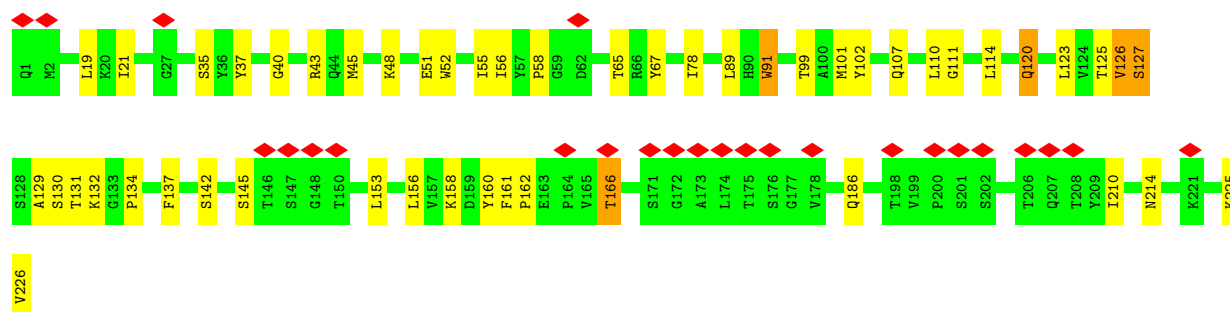
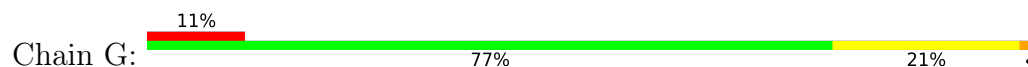


- Molecule 2: CYFN1006-2 light chain

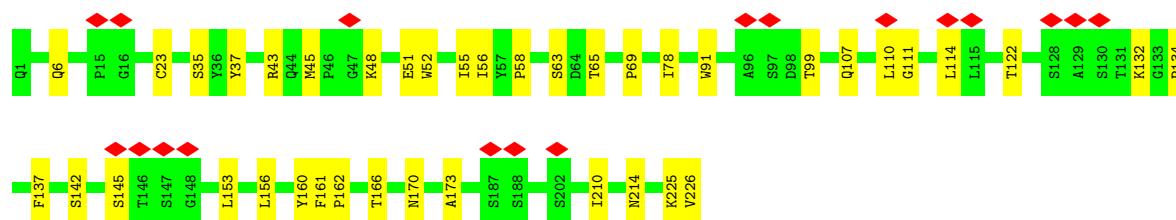
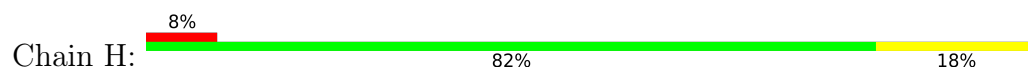




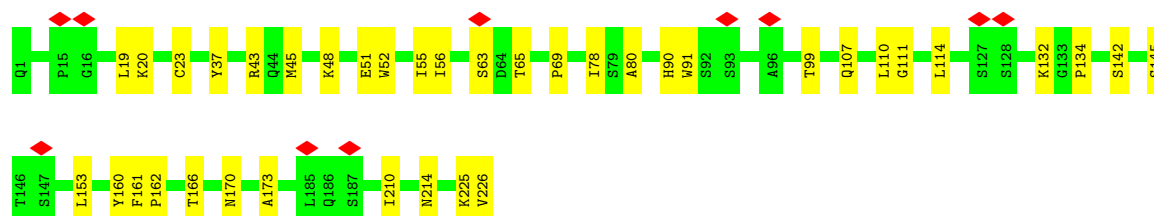
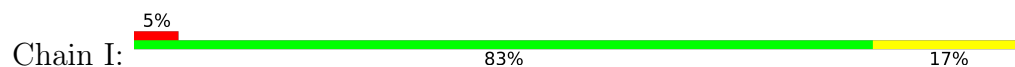
- Molecule 3: CYFN1006-2 heavy chain



- Molecule 3: CYFN1006-2 heavy chain



- Molecule 3: CYFN1006-2 heavy chain



4 Experimental information

Property	Value	Source
EM reconstruction method	SINGLE PARTICLE	Depositor
Imposed symmetry	POINT, Not provided	
Number of particles used	244940	Depositor
Resolution determination method	FSC 0.143 CUT-OFF	Depositor
CTF correction method	PHASE FLIPPING AND AMPLITUDE CORRECTION	Depositor
Microscope	FEI TITAN KRIOS	Depositor
Voltage (kV)	300	Depositor
Electron dose ($e^-/\text{\AA}^2$)	50	Depositor
Minimum defocus (nm)	1200	Depositor
Maximum defocus (nm)	2200	Depositor
Magnification	Not provided	
Image detector	FEI FALCON IV (4k x 4k)	Depositor
Maximum map value	2.290	Depositor
Minimum map value	-0.728	Depositor
Average map value	0.000	Depositor
Map value standard deviation	0.042	Depositor
Recommended contour level	0.2	Depositor
Map size (Å)	571.2, 571.2, 571.2	wwPDB
Map dimensions	480, 480, 480	wwPDB
Map angles (°)	90.0, 90.0, 90.0	wwPDB
Pixel spacing (Å)	1.19, 1.19, 1.19	Depositor

5 Model quality [i](#)

5.1 Standard geometry [i](#)

The Z score for a bond length (or angle) is the number of standard deviations the observed value is removed from the expected value. A bond length (or angle) with $|Z| > 5$ is considered an outlier worth inspection. RMSZ is the root-mean-square of all Z scores of the bond lengths (or angles).

Mol	Chain	Bond lengths		Bond angles	
		RMSZ	# Z >5	RMSZ	# Z >5
1	A	0.24	0/8707	0.42	0/11856
1	B	0.26	0/8707	0.43	0/11856
1	C	0.25	0/8707	0.43	0/11856
2	J	0.26	0/1540	0.49	0/2101
2	K	0.24	0/1540	0.43	0/2101
2	L	0.25	0/1540	0.43	0/2101
3	G	0.25	0/1691	0.47	0/2302
3	H	0.24	0/1691	0.44	0/2302
3	I	0.24	0/1691	0.44	0/2302
All	All	0.25	0/35814	0.43	0/48777

There are no bond length outliers.

There are no bond angle outliers.

There are no chirality outliers.

There are no planarity outliers.

5.2 Too-close contacts [i](#)

In the following table, the Non-H and H(model) columns list the number of non-hydrogen atoms and hydrogen atoms in the chain respectively. The H(added) column lists the number of hydrogen atoms added and optimized by MolProbity. The Clashes column lists the number of clashes within the asymmetric unit, whereas Symm-Clashes lists symmetry-related clashes.

Mol	Chain	Non-H	H(model)	H(added)	Clashes	Symm-Clashes
1	A	8502	0	8290	97	0
1	B	8502	0	8290	86	0
1	C	8502	0	8290	110	0
2	J	1502	0	1445	21	0
2	K	1502	0	1445	15	0
2	L	1502	0	1445	15	0
3	G	1646	0	1615	30	0

Continued on next page...

Continued from previous page...

Mol	Chain	Non-H	H(model)	H(added)	Clashes	Symm-Clashes
3	H	1646	0	1615	21	0
3	I	1646	0	1615	20	0
All	All	34950	0	34050	392	0

The all-atom clashscore is defined as the number of clashes found per 1000 atoms (including hydrogen atoms). The all-atom clashscore for this structure is 6.

All (392) close contacts within the same asymmetric unit are listed below, sorted by their clash magnitude.

Atom-1	Atom-2	Interatomic distance (Å)	Clash overlap (Å)
3:G:126:VAL:CG2	3:G:127:SER:H	1.58	1.09
3:G:126:VAL:HG23	3:G:127:SER:N	1.58	1.06
3:G:126:VAL:HG23	3:G:127:SER:H	0.73	0.90
1:B:478:LYS:HE3	1:B:487:ASN:HD21	1.54	0.72
1:C:336:CYS:HB2	1:C:362:VAL:H	1.54	0.72
1:A:564:GLN:HG3	1:A:577:ARG:HB3	1.71	0.71
1:A:478:LYS:HE3	1:A:487:ASN:HD21	1.54	0.70
3:I:37:TYR:HA	3:I:107:GLN:HE21	1.57	0.69
1:B:564:GLN:HG3	1:B:577:ARG:HB3	1.73	0.69
1:A:544:ASN:ND2	1:A:564:GLN:OE1	2.26	0.68
1:C:478:LYS:HE3	1:C:487:ASN:HD21	1.58	0.67
3:G:131:THR:HA	3:G:161:PHE:HB3	1.77	0.67
2:J:131:LYS:HA	2:J:161:TYR:HB3	1.76	0.67
3:G:37:TYR:HA	3:G:107:GLN:HE21	1.60	0.66
1:A:345:THR:O	1:A:509:ARG:NH1	2.27	0.66
1:A:328:ARG:HG3	1:A:542:ASN:HB3	1.77	0.65
1:C:132:CYS:SG	1:C:166:CYS:N	2.69	0.65
3:H:56:ILE:HG22	3:H:65:THR:HG22	1.79	0.65
1:B:345:THR:O	1:B:509:ARG:NH1	2.28	0.64
3:H:37:TYR:HA	3:H:107:GLN:HE21	1.62	0.64
1:A:132:CYS:SG	1:A:166:CYS:N	2.71	0.63
1:B:132:CYS:SG	1:B:166:CYS:N	2.70	0.63
3:I:56:ILE:HG22	3:I:65:THR:HG22	1.79	0.63
1:C:345:THR:O	1:C:509:ARG:NH1	2.32	0.63
1:B:107:PHE:HB2	1:B:118:LEU:HB3	1.81	0.62
1:A:1047:TYR:HB2	1:A:1067:TYR:HB3	1.82	0.62
3:G:56:ILE:HG22	3:G:65:THR:HG22	1.79	0.62
1:B:312:ILE:HD12	1:B:313:TYR:H	1.64	0.62
1:A:107:PHE:HB2	1:A:118:LEU:HB3	1.81	0.62
1:C:350:VAL:HG11	1:C:418:ILE:HD12	1.82	0.62
1:B:544:ASN:ND2	1:B:564:GLN:OE1	2.32	0.62

Continued on next page...

Continued from previous page...

Atom-1	Atom-2	Interatomic distance (Å)	Clash overlap (Å)
1:A:312:ILE:HD12	1:A:313:TYR:H	1.64	0.62
2:J:190:ASN:OD1	2:J:192:LYS:NZ	2.33	0.62
1:C:312:ILE:HD12	1:C:313:TYR:H	1.65	0.61
1:C:544:ASN:ND2	1:C:564:GLN:OE1	2.34	0.61
1:B:329:PHE:O	1:B:579:PRO:HG2	2.00	0.61
2:K:190:ASN:OD1	2:K:192:LYS:NZ	2.31	0.61
1:C:107:PHE:HB2	1:C:118:LEU:HB3	1.81	0.61
1:B:1047:TYR:HB2	1:B:1067:TYR:HB3	1.83	0.61
1:B:131:VAL:HB	1:B:168:PHE:HB3	1.83	0.60
2:L:190:ASN:OD1	2:L:192:LYS:NZ	2.32	0.60
1:C:725:GLU:OE2	1:C:1028:LYS:NZ	2.34	0.60
1:A:742:ILE:O	1:A:1000:ARG:NH2	2.34	0.60
2:K:23:CYS:HB3	2:K:87:ALA:HB3	1.82	0.60
1:B:350:VAL:HG11	1:B:418:ILE:HD12	1.82	0.59
1:A:350:VAL:HG11	1:A:418:ILE:HD12	1.84	0.59
1:A:94:ALA:HB1	1:A:189:LEU:HD11	1.84	0.59
1:C:339:HIS:O	1:C:343:ASN:N	2.33	0.59
3:H:142:SER:HG	3:H:145:SER:HG	1.51	0.59
2:L:157:ILE:HB	2:L:195:ALA:HB3	1.85	0.59
1:C:1047:TYR:HB2	1:C:1067:TYR:HB3	1.84	0.59
1:B:94:ALA:HB1	1:B:189:LEU:HD11	1.85	0.58
2:J:187:LYS:HG2	2:J:194:ALA:HB2	1.86	0.58
1:C:742:ILE:O	1:C:1000:ARG:NH2	2.37	0.58
1:A:624:ILE:HB	1:A:628:GLN:HB2	1.86	0.58
1:A:726:ILE:HG12	1:A:1061:VAL:HG22	1.85	0.58
1:B:742:ILE:O	1:B:1000:ARG:NH2	2.37	0.57
1:A:361:CYS:H	1:A:524:VAL:HG12	1.69	0.57
1:A:524:VAL:HG23	1:A:525:CYS:H	1.69	0.57
2:L:23:CYS:HB3	2:L:87:ALA:HB3	1.85	0.57
1:C:122:ASN:ND2	1:C:180:GLU:O	2.37	0.57
1:B:28:SER:HB2	1:B:65:TRP:HB3	1.84	0.57
1:B:624:ILE:HB	1:B:628:GLN:HB2	1.86	0.57
1:B:452:LEU:HD13	1:B:492:LEU:HB3	1.86	0.57
2:J:157:ILE:HB	2:J:195:ALA:HB3	1.86	0.57
1:A:401:VAL:HG22	1:A:509:ARG:HG2	1.87	0.57
2:K:21:ILE:HD12	2:K:89:LEU:HD23	1.86	0.57
2:K:75:ARG:NH1	2:K:93:GLY:O	2.38	0.57
1:C:641:ASN:HB3	1:C:652:GLY:H	1.70	0.57
1:C:68:ALA:HA	1:C:78:LYS:HA	1.87	0.57
1:B:122:ASN:ND2	1:B:180:GLU:O	2.38	0.57
1:B:852:ALA:O	1:B:856:ASN:ND2	2.38	0.57

Continued on next page...

Continued from previous page...

Atom-1	Atom-2	Interatomic distance (Å)	Clash overlap (Å)
3:G:153:LEU:HD23	3:G:226:VAL:HG13	1.86	0.56
1:C:28:SER:HB2	1:C:65:TRP:HB3	1.86	0.56
1:C:361:CYS:SG	1:C:362:VAL:N	2.79	0.56
1:A:330:PRO:HD2	1:A:530:SER:HA	1.87	0.56
2:K:157:ILE:HB	2:K:195:ALA:HB3	1.86	0.56
1:C:452:LEU:HD13	1:C:492:LEU:HB3	1.85	0.56
2:J:75:ARG:NH1	2:J:93:GLY:O	2.38	0.56
3:G:126:VAL:CG2	3:G:127:SER:N	2.33	0.56
1:B:725:GLU:OE2	1:B:1028:LYS:NZ	2.35	0.56
1:A:295:PRO:HG3	1:A:634:ARG:HD2	1.87	0.56
1:C:94:ALA:HB1	1:C:189:LEU:HD11	1.88	0.56
1:B:381:GLY:HA3	1:B:430:THR:HG23	1.87	0.55
3:G:45:MET:HB2	3:G:48:LYS:HB2	1.86	0.55
3:H:153:LEU:HD23	3:H:226:VAL:HG13	1.88	0.55
2:L:75:ARG:NH1	2:L:93:GLY:O	2.39	0.55
3:I:153:LEU:HD23	3:I:226:VAL:HG13	1.88	0.55
1:A:452:LEU:HD13	1:A:492:LEU:HB3	1.88	0.55
1:A:321:GLN:HE21	1:A:591:SER:H	1.54	0.55
1:B:206:LYS:HB2	1:B:223:LEU:HA	1.89	0.55
1:B:68:ALA:HA	1:B:78:LYS:HA	1.88	0.54
1:A:28:SER:HB2	1:A:65:TRP:HB3	1.88	0.54
1:A:852:ALA:O	1:A:856:ASN:ND2	2.39	0.54
3:H:45:MET:HB2	3:H:48:LYS:HB2	1.90	0.54
3:H:63:SER:HB2	1:C:500:THR:HG21	1.89	0.54
1:C:624:ILE:HB	1:C:628:GLN:HB2	1.88	0.54
3:H:56:ILE:HD13	3:H:78:ILE:HG22	1.89	0.54
1:C:292:ALA:HB1	1:C:633:TRP:HB2	1.89	0.54
1:A:725:GLU:OE2	1:A:1028:LYS:NZ	2.36	0.54
3:I:142:SER:HG	3:I:145:SER:HG	1.53	0.54
3:H:35:SER:HA	3:H:58:PRO:HB2	1.90	0.54
1:A:756:TYR:OH	1:A:994:ASP:OD1	2.25	0.54
1:A:122:ASN:ND2	1:A:180:GLU:O	2.41	0.53
1:B:642:VAL:HG12	1:B:651:ILE:HG12	1.90	0.53
1:A:641:ASN:HB3	1:A:652:GLY:H	1.73	0.53
1:B:295:PRO:HG3	1:B:634:ARG:HD2	1.89	0.53
3:G:111:GLY:HA3	3:G:114:LEU:HD22	1.91	0.53
3:I:52:TRP:HE1	3:I:55:ILE:HG23	1.73	0.53
2:L:187:LYS:HG2	2:L:194:ALA:HB2	1.91	0.53
1:C:358:ILE:HB	1:C:395:VAL:HG13	1.91	0.53
1:A:763:LEU:HD22	1:A:1008:VAL:HG21	1.89	0.53
2:L:56:GLU:O	2:L:66:LYS:N	2.35	0.53

Continued on next page...

Continued from previous page...

Atom-1	Atom-2	Interatomic distance (Å)	Clash overlap (Å)
3:I:45:MET:HB2	3:I:48:LYS:HB2	1.91	0.53
1:C:852:ALA:O	1:C:856:ASN:ND2	2.41	0.53
1:B:1074:ASN:OD1	1:C:895:GLN:NE2	2.42	0.52
1:A:206:LYS:HB2	1:A:223:LEU:HA	1.89	0.52
2:J:23:CYS:HB3	2:J:87:ALA:HB3	1.90	0.52
1:C:131:VAL:HB	1:C:168:PHE:HB3	1.92	0.52
1:B:726:ILE:HG12	1:B:1061:VAL:HG22	1.92	0.52
1:A:294:ASP:OD1	1:A:294:ASP:N	2.43	0.52
2:J:129:GLN:HG2	2:J:130:PRO:HD2	1.92	0.52
1:B:722:VAL:HG22	1:B:1065:VAL:HG22	1.91	0.52
3:G:210:ILE:HA	3:G:225:LYS:HA	1.92	0.52
1:B:424:LYS:NZ	1:B:425:LEU:O	2.41	0.51
1:A:361:CYS:N	1:A:524:VAL:HG12	2.25	0.51
1:B:853:GLN:HB2	1:B:858:LEU:HB2	1.93	0.51
1:A:68:ALA:HA	1:A:78:LYS:HA	1.91	0.51
1:B:895:GLN:NE2	1:A:1074:ASN:OD1	2.43	0.51
2:J:12:SER:OG	2:J:127:LEU:HA	2.11	0.51
3:I:210:ILE:HA	3:I:225:LYS:HA	1.92	0.51
1:C:726:ILE:HG12	1:C:1061:VAL:HG22	1.93	0.51
1:B:321:GLN:HE21	1:B:591:SER:H	1.58	0.51
1:C:295:PRO:HG3	1:C:634:ARG:HD2	1.90	0.51
1:B:294:ASP:N	1:B:294:ASP:OD1	2.44	0.51
1:A:358:ILE:HB	1:A:395:VAL:HG13	1.93	0.51
1:A:424:LYS:NZ	1:A:425:LEU:O	2.38	0.51
1:A:983:ARG:HA	1:C:390:LEU:HD11	1.92	0.51
3:G:56:ILE:HD13	3:G:78:ILE:HG22	1.92	0.51
2:L:107:TYR:HB3	2:L:116:VAL:HG12	1.93	0.51
1:C:206:LYS:HB2	1:C:223:LEU:HA	1.92	0.50
3:G:101:MET:CE	3:G:123:LEU:HB2	2.40	0.50
1:B:641:ASN:HB3	1:B:652:GLY:H	1.76	0.50
2:J:14:SER:HB3	2:J:127:LEU:HD12	1.93	0.50
1:C:634:ARG:O	1:C:634:ARG:NE	2.41	0.50
1:A:722:VAL:HG22	1:A:1065:VAL:HG22	1.93	0.50
3:I:56:ILE:HD12	3:I:80:ALA:HB2	1.93	0.50
1:C:722:VAL:HG22	1:C:1065:VAL:HG22	1.92	0.50
3:I:56:ILE:HD13	3:I:78:ILE:HG22	1.93	0.50
1:A:895:GLN:NE2	1:C:1074:ASN:OD1	2.45	0.50
1:C:294:ASP:OD1	1:C:294:ASP:N	2.44	0.50
1:B:971:GLY:O	1:B:995:ARG:NH2	2.43	0.50
1:B:983:ARG:HA	1:A:390:LEU:HD11	1.92	0.50
1:A:131:VAL:HB	1:A:168:PHE:HB3	1.94	0.50

Continued on next page...

Continued from previous page...

Atom-1	Atom-2	Interatomic distance (Å)	Clash overlap (Å)
1:A:373:PRO:HB3	1:C:504:GLY:HA3	1.94	0.50
1:A:109:THR:OG1	1:A:234:ASN:O	2.28	0.49
1:A:642:VAL:HG12	1:A:651:ILE:HG12	1.94	0.49
3:H:134:PRO:HB3	3:H:160:TYR:HB3	1.94	0.49
1:A:501:TYR:HE1	3:I:63:SER:HB2	1.78	0.49
1:B:401:VAL:HG22	1:B:509:ARG:HG2	1.95	0.49
1:A:381:GLY:HA3	1:A:430:THR:HG23	1.94	0.49
1:A:983:ARG:HB3	1:C:382:VAL:HG12	1.95	0.49
1:B:715:PRO:HA	1:B:1072:GLU:HA	1.93	0.49
2:K:187:LYS:HG2	2:K:194:ALA:HB2	1.95	0.49
1:A:385:THR:OG1	1:C:415:THR:OG1	2.28	0.49
3:H:210:ILE:HA	3:H:225:LYS:HA	1.95	0.49
1:A:361:CYS:SG	1:A:362:VAL:N	2.86	0.49
2:J:42:TYR:OH	3:G:114:LEU:O	2.30	0.48
2:L:9:SER:HA	2:L:123:MET:H	1.78	0.48
3:I:166:THR:HG23	3:I:214:ASN:HB2	1.94	0.48
1:C:715:PRO:HA	1:C:1072:GLU:HA	1.95	0.48
3:G:134:PRO:HB3	3:G:160:TYR:HB3	1.95	0.48
1:C:344:ALA:O	1:C:509:ARG:NH2	2.46	0.48
1:C:92:TYR:N	1:C:268:GLY:O	2.42	0.48
1:A:715:PRO:HA	1:A:1072:GLU:HA	1.94	0.48
2:L:171:ALA:O	2:L:174:SER:OG	2.25	0.48
1:B:718:PHE:HA	1:B:1069:PRO:HA	1.96	0.48
2:J:134:PRO:HB2	2:J:216:VAL:HG11	1.95	0.48
3:I:134:PRO:HB3	3:I:160:TYR:HB3	1.96	0.48
2:J:52:LEU:HD11	2:J:55:TYR:HB3	1.96	0.48
3:G:166:THR:HG23	3:G:214:ASN:HB2	1.96	0.48
2:K:171:ALA:O	2:K:174:SER:OG	2.25	0.48
1:C:853:GLN:HB2	1:C:858:LEU:HB2	1.96	0.48
1:B:756:TYR:OH	1:B:994:ASP:OD1	2.29	0.48
1:A:734:THR:HG22	1:A:860:VAL:HG22	1.96	0.48
2:K:41:TRP:HB2	2:K:54:ILE:HB	1.96	0.47
1:C:564:GLN:HG3	1:C:577:ARG:HB3	1.94	0.47
1:A:634:ARG:O	1:A:634:ARG:NE	2.42	0.47
1:B:344:ALA:HB3	1:B:347:PHE:HE1	1.80	0.47
1:C:424:LYS:NZ	1:C:425:LEU:O	2.45	0.47
1:A:35:ARG:HD2	1:A:216:LEU:HD13	1.96	0.47
3:G:142:SER:HG	3:G:145:SER:HG	1.54	0.47
1:B:811:LYS:NZ	1:B:820:ASP:OD2	2.40	0.47
2:L:21:ILE:HD12	2:L:89:LEU:HD23	1.96	0.47
1:B:35:ARG:NH2	1:B:191:GLU:OE2	2.48	0.47

Continued on next page...

Continued from previous page...

Atom-1	Atom-2	Interatomic distance (Å)	Clash overlap (Å)
1:B:292:ALA:HB1	1:B:633:TRP:HB2	1.97	0.47
1:A:246:ARG:HG3	1:A:260:ALA:HB3	1.96	0.47
1:A:287:ASP:OD1	1:A:288:ALA:N	2.47	0.47
2:J:107:TYR:HB3	2:J:116:VAL:HG12	1.96	0.47
2:K:15:PRO:HA	2:K:94:LEU:HB2	1.96	0.47
1:C:361:CYS:H	1:C:524:VAL:HG22	1.79	0.47
2:K:9:SER:HA	2:K:123:MET:H	1.80	0.47
2:L:115:ARG:HH21	3:I:69:PRO:HD3	1.79	0.47
1:B:358:ILE:HB	1:B:395:VAL:HG13	1.97	0.47
1:B:476:GLY:HA3	1:B:487:ASN:HB2	1.96	0.47
1:A:501:TYR:HB3	1:A:505:HIS:HB2	1.95	0.47
1:A:909:ILE:HD13	1:A:1049:LEU:HD21	1.97	0.47
3:H:166:THR:HG23	3:H:214:ASN:HB2	1.97	0.47
1:C:756:TYR:OH	1:C:994:ASP:OD1	2.31	0.47
1:B:109:THR:OG1	1:B:234:ASN:O	2.29	0.46
1:A:802:PHE:HD1	1:A:805:ILE:HD11	1.78	0.46
1:B:287:ASP:OD1	1:B:288:ALA:N	2.47	0.46
1:A:457:ARG:NH1	1:A:467:ASP:OD2	2.43	0.46
1:C:109:THR:OG1	1:C:234:ASN:O	2.31	0.46
1:C:642:VAL:HG12	1:C:651:ILE:HG12	1.97	0.46
1:C:770:ILE:HD11	1:C:1012:LEU:HD23	1.98	0.46
1:C:795:LYS:HG2	1:C:796:TYR:H	1.81	0.46
1:A:529:LYS:HB2	1:A:529:LYS:HE2	1.43	0.46
1:A:901:GLN:O	1:A:905:ARG:HG2	2.15	0.46
3:G:43:ARG:O	3:G:51:GLU:N	2.44	0.46
3:H:6:GLN:NE2	3:H:122:THR:OG1	2.48	0.46
1:A:795:LYS:HG2	1:A:796:TYR:H	1.81	0.46
1:B:596:SER:OG	1:B:613:GLN:NE2	2.48	0.46
1:A:476:GLY:HA3	1:A:487:ASN:HB2	1.96	0.46
1:C:521:PRO:HG3	1:C:564:GLN:HB2	1.98	0.46
1:A:195:LYS:HD2	1:A:202:LYS:HD2	1.97	0.46
1:A:708:SER:HB3	1:A:711:SER:HB3	1.97	0.46
1:A:962:LEU:HD11	1:A:1004:LEU:HD23	1.98	0.46
3:H:52:TRP:HE1	3:H:55:ILE:HG23	1.81	0.46
1:C:287:ASP:OD1	1:C:288:ALA:N	2.47	0.46
1:C:708:SER:HB3	1:C:711:SER:HB3	1.98	0.46
1:A:903:ALA:HB2	1:A:916:LEU:HD22	1.97	0.46
2:K:115:ARG:HH21	3:H:69:PRO:HD3	1.81	0.46
3:I:111:GLY:HA3	3:I:114:LEU:HD22	1.97	0.46
1:C:971:GLY:O	1:C:995:ARG:NH2	2.45	0.46
1:B:312:ILE:H	1:B:312:ILE:HG13	1.43	0.46

Continued on next page...

Continued from previous page...

Atom-1	Atom-2	Interatomic distance (Å)	Clash overlap (Å)
1:B:708:SER:HB3	1:B:711:SER:HB3	1.98	0.46
1:B:707:TYR:HB3	1:C:792:PRO:HG3	1.98	0.46
3:I:19:LEU:O	3:I:91:TRP:N	2.42	0.46
1:B:92:TYR:N	1:B:268:GLY:O	2.42	0.45
1:A:379:CYS:HA	1:A:432:CYS:HA	1.99	0.45
3:H:43:ARG:O	3:H:51:GLU:N	2.44	0.45
1:B:35:ARG:HD2	1:B:216:LEU:HD13	1.97	0.45
1:C:811:LYS:NZ	1:C:820:ASP:OD2	2.39	0.45
2:J:56:GLU:O	2:J:66:LYS:N	2.37	0.45
1:C:882:ILE:HG13	1:C:883:THR:HG23	1.98	0.45
3:H:170:ASN:HB2	3:H:173:ALA:HB3	1.97	0.45
1:C:319:ARG:N	1:C:593:GLY:O	2.44	0.45
1:B:38:TYR:OH	1:B:55:LEU:O	2.29	0.45
2:L:41:TRP:HB2	2:L:54:ILE:HB	1.98	0.45
1:C:401:VAL:HG22	1:C:509:ARG:HG2	1.99	0.45
1:C:476:GLY:HA3	1:C:487:ASN:HB2	1.98	0.45
3:I:20:LYS:HB2	3:I:90:HIS:HD2	1.81	0.45
1:C:948:LEU:HD21	1:C:1059:GLY:HA3	1.99	0.45
1:B:246:ARG:HG3	1:B:260:ALA:HB3	1.98	0.45
1:A:351:TYR:HD2	1:A:468:ILE:HA	1.82	0.45
2:J:171:ALA:O	2:J:174:SER:OG	2.24	0.45
1:C:337:PRO:HD2	1:C:361:CYS:HB2	1.99	0.45
1:C:474:GLN:HA	1:C:488:CYS:HB3	1.99	0.45
1:B:795:LYS:HG2	1:B:796:TYR:H	1.81	0.44
1:A:344:ALA:HB3	1:A:347:PHE:HE1	1.81	0.44
2:K:56:GLU:O	2:K:66:LYS:N	2.33	0.44
2:K:107:TYR:HB3	2:K:116:VAL:HG12	1.98	0.44
1:C:246:ARG:HG3	1:C:260:ALA:HB3	1.97	0.44
1:C:351:TYR:HD2	1:C:468:ILE:HA	1.82	0.44
1:B:624:ILE:HG21	1:B:629:LEU:HD22	1.98	0.44
1:B:948:LEU:HD21	1:B:1059:GLY:HA3	1.99	0.44
3:H:37:TYR:HD1	3:H:107:GLN:HG3	1.83	0.44
2:L:42:TYR:OH	3:I:114:LEU:O	2.33	0.44
1:C:985:ASP:OD1	1:C:985:ASP:N	2.48	0.44
1:A:457:ARG:NH2	1:A:459:SER:O	2.42	0.44
1:B:882:ILE:HG13	1:B:883:THR:HG23	1.99	0.44
3:G:52:TRP:HE1	3:G:55:ILE:HG23	1.83	0.44
2:J:134:PRO:CB	2:J:216:VAL:HG11	2.48	0.44
1:C:734:THR:HG22	1:C:860:VAL:HG22	2.00	0.44
1:C:334:ASN:HB2	1:C:335:LEU:H	1.49	0.44
1:C:822:LEU:HD21	1:C:938:LEU:HD13	2.00	0.44

Continued on next page...

Continued from previous page...

Atom-1	Atom-2	Interatomic distance (Å)	Clash overlap (Å)
1:A:411:ALA:HB3	1:A:414:GLN:HG3	1.99	0.44
3:G:21:ILE:HD11	3:G:89:LEU:HD23	1.98	0.44
1:C:369:TYR:OH	1:C:384:PRO:O	2.35	0.44
1:C:1028:LYS:HE3	1:C:1028:LYS:HB2	1.86	0.44
1:A:116:GLN:HE21	1:C:468:ILE:HD11	1.82	0.44
1:A:135:GLN:HB3	1:A:161:SER:HB2	2.00	0.44
1:A:193:VAL:HG23	1:A:223:LEU:HD22	1.98	0.44
1:B:96:THR:OG1	1:B:214:ARG:NH1	2.51	0.43
1:C:620:VAL:HG13	1:C:623:ALA:HB3	2.00	0.43
1:C:746:SER:HB3	1:C:749:CYS:HB3	2.00	0.43
1:B:351:TYR:HD2	1:B:468:ILE:HA	1.83	0.43
1:B:422:ASN:ND2	1:B:453:TYR:O	2.49	0.43
1:B:802:PHE:HD1	1:B:805:ILE:HD11	1.83	0.43
1:C:326:ILE:HG22	1:C:540:ASN:HB2	2.01	0.43
1:A:106:ILE:HD11	1:A:239:GLN:HB3	1.99	0.43
3:G:35:SER:HA	3:G:58:PRO:HB2	2.00	0.43
1:C:106:ILE:HD11	1:C:239:GLN:HB3	1.99	0.43
1:C:985:ASP:HB2	1:C:987:PRO:HD2	2.00	0.43
1:B:193:VAL:HG23	1:B:223:LEU:HD22	2.00	0.43
1:A:985:ASP:OD1	1:C:383:SER:OG	2.35	0.43
1:C:422:ASN:ND2	1:C:453:TYR:O	2.46	0.43
1:A:770:ILE:O	1:A:774:GLN:HG2	2.19	0.43
3:I:170:ASN:HB2	3:I:173:ALA:HB3	2.01	0.43
1:C:472:ILE:HG22	1:C:488:CYS:HB2	1.99	0.43
1:C:718:PHE:HA	1:C:1069:PRO:HA	2.00	0.43
1:B:516:GLU:HG3	1:B:518:LEU:HG	1.98	0.43
2:K:42:TYR:OH	3:H:114:LEU:O	2.36	0.43
1:C:314:GLN:OE1	1:C:315:THR:N	2.50	0.43
1:A:532:ASN:OD1	1:A:533:LEU:N	2.52	0.43
1:A:1035:GLY:HA3	1:C:1040:VAL:HG21	2.01	0.43
1:C:596:SER:OG	1:C:613:GLN:NE2	2.52	0.42
2:K:157:ILE:HD13	2:K:216:VAL:HG13	2.01	0.42
3:H:161:PHE:HB3	3:H:162:PRO:HD3	2.01	0.42
1:C:457:ARG:NH2	1:C:459:SER:O	2.41	0.42
1:C:529:LYS:HD3	1:C:529:LYS:HA	1.62	0.42
1:C:906:PHE:HB3	1:C:911:VAL:HB	2.01	0.42
1:C:135:GLN:HB3	1:C:161:SER:HB2	2.00	0.42
1:B:411:ALA:HB3	1:B:414:GLN:HG3	2.01	0.42
1:B:532:ASN:OD1	1:B:533:LEU:N	2.52	0.42
1:A:92:TYR:N	1:A:268:GLY:O	2.43	0.42
1:A:821:LEU:O	1:A:825:LYS:HG2	2.19	0.42

Continued on next page...

Continued from previous page...

Atom-1	Atom-2	Interatomic distance (Å)	Clash overlap (Å)
3:G:67:TYR:HE1	3:G:78:ILE:HG13	1.85	0.42
3:I:161:PHE:HB3	3:I:162:PRO:HD3	2.00	0.42
1:B:314:GLN:OE1	1:B:315:THR:N	2.51	0.42
1:B:821:LEU:O	1:B:825:LYS:HG2	2.19	0.42
1:A:718:PHE:HA	1:A:1069:PRO:HA	2.02	0.42
1:C:411:ALA:HB3	1:C:414:GLN:HG3	2.01	0.42
1:B:906:PHE:HB3	1:B:911:VAL:HB	2.01	0.42
1:C:110:THR:OG1	1:C:112:ASP:OD1	2.26	0.42
1:C:127:VAL:HG12	1:C:173:GLN:H	1.84	0.42
1:A:850:ILE:HG22	1:A:854:LYS:HE2	2.01	0.42
2:L:15:PRO:HA	2:L:94:LEU:HB2	2.02	0.42
1:B:734:THR:HG22	1:B:860:VAL:HG22	2.02	0.42
1:A:292:ALA:HB1	1:A:633:TRP:HB2	2.01	0.42
3:G:19:LEU:O	3:G:91:TRP:N	2.45	0.42
3:G:137:PHE:O	3:G:156:LEU:N	2.42	0.42
1:C:798:GLY:HA3	1:C:899:PRO:HG3	2.02	0.42
1:B:106:ILE:HD11	1:B:239:GLN:HB3	2.01	0.41
1:A:311:GLY:N	1:A:599:THR:O	2.50	0.41
2:J:109:LEU:HD22	1:C:340:GLU:HA	2.02	0.41
1:A:622:VAL:HG13	1:A:623:ALA:H	1.85	0.41
2:J:161:TYR:HB3	2:J:162:PRO:HD3	2.02	0.41
1:B:629:LEU:HG	1:B:631:PRO:HD2	2.02	0.41
1:A:743:CYS:SG	1:A:750:SER:N	2.93	0.41
1:A:773:GLU:OE2	1:A:1019:ARG:HD3	2.20	0.41
3:I:43:ARG:O	3:I:51:GLU:N	2.45	0.41
1:C:1142:GLN:HB2	1:C:1143:PRO:HD3	2.03	0.41
1:B:746:SER:HB3	1:B:749:CYS:HB3	2.02	0.41
1:B:822:LEU:HD21	1:B:938:LEU:HD13	2.01	0.41
2:J:19:VAL:HG13	2:J:94:LEU:HD11	2.03	0.41
1:C:322:PRO:HD3	1:C:629:LEU:HB3	2.02	0.41
1:B:379:CYS:HA	1:B:432:CYS:HA	2.03	0.41
1:B:620:VAL:HG13	1:B:623:ALA:HB3	2.01	0.41
1:A:319:ARG:N	1:A:593:GLY:O	2.43	0.41
3:G:161:PHE:HB3	3:G:162:PRO:HD3	2.01	0.41
1:C:374:PHE:HD1	1:C:436:TRP:HB3	1.85	0.41
1:C:622:VAL:HG13	1:C:623:ALA:H	1.85	0.41
1:C:821:LEU:O	1:C:825:LYS:HG2	2.20	0.41
1:B:622:VAL:HG13	1:B:623:ALA:H	1.85	0.41
3:H:137:PHE:O	3:H:156:LEU:N	2.40	0.41
1:C:123:ASN:OD1	1:C:124:ALA:N	2.45	0.41
1:C:180:GLU:HG2	1:C:226:LEU:HD21	2.03	0.41

Continued on next page...

Continued from previous page...

Atom-1	Atom-2	Interatomic distance (Å)	Clash overlap (Å)
1:B:135:GLN:HB3	1:B:161:SER:HB2	2.01	0.41
1:A:158:ARG:HH21	1:A:252:VAL:HG22	1.85	0.41
1:B:472:ILE:HG22	1:B:488:CYS:HB2	2.02	0.41
3:G:158:LYS:NZ	3:G:186:GLN:OE1	2.53	0.41
1:B:611:LEU:HD22	1:B:666:ILE:HG23	2.02	0.41
1:A:418:ILE:HA	1:A:422:ASN:HD22	1.85	0.41
1:A:971:GLY:O	1:A:995:ARG:NH2	2.53	0.41
2:J:131:LYS:H	2:J:131:LYS:HG2	1.55	0.41
3:G:43:ARG:HE	3:G:102:TYR:HE1	1.68	0.41
3:G:120:GLN:H	3:G:120:GLN:HG3	1.73	0.41
1:C:158:ARG:HH21	1:C:252:VAL:HG22	1.86	0.41
1:C:351:TYR:CE1	1:C:452:LEU:HB2	2.56	0.41
1:B:474:GLN:HA	1:B:488:CYS:HB3	2.02	0.41
1:A:792:PRO:HG3	1:C:707:TYR:HB3	2.03	0.41
1:A:822:LEU:HD22	1:A:945:LEU:HD21	2.02	0.41
1:C:35:ARG:NH2	1:C:191:GLU:OE2	2.54	0.41
1:A:312:ILE:H	1:A:312:ILE:HG13	1.44	0.40
1:C:170:TYR:CE2	1:C:172:SER:HB2	2.56	0.40
3:G:40:GLY:HA3	3:G:55:ILE:HG22	2.03	0.40
2:L:161:TYR:HB3	2:L:162:PRO:HD3	2.03	0.40
1:C:534:VAL:HB	1:C:537:LYS:HD2	2.04	0.40
1:C:961:THR:HA	1:C:964:LYS:HE2	2.03	0.40
1:B:519:HIS:HB3	1:B:565:PHE:CD1	2.57	0.40
1:B:1142:GLN:HB2	1:B:1143:PRO:HD3	2.02	0.40
1:A:904:TYR:CE1	1:C:1107:ARG:HD2	2.56	0.40
1:A:906:PHE:HA	1:A:909:ILE:HG12	2.03	0.40
2:J:30:VAL:HG11	1:C:341:VAL:HG23	2.03	0.40
3:H:111:GLY:HA3	3:H:114:LEU:HD22	2.04	0.40
1:C:273:ARG:NH1	1:C:290:ASP:OD2	2.48	0.40
1:C:743:CYS:SG	1:C:750:SER:N	2.95	0.40
1:B:743:CYS:SG	1:B:750:SER:N	2.95	0.40
1:B:985:ASP:HB2	1:B:987:PRO:HD2	2.03	0.40
3:G:37:TYR:HD1	3:G:107:GLN:HG3	1.86	0.40

There are no symmetry-related clashes.

5.3 Torsion angles

5.3.1 Protein backbone

In the following table, the Percentiles column shows the percent Ramachandran outliers of the chain as a percentile score with respect to all PDB entries followed by that with respect to all EM entries.

The Analysed column shows the number of residues for which the backbone conformation was analysed, and the total number of residues.

Mol	Chain	Analysed	Favoured	Allowed	Outliers	Percentiles	
1	A	1073/1295 (83%)	1026 (96%)	47 (4%)	0	100	100
1	B	1073/1295 (83%)	1032 (96%)	40 (4%)	1 (0%)	48	79
1	C	1073/1295 (83%)	1019 (95%)	52 (5%)	2 (0%)	44	74
2	J	201/215 (94%)	189 (94%)	11 (6%)	1 (0%)	25	58
2	K	201/215 (94%)	192 (96%)	9 (4%)	0	100	100
2	L	201/215 (94%)	192 (96%)	9 (4%)	0	100	100
3	G	216/218 (99%)	205 (95%)	8 (4%)	3 (1%)	9	34
3	H	216/218 (99%)	208 (96%)	8 (4%)	0	100	100
3	I	216/218 (99%)	208 (96%)	8 (4%)	0	100	100
All	All	4470/5184 (86%)	4271 (96%)	192 (4%)	7 (0%)	45	74

All (7) Ramachandran outliers are listed below:

Mol	Chain	Res	Type
2	J	137	THR
1	C	331	ASN
3	G	126	VAL
3	G	127	SER
1	C	526	GLY
3	G	129	ALA
1	B	330	PRO

5.3.2 Protein sidechains

In the following table, the Percentiles column shows the percent sidechain outliers of the chain as a percentile score with respect to all PDB entries followed by that with respect to all EM entries.

The Analysed column shows the number of residues for which the sidechain conformation was analysed, and the total number of residues.

Mol	Chain	Analysed	Rotameric	Outliers	Percentiles	
1	A	948/1118 (85%)	928 (98%)	20 (2%)	48	74
1	B	948/1118 (85%)	927 (98%)	21 (2%)	47	73
1	C	948/1118 (85%)	921 (97%)	27 (3%)	38	67
2	J	168/179 (94%)	159 (95%)	9 (5%)	18	47
2	K	168/179 (94%)	167 (99%)	1 (1%)	84	92
2	L	168/179 (94%)	166 (99%)	2 (1%)	67	84
3	G	184/184 (100%)	176 (96%)	8 (4%)	25	55
3	H	184/184 (100%)	179 (97%)	5 (3%)	40	68
3	I	184/184 (100%)	180 (98%)	4 (2%)	47	73
All	All	3900/4443 (88%)	3803 (98%)	97 (2%)	43	70

All (97) residues with a non-rotameric sidechain are listed below:

Mol	Chain	Res	Type
1	B	98	LYS
1	B	146	GLN
1	B	182	LYS
1	B	229	LEU
1	B	249	LEU
1	B	312	ILE
1	B	313	TYR
1	B	328	ARG
1	B	329	PHE
1	B	331	ASN
1	B	332	ILE
1	B	333	THR
1	B	336	CYS
1	B	362	VAL
1	B	377	PHE
1	B	489	TYR
1	B	529	LYS
1	B	624	ILE
1	B	633	TRP
1	B	634	ARG
1	B	811	LYS
1	A	98	LYS
1	A	146	GLN
1	A	182	LYS
1	A	229	LEU
1	A	249	LEU

Continued on next page...

Continued from previous page...

Mol	Chain	Res	Type
1	A	312	ILE
1	A	313	TYR
1	A	329	PHE
1	A	336	CYS
1	A	361	CYS
1	A	377	PHE
1	A	489	TYR
1	A	515	PHE
1	A	528	LYS
1	A	529	LYS
1	A	530	SER
1	A	624	ILE
1	A	634	ARG
1	A	738	CYS
1	A	811	LYS
2	J	122	THR
2	J	123	MET
2	J	124	LEU
2	J	129	GLN
2	J	131	LYS
2	J	136	VAL
2	J	137	THR
2	J	166	THR
2	J	201	LEU
3	G	91	TRP
3	G	99	THR
3	G	110	LEU
3	G	120	GLN
3	G	125	THR
3	G	130	SER
3	G	132	LYS
3	G	166	THR
2	K	166	THR
3	H	23	CYS
3	H	91	TRP
3	H	99	THR
3	H	110	LEU
3	H	132	LYS
2	L	166	THR
2	L	201	LEU
3	I	23	CYS
3	I	99	THR

Continued on next page...

Continued from previous page...

Mol	Chain	Res	Type
3	I	110	LEU
3	I	132	LYS
1	C	98	LYS
1	C	146	GLN
1	C	182	LYS
1	C	229	LEU
1	C	249	LEU
1	C	312	ILE
1	C	313	TYR
1	C	320	VAL
1	C	323	THR
1	C	328	ARG
1	C	332	ILE
1	C	334	ASN
1	C	335	LEU
1	C	338	PHE
1	C	361	CYS
1	C	362	VAL
1	C	377	PHE
1	C	489	TYR
1	C	517	LEU
1	C	525	CYS
1	C	528	LYS
1	C	529	LYS
1	C	531	THR
1	C	624	ILE
1	C	634	ARG
1	C	638	THR
1	C	811	LYS

Sometimes sidechains can be flipped to improve hydrogen bonding and reduce clashes. All (79) such sidechains are listed below:

Mol	Chain	Res	Type
1	B	27	GLN
1	B	88	ASN
1	B	100	ASN
1	B	122	ASN
1	B	185	ASN
1	B	321	GLN
1	B	414	GLN
1	B	487	ASN
1	B	493	GLN

Continued on next page...

Continued from previous page...

Mol	Chain	Res	Type
1	B	544	ASN
1	B	564	GLN
1	B	607	GLN
1	B	613	GLN
1	B	677	GLN
1	B	690	GLN
1	B	762	GLN
1	B	836	GLN
1	B	901	GLN
1	B	955	ASN
1	B	957	GLN
1	B	1011	GLN
1	A	27	GLN
1	A	88	ASN
1	A	100	ASN
1	A	122	ASN
1	A	185	ASN
1	A	321	GLN
1	A	414	GLN
1	A	487	ASN
1	A	493	GLN
1	A	607	GLN
1	A	613	GLN
1	A	677	GLN
1	A	690	GLN
1	A	762	GLN
1	A	836	GLN
1	A	901	GLN
1	A	955	ASN
1	A	957	GLN
1	A	1011	GLN
2	J	95	GLN
2	J	218	HIS
3	G	75	GLN
3	G	107	GLN
2	K	95	GLN
2	K	218	HIS
3	H	72	GLN
3	H	75	GLN
3	H	107	GLN
3	H	120	GLN
2	L	95	GLN

Continued on next page...

Continued from previous page...

Mol	Chain	Res	Type
2	L	218	HIS
3	I	75	GLN
3	I	90	HIS
3	I	107	GLN
1	C	27	GLN
1	C	31	ASN
1	C	88	ASN
1	C	100	ASN
1	C	122	ASN
1	C	185	ASN
1	C	321	GLN
1	C	394	ASN
1	C	414	GLN
1	C	487	ASN
1	C	493	GLN
1	C	536	ASN
1	C	544	ASN
1	C	564	GLN
1	C	607	GLN
1	C	613	GLN
1	C	677	GLN
1	C	690	GLN
1	C	762	GLN
1	C	836	GLN
1	C	901	GLN
1	C	955	ASN
1	C	957	GLN
1	C	1011	GLN

5.3.3 RNA ⓘ

There are no RNA molecules in this entry.

5.4 Non-standard residues in protein, DNA, RNA chains ⓘ

There are no non-standard protein/DNA/RNA residues in this entry.

5.5 Carbohydrates ⓘ

There are no oligosaccharides in this entry.

5.6 Ligand geometry [i](#)

There are no ligands in this entry.

5.7 Other polymers [i](#)

There are no such residues in this entry.

5.8 Polymer linkage issues [i](#)

There are no chain breaks in this entry.

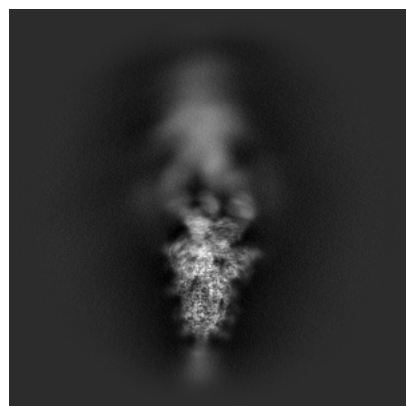
6 Map visualisation [i](#)

This section contains visualisations of the EMDB entry EMD-39806. These allow visual inspection of the internal detail of the map and identification of artifacts.

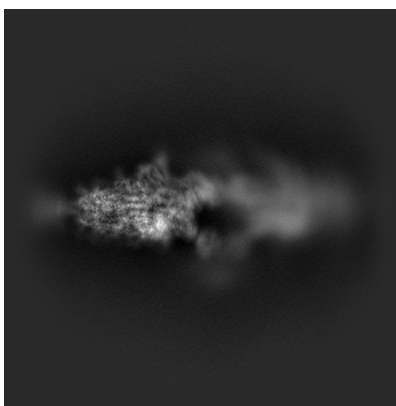
Images derived from a raw map, generated by summing the deposited half-maps, are presented below the corresponding image components of the primary map to allow further visual inspection and comparison with those of the primary map.

6.1 Orthogonal projections [i](#)

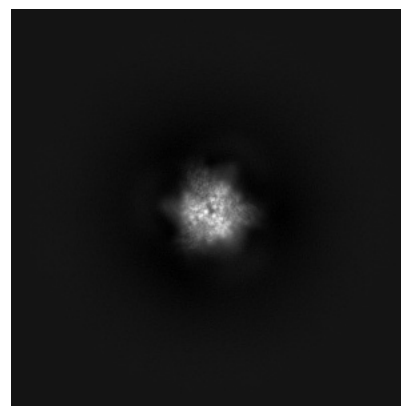
6.1.1 Primary map



X

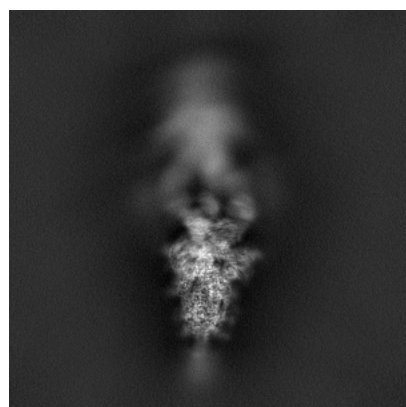


Y

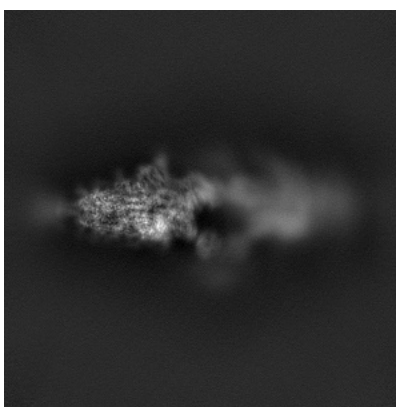


Z

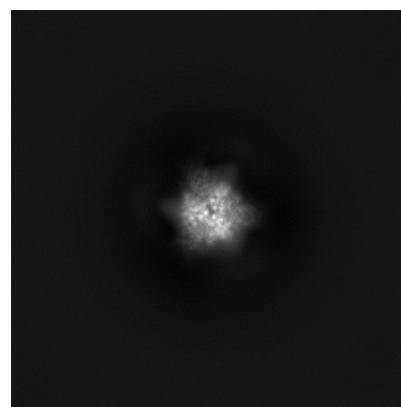
6.1.2 Raw map



X



Y

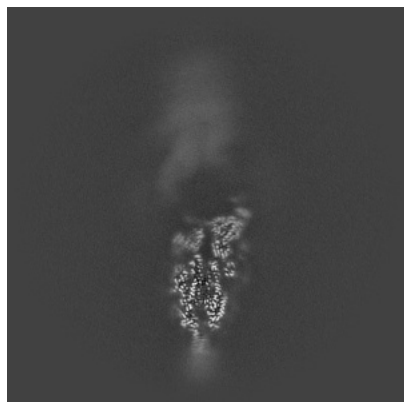


Z

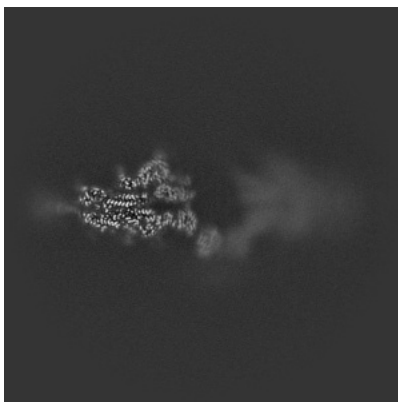
The images above show the map projected in three orthogonal directions.

6.2 Central slices [i](#)

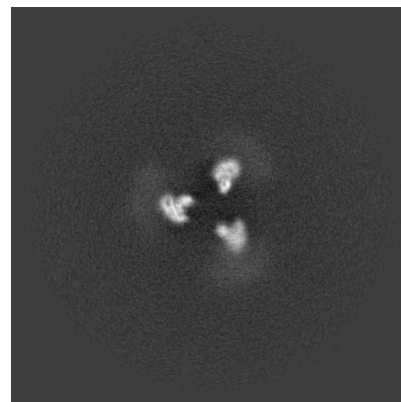
6.2.1 Primary map



X Index: 240

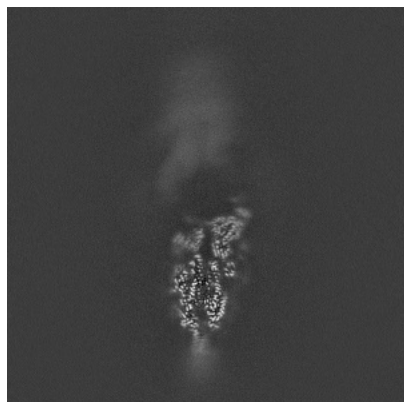


Y Index: 240

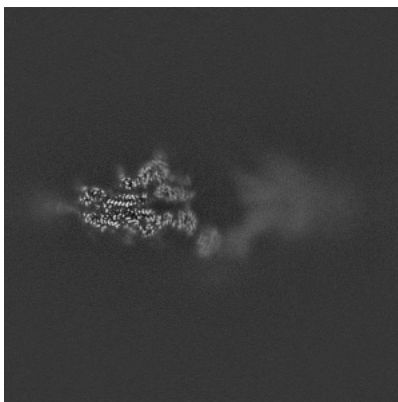


Z Index: 240

6.2.2 Raw map



X Index: 240



Y Index: 240

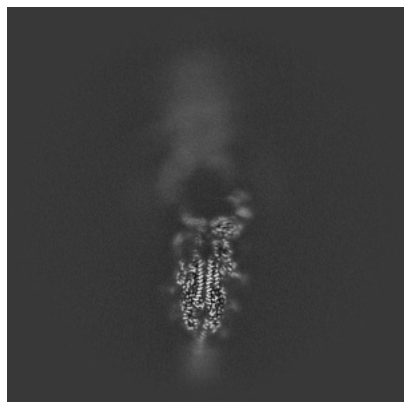


Z Index: 240

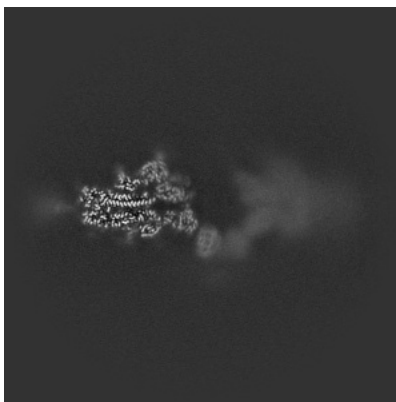
The images above show central slices of the map in three orthogonal directions.

6.3 Largest variance slices [i](#)

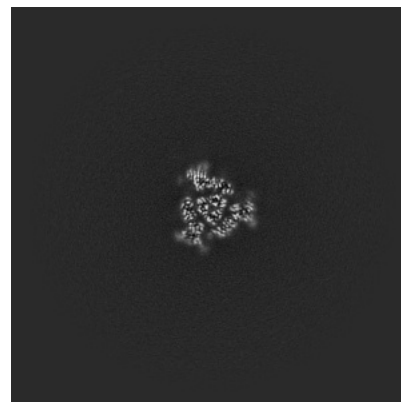
6.3.1 Primary map



X Index: 244

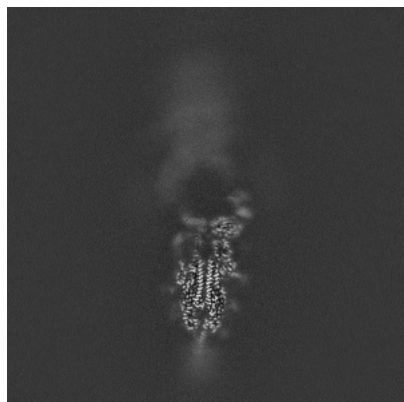


Y Index: 242



Z Index: 170

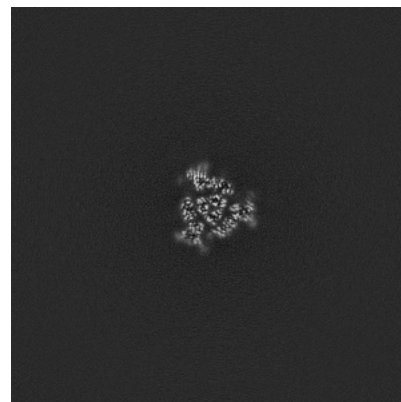
6.3.2 Raw map



X Index: 244



Y Index: 242

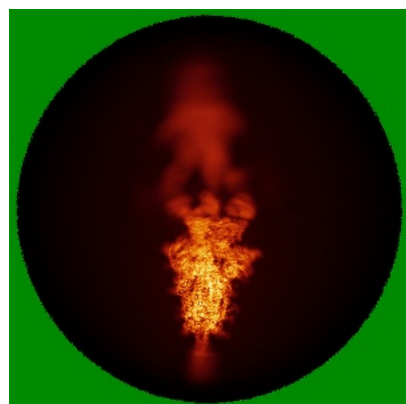


Z Index: 170

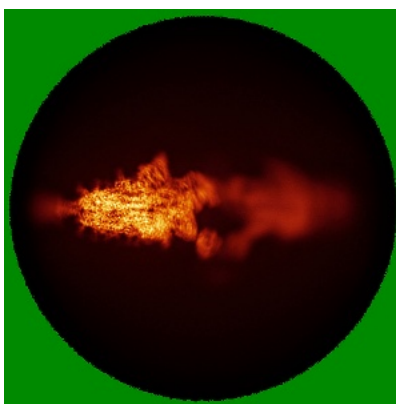
The images above show the largest variance slices of the map in three orthogonal directions.

6.4 Orthogonal standard-deviation projections (False-color) [i](#)

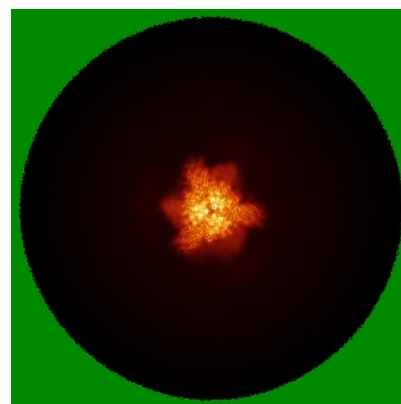
6.4.1 Primary map



X

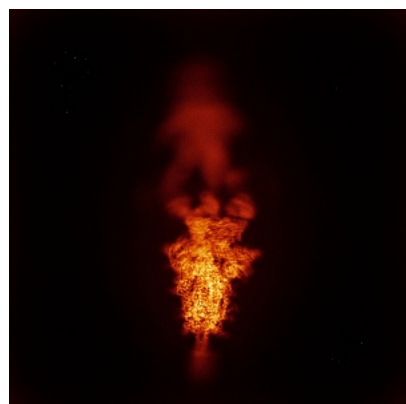


Y

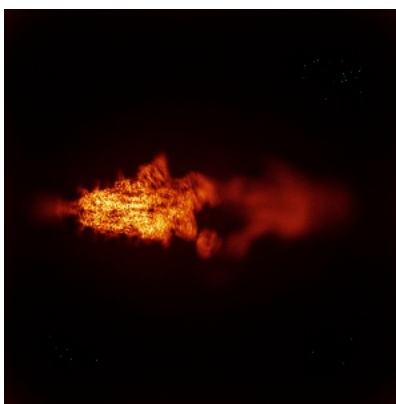


Z

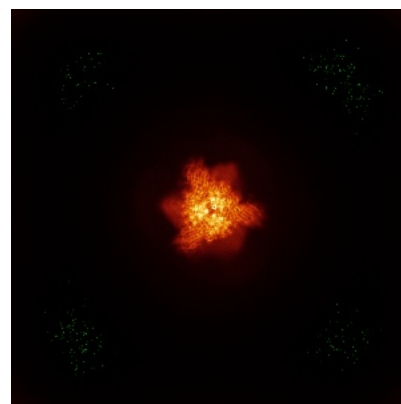
6.4.2 Raw map



X



Y

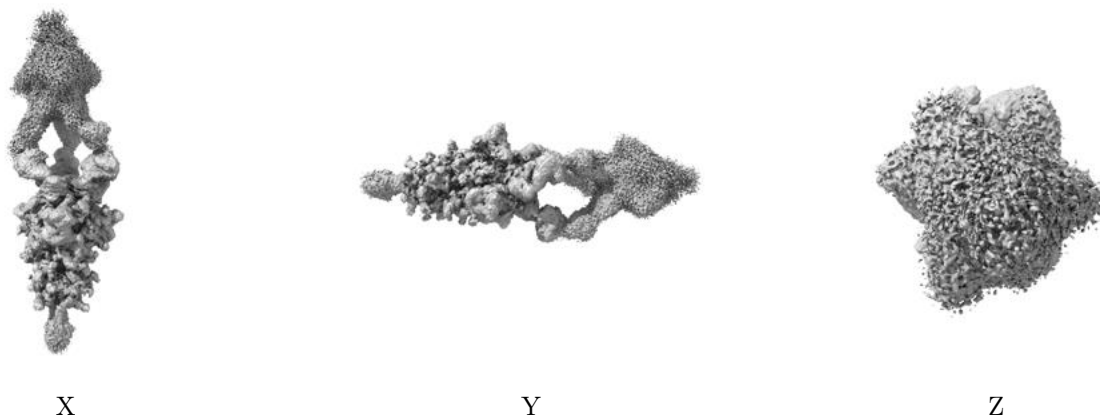


Z

The images above show the map standard deviation projections with false color in three orthogonal directions. Minimum values are shown in green, max in blue, and dark to light orange shades represent small to large values respectively.

6.5 Orthogonal surface views [i](#)

6.5.1 Primary map



The images above show the 3D surface view of the map at the recommended contour level 0.2. These images, in conjunction with the slice images, may facilitate assessment of whether an appropriate contour level has been provided.

6.5.2 Raw map



These images show the 3D surface of the raw map. The raw map's contour level was selected so that its surface encloses the same volume as the primary map does at its recommended contour level.

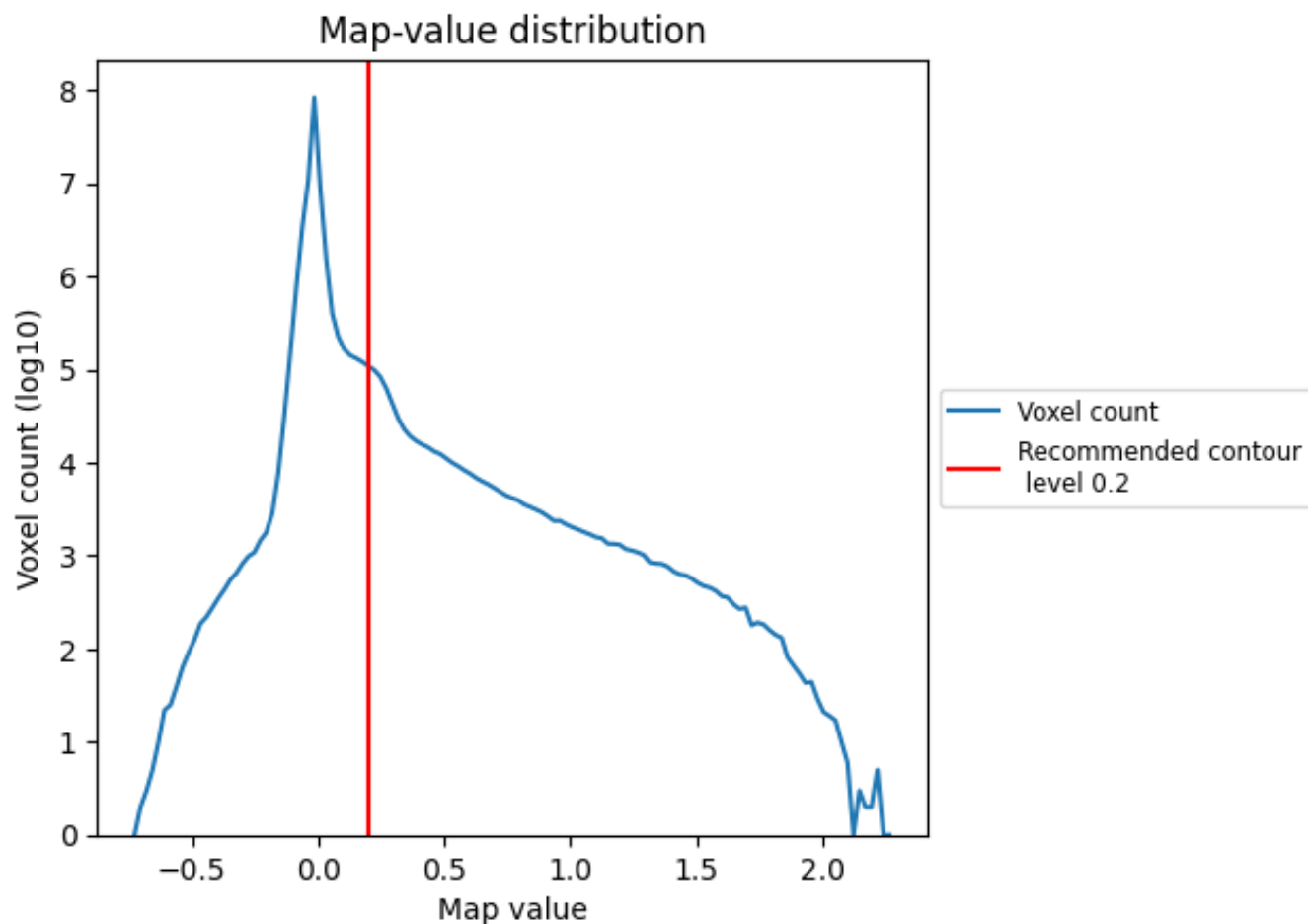
6.6 Mask visualisation [i](#)

This section was not generated. No masks/segmentation were deposited.

7 Map analysis [i](#)

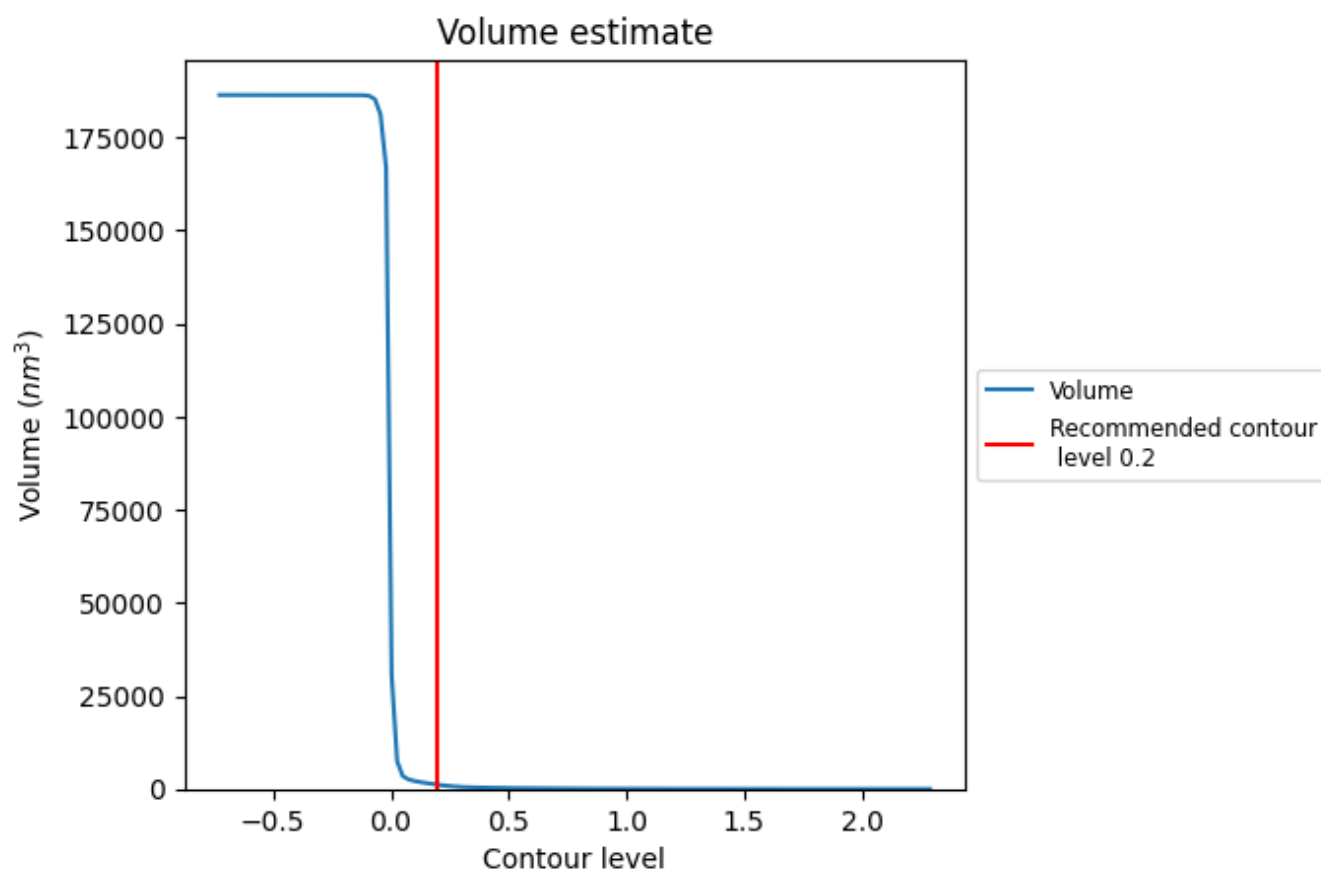
This section contains the results of statistical analysis of the map.

7.1 Map-value distribution [i](#)



The map-value distribution is plotted in 128 intervals along the x-axis. The y-axis is logarithmic. A spike in this graph at zero usually indicates that the volume has been masked.

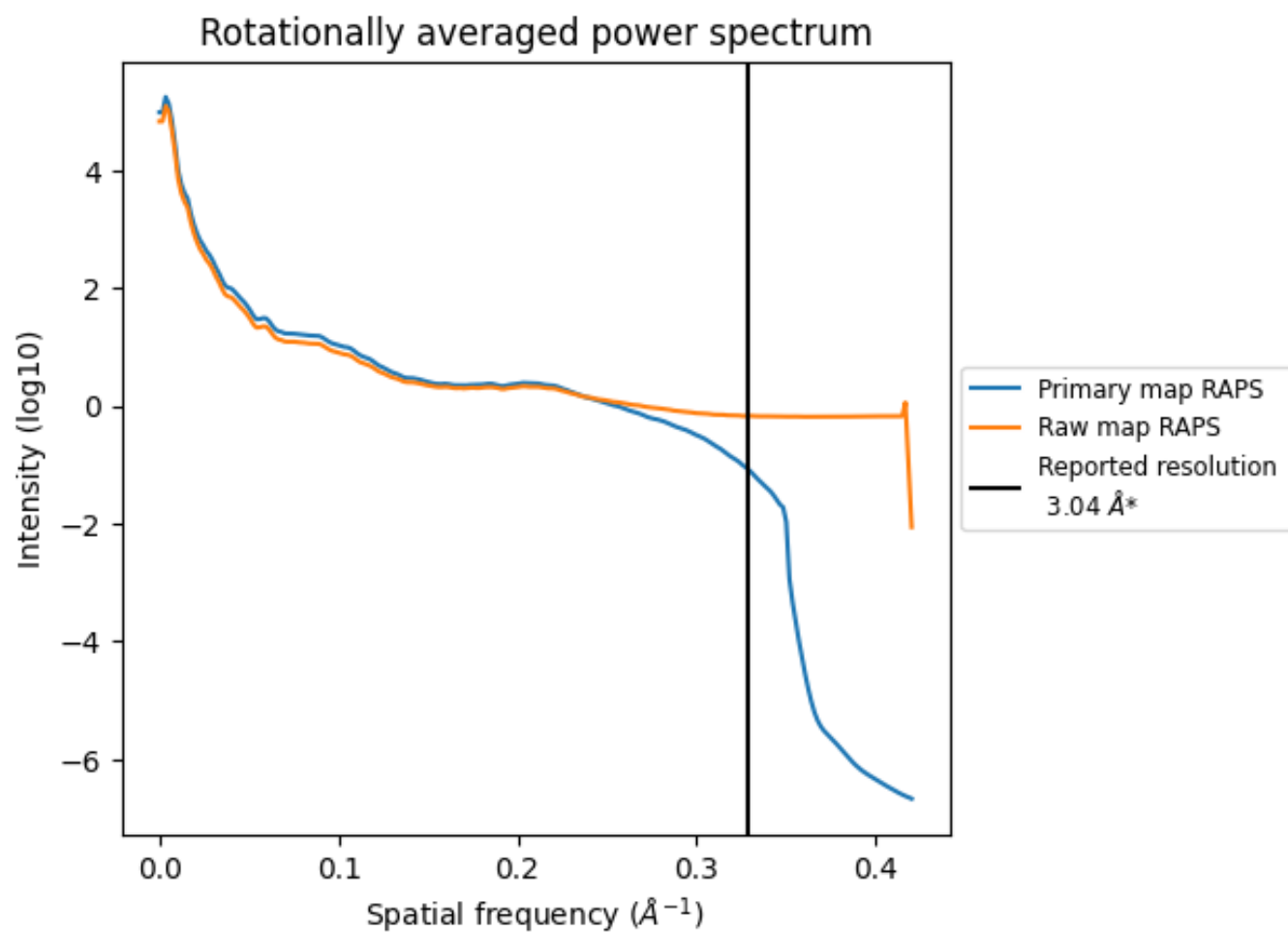
7.2 Volume estimate [i](#)



The volume at the recommended contour level is 1138 nm^3 ; this corresponds to an approximate mass of 1028 kDa.

The volume estimate graph shows how the enclosed volume varies with the contour level. The recommended contour level is shown as a vertical line and the intersection between the line and the curve gives the volume of the enclosed surface at the given level.

7.3 Rotationally averaged power spectrum ⓘ

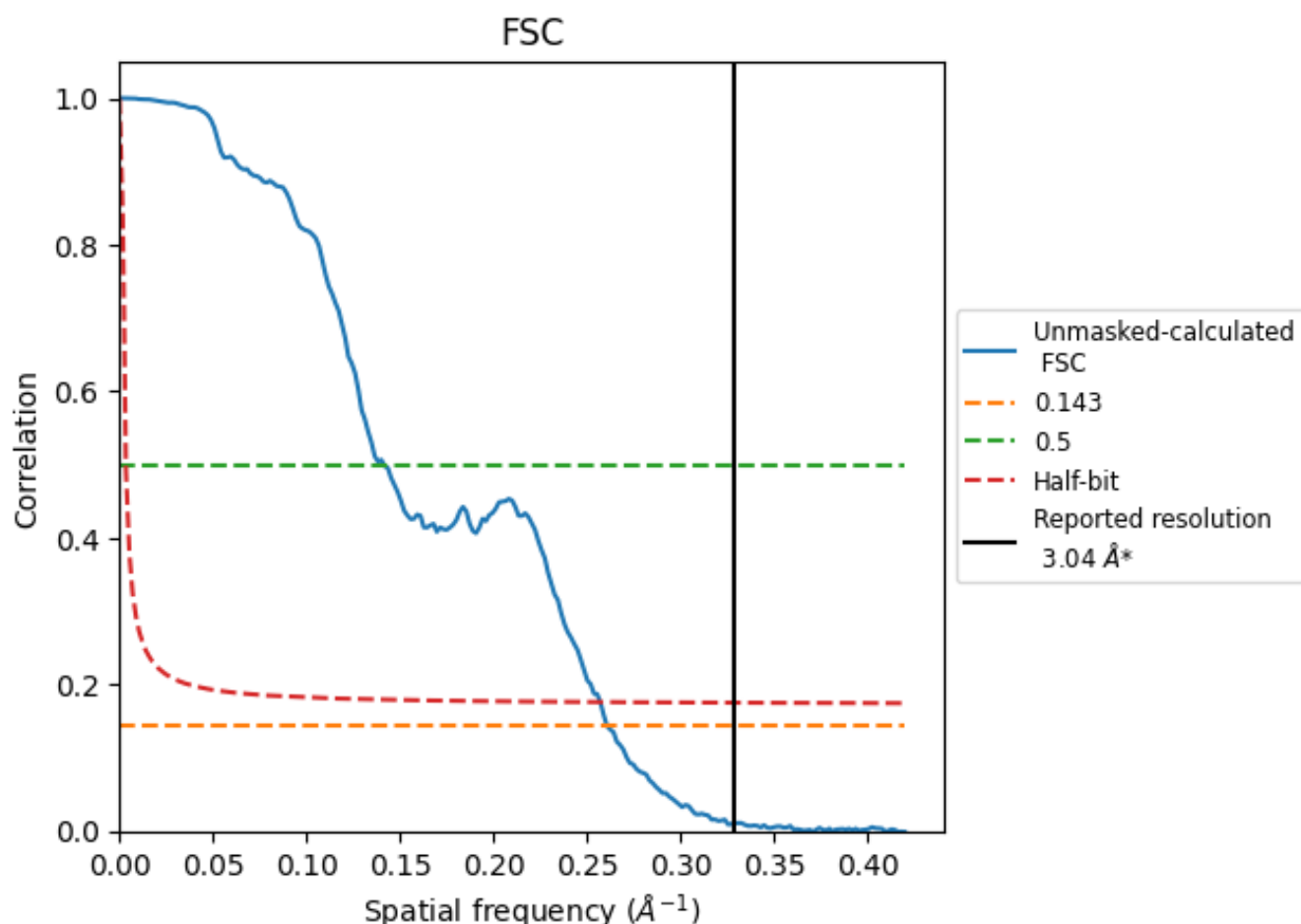


*Reported resolution corresponds to spatial frequency of 0.329 \AA^{-1}

8 Fourier-Shell correlation [i](#)

Fourier-Shell Correlation (FSC) is the most commonly used method to estimate the resolution of single-particle and subtomogram-averaged maps. The shape of the curve depends on the imposed symmetry, mask and whether or not the two 3D reconstructions used were processed from a common reference. The reported resolution is shown as a black line. A curve is displayed for the half-bit criterion in addition to lines showing the 0.143 gold standard cut-off and 0.5 cut-off.

8.1 FSC [i](#)



*Reported resolution corresponds to spatial frequency of 0.329 Å⁻¹

8.2 Resolution estimates [i](#)

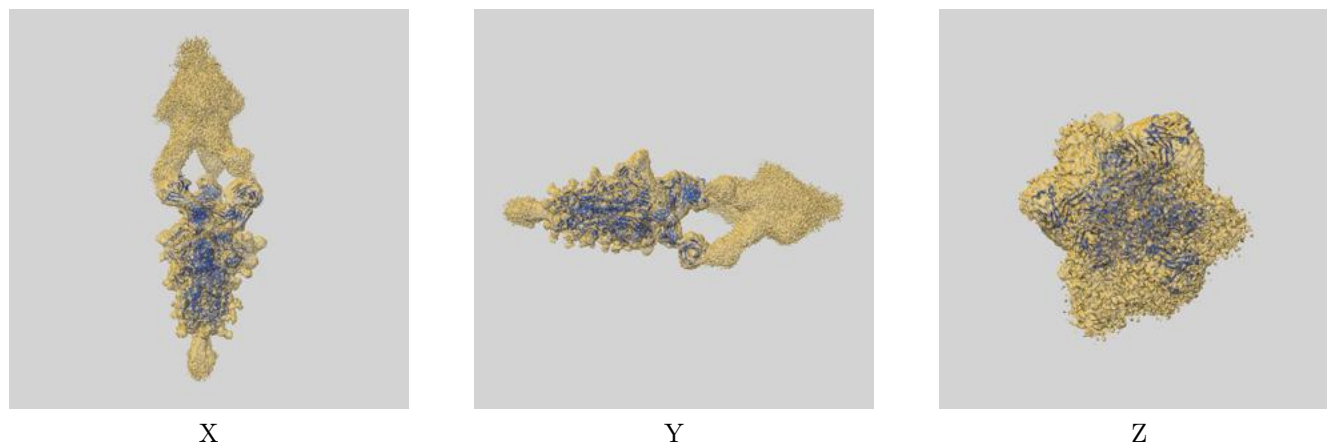
Resolution estimate (Å)	Estimation criterion (FSC cut-off)		
	0.143	0.5	Half-bit
Reported by author	3.04	-	-
Author-provided FSC curve	-	-	-
Unmasked-calculated*	3.83	7.07	3.89

*Resolution estimate based on FSC curve calculated by comparison of deposited half-maps. The value from deposited half-maps intersecting FSC 0.143 CUT-OFF 3.83 differs from the reported value 3.04 by more than 10 %

9 Map-model fit [i](#)

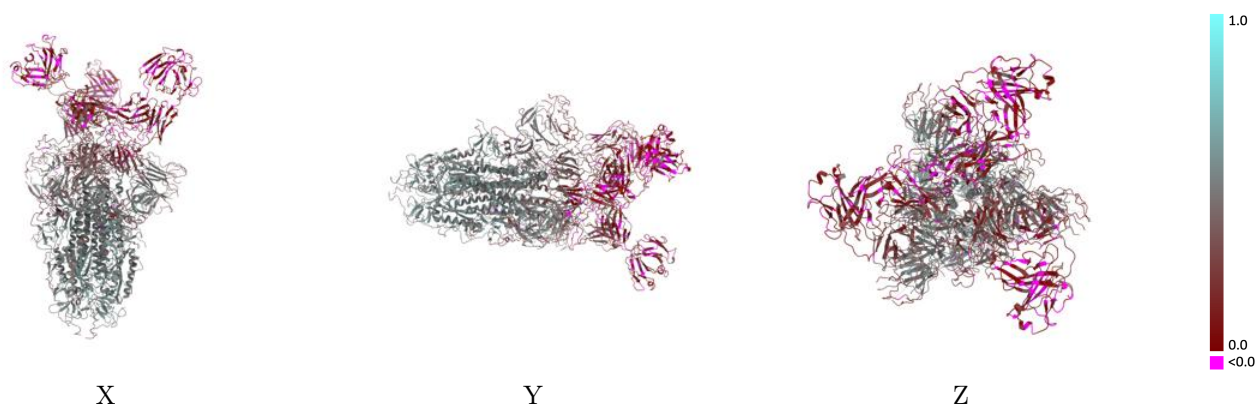
This section contains information regarding the fit between EMDB map EMD-39806 and PDB model 8Z6W. Per-residue inclusion information can be found in section 3 on page 11.

9.1 Map-model overlay [i](#)



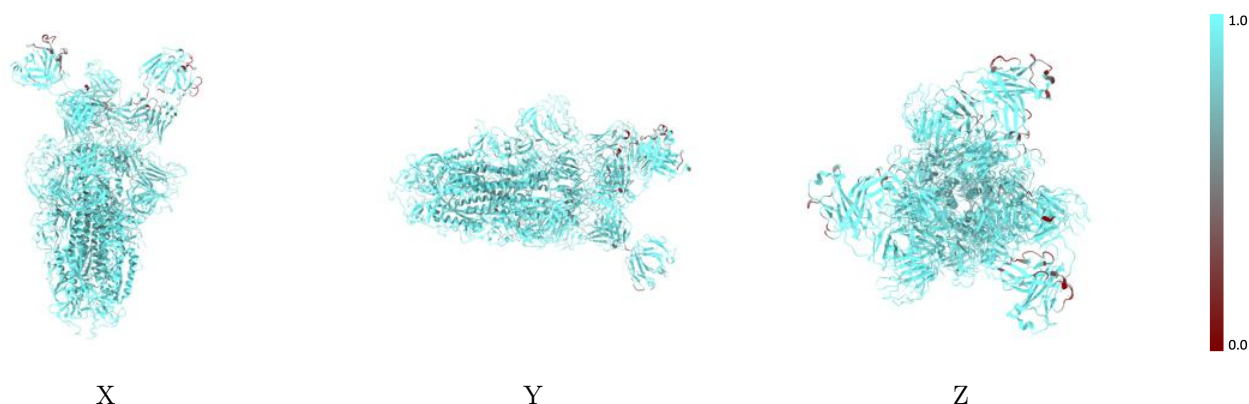
The images above show the 3D surface view of the map at the recommended contour level 0.2 at 50% transparency in yellow overlaid with a ribbon representation of the model coloured in blue. These images allow for the visual assessment of the quality of fit between the atomic model and the map.

9.2 Q-score mapped to coordinate model [i](#)



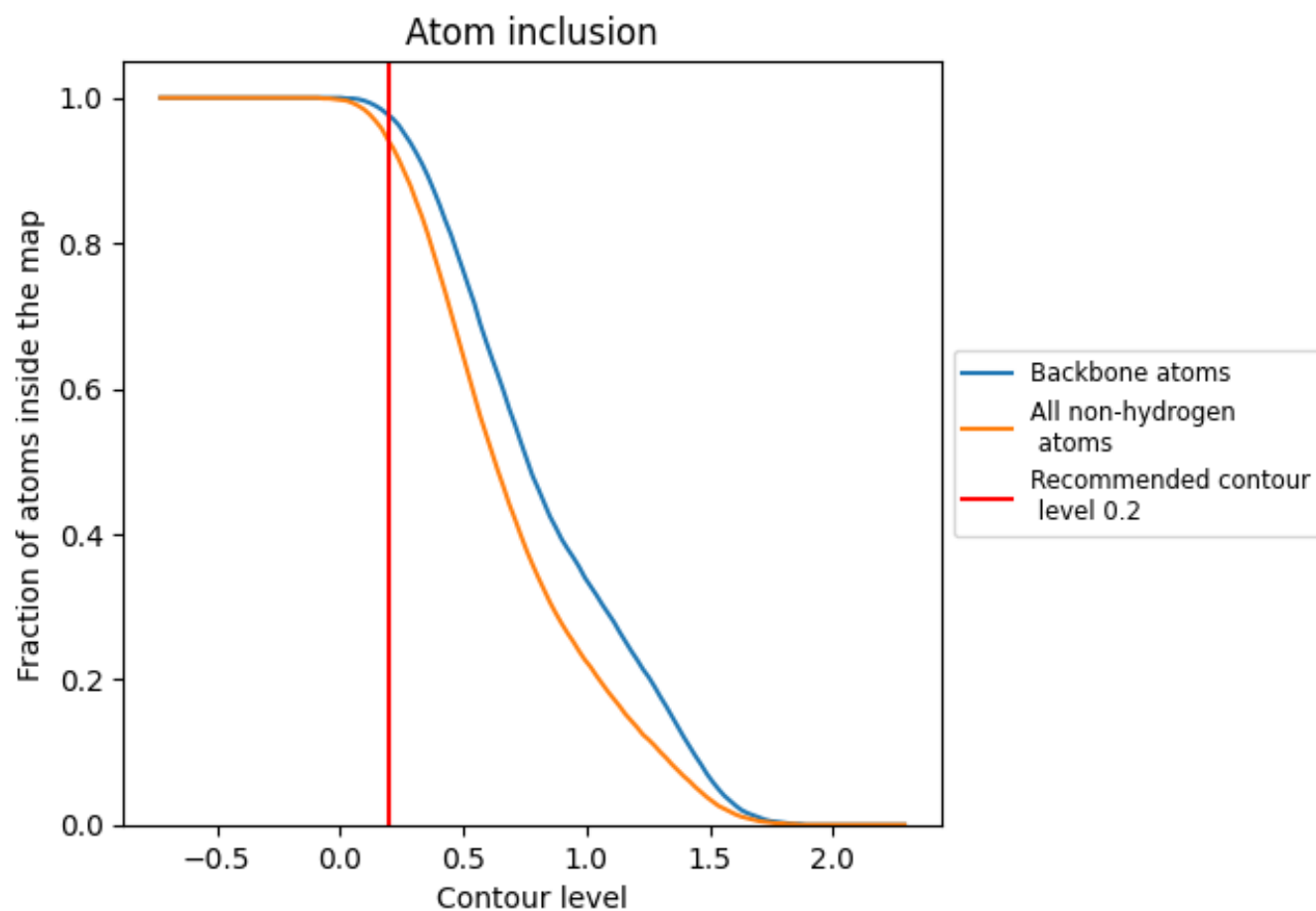
The images above show the model with each residue coloured according to its Q-score. This shows their resolvability in the map with higher Q-score values reflecting better resolvability. Please note: Q-score is calculating the resolvability of atoms, and thus high values are only expected at resolutions at which atoms can be resolved. Low Q-score values may therefore be expected for many entries.

9.3 Atom inclusion mapped to coordinate model [i](#)



The images above show the model with each residue coloured according to its atom inclusion. This shows to what extent they are inside the map at the recommended contour level (0.2).

9.4 Atom inclusion [i](#)



At the recommended contour level, 98% of all backbone atoms, 94% of all non-hydrogen atoms, are inside the map.

9.5 Map-model fit summary ⓘ

The table lists the average atom inclusion at the recommended contour level (0.2) and Q-score for the entire model and for each chain.

Chain	Atom inclusion	Q-score
All	<div><div></div>0.9390</div>	<div><div></div>0.3510</div>
A	<div><div></div>0.9520</div>	<div><div></div>0.3950</div>
B	<div><div></div>0.9690</div>	<div><div></div>0.4510</div>
C	<div><div></div>0.9600</div>	<div><div></div>0.4360</div>
G	<div><div></div>0.8190</div>	<div><div></div>0.1510</div>
H	<div><div></div>0.8670</div>	<div><div></div>0.0970</div>
I	<div><div></div>0.9100</div>	<div><div></div>0.1490</div>
J	<div><div></div>0.9210</div>	<div><div></div>0.1550</div>
K	<div><div></div>0.8550</div>	<div><div></div>0.1040</div>
L	<div><div></div>0.9350</div>	<div><div></div>0.2160</div>

1.0

0.0

<0.0