



Full wwPDB EM Validation Report ⓘ

Sep 28, 2024 – 09:01 pm BST

PDB ID : 6ZGG
EMDB ID : EMD-11205
Title : Furin Cleaved Spike Protein of SARS-CoV-2 with One RBD Erect
Authors : Wrobel, A.G.; Benton, D.J.; Rosenthal, P.B.; Gamblin, S.J.
Deposited on : 2020-06-18
Resolution : 3.80 Å(reported)
Based on initial model : 6VXX

This is a Full wwPDB EM Validation Report for a publicly released PDB entry.

We welcome your comments at validation@mail.wwpdb.org

A user guide is available at

<https://www.wwpdb.org/validation/2017/EMValidationReportHelp>
with specific help available everywhere you see the ⓘ symbol.

The types of validation reports are described at

<http://www.wwpdb.org/validation/2017/FAQs#types>.

The following versions of software and data (see [references ⓘ](#)) were used in the production of this report:

EMDB validation analysis : 0.0.1.dev113
MolProbity : 4.02b-467
Percentile statistics : 20231227.v01 (using entries in the PDB archive December 27th 2023)
MapQ : 1.9.13
Ideal geometry (proteins) : Engh & Huber (2001)
Ideal geometry (DNA, RNA) : Parkinson et al. (1996)
Validation Pipeline (wwPDB-VP) : 2.39

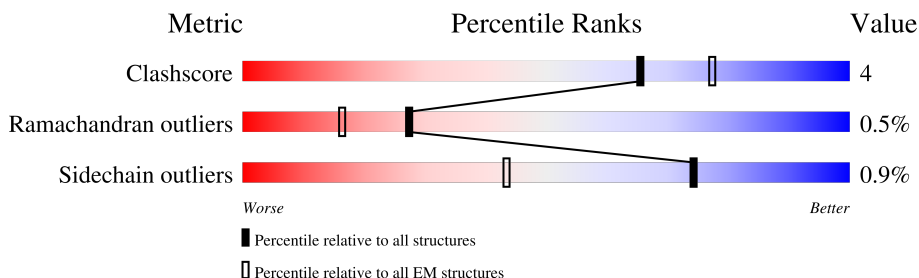
1 Overall quality at a glance

The following experimental techniques were used to determine the structure:

ELECTRON MICROSCOPY

The reported resolution of this entry is 3.80 Å.

Percentile scores (ranging between 0-100) for global validation metrics of the entry are shown in the following graphic. The table shows the number of entries on which the scores are based.



Metric	Whole archive (#Entries)	EM structures (#Entries)
Clashscore	210492	15764
Ramachandran outliers	207382	16835
Sidechain outliers	206894	16415

The table below summarises the geometric issues observed across the polymeric chains and their fit to the map. The red, orange, yellow and green segments of the bar indicate the fraction of residues that contain outliers for ≥ 3 , 2, 1 and 0 types of geometric quality criteria respectively. A grey segment represents the fraction of residues that are not modelled. The numeric value for each fraction is indicated below the corresponding segment, with a dot representing fractions $\leq 5\%$. The upper red bar (where present) indicates the fraction of residues that have poor fit to the EM map (all-atom inclusion $< 40\%$). The numeric value is given above the bar.

Mol	Chain	Length	Quality of chain
1	A	1287	
1	B	1287	
1	C	1287	

2 Entry composition

There is only 1 type of molecule in this entry. The entry contains 25096 atoms, of which 0 are hydrogens and 0 are deuteriums.

In the tables below, the AltConf column contains the number of residues with at least one atom in alternate conformation and the Trace column contains the number of residues modelled with at most 2 atoms.

- Molecule 1 is a protein called Spike glycoprotein.

Mol	Chain	Residues	Atoms					AltConf	Trace
1	A	1069	Total	C	N	O	S	0	0
			8366	5339	1397	1591	39		
1	B	1071	Total	C	N	O	S	0	0
			8380	5348	1399	1594	39		
1	C	1067	Total	C	N	O	S	0	0
			8350	5327	1395	1589	39		

There are 243 discrepancies between the modelled and reference sequences:

Chain	Residue	Modelled	Actual	Comment	Reference
A	-30	MET	-	initiating methionine	UNP P0DTC2
A	-29	GLY	-	expression tag	UNP P0DTC2
A	-28	ILE	-	expression tag	UNP P0DTC2
A	-27	LEU	-	expression tag	UNP P0DTC2
A	-26	PRO	-	expression tag	UNP P0DTC2
A	-25	SER	-	expression tag	UNP P0DTC2
A	-24	PRO	-	expression tag	UNP P0DTC2
A	-23	GLY	-	expression tag	UNP P0DTC2
A	-22	MET	-	expression tag	UNP P0DTC2
A	-21	PRO	-	expression tag	UNP P0DTC2
A	-20	ALA	-	expression tag	UNP P0DTC2
A	-19	LEU	-	expression tag	UNP P0DTC2
A	-18	LEU	-	expression tag	UNP P0DTC2
A	-17	SER	-	expression tag	UNP P0DTC2
A	-16	LEU	-	expression tag	UNP P0DTC2
A	-15	VAL	-	expression tag	UNP P0DTC2
A	-14	SER	-	expression tag	UNP P0DTC2
A	-13	LEU	-	expression tag	UNP P0DTC2
A	-12	LEU	-	expression tag	UNP P0DTC2
A	-11	SER	-	expression tag	UNP P0DTC2
A	-10	VAL	-	expression tag	UNP P0DTC2
A	-9	LEU	-	expression tag	UNP P0DTC2
A	-8	LEU	-	expression tag	UNP P0DTC2
A	-7	MET	-	expression tag	UNP P0DTC2

Continued on next page...

Continued from previous page...

Chain	Residue	Modelled	Actual	Comment	Reference
A	-6	GLY	-	expression tag	UNP P0DTC2
A	-5	CYS	-	expression tag	UNP P0DTC2
A	-4	VAL	-	expression tag	UNP P0DTC2
A	-3	ALA	-	expression tag	UNP P0DTC2
A	-2	GLU	-	expression tag	UNP P0DTC2
A	-1	THR	-	expression tag	UNP P0DTC2
A	0	GLY	-	expression tag	UNP P0DTC2
A	986	PRO	LYS	engineered mutation	UNP P0DTC2
A	987	PRO	VAL	engineered mutation	UNP P0DTC2
A	1209	SER	-	expression tag	UNP P0DTC2
A	1210	GLY	-	expression tag	UNP P0DTC2
A	1211	ARG	-	expression tag	UNP P0DTC2
A	1212	GLU	-	expression tag	UNP P0DTC2
A	1213	ASN	-	expression tag	UNP P0DTC2
A	1214	LEU	-	expression tag	UNP P0DTC2
A	1215	TYR	-	expression tag	UNP P0DTC2
A	1216	PHE	-	expression tag	UNP P0DTC2
A	1217	GLN	-	expression tag	UNP P0DTC2
A	1218	GLY	-	expression tag	UNP P0DTC2
A	1219	GLY	-	expression tag	UNP P0DTC2
A	1220	GLY	-	expression tag	UNP P0DTC2
A	1221	GLY	-	expression tag	UNP P0DTC2
A	1222	SER	-	expression tag	UNP P0DTC2
A	1223	GLY	-	expression tag	UNP P0DTC2
A	1224	TYR	-	expression tag	UNP P0DTC2
A	1225	ILE	-	expression tag	UNP P0DTC2
A	1226	PRO	-	expression tag	UNP P0DTC2
A	1227	GLU	-	expression tag	UNP P0DTC2
A	1228	ALA	-	expression tag	UNP P0DTC2
A	1229	PRO	-	expression tag	UNP P0DTC2
A	1230	ARG	-	expression tag	UNP P0DTC2
A	1231	ASP	-	expression tag	UNP P0DTC2
A	1232	GLY	-	expression tag	UNP P0DTC2
A	1233	GLN	-	expression tag	UNP P0DTC2
A	1234	ALA	-	expression tag	UNP P0DTC2
A	1235	TYR	-	expression tag	UNP P0DTC2
A	1236	VAL	-	expression tag	UNP P0DTC2
A	1237	ARG	-	expression tag	UNP P0DTC2
A	1238	LYS	-	expression tag	UNP P0DTC2
A	1239	ASP	-	expression tag	UNP P0DTC2
A	1240	GLY	-	expression tag	UNP P0DTC2
A	1241	GLU	-	expression tag	UNP P0DTC2

Continued on next page...

Continued from previous page...

Chain	Residue	Modelled	Actual	Comment	Reference
A	1242	TRP	-	expression tag	UNP P0DTC2
A	1243	VAL	-	expression tag	UNP P0DTC2
A	1244	LEU	-	expression tag	UNP P0DTC2
A	1245	LEU	-	expression tag	UNP P0DTC2
A	1246	SER	-	expression tag	UNP P0DTC2
A	1247	THR	-	expression tag	UNP P0DTC2
A	1248	PHE	-	expression tag	UNP P0DTC2
A	1249	LEU	-	expression tag	UNP P0DTC2
A	1250	GLY	-	expression tag	UNP P0DTC2
A	1251	HIS	-	expression tag	UNP P0DTC2
A	1252	HIS	-	expression tag	UNP P0DTC2
A	1253	HIS	-	expression tag	UNP P0DTC2
A	1254	HIS	-	expression tag	UNP P0DTC2
A	1255	HIS	-	expression tag	UNP P0DTC2
A	1256	HIS	-	expression tag	UNP P0DTC2
B	-30	MET	-	initiating methionine	UNP P0DTC2
B	-29	GLY	-	expression tag	UNP P0DTC2
B	-28	ILE	-	expression tag	UNP P0DTC2
B	-27	LEU	-	expression tag	UNP P0DTC2
B	-26	PRO	-	expression tag	UNP P0DTC2
B	-25	SER	-	expression tag	UNP P0DTC2
B	-24	PRO	-	expression tag	UNP P0DTC2
B	-23	GLY	-	expression tag	UNP P0DTC2
B	-22	MET	-	expression tag	UNP P0DTC2
B	-21	PRO	-	expression tag	UNP P0DTC2
B	-20	ALA	-	expression tag	UNP P0DTC2
B	-19	LEU	-	expression tag	UNP P0DTC2
B	-18	LEU	-	expression tag	UNP P0DTC2
B	-17	SER	-	expression tag	UNP P0DTC2
B	-16	LEU	-	expression tag	UNP P0DTC2
B	-15	VAL	-	expression tag	UNP P0DTC2
B	-14	SER	-	expression tag	UNP P0DTC2
B	-13	LEU	-	expression tag	UNP P0DTC2
B	-12	LEU	-	expression tag	UNP P0DTC2
B	-11	SER	-	expression tag	UNP P0DTC2
B	-10	VAL	-	expression tag	UNP P0DTC2
B	-9	LEU	-	expression tag	UNP P0DTC2
B	-8	LEU	-	expression tag	UNP P0DTC2
B	-7	MET	-	expression tag	UNP P0DTC2
B	-6	GLY	-	expression tag	UNP P0DTC2
B	-5	CYS	-	expression tag	UNP P0DTC2
B	-4	VAL	-	expression tag	UNP P0DTC2

Continued on next page...

Continued from previous page...

Chain	Residue	Modelled	Actual	Comment	Reference
B	-3	ALA	-	expression tag	UNP P0DTC2
B	-2	GLU	-	expression tag	UNP P0DTC2
B	-1	THR	-	expression tag	UNP P0DTC2
B	0	GLY	-	expression tag	UNP P0DTC2
B	986	PRO	LYS	engineered mutation	UNP P0DTC2
B	987	PRO	VAL	engineered mutation	UNP P0DTC2
B	1209	SER	-	expression tag	UNP P0DTC2
B	1210	GLY	-	expression tag	UNP P0DTC2
B	1211	ARG	-	expression tag	UNP P0DTC2
B	1212	GLU	-	expression tag	UNP P0DTC2
B	1213	ASN	-	expression tag	UNP P0DTC2
B	1214	LEU	-	expression tag	UNP P0DTC2
B	1215	TYR	-	expression tag	UNP P0DTC2
B	1216	PHE	-	expression tag	UNP P0DTC2
B	1217	GLN	-	expression tag	UNP P0DTC2
B	1218	GLY	-	expression tag	UNP P0DTC2
B	1219	GLY	-	expression tag	UNP P0DTC2
B	1220	GLY	-	expression tag	UNP P0DTC2
B	1221	GLY	-	expression tag	UNP P0DTC2
B	1222	SER	-	expression tag	UNP P0DTC2
B	1223	GLY	-	expression tag	UNP P0DTC2
B	1224	TYR	-	expression tag	UNP P0DTC2
B	1225	ILE	-	expression tag	UNP P0DTC2
B	1226	PRO	-	expression tag	UNP P0DTC2
B	1227	GLU	-	expression tag	UNP P0DTC2
B	1228	ALA	-	expression tag	UNP P0DTC2
B	1229	PRO	-	expression tag	UNP P0DTC2
B	1230	ARG	-	expression tag	UNP P0DTC2
B	1231	ASP	-	expression tag	UNP P0DTC2
B	1232	GLY	-	expression tag	UNP P0DTC2
B	1233	GLN	-	expression tag	UNP P0DTC2
B	1234	ALA	-	expression tag	UNP P0DTC2
B	1235	TYR	-	expression tag	UNP P0DTC2
B	1236	VAL	-	expression tag	UNP P0DTC2
B	1237	ARG	-	expression tag	UNP P0DTC2
B	1238	LYS	-	expression tag	UNP P0DTC2
B	1239	ASP	-	expression tag	UNP P0DTC2
B	1240	GLY	-	expression tag	UNP P0DTC2
B	1241	GLU	-	expression tag	UNP P0DTC2
B	1242	TRP	-	expression tag	UNP P0DTC2
B	1243	VAL	-	expression tag	UNP P0DTC2
B	1244	LEU	-	expression tag	UNP P0DTC2

Continued on next page...

Continued from previous page...

Chain	Residue	Modelled	Actual	Comment	Reference
B	1245	LEU	-	expression tag	UNP P0DTC2
B	1246	SER	-	expression tag	UNP P0DTC2
B	1247	THR	-	expression tag	UNP P0DTC2
B	1248	PHE	-	expression tag	UNP P0DTC2
B	1249	LEU	-	expression tag	UNP P0DTC2
B	1250	GLY	-	expression tag	UNP P0DTC2
B	1251	HIS	-	expression tag	UNP P0DTC2
B	1252	HIS	-	expression tag	UNP P0DTC2
B	1253	HIS	-	expression tag	UNP P0DTC2
B	1254	HIS	-	expression tag	UNP P0DTC2
B	1255	HIS	-	expression tag	UNP P0DTC2
B	1256	HIS	-	expression tag	UNP P0DTC2
C	-30	MET	-	initiating methionine	UNP P0DTC2
C	-29	GLY	-	expression tag	UNP P0DTC2
C	-28	ILE	-	expression tag	UNP P0DTC2
C	-27	LEU	-	expression tag	UNP P0DTC2
C	-26	PRO	-	expression tag	UNP P0DTC2
C	-25	SER	-	expression tag	UNP P0DTC2
C	-24	PRO	-	expression tag	UNP P0DTC2
C	-23	GLY	-	expression tag	UNP P0DTC2
C	-22	MET	-	expression tag	UNP P0DTC2
C	-21	PRO	-	expression tag	UNP P0DTC2
C	-20	ALA	-	expression tag	UNP P0DTC2
C	-19	LEU	-	expression tag	UNP P0DTC2
C	-18	LEU	-	expression tag	UNP P0DTC2
C	-17	SER	-	expression tag	UNP P0DTC2
C	-16	LEU	-	expression tag	UNP P0DTC2
C	-15	VAL	-	expression tag	UNP P0DTC2
C	-14	SER	-	expression tag	UNP P0DTC2
C	-13	LEU	-	expression tag	UNP P0DTC2
C	-12	LEU	-	expression tag	UNP P0DTC2
C	-11	SER	-	expression tag	UNP P0DTC2
C	-10	VAL	-	expression tag	UNP P0DTC2
C	-9	LEU	-	expression tag	UNP P0DTC2
C	-8	LEU	-	expression tag	UNP P0DTC2
C	-7	MET	-	expression tag	UNP P0DTC2
C	-6	GLY	-	expression tag	UNP P0DTC2
C	-5	CYS	-	expression tag	UNP P0DTC2
C	-4	VAL	-	expression tag	UNP P0DTC2
C	-3	ALA	-	expression tag	UNP P0DTC2
C	-2	GLU	-	expression tag	UNP P0DTC2
C	-1	THR	-	expression tag	UNP P0DTC2

Continued on next page...

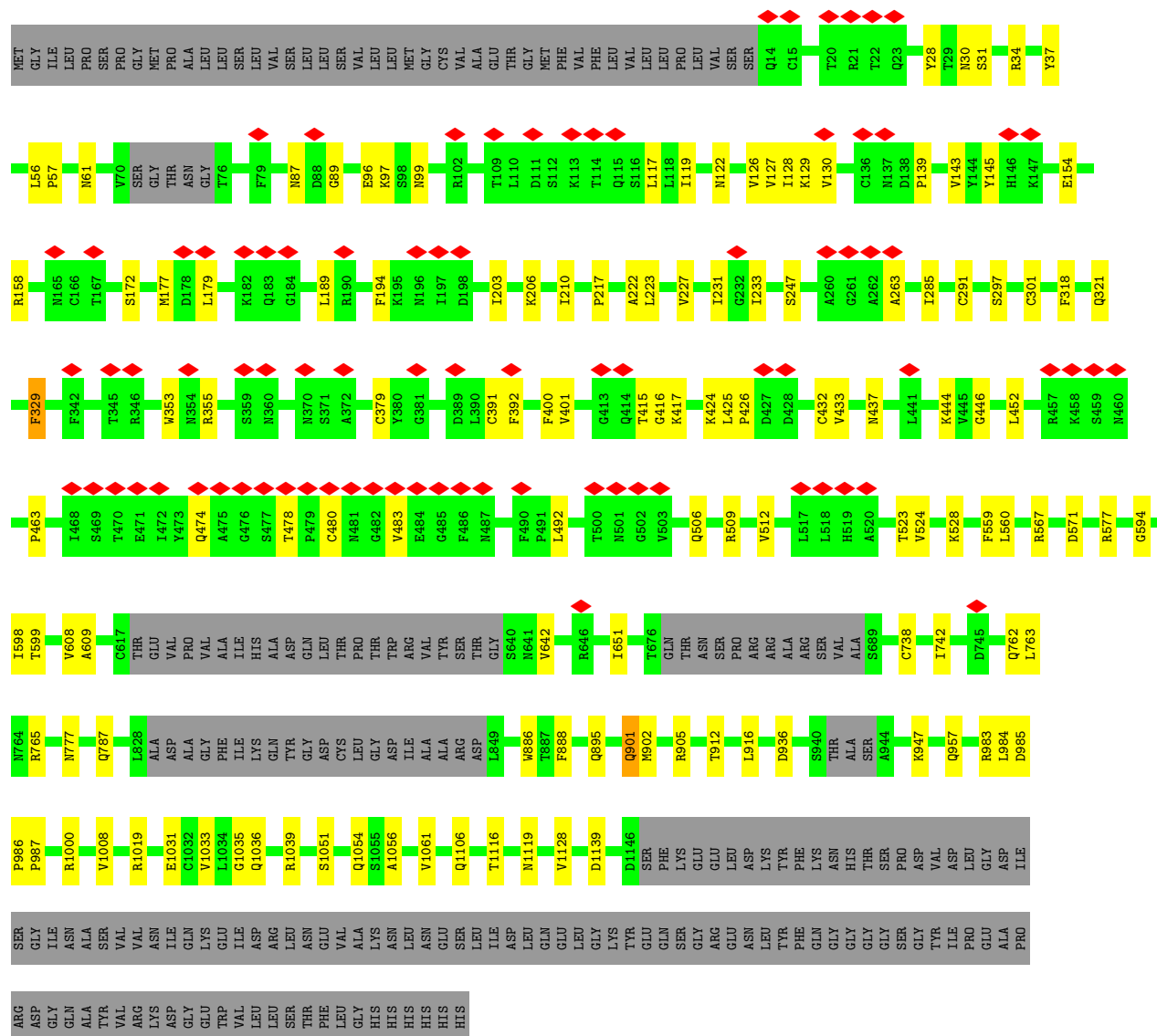
Continued from previous page...

Chain	Residue	Modelled	Actual	Comment	Reference
C	0	GLY	-	expression tag	UNP P0DTC2
C	986	PRO	LYS	engineered mutation	UNP P0DTC2
C	987	PRO	VAL	engineered mutation	UNP P0DTC2
C	1209	SER	-	expression tag	UNP P0DTC2
C	1210	GLY	-	expression tag	UNP P0DTC2
C	1211	ARG	-	expression tag	UNP P0DTC2
C	1212	GLU	-	expression tag	UNP P0DTC2
C	1213	ASN	-	expression tag	UNP P0DTC2
C	1214	LEU	-	expression tag	UNP P0DTC2
C	1215	TYR	-	expression tag	UNP P0DTC2
C	1216	PHE	-	expression tag	UNP P0DTC2
C	1217	GLN	-	expression tag	UNP P0DTC2
C	1218	GLY	-	expression tag	UNP P0DTC2
C	1219	GLY	-	expression tag	UNP P0DTC2
C	1220	GLY	-	expression tag	UNP P0DTC2
C	1221	GLY	-	expression tag	UNP P0DTC2
C	1222	SER	-	expression tag	UNP P0DTC2
C	1223	GLY	-	expression tag	UNP P0DTC2
C	1224	TYR	-	expression tag	UNP P0DTC2
C	1225	ILE	-	expression tag	UNP P0DTC2
C	1226	PRO	-	expression tag	UNP P0DTC2
C	1227	GLU	-	expression tag	UNP P0DTC2
C	1228	ALA	-	expression tag	UNP P0DTC2
C	1229	PRO	-	expression tag	UNP P0DTC2
C	1230	ARG	-	expression tag	UNP P0DTC2
C	1231	ASP	-	expression tag	UNP P0DTC2
C	1232	GLY	-	expression tag	UNP P0DTC2
C	1233	GLN	-	expression tag	UNP P0DTC2
C	1234	ALA	-	expression tag	UNP P0DTC2
C	1235	TYR	-	expression tag	UNP P0DTC2
C	1236	VAL	-	expression tag	UNP P0DTC2
C	1237	ARG	-	expression tag	UNP P0DTC2
C	1238	LYS	-	expression tag	UNP P0DTC2
C	1239	ASP	-	expression tag	UNP P0DTC2
C	1240	GLY	-	expression tag	UNP P0DTC2
C	1241	GLU	-	expression tag	UNP P0DTC2
C	1242	TRP	-	expression tag	UNP P0DTC2
C	1243	VAL	-	expression tag	UNP P0DTC2
C	1244	LEU	-	expression tag	UNP P0DTC2
C	1245	LEU	-	expression tag	UNP P0DTC2
C	1246	SER	-	expression tag	UNP P0DTC2
C	1247	THR	-	expression tag	UNP P0DTC2

Continued on next page...

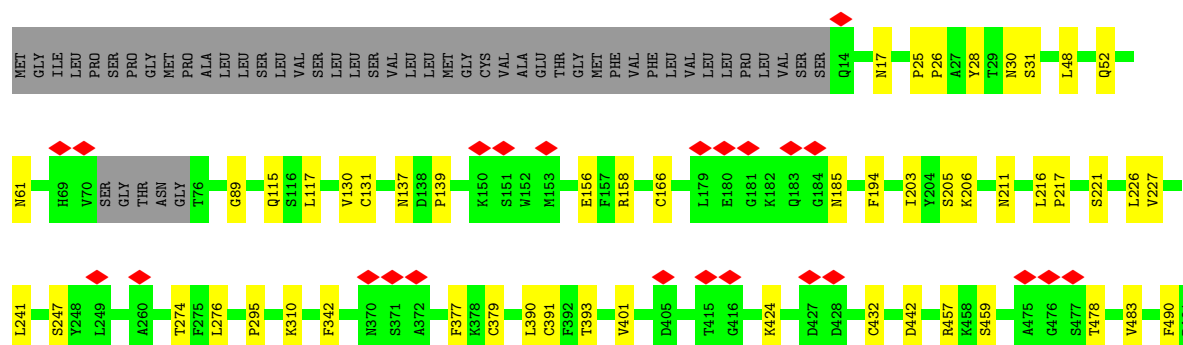
Continued from previous page...

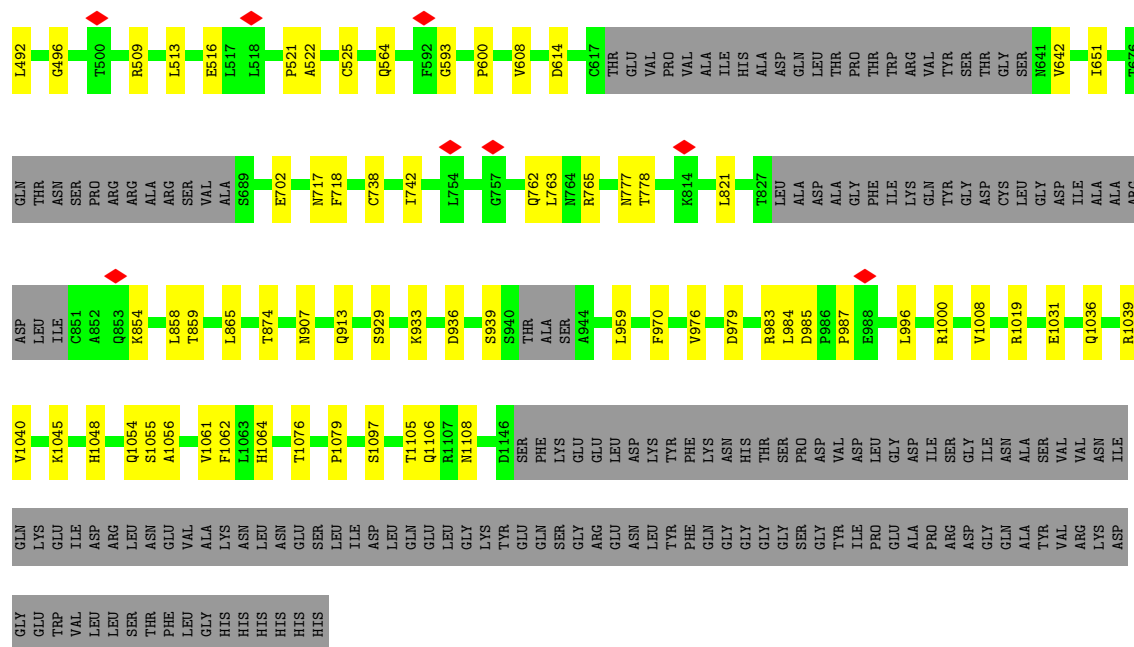
Chain	Residue	Modelled	Actual	Comment	Reference
C	1248	PHE	-	expression tag	UNP P0DTC2
C	1249	LEU	-	expression tag	UNP P0DTC2
C	1250	GLY	-	expression tag	UNP P0DTC2
C	1251	HIS	-	expression tag	UNP P0DTC2
C	1252	HIS	-	expression tag	UNP P0DTC2
C	1253	HIS	-	expression tag	UNP P0DTC2
C	1254	HIS	-	expression tag	UNP P0DTC2
C	1255	HIS	-	expression tag	UNP P0DTC2
C	1256	HIS	-	expression tag	UNP P0DTC2



• Molecule 1: Spike glycoprotein

Chain C: 74% 9% 17%





4 Experimental information

Property	Value	Source
EM reconstruction method	SINGLE PARTICLE	Depositor
Imposed symmetry	POINT, C1	Depositor
Number of particles used	73000	Depositor
Resolution determination method	FSC 0.143 CUT-OFF	Depositor
CTF correction method	PHASE FLIPPING AND AMPLITUDE CORRECTION	Depositor
Microscope	FEI TITAN KRIOS	Depositor
Voltage (kV)	300	Depositor
Electron dose ($e^-/\text{\AA}^2$)	54.4	Depositor
Minimum defocus (nm)	1500	Depositor
Maximum defocus (nm)	3000	Depositor
Magnification	Not provided	
Image detector	GATAN K2 QUANTUM (4k x 4k)	Depositor
Maximum map value	1.590	Depositor
Minimum map value	-0.707	Depositor
Average map value	0.003	Depositor
Map value standard deviation	0.032	Depositor
Recommended contour level	0.25	Depositor
Map size (Å)	431.19998, 431.19998, 431.19998	wwPDB
Map dimensions	400, 400, 400	wwPDB
Map angles (°)	90.0, 90.0, 90.0	wwPDB
Pixel spacing (Å)	1.078, 1.078, 1.078	Depositor

5 Model quality [i](#)

5.1 Standard geometry [i](#)

The Z score for a bond length (or angle) is the number of standard deviations the observed value is removed from the expected value. A bond length (or angle) with $|Z| > 5$ is considered an outlier worth inspection. RMSZ is the root-mean-square of all Z scores of the bond lengths (or angles).

Mol	Chain	Bond lengths		Bond angles	
		RMSZ	# Z >5	RMSZ	# Z >5
1	A	0.24	0/8560	0.41	0/11648
1	B	0.24	0/8574	0.41	0/11667
1	C	0.24	0/8544	0.40	0/11626
All	All	0.24	0/25678	0.41	0/34941

There are no bond length outliers.

There are no bond angle outliers.

There are no chirality outliers.

There are no planarity outliers.

5.2 Too-close contacts [i](#)

In the following table, the Non-H and H(model) columns list the number of non-hydrogen atoms and hydrogen atoms in the chain respectively. The H(added) column lists the number of hydrogen atoms added and optimized by MolProbity. The Clashes column lists the number of clashes within the asymmetric unit, whereas Symm-Clashes lists symmetry-related clashes.

Mol	Chain	Non-H	H(model)	H(added)	Clashes	Symm-Clashes
1	A	8366	0	8163	71	0
1	B	8380	0	8179	68	0
1	C	8350	0	8141	59	0
All	All	25096	0	24483	188	0

The all-atom clashscore is defined as the number of clashes found per 1000 atoms (including hydrogen atoms). The all-atom clashscore for this structure is 4.

All (188) close contacts within the same asymmetric unit are listed below, sorted by their clash magnitude.

Atom-1	Atom-2	Interatomic distance (Å)	Clash overlap (Å)
1:C:139:PRO:HA	1:C:158:ARG:O	1.83	0.79

Continued on next page...

Continued from previous page...

Atom-1	Atom-2	Interatomic distance (Å)	Clash overlap (Å)
1:A:139:PRO:HA	1:A:158:ARG:O	1.87	0.74
1:A:559:PHE:HB2	1:A:577:ARG:HH21	1.57	0.69
1:B:474:GLN:NE2	1:B:480:CYS:SG	2.68	0.67
1:C:391:CYS:HA	1:C:525:CYS:HA	1.77	0.67
1:A:391:CYS:HA	1:A:525:CYS:HA	1.78	0.66
1:C:763:LEU:HD22	1:C:1008:VAL:HG21	1.78	0.64
1:C:1031:GLU:OE1	1:C:1039:ARG:NH1	2.30	0.63
1:B:291:CYS:HA	1:B:297:SER:HB3	1.81	0.61
1:A:89:GLY:HA2	1:A:194:PHE:O	2.00	0.60
1:C:89:GLY:HA2	1:C:194:PHE:O	2.00	0.60
1:C:593:GLY:HA2	1:C:614:ASP:HB2	1.84	0.60
1:B:763:LEU:HD22	1:B:1008:VAL:HG21	1.83	0.60
1:C:1056:ALA:HB2	1:C:1061:VAL:HG23	1.85	0.58
1:A:983:ARG:HG3	1:A:984:LEU:HG	1.85	0.58
1:A:30:ASN:ND2	1:A:31:SER:O	2.37	0.58
1:B:139:PRO:HA	1:B:158:ARG:O	2.03	0.57
1:B:126:VAL:HB	1:B:172:SER:HB3	1.86	0.57
1:A:593:GLY:HA2	1:A:614:ASP:HB2	1.85	0.57
1:B:742:ILE:O	1:B:1000:ARG:NH1	2.38	0.57
1:B:318:PHE:H	1:B:594:GLY:HA2	1.67	0.57
1:C:742:ILE:O	1:C:1000:ARG:NH1	2.38	0.57
1:A:1031:GLU:OE1	1:A:1039:ARG:NH1	2.39	0.56
1:B:426:PRO:HG3	1:B:463:PRO:HB3	1.87	0.56
1:C:206:LYS:NZ	1:C:221:SER:OG	2.38	0.56
1:A:357:ARG:HH12	1:A:394:ASN:HD22	1.54	0.56
1:B:203:ILE:HB	1:B:227:VAL:HG12	1.86	0.56
1:C:983:ARG:HG3	1:C:984:LEU:HG	1.88	0.56
1:A:117:LEU:HD13	1:A:130:VAL:HG22	1.87	0.55
1:C:777:ASN:OD1	1:C:1019:ARG:NH1	2.38	0.55
1:C:30:ASN:ND2	1:C:31:SER:O	2.38	0.55
1:B:567:ARG:NH2	1:B:571:ASP:O	2.40	0.55
1:C:48:LEU:HB3	1:C:276:LEU:HD11	1.87	0.55
1:C:216:LEU:HD12	1:C:217:PRO:HD2	1.89	0.55
1:C:52:GLN:NE2	1:C:274:THR:OG1	2.39	0.55
1:A:929:SER:OG	1:A:933:LYS:NZ	2.40	0.55
1:B:34:ARG:NH2	1:B:217:PRO:O	2.40	0.55
1:C:929:SER:OG	1:C:933:LYS:NZ	2.39	0.55
1:A:822:LEU:HD13	1:A:1061:VAL:HG21	1.90	0.54
1:B:598:ILE:HB	1:B:609:ALA:HB3	1.88	0.54
1:C:457:ARG:NH1	1:C:459:SER:OG	2.41	0.54
1:B:30:ASN:ND2	1:B:31:SER:O	2.40	0.53

Continued on next page...

Continued from previous page...

Atom-1	Atom-2	Interatomic distance (Å)	Clash overlap (Å)
1:A:417:LYS:HD3	1:A:417:LYS:H	1.72	0.53
1:B:957:GLN:OE1	1:C:765:ARG:NH1	2.42	0.53
1:A:1039:ARG:NH2	1:B:1031:GLU:OE2	2.33	0.53
1:B:56:LEU:HD12	1:B:57:PRO:HD2	1.90	0.53
1:A:355:ARG:HE	1:A:396:TYR:HB3	1.72	0.52
1:A:762:GLN:HG2	1:A:765:ARG:HH21	1.73	0.52
1:B:37:TYR:HB3	1:B:223:LEU:HB2	1.91	0.52
1:B:1056:ALA:HB2	1:B:1061:VAL:HG23	1.91	0.52
1:C:762:GLN:OE1	1:C:765:ARG:NH2	2.43	0.52
1:C:295:PRO:HB2	1:C:608:VAL:HG21	1.92	0.52
1:C:401:VAL:HG22	1:C:509:ARG:HG2	1.91	0.51
1:B:122:ASN:ND2	1:B:154:GLU:OE1	2.43	0.51
1:C:642:VAL:HG22	1:C:651:ILE:HG12	1.93	0.51
1:A:189:LEU:HD22	1:A:217:PRO:HG2	1.92	0.51
1:B:1054:GLN:HB2	1:B:1061:VAL:HB	1.93	0.51
1:C:185:ASN:ND2	1:C:211:ASN:OD1	2.44	0.51
1:A:300:LYS:NZ	1:A:306:PHE:O	2.41	0.51
1:B:189:LEU:HB2	1:B:210:ILE:HD13	1.92	0.51
1:C:442:ASP:OD1	1:C:509:ARG:NH2	2.43	0.51
1:A:558:LYS:HA	1:A:584:ILE:HG13	1.92	0.51
1:B:642:VAL:HG22	1:B:651:ILE:HG12	1.92	0.50
1:A:203:ILE:HB	1:A:227:VAL:HG12	1.92	0.50
1:A:1074:ASN:OD1	1:B:895:GLN:NE2	2.44	0.50
1:C:117:LEU:HD13	1:C:130:VAL:HG22	1.94	0.50
1:A:401:VAL:HG22	1:A:509:ARG:HG2	1.93	0.50
1:A:412:PRO:HB3	1:A:429:PHE:HB3	1.92	0.50
1:B:523:THR:HG23	1:B:524:VAL:HG23	1.94	0.50
1:A:742:ILE:O	1:A:1000:ARG:NH1	2.44	0.50
1:B:444:LYS:HG2	1:B:446:GLY:H	1.76	0.50
1:B:599:THR:HG22	1:B:608:VAL:HG12	1.94	0.50
1:A:32:PHE:HD2	1:A:216:LEU:HD23	1.76	0.50
1:A:130:VAL:O	1:A:167:THR:OG1	2.23	0.50
1:A:189:LEU:HB2	1:A:210:ILE:HD13	1.93	0.49
1:C:1036:GLN:NE2	1:C:1048:HIS:O	2.45	0.49
1:B:1031:GLU:OE1	1:B:1039:ARG:NH1	2.44	0.49
1:A:805:ILE:HD12	1:A:878:LEU:HD11	1.93	0.49
1:B:401:VAL:HG22	1:B:509:ARG:HG2	1.94	0.49
1:A:108:THR:HA	1:A:236:THR:HB	1.95	0.49
1:C:203:ILE:HB	1:C:227:VAL:HG12	1.95	0.49
1:C:1054:GLN:HB2	1:C:1061:VAL:HB	1.95	0.49
1:A:1035:GLY:HA3	1:C:1040:VAL:HG21	1.95	0.48

Continued on next page...

Continued from previous page...

Atom-1	Atom-2	Interatomic distance (Å)	Clash overlap (Å)
1:C:854:LYS:HG2	1:C:859:THR:HA	1.94	0.48
1:B:902:MET:HG3	1:B:916:LEU:HD11	1.96	0.48
1:B:391:CYS:SG	1:B:392:PHE:N	2.86	0.48
1:B:99:ASN:HD22	1:B:177:MET:HB3	1.78	0.48
1:B:1116:THR:OG1	1:B:1119:ASN:OD1	2.31	0.48
1:C:1076:THR:OG1	1:C:1097:SER:OG	2.31	0.48
1:C:17:ASN:HD21	1:C:137:ASN:HB3	1.78	0.48
1:C:310:LYS:HG3	1:C:600:PRO:HA	1.96	0.47
1:A:310:LYS:HG3	1:A:600:PRO:HA	1.96	0.47
1:A:701:ALA:HB3	1:B:787:GLN:HE22	1.78	0.47
1:A:390:LEU:HD11	1:B:983:ARG:HA	1.96	0.47
1:C:985:ASP:HB2	1:C:987:PRO:HD2	1.96	0.47
1:A:331:ASN:ND2	1:A:530:SER:OG	2.47	0.47
1:B:96:GLU:HG2	1:B:263:ALA:HB1	1.96	0.47
1:B:912:THR:HG23	1:B:1106:GLN:HE22	1.80	0.47
1:B:452:LEU:HD13	1:B:492:LEU:HB3	1.96	0.47
1:C:393:THR:HB	1:C:516:GLU:HB2	1.96	0.47
1:C:907:ASN:HD21	1:C:913:GLN:HE21	1.63	0.47
1:A:433:VAL:HG22	1:A:512:VAL:HG22	1.96	0.46
1:A:314:GLN:NE2	1:A:596:SER:OG	2.48	0.46
1:A:964:LYS:HZ2	1:A:964:LYS:HB2	1.80	0.46
1:A:1082:CYS:HB2	1:A:1132:ILE:HD11	1.97	0.46
1:B:89:GLY:HA2	1:B:194:PHE:O	2.15	0.46
1:A:39:PRO:HG3	1:A:51:THR:HG21	1.97	0.46
1:A:100:ILE:HG13	1:A:262:ALA:H	1.80	0.46
1:A:983:ARG:HA	1:C:390:LEU:HD11	1.97	0.46
1:B:145:TYR:HB3	1:B:247:SER:HA	1.97	0.46
1:A:444:LYS:HG2	1:A:446:GLY:H	1.80	0.46
1:B:762:GLN:HA	1:B:765:ARG:HE	1.81	0.46
1:B:985:ASP:HB2	1:B:987:PRO:HD2	1.98	0.46
1:C:342:PHE:HZ	1:C:513:LEU:HD11	1.80	0.46
1:B:559:PHE:HB2	1:B:577:ARG:HH21	1.80	0.46
1:B:231:ILE:HD12	1:B:233:ILE:H	1.81	0.46
1:B:560:LEU:O	1:B:577:ARG:NH2	2.43	0.46
1:A:676:THR:H	1:A:690:GLN:HE22	1.64	0.45
1:A:97:LYS:HB3	1:A:186:PHE:HA	1.99	0.45
1:B:353:TRP:HB3	1:B:400:PHE:HB3	1.97	0.45
1:A:1125:ASN:HD22	1:A:1127:ASP:H	1.65	0.45
1:B:329:PHE:HD2	1:B:528:LYS:HE3	1.82	0.45
1:C:28:TYR:HB3	1:C:61:ASN:HD21	1.81	0.45
1:C:1062:PHE:HB3	1:C:1064:HIS:CE1	2.51	0.45

Continued on next page...

Continued from previous page...

Atom-1	Atom-2	Interatomic distance (Å)	Clash overlap (Å)
1:A:742:ILE:HA	1:A:1000:ARG:HH11	1.81	0.45
1:B:222:ALA:HB2	1:B:285:ILE:HB	1.99	0.45
1:B:206:LYS:HE2	1:B:223:LEU:HA	1.99	0.44
1:A:985:ASP:OD1	1:A:985:ASP:N	2.45	0.44
1:C:1106:GLN:HG3	1:C:1108:ASN:H	1.82	0.44
1:A:342:PHE:HZ	1:A:513:LEU:HD11	1.82	0.44
1:B:983:ARG:HG3	1:B:984:LEU:HG	1.99	0.44
1:C:115:GLN:HA	1:C:131:CYS:O	2.17	0.44
1:B:433:VAL:HG22	1:B:512:VAL:HG22	2.00	0.44
1:C:874:THR:HG21	1:C:1055:SER:HB3	2.00	0.43
1:B:415:THR:OG1	1:B:416:GLY:N	2.49	0.43
1:B:777:ASN:OD1	1:B:1019:ARG:NH1	2.41	0.43
1:B:986:PRO:N	1:B:987:PRO:HD2	2.34	0.43
1:A:1010:GLN:NE2	1:B:762:GLN:OE1	2.52	0.43
1:A:905:ARG:NH1	1:A:1049:LEU:O	2.52	0.43
1:C:379:CYS:HA	1:C:432:CYS:HA	2.01	0.43
1:C:521:PRO:HG3	1:C:564:GLN:HB2	2.00	0.43
1:B:886:TRP:HZ3	1:B:901:GLN:HG2	1.84	0.43
1:C:131:CYS:HA	1:C:166:CYS:HA	2.01	0.43
1:A:1033:VAL:HG22	1:A:1051:SER:HB2	2.01	0.43
1:C:858:LEU:HD13	1:C:959:LEU:HD22	2.00	0.43
1:B:424:LYS:NZ	1:B:425:LEU:O	2.48	0.42
1:A:778:THR:HG22	1:A:865:LEU:HD12	2.01	0.42
1:C:778:THR:HB	1:C:865:LEU:HD12	2.02	0.42
1:A:495:TYR:HB3	1:A:496:GLY:H	1.75	0.42
1:A:1052:PHE:HB2	1:A:1063:LEU:HB2	2.01	0.42
1:B:353:TRP:HH2	1:B:355:ARG:HH21	1.66	0.42
1:B:353:TRP:HZ3	1:B:355:ARG:HB2	1.84	0.42
1:C:717:ASN:OD1	1:C:718:PHE:N	2.53	0.42
1:B:143:VAL:HG21	1:B:179:LEU:HD13	2.02	0.42
1:C:25:PRO:HA	1:C:26:PRO:HD3	1.94	0.42
1:A:578:ASP:OD2	1:A:581:THR:N	2.42	0.42
1:B:119:ILE:HG23	1:B:128:ILE:HG12	2.01	0.42
1:A:457:ARG:NH1	1:A:460:ASN:O	2.52	0.42
1:A:788:ILE:HB	1:C:702:GLU:HA	2.01	0.42
1:A:762:GLN:HG2	1:A:765:ARG:NH2	2.35	0.42
1:A:862:PRO:HA	1:A:863:PRO:HD3	1.94	0.42
1:B:437:ASN:ND2	1:B:506:GLN:OE1	2.49	0.42
1:A:391:CYS:SG	1:A:525:CYS:N	2.93	0.42
1:A:418:ILE:HA	1:A:422:ASN:HD22	1.84	0.41
1:B:117:LEU:HD13	1:B:130:VAL:HG22	2.02	0.41

Continued on next page...

Continued from previous page...

Atom-1	Atom-2	Interatomic distance (Å)	Clash overlap (Å)
1:A:127:VAL:HG12	1:A:129:LYS:HG3	2.02	0.41
1:C:139:PRO:HB2	1:C:241:LEU:HD21	2.02	0.41
1:A:1105:THR:OG1	1:A:1106:GLN:N	2.53	0.41
1:C:1105:THR:OG1	1:C:1106:GLN:N	2.52	0.41
1:B:28:TYR:HB3	1:B:61:ASN:HD21	1.84	0.41
1:B:379:CYS:HA	1:B:432:CYS:HA	2.02	0.41
1:C:976:VAL:HG12	1:C:979:ASP:H	1.86	0.41
1:C:490:PHE:HE1	1:C:492:LEU:HB2	1.85	0.41
1:A:328:ARG:NH1	1:A:531:THR:O	2.47	0.41
1:C:970:PHE:HB2	1:C:996:LEU:HD23	2.03	0.41
1:A:206:LYS:HZ3	1:A:224:GLU:H	1.68	0.41
1:C:821:LEU:HD21	1:C:939:SER:HB3	2.03	0.41
1:A:541:PHE:HB2	1:A:543:PHE:HE2	1.86	0.41
1:A:1040:VAL:HG21	1:B:1035:GLY:HA3	2.03	0.41
1:B:1033:VAL:HG22	1:B:1051:SER:HB2	2.02	0.41
1:A:442:ASP:OD2	1:A:451:TYR:OH	2.35	0.40
1:B:127:VAL:HG12	1:B:129:LYS:HG3	2.04	0.40
1:B:905:ARG:NH1	1:B:1036:GLN:HB2	2.36	0.40
1:C:205:SER:HB3	1:C:226:LEU:HD22	2.03	0.40
1:A:415:THR:OG1	1:A:416:GLY:N	2.52	0.40
1:A:457:ARG:NH1	1:A:459:SER:OG	2.54	0.40
1:A:763:LEU:HD22	1:A:1008:VAL:HG21	2.02	0.40
1:C:393:THR:HG23	1:C:522:ALA:HB2	2.02	0.40

There are no symmetry-related clashes.

5.3 Torsion angles [i](#)

5.3.1 Protein backbone [i](#)

In the following table, the Percentiles column shows the percent Ramachandran outliers of the chain as a percentile score with respect to all PDB entries followed by that with respect to all EM entries.

The Analysed column shows the number of residues for which the backbone conformation was analysed, and the total number of residues.

Mol	Chain	Analysed	Favoured	Allowed	Outliers	Percentiles	
1	A	1057/1287 (82%)	922 (87%)	130 (12%)	5 (0%)	25	58
1	B	1059/1287 (82%)	924 (87%)	129 (12%)	6 (1%)	22	55

Continued on next page...

Continued from previous page...

Mol	Chain	Analysed	Favoured	Allowed	Outliers	Percentiles	
1	C	1055/1287 (82%)	917 (87%)	133 (13%)	5 (0%)	25	58
All	All	3171/3861 (82%)	2763 (87%)	392 (12%)	16 (0%)	27	58

All (16) Ramachandran outliers are listed below:

Mol	Chain	Res	Type
1	B	329	PHE
1	C	1079	PRO
1	A	164	ASN
1	B	87	ASN
1	B	478	THR
1	C	483	VAL
1	A	293	LEU
1	A	478	THR
1	A	603	ASN
1	A	1128	VAL
1	C	478	THR
1	C	247	SER
1	B	1128	VAL
1	B	483	VAL
1	B	1139	ASP
1	C	496	GLY

5.3.2 Protein sidechains [i](#)

In the following table, the Percentiles column shows the percent sidechain outliers of the chain as a percentile score with respect to all PDB entries followed by that with respect to all EM entries.

The Analysed column shows the number of residues for which the sidechain conformation was analysed, and the total number of residues.

Mol	Chain	Analysed	Rotameric	Outliers	Percentiles	
1	A	935/1116 (84%)	926 (99%)	9 (1%)	73	80
1	B	937/1116 (84%)	928 (99%)	9 (1%)	73	80
1	C	933/1116 (84%)	927 (99%)	6 (1%)	84	88
All	All	2805/3348 (84%)	2781 (99%)	24 (1%)	74	82

All (24) residues with a non-rotameric sidechain are listed below:

Mol	Chain	Res	Type
1	A	14	GLN
1	A	156	GLU
1	A	166	CYS
1	A	173	GLN
1	A	206	LYS
1	A	377	PHE
1	A	417	LYS
1	A	643	PHE
1	A	936	ASP
1	B	97	LYS
1	B	301	CYS
1	B	321	GLN
1	B	417	LYS
1	B	738	CYS
1	B	888	PHE
1	B	901	GLN
1	B	936	ASP
1	B	947	LYS
1	C	156	GLU
1	C	377	PHE
1	C	424	LYS
1	C	738	CYS
1	C	936	ASP
1	C	1045	LYS

Sometimes sidechains can be flipped to improve hydrogen bonding and reduce clashes. All (92) such sidechains are listed below:

Mol	Chain	Res	Type
1	A	14	GLN
1	A	17	ASN
1	A	115	GLN
1	A	134	GLN
1	A	149	ASN
1	A	173	GLN
1	A	211	ASN
1	A	271	GLN
1	A	314	GLN
1	A	321	GLN
1	A	331	ASN
1	A	394	ASN
1	A	414	GLN
1	A	564	GLN
1	A	580	GLN

Continued on next page...

Continued from previous page...

Mol	Chain	Res	Type
1	A	613	GLN
1	A	675	GLN
1	A	690	GLN
1	A	787	GLN
1	A	872	GLN
1	A	913	GLN
1	A	920	GLN
1	A	935	GLN
1	A	954	GLN
1	A	965	GLN
1	A	1005	GLN
1	A	1010	GLN
1	A	1036	GLN
1	A	1054	GLN
1	A	1064	HIS
1	A	1098	ASN
1	A	1125	ASN
1	A	1142	GLN
1	B	52	GLN
1	B	61	ASN
1	B	69	HIS
1	B	115	GLN
1	B	211	ASN
1	B	218	GLN
1	B	239	GLN
1	B	271	GLN
1	B	282	ASN
1	B	321	GLN
1	B	414	GLN
1	B	540	ASN
1	B	564	GLN
1	B	613	GLN
1	B	690	GLN
1	B	755	GLN
1	B	762	GLN
1	B	787	GLN
1	B	901	GLN
1	B	920	GLN
1	B	925	ASN
1	B	935	GLN
1	B	954	GLN
1	B	965	GLN

Continued on next page...

Continued from previous page...

Mol	Chain	Res	Type
1	B	1011	GLN
1	B	1064	HIS
1	B	1071	GLN
1	C	14	GLN
1	C	17	ASN
1	C	23	GLN
1	C	52	GLN
1	C	61	ASN
1	C	115	GLN
1	C	185	ASN
1	C	218	GLN
1	C	239	GLN
1	C	271	GLN
1	C	314	GLN
1	C	321	GLN
1	C	370	ASN
1	C	422	ASN
1	C	519	HIS
1	C	613	GLN
1	C	675	GLN
1	C	784	GLN
1	C	853	GLN
1	C	907	ASN
1	C	920	GLN
1	C	935	GLN
1	C	954	GLN
1	C	965	GLN
1	C	1002	GLN
1	C	1005	GLN
1	C	1011	GLN
1	C	1054	GLN
1	C	1064	HIS
1	C	1071	GLN
1	C	1074	ASN
1	C	1134	ASN

5.3.3 RNA ⓘ

There are no RNA molecules in this entry.

5.4 Non-standard residues in protein, DNA, RNA chains [i](#)

There are no non-standard protein/DNA/RNA residues in this entry.

5.5 Carbohydrates [i](#)

There are no oligosaccharides in this entry.

5.6 Ligand geometry [i](#)

There are no ligands in this entry.

5.7 Other polymers [i](#)

There are no such residues in this entry.

5.8 Polymer linkage issues [i](#)

There are no chain breaks in this entry.

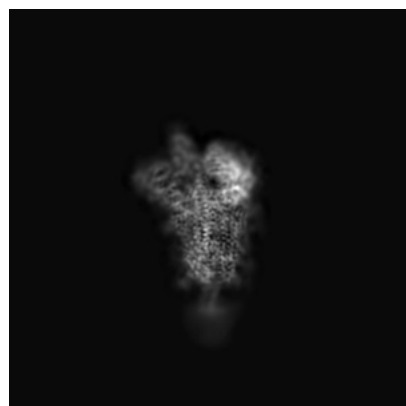
6 Map visualisation [i](#)

This section contains visualisations of the EMDB entry EMD-11205. These allow visual inspection of the internal detail of the map and identification of artifacts.

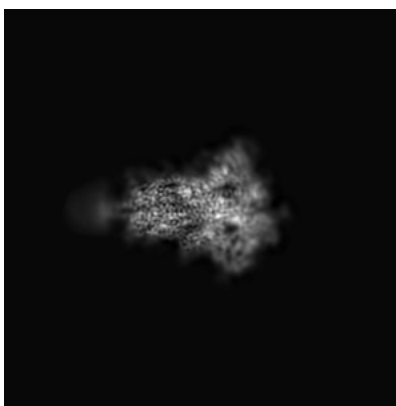
Images derived from a raw map, generated by summing the deposited half-maps, are presented below the corresponding image components of the primary map to allow further visual inspection and comparison with those of the primary map.

6.1 Orthogonal projections [i](#)

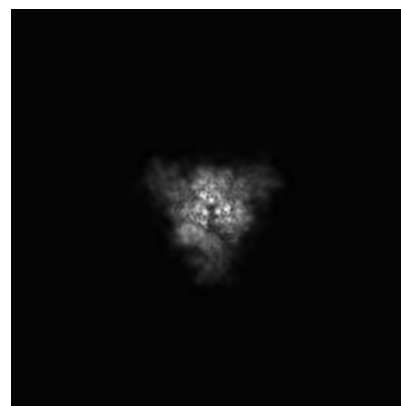
6.1.1 Primary map



X

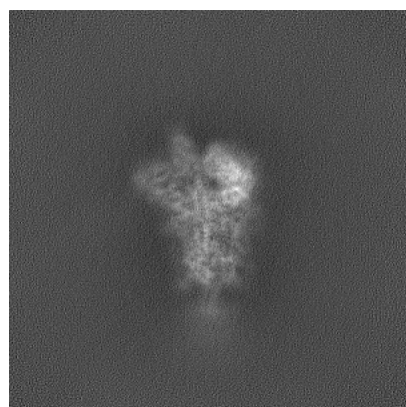


Y

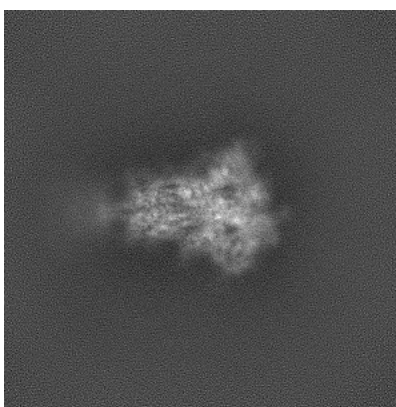


Z

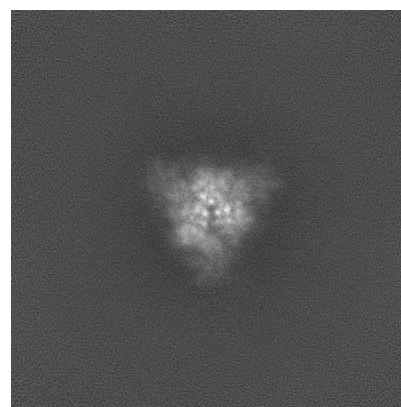
6.1.2 Raw map



X



Y

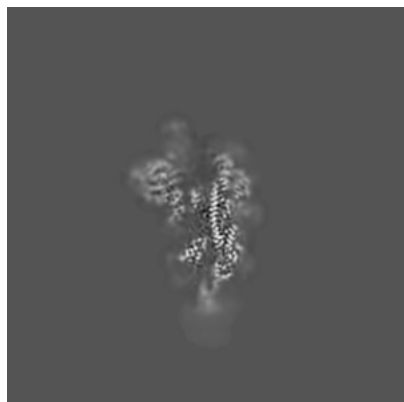


Z

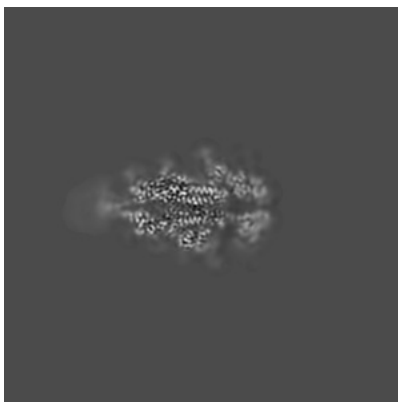
The images above show the map projected in three orthogonal directions.

6.2 Central slices [i](#)

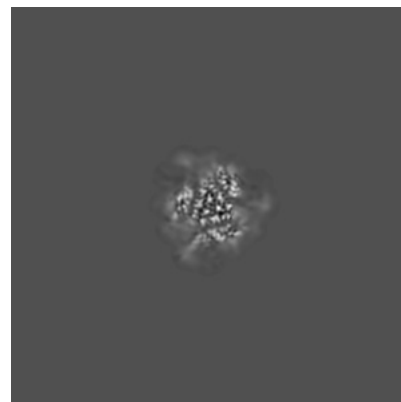
6.2.1 Primary map



X Index: 200



Y Index: 200

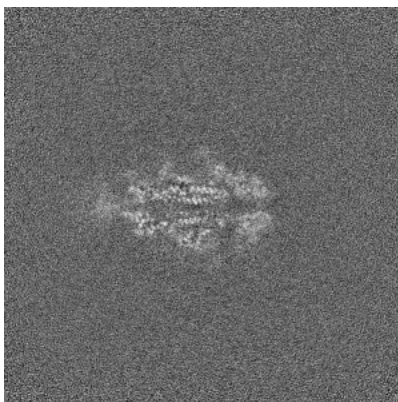


Z Index: 200

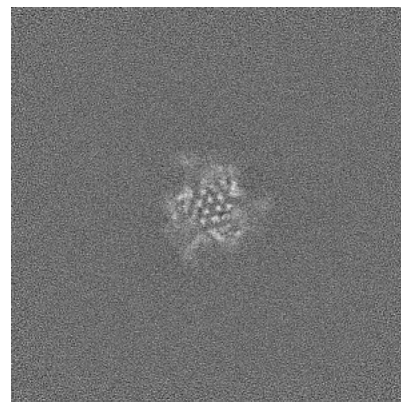
6.2.2 Raw map



X Index: 200



Y Index: 200



Z Index: 200

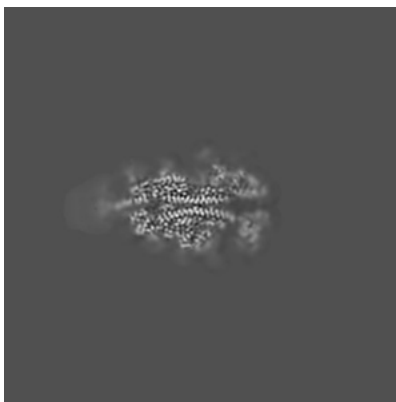
The images above show central slices of the map in three orthogonal directions.

6.3 Largest variance slices [i](#)

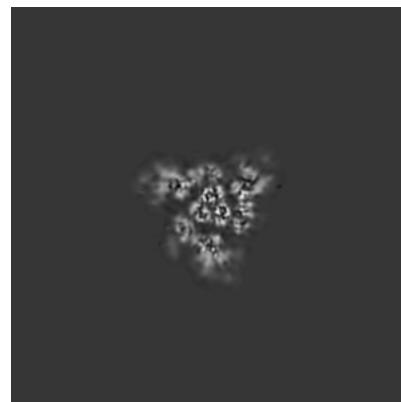
6.3.1 Primary map



X Index: 194

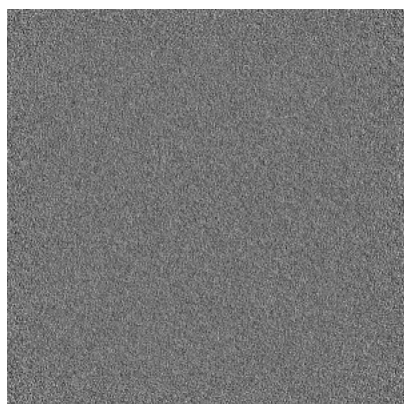


Y Index: 197

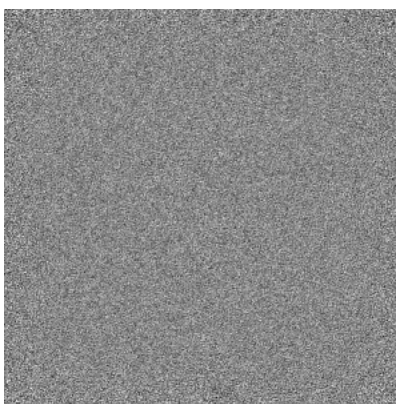


Z Index: 217

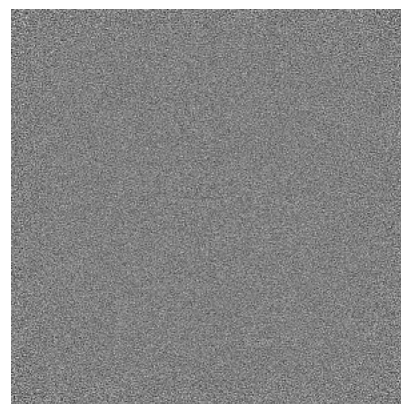
6.3.2 Raw map



X Index: 0



Y Index: 0

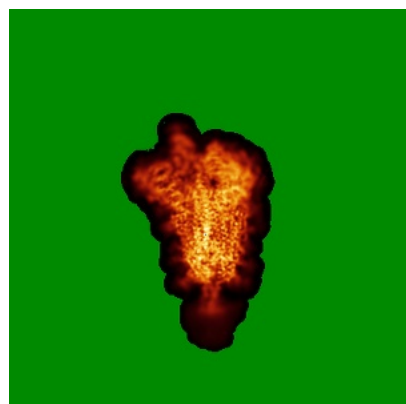


Z Index: 0

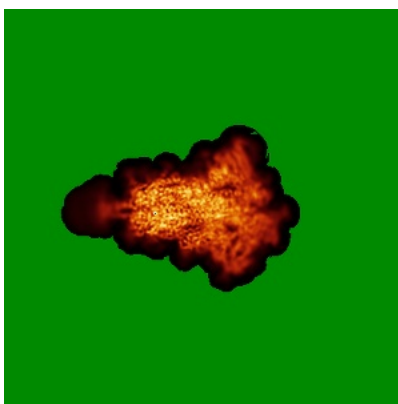
The images above show the largest variance slices of the map in three orthogonal directions.

6.4 Orthogonal standard-deviation projections (False-color) [i](#)

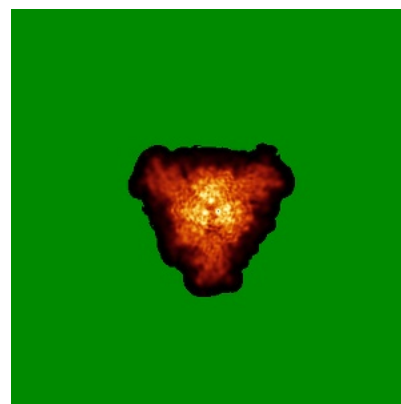
6.4.1 Primary map



X

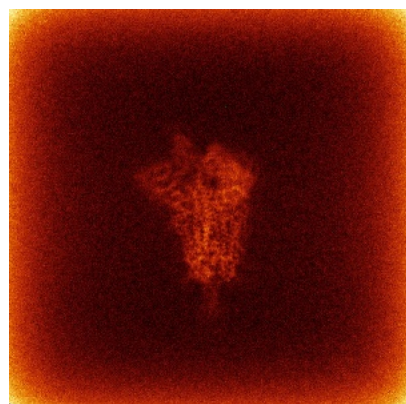


Y

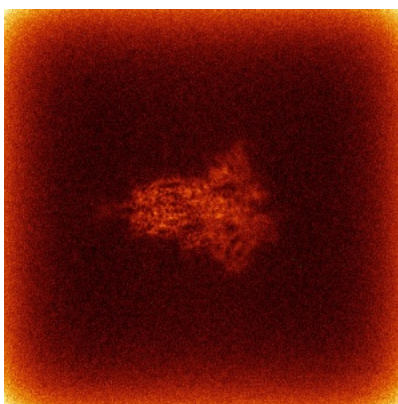


Z

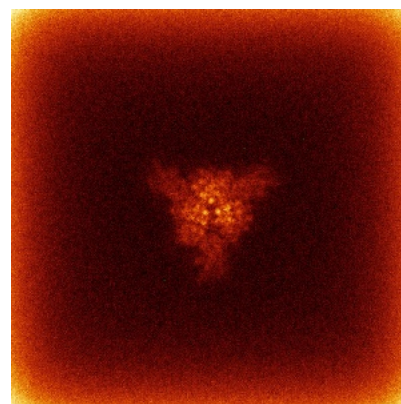
6.4.2 Raw map



X



Y

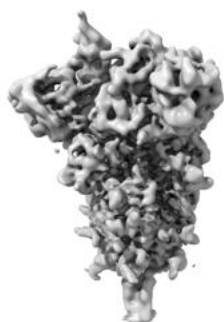


Z

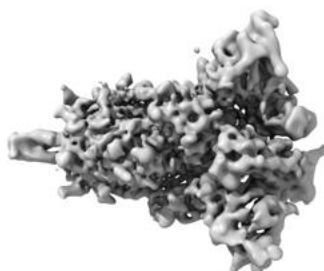
The images above show the map standard deviation projections with false color in three orthogonal directions. Minimum values are shown in green, max in blue, and dark to light orange shades represent small to large values respectively.

6.5 Orthogonal surface views [i](#)

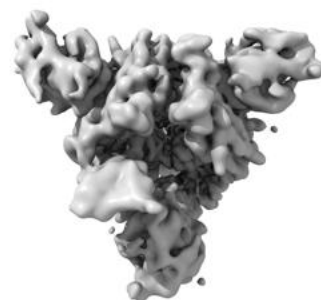
6.5.1 Primary map



X



Y



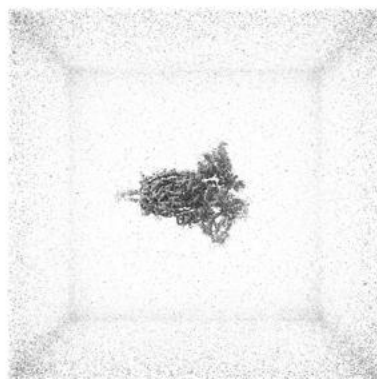
Z

The images above show the 3D surface view of the map at the recommended contour level 0.25. These images, in conjunction with the slice images, may facilitate assessment of whether an appropriate contour level has been provided.

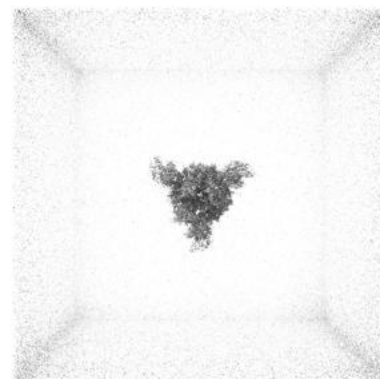
6.5.2 Raw map



X



Y



Z

These images show the 3D surface of the raw map. The raw map's contour level was selected so that its surface encloses the same volume as the primary map does at its recommended contour level.

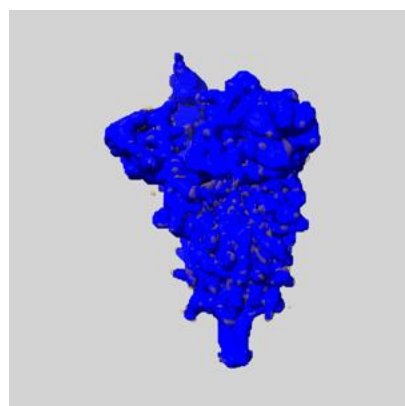
6.6 Mask visualisation [i](#)

This section shows the 3D surface view of the primary map at 50% transparency overlaid with the specified mask at 0% transparency

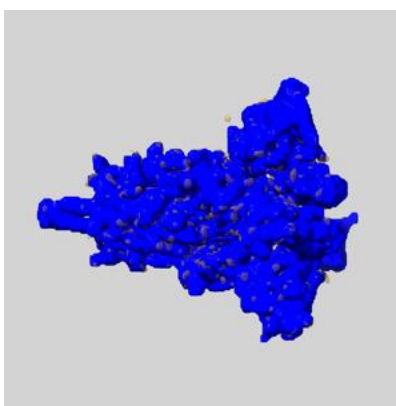
A mask typically either:

- Encompasses the whole structure
- Separates out a domain, a functional unit, a monomer or an area of interest from a larger structure

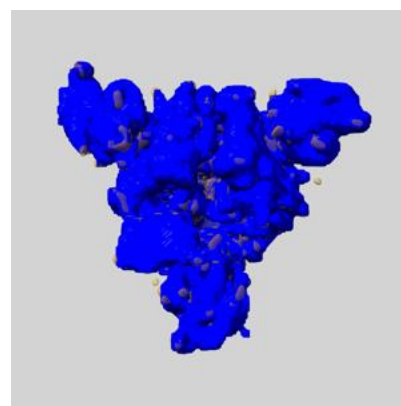
6.6.1 emd_11205_msk_1.map [i](#)



X



Y

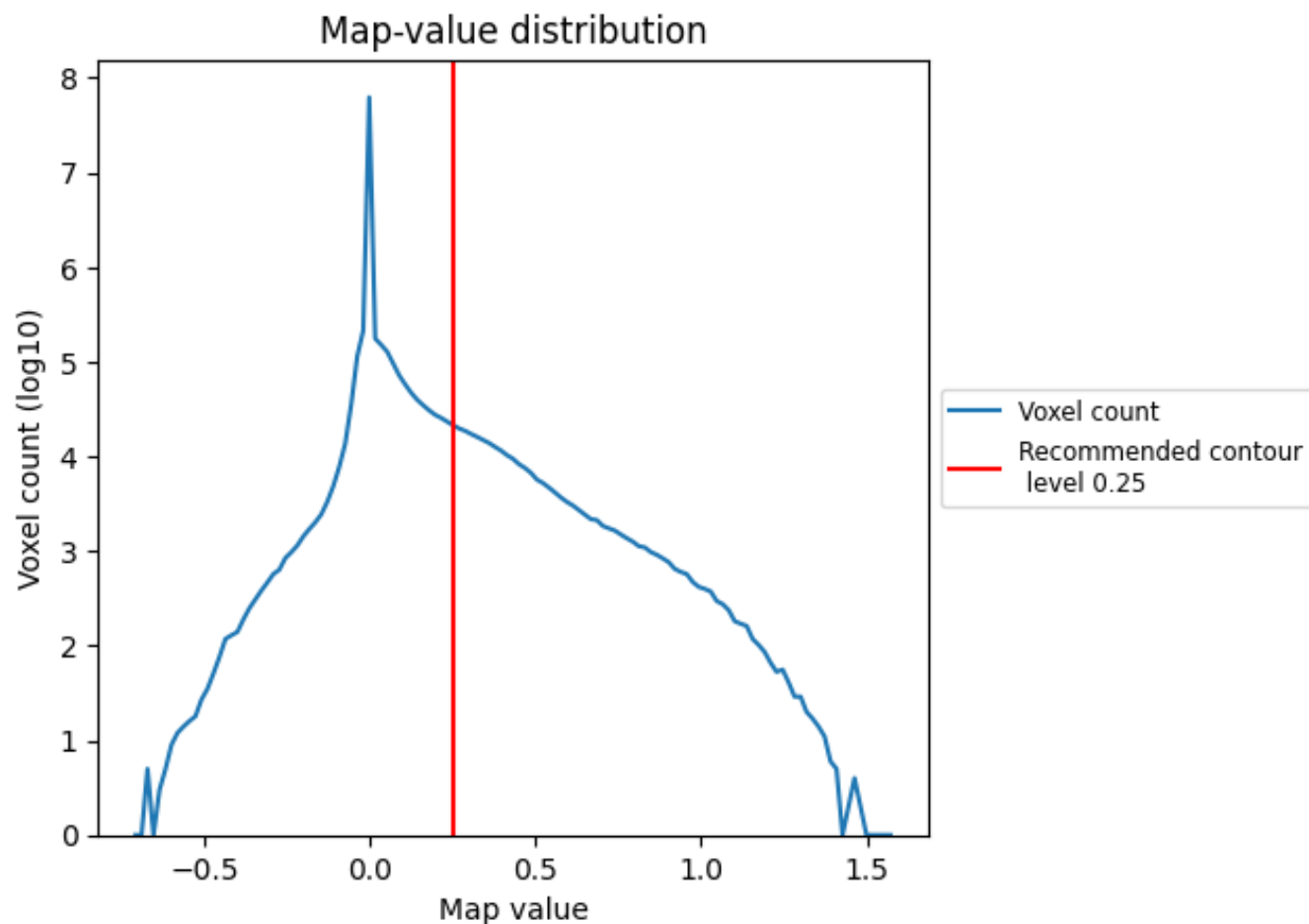


Z

7 Map analysis [i](#)

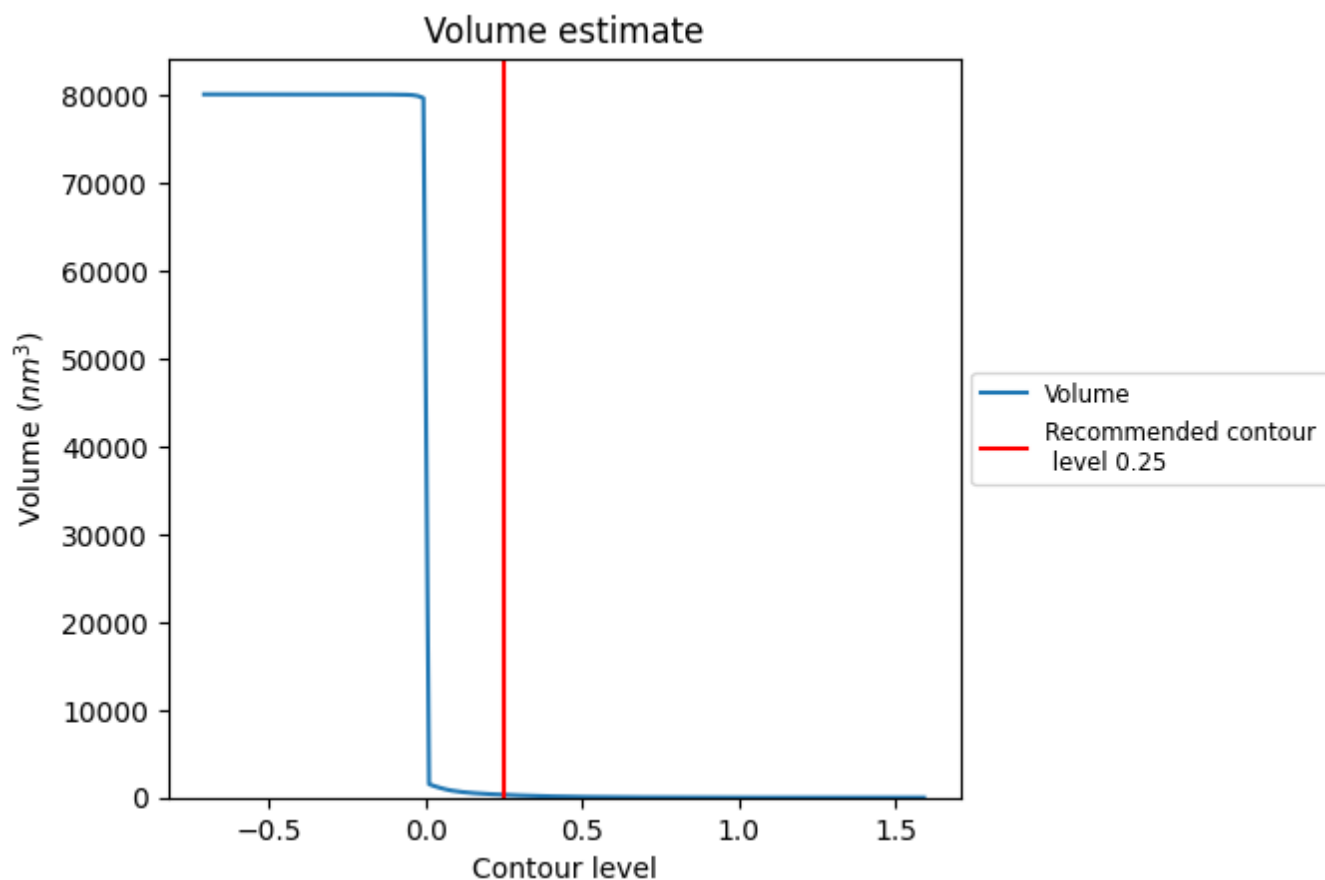
This section contains the results of statistical analysis of the map.

7.1 Map-value distribution [i](#)



The map-value distribution is plotted in 128 intervals along the x-axis. The y-axis is logarithmic. A spike in this graph at zero usually indicates that the volume has been masked.

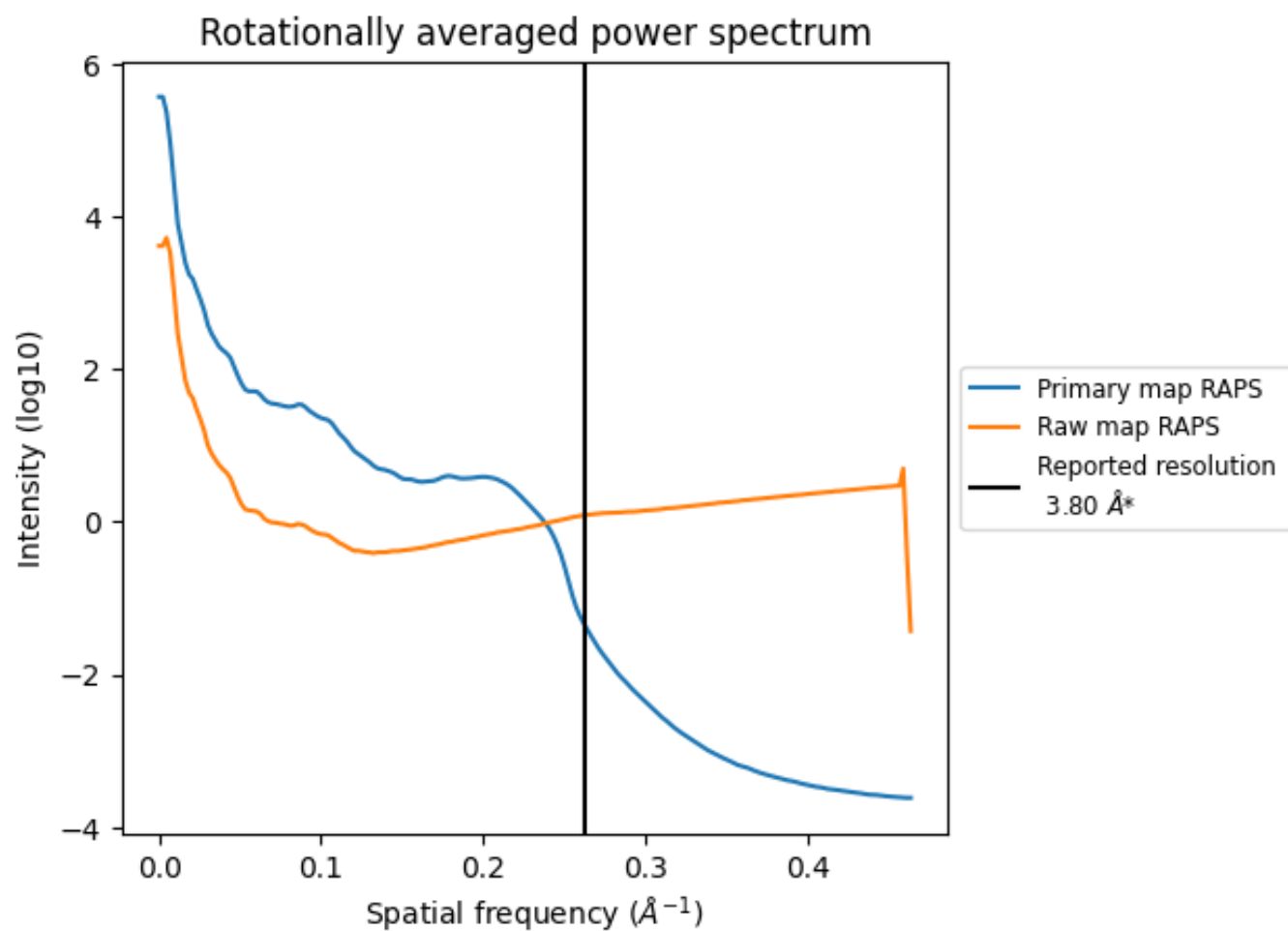
7.2 Volume estimate [i](#)



The volume at the recommended contour level is 314 nm^3 ; this corresponds to an approximate mass of 283 kDa.

The volume estimate graph shows how the enclosed volume varies with the contour level. The recommended contour level is shown as a vertical line and the intersection between the line and the curve gives the volume of the enclosed surface at the given level.

7.3 Rotationally averaged power spectrum ⓘ

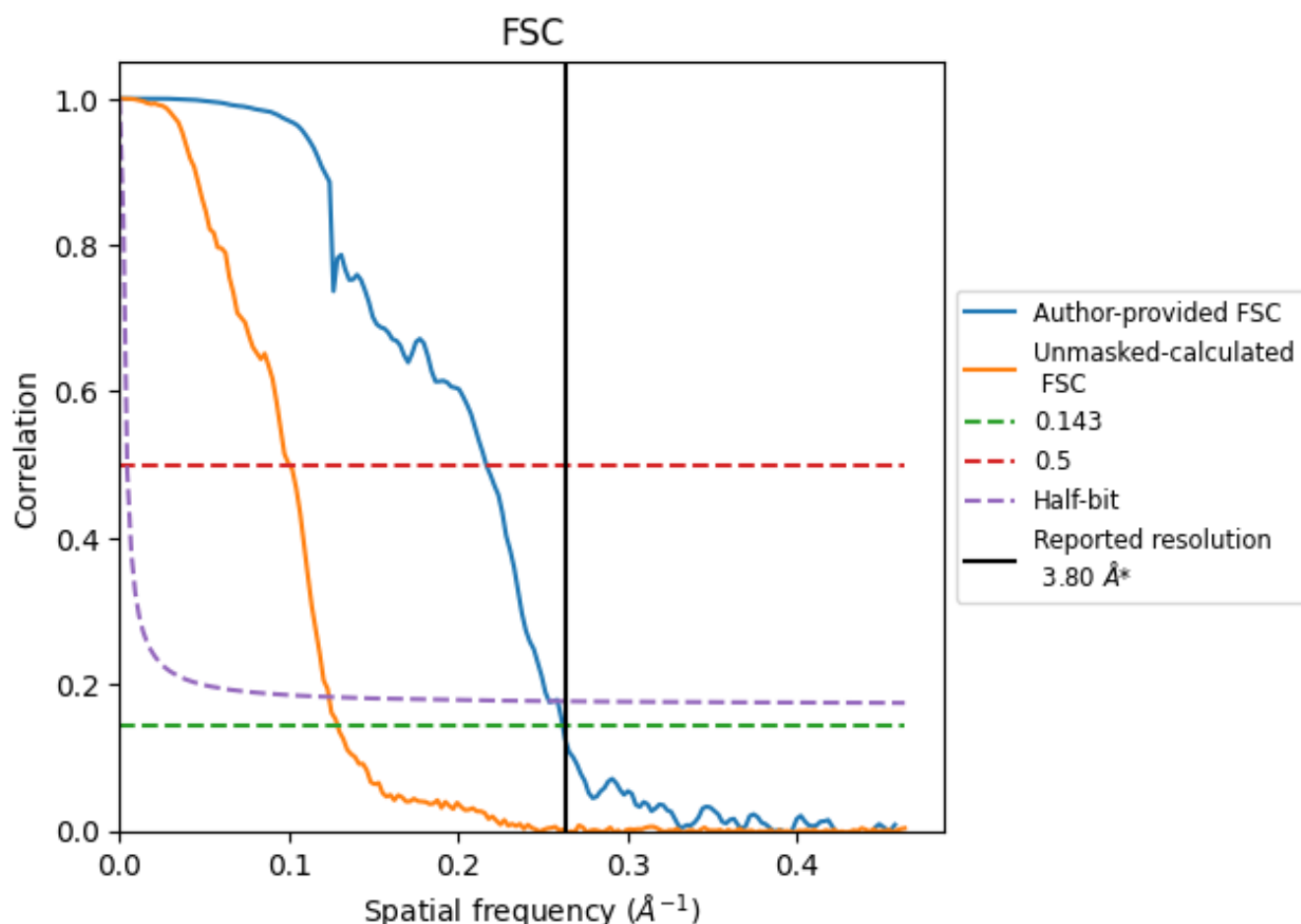


*Reported resolution corresponds to spatial frequency of 0.263 \AA^{-1}

8 Fourier-Shell correlation [i](#)

Fourier-Shell Correlation (FSC) is the most commonly used method to estimate the resolution of single-particle and subtomogram-averaged maps. The shape of the curve depends on the imposed symmetry, mask and whether or not the two 3D reconstructions used were processed from a common reference. The reported resolution is shown as a black line. A curve is displayed for the half-bit criterion in addition to lines showing the 0.143 gold standard cut-off and 0.5 cut-off.

8.1 FSC [i](#)



*Reported resolution corresponds to spatial frequency of 0.263 Å⁻¹

8.2 Resolution estimates [i](#)

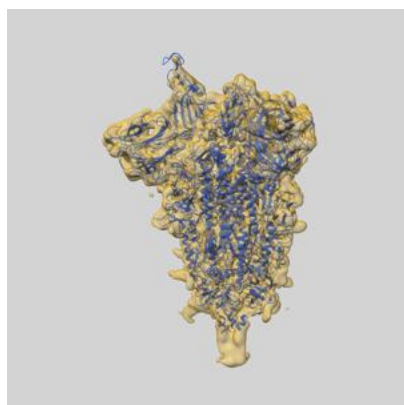
Resolution estimate (Å)	Estimation criterion (FSC cut-off)		
	0.143	0.5	Half-bit
Reported by author	3.80	-	-
Author-provided FSC curve	3.82	4.62	3.94
Unmasked-calculated*	7.76	9.97	8.08

*Resolution estimate based on FSC curve calculated by comparison of deposited half-maps. The value from deposited half-maps intersecting FSC 0.143 CUT-OFF 7.76 differs from the reported value 3.8 by more than 10 %

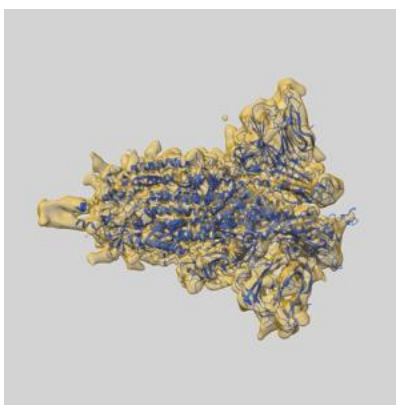
9 Map-model fit [i](#)

This section contains information regarding the fit between EMDB map EMD-11205 and PDB model 6ZGG. Per-residue inclusion information can be found in section [3](#) on page [10](#).

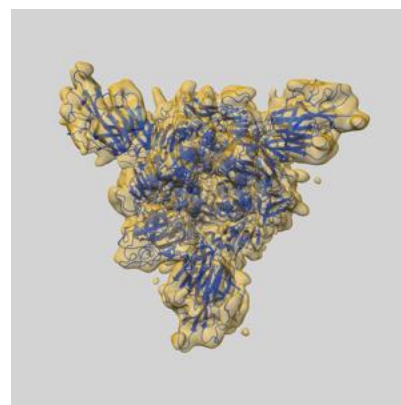
9.1 Map-model overlay [i](#)



X



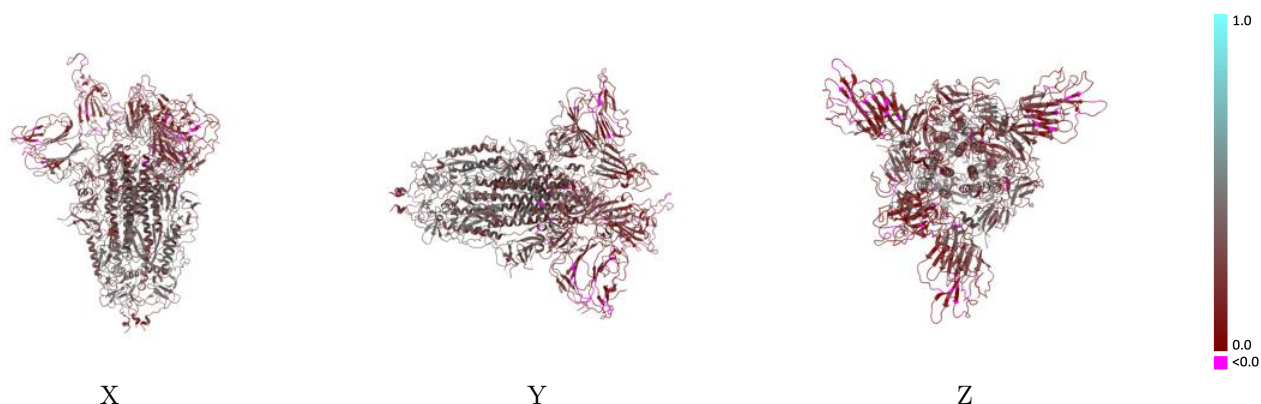
Y



Z

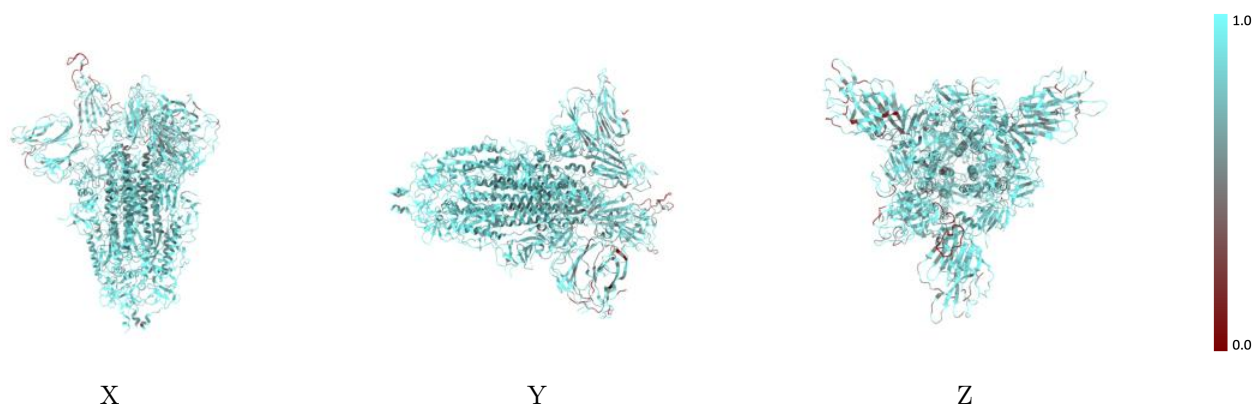
The images above show the 3D surface view of the map at the recommended contour level 0.25 at 50% transparency in yellow overlaid with a ribbon representation of the model coloured in blue. These images allow for the visual assessment of the quality of fit between the atomic model and the map.

9.2 Q-score mapped to coordinate model [i](#)



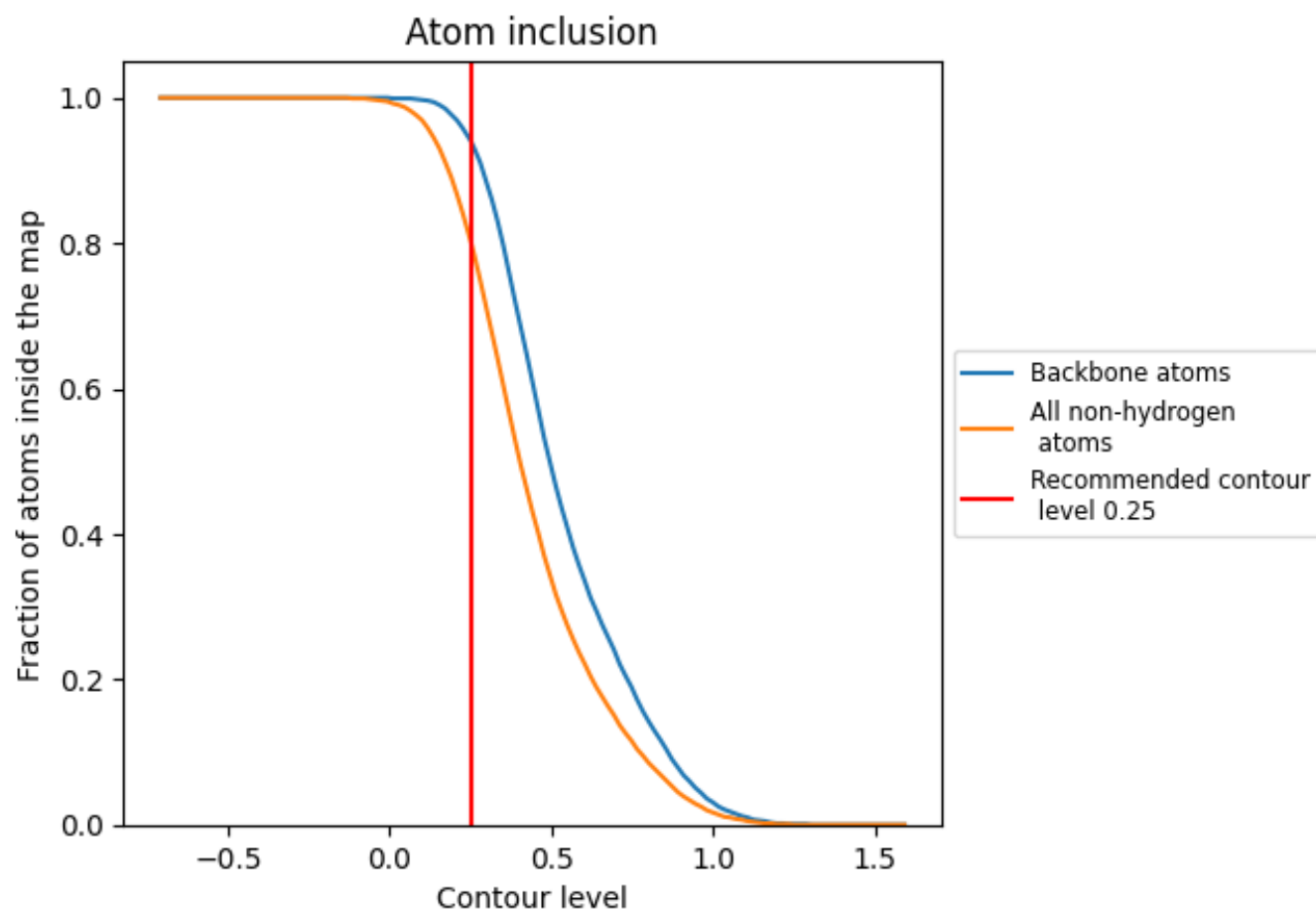
The images above show the model with each residue coloured according to its Q-score. This shows their resolvability in the map with higher Q-score values reflecting better resolvability. Please note: Q-score is calculating the resolvability of atoms, and thus high values are only expected at resolutions at which atoms can be resolved. Low Q-score values may therefore be expected for many entries.

9.3 Atom inclusion mapped to coordinate model [i](#)



The images above show the model with each residue coloured according to its atom inclusion. This shows to what extent they are inside the map at the recommended contour level (0.25).

9.4 Atom inclusion [i](#)



At the recommended contour level, 94% of all backbone atoms, 80% of all non-hydrogen atoms, are inside the map.

9.5 Map-model fit summary ⓘ

The table lists the average atom inclusion at the recommended contour level (0.25) and Q-score for the entire model and for each chain.

Chain	Atom inclusion	Q-score
All	<div><div></div></div> 0.8030	<div><div></div></div> 0.2860
A	<div><div></div></div> 0.8180	<div><div></div></div> 0.2950
B	<div><div></div></div> 0.7710	<div><div></div></div> 0.2660
C	<div><div></div></div> 0.8190	<div><div></div></div> 0.2980

