



Full wwPDB EM Validation Report ⓘ

Jul 8, 2025 – 03:19 PM JST

PDB ID : 8ZT5 / pdb_00008zt5
EMDB ID : EMD-60447
Title : Structure of calcium preference ATP-gated channel P2X1 in the Desensitized state 2 in the presence of 1mM Calcium ion
Authors : Zhang, H.; Xu, H.E.
Deposited on : 2024-06-06
Resolution : 2.35 Å(reported)

This is a Full wwPDB EM Validation Report for a publicly released PDB entry.

We welcome your comments at validation@mail.wwpdb.org

A user guide is available at

<https://www.wwpdb.org/validation/2017/EMValidationReportHelp>
with specific help available everywhere you see the ⓘ symbol.

The types of validation reports are described at

<http://www.wwpdb.org/validation/2017/FAQs#types>.

The following versions of software and data (see [references ⓘ](#)) were used in the production of this report:

EMDB validation analysis : **FAILED**
Mogul : 1.8.5 (274361), CSD as541be (2020)
MolProbity : 4-5-2 with Phenix2.0rc1
buster-report : 1.1.7 (2018)
Percentile statistics : 20231227.v01 (using entries in the PDB archive December 27th 2023)
MapQ : **FAILED**
Ideal geometry (proteins) : Engh & Huber (2001)
Ideal geometry (DNA, RNA) : Parkinson et al. (1996)
Validation Pipeline (wwPDB-VP) : 2.44

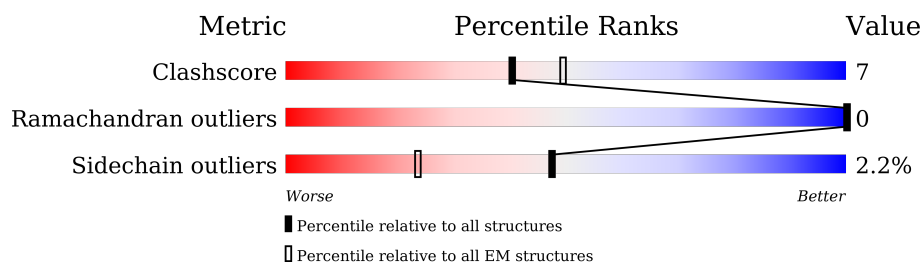
1 Overall quality at a glance

The following experimental techniques were used to determine the structure:

ELECTRON MICROSCOPY

The reported resolution of this entry is 2.35 Å.

Percentile scores (ranging between 0-100) for global validation metrics of the entry are shown in the following graphic. The table shows the number of entries on which the scores are based.



Metric	Whole archive (#Entries)	EM structures (#Entries)
Clashscore	210492	15764
Ramachandran outliers	207382	16835
Sidechain outliers	206894	16415

The table below summarises the geometric issues observed across the polymeric chains and their fit to the map. The red, orange, yellow and green segments of the bar indicate the fraction of residues that contain outliers for ≥ 3 , 2, 1 and 0 types of geometric quality criteria respectively. A grey segment represents the fraction of residues that are not modelled. The numeric value for each fraction is indicated below the corresponding segment, with a dot representing fractions $\leq 5\%$

Mol	Chain	Length	Quality of chain
1	A	399	
1	B	399	
1	C	399	

2 Entry composition [i](#)

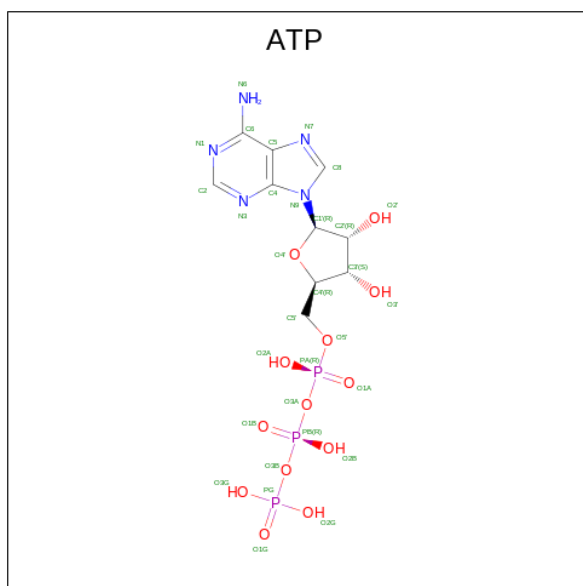
There are 6 unique types of molecules in this entry. The entry contains 7996 atoms, of which 0 are hydrogens and 0 are deuteriums.

In the tables below, the AltConf column contains the number of residues with at least one atom in alternate conformation and the Trace column contains the number of residues modelled with at most 2 atoms.

- Molecule 1 is a protein called P2X purinoceptor 1.

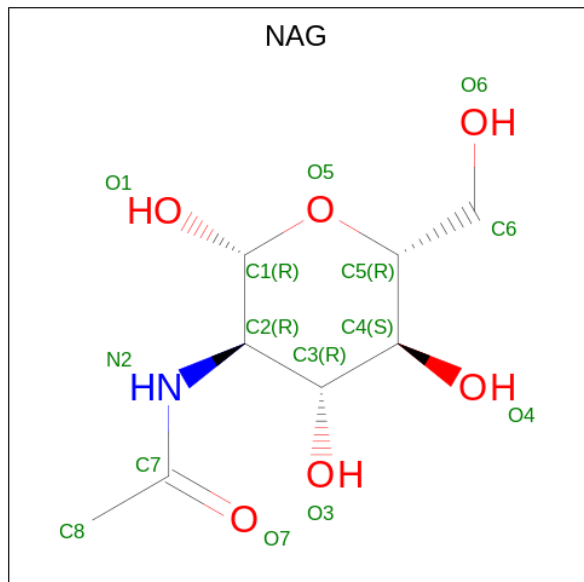
Mol	Chain	Residues	Atoms					AltConf	Trace
1	B	330	Total	C	N	O	S	0	0
			2588	1672	445	456	15		
1	C	330	Total	C	N	O	S	0	0
			2588	1672	445	456	15		
1	A	330	Total	C	N	O	S	0	0
			2588	1672	445	456	15		

- Molecule 2 is ADENOSINE-5'-TRIPHOSPHATE (CCD ID: ATP) (formula: $C_{10}H_{16}N_5O_{13}P_3$) (labeled as "Ligand of Interest" by depositor).



Mol	Chain	Residues	Atoms					AltConf
2	B	1	Total	C	N	O	P	0
			31	10	5	13	3	
2	C	1	Total	C	N	O	P	0
			31	10	5	13	3	
2	A	1	Total	C	N	O	P	0
			31	10	5	13	3	

- Molecule 3 is 2-acetamido-2-deoxy-beta-D-glucopyranose (CCD ID: NAG) (formula: $C_8H_{15}NO_6$) (labeled as "Ligand of Interest" by depositor).



Mol	Chain	Residues	Atoms				AltConf
3	B	1	Total	C	N	O	0
			14	8	1	5	
3	B	1	Total	C	N	O	0
			14	8	1	5	
3	B	1	Total	C	N	O	0
			14	8	1	5	
3	C	1	Total	C	N	O	0
			14	8	1	5	
3	C	1	Total	C	N	O	0
			14	8	1	5	
3	C	1	Total	C	N	O	0
			14	8	1	5	
3	A	1	Total	C	N	O	0
			14	8	1	5	
3	A	1	Total	C	N	O	0
			14	8	1	5	
3	A	1	Total	C	N	O	0
			14	8	1	5	

- Molecule 4 is MAGNESIUM ION (CCD ID: MG) (formula: Mg) (labeled as "Ligand of Interest" by depositor).

Mol	Chain	Residues	Atoms		AltConf
4	B	1	Total	Mg	0
			1	1	

Continued on next page...

Continued from previous page...

Mol	Chain	Residues	Atoms		AltConf
4	C	1	Total 1	Mg 1	0
4	A	1	Total 1	Mg 1	0

- Molecule 5 is CALCIUM ION (CCD ID: CA) (formula: Ca) (labeled as "Ligand of Interest" by depositor).

Mol	Chain	Residues	Atoms		AltConf
5	C	1	Total 1	Ca 1	0
5	A	2	Total 2	Ca 2	0

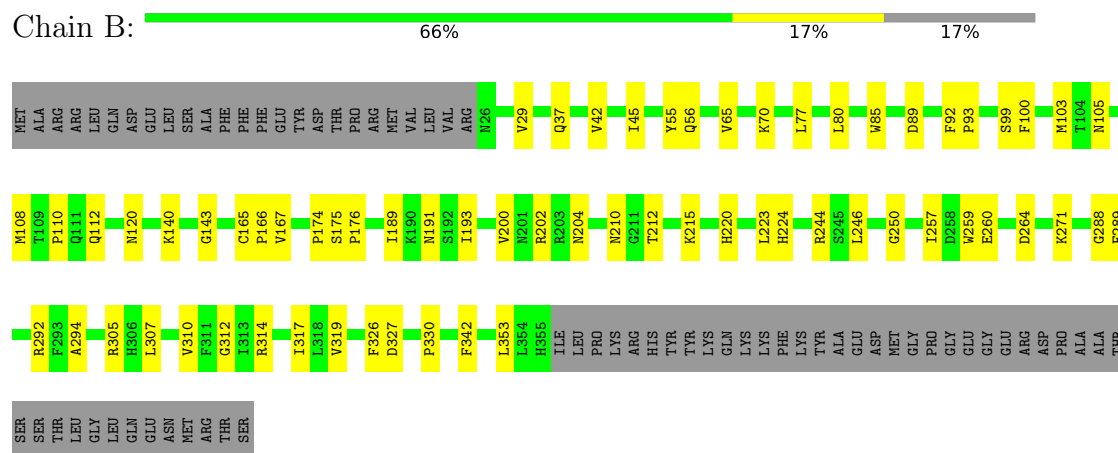
- Molecule 6 is water.

Mol	Chain	Residues	Atoms		AltConf
6	B	3	Total 3	O 3	0
6	C	2	Total 2	O 2	0
6	A	2	Total 2	O 2	0

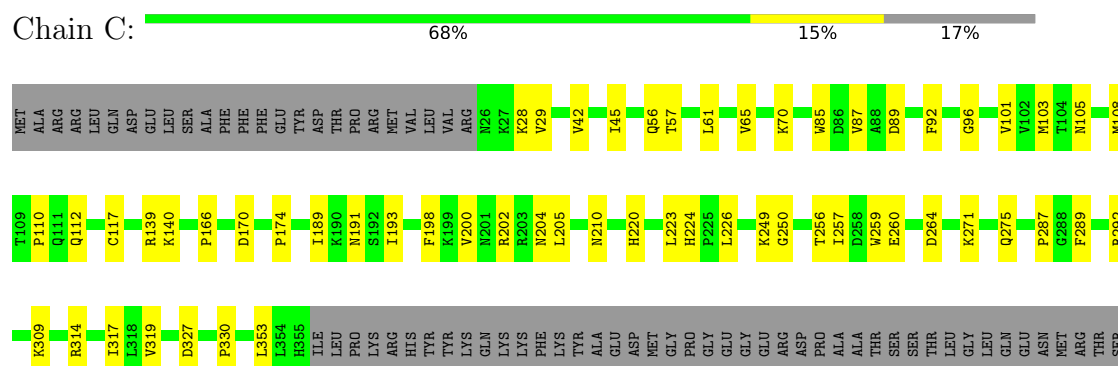
3 Residue-property plots

These plots are drawn for all protein, RNA, DNA and oligosaccharide chains in the entry. The first graphic for a chain summarises the proportions of the various outlier classes displayed in the second graphic. The second graphic shows the sequence view annotated by issues in geometry. Residues are color-coded according to the number of geometric quality criteria for which they contain at least one outlier: green = 0, yellow = 1, orange = 2 and red = 3 or more. Stretches of 2 or more consecutive residues without any outlier are shown as a green connector. Residues present in the sample, but not in the model, are shown in grey.

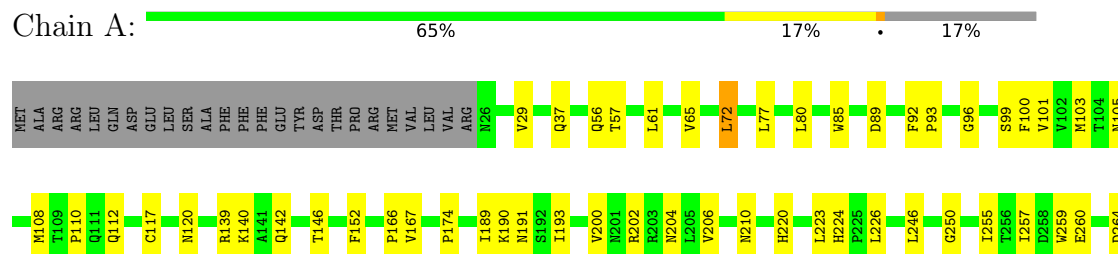
• Molecule 1: P2X purinoceptor 1



• Molecule 1: P2X purinoceptor 1



• Molecule 1: P2X purinoceptor 1





4 Experimental information

Property	Value	Source
EM reconstruction method	SINGLE PARTICLE	Depositor
Imposed symmetry	POINT, Not provided	
Number of particles used	245073	Depositor
Resolution determination method	FSC 0.143 CUT-OFF	Depositor
CTF correction method	PHASE FLIPPING AND AMPLITUDE CORRECTION	Depositor
Microscope	TFS KRIOS	Depositor
Voltage (kV)	300	Depositor
Electron dose ($e^-/\text{\AA}^2$)	50	Depositor
Minimum defocus (nm)	1000	Depositor
Maximum defocus (nm)	3000	Depositor
Magnification	Not provided	
Image detector	FEI FALCON IV (4k x 4k)	Depositor

5 Model quality [i](#)

5.1 Standard geometry [i](#)

Bond lengths and bond angles in the following residue types are not validated in this section: CA, ATP, NAG, MG

The Z score for a bond length (or angle) is the number of standard deviations the observed value is removed from the expected value. A bond length (or angle) with $|Z| > 5$ is considered an outlier worth inspection. RMSZ is the root-mean-square of all Z scores of the bond lengths (or angles).

Mol	Chain	Bond lengths		Bond angles	
		RMSZ	$\# Z > 5$	RMSZ	$\# Z > 5$
1	A	0.18	0/2655	0.40	0/3598
1	B	0.15	0/2655	0.36	2/3598 (0.1%)
1	C	0.17	0/2655	0.44	0/3598
All	All	0.16	0/7965	0.40	2/10794 (0.0%)

There are no bond length outliers.

All (2) bond angle outliers are listed below:

Mol	Chain	Res	Type	Atoms	Z	Observed(°)	Ideal(°)
1	B	271	LYS	CA-C-N	-5.78	114.65	120.31
1	B	271	LYS	C-N-CA	-5.78	114.65	120.31

There are no chirality outliers.

There are no planarity outliers.

5.2 Too-close contacts [i](#)

In the following table, the Non-H and H(model) columns list the number of non-hydrogen atoms and hydrogen atoms in the chain respectively. The H(added) column lists the number of hydrogen atoms added and optimized by MolProbity. The Clashes column lists the number of clashes within the asymmetric unit, whereas Symm-Clashes lists symmetry-related clashes.

Mol	Chain	Non-H	H(model)	H(added)	Clashes	Symm-Clashes
1	A	2588	0	2568	43	0
1	B	2588	0	2568	38	0
1	C	2588	0	2568	33	0
2	A	31	0	12	0	0
2	B	31	0	12	1	0
2	C	31	0	12	1	0

Continued on next page...

Continued from previous page...

Mol	Chain	Non-H	H(model)	H(added)	Clashes	Symm-Clashes
3	A	42	0	39	0	0
3	B	42	0	39	0	0
3	C	42	0	39	0	0
4	A	1	0	0	1	0
4	B	1	0	0	0	0
4	C	1	0	0	0	0
5	A	2	0	0	0	0
5	C	1	0	0	0	0
6	A	2	0	0	0	0
6	B	3	0	0	0	0
6	C	2	0	0	0	0
All	All	7996	0	7857	107	0

The all-atom clashscore is defined as the number of clashes found per 1000 atoms (including hydrogen atoms). The all-atom clashscore for this structure is 7.

All (107) close contacts within the same asymmetric unit are listed below, sorted by their clash magnitude.

Atom-1	Atom-2	Interatomic distance (Å)	Clash overlap (Å)
2:C:502:ATP:O3G	4:A:501:MG:MG	1.33	0.72
1:B:189:ILE:O	1:B:204:ASN:ND2	2.30	0.65
1:C:189:ILE:O	1:C:204:ASN:ND2	2.31	0.64
1:C:92:PHE:HE1	1:C:103:MET:HB2	1.67	0.60
1:B:314:ARG:NH1	1:A:96:GLY:O	2.36	0.59
1:B:93:PRO:HG2	1:B:100:PHE:HA	1.85	0.58
1:A:93:PRO:HG2	1:A:100:PHE:HA	1.86	0.57
1:B:220:HIS:HD2	1:B:223:LEU:H	1.51	0.56
1:C:220:HIS:HD2	1:C:223:LEU:H	1.51	0.56
1:A:220:HIS:HD2	1:A:223:LEU:H	1.52	0.56
1:C:108:MET:HE2	1:C:110:PRO:HB3	1.88	0.56
1:B:29:VAL:HG13	1:B:353:LEU:HD22	1.89	0.55
1:B:260:GLU:OE1	1:B:260:GLU:N	2.40	0.54
1:B:143:GLY:HA2	1:A:72:LEU:HD22	1.89	0.54
1:A:108:MET:HE2	1:A:110:PRO:HB3	1.89	0.54
1:C:96:GLY:O	1:A:314:ARG:NH1	2.39	0.54
1:A:260:GLU:N	1:A:260:GLU:OE1	2.41	0.53
1:C:260:GLU:N	1:C:260:GLU:OE1	2.42	0.53
2:B:401:ATP:O2'	1:C:140:LYS:NZ	2.41	0.52
1:A:29:VAL:HG13	1:A:353:LEU:HD22	1.91	0.52
1:A:246:LEU:O	1:A:250:GLY:N	2.41	0.52
1:A:220:HIS:HB3	1:A:224:HIS:H	1.75	0.52

Continued on next page...

Continued from previous page...

Atom-1	Atom-2	Interatomic distance (Å)	Clash overlap (Å)
1:C:70:LYS:HE2	1:A:140:LYS:HZ1	1.75	0.52
1:C:70:LYS:HE2	1:A:140:LYS:NZ	2.24	0.52
1:C:220:HIS:HB3	1:C:224:HIS:H	1.75	0.52
1:B:85:TRP:HE3	1:B:89:ASP:HB3	1.74	0.51
1:C:193:ILE:HD11	1:C:202:ARG:HB2	1.92	0.51
1:C:85:TRP:HE3	1:C:89:ASP:HB3	1.75	0.51
1:A:85:TRP:HE3	1:A:89:ASP:HB3	1.75	0.50
1:B:212:THR:HA	1:B:215:LYS:HE3	1.92	0.50
1:A:139:ARG:HG2	1:A:140:LYS:HG3	1.93	0.50
1:C:249:LYS:HE2	1:C:287:PRO:HG2	1.93	0.50
1:C:56:GLN:NE2	1:C:264:ASP:OD2	2.44	0.50
1:A:257:ILE:HB	1:A:319:VAL:HG22	1.94	0.49
1:A:37:GLN:HG3	1:A:342:PHE:HE1	1.77	0.49
1:B:165:CYS:HB3	1:B:166:PRO:HD3	1.95	0.49
1:A:37:GLN:HG3	1:A:342:PHE:CE1	2.47	0.49
1:A:77:LEU:HD12	1:A:80:LEU:HD23	1.94	0.49
1:B:37:GLN:HG3	1:B:342:PHE:CE1	2.48	0.48
1:B:99:SER:HB3	1:B:314:ARG:HE	1.78	0.48
1:A:57:THR:HB	1:A:330:PRO:HG2	1.96	0.48
1:C:220:HIS:CD2	1:C:223:LEU:H	2.31	0.48
1:C:29:VAL:HG13	1:C:353:LEU:HD22	1.95	0.48
1:B:77:LEU:HD12	1:B:80:LEU:HD23	1.96	0.48
1:A:292:ARG:HG2	1:A:307:LEU:HD11	1.96	0.47
1:A:105:ASN:HD21	1:A:174:PRO:HD2	1.79	0.47
1:B:112:GLN:OE1	1:B:305:ARG:NE	2.38	0.47
1:B:246:LEU:O	1:B:250:GLY:N	2.42	0.47
1:A:92:PHE:HB2	1:A:93:PRO:HD3	1.97	0.47
1:C:250:GLY:HA3	1:C:289:PHE:H	1.80	0.47
1:B:193:ILE:HD11	1:B:202:ARG:HB2	1.96	0.47
1:A:193:ILE:HD11	1:A:202:ARG:HB2	1.97	0.47
1:A:220:HIS:CD2	1:A:223:LEU:H	2.31	0.47
1:A:56:GLN:NE2	1:A:264:ASP:OD2	2.47	0.47
1:C:191:ASN:ND2	1:C:259:TRP:HE1	2.14	0.46
1:C:105:ASN:HD21	1:C:174:PRO:HD2	1.80	0.46
1:A:65:VAL:HG11	1:A:317:ILE:HG21	1.97	0.46
1:B:288:GLY:O	1:A:190:LYS:NZ	2.47	0.46
1:A:99:SER:HB3	1:A:314:ARG:HE	1.81	0.46
1:A:101:VAL:HG11	1:A:291:PHE:HE1	1.81	0.46
1:B:220:HIS:CD2	1:B:223:LEU:H	2.32	0.46
1:C:139:ARG:HG2	1:C:140:LYS:HG3	1.98	0.46
1:B:292:ARG:HG2	1:B:307:LEU:HD11	1.98	0.45

Continued on next page...

Continued from previous page...

Atom-1	Atom-2	Interatomic distance (Å)	Clash overlap (Å)
1:B:92:PHE:HB2	1:B:93:PRO:HD3	1.97	0.45
1:B:108:MET:HE2	1:B:110:PRO:HB3	1.98	0.45
1:A:112:GLN:HA	1:A:166:PRO:HD2	1.98	0.45
1:C:257:ILE:HB	1:C:319:VAL:HG22	1.98	0.45
1:B:250:GLY:HA3	1:B:289:PHE:H	1.81	0.45
1:A:120:ASN:HB3	1:A:142:GLN:HE22	1.82	0.45
1:C:42:VAL:HA	1:C:45:ILE:HG22	1.99	0.45
1:B:65:VAL:HG11	1:B:317:ILE:HG21	1.98	0.45
1:B:294:ALA:HB1	1:B:305:ARG:HD2	1.99	0.44
1:B:56:GLN:NE2	1:B:264:ASP:OD2	2.51	0.44
1:B:105:ASN:HD21	1:B:174:PRO:HD2	1.82	0.44
1:B:191:ASN:ND2	1:B:259:TRP:HE1	2.16	0.44
1:B:37:GLN:HG3	1:B:342:PHE:HE1	1.83	0.44
1:A:189:ILE:O	1:A:204:ASN:ND2	2.48	0.44
1:B:244:ARG:HH21	1:B:244:ARG:HA	1.82	0.43
1:A:327:ASP:HB3	1:A:330:PRO:HD2	2.00	0.43
1:B:103:MET:HG3	1:B:310:VAL:HG13	1.99	0.43
1:A:152:PHE:HE1	1:A:167:VAL:HG21	1.83	0.43
1:B:42:VAL:HA	1:B:45:ILE:HG22	2.01	0.43
1:B:327:ASP:HB3	1:B:330:PRO:HD2	2.01	0.43
1:C:101:VAL:HG22	1:C:314:ARG:HB3	2.00	0.43
1:A:191:ASN:ND2	1:A:259:TRP:HE1	2.17	0.42
1:B:220:HIS:HB3	1:B:224:HIS:H	1.85	0.42
1:B:70:LYS:HD3	1:C:140:LYS:HG2	2.00	0.42
1:C:57:THR:HG23	1:C:198:PHE:HZ	1.84	0.42
1:A:250:GLY:HA2	1:A:312:GLY:O	2.19	0.42
1:A:112:GLN:OE1	1:A:305:ARG:NE	2.42	0.42
1:C:65:VAL:HG11	1:C:317:ILE:HG21	2.02	0.42
1:C:205:LEU:HD13	1:A:285:LEU:HG	2.02	0.41
1:B:175:SER:HB2	1:B:176:PRO:HD3	2.01	0.41
1:C:112:GLN:HA	1:C:166:PRO:HD2	2.03	0.41
1:A:103:MET:HG3	1:A:310:VAL:HG13	2.01	0.41
1:A:259:TRP:CE2	1:A:272:PRO:HB3	2.55	0.41
1:A:322:LYS:HE3	1:A:322:LYS:HB2	1.66	0.41
1:C:256:THR:OG1	1:C:275:GLN:HB2	2.20	0.41
1:C:170:ASP:OD2	1:C:309:LYS:NZ	2.54	0.41
1:C:327:ASP:HB3	1:C:330:PRO:HD2	2.03	0.41
1:C:92:PHE:CE1	1:C:103:MET:HB2	2.50	0.41
1:A:255:ILE:HG12	1:A:276:PHE:HD1	1.86	0.40
1:A:206:VAL:HG21	1:A:226:LEU:HD13	2.04	0.40
1:B:55:TYR:HD2	1:B:326:PHE:HD1	1.68	0.40

Continued on next page...

Continued from previous page...

Atom-1	Atom-2	Interatomic distance (Å)	Clash overlap (Å)
1:B:257:ILE:HB	1:B:319:VAL:HG22	2.04	0.40
1:B:250:GLY:HA2	1:B:312:GLY:O	2.21	0.40
1:C:226:LEU:HD21	1:C:271:LYS:HD3	2.03	0.40

There are no symmetry-related clashes.

5.3 Torsion angles [i](#)

5.3.1 Protein backbone [i](#)

In the following table, the Percentiles column shows the percent Ramachandran outliers of the chain as a percentile score with respect to all PDB entries followed by that with respect to all EM entries.

The Analysed column shows the number of residues for which the backbone conformation was analysed, and the total number of residues.

Mol	Chain	Analysed	Favoured	Allowed	Outliers	Percentiles	
1	A	328/399 (82%)	323 (98%)	5 (2%)	0	100	100
1	B	328/399 (82%)	324 (99%)	4 (1%)	0	100	100
1	C	328/399 (82%)	320 (98%)	8 (2%)	0	100	100
All	All	984/1197 (82%)	967 (98%)	17 (2%)	0	100	100

There are no Ramachandran outliers to report.

5.3.2 Protein sidechains [i](#)

In the following table, the Percentiles column shows the percent sidechain outliers of the chain as a percentile score with respect to all PDB entries followed by that with respect to all EM entries.

The Analysed column shows the number of residues for which the sidechain conformation was analysed, and the total number of residues.

Mol	Chain	Analysed	Rotameric	Outliers	Percentiles	
1	A	282/343 (82%)	275 (98%)	7 (2%)	42	53
1	B	282/343 (82%)	277 (98%)	5 (2%)	54	67
1	C	282/343 (82%)	275 (98%)	7 (2%)	42	53

Continued on next page...

Continued from previous page...

Mol	Chain	Analysed	Rotameric	Outliers	Percentiles
All	All	846/1029 (82%)	827 (98%)	19 (2%)	47 59

All (19) residues with a non-rotameric sidechain are listed below:

Mol	Chain	Res	Type
1	B	120	ASN
1	B	140	LYS
1	B	167	VAL
1	B	200	VAL
1	B	210	ASN
1	C	28	LYS
1	C	61	LEU
1	C	87	VAL
1	C	117	CYS
1	C	200	VAL
1	C	210	ASN
1	C	292	ARG
1	A	61	LEU
1	A	72	LEU
1	A	117	CYS
1	A	146	THR
1	A	200	VAL
1	A	210	ASN
1	A	292	ARG

Sometimes sidechains can be flipped to improve hydrogen bonding and reduce clashes. All (13) such sidechains are listed below:

Mol	Chain	Res	Type
1	B	83	GLN
1	B	120	ASN
1	B	191	ASN
1	B	220	HIS
1	B	275	GLN
1	B	290	ASN
1	C	56	GLN
1	C	83	GLN
1	C	191	ASN
1	C	220	HIS
1	A	83	GLN
1	A	191	ASN
1	A	220	HIS

5.3.3 RNA ⓘ

There are no RNA molecules in this entry.

5.4 Non-standard residues in protein, DNA, RNA chains ⓘ

There are no non-standard protein/DNA/RNA residues in this entry.

5.5 Carbohydrates ⓘ

There are no oligosaccharides in this entry.

5.6 Ligand geometry ⓘ

Of 18 ligands modelled in this entry, 6 are monoatomic - leaving 12 for Mogul analysis.

In the following table, the Counts columns list the number of bonds (or angles) for which Mogul statistics could be retrieved, the number of bonds (or angles) that are observed in the model and the number of bonds (or angles) that are defined in the Chemical Component Dictionary. The Link column lists molecule types, if any, to which the group is linked. The Z score for a bond length (or angle) is the number of standard deviations the observed value is removed from the expected value. A bond length (or angle) with $|Z| > 2$ is considered an outlier worth inspection. RMSZ is the root-mean-square of all Z scores of the bond lengths (or angles).

Mol	Type	Chain	Res	Link	Bond lengths			Bond angles		
					Counts	RMSZ	$\# Z > 2$	Counts	RMSZ	$\# Z > 2$
3	NAG	A	503	1	14,14,15	0.25	0	17,19,21	0.40	0
2	ATP	A	502	4	26,33,33	0.90	1 (3%)	31,52,52	1.52	6 (19%)
3	NAG	C	503	1	14,14,15	0.24	0	17,19,21	0.39	0
3	NAG	A	504	1	14,14,15	0.21	0	17,19,21	0.42	0
2	ATP	B	401	4	26,33,33	0.90	1 (3%)	31,52,52	1.51	6 (19%)
3	NAG	B	403	1	14,14,15	0.23	0	17,19,21	0.42	0
3	NAG	C	505	1	14,14,15	0.23	0	17,19,21	0.38	0
2	ATP	C	502	-	26,33,33	0.89	1 (3%)	31,52,52	1.52	6 (19%)
3	NAG	B	404	1	14,14,15	0.24	0	17,19,21	0.37	0
3	NAG	C	504	1	14,14,15	0.21	0	17,19,21	0.42	0
3	NAG	A	505	1	14,14,15	0.22	0	17,19,21	0.37	0
3	NAG	B	402	1	14,14,15	0.26	0	17,19,21	0.39	0

In the following table, the Chirals column lists the number of chiral outliers, the number of chiral centers analysed, the number of these observed in the model and the number defined in the Chemical Component Dictionary. Similar counts are reported in the Torsion and Rings columns. '-' means no outliers of that kind were identified.

Mol	Type	Chain	Res	Link	Chirals	Torsions	Rings
3	NAG	A	503	1	-	2/6/23/26	0/1/1/1
2	ATP	A	502	4	-	3/18/38/38	0/3/3/3
3	NAG	C	503	1	-	2/6/23/26	0/1/1/1
3	NAG	A	504	1	-	1/6/23/26	0/1/1/1
2	ATP	B	401	4	-	6/18/38/38	0/3/3/3
3	NAG	B	403	1	-	1/6/23/26	0/1/1/1
3	NAG	C	505	1	-	2/6/23/26	0/1/1/1
2	ATP	C	502	-	-	5/18/38/38	0/3/3/3
3	NAG	B	404	1	-	2/6/23/26	0/1/1/1
3	NAG	C	504	1	-	1/6/23/26	0/1/1/1
3	NAG	A	505	1	-	2/6/23/26	0/1/1/1
3	NAG	B	402	1	-	2/6/23/26	0/1/1/1

All (3) bond length outliers are listed below:

Mol	Chain	Res	Type	Atoms	Z	Observed(Å)	Ideal(Å)
2	A	502	ATP	C5-C4	2.34	1.47	1.40
2	C	502	ATP	C5-C4	2.33	1.47	1.40
2	B	401	ATP	C5-C4	2.33	1.47	1.40

All (18) bond angle outliers are listed below:

Mol	Chain	Res	Type	Atoms	Z	Observed(°)	Ideal(°)
2	C	502	ATP	N3-C2-N1	-3.50	123.21	128.68
2	A	502	ATP	N3-C2-N1	-3.47	123.26	128.68
2	B	401	ATP	N3-C2-N1	-3.46	123.27	128.68
2	A	502	ATP	C3'-C2'-C1'	3.12	105.67	100.98
2	A	502	ATP	PA-O3A-PB	-3.11	122.14	132.83
2	C	502	ATP	C3'-C2'-C1'	3.09	105.63	100.98
2	B	401	ATP	C3'-C2'-C1'	3.06	105.59	100.98
2	C	502	ATP	PA-O3A-PB	-3.00	122.53	132.83
2	B	401	ATP	PA-O3A-PB	-2.98	122.60	132.83
2	C	502	ATP	PB-O3B-PG	-2.84	123.09	132.83
2	A	502	ATP	C4-C5-N7	-2.80	106.48	109.40
2	B	401	ATP	C4-C5-N7	-2.78	106.50	109.40
2	C	502	ATP	C4-C5-N7	-2.71	106.57	109.40
2	A	502	ATP	PB-O3B-PG	-2.71	123.53	132.83
2	B	401	ATP	PB-O3B-PG	-2.65	123.72	132.83
2	A	502	ATP	C2-N1-C6	2.12	122.38	118.75
2	B	401	ATP	C2-N1-C6	2.11	122.37	118.75
2	C	502	ATP	C2-N1-C6	2.11	122.37	118.75

There are no chirality outliers.

All (29) torsion outliers are listed below:

Mol	Chain	Res	Type	Atoms
2	B	401	ATP	C5'-O5'-PA-O2A
2	C	502	ATP	C5'-O5'-PA-O1A
2	C	502	ATP	C5'-O5'-PA-O2A
2	A	502	ATP	C5'-O5'-PA-O2A
3	C	503	NAG	O5-C5-C6-O6
3	A	503	NAG	O5-C5-C6-O6
3	B	402	NAG	O5-C5-C6-O6
3	C	505	NAG	O5-C5-C6-O6
3	B	404	NAG	O5-C5-C6-O6
3	A	505	NAG	O5-C5-C6-O6
3	A	505	NAG	C4-C5-C6-O6
3	C	505	NAG	C4-C5-C6-O6
3	B	404	NAG	C4-C5-C6-O6
3	C	503	NAG	C4-C5-C6-O6
3	A	503	NAG	C4-C5-C6-O6
3	C	504	NAG	O5-C5-C6-O6
3	B	402	NAG	C4-C5-C6-O6
3	A	504	NAG	O5-C5-C6-O6
3	B	403	NAG	O5-C5-C6-O6
2	B	401	ATP	C5'-O5'-PA-O3A
2	A	502	ATP	C5'-O5'-PA-O3A
2	B	401	ATP	PG-O3B-PB-O1B
2	B	401	ATP	C5'-O5'-PA-O1A
2	A	502	ATP	C5'-O5'-PA-O1A
2	C	502	ATP	PB-O3A-PA-O2A
2	C	502	ATP	C5'-O5'-PA-O3A
2	B	401	ATP	PG-O3B-PB-O2B
2	B	401	ATP	PB-O3A-PA-O1A
2	C	502	ATP	PB-O3A-PA-O1A

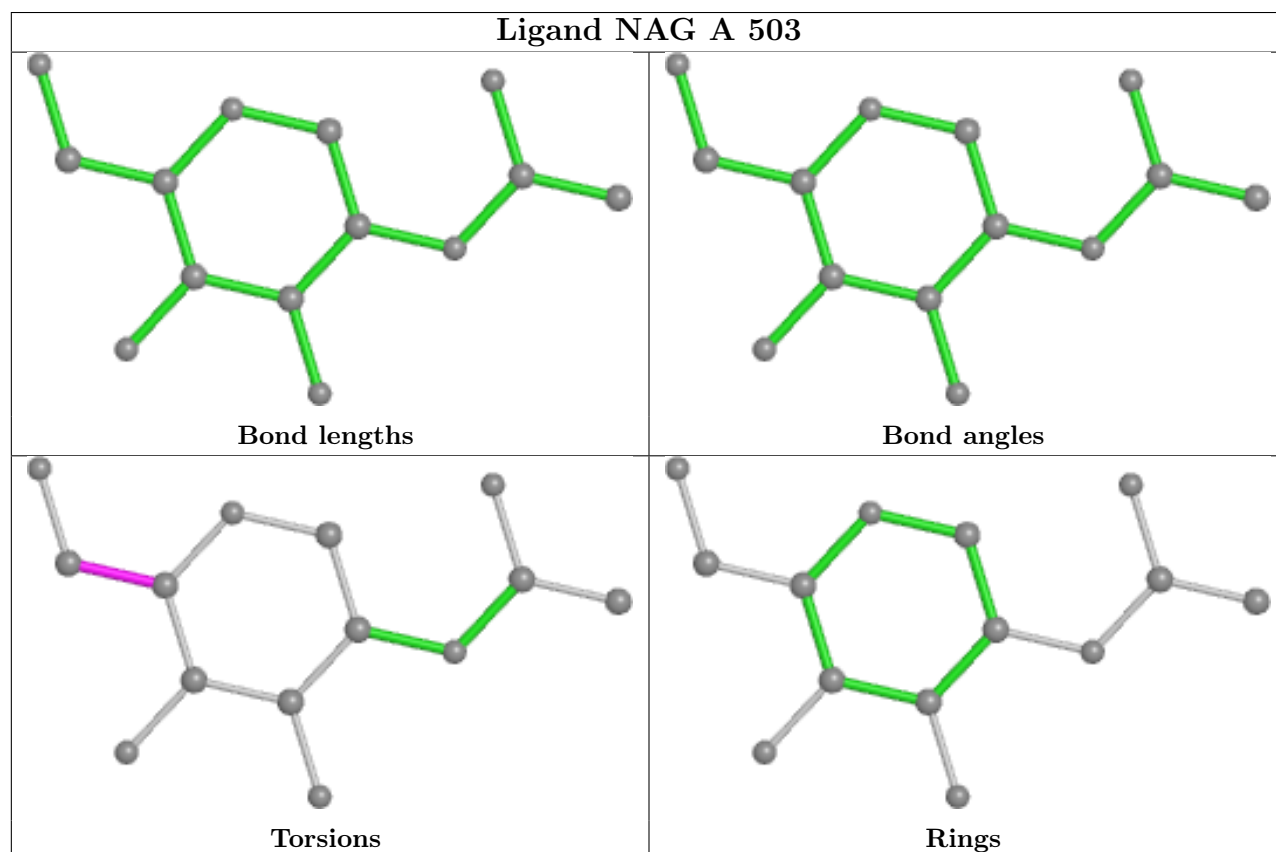
There are no ring outliers.

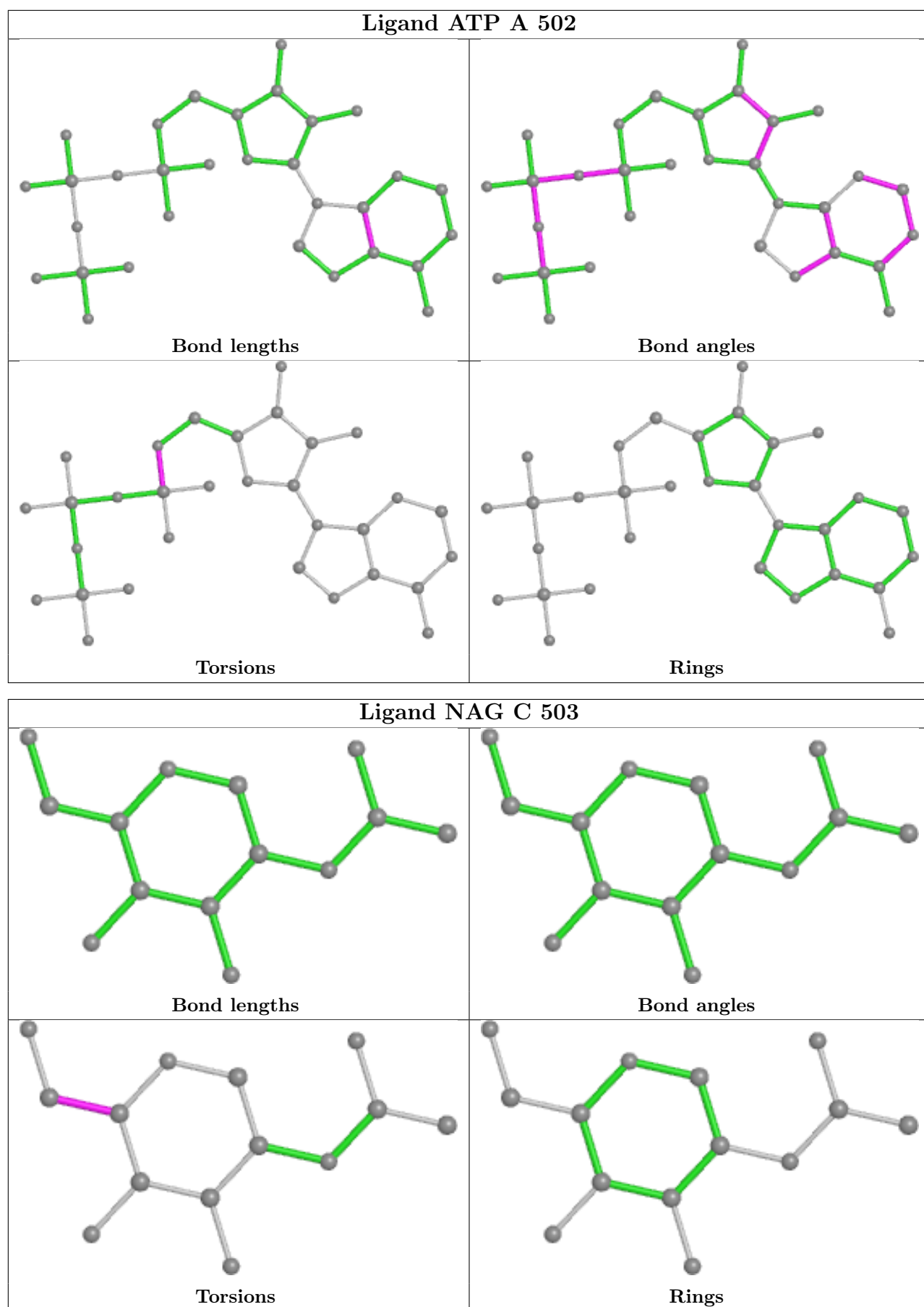
2 monomers are involved in 2 short contacts:

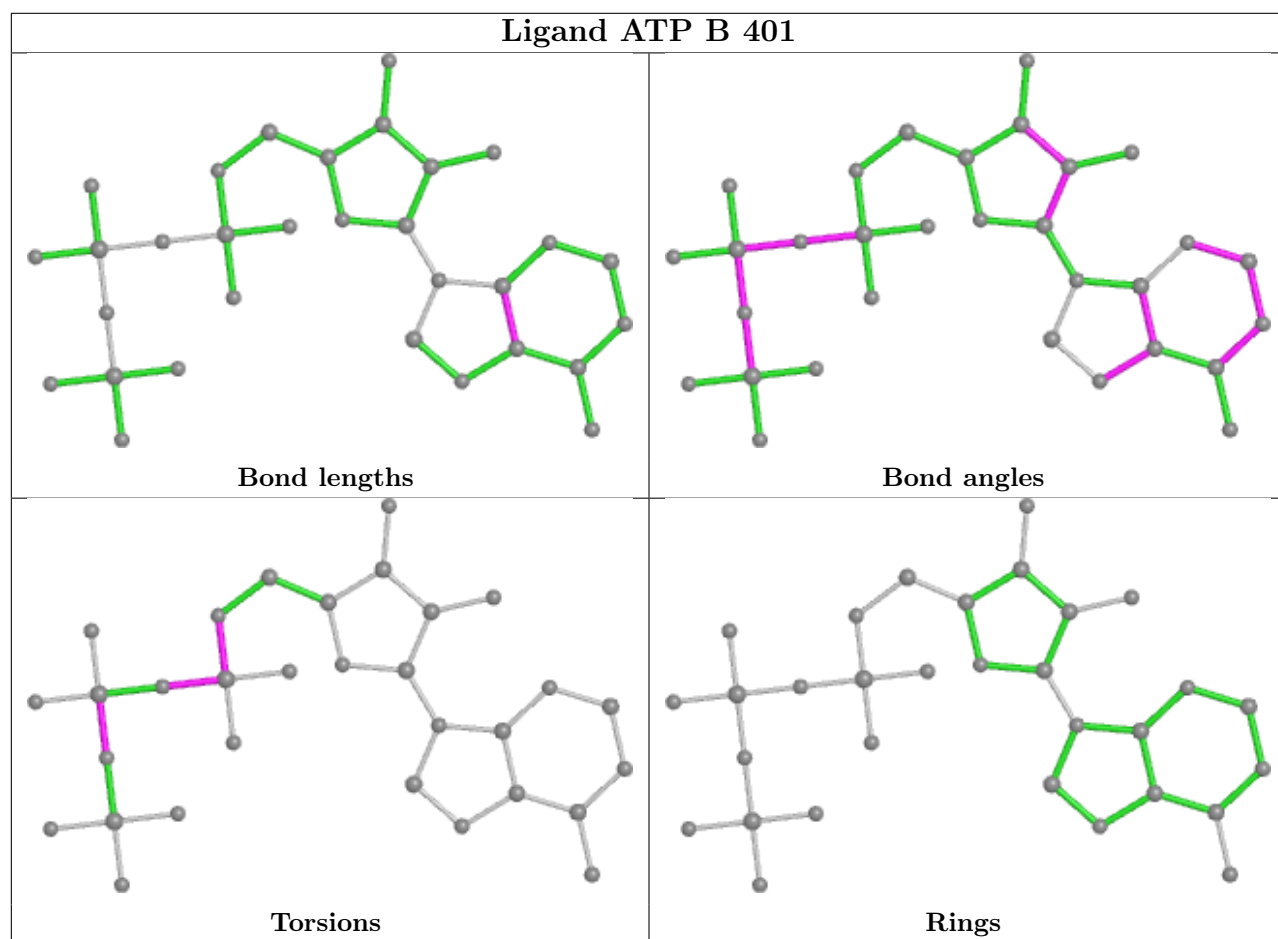
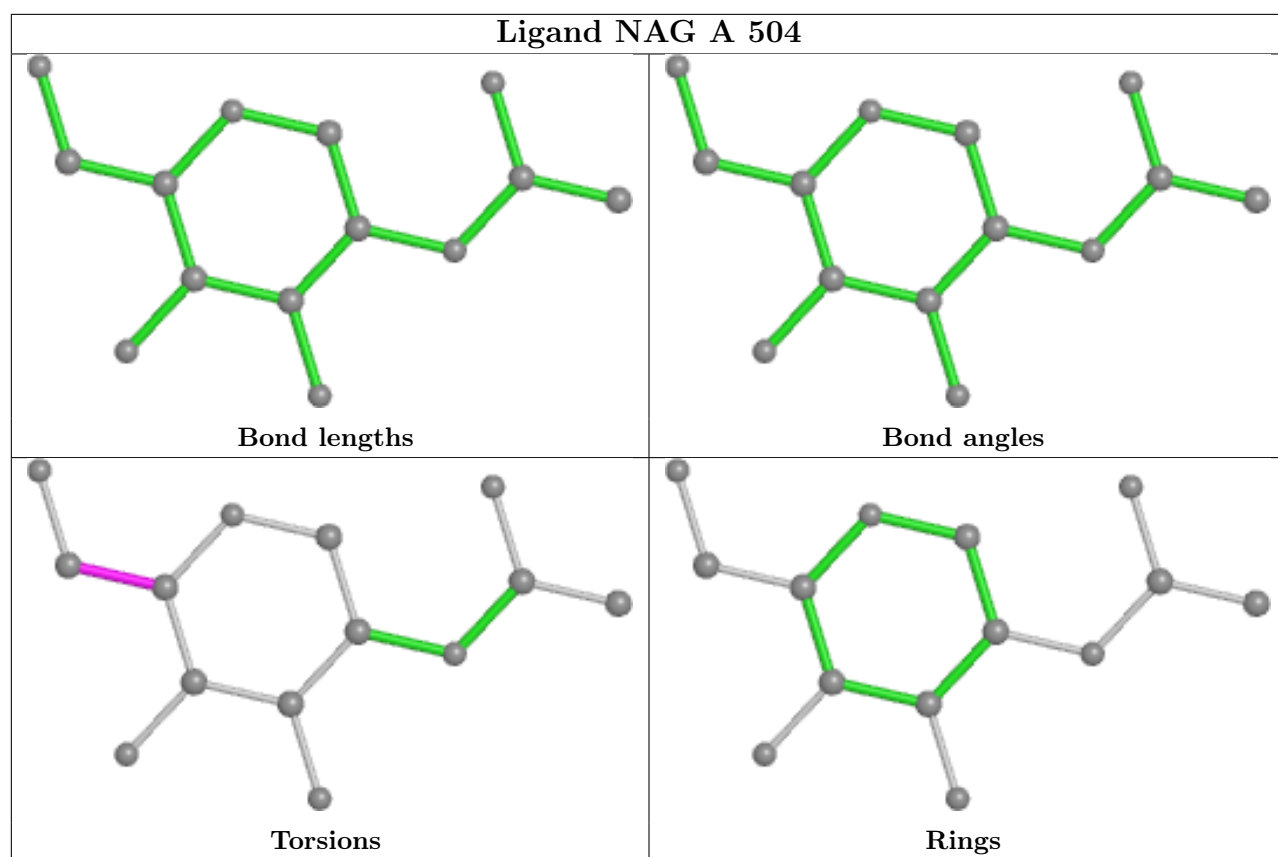
Mol	Chain	Res	Type	Clashes	Symm-Clashes
2	B	401	ATP	1	0
2	C	502	ATP	1	0

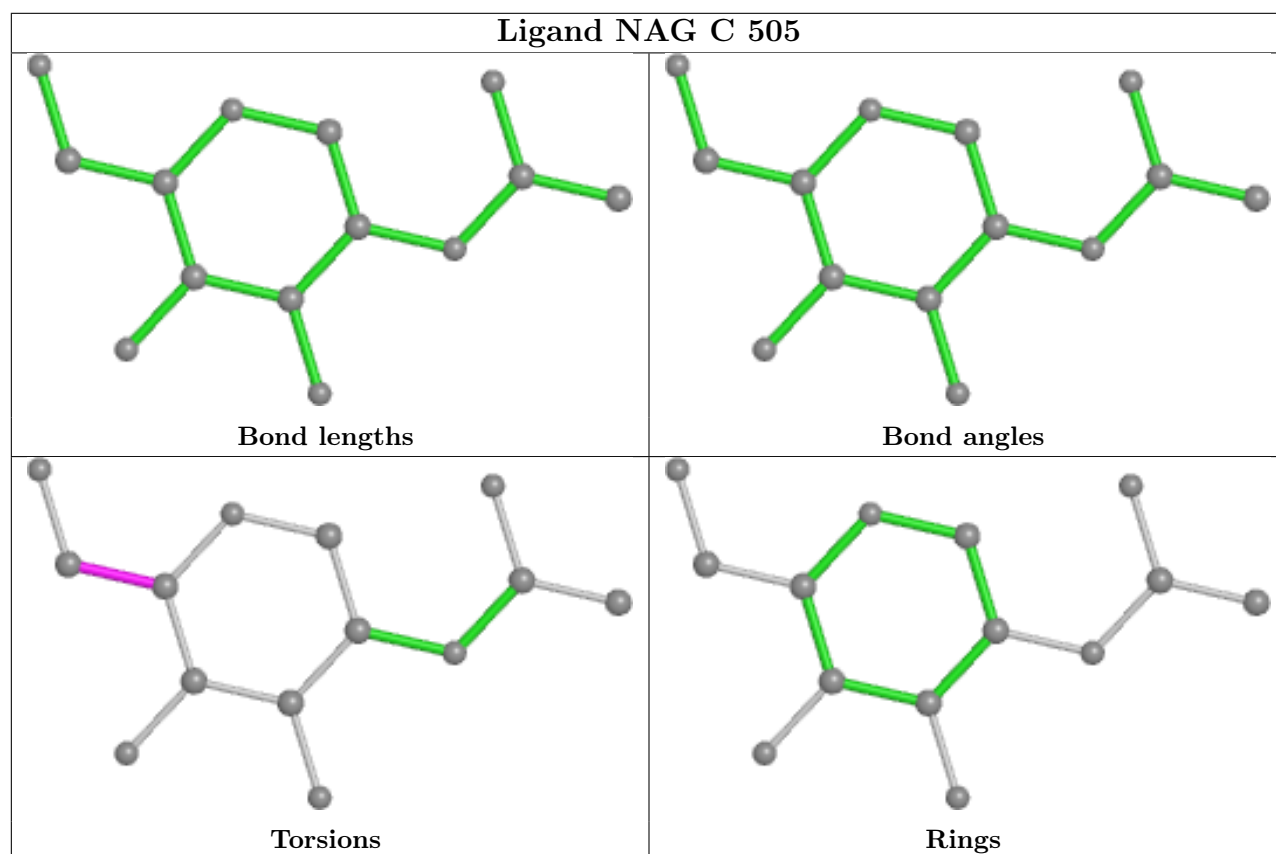
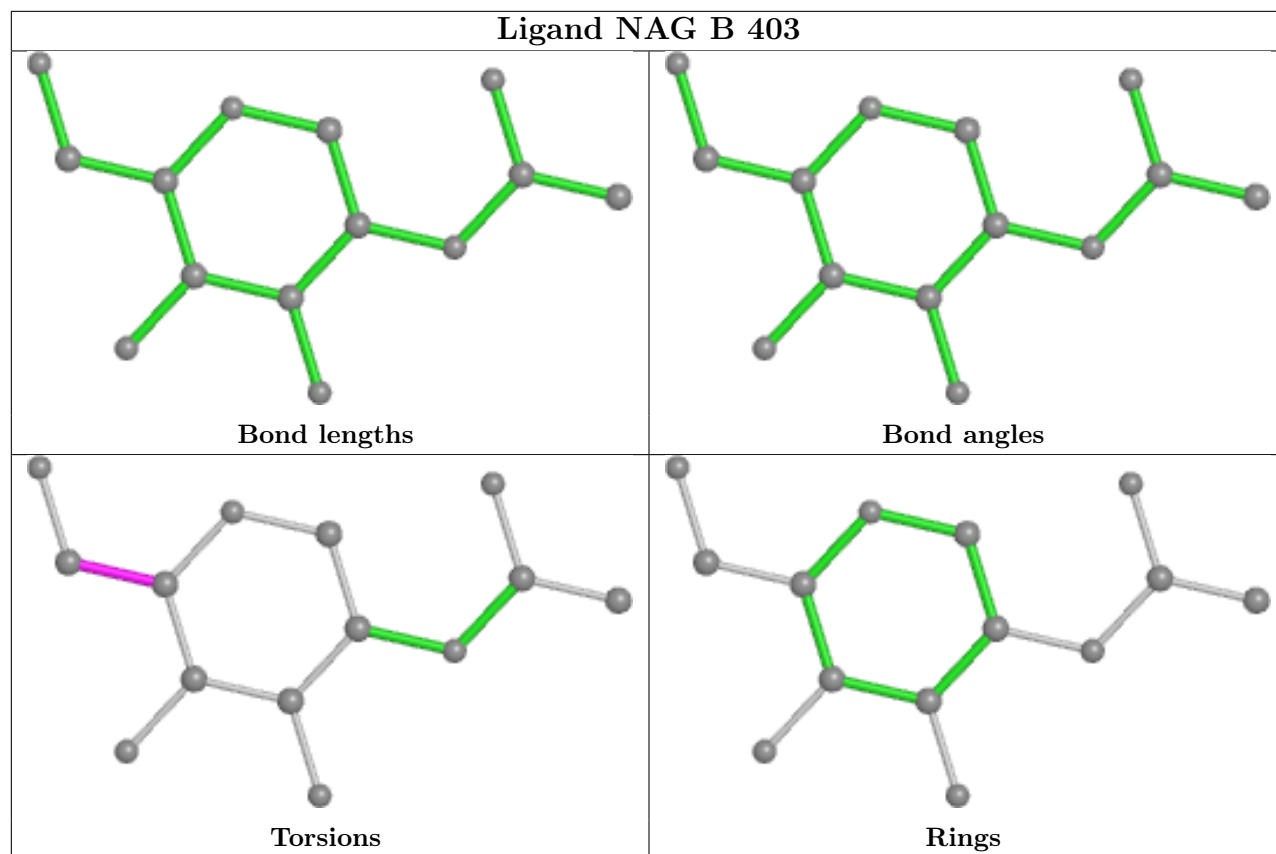
The following is a two-dimensional graphical depiction of Mogul quality analysis of bond lengths, bond angles, torsion angles, and ring geometry for all instances of the Ligand of Interest. In addition, ligands with molecular weight > 250 and outliers as shown on the validation Tables will

also be included. For torsion angles, if less than 5% of the Mogul distribution of torsion angles is within 10 degrees of the torsion angle in question, then that torsion angle is considered an outlier. Any bond that is central to one or more torsion angles identified as an outlier by Mogul will be highlighted in the graph. For rings, the root-mean-square deviation (RMSD) between the ring in question and similar rings identified by Mogul is calculated over all ring torsion angles. If the average RMSD is greater than 60 degrees and the minimal RMSD between the ring in question and any Mogul-identified rings is also greater than 60 degrees, then that ring is considered an outlier. The outliers are highlighted in purple. The color gray indicates Mogul did not find sufficient equivalents in the CSD to analyse the geometry.

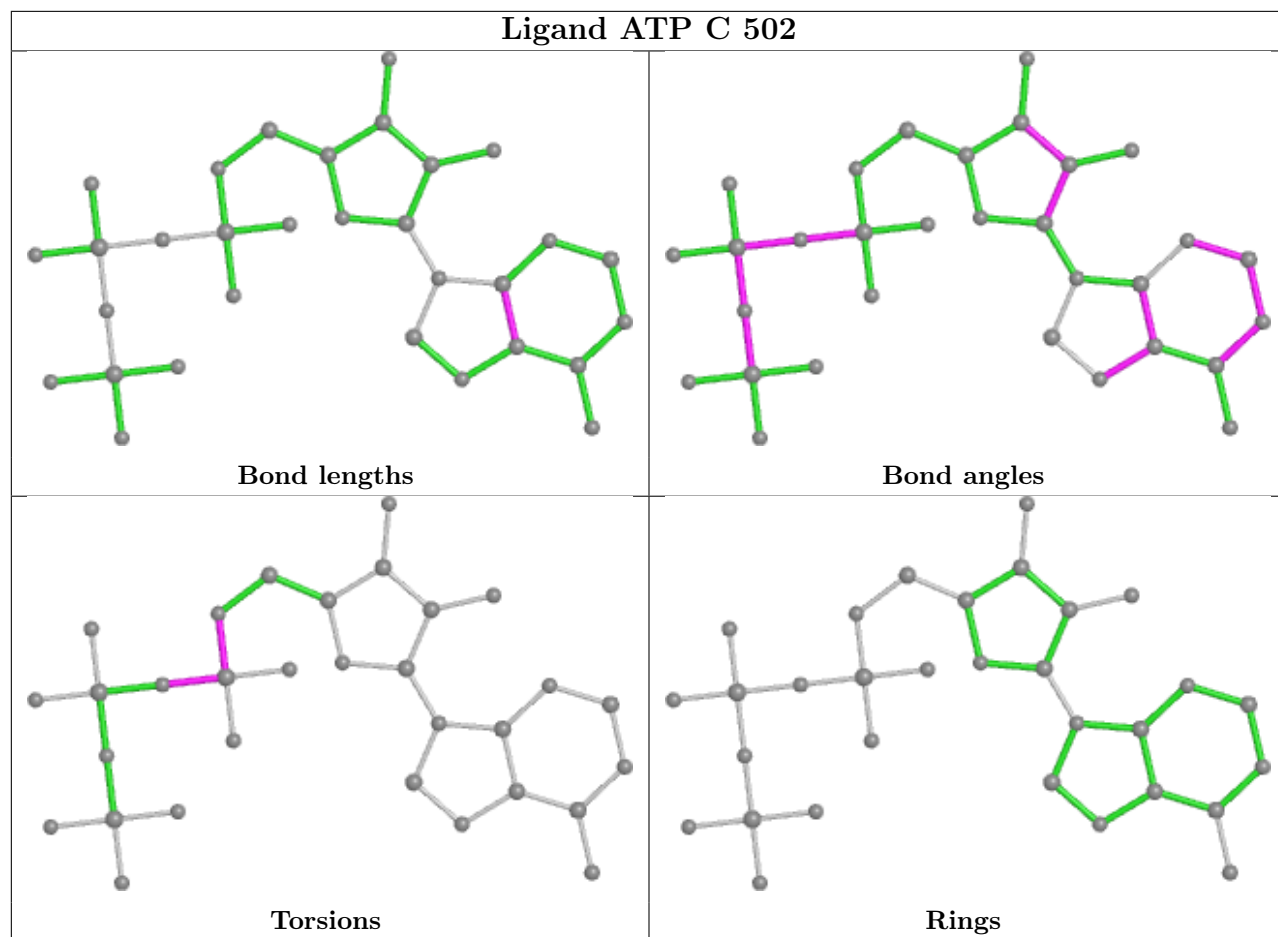




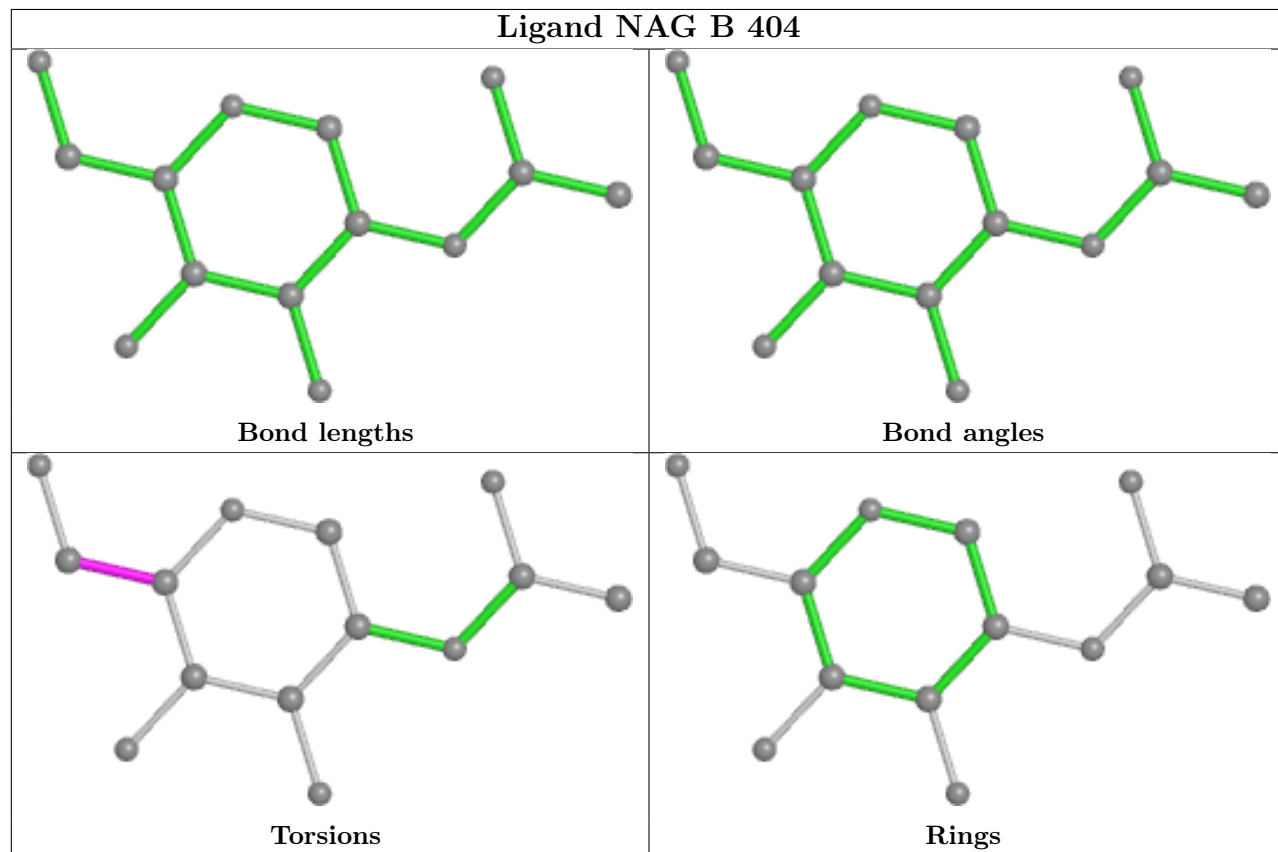


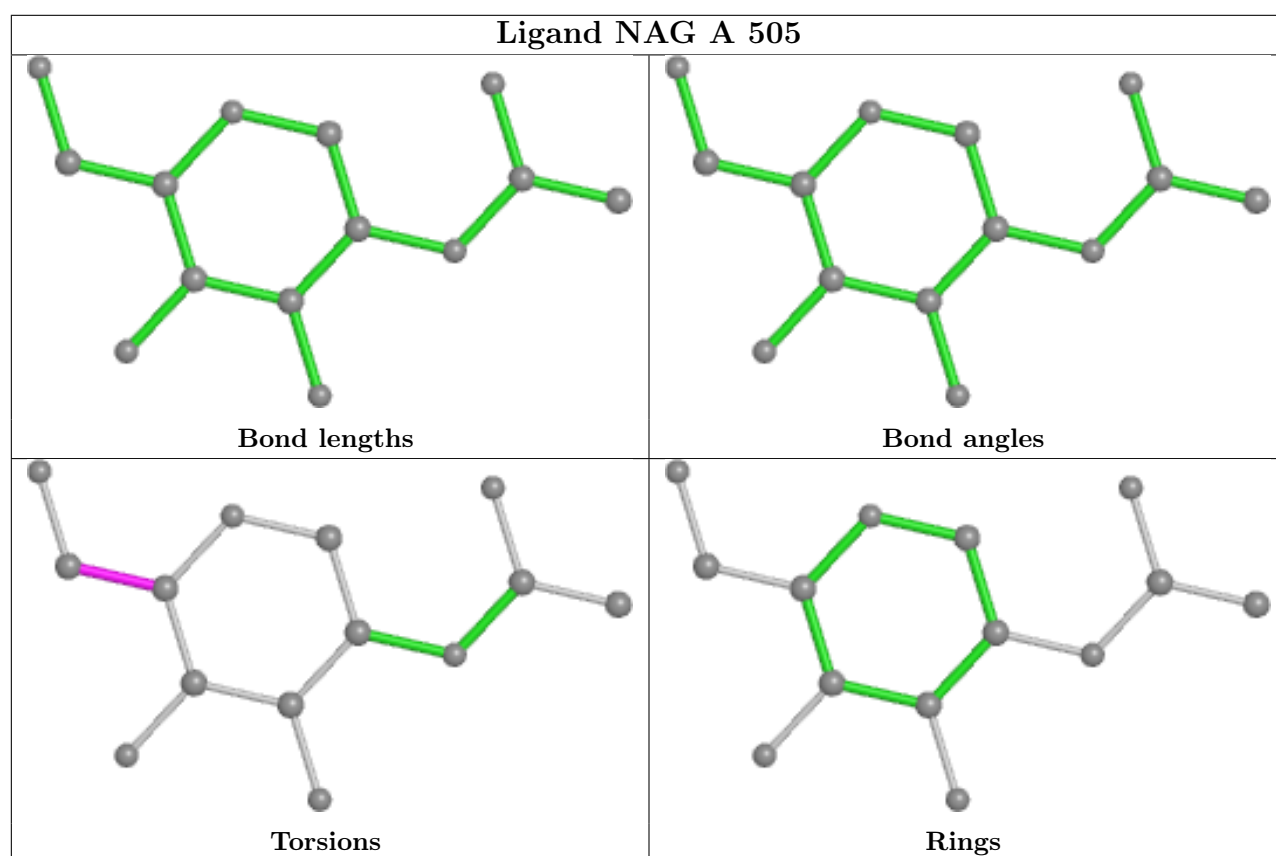
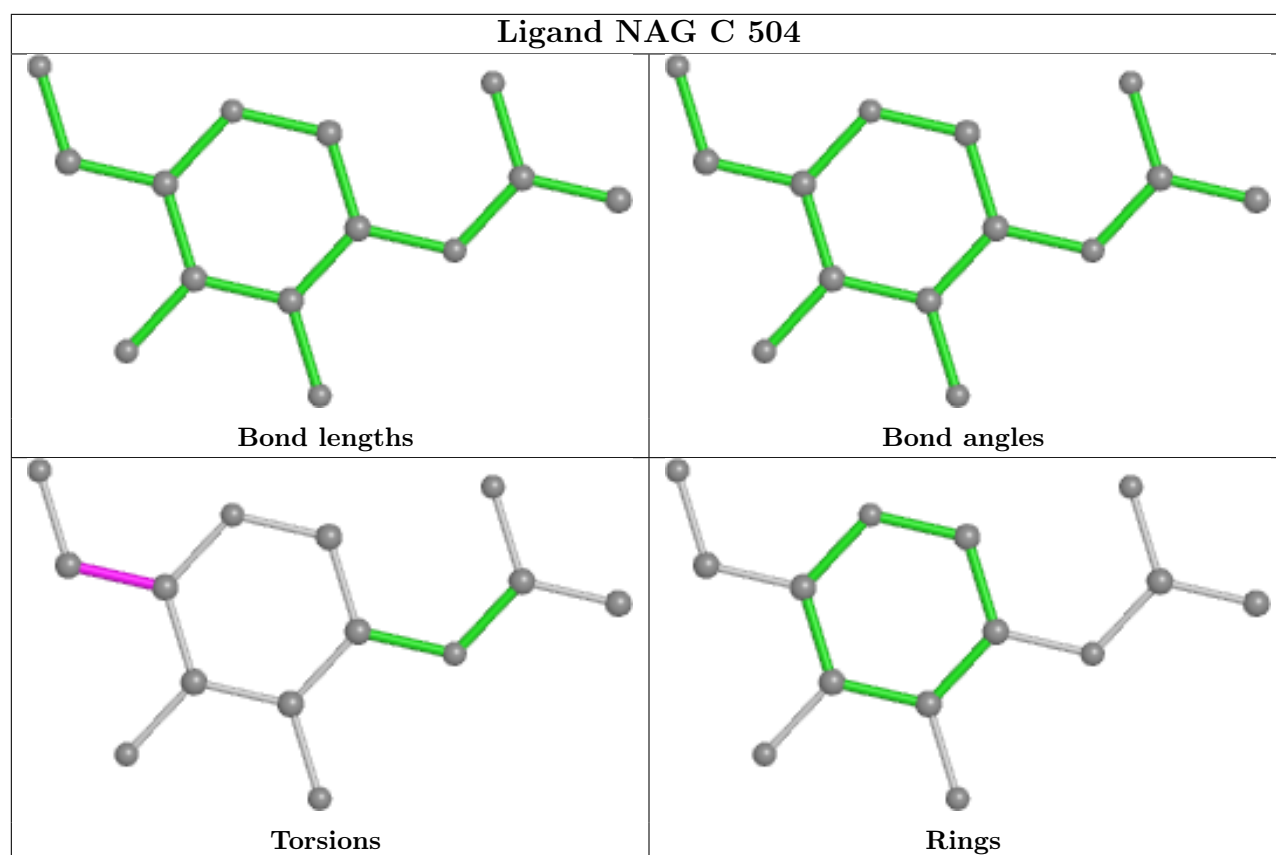


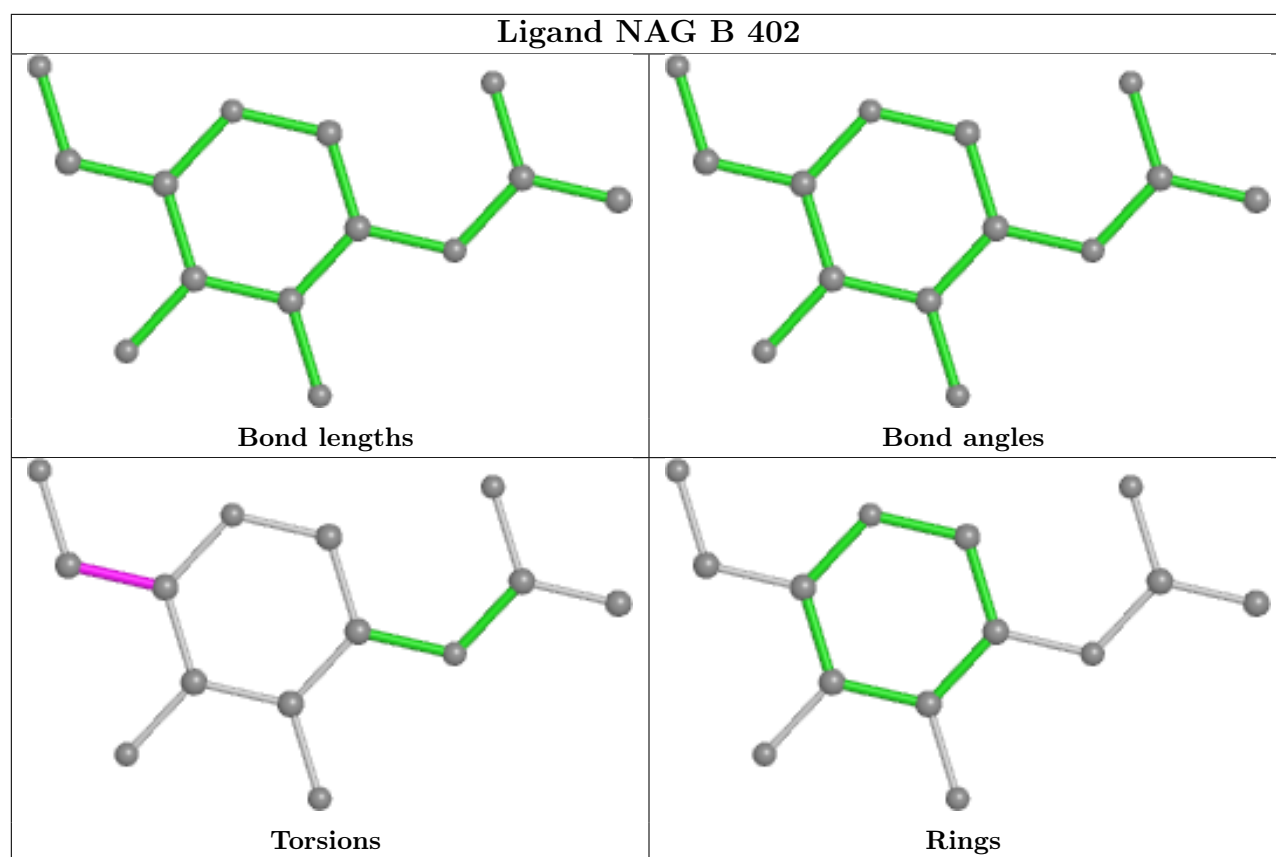
Ligand ATP C 502



Ligand NAG B 404







5.7 Other polymers [i](#)

There are no such residues in this entry.

5.8 Polymer linkage issues [i](#)

There are no chain breaks in this entry.